

Ica

Cameras



Ica Cameras



Harold M. Bennett
U.S. Agent
153 West 23rd Street
New York

Ica Cameras

Ica Cameras are the product of Europe's foremost camera manufacturer.

The selection of models offered herein has been made with the utmost care, to meet the requirements of the American photographic public.

All models take standard American plates or films, they have American size tripod sockets, distances are marked in feet, the diaphragms are engraved in the familiar F system, and instruction books are in English.

The lens equipments include the world renowned Carl Zeiss Tessars.

In New York a service shop is maintained, well stocked with all necessary repair parts, repairs being made by thoroughly trained mechanics.

Ica Cameras are sold all over the world by leading dealers in cameras and photographic supplies.

Ica Roll Film Cameras

Ica roll film cameras have set a new standard in design and construction for cameras of this type. The mechanical features, the precise workmanship, distinctive designs and ultra quality of Ica roll film cameras are the same characteristics that have won an enviable reputation for Ica plate cameras.

In handling one of these remarkable instruments, one is impressed with the solidity of construction, smoothness of all movements and the elegant finish in black and nickel. The impression is that Ica cameras are the creation of the world's cleverest camera designers, that each Ica is a camera masterpiece, an instrument that will inspire its proud owner to the utmost in photography.

Each of the models described herein uses standard size American film.

They have standard American tripod sockets, the diaphragm markings are in the f system, and the focusing scales are engraved in feet.

The shutter is the Compur, having a range of speeds up to 1/250 of a second in the smaller sizes, and up to 1/150 of a second in the larger sizes. A more dependable shutter is not to be had than the Compur.

The optical equipment of Ica roll film cameras offers a selection for the most discriminating, including as it does the well-known Hekla Anastigmat, working at f:6.8, as a moderate-priced lens, the Dominar f:4.5, desirable for its extremely large aperture and moderate price, and the always popular Carl Zeiss lenses.

The larger cameras described herein may all be converted into plate cameras by removal of a rear panel and resetting of the focusing scale for plates. A ground glass focusing back may then be inserted, making the roll film camera into a very efficient plate camera in but a few seconds.

Each of these instruments has suitable vertical and horizontal front movement and is supplied with Iconometer finder and flexible cable shutter release.

Icarette B



The Icarette B embodies many distinctive features entirely its own. Although a miniature camera, it makes pictures $2\frac{1}{4} \times 2\frac{1}{4}$ inches and uses any make of roll film. It is a suitable camera to carry constantly, readily fitting the pocket. The many opportunities to make pictures that present themselves during our daily routine amply justify having the Icarette B as one's constant companion.

Its field of picture making is almost unlimited when equipped with the faster lenses and Compur Shutter. Excellent results are obtainable even when the sky is overcast. The extreme shutter speed, $1/300$ of a second, will catch rapidly moving objects such as airplanes in flight, races, and athletic events. It is equally capable of portraiture and interior work. The high quality of the lenses furnished insures exceptional results in enlarging from Icarette negatives. The picture it makes lends itself particularly well to enlarging, as being square, it may easily be proportioned in enlarging to a vertical or horizontal print.

Icurette B

The Icurette B is also furnished with a plate back so that plates $4\frac{1}{2} \times 6$ cm. ($1\frac{3}{4} \times 2\frac{1}{2}$ inches) may be used. It is fitted with rising front, the movement of which is accurately indicated by the Iconometer finder with which the camera is equipped. The Iconometer is absolutely accurate and permits using the camera at eye level. A brilliant indirect finder is also fitted.

The lenses furnished with the Icurette B have a focal length of three inches and are as follows: Hekla f:6.8, Dominar f:4.5 and Zeiss Tessar f:4.5.

Focusing is done by a lever focusing adjustment to as close as three feet. The Icurette B is unexcelled as a miniature camera for pictures under all conditions from which perfect enlargements up to 11×14 inches can be made. The Compur Shutter furnished has speeds ranging from 1 to $1/300$ of a second, besides time and bulb exposures. The camera is provided with tripod socket of standard size.

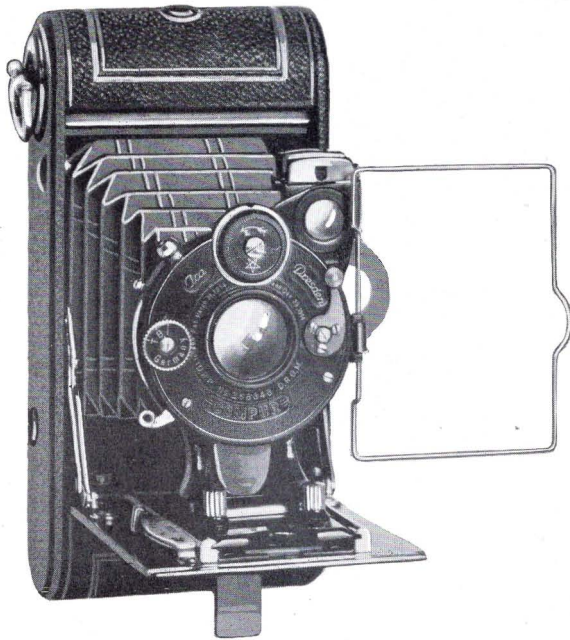
The method of loading is extremely simple, as the entire back is readily removed, allowing easy access to the film chambers. With each camera is furnished a cable shutter release.



Size: $1\frac{1}{4} \times 3\frac{1}{8} \times 4\frac{7}{8}$ inches.

Weight: 15 ounces.

V. P. Icarette



The V. P. Icarette makes pictures size $1\frac{5}{8} \times 2\frac{1}{2}$ inches — pictures that are not only as good, but which would be actually impossible to produce with a large camera. Its shutter is the Compur, with a range of speeds from one to $1/300$ of a second. This speed arrests motion in photographing rapidly moving objects, such as athletes in action, races, diving, aeroplanes in flight. From these negatives enlargements 8×10 inches, or even larger, can be made with splendid results.

The best professional motion pictures are made with Carl Zeiss Tessar lenses on a film even smaller than the film used in the V. P. Icarette, yet we all marvel at the

V. P. Icarette

perfect detail in motion pictures, even when enlarged to the size of a theatre curtain.

With the V. P. Icarette the three-inch Carl Zeiss Tessar lens f:4.5 produces depth of field with illumination and definition the same as it does in the movies.

For such accuracy the camera must be absolutely free from any mechanical defects; it must be substantially built, and dependable. The V. P. Icarette is the refinement of these important qualities – it is just about all that a little camera can be. It is entirely of metal construction, finished in polished black enamel with nickel trimmings, and covered with fine grain leather. Beside the usual brilliant reflecting finder, it has an Ica Iconometer finder. This consists of a wire frame and sight enabling the user to observe the subject to be photographed full size from the level of the eye.

The V. P. Icarette may be used in either horizontal or vertical positions. The shutter can be operated with its flexible cable release on time or bulb for slow exposures of any duration. Thus this very versatile little camera is as suitable for interior pictures and even portraiture as it is for snapshots. As a snapshot camera it can be used in many instances where larger cameras would fail completely.

Due to the small size film used, the V. P. Icarette is a very economical camera to operate. In fact, it costs no more to use a V. P. Icarette having postcard-size enlargements made than to use a postcard-size camera. The results are as good if not better, the camera is easier to operate, and far more convenient to carry.

Size: $5\frac{1}{8} \times 2\frac{3}{4} \times 1\frac{1}{4}$ inches. Weight: 14 ounces.

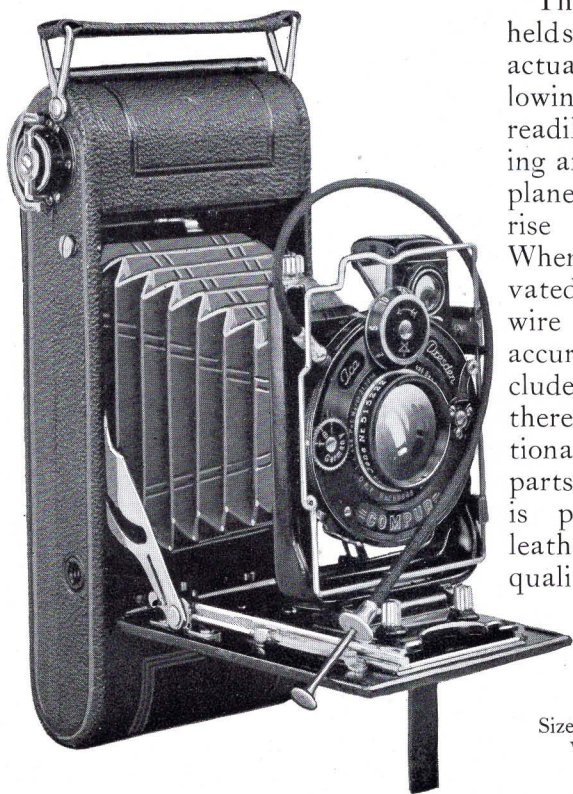
Icarette C

Although it is a very compact camera, the $2\frac{1}{4} \times 3\frac{1}{4}$ -inch picture produced with the Icarette C is a suitable size for contact prints, while the enlarging possibilities are almost unlimited.

The lenses furnished are the Carl Zeiss Tessar, or Ica Dominar, 4 inch focus, both having apertures of $f:4.5$. The shutter is the Compur with speeds from 1 to $1/250$ of a second.

The construction is entirely of metal, all exposed metal parts being finished in polished black enamel and nickel.

The roll of film is held securely by spring actuated holders, allowing the film to turn readily and presenting an absolutely flat plane. There is ample rise to the front. When the front is elevated the Iconometer wire finder indicates accurately the view included. When closed there are no objectionable projecting parts. The covering is pin seal heavy leather of the finest quality.



Size: $7 \times 3\frac{1}{2} \times 1\frac{1}{2}$ inches.
Weight: 25 ounces.

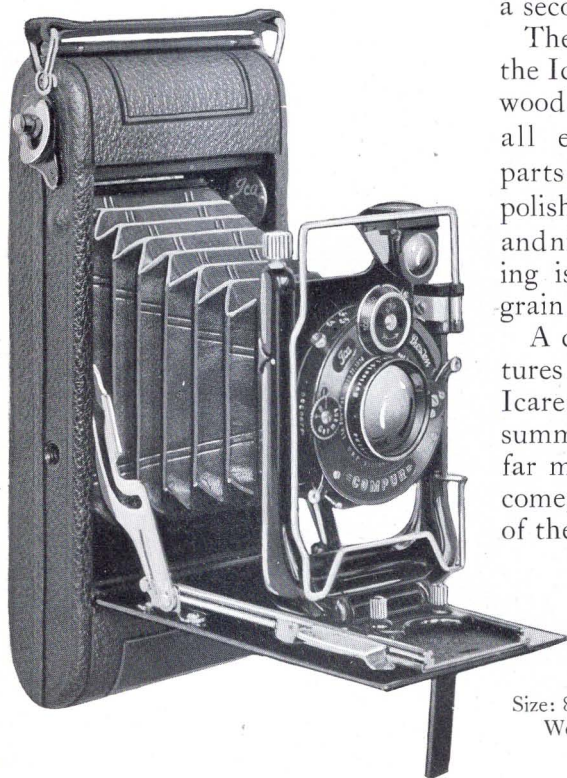
Icarette D

The Icarette D is slightly larger than the C, making pictures $2\frac{1}{2} \times 4\frac{1}{4}$ inches. It uses either six or twelve exposure film, has the Iconometer finder, rising front, lever focusing device and in every detail it is just as perfect as a camera can be. It is a camera that will endure and is a most satisfactory companion.

The lenses furnished are the Carl Zeiss Tessar and Ica Dominar, $4\frac{3}{4}$ inch focus, both having apertures of f:4.5. The shutter is the Compur with speeds from 1 to $1/250$ of a second.

The construction of the Icarette D is part wood and part metal, all exposed metal parts being finished in polished black enamel and nickel. The covering is of the finest grain leather.

A collection of pictures made with the Icarette D during a summer will be worth far more, in years to come, than the cost of the camera.



Size: $8\frac{1}{4} \times 4 \times 1\frac{1}{2}$ inches.
Weight: 31 ounces.

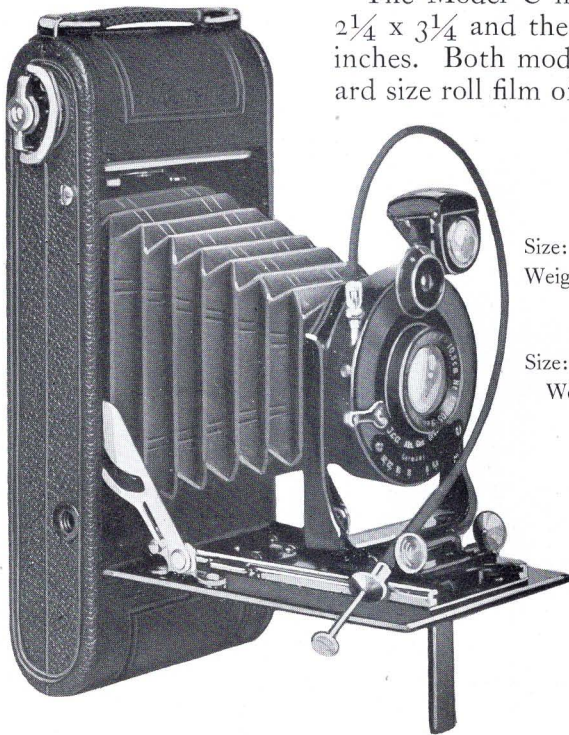
Junior Icarette

To those who require a camera with a minimum number of adjustments, simplicity of design and sturdy construction, and to whom price is an important consideration, the Junior Icarette will make a strong appeal.

It is made of light metal covered with leather. The shutter is automatic, giving exposures of $1/25$, $1/50$, $1/100$ of a second, time and bulb.

The lens is the Novar, an anastigmat of $f:6.8$ aperture, fast enough for snapshots even in a poor light. The excellent quality of the lens permits enlargements of many diameters.

The Model C makes pictures $2\frac{1}{4} \times 3\frac{1}{4}$ and the D, $2\frac{1}{2} \times 4\frac{1}{4}$ inches. Both models use standard size roll film of any make.



Model C

Size: $7 \times 3\frac{1}{2} \times 1\frac{1}{4}$ in.

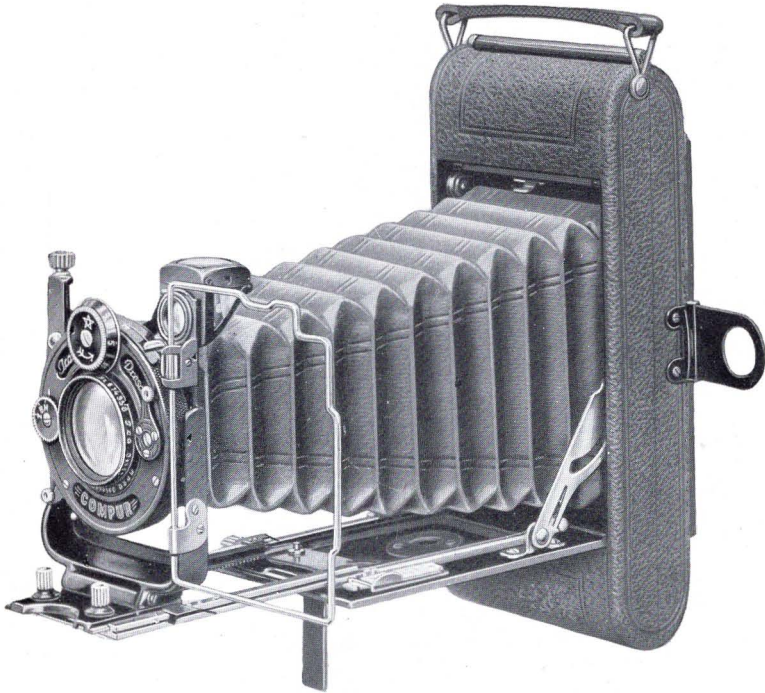
Weight: $15\frac{1}{8}$ ounces.

Model D

Size: $7\frac{7}{8} \times 3\frac{1}{2} \times 1\frac{1}{2}$ in.

Weight: 24 ounces.

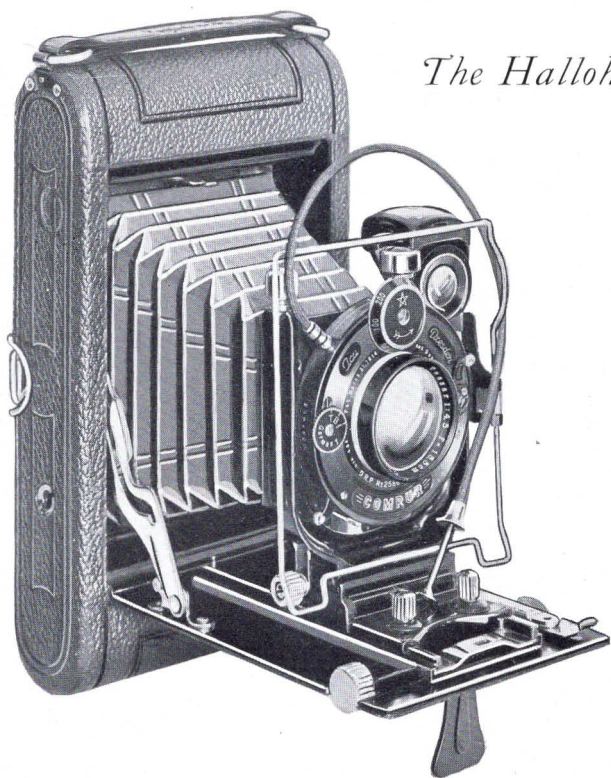
Icarette L



The Icarette L is a new model roll film and plate camera having double extension bellows. It takes six exposure roll films $2\frac{1}{4} \times 3\frac{1}{4}$ inches of any make, or may be used for plates $2\frac{1}{2} \times 3\frac{1}{2}$ inches ($6\frac{1}{2} \times 9$ cm.) by means of single metal plateholders. The back is fitted with a panel which is readily removable so that a plateholder or focusing back may be inserted. The $6\frac{1}{2}$ inch bellows is long enough to permit using a Distar lens, or when plates are used objects within two feet of the camera may be photographed. The lenses furnished are the Carl Zeiss Tessar $f:4.5$ and the Dominar $f:4.5$ of 4-inch focal length. The shutter is the Compur with speeds of from 1 to $1/250$ of a second.

Size: $6\frac{3}{4} \times 3\frac{1}{8} \times 1\frac{3}{8}$ inches. Weight: $25\frac{1}{2}$ ounces.

Halloh Nixe A Lloyd Nixe B



The Halloh

These roll film models will appeal to those who desire the very popular $3\frac{1}{4} \times 4\frac{1}{4}$ or $3\frac{1}{4} \times 5\frac{1}{2}$ inch sizes. Nothing has been spared in making them the most perfect in design and workmanship of any roll film cameras made. The efficient design of their film chambers and spool holders insures free smooth winding of the film. Their fronts are particularly strong, and have horizontal and vertical movements operated by screw adjustments.

Halloh Nixe A Lloyd Nixe B

The Ica Iconometer direct view finder on these models shows the correct view at all times even with front off center and bellows extended.

The backs are provided with removable panels so that the view may be examined and focused on the ground glass when plate holders are used. A hooded ground-glass back as well as plate holders may be obtained at any time.

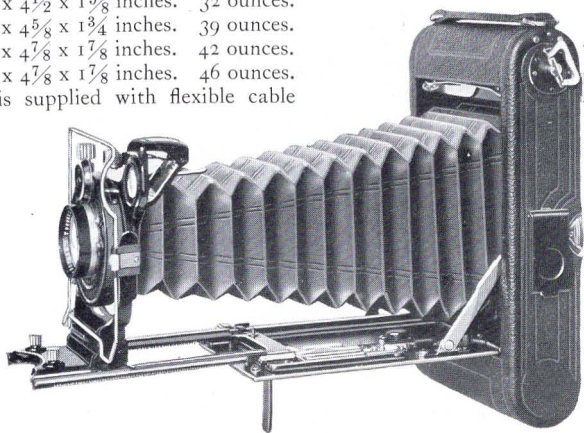
The Halloh, for $3\frac{1}{4} \times 4\frac{1}{4}$, and the Lloyd, for $3\frac{1}{4} \times 5\frac{1}{2}$ inch pictures, have single extension bellows, while the Nixe A, $3\frac{1}{4} \times 4\frac{1}{4}$, and the Nixe B, $3\frac{1}{4} \times 5\frac{1}{2}$ inches, have double bellows of 9 inches in the A and 12 inches in the B. It is therefore possible to use the Zeiss Distar lens with the Dominar or Zeiss Tessar f:4.5 or the single element of the convertible lenses of either model of the Nixe. The lenses regularly furnished with the Halloh and Lloyd are the Hekla f:6.8, Dominar and Carl Zeiss Tessar f:4.5. Besides these lenses the Nixe models are furnished with the Carl Zeiss Amatar f:6.8 and Protar f:6.3 in the Nixe A, and f:7 in the Nixe B.

The shutter is the Compur with speeds from 1 to $1/500$ of a second.

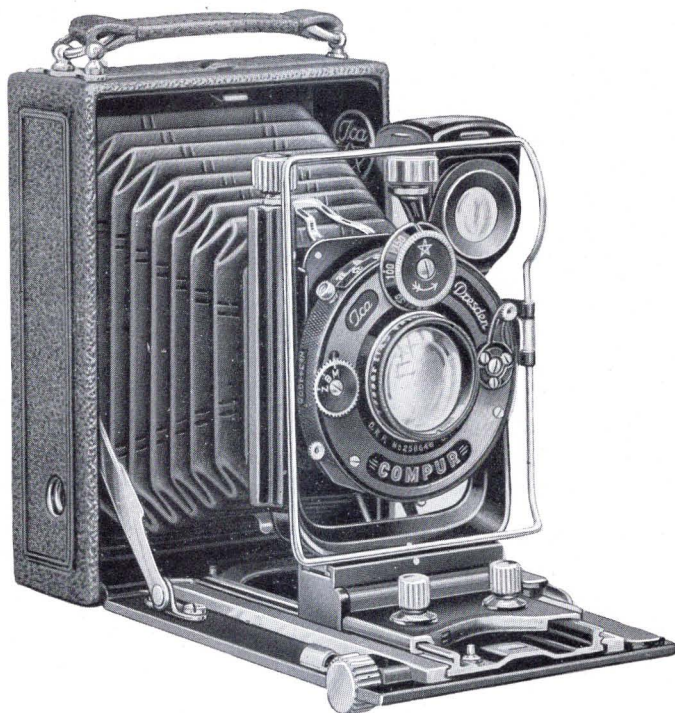
	<i>Size</i>	<i>Weight</i>
Halloh.....	$7\frac{3}{4} \times 4\frac{1}{2} \times 1\frac{5}{8}$ inches.	32 ounces.
Nixe A.....	$8\frac{1}{4} \times 4\frac{5}{8} \times 1\frac{3}{4}$ inches.	39 ounces.
Lloyd.....	$9\frac{1}{2} \times 4\frac{7}{8} \times 1\frac{7}{8}$ inches.	42 ounces.
Nixe B.....	$9\frac{1}{2} \times 4\frac{7}{8} \times 1\frac{7}{8}$ inches.	46 ounces.

Each camera is supplied with flexible cable shutter release.

The Nixe



Ica Ideal A



For its size, it is safe to say that no more versatile camera is to be had than the Ideal A, using plates $2\frac{1}{2} \times 3\frac{1}{2}$ inches ($6\frac{1}{2} \times 9$ centimeters) or film packs $2\frac{1}{4} \times 3\frac{1}{4}$ inches. It is constructed of metal, finished in polished black enamel, and covered with pin grain seal leather. The liberal bellows extension of $8\frac{1}{2}$ inches, permits focusing on objects as close as nine inches from the camera, a decided advantage in making copies or photographing small objects.

The Distar Lens can be furnished for the Ideal when fitted with the Carl Zeiss Tessar $f:4.5$ or Tessar $f:6.3$ or with the Dominar Anastigmat $f:4.5$ of $4\frac{3}{4}$ inch focus. Other lenses supplied are the Amatar $f:6.8$ of $3\frac{1}{2}$ and Protar $f:6.3$ of 4 inch focus.

Ica Ideal A

The Amatar and Protar lenses are convertible, permitting the use of the rear element of the lens for distance pictures, the resulting image being about double the diameter of that produced with the combined lens. The shutter is the Compur with speeds ranging from 1 to 1/250 of a second.

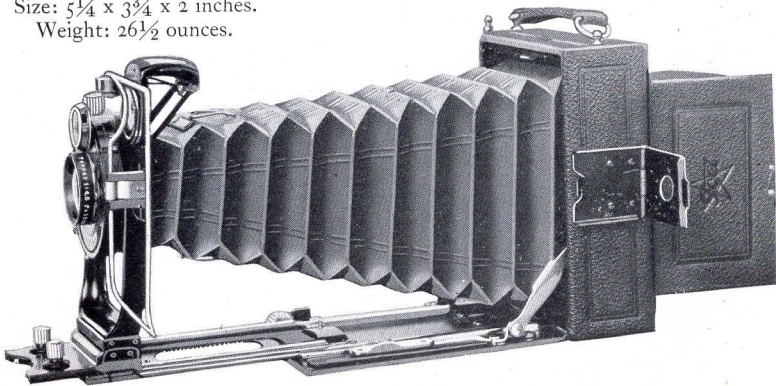
The lens panel of the Ideal has both vertical and horizontal movements of one inch, considerable for a camera of its size. These adjustments, together with the long extension, are most important in architectural photography.

The Iconometer wire finder furnished with the Ideal A is absolutely accurate, indicating correctly the front movements as well as the correct view when the Distar Lens or rear element of the convertible lens is used.

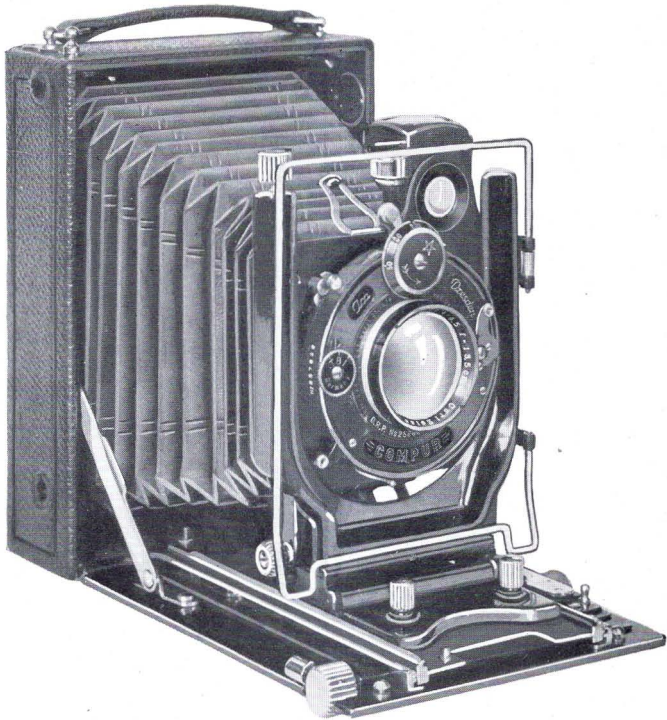
For critical work, focusing may be done while viewing the image on the hooded ground glass. The movable bed is operated by rack and pinion adjustment and can be locked at any desired point. The bellows is fitted with an automatic take-up, eliminating the possibility of its sagging and perhaps cutting off part of the picture.

With each camera are included three single metal plateholders, film pack adapter and cable shutter release.

Size: $5\frac{1}{4} \times 3\frac{3}{4} \times 2$ inches.
Weight: $26\frac{1}{2}$ ounces.



Ica Ideal B



The Ica Ideal B is a camera of larger proportions than any of the foregoing models. The size of the pictures it produces is $3\frac{1}{2} \times 4\frac{3}{4}$ inches (9 x 12 centimeters).

The dimensions of the Ica Ideal B when closed are $1\frac{3}{4} \times 5 \times 6\frac{1}{2}$ inches, and the weight $41\frac{1}{2}$ ounces, except when furnished with the Carl Zeiss Tessar, f:4.5, or with the Dominar Anastigmat f:4.5, which necessitates a larger camera, $2 \times 5 \times 6\frac{1}{2}$ inches, and weighing $45\frac{1}{2}$ ounces.

The construction is entirely of metal, insuring strength and extreme rigidity. The finish is black enamel and nickel, the covering being of fine grain seal leather.

Ica Ideal B

Its bellows extension of $11\frac{1}{2}$ inches is sufficient to permit using the rear elements of the convertible lenses, also permitting the use of the Distar Lens with the Carl Zeiss Tessars and Dominar Anastigmats f:4.5, or the single elements of the convertible Amatar and Protar. Photographs can be made of objects within 10 inches of the camera, a necessity when making copies and pictures of small objects.

The front has a vertical movement of $1\frac{1}{4}$ inches and a horizontal movement of $1\frac{3}{8}$ inches. There is also a vertical swing back, quite an innovation in such a small camera.

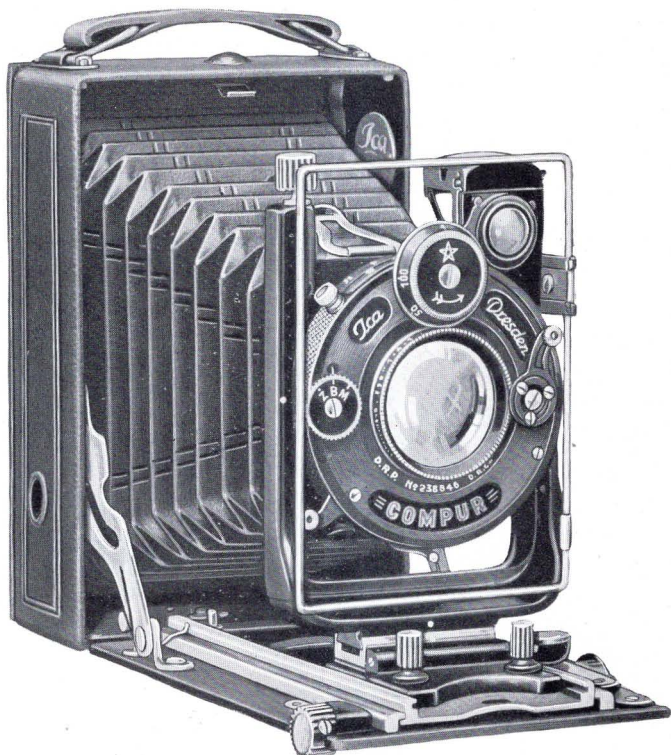
One of the most important features of the Ica Ideal B is the Iconometer, the most accurate finder that can be fitted to a camera. Holding the camera at the eye's level, the view is observed through the Iconometer. As the metal frame moves with the lens forward, backward, up or down, every variation in the angle view, due to extending the bellows, also any horizontal or vertical movement is accurately registered. A large brilliant reflecting finder is also provided.

Should the size of $3\frac{1}{4} \times 4\frac{1}{4}$ inches be desirable for some work, metal kits are furnished for both plate holders and film pack adapter so that either 9 x 12 centimeter or $3\frac{1}{4} \times 4\frac{1}{4}$ inch plates or film packs may be used.

The lenses furnished have focal lengths of $5\frac{1}{4}$ inches with an additional f: 4.5 Tessar of 6 inch focus, and are the best possible assortment to choose from, and with the Compur Shutter, with speeds ranging from 1 to 1/150 of a second, surely offer for selection a photographic optical equipment to meet the requirements of the most exacting photographer.

Three single metal plate-holders, film pack adapter and cable shutter release are included with each camera.

Ica Trona



The popular size of the pictures made with the Trona ($3\frac{1}{4} \times 4\frac{1}{4}$ inches) and the general make-up of the instrument appeal to those who require a very compact camera, making a picture of suitable size as a contact print, and combining in its construction every required adjustment for serious picture making.

It may be used with plates or film packs.

The lenses furnished are the Hekla and Amatar $f:6.8$, the Tessar $f:6.3$ and the Dominar and Tessar $f:4.5$, all of $5\frac{1}{4}$ inch focal length. The shutter is the Compur ranging in speed from 1 to $1/200$ of a second.

Ica Trona

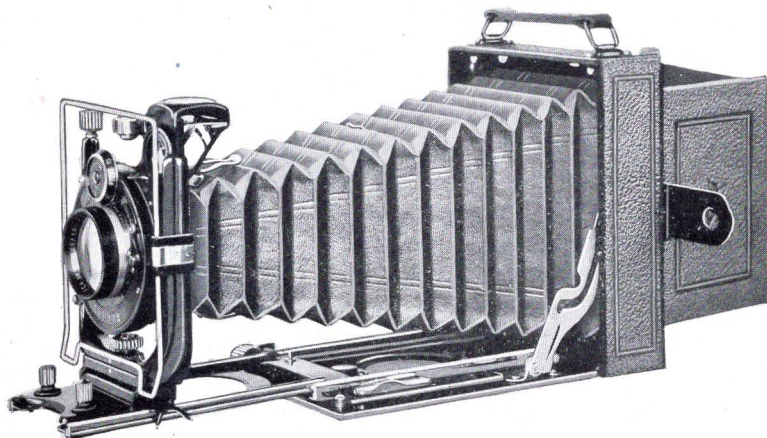
A large protecting hood over the ground glass back makes the use of a focusing cloth unnecessary. When closed, the metal cover of the focusing hood protects the ground glass.

The Iconometer wire finder is the most accurate of all camera finders. It indicates correctly the view included when the lens front is used for vertical or horizontal movement. Even when a supplementary lens such as the Zeiss Distar is used, the Iconometer shows the correct view.

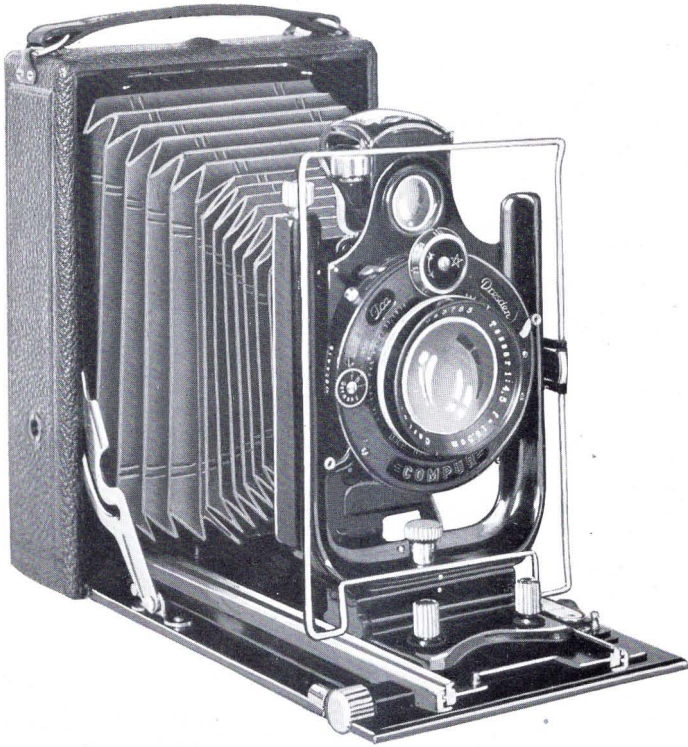
The maximum bellows extension is ten inches, so that objects within twelve inches of the camera may be photographed without using a supplementary lens. For distant subjects this long bellows extension can be used to excellent advantage with a Zeiss Distar lens. When extended, the front stops automatically, focused for distance. Focusing is done with rack and pinion which may be securely locked for any distance.

With each camera are included three single metal plate holders, film pack adapter and cable shutter release.

Size: $5\frac{3}{4}$ x $4\frac{1}{2}$ x 2 inches. Weight: 33 ounces.



Ica Trix



The Ica Trix has already won a reputation for itself, having been adopted some years ago by many of the leading daily newspapers as the most satisfactory camera for this very difficult branch of photography. The size of the picture is 4 x 6 inches (10 x 15 centimeters), perfect proportions for artistic composition.

Press work requires a camera that can be readily concealed about the person, yet producing pictures large enough for reproduction. It must have the most perfect lens both for detail and extreme speed, for the press-photographer cannot choose his light and must be equipped to make pictures under

Ica Trix

the most trying light conditions. The operation of the camera must be simple, for in many instances but a moment of time is available to make ready and get the picture. The camera must also be suitable for flashlight work, holding the camera and operating the flash at the same time. The Trix has all of these qualifications.

The camera has a bellows capacity of fourteen inches, vertical and horizontal front movements of $1\frac{1}{8}$ and $1\frac{1}{4}$ inches respectively, Iconometer as well as a large brilliant view finder, three tripod sockets, hooded ground glass back, and rack and pinion focusing device.

The plateholders are of sheet steel, strong and accurate, and with no projections. Three of the Trix holders are of about the same bulk as one double wooden holder of corresponding size.

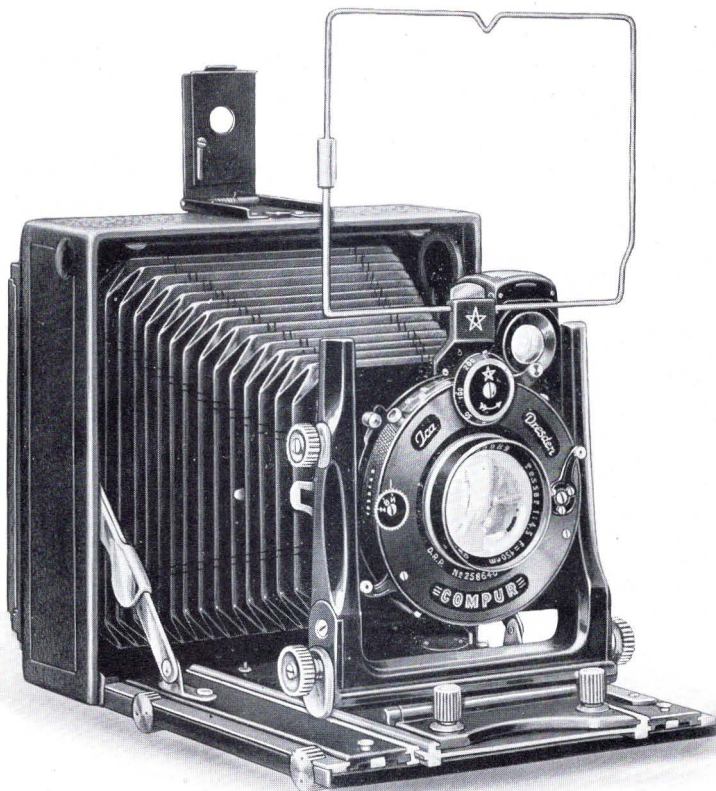
The lenses furnished with the Trix have focal lengths of $6\frac{1}{2}$ inches. The Hekla and Zeiss Amatar are convertible lenses, the rear elements of which may be used separately for a telephoto effect in photographing distant objects. The largest aperture of these lenses is $f:6.8$.

The Dominar $f:4.5$ and Carl Zeiss Tessar $f:4.5$ are desirable where it is necessary to use the camera in poor light conditions, such as for instantaneous pictures indoors. For distant pictures the addition of a Zeiss Distar Lens will produce images of various magnifications.

The shutter is the Compur, having speeds from 1 to $1/150$ of a second when fitted with Carl Zeiss Tessar $f:4.5$ or with the Dominar Anastigmat, $f:4.5$ and up to $1/200$ of a second with the other lenses. With the camera are included three plateholders, film pack adapter and cable shutter release.

Size: $7\frac{3}{4} \times 5\frac{1}{2} \times 2\frac{1}{4}$ inches. Weight: $47\frac{1}{2}$ ounces.

Ica Universal Palmos



Portraiture, landscapes, architecture, copies, tele-photography, are a few branches of photography which actually become a pleasure when attempted with the Universal Palmos. Note the extreme rise and the tilting feature of the front, the swing back and the sixteen-inch bellows. The vertical and horizontal front movements are operated by screw adjustment. Two rack and pinion focusing screws are provided so that the front may be extended by the front thumb

Ica Universal Palmos

screw and the back by the rear thumb screw. The double plateholders, as well as film pack adapter are beautifully finished in ebonized hard wood reinforced with aluminum, and will accommodate plates or film packs 9 x 12 cm. or $3\frac{1}{4} \times 4\frac{1}{4}$ inches. The back of the Camera can be revolved.

The lenses furnished are the Tessar and Dominar f:4.5 and the convertible Protars. The Compur Shutter locks in place and may be instantly removed.

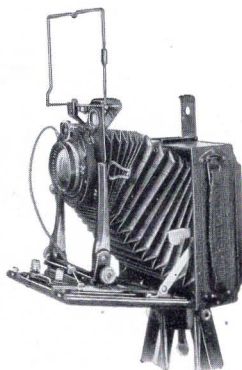
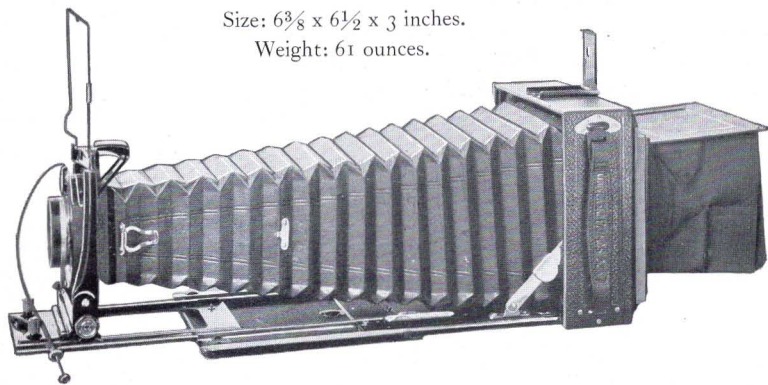
It has speeds ranging from 1 to $1/150$ of a second.

The construction throughout is entirely of metal. The bellows capacity is ample for the use of Zeiss Distar lenses, or for the use of the single element of any of the convertible lenses furnished.

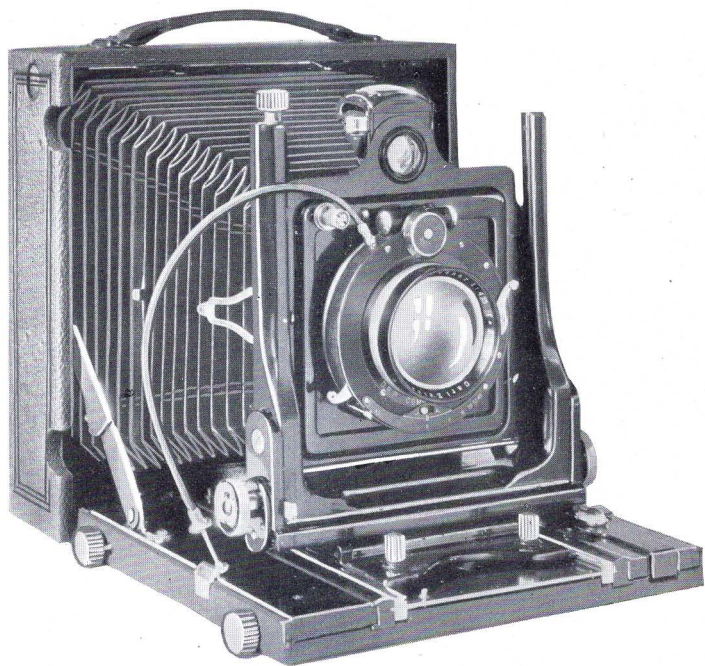
If a wide-angle lens is to be used, the bed may be lowered and the front set parallel with the back. Three double wooden holders, a film pack adapter, and flexible cable shutter release are included with each Universal Palmos.

Size: $6\frac{3}{8} \times 6\frac{1}{2} \times 3$ inches.

Weight: 61 ounces.



Ica Juwel



The aristocrat of all cameras, the Juwel, makes its appeal to the whole-hearted, ambitious photographer. It may well be termed "a camera of limitless possibilities."

It is a Juwel in appearance as well as in name, microscopically accurate in its adjustments, structurally correct, and of perfect design; it is truly a super camera. The dimensions over all when closed are 9 x 3½ x 9 inches and its weight 6 pounds, 6½ ounces. The size of the picture is 5 x 7 inches.

The construction of the Juwel is of ebonized hard wood, metal reinforced. The plateholder or film pack adapter is locked in position by the pressure of a button, an exclusive and valuable Ica feature. The large focusing hood eliminates

Ica Juwel

the necessity of a focusing cloth. It is furnished with the Compound Shutter having speeds from 1 to 1/150 of a second.

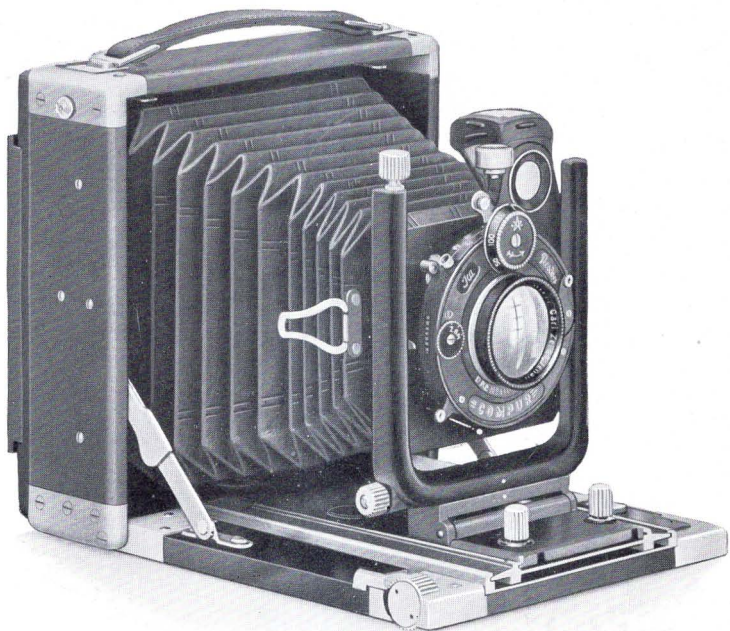
Of utmost importance is the Carl Zeiss Tessar lens, its large working aperture of f:4.5 being suitable for interior portraiture, autochromes, exposures in poor light; in fact, wherever perfect optical correction combined with extreme speed is required, the Tessar is unequalled.

For wide angle photographs with an extreme wide angle lens, the front adjustments of the Juwel permit dropping the camera bed, also tilting the lens panel to any required angle.

The front of the Juwel has extreme vertical and horizontal movements operated by screw adjustments. Both the front and the revolving back of the camera have swing adjustments so that even when the camera is pointed upward at an angle the lens and plate may be set vertical and parallel to each other. These adjustments are the same as illustrated on page 23, showing the Universal Palmos. The great advantage in working with a camera having these important adjustments will be readily understood. In photographing many subjects these movements are absolutely essential to enable one to obtain the best results. The bellows extension is eighteen inches and may be extended by either front or rear rack and pinion. This makes possible the use of a Carl Zeiss Distar lens for telephoto effects with the Dominar or Carl Zeiss Tessar lenses f:4.5 or the single element of the Carl Zeiss Amatar f:6.8 or Protar f:6.3.

With the Juwel are included three double wooden plateholders, film pack adapter and cable shutter release.

Ica Tropic



Designed for use in the tropics, the Ica Tropic has proved a most satisfactory camera with various expeditions where an ordinary camera would have failed. The body of the Tropic is constructed of thoroughly seasoned teak wood highly polished. All corners are reinforced with metal and all metal parts such as the hinged-bed, side-braces, handle-ends, back, etc., are bolted to the hard teak wood. All metal parts are heavily nicked or enamelled, and the leather bellows is especially treated to resist the attacks of tropical insects.

There is ample horizontal and vertical front movement operated by screw adjustment. The Model C has swing back and front, so that when tilted the back may be kept

Ica Tropica

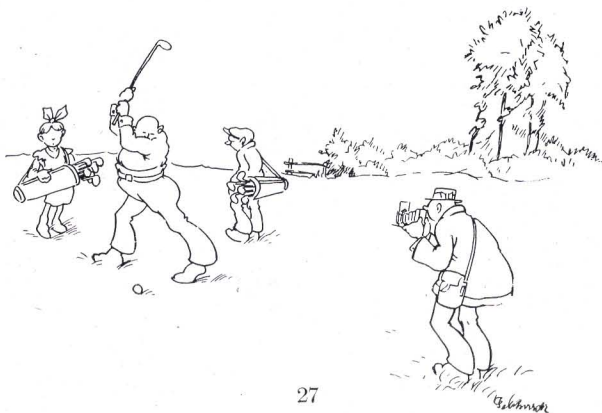
parallel to the lens. It has a revolving back. The Model B does not have the swing front but is furnished with a reversible back.

The lenses supplied are the Carl Zeiss Tessar and the Dominar $f:4.5$, and convertible Protar $f:6.3$. In the Model B, size $3\frac{1}{2} \times 4\frac{3}{4}$ inches (9 x 12 centimeters) a Protar of 5 inches or Tessar of 6 inch focus is furnished and in the Model C, size 5 x 7 inches, the Protar has a focus of 8 and the Tessar of $8\frac{1}{4}$ inches. With the exception of the $8\frac{1}{4}$ inch Tessar and Dominar which are supplied with Compound Shutter, the Tropica is furnished with the Compur Shutter, with speeds ranging from 1 to $1/200$ of a second in the Model B and to $1/100$ of a second in the Model C.

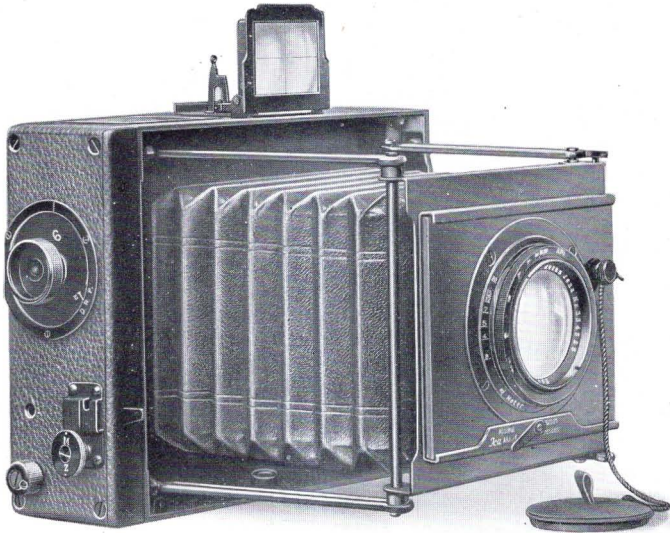
The back of the Tropica is revolving and is fitted with a large focusing hood. The Model C is supplied with three double plateholders and film pack adapter of polished teak wood, and the Model B with six blackened brass single holders and film pack adapter. The bellows extension of 10 inches in the Model B and 15 inches in the Model C is sufficient to permit using the single element of the Protar or a Distar lens for distance photography.

	<i>Size</i>
Model B . . .	$6\frac{1}{8} \times 6\frac{1}{8} \times 2\frac{1}{2}$ inches
Model C . . .	$9\frac{1}{8} \times 8\frac{1}{8} \times 3\frac{1}{4}$ inches

	<i>Weight</i>
Model B . . .	5 pounds
Model C . . .	8 pounds, 6 ounces



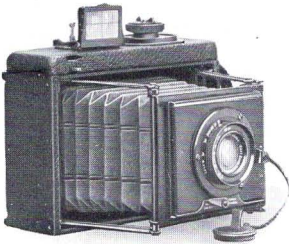
Ica Minimum Palmos



The Minimum Palmos is essentially an out-of-doors speed camera, suitable for sport pictures, animal photography, etc., and, although strongly built, is very compact. The Model A takes $2\frac{1}{2} \times 3\frac{1}{2}$ ($6\frac{1}{2} \times 9$ cm.) plates or $2\frac{1}{4} \times 3\frac{1}{4}$ film packs, and the B $3\frac{1}{2} \times 4\frac{3}{4}$ inches (9×12 cm.).

Model A has a range of speeds from $1/15$ to $1/700$, and the B from $1/7$ to $1/1000$ of a second. Three double ebonized wooden plate-holders and film pack adapter are supplied with each camera.

The lenses supplied with the Minimum Palmos are the Carl Zeiss Triotar f:3.5 or Tessar f:4.5, of $4\frac{3}{4}$ inch focus in the Model A and 6 inch focus in the B.



	Size	Weight
Model A	$5\frac{3}{4} \times 4\frac{5}{8} \times 2\frac{3}{4}$ ins.	$30\frac{1}{2}$ oz.
Model B	$7\frac{1}{4} \times 5\frac{1}{2} \times 3\frac{1}{4}$ ins.	47 oz.

Ica Palmos O

The Palmos O is the most practical camera for its particular field of photography. It takes plates and film packs $4\frac{1}{2} \times 6$ cm. Fitted with the new Zeiss Tessar f:2.7 it will produce pictures under the most adverse light conditions. A subject requiring $\frac{1}{10}$ of a second exposure with an f:6.3 lens may be fully exposed in $\frac{1}{50}$ part of a second with the f:2.7 Tessar or in $\frac{1}{125}$ of a second it will admit even more light than an f:6.3 lens will admit in $\frac{1}{25}$ of a second. Then there is the added efficiency of the focal plane shutter with speeds ranging from $\frac{1}{50}$ to $\frac{1}{1000}$ of a second. The $3\frac{1}{8}$ inch Tessar f:2.7 gives sufficient depth of field so that its full aperture may be used when it would be absolutely necessary to use a relatively small diaphragm with a lens of six inch focus.

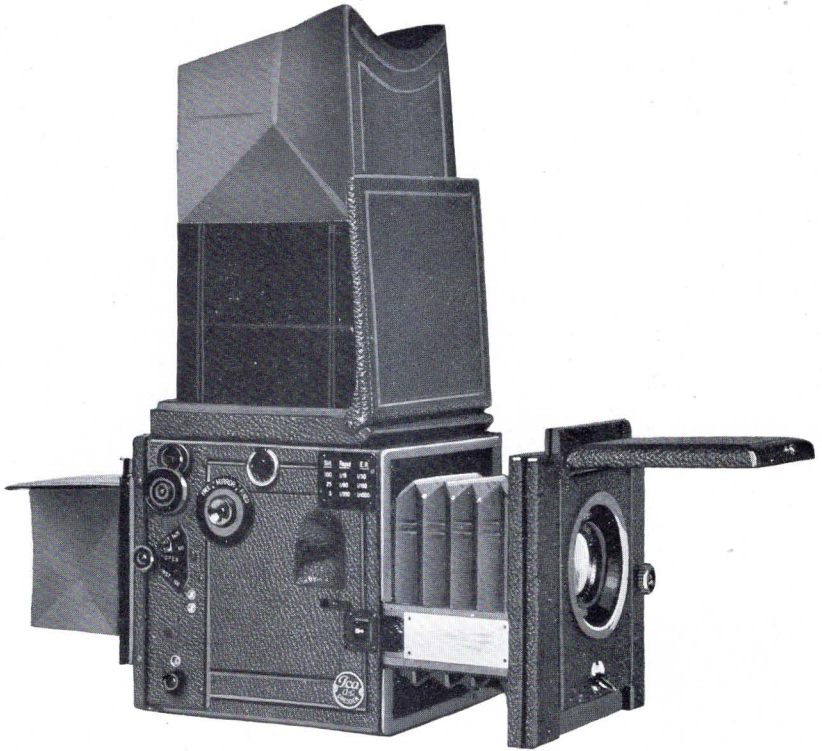
The Palmos O is entirely of metal construction, leather covered, and when closed the front of the camera protects the lens. Focusing is done by means of the focusing mount of the lens. The shutter is of the safety self-capping type.

A hooded ground glass focusing back, two tripod sockets, Iconometer finder, flexible cable shutter release, three metal plateholders and film pack adapter are included with each camera.

Size: $4\frac{1}{4} \times 3\frac{1}{2} \times 2\frac{1}{2}$ inches.
Weight: 25 ounces.



Ica Reflex



It is the reflex type of camera that makes possible pictures of rapidly moving objects, such as athletic events, aeroplanes in flight, racing pictures, animal studies, and perhaps most important of all, portraits of children in natural unstrained poses while at play either in or out of doors.

In the Ica Reflex the picture is shown right side up, exactly as it will be in the finished picture, except for color and being reversed right and left. The shutter can remain set while the image is being viewed on the ground glass, and the moment it appears at its best the exposure can be made. It provides a positive means of focusing and the comfort of working with-

Ica Reflex

out a focusing cloth or a tripod. The shutter of the reflex is of the focal plane type, consisting of a light-proof cloth curtain with fixed slits working on rollers.

Its picture size is $3\frac{1}{4} \times 4\frac{1}{4}$ inches, the most popular of all sizes for a reflex camera.

It has a reversible back, with a hooded rear ground glass so that it may be used for time exposures on a tripod.

The focusing hood is large and square in shape so that the corners of the ground glass may be easily observed. Upon releasing it, the hood springs to an erect position.

The reflecting mirror is silvered on the upper surface. In reflex cameras having an ordinary mirror a double image is caused by the upper as well as the lower surface reflecting an image which frequently gives trouble in focusing.

The bellows capacity of the Ica Reflex is 9 inches.

Another feature often found most useful on the Ica Reflex is the infinity indicator. This consists of a spring actuated stud which slips into a slight indentation on the focusing scale, causing it to stop when the point of infinity is reached. The scale is marked in distances down to 3 feet.

The front has rising and falling adjustment, a necessity in eliminating foreground or in taking in high buildings, etc.

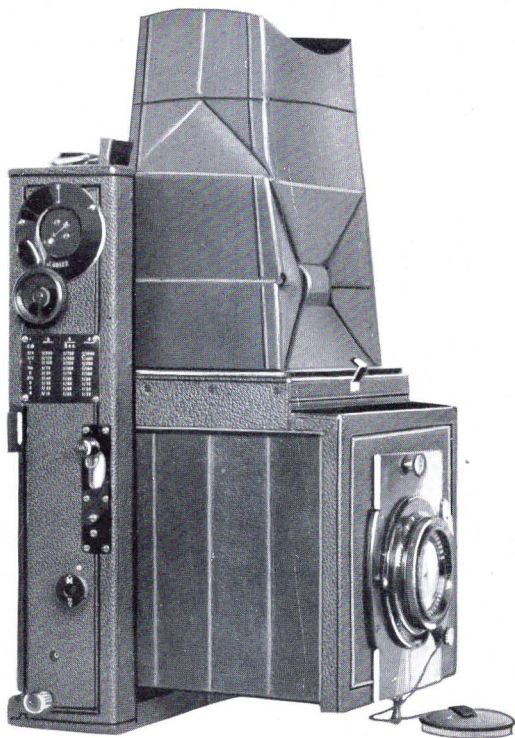
The Ica Reflex has shutter speeds ranging from $1/15$ to $1/1000$ of a second besides time exposure, there being a sufficient assortment of speeds for every possible condition.

The body of the camera is constructed of mahogany and covered with the finest quality selected morocco leather. The metal parts are finished in black enamel.

The lenses regularly fitted to the Ica Reflex are the Dominar and Carl Zeiss Tessar $f:4.5$ of 6 inch focus and Carl Zeiss Triotar $f:3.5$, 7 inch, and Tessar $f:2.7$, $6\frac{1}{2}$ inch focus.

Size: $6\frac{3}{8} \times 6\frac{1}{8} \times 7\frac{1}{4}$ inches. Weight: 4 pounds 7 ounces.

Ica Folding Reflex



The Ica Folding Reflex has most of the important features of the regular model with exception of the reversible back and bellows capacity. Focusing is accomplished by means of the focusing lens mount instead of rack and pinion. Objects can be focused as close as six feet. The shutter speeds range from $1/15$ to $1/1000$ of a second, besides having time adjustment. There is a safety blind which protects the plate or film while the shutter is being set. The front has both horizontal and vertical movements.

The accompanying illustrations show the Folding Reflex open and closed. To open the camera a button at the side

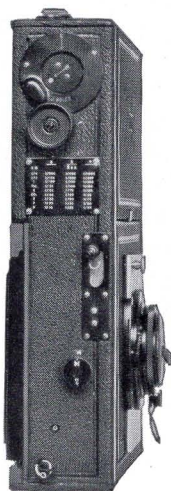
Ica Folding Reflex

is pressed when the front may be extended. As the front locks in position the mirror automatically sets itself at the proper angle. The hood is then opened, and the camera is ready to operate.

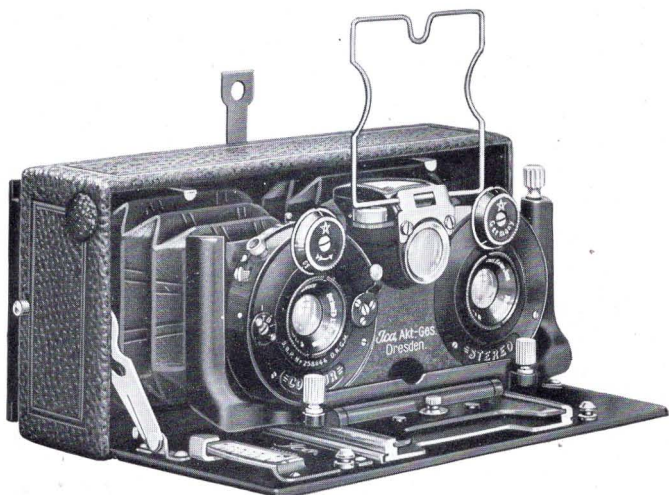
The camera is supplied with a hooded ground glass focusing back so that it may be used upon a tripod the same as an ordinary plate camera. A flexible cable shutter release is also provided, which is most useful when making time exposures with a tripod. The very compact size and light weight of the Ica Folding Reflex will appeal to those who like the exclusive reflex features, and at the same time require a compact instrument.

The lenses furnished with the Ica Folding Reflex are the Carl Zeiss Tessar $f:4.5$ and the Triotar $f:3.5$. The model A is for use with film packs size $2\frac{1}{4} \times 3\frac{1}{4}$ inches or plates $2\frac{1}{2} \times 3\frac{1}{2}$ inches ($6\frac{1}{2} \times 9$ cm.) and the model B for 9×12 cm. ($3\frac{1}{2} \times 4\frac{3}{4}$ inch) plates or film packs. Kits are supplied for the model B so that $3\frac{1}{4} \times 4\frac{1}{4}$ inch plates or film packs may also be used. The plate holders and film pack adapters are of ebonized wood and aluminum construction. Each camera is furnished with three double holders and film pack adapter. The focal length of the lens in the model A is $4\frac{3}{4}$ inches and in the model B 6 inches.

	<i>Size</i>	<i>Weight</i>
Model A,	$8\frac{1}{4} \times 5\frac{3}{4} \times 2\frac{7}{8}$ inches.	3 pounds, 8 ounces.
Model B,	$10 \times 7\frac{1}{4} \times 3$ inches.	4 pounds, 11 ounces.



Ica Stereolette



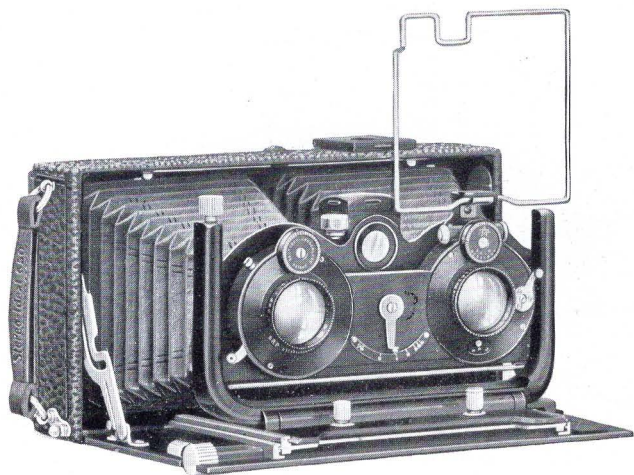
The Ica Stereolette for years has been one of the most popular stereoscopic cameras. The size of its picture, 45 x 107 millimeters ($1\frac{3}{4} \times 4\frac{3}{16}$ inches), has become so popular that it may almost be termed the standard stereo size. By means of suitable holders; plates, film packs, cut films, or autochrome color plates may be used. A magazine holding twelve plates is a great convenience for the user of the Stereolette.

It is fitted with matched lenses, either Carl Zeiss Tessars or Ica Dominars f:4.5 of $2\frac{1}{2}$ inch focus in Compur Shutters, with speeds of from 1 to $1/250$ of a second.

It is a handsome little picture maker with simple focusing adjustment, rising and falling front, Iconometer and reflecting finder and hooded focusing back. With the Stereolette are included three single holders, film pack adapter and flexible cable shutter release.

Size: $6 \times 2\frac{3}{4} \times 1\frac{7}{8}$ inches. Weight: $20\frac{1}{2}$ ounces.

Ica Stereo Ideal



In design the Stereo Ideal is similar to the Stereolette. The size, however, is 6 x 13 centimeters ($2\frac{3}{8}$ x 5 inches) and will therefore produce larger pictures more suitable for enlarging.

Matched Zeiss Tessar lenses f:4.5 of $3\frac{1}{2}$ inch focus and Compur Shutter with speeds of from 1 to 1/150 of a second are supplied with the Stereo Ideal.

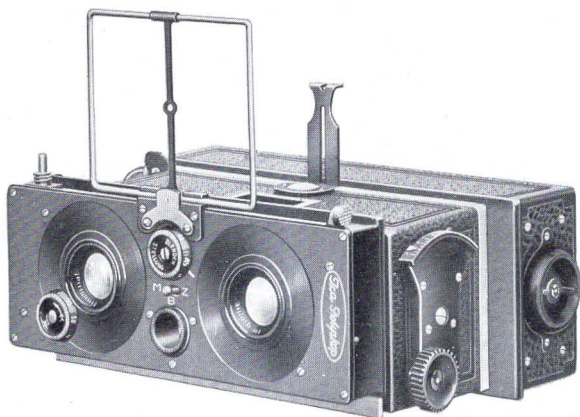
The camera has rack and pinion focusing adjustment and the plateholders or film pack adapter clamp on. For photography with color plates the larger size of the Stereo Ideal will cause the grain of the plates to appear less pronounced.

The back is fitted with a hooded ground glass for accurate focusing. There is a rising and falling front operated by screw adjustment.

With each camera three plateholders, film pack adapter and cable shutter release are furnished.

Size: $6\frac{1}{4}$ x $3\frac{3}{4}$ x $1\frac{3}{4}$ inches. Weight: 44 ounces

Ica Polyscope A



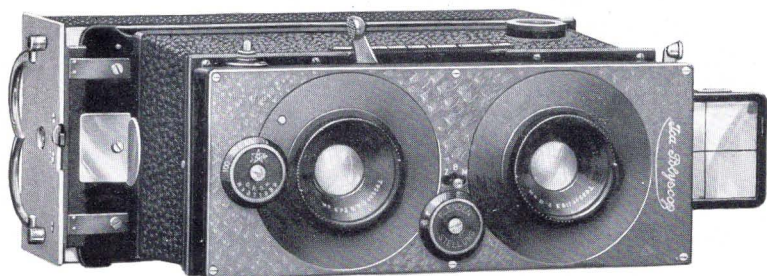
The Ica Polyscope A is without question the premier of all stereo cameras. It is constructed most accurately, is of elegant appearance, and has every adjustment requisite to the best stereoscopic results. This model makes the popular 45 x 107 millimeter picture. The body of the Polyscope A is of aluminum with fixed extension, a screw adjustment providing a means for fine focusing. An ample rising front is provided, the effect of its elevation being indicated in the Iconometer. A brilliant indirect finder is mounted between the lenses. Its position is central between the two lenses and relatively at the same elevation which insures its accuracy in close work. The Compur Shutter, having speeds up to 1/300 of a second, and Zeiss Tessar lenses f:4.5, of 2½ inch focus are standard equipment.

The Ica Polyscope A may be used with single metal plate holders, magazine for twelve plates, or film pack adapter. Each Polyscope is furnished with cable shutter release and leather case.

Size with one plateholder: 5¼ x 2¾ x 2⅜ inches. Weight: 24 ounces.

Size with magazine: 6 x 4⅞ x 2¾ inches. Weight: 44 ounces.

Ica Polyscope B



In general, the 6 x 13 cm. Polyscope B is similar to the smaller model. Due to the larger size of the negative produced, it is somewhat better adapted for enlargements.

It is fitted with the Carl Zeiss Tessars, f:4.5, of 4 inch focus, in Stereo Compound Shutter with speeds ranging from 1 to 1/150 of a second.

Focusing is done by means of a lever on top of the camera.

The plate magazine of the Polyscope B is very simple to load, and may be operated in any position.

Besides stereoscopic pictures, the Polyscope B may be easily converted for panoram pictures, size 6 x 13 cm. ($2\frac{3}{8}$ x 5 inches). Pressure of a button permits the front to be moved to one side so that the lens on the left side will be centered. This operation moves the center division to one side, at the same time covering one lens.

There is a brilliant reflecting finder, also a direct vision finder. The front is fitted with rising and falling front.

The construction of the Polyscope is entirely of aluminum, except the working parts which are of harder metal.

Each Polyscope is supplied with cable shutter release and plush-lined leather carrying case.

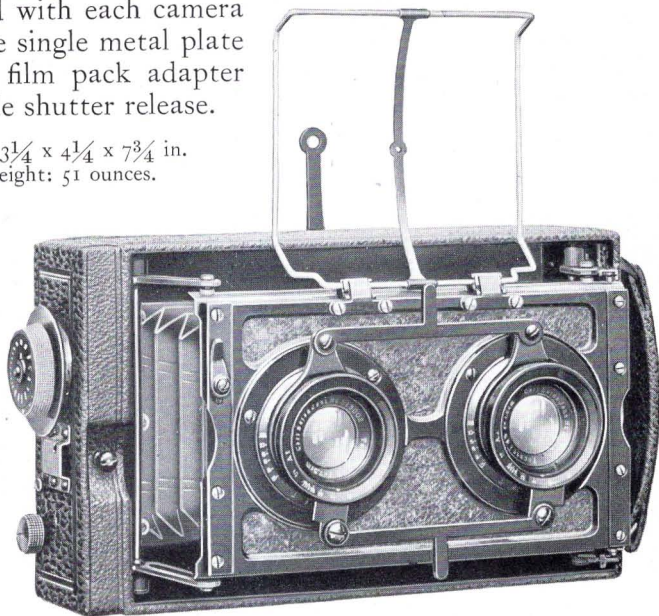
Size: without magazine: $6\frac{1}{2}$ x 3 x 4 inches. Weight: $33\frac{1}{2}$ ounces.

Size: with magazine: $6\frac{7}{8}$ x 3 x $5\frac{3}{8}$ inches. Weight: 56 ounces.

Ica Stereo Minimum Palmos

The Stereo Minimum Palmos is a speed camera, its shutter being of the focal plane type with speeds from $1/30$ up to $1/1000$ of a second. It has a self capping blind so that the shutter may be set even when the slide has been withdrawn from the plate holder or film pack adapter. The construction is entirely of aluminum with black enameled finish, and the body of the camera is covered with the finest grained leather. The lenses regularly furnished are Carl Zeiss Tessars $f:4.5$ of three inch focus. They are perfectly matched and mounted in focusing mounts so that they may both be focused in one operation. The diaphragms also operate together. The Stereo Minimum Palmos also has Iconometer finder, vertical front movement, ground glass focusing back, and standard American size tripod socket. It may be used with 6×13 centimeter ($2\frac{3}{8} \times 5$ inch) plates or film packs. Included with each camera are three single metal plate holders, film pack adapter and cable shutter release.

Size: $3\frac{1}{4} \times 4\frac{1}{4} \times 7\frac{3}{4}$ in.
Weight: 51 ounces.



Ica Bebe

The Ica Bebe here illustrated is of a new design. Its equipment includes a well protected ground glass focusing back which clamps on. It may be removed by the pressure of a button, and a plateholder, film pack adapter, or magazine holding twelve plates may be inserted instantly without jarring the camera out of position.

The Bebe is supplied in two models, the A for pictures $1\frac{3}{4} \times 2\frac{3}{8}$ inches ($4\frac{1}{2} \times 6$ centimeters) and the B for pictures $2\frac{1}{2} \times 3\frac{1}{2}$ inches ($6\frac{1}{2} \times 9$ centimeters).

The lens of the Bebe is the Carl Zeiss Tessar f:4.5 of 3 and 4 inch focus respectively. Objects are brought into focus by rotating the front lens, the focusing scale on the lens mount being graduated for distances from $3\frac{1}{2}$ feet to infinity.

The shutter is the Compur with speeds from 1 to $1/250$ of a second.

Besides the Iconometer there is a direct vision glass finder.

Each Bebe is supplied with leather case, six metal plateholders, film pack adapter and cable shutter release.

Bebe A

Size :

$3\frac{5}{8} \times 1\frac{3}{8} \times 2\frac{5}{8}$ in.

Weight :

$15\frac{1}{2}$ ounces.

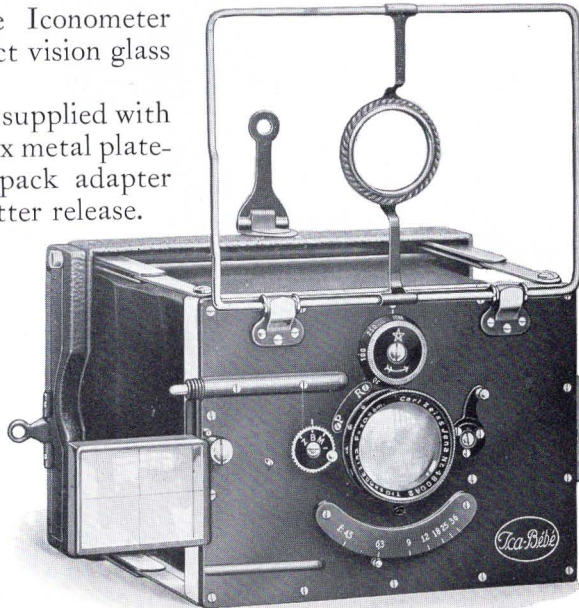
Bebe B

Size :

$5 \times 1\frac{3}{8} \times 3\frac{3}{8}$ in.

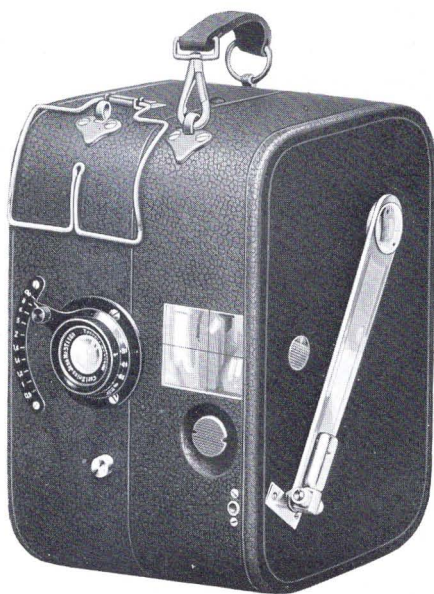
Weight :

25 ounces.



Ica Kinamo

*Kinamo A
with Motor*



The Kinamo is a practical camera for making motion pictures of standard size or individual pictures on motion picture film. The great bulk, excessive weight and complicated mechanism of the average movie camera, not to mention its expense, has heretofore limited motion picture photography to the professional producer.

Nothing has been sacrificed in the quality, durability or construction of the Kinamo, although it is the smallest practical, standard size motion picture camera made. It is not a plaything; in fact, Kinamo pictures of standard size are equal to the best work the most expensive professional camera can produce.

The Kinamo is made in two sizes, Model A for 50 feet of film, and Model B for 80 feet, and it is as readily loaded as the average roll film camera, but is much easier to operate.

Ica Kinamo

The focal length of the lens of the Kinamo is 40 mm., so that with a moderate lens opening everything from 6 feet beyond will be sharp.

Exposures are made by turning the crank two turns per second, or, if individual exposures are to be made, the crank is changed to the one stop movement when each turn will make one exposure.

There is a scene punch which may be pressed at the end of each scene, making a dent in the center of the film.

The film counter indicates the amount of film used in feet.

The regular lens furnished with the Kinamo is the Carl Zeiss Tessar f:3.5, the same lens with which the best movies are made. The Dominar, which is also supplied, is less expensive, but is an excellent lens and can be depended upon to produce beautiful results.

Either lens may be focused to as close as 3 feet.

The Kinamo is supplied with a substantial wooden tripod and a panoram top.

The Model A weighs $2\frac{1}{4}$ pounds, and its dimensions are $4\frac{1}{2} \times 2\frac{1}{2} \times 6$ inches. The weight of the Model B is $3\frac{1}{4}$ pounds, and its size $5\frac{1}{8} \times 2\frac{1}{2} \times 6$ inches.

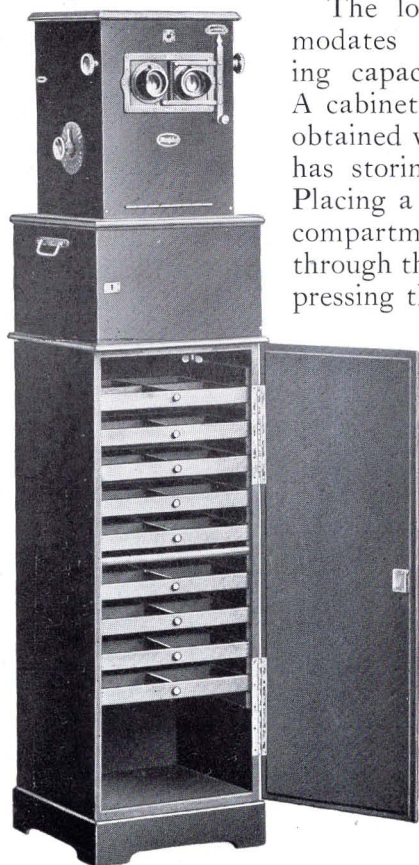
A new innovation for the Kinamo is the spring motor. This motor is only supplied complete with the Model A. When completely wound up the motor will turn one-third of the entire length of film. In cases where it is impractical to use a tripod the motor-driven Kinamo will be found to be most useful.



Kinamo B

Multiplast

There is no more satisfactory method of viewing stereoscopic transparencies than with the Multiplast. It is a handsome piece of polished mahogany cabinet work and is a most attractive addition to any room. The Model A is for 45 x 107 mm., and the Model B for 6 x 13 cm. stereoscopic transparencies.



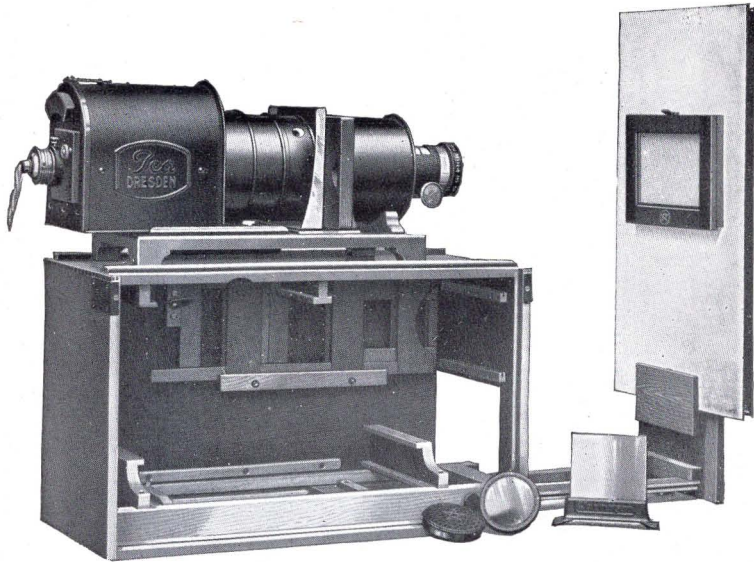
Multiplast with Cabinet

The lower compartment accommodates twelve trays, each having capacity for twenty-five views. A cabinet as illustrated may also be obtained which serves as a stand and has storing capacity for 900 views. Placing a tray of views in the upper compartment, they may be observed through the eyepieces and changed by pressing the lever at the side. When the last view has been shown, pressure of the lever automatically sets number one in position for viewing. There is a set of magnifying lenses which may be easily placed in position, thereby greatly enlarging the view.

For artificial illumination and for projection with the Multiplast, the Illuminator and Projection Outfit shown on page 43 are recommended.

With each Multiplast there is included one tray.

Ica Enlarging and Projection Outfit



Suitable for enlargements up to $6\frac{1}{2} \times 8\frac{1}{2}$ inches from plate or film negatives of any size up to and including $2\frac{1}{2} \times 3\frac{1}{2}$ inches or for part of a $3\frac{1}{4} \times 4\frac{1}{4}$ negative. A special frame is provided for making enlargements on postcards.

The easel is carried on a sectional sliding platform which can be locked by thumb screws when the proper focus is attained. This assures the position of the easel being always at right-angle to the lens and parallel with the plate.

The lamp socket is mounted on a sliding base, permitting the operator to accurately center the source of illumination.

By simply interchanging the negative carrier with the lantern slide carrier and removing the easel, the outfit is converted into a projection lantern.

The outfit consists of Enlarging Lantern with lens and condenser, electric nitrogen filled bulb, easel, plate carrier, lantern slide carrier and postcard frame. When not in use the outfit is stored in the wooden case shown which measures over all $19\frac{1}{2} \times 9 \times 11\frac{1}{2}$ inches.

Distars

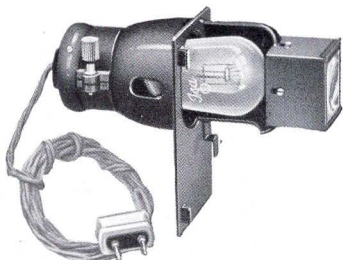
The following list includes the Ica Cameras with which Zeiss Distar lenses can be used. Under Distars is shown the particular lens for each model and under "focus" is shown the focal length of the lens with Distar added. Zeiss Yellow Filters are designated by the letters or numbers at the right of the oblique lines. For example, the proper filter for the Ideal B with Tessar f:4.5, 15 centimeters, is IV, either 5x or 10x.

Camera	Lens	Distar			Focus, inches			Price
ICARETTE L	Dominar f:4.5.....	2 /Co ^x	3 /Co ^x	5 $\frac{1}{8}$	6	\$3.50
	Tessar f:4.5.....	2 /Co ^x	3 /Co ^x	5 $\frac{1}{8}$	6	3.50
IDEAL A...	Dominar f:4.5.....	2.5/Coa	3.5/Coa	6 $\frac{1}{4}$	7 $\frac{1}{2}$	3.50
	Tessar f:4.5.....	2.5/Coa	3.5/Coa	6 $\frac{1}{4}$	7 $\frac{1}{2}$	3.50
	Tessar f:6.3.....	2 /Co	3 /Co	3.5/Co	6	6 $\frac{3}{4}$	7 $\frac{1}{4}$	3.50
TRONA.....	Dominar f:4.5.....	2 /III	3 /III	3.5/III	7 $\frac{1}{4}$	8 $\frac{3}{4}$	9 $\frac{3}{4}$ (20)	4.00
	Tessar f:4.5.....	2 /III	3 /III	3.5/III	7 $\frac{1}{4}$	8 $\frac{3}{4}$	9 $\frac{3}{4}$ (20)	4.00
	Tessar f:6.3.....	2 /Co	3 /Co	7 $\frac{1}{2}$	9(18)	3.50
IDEAL B...	Dominar f:4.5.....	2 /III	3 /III	3.5/III	7 $\frac{1}{4}$	8 $\frac{3}{4}$	9 $\frac{3}{4}$	4.00
	Tessar f:4.5, 13.5 cm.	2 /III	3 /III	3.5/III	7 $\frac{1}{4}$	8 $\frac{3}{4}$	9 $\frac{3}{4}$	4.00
	Tessar f:4.5, 15 cm.	2 /IV	3 /IV	3.5/IV	8	10(10)	11 $\frac{1}{4}$ (50)	4.50
	Tessar f:6.3, 13.5 cm.	2 /Co	3 /Co	3.5/Co	7 $\frac{1}{2}$	9	10 $\frac{1}{2}$ (15)	3.50
	Tessar f:6.3, 15 cm.	2 /Co ^x	3 /Co ^x	8 $\frac{1}{4}$	10 $\frac{1}{2}$ (15)	3.50

UNIVERSAL PALMOS..	Dominar f:4.5, 15 cm.	2 /IV	3 /IV	3.5/IV	8	10	11 $\frac{1}{4}$	4.50
	Dominar f:4.5, 16.5 cm.	1.5/VI	2.5/VI	3 /VI	8 $\frac{1}{2}$	11	12 $\frac{1}{2}$	4.50
	Tessar f:4.5, 15 cm.	2 /IV	3 /IV	3 /IV	8	10	11 $\frac{1}{4}$	4.50
	Tessar f:4.5, 16.5 cm.	1.5/VI	2.5/VI	3 /VI	8 $\frac{1}{2}$	11	12 $\frac{1}{2}$	4.50
TROPICA B.	Dominar f:4.5.....	2 /IV	3 /IV	8	10	4.50
	Tessar f:4.5.....	2 /IV	3 /IV	8	10	4.50
TRIX.....	Dominar f:4.5.....	1.5/VI	2.5/VI	3 /VI	8 $\frac{1}{2}$	11	12 $\frac{1}{2}$ (15)	4.50
	Tessar f:4.5.....	1.5/VI	2.5/VI	3 /VI	8 $\frac{1}{2}$	11	12 $\frac{1}{2}$ (15)	4.50
	Tessar f:6.3.....	1.5/II	2.5/II	3 /II	8 $\frac{3}{4}$	11 $\frac{1}{4}$	13 (20)	4.00
JUWEL.....	Dominar f:4.5.....	1.5/VII	2 /VII	2.5/VII	11 $\frac{3}{4}$	13 $\frac{1}{4}$	16	7.50
	Tessar f:4.5.....	1.5/VII	2 /VII	2.5/VII	11 $\frac{3}{4}$	13 $\frac{1}{4}$	16	7.50
TROPICA C.	Tessar f:4.5.....	1.5/VII	2 /VII	11 $\frac{3}{4}$	13 $\frac{1}{4}$	7.50
REFLEX A..	Dominar f:4.5.....	2 /IV	8	4.50
	Tessar f:4.5.....	2 /IV	8	4.50
NIXE A....	Dominar f:4.5.....	2 /III	3 /III	7 $\frac{1}{4}$	8 $\frac{3}{4}$	4.00
	Tessar f:4.5.....	2 /III	3 /III	7 $\frac{1}{4}$	8 $\frac{3}{4}$	4.00
	Tessar f:6.3.....	2 /Co	3 /Co	7 $\frac{1}{2}$	9	3.50
NIXE B....	Dominar f:4.5.....	2 /IV	3 /IV	3.5/IV	8	10	11 $\frac{1}{4}$ (15)	4.50
	Tessar f:4.5.....	2 /IV	3 /IV	3.5/IV	8	10	11 $\frac{1}{4}$ (15)	4.50
	Tessar f:6.3.....	2 /Co ^x	3 /Co ^x	8 $\frac{1}{4}$	10 $\frac{1}{2}$	3.50

Most Distar lenses may be used for Portrait or other work at distances of six feet or less. Figures in parenthesis indicate the closest distance, in feet, at which those Distars will produce a sharp image.

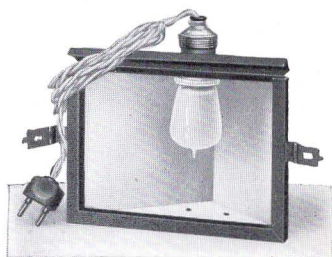
Ica Photo Accessories



The Projection Outfit

May be easily attached to the rear of the Multiplast. Will project the views up to about three feet square.

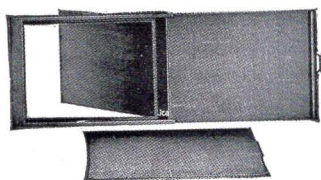
Specify if for 110 or 220 volts.



The Stereo-illuminator

May be attached to the rear of the Multiplast for illuminating the views by artificial light.

In ordering specify if for 110 or 220 volts.



Universal Plate Holder

This type of holder will accommodate any plate whether of extra thin or thick glass. Agfa or Autochrome color plates or by using a pasteboard backing cut films may be used in it. The price list specifies the cameras with which it may be used.



Stereoscopes

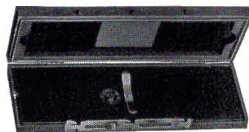
These stereoscopes are of polished mahogany, with focusing knob, and large, well corrected lenses.

Two sizes are supplied. Model A, for 45 x 107 mm. and model B for 6 x 13 cm. transparencies.

Transposing Stereo Printing Frames

A - for 45 x 107 mm. negatives.

B - for 6 x 13 cm. negatives.



Ica Photo Accessories

Ica Exposure Meter "DIAPHOT"

With the Diaphot, the correct exposure or diaphragm opening for any subject, in almost any light, may be quickly determined. There is no calculating to do, no complicated table to use, and no paper to expose. It may be used in any latitude, in any kind of daylight for all subjects, near or far. The diaphragm markings are in both U. S. and F. systems, f:4.5 and smaller. It is about the size of a small thin watch and beautifully made. Each Diaphot is supplied in a neat leather purse with complete instructions.



TECHNICAL STAFF
J. H. SHACKELFORD
CHIEF ENGINEER
S. HAYARD COLGATE
CHIEF OF HEAVY TRANSPORT
J. MCKENZIE YOUNG
HEAVY TRANSPORT
GEORGE GLAZIER
PETER KAISEN
ALBERT F. JOHNSON
ASSISTANT TO PHOTOGRAPHER
—
STUDIO ADDRESS
MICROSCOPY, PRINTING
—
CHIEF, COLOR
A. H. C. 57th AND 67th
EDITIONS, BENTLEY'S

THIRD ASIATIC EXPEDITION
OF THE
AMERICAN MUSEUM OF NATURAL HISTORY
IN COOPERATION WITH THE
AMERICAN ASIATIC ASSOCIATION
AND
ASIA MAGAZINE

SCIENTIFIC STAFF
ROY CHAPMAN ANDREWS
LEADER AND ZOOLOGIST
WALTER GRANGER
CHIEF PALAEONTOLOGIST
CHARLES F. BREYER
CHIEF ORNITHOLOGIST
FREDERICK K. MOHRLEN
ORNITHOLOGIST AND ZOOLOGIST
JAMES P. CHAPIN
ENTOMOLOGIST
CLIFFORD H. POPE
ASSISTANT TO ZOOLOGIST
—
FIELD HEADQUARTERS
2 KUNGS HEKED HETTING
PEKING, CHINA

New York, Jan. 24, 1925

Mr. Harold M. Bennett,
153 West 23rd St., New York, N. Y.

My dear Mr. Bennett:

I have had so many favorable comments on the photography, that it gives me great pleasure to send herewith some prints made from Ica Camera negatives during the Third Asiatic Expedition. The Ica Ideal B was my favorite camera, most of my stills having been made with it.

All of my cameras, including the movies, were equipped with Carl Zeiss lenses, and am having more of them fitted for the coming year's work in Mongolia.

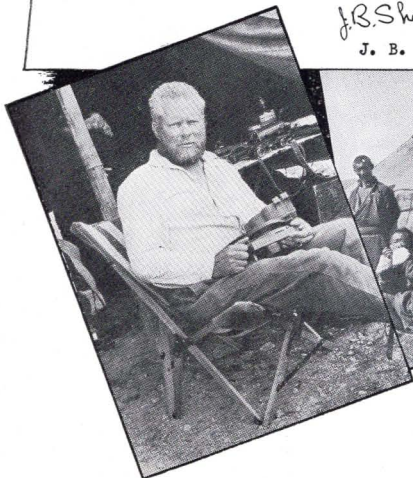
It may also interest you to know that many of the illustrations used in the story of the Expedition that ran in ASIA Magazine, were enlargements from movie film, taken with the Carl Zeiss 2 inch Tessar.

My old Carl Zeiss Binoculars gave such satisfaction that I am taking a new pair this year, as are several other members of the party.

Very truly yours,

J. B. Shackelford.

J. B. Shackelford.



Ica Cameras



Price List No. 9

in effect, October 15, 1925



HAROLD M. BENNETT

U. S. Agent

153 West 23rd Street

New York

ICARETTE JUNIOR

	C	D
With Novar Anastigmat, f6.8	\$25.00	\$ 26.00
Leather carrying case	3.00	3.50

ICARETTE B

With Hekla Anastigmat, f6.8.	40.00
With Dominar Anastigmat, f4.5.....	47.50
With Carl Zeiss Tessar, f4.5.....	55.00
Zeiss 5x yellow glass filter.....	4.00
Plate holder.....	.50
Ground glass back and 3 plate holders.	3.50
Leather carrying case.	3.50

VEST POCKET ICARETTE

With Carl Zeiss Tessar, f4.5	55.00
Zeiss 5x yellow glass filter.....	4.00
Leather carrying case	3.50

ICARETTE C AND D

	C	D
With Dominar Anastigmat, f4.5.....	52.50
With Carl Zeiss Tessar, f4.5	67.50	72.50
Zeiss 5x yellow glass filter.....	5.00	5.00
Leather carrying case	5.00	5.50

ICARETTE L

With Dominar Anastigmat, f4.5	63.50
With Carl Zeiss Tessar, f4.5	75.00
Zeiss 5x yellow glass filter	5.00
Plate holder.....	.65
Ground glass back and 3 plate holders.....	5.00
Leather carrying case	5.00

HALLOH AND NIXE A

	HALLOH	NIXE A
With Hekla Anastigmat, f6.8 5¼ inch focus	48.00	60.00
With Dominar Anastigmat, f4.5 5¼ inch focus	65.00
With Carl Zeiss Amatar, f6.8 5¼ inch focus	77.50
With Carl Zeiss Protar, f6.3 5 inch focus.....	115.00
With Carl Zeiss Tessar, f4.5 5¼ inch focus	75.00	85.00
Zeiss 5x yellow glass filter.....	5.00	5.00
Plate holder.....	.80	.80
Ground glass back and 3 plate holders.....	6.50	6.50
Leather carrying case	5.50	5.50

TRIX

With Dominar Anastigmat, f4.5.....	95.00
With Carl Zeiss Protar, f6.3.....	120.00
With Carl Zeiss Tessar, f4.5.....	105.00
Zeiss 5x yellow glass filter for f4.5 lenses.....	8.00
Zeiss 5x yellow glass filter for other lenses.....	5.00
Plate holder.....	1.00
Universal plate holder.....	2.25
Film pack adapter.....	3.50
Leather carrying case.....	9.00

UNIVERSAL PALMOS

With Dominar Anastigmat, f4.5, 6 inch focus.....	177.50
With Dominar Anastigmat, f4.5, 6½ inch focus.....	190.00
With Carl Zeiss Tessar f4.5, 6 inch focus.....	200.00
With Carl Zeiss Tessar f4.5, 6½ inch focus.....	207.50
With Carl Zeiss Protar, f6.3, 5 inch focus.....	215.00
With Carl Zeiss Protar, f7, 5¾ inch focus.....	222.50
Zeiss 5x yellow glass filter for f4.5 lenses, 6 inch focus.....	6.00
Zeiss 5x yellow glass filter for f4.5 lenses, 6½ inch focus.....	8.00
Zeiss 5x yellow glass filter for other lenses.....	5.00
Double wooden plate holder.....	7.00
Film pack adapter.....	7.50
Leather carrying case.....	12.50

J U W E L

With Dominar Anastigmat, f4.5, 8¼ inch focus.....	215.00
With Carl Zeiss Amatar, f6.8 7 inch focus.....	192.50
With Carl Zeiss Protar, f6.3 8 inch focus.....	260.00
With Carl Zeiss Tessar, f4.5 8¼ inch focus.....	240.00
Zeiss 5x yellow glass filter for f6.3 lenses.....	6.00
Zeiss 5x yellow glass filter for f4.5 lenses.....	10.00
Double wooden plate holder.....	8.50
Film pack adapter.....	9.00
Leather carrying case.....	15.00

TROPICA

	B	C
With Carl Zeiss Tessar, f4.5.....	160.00	250.00
With Carl Zeiss Protar, f6.3.....	177.50	265.00
Zeiss 5x yellow glass filter for f6.3 lenses.....	5.00	6.00
Zeiss 5x yellow glass filter for f4.5 lenses.....	6.00	10.00
Plate holder.....	1.25	8.50
Film pack adapter.....	4.50	12.00
Leather carrying case.....	12.50	15.00

MINIMUM PALMOS

	A	B
With Carl Zeiss Tessar, f4.5.....	150.00	165.00
With Carl Zeiss Tele Tessar, f6.3.....	187.50
With Carl Zeiss Triotar, f3.5.....	150.00	165.00
Zeiss 5x yellow glass filter for Tessar, f4.5.....	5.00	6.00
Zeiss 5x yellow glass filter for Triotar, f3.5.....	6.00	8.00
Double wooden plate holder.....	6.50	7.00
Film pack adapter.....	7.00	7.50
Leather carrying case.....	9.50	11.00

MINIMUM PALMOS O

With Carl Zeiss Tessar, f2.7	\$157.50
Zeiss 5x yellow glass filter	5.00
Plate holder75
Film pack adapter	2.75
Leather carrying case	6.00

REFLEX

With Dominar Anastigmat, f4.5, 3 single plate holders and F. P. adapter	90.00
With Carl Zeiss Tessar, f4.5, 1 Graflex plate holder....	125.00
With Carl Zeiss Triotar, f3.5. " " "	170.00
With Carl Zeiss Tessar, f2.7 " " "	215.00
Zeiss 5x yellow glass filter for f4.5 lenses	6.00
Single metal plate holder for Camera with Dominar lens	.75
Universal plate holder " " "	2.00
Film pack adapter " " "	3.00
Leather carrying case	14.00

FOLDING REFLEX

	A	B
With Carl Zeiss Tessar, f4.5.....	175.00	195.00
With Carl Zeiss Triotar, f3.5.	175.00	195.00
Zeiss 5x yellow glass filter for Triotar...	6.00	8.00
Zeiss 5x yellow glass filter for Tessar...	5.00	6.00
Film pack adapter	7.00	7.50
Universal plate holder	1.75	2.00
Double wooden plate holder	6.50	7.00
Leather carrying case	9.50	12.00

STEREOLETTE

With Hekla Anastigmat, f6.8	75.00
With Carl Zeiss Tessar, f6.3.....	92.50
With Carl Zeiss Tessar, f4.5.....	112.50
Zeiss 5x yellow glass filter	4.00
Plate magazine holding 12 plates.....	30.00
Plate holder65
Universal plate holder	1.50
Film pack adapter	2.75
Leather carrying case.....	5.50

STEREO IDEAL

With Carl Zeiss Tessar, f4.5.	140.00
Zeiss 5x yellow glass filter	4.00
Plate holder	1.00
Universal plate holder	2.00
Film pack adapter	3.50
Leather carrying case	7.50

POLYSCOPE A AND B

	A	B
With 6 plate holders	135.00	165.00
With plate magazine	165.00	200.00
Plate holder60	1.00
Universal plate holder.....	1.50	2.00
Film pack adapter	6.25	7.50
Polyscope plate magazine for 12 plates..	35.00	45.00
Extra septums for magazine, each.....	.25	.35
Zeiss 5x yellow glass filter.....	4.00	5.00

STEREO MINIMUM PALMOS

With Carl Zeiss Tessar, f4.5.....		\$185.00
Zeiss 5x yellow glass filter.....		4.00
Plate holder.....		1.00
Universal plate holder.....		2.00
Film pack adapter.....		3.00
Leather carrying case.....		12.00

BEBE A AND B

	A	B
With Carl Zeiss Tessar, f4.5.....	87.50	110.00
Zeiss 5x yellow glass filter.....	4.00	4.00
Plate holder.....	.65	.80
Universal plate holder.....	1.25	1.50
Plate magazine holding 12 plates.....	30.00	39.00
Film pack adapter.....	2.75	3.00

KINAMO

	A	B
With Dominar Anastigmat, f3.5.....	90.00	110.00
With Carl Zeiss Tessar, f3.5.....	107.50	130.00
With Carl Zeiss Tessar, f3.5 and motor..	150.00
Zeiss 5x yellow glass filter.....	4.00	4.00
Lens sun shade.....	1.50	1.50
Panoram tripod top.....	7.50	7.50
Panoram and tilting top.....	12.00	12.00
Film box.....	2.50	3.50
Leather carrying case.....	12.00	12.00

STEREO APPARATUS, MULTIPLAST

	A	B
With 1 tray.....	125.00	150.00
Extra tray.....	2.00	3.00
Storage cabinet for trays.....	90.00	100.00
STEREO ILLUMINATOR.....	7.50	
PROJECTION OUTFIT.....	17.50	

ENLARGING AND PROJECTION OUTFIT

Complete as listed.....	50.00
Single wooden carrier kits for negatives.....	.50
Single wooden carrier kits for lantern slides.....	.50

STEREOSCOPES

Model A 45x107 mm.....	7.50
Model B 6x13 cm.....	9.00
Opera Glass 45x107 mm.....	7.50

STEREO PRINTING FRAMES

Model A 45x107 mm.....	3.50
Model B 6x13 cm.....	5.00

DIAPHOT EXPOSURE METER.....	1.75
-----------------------------	------

All camera prices include Excise War Tax