

WE SELL ONLY

THORNTON-PICKARD

ABRIDGED CATALOGUE

1911.

FOR

NEW GOODS

SEE

COMPLETE CATALOGUE

Published January,

1911

**THE THORNTON-PICKARD MANFG. CO., LTD.,
ALTRINCHAM**

BRITISH-MADE CAMERAS

WE OURSELVES MAKE

ALL THE CAMERAS WE SELL

Terms of Business.

RETAIL ORDERS. The prices in this Catalogue are strictly nett. It is respectfully requested that all orders be accompanied by remittance unless references have previously been given and an account opened.

REMITTANCES. Cheques or Post Office Orders to be made payable to the Thornton-Pickard Manufacturing Co., Limited, and may be crossed **Lloyds Bank, Ltd.** P.O. Orders should be made payable at **Altrincham**. Postage Stamps may be used for the payment of small amounts. Foreign Orders are payable by P.O. Orders at **Altrincham**, or by Draft on London or Manchester Bank.

ACCOUNTS. Monthly statements are rendered Nett, and are payable **without** any further deduction on or before the 15th of the month following date of Invoice.

NEW ACCOUNTS. In opening new accounts, remittance to be sent with first order together with Bankers' and Trade references.

"ON APPROVAL." All Goods made by the Thornton-Pickard Manufacturing Co., Limited, may be obtained through any dealer in Photographic Apparatus or they will be sent direct, on "on approval" terms, if remittance for the amount accompanies order. The goods, if not approved, to be returned, carriage paid, within three days after receipt.

ELECTROS. Electros of any of the Thornton-Pickard specialities are sent on application for inclusion in Dealers' Catalogues, at a nominal charge for each, according to size. Upon return of the Blocks this charge is credited in full.

CARRIAGE. Carriage will be paid on all prepaid retail orders within the British Isles, and on Foreign prepaid retail orders to port of shipment. All small parcels are sent per parcel post, and larger ones by passenger train unless otherwise ordered.

PACKING. Experienced packers only are employed, and every care is taken to ensure safe transit. We do not, therefore, hold ourselves responsible for any loss or damage that may occur after the goods leave our premises. Packing boxes are charged at the lowest rate, and are not returnable.

RUBBER MOULDING.

**THORNTON-PICKARD
PATENT.**

Made in different
thicknesses as
shown.

Price **8d.** per foot, or any
less quantity.



EXPOSURE RECORDER.

**For DARK SLIDES or
PLATE HOLDERS.**

Price
6d.



Shows at a glance which plates have been exposed. Prevents two pictures being taken on one plate.

Each.
Postage 1d.
Also supplied
on Cards of Six,
Price 3/-
Postage 1d.



This simple little device has proved a great success. It ought to be fitted to every Dark Slide and Plate Holder. It records automatically which plates have been exposed and which have not.

Complete Catalogue, Published in January, post free.

**The Thornton-Pickard Manufacturing Co., Ltd.,
ALTRINCHAM.**

THORNTON-PICKARD

"ROYAL" SHUTTER

TIME and Instantaneous.

**IMPROVED MODEL FOR 1911.**

The chief advantages of the "Royal" over the standard pattern are that in the "Royal" Shutter all working parts are enclosed within the Shutter Box. It is also fitted with a new and patented device which automatically releases the Spring when the Shutter is set at "Time."

PRICE LIST OF "ROYAL" SHUTTERS (Speed Indicator included).

SIZE:—To fit on Lens Hood or Tube, up to inches diameter.	1½	1⅝	2	2½	3
Before Lens Model	21/-	22/-	23/-	25/-	28/-
Behind Lens Model	22/-	23/-	24/-	26/-	30/-

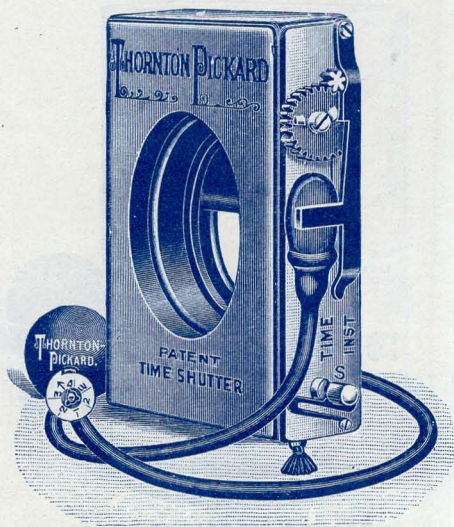
Patent Time Exposure Valve, 3/6 extra.

Patent Disappearing Cord, 3/6 extra.

THORNTON-PICKARD PATENT**Time Exposure Valve.***For short time exposures. ½, 1, 1½, 2, and 3 Seconds.*

PRICE : Fitted to any new Thornton-Pickard Time and Inst. Shutter, or to any Time and Inst. Shutter sent to us for that purpose **3/6**
 With new Ordinary Ball, Tube and Teat, 2/- extra. ..
 If the Shutter cannot be sent to us for fitting, we can supply the Valve complete with Arabesque Ball, Tube, and Teat **5/6**

THE ALL BRITISH CAMERA MAKERS

THORNTON-PICKARD**Time and Instantaneous Shutter.**

In every part of the civilised world the Thornton-Pickard Standard Pattern Time and Instantaneous Shutter is well known. It was the first successful Time and Instantaneous Shutter invented, and was in reality the one which made Instantaneous Photography practicable.

Instantaneous Exposures up to 1/90 second in the two smaller sizes. (Larger sizes work proportionately slower.)

Prolonged Time Exposures of any duration.

With the addition of the Patent Time Exposure Valve (3/6 extra), as shown near the ball in the illustration, the Shutter will also give automatically Short "Time" Exposures of $\frac{1}{2}$, $\frac{1}{4}$, $\frac{1}{8}$, 1, 2, and 3 seconds.

PRICES.	SIZE, to fit on a Lens Hood or Tube up to inches diam.								
	1 $\frac{1}{2}$	1 $\frac{3}{8}$	2	2 $\frac{1}{2}$	3	3 $\frac{1}{2}$	4	4 $\frac{1}{2}$	5
Speed Indicator included.									
Before Lens.....	14/6	15/-	16/-	18/-	21/-	25/-	30/-	35/-	38/-
Behind Lens	15/6	16/-	17/6	19/6	22/6	26/6	31/6	36/6	39/6

Patent Time Exposure Valve 3/6 Extra.

New Patent Disappearing Cord, which runs back into the Shutter Box after setting, 3/6 extra. Fitted to Shutters previously supplied 5/-.

THE ALL BRITISH CAMERA MAKERS

THORNTON-PICKARD

STEREOSCOPIC SHUTTERS.

**Made in Before and Behind Lens Patterns and
also with Adjustable Centres.**

Stereoscopic Pictures are greatly favoured by many amateurs, and for this class of work the Shutter here shown is extremely suitable, and in fact superior to any other form. It gives exposures up to $\frac{1}{500}$ th of a second in the two smallest sizes, as well as **Time Exposures of any duration.**



PRICE LIST.

Size, to fit on a Lens Hood or Tube up to inches dia.	$1\frac{1}{2}$	$1\frac{3}{8}$	2	$2\frac{1}{2}$
Stereoscopic Time & Inst., at 3in. or $3\frac{1}{2}$in. centres.	20/- 22/6	21/- 23/6	23/- 25/6	27/- 29/6
3in. centres, 2/- extra; $3\frac{1}{2}$in. centres, 4/- extra. Adjustable Panel for Behind Lens Pattern, 7/6 extra. New Patent Disappearing Cord, 3/6 extra. Patent Time Exposure Valve, 3/6 extra.				

Self-Capping Blind fitted to Time & Instantaneous & Stereo Shutters at a charge of 5/- extra for Time and Instantaneous Shutters up to 2½ in. size. Stereo Shutters 10/- extra.

Thornton-Pickard New Patent
STUDIO SHUTTER.

Works in Front of the Lens or Inside the Camera.

**THE MOST PERFECT AND SUCCESSFUL
STUDIO SHUTTER IN THE MARKET.
NO VIBRATION.
PRACTICALLY NOISELESS IN WORKING.
A BOON TO THE PROFESSIONAL.
NO STUDIO SHOULD BE WITHOUT IT.**

Specially designed for Studio use where silence in working is a desideratum. For photographing children, animals, and nervous subjects generally.



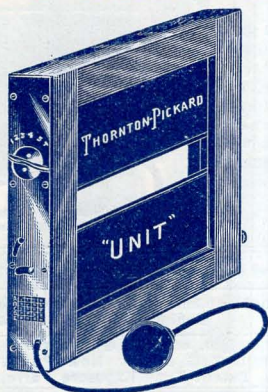
Exposures of from 1/8th second up to any duration.

PRICES.	To fit on Lens Hood or Tube up to ins. diameter.						
	2	2½	3	3½	4	4½	5
Silent Studio Shutter	20/6	23/6	27/6	32/6	37/6	42/6	47/6

THE ALL BRITISH CAMERA MAKERS

THORNTON-PICKARD

NEW PATENT 'UNIT' SELF-CAPPING TIME AND INST. Focal Plane Shutter



EXPOSURES UP TO
 $\frac{1}{1000}$
of a Second.

Special Points of the "UNIT" Shutter.

This Focal Plane Shutter has been named the "UNIT" owing to the fact that its adjustments are effected and the Shutter set **by one and the same operation**. This operation consists in simply turning the Winding Key, which effects the following movements:—

1. It sets the Shutter for exposure.
2. It automatically adjusts the Slit to the desired width.
3. It varies the duration of the exposure.
4. It alters the Shutter for Time and Instantaneous at will.
5. It maintains the aperture covered with the Self-capping Blind until the actual exposure.

Instantaneous Exposures from $\frac{1}{15}$ th
to $\frac{1}{1000}$ th.

Time Exposures from seconds to
hours, or of any duration.

Adjustable Slit with 6 different-
sized Apertures.

Square Aperture Opening Shutter.

Automatic Self-capping Blind.

Automatic Self-adjusting Slit.

One Setting Key only.

No Lever to move to change from
Time to Instantaneous, or vice-
versa.

One Turn to Set; One Press to
Release.

No complicated Mechanism.

Smooth free-working of Shutter.

Blind always perfectly taut. No
sagging.

Blind sets and closes as straight
as a metal plate.

Perfect combination of Simplicity
and Efficiency.

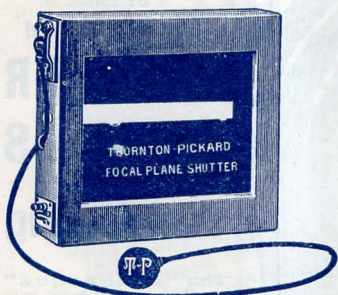
One and the same operation of
turning the Winding Key both
sets the Shutter and varies the
Speed.

$\frac{1}{4}$ -Plate ($4\frac{1}{4} \times 3\frac{1}{4}$) **70/-**
5 × 4, 9 × 12 c/m & Postcard **77/6**

$\frac{1}{2}$ -Plate ($6\frac{1}{2} \times 4\frac{3}{4}$) **84/-**
 $7\frac{1}{2} \times 5$ & 13×18 c/m **90/-**

THORNTON-PICKARD

Focal Plane Shutters.



No. 1 Model Focal Plane.



No. 3 Model Focal Plane. 8

EXPOSURES up to $\frac{1}{1000}$ of a Second.

Thornton-Pickard Focal Plane Shutters are made in four different models. The cheapest pattern is the No. 1 or Original Model, which is quite as efficient and practical as any Focal Plane Shutter made. In this Original Model the Blind Slit is adjusted by means of small chains, which have to be lengthened or shortened as required by the operator.

THE Nos. 2 and 3 MODELS.

The Nos. 2 and 3 Models of Focal Plane Shutter are improvements upon the pattern above described. The Slit in the Blind of each of these Shutters is adjusted from the outside by simply rotating a knob. The principle of construction is different, but the two Shutters possess the same practical advantages, and are more convenient in use than the original No. 1 pattern.

FOR FITTING. The Reversing Back and a Dark Slide should be sent to us. A charge of from 5/- to 10/- is made, according to work required. The fitting is done gratis to current patterns of Thornton-Pickard Cameras.

PRICES, including Speed Indicator and Speed Tablet.

No. 1 OR ORIGINAL MODEL.

$4\frac{1}{2} \times 3\frac{1}{2}$	£1 5 0	$6\frac{1}{2} \times 4\frac{1}{2}$ £1 10 0	$6\frac{1}{2} \times 4\frac{3}{4}$ £1 10 0	$8\frac{1}{2} \times 6\frac{1}{2}$ £1 15 0	10×8 .. £2 5 0
5×4 & 9×12 c/m	£1 7 6	$6\frac{3}{4} \times 3\frac{1}{2}$ £1 10 0	$7\frac{1}{2} \times 5$ £1 10 0		

No. 2 MODEL (With Outside Adjustments).

5×4 & 9×12 c/m	£2 10 0	10×8	£4 4 0	12×10	£5 5 0	9×12 c/m	£2 10 0	18×24 c/m	£4 4 0
----------------------------------	---------	---------------	--------	----------------	--------	-------------------	---------	--------------------	--------

No. 3 MODEL (With Outside Adjustments).

$\frac{1}{2}$ -Plate ($4\frac{1}{2} \times 3\frac{1}{2}$) ..	£2 5 0	$7\frac{1}{2} \times 5$	£3 6 0	Whole Plate.	
$\frac{3}{4}$ -Plate ($6\frac{1}{2} \times 4\frac{1}{2}$) ..	£2 15 0	13×18 c/m. ..	£3 6 0		£3 10 0

THE ALL BRITISH CAMERA MAKERS

THORNTON-PICKARD



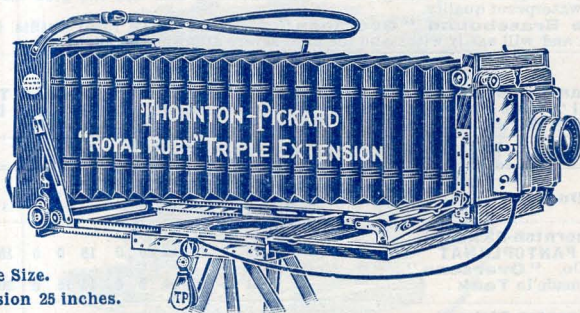
PRICE LIST of the Thornton-Pickard SHUTTER RELEASES and Gas Tubing

The "Arabesque" Balls and Tubes, supplied by us, are all specially made from the best pure Para Rubber and are unequalled in quality and durability.

NO.		S. D.	
	"Arabesque" Rubber Releases.	2 0	
1	Standard Pattern "Arabesque" Round Ball, Tube, and Teat ..	1 9	
2	Between-Lens Shutter Oval Ball, Tube without Teat	1 6	
3	Small Size Oval Ball and Tube	3 0	
4	Studio Shutter Release, Ball Tube and Bellows Teat	0 6	
	"Arabesque" Shutter Tubing per foot	0 8	
	" Gas Tubing No. 1, $\frac{9}{32}$ in. bore, $\frac{1}{16}$ in. walls	0 10	
	" " No. 2, $\frac{3}{32}$ in. " $\frac{1}{16}$ in. "	1 0	
	" " No. 3, $\frac{3}{32}$ in. " $\frac{1}{16}$ in. "	0 4	
	" Teats	1 0	
	" Studio Bellows Teats	1 0	
	Black and Red Rubber Releases.		
5	Black Enamelled Rubber Ball Tube and Teat	1 6	
6	Red Polished	1 3	
7	" " small size Oval Ball and Tube	0 9	
8	" " Round "	0 6	
	Shutter Release Tubing, black or red per foot	0 3	
	Black and Red Teats	0 3	
	Gas Tubing for Lanterns, black or red :—		
	No. 1, $\frac{5}{16}$ in. bore, 60ft. lengths, 13s. 6d. per foot	0 3	
	No. 2, $\frac{1}{2}$ in. " 60ft. " 18s.	0 4	
	No. 3, $\frac{3}{4}$ in. " 60ft. " 30s.	0 7	
	Large Sized "Arabesque" Round Balls.		
	DIAMETER.	WORKING CAPACITY.	
0	1 $\frac{1}{2}$ in.	Ordinary Ball for 2ft.	1 0
1	1 $\frac{3}{4}$ in.	For Studio Shutter Release	1 4
3	2 $\frac{1}{4}$ in.	For Tubing up to 30ft. long	3 0
4	2 $\frac{3}{4}$ in.	" " 50ft. "	4 0
6	3 in.	" " 100ft. "	6 0

We Specialize in Rubber Releases.

THE ALL BRITISH CAMERA MAKERS

THORNTON-PICKARD**THE THORNTON-PICKARD PATENT****Latest
Improved
Model.****“ROYAL RUBY”****The World's Standard HIGH-CLASS CAMERA.** $\frac{1}{2}$ -Plate Size.

Extension 25 inches.

Represents the greatest achievement in the Art of Camera Construction.

The “ROYAL RUBY” is unquestionably the greatest success yet achieved in the making of Photographic Apparatus, and such is the reputation it has gained that it is best known as the

KING OF CAMERAS

It is difficult to give here an adequate conception of what this Camera really is; suffice it to say that it is the best production of the *Best British Camera Makers*, and is strongly recommended to all in search of the **finest all-round Camera procurable**. The prices are, for such an Outfit, very moderate, and no purchaser can experience anything but the greatest pleasure and satisfaction in acquiring a “Royal Ruby.”

A few of its most salient features are enumerated below.

“Omniflex” Extending and Swinging Front.

Triple Extension Baseboard and Bellows.

Considerable rise to front.

Fall to front.

Independent Rack and Pinion Rise to front panel at shortest focus.

Independent Rack and Pinion Fall to front panel at shortest focus.

Rack and Pinion Cross Front Movement.

Short Focus Movement at front of Camera; no protruding baseboard, no cutting off.

Improved pattern Folding Front, locking automatically in position.

Rising Front, brassbound on sides, preventing wear and tear.

Triple Swing to Front, Backward, Forward, and Independent Swing.

Triple Swing to Back, Backward, Forward, and Side Swing.

Automatic Spring Stretchers to Front and Back.

A greater range of movements, with greater latitude than any other Camera made.

SEE PRICE LIST NEXT PAGE. **STANDARD** and “**OVERSEAS**” (TEAK) Patterns.

THE ALL BRITISH CAMERA MAKERS

THORNTON-PICKARD

THORNTON-PICKARD

‘ROYAL RUBY’ TRIPLE EXTENSION OUTFITS.

With various makes of Lenses.

Two qualities of Cameras are listed below, viz., the Standard Pattern Mahogany and the “Overseas” pattern. The “Overseas” Model is in all respects similar to the Standard Pattern Camera, but it is built of **Seasoned Teak** throughout, a wood expressly selected for its damp and heat resisting qualities. Every joint is specially strengthened by being screwed as well as glued, and the glue used is of special waterproof quality.

The Brassbound “Overseas” Models make ideal outfits for any climate, and will easily withstand the most severe atmospheric changes.

SPECIFICATION.

Camera with Turntable, Threefold Automatic English Ash Tripod, “Royal” Time and Inst. Shutter with Speed Indicator, Best Quality Double Bookform Dark Slide with hinged metal Division, and Lens as per list.

SIZES AND PRICES OF OUTFITS.

No.	Outfit with Lens.	Series	Largest ap't're	Half-plate 6½×4½	7½×5 13×18 c/m	Wh'f-plate 8½×6½	10×8 18×24 c/m
1	Thornton-Pickard PANTOPANAT	—	F8	10 10 0	12 10 0	15 0 0	18 10 0
1A	Do. “Overseas” made in Teak	—		11 15 0	14 0 0	16 15 0	20 10 0
2	Thornton-Pickard “RUBY ANASTIGMAT”	—	F6.8	13 5 0	15 10 0	18 10 0	21 10 0
2A	Do. “Overseas”	—		14 10 0	17 0 0	20 5 0	23 10 0
3	Beck “ISOSTIGMAR”	III	F7.7	11 15 0	13 15 0	16 5 0	—
3A	Do. “Overseas”	—		13 0 0	15 5 0	18 0 0	—
4	Beck “ISOSTIGMAR”	II	F5.8	12 17 6	14 17 6	—	—
4A	Do. “Overseas”	—		14 2 6	16 7 6	—	—
5	Ross “HOMOCENTRIC”	III	F6.3	14 15 0	18 0 0	22 0 0	27 0 0
5A	Do. “Overseas”	—		16 0 0	19 10 0	23 15 0	29 0 0
6	Ross “HOMOCENTRIC”	II	F5.6	16 5 0	19 10 0	24 10 0	31 10 0
6A	Do. “Overseas”	—		17 10 0	21 0 0	26 5 0	33 10 0
7	Aldis “ANASTIGMAT”	½-plate Series II. F6 13×18 c/m & 1/1 pl. Series III. F7.7		13 2 6	13 5 0	15 10 0	—
7A	Do. “Overseas”	—		14 7 6	14 15 0	17 5 0	—
8	Cooke “ANASTIGMAT”	III	F6.5	14 17 0	17 3 0	21 4 0	27 18 6
8A	Do. “Overseas”	—		16 2 0	18 13 0	22 19 0	29 18 6
9	Dallmeyer “STIGMATIC”	IV	F6.3	13 10 0	16 15 0	—	—
9A	Do. “Overseas”	—		14 15 0	18 5 0	—	—
10	Dallmeyer “STIGMATIC”	II	F6	17 7 6	21 10 0	26 0 0	33 0 0
10A	Do. “Overseas”	—		18 12 6	23 0 0	27 15 0	35 0 0
11	Goerz “DACOR”	III	F6.8	16 10 0	19 15 0	23 0 0	29 15 0
11A	Do. “Overseas”	—		17 15 0	21 5 0	24 15 0	31 15 0

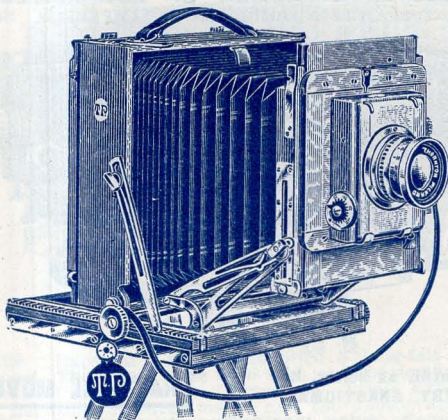
Camera and Slide Brassbound	Standard and “Overseas” Patterns	25/-	30/-	35/-	40/-
Extra Bookform Mahogany Slides .. each		17/6	20/-	22/6	30/-
Do. TEAK do. .. each		22/6	25/-	27/6	35/6
Brassbinding to either pattern .. each		5/-	5/-	5/-	5/6

THE ALL BRITISH CAMERA MAKERS

THORNTON-PICKARD

"SPECIAL RUBY."

THE MASTERPIECE OF MEDIUM PRICED CAMERAS.
NEW RACK AND PINION RISING PANEL. NEW SIDE SWING.

**PRINCIPAL PRACTICAL POINTS OF THE CAMERA.**

"Omniflex" Rising, Falling, Swinging, and Extending Front, similar in pattern to the "Royal Ruby."

Extra Wide Front and Bellows, preventing all "cutting off" with shortest focus lenses, and making the Camera adaptable for Stereo. Work when required.

Camera Body racks forward on baseboard for focussing purposes. Also focussing effected by Front Pinion Head in ordinary manner.

Improved Folding Front, with practically automatic erection.

Automatic Spring Stretchers to Front and Back of Camera.

Rising and Falling Front of great latitude.

Independent Rising and Falling Panel, operated by Rack and Pinion, usable at shortest focus.

Cross Front, Triple Extension, Alternative Wide Angle Movements, Swinging Movements in all directions, &c., including SIDE SWING to Camera Back, &c., &c.

SPECIFICATION AND PRICES.

"Special Ruby" Triple Extension Camera, with "Omniflex" Rising, Falling, Swinging, and Extending Front, and all other adjustments comprehensive and complete. Extra Wide Real Leather Bellows, Brass Turntable, Three-fold Ash Rule-joint Tripod, Time and Inst. Thornton-Pickard Roller Blind Shutter, speeds $\frac{1}{25}$ to $\frac{1}{500}$ second, and Time Exposures. One Double Bookform Dark Slide, Double-Hinged Focussing Screen, and Beck Symmetrical Lens with Iris F/8.

	Standard Outfit.	Brassbound Outfit.	Stereo. Outfit.
$\frac{1}{2}$ -PLATE ...	£6. 10. 0	£7. 15. 0	£8. 10. 0
Extra Bookform Mahogany Slides	each	8/6	
Brassbinding Camera and Slide	each	25/-	
Brassbinding Slide	each	5/-	

THE ALL BRITISH CAMERA MAKERS

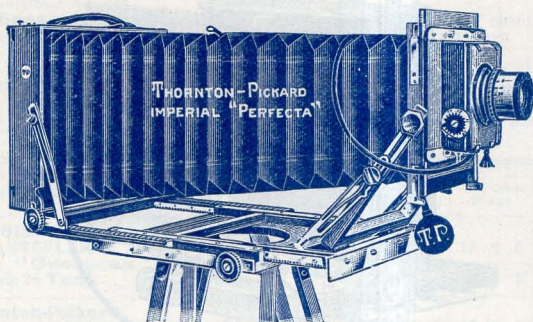
THORNTON-PICKARD

"PERFECTA"

TRIPLE EXTENSION CAMERA OUTFIT.

THE ABSOLUTE PERFECTION OF LOW-PRICED SETS.

The Principal Camera Outfit of the "IMPERIAL" Series.



"Perfecta" Outfit, as below, but with T.-P. "RUBY ANASTIGMAT" Lens, F/6.8.

5×4 and Postcard ..	£7 12 6
$\frac{1}{2}$ -Plate	£8 10 0
$\frac{1}{4}$ -Plate	£12 10 0
13×18 c/m.. .. .	£10 6 0

"PERFECTA" Outfit, large sizes, with Beck Symmetrical Lens with Iris Diaphragm F/8.

10×8 and 18×24 c/m ..	£12 0 0
12×10 and 24×30 c/m ..	£14 15 0

PRACTICAL MOVEMENTS.

Triple Extension, $\frac{1}{2}$ -pl., 22". $\frac{1}{4}$ -pl., 28"
 Short Extension.
 Three Racks and Pinions.
RACKWORK FOCUSING BODY.
 Rising, Falling, and Cross Front.
 Independent Rising Front, operated by Rack and Pinion.
 Modified "OMNIFLEX" Swinging and Extending Front.
 Swing Back, Forward, Backward, and Side Swing.
 Reversing Back.
 Lens convertible for Long Focus Views.

SPECIFICATION AND PRICES.

TRIPLE EXTENSION CAMERA, with all movements as above, including "Omni-flex" Swinging Front, Brass Turntable; Beck Symmetrical Lens, with Iris Diaphragm F/8; Double Bookform Dark Slide, with hinged division; Three-fold Stand; Thornton-Pickard Time and Instantaneous Shutter, with Speed Indicator. Camera fitted with **Real Leather Bellows**.

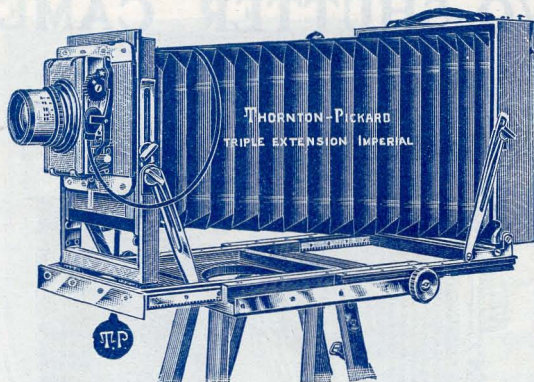
Outfit with Lens.	5×4 & P/c.	$\frac{1}{2}$ -plate.	13×18 c/m.	$\frac{1}{4}$ -Plate.
Outfit as above, with Beck Symmetrical Lens	£4 10 0	£5 0 0	£6 6 0	£7 7 0
With Beck Isostigmat III. F/7.7.....	5 17 6	6 10 0	7 16 0	9 12 0
With T.-P. Ruby Anastigmat F/6.8..	7 12 6	8 10 0	10 6 0	12 10 0
„ Ross Homocentric III. F/6.3..	8 12 6	10 0 0	12 16 0	16 0 0
„ Dallmeyer Stigmatic IV. F/6.3	7 12 6	8 15 0	11 11 0	—
„ „ II. F/6.	9 17 6	12 17 6	16 10 0	20 0 0
„ T.-P. "Pantoplanat" F/6 ..	4 15 0	5 5 0	6 10 0	7 15 0
Extra Slides, each	8 0	8 6	10 6	14 6
Carrying Case, K	7 6	9 0	10 6	11 6
Time Exposure Valve to Shutter ..	3 6	3 6	3 6	3 6

THE ALL BRITISH CAMERA MAKERS

$\frac{1}{2}$ -Plate "Perfecta" Outfit with Cooke Anastigmat F/7.7. £9 0. 0.

THORNTON-PICKARD

NEW "IMPERIAL"



That the "Imperial" Outfit has filled a long-felt want has been clearly proved. Thousands have been sold, and the demand is increasing. The phenomenal success of the "Imperial" Triple Extension has been gained on the basis of sheer merit, and the photographic public have been quick to recognise the exceptional value offered for the price charged. It is recognised by Dealers and Photographers everywhere as

THE LEADING LOW-PRICED SET.

SPECIFICATION.

Camera, with all practical movements, including Triple Swing Back; Rising, Falling, and Cross Front; Triple Swing Front; Triple Extension; Short Focus; Reversing Back; Double Rack and Pinion; Brass Turntable; Beck Symmetrical Lens, with Iris Diaphragm $f/8$; one Double Bookform Dark Slide, with hinged division. Three-fold Stand; Thornton-Pickard Time and Instantaneous Shutter, with Speed Indicator.

COMPLETE OUTFIT with LENS.	$\frac{1}{2}$ -plate $4\frac{1}{2} \times 3\frac{1}{2}$	5×4 and Post Card	$\frac{1}{2}$ -plate $6\frac{1}{2} \times 4\frac{1}{2}$	13×18 c/m and 7×5	$\frac{1}{1}$ plate $8\frac{1}{2} \times 6\frac{1}{2}$	10×8 and 18×24 c/m	12×10 and 24×30 c/m
With Beck Symmetrical as specified	67/6	70/-	75/-	90/-	117/6	210/-	245/-
With Thornton-Pickard "Pantoplanat" $F/8$	72/6	75/-	80/-	95/-	127/6	225/-	260/-
With Thornton-Pickard "Rectoplanat" $F/8$	65/-	67/6	70/-	90/-	110/-	210/-	240/-
Teak "OVERSEAS" Imperial See also page 189.				Half-plate 95/-		Whole-plate, 147/6	

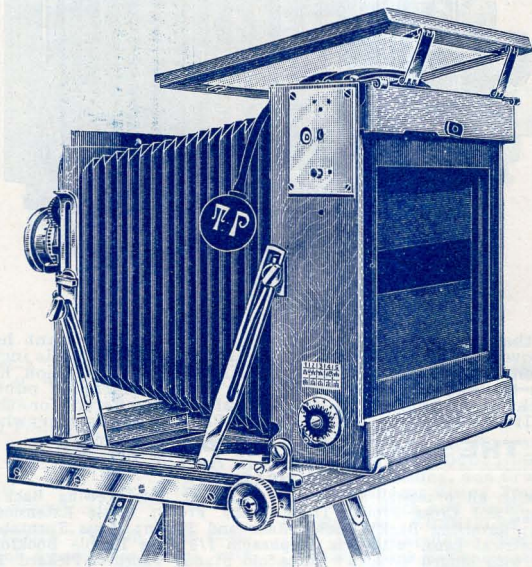
SPECIAL OFFER. $\frac{1}{2}$ -PLATE "Imperial" Outfit with "ALDIS" Anastigmat, $F7.7$ | **90/-**

Extra Slides for Standard "Imperials," Cases, &c., as on page 184.

THE ALL BRITISH CAMERA MAKERS

THORNTON-PICKARD

FOCAL PLANE IMPERIAL TWO-SHUTTER CAMERA.



EXPOSURES UP TO $\frac{1}{1000}$ th OF A SECOND

This Camera, which is sold as a Complete Outfit, is generally similar to the "Imperial Triple Extension" Outfit as described on page 185 but with the addition of a Special pattern Focal Plane Shutter built in the Camera body.

The Focal Plane Shutter has three apertures—one full width of the plate for Focussing purposes; the second, about $1\frac{1}{2}$ inches wide, for slow and medium Instantaneous Exposures; and the third one is a narrow slit for High Speed Instantaneous Exposures up to $\frac{1}{1000}$ th second. Outside Indicators and Speed Tablet show at a glance the requisite combination of spring tension and Slit for any given exposure. The great range of speeds from "Time" to $\frac{1}{1000}$ th second render this Camera suitable for any class of subject.

SPECIFICATION.—Exactly as on page 185. but with the addition of Focal Plane Shutter built in the Camera body, Half-Plate size, with Beck Lens

110/-

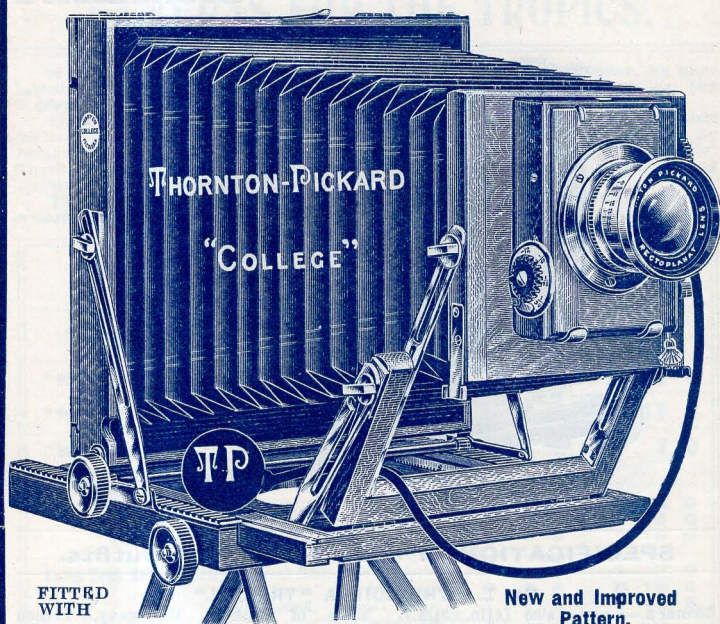
OUTFIT with T.P. Ruby Anastigmat Lens F6.8 . . . 180/-

OUTFIT with Cooke Anastigmat Lens, F7.7 . . . 190/-

THE ALL BRITISH CAMERA MAKERS

THORNTON-PICKARD

"COLLEGE"


RACKWORK FOCUSING BODY. INDEPENDENT RISING FRONT.
SPECIFICATION.

Camera.—Made of beautifully polished Mahogany with best Machine-finished Brass Fittings and Brass Turntable; Extremely Long Extension, with Extending and Swinging Front; Double Stretchers to Camera Back and Front; Brass-lined Fork; Rising and Falling Front; Rackwork Focusing Body, Reversing Back, etc., etc.

Thornton-Pickard Time and Instantaneous Shutter, Speeds $\frac{1}{15}$ th to $\frac{1}{100}$ th and Time Exposures. Two-fold Stand to fit Turntable, Double Book-form Slide, and Thornton-Pickard Rectoplanat Lens, with Iris Diaphragm.

PRICE LIST.	$\frac{1}{4}$ -Plate	$\frac{1}{2}$ -Plate	7×5 13×18 c/m	Whole-plate
Thornton-Pickard "College" Complete Set, as above Specification ..	47/6	57/6	75/-	92/6
Do do as above, but with BRCK RAPID SYMMETRICAL LENS, F8. .	52/6	62/6	85/-	100/-
Extra Double Bookform Dark Slides, each	5/6	7/-	9/-	12/-
Good Quality Waterproof Cloth Case, Pattern I ..	2/6	3/6	5/-	5/6
Stiff Waterproof Cloth Case, Pattern L ..	3/6	5/-	7/-	7/6

$\frac{1}{2}$ -Plate Outfit, with Aldis Anastigmat Lens, F7·7, 70/-

THE ALL BRITISH CAMERA MAKERS

THORNTON-PICKARD

'TRIBUNE' QUARTER-PLATE CAMERA SETS

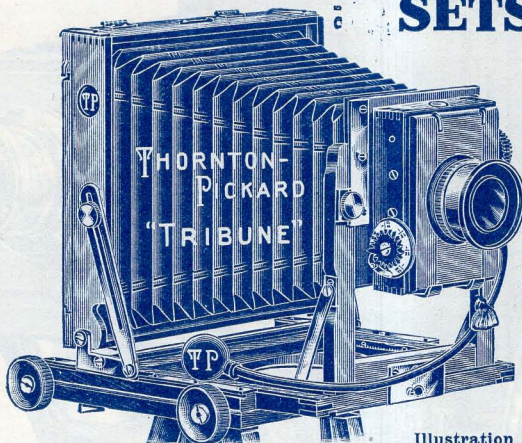


Illustration of 35/- Set

Very suitable for JUVENILES and YOUNG BEGINNERS.

SPECIFICATION of the "TRIBUNE" Outfits.

No. 1. THE GUINEA "TRIBUNE."

Camera.— $\frac{1}{4}$ -plate size ($4\frac{1}{2}$ in. \times $3\frac{1}{2}$ in.). Made of selected Mahogany, French Polished. Double Extension. Rack and Pinion focussing from $3\frac{1}{2}$ in. to 11in. Double Stretchers to Back and Front. Reversing Back. Double Swing Back. Rising and Falling Front. Brass Turntable. Two-fold Ash Stand. One Double Bookform Slide. Metal Shutter giving Time Exposures and Variable Instantaneous Speeds. Achromatic Lens with Iris

No. 1 "TRIBUNE," complete **21/-**

No. 2 "TRIBUNE." Same as specification No. 1, but with Double Racks and Pinions, and Sliding Body for use with Short Focus Lenses **25/-**

No. 3 "TRIBUNE." Exactly as No. 2 Outfit, but fitted with Thornton-Pickard Roller Blind "Snap Shot" Shutter instead of Metal Shutter. Exposures $\frac{1}{15}$ th to $\frac{1}{60}$ th sec. **30/-**

No. 4 "TRIBUNE." Exactly as No. 2 Outfit, but fitted with Thornton-Pickard Roller Blind Time and Instantaneous Shutter. Exposures $\frac{1}{15}$ th to $\frac{1}{60}$ th sec., as well as Time Exposures, as illustration **35/-**

No. 5 "TRIBUNE." Exactly as No. 4, with Thornton-Pickard Time and Instantaneous Shutter and good quality Rapid Rectilinear Lens of splendid covering power and definition instead of Single Achromatic Lens **37/6**

Extra Slides, each 5/6. Collapsible Carrying Case I, 2/6. Stiff Case I, 5/6.

THE ALL BRITISH CAMERA MAKERS

THORNTON-PICKARD

SPECIAL "OVERSEAS" TEAK PATTERN CAMERAS FOR THE TROPICS.

In response to numerous requests from Colonial and other customers, we have introduced our principal Camera Sets in what will be known as the **"OVERSEAS" PATTERN.**

These Cameras are built of **Seasoned Teak throughout**—a wood expressly selected for its heat and damp-resisting qualities. Every joint is specially strengthened by being screwed as well as glued, and the glue used is of Special Waterproof quality. These Outfits are **polished a rich teak colour** and present a beautiful and pleasing appearance.

The **Brassbound "OVERSEAS"** Models make ideal outfits for any climate, and will withstand the most severe atmospheric conditions.

PRICE LIST OF "OVERSEAS" TEAK FIELD CAMERA SETS.

PATTERN OF CAMERA.	Specification same as Standard Outfit on pages	$\frac{1}{2}$ -Plate. $6\frac{1}{2} \times 4\frac{1}{2}$	$1\frac{1}{4}$ -Plate. $8\frac{1}{2} \times 6\frac{1}{2}$
"ROYAL RUBY"	182, 1A Outfit	£11 15 0	£16 15 0
"PERFECTA"	184, with Beck Lens, F/8	6 0 0	8 17 0
"IMPERIAL"	185, with Beck Lens, F/8	4 15 0	7 7 0
BRASSBINDING Camera and Slide—			
"Royal Ruby"		1 5 0	1 15 0
"Perfecta"		1 5 0	1 15 0
"Imperial"		1 5 0	1 15 0
Extra Teak Slides each,			
"Royal Ruby"		1 2 6	1 7 6
"Perfecta" and Imperial"		0 12 6	0 18 6
Brassbound, "Royal Ruby"		1 7 6	1 12 6
"Perfecta" and Imperial"		0 16 6	1 2 6

"OVERSEAS" PATTERN HAND AND REFLEX CAMERAS.

Made in Teak. Polished a Rich Teak colour and **strongly Brassbound** at all joints.

Pattern of Camera, "OVERSEAS" (Teak).		$\frac{1}{2}$ -Plate.	5×4, P.-C., and 9×12 c/m.
"UNIT" FOCAL PLANE "FOLDING RUBY"	Specification as on page 193, without Lens.	£13 0 0	£14 7 6
"RUBY REFLEX" Single Extension	Specification as on page 197, without Lens on page 198, Do. do.	$\frac{1}{2}$ -Plate.	5×4 and 9×12 c/m.
"DUPLEX RUBY" REFLEX Double Extension		£12 0 0	£16 10 0
"ROYAL RUBY" REFLEX Triple Extension	Specification as on page 199, without Lens	14 0 0	25 10 0
		16 16 0	32 0 0

For fullest particulars of **"Overseas" Teak Reflex Cameras**, and **Teak Pattern "UNIT" Folding Ruby**, with Lenses, see complete Catalogue published in January.

THE ALL BRITISH CAMERA MAKERS

THORNTON-PICKARD**The Thornton-Pickard New 1911 Patent****“UNIT” FOCAL PLANE CAMERA SETS**

The “ROYAL RUBY,” “SPECIAL RUBY,” “PERFECTA,” and “IMPERIAL” TRIPLE EXTENSION CAMERAS, in both Standard and “Overseas” Models, can all be supplied with the “UNIT” Self-capping Time and Instantaneous Focal Plane Shutter, built in the Camera Body. N.B.—For description of “Overseas” Model see heading page 182.

SPECIFICATION.—In each case the Specification is the same as the Standard Set of each respective pattern, and comprises Triple Extension Camera, with Turntable, 3-fold Ash Stand, Double Bookform Dark Slide,

“Unit” Time and Inst. Self-capping Focal Plane Shutter embodied, and Lens as per list below.

No.	Outfit with Lens.	Lens		Royal Ruby	Per-fecta	Imperial	
		Series	Aperture	$\frac{1}{2}$ -Plate only	$\frac{1}{2}$ -Plate only	$\frac{1}{2}$ -Plate.	13x18 c/m.
1	Thornton-Pickard RUBY ANASTIGMAT ..	—	F6.8	17 0 0	12 6 6	11 1 6	12 12 6
1A	Do. “Overseas” (Teak) ..	—		18 5 0	13 6 6	12 1 6	14 7 6
2	Dallmeyer “STIGMATIC” ..	IV.	F6.3	17 5 0	12 11 6	11 6 6	13 17 6
2A	Do. “Overseas” (Teak) ..			18 10 0	13 11 6	12 6 6	15 12 6
3	Dallmeyer “STIGMATIC” ..	II.	F6	21 2 6	16 14 0	15 10 0	18 12 6
3A	Do. “Overseas” (Teak) ..			22 7 6	17 14 0	16 10 0	20 7 6
4	Beck “ISOSTIGMAR” ..	III.	F7.7	15 10 0	10 6 6	9 6 6	11 7 6
4A	Do. “Overseas” (Teak) ..			16 15 0	11 6 6	10 6 6	13 2 6
5	Beck “ISOSTIGMAR” ..	II.	F5.8	16 12 6	11 10 0	10 9 0	12 7 6
5A	Do. “Overseas” (Teak) ..			17 17 6	12 10 0	11 9 0	14 2 6
6	Aldis “ANASTIGMAT” ..	III.	F7.7	14 18 0	9 16 6	8 11 6	10 7 6
6A	Do. “Overseas” (Teak) ..			16 3 0	10 16 6	9 11 6	12 2 6
7	Aldis “ANASTIGMAT” ..	II.	F6	16 17 6	12 4 0	10 19 0	—
7A	Do. “Overseas” (Teak) ..			18 2 6	13 4 0	11 19 0	—
8	Ross “HOMOCENTRIC” ..	III.	F6.3	18 10 0	13 16 6	12 11 6	15 2 6
8A	Do. “Overseas” (Teak) ..			19 15 0	14 16 6	13 11 6	16 17 6
9	Ross “HOMOCENTRIC” ..	II.	F5.6	20 0 0	15 6 6	14 1 6	16 12 6
9A	Do. “Overseas” (Teak) ..			21 5 0	16 6 6	15 1 6	18 7 6
10	Cooke “ANASTIGMAT” ..	III.	F6.5	18 12 0	13 18 6	12 13 6	14 5 6
10A	Do. “Overseas” (Teak) ..			19 17 0	14 18 6	13 13 6	16 0 6
11	Cooke “ANASTIGMAT” ..	II.	F4.5	19 12 6	14 19 0	13 15 0	14 15 0
11A	Do. “Overseas” (Teak) ..			20 17 6	15 19 0	14 15 0	16 10 0
12	Goerz “DAGOR” ..	III.	F6.8	20 5 0	15 11 6	14 6 6	16 17 6
12A	Do. “Overseas” (Teak) ..			21 10 0	16 11 6	15 6 6	18 12 6

BRASSBOUND } Standard and Camera and Slide } “Overseas” Pattern ..		25/-	25/-	25/-	35/-
Outfit without Lens ..		14 0 0	8 15 0	7 5 0	8 10 0
Do. Do. “Overseas” ..		15 5 0	10 10 0	8 5 0	10 5 0
Camera and Turntable only, with “Unit” Shutter ..		12 0 0	8 0 0	6 10 0	7 15 0
Do. do. “Overseas” ..		13 5 0	8 16 0	7 6 0	9 5 0

SPECIAL RUBY “UNIT” Camera Set, $\frac{1}{2}$ -plate only

With “Ruby”
Anastigmat F6.8
£13 16 6

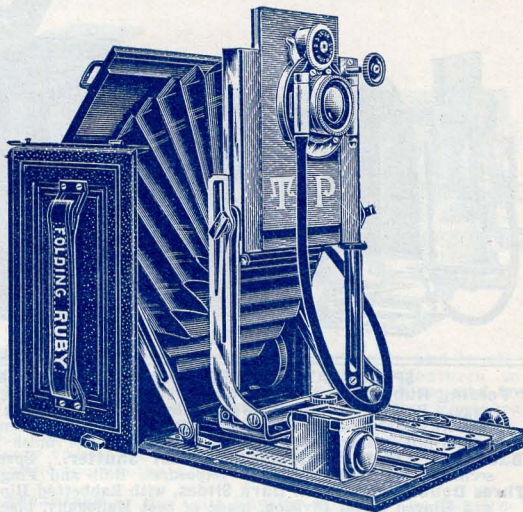
Outfit WITHOUT Lens
£10 5 0

THE ALL BRITISH CAMERA MAKERS

THORNTON-PICKARD

"Folding Ruby," No. 1.

THE PERFECT MODERN HAND CAMERA.



"OMNIFLEX" RISING, FALLING, SWINGING, AND EXTENDING FRONT.

This is the cheapest model of the "Folding Ruby" series, and is a high-class Hand Camera suitable for every class of work. It is sold at a price so moderate as to bring it within the reach of all who require a portable, practical instrument which embodies every movement the most advanced Hand Camerist is likely to require.

SPECIFICATION AND PRICES, No. 1 "FOLDING RUBY" OUTFIT.

"FOLDING RUBY" HAND CAMERA, with movements as above. Best Selected Mahogany, beautifully polished internally, with handsome machine-made highly-finished Brass Fittings, covered externally with Real Seal-Grained Morocco Leather, fitted with Leather Carrying Handle and Long Sling Strap.

SHUTTER. New Pattern Bausch & Lomb "AUTOMAT" Between-Lens giving variable Instantaneous Exposures up to 1/100th sec., as well as "Time" and "Bulb" Exposures. Fitted with Pneumatic and Finger Releasea.

PLATEHOLDERS. Three Plateholders of new design, with Spring Light Traps and Aluminium Shutters.

BRIGHT FINDER, for Vertical and Horizontal Pictures.

SPIRIT LEVEL.

LENS. Beck Rapid Symmetrical, with Iris Diaphragm, F/8.

1/4-Plate ... £5 5 0 | 5×4 & 9×12c/m £6 0 0

Extra Plateholders, each, 1/4-plate, 5/6; 5×4, 6/6;

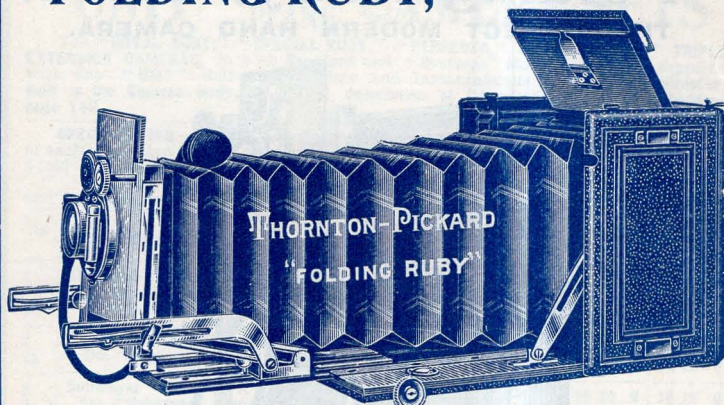
Waterproof Carrying Case, 1/4-pl., 7/6; 5×4, 8/6;

Black Leather Case, 1/4-pl., 12/6; 5×4, 14/6.

THE ALL BRITISH CAMERA MAKERS

THORNTON-PICKARD

"FOLDING RUBY," Nos. 2 and 3



SPECIFICATION. "FOLDING RUBY" No. 2 Model.

"Folding Ruby" Camera with all movements as detailed on previous page. Rack and Pinion Movement to Rising and Falling Front Panel, and Auxiliary Racking Baseboard, for Short Focus Lenses. Other points in Camera as No. 1 Model, but of superior finish generally.

Bausch & Lomb "Automat" Everset Shutter. Speeds $\frac{1}{100}$ to 3 seconds, and Time and Bulb Exposures, Bulb and Finger Releases.

Three Double Book-Form Dark Slides, with Rabbetted Hinged Shutters, and Hinged Metal Division, made of best Mahogany, black polished to match Camera, and fitted with Patent Exposure Recorders.

Best Brilliant Finder for Vertical and Horizontal Pictures. **Spirit Level.**

Beck Double "Aplanat" Convertible Lens, F. 7.7 with Iris.

$\frac{1}{4}$ -plate size	5×4 and 9×12 c/m.	Postcard Size	Half-plate
£6 10 0	£7 10 0	£8 10 0	£10 10 0

"FOLDING RUBY," No. 3. Model De Luxe.

SPECIFICATION.—Same general Specification as No. 2 Outfit above, but Camera fitted with **Universal Swing Back** and **Revolving** instead of Reversing Back, which allows slide to be changed from vertical to horizontal, or *vice versa* when in position. **Bausch & Lomb "Automat" Shutter,** Three Double Bookform Slides, Bright Finder, Spirit Level, and Beck Double "Aplanat" Convertible Lens, F7.7.

$\frac{1}{4}$ Plate .. £8. 0. 0. | 5×4 .. £9. 0. 0. | $\frac{1}{2}$ Plate .. £12. 0. 0

Extras for "Folding-Ruby" Hand Cameras.

	$\frac{1}{4}$ PLATE.	5×4 and 9×12 c/m.	$\frac{1}{2}$ PLATE.
Extra Book Form Double Dark Slides ..	0 10 00	0 11 00	0 12 6
Waterproof Carrying Case for Camera with three Plateholders ..	0 7 60	8 60	0 12 6
Black Leather Case for Camera and three Plateholders ..	0 12 60	14 61	0 0
Telescopic Hand Camera Stand, No. 2, Height 48in.	0 9 00	9 0	—
Time Exposure Valve to Shutter ..	0 3 60	3 60	3 6
Mackenzie-Wishart Patent Loading Daylight Slide ..	0 15 00	18 01	1 0
Envelopes for Ditto ..	0 1 30	1 60	2 0
Film Pack Adapter, including fitting ..	0 6 6	—	—

THE ALL BRITISH CAMERA MAKERS

THORNTON-PICKARD

'FOLDING RUBY UNIT'



The "Folding Ruby Unit" is made in one pattern, and in all sizes from $\frac{1}{4}$ -plate to $\frac{1}{2}$ -plate. It is similar in general features to the No. 2 "Folding Ruby," with the addition of the Unit Time and Instantaneous Focal Plane Shutter built in the body. The Photographer equipped with the "Folding Ruby Unit" Camera will be provided with the most perfect apparatus for work of every class, for not only will the Shutter give every variety of exposure, but the Camera also gives every practical movement the Photographer can require.

One great advantage of the Unit Shutter built in the Camera body is that it does away with the use of the various inefficient types of between-lens shutters, and provides instead the most simple and efficient form of shutter it is possible to design. It also leaves the lens board free for the fitting of the lens only, and that in its original rigid Iris mount.

SPECIFICATION AND PRICE LIST.

In every detail these Outfits are similar to the "Folding Ruby" No. 2, as listed on page 192, with the addition of "Unit" Focal Plane Shutter embodied (see page 178).

No.	OUTFIT WITH LENS	STANDARD PATTERN—MAHOGANY—LEATHER COVERED					
		LENS. Series	Aper- ture	$\frac{1}{4}$ -Plate $4\frac{1}{2} \times 3\frac{1}{4}$	5×4 and 9×12 c/m.	Postcard $5\frac{1}{2} \times 3\frac{1}{2}$	$\frac{1}{2}$ -Plate $6\frac{1}{2} \times 4\frac{1}{2}$
1	Thornton-Pickard Ruby Anastigmat	—	F6·8	13 0 0	14 7 6	15 7 6	17 15 0
2	Dallmeyer 'Stigmatic'	IV.	F6·3	13 0 0	14 7 6	15 7 6	18 0 0
3	Dallmeyer 'Stigmatic'	II.	F6	16 5 0	17 12 6	18 12 6	21 17 6
5	Beck 'Isostigmat' ..	II.	F5·8	12 12 6	14 0 0	15 5 0	17 7 6
6	Aldis Anastigmat ..	II.	F6	11 12 6	13 0 0	14 0 0	17 12 6
10	Cooke Anastigmat ..	III.	F6·5	14 2 0	15 9 6	16 9 6	19 5 0
11	Cooke Anastigmat ..	II.	F4·5	14 19 6	16 7 0	17 7 0	20 7 6

THE ALL BRITISH CAMERA MAKERS

THORNTON-PICKARD

'NIMROD AUTOMAN'

Self-Erecting Hand Cameras.

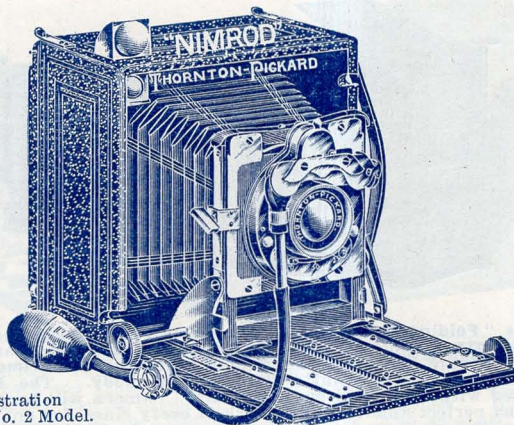


Illustration
of No. 2 Model.

SPECIFICATIONS AND PRICES.

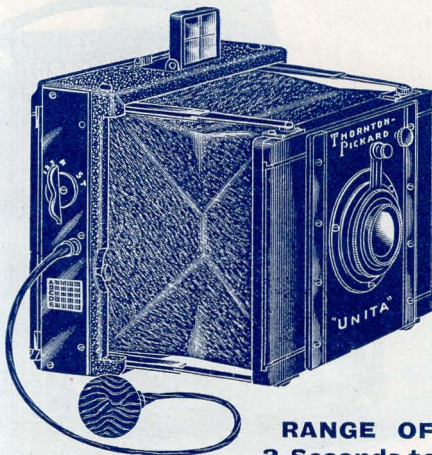
	$\frac{1}{4}$ Plate	5in. x 4in. and 9 x 12 c/m.
"NIMROD AUTOMAN" No. 1. Camera made of mahogany, beautifully polished inside and covered with best quality Waterproof Morocco-grained Leatherette, Brass Fittings machine-made, highly finished and lacquered. With all movements. Between Lens Shutter for Time and variable Instantaneous exposures, with Pneumatic and Trigger Releases, one Double Plateholder, and T.-P. RECTOPLANAT Lens, F8	Not Made.	£3 15s. 0d.
"NIMROD AUTOMAN" No. 2. Outfit exactly as No. 1, specified above, but Camera with Double Extension Baseboard and Bellows, Two Racks and Pinions, and T.-P. "SUNBEAM" Shutter, having a greater range of Instantaneous Exposures than Shutter of No. 1 Model. Speeds $\frac{1}{160}$ th up to 3 seconds..	£4 4s. 0d.	£5 5s. 0d.
"NIMROD AUTOMAN" No. 3 MODEL DE LUXE. Double Extension Camera and Bellows, with two Racks and Pinions, as Model No. 2, but fitted in addition with Central Universal Swing Back, Extra Back Extension, giving longer Focus, and Spirit Level. Covered with Real Seal-grained Morocco Leather. Fitted with BECK RAPID SYMMETRICAL LENS F8, instead of Rectoplanat. Other points as No. 2 Outfit	£5 5s. 0d.	£6 6s. 0d.
Extra Plateholders, each	5/-	6/-
Portable Telescopic Stand, 48 inches closing to 16 inches long	9/-	9/-
Black Leather Carrying Case for Camera and Three Plateholders	9/-	12/6

SPECIAL PATTERN 5 x 4 FOCAL PLANE AUTOMAN, £6 6s. 0d.

THE ALL BRITISH CAMERA MAKERS

Fullst details of above Cameras in Complete Catalogue published January, 1911

THORNTON-PICKARD

"UNITA" Collapsible Camera.

RANGE OF SPEEDS
3 Seconds to 1/1000th.

Fitted with the Patent

"UNIT" TIME & INSTANTANEOUS SELF-CAPPING FOCAL PLANE SHUTTER.

The notable point of difference between the new "Unita" Camera and the various makes of Collapsible Cameras already on the market, is that the "Unita" is fitted with the Thornton-Pickard Patent "Unit" Self-capping Time and Instantaneous Focal Plane Shutter, as described in detail on page 178. This fact alone makes the "Unita" preferable to all other Cameras of similar type. It is superior to all others both for simplicity and efficiency. One and the same turn of the Winding Key performs the necessary operations for the correct working of the "Unit" Focal.

SPECIFICATION.—Quarter-Plate ($4\frac{1}{2}$ by $3\frac{1}{2}$) "Unit" Camera, with Mahogany Body, leather-covered, and with ebony polished Front and Back. Strong self-locking Steel Struts, fixing camera absolutely rigid. Square Morocco Leather Bellows. "Unit" Self-capping Time and Inst. Focal Plane Shutter embodied. Pneumatic and Trigger Releases. Rising, Falling, and Cross Front. Three Double Plateholders, Aluminium Cased. Direct Vision Finder and including Leather Carrying Case.

Outfit as above without Lens	£7 10 0
With Thornton-Pickard Ruby Anastigmat F6.8 Lens in Focussing Mount.	11 0 0
Do. do. do. II. F6. do.	13 5 0
Do. Cooke Anastigmat do. III. F6.5 do.	11 16 6
Extra Plateholders of Special Quality, Aluminium Cased	0 10 6
Black Leather Case	0 10 0

THE ALL BRITISH CAMERA MAKERS

THORNTON-PICKARD

"SUNBEAM"



Illustration of MODEL A.

The All British Made Roll Film Camera.

SPECIFICATION, MODEL A.

Camera.—Best well-seasoned Mahogany, with Aluminium Baseboard, and Best Nickelled Fittings. Covered in Best Black Seal-grained Leather. Fitted with all necessary movements, including Rising, Falling, and Cross Front. Automatic Spring Stretchers. Camera Front Clamp. Self-detaching Spring Back, and Improved Spool-holder. Tripod Bushes.

Real Leather Bellows.

Infinity Catch.—Automatically Locks the Front on Extension at "infinity" focus.

(Model A is fitted with Improved Auto. Focussing Stop for varying distances.)

Engraved Focussing Scale, with Pointer for objects nearer than infinity.

Lens.—Beck Rapid Symmetrical, with Iris F8.

Finder.—Combined Brilliant Reversible Swivel Finder and Spirit Level.

Shutter.—New Pattern "Automat" Everset Between-Lens, giving variable Instantaneous Speeds of $\frac{1}{25}$, $\frac{1}{50}$, and $\frac{1}{100}$ second. Automatic Exposures of 1, $\frac{1}{2}$, and $\frac{1}{8}$ second. Also "Time" and "Bulb" Pneumatic and Trigger Releases.

SPECIFICATION, MODEL B.

Exactly as above, but with **DOUBLE EXTENSION BELLWS**, Rack and Pinion Focussing, Screw Arm Adjustment, Rising and Falling Front, Swing Back, &c.

QUARTER-PLATE SIZE ($4\frac{1}{2}'' \times 3\frac{1}{4}''$).	Series	Aper- ture	Model "A"	Model "B"
"Sunbeam" Camera with Beck Sym. Lens...	—	F8	£3 10 0	£4 10 0
" " " " Ruby Anastigmat	—	F6.8	6 6 0	7 7 6
" " " " Aldis Anastigmat	11	F6	4 15 0	5 15 6

"Koilos" Shutter in place of Automat, 15/- extra.

THE ALL BRITISH CAMERA MAKERS

THORNTON-PICKARD

'RUBY' REFLEX

**RUBY REFLEX. PRICE LIST & SPECIFICATION.**

Camera.—Body made of Mahogany throughout, covered with fine seal-grained morocco leather. All external metal fittings black oxydised and enamelled, and mechanism covered with dull black ebonite plates. Camera, Back, Front, and Focussing Hood Frame all made of specially seasoned and prepared ebonised wood, black throughout.

Detachable Lens Box of Black Ebonised Wood, with Sky Shade.

Reversible Focussing Hood, to enable photographs to be taken without the subject's knowledge. Made of Stiffened leather, rigid when erected, holding flat when not in use. Detachable for cleaning ground glass.

Reflecting Mirror of specially-prepared glass, silvered on the surface, everset.

"Unit" Focal Plane Shutter.—Quickwind, latest and most perfect type. Time Exposures of any duration. Instantaneous Exposures of 1-10th to 1-1000th of a second. Automatic Self-capping Blind.

Plateholders.—Three, each holding two plates;

or **Double Bookform Slides**, instead of solid Plateholders, at extra price.

RUBY REFLEX CAMERAS with VARIOUS MAKES of LENSES.

Specification as above, with Three Double Plateholders and Lens as quoted.

OUTFIT WITH LENS	Series	Largest Ap'ture	$\frac{1}{4}$ -plate $4\frac{1}{4} \times 3\frac{1}{4}$			5×4, Postcard, 9×12 c/m Horizontal.			5×4, Postcard, 9×12 c/m Square Reversing Back.			$\frac{1}{4}$ -plate $6\frac{1}{2} \times 4\frac{3}{4}$		
			£	s.	d.	£	s.	d.	£	s.	d.	£	s.	d.
Thornton-Pickard														
"Ruby" Anastigmat	—	F6·8	11	10	0	12	10	0	16	0	0	20	10	0
Dallmeyer Stigmatic....	IV	F6·3	11	10	0	12	10	0	16	5	0	21	15	0
Do. do.	II	F6	14	15	0	15	15	0	20	2	6	26	10	0
Aldis Anastigmat	II	F6	10	12	6	11	12	6	14	16	6	19	17	6
Beck Isostigmat.....	II	F5·8	11	10	0	12	10	0	16	2	6	21	5	0
Cooke Anastigmat	II	F4·5	13	15	0	14	15	0	18	16	0	23	10	0
Do. Do.	III	F6·5	12	17	6	13	17	6	17	12	0	22	13	6
"RUBY REFLEX" Camera and 3 Plate- holders without Lens			$\frac{1}{4}$ -Plate Horizontal 5×4 Post Card and 9×12 c/m.			Reversing Back 5×4, Post Card and 9×12 c/m.			$\frac{1}{4}$ -Plate					
			£8 10 0			£9 10 0			£12 12 0			£16 16 0		

THORNTON-PICKARD

"DUPLIX RUBY" REFLEX CAMERA

The Instrument of
Precision.

The
Pressman's
Ideal.

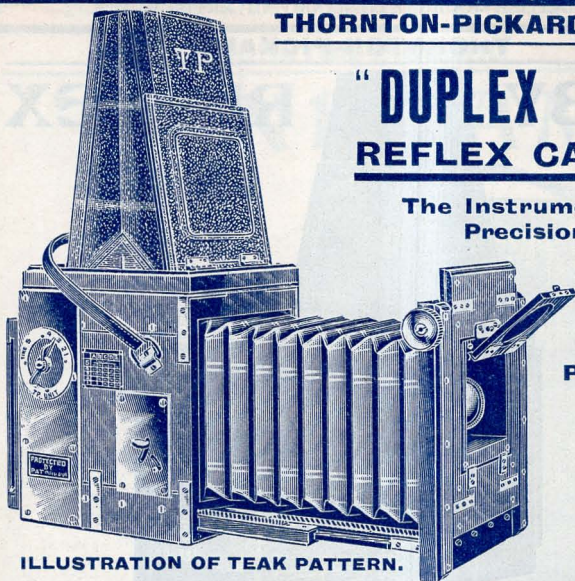


ILLUSTRATION OF TEAK PATTERN.

RUBY REFLEX. PRICE LIST AND SPECIFICATION.

Camera.—Body made of Mahogany throughout, covered with fine seal-grained morocco leather. All external metal fittings black oxydised and enamelled, and mechanism covered with dull black ebonite plates. Camera, Back, Front, and Focussing Hood Frame all made of specially seasoned and prepared ebonised wood, black throughout.

Rack and Pinion Rising and Falling Front, with self-locking Pinion.

Double Extension, operated automatically by One Pinion, allowing use of lenses of long focus.

Revolving Back, automatically giving Vertical or Horizontal picture.

Detachable Lens Box of Black Ebonised Wood, with Sky Shade.

Reversible Focussing Hood, to enable photographs to be taken without the subject's knowledge.—Stiffened Leather, rigid when erected, holding flat when not in use. Detachable for cleaning ground glass.

Reflecting Mirror of specially-prepared glass, silvered on the surface, everset.

"Unit" Focal Plane Shutter.—Quickwind, latest and most perfect type. Time Exposures of any duration. Instantaneous Exposures of 1-10th to 1-1000th of a second. Automatic Self-capping Blind.

Plateholders.—Three, each holding two plates; or **Double Bookform Slides**, instead of Solid Plateholders, at extra price.

DUPLIX RUBY REFLEX WITH LENS.	Series	Aper- ture	1/4-plate 4 1/4 × 3 1/4	5 × 4, P.C. and 9 × 12 c/m Horizontal.	5 × 4, P.C. and 9 × 12 c/m Revolving Back.	1/2-Plate. 6 1/2 × 4 1/2
With Thornton-Pickard	—		£ s. d.	£ s. d.	£ s. d.	£ s. d.
"Ruby" Anastigmat	—	F6.8	13 10 0	14 10 0	19 0 0	23 10 0
Dallmeyer Stigmatic.....	IV	F6.3	13 10 0	14 10 0	19 5 0	24 15 0
Do. do.	II	F6	16 15 0	17 15 0	23 2 6	29 10 0
Aldis Anastigmat	II	F6	12 12 6	13 12 6	17 16 6	22 17 6
Beck Isostigmat	II	F5.8	13 10 0	14 10 0	19 2 6	24 5 0
Cooke Anastigmat	II	F4.5	15 15 0	16 15 0	21 16 0	26 10 0
Do. do.	III	F6.5	14 17 6	15 17 6	20 12 0	25 13 6
Goerz Dagor	III	F6.8	16 5 0	17 5 0	22 5 0	27 15 0
"DUPLIX RUBY" Camera, Shutter, and three Plateholders, without Leus			10 10 0	12 12 0	15 15 0	20 0 0

N.B.—Sunk or Iris Lens Mounts are quoted with above Reflex Cameras,
as found necessary.

THORNTON-PICKARD

PATENT

"ROYAL RUBY" REFLEX CAMERA



PRICE LIST AND SPECIFICATION.

Boxform Reflex Camera, covered with fine seal-grained Morocco Leather, and with all external fittings either leather covered or oxydised.

Extending Baseboard, with extra long extension of 15in. full in $\frac{1}{4}$ -plate size.

"Omni-flex" Rising, Falling, Swinging, and Extending Front. Detachable Lens Panel.

Rack and Pinion Focussing, for near objects.

Self-locking Revolving Back, for Horizontal and Vertical pictures.

Long Reversible Focussing Hood, rigid when erected. Reversible to allow photographs to be taken without the subject's knowledge.

Best Silver-surfaced Everset Reflecting Mirror, specially mounted, and returning to "set" position after each exposure. No vibration during actual exposure.

Double-acting Release, releasing Shutter and raising Mirror simultaneously.

Special Locking Device for securing Mirror out of way when using Camera on a tripod.

Thornton-Pickard "Unit" Self-capping Time and Instantaneous Focal Plane Shutter, fitted with Adjustable Slit and Adjustable Spring Tension, Speed Tablet, Speed Indicator, and Slit Indicator. Speeds, $\frac{1}{1000}$ to $\frac{1}{10000}$ of a second, and **Time Exposures** of any duration. (For full description of the "Unit" Shutter, see page 178.)

Tripod Bush, for use on Stand.

Three Double Plateholders of new design, fitted with Spring Light Traps and Aluminium Shutters, or Double Bookform Dark Slides, at extra price.

	Quarter Plate $4\frac{1}{4} \times 3\frac{1}{4}$	$5 \times 4, 9 \times 12$ c/m and Post Card	Half Plate $6\frac{1}{2} \times 4\frac{1}{4}$
"Royal Ruby" Reflex Outfit, as above specification (without Lens) ..	£12 12 0	£18 0 0	£24 0 0
Do., without Lens, but with Three Bookform Slides instead of Plateholders..	13 2 0	18 15 0	25 0 0

"ROYAL RUBY" REFLEX, as above specification, with three Double Plateholders and Lens as listed below.

Thornton-Pickard	Series	Aperture	Quarter Plate $4\frac{1}{4} \times 3\frac{1}{4}$	$5 \times 4, 9 \times 12$ c/m and Post Card	Half Plate $6\frac{1}{2} \times 4\frac{1}{4}$
"Ruby" Anastigmat ..	—	F6.8	£15 10 0	£21 5 0	£27 10 0
Dallmeyer Stigmatic ..	IV.	F6.3	15 10 0	21 10 0	28 15 0
Do. do. ..	II.	F6	18 15 0	25 7 6	33 10 0
Beck Isostigmat ..	II.	F5.8	15 10 0	21 7 6	28 5 0
Cooke Anastigmat ..	III.	F6.5	16 17 6	22 17 0	29 13 6
Do. do. ..	II.	F4.5	17 15 0	24 0 0	30 10 0

THORNTON-PICKARD

"SAFETY" MAGAZINE HAND CAMERA

¼-PLATE SIZE ONLY.

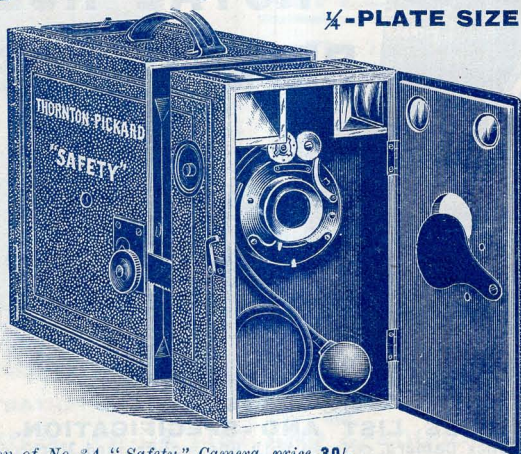


Illustration of No. 3A "Safety" Camera, price 30/-

Made in 11 Patterns, Series I, 1A, and Model de Luxe.

SPECIFICATION. No. 1 "SAFETY" MAGAZINE HAND CAMERA.

Camera made of well-seasoned hard wood, and covered with Black Seal-Grained Leatherette, with Nickelled Fittings. Hinged Front Door for cleaning Lens and Finders. Inside Lens Board, Camera Sides, and Back of Front Door beautifully polished. Hinged Back Door to Magazine Chamber, with supplementary door for removal of exposed plates. Perfect Changing Arrangement of the greatest reliability. Automatic Numerator.

Shutter.—"Everset" Between Lens Shutter for Time, Bulb, and variable Instantaneous Exposures, with Pneumatic and Trigger Releases.

Lens.—Thornton-Pickard Achroplanat, a single Lens, giving brilliant definition, and capable of producing good sharp pictures.

Portrait Attachment.—For focussing objects nearer than infinity.

Finders.—Two, for vertical and horizontal, Brilliant pattern, showing image right way up.

Tripod Bushes, fitted for vertical and horizontal pictures when used on Stand.

No. 1 "SAFETY" MAGAZINE CAMERA.

Quarter-plate Size, as above specified **21/-**

No. 2 "SAFETY" MAGAZINE CAMERA.

Same as No. 1, but fitted with T.-P. "Rectoplanat" Double Rectilinear Lens instead of Achroplanat **25/-**

No. 3 "SAFETY" MAGAZINE CAMERA.

Same specification as No. 1, but with Racking Focussing Arrangement for objects nearer the Camera than infinity, with Engraved Focussing Scale **25/-**

No. 4 "SAFETY" MAGAZINE CAMERA.

Same as No. 3, with Rack and Pinion Focussing, and with "Rectoplanat" Lens instead of Achroplanat **30/-**

"Koilos" Shutter, 15/- extra; Bausch & Lomb "Automat," 7/6, in all cases.

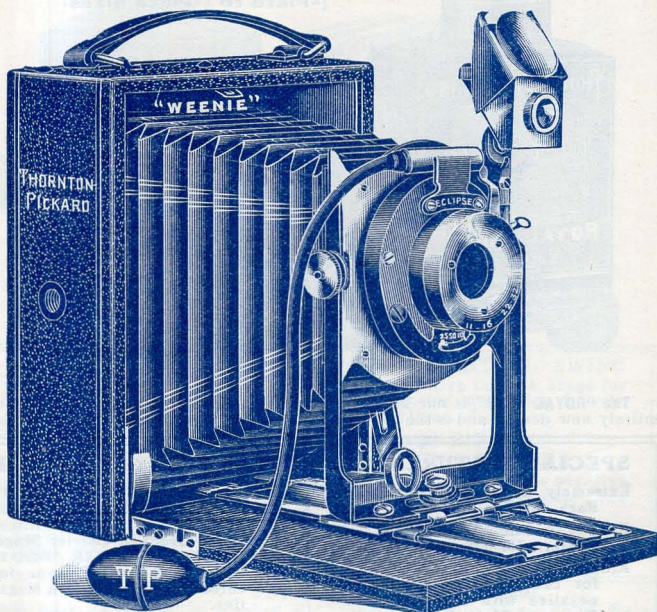
THE ALL BRITISH CAMERA MAKERS

For other patterns of "Safety" Camera see complete Catalogue published in January

THORNTON-PICKARD

THE NEW "WEENIE"
1911

The Finest 21/- Camera Made.

Illustration of
21/- Pattern A.

SPECIFICATION.

Camera.—Body and Baseboard of good seasoned Mahogany, covered in best fine-grained Morocco Leatherette. Brass fittings, beautifully burnished and lacquered. Real Leather Bellows. Focussing Scale. Infinity Catch. Rising and Falling Front, Ground Glass Focussing Screen, &c.

Lens.—Rapid Achroplanat, with Iris Diaphragm.

Shutter.—T.P. "Eclipse," giving Time Bulb and Instantaneous Exposures. Pneumatic and Finger Release.

Reversible View Finder, for vertical and horizontal.

Slides.—Two Single Metal Slides, with Plush Light Traps.

Tripod Bushes, for Vertical and Horizontal Pictures.

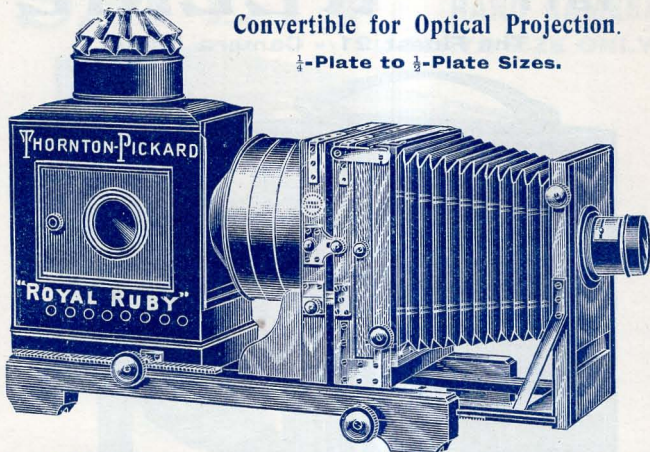
PRICES.

PATTERN A. —		
"Weenie" Camera, as above Specification		21/-
PATTERN B. —		
Do. do. do. but with T.P. Rectoplanat Double Lens		
instead of Single Achroplanat		25/-
PATTERN C. —		
Do. do. Double Extension Bellows, with Rack and		
Pinion, Achroplanat Lens.		30/-
PATTERN D. —		
Do. do. Double Extension Bellows, with Rack and		
Pinion, and T.P. Rectoplanat Lens		35/-

THORNTON-PICKARD

'ROYAL RUBY' ENLARGER

Convertible for Optical Projection.

 $\frac{1}{4}$ -Plate to $\frac{1}{2}$ -Plate Sizes.

The "ROYAL RUBY" is our latest production in Enlarging Cameras. It is of an entirely new design, and is the most superb Enlarging Camera it is possible to obtain.

SPECIAL FEATURES of the "ROYAL RUBY" ENLARGER

Extremely Long Extension with Rack and Pinion.

Rack and Pinion Movement of Lantern for adjusting light.

RISING and FALLING CARRIER for centring any portion of negative with the light, with Rack and Pinion.

Rack and Pinion Rising and Falling Front, with Automatic Lock.

REVOLVING CARRIER, with Rack and Pinion, for placing negative in any position. Brass Grooved Carrier Stage.

SWINGING CARRIER BODY, with Rack and Pinion, for correcting distortion in Negative.

Detachable Bellows for Science Projection.

Camera Body brassbound suitable for any climate.

SPECIFICATION.—Camera and all Woodwork of best seasoned mahogany, beautifully french polished, with Brassbound Body. Russian Iron Lantern with Cowl, Cones, and Rims of polished copper. Specially selected Plano Convex Condenser in Oxidised Brass Mount. Fine quality Portrait Lens in Black and Brass Mount, with Iris and Orange Glass Cap.

$\frac{1}{4}$ -Plate with 5 $\frac{1}{2}$ in. Condenser and Portrait Lens ..	£10 10 0
Combination P.C. and 5×4. 7in. Condenser and Portrait Lens ..	11 15 0
$\frac{1}{2}$ -Plate with 8 $\frac{1}{2}$ in. Condenser and Portrait Lens ..	14 10 0

OPTICAL PROJECTION REQUIREMENTS.

4 $\frac{1}{2}$ in. Bi-Convex and Meniscus Condenser with Adapter to fit Enlarger Body ..	$\frac{1}{4}$ -plate 5×4 & P.C. 25/-
Lantern Slide Carrier Adapting Frame, and "Merito" Lantern Slide Dissolving Carrier ..	$\frac{1}{4}$ -plate 30/-

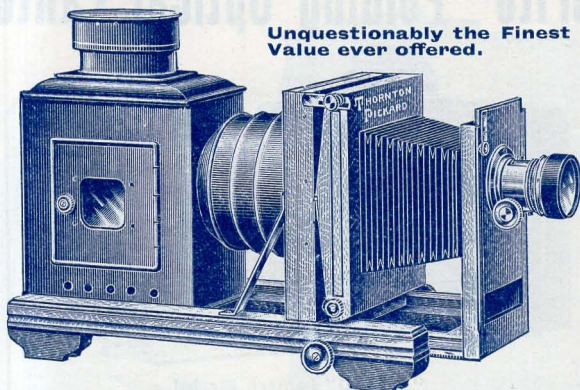
THE ALL BRITISH CAMERA MAKERS

The "Royal Ruby" is a Perfect Combination Enlarger and Optical Lantern.

THORNTON-PICKARD

"RUBY" ENLARGERS

FOUR PATTERNS. THREE SIZES.



Unquestionably the Finest
Value ever offered.

REAL LEATHER BELLOWS.

Rack and Pinion Focussing exactly like a Camera.

Rack and Pinion Operated from both sides.

Perfect Rigidity of Condenser Body
Solid Strengthening Brackets.

Lantern Body Sliding on Mahogany Platform.

Triple Extension Collapsible Light-tight Tubes.

PATENT CENTRAL SWING

to Negative Carrier Stage for correcting distortion in vertical lines.

**RACK and PINION
REVOLVING CARRIER**

giving side motion to negative for rectifying horizontal lines when out of straight.

Russian Iron Lantern of Sound and Substantial Construction. Strengthened with Corrugations.

SPECIFICATION. PATTERN A. (as illustrated).

Camera made of beautifully polished Mahogany, fitted with Rising Front, Swing Body, Negative Holder, and other features as above enumerated.

Square Pattern Russian Iron Lantern Body, with Oval Cowl, Sliding Back Door, and Light-tight Hinged Side Door, with Ruby Glass Window, Tray and Rod for Illuminant Fittings.

Condenser.—Specially selected Plane Convex in Solid Mount.

Lens.—Rapid Portrait in Solid Black and Brass Mount, with Rack Pinion, Iris Diaphragms, and Orange Glass Cap.

$\frac{1}{4}$ -Plate, £4 0 0. | 5 x 4 and Postcard, £5 0 0. | $\frac{1}{2}$ -Plate, £7 0 0.

PATTERN C.

Same specification as Pattern A., but with Vertical Lantern Body, with Long Hopper Chimney. Fitted complete with Incandescent Fittings or Duplex Lamp

$\frac{1}{4}$ -Plate, £4 0 0. | 5 x 4 and Postcard, £5 0 0. | $\frac{1}{2}$ -Plate, £7 0 0.

PATTERN B.

Lantern Body, Base, and Stage, with Tray and Rod for Light Fittings, as in Pattern A., but this pattern is for use with Customer's own Lens and Camera, and is therefore supplied without Extending Front, Bellows, Rack and Pinion, and Lens.

$\frac{1}{4}$ -Plate, £2 15 0. | 5 x 4 and Postcard, £3 10 0. | $\frac{1}{2}$ -Plate, £5 5 0.

PATTERN D.

Same as Pattern B., but with Vertical Lantern Body, with Long Hopper Chimney, and Incandescent Fittings or Duplex Lamp.

$\frac{1}{4}$ -Plate, £2 15 0. | 5 x 4 and Postcard, £3 10 0. | $\frac{1}{2}$ -Plate, £5 5 0.

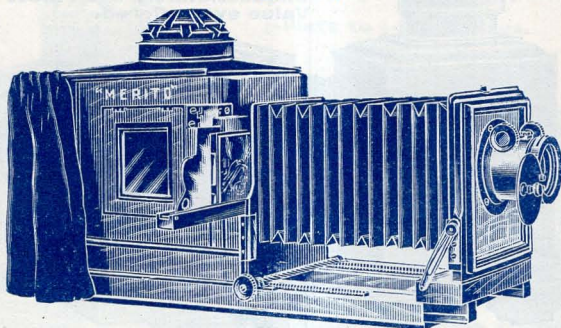
THE ALL BRITISH CAMERA MAKERS

A descriptive Booklet entitled

"ENLARGEMENTS: Lantern Slides and Projection," is sent post free.

THORNTON-PICKARD

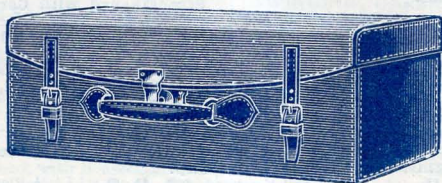
'Merito' Folding Optical Lantern



"MERITO" Lantern Erected.

THE LATEST AND MOST PRACTICAL NOVELTY IN PROJECTION LANTERNS.

This instrument is a really practical and efficient Folding or Collapsible Lantern, and is designed to retain every essential feature necessary to success in lantern manipulation. It is the first Collapsible Lantern really worthy of the name, and, whilst it is extremely compact for transit purposes, it can be opened out and erected in a few seconds. The Lantern has a handsome and striking appearance, rack and pinion extension baseboard superseding and excelling lengthening tubes, long or short focus lenses can be used at will, and the bellows are detachable for demonstration work.



Folded and Packed in Leather Case.

SPECIFICATION.—Lantern, Mahogany body lined with Russian iron and asbestos, rack and pinion focussing movement to base, detachable bellows.

Condenser, 4 $\frac{1}{2}$ in., bi-convex meniscus.

6 in. Focus Objective.

Fine Focussing Objective Jacket.

Limelight Jet, with fine adjustment.

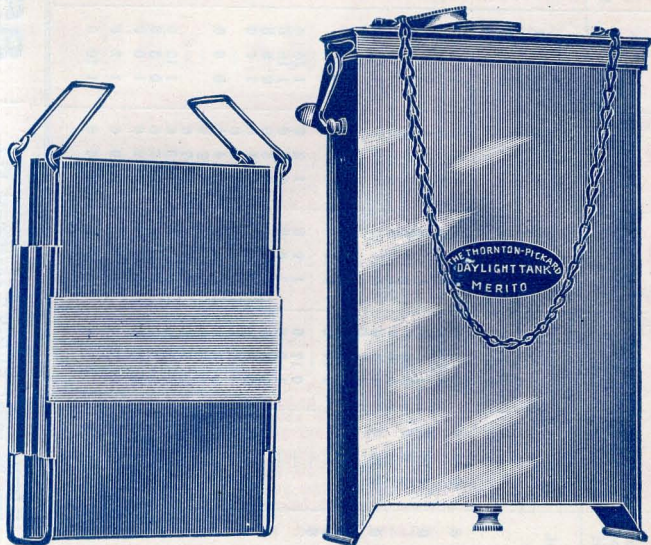
"Merito" Patent Slide Carrier.

Leather Carrying Case, with Lock and Key.

Price, Complete Outfit, £9. 9s. Od.

THE ALL BRITISH CAMERA MAKERS

THORNTON-PICKARD PATENT "MERITO" DAYLIGHT TANK



The Thornton-Pickard "MERITO" Patent Developing Tank is the result of much experimental work to obtain a suitable apparatus at a reasonable price, and one that will give the maximum of advantage with the minimum of trouble, and we recommend it with full assurance that it will be found to be the very best Stand Developing Tank obtainable.

A darkened room or light-tight bag is all that is necessary for the plates or films to be placed back to back in the loose rack and the Tank Lid duly closed.

All subsequent operations are carried out in broad daylight, including washing between development and fixing.

ADVANTAGES.

Absolutely Watertight in any position during development.

The only Tank on the market combining above feature with a clear passage right through the Tank for Washing.

Clear passage ensures absolute elimination of Hypo when washing after fixing, and prepares Tank for next developing operation.

Enables Photographers to develop plates with success on tour.

Beautifully Nickel-Plated.

Handsome and Neat Appearance.

Superior to and more efficient than any other Tank on the market.

PRICES:

**"Merito" Patent Daylight Tank
TO TAKE 6 PLATES**

$\frac{1}{4}$ -Plate

7/6

5x4 & P.C.

10/6

$\frac{1}{2}$ -Plate

12/6

PRICE LIST OF THORNTON-PICKARD CAMERAS, &c.

206

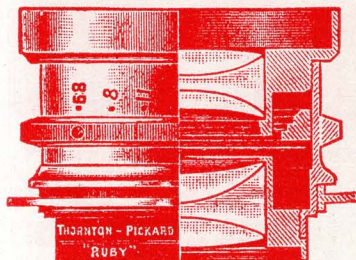
THE BRITISH JOURNAL ALMANAC ADVERTISEMENTS.

CAMERA & TURNTABLE ONLY.	Size of Plate in inches.	Quarter-Plate 3¼ × 4¼	5 × 4 and 9 × 12 c/m.	Half-Plate 6½ × 4¾	7½ × 5 and 13 × 18 c/m.	Whole-Plate 8½ × 6½	10 × 8 and 18 × 24 c/m.	12 × 10 and 24 × 30 c/m.
		£ s. d.	£ s. d.	£ s. d.	£ s. d.	£ s. d.	£ s. d.	£ s. d.
	"ROYAL RUBY" TRIPLE EXTENSION	—	—	7 10 0	9 5 0	10 5 0	11 10 0	15 10 0
	Do. do. "OVERSEAS" TEAK	—	—	8 15 0	11 0 0	11 15 0	—	—
	Brassbinding to either of above	—	—	1 5 0	1 10 0	1 10 0	2 0 0	2 5 0
	"SPECIAL RUBY"	—	—	4 10 0	—	—	—	—
	Do. Brassbound	—	—	5 10 0	—	—	—	—
	"IMPERIAL" TRIPLE EXTENSION	1 18 6	2 0 0	2 1 6	3 0 0	3 5 6	7 5 0	8 10 0
	Do. do. "OVERSEAS" pattern	—	—	2 17 6	4 10 0	4 11 6	—	—
	Brassbinding to either of above	0 16 0	0 16 0	1 1 0	1 11 0	1 11 0	1 15 0	2 5 0
	"PERFECTA"	—	3 5 0	3 10 0	4 15 0	5 0 0	8 15 0	11 0 0
	Do. "OVERSEAS" pattern	—	—	4 6 0	5 16 0	6 11 0	—	—
	Brassbinding to either of above	0 16 0	0 16 0	1 1 0	1 11 0	1 11 0	1 15 0	2 5 0
	IMPERIAL "FOCAL PLANE" do...	—	—	4 2 0	—	—	—	—
	Do. Brassbound, do.	—	—	5 7 0	—	—	—	—
	"COLLEGE"	1 10 0	—	1 17 6	2 10 0	2 15 0	—	—
	"PRÆTOR"	1 7 6	—	—	—	—	—	—
	Double Slide, Bookform, "ROYAL RUBY" pattern	—	—	0 17 6	1 0 0	1 2 6	1 10 0	2 5 0
	Do. do. "OVERSEAS" TEAK	—	—	1 2 6	1 5 0	1 7 6	1 15 6	2 12 0
	Brassbinding to either of above	—	—	0 5 0	0 5 0	0 5 0	0 5 6	0 7 0
	"IMPERIAL" Slide, Bookform	0 7 6	0 8 0	0 8 6	0 10 6	0 14 6	1 1 0	1 5 0
	Do. do. "OVERSEAS" TEAK pattern	—	—	0 12 6	0 14 6	0 18 6	—	—
	Brassbinding to either of above	0 4 0	0 4 0	0 4 0	0 4 0	0 4 0	0 5 0	0 8 0
	"COLLEGE" Slide	0 5 6	—	0 7 0	—	0 12 0	—	—
	Two-fold Stand to fit Turntable, "COLLEGE"	0 5 0	—	0 5 0	0 7 6	0 7 6	—	—
	Three-fold Stand do. "RUBY"	—	—	0 17 6	0 17 6	1 2 6	1 10 0	1 15 0
	Top for Stand, with Folding Tripod Screw	0 3 6	0 3 6	0 3 6	0 3 6	0 3 6	0 3 6	0 5 0
	"IMPERIAL" 3-fold Stand and Top	0 7 6	0 7 6	0 7 6	0 7 6	0 12 6	1 0 0	1 0 0
	Standard Pattern, Time and Inst. Shutter, with Speed Indicator	0 15 6	0 16 0	0 17 6	0 17 6	0 19 6	1 2 6	1 6 6
	"ROYAL" do. do. with Inside Fittings	1 2 0	1 3 0	1 0	1 4 0	1 6 0	1 10 0	—

SPECIAL OFFER.

"Imperial" Outfit, as Specification on page 185, with "ALDIS" Anastigmat, F7.7.
HALF-PLATE SIZE.

85/-

THORNTON-PICKARD
THE THORNTON-PICKARD THREE FOCI
“RUBY ANASTIGMAT”


is a Perfect Modern
Anastigmat of the
Highest Class, at
Popular Prices.
Critical Definition
all over the Plate at
full aperture, F6.8.

In view of the fact that there are now such large numbers of both British and foreign-made Anastigmat Lenses on the market, it becomes increasingly difficult for the photographer to select a suitable Lens of really good value. Under these circumstances we would draw the attention of users of Photographic Lenses to the above illustrated “Ruby Anastigmat” Lens.

This Lens is, when required, fitted to all the Cameras of our manufacture, and when bought in conjunction with any of our “Ruby” or “Royal Ruby” Cameras, forms part of an Outfit which stands unrivalled for thorough efficiency in operation and perfect design and finish.

Thornton-Pickard “RUBY ANASTIGMAT.”

The NEW THORNTON-PICKARD “RUBY ANASTIGMAT” is a Lens of the high-class Anastigmat type and of the finest quality. It is a Lens for universal work, has a large working aperture of F6.8, at which aperture the plate is sharply covered to the extreme edges. For definition, brilliancy, and flatness of field, no lens at the price can equal it. It is suitable alike for Portraits, Groups, ordinary Snap Shot, and High Speed Instantaneous Work, and, in fact, for every class of subject. Though considerably lower in price, it is quite the equal of many of the higher-priced Anastigmats on the market, and is strongly recommended.

The prices for this Lens and the approximate foci of the various sizes are given below.

SIZE OF PLATE Covered Sharply at			Description.	Equiv. Focus, inches.	Full Aperture	PRICE		
F 6'8	F 16	F 44				£	s.	d.
4½ × 3½	6½ × 4½	8½ × 6½	“RUBY ANASTIGMAT”	5	F6'8	3	5	0
5 × 4	8 × 5	10 × 8	“ ”	6	F6'8	3	10	0
6½ × 4½	8½ × 6½	12 × 10	“ ”	7½	F6'8	4	0	0
7½ × 5½	8½ × 6½	12 × 10	“ ”	8	F6'8	4	10	0
8½ × 6½	10 × 8	15 × 12	“ ”	9½	F6'8	6	0	0
10 × 8	12 × 10	18 × 15	“ ”	10	F6'8	7	0	0

Photographers' opinions on the Thornton-Pickard “Ruby Anastigmat” Lens :

I may say I consider my Ruby Anastigmat second to none.—E.C.S.

The Ruby Anastigmat is a beautiful Lens.—P.V.S.

Personally I consider the Ruby Lens is a Gem.—W.C.S.

THE ALL BRITISH CAMERA MAKERS

CARRYING CASES

BEST QUALITY,

For THORNTON-PICKARD and other Cameras.



PATTERN A.

Patterns A and B are Waterproof Cloth Cases, Leather Bound, with Collapsible sides and Loose division, lined with Green Baize, and fitted with Snap Lock and Key, and Shoulder Strap.

A To hold Camera, three Slides, Shutter, Lens, Focussing Cloth, &c.

B To hold three extra Slides only.

Pattern H is a strong Waterproof Cloth Case, Leather Bound, to hold Tripod Stand.

Patterns C and D are Strong Waterproof Cloth Cases, Leather

PATTERN D.

Bound, with Stuff Sides and Fast Division Lined with Green Baize, and fitted with Snap Lock and Key, Handle and Shoulder Strap, which may also be used Knapsack fashion.

C To hold Cameras, three Slides, Shutter, Lens, Focussing Cloth, &c.

D To hold Camera, six Slides, Shutter, and accessories; or Camera with Lens attached in situ, five Slides, Shutter, and accessories; or Stereoscopic Camera, five Slides, Shutter, and accessories.

PATTERN C.

LEATHER CASES.

Patterns F and G are best portmanteau finish Leather Cases, built on internal steel framing. They hold respectively same as Waterproof Cloth Cases C and D.

Sizes and Prices.	$4\frac{1}{2} \times 3\frac{1}{2}$	5×4	$6\frac{1}{2} \times 4\frac{1}{2}$	$7\frac{1}{2} \times 5$	$8\frac{1}{2} \times 6\frac{1}{2}$	10×8	12×10
Pattern A Waterproof Cloth	0 7 6	0 8 6	0 9 6	0 11 6	0 13 6	0 16 0	..
Pattern B " "	0 5 6	0 6 6	0 7 6	0 8 6	0 9 6	0 12 0	..
Pattern C " "	0 14 0	0 15 0	0 16 0	0 18 0	0 19 0	0 21 8	0 23 0
Pattern D " "	0 17 6	0 19 0	0 1 0	0 1 2 0	0 1 4 0	0 1 8 0	0 15 0
Pattern F Solid Leather ..	1 5 0	1 10 0	1 15 0	2 0 0	2 5 0	3 0 0	4 10 0
Pattern G " "	2 0 0	2 5 0	2 15 0	2 17 6	3 10 0	4 15 0	6 0 0
Pattern H Stand Case	0 7 0	0 7 0	0 7 0	0 7 0	0 7 0	0 9 0	..
Leather Lens Case	0 3 6	0 3 6	0 4 0	0 4 0	0 4 0	0 5 6	0 7 6

SECOND QUALITY.

Our second quality Cases are substantial and serviceable, and much lower in price. Patterns J, K, and N correspond respectively to cases A, C, and D as regards their carrying capacity, and Pattern O to Leather Case F.

Sizes and Prices.	$4\frac{1}{2} \times 3\frac{1}{2}$	5×4 & 9×12 c/m.	$6\frac{1}{2} \times 4\frac{1}{2}$	$7\frac{1}{2} \times 5$ & 13×18 c/m	$8\frac{1}{2} \times 6\frac{1}{2}$
Pattern J	0 4 6	0 5 0	0 5 6	0 6 6	0 7 0
Pattern K	0 7 0	0 7 6	0 9 0	0 10 6	0 11 6
Pattern N	0 12 0	0 12 6	0 13 6	0 14 6	1 0 0
Pattern M (Stand Case) ..	0 4 6	0 4 6	0 4 6	0 4 6	0 5 0
Pattern O (Leather Case)	0 17 6	..	1 7 6

The THORNTON-PICKARD MFG. CO., LTD., ALTRINCHAM
COMPLETE ILLUSTRATED CATALOGUE PUBLISHED IN JANUARY.