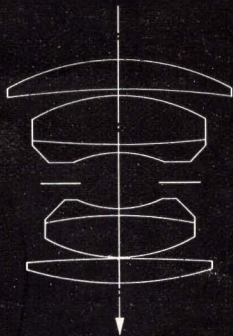
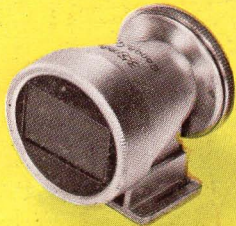
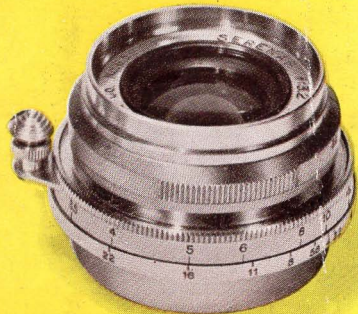


Announcing the NEW

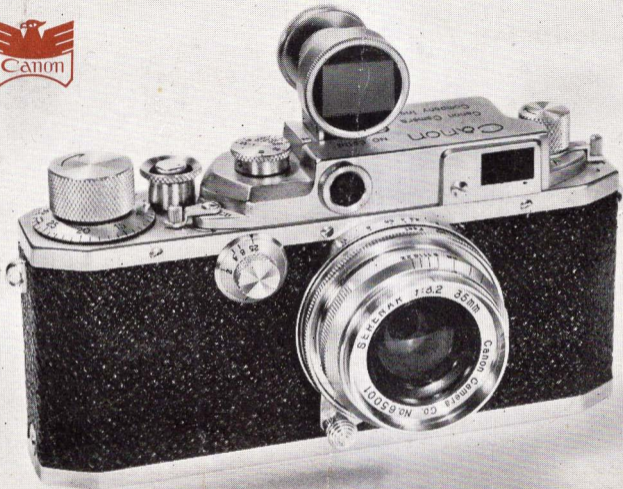
Wide Angle Lens



Canon

SERENAR 35mm f: 3.2

6 Elements



Canon Model III with SERENAR 35mm f : 3.2

CANON offers you, with pride and pleasure, a new precision built wide-angle lens based on a radically new principle created by our lens designers. Tremendous resolving power for razor-edge sharpness, perfect color correction for true color pictures, increase in lens speed for wider range of photography, and increase of light ray reaching the circumference of the film frame for uniform exposure are among the outstanding improvements on this lens as compared with the 35mm f:3.5.

We are convinced that you will be perfectly satisfied with this lens for its extremely excellent results in black-and-white or in color pictures.

Specifications:

Angle of View: 64°

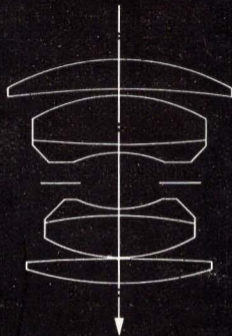
Focusing Range: 3½ ft to infinity.

f-markings: 3.2 to 22.

Lens Mount: Non-Collapsible.

Attachment Size: Series VI.

Net Weight: 190 gram or 6.7 oz.



6 Elements

Serenar 35mm f: 3.2 with Special Viewfinder and leather case

Canon Sunshade with Adapter ring and leather case for the above lens. . . .

Prices subject to change without notice.

Canon Camera Company, Inc.
3, Ginza 5-chome, Chuo-ku, Tokyo, Japan
(Z Ave, Ginza, Tokyo)
