

Rolleiflex 3003

**The 35-mm reflex system
with the creative potential of
medium-format cameras**

Rollei
fototechnic

The revolutionary camera concept – made in Germany

For dedicated amateurs and professional photographers alike, the name Rollei has become a byword for pioneering camera technology "made in Germany". Over the decades, Rollei has time and time again lived up to this ambitious claim by producing high-performance equipment that has often represented a major contribution to the development of photography. For example, there are the legendary twin-lens Rolleiflex and Rolleicord, which have written their own chapter in the history of photography. Or the Rolleiflex 6006 and SL 66 E, whose superior design sets the scene today in professional medium-format photography. In many respects, Rollei caused a sensation with the introduction of the SL 2000 F single-lens reflex camera. The experts all agreed: this camera represented something completely new in photographic technology. For the first time, here was a 35 mm single-lens reflex

camera that was in a class of its own. Rollei had channelled its decades of experience with medium-format cameras into successfully producing a camera which brought a totally new dimension to photography. The design of the Rolleiflex SL 2000 F was streamlined and above all functional. With its interchangeable film magazine and integral twin viewfinder system, this model introduced the creative scope of the professional medium-format camera into 35 mm photography. This concept was enthusiastically taken up by photographers all over the world.

Rollei's latest model, the Rolleiflex 3003, marks a high point in modern camera technology. A unique tradition in medium-format photography and the latest developments in research, technology and photographic practice have come together to make the Rolleiflex 3003 the embodiment of progress in 35 mm photography.

Rolleiflex 3003

Function defines form

The unusual design of the Rolleiflex 3003 is unique among cameras in the 24 x 36 mm format. The impressive shape of this model is primarily determined by function. Its design is based on the concept of combining the proven elements of medium-format technology with the comfort and speed of the ideal modern 35 mm camera, thus creating a new and superior class of pioneering

professional 35 mm SLR camera. The systematic development of this concept has produced the distinctive look of the Rolleiflex 3003. The camera's handy, compact cube shape is the result of completely new product features and intensive ergonomic studies. For this reason, the Rolleiflex 3003 offers an ease of handling that is unique in this class of camera.



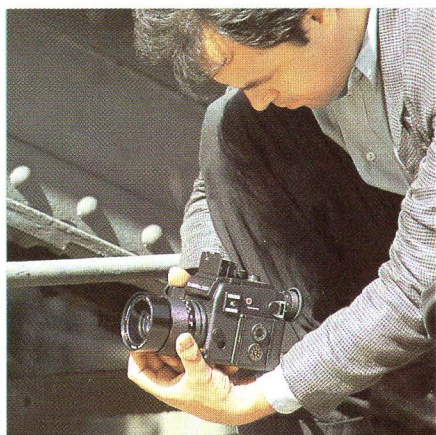
Rolleiflex 3003

Light and easy to handle – universally adjustable

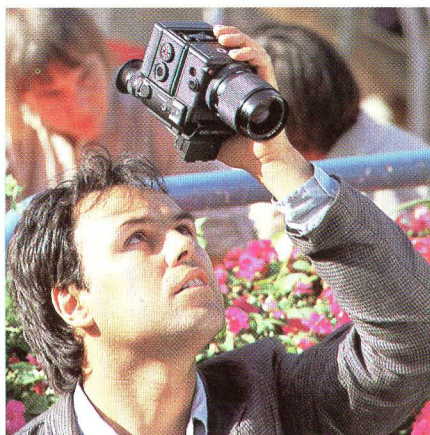
The Rolleiflex 3003: a new dimension in cameras. Made in Braunschweig with Rollei's supreme precision. A marvellous synthesis of robust mechanics and the latest electronics.

For the photographer working in 35 mm, the camera technology of the Rolleiflex 3003 opens up opportunities that up to now were only available with professional medium-format models. The combination of the proven interchangeable film magazine system, the integral twin viewfinder system and the built-in high-performance motor is unique

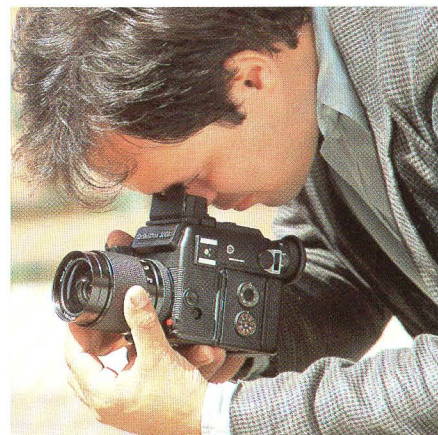
among 35 mm SLR cameras. Despite its sophisticated technology, the Rolleiflex 3003 is an amazingly simple camera to operate. All the controls are arranged and shaped in such a way that they are easy to adjust in any position and in any situation. They can even be operated with gloves on. Modern electronics ensures that every creative idea can be realized with superlative precision. A well-designed monitoring and safety system practically eliminates sources of error and operating faults.



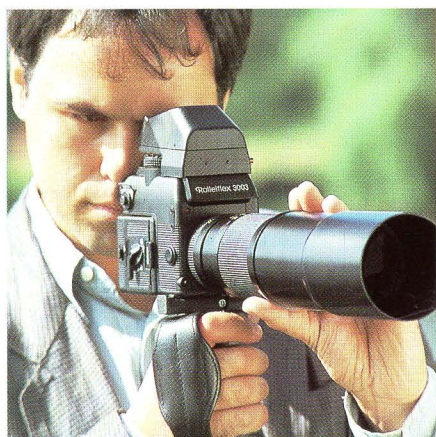
Photos from a worm's-eye-view give highly expressive and unusually attractive results.



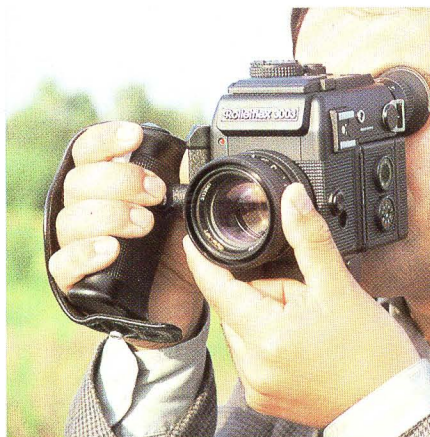
The fact that circumstances don't allow high enough a camera standpoint doesn't mean you can't take interesting pictures.



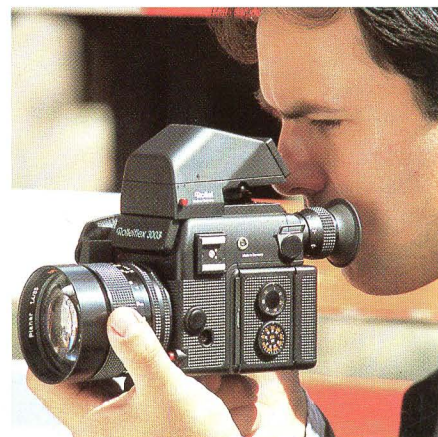
Using the viewfinder with the magnifier tilted upwards is the ideal way to achieve a creative composition.



With the Rolleiflex 3003 and its pistol grip, you have great camera stability.



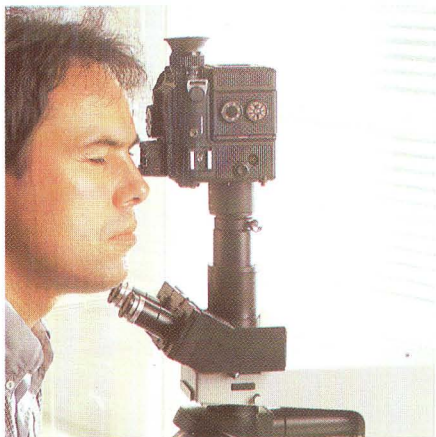
This is also true with the handgrip mounted on the side of the Rolleiflex 3003.



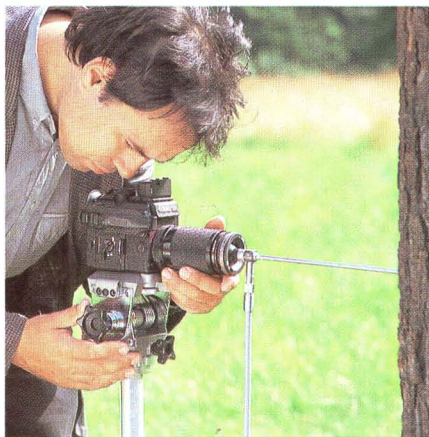
It's not just the spectacle-wearers who'll appreciate the prism sports viewfinder for rapid reportage and sports photography.



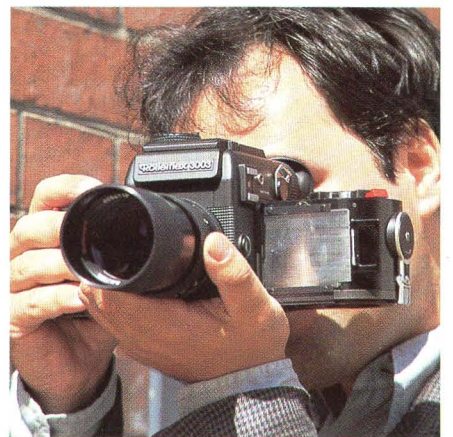
Peter Kaus, a leading professional photographer, shows the many ways the Rolleiflex 3003 can be handled and explains what they mean in practice.



The Rolleiflex 3003 is just as much at home in the world of macrophotography and microphotography...



...or in special photographic situations involving high film consumption...



...as in research and photographic documentation in special areas of medicine or conservation.

Clear features of this system

① **Unique feature: the interchangeable magazine system**
Speedy changes of even partly exposed film without the loss of a single picture. From slide film to negative film. From standard film to high-speed film or vice-versa. Interchangeable magazine with frame counter and integral DIN/ASA control. Removal of film insert with magazine fitted or detached.

② **Unique feature: loop handgrip as part of the camera design**
For expert handling in reportage photography. This feature is used in conjunction with the additional release button on top of the camera.

③ Eyelet for carrying strap, right.

④ **Unique feature: built-in high-performance motor**
For automatically available individual exposures or sequences of exposures at about 3 frames per second.

⑤ **Unique feature: two built-in viewfinder systems**
Telescopic viewfinder with dioptre compensation and viewfinder hood with hinge-up magnifier. Interchangeable focusing screens. This feature offers a whole range of creative opportunities such as worm's-eye-views and overhead photography as well as trouble-free viewing in close-up photography.

⑥ Power pack with rechargeable NiCd battery.

1 2 3 4 5



6 7 8 9 10 11 12

- ⑦ Magazine switch for single and multiple exposures as well as for magazine change-over.
- ⑧ Drawslide for changing magazines with partly-exposed film.
- ⑨ Shutter release on the right-hand side of the camera.
- ⑩ Change-over switch for working/open aperture metering.
- ⑪ LED for photography with auto release.
- ⑫ Tripod bush with 1/4" thread.
- ⑬ Hot shoe with centre contact and control contacts for automatic flash units.

13

- ⑭ Synchronizing socket for connection to automatic flash.
- ⑮ Eyelet for carrying strap, left.
- ⑯ Setting disc for exposure correction with EV intervals from -1 to +2.
- ⑰ Unlocking button for control ring.
- ⑱ Control ring for operational mode and shutter speeds of 1/2000 to 16 sec.
- ⑲ Shutter release for use in conjunction with the loop handgrip.
- ⑳ Telescopic viewfinder.
- ㉑ Main switch for individual exposure, series exposure and time exposure.

14

15

16

17

18

19

- ㉒ Unlocking button for interchangeable lenses.
- ㉓ Shutter release on the left-hand side of the camera.
- ㉔ Connection socket for remote operation, timer, infrared remote release and programmed sequences of exposures.
- ㉕ Setting disc for film speeds from 15 to 39 DIN (25 to 6400 ASA).
- ㉖ Frame counter, for up to 72 frames.
- ㉗ Indicator for fault/operating error and battery voltage.
- ㉘ Switch for measured value storage, auto release and power monitoring.

20

21



22

23

24

25

26

27

28

Rolleiflex 3003

Completely trouble-free exposure control: you yourself couldn't make a more positive choice between light and dark

With the Rolleiflex 3003, you can be sure of the right exposure in any situation. The superlative technical features of this model are matched by its exceptional ease of operation. The exposure is automatically controlled (automatic shutter with aperture priority). The automatic system can be corrected by -1 to $+2$ EV intervals or can be switched over to manual exposure compensation (follow-up system).

Rollei selective metering

Most cameras integrate the measured brightness and build up an average value from the light and dark areas of the subject as a whole. With its special selective metering, the Rolleiflex 3003 precisely takes into account important subject details. In most cases, simple integral measurement is good enough since about 80% of all photographs only show moderate contrast. But a top-class camera must also be able to cope with the other 20% of the

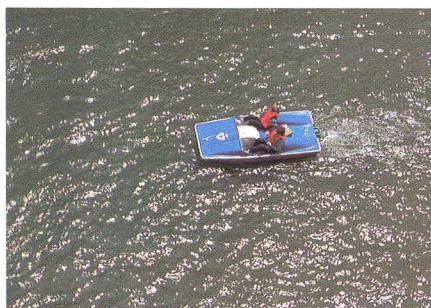
cases directly without the need for intricate manipulations. Thus, in the Rolleiflex 3003, the measurement field is defined as a rectangular area in the viewfinder – a method superior in practice to the less accurate total area measurement and the slower spot measurement.

Measured value storage

If the important subject detail is not in the middle of the frame, the measured value can be held. The required framing can then be selected and the picture taken. It is particularly important to remember that the measured value memory functions with sequences of exposures as well as with individual pictures.

Multiple exposure

Particularly striking effects can be achieved by making two or more exposures one after another on the same negative or slide.



Working/open aperture metering

Working aperture metering is useful not only for monitoring the depth of field at a particular aperture, but also when using

- older Rollei lenses without aperture transfer,
- non-standard lenses without aperture transfer,
- extension tubes not equipped for automatic operation,
- adapters of all types and bellows units.

The Rolleiflex 3003 proves itself to be completely trouble-free because the automatic features continue to function with working aperture operation.

With the Rolleiflex 3003, successful multiple exposures are no trouble at all.

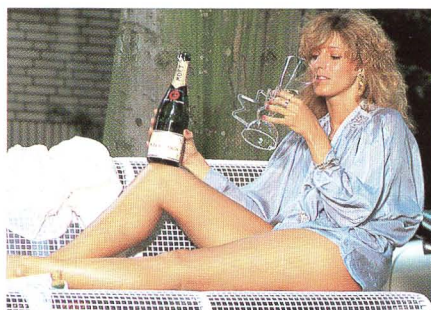
Flashes of perfection – with automatic flash

The TTL flash metering system in the Rolleiflex 3003 reflects the state of the art. Automatic flash units and

special adapters make it possible to master flash photography speedily and without problems – with no aperture restrictions either. The Rollei SCA 356 adapter (SCA 300 system) is suitable for flash units from Agfa, Braun, Metz, Osram, Philips and Regula. A sensor built into the camera body measures the light reaching the film through the lens. The special flash control electronics in the external special adapter then meters out the flash power required for the particular subject. The camera automatically sets the flash synchronous speed of $1/100$ sec; “flash ready” and the correctness or incorrectness of the exposure are indicated in the viewfinder. Extension factors (e.g. when using bellows, extension tubes, converters, filters, etc.) are automatically allowed for in the metering. Of course other flash units can also be connected directly to the Rolleiflex 3003, without accessories, either by using the hot shoe with a centre contact or via a synchronizing cable.

With the specially designed pistol grip and flash extension unit 1, the flash can be mounted in any position next to the camera – right or left, above or below. In every position, the camera can be held easily and firmly.

The TTL flash metering system can be used with advantage in the close-up and macro range, as well as with the Rollei MF 1 Macroflash. And even when using professional studio flash equipment, it is now possible for the first time, using the Rollei FM 1 TTL flash exposure meter, to measure studio flash light through the lens. The meter will tell you the correct change of aperture or reduction in flash power to achieve perfect exposure as measured from the film plane. The meter will then check the final exposure measuring 0 or plus or minus EV factors. All this is achieved without wasting film or having to approach the subject with a conventional flash meter.



Rolleiflex 3003

Unique feature: the built-in twin reflex viewfinder system, the individual perspective



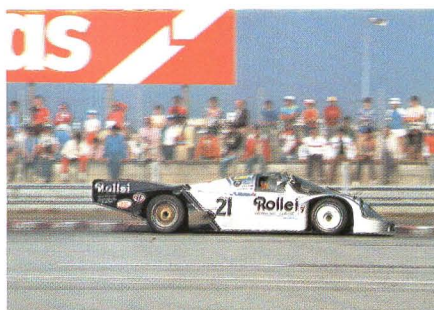
Whether you're taking pictures flat on the ground, over your head or round a corner, you can now achieve the optimum view of your subject in any situation.

The telescopic viewfinder system is for normal applications: it is suitable for all types of photograph that you may want to take from the viewpoint of the human eye. A special feature is the facility to change the dioptre rating of the eyepiece to accommodate visual defects. This does away with the need to change the lenses in the eyepiece.

The hood viewfinder system is particularly suitable for unusual viewpoints – subjects near ground level, for example – but also for situations in which the subject cannot be viewed directly. Thus, it is possible to take

photographs over crowds or walls, or from viewpoints that previously would have been out of the question. In these situations, you hold the camera over your head and look into the viewfinder from below.

You can change from the telescopic to the hood viewfinder in a flash. With the Rolleiflex 3003, you don't lose any time removing and fixing finder systems because they are already built into the camera. Focusing screens for the viewfinder can be changed easily without tools. You have a choice of seven different screens that can be interchanged to suit the subject. Hence, the Rolleiflex 3003 is a custom-built instrument for use in any photographic situation.



Shutter speeds are indicated on the left-hand edge of the viewfinder as soon as the shutter release is pressed to the first stop. If two speed indications light up at the same time, the camera uses the intermediate value.

The selected aperture is indicated on the right-hand edge of the viewfinder. When Rollei lenses not designed for the Rolleiflex SL 2000 or 3003 are used, the aperture cannot be indicated for technical reasons. In this case, all the aperture values in the viewfinder light up. However, this has no effect on the correct exposure measurement and the automatic operation of the camera.

The measurement field for selective exposure metering is recognizable in the viewfinder as a precisely defined light-grey rectangle.

Focusing aids. The standard focusing screen has a split-image rangefinder and micro-prism grid as a focusing aid. It can be interchanged with other focusing screens according to the photographic requirements.

Follow-up exposure adjustment. When the exposure is set manually, a shutter speed indicator will flash if the setting is not correctly balanced. As soon as the correct shutter speed is obtained by alteration of aperture and/or speed, the light in the viewfinder will glow steadily.

The "memo" function: measured value storage is signalled by the fact that only the shutter speed indicator lights up.

Flash monitoring. When automatic flash is used, a green flash symbol in the viewfinder indicates when the flash is ready. After the flash exposure, the flash symbol indicates whether the light output of the flash was sufficient.

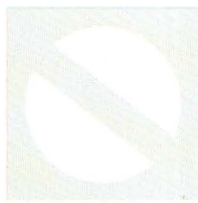
Exposure correction. When you are working with exposure correction, a red LED reminds you to switch off again before taking photographs in the normal way.



Shutter speed indication



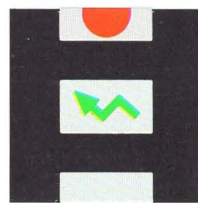
Aperture indication



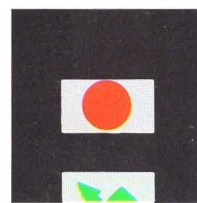
Split-image rangefinder



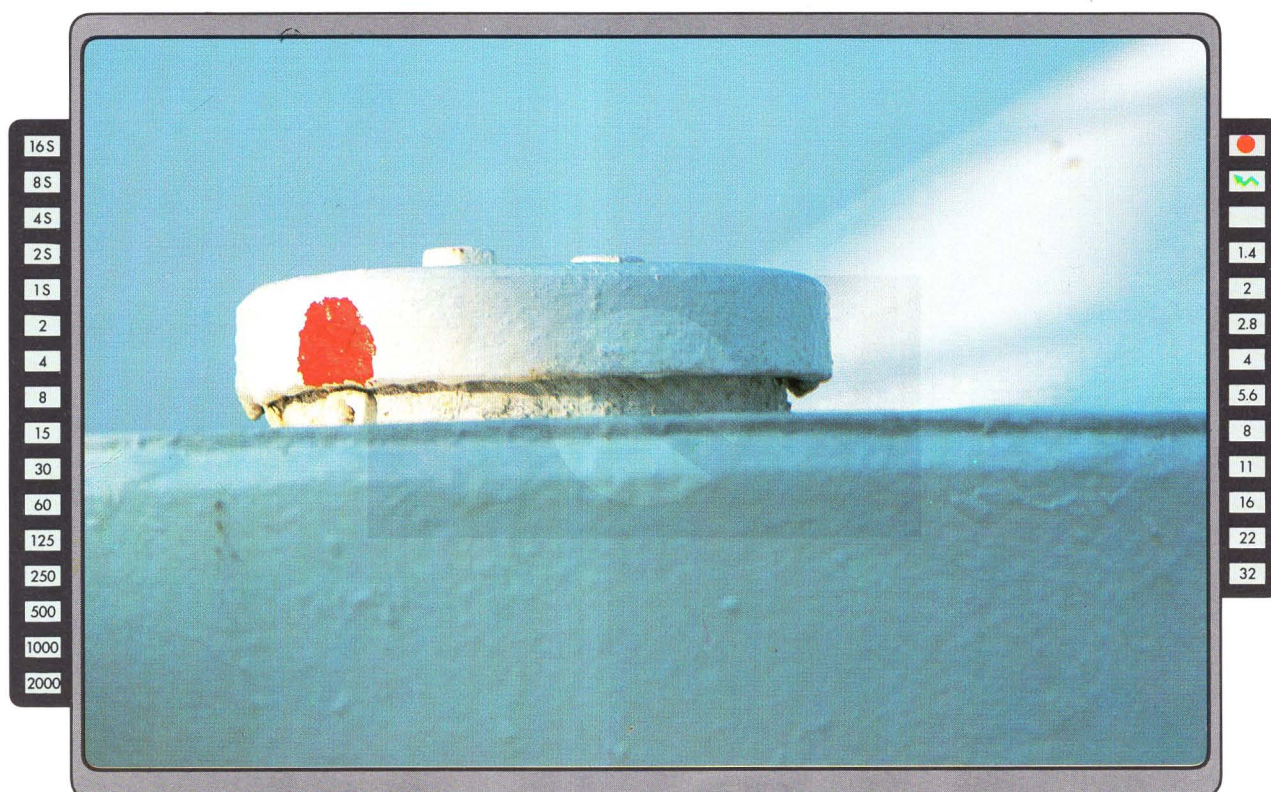
Memo control



Flash control



LED for exposure correction

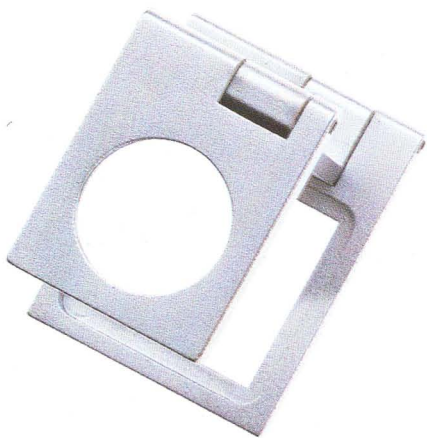


Rolleiflex 3003

**Unique feature:
the built-in high-performance motor**

This is also a first for a camera in this class. A high-performance motor efficiently and precisely operates all the camera functions, including the shutter and film transport. The two modes of operation of the motor allow for individual exposures or sequences of exposures. When the release is pressed for a single picture, the motor moves the film on by just one frame. If rapid movements are to be captured or a series of frames is to be shot for information purposes, the continuous release provides photographs at 3 frames per second. Those who take

a lot of photographs will appreciate this facility, for how often in action photography has the subject moved at the moment of shutter release so that you only hit the mark with a quick second shot. Between shots the exposure is automatically checked and, if necessary, the shutter speed is corrected. Designed as an uncompromising motorized camera for the professional, the Rolleiflex 3003, with its interchangeable magazine, is altogether one of the fastest and most versatile camera systems available today.



Rolleiflex 3003

Unique feature: the interchangeable magazine system

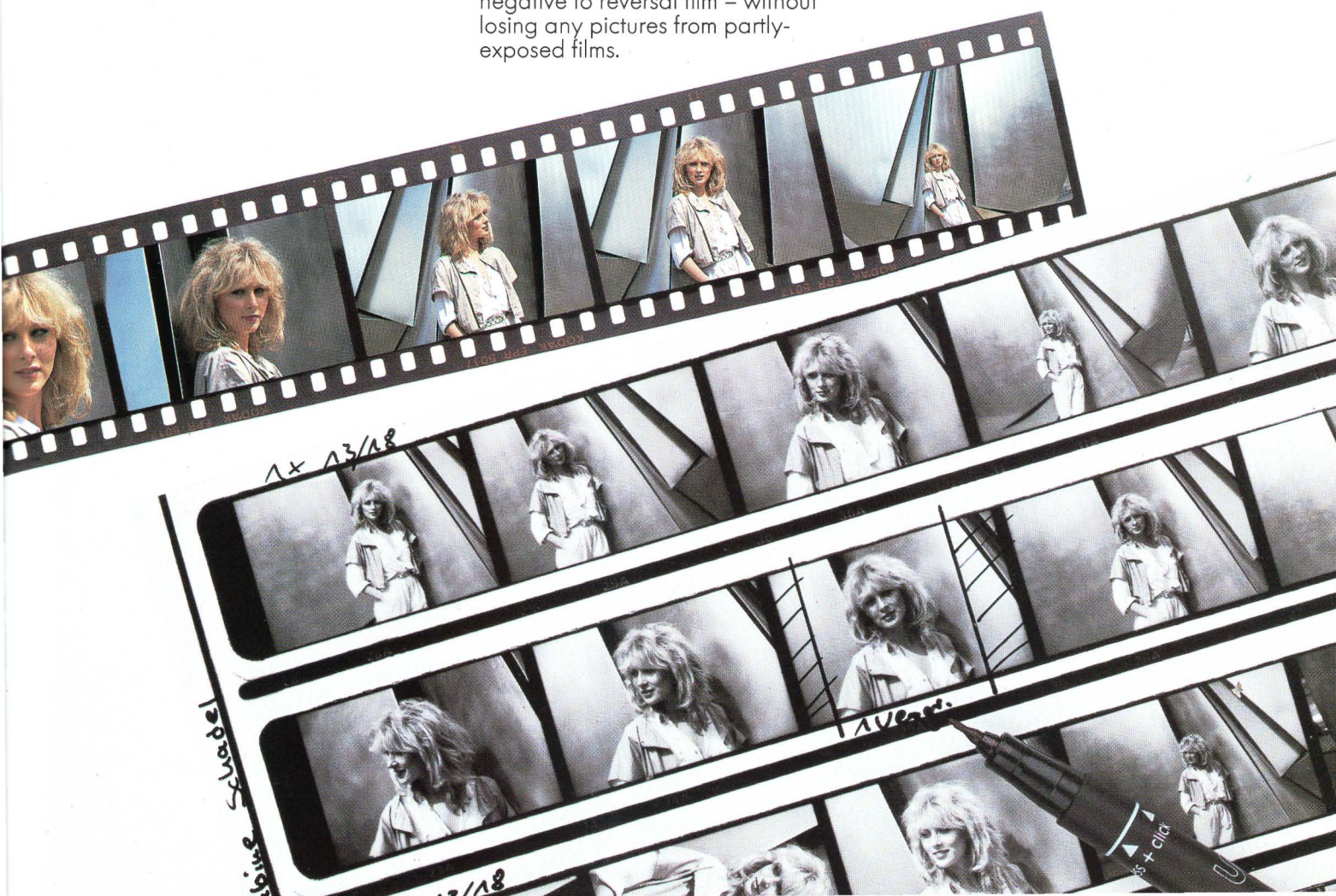


The Rolleiflex 3003 is the only 35 mm reflex camera in the world with a professional interchangeable magazine system. This enables you to take advantage of the sweeping developments in photochemistry, which have given a new impetus to professional photography with new films and emulsions: high-speed colour film for photography with very short exposure times or true-to-life atmospheric pictures in poor light conditions; colour transparency film for bright projection or rapid direct copying; black-and-white film that is both highly sensitive and very fine-grained. With the Rolleiflex 3003 and its unique interchangeable magazine system, you will always be able to cope with future innovations in chemistry. Quick magazine change means exacting creative photography. You can change quickly and easily from colour to black-and-white film, from standard to high-speed film, from negative to reversal film – without losing any pictures from partly-exposed films.

In this way, the use of several magazines can multiply the creative possibilities of the Rolleiflex 3003. The performance of the camera will no longer be hampered by a film that does not meet the changed photographic situation.

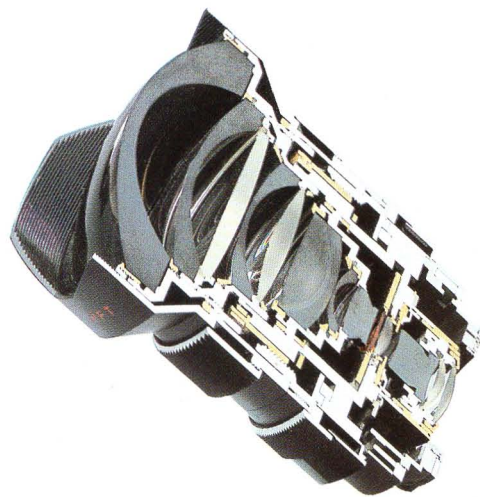
Inside a church you are taking atmospheric pictures with a super high-speed film. For further photographs outside, the range of shutter speed/aperture combinations is not sufficient or else the grain is disturbingly noticeable. A second magazine with standard film provides the ideal solution to the problem.

An ingenious interlock system prevents errors in operation. The cassette can only be disengaged when the magazine drawslide is inserted, protecting the film from unwanted light. On the other hand, the camera shutter can only be released when the drawslide is pulled out, leaving the film free.



Rolleiflex 3003

– objectively in the lead



Any outstanding camera system designed to meet professional demands must have top-quality lenses. Hence, the excellent Carl Zeiss lenses are the logical and ideal companion for the camera. Schneider Kreuznach also play their part in this area of collaboration between top-class manufacturers. Germany's world-wide reputation for precision optics is closely tied up with the designs produced by these two companies. Carl Zeiss specialize in extremely fast lenses and special lenses such as the Makro-Planar f 2.8/60 mm (up to an image scale of 1:1).

Top-quality Zeiss lenses

Every Carl Zeiss lens is a synthesis of almost a hundred years' experience combined with the most up-to-date computer-aided design methods. Even though automatic computer programmes have been introduced to calculate the optimum correction of aberrations, the basic design still plays an essential part in the achievement of the development objective. The success of the design process

depends entirely on the know-how of the designer. Internationally-renowned lens designs such as Tessar, Planar, Sonnar and Distagon are clear proof of the value of Zeiss's experience and represent the highest standards of optical precision and image quality.

The antireflective coating, originally developed by Zeiss and patented in 1935, is one of the most fundamental advances in optics this century. It is responsible for the uniquely balanced and neutral colour character of all Zeiss lenses. The close collaboration between Carl Zeiss and Rollei finally led to the Rollei HFT (High Fidelity Transfer) coating used today.

The quality of a lens should show up in sharpness, contrast, colour reproduction and brilliance. Zeiss lenses give the highest priority to this requirement. The MTF (Modulation Transfer Function) measuring system perfected by Zeiss ensures that every single Zeiss lens manufactured for Rollei cameras meets this high standard to the full. An ingeniously devised monitoring system and the



painstaking MTF tests guarantee the outstanding image quality which is prized by professional photographers – especially in advertising, technical and portrait photography – and is experienced to its best effect in the projected slide.

Over the past ten years, the long-standing partnership between Carl Zeiss and Rollei has steadily developed to the point where Zeiss lenses are now manufactured under licence by Rollei Fototechnik.

Rolleinar lenses for all areas of creative composition

The Rolleinar lenses are a new range of lenses which are the product of Rollei's accumulated experience, know-how and specially developed methods of evaluating the image quality and definition of mass-produced lenses. Professionals use them above all in reportage and action photography. With their extremely compact design in comparison with the Zeiss range, the generally slower standard lenses with fixed focal lengths in the Rolleinar range and the Rolleinar zoom lenses are

eminently suitable for these fields of photography.

A practical selection of sensibly spaced focal lengths offers the demanding photographer the whole spectrum of creative photographic composition from fish-eye to super telephoto up to fast zoom lenses and special lenses.

Rollei's strict evaluation criteria guarantee the professional user an excellent cost-benefit ratio. Naturally, all Rolleinars are provided with an effective multi-layer coating to reduce reflection.

To achieve such high cost-effectiveness, Rollei works with several leading lens manufacturers. The Rollei selection criteria guarantee a uniformly high quality in all Rolleinar lenses.

Distagon: the traditional name for wide-angle lenses. The very latest optical designs are guaranteed. The partial use of floating elements improves image quality, especially in the close-up range.

Planar: further development of a pioneering design principle based on minimizing lens curvature (P. Rudolf, 1896). Planar designs are intended to provide very fast lenses, which are frequently used at full aperture (Available Light Photography).

Sonnar: introduced about 50 years ago, this lens has become recognized as a pioneering telephoto design (1936 Olympics – the Sonnar f 2.8/180 mm was designed for L. Riefenstahl). The name is used today for computer-calculated Zeiss lenses.

Tele-Tessar: the name Tessar was coined by P. Rudolf in 1902 for the "triple design", which is distinguished by its superlative image quality. The name of the lens was later lengthened to Tele-Tessar. The main characteristic of this lens is its compact construction resulting from the introduction of the latest types of glass and new calculation techniques. Excellent results are achieved even at full aperture. This is especially suitable for wild-life and sports photography.

Miotar: the name for very fast mirror lenses. Completely free from chromatic aberration, they meet the requirements of the most demanding photographer.

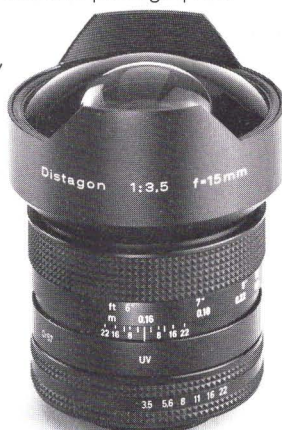


The super wide-angle range



Zeiss Distagon f 3.5/15 mm HFT

A top-class super wide-angle lens with a high aperture and outstanding image qualities which opens up new creative opportunities for the demanding amateur as well as for the professional photographer. With an angle of view of 110° and minimal distortion, this lens is particularly suitable for architectural, interior and landscape photography. Even when the lens is moderately stopped down, the corners of the image are still almost equally illuminated.



Zeiss F-Distagon f 2.8/16 mm HFT

A super wide-angle lens (fisheye type) with a large aperture and exceptional image quality. Clear reproduction of the whole frame. Good illumination of the picture field, even at full aperture. Barrel distortion of lines away from the image centre. Excellent for panoramic photographs, very cramped interiors, advertising and special effects.



Zeiss Distagon f 4.0/18 mm HFT

This lens, with an angle of view of 100°, can be considered the "standard focal length" among the super wide-angle lenses. It is particularly used for architectural, landscape and special effect photography. Exceptionally sharp focus in the close-up range is achieved by the use of "floating elements".



F-Rolleinar-MC f 3.5/14 mm

A fisheye lens with an extremely short focal length. It has full definition over the whole 35 mm format and is strongly corrected with a maximum depth of field. It is surprisingly small and light and has a quadruple revolving filter holder for black-and-white or colour film. It can be recommended for restricted interiors, creative composition, panoramic photographs and distortion effects.

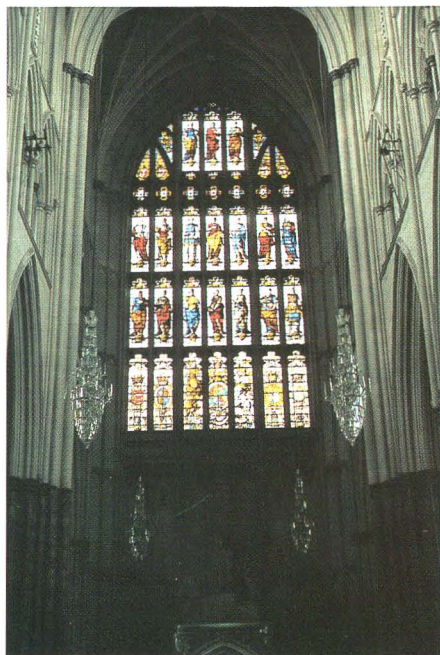


Rolleinar-MC f 4.0/21 mm

Super wide-angle lens with distortion-free image and very good depth of field. Especially suitable for high interiors, spacious landscapes and architecture and for use by mountaineers.



The normal wide-angle range



Zeiss Distagon f 2.8/25 mm HFT

A superlatively designed wide-angle lens of particularly compact construction. Very light at only 310 g. Universally applicable for landscape, architectural and interior photography. Excellent depth of field, even at f 2.8.



Zeiss Distagon f 2.8/35 mm HFT

A high-performance lens – for photographers who understand by “high performance” not the largest available aperture but high image quality. The range of applications for this lens is so varied and universal that it has a place in every photographer's equipment. It is recognized as the classic landscape lens.



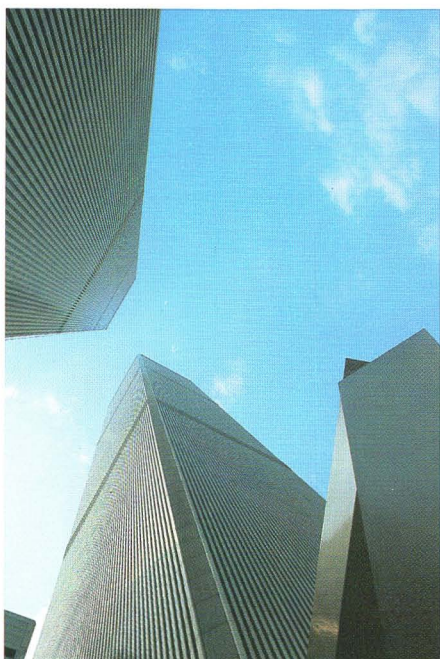
Zeiss Distagon f 2.0/28 mm HFT

A super fast wide-angle lens. A meticulously developed optical design with moving elements for outstandingly sharp focus even in the close-up range. Recommended for theatre, variety and indoor sports photography – where flash cannot be used – and for interior architecture and reportage.



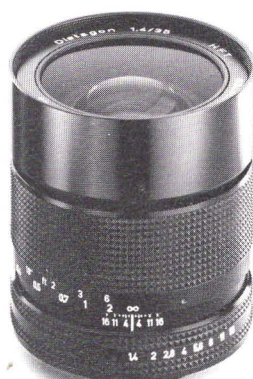
HFT Rolleinar f 2.8/28 mm

A compactly built, fast wide-angle lens, very light and easy to handle. For landscape, architectural and indoor sports photography as well as for snapshots, reportage and interiors. This lens can be focused down to 30 cm.



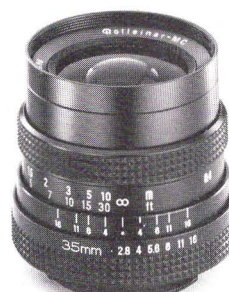
Zeiss Distagon f 1.4/35 mm HFT

The classic wide-angle focal length with an extra large aperture and floating elements for exceptional picture quality down to the close-up range. Especially precise focusing at full aperture. First choice for available light photography (reportage, theatre, sport).



Rolleinar-MC f 2.8/35 mm

A classic wide-angle lens which can often be used in place of a standard lens. At 235 g, it is the lightest lens in the Rolleinar range. A universal lens for almost all close-range photographic assignments. With the f 2.8/135 mm, it makes up a complete set of light and handy lenses.

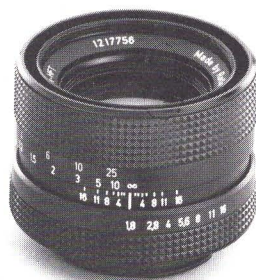


Rolleiflex 3003

The standard range

Zeiss Planar f 1.8/50 mm HFT

The fast standard focal-length lens with optimum correction and extra sharp definition. At 185 g, extremely light and easy to handle. A universal lens with close-up focusing down to 45 cm. Suitable for all subjects.



Zeiss Planar f 1.4/50 mm HFT

The super fast normal lens with outstanding correction and needle-sharp definition, even at full aperture. Light and very compact. Universally applicable. Can be focused down to 45 cm.



The medium telephoto range



Zeiss Planar f 1.4/85 mm HFT

Extra fast telephoto lens with exceptionally good image quality, even at full aperture. Very wide-ranging applications for theatre and floodlight photographs and in sports photography, reportage photography, wildlife photography in poor light and (using a wide aperture) portrait photography with blurred and fading backgrounds.



Rolleinar-MC f 2.8/85 mm

The "short" telephoto lens for photographic assignments such as portraits, landscape photography, wildlife photography, etc., where a greater distance from the subject is required. Very compact for a long-focus lens. And at 270 g a light, handy lens.



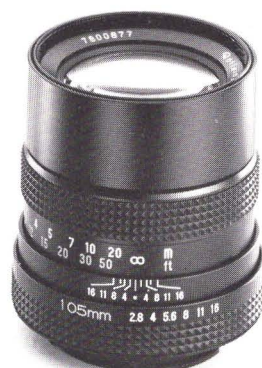
Zeiss Sonnar f 2.8/135 mm HFT

Fast standard telephoto lens. Short and light. The outstanding picture quality right up to full aperture allows handheld operation, even in unfavourable light conditions.



Rolleinar-MC f 2.8/105 mm

A "medium" telephoto lens with more than twice the image size of a lens with a normal focal length. Eminently suitable for portrait photography, but also for sports photography or for shooting precise details from a distance.



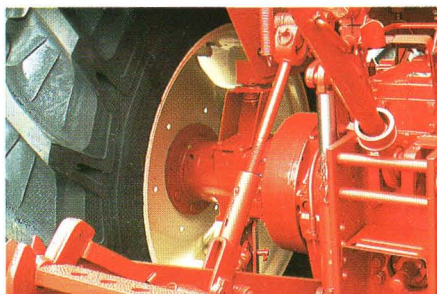
Zeiss Tele-Tessar f 4.0/135 mm HFT

A slower, less expensive alternative to the Sonnar 135 mm. Widely suitable for portrait, wildlife, sports and detailed landscape photography.



Rolleinar-MC f 2.8/135 mm

The "classic" telephoto lens for all photographs taken at a considerable distance from the subject – wildlife photography in the zoo or on safari, architectural details, sports photography and also group photographs. At 97 mm long, it is a very short, handy lens.



The extended telephoto range



Zeiss Tele-Tessar f 4.0/200 mm HFT

The lens for long-range reportage, wildlife and sports photography. Excellent image quality. Comfortable to handle, with a built-in lens hood.



Rolleinar-MC f 3.5/200 mm

Telephoto lens with four times the image size compared with a normal lens. For long-range photographs, particularly in sports and documentary photography, to span great distances. It can easily be used handheld with high-speed film.

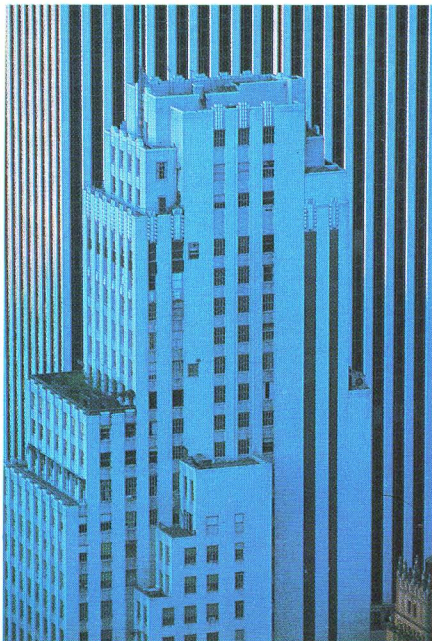


Rolleinar-MC f 5.6/400 mm

Long-focus lens with eight times the image size of the normal focal-length lens. Surprisingly easy to handle at 21 cm long thanks to internal focusing and short focusing movement. Indispensable for distant views, long-range wildlife photography, sports photography, etc. Recommended accessory: a shoulder support to prevent shake.



The super telephoto range



Zeiss Miotar f 5.6/1000 mm HFT

A mirror lens with supreme optical correction. No focal change needed for infrared photography. Twenty times the image size compared with standard focal lengths. Recommended for long-range photography, wildlife photography and reportage photography from very great distances using a tripod. Three individual grey filters can be swung in to reduce the incident light to apertures 5.6, 8 and 11.



Zeiss Miotar f 4.5/500 mm HFT

A long-focus mirror lens very similar to the 1000 mm Miotar, with a relatively high aperture and 10 times the image size of a lens with a standard focal length. Recommended for the same range of applications. Relatively fast and compact, with three individual grey filters that can be swung into place, corresponding to aperture values 4.5, 8 and 11. Can be focused to maximum sharpness, giving great scope for subsequent enlargement.

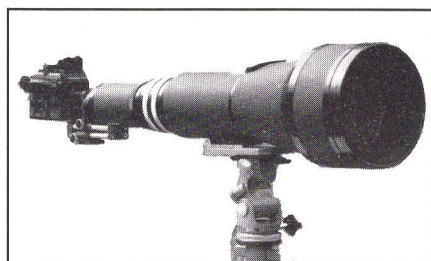
Reflex-Rolleinar-MC f 8.0/500 mm

A telephoto lens of the mirror type, wonderfully compact – only 78 x 88 mm in size and weighing 500 g. Grey filters can be inserted to reduce the aperture fixed at f 8. This lens can be used handheld with appropriately short exposure times and can span very great distances. The exceptionally large focusing range, down to 1.5 m, even allows magnified close-up photographs.

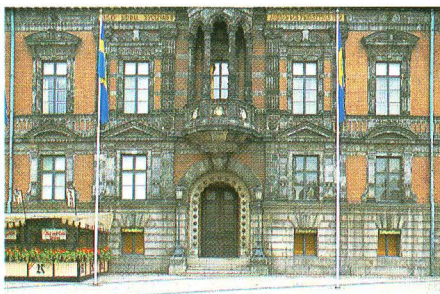
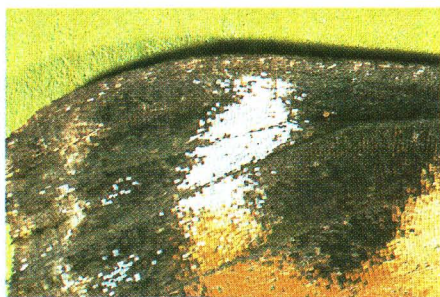
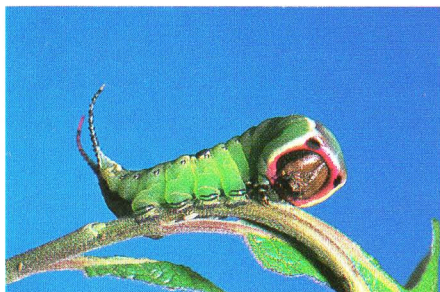


Zeiss Tele-Tessar f 8.0/1000 mm

A telephoto lens with 20 times the image size compared with the standard 50 mm focal length to cover very great distances. No loss of definition right up to the edge of the frame, since the lens is corrected up to the 6x6 format. With lens hood and collapsible tube for insertion of filter (bayonet size VII) inside the lens. Focusing by means of ancillary bellows unit (supplied).



The special range



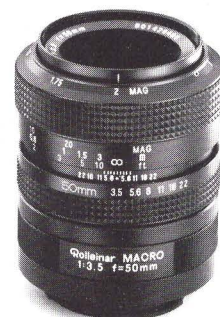
Schneider PC-Curtagon f 4.0/35 mm HFT

A special lens with the facility for shifting the optical system for perspective correction, e.g. with converging lines in large-scale architectural photography. Angle of view increased by 14° in the shift direction, with millimetre scale. Also eminently suitable for high interiors in museums and churches. In normal adjustment, it can be used as a highly-corrected universal wide-angle lens.



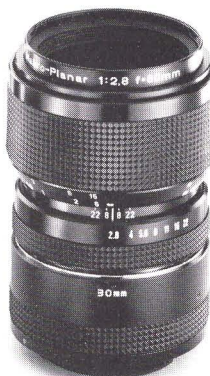
Rolleinar f 3.5/50 mm Macro

A compact special lens for close-up photography with continuous focusing from infinity down to a scale of 1:2 or, with additional extension tube, 1:1. The Rolleinar f 3.5/50 mm is especially suitable for detail, reproduction and still life photography. It can also serve as a normal lens.



Zeiss Makro-Planar f 2.8/60 mm HFT

The special lens for close-up work with continuous focusing from infinity down to a scale of 1:2 or, with additional extension tube, 1:1. Supremely suitable for frequent changes from general to detail photographs and also for still life photography and photographic reproduction. Can also be used as a normal lens.



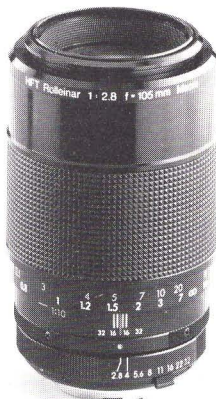
Night vision unit NVS 100

Second-generation residual light amplifier for special applications – for police, security firms, hunters and any situation where the light is no longer sufficient for normal photography or the human eye. Amplification factor 25000, automatic brightness control, full frame 24 x 36 mm.



HFT Rolleinar Macro f 2.8/105 mm

A fast long focal-length macro lens with extra long screw extension permitting shots down to a scale of 1:1. Due to the large lens-to-subject distance, this lens is ideally suited to photography of small animals liable to flee suddenly if disturbed. This distance similarly allows for optimum illumination of the subject. As a medium telephoto lens, it is also highly suitable for portrait photography.

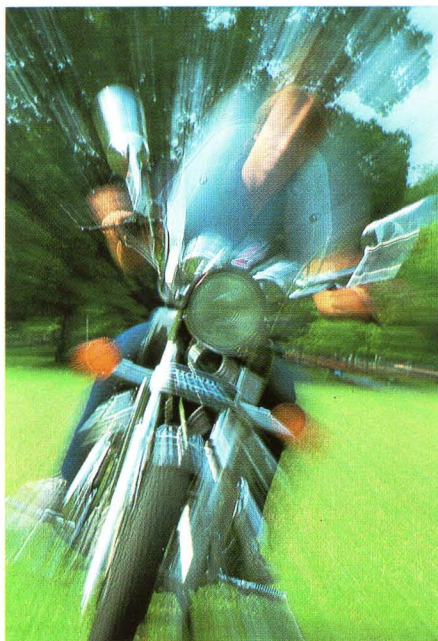


Zeiss Luminar magnifying lenses

Suitable for applications where the lens-to-film distance is greater than the camera-to-subject distance. The luminars are available with focal lengths f 2.5/16 mm, f 3.5/25 mm, f 4/40 mm and f 4.5/63 mm and are equipped with an iris diaphragm. Attachment is by means of the international standard microscope thread W 0.8" x 1.36".



The zoom range



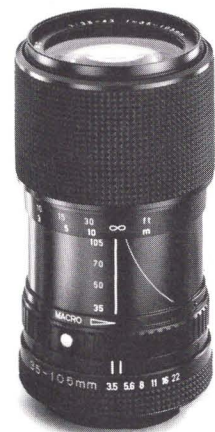
HFT Rolleinar f 3.2-4.5/28-105 mm Macro

A compact zoom lens which covers the wide-angle to medium telephoto range and also serves as an "extended standard lens", offering excellent scope for creative composition. Simple and rapid single-ring operation, with an image scale up to 1:4 in the macro position. A lens whose design takes into account the latest developments in optics and precision engineering.



Zoom-Rolleinar-MC f 3.5-4.3/35-105 mm Macro

This zoom lens is so short that it can be kept on the camera permanently. With its three-fold focal-length range, it offers considerable scope for creative photography. The single-lens operation ensures the fastest possible readiness to shoot. The lens has a close-focusing ring with which image scales up to 1:4 can be obtained.



HFT Rolleinar f 4.0-5.6/50-250 mm Macro

This single-ring slide zoom lens is a compact high-performance lens with a fivefold focal-length range. The latest design technology has produced a lens which offers the photographer a wide spectrum of interesting composition from telephoto down to the macro range. This lens is characterized by its excellent image-forming properties, comparatively light weight and very easy handling.



HFT Rolleinar f 4.0/80-200 mm Zoom

Classic single-ring slide zoom lens with 2.5x focal-length range, infinitely variable. Once focused, the image stays sharp as the focal length is changed. Close-up adjustment down to 1 metre.



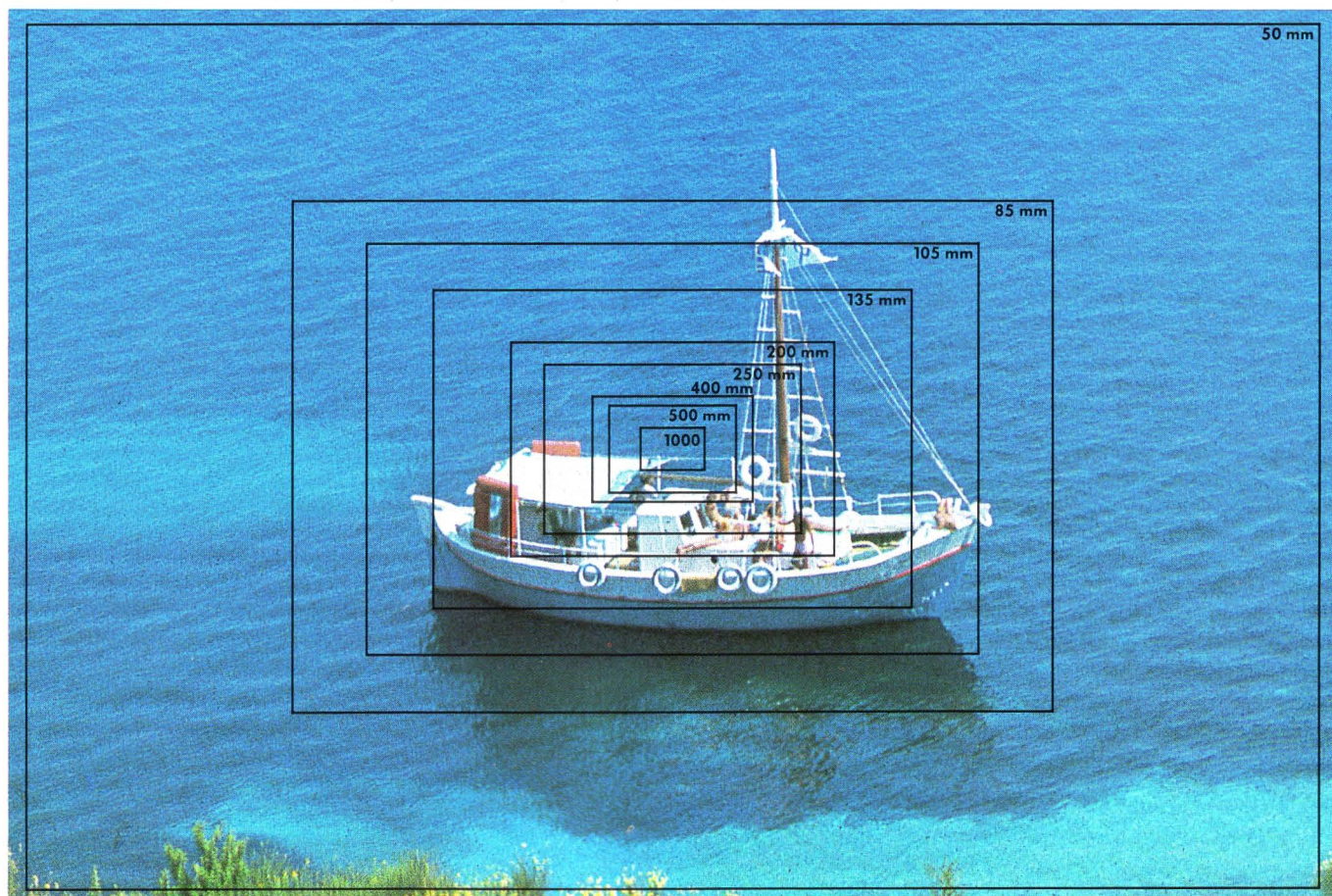
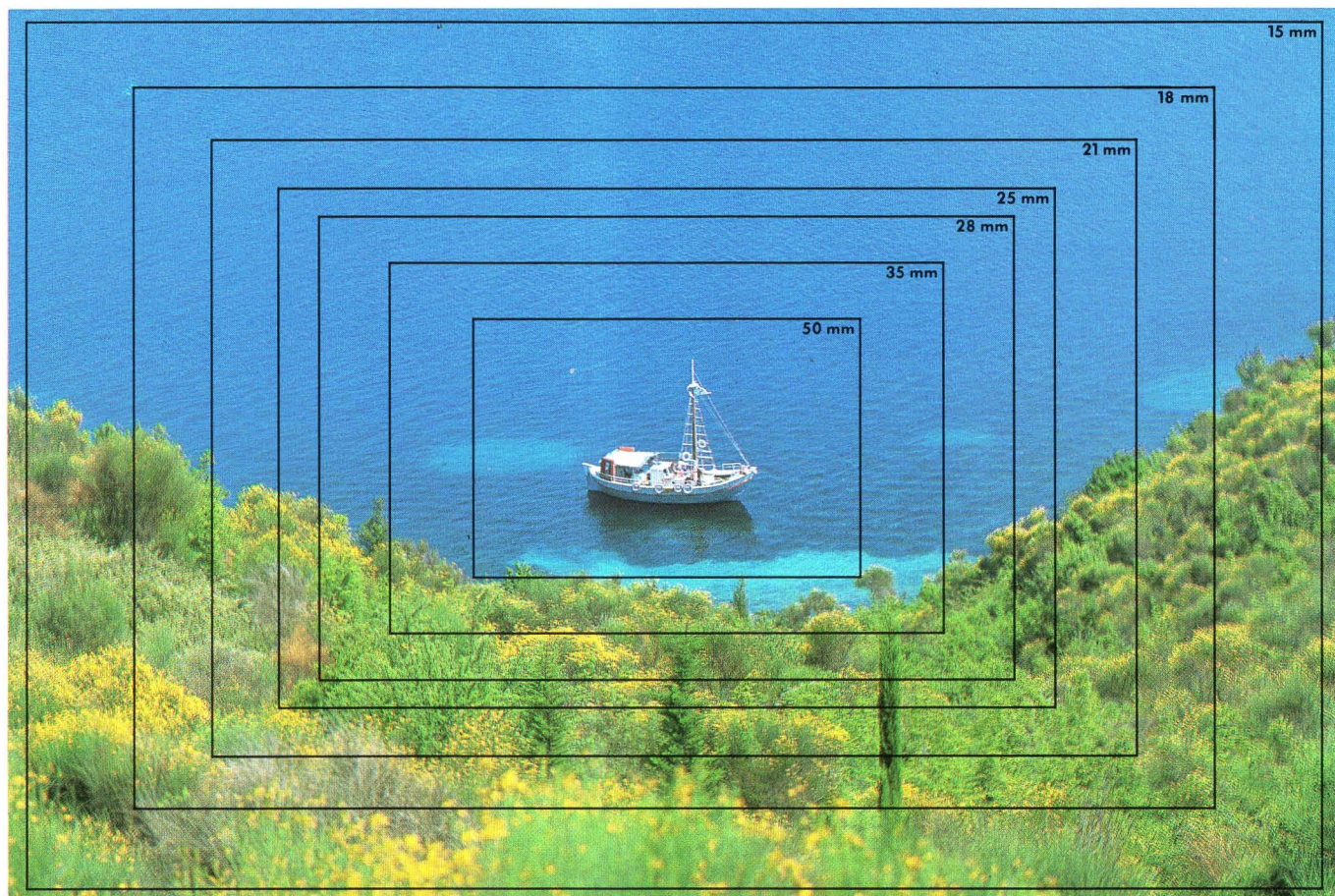
HFT Rolleinar f 2.8/80-200 mm Zoom

This newly-designed fast high-performance zoom lens owes its outstanding performance to the most modern design technology. The selection of glasses with very low dispersion allows excellent colour reproduction and high resolution. Further outstanding qualities of the lens are its single-ring operation and compactness.



Rolleiflex 3003

Every creative opportunity



Lens*	Elements/ Components	Aperture range	Angle of view	Adjustable down to	Filter- size	Maximum diameter	Maximum length	Weight
Zeiss Distagon f 3.5/15 mm HFT	13/12	3.5–22	110°	0.16 m	Revolver with 4 Filters	83 mm	94 mm	620 g
Zeiss F-Distagon f 2.8/16 mm HFT	8/7	2.8–16	180°	0.30 m	Revolver with 4 Filters	70 mm	68 mm	343 g
Zeiss Distagon f 4.0/18 mm HFT	10/9	4–22	100°	0.30 m	Slip-on filter 70 mm	70 mm	52 mm	350 g
Zeiss Distagon f 2.8/25 mm HFT	8/7	2.8–22	80°	0.25 m	E 49	62 mm	64 mm	310 g
Zeiss Distagon f 2.0/28 mm HFT	9/8 floating elements	2.0–22	74°	0.24 m	E 55	63 mm	83 mm	530 g
Zeiss Distagon f 1.4/35 mm HFT	9/8 floating elements	1.4–16	61°	0.30 m	E 67	70 mm	85 mm	471 g
Zeiss Distagon f 2.8/35 mm HFT	5/5	2.8–22	61°	0.40 m	E 49	62 mm	53 mm	210 g
Schneider PC-Curtagon f 4.0/35 mm HFT	7/6	4.0–22	64°/78°	0.30 m	E 49	63 mm	56 mm	290 g
Zeiss Planar f 1.4/50 mm HFT	7/6	1.4–16	46°	0.45 m	E 49	62 mm	50 mm	230 g
Zeiss Planar f 1.8/50 mm HFT	7/6	1.8–16	45°	0.45 m	E 49	62 mm	47 mm	185 g
Zeiss Makro-Planar f 2.8/60 mm HFT	6/4	2.8–22	39°	0.27 m	E 55	68 mm	70 mm	570 g
Zeiss Planar f 1.4/85 mm HFT	6/5	1.4–16	29°	1.00 m	E 67	70 mm	72 mm	537 g
Zeiss Sonnar f 2.8/135 mm HFT	4/4	2.8–32	18°	1.60 m	E 55	63 mm	98 mm	450 g
Zeiss Tele-Tessar f 4.0/200 mm HFT	6/5	4.0–32	13°	2.50 m	E 67	76 mm	134 mm	750 g
Zeiss Mirotar f 4.5/500 mm HFT	5/5	4.5/8/11 grey filter	5°	3.50 m	Filter- slide	193 mm	235 mm	4,500 g
Zeiss Mirotar f 5.6/1000 mm HFT	5/5	5.6/8/11 grey filter	2.5°	12.00 m	Filter- slide	250 mm	420 mm	16,500 g
Zeiss Tele-Tessar f 8.0/1000 mm	4/4	8–64	2.5°	14.5 m	Gr. VI	218 mm	825 mm	8,800 g
Zeiss Luminar f 2.5/16 mm	5/4	2.5–10	–	β 8–14:l**	–	28 mm	42 mm	100 g
Zeiss Luminar f 3.5/25 mm	4/3	3.5–14	–	β 4–8:l**	–	28 mm	36 mm	91 g
Zeiss Luminar f 4.5/40 mm	3/3	4.5–25	–	β 2–4:l**	–	28 mm	29 mm	67 g
Zeiss Luminar f 4.5/63 mm	3/3	4.5–36	–	β 1–3:l**	–	28 mm	30 mm	74 g
F-Rolleinar-MC f 3.5/14 mm	10/7	3.5–16	180°	0.3 m	Built-in	64 mm	56 mm	320 g
Rolleinar-MC f 4.0/21 mm	9/8	4.0–16	90°	0.45 m	E 58	63 mm	56 mm	245 g
HFT-Rolleinar f 2.8/28 mm	8/7	2.8–22	75°	0.30 m	E 52	63 mm	40 mm	200 g
Rolleinar-MC f 2.8/35 mm	7/5	2.8–16	63°	0.4 m	E 52	63 mm	60 mm	235 g
Rolleinar f 3.5/50 mm, Macro	5/4	3.5–22	47°	0.22 m	E 49	64.5 mm	52 mm	205 g
Rolleinar-MC f 2.8/85 mm	4/4	2.8–16	28°	0.85 m	E 52	63 mm	64 mm	270 g
HFT-Rolleinar Macro f 2.8/105 mm	6/6	2.8–32	23°	0.35 m	E 55	72 mm	103 mm	650 g
Rolleinar-MC f 2.8/105 mm	4/4	2.8–16	23°	1.2 m	E 52	63 mm	69 mm	305 g
Rolleinar-MC f 2.8/135 mm	4/4	2.8–22	18°	1.5 m	E 52	66 mm	97 mm	505 g
Rolleinar-MC f 3.5/200 mm	4/4	3.5–22	13°	2.3 m	E 58	71 mm	147 mm	590 g
Rolleinar-MC f 5.6/400 mm	8/5	5.6–22	6°	4 m	E 72	78 mm	216 mm	950 g
Reflex-Rolleinar-MC f 8/500 mm	7/2	8	5°	1.5 m	E 33.5	78 mm	95 mm	500 g
HFT-Rolleinar f 3.2–4.5/28–105 mm, Macro	15/11	3.2–22	75°–23.2°	0.25 m	E 67	70 mm	112.5 mm	686 g
Zoom-Rolleinar-MC f 3.5–4.3/35–105 mm, Macro	16/13	3.5–22	63°–23°	1.6 m	E 55	64 mm	96 mm	445 g
HFT-Rolleinar f 4.0–5.6/50–250 mm, Macro	14/11	4.0–22	47°–10°	1.8 m	E 55	68 mm	179 mm	720 g
HFT-Rolleinar f 2.8/80–200 mm, Zoom	17/11	2.8–32	30°–12°	1.8 m	E 77	81 mm	174.5 mm	1080 g
HFT-Rolleinar f 4.0/80–200 mm, Zoom	13/9	4.0–32	30°–12°	1.0 m	E 58	68 mm	141 mm	655 g
Doubling-Teleconverter	7/5	–	–	–	–	62 mm	48 mm	221 g

*can also be used with Rolleiflex SL 2000 F, SL 350, SL 35, M-ME and SL 35E

**SLR cameras with extension bellows

Accessories

A complete range for the professional photographer

Interchangeable magazines

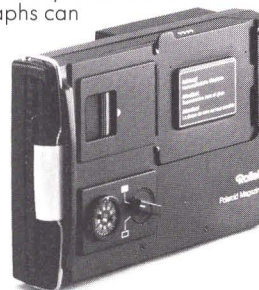
36/72 magazine

With drawslide for quick change, even with partly exposed film. For 12-, 20- and 72-exposure cartridges or for sheet film and bulk film stock. Automatic film stop after last complete film transport. Single or multiple exposure. The film speed can be set between 15 and 39 DIN/25 and 6400 ASA. The frame counter only operates when the magazine contains film. Memo holder for tear-off tab from film box. A special 72-film pressure plate (for optimum sharpness requirements when using Ilford 72 film) is available as an accessory.



Polaroid magazine

A Polaroid magazine for use with the following types of film: 665, 667, 668, 669. The Polaroid magazine and its power pack are attached to the camera just as easily as the normal magazine. The attachment of the Polaroid magazine does not hinder viewing through the telescopic viewfinder. Optical compensation for the longer film distance in the Polaroid magazine is achieved by means of a flat parallel glass plate. The focusing range of the lens is fully maintained. Two 24 x 36 photographs can be taken in one Polaroid frame. An attached metal drawslide covers the film so that the magazine can be changed without losing any pictures.



250 long-film magazine

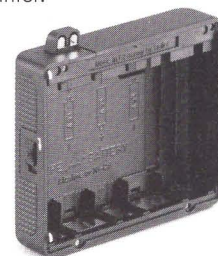
The long-film magazine allows up to 250 pictures to be taken without changing the film. It accepts type 250 film cassettes which contain up to 10 metres of bulk film stock. All the Rolleiflex 3003 functions continue without restriction when the long-film magazine is used. The magazine is fitted with an additional shutter release to ensure ease of operation. Long-film magazines used in conjunction with the camera motor drive are especially useful in sports and documentary photography involving high film consumption.



Power supply

Interchangeable power pack

You should always make sure you have at least one additional interchangeable power pack and, when using several magazines, one per magazine. This way, you will always have sufficient power reserves available. With the spare power pack in your pocket, you can be ready to shoot at any moment, even in the severest winter.



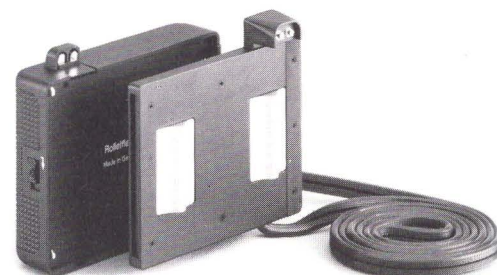
NC power pack

The quick-change NC power pack provides an optimum power supply by means of firmly built-in NiCd batteries soldered together. It can only be recharged with the Rollei charger.



External power connection

In extreme cold, you can secure the power supply for the camera by means of a cable and connector. The power pack and its batteries can be kept in your trousers pocket so that they are warmed by your body heat.



Special release equipment

Mains connection

The Rolleiflex 3003 is fitted with a mains connection for continuous professional use in one place. By means of this connection, current can be taken from a convenient DC voltage source (mains power unit with 6 V/4 A DC output).



Charger for the Rolleiflex 3003

The standard NC power pack provides the Rolleiflex 3003 with a professional power supply sufficient for 1000 photographs under normal conditions. The charger supplied with it fully recharges the battery in 14 hours. After only one hour on charge, there is enough power available for two films.



Quick-action charger

Recharging is even faster with the specially designed Rollei quick-action charger. After only one hour, about 70% capacity is available. If the power pack is left on charge for longer, it switches automatically from "quick charge" to "normal charge". The batteries are fully recharged after about three hours.



Car-battery connection cable

For connecting the charge to the 12 V circuit of a car via the cigarette-lighter socket. The charging time is approximately 14 hours.



Remote release handpiece

The Rolleiflex 3003 is an electronically controlled camera. Hence, whenever a particularly gentle shutter release action is required, you can use the electrical remote release (e.g. for tripod photographs, in the macro range, etc.). The release is available in short (0.5 m) or long (10 m) versions. Connection is via the remote operation socket.



IR remote release

The Rollei IR transmitter/receiver allows individual or multiple exposures from a distance of up to 60 m. A special switch in the infrared transmitter even permits the release of a second Rolleiflex synchronously with a first camera which is released manually. Both transmitter and receiver are light, compact and easy to use. Optical monitoring signals tell the photographer when transmission and reception are taking place and also, for time exposures, when the shutter is open.

With this cordless remote release, many interesting and previously unavailable opportunities are opened up for the serious photographer – from candid snapshots taken by a hidden camera to photographs of camera-shy or dangerous animals taken from a safe distance.



ME 2000 electrical hand release

For sequences of photographs in sets of 1, 2, 4, 8, 16 or 32 and for multiple exposures.



FRC 1 foot-operated remote release

Electronic remote release for use when working with a microscope or copying stand when both hands are needed to operate the equipment.



Timer

The Rollei timer is a versatile electronic time-switch unit by means of which the Rolleiflex 3003 can make any chosen number of exposures at preselected intervals. It controls the interval between exposures in the unusually wide range between one second and 59 hours 59 minutes. And it can make between 1 and 999 exposures. The set programme of the number of exposures and the interval required is constantly displayed, while the number of exposures remaining or the interval-time used up can be read from an illuminable indicator display. A programme can be halted at any time. Additional pictures can be taken outside the programme during an interval period. The quartz-controlled interval-times are held to a high degree of accuracy: with maximum deviations of 1/200,000 seconds they meet highest scientific standards.



Focusing screens and viewfinder attachments

Oblique split-image rangefinder and microprism grid

The universal focusing screen with a split-image rangefinder, microprism grid and ground-glass screen. The split-image rangefinder gives precision focusing using horizontal and vertical lines. It can even be used with very restricted apertures and/or with a bellows unit.

Horizontal split-image rangefinder and microprism grid

A universal focusing screen for the highest sharpness requirements, with rangefinder wedge, microprism grid and ground-glass screen. Rangefinder wedge for maximum focusing accuracy on vertical lines.

Microprism grid

Universal focusing screen with microprism grid and ground-glass screen for quick-action photography. The "glitter-free image" gives trouble-free focusing, even in poor light conditions.

Cross-hairs

A completely matt screen with cross-hairs for unimpeded subject composition and for aligning the camera in architectural photography, photo reproduction and macro-photography. Also useful for lenses with very small apertures and for estimating depth of field.

Clear-view spot

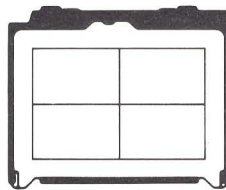
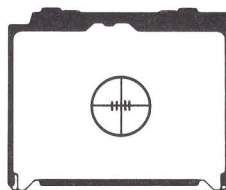
Special focusing screen for macro- and microphotography with clear-view spot, scale and ground-glass screen. The clear-view spot is used for parallax-free focusing of aerial images at extremely low apertures, e.g. on a microscope. The scale makes it possible to determine the magnification.

Endoscopy

Special focusing screen for endoscopy: clear screen with cross-hairs.

Reference grid

Focusing screen with grid of reference lines. Especially suitable for reproduction and macrophotography.



Prism sports viewfinder

The prism sports viewfinder for the Rolleiflex 3003 gives an upright, right-reading finder image. The large eyepiece provides the photographer with an excellent image monitor – a considerable advantage in sports, reportage and underwater photo-

graphy. The prism viewfinder makes it particularly easy to follow moving objects in macrophotography near ground level. And that's not all. The good view into the finder also enables spectacle-wearers to keep a distance between eye and eyepiece.

Close-up accessories

Bellows unit

For versatile photography in the close-up and macro ranges. The bellows unit can be combined with extension tubes and/or lens adapters. Clamping screws and extension scales ensure precise operation. Its four struts provide stability and torsional stiffness. The focusing rack is fitted with $\frac{1}{4}$ " and $\frac{3}{8}$ " tripod bushes. For automatic exposure control, it is necessary to switch the camera to the working aperture.



Extension tubes

Four extension tubes (50, 30, 15 and 7.8 mm), used separately or combined as required, allow close-up photography with various magnifications according to the focal length of the lens. All the extension tubes transmit the aperture control function. For automatic exposure control, the camera must be switched to the working aperture.



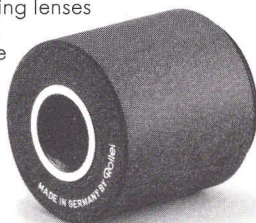
Microscope adapter

The microscope adapter makes it possible to attach the Rolleiflex 3003 to commercially available microscopes. Operation of the automatic exposure is also maintained on the microscope by pressing the working-aperture button.



Magnifying adapter

With the magnifying adapter, all commonly available magnifying lenses (Luminars, Photars) can be used on the Rolleiflex 3003. The 42x1 adapter is also required.



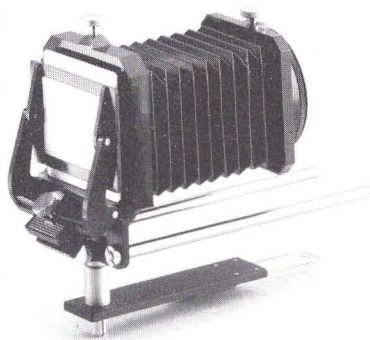
Adapter mount for lens reversal

For close-up photography and macro-photography. With the Rollei bayonet and E49 or E55 threaded connection. Working aperture measurement.



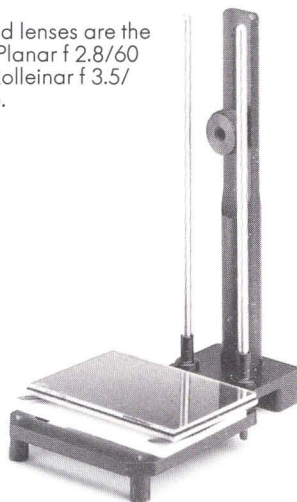
Slide copying equipment

Used in conjunction with the bellows unit, this equipment allows the duplication of slides and negatives. The equipment comprises a bellows lens hood on guide bars and the slide copying attachment for slides or film strips. All Rollei lenses between 50 and 60 mm focal length are suitable for slide copying.



Macro stage

This accessory allows trouble-free macro-photography using the bellows unit. It ensures that the film plane and subject plane are parallel without special alignment being required. Recommended lenses are the Zeiss Macro-Planar f 2.8/60 mm and the Rolleinar f 3.5/50 mm macro.



Firmly in your grip in any situation

Loop handgrip

The integral detachable loop handgrip on the Rolleiflex 3003 allows the camera to be comfortably and safely handled in any photographic situation. It forms part of the standard equipment of this model.



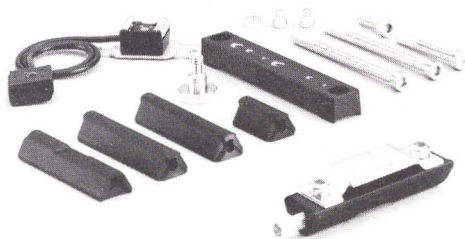
Pistol handgrip

With built-in release. It can be attached quickly and easily to the bottom of the camera and enables the camera to be held still even for long exposure times.



Flash extension mount I/II

With this accessory, the handgrip system can be extended to form a universal flash holder for all standard and Rollei flash units.



Side extension mount

Using the side extension mount, the pistol handgrip can easily be fixed to the left or right of the camera which can thus be comfortably handled in most photographic situations.



Adapters

M 42 adapter

Using the M 42x1 adapter, all lenses with an M 42 thread can be used with the Rolleiflex 3003. Operation of the automatic aperture control is retained when the working-aperture button is pressed.



35/66 adapter

This adapter enables lenses from the Rolleiflex SL 66 to be used freely on the Rolleiflex 3003. It is adjustable to focal lengths from 30 to 1000 mm.

With this adapter, lenses designed for the professional 6x6 format can also be used most effectively in the 24x36 format. Since the 24x36 format only uses the centre of the 6x6 image, the resulting pictures have the highest quality and brilliance. The automatic exposure metering of the camera functions on the working-aperture setting.



Rollei SCA 356 flash adapter

The Rollei SCA 356 allows all reputable makes of automatic flash unit offering the SCA 300 system to be connected into the electronics of the camera. The connection is made by plugging the flash unit with the SCA adapter into the hot shoe of the camera. This provides the transmission of the necessary data for automatic flash operation and so guarantees the best possible flash photographs.



Rollei MF 1 ring flash

The ring-shaped light source provides shadow-free, even illumination in the close-up and macro ranges.

It gives particularly trouble-free flashes using TTL metering via the Rollei SCA 356 flash adapter. It should preferably be used with Rollei macro lenses. G. N. 8 at 21 DIN.



Rollei FM 1 flash exposure meter

This piece of equipment allows TTL-metered flash photographs to be taken for the first time in conjunction with studio flash equipment. An extremely sensitive instrument indicates in EV units whether an exposure will be correct. Exposure is balanced by the light output of the flash equipment or the aperture of the camera.



Doubling teleconverter

Designed for all standard, telephoto and zoom lenses, it doubles the focal length of the basic lens. At the same time, it alters the aperture value by two stops. Thanks to the carefully-designed optical system, practically the full performance of the basic lens is maintained.



Underwater housing

With the Aquamarin WKD SL 2000, the Rolleiflex 3003 opens up the fascinating world of underwater photography down to a depth of 120 m. The two-part pressure-die-cast light-alloy housing takes the Rolleiflex 3003 with the 30° prism sports viewfinder and has interchangeable front windows for lenses 16 to 85 mm. Detailed information from Oceanoptics, Rheinstrasse 82-88, D-6100 Darmstadt.



Lens hoods, close-focusing lenses, lens holders and cases complete the Rolleiflex 3003 system, which is otherwise fully compatible with the Rolleiflex SL 2000 F model.

Rolleiflex 3003

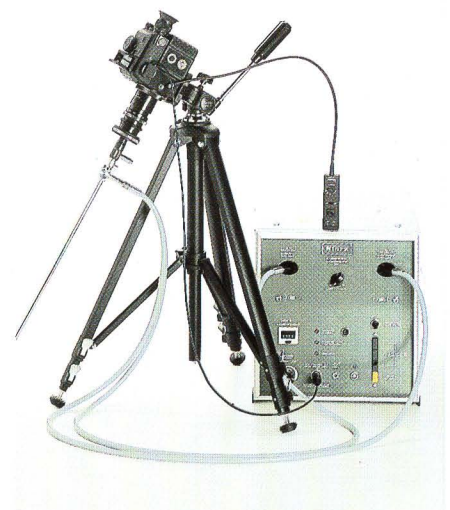
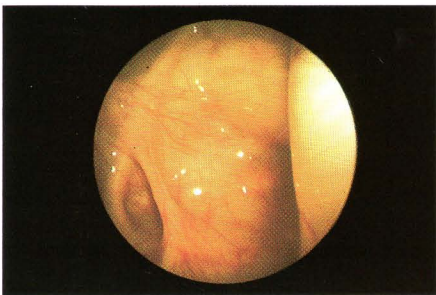
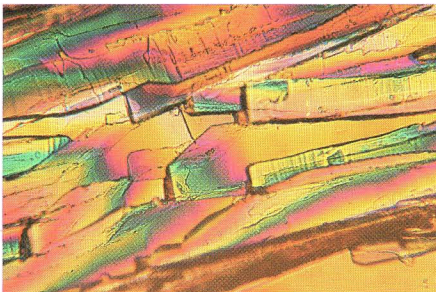
The professional camera in the field of science and technology

Being uniquely equipped with interchangeable lenses, a twin viewfinder system, a built-in high-performance motor and the most up-to-date automatic exposure and flash metering, the Rolleiflex 3003 is eminently suitable for the most varied applications. It is widely used throughout the field of creative photography and contributes to advances and the solution of problems in medicine, science and industry. A few examples of the many areas of application are given below.

In medicine, as in engineering, it is often vitally important to keep photographic records. The special endoscopic accessories make it possible to photograph internal organs and to investigate concealed areas which are inaccessible to normal optical systems. For instance, the Rolleiflex 3003 can photograph

inside a tree without disturbing it and, thus, is an important aid in the early detection of tree disease and appropriate action to combat it. In scientific magnification photography with special lenses and close-up accessories, the Rolleiflex 3003 allows magnification up to 30 times the size of the subject and optimum lighting by means of the TTL automatic flash system.

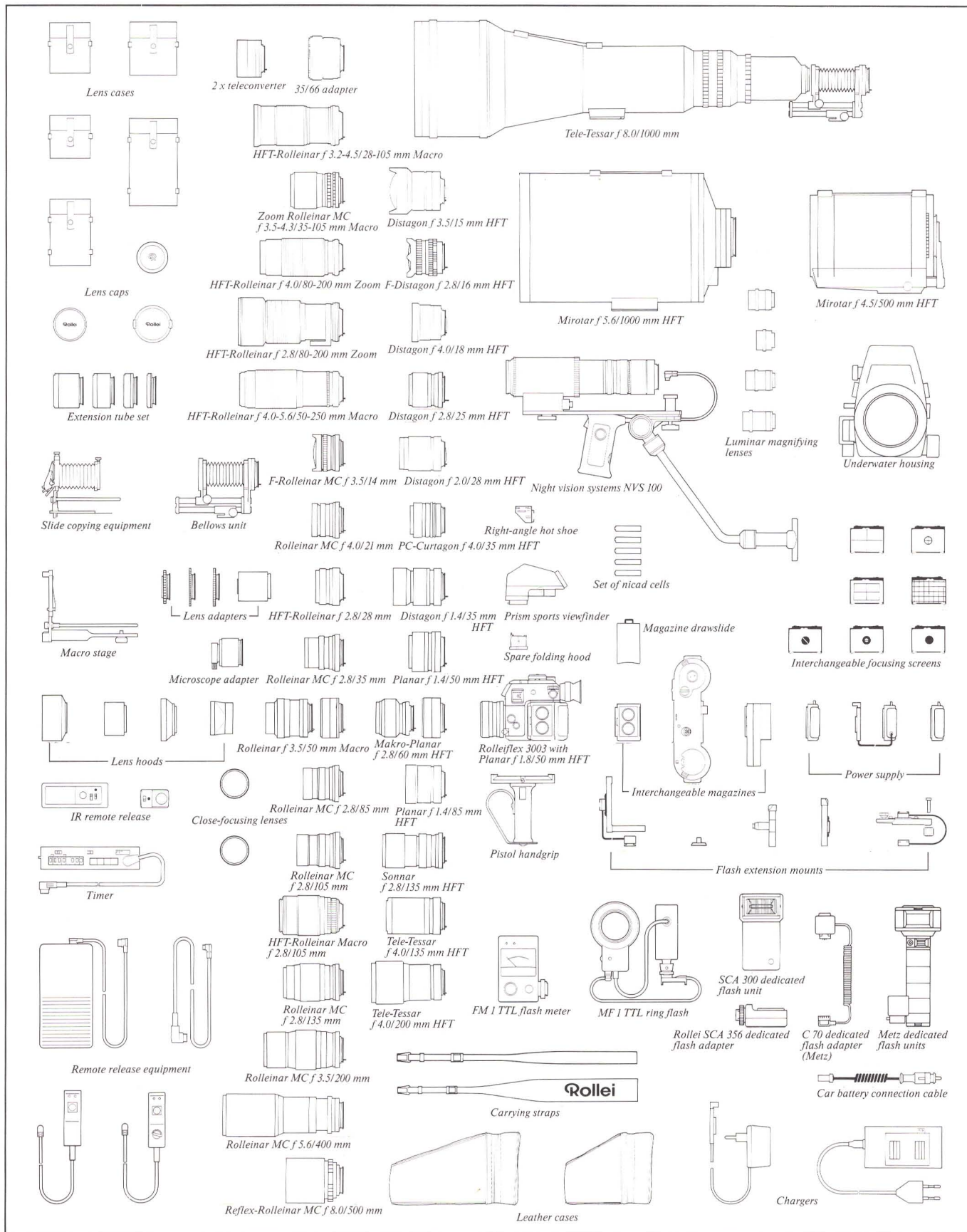
In its special version as a surveying camera, coupled with analytic image evaluation, the Rolleiflex 3003 opens up completely new areas of application in 35 mm photographic measurement techniques. This close-up photogrammetry is extremely valuable in architecture, archaeology, monument protection work and the securing of evidence, where the Rolleiflex 3003 offers an ease of handling unknown with the large surveying cameras.



Camera type	Single-lens reflex camera with interchangeable film magazine, two integral viewfinder systems and built-in motor drive. Highly integrated analogue/digital control circuits, central control and monitoring of all measurement and drive functions.
Picture format	24 x 36 mm
Film type	Type 135 35 mm film cartridges for 12, 20, 24, 36 or 72 exposures, and also sheet film and bulk film stock.
Film speed	Magazine setting: 15-39 DIN (25-6400 ASA).
Exposure metering	Through-the-lens Rollei selective metering, using open or working aperture. Measuring field shown on the viewfinder image. Exposure correction: -1 to +2 EV intervals. Sensor: two silicon photodiodes
Measurement range	Exposure values 1-18 for 21 DIN/100 ASA film with aperture 1:1.4.
Shutter	Vertical-running metal-blind focal-plane shutter. Electronically controlled. Automatic selection of shutter speed with aperture priority, or manual exposure balance (follow-up system). Shutter speeds: 1/2000 sec to 16 sec, automatic or manual setting, time exposure B, flash synchronization speed 1/100 sec to 16 sec, X = 1/100 sec.
Interchangeable lenses	Rollei QBM bayonet interlocking with iris simulator, Zeiss lenses with focal length from 15 to 1000 mm, Rolleinar lenses with focal length from 14 to 500 mm and zoom lenses.
Shutter release	Three microswitches, one on each side of the camera as well as one on the top right for reportage applications using the loop handgrip. Electronically controlled automatic release.
Film transport	Built-in high-performance motor. Single or continuous release at around 3 pictures per second.
Multiple exposure	By means of a switch on the magazine.
Reflex mirror	Damped swinging mirror, hard coated.
Viewfinder systems	Two built-in viewfinders: <ul style="list-style-type: none"> ● Telescopic viewfinder with rotatable eyepiece for dioptre adjustment and rubber eyecup. ● Hood with interchangeable viewfinder attachments. Standard version: folding viewfinder hood with flip-up magnifier. Seven interchangeable focusing screens. Can be changed without tools.
Viewfinder information	Indication of aperture by luminous numbers (LEDs). Indication of shutter speed by luminous numbers (LEDs). Indication when shutter speed range is exceeded. Identification of measuring field for exposure metering. Indication of "flash ready" and underexposure when automatic flash is used. Memory function. Indicator for exposure correction.
Flash synchronization	1/100 sec. Accessory shoe with synchronizing centre contact and contacts for automatic flash units with Rollei SCA 356 or Metz C 70 special adapters.
Automatic flash control	TTL flash metering in the film plane by means of additional photodiode with "flash ready" indication and exposure monitoring in the viewfinder.
Power supply	Quick-change power pack with soldered-in NiCd batteries. Can be replaced by external electrical supply connection. Charger for normal charging rate. Charging time 14 hours.
Interchangeable magazines	With drawslide for quick change of partly exposed films. For 12-, 20-, 24-, 36- or 72-exposure films, and also for sheet film. Exposed film can also be removed with the magazine attached. The magazine interlocks to prevent errors in operation. Facility for single and multiple exposures. The film speed can be set between 15 and 39 DIN (25 and 6400 ASA). The frame counter only operates when the magazine is loaded. Memo holder for tear-off tab from film box. Polaroid magazine for Polaroid film pack (two pictures 24 x 36). Long-film magazine for 250 exposures.
Connections	Multiple socket for electrical remote release cable, timer, infrared remote operation. 1/4" tripod bush.
Dimensions	89 x 111 x 159 mm with f 1.4/50 mm lens.
Weight	Approximately 1350 g with f 1.4/50 mm lens.

Rolleiflex 3003

System



Rolleiflex 3003





The ideal combination to the Rolleiflex 3003

Top-class Rollei projectors are available for showing slides shot with the pioneering Rolleiflex 3003. Thanks to their innovative technology and exceptional ease of operation, perfect slide shows are now within everyone's reach.



Rolleivision 35 twin projector

The only professional slide projector in the world with a dissolve facility using one projector and one magazine. It turns your slide presentation into a real show without extra equipment and a tangle of cables. Coincident projection from any distance by means of an adjustable slide stage. Variable dissolve time and viewing time. Manual or programmed magazine control. Autofocus with override function. Interchangeable lenses and zoom from 50 to 150 mm. Remote operation via cable or cordless infrared operation. Available in two versions.

Rollei Fototechnik GmbH has set itself the task of producing first-class photographic equipment for professionals and demanding amateurs. We make high-performance cameras from the 35 mm to 6x6 formats, a special range of quality lenses and accessories, and slide projectors which meet the highest technical standards. Rollei Service guarantees that you can make use of all the advantages of Rollei equipment, wherever you may be.