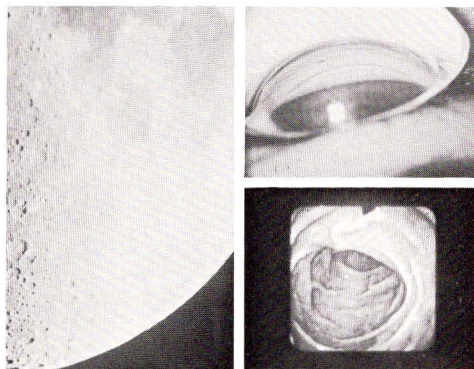




THE PHOTOTECHNICAL GROUP

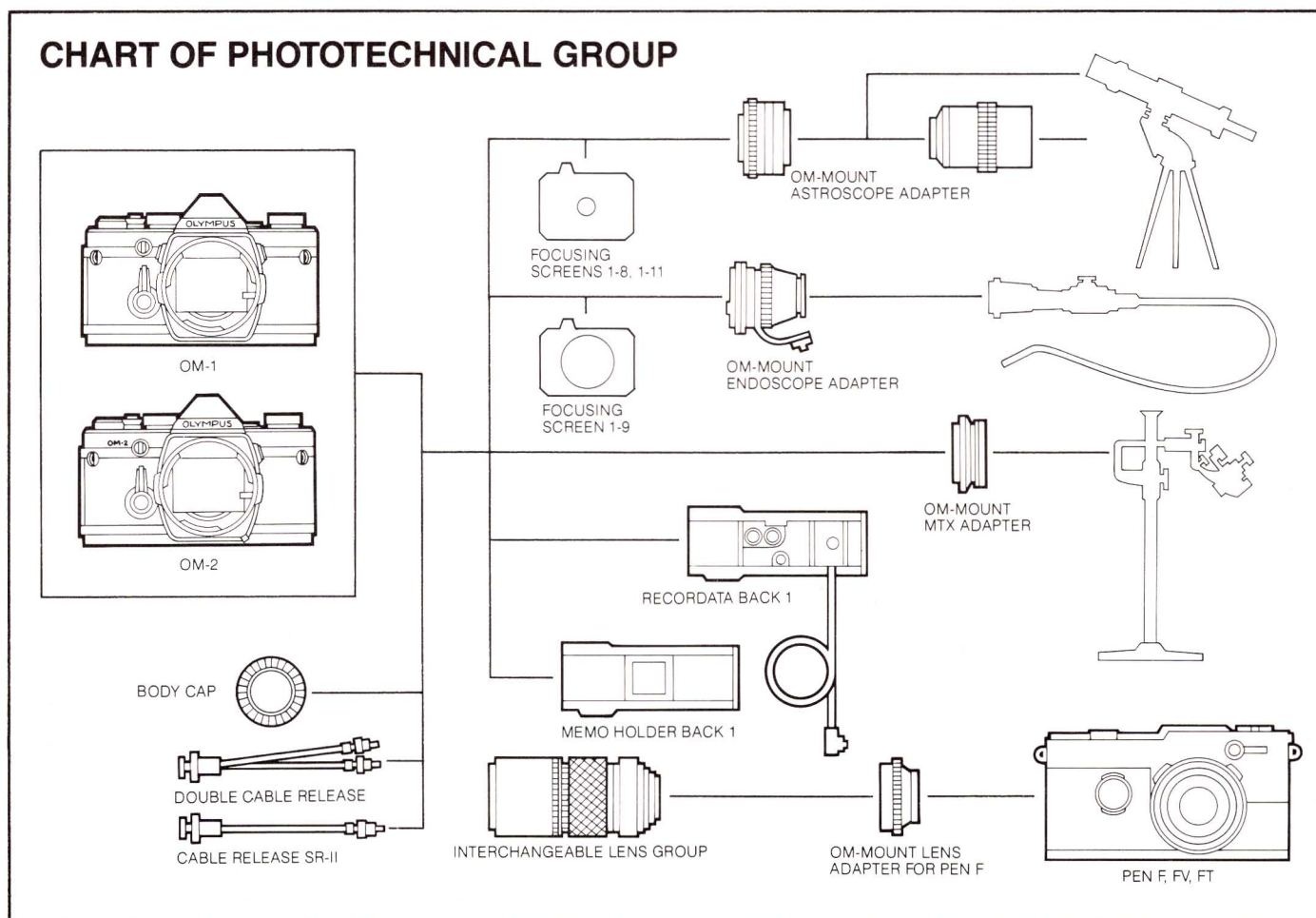
- Links OM camera bodies to high-magnification lenses of innovative scientific equipment
- Complete range of specialized fiberscopes permits photography of internal body organs and interiors of complicated machinery

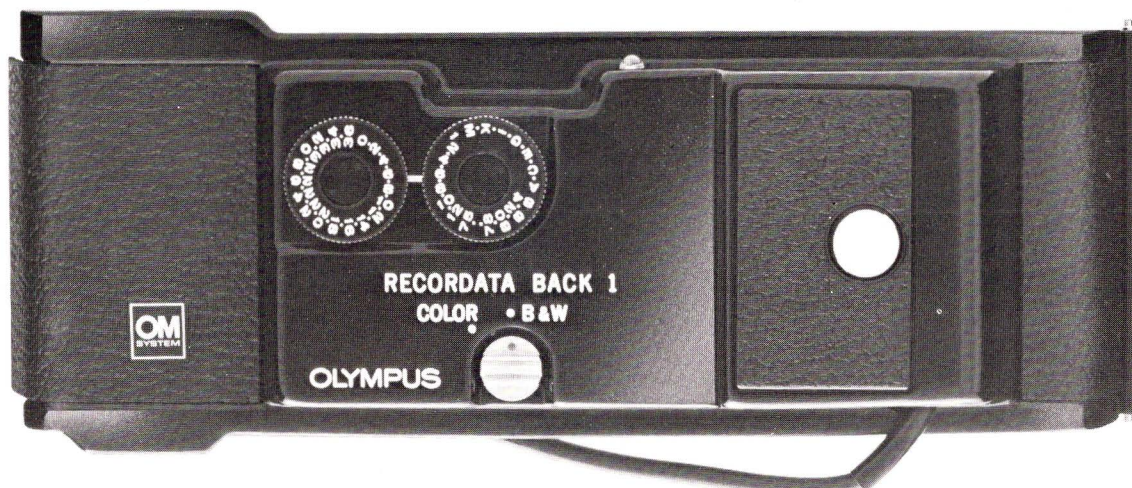


PHOTOTECHNICAL GROUP

The Phototechnical Group includes adapters to fit OM camera bodies for photography through a vast array of endoscopes, fiberscopes, operation microscopes, and astronomical telescopes. The OM-2 and OM-1 become data cameras with the Recordata camera back, which automatically catalogs each frame as it is shot, for high-efficiency information storage and retrieval. Compatible with the total OM System, the units of the Phototechnical Group can also be used with the Motor Drive Group.

CHART OF PHOTOTECHNICAL GROUP





RECORDATA BACK 1

An interchangeable rear cover labels each film frame with any numerical-alphabetical code the photographer chooses. It instantly records dates and an infinite variety of data with any of 1332 combinations. Powered by 1.5v silver-oxide batteries. Its built-in cord fits the flash synchro socket in OM-2 and OM-1 camera bodies. Compatible with motor drive and cordless automatic flash units. Light-emitting diode indicates positive functioning. Weight, without batteries, only 3.4 ounces.

ORDERING INFORMATION

Recordata Back 1

Stock No. 108-900

OM LENS ADAPTER FOR PEN F

Adapts any of the OM System Zuiko lenses for use on Olympus Pen F cameras.



ORDERING INFORMATION

OM/Pen F Adapter

Stock No. 108-902

OM-MOUNT ASTROSCOPE ADAPTER

Permits astrophotography by attaching the OM Body to a telescope with the adapter's 35mm diameter, pitch 1 mm and pitch 0.75 threads. It enables direct objective photography and high magnification photography through the telescope eyepiece.

ORDERING INFORMATION

Astroscope Adapter

Stock No. 108-901

