

*Leiss Ikon Cameras*

Quality first, because quality lasts. In these few words can be summed up the reason why you should buy a Zeiss Ikon. The substantial construction and ease of operation have won for Zeiss Ikon the highest place among the World's fine cameras.

## TO SELECT A CAMERA

consider the following:

**Type of Camera:** The Zeiss Ikon line includes many models, ranging from the simple snapshot to the precision camera. In general, rollfilm cameras are popular with the public at large, because of their simplicity of operation, while plate and film-pack cameras are preferred by more serious photographers.

**Size of Picture:** It must be obvious that excellent optics ensure excellent pictures. This being the case, the size of the negative is relatively unimportant, because excellent enlargements to any practical size can be made from small, well defined negatives.

**Lenses and Shutters:** Zeiss Ikon Cameras are fitted with a highly corrected Novar Anastigmat in Derval Shutter or the celebrated Zeiss Tessar in Compur Shutter. Special models are available with focal plane shutters up to 1/2000th sec. Distar and Proxar supplementary lenses may be used on Zeiss Tessar equipped cameras having double bellows extension. Distars lengthen the focal length, while Proxars shorten it.

**Films and Plates:** Standard sizes are used on all Zeiss Ikon Cameras. Cut films may also be used in plate holders with special sheaths. Tripod sockets have standard threads, focusing scales are in feet, and diaphragm markings in the familiar F/ system.

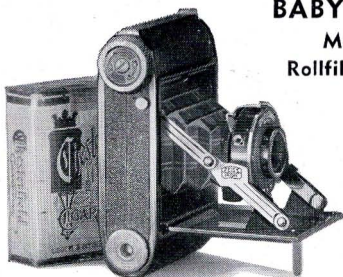
**Prices:** These are very largely determined by the picture size, lens and shutter equipment as well as by the quality of workmanship and materials built into the camera.

Zeiss Ikon Cameras, with proper care, not only will last a life-time, but are also more economical to operate, because of their superior quality and performance. Special folders on the auto-focusing models Super Ikomat, Super Nettel, Contax will be furnished on request.

# *Leiss Ikon Cameras*

## **BABY IKOMAT**

**Miniature  
Rollfilm Camera**



Picture Size:  $1\frac{1}{4} \times 1\frac{5}{8}$ "

Lens: Novar F/4.5, Zeiss Tessar F/4.5 or F/3.5  
(2" focus)

Shutter: Derval 1/25, 1/50, 1/100 sec. T & B  
New Compur 1 to 1/300 sec. T & B

Prices: With Novar F/4.5, \$21, With Tessar  
F/4.5, \$41.25; With Tessar F/3.5, \$48.50

Leather carrying case \$2.50 extra.

**A** POPULAR little picture maker. So small it fits a man's pocket or a woman's purse. Pressing the button causes the camera to open automatically, set for instant action. It takes 16 exposures on standard V.P. rollfilm and is therefore most economical to use. Splendid enlargements can be made with the Helinox or Mirette Enlargers, listed on page 15.



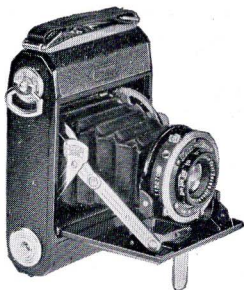
*Makes vertical or horizontal pictures  
this size*



# Leiss Ikon Cameras

## IKOMAT A

For Rollfilms



Picture Size:  $1\frac{5}{8} \times 2\frac{1}{4}$ "

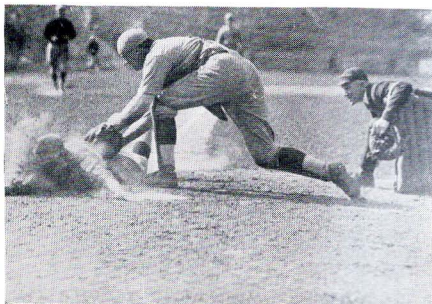
Lens: Novar F/4.5 (3" focus) or Zeiss Tessar F/4.5 or F/3.5 (3" focus)

Shutter: Telma  $1/25$ ,  $1/50$ ,  $1/100$  sec. T & B  
New Compur 1 to  $1/300$  sec. T & B

Prices: With Novar F/4.5, \$29; With Tessar F/4.5, \$48; With Tessar F/3.5, \$55

Leather Carrying Case: \$3.25 extra.

**T**HIS compact camera makes 16 exposures on standard  $2\frac{1}{4} \times 3\frac{1}{4}$ " rollfilm. Pressure on the button opens the camera ready for use. By means of a simple adjustment it may be used as fixed focus camera. The Telma shutter is of the "delayed action" type. Fitted with the Zeiss Tessar in Compur Shutter, this little camera is an extremely efficient and economical outfit.

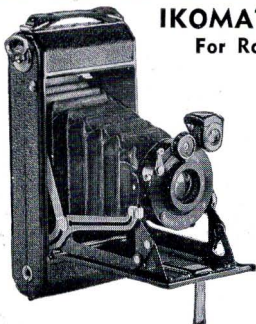


*The Ikomat  
takes vertical  
and horizontal  
pictures this  
size.*



# Leiss Ikon Cameras

## IKOMAT C & D For Rollfilms



Front view of  
**IKOMAT SPECIAL**

**T**WO models differing in size, weight, lenses and shutters only. Sturdy all metal construction. Simple and economical to operate. Hinged back simplifies loading. Pressing a button opens the base board and the camera is ready set for action. Front lens focusing. Besides two-point setting permits operation as fixed focus models for objects at 12 ft. or more. Direct vision and brilliant view finders. Equipped with F/6.3 Anastigmat lenses.

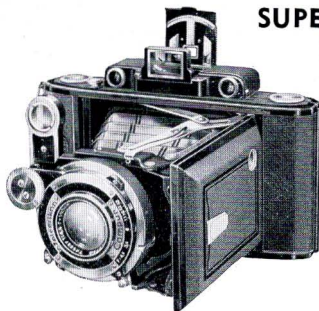
### IKOMAT C and D SPECIAL

Camera bodies as before but equipped with optical view finder and with Zeiss Tessar lenses in Compur shutters. Insert masks permit taking either 8 or 16 pictures of two different sizes.

| Model     | Picture size                           | Lens                   | Shutter                            | Price   |
|-----------|--|------------------------|------------------------------------|---------|
| C         | 2 1/4 x 3 1/4"                         | Nettar F/6.3<br>4 1/8" | Dervall<br>1/25-<br>1/100<br>T & B | \$19.75 |
| D         | 2 1/2 x 4 1/4"                         | Novar F/6.3<br>5"      |                                    | 23.00   |
| C Special | 2 1/4 x 3 1/4"<br>or<br>1 5/8 x 2 1/4" | Tessar F/4.5<br>4 1/8" | Compur<br>1-1/250<br>T & B         | 47.50   |
| D Special | 2 1/2 x 4 1/4"<br>or<br>2 x 2 3/8"     | Tessar F/4.5<br>5"     |                                    | 56.00   |

Carrying Cases: C: \$3.75; D: \$4.50

# *Leiss Ikon Cameras*



## **SUPER IKOMAT A**

**For Rollfilm**

Picture size: 16 pictures  $1\frac{5}{8} \times 2\frac{1}{4}$ "

Lens: Zeiss Tessar F/3.5— $2\frac{3}{4}$ "

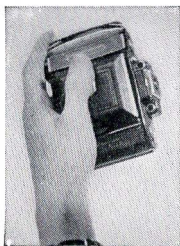
Shutter: Compur 1— $1/300$  sec. T & B

Price: \$85.00. Case extra.

**F**OR natural, unposed action pictures, and in fact for any other photos where critical definition is desired this model is ideal. The auto-focusing rangefinder device eliminates guessing of distances, enabling to work at full opening and thus utilizing all the speed of the lens. Enlargements of many diameters possible.

Aside from the ingenious rangefinder device this Super Ikomat A model is built like the Ikomat, camera shown on page 4.

Special folder with detailed description on request.



*Just a handful*

Size:

$4\frac{1}{2} \times 3 \times 1\frac{5}{8}$ "

# Leiss Ikon Cameras



## **SUPER IKOMAT**

**C and D**

Lens: Zeiss Tessar  
F/4.5

C:  $4\frac{1}{8}$ " ; D:  $4\frac{3}{4}$ "

Shutter: Both Compur 1 to 1/250  
T & B

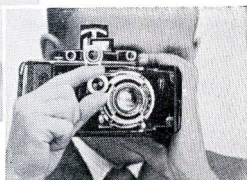
Prices: C: \$80.00;  
D: \$90.00  
Case extra

**S**AME auto-focusing device as shown on previous page. In all other regards they are nearly alike in construction and size to the Ikomat C and D models, page 5. They, too, permit taking two sizes of negatives, viz.:

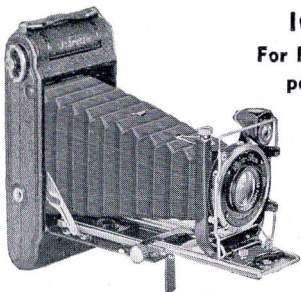
C: 8 pictures  $2\frac{1}{4} \times 3\frac{1}{4}$ " or  $16-1\frac{5}{8} \times 2\frac{1}{4}$ "

D: 8 pictures  $2\frac{1}{2} \times 4\frac{1}{4}$ " or  $16-2 \times 2\frac{3}{8}$ "

To rollfilm cameras of the Super Ikomat type belongs the future. Additional accessories for all Super Ikomat models are: Filters, sunshades, portrait lenses, eveready case and standard leather case. Special folder on request.



# Leiss Ikon Cameras



## ICARETTE L

For Rollfilm and Film-  
packs  $2\frac{1}{4} \times 3\frac{1}{4}$ "

For Cutfilm  
and Plates  
 $2\frac{1}{2} \times 3\frac{1}{2}$ "  
( $6\frac{1}{2} \times 9$  cm)

Lens: Zeiss Tessar F/4.5— $4\frac{1}{8}$ "

Distar and Proxar lenses extra

Shutter: Self timing Compur 1 to  $1/250$  sec.  
T & B

Bellows Extension:  $7\frac{1}{2}$ "

Prices: Camera for rollfilm \$84.00 incl. leather  
case;

Distar, Proxar lenses \$6.00—ea.;

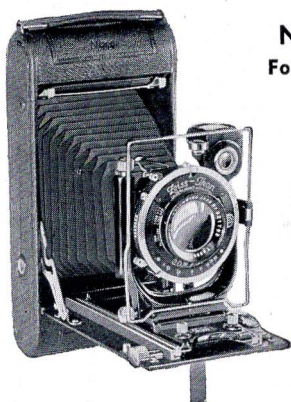
Film-pack adapter \$3.30, Ground glass  
back \$3.75

THIS fine camera is an unusually versatile model, because it may be used with either rollfilms or plates, film-packs or cut films, in combination with the ground glass and focusing hood. Moreover, its double bellows extension permits the use of Distar and Proxar Lenses. Front may be raised or lowered. Equipped with brilliant and wire view finders.





# Leiss Ikon Cameras



## **NIXE A and B** **For Rollfilms, Plates** **and Film packs**

Picture Size: A:  $3\frac{1}{4} \times 4\frac{1}{4}$ ";

B:  $3\frac{1}{4} \times 5\frac{1}{2}$ "

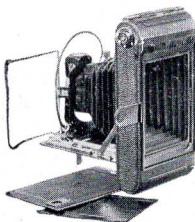
Lens: Zeiss Tessar F/4.5 A:  $5\frac{1}{4}$ "; B: 6"

Shutter: New Compur 1 to  $1/200$  sec. T & B

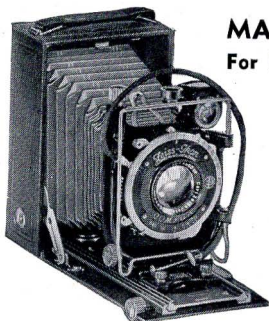
Prices: A: \$95; B: \$106 incl. case

**N**O more versatile cameras are available at any price. Although essentially rollfilm cameras, they may also be used with plates, film packs or cut films. They have every adjustment required for every phase of amateur photography, including double bellows extension for the use of Distar and Proxar Lenses.

*The back of the Nixe is fitted with a removable panel and pressure plate. When these are removed, a focusing back or plate holder may be inserted.*



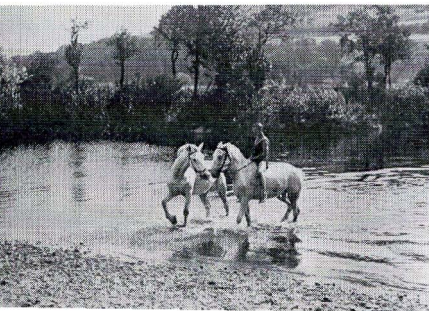
# *Leiss Ikon Cameras*



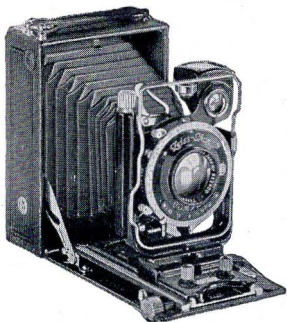
## **MAXIMAR A and B** **For Plates and Film packs**

Picture Size: A: (Plates)  $2\frac{1}{2} \times 3\frac{1}{2}$ "  
( $6\frac{1}{2} \times 9$ cm); (Film packs)  $2\frac{1}{4} \times 3\frac{1}{4}$ ";  
B: (Plates)  $3\frac{1}{2} \times 4\frac{3}{4}$ " ( $9 \times 12$ cm);  
(Film packs)  $3\frac{1}{2} \times 4\frac{3}{4}$ " ( $9 \times 12$ cm)  
Lens: Zeiss Tessar F/4.5 A:  $4\frac{1}{8}$ "; B:  $5\frac{1}{4}$ "  
Shutter: New Compur A: 1 to  $1/250$  sec. T & B  
B: 1 to  $1/200$  sec. T & B  
Prices: A: \$56; B: \$65  
Leather Carrying Case: \$5.50 extra

**T**HESE cameras embody many features of the more advanced ideal models, yet are moderately priced. Both have double bellows extension, permitting the use of Distar and Proxar Lenses. They are outstanding values for plate camera enthusiasts in all parts of the globe, seeking a finely finished camera that will handle practically every phase of photographic work.



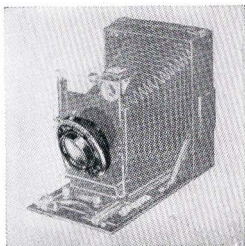
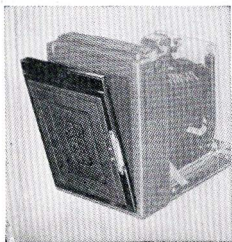
# Leiss Ikon Cameras



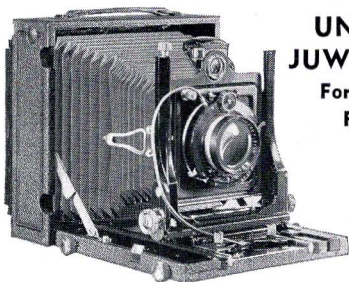
## **IDEAL A and B** **For Plates and** **Film packs**

Picture Size: A: (Plates)  $2\frac{1}{2} \times 3\frac{1}{2}$ "  
( $6\frac{1}{2} \times 9$ cm); (Film packs)  $2\frac{1}{4} \times 3\frac{1}{4}$ "  
B: (Plates)  $3\frac{1}{2} \times 4\frac{3}{4}$ " ( $9 \times 12$ cm);  
(Film packs)  $3\frac{1}{2} \times 4\frac{3}{4}$ " ( $9 \times 12$ cm)  
Lens: Zeiss Tessar F/4.5 A:  $4\frac{3}{4}$ "; B:  $5\frac{1}{4}$ " or 6"  
Shutter: New Compur A: 1 to 1/250 sec. T & B  
B: 1 to 1/200 sec. T & B  
Prices: A: \$85; B: ( $5\frac{1}{4}$ " focus), \$100;  
(6" focus), \$108

**E**VERY conceivable adjustment is embodied in these splendid precision cameras. Both have extremely long bellows extension permitting the use of Distar and Proxar Lenses. The hinged front permits lateral and vertical adjustments. Lenses and shutter easily interchangeable. Clamped-on back a most convenient feature. Moreover Model B has a vertical swingback. Cameras most rigidly built. Ideal as the name implies.—For serious work.



# *Leiss Ikon Cameras*



## **UNIVERSAL JUWEL A and B** For Plates and Filmpacks

Picture Size: A:  $3\frac{1}{2} \times 4\frac{3}{4}$ " (9 x 12cm);  
B:  $5 \times 7$ "

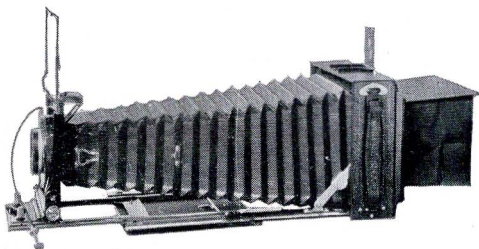
Lens: Zeiss Tessar F/4.5; A: 6 and  $6\frac{1}{2}$ " focus;  
B:  $8\frac{1}{4}$ " focus

Shutter: A: New Compur 1 to  $1/200$  sec. T & B  
B: Compound 1 to  $1/100$  sec. T & B

Bellows Extension: A: 16"; B: 19"

Prices: A: (6" focus), \$299; ( $6\frac{1}{2}$ " focus),  
\$313; B: \$434, incl. cases

THE Juwel A and B embody every essential feature for the advanced amateur, artist, scientist and professional photographer. They are jewels of precision, workmanship and performance. Both have revolving, clamp-on backs for convenient manipulation and triple bellows extension. Camera beds may be raised or lowered and the front set parallel with the back.





# Leiss Ikon Cameras



## **MIROFLEX A and B** **For Plates and Film packs**

Picture Size: A: (Plates)  $2\frac{1}{2} \times 3\frac{1}{2}$ "  
( $6\frac{1}{2} \times 9$ cm); (Film packs)  $2\frac{1}{4} \times 3\frac{1}{4}$ ";  
B: (Plates)  $3\frac{1}{2} \times 4\frac{3}{4}$ " ( $9 \times 12$ cm);  
(Film packs)  $3\frac{1}{2} \times 4\frac{3}{4}$ "; ( $9 \times 12$ cm)  
Lens: Zeiss Tessar F/4.5 A:  $4\frac{3}{4}$ "; B: 6";  
F/3.5 A:  $4\frac{3}{4}$ "; B:  $6\frac{1}{2}$ ";  
F/2.8 A:  $5\frac{1}{4}$ "; F/2.7 B:  $6\frac{1}{2}$ "  
Shutter: Focal Plane with gear brake, 1/3 to  
1/2000 sec. T & B  
Prices: A: F/4.5 \$224; F/3.5 \$242; F/2.8 \$321  
B: F/4.5 \$242; F/3.5 \$315; F/2.7 \$325  
Cases included

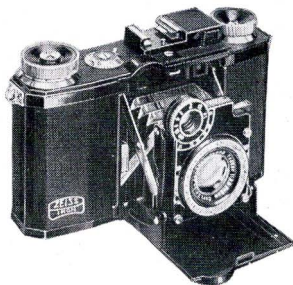
**T**HE Miroflex is the Sport Camera par excellence, combining the advantages of the sport camera with those of the folding reflex type. All timing controls are centralized in one single knob. Held by a convenient neck strap, both hands are left free for manipulating the camera.



# Zeiss Ikon Cameras

## **SUPER NETTEL**

**for 35 mm Rollfilm**

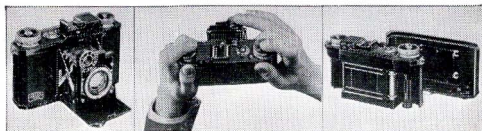


**A** NEW automatic miniature camera using 35 mm film. Negative size 24 x 36 mm. The construction embodies many features of the Zeiss Ikon Contax camera and permits using most of the Contax accessories which have made this camera so universal and well liked. Compact, rigid, pleasing. Automatic film transport. Silent focal plane shutter. Nine speeds: 1/5 to 1/1000 sec and B. Detachable back. Simple loading with daylight loading spool or daylight cartridge. Rewinding unnecessary. Equipped with Zeiss Tessar lenses:

F/3.5 — 50 mm \$102.00.

F/2.8 — 50 mm \$110.00.

Eveready carrying case \$8.00.

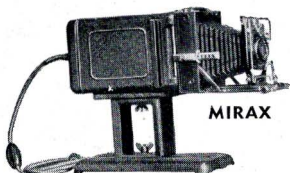


# *Leiss Ikon Cameras*

## **ZEISS IKON ENLARGERS**

Additional information supplied on request

**NEW MODEL**  
\$47.00 AND \$61.50



**MIRAX**

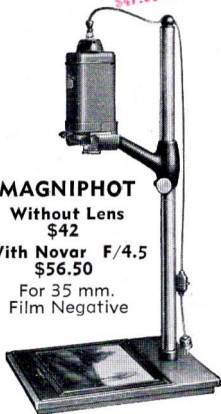
Enlarging attachment for plate cameras  $6\frac{1}{2} \times 9$  cm. to  $9 \times 12$  cm., or rollfilm cameras  $2\frac{1}{4} \times 3\frac{1}{4}$ " to  $3\frac{1}{4} \times 4\frac{1}{4}$ ". Camera backs must be removable or hinged. **\$17.50**

### **MAGNIPHOT**

**Without Lens**  
**\$42**

**With Novar F/4.5**  
**\$56.50**

For 35 mm.  
Film Negative



**MIRAPHOT**

For negatives up to  $9 \times 12$  cm. ( $3\frac{1}{2} \times 4\frac{3}{4}$ ") enlarges up to  $11 \times 14$ ".

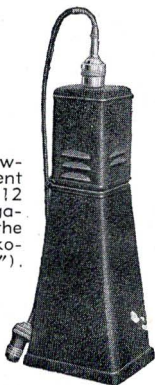
With Novar F/6.3 lens. **\$55**

With Zeiss Tessar F/4.5 lens. **\$65**

### **HELINOX**

**\$10**

Fixed focus allowing enlargement only up to  $9 \times 12$  cm . . . for negatives up to the size of Baby Ikonmat ( $1\frac{1}{4} \times 1\frac{5}{8}$ ").



# Leiss Ikon Cameras

## CONTAX



**C**ONTAX uses standard movie film. Picture size 24 x 36 mm. Metal housing. Virtually silent metal focal plane shutter. Automatic range finder focusing. Automatic film transport eliminating the possibility of double exposure. Daylight loading with simple film spool or magazine. No rewinding necessary. Ten speeds up to 1/1000 sec., T. & B. Twelve interchangeable lenses up to the fast F/1.5 Sonnar. Extreme wide angle and long focus lenses up to 1000 mm. Detachable back permitting easy access and ground glass focusing. Special plate back permits use of plates or cut film. Near focusing attachment and numerous other accessories.

For day or night, outdoor or indoor shots, landscape, portrait or rapid sports pictures. Contax is the truly universal camera.

**Special catalogs and price list on request.**

