

**KALLOFLEX**

**AUTOMAT**

Prominar  
1:3.5 F = 75mm



**KOWA OPTICAL WORKS**



# RESOLUTION 125 $\frac{4}{m.m}$

## Most Excellent and Creative Mechanism

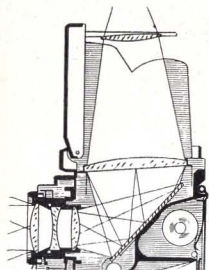
The self-regulating counter mechanism ensures extremely accurate, easy and convenient film loading.

### Speedy Operation

Film-advance crank and focusing knob under coaxial arrangement.

### Precise Focusing

Rationally sloped, convex groundglass ensures an exceptionally brilliant picture right side up.



### Automatic Film Transport

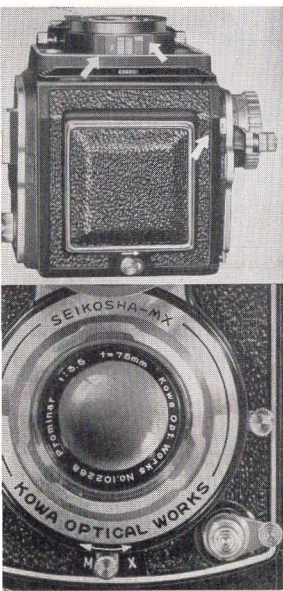
One turn of the handy crank puts the film on taking position, cocks the shutter, counts the picture taken and simultaneously prevents double exposures, but if necessary, double and multiple exposures are possible.

### All Necessary Controls Visible from the Top

Shutter Speeds  
Diaphragm Scales  
Exposure Counter

### Seikosa-Rapid with M-X lever

Seikosa-MX Shutter for modern flash photography, equipped with electrical contacts may be adjustable to the required delay of the flash lamps should be synchronized to all shutter speeds up to 1/500 sec. by means of the changing lever: Also has setting X for use with electronic flash units.



New Feature of

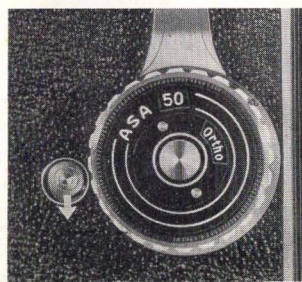
# KALLOFLEX

## AUTOMAT



### Adjustable Film-Reminder

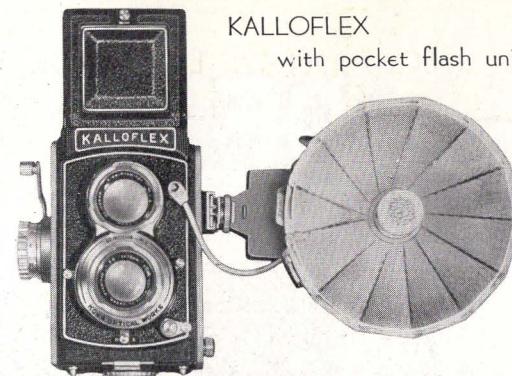
Two adjustable disks, located in the focusing knob indicate the film type and speeds with which camera was last loaded.



### Double Exposures

Shutter can be tensioned and released two or more times repeatedly by pushing down the Release Button in the rear of the knob and one reverse-turning the crank to the former position without film-advance.

KALLOFLEX  
with pocket flash unit



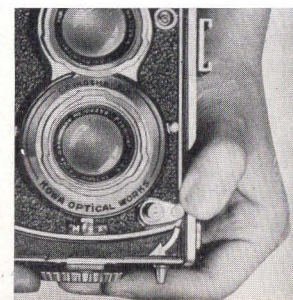
## MAIN FEATURES

|                |   |
|----------------|---|
| Lens :         | Prominar 1:3.5 F=75m/m 4-elements                                     |
| Viewing Lens : | View Prominar 1:3.0 F=75m/m 3-elements                                |
| Shutter :      | Seikosa-MX B, 1—1/500 sec.<br>Built in Synchronization                |
| Picture size : | 12 Exposures 2-1/4" x 2-1/4" (6 x 6cm)<br>Roll film size: #120        |
| Body :         | Sturdy die-cast light alloy   |
| Size :         | Convenient 9.5 x 10 x 14cm, 1050 grms. weight<br>without leather case |

Shutter Speed and diaphragm lever with click device

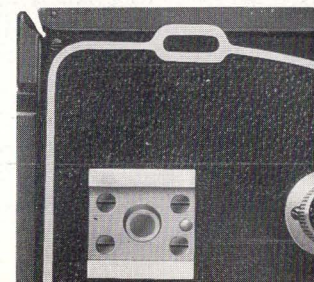
### Shutter Release Guard

Being provided the safeguard release, there is no risk for any accidental exposure by locking the guard. Meanwhile, applicable to long time exposures, keeping the shutter Set to "B" push down and swinging the safeguard to locked position.

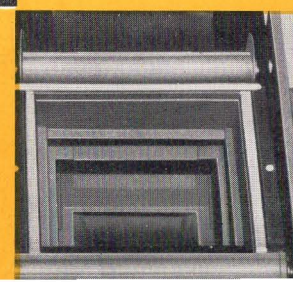


### Accessory Clip

Standard type. Designed for use with all commercially available flash guns and electronic flash unit.



### Anti-Reflection Baffle





## RESOLUTION 125 L/mm !!

It is a general theory that resolution of the lens at full-opening in projection-test is pointed out the highest value, when the taking lens is constructed to Tessar-type, 4-element,  $F 1:3.5$ , if the lens should be practical and economical, and also be produced uniformly among all kind of lenses.

Up to this time, international famous lenses in Tessar-type have the resolution  $80 \sim 100$  in their average value. In comparison with the above, "Prominar" has a sensational faculty resolving 125 lines per mm.

Considering the fact, there is no lens to be found which has the best condition for precise and accurate description or portrait photography except "Prominar-f/3.5" in Tessar-type lenses.

## SPEEDY OPERATION

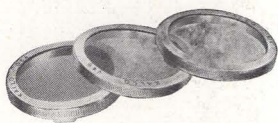
— Suitable for Snap-shot —

For the purpose of clearing the fault in twin lens reflex-camera—slow and dull-witted character—KALLO-FLEX is much improved upon the mechanism and operation, that make possible to snap-shot easily at chest-level position with coaxial arrangement of film winding, crank and focusing knob by right hand, holding camera and shutter cocking by left hand, furthermore an equal division on necessary operation to each hand.

Resulting of this remarkable improvement, KALLO-FLEX can take through 12 exposures within only 20 seconds sequentially.

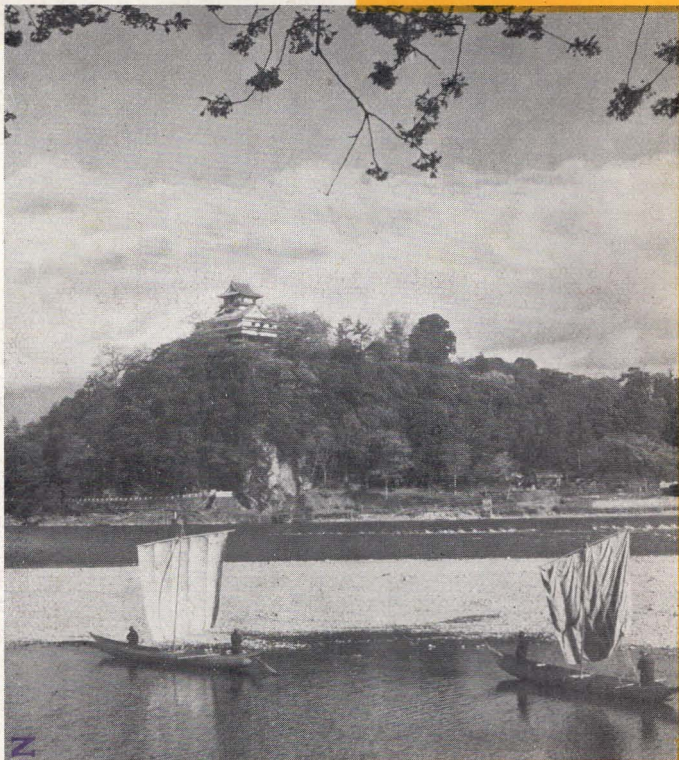
### Accessories

KALLO-Filters...A set of three color (UV, Yellow, Orange) frequently required in general use with beautiful plastic case.



KALLO-Lenshood...bayonet type 37mm with cowhide case





KOWA OPTICAL CORPORATION  
260 FIFTH AVENUE  
NEW YORK 1, N. Y.

Speedy Operation !!  
Scientific Precision !!  
Sensational Resolution !!

Giving the above three creative features

The very **KALLOFLEX** automat

for everybody !

everytime !

everywhere !



KOWA OPTICAL WORKS  
**KOFUKU SANGYO CO., LTD.**

1-10, Asahimachi, Naka-ku, Nagoya