

**NOVOFLEX**

**Noflexar f/3.5 35 mm**

## "Two In One" Lens

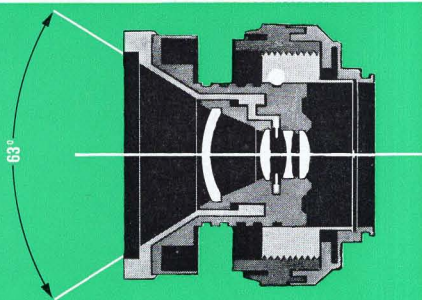
As the classification Wide Angle-Close-up implies, the Noflexar f/3.5 35 mm (Patents pending) fulfills two duties.

1. With a  $63^\circ$  angle the Noflexar 35 mm takes in the entire subject, where space is limited and the focal lengths require more distance between camera and subject (i.e. when taking pictures of high buildings in narrow streets, interiors of rooms, etc.). The depth of field and unusual perspective in these cases are often highly useful for special effects and interesting compositions.
2. As a Macro or Close-up lens the Noflexar opens the highly interesting world of small objects, (i.e. flowers, insects, details of photographs, documents, table-tops, jewelry, etc.). The unique Noflexar is immediately adaptable to this field of close-up photography as no bellows extension is needed. Extension is rapidly accomplished with the dual-helical lens tube by extending the outer ring four click-stop positions. Thus close-ups up to a reproduction ratio of 1:2 are possible with this lens. In extreme cases a bellows extension unit can be employed to produce a  $2\frac{1}{2}$  to 5-times enlargement on the negative or transparency (see table 1). At a ratio larger than 1:1 it is advisable to reverse the optical system. We supply the reversal rings UMCO or UMEX which have a thread of  $M\ 49 \times 0.75$  on one side, and a thread or bayonet on the other side, depending on the bellows extension unit.

## Lens Quality

Sharpness combined with outstanding brilliance reflects Novoflex quality which has been proven a 1000 times over and is known throughout the world. It has a hard coating and is suitable for black and white as well as for exact color reproduction with color-negatives and color-reversal film.

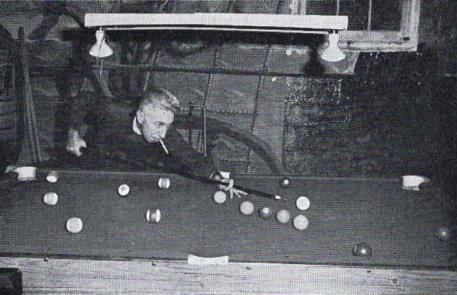
NOVOFLEX



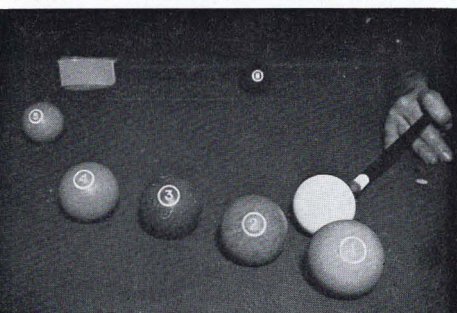
## Which cameras are suitable for the Macro-Noflexar?

The Noflexar 35 mm is available in two models:

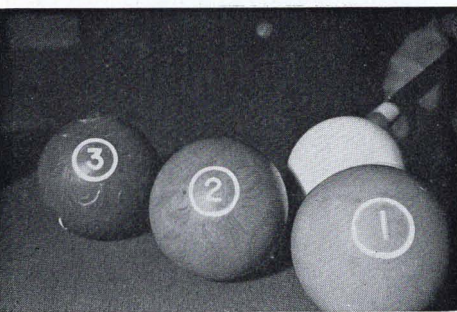
EXWEIT for cameras with Exakta-bayonet (Exakta, Exa, etc. – not Topcon) and for cameras where an adaptor ring is supplied by the camera manufacturer, which permits focusing of Exakta



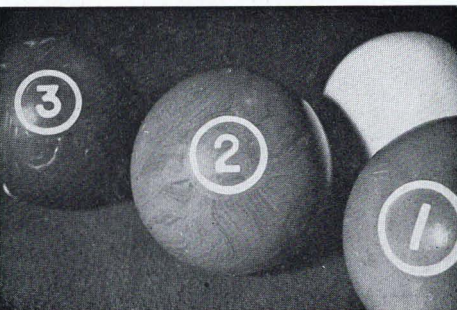
The picture series by Eugene Hesnault shows the coverage of the 35 mm Noflexar ranging from infinity to 2½ ins. without any accessory.



**+1** click-stop position



**+2** click-stop positions



**+3** click-stop positions



**+4** click-stop positions



lenses to infinity (Minolta, Miranda, Yashica Pentamatic, etc.) COWEIT for cameras with Praktica/Edixa-thread (Praktica, Edixa (-mat) Reflex, Pentacon, Hexacon, Contax-S, Contax-D, Asahi-Honeywell-Heiland Pentax, Yashica Reflex, etc.)

Cameras with other distances from lens to focal plane (i.e. Leica, Praktina, Nikon, etc.) and all cameras with between-the-lens shutters **cannot** be used with the Macro-Noflexar 35 mm.

### **Handling is simple and fast**

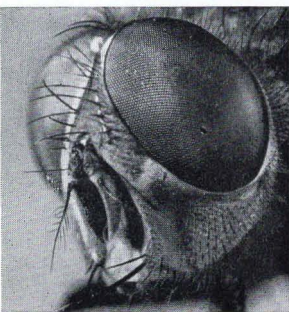
First: It is a close-up lens which fits into your ever-ready case! Because of its unusual construction – it is no larger than a standard 35 mm or 50 mm lens. The helical focusing mount allows focusing from infinity to 40 cm, which is normal with any lens of this focal length.

### **This is what makes the Noflexar unique!**

To obtain close-ups in a split second – the front of the lens is extended in four click-stop positions. At each position is a definite click. You then choose the position which gives you the desired reproduction ratio. Fine focusing is also obtained with the helical focusing mount and focusing is uninterrupted. (See table 1)

### **Exposure increase without scales and tables**

As with any other wide angle lens normal exposure time is used for up to 16 ins. When set for closer distances each click stop position is equivalent to an exposure time increase of one quarter of a diaphragm stop. Therefore, when totally extended, the exposure time has to be doubled, or the diaphragm opened one stop (i. e. f 11 instead f 16).



### **Simple and safe pre-set diaphragm**

With a short focal length lens, stopped down, it is sometimes difficult to check for sharpness on the focusing screen. Therefore, the Noflexar 35 mm has a pre-set diaphragm. The first ring, with the diaphragm readings, is turned, while holding the ring behind

**Table 1:** Focus range and reproduction ratio **without** bellows extension unit.

	Foc. range from - to	+ 1 position from - to	+2 positions from - to	+3 positions from - to	+4 positions from - to
Focusing range in mm (measured from lens front)	$\infty - 280$	330 - 152	161 - 102	112 - 75	80 - 60
reproduction ratio	up to 0.14	0.12 - 0.24	0.23 - 0.37	0.34 - 0.46	0.45 - 0.59

**Table 2:** Focusing range (g), reproduction ratio (n), exposure increase factor (k) and depth of field range (Tp 16 at f 16) with Bellows extension unit I, S or II with reversal ring and Macro Noflexar 35 mm

Bellows extension according to scale for 50 mm lenses	g *) mm	n	k	Tp 16 mm
(0)	51.9	2.58	8.33	0.57
3	49.0	2.75	9.14	0.53
5	46.5	3.37	12.41	0.38
7	46.1	4.12	17.04	0.33
9	45.1	4.46	19.38	0.30
max.	44.4	5.32	25.96	0.24

with Follow focus bellows extension unit with adapter ring LEICO or LEIEX, reversal ring and Macro Noflexar 35 mm.

Bellows extension according to cm-scale (Grip folded)	g *) mm	n	k	Tp 16 mm
0	49.7	3.3	12.02	0.52
1	48.8	3.4	12.58	0.47
2	47.9	3.5	13.16	0.40
3	46.6	3.6	13.75	0.38
4	45.9	3.8	14.97	0.35
5	45.2	4.1	16.90	0.32
6	44.7	4.4	18.95	0.30
7	44.4	5.1	24.18	0.25
+ extension with trigger released	42.1	5.5	27.50	0.23

\* measured from lens

Small differences in the above values may be caused by tolerances in focal length.

The mount of the Noflexar serves as an efficient lens hood, and is also perfect for Macro photography, when the lens is used in reverse in the bellows extension unit. The "built-in" lens hood is adjustable.

Filter Thread M 49 x 0.75

Outside lens diameter: 60 mm

Length when mounted

on camera: 35 mm

Angle of view: 63°

Number of elements: 4

Pre-selected diaphragm

from f/3.5 - f/16

Weight: 185 g

it, until the desired diaphragm stop is opposite the white dot. With the diaphragm wide open the lens is focused and just before exposure both rings are turned in the opposite direction to the pre-selected diaphragm stop. A button on the bottom of the lens offers a grip for the finger.

### **Fast, sharp snap-shots without distance settings**

Lenses with short focal lengths always have a great depth of field. This is ideal for fast snap shots, since distance and diaphragm can be set so that all objects, of importance to the picture, are included in the depth of field. The depth of field is visible on the focusing screen. In case it is difficult to check the depth of field on the focusing screen, when the lens is stopped down, it is easily determined with the depth of field ring. This ring, containing the diaphragm readings, is located in front of the distance scale of the lens and indicates the zone of sharp focus, according to diaphragm opening.

This technical data is comparable to wide angle lenses priced much higher:

Subjects of sizes up to 5×7 cm can be photographed without bellows extension unit, with bellows extension unit subjects of sizes up to 5×7 mm.

The straight guide bearing of the helical focusing mount permits reading of all scales from above lens.

---

List Price \$ 99.50

Technical modifications to serve progress  
are subject to change without notice.

**NOVOFLEX Burleigh Brooks, Inc.,  
420 Grand Avenue, Englewood, New Jersey**

Printed in West Germany – 30 10 64

Photos: Eugène Hesnault,  
Leif Geiges, Novoflex archives