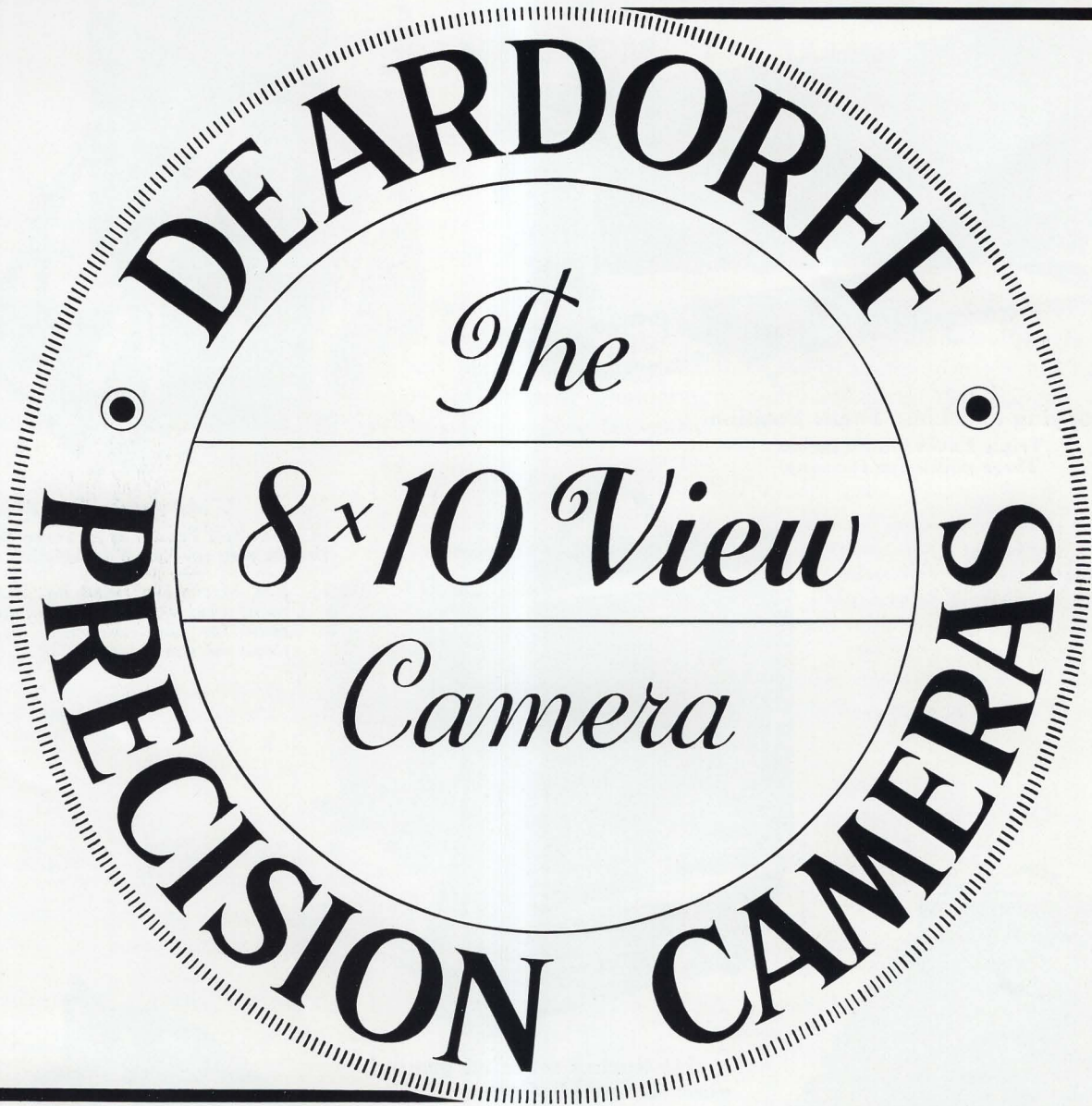


“MAKE THE CORRECTION ON THE NEGATIVE”

DOUBLE SWING BACK



DOUBLE SWING FRONT

*the* **STANDARD VIEW CAMERA** *for*  
*Color and Black and White Photography*

a compact rigid camera permitting the greatest possible image control, the greatest possible depth of field control at the largest possible "taking aperture"

**L. F. DEARDORFF & SONS, INC.**

11 SOUTH DES PLAINES STREET, CHICAGO 6, ILLINOIS

DESIGNERS AND BUILDERS OF PRECISION CAMERAS AND STANDS FOR CORRECTIVE PHOTOGRAPHY

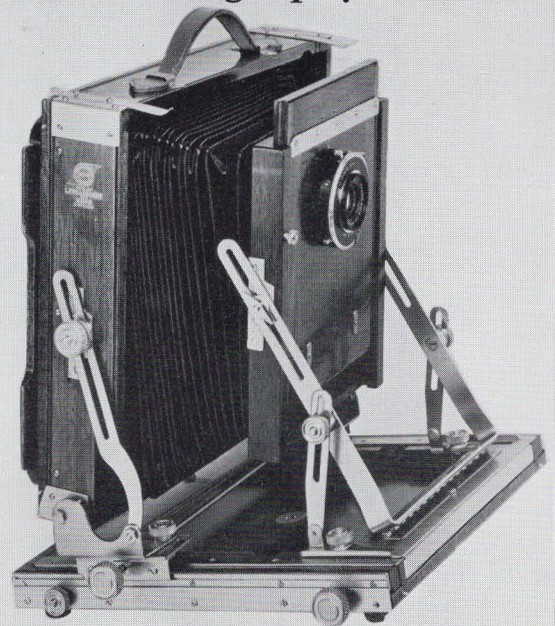


# Deardorff Swings for Corrective Photography



**Copying and Long Focus Position**

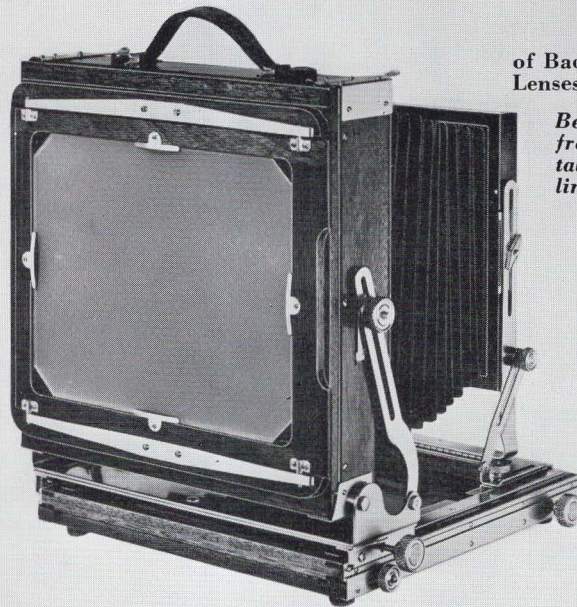
Triple Extension 30 inches  
Three points for focusing



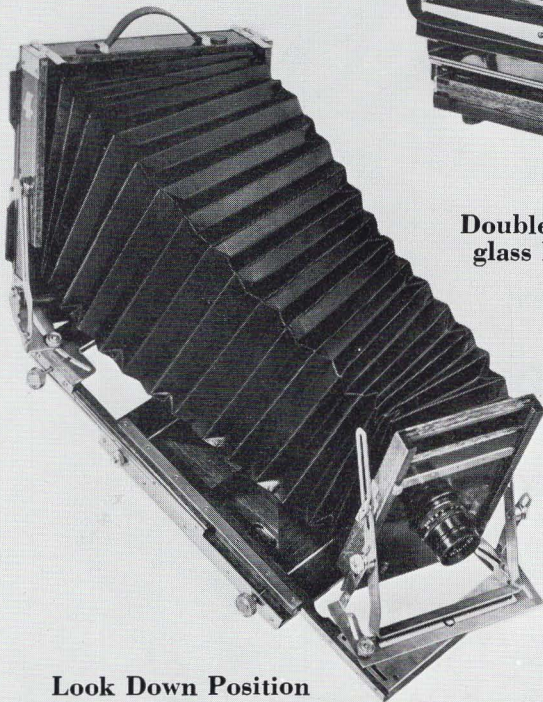
**Wide Angle Position**

of Back and Front for extreme Wide Angle  
Lenses with no Cutoff or binding of bellows

*Bed of camera tilted up. Back and  
front swung vertically and horizon-  
tally for the correction of those  
lines on the negative*

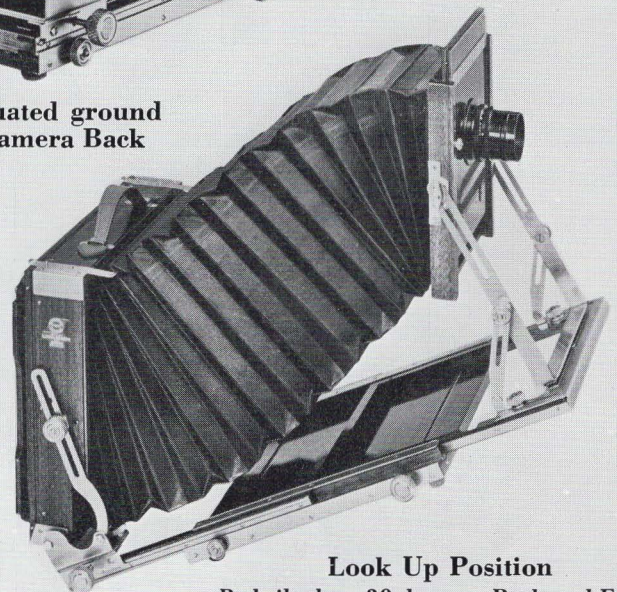


**Double Spring actuated ground  
glass Reversible Camera Back**



**Look Down Position**

Bed tilted down 30 degrees. Back and Front  
swung 30 degrees vertically and  
20 degrees horizontally



**Look Up Position**

Bed tilted up 30 degrees. Back and Front  
swung 30 degrees vertically and can be  
swung 20 degrees horizontally



# DEARDORFF

## PRECISION VIEW CAMERA

### 8/10

**T**HIS series made for many years has always led the field in perfection of design, compactness, rigidity, light weight, and ease of manipulation for making perfect reproductions.

The leading Commercial, Illustrative and Industrial Photographers throughout the United States and Canada not only welcomed this Camera but proclaimed it as the Standard of perfection. The possibilities for making reproductions showing detail, drawing, and perspective not possible heretofore, and also permitting special lighting effects, have improved immensely this field of photography and have made this Camera the most successful instrument ever offered to the "photographic fraternity".

### SPECIFICATIONS

The Vertical Swing of the Back is 30° each side of center.  
The Lateral Swing of the Back is 20° each side of center.  
The Vertical Swing of the Front is 30° each side of center.  
The Lateral Swing of the Front is 20° each side of center.  
The front and rear Turntables are made of heavy gauge Stainless Steel.

The Front Standard is made of heavy gauge Steel.

The Front raises and lowers 3¼" from center.

Back is square, reversible all the way around and supplied with cut-out boards.

Bed is made in four sections, Tongue and Groove construction with grain in two directions. Metal Bed Plate with incorporated Tripod Socket reinforces and protects camera bed. It overcomes scratching when mounting camera to stand. The Box and Back are made with interlocking corners and are further reinforced with Metal.

The Lens Board is square and reversible all the way around.

Lenses with focal lengths from 4" to 30" can be accommodated in this camera.

### CAMERA

Size of Plate	Focal Length of Lenses From	Total Extension	Size of Bellows at Back and Front of Camera		Rise & Fall of Front Total Inches	Lens Board	Camera Closed	Wgt. in Lbs.
			Back	Front				
8x10	3⅝	30	11¼x11¼	6¼x8	6½	6x6	12½x13¼x4¼	12½

### REVERSIBLE CAMERA BACKS • REVOLVING CAMERA BACKS • SPLIT SLIDING CARRIAGES

Size of Camera	Size of Back	Size of Camera	Size of Back	Size of Camera	Size of Film	Size of Opening
8x10	8x10 8x10-5x7 *8x10-4x5 8x10-3¼x4¼ supplied with Grafflok Fittings only	8x10	5x7 } Deardorff 4x5 } Back only 3¼x4¼ supplied with Grafflok Fittings only	8x10	5x7 8x10	3½x5 5x8

\*Can be supplied with Grafflok Fittings

‡Made to order. Price on application.

### CAMERA LENS BOARD

### CAMERA LENS BOARD REDUCERS

Size of Camera	Size of Lens Board	Size of Camera	Size of Lens Board Reducers	Size of Lens Board to Fit Reducer
8x10	6x6	8x10	6x6 6x6 6x6	4½x4½ 4x4 3½x3½

### PACKARD SHUTTER ADAPTER AND SHUTTER

Size of Camera	Description
8x10	Accepts 2¼" opening No. 6 Packard Shutter, supplied with Tubing, Bulb, Pin and Lens Board



# LENSES AND SHUTTERS For DEARDORFF CAMERAS

The table below lists lenses of several focal lengths for various phases of Commercial, Illustrative and Industrial Photography. It should be noted that the emphasis in the table is on Focal Lengths. These focal lengths definitely should be part of every photographers equipment because only by his choice of the proper focal length of lens can the best perspective and control of image distortion be accomplished.

## LENS AND SHUTTER EQUIPMENT — 8x10 VIEW CAMERA WITH 30-INCH EXTENSION

5" to 7" E.F.L., f/6.8 to f/8 wide-angle lens in shutter;  
for wide-angle photography.

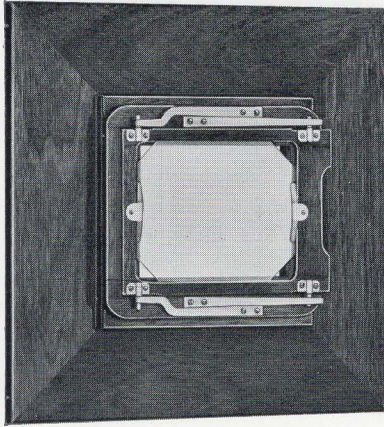
12" to 16" E.F.L., f/6.3 to f/6.8 lens in shutter;  
for average work.

8¼" to 10¾" E.F.L., f/6.3 to f/6.8 lens in shutter; for  
medium wide-angle photography.

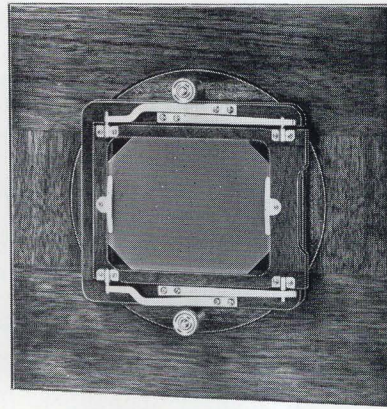
16" to 19" E.F.L., f/9.5 to f/10 lens in shutter or barrel;  
for corrective photography.

Catalogues of the leading lens makers may be had upon request. Advice on the correct types and focal lengths of lenses for any photographic problem given to anyone presenting their difficulties in writing with suitable photographs.

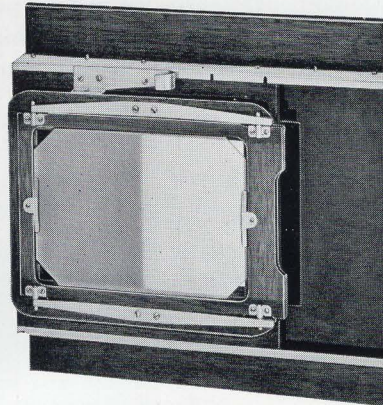
## ACCESSORIES FOR 8x10 VIEW CAMERA



Reversible Camera Backs  
for 8x10, 5x7, 4x5 or  
3¼ x 4¼ film sizes

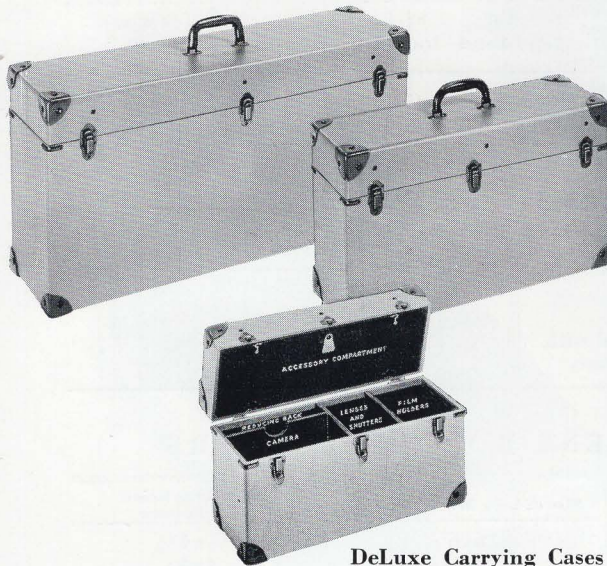
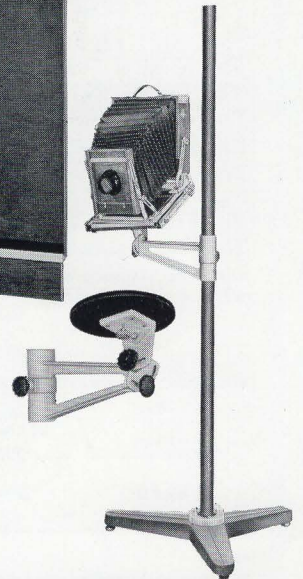


Revolving Camera Backs  
for 5x7, 4x5 or  
3¼ x 4¼ film sizes

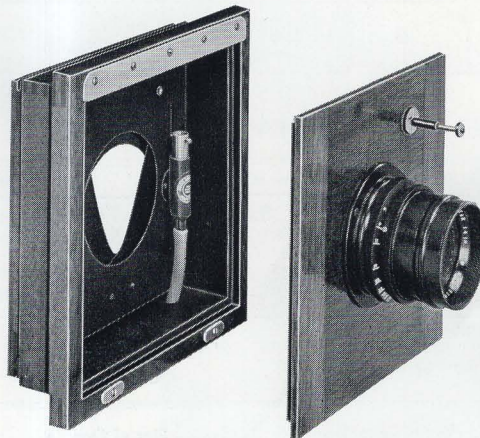


Split Sliding Carriage  
8x10 — 2 on 5x7

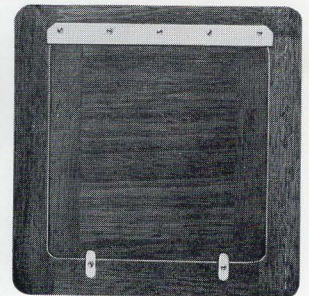
Handi-Stand  
6 Foot — 8 Foot



DeLuxe Carrying Cases



Packard Shutter Adapter and Shutter  
Fitted with 6x6 Lens Board



Lens Board Reducer  
See specifications for reduced sizes.  
Lens board not furnished

**CORRECTIVE PHOTOGRAPHY**, by Lewis L. Kellsey, Cr. Photog., is an illustrated elementary textbook on Camera Swings And How To Use Them. The subject is presented in a simplified and understandable manner. Answers all questions about the practice of Corrective Photography. Every photographer should have a copy for reference purposes.

Published by

**L. F. DEARDORFF & SONS, INC.**