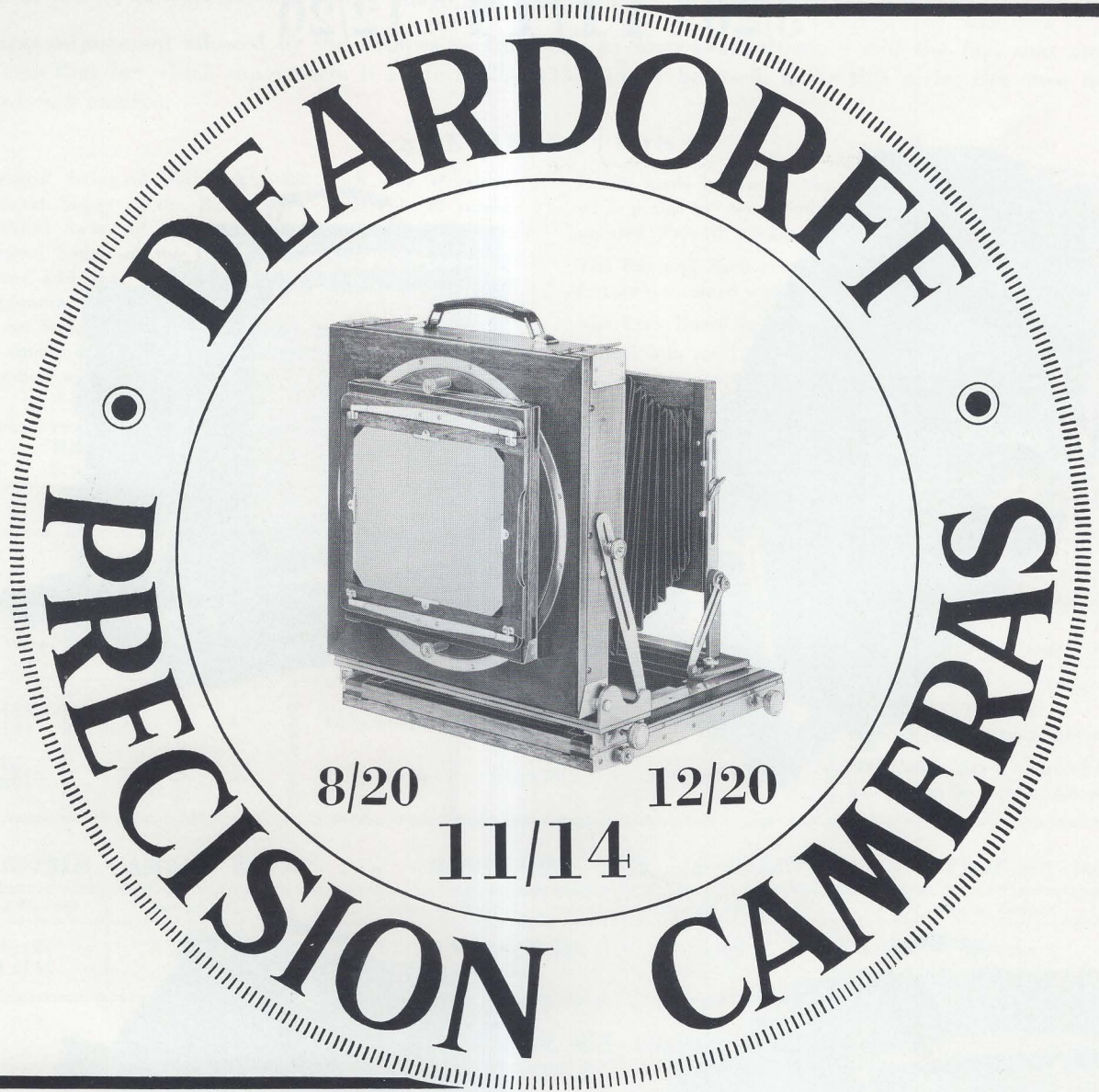


“MAKE THE CORRECTION ON THE NEGATIVE”

DOUBLE SWING BACK



DOUBLE SWING FRONT

the **STANDARD VIEW CAMERA** *for*
Color and Black and White Photography

a compact rigid camera permitting the greatest possible image control, the greatest possible depth of field control at the largest possible “taking aperture”

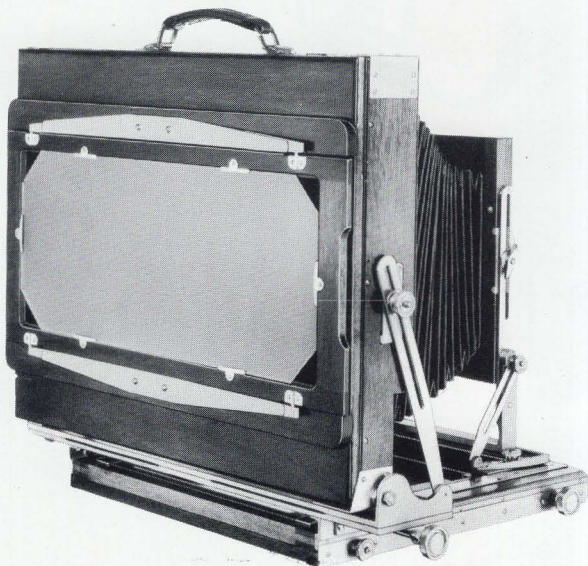
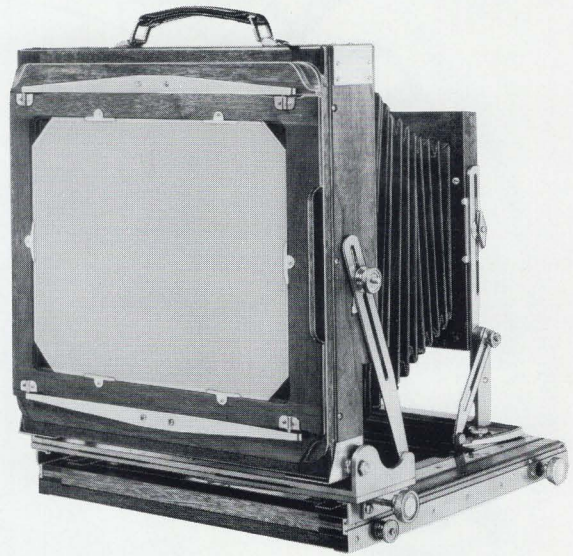
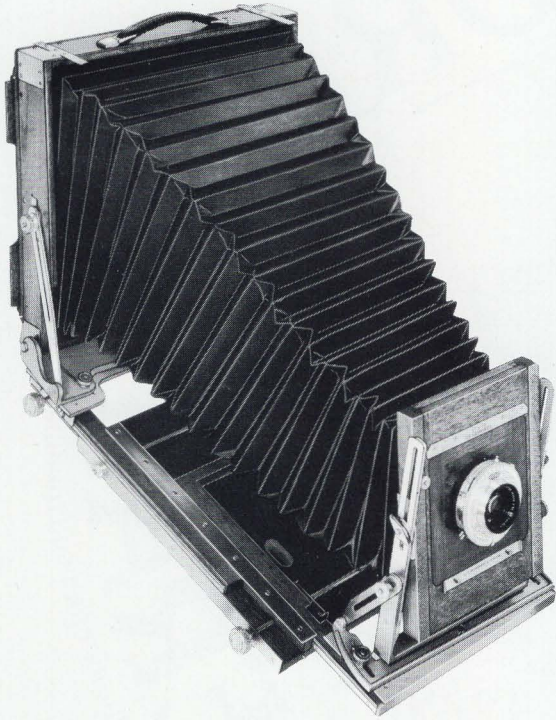
L. F. DEARDORFF & SONS, INC.

11 SOUTH DES PLAINES STREET, CHICAGO 6, ILLINOIS

DESIGNERS AND BUILDERS OF PRECISION CAMERAS AND STANDS FOR CORRECTIVE PHOTOGRAPHY

DEARDORFF PRECISION VIEW CAMERAS

8/20 - 11/14 - 12/20



THIS series of larger view cameras was made to fill the demand of those photographers who require these sizes to record the detail of large scenes and objects, and also those who wanted to use longer focal length lenses on regular size film than the thirty inch draw of the 8x10 view camera would allow. They are used for photographing a very wide range of subjects from scenes for large murals, big groups, and furniture, to small objects in proper perspective where the image size must be large in relation to the subject.

The great adjustment allowed by the bellows — from five to forty-two inches — and the fact that any size back from that for which the camera is made to 2¼"x3¼" made be used, make this series the most flexible standard view camera.

SPECIFICATIONS

The Vertical Swing of the Back is 30° each side of center.
 The Lateral Swing of the Back is 20° each side of center.
 The Vertical Swing of the Front is 30° each side of center.
 The Lateral Swing of the Front is 20° each side of center.
 The front and rear Turntables are made of heavy gauge cast Aluminum.

The Front Standard is made of heavy gauge Aluminum.
 Back is square on the 11x14 and reversible all the way around, and supplied with cut out boards.

Bed is made in four sections, Tongue and Groove construction with grain in two directions. Metal Bed Plate with incorporated Tripod Socket reinforces and protects camera bed.

The Box and Back are made with interlocking corners and are further reinforced with Metal.

The Lens Board is square and reversible all the way around.

Lenses with focal lengths from 5" to 42" can be accommodated in these cameras.

Rise & Fall on Front Standard	Additional Rise & Fall of Lens Board	Total Rise & Fall of Lens
5¾"	4"	9¾"

CAMERA

Size of Plate	Focal Length of Lenses From	Total Extension	Size of Bellows at Back and Front of Camera		Camera Closed	Weight in Pounds
			Back	Front		
10x12} 11x14}	5	42	15⅞x15⅞	8¼x7¾ ₁₆	20x17½x6	27 with 11x14 Back 30 with Revolving Adapter
8x20} 12x20}	5	42	21¾x15⅞	8¼x7¾ ₁₆	22¾x17½x6¾	30½ with Either Camera Back 33½ with Revolving Adapter

REVERSIBLE CAMERA BACKS • REVOLVING CAMERA ADAPTER • CAMERA BACKS

Size of Camera	Size of Back	Size of Camera	Size of Back	Size of Camera
10x12} 11x14}	11x14	11x14 to all Sizes of Backs from 8x10 to 2¼x3¼	8x20} 12x20}	Non-reversible Backs Cut Out Boards Not Supplied

SPECIAL CAMERA BACKS FOR ALL DEARDORFF CAMERAS

Sliding Carriages 2¼"x3¼" Roll Film for 8x10 Camera Includes One Graflok "23" Roll Holder	Adapter Camera Backs for Beattie Magazines Made to Order Only For 70mm. Roll Film Magazine for 8x10 Camera For 90mm. Roll Film Magazine for 8-10 Camera Without the Magazine
---	--

CAMERA LENS BOARD

CAMERA LENS BOARD REDUCERS

Size of Camera	Size of Lens Board	Size of Camera	Size of Lens Board Reducers	Size of Lens Board to Fit Reducer
All Sizes	6x6	All Sizes	6x6 6x6 6x6	4½x4½ 4x4 3½x3½

PACKARD SHUTTER ADAPTER AND SHUTTER

Size of Camera	Description
All Sizes	Accepts 2¾" opening No. 6 Packard Shutter, supplied with Tubing, Bulb, Pin and Lens Board

LENSES AND SHUTTERS For DEARDORFF CAMERAS

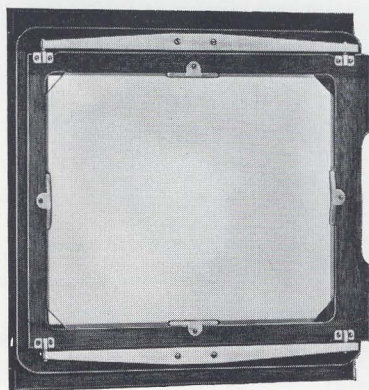
The table below lists lenses of several focal lengths for various phases of Commercial, Illustrative and Industrial Photography. It should be noted that the emphasis in the table is on Focal Lengths. These focal lengths definitely should be part of every photographer's equipment because only by his choice of the proper focal length of lens can the best perspective and control of image distortion be accomplished.

LENS AND SHUTTER EQUIPMENT — 11x14 — 8x20 — 12x20 VIEW CAMERAS WITH 42-INCH EXTENSION

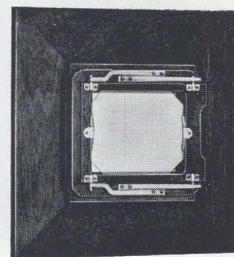
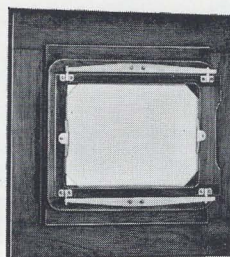
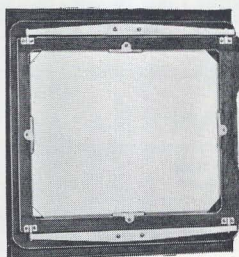
8¼" to 9½" E.F.L., wide angle lenses in shutters; for wide angle photography on 11x14.	24" to 25" E.F.L., lenses in shutters for narrow angle photography on 11x14 and normal on 8x20 and 12x20.
12" to 14" E.F.L., lenses in shutters; for medium wide angle on 11x14.	
16½" to 19" E.F.L., lenses in shutters for normal angle on 11x14 and medium wide angle on 8x20 and 12x20.	30" E.F.L., lens in barrel for narrow angle photography on 11x14 and normal on 8x20 and 12x20.

Catalogues of the leading lens makers may be had upon request. Advice on the correct types and focal lengths of lenses for any photographic problem given to anyone presenting their difficulties in writing with suitable photographs.

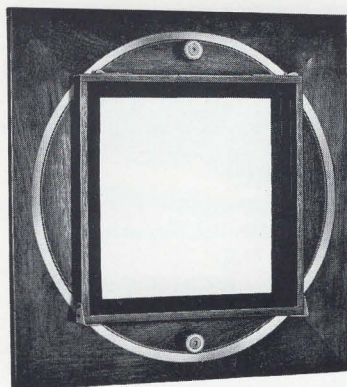
ACCESSORIES FOR 8x10 VIEW CAMERA



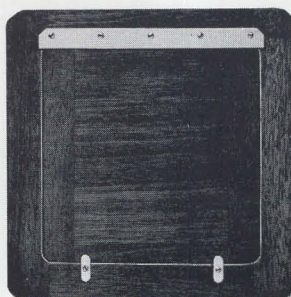
Reversible Camera Back
for 11x14



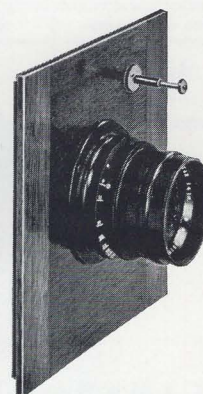
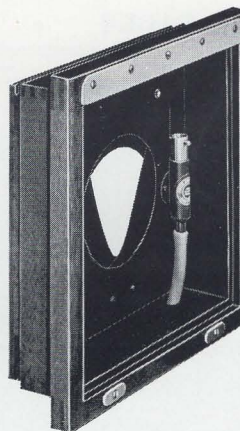
Reversible Camera Backs
for 8x10, 5x7, 4x5 or
3¼x4¼ film sizes



Revolving Back Adapter
to take reducing Camera Backs



Lens Board Reducer
See specifications for reduced sizes.
Lens board not furnished.



Packard Shutter Adapter and Shutter
Fitted with 6x6 Lens Board

CORRECTIVE PHOTOGRAPHY, by Lewis L. Kellsey, Cr. Photog., is an illustrated elementary textbook on Camera Swings And How To Use Them. The subject is presented in a simplified and understandable manner. Answers all questions about the practice of Corrective Photography. Every photographer should have a copy for reference purposes.

Published by

L. F. DEARDORFF & SONS, INC.