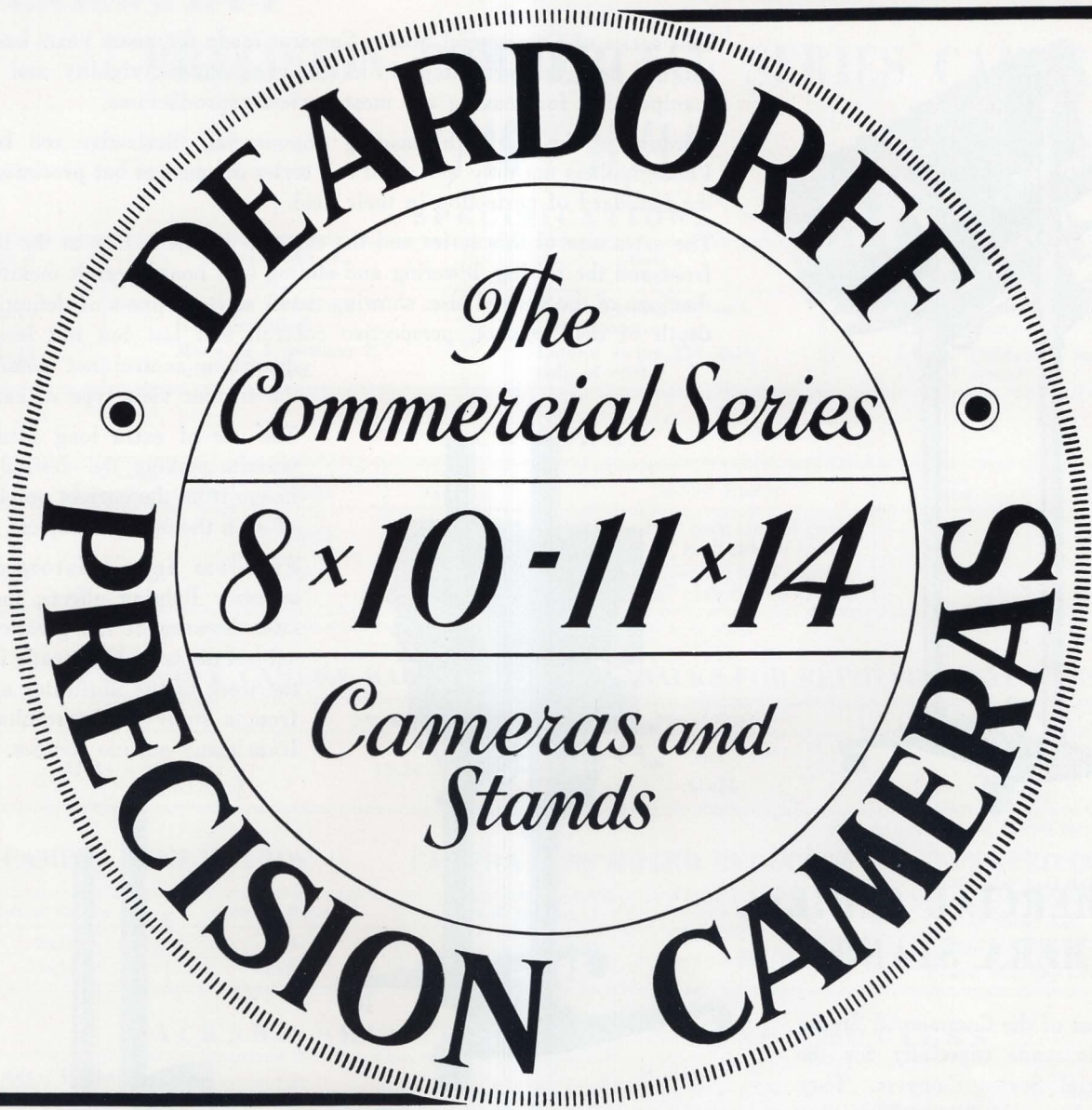


"MAKE THE CORRECTION ON THE NEGATIVE"

DOUBLE SWING BACK



DOUBLE SWING FRONT

the **STANDARD COMMERCIAL SERIES** *for*

Color and Black and White, Illustrative, and Commercial Studio Photography

extra large rigid cameras, extra long bellows for extra long focus lenses permitting greatest possible image control, greatest possible depth of field control at the largest possible "taking aperture".

extra tall rigid camera stands, permitting highest elevation at maximum angle positions for look-down reproductions. Also allowing lowest maximum angle position for look-up reproductions.

L. F. DEARDORFF & SONS, INC.

11 SOUTH DES PLAINES STREET, CHICAGO 6, ILLINOIS

DESIGNERS AND BUILDERS OF PRECISION CAMERAS AND STANDS FOR CORRECTIVE PHOTOGRAPHY

COMMERCIAL SERIES CAMERAS

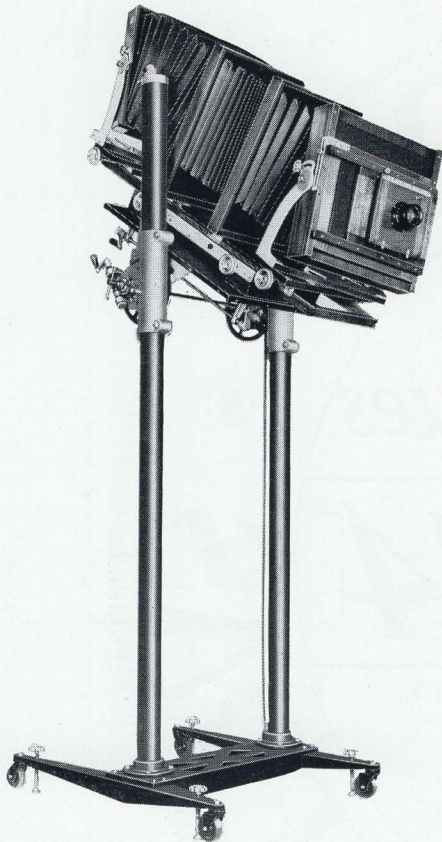
This series of Commercial Studio Cameras made for many years has always led the field in perfection of design, compactness, rigidity and ease of manipulation for making the most perfect reproductions.

Throughout the world the leading Commercial, Illustrative and Industrial Photographers not only welcomed this series of cameras but proclaimed them the Standard of perfection in their field.

The extra size of this series and the extreme double swings at the back and front and the raising, lowering and sliding lens board permit making reproductions of the desired size, showing detail and sharpness of definition, with depth of field control, perspective control, and last but not least image distortion control not possible with the smaller view type of cameras.

The use of extra long focus lenses permits making the desired size of image from the correct point of view of even the smallest objects.

Freedom from distortion plus superior lighting effects, made possible because of the greater lens to subject distance, has greatly improved the work of the illustrator as is seen from a study of the results coming from many outside sources.



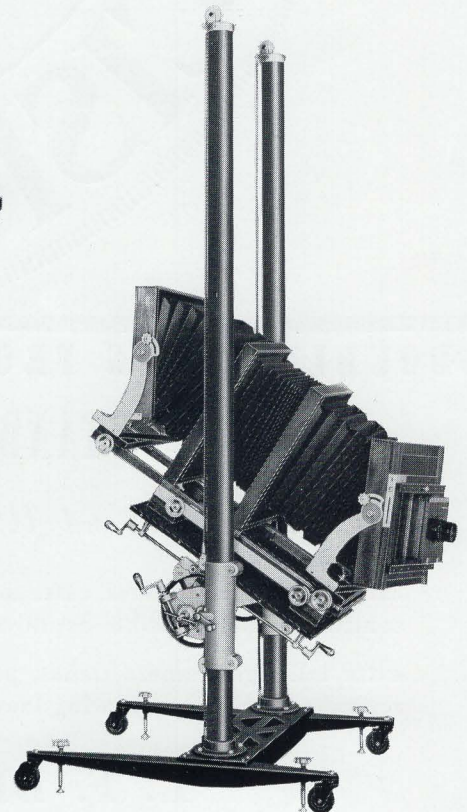
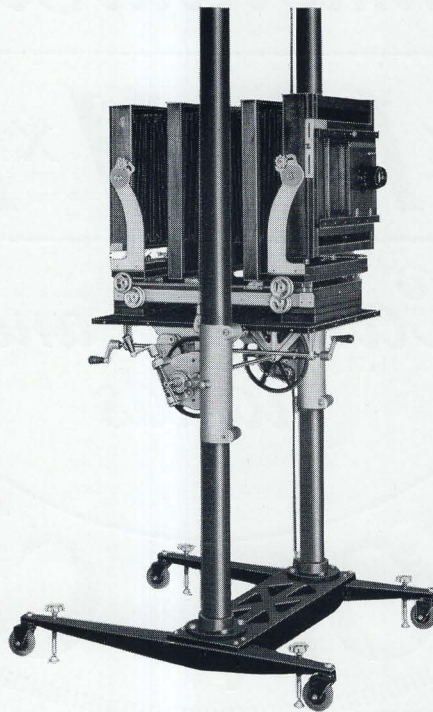
COMMERCIAL SERIES CAMERA STANDS

This series of the Commercial Studio Stands is made especially for the Commercial Series Cameras. They may also be used with the View type of camera by changing the counterweights.

Ease of manipulation and the control of vibration is derived from perfection of design which has placed these stands in an enviable position with the leading Commercial, Illustrative and Industrial Photographers.

The revolving device will rotate the camera 360°. The elevating mechanism will raise the camera above the top of the stand and, when revolved to the inverted position, will lower it to the floor. Both revolving and elevating mechanisms are fitted with cranks for fine adjustment. The vertical mechanism is fitted with a clutch which, when released, allows the camera to be raised or lowered very rapidly by hand. Substantial locks control every movement.

The legs of the stand are supplied with rubber tired casters and elevating screws allowing ease of movement and permitting control of vibration at any position of the camera and without danger of upsetting at extreme heights.



DEARDORFF

PRECISION COMMERCIAL SERIES CAMERAS

8/10 - 11/14

SPECIFICATIONS

Size of Plate	Construction of Bed of Camera	Back Swings	Front Swings
8x10	Made in 2 sections 50" fully extended	Vertical swing 30° each side of center	Vertical swing 30° each side of center
11x14	Made in 3 sections 75" fully extended	Lateral swing 20° each side of center	Lateral swing 20° each side of center

CAMERAS

Size of Plate	Minimum Focal Length of Lens★	Bellows Square	Total Extension	Shifting Front	Lens Board	Weight
8x10	12	13x13	50	Vertical—1 $\frac{3}{4}$ " each side of center Lateral—2 $\frac{3}{4}$ " each side of center	8x8	45 lbs.
11x14	12	16x16	75	Vertical—3" each side of center Lateral—2 $\frac{3}{4}$ " each side of center	8x8	60 lbs.

★Inverted cones are required with minimum focus lenses to allow camera swings to be used.

REVERSIBLE CAMERA BACK

BACKS FOR REVOLVING ADAPTERS

Size of Camera	Size of Back	Size of Camera	Size of Back
11x14	11x14	8x10	8x10
		11x14	*8x10-4x5 8x10-5x7

*Can be supplied with Graflex Fittings

CAMERA LENS BOARDS

CAMERA LENS BOARD REDUCERS

INVERTED CONE (Recessed Lens Board)

Size of Camera	Size of Board	Size of Reducer	Size of Board	Size of Cone 8x8. Length of Cone 6". Fitted with 6x6 Lens Board.
8x10	8x8			
11x14	8x8	8x8	6x6	

PACKARD SHUTTER ADAPTERS AND SHUTTERS

Size of Camera	Description
8x10 11x14	Accepts 4" opening No. 6 Packard Shutter, supplied with Tubing, Bulb, Pin and Lens Board

PRECISION COMMERCIAL SERIES CAMERA STANDS

8 - 10 - 12 and 14 Feet

The casters increase the overall height of each size of stand about 8 $\frac{1}{2}$ inches

SPECIFICATIONS

Uprights	Counterweights for 8x10—11x14 Cameras	Bed and Gears	Base and Legs
Seamless Steel Tubing	88# 126# Lead Weights	Bed measures 30 $\frac{3}{4}$ " x 23 $\frac{1}{4}$ ". Revolves around 360° by worm and gear. Vertical movement by chain and gear drive. All movements fitted with locks.	Base—Cast Iron Legs—Cast Iron Leveling Screws Ball Bearing Casters

LENSES AND SHUTTERS For DEARDORFF CAMERAS

The table below lists lenses of several focal lengths for various phases of Commercial, Illustrative and Industrial Photography. It should be noted that the emphasis in the table is on Focal Lengths. These focal lengths definitely should be part of every photographers equipment because only by his choice of the proper focal length of lens can the best perspective and control of image distortion be accomplished.

LENS AND SHUTTER EQUIPMENT 8x10 COMMERCIAL SERIES CAMERA WITH 50-INCH EXTENSION

14" to 16½" E.F.L., f/9	to f/10 lens in shutter or barrel; for corrective photography.
19" to 25" E.F.L., f/10	to f/11 lens in shutter or barrel; for corrective photography.
30" to 35" E.F.L., f/12.5	lens in barrel; for corrective photography.
12" to 14" E.F.L., f/6.3	to f/7.7 lens in shutter; for average work.
12" to 30" E.F.L., f/4.5	or slower lens in shutter or barrel; for portrait work.

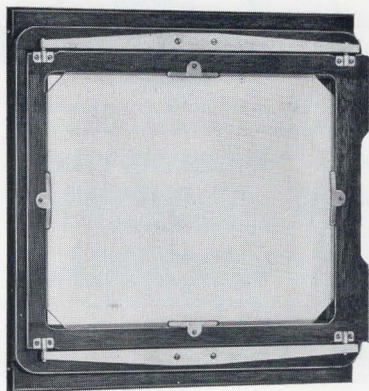
LENS EQUIPMENT 11x14 COMMERCIAL SERIES CAMERA WITH 75-INCH EXTENSION

All of the lenses listed for the 8x10 camera may be used with equally good results on the 11x14 camera, with the proper back for the plate size the lens will cover. The additional bellows capacity of the larger camera permits lenses of even longer focal length to be used, with improved perspective. These extra long focus lenses are shown below:

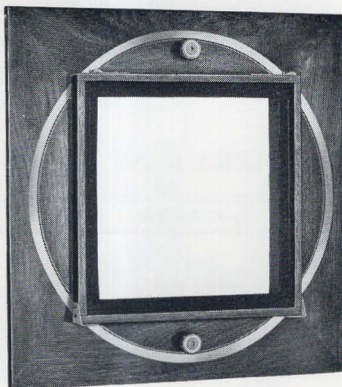
42" E.F.L., f/14	lens in barrel; for corrective photography.
47½" E.F.L., f/15	lens in barrel; for corrective photography.

Catalogues of the leading lens makers may be had upon request. Advice on the correct types and focal lengths of lenses for any photographic problem given to anyone presenting their difficulties in writing with suitable photographs.

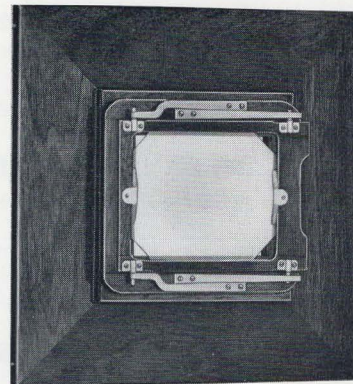
ACCESSORIES FOR 11x14 AND 8x10 COMMERCIAL SERIES CAMERAS



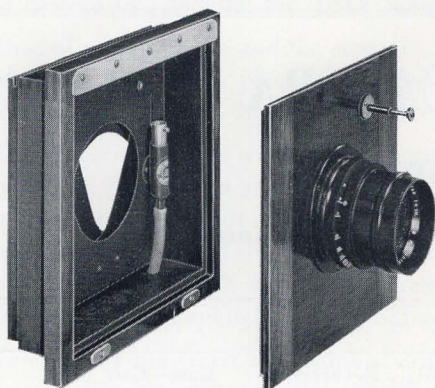
Reversible Camera Back
for 11x14



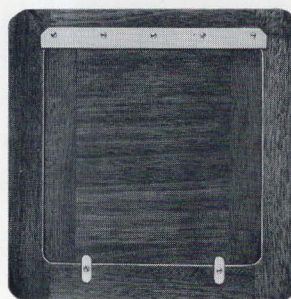
Revolving Camera Adapters
to take reducing Camera Backs



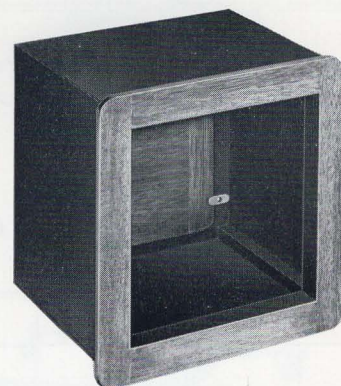
Reducing Camera Backs
for 8x10, 5x7, 4x5 film sizes



8x8 Packard Shutter Adapter and Shutter
Fitted with 8x8 Lens Board



Lens Board Reducer
8x8 to 6x6
Lens Board not furnished



Inverted Cone
Fitted with 6x6 Lens Board