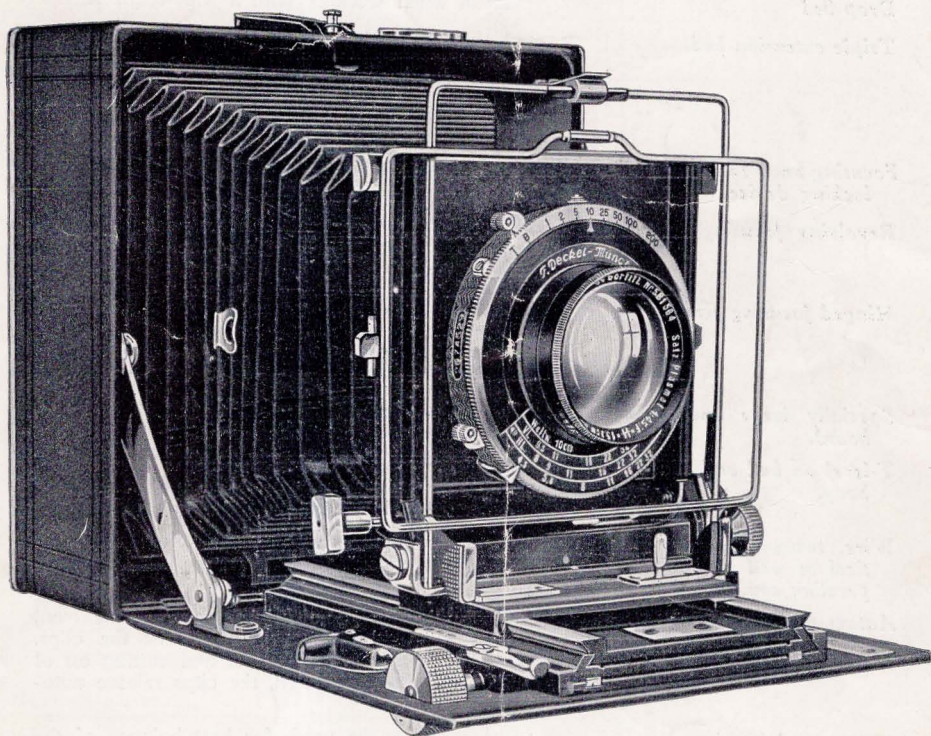


Precision



Cameras



STANDARD MODEL

Linhof Precision Cameras, available in all sizes from  $2\frac{1}{4} \times 3\frac{1}{4}$ " to  $5 \times 7$ ", represent the highest achievement in camera construction today.

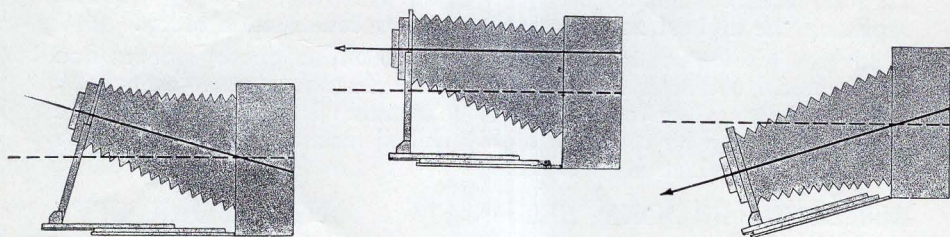
With this instrument serious artistic and scientific photographers find the technical obstacles in the path of fine photography almost wholly eliminated. It is left for them only to master all the features of the camera, designed by the most highly skilled mechanical experts in the field, and make them his servants.

BURLEIGH BROOKS, INC.

NEW YORK CITY

**The following table lists the most important features of the Standard Model Linhof and their uses:**

<i>Lensboard for ample rising and falling of lens by rack and pinion.</i>	Architecture, interiors, etc.
<i>Lateral side movement of lens by rack and pinion (the side movement is obtained by hand with 6½x9 cm. camera only).</i>	Architecture, interiors, portraiture, etc.
<i>Interchangeability of lenses</i>	Use of additional lens equipment, such as telephoto and wide angles lenses.
<i>Tilting front board</i>	Useful when working with a wide-angle lens.
<i>Drop bed</i>	Useful when working with a wide-angle lens.
<i>Triple extension bed</i>	Useful with telephoto lenses, for closeups and reproductions of natural or over-natural size. Parts of lenses can also be used. This is very important for many classes of work when it is not possible to get close enough to the object.
<i>Focusing knob rack and pinion with locking device.</i>	Perfect focusing.
<i>Revolving focusing screen back</i>	Horizontal or vertical pictures may be made without turning or removing the camera from the tripod.
<i>Hinged focusing screen hood</i>	Hood drops down, making it possible to insert magnifier for focusing conveniently, especially under poor lighting conditions, or when cloth is used, revealing the image to the very corners.
<i>Specially large and strong front board.</i>	Insures absolute rigidity of front board and permits the use of over-size lenses.
<i>T-level on bed and round level on body.</i>	Permit exact adjustment of camera. Very important for wide-angle work and architecture, to insure absolutely straight lines.
<i>Wire, two-way, frame finder, vertical as well as horizontal, with parallax compensation</i>	For taking pictures with camera held in the hand, for sports, quick action shots, etc.
<i>Automatically releasing bellows clip.</i>	When bellows is not fully extended, the front folds are held closed by means of the clips, avoiding sagging of bellows, and cutting off of corners. When extended, the clips release automatically.
<i>Two tripod bushings</i>	Either one to be used, for best balance of the camera, depending on bellows extension, weight of lens in use, etc.

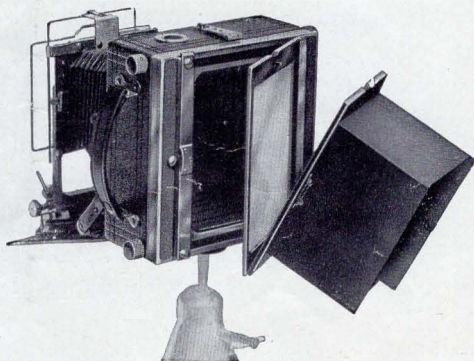
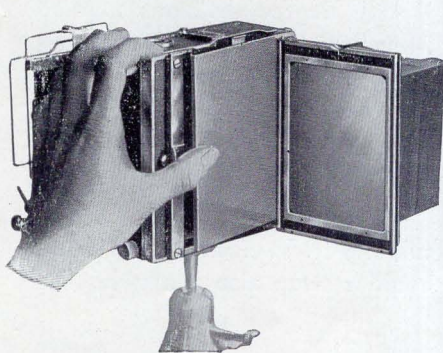




<i>Finger grips on bottom of front standard.</i>	Facilitate extension of the front standard.
<i>Automatic locking of front standard.</i>	Notch on bed of camera locks standard at infinity.
<i>Excellent leather bellows and leather covering.</i>	Durable and neat.
<i>Light metal construction</i>	Minimum weight and maximum stability.
<i>Large, firm knobs, conveniently located.</i>	Insuring easy and reliable manipulation.
<i>Bed locking device</i>	Prevents altering of position of bed after focusing is completed.

*In addition to all of the above features, the Technika also has the following valuable points:*

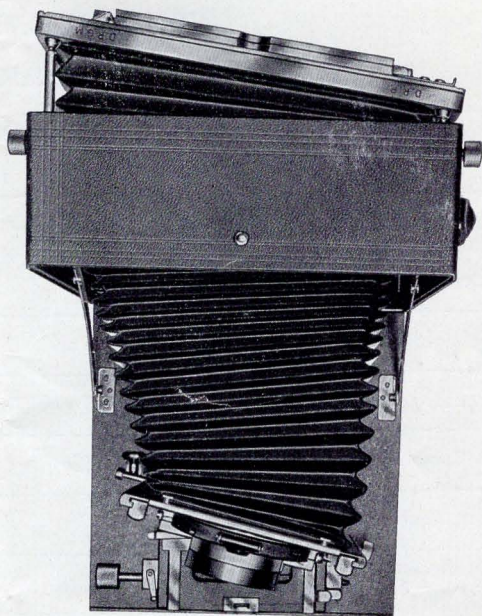
<i>Four-way swing back</i>	By means of four locking knobs, conveniently located, one in each corner, the ground glass back may be tilted in every direction for altering the focal plane. In this way different distances can be brought into the same plane, possible otherwise only by considerably stopping down the lens, with the subsequent loss of its speed.
<i>Hinged swinging ground glass back.</i>	The plate holder or film pack adapter is inserted with the greatest of ease when the ground glass is swung open. Easily manipulated metal bar locks the accessories firmly without jarring or moving the camera out of position.
<i>Handle on lens standard</i>	For easily pulling out the lens standard into working position.
<i>Swing lensboard</i>	In the 4x6" and 5x7" size, the lens unit alone can be swung horizontally to left and right and tilted upwards. The downward tilt can be obtained by means of the camera bed, as described above for the Standard model.
<i>Construction</i>	The refinements of the Standard are developed to an even higher level in the Technika, since it must unquestionably answer the most exacting needs of the most discriminating worker.



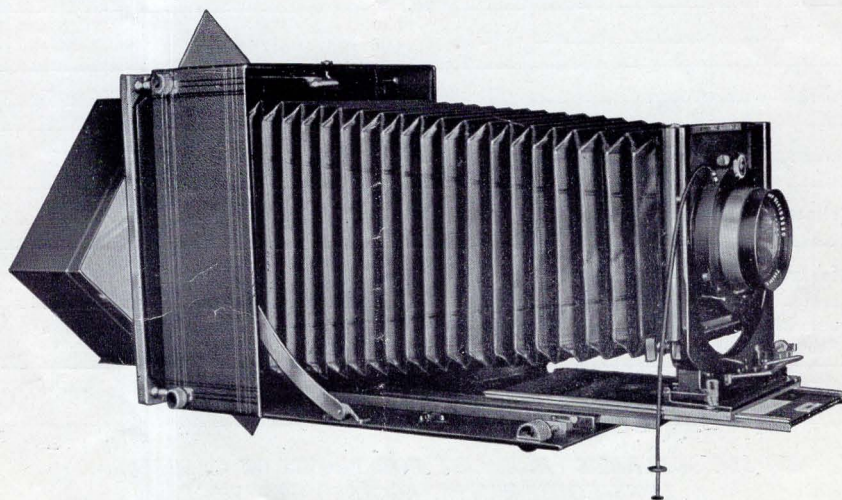
All models can be fitted with the popular Schneider Tele Xenar f 5.5 telephoto lenses, mounted on extra lensboards in Compur shutter, ready for use.

The Schneider Angulon f 6.8 extreme wide angle lens ( $105^{\circ}$ ) mounted in the same manner is unsurpassed for wide angle work.

The Kalart Range Finder can be adapted to the 9x12 cm. Linhof Cameras with standard lens equipment, making the outfit ideal for news and sport work. Further particulars upon request.



*Each camera supplied complete with three plate holders, film pack adapter, ground glass back, and cable release. The 5 x 7" can be supplied either with regular Linhof accessories, or with Eastman Kodak View back, without accessories, at no extra charge.*





## SPECIFICATIONS STANDARD

	6½x9 cm. or 2¼x3¼"	9x12 cm. or 3¼x4¼"	10x15 cm. or 4x6"	5x7"
Length and width, square.....	4¾x4¾"	6x6"	7x7"	8⅜x8⅜"
Depth .....	2⅜"	2⅝"	2⅝"	2⅜"
Weight without lens.....	2 lbs. 5 oz.	3 lbs. 5 oz.	3 lbs. 15 oz.	4 lbs. 10 oz.
Lensboard, square .....	2⅜"	3½"	3½"	4¼"
Bellows extension .....	12⅜"	17"	18⅝"	21⅝"
Maximum front board opening	1⅝"	2⅜"	2⅝"	3⅜"
Schneider Angulon f 6.8 wide angle lens recommended.....	3½"	3½"	4¾"	4¾"
Schneider Tele Xenar f 5.5 tele- photo lens recommended.....	7⅛"	10⅝"	11¾"	14¼"

## TECHNIKA

	6½x9 cm. or 2¼x3¼"	9x12 cm. or 3¼x4¼"	10x15 cm. or 4x6"	5x7"
Length and width, square.....	4⅝x4⅝"	6x6"	7x7"	8⅜x8⅜"
Depth .....	2⅝"	2⅜"	3"	3⅝"
Weight without lens.....	2½ lbs.	3 lbs. 11 oz.	6 lbs. 2½ oz.	6 lbs. 5 oz.
Lensboard, square .....	2⅜"	3½"	3½"	4⅜"
Bellows extension .....	11⅜"	15⅜"	17⅝"	21⅝"
Maximum front board opening	1⅝"	2⅜"	2⅝"	3⅜"
Schneider Angulon f 6.8 wide angle lens recommended.....	3½"	3½"	4¾"	4¾"
Schneider Tele Xenar f 5.5 tele- photo lens recommended.....	7⅛"	10⅝"	11¾"	14¼"

**SEE SEPARATE PRICE LIST FOR PRICES OF CAMERAS,  
LENS EQUIPMENTS, ACCESSORIES, ETC.**

# LINHOF PRECISION TRIPOD



The Linhof Tripod follows through the reputation of Linhof for precision instruments of the highest rank enjoyed by this factory for the past half century. The high standard for excellent design and construction embodied in the cameras is evident in the tripod as well to a remarkable degree. This tripod has been introduced by Linhof to meet the most exacting demands of the serious still and motion picture amateur and professional, and its construction and execution are unsurpassed in every respect.

It embodies a panorama head ( $360^{\circ}$ ) with degree divisions marked every ten degrees, head tilting to  $90^{\circ}$ , level on the tripod showing its exact position, and built-in friction locking device, remarkably smooth in operation, which can be locked in every desired position. The tripod bushing can be removed, fastened to the camera, and the unit so prepared attached to the tripod in an extremely simple and convenient manner.

Length of tripod: Closed,  $2\frac{1}{2}$  ft.; extended, 6 ft. Weight: About 4 lbs. Linen carrying bag with zipper and shoulder strap also available.

*See Linhof Camera Price List*