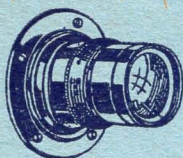
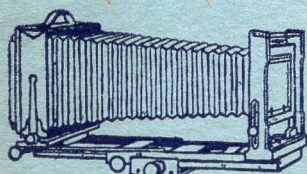


Gundlach



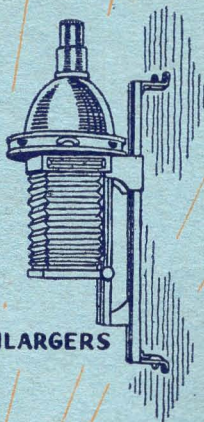
LENS



CAMERAS



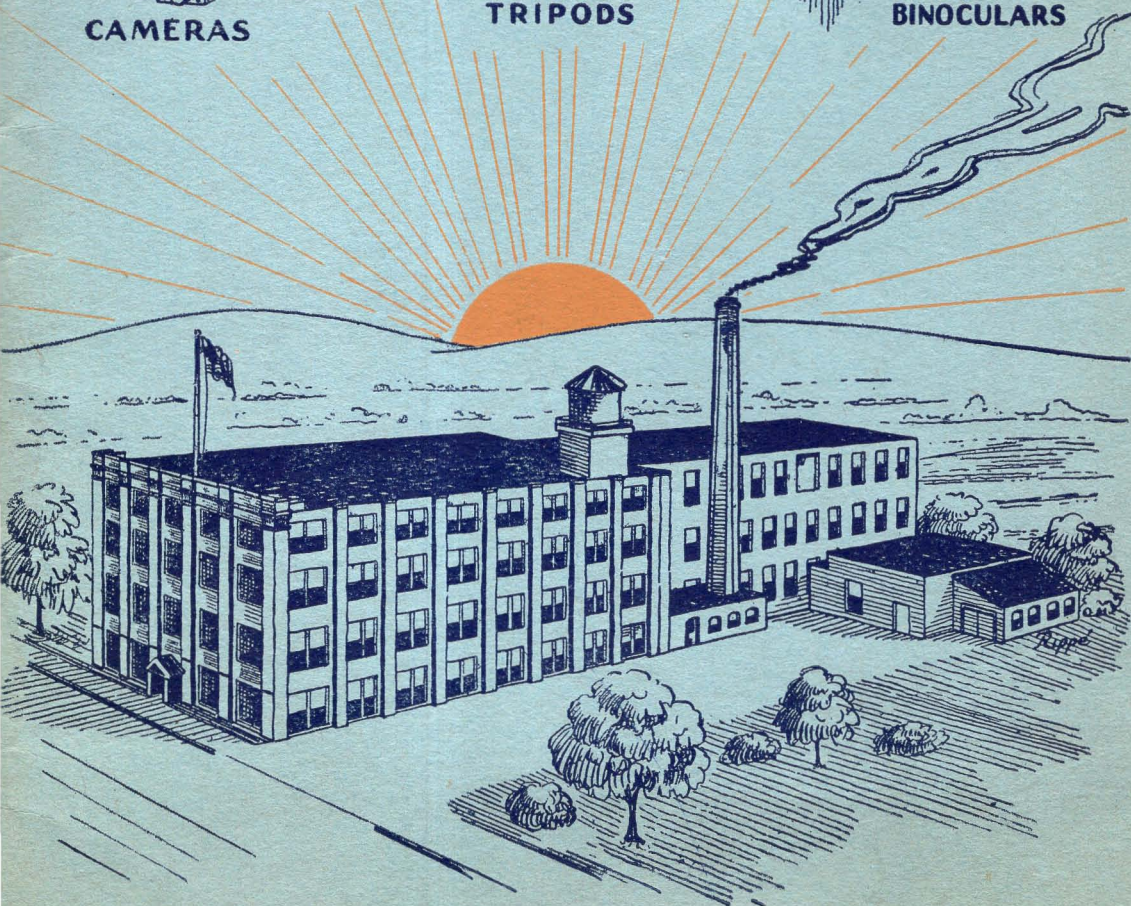
TRIPODS



ENLARGERS



BINOCULARS



GUNDLACH KORONA TURNER-REICH

*FAMOUS NAMES IN PHOTOGRAPHIC HISTORY
SINCE 1884*



CAMERAS—LENSES—EQUIPMENT

GUNDLACH MANUFACTURING CORPORATION
739 CLINTON AVENUE SOUTH
ROCHESTER, NEW YORK

CATALOG No. 32



GUNDLACH MANUFACTURING CORPORATION



Turner-Reich

CONVERTIBLE-ANASTIGMAT F: 6.8

THE PERFECT AMERICAN LENS

The Turner-Reich Anastigmat is adaptable to every class of subject. It provides three different focal lengths, thereby making a triple convertible anastigmat. You have three lenses of different focal lengths at your command at all times.

THREE FOCAL LENGTHS

THREE DIFFERENT IMAGES

THREE FILM AND PLATE SIZES

You, as a photographer, will appreciate these advantages. A lens that will cover two sizes larger, that you can use as a wide angle and which gives you control of image size at any view point.

We believe the ideal lens must not only have optical quality, but freedom from air spaces, permanency of glass, and flexibility of formula to maintain absolute standard of permanence. Such a lens must hold a clear, sharp image to the very edge of the light circle.

Proof that the Turner-Reich does all these things is borne out by the continued use of this lens by the United States Government—the Canadian Government—Photo Engravers—Studios, and very largely by technical photographers and scientists.

This lens is regular equipment on Cirkut Cameras. Practically all large Cirkut pictures were taken with the single combinations. **THE TURNER-REICH IS A GREAT LENS, WORTHY OF A PLACE IN THE EQUIPMENT OF EVERY PHOTOGRAPHER.**

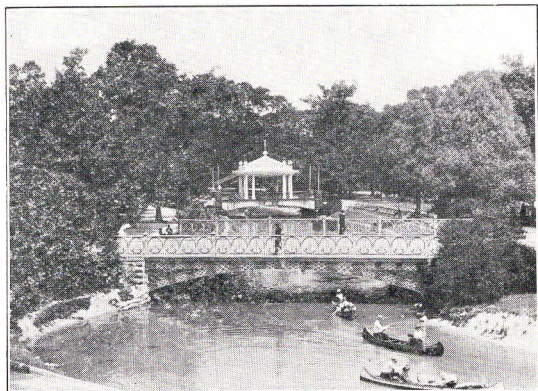
This lens is our finest product and can be used for any purpose you desire, such as commercial, outdoor and indoor, portraits, studios, enlarging, copying, Panoramic, Telephoto, etc.

The construction of this lens prevents internal reflection. It gives great depth,



*All made with the
same lens from the
same view point.*

*The most versatile
and useful of all
the different types
of anastigmat
lenses.*



*Taken with a 5x7
Series II Turner-
Reich Anastigmat
F:6.8.*



GUNDLACH MANUFACTURING CORPORATION

and insures brilliancy of image. Each single combination is fully corrected and marginal definition is good with large aperture. It is the best type lens for the greatest variety of photographic work.

Note that their front and rear combinations are of different focal lengths in every case—the only true form of convertible lens.

Turner-Reich

THE PERFECT AMERICAN LENS

CONVERTIBLE ANASTIGMAT F: 6.8

SERIES II

No.	Size	Equiva- lent Focus	Focus Front Comb.	Focus Rear Comb.	Diam. of Cells	Price in Cells	Price in Betax Shutter	Price in General Shutter	Price in Universal Shutter
0	3¼x4¼	5"	12"	8"	1⅛"	\$ 45.00	\$ 53.00	\$ 55.00	\$ 59.50
1	4x5	6¼"	14"	11"	1¼"	53.00	62.00	65.00	68.00
2	5x7	7½"	18"	12"	1½"	60.00	72.00	73.00	76.00
3	5x8	8½"	20"	14"	1¾"	68.00	80.00	83.00	86.00
4	6½x8½	10½"	24"	18"	1⅞"	93.00	105.00	108.00	111.00
5	8x10	12"	28"	21"	2¼"	112.00	127.00	130.00	132.00
*6	11x14	15"	36"	24"	2½"	155.00	170.00	173.00	175.00

*The No. 6 size has a working aperture of F:7.5. Working aperture of single combinations: Front F:16, Rear F:12.5.

Prices of barrel mounts with iris diaphragm

No. 0 \$8.00	No. 2 \$10.00	No. 4 \$12.00
No. 7 9.00	No. 3 12.00	No. 5 15.00
	No. 6 \$20.00	

The charge for special fitting of a lens in cells to a barrel or shutter depends upon the time required to do the work.

MOUNTED IN HIGH SPEED SHUTTERS

Shutter speed is a most important factor in photographing objects in motion. If the shutter does not work fast enough the image will be blurred. A high grade shutter giving a wide range of speeds is, therefore, essential for instantaneous pictures. A fine lens like the Turner-Reich Anastigmat can not be used to the best advantage without a shutter designed for speed.

Speed of Optimo and Acme

All sizes one second to 1/300 second.					No. 0 1/250	No. 1 1/200	No. 2 1/150	No. 3 1/100
No.	Size	Equiva- lent Focus	Focus Front Comb.	Focus Back Comb.	Price in Optimo Shutter		Price in Acme Shutter	Price in Compound Shutter
0	3¼x4¼	5"	12"	8"	\$ 60.00		\$ 63.00	\$ 63.00
1	4x5	6¼"	14"	11"	70.00		71.00	72.00
2	5x7	7½"	18"	12"	77.00		80.00	81.00
3	5x8	8½"	20"	14"	88.00		90.50	89.00
4	6½x8½	10½"	24"	18"	113.00		115.50	118.00
5	8x10	12"	28"	21"	134.50		137.00	137.00
*6	11x14	15"	36"	24"	177.50		180.00	190.00

*Working aperture F:7.5.

"I have been using one of your Series II *Turner-Reich Anastigmat Lenses* for the past 12 years and it's the best lens of its kind that I ever saw."

Arthur Lyle,
62 McDowell St., Welch, W. Va.



8x10 negative made with
5x8 Turner-Reich Lens

*By A. J. Baker
Portland, Ore*

Commercial photography in all its interesting phases demands a good lens for technical excellence which will please the customer and bring prestige to the photographer. The Convertible Turner-Reich Anastigmat F: 6.8 is unrivalled for this class of work.

Philadelphia, Pa.
"I have told all my customers that the *Turner-Reich Lens* is best of all I have tried. I swear by it for all my construction work, and am now trying it for aeroplane work."

W. B. Jennings,
1305 Arch St.



What Others Say

DAILY, we receive letters from various parts of the country complimenting our products. These letters are unsolicited and our files contain thousands of them. Space permits us to set forth just a few.

"My acquaintance with the Turner-Reich Lens began over twenty years ago. In that time, I have used . . . and . . . anastigmats (all good lenses), but I have not gotten the brilliancy that I have with the T-R."

(Office Chief of Engineers, U. S. Army.)

"We have owned several cameras in the last twenty-five years, but I think that there is none better than the camera and lens that you manufacture. The Turner-Reich lenses are in a class by themselves, the best I ever saw or used and my Korona Camera is a beautiful instrument. For fine pictures, I will take the Korona Camera and Turner-Reich Lens."

"I am very much pleased with the lens. It is a peach and sure does cut sharp wide open and the extra elements come in handy."

"I recently purchased from my dealer one of your Korona Pictorial View Cameras fitted with a Turner-Reich Series II Convertible Lens. This has proved to be a wonderful machine and I cannot compliment you too highly on it. It has done some fine work for me and I feel sure that I have as good a camera as it is possible to buy for anywhere near the money."

"We are getting more mileage and satisfaction from this camera than any of the several we have ever owned."

"When I am ready to purchase a Telephoto Lens or any other kind, it will be a Gundlach, as I have a Gundlach Lens at present and I am more than satisfied with it."

"I have been the owner of one of the 8x20 Korona Cameras for the past five years and I have been so well satisfied with the results that I would not be willing to take ten times the amount I paid for it."

"I purchased a Turner-Reich. I liked the lens so well I bought a Gundlach. This has also met our ideas of being an ideal lens. We have done work with it that we are mighty proud of. You see, we are mighty well pleased with your lenses."

"I have used a . . . , an . . . Anastigmat, a . . . and a . . . , they are all good lenses I guess, but I wouldn't trade my Turner-Reich for any of them simply because my Turner-Reich has produced more good pictures for me in the last two months than all the other lenses in ten years."

"I have purchased a Turner-Reich No. 2 Convertible and am very well satisfied with same; in fact, it is the best lens I have ever used."

"We prize our set of Turner-Reich Lenses above all others in our collection. They fully meet our requirements—that is saying something in an establishment like ours."

(General Motors Truck Company.)

"Now then; who do you people know here in Chicago, that would be foolish enough to trade a Turner-Reich for a . . . ?"

"I am keeping the 7½ inch lens and consider it the finest soft focus lens that I have ever used, and I believe that I have tried every soft focus lens made . . ."



Turner-Reich

THE PERFECT AMERICAN LENS,—IN SETS

CONVERTIBLE ANASTIGMAT F:6.8

NINE DIFFERENT FOCAL LENGTHS AT YOUR COMMAND
WITH ONE SET

A SET of Turner-Reich Lenses of four single combinations takes the place of nine different lenses at much lower cost, greater convenience and saving in weight. The four single combinations will form six doublets providing the photographer with a battery of lenses of different focal lengths from which he can choose the right one to suit the subject or viewpoint. Lenses all fitted to use interchangeably in one shutter. The Convertible Turner-Reich Lens is a double Anastigmat in the sense that each of its single combinations is fully corrected and is independent of its relation to the other. The single combinations are very useful for such work as requires long focal lengths. Nearly all pictures made with *Cirkut Panoramic Cameras* are taken with single combinations of Series II Turner-Reich Anastigmats. Proved to be the best lenses in the world for these cameras.

PRICES

Sets for 8x10 and Larger Cameras
Nine Different Focal Lengths in a Set

Single Combinations of	Focal Lengths in Combinations	Working Aperture	In Suitable Shutters	Price per set In Shutters
14 in.	14 in. + 18 in. = 8 in.	F:6.4	No. 4 Betax	\$216.00
18 in.	14 in. + 24 in. = 9½ in.	F:7.6	No. 4 Optimo	223.50
24 in.	14 in. + 28 in. = 10½ in.	F:8.4	No. 4 General	219.00
28 in.	18 in. + 24 in. = 10½ in.	F:6.8	No. 4 Ilex Universal....	221.00
	18 in. + 28 in. = 11½ in.	F:7.5	No. 4 Ilex Acme	226.00
	24 in. + 28 in. = 13 in.	F:8.3	No. 3 Compound	226.00

Note.—The combination with the longer focal length should be used in front when using two combinations to form a doublet. When using the combinations singly screw the lens into the rear adapter.

Turner-Reich

SYMMETRICAL ANASTIGMAT F: 6.8, SERIES III

THESE larger sizes are made by the same formula as the convertible lenses with which they are identical in quality. The single combinations may be used separately, both front and rear having about equal focal lengths and about twice the focal length of the complete lens.

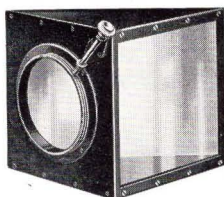
No.	Size	Diameter of Lenses	Equiva- lent Focus	Price in Cells	Price in Barrel	Price in Betax Shutter
6	10x12	2 in.	14 in.	\$132.00	\$147.00	\$150.00
7	11x14	2½ in.	17 in.	165.00	185.00	
8	14x17	3½ in.	21 in.	242.00	267.00	

"We have put this set of *Turner-Reich Lenses* to some very severe tests and have found it more than equal to anything we have ever used."

Jos. E. Johnson Photo Corp., Anderson, Ind.



GUNDLACH MANUFACTURING CORPORATION



Turner-Reich

THE PERFECT AMERICAN LENS Series V. Anastigmat F:9

THESE lenses are intended for process work and all other purposes of reproduction which require absolute definition. They are the best lenses for all kinds of commercial photography above 8x10 as they are smaller and much lighter than lenses of larger working aperture. There is a considerable saving in cost as compared with more rapid lenses of equal focus lengths. As satisfactory depth of focus can never be secured in commercial work when using fast lenses of these focal lengths without stopping down to at least F:9 it follows that a larger aperture offers no advantage. Our lenses give a perfect image free from chromatic aberration, astigmatism or distortion. Definition is critically sharp over the whole field. The homogeneous formation and permanency of Turner-Reich lenses make them especially desirable for use in establishments where chemicals and acid fumes are present. For color work, half-tones, engravers and commercial copying, enlarging, etc.

PRICES

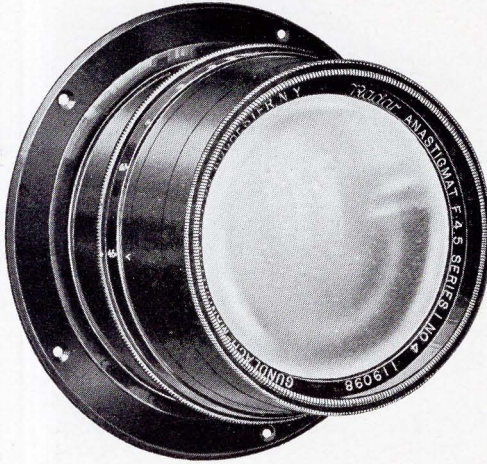
No.	Diameter of Lenses	Size	Equivalent Focus	Price in Cells	Price in Barrel with Iris Diaphragm	Suitable Size of Prism	Price of Prism Extra
1	1 $\frac{5}{8}$	10x12	14 in.	\$ 95.00	\$107.00	2 in.	\$ 60.00
2	2	16x18	18 in.	132.00	147.00	2 $\frac{1}{2}$ in.	72.00
3	2 $\frac{5}{8}$	18x22	24 in.	176.00	194.00	3 in.	95.00
4	3 $\frac{3}{8}$	22x25	30 in.	218.00	243.00	3 $\frac{1}{2}$ in.	125.00



Korona Focusing Glass

A VERY useful magnifier for examining the image on the ground glass, especially when the subject is poorly illuminated, as in the case of many interiors. The lens is mounted in an adjustable tube, and a set screw holds it at any desired point.

Price in nickel-plated mount . . . \$3.00



Radar

ANASTIGMAT F:4.5

A HIGH GRADE SPEED LENS

MODERN photography is largely speed work. Exposure must be brief for many reasons, depending upon the class of subject. It may be a rapidly moving object, the fleeting expression of a child, or merely poor light conditions, which press photographers frequently have to contend with. In any case a lens of large aperture is a great aid and frequently indispensable, because successful results cannot be obtained without it.

The essentials of a high speed lens are—critical definition, a flat field at full aperture, a brilliant image. These conditions are met in the highest degree by the Radar Anastigmat F:4.5. A lens of five elements, two forming an uncemented front combination and the other three a cemented rear combination. This formation provides for speed.

This lens has all the qualities a strictly high grade lens must possess. It is suitable for every class of photography which demands rapidity and optical efficiency. For portraiture, in the studio or home, and groups, as well as outdoor high speed work, under all conditions, it is an ideal lens.

Particularly suitable for studio, groups, child portraiture, speed work with reflex cameras, copying, enlarging. Prices on next page.



GUNDLACH MANUFACTURING CORPORATION

Radar Anastigmat F:4.5

PRICE LIST

No.	Size	Equi. Focus	Dia. of Cells	Price in Cells	Price in Barrel	Price in Betax Shutter	Price in Optima Shutter	Price in Acme Shutter	Price in Compound Shutter
00	2 1/4 x 3 1/4	3 1/2"	1 1/8"	\$ 27.50	\$ 35.50	\$ 36.50	\$ 42.50	\$ 45.50	\$46.50
0	3 1/4 x 4 1/4	5"	1 1/2"	33.50	42.50	45.50	50.50	52.00	54.00
1	4x5	6 1/4"	1 1/8"	39.00	51.00	51.00	59.00	61.50	64.00
2	5x7	7 1/2"	2 1/4"	49.50	64.50	64.50	72.00	74.50	74.50
3	5x8	8 1/2"	2 1/2"	63.00	78.00	78.00	85.50	88.00	98.00
4	6 1/2 x 8 1/2	10 1/2"	2 1/8"	102.50	120.00	120.50			137.50
5	8x10	12"	3 1/4"	134.00	159.00	152.00			174.00
6	10x12	15"	4 1/4"	156.00	190.00				
7	11x14	18"		192.50	242.50				

SUNK MOUNTS

This style of mount with iris diaphragm
will be supplied at the following prices:

2 1/4 x 3 1/4
\$10.50

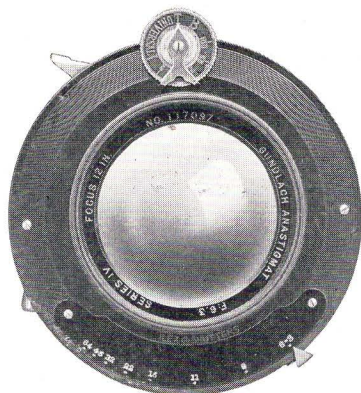
3 1/4 x 4 1/4
\$12.00

4x5
\$15.00

5x7
\$20.00



FOR FINE DETAIL AND CLARITY USE A RADAR F:4.5
THE APPROVED LENS



Gundlach Anastigmat Lens F:6.3

SERIES IV

A MODERATELY PRICED ANASTIGMAT FOR ALL GENERAL PURPOSES

TO SUPPLY the demand for a good lens at a moderate price, we offer the Gundlach Anastigmat F:6.3. It has four elements, two in each combination, by which we can obtain higher correction and more satisfactory objectives. A lens to bear the Gundlach name must be a good lens.

These lenses have a very flat field, yield excellent definition and evenly illuminate or cover one size larger than they are listed for. Splendid for commercial work, and they also produce beautiful results in studios when used for portraits and groups. Excellent for copy work, enlarging, views. A real value at a moderate figure.

Size	No.	Equivalent Focus	Diameter of Cells	Price in Barrel	Price in Betax Shutter	Price in General Shutter	Price in Universal Shutter	Price in Optimo Shutter
0	3 1/4 x 4 1/4	5 1/4"	1 1/8"	\$26.00	\$26.00	\$28.00	\$ 32.50	\$33.00
1	4x5	6 1/2"	1 1/8"	29.00	29.00	32.00	35.00	37.00
2	5x7	7 1/2"	1 1/2"	36.00	38.00	39.00	42.00	43.00
3	5x8	8 1/2"	1 3/4"	44.00	44.00	47.00	50.00	52.00
4	6 1/2 x 8 1/2	10 1/2"	2 1/8"	48.00	51.00	54.00	56.00	58.50
5	8x10	12"	2 1/2"	68.00	68.00	71.00	73.00	75.50
6	11x14	16"	3 1/4"	99.50	97.50		109.00	

When ordered in cells, customers' shutters should be sent in for fitting to insure precision in mounting and adjusting. We cannot be certain of identifying a shutter by description, as shutters of the same kind vary to some extent. Extra charge is made for fitting.



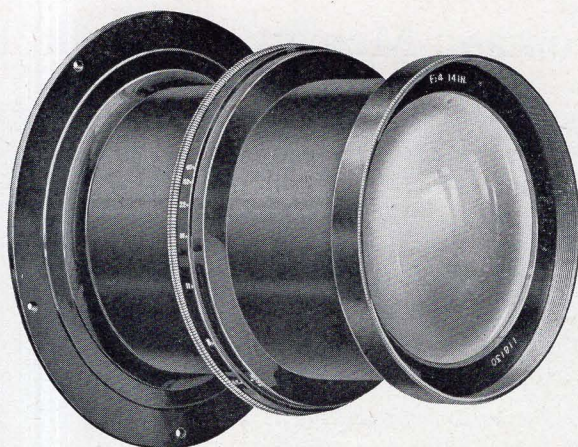
GUNDLACH MANUFACTURING CORPORATION



A WELL known photographer said to our representative: "Do you know you are making a great lens in the Hyperion. The more I use this lens, the better I like it."

Once the portrait photographer realizes the possibilities of the Hyperion, he will value it as an indispensable part of his equipment. The soft definition eliminates considerable retouch work.

"The finest soft focus lens that I have ever used, and I believe that I have tried every soft focus lens made in America."



Hyperion Diffusion Portrait Lens, F:4

A CONVERTIBLE LENS OF UNUSUAL QUALITIES FOR ARTISTIC PORTRAITURE AND PICTORIAL PHOTOGRAPHY

"The more I use this lens, the better I like it."

THE Hyperion Diffusion Portrait Lens F:4. assists the photographer and pictorialist to create the ideal picture. It produces the soft definition the eye is accustomed to see. It subdues the optical effect without loss of detail or fidelity of modeling. Shades of lighting and extremes of high light and shadow are preserved with a soft but brilliant effect, agreeable to the artistic sense. The degree of softness is controlled by your use of the diaphragm. Formed of two cemented combinations with two thin elements in each. The single combinations are of unequal focal lengths, each corrected for use separately, with working apertures of F:6.3. and F:11. respectively, making it a truly convertible lens.

Diffusion of image is obtained by a slight under correction for spherical aberration. The field is flat at full aperture. Sharp definition begins at about F:6.3. Perfect chromatic correction insures coincidence of the visual and chemical image which is brilliant and without flare, as there are no air spaces in the combinations to cause reflections. In designing this lens we kept these physical requirements of a perfect lens in view as well as the ideal optical result to be attained.

We instruct you how to use this lens properly.

PRICE LIST

No.	Size	Focal Length	Focus Rear Combination	Focus Front Combination	Flange I. D.	O. D.	Price in Barrel	Price with Studio Shutter	Price of Flanges
1	4x5	7"	10"	18"	2 3/4"	3 5/8"	\$32.00	\$44.00	\$2.00
2	5x7	9"	15"	21"	3 1/8"	4 "	40.00	52.00	2.50
4	6 1/2 x 8 1/2	12"	18"	30"	3 1/8"	5 1/4"	60.00	75.00	3.50
5	8x10	14"	20"	36"	4 5/8"	6 "	85.00	100.00	4.50
7	11x14	18"	36"	36"	5 1/8"	6 1/2"	112.00	132.00	5.00



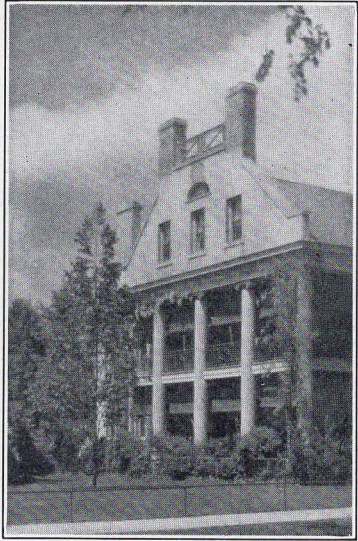
GUNDLACH MANUFACTURING CORPORATION

Achromatic Meniscus Portrait Lens F:6

THE soft definition produced by the Achromatic Meniscus Portrait Lens imparts an artistic quality which produces very pleasing results in portraiture and views. An ideal lens for pictorial photography. Its softening influence gives a charming effect to many common-place subjects.

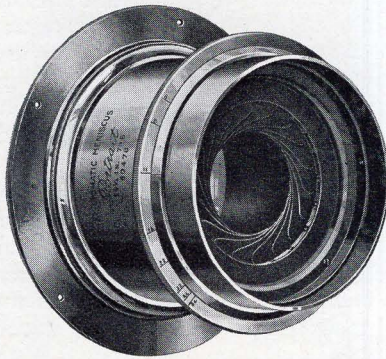
A single achromatic lens of meniscus form which many photographers prefer on account of its simplicity and freedom from internal reflecting surfaces.

The preference for this type of lens by pictorial photographers has induced us to list smaller sizes for Reflex Cameras. Many photographers use this lens for studio portraiture.



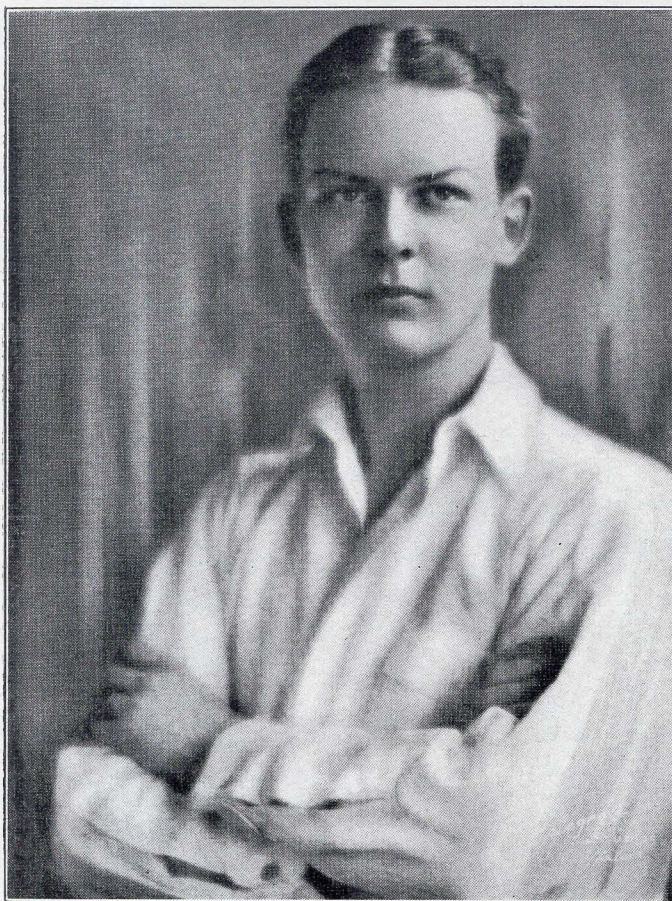
Try this lens with your Reflex Camera for artistic effects, in any of the three smaller sizes.

The larger sizes are all suitable for cameras up to 8x10 size. The customer should choose the focal length most adaptable to the bellows capacity of his camera or the working distance of studio. These lenses will actually cover much larger than the sizes listed.



PRICE LIST

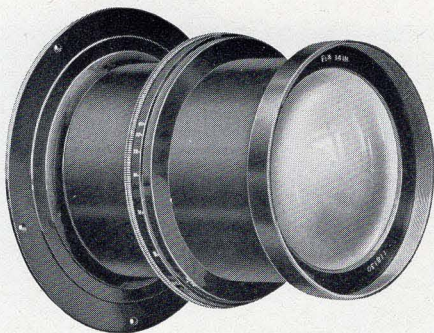
No.	Size	Focal Length	Dia. of Cell	Flange I. D.	O. D.	In Barrel	Betax Shutter	Studio Shutter	Universal Shutter
1	3 1/4 x 4 1/4	5 1/4"	1 3/4"	1 "	1 11/16"	\$21.00	\$24.00		\$26.00
2	4x5	7 1/2"	1 1/2"	1 9/16"	2 1/4"	23.00	27.00		28.00
3	5x7	10 "	1 11/16"	2 "	2 3/4"	27.00	30.00		33.00
4	6 1/2 x 8 1/2	13 1/2"	2 1/8"	3 1/8"	4 "	32.00	38.00	\$41.00	47.00
5	8x10	15"	2 1/8"	3 1/8"	4 "	35.00	42.00	44.00	50.00
6	8x10	16 1/4"	3 1/4"	3 1/16"	4 3/4"	42.00	50.00	52.00	57.00
7	8x10	18 "	3 3/4"	3 1/16"	4 3/4"	48.00	58.00	60.00	63.00



This is one of hundreds of fine examples of artistic portraiture produced by Cosgrove Bros. of Buffalo, N. Y., with an Achromatic Meniscus Portrait Lens F : 6 for their theatrical customers. Much of the beautiful quality of the above picture is lost in the reproduction. The original is softer and was printed in a light sepia tone on paper with a linen finish, which is very pleasing.



The fine quality of the image at full aperture enables the photographer to take full advantage of the great speed of the Series B Gundlach Portrait Lens F: 4. This lens is invaluable for large heads, child portraiture, and the general run of studio work.



Series B Gundlach Portrait Lens, F:4

IDEAL FOR LARGE HEADS AND CHILD PORTRAITURE

SUCCESSFUL portraiture depends very largely upon short exposures to catch the charm of a fleeting expression. This requires a rapid lens which produces a fine quality image at full aperture. The Series B Gundlach Portrait Lens F:4 is an improved lens of the Petzval type, corrected to a higher degree for flatness of field and capable of reproducing faithfully in the negative the fine detail and tonal values without exaggeration. Its relative speed is 50% faster than a lens working at F:5. An ideal lens for large heads and child portraiture. Round, warm tones and excellent depth. Every studio should have a lens of this type of 18" focal length for large heads on an 8x10 plate. We recommend the 24" lens to those who have sufficient operating distance. Long focal lengths insure good perspective, without setting camera too close to subject.

PRICE LIST

No.	Size	Focal Length	Flange		Price in Barrel	Price with Studio Shutter	Price of Flanges
			I. D.	O. D.			
1	4x5	7½"	2¾"	3⅝"	\$ 45.00	\$ 57.00	\$2.00
2	5x7	9"	3⅞"	4"	60.00	72.00	2.50
4	6½x8½	12"	3⅞"	5¼"	90.00	105.00	3.50
5	8x10	14"	4⅝"	6"	125.00	140.00	4.50
6	11x14	18"	5⅞"	6½"	170.00	190.00	5.00
7	14x17	24"	5⅞"	6½"	185.00	205.00	5.00

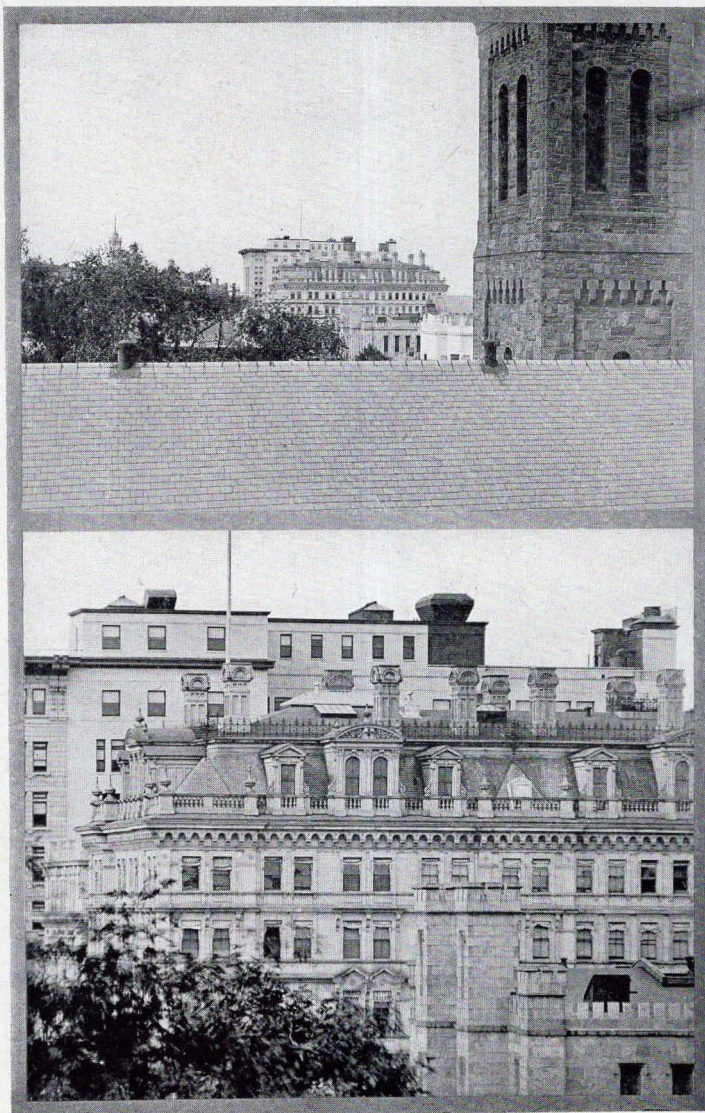
The 14x17 size has an aperture of F:6 and is supplied in a mount of the same size as the 11x14 but a little longer.

"Your Series B Portrait Lens is without question the best for children we have ever been privileged to use."

C. W. Neiswanger,
The Neiswanger Studio, Muncie, Ind

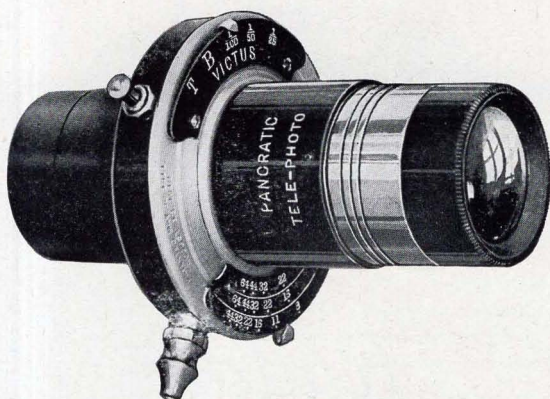


GUNDLACH MANUFACTURING CORPORATION



Upper picture
taken with
6" lens

Lower picture taken with
Pancratic Telephoto Lens
Magnification 4 dia.



Pancratic Telephoto Lens

ALWAYS IN DEMAND—MAGNIFYING POWER

THE Pancratic Telephoto has simplified telephotography, broadened interest in this fascinating art, and made it possible for any one having a camera with sufficient bellows extension to take distant or inaccessible subjects without using a clumsy telephoto attachment. Ready for use in any shutter having openings for the lens cells $1\frac{3}{16}$ in. diameter. Many 4x5 and 5x7 cameras have shutters of this size. Larger shutters must be sent to us for fitting for which we charge \$3.00.

The Pancratic is a complete lens and is not used as an attachment to another lens. It is formed with a front positive combination in an adjustable mount graduated with the magnifying powers, and a negative rear combination between which is placed the shutter.

Pancratic gives fine definition. Results compare favorably in every way with the performance of a telephoto attachment fitted to an anastigmat; in fact, the Pancratic is superior in covering power, much more convenient, very much smaller and lighter. The positive combination has a focal length of about 6 inches and working aperture of F: 12. Focal length of negative lens is about 3 inches. A range of magnifying power between 3 diameters and 8 diameters is obtainable, equivalent to using lenses of 18 in. to 48 in. focus. Films and plates from $3\frac{1}{4}\times4\frac{1}{4}$ to 8x10 may be covered.

Magnifications in diameters	3	4	5	6	7	8
Diameter of light circle	5"	7"	9"	11"	13"	15"
Bellows length required	6"	9"	12"	15"	18"	21"

Add $1\frac{1}{2}$ inches to bellows length to allow for distance lens projects inside of the camera. Weight of lens and case, 6 ozs.

PRICES

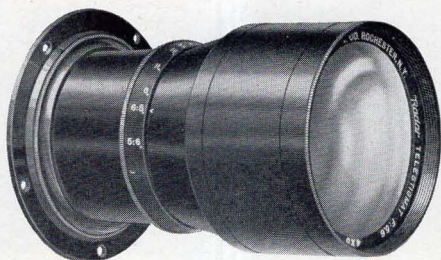
No. 1 Pancratic Telephoto Lens with leather case	\$18.00
No. 2 Gammax Shutter	6.00

A Shutter of some kind is much preferable to a Barrel Mount for a Lens of this kind.

Sold by all dealers subject to 10 days' trial. Send for booklet Telephotography with a Pancratic Telephoto Lens.



GUNDLACH MANUFACTURING CORPORATION



Radar

Telephoto Anastigmat F:5.6

DOUBLES SIZE OF IMAGE—MAKES CLOSE-UPS

A REMARKABLE type of Anastigmat. Back focus one-half the length of its equivalent focus. Makes it possible to obtain image of large size with short bellows. This has many advantages.

Makes close-ups without setting the camera too near the object. Very desirable when taking birds or animals. In all kinds of work the photographer can double the size of the image without changing his position.

Composed of two lenses in each combination, cemented together. Avoids internal reflecting surfaces and insures brilliant image. Corrections of a high grade anastigmat. Image is uniformly sharp at full aperture, with a flat field. Small diameter of rear combination permits fitting to cameras with small lens boards.

May be fitted to all kinds of Reflex Cameras of same sizes as the lenses. Every photographer will find a lens of this type a very useful addition to his equipment and, at times, indispensable.

PRICES

No.	Size	Back Focus	Equiva- lent Focus	Rear Cell	Diameter Front Cell	In Barrel	In Betax Shutter	In Optimo Shutter	In Universal Shutter
00	2¼x3¼	4½"	9"	1½"	1⅞"	\$ 75.00	\$ 83.00	\$ 89.00	\$ 86.00
0	3¼x4¼	5½"	11"	1¾"	2½"	90.00	98.00	104.00	102.00
1	4x5	7"	14"	2¼"	2⅞"	115.00	125.00	130.00	129.00
2	5x7	9"	18"	2⅝"	4⅝"	140.00	152.00		160.00



Radars

Extreme Wide Angle Anastigmat F:16

FOR LIMITED SPACES AND SHORT FOCUS

ANGLE 90 DEGREES



A WIDE angle lens is indispensable for taking interiors and exteriors, including many subjects which are so situated that there is not sufficient working distance to permit using a lens of normal focal length, such as buildings in narrow streets, banquets, etc.

Radars Extreme Wide Angle Lens F:16 is the best type for the purpose. Critical definition, a flat field, uniform illumination, including an angle of 90 degrees, with ample covering power to provide for using the rising front. For studios, commercial, flashlights.

PRICE LIST

No.	Size	Equivalent Focus	In Barrel Iris Diaphragm	In Betax Shutter
2	5x7	4 3/8 in.	\$25.00	\$35.00
4	6 1/2 x 8 1/2	5 3/8 in.	32.00	42.00
5	8x10	6 1/4 in.	38.00	48.00
6	11x14	9 in.	50.00	60.00
7	14x17	12 in.	65.00	75.00
8	17x20	14 in.	85.00	95.00

Ultrastigmat Lens F:1.9

FOR CINEMA CAMERAS
WITH US F:1.9 MEANS F:1.9

THIS lens has opened up new possibilities in taking motion pictures under poor light conditions and with higher shutter speeds. It is used by the U. S. War Department, Bell and Howell, Famous-Players Lasky, Q. R. S. De Vry, and many others who appreciate its remarkable speed and optical quality.

PRICES

In Focusing Mount

25 m/m focal length—1 "	for 16 m/m Camera	\$60
40 m/m focal length—1 3/4 "	for 35 m/m Camera	60
50 m/m focal length—2 "	for 35 m/m Camera	60

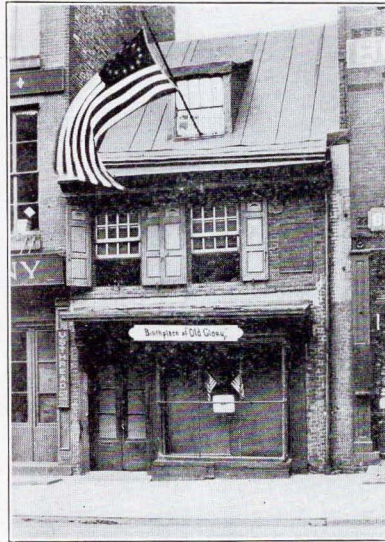


"I use this lens a great deal on commercial work as I find that I can make interiors with it that would require lights without it and get shots on bad days that I could not get without it."

Quincy Peacock,
1611 Market St.,
Jacksonville, Fla.



Pictures Enhance History



GUNDLACH
SPECIAL
ANASTIGMAT
F: 6.3

FOR HAND
CAMERAS

SPECIAL
ANASTIGMAT
F: 7.5



This is a very good simplified form of Anastigmat giving excellent definition with a flat field. Just the lens you need to take the place of a rapid rectilinear if you want a better lens. A very moderate price for a good Anastigmat.

PRICES

$3\frac{1}{4} \times 4\frac{1}{4}$
 $3\frac{1}{4} \times 5\frac{1}{2}$ or 4×5
 4×5 F:7.5

$5\frac{1}{4}$ " focal length—F:6.3
 $6\frac{1}{2}$ " focal length—F:6.3
 $6\frac{1}{2}$ " focal length

In cells	In Gammax Shutter
\$9.00	\$15.00
12.00	18.00
	19.00

If you wish to order the above lens in cells to fit an old shutter it is advisable to send us the shutter. There will be no extra charge unless special mounting is necessary and we will advise you about this when we examine shutter.





Perigraphic Convertible Lens F:5.6

A RAPID PORTRAIT, VIEW AND GENERAL PURPOSE LENS

THE PERIGRAPHIC is a very useful lens for those who wish to use one lens for many different purposes. It has a large aperture and when moderately stopped down it is a good group lens. It also may be used for views or any class of commercial subjects and the single combinations may be used separately for long focus lenses. It has remarkable covering power and may be used as a wide angle lens to cover a larger size. It has three lenses in each combination, cemented together and it is an exceptionally well corrected rectilinear lens of large aperture which has been widely used for many years.



PRICES

No.	Size	Equivalent Focus	Focus Back Lens	Focus Front Lens	Price in Cells	Price in Barrel	Price in Betax Shutter	Price in Optimo Shutter
2	5x7	8"	13½"	18"	\$42.00	\$54.00	\$54.00	\$62.00
4	8x10	12"	20½"	28"	65.00	85.00	85.00	92.50
5	11x14	16"	25½"	34"	86.50	111.50	111.50	

OTHER SIZES MADE ON ORDER

Rapid Rectigraphic Convertible Lenses F:8

AN OLD FAVORITE



A SUPERIOR form of rapid rectilinear lens, excelled only by lenses of Anastigmat type. For landscape, views and commercial. Three lenses cemented together in each combination. By this construction the corrections have been carried to a higher degree than is possible with the usual two lens system. A great favorite for over thirty years. We believe it was the first convertible lens ever made.

No.	Size of Plate	Diameter of Lenses	Equivalent Focus	Focus of Back Lens	Focus of Front Lens	Price in Cells	Price in Barrel	Price in Betax Shutter
2	5x7	1⅞"	7½"	12"	18"	\$27.00	\$36.00	\$36.00
5	8x10	1¾"	12"	21"	28"	48.00	63.00	66.00
7	11x14	2¼"	18½"	29¼"	39½"	80.00	105.00	105.00

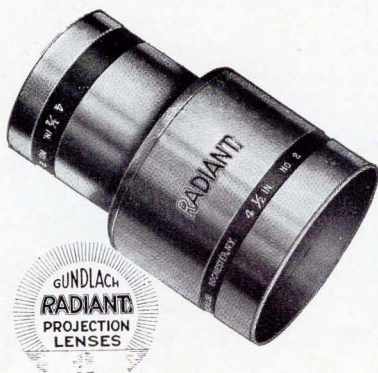
OTHER SIZES MADE ON ORDER



GUNDLACH MANUFACTURING CORPORATION

Gundlach Radiant Projection Lens

HIGHEST GRADE LENS FOR PROJECTING



WE MADE the first improvement in the quality and working aperture of projection lenses in 1908 and originated the No. 1 and No. 2 sizes, now standard. Our Radiant Projection Lenses are remarkable for their large working aperture, flat field and uniform definition from centre to margin and we recommend them as the highest grade of projection lenses obtainable for motion picture machines and stereopticons.

PRICES

No. 1 In focal lengths from $4\frac{1}{2}$ " up, graded in $\frac{1}{4}$ inches tubes, 1-15/32" dia., \$25.00

No. 2 In focal lengths from $4\frac{1}{2}$ " up, graded in $\frac{1}{4}$ inches tubes, 2-25/32" dia., 45.00

No. 1 Jackets, \$5.00

No. 2 Jackets, \$7.50

Jackets have a spiral adjustment.

These Projection Lenses in both sizes will be supplied for Stereopticons in mounts with rack and pinion adjustment.

No 1 Size, \$25.00

No. 2 Size, \$46.00

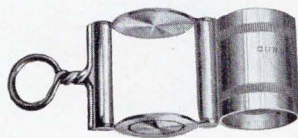
We recently purchased a RADIANT from a supply dealer, and find it to be far superior to any lens we have ever tried, and we have tried some of the higher priced ones too. It is unsurpassed for brilliancy and sharp definition.

(Signed) Ward Christensen,
Cozy Theatre, Crystal Lake, Minn.

Korona Globe Magnifier

THIS pocket magnifier is an exceptionally fine instrument which is used largely by assayers, prospectors, physicians and others who desire the best results. It consists of a sphere of crown glass enclosed in two hemispheres of flint glass, a construction which results in a large, flat field.

- | | |
|--|--------|
| No. 290—1 inch focus, nickel-plated brass mount, magnifying 11 diameters, dia. of lens 17.4 m/m | \$6.00 |
| No. 291— $\frac{3}{4}$ inch focus, nickel-plated brass mount, magnifying 14 diameters, dia. of lens 12.5 m/m | 6.75 |
| No. 292— $\frac{1}{2}$ inch focus, nickel-plated brass mount, magnifying 21 diameters, dia. of lens 10.4 m/m | 7.50 |





Turner-Reich

Prism Binoculars

THE PERFECT AMERICAN FIELD GLASS

WE BELIEVE IT IS SECOND TO NO OTHER

THE pleasure and satisfaction of possessing a prism binocular is something everyone should enjoy who is fond of outdoor life, hunting, sports, nature study and travel. The prism binocular is a delightful and useful companion, light in weight, convenient to carry and a powerful aid to vision which brings distant objects under close observation.

How fascinating it is to make an intimate study of birds and wild animals without attracting their attention, to have the satisfaction of a near view of games and players, to examine the beauties of architectural details and distant scenery when traveling, or the yachts in a race, and many other things beyond the range of human vision.

Try a Turner-Reich Prism Binocular and you will never be satisfied with an ordinary field glass of the old type. See picture page 48.



OUR BINOCULARS ARE USED EXTENSIVELY BY THE
U. S. GOVERNMENT

Linear Magnification	6X	8X	6X	8X
Diameter of objectives	22 m/m	22 m/m	30 m/m	30 m/m
Field of View—				
angular	5½°	5°	8½°	6½°
linear in feet	113.5	104.7	149	114
Weight—				
binocular	18 oz.	18 oz.	20 oz.	29 oz.
case and straps	9 oz.	9 oz.	15 oz.	15 oz.

PRICE

Including sole leather case, shoulder and neck straps.

With central focusing screw and compensating eyepiece.

6X 22 m/m Turner-Reich Prism Binocular	\$35.00
8X 22 m/m Turner-Reich Prism Binocular	40.00
6X 30 m/m Turner-Reich Prism Binocular	50.00
8X 30 m/m Turner-Reich Prism Binocular	60.00



Gundlach Simplex Microscope

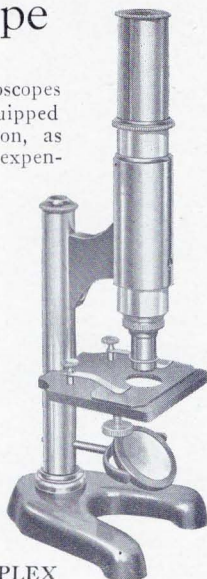
FOR SCHOOL LABORATORIES—STUDENTS

MICROSCOPIC data is revealed as perfectly as by microscopes costing much more. A scientist accustomed to a well equipped physical laboratory can use this microscope with satisfaction, as the optical system is of same quality furnished with more expensive stands.

Microscopists up to comparatively few years ago, never had the opportunity to use a microscope of such precision and optical excellence.

A full size instrument, conforming to society standards. High or low power eyepieces and objectives may be added to equipment. Stand is brass, lacquered. Base is finished in black lacquer. Draw tube 160 m/m long, nickel plated and polished where it slides.

Main tube cloth lined, same as most expensive microscopes. Stage full size. Supplementary micrometer stage, affording very delicate adjustment. Nickel plated spring clips. Plane mirror, adjustable any angle. Optical equipment—7x Huyghenian eyepiece and 2/3 and 1" divisible objective.



SIMPLEX

Height	10 5/8"	Weight	2 1/2 lbs.
Size of stage	2 3/4 x 2 7/8	Case	1 3/4 lbs.
Mirror	1 3/16" dia	Packed	5 1/2 lbs.

Price, complete, \$20.00.

Gundlach Advanced Microscope

FOR PHYSICIANS—CHEMISTS—
UNIVERSITIES—STUDENTS

AN IDEAL instrument, well adapted to general laboratory work. Serviceable and accurate, incorporating the essential features of microscope construction.

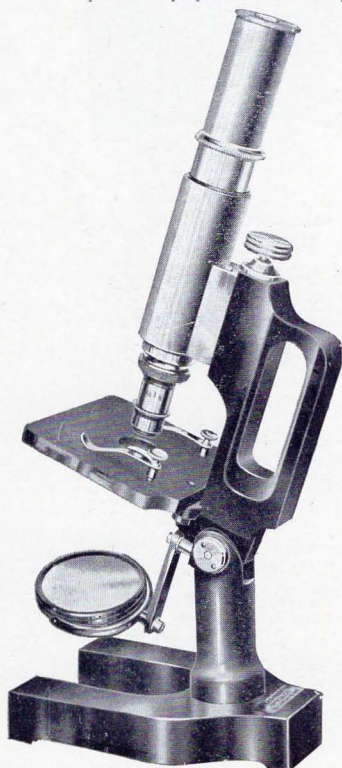
Coarse adjustment acquired by main tube sliding in cloth lined jacket. Very sensitive micrometer screw provides fine adjustment and easy operation, with elbow at rest.

Stage threaded for addition of substage ring to hold an Abbe condenser. Mirrors are plane and concave. Inclination joint and handle arm are additional features. Finely finished, with main tube nickel plated and brass parts lacquered. Main tube takes eyepieces and objectives conforming to society standards.

Height, 12"; Size of stage, 3 1/8 x 3 1/8"; Mirrors, 1 3/4" dia.

Advanced Model, including equipment of 7x Huyghenian eyepiece, 2/3 and 1/6 divisible objective and case.

Price, \$36.00.



ADVANCED



Gundlach Master Microscope

FOR SCIENTIFIC RESEARCH—MEDICAL—
CHEMICAL LABORATORIES

A laboratory instrument of standardized design—massive construction—graceful lines. Ample working space—convenient arrangement of mechanical adjustments and control.

Coarse adjustment by rack and pinion, operative from either side, with large, knurled buttons. Fine adjustment by sensitive micrometer screw, direct in action, with no reciprocating parts.

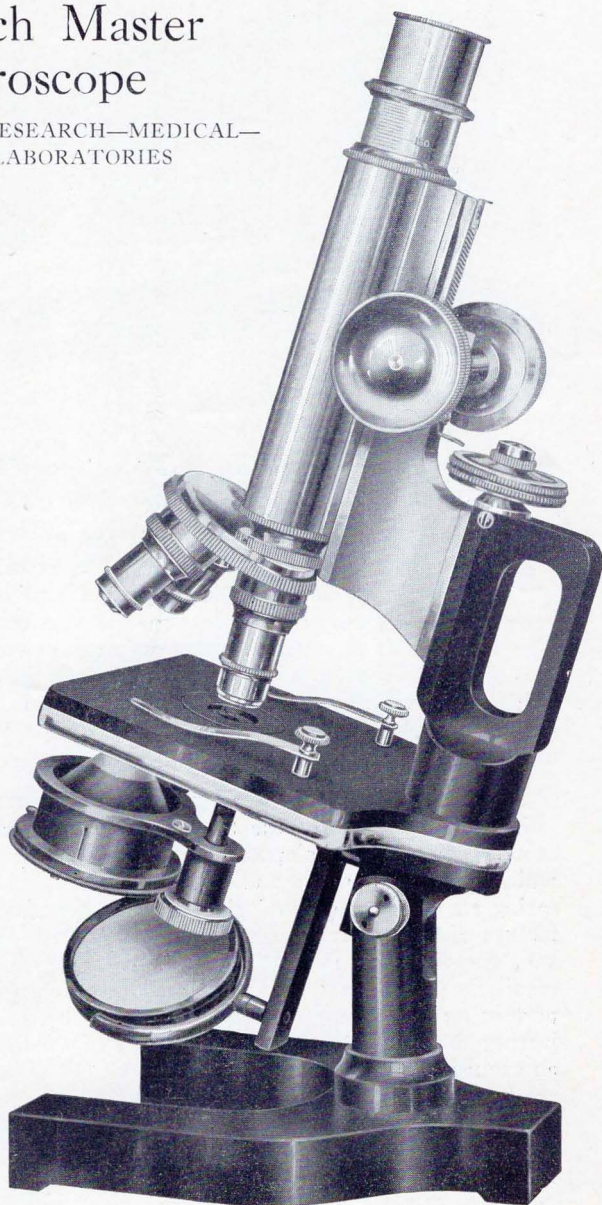
Stage is 11 c/m x 11 c/m, covered with hard rubber, with nickel silver spring clips. Abbe condenser carried by quick acting substage screw, by which it may be focused or swung out of position. Mirror has plane and concave surfaces, 1 $\frac{3}{4}$ -inch diameter, hung on swinging arm.

Complete outfit consists of microscope—case with lock and key, 7x and 3x oculars, 2/3 and 1/6 dry objectives, 1/12 oil immersion objective, triple nosepiece, quick acting substage screw, Abbe condenser 1-20 NA.

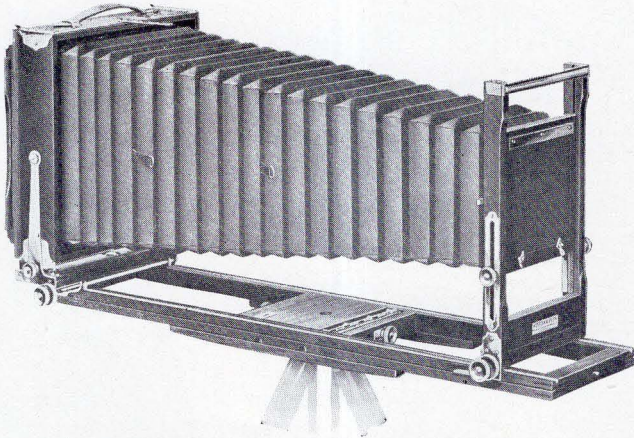
Weight, complete, 15 lbs.

Price, \$125.00

See Page 48 for Prices
of Accessories.



MASTER



Korona View Camera

ASK ANY PROFESSIONAL PHOTOGRAPHER

COMMERCIAL photography is the vocation of a large number of men who have to make pictures of every conceivable class of subject under all kinds of conditions, and the camera for this purpose must necessarily be equal to any occasion and serviceable, light and portable. The Korona View represents many years of evolution and improvement resulting in a camera with many refinements in construction, design and finish, which the experienced photographer will appreciate. We receive many compliments upon the practical ideas embodied in their construction, fine workmanship and finish.

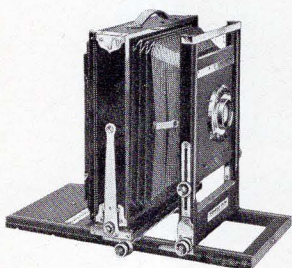
In bellows length, adjustment of the rising front, latitude of the double swing back and size of the lens board, these cameras offer the maximum capacity with a well balanced proportion of the woodwork and metal parts, which secures strength and rigidity without unnecessary weight. The spring action of the ground glass frame is the most distinctive and valuable feature of this camera. The frame is pivoted in the centre and the springs have less than half the usual distance to move, although the frame recedes readily a great deal more than the ordinary spring arrangement allows, permitting the insertion and removal of the holder very easily without jarring the camera and with no danger of straining the springs. This is an exclusive feature of our view cameras. The back and the front frames are both under rack and pinion control for focusing and the rising front and swing back also operate with rack and pinion and have convenient lock nuts.

The back stop to prevent the back from running off the bed when the rear bed section is not attached is another improvement. It works automatically. It requires none of the fussing that other stops do which are operated by an extra or third pin. Another convenience is the bed lock

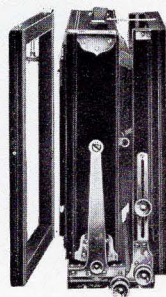


screws which fall into place and merely require a few turns to lock the bed sections together.

The $6\frac{1}{2} \times 8\frac{1}{2}$ and larger sizes are furnished with detachable bed braces which support and give great rigidity to the bed when the camera is fully



extended. For wide angle work we suggest folding the front bed section up against the front standard and focusing from the rear. This balances the weight on the tripod and avoids making the camera much heavier by the addition of a sliding bed



block, which is really an unnecessary attachment.

Our canvas cases are strongly made and lined with canton flannel. The usual straps are replaced by more convenient catches and the handle is a comfortable shape which will not cramp the hand.

The regular long case will take the camera and six plate holders except in 11×14 size, with which we supply a short case for camera and three plate holders.

SPECIFICATIONS

Walnut finish, metal parts nickel plate, reversible back, spring acting pivoted ground glass frame, double swings, rising and falling front with rack and pinion, sliding panel in back, detachable lens boards, bed brace, automatic back stop, leatherette bellows lined with rubber cloth.

	4x5	5x7	$6\frac{1}{2} \times 8\frac{1}{2}$	8x10	7x11	11x14
Lens boards	4x4	$4\frac{1}{2} \times 4\frac{1}{2}$	$4\frac{1}{2} \times 4\frac{1}{2}$	6x6	6x6	$6\frac{3}{8} \times 6\frac{3}{8}$
Bellows length	20 in.	24 in.	28 in.	32 in.	34 in.	42 in.
Weight	4½ lbs.	5½ lbs.	7 lbs.	9 lbs.	10½ lbs.	15 lbs.

PRICES

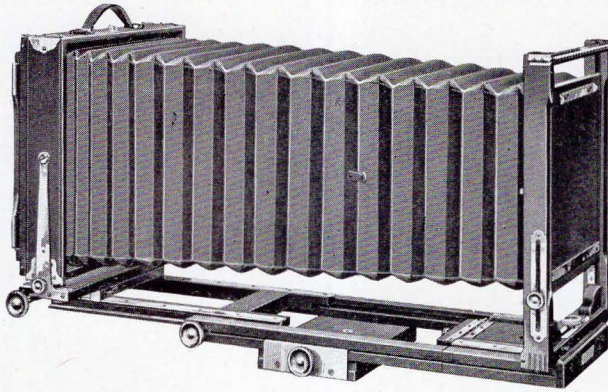
We will assume that carrying case and one plate holder are wanted with each Camera unless order specifies otherwise.

	4x5	5x7	$6\frac{1}{2} \times 8\frac{1}{2}$	8x10	7x11	11x14
Korona View Camera only	\$40.00	\$45.00	\$49.00	\$50.00	\$55.00	\$75.00
Canvas Carrying Case	5.00	6.00	7.00	8.00	9.00	10.00
Extra for leather Bellows	2.50	3.00	4.00	5.00	5.00	7.00
Plate or Film Holders	2.00	2.25	2.50	2.75	2.75	7.00
Extra Lens Boards90	.90	.90	1.00	1.00	1.25

When ordering lens boards specify the dimensions as former models take lens boards of different sizes.

The 4x5 Korona View will be supplied with the choice of a reversible back for 4x5 or $3\frac{1}{4} \times 5\frac{1}{2}$ Holders.

4x5— $3\frac{1}{4} \times 5\frac{1}{2}$ Reducing Back	\$8.50
$3\frac{1}{4} \times 5\frac{1}{2}$ Reversible Back for 4x5 Korona View	8.50



Korona Pictorial View

AN EXCELLENT CAMERA

THIS camera marks a distinct advance in camera design. It has several entirely new improvements. Beyond question the best type of camera yet produced for all round work in the studio, for commercial photography, home portraiture and with ample capacity for enlarging and reducing.

The bed is telescopic, one section sliding within the other and operated by rack and pinion, making a stronger bed which takes up less space and doing away with the detachable bed section. Rear frame has metal shoes which slide on metal guide plates so there are no grooves to wear loose. Metal to metal permits a closer fit and makes the back more rigid. When extended beyond normal focusing range there is very little or none of the bed projecting beyond the back of the camera. Camera can be more quickly focused because the back slides out on the metal guides to any point on the bed and the rack and pinion is then used only within a narrow range for fine focusing.

Two tripod sockets permit balancing the camera when partly or fully extended. A large lens board. Ample rack and pinion adjustment of the rising and falling front. Front has a lateral adjustment as well. Double swing back is pivoted in centre both vertically and horizontally. Ground glass frame is pivoted in centre and operated by spring device which allows frame to recede more than necessary for insertion of holder without jarring the camera. These springs never get out of order and the frame is under uniform pressure at all points. The best back ever put on a camera and an exclusive Korona feature. We have added clips for holding the focusing cloth which are located on top of the rear frame. You can focus more comfortably than you ever did before.



The Sliding Bed Block furnished with the 5x7 and 8x10 sizes is a very convenient attachment for centering the camera on a tripod or stand to balance it so the weight will be equally distributed. Rests more firmly, reduces vibration and is a safeguard against damage because it is not so easily upset by wind or accident.

The Pictorial View Camera has every desirable feature for home portraiture and it is strongly built of cherry with walnut finish. All metal parts are made of brass, nickel plated.

SPECIFICATIONS

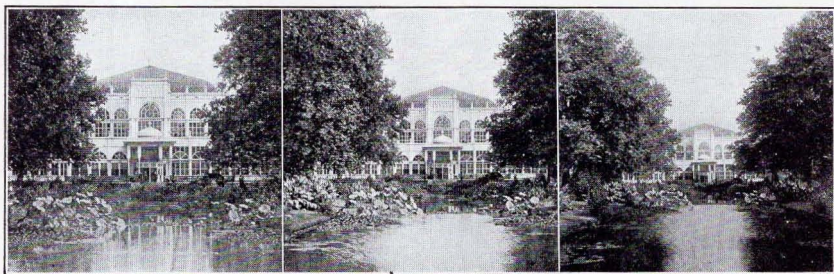
	5x7	8x10
Lens Board	5 $\frac{1}{4}$ x5 $\frac{1}{4}$	7 $\frac{1}{2}$ x7 $\frac{1}{2}$
Bellows length	21 inches	29 inches
Weight of camera	5 $\frac{3}{4}$ lbs.	11 lbs.
Weight of case	3 $\frac{1}{2}$ lbs.	7 $\frac{1}{2}$ lbs.

PRICES

	5x7	8x10
Pictorial View camera without case or holder.....	\$55.00	\$65.00
Leatherette covered case	8.00	10.00
Extra charge for leather bellows	3.00	5.00
Plate holders	2.25	2.75
Film holders	2.25	2.75
Extra Lens boards90	1.25

The regular equipment of the 5x7 and 8x10 sizes is a leatherette bellows.

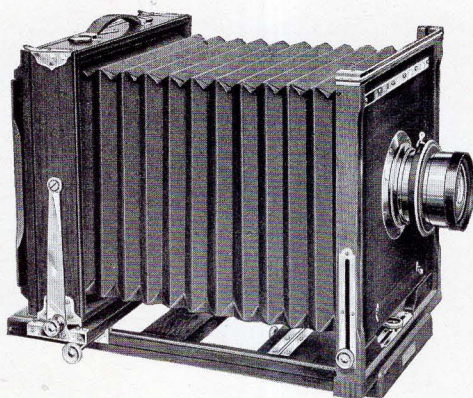
The Carrying Case is covered with black leatherette and all four corners protected by metal pieces. Cover is attached with metal hinges and locked with Korona fasteners, a new device very easy to lock and unlock. Cases take the camera and six plate holders or seven film holders.



ALL MADE FROM THE SAME VIEW POINT
WITH A TURNER-REICH LENS



GUNDLACH MANUFACTURING CORPORATION



Korona Home Portrait Camera

THOUSANDS IN DAILY SERVICE

IT FULFILLS very nicely the need of a light, compact, portable camera for home portraiture or for use in small studios, private or professional. Including all regular adjustments and Korona features it has a lens board of ample size to accommodate lenses of largest aperture.

Made of selected cherry, finished in walnut, the metal parts are of brass, nickel plated. Rising and falling front operated by rack and pinion and a lateral front adjustment. Double swing back with vertical swing operated by rack and pinion. Back is reversible and contains two sliding panels for making two or four exposures. Ground glass frame controlled by our center pivoted spring actuated device, an exclusive feature, making it extremely easy to insert and remove holders.

The short canvas case, lined with canton flannel, takes the camera and six holders in 5x7 size and three holders in 6½x8½ and 8x10 size.

Size	Bellows Length	Lens Board	Weight
5x7	13½ inches	6x6	5 lbs.
6½x8½	16½ inches	7x7	6 lbs.
8x10	18½ inches	9x9	8 lbs.

NOTE:—In ordering replacement lens board, measure your old one and specify size as this camera was formerly made with different size boards.

PRICES

We will assume that carrying case and one plate holder are wanted with each Camera unless order specifies otherwise.

	5x7	6½x8½	8x10
Korona Home Portrait Camera, only.....	\$40.00	\$45.00	\$47.00
Canvas Carrying Case.....	5.00	5.50	6.00
Plate or Film Holder.....	2.25	2.50	2.75
Leather Bellows, extra.....	2.00	2.50	3.00
Lens Boards, specify size.....	.90	1.00	1.25

See description of Improved Korona Folding Studio Stand.

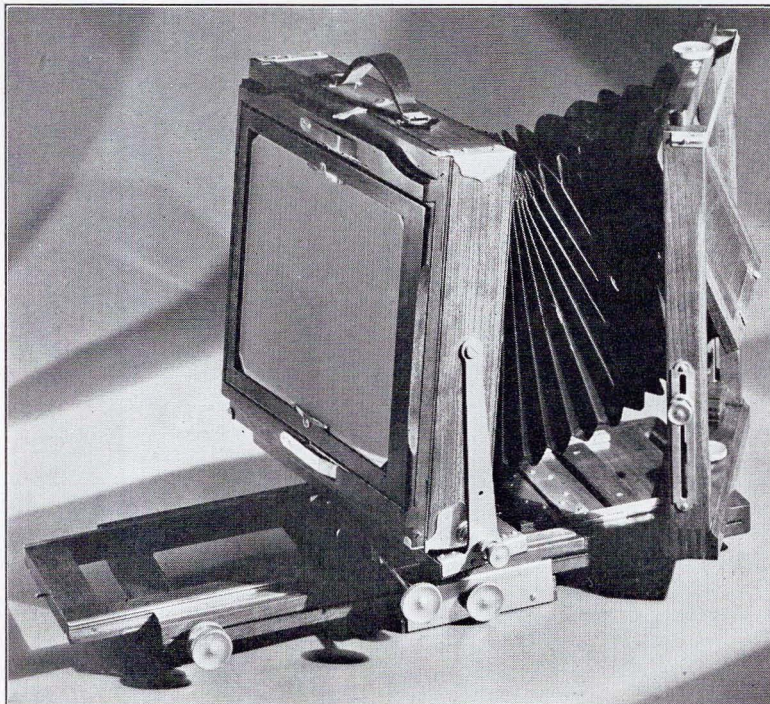
This camera also fits the long carrying case made for the Korona View.



Korona Commercial Camera

EXTREME ADJUSTMENTS

THE ARISTOCRAT AMONG CAMERAS



EVERYBODY understands that it requires a good lens to produce good results. But not so many know that the results obtainable by a good lens are limited by the adjustments of the camera. Note the picture and you can vision the extreme adjustments made possible by the Korona Commercial.

To obtain the best results it is necessary to use a camera which enables the film or plate to be placed in such a position that the image made by the lens can be utilized to the best advantage under any and all conditions. The camera must have swing-back, rising and falling front, tilting front, side-swing and many other adjustments.

Chapters can be written around the subject of camera adjustments for improving perspective, critical focusing and other factors, without exhausting the explanation of the uses of rising, swinging and tilting effects.

The Korona Commercial has all of these all-direction adjustments. It is a luxurious camera.

Size 8x10, telescopic bed, metal to metal sliding sections, two tripod sockets, sliding tripod block, weight 12 lbs., 6x6 in. lens board, bellows extension of $4\frac{3}{8}$ in. to $27\frac{1}{2}$ in. can be made from $2\frac{3}{4}$ in for wide angle to $29\frac{1}{2}$ in. for long extension by ordering reversible recessed lens board.

PRICES

Korona Commercial only	\$70.00
Leatherette covered case	10.00
Special recessed lens board	5.00
Film or Plate Holder	2.75
Extra for leather bellows	5.00
Camera and Turner-Reich lens in the Deluxe Combination	185.00

Ask for pamphlet "Why a Camera Should Look Up, Down or Sideways."



1200 Prints Sold in One Month

Box 1452, Cristobal, Canal Zone

The Gundlach Manhattan Optical Co.,

Rochester, N. Y., U. S. A.

Dear Sirs:

While looking over your catalogue to select a 5x7 outfit for a friend who is starting in on commercial photography, I noticed several letters recommending your equipment and thought it will interest you to tell you of the work I have done with a 7x17 Korona Panoramic View Camera equipped with a Convertible Turner-Reich Anastigmat Lens F:6.8.

Early in 1922 I placed an order with a dealer in Syracuse to get me the best 7x17 outfit on the market, price being no object and he shipped the Korona Panoramic View and Turner-Reich Lens. The first two negatives sold approximately 400 prints.

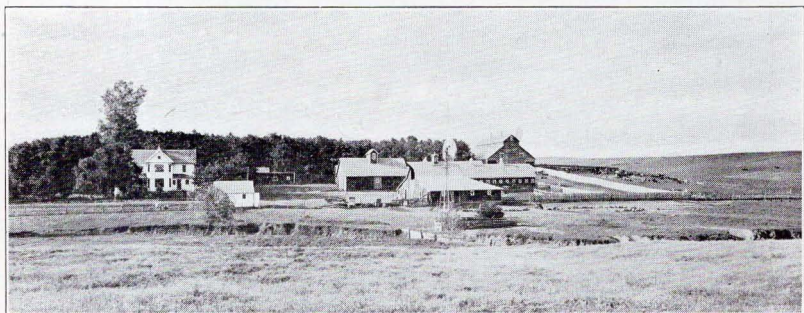
Since that date I have taken several hundred negatives, and I can truthfully say that as a money maker, there is nothing that I have ever owned or seen that will touch it; a negative taken 7/22/24 of H. M. S. "HOOD," transiting the Canal, holds the present record of salability, as to date (8/25/24) I have made up and sold about 1,200 7x17 double-weight prints of the same.

For groups, either outdoor, studio or flashes, the covering power and depth of focus is so exceptional that I have yet to find its equal; for landscape and panoramic view work, to show accurately, without false perspective, it is sure the best ever and I find the combination of the 12, 21 and 28 in. lenses to cover about all the requirements here. I have one of your telephoto outfits, recently purchased, but so far have been too busy to try it out. I use the 12 in. lens occasionally on my 5x7 Home Portrait Graflex when I wish to use the longer focal lengths available.

Again I wish to congratulate you on putting out such an outfit and I am pleased to recommend your goods when the opportunity occurs, as at the present time. I am sending you a couple of prints that may be interesting, although they are not the best that I have taken by far.

Sincerely,

(Signed) L. C. Leighton.



Korona Panoramic View Camera

THIS camera has many advantages to commend it for commercial photography. The proportions of the picture are especially suitable for groups, farm views, railroad scenery, manufacturing plants, automobiles, country estates and practically every class of subject. The panoramic sizes make artistic, interesting pictures of many subjects which would otherwise be commonplace. The pictures have individuality.

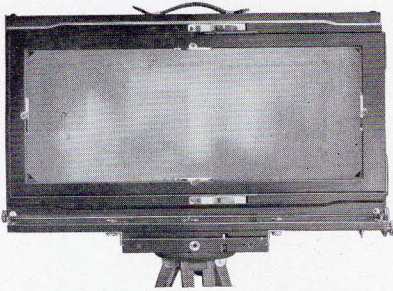
A Korona Panoramic View Camera is an investment which brings big returns. It creates new business at better prices and gives the photographer a reputation for enterprise by using modern apparatus. Photographers have reported to us that they have paid for the outfit by taking one or two pictures.

There is no distortion, no curvature of straight lines incidental to Panoramic Cameras of other types. Korona Panoramic View Cameras may be used under any conditions, indoors or out, which permits taking pictures.

Beautifully made of cherry with walnut finish, all metal parts nickel plated. Rising and falling front, double swing back and focus from the front or rear with rack and pinion adjustment. The ground glass frame is pivoted in the center and recedes easily for the insertion and removal of the holder, at the same time giving a strong even pressure at all points. The wonderful back spring device is an exclusive Korona feature found on all our cameras. The back has a sliding panel to permit making two exposures on a plate. There is a choice between a canvas covered case and a leatherette covered case. The latter is waterproof and more serviceable, so well worth the difference in cost. Case takes the camera and three holders.

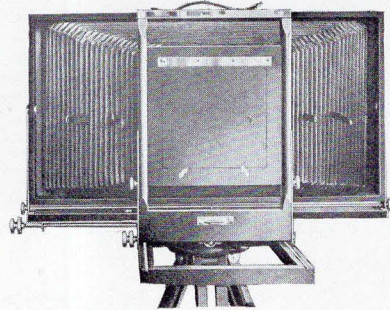


GUNDLACH MANUFACTURING CORPORATION



NO OTHER
COMPARES WITH IT.

Korona Panoramic View Camera



PRICES

We will assume that carrying case and one plate holder are wanted with each Camera unless order specifies otherwise.

	7x17	8x20	12x20	
Camera only without case or holder	\$85.00	\$95.00	\$95.00	
Canvas carrying case	9.00	11.00	11.00	
Extra charge for leatherette bellows, with leather corners	4.00	5.00	3.00	
Plate Holders	8.50	10.00	12.00	
Film Holders	8.50	10.00	12.00	
Printing Frames	7.00	8.00	10.00	
Lens Boards	1.00	1.00	1.00	
Leatherette covered carrying case	11.00	13.00	16.00	
7x17 Reducing Back with 6½x8½ Reversible Back				\$18.00
8x20 Reducing Back with 8x10 Reversible Back.....				21.00
Reversing Attachment for tripod for 7x17 camera....				9.50
Reversing Attachment for tripod for 8x20 camera....				10.50

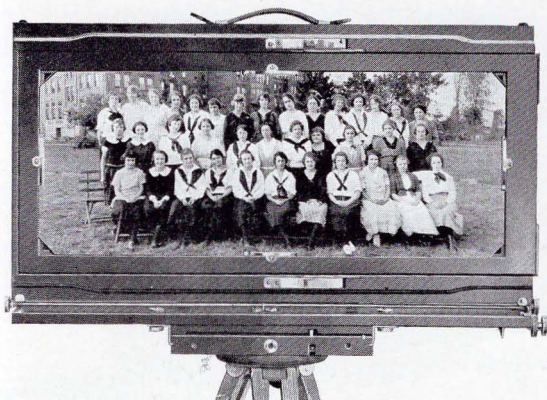
SPECIFICATIONS

	7x17	8x20	12x20
Lens Board	5¼x5¼	6x6	5½x5½
Bellows length	28¾ inches	32½ inches	22¾ inches
Camera folded	5½x21¼x13¼	6x24½x14¾	7¼x18½x23¼
Weight of Camera	10 lbs.	13½ lbs.	18 lbs.

EXTRA EQUIPMENT

Their all round utility is increased by the addition of a Reducing Back. These are reversible. We also supply Tripod Reversing Attachments to use these cameras for taking vertical pictures.

You are losing business every day you are without one of these Panoramic Outfits.



Lens Equipment for Panoramics

A TURNER-REICH BY ALL MEANS

BY USING the Convertible Turner-Reich Anastigmat the best results are obtained. An Anastigmat is indispensable because a rapid rectilinear has not the required covering power unless a very long focal length is used.

We suggest an 8x10 Series II Turner-Reich Anastigmat F:6.8 for the 7x17 Camera, and the 11x14 size for the 8x20 and the 12x20. These lenses include an angle of about 70 degrees and the single combinations may be used separately when lenses of longer focal length are required. The photographer has three lenses in one at his command. The rear combination is particularly useful for groups which should not be made with a short focal length as the wide angle of groups has a tendency to distort the figures near the ends. No lens but the Convertible Turner-Reich Anastigmat will give such excellent results and few lenses will meet such a severe test for covering power.

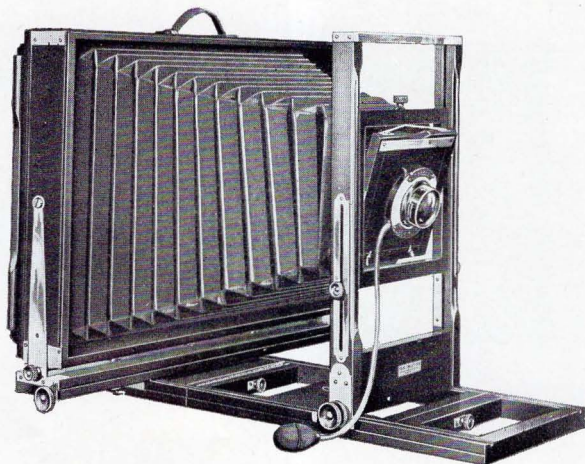
Turner-Reich

THE PERFECT AMERICAN LENS

CONVERTIBLE ANASTIGMAT LENS F:6.8

FOR KORONA PANORAMIC VIEW CAMERAS

No.	Size of Lens	Equivalent Focus	For Camera	Price in Betax Shutter	Price in Optimo Shutter
5	8x10	12"	7x17	\$127.00	\$134.50
6	11x14	15"	8x20-12x20	170.00	177.50



Korona Banquet Camera

WITH SWING FRONT

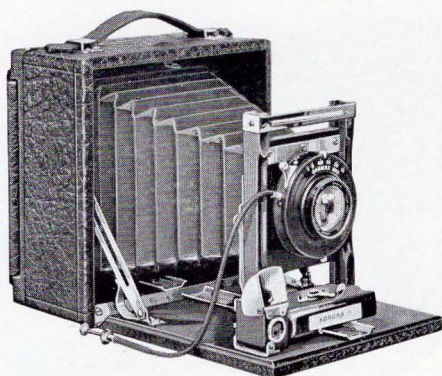
WE HAVE incorporated in the construction of this camera many ideas suggested by expert commercial photographers. Primarily it is intended for taking flashlights of banquets and large groups but it is also used for panoramic and many other purposes. It has all the usual adjustments of a view camera. It is a front focusing camera without a rear bed extension but may also be focused from the rear for convenience in final focusing. The front has a vertical swinging lens board and there is a double swing in connection with the rear frame. The rising and falling front operate with rack and pinion and allow ample adjustment. This camera is made of cherry throughout with walnut finish and has all metal parts nickel plated,—a very beautiful combination. The holders have double flexible valves. Bellows length $22\frac{3}{4}$ inches. Lens Board $5\frac{1}{2} \times 5\frac{1}{2}$ inches. Weight 18 lbs. Dimensions closed, $7\frac{1}{4} \times 18\frac{1}{2} \times 23\frac{1}{4}$.

PRICES

We will assume that carrying case and one plate holder are wanted unless otherwise ordered.

12x20 Korona Banquet Camera without case or holder.....	\$95.00
Canvas Carrying Case	11.00
Extra charge for leatherette bellows with leather corners.....	3.00
12x20 Plate Holder	12.00
12x20 Film Holder	12.00
12x20 Printing Frame	10.00
Lens Boards $5\frac{1}{2} \times 5\frac{1}{2}$	1.00

We recommend the No. 6 Series II Turner-Reich Anastigmat F:7.5 for this camera.



Korona Junior

FOR PLATES AND FILM PACKS
EXCELLENT VALUE AT MODERATE PRICE

THIS camera is admirably adapted to the beginners' requirements. It has a rising and falling front which is a very useful feature, a reversible back which is a great convenience and sufficient bellows length for every ordinary purpose. The bed may be dropped by detaching the side arms, permitting the use of a wide angle lens in connection with our simple wide angle bed plate. The construction and finish are in every way equal to our higher priced cameras and altogether this is a simple, compact and serviceable camera of excellent value for its moderate price.

SPECIFICATIONS

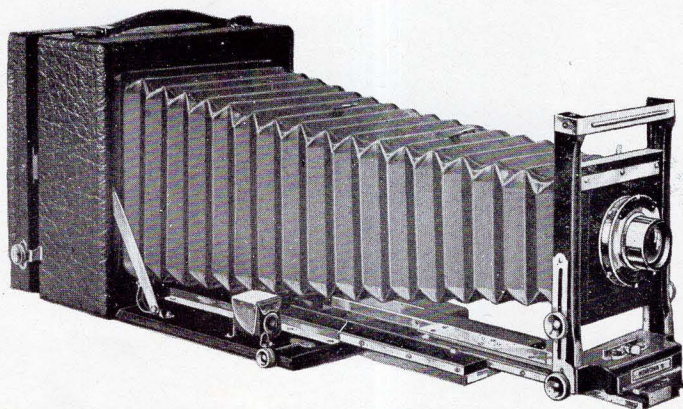
Mahogany, rubbed finish, metal parts nickel plated, leather covered, spring actuated, detachable ground glass frame, rising and falling front, reversible back, brilliant finder, piano hinge, tripod socket.

	4x5	5x7
Bellows length	7 inches	9 inches
Dimensions	3x6 $\frac{1}{4}$ x6 $\frac{1}{4}$	3 $\frac{1}{8}$ x8x8
Weight	2 lbs. 2 oz.	2 lbs. 14 oz.

PRICES

Including leatherette covered case and one plate holder

Korona Junior, Anastigmat Lens F:6.3, Betax Shutter		
Korona Plate Holders	2.00	2.25
Korona Film Holders	2.00	2.25
Korona Adapter for Film Packs	2.00	3.00



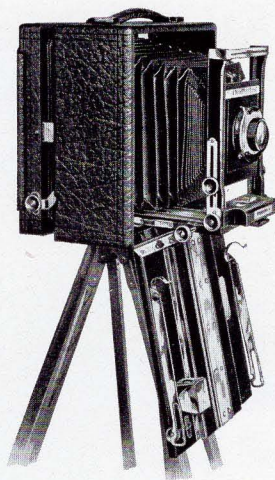
Korona Kraft

A MASTERPIECE FOR PLATES AND FILM PACKS

A BEAUTIFUL camera representing in every way the finest features of construction, the greatest capacity for the work of the expert amateur and the excellence of finish desired by those who appreciate good workmanship. A long focus camera, well adapted to wide angle work. It may be operated quickly and conveniently for any purpose. Especially suited for pictorial photography, copying and telephoto work.

The triple bed extension is obtained by a center section which is unlocked and pulled out automatically by the front and returned in the same way. Second section is controlled by rack and pinion which can be locked at any point. Bed sections are brass bound and carefully fitted. Front standard and base are in one piece and very substantial. Underneath is a metal shoe with one loose side controlled by a cam and locking lever which locks the front firmly to the bed plate, at the same time squaring the front standard with the bed plate without possibility of side motion.

Cam plate has adjusting screws, an exclusive feature. Lateral front adjustment is part of the metal shoe and is operated by a worm screw making the entire front unusually rigid. The swing is centrally pivoted, and opens automatically by pressing concealed button. Lens board is detachable in the Korona way by merely raising until it clears the frame. Ground glass frame is detachable and swings out a sufficient distance to easily insert adapter for film packs.



Korona Kraft

AS USED FOR WIDE ANGLE WORK, SHOWING THE AUXILIARY
WIDE ANGLE BED IN PLACE

SPECIFICATIONS

Mahogany with rubbed finish, covered with bear grain cowhide, black leather bellows, lined with rubber cloth, padded handle, automatic swing back, triple extension bed, reversible back, diagonal rack and pinion for focusing, rising and falling front with rack and pinion, lateral front movement with screw adjustment, detachable lens board, brilliant finder, piano hinge, two tripod sockets.

	4x5	5x7
Bellows extension	15½ inches	20 inches
Dimensions	4¼x6¼x6¼	4¾x8x8
Weight	3 lbs.	4 lbs. 6 oz.
Lens Board	2x2 inches	2⅝x2⅝

PRICES

Including sole leather case, and one holder.

	4x5	5x7
Korona Kraft, Series IV Gundlach Anastigmat F:6.3, Betax Shutter	\$ 93.00	\$113.00
Korona Kraft, Series II Turner-Reich Anastigmat F:6.8 Betax Shutter	126.00	145.00
Korona Kraft without lens or shutter	64.00	75.00
Korona Plate Holders	2.00	2.25
Korona Film Holders	2.00	2.25
Korona Adapter for Film Packs	2.00	3.00
Auxiliary Wide Angle Bed	3.00	3.50
Lens Boards	1.00	1.00

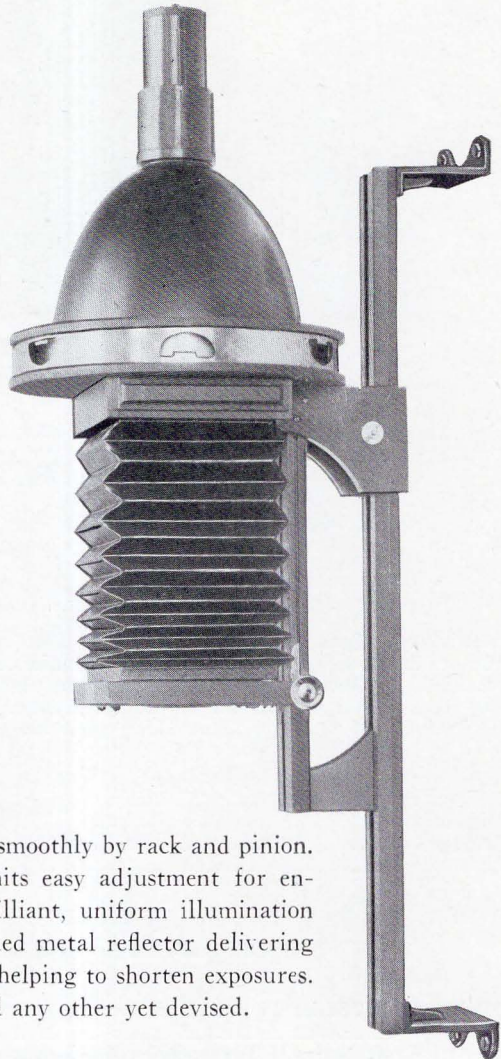


The Korona Enlarger

A new enlarger and reducer, 5x7, again proves Korona's 45 year leadership. Ventilation troubles overcome by simple, efficient device, permitting long exposures without excessive heat which causes film to buckle. Permits more uniform illumination and greatly increased exposure.

Accurately built, strong, rigid. Operates quickly, smoothly, so that most exacting enlargements may be made with certainty. Easily screwed or bolted to wall or partition in dark room. Remains rigid in very convenient upright position.

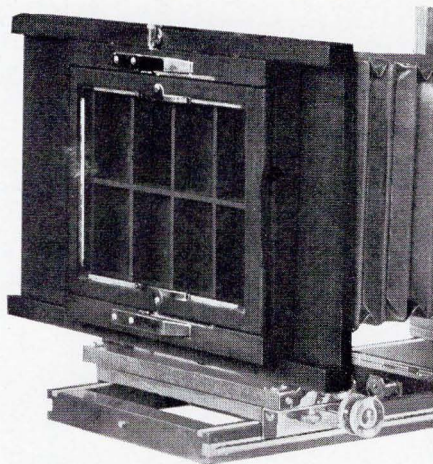
Negative carrier opens like a book. Spring adjustment prevents negative shifting. Front focuses accurately and smoothly by rack and pinion. Sliding carriage mount permits easy adjustment for enlargement or reduction. Brilliant, uniform illumination is obtained with highly polished metal reflector delivering all light possible to negative, helping to shorten exposures. Ventilation system far beyond any other yet devised.



PRICES

Korona Enlarger (5x7) without lens..... \$43.00

To figure price with lenses listed in this catalogue, add price of lens and enlarger together and deduct 10% from total.



Korona Multiplying Back

WITH GROUND GLASS REMOVED

THIS reasonably priced new addition to our line again demonstrates Korona leadership of forty-five years. You can take either 2, 4, 6 or 8 pictures on a 5x7 film or plate. You must specify number of exposures desired when ordering.

Takes eight pictures $1\frac{5}{8} \times 2\frac{1}{4}$ on 5x7 film or plate for passports, auto and chauffeur licenses, etc. You use every inch for exposures—no film or plate space goes to waste.

PRICES

Multiplying Back for 5x7 Korona	\$18.50
Adapter to use it on 8x10 Korona	4.50
Extra frame for 5x7 of other makes	1.50
Extra frame for 8x10 of other makes	6.00

Other makes mean Eastman, Seneca, Ansco.

"We originally acquired this lens quite a few years ago. It has given us wonderful service in use six days of every week. It has made tens of thousands of dollars worth of negatives. It has been lost on the floor of the ocean for days, lost again when left carelessly on the running board of a car, run over by a heavy paper truck, dropped, camera and all, from the top of a box car (camera was totally wrecked) and has made more negatives than all our other lenses put together for years."

(Shaw of Boston.)

WE WONDER IF THIS LENS WILL HAVE NINE LIVES.



GUNDLACH MANUFACTURING CORPORATION

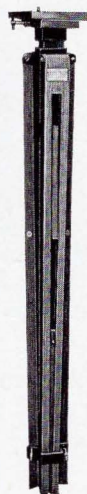
The Korona Folding Studio Stand

IMPROVED MODEL WITH ADJUSTABLE EXTENSION LEGS
AND REVOLVING TOP

THESE stands are ideal for indoor and outdoor photography. We have now made them equally suitable for use under any conditions where the ground or surface is not level, by providing them with adjustable leg extensions, which at the same time give greater latitude in height. We have also improved the construction by inserting a strip of metal in the center post to avoid injuring it with set screws. The metal parts are now all unbreakable and finished with crystalized lacquer. The set screws are all of wing design.



Altogether the Korona Folding Studio Stand is a compact, portable and very convenient support for a camera or a projection lantern under all conditions. It is beautifully made of cherry finished in walnut to match Korona View Cameras in all the different models. It is an ideal stand for Home Portraiture or the small studio. Safe and rigid. The three legs open up simultaneously and the stand may be moved about on smooth surfaces with perfect safety to the camera.



The center post is adjustable for height from 31 to 45 inches, and the top is detachable and adjustable for inclination.

Maximum height 60 inches. Weight: No. 1, 4 lbs. No. 2, 6 lbs.

PRICES

No. 1 for 5x7 and smaller cameras	\$14.00
No. 2 for 8x10 and larger cameras	17.00
Special top for Projection lantern 7½x24 which may be used with stand	3.00



Korona Tripods

A STRONG, rigid tripod is an indispensable adjunct of a camera to give it a firm support. The salient feature of our tripods is the V-shaped grooves which strengthen and stiffen the legs and makes a joint free from looseness when clamped together. Recent improvements have greatly added to the rigidity of our tripods and they will stand hard and continuous service.

Order the No. 4 Sliding Tripod with detachable head, 8 inches diameter, for your big cameras and it will last you a life time.

	Length Extended	Length Folded	Weight	Price
No. 1 Combination Tripod	57 in.	23 in.	2 lbs.	\$ 6.50
No. 2 Combination Tripod	57 in.	23 in.	2½ lbs.	8.50
No. 3 Sliding Tripod	58 in.	33 in.	3 lbs.	8.00
No. 4 Sliding Tripod	58 in.	33 in.	6 lbs.	9.50
No. 5 Combination Tripod	90 in.	37 in.	11 lbs.	22.00
No. 6 Commercial Tripod	66 in.	41 in.	14½ lbs.	32.50
No. 5 Special Tripod	144 in.	60 in.	13 lbs.	42.00

NOTE:—No. 1 is for 4x5 cameras and smaller.

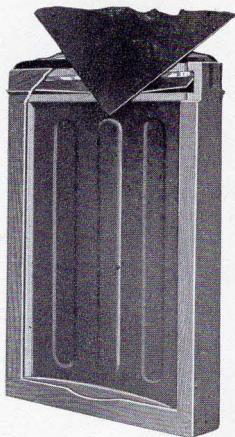
No. 2 is for 5x7 cameras.

No. 3 is for 5x7 and 8x10 cameras.

No. 4 is for larger cameras, also 8x10.



GUNDLACH MANUFACTURING CORPORATION



Korona

PLATE HOLDERS AND FILM HOLDERS
WITH FLEXIBLE VALVES

THERE are two styles of holders—those with grooves at the upper end and those with ridges, both designed to form a light proof connection with the camera frame. These are made in a number of different models of various widths and lengths and when ordering it is necessary to give the width wanted and specify with grooves or ridges, to get the proper holders to fit the camera. The flexible valves open only at the point where the slide is inserted. The plates rest upon a wooden bar held up by a spring which is merely pressed down when the plates are inserted or removed. We designate the holders with ridges as “Standard” because they

fit a number of other cameras as well as our own View Cameras of the present models.

PRICES

3A	3¼x4¼	3¼x5½	4x5	5x7	6½x8½	7x11
\$2.00	\$2.00	\$2.00	\$2.00	\$2.25	\$2.50	\$2.75
8x10	10x12	11x14	5x12	7x17	8x20	12x20
\$2.75	\$8.00	\$8.00	\$8.00	\$9.00	\$10.00	\$12.00

Korona Film Holders are made with hinged flaps at the bottom which allows the films to be slipped into place in the grooved edges.

A recent improvement insures a light tight joint at this point which is a valuable Korona feature.

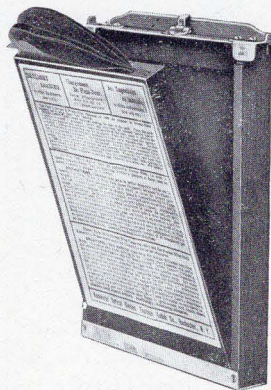
We make 4¾x6½ and 4¼x6½ plate holders, standard model, to fit 5x7 cameras, price \$2.50 each.

Korona Film Pack Adapters

IMPROVED WITH FLEXIBLE VALVE

THE Korona Adapter for film packs has no loose parts of any kind to break or get out of order. It is smooth and without projections on all sides and in every respect the neatest, most simple and best finished adapter on the market. The flexible valve offers no obstruction to the slide and it minimizes to the fullest extent the danger of fogging the film.

Korona Adapters are made in sizes to fit all cameras.



PRICES

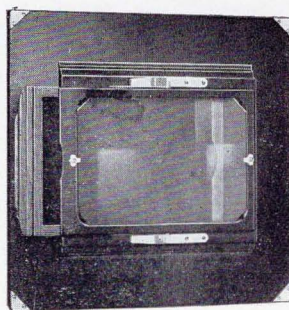
3¼x4¼	3¼x5½	3A	4x5	5x7
\$2.00	\$2.25	\$2.25	\$2.25	\$3.00

The 3¼x5½ size takes 3x5¼ film packs and fits the Korona Petit Cameras.



Korona Reducing Backs

THESE convenient attachments for using holders of smaller sizes have become very popular no doubt because they have proved their worth as a practical addition to every photographer's outfit.

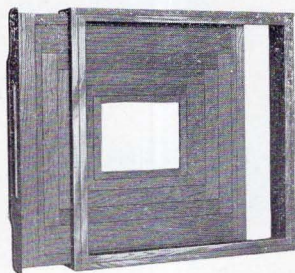


PRICES

Without Holder.

4x5 for 3¼x4¼ or 3¼x5½ holders	\$ 8.50
5x7 for 3¼x4¼, 4x5 or 3¼x5½ holders	9.50
6½x8½ for 5x7 holders	12.00
8x10 for 6½x8½ or 5x7 holders	14.00
7x11 for 8x10 or 5x7 holders	14.00
11x14 for 10x12, 8x10 or 6½x8½ holders	18.00
7x17 for 6½x8½ holders, reversible	18.00
8x20 for 8x10 holders, reversible	21.00
3¼x5½ Reversible Back for 4x5 Korona View	8.50

Korona Enlarging Attachment



ALL a front focusing view camera needs to adapt it to enlarging is a back with negative carriers of different sizes to take the place of the regular reversible back. The camera can then be used for the purpose of photography or enlarging without a double investment for two separate outfits. These are made in stock sizes only to fit the Korona View and we cannot supply them for other view cameras unless the camera is sent to us for fitting which will be charged for extra, according to the work required.

PRICES

Korona Enlarging Attachment with
a full set of Negative Carriers.

4x5	5x7	6½x8½	8x10	7x11	11x14
\$8.00	\$9.00	\$10.00	\$12.00	\$12.00	\$15.00

Have been studying several of the best Cameras and have come to the conclusion that your Cameras have more REAL features than any other make.

Clyde B. Elliott,
Ann Arbor, Mich.



GUNDLACH MANUFACTURING CORPORATION

Microscope Accessories



OBJECTIVES

2-in.	Dry\$6.00
1½-in.	Dry 6.00
1-in.	Dry 6.75
¾-in.	Dry 7.50
½-in.	Dry 12.00
1-6-in.	Dry 12.00
⅛-in.	Dry 12.00
⅓ and 1-6	Divisible 12.00
1-12-in.	Oil Immersion	... 37.50

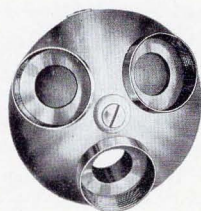
IMPROVED HUYGHENIAN EYEPIECES (Oculars)

9x	¾ in.\$2.50
7x	1 in. 2.50
4x	1½ in. 2.50
3x	2 in. 2.50



NOSE PIECES

Double\$6.00
Triple 8.00



ABBE CONDENSER

1-20 N. A. \$9.00

Prism



Binoculars

MAGNIFICATION AND FIELD OF VISION
SECOND TO NO OTHER

Precision, Optical and Lens Systems

We design, plan and construct precision, optical and lens systems for research laboratories, scientific and medical purposes, universities, industrial and theatrical projects, periscopic and telescopic requirements, as well as photographic undertakings requiring optical and lens precision.



Korona Kits

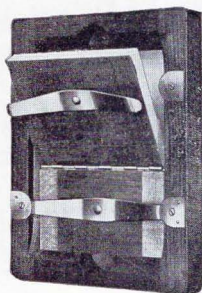
These are adapter-frames, allowing the use of smaller than the regular size plates in holders.

4x5 for $3\frac{1}{4} \times 4\frac{1}{4}$ or $3\frac{1}{4} \times 4$ plates.....	\$.30
5x7 for $3\frac{1}{4} \times 4\frac{1}{4}$ or 4x5 or $3\frac{1}{4} \times 5\frac{1}{2}$ plates.....	.35
$6\frac{1}{2} \times 8\frac{1}{2}$ for 4x5 or 5x7 plates.....	.40
8x10 for $6\frac{1}{2} \times 8\frac{1}{2}$ or 5x7 plates.....	.50
11x14 for 8x10 plates.....	.60
8x20 for 7x17 plates.....	2.00
7x17 for 5x12 plates.....	1.50

Korona Printing Frames

WITH PIANO HINGES

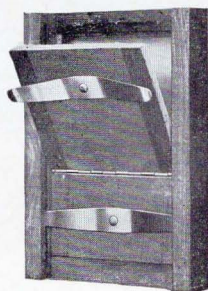
THESE are made of thoroughly seasoned cherry, the No. 1, which is the heavier, being the standard style. The No. 2 frame, while not so heavy as the No. 1, is quite as serviceable for the amateur.



No. 1 Heavy			
4	x5	\$2.00	
5	x7	2.00	
$6\frac{1}{2} \times 8\frac{1}{2}$		3.00	
8	x10	2.50	
7	x11	3.00	
10	x12	7.00	
11	x14	6.00	
14	x17	10.00	
18	x22	15.00	
20	x24	15.00	

5	x12	8.00
7	x17	8.00
8	x20	8.00
12	x20	10.00
16	x20	12.00

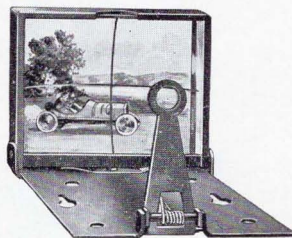
No. 2 Light			
$3\frac{1}{2} \times 4\frac{1}{4}$		\$.40	
4x5		.50	
$3\frac{1}{4} \times 5\frac{1}{2}$.50	
5x7		.65	



Korona Direct View Brilliant Finders

THE illustration shows very clearly the style of this finder which is made to fold and occupy very little space when not in use. Finders of this type are frequently very convenient in hand camera work and they are better than ordinary finders for centering fast moving objects on the plate.

These finders may be used with a camera of any size.

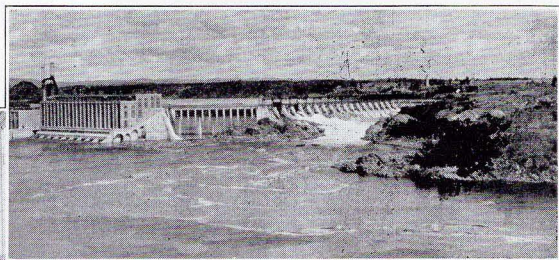
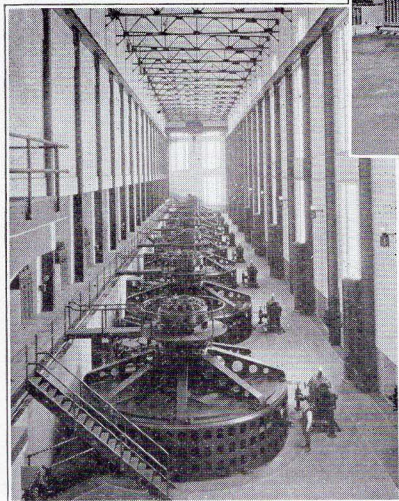


Size of Lens $1\frac{1}{8} \times 1\frac{1}{8}$

Price..... \$3.50

KORONA SUNDRIES

Tubing, per foot.....	\$.20	Rubber focusing cloth.....	\$1.25
Ground glass, 4x5, acid ground.....	.25	Shoulder straps, 36", 42", 48".....	\$.75
Ground glass, 5x7, acid ground.....	.35	Bulb and tube.....	.50
Ground glass, $6\frac{1}{2} \times 8\frac{1}{2}$, acid gr'nd, .50		Tripod, leg screws.....	.25
Ground glass, 8x10, acid ground..	.60	Tripod, head screws.....	.35



Korona Camera Bellows

LEATHER BELLOWS

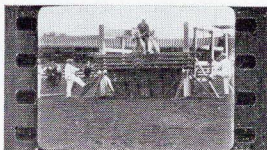
3¼x4¾	Pictorial View	\$ 6.00
5x7	Pictorial View	8.50
8x10	Pictorial View	14.00
4x5	Korona View	6.00
5x7	Korona View	9.00
6½x8½	Korona View	11.00
8x10	Korona View	12.00
7x11	Korona View	12.50
11x14	Korona View	21.50
5x7	Home Portrait	8.75
6½x8½	Home Portrait	10.00
8x10	Home Portrait	11.75

LEATHERETTE BELLOWS

5x7	Pictorial View	\$ 7.00
8x10	Pictorial View	11.50
4x5	Korona View	5.00
5x7	Korona View	7.50
6½x8½	Korona View	8.75
8x10	Korona View	10.00
7x11	Korona View	12.00
11x14	Korona View	16.00
5x7	Home Portrait	6.25
6½x8½	Home Portrait	7.50
8x10	Home Portrait	8.75
5x12	Panoramic View	9.50
7x17	Panoramic View	11.25
8x20	Panoramic View	12.75
12x20	Banquet Camera	12.50

Korona Lens Board

3¼x3¾	\$.90
3½x5½90
4x490
4½x4½90
5¼x5¼90
5½x5½90
6x6	1.00
6¾x6¾	1.25
7x7	1.25
7½x7½	1.25
9x9	1.50
For 4x5 Hand Cameras	\$1.00
For 5x7 Hand Cameras	1.00



ROCHESTER HORSE SHOW
—ULTRASTIGMAT USED—

BELLOWS FOR CAMERAS
MADE TO ORDER



Accessories—Sundries—Repairs

FOR LENSES—CAMERAS—PHOTOGRAPHIC APPARATUS

GUNDLACH-KORONA accessories and sundries are known all over the world. They are constructed on a quality service basis and not merely for price. We list *herewith a few of the many accessories and sundries* which we manufacture and sell. On other pages, you will find prices on bellows, lens barrels, lens boards, carrying cases, film and plate holders, kits, etc. Ask about items not listed here.

Size Number	Diaphragm Blades	Barrels with Iris Diaphragm	Flanges for Shutters	Flanges for Barrels	Flanges for Barrels	Lens Caps Outside Cell Dia.	Price
No. 0	\$1.75	\$ 8.00	\$1.00	\$.75	No. 7—\$3.00	1" and under	\$1.00
No. 1	2.00	9.00	1.00	1.00	No. 8— 3.50	2" and under	1.50
No. 2	2.50	10.00	1.25	1.25	No. 9— 3.50	3" and under	2.00
No. 3	3.25	12.00	1.50	1.50	No. 10— 4.00	4" and under	2.50
No. 4	4.00	12.00	1.75	1.75	No. 11— 2.50	5" and under	2.75
No. 5	4.75	15.00	2.00	2.00	No. 12— 3.00	Over 5"	3.00
No. 6	5.50	20.00	3.00	2.50	SPECIFY EXACT DIAMETER		

WIRE RELEASES—6"—\$.60; 12"—\$1.00; 18"—\$1.50; 36"—\$2.50.

FOCUS SCALES—DIAPHRAGM SCALES—FOR SHUTTERS—\$1.50.

BULB ATTACHMENTS—\$2.50.

SPECIAL—of lenses to shutters. Prices depend on size. Lens should be sent in.

FITTINGS—of Special Backs and beds or bellows. Send in exact dimensions.

SHUTTERS REPAIRED—on estimates based on amount of work necessary or on order.

CAMERAS—CASES—designed, constructed, repaired, on order or estimates.

PRICES—KORONA CAMERA BEDS COMPLETE—REVERSIBLE BACKS

NOTE: Due to nature of construction, the bed is supplied only as a complete unit.

Sizes	Korona Beds	Pictorial Backs	Home Beds	Portrait Backs	Commercial Beds	Commercial Backs	Korona Beds	View Backs
5x7	\$12.00	\$ 8.50	\$ 9.00	\$ 8.50			\$11.25	\$ 8.50
6½x8½			10.00	10.50			12.00	10.50
8x10	14.00	12.00	11 00	12.00	14.00	12.00	13.00	12.00

Size	Korona Beds	View Backs	Size	Panoramics Beds	Backs
4x5	—\$10.00	\$ 7.50	7x17	\$21.50	\$16.00
7x11	15.00	14.00	8x20	24.00	18.00
11x14	18.75	15.00	12x20	23.75	20.00

NOTE: 7x17; 8x20; 12x20 backs are not reversible.

KORONA STUDIO STANDS

Parts	No. 1	No. 2
Leg	\$2.50	\$3.00
Center Post	3.00	4.00
Top (complete)	3.50	4.50
Head Assembly	1.50	1.75
Leg Clamps (3)75	.75
Leg Extension75	.90

All other parts available.

PRICES ON REQUEST

Tripod Parts
Ground Glasses
Holder Slides
Holder Handles
Brackets—Clamps
Hinges—Screws
Camera Rackings

PRECISION, OPTICAL AND LENS SYSTEMS

DESIGNED AND CONSTRUCTED FOR LABORATORIES, Universities, scientific and medical purposes, industrial and theatrical requirements—periscopic, telescopic, naval glasses, prisms, binoculars, microscopes.

Some discontinued models listed in recent catalogs can be supplied—prices on request.



GUARANTEES

The Gundlach and Turner-Reich lenses, as well as Korona Cameras, are guaranteed to be perfect, optically and technically. We will repair or replace, free of charge, any lens which, with proper care, fails to give satisfaction within a year after it leaves our plant.

TRIAL TERMS

You may test our lenses before buying by having them sent to you on trial thru any responsible photographic dealer. There is no obligation further than that you are expected to pay the transportation charges when lenses are sent on trial. The trial period is for ten days from date you receive the lens. If the lens is not then returned, it is considered as a purchase by you.

SALE TERMS

Our products are sold thru established photographic stockhouses and dealers thruout the world. If you have no local dealer, and write to us, we will gladly give you the names of dealers conveniently located near your territory. All shipments are carefully packed and delivered to transportation companies in first class condition. Our prices are F.O.B. Rochester, New York.

TECHNICAL SERVICE

Our technical department is at your service at all times, ready and willing, without obligation, to give prompt individual attention to your optical, lens and camera problems.

REPAIRS

Our Repair Department is equipped and ready to give you high grade service on lenses, cameras and photographic equipment of almost every style and type. Estimates carefully given and moderately priced consistent with high grade work.

EXPERIENCE

For more than forty-seven years, we have been constructing and selling our high grade cameras and lenses and almost any professional studio, research laboratory or scientific department can tell you there is nothing better than a Gundlach Lens and nothing finer than a Korona Camera.