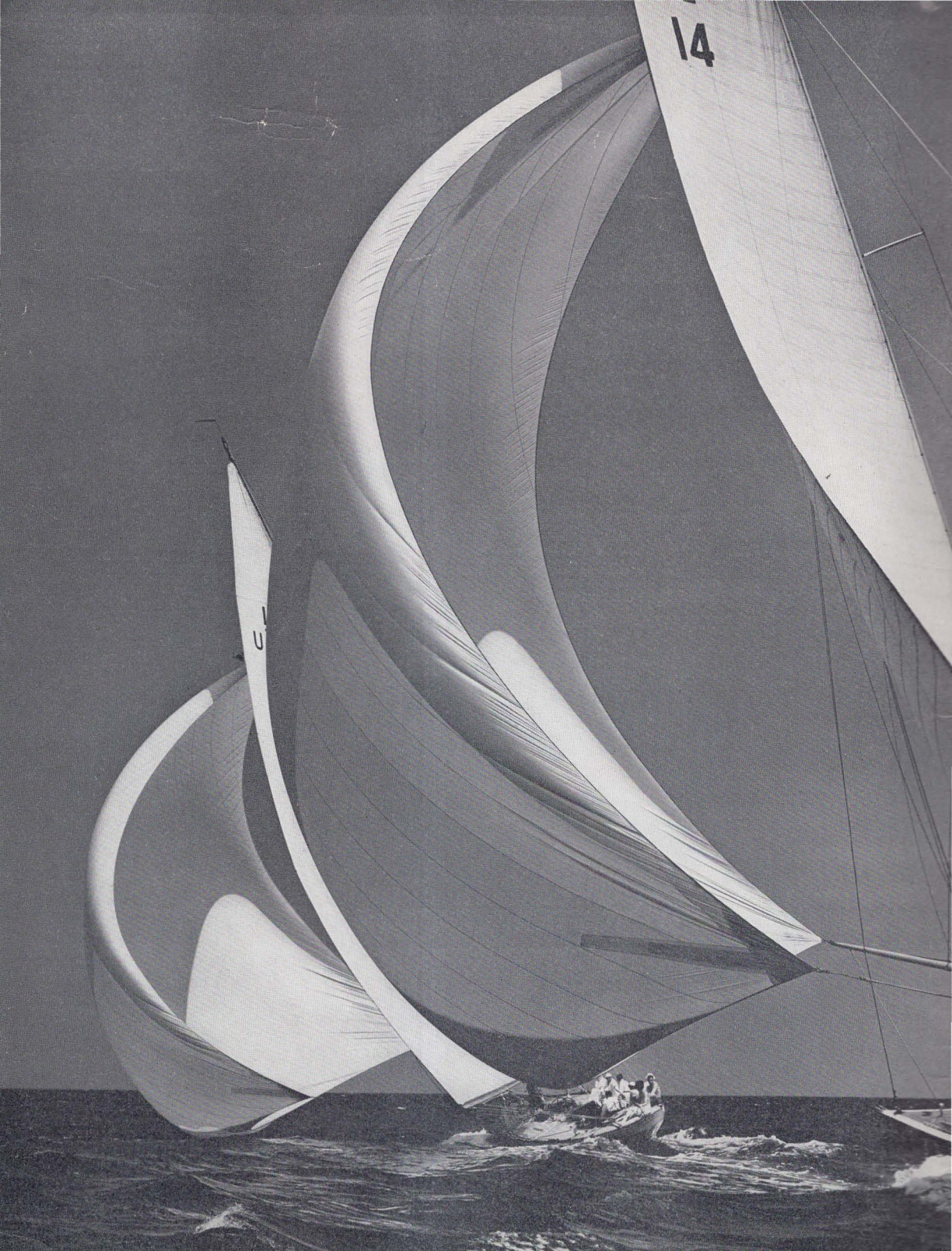


AGFA

Cameras and Films for Amateur Use



CATALOG A 89

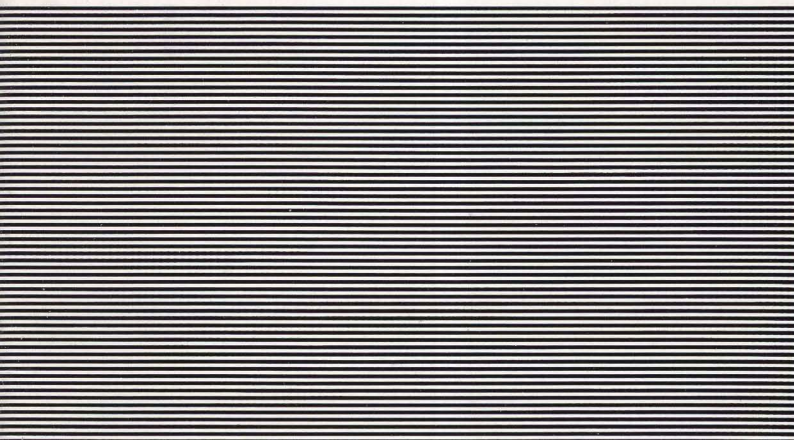




AGFA PHOTOGRAPHIC MATERIALS FOR AMATEUR USE
CAMERAS AND ACCESSORIES, FILMS, PAPERS AND CHEMICALS

Made in U. S. A.
Agfa Ansco, Binghamton, New York.

REVISED TO JANUARY, 1941



Index

CAMERAS AND ACCESSORIES

Pages 4-21

Accessories	20, 21
Box Cameras	18, 19
Cable Releases	21
Cadet Box Cameras	18, 19
Carrying Cases	20
Chief Camera	16, 17
Clipper Unifo Camera	14, 15
Clipper Special Camera	14, 15
Color Filters	20
Flash Lamps	20
Flood Lamps	21
Folding Cameras	6-13
Memo Camera	6, 7
Picture Sizes	4, 5
Pioneer Camera	16, 17
Portrait Attachments	21
Readyset Special Camera	12, 13
Shur-Shot Box Cameras	18, 19
Speedex Cameras	8, 9
Sunshades	21
Tripods	21
View Finders	20
Viking Cameras	10, 11

FILMS

Pages 23-33

8mm. Film	31
16mm. Film	30, 31
35mm. Film	27-29
Film Packs	26
Fine-Grain Plenachrome	28
Fine-Grain Superpan Reversible	29
Finopan	24, 28
Hypan Reversible	30

Infra-Red	24, 25, 28, 29
Isopan	33
Miniature-Camera Film	27-29
Motion Picture Film	30, 31
Panchromatic Reversible	30, 31
Plenachrome	23
Plenachrome Reversible	30, 31
Roll Film	23-25
Sheet Film	32, 33
Standard	23
Superpan Portrait	33
Superpan Press	32
Superpan Supreme	24, 26, 27, 30
Super Plenachrome	23-26
Super Plenachrome Press	24, 32
Supersensitive Plenachrome	33
Triple S Pan	33
Triple S Pan Reversible	30
Twin Eight Hypan Reversible	31
Twin Eight Pan Reversible	31
Ultra-Speed Pan	27

PAPERS AND CHEMICALS

Pages 35-39

Brovira	35
Chemicals	39
Convira	35
Cykon	35
Cykora	36
Darkroom Outfits and Extra Equipment	37, 38
Desensitizers	39
Indiatone	35
Photographic Papers	35, 36
Prepared Developers	39
Prepared Fixers	39

All prices subject to change without notice

Picture-Taking with Agfa Equipment



PHOTOGRAPHY, as a thrilling pastime, ranks second to no other hobby. Unlike the others, however, its fascination does not depend completely upon expertness. Fun starts with the first roll of film in the simplest box camera. Yet photographic possibilities are so limitless that a lifetime of application will not exhaust them.

From the first click of the shutter, amateur photography gives to everyone a means of artistic self-expression, an ability to create something new, and an opportunity to make a permanent record of actions, people, places and stories . . . records that become priceless possessions.

Naturally, the pleasure which is derived from photography is primarily dependent upon successful results. To obtain these results, the proper tools—a good camera

and the finest film, are of utmost importance. This perfect combination is provided in the Agfa cameras and films that are prepared to fill your picture-taking needs. Like many a professional photographer, you will find in Agfa equipment "an extra margin of quality"—the result of careful precision-manufacturing in a modern plant, never-ending research, and the ninety-nine years' experience of America's oldest photographic company.

★ ★ ★ ★

In these pages will be found the cameras, films, papers, chemicals and other photographic equipment of interest to both beginners and advanced amateurs. A separate catalog which lists photographic materials for professional use is available upon request.

POPULAR PICTURE SIZES OF

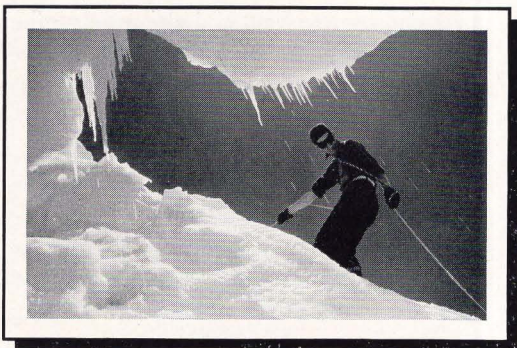
IN choosing a camera, one of the first considerations should be that of picture size. Individual preferences make specific recommendations on this subject difficult, and amateurs should consider their personal requirements closely in selecting picture-taking equipment. For your convenience, the most popular picture sizes have been indicated on these two pages, together with a listing of Agfa cameras available in each size.



$2\frac{1}{4} \times 2\frac{1}{4}$ inches—Agfa B2 Speedex and Speedex Junior Cameras take this size picture.



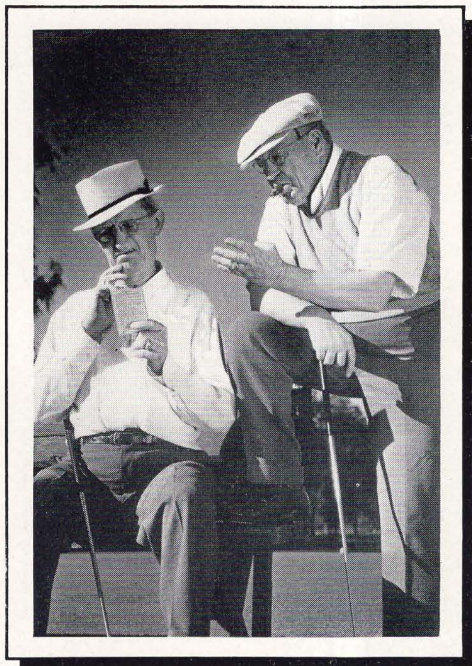
$2\frac{1}{16} \times 2\frac{1}{2}$ inches—Pictures this size are obtained with Agfa PD16 Clipper Unifo and Clipper Special Cameras.



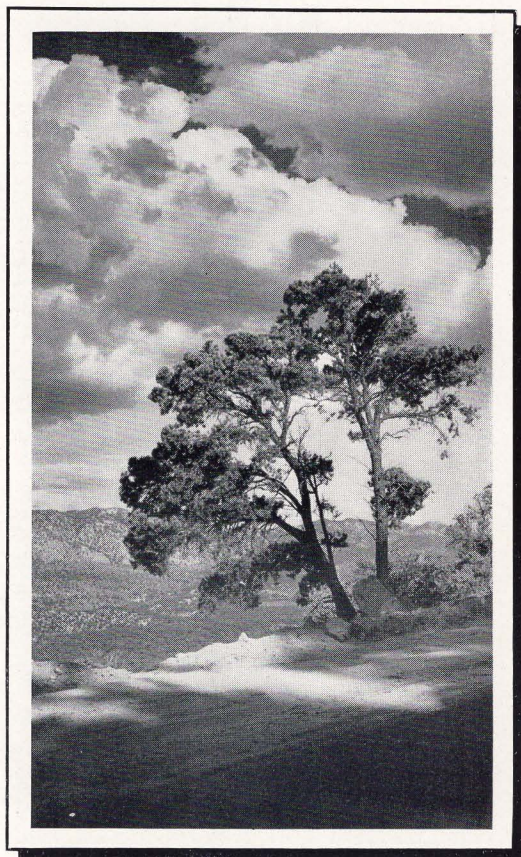
$1\frac{5}{8} \times 2\frac{1}{2}$ inches—Agfa A8 Cadet-Flash Camera takes this size picture.



AGFA CAMERAS



$2\frac{1}{4} \times 3\frac{1}{4}$ inches—This size picture is made by Agfa PB20 Chief, Pioneer, Viking and Readysset Special Cameras and by Agfa B2 Shur-Shot and Cadet Cameras. Pictures half this size ($1\frac{5}{8} \times 2\frac{1}{4}$) are produced by the B2 Shur-Shot with half-size mask in position.



$2\frac{1}{2} \times 4\frac{1}{4}$ inches—Pictures this size are taken by Agfa PD16 Chief, Pioneer, Viking and Readysset Special Cameras and by Agfa D6 Shur-Shot and Cadet Cameras. Pictures half this size ($2\frac{1}{8} \times 2\frac{1}{2}$) are obtained when half-size mask is used with the Agfa D6 Shur-Shot Camera.

← **$1\frac{7}{16} \times 1\frac{5}{16}$** inches (24x36mm.)—Agfa Double-Frame Memo Cameras produce negatives this size on 35mm. film, permitting enlargements to larger sizes. Single-Frame Memo Cameras give negatives half this size (24x18mm.—app. $\frac{3}{4} \times 1\frac{5}{16}$ inches).

MEMO

PRESENTING a combination of valuable features found on no other miniature camera, this American-made, precision-built, Agfa Memo is an outstanding value among 35mm. cameras. Available in five models that permit individual selection of picture size and lens and shutter equipment, the Memo brings fine-camera quality at remarkably low cost. Exclusive design and construction principles make this camera extremely easy to load, while a rapid film-shift mechanism eliminates film-winding and "window-watching." The compact lines of the Memo are emphasized by a finish of black Morocco leather* and polished chromium* trim.

The Memo is supplied in a "double-frame" model taking twenty-four pictures 24x36mm. (approximately $1\frac{7}{16} \times \frac{15}{16}$ inches) on a standard Agfa Memo Cartridge. The "single-frame" model, taking forty-eight pictures 18x24mm. (approximately $\frac{3}{4} \times \frac{15}{16}$ inches), is excellent for educational and demonstration work requiring 35mm. film strips for projection purposes. Both models are fitted with a corrected anastigmat lens

of two inches focal length and f4.5 or f3.5 aperture, and with a new-type, precision shutter giving Bulb and Time exposures and speeds of $\frac{1}{2}$ to 1/200 second. An f5.6 double-frame model of the Memo is also furnished, bringing at exceptionally low cost all basic features of other Memo models but with simpler trim and fittings, and with shutter speeds 1/25 to 1/100 second, Bulb and Time.

Additional features of the Memo include: automatic exposure counter; rugged, pressed-steel frame; depth-of-field scale*; optical, eye-level finder; accessory clip*; tripod socket; neckcord*; and eyelets for neckcord. Accessories for the Memo are listed on pages 20-21.

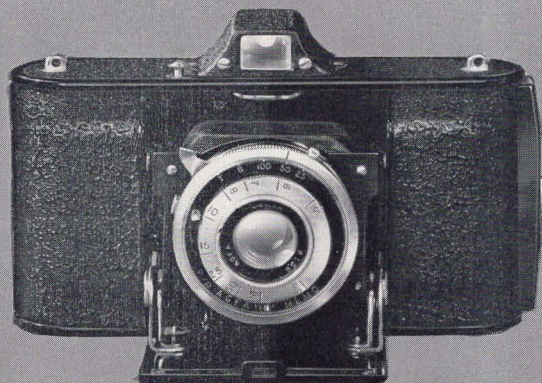
**Supplied on f3.5 and f4.5 models only.*

Double-Frame Models (24 pictures 24x36mm. on Agfa Memo Cartridge).

Model JN120 f4.5 lens.....	\$25.00
Model JN121 f3.5 lens.....	35.00
Model JN124 f5.6 lens.....	14.50

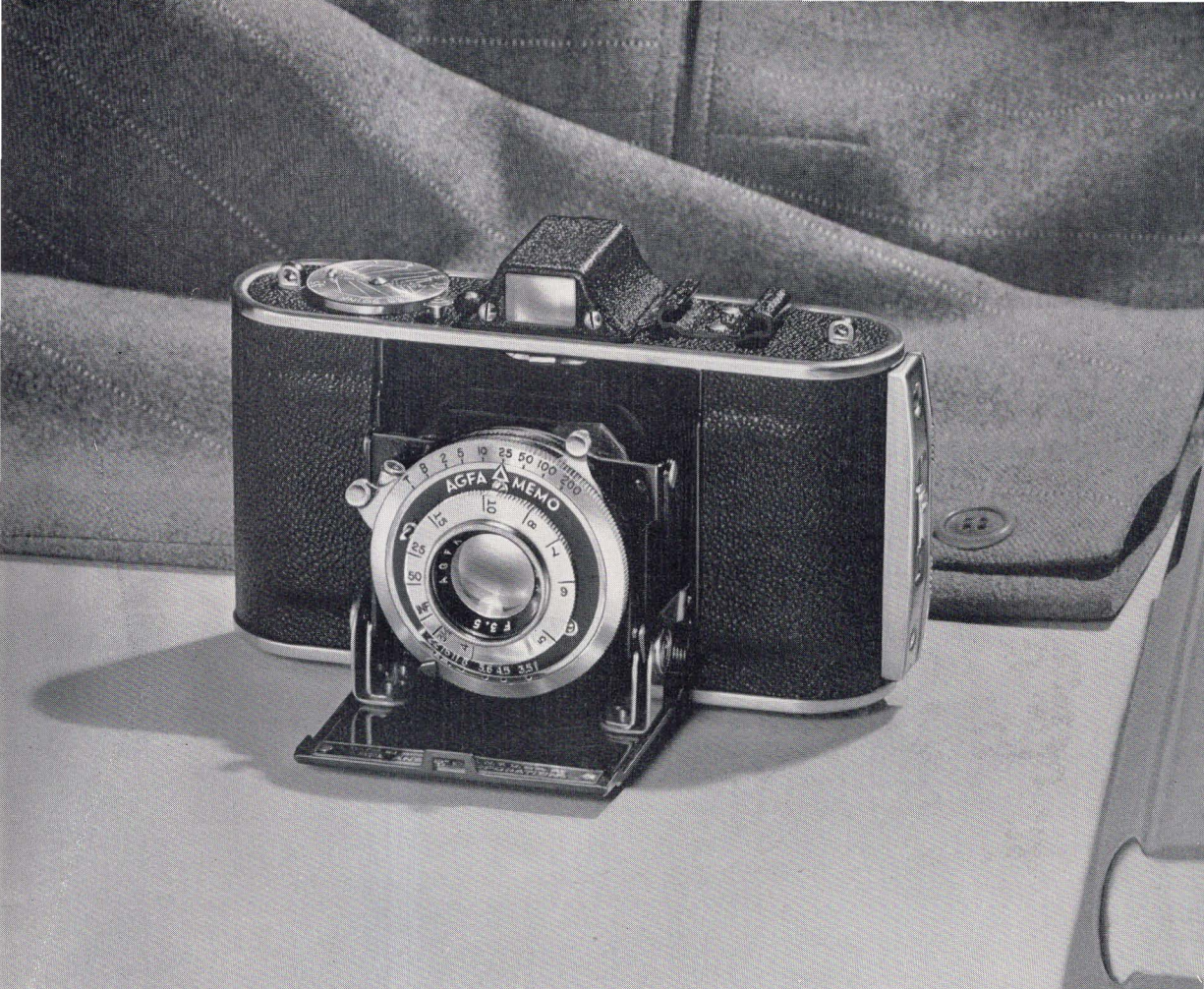
Single-Frame Models (48 pictures 18x24mm. on Agfa Memo Cartridge).

Model JN118 f4.5 lens.....	\$25.00
Model JN119 f3.5 lens.....	35.00

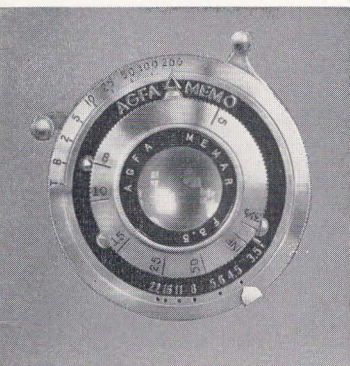


Slim and compact, the Memo is easy to carry in pocket or purse, convenient to hold when taking pictures.

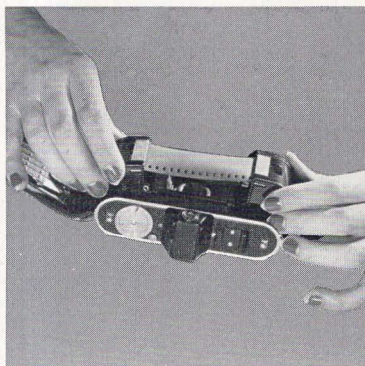
Left: Agfa Memo, f5.6 double-frame model.



Above: Agfa Memo, f3.5 double-frame model.



Memar lens, a corrected anastigmat of 2-in. focal length, focuses from 3½ ft. to infinity; provides shutter speeds ½ to 1/200 second.



Daylight-loading film cartridges drop snugly into place in an instant. No spools to thread or fit.



A simple, sliding bar advances film quickly and accurately. No film-winding or window-watching.

SPEEDEX

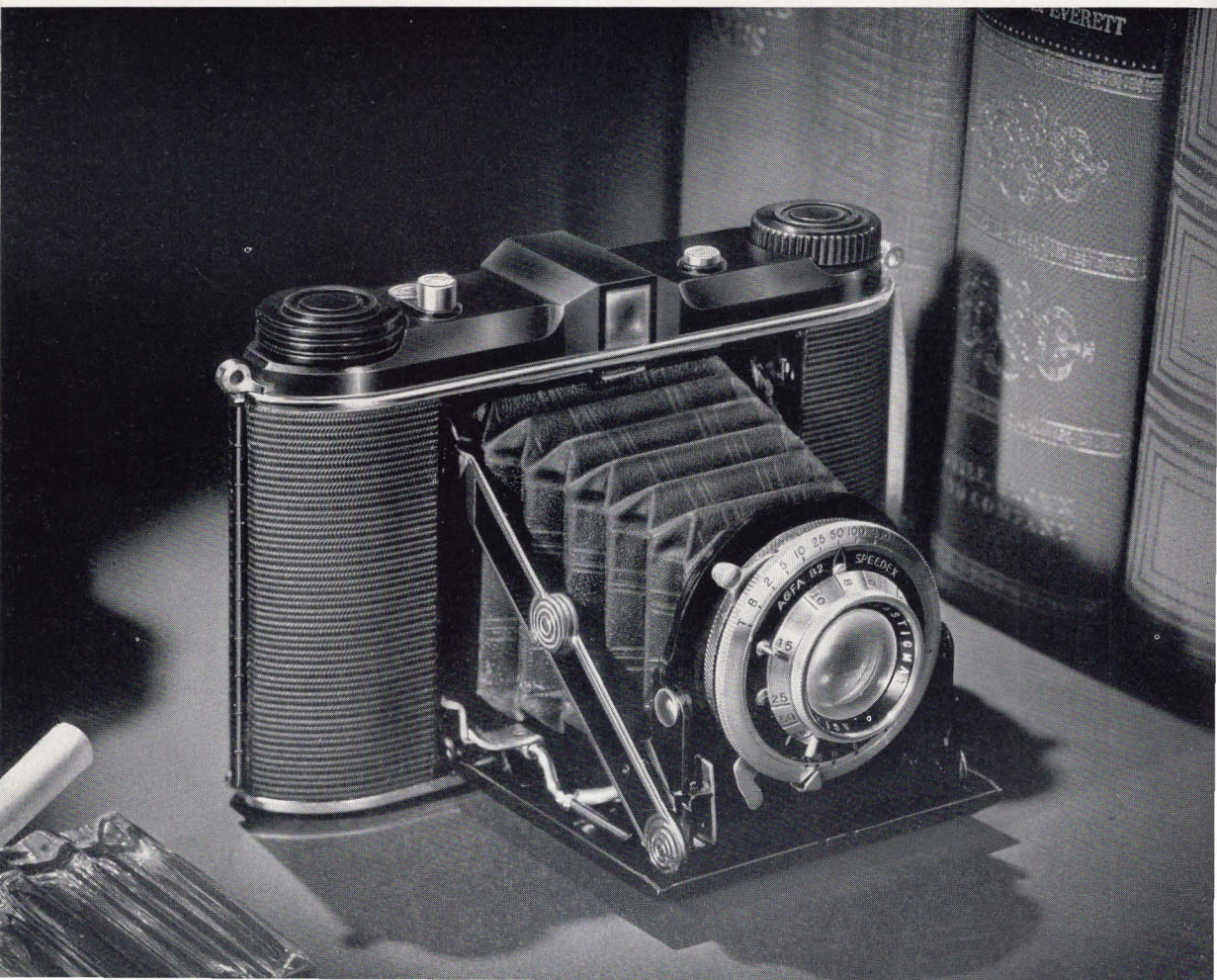
FIRST choice of value-wise photographers among folding hand cameras is this new Agfa Speedex, a model that brings newest features in compact design and precision construction at a remarkably low price. 100% American-made, the Speedex is supplied with an f4.5 anastigmat lens of 85mm. focal length and a precision shutter giving speeds of $\frac{1}{2}$ to $\frac{1}{250}$ second and Bulb and Time exposures. This combination of a fast, high-quality lens and wide range of shutter speeds makes the

Below: B2 Speedex, f4.5 model.

Speedex usable over an extremely wide variety of subjects and light conditions.

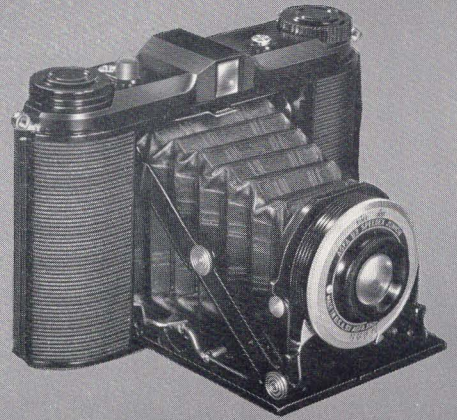
The Speedex loads with inexpensive B2 roll film, taking twelve pictures per roll in $2\frac{1}{4} \times 2\frac{1}{4}$ inch size—the increasingly popular square format that heightens convenience of camera operation. Notable among its many mechanical refinements is its self-erecting front platform which, at the touch of a button, quickly and smoothly brings the lens and shutter into picture-taking position.

An attractive molded top incloses the optical, eye-level finder in a position of



minimum parallax, and also serves to house film-winding knobs, platform release button, shutter release button and built-in cable release socket. The body of the camera is covered with a rich-black, wear-resistant material and trimmed with polished chromium—under which is a rugged steel frame, built to last a lifetime. Other standard equipment includes centrally-located tripod socket, neckcord and built-in neckcord eyelets, and single film window placed in center of camera back. See pages 20-21 for accessories.

B2 Speedex (12 pictures $2\frac{1}{4} \times 2\frac{1}{4}$) takes B2 Agfa Film (same size as 120) JN123 \$29.00



Above: B2 Speedex Junior.

SPEEDEX JUNIOR

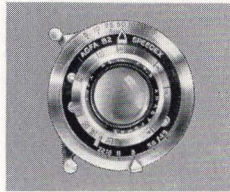
LOW-PRICED companion to the Speedex, this model brings a great number of the same high-quality features of fine-camera design and precision construction that distinguished the Speedex Camera. Its remarkably low price is made possible by the use of simpler lens and shutter equipment—a point that is of particular value to beginners.

The Speedex Junior is supplied with a fixed-focus, four-aperture, double lens of rectilinear correction and with a shutter giving Instantaneous and Time exposures. With but little difference in external finish and trim from that used on the Speedex, the Junior model provides built-in body shutter release; precision opening-closing movement on front platform; optical, eye-level finder; modern molded top inclosing finder, film winding knobs, release buttons and cable release socket; rugged steel frame; hinged back with safety catch; centrally-located film window and tripod socket; and built-in eyelets for neckcord.

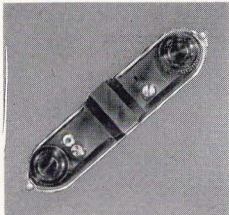
B2 Speedex Junior (12 pictures $2\frac{1}{4} \times 2\frac{1}{4}$) takes B2 Agfa Film (same size as 120) JN125 \$11.00



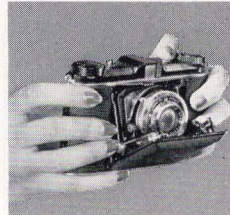
Speedex is convenient to carry, hold and use.



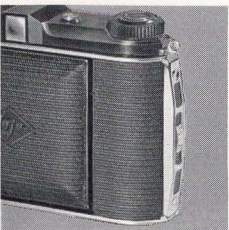
Speedex lens focuses $3\frac{1}{2}$ ft. to infinity.



Molded top encases view finder and controls.



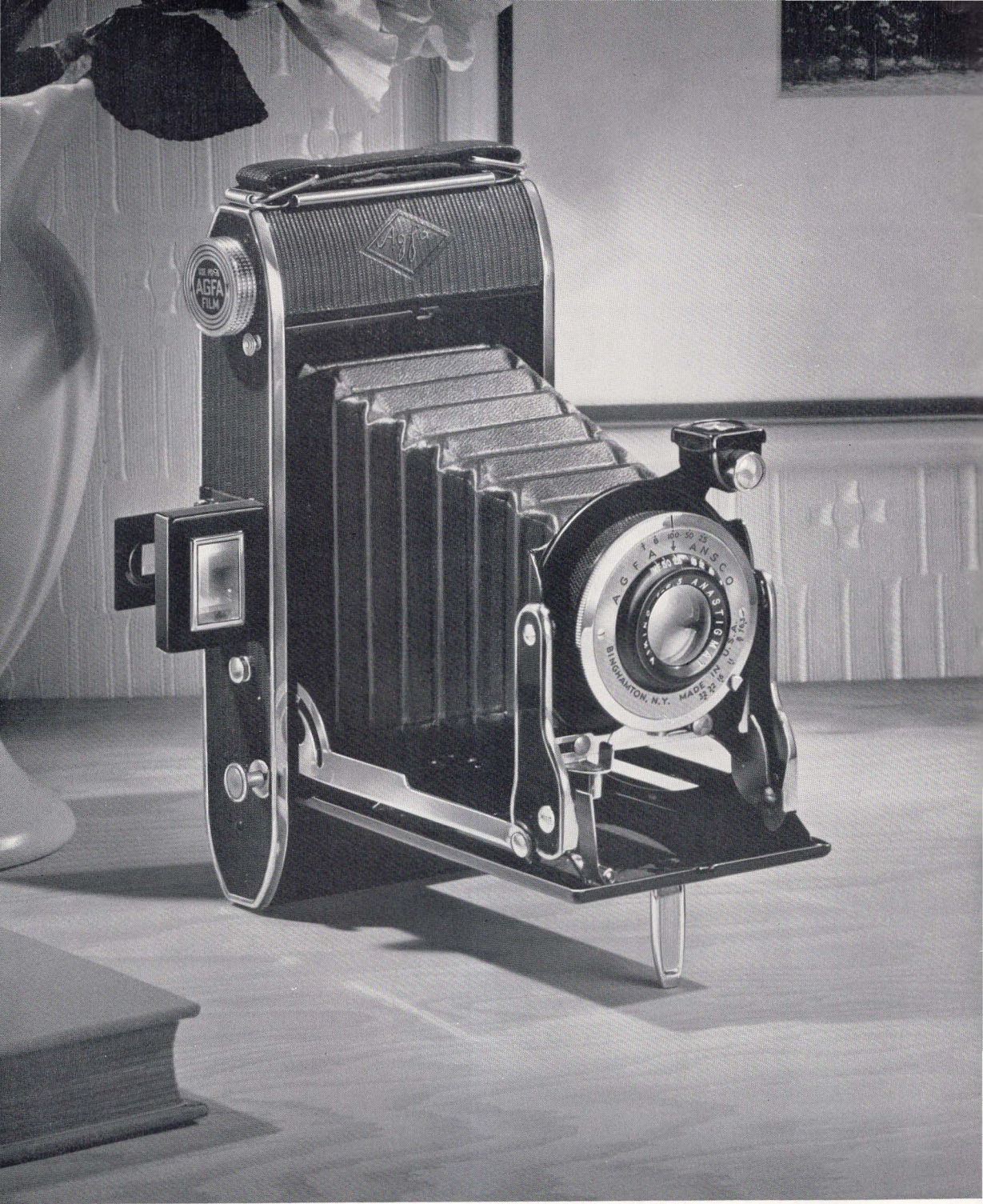
Front platform has precision construction.



Safety latch locks hinged back securely.



Tripod socket and film window have central location.



VIKING

SLIM and graceful in appearance with polished chromium accentuating their contours; crowded with a host of features that result in better photographs—these are first impressions you'll receive when inspecting Agfa's new Viking Cameras. A new, built-in body shutter release adds to the convenience of operating the Viking, being especially useful when the camera is sighted at eye-level with the optical, direct-view finder.

Fully-corrected anastigmat lenses are supplied on the Viking in two models of different speed to satisfy individual preference. An f7.7 model brings a wide variety of outdoor subjects within camera range and may also be used indoors with proper lighting. A faster, f6.3 model further extends the scope of the Viking for both indoor and outdoor work. Both models focus from 5 feet to infinity, and are furnished with precision shutters giving speeds of 1/25, 1/50 and 1/100 second, and Bulb and Time exposures. Both PB20 and PD16 sizes of the Viking are available, as listed below, permitting a choice on each

model between the two most popular picture sizes, $2\frac{1}{4} \times 3\frac{1}{4}$ and $2\frac{1}{2} \times 4\frac{1}{4}$.

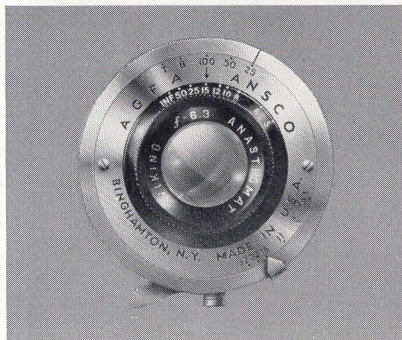
The Viking represents an unusual concentration of fine-camera construction features (some of which are illustrated below and on page 13) and incorporates value and quality well beyond what is ordinarily obtained at its price. Typical of its many superior details are: dull chrome face plate with clearly etched, easily visible numerical markings; optical, eye-level and reflecting, waist-level finders; hinged back and easy-loading spool carriers; recessed tripod sockets; covered port in front platform for access to cable release socket; smooth-acting "grasshopper" type, self-erecting front. See pages 20-21 for accessories.

	<i>PB20 Size</i>	
	8 pictures $2\frac{1}{4} \times 3\frac{1}{4}$	
	Takes PB20 Agfa Film	
	(same size as 620)	
Model		
Viking f6.3	JN154	\$17.50
Viking f7.7	JN156	14.50
	<i>PD16 Size</i>	
	8 pictures $2\frac{1}{2} \times 4\frac{1}{4}$	
	Takes PD16 Agfa Film	
	(same size as 616)	
Viking f6.3	JN155	\$19.50
Viking f7.7	JN157	16.50



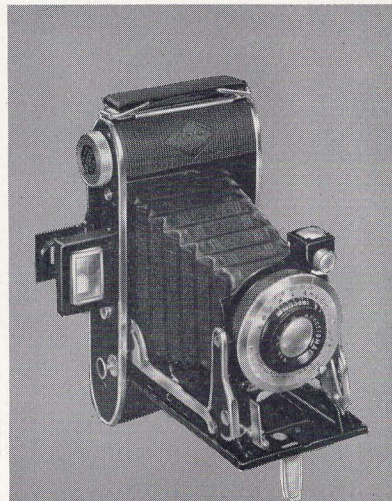
The Viking is easy to hold, easy to use, with convenient body shutter release and eye-level finder.

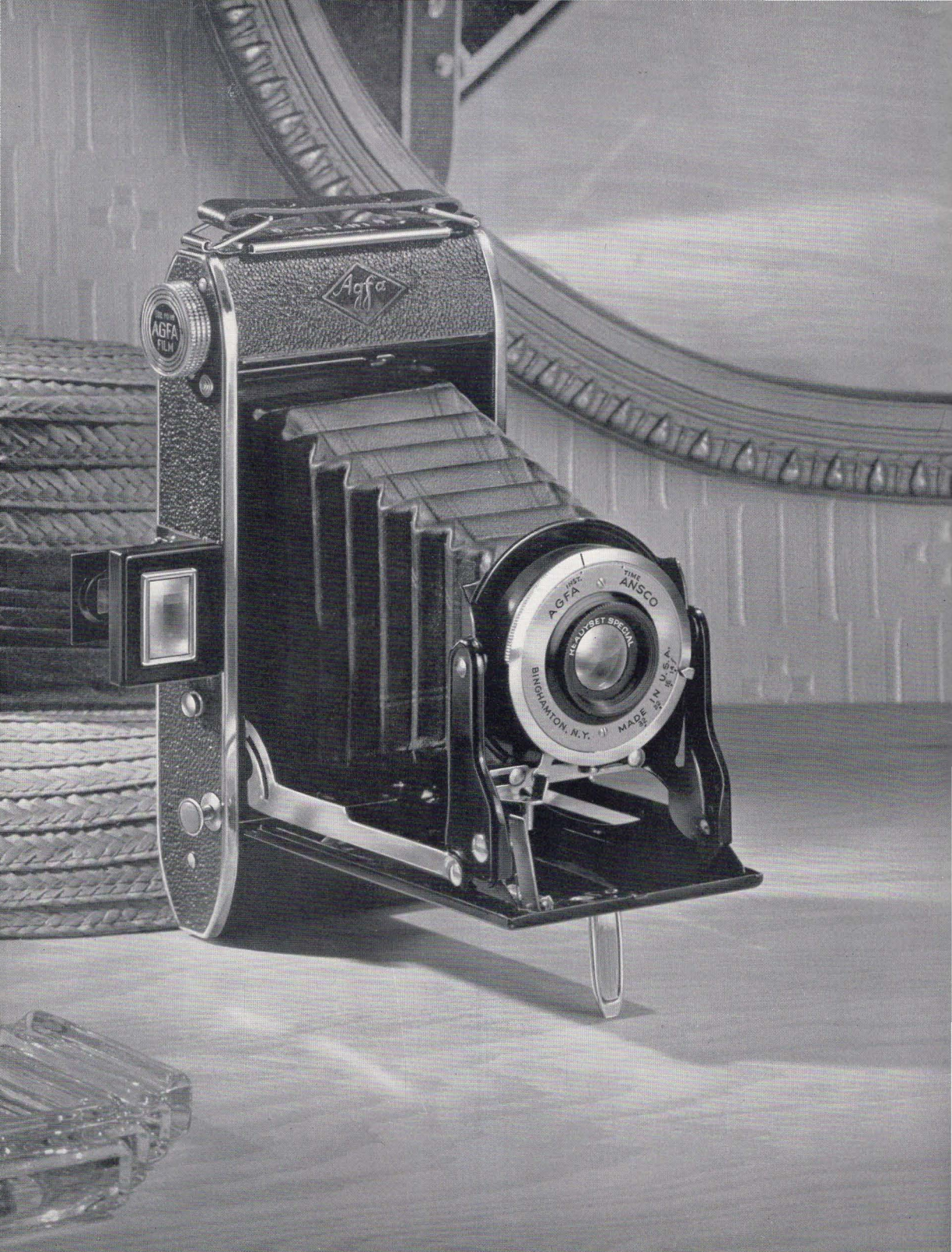
Above, Left: PD16 Viking, f6.3 model.



The Viking anastigmat lens focuses manually from five feet to infinity in both f6.3 and f7.7 models.

Right: PB20 Viking, f7.7 model.





AGFA
FILM

Agfa

ANSKO
AGFA
KEYSET SPECIAL
MADE IN U.S.A.
BINGHAMTON, N.Y.

READYSET SPECIAL

WITH emphasis on extreme operating simplicity, this new Readysset Special incorporates improvements in construction and appearance that make it an exceptional value at its low price. Provided with built-in body shutter release, optical eye-level finder and many other extra-quality features found on the Viking cameras, the Readysset Special is at the same time so simple in operation that beginners find it an excellent selection. As listed below, two models are available, permitting a choice in picture size between $2\frac{1}{4} \times 3\frac{1}{4}$ and $2\frac{1}{2} \times 4\frac{1}{4}$ inches.

The high-quality achromatic lens supplied on the Readysset Special produces

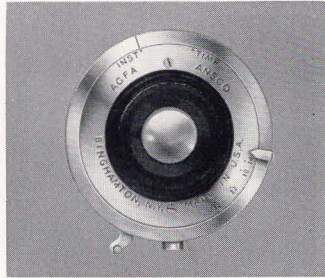
sharp, clear pictures and is mounted in a shutter giving Instantaneous and Time exposures. Standard equipment includes hinged spool carriers; durable, waterproof covering with polished metal trim; variable diaphragm; and easy opening and closing devices.

PB20 Readysset Special (8 pictures $2\frac{1}{4} \times 3\frac{1}{4}$)
takes PB20 Agfa Film (same size as 620)
JN158..... \$9.45

PD16 Readysset Special (8 pictures $2\frac{1}{2} \times 4\frac{1}{4}$)
takes PD16 Agfa Film (same size as 616)
JN159..... \$10.45



Body shutter release, eye-level finder and compact frame heighten operating convenience.



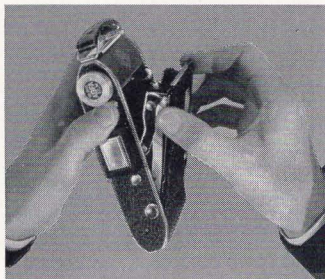
Readysset Special is equipped with fixed-focus achromatic lens and four-aperture diaphragm.



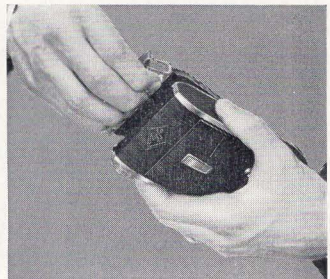
Hinged camera back and pivoted spool carriers make film loading a simple, rapid operation.



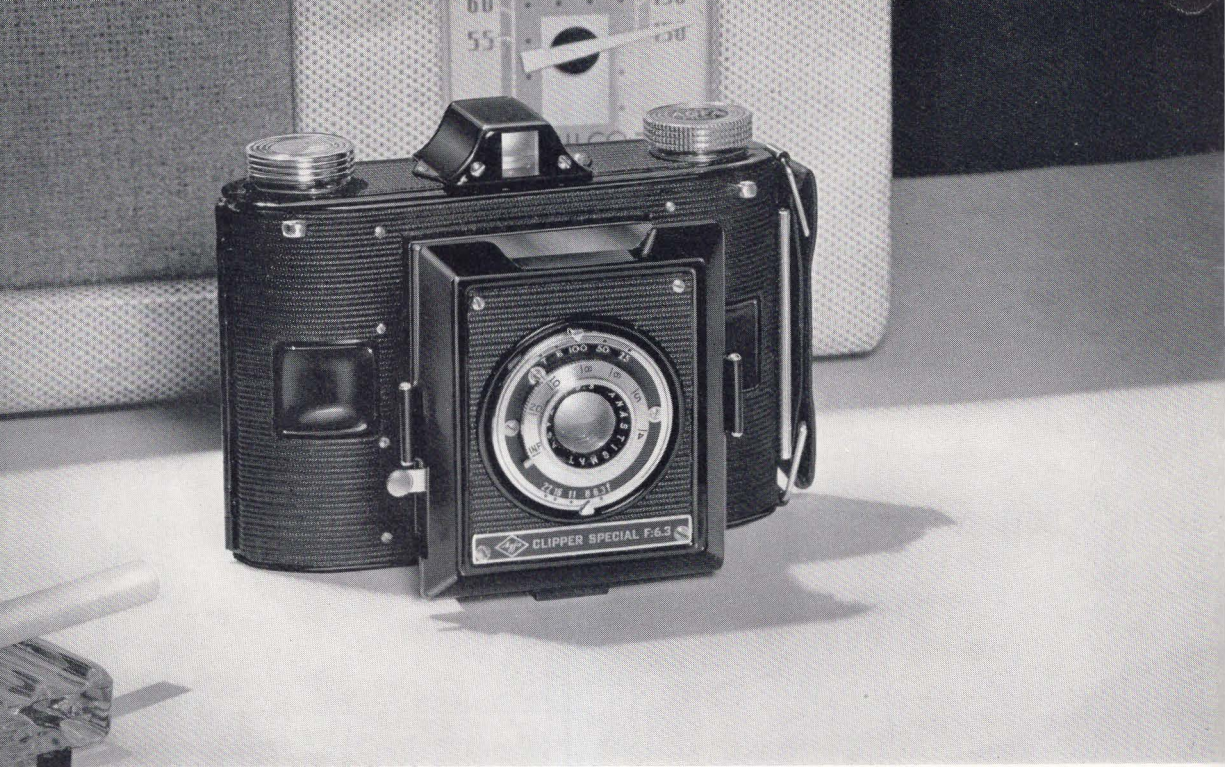
Trim, slender lines and proper proportioning of component parts bring amazing compactness.



Smooth-acting "grasshopper" front opens easily, locks rigidly in picture-taking position.



Camera back locks securely, opens quickly; swings out of way for maximum accessibility.



Above: PD16 Clipper Special (f6.3). Below: PD16 Clipper Unifo.



CLIPPER SPECIAL

THE unusual design and advanced features of this capable Clipper Special make it an ideal selection for amateur photographers who want a camera that is compact for carrying yet instantly ready for use. Bellows are eliminated on this modern camera by a telescoping "pull-out" front that is both permanently light-leak proof and quickly brought into picture-taking position. Lens, shutter and focusing settings are all centrally located to facilitate rapid exposure adjustments. The lens is a high-quality, f6.3 corrected anastigmat, focusing from 4 feet to infinity, while the shutter is a precision type giving exposures of 1/25, 1/50 and 1/100 second, and Bulb and Time. This combination endows the Clipper Special with picture-taking ability over a wide range of subjects and light conditions, both indoors and out.

Other features include: sturdy, pressed-steel frame; exterior finish of grained black, waterproof material trimmed with polished metal and black enamel; hinged back and easy loading arrangements; lower film cost per picture (15 exposures $2\frac{1}{16} \times 2\frac{1}{2}$ per roll of PD16 film); optical, direct-view finder; shutter release guard; tripod socket; neckcord; lens cap; and depth-of-field

scale. Extra accessories for the Clipper Special are listed on pages 20-21.

PD16 Clipper Special f6.3 (15 pictures $2\frac{1}{16} \times 2\frac{1}{2}$) takes PD16 Agfa Film (same size as 616) JN117. . . . \$15.50

CLIPPER UNIFO

ATTRACTIVE appearance; simple, certain operation; and rugged, durable construction distinguished this inexpensive Clipper Camera. Employing the same type of "pull-out" telescoping front construction used on the Clipper Special, this new and improved model of the Clipper Unifo is supplied with an optical eye-level finder in a new streamlined top, a new-type safety latch on the hinged back, and numerous other features that make it a top value at its low price. The Clipper is not only low in first cost; it is also economical in film requirements, taking fifteen $2\frac{1}{16} \times 2\frac{1}{2}$ -inch pictures per roll of film. Other specifications include: rugged steel construction; Unifo double lens; instantaneous and bulb exposure shutter; shutter release guard; easy loading arrangements; and black, waterproof covering with trim of black enamel and polished metal. Accessories are listed on pages 20-21.

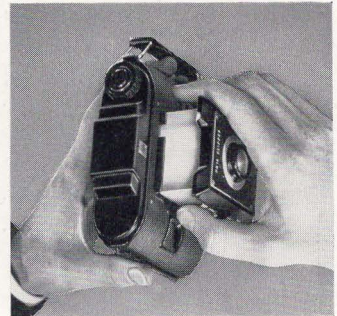
PD16 Clipper Unifo (15 pictures $2\frac{1}{16} \times 2\frac{1}{2}$) takes PD16 Agfa Film (same size as 616) JN116. \$5.00



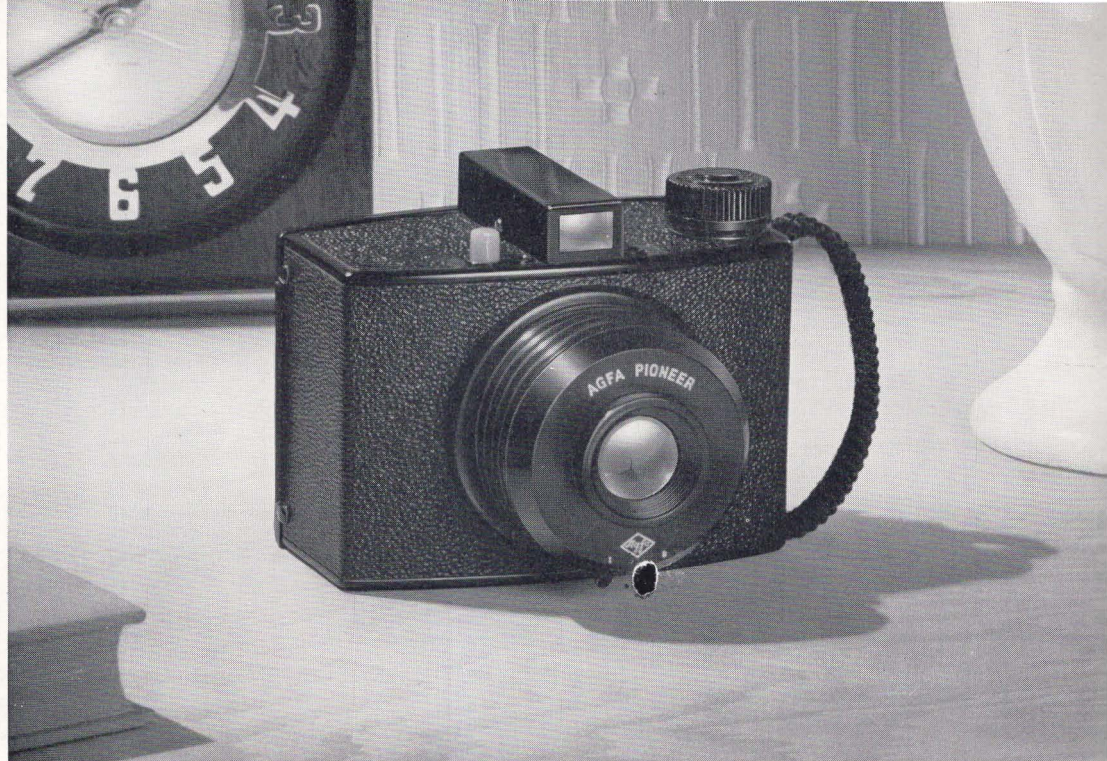
Direct-view finder enhances rapid sighting. Individual shape promotes ease of operation.



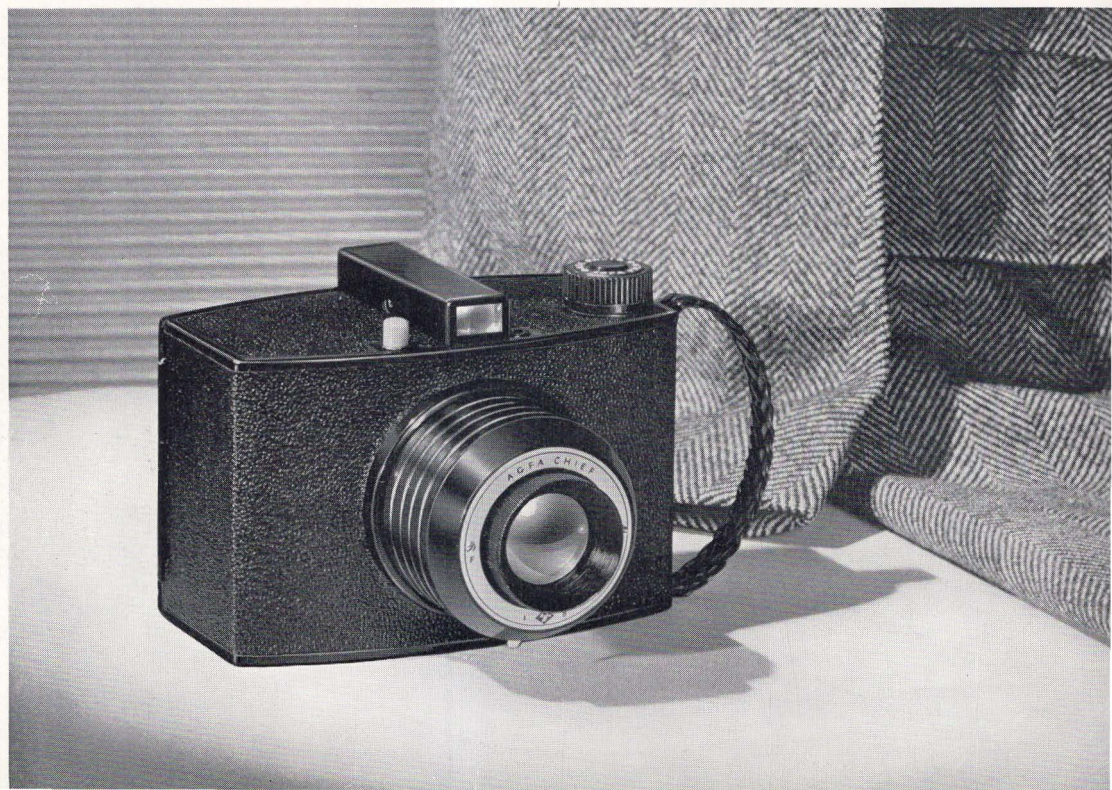
Depth-of-field scale on f6.3 Clipper shows range of distances in focus at all lens openings.



"Pull-out" front opens quickly for picture-taking, telescopes compactly for easy carrying.



Above: PB20 Pioneer. Below: PD16 Chief.



CHIEF AND PIONEER

THESE handsome new Agfa cameras, the Chief and Pioneer, represent the most modern ideas in design and construction, and offer a group of outstanding advantages never before available in their price range. Their external beauty and the ingenious yet logical design which they incorporate were achieved with the collaboration of Henry Dreyfuss—America's famous industrial designer. Examine them closely and you'll see why they've been referred to as "the cameras of tomorrow—today."

Careful planning has made the Chief and Pioneer Cameras amazingly compact in both PB20 and PD16 sizes, yet they take eight full-size pictures per roll of film and are more comfortable to hold and use, easier to carry than larger cameras. Ease of operation is enhanced with a built-in, body shutter release, an optical, direct-view finder for eye-level sighting, and a removable, all-metal cone that simplifies film loading. Sturdy steel construction; waterproof, pebble-grain covering; and turret lens mount contribute greatly to the ruggedness and durability of these smart, new cameras.

Both Chief and Pioneer Cameras are equipped with a built-in, synchronized flash mechanism that is immediately adaptable at any time for flashlight pictures with the inexpensive Agfa Flash Unit. Foolproof and dependable, this synchronized flash mechanism requires no adjustments and interferes in no way with use of the camera for daylight exposures.

Excellent picture-taking ability is assured by the high-quality lens and shutter equipment used on both cameras. The Pioneer provides an accurate rotary shutter giving Bulb and Instantaneous exposures, and a fixed-focus meniscus lens. The Chief has similar shutter equipment and is fitted with a lens having a two-zone, helical focusing adjustment with a built-in yellow haze filter which is automatically brought into position for pictures of landscapes and distant subjects.

PB20 Size, 8 pictures $2\frac{1}{4} \times 3\frac{1}{4}$, takes PB20 Agfa Film (same size as 620).

Pioneer JN150 \$2.95

Chief JN152 3.95

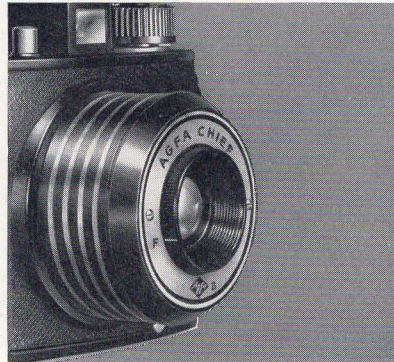
PD16 Size, 8 pictures $2\frac{1}{2} \times 4\frac{1}{4}$, takes PD16 Agfa Film (same size as 616).

Pioneer JN151 \$3.45

Chief JN153 4.45



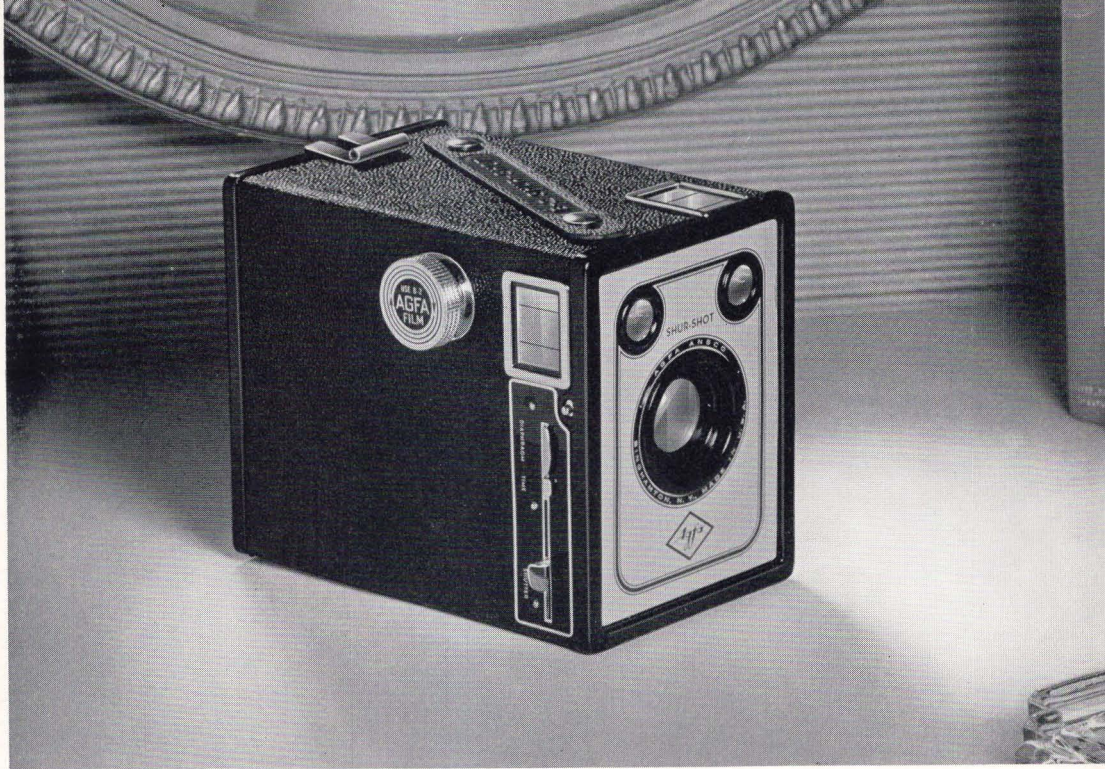
Built-in synchronized flash mechanism on Pioneer and Chief assures perfect results with Flash Unit accessory.



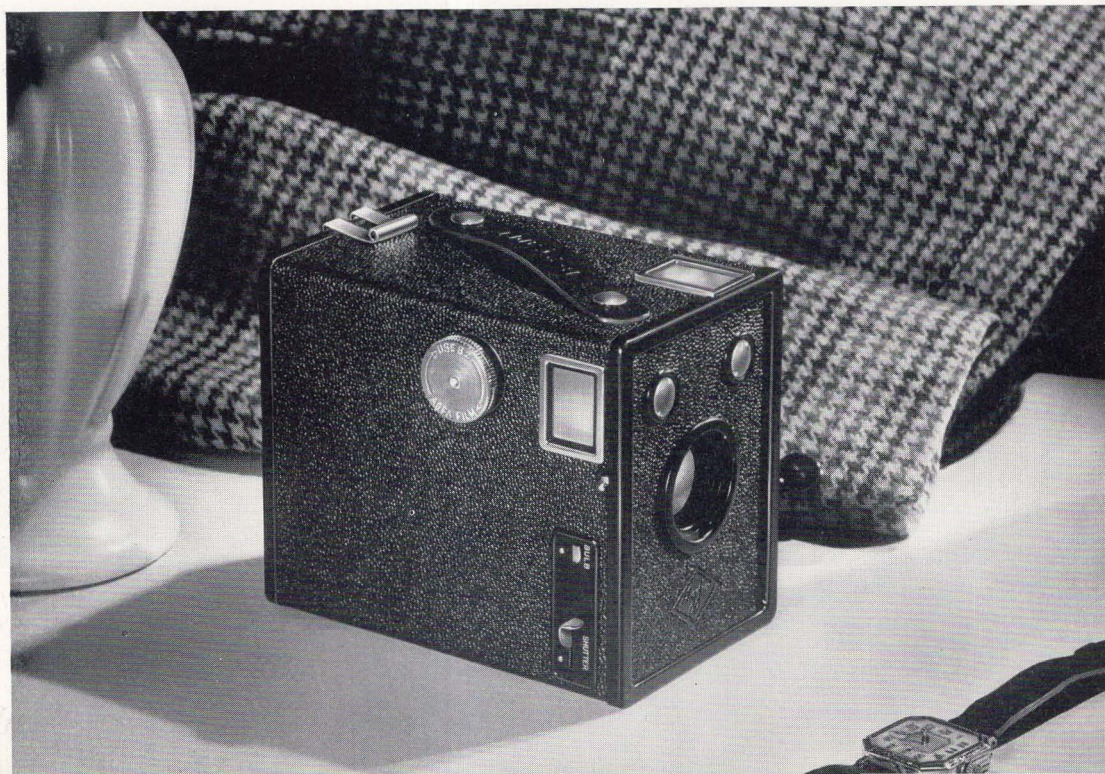
Chief Camera incorporates two-zone focusing adjustment automatically coupled with haze filter for distant scenes.



Simple addition of Flash Unit adapts Pioneer and Chief for flashlight pictures at any time.



Above: B2 Shur-Shot. Below: B2 Cadet.



SHUR-SHOT AND CADET

THESE fine box cameras have won a reputation for dependable picture-taking ability, sturdiness and simplicity of operation. Constructed with materials selected strictly on their qualifications for photographic use, the Shur-Shots and Cadets represent the cumulative skill brought by years of experience in producing practicable, dependable cameras.

The B2 and D6 Shur-Shots are deluxe models that are low in price yet superior in performance and equipment. In addition to high-quality lens and shutter equipment, permitting Bulb and Instantaneous exposures, the Shur-Shots have built-in "wings" allowing a choice between full-size and half-size pictures. Other features include: hinged back; easy-loading metal cone; large finders for easy sighting; two diaphragm openings; built-in yellow filter; satin-finish front plate; grained waterproof covering; and convenient carrying strap.

Built with equal care but with somewhat simpler trim and finish, the B2 and D6 Cadets are recognized as an excellent

buy among low-cost cameras. Equipped with a high-grade lens; one-way shutter release; shutter giving Bulb and Instantaneous exposures, the Cadets also provide removable, easy-loading metal cone; hinged back; and two large finders.

A special model, the A8 Cadet-Flash, is also available, bringing at low cost a compact outfit that is remarkably capable over a wide range of subjects. The A8 Cadet-Flash incorporates a dependable synchronizing mechanism and a detachable flash unit to permit use of the camera alone for daylight exposures and of the camera and flash unit for flash lamp exposures indoors and at night.

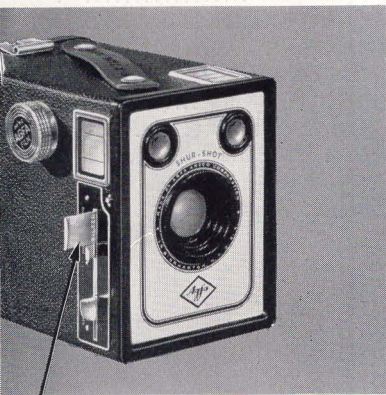
B2 Shur-Shot (8 pictures $2\frac{1}{4} \times 3\frac{1}{4}$ or 16 pictures $2\frac{1}{4} \times 1\frac{5}{8}$) takes B2 Agfa Film (same size as 120) JN94 \$2.10

D6 Shur-Shot (8 pictures $2\frac{1}{2} \times 4\frac{1}{4}$ or 15 pictures $2\frac{1}{2} \times 2\frac{1}{8}$) takes D6 Agfa Film (same size as 116) JN95 \$2.45

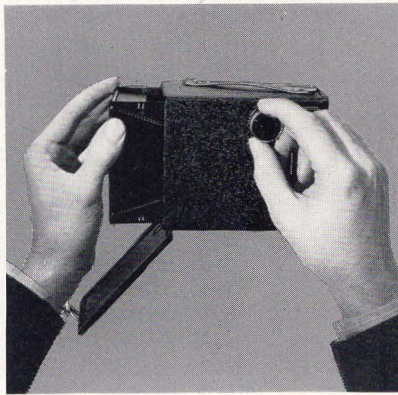
A8 Cadet-Flash (8 pictures $1\frac{5}{8} \times 2\frac{1}{2}$) takes A8 Agfa Film (same size as 127) JN127.

B2 Cadet (8 pictures $2\frac{1}{4} \times 3\frac{1}{4}$) takes B2 Agfa Film (same size as 120) JN98.

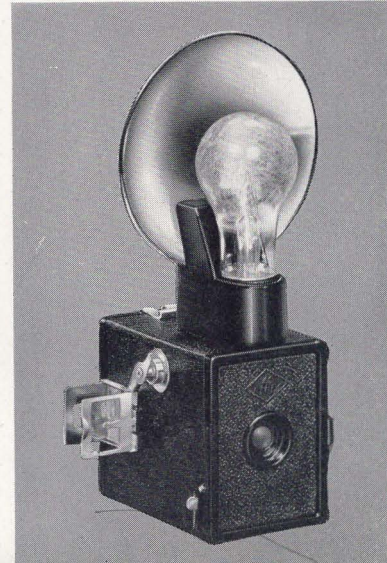
D6 Cadet (8 pictures $2\frac{1}{2} \times 4\frac{1}{4}$) takes D6 Agfa Film (same size as 116) JN107.



Sliding bar on Shur-Shot brings yellow filter into place and permits choice of two diaphragm openings.



Removable, all-metal cone and hinged back make loading of Shur-Shot and Cadet Cameras both easy and rapid.



Right: A8 Cadet-Flash with flash unit.

PICTURE-TAKING

(Darkroom equipment items)

CARRYING CASES

JN129, Soft Leather, PB20 Size, for Viking and Readysset Special	\$1.95
JN130, Soft Leather, PD16 Size, for Viking and Readysset Special	2.10
JN131, Soft Leather, PD16 Size, for Clipper (Unifo and Special)	1.75
JN132, Eveready Type, for Memo, Double-Frame Models	4.50
JN133, Eveready Type, PD16 Size, for Clipper Special	3.95
JN134, Eveready Type, for B2 Speedex and Speedex Junior	4.95
JN135, Eveready Type, for Agfa No. 1 and 2 Tripods	1.75
JN136, Eveready Type, for Memo, Single-Frame Models	4.50
JN137, Eveready Type, PB20 Size, for Viking and Readysset Special	2.45
JN138, Eveready Type, PD16 Size, for Viking and Readysset Special	2.95

COLOR FILTERS

Size 24 (26mm) B2 Speedex and Speedex Junior; Size 25 (28mm) PB20 and PD16 Viking and Readysset Special; Size 26 (22mm) PD16 Clipper Special; Size 27 (24mm) Memo; Size 28 (30mm) PB20 Chief and Pioneer; Size 29 (35mm) PD16 Chief and Pioneer; Size 30 (23mm) PD16 Clipper Unifo.

No. 1 (Light) Yellow, any size, each	\$1.75
Size 27 (24mm) Memo, No. 3 (Medium) and No. 5 (Dark) Yellow, each	2.00
Size 27 (24mm) Memo, No. G1 Green and No. 48 Red, each	2.25

FLASH AND FLOOD LAMPS

Photoflash	No. 5, wire-filled, "wide-peak," midget lamp	\$.13
	No. 16a, wire-filled, "wide-peak," small bulb	.15
	No. 11a, foil-filled, "high-peak," small bulb	.13
	No. 21, foil-filled, "high-peak," med. bulb	.15
	No. 21B, same as No. 21 but with blue-coated bulb	.20
	No. 31, wire-filled, "ultra-long peak," med. bulb	.23
	No. 75, foil-filled, "high-peak," large bulb	.55
	Adapter No. 68, short shank, fits No. 5 lamp to standard socket	.40
	Adapter No. 681, long shank, fits No. 5 lamp to standard socket	.50
Superflash	No. 0, extra small bulb, wire-filled	.10
	Press 25, midget bulb, wire-filled	.15
	Press 40, med. bulb, wire-filled	.16
	Press 50, med. bulb, wire-filled	.18
	No. 2, med. bulb, wire-filled	.22
	No. 2B (Sunlite), same as No. 2, but with blue bulb	.25
	No. 2a, med. bulb, wire-filled	.23
	No. 3, large bulb, wire-filled	.40
	No. 3B (Sunlite), blue-bulb	.45



ACCESSORIES

as are listed on page 38)

Photoflood or Superflood, No. 115
No. 230
Photoflood R2 or Reflector Superflood85
Photoflood or Superflood No. 4 (Mogul Base).....	1.20
Daylight bulb No. B1.....	.30
No. B2.....	.60
No. B4.....	1.75
Photo-enlarger No. 211, 212, 213.....	.25
No. 301, 302, 303.....	.75
No. 111, bayonet base.....	.35
Super-N-Larger, E10, E11 and E12.....	.35
E14 and E15.....	.75

MISCELLANEOUS

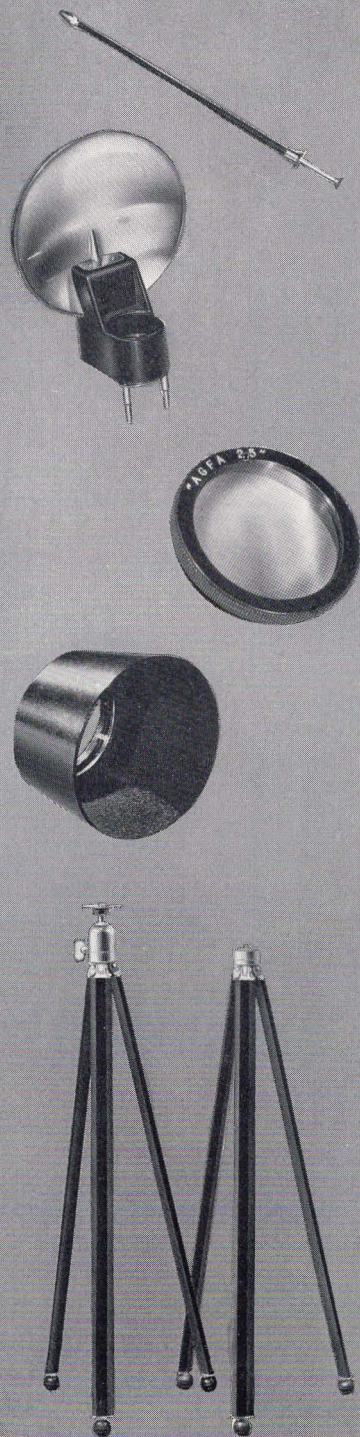
"No-Mar" cable releases, Code I fits Readysset Special, Code W fits Viking, Code C fits Speedex, Code E fits majority of other makes, each	\$.35
Flash Unit (battery case, socket and reflector) to fit Pioneer and Chief Cameras JN149, each.....	\$1.00
Lens Cap for PD16 Clipper Special, each.....	.15
Memo Speedgun, for synchronized flash exposures with f3.5 and f4.5 Memo Cameras, each.....	\$14.50
Neckcord for Memo, Speedex and Clipper Cameras, each.....	.35
Optical, eye-level view finder for Agfa PB20 and PD16 folding cameras (specify size), each.....	\$1.25
Sunshade for Memo Camera, each.....	.75

PORTRAIT ATTACHMENTS

Size No. 20 (16mm) A8 Cadet-Flash; No. 22 (23mm) B2 Cadet and B2 Shur-Shot; No. 23 (29½mm) D6 Cadet and D6 Shur-Shot; No. 24 (28mm) B2 Speedex and Speedex Junior; No. 25 (30mm) PB20 and PD16 Viking and Readysset Special; No. 26 (22mm) PD16 Clipper Special; No. 28 (30mm) PB20 Chief and Pioneer; No. 29 (35mm) PD16 Chief and Pioneer; No. 30 (23mm) PD16 Clipper Unifo, each.....	\$.90
--	-------

TRIPODS

Agfa No. 1, with stationary head.....	\$3.95
Agfa No. 2, with ball and socket, swivel head.....	4.95





AGFA ROLL FILM

WIDELY accepted as the standard for excellence and dependability, Agfa roll film is furnished in seven different types to meet every picture-taking requirement. Every roll is guaranteed—as explained on page 25.

PLENACHROME

Fine outdoor pictures, even under adverse light conditions met on dull days, are certain when you use Agfa Plenachrome. Speedy, reliable, efficient, this modern film is of the "chrome" type, having high sensitivity to all colors except red. In addition, Plenachrome has wide latitude to compensate for variations in exposure, a degree of contrast which gives pleasingly brilliant prints, full anti-halo protection, and a special surface coating to help prevent abrasion marks.

SUPER PLENACHROME

This high-speed, orthochromatic roll film has won fame and preference among many camera owners. With greater speed and latitude than Plenachrome, this film adds hours to the snapshot day and largely overcomes the common error of incorrect exposure. Brilliant gradation, and full anti-halo protection contribute toward making Super Plenachrome a truly versatile material capable of doing an outstanding job in any camera.

STANDARD

For picture-taking of conventional outdoor subjects, Agfa Standard Roll Film is both a serviceable and inexpensive choice. Long known as a dependable material for average light conditions, this film is excellent for outdoor photography. Its



ample speed and color sensitivity insure good results—yet its lower price brings a worth-while economy to your picture-taking.

SUPERPAN SUPREME

Here's the first choice of discriminating camera-users for snapshots at night, for photographs taken indoors or out, even when light is poor, and for subjects that demand a true interpretation of color values. Superpan Supreme is an improved, high-speed film with sensitivity to all colors of the rainbow. Its emulsion has been carefully balanced to give brilliant results outdoors without producing harsh negatives when exposed under artificial lighting. Extremely wide latitude guards against exposure errors and a special back-coating prevents unsharpness due to halation.



FINOPAN

Users of small hand cameras have long wished for just this kind of a film for outdoor work—one which gives correct color rendering, clean, brilliant gradation, anti-halo protection and a grain structure so fine that enlargements of great size are possible and practical. In addition, Finopan has ample speed and latitude for a wide range of picture-taking.

SUPERPAN PRESS

Still setting the pace for highest speed in photographic materials, this exceptionally fast Agfa film gives added subject range to any camera. The phenomenal speed of Superpan Press has been obtained without loss of fineness of grain, brilliance or balanced panchromatic color sensitivity, and is of tremendous importance when light is poor and lens openings must be small or shutter speeds fast.

INFRA-RED

With its special sensitivity to deep red and infra-red regions of the spectrum, this film emulsion will prove a valuable tool to still photographers who wish to dramatize their subjects with unusual tone interpretations. Because of this individual type of sensitivity and tone recording, pictures made with Infra-Red film and a red filter present innumerable opportunities for unusual and artistic treatment of outdoor scenes and scenic views; blue skies being recorded in dark tones, and green foliage, light-colored buildings, white clouds and similar subject matter in various tones from light gray to clean white. Other specifications include moderately brilliant gradation, and effective anti-halo protection.

AGFA ROLL FILM IS THE GUARANTEED FILM

EACH Agfa Film—Plenachrome, Super Plenachrome, Standard, Superpan Supreme, Finopan, Superpan Press and Infra-Red—is sold with the guarantee: "Pictures that satisfy or a new roll free". This unusual warranty is more than a simple pledge of quality—for behind it lies the desire to see that every user of Agfa roll films will obtain satisfactory pictures. If a customer is dissatisfied with Agfa roll film negatives, *even when the user has made a mistake*, he need but follow the directions on the guarantee bond and a new roll will be sent *absolutely free of charge*. With each replacement roll a list of detailed recommendations is sent, showing how to correct mistakes and obtain better pictures.



ROLL FILM PRICES

Size	Agfa No.	Same Size As	No. of Exposures	Price						
				Stand-ard	Plena-chrome	Super Plena-chrome	Super-pan Supreme	Finopan	Super-pan Press	Infra-Red
1 $\frac{5}{8}$ x 2 $\frac{1}{2}$	A8	127	8	\$.20	\$.25	\$.30	\$.30	\$.30	\$.30	\$.40
2 $\frac{1}{4}$ x 2 $\frac{1}{4}$ (6 x 6cm).....	B1	117	6	..	.25	..	.30
2 $\frac{1}{4}$ x 3 $\frac{1}{4}$ (6 x 9 cm).....	B2	120	8	.25	.30	.35	.35	.35	.35	.45
2 $\frac{1}{4}$ x 3 $\frac{1}{4}$ (Thin Metal Spool)	PB20	620	8	.25	.30	.35	.35	.35	.35	.45
2 $\frac{1}{2}$ x 4 $\frac{1}{4}$ (6.5 x 11 cm).....	D6	116	8	.30	.35	.40	.40	..	.40	..
2 $\frac{1}{2}$ x 4 $\frac{1}{4}$ (Thin Metal Spool)	PD16	616	8	.30	.35	.40	.40	..	.40	..
2 $\frac{7}{8}$ x 4 $\frac{7}{8}$ (7.25 x 12.5 cm)...	M6	130	6	..	.45
3 $\frac{1}{4}$ x 4 $\frac{1}{4}$ (8 x 10.5 cm).....	E6	118	6	..	.45
3 $\frac{1}{4}$ x 4 $\frac{1}{4}$ (8 x 10.5 cm).....	F6	124	6	..	.45
3 $\frac{1}{4}$ x 5 $\frac{1}{2}$ (8 x 14 cm).....	G6	122	6	..	.55	.65	.65
$\frac{3}{4}$ x $\frac{3}{4}$	R12	...	12	..	.20

AGFA FILM PACKS

THREE KINDS of Agfa film are available in film pack form for those who desire the convenience of twelve exposures in one pack and the speed in changing film between exposures that is offered by this type of packaging.

SUPERPAN PRESS in film pack form is similar to that supplied as roll film and cut film. Already famous among photographers for its amazing increase in light sensitivity over previous high-speed films, Superpan Press is the ideal selection when highest possible film speed is required. This remarkable speed, which has been achieved in Superpan Press without sacrifice of keeping qualities, fineness of grain, brilliance or balanced color sensitivity, means much to every photographer who must use small lens openings or high shutter speeds under adverse light conditions. Excellent in either daylight or Mazda light, Superpan Press film pack greatly extends the subject range of any

photographer's working equipment.

SUPERPAN SUPREME is a high-speed panchromatic film, ideally suited as an excellent recording medium for portraiture indoors or out, pictures at night by flood or flash bulbs and an almost limitless variety of outdoor subjects. Its panchromatic color sensitivity, wide latitude and effective protection against halation help greatly in securing perfect results, even when working conditions are unfavorable.

SUPER PLENACHROME is an orthochromatic film of high speed, widely preferred among film pack users for sports photography, as well as for pictorial and scenic work. For outdoor picture-taking requiring short exposures with a film of wide latitude, high orthochromatic color sensitivity, brilliance and protection against halation, Super Plenachrome provides a logical selection.



FILM PACK PRICES

PICTURE SIZE		SAME SIZE AS	PRICE PER PACK		
<i>Inches</i>	<i>Centi- meters</i>		<i>Super- Plena.</i>	<i>Superpan Supreme</i>	<i>Superpan Press</i>
1¾ x 2⅜	4.5 x 6	500	\$.50
2¼ x 3¼	6 x 9	520	.70	\$.70	\$.75
3¼ x 4¼	8 x 10.5	518	1.15	1.20	1.25
3½ x 4¾	9 x 12	541	1.25	1.30	1.40
3¾ x 5½	8 x 14	522	1.30
4 x 5	10 x 12.5	523	1.30	1.40	1.50
4 x 6	10 x 15	543	1.60
5 x 7	13 x 18	515	2.30	2.40

AGFA 35 mm. MINIATURE CAMERA FILM

Six outstanding Agfa films, prepared especially for use in 35mm. miniature cameras, are supplied to fulfill the need for various types of recording materials. Each of the films is furnished in an improved Agfa cartridge for the LEICA camera; all negative films are available also in the daylight-loading spool for the CONTAX camera. Five of the films are supplied in daylight-loading cartridges to fit the new Agfa Memo camera. Darkroom loadings in various lengths are also available in several of the films as noted in the table on page 29.

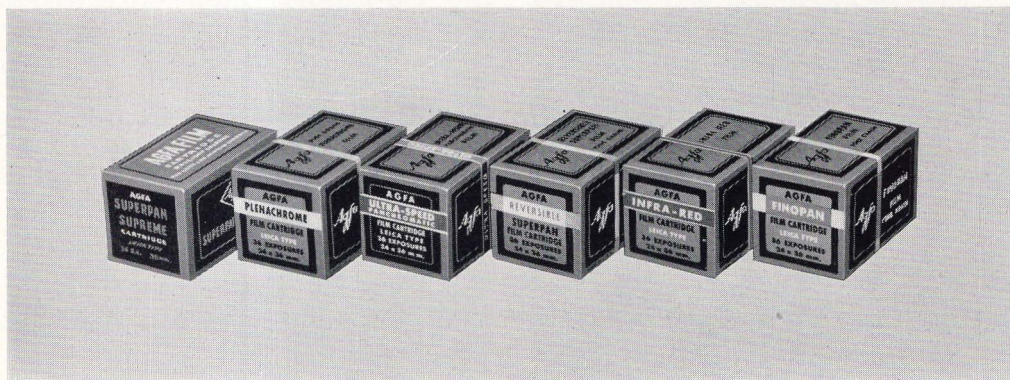
SUPERPAN SUPREME

The ideal selection for the majority of picture-taking occasions, this all-purpose film incorporates an emulsion with characteristics excellently suited for use by day or night. Superpan Supreme provides remarkably high speed with unusually fine grain—a combination of qualities that is attractive to every 35mm. camera user. In addition, it possesses sensitivity to all

colors, and a moderately brilliant gradation that promotes good print quality in the final photograph. The Superpan Supreme emulsion has wide latitude in exposure to compensate for minor errors in judging light or adjusting lens or shutter settings; is furnished on gray base to prevent halation and provided with a protective surface coating to minimize abrasion marks. Supplied in Memo Cartridges, Leica Cartridges, Contax Spools, Argus Spools, and bulk lengths as listed on page 29.

ULTRA-SPEED PAN

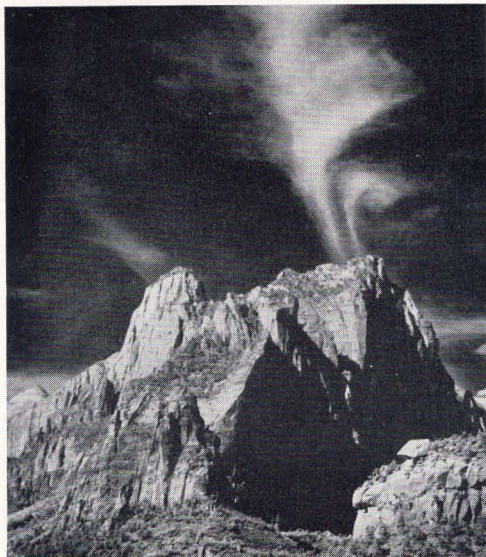
Designed especially for use in artificial light, this remarkable film, widely accepted as the fastest film obtainable for miniature-camera use, provides a degree of speed that brings heretofore impossible subjects easily within camera range. With full sensitivity to all colors and with a long-scale type of gradation that secures full registration of shadow detail, Ultra-Speed Pan is an excellent selection for use



in Mazda light, indoors and out, when neither daylight nor high-powered lights are available. It is furnished on gray base, has non-abrasion surface coating and is supplied in Memo Cartridges, Leica Cartridges, Contax Spools and bulk lengths as listed on page 29.

FINOPAN

Finest possible grain with panchromatic color sensitivity and moderately high speed is the combination of characteristics brought by this popular Agfa film. The ideal film to use when fineness of grain size is a criterion, Finopan is excellent for photo mural work and other occasions when good-sized enlargements are desired. With moderately brilliant gradation and with gray-base halation protection and a surface coating to prevent abrasion marks, Finopan is regarded by many miniature-camera users as a general "all-purpose" film. It is available in Memo Cartridges,



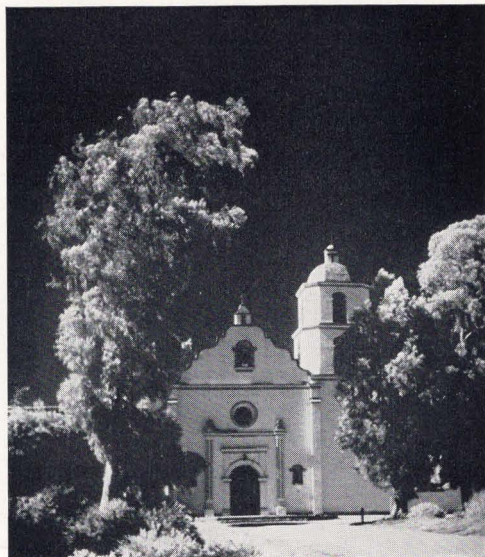
Leica Cartridges, Contax Spools and bulk lengths as listed on page 29.

FINE-GRAIN PLENACHROME

Clear, sparkling negatives of pictures made outdoors are assured by this fast orthochromatic film. Its fineness of grain and its high sensitivity to all colors except red make it a preferred film for general outdoor photography of a wide variety of subjects. Plenachrome provides anti-halation and non-abrasion protection; is supplied in Memo Cartridges, Leica Cartridges, Contax Spools and bulk lengths as listed on page 29.

INFRA-RED

Agfa Infra-Red Film is an unusual material which brings new possibilities to the miniature-camera user, for with it effects can be easily obtained that are difficult or impossible with other films.



Night-effect scenes in broad daylight, crystal-clear pictures of distant scenes, fluffy white clouds against a jet black sky and dramatic presentation of otherwise ordinary commercial shots, all are possible and practical with this remarkable film. Supplied in Leica Cartridges, Contax Spools and bulk lengths as listed below.

FINE-GRAIN SUPERPAN REVERSIBLE

To meet the demand for a reversible film for use in miniature cameras, Agfa Fine-Grain Superpan Reversible has been made available in safety base. Superpan Reversible is converted to a positive by the Agfa reversal process at authorized Agfa Reversal Laboratories for a cost of fifty cents per 36-exposure roll. Supplied in Memo and Leica Cartridges only.



35MM. FILM PRICES

NAME OF AGFA FILM	24- <i>Exposure*</i> Memo Cartridge		20- <i>Exposure</i> Leica Cartridge		36- <i>Exposure</i> Leica Cartridge		36- <i>Exposure</i> Contax Spool		27½-ft.	55-ft.	100-ft.
	ORDER NO.		ORDER NO.		ORDER NO.		ORDER NO.		Container Notched Film	Container Notched Film	Container Unnotched Film
Ultra-Speed Panchromatic	M35-1	\$.65	L20-1	\$.65	L36-1	\$1.00	C36-1	\$1.00	\$1.80	\$3.50	\$6.00
Superpan Supreme	M35-2	.65	L20-2	.65	L36-2	1.00	C36-2	1.00	1.80	3.50	6.00
Finopan	M35-3	.65	L20-3	.65	L36-3	1.00	C36-3	1.00	1.80	3.50	6.00
Fine-Grain Plenachrome	M35-4	.60	L20-4	.60	L36-4	.90	C36-4	.90	1.65	3.25	6.00
Infra-Red	L20-5	.75	L36-5	1.20	C36-5	1.20	2.15
Superpan Reversible	M35-6	1.00	L36-6	1.50

18-exposure Superpan Supreme spool for Argus camera \$.50

*Cartridge gives 24 DOUBLE FRAME exposures, also fits single-frame MEMO giving 48 exposures.

AGFA MOTION PICTURE FILM

16MM. TRIPLE S PAN REVERSIBLE

This amazingly fast panchromatic film is ideal for indoor movies and for slow-motion work under light conditions requiring extreme speed. With its exceptional speed and remarkable fineness of grain, the emulsion of Triple S Pan proves an excellent recording medium for a wide variety of otherwise difficult subjects. In addition this film is balanced in contrast to provide desirable brilliance outdoors without showing harsh effects under artificial lighting. Triple S Pan has wide latitude to guard against errors in exposure, and the highly effective Agfa anti-halo coating to preserve sharpness of detail recorded on the film.

16MM. HYPAN REVERSIBLE

This panchromatic film has been especially designed for outdoor and indoor work where brilliant contrast, fineness of grain and clear, sharp results are necessary. Intermediate in speed to Triple S Pan and Panchromatic Reversible films, Hypan is more than amply fast for average outdoor subjects and insures clear, brilliant projection with its fine-grain emulsion and anti-halation coating.

16MM. PANCHROMATIC REVERSIBLE

This new Agfa film is a fast material, sensitive to all colors and possessing good screen brilliance on projection. Supplied at a price which makes it an exceptional value, Agfa Panchromatic Reversible is a suitable film selection for a wide variety of subject material.

16MM. FINE-GRAIN PLENACHROME REVERSIBLE

With ample speed, pleasingly brilliant contrast and orthochromatic color sensitivity, this film provides an excellent outdoor medium at moderate price. With excellent speed for outdoor movie-making, Plenachrome possesses wide latitude and full anti-halo protection.

16MM. SUPERPAN SUPREME NEGATIVE

Cine workers who require negative material from which positive prints are to be made, will find Agfa 16mm. Superpan Negative an extremely fast, panchromatic material. It is recommended for indoor and outdoor use whenever highest speed and sensitivity to all colors are necessary. Processing not included in list price.



"TWIN EIGHT" HYPAN REVERSIBLE

This new film emulsion has been especially designed for finer results with double 8 cameras. Incorporating an extremely fine-grained emulsion with high speed, this new film permits good exposures indoors or out. In addition, fully panchromatic color sensitivity, wide latitude and good brilliance characteristics are provided.

"TWIN EIGHT" PANCHROMATIC REVERSIBLE

Slightly slower than Twin Eight Hypan and Filmopan Reversible films, this high-quality, panchromatic emulsion, supplied for double-width 8mm. cameras, provides fine grain, high resolving power and brilliant screen results at low cost.

8 MM. F. G. PANCHROMATIC REVERSIBLE

A single-width 8mm. film with excellent fine-grain qualities, full color sensitivity, ample speed and brilliant gradation. Supplied on a special spool to fit Keystone K8 Cameras, it is also furnished as F. G. Filmopan Reversible for Filmo Straight-8 Cameras.

LABORATORY SERVICE

All Agfa 8mm. and 16mm. REVERSIBLE films will be processed at no extra charge at any of the authorized Agfa AnSCO laboratories listed below. The following services are also offered:

Developing 16 mm. Negative or Positive Film

50 to 100 ft.	\$1.50
Minimum charge.75
Combination Order: Developing 100 ft. negative and preparation of 16 mm. positive.	4.00

Positive Prints from Developed Negative Film

Rolls of 77 ft. to 100 ft.	\$3.50
Rolls of 100 ft. or more, per foot.03½
Rolls of less than 77 ft., per foot.05
Minimum charge per order.	2.50

Duplicates from Reversible Film

Rolls of 77 to 100 ft.	\$5.00
Rolls of 100 ft. or more, per foot.05
Rolls of less than 77 ft., per foot.06½
Minimum charge per order.	3.25

Printed Titles

Per Word.	\$.03
Minimum charge per title (10 words or less).40
Minimum charge per order.	1.00

These prices do not apply to Canadian Laboratory.

16MM. FILM PRICES

Name	Order No.	50-ft. Roll	Order No.	100-ft. Roll	400-ft. Roll
Triple S Pan Reversible.	51	\$ 3.25	101	\$ 6.00*	\$21.60*
Hypan Reversible.	52	3.25	102	6.00*	21.60*
F. G. Plenachrome Reversible.	53	2.75	103	4.50*	17.10*
Panchromatic Reversible.	54	2.75	104	4.50*	17.10*
Superpan Supreme Negative.	106	3.50*	12.60*
Safety Positive.	107	.90*	3.60*

*Also available perforated for sound on special order from Binghamton only.

8MM. FILM PRICES

"Twin Eight" Hypan Reversible, 25 ft. including processing, Order No. 282.	\$2.25
100 ft. to fit Bolex H8, including processing.	7.50
"Twin Eight" Panchromatic Reversible, 25 ft. including processing, Order No. 284.	2.00
Fine-Grain Filmopan Reversible, 30 ft. including processing.	1.45
Fine-Grain Panchromatic Reversible for Keystone Camera K8, including processing.	1.45

AUTHORIZED AGFA ANSCO LABORATORIES

AGFA ANSCO, 245 W. 55th St., New York, N. Y.

*AGFA ANSCO, 433 E. Erie St., Chicago, Ill.

AGFA ANSCO, 1224 So. Hope St., Los Angeles, Calif.

*AGFA ANSCO, 121 Julia St., Jacksonville, Fla.

MOTION PICTURE SERVICE Co., 125 Hyde St., San Francisco, Calif.

THE CALVIN Co., 26th & Jefferson Sts., Kansas City, Mo.

ASSOCIATED SCREEN NEWS LTD., 5271 Western Ave., Montreal, Quebec

Laboratories marked * provide reversal processing and title service only.

AGFA SHEET FILM

AMONG the many different kinds of Agfa sheet films prepared for professional photographic use, there are six most adaptable and best suited for the requirements of the advanced amateur. These six films, Superpan Press, Super Plenachrome Press, Superpan Portrait, Triple S Pan, Isopan, and Supersensitive Plenachrome, are described below. For full information on other Agfa sheet films, ask for Professional Catalog, P30.

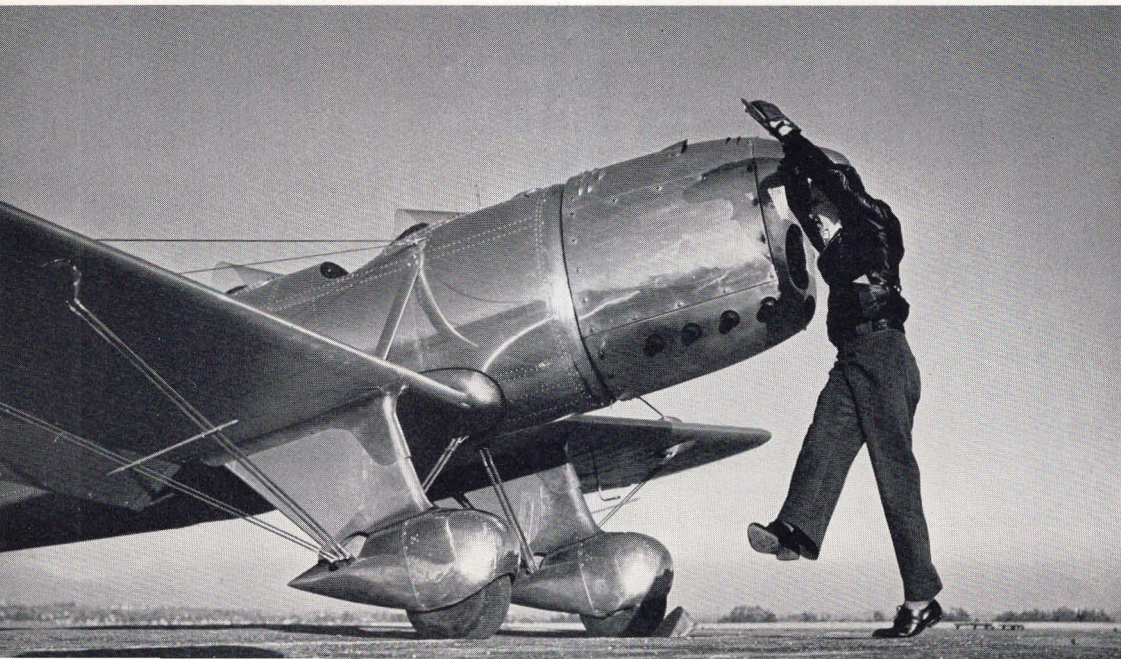
SUPERPAN PRESS

Although designed primarily for press photography, this remarkable film has found countless applications in amateur work where good photographs must be

obtained in the face of adverse working conditions. In addition to its extreme speed, which greatly extends the picture-taking range of any camera, Superpan Press gives moderately brilliant gradation, panchromatic color sensitivity and protection against halation. It should be handled and developed in total darkness. See Schedule B on page 33 for prices.

SUPER PLENACHROME PRESS

This outstanding orthochromatic film furnishes unmatched speed for the photographer who wants a film that can be developed by red safelight. For prices, see Schedule A on page 33.



SUPERPAN PORTRAIT

This film is a high-speed, panchromatic material with sensitivity to all colors and a scale of gradation which gives excellent registration of highlight detail. Although designated as a "portrait" film, it has a wide range of suitability to all types of indoor and outdoor subjects which call for a panchromatic film. Anti-halation protection is provided by a coating which disappears during development. For prices, see Schedule B.

TRIPLE S PAN

An adaptation of Agfa's famed high-speed emulsions, this film provides extremely high speed, fully twice that of well-known Superpan Portrait or Super-sensitive Panchromatic films. This sensitivity advantage is obviously valuable where small lens openings and fast shutter speeds are desired and when pictures are taken under adverse light conditions. This new film also brings a finer balance of recording characteristics, particularly noticeable under Mazda light. Triple S Pan is similar in gradation and color sensitivity characteristics to Superpan Portrait and possesses wide latitude and full protection against halation. For prices, see Schedule B.

ISOPAN

Isopan is a panchromatic film of extremely fine grain, the logical choice whenever enlargements of unusual size are to be made and utmost fineness of grain is desired. In addition, Isopan provides high speed and brilliant gradation as well as an efficient anti-halation coating. Isopan is also particularly well-suited for three-color separation negatives in color photography, having a well-balanced color sensi-

tivity for this kind of work, as well as ample speed and brilliance. See Schedule B for prices.

SUPERSENSITIVE PLENACHROME

This film has won wide recognition as an orthochromatic material that is excellent for portraiture and for a wide range of miscellaneous outdoor photography. Super-sensitive Plenachrome has wide latitude, excellent speed, high sensitivity to all colors except red, and is protected against halation by a back-coating which disappears in development. For prices see Schedule A below.

FILM PRICES

SIZE	PRICE PER DOZEN	
	<i>Schedule A</i>	<i>Schedule B</i>
2¼ x 3¼ in.	\$.45	\$.50
2½ x 3½ in.	.45	.50
6.5 x 9cm.	.50	.55
3¼ x 4¼ in.	.65	.75
9 x 12cm.	.80	.90
4 x 5 in.	.90	1.00
5 x 7 in.	1.45	1.60
8 x 10 in.	3.20	3.55





AGFA PHOTOGRAPHIC PAPERS

CONVIRA . . . for contact printing. This developing-out paper is the result of long experience in the preparation of paper fitted to meet the exacting requirements of photo finishers, and commercial and professional photographers, as well as advanced amateurs.

The Convira emulsion is carefully balanced to give prints with a brilliant blue-black tone, uniform through all grades of contrast and capable of being increased in warmth if desired, by modification of development. Convira is supplied in Glossy and Velvet, single or double weight, in six grades of contrast spaced and balanced to provide perfect reproduction from all types of negatives.

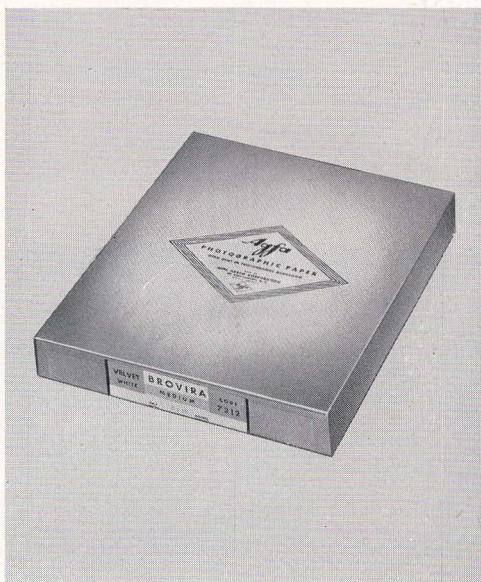
INDIATONE . . . for contact and projection. Slower than bromide papers yet faster than Convira, this warm-toned paper may be used for contact printing by screening down the lights, or for projection with apparatus having adequate illumination. Used either way, it yields beautiful prints, with identical quality when both contact and projection prints are desired from the same negative. Indiatone is a paper of natural warmth, well-suited for sepia and gold toning. It is supplied in double weight stock in a variety of pleasing surfaces.

BROVIRA . . . for projection printing. Agfa Brovira is a fast bromide enlarging paper which has won widespread recognition for its reliability in use and for the excellence and beauty of its finished prints. Brovira has remarkable latitude and per-

mits wide control over contrast by manipulation in development. It is distinguished by the depth and richness of its blacks and by the freedom from grayish, flat results.

Brovira is offered in a range of contrasts on single and double weight stock in Glossy and Velvet and on double weight in a variety of practical and attractive surfaces.

CYKON . . . for contact printing. This new Agfa paper, designed especially for use in portrait work, establishes a new standard for excellence in contact printing papers. Providing a full-scale range of warm tones, Cykon produces prints with new beauty and accuracy of tone reproduction. Cykon is available in three grades of contrast, supplied in a variety of pleasing surfaces on double weight stock.



CYKORA . . . for projection printing. A companion paper to the new Cykon, this outstanding new enlarging paper, a product of Agfa Ansco research in emulsion-making, brings new beauty to prints made by projection. The warm-toned Cykora emulsion incorporates an im-

proved, full-scale range of tones that results in photographs with superior print quality. Inherently warm toned, Cykora is well adapted to toning in almost any standard toner. Cykora is supplied in three contrast grades (4 grades in glossy) and a variety of surfaces on double weight stock.

PHOTOGRAPHIC PAPER PRICES

<i>Size</i>	<i>Convira Per 2 Doz. Single Weight</i>	<i>Size</i>	<i>Convira and Cykon Per Doz. Double Weight</i>	<i>Brovira, Indiatone and Cykora Per Doz. Double Weight</i>
2½ x 3½	\$.20	5 x 7	\$.30	\$.45
2¾ x 4½	.25	6½ x 8½	.50	.70
3½ x 5¾	.30	8 x 10	.70	.95
4 x 6	.35	11 x 14	1.25	1.75

NOTE: This is a very condensed price list. For complete price information ask for Professional Catalog P30. Special Stipple Surfaces of Cykon, Cykora, Brovira and Indiatone are approximately ten per cent higher than prices listed.



AGFA DARKROOM OUTFITS

DARKROOM OUTFIT NO. 1A This developing and printing kit is complete yet inexpensive; providing all necessary equipment and material for developing and printing, plus enough chemicals and paper to develop and print at least three rolls of film.

The Agfa Darkroom Outfit No. 1A includes: red safelight lamp with bulb; three 4x6-inch, hard rubber trays; 4-ounce graduate; stirring rod; 4x6-inch printing frame; two stainless-steel film clips; three MQ Developer Tubes; 1 quart size can Acid Hypo; 1 package 3¼x5½" Convira Paper; and instruction book.

Agfa No. 1A Darkroom Outfit, boxed and complete as described above—\$2.45.

DARKROOM OUTFIT NO. 2A This developing and printing kit has been assembled to provide more complete and elaborate apparatus than is available in the No. 1A Outfit. The three trays included in the outfit are new-type, Agfa, stainless-steel, 5x7 inches in size. A stainless-steel tray thermometer and two stainless-steel film clips are also provided, along with an 8-ounce glass graduate; a glass stirring rod; 4x6-inch printing frame; red safelight lamp with bulb; 1 package 3¼x5½" Convira Paper; five MQ Developer Tubes; ½-gallon size can Agfa Acid Hypo; and instruction book.

Agfa No. 2A Darkroom Outfit, boxed and complete as described above—\$4.95.

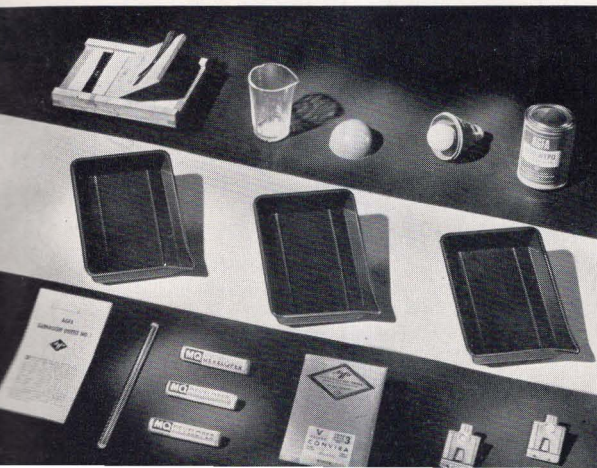
DELUXE DARKROOM OUTFIT NO. 3 This developing and printing kit contains all necessary material for developing and printing, plus several extra items that add greatly to convenience in darkroom work. The outfit includes a wide assortment of useful equipment. Packaged in an improved case with fabric covering and a convenient handle, the outfit is easy to carry.

Special features of the Deluxe Outfit are the Agfa 4x6-inch masking print-frame and the convenient Agfa Safelight Outfit with yellow bulb and red and green filters for use when handling paper or film. The safelight filters are balanced in color to furnish illumination of maximum safety and optimum visibility.

Also included in the new outfit are: three Agfa 5x7-inch, stainless-steel trays; 1 package 4x6" Convira Paper; 2-ounce bottle of Rodinal Developer; five MQ Developer Tubes; ½-gallon size can Agfa Acid Hypo; 8-ounce glass graduate; glass stirring rod; stainless-steel thermometer; two stainless-steel film clips; 4-inch print roller; four 10x12-inch blotters for drying dull-surfaced prints; and one 10x12-inch ferrotype tin for drying glossy prints. Also furnished is a copy of the comprehensive, yet easy to read, 60-page booklet, "Developing and Printing Made Easy."

Agfa No. 3 Deluxe Darkroom Outfit, boxed and complete as described above—\$9.75.

Agfa Darkroom Outfit No. 1A



Agfa Darkroom Outfit No. 2A





Agfa DeLuxe Darkroom Outfit No. 3

DARKROOM EQUIPMENT ITEMS

FILM CLIPS

Easy-Clip type, stainless steel, 1 3/8" size.....	\$ 1.20 per doz.
2" size.....	1.80 per doz.
Lead Weights for "Easy Clips".....	1.80 per doz.
Professional type, plated brass.....	.30 each

GRADUATES

	4 oz.	8 oz.	16 oz.	32 oz.
Molded glass.....	\$.15	\$.20	\$.30	\$.60

MISCELLANEOUS

Cine Film Cement.....	1 oz. \$.25; 2 oz., \$.50
"Developing and Printing Made Easy" booklets.....	\$.25 each
Ferrotypes Tins, 10x12 inch.....	.20 each
Printer, 5x7-inch size, advanced ama- teur type.....	19.50 each
Printing Frame, 4x6-inch size, with glass.....	.60 each
masking type.....	1.50 each
Print Roller, 4 inch.....	.30 each
Stirring Rod, 7 1/2" length, glass.....	.05 each

Timer, black figures on white dial, minute and second hands.....	\$5.00 each
"Tray-Clip" Thermometer.....	.45 each

SAFELIGHT OUTFITS AND FILTERS

Red Plastic Safelight, complete with 7 1/2 w. bulb.....	.60 each
Darkroom Lamp and Filter Outfit, with housing, A3, A6 and A7 filters (no bulb).....	1.95 each
Safelight Outfit, with housing, yellow bulb, A3 and A7 filters.....	1.95 each
Housing only.....	1.15 each
A3 green filter, A5 yellow filter, A6 yellow-green filter, A7 red filter 3 1/4 x 4 3/4 size.....	.40 each
5 x 7 size.....	.60 each
8 x10 size.....	.90 each

TRAYS

	4x6	5x7	8x10	11x14	14x17
Enamelled Steel	—	—	\$.95	\$1.95	\$2.85
Hard Rubber	\$.20	—	—	—	—
Stainless-Steel	—	\$.55	2.15	4.95	—

AGFA PHOTOGRAPHIC CHEMICALS

PREPARED DEVELOPERS

These developers are the most popular of a host of time-tested Agfa formulas. Reliable and uniform in their action, they insure proper development of your photographic materials. Compounded from photographically-pure chemicals, they are packed in sealed containers and need only to be dissolved in water for use.

AGFA 17 FINE-GRAIN DEVELOPER. This fine-grain Borax developer gives soft, fine-grain development. Formula 17 has excellent keeping qualities and gives negatives with a long, even scale of gradation.

1 qt. size.....\$.25 ½ gal. size.....\$.35

AGFA 47 FILM DEVELOPER. A standard developer recommended for Agfa films. This preparation keeps well and gives clear, brilliant negatives.

1 gal. size.....\$.45 3½ gal. size....\$1.10

AGFA 103 FILM AND PAPER DEVELOPER. This is a universal type developer which is particularly designed for use with photographic films, plates, and contact or enlarging papers. The developer is packed as a dry powder which requires dissolving in water to form the following quantities of stock solution.

1 qt. size.....\$.25 ½ gal. size.....\$.40

AGFA 125 PAPER AND FILM DEVELOPER. This formula is especially recommended for Brovira, Cykon, Cykora and similar papers; may also be used for films when brilliant negatives are desired. Furnished in cans to give the following quantities of stock solution.

1 qt. size.....\$.25 ½ gal. size.....\$.40

AGFA 135 PAPER DEVELOPER. This paper developer has been especially designed to give rich, warm-black tones with Convira, Cykon, Cykora, Brovira and Indiatone. Formula 135 is dissolved in water to form the following quantities of stock solution.

1 qt. size.....\$.25 ½ gal. size.....\$.35

M-Q DEVELOPER. This is a universal film and paper developer in powdered form. Each tube makes 8 oz. of developing solution.

5 tube carton (glass tubes).....\$.30
100 tube boxes.....6.00

FINE-GRAIN TUBE DEVELOPER. This is a special formula for fine-grain film development. Each tube makes 8 oz. tray developer or 28 oz. tank developer.

5 tube carton (glass tubes).....\$.75

RODINAL. This is a highly concentrated liquid developer, complete in one solution and needing only dilution with water for use. It is easy to handle and suitable for all types of plates and film.

3 oz. bottle.....\$.50 8 oz. bottle....\$1.00

OTHER PREPARATIONS

ACID HYPO. This standard item provides a fixing solution for plates, film and paper.

8 oz. can (for 1 qt. solution).....\$.15
1 lb. can (for 2 qt. solution)..... .25

RAPID FIXER. This preparation forms a fixing bath which lasts longer and fixes more rapidly than conventional formulas.

4 oz. bottle (for 16 oz. solution).....\$.18
8 oz. bottle (for 1 qt. solution)..... .30
1 lb. bottle (for 2 qt. solution)..... .45

FLEMISH TONER. A preparation producing beautiful brown tones on chloride and chlorobromide papers. Large bottle making sufficient toner for several hundred 5 x 7 prints.....\$1.00

DIRECT SEPIA TONER. A concentrated solution giving rich sepia tones in one simple operation.

4 oz. bottle.....\$.45 8 oz. bottle....\$.75

BROVIRA TONER. A preparation giving beautiful chalk-red to brown tones on Brovira paper.

4 oz. size (concentrated solution).....\$.75

Bleaching powders for Brovira Toner, tube for

16 oz. solution..... .15

REDUCER in powdered form for solution in water.
10 gram bottle.....\$.25

INTENSIFIER in powdered form for solution in water.
10 gram bottle.....\$.30



AGFA ANSCO

General Offices

BINGHAMTON, NEW YORK

Branches

BOSTON, MASS.....	210 Lincoln Street
NEW YORK CITY, N. Y.....	245 West 55th Street
CINCINNATI, OHIO.....	229 East Sixth Street
JACKSONVILLE, FLA.....	121 Julia Street
CHICAGO, ILL.....	433 East Erie Street
KANSAS CITY, MO.....	209 Pershing Road
SAN FRANCISCO, CAL.....	548 Mission Street
LOS ANGELES, CAL.....	1224 South Hope Street
DALLAS, TEXAS.....	2025 Commerce Street

In Canada

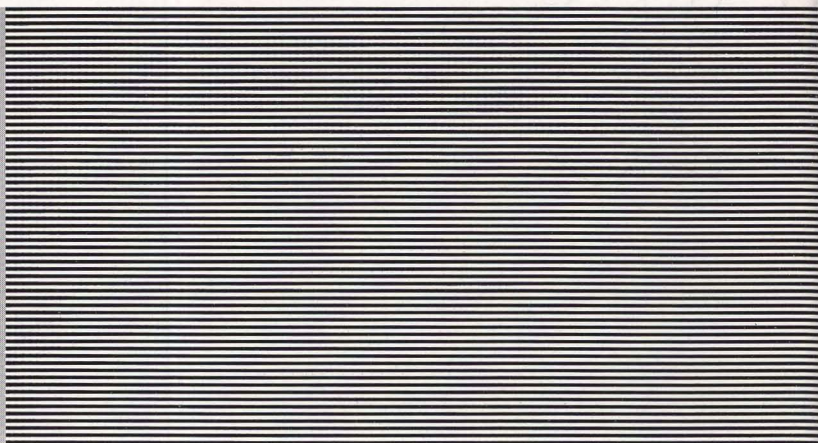
Agfa Ansco Limited, 60 Front Street W., Toronto, Ont.

All prices subject to change without notice

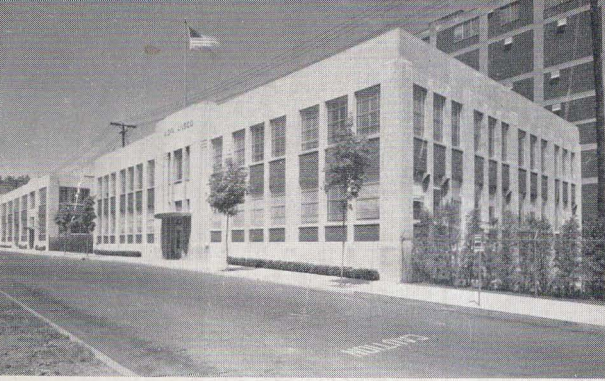
A89-120-30 TM REG. U. S. PAT. OFF. Revised to January, 1941 Printed in U. S. A.



Agfa







VIEWS OF
OFFICES AND PLANT OF
AGFA ANSCO
BINGHAMTON, N. Y.

