

Making Pictures With National GRAFLEX SERIES II



—as
simple
as
the
ABC's

It's Easy to Load the National Graflex

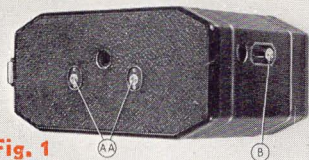


Fig. 1

1 Move cover catches AA (Fig. 1) to O (open) position. This unlocks the inner from the outer case. Separate the cases (see Fig. 2). Open the top cover (see Fig. 3).

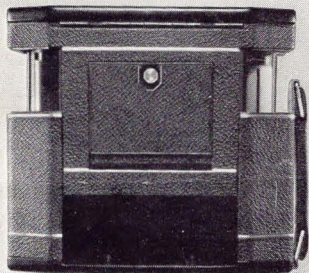


Fig. 2

2 Place the new film roll in the receptacle under knob No. 7 (Fig. 3). Hold No. 5 in direction of arrow and unwind enough film to reach the take-up spool under knob No. 6. Thread the film into the take-up spool. Wind No. 6 until the paper leader is taut. Carefully replace the cases and lock together by moving cover catches AA to C (closed) position.

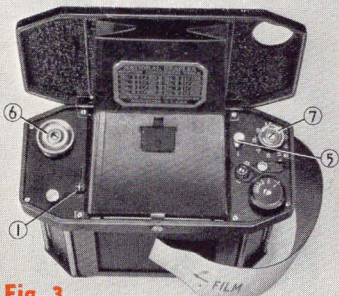


Fig. 3

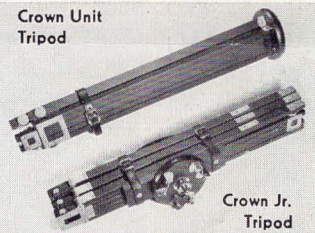
3 With the cases firmly locked, open Ruby Window Cover B (Fig. 1). Now hold the button No. 5 in the direction of arrow and wind knob No. 6 clockwise until the Figure 1 on the film appears in ruby window. Close cover B. Again holding button No.

5 in the direction of arrow lift upward on knob No. 7 and turn the pointer until it is set between the figure 9 and the letter "S" (nearer "S") on the dial.

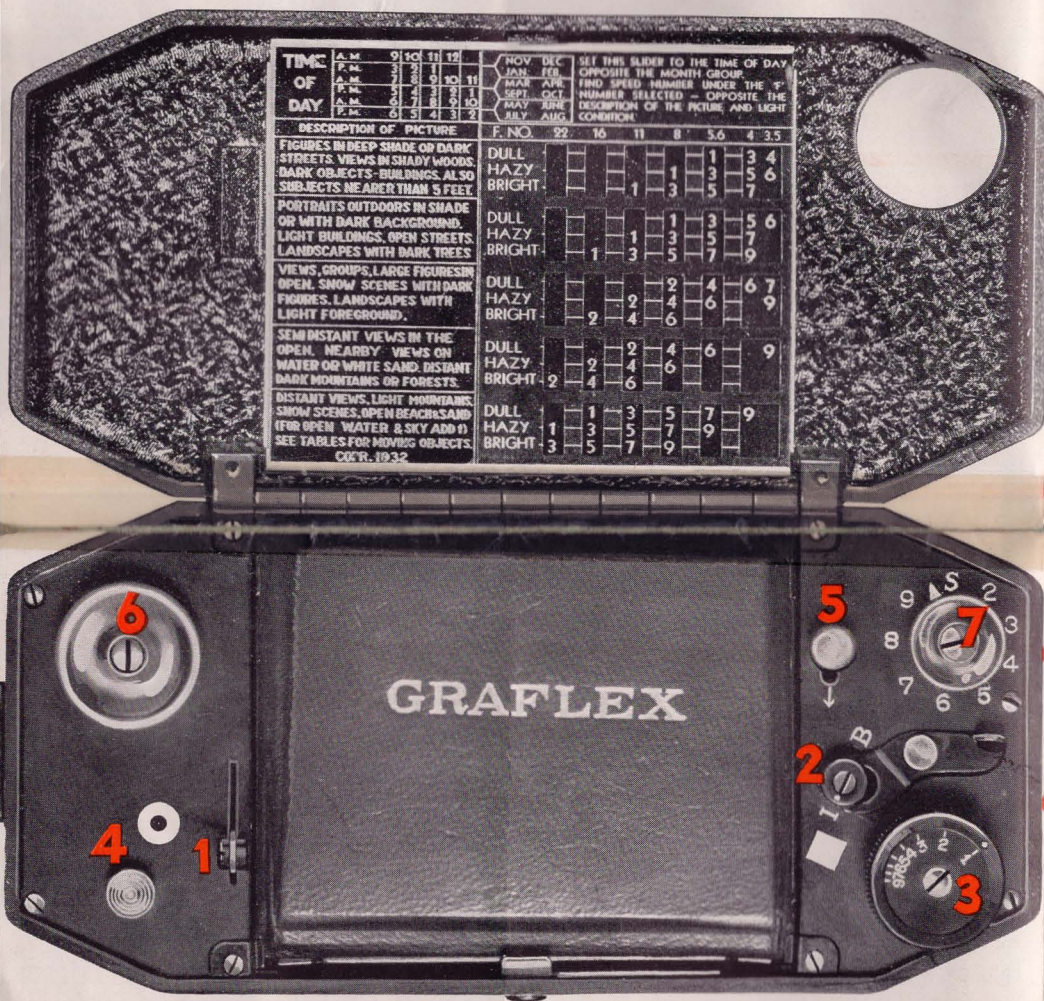
Now release button No. 5 and turn knob No. 6 clockwise until, without strain, it turns no further. The pointer on knob No. 7 will now point to the "S" position for your first picture.

NOTE: Before closing either the lens door or the top cover, place No. 1, the mirror set lever, in position nearest to you. Turn the focusing lever to the lowest position before closing the lens into the camera.

National Graflex Lenses and Accessories



Three simple cycles for real GRAFLEX pictures



NATIONAL GRAFLEX CONTROLS GIVE MORE

No. **1**, the mirror set lever, gives position to a real Graflex mirror
 No. **5**, the film tightening device, gives absolutely flat exposure surface to the film.
 No. **7**, the film measuring meter gives ten large pictures ($2\frac{1}{2} \times 2\frac{1}{2}$) on an 8-exposure roll of film.

A GETTING SET

Open lens door downward into firm position.

Open top cover.

No. **1** is the mirror set lever. Set it in position nearest to you. See that marker on No. **2** is at "I" (Instantaneous).

No. **3** is the shutter winding knob. Wind it clockwise as far as possible.

You are now **all set**.

Note: Focus with the lens wide open—that is, with 3.5 opposite the white guide mark on the lens mount. You will give depth and brilliancy to your average picture by turning the knurled ring on the lens mount, after focusing, to 11. Use the Exposure Guide for pictures to be taken under unusual light conditions.

B ALL SET—TAKE THE PICTURE

No. **4** is the release. **Press it way down.** As simple as that—your picture is taken.

C THE NEXT PICTURE

In taking the picture, No. **1** moved forward. **Reset No. 1** to position nearest you.

No. **5** is the film lock. **Release it** in direction of arrow.

No. **6** is the film winding knob. **Wind it** clock-

wise until, without strain, it turns no further. (Automatically the pointer on the film meter, No. **7** has turned and is now pointing to the number of the next picture to be made. For the tenth and last picture it will again point to "S".)

NOTE: The **black** controls Nos. **1**, **2**, and **3** are shutter controls. (The marker on No. **2** should be at "I" for instantaneous exposures; at "B" for bulb or time exposures.) The **bright** controls Nos. **5**, **6**, and **7** are film controls.

To change shutter speed first see that No. **1** is set in position nearest to you; then wind shutter winding knob (No. **3**) clockwise as far as possible; then lift upward on its outer ring and turn to speed number, **1** to **9**, as desired.

"Keepworthy" pictures—big, vivid, lasting—are yours with National GRAFLEX



National GRAFLEXED by Chas. Brecker

**FOLMER GRAFLEX
CORPORATION**

Rochester, New York

209140
Inside Case