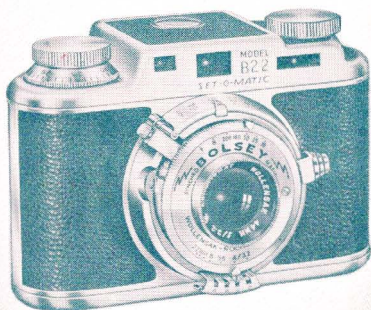


BOLSEY



CAMERAS and ACCESSORIES

featuring

SET-O-MATIC

B22 and C22 CAMERAS

A milestone in Photography

FREE
EXPOSURE GUIDE
SEE CARD INSIDE



BOLSEY CORPORATION OF AMERICA

One of the Finer Names in Photography

118 EAST 25th STREET NEW YORK 10, NEW YORK

VERSATILE BOLSEY

Everybody's CAMERA

NOW! PERFECT FLASH PICTURES... AUTOMATICALLY!

BOLSEY MODEL B22

with
SET-O-MATIC
AUTOMATIC DIAPHRAGM COMPUTER

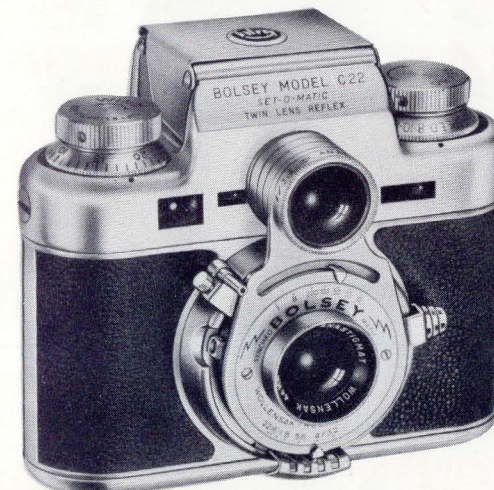
BOLSEY MODEL C22

The most important photographic advance in 22 years! Now *anyone*, with *one single, simple setting*, can take perfect color or black and white flash pictures — shot after shot — and never, *never* a wasted picture. You set

the SET-O-MATIC slide. then range find and shoot *that's all*. SET-O-MATIC calculates, measures, interprets for you — *automatically*.



\$79⁵⁰
fed. tax incl.



\$115⁵⁰
fed. tax incl.

EXAMINE THIS LIST OF IMPORTANT B22 and C22 FEATURES

1. SET-O-MATIC Automatic Diaphragm Computer for perfect flash pictures automatically.
2. SET-O-MATIC CHART in back of camera quickly gives SET-O-MATIC letter for all film-midget bulb combinations.
3. Fast f:3.2 Anastigmat lens all surfaces coated; color corrected.
4. Coupled Rangefinder — Military precision, split-image type built-in and sealed, assures smooth, sure-sharp focusing permanently.
5. Internally synchronized shutter for flash with any standard or midget base flashbulb.
6. All wiring internal, carefully insulated.
7. Special 44mm lens gives wider picture taking area, increases depth of field.
8. Accurate shutter speeds 1/10 to 1/200, T and B.
9. Exclusive "No-Double-Exposure" Device prevents accidentally taking two pictures on the same frame, but you can do so if you wish.
10. Helical mounted lens and shutter for smoother focusing action. Always ready. No pulling out. Prevents lens rotation — important with Polaroid filters and attachments.
11. Unusually close focusing up to two feet with rangefinder.
12. Optical eye-level viewfinder, set close to rangefinder for fast operation.
13. New film lead catch saves 10% or more of film... get 2 to 4 extra pictures per roll. Think of the saving in color.
14. Properly placed finger-tip controls for fast, accurate shooting.

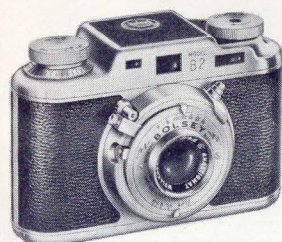
15. New-design Flashgun Mount, two-prong, one-screw, attaches flashgun quickly, easily and firmly.
16. Frame counter automatically returns to Zero after re-load.
17. Small enough to fit pocket or purse, and so comfortable to use.
18. Winding knob tells when camera is not loaded... turns without stopping.
19. Rapid loading. Entire back of camera removable. Take-up spool permanently in camera. New safety film lead catch, lead cannot escape accidentally.
20. Practically no parallax. Viewfinder very close to lens.
21. Takes standard 35mm film cartridge. Gives standard double frame negative size, 1 x 1½ inches.
22. Leatherette covering countersunk into body and protected by metal rims.
23. All Aluminum high precision die-cast body.
24. Takes beautiful black and white or brilliant natural color.
25. Distinctive design... beautiful, modern lines.

ADDITIONAL FEATURES OF MODEL C22

1. Fool-proof twin-lens reflex focusing on ground glass.
2. Reflex finder lens and taking lens perfectly matched f:3.2.
3. Parallax correction indicator on reflex ground glass viewer at 2 ft.
4. Flip-up disappearing magnifying lens.
5. Side screws allow strap-carrying without case. Appear when wanted only.

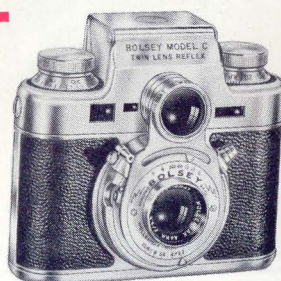
Bolsey is the camera that gives you picture quality formerly thought possible only with the most expensive foreign makes. The secret of such performance is in the exceptional design of the camera and its optical system, plus manufacturing and engineering techniques that set new higher standards of excellence in the reasonably priced 35mm field.

When you buy Bolsey, you buy top value. A camera that combines more features, more important features than any other 35mm camera in its price range. (\$61.50 to \$115.50)



MODEL B2

Internally Flash Synchronized. Built-in Coupled Range Finder. No Double Exposures. All Aluminum Precision Die-cast Body. Fed. tax incl. **\$73⁵⁰**



MODEL C

Twin Lens Reflex plus Built-in Coupled Range Finder and All B2 Features. Fed. tax incl. **\$109⁵⁰**

MODEL B without Internal Synchronization. **\$61⁵⁰** Fed. tax incl.



"BOLSEY Threesome"

"A Prize Package For Prize Pictures"

- MODEL B2, 35MM CAMERA
- EVEREADY CARRY CASE
- MODERN-DESIGN FLASHGUN

Only **\$79.⁵⁰** Fed. tax incl.

Your complete Bolsey outfit camera, case, and flashgun an ensemble as rich in appearance as it is in performance. Masterfully designed and skillfully made, this popular picture-taking package is one you'll be proud to own to use to show your fellow photo fans. An unusual value at only \$79.50.



One of the Finer Names in Photography

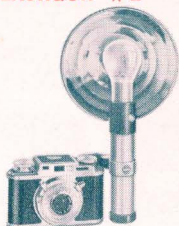
BOLSEY

ACCESSORIES

FOR MODELS B2, C, B22 and C22 — FLASHGUN #2

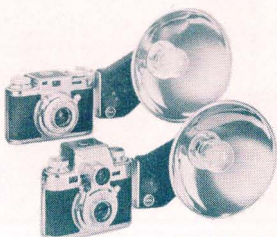
Can be used with camera case on or off. New design makes gun attachment quick, easy so secure you can even use gun as carrying handle. Built-in bulb ejector. Uses 2 standard photoflash batteries.

\$9.95



FOR MODELS B2, C, B22 and C22 — B/C FLASHGUN #3 (Battery Capacitor)

Utterly New, different! Uses a high capacity condenser (capacitor) charged by a 22½ volt hearing aid type battery. More energy for flashing than standard batteries. Lasts for more than 10,000 high-powered flashes or 2 to 3 years of hard use. Built-in test light, bulb ejector. Exclusive Bolsey mount for quick, easy, secure attachment. No dangling wires. Designed to blend artistically with Bolsey Camera.



\$15.50

BOLSEY EVER READY CARRYING CASES WITH REMOVABLE FRONTS

Handsome, top grain cowhide cases expertly stitched for long wear. 24" measuring tape on reverse side of carrying strap.

FOR MODELS B, B2, B22 \$7.95

FOR MODELS C, C22 \$10.95

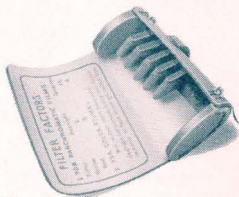


BOLSEY FILTER KIT

For All Bolsey Cameras

Made of genuine leather. Snaps on carrying strap. Contains four series V optically correct and color correct filters. Yellow, Red, Haze and Type A Conversion. Guaranteed against defects for life!

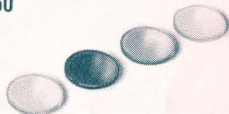
\$7.50



BOLSEY ADAPTERS

For All Bolsey Cameras

Accepts Series V filters and standard sunshade. Satin finish.



\$1.10

BOLSEY SUNSHADES

For All Bolsey Cameras

Will not vignette or interfere with viewfinder. Satin finish.

\$1.90



BOLSEY CABLE RELEASE

Fits all Bolsey Cameras.

\$1.40



ACCEPTED



U. S. ARMED FORCES

No greater honor could be bestowed upon, or be engraved so deeply into the history of Bolsey.

For with the acceptance of the Bolsey camera by the U.S. Army Signal Corps, the U.S. Air Forces, and the U.S. Navy comes the conviction that we have succeeded in our original intent to design and build a 35mm camera without equal in its class at a price low enough to make it available to all who would enjoy fine photography.

Through two World Wars, the Bolsey research and engineering staff, headed by Jacques Bolsey, inventor of the world's first non-professional movie cameras, designed and manufactured military optical instruments and photographic equipment for the allied governments. Today's Bolsey camera embodies the results of all of these years of photographic instrument development experience.

Bolsey is proud of the fact that 6 out of 10 Bolsey cameras are sold on satisfied customer recommendations no other camera enjoys such customer confidence and satisfaction.

U. S. CAMERA



ACHIEVEMENT AWARD

Bolsey is proud to have received the U. S. Camera Achievement Award in recognition of the development and production of the Bolsey N-9 Combat Recording Camera.

You will find the complete Bolsey line coupled with Friendly Service at: