



KODAK

## **The Digitized Kodak Catalog Project (1886 - 1941): A Very Brief History**

Most camera collectors at some point in their collecting careers pass through a Kodak phase - some never come out of it. And if there ever was one name that came to be associated with both cameras and collecting, it was Kodak.

George Eastman received his first patent (for coating dry plates) and bought his first manufacturing facility in 1880, and in 1881 he started the Eastman Dry Plate Company. In 1886 he received a patent for the near-mythical Eastman Detective Camera, but it wasn't until 1888 that the first camera bearing the name "Kodak" was introduced.

One of the nice things about collecting Kodak is that the product line is pretty well known, and because the company produced annual catalogs for many years, collectors can be reasonably sure of what they're looking at, when it was made, the variations and so on - presuming that they have access to either the appropriate catalog, or a number of the many books which document Kodak, each to some greater or lesser extent.

But what would be really nice would be to have a complete set of Kodak catalogs in an easily accessible form and readily available. And since the advent of portable computing devices (PC, Macintosh, etc.) that's been possible - except for the difficulty of assembling a complete set of Kodak catalogs in one spot and then scanning them and making the results available.

The idea of digitizing a complete set of Kodak catalogs has kicked around the collecting community for many years. It's been proposed on a number of online forums, during meetings of various photohistory groups, and for years there have been many incomplete "Kodak CDs" on eBay but at best, they only contained a few catalogs - whatever the owner had available. But assembling a complete set of catalogs, then scanning and processing perhaps 3,000 to 4,000 pages, was a daunting task - if not completely overwhelming - and nothing ever came of it.

Until now.

In early 2010, the idea came up again, but this time we - "we" as in "the collecting community" - were lucky. A number of collectors were willing to loan their catalogs to this project and a couple of insane - wait, let's call them "dedicated" - dedicated enthusiasts - neither of whom collected Kodak, but both of whom enjoyed the challenge of such a project - were willing to put in the time and effort to scan and pull together the entire set of catalogs into a full-blown Kodak Catalog Digital Library.

Our initial objective was to include just the annual amateur catalogs, but it turns out that many cameras only appear in certain professional and specialty catalogs. We included as many of those as we could obtain so that almost every Kodak camera made in the US, Canada and Europe, would be documented - at least up to about 1941. After that, it becomes much more difficult as Kodak stopped producing annual catalogs as their product line became increasingly more diversified.

However, even with the additional "non-amateur" catalogs, we weren't completely successful in illustrating "every" camera Kodak ever made. There are an elusive few that might appear in specialty catalogs that we simply couldn't track down. If you can't find one of those odd cameras, that's no doubt why. We may do a revision at some point in the future if someone is willing to loan us a catalog that includes a camera that isn't already recorded.

In this project, a total of 67 catalogs were used from 1886 through 1941 including a number of professional and dealer catalogs, and in some years, two or even three different catalogs to cover all the bases. With the cooperation of a number of dedicated collectors, we were able to pull together all those catalogs and in June 2010, the project started in earnest.

By November 2010, we had scanned everything we needed and eventually all 67 catalogs were then reassembled as image folders and converted to the universally accepted PDF format and finally, converted into individually searchable PDFs which could then be searched globally as a collection.

For those of you interested in the statistics: about 200 hours of scanning time (we never want to hear that sound again), 67 catalogs and 3,908 page scans - which generated 7,917 original and processed images - and 11.4 GB of disk space. Additionally, another 100+ hours of technical development time was needed to convert the digital catalogues into a fully searchable "knowledgebase" that could be launched from most any standard web browser.

The overwhelming number of catalogs was loaned to us by that most remarkable of Kodak collectors, Charlie Kamerman of Eagle Creek, Oregon. Without Charlie, it's very doubtful that this project could even have been attempted.

But as it turned out, even Charlie didn't have all the publications that were needed, but he was able to track down the five that he lacked and was able to secure either a copy or high resolution images that we could work with. And so, our thanks to the contributors of the catalogs and scans that we used:

Charlie Kamerman for the vast majority of catalogs used and all his help,  
Steve Shohet for loaning a variety of test catalogs,  
Ryerson University (Toronto) for the 1886 Eastman Catalog  
George Layne for the 1890 New Kodaks Catalog,  
Mike Kessler for the 1891 Dealer Display Catalog,  
Ralph London for the 1893 UK Catalog,  
Michael Pritchard for the 1897 UK Catalog.

The digital side of the project - also known as "all of the work" - was done by Rob Niederman of Medina, Minnesota, and Milan Zahorcak of Tualatin, Oregon. Remarkably we're still friends and in a few years, we'll probably be able to talk about this project rationally.

And there you have it, a more-or-less done deal. We're fairly sure that it isn't quite perfect, and expect there will be some carping about something or other; but all-in-all, we believe this to be a pretty good product and can now move on to something else.

Our thanks to all of those involved.

Rob Niederman  
Milan Zahorcak

Fall, 2011

# KODAKS AND



© 1997 Kodak Company. Kodak and Kodak Catalogue are registered trademarks of Eastman Kodak Company.

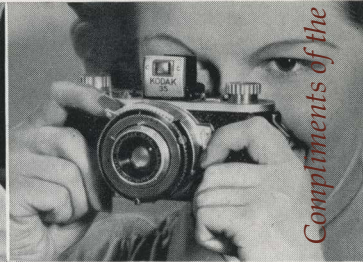
FROM A KODACHROME ORIGINAL (SEE, ALSO, PAGES 20 AND 21, AND INSIDE BACK COVER)

# BROWNIES

## TO HELP YOU CHOOSE YOUR CAMERA

**I**N selecting a camera consider, first of all, the picture size. In this connection it is important to decide whether you will want to use the bulk of your pictures in their original size, or whether you expect to have them enlarged (or enjoy the fun of enlarging them yourself). Kodaks and Brownies offer you a wide range of models that make album-size pictures. Other types are designed for "miniature" photography, which begins with diminutive cameras and negatives and ends with striking enlargements, or large images projected on a screen.

**TYPE OF CAMERA** From the standpoint of design, the cameras in this catalog fall into three classes. The box models, easy to use and modest in price, are, nevertheless, thoroughly dependable picture makers in their intended sphere. The largest class, represented by the famous folding Kodaks, offers greater compactness and carrying ease, and includes several groups of successively greater versatility. Minia-

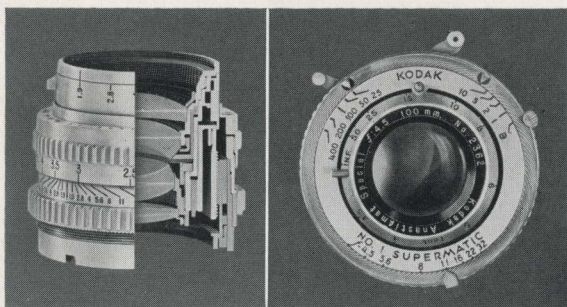


ture Kodaks of the 35-millimeter type do not fold yet are extremely convenient, especially since they can be carried in a "field" case suspended around the neck, and used at an instant's notice without complete removal from the case.

**VARIETY OF PICTURES** Consider the variety of pictures you want, and the conditions under which you expect to take them. Even the very simplest Eastman cameras regularly make sharp, clear pictures of average outdoor subjects in good light, and modern films and photo lamps have extended their scope to certain indoor situations. The more pretentious types of Kodaks broaden this scope still further to include rapidly moving subjects in the sports and other fields, varied indoor subjects, and . . . in the case of most miniature Kodaks . . . full-color transparencies.



**LENS AND SHUTTER** The versatility of a camera depends largely upon the "speed" of its lens; that is, upon the relative ability of the lens to collect light from the subject and transmit it to the negative material within a given interval. The illustration below shows the approximate design of the glass elements of several Eastman lenses, and the relative speeds that result.



lenses are specially designed for efficient performance on their particular cameras. They reach the peak of their design and construction in the superb Kodak Ektars. Above, at left, is shown one of the Ektars for the new Kodak Ektra.

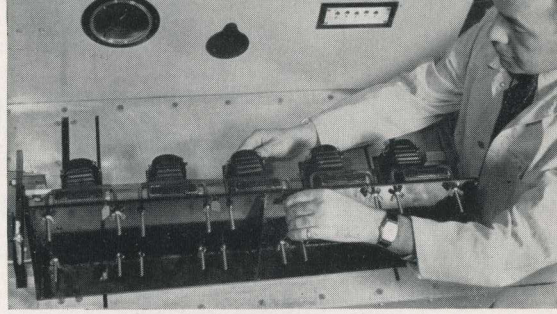
In order to capitalize the varied ability of fast lenses, they must be geared to shutters that afford adequate exposure-speed ranges, and that have been carefully tested for time-after-time accuracy and stability. An outstanding example of precision shutter construction is Eastman's Supermatic—the

the negative material within a given interval. The illustration below shows the approximate design of the glass elements of several Eastman lenses, and the relative speeds that result. All Kodak and Brownie

TYPE OF LENS	ELEMENTS OF LENS	RELATIVE SPEED
Meniscus		1
Doublet		1/2
Anastigmat <i>f</i> /8.8		3
Anastigmat <i>f</i> /6.3		6
Anastigmat <i>f</i> /4.5		11
Anastigmat Special <i>f</i> /3.5		18
Ektar <i>f</i> /1.9		61

world's finest high-speed between-the-lens shutter. This is illustrated on the opposite page.

Chiefly responsible for the scope of any camera, the lens and shutter likewise account for a large share of the cost—particularly on cameras that fall into the higher classifications. It is well to bear this in mind in deciding the final point . . .



**THE PRICE TO PAY** Determine this in the light of the preceding paragraphs—in general, according to the purposes to which the camera is to be put. Your Kodak dealer will be glad to help you make your decision. Regardless of your final choice, you can be sure that your Kodak or Brownie has been not only expertly manufactured but also exhaustively tested, as in the bellows "breakdown test" illustrated above. It will bring you the matchless extra values of more than fifty years' experience in camera making . . . plus an investment of millions in precision equipment . . . plus the inventiveness and skill of the largest group of camera craftsmen ever brought together.

*Prices in this catalog are subject to change without notice*

# EASTMAN KODAK COMPANY

June, 1941

Rochester, N. Y.

*Only Eastman Makes the Kodak*

5

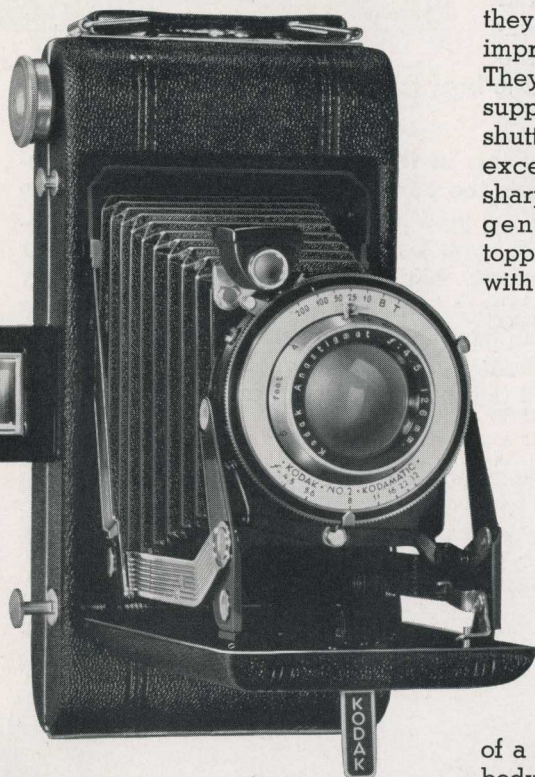
Camera Works and Executive Offices



*Compliments of the Digitized Kodak Catalog Project: 1886 - 1941*

# KODAK VIGILANTS

*Brilliant "moderns" for album-size pictures*



THESE modern cameras for  $2\frac{1}{4} \times 3\frac{1}{4}$ - or  $2\frac{1}{2} \times 4\frac{1}{4}$ -inch pictures are especially noteworthy because

they offer a surprising number of improvements at moderate cost. They have a distinctive ten-point support, by which the lens and shutter are erected and held with exceptional precision to assure sharp pictures. All the lenses are genuine Kodak Anastigmats, topped by the  $f/4.5$  Special. Paired with them are shutters thoroughly tested for accuracy... for time-after-time uniformity of speeds. They include the Supermatic... the world's finest high-speed between-the-lens shutter.

The camera bed is opened... and also released for closing... through a single push button. You sight on your subject from waist level or eye level, for Vigilants have both direct-view and reflecting finders. You release the shutter by means of a button located on the camera body to minimize danger of movement. Though at your finger tips as you make the picture, this device is automatically retracted to an out-of-the-way position when you close

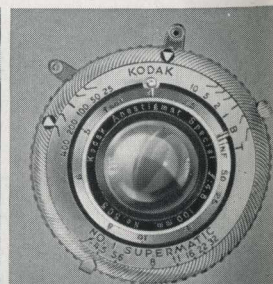
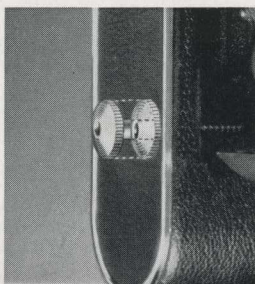
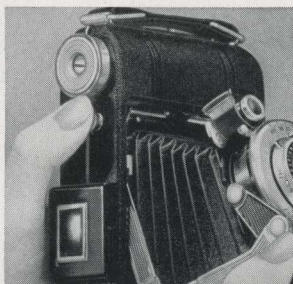
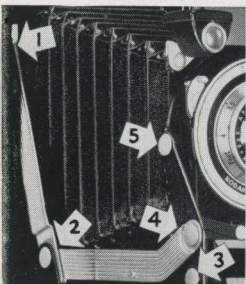
● Five-point support on each side positions lens and shutter with great accuracy, to assure excellent pictures.

● Pressing a button releases bed for opening... same button frees it for closing when picture has been made.

● Shutter-release button, at your finger tips when in use, is retracted to position close to body when camera is closed.

● Supermatic shutter, with 9 speeds from 1 to  $1/400$  second, is unsurpassed in accuracy of speeds, design, finish.

6





the camera. And if you want to attach a cable release, you will find a socket for it placed ingeniously in the top of this same button.

These features, plus general construction that is typically Eastman in its reliability, add up to outstanding picture-making proficiency. You will find the Kodak Vigilants soundly engineered, carefully equipped, completely competent.

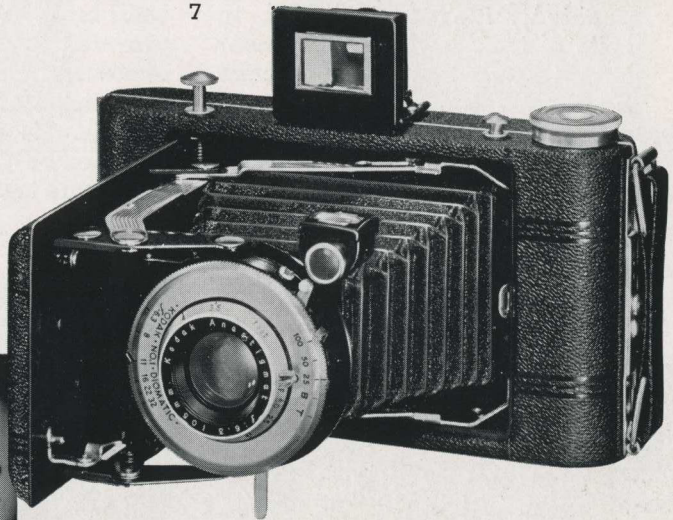
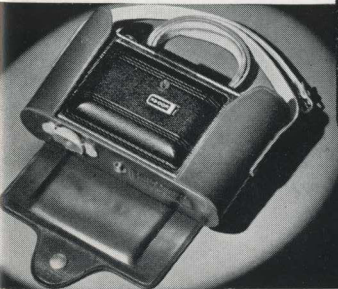
**DETAILS** Six-16's make 2½ x 4¼-inch pictures on No. 616 Kodak Films; Six-20's, 2¼ x 3¼-inch pictures on No. 620 Kodak Films. Diomatic shutter has settings for 1/25, 1/50, 1/100 second, time, "bulb"; Kodamatic, 1/10, 1/25, 1/50, 1/100, 1/200 second, time, "bulb," delayed action; Supermatic, 1, 1/2, 1/5, 1/10, 1/25, 1/50, 1/100, 1/200,

1/400 second, time, "bulb," delayed action. All models have apertures to *f*/32. Self-erecting front. Focusing by revolving lens mount, from infinity to 3½ feet on Six-20's, infinity to 4 feet on Six-16's. Threaded supplementary socket on shutter takes either cable release or flash synchronizer. Kodak Parallax Correction Finder regularly supplied on *f*/4.5 and *f*/4.5 Special models, and may be substituted for regular eye-level finder on *f*/8.8 and *f*/6.3 models (see price below). Vertical and horizontal tripod sockets; also supports for resting camera in either position on flat surface. Creased black grain covering (genuine pin-seal grain leather on *f*/4.5 Special models). Dimensions and weights: *f*/8.8, *f*/6.3, *f*/4.5 models—Six-16's, 7⅞ x 4 x 1⅞ inches, 32 ounces; Six-20's, 6⅞ x 3⅞ x 1¾ inches, 23½ ounces; *f*/4.5 Special models—Six-16, 8 x 4⅞ x 1⅞ inches, 34 ounces; Six-20, 6⅞ x 3⅞ x 1¾ inches, 24½ ounces.

Kodak Vigilants Six-16 and Six-20	
with <i>f</i> /8.8 lens, Diomatic shutter . . . . .	
with <i>f</i> /6.3 lens, Diomatic shutter . . . . .	
with <i>f</i> /4.5 lens, Kodamatic shutter . . . . .	
with <i>f</i> /4.5 Special lens, Supermatic shutter . . . . .	
Tan sole leather field cases . . . . .	
Tan leather Snapsacks . . . . .	
Kodak Verichrome, Super-XX, Plus-X, or Panatomic-X Film (8 exposures)	
Kodak Parallax Correction Finder for <i>f</i> /8.8 and <i>f</i> /6.3 models . . . . .	
	For prices please turn to supplement at back of catalog

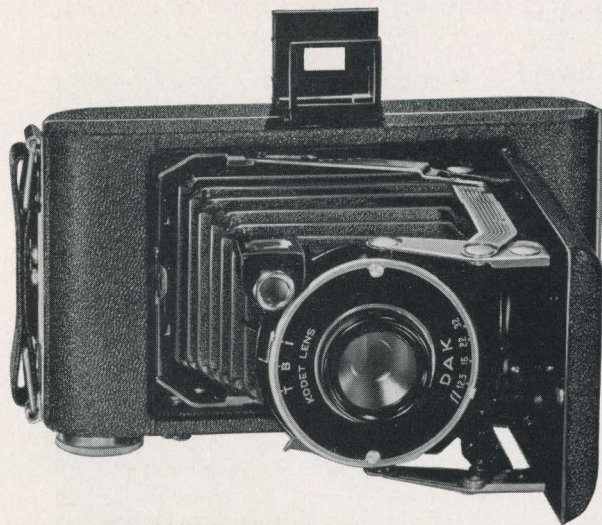
7

● Field case with neck strap provides convenient carrying—permits using camera without complete removal from case. For illustration of Snapsack, a conventional-type case, see page 8.



# KODAK VIGILANT JUNIORS

*Capable new Kodaks at low cost*



When you inspect a Vigilant Junior, you will find that it opens by means of a push button . . . and the same button frees the bed for closing. As you open the camera, the lens and shutter are not only erected, but are positioned with unusual accuracy in relation to the film. Utilizing five points of support on each side, this precise new erecting mechanism gives every user extra assurance of sharp pictures.

**F**OUR distinguishing features will help you to decide whether one of these new Kodaks is the camera for you. All of the models make album-size pictures. Their operation is simple and quick. They are decidedly inexpensive. And, in spite of their low cost, they offer improvements that have heretofore been available only on higher-priced cameras . . . features that truly spell both added picture quality and greater convenience.

There is a choice of two lens-and-shutter combinations, both reliable and both easy to work. All models have direct-view and reflecting finders, so that you can sight on the subject from either eye level or waist level. Two tripod sockets are provided for use in making time exposures. Roomy interiors make for quick loading, and, once this operation is completed, you can count on easy, enjoyable, successful picture taking.

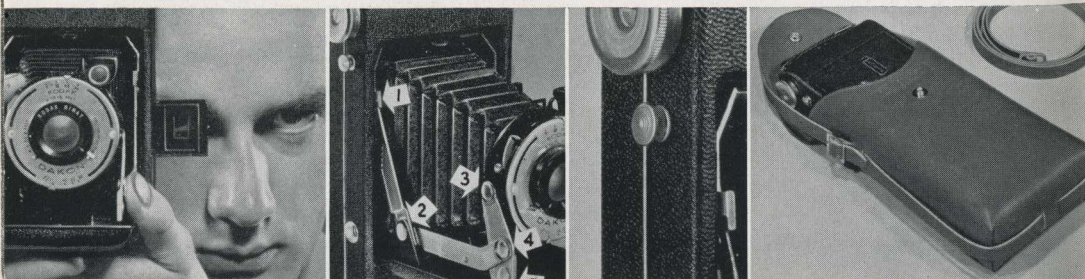
8

● Eye-level finder in use. Provision of reflecting finder, at upper left, permits "shooting" from waist level as well.

● Five points of support for erecting struts on each side of camera position lens with great rigidity and accuracy.

● Convenient push button opens camera. After picture has been made, same button frees camera bed for closing.

● Tan leather Snap-sacks, available for all Kodak Vigilant Junior models, have both hand and shoulder straps.



If, like many other people, you are looking for a simple, economical folding camera, see the Kodak Vigilant Juniors. They afford large pictures . . . and good pictures . . . at a small initial cost.

**DETAILS** Six-16's make  $2\frac{1}{2} \times 4\frac{1}{4}$ -inch pictures on No. 616 Kodak Films; Six-20's,  $2\frac{3}{4} \times 3\frac{3}{4}$ -inch pictures on No. 620 Kodak Films. Models with Kodet lens and Dak shutter have fixed focus (no focusing required); adjustments for snapshot, time, and "bulb" exposures; aperture range from  $f/12.5$  to  $f/32$ . Models with Bimat lens and

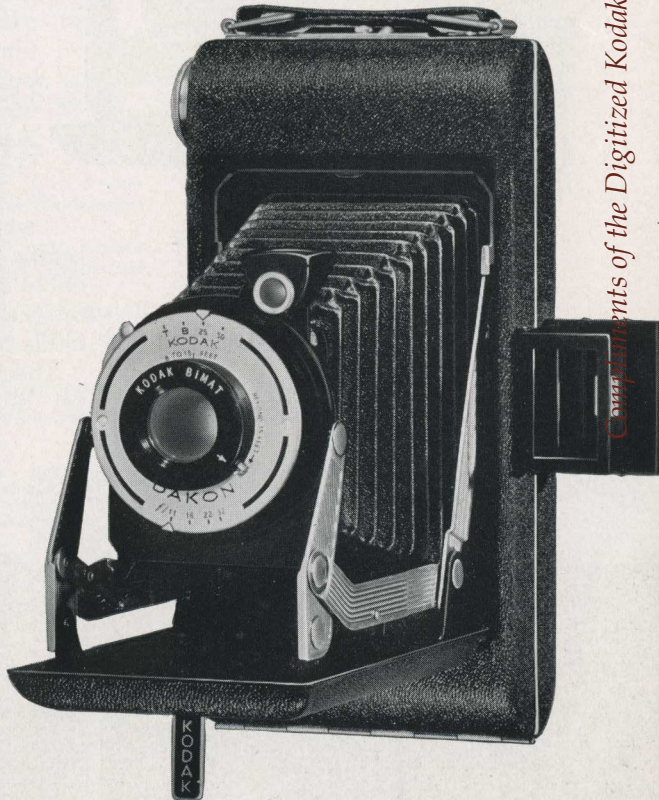
Dakon shutter have simple 3-point focusing by revolving lens mount—adjustable for distances of 5 to 8 feet, 8 to 15 feet, and beyond 15 feet; shutter speeds of 1/25, 1/50 second, time, "bulb"; aperture range from  $f/11$  to  $f/32$ . All models have trigger shutter release (cable release may be added); folding direct-view eye-level finder—also reflecting waist-level finder, reversible for horizontal or vertical views. Bed support to hold camera in vertical position on flat surface—also two sockets, for attaching tripod, Kodapod, or Optipod. Black morocco-grain covering. Dimensions and weights: Six-16's,  $8 \times 4\frac{3}{16} \times 1\frac{7}{8}$  inches, 29 ounces; Six-20's,  $6\frac{5}{8} \times 3\frac{7}{8} \times 1\frac{3}{4}$  inches, 23 ounces.

Kodak Vigilant Juniors Six-16 and Six-20 with Kodet lens, Dak shutter . . . . .	For prices please turn to supplement at back of catalog
with Bimat lens, Dakon shutter . . . . .	
Tan leather Snapsacks . . . . .	
Kodak Verichrome Film (8 exposures) . . . . .	
Kodak Super-XX, Plus-X, or Panatomic-X Film (8 exposures) . . . . .	

● Simplest Vigilant Junior models—those fitted with Kodet lens and Dak shutter—require no focusing.



● Models equipped with Bimat lens give added scope, and are easily focused by revolving the lens mount.



# KODAK MONITORS

## The famous folding Kodaks at their finest

Compliments of the Digitized Kodak Catalog Project: 1886 - 1941



**I**N THE Kodak Monitors you will discover the most expertly designed cameras available in their class. To the making of their large

pictures they bring highly advanced construction, exceptional lenses and shutters, and many important refinements. The result is a breadth of photographic scope and a degree of certainty and convenience that you will sense as soon as your dealer shows you a Monitor.

Lens-and-shutter combinations are the highly corrected Kodak Anastigmat  $f/4.5$  in Kodamatic shutter and the even more precise Kodak Anastigmat Special  $f/4.5$  in Eastman's new but already famous nine-speed Supermatic. They are brought into position . . . and held in exact, rigid alignment with the film plane . . . by scientific ten-point support of the erecting arms. Exposures are normally made by a shutter release button located on the camera body and automatically retracted when the camera is closed. The button has a socket to receive a cable release, and another socket on the shutter itself takes either cable release or flash synchronizer.

The handsome satin-chrome turret houses further conveniences

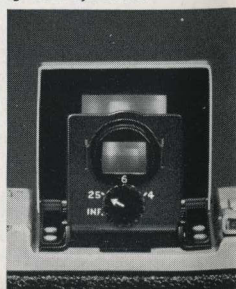
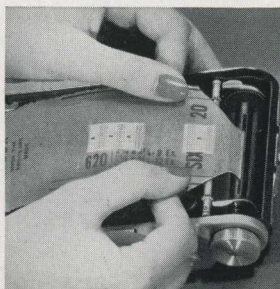
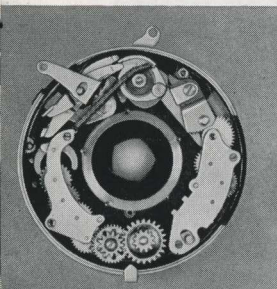
10

● A part of the mechanism of the highly precise nine-speed Supermatic shutter.

● Roomy interiors and floating film rollers make loading and winding unusually easy.

● A single push button both opens the camera and releases the bed for closing.

● The Kodak Parallax Correction Finder assures extra-accurate sighting from eye level.





● Turret controls of the Kodak Monitors: (left to right) film-winding knob, opening-closing button, exposure counter, direct-view finder, universal accessory clip, body shutter release, depth-of-field indicator (on *f*/4.5 Special models only).

and safeguards: a device that stops the film at the correct point as you advance it . . . a counter that shows the exposure number . . . a mechanism that prevents double exposures. To the right of the eye-level finder is a clip that takes the Kodak Service Range Finder, and on the *f*/4.5 Special models the turret also carries a depth-of-field indicator.

Mere enumeration of features cannot give you a full appreciation of the Monitors. See, and study, the cameras themselves at your first opportunity.

**DETAILS** Six-16's make  $2\frac{1}{2} \times 4\frac{1}{4}$ -inch pictures on No. 616 Kodak Films; Six-20's,

$2\frac{1}{4} \times 3\frac{1}{4}$ -inch pictures on No. 620 Kodak Films. Focal lengths: Kodak Anastigmat *f*/4.5—Six-16, 126 mm.; Six-20, 103 mm.; *f*/4.5 Special—Six-16, 127 mm.; Six-20, 101 mm. Focusing (by revolving lens mount): Six-16's, infinity to 4 feet; Six-20's, infinity to  $3\frac{1}{2}$  feet. Aperture range, *f*/4.5 to *f*/32. Shutter settings: Kodamatic—1/10, 1/25, 1/50, 1/100, 1/200 second, "bulb," delayed action; Supermatic—1, 1/2, 1/5, 1/10, 1/25, 1/50, 1/100, 1/200, 1/400, "bulb," delayed action. Time exposures with aid of T.B.I. Cable Release No. 2 (extra). Self-erecting front. Kodak Parallax Correction Finder (eye-level); reversible waist-level finder. Horizontal, vertical tripod sockets. Aluminum body, with tooled black grain covering (genuine pin-grain seal leather on *f*/4.5 Special models). Dimensions and weights: Six-16's,  $8 \times 4\frac{1}{4} \times 1\frac{5}{8}$  inches,  $37\frac{1}{2}$  ounces; Six-20's,  $6\frac{3}{4} \times 4 \times 1\frac{3}{4}$  inches,  $27\frac{1}{2}$  ounces.

Kodak Monitor Six-16, with Kodak Anastigmat *f*/4.5 lens, Kodamatic shutter

Kodak Monitor Six-20, with Kodak Anastigmat *f*/4.5 lens, Kodamatic shutter

Kodak Monitor Six-16, with Kodak Anastigmat Special *f*/4.5 lens, Supermatic shutter

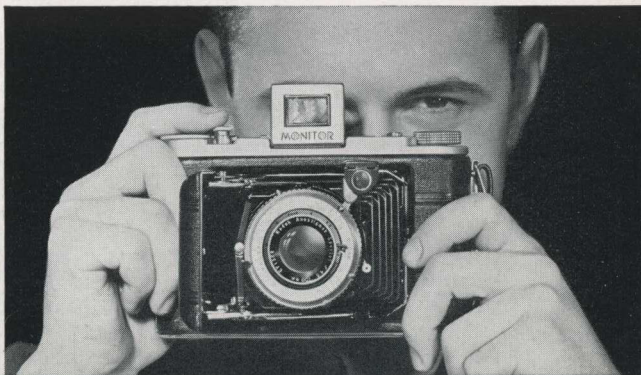
Kodak Monitor Six-20, with Kodak Anastigmat Special *f*/4.5 lens, Supermatic shutter

Kodak Verichrome, Super-XX, Plus-X, or Panatomic-X Film (8 exposures)

T.B.I. Cable Release No. 2  
De luxe field cases for Kodak Monitors Six-16 and Six-20

For prices please turn to supplement at back of catalog

● De luxe lined tan sole leather field case for Kodak Monitors. Regular field cases and Snapsacks listed on page 7 may also be used.



# 3A KODAK SERIES II

*The Kodak that makes  
postcard-size negatives*



**I**F YOU want plus-size prints without resorting to enlarging, 3A Kodak, Series II, is likely to be your camera. It makes  $3\frac{1}{4} \times 5\frac{1}{2}$ -inch negatives . . . as big as postcards. Fine quality in the pictures is assured by the Kodak Anastigmat  $f/6.3$  lens in Diodak shutter, and they are easy

to make because of the simple, dependable operating procedure.

The 3A Kodak has long been the favorite of many amateur photographers. In the present model this popular camera takes on the full effectiveness of modern design and equipment.

**DETAILS** Makes  $3\frac{1}{4} \times 5\frac{1}{2}$ -inch pictures on No. 122 Kodak Films. Lens, Kodak Anastigmat  $f/6.3$ ; focal length, 170 mm. Aperture range,  $f/6.3$  to  $f/45$ . Diodak shutter; settings for 1/10, 1/25, 1/50, 1/100 second, time, and "bulb"; trigger, cable releases. Reflecting waist-level finder (direct-view finder may be added as an accessory). Focusing from infinity to 6 feet by shifting draw front. Morocco leather covering; metal side panels with chromium and black finish. Dimensions,  $10 \times 4\frac{7}{8} \times 2$  inches. Weight, 50 ounces.

3A Kodak, Series II, with Kodak Anastigmat  $f/6.3$  lens, Diodak shutter  
Black leather carrying case  
Kodak Verichrome, Super-XX, Plus-X, or  
Panatomic-X Film (6 exposures)  
Direct-View Finder, installed

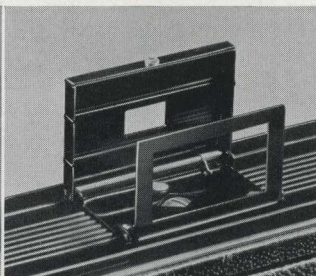
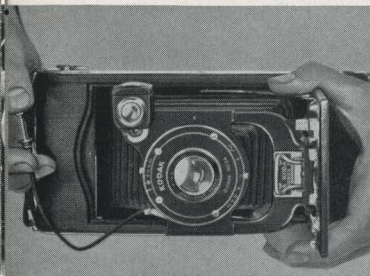
For prices please turn to supplement  
at back of catalog

12

● The finder supplied on 3A Kodak, Series II, is of the brilliant reflecting type, reversible for vertical or horizontal pictures.

● The accessory Direct-View Finder enables you to use the 3A Kodak, Series II, at eye level as well as at waist level.

● The lined black leather case, supplied with hand and shoulder straps, affords the protection every good camera deserves.



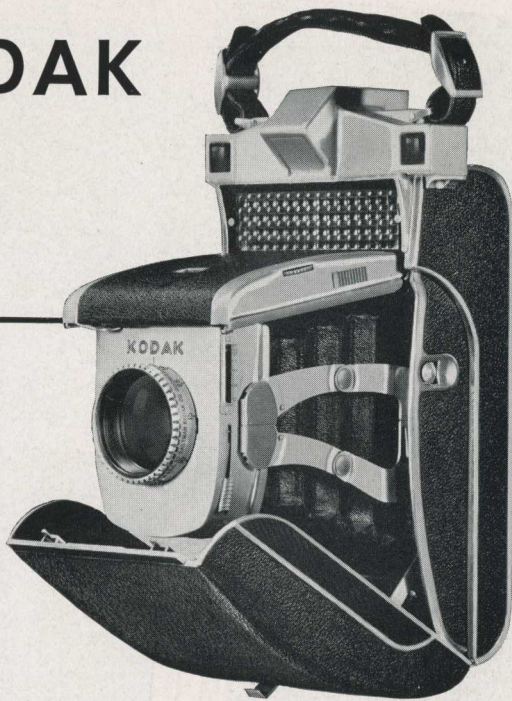
# SUPER KODAK SIX-20

*The camera with the  
electric eye*

**T**HIS remarkable Kodak represents the first practical application of a light-measuring cell coupled with a camera diaphragm to give automatic exposure control. Because of this feature, plus a new-type focusing finder and other refinements, Super Kodak Six-20 attains a long-sought photographic ideal. It offers the great scope of a fast lens, speedy shutter, and variable diaphragm, yet its operating simplicity is comparable with that of a box camera.

In using this revolutionary Kodak, you simply choose a shutter speed to fit your subject and bring the subject into focus by a turn of the lens mount. As you trip the shutter, the diaphragm is automatically set at the proper opening to give optimum exposure.

**DETAILS** Makes  $2\frac{1}{4} \times 3\frac{1}{4}$ -inch pictures on No. 620 Kodak Films. Kodak Anastigmat Special  $f/3.5$  lens; focal length, 100 mm. Built-in shutter; speeds, 1,  $1/2$ ,  $1/5$ ,  $1/10$ ,



$1/25$ ,  $1/50$ ,  $1/100$ ,  $1/200$  second; self timer. Diaphragm apertures (range,  $f/3.5$  to  $f/22$ ) automatically selected by photoelectric cell for all hand-held shutter speeds. Built-in coupled split-field combination range and view finder. Double-exposure prevention. Dimensions,  $8\frac{3}{8} \times 3\frac{5}{8} \times 2\frac{3}{8}$  inches. Weight, 44 ounces. *For further details, ask your dealer for special folder.*

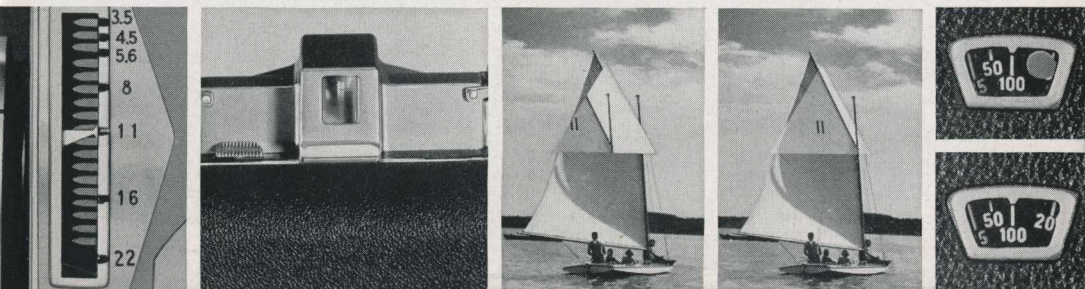
Super Kodak Six-20, with Kodak Anastigmat Special  $f/3.5$  lens  
Lined tan sole leather case  
Kodak Verichrome, Super-XX, Plus-X, or Panatomic-X Film (8 exposures)

For prices please turn to supplement at back of catalog

13

● Below (left to right): Automatic scale shows diaphragm aperture which electric eye has selected, and at which exposure will be made—Single eyepiece that serves as both view-finder and range-finder window—How a typical scene appears in

eyepiece when out of focus, and when brought into hairline focus by turn of lens mount—Colored warning signal shows in speed-dial window until flash has been wound and shutter set, indicating at a glance whether the camera is ready for the next exposure.



Compliments of the Digitized Kodak Catalog Project: 1886 - 1941

JIFFY KODAK  
SIX-16,  
SERIES II

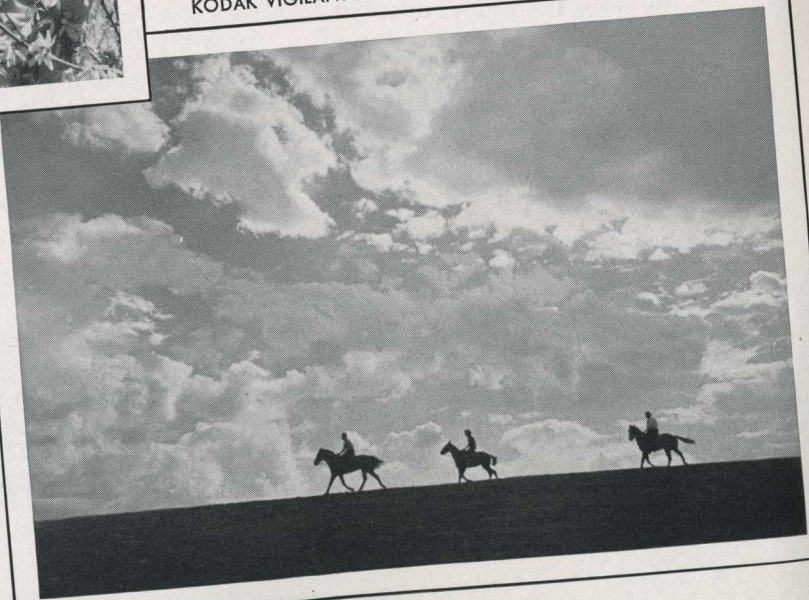


KODAK VIGILANT JUNIOR SIX-20



KODAK DUEX

**KODAK BANTAM**  
Standard  $2\frac{3}{4} \times 4$  en-  
larged print, availa-  
ble at low cost through  
modern photofinishing.  
Similar prints obtain-  
able from negatives  
made with Kodak  
Ektra, Kodak 35's,  
Jiffy Kodak V.P., Baby  
Brownies, Kodak Duex,  
Brownie Reflex, and  
Bullet.



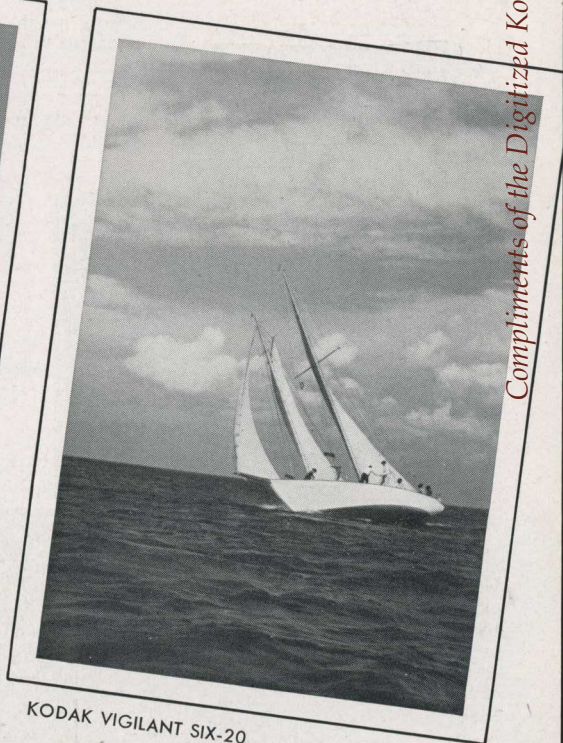




3A KODAK, SERIES II (slightly reduced in size)



SIX-20 BROWNIE SPECIAL



KODAK VIGILANT SIX-20

# JIFFY KODAKS

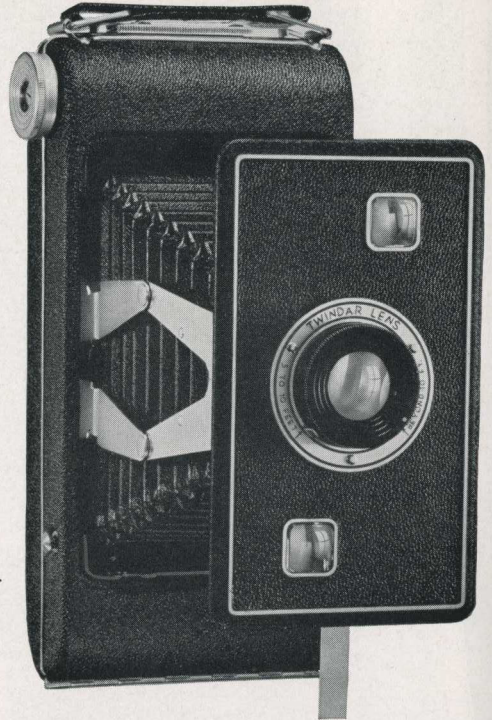
*Box-camera simplicity...folding-camera style*

**M**ANY people who hesitate to carry box cameras would, nevertheless, like to have the benefit of their pronounced operating simplicity. Jiffy Kodaks are a happy solution for such people, as they are for many others who want to make pictures in the easiest possible way.

The Jiffys are stylish and compact folding cameras, yet they are actually no more complicated than a box model. Press a button—the camera opens and the front springs out into position. Sight on your subject and press a trigger—the picture is made. Return the front

JIFFY  
KODAK SIX-16,  
SERIES II ▶

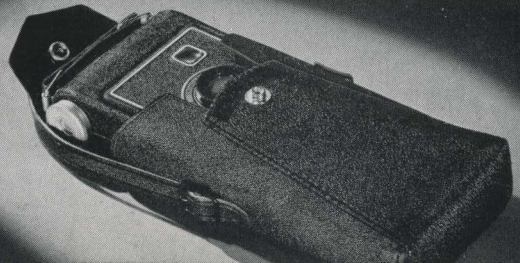
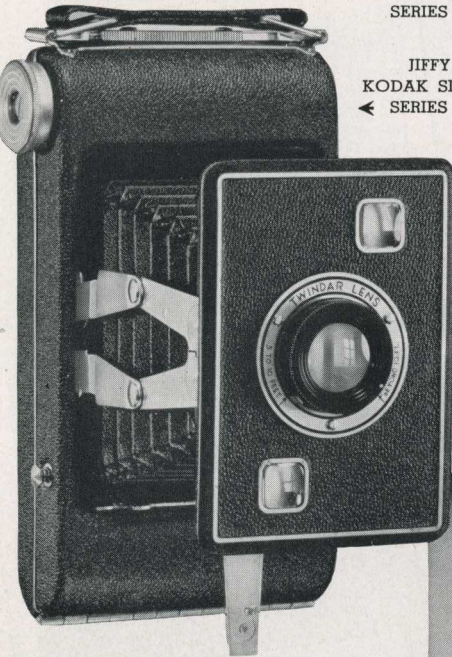
◀ JIFFY  
KODAK SIX-20,  
SERIES II



to its original position and your camera, as easy to work as a Brownie, again takes on the slender, dignified lines of the folding type. Any of the three models is handy to carry, and Jiffy Kodak

16

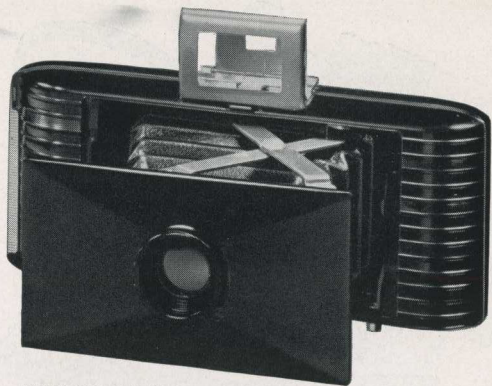
● Soft leather cases, with hand straps, are available for Jiffy Kodaks Six-16 and Six-20. A shoulder strap may also be had at nominal extra cost.



V.P. is so small that it can be readily slipped into a pocket or handbag.

Convenience and style are, however, only a part of the Jiffy story. All three models make pictures large enough to mount in an album. Furthermore, they're definitely good pictures . . . the sound Eastman design and carefully tested equipment see to that. And, naturally, you can "shoot" Jiffy pictures fast, for the same construction that makes the cameras easy to operate gets them into action swiftly when the need arises. You will be interested to see and handle these popular Kodaks at your dealer's.

**DETAILS** Jiffy Kodaks, Series II—Six-16 makes  $2\frac{1}{2} \times 4\frac{1}{4}$ -inch pictures on No. 616 Kodak Films; Six-20,  $2\frac{1}{4} \times 3\frac{3}{4}$ -inch pictures on No. 620 Kodak Films. Twindar lens with simple two-position focusing for distances of 5 to 10 feet, and beyond 10 feet, by revolving lens mount. Built-in shutter with snapshot and time actions, trigger release. Two crowned brilliant reflecting finders, for vertical and horizontal pictures. Spring-actuated front, controlled by push button. Aluminum body with black pin-



JIFFY KODAK V. P.

grain covering. Metal cap (extra) protects lens from dust, sand, etc. Dimensions: Six-16,  $7\frac{3}{16} \times 3\frac{3}{4} \times 1\frac{1}{8}$  inches; Six-20,  $6\frac{9}{16} \times 3\frac{1}{2} \times 1\frac{1}{16}$  inches. Weights: Six-16,  $26\frac{1}{2}$  ounces; Six-20,  $18\frac{1}{2}$  ounces.

Jiffy Kodak V.P.—Makes  $1\frac{5}{8} \times 2\frac{1}{2}$ -inch pictures on No. 127 Kodak Films. Kodak Doublet lens, deeply recessed for protection. Fixed focus (no focusing required). Built-in shutter with snapshot and "bulb" actions, trigger release. Aperture can be stopped down to  $f/16$ . Folding direct-view eye-level finder. Spring-actuated front, controlled by push button, opens camera to picture-taking position. Molded black body, with ornamental ribbing and permanent glossy finish. Removable back. Dimensions,  $5\frac{1}{2} \times 2\frac{3}{8} \times 1\frac{3}{8}$  inches. Weight, 10 ounces.

Jiffy Kodak Six-16, Series II  
 Jiffy Kodak Six-20, Series II  
 Jiffy Kodak V.P.  
 Leather carrying cases for  
 Jiffy Kodak Six-16, Series II  
 Jiffy Kodak Six-20, Series II  
 Jiffy Kodak V.P.

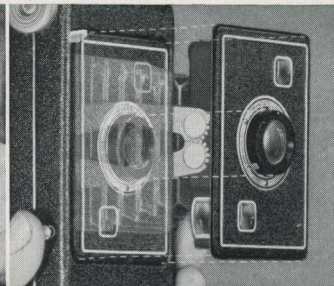
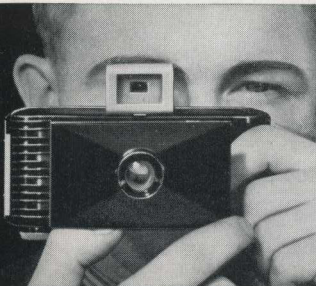
Shoulder strap for Jiffy Kodaks Six-16  
 and Six-20, Series II  
 Kodak Verichrome, Super-XX, Plus-  
 X, or Panatomic-X Film (8 exp.)  
 Lens cap for Jiffy Kodaks Six-16 and  
 Six-20, Series II

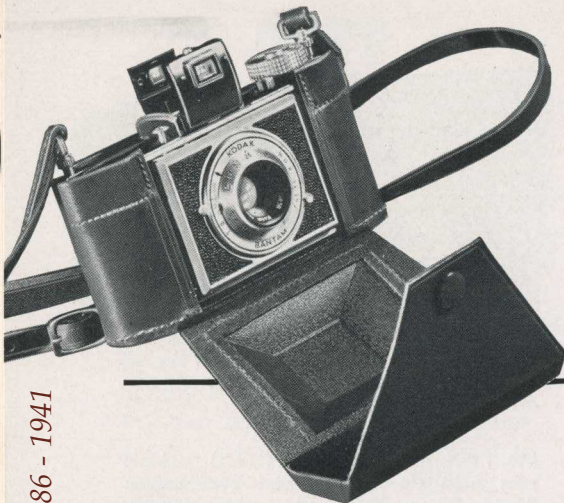
For prices please turn to supplement at back of catalog

● The eye-level finder of Jiffy Kodak V.P. opens at a touch . . . can be folded out of the way after the picture has been made.

● The touch of a button springs the front out into position. After the exposure the front is simply pressed back to the locked position.

● The "V.P." model's lined cowhide leather case (extra) provides ample protection and carrying ease for this smart little camera.





# KODAK BANTAMS

## Small cameras that lead to big pictures

**T**HE Bantam family, comprising three of the most convenient picture takers ever designed, are definitely built around the idea of big pictures from small cameras. They are palm-size, yet through modern photofinishing methods may lead to prints  $2\frac{3}{4} \times 4$  inches . . . almost as large as the cameras themselves. You load easily and quickly with Kodak Films that are decidedly inexpensive—in special eight-exposure rolls. Pressing a button springs the lens out into position, ready for the picture. And not to be overlooked is the fact that you don't

have to watch the window while winding to the next exposure: a special device centers the film . . . locks it in position.

The three Kodak Bantams have successively wider scope. The *f/8* model makes good black-and-white snapshots under average conditions, without adjustment of any kind. The *f/6.3* model brings users the lens speed of the Kodak Anastigmat *f/6.3*, and makes snapshots or time exposures. Photography with either of these dependable, inexpensive little cameras is worth investigating.

In the *f/4.5* model, Bantam versatility is stepped up greatly by the fast Kodak Anastigmat Special *f/4.5* lens, a shutter with speeds up to

18

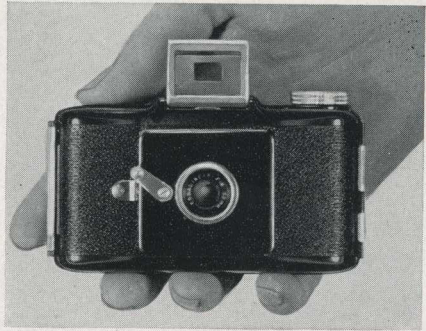
● Kodak Bantam *f/4.5* has the sturdy, precise construction so essential in a fine "miniature."



KODAK BANTAM *f/8*

1/200 second, and extra-accurate construction. These factors permit enlargement far beyond the standard  $2\frac{3}{4}$  x 4-inch size, and adapt Kodak Bantam *f*/4.5 not only to varied black-and-white photography but also to the making of vivid full-color Kodachrome transparencies. A true precision miniature, this camera is capable of dealing with almost any situation, whether monochrome or Kodachrome picture making is the order of the day.

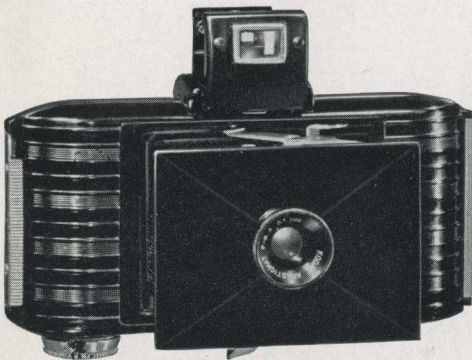
**DETAILS** Kodak Bantams make 28x40-mm. negatives on No. 828 Kodak Films. Standard enlarged print size,  $2\frac{3}{4}$  x 4 inches. Folding optical eye-level finder (open-frame on *f*/8 model). *F*/8 model: snapshot action; aperture, *f*/8; fixed focus; black molded body, grained surface. *F*/6.3 model: snapshot, time actions; apertures, *f*/6.3, *f*/11; fixed focus; black molded body with ornamental ribbing. *F*/4.5 model: shutter



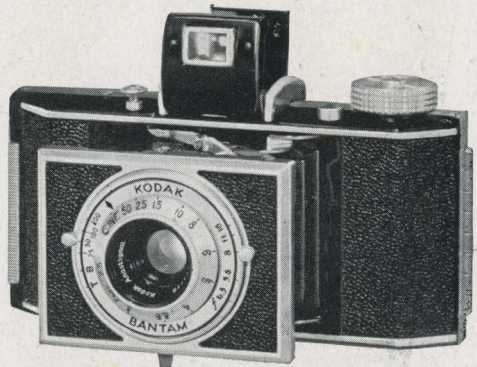
● Hardly a handful, Kodak Bantams are among the most convenient cameras ever designed.

settings—1/25, 1/50, 1/100, 1/200 second, time, "bulb"; body shutter release; aperture range, *f*/4.5 to *f*/16; focusing, by revolving lens mount, from infinity to  $2\frac{1}{2}$  feet; die-cast metal body, black grained covering. Dimensions (vary slightly according to model):  $4\frac{1}{2}$  x  $2\frac{9}{16}$  x  $1\frac{1}{2}$  inches. Weights: *f*/8, 7 ounces; *f*/6.3, 8 ounces; *f*/4.5, 12 ounces.

Kodak Bantam, with Kodalinear <i>f</i> /8 lens . . . . .	
Kodak Bantam, with Kodak Anastigmat <i>f</i> /6.3 lens . . . . .	
Kodak Bantam, with Kodak Anastigmat Special <i>f</i> /4.5 lens . . . . .	
Carrying Cases . . . . .	
Kodak Panatomic Film (8 exposures) . . . . .	
Kodak Plus-X, Super-XX, Panatomic-X, or Infrared Film . . . . .	
(8 exposures)	
Kodachrome Film (8 exposures) including processing . . . . .	
	For prices please turn to supplement at back of catalog



KODAK BANTAM *f*/6.3



KODAK BANTAM *f*/4.5



These illustrations are reproduced from the original. Such full-color views, in black and white, open up a new world of possibilities for the amateur camera that load with Kodak film. For more information, see pages 24 to 25 of this catalog. For the full beauty of the full-color transparencies, see pages 24 to 25 of this catalog.





ed from typical Kodachrome  
as easy to make as black and  
picture enjoyment. For minia-  
dachrome Film, see pages 18  
ectors that bring out the vivid  
encies they make, see page 37.

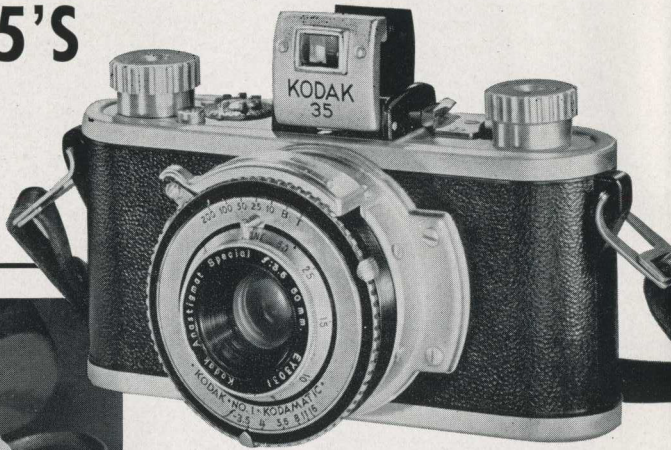


# KODAK 35'S

The "more for  
your money"  
miniatures



**K**ODAK 35'S are miniature cameras of the popular 35-millimeter type. More than that, their fine design and construction assure the big enlargements . . . the brilliant, detailed Kodachrome images . . . on which miniature-camera users count. They have not only fast, color-corrected lenses, and shutters of unusual accuracy, but also the extreme exactness which alone



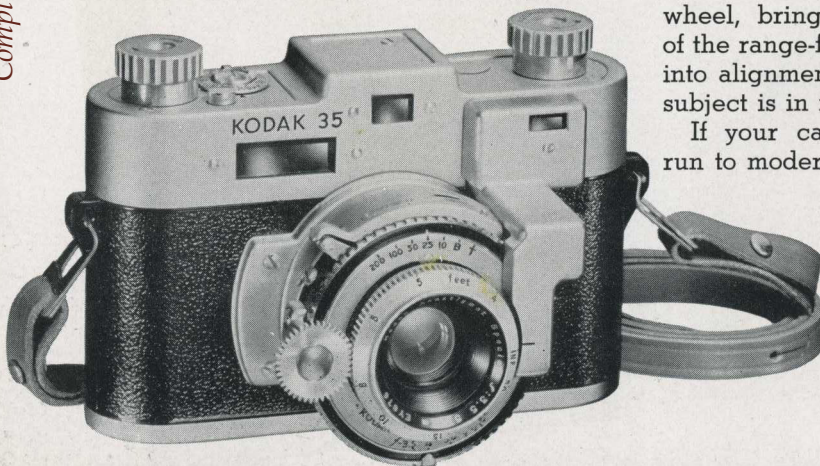
can stamp a group of cameras as true precision miniatures. You will find that in design, workmanship, and reliability of operation, they are not matched by any similar cameras in their price range.

Aside from their basic soundness, the 35's have such conveniences as the automatic film stop and exposure counter. *F/4.5* and *f/3.5* models add not only wider scope but double-exposure prevention, delayed-action adjustment to enable the photographer to get into the picture, and automatic shutter setting. Heading the group is the superb model with coupled split-field range finder, illustrated at

left. You turn a handy wheel, bring the halves of the range-finder image into alignment, and your subject is in focus.

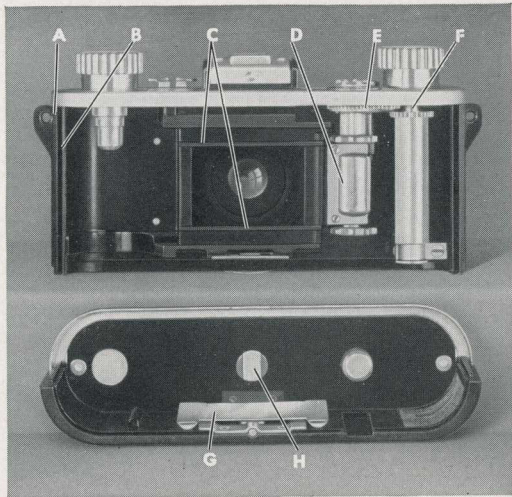
If your camera tastes run to moderately priced

22





- A** Sturdy, precision-built body of damage-resistant material.
- B** Superior tongue-and-groove seal between body, back gives complete light-leak protection needed for good pictures.
- C** Precision-finished film track, to avoid binding or tearing of film.
- D** Positive film-centering mechanism stops film at proper point as it is advanced . . . positions new section exactly.
- E** Machined sprockets and gears of fine materials, for accurate operation.
- F** Carefully machined shafts in phosphor-bronze bushings assure long life.
- G** Film-pressure plate adjusted to 1/1000-inch for sharp, detailed pictures.
- H** Strong latch locks camera securely.



35-mm. miniatures, choose a Kodak 35 and use the wide range of Kodak Films available. Then you will be set for years of varied, enjoyable picture taking.

**DETAILS** Kodak 35's make 24 x 36-mm. negatives on No. 135 Kodak Films. Standard enlarged print size, 2 $\frac{3}{4}$  x 4 inches. Lenses and shutters: Kodak Anastigmat f/5.6 in Kodex, with 1/25, 1/50, 1/100 second, time, "bulb," Kodak Anastigmat f/4.5 in Diomatic, with 1/25, 1/50, 1/100, 1/150, time,

"bulb," delayed action. Kodak Anastigmat Special f/3.5 in Kodamatic, with 1/10, 1/25, 1/50, 1/100, 1/200, time, "bulb," delayed action. Focusing, by revolving lens mount, from infinity to 4 feet. Optical eye-level view finder. Dimensions and weights: Range finder model, 5 $\frac{7}{16}$  x 3 $\frac{7}{16}$  x 3 $\frac{1}{16}$  inches, 24 ounces; regular models, 5 $\frac{7}{16}$  x 2 $\frac{3}{4}$  x 2 $\frac{3}{4}$  inches, 18 ounces.

**Kodak 35**

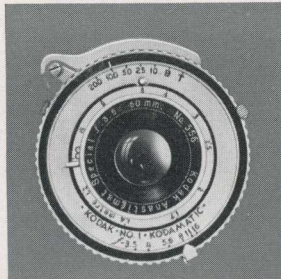
- with Kodak Anastigmat f/5.6 lens, neck strap . . .
- with Kodak Anastigmat f/4.5 lens, neck strap . . .
- with Kodak Anastigmat Special f/3.5 lens, neck strap
- with Kodak Anastigmat Special f/3.5 lens, coupled range finder, neck strap . . . . .
- Sole leather field case (for any of first 3 models) . . .
- De luxe sole leather field case (for any of first 3 models)
- De luxe sole leather field case (for range-finder model)
- Kodak Plus-X, Super-XX, or Panatomic-X Film (18 or 36 exposures); Kodak Infrared Film (36 exposures) . .
- Kodachrome Film (18 exposures), including processing

For prices please turn to supplement at back of catalog

● When safe, handy latch is released, back can be slipped off with one finger for easy loading.

● Kodak 35 shutters have ample speed ranges plus great reliability, time-after-time uniformity.

● Aided by Kodak Combination Lens Attachments, Kodak 35's give unlimited variety of effects.



# KODAK EKTRA

*The world's most distinguished camera*

---



the field angle of any of the lenses, and automatically compensating for parallax. Also built in, and usable with all of the lenses, is a brilliant advanced-type military range finder which, because of its sharply split field, high image magnification, and exceptionally wide base, gives the

**A**MONG all the world's still cameras there is no parallel to the new Kodak Ektra. Result of years of research and planning, it is the first camera which fully capitalizes the newer films and other modern photographic materials. It meets to an unprecedented degree the demand for super-precision and super-flexibility. It gives finer results, over a wider range of photography, than any other existing camera.

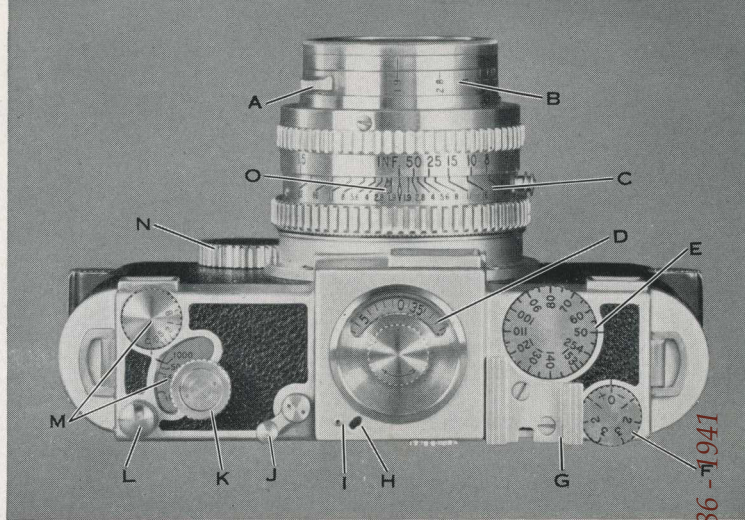
One of the chief factors contributing to the Ektra's great picture-making scope is the six superb, interchangeable Kodak Ektar lenses of various focal lengths available for it. Complementing them is a focal plane shutter giving exceptionally even exposure over the entire field, and affording speeds of great accuracy and stability up to 1/1000 second. An integral part of the camera is a variable-power view finder, instantly adjustable to

most precise automatic focusing obtainable on any camera. A miniature-camera feature entirely exclusive to the Ektra is the provision for interchangeable magazine backs. By means of extra backs any of eight different 35-millimeter Kodak Films can be quickly interchanged between exposures.

The exquisite, exhaustively precise Kodak Ektra marks an epoch in camera construction. Eastman presents it, without reservation, as the world's most distinguished camera.

**DETAILS** Makes 24 x 36-mm. negatives on No. 135 Kodak Plus-X, Super-XX, Panatomic-X, Infrared, Micro-File, Direct Positive, or Kodachrome (regular or Type A) Film. Lenses: surface-treated by process that improves clarity and brilliance of negatives; choice offered—50-mm.  $f/1.9$ ; 50-mm.  $f/3.5$ ; 35-mm.  $f/3.3$ ; 90-mm.  $f/3.5$ ; 135-mm.  $f/3.8$ ; 153-mm.  $f/4.5$ . Focal plane shutter with predetermined variable slit; settings, 1, 1/2, 1/5, 1/10, 1/25, 1/50, 1/100, 1/250, 1/500, 1/1000 second, "bulb," delayed action. Double-exposure prevention. Rhythmic

- A Diaphragm control
- B Diaphragm scale
- C Depth-of-field scale
- D Exposure counter
- E Variable-power view finder control
- F Range finder individual-vision adjustment
- G Universal accessory bracket
- H Shutter signal
- I Focal-plane index
- J Delayed-action lever
- K Shutter-speed setting knob
- L Plunger shutter release
- M Shutter speed scales
- N Focusing knob
- O Infrared index



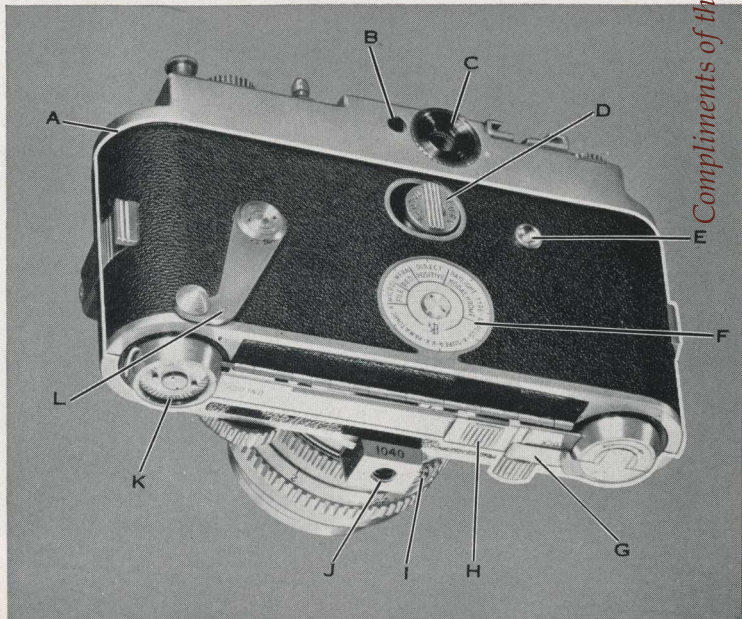
operating cycle for all major adjustments, with controls at finger tips of one hand—all operating scales and dials visible from above. Rapid rewind. Safety slide automatically covers film when back is unlocked

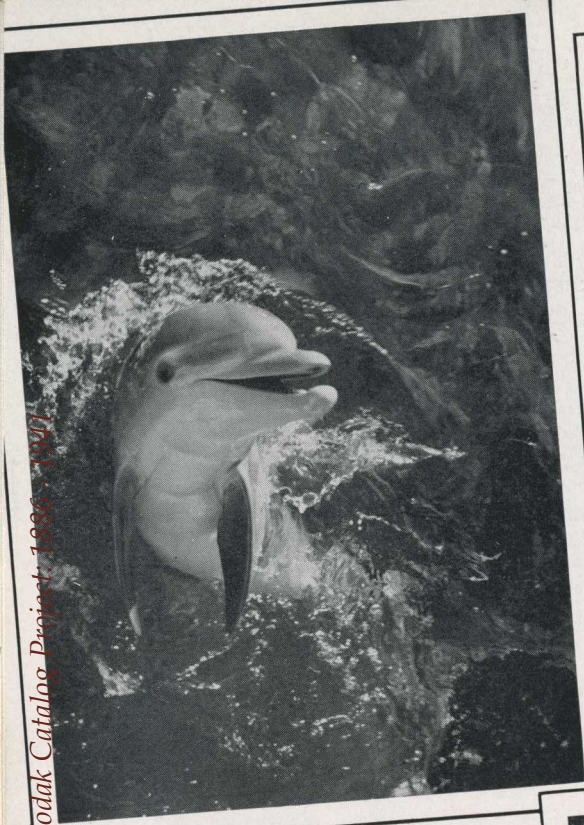
from body. Dimensions and weight (with *f*/1.9 lens): length,  $5\frac{11}{16}$ ; height,  $3\frac{7}{16}$ ; thickness,  $3\frac{3}{8}$  inches;  $38\frac{3}{4}$  ounces. For further details, accessories, and complete prices, ask your dealer for Ektra booklet.

- Kodak Ektra, with 50-mm. Kodak Ektar *f*/1.9 lens . . .
- Kodak Ektra, with 50-mm. Kodak Ektar *f*/3.5 lens . . .
- 35-mm. Kodak Ektar *f*/3.3 lens . . . . .
- 90-mm. Kodak Ektar *f*/3.5 lens . . . . .
- 135-mm. Kodak Ektar *f*/3.8 lens . . . . .
- 153-mm. Kodak Ektar *f*/4.5 lens . . . . .
- Extra interchangeable magazine backs . . . . .
- Brown cowhide field-type carrying case . . . . .
- Brown cowhide combination carrying case . . . . .

For prices please turn to supplement at back of catalog

- A Interchangeable magazine back (outlined in white)
- B Range-finder sight
- C View-finder sight
- D Lock for magazine-back cover
- E Film-movement indicator
- F Film-type indicator
- G Folding rapid-rewind crank
- H Sliding lock of magazine back
- I Lens-locking knob
- J Tripod socket
- K Magazine-back exposure record
- L Film-advance, shutter-wind lever





**KODAK 35** Standard 2 $\frac{3}{4}$  x 4-inch enlarged print, available at low cost through modern photofinishing methods. Similar prints can be obtained from negatives made with Kodak Ektra, Kodak Bantams, Jiffy Kodak V. P., Kodak Duex, Baby Brownies, Brownie Reflex, and Bullet.



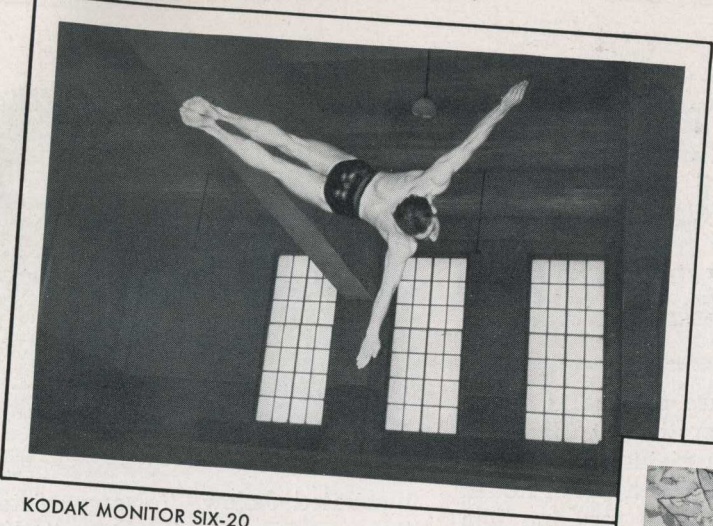
**SUPER KODAK SIX-20**



**BULLET**



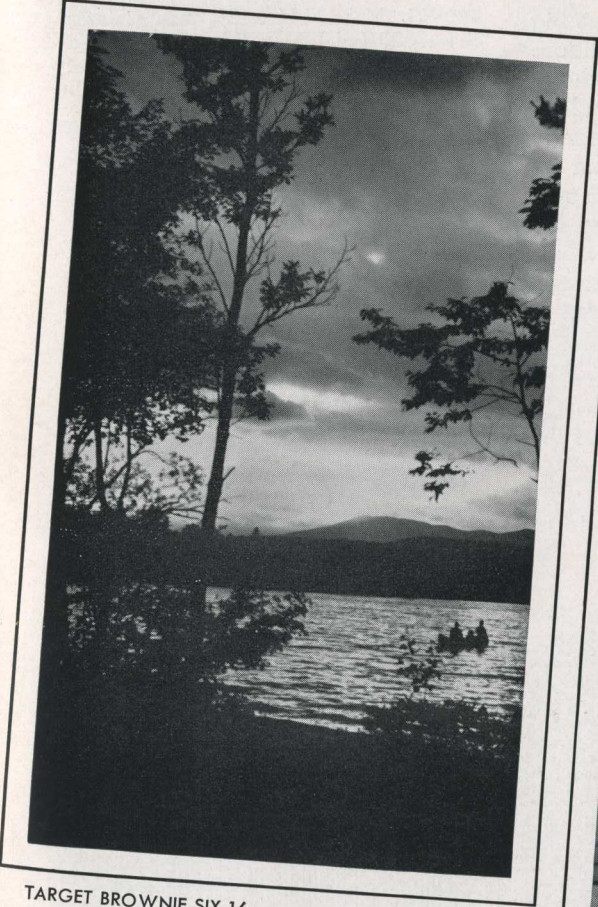
**KODAK EKTRA**  
Standard 2 $\frac{3}{4}$  x 4-inch enlarged print (see above, under Kodak 35)



KODAK MONITOR SIX-20



BROWNIE REFLEX



TARGET BROWNIE SIX-16



SIX-20 FLASH BROWNIE

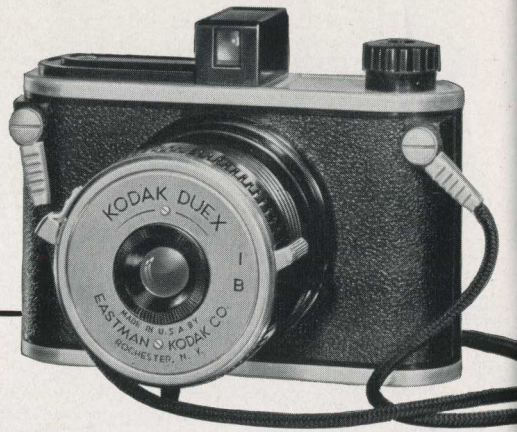
Compliments of the Digitized Kodak Catalog Project, 1886 - 1941

# KODAK DUEX

*A new miniature for  
album-size pictures*

**T**HIS miniature camera is of the popular "split 620" type. It makes sixteen pictures, instead of the usual eight, on a roll of Kodak Film No. 620. The resulting film economy is obvious, and the pictures— $1\frac{5}{8} \times 2\frac{1}{4}$  inches—are big enough for album use. In addition, modern photofinishing methods lead to prints  $2\frac{3}{4} \times 3\frac{3}{4}$  inches.

Aside from its film economy, the Kodak Duex is notable for its easy operation, genuine photographic ability, and low price. Its spiral-threaded lens tube, which gives it a compactness comparable with that of a folding camera, is



illustrated below. To appreciate this, you must see the Duex itself.

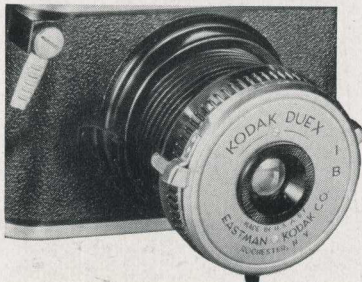
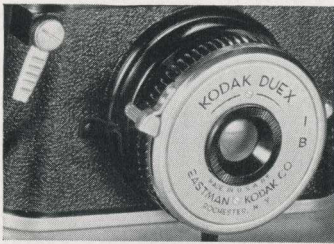
**DETAILS** Makes  $1\frac{5}{8} \times 2\frac{1}{4}$ -inch pictures on No. 620 Kodak Films. Standard enlarged print size,  $2\frac{3}{4} \times 3\frac{3}{4}$  inches. Kodak Doublet lens; fixed focus (no focusing required). Snapshot and "bulb" exposures. Enclosed optical eye-level finder. Sturdy, damage-resistant molded construction.

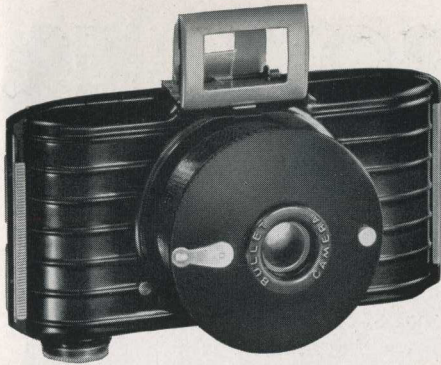
Kodak Duex, with Kodak Doublet lens, braided neck cord  
Kodak Verichrome, Super-XX, Plus-X, or Panatomic-X Film (16 exposures)

For prices please turn to supplement at back of catalog

28

● Though built without bellows, Kodak Duex has the compactness of a folding camera. One full turn of a spiral-threaded tube brings the lens out into position. A turn in the opposite direction and the camera is back to its slim shape.





**O**NE turn of the spiral front brings the Bullet's lens into position. Then just aim and "shoot" . . . as simple a photographic formula as you'll find anywhere. Turn back the lens, fold the finder, and the Bullet fits snugly in your hand, pocket, or handbag. Most impor-

# BULLET

tant of all, it makes thoroughly satisfying album-size pictures. New in design, reliable in results, and low in price, it is a real camera bargain.

**DETAILS** Makes  $1\frac{5}{8} \times 2\frac{1}{2}$ -inch pictures on No. 127 Kodak Films. Meniscus lens. Shutter with snapshot and "bulb" actions. Folding eye-level direct-view finder. Molded construction, with raised ribbing and permanent black glossy finish. Removable back. Dimensions,  $4\frac{7}{8} \times 2\frac{3}{16} \times 1\frac{7}{8}$  inches. Weight, 7 ounces.

Bullet  
 Leather carrying case  
 Fabric field case  
 Kodak Verichrome, Super-XX, Plus-X, or  
 Panatomic-X Film (8 exposures)

For prices please turn to supplement  
 at back of catalog

# SIX-20 BULL'S EYE

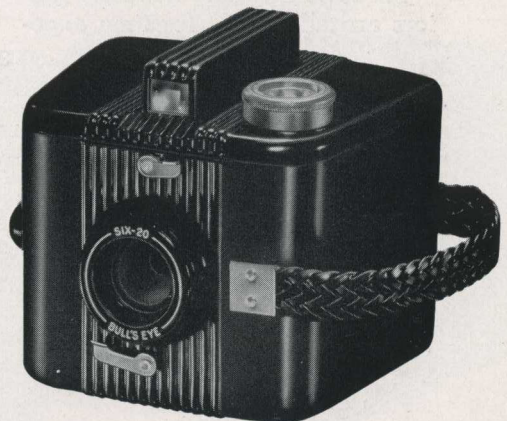
**Y**OUNG people and beginners of all ages are instantly attracted to this modern box-type camera. Its glossy black molded body tapers toward the front, while the back is gently curved. These details of design not only lead to unusual compactness, but, together with the rounded edges and raised ribbing, give the Bull's Eye distinctive looks. Operation is, of course, exceptionally simple. You load, sight on your subject, and trip the shutter. The "spyglass" finder shows the subject brilliantly and accurately. The tested lens and smooth-working shutter do the rest to give you good pictures. In short, the Bull's Eye qualifies as a real star among easy-to-use, inexpensive cameras.

**DETAILS** Makes  $2\frac{1}{4} \times 3\frac{1}{4}$ -inch pictures on No. 620 Kodak Films. Meniscus lens; fixed

focus. Snapshot, "bulb" actions. Tubular optical eye-level finder. Braided strap, for carrying and steadying camera. Dimensions,  $3\frac{5}{8}$  inches high,  $4\frac{5}{16}$  inches wide,  $4\frac{1}{16}$  inches thick. Weight, 16 ounces.

Six-20 Bull's Eye  
 Fabric carrying case  
 Kodak Verichrome, Super-XX, Plus-X, or  
 Panatomic-X Film (8 exposures)

For prices please turn to supplement  
 at back of catalog





# BROWNIES

## The favorite box cameras of millions

**B**ROWNIES are the world's best-known and most widely used box cameras, because they combine great simplicity with pronounced photographic ability. The basic Brownie formula of "load, aim, shoot" yields good pictures with amazing regularity. The models shown here have refinements that make them even more capable than their predecessors.

The Baby Brownie and Baby Brownie Special are "babies" in size and price, but full-fledged cameras nevertheless. They make good, sizable snapshots. Extremely easy to use, they are unsurpassed "starters" for beginners of all ages.

Six-16 and Six-20 Brownie Juniors are adjustable for time expo-

sures as well as snapshots, and make larger pictures than the Baby Brownies . . . but they are just as simple to operate. Once loaded, they require only sighting on the subject, tripping the shutter. Neatly finished and low in price, they are sound photographic investments.

Efficient new members of this famous family are the Target Brownies Six-16 and Six-20. Like the Juniors, they make large pictures, but they have a new, specially accurate single-action shutter, handy circular film-winding knob, and brilliant view finders for extra-easy sighting.

Finest of the whole group are the Six-16 and Six-20 Brownie Specials. Their compact, tapered form makes them distinctively smart, and the "spyglass" finder and plunger shutter release bring added certainty of excellent pictures.

**DETAILS** Baby Brownie, Baby Brownie Special make  $1\frac{5}{8} \times 2\frac{1}{2}$ -inch pictures on No. 127 Kodak Films; Six-20 models,  $2\frac{1}{4} \times 3\frac{3}{4}$ -inch pictures on No. 620 Kodak Films;

30



← BABY BROWNIE



BABY BROWNIE SPECIAL →





SIX-20 BROWNIE JUNIOR



TARGET BROWNIE SIX-20

Six-16 models,  $2\frac{1}{2} \times 4\frac{1}{4}$ -inch pictures on No. 616 Kodak Films. Baby Brownie: snapshots only; lever shutter release; fixed focus; black molded body; folding eye-level finder. Baby Brownie Special: snapshots only; plunger shutter release; fixed focus; black molded body, white trimmings; enclosed eye-level finder. Brownie

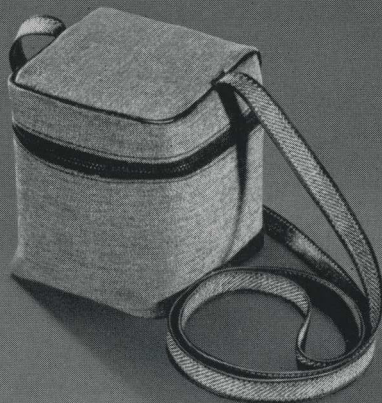
Juniors: snapshots, time exposures; fixed focus; levant-grain covering; ground-glass waist-level finders. Target Brownies: snapshots, "bulb" exposures; fixed focus; levant-grain covering; brilliant waist-level finders. Brownie Specials: snapshots, time exposures; two-position focusing; covered metal body; enclosed eye-level finder.

Baby Brownie  
Baby Brownie Special  
Six-16 Brownie Junior  
Six-20 Brownie Junior  
Target Brownie Six-16  
Target Brownie Six-20  
Six-16 Brownie Special  
Six-20 Brownie Special

Baby Brownie carrying case  
Six-16 Brownie Special  
carrying case  
Six-20 Brownie Special  
carrying case  
Kodak Verichrome, Super-XX,  
Plus-X, or Panatomic-X Film  
(8 exposures)

For prices please turn to supplement at back of catalog

● Sport-cloth carrying cases with slide fasteners and shoulder straps are available as accessories for the Six-16 and Six-20 Brownie Specials.



SIX-16 BROWNIE SPECIAL

# BROWNIE REFLEX

## A reflex-type miniature for young and old



**L**OOK into the hooded finder of the Brownie Reflex: there is your subject in full picture size—sharp, clear. Press the shutter release: the picture is yours. Because of the big, fully lighted image, the com-

pletely simple operation, it's easy for anyone to use a Brownie Reflex successfully. And though it is definitely a miniature, it gives you, without enlargement, pictures in the substantial, popular  $1\frac{5}{8}$ -inch-square size. Through modern photofinishing methods it can lead to prints  $2\frac{3}{4} \times 2\frac{3}{4}$  inches. You use economical Kodak Film No. 127, and get twelve pictures on a roll.

In spite of these features—in spite of its careful, accurate construction and expensive-looking finish, the Brownie Reflex is priced decidedly low. One of the most intriguing little cameras ever offered, it is bound to interest you on sight.

**DETAILS** Makes  $1\frac{5}{8} \times 1\frac{5}{8}$ -inch pictures on No. 127 Kodak Films. Tested meniscus lens; fixed focus (no focusing required). Snap-shot and "bulb" actions; plunger release. Black body of tough molded material; morocco-grain surface finish. Ornamental satin-aluminum top and bottom covers. Etched metal front plate. Tripod socket. Braided black neck cord. Dimensions,  $4\frac{3}{4} \times 3\frac{1}{2} \times 2\frac{1}{4}$  inches. Weight, 15 ounces.

Brownie Reflex, complete with neck cord . . .  
Kodak Verichrome, Super-XX, Plus-X, or Panatomic-X Film (12 exposures) . . . . .

For prices please  
turn to supplement  
at back of catalog

● In the big finder you see your picture full-size, brilliantly sharp, while you're making it.

● The finder hood folds flush . . . springs open at a touch when you're ready to use it.

● The precision-molded film holder slips readily off the bottom of the camera for quick loading.





# SIX-20 FLASH BROWNIE

*An inexpensive  
all-round camera*

No. 5 lamp may also be used with proper adapter. 4-inch nickeled steel reflector.

Six-20 Flash Brownie  
Flashholder for Six-20 Flash Brownie (with-  
out lamps and batteries)  
Kodak Verichrome, Super-XX, Plus-X, or  
Panatomic-X Film (8 exposures)

For prices please turn to supplement  
at back of catalog

**H**ERE is a reliable low-cost Eastman camera with which anyone can make good Photoflash shots. And though it is designed especially for picture taking at night, the Six-20 Flash Brownie becomes a full-fledged daylight camera, trim and efficient, when used without the Flashholder. It is a real all-round model, with dependable flash synchronization added to the well-known Brownie features.

For Photoflash photography you attach the Flashholder, fit it with flash bulb and batteries, and operate according to easy directions. For daytime pictures you loosen two retaining screws, remove the Flashholder, and proceed as with any simple box camera. Let your dealer give you a demonstration.

**DETAILS** Makes  $2\frac{1}{4}$  x  $3\frac{1}{4}$ -inch pictures on No. 620 Kodak Films. Meniscus lens, with simple two-position focusing. New single-action self-setting shutter with instantaneous and "bulb" settings, plunger-type release with safety latch. Enclosed "spy-glass" eye-level view finder. Covered metal body. Flashholder, of tough black molded material, has two receptacles for size AA flashlight batteries (not included). Takes No. 11A, 16A, or 21 Photoflash lamp.



# KODAK ENLARGERS

*Dependable equipment for making big prints*



● Kodak Advance Enlarger—efficient, inexpensive.

## KODAK ADVANCE ENLARGER

A sturdy, capable enlarger that is moderately priced. It accommodates all amateur negatives from 35-mm. and Bantam to  $3\frac{1}{4} \times 5\frac{1}{2}$  inches (of which a  $3\frac{1}{4} \times 4\frac{1}{4}$ -inch portion can be enlarged). With its standard 4-inch  $f/11$  lens it makes fine enlargements up to  $5\frac{1}{2}$  diameters at the baseboard. For greater magnifications, or for greater printing speed, any of the Kodak Precision Enlarger lenses (see opposite page) and the Kodak 2-inch Projection Anastigmat  $f/6.3$  can be used interchangeably. Other features: rigid construction; even illumination; simple, direct adjustments.

Kodak Advance Enlarger, with  
4-inch  $f/11$  lens, without lamp  
2-in. Kodak Anastigmat  $f/6.3$  lens  
No. 211 Mazda Photo Enlarger Lamp  
Microfocus Attachment

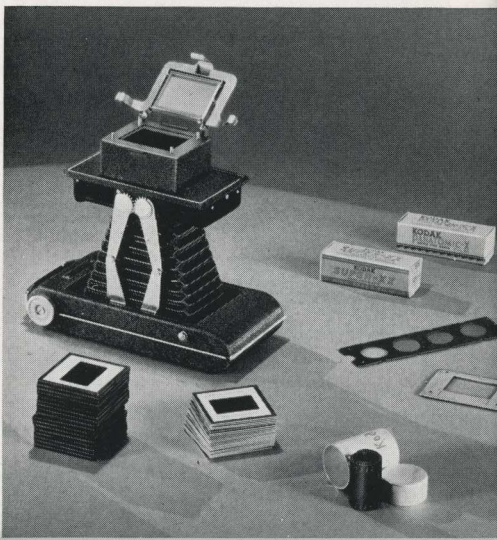
For prices please turn to supplement  
at back of catalog

## KODAK TRANSPARENCY ENLARGER

A simple means of making black-and-white negatives from miniature Kodachrome transparencies. Makes eight enlarged negatives, approximately  $2\frac{1}{8} \times 3\frac{1}{8}$  inches, on a roll of No. 616 Kodak Film. The transparency—unmounted, mounted in glass, or in a Kodaslide—is clamped in position before the lens. Exposure is made by placing the Enlarger close to a brilliant light, such as a No. 1 Photoflood, and opening the shutter. A set of Wratten Tricolor Filters is supplied with the Enlarger.

For prices please turn to supplement  
at back of catalog

● Kodak Transparency Enlarger makes black-and-white negatives from Kodachrome transparencies.





● The super-versatile Kodak Precision Enlarger.

**KODAK PRECISION ENLARGER** A high-precision machine that not only makes enlargements of superior quality but that can be adapted to copying, titling, photomicrography, macrophotography, and making color-separation negatives. It can also be converted into a double-extension-bellows camera. In other words, it is the nucleus for interchangeable precision photographic apparatus having wide use both in the darkroom and in actual photography. In addition to the lenses listed, three Kodak Projection Ektars and a number of accessories

are available. For complete details, ask your dealer for special booklet.

Kodak Precision Enlarger, A Assembly (for enlarging from negatives up to and including  $2\frac{1}{4} \times 3\frac{1}{4}$  inches)

Kodak Projection Anastigmat lenses:

2-inch  $f/4.5$

3-inch  $f/4.5$

4-inch  $f/4.5$

For prices please turn to supplement at back of catalog

**KODAK PORTABLE MINIATURE ENLARGER** A precision instrument that provides new efficiency and convenience in enlarging from 35-mm. or Bantam negatives. It can be quickly taken down and packed in the Carryall Case. The case also accommodates a camera, film, developers, film tank, and other accessories... a complete outfit for miniature photography, easy to store, handy to take on trips and vacations. Outside dimensions of the case are  $13\frac{3}{4} \times 13\frac{3}{4} \times 6\frac{1}{4}$  inches. The enlarger gives magnifications from about  $2\frac{1}{2}$  to 9 diameters at the baseboard—larger by projection to wall or floor.

Kodak Portable Miniature Enlarger

2-in. Kodak Anastigmat  $f/6.3$  lens

2-in. Kodak Anastigmat  $f/4.5$  lens

2-in. Kodak Ektar  $f/4.5$  lens

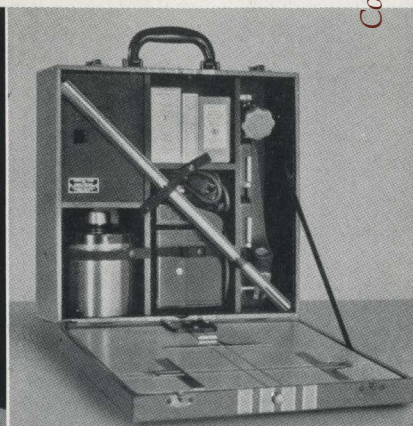
Carryall Case

For prices please turn to supplement at back of catalog

35

● Assembled, the Kodak Portable Miniature Enlarger makes brilliant enlargements from small negatives.

● Taken down, it fits into the Carryall Case as part of a miniature photographic outfit.



Compliments of the Digitized Kodak Catalog Project: 1886 - 1944



# KODAK FILMS

for every need

**VERICHROME** For surer results in day-in and day-out photography with the average camera. Special double coating offsets reasonable exposure errors. Standard rolls and packs.

**SUPER-XX** Exceptional speed, for snapshots at night, fast action shots, fully timed negatives under difficult conditions. (To avoid overexposure, do not use in bright sunlight in a camera with only one or two diaphragm openings.) Rolls (including miniature sizes), packs, sheets.

**PLUS-X** All-round film combining high photographic quality, extra speed, unusually fine grain. Negatives made under adverse conditions yield generous enlargements without perceptible graininess. Rolls (including miniature sizes), packs.

**PANATOMIC-X** Grain of truly microscopic fineness, and speed ample for ordinary purposes. The film for big, brilliant enlargements. Rolls (including miniature sizes), packs, sheets.

**KODACHROME** Yields full-color transparencies, for viewing as they are, or, in miniature sizes, for projection on a screen. Prices include processing. Standard miniature transparencies (24 x 36 mm. and 28 x 40 mm.) are returned mounted, ready for projection. Miniature rolls, sheets.

**INFRARED** With a red filter such as No. 25A, minimizes effect of haze, increases photographic visibility of distant objects. Gives dramatic effects: dark skies, light foliage, hard shadows. Popular rolls (including miniature sizes).



**Other Eastman Films** Direct Positive (miniature rolls)—a superior material for making black-and-white positive transparencies by chemical reversal. Micro-File (36-exposure No. 135 rolls)—extremely fine grain, high contrast, for microfilming newspapers, manuscripts, etc. Portrait Panchromatic—a favorite multi-purpose sheet film. Panchro-Press (sheets)—a splendid, physically hardened "press" film. Super Panchro-Press (sheets)—extra speed for adverse light. Tri-X Panchromatic—Eastman's fastest sheet film. Super Ortho Press (sheets and packs)—fine, fast ortho material. Ortho-X (sheets)—top-speed ortho film.

# KODACHROME ACCESSORIES

*For projecting transparencies*

**C**AMERAS described on pages 18 to 25 of this catalog may, if desired, be loaded with Kodachrome Film in miniature sizes (Nos. K135 and K828). After processing without extra charge, the film is returned to you in the form of full-color transparencies individually mounted as Kodaslide. These can then be viewed as they are, but their matchless beauty can best be appreciated by projecting them in one of the Kodaslide Projectors listed below. Viewed in large size on the home screen with the aid of one of these simple devices, the images have a realism and richness of detail matched only by the original scenes.

For showing in projectors not equipped to take Kodaslide, the transparencies may be slipped into Kodaslide Adapting Frames, or they may be mounted in glass slides by means of materials available for this purpose. For further details see the booklet "Color With Your Miniature Camera."



● Kodaslide (actual size 2x2 inches) bring you your Kodachrome transparencies ready for projection.

Kodaslide Projector, Model 1—  
Kodaslide Projector, Model 2—  
with 5-inch lens  
with 7½-inch lens  
Kodaslide Changer for semiautomatic projection of Kodaslide

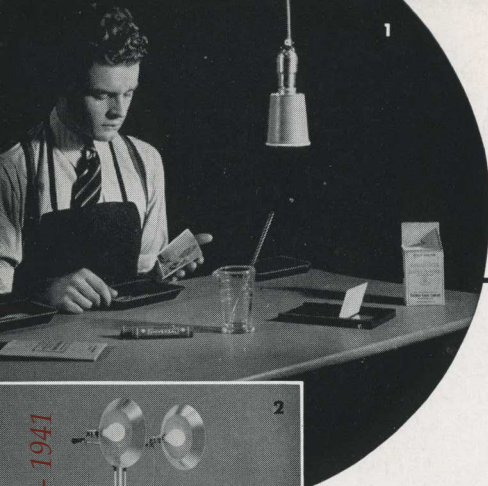
For prices please turn to supplement at back of catalog

37

● The Model 2 Projector, with Kodaslide Changer.

● The inexpensive, capable Model 1 Projector.





# ACCESSORIES

## for the picture maker

For prices please see supplement

**KODAK DARKROOM OUTFITS (1)** The essential materials, plus instructions, for developing and printing in the home darkroom.

**KODAFLECTOR SENIOR (2)** A new lighting unit for high efficiency from photo lamps in indoor photography.

**KODAK HANDY REFLECTORS (not illustrated)** Effective cardboard reflectors, with handy measure, for photo lamps in home fixtures.

**KODAK COMBINATION LENS ATTACHMENTS (3)** A versatile system of attachments that fit nearly all cameras, permitting many combinations of filters, Pola-Screen, diffusion disk, supplementary lenses. Also other attachments for all cameras.

**KODAK ALL-METAL PRINTER (4)** A modern, ultra-convenient printer that accommodates all amateur-size negatives.

**KODAK DAY-LOAD TANK (5)** An ingenious tank for daylight processing of 18- or 36-exposure 35-mm. film in magazines.

**KODAK REFERENCE HANDBOOK (6)** An invaluable new 388-page illustrated book on lenses, filters, films, transparencies, papers, darkroom design, processing, copying, microfilming.

**KODAK SENIOR SYNCHRONIZER Speedgun Model E (7)** A highly accurate synchronizer especially designed and sized for flash work with Kodaks, at speeds up to 1/400 second.

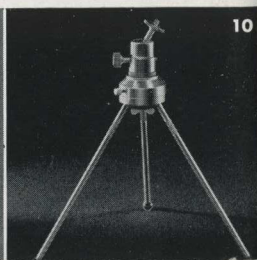
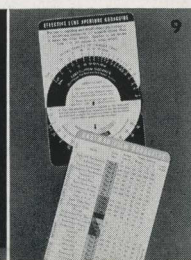
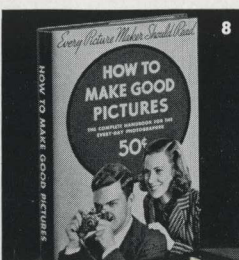
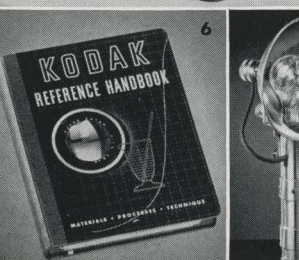
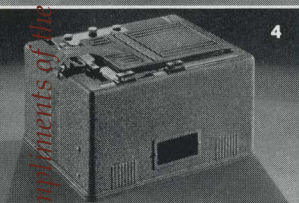
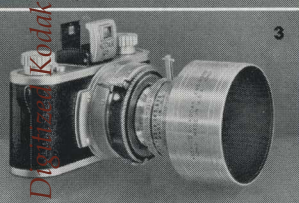
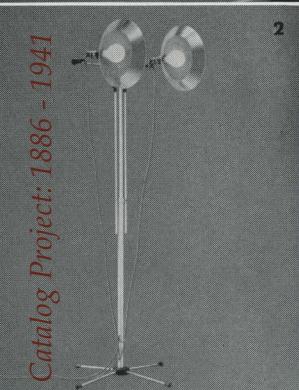
**"HOW TO MAKE GOOD PICTURES" (8)** Simple, practical information on all types of pictures. Hundreds of illustrations.

**KODAGUIDES (9)** A series of handy guides to correct exposure, home lighting, use of filters, development.

**KODAK TABLE TOP TRIPOD COMBINATION (10)** A versatile camera support for indoor and outdoor use, consisting of Table Top Tripod; Pan-a-pod, an indexed revolving head for panoraming; and Tilt-a-pod, for tilting camera to unusual angles. Units available separately.



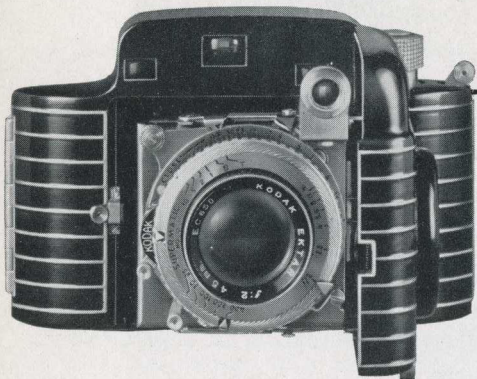
*See these accessories at your Kodak dealer's. For other photo accessories, see the booklet "Kodak Picture-Making Aids." For home movie equipment, ask your dealer for a Ciné-Kodak catalog.*



Compliments of the Digital Kodak Catalog Project: 1886 - 1941



# KODAK BANTAM SPECIAL



*A jewel-like miniature  
of exceptional scope*

**T**HE original model of this unusual miniature achieved an enviable reputation through its exquisite construction and brilliant performance. Now it is available with two notable equipment changes. It carries the world's finest between-the-lens shutter—the Kodak Supermatic. In addition its high-speed *f*/2.0 lens is of the "treated" variety, the inner surfaces being coated by a process that improves the clarity and brilliance of the negatives obtained. In such other features as its coupled split-field range finder, film-centering device, and beautiful modern design and finish, the Bantam Special is the same as before. But, unquestionably, it is an even greater camera—for both

black-and-white and color photography. If you are in the market for a fine miniature, this is more than ever the camera to see before you make up your mind.

**DETAILS** Makes 28 x 40-mm. negatives on No. 828 Kodak Films. Standard enlarged print size,  $2\frac{3}{4} \times 4$  inches. Kodak Ektar, *f*/2.0 lens; coated inner glass-air surfaces; focal length, 45 mm.; apertures, *f*/2.0 to *f*/16. Supermatic shutter; settings, 1, 1/2, 1/5, 1/10, 1/25, 1/50, 1/100, 1/200, 1/400 second, time, "bulb"; lever release (cable release may be added). Focusing from 3 feet to infinity by lever coupled with built-in split-field military-type range finder. Infrared focusing index. Eyepiece on range finder adjustable to user's vision. Film locks automatically in centered position for each exposure. Hinged back. Die-cast body.

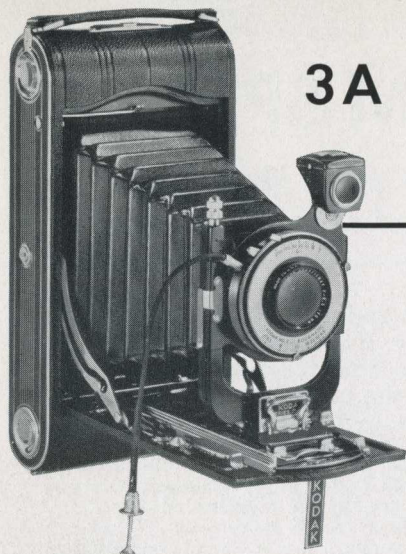
#### PRICES

Kodak Bantam Special, with Kodak Ektar <i>f</i> /2.0 lens, Kodak Supermatic shutter, tan leather field case	\$116.00
Kodak Panatomic Film (F828), 8 exposures	.21
Kodak Plus-X (PX828), Super-XX (XX828), Panatomic-X (FX828), or Infrared (IR828) Film, 8 exposures	.26
Kodak Direct Positive Film (DP828), 8 exposures	.37
Kodachrome Film (K828 or K828A), 8 exposures, including processing	1.45

## KODAK MINICOLOR PRINTS

FULL-COLOR photographic enlargements—prints that recreate the freshness of the originals—can now be made from good miniature Kodachrome transparencies that are mounted in 2 x 2-inch slides with centered standard Kodak aperture (either 35-mm. or Bantam). Ask your Kodak dealer for the descriptive leaflet about *Kodak Minicolor Prints*.

Kodak Minicolor Prints 2X (about $2\frac{1}{4} \times 3\frac{3}{4}$ inches), each	\$ .75
Kodak Minicolor Prints 5X (about $5 \times 7\frac{1}{2}$ inches), each	3.50
<i>Minimum charge per order \$1.00</i>	



## 3A KODAK, SERIES III

*A finer camera for 3¼ x 5½  
(postcard-size) pictures*

**T**HIS new camera is similar to the 3A Kodak, Series II, described on page 12 of this catalog. It is, however, equipped for finer, more varied picture taking. Its shutter is the multiple-tested Kodamatic, with five speeds to 1/200 second and built-in delayed-action mechanism. Regular fittings include both eye-level and waist-level finders, and an easily operated rising front is provided as an aid in composing vertical pictures.

### PRICES

3A Kodak, Series III, with Kodak Anastigmat <i>f</i> /6.3 lens, Kodamatic shutter . . .	\$55.75
Black leather carrying case . . . . .	5.25
Kodak Verichrome Film (VI22), 6 exposures . . . . .	.58
Kodak Super-XX (XX122), Plus-X (PX122), or Panatomic-X (FX122) Film, 6 exp. . . . .	.69

## BROWNIE REFLEX

### SYNCHRO MODEL

*A reflex-type miniature  
for daylight and flash pictures*



**I**N THE Synchro Model of the Brownie Reflex (see page 32), the simple and sure picture making of this well-known camera is extended to the flashlight field. Slide the Flashholder into position, attach the electrical plug to the front of the camera, and, aided by inexpensive batteries and lamps, you can make attractive flash pictures indoors or outdoors, including snapshots of subjects that are in motion.

### PRICES

Brownie Reflex, Synchro Model . . . . .	\$6.35
Brownie Flashholder for Brownie Reflex (without lamps and batteries) . . . . .	2.95
Brownie Reflex, Synchro Model, with Flashholder . . . . .	9.30
Kodak Verichrome Film (VI27), 12 exposures . . . . .	.26
Kodak Super-XX (XX127), Plus-X (PX127), or Panatomic-X (FX127) Film, 12 exposures . . . . .	.32

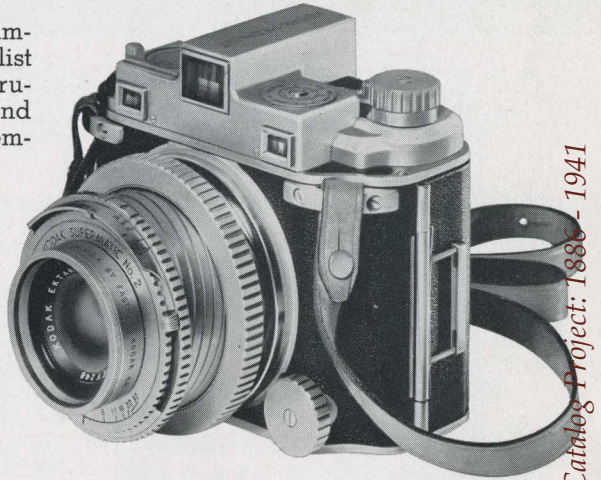
# KODAK MEDALIST

*A remarkable new 2¼ x 3¼ camera*

A RADICAL departure in camera design, Kodak Medalist is also a photographic instrument of remarkable ability and fineness. In one compact assembly it combines the convenience of roll film with easy adaptability to ground-glass focusing, back extensions, and the negative-material range of a view camera . . . and adds the scope, accuracy, and operating refinements of a precision miniature. This has never before been accomplished in any known camera of this type.

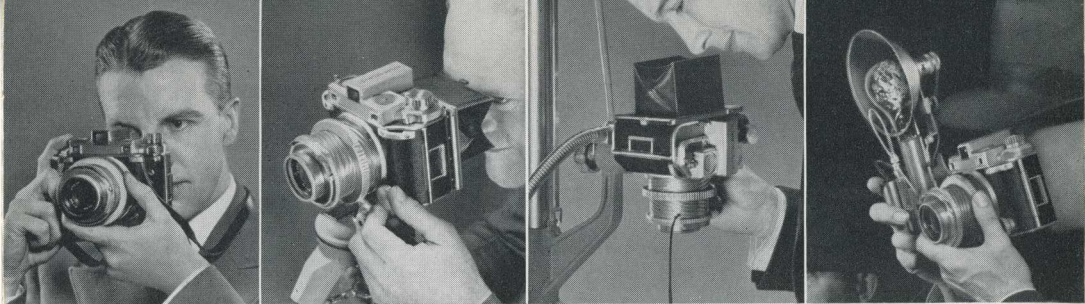
Starting point in planning the camera was the 2¼ x 3¼-inch size . . . one of the most pleasing and most practical of all picture proportions. In the basic Medalist this format places at the user's disposal five Kodak roll films in the 620 size. With the available accessory back the camera takes twenty-five different 6.5 x 9-cm. (and 2¼ x 3¼) sheet films, including Professional Kodachrome . . . six types of Kodak Film Packs . . . and more than 150 Kodak plate emulsions.

This great variety of negative materials gains significance when considered in relation to the superlative equipment with which the Medalist utilizes them. The lens is a five-element Kodak Ektar  $f/3.5$ , especially designed for this camera, and critically corrected. Its interior glass-air surfaces are treated to assure negatives of brilliant contrast and full-color transparencies of greater color purity. Incorporat-



ing a new formula, high-precision manufacture, and exhaustively tested assembling, this is the finest lens ever offered in the 2¼ x 3¼ field. It is controlled by a special model of the Kodak Supermatic shutter, with speeds to 1/400 second, built-in delayed action, and cable release socket for remote control and flash synchronization.

This exceptional lens-in-shutter combination is supported . . . and moved in and out for focusing . . . not by bed and bellows, but by two helically interthreaded tubular members. Because of their more than thirty inches of metal-to-metal bearing, these members hold the lens in extremely accurate position in relation to the film plane. Furthermore, they make possible the direct, positive coupling of the shutter with convenient, quick-action controls for advancing the film, cocking the shutter, and making the exposure. Similar positive



- Hand-held, Kodak Medalist is used like a miniature. You hold and focus it with the left hand, operate it with the right.
- Medalist on a tripod, with accessory back, ground-glass panel, and microfocusing knob in use for critical focusing.
- Kodak Precision Enlarger Stand Assembly, Copying Lights make Medalist and accessory back a copying camera.
- Supplemented with either of two Kodak synchronizers, the Medalist becomes a "flash" camera of outstanding ability.

connections contribute to the operating accuracy of the coupled split-field military-type range finder . . . the combined focusing and depth-of-field scales atop the camera . . . the automatic parallax correction of the view finder.

No brief description can convey an adequate idea of the masterly design and operating efficiency of the Kodak Medalist. This is definitely a camera for discriminating and serious workers. If you fall into that classification, and are interested in learning more about the Medalist, be sure to ask your Kodak dealer for a demonstration, and for a special descriptive booklet.

**DETAILS** Makes  $2\frac{1}{4} \times 3\frac{1}{4}$ -inch pictures on No. 620 Kodak roll films; with accessory back and proper adapter or holder, takes  $2\frac{1}{4} \times 3\frac{1}{4}$  film packs,  $2\frac{1}{4} \times 3\frac{1}{4}$ -inch or 6.5 x 9-cm. sheet films, plates. Kodak Ektar  $f/3.5$  lens; focal length, 100 mm.; angle of coverage, 54 degrees. Supermatic shutter; speeds, 1, 1/2, 1/5, 1/10, 1/25, 1/50, 1/100, 1/200, 1/400; 8 apertures from  $f/32$  to  $f/3.5$ ; cable-release socket for remote control and

Photoflash synchronization; scales visible from operating position. Built-in coupled split-field military-type range finder. Viewfinder system automatically corrects for vertical parallax. Twin eyepiece for range-finder and view-finder images. Body plunger shutter release, with lever for time exposures. Double-exposure prevention. Roll-film winding knob automatically cocks shutter. Manual cocking lever for accessory back and for intentional double exposures. Visible shutter signal. Film-measuring device. Dial to record type of film with which camera is loaded. Exposure counter. Focusing scale indexed for visible and infrared light. Finders and scales are accurate with accessory back as well as with roll-film back. Strong, rigid body of interlocking, light-trapped, special-alloy castings.

**PRICES**

Kodak Medalist, with Kodak Ektar $f/3.5$ lens, Supermatic shutter, neck strap, adapter ring insert, lens cap . . . . .	\$176.00
Accessory Back for Sheet Film, Film Packs, and Plates for Kodak Medalist, including ground-glass focusing screen and T.B.I. Cable Release No. 2 . . . . .	19.75
Tan Leather Field Case, with neck strap. . . . .	12.50

Due to the present unusual difficulty in the supply of certain essential materials, and in precision production generally, deliveries of some of the products described in this booklet may be unavoidably delayed.

Also, for similar reasons, some of the products and equipment illustrated and described may have undergone or may undergo change without, however, impairment of their efficiency.

As both situations are largely brought about by necessary war measures, we know that we can count on your understanding and indulgence.

*All prices subject to change without notice*

# PRICE LIST

*All prices subject to change without notice*

PAGES	PRODUCTS	PRICES
<b>6, 7</b>	<b>KODAK VIGILANT SIX-16</b>	
	With Kodak Anastigmat <i>f</i> /8.8 lens, Diomatic shutter	\$17.00
	With Kodak Anastigmat <i>f</i> /6.3 lens, Diomatic shutter	20.75
	With Kodak Anastigmat <i>f</i> /4.5 lens, Kodamatic shutter	30.85
	With Kodak Anastigmat Special <i>f</i> /4.5 lens, Supermatic shutter	45.50
	Tan sole leather field case	4.75
	Tan leather Snapsack	3.00
	Kodak Verichrome Film (V616), 8 exposures	.37
	Kodak Super-XX (XX616), Plus-X (PX616), or Panatomic-X (FX616) Film, 8 exposures	.42
	Kodak Parallax Correction Finder for <i>f</i> /8.8 and <i>f</i> /6.3 models	1.60
	<b>KODAK VIGILANT SIX-20</b>	
	With Kodak Anastigmat <i>f</i> /8.8 lens, Diomatic shutter	\$15.50
	With Kodak Anastigmat <i>f</i> /6.3 lens, Diomatic shutter	18.00
	With Kodak Anastigmat <i>f</i> /4.5 lens, Kodamatic shutter	26.50
	With Kodak Anastigmat Special <i>f</i> /4.5 lens, Supermatic shutter	39.85
	Tan sole leather field case	4.00
	Tan leather Snapsack	2.50
	Kodak Verichrome Film (V620), 8 exposures	.32
	Kodak Super-XX (XX620), Plus-X (PX620), or Panatomic-X (FX620) Film, 8 exposures	.37
	Kodak Parallax Correction Finder for <i>f</i> /8.8 and <i>f</i> /6.3 models	1.60
<b>8, 9</b>	<b>KODAK VIGILANT JUNIOR SIX-16</b>	
	With Kodet lens, Dak shutter	\$10.50
	With Bimat lens, Dakon shutter	13.25
	Tan leather Snapsack	3.00
	Kodak Verichrome Film (V616), 8 exposures	.37
	Kodak Super-XX (XX616), Plus-X (PX616), or Panatomic-X (FX616) Film, 8 exposures	.42
	<b>KODAK VIGILANT JUNIOR SIX-20</b>	
	With Kodet lens, Dak shutter	\$ 9.25
	With Bimat lens, Dakon shutter	11.75
	Tan leather Snapsack	2.50
	Kodak Verichrome Film (V620), 8 exposures	.32
	Kodak Super-XX (XX620), Plus-X (PX620), or Panatomic-X (FX620) Film, 8 exposures	.37
<b>10, 11</b>	<b>KODAK MONITOR SIX-16</b>	
	With Kodak Anastigmat <i>f</i> /4.5 lens, Kodamatic shutter	
	Without case	\$37.25
	With de luxe field case	44.00
	With Kodak Anastigmat Special <i>f</i> /4.5 lens, Supermatic shutter	
	Without case	51.50
	With de luxe field case	58.25
	Kodak Verichrome Film (V616), 8 exposures	.37
	Kodak Super-XX (XX616), Plus-X (PX616), or Panatomic-X (FX616) Film, 8 exposures	.42
	T.B.I. Cable Release No. 2	1.05
	<b>KODAK MONITOR SIX-20</b>	
	With Kodak Anastigmat <i>f</i> /4.5 lens, Kodamatic shutter	
	Without case	\$32.00
	With de luxe field case	38.00
	With Kodak Anastigmat Special <i>f</i> /4.5 lens, Supermatic shutter	
	Without case	45.50
	With de luxe field case	51.50
	Kodak Verichrome Film (V620), 8 exposures	.32
	Kodak Super-XX (XX620), Plus-X (PX620), or Panatomic-X (FX620) Film, 8 exposures	.37
	T.B.I. Cable Release No. 2	1.05

## PAGES

## PRODUCTS

## PRICES

12	<b>3A KODAK, SERIES II</b> —See new <i>Series III</i> in accompanying folder	
13	<b>SUPER KODAK SIX-20</b>	
	With Kodak Anastigmat Special <i>f</i> /3.5 lens, self-timer shutter . . . . .	\$240.00
	Lined tan sole leather case . . . . .	16.50
	Kodak Verichrome Film (V620), 8 exposures . . . . .	.32
	Kodak Super-XX (XX620), Plus-X (PX620), or Panatomic-X (FX620) Film, 8 exposures . . . . .	.37
16, 17	<b>JIFFY KODAK SIX-16, SERIES II</b>	\$ 9.00
	Leather carrying case . . . . .	1.85
	Shoulder strap . . . . .	.50
	Kodak Verichrome Film (V616), 8 exposures . . . . .	.37
	Kodak Super-XX (XX616), Plus-X (PX616), or Panatomic-X (FX616) Film, 8 exposures . . . . .	.42
	Lens cap . . . . .	.15
	<b>JIFFY KODAK SIX-20, SERIES II</b>	\$ 8.25
	Leather carrying case . . . . .	1.65
	Shoulder strap . . . . .	.50
	Kodak Verichrome Film (V620), 8 exposures . . . . .	.32
	Kodak Super-XX (XX620), Plus-X (PX620), or Panatomic-X (FX620) Film, 8 exposures . . . . .	.37
	Lens cap . . . . .	.15
	<b>JIFFY KODAK V.P.</b>	\$ 4.90
	Leather carrying case . . . . .	1.35
	Kodak Verichrome Film (V127), 8 exposures . . . . .	.26
	Kodak Super-XX (XX127), Plus-X (PX127), or Panatomic-X (FX127) Film, 8 exposures . . . . .	.32
18, 19	<b>KODAK BANTAMS</b>	
	With Kodalinear <i>f</i> /8 lens . . . . .	\$ 4.50
	With Kodak Anastigmat <i>f</i> /6.3 lens . . . . .	9.00
	With Kodak Anastigmat <i>f</i> /4.5 lens . . . . .	25.00
	Field case, with neck strap, for Kodak Bantam <i>f</i> /8 . . . . .	1.50
	Brown leather field case, with neck strap, for Kodak Bantam <i>f</i> /6.3 . . . . .	2.75
	Tan "bridle" leather field case, with shoulder strap, for Kodak Bantam <i>f</i> /4.5 . . . . .	4.25
	Kodak Panatomic Film (F828), 8 exposures . . . . .	.21
	Kodak Plus-X (PX828), Super-XX (XX828), Panatomic-X (FX828), or Infrared (IR828) Film, 8 exposures . . . . .	.26
	Kodachrome Film (K828 or K828A), 8 exp., including processing . . . . .	1.45
22, 23	<b>KODAK 35'S</b>	
	With Kodak Anastigmat <i>f</i> /5.6 lens, Kodex shutter, neck strap . . . . .	\$ 15.50
	With Kodak Anastigmat <i>f</i> /4.5 lens, Diomatic self-timer shutter, neck strap . . . . .	26.00
	With Kodak Anastigmat Special <i>f</i> /3.5 lens, Kodamatic self-timer shutter, neck strap . . . . .	35.50
	With Kodak Anastigmat Special <i>f</i> /3.5 lens, Kodamatic self-timer shutter, coupled range finder, neck strap . . . . .	50.50
	Sole leather field case (for any of first 3 models) . . . . .	4.00
	De luxe sole leather field case (for any of first 3 models) . . . . .	6.00
	De luxe sole leather field case (for <i>f</i> /3.5 model with range finder) . . . . .	7.00
	Kodak Plus-X (PX135), Super-XX (XX135), or Panatomic-X (FX135) Film, 18 exposures . . . . .	.63
	Kodak Plus-X (PX135), Super-XX (XX135), or Panatomic-X (FX135) Film, 36 exposures . . . . .	1.00
	Kodak Infrared Film (IR135), 36 exposures . . . . .	1.27
	Kodachrome Film (K135 or K135A), 18 exp., including processing . . . . .	2.68
24, 25	<b>KODAK EKTRA</b>	
	With 50-mm. Kodak Ektar <i>f</i> /1.9 lens . . . . .	\$373.50
	With 50-mm. Kodak Ektar <i>f</i> /3.5 lens . . . . .	304.00
	35-mm. Kodak Ektar <i>f</i> /3.3 lens . . . . .	72.50

PAGES	PRODUCTS	PRICES
<b>24, 25</b>	90-mm. Kodak Ektar <i>f</i> /3.5 lens	\$ 90.75
<i>(Continued)</i>	135-mm. Kodak Ektar <i>f</i> /3.8 lens	138.75
	153-mm. Kodak Ektar <i>f</i> /4.5 lens	160.00
	Extra interchangeable magazine backs, each	58.65
	Brown cowhide field-type carrying case	10.00
	Brown cowhide combination carrying case	15.00
	<i>(For other accessories see Kodak Ektra booklet)</i>	
<b>28</b>	<b>KODAK DUEX, WITH KODAK DOUBLE LENS</b>	\$ 6.50
	Kodak Verichrome Film (V620), 16 exposures	.32
	Kodak Super-XX (XX620), Plus-X (PX620), or Panatomic-X (FX620) Film, 16 exposures	.37
<b>29</b>	<b>BULLET</b>	\$ 2.35
	Soft leather carrying case, with hand strap	.75
	Field case, with neck strap	.85
	Kodak Verichrome Film (V127), 8 exposures	.26
	Kodak Super-XX (XX127), Plus-X (PX127), or Panatomic-X (FX127) Film, 8 exposures	.32
	<b>SIX-20 BULL'S EYE</b>	\$ 2.95
	Fabric carrying case, with shoulder strap	1.10
	Kodak Verichrome Film (V620), 8 exposures	.32
	Kodak Super-XX (XX620), Plus-X (PX620), or Panatomic-X (FX620) Film, 8 exposures	.37
<b>30, 31</b>	<b>BROWNIES</b>	\$ 1.15
	Baby Brownie	1.50
	Baby Brownie Special	2.80
	Six-16 Brownie Junior	2.45
	Six-20 Brownie Junior	3.25
	Target Brownie Six-16	2.90
	Target Brownie Six-20	4.60
	Six-16 Brownie Special	4.00
	Six-20 Brownie Special	.25
	Suede-finish carrying case, with hand strap, for Baby Brownie	1.25
	Fabric carrying case, shoulder strap, for Six-16 Brownie Special	1.10
	Fabric carrying case, shoulder strap, for Six-20 Brownie Special	
	Kodak Verichrome Film	
	For Baby Brownie, Baby Brownie Special (V127), 8 exposures	.26
	For all Six-16 Brownies (V616), 8 exposures	.37
	For all Six-20 Brownies (V620), 8 exposures	.32
	Kodak Super-XX, Plus-X, or Panatomic-X Film	
	For Baby Brownie, Baby Brownie Special (XX127, PX127, FX127), 8 exposures	.32
	For all Six-16 Brownies (XX616, PX616, FX616), 8 exposures	.42
	For all Six-20 Brownies (XX620, PX620, FX620), 8 exposures	.37
<b>32</b>	<b>BROWNIE REFLEX—See new Synchro Model in accompanying folder</b>	
<b>33</b>	<b>SIX-20 FLASH BROWNIE</b>	\$ 4.75
	Flashholder for Six-20 Flash Brownie (without lamps and batteries)	1.60
	Six-20 Flash Brownie and Flashholder	6.35
	Kodak Verichrome Film (V620), 8 exposures	.32
	Kodak Super-XX (XX620), Plus-X (PX620), or Panatomic-X (FX620) Film, 8 exposures	.37
<b>34, 35</b>	<b>KODAK ADVANCE ENLARGER</b>	\$ 29.35
	With 4-inch <i>f</i> /11 lens, without lamp	26.65
	Without either lens or lamp	8.00
	2-inch Kodak Projection Anastigmat <i>f</i> /6.3 lens	.25
	No. 211 Mazda photo enlarger lamp	1.35
	Microfocus attachment	
	<i>(See new Model 2 including Microfocus Attachment and carrier taking negatives individually or in strips—at your dealer's)</i>	

PAGES	PRODUCTS	PRICES
<b>34, 35</b>	<b>KODAK TRANSPARENCY ENLARGER</b>	<b>\$19.75</b>
<i>(Continued)</i>		
	<b>KODAK PRECISION ENLARGER</b>	
	A Assembly (for enlarging from negatives up to and including 2¼ x 3¼ inches), without lens	\$72.00
	Kodak Projection Anastigmat lenses:	
	2-inch f/4.5	16.00
	3-inch f/4.5	18.65
	4-inch f/4.5	21.35
	Kodak Projection Ektar lenses:	
	2-inch f/4.5	26.65
	3-inch f/4.5	32.00
	4-inch f/4.5	37.35
	<i>(For the "B" Assembly and other accessories see Kodak Precision Enlarger booklet)</i>	
	<b>KODAK PORTABLE MINIATURE ENLARGER</b>	
	Without lens or Carryall Case (not supplied without lens)	\$29.35
	Without lens but with case (not supplied without lens)	37.35
	2-inch Kodak Projection Anastigmat f/6.3 lens	8.00
	2-inch Kodak Projection Anastigmat f/4.5 lens	16.00
	2-inch Kodak Projection Ektar f/4.5 lens	26.65
<b>37, 38</b>	<b>ACCESSORIES</b>	
	Kodaslide Projector, Model 1	\$18.50
	Kodaslide Projector, Model 2, with 5-inch lens	33.50
	With 7½-inch lens	52.00
	Kodaslide Changer	12.00
	Kodak Darkroom Outfit No. 3	4.70
	Kodak ABC Darkroom Outfit	3.05
	Kodaflector Senior	12.80
	Kodaflector Regular	5.35
	Kodak Handy Reflectors—set of 2, with 1 Kodak Handy Measure	.20
	Kodak Combination Lens Attachments (for prices see Kodak Combination Lens Attachments booklet—at your dealer's)	
	Kodak All-Metal Printer (new Model 2)	19.75
	Kodak Day-Load Tank	7.40
	Kodak Reference Handbook	2.75
	Kodak Senior Synchronizer, Speedgun Model E	19.25
	"How to Make Good Pictures"	.50
	Kodaguides	\$.10 and .25
	Kodak Table Top Tripod	1.85
	Pan-a-pod	3.20
	Tilt-a-pod	2.65
	Combination of all three of above units	7.45
	<i>(For other photo accessories see your dealer)</i>	

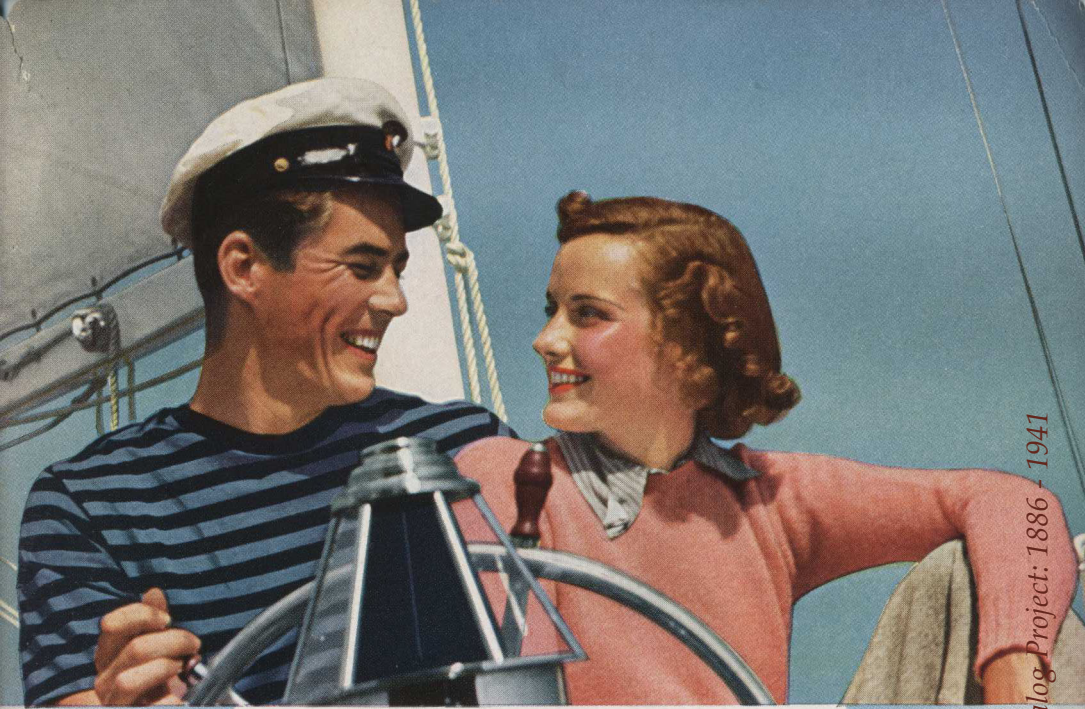
Due to the present unusual difficulty in the supply of certain essential materials, and in precision production generally, deliveries of some of the products described in this booklet may be unavoidably delayed.

Also, for similar reasons, some of the products and equipment illustrated and described here may have undergone or may undergo change without, however, impairment of their efficiency.

As both situations are largely brought about by necessary war measures, we know that we can count on your understanding and indulgence.

EASTMAN KODAK COMPANY



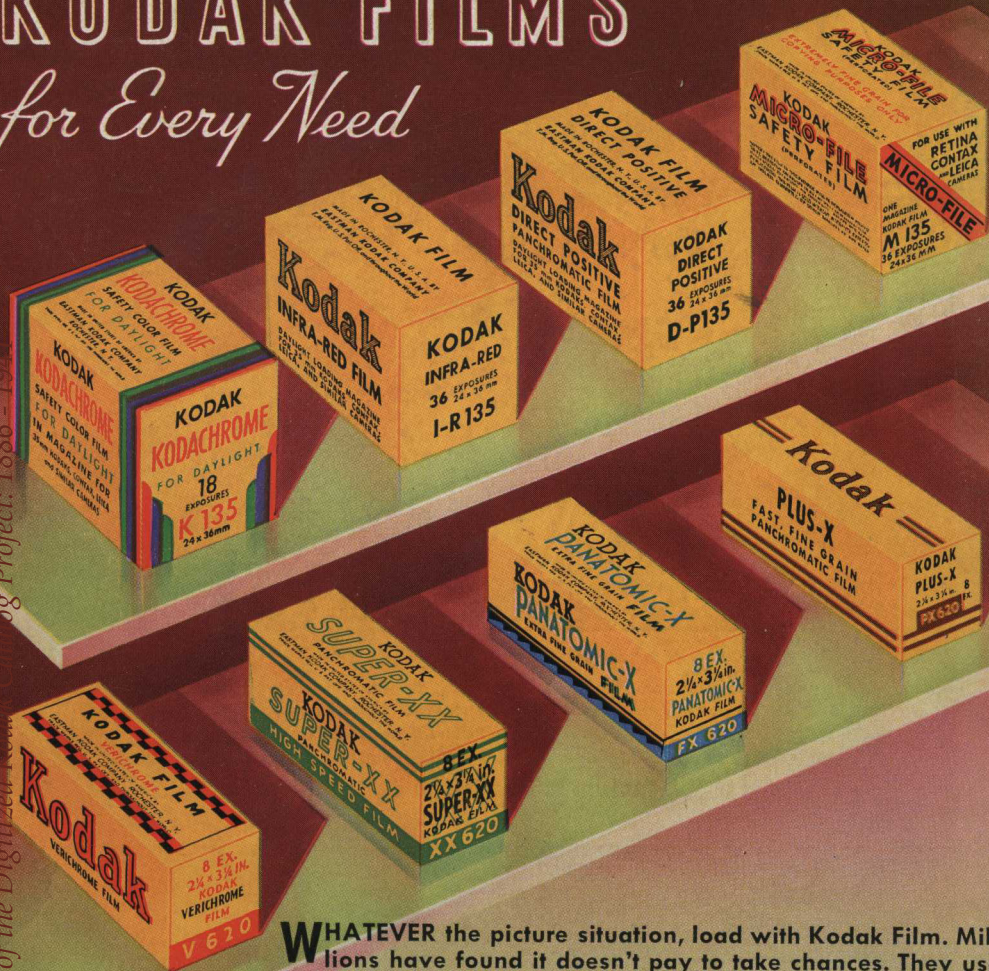


Kodachrome Film brings home the highlights of your outings, trips, and vacations in all their vivid color and charm. For miniature cameras that load with Kodachrome Film, see pages 18 to 25. For accessories that help you to enjoy the beauty of their full-color transparencies, see page 37.



# KODAK FILMS

For Every Need



**W**HATEVER the picture situation, load with Kodak Film. Millions have found it doesn't pay to take chances. They use Kodak Film always—and come home secure in the knowledge that their snapshots will “turn out”... be all that they should be. Accept nothing but the film in the familiar yellow box—Kodak Film—which only Eastman makes.

**NEW — An Important Safety Margin:** An exclusive “skiving” process provides, in all popular Kodak Film sizes, a safeguard against light leak along the edges of the film—an extra assurance of better pictures with Kodak Film.

Eastman Kodak Stores, Inc.

1009 Olive St.  
ST. LOUIS, MO.

Compliments of the Digitized Project: 1886-19