

KODAK

The Digitized Kodak Catalog Project (1886 - 1941): A Very Brief History

Most camera collectors at some point in their collecting careers pass through a Kodak phase - some never come out of it. And if there ever was one name that came to be associated with both cameras and collecting, it was Kodak.

George Eastman received his first patent (for coating dry plates) and bought his first manufacturing facility in 1880, and in 1881 he started the Eastman Dry Plate Company. In 1886 he received a patent for the near-mythical Eastman Detective Camera, but it wasn't until 1888 that the first camera bearing the name "Kodak" was introduced.

One of the nice things about collecting Kodak is that the product line is pretty well known, and because the company produced annual catalogs for many years, collectors can be reasonably sure of what they're looking at, when it was made, the variations and so on - presuming that they have access to either the appropriate catalog, or a number of the many books which document Kodak, each to some greater or lesser extent.

But what would be really nice would be to have a complete set of Kodak catalogs in an easily accessible form and readily available. And since the advent of portable computing devices (PC, Macintosh, etc.) that's been possible - except for the difficulty of assembling a complete set of Kodak catalogs in one spot and then scanning them and making the results available.

The idea of digitizing a complete set of Kodak catalogs has kicked around the collecting community for many years. It's been proposed on a number of online forums, during meetings of various photohistory groups, and for years there have been many incomplete "Kodak CDs" on eBay but at best, they only contained a few catalogs - whatever the owner had available. But assembling a complete set of catalogs, then scanning and processing perhaps 3,000 to 4,000 pages, was a daunting task - if not completely overwhelming - and nothing ever came of it.

Until now.

In early 2010, the idea came up again, but this time we - "we" as in "the collecting community" - were lucky. A number of collectors were willing to loan their catalogs to this project and a couple of insane - wait, let's call them "dedicated" - dedicated enthusiasts - neither of whom collected Kodak, but both of whom enjoyed the challenge of such a project - were willing to put in the time and effort to scan and pull together the entire set of catalogs into a full-blown Kodak Catalog Digital Library.

Our initial objective was to include just the annual amateur catalogs, but it turns out that many cameras only appear in certain professional and specialty catalogs. We included as many of those as we could obtain so that almost every Kodak camera made in the US, Canada and Europe, would be documented - at least up to about 1941. After that, it becomes much more difficult as Kodak stopped producing annual catalogs as their product line became increasingly more diversified.

However, even with the additional "non-amateur" catalogs, we weren't completely successful in illustrating "every" camera Kodak ever made. There are an elusive few that might appear in specialty catalogs that we simply couldn't track down. If you can't find one of those odd cameras, that's no doubt why. We may do a revision at some point in the future if someone is willing to loan us a catalog that includes a camera that isn't already recorded.

In this project, a total of 67 catalogs were used from 1886 through 1941 including a number of professional and dealer catalogs, and in some years, two or even three different catalogs to cover all the bases. With the cooperation of a number of dedicated collectors, we were able to pull together all those catalogs and in June 2010, the project started in earnest.

By November 2010, we had scanned everything we needed and eventually all 67 catalogs were then reassembled as image folders and converted to the universally accepted PDF format and finally, converted into individually searchable PDFs which could then be searched globally as a collection.

For those of you interested in the statistics: about 200 hours of scanning time (we never want to hear that sound again), 67 catalogs and 3,908 page scans - which generated 7,917 original and processed images - and 11.4 GB of disk space. Additionally, another 100+ hours of technical development time was needed to convert the digital catalogues into a fully searchable "knowledgebase" that could be launched from most any standard web browser.

The overwhelming number of catalogs was loaned to us by that most remarkable of Kodak collectors, Charlie Kamerman of Eagle Creek, Oregon. Without Charlie, it's very doubtful that this project could even have been attempted.

But as it turned out, even Charlie didn't have all the publications that were needed, but he was able to track down the five that he lacked and was able to secure either a copy or high resolution images that we could work with. And so, our thanks to the contributors of the catalogs and scans that we used:

Charlie Kamerman for the vast majority of catalogs used and all his help,
Steve Shohet for loaning a variety of test catalogs,
Ryerson University (Toronto) for the 1886 Eastman Catalog
George Layne for the 1890 New Kodaks Catalog,
Mike Kessler for the 1891 Dealer Display Catalog,
Ralph London for the 1893 UK Catalog,
Michael Pritchard for the 1897 UK Catalog.

The digital side of the project - also known as "all of the work" - was done by Rob Niederman of Medina, Minnesota, and Milan Zahorcak of Tualatin, Oregon. Remarkably we're still friends and in a few years, we'll probably be able to talk about this project rationally.

And there you have it, a more-or-less done deal. We're fairly sure that it isn't quite perfect, and expect there will be some carping about something or other; but all-in-all, we believe this to be a pretty good product and can now move on to something else.

Our thanks to all of those involved.

Rob Niederman
Milan Zahorcak

Fall, 2011

KODAKS AND



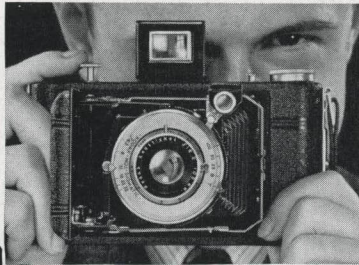
FROM A KODACHROME ORIGINAL (SEE, ALSO,
PAGES 20 AND 21, AND INSIDE BACK COVER)

BROWNIES

TO HELP YOU CHOOSE YOUR CAMERA

In selecting a camera consider, first of all, the picture size. In this connection it is important to decide whether you will want to use the bulk of your pictures in their original size, or whether you expect to have them enlarged (or enjoy the fun of enlarging them yourself). Kodaks and Brownies offer you a wide range of models that make album-size pictures. Other types are designed for "miniature" photography, which begins with diminutive cameras and negatives and ends with striking enlargements, or large images projected on a screen.

TYPE OF CAMERA From the standpoint of design, the cameras in this catalog fall into three classes. The box models, easy to use and modest in price, are, nevertheless, thoroughly dependable picture makers in their intended sphere. The largest class, represented by the famous folding Kodaks, offers greater compactness and carrying ease, and includes several groups of successively greater versatility. Minia-





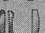
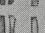
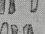

ture Kodaks of the 35-millimeter type do not fold yet are extremely convenient, especially since they can be carried in a "field" case suspended around the neck, and used at an instant's notice without complete removal from the case.

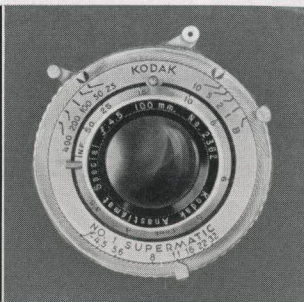
VARIETY OF PICTURES Consider the variety of pictures you want, and the conditions under which you expect to take them. Even the very simplest Eastman cameras regularly make sharp, clear pictures of average outdoor subjects in good light, and modern films and photo lamps have extended their scope to certain indoor situations. The more pretentious types of Kodaks broaden this scope still further to include rapidly moving subjects in the sports and other fields, varied indoor subjects, and ... in the case of most miniature Kodaks ... full-color transparencies.

LENS AND SHUTTER The versatility of a camera depends largely upon the "speed" of its lens; that is, upon the relative ability of the lens to collect light from the subject and transmit it to the negative material within a given interval. The illustration at the

extreme left shows, in approximate form, the types of design used in the glass elements of several Eastman lenses, and the relative speeds that result.

In order to capitalize

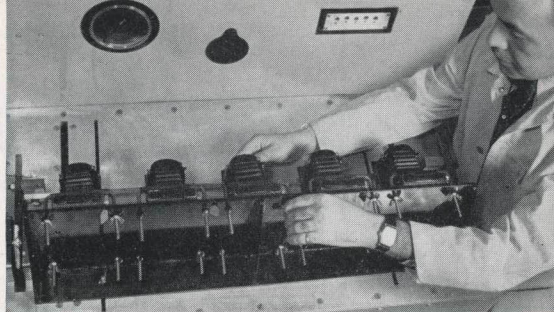
TYPE OF LENS	ELEMENTS OF LENS	RELATIVE SPEED
Meniscus		1
Doublet		1½
Anastigmat f/8.8		3
Anastigmat f/6.3		6
Anastigmat f/4.5		11
Anastigmat Special f/3.5		18



the varied ability of fast lenses, they must be geared to shutters that afford adequate exposure-speed ranges, and that have been carefully tested for time-after-time accuracy and stability, as in the scientifically precise photoelectric "scanning" device shown at right. An outstanding example of precision shutter construction is Eastman's new but already famous Supermatic—the world's finest high-speed between-the-lens shutter.



Chiefly responsible for the scope of any camera, the lens and shutter likewise account for a large share of the cost—particularly on cameras that fall into the higher classifications. It is well to bear this in mind in deciding the final point . . .



THE PRICE TO PAY Determine this in the light of the preceding paragraphs—in general, according to the purposes to which the camera is to be put. Your Kodak dealer will be glad to help you make your decision. Regardless of your final choice, you can be sure that your Kodak or Brownie has been not only expertly manufactured but also exhaustively tested, as in the bellows “breakdown test” illustrated above. It will bring you the matchless extra values of more than fifty years’ experience in camera making . . . plus an investment of millions in precision equipment . . . plus the inventiveness and skill of the largest group of camera craftsmen ever brought together.

Prices in this catalog are subject to change without notice

EASTMAN KODAK COMPANY

September, 1940

Rochester, N. Y.

Only Eastman Makes the Kodak

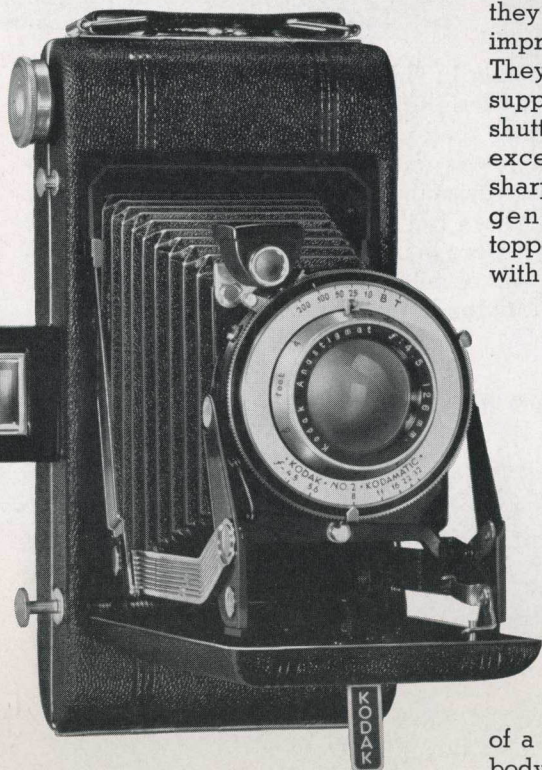
5

Camera Works and Executive Offices



KODAK VIGILANTS

Brilliant "moderns" for album-size pictures



THESE modern cameras for $2\frac{1}{4} \times 3\frac{1}{4}$ or $2\frac{1}{2} \times 4\frac{1}{4}$ -inch pictures are especially noteworthy because

● Five-point support on each side positions lens and shutter with great accuracy, to assure excellent pictures.

● Pressing a button releases bed for opening . . . same button frees it for closing when picture has been made.

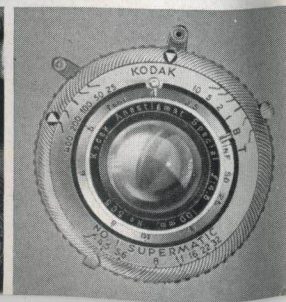
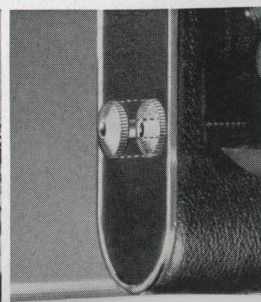
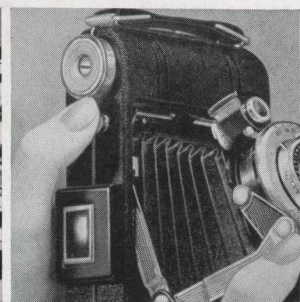
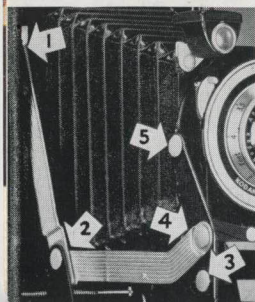
● Shutter-release button, at your finger tips when in use, is retracted to position close to body when camera is closed.

● Supermatic shutter, with 9 speeds from 1 to $1/400$ second, is unsurpassed in accuracy of speeds, design, finish.

they offer a surprising number of improvements at moderate cost. They have Eastman's new ten-point support, by which the lens and shutter are erected and held with exceptional precision to assure sharp pictures. All the lenses are genuine Kodak Anastigmats, topped by the $f/4.5$ Special. Paired with them are shutters thoroughly tested for accuracy . . . for time-after-time uniformity of speeds. They include the Supermatic . . . the world's finest high-speed between-the-lens shutter.

The camera bed is opened . . . and also released for closing . . . through a single push button. You sight on your subject from waist level or eye level, for Vigilants have both direct-view and reflecting finders. You release the shutter by means of a button located on the camera body to minimize danger of movement. Though at your finger tips as you make the picture, this device is automatically retracted to an out-of-the-way position when you close

6



the camera. And if you want to attach a cable release, you will find a threaded socket for it placed ingeniously in the top of this same button.

These features, plus general construction that is typically Eastman in its reliability, add up to outstanding picture-making proficiency. You will find the Kodak Vigilants a soundly engineered, carefully equipped, completely competent group of cameras.

DETAILS Picture sizes: Six-16, 2½ x 4¼ inches; Six-20, 2¼ x 3¼ inches. Diomatic shutter has settings for 1/25, 1/50, 1/100 second, time, "bulb"; Kodamatic, 1/10, 1/25, 1/50, 1/100, 1/200 second, time, "bulb," delayed action; Supermatic, 1,

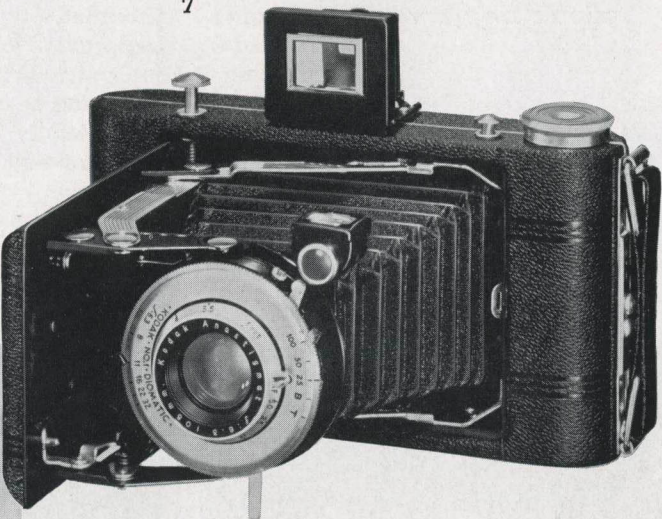
1/2, 1/5, 1/10, 1/25, 1/50, 1/100, 1/200, 1/400 second, time, "bulb," delayed action. All models have apertures to f/32. Self-erecting front. Focusing by revolving lens mount, from infinity to 3½ feet on Six-20's, infinity to 4 feet on Six-16's. Threaded supplementary socket on shutter takes either cable release or flash synchronizer. Kodak Parallax Correction Finder (extra) may be substituted for regular eye-level finder for critical work. Vertical and horizontal tripod sockets; also supports for resting camera in either position on flat surface. Creased black grain covering (genuine pin-seal grain leather on f/4.5 Special models). Pivoted film-window cover. Dimensions and weights: f/8.8, f/6.3, f/4.5 models—Six-16's, 7⅞ x 4 x 1⅞ inches, 32 ounces; Six-20's, 6⅞ x 3⅞ x 1¾ inches, 23½ ounces; f/4.5 Special models—Six-16, 8 x 4⅞ x 1⅞ inches, 34 ounces; Six-20, 6⅞ x 3⅞ x 1¾ inches, 24½ ounces.

PRICES

	Vigilant Six-16	Vigilant Six-20
With f/8.8 lens, Diomatic shutter	\$16.00	\$14.50
With f/6.3 lens, Diomatic shutter	19.50	17.00
With f/4.5 lens, Kodamatic shutter	29.00	25.00
With f/4.5 Special lens, Supermatic shutter . .	42.50	37.50
Tan sole leather field case	4.75	4.00
Tan leather Snapsack	3.00	2.50
Kodak Verichrome Film (8 exposures)35	.30
Kodak Super-XX or Panatomic-X Film (8 exp.) .	.40	.35
Kodak Parallax Correction Finder	1.50	1.50

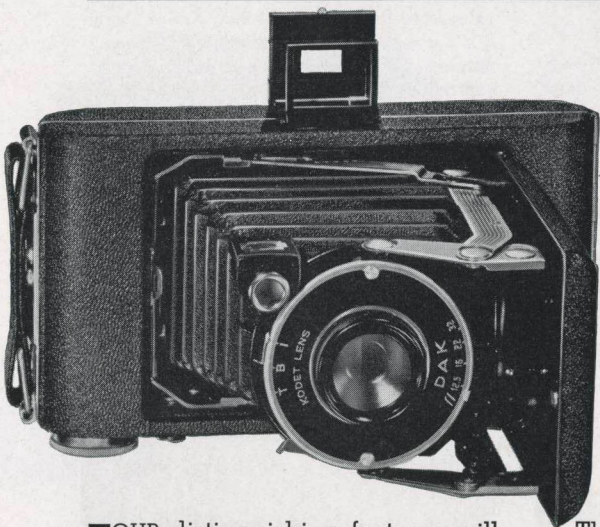
7

● Field case with neck strap provides convenient carrying—permits using camera without complete removal from case. For illustration of Snapsack, a conventional-type case, see page 8.



KODAK VIGILANT JUNIORS

Capable new Kodaks at low cost



When you inspect a Vigilant Junior, you will find that it opens by means of a push button . . . and the same button frees the bed for closing. As you open the camera, the lens and shutter are not only erected, but are positioned with unusual accuracy in relation to the film. Utilizing five points of support on each side, this precise new erecting mechanism gives every user extra assurance of sharp pictures.

FOUR distinguishing features will help you to decide whether one of these new Kodaks is the camera for you. All of the models make album-size pictures. Their operation is simple and quick. They are decidedly inexpensive. And, in spite of their low cost, they offer improvements that have heretofore been available only on higher-priced cameras . . . features that truly spell both added picture quality and greater convenience.

There is a choice of two lens-and-shutter combinations, both reliable and both easy to work. All models have direct-view and reflecting finders, so that you can sight on the subject from either eye level or waist level. Two tripod sockets are provided for use in making time exposures. Roomy interiors make for quick loading, and, once this operation is completed, the film is protected by a safety back latch that prevents accidental opening.

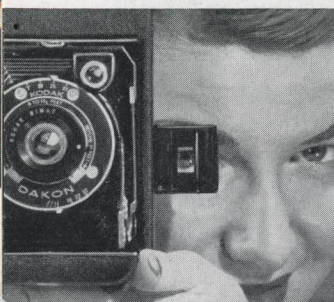
8

● Eye-level finder in use. Provision of reflecting finder, at upper left, permits "shooting" from waist level as well.

● Five points of support for erecting struts on each side of camera position lens with great rigidity and accuracy.

● Convenient push button opens camera. After picture has been made, same button frees camera bed for closing.

● Tan leather Snap-sacks, available for all Kodak Vigilant Junior models, have both hand and shoulder straps.



If, like many other people, you are looking for a simple, economical folding camera, see the Kodak Vigilant Juniors. They afford large pictures . . . and good pictures . . . at a small initial cost.

DETAILS Picture sizes: Six-16, $2\frac{1}{2} \times 4\frac{1}{4}$ inches; Six-20, $2\frac{1}{4} \times 3\frac{1}{4}$ inches. Models with Kodet lens and Dak shutter have fixed focus (no focusing required); adjustments for snapshot, time, and "bulb" exposures; aperture range from $f/12.5$ to $f/32$. Models with Bimat lens and Dakon shutter have simple 3-point focusing by revolving lens

mount—adjustable for distances of 5 to 8 feet, 8 to 15 feet, and beyond 15 feet; shutter speeds of $1/25$, $1/50$ second, time, "bulb"; aperture range from $f/11$ to $f/32$. All models have trigger shutter release (cable release may be added); folding direct-view eye-level finder—also reflecting waist-level finder, reversible for horizontal or vertical views. Bed support to hold camera in vertical position on flat surface—also two sockets, for attaching tripod, Kodapod, or Optipod. Black morocco-grain covering; bright metal and black lacquer trimmings. Dimensions and weights: Six-16's, $8 \times 4\frac{3}{16} \times 1\frac{7}{8}$ inches, 29 ounces; Six-20's, $6\frac{5}{8} \times 3\frac{3}{8} \times 1\frac{1}{4}$ inches, 23 ounces.

PRICES

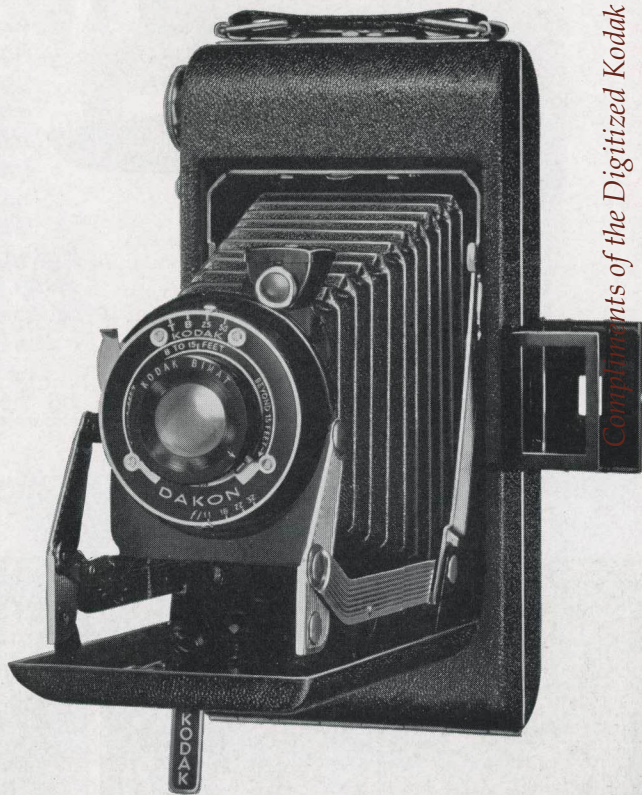
	Vigilant Junior Six-16	Vigilant Junior Six-20
With Kodet lens, Dak shutter	\$ 9.75	\$ 8.50
With Bimat lens, Dakon shutter	12.50	11.00
Tan leather Snapsack	3.00	2.50
Kodak Verichrome Film (8 exposures)35	.30
Kodak Super-XX or Panatomic-X Film (8 exp.) .	.40	.35

9

● Simplest Vigilant Junior models—those fitted with Kodet lens and Dak shutter—require no focusing.



● Models equipped with Bimat lens give added scope, and are easily focused by revolving the lens mount.



KODAK MONITORS

The famous folding Kodaks at their finest

Compliments of the Digitized Kodak Catalog Project: 1886 - 1941



IN THE Kodak Monitors you will discover the most expertly designed cameras available in their class. To the making of their large

pictures they bring highly advanced construction, exceptional lenses and shutters, and many important refinements. The result is a breadth of photographic scope and a degree of certainty and convenience that you will sense as soon as your dealer shows you a Monitor.

Lens-and-shutter combinations are the highly corrected Kodak Anastigmat $f/4.5$ in Kodamatic shutter and the even more precise Kodak Anastigmat Special $f/4.5$ in Eastman's new but already famous nine-speed Supermatic. They are brought into position . . . and held in exact, rigid alignment with the film plane . . . by scientific ten-point support of the erecting arms. Exposures are normally made by a shutter release button located on the camera body and automatically retracted when the camera is closed. The button has a socket to receive a cable release, and another socket on the shutter itself takes either cable release or flash synchronizer.

The handsome satin-chrome turret houses further conveniences

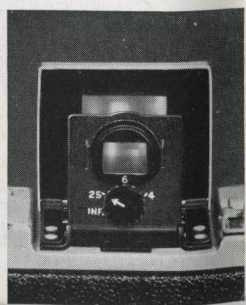
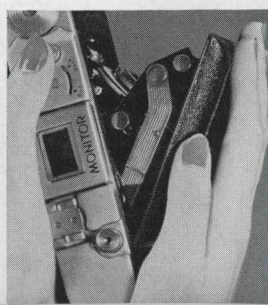
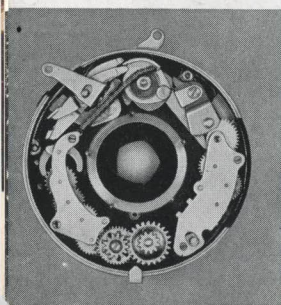
10

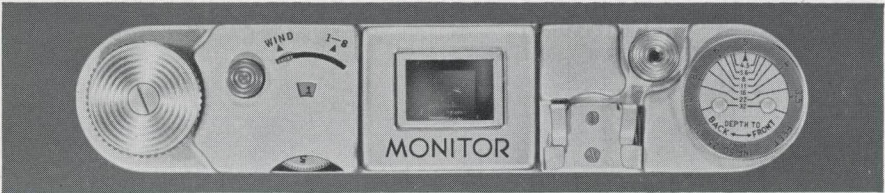
● A part of the mechanism of the highly precise nine-speed Supermatic shutter.

● Roomy interiors and floating film rollers make loading and winding unusually easy.

● A single push button both opens the camera and releases the bed for closing.

● The accessory Kodak Parallax Correction Finder, available for critical picture making.





● Turret controls of the Kodak Monitors: (left to right) film-winding knob, opening-closing button, exposure counter, direct-view finder, universal accessory clip, body shutter release, depth-of-field indicator (on *f*/4.5 Special models only).

and safeguards: a device that stops the film at the correct point as you advance it . . . a counter that shows the exposure number . . . a mechanism that prevents double exposures. To the right of the eye-level finder is a clip that takes the Kodak Pocket Range Finder, and on the *f*/4.5 Special models the turret also carries a depth-of-field indicator.

Mere enumeration of features cannot give you a full appreciation of the Monitors. See, and study, the cameras themselves.

DETAILS Picture sizes: Six-16, 2½ x 4¼ inches; Six-20, 2¼ x 3¼ inches. Focal

lengths: Kodak Anastigmat *f*/4.5—Six-16, 126 mm.; Six-20, 103 mm.; *f*/4.5 Special—Six-16, 127 mm.; Six-20, 101 mm. Focusing (by revolving lens mount): Six-16's, infinity to 4 feet; Six-20's, infinity to 3½ feet. Aperture range, *f*/4.5 to *f*/32. Shutter settings: Kodamatic—1/10, 1/25, 1/50, 1/100, 1/200 second, "bulb," delayed action; Supermatic—1, 1/2, 1/5, 1/10, 1/25, 1/50, 1/100, 1/200, 1/400, "bulb," delayed action. Time exposures with aid of T.B.I. Cable Release No. 2 (extra). Self-erecting front. Folding optical eye-level finder; reversible waist-level finder. Horizontal, vertical tripod sockets. Aluminum body, with tooled black grain covering (genuine pin-grain seal leather on *f*/4.5 Special models). Dimensions and weights: Six-16's, 8 x 4¼ x 1½ inches, 37½ ounces; Six-20's, 6¾ x 4 x 1¾ inches, 27½ ounces.

PRICES

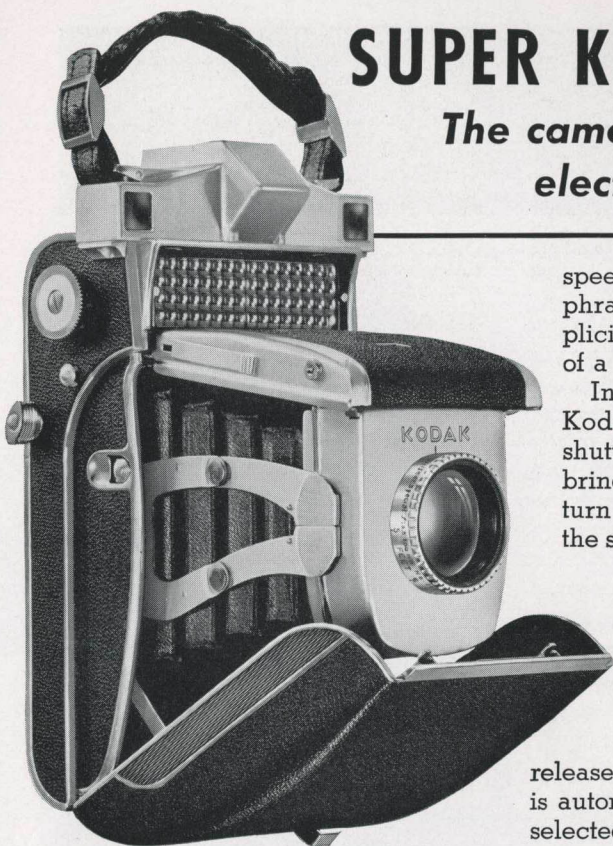
	Monitor Six-16		Monitor Six-20	
	Without De luxe Field Case	With De luxe Field Case	Without De luxe Field Case	With De luxe Field Case
With Kodak Anastigmat <i>f</i> /4.5 lens, Kodamatic shutter	\$35.00	\$41.50	\$30.00	\$35.75
With Kodak Anastigmat Special <i>f</i> /4.5 Lens, Supermatic shutter	48.50	55.00	42.50	48.25
Kodak Verichrome Film (8 exposures)	\$.35		\$.30	
Kodak Super-XX or Panatomic-X Film (8 exposures)40		.35	
T.B.I. Cable Release No. 2	1.00		1.00	
Kodak Parallax Correction Finder.	1.50		1.50	

● De luxe lined tan sole leather field case for Kodak Monitors. Regular field cases and Snapshots listed on page 7 may also be used.



SUPER KODAK SIX-20

The camera with the electric eye



speedy shutter, and variable diaphragm, yet its operating simplicity is comparable with that of a box camera.

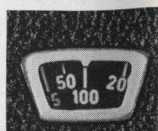
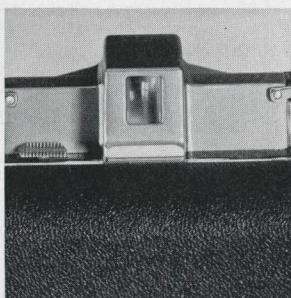
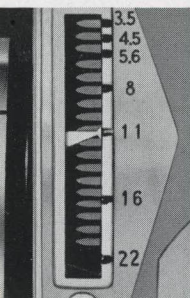
In using this revolutionary Kodak, you simply choose a shutter speed to fit your subject, bring the subject into focus by a turn of the lens mount, and trip the shutter. The ingenious mechanism does the rest. The photoelectric cell, linked with the diaphragm, pre-determines the aperture that is correct for the chosen speed under existing light conditions. As you

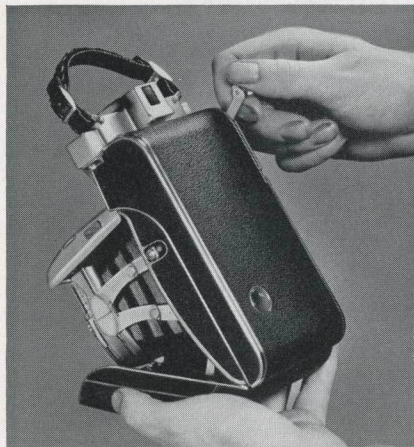
release the shutter the diaphragm is automatically set at the opening selected by the electric eye. Optimum exposure results.

Figuring largely in the easy operation of Super Kodak is the dual finder. It combines a view finder and military-type split-field coupled range finder into one optical sys-

THIS remarkable Kodak represents the first practical application of a light-measuring cell coupled with a camera diaphragm to give automatic exposure control. Because of this feature, plus a new-type focusing finder and other refinements, Super Kodak Six-20 attains a long-sought photographic ideal. It offers the great scope of a fast lens,

● Below (left to right): Automatic scale shows diaphragm aperture which electric eye has selected, and at which exposure will be made—Single eyepiece that serves as both view-finder and range-finder window—How a typical scene appears in eyepiece when out of focus, and when brought into hairline focus by turn of lens mount—Colored warning signal shows in speed-dial window until film has been wound and shutter set.





● The multi-purpose winding lever in use: one operation sets the shutter, actuates the film-window cover, and advances the film.



● The carrying case holds not only the camera but also film and some of the accessories that enhance the versatility of Super Kodak Six-20.

tem, with one eyepiece. In what amounts to a single operation you compose the picture and bring the principal subject into critical focus. Extremely interesting, too, is the multi-purpose winding lever. It both advances the film and sets the shutter, thereby preventing double exposures. At the same time it opens the window showing the exposure numbers, and, as you return it to its original position, closes the window to protect the film.

A unique accomplishment of photographic engineering and craftsmanship, the Super Kodak is the most advanced instrument available for the making of album-size pictures.

DETAILS Picture size, $2\frac{1}{4} \times 3\frac{1}{4}$ inches. Kodak Anastigmat Special $f/3.5$ lens; focal length, 100 mm.; takes Series VI Kodak Combination Lens Attachments. Built-in shutter; settings, 1, $1/2$, $1/5$, $1/10$, $1/25$, $1/50$, $1/100$, $1/200$ second, and "bulb"; finger release; T.B.I. Cable Release No. 1 (extra) may be added for time exposures without affecting double-exposure prevention; self-timer. Range finder, with field split by triangular area, automatically focuses for distances from 4 feet to infinity. Diaphragm, with apertures from $f/3.5$ to $f/22$, photoelectrically controlled by cell below range finder; aperture selection automatic for all hand-held shutter speeds (diaphragm set manually for speeds slower than $1/25$). Photoelectric cell and dual finder cover same angle of view. Push button releases bed and self-erecting front for opening. Die-cast aluminum body; Persian morocco leather covering. Dimensions, $8\frac{3}{8} \times 3\frac{3}{8} \times 2\frac{3}{8}$ inches. Weight, 44 ounces.

PRICES

Super Kodak Six-20, with Kodak Anastigmat Special $f/3.5$ lens. . .	\$225.00
Lined tan sole leather case with shoulder strap	16.50
T.B.I. Cable Release No. 1	1.00
Super Kodak Six-20 Masks (applied over photoelectric cell when using filters or artificial light), in leather case	5.00
Kodak Verichrome Film (8 exposures)30
Kodak Super-XX or Panatomic-X Film (8 exposures)35



JIFFY KODAK
SIX-16,
SERIES II

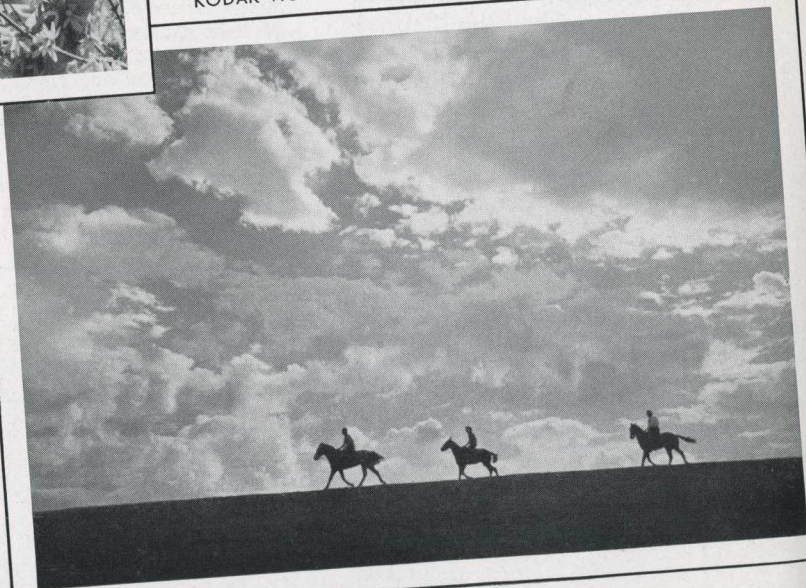


KODAK DUEX



KODAK VIGILANT JUNIOR SIX-20

KODAK BANTAM
Standard $2\frac{3}{4} \times 4$ en-
larged print, availa-
ble at low cost through
modern photofinishing.
Similar prints obtain-
able from negatives
made with Kodak 35's,
Jiffy Kodak V.P., Baby
Brownies, Kodak Duex,
Brownie Reflex, and
Bullet camera.





3A KODAK, SERIES II (slightly reduced in size)



SIX-20 BROWNIE SPECIAL



KODAK VIGILANT SIX-20

JIFFY KODAKS

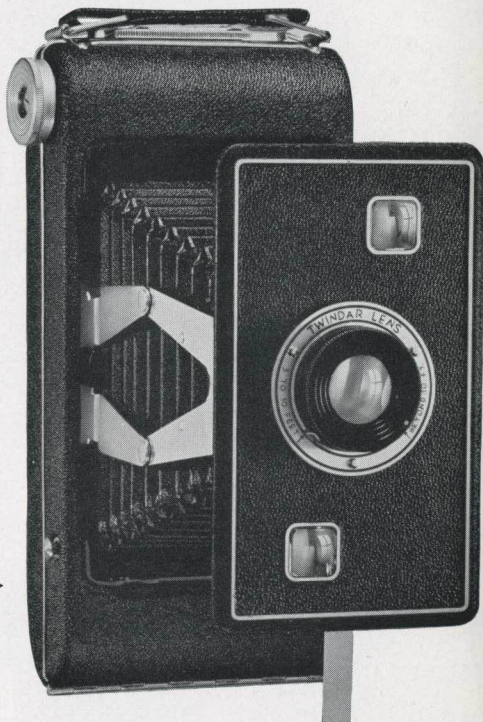
Box-camera simplicity...folding-camera style

MANY people who hesitate to carry box cameras would, nevertheless, like to have the benefit of their pronounced operating simplicity. Jiffy Kodaks are a happy solution for such people, as they are for many others who want to make pictures in the easiest possible way.

The Jiffys are stylish and compact folding cameras, yet they are actually no more complicated than a box model. Press a button—the camera opens and the front springs out into position. Sight on your subject and press a trigger—the picture is made. Return the front

JIFFY
KODAK SIX-16,
SERIES II ➤

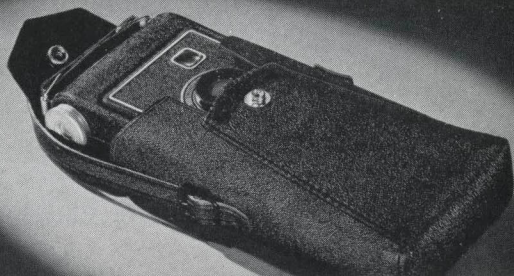
JIFFY
KODAK SIX-20,
← SERIES II



to its original position and your camera, as easy to work as a Brownie, again takes on the slender, dignified lines of the folding type. Any of the three models is handy to carry, and Jiffy Kodak

16

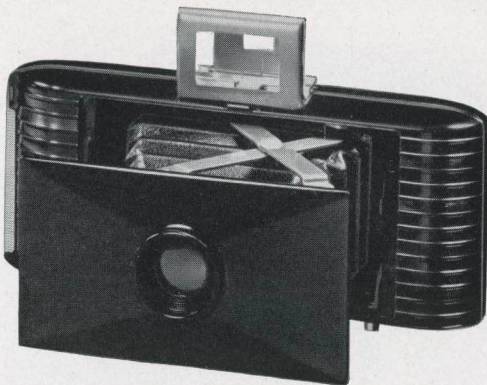
● Soft tan leather cases, with hand straps, are available for Jiffy Kodaks Six-16 and Six-20. A shoulder strap may also be had at nominal extra cost.



V.P. is so small that it can be readily slipped into a pocket or handbag.

Convenience and style are, however, only a part of the Jiffy story. All three models make pictures large enough to mount in an album. Furthermore, they're definitely good pictures . . . the sound Eastman design and carefully tested equipment see to that. And, naturally, you can "shoot" Jiffy pictures fast, for the same construction that makes the cameras easy to operate gets them into action swiftly when the need arises. You will be interested to see and handle these simple, popular Kodaks at your dealer's.

DETAILS Jiffy Kodaks Six-16 and Six-20, Series II—Picture sizes: Six-16, $2\frac{1}{2} \times 4\frac{1}{4}$ inches; Six-20, $2\frac{1}{4} \times 3\frac{1}{4}$ inches. Twindar lens with simple two-position focusing for distances of 5 to 10 feet, and beyond 10 feet, by revolving lens mount. Built-in shutter with snapshot and time actions, trigger release. Two crowned brilliant reflecting finders, for vertical and horizontal pictures. Spring-actuated front, controlled by push button. Aluminum body with black



JIFFY KODAK V. P.

pin-grain covering. Metal cap (extra) protects lens from dust, sand, etc. Dimensions: Six-16, $7\frac{7}{16} \times 3\frac{3}{4} \times 1\frac{1}{8}$ inches; Six-20, $6\frac{3}{16} \times 3\frac{1}{2} \times 1\frac{1}{16}$ inches. Weights: Six-16, 26½ ounces; Six-20, 18½ ounces.

Jiffy Kodak V.P.—Picture size, $1\frac{5}{8} \times 2\frac{1}{2}$ inches. Kodak Doublet lens, deeply recessed for protection. Fixed focus (no focusing required). Built-in shutter with snapshot and "bulb" actions, trigger release. Aperture can be stopped down to f/16. Folding direct-view eye-level finder. Spring-actuated front, controlled by push button, opens camera to picture-taking position. Molded black body, with ornamental ribbing and permanent glossy finish. Removable back. Dimensions, $5\frac{1}{2} \times 2\frac{3}{8} \times 1\frac{3}{8}$ inches. Weight, 10 ounces.

PRICES

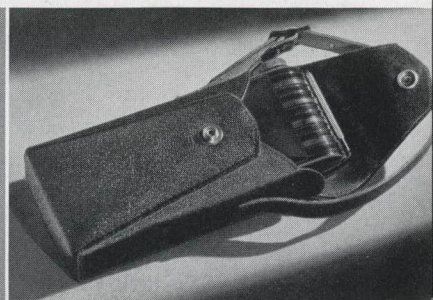
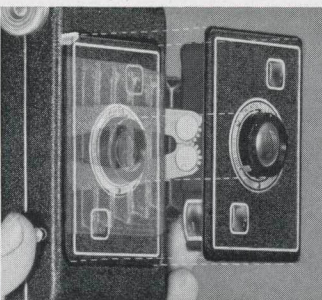
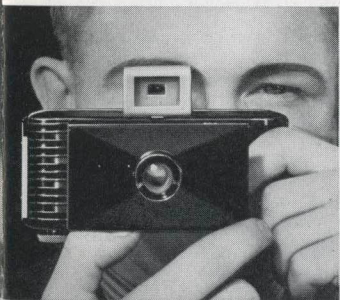
	Six-16, Series II	Six-20, Series II	V. P. Model
Jiffy Kodak	\$8.25	\$7.50	\$4.25
Leather carrying case	1.85	1.65	1.35
Shoulder strap50	.50
Kodak Verichrome Film (8 exposures)35	.30	.25
Kodak Super-XX or Panatomic-X Film (8 exposures)40	.35	.30
Lens Cap.15	.15

17

● The eye-level finder of Jiffy Kodak V.P. opens at a touch . . . can be folded out of the way after the picture has been made.

● The touch of a button springs the front out into position. After the exposure the front is simply pressed back to the locked position.

● The "V.P." model's lined cowhide leather case (extra) provides ample protection and carrying ease for this smart little camera.



3A KODAK

SERIES II

*The Kodak that makes
postcard-size negatives*



IF YOU want plus-size prints without resorting to enlarging, 3A Kodak, Series II, is likely to be your camera. It makes $3\frac{1}{4} \times 5\frac{1}{2}$ -inch negatives... as big as postcards... and fine quality is assured by the Kodak Anastigmat $f/6.3$ lens in Diodak shutter. This 3A can also

be converted into a double-duty camera. With the Twin Exposure Back, installed at a camera service shop, it makes eleven $2\frac{1}{2} \times 3\frac{1}{4}$ -inch negatives on the usual six-exposure roll, thus supplementing your regular-size pictures with smaller ones.

DETAILS Picture size, $3\frac{1}{4} \times 5\frac{1}{2}$ inches (with Twin Exposure Back, $2\frac{1}{2} \times 3\frac{1}{4}$ inches). Lens, Kodak Anastigmat $f/6.3$; focal length, 170 mm. Aperture range, $f/6.3$ to $f/45$. Diodak shutter; settings for $1/10$, $1/25$, $1/50$, $1/100$ second, time, and "bulb"; trigger, cable releases. Reflecting finder. Focusing from infinity to 6 feet by shifting draw front. Morocco leather covering; metal side panels with chromium and black finish. Dimensions, $10 \times 4\frac{7}{8} \times 2$ inches. Weight, 50 ounces.

PRICES

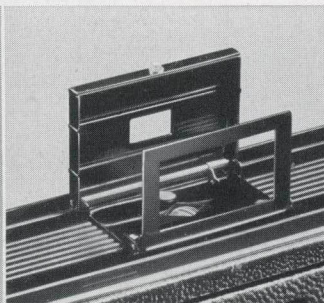
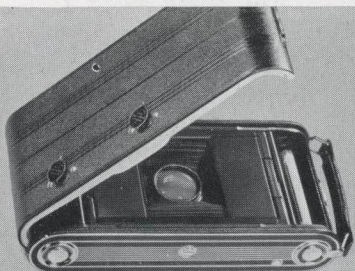
3A Kodak, Series II, with Kodak Anastigmat $f/6.3$ lens, Diodak shutter	\$42.50
Black leather carrying case	5.25
Kodak Verichrome Film	.55
Kodak Super-XX or Panatomic-X Film	.65
Twin Exposure Back, installed	5.00
Direct-View Finder, installed	1.25

18

● Twin Exposure Back, for split-size pictures, includes double-window back, interior mask, and mask for view finder.

● The accessory Direct-View Finder enables you to use the 3A Kodak, Series II, at eye level as well as at waist level.

● The lined black leather case, supplied with hand and shoulder straps, affords the protection every good camera deserves.

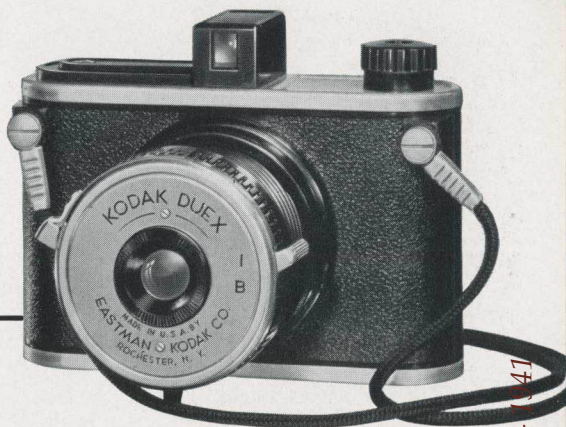


KODAK DUEX

*A new miniature for
album-size pictures*

THIS miniature camera is of the popular "split 620" type. It makes sixteen pictures, instead of the usual eight, on a roll of Kodak Film No. 620. The resulting film economy is obvious, and the pictures— $1\frac{5}{8} \times 2\frac{1}{4}$ inches—are big enough for album use. In addition, modern photofinishing methods lead to prints $2\frac{3}{4} \times 3\frac{3}{4}$ inches.

Aside from its film economy, the Kodak Duex is notable for its easy operation, genuine photographic ability, and low price. Its spiral-threaded lens tube, which gives it a compactness comparable with that of a folding camera, is



illustrated below. To appreciate this, you must see the Duex itself.

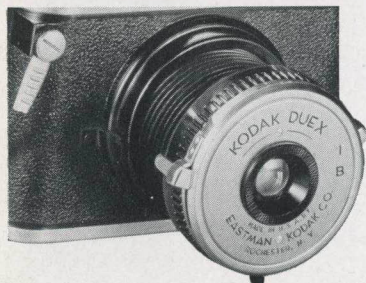
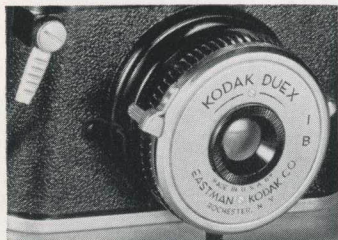
DETAILS Picture size, $1\frac{5}{8} \times 2\frac{1}{4}$ inches. Standard enlarged print size, $2\frac{3}{4} \times 3\frac{3}{4}$ inches. Kodak Doublet lens; fixed focus (no focusing required). Snapshot and "bulb" exposures. Enclosed optical eye-level finder. Body, lens tube, shutter housing of sturdy, damage-resistant molded material.

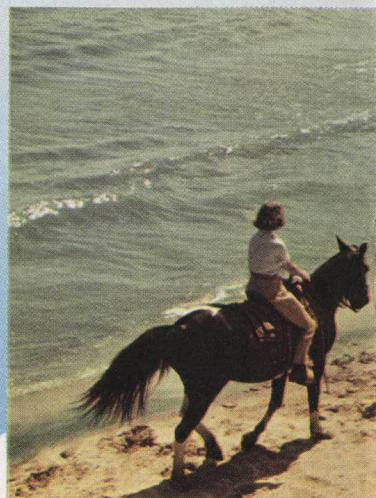
PRICES

Kodak Duex, with Kodak Doublet lens, braided neck cord	\$5.75
Kodak Verichrome Film (16 exp.)30
Kodak Super-XX or Panatomic-X Film (16 exposures)35

19

● Though built without bellows, Kodak Duex has the compactness of a folding camera. One full turn of a spiral-threaded tube brings the lens out into position. A turn in the opposite direction and the camera is back to its slim shape.



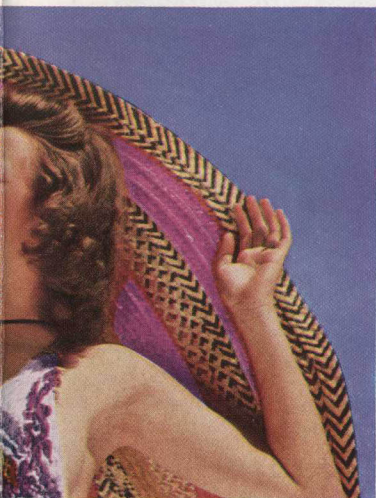


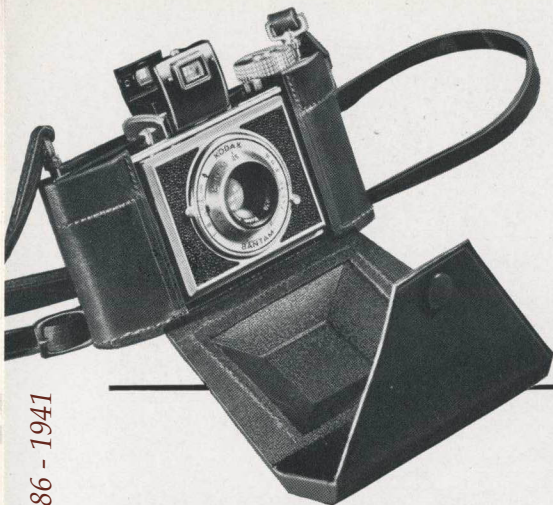
These illustrations are reproduced from the original. Such full-color views, in black and white, open up a new world of possibilities for the amateur photographer. The Kodak camera that loads with Kodak film is one of the 25 of this catalog. For the full beauty of the full-color transparencies.





duced from typical Kodachrome
as easy to make as black and
of picture enjoyment. For minia-
Kodachrome Film, see pages 22
projectors that bring out the vivid
tendencies they make, see page 37.





KODAK BANTAMS

*Small cameras that
lead to big pictures*

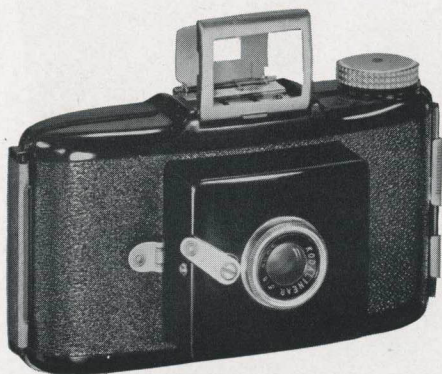
THE Bantam family, four of the most convenient picture takers ever designed, are built around the idea of big pictures from small cameras. They are palm-size, yet through modern photofinishing methods they lead to prints $2\frac{3}{4} \times 4$ inches . . . almost as large as the cameras themselves. You load easily, quickly with Kodak Films that are decidedly inexpensive . . . 20 and 25 cents for black and white. Pressing a button springs the lens out into position, ready for the picture. And not to be overlooked is the fact that you don't have to watch the window while

winding to the next exposure: a special device centers the film . . . locks it in position.

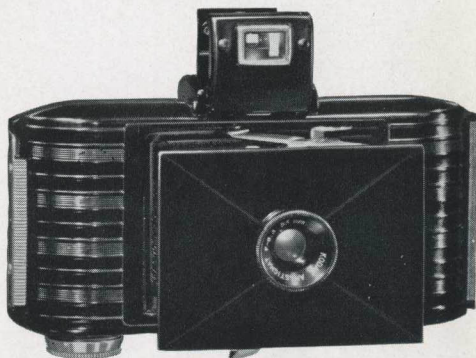
The four Kodak Bantams have successively wider scope. The $f/8$ model makes good black-and-white snapshots under average conditions, without adjustment of any kind. The $f/6.3$ model brings users the lens speed of the Kodak Anastigmat $f/6.3$, and makes snapshots or time exposures. Picture taking with either of these little cameras is worth investigating.

In the $f/5.6$ model, Bantam versatility is stepped up by the fast Kodak Anastigmat $f/5.6$ lens, a multiple-speed shutter, and extra-accurate construction. These factors permit enlargement far beyond the standard $2\frac{3}{4} \times 4$ -inch size, and adapt

22



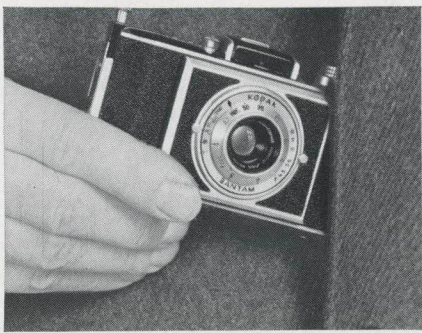
KODAK BANTAM $f/8$



KODAK BANTAM $f/6.3$

Kodak Bantam *f*/5.6 not only to varied black-and-white photography but also to the making of vivid full-color Kodachrome transparencies. At the head of the Bantam family stands the model equipped with Kodak Anastigmat Special *f*/4.5 lens and 1/200-second shutter. A true precision miniature, this camera is capable of dealing with almost any situation in monochrome or Kodachrome photography.

DETAILS Standard enlarged print size, 2 3/4 x 4 inches. Negative size, 28 x 40 mm. Folding optical eye-level finder (open-frame on *f*/8). *F*/8 model: snapshot action; aperture, *f*/8; fixed focus; black molded body, grained surface. *F*/6.3 model: snapshot, time actions; apertures, *f*/6.3, *f*/11; fixed focus; black molded body. *F*/5.6 model: shutter settings—1/25, 1/50, 1/100 second, time, "bulb"; apertures, *f*/5.6 to *f*/16; focusing, by revolving lens mount, infinity to 4 feet; black molded body, alu-

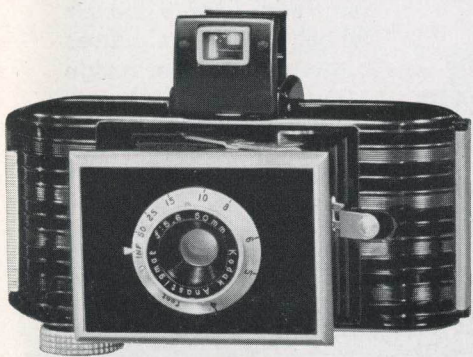


● A Kodak Bantam is as convenient to carry as a watch . . . unobtrusive yet ever at hand.

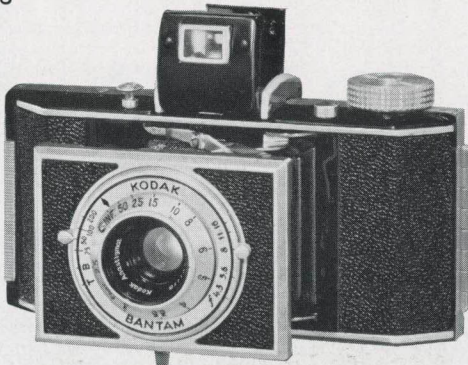
minum front. *F*/4.5 model: shutter settings—1/25, 1/50, 1/100, 1/200 second, time, "bulb"; body shutter release; apertures, *f*/4.5 to *f*/16; focusing, by revolving lens mount, infinity to 2 1/2 feet; die-cast aluminum body, black grained covering. Tripod socket. Dimensions (vary slightly according to model): 4 1/2 x 2 1/16 x 1 1/2 inches. Weights: *f*/8, 7 ounces; *f*/6.3, 8 ounces; *f*/5.6, 9 1/2 ounces; *f*/4.5, 12 ounces.

PRICES

	Kodak Bantam	Field Case
With Kodalinear <i>f</i> /8 lens	\$ 3.95	\$1.50
With Kodak Anastigmat <i>f</i> /6.3 lens	8.50	2.75
With Kodak Anastigmat <i>f</i> /5.6 lens	14.00	3.25
With Kodak Anastigmat Special <i>f</i> /4.5 lens	22.50	4.25
Kodak Plus-X, Super-XX, Panatomic-X, or Infra-Red Film (8 exposures)	Film	
	\$.25	
Kodak Panatomic Film (8 exposures)20
Kodachrome Film (8 exposures) including processing		1.35



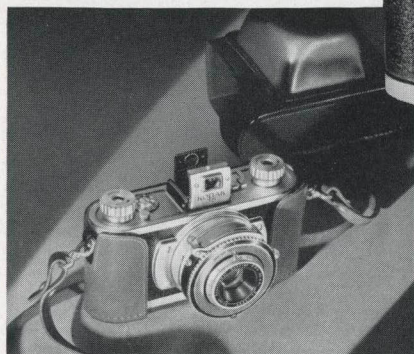
KODAK BANTAM *f*/5.6



KODAK BANTAM *f*/4.5

KODAK 35'S

*The "more for
your money"
miniatures*



KODAK 35'S are miniature cameras of the popular 35-millimeter type. More than that, their fine design and construction assure the big, rich prints . . . the brilliant, detailed Kodachrome images . . . on which miniature-camera users count. They have not only fast, color-corrected lenses, and shutters of unusual accuracy, but also the extreme exactness which alone



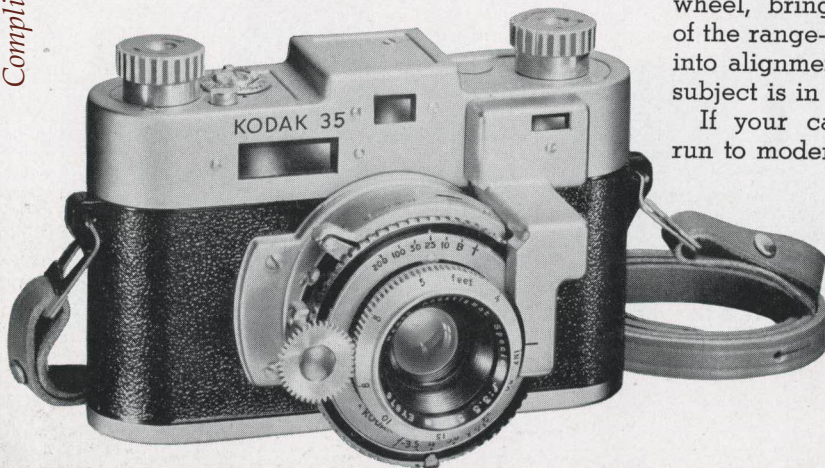
can stamp a group of cameras as true precision miniatures. You will find that in design, workmanship, and reliability of operation, they are not matched by any similar cameras in their price range.

Aside from their basic soundness, the 35's have such conveniences as the automatic film stop and exposure counter. *F*/4.5 and *f*/3.5 models add not only wider scope but double-exposure prevention, delayed-action adjustment to enable the photographer to get into the picture, and automatic shutter setting. Heading the group is the superb model with coupled split-field range finder, illustrated at

left. You turn a handy wheel, bring the halves of the range-finder image into alignment, and your subject is in focus.

If your camera tastes run to moderately priced

24



A Sturdy, precision-built body of damage-resistant material.

B Superior tongue-and-groove seal between body, back gives complete light-leak protection needed for good pictures.

C Precision-finished film track, to avoid binding or tearing of film.

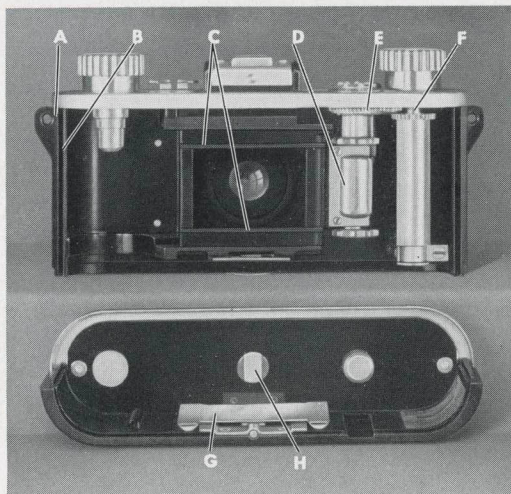
D Positive film-centering mechanism stops film at proper point as it is advanced . . . positions new section exactly.

E Machined sprockets and gears of fine materials, for accurate operation.

F Carefully machined shafts in phosphor-bronze bushings assure long life.

G Film-pressure plate adjusted to 1/1000-inch for sharp, detailed pictures.

H Strong latch locks camera securely.



35-mm. miniatures, choose a Kodak 35 and use the wide range of Kodak Films available. Then you will be set for years of enjoyable picture taking under a great variety of conditions.

DETAILS Negative size, 24 x 36 mm. Standard enlarged print size, 2 $\frac{3}{4}$ x 4 inches. Lenses and shutters: Kodak Anastigmat f/5.6 in Kodex, with 1/25, 1/50, 1/100 second, time, "bulb." Kodak Anastigmat f/4.5 in Diomatic, with 1/25, 1/50, 1/100,

1/150, time, "bulb," delayed action. Kodak Anastigmat Special f/3.5 in Kodamatic, with 1/10, 1/25, 1/50, 1/100, 1/200, time, "bulb," delayed action. Focusing, by revolving lens mount, from infinity to 4 feet. Optical eye-level view finder. Dimensions and weights: Range finder model, 5 $\frac{7}{16}$ x 3 $\frac{3}{16}$ x 3 $\frac{1}{16}$ inches, 24 ounces; regular models, 5 $\frac{7}{16}$ x 2 $\frac{3}{4}$ x 2 $\frac{3}{4}$ inches, 18 ounces.

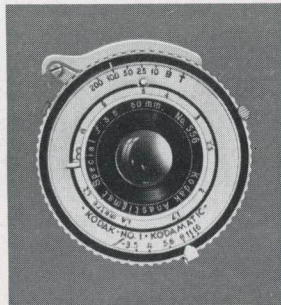
PRICES

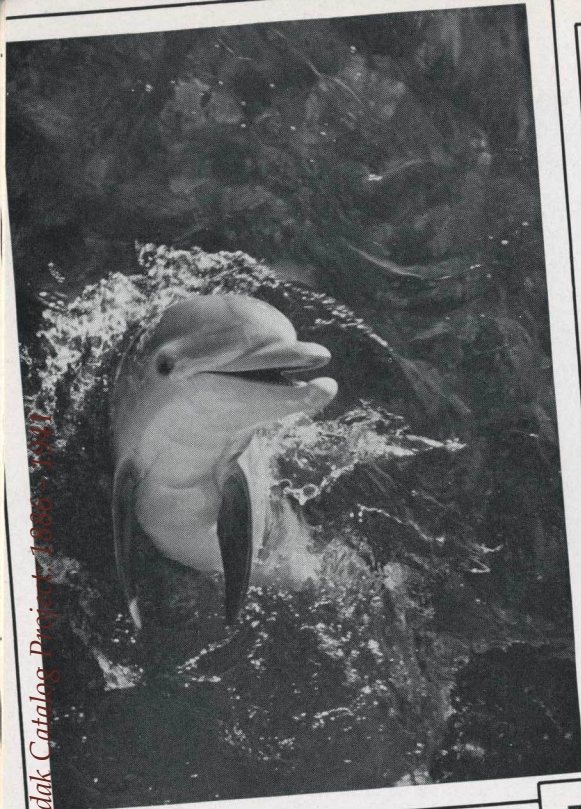
Kodak 35, with Kodak Anastigmat f/5.6 lens	\$14.50
Kodak 35, with Kodak Anastigmat f/4.5 lens	24.50
Kodak 35, with Kodak Anastigmat Special f/3.5 lens	33.50
Kodak 35, with Kodak Anastigmat Special f/3.5 lens and range finder (complete with neck strap)	47.50
Sole leather field case (for any of first 3 models)	4.50
De luxe sole leather field case (for any of first 3 models)	6.50
De luxe sole leather field case (for f/3.5 model with range finder)	7.00
Kodak Plus-X, Super-XX, or Panatomic-X Film (18 exposures)60
Kodak Plus-X, Super-XX, or Panatomic-X Film (36 exposures)95
Kodak Infra-Red Film (36 exposures)	1.20
Kodachrome Film (18 exposures), including processing	2.50

● When safe, handy latch is released, back can be slipped off with one finger for easy loading.

● Kodak 35 shutters have ample speed ranges plus great reliability, time-after-time uniformity.

● Aided by Kodak Combination Lens Attachments, Kodak 35's give unlimited variety of effects.





SUPER KODAK SIX-20

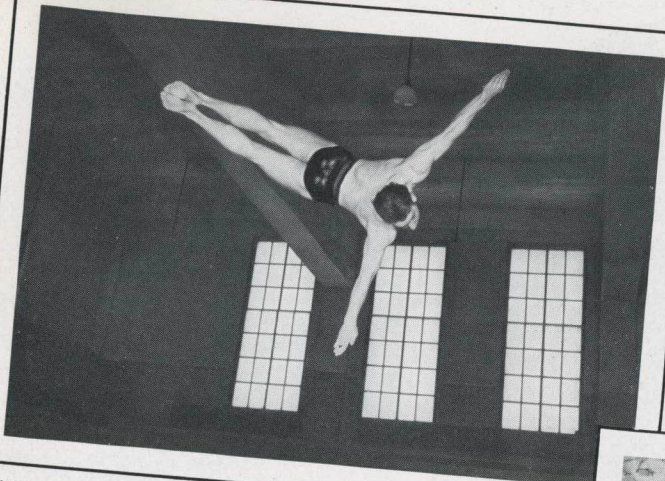
KODAK 35 Standard $2\frac{3}{4}$ x 4-inch enlarged print, available at low cost through modern photofinishing methods. Similar prints can be obtained from negatives made with Kodak Bantams, Jiffy Kodak V. P., Kodak Duex, Baby Brownies, Brownie Reflex, and Bullet camera.



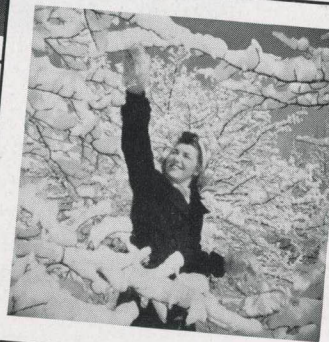
BULLET CAMERA



BABY BROWNIE SPECIAL Standard $2\frac{3}{4}$ x 4-inch enlarged print (See above, under Kodak 35)



KODAK MONITOR SIX-20



BROWNIE REFLEX



SIX-16 BROWNIE



SIX-20 BROWNIE JUNIOR



BROWNIES

The favorite box cameras of millions

BBROWNIES are the world's best-known and most widely used box cameras, because they combine great simplicity with pronounced photographic ability. The basic Brownie formula of "load, aim, shoot" yields good pictures with amazing regularity. The models shown here have the traditional Brownie qualities plus refinements that make them even more capable than their predecessors.

The Baby Brownie and Baby Brownie Special are "babies" in size and price, but full-fledged cameras nevertheless. They make good, sizable snapshots. Extremely easy to use, they are unsurpassed "starters" for beginners of all ages.

Six-16 and Six-20 Brownie Jun-

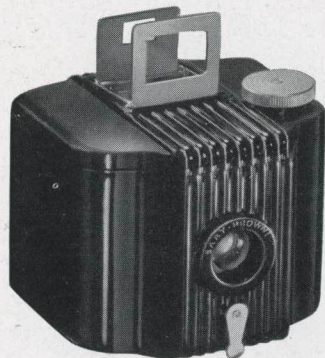
iors are adjustable for time exposures as well as snapshots, and make larger pictures than the Baby Brownies . . . but they are just as simple to operate. Once loaded, they require only sighting on the subject, tripping the shutter. Neatly finished and low in price, they are sound photographic investments.

Senior members of this famous family are the "regular" Six-16 and Six-20 Brownies. Like the Juniors, they make large pictures, but they have brilliant view finders for extra-easy sighting, and the Diway lens, which assures sharp focus for near and distant subjects.

Finest of the whole group are the Six-16 and Six-20 Brownie Specials. Their compact, tapered form makes them distinctively smart, and the "spyglass" finder and plunger shutter release bring added certainty of excellent pictures.

DETAILS Picture sizes: Baby Brownie, Baby Brownie Special, $1\frac{3}{8} \times 2\frac{1}{2}$ inches; Six-20 models, $2\frac{1}{4} \times 3\frac{1}{4}$ inches; Six-16

28



← BABY BROWNIE

BABY BROWNIE SPECIAL →





SIX-20 BROWNIE JUNIOR



SIX-20 BROWNIE

models, $2\frac{1}{2} \times 4\frac{1}{4}$ inches. Baby Brownie: snapshots only; lever shutter release; fixed focus; glossy black molded body; folding eye-level finder. Baby Brownie Special: snapshots only; plunger shutter release; fixed focus; glossy black molded body, white trimmings; enclosed eye-level finder. Brownie Juniors: snapshots, time expo-

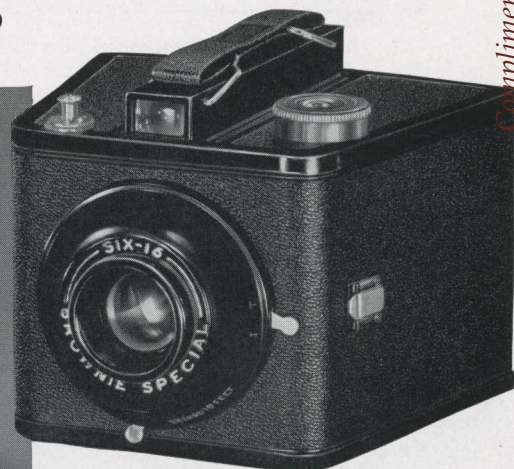
tures; fixed focus; covered metal body; ground-glass waist-level finders. Brownies ("regular"): snapshots, time exposures; two-position focusing; covered metal body; brilliant waist-level finders. Brownie Specials: snapshots, time exposures; two-position focusing; covered metal body; enclosed eye-level finder.

PRICES

	Camera	Carrying Case	Kodak Film (8 exp.)	
			Verichrome	Super-XX Panatomic-X
Baby Brownie	\$1.00	\$.25	\$.25	\$.30
Baby Brownie Special	1.2525	.30
Six-20 Brownie Junior	2.0030	.35
Six-20 Brownie	2.8530	.35
Six-20 Brownie Special	3.75	1.10	.30	.35
Six-16 Brownie Junior	2.3535	.40
Six-16 Brownie	3.2535	.40
Six-16 Brownie Special	4.25	1.25	.35	.40

29

● Sport-cloth carrying cases with slide fasteners and shoulder straps are available as accessories for the Six-16 and Six-20 Brownie Specials.



SIX-16 BROWNIE SPECIAL

BROWNIE REFLEX

A reflex-type miniature for young and old



LOOK into the hooded finder of the Brownie Reflex: there is your subject full-size—brilliantly sharp, clear. Press the shutter release: the picture is yours. Because of the big, fully lighted image, the com-

pletely simple operation, it's easy for anyone to use a Brownie Reflex successfully. And though it is definitely a miniature, it gives you, without enlargement, pictures in the substantial, popular $1\frac{5}{8}$ -inch-square size. Through modern photofinishing methods it can lead to prints $2\frac{3}{4} \times 2\frac{3}{4}$ inches. You use economical Kodak Film No. 127, and get twelve pictures on a roll.

In spite of these features—in spite of its careful, accurate construction and expensive-looking finish, the Brownie Reflex is priced decidedly low. One of the most intriguing little cameras ever offered, it is bound to interest you on sight.

DETAILS Picture size, $1\frac{5}{8} \times 1\frac{5}{8}$ inches. Tested meniscus lens; fixed focus (no focusing required). Snapshot and "bulb" actions; plunger release. Black body of tough molded material; morocco-grain surface finish. Ornamental satin-aluminum top and bottom covers. Etched metal front plate. Tripod socket. Braided black neck cord. Dimensions, $4\frac{3}{4} \times 3\frac{1}{2} \times 2\frac{1}{4}$ inches. Weight, 15 ounces.

PRICES

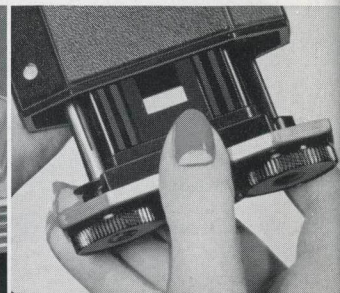
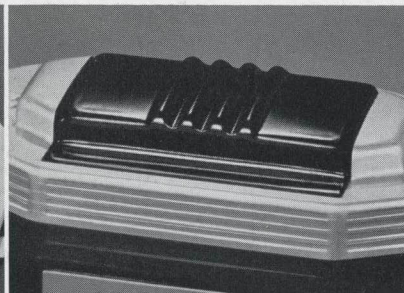
Brownie Reflex, complete with braided neck cord	\$5.25
Kodak Verichrome Film (12 exposures)25
Kodak Super-XX or Panatomic-X Film (12 exposures)30

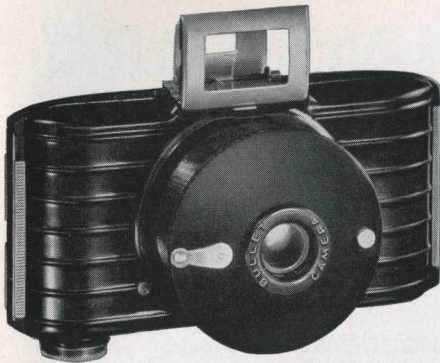
30

● In the big finder you see your picture full-size, brilliantly sharp, while you're making it.

● The finder hood folds flush . . . springs open at a touch when you're ready to use it.

● The precision-molded film holder slips readily off the bottom of the camera for quick loading.





ONE turn of the spiral front brings the Bullet's lens into position. Then just aim and "shoot" . . . as simple a photographic formula as you'll find anywhere. Turn back the lens, fold the finder, and the Bullet fits snugly in your hand, pocket, or handbag. Most impor-

BULLET

tant of all, it makes thoroughly satisfying album-size pictures. New in design, reliable in results, and low in price, it is a real camera bargain.

DETAILS Picture size, $1\frac{5}{8} \times 2\frac{1}{2}$ inches. Meniscus lens. Shutter with snapshot and "bulb" actions. Folding eye-level direct-view finder. Molded construction, with raised ribbing and permanent black glossy finish. Removable back for quick, easy loading. Dimensions, $4\frac{7}{8} \times 2\frac{3}{16} \times 1\frac{7}{8}$ inches. Weight, 7 ounces.

PRICES

Bullet camera.	\$2.00
Leather carrying case.75
Fabric field case.85
Kodak Verichrome Film (8 exp.)25
Kodak Super-XX or Panatomic-X Film (8 exposures).30

SIX-20 BULL'S EYE

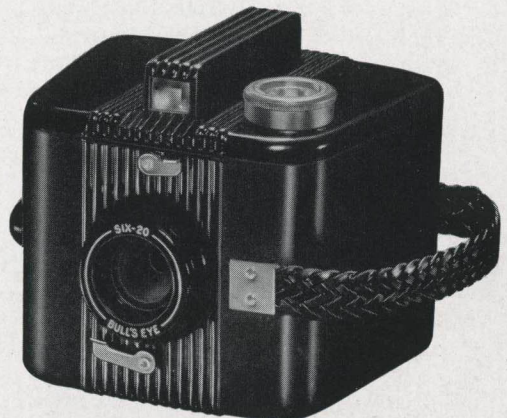
YOUNG people and beginners of all ages are instantly attracted to this modern box-type camera. Its glossy black molded body tapers toward the front, while the back is gently curved. These details of design not only lead to unusual compactness, but, together with the rounded edges and raised ribbing, give the Bull's Eye distinctive looks. Operation is, of course, exceptionally simple. You load, sight on your subject, and trip the shutter. The "spyglass" finder shows the subject brilliantly and accurately. The tested lens and smooth-working shutter do the rest to give you good pictures. In short, the Bull's Eye qualifies as a real star among easy-to-use, inexpensive cameras.

DETAILS Picture size, $2\frac{1}{4} \times 3\frac{3}{4}$ inches. Meniscus lens; fixed focus. Snapshot and

"bulb" actions. Tubular optical eye-level finder. Braided strap, for carrying, also aids in steadying camera. Dimensions, $3\frac{5}{8}$ inches high, $4\frac{5}{16}$ inches wide, $4\frac{1}{16}$ inches thick. Weight, 16 ounces.

PRICES

Six-20 Bull's Eye	\$2.75
Fabric carrying case.	1.10
Kodak Verichrome Film (8 exp.)30
Kodak Super-XX or Panatomic-X Film (8 exposures).35



KODAK FILMS FOR EVERY NEED

VERICHROME For surer results in day-in and day-out picture taking with the average camera. A fast orthochromatic film, with a special double coating that takes care of reasonable exposure errors and increases your ability to get clear, satisfying pictures. Supplied in standard rolls and packs.

SUPER-XX A film of exceptional speed, with grain size held to a minimum. Especially adapted to the making of snapshots indoors at night with Photoflood lighting . . . fast-action shots at high shutter speeds . . . fully timed negatives under seemingly impossible light conditions. Panchromatic. (Note: this film is so fast that it will result in overexposure if used in bright sunlight in cameras with only one or two diaphragm openings.) Supplied in rolls (including miniature sizes), packs, and sheets.

PANATOMIC-X Grain of truly microscopic fineness, speed ample for ordinary purposes. This is the film for big, brilliant enlargements, with no appreciable graininess, or for any pictures in which special richness of detail is desired. Panchromatic. Supplied in rolls (including miniature sizes), packs, and sheets.

PLUS-X The all-round, standard film for miniature cameras. It combines extra speed with unusual fineness of grain, so that Plus-X negatives made under adverse

light conditions yield generous enlargements free from disturbing graininess. Panchromatic. Supplied only in miniature rolls.

KODACHROME Yields full-color transparencies, which may be viewed as they are or, in the case of miniature sizes, projected in large size on the home screen. It requires no extra equipment for taking, and is as easy to use as black-and-white film. Supplied in miniature rolls and sheets. Prices include processing. All standard miniature (24 x 36 mm. and 28 x 40 mm.) transparencies processed in U.S.A. are, unless otherwise



specified, returned mounted as Kodaslide, ready for projection.

INFRA-RED With a red filter such as Wratten A (No. 25) over the camera lens, this film minimizes the effect of atmospheric haze and increases the photographic visibility of distant subjects. It also yields dramatic effects, rendering skies dark, shadows hard, and foliage as though snow-covered. Regularly furnished only in miniature rolls.

PANCHRO-PRESS A fine, fast panchromatic film of the "press" type, with an emulsion physically hardened to withstand rush handling. Supplied only in sheets.

SUPER PANCHRO-PRESS An extremely fast panchromatic film of high quality, specially treated to resist abrasion. A good choice for photography under dull daylight

conditions, or under existing light conditions at night. Supplied only in sheets.

SUPER ORTHO PRESS A superior film of the "press" type, with a high-speed orthochromatic emulsion suited to many special purposes. Supplied only in sheets.

ORTHO-X The very high speed and medium contrast of this new film make it particularly suitable for informal-portrait work for which an orthochromatic material is desired. Supplied only in sheets.

TRI-X PANCHROMATIC Besides being the fastest of all Eastman sheet films, Tri-X has excellent quality and moderate contrast. It is particularly adapted to subjects which, because of existing or expected movement, require short exposures.

33



KODAK ENLARGERS

Dependable equipment for making big prints

KODAK HOME ENLARGER

A simple, low-cost enlarger adapted particularly to beginners. It takes negatives up to $3\frac{1}{4} \times 4\frac{1}{4}$ inches; also $4\frac{1}{2}$ -inch sections of $3\frac{1}{4} \times 5\frac{1}{2}$ -inch negatives. It makes enlargements up to 11×14 inches—up to about 10×14 inches from "vest pocket" negatives.

PRICES

Kodak Home Enlarger (without 60-watt lamp) . . .	\$16.50
Safety Filter50
Diffusion Disk for soft-focus effects.	1.50

KODAK ADVANCE ENLARGER

A sturdy, capable enlarger that costs only \$27.50. It takes all roll-film negatives from 35-mm. and Bantam to $3\frac{1}{4} \times 5\frac{1}{2}$ inches (of which a $3\frac{1}{4} \times 4\frac{1}{4}$ -inch portion can be enlarged). With its

● Kodak Advance Enlarger—efficient, inexpensive.



● Kodak Home Enlarger is easy for anyone to use.

standard 4-inch $f/11$ lens it makes fine enlargements up to $5\frac{1}{2}$ diameters at the baseboard. For greater magnifications, or for greater printing speed, any of the Kodak Precision Enlarger lenses (see opposite page) and the Kodak 2-inch Projection Anastigmat $f/6.3$ can be used interchangeably. Other features: rigid construction, even illumination, simple, direct adjustments.

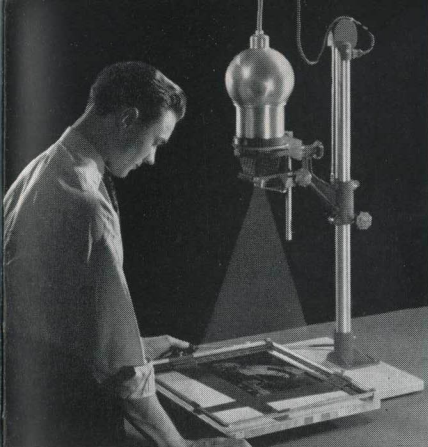
PRICES

Kodak Advance Enlarger with 4-inch $f/11$ lens, without lamp .	\$27.50
Without either lens or lamp . .	25.00
2-inch $f/6.3$ lens	7.50
No. 211 Mazda Photo Enlarger Lamp .	.25

KODAK PRECISION ENLARGER

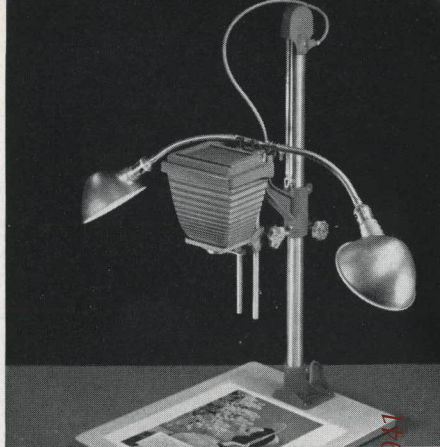
A high-precision machine that not only makes enlargements of superior quality but that can be adapted to copying, titling, photomicrography, macrophotography, and mak-





● At left: Kodak Precision Enlarger, A Assembly—one of the two enlarging assemblies. With available accessories, both this and the B Assembly can be converted for other photographic uses.

● At right: "B" parts adapted for copying.



ing color-separation negatives. It can also be converted into a double-extension-bellows camera. In other words, it is the nucleus for interchangeable precision photographic apparatus having wide use both in the darkroom and in actual photography. For complete details see special booklet.

PRICES

Kodak Precision Enlarger, A Assembly (for enlarging from negatives up to and including $2\frac{1}{4} \times 3\frac{1}{4}$ inches), without lens . . .	\$67.50
Kodak Precision Enlarger, B Assembly (for enlarging from negatives up to and including $4 \times 5\frac{1}{2}$ inches), without lens . . .	75.00
Kodak Projection Anastigmat lenses:	
2-inch $f/4.5$ (for A Assembly) . .	15.00
3-inch $f/4.5$ (for A or B Assembly) . . .	17.50
4-inch $f/4.5$ (for A or B Assembly) . . .	20.00
5-inch $f/6.3$ (for B Assembly) . .	25.00
$5\frac{3}{8}$ -inch $f/4.5$ (for B Assembly) .	33.75
$6\frac{3}{8}$ -inch $f/4.5$ (for B Assembly) .	37.00

KODAK PORTABLE MINIATURE ENLARGER

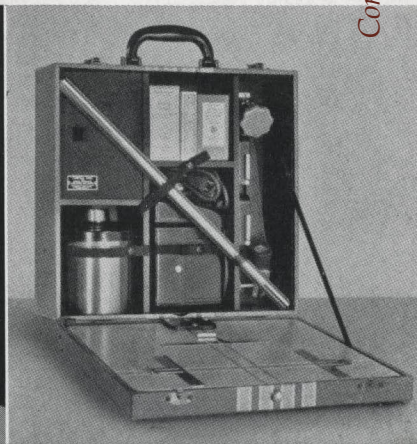
A precision instrument that provides new efficiency and convenience in enlarging from 35-mm. or Bantam negatives. It can be quickly taken down and packed in the Carryall Case. The case also accommodates a camera, film, developers, film tank, and other accessories . . . a complete outfit for miniature photography, easy to store, handy to take on trips and vacations. Outside dimensions of the case are $13\frac{3}{4} \times 13\frac{3}{4} \times 6\frac{1}{4}$ inches. The enlarger gives magnifications from about $2\frac{1}{2}$ to 9 diameters at the baseboard—larger by projection to wall or floor.

PRICES

Kodak Portable Miniature Enlarger, without lens or Carryall Case . .	\$27.50
With 2-inch $f/6.3$ lens and Case .	42.50
With 2-inch $f/4.5$ lens and Case .	50.00

● Assembled, the Kodak Portable Miniature Enlarger makes brilliant enlargements from small negatives.

● Taken down, it fits into the Carryall Case as part of a miniature photographic outfit.



PAPERS AND DEVELOPERS

KODABROM PAPER An extremely popular general-purpose enlarging paper, noted for its long scale of tones, culminating in brilliant, rich blacks. Other advantages are four degrees of contrast to fit negatives of various densities, wide exposure and development latitude, an emulsion that is physically hardened to prevent abrasion, and speed that makes its use practical with any type of enlarger.

VELOX PAPER The name *Velox* on the reverse side of pictures has long been the sign of the finest possible album prints made by contact. Velox is supplied in six degrees of contrast, to fit all negatives, and gives uniformly fine blue-black tones throughout the various contrast grades. These features, plus ample speed, make Velox the ideal amateur contact-printing paper.

For valuable information on these and other famous papers, see the data book *Eastman Photographic Papers*. Price 15 cents.

EASTMAN PREPARED DEVELOPERS

Accurately compounded of Eastman Tested Chemicals, these developers require only the addition of water to make them ready for use. They save time and trouble, and assure thoroughly dependable developing solutions. For prices, as well as other information on developing and printing supplies, see the free booklet *Kodak Picture-Making Aids*.



KODACHROME ACCESSORIES

For projecting transparencies

CAMERAS described on pages 22 to 25 of this catalog may, if desired, be loaded with Kodachrome Film in miniature sizes (Nos. K135 and K828). After processing without extra charge, the film is returned to you in the form of full-color transparencies individually mounted as Kodaslides. These can then be viewed as they are, but their matchless beauty can best be appreciated by projecting them in one of the Kodaslide Projectors listed below. Viewed in large size on the home screen with the aid of one of these simple devices, the images have a realism and richness of detail matched only by the original scenes.

For showing in projectors not equipped to take Kodaslides, the transparencies may be slipped into Kodaslide Adapting Frames, or they may be mounted in glass slides by means of materials available for this purpose.

For further details see the booklet "Color With Your Camera."



● Kodaslides (actual size 2 x 2 inches) bring you your Kodachrome transparencies ready for projection.

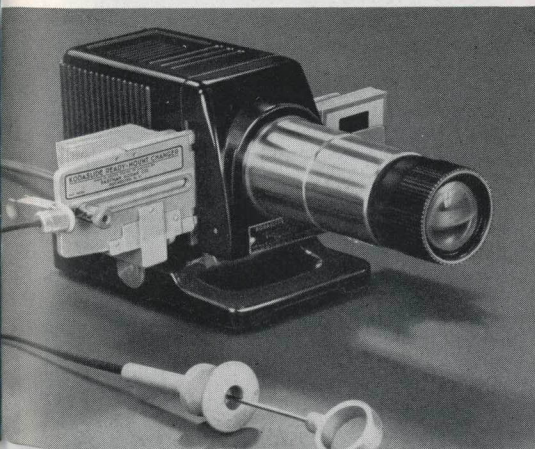
PRICES

Kodaslide Projector, Model 1—efficient, economical	\$18.50
Kodaslide Projector, Model 2—ultra-capable—with 5-inch lens	33.50
With 7½-inch lens	52.00
Kodaslide Changer (for semiautomatic projection of Kodaslides)	12.00

37

● The Model 2 Projector, with Kodaslide Changer.

● The inexpensive, capable Model 1 Projector.





ACCESSORIES

for the picture maker

KODAK DARKROOM OUTFITS (1) The essential materials, plus instructions, for developing and printing in the home darkroom. \$2.25 to \$8.75.

KODAFLECTOR (2) A lighting unit that assures high efficiency from photo bulbs in indoor photography. Complete, \$5.

KODAK HANDY REFLECTORS (not illustrated) Effective cardboard reflectors for photo lamps in home fixtures. With handy measure, 2 for \$.20.

KODAK COMBINATION LENS ATTACHMENTS (3) A versatile system of attachments for folding cameras, permitting many combinations of filters, Pola-Screen, diffusion disk, supplementary lenses. Also other attachments for all cameras. Kodak Portrait Attachments, \$.65 to \$1.50.

EASTMAN ALBUMS FOR PRINTS (4) Attractive, durable albums that save today's pictures for the future. Many styles. \$.75 to \$5.

KODAK NEGATIVE ALBUMS (5) For protecting and filing negatives in transparent numbered envelopes, with index. \$1.25 to \$2.

"HOW TO MAKE GOOD PICTURES" (6) Simple, practical information on all types of pictures. Hundreds of illustrations. \$.50.

KODAGUIDES (7) A series of handy guides to correct exposure, home lighting, use of filters, development. \$.10 each.

KODAK TABLE TOP TRIPOD (8) A versatile camera support for indoor and outdoor use. \$1.75. Pan-a-pod, indexed revolving head for panoraming, \$3. Tilt-a-pod, for tilting camera to unusual angles, \$2.50. Combination of all three units (illustrated), \$7.

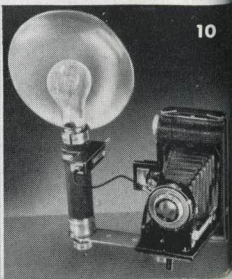
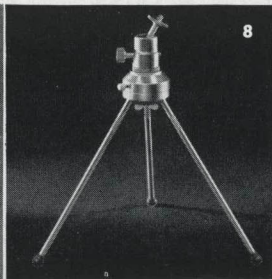
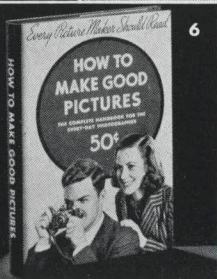
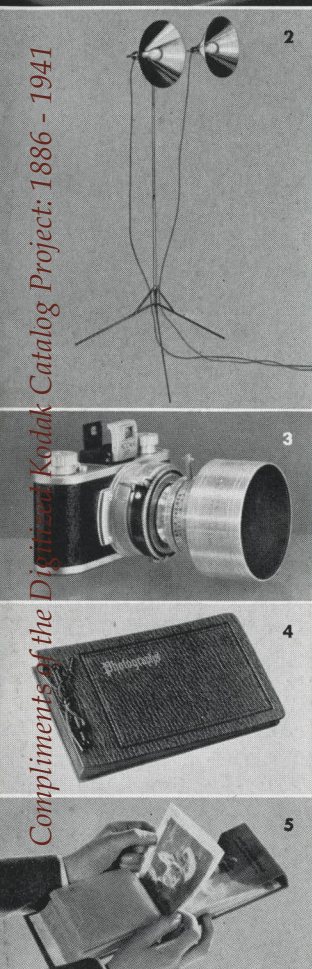
KODAK POCKET RANGE FINDER (9) For use with any camera that has a focusing scale. Look through range finder, adjust, and set camera for distance indicated. May be carried in pocket like fountain pen, or attached to many types of cameras. \$7.

KODAK FLASH SYNCHRONIZER (10) For any Kodak with cable release and tripod socket. A carefully designed synchronizer for use with "bulb" setting or speeds up to 1/25 second. \$7.50.

• • •

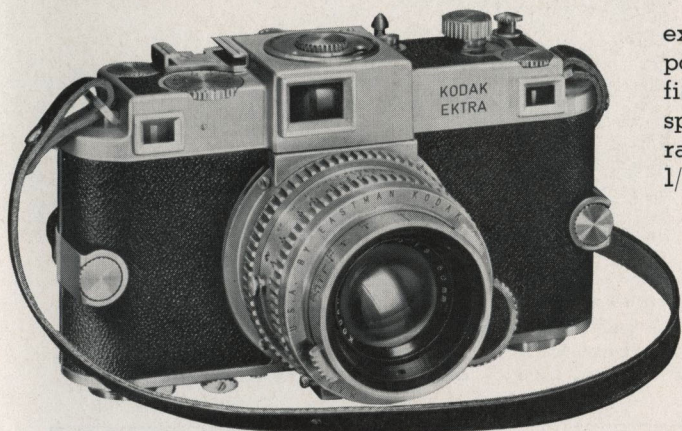
See these accessories at your Kodak dealer's. For other photo accessories, see the booklet "Kodak Picture-Making Aids." For home movie equipment, ask your dealer for a Ciné-Kodak catalog.

38



KODAK EKTRA

The world's most distinguished camera



exceptionally even exposure over the entire field, and affording speeds of great accuracy and stability up to 1/1000 second. An integral part of the

camera is a variable-power view finder, instantly adjustable to the field angle of any of the lenses, and automatically compensating for par-

allax. Also built in, and usable with all of the lenses, is a brilliant advanced-type military range finder which, because of its sharply split field, high image magnification, and exceptionally wide base, gives the most precise automatic focusing obtainable on any camera.

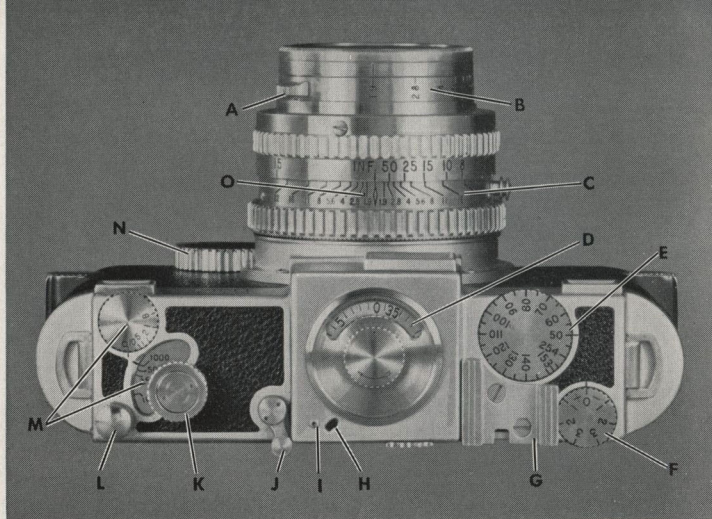
The exquisite, exhaustively precise Kodak Ektra marks an epoch in camera construction. Eastman presents it, without reservation, as the world's most distinguished camera.

AMONG all the world's still cameras there is no parallel to the new Kodak Ektra. Result of years of research and planning, it is the first camera which fully capitalizes the newer films and other modern photographic materials. It meets to an unprecedented degree the demand for super-precision and super-flexibility. It gives finer results, over a wider range of photography, than any other existing camera.

The Ektra takes eight different types of 35-millimeter Kodak Film, and these can, if desired, be quickly interchanged between exposures by means of extra magazine backs . . . one of the exclusive features of this great miniature. For still broader versatility there is a choice of six superb, interchangeable Kodak Ektar lenses, varying in focal length and surface-treated for added efficiency. Complementing them is a focal plane shutter giving

DETAILS Negative size, 24 x 36 millimeters. Lenses: surface-treated by process that improves clarity and brilliance of negatives; choice offered—50-mm. *f*/1.9; 50-mm. *f*/3.5; 35-mm. *f*/3.3; 90-mm. *f*/3.5; 135-mm. *f*/3.8; 153-mm. *f*/4.5. Focal plane shutter with pre-determined variable slit; settings, 1, 1/2, 1/5, 1/10, 1/25, 1/50, 1/100, 1/250, 1/500, 1/1000 second, "bulb," delayed action. Time exposures with T.B.I. Cable Release No. 1. Double-exposure prevention. Kodak Films: Plus-X, Super-XX, Panatomic-X, Infra-Red, Micro-File, Direct Positive, Kodachrome (regular and Type A). Rhythmic operating

- A Diaphragm control
- B Diaphragm scale
- C Depth-of-field scale
- D Exposure counter
- E Variable-power view finder control
- F Range finder individual-vision adjustment
- G Universal accessory bracket
- H Shutter signal
- I Focal-plane index
- J Delayed-action lever
- K Shutter-speed setting knob
- L Plunger shutter release
- M Shutter speed scales
- N Focusing knob
- O Infrared index



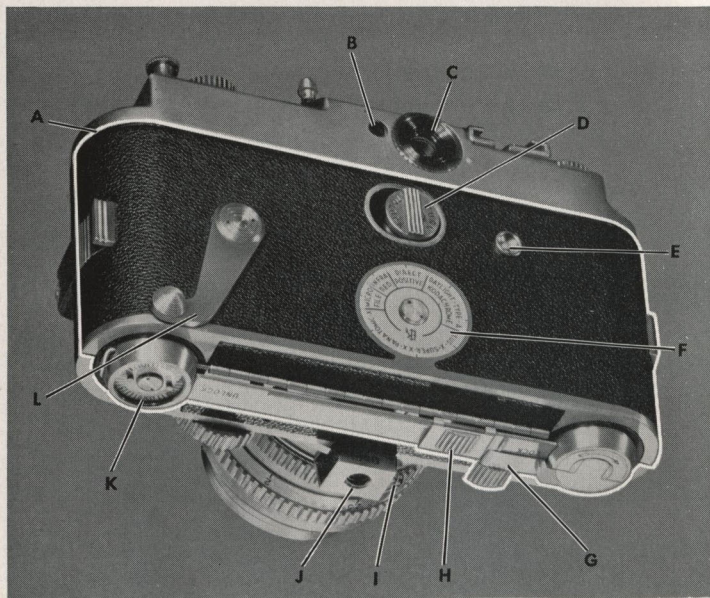
cycle for all major adjustments, with controls at finger tips of one hand—all operating scales and dials visible from above. Rapid rewind. Safety slide automatically covers film when back is unlocked from

body. Dimensions and weight (with $f/1.9$ lens): length, $5\frac{1}{8}$; height, $3\frac{1}{8}$; thickness, $3\frac{3}{8}$ inches; $38\frac{3}{4}$ ounces. For further details, accessories, and complete prices, ask your dealer for *Ektra* booklet.

PRICES

Kodak Ektra, with 50-mm. Kodak Ektar $f/1.9$ lens	\$300.00
Kodak Ektra, with 50-mm. Kodak Ektar $f/3.5$ lens	235.00
35-mm. Kodak Ektar $f/3.3$ Lens	68.00
90-mm. Kodak Ektar $f/3.5$ Lens	85.00
135-mm. Kodak Ektar $f/3.8$ Lens	130.00
153-mm. Kodak Ektar $f/4.5$ Lens	150.00
Extra Interchangeable Magazine Backs, each	55.00
Brown Cowhide Combination Carrying Case, to hold camera (with 50-mm. or 35-mm. lens), accessories, film	15.00

- A Interchangeable magazine back (outlined in white)
- B Range-finder sight
- C View-finder sight
- D Lock for magazine-back cover
- E Film-movement indicator
- F Film-type indicator
- G Folding rapid-rewind crank
- H Sliding lock of magazine back
- I Lens-locking knob
- J Tripod socket
- K Magazine-back exposure record
- L Film-advance, shutter-wind lever



SIX-20 FLASH BROWNIE

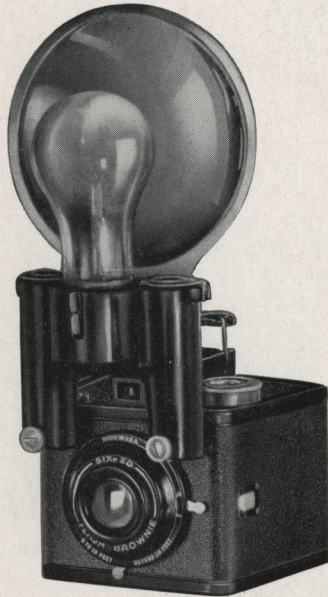
with Flashholder

HERE is a reliable, inexpensive Eastman camera with which anyone can make good Photoflash shots. And in case photography is entirely new to you, the Six-20 Flash Brownie may hold a *double* appeal for you. Designed especially for picture taking at night, it becomes a full-fledged daylight camera, trim and efficient, when used without the Flashholder. It is a real all-round model, with dependable flash synchronization added to the well-known Brownie features.

With the Flashholder in position and fitted with flash bulb and batteries, you just set the camera at one of two focusing positions, sight on your subject, and press the shutter release. A spring makes the electrical contact, and times the setting-off of the lamp so accurately that the full flash occurs while the shutter is open. For daytime pictures you simply loosen two retaining screws, remove the Flashholder, and proceed as before.

With the Flash Brownie either daytime or nighttime photography is quick, easy, and—best of all—dependable, for this new camera gives you the same picture-making certainty that has won earlier Brownies their world-wide popularity. Let your dealer give you a demonstration.

DETAILS Picture size, $2\frac{1}{4} \times 3\frac{1}{4}$ inches. Meniscus lens, with simple two-position focusing. New single-action self-setting shutter with instantaneous and "bulb" set-



tings, plunger-type release. Enclosed "spy-glass" eye-level view finder. Covered metal body. Flashholder, of tough black molded material, has two receptacles for size AA flashlight batteries (not included), with spring-clip covers to assure good contact. 4-inch nickel-plated steel reflector, extra-rugged for long life and rigidity. No. 11A, 16A, or 21 Photoflash lamp can be simply pressed into lamp socket, and, with slight pressure on two lugs, shaken out after use. Socket also takes Photoflash lamp No. 5 with long No. 681 adapter.

PRICES

Six-20 Flash Brownie	\$4.25
Flashholder for Six-20 Flash Brownie (without lamps and batteries) . . .	1.50
Six-20 Flash Brownie and Flashholder Kodak Verichrome Film (V620), 8 exposures	5.75
Kodak Panatomic-X (FX620) or Super-XX (XX620) Film, 8 exposures30
	.35



KODAK SENIOR SYNCHRONIZER

*Speedgun
Model E*

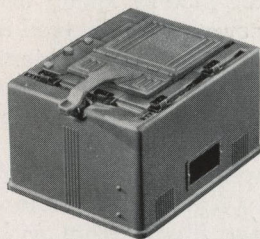
ESPECIALLY designed for flash work with Kodaks. Light, compact; available with cable release for any camera with Supermatic, Diomatic, Kodamatic, or Compur shutter having cable release socket. Dependable accuracy for all speeds up to 1/400 second is assured by electrical synchronization, individual testing and sealing at the factory. Adjustable reflector with two sockets—one for No. 5, the other for Nos. 11A, 16A, and 21 bulbs.

Kodak Senior Synchronizer, Speedgun Model E (without lamp) \$16.50

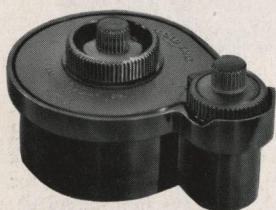
KODAK ALL-METAL PRINTER

A UNIQUE new printer whose many features spell greater ease and better results in making contact prints from any negative up to $3\frac{3}{4} \times 5\frac{1}{2}$ or 4×5 inches. It has a one-piece die-cast body. Its construction assures positive contact and uniform light distribution. It is equipped with lighted masking scales and calibrated margin guides. A special split platen and film and paper guides are provided for 35-mm. strip printing.

Kodak All-Metal Printer (with printing and ruby lamps) \$16.50



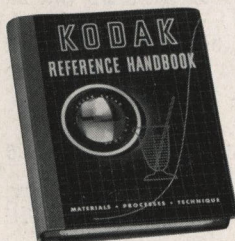
KODAK DAY-LOAD TANK



AN INGENIOUS, reliable tank that affords new convenience in processing 18- or 36-exposure 35-mm. films in magazines. After the magazine is inserted, turning a knob guides the film and winds it on a spiral reel. The film is severed from the magazine by a built-in knife, the magazine removed, solutions poured in and emptied, the reel agitated, the temperature checked . . . all in daylight, for the tank is lighttight throughout the procedure.

Kodak Day-Load Tank \$6.95

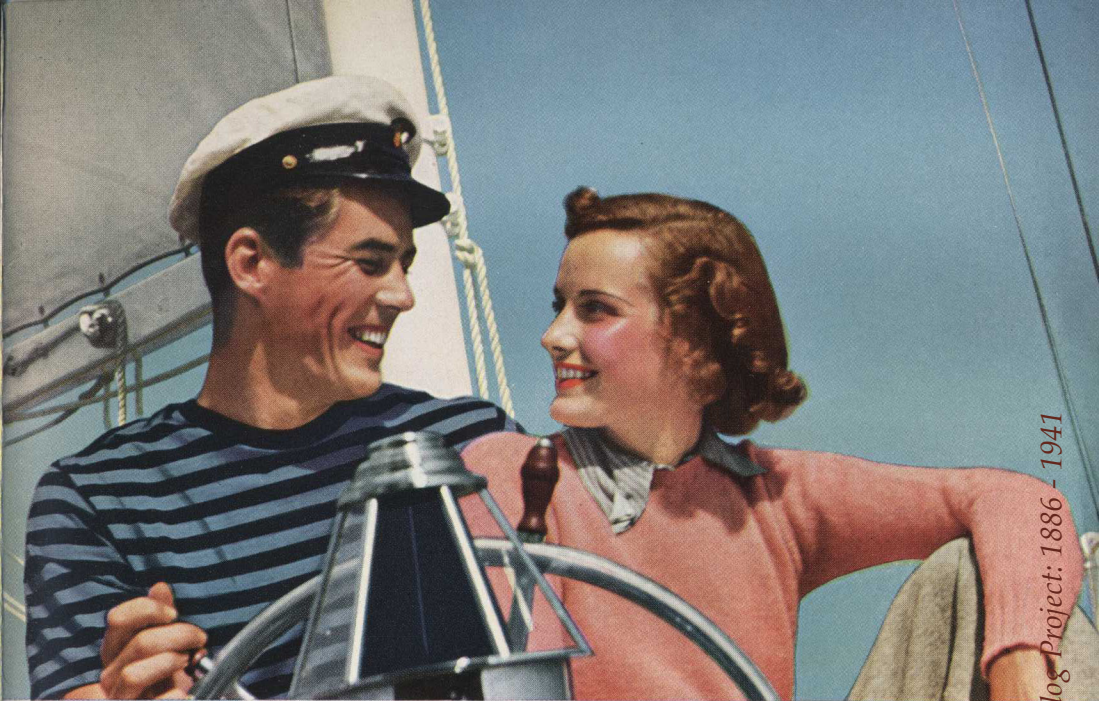
KODAK REFERENCE HANDBOOK



THIS important and handsome new photographic book offers authoritative information on lenses, filters, Kodachrome and black-and-white films, slides and transparencies, papers, darkroom design, formulas and processing, copying and micro-filming. It contains 388 pages, with 94 illustrations, 107 curves and spectrograms, and 180 tables. The arrangement of material, convenient indexing, and water-resistant binding are all calculated to provide a handbook suited to practical, everyday use.

Kodak Reference Handbook \$2.75

Prices subject to change without notice



Kodachrome Film brings home the highlights of your outings, trips, and vacations in all their vivid color and charm. For miniature cameras that load with Kodachrome Film, see pages 22 to 25. For accessories that help you to enjoy the beauty of their full-color transparencies, see page 37.



KODAK FILMS

for Every Need



WHATEVER the picture situation, load with Kodak Film. Millions have found it doesn't pay to take chances. They use Kodak Film always—and come home secure in the knowledge that their snapshots will “turn out” . . . be all that they should be. Accept nothing but the film in the familiar yellow box—Kodak Film—which only Eastman makes.

NEW—An Important Safety Margin: An exclusive “skiving” process provides, in all popular Kodak Film sizes, a safeguard against light leak along the edges of the film—an extra assurance of better pictures with Kodak Film.

Eastman Kodak Stores, Inc.

606 Wood Street

PITTSBURGH, PA.

AT-6227