

KODAK



## **The Digitized Kodak Catalog Project (1886 - 1941): A Very Brief History**

Most camera collectors at some point in their collecting careers pass through a Kodak phase - some never come out of it. And if there ever was one name that came to be associated with both cameras and collecting, it was Kodak.

George Eastman received his first patent (for coating dry plates) and bought his first manufacturing facility in 1880, and in 1881 he started the Eastman Dry Plate Company. In 1886 he received a patent for the near-mythical Eastman Detective Camera, but it wasn't until 1888 that the first camera bearing the name "Kodak" was introduced.

One of the nice things about collecting Kodak is that the product line is pretty well known, and because the company produced annual catalogs for many years, collectors can be reasonably sure of what they're looking at, when it was made, the variations and so on - presuming that they have access to either the appropriate catalog, or a number of the many books which document Kodak, each to some greater or lesser extent.

But what would be really nice would be to have a complete set of Kodak catalogs in an easily accessible form and readily available. And since the advent of portable computing devices (PC, Macintosh, etc.) that's been possible - except for the difficulty of assembling a complete set of Kodak catalogs in one spot and then scanning them and making the results available.

The idea of digitizing a complete set of Kodak catalogs has kicked around the collecting community for many years. It's been proposed on a number of online forums, during meetings of various photohistory groups, and for years there have been many incomplete "Kodak CDs" on eBay but at best, they only contained a few catalogs - whatever the owner had available. But assembling a complete set of catalogs, then scanning and processing perhaps 3,000 to 4,000 pages, was a daunting task - if not completely overwhelming - and nothing ever came of it.

Until now.

In early 2010, the idea came up again, but this time we - "we" as in "the collecting community" - were lucky. A number of collectors were willing to loan their catalogs to this project and a couple of insane - wait, let's call them "dedicated" - dedicated enthusiasts - neither of whom collected Kodak, but both of whom enjoyed the challenge of such a project - were willing to put in the time and effort to scan and pull together the entire set of catalogs into a full-blown Kodak Catalog Digital Library.

Our initial objective was to include just the annual amateur catalogs, but it turns out that many cameras only appear in certain professional and specialty catalogs. We included as many of those as we could obtain so that almost every Kodak camera made in the US, Canada and Europe, would be documented - at least up to about 1941. After that, it becomes much more difficult as Kodak stopped producing annual catalogs as their product line became increasingly more diversified.

However, even with the additional "non-amateur" catalogs, we weren't completely successful in illustrating "every" camera Kodak ever made. There are an elusive few that might appear in specialty catalogs that we simply couldn't track down. If you can't find one of those odd cameras, that's no doubt why. We may do a revision at some point in the future if someone is willing to loan us a catalog that includes a camera that isn't already recorded.

In this project, a total of 67 catalogs were used from 1886 through 1941 including a number of professional and dealer catalogs, and in some years, two or even three different catalogs to cover all the bases. With the cooperation of a number of dedicated collectors, we were able to pull together all those catalogs and in June 2010, the project started in earnest.

By November 2010, we had scanned everything we needed and eventually all 67 catalogs were then reassembled as image folders and converted to the universally accepted PDF format and finally, converted into individually searchable PDFs which could then be searched globally as a collection.

For those of you interested in the statistics: about 200 hours of scanning time (we never want to hear that sound again), 67 catalogs and 3,908 page scans - which generated 7,917 original and processed images - and 11.4 GB of disk space. Additionally, another 100+ hours of technical development time was needed to convert the digital catalogues into a fully searchable "knowledgebase" that could be launched from most any standard web browser.

The overwhelming number of catalogs was loaned to us by that most remarkable of Kodak collectors, Charlie Kamerman of Eagle Creek, Oregon. Without Charlie, it's very doubtful that this project could even have been attempted.

But as it turned out, even Charlie didn't have all the publications that were needed, but he was able to track down the five that he lacked and was able to secure either a copy or high resolution images that we could work with. And so, our thanks to the contributors of the catalogs and scans that we used:

Charlie Kamerman for the vast majority of catalogs used and all his help,  
Steve Shohet for loaning a variety of test catalogs,  
Ryerson University (Toronto) for the 1886 Eastman Catalog  
George Layne for the 1890 New Kodaks Catalog,  
Mike Kessler for the 1891 Dealer Display Catalog,  
Ralph London for the 1893 UK Catalog,  
Michael Pritchard for the 1897 UK Catalog.

The digital side of the project - also known as "all of the work" - was done by Rob Niederman of Medina, Minnesota, and Milan Zahorcak of Tualatin, Oregon. Remarkably we're still friends and in a few years, we'll probably be able to talk about this project rationally.

And there you have it, a more-or-less done deal. We're fairly sure that it isn't quite perfect, and expect there will be some carping about something or other; but all-in-all, we believe this to be a pretty good product and can now move on to something else.

Our thanks to all of those involved.

Rob Niederman  
Milan Zahorcak

Fall, 2011



# KODAKS AND

*Compliments of the Digitized Kodak Catalog Project: 1886 - 1941*



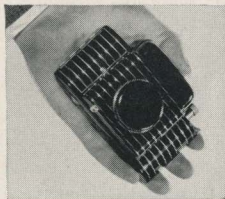


# BROWNIES

## IN SELECTING A CAMERA, CONSIDER THESE POINTS:

**PICTURE SIZE** Pick the size that appeals to you most. The various Kodaks and Brownies afford a wide range, topped by the 3A or postcard size. In connection with this first point, consider whether you will want to use most of your pictures in their original size or whether you expect to have them enlarged (or enjoy the fun of enlarging them yourself). Cameras that yield album-size pictures are as popular as ever. At the same time "miniature" photography, which begins with diminutive cameras and negatives and ends with striking enlargements...or large images projected on a screen...is enjoying an ever greater vogue. Any good picture can be enlarged, but miniature photography is definitely based on large pictures from small cameras.








**TYPE OF CAMERA** Determine which of the types of cameras you prefer...box or folding. Both types, as built by Eastman, make excellent pictures. The box models, though modest in price, embody the most modern construction and finish, and are thoroughly dependable picture makers within their intended sphere. The folding models supplement these qualities with greater compactness and added carrying ease, and each successively higher classification gives greater versatility. This fact logically leads to the next point in choosing your camera...



Kodak Bantam Special—  
an outstanding example of  
compactness plus ability.

**VARIETY OF PICTURES** Consider the variety of pictures you want, and the conditions under which you expect to take them. Even the very simplest Eastman cameras regularly make sharp, clear pictures of average outdoor subjects in good light, and modern films and photo lamps have extended their scope to certain indoor situations. The more pretentious types of Kodaks extend this scope still farther to include rapidly moving subjects in the sports and other fields, "slices-of-life" shots indoors and out, night club and theater pictures, and...in the case of most miniature Kodaks...full-color transparencies. Such broadened ability is due largely to lenses and shutters of successively greater range and precision.

One of the chief factors determining the capability of a lens is its "speed"—or relative ability to collect light from the subject, and transmit this image-forming light to the negative material, within a given interval. Fast lenses, collecting and transmitting comparatively large amounts of light in short times, make possible pictures under poor lighting conditions—or with extremely short exposures. Such lenses, consisting of a number of different elements, require exceedingly intricate design, complex construction, the finest of materials, and the most painstaking craftsmanship. And, to capitalize the outstanding performance of which they are capable, these fast lenses must be mounted in shutters

LENS	ELEMENTS OF LENS	RELATIVE SPEED
MENISCUS		1
DOUBLET		1½
F.7.7		4
F.6.3		6
F.4.5		11
F.3.5		18
F.2.0		56

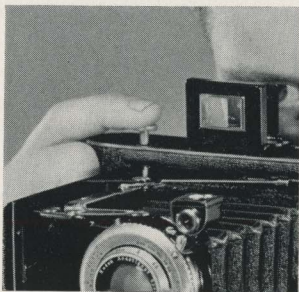
How various lenses are constructed—and the approximate relative "speeds" that result.

And, to capitalize the outstanding performance of which they are capable, these fast lenses must be mounted in shutters



built with watch-like accuracy, and offering an unusually wide selection of exposure speeds.

Chiefly responsible for the scope of any camera, the lens and shutter likewise account for a large share of its cost. It is well to bear this in mind in deciding the final point. . .



Using the body shutter release—an important recent improvement embodied in many Eastman cameras.

**THE PRICE TO PAY** Determine the price you want to pay in the light of the factors pointed out in the preceding paragraphs—in general, according to the purposes to which the camera is to be put.

Regardless of your final choice, you may be sure that your Kodak or Brownie will give you complete satisfaction, because Kodak, the world's largest photographic organization, has made and sold millions of cameras of all varieties, on the basis of constant improvement and unquestioned value. Even the lowest-priced models have an enviable reputation as full-fledged, reliable cameras. Similarly, in the more elaborate types, where finest mechanical and optical design and fabrication are indispensable, Eastman offers photographic instruments of a quality second to none.

*Prices in this catalog are subject to change without notice*

**EASTMAN KODAK COMPANY**

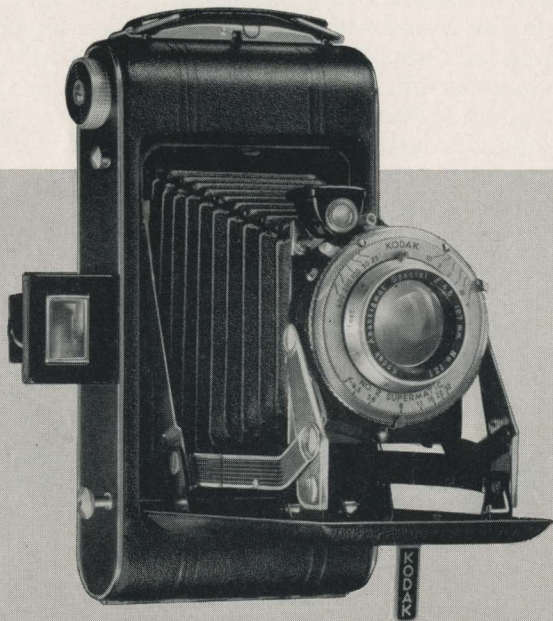
**OCTOBER, 1939      ROCHESTER, N. Y.**



# KODAK VIGILANTS

**T**HESE brand-new cameras for album-size pictures have made an instant hit. Interesting and worth-while new features saw to that. A single push button both opens the camera and releases the bed for closing. The smoothly operating body shutter release is automatically retracted as the camera closes. You can sight on your subject from either eye level or waist level, for the Vigilants have both direct-view and reflecting finders. And whichever way you "shoot," the excellent construction and equipment will give you fine results. The lenses are all genuine Kodak Anastigmats, topped by the versatile  $f/4.5$  Special. All of the shutters have typical Eastman reliability, and the new Supermatic is the finest high-precision, high-speed between-lens shutter in the world. The erecting mechanism supports both lens and shutter with exceptional rigidity.

If you want an up-to-the-minute yet moderately priced camera, you can't go wrong in choosing a Vigilant. All of them are soundly engineered, beautifully constructed, carefully equipped, satisfyingly



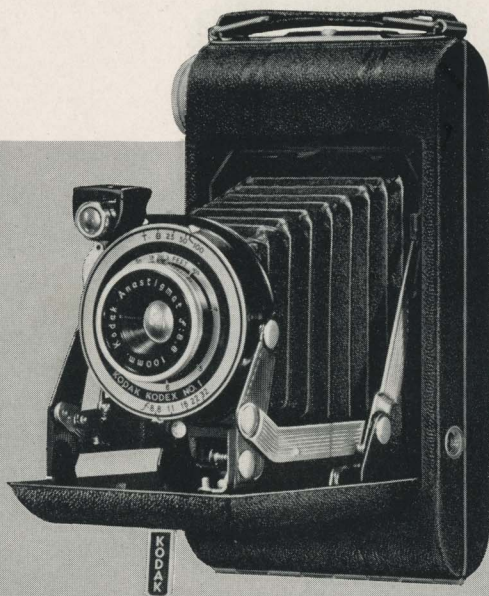
# SIX-16 AND SIX-20

modern. According to high Eastman standards they represent picture-making value plus.

**DETAILS** Picture sizes: Six-16,  $2\frac{1}{2} \times 4\frac{1}{4}$  inches; Six-20,  $2\frac{1}{4} \times 3\frac{1}{4}$  inches. Kodex shutter has 3 speeds to 1/100 second; Kodamatic, 5 speeds to 1/200, self timer; Supermatic, 9 speeds to 1/400, self timer. Self-erecting front. New retracting body shutter release, with threaded socket for attaching cable release. New safety back latch. Creased black grain covering (genuine leather on *f*/4.5 Special models).

## PRICES

	Vigilant Six-16	Vigilant Six-20
With <i>f</i> /8.8 lens, Kodex shutter . . . . .	\$16.00	\$14.50
With <i>f</i> /6.3 lens, Kodex shutter . . . . .	19.50	17.00
With <i>f</i> /4.5 lens, Kodamatic shutter . . . . .	29.00	25.00
With <i>f</i> /4.5 Special lens, Supermatic shutter . . . . .	42.50	37.50
Field case . . . . .	4.75	4.00
De luxe field case . . . . .	6.75	6.00
Snapsack . . . . .	3.00	2.50
Kodak Verichrome Film (8 exposures) . . . . .	.35	.30
Kodak Super-XX or Panatomic-X Film (8 exp.) . . . . .	.40	.35



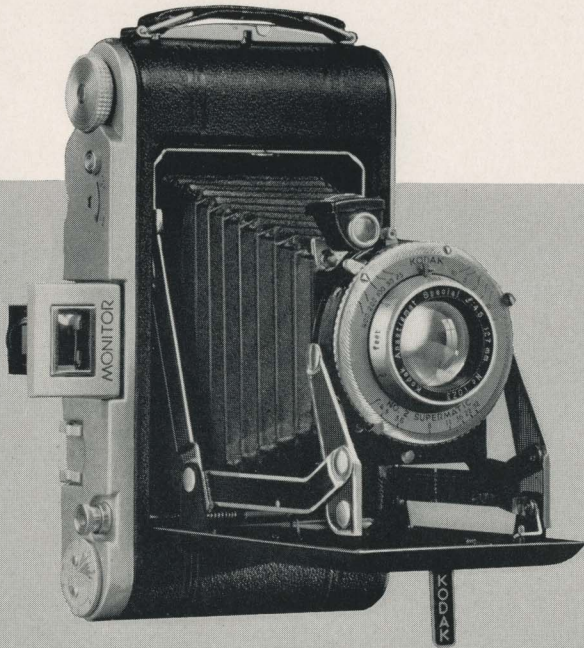


# KODAK MONITORS

**E**ASTMAN proudly presents the Kodak Monitors as the finest, most expertly designed cameras available in their class. The picture sizes,  $2\frac{1}{2} \times 4\frac{1}{4}$  and  $2\frac{1}{4} \times 3\frac{1}{4}$  inches, are old favorites. . . almost everything else is new. The advanced structure and equipment assure a high degree of picture-making certainty. The many supplementary refinements enhance that certainty, and add all the convenience demanded today by the discriminating photographer.

The new ten-point support of the folding arms erects and positions the lens and shutter with exceptional accuracy. This exact positioning makes the most of the superb lens-and-shutter combinations. . . the fast, highly corrected Kodak Anastigmat  $f/4.5$  in Kodamatic shutter, or the even more precise Kodak Anastigmat Special  $f/4.5$  in Supermatic shutter. The Supermatic, a new Eastman development, is the most accurate high-speed between-the-lens shutter made.

Entirely new on cameras of this type are these important automatic features: a device that prevents double exposures. . . a mechanism that centers the film accurately for every picture. . . a scale that





# SIX-16 AND SIX-20

counts exposures for you. In addition, a single button controls opening and closing, and a retracting shutter release on the body guards against camera movement. Its push button has a threaded socket to receive a cable release, and a socket on the shutter takes either a cable release or a flash synchronizer.

**DETAILS** Picture sizes: Six-16,  $2\frac{1}{2} \times 4\frac{1}{4}$  inches; Six-20,  $2\frac{1}{4} \times 3\frac{1}{4}$  inches. Kodamatic shutter, 5 speeds to 1/200 second, self timer. Supermatic, 9 speeds to 1/400, self timer. Folding optical eye-level finder; reversible waist-level finder. Depth-of-field indicator. New safety back latch. Universal range-finder clip. Tooled black grain covering (genuine leather on Supermatic models).

## PRICES

	Monitor Six-16		Monitor Six-20	
	Without De luxe Field Case	With De luxe Field Case	Without De luxe Field Case	With De luxe Field Case
With Kodak Anastigmat <i>f</i> /4.5 lens, Kodamatic shutter . . . . .	\$35.00	\$41.50	\$30.00	\$35.75
With Kodak Anastigmat Special <i>f</i> /4.5 lens, Supermatic shutter . . . . .	48.50	55.00	42.50	48.25
Kodak Verichrome Film (8 exposures) . . . . .		\$.35		\$.30
Kodak Super-XX or Panatomic-X Film (8 exp.)		.40		.35





KODAK BANTAM Standard  $2\frac{3}{4} \times 4$  enlargement, available at low cost through modern photofinishing methods. Similar enlargements can be obtained from negatives made with Jiffy Kodak V.P., Baby Brownies, Kodak 35, and Bullet camera.

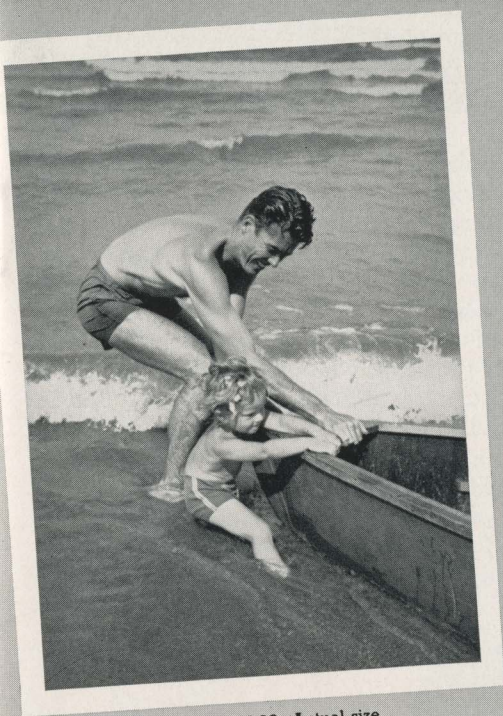
SUPER KODAK SIX-20 Actual size



JIFFY KODAK V.P. Actual size







KODAK MONITOR SIX-20 Actual size



BABY BROWNIE SPECIAL Actual size



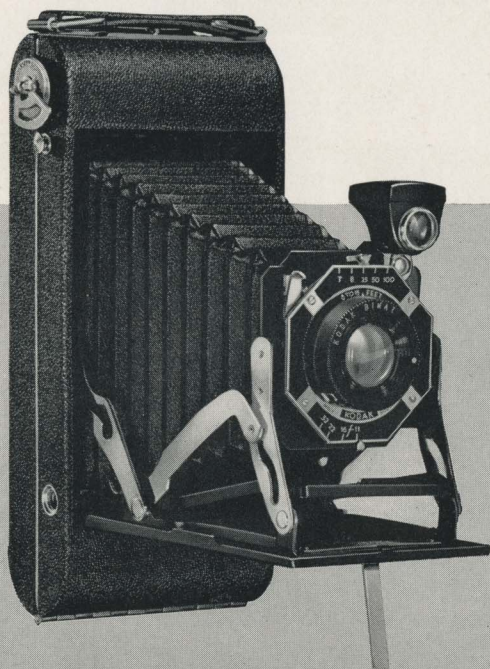
KODAK JUNIOR SIX-16, SERIES II Actual size



## KODAK JUNIORS SIX-16

**T**AKE this as a guide: Kodak Juniors, Series II, are among America's most popular cameras. . . for more reasons than one. Opening to picture-taking position with a single pull on the bed support, they get into action quickly, easily. Equipped with both reflecting and direct-view finders, they give you the choice of sighting either from waist height or from eye level. And when the picture has been made, your camera closes at the touch of a one-finger bar release. For lens equipment you can have either the readily focused Kodak Bimat or a single lens that requires no focusing whatever. Both are mounted in reliable shutters, and are fully capable within their intended picture-making ranges.

Series II Juniors are neatly finished and nicely proportioned. And, though compact, they afford pictures in a choice of two generous sizes. . . pictures amply large for mounting. In short, every one of these cameras offers far greater value than its modest price indi-



# AND SIX-20, SERIES II

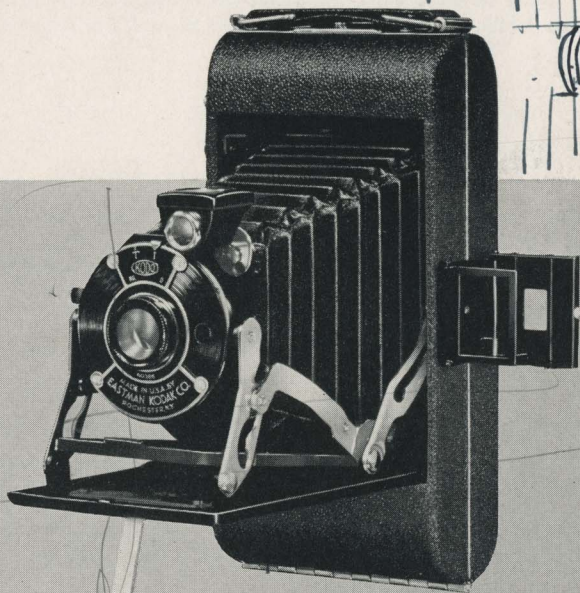
cates. Be sure to see all of the models, whether you are shopping for a camera of your own or want to present someone else with the means to simple, satisfying photography.

**DETAILS** Picture sizes: Six-16,  $2\frac{1}{2} \times 4\frac{1}{4}$  inches; Six-20,  $2\frac{1}{4} \times 3\frac{1}{4}$  inches. Self-erecting front—one pull opens camera and erects lens into position. Light pressure on special bar release frees bed of camera for closing. Two tripod sockets. Single-lens models have fixed focus. Bimat models, focus adjustable by revolving lens mount. Reflecting finder, reversible for vertical and horizontal positions; also folding direct-view finder for either position. Black pin-grain covering, with bright nickel trimmings.

## PRICES

With Single lens, snapshot and time adjustments . . . . .  
 With Kodak Bimat lens, shutter speeds to 1/100 . . . . .  
 Soft leather carrying case . . . . .  
 Lined grain leather case . . . . .  
 Kodak Verichrome Film (8 exposures) . . . . .  
 Kodak Super-XX or Panatomic-X Film (8 exp.) . . . . .

	Junior Six-16 Series II	Junior Six-20 Series II
With Single lens, snapshot and time adjustments . . . . .	\$ 9.25	* \$ 7.75
With Kodak <u>Bimat</u> lens, shutter speeds to 1/100 . . . . .	11.50	10.00
Soft leather carrying case . . . . .	1.35	1.65
Lined grain leather case . . . . .	3.00	2.50
Kodak Verichrome Film (8 exposures) . . . . .	.35	.30
Kodak Super-XX or Panatomic-X Film (8 exp.) . . . . .	.40	.35



Compliments of the Digitized Kodak Catalog Project: 1886 - 1941

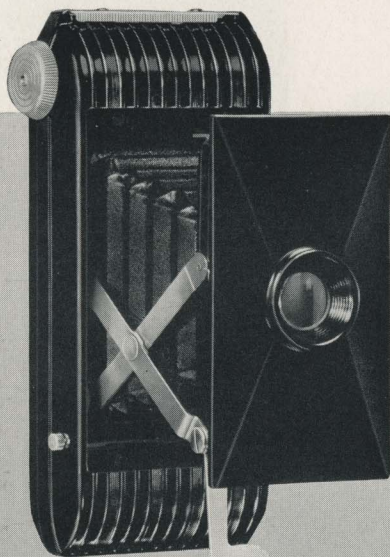


## JIFFY KODAK V. P.

**A** FEW dollars invested in Jiffy Kodak V. P. buy a great deal. Modern molded construction . . . substantial picture size . . . plus the basically sound design and equipment that make Eastman cameras ever-reliable—and ever-ready for good pictures. The lens and shutter, deciding factors in any camera, are carefully made and thoroughly tested, and ingenious construction gets them into action instantly. Springing open at the touch of a button, the Jiffy V. P. goes to work without the preliminaries of focusing or other adjustment. Just trip the shutter and the picture is made. Latest of "vest pocket" Kodaks, this model meets today's demand for a swift, good-looking, compact little folding camera.

**DETAILS** Picture size,  $1\frac{5}{8} \times 2\frac{1}{2}$  inches. Permanent "built-in" glossy black finish, with ornamental ribbing. Removable back. Weight, 10 ounces. Fixed focus. Kodak Doublet lens, deeply recessed for protection. Built-in shutter, with snapshot and bulb actions, 2 release triggers. Aperture can be stopped down to  $f/16$ . Folding direct-view eye-level finder. Action front, operated by push button, opens camera to picture-taking position.

**PRICES** *Jiffy Kodak V.P.*, \$4.25. Lined cowhide carrying case, \$1.35. No. 127 Kodak Film (8 exp.): Verichrome, \$.25; Super-XX or Panatomic-X, \$.30.





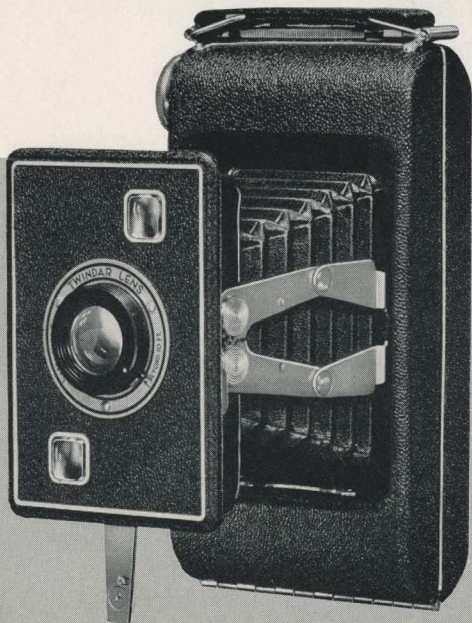
# JIFFY KODAKS SIX-16 and SIX-20, Series II

**T**HOUGH Jiffy Kodaks Six-16 and Six-20 make big pictures, their slim, compact design makes them unusually smart-looking . . . unusually handy to carry. And no folding camera known is easier to use . . . or works faster. Press one button—the camera opens. Press another and the picture's yours. Jiffy Kodaks live up to their name. And they have other features: genuine proficiency, assured by the "near-and-far" Twindar lens; fine finish, emphasized by the lustrous black pin-grain covering; and low cost. Because of their multiple attractions, the Jiffys have easily sold themselves to a multitude of people.

**DETAILS** Picture size: Six-16,  $2\frac{1}{2} \times 4\frac{1}{4}$  inches; Six-20,  $2\frac{1}{4} \times 3\frac{1}{4}$  inches. Twindar lens. Simple two-position focusing. Snapshot, time actions. Crowned, brilliant finders. Metal cap (extra) protects lens from dust, sand, etc.

**PRICES Jiffy Kodak Six-16, Series II**, \$8.25. Leather case, \$1.85. Kodak Film No. 616 (8 exposures): Verichrome, \$.35; Super-XX or Panatomic-X, \$.40. Lens Cap, \$.15.

**Jiffy Kodak Six-20, Series II**, \$7.50. Leather case, \$1.65. Kodak Film No. 620 (8 exp.): Verichrome, \$.30; Super-XX or Panatomic-X, \$.35. Lens Cap, \$.15.

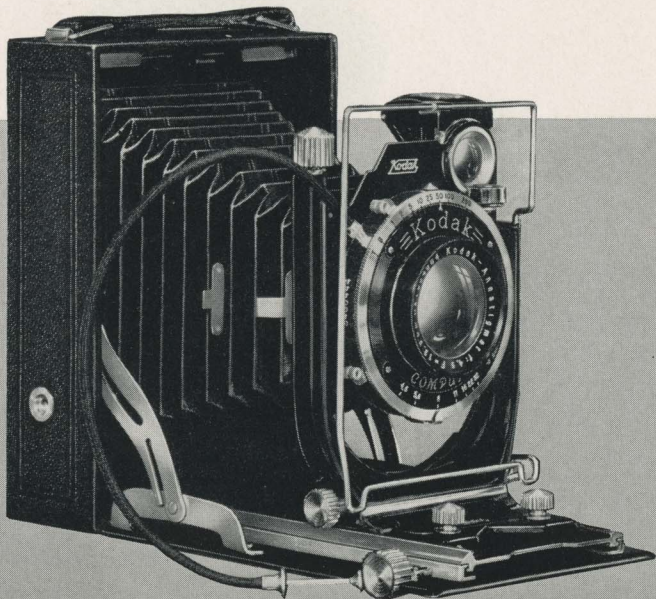


# KODAK RECOMARS 18 AND 33

**T**HESE two cameras fall into perfect step with the trend toward varied and serious photography. Outstanding in equipment and mechanical excellence, their usefulness is multiplied by their ability to use the innumerable film-pack, sheet-film (including Professional Kodachrome), and plate emulsions. Recomars bring users the highly corrected Kodak Anastigmat  $f/4.5$  lens, Compur shutter, rack-and-pinion focusing, double-extension bellows and bed, a rising-sliding front, and many other aids toward universal adaptability. An adapter for miniature Kodachrome and a group of supplementary lenses are supplied as accessories.

**DETAILS** Picture sizes and negative materials: "18"— $2\frac{1}{4} \times 3\frac{1}{4}$ -inch film packs, 6.5 x 9-cm. sheet film or plates; "33"— $3\frac{1}{4} \times 4\frac{1}{4}$ -inch or 9 x 12-cm. film packs, sheet film, or plates. Compur shutter with 8 speeds to 1/200 second (1/250 on "18"), and built-in self timer. Ground-glass back. Spirit level.

**PRICES** "18," \$54; "33," \$63 (both including 3 combination plate and film holders, film-pack adapter, cable release). Case for "18," \$5; for "33," \$5.50. Miniature-Kodachrome Adapter for either model, \$23.50. Supplementary lenses: A and B, for large images of distant objects, \$3.50 each; D (for "18") and E (for "33"), for wide-angle work, \$3.50 each.



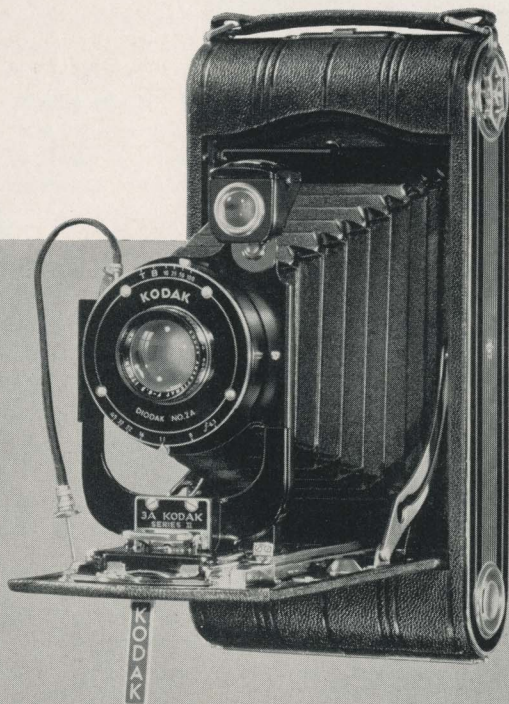


## 3A KODAK, SERIES II

**EXCELLENT** big prints without enlarging . . . that is the aim and accomplishment of the 3A Kodak, Series II. Its pictures are  $3\frac{1}{4} \times 5\frac{1}{2}$  inches . . . postcard size. Either of the Kodak Anastigmat lenses offered . . .  $f/6.3$  and  $f/4.5$  . . . assures versatility and brilliant negatives, and both are supplemented by high-quality shutters. The covering is morocco leather, embellished by chrome-and-black side panels. In this model the 3A takes on the new effectiveness of up-to-date design and full modern efficiency.

**DETAILS** Picture size,  $3\frac{1}{4} \times 5\frac{1}{2}$  inches. Draw front. Focusing, 6 feet to infinity. Twin Exposure Back (extra) gives 11 pictures,  $2\frac{1}{2} \times 3\frac{1}{4}$ , on 6-exposure film.  $f/4.5$  model: both waist-level, eye-level finders; rising, falling front; self timer.

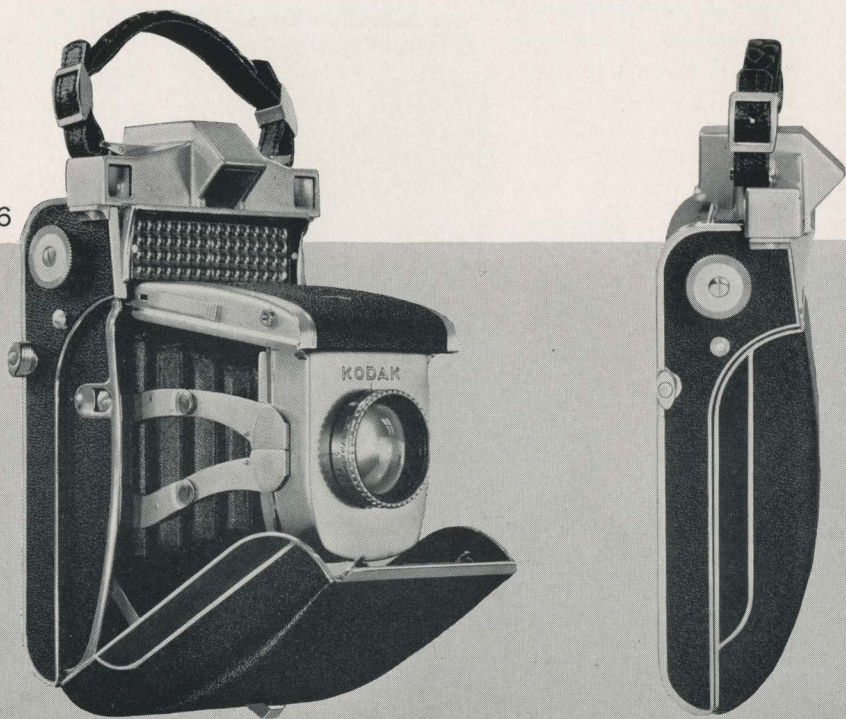
**PRICES** 3A Kodak, Series II, with  $f/4.5$  lens, Compur shutter (8 speeds to  $1/200$  second), \$71; with  $f/6.3$  lens, Diodak shutter (4 speeds to  $1/100$  second), \$42.50. Leather case, \$5.25. Kodak Film No. 122 (6 exp.): Verichrome, \$.55; Super-XX or Panatomic-X, \$.65. Twin Exposure Back, \$5, installed.



# SUPER KODAK SIX-20

**T**HIS remarkable Kodak tops a new page in photographic history. Its diaphragm is photoelectrically controlled. You simply choose your shutter speed to fit your subject. The photoelectric cell, linked with the diaphragm, automatically selects the proper aperture for that speed under existing light conditions. Optimum exposure results.

Extremely interesting, too, is the multi-purpose film-winding lever. It both advances the film and sets the shutter, thereby preventing double exposures. At the same time it opens the window showing the exposure number, and, as you return it to its original position, closes it to protect the film. A third outstanding feature is the combined view finder and split-field range finder of new design, coupled with the focusing mount. The whole camera is designed for convenient operation. Used in the vertical position, it rests comfortably in the left hand, with thumb and index finger on the focusing mount. The right hand operates the shutter-release trigger. Factors which the user





# SUPER KODAK SIX-20

might forget are taken care of automatically, and, as you hold the Super Kodak up to your eye, the picture-making controls are at your finger tips.

Only after inspecting this Kodak can you appreciate its marvelous mechanism... its innumerable refinements... its exquisitely precise construction and beautiful finish. Striking a new level in engineering and craftsmanship, it is a find for those who want the most advanced photographic instrument of the day.

**DETAILS** Picture size,  $2\frac{1}{4} \times 3\frac{1}{4}$  inches. Kodak Anastigmat Special  $f/3.5$  lens of 100-mm. focal length. Built-in shutter with 8 speeds to  $1/200$  and self timer. Finding range by revolving lens mount automatically focuses camera for distances from 4 feet to infinity. Triangular area splitting range-finder field permits easy hairline focusing. Diaphragm apertures photoelectrically controlled by cell below range finder, and fully automatic for all hand-held shutter speeds (diaphragm set manually for speeds slower than  $1/25$ ). Photoelectric cell and finder cover same angle of view. Hand release (cable release may be added without affecting double-exposure prevention device). Red signal in speed-dial window shows until film has been wound and shutter set. Push button releases bed and self-erecting front for opening. Die-cast aluminum case; Persian morocco leather covering; chromium trimmings.

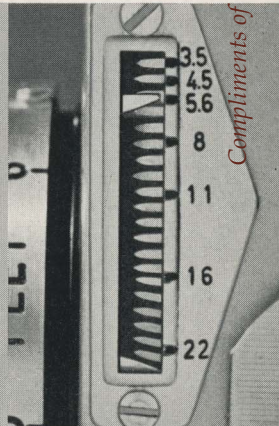
**PRICES** Super Kodak Six-20, \$225. Lined tan sole leather case with shoulder strap, for camera, film, accessories, \$16.50. T.B.I. Cable Release No. 1, \$1.00. Super Kodak Six-20 Masks (for use with various films, filters), with case, \$5.00. Kodak Film (8 exposures): Verichrome, \$.30; Super-XX or Panatomic-X, \$.35.



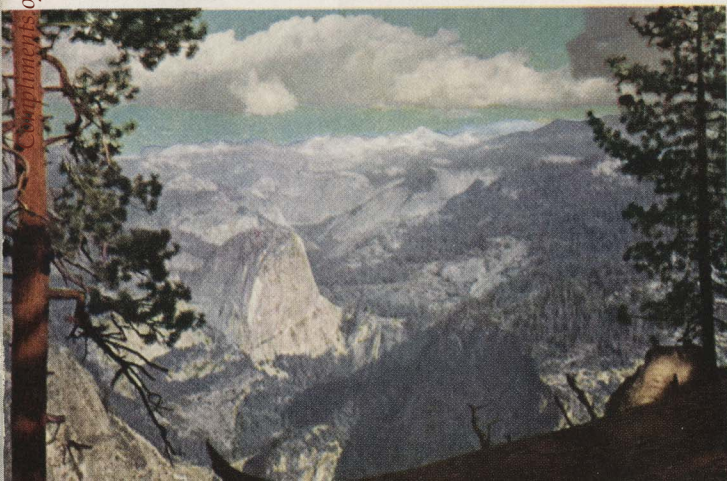
The Super Kodak's picture-making controls are at your finger tips.



One operation sets shutter, actuates window cover, advances film.

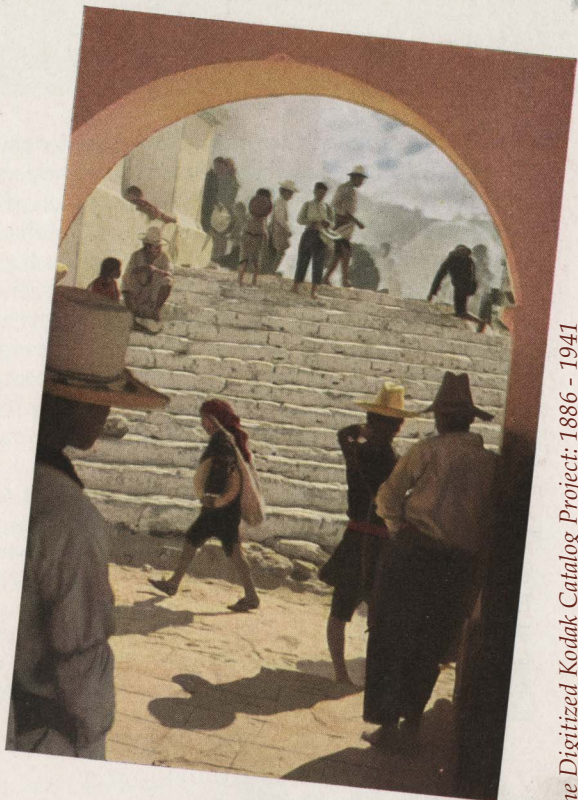


Automatic scale shows aperture at which exposure will be made.



● These illustrations, like the one on the opposite page of the catalog, are enlarged from typical Kodak transparencies. Such enlargements are easy to make, and you can enjoy the pictures on your screen with any one of the projectors shown on pages 14, 20, and 25. You bring the finished enlargements to life with one of the projectors shown





ons, as well as  
over of this cata-  
l reproductions  
achrome trans-  
full-color views,  
d a new world  
ment. You take  
odachrome Film  
e cameras listed  
22, 23, 24, and  
t the full beauty  
transparencies  
simple Eastman  
on page 34.



# KODAK BANTAMS *f*/6.3 AND *f*/8

**H**ERE are two of the most convenient cameras ever designed. They are little more than four inches long. . . so small that either fits the palm of the hand. Even more surprising are the results they give you, for through modern photofinishing methods they lead to pictures  $2\frac{3}{4} \times 4$  inches. And note these additional points: Kodak Bantams use inexpensive (20- and 25-cent) eight-exposure films. You don't have to watch the window while winding to the next exposure, because a special device centers the film. . . locks it accurately in position. And Bantam operating features, aided by the versatile film, minimize exposure problems. Photography with a Bantam. . . especially with the *f*/6.3 model. . . is decidedly worth investigating.

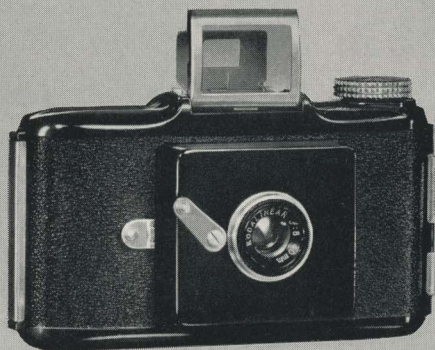
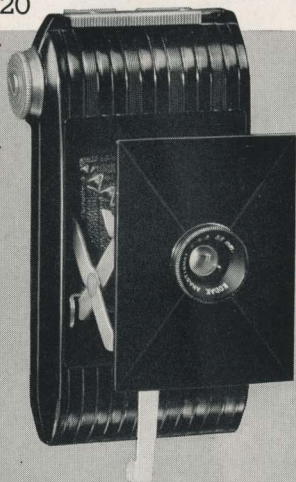
**DETAILS** Standard enlargement size,  $2\frac{3}{4} \times 4$  inches. Fixed focus. Molded body,  $4\frac{3}{8} \times 2\frac{3}{8}$  inches. Weight, 8 ounces. Slight pressure on push button brings front out to picture-taking position. *F*/6.3 model: Kodak Anastigmat *f*/6.3 lens, snapshot and time actions, optical eye-level finder. *F*/8 model: Kodalinear *f*/8 lens, snapshot action, eye-level finder.

**PRICES** Kodak Bantam, *f*/6.3, \$8.50. Kodak Bantam, *f*/8, \$3.95. Black leather case for *f*/6.3 model, \$1.25. Field case for *f*/8 model, \$1.50. Kodak Film No. 828 (8 exposures): Panatomic, \$.20; Plus-X, Super-XX, or Panatomic-X, \$.25.

20

Kodak Bantam *f*/6.3

Kodak Bantam *f*/8





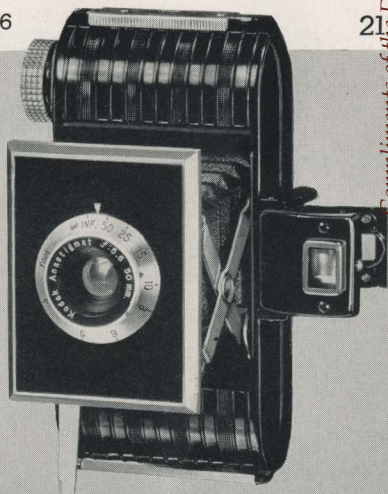
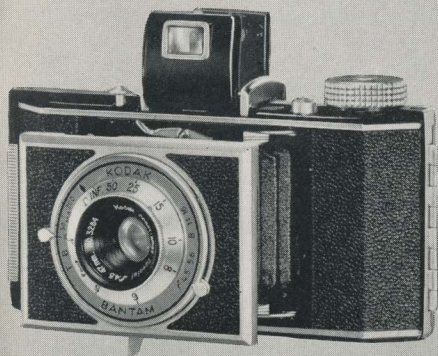
# KODAK BANTAMS $f/4.5$ AND $f/5.6$

**EASTMAN** offers two more members of the Kodak Bantam family. The basic Bantam principle embodied in them leads... through modern finishing methods... to pictures as big as the cameras themselves, while precise construction, plus swift lens-and-shutter combinations, gives unusually wide scope. Pictures can be made under a variety of conditions and may, if desired, be enlarged far beyond the standard  $2\frac{3}{4} \times 4$ -inch enlargement size. Also, both models can be used to make vivid full-color Kodachrome transparencies, which may be viewed as they are or projected on a screen, in large size, with a Kodaslide Projector.

**DETAILS** Standard enlargement size,  $2\frac{3}{4} \times 4$  inches. Front extended at touch of a button. Folding optical eye-level finder.  $F/4.5$  model: Kodak Anastigmat Special  $f/4.5$  lens; 4 shutter speeds to  $1/200$  second; die-cast aluminum body with grained black covering; body shutter release.  $F/5.6$  model: Kodak Anastigmat  $f/5.6$  lens; 3 shutter speeds to  $1/100$  second; black molded body.

**PRICES** Kodak Bantam,  $f/4.5$ , \$22.50. Field case with shoulder strap, \$4.25. Shoulder strap only, \$1.00. Kodak Bantam,  $f/5.6$ , \$14.00. Field case, \$3.25. Universal Range Finder Clip for  $f/4.5$  model, \$.75. Kodak Film No. 828 (8 exposures): Panatomic, \$.20; Plus-X, Super-XX, or Panatomic-X, \$.25. Kodachrome Film No. K828 (K828A for artificial lighting), 8 exposures, \$1.35, including processing (see inside back cover).

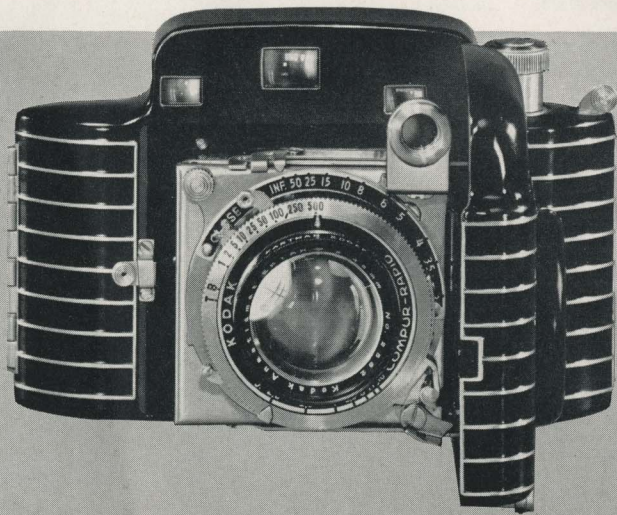
Kodak Bantam  $f/4.5$       Kodak Bantam  $f/5.6$



# KODAK BANTAM SPECIAL

**K**ODAK Bantam Special is one of the most distinctive and distinguished "miniatures" on the market. It has a beauty that is entirely unique in camera design, but it is beauty with a purpose, for the glistening black body protects a remarkably precise and versatile mechanism. Dominating in its importance is the six-element Kodak Ektar  $f/2.0$  lens. It is not only exceptional in speed, but is so highly corrected that it functions outstandingly even when used "wide open." The Ektar is mounted in a Compur-Rapid shutter, which affords speeds up to  $1/500$  of a second. A split-field, military-type range finder is built into the camera and coupled with the focusing mechanism. Enabling the user to find the range and to focus in one simple operation, it eliminates all the guesswork of judging distances. A special device is provided to center the film accurately for each exposure. As the film is advanced, this mechanism stops it at the proper point, making it unnecessary to watch the film window.

With such equipment this finest of the Bantams handles fast action and difficult light as though they were routine picture-making conditions. Through modern photofinishing methods it leads to  $2\frac{3}{4} \times 4$ -inch black-and-white pictures, but because of the sharpness of its negatives enlargement can be carried to practically any point desired. Loading with Kodachrome Film results in brilliantly beautiful full-





# KODAK BANTAM SPECIAL

color transparencies. Bantam Special buyers have a camera with the appearance, "feel," and balance of an exquisitely made instrument . . . and they have real picture-making power at their finger tips, at a cost that represents a rare photographic value.

**DETAILS** Standard black-and-white enlargement size,  $2\frac{3}{4} \times 4$  inches. Kodak Ektar  $f/2.0$  lens of 45-mm. focal length. Compur-Rapid shutter with 9 speeds from 1 to  $1/500$  second. Lever shutter release (cable release may be added). Focusing, from 3 feet to infinity, by lever coupled with built-in range finder. Cover of camera, when closed, protects range finder elements as well as lens and shutter. Focusing eyepiece on range finder permits quick adjustment to individual user's vision. Camera closes when focusing knob has been pushed just beyond infinity position. Opening camera automatically sets focus at infinity. Flush-type sliding film-window cover. Extensible winding knob, for greater convenience. Film locks automatically in centered position for each exposure. Hinged back. Special film-pressure plate. Tripod socket for horizontal position. Smartly styled die-cast and machined aluminum case. Tough, highly polished, black baked-enamel finish, with contrasting raised aluminum ribbing. Metal operating parts, stainless steel or chromium finish. Dimensions,  $4\frac{7}{8} \times 3\frac{1}{8} \times 1\frac{13}{16}$  inches. Weight, 16 ounces.

**PRICES** **Kodak Bantam Special**, complete with tan sole leather field case, \$87.50. Kodak Film No. 828 (8 exposures): Panatomic, \$.20; Plus-X, Super-XX, Panatomic-X, or Infra-Red, \$.25. Kodachrome Film No. K828 (K828A for artificial lighting), 8 exposures, \$1.35, including processing (see inside back cover).



**Above, left:** Split image seen in range finder window shows subject is out of focus. **Above, right:** Focusing lever brings halves of image together — subject into sharp focus. **At left:** Rear of camera, showing winding knob, range finder and view finder windows, film release button, sliding film-window cover.



Kodak Bantam Special in its two-piece tan sole leather field case.

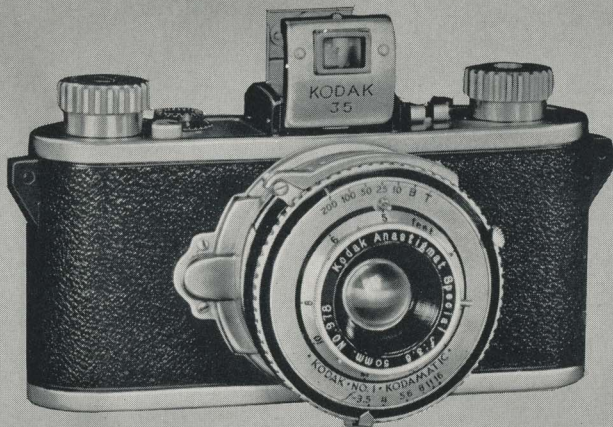
# KODAK 35

**A**LL three of the Kodak 35's are new high values in inexpensive miniature cameras. Of the 35-millimeter type . . . with fast lenses and precision shutters . . . designed and built to exacting Eastman standards . . . they are great picture-makers in both black-and-white and Kodachrome photography.

It will be well worth your while to examine these new cameras at your Kodak dealer's. Note the fast Kodak Anastigmat lenses and precision shutters which they carry. Test the rigidity and strength built into both body and fittings. Open a "35" and see how accurately the back is fitted to prevent light leakage. Inspect the interior mechanism, as well. Notice how precisely the gears and sprockets have been machined to insure accurate advancement of the film. Notice, too, that the  $f/3.5$  and  $f/4.5$  models have an ingenious device for preventing double exposures, and a delayed-action adjustment that enables the photographer to include himself in the picture. You need not set the shutter by hand on either of these two models. It is set automatically, but not until you wind the film to the next exposure.

All of these points, and many more that will come to your attention, mean just one thing. Kodak 35 is not a "novelty" camera in any respect. It not only has features new to its price range, but is built with the precision indispensable to a real miniature camera. When

Illustrated—Kodak 35,  $f/3.5$





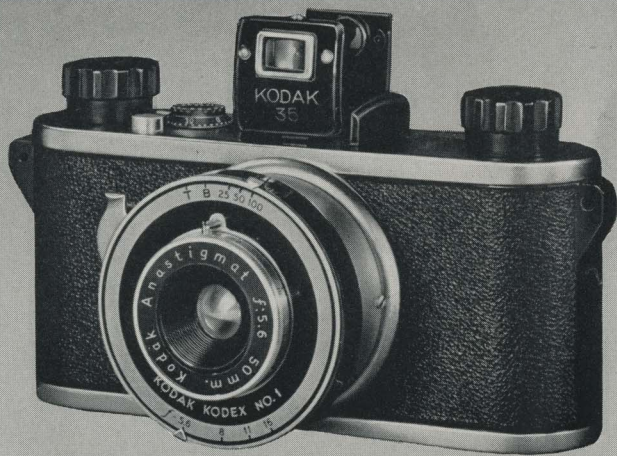
# KODAK 35

loaded with Kodachrome Film it performs brilliantly as a color camera. And while, through modern photofinishing methods, it regularly leads to  $2\frac{3}{4}$  x 4-inch black-and-white pictures, you can count on substantially bigger enlargements whenever you want them.

**DETAILS** Negative size,  $1 \times 1\frac{1}{2}$  inches. Lenses and shutters: Kodak Anastigmat Special  $f/3.5$  in Kodamatic shutter (5 speeds to  $1/200$ , and delayed action); Kodak Anastigmat  $f/4.5$  in Diomatic shutter (4 speeds to  $1/150$ , and delayed action); Kodak Anastigmat  $f/5.6$  in Kodex shutter (3 speeds to  $1/100$ ). Fingertip focusing from 4 feet to infinity, by revolving lens mount. Folding optical eye-level finder. Automatic exposure counter. Device to center film accurately for each exposure and lock it in position. Loading facilitated by sliding off one-piece bottom and back. Tripod socket. Finish: fine pin seal grain molded into body made of new, tough, damage-resistant material; fittings in natural metal and black lacquer.  $F/3.5$  and  $f/4.5$  models have double-exposure prevention; universal clip for attaching range finder.

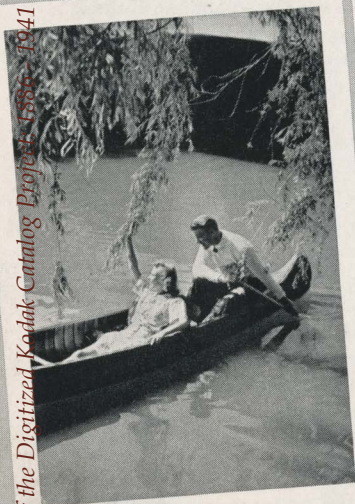
**PRICES** Kodak 35, with Kodak Anastigmat  $f/5.6$  lens, \$14.50; with Kodak Anastigmat  $f/4.5$  lens, \$24.50; with Kodak Anastigmat Special  $f/3.5$  lens, \$33.50. Carrying case for any of 3 models (2-piece field-type case of high-grade sole leather, with rawhide lining in main section), with shoulder strap, \$6.50. Shoulder strap (fits lugs molded integrally with camera body), \$1. Kodak Pocket Range Finder, \$7. Kodak Film No. 135: Plus-X, Super-XX, or Panatomic-X, 36 exposures, \$.95; 18 exposures, \$.60. Infra-Red, 36 exposures, \$1.20. Kodachrome Film No. K135 (K135A for artificial lighting), 18 exposures, \$2.50, including processing (see inside back cover).

Illustrated—Kodak 35,  $f/5.6$



KODAK 35 Standard  $2\frac{3}{4} \times 4$  enlargement, available at low cost through modern photofinishing methods. Similar enlargements can be obtained from negatives made with Jiffy Kodak V.P., Kodak Bantams, Baby Brownies, and Bullet camera.

BABY BROWNE Actual size



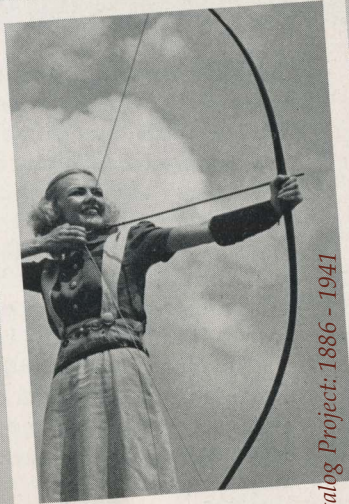
Compliments of the Digitized Kodak Catalog Project 1886-1941



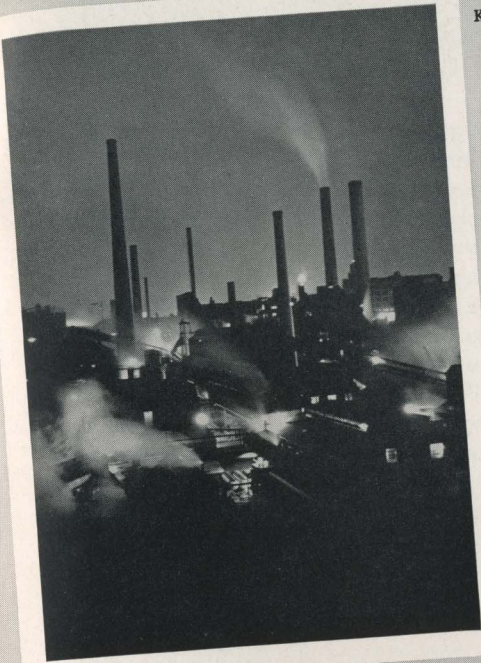
JIFFY KODAK SIX-20, SERIES II Actual size



KODAK RECOMAR 18 Actual size



BULLET CAMERA Actual size



KODAK VIGILANT SIX-16 Actual size

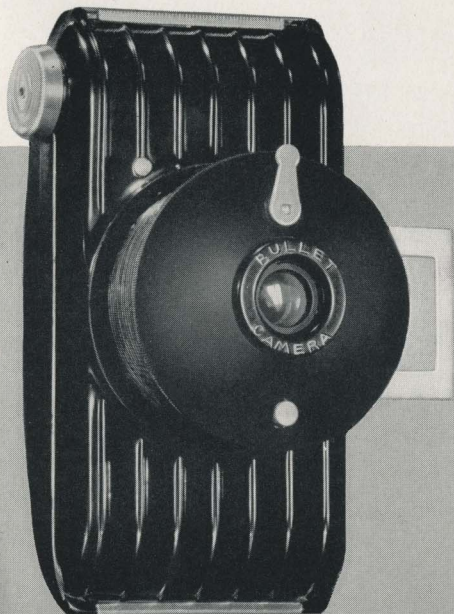
Compliments of the Digitized Kodak Catalog Project: 1886 - 1941

# BULLET CAMERA

**H**ERE is one of the most intriguing little picture makers on the market. It is built on the principle of the folding camera, but instead of bellows it has an ingenious spiral mount which brings the lens out into picture-taking position with a single turn. The rest is just as easy: sight on your subject through the eye-level finder, press the shutter release, and the picture is yours. Turn back the mount, fold the finder, and the camera fits snugly in your hand, pocket, or handbag. The Bullet represents a novel conception in camera construction . . . a conception so well carried out that it results in really excellent pictures, even though the user may be entirely inexperienced, and may never before have tripped a camera shutter.

**DETAILS** Picture size,  $1\frac{5}{8} \times 2\frac{1}{2}$  inches. Latest molded construction, with raised ribbing and permanent black glossy finish. Meniscus lens. Shutter with snapshot and bulb actions. Removable back for quick, easy loading.

**PRICES** **Bullet Camera**, \$2.00. Carrying case, \$.75. Field-type carrying case, with neck strap, \$.85. Kodak Film No. 127 (8 exposures): Verichrome, \$.25; Super-XX or Panatomic-X, \$.30.



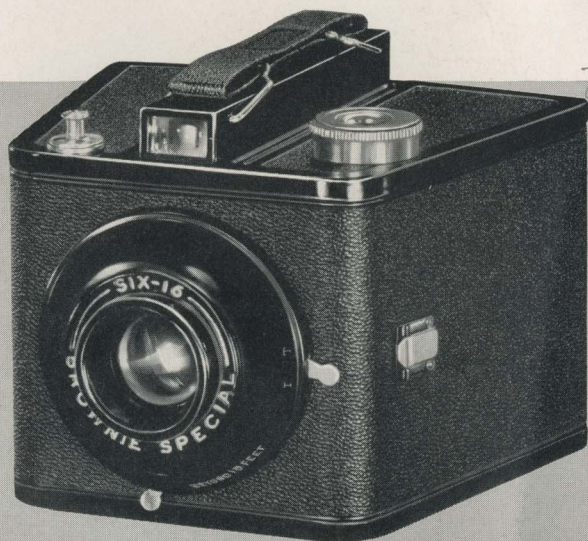


# SIX-16 AND SIX-20 BROWNIE SPECIALS

**F**INEST in box-type cameras are these Brownie Specials. They are strikingly different...in looks, compactness, and convenience. Tapered toward the front, curved at the back, they are distinctively smart. This design also leads to definitely smaller cameras...without reducing picture sizes. A brilliant "spyglass" finder frames subjects from eye level. A plunger shutter release is provided atop the camera, within easy finger reach, and a safety latch prevents accidental exposures. Final assurances of efficient operation are the Eastman-made meniscus lens and smooth-working rotary shutter. Brownie Specials break with tradition on many points, but they bring you in extra measure the Brownie ability to make good pictures.

**DETAILS** Picture sizes: Six-16,  $2\frac{1}{2} \times 4\frac{1}{4}$  inches; Six-20,  $2\frac{1}{4} \times 3\frac{1}{4}$  inches. Snapshot and time actions. Simple two-position focusing by lever below lens mount. Tripod socket for horizontal position; folding support for vertical position. All-metal body; black pin-grain covering; black japan edging.

**PRICES** **Six-16 Brownie Special**, \$4.25. Carrying case, \$1.25. Kodak Film No. 616 (8 exposures): Verichrome, \$.35; Super-XX or Panatomic-X, \$.40. **Six-20 Brownie Special**, \$3.75. Carrying case, \$1.10. Kodak Film No. 620 (8 exposures): Verichrome, \$.30; Super-XX or Panatomic-X, \$.35.

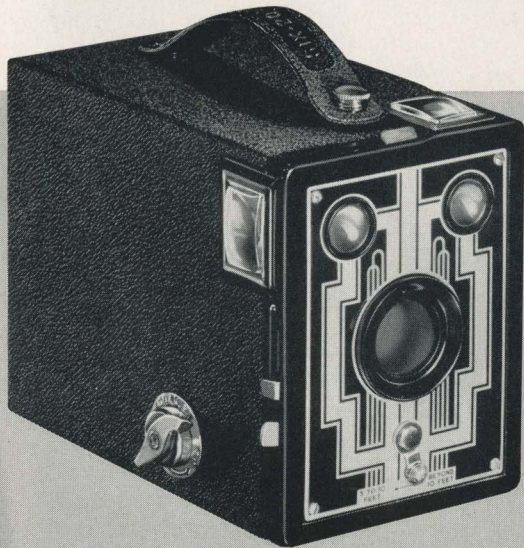


## SIX-16 AND SIX-20 BROWNIES

"**BROWNIE**" is the world's byword for an amazing combination of simplicity and photographic ability, and those qualities stand out prominently in the standard Six-16 and Six-20 models. They are fitted with the Diway lens, which through one simple adjustment assures sharp focus for near or distant subjects. The finders for horizontal and vertical pictures are extra-large and of the brilliant type, making it unusually easy to sight on the subject. As a result these Brownies perform even more capably than older models, and are even more popular. As a matter of fact, they captivate both grown-ups and children at sight, for efficient as their predecessors were, they never approached these models in "eye appeal" . . . in swank yet businesslike looks. You will want to see the Six-16 and Six-20 at your favorite dealer's.

**DETAILS** Picture sizes: Six-16,  $2\frac{1}{2} \times 4\frac{1}{4}$  inches; Six-20,  $2\frac{1}{4} \times 3\frac{1}{4}$  inches. Eastman Rotary shutter (snapshot and time actions). Black morocco-grain covering. Decorative two-tone metal front. Nickered fittings. Easy two-position focusing by lever below lens mount.

**PRICES** **Six-16 Brownie**, \$3.25. Kodak Film No. 616 (8 exposures): Verichrome, \$.35; Super-XX or Panatomic-X, \$.40. **Six-20 Brownie**, \$2.85. Kodak Film No. 620 (8 exposures): Verichrome, \$.30; Super-XX or Panatomic-X, \$.35.





# SIX-16 AND SIX-20 BROWNIE JUNIORS

**LOAD . . . aim . . . shoot!** With such an easy formula to follow, anyone can operate a camera. That, plus the factor of really good pictures, is the success secret of the Brownie Juniors. They demand no measuring of distances, because they have "fixed" focus. Once they are loaded, there remains only the tripping of the shutter, and thousands perform that simple operation every day, confident in the knowledge that, within their camera class, Brownies are unsurpassed. With their sound construction and neat, modern finish, these junior members of the famous family have established an enviable reputation for lasting high value.

**DETAILS** Picture sizes: Six-16, 2½ x 4¼ inches; Six-20, 2¼ x 3¼ inches. Tested meniscus lens, with protective front crystal. Rotary shutter (snapshot and time actions). Extra large ground-glass finders for easy framing of subject. Black levant-grain covering. Decorative metal front plate. Fittings in nickel and smooth black japan.

**PRICES** **Six-16 Brownie Junior**, \$2.35. Kodak Film No. 616 (8 exposures): Verichrome, \$.35; Super-XX or Panatomic-X, \$.40. **Six-20 Brownie Junior**, \$2.00. Kodak Film No. 620 (8 exposures): Verichrome, \$.30; Super-XX or Panatomic-X, \$.35.



# BABY BROWNIE...BABY BROWNIE SPECIAL

**A**T first glance, a camera as small as either the Baby Brownie or the new Baby Brownie Special might not seem entirely practical. But make no mistake: these genuine Eastman models are "babies" in size and price only. Actually they are complete, carefully designed cameras that make surprisingly good pictures . . . sizable ones, too, measuring  $1\frac{5}{8} \times 2\frac{1}{2}$  inches. Operation is extremely simple, and that is one of the reasons why both models are unsurpassed "starting" cameras for beginners of all ages. If you need such a camera . . . for yourself or for a member of your family . . . see the modern, proficient Baby Brownie, and the even smarter Baby Brownie Special, at your dealer's.

**DETAILS** Picture size,  $1\frac{5}{8} \times 2\frac{1}{2}$  inches. Easy loading. No focusing required. Meniscus lens. Smooth-working shutter, for horizontal or vertical snapshots. Molded bodies of modern design, with permanent, rich, glossy black finish. Baby Brownie Special has brilliant spyglass-type eye-level finder, push-button shutter release, white trimmings, braided carrying strap. Baby Brownie has two-piece eye-level finder (folds flush with top of camera when not in use), lever shutter release.

**PRICES** **Baby Brownie**, \$1. Carrying Case, \$.25. **Baby Brownie Special**, \$1.25. Kodak Film No. 127 (8 exposures): Verichrome, \$.25; Super-XX or Panatomic-X, \$.30.

Baby Brownie

Baby Brownie Special



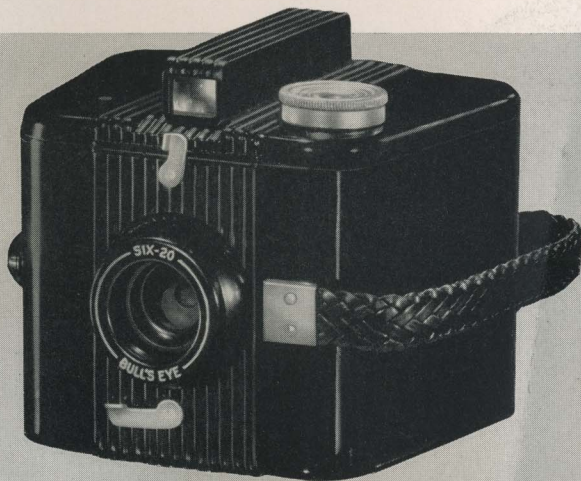


## SIX-20 BULL'S EYE

**LATEST** styling and simple efficiency stand out all over this Eastman camera. Its glossy black molded body tapers somewhat toward the front, while the back is gently curved. These details of design not only lead to exceptional compactness, but, together with the rounded edges and raised ribbing, give the Bull's Eye distinctive looks and a pleasant "feel." Operation is the simplest possible: load, sight on your subject, trip the shutter. The tubular "spyglass" finder shows the picture-to-be with great brilliance and accuracy. The reliable lens and shutter do the rest. Young people . . . beginners of all ages, in fact . . . are instantly attracted by the appearance of this clever little camera. And they are delighted when they find how easily it makes fine pictures. In short, the Six-20 Bull's Eye easily qualifies as a real star among inexpensive, box-type cameras. You will surely want to see it at your favorite camera counter.

**DETAILS** Picture size,  $2\frac{1}{4} \times 3\frac{1}{4}$  inches. Meniscus lens. Single-action shutter with snapshot and bulb settings. Fixed focus, with range from 8 feet to infinity. Tubular, optical, eye-level finder. Easy loading by removing top of camera. Black molded body, with permanent glossy finish. Braided strap, for carrying, also aids in steadying camera during exposure.

**PRICES** Six-20 Bull's Eye, \$2.75. Carrying case, \$1.10. Kodak Film No. 620 (8 exposures): Verichrome, \$.30; Super-XX or Panatomic-X, \$.35.



# KODACHROME ACCESSORIES

**K**ODACHROME Film Nos. K135 and K828, usable in several cameras listed in this catalog, is returned to you after processing, without extra charge, in the form of full-color transparencies individually mounted in Ready-Mounts. If desired, the transparencies may then be viewed as they are, but their matchless beauty can be best appreciated by projecting them in a Kodaslide Projector. Viewed in large size on the home screen with the aid of one of these simple devices, the images have a realism and richness of detail matched only by the original scenes.

For showing in projectors not equipped to take Ready-Mounts, the transparencies may be mounted into Kodaslides by means of masks, cover glasses, and tape (or metal binding)—or the Ready-Mounts may be slipped into Ready-Mount Metal Frames. For other accessories that heighten the enjoyment of color photography, see the booklet "Color With Your Camera."

**DETAILS AND PRICES** **Kodaslide Projector, Model 1**, an efficient, compact, low-priced projector, \$18.50. **Kodaslide Projector, Model 2**, a brilliantly performing, highly convenient projector: with 5-inch lens, \$33.50; with 7½-inch lens, \$52. (Both projectors take either Ready-Mounts or Kodaslides.) **Kodaslide Materials:** Cover glasses, box of 36, \$.50; masks, box of 50, \$.35; tape, 10-yard roll, \$.20; metal binding, box of 12, \$.75. **Ready-Mount Metal Frames**, box of 6, \$.60.

**At left:** Kodaslide Ready-Mounts (actual size 2 x 2 inches) bring you your Kodachrome transparencies ready for projection. **Below:** Kodaslide Projector, Model 1. **At right:** Kodaslide Projector, Model 2, in use.





# KODAK PRECISION ENLARGER

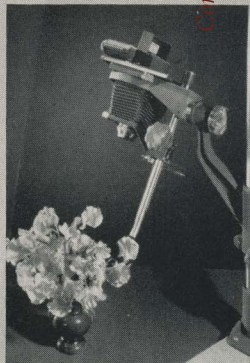
**I**F you have, or intend to have, a darkroom of your own, see the new Kodak Precision Enlarger. It not only leads to enlargements of highest quality, but is adaptable to many other branches of photographic work as well. Add one of the special projection lenses to the basic units and you have an enlarger of unsurpassed certainty and convenience. Supplement them with additional accessories and you equip yourself for copying, ciné titling, still-life photography, photomicrography, double-bellows-extension photography, or making color-separation negatives. Ask for the booklet describing this versatile machine in full.

**ACCESSORIES AND DETAILS:** Two groups of special  $f/4.5$  lenses, in 2-, 3-, and 4-inch focal lengths. Glass or glassless negative carriers for negatives up to  $2\frac{1}{4} \times 3\frac{1}{4}$  inches. Up to 16-diameter enlargements on baseboard with 2-inch lenses. . . unlimited sizes on wall or floor. Three interchangeable condensers to serve entire negative range. Lens boards to accommodate camera lenses. Masking paper board. Diffusing disk. Kodachrome transparency holders. Tricolor filter holder. Camera back adapter. Copying lights. Microscope attachment. Bracket for determining exposure with Weston 715 or 650 Meter.

**PRICES** **Kodak Precision Enlarger**, including Stand Assembly, Bellows Assembly A, Condenser Head A with No. 2, 3, or 4 Condenser, 1 Glassless Negative Carrier, Lamp, \$67.50. 2-inch Kodak Projection Anastigmat  $f/4.5$  Lens, \$15. Other accessories extra.



**At left:** Embodying the chief advantages of both condenser and diffuse types of enlargers, the Kodak Precision Enlarger affords splendid print quality plus speedy operation. **Below,** converted into a camera for black and white or full color: left, copying; right, still-life photography.



# ACCESSORIES FOR THE PICTURE MAKER

**KODAFLECTOR** A lighting unit that greatly increases the efficiency of photo bulbs. Complete, \$5.

**KODAK HANDY REFLECTOR, MODEL C (not illustrated)** Simple, effective cardboard reflectors for use on standard sockets in home lamps. 2 for \$1.15.

**KODAK POCKET RANGE FINDER** Eliminates guesswork with any camera that has a focusing scale. Look through the range finder, adjust by means of a knurled knob, and set camera for distance indicated. \$7.

**KODAPOD AND OPTIPOD** For standard tripod sockets. May be attached to handy objects, to hold camera steady during exposure. Kodapod, \$1.75; Optipod, \$1.25.

**KODAK TABLE TOP TRIPOD COMBINATION** Three versatile units, for use together or separately—Table Top Tripod, \$1.75; Pan-a-pod, an indexed revolving head, \$3; Tilt-a-pod, a tilting device, \$2.50. Combination of all three units, \$7.

**DARKROOM OUTFITS** Supplies for developing and printing pictures in the home darkroom installed in basement, closet, or attic. Kodak Darkroom Outfit No. 1, \$8.75; No. 3, \$4.25; ABC Outfit, \$2.25.

**LENS ATTACHMENTS** Fit over the regular camera lens to give unusual results. Kodak Portrait Attachments, \$.65 to \$3.75. Other types of attachments are priced as low as \$1.25.

**EASTMAN ALBUMS** Attractive...durable...easy to use. Many styles, in a wide price range. Eastman Albums for prints are priced from \$.90 to \$5. Kodak Negative Albums, \$1.25 to \$2.

**"HOW TO MAKE GOOD PICTURES"** Latest, revised edition of this helpful publication. Hundreds of pictures, diagrams. Simple, untechnical explanations. Every amateur photographer should own a copy. \$50.





*Announced Since This Catalog was Issued—*

## BROWNIE REFLEX

*An inexpensive, new-type miniature camera that offers the advantages of reflex photography*

**L**OOK into the hooded finder of the new Brownie Reflex; you see your subject *instantly*: full-size—brilliantly sharp and clear. Press the shutter release, and the picture's yours.

Because of the big, fully lighted image, the completely simple operation, it's easy for anyone to use a Brownie Reflex with full assurance of good results. You see your picture, just as in the finished snapshot, while you're making it. The Brownie Reflex offers everyone the advantages of twin-lens reflex photography, formerly open only to people with expensive cameras.

This latest Brownie is unusual in other ways, too. It's definitely a miniature camera, yet it makes pictures without enlargement of a substantial and ever more popular size— $1\frac{5}{8}$  inches square. And through modern photofinishing methods it may lead to prints  $2\frac{3}{4}$  x  $2\frac{3}{4}$  inches. You load with inexpensive Kodak Film No. 127—and you get twelve pictures on a roll.

In spite of these features—in spite of its typical Eastman accuracy and dependability, its handsome, expensive-looking construction—the Brownie Reflex is priced surprisingly low. It is one of the most intriguing little picture makers ever offered—a rare camera value. Be sure to see it soon.

**DETAILS** Picture size,  $1\frac{5}{8}$  x  $1\frac{5}{8}$  inches. Recommended standard enlarged print size,  $2\frac{3}{4}$  x  $2\frac{3}{4}$  inches. Carefully adjusted meniscus lens. Fixed focus (no focusing required). Reliable automatic shutter (requires no setting), with snapshot and "bulb" actions. Smooth-working plunger-type shutter release. Brilliant, negative-size finder. Two-piece metal finder hood springs open at a touch—folds quickly when not in use, covering finder lens. Black body of tough, damage-resistant material, with molded morocco grain. Strong, ornamental, satin-aluminum top and bottom covers. Etched metal front plate. Tripod socket. Dimensions,  $4\frac{3}{4}$  x  $3\frac{1}{2}$  x  $2\frac{1}{4}$  inches. Weight, 15 ounces. Braided black neck cord provides convenient carrying and helps steady camera during exposures. Precision-molded film holder, easily slipped off bottom of camera for loading.

**PRICE** Brownie Reflex, complete with braided black neck cord . . . . . \$5.25



# KODAK ADVANCE ENLARGER

**H**ERE is a new enlarger of unusual scope that costs only \$27.50. It accommodates all roll-film negatives from 35 mm. and Bantam to  $3\frac{1}{4} \times 5\frac{1}{2}$  inches (of which a  $3\frac{1}{4} \times 4\frac{1}{4}$ -inch portion can be enlarged). With its standard 4-inch  $f/11$  lens, included in the above price, you can easily make fine enlargements up to  $5\frac{1}{2}$  diameters at the baseboard, or larger ones when projecting to the floor. For greater magnifications, or for greater printing speed, any of the 2-, 3-, and 4-inch Kodak Precision Enlarger lenses, and the 2-inch Kodak Projection Anastigmat,  $f/6.3$ , can be used interchangeably.

And the Kodak Advance Enlarger has other important features that the amateur requires: sturdy, rigid construction—even illumination—simple, direct adjustments—positive focusing. It is easy to assemble, and to take down. Capable and inexpensive, it is a splendid instrument with which to undertake one

of the most fascinating of all photographic processes—the making of your own big prints.

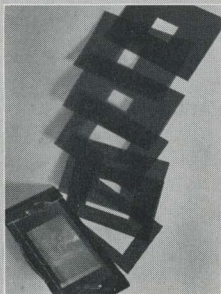
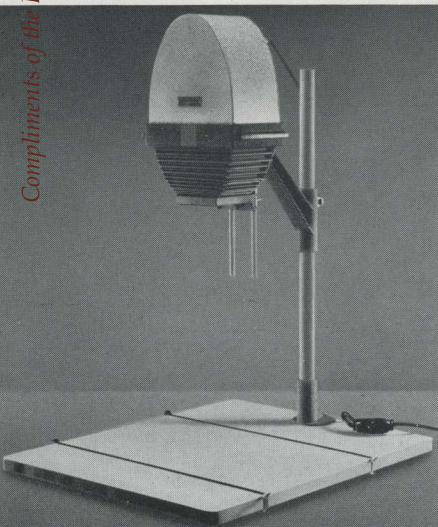
**DETAILS** Heavy, tubular, 24-inch vertical column and die-cast supplementary parts assure rigidity, accurate alignment, critical definition. Parabolic lamphouse accurately directs light through opal diffusing screen and lens. Critical focus easily secured by moving lower bellows frame up or down, and maintained by positive, spring-actuated locking device. Open-frame negative carrier of strong molded material. Turning enlarger head about vertical column permits projecting to floor.  $17\frac{1}{2} \times 22$ -inch five-ply natural-finish baseboard, presealed under pressure to prevent warping. Maximum magnifications at baseboard: with standard 4-inch lens,  $5\frac{1}{2}$  diameters; with 3-inch Precision Enlarger lenses, 8 diameters; with 2-inch Precision Enlarger lenses, or 2-inch  $f/6.3$  lens, 13 diameters.

**PRICES** Kodak Advance Enlarger with 98-mm. (4-inch)  $f/11$  projection lens and baseboard, but without lamp, \$27.50; without either lens or lamp, \$25. Kodak 2-inch Projection Anastigmat  $f/6.3$  lens, \$7.50. No. 211, 75-watt Mazda Photo Enlarger Lamp, \$.35. Ruby Kodaloid Mask for any of 9 negative sizes, \$.15.

**At left:** The \$27.50 price of the Kodak Advance Enlarger includes the baseboard and 4-inch  $f/11$  lens. The lamp, not included, costs only \$.35.

**Below, left:** The single negative carrier supplied accommodates any of nine Kodaloid masks for various negative sizes.

**Below, right:** The lower bellows frame accepts interchangeably any of the lenses designed for the Kodak Precision Enlarger.





# KODAK PORTABLE MINIATURE ENLARGER

**T**HIS new precision instrument, designed solely for making beautiful enlargements from 35-mm. or Bantam negatives, provides miniature camera owners with new enlarging efficiency and convenience. It is, in addition, so constructed that it can be quickly taken down and packed in the Carryall Case, which also has separate compartments for camera, film, developers, film tank, and accessories . . . a complete outfit for miniature photography.

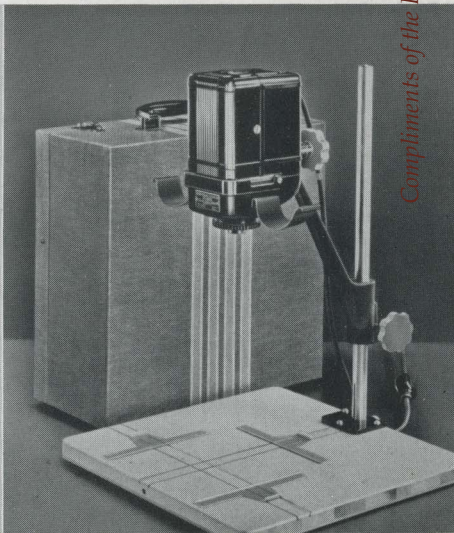
Together, the case and enlarger weigh only twelve pounds. And the outside dimensions of the case are only  $13\frac{3}{4}$  x  $13\frac{3}{4}$  x  $6\frac{1}{4}$  inches. It is easy to see, therefore, how conveniently the Kodak Portable Miniature Enlarger can be taken along on trips and vacations for enlarging en route . . . and how compact a photo "lab" it becomes when storage space is limited to the corner of a closet in a small apartment. If the bulk of your enlarging is to be done

from miniature negatives, make it a point to see this ingenious outfit.

**DETAILS** Open-frame negative carrier—Bantam or 35-mm. size, as desired; film in strips can be advanced without removing carrier from head. Enlarger head, with thermoplastic lamp-house, is raised or lowered by turning Tenite knob; can be tilted in vertical plane to any angle, or replaced by owner's camera for copying. Illumination system, with diffuse light source and three-element condenser, ideal for miniature work. Easy, accurate focusing by rotating lens tube. Magnifications from about  $2\frac{1}{2}$  to 9½ diameters at baseboard—larger by projection to wall or floor. Baseboard is 5-ply maple, pre-sealed against warping.

**PRICES** Kodak Portable Miniature Enlarger, with 35-mm. or Bantam Negative Carrier, 50-watt No. 113 Mazda Photo Enlarger Lamp—not including Carryall Case or lens (three lenses are available—specify choice), \$27.50; with 2-inch  $f/6.3$  Projection Anastigmat and Case, \$42.50; with 2-inch  $f/4.5$  Projection Anastigmat and Case, \$50; with 2-inch  $f/4.5$  Projection Ektar and Case, \$60. Lenses only (in lens tubes):  $f/6.3$  Projection Anastigmat, \$7.50;  $f/4.5$  Projection Anastigmat, \$15;  $f/4.5$  Projection Ektar, \$25. Carryall Case only, \$10.

**Below:** The Carryall Case holds not only the Kodak Portable Miniature Enlarger but also packaged chemicals, a film tank, and—at upper left—camera, film, and accessories in a completely enclosed compartment.



Compliments of the Digitized Kodak Catalog Project: 1886 - 1941

# KODAK VIGILANT JUNIORS SIX-16 AND SIX-20

**F**OUR distinguishing features will help you decide whether one of these new Kodaks is the camera for you. They make album-size pictures. They include latest advances in design and construction. Operation is quick and simple... and prices decidedly low.

Control of opening and closing is centralized in a single push button. It releases the bed when the camera goes into action, and frees it for folding when the picture has been made. The mechanism for erecting the lens and shutter embodies Eastman's precise new ten-point support, which gives extra assurance of good pictures. There is a choice of two lens-and-shutter combinations,

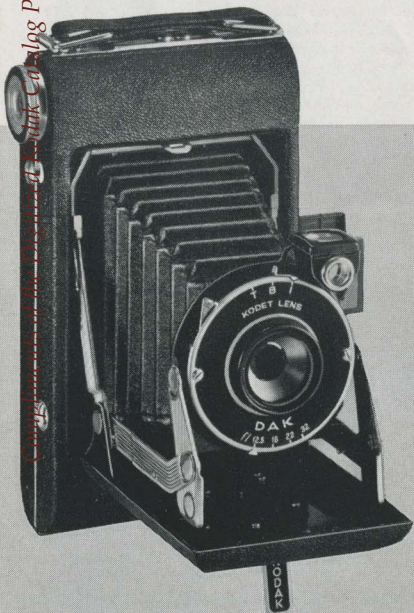
both reliable and both easy to work. Two view finders are provided to enable you to "shoot" from either eye level or waist level. Roomy interiors for quick loading, two tripod sockets, and a back latch with safety guard add further convenience and certainty. A Kodak Vigilant Junior gives you large pictures—good pictures—from a small investment.

**DETAILS** Picture sizes: Six-16,  $2\frac{1}{2} \times 4\frac{1}{4}$  inches; Six-20,  $2\frac{1}{4} \times 3\frac{3}{4}$  inches. Dak shutter adjustable for time, "bulb," and snapshot exposures; Dakon, for time, "bulb,"  $1/25$  and  $1/50$  second. Trigger shutter release. Black morocco-grain covering.

**PRICES** Kodak Vigilant Junior Six-16 with Kodet lens, Dak shutter, \$9.75; with Bimat lens, Dakon shutter, \$12.50. Kodak Vigilant Junior Six-20 with Kodet lens, Dak shutter, \$8.50; with Bimat lens, Dakon shutter, \$11.

*All prices subject to change without notice*

Copyright of the Eastman Kodak Company Project: 1886 - 1941



Kodak Vigilant Juniors fitted with Kodet lens and Dak shutter require no focusing whatever.

Models carrying the Bimat lens and Dakon shutter are quickly focused by rotating the lens mount to one of three positions.





# KODAK FILMS FOR EVERY NEED

**VERICHROME** For general use . . . for day-in and day-out picture making . . . use Kodak Verichrome Film for surer results. Double-coated by a special process, it takes care of reasonable exposure errors . . . increases your ability to get clear, satisfying results. Supplied in rolls and packs.

**SUPER-XX** A film of exceptional speed, with grain size held to a minimum. For fast-action shots at high shutter speeds . . . fully timed negatives under seemingly impossible light conditions . . . snapshots at night. Panchromatic. Antihalation base. Standard rolls, including miniature sizes, and packs. (Note: Super-XX is so extremely fast that overexposure will result if it is used in bright sunlight in cameras that have but one or two diaphragm stop openings.)

**PANATOMIC-X** A film with grain of truly microscopic fineness, and speed ample for ordinary purposes. This is the film for big, brilliant enlargements, with no appreciable graininess. Fully panchromatic. Antihalation base. Supplied in standard rolls, including miniature sizes, and in packs.

**PLUS-X** The all-round, standard film for miniature cameras. Combines extra speed with unusual fineness of grain, so that Plus-X negatives made under adverse light conditions yield generous enlargements free from disturbing graininess. Panchromatic. Antihalation base. Miniature sizes only.

**KODACHROME** Yields full-color transparencies, which may be viewed as they are or, in the case of miniature sizes, projected on a screen. Requires no extra equipment for taking. Two types, for use outdoors and indoors. Miniature rolls and popular sheet sizes. Prices include processing. All standard miniature (24 x 36 mm. and 28 x 40 mm.) Kodachrome transparencies processed in U. S. A. will be returned mounted in Kodaslide Ready-Mounts (without extra cost) unless otherwise specified.



**THE GREAT SNAPSHOTS  
ARE MADE ON KODAK FILM**



WHETHER you're expert or inexperienced—for day-in and day-out picture making—use Kodak Verichrome Film for surer results••• Accept nothing but the film in the familiar yellow box—Kodak Film —which only Eastman makes.

**Eastman Kodak Stores Inc.**  
1009 Olive St.  
ST. LOUIS, MO.