



KODAK

## **The Digitized Kodak Catalog Project (1886 - 1941): A Very Brief History**

Most camera collectors at some point in their collecting careers pass through a Kodak phase - some never come out of it. And if there ever was one name that came to be associated with both cameras and collecting, it was Kodak.

George Eastman received his first patent (for coating dry plates) and bought his first manufacturing facility in 1880, and in 1881 he started the Eastman Dry Plate Company. In 1886 he received a patent for the near-mythical Eastman Detective Camera, but it wasn't until 1888 that the first camera bearing the name "Kodak" was introduced.

One of the nice things about collecting Kodak is that the product line is pretty well known, and because the company produced annual catalogs for many years, collectors can be reasonably sure of what they're looking at, when it was made, the variations and so on - presuming that they have access to either the appropriate catalog, or a number of the many books which document Kodak, each to some greater or lesser extent.

But what would be really nice would be to have a complete set of Kodak catalogs in an easily accessible form and readily available. And since the advent of portable computing devices (PC, Macintosh, etc.) that's been possible - except for the difficulty of assembling a complete set of Kodak catalogs in one spot and then scanning them and making the results available.

The idea of digitizing a complete set of Kodak catalogs has kicked around the collecting community for many years. It's been proposed on a number of online forums, during meetings of various photohistory groups, and for years there have been many incomplete "Kodak CDs" on eBay but at best, they only contained a few catalogs - whatever the owner had available. But assembling a complete set of catalogs, then scanning and processing perhaps 3,000 to 4,000 pages, was a daunting task - if not completely overwhelming - and nothing ever came of it.

Until now.

In early 2010, the idea came up again, but this time we - "we" as in "the collecting community" - were lucky. A number of collectors were willing to loan their catalogs to this project and a couple of insane - wait, let's call them "dedicated" - dedicated enthusiasts - neither of whom collected Kodak, but both of whom enjoyed the challenge of such a project - were willing to put in the time and effort to scan and pull together the entire set of catalogs into a full-blown Kodak Catalog Digital Library.

Our initial objective was to include just the annual amateur catalogs, but it turns out that many cameras only appear in certain professional and specialty catalogs. We included as many of those as we could obtain so that almost every Kodak camera made in the US, Canada and Europe, would be documented - at least up to about 1941. After that, it becomes much more difficult as Kodak stopped producing annual catalogs as their product line became increasingly more diversified.

However, even with the additional "non-amateur" catalogs, we weren't completely successful in illustrating "every" camera Kodak ever made. There are an elusive few that might appear in specialty catalogs that we simply couldn't track down. If you can't find one of those odd cameras, that's no doubt why. We may do a revision at some point in the future if someone is willing to loan us a catalog that includes a camera that isn't already recorded.

In this project, a total of 67 catalogs were used from 1886 through 1941 including a number of professional and dealer catalogs, and in some years, two or even three different catalogs to cover all the bases. With the cooperation of a number of dedicated collectors, we were able to pull together all those catalogs and in June 2010, the project started in earnest.

By November 2010, we had scanned everything we needed and eventually all 67 catalogs were then reassembled as image folders and converted to the universally accepted PDF format and finally, converted into individually searchable PDFs which could then be searched globally as a collection.

For those of you interested in the statistics: about 200 hours of scanning time (we never want to hear that sound again), 67 catalogs and 3,908 page scans - which generated 7,917 original and processed images - and 11.4 GB of disk space. Additionally, another 100+ hours of technical development time was needed to convert the digital catalogues into a fully searchable "knowledgebase" that could be launched from most any standard web browser.

The overwhelming number of catalogs was loaned to us by that most remarkable of Kodak collectors, Charlie Kamerman of Eagle Creek, Oregon. Without Charlie, it's very doubtful that this project could even have been attempted.

But as it turned out, even Charlie didn't have all the publications that were needed, but he was able to track down the five that he lacked and was able to secure either a copy or high resolution images that we could work with. And so, our thanks to the contributors of the catalogs and scans that we used:

Charlie Kamerman for the vast majority of catalogs used and all his help,  
Steve Shohet for loaning a variety of test catalogs,  
Ryerson University (Toronto) for the 1886 Eastman Catalog  
George Layne for the 1890 New Kodaks Catalog,  
Mike Kessler for the 1891 Dealer Display Catalog,  
Ralph London for the 1893 UK Catalog,  
Michael Pritchard for the 1897 UK Catalog.

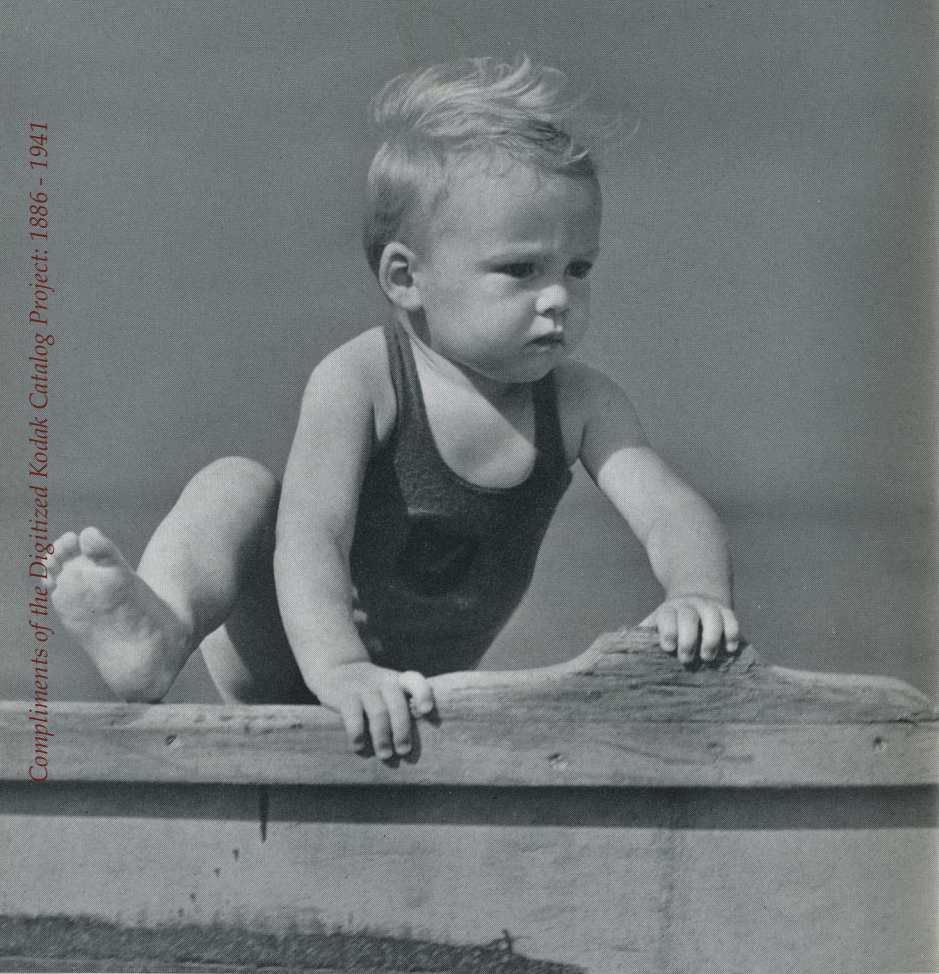
The digital side of the project - also known as "all of the work" - was done by Rob Niederman of Medina, Minnesota, and Milan Zahorcak of Tualatin, Oregon. Remarkably we're still friends and in a few years, we'll probably be able to talk about this project rationally.

And there you have it, a more-or-less done deal. We're fairly sure that it isn't quite perfect, and expect there will be some carping about something or other; but all-in-all, we believe this to be a pretty good product and can now move on to something else.

Our thanks to all of those involved.

Rob Niederman  
Milan Zahorcak

Fall, 2011



# KODAKS AND

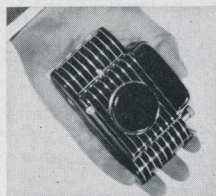


# IN SELECTING A CAMERA, CONSIDER THESE POINTS:

**THE PICTURE SIZE** that appeals to you most. The various Kodaks and Brownies afford a wide range, topped by the 3A or postcard size. In connection with this first point, consider whether you will want to use most of your pictures in their original size or whether you expect to have them enlarged (or enjoy the fun of enlarging them yourself). Cameras that yield album-size pictures are as popular as ever. At the same time "miniature" photography, which begins with diminutive cameras and negatives and ends with striking enlargements . . . or large images projected on a screen . . . is enjoying an ever greater vogue. Any good picture can be enlarged, but miniature photography is definitely based on large pictures from small cameras.

## **THE TYPE OF CAMERA YOU PREFER**

. . . box or folding. Both types, as built by Eastman, make excellent pictures. The box models, though modest in price, embody the most modern con-



Kodak Bantam Special—  
an outstanding example of  
compactness plus ability.









# BROWNIES

struction and finish, and are thoroughly dependable picture makers within their intended sphere. The folding models supplement these qualities with greater compactness and added carrying ease, and each successively higher classification gives greater versatility. This fact logically leads to the next point in choosing your camera. . .

**THE VARIETY OF PICTURES YOU WANT**, and the conditions under which you expect to take them. Even the very simplest Eastman cameras regularly make sharp, clear pictures of average outdoor subjects in good light, and modern films and photo lamps have extended their scope to certain indoor situations. The more pretentious types of Kodaks extend this scope still farther to include rapidly moving subjects in the sports and other fields, "slices-of-life" shots indoors and out, night club and theater pictures, and. . . in the case of

most miniature Kodaks . . . full-color transparencies. Such broadened ability is due largely to lenses and shutters of successively greater range and precision.

One of the chief factors governing the capability of a lens is its "speed" . . . the amount of light it can admit to the camera in a given time interval. And the speed of a lens, as well as other factors of efficiency, depends largely upon the extent to which the lens has been corrected for certain aberrations which normally arise when light transmits an image through

LENS	ELEMENTS OF LENS	RELATIVE SPEED
MENISCUS		1
DOUBLET		1½
F.7.7		4
F.6.3		6
F.4.5		11
F.3.5		18
F.2.8		28
F.2.0		56

How various lenses are constructed—and the approximate relative "speeds" that result.

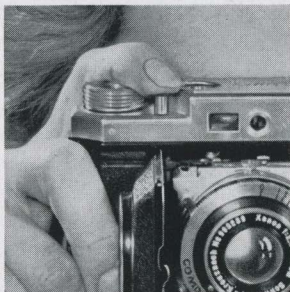


glass. Correction of these faults demands complex construction, finest of materials, and the most painstaking craftsmanship, but results in lenses of great adaptability. To capitalize the outstanding performance of which they are capable, such lenses must be mounted in shutters built with watch-like accuracy, and offering an unusually wide selection of exposure speeds.

Chiefly responsible for the scope of any camera, the lens and shutter likewise account for a large share of its cost. It is well to bear this in mind in deciding the final point. . .

**THE PRICE TO PAY.** Determine the price you want to pay in the light of the factors pointed out in the preceding paragraphs—in general, according to the purposes to which the camera is to be put.

Regardless of your final choice, you may be sure that your Kodak or Brownie will give you complete satisfaction. Because Kodak, the world's largest photographic organization, has made and sold millions of cameras of all varieties, on the basis of constant improvement and unquestioned value. Even the lowest-priced models have an enviable reputation as full-fledged, reliable cameras. Similarly, in the more elaborate types, where finest mechanical and optical design and fabrication are indispensable, Eastman offers photographic instruments of a quality second to none.



Using the body shutter release—an important recent improvement embodied in many Eastman cameras.

Prices in this catalog are subject to change without notice

**EASTMAN KODAK COMPANY**

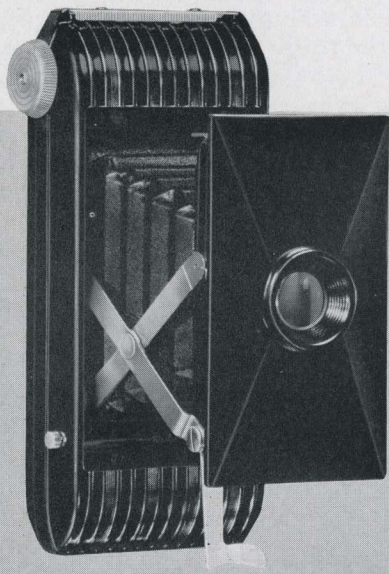
**OCTOBER, 1938    ROCHESTER, N. Y.**

## JIFFY KODAK V. P.

**A** FEW dollars invested in Jiffy Kodak V. P. buy a great deal. Modern molded construction...substantial picture size...plus the basically sound design and equipment that make Eastman cameras ever-reliable—and ever-ready for good pictures. The lens and shutter, deciding factors in any camera, are carefully made and thoroughly tested, and ingenious construction gets them into action instantly. Springing open at the touch of a button, the Jiffy V. P. goes to work without the preliminaries of focusing or other adjustment. Just trip the shutter and the picture is made. Latest of "vest pocket" Kodaks, this model meets today's demand for a swift, good-looking, compact little folding camera.

**DETAILS** Picture size,  $1\frac{5}{8} \times 2\frac{1}{2}$  inches. Permanent "built-in" glossy black finish, with ornamental ribbing. Removable back. Weight, 10 ounces. Fixed focus. Kodak Doublet lens, deeply recessed for protection. Built-in shutter, with snapshot and bulb actions, 2 release triggers. Aperture can be stopped down to  $f.16$ . Folding direct-view eye-level finder. Action front, operated by push button, opens camera to picture-taking position.

**PRICES** Jiffy Kodak V.P., \$4.75. Lined cowhide carrying case, \$1.35. No. 127 Kodak Film (8 exp.): Verichrome, \$.25; Super-XX or Panatomic, \$.30.





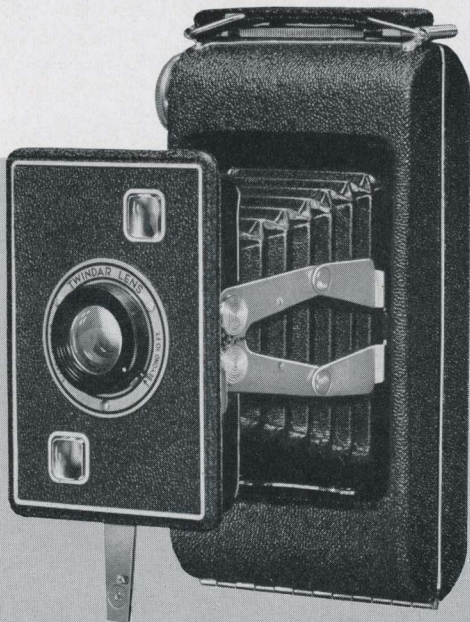
# JIFFY KODAKS SIX-16 and SIX-20, Series II

**T**HOUGH Jiffy Kodaks Six-16 and Six-20 make big pictures, their slim, compact design makes them unusually smart-looking...unusually handy to carry. And no folding camera known is easier to use...or works faster. Press one button—the camera opens. Press another and the picture's yours. Jiffy Kodaks live up to their name. And they have other features: genuine proficiency, assured by the "near-and-far" Twindar lens; fine finish, emphasized by the lustrous black pin-grain covering; and low cost. Because of their multiple attractions, the Jiffys have easily sold themselves to a multitude of people.

**DETAILS** Picture size: Six-16,  $2\frac{1}{2} \times 4\frac{1}{4}$  inches; Six-20,  $2\frac{1}{4} \times 3\frac{1}{4}$  inches. Twindar lens. Simple two-position focusing. Snapshot, time actions. Crowned, brilliant finders. Metal cap (extra) protects lens from dust, sand, etc.

**PRICES** **Jiffy Kodak Six-16, Series II**, \$9.50. Leather case, \$1.85. Kodak Film No. 616 (8 exposures): Verichrome, \$.35; Super-XX or Panatomic, \$.40. Lens Cap, \$.15.

**Jiffy Kodak Six-20, Series II**, \$8.50. Leather case, \$1.65. Kodak Film No. 620 (8 exp.): Verichrome, \$.30; Super-XX or Panatomic, \$.35. Lens Cap, \$.15.

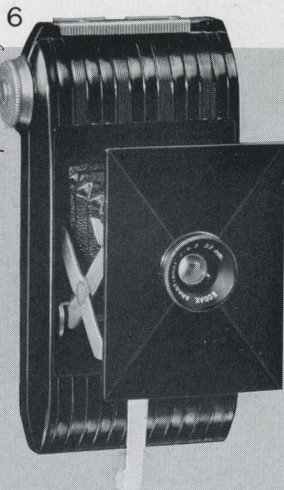


# KODAK BANTAMS *f*.6.3 AND *f*.8

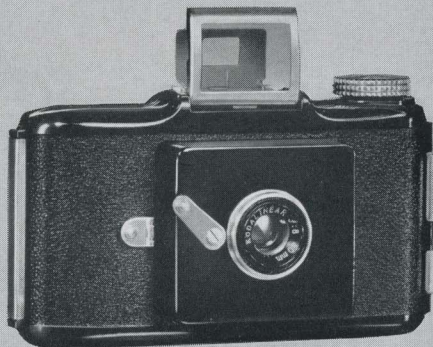
**H**ERE are two of the most convenient cameras ever designed. They are little more than four inches long... so small that either fits the palm of the hand. Even more surprising is the size of the pictures to which they lead, for modern photofinishing methods give you  $2\frac{3}{4}$  x 4-inch prints. And note these additional points: Kodak Bantams use inexpensive (20- and 25-cent) eight-exposure films. You don't have to watch the window while winding to the next exposure, because a special device centers the film... locks it accurately in position. And Bantam operating features, aided by the versatile film, minimize exposure problems. Photography with a Bantam... especially with the *f*.6.3 model... is decidedly worth investigating.

**DETAILS** Standard enlargement size,  $2\frac{3}{4}$  x 4 inches. Fixed focus. Molded body,  $4\frac{3}{8}$  x  $2\frac{3}{8}$  inches. Weight, 8 ounces. Slight pressure on push button brings front out to picture-taking position. *F*.6.3 model: Kodak Anastigmat *f*.6.3 lens, snapshot and time actions, optical eye-level finder. *F*.8 model: Kodalinear *f*.8 lens, snapshot action, eye-level finder.

**PRICES** Kodak Bantam, *f*.6.3, \$9.50. Kodak Bantam, *f*.8, \$4.75. Black leather case for *f*.6.3 model, \$1.25. Tan leather field case, neck strap, for *f*.6.3 model, \$2.75. Field case for *f*.8 model, \$1.50. Kodak Film No. 828 (8 exposures): Plus-X, Super-XX, or Panatomic-X, \$.25; Panatomic or Super X, \$.20.



Kodak Bantam *f*.6.3



Kodak Bantam *f*.8



# KODAK BANTAMS *f*.4.5 AND *f*.5.6

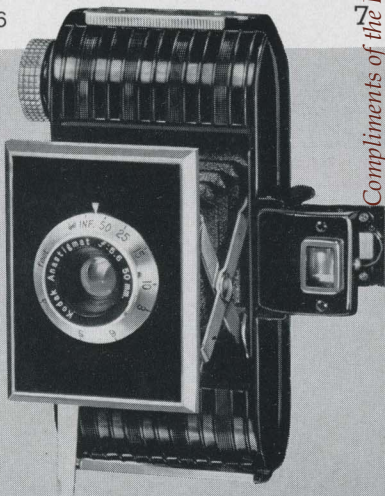
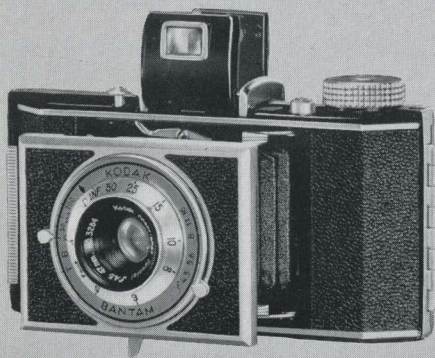
**EASTMAN** presents two more members of the Kodak Bantam family. The basic Bantam principle embodied in them affords . . . through modern finishing methods . . . pictures as big as the cameras themselves, while precise construction, plus swift lens-and-shutter combinations, gives unusually wide scope. Pictures can be made under a variety of conditions and may, if desired, be enlarged far beyond the standard  $2\frac{3}{4}$  x 4-inch Bantam size. Furthermore, both models can be used to make vivid full-color Kodachrome transparencies, which may be viewed as they are or mounted for large-size projection with the Kodaslide Projector.

**DETAILS** Standard enlargement size,  $2\frac{3}{4}$  x 4 inches. Black enamel and bright metal trimmings. Front extended to picture-taking position at touch of a button. Folding optical eye-level finder. *F*.4.5 model: Kodak Anastigmat Special *f*.4.5 lens; 4 shutter speeds to 1/200 second; die-cast aluminum body with grained black covering; body shutter release. *F*.5.6 model: Kodak Anastigmat *f*.5.6 lens; 3 shutter speeds to 1/100 second; black molded body.

**PRICES** Kodak Bantam, *f*.4.5, \$27.50. Field case with shoulder strap, \$5.50. Kodak Bantam, *f*.5.6, \$16.50. Field case, \$3.75. Kodak Film No. 828 (8 exposures): Plus-X, Super-XX, or Panatomic-X, \$.25; Panatomic or Super X, \$.20. Kodachrome Film No. K828 (K828A for Photoflood lighting), 8 exposures, \$1.35, including processing.

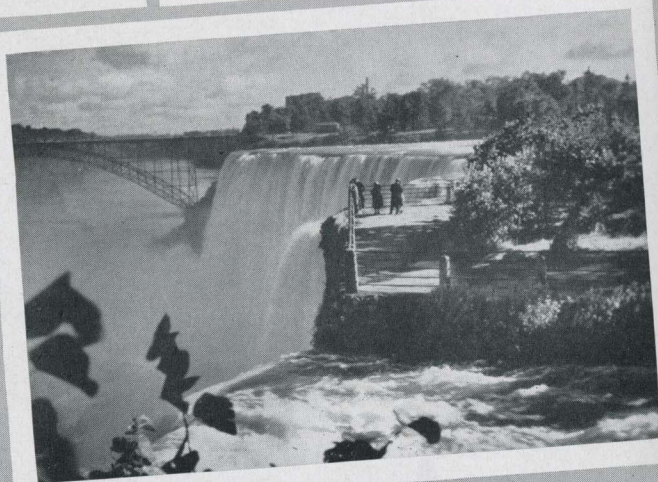
Kodak Bantam *f*.4.5

Kodak Bantam *f*.5.6



KODAK BANTAM  
(standard 2¼ x 4 enlargement)

JIFFY KODAK V.P.



JIFFY KODAK SIX-20,  
SERIES II





KODAK JUNIOR SIX-20, SERIES III

KODAK DUO SIX-20, SERIES II

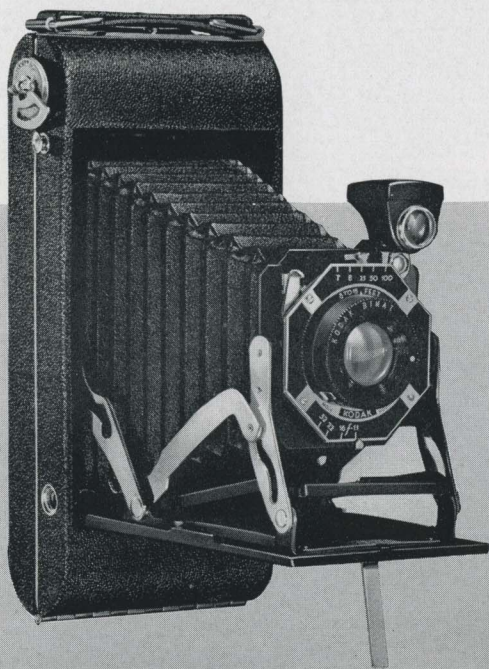


KODAK SENIOR SIX-16

## KODAK JUNIORS SIX-16

**TAKE** this as a guide: Kodak Juniors, Series II, are among America's most popular cameras...for more reasons than one. Opening to picture-taking position with a single pull on the bed support, they get into action quickly, easily. Equipped with both reflecting and direct-view finders, they give you the choice of sighting either from waist height or from eye level. And when the picture has been made, your camera closes at the touch of a one-finger bar release. For lens equipment you can have either the readily focused Kodak Bimat or a single lens that requires no focusing whatever. Both are mounted in reliable shutters, and are fully capable within their intended picture-making ranges.

Series II Juniors are neatly finished and nicely proportioned. And, though compact, they afford pictures in a choice of two generous sizes...pictures amply large for mounting. In short, every one of these cameras offers far greater value than its modest price indi-





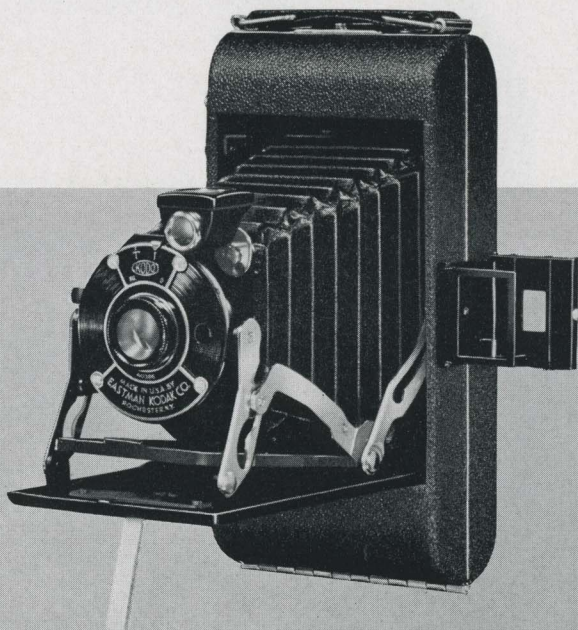
## AND SIX-20, SERIES II

cates. Be sure to see all of the models, whether you are shopping for a camera of your own or want to present someone else with the means to simple, satisfying photography.

**DETAILS** Picture sizes: Six-16,  $2\frac{1}{2} \times 4\frac{1}{4}$  inches; Six-20,  $2\frac{1}{4} \times 3\frac{1}{4}$  inches. Self-erecting front—one pull opens camera and erects lens into position. Light pressure on special bar release frees bed of camera for closing. Two tripod sockets. Single-lens models have fixed focus. Bimat models, focus adjustable by revolving lens mount. Reflecting finder, reversible for vertical and horizontal positions; also folding direct-view finder for either position. Black pin-grain covering, with bright nickel trimmings.

### PRICES

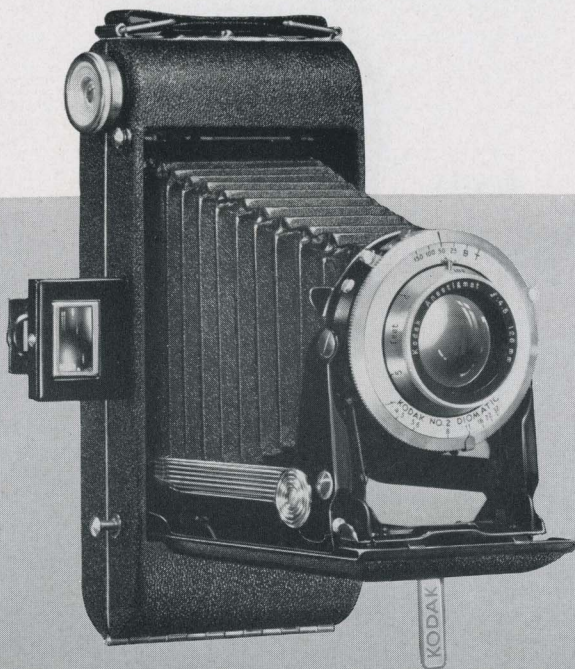
	Junior Six-16 Series II	Junior Six-20 Series II
With Single lens, snapshot and time adjustments . . . . .	\$10.25	\$8.75
With Kodak Bimat lens, shutter speeds to 1/100 . . . . .	12.75	11.00
Soft leather carrying case . . . . .	1.85	1.65
Lined grain leather case . . . . .	3.00	2.50
Kodak Verichrome Film (8 exposures) . . . . .	.35	.30
Kodak Super-XX or Panatomic Film (8 exp.) . . . . .	.40	.35



# KODAK JUNIORS SIX-16

**ADVANCED** style, pronounced ability, big pictures, moderate cost ... if these are your camera specifications, you will want to see the new Kodak Juniors, Series III. With their smooth contours, sturdy erecting arms, and natural-metal fronts, they are undeniably modern in appearance. Every one of the models... and there are six in all ... is equipped for the type of picture making demanded today: simple, fast, and sure. Anastigmat lenses, precise shutters, body shutter releases, optical eye-level finders, and finger-tip focusing are some of the features. Pictures are substantial in size...  $2\frac{1}{4} \times 3\frac{1}{4}$  or  $2\frac{1}{2} \times 4\frac{1}{4}$ ... and their quality means good enlargements when you want them.

Price will depend upon the conditions under which you expect to use your camera, the models with Kodak Anastigmat  $f.4.5$  lens and Diomatic shutter giving you the greatest latitude. If these Kodaks strike your fancy, you will probably find one that meets your ideas of cost as well, for the price range is not only wide, but moderate





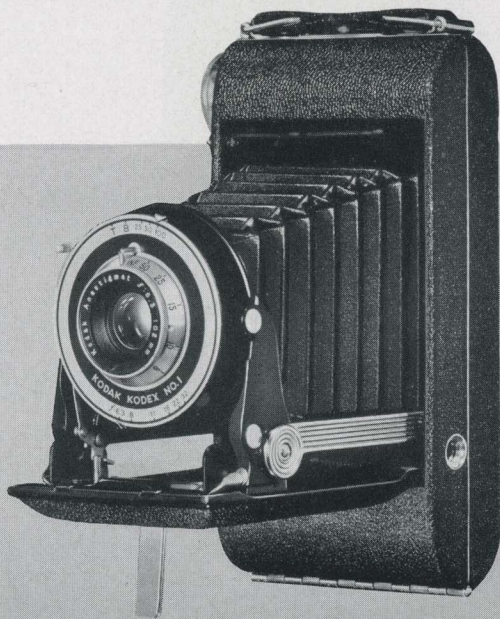
# AND SIX-20, SERIES III

throughout. Many a search for the "right" camera is ending at the Juniors, Series III.

**DETAILS** Picture sizes: Six-16,  $2\frac{1}{2} \times 4\frac{1}{4}$  inches; Six-20,  $2\frac{1}{4} \times 3\frac{1}{4}$  inches. Self-erecting front. Body shutter release. Kodex shutter has 3 speeds to 1/100. Diomatic shutter has 4 speeds to 1/150 and built-in self timer. Focusing, by revolving lens mount, from  $3\frac{1}{2}$  feet to infinity (4 feet to infinity on Six-16, *f*.4.5 and *f*.8.8 models). Knurled film-winding knob. Folding optical eye-level finder. One-finger bed release for easy closing. Swing-type metal cover over film window, to protect fast films. Covering, black morocco-grain material.

## PRICES

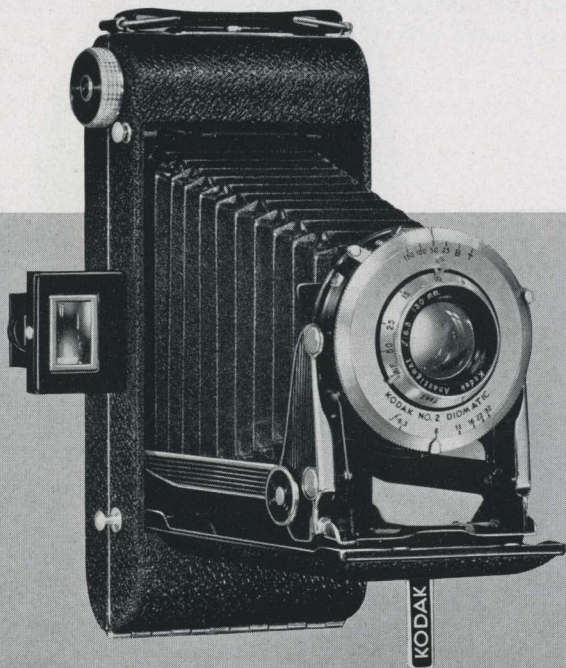
	Junior Six-16 Series III	Junior Six-20 Series III
With Kodak Anastigmat <i>f</i> .8.8 lens, Kodex shutter	\$15.50	\$13.50
With Kodak Anastigmat <i>f</i> .6.3 lens, Kodex shutter	18.00	16.00
With Kodak Anastigmat <i>f</i> .4.5 lens, Diomatic shutter . . . . .	29.50	25.00
Soft leather carrying case . . . . .	1.85	1.65
Lined grain leather case . . . . .	3.00	2.50
Kodak Verichrome Film (8 exposures) . . . .	.35	.30
Kodak Super-XX or Panatomic Film (8 exp.) . .	.40	.35



# KODAK SENIORS

**I**NSPECT these swank Kodaks ever so briefly, and you will be impressed with the manner in which they combine beautiful simplicity with latest efficiency. Touch a button . . . your Senior pulls open, the lens ready for the picture. Touch a bar just inside the bed and the mechanism folds back out of sight. Hold the open camera up to your eye with both hands and pick out your subject through the direct-view finder. Right at your finger tips . . . on the camera body . . . is a plunger button that trips the shutter at the instant when the picture is "right." Danger of camera movement is minimized . . . there is no need of fumbling for a remote release on the shutter itself . . . your fingers cannot obscure the lens. This is picture making with an up-to-the-minute Kodak Senior.

Incidental fittings and finish speak for themselves. From beginning to end the Seniors are exceptional cameras. Their two popular sizes and triple choice of Kodak Anastigmat lenses fit almost any ambitious photographer's purse and purpose. Your favorite Kodak dealer will





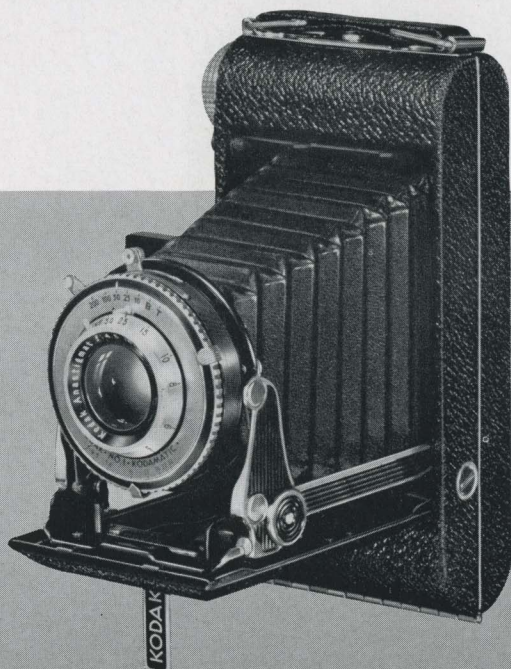
# SIX-16 AND SIX-20

be glad to show you the variety of models supplied. For widest scope, see the models equipped with *f*.4.5 lens and Kodamatic shutter.

**DETAILS** Picture sizes: Six-16, 2½ x 4¼ inches; Six-20, 2¼ x 3¼ inches. Self-erecting front. Kodex shutter has 3 speeds to 1/100 second; Diomatic, 4 speeds to 1/150 second, self timer; Kodamatic, 5 speeds to 1/200 second, self timer. Focusing: Six-20, from infinity to 3½ feet; Six-16, infinity to 4 feet. Optical direct-view eye-level finder. Body shutter release on side of camera (trigger release retained). Black pig-grain covering.

## PRICES

	Senior Six-16		Senior Six-20	
	Without Case	With Case	Without Case	With Case
With <i>f</i> .4.5 lens, Kodamatic shutter . . . . .	\$32.00	\$34.75	\$28.00	\$30.25
With <i>f</i> .6.3 lens, Diomatic shutter . . . . .	24.50	27.25	21.00	23.25
With <i>f</i> .6.3 lens, Kodex shutter . . . . .	21.00	23.75	18.50	20.75
With <i>f</i> .7.7 lens, Kodex shutter . . . . .	19.50	22.25	17.00	19.25
With Bimat lens, Kodex shutter . . . . .	16.50	19.25	15.00	17.25
Kodak Verichrome Film (8 exposures) . . . . .	\$.35		\$.30	
Kodak Super-XX or Panatomic Film (8 exp.) . . . . .	.40		.35	

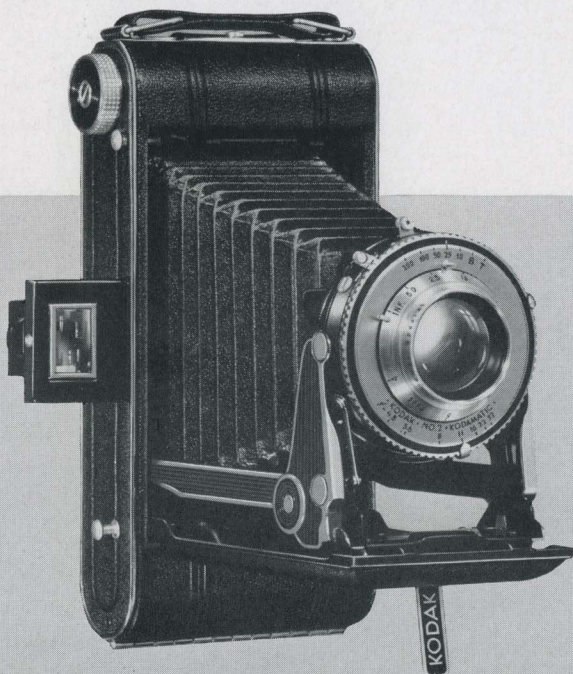


## KODAK SPECIALS

**NOTHING** so delights the serious picture taker as a group of fine cameras from which he can select an instrument exactly suited to his discriminating taste. If you are one of many such photographers, here is your opportunity.

Made for two standard picture sizes, all of the Kodak Specials have these advanced refinements: a folding optical finder that catches the scene as you see it . . . from eye level; a fingertip body shutter release that minimizes chances of movement; a built-in self timer, which enables the user to take his own picture; a one-finger bed release for quick closing; a special aluminum case, covered with pin-seal grain leather, and trimmed with chromium and black lacquer. No term except "de luxe" adequately describes this group of fine cameras.

And, regardless of which size is your favorite, the model of your choice will bring you the fast, finely corrected Kodak Anastigmat Special  $f.4.5$  lens, mounted in either the Kodamatic or Compur-Rapid shutter. Great versatility and ease of handling can be taken for





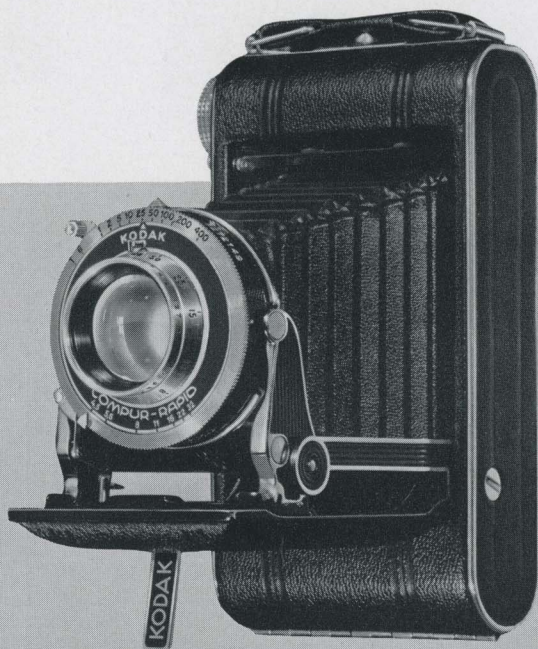
# SIX-16 AND SIX-20

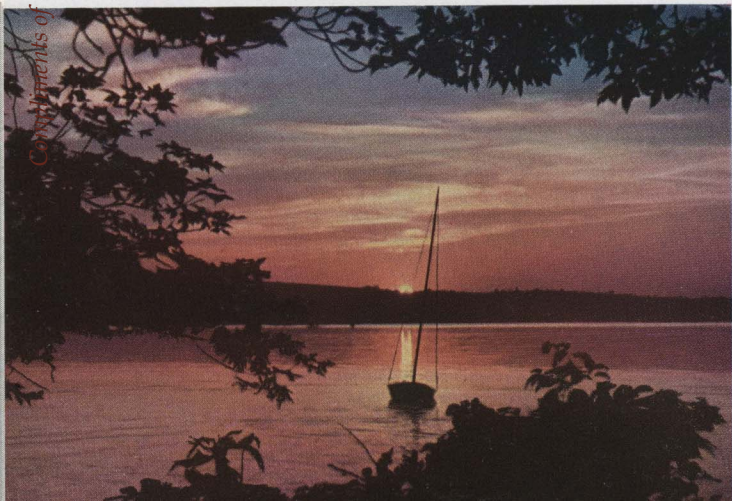
granted in even the lowest-priced Special, and every dollar above that minimum can be counted on to justify itself in added scope, preciseness, and certainty of superlative results.

**DETAILS** Picture sizes: Six-16,  $2\frac{1}{2} \times 4\frac{1}{4}$  inches; Six-20,  $2\frac{1}{4} \times 3\frac{1}{4}$  inches. Plunger-type body shutter release (also regular trigger release). Built-in delayed-action timer. Fingertip focusing by revolving lens mount (down to  $3\frac{1}{2}$  feet on Six-20's, 4 feet on Six-16's). Kodamatic shutter has 5 speeds to  $1/200$ ; Compur-Rapid, 9 speeds to  $1/400$ . Diaphragm openings from  $f.4.5$  to  $f.32$ . Folding optical direct-view eye-level finder. Convenient bar release frees bed for closing.

## PRICES

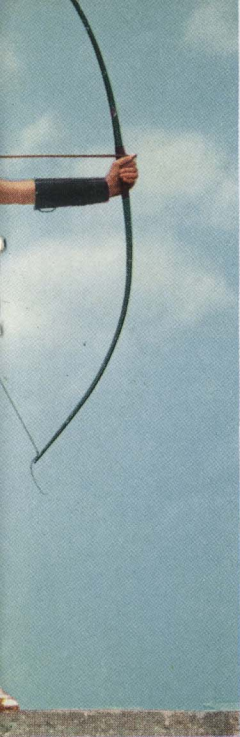
	Special Six-16		Special Six-20	
	Without Case	With Case	Without Case	With Case
With Kodak Anastigmat Special $f.4.5$ lens, Compur-Rapid shutter . . . . .	\$46.00	\$48.75	\$42.50	\$44.75
With Kodak Anastigmat Special $f.4.5$ lens, Kodamatic shutter . . . . .	39.00	41.75	35.50	37.75
Kodak Verichrome Film (8 exposures) . . . .	\$ .35		\$ .30	
Kodak Super-XX or Panatomic Film (8 exp.) . .	.40		.35	





● The illustrations on these pages and on the Kodachrome pages of the Kodak catalog can be used as Kodachrome pictures of transparencies projected on a screen. For such camera work, see pages 22, 24, 25, 26, 27, 28, 29, 30, 31, 32, 33, 34, 35, 36, 37, 38, 39, 40, 41, 42, 43, 44, 45, 46, 47, 48, 49, 50, 51, 52, 53, 54, 55, 56, 57, 58, 59, 60, 61, 62, 63, 64, 65, 66, 67, 68, 69, 70, 71, 72, 73, 74, 75, 76, 77, 78, 79, 80, 81, 82, 83, 84, 85, 86, 87, 88, 89, 90, 91, 92, 93, 94, 95, 96, 97, 98, 99, 100. For more information on the inside of the Kodachrome film, see the inside of the Kodachrome film.





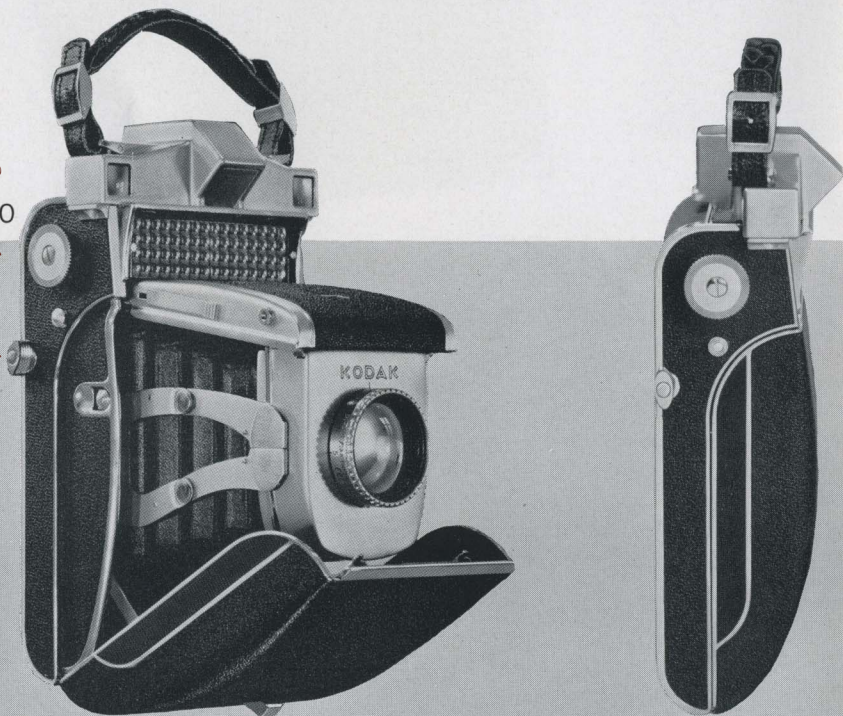
ons on these  
cover are from  
iginals. Several  
described in this  
used for making  
ures in the form  
, which may be  
screen...with  
ful results...by  
aslide Projector.  
s, see pages 7,  
30. For Koda-  
the details given  
ck cover.



## SUPER KODAK SIX-20

**T**HIS remarkable Kodak tops a new page in photographic history. Its diaphragm is photoelectric-cell-controlled. You simply choose your shutter speed to fit your subject. The built-in cell, linked with the diaphragm, automatically selects the proper aperture for that speed under existing light conditions. Optimum exposure results.

Extremely interesting, too, is the multi-purpose film-winding lever. It both advances the film and sets the shutter, thereby preventing double exposures. At the same time it opens the window showing the exposure number, and, as you return it to its original position, closes it to protect the film. A third outstanding feature is the combined view finder and split-field range finder of new design, coupled with the focusing mount. The whole camera is designed for convenient operation. Used in the vertical position, it rests comfortably in the left hand, with thumb and index finger on the focusing mount. The right hand operates the shutter-release trigger. Factors which the user





# SUPER KODAK SIX-20

might forget are taken care of automatically, and, as you hold the Super Kodak up to your eye, the picture-making controls are at your finger tips.

Only after inspecting this Kodak can you appreciate its marvelous coördination . . . its innumerable refinements . . . its exquisitely precise construction and beautiful finish. Striking a new level in photographic engineering and craftsmanship, its presentation is an event of unusual significance.

**DETAILS** Picture size,  $2\frac{1}{4} \times 3\frac{1}{4}$  inches. Kodak Anastigmat Special  $f.3.5$  lens of 100-mm. focal length. Built-in shutter, with eight speeds to 1/200, and self timer. Finding range by revolving lens mount automatically focuses camera for distances from 4 feet to infinity. Triangular area splitting range-finder field permits easy hair-line focusing. Diaphragm apertures photoelectrically controlled by cell below range finder, and fully automatic for all hand-held shutter speeds (diaphragm set manually for speeds slower than 1/25). Cell and finder cover same angle of view and same field. Hand release (cable release may be added without affecting double-exposure prevention device). Red signal in speed-dial window shows until film has been wound and shutter set. Push button releases bed and self-erecting front for opening. Die-cast aluminum case; Persian morocco leather covering; chromium trimmings. Tripod socket, camera support for vertical position.

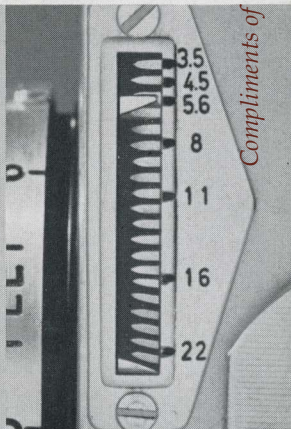
**PRICES** Super Kodak Six-20, \$225. Lined tan sole-leather case with shoulder strap, for camera, film, accessories, \$16.50. Special cable release, \$1.00. Kodak Film (8 exposures): Verichrome, \$.30; Super-XX or Panatomic, \$.35.



The Super Kodak's picture-making controls are at your finger tips.



One operation sets shutter, actuates window cover, advances film.



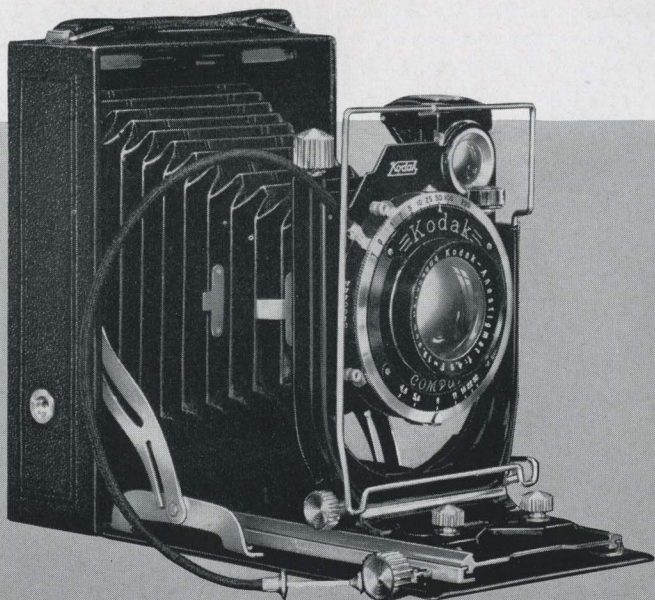
Automatic scale shows aperture at which exposure will be made.

# KODAK RECOMARS 18 AND 33

**T**HESE two cameras fall into perfect step with the trend toward varied and serious photography. Outstanding in equipment and mechanical excellence, their usefulness is multiplied by their ability to use the innumerable film-pack, cut-film, and plate emulsions. Recomars bring users the highly corrected Kodak Anastigmat *f*.4.5 lens, Compur shutter, rack-and-pinion focusing, double-extension bellows and bed, a rising-sliding front, and many other aids toward universal adaptability. Final factors in this direction are the Miniature-Kodachrome Adapter and a group of supplementary lenses. These are supplied as accessories.

**DETAILS** Picture sizes and negative materials: "18"—2¼ x 3¼-inch film packs, 6.5 x 9-cm. cut film or plates; "33"—3¼ x 4¼-inch or 9 x 12-cm. film packs, 9 x 12-cm. cut film or plates. Compur shutter with 8 speeds to 1/200 second (1/250 on "18"), and built-in self timer. Ground-glass back. Spirit level.

**PRICES** "18," \$54; "33," \$63 (both including 3 combination plate and film holders, film-pack adapter, cable release). Case for "18," \$5; for "33," \$5.50. Miniature-Kodachrome Adapter for either model, \$23.50. Supplementary lenses: A and B, for large images of distant objects, \$3.50 each; D (for "18") and E (for "33"), for wide-angle work, \$3.50 each.



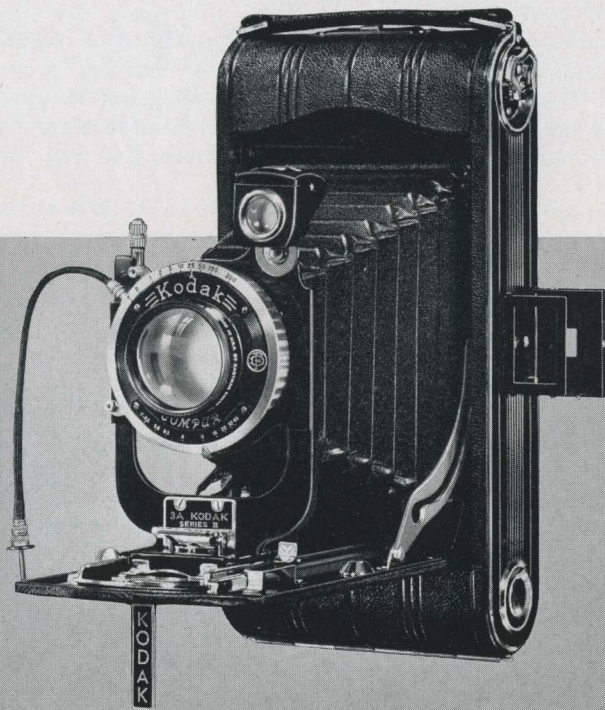


## 3A KODAK, SERIES II

**EXCELLENT** big prints without enlarging . . . that is the aim and accomplishment of the 3A Kodak, Series II. Its pictures are  $3\frac{1}{4} \times 5\frac{1}{2}$  inches . . . postcard size. Either of the Kodak Anastigmat lenses offered . . . *f*.6.3 and *f*.4.5 . . . assures versatility and brilliant negatives, and both are supplemented by high-quality shutters. The covering is morocco leather, embellished by chrome-and-black side panels. In this model the 3A takes on the new effectiveness of up-to-date design and full modern efficiency.

**DETAILS** Picture size,  $3\frac{1}{4} \times 5\frac{1}{2}$  inches. Draw front. Focusing, 6 feet to infinity. *F*.4.5 model: both waist-level, eye-level finders; rising, falling front; self timer. Twin Exposure Back (extra) gives 11 pictures,  $2\frac{1}{2} \times 3\frac{1}{4}$ , on 6-exposure film.

**PRICES** 3A Kodak, Series II, with *f*.4.5 lens, Compur shutter (8 speeds to 1/200 second), \$71; with *f*.6.3 lens, Diodak shutter (4 speeds to 1/100 second), \$42.50. Leather case, \$5.25. Kodak Film No. 122 (6 exp.): Verichrome, \$.55; Super-XX or Panatomic, \$.65. Twin Exposure Back, \$5, installed.

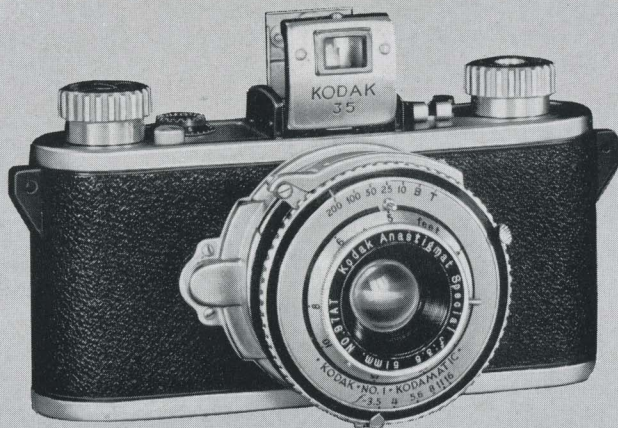


# KODAK 35

**H**ERE is a camera for which many a picture maker has been waiting: a "miniature" of the 35-millimeter type that is modestly priced yet designed and built to typical Eastman standards, and thoroughly dependable...completely satisfactory...in either black-and-white or Kodachrome photography.

If you are interested in a 35-millimeter camera, see the new Kodak 35's at your dealer's. Note the fast Kodak Anastigmat lenses and precision shutters which they carry. Test the rigidity and strength built into both body and fittings. Open a "35" and see how accurately the back is fitted to prevent light leakage. Inspect the interior mechanism, as well. Notice how precisely the gears and sprockets have been machined to insure accurate advancement of the film. Notice, too, that the *f*.3.5 and *f*.4.5 models have an ingenious device for preventing double exposures. You need not set the shutter by hand on these models. It is set automatically, but not until you wind the film to the next exposure.

All of these points, and many more that will come to your attention, mean just one thing. Kodak 35 is not a "novelty" camera in any respect. It not only has features new to its price range, but is built with the precision indispensable to a real miniature camera intended for both monochrome and full-color pictures. You will enjoy examin-





## KODAK 35

ing it... particularly if you have familiarized yourself beforehand with the additional details which are given below.

**DETAILS** Negative size,  $1 \times 1\frac{1}{2}$  inches. Lenses and shutters: *f*.3.5 Kodak Anastigmat Special in Kodamatic shutter (5 speeds to 1/200, and delayed action); Kodak Anastigmat *f*.4.5 in Diomatic shutter (4 speeds to 1/150, and delayed action); Kodak Anastigmat *f*.5.6 in Kodex shutter (3 speeds to 1/100). Fingertip focusing from 4 feet to infinity, by revolving lens mount. Folding optical eye-level finder. Automatic exposure counter. Device to center film accurately for each exposure and lock it in position. Loading facilitated by sliding off one-piece bottom and back. Tripod socket. Finish: fine pin seal grain molded into body made of new, tough, damage-resistant material; fittings in natural metal and black lacquer. *F*.3.5 and *f*.4.5 models have double-exposure prevention; clip for Kodak Pocket Range Finder.

**PRICES** Kodak 35, with Kodak Anastigmat *f*.5.6 lens, \$18.50; with Kodak Anastigmat *f*.4.5 lens, \$29.50; with Kodak Anastigmat Special *f*.3.5 lens, \$39.50. Carrying case for any of 3 models (2-piece field-type case of high-grade sole leather, with rawhide lining in main section), with shoulder strap, \$6.50. Carrying strap (fits lugs molded integrally with camera body), \$1. Kodak Pocket Range Finder, \$7. Kodak Film No. 135: Plus-X, Super-XX, or Panatomic-X, 36 exposures, \$.95; 18 exposures, \$.60. Panatomic or Super X, 36 exposures, \$.85; 18 exposures, \$.55. Infra-Red, 36 exposures, \$1.10. Kodachrome Film No. K135 (K135A for Photoflood lighting), 18 exposures, \$2.50, including processing.

Illustrated—Kodak 35, *f*.5.6



KODAK RECOMAR 18



KODAK SPECIAL SIX-20



3A KODAK, SERIES II (reduced in size)





KODAK RETINA (enlargement)

KODAK BANTAM SPECIAL  
(standard 2 1/4 x 4 enlargement)



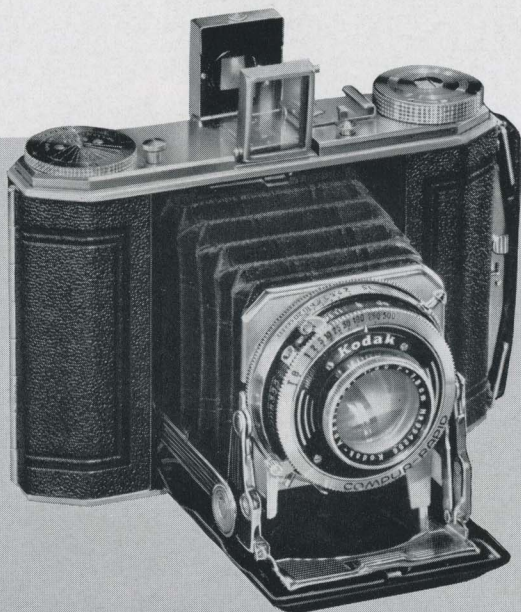
SIX-20 BROWNIE  
JUNIOR

# KODAK DUO SIX-20, SERIES II

**ALREADY** famous as the miniature camera that makes album-size pictures, the Kodak Duo is now available in a new and improved form. It retains all the versatility provided by its brilliant Kodak Anastigmat  $f.3.5$  lens and Compur-Rapid shutter. Now, however, it is even more certain in results. With the direct-view finder at your eye, and the sensitive body shutter release at your finger tips, you frame the action accurately and snap the picture at precisely the chosen instant. A one-finger closing device and satin-finish chromium fittings further enhance the value and beauty of this newer, finer Duo Six-20.

**DETAILS** Picture size,  $1\frac{5}{8} \times 2\frac{1}{4}$  inches. Compur-Rapid shutter (9 speeds to  $1/500$  second). Body shutter release (also regular finger release). Focusing from  $3\frac{1}{2}$  feet to infinity. Depth-of-focus scale. Tooled black leather covering. Bracket for Kodak Pocket Range Finder. Tripod socket. Twin ruby windows with flush-mounted sliding covers to protect fast films.

**PRICES** Kodak Duo Six-20, Series II, \$57.50. Brown cowhide case, \$6. Tan sole-leather field case, \$8.50. Kodak Pocket Range Finder, \$7. Kodak Film No. 620 (16 exposures): Verichrome, \$.30; Super-XX or Panatomic, \$.35.



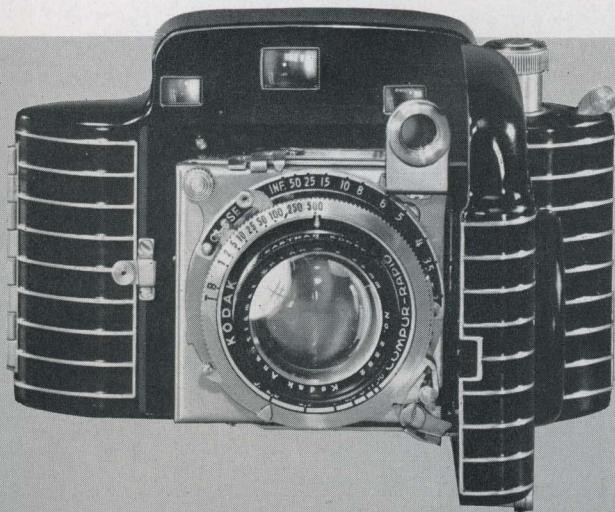


# KODAK BANTAM SPECIAL

**K**ODAK Bantam Special is a miniature-camera sensation. It has a beauty unique in camera design . . . but it is beauty with a purpose. For the case protects a remarkably precise and versatile mechanism: the super-corrected, super-speed Kodak Anastigmat Ektar *f*.2.0 lens . . . Compur-Rapid shutter . . . a coupled range finder to eliminate the guesswork of judging distances . . . an automatic film-centering device. With this camera you can undertake indoor and outdoor "shots" you never before considered, and enjoy, besides, the greatest thrill in photography . . . Kodachrome's lovely full color. The Bantam Special spells new picture-making delight. Especially at its new low price, it is a find for camera connoisseurs.

**DETAILS** Standard black-and-white enlargement size,  $2\frac{3}{4} \times 4$  inches. Compur-Rapid shutter (9 speeds, 1 to 1/500). When closed, cover protects range-finder elements as well as lens and shutter. Extra-hard, brilliant enamel finish, with raised aluminum ribbing. Stainless steel and chromium fittings.

**PRICES** **Kodak Bantam Special**, complete with tan sole leather sportsman's field case, \$87.50. Tan leather combination case, for camera and 3 lens attachments, \$7. Kodak Film No. 828 (8 exposures): Plus-X, Super-XX, Panatomic-X, or Infra-Red, \$.25; Panatomic or Super X, \$.20. Kodachrome Film No. K828 (K828A for Photoflood lighting), 8 exposures, \$1.35, including processing.



# KODAK RETINAS I AND II

\* **T**HE Kodak Retinas are versatile, beautifully finished "miniatures" of the 35-millimeter type. Their superprecise construction and splendid lens-and-shutter combinations assure critically sharp negatives under greatly varying conditions... negatives that yield striking enlargements. All three models can be used to make Kodachrome transparencies. For truly fine yet moderately priced 35-millimeter cameras, see the Retinas... particularly the Retina II's with their ultra-fast lenses, coupled range finder, body shutter release, and double-exposure prevention.

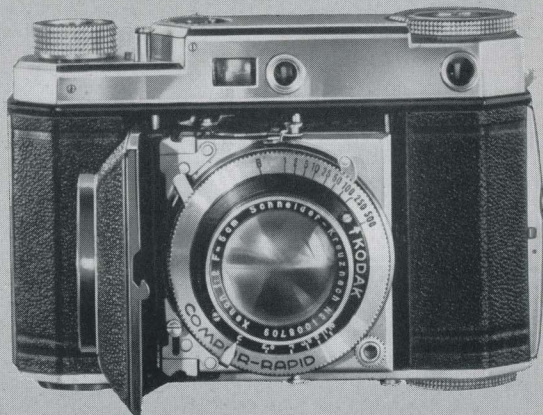
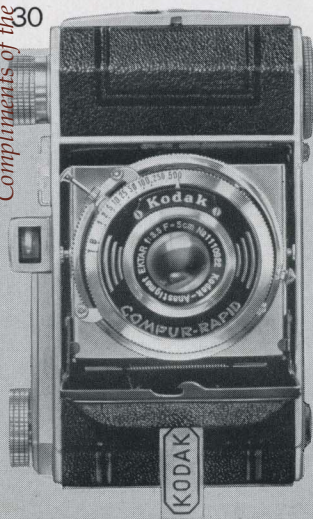
**DETAILS** Negative size, 1 x 1½ inches. Lenses: Retina I, Kodak Anastigmat Ektar f.3.5; Retina II, anastigmat f.2.8 or f.2.0. Compur-Rapid shutter (9 speeds, 1 to 1/500). Optical eye-level finder. Automatic exposure counter and film-measuring device. Depth-of-focus scale.

**PRICES** **Kodak Retina I**, \$57.50. Soft leather case, \$1.50. Field case, \$8.50. Kodak Pocket Range Finder, \$7. **Kodak Retina II**: with f.2.8 lens, field case, \$115; with f.2.0 lens, field case, \$140. Kodak Film No. 135: Plux-X, Super-XX, or Panatomic-X, 36 exposures, \$.95; 18 exposures, \$.60. Panatomic or Super X, 36 exposures, \$.85; 18 exposures, \$.55. Infra-Red, 36 exposures, \$1.10. Kodachrome Film No. K135 (K135A for Photoflood lighting), 18 exposures, \$2.50, including processing.

\* Since this Catalog was printed the Price of the Kodak Retina I, has been reduced to \$48.50.

Kodak Retina I

Kodak Retina II





## SIX-16 AND SIX-20 BROWNIE SPECIALS

**L**ATEST and finest in box-type cameras are these Brownie Specials. They are strikingly new . . . in looks, compactness, and convenience. Tapered toward the front, curved at the back, they are distinctively smart. This design also leads to definitely smaller cameras . . . without reducing picture sizes. A brilliant "spyglass" finder frames subjects from eye level. A plunger shutter release is provided atop the camera, within easy finger reach, and a safety latch prevents accidental exposures. Final assurances of efficient operation are the Eastman-made meniscus lens and smooth-working rotary shutter. Brownie Specials break with tradition on many points, but they bring you in extra measure the Brownie ability to make good pictures.

**DETAILS** Picture sizes: Six-16,  $2\frac{1}{2} \times 4\frac{1}{4}$  inches; Six-20,  $2\frac{1}{4} \times 3\frac{1}{4}$  inches. Snapshot and time actions. Simple two-position focusing by lever below lens mount. Tripod socket for horizontal position; folding support for vertical position. All-metal body; black pin-grain covering; black japan edging.

**PRICES** **Six-16 Brownie Special**, \$4.50. Carrying case, \$1.25. Kodak Film No. 616 (8 exposures): Verichrome, \$.35; Super-XX or Panatomic, \$.40. **Six-20 Brownie Special**, \$4. Carrying case, \$1.10. Kodak Film No. 620 (8 exposures): Verichrome, \$.30; Super-XX or Panatomic, \$.35.

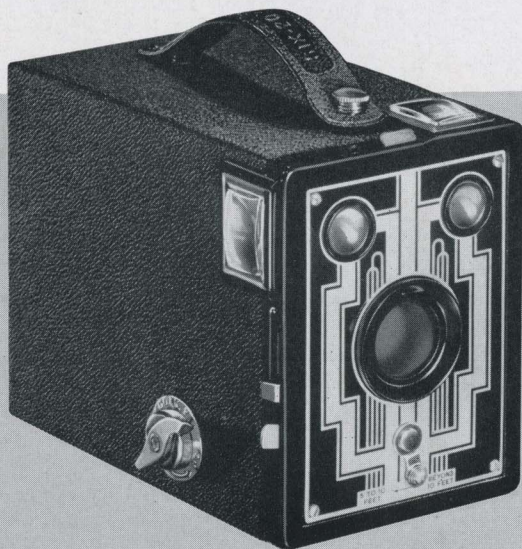


## SIX-16 AND SIX-20 BROWNIES

"**BROWNIE**" is the world's byword for an amazing combination of simplicity and photographic ability, and those qualities stand out prominently in the standard Six-16 and Six-20 models. They are fitted with the Diway lens, which through one simple adjustment assures sharp focus for near or distant subjects. The finders for horizontal and vertical pictures are extra-large and of the brilliant type, making it unusually easy to sight on the subject. As a result these Brownies perform even more capably than older models, and are even more popular. As a matter of fact, they captivate both grown-ups and children at sight, for efficient as their predecessors were, they never approached these models in "eye appeal" . . . in swank yet businesslike looks. You will want to see the Six-16 and Six-20 at your favorite dealer's.

**DETAILS** Picture sizes: Six-16,  $2\frac{1}{2} \times 4\frac{1}{4}$  inches; Six-20,  $2\frac{1}{4} \times 3\frac{1}{4}$  inches. Eastman Rotary shutter (snapshot and time actions). Black morocco-grain covering. Decorative two-tone metal front. Nickered fittings. Easy two-position focusing by lever below lens mount.

**PRICES** **Six-16 Brownie**, \$3.75. Kodak Film No. 616 (8 exposures): Verichrome, \$.35; Super-XX or Panatomic, \$.40. **Six-20 Brownie**, \$3.10. Kodak Film No. 620 (8 exposures): Verichrome, \$.30; Super-XX or Panatomic, \$.35.





# SIX-16 AND SIX-20 BROWNIE JUNIORS

**LOAD**...aim...shoot! With such an easy formula to follow, anyone can operate a camera. That, plus the factor of really good pictures, is the success secret of the Brownie Juniors. They demand no measuring of distances, because they have "fixed" focus. Once they are loaded, there remains only the tripping of the shutter, and thousands perform that simple operation every day, confident in the knowledge that, within their camera class, Brownies are unsurpassed. With their sound construction and neat, modern finish, these junior members of the famous family have established an enviable reputation for lasting high value.

**DETAILS** Picture sizes: Six-16,  $2\frac{1}{2} \times 4\frac{1}{4}$  inches; Six-20,  $2\frac{1}{4} \times 3\frac{3}{4}$  inches. Tested meniscus lens, with protective front crystal. Rotary shutter (snapshot and time actions). Extra large ground-glass finders for easy framing of subject. Black levant-grain covering. Decorative metal front plate. Fittings in nickel and smooth black japan.

**PRICES** **Six-16 Brownie Junior**, \$2.85. Kodak Film No. 616 (8 exposures): Verichrome, \$.35; Super-XX or Panatomic, \$.40. **Six-20 Brownie Junior**, \$2.35. Kodak Film No. 620 (8 exposures): Verichrome, \$.30; Super-XX or Panatomic, \$.35.



# BABY BROWNIE

**A**T first glance a camera as small as the Baby Brownie, and selling at only a dollar, may not seem entirely practical. But make no mistake: this genuine Eastman model is a "baby" in size and price only. Actually, it is a complete, carefully designed, thoroughly proven camera that makes surprisingly good pictures. And sizable ones, too, for they measure  $1\frac{5}{8} \times 2\frac{1}{2}$  inches...the long-favored "vest pocket" proportions. Operation is extremely simple...one of the reasons for the Baby Brownie's huge popularity, especially among children. You may want to bear that point in mind, because experience shows that there is no better camera with which to introduce youngsters to the entrancing hobby of photography. Examine this surprising little picture maker at your dealer's.

**DETAILS** Picture size,  $1\frac{5}{8} \times 2\frac{1}{2}$  inches. Easy loading by removing top of camera. Makes vertical or horizontal pictures. Meniscus lens. Rotary shutter with snapshot action. Fixed focus, with range from 5 feet to infinity (no focusing or measuring of distances necessary). Eye-level direct-view finder; folds flush with top of camera when not in use. Molded body of modern design, with permanent, rich, glossy-black finish.

**PRICES** **Baby Brownie**, \$1. Carrying case, \$.25. Kodak Film No. 127 (8 exposures): Verichrome, \$.25; Super-XX or Panatomic, \$.30.



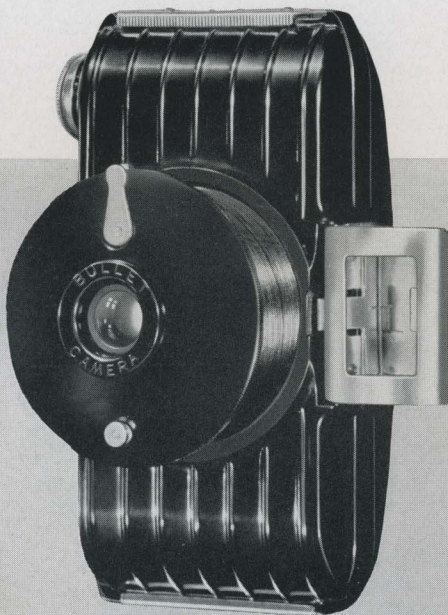


# BULLET CAMERA

**HERE** is one of the most intriguing little picture makers on the market. It is built on the principle of the folding camera, but instead of bellows it has an ingenious spiral mount which brings the lens out into picture-taking position with a single turn. The rest is just as easy: sight on your subject through the eye-level finder, press the shutter release, and the picture is yours. Turn back the mount, fold the finder, and the camera fits snugly in your hand, pocket, or handbag. The Bullet represents a novel conception in camera construction . . . a conception so well carried out that it results in really excellent pictures, even though the user may be entirely inexperienced, and may never before have tripped a camera shutter.

**DETAILS** Picture size,  $1\frac{5}{8} \times 2\frac{1}{2}$  inches. Latest molded construction, with raised ribbing and permanent black glossy finish. Meniscus lens. Shutter with snapshot and bulb actions. Removable back, with push latch, for quick, easy loading. Milled film-winding knob.

**PRICES** **Bullet Camera**, \$2.50. Carrying case, \$.75; Kodak Film No. 127 (8 exposures): Verichrome, \$.25; Super-XX or Panatomic, \$.30.



## SIX-20 BULL'S EYE

**LATEST** styling and simple efficiency stand out all over this new Eastman camera. Its glossy black molded body tapers somewhat toward the front, while the back is gently curved. These details of design not only lead to exceptional compactness, but, together with the rounded edges and raised ribbing, give the Bull's Eye distinctive looks and a pleasant "feel." Operation is the simplest possible: load, sight on your subject, trip the shutter. The tubular "spy-glass" finder shows the picture-to-be with great brilliance and accuracy. The reliable lens and shutter do the rest. Young people . . . beginners of all ages, in fact . . . are instantly attracted by the appearance of this clever little camera. And they are delighted when they find how easily it makes fine pictures. In short, the Six-20 Bull's Eye easily qualifies as a new star among inexpensive, box-type cameras. You will surely want to see it at your favorite camera counter.

**DETAILS** Picture size,  $2\frac{1}{4} \times 3\frac{1}{4}$  inches. Meniscus lens. Single-action shutter with snapshot and bulb settings. Fixed focus, with range from 8 feet to infinity. Tubular, optical, eye-level finder. Easy loading by removing top of camera. Black molded body, with permanent glossy finish. Braided strap, for carrying, also aids in steadying camera during exposure.

**PRICES** **Six-20 Bull's Eye**, \$3. Carrying case, \$1.10. Kodak Film No. 620 (8 exposures): Verichrome, \$.30; Super-XX or Panatomic, \$.35.





# KODAK FILMS FOR EVERY NEED

**VERICHROME** Double-coated by a special process. Corrects reasonable exposure errors, makes satisfying results doubly sure. For day-in and day-out picture making, insist on Verichrome. Supplied in rolls and packs.

**PANATOMIC** Its fine grain makes it especially suitable for enlargements. Amply fast for normal needs. Supplied in rolls, packs, magazines, cut sheets.

**SUPER X** A high-grade film that is considerably faster than Panatomic. Valuable to miniature-camera users for indoor pictures and short exposures outdoors. Miniature sizes only.

**PLUS-X** The all around, standard film for miniature-camera users. It has twice the speed of Panatomic and is equally fine-grained. Permits generous enlargements free from disturbing graininess. Miniature sizes only.

**SUPER-XX** Outstanding "high-speed" film. Four times as fast as Panatomic. Grain size held to a minimum. For action shots at high shutter speeds, pictures under adverse conditions, snapshots at night. Supplied in standard rolls, including miniature sizes.

**PANATOMIC-X** Has approximately the same speed as Panatomic, but carries fineness of grain far beyond that of Panatomic. Unequalled for big, brilliant enlargements, with no appreciable graininess. Supplied in miniature sizes only.

**KODACHROME** Yields full-color transparencies, which may be viewed as they are or mounted in slides for large-size projection. Requires no extra equipment for taking. Two types, for use outdoors and indoors. Miniature sizes.

**INFRA-RED** With a red filter, increases photographic visibility of distant objects. Renders skies dark, trees as though snow-covered. Miniature sizes.



For photo accessories, see the booklet, "Kodak Picture-Making Aids"  
For home movie equipment, ask your dealer for a Ciné-Kodak catalog

**THE GREAT SNAPSHOTS  
ARE MADE ON KODAK FILM**



WHETHER you're expert or inexperienced—for day-in and day-out picture making—use Kodak Verichrome Film for surer results... Accept nothing but the film in the familiar yellow box—Kodak Film—which only Eastman makes.

**Eastman Kodak Stores, Inc.**

1009 Olive St.

ST. LOUIS, MO.