



KODAK

The Digitized Kodak Catalog Project (1886 - 1941): A Very Brief History

Most camera collectors at some point in their collecting careers pass through a Kodak phase - some never come out of it. And if there ever was one name that came to be associated with both cameras and collecting, it was Kodak.

George Eastman received his first patent (for coating dry plates) and bought his first manufacturing facility in 1880, and in 1881 he started the Eastman Dry Plate Company. In 1886 he received a patent for the near-mythical Eastman Detective Camera, but it wasn't until 1888 that the first camera bearing the name "Kodak" was introduced.

One of the nice things about collecting Kodak is that the product line is pretty well known, and because the company produced annual catalogs for many years, collectors can be reasonably sure of what they're looking at, when it was made, the variations and so on - presuming that they have access to either the appropriate catalog, or a number of the many books which document Kodak, each to some greater or lesser extent.

But what would be really nice would be to have a complete set of Kodak catalogs in an easily accessible form and readily available. And since the advent of portable computing devices (PC, Macintosh, etc.) that's been possible - except for the difficulty of assembling a complete set of Kodak catalogs in one spot and then scanning them and making the results available.

The idea of digitizing a complete set of Kodak catalogs has kicked around the collecting community for many years. It's been proposed on a number of online forums, during meetings of various photohistory groups, and for years there have been many incomplete "Kodak CDs" on eBay but at best, they only contained a few catalogs - whatever the owner had available. But assembling a complete set of catalogs, then scanning and processing perhaps 3,000 to 4,000 pages, was a daunting task - if not completely overwhelming - and nothing ever came of it.

Until now.

In early 2010, the idea came up again, but this time we - "we" as in "the collecting community" - were lucky. A number of collectors were willing to loan their catalogs to this project and a couple of insane - wait, let's call them "dedicated" - dedicated enthusiasts - neither of whom collected Kodak, but both of whom enjoyed the challenge of such a project - were willing to put in the time and effort to scan and pull together the entire set of catalogs into a full-blown Kodak Catalog Digital Library.

Our initial objective was to include just the annual amateur catalogs, but it turns out that many cameras only appear in certain professional and specialty catalogs. We included as many of those as we could obtain so that almost every Kodak camera made in the US, Canada and Europe, would be documented - at least up to about 1941. After that, it becomes much more difficult as Kodak stopped producing annual catalogs as their product line became increasingly more diversified.

However, even with the additional "non-amateur" catalogs, we weren't completely successful in illustrating "every" camera Kodak ever made. There are an elusive few that might appear in specialty catalogs that we simply couldn't track down. If you can't find one of those odd cameras, that's no doubt why. We may do a revision at some point in the future if someone is willing to loan us a catalog that includes a camera that isn't already recorded.

In this project, a total of 67 catalogs were used from 1886 through 1941 including a number of professional and dealer catalogs, and in some years, two or even three different catalogs to cover all the bases. With the cooperation of a number of dedicated collectors, we were able to pull together all those catalogs and in June 2010, the project started in earnest.

By November 2010, we had scanned everything we needed and eventually all 67 catalogs were then reassembled as image folders and converted to the universally accepted PDF format and finally, converted into individually searchable PDFs which could then be searched globally as a collection.

For those of you interested in the statistics: about 200 hours of scanning time (we never want to hear that sound again), 67 catalogs and 3,908 page scans - which generated 7,917 original and processed images - and 11.4 GB of disk space. Additionally, another 100+ hours of technical development time was needed to convert the digital catalogues into a fully searchable "knowledgebase" that could be launched from most any standard web browser.

The overwhelming number of catalogs was loaned to us by that most remarkable of Kodak collectors, Charlie Kamerman of Eagle Creek, Oregon. Without Charlie, it's very doubtful that this project could even have been attempted.

But as it turned out, even Charlie didn't have all the publications that were needed, but he was able to track down the five that he lacked and was able to secure either a copy or high resolution images that we could work with. And so, our thanks to the contributors of the catalogs and scans that we used:

Charlie Kamerman for the vast majority of catalogs used and all his help,
Steve Shohet for loaning a variety of test catalogs,
Ryerson University (Toronto) for the 1886 Eastman Catalog
George Layne for the 1890 New Kodaks Catalog,
Mike Kessler for the 1891 Dealer Display Catalog,
Ralph London for the 1893 UK Catalog,
Michael Pritchard for the 1897 UK Catalog.

The digital side of the project - also known as "all of the work" - was done by Rob Niederman of Medina, Minnesota, and Milan Zahorcak of Tualatin, Oregon. Remarkably we're still friends and in a few years, we'll probably be able to talk about this project rationally.

And there you have it, a more-or-less done deal. We're fairly sure that it isn't quite perfect, and expect there will be some carping about something or other; but all-in-all, we believe this to be a pretty good product and can now move on to something else.

Our thanks to all of those involved.

Rob Niederman
Milan Zahorcak

Fall, 2011



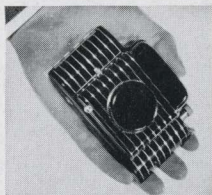
KODAKS AND

IN SELECTING A CAMERA, CONSIDER THESE POINTS:

THE PICTURE SIZE that appeals to you most. The various Kodaks and Brownies afford a wide range, topped by the 3A or postcard size. In connection with this first point, consider whether you will want to use most of your pictures in their original size or whether you expect to have them enlarged (or enjoy the fun of enlarging them yourself). Cameras that yield album-size pictures are as popular as ever. At the same time "miniature" photography, which begins with diminutive cameras and negatives and ends with striking enlargements . . . or large images projected on a screen . . . is enjoying an ever greater vogue. Any good picture can be enlarged, but miniature photography is definitely based on large pictures from small cameras.

THE TYPE OF CAMERA YOU PREFER

. . . box or folding. Both types, as built by Eastman, make excellent pictures. The box models, though modest in price, embody the most modern con-



Kodak Bantam Special—
an outstanding example of
compactness plus ability.


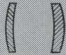






BROWNIES

struction and finish, and are thoroughly dependable picture makers within their intended sphere. The folding models supplement these qualities with greater compactness and added carrying ease, and each successively higher classification gives greater versatility. This fact logically leads to the next point in choosing your camera. . .

THE VARIETY OF PICTURES YOU WANT, and the conditions under which you expect to take them. Even the very simplest Eastman cameras regularly make sharp, clear pictures of average outdoor subjects in good light, and modern films and photo lamps have extended their scope to certain indoor situations. The more pretentious types of Kodaks extend this scope still farther to include rapidly moving subjects in the sports and other fields, "slices-of-life" shots indoors and out, night club and theater pictures, and. . . in the case of

most miniature Kodaks . . . full-color transparencies. Such broadened ability is due largely to lenses and shutters of successively greater range and precision.

One of the chief factors governing the capability of a lens is its "speed" . . . the amount of light it can admit to the camera in a given time interval. And the speed of a lens, as well as other factors of efficiency, depends largely upon the extent to which the lens has been corrected for certain aberrations which normally arise when light transmits an image through

LENS	ELEMENTS OF LENS	RELATIVE SPEED
MENISCUS		1
DOUBLET		1½
F.7.7		4
F.6.3		6
F.4.5		11
F.3.5		18
F.2.8		28
F.2.0		56

How various lenses are constructed—and the approximate relative "speeds" that result.

glass. Correction of these faults demands complex construction, finest of materials, and the most painstaking craftsmanship, but results in lenses of great adaptability. To capitalize the outstanding performance of which they are capable, such lenses must be mounted in shutters built with watch-like accuracy, and offering an unusually wide selection of exposure speeds.

Chiefly responsible for the scope of any camera, the lens and shutter likewise account for a large share of its cost. It is well to bear this in mind in deciding the final point . . .



Using the body shutter release—an important recent improvement embodied in many Eastman cameras.

THE PRICE TO PAY. Determine the price you want to pay in the light of the factors pointed out in the preceding paragraphs—in general, according to the purposes to which the camera is to be put.

Regardless of your final choice, you may be sure that your Kodak or Brownie will give you complete satisfaction. Because Kodak, the world's largest photographic organization, has made and sold millions of cameras of all varieties, on the basis of constant improvement and unquestioned value. Even the lowest-priced models have an enviable reputation as full-fledged, reliable cameras. Similarly, in the more elaborate types, where finest mechanical and optical design and fabrication are indispensable, Eastman offers photographic instruments of a quality second to none.

Prices in this catalog are subject to change without notice

EASTMAN KODAK COMPANY

JULY, 1938

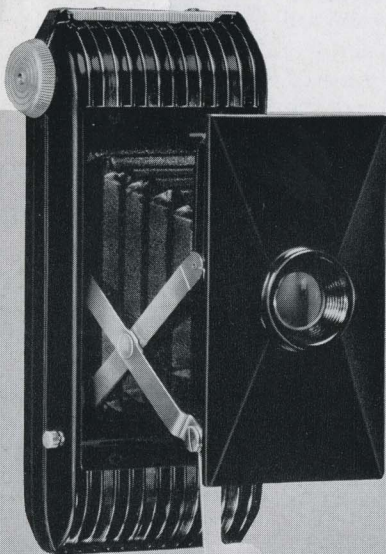
ROCHESTER, N. Y.

JIFFY KODAK V. P.

A FEW dollars invested in Jiffy Kodak V. P. buy a great deal. Modern molded construction . . . substantial picture size . . . plus the basically sound design and equipment that make Eastman cameras ever-reliable—and ever-ready for good pictures. The lens and shutter, deciding factors in any camera, are carefully made and thoroughly tested, and ingenious construction gets them into action instantly. Springing open at the touch of a button, the Jiffy V. P. goes to work without the preliminaries of focusing or other adjustment. Just trip the shutter and the picture is made. Latest of "vest pocket" Kodaks, this model meets today's demand for a swift, good-looking, compact little folding camera.

DETAILS Picture size, $1\frac{5}{8} \times 2\frac{1}{2}$ inches. Permanent "built-in" glossy black finish, with ornamental ribbing. Removable back. Weight, 10 ounces. Fixed focus. Kodak Doublet lens, deeply recessed for protection. Built-in shutter, with snapshot and bulb actions, 2 release triggers. Aperture can be stopped down to $f.16$. Folding direct-view eye-level finder. Action front, operated by push button, opens camera to picture-taking position.

PRICES *Jiffy Kodak V.P.*, \$4.75. Lined cowhide carrying case, \$1.35. No. 127 Kodak Film (8 exposures): Regular N.C., \$.20; Verichrome, \$.25; "SS" or Panatomic, \$.30.



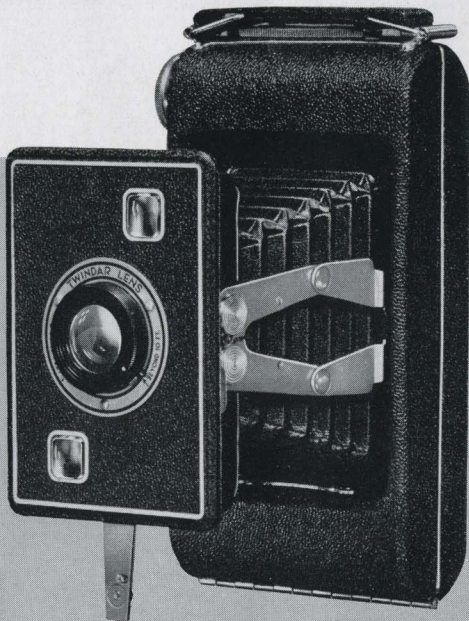
JIFFY KODAKS SIX-16 and SIX-20, Series II

THOUGH Jiffy Kodaks Six-16 and Six-20 make big pictures, their slim, compact design makes them unusually smart-looking . . . unusually handy to carry. And no folding camera known is easier to use . . . or works faster. Press one button—the camera opens. Press another and the picture's yours. Jiffy Kodaks live up to their name. And they have other features: genuine proficiency, assured by the "near-and-far" Twindar lens; fine finish, emphasized by the lustrous black pin-grain covering; and low cost. Because of their multiple attractions, the Jiffys have easily sold themselves to a multitude of people.

DETAILS Picture size: Six-16, $2\frac{1}{2} \times 4\frac{1}{4}$ inches; Six-20, $2\frac{1}{4} \times 3\frac{1}{4}$ inches. Twindar lens. Simple two-position focusing. Snapshot, time actions. Crowned, brilliant finders. Metal cap (extra) protects lens from dust, sand, etc.

PRICES **Jiffy Kodak Six-16, Series II**, \$9.50. Leather case, \$1.85. Kodak Film No. 616 (8 exposures): Verichrome, \$.35; "SS" or Panatomic, \$.40. Lens Cap, \$.15.

Jiffy Kodak Six-20, Series II, \$8.50. Leather case, \$1.65. Kodak Film No. 620 (8 exposures): Verichrome, \$.30; "SS" or Panatomic, \$.35. Lens Cap, \$.15.



KODAK BANTAMS *f*.6.3 AND *f*.8

HERE are two of the most convenient cameras ever designed. They are little more than four inches long. . . so small that either fits the palm of the hand. Even more surprising is the size of the pictures to which they lead, for modern photofinishing methods give you $2\frac{3}{4}$ x 4-inch prints. And note these additional points: Kodak Bantams use Kodak Panatomic Film in a 20-cent, 8-exposure roll. You don't have to watch the window while winding to the next exposure, because a special device centers the film. And Bantam operating features, aided by the versatile film, minimize exposure problems. Photography with a Bantam . . . especially with the *f*.6.3 model . . . is worth investigating.

DETAILS Standard enlargement size, $2\frac{3}{4}$ x 4 inches. Fixed focus. Molded body, $4\frac{3}{8}$ x $2\frac{3}{8}$ inches. Weight, 8 ounces. *F*.6.3 Model: Kodak Anastigmat *f*.6.3 lens, snapshot and time actions, optical eye-level finder. *F*.8 model (illustrated): Kodalinear *f*.8 lens, snapshot action, eye-level finder.

PRICES Kodak Bantam, *f*.6.3, \$9.50. Kodak Bantam, *f*.8, \$4.75. Black leather case for *f*.6.3 model, \$1.25. Tan leather field case, neck strap, for *f*.6.3 model, \$2.75. (Carrying case for *f*.8 model ready later.) Kodak Panatomic Film No. F828 (8 exposures), \$.20.

Illustrated—
Kodak Bantam *f*.8



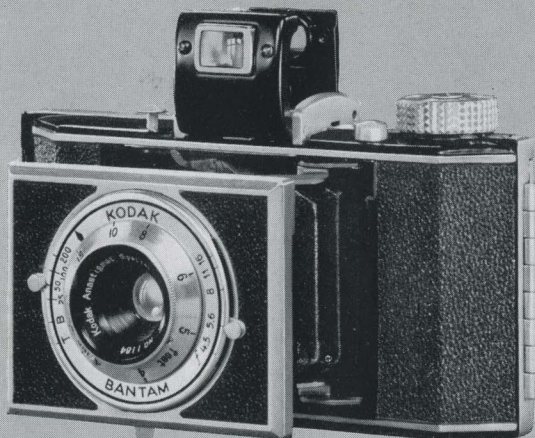
KODAK BANTAMS *f*.4.5 AND *f*.5.6

EASTMAN presents two more members of the Kodak Bantam family. The basic Bantam principle embodied in them affords . . . through modern finishing methods . . . pictures as big as the cameras themselves, while precise construction, plus swift lens-and-shutter combinations, gives unusually wide scope. Pictures can be made under a variety of conditions and may, if desired, be enlarged far beyond the standard $2\frac{3}{4} \times 4$ -inch Bantam size. Furthermore, both models can be used to make vivid full-color Kodachrome transparencies, which may be viewed as they are or mounted for large-size projection on a screen with the aid of the Kodaslide Projector. Inspect these versatile new Bantam models.

DETAILS Standard enlargement size, $2\frac{3}{4} \times 4$ inches. Black enamel and bright metal trimmings. Front extended to picture-taking position at touch of a button. Folding optical eye-level finder. *F*.4.5 model (illustrated): Kodak Anastigmat Special *f*.4.5 lens; 4 shutter speeds to 1/200 second; die-cast aluminum body with grained black covering; body shutter release. *F*.5.6 model: Kodak Anastigmat *f*.5.6 lens; 3 shutter speeds to 1/100 second; black molded body.

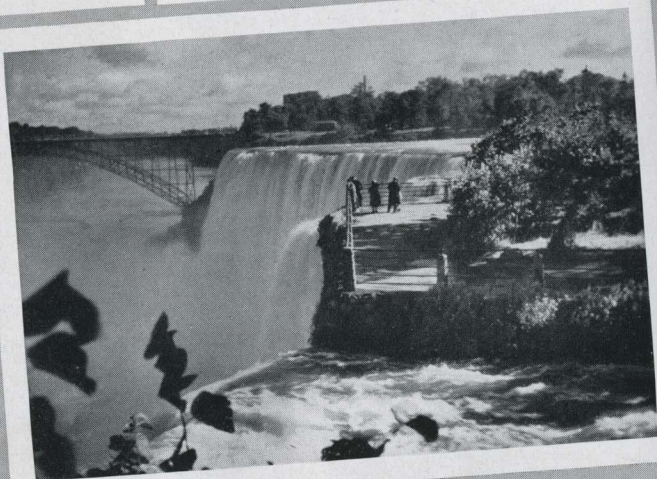
PRICES **Kodak Bantam, *f*.4.5**, \$27.50. Field case, \$4.50. Special neck strap, \$1.50. **Kodak Bantam, *f*.5.6**, \$16.50. Field case, \$3.75. Kodak Panatomic or Super X Film No. 828 (8 exposures), \$.20. Kodachrome Film No. K828 (K828A for Photoflood lighting), 8 exposures, \$1.35, including processing.

Illustrated—
Kodak Bantam *f*.4.5



KODAK BANTAM
(standard $2\frac{3}{4} \times 4$ enlargement)

JEFFY KODAK V.P.



JEFFY KODAK SIX-20,
SERIES II

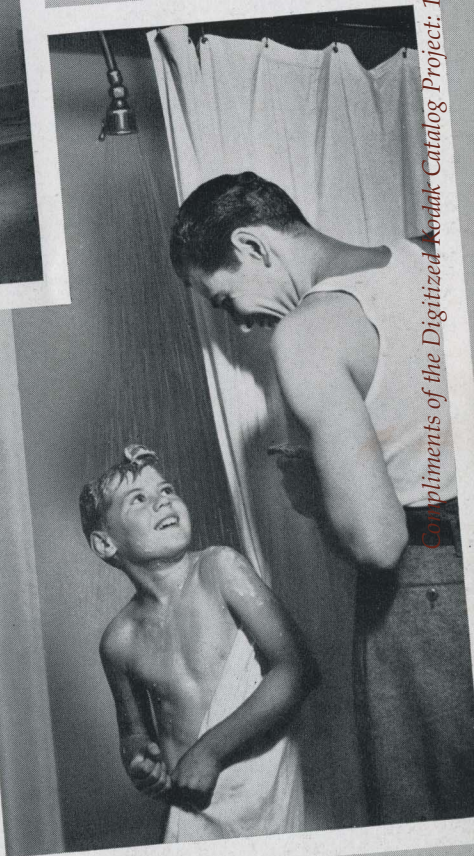


KODAK JUNIOR SIX-20, SERIES II

KODAK SENIOR SIX-16



KODAK DUO SIX-20, SERIES II

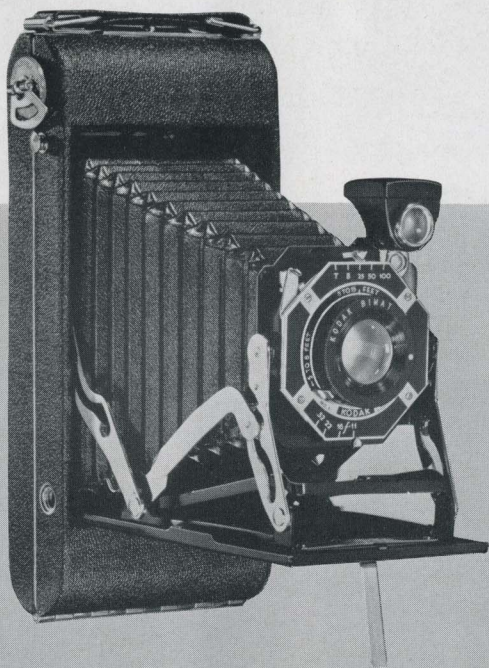


Compliments of the Digitized Kodak Catalog Project: 1886 - 1941

KODAK JUNIORS SIX-16

TAKE this as a guide: Kodak Juniors, Series II, are among America's most popular cameras...for more reasons than one. Opening to picture-taking position with a single pull on the bed support, they get into action quickly, easily. Equipped with both reflecting and direct-view finders, they give you the choice of sighting either from waist height or from eye level. And when the picture has been made, your camera closes at the touch of a one-finger bar release. For lens equipment you can have either the readily focused Kodak Bimat or a single lens that requires no focusing whatever. Both are mounted in reliable shutters, and are fully capable within their intended picture-making ranges.

Series II Juniors are neatly finished and nicely proportioned. And, though compact, they afford pictures in a choice of two generous sizes...pictures amply large for mounting. In short, every one of these cameras offers far greater value than its modest price indi-



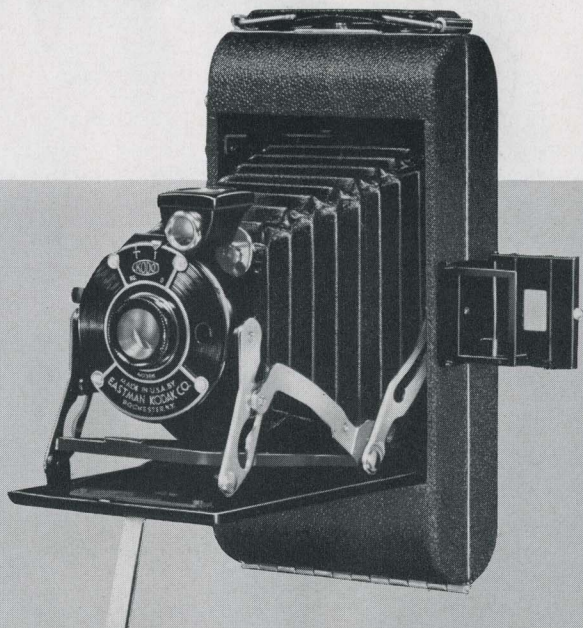
AND SIX-20, SERIES II

cates. Be sure to see all of the models, whether you are shopping for a camera of your own or want to present someone else with the means to simple, satisfying photography.

DETAILS Picture sizes: Six-16, 2½ x 4¼ inches; Six-20, 2¼ x 3¼ inches. Self-erecting front—one pull opens camera and erects lens into position. Light pressure on special bar release frees bed of camera for closing. Two tripod sockets. Single-lens models have fixed focus. Bimat models, focus adjustable by revolving lens mount. Reflecting finder, reversible for vertical and horizontal positions; also folding direct-view finder for either position. Black pin-grain covering, with bright nickel trimmings.

PRICES

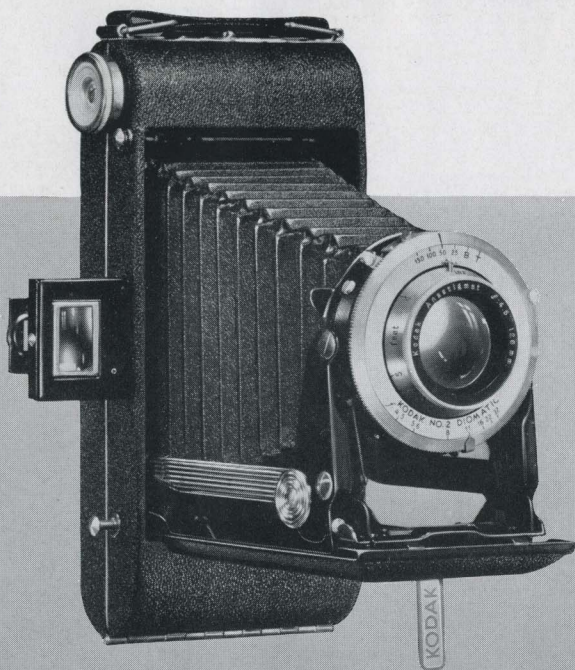
	Junior Six-16 Series II	Junior Six-20 Series II
With Single lens, snapshot and time adjustments	\$10.25	\$8.75
With Kodak Bimat lens, shutter speeds to 1/100	12.75	11.00
Soft leather carrying case	1.85	1.65
Lined grain leather case	3.00	2.50
Kodak Verichrome Film (8 exposures)35	.30
Kodak "SS" or Panatomic Film (8 exposures)40	.35



KODAK JUNIORS SIX-16

ADVANCED style, pronounced ability, big pictures, moderate cost ... if these are your camera specifications, you will want to see the new Kodak Juniors, Series III. With their smooth contours, sturdy erecting arms, and natural-metal fronts, they are undeniably modern in appearance. Every one of the models... and there are six in all ... is equipped for the type of picture making demanded today: simple, fast, and sure. Anastigmat lenses, precise shutters, body shutter releases, optical eye-level finders, and finger-tip focusing are some of the features. Pictures are substantial in size... $2\frac{1}{4} \times 3\frac{1}{4}$ or $2\frac{1}{2} \times 4\frac{1}{4}$... and their quality means good enlargements when you want them.

Price will depend upon the conditions under which you expect to use your camera, the models with Kodak Anastigmat $f.4.5$ lens and Diomatic shutter giving you the greatest latitude. If these Kodaks strike your fancy, you will probably find one that meets your ideas of cost as well, for the price range is not only wide, but moderate



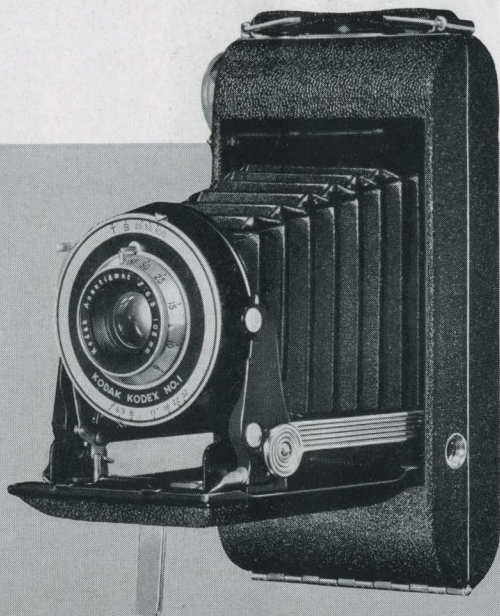
AND SIX-20, SERIES III

throughout. Many a search for the "right" camera is ending at the Juniors, Series III.

DETAILS Picture sizes: Six-16, $2\frac{1}{2} \times 4\frac{1}{4}$ inches; Six-20, $2\frac{1}{4} \times 3\frac{1}{4}$ inches. Self-erecting front. Body shutter release. Kodex shutter has 3 speeds to 1/100. Diomatic shutter has four speeds to 1/150 and built-in self timer. Focusing, by revolving lens mount, from $3\frac{1}{2}$ feet to infinity (4 feet to infinity on Six-16, *f*.4.5 and *f*.8.8 models). Knurled film-winding knob. Folding optical eye-level finder. One-finger bed release for easy closing. Swing-type metal cover over film window, to protect fast films. Covering, black morocco-grain material.

PRICES

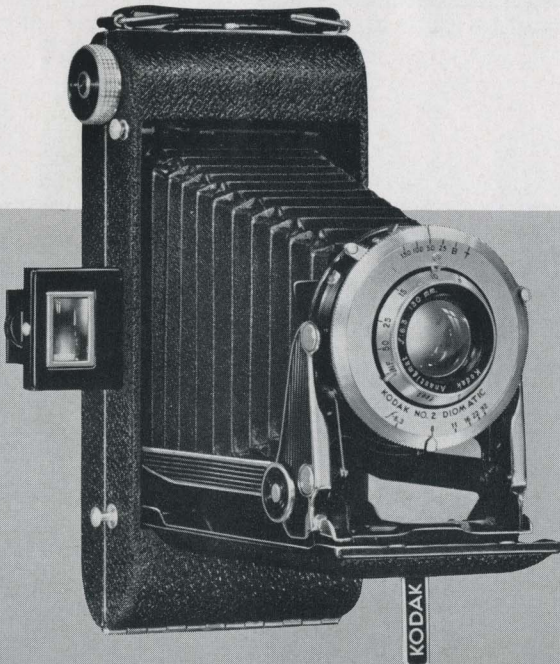
	Junior Six-16 Series III	Junior Six-20 Series III
With Kodak Anastigmat <i>f</i> .8.8 lens, Kodex shutter	\$15.50	\$13.50
With Kodak Anastigmat <i>f</i> .6.3 lens, Kodex shutter	18.00	16.00
With Kodak Anastigmat <i>f</i> .4.5 lens, Diomatic shutter	29.50	25.00
Soft leather carrying case	1.85	1.65
Lined grain leather case	3.00	2.50
Kodak Verichrome Film (8 exposures)	.35	.30
Kodak "SS" or Panatomic Film (8 exposures)	.40	.35



KODAK SENIORS

INSPECT these swank Kodaks ever so briefly, and you will be impressed with the manner in which they combine beautiful simplicity with latest efficiency. Touch a button . . . your Senior pulls open, the lens ready for the picture. Touch a bar just inside the bed and the mechanism folds back out of sight. Hold the open camera up to your eye with both hands and pick out your subject through the direct-view finder. Right at your finger tips . . . on the camera body . . . is a plunger button that trips the shutter at the instant when the picture is "right." Danger of camera movement is minimized . . . there is no need of fumbling for a remote release on the shutter itself . . . your fingers cannot obscure the lens. This is picture making with an up-to-the-minute Kodak Senior.

Incidental fittings and finish speak for themselves. From beginning to end the Seniors are exceptional cameras. Their two popular sizes and triple choice of Kodak Anastigmat lenses fit almost any ambitious photographer's purse and purpose. Your favorite Kodak dealer will



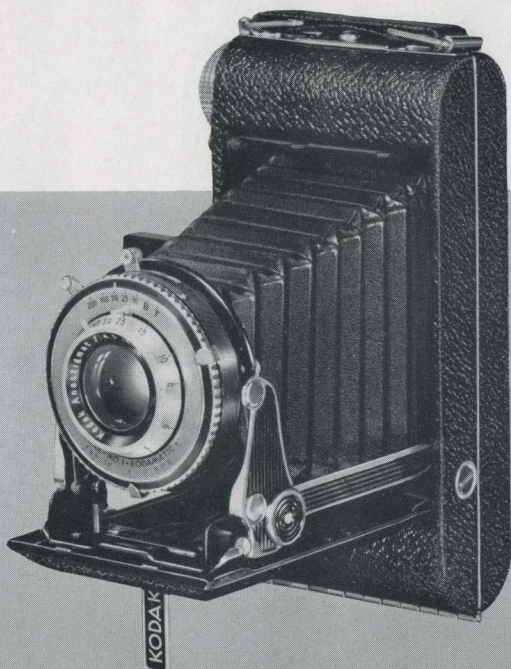
SIX-16 AND SIX-20

be glad to show you the variety of models supplied. For widest scope, see the splendid "speed" models equipped with *f*.4.5 lens and Kodamatic shutter.

DETAILS Picture sizes: Six-16, 2½ x 4¼ inches; Six-20, 2¼ x 3¼ inches. Self-erecting front. Kodex shutter has 3 speeds to 1/100 second; Diomatic, 4 speeds to 1/150 second, self timer; Kodamatic, 5 speeds to 1/200 second, self timer. Focusing: Six-20, from infinity to 3½ feet; Six-16, infinity to 4 feet. Optical direct-view eye-level finder. Body shutter release on side of camera (trigger release retained). Black pig-grain covering.

PRICES

	Senior Six-16		Senior Six-20	
	Without Case	With Case	Without Case	With Case
With <i>f</i> .4.5 lens, Kodamatic shutter	\$32.00	\$34.75	\$28.00	\$30.25
With <i>f</i> .6.3 lens, Diomatic shutter	24.50	27.25	21.00	23.25
With <i>f</i> .6.3 lens, Kodex shutter	21.00	23.75	18.50	20.75
With <i>f</i> .7.7 lens, Kodex shutter	19.50	22.25	17.00	19.25
Kodak Verichrome Film (8 exposures)	\$.35		\$.30	
Kodak "SS" or Panatomic Film (8 exposures)	.40		.35	



KODAK SPECIALS

NOTHING so delights the serious picture taker as a group of fine cameras from which he can select an instrument exactly suited to his discriminating taste. If you are one of many such photographers, here is your opportunity.

Made for two standard picture sizes, all of the Kodak Specials have these advanced refinements: a folding optical finder that catches the scene as you see it . . . from eye level; a finger-tip body shutter release that minimizes chances of movement; a built-in self timer, which enables the user to take his own picture; a one-finger bed release for quick closing; a special aluminum case, covered with pin-seal grain leather, and trimmed with chromium and black lacquer. No term except "de luxe" adequately describes this group of fine cameras.

And, regardless of which size is your favorite, the model of your choice will bring you the fast, finely corrected Kodak Anastigmat Special $f.4.5$ lens, mounted in either the Kodamatic or Compur-Rapid shutter. Great versatility and ease of handling can be taken for



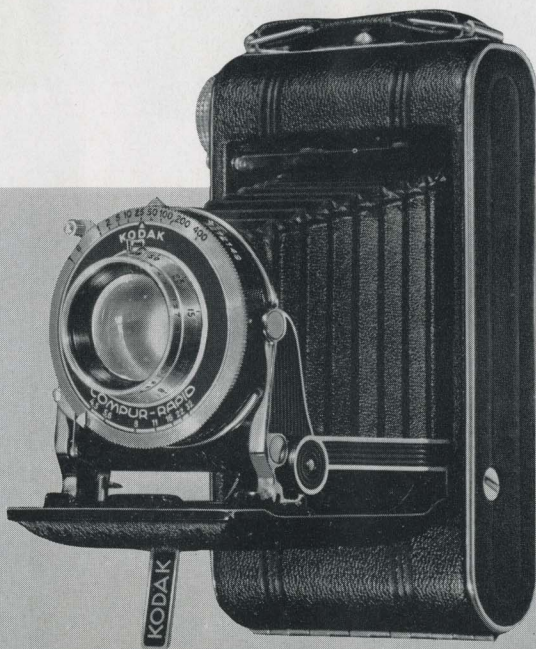
SIX-16 AND SIX-20

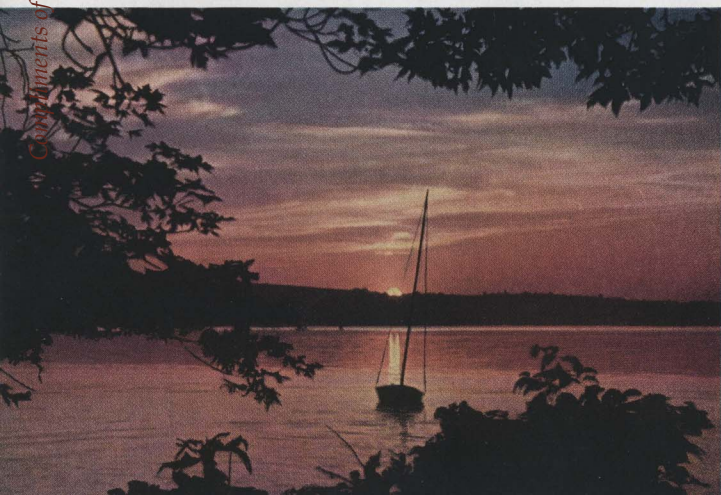
granted in even the lowest-priced Special, and every dollar above that minimum can be counted on to justify itself in added scope, preciseness, and certainty of superlative results.

DETAILS Picture sizes: Six-16, $2\frac{1}{2} \times 4\frac{1}{4}$ inches; Six-20, $2\frac{1}{4} \times 3\frac{1}{4}$ inches. Plunger-type body shutter release (also regular trigger release). Built-in delayed-action timer. Finger-tip focusing by revolving lens mount (down to $3\frac{1}{2}$ feet on Six-20's, 4 feet on Six-16's). Kodamatic shutter has 5 speeds to 1/200; Compur-Rapid, 9 speeds to 1/400. Diaphragm openings from $f.4.5$ to $f.32$. Folding optical direct-view eye-level finder. Convenient bar release frees bed for closing.

PRICES

	Special Six-16		Special Six-20	
	Without Case	With Case	Without Case	With Case
With Kodak Anastigmat Special $f.4.5$ lens, Compur-Rapid shutter	\$46.00	\$48.75	\$42.50	\$44.75
With Kodak Anastigmat Special $f.4.5$ lens, Kodamatic shutter	39.00	41.75	35.50	37.75
Kodak Verichrome Film (8 exposures)35		\$.30	
Kodak "SS" or Panatomic Film (8 exposures) .	.40		.35	





● The illustrations on these pages and on the Kodachrome or Kodak pages of the Kodak catalog can be used as Kodachrome pictures or as transparencies projected on a screen. For such camera use, see pages 24, 25, and 29. For more information on Kodachrome Film



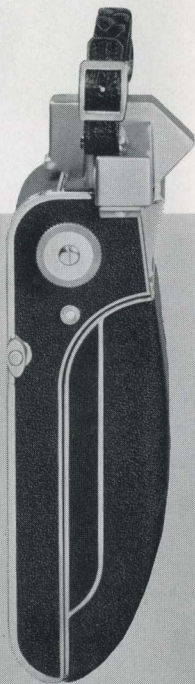
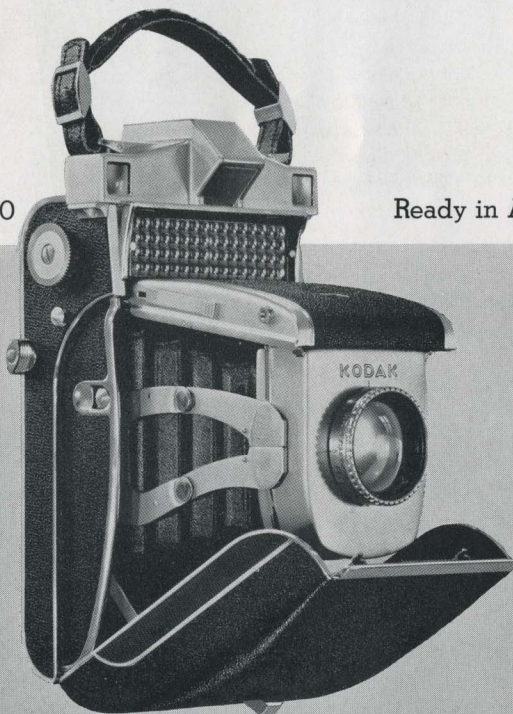
ons on these
cover are from
originals. Several
described in this
used for making
ures in the form
which may be
screen... with
l results... by
slide Projector.
s, see pages 7,
or details about
y, see page 35.

SUPER KODAK SIX-20

THIS remarkable Kodak tops a new page in photographic history. Its diaphragm is photoelectric-cell-controlled. You simply choose your shutter speed to fit your subject. The built-in cell, linked with the diaphragm, automatically selects the proper aperture for that speed under existing light conditions. Optimum exposure results.

Extremely interesting, too, is the multi-purpose film-winding lever. It both advances the film and sets the shutter, thereby preventing double exposures. At the same time it opens the window showing the exposure number, and, as you return it to its original position, closes it to protect the film. A third outstanding feature is the combined view finder and split-field range finder of new design, coupled with the focusing mount. The whole camera is designed for convenient operation. Used in the vertical position, it rests comfortably in the left hand, with thumb and index finger on the focusing mount. The right hand operates the shutter-release trigger. Factors which the user

Ready in August



SUPER KODAK SIX-20

might forget are taken care of automatically, and, as you hold the Super Kodak up to your eye, the picture-making controls are at your finger tips.

Only after inspecting this Kodak can you appreciate its marvelous linkages...its innumerable refinements...its exquisitely precise construction and beautiful finish. Striking a new level in photographic engineering and craftsmanship, its presentation is an event of unusual significance.

DETAILS Picture size, $2\frac{1}{4} \times 3\frac{1}{4}$ inches. Kodak Anastigmat Special $f.3.5$ lens of 100-mm. focal length. Built-in Compur shutter, with 8 speeds to 1/200, and self timer. Finding range by revolving lens mount automatically focuses camera for distances from 4 feet to infinity. Triangular area splitting range-finder field permits easy hair-line focusing. Diaphragm apertures photoelectrically controlled by cell below range finder, and fully automatic for all hand-held shutter speeds (diaphragm set manually for speeds slower than 1/25). Cell and finder cover same angle of view and same field. Hand release (cable release may be added without affecting double-exposure prevention device). Red signal in speed-dial window shows until film has been wound and shutter set. Push button releases bed and self-erecting front for opening. Die-cast aluminum case; Persian morocco leather covering; chromium trimmings. Tripod socket, camera support for vertical position.

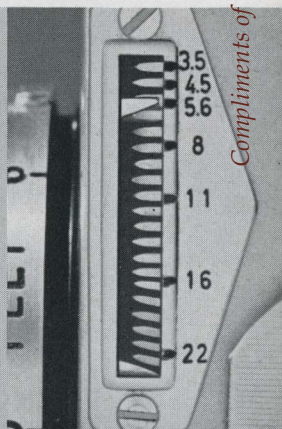
PRICES Super Kodak Six-20, \$225. Lined tan sole-leather case with shoulder strap, for camera, film, accessories, \$16.50. Special cable release, \$1.00. Kodak Film (8 exposures): Verichrome, \$.30; "SS" or Panatomic, \$.35.



The Super Kodak's picture-making controls are at your finger tips.



One operation sets shutter, actuates window cover, advances film.



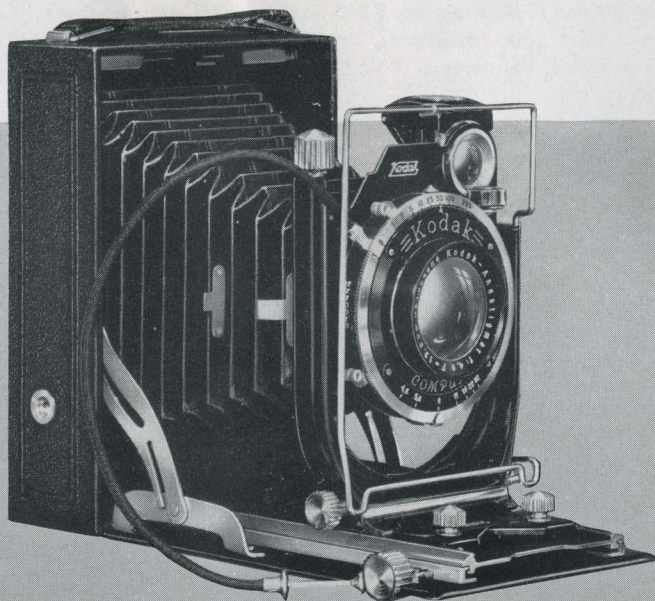
Automatic scale shows aperture at which exposure will be made.

KODAK RECOMARS 18 AND 33

THESE two cameras fall into perfect step with the trend toward varied and serious photography. Outstanding in equipment and mechanical excellence, their usefulness is multiplied by their ability to use the innumerable film-pack, cut-film, and plate emulsions. Recomars bring users the highly corrected Kodak Anastigmat *f*.4.5 lens, Compur shutter, rack-and-pinion focusing, double-extension bellows and bed, a rising and sliding front to aid in composing the picture, and many other aids toward universal adaptability. Final factors in this direction are a group of supplementary lenses supplied as accessories.

DETAILS Picture sizes and negative materials: "18"—2¼ x 3¼-inch film packs, 6.5 x 9-cm. cut film or plates; "33"—3¼ x 4¼-inch or 9 x 12-cm. film packs, 9 x 12-cm. cut film or plates. Compur shutter with 8 speeds to 1/200 second (1/250 on "18"), and built-in self timer. Reflecting and eye-level finders. Ground-glass back. Spirit level. 2 tripod sockets. Rising, sliding movements.

PRICES "18," \$54; "33," \$63 (both including 3 combination plate and film holders, film pack adapter, cable release). Case for "18," \$5; for "33," \$5.50. Supplementary lenses: A and B, for large images of distant objects, \$3.50 each; D (for "18") and E (for "33"), for wide-angle work, \$3.50 each.

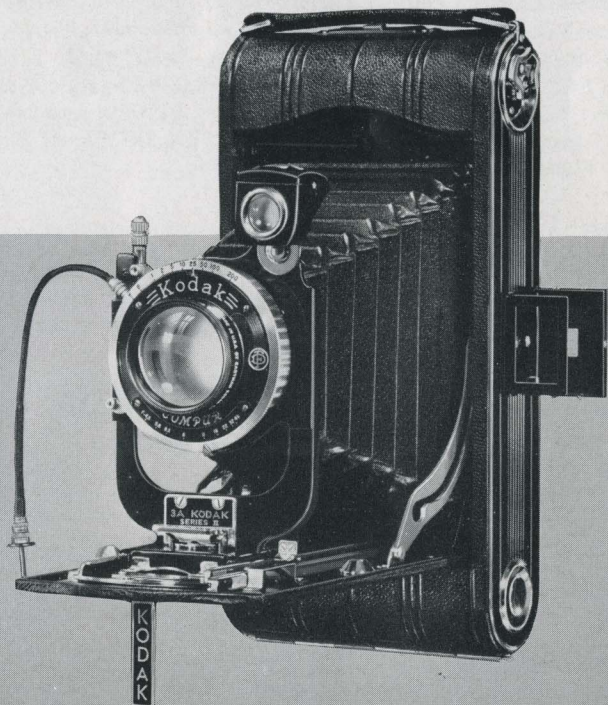


3A KODAK, SERIES II

EXCELLENT big prints without enlarging . . . that is the aim and accomplishment of the 3A Kodak, Series II. Its pictures are $3\frac{1}{4} \times 5\frac{1}{2}$ inches . . . postcard size. Either of the Kodak Anastigmat lenses offered . . . $f.6.3$ and $f.4.5$. . . assures versatility and brilliant negatives, and both are supplemented by high-quality shutters. The covering is morocco leather, embellished by chrome-and-black side panels. In this model the 3A takes on the new effectiveness of up-to-date design and full modern efficiency.

DETAILS Picture size, $3\frac{1}{4} \times 5\frac{1}{2}$ inches. Draw front. Focusing, 6 feet to infinity. $F.4.5$ model: both waist-level, eye-level finders; rising, falling front; self timer. Twin Exposure Back (extra) gives 11 pictures, $2\frac{1}{2} \times 3\frac{1}{4}$, on 6-exposure film.

PRICES 3A Kodak, Series II, with $f.4.5$ lens, Compur shutter (8 speeds to $1/200$ second), \$71; with $f.6.3$ lens, Diodak shutter (4 speeds to $1/100$ second), \$42.50. Leather case, \$5.25. Kodak Film No. 122 (6 exposures): Verichrome, \$.55; "SS" or Panatomic, \$.65. Twin Exposure Back, \$5, installed.

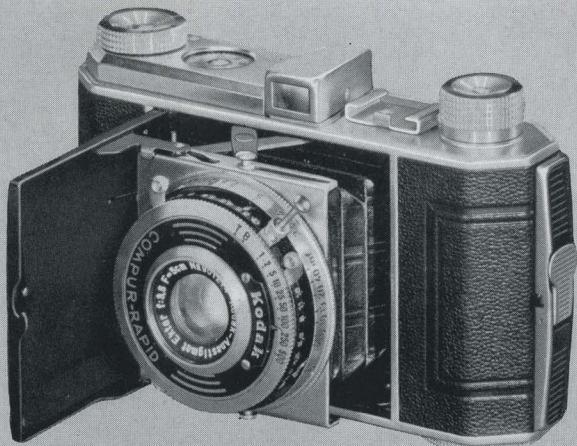


KODAK RETINA I

KODAK Retina I is a "miniature" of the 35-millimeter type, so compact that it slips readily into the pocket. But it is the Retina's precise workmanship and remarkable photographic ability, rather than its size, that make it truly a "best seller." With its super-precise Kodak Anastigmat Ektar *f*.3.5 lens and Compur-Rapid shutter it makes critically sharp negatives on a variety of Kodak black-and-white films... negatives that can be enlarged to striking size. Furthermore, it loads with Kodachrome Film to make the gorgeous full-color transparencies that are creating such a sensation. These may be projected on a screen, with strikingly beautiful results, by means of the Kodaslide Projector. Small though it is, Kodak Retina I is a veritable photographic giant from the standpoint of its accomplishments.

DETAILS Negative size, 1 x 1½ inches. Kodak Anastigmat Ektar *f*.3.5 lens. Compur-Rapid shutter (9 speeds, 1 to 1/500). Optical eye-level finder. Depth-of-focus scale. Exposure counter. Film-measuring device. Bracket for Kodak Pocket Range Finder. Black morocco covering; satin-chromium trimmings.

PRICES **Kodak Retina I**, \$57.50. Soft leather case, \$1.50. Sportsman's field case, \$8.50. Kodak Pocket Range Finder, \$7. Kodak Film No. 135, 36 exposures: "SS," Panatomic, or Super X, \$.85; Infra-Red, \$1.10; 18 exposures: Panatomic or Super X, \$.55. Kodachrome Film No. K135 (K135A for Photoflood lighting), 18 exposures, \$2.50, including processing.



KODAK RETINA II

SIMILAR to Kodak Retina I, the new Retina II has refinements that give it a distinction entirely its own. A coupled coincidence-type range finder swiftly brings subjects into hairline focus, eliminating all need of measuring distances. There is no danger of "double" exposures, for the body shutter release can be tripped only after the film has been properly advanced. Functioning perfectly with these features is a Compur-Rapid shutter and a choice of two ultra-fast anastigmat lenses: an *f*.2.8, fifty per cent faster than the Retina I lens, and an *f*.2.0, twice as fast as the *f*.2.8. With such equipment, and adaptability to both black-and-white and Kodachrome, Retina II is indeed a high-speed, all-purpose miniature . . . a masterpiece of camera construction. Little wonder that it has been enthusiastically received by people who know fine "miniatures."

DETAILS Negative size, 1 x 1½ inches. Compur-Rapid shutter (9 speeds, 1 to 1/500). Shutter release on camera body. Optical direct-view finder, enclosed in turret with other controls. Exposure counter. Depth-of-focus scale. Focusing, from 3½ feet to infinity. Lens completely protected when camera is closed. Black morocco covering; satin chromium trimmings.

PRICES Kodak Retina II: With Anastigmat *f*.2.8 lens and sportsman's field case, \$115; with Anastigmat *f*.2.0 lens and sportsman's field case, \$140. Kodak Film No. 135: see listings under Kodak Retina I on opposite page.



KODAK RECOMAR 18



KODAK SPECIAL SIX-20



3A KODAK, SERIES II (reduced in size)





KODAK RETINA (enlargement)

KODAK BANTAM SPECIAL
(standard 2 3/4 x 4 enlargement)



SIX-20 BROWNIE
JUNIOR

Compliments of the Digitized Kodak Catalog Project: 1986-1941

KODAK DUO SIX-20, SERIES II

ALREADY famous as the miniature camera that makes album-size pictures, the Kodak Duo is now available in a new and improved form. It retains all the versatility provided by its brilliant Kodak Anastigmat *f*.3.5 lens and Compur-Rapid shutter. Now, however, it is even more certain in results. With the direct-view finder at your eye, and the sensitive body shutter release at your finger tips, you frame the action accurately and snap the picture at precisely the chosen instant. A one-finger closing device and satin-finish chromium fittings further enhance the value and beauty of this newer, finer Duo Six-20.

DETAILS Picture size, $1\frac{5}{8} \times 2\frac{1}{4}$ inches. Compur-Rapid shutter (9 speeds to $1/500$ second). Body shutter release (also regular finger release). Focusing from $3\frac{1}{2}$ feet to infinity. Depth-of-focus scale. Tooled black leather covering. Bracket for Kodak Pocket Range Finder. Tripod socket. Twin ruby windows with flush-mounted sliding covers to protect fast films.

PRICES Kodak Duo Six-20, Series II, \$57.50. Brown cowhide case, \$6. Tan sole leather field case, \$8.50. Kodak Pocket Range Finder, \$7. Kodak Film No. 620 (16 exposures): Verichrome, \$.30; "SS" or Panatomic, \$.35.

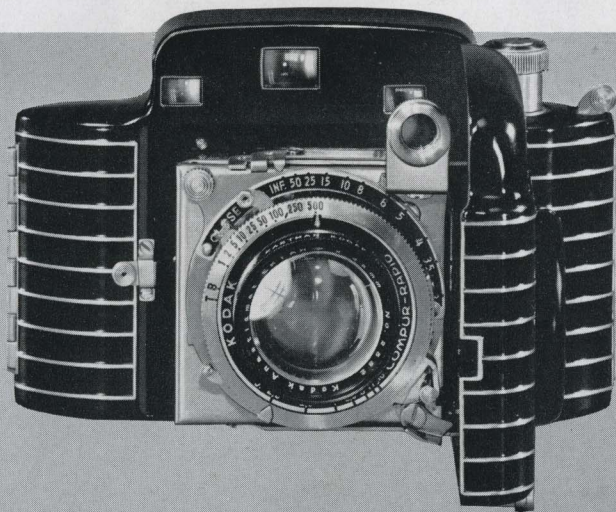


KODAK BANTAM SPECIAL

KODAK Bantam Special is a miniature-camera sensation. It has a beauty unique in camera design . . . but it is beauty with a purpose. For the case protects a remarkably precise and versatile mechanism: the super-corrected, super-speed Kodak Anastigmat Ektar *f*.2.0 lens . . . Compur-Rapid shutter . . . a coupled range finder to eliminate the guesswork of judging distances . . . an automatic film-centering device. With this camera you can undertake indoor and outdoor "shots" you never before considered, and enjoy, besides, the greatest thrill in photography . . . Kodachrome's lovely full color. The Bantam Special spells new picture-making delight. Especially at its new low price, it is a find for camera connoisseurs.

DETAILS Standard black-and-white enlargement size, $2\frac{3}{4} \times 4$ inches. Compur-Rapid shutter (9 speeds, 1 to 1/500). When closed, cover protects range-finder elements as well as lens and shutter. Extra-hard, brilliant enamel finish, with raised aluminum ribbing. Stainless steel and chromium fittings.

PRICES **Kodak Bantam Special**, complete with tan sole leather sportsman's field case, \$87.50. Tan leather combination case, for camera and 3 lens attachments, \$7. Kodak Panatomic or Super X Film No. 828 (8 exposures), \$.20. Kodachrome Film No. K828 (K828A for Photoflood lighting), 8 exposures, \$1.35, including processing.

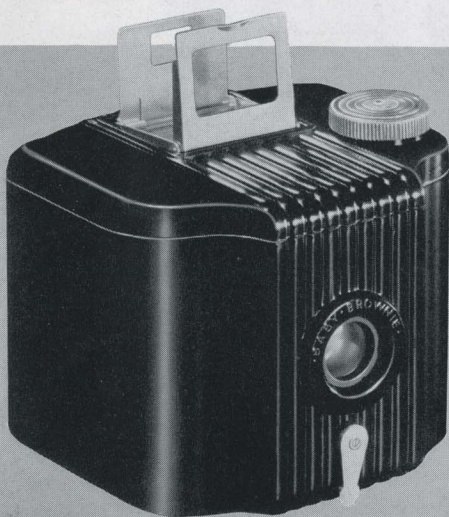


BABY BROWNIE

AT first glance a camera as small as the Baby Brownie, and selling at only a dollar, may not seem entirely practical. But make no mistake: this genuine Eastman model is a "baby" in size and price only. Actually, it is a complete, carefully designed, thoroughly proven camera that makes surprisingly good pictures. And sizable ones, too, for they measure $1\frac{5}{8} \times 2\frac{1}{2}$ inches . . . the long-favored "vest pocket" proportions. Operation is extremely simple . . . one of the reasons for the Baby Brownie's huge popularity, especially among children. You may want to bear that point in mind, because experience shows that there is no better camera with which to introduce youngsters to the entrancing hobby of photography. Examine this surprising little picture maker at your dealer's.

DETAILS Picture size, $1\frac{5}{8} \times 2\frac{1}{2}$ inches. Easy loading by removing top of camera. Makes vertical or horizontal pictures. Meniscus lens. Rotary shutter with snapshot action. Fixed focus, with range from 5 feet to infinity (no focusing or measuring of distances necessary). Eye-level direct-view finder; folds flush with top of camera when not in use. Molded body of modern design, with permanent, rich, glossy-black finish.

PRICES **Baby Brownie**, \$1. Carrying case, \$.25. Kodak Film No. 127 (8 exposures): Regular N.C., \$.20; Verichrome, \$.25; "SS" or Panatomic, \$.30.



SIX-16 AND SIX-20 BROWNIE JUNIORS

LOAD... aim...shoot! With such an easy formula to follow, anyone can operate a camera. That, plus the factor of really good pictures, is the success secret of the Brownie Juniors. They demand no measuring of distances, because they have "fixed" focus. Once they are loaded, there remains only the tripping of the shutter, and thousands perform that simple operation every day, confident in the knowledge that, within their camera class, Brownies are unsurpassed. With their sound construction and neat, modern finish, these junior members of the famous family have established an enviable reputation for lasting high value.

DETAILS Picture sizes: Six-16, $2\frac{1}{2} \times 4\frac{1}{4}$ inches; Six-20, $2\frac{1}{4} \times 3\frac{1}{4}$ inches. Tested meniscus lens, with protective front crystal. Rotary shutter (snapshot and time actions). Extra-large ground-glass finders. Black levant-grain covering. Decorative metal front plate. Nickered fittings.

PRICES **Six-16 Brownie Junior**, \$2.85. Kodak Film No. 616 (8 exposures): Regular N.C., \$.30; Verichrome, \$.35; "SS" or Panatomic, \$.40. **Six-20 Brownie Junior**, \$2.35. Kodak Film No. 620 (8 exposures): Regular N.C., \$.25; Verichrome, \$.30; "SS" or Panatomic, \$.35.

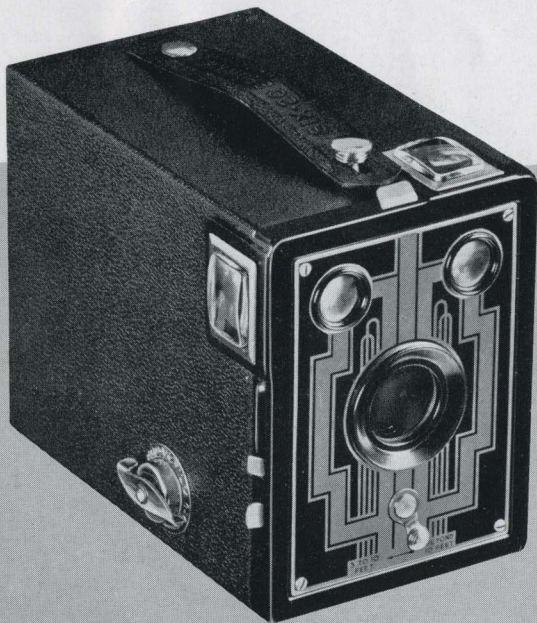


SIX-16 AND SIX-20 BROWNIES

"**BROWNIE**" is the world's byword for an amazing combination of simplicity and photographic ability. In these Six-16 and Six-20 models this ability hits a new high. Improvements include the Diway lens, which assures sharp focus for near or distant subjects. The finders for horizontal and vertical subjects are extra-large and of the brilliant type. The shutter is as dependable as ever. As a result these Brownies perform even more capably than older models, and are even more popular. As a matter of fact, they captivate both grown-ups and children at sight, for efficient as their predecessors were, they never approached these models in "eye appeal" . . . in swank yet businesslike looks.

DETAILS Picture sizes: Six-16, $2\frac{1}{2} \times 4\frac{1}{4}$ inches; Six-20, $2\frac{1}{4} \times 3\frac{1}{4}$ inches. Eastman Rotary shutter (snapshot and time actions). Black morocco-grain covering. Decorative two-tone metal front. Nickered fittings.

PRICES **Six-16 Brownie**, \$3.75. Kodak Film No. 616 (8 exposures): Regular N.C., \$.30; Verichrome, \$.35; "SS" or Panatomic, \$.40. **Six-20 Brownie**, \$3.10. Kodak Film No. 620 (8 exposures): Regular N.C., \$.25; Verichrome, \$.30; "SS" or Panatomic, \$.35.

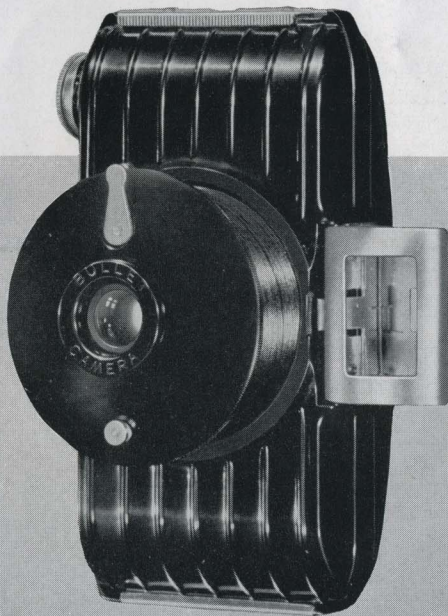


BULLET CAMERA

HERE is one of the most intriguing little picture makers on the market. It is built on the principle of the folding camera, but instead of bellows it has an ingenious spiral mount which brings the lens out into picture-taking position with a single turn. The rest is just as easy: sight on your subject through the eye-level finder, press the shutter release, and the picture is yours. Turn back the mount, fold the finder, and the camera fits snugly in your hand, pocket, or handbag. The Bullet represents a novel conception in camera construction... a conception so well carried out that it results in really excellent pictures, even though the user may be entirely inexperienced, and may never before have tripped a camera shutter.

DETAILS Picture size, $1\frac{5}{8} \times 2\frac{1}{2}$ inches. Latest molded construction, with raised ribbing and permanent black glossy finish. Meniscus lens. Shutter with snapshot and bulb actions. Removable back, with push latch, for quick, easy loading. Milled film-winding knob.

PRICES **Bullet Camera**, \$2.50. Carrying case, \$.75; Kodak Film No. 127 (8 exposures): Regular N.C., \$.20; Verichrome, \$.25; "SS" or Panatomic, \$.30.



SIX-20 BULL'S EYE

LATEST styling and simple efficiency stand out all over this new Eastman camera. Its glossy black molded body tapers somewhat toward the front, while the back is gently curved. These details of design not only lead to exceptional compactness, but, together with the rounded edges and raised ribbing, give the Bull's Eye distinctive looks and a pleasant "feel." Operation is the simplest possible: load, sight on your subject, trip the shutter. The tubular "spy-glass" finder shows the picture-to-be with great brilliance and accuracy. The reliable lens and shutter do the rest. Young people . . . beginners of all ages, in fact . . . are instantly attracted by the appearance of this clever little camera. And they are delighted when they find how easily it makes fine pictures. In short, the Six-20 Bull's Eye easily qualifies as a new star among inexpensive, box-type cameras. You will surely want to see it at your favorite camera counter.

DETAILS Picture size, $2\frac{1}{4} \times 3\frac{1}{4}$ inches. Meniscus lens. Single-action shutter with snapshot and bulb settings. Fixed focus, with range from 8 feet to infinity. Tubular, optical, eye-level finder. Easy loading by removing top of camera. Black molded body, with permanent glossy finish. Braided strap, for carrying, also aids in steadying camera during exposure.

PRICES **Six-20 Bull's Eye**, \$3. Kodak Film No. 620 (8 exposures): Regular N.C., \$.25; Verichrome, \$.30; "SS" or Panatomic, \$.35.



KODAK FILMS FOR EVERY NEED

VERICHROME Double-coated by a special process, Kodak Verichrome Film takes care of reasonable exposure errors... increases your ability to get clear, satisfying results. Verichrome has great exposure latitude, is fully orthochromatic, and is provided with an antihalation backing. Rolls and packs.

PANATOMIC Unmatched for general "miniature" work. Has a grain of microscopic fineness, so that pictures, even when greatly enlarged, show no appreciable graininess, retain remarkable brilliance, detail. Fully panchromatic. Nonhalation backing. Rolls, packs, magazines, cut sheets.

"SS" PAN Completely color-sensitive and lightning-fast. Substantially improves picture quality and increases the range of your camera... indoors and out... in any light. Aided by Photoflood bulbs, it can be used for snapshots at night. Nonhalation backing. Rolls, packs, magazines, cut sheets.

SUPER X Even faster than "SS" Pan... both in daylight and under tungsten illumination. Yields fully timed negatives much earlier or later in the day. Fully panchromatic. Invaluable for short exposures, and indoor work. Unusually fine grain. For 35-millimeter cameras and Kodak Bantams.

KODACHROME Gives you lovely full-color transparencies, which may be viewed as they are or mounted in slides for large-size projection with the Kodaslide Projector. Requires no extra equipment. Made in two types, for use outdoors and indoors. For miniature cameras.

INFRA-RED Used with a red filter, such as Wratten No. 25 (A), this film minimizes the effect of atmospheric haze and increases the photographic visibility of distant objects. Renders skies very dark, shadows hard, trees as though snow-covered. For 35-millimeter cameras.



ACCESSORIES FOR THE PICTURE MAKER

KODAFLECTOR A lighting unit that greatly increases the efficiency of photo bulbs. Complete, \$5.

KODAK HANDY REFLECTOR, MODEL B (not illustrated) Simple, effective cardboard reflectors for use on standard sockets in home lamps. 2 for \$.25.

KODAK POCKET RANGE FINDER Eliminates guesswork with any camera that has a focusing scale. Look through the range finder, adjust by means of a knurled knob, and set camera for distance indicated. \$7.

KODAPOD AND OPTIPOD For standard tripod sockets. May be attached to any handy object to hold the camera steady during exposure. Kodapod, \$1.75; Optipod, \$1.25.

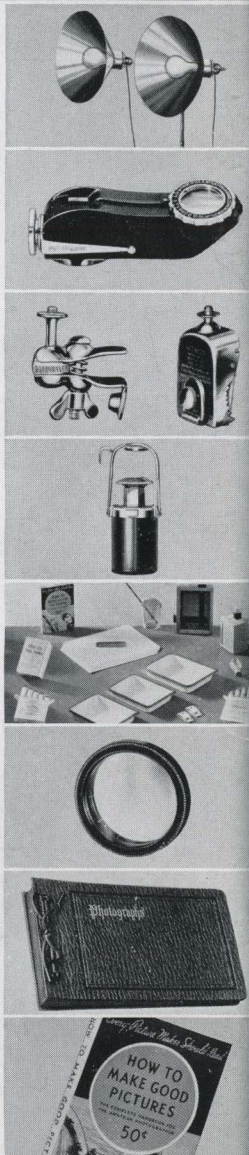
KODAK SELF TIMER For any camera with a cable release. Trips the shutter automatically. Allows camerist to take his own picture, and to include himself in pictures of groups. \$1.25.

DARKROOM OUTFITS Supplies for developing and printing pictures in the home darkroom installed in basement, closet, or attic. Kodak Darkroom Outfit No. 1, \$8.75; No. 3, \$4.25; ABC Outfit, \$2.25.

LENS ATTACHMENTS Fit over the regular camera lens to give unusual results. Kodak Portrait Attachments, \$.65 to \$3.75. Other types of attachments are priced as low as \$1.

EASTMAN ALBUMS Attractive...durable...easy to use. Many styles, in a wide price range. Eastman Albums for prints are priced from \$.90 to \$5. Kodak Negative Albums, \$1.25 to \$2.

"HOW TO MAKE GOOD PICTURES" Latest, revised edition of this helpful publication. Hundreds of pictures, diagrams. Simple, untechnical explanations. Every amateur photographer should own a copy. \$50.





**THE GREAT SNAPSHOTS
ARE MADE ON KODAK FILM**



WHETHER you're expert or inexperienced—for day-in and day-out picture making—use Kodak Verichrome Film for surer results... Accept nothing but the film in the familiar yellow box—Kodak Film—which only Eastman makes.

Ford Optical Company

1029
16th Street

TWO
Stores

1558
Broadway

DENVER, COLO.
Mail Orders Promptly Filled