



**KODAK**

## **The Digitized Kodak Catalog Project (1886 - 1941): A Very Brief History**

Most camera collectors at some point in their collecting careers pass through a Kodak phase - some never come out of it. And if there ever was one name that came to be associated with both cameras and collecting, it was Kodak.

George Eastman received his first patent (for coating dry plates) and bought his first manufacturing facility in 1880, and in 1881 he started the Eastman Dry Plate Company. In 1886 he received a patent for the near-mythical Eastman Detective Camera, but it wasn't until 1888 that the first camera bearing the name "Kodak" was introduced.

One of the nice things about collecting Kodak is that the product line is pretty well known, and because the company produced annual catalogs for many years, collectors can be reasonably sure of what they're looking at, when it was made, the variations and so on - presuming that they have access to either the appropriate catalog, or a number of the many books which document Kodak, each to some greater or lesser extent.

But what would be really nice would be to have a complete set of Kodak catalogs in an easily accessible form and readily available. And since the advent of portable computing devices (PC, Macintosh, etc.) that's been possible - except for the difficulty of assembling a complete set of Kodak catalogs in one spot and then scanning them and making the results available.

The idea of digitizing a complete set of Kodak catalogs has kicked around the collecting community for many years. It's been proposed on a number of online forums, during meetings of various photohistory groups, and for years there have been many incomplete "Kodak CDs" on eBay but at best, they only contained a few catalogs - whatever the owner had available. But assembling a complete set of catalogs, then scanning and processing perhaps 3,000 to 4,000 pages, was a daunting task - if not completely overwhelming - and nothing ever came of it.

Until now.

In early 2010, the idea came up again, but this time we - "we" as in "the collecting community" - were lucky. A number of collectors were willing to loan their catalogs to this project and a couple of insane - wait, let's call them "dedicated" - dedicated enthusiasts - neither of whom collected Kodak, but both of whom enjoyed the challenge of such a project - were willing to put in the time and effort to scan and pull together the entire set of catalogs into a full-blown Kodak Catalog Digital Library.

Our initial objective was to include just the annual amateur catalogs, but it turns out that many cameras only appear in certain professional and specialty catalogs. We included as many of those as we could obtain so that almost every Kodak camera made in the US, Canada and Europe, would be documented - at least up to about 1941. After that, it becomes much more difficult as Kodak stopped producing annual catalogs as their product line became increasingly more diversified.

However, even with the additional "non-amateur" catalogs, we weren't completely successful in illustrating "every" camera Kodak ever made. There are an elusive few that might appear in specialty catalogs that we simply couldn't track down. If you can't find one of those odd cameras, that's no doubt why. We may do a revision at some point in the future if someone is willing to loan us a catalog that includes a camera that isn't already recorded.

In this project, a total of 67 catalogs were used from 1886 through 1941 including a number of professional and dealer catalogs, and in some years, two or even three different catalogs to cover all the bases. With the cooperation of a number of dedicated collectors, we were able to pull together all those catalogs and in June 2010, the project started in earnest.

By November 2010, we had scanned everything we needed and eventually all 67 catalogs were then reassembled as image folders and converted to the universally accepted PDF format and finally, converted into individually searchable PDFs which could then be searched globally as a collection.

For those of you interested in the statistics: about 200 hours of scanning time (we never want to hear that sound again), 67 catalogs and 3,908 page scans - which generated 7,917 original and processed images - and 11.4 GB of disk space. Additionally, another 100+ hours of technical development time was needed to convert the digital catalogues into a fully searchable "knowledgebase" that could be launched from most any standard web browser.

The overwhelming number of catalogs was loaned to us by that most remarkable of Kodak collectors, Charlie Kamerman of Eagle Creek, Oregon. Without Charlie, it's very doubtful that this project could even have been attempted.

But as it turned out, even Charlie didn't have all the publications that were needed, but he was able to track down the five that he lacked and was able to secure either a copy or high resolution images that we could work with. And so, our thanks to the contributors of the catalogs and scans that we used:

Charlie Kamerman for the vast majority of catalogs used and all his help,  
Steve Shohet for loaning a variety of test catalogs,  
Ryerson University (Toronto) for the 1886 Eastman Catalog  
George Layne for the 1890 New Kodaks Catalog,  
Mike Kessler for the 1891 Dealer Display Catalog,  
Ralph London for the 1893 UK Catalog,  
Michael Pritchard for the 1897 UK Catalog.

The digital side of the project - also known as "all of the work" - was done by Rob Niederman of Medina, Minnesota, and Milan Zahorcak of Tualatin, Oregon. Remarkably we're still friends and in a few years, we'll probably be able to talk about this project rationally.

And there you have it, a more-or-less done deal. We're fairly sure that it isn't quite perfect, and expect there will be some carping about something or other; but all-in-all, we believe this to be a pretty good product and can now move on to something else.

Our thanks to all of those involved.

Rob Niederman  
Milan Zahorcak

Fall, 2011

*Compliments of the Digitized Kodak Catalog Project: 1886 - 1941*



**KODAKS AND**

815  
J74

**IN SELECTING  
A CAMERA,  
CONSIDER  
THESE FOUR  
POINTS:**

**THE PICTURE SIZE** that appeals to you most . . .

**THE TYPE OF CAMERA YOU PREFER** . . . box  
or folding . . .

**THE VARIETY OF PICTURES** you want, and  
the conditions under which you expect to take  
them . . .

**THE PRICE** you want to pay.

Your dealer will be glad to help you make your  
selection.

For complete information on Kodak Film and  
photographic accessories, ask for the booklet,  
"Kodak Picture-Making Aids."

Prices in this catalog are subject to change without notice.

March, 1938

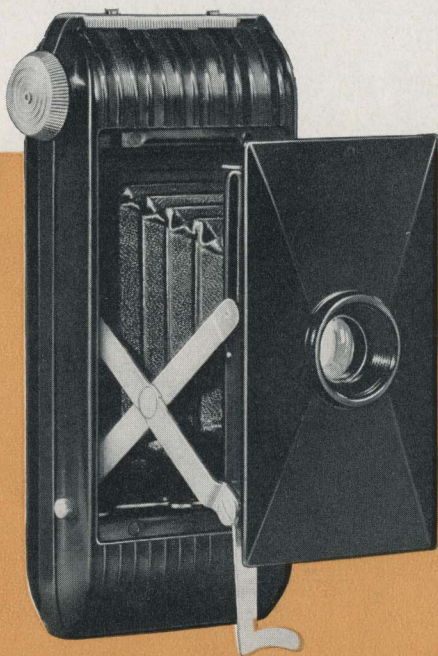
**BROWNIES**

## JIFFY KODAK V.P.

**F**IVE dollars invested in Jiffy Kodak V.P. buys a great deal. Modern molded construction. . . substantial picture size. . . plus the sound design that makes Eastman cameras ever-reliable—and ever-ready for good pictures. Lens and shutter, deciding factors in any camera, are carefully made, and ingenious construction gets them into action instantly. Springing open at the touch of a button, Jiffy V.P. goes to work without focusing or other adjustment. Just trip the shutter and the picture is made. Latest of "vest pocket" Kodaks, this model meets today's demand for a swift, good-looking, compact little folding camera.

**DETAILS** Picture size,  $1\frac{5}{8} \times 2\frac{1}{2}$  inches. Glossy black finish. Fixed focus. Kodak Doublet lens, recessed for protection. Built-in shutter, with instantaneous and bulb actions, and 2 release triggers. Aperture can be stopped down to  $f.16$ . Folding eye-level finder. Weight, 10 ounces.

**PRICES** **Jiffy Kodak V.P.**, \$5. Carrying case, \$1.35. No. 127 Kodak Film (8 exposures): Regular N.C., \$.20; Verichrome, \$.25; "SS" or Panatomic, \$.30.

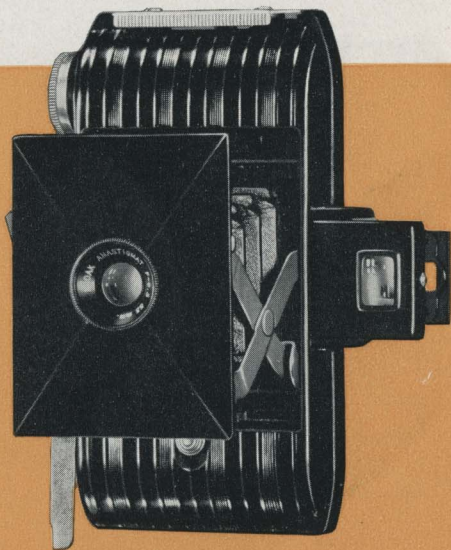


# KODAK BANTAM

**H**ERE is the most convenient camera to carry ever designed. It is little more than four inches long . . . so small that it fits the palm of the hand. But even more surprising is the size of the pictures to which it leads, for modern photofinishing methods give you  $2\frac{3}{4}$  x 4-inch prints, at moderate cost. And note these additional points: Kodak Bantam uses Kodak Panatomic Film in a 20-cent, 8-exposure roll. You don't have to watch the window while you are winding to the next exposure, because a special device centers the film automatically. And Bantam operating features, aided by the versatile film, cancel ordinary exposure problems. Be sure to see this tiny Kodak. Photography with the Bantam . . . and especially with the *f.6.3* model . . . is worth investigating.

**DETAILS** Standard enlargement size,  $2\frac{3}{4}$  x 4 inches. Fixed focus. Molded body,  $4\frac{3}{8}$  x  $2\frac{1}{4}$  x 1 inch. Weight, 8 ozs. *F.6.3* model: Kodak Anastigmat *f.6.3* lens, snapshot and time actions, folding optical eye-level finder. Doublet model: Kodak Doublet lens, snapshot and bulb actions, folding eye-level finder.

**PRICES** **Kodak Bantam**, *f.6.3*, \$10. **Kodak Bantam**, Doublet, \$6. Black leather case for either model, \$1.25. Tan leather field case with neck strap, for *f.6.3* model, \$2.75. Kodak Panatomic Film No. F828 (8 exposures), \$.20.

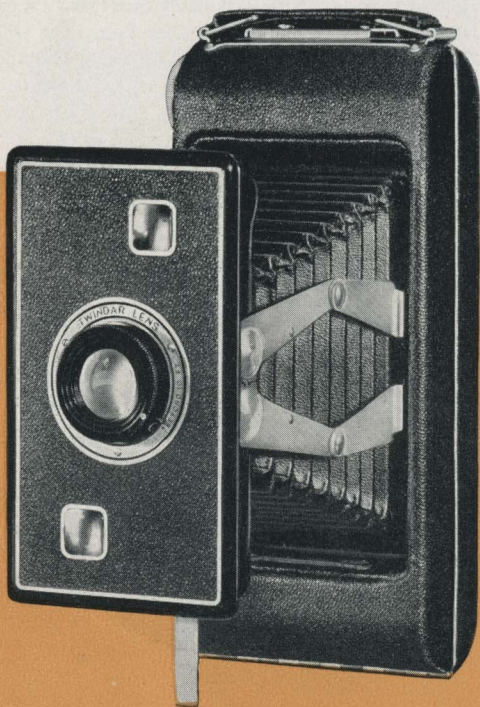


## JIFFY KODAKS SIX-16

**I**N judging Jiffy Kodaks, consider these outstanding characteristics: though they make big pictures, the Jiffys are unusually handy to carry because of their slim, compact design. Besides, they are so simple that anyone can master their operation in a minute. In fact, no folding camera known is easier to use than the Jiffy type . . . or works faster. Press one button—the camera opens and the lens automatically springs out into position. Press another button and the picture's yours. Jiffy Kodaks very definitely live up to their name.

You want other features, too, of course . . . and Jiffy Kodaks have them: genuine proficiency, assured by the "near-and-far" Twindar lens and the sturdy built-in shutter. Style, emphasized by the lustrous black pin-grain covering and natural-metal edging. Low cost, for Jiffy prices are moderate to a degree seldom found in cameras of comparable picture size and photographic ability.

Because of their multiple attractions, Jiffy Kodaks have sold them-





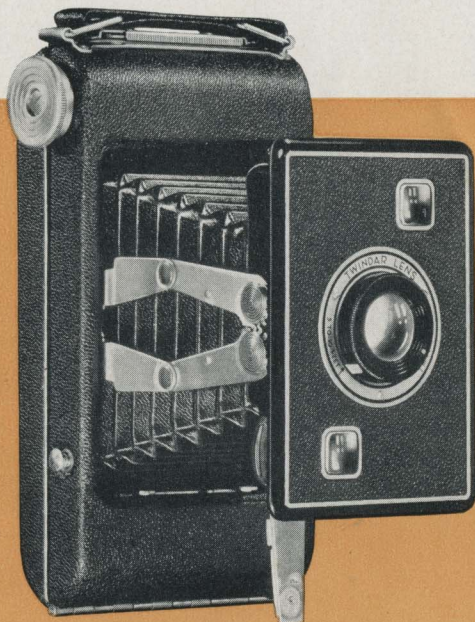
## AND SIX-20, SERIES II

selves to a multitude of people. You will find them very difficult to resist when you see them at your Kodak dealer's, whether you are shopping for a camera of your own or want to present someone else with the means to simple, satisfying photography.

**DETAILS** Picture size: Six-16,  $2\frac{1}{2} \times 4\frac{1}{4}$  inches; Six-20,  $2\frac{1}{4} \times 3\frac{1}{4}$  inches. Camera opened by slight pressure on a button, which releases spring-actuated erecting arms. Twindar lens has revolving mount which can be turned to either of two positive stops, for distances from 5 to 10 feet, and beyond 10 feet. Built-in shutter with snapshot and time actions, three apertures, and finger release. Crowned, brilliant waist-level finders for vertical and horizontal pictures. Swinging foot supports camera for time exposures in either vertical or horizontal position. Black pin-grain covering. Black japanned metal cap (extra) protects lens from dust, sand, and breakage.

### PRICES

	<b>Jiffy Six-16 Series II</b>	<b>Jiffy Six-20 Series II</b>
With Twindar lens . . . . .	\$10.00	\$9.00
Leather carrying case . . . . .	1.85	1.65
Lens Cap . . . . .	.15	.15
Kodak Verichrome Film (8 exposures) . . . . .	.35	.30
Kodak "SS" or Panatomic Film . . . . .	.40	.35



KODAK BANTAM  
(standard 2 3/4 x 4 enlargement)



Compliments of the Digitized Kodak Contag Project: 1936 - 1941

JEFFY KODAK V.P.



JEFFY KODAK SIX-20,  
SERIES II

KODAK JUNIOR SIX-20, SERIES II



KODAK SENIOR SIX-16



Compliments of the Digitized Kodak Catalog Project: 1886 - 1941

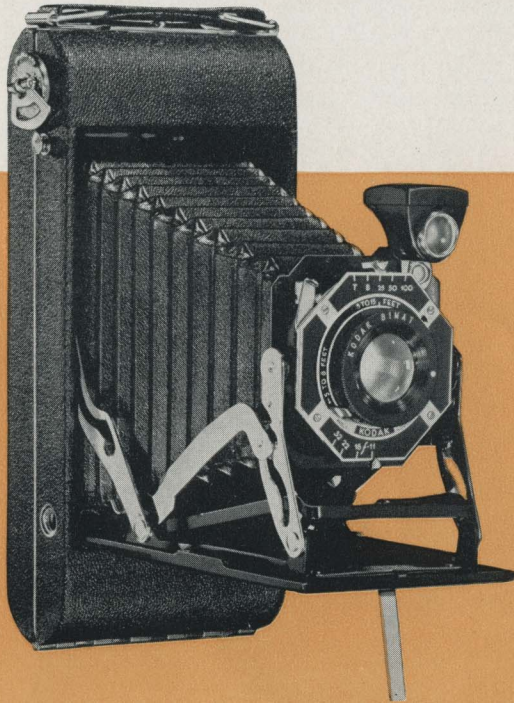


KODAK DUO SIX-20, SERIES II

# KODAK JUNIORS SIX-16

**T**AKE this as a guide: Kodak Juniors are among America's most popular cameras. One reason is that they include very modestly priced models fitted with the Kodak Anastigmat  $f.6.3$  lens. With such a Junior you have real lens power at your command. It enables you to make indoor snapshots at night, with the aid of Kodak "SS" Film and Photoflood lamps. Outdoors you can disregard most weather conditions. The  $f.6.3$  admits much more light than the ordinary lens, greatly increasing the scope and variety of your picture taking.

Some Kodak Juniors carry the easily focused Bimat, and others a single lens that requires no focusing whatever. These models are fully capable within their intended picture-making ranges, and, with the exception of their lenses and shutters, are identical with the  $f.6.3$  Juniors. All models open into picture-taking position with a single pull on the bed latch . . . close at the touch of a one-finger bar release . . . bring you two view finders, for use at eye level or waist



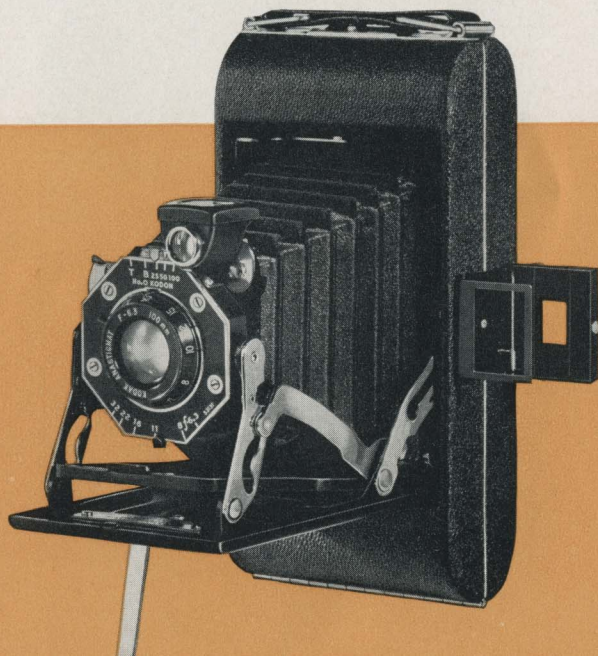
## AND SIX-20, SERIES II

level . . . are finely finished . . . and give you a choice of two generous picture sizes. Every Kodak Junior, Series II, offers far greater value than its modest price indicates.

**DETAILS** Picture sizes: Six-16,  $2\frac{1}{2} \times 4\frac{1}{4}$  inches; Six-20,  $2\frac{1}{4} \times 3\frac{1}{4}$  inches. Self-erecting front—one pull opens camera and erects lens into position. Light pressure on special bar release frees bed of camera for closing. Two tripod sockets. Single-lens models have fixed focus. *f*.6.3 and Bimat models, focus adjustable by revolving lens mount.

### PRICES

	Junior Six-16 Series II	Junior Six-20 Series II
With Kodak Anastigmat <i>f</i> .6.3 lens, shutter speeds to 1/100 second . . . . .	\$15.75	\$14.00
With Kodak Bimat lens, shutter speeds to 1/100 second . . . . .	13.50	11.75
With Single lens, snapshot and time adjustments . . . . .	11.00	9.25
Soft leather carrying case . . . . .	1.85	1.65
Lined grain leather case . . . . .	3.00	2.50
Kodak Verichrome Film (8 exposures) . . . . .	.35	.30
Kodak "SS" or Panatomic Film (8 exposures) . . . . .	.40	.35



# KODAK SENIORS

**I**NSPECT these swank new Kodaks ever so briefly, and you will be impressed with the manner in which they combine beautiful simplicity with latest efficiency. Touch a button . . . your Senior pulls open, the lens ready for the picture. Touch a bar just inside the bed and the mechanism folds back out of sight. Hold the open camera up to your eye with both hands and pick out your subject through the direct-view finder. Right at your finger tips . . . on the camera body . . . is a plunger button that trips the shutter at the instant when the picture is "right." Danger of camera movement is minimized . . . there is no need of fumbling for a remote release on the shutter itself . . . your fingers cannot obscure the lens. This is picture making with an up-to-the-minute Kodak Senior.

Incidental fittings and finish speak for themselves. From beginning to end the Seniors are exceptional cameras. Their two popular sizes and triple choice of lenses and shutters fit almost any ambitious photographer's purse and purpose. Your favorite Kodak dealer will be



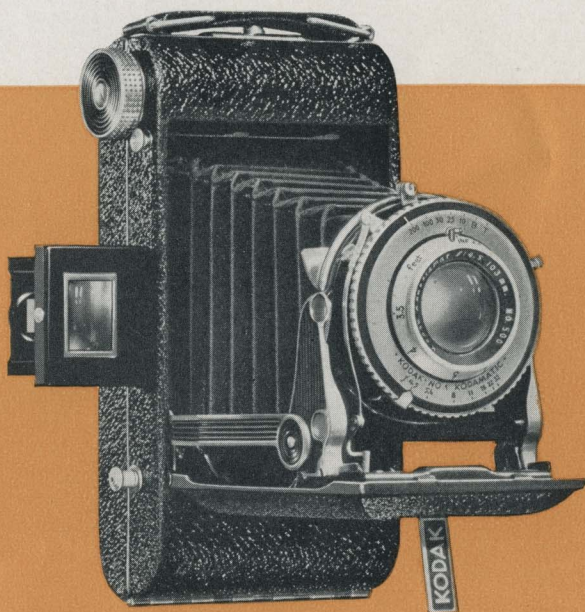
# SIX-16 AND SIX-20

glad to show you all of the models supplied. For widest scope, see the splendid "speed" models equipped with the Kodak Anastigmat *f*.4.5 lens and Kodamatic shutter.

**DETAILS** Picture sizes: Six-16, 2½ x 4¼ inches; Six-20, 2¼ x 3¼ inches. Self-erecting front. Kodex shutter has 3 speeds to 1/100 second. Kodamatic shutter has 5 speeds to 1/200 second, and built-in delayed-action timer. Bimat models have simple three-position focusing mounts. Revolving mounts on other models can be set from 3½ feet to infinity. Handy knurled film-winding knob. Swing-out film supply bracket. Optical direct-view eye-level finder. Body shutter release on side of camera (trigger release retained). Covering, black pig grain material.

## PRICES

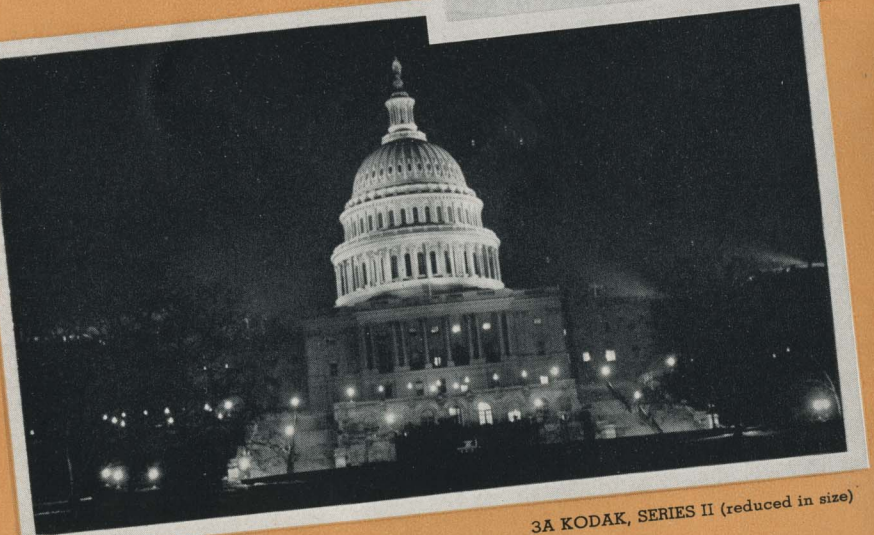
	Senior Six-16		Senior Six-20	
	Without Case	With Case	Without Case	With Case
With Kodak Anastigmat <i>f</i> .4.5 lens, Kodamatic shutter . . . . .	\$33.50	\$36.25	\$29.50	\$31.75
With Kodak Anastigmat <i>f</i> .6.3 lens, Kodex shutter . . . . .	22.00	24.75	19.50	21.75
With Kodak Bimat lens, Kodex shutter . . . . .	17.50	20.25	16.00	18.25
Kodak Verichrome Film (8 exposures) . . . . .		\$.35		\$.30
Kodak "SS" or Panatomic Film (8 exposures) . . . . .		.40		.35



KODAK RECOMAR 18



KODAK SPECIAL SIX-20

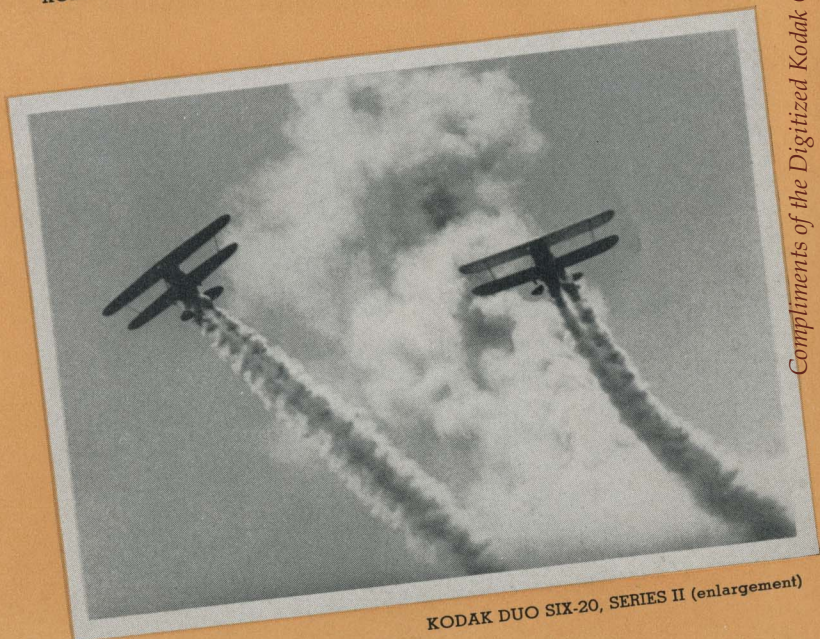


3A KODAK, SERIES II (reduced in size)





KODAK RETINA (enlargement)

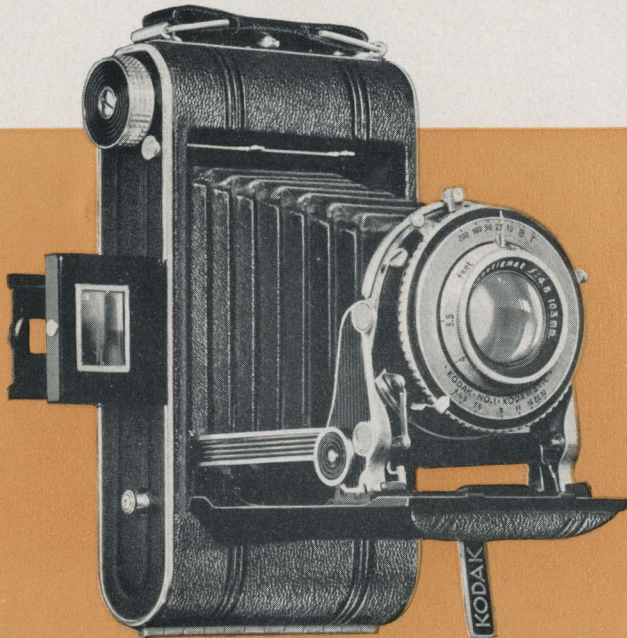


KODAK DUO SIX-20, SERIES II (enlargement)

**N**OTHING so delights the serious picture taker as a wealth of fine equipment from which he can choose an instrument exactly suited to his discriminating taste. If you are one of many such photographers, here is your opportunity.

Made for two standard picture sizes, all of the Kodak Specials have these advanced refinements: a folding optical finder that catches the scene as you see it . . . from eye level; a finger-tip body shutter release that minimizes chances of movement; a built-in self timer, which enables the user to take his own picture; a one-finger bed release for quick closing; a special aluminum case, covered with pin-seal grain leather, and further dignified by chromium and black lacquer trimmings. No term except "de luxe" adequately describes this group of truly fine cameras.

And, regardless of which size is your favorite, you may choose from three combinations of the following superb lenses and shutters: Regular and Special Kodak Anastigmat  $f.4.5$  lenses . . . Kodamatic and Compur-Rapid shutters. Great versatility and ease of handling can be



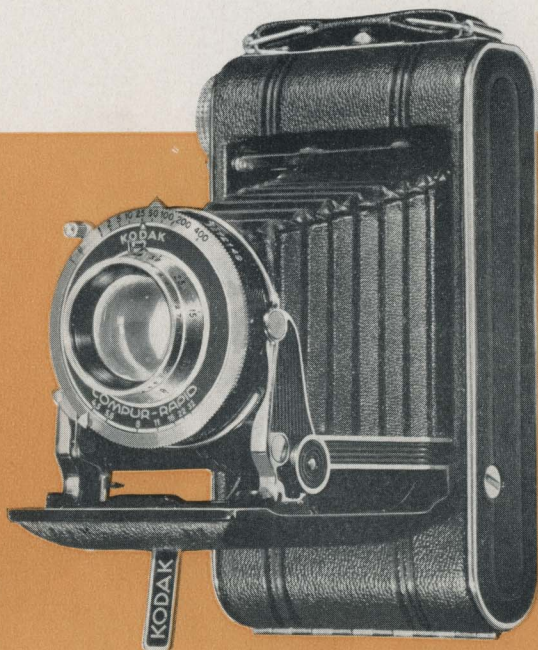
# SIX-16 AND SIX-20

taken for granted in even the lowest-priced Special, and every dollar above that minimum can be counted on to justify itself in added scope, preciseness, and certainty of superlative results.

**DETAILS** Picture sizes: Six-16,  $2\frac{1}{2} \times 4\frac{1}{4}$  inches; Six-20,  $2\frac{1}{4} \times 3\frac{1}{4}$  inches. Body shutter release (also regular trigger release). Built-in self timer. Focusing by revolving lens mount (down to  $3\frac{1}{2}$  feet on Six-20's, 4 feet on Six-16's). Kodamatic shutter has 5 speeds to  $1/200$ ; Compur-Rapid, 8 speeds to  $1/400$ . Diaphragm openings from  $f.4.5$  to  $f.32$ . Optical direct-view eye-level finder.

## PRICES

	Special Six-16		Special Six-20	
	Without Case	With Case	Without Case	With Case
With Kodak Anastigmat Special $f.4.5$ lens, Compur-Rapid shutter . . . . .	\$48.50	\$51.25	\$45.00	\$47.25
With Kodak Anastigmat Special $f.4.5$ lens, Kodamatic shutter . . . . .	41.00	43.75	37.50	39.75
With Kodak Anastigmat $f.4.5$ lens, Kodamatic shutter . . . . .	36.50	39.25	33.00	35.25
Kodak Verichrome Film (8 exposures) . . . . .		\$.35		\$.30
Kodak "SS" or Panatomic Film (8 exposures) . . . . .		.40		.35

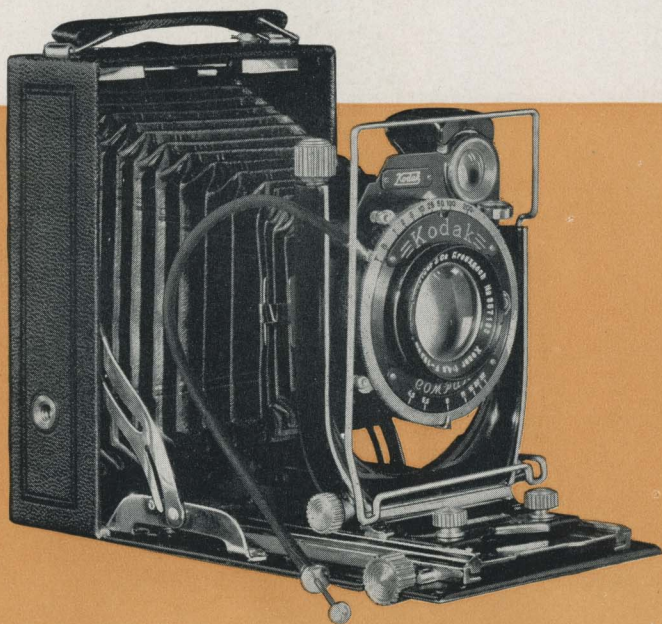


## KODAK RECOMARS 18 AND 33

**T**HESE two cameras fall into perfect step with the trend toward varied and serious photography. Outstanding in equipment and mechanical excellence, their usefulness is multiplied by their ability to use the innumerable film-pack, cut-film, and plate emulsions. Recomars bring users the highly corrected Kodak Anastigmat *f*.4.5 lens, Compur shutter, rack-and-pinion focusing, double-extension bellows and bed, and many other aids toward universal adaptability. Final factors in this direction are a group of supplementary lenses supplied as accessories.

**DETAILS** Picture sizes and negative materials: "18"— $2\frac{1}{4}$  x  $3\frac{1}{4}$ -inch film packs, 6.5 x 9-cm. cut film or plates; "33"— $3\frac{1}{4}$  x  $4\frac{1}{4}$ -inch or 9 x 12-cm. film packs, 9 x 12-cm. cut film or plates. Compur shutter with 8 speeds to 1/200 second (1/250 on "18"), and built-in self timer. Reflecting and eye-level finders. Ground-glass back. Spirit level. 2 tripod sockets. Rising, sliding movements.

**PRICES** "18," \$54; "33," \$63 (both including 3 combination plate and film holders, film pack adapter, cable release). Case for "18," \$5; for "33," \$5.50. Supplementary lenses: A and B, for large images of distant objects, \$3.50 each; D (for "18") and E (for "33"), for wide-angle work, \$3.50 each.



## 3A KODAK, SERIES II

**EXCELLENT** big prints without enlarging . . . that is the aim and accomplishment of the 3A Kodak, Series II. Its pictures are  $3\frac{1}{4} \times 5\frac{1}{2}$  inches . . . postcard size. Either of the Kodak Anastigmat lenses offered . . .  $f.6.3$  and  $f.4.5$  . . . assures versatility and brilliant negatives . . . and both are supplemented by high-quality shutters. The covering is morocco leather, embellished by chrome-and-black side panels. In this model the 3A takes on the new effectiveness of up-to-date design and full modern efficiency.

**DETAILS** Picture size,  $3\frac{1}{4} \times 5\frac{1}{2}$  inches. Push-button bed release. Draw front. Focusing from 6 feet to infinity. Hinged back.  $F.4.5$  model: both waist-level and eye-level finders; rising, falling front; self timer.

**PRICES** 3A Kodak, Series II, with  $f.4.5$  lens, Compur shutter (8 speeds to  $1/200$  second), \$75; with  $f.6.3$  lens, Diodak shutter (4 speeds to  $1/100$  second), \$45. Sole leather case, \$5.25. Kodak Film No. 122 (6 exposures): Verichrome, \$.55; "SS" or Panatomic, \$.65. Twin Exposure Back, \$5, installed.

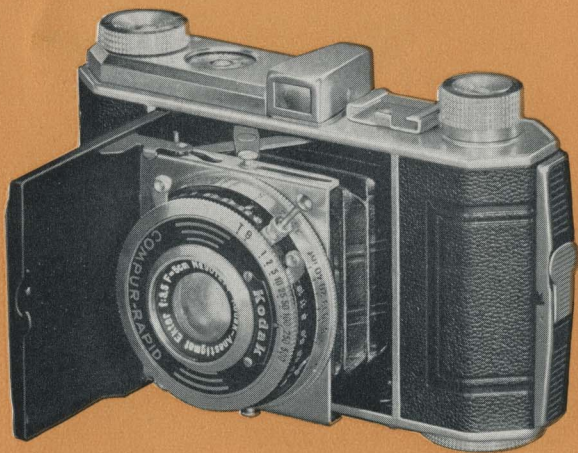


# KODAK RETINA I

**K**ODAK Retina I is a "miniature" of the 35-millimeter type, so compact that it slips readily into the pocket. But it is the Retina's precise workmanship and remarkable photographic ability, rather than its size, that make it truly a "best seller." With its super-precise Kodak Anastigmat Ektar *f*.3.5 lens and Compur-Rapid shutter it makes critically sharp negatives on a variety of Kodak black-and-white films. . . negatives that can be enlarged to striking size. Furthermore, it loads with Kodachrome Film to make the gorgeous full-color transparencies that are creating such a sensation. Small though it is, Kodak Retina I is a veritable photographic giant from the standpoint of its accomplishments.

**DETAILS** Negative size, 1 x 1½ inches. Kodak Anastigmat Ektar *f*.3.5 lens. Compur-Rapid shutter (9 speeds, 1 to 1/500). Optical eye-level finder. Depth-of-focus scale. Exposure counter. Film-measuring device. Bracket for Range Finder. Black morocco covering; satin-chromium trimmings.

**PRICES** **Kodak Retina I**, \$57.50. Soft leather case, \$1.50. Sportsman's field case, \$8.50. Kodak Pocket Range Finder, \$7. Kodak Film No. 135, 36 exposures: "SS," Panatomic, or Super X, \$.85; Infra-Red, \$1.10; 18 exposures: Panatomic or Super X, \$.55. Kodachrome Film No. K135 (K135A for Photoflood lighting), 18 exposures, \$2.50, including processing.



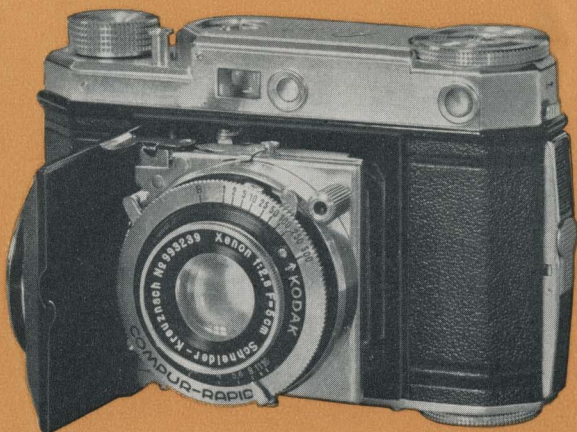
## KODAK RETINA II

**SIMILAR** to Kodak Retina I, the new Retina II has refinements that give it a distinction entirely its own. A coupled coincidence-type range finder swiftly brings subjects into hairline focus, eliminating all need of measuring distances. Exposures are made with a finger-tip body shutter release. And there is no danger of "double" exposures, for the shutter cannot be tripped after an exposure until the film has been properly advanced. Functioning perfectly with these features is a Compur-Rapid shutter and a choice of two ultra-fast anastigmat lenses: an *f.2.8*, fifty per cent faster than the Retina I lens, and an *f.2.0*, twice as fast as the *f.2.8*. With such equipment, and adaptability to both black-and-white and Kodachrome, Retina II is indeed a high-speed, all-purpose miniature. . . a masterpiece of camera construction.

**DETAILS** Negative size, 1 x 1½ inches. Compur-Rapid shutter (9 speeds, 1 to 1/500). Optical direct-view finder, enclosed in turret with other controls. Exposure counter. Depth-of-focus scale. Lens completely protected when camera is closed. Black morocco covering; satin chromium trimmings.

**PRICES Kodak Retina II:** With Anastigmat *f.2.8* lens and sportsman's field case, \$115; with Anastigmat *f.2.0* lens and sportsman's field case, \$140. Kodak Film No. 135: see listings under Kodak Retina I on opposite page.

*14 cents per exp. K.*

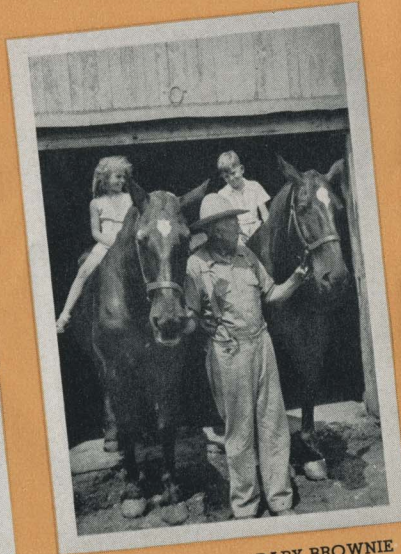




SIX-20 BROWNIE JUNIOR



SIX-20 BROWNIE



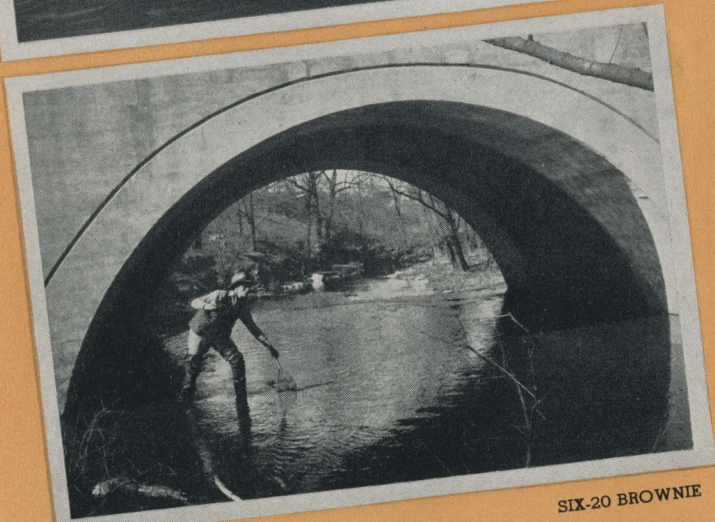
BABY BROWNIE





BULLET CAMERA

KODAK BANTAM SPECIAL  
(standard 2 3/4 x 4 enlargement)



SIX-20 BROWNIE

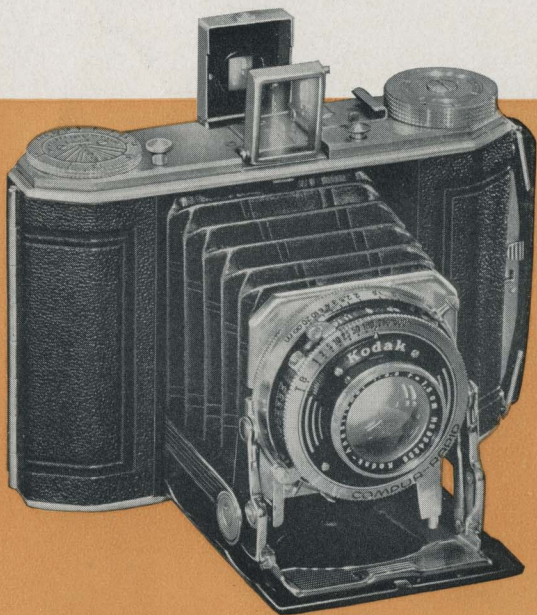
Compliments of the Digitized Kodak Catalog Project: 1936-1943

## KODAK DUO SIX-20, SERIES II

**ALREADY** famous as the miniature camera that makes album-size pictures, the Kodak Duo is now available in a new and improved form. It retains all the versatility provided by its brilliant Kodak Anastigmat  $f.3.5$  lens and Compur-Rapid shutter. Now, however, it is even more certain in results. With the direct-view finder at your eye, and the sensitive body shutter release at your finger tips, you frame the action accurately and snap the picture at precisely the chosen instant. A one-finger closing device and satin-finish chromium fittings further enhance the value and beauty of this newer, finer Duo Six-20.

**DETAILS** Picture size,  $1\frac{7}{8} \times 2\frac{1}{4}$  inches. Compur-Rapid shutter (9 speeds to  $1/500$  second). Body shutter release (also regular finger release). Focusing from  $3\frac{1}{2}$  feet to infinity. Depth-of-focus scale. Tooled black leather covering. Bracket for Kodak Pocket Range Finder. Tripod socket. Twin ruby windows with flush-mounted sliding covers to protect fast films.

**PRICES** **Kodak Duo Six-20, Series II**, \$57.50. Brown cowhide case, \$6. Tan sole leather field case, \$8.50. Kodak Pocket Range Finder, \$7. Kodak Film No. 620 (16 exposures): Verichrome, \$.30; "SS" or Panatomic, \$.35.

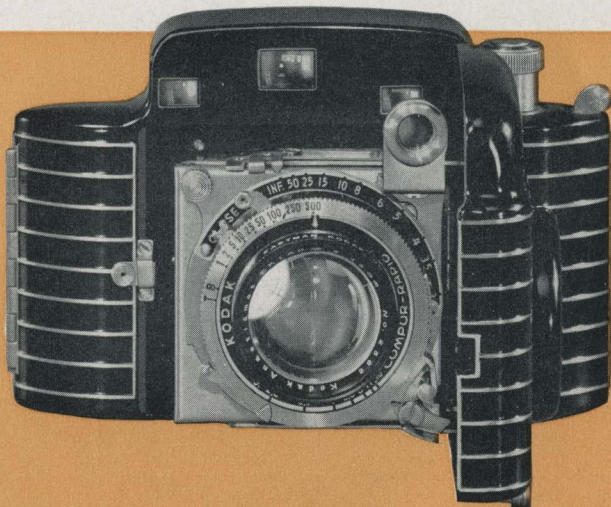


# KODAK BANTAM SPECIAL

**K**ODAK Bantam Special is a miniature-camera sensation. It has a beauty unique in camera design . . . but it is beauty with a purpose. For the case protects a remarkably precise and versatile mechanism: the super-corrected, super-speed Kodak Anastigmat Ektar *f*.2.0 lens . . . Compur-Rapid shutter . . . a coupled range finder to eliminate the guesswork of judging distances . . . an automatic film-centering device. With this camera you can undertake indoor and outdoor "shots" you never before considered, and enjoy, besides, the greatest thrill in photography . . . Kodachrome's lovely full color. Balking at no assignment, Bantam Special spells new delight for camera connoisseurs.

**DETAILS** Standard black-and-white enlargement size, 2¾ x 4 inches. Compur-Rapid shutter (9 speeds, 1 to 1/500). When closed, cover protects range-finder elements as well as lens and shutter. Extra-hard, brilliant enamel finish, with raised aluminum ribbing. Stainless steel and chromium fittings.

**PRICES** **Kodak Bantam Special**, complete with tan sole leather sportsman's field case, \$87.50. Tan leather combination case, for camera and 3 lens attachments, \$7. Kodak Panatomic or Super X Film No. 828 (8 exposures), \$.20. Kodachrome Film No. K828 (K828A for Photoflood lighting), 8 exposures, \$1.35, including processing. *.17 cents per exp. K.*

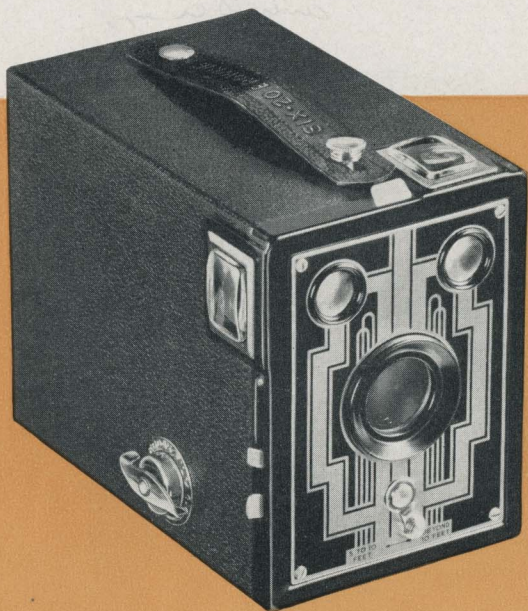


## SIX-16 AND SIX-20 BROWNIES

"**BROWNIE**" is the world's byword for an amazing combination of simplicity and photographic ability. In these Six-16 and Six-20 models this ability hits a new high. Improvements include the Diway lens, which assures sharp focus for near or distant subjects. The finders for horizontal and vertical subjects are extra-large and of the brilliant type. The shutter is as dependable as ever. As a result these Brownies perform even more capably than older models, and are even more popular. As a matter of fact, they captivate both grown-ups and children at sight, for efficient as their predecessors were, they never approached these models in "eye appeal" . . . in swank yet businesslike looks.

**DETAILS** Picture sizes: Six-16,  $2\frac{1}{2} \times 4\frac{1}{4}$  inches; Six-20,  $2\frac{1}{4} \times 3\frac{1}{4}$  inches. Eastman Rotary shutter (snapshot and time actions). Black morocco-grain covering. Decorative two-tone metal front. Nicked fittings.

**PRICES** **Six-16 Brownie**, \$4. Kodak Film No. 616 (8 exposures): Regular N.C., \$.30; Verichrome, \$.35; "SS" or Panatomic, \$.40. **Six-20 Brownie**, \$3.25. Kodak Film No. 620 (8 exposures): Regular N.C., \$.25; Verichrome, \$.30; "SS" or Panatomic, \$.35.



## SIX-16 AND SIX-20 BROWNIE JUNIORS

**LOAD** . . . aim . . . shoot! With such an easy formula to follow, anyone can operate a camera. That, plus the factor of really good pictures, is the success secret of the Brownie Juniors. They demand no measuring of distances, because they have "fixed" focus. Once they are loaded, there remains only the tripping of the shutter, and thousands perform that simple operation every day, confident in the knowledge that, within their camera class, Brownies are unsurpassed. With their sound construction and neat, modern finish, these junior members of the famous family have established an enviable reputation for lasting high value.

**DETAILS** Picture sizes: Six-16,  $2\frac{1}{2} \times 4\frac{1}{4}$  inches; Six-20,  $2\frac{1}{4} \times 3\frac{1}{4}$  inches. Tested meniscus lens, with protective front crystal. Rotary shutter (snapshot and time actions). Extra-large ground-glass finders. Black levant-grain covering.

**PRICES** **Six-16 Brownie Junior**, \$3. Kodak Film No. 616 (8 exposures): Regular N.C., \$.30; Verichrome, \$.35; "SS" or Panatomic, \$.40. **Six-20 Brownie Junior**, \$2.50. Kodak Film No. 620 (8 exposures): Regular N.C., \$.25; Verichrome, \$.30; "SS" or Panatomic, \$.35.

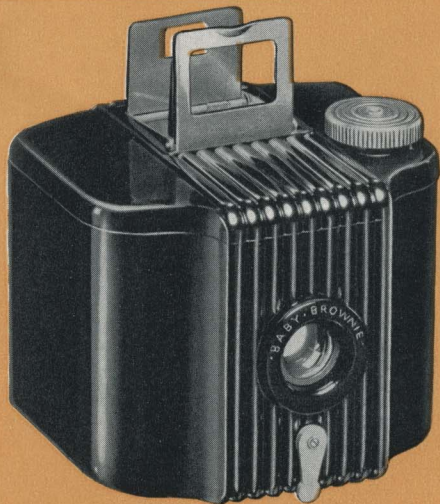


# BABY BROWNIE

**A**T first glance a camera as small as the Baby Brownie, and selling at only a dollar, may not seem entirely practical. But make no mistake: this genuine Eastman model is a "baby" in size and price only. Actually, it is a complete, carefully designed, thoroughly proven camera that makes surprisingly good pictures. And sizable ones, too, for they measure  $1\frac{5}{8} \times 2\frac{1}{2}$  inches... the long-favored "vest pocket" proportions. Operation is extremely simple... one of the reasons for the Baby Brownie's huge popularity, especially among children. You may want to bear that point in mind, because experience shows that there is no better camera with which to introduce youngsters to the entrancing hobby of photography.

**DETAILS** Picture size,  $1\frac{5}{8} \times 2\frac{1}{2}$  inches. Easy loading by removing top of camera. Makes vertical or horizontal pictures. Meniscus lens. Rotary shutter with snapshot action. Fixed focus, with range from 5 feet to infinity (no focusing or measuring of distances necessary). Eye-level direct-view finder; folds flush with top of camera when not in use. Molded body of modern design, with permanent, rich, glossy-black finish.

**PRICES** **Baby Brownie**, \$1. Carrying case, \$.25. Kodak Film No. 127 (8 exposures): Regular N.C., \$.20; Verichrome, \$.25; "SS" or Panatomic, \$.30.

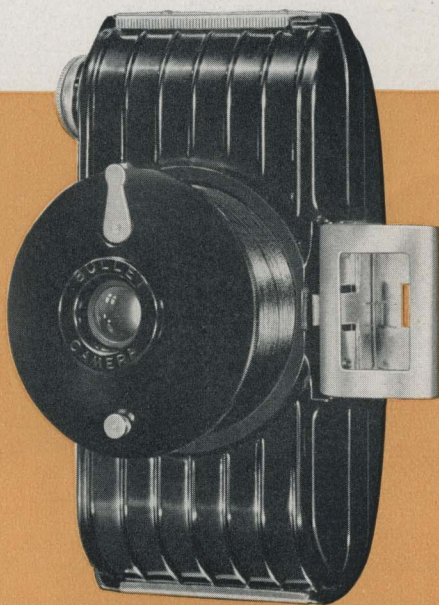


# BULLET CAMERA

**H**ERE is one of the most intriguing little picture makers on the market. It is built on the principle of the folding camera, but instead of bellows it has an ingenious spiral mount which brings the lens out into picture-taking position with a single turn. The rest is just as easy: sight on your subject through the eye-level finder, press the shutter release, and the picture is yours. Turn back the mount, fold the finder, and the camera fits snugly in your hand, pocket, or handbag. The Bullet represents a novel conception in camera construction . . . a conception so well carried out that it results in really excellent pictures, even though the user may be entirely inexperienced, and may never before have tripped a camera shutter.

**DETAILS** Picture size,  $1\frac{5}{8} \times 2\frac{1}{2}$  inches. Latest molded construction, with raised ribbing and permanent black glossy finish. Meniscus lens. Shutter with snapshot and bulb actions. Removable back, with push latch, for quick, easy loading. Milled film-winding knob.

**PRICES** **Bullet Camera**, \$2.85. Carrying case, \$.75; Kodak Film No. 127 (8 exposures): Regular N.C., \$.20; Verichrome, \$.25; "SS" or Panatomic, \$.30.



# ACCESSORIES FOR THE PICTURE MAKER

**KODAFLECTOR** A lighting unit that greatly increases the efficiency of photo bulbs. Complete, \$5.

**KODAK HANDY REFLECTOR, MODEL B (not illustrated)** Simple, effective cardboard reflectors for use on standard sockets in home lamps. 2 for \$.25.

**KODAK POCKET RANGE FINDER** Eliminates guesswork with any camera that has a focusing scale. Look through the range finder, adjust by means of a knurled knob, and set camera for distance indicated. \$7.

**KODAPOD AND OPTIPOD** For standard tripod sockets. May be attached to any handy object to hold the camera steady during exposure. Kodapod, \$1.75; Optipod, \$1.25.

**KODAK SELF TIMER** For any camera with a cable release. Trips the shutter automatically. Allows camerist to take his own picture, and to include himself in pictures of groups. \$1.25.

**DARKROOM OUTFITS** Supplies for developing and printing pictures in the home darkroom installed in basement, closet, or attic. Kodak Darkroom Outfit No. 1, \$8.75; No. 2, \$3.25; ABC Outfit, \$2.25.

**LENS ATTACHMENTS** Fit over the regular camera lens to give unusual results. Kodak Portrait Attachments, \$.50 to \$3.75. Other types of attachments are priced as low as \$1.

**EASTMAN ALBUMS** Attractive...durable...easy to use. Many styles, in a wide price range. Eastman Albums for prints are priced from \$.90 to \$5. Kodak Negative Albums, \$1.25 to \$2.

**"HOW TO MAKE GOOD PICTURES"** Latest, revised edition of this helpful publication. Hundreds of pictures, diagrams. Simple, untechnical explanations. Every amateur photographer should own a copy. \$50.







ACCEPT NOTHING  
BUT THE FILM IN  
THE FAMILIAR  
YELLOW BOX...  
KODAK FILM...  
WHICH ONLY  
EASTMAN MAKES



HARPEL'S  
Everything Photographic  
LEBANON, PA.

No. 750  
Printed in U. S. A.

Compliments of the Digitized Kodak Catalog Project 1888-1941

*Compliments of the Digitized Kodak Catalog Project: 1886 - 1941*



**KODAK**