

KODAK



The Digitized Kodak Catalog Project (1886 - 1941): A Very Brief History

Most camera collectors at some point in their collecting careers pass through a Kodak phase - some never come out of it. And if there ever was one name that came to be associated with both cameras and collecting, it was Kodak.

George Eastman received his first patent (for coating dry plates) and bought his first manufacturing facility in 1880, and in 1881 he started the Eastman Dry Plate Company. In 1886 he received a patent for the near-mythical Eastman Detective Camera, but it wasn't until 1888 that the first camera bearing the name "Kodak" was introduced.

One of the nice things about collecting Kodak is that the product line is pretty well known, and because the company produced annual catalogs for many years, collectors can be reasonably sure of what they're looking at, when it was made, the variations and so on - presuming that they have access to either the appropriate catalog, or a number of the many books which document Kodak, each to some greater or lesser extent.

But what would be really nice would be to have a complete set of Kodak catalogs in an easily accessible form and readily available. And since the advent of portable computing devices (PC, Macintosh, etc.) that's been possible - except for the difficulty of assembling a complete set of Kodak catalogs in one spot and then scanning them and making the results available.

The idea of digitizing a complete set of Kodak catalogs has kicked around the collecting community for many years. It's been proposed on a number of online forums, during meetings of various photohistory groups, and for years there have been many incomplete "Kodak CDs" on eBay but at best, they only contained a few catalogs - whatever the owner had available. But assembling a complete set of catalogs, then scanning and processing perhaps 3,000 to 4,000 pages, was a daunting task - if not completely overwhelming - and nothing ever came of it.

Until now.

In early 2010, the idea came up again, but this time we - "we" as in "the collecting community" - were lucky. A number of collectors were willing to loan their catalogs to this project and a couple of insane - wait, let's call them "dedicated" - dedicated enthusiasts - neither of whom collected Kodak, but both of whom enjoyed the challenge of such a project - were willing to put in the time and effort to scan and pull together the entire set of catalogs into a full-blown Kodak Catalog Digital Library.

Our initial objective was to include just the annual amateur catalogs, but it turns out that many cameras only appear in certain professional and specialty catalogs. We included as many of those as we could obtain so that almost every Kodak camera made in the US, Canada and Europe, would be documented - at least up to about 1941. After that, it becomes much more difficult as Kodak stopped producing annual catalogs as their product line became increasingly more diversified.

However, even with the additional "non-amateur" catalogs, we weren't completely successful in illustrating "every" camera Kodak ever made. There are an elusive few that might appear in specialty catalogs that we simply couldn't track down. If you can't find one of those odd cameras, that's no doubt why. We may do a revision at some point in the future if someone is willing to loan us a catalog that includes a camera that isn't already recorded.

In this project, a total of 67 catalogs were used from 1886 through 1941 including a number of professional and dealer catalogs, and in some years, two or even three different catalogs to cover all the bases. With the cooperation of a number of dedicated collectors, we were able to pull together all those catalogs and in June 2010, the project started in earnest.

By November 2010, we had scanned everything we needed and eventually all 67 catalogs were then reassembled as image folders and converted to the universally accepted PDF format and finally, converted into individually searchable PDFs which could then be searched globally as a collection.

For those of you interested in the statistics: about 200 hours of scanning time (we never want to hear that sound again), 67 catalogs and 3,908 page scans - which generated 7,917 original and processed images - and 11.4 GB of disk space. Additionally, another 100+ hours of technical development time was needed to convert the digital catalogues into a fully searchable "knowledgebase" that could be launched from most any standard web browser.

The overwhelming number of catalogs was loaned to us by that most remarkable of Kodak collectors, Charlie Kamerman of Eagle Creek, Oregon. Without Charlie, it's very doubtful that this project could even have been attempted.

But as it turned out, even Charlie didn't have all the publications that were needed, but he was able to track down the five that he lacked and was able to secure either a copy or high resolution images that we could work with. And so, our thanks to the contributors of the catalogs and scans that we used:

Charlie Kamerman for the vast majority of catalogs used and all his help,
Steve Shohet for loaning a variety of test catalogs,
Ryerson University (Toronto) for the 1886 Eastman Catalog
George Layne for the 1890 New Kodaks Catalog,
Mike Kessler for the 1891 Dealer Display Catalog,
Ralph London for the 1893 UK Catalog,
Michael Pritchard for the 1897 UK Catalog.

The digital side of the project - also known as "all of the work" - was done by Rob Niederman of Medina, Minnesota, and Milan Zahorcak of Tualatin, Oregon. Remarkably we're still friends and in a few years, we'll probably be able to talk about this project rationally.

And there you have it, a more-or-less done deal. We're fairly sure that it isn't quite perfect, and expect there will be some carping about something or other; but all-in-all, we believe this to be a pretty good product and can now move on to something else.

Our thanks to all of those involved.

Rob Niederman
Milan Zahorcak

Fall, 2011



*In selecting a camera,
consider these four points:*

**KODAKS
AND BROWNIES**

THE PICTURE SIZE that appeals to you most...

THE TYPE OF CAMERA YOU PREFER ... box or folding ...

THE VARIETY OF PICTURES you want, and the conditions under which you expect to take them...

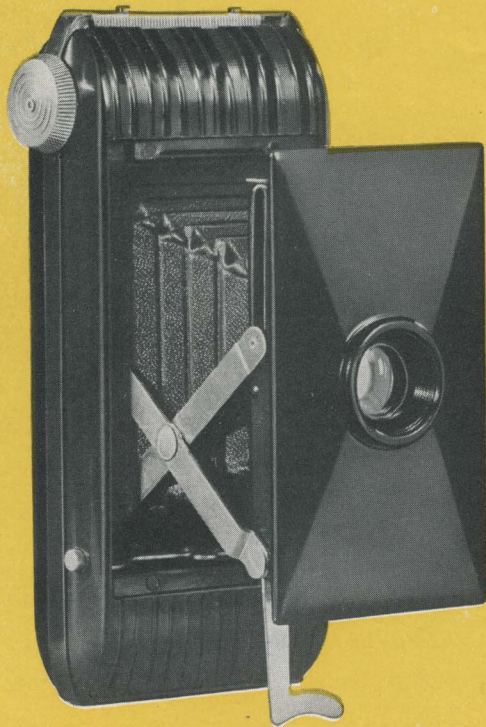
THE PRICE you want to pay....Your dealer will be glad to help you make your selection.

For complete information on Kodak Film and photographic accessories, ask for the booklet, *Kodak Picture-Making Aids*.

Prices in this catalog are subject to change without notice.

EASTMAN KODAK COMPANY, ROCHESTER, N. Y.

(July, 1937)



Jiffy Kodak V.P. "Vest pocket" Kodaks are long-time favorites because of their great convenience...their reliable picture quality...their moderate cost. In this latest version, ultra-modern molded construction and the popular "Jiffy" action have been thrown in for good measure. Jiffy Kodak V.P. is smart and swift. Press a button and the lens snaps out into position. Press the release and you've made the picture, without focusing or other adjustment. Here you have the famous five-dollar Kodak completely restyled... and a more completely satisfying picture maker than ever before.

DETAILS Picture size, $1\frac{5}{8} \times 2\frac{1}{2}$ inches. Permanent "built-in" glossy finish, with ornamental ribbing. Removable back. Weight, 10 ounces. Fixed focus. Kodak Doublet lens, deeply recessed for protection. Built-in shutter, with 2 release triggers. Aperture can be stopped down to $f.16$. Folding direct-view eye-level finder.

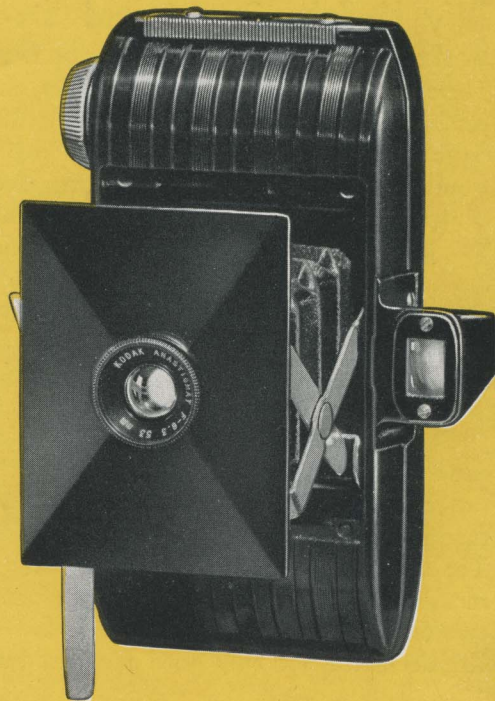
PRICES Jiffy Kodak V. P., \$5. Cowhide carrying case, \$1.35. No. 127 Kodak Film (8 exposures): Regular N.C., \$.20; Verichrome, \$.25; "SS" or Panatomic, \$.30.

J I F F Y K O D A K V . P .

Kodak Bantam Though it is so small that it fits the palm of the hand, Kodak Bantam leads to good pictures larger than itself. Modern photo-finishing methods give you these big prints at reasonable cost. Film cost, too, is low. . . 20 cents for an eight-exposure roll of Kodak Panatomic. This capable film, plus fixed focus and fixed shutter speed, cancels ordinary exposure problems. Besides, you don't have to watch the window when winding film: a special device centers exposures. . . speeds up your picture making. Smallest of all Kodaks, the Bantam is also one of the most intriguing. . . especially the versatile *f.6.3* model.

DETAILS Standard enlargement size, $2\frac{3}{4} \times 4$ inches. Molded body, $4\frac{3}{8} \times 2\frac{1}{4} \times 1$ inch. Weight, 8 ounces. *F.6.3* model has Kodak Anastigmat *f.6.3* lens, snapshot and time actions, optical eye-level finder. Doublet model has Kodak Doublet lens, snapshot and bulb actions, folding eye-level finder.

PRICES *Kodak Bantam, f.6.3*, \$10. *Kodak Bantam, Doublet*, \$6. Case for either model, \$1.25. Kodak Panatomic Film No. F828 (8 exposures), \$.20.

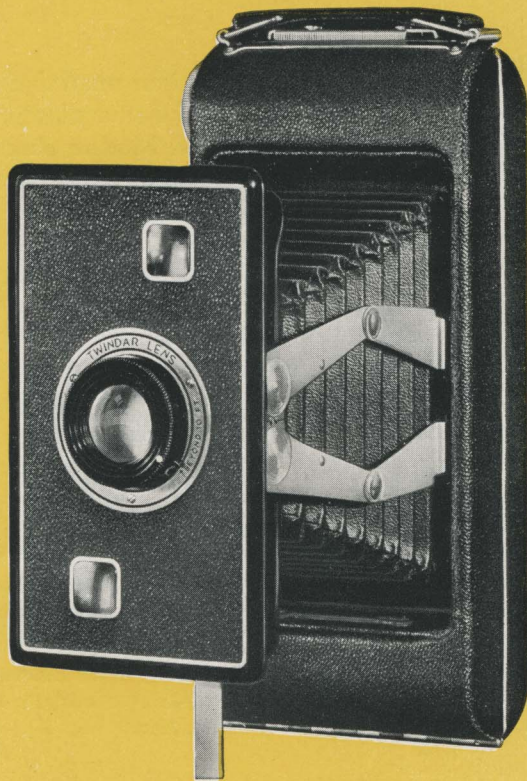


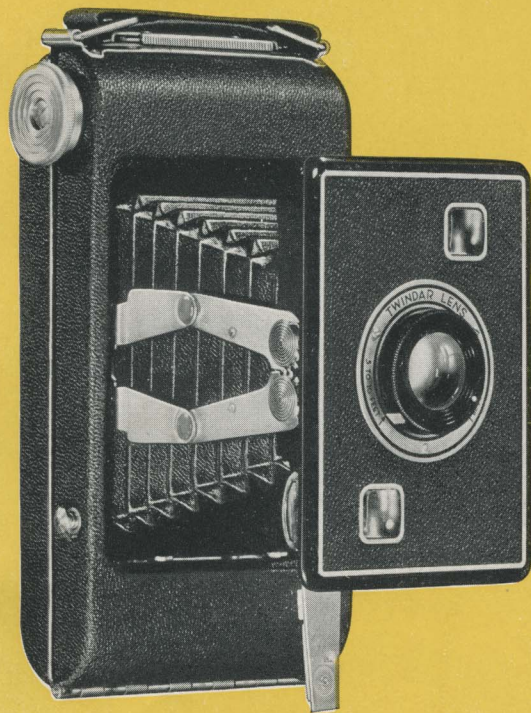
Jiffy Kodaks Six-16 and Six-20, Series II

(Ready August 1, 1937)

There is no secret about the popularity of Jiffy Kodaks. They have all the style of the folding camera plus the simplicity of a box model. Press a button: "Pop"—the Jiffy opens. Press another: "Click"—it gets the picture. Jiffy operation is as simple as that. It's so simple, in fact, that anyone can master it in a minute. The fast-moving mechanism comes in a camera body notable both for its compactness and its new finish of modish pin-grain material enhanced by lacquered, plated, and natural metal trimmings.

Good pictures come easily with a Jiffy Kodak, Series II. The brilliant finders "pick out" the subject clearly. . . instantly. The Twindar lens assures sharp focus for either near or distant views. The sturdy built-in shutter is ready at a moment's notice for "snap" or time exposure. And two other points must not be overlooked—Jiffy Kodaks make not only good pictures, but *big*





pictures; and they cost little to buy. Simplest folding cameras ever devised, their happy combination of qualities makes them irresistible to many thousands of people.

DETAILS Picture sizes: Six-16, $2\frac{1}{2} \times 4\frac{1}{4}$ inches; Six-20, $2\frac{1}{4} \times 3\frac{1}{4}$ inches. Camera opened by slight pressure on a button, which releases spring-actuated erecting arms. Twinar lens has revolving mount which can be turned to either of two positive stops, for distances from 5 to 10 feet, and beyond 10 feet. Built-in shutter with snapshot and time actions, three apertures, and finger release. Crowned, brilliant waist-level finders for vertical and horizontal pictures. Swinging foot supports camera for time exposures in either vertical or horizontal position. Black pin-grain covering. Closely fitting hinged back. Swinging cover over ruby window, to protect films of high sensitivity. Black japanned metal cap (extra) protects lens from dust, sand, and breakage.

PRICES *Jiffy Kodak Six-16, Series II*, \$10. Leather Case, \$1.85. Kodak Film No. 616 (8 exposures): Verichrome, \$.35; "SS" or Panatomic, \$.40. Lens Cap, \$.15.

Jiffy Kodak Six-20, Series II, \$9. Leather Case, \$1.65. Kodak Film No. 620 (8 exposures): Verichrome, \$.30; "SS" or Panatomic, \$.35. Lens Cap, \$.15.

JIFFY KODAK SIX-20, SERIES II

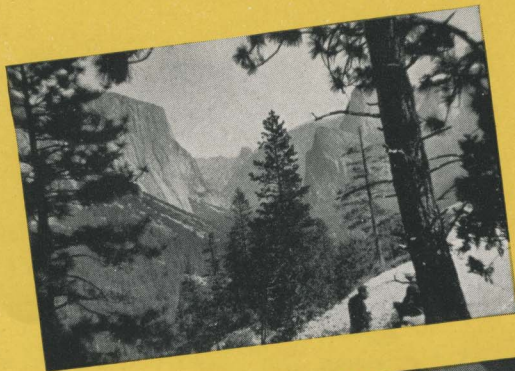


KODAK SENIOR SIX-16

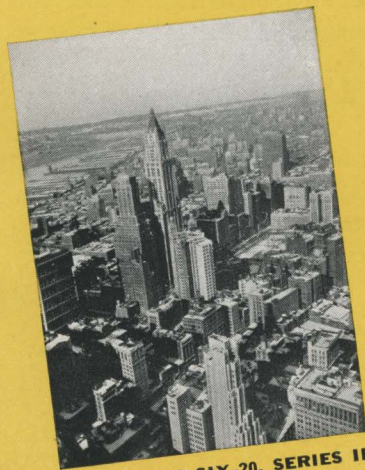


KODAK VOLLENDIA





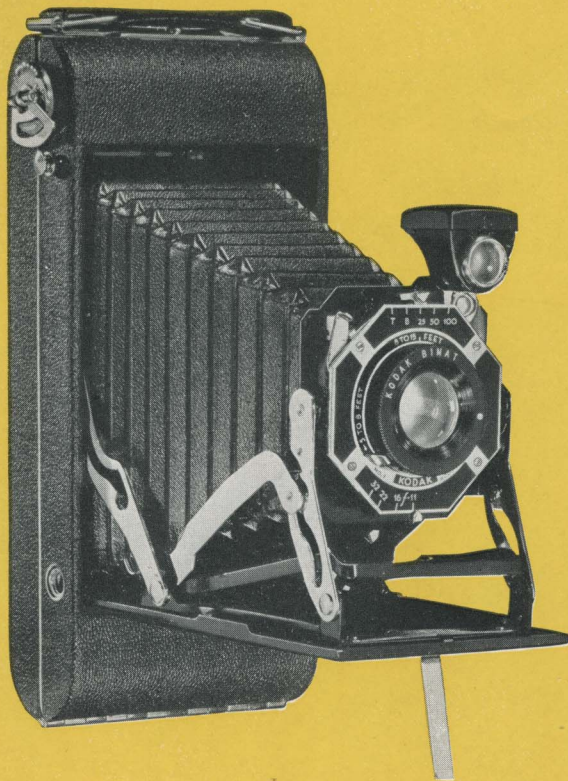
JIFFY KODAK V.P.



KODAK DUO SIX-20, SERIES II



KODAK BANTAM (standard $2\frac{3}{4} \times 4$ enlargement)



Kodak Juniors Six-16 and Six-20, Series II

One fact about these Kodaks stands out above all others: they offer you the opportunity of getting a fine, fast lens (Kodak Anastigmat $f.6.3$) at an extremely moderate price. Thus equipped, Kodak Juniors make snapshots even on cloudy days, or indoors at night with the aid of Kodak "SS" Film and Mazda Photoflood bulbs. The Doublet and single-lens models, on their part, are thoroughly reliable for less exacting picture situations.

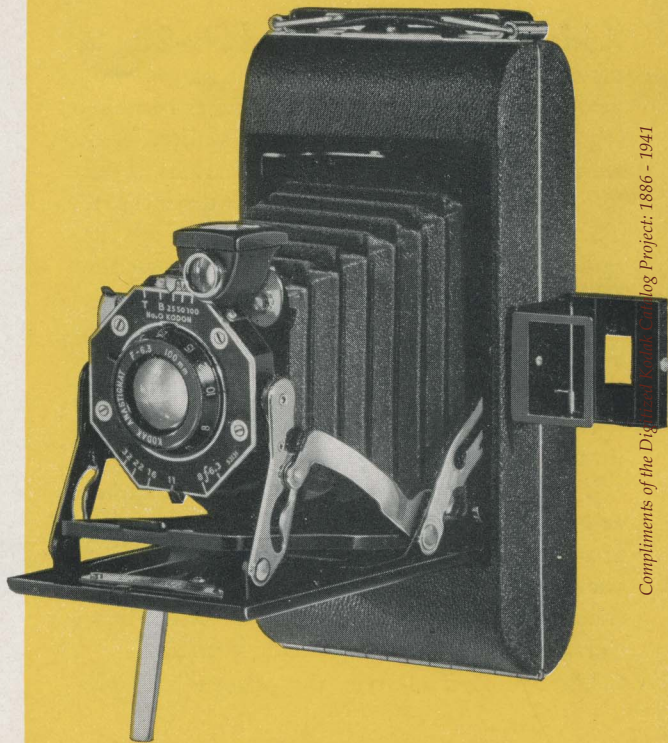
Any Kodak Junior, Series II, gets into action quickly and easily. One pull on the bed latch snaps the lens out into picture-taking position. Once the camera is open you can sight through either the waist-level or the eye-level finder, depending upon your subject or upon the angle of view you prefer. When the picture has been made, light finger pressure on a metal bar releases the bed, and the camera is closed as quickly as it was opened.

Swiftness and convenience of operation are topped off by a trim, new finish. There have been other Kodak Juniors, but, more than ever, these models represent "a lot for a little."

DETAILS Picture sizes: Six-16, $2\frac{1}{2} \times 4\frac{1}{4}$ inches; Six-20, $2\frac{1}{4} \times 3\frac{1}{4}$ inches. Self-erecting front—one pull opens camera and erects lens into position. Two tripod sockets. Single-lens models have fixed focus. *F*.6.3 and Bimat models, focus adjustable by revolving lens mount.

PRICES *Kodak Junior Six-16, Series II*: with Kodak Anastigmat *f*.6.3 lens, Kodex shutter (speeds to 1/100 second), \$15.75; with Bimat lens, Kodon shutter (speeds to 1/100 second), \$13.50; with single lens, Kodal shutter (time, snapshot settings), \$11. Cases: soft leather, \$1.85; lined grain leather, \$3. Kodak Film No. 616 (8 exposures): Verichrome, \$.35; "SS" or Panatomic, \$.40.

Kodak Junior Six-20, Series II: with Kodak Anastigmat *f*.6.3 lens, Kodon shutter (speeds to 1/100 second), \$14; with Bimat lens, Kodon shutter (speeds to 1/100 second), \$11.75; with single lens, Kodo shutter (time and instantaneous settings), \$9.25. Carrying cases: soft leather, \$1.65; lined grain leather, \$2.50. Kodak Film No. 620 (8 exposures): Verichrome, \$.30; "SS" or Panatomic, \$.35.

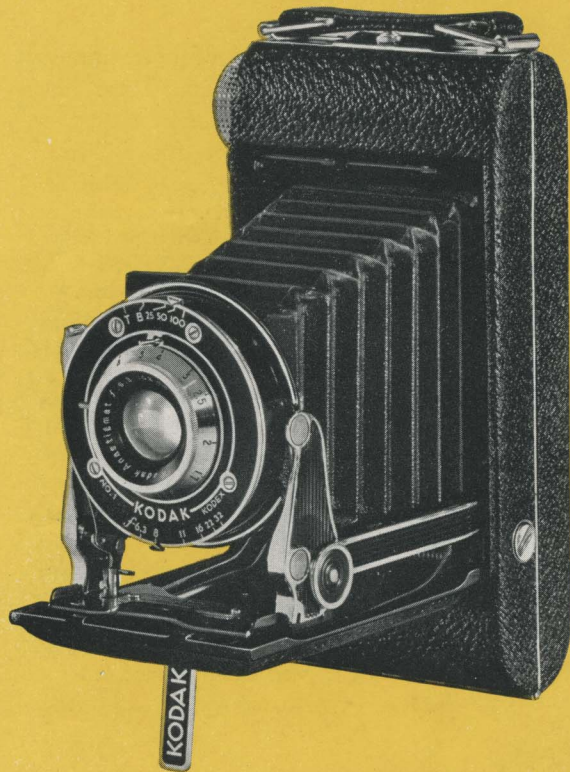


Compliments of the Digital Kodak Catalog Project: 1886 - 1941

Kodak Seniors Six-16 and Six-20 In these new Kodaks, Eastman presents a group of very fine yet moderately priced cameras combining latest design and outstanding ability. They are trim and businesslike in looks... swift to get into action... satisfyingly certain in their results. They have a new shutter release located on the camera body. Utilizing this device, the picture taker holds the camera firmly in both hands, sights through the optical direct-view eye-level finder, releases the shutter with the touch of a finger. This technique minimizes camera movement and gets the picture from eye level at the instant the scene is "right."

The Seniors open by means of a push button; and pressure on a one-finger release... another new feature... allows the camera to be closed in one simple motion. Both sizes come with a choice of equipment, topped by the Kodak Anastigmat $f.4.5$ lens and Kodamatic shutter.

Ultra-modern in style, the Seniors have the



K O D A K S E N I O R S



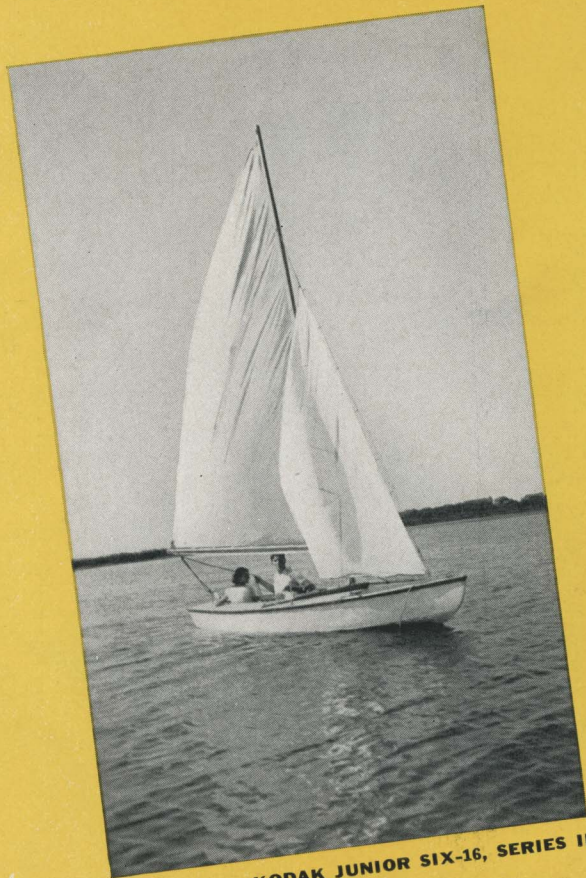
fundamental design that spells excellent pictures. They are the "hit" of the year in fine cameras.

DETAILS Picture sizes: Six-16, $2\frac{1}{2} \times 4\frac{1}{4}$ inches; Six-20, $2\frac{1}{4} \times 3\frac{1}{4}$ inches. Self-erecting front. Kodex shutter has 3 speeds to 1/100 second. Kodamatic shutter has 5 speeds to 1/200 second, and built-in delayed-action timer. Bimat models have simple three-position focusing mounts. Revolving mounts on other models can be set from $3\frac{1}{2}$ feet to infinity. Handy knurled film-winding knob. Swing-out film supply bracket.

PRICES *Kodak Senior Six-16*: with Kodak Anastigmat f.4.5 lens, Kodamatic shutter, \$33.50 (with case, \$36.25); with Kodak Anastigmat f.6.3 lens, Kodex shutter, \$22 (with case, \$24.75); with Kodak Bimat lens, Kodex shutter, \$17.50 (with case, \$20.25). Kodak Film No. 616 (8 exposures): Verichrome, \$.35; "SS" or Panatomic, \$.40.

Kodak Senior Six-20: with Kodak Anastigmat f.4.5 lens, Kodamatic shutter, \$29.50 (with case, \$31.75); with Kodak Anastigmat f.6.3 lens, Kodex shutter, \$19.50 (with case, \$21.75); with Kodak Bimat lens, Kodex shutter, \$16 (with case, \$18.25). Kodak Film No. 620 (8 exposures): Verichrome, \$.30; "SS" or Panatomic, \$.35.

KODAK RECOMAR 18



KODAK JUNIOR SIX-16, SERIES II



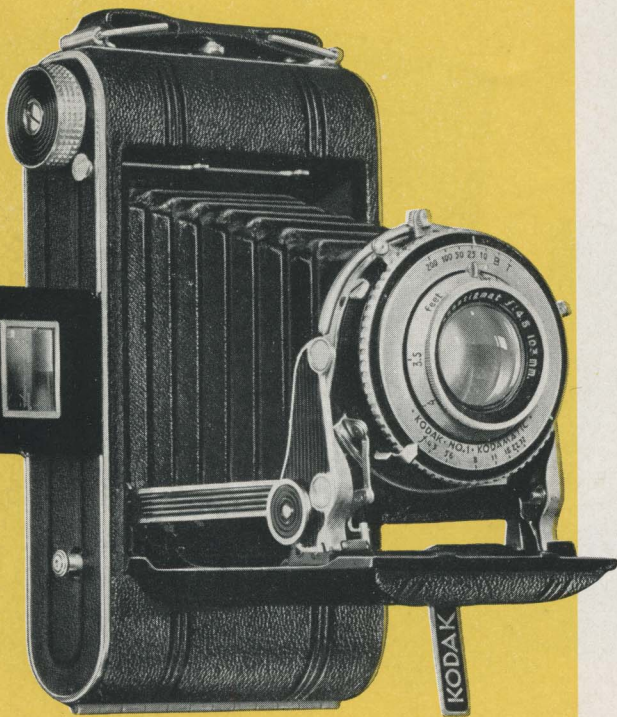
KODAK VOLLENDAA



KODAK SPECIAL SIX-20



KODAK SENIOR SIX-20



Kodak Specials Six-16 and Six-20

Here is a real delight for camera enthusiasts who want equipment refined to the last detail. Six new Kodak Specials, all fitted with *f.4.5* lenses and fast shutters, give discriminating picture takers a chance to choose an instrument exactly suited to their needs and tastes. And they bring users a wealth of the latest developments in camera making.

Kodak Specials have a new folding optical eye-level finder. Together with the body shutter release, it affords the utmost in operating efficiency. Pressure on a button opens the camera, and a one-finger bed release permits quick closing. A knurled knob speeds up film winding. Case and back are special-quality aluminum. The covering is genuine pin-seal grain leather, set off by chromium and black lacquer.

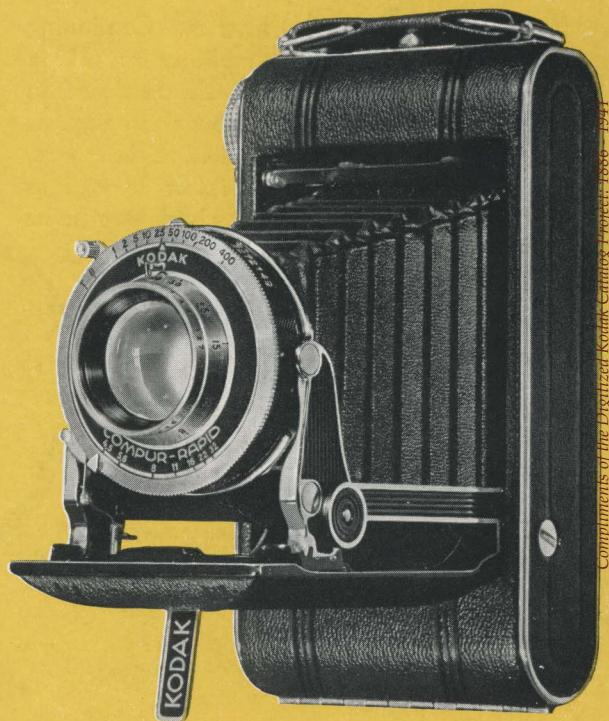
From start to finish, Kodak Specials are strictly *de luxe*, their refinements serving the prime purpose of providing full help for the

superb lenses and shutters. Exceptional picture makers all, they reach their peak in models with the new, precise Kodak Anastigmat Special *f*.4.5 lens and Compur-Rapid shutter.

DETAILS Picture sizes: Six-16, $2\frac{1}{2} \times 4\frac{1}{4}$ inches; Six-20, $2\frac{1}{4} \times 3\frac{1}{4}$ inches. Body shutter release (also regular trigger release). Built-in self timer. Focusing by revolving lens mount (down to $3\frac{1}{2}$ feet on Six-20's, 4 feet on Six-16's). Kodamatic shutter has 5 speeds to 1/200; Compur-Rapid, 8 speeds to 1/400.

PRICES *Kodak Special Six-16*: with Kodak Anastigmat Special *f*.4.5 lens; Compur-Rapid shutter, \$48.50 (with case, \$51.25); with Kodak Anastigmat Special *f*.4.5 lens, Kodamatic shutter, \$41 (with case, \$43.75); with Kodak Anastigmat *f*.4.5 lens, Kodamatic shutter, \$36.50 (with case, \$39.25). Kodak Film No. 616 (8 exposures): Verichrome, \$.35; "SS" or Panatomic, \$.40.

Kodak Special Six-20: with Kodak Anastigmat Special *f*.4.5 lens, Compur-Rapid shutter, \$45 (with case, \$47.25); with Kodak Anastigmat Special *f*.4.5 lens, Kodamatic shutter, \$37.50 (with case, \$39.75); with Kodak Anastigmat *f*.4.5 lens, Kodamatic shutter, \$33 (with case, \$35.25). Kodak Film No. 620 (8 exposures): Verichrome, \$.30; "SS" or Panatomic, \$.35.

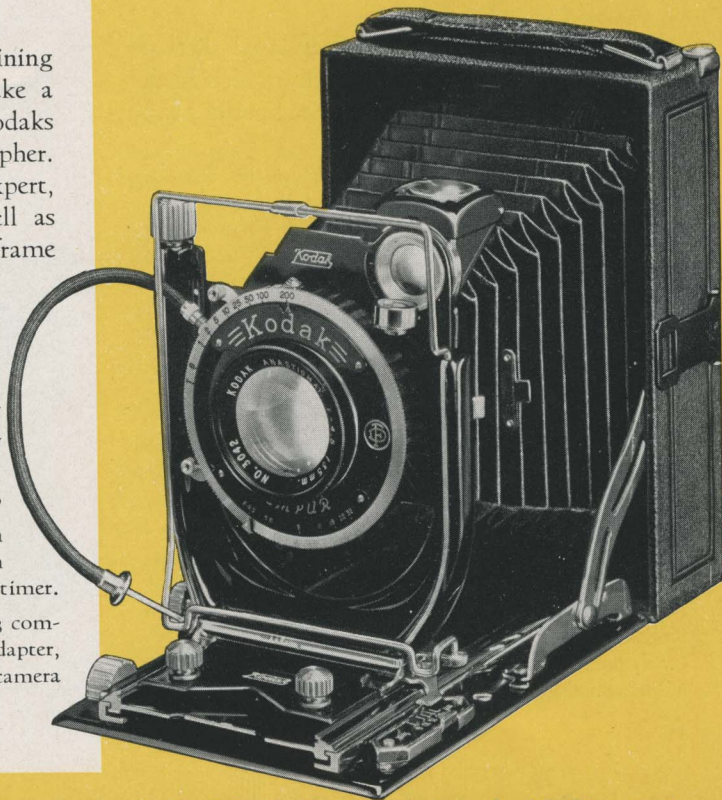


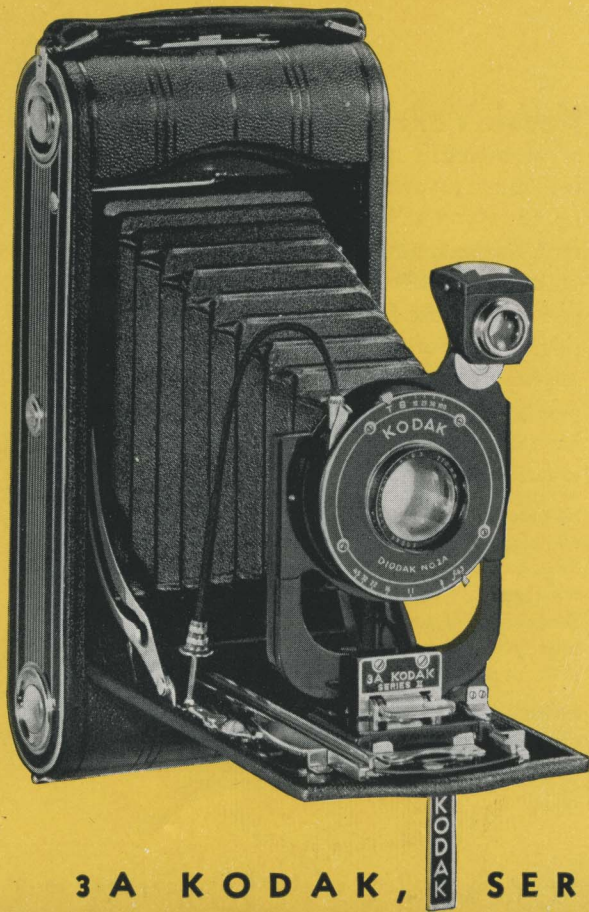
Compliments of the Digitized Kodak Entomog Project: 1886-1941

Kodak Recomars 18 and 33 Combining mechanical excellence with ability to take a great variety of negative materials, these Kodaks are admirably suited to the serious photographer. Their use is not, however, limited to the expert, for their refinements mean simple as well as varied picture taking. They have both wire-frame eye-level and brilliant waist-level finders . . . focusing by rack-and-pinion or ground-glass back . . . double-extension bellows and bed. Their lens is the Kodak Anastigmat *f*.4.5 . . . a triumph in optical design . . . their shutter the famous Compur. Sturdy, precise, they give a lifetime of first-class performance.

DETAILS Picture sizes and negative materials: "18"— $2\frac{1}{4} \times 3\frac{1}{4}$ -inch film packs, 6.5 x 9-cm. cut film or plates; "33"— $3\frac{1}{4} \times 4\frac{1}{4}$ -inch or 9 x 12-cm. film packs, 9 x 12-cm. cut film or plates. Built-in self timer.

PRICES "18," \$54; "33," \$63 (both including 3 combination plate and film holders, film pack adapter, cable release). Lined brown cowhide case for camera and accessories: for "18," \$5; for "33," \$5.50.

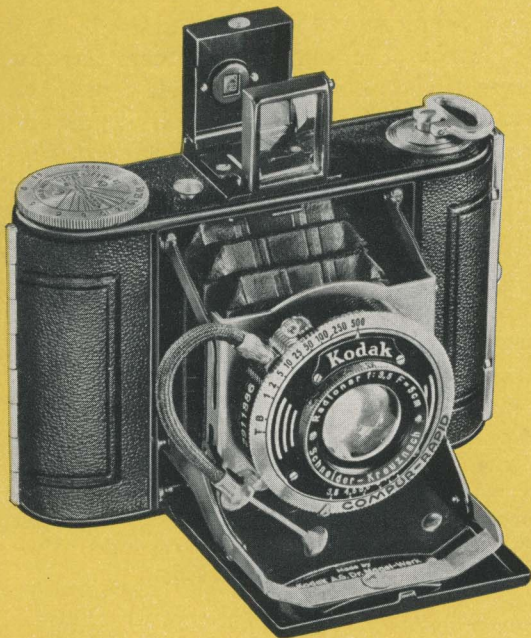




3A Kodak, Series II An ideal camera for people who want large pictures without the necessity of enlarging. With a 3A Kodak, Series II, you get pictures of full post-card size. . . $3\frac{1}{4} \times 5\frac{1}{2}$ inches. The camera itself combines the beauty of chromium-and-black side panels, and creased cowhide covering, with full modern efficiency. Two high-grade lenses. . . Kodak Anastigmats $f.4.5$ and $f.6.3$. . . are available. Geared to shutters of corresponding excellence, both assure good pictures even under difficult conditions, the $f.4.5$ naturally having the wider scope. In performance as well as looks the 3A, Series II, is a noteworthy big-picture camera.

DETAILS Picture size, $3\frac{1}{4} \times 5\frac{1}{2}$ inches. $F.4.5$ model: both waist-level and eye-level finders; rising, falling front.

PRICES 3A Kodak, Series II, with Kodak Anastigmat $f.4.5$ lens, Compur shutter (8 speeds to $1/200$ second), \$75; with Kodak Anastigmat $f.6.3$ lens, Diodak shutter (4 speeds to $1/100$ second), \$45. Lined grain leather case, \$5.25. Kodak Film No. 122 (6 exposures): Verichrome, \$.55; "SS" or Panatomic, \$.65.



Kodak Vollenda A masterful “miniature” at an unusually moderate price. Provided with a brilliant $f.3.5$ anastigmat lens, and shutter speeds up to $1/500$ second, the Vollenda takes front rank for versatility, and makes negatives capable of extreme enlargement...especially when the film used is the famous Kodak Panatomic. Further...its precise mechanism is contained in a camera body no bulkier than a pocketbook. Weighing only twelve ounces, Kodak Vollenda has nevertheless demonstrated that it is a highly practical, economical, satisfying picture maker.

DETAILS Picture size, $1\frac{3}{16} \times 1\frac{9}{16}$ inches. Size of camera (closed), $4\frac{1}{4} \times 3\frac{1}{8} \times 1\frac{1}{4}$ inches. Action front opens camera and erects lens to picture-making position. Focusing from $3\frac{1}{2}$ feet to infinity by revolving lens mount. Anastigmat $f.3.5$ lens. Compur-Rapid shutter, with nine speeds to $1/500$. Optical eye-level finder. Depth-of-focus scale. Covering, black pin-grain morocco leather.

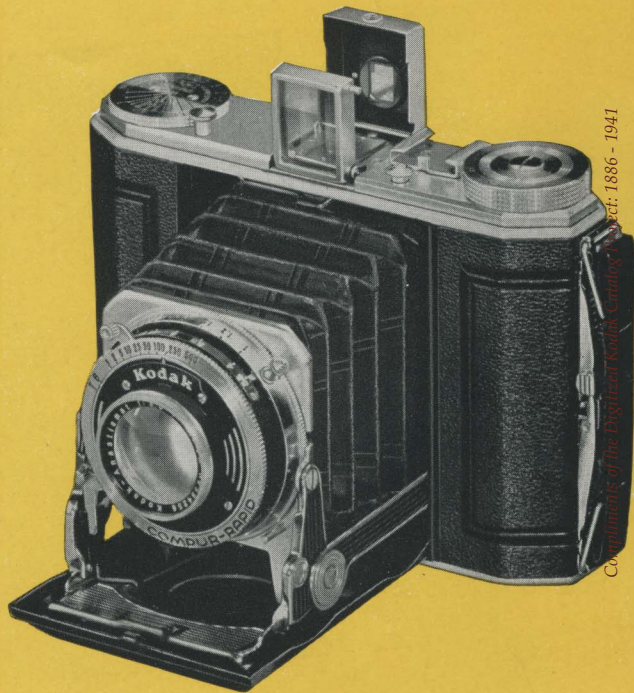
PRICES Kodak Vollenda, \$44.50. Lined soft-leather carrying case, \$1.50. Kodak Film No. 127 (16 exposures): Verichrome, \$.25; “SS” or Panatomic, \$.30.

K O D A K V O L L E N D A

Kodak Duo Six-20, Series II Though built with the smart compactness of a true "miniature," the Duo makes pictures $1\frac{5}{8} \times 2\frac{1}{4}$ inches... album size. They may be enlarged, of course, for the Kodak Anastigmat $f.3.5$ lens and Compur-Rapid shutter give negatives almost limitless sharp detail. As for scope... the Duo is as sure of itself in dealing with nighttime pictures and action shots as it is in ordinary snapshooting. Carefully finished, and provided with such refinements as the body shutter release, it is a brilliant example of photographic craftsmanship.

DETAILS Picture size, $1\frac{5}{8} \times 2\frac{1}{4}$ inches. Button release opens camera, erects Kodak Anastigmat $f.3.5$ lens. Compur-Rapid shutter (9 speeds to $1/500$ second). Body shutter release (also regular finger release). Focusing from $3\frac{1}{2}$ feet to infinity by revolving entire lens-and-shutter mount. Diaphragm settings from $f.3.5$ to $f.22$. Rotating depth-of-focus scale. Fine-grained, tooled black leather covering. Satin chrome trimmings.

PRICES Kodak Duo Six-20, Series II, \$57.50. Brown cowhide carrying case, \$6. Kodak Film No. 620 (16 exposures): Verichrome, \$.30; "SS" or Panatomic, \$.35.

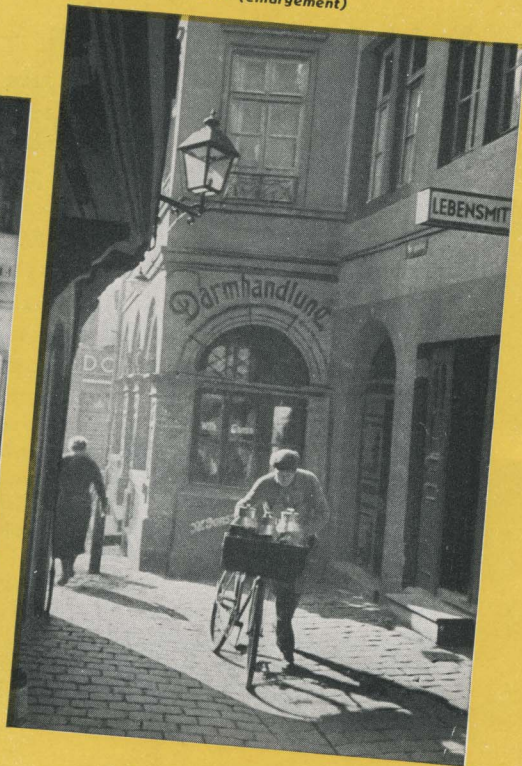
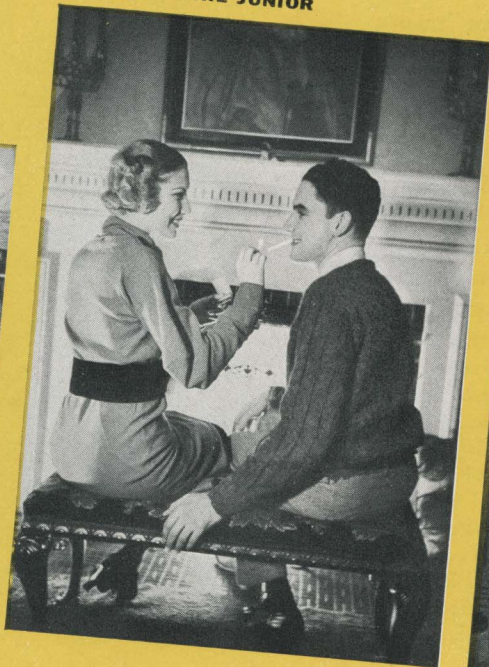
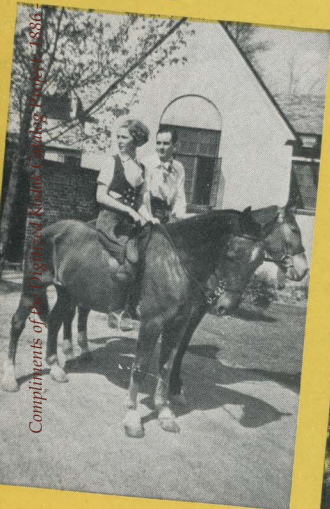


Complements of the Digital of Kodak Canada, Project: 1886 - 1941

KODAK RETINA (enlargement)

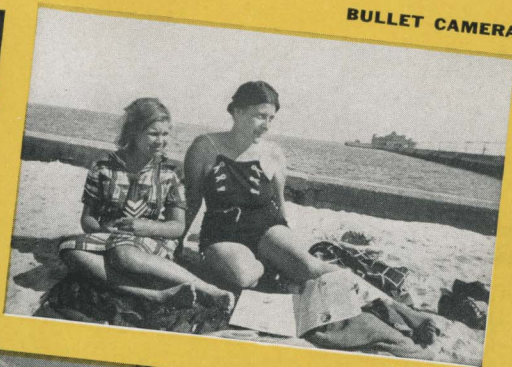
SIX-20 BROWNIE JUNIOR

BABY BROWNIE

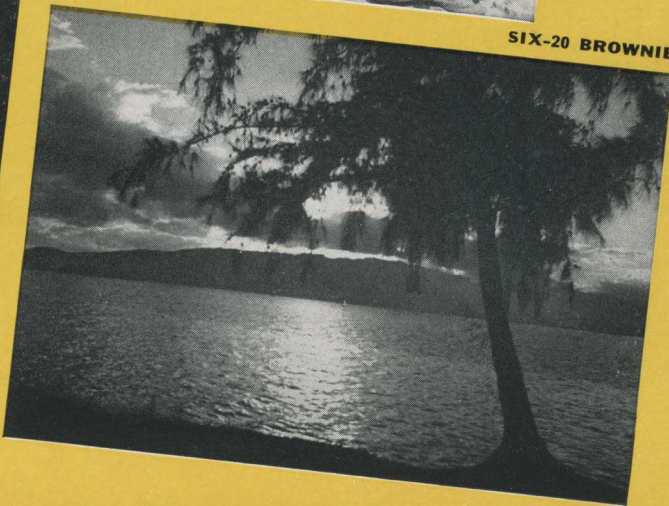


Compliments of Pat Dignity and Kodak Company 1938

BULLET CAMERA



SIX-20 BROWNIE

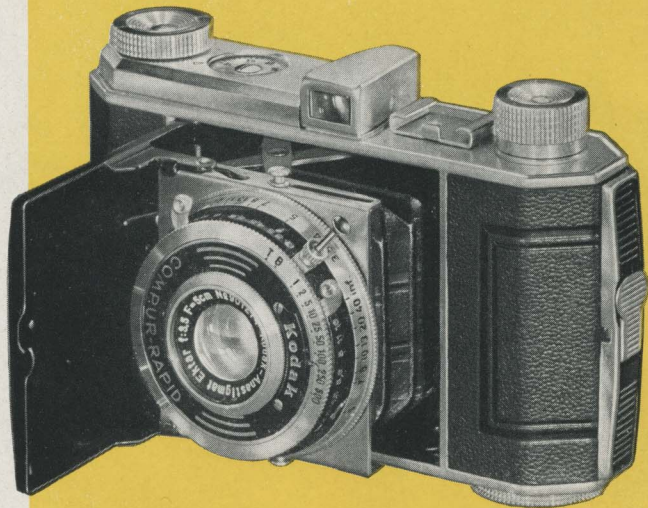


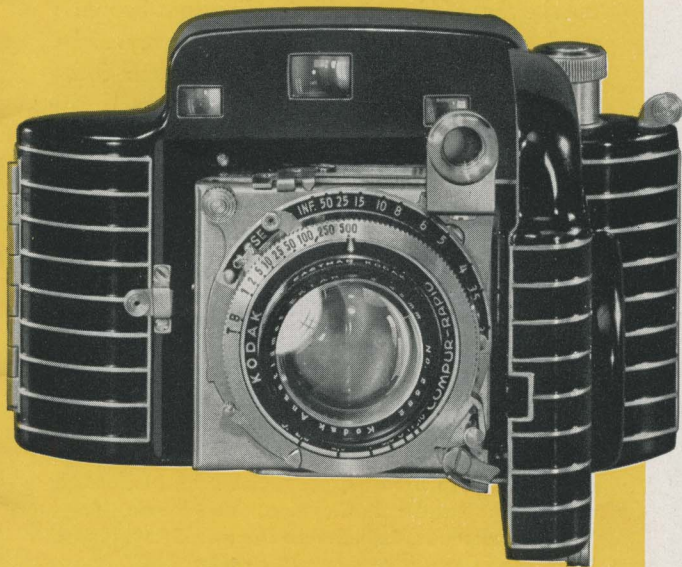
KODAK BANTAM SPECIAL (standard $2\frac{3}{4} \times 4$ enlargement)

Kodak Retina Here is remarkable photographic proficiency compressed to the dimensions of a true "miniature." Closed, the Retina slips into pocket or handbag. Opened in a second, it is ready not only for everyday photography, but for fast sports shots. . . indoor pictures at night. . . rainy-day snapshots. . . lovely, full-color views on Kodachrome Film. Its black-and-white pictures can be enlarged to striking proportions. Its color transparencies may be viewed as they are or projected on a screen, with charming results.

DETAILS Picture size, $1 \times 1\frac{1}{2}$ inches. Kodak Anastigmat EKTAR $f.3.5$ lens. Compur-Rapid shutter (1 to $1/500$). Finger and special plunger releases. Enclosed optical eye-level finder. Depth-of-focus scale. Exposure counter. Black morocco covering, chromium trimmings.

PRICES *Kodak Retina*, \$57.50. Soft black leather case, \$1.50. Combination case, for camera, filters, range finder, \$5.50. Kodak Film No. 135, 36 exposures: "SS," Panatomic, or Super X, \$.85; Infra-Red, \$1.10; 18 exposures: Panatomic or Super X, \$.55. Kodachrome Film No. K135 (K135A for Photoflood lighting), 18 exposures, \$2.50, including processing.

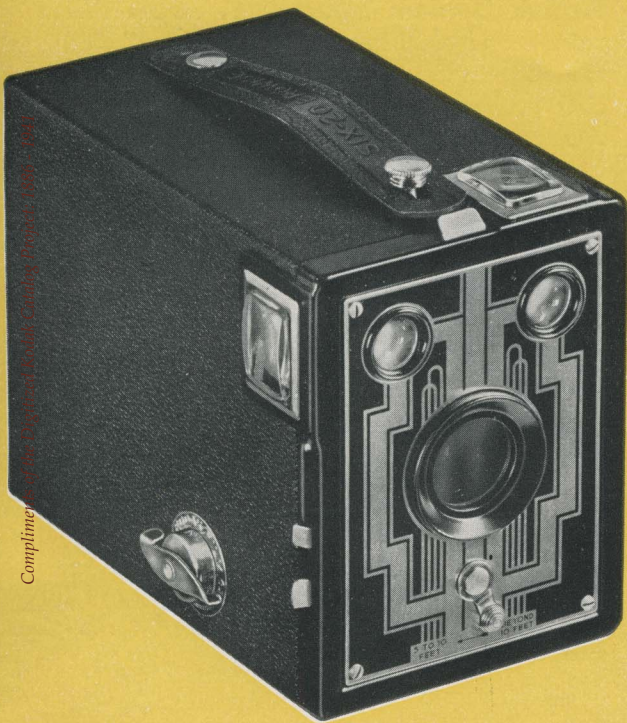




Kodak Bantam Special A camera that unites the adaptability of a fine “miniature” with advanced construction and styling. Bantam Special’s coupled range finder simultaneously measures distances and focuses the camera. The Compur-Rapid shutter offers speeds to 1/500 second. A special device locks the film in position for each exposure. Best of all, the super-speed, super-corrected lens, Kodak Anastigmat EKTAR *f*.2.0, assures unsurpassed scope and quality in both black-and-white and Kodachrome full-color photography. The brilliantly finished aluminum body fully protects this mechanism, completing a choice photographic instrument.

DETAILS Standard black-and-white enlargement size, $2\frac{3}{4} \times 4$ inches. Stainless steel and chromium fittings. Special film-pressure plate. Weight, 16 ounces.

PRICES *Kodak Bantam Special*, \$110. Brown leather case, \$7. Field case, \$8.50. Kodak Panatomic or Super X Film No. 828 (8 exposures), \$.20. Kodachrome Film No. K828 (K828A for Photoflood lighting), 8 exposures, \$1.35, including processing.



Six-16 and Six-20 Brownies Look where you may, you will not find a box camera that can excel either of these Brownies. Previous Brownie models have made photographic history...the Six-16 and Six-20 are following in their footsteps. As a matter of fact, they are even better than their predecessors, embodying, as they do, refinements that only yesterday's experience and today's facilities could provide. Their Diway lens insures sharp focus for either near or distant subjects. Finders are extra-large and of the brilliant type. Shutters are as dependable as ever. And the improvement in appearance made by the decorative metal front is obvious at a glance.

DETAILS Picture sizes: Six-16, $2\frac{1}{2} \times 4\frac{1}{4}$ inches; Six-20, $2\frac{1}{4} \times 3\frac{1}{4}$ inches. Eastman Rotary shutter (snapshot, time actions). Black morocco-grain covering.

PRICES *Six-16 Brownie*, \$4, Kodak Film No. 616 (8 exposures): Regular N.C., \$.30; Verichrome, \$.35; "SS" or Panatomic, \$.40. *Six-20 Brownie*, \$3.25. Kodak Film No. 620 (8 exposures): Regular N.C., \$.25; Verichrome, \$.30; "SS" or Panatomic, \$.35.

Six-16 and Six-20 Brownie Juniors

For large pictures, made in the simplest way possible, choose a Brownie Junior. The focus is "fixed"—you never have to measure distances. Just load your camera, aim at your subject, trip your shutter. . . and the picture is made. And your Junior will be good-looking, too, with its neat, leather-like covering, and . . . by way of contrast . . . its two-toned metal front. Point of prime importance, however, is this: into the design of the Brownie Juniors went real care, and out of them come real pictures, even though the user may never have tripped a camera shutter before.

DETAILS Picture sizes: Six-16, $2\frac{1}{2} \times 4\frac{1}{4}$ inches; Six-20, $2\frac{1}{4} \times 3\frac{1}{4}$ inches. Meniscus lens and protective front crystal. Rotary shutter (snapshot, time actions). Two extra-large ground-glass finders.

PRICES *Six-16 Brownie Junior*, \$3; Kodak Film No. 616 (8 exposures): Regular N.C., \$.30; Verichrome, \$.35; "SS" or Panatomic, \$.40. *Six-20 Brownie Junior*, \$2.50. Kodak Film No. 620 (8 exposures): Regular N.C., \$.25; Verichrome, \$.30; "SS" or Panatomic, \$.35.



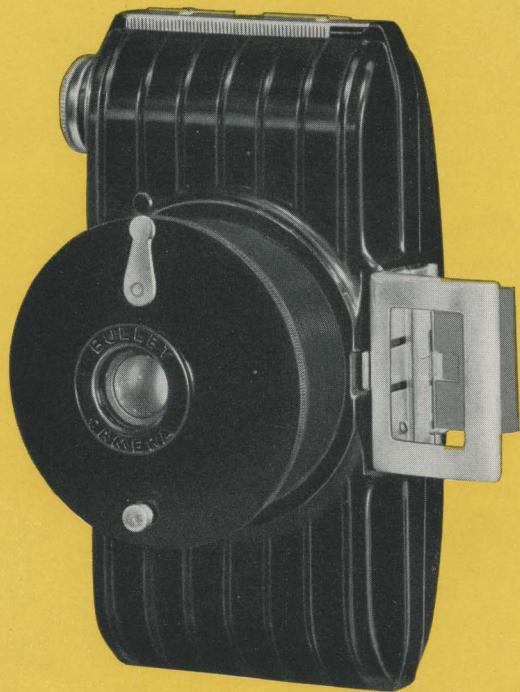
Copyright © 1935 Kodak Company. Brownie Junior, 1935

Baby Brownie Perhaps you have been doubtful as to whether a real camera could be built to sell for only one dollar. Yet here it is: a full-fledged, modern picture taker. . . and an unusually handsome one, too. Many like its glossy black shape. . . its easy, reliable action. And others are surprised by the quality of the pictures it turns out. The explanation is simple: though small and inexpensive, the Baby Brownie embodies all the experience gained in many years of camera construction. It is correctly designed. . . carefully built. . . painstakingly inspected. The result is a smart little camera of amazing efficiency and reliability.

DETAILS Picture size, $1\frac{5}{8} \times 2\frac{1}{2}$ inches. Easy loading by removing top of camera. Makes vertical or horizontal pictures. Meniscus lens. Rotary shutter with snapshot action. Fixed focus, with range from 5 feet to infinity. Folding eye-level direct-view finder.

PRICES Baby Brownie, \$1. Carrying case, \$.25. Kodak Film No. 127 (8 exposures): Regular N.C., \$.20; Verichrome, \$.25; "SS" or Panatomic, \$.30.





Bullet Camera It's new...and its new features have quickly made it a sensation in picture-taking circles. One turn on its ingenious spiral mount and the lens is out in picture-taking position. The rest is just as easy: sight on the subject through the eye-level finder and press the release. No focusing is necessary. After the picture is made the finder is folded, the mount turned back, and the Bullet takes on a smooth, compact, hand-fitting form. It's more than a novelty, though, for it is scientifically designed for what every Eastman camera must do—make genuinely good pictures. Though it means fun from the start, the Bullet camera scores its real hit when the first batch of prints comes back.

DETAILS Picture size, $1\frac{5}{8} \times 2\frac{1}{2}$ inches. Latest molded construction, with permanent glossy finish. Meniscus lens. Snapshot and bulb actions. Removable back, for quick, easy loading.

PRICES Bullet Camera, \$2.85. Case with hand strap, \$.75. Kodak Film No. 127 (8 exposures): Regular N.C., \$.20; Verichrome, \$.25; "SS" or Panatomic, \$.30.

Compliments of the Digitized Kodak Catalog Project: 1886 - 1941

ACCESSORIES FOR THE PICTURE MAKER

KODAFLECTOR (Right)

Improves greatly the efficiency of photo bulbs. Complete, \$5.

KODAK HANDY REFLECTOR, MODEL B (not illustrated)

Simple, effective cardboard reflectors; special holders. 2 for \$.25.

KODAK POCKET RANGE FINDER

Eliminates the guesswork with any folding camera. \$7.

KODAK METAL TRIPODS

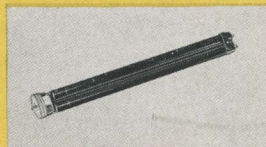
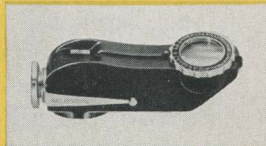
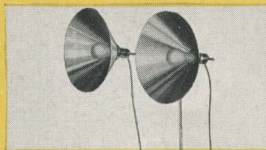
Fit any standard tripod socket. Legs are of light, rigid telescoping brass tubing. 3 models—one as low as \$2.75.

KODAPOD AND OPTIPOD

For standard tripod sockets. May be attached to any handy object to hold the camera steady during exposure. Kodapod, \$1.75; Optipod, \$1.25.

KODAK SELF TIMER

For any camera with a cable release. Clicks the shutter automatically. Allows camerist to take his own picture. \$1.25.



DARKROOM OUTFITS

Supplies for developing and printing at home. Kodak Dark-room Outfit No. 1 is \$8.75; No. 2, \$3.25.

LENS ATTACHMENTS

Fit over the regular camera lens to give unusual results. Kodak Portrait Attachments, \$.50, \$.75, and \$2. Other types of attachments are as low as \$1.

VELOX WATER COLORS

12 shades coated on paper stamps. Rapidly soluble in water to produce effects desired. In enamel case with 3 brushes, \$1.

EASTMAN ALBUMS

Attractive . . . durable . . . easy to use. Many styles, in a wide price range. Eastman Albums are priced from \$.90 to \$5.

"HOW TO MAKE GOOD PICTURES"

Latest, revised edition of this helpful publication. Hundreds of pictures, diagrams. Every amateur photographer should own a copy. Price \$.50.

For other photo accessories, see the booklet, "Kodak Picture-Making Aids"

For home movie equipment, ask your dealer for Ciné-Kodak catalog





ACCEPT NOTHING BUT
THE FILM IN THE YEL-
LOW BOX...KODAK
FILM...WHICH ONLY
EASTMAN MAKES.



J. F. ADAMS, Inc.
459 WASHINGTON ST.
BUFFALO, N. Y.