



KODAK

The Digitized Kodak Catalog Project (1886 - 1941): A Very Brief History

Most camera collectors at some point in their collecting careers pass through a Kodak phase - some never come out of it. And if there ever was one name that came to be associated with both cameras and collecting, it was Kodak.

George Eastman received his first patent (for coating dry plates) and bought his first manufacturing facility in 1880, and in 1881 he started the Eastman Dry Plate Company. In 1886 he received a patent for the near-mythical Eastman Detective Camera, but it wasn't until 1888 that the first camera bearing the name "Kodak" was introduced.

One of the nice things about collecting Kodak is that the product line is pretty well known, and because the company produced annual catalogs for many years, collectors can be reasonably sure of what they're looking at, when it was made, the variations and so on - presuming that they have access to either the appropriate catalog, or a number of the many books which document Kodak, each to some greater or lesser extent.

But what would be really nice would be to have a complete set of Kodak catalogs in an easily accessible form and readily available. And since the advent of portable computing devices (PC, Macintosh, etc.) that's been possible - except for the difficulty of assembling a complete set of Kodak catalogs in one spot and then scanning them and making the results available.

The idea of digitizing a complete set of Kodak catalogs has kicked around the collecting community for many years. It's been proposed on a number of online forums, during meetings of various photohistory groups, and for years there have been many incomplete "Kodak CDs" on eBay but at best, they only contained a few catalogs - whatever the owner had available. But assembling a complete set of catalogs, then scanning and processing perhaps 3,000 to 4,000 pages, was a daunting task - if not completely overwhelming - and nothing ever came of it.

Until now.

In early 2010, the idea came up again, but this time we - "we" as in "the collecting community" - were lucky. A number of collectors were willing to loan their catalogs to this project and a couple of insane - wait, let's call them "dedicated" - dedicated enthusiasts - neither of whom collected Kodak, but both of whom enjoyed the challenge of such a project - were willing to put in the time and effort to scan and pull together the entire set of catalogs into a full-blown Kodak Catalog Digital Library.

Our initial objective was to include just the annual amateur catalogs, but it turns out that many cameras only appear in certain professional and specialty catalogs. We included as many of those as we could obtain so that almost every Kodak camera made in the US, Canada and Europe, would be documented - at least up to about 1941. After that, it becomes much more difficult as Kodak stopped producing annual catalogs as their product line became increasingly more diversified.

However, even with the additional "non-amateur" catalogs, we weren't completely successful in illustrating "every" camera Kodak ever made. There are an elusive few that might appear in specialty catalogs that we simply couldn't track down. If you can't find one of those odd cameras, that's no doubt why. We may do a revision at some point in the future if someone is willing to loan us a catalog that includes a camera that isn't already recorded.

In this project, a total of 67 catalogs were used from 1886 through 1941 including a number of professional and dealer catalogs, and in some years, two or even three different catalogs to cover all the bases. With the cooperation of a number of dedicated collectors, we were able to pull together all those catalogs and in June 2010, the project started in earnest.

By November 2010, we had scanned everything we needed and eventually all 67 catalogs were then reassembled as image folders and converted to the universally accepted PDF format and finally, converted into individually searchable PDFs which could then be searched globally as a collection.

For those of you interested in the statistics: about 200 hours of scanning time (we never want to hear that sound again), 67 catalogs and 3,908 page scans - which generated 7,917 original and processed images - and 11.4 GB of disk space. Additionally, another 100+ hours of technical development time was needed to convert the digital catalogues into a fully searchable "knowledgebase" that could be launched from most any standard web browser.

The overwhelming number of catalogs was loaned to us by that most remarkable of Kodak collectors, Charlie Kamerman of Eagle Creek, Oregon. Without Charlie, it's very doubtful that this project could even have been attempted.

But as it turned out, even Charlie didn't have all the publications that were needed, but he was able to track down the five that he lacked and was able to secure either a copy or high resolution images that we could work with. And so, our thanks to the contributors of the catalogs and scans that we used:

Charlie Kamerman for the vast majority of catalogs used and all his help,
Steve Shohet for loaning a variety of test catalogs,
Ryerson University (Toronto) for the 1886 Eastman Catalog
George Layne for the 1890 New Kodaks Catalog,
Mike Kessler for the 1891 Dealer Display Catalog,
Ralph London for the 1893 UK Catalog,
Michael Pritchard for the 1897 UK Catalog.

The digital side of the project - also known as "all of the work" - was done by Rob Niederman of Medina, Minnesota, and Milan Zahorcak of Tualatin, Oregon. Remarkably we're still friends and in a few years, we'll probably be able to talk about this project rationally.

And there you have it, a more-or-less done deal. We're fairly sure that it isn't quite perfect, and expect there will be some carping about something or other; but all-in-all, we believe this to be a pretty good product and can now move on to something else.

Our thanks to all of those involved.

Rob Niederman
Milan Zahorcak

Fall, 2011

ENLARGED FROM A NEGATIVE MADE ON KODAK "SS" PAN FILM



Compliments of the Digitized Kodak Catalog Project: 1886 - 1941

KODAKS

AND KODAK SUPPLIES

1936-1937

*In selecting a
camera, consider . . .*

THE PICTURE SIZE... The following pages show sample pictures made with various cameras, and in most cases an enlargement as well. Select the picture size that appeals to you most, remembering that, as illustrated in this catalog, any good picture can be generously enlarged.

THE TYPE YOU PREFER... box or folding camera.

THE VARIETY OF PICTURES you want, and the range of conditions under which you expect to take them. These factors apply particularly to the folding cameras. The versatility of a camera depends largely upon the grade of its lens and shutter (see page 29) . . . and, in some models, upon the variety of negative materials which can be used.

THE PRICE... Camera prices are determined to a great extent by the types of lenses and shutters employed, since these items represent a large part of the manufacturing cost. As pointed out above, this equipment to a large degree determines the scope of the camera.

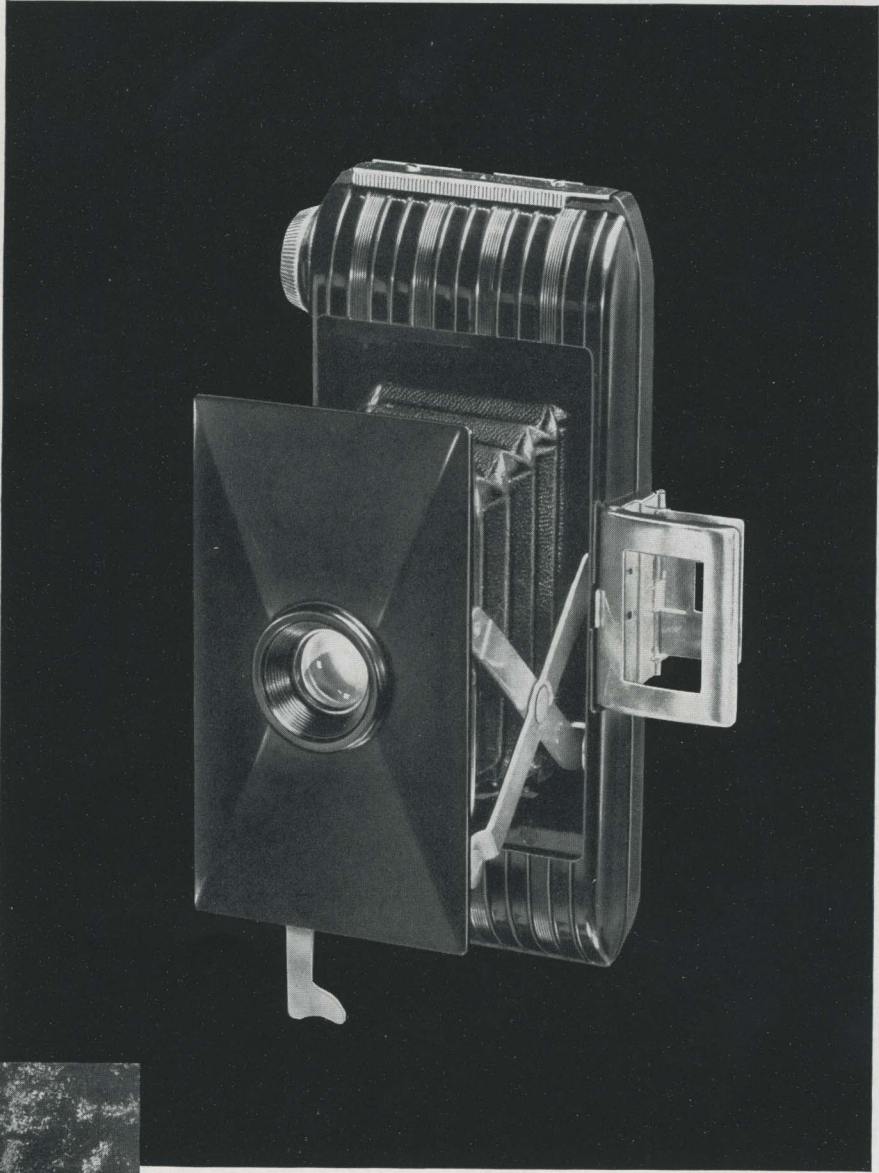
Your dealer will be glad to help you make your selection

EASTMAN KODAK COMPANY
ROCHESTER, N. Y.

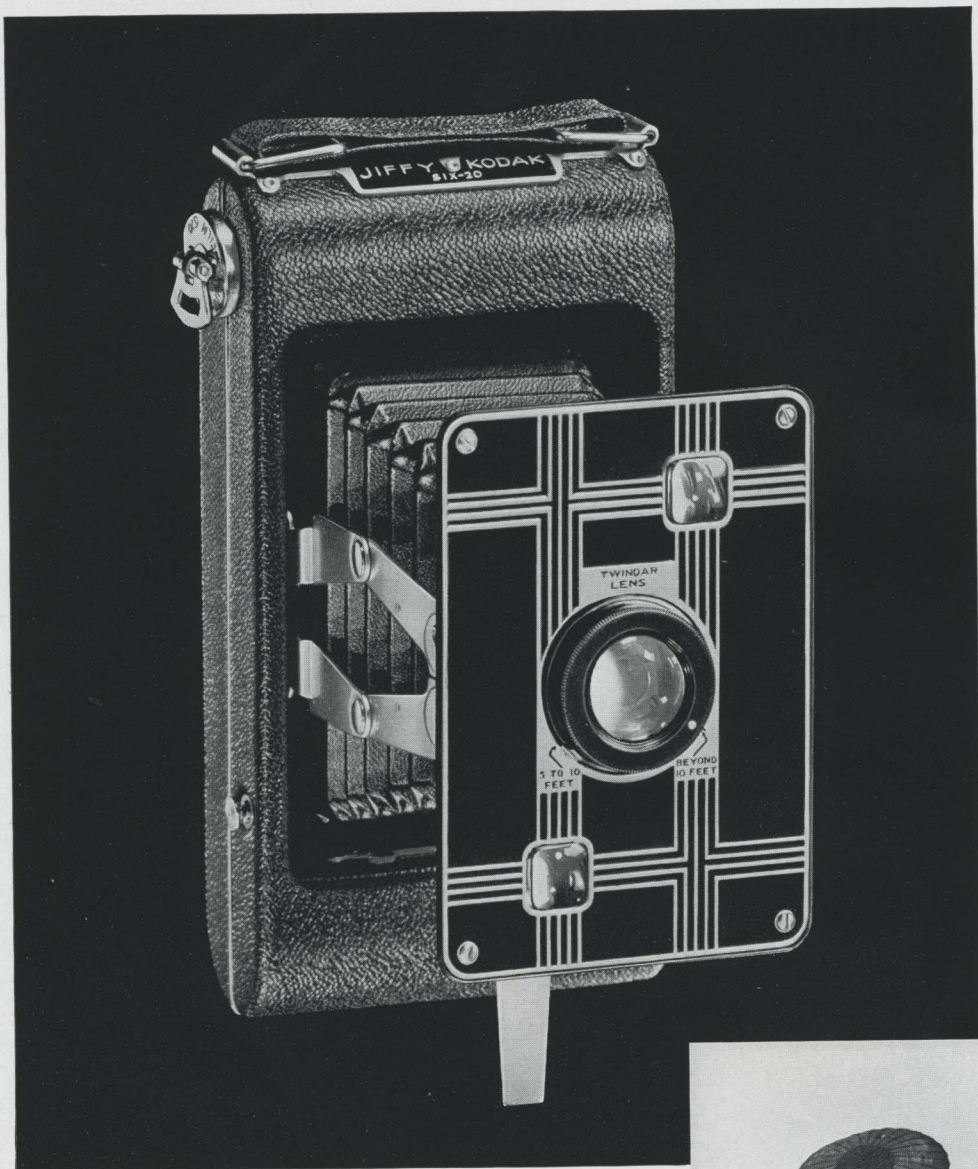
For your convenience an index of the contents of this catalog is provided on Page 48



ACTUAL-SIZE PICTURES, AND ENLARGEMENT, FROM NEGATIVES MADE WITH THE JIFFY KODAK V. P. ON KODAK VERICHROME FILM



JIFFY KODAK V.P. A long-famous Kodak... the "Vest Pocket"... completely restyled, with a new, glossy-black molded body, and the popular "Jiffy" action. Slight pressure on a button snaps it open... its capable double lens ready for the picture. Slight pressure on the release, without focusing or other preliminary adjustment, makes the exposure. The pictures, $1\frac{5}{8} \times 2\frac{1}{2}$ inches, are album-size to begin with, and can be enlarged if desired. Best of all: though this is a real Kodak, bringing you last-minute refinements, its price is only \$5. Jiffy V.P. is the buy of the day in a small, smart camera of substantial picture size. See page 30 for the details.



JIFFY KODAKS SIX-16 AND SIX-20

Examine a Jiffy Kodak at your dealer's with the following features in mind. Simple operation: press two buttons in succession. . . the camera's open, the picture made. Style: easily distinguishable in Jiffy's smooth, compact shape, black morocco-grain covering, black-and-nickel etched front. Big pictures: $2\frac{1}{4} \times 3\frac{1}{4}$ for the Six-20; $2\frac{1}{2} \times 4\frac{1}{4}$ for the Six-16. Moderate prices: \$8 and \$9. The "simplest folding camera ever devised" is a bargain in any market. For a detailed description, see page 30.



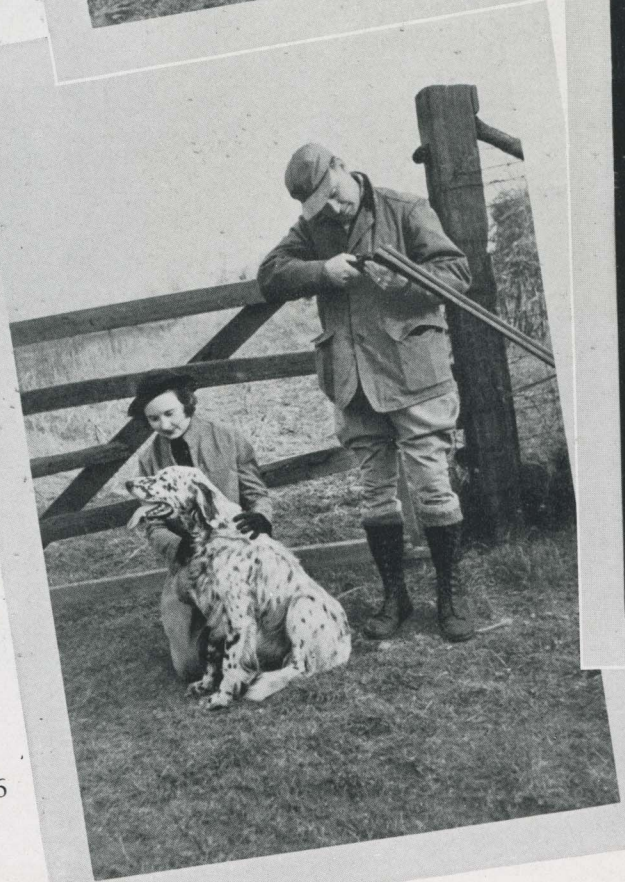


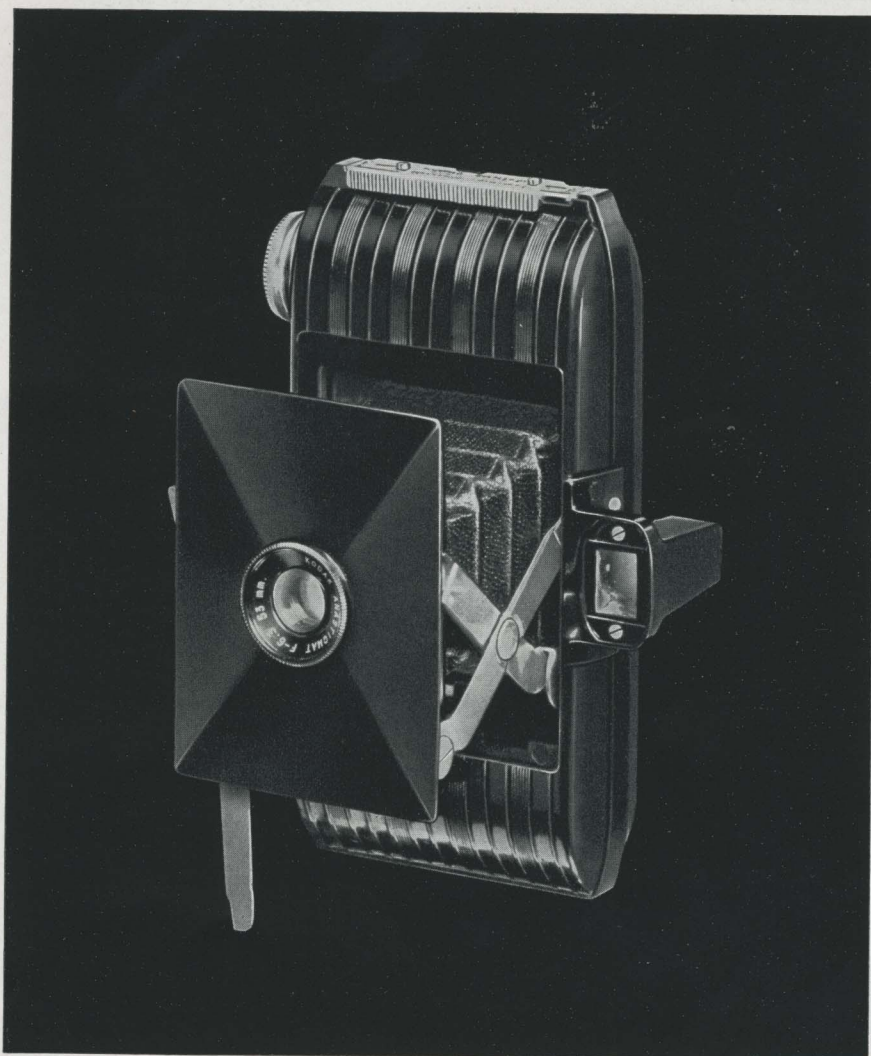
Compliments of the Digitized Kodak Catalog Project: 1886 - 1941



ACTUAL-SIZE PICTURES, AND ENLARGEMENT, FROM JIFFY KODAK NEGATIVES MADE ON KODAK VERICHROME FILM... THE INDOOR SCENE WITH THE AID OF A PHOTOFLASH BULB

SAMPLES OF INEXPENSIVE KODAK BANTAM PICTURES MADE BY UP-TO-THE-MINUTE PHOTO-FINISHING METHODS FROM NEGATIVES ON KODAK PANATOMIC FILM

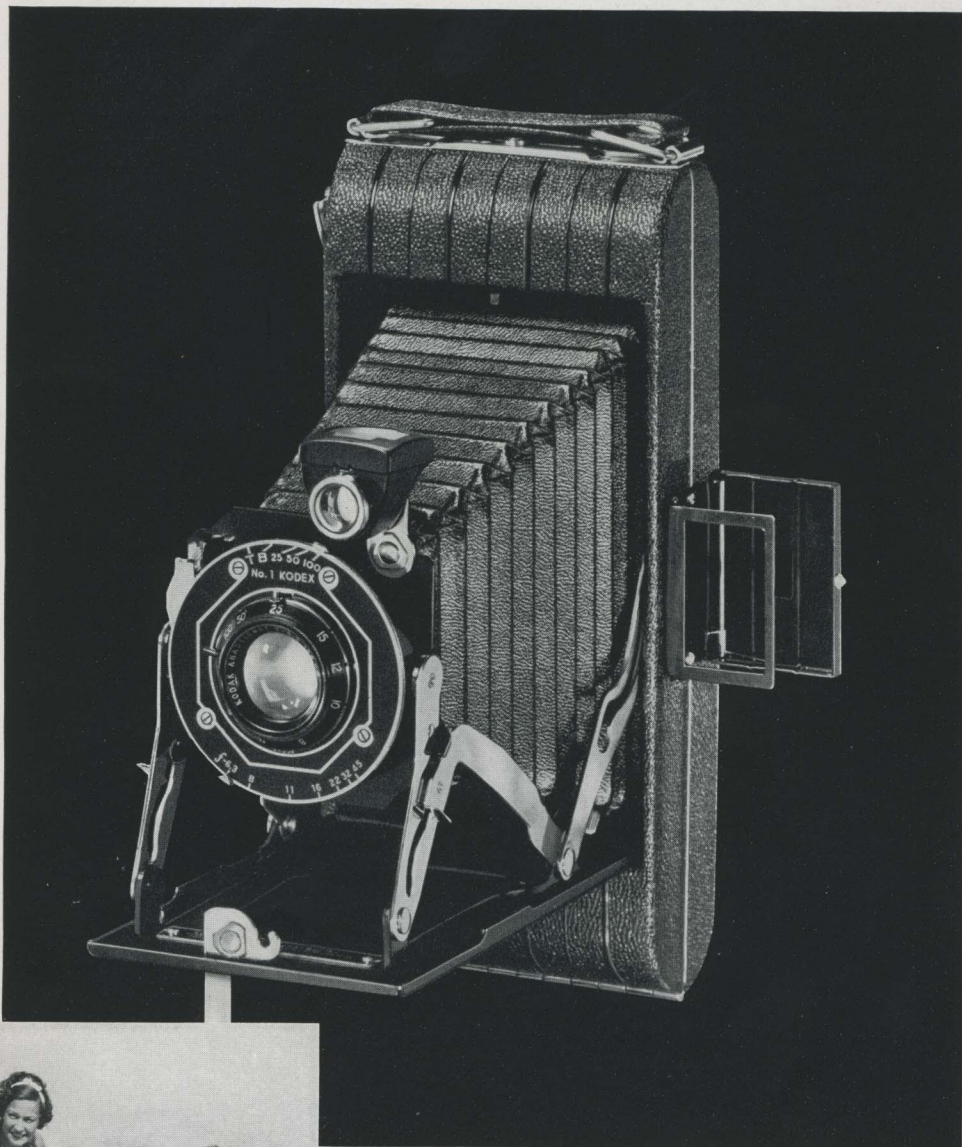




KODAK BANTAM A camera that embodies new ideas. Small as the palm of your hand, Kodak Bantam leads to pictures bigger than itself. Modern finishing methods give you large-size prints at reasonable cost. Film cost is low, for the Bantam loads with a Kodak Panatomic Film roll priced at twenty cents. And mark these added features: the fast, versatile film, fixed focus, and fixed shutter speed cancel ordinary exposure problems. You don't have to watch the window when winding film... a special device centers exposures for you. You can make a quick *series* of snaps, if you wish, without so much as lowering the Bantam from eye level. ...Such a brilliant camera deserves a brilliant lens. The Bantam has it: Kodak Anastigmat *f.6.3*. So equipped, the camera costs but \$9.75. With the more modest Doublet lens, it is priced at only \$5.75. See Kodak Bantam. It spells a new way to easy, satisfying, economical picture making. Further details are given on page 30.



ACTUAL-SIZE PICTURES, AND ENLARGEMENT, FROM KODAK JUNIOR NEGATIVES MADE ON KODAK VERICHROME FILM... THE INDOOR SCENE WITH THE AID OF A PHOTOFLASH BULB

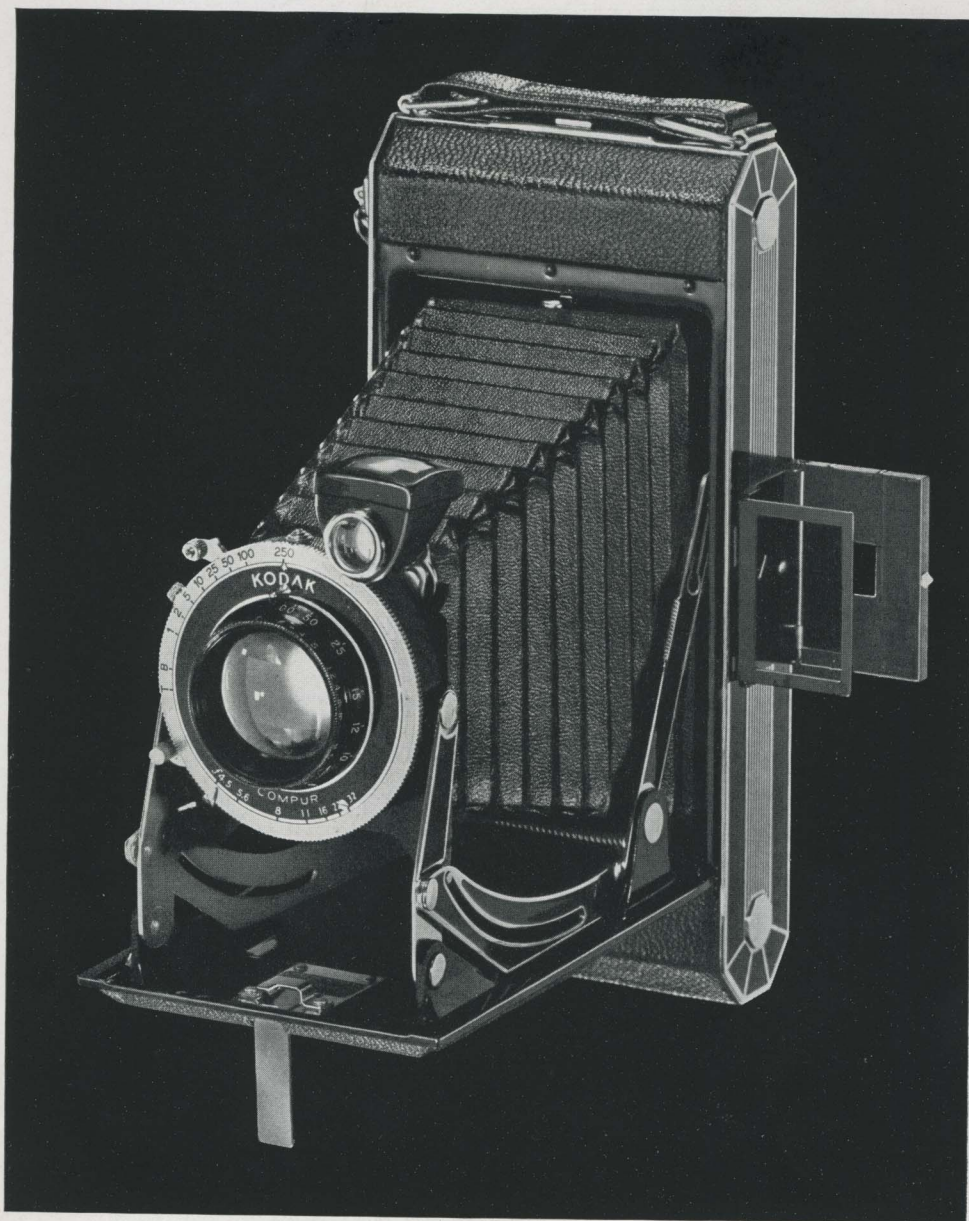


KODAK JUNIORS SIX-16 AND SIX-20

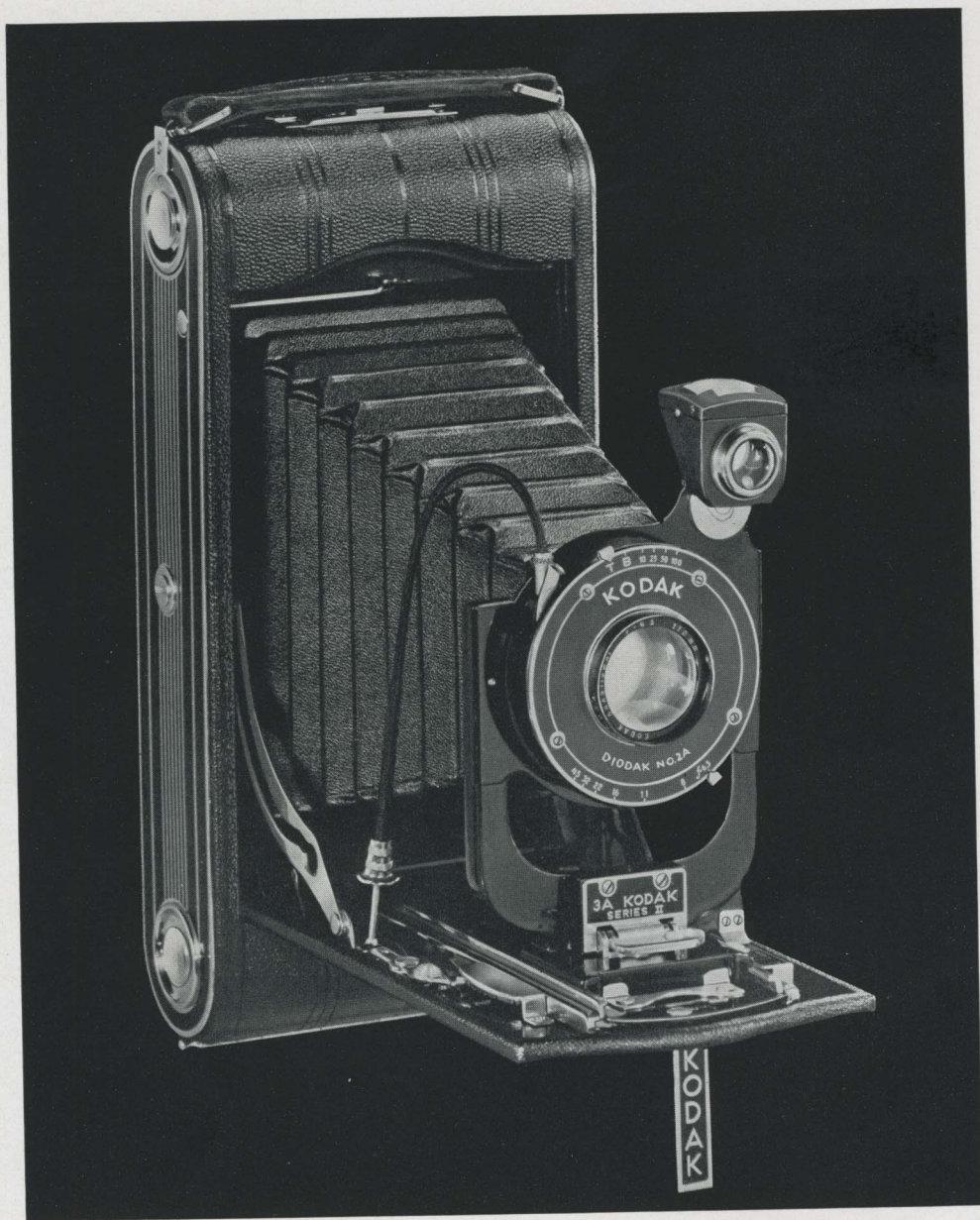
If you want a lot for your money, see the Kodak Juniors. They are unmistakably slender, smart, compact. Their self-erecting front gets them into action instantly, and that action means good pictures. The reliable Doublet-lens models require no focusing. The versatile *f.6.3* models, equipped with supplementary finders for aiming at eye-level, make snapshots even in the rain, or indoors at night with Kodak "SS" Film and Photofloods. Prices, \$10 to \$15.50. Details, page 31.



ACTUAL-SIZE PICTURE, AND ENLARGEMENT, FROM A KODAK SIX-16 NEGATIVE MADE ON KODAK VERICHROME FILM



KODAKS SIX-16 AND SIX-20 Six splendid Kodaks ... America's favorite fine cameras. All, including the simple Doublet models, have the action front, which snaps the lens out into position at the touch of a button. *F.6.3* models, versatile outdoors, are also ideally suited to indoor photography at night. The *f.4.5* models, with big *f.4.5* lenses and swift Compur shutters, stop at nothing. Regardless of subject or light conditions, they can be depended upon to give you the pictures you want. ... Picture sizes are generous: Kodak Six-16, $2\frac{1}{2} \times 4\frac{1}{4}$; Kodak Six-20, $2\frac{1}{4} \times 3\frac{1}{4}$. There is a wide price range: \$14 to \$40. Be sure to study the details on page 31.



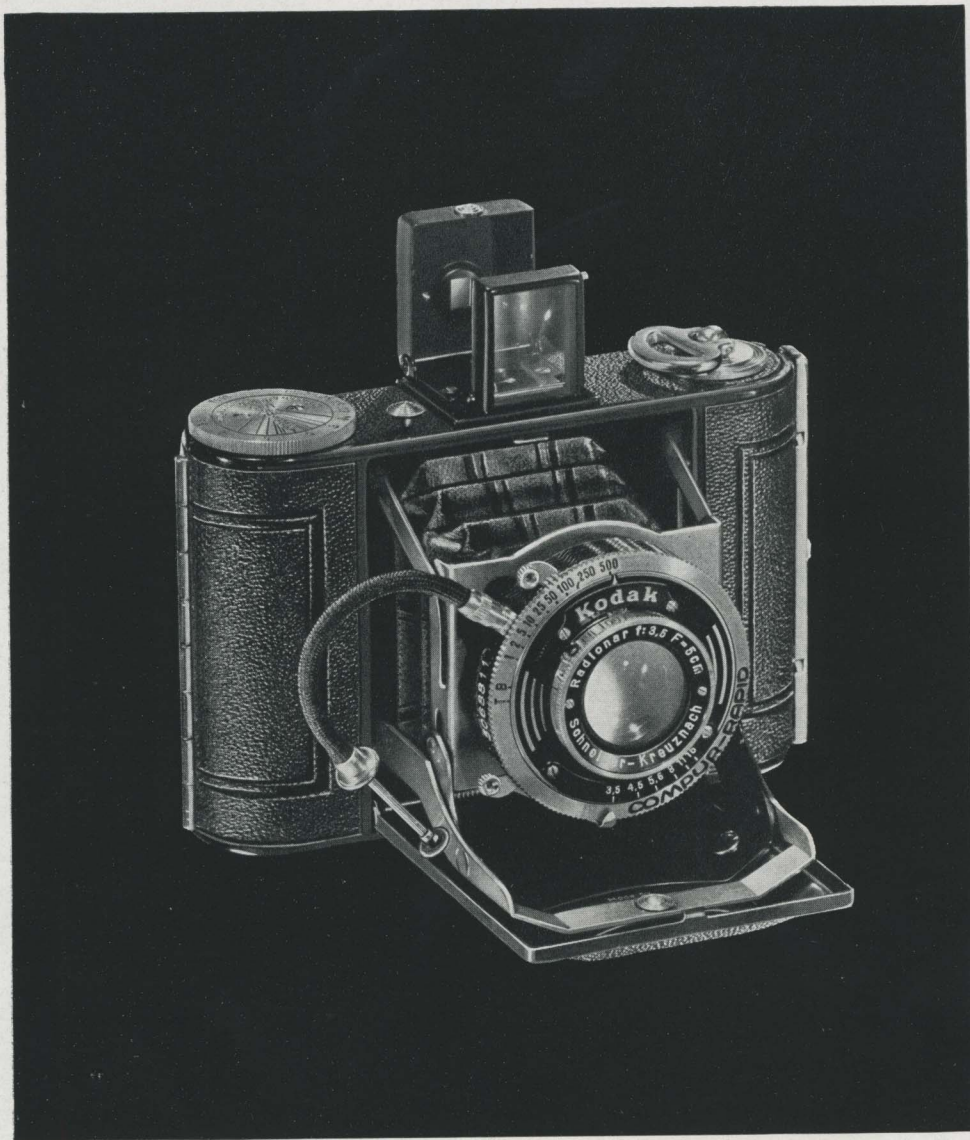
3A KODAK, SERIES II Insistent demand inspired this new 3A Kodak... a 3A with the same old capability but entirely new styling. Its side panels are brilliantly finished in black enamel and chromium, and its smartly creased cowhide covering adds another thoroughly modern note. *All* bright metal parts are chromium-plated, even the little button that automatically opens the camera and drops the bed into position. The lens is a Kodak Anastigmat with *f*.6.3 rating... fast enough for rainy-day pictures or night-time snapshots with Kodak "SS" Film and Photoflood bulbs. Coupled with the Diodak shutter, it provides a combination of notable reliability. The price is only \$39.50. If you are one of the many people whose favorite picture size is $3\frac{1}{4} \times 5\frac{1}{2}$ inches, study the details on page 32, and see this new 3A model at your Kodak dealer's.



ACTUAL-SIZE PICTURES FROM 3A KODAK, SERIES II, NEGATIVES MADE ON KODAK SUPER SENSITIVE PANCHROMATIC FILM



Complements of the Digitized Kodak Catalog Project: 1886 - 1941

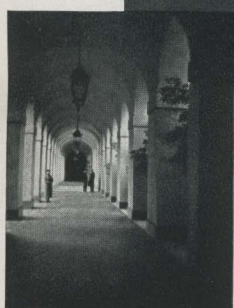


KODAK VOLLEND A Extreme compactness, marked simplicity, and outstanding ability have made Kodak Vollenda one of the really big favorites among miniature cameras. It makes sixteen $1\frac{3}{16} \times 1\frac{9}{16}$ -inch pictures on a roll of "vest pocket" film, and they are capable of generous enlargement. . . especially when the film is the famous Kodak Panatomic. Sharp negatives and great versatility are assured by the model carrying the *f*.4.5 anastigmat lens and Pronto shutter with self timer. Even greater adaptability comes with the second model, equipped with an *f*.3.5 anastigmat and the Compur-Rapid shutter that splits exposures to $1/500$ second. Action front. . . sturdy construction. . . low operating cost. . . these features give added distinction to both Vollendas. In view of such ability the prices, \$25 and \$44.50, are low. See the detailed information given on page 32.





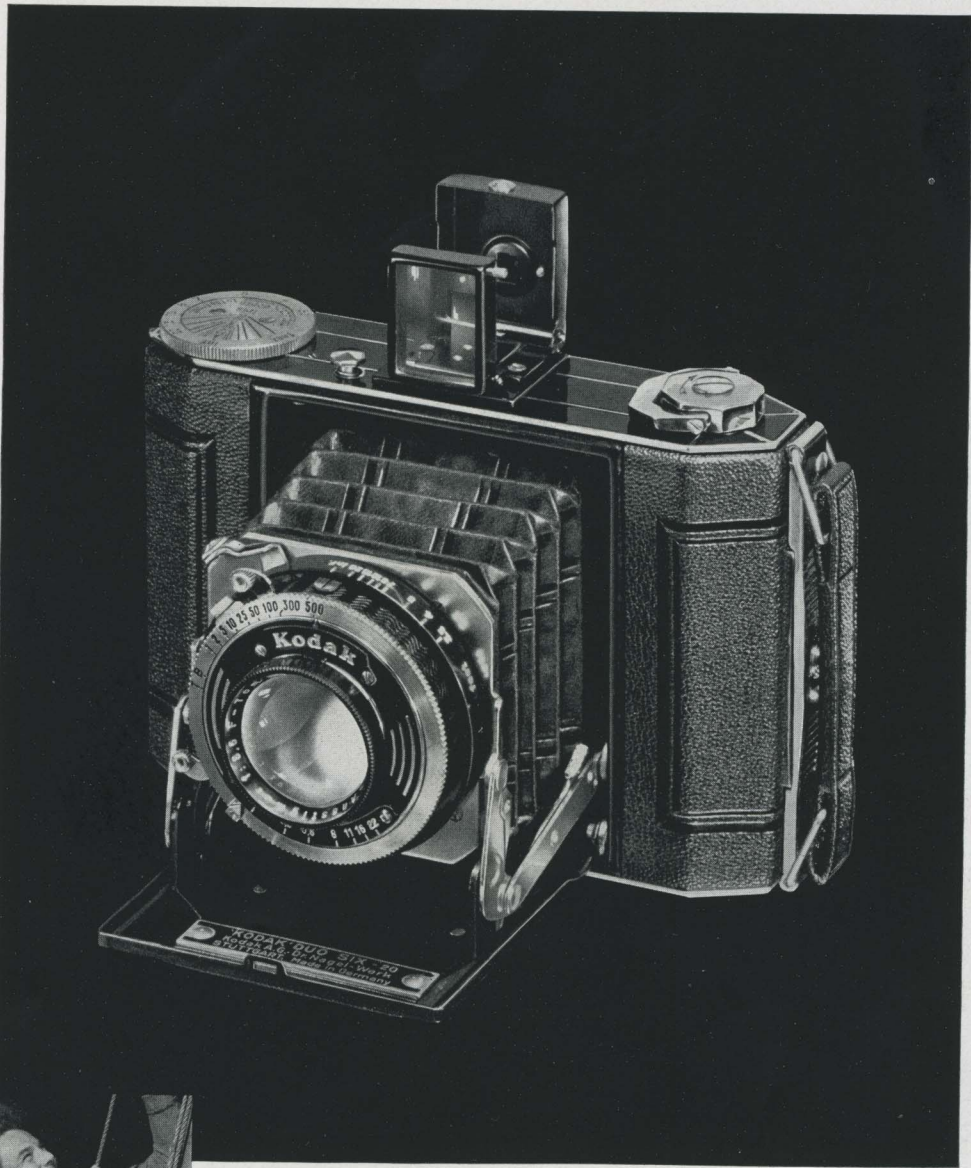
Compliments of the Digitized Kodak Catalog Project: 1886 - 1941



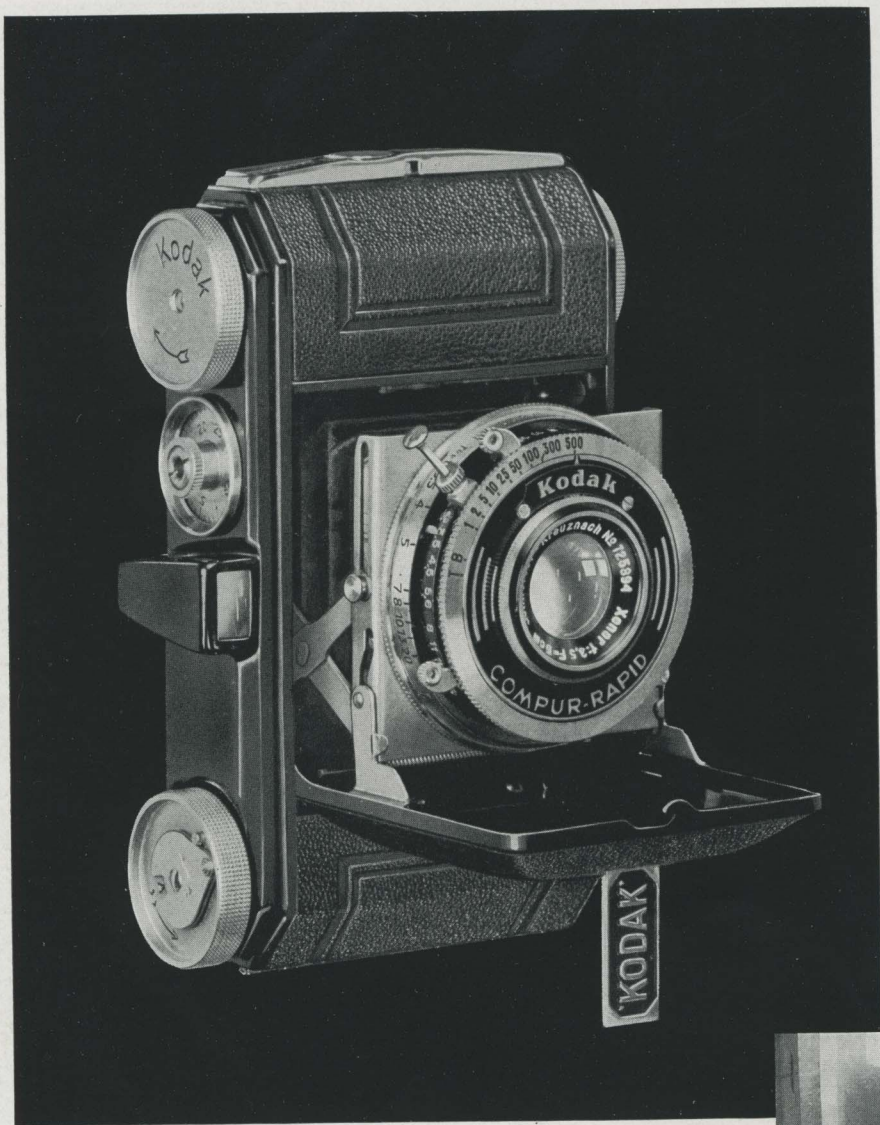
ACTUAL-SIZE PICTURES, AND ENLARGEMENT, FROM NEGATIVES MADE WITH THE KODAK VOLLENDIA ON KODAK PANATOMIC FILM



ACTUAL-SIZE PICTURES, AND ENLARGEMENT, FROM KODAK DUO SIX-20 NEGATIVES MADE ON KODAK PANATOMIC FILM...NIGHT SCENE (RIGHT) WITH THE AID OF PHOTOFASH

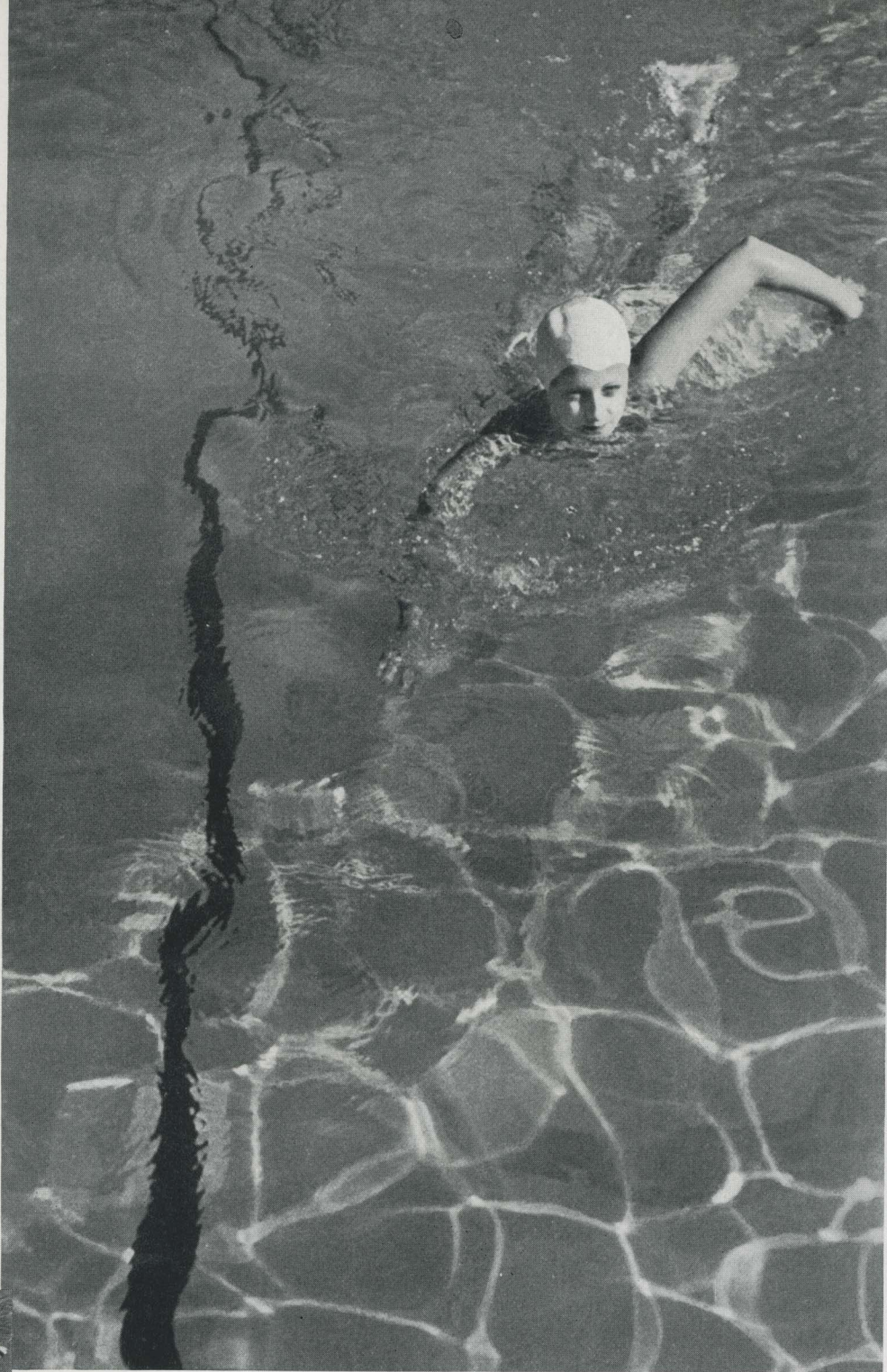


KODAK DUO SIX-20 You will find this Kodak fully as compact as the average "miniature," and just as finely built, yet it makes $1\frac{5}{8} \times 2\frac{1}{4}$ -inch pictures. . . large enough for any album. At the same time the negatives, when made on Kodak Panatomic Film, are so sharp that they give you big enlargements of exceptional quality. In short, the Duo is the double-purpose "miniature." As for adaptability: the $f.3.5$ anastigmat lens and $1/500$ -second Compur-Rapid shutter make short work of action shots, rainy-day pictures, close-ups, and indoor snapshots with Kodak Super Sensitive Panchromatic Film and Mazda Photoflood bulbs. The Duo is a "buy" at \$57.50. See the details on pages 32 and 33.



KODAK RETINA When you buy a little Retina, you buy concentrated photographic versatility. Its lens is a keen $f.3.5$ anastigmat. Its shutter is the Compur-Rapid, with nine speeds to $1/500$ second. It loads with a variety of convenient 36-exposure Kodak Film magazines: "SS," Panatomic, Super X, and Infra-Red. This combination means literally endless possibilities for pictures capable of great enlargement. Ease of operation is assured by the film-measuring device, exposure counter, and enclosed eye-level finder. In fact, Kodak Retina's quick, convenient action rivals its adaptability to every picture situation. It is a high-speed, high-precision, all-purpose miniature camera... and its price is only \$57.50. Descriptive details are given in full on page 33.



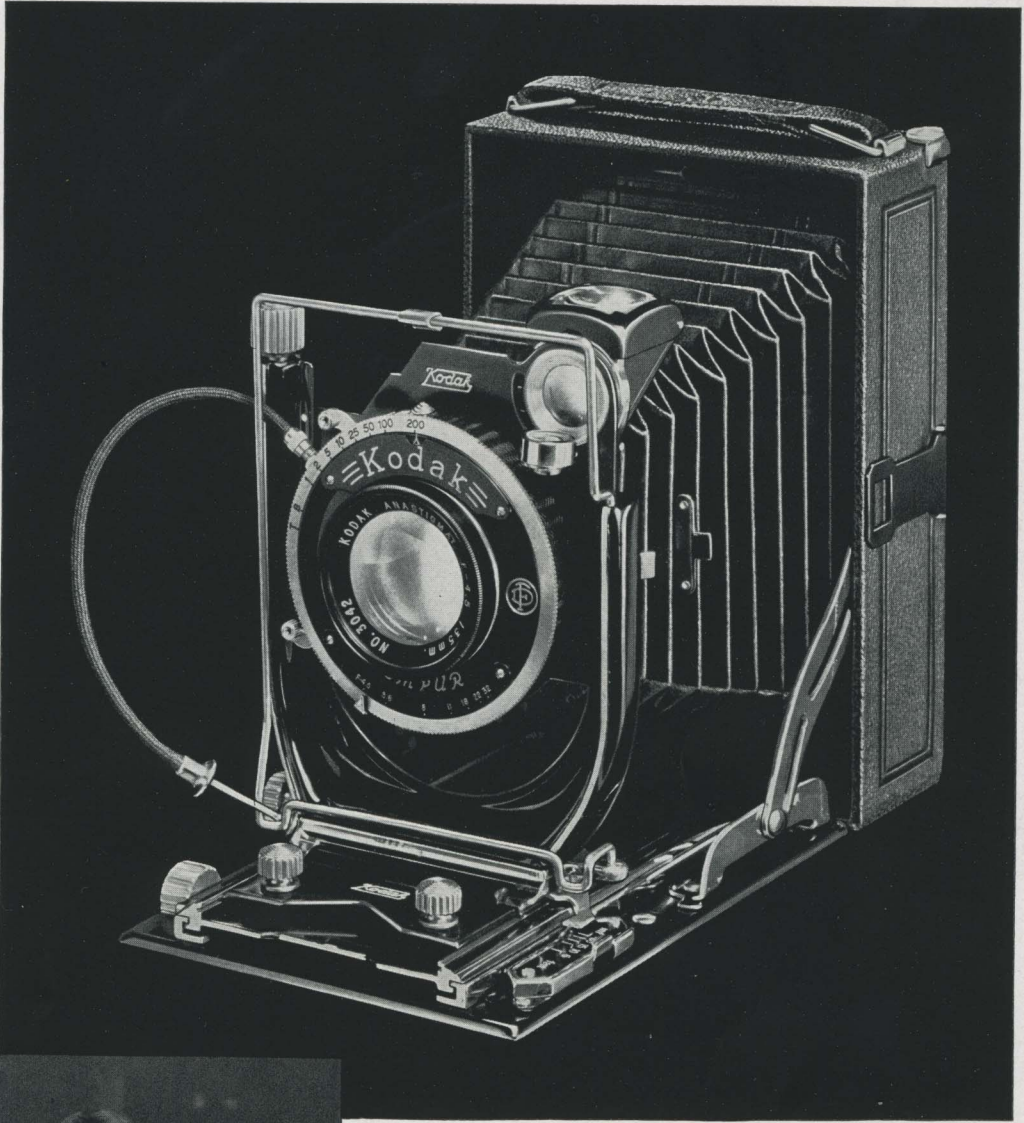


ACTUAL-SIZE PICTURES, AND ENLARGEMENT, FROM NEGATIVES MADE WITH THE KODAK RETINA ON KODAK PANATOMIC FILM



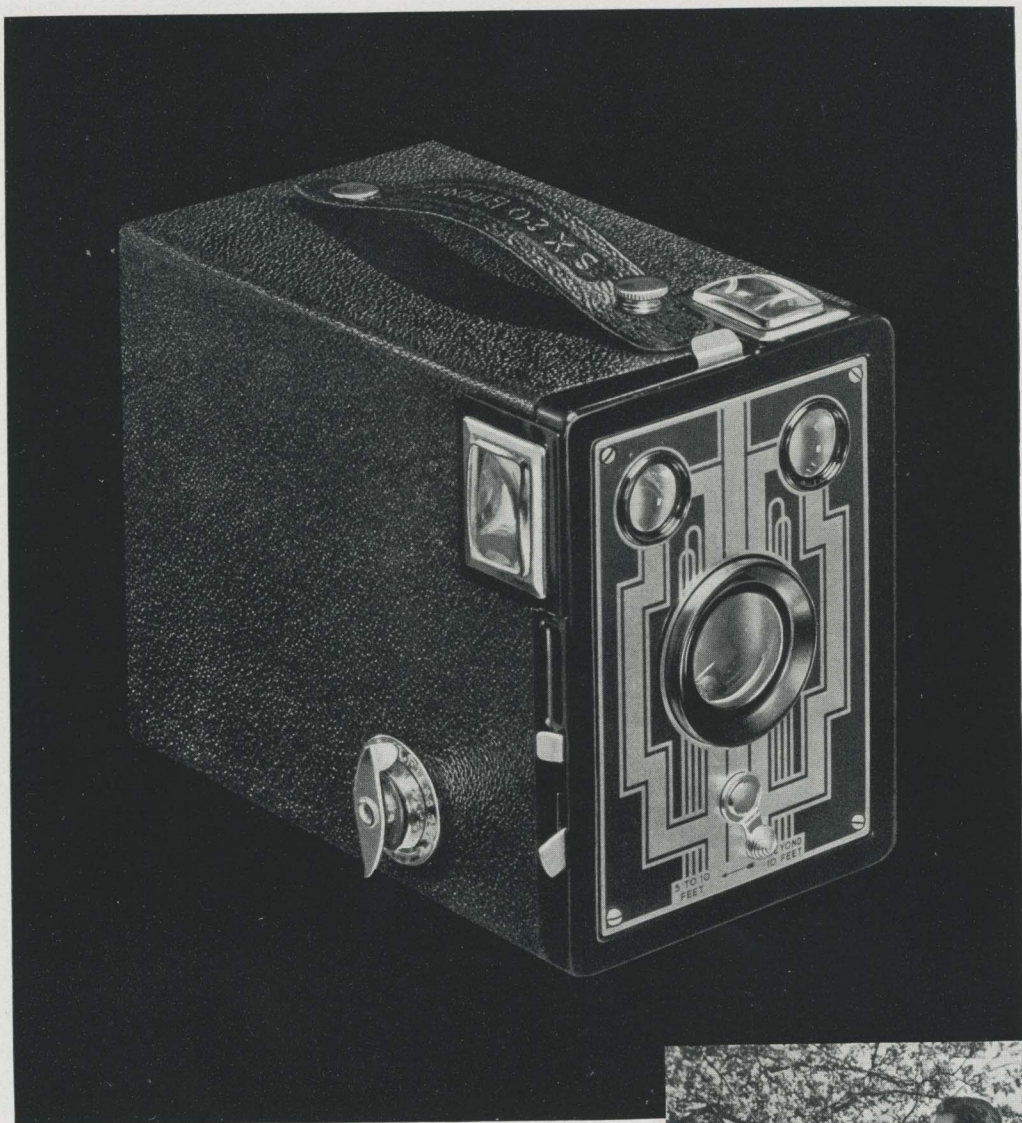


ACTUAL-SIZE PICTURES, AND ENLARGEMENT, FROM KODAK RECOMAR NEGATIVES MADE ON KODAK "SS" FILM... THE INDOOR SCENE WITH THE AID OF PHOTOFLOOD BULBS



KODAK RECOMARS 18 AND 33

Life-time cameras for serious amateurs who want outstanding equipment, adaptable to a variety of negative materials. Kodak Recomars utilize the almost limitless emulsions available in film packs, cut film, and plates... and make the most of them. For they carry the unexcelled Kodak Anastigmat $f.4.5$ lens and famous Compur shutter with built-in self timer. Other features are the double-extension bellows and bed, ground-glass focusing back, and wire-frame finder. The picture sizes are substantial: $2\frac{1}{4} \times 3\frac{1}{4}$ for the "18"; $3\frac{1}{4} \times 4\frac{1}{4}$ for the "33." Prices, \$54 and \$63. Study the details given on pages 33 and 34.

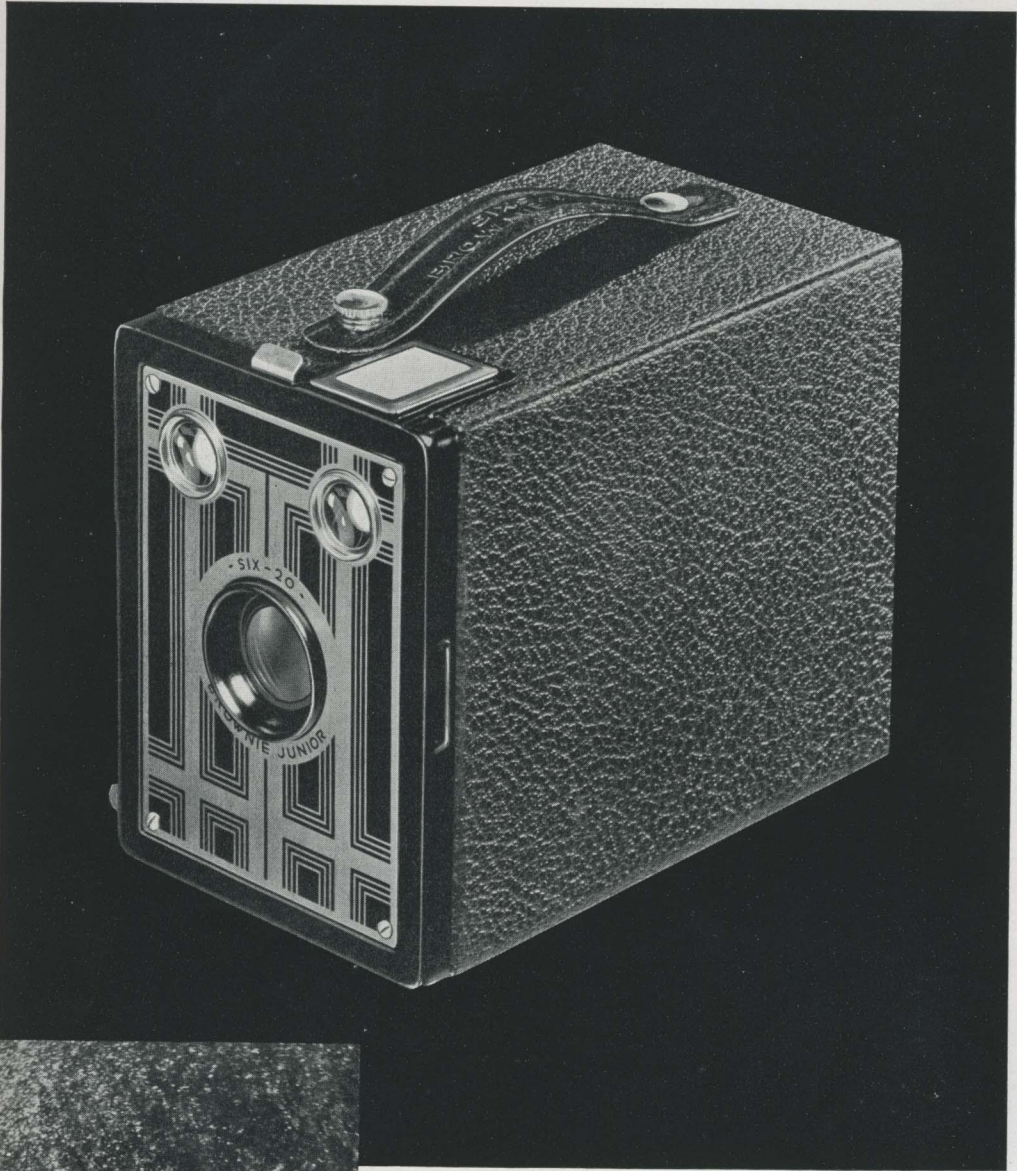


SIX-16 AND SIX-20 BROWNIES Here are today's versions of the famous Brownies that made millions of good pictures in the past...finer, handsomer models than ever. They are the only cameras equipped with the Diway lens, which by one simple adjustment insures sharp focus for either near or distant subjects. Finders are extra-large and of the brilliant type. The finish is featured by a smart morocco-grain covering and a decorative etched metal front plate. Picture sizes and prices: Six-16, $2\frac{1}{2} \times 4\frac{1}{4}$, \$3.75; Six-20, $2\frac{1}{4} \times 3\frac{1}{4}$, \$3.00. Details are given on page 34.

22

ACTUAL-SIZE PICTURE FROM SIX-20 BROWNIE NEGATIVE MADE ON KODAK VERICHROME FILM

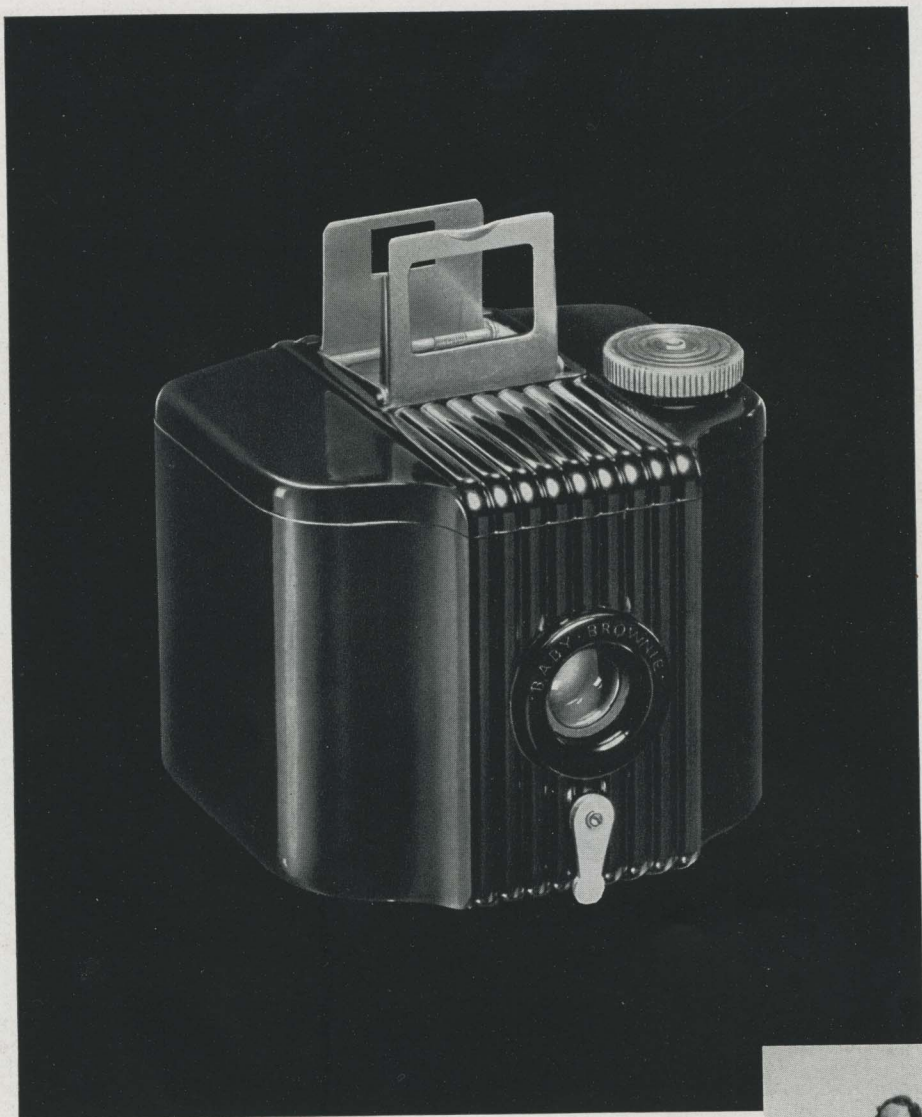




SIX-16 AND SIX-20 BROWNIE JUNIORS

To operate a Brownie Junior you load, aim at the subject, press a button...nothing more. Juniors are a boon to people who want their picture-making simple, and favorites with children, particularly since they have the typical Brownie reliability. Nor has simplicity been gained at the expense of good looks. Both models have a neat leather-like covering and a two-toned metal front. Prices are very modest: Six-16, for $2\frac{1}{2} \times 4\frac{1}{4}$ pictures, \$2.75; Six-20, for $2\frac{1}{4} \times 3\frac{1}{4}$ pictures, only \$2.25. Details, page 34.

ACTUAL-SIZE PICTURE FROM SIX-20 BROWNIE JUNIOR
NEGATIVE MADE ON KODAK VERICHROME FILM



BABY BROWNIE Hundreds of thousands have bought this dollar camera. There is only one reason: it makes good pictures. In spite of its simplicity and negligible price, the Baby Brownie is not a toy, but a full-fledged modern camera, carefully designed, painstakingly built, and styled to the minute. Its lens and snapshot shutter are thoroughly dependable. Its eye-level finder folds flush when not in use. And its graceful, molded body is the latest word in camera craftsmanship. Economical to buy and to use; price, \$1.00... eight $1\frac{5}{8} \times 2\frac{1}{2}$ pictures on a roll of "vest pocket" Kodak Film. See the details, page 34.

24



ACTUAL-SIZE PICTURE FROM BABY BROWNIE
NEGATIVE MADE ON KODAK VERICHROME FILM

HOME MOVIES

...WITH CINÉ-KODAK AND KODASCOPE

MORE and more snapshot makers are discovering that the fun of picture making does not by any manner of means end with the album.

The reason—home movies.

For movie making has daily become far more alluring...far less expensive. Your favorite snapshot subjects—family, friends, travels, sports, spectacles—in movies they will live again in action...in color if you wish. Small wonder that personal movie shows are becoming so popular.

And movies are so easy to make!

The new Magazine Ciné-Kodak requires no threading. The film comes in a magazine. Slip the magazine into the camera...close the cover—and shoot. That's all there is to it. Other Ciné-Kodaks are as easy to load as your "still" camera. Then you glance at the exposure guide under the lens—it tells you what diaphragm stop to use. Point the camera...press the exposure lever—and you'll make movies on your very first roll that you'll be proud to see and to show.

And in considering Ciné-Kodak movies, be sure to remember it is every bit as easy to show them as it is to make them.



THE ECONOMY OF MOVIE MAKING

CINÉ-KODAK EIGHT, for example. The camera costs but \$34.50. The film costs \$2.25—and this price includes finishing in any of Eastman's world-wide chain of processing stations. On this \$2.25 roll of film you can record 20 to 30 different subjects in full-length movie scenes as long as those in the newsreels. And this means movies at about ten cents a shot. 16-mm. Ciné-Kodak Film, \$4.50 to \$9 per 100 feet, including processing.



MAKING MOVIES WITH CINÉ-KODAK EIGHT

THOUGH small in size and modest in cost Ciné-Kodaks Eight are thoroughly capable movie cameras. For the past three years they have romped off with the highest awards for photography in the annual amateur movie contests of the American Society of Cinematographers of Hollywood. And much credit for these victories must be given to the quality and efficiency of Ciné-Kodak Eight



Left: Ciné-Kodak Eight, Model 25; right: the Model 20



The de luxe Model 60, with carrying case and telephoto

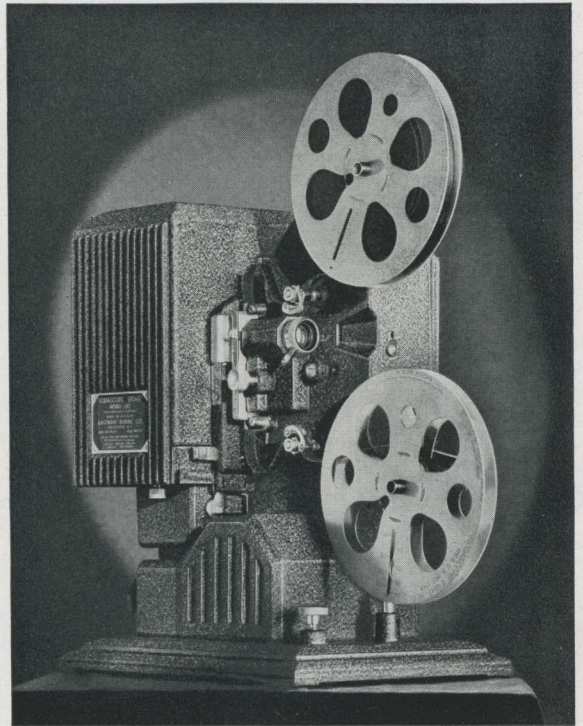
Panchromatic Film with which Ciné-Kodak Eight owners are able to make movies for only "10 cents a shot."

The Model 20 costs but \$34.50 with Kodak Anastigmat $f.3.5$ lens—"fast" enough for movie making under average outdoor light conditions, and indoors, too, when Eastman's brilliant \$5 Kodaflector supplies the light. The Model 25, similar in appearance, and with a "faster" $f.2.7$ lens, is priced at \$45. Ciné-Kodak Eight, Model 60, is an amazingly competent little movie camera fitted with an "ultra-fast" $f.1.9$ lens, interchangeable with a telephoto lens (\$37.50 extra) which magnifies objects three times. With carrying case, the Model 60 is priced at \$91.50.

For showing the movies you've made with Ciné-Kodaks Eight you've your choice of three Kodascopes Eight—all equally dependable, varying only in screen brilliance and appointments. The Model 20, sturdy, simple, is priced at only \$26. \$39 buys the Model 40, with brilliant 200-watt lamp. Kodascope Eight, Model 80, with super-brilliant 300-watt lamp and many projection conveniences, is priced at \$97.50 with carrying case.

THE WIDER RANGE OF MOVIE MAKING WITH A 16 MM. CINÉ-KODAK

MAGAZINE Ciné-Kodak and Ciné-Kodak K make larger film images, permit the showing of larger screen pictures with Kodascopes E and L. Besides a Panchromatic Film similar to Ciné-Kodak Eight Film, they load with Ciné-Kodak Super Sensitive "Pan" Film, far faster than regular "Pan," making indoor movies easier, and with the sensational full-color Kodachrome Film which reproduces subjects in colors almost as real as life itself.



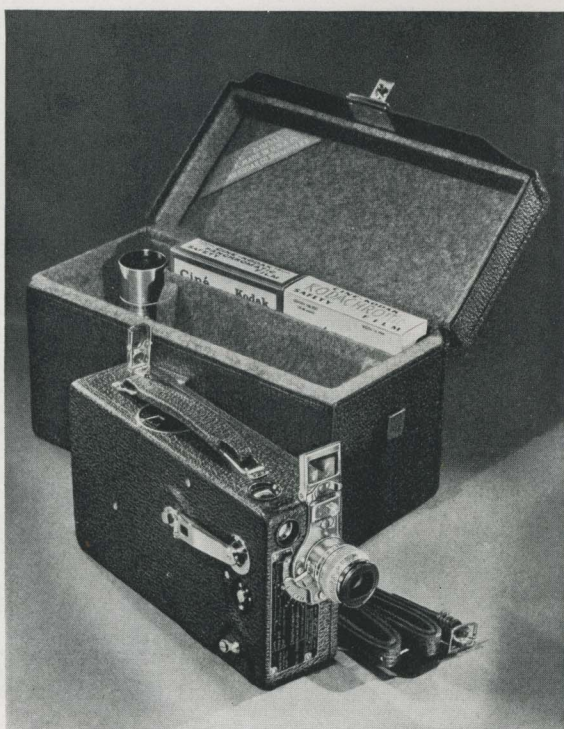
The smartly styled Kodascope Eight, Model 80



The versatile Magazine Ciné-Kodak and carrying case

Magazine Ciné-Kodak, pocket-size, will be the choice of those desiring home movies at their simplest and best. Magazine load, you can switch from one film to another in a jiffy—even when but part of the film has been exposed. Possessed of other advantages too numerous to mention here, Magazine Ciné-Kodak is priced at \$125 with *f*.1.9 lens.

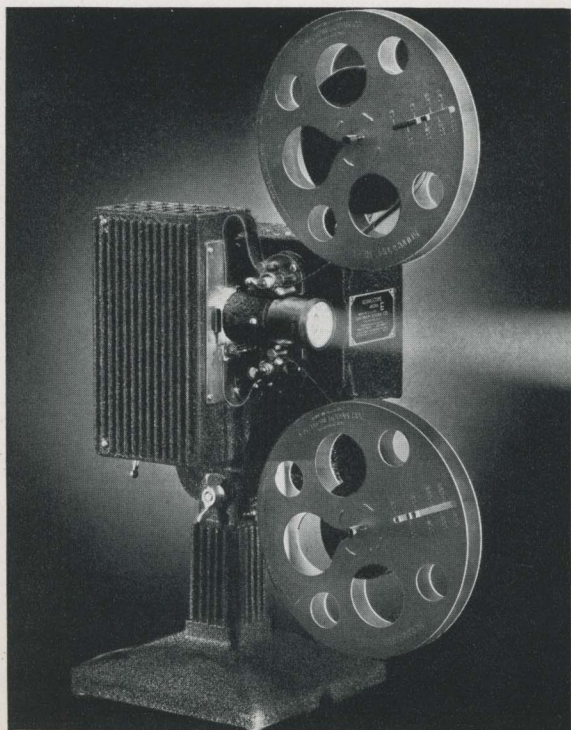
Ciné-Kodak K loads with 50- or 100-foot film rolls



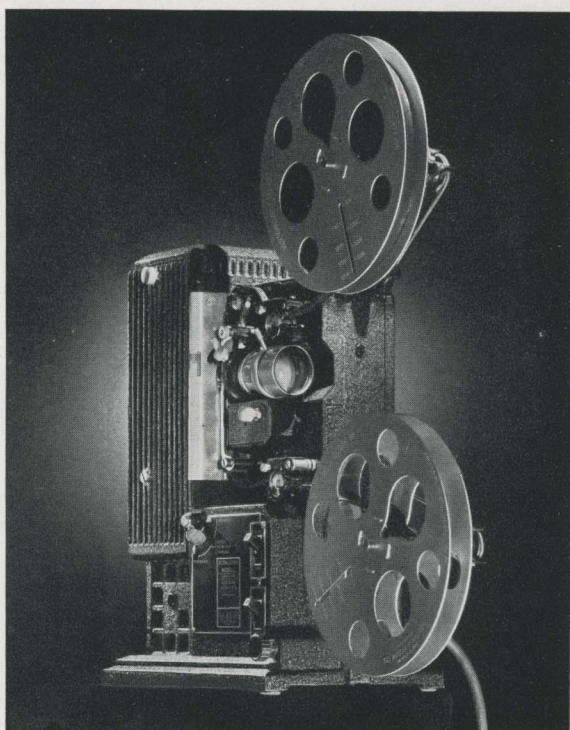
The popular Ciné-Kodak K and carrying case

instead of 50-foot magazines, and is therefore somewhat larger than Magazine Ciné-Kodak which it otherwise closely parallels. Price, \$112.50; with carrying case, \$125.

Kodascope E, a new low-cost 16 mm. projector, is unusually capable and brilliant considering its price of \$54.50. Kodascope L, finest of all 16 mm. projectors, is priced from \$184—depending upon lens and lamp.



The new and brilliant Kodascope, Model E



The superior and versatile Kodascope, Model L



KODACHROME

BLACK-AND-WHITE HOME MOVIES

COME TO LIFE

THERE has never been a movie film to compare with Kodachrome. Color film...yes—but always with definite limitations. Truthfully, Kodachrome's color realism and beauty must be seen on the screen to be fully appreciated.

Kodachrome reproduces *all* colors. Not all reds as one red, nor all blues as one blue. But every subtle tone...every delicate shading.

Kodachrome movies can be exposed in all standard 16 mm. cameras indoors under artificial light, as well as outdoors under practically all light conditions suggesting picture making. No filters are required for the taking of all average movie subjects. Kodachrome can be made with telephoto lenses as well as with the standard lenses of Ciné-Kodaks. No filters are required for showing Kodachrome movies with any 16 mm. projector. The color is in the film. Nor are there any patterns or fringes on the screen. Just smooth, even coloring—that mirrors life itself. And Kodachrome sequences can be spliced into a reel of black-and-white movies and projected without even so much

as making a minor adjustment of the Kodascope.

AN IDEAL FINALLY REALIZED

From the very beginning of photography, experimenters have tried to make photographs in color instead of in monochrome, and numberless processes have been put forward for that purpose. It was obvious that the ideal process would be one in which the color pictures would be as easy to take and as certain in result as the monochrome picture is, but until now no color process has approached that ideal.

The new Kodachrome process, so far as the photographer is concerned, not merely approaches but realizes that ideal for home movies.

Most Ciné-Kodak dealers are already equipped to show you Kodachrome. Visit your dealer at once. Learn for yourself how inadequate any printed description of this amazing discovery really is. Visualize your favorite movie subjects as reproduced with the unmatched beauty and realism that only Kodachrome can bring to your screen.

DETAILS AND PRICES

OF KODAKS AND BROWNIES SHOWN IN THIS CATALOG

LENSES AND SHUTTERS

IMPORTANT—Because the quality and variety of the pictures which can be made with any camera depend chiefly upon its lens and shutter, it is well to remember the following points when studying Kodak or Brownie details.

Pictures can be made *without* a lens, by simply using a box or chamber with a pinhole in the middle of one side. The pinhole takes the place of a lens and transmits the image. It admits very little light, however, so that the improvised camera has limited scope. And if the pinhole is enlarged, to let in more light, the images transmitted are hopelessly blurred—the camera becomes entirely ineffective.

The principle involved here is the key to all lens structure, quality, and price. Just as the opening of the pinhole camera has limits beyond which it cannot be effectively enlarged, so ordinary inexpensive photographic lenses can be used only at moderate openings. But lenses vary in ability. The larger the relative opening at which any lens can be successfully used—that is, the greater the volume of light that can be passed through it without spoiling the image of the subject—the “faster” and more versatile that lens is.

MENISCUS LENSES—Eastman meniscus lenses, though the simplest type used on Eastman cameras, are carefully computed, ground, polished, and tested. They are designed to make excellent pictures under ordinary conditions, and admit a volume of light ample for this purpose.

DOUBLET LENSES—Kodak Doublet lenses are slightly faster than the meniscus type; that is, they admit somewhat more light, giving the camera added scope. In addition, their outer element helps to protect the shutter and adds to the appearance of the camera. Diway and Twindar lenses are of the doublet type, with a simple adjustment that insures sharp focus for both far and near subjects.

ANASTIGMAT LENSES—Anastigmats represent the highest type of photographic lenses. They are more complicated and more expensive to manufacture than other types; on the other hand,

each of the successively finer grades available on Kodaks gives correspondingly greater versatility, and definitely greater assurance of success in every picture-taking situation. The *f.6.3* is four times as fast as the meniscus. Admitting a very much greater volume of light, it does not require direct sunlight for good snapshots, but makes them even in cloudy weather—or in the rain. The *f.4.5* anastigmats, in their turn, are practically twice as fast as the *f.6.3*—eight times as fast as the meniscus—giving greatly multiplied capability to cope with varying picture-taking conditions. The *f.3.5* anastigmats have even greater speed, being 60% faster than the *f.4.5*'s. Admitting about thirteen times as much light as the meniscus, they give the user a tremendous reserve of lens power with which to capitalize every picture opportunity.

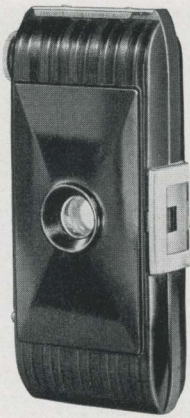
All of these anastigmats yield sharp, brilliant negatives. A Kodak fitted with any one of them, loaded with Kodak “SS” Film, and aided by inexpensive supplementary lighting (see Kodaflector, page 36), will make snapshots indoors *at night*. Each successively higher-priced Eastman lens gives added camera scope, and, of them all, the anastigmats are most certain to make good the picture chances that may come but once.

SHUTTERS—The shutters supplied on Kodaks and Brownies vary widely in design and manufacturing cost, and correspond in versatility to the lenses to which they are geared. With one exception, even the simplest ones can be used to make both snapshots and time (or bulb) exposures. Those coupled with the faster lenses have correspondingly greater ranges of speeds—for such purposes as slow snapshots in weak light, or fast snapshots that “stop” moving objects.

Some of the shutters are provided with conveniences like the built-in self timer (enabling the photographer to include himself in the picture), or duplicate shutter-speed and diaphragm scales. All of them are reliably and accurately built, and carefully inspected. They can be counted on for years of satisfactory service.

JIFFY KODAK V.P.

A MOLDED KODAK—Jiffy Kodak V.P. has a light but strong body of black, molded material, with permanent, "built-in" glossy finish and ornamental raised ribbing. Removable back. Weight, unloaded, only 10 ounces. Makes 8 pictures, $1\frac{5}{8} \times 2\frac{1}{2}$ inches, per roll of No. 127 Kodak Film. Action front. Fixed focus (no focusing necessary). Kodak Doublet lens, deeply recessed in front plate for protection. Built-in shutter, with instantaneous and bulb actions, and two releases—one for use when making horizontal exposures. The full aperture can be stopped down to $f.16$. Folding direct-view eye-level finder. Swinging foot to support camera in vertical position. Bright metal parts have rust-proof finish.



The "V.P." is particularly slender and stylish when closed

PRICES

Jiffy Kodak V.P., with Kodak Doublet Lens . . . \$5.00
Cowhide Carrying Case, velveteen-lined . . . 1.35

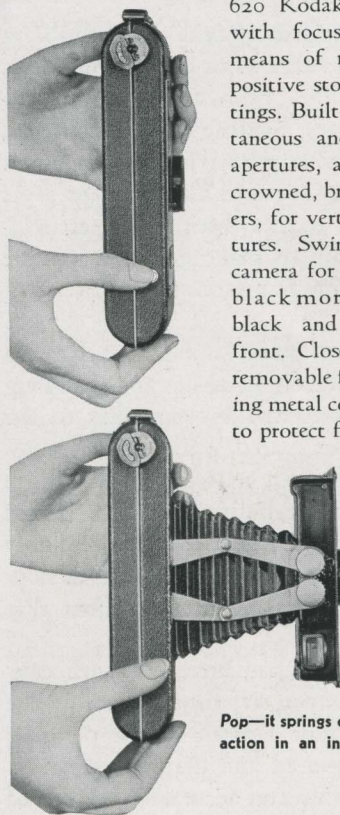
JIFFY KODAKS SIX-16 AND SIX-20

QUICK ACTION—Pressure on a nicked button opens these cameras instantly and extends their bellows, ready for picture taking. Jiffy Kodak Six-16 makes 8 pictures, $2\frac{1}{2} \times 4\frac{1}{4}$ inches, per roll of No. 616 Kodak Film. Jiffy Kodak Six-20 makes 8 pictures, $2\frac{1}{4} \times 3\frac{1}{4}$ inches, per roll of No. 620 Kodak Film. Twindar lens, with focus easily adjustable by means of revolving mount with positive stops for near and far settings. Built-in shutter with instantaneous and time actions. Three apertures, and finger release. Two crowned, brilliant, waist-level finders, for vertical and horizontal pictures. Swinging foot to support camera for time exposures. Finish: black morocco-grain covering; black and nickel etched metal front. Closely fitted back, quickly removable for loading, with swinging metal cover over ruby window, to protect films of high sensitivity.

A black japanned metal cap (extra) protects the lens from dust, sand, and breakage.

Touch a little nicked button near the bottom of the Jiffy Kodak:

Pop—it springs open on strong arms—ready for action in an instant—and the picture's made just as quickly



PRICES

Jiffy Kodak Six-16, with Twindar Lens \$9.00
Grain Leather Carrying Case 1.85
Jiffy Kodak Six-20, with Twindar Lens 8.00
Grain Leather Carrying Case 1.65
Black Japanned Metal Lens Cap for either camera 15

KODAK BANTAM

THE SMALLEST KODAK—Fitting the palm of the hand, Kodak Bantam is the tiniest Kodak ever built, though it leads to big pictures (see page 7). Camera body, closed, $4\frac{3}{8} \times 2\frac{1}{4} \times 1$ inch. Capacity, 8 exposures, on Kodak Film No. F828. Film roll drops easily into place, lifts out instantly after exposure, and seals itself without a sticker, by means of specially crimped edges on protecting paper. Special



The Doublet Model with folding eye-level finder



Kodak Bantam is as small as the palm of your hand

device centers exposure—locks film in proper position—film-winding knob being immovable until freed by pressure on special button. Optional green window for checking number of exposures. Pressure on button opens camera to picture-taking position. Shutter-release plunger is automatically brought out to convenient position as camera is opened, and withdrawn beyond edge of front as camera is closed. Swinging camera foot for vertical position. Camera body made of black molded material, with permanent glossy finish and decorative ribbing. Removable back, held by positive friction lock. Bright metal parts have rust-proof finish.

F.6.3 Model—Equipped with Kodak Anastigmat $f.6.3$ lens of 53 mm. focal length. Built-in shutter has instantaneous and time actions. Fixed focus (no focusing necessary). Brilliant optical direct-view finder. Weight, 8 ounces.

Doublet Model—Equipped with reliable Doublet lens, and built-in shutter for instantaneous and bulb exposures. Fixed focus (no focusing necessary). Two-piece, metal, folding direct-view finder, instantly opened or closed. Other features, including the finish, are the same as those of the $f.6.3$ model. Weight, 7 ounces.



As handy as an ordinary package of cigarettes



Either model fits the smart carrying case

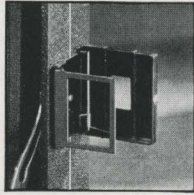
PRICES

Kodak Bantam with Kodak Anastigmat $f.6.3$ Lens . . . \$9.75
With Doublet Lens . . . 5.75
Morocco-Grain Carrying Case for either model . . 1.25
Optical View Finder, for use on Doublet model . . 1.25

KODAK JUNIORS SIX-16 AND SIX-20

TWO POPULAR SIZES—Kodak Junior Six-16 makes 8 pictures, in the favorite $2\frac{1}{2} \times 4\frac{1}{4}$ -inch size, on a roll of No. 616 Kodak Film. Kodak Junior Six-20 makes 8 pictures, $2\frac{1}{4} \times 3\frac{1}{4}$ inches, per roll of No. 620 Kodak Film. All models durably covered with black morocco-grain material, smartly embossed. Other features: swing cover for ruby window; swing-out, hinged film-supply bracket; hinged back; self-erecting front; tripod socket for vertical pictures. Two lens equipments are offered—Kodak Doublet and Kodak Anastigmat *f.6.3*. Kodak Doublet models have fixed focus (no focusing necessary).

THE *f.6.3* MODELS—Models carrying Kodak Anastigmat *f.6.3* lenses are equipped with direct-view eye-level finders as well as regular waist-level brilliant finders. Kodak Junior Six-16 *f.6.3* has a focal length of 126 mm.; No. 1 Kodex shutter with speeds of $\frac{1}{25}$, $\frac{1}{50}$, and $\frac{1}{100}$ second; time and bulb actions; finger-tip focusing mount with distances marked from 6 to 100 feet. Kodak Junior Six-20 *f.6.3* has a focal length of 100 mm., No. OKodon shutter with speeds of $\frac{1}{25}$, $\frac{1}{50}$, and $\frac{1}{100}$ second; time and bulb actions; revolving focusing mount with distances marked from 5 to 100 feet. These models, when aided by Kodak Super Sensitive Panchromatic Film and Photoflash bulbs, can be used to make snapshots at night



F.6.3 Models have direct-view eye-level finders

PRICES

KODAK JUNIOR SIX-16	
With Kodak Doublet Lens, Kodon Shutter . . .	\$12.00
With Kodak Anastigmat <i>f.6.3</i> Lens, Kodex Shutter . . .	15.50
Soft Leather Carrying Case	1.85
Grain Leather Velvet-Lined Carrying Case	3.00
KODAK JUNIOR SIX-20	
With Kodak Doublet Lens, Kodon Shutter . . .	10.00
With Kodak Anastigmat <i>f.6.3</i> Lens, Kodon Shutter . . .	13.50
Soft Leather Carrying Case	1.65
Grain Leather Velvet-Lined Carrying Case	2.50

KODAKS SIX-16 AND SIX-20

UNUSUAL COMPACTNESS

—Small camera size, as compared with picture size, is a big feature of these Kodaks. Both models are ultra-compact, and Kodak Six-16 is the world's smallest folding camera taking $2\frac{1}{2} \times 4\frac{1}{4}$ -inch pictures. It makes 8 such pictures on a roll of No. 616 Kodak Film. Kodak Six-20 makes 8 pictures, $2\frac{1}{4} \times 3\frac{1}{4}$ inches, per roll of No. 620 Kodak Film.

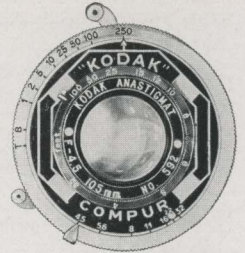


The reliable Kodon shutter comes on three of the six models

LENSES AND SHUTTERS—Both cameras can be had with any of three lenses. The Kodak Doublet, a three-position focusing lens, combines dependability and simplicity.

F.6.3 and *f.4.5* models have reserve lens power for snapshots under varying conditions—early or late in the day—in cloudy or rainy weather—indoors at night, with Kodak "SS" Film and Photoflash bulbs.

F.4.5 models carry the famous Compur shutter, with speeds of 1, $\frac{1}{2}$, $\frac{1}{5}$, $\frac{1}{10}$, $\frac{1}{25}$, $\frac{1}{50}$, $\frac{1}{100}$, and $\frac{1}{250}$ second. Combined with Kodak Anastigmat *f.4.5*—an exceptional lens—it gives these models great versatility, enabling them, for instance, to "stop" fast action. The Compur shutters have a built-in self timer, which trips the shutter automatically when the user wishes to include himself in pictures.

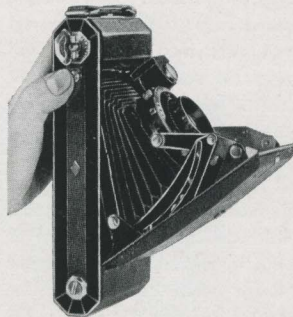


The Compur shutter as supplied on Kodak Six-20 *f.4.5*

The Kodon shutter used on three of the models has secondary shutter-speed and diaphragm scales, visible from above. They permit setting shutter with camera in picture-taking position and are especially convenient as a means for making a last-minute check of the shutter adjustment.

OTHER FEATURES

All Six-16 and Six-20 Kodaks have "action front." Pressing a button opens the camera, extends the bellows, snaps the lens into position—ready for the picture. *F.4.5* and *f.6.3* models have both brilliant reflecting finder and folding direct-view eye-level finder. The latter is particularly valuable in locating moving subjects.



The action front springs out at the touch of a nickeled button

Speeds of shutters other than Compur: Dakar, $\frac{1}{10}$, $\frac{1}{25}$, $\frac{1}{50}$, $\frac{1}{100}$; Kodon, $\frac{1}{25}$, $\frac{1}{50}$, $\frac{1}{100}$; all with time and bulb actions, finger release. Cable release may be added to any model. Focus: adjustable, by revolving lens mount. Easy loading assured by swinging spool brackets. Focal lengths: Six-16—*f.4.5*, 124 mm., *f.6.3*, 128 mm.; Six-20—*f.4.5*, 105 mm., *f.6.3*, 100 mm. Finish: covering, black grained material (genuine leather on *f.4.5* models); metal parts, enameled in black, plated, or etched. Dimensions: Six-16, $7 \times 3\frac{3}{8} \times 1\frac{5}{8}$ inches; Six-20, $5\frac{3}{4} \times 3 \times 1\frac{1}{4}$ inches. Weights: Six-16, 26 ounces; Six-20, 19 ounces. Cover over ruby window protects films of high sensitivity. Regular carrying cases, genuine black pig-grain leather, velvet-lined.

Combination carrying cases, made of black pig-grain leather, have an outside unlined leather pocket for filters, portrait attachments, etc. A double snap catch locks both compartments. (Prices of cameras and cases on next page.)



The combination carrying case supplied for Kodaks Six-16 and Six-20 has space not only for the camera, but for several lens attachments as well

Compliments of the Digitized Kodak Catalog Project: 1886 - 1941

PRICES

	<i>Without Case</i>	<i>With Case</i>
KODAK SIX-16		
With Kodak Doublet Lens, Kodon Shutter	\$16.00	\$18.75
With Kodak Anastigmat f.6.3 Lens, Dakar Shutter	20.00	22.75
With Kodak Anastigmat f.4.5 Lens, Compur Shutter	40.00	42.75
KODAK SIX-20		
With Kodak Doublet Lens, Kodon Shutter	14.00	16.25
With Kodak Anastigmat f.6.3 Lens, Kodon Shutter	17.50	19.75
With Kodak Anastigmat f.4.5 Lens, Compur Shutter	37.50	39.75
	<i>Six-20</i>	<i>Six-16</i>
Combination Carrying Case	\$3.00	\$3.50

3A KODAK, SERIES II

OLD FAVORITE IN NEW GARB—This new Kodak, which makes pictures in the long popular 3 1/4 x 5 1/2-inch size, loads with Kodak Film No. 122. Its capacity is 10 exposures. Focus is adjustable, by means of a simple lever system and scale graduated from 6 feet to infinity. Focusing lever springs conveniently into notches corresponding to distance markings on scale. Lens: Kodak Anastigmat f.6.3, of 170 mm. focal length. Shutter: Diodak No. 2A, with instantaneous speeds of 1/10, 1/25, 1/50, 1/100 second; time and bulb actions; diaphragm openings from f.6.3 to f.45; cable and finger release. Single-finger bed release, actuated by push button, opens camera and drops bed into place. One-piece, die-cast aluminum slide block and front easily pulled out by means of metal finger grip. Brilliant finder, reversible for vertical and horizontal views. 2 tripod sockets. Swinging bed rest for horizontal time exposures. Hinged back, for convenient loading. Finish: body, genuine black morocco-grain cowhide, with ornamental striped creasing; etched metal side panels, with black enamel and chromium finish; other metal parts, black enamel or chromium plate.

PRICES

3A Kodak, Series II, with Kodak Anastigmat f.6.3 Lens, Diodak Shutter (this camera ready in June, 1936)	\$39.50
Grain Leather Case, velveteen-lined	5.25

KODAK VOLLENDIA

TINY BUT VERSATILE—An extremely compact camera, measuring (when closed) only 4 1/4 x 3 1/8 x 1 1/4 inches. Makes sixteen pictures, 1 3/16 x 1 3/16, capable of generous enlargement, on a roll of No. 127 Kodak Film. Action front, actuated by push button, automatically opens camera, extends bellows, erects lens, and locks front in picture-taking position. Focusing: from 3 1/2 feet to infinity, by revolving lens mount. Finish: black pin-grain morocco leather, with tooled panels; polished and nicked metal trim. Tripod socket for vertical pictures. Sturdy



No bulkier than a pocketbook

hinged back gives easy access to film chambers in loading. Two models available. Ruby windows have safety device requiring no covers for use with fast films.

f.3.5 MODEL—Equipped with f.3.5 anastigmat lens of 5-cm. focal length. Rim-set Compur-Rapid shutter, with 9 speeds from 1 to 1/500 second; time and bulb; diaphragm openings from f.3.5 to f.16; cable and finger releases. Folding optical eye-level direct-view finder. Depth-of-focus scale shows range of sharpness for any combination of distance and diaphragm setting. Weight, 12 ounces.



Setting the built-in self timer on the f.4.5 Kodak Vollendia

focal length. Pronto shutter, with speeds of 1/25, 1/50, 1/100 second; time and bulb; diaphragm openings from f.4.5 to f.16; cable and finger releases; built-in self timer (trips shutter automatically). Folding eye-level direct-view finder. Weight, 10 1/2 ounces.



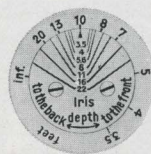
Kodak Vollendia in its soft leather carrying case

PRICES

Kodak Vollendia, with f.3.5 Anastigmat Lens, Compur-Rapid Shutter	\$44.50
With f.4.5 Anastigmat Lens, Pronto Shutter	25.00
Soft Leather Carrying Case, plush-lined, for either model	1.50

KODAK DUO SIX-20

A LARGER "MINIATURE"—An outstanding miniature camera that makes 16 pictures, 1 5/8 x 2 1/4 inches, on a roll of No. 620 Kodak Film. Dimensions when closed, 5 x 3 1/2 x 1 3/8 inches. Weight, 17 ounces. Action front opens



The helpful depth-of-focus scale



The nine-speed Compur-Rapid shutter can clip exposures to 1/500 second

camera and erects lens at the touch of a button. Kodak Anastigmat f.3.5 lens of 70-mm. focal length. Rim-set Compur-Rapid shutter, with 9 speeds from 1 to 1/500 second; time and bulb; diaphragm settings from f.3.5 to f.22; finger release (also bushing for cable release). Focusing: entire lens-and-shutter mount extended by rotating outside ring, graduated from 3 1/2 feet to infinity. Folding optical eye-level direct-view finder. Rotating outer ring of depth-of-focus scale shows sharp-focus range for any stop-and-distance combination. Strong hinged back, with convenient, positive lock, gives full access to spool chambers. Twin ruby windows have built-in, flush-mounted sliding covers to protect fast films. Finish: fine-grained black leather covering, with decorative tooling; top and bottom



Kodak Duo Six-20 in the special lined cowhide case provided for it (see listing below)

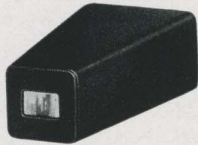
panels in nickel and black enamel. Tripod socket for vertical position.

PRICES

Kodak Duo Six-20, with *f.3.5* Anastigmat Lens, Compur-Rapid Shutter. \$57.50
 Brown Cowhide Carrying Case, velveteen-lined. 4.00

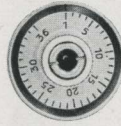
KODAK RETINA

A SPEED KODAK—Kodak Retina makes 36 pictures on Kodak Panatomic (F135), Super Sensitive (SS135), Super X (X135), or Infra-Red (I-R135) Film, provided in daylight-loading magazines. Picture size, 24 x 36 mm. (approximately 1 x 1½ inches). Push button releases bed; bringing bed to perpendicular swings front into picture-making position. *F.3.5* anastigmat lens of 5-cm. focal length. Rim-set Compur-Rapid shutter with 9 speeds from 1 to 1/500 second; bulb and time; regular finger and special plunger releases. Lens-and-shutter assembly in lever-operated focusing mount. Duplicate focus and diaphragm scales for horizontal and vertical pictures. Focus scales graduated from 3½ feet to infinity. Diaphragm openings, *f.3.5* to *f.16*. Enclosed optical eye-level direct-view finder shows a brilliant image and is unusually efficient with either stationary or moving subjects. Depth-of-focus scale of the built-in type shows sharp-focus range for any stop-and-distance combination. Large knurled knobs for rapid, measured film winding, and for rewinding film into



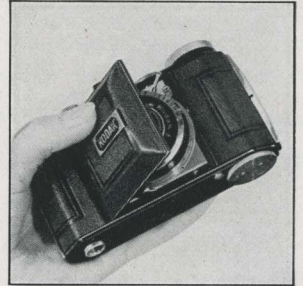
The enclosed view finder is unusually efficient

magazine when all exposures have been made. Exposure counter and film-lock release. Hinged back with improved finger-lift latch. Tripod socket for horizontal pictures. Folding camera foot for vertical pictures. Light, die-cast metal case to assure rigidity. Finish: black morocco leather covering, with tooled panels; nickeled trimmings. Dimensions, closed, 4¾ x 3 x 1½ inches. Weight, 15½ ounces. When closed, Kodak Retina affords complete protection to its lens.



This little dial counts the exposures for you

SPECIAL ATTACHMENTS—Special color filters and portrait attachments screw into lens mount and are so compact that camera can be closed with either (but not both) in position. Portrait attachment and filter may be used together when the camera is open. Color filters have following filter factors in daylight: N-1 (light yellow), 1.5; N-2 (medium yellow), 2.0; N-3 (green), 2.5. Portrait Attachment "A" reduces focal distance as follows: at infinity setting, to 41



The Retina folds into a compact shape—the lens out of sight, and protected from hard knocks and the elements

inches; at 3½-foot setting, to 21 inches. Portrait Attachment "B" reduces focal distance as follows: at infinity setting, to 25 inches; at 3½-foot setting, to 16 inches.



In the combination carrying case there is space for the camera, three color filters, and a Kodak Pocket Range Finder

PRICES

Kodak Retina, with *f.3.5* Anastigmat Lens, Compur-Rapid Shutter. \$57.50
 Color Filters N-1, N-2, N-3, each 3.00
 Kodak Portrait Attachments "A" and "B," each. 3.00
 Soft Black Leather Carrying Case 1.50
 Combination Carrying Case, for camera, color filters, and range finder 5.50



Kodak Retina loads, and operates, as simply as any other roll-film camera—it does not call for any new photographic procedure

KODAK RECOMARS 18 AND 33

FOR THE SERIOUS CAMERIST—Expert models designed for serious photographic workers. Picture sizes and negative material (see pages 35, 36): "18"—2¼ x 3¼-inch film packs, 6.5 x 9-cm. cut film or plates; "33"—3¼ x 4¼-inch or 9 x 12-cm. film packs, 9 x 12-cm. cut film or



The carrying case holds the camera and its accessories

FOR KODAK FILM SEE PAGE 35

plates. Both of the Kodak Recomar are equipped with a lens of unsurpassed quality—Kodak Anastigmat *f*.4.5—with focal length of 105 mm. on "18," 135 mm. on "33." Famous rim-set Compur shutter, with 8 speeds up to 1/200 second (1/250 on "18"); time, bulb, and built-in self timer; cable and finger releases. Finders: wire-frame direct-view, for use at eye level; also brilliant reflecting reversible type, with spirit level attached, for use at waist height. Focusing: by rack-and-pinion and scale graduated from 6 feet to infinity; or by hooded ground-glass back. Two tripod sockets, for vertical and horizontal positions.

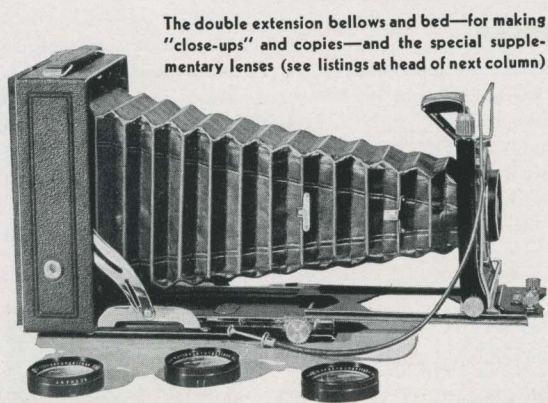


The wire-frame direct-view finder is particularly valuable in "following" moving subjects

CONSTRUCTION FEATURES—Both models have drop bed, actuated by concealed release button. Rigid, U-shaped, cast-metal pull-out front, with rising and sliding movements. Double extension bellows and bed, actuated by rack-and-pinion controlled by knurled knob; maximum draw (8 inches on "18," 10 1/2 inches on "33") permits images almost actual size. Ground-glass back, film-pack adapter, and film and plate holders are interchangeable. Dimensions (closed): "18," 4 3/4 x 3 1/8 x 1 3/4 inches; "33," 6 x 4 1/4 x 2 inches. Weights: "18," 24 ounces; "33," 40 ounces. Finish: genuine black leather covering, with ornamental tooled panels; nicked and enameled fittings.



The ground-glass focusing back assures critical focus and pleasing composition



The double extension bellows and bed—for making "close-ups" and copies—and the special supplementary lenses (see listings at head of next column)

PRICES	"18"	"33"
Kodak Recomar, with Kodak Anastigmat <i>f</i> .4.5 Lens, Compur Shutter, 3 Combination Plate and Film Holders, Film Pack Adapter, and Cable Release	\$54.00	\$63.00
Brown Cowhide Carrying Case, velvet-lined, to hold camera, plate and film holders, film pack adapter . . .	5.00	5.50

(Continued at top of next column)

SUPPLEMENTARY LENSES	Increase in Image Size	Price
For large images of distant subjects		
Lens A, for "18"	28%	\$3.50
Lens A, for "33"	33%	3.50
Lens B, for "18"	62%	3.50
Lens B, for "33"	70%	3.50

For wide-angle interiors and street scenes—also for magnifying small objects at close range	Increase in Angle of View	
Lens D, for "18"	17%	3.50
Lens E, for "33"	23%	3.50

SIX-16 AND SIX-20 BROWNIES

DEPENDABILITY—The Diway lens on these Brownie models assures sharp focus for both near and far subjects. The regular setting, for subjects beyond 10 feet, may be instantly changed for pictures at 5 to 10 feet. Eastman Rotary shutter, with instantaneous and time actions, two diaphragm settings. Two brilliant Magna-finders, for vertical and horizontal pictures. Finish: black morocco-grain covering; two-tone metal front plate; nicked fittings. Six-16 makes 8 pictures, 2 1/2 x 4 1/4 inches, per roll of No. 616 Kodak Film. Six-20 makes 8 pictures, 2 1/4 x 3 1/4 inches, per roll of No. 620 Kodak Film.

PRICES

Six-16 Brownie, with Diway Lens, Eastman Rotary Shutter	\$3.75
Six-20 Brownie, with Diway Lens, Eastman Rotary Shutter	3.00

SIX-16 AND SIX-20 BROWNIE JUNIORS

SIMPLICITY—It is not necessary to focus the Brownie Juniors: their focus is "fixed." Meniscus lens and protective, ornamental front crystal. Rotary shutter, with instantaneous and time actions, two diaphragm settings. Two extra-large ground-glass finders, for vertical and horizontal pictures. Finish: black levant-grain covering; decorative metal front plate; nicked fittings. Six-16 makes 8 pictures, 2 1/2 x 4 1/4 inches, per roll of No. 616 Kodak Film. Six-20 makes 8 pictures, 2 1/4 x 3 1/4 inches, per roll of No. 620 Kodak Film.

PRICES

Six-16 Brownie Junior, with Single Meniscus Lens and Rotary Shutter	\$2.75
Six-20 Brownie Junior, with Single Meniscus Lens and Rotary Shutter	2.25

BABY BROWNIE

SMARTNESS—The Baby Brownie's rich, glossy-black molded body gives lasting good looks. Camera loaded by removing top, to which film-winding mechanism is attached. Makes 8 pictures, 1 5/8 x 2 1/2 inches, vertical or horizontal, per roll of No. 127 Kodak Film. Meniscus lens. Rotary shutter, for instantaneous exposures only. Fixed focus, with range from 5 feet to infinity. Eye-level direct-view finder—folds flush with top of camera.

Baby Brownie, with Meniscus Lens, Rotary Shutter	\$1.00
--	--------

ACCESSORIES

SUPPLIES AND SUNDRIES THAT MULTIPLY PICTURE-TAKING PLEASURE

KODAK FILM AND FILM PACKS

IF YOU want greater speed than ordinary film affords, a more natural color balance, and the highest possible percentage of successful snaps, use *Kodak Verichrome Film*. Its double coating helps to correct exposure errors.

Kodak Super Sensitive Panchromatic Film gives complete color correction, and also definitely lengthens the snapshot day, making brilliant snaps earlier in the morning and later in the afternoon. With this "SS" Film, a few Photoflood bulbs (see Kodaflector, next page), and a camera with *f*.6.3 or faster lens, it is easy to make snapshots *indoors at night* or short time exposures with slower-lens cameras.

For superb enlargements from miniature negatives, and

for wonderfully rich contact prints in any size, use *Kodak Panatomic Film*. It is completely color-sensitive, and its fine grain permits an astonishing degree of enlargement.

Kodak Super X Panchromatic Film gives a finely balanced monochrome rendition of colors, and is considerably faster even than "SS" Film. It is invaluable for indoor pictures, and for very short exposures outdoors.

Kodak Infra-Red Film plus a deep yellow or red filter is valuable for distant landscape photography. It renders skies dark, shadows hard, and trees as though snow-covered. It can also be used with artificial lighting.

For ordinary picture purposes use *Regular Kodak Film*.

KODAK Film is listed here in the most commonly used sizes. For other sizes, see your dealer.

Camera Models	Negative Size	Exposures	Kodak Verichrome Film		Kodak Super Sensitive Panchromatic Film		Kodak Panatomic Film		Kodak Super X Panchromatic Film		Kodak Infra-Red Film		Regular Kodak (N.C.) Film	
			Number	Price	Number	Price	Number	Price	Number	Price	Number	Price	Number	Price
Kodak Retina	24 x 36 mm.	36*	SS135	\$.85	F135	\$.85	X135	\$.85	I-R135	\$1.10
All Kodak Bantams	28 x 40 mm.	8	F828	.20
Jiffy Kodak V.P., Vest Pocket Kodaks, Kodaks Pupille, Volland, No. 0 or Baby Brownie	1 1/8" x 2 1/8"	8**	V127	\$.30	SS127	.35	F127	.35	127	\$.25
All No. 1 or No. 2 Cameras	2 1/8" x 3 1/4"	8	V120	.30	SS120	.35	F120	.35	120	.25
All Six-20 Cameras	2 1/8" x 3 1/4"	8***	V620	.30	SS620	.35	F620	.35	620	.25
All No. 1A or No. 2A Cameras	2 1/8" x 4 1/4"	8	V116	.35	SS116	.40	F116	.40	116	.30
All Six-16 Cameras	2 1/8" x 4 1/4"	8	V616	.35	SS616	.40	F616	.40	616	.30
All No. 2C Cameras	2 1/8" x 4 7/8"	6	V130	.45	SS130	.55	130	.40
All No. 3 Kodaks	3 1/4" x 4 1/4"	6	V118	.45	SS118	.55	118	.40
No. 3 Brownies	3 1/4" x 4 1/4"	6	V124	.45	124	.40
All No. 3A Kodaks	3 1/4" x 5 1/2"	6	V122	.55	SS122	.65	F122	.65	122	.50
		10	V122	.90

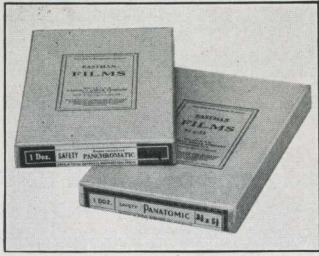
*In daylight-loading magazine. **16 exposures, 1 1/8" x 1 1/8", in Kodak Pupille or Volland. ***16 exposures, 1 1/8" x 2 1/4", in Kodak Duo Six-20.

KODAK Film Packs carry 12 exposures. They are easily identified by the familiar yellow box.

Picture Size in Inches	Picture Size in Centimeters	Kodak Verichrome Film Packs		Kodak Super Sensitive Panchromatic Film Packs		Kodak Panatomic Film Packs		Regular Kodak Film Packs	
		Number	Price	Number	Price	Number	Price	Number	Price
1 3/8 x 2 3/8	4.5 x 6	V500	\$.40	SS500	\$.55	F500	\$.55
1 3/8 x 4 1/4	4.5 x 10.7	V540	.65
2 1/4 x 3 1/4	6 x 9	V520	.60	SS520	.70	F520	.70	520	\$.50
2 3/8 x 5 11/32	6 x 13	V531	1.00
2 1/2 x 4 1/4	6.5 x 11	V516	.70
3 x 5 1/4	7.5 x 13.5	V542	1.10	516	.60
3 1/4 x 4 1/4	8 x 10.5	V518	1.00	SS518	1.20	F518	1.20
3 1/4 x 5 1/2	8 x 14	V522	1.15
3 1/2 x 4 3/4	9 x 12	V541	1.10	SS541	1.30	F541	1.30
3 3/4 x 5 1/2	10 x 15	V543	1.40	SS543	1.65	F543	1.65
4 x 5	10 x 12.5	V523	1.15	SS523	1.40	F523	1.40
4 3/4 x 6 1/2	12 x 16.5	V526	1.80
5 x 7	13 x 18	V515	2.00	SS515	2.40



EASTMAN CUT FILM IN AMATEUR SIZES



EASTMAN cut film offers all of the advantages of plates, and in addition it is extremely light, free from halation, easy to handle, and unbreakable. It is one of the several negative materials that make Kodak Reco-

mar 18 and 33 so versatile, and can also be used in other cameras of similar type. It is available in the two modern, highly capable emulsions described and listed below. Both of these can be counted on for typical Eastman uniformity, and for negatives of strictly superior quality.

EASTMAN SUPER SENSITIVE PANCHROMATIC FILM

THIS cut film is completely sensitive to all colors and when used with proper filters gives splendid monochrome reproductions of all tints and shades. In addition it has amazing speed, especially under Mazda lights, and opens up a new field to the serious amateur. Used in a Kodak Recomar, or other similar camera with a lens of *f*.6.3 or faster rating, and aided by the supplementary light inexpensively supplied by Mazda Photoflood bulbs, it can be used to make snapshots indoors *at night*. Because of its extremely high sensitivity, this film must be developed in total darkness.

Eastman Super Sensitive Panchromatic Film, dozen . \$.50 \$.55 \$.75 \$.90 \$ 1.00

EASTMAN SAFETY PANATOMIC FILM

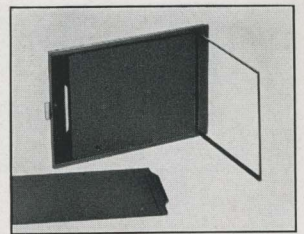
A NEW cut film that gives users of cameras like the Kodak Recomars the advantages of the famous Panatomic emulsion. It has ample speed for the usual picture situation, is completely color-sensitive, and has the typical Panatomic grain of almost atomic fineness. It is therefore particularly suitable for pictures that are to be considerably enlarged, besides yielding unusually rich and brilliant prints of contact size. Because of the panchromatic qualities of Eastman Safety Panatomic Film, the finishing of this material must proceed in total darkness until the film has been in the developer for at least three minutes.

Eastman Safety Panatomic Film, dozen . \$.50 \$.55 \$.75 \$.90 \$ 1.00

KODAK COMBINATION PLATE AND FILM HOLDERS

THESE holders can be used in Kodak Recomars 18 and 33 or in any cameras that normally take 6.5 x 9-cm., 9 x 12-cm., or 3 1/4 x 4 1/4-inch single metal plate holders. Because of their self-adjusting pressure plates, they can be

loaded with either plates or cut film, and do not require cut film sheaths. The method of loading is so simple that when highly sensitive materials are being used the operation can readily be carried on in total darkness.



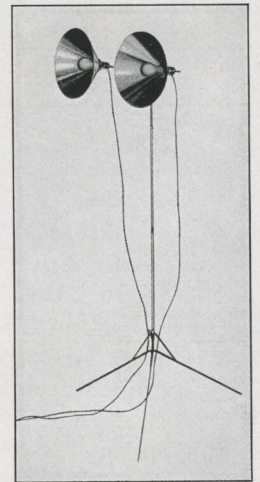
Kodak Combination Plate 6.5 x 9 cm. 9 x 12 cm. 3 1/4 x 4 1/4
and Film Holders, each . \$.75 \$.90 \$.90

EASTMAN PLATES

THE AMATEUR who intends to use plates in a Kodak Recomar 18 or 33, or in a plate camera of any size, will find it advantageous to use the following well-known Eastman brands: Eastman 50, Eastman 40, Single or Double Coated Ortho, Eastman Ortho Press Anti-Halation, Wratten & Wainwright Panchromatic, Wratten Hypersensitive Panchromatic. These types can be counted on to meet practically any plate requirement.

KODAFLECTOR

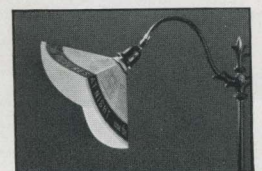
THE Kodaflector greatly simplifies the making of either still pictures or "movies" indoors and at night. It is designed especially for use with Mazda Photoflood bulbs, which are far more effective for picture making than ordinary home electric bulbs, and, in a Kodaflector, seven times as efficient as they would be without reflectors. Their maximum life on 115-volt lines is two hours. For flashlights the Kodaflector may, if desired, be fitted with Mazda Photoflash bulbs which are good for only one exposure but give an extremely intense light. The Kodaflector lights can be set in any direction, and at any height up to 6 feet, 4 inches. The aluminum reflectors lie flat when not in use. Folded, the stand is only two feet long.



Kodaflector, complete with reflectors, lamp sockets, stand, and connecting cords, but without lamps. \$5.00
Mazda Photoflood Lamp, No. 125
Mazda Photoflash Lamp, No. 10 (small)15
Mazda Photoflash Lamp, No. 20 (medium)25

KODAK HANDY REFLECTORS

THESE simple but efficient reflectors, when used on home lamps, conserve much of the light that is ordinarily lost. They are made of heavy card stock, equipped with special holders, and adapted for use with standard electrical sockets. A complete exposure table is printed on each reflector.



Kodak Handy Reflectors, set of two \$.25

KODAK POCKET RANGE FINDER

THE Kodak Pocket Range Finder takes away the guess-work in focusing. Look through the eyepiece and you see not only your subject but also a pointer and a translucent scale marked in feet. The upper half of the image will probably appear displaced either to right or left, but when you turn a knurled ring in the proper direction, the two halves move closer and closer together. When they are perfectly matched, the distance indicated on the scale by the pointer is the distance from finder to subject. You read the distance while viewing the subject. Set your camera for this distance and you have definite assurance that your subject will be in focus.



This range finder can be readily used with any camera that has a focusing scale, to speed up picture taking and to make its results surer. It is especially valuable when fast lenses are used at wide apertures, with the accompanying lack of depth of field. A spring clip makes the range finder as easy to carry as a fountain pen.

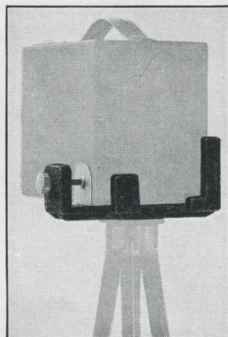


Kodak Pocket Range Finder. \$7.00

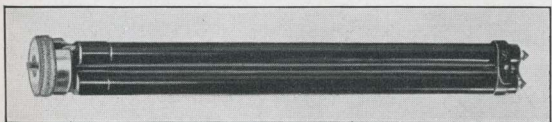
KODAK TRIPOD ADAPTER

A NEATLY finished aluminum device for adapting such cameras as Jiffy Kodaks Six-16 and Six-20, Kodak Juniors, Six-16 and Six-20 Brownies and Brownie Juniors for use on a tripod. It is not recommended for molded cameras.

Kodak Tripod Adapter. \$1.00

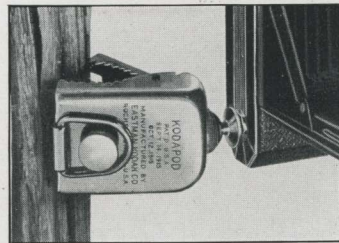


KODAK METAL TRIPODS



THESE light, compact, rigid tripods fit any standard tripod socket. The legs are of brass tubing, the sections telescoping neatly to give small collapsed size without sacrifice of strength. The three models range from 13½ to 15½ inches in length, when closed. Nos. 1 and 2 have revolving heads which permit the camera to be swung in any direction without moving the tripod. They also have straps to hold the legs in place when the tripod is not in use. For indoor use, the metal spurs of Kodak Metal Tripods may be covered with the special rubber tips which are available for that purpose.

	Sections	Length (inches)		Weight (ounces)	Price
		Closed	Extended		
Kodak Metal Tripod No. 0	3	15½	39½	15	\$2.75
Kodak Metal Tripod No. 1	4	15	48½	24½	4.50
Kodak Metal Tripod No. 2	5	13½	49½	25	5.00
Rubber Tips, for Metal Tripod Spurs (per set of 3)					.10

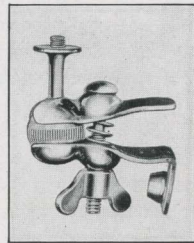
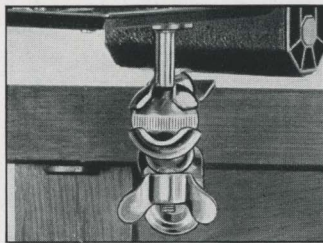


THE KODAPOD

THE Kodapod is particularly suited for use in place of a tripod in outdoor photography. The toothed jaws firmly grip tree, fence, or other wooden object, while the other end threads into any standard tripod socket. A clamping screw adjusts the camera to the correct position, where it is firmly held. The Kodapod is quickly attached and detached, and can be easily carried in a coat pocket when not in use. Strongly constructed, finished in nickel.

The Kodapod \$1.75

THE OPTIPOD



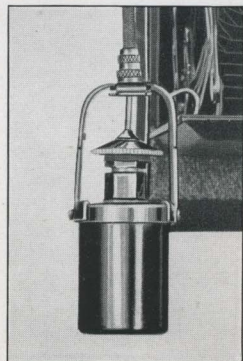
A COMBINED tripod head and felt-lined clamp—frequently used instead of a tripod. Used alone, the Optipod clamps to any shelf, table, window ledge, running board or other support, and holds the camera firmly. It fits any standard tripod socket. The ball-and-socket joint permits tilting the camera to almost any angle. It is especially valuable when the Optipod is used with a tripod to photograph subjects so situated that it is impossible to place the tripod alone in the desired position.

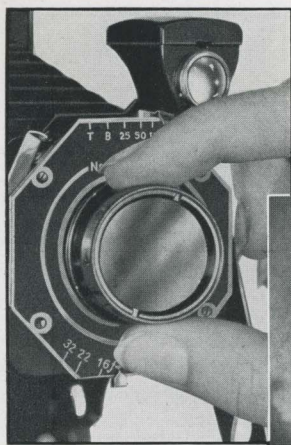
The Optipod \$1.25

KODAK SELF TIMER

THIS accessory helps in making a really complete picture record. With it the photographer can make snapshots of himself or can include himself in group pictures. It can be used on any camera that takes a cable release. Clip the Timer to the cable release, set it for any interval from one-half second to one minute, and step into the picture. When the interval has elapsed, the plunger of the Timer automatically presses the button of the cable release and trips the shutter.

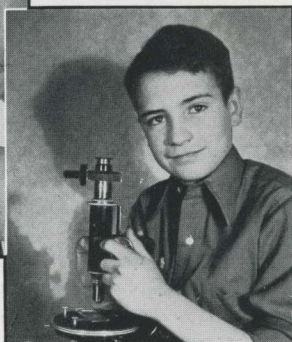
Kodak Self Timer . . . \$1.25
Cable Release (in purchasing, specify name of camera)35





Slip a Kodak Portrait Attachment over your camera lens:

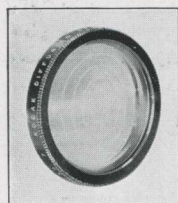
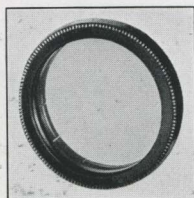
Then you're ready to make clear-cut close-ups like the one illustrated below



KODAK PORTRAIT ATTACHMENT

IF a subject is placed within arm's length of the ordinary hand camera, the result is likely to be a blurred image, because most lenses are not designed to take pictures at extremely short distances. But when you supplement your regular Kodak or Brownie lens with a Kodak Portrait Attachment, your camera is equipped to make "close-ups" of your family and friends, as well as clear-cut, close-range pictures of flowers, art objects, and still-life subjects in general.

It's all very easy, too. The attachment is quickly slipped over the regular lens and the camera is operated as usual, without any change in timing or shutter opening. Using the attachment simply keeps the focus sharp at close range, and results in images that almost fill the negative area.

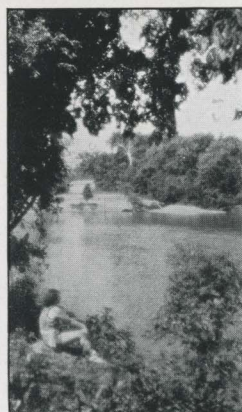


KODAK DIFFUSION PORTRAIT ATTACHMENT

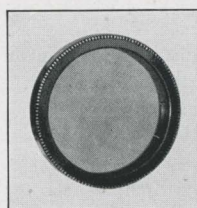
THE concentric lines polished into the surface of this attachment diffuse the light that reaches the lens. Besides giving large images like the regular Kodak Portrait Attachment, this little disk lends a charming softness—*atmosphere*—to pictures. It reduces sharp contrasts, softens chalky highlights, and blends harsh lines, so that pictures made with it take on the popular "soft focus" effect. Avoiding extreme diffusion, it gives genuinely artistic results.



KODAK PICTORIAL DIFFUSION DISK



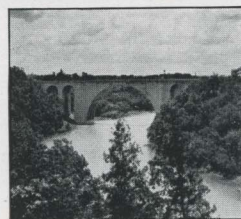
A KODAK Pictorial Diffusion Disk does for landscapes what a Kodak Diffusion Portrait Attachment does for "close-ups." The concentric and radiating lines polished into its surface lend a pleasing softness, without loss of brilliancy, and without carrying the diffusion to the point of "fuzziness."



KODAK COLOR FILTER

THE Kodak Color Filter is valuable in photographing highly colored landscapes, flowers, art objects, etc. The dye in the filter holds back the strong blue and violet rays, which affect the negative most quickly, and gives the weaker shades time to register. The resulting black-and-white picture renders all colors more nearly in the values which the eye gives them, and preserves much of the brilliancy that would otherwise be lost.

Like other Kodak lens attachments, the Color Filter can be attached instantly.



KODAK SKY FILTER

BRIGHT clouds and blue sky reflect much more light than the rest of an outdoor view. But the Kodak Sky Filter with its yellow-stained upper half holds back the light from the sky. This restrained light renders the clouds distinctly while the darker portions of the picture get the benefit of full exposure through the clear half of the attachment.

The Kodak Sky Filter slips readily over the camera lens.



FOR PRICES OF THESE ATTACHMENTS, SEE OPPOSITE PAGE

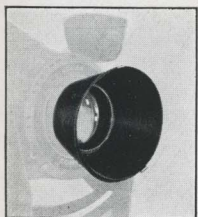
KODAK PORTRAIT AND DIFFUSION PORTRAIT ATTACHMENTS, PICTORIAL DIFFUSION DISKS, SKY AND COLOR FILTERS

(Listed only for current models of Eastman cameras. For attachments to be used on older models, see your dealer.)

	Order by this Number	Portrait Attachments	Diffusion Portrait Attachments	Pictorial Diffusion Disks	Sky or Color Filters
FOR KODAKS					
Kodak Bantam, Doublet lens	8	\$.75	\$1.00
Kodak Bantam, Kodak Anastigmat f.6.3	8	.75	1.00
Jiffy Kodak V.P., Doublet lens	13	.75	\$1.25	\$1.75	1.00
Jiffy Kodak Six-20, Twindar lens	6A	.75	1.50	2.50	1.50
Jiffy Kodak Six-16, Twindar lens	7A	.75	1.50	2.50	1.50
Kodak Junior Six-20, Kodak Doublet lens	13	.75	1.25	1.75	1.00
Kodak Junior Six-20, Kodak Anastigmat f.6.3	13	.75	1.25	1.75	1.00
Kodak Junior Six-16, Kodak Doublet lens	13	.75	1.25	1.75	1.00
Kodak Junior Six-16, Kodak Anastigmat f.6.3	13	.75	1.25	1.75	1.00
Kodak Six-20, Kodak Doublet lens	6A	.75	1.50	2.50	1.50
Kodak Six-20, Kodak Anastigmat f.6.3	13	.75	1.25	1.75	1.00
Kodak Six-20, Kodak Anastigmat f.4.5	7A	.75	1.50	2.50	1.50
Kodak Six-16, Kodak Doublet lens	7A	.75	1.50	2.50	1.50
Kodak Six-16, Kodak Anastigmat f.6.3	6A	.75	1.50	2.50	1.50
Kodak Six-16, Kodak Anastigmat f.4.5	7A	.75	1.50	2.50	1.50
3A Kodak, Series II	7A	.75	1.50	2.50	1.50
Kodak Duo Six-20, Kodak Anastigmat f.3.5	17	.75	1.50	2.50	1.50
Kodak Recomar 18, Kodak Anastigmat f.4.5	5	2.50	1.50
Kodak Recomar 33, Kodak Anastigmat f.4.5	16	5.00	3.30
Kodak Vollenda, f.3.5 or f.4.5 anastigmat lens (order attachments by number specified in camera manual).	{ 13A 17	.75 .75 1.50 2.50	1.00 1.50
Kodak Retina, f.3.5 anastigmat lens	17	*	1.50	2.50	**
FOR BROWNIES					
Baby Brownie, meniscus lens	3	.75	1.25	1.00
Six-20 Brownie, Diway lens	7A	.75	1.50	2.50	1.50
Six-20 Brownie Junior, meniscus lens	6A	.75	1.50	2.50	1.50
Six-16 Brownie, Diway lens	7A	.75	1.50	2.50	1.50
Six-16 Brownie Junior, meniscus lens	7A	.75	1.50	2.50	1.50

* Portrait Attachments "A" and "B," each, \$3.00. ** Color Filters N-1, N-2, N-3, each, \$3.00.

KODAK ADJUSTABLE LENS HOOD



A VALUABLE device for preventing "lens flare" in bright light. Made of black, rust-proofed spring steel, it can be quickly expanded and slipped over the lens or lens-attachment mount, where it is held by the tension of the coil. No. 1 recommended for Baby Brownie or any lens or attachment with diameter of one inch or less. No. 2 can be used on most of the other cameras in this catalog, or on any lens or attachment with diameter over one inch but not over two inches. In the case of a recessed lens, as on Six-16 and Six-20 Brownies, the lens hood can be used only over an attachment with projecting shoulder.

Kodak Adjustable Lens Hood, No. 1 or No. 2 . . . \$.75

KODAK LENS CLEANER

A NEW, improved formula offers a neutral solution containing no soap or alkali. Its use once a month prevents fungus growth. Does not affect lens mounts, and assures a spotless lens.

Kodak Lens Cleaner, 1 ounce . . . \$.20
 Lens Cleaning Paper (25-sheet booklet, 2 3/4 x 4 1/2)05



KODAK FILM TANK

THE ingenious construction and operation of the Kodak Film Tank make it the simplest, safest device for developing roll film, including Kodak Super Sensitive Panchromatic and Kodak Panatomic. Because of their extreme sensitiveness, these materials must be handled in total darkness until they have been in the developer at least three minutes. (See the instructions packed with each roll of film.) Kodak Film Tank meets these requirements ideally, without resort to a dark-room. In the light-tight box, the film is transferred to a reel and covered with a protecting apron. Reel, film, and apron are then immersed in the solution cup and developed in accordance with the complete instructions packed with every outfit.

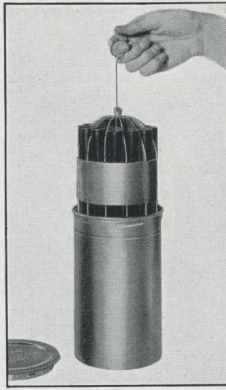
Kodak Film Tank, for films up to 2 1/4 inches wide \$5.00
 Kodak Film Tank, for films up to 2 1/2 inches wide 6.50
 Kodak Film Tank, for films up to 3 1/2 inches wide 7.50
 Kodak Tank Developer Powders, for 2 1/4-inch Tank, per 1/2 dozen20
 Ditto, for 2 1/2-inch or 3 1/2-inch Tank, per 1/2 dozen .25
 Kodak Acid Fixing Powder, per 1/4-lb., 1/2-lb., or 1-lb. package \$.10, \$.15, .25



Compliments of the Digitized Kodak Catalog Project: 1886 - 1941

KODAK FILM PACK TANK

A CONVENIENT means of developing any film pack. Films are loaded into a metal cage and immersed in a tank for development. The tank must be loaded in a darkroom. Kodak "SS" Panchromatic and Panatomic Packs must be handled in total darkness until developed for at least three minutes.



- No. 1 Tank, for twelve 1 3/4 x 2 3/8 or 2 1/4 x 3 1/4 films \$1.75
- No. 2 Tank, for twelve 2 1/2 x 4 1/4, 3 1/4 x 4 1/4, 3 x 5 1/4, 3 1/4 x 5 1/2, 4 x 5, or 9 x 12 (cm.) films 3.50
- No. 1 Developer Powders (package of 6 pairs)30
- No. 2 Developer Powders (package of 6 pairs)40
- Kodak Acid Fixing Powders, per 1/4-lb. package10

"HOW TO MAKE GOOD PICTURES"



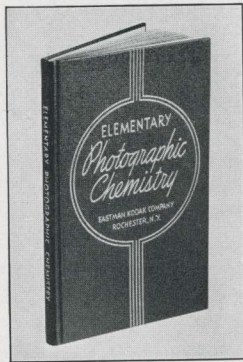
TWENTY-FIRST edition completely revised. 224 pages, profusely illustrated. Explains, in untechnical language, operation of cameras; developing, printing, enlarging, oil and water coloring; landscape, architectural, interior photography (including snapshots at night); home portraiture, etc. Every amateur photographer should own this famous book.

"How to Make Good Pictures" \$.50

"ELEMENTARY PHOTOGRAPHIC CHEMISTRY"

INVALUABLE to practical photographers. Includes introduction to elementary chemistry, descriptions of important photographic chemicals, their properties and reactions. Features are a table of solubilities of common chemicals, preparation of solutions, and photographic formulas.

"Elementary Photographic Chemistry" \$1.00



BROWNIE DARKROOM LAMP

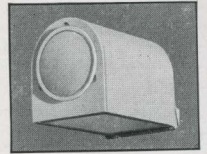


MADE of specially prepared red paper-board stock. It is supplied with a standard 7 1/2-watt, 115-volt bulb. The Brownie Darkroom Lamp is safe for Regular Kodak Film and Kodak Verichrome Film, when used at a distance of at least 18 inches.

Brownie Darkroom Lamp . . . \$.50

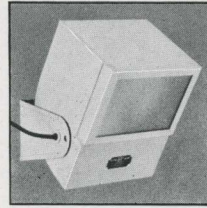
BROWNIE SAFELIGHT LAMP

THE Brownie Safelight Lamp, but little larger than the electric bulb it holds, screws into any electric socket. It is made of gray-lacquered metal, and has safelights at the end and at the front (both Series 2, unless otherwise specified).



- Brownie Safelight Lamp, without 10-watt bulb . . \$1.75
- Extra Circular End Safelight (any series), each25
- Extra Rectangular Safelight (any series), each40

KODAK SAFELIGHT LAMP

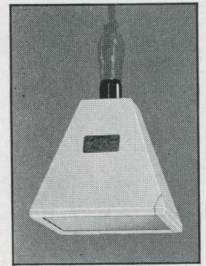


THIS lamp is ideal for all darkroom uses. With its new adjustable bracket—by which it can be swung in an arc of almost 180°—it is suited to the work of the beginner, the advanced amateur, or the professional. It is regularly supplied with a 5 x 7 Series 2 Safelight (for use with all films

- or plates except panchromatic), electric cord, and fittings.
- Kodak Safelight Lamp, without 25-watt bulb. . . \$4.00
- Extra Safelight, 5 x 7, any series75

EASTMAN SAFELIGHT LAMP

SUSPENDED from an electric cord or fixture, the Eastman Safelight Lamp throws the light directly downward over the work table. Regularly supplied with 5 x 7 Series 2 Safelight, for use with all films or plates, except panchromatic.



- Eastman Safelight Lamp, without 10-watt bulb. . \$3.00
- Extra Safelight, any series.75

EXTRA SAFELIGHTS

- SERIES O—Orange, for bromide paper, lantern slide plates.
- SERIES OA—Greenish-yellow, for bromide paper, lantern slide plates.
- SERIES OO—For developing-out papers (except bromide).
- SERIES 1—For films or plates not highly color-sensitive.
- SERIES 2—For use with Kodak Verichrome Film and extra-rapid orthochromatic films and plates.
- SERIES 3—For Kodak "SS" Film, Kodak Panatomic Film, and other panchromatic films and plates.
- Any Series, for Eastman and Kodak Safelight Lamps \$.75
- For Brownie Safelight Lamp, circular25
- For Brownie Safelight Lamp, rectangular40
- Safelight for Kodak Super Sensitive Panchromatic and Kodak Panatomic Films—Because of the extreme sensitivity of Kodak "SS" Film and Film Packs and Super X Film, and the panchromatic qualities of Kodak Panatomic Film, finishing of these materials must proceed in total darkness until the film has been in the developer not less than three minutes. It may then be examined under a Safelight Lamp fitted with Series 3 Safelight and 10-watt bulb. The lamp must be six feet or more from the film.

KODAK DARKROOM OUTFITS

A CORNER of the basement, a big closet, an attic room—any of these provides a home darkroom where you can have the fun of developing and printing your own pictures with one of these outfits.



KODAK DARKROOM OUTFIT NO. 1

THIS outfit is particularly valuable to advanced amateurs, and can also be used as a basis for permanent darkroom equipment by Boy Scouts, camera clubs, etc. It includes a Brownie Safelight Lamp (with Series 2 Safelight, unless otherwise specified), 10-watt Mazda Bulb, Kodak Auto-Mask Printing Frame, two 4 x 6 Enamelled Trays, 5 x 7 Enamelled Tray, 8-ounce Eastko Graduate, Hard Rubber Stirring Rod, Eastman Thermometer, 1 pair 3 1/2-inch Eastman Film Developing Clips, 6 blotters (size 9 1/2 x 12 inches), 1 package (5 tubes) Eastman M.Q. Developer, 1 package (5 tubes) Eastman Film and Plate Developer, 1 pound Kodak Acid Fixing Powder, instruction booklet, and the most informative book on amateur photography—"How to Make Good Pictures."

Outfit No. 1, complete, packed in black fiber case. \$8.75

KODAK DARKROOM OUTFIT NO. 2

MANY beginners in photography find their greatest joy, not in snapping pictures, but in developing and printing them. Kodak Darkroom Outfit No. 2, surprisingly complete considering its price, provides means for performing these steps economically. The outfit includes one Brownie Darkroom Lamp, a 3 1/4 x 5 1/2-inch Eastman Printing Frame, a 4-ounce Eastko Graduate, a pair of 3 1/2-inch Eastman Film Developing Clips, three 4 x 6-inch Trays, a Special Tray Thermometer, an 8-inch Glass Stirring Rod, five tubes Eastman Universal Developer, 1/2-pound Kodak Acid Fixing Powder, and an instruction booklet.

Outfit No. 2, complete, packed in carton . . . \$3.25

DEVELOPING AND PRINTING OUTFITS



A CHOICE of two outfits that provide reliable and inexpensive assortments of materials for developing and print-

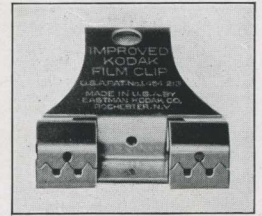
ing. Being assembled in large numbers, they can be offered at prices considerably lower than the total retail values of the separate items. See the listings given below.

The Eastman 3A Outfit consists of a Brownie Dark-room Lamp, Printing Rod, 4 Developing Trays, 5 tubes Eastman Universal Developer, 1/2 lb. Kodak Acid Fixing Powder, 2 doz. 3 1/4 x 5 1/2 Velox Paper, instructions. Eastman 3A Outfit, complete, neatly packed . . \$2.00
Eastman ABC Outfit, similar to 3A, but providing

for 4 x 5-inch or smaller pictures 2.00

IMPROVED KODAK FILM CLIP

A STURDY, dependable clip made in two styles, of non-corrosive metal. One style is used in suspending the film from a support. The other can be attached to the lower edge of the film, a lead weight keeping the film taut. Both styles have 2-inch jaws. Drainage holes prevent water-streaking of dried films.



Improved Kodak Film Clip, without lead weight . \$.35
Improved Kodak Film Clip, with lead weight. . . .45

KODAK JUNIOR FILM CLIP

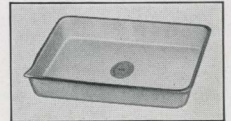


TWO teeth in the jaw of this clip remove all possibility of slipping. The clip is made in one size only, 1 3/8 inches wide, of stainless steel, and is equally practical for tray development or for drying films.

Kodak Junior Film Clip \$.15

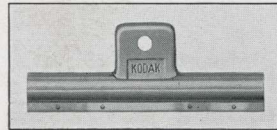
DEVELOPING TRAYS

TWO types are offered—composition and enamelled. Both are carefully selected as to quality.



"Bull's Eye" (Composition)		Eastman Enamelled	
3 1/4 x 4 1/4 . .	\$.30	4 x 6 . .	\$.60
4 x 5 . .	.40	5 x 7 . .	.75
5 x 8 . .	.80	7 x 9 . .	1.00
		8 x 10 . .	\$1.10
		10 x 12 . .	1.50
		11 x 14 . .	2.50

EASTMAN FILM DEVELOPING CLIP

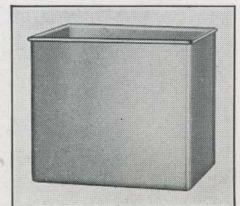


A STRONG, convenient, dependable clip. Suitable for tray development or drying of films.

3 1/2-inch, per pair . \$.30

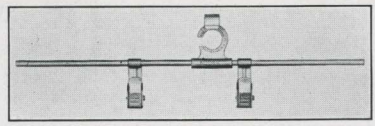
KODAK DEVELOPING BOX, No. 1

A HANDY means for the uniform development of cut film. Capacity, twelve films, suspended from Kodak Cut Film Developing Hangers (see next page). The tank is made of acid-resisting metal. It measures 4 5/8 x 5 1/4 x 6 inches.



Kodak Developing Box, No. 1, without hangers . \$2.50

KODAK CUT FILM DEVELOPING HANGER

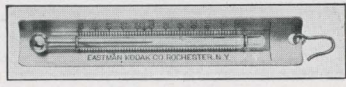


DURABLE hangers, sufficiently long to lie across top of Kodak Developing Box No. 1.

Kodak Cut Film Developing Hangers, each . . . \$.30

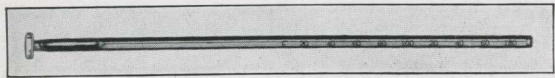
EASTMAN THERMOMETER

ESPECIALLY convenient in tank or tray development. Can be suspended in solutions. Curved back fits corner of a developing tank.



Eastman Thermometer \$.90

THERMOMETER STIRRING ROD

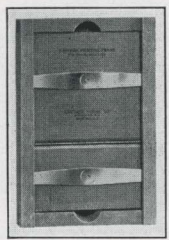


THIS rod can be used to record the temperature of solutions, to stir them, and to crush lumpy powders.

Thermometer Stirring Rod \$1.25

EASTMAN PRINTING FRAMES

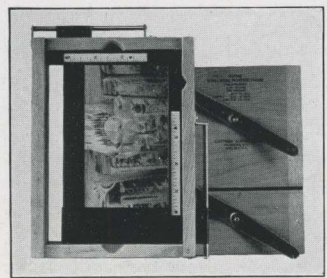
THESE frames have a two-section hinged back, with clamps to hold negative and paper firmly. Construction, of beech, assures rigidity and long life. Supplied without glass.



- For 2 1/4 x 3 1/4-inch plates and V.P.K. or smaller film negatives \$.50
- For 2 1/2 x 4 1/4-inch or smaller film negatives50
- For 3 1/4 x 4 1/4-inch plates and 2 1/4 x 3 1/4-inch or smaller film negatives55
- For 3 1/4 x 5 1/2-inch or smaller film negatives60
- For 3 1/4 x 5 1/2-inch plates45
- For 4 x 5-inch plates or cut films60
- For 5 x 7-inch plates or cut films70
- Glass for above frames, per sheet05

KODAK AUTO-MASK PRINTING FRAME

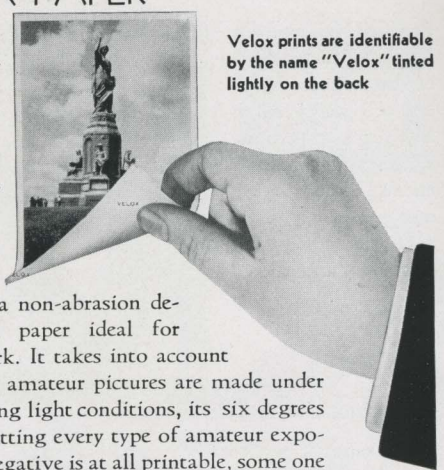
CAN be used in printing from any negatives of amateur size: 4 x 5, 3 1/4 x 5 1/2 inches, or smaller. Has two slides, adjusted from the outside, forming an accurate mask of whatever size is desired. Any number of uniformly masked prints can be made without further adjustment.



Kodak Auto-Mask Printing Frame . \$1.50

VELOX PAPER

"LOOK FOR VELOX ON THE BACK"



Velox prints are identifiable by the name "Velox" tinted lightly on the back

VELOX is a non-abrasion developing-out paper ideal for amateur work. It takes into account the fact that amateur pictures are made under greatly varying light conditions, its six degrees of contrast fitting every type of amateur exposure. If the negative is at all printable, some one of these six degrees will give the proper and most pleasing rendering of highlights and shadows. Velox is also supplied in two surfaces, affording a choice in the matter of finish.

GRADE	SURFACE	CONTRAST
Velvet Velox	Semi-Gloss	0 1 2 3 4 5
Glossy Velox	Enameled	0 1 2 3 4 5

SIZES IN INCHES	PRICES	
	2 Dozen	1 Gross
1 7/8 x 2 3/4 (for 1 5/8 x 2 1/2 negatives) . . .	\$.15	\$.50
2 1/2 x 3 1/2 (for 2 1/4 x 3 1/4 negatives)20	.70
2 3/4 x 4 1/2 (for 2 1/2 x 4 1/4 negatives)20	.90
3 1/2 x 4 1/2 (for 3 1/4 x 4 1/4 negatives)25	1.10
3 1/8 x 5 1/8 (for 2 7/8 x 4 7/8 negatives)25	1.15
3 1/2 x 5 3/4 (for 3 1/4 x 5 1/2 negatives)30	1.40

Velox is also available in exact negative sizes (except Vest Pocket)

KODAK AMATEUR PRINTER

FOR quick and convenient contact printing the amateur can choose no better means than this compact device.

It fits negatives from 1 5/8 x 2 1/2 to 4 x 5 or 3 1/4 x 5 1/2 inches. The negative to be printed is placed on the top glass window by the light of a red bulb inside the printer. A simple masking arrangement controls the white margins. The paper is placed over the negative and the hinged frame closed. This automatically turns on a 60-watt electric lamp (not supplied).

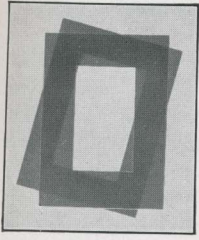


The printer is supplied with 5 1/2 feet of electric cord with plug attached, and one red bulb. By simply inserting an ordinary 60-watt lamp the printer is made ready for instant use.

Thousands of amateurs can attest to the efficiency of this inexpensive printer.

Kodak Amateur Printer . \$12.00

KODALOID PRINTING MASKS



THESE masks, orange-red in color, have openings of various convenient sizes. Their transparency enables the user to see clearly the portions of the picture which are being masked off. (They are supplied in the sizes listed below.)

With 4 x 6 Outside Dimensions

$\frac{7}{8} \times 1\frac{3}{8}$	$2\frac{3}{8} \times 4\frac{1}{16}$
$1\frac{1}{8} \times 1\frac{1}{2}$	$2\frac{5}{16} \times 3\frac{5}{16}$
$1\frac{1}{2} \times 2\frac{1}{8}$	$3\frac{1}{16} \times 4\frac{1}{16}$
$1\frac{1}{2} \times 2\frac{3}{8}$	$2\frac{3}{4} \times 4\frac{3}{4}$
$2\frac{1}{16} \times 2\frac{1}{16}$	$3\frac{1}{8} \times 5\frac{3}{8}$
$2\frac{1}{16} \times 3\frac{1}{16}$	

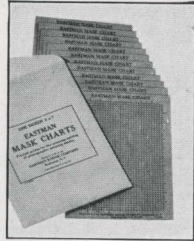
With 5 x 7 Outside Dimensions

$3\frac{13}{16} \times 4\frac{13}{16}$
$3\frac{1}{8} \times 4\frac{5}{8}$

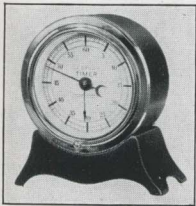
Kodaloid Printing Masks, any size, each \$.15

EASTMAN MASK CHARTS

THESE charts provide the picture taker with the means of cutting out his own printing masks. Limits of any mask desired are quickly determined by means of imprinted horizontal and vertical lines.



Eastman Mask Charts, 5 x 7 inches, per dozen . . \$.15
 Ditto, 8 x 10 inches, per dozen25
 Ditto, 11 x 14 inches, per dozen45



KODAK TIMER

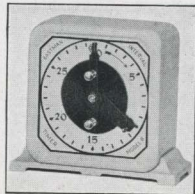
WITH this precise clocking device it is easy to secure accurate timing of exposures in printing. Both minute and second hands may be reset instantly.

Kodak Timer \$5.00

EASTMAN INTERVAL TIMER, MODEL B

ADJUSTING indicator automatically winds mechanism. At end of interval a bell rings. Very useful in developing and fixing, or in making long exposures. Adjustable stop for repeat timings.

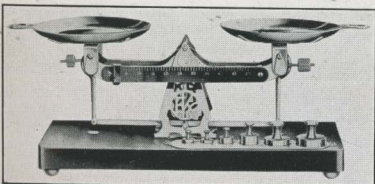
Eastman Interval Timer . \$5.00



EASTMAN STUDIO SCALE

AN ideal weighing instrument for all photographers who mix their own chemicals. Made of finest nicked steel and mounted on a mahogany-finished base, 9 inches long. Supplied with weights and markings in either the avoirdupois or metric system (specify system wanted). A graduated beam provides for minor weights. Larger quantities are weighed by means of accurately turned metal pan weights.

Eastman Studio Scale \$4.50



EASTMAN TESTED CHEMICALS

CERTAINTY of good results in making negatives and prints depends as much on the quality of your chemicals as on any other one thing. All of the chemicals listed below are carefully tested before the E. K. C. seal is affixed.



Acid, Acetic, 28 per cent—pound bottle	\$.30
Acid, Citric—four-ounce bottle38
Alum, Potassium, fine granular—pound16
Elon—ounce48
Hydroquinone—ounce can20
Intensifier, Eastman (Chromium)—glass tube15
Kodolon—ounce40
Potassium Bromide, granular—ounce can12
Reducer and Stain Remover, Eastman—carton of 5 tubes50
Sodium Carbonate (Desiccated)—pound bottle35
Sodium Sulphite (Desiccated)—pound bottle39
Sodium Thiosulphate (Hypo) prismatic—pound12
Velox Liquid Hardener	
4-ounce bottle25
8-ounce bottle35

(A few of these prices are slightly higher west of the Rocky Mts. For Tank Developer Chemicals, see pages 39, 40.)

PREPARED CHEMICALS

Prepared Developers supplied in tubes, cans, and bottles.	
Universal Developer—carton of 5 glass tubes35
Special Developer—package of 6 powders30
Film and Plate Developer—carton of 5 glass tubes35
M. Q. Developer—carton of 5 glass tubes30
Nepara Solution	
4-ounce bottle28
16-ounce bottle84
Eastman Ultra Fine Grain Developer	
1 pint30
1 quart40
D-76 Elon-Hydroquinone Borax Developer (for maximum shadow detail on all films; satisfactory for tray or open or closed tank use)	
Can sufficient to make one quart25
Can sufficient to make half gallon35
Can sufficient to make one gallon60
D-72 A long-keeping developer for all papers	
Can sufficient to make one quart25
Can sufficient to make half gallon35
Can sufficient to make one gallon60
Kodak Acid Fixing Powder (for all films and papers)	
One-pound package (makes two quarts)25
Half-pound package (makes one quart)15
Quarter-pound package (makes one pint)10

P.M.C. BROMIDE PAPER

THIS famous bromide enlarging paper gives unsurpassed quality and uniformity, offers a variety of effects, and is as easy to use as Velox. It is supplied in twelve different grades, some of them single weight and others double weight. There is a variety of stocks and surfaces, and some of the grades are available in four degrees of contrast to fit various types of negatives.

Compliments of the Digitized Kodak Catalog Project: 1886 - 1941



KODAK AUTO-FOCUS ENLARGER, MODEL B

THIS enlarger supplies an easy, efficient means of making enlargements. It can be clamped to any table. As the projector is moved up or down to form the desired image, a cam-and-lever arrangement keeps the focus critically sharp.

Kodak Anastigmat lens assures big prints of finest quality. Outfit includes an all-metal paper holder, with clamps and felt-covered bottom. Negative holder has an opening 4 x 6 inches, and is adaptable to film or plate negatives. They can be enlarged from 1 1/2 to 3 1/2 diameters. Prints approximately 11 x 18 1/2 inches can be made from 3 1/4 x 5 1/2 negatives; and prints 5 1/4 x 8 1/4 inches from "vest pocket" negatives. Ventilated lamphouse holds Mazda Photoflood lamp. Switches provide two degrees of illumination.

- Kodak Auto-Focus Enlarger, Model B, with Kodak Anastigmat Lens, electric cord and plug, Photoflood lamp, set of seven flexible metal masks, paper holder \$40.00
- Paper Holder only 7.50
- Diffusing Disc for soft-focus effects 1.00
- Adapter, 100-125 volts, to permit use of Photoflood in old-style Auto-Focus Enlarger 8.00
- Kodak Enlarger Paper-Cabinet Base (see description under Kodak Miniature Enlarger) 10.00
- Enlarging Assembly, including f.4.5 lens, to convert Kodak Auto-Focus Enlarger, Model B, to 8-diameter miniature-type enlarger 35.00
- Enlarging Assembly, including f.4.5 lens, iris diaphragm, magnification scale, to convert Kodak Auto-Focus Enlarger, Model B, to 8-diameter Model B miniature-type enlarger 50.00

KODAK MINIATURE ENLARGER, MODEL B



ENLARGES the sharp little pictures made by miniature cameras from 2 1/2 to 10 diameters—100 times their original negative area—or 20 diameters when the wall bracket supplied as an accessory is used. Negative carrier, provided with cupped supports for film in strips, takes negatives up to 2 1/4 x 2 1/2 inches (or 2 1/4 x 3 1/4

inches, masking off a 2 1/4 x 2 1/2-inch area). Special focusing target on negative carrier has sharp, fine-line pattern which can be slid into field of view temporarily in enlarging from negatives difficult to focus on account of their density. Enlarger regularly gives prints up to 16 x 24 inches from 1 5/8 x 2 1/2 negatives, 11 x 14 from 1 3/8 x 1 9/16 negatives, 9 1/4 x 14 from 1 x 1 1/2-inch negatives, these dimensions being doubled when enlarger is mounted on wall bracket. Head held at any elevation by friction lock. Focusing by turn of lens barrel, with clamp screw to hold focus position. Kodak Anastigmat lens f.4.5, giving beautiful all-over sharpness, even at maximum enlargement. Iris diaphragm, with magnification scale for use with exposure calculator on Masking Paper Holder. Calculator indicates exposure for subsequent prints, at different magnifications, once exposure has been determined for any one size. Improved Paper Holder sturdily built, with sliding, graduated masking arms on hinged metal frame. Removable "L"-shaped mask provides secondary masking device. Photoflood lamp, switches, and rheostat give two degrees of illumination. Special diffusing, heat-absorbing, and safelight glass discs. Paper-Cabinet Base (extra) makes enlarger self-contained unit, independent of table. Has compartments for 5 x 7, 8 x 10, 11 x 14 paper, etc. Base can be used also with Kodak Auto-Focus Enlarger.

- Kodak Miniature Enlarger, Model B, with Kodak Anastigmat f.4.5 lens, iris diaphragm, magnification scale, improved Masking Paper Holder (including exposure calculator), focusing-target negative holder \$82.50
- Without Masking Paper Holder 67.50
- Kodak Miniature Enlarger, Model B (as in first listing but without iris diaphragm) 67.50
- Without Masking Paper Holder 52.50
- Masking Paper Holder, with exposure calculator 17.50
- Kodak Enlarger Paper-Cabinet Base 10.00
- Wall Bracket (permits enlargements up to 20 diameters) 3.75

(For enlarging assemblies only, see first column)

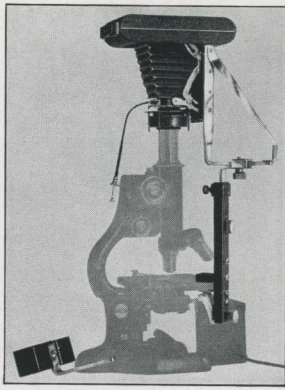
KODAK HOME ENLARGER

A SIMPLE enlarger, particularly adapted to the beginner. It takes negatives from half-vest pocket size up to and including 3 1/4 x 4 1/4-inch and 9 x 12-centimeter. A 3 1/4 x 5 1/2-inch negative will fit in the holder but only 4 1/2 inches of its length can be enlarged. Enlargements up to 11 x 14 inches can be made; up to 5 x 7 from half-vest pocket negatives, and proportionate enlargements from larger-sized negatives. Exact-size prints by projection also can be made.



- Kodak Home Enlarger, with Kodar 98 mm. lens, negative holder, paper holder (but without 60-watt lamp) \$16.50

MICRODAK OUTFIT



THE Microdak, a photomicrographic camera for amateur and student use, enables any user of a microscope to take pictures through his instrument with merely a casual knowledge of photography. It is only necessary to focus the subject under the microscope, place the Microdak in position, and operate the shutter. The outfit consists of a special camera taking No. 620 Kodak Film, a horizontally and vertically adjustable stand for attaching the camera to the microscope stage, a light-lock that goes between the camera lens and microscope ocular, a counterweight to replace the camera when the latter is removed to focus the microscope, a copy of the latest edition of "Photomicrography," and a booklet of instructions. The outfit can be used with many well-known types of microscopes.

Because the camera takes roll film, photomicrography with the Microdak demands no darkroom, either for loading or for developing the film (provided a Kodak Film Tank is used), so that photomicrographs can be made in any classroom, home, or office. The Microdak is not a toy but a carefully designed, well-made apparatus, capable of producing fine results without the limitation of high cost or the necessity for extensive training.

Microdak Outfit	\$37.50
Neutral Density Filter for Microdak (gray filter that reduces intensity of illumination to $\frac{1}{10}$ of incident light)	1.50

KODAK LIQUID GLUE



THE quickest means of mounting photographic prints. Will not discolor or cockle them.

Per tube . . . \$.15

VELOX WATER COLOR OUTFIT



PHOTOGRAPHIC prints, lantern slides, and even ordinary magazine pictures can be colored

easily, artistically, by using Velox Water Colors. The outfit consists of three brushes and a booklet containing twelve leaves of different colors as well as complete instructions. Each leaf is divided into twenty-six detachable, soluble color stamps. The inside cover of the case serves as a mixing palette.

Velox Water Color Outfit (book of water color stamps, three special brushes, case)	\$1.00
Book of Water Color Stamps, 12 colors50
Separate Color Leaves, per sheet04
Set of three Special Brushes50

KODAK TRANSPARENT OIL COLOR OUTFIT



A **SPLENDID** means of coloring photographs. The pigments are of the highest quality and are ground extremely fine to give complete smoothness. They contain no element that might affect photographic prints. Fifteen standard colors, which, when mixed according to the chart supplied, produce almost any

tint or shade. They have strength, brilliance, and permanence equal to the standards for artists' oil colors. Complete outfit also includes sizing fluid, cleaning fluid for margins, transparent medium for thinning, stump cotton, applicators (skewers), and instruction book.

Kodak Transparent Oil Color Outfit (complete, in decorative lacquered box)	\$3.75
Refill Set of 15 No. 2 size Tubes of Oil Colors only, with Instruction Book	2.60
Kodak Transparent Oil Colors, No. 2 size, per tube, any color.20
Transparent Thinning Medium, No. 4A size, per tube35
Sizing Fluid, per 1-oz. bottle20
Cleaning Fluid, per 1-oz. bottle20
Stump Cotton, per package15
Skewers, per dozen20
Instruction Book only10

KODAK EIGHT-TUBE OIL COLOR SET

A **SMALLER** outfit than the one described above, but thoroughly practical. Contains eight tubes of standard colors, transparent thinning medium, stump cotton, applicators, and an instruction book which tells exactly how to use the materials.



Kodak Eight-Tube Oil Color Set (complete, in attractive box)	\$2.00
--	--------

KODAK PHOTO BLOTTER ROLL

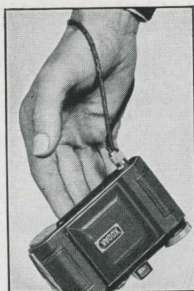
AN efficient device for drying velvet and matte-surfaced prints or enlargements. One of the two rolls of white blotting paper included has a linen lining, against which the emulsion side of the prints is placed. A strip of corrugated board helps to circulate air through the roll. Dimensions, 11 $\frac{1}{2}$ inches by 6 feet. Capacity, about 60 prints of average size.



Kodak Photo Blotter Roll . \$1.50

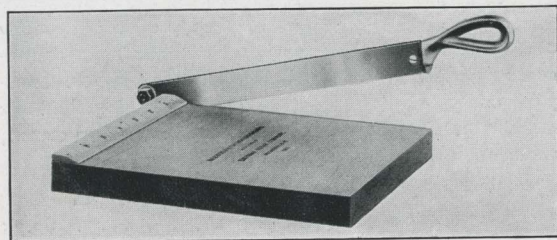
KODAK HAND STRAP

MAKES it practically impossible to drop a Kodak while it is in use. Particularly useful with small cameras, such as Kodak Retina and Kodak Vollandia, but can be attached to any camera equipped with a standard tripod socket. It fastens to the camera by means of a swivel, knurled knob.



Kodak Hand Strap \$.50

KODAK TRIMMING BOARDS



STAINCHLY constructed, with boards of hard wood, blades of fine quality steel, and rules plainly marked.

No. 1, capacity 5 x 5 inches \$1.00
 No. 2, capacity 7 x 7 inches 1.25

KODAK DRY MOUNTING TISSUE

FIX tissue on the print, lay both on the mount, and press with a warm flat-iron. Heat causes the tissue to fuse, giving perfect contact.



1 gross sheets for 2 1/4 x 3 1/4 prints \$.25
 1 gross sheets for prints up to 3 1/4 x 4 1/430
 2 dozen sheets for 3 1/4 x 5 1/2 prints15

(For larger sizes, see your dealer)

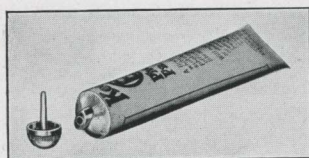
EASTMAN PHOTO PASTE

A HIGH quality paste, useful for mounting pictures, and also for general household purposes. It is white in color, of uniform consistency, and will neither discolor nor cockle photographic prints.

4-ounce jar \$ 25



KODAK PHOTO PASTE



AN excellent white adhesive for mounting prints. It will not bleach or discolor them.

1 1/8-ounce tube. \$.10
 2-ounce tube15

FLEXO PRINT ROLLER

FOUR-inch rubber roll, in black metal frame. Price, \$.35.



KODAK PRINT ROLLER



A HIGHLY convenient roller, with nicked frame and six-inch, durable rubber rolls.

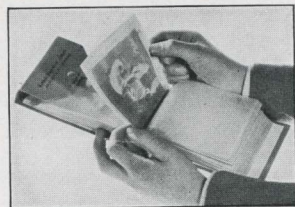
Kodak Print Roller \$1.50

MISCELLANEOUS SUPPLIES

Ferrotypes Plate, Special (for making glossy prints), 10 x 14, light	\$.20
Special Ferrotypes Plate, 10 x 14, heavy30
Graduates, Eastman Visible (with opaque graduations, visible even under a safelight)—2-ounce, \$.40; 4-ounce, \$.50; 8-ounce, \$.60; 16-ounce90
Kodacoat Paint (special black paint for making trays and tanks of wood, tin, etc., chemical-proof)—1/2 pint, \$.45; 1 pint75
Opaque, Eastman Universal (for blocking-out purposes, on films or plates)—No. 1 jar25
Rubber Finger Tips, set of 315
Rubber Focusing Cloth, per yard	1.00
Spotting Colors, Eastman (consist of three colors—black, white, and sepia), per set25
Squeegee, Eastman Special, 8-inch (for use with ferrotypes plates, to squeeze prints into contact).	1.25
Stirring Rod, Hard Rubber (acid- and chemical-proof)25

KODAK NEGATIVE ALBUMS

ENABLE the picture taker to store film negatives in transparent envelopes, where they can be viewed without handling. They are ready for reprints, safe from loss or damage. Each album holds 100 negatives (except the first one, which holds 200), and includes a page for indexing subjects.

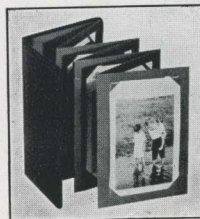


For 200 negatives, 1 1/8 x 1 3/8, in strips of 4	\$1.25	For 100 negatives, 3 1/4 x 4 1/4	\$1.25
For 100 negatives, 1 5/8 x 2 1/2	1.25	For 100 negatives, 4 x 5	1.50
For 100 negatives, 2 1/4 x 3 1/4	1.25	For 100 negatives, 3 1/4 x 5 1/2	1.50
For 100 negatives, 2 1/2 x 4 1/4	1.25	For 100 negatives, 5 x 7	2.00

SIMPLEX POCKET PHOTO CASES

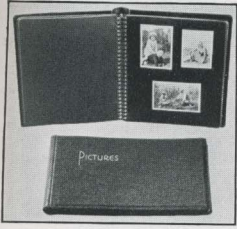
A LIGHT-WEIGHT case that will hold your prized pictures of the home, children, etc., and that will fit your coat pocket or handbag. It keeps prints clean and quickly accessible. All cases have Simplex die-cut slots, so that standardized prints are easily inserted, without pasting—and quickly taken out when they are to be placed in an album. With the exception of No. 828, they hold 12 prints on an accordion-like, folded leaf and have covers of black levant-grain material.

No. 828, designed especially for 3 1/4 x 4 1/2 pictures made from Kodak Bantam negatives, holds a total of 13 prints, instead of the usual 12. The cover is pin-grain genuine black leather, with the word "Pictures" stamped on it in gold leaf.



No.	Standard size of trimmed print	Price each
127A	For 12 1 7/8 x 2 3/4 Prints	\$.20
120A	For 12 2 1/2 x 3 1/2 Prints	.25
116A	For 12 2 3/4 x 4 1/2 Prints	.25
118A	For 12 3 1/2 x 4 1/2 Prints	.30
130A	For 12 3 1/2 x 5 1/2 Prints	.30
122A	For 12 3 1/2 x 5 3/4 Prints	.30
828	For 13 3 1/4 x 4 1/2 Prints	.50

ASSEMBLY ALBUMS

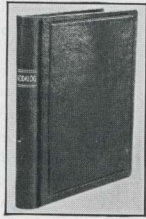


THE latest in albums. An attractive and dominant feature is that when open, they lie perfectly flat, so that pictures are easily mounted or viewed. Choice of table or library style. The table style is covered with black squirrel or pig-grain material; the library with squirrel grain. Both styles contain fifty black leaves. The type of binding employed does not permit the addition of extra leaves. The word "Pictures" is stamped in gold leaf on the cover.

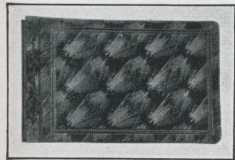
	Size of leaf from binding edge	Price
<i>Horizontal (Table Style)</i>		
H-1, Black Squirrel-Grain Cover	6 $\frac{7}{8}$ x 11 $\frac{1}{2}$	\$1.50
H-2, Black Pig-Grain Cover	6 $\frac{7}{8}$ x 11 $\frac{1}{2}$	1.50
<i>Upright (Library Style)</i>		
L-1, Black Squirrel-Grain Cover	7 $\frac{1}{2}$ x 8 $\frac{3}{4}$	1.50

KODALOG ALBUM

PRINTS are quickly and easily inserted under embossed corners on the leaves—no pasting is necessary. Thirty-five black leaves, for one hundred forty 3 $\frac{1}{4}$ x 4 $\frac{1}{2}$ pictures (two on a page, four to a leaf) made from Kodak Bantam negatives; or for any prints made on paper 3 $\frac{1}{4}$ x 4 $\frac{1}{2}$ inches (outside size). Twenty extra leaves can be added. Black library-style cover. The word "Kodalog" is stamped in gold leaf on the rounded back. Size of leaf, from folding edge, 6 $\frac{1}{4}$ x 9 inches.



With Black Squirrel-Grain Cover \$1.50
 Package of 12 extra leaves, size EXL40



KODAK ALBUMS

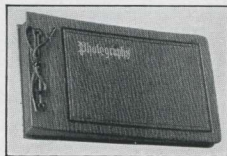
LOOSE-LEAF, open-back style. Genuine black leather cover, in choice of pine needle or pearl grain morocco finish. Fifty black, round-cornered

leaves, held in place with silk-finished cord through cover and metal tubes. The unusual covers must be seen in order to be appreciated.

7 x 11, PB, Pine Needle . . . \$3.00	TB, Pearl Grain Morocco . . . \$3.00
10 x 12, PC, Pine Needle . . . 4.50	TC, Pearl Grain Morocco . . . 4.50
11 x 14, PD, Pine Needle . . . 5.00	TD, Pearl Grain Morocco . . . 5.00
Package of 12 extra leaves, Size B (7 x 11), \$18;	
Size C (10 x 12), \$30; Size E (11 x 14), \$40	

JUNO ALBUMS

LOOSE-LEAF, open-back style. Fifty black leaves held in place by metal tubing and cord through covers. Embossed, English-grain cover, in choice of brown or black. The word "Photographs" is stamped in gilt on the front. A conservatively styled and modestly priced album that never fails to please.



5 x 8, BA, brown or CA, black. \$ 90	10 x 12, BC, brown or CC, black. \$2.00
7 x 11, BB, brown or CB, black 1.25	11 x 14, BD, brown or CD, black 2.25
Package of 12 extra leaves, Size A (5 x 8), \$15; Size B (7 x 11), \$18;	
Size C (10 x 12), \$30; Size E (11 x 14), \$40	

LIBRARY ALBUMS

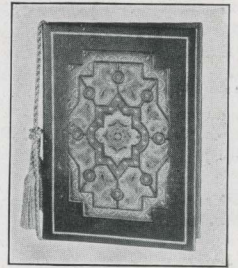
MODERN albums in book form, readily placed in the bookcase when not in use. The words "Kodak Library" are stamped in gold on the rounded back. Choice of covers: genuine seal-grain black leather, with pressed book design, or *de luxe* grained material, with exclusive design and artistic coloring. Loose-leaf arrangement for holding the 50 black leaves is inside cover so that there are no projections to mar the table or desk on which the album may be placed.



B, Genuine Black Leather Cover, 6 $\frac{1}{2}$ x 9 (size of leaf from folding edge). . \$3.00
 M, *De Luxe* Grained Cover, 6 $\frac{1}{2}$ x 9 (size of leaf from folding edge) 2.00
 Extra leaves, package of 12, Size L, \$.18

SIMPLEX FOLIOS

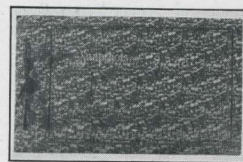
A NEW note in albums. Large, four-page leaves slip between the heavy tasseled cord and cover. No pasting, tying, or untying is necessary, except in the case of odd-sized prints. Of the leaves listed, all but one have die-cut slots or embossed corners for easy, pasteless mounting of standard-sized prints. Choice of four covers. Practical—a folio to hold in one container the different-sized pictures made by you and your friends. Incidentally, these folios make ideal gifts. Prices do not include leaves.



A, Blue Squirrel-finished Cover. \$2.50
 E, Black Morocco-finished, Genuine Leather Cover, Multi-toned Florentine Design . . . 7.50
 B, Maroon Grained Cover . . \$2.50
 F, Black Morocco Leather Cover, with Genuine Gold Line Tooling 5.00
 All leaves are the same outside size, and sell at \$1.20 per carton of 12. With one exception, the numbers below correspond to Kodak Film numbers ("H" for horizontal prints; "V" for vertical prints).

No.	Standard Size of Trimmed Print	Leaf—4 pages—will hold
127H	1 $\frac{7}{8}$ x 2 $\frac{3}{4}$ inches	32 Prints, Horizontal
127V	1 $\frac{7}{8}$ x 2 $\frac{3}{4}$ inches	36 Prints, Vertical
120H	2 $\frac{1}{2}$ x 3 $\frac{1}{2}$ inches	24 Prints, Horizontal
120V	2 $\frac{1}{2}$ x 3 $\frac{1}{2}$ inches	24 Prints, Vertical
116H	2 $\frac{3}{4}$ x 4 $\frac{1}{2}$ inches	12 Prints, Horizontal
116V	2 $\frac{3}{4}$ x 4 $\frac{1}{2}$ inches	16 Prints, Vertical
828H	3 $\frac{1}{4}$ x 4 $\frac{1}{2}$ inches	12 Prints, Horizontal
828V	3 $\frac{1}{4}$ x 4 $\frac{1}{2}$ inches	16 Prints, Vertical
118H	3 $\frac{1}{2}$ x 4 $\frac{1}{2}$ inches	12 Prints, Horizontal
118V	3 $\frac{1}{2}$ x 4 $\frac{1}{2}$ inches	16 Prints, Vertical
130H	3 $\frac{1}{2}$ x 5 $\frac{1}{8}$ inches	12 Prints, Horizontal
130V	3 $\frac{1}{2}$ x 5 $\frac{1}{8}$ inches	16 Prints, Vertical
122H	3 $\frac{1}{2}$ x 5 $\frac{3}{4}$ inches	12 Prints, Horizontal
122V	3 $\frac{1}{2}$ x 5 $\frac{3}{4}$ inches	16 Prints, Vertical
PI	Plain Leaf for pasting or dry-mounting odd-sized prints	

NEW BRIGHTON ALBUMS



HERE is a moderately priced album. Cover offered in choice of two colors of a sparkling embossed book cloth. Leaves are black—of good quality—held in place by tubes and cord through cover. Cover is stamped in gilt with the word "Snapshots." This album is unusually good-looking in either of the two colors offered, and will stand long wear. 50 leaves per album.

5 x 8—A-1, Green; A-2, Maroon	\$.75
7 x 11—B-1, Green; B-2, Maroon	1.00
10 x 12—C-1, Green; C-2, Maroon	1.50
11 x 14—D-1, Green; D-2, Maroon	1.75
Package of 12 extra leaves, Size A (5 x 8), \$15; Size B (7 x 11), \$18; Size C (10 x 12), \$30; Size E (11 x 14), \$40	

INDEX

A	PAGE	G	PAGE	PAGE	
Adapter, Tripod	37	Glue, Kodak Liquid	45	Panatomic Roll Film	35
Adjustable Lens Hood	39	Graduates, Eastman Visible	46	Paper-Cabinet Base for Enlargers	44
Album Leaves	47	H		Paper, Lens Cleaning	39
Albums for Negatives	46	Hand Strap, Kodak	46	Paper Holders for Enlargers	44
Albums for Prints	47	Handy Reflector, Kodak	36	Paper, Enlarging	43
Anastigmat Lenses	29	Hangers, Developing	42	Paper, Velox	42
Assemblies to convert Auto-Focus Enlargers to Miniature-Type Enlargers	44	Holders, Combination Plate and Film	36	Photo Blotter Roll	45
Attachments, Portrait and Diffusion Portrait	38	Holders, Paper, for Enlargers	44	Photo Cases, Pocket	46
Auto-Focus Enlarger	44	Home Enlarger	44	Photoflash Lamps	36
		Home Movies	25-28	Photoflood Lamps	36
B		"How to Make Good Pictures"	40	Photo Paste	46
Blotter Roll, Photo	45	I		Pictorial Diffusion Disks	38
Bracket, Wall, for Miniature Enlarger	44	Infra-Red Roll Film	35	Plate and Film Holders, Combination	36
Brownies:		Interval Timer	43	Plates	36
Six-16 and Six-20	22, 34	K		Plates, Ferrotype	46
Six-16 and Six-20 Juniors	23, 34	Kodachrome Film	28	P.M.C. Bromide Paper	43
Baby Brownie	24, 34	Kodacoat Paint	46	Pocket Range Finder	37
Brushes, for Water Colors	45	Kodaflector	36	Portrait Attachment	38
C		Kodaks:		Print Rollers	46
Cable Releases	37	Bantam	6, 7, 30	Printer, Amateur	42
Camera Supports	37	Duo Six-20	16, 17, 32	Printing Frames	42
Carrying Cases for Cameras (listed with cameras)		Jiffy Six-16 and Six-20	4, 5, 30	Printing Masks, Kodaloid	43
Cases, Pocket Photo	46	Jiffy V.P.	2, 3, 30		
Charts, Mask	43	Juniors Six-16 and Six-20	8, 9, 31	R	
Chemicals, Eastman Tested	43	Six-16 and Six-20	10, 11, 31	Range Finder, Pocket	37
Chemicals, Prepared	43	Recomars 18 and 33	20, 21, 33	Reflectors, Kodak Handy	36
Ciné-Kodaks Eight	25, 26	Retina	18, 19, 33	Roll Film	35
Ciné-Kodak K	27	3A, Series II	12, 13, 32	Rollers, Print	46
Ciné-Kodak, Magazine	27	Vollenda	14, 15, 32	S	
Cleaner, Lens	39	Kodaloid Printing Masks	43	Safelight Lamps	40
Cleaning Fluid (for oil coloring)	45	Kodapod	37	Safelights, Extra	40
Clips, Film	41	Kodascopes	26, 27	Scales, Eastman Studio	43
Color Filter	38	L		Self Timer	37
Coloring Outfits	45	Lamps:		Shutters	29
Colors, Spotting	46	Brownie Darkroom	40	Sizing Fluid	45
Cotton, Stump	45	Brownie Safelight	40	Skewers	45
Cut Film	36	Eastman Safelight	40	Sky Filters	38
D		Kodak Safelight	40	Spotting Colors, Eastman	46
Darkroom Outfits	41	Photoflash	36	Squeeze, Eastman Special	46
Developer Chemicals, Tank	39, 40	Photoflood	36	Stirring Rod, Hard Rubber	46
Developing and Printing Outfits	41	Lens Attachments	38, 39	Strap, Kodak Hand	46
Developing Boxes	41	Lens Cap for Jiffy Kodak Six-16 or Six-20	30	Stump Cotton	45
Developing Hangers	42	Lens Cleaner	39	"SS" Film	35
Developing Tanks	39, 40	Lens Cleaning Paper	39	Super Sensitive Panchromatic Cut Film	36
Developing Trays	41	Lens Hood, Adjustable	39	Super Sensitive Panchromatic Film Packs	35
Diffusion Disc for Auto-Focus Enlarger	44	Lenses	29	Super Sensitive Panchromatic Roll Film	35
Diffusion Disks, Pictorial	38	Lenses: Supplementary, for Kodak Recomars	34	Super X Panchromatic Roll Film	35
Diffusion Portrait Attachment	38	M		T	
Doublet Lenses	29	Magazine Ciné-Kodak	27	Tank Developer Chemicals	39, 40
Dry Mounting Tissue	46	Mask Charts	43	Tanks, Developing	39, 40
E		Masks, Kodaloid Printing	43	Tanks, Roll Film and Film Pack	39, 40
"Elementary Photographic Chemistry"	40	Meniscus Lenses	29	Tested Chemicals, Eastman	43
Enlarger Base	44	Microdax Outfit	45	Thermometers	42
Enlargers	44	Miniature Enlarger	44	Thermometer Stirring Rod	42
Enlarging Paper	43	Mounting Tissue, Dry	46	Thinning Medium, Transparent	45
F		N		Timers	37, 43
Ferrotype Plates	46	Negative Albums	46	Tips, Rubber, for Tripod Spurs	37
Film Clips	41	O		Tissue, Dry Mounting	46
Film, Cut	36	Oil Colors, Transparent	45	Trays, Developing	41
Film Holders, Combination Plate and	36	Opaque, Eastman Universal	46	Trimming Boards	46
Film Packs	35	Optipod	37	Tripod Adapter	37
Film, Roll	35	P		Tripods, Metal	37
Film Tanks, Roll and Pack	39, 40	Packs, Film	35	V	
Filter for Microdax	45	Paint, Kodacoat	46	Velox Paper	42
Filters, Color	38	Panatomic Cut Film	36	Velox Water Colors	45
Filters, Sky	38	Panatomic Film Packs	35	Verichrome Film Packs	35
Finger Tips, Rubber	46			Verichrome Roll Film	35
Focusing Cloth, Rubber	46			W	
Frames, Printing	42			Wall Bracket for Miniature Enlarger	44
				Water Colors, Velox	45

Compliments of the Digitized Kodak Catalog Project: 1886 - 1941

KODAK is the registered and common-law trade-mark of the Eastman Kodak Company, and cannot be right-fully applied except to goods of their manufacture. Prices in this catalog are subject to change without notice.

Printed in U.S.A.

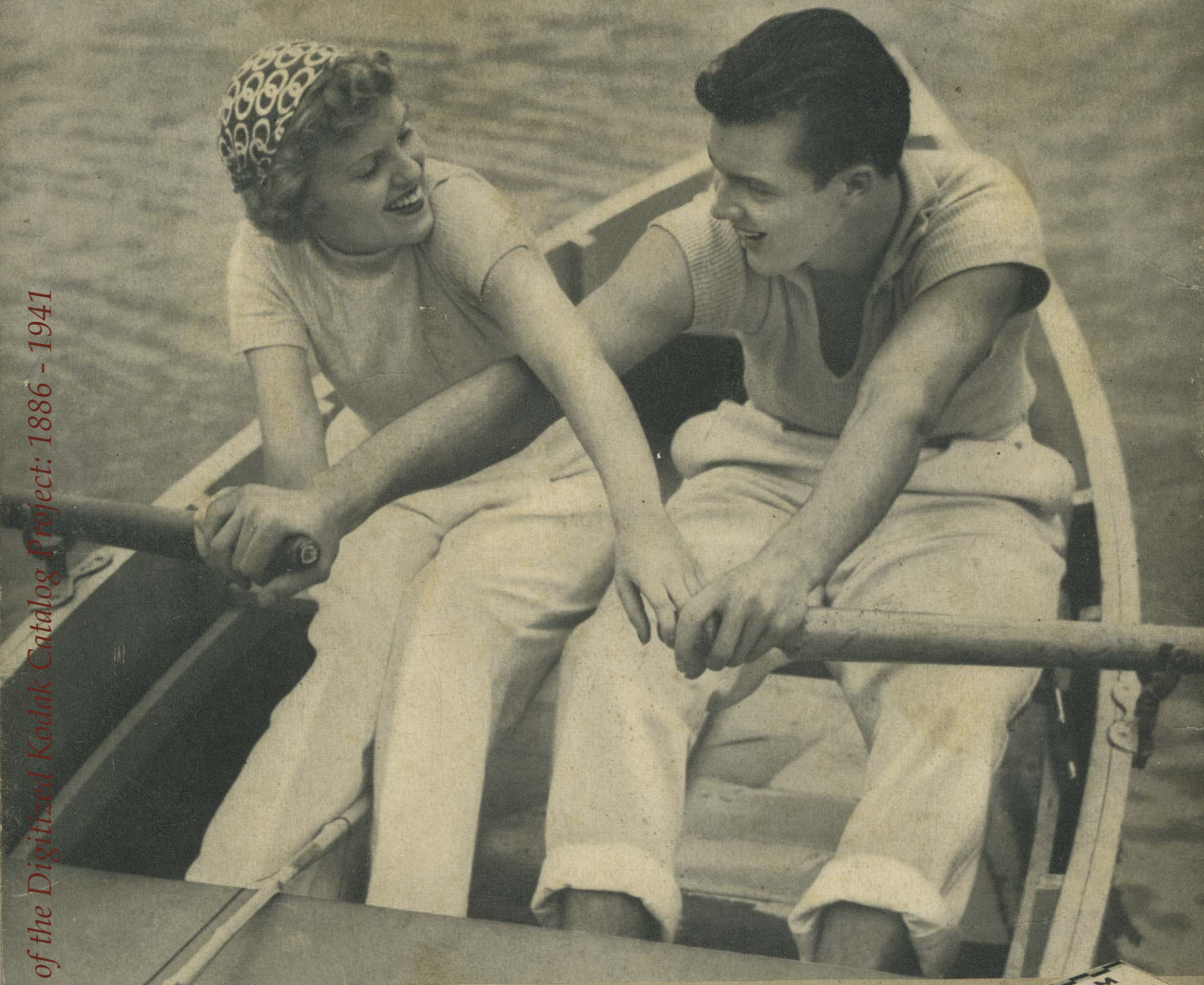
ENLARGED FROM A NEGATIVE MADE ON KODAK "SS" PAN FILM



Compliments of the Digitized Kodak Catalog Project: 1886 - 1941

ONLY EASTMAN MAKES KODAK FILM

Compliments of the Digitized Kodak Catalog Project: 1886 - 1941



DON'T take chances . . . load your camera with Kodak Verichrome Film. This double-coated film gets the picture where ordinary films fail. Your snapshots come out clearer, truer, more lifelike. Any camera is a better camera, loaded with Verichrome . . . use it always. Accept nothing but the film in the familiar yellow box.



Eastman Kodak Stores, Inc.
1862 East 6th Street 915 Euclid Ave.
Leader Bldg.
806 Huron Road
CLEVELAND, OHIO