

1935

K O D A K



The Digitized Kodak Catalog Project (1886 - 1941): A Very Brief History

Most camera collectors at some point in their collecting careers pass through a Kodak phase - some never come out of it. And if there ever was one name that came to be associated with both cameras and collecting, it was Kodak.

George Eastman received his first patent (for coating dry plates) and bought his first manufacturing facility in 1880, and in 1881 he started the Eastman Dry Plate Company. In 1886 he received a patent for the near-mythical Eastman Detective Camera, but it wasn't until 1888 that the first camera bearing the name "Kodak" was introduced.

One of the nice things about collecting Kodak is that the product line is pretty well known, and because the company produced annual catalogs for many years, collectors can be reasonably sure of what they're looking at, when it was made, the variations and so on - presuming that they have access to either the appropriate catalog, or a number of the many books which document Kodak, each to some greater or lesser extent.

But what would be really nice would be to have a complete set of Kodak catalogs in an easily accessible form and readily available. And since the advent of portable computing devices (PC, Macintosh, etc.) that's been possible - except for the difficulty of assembling a complete set of Kodak catalogs in one spot and then scanning them and making the results available.

The idea of digitizing a complete set of Kodak catalogs has kicked around the collecting community for many years. It's been proposed on a number of online forums, during meetings of various photohistory groups, and for years there have been many incomplete "Kodak CDs" on eBay but at best, they only contained a few catalogs - whatever the owner had available. But assembling a complete set of catalogs, then scanning and processing perhaps 3,000 to 4,000 pages, was a daunting task - if not completely overwhelming - and nothing ever came of it.

Until now.

In early 2010, the idea came up again, but this time we - "we" as in "the collecting community" - were lucky. A number of collectors were willing to loan their catalogs to this project and a couple of insane - wait, let's call them "dedicated" - dedicated enthusiasts - neither of whom collected Kodak, but both of whom enjoyed the challenge of such a project - were willing to put in the time and effort to scan and pull together the entire set of catalogs into a full-blown Kodak Catalog Digital Library.

Our initial objective was to include just the annual amateur catalogs, but it turns out that many cameras only appear in certain professional and specialty catalogs. We included as many of those as we could obtain so that almost every Kodak camera made in the US, Canada and Europe, would be documented - at least up to about 1941. After that, it becomes much more difficult as Kodak stopped producing annual catalogs as their product line became increasingly more diversified.

However, even with the additional "non-amateur" catalogs, we weren't completely successful in illustrating "every" camera Kodak ever made. There are an elusive few that might appear in specialty catalogs that we simply couldn't track down. If you can't find one of those odd cameras, that's no doubt why. We may do a revision at some point in the future if someone is willing to loan us a catalog that includes a camera that isn't already recorded.

In this project, a total of 67 catalogs were used from 1886 through 1941 including a number of professional and dealer catalogs, and in some years, two or even three different catalogs to cover all the bases. With the cooperation of a number of dedicated collectors, we were able to pull together all those catalogs and in June 2010, the project started in earnest.

By November 2010, we had scanned everything we needed and eventually all 67 catalogs were then reassembled as image folders and converted to the universally accepted PDF format and finally, converted into individually searchable PDFs which could then be searched globally as a collection.

For those of you interested in the statistics: about 200 hours of scanning time (we never want to hear that sound again), 67 catalogs and 3,908 page scans - which generated 7,917 original and processed images - and 11.4 GB of disk space. Additionally, another 100+ hours of technical development time was needed to convert the digital catalogues into a fully searchable "knowledgebase" that could be launched from most any standard web browser.

The overwhelming number of catalogs was loaned to us by that most remarkable of Kodak collectors, Charlie Kamerman of Eagle Creek, Oregon. Without Charlie, it's very doubtful that this project could even have been attempted.

But as it turned out, even Charlie didn't have all the publications that were needed, but he was able to track down the five that he lacked and was able to secure either a copy or high resolution images that we could work with. And so, our thanks to the contributors of the catalogs and scans that we used:

Charlie Kamerman for the vast majority of catalogs used and all his help,
Steve Shohet for loaning a variety of test catalogs,
Ryerson University (Toronto) for the 1886 Eastman Catalog
George Layne for the 1890 New Kodaks Catalog,
Mike Kessler for the 1891 Dealer Display Catalog,
Ralph London for the 1893 UK Catalog,
Michael Pritchard for the 1897 UK Catalog.

The digital side of the project - also known as "all of the work" - was done by Rob Niederman of Medina, Minnesota, and Milan Zahorcak of Tualatin, Oregon. Remarkably we're still friends and in a few years, we'll probably be able to talk about this project rationally.

And there you have it, a more-or-less done deal. We're fairly sure that it isn't quite perfect, and expect there will be some carping about something or other; but all-in-all, we believe this to be a pretty good product and can now move on to something else.

Our thanks to all of those involved.

Rob Niederman
Milan Zahorcak

Fall, 2011

Compliments of the Digitized Kodak Catalog Project: 1886 - 1941



ENLARGED FROM A KODAK VERICHROME FILM NEGATIVE

KODAKS

AND KODAK SUPPLIES • 1935-1936

IN SELECTING A CAMERA, CONSIDER...

THE PICTURE SIZE... The following pages show sample pictures made with various cameras, and in most cases an enlargement as well. Select the picture size that appeals to you most, remembering that, as illustrated in this catalog, any good picture can be generously enlarged.

THE TYPE YOU PREFER ... box camera or folding camera.

THE VARIETY OF PICTURES you want, and the range of conditions under which you expect to take them. These factors apply particularly to the folding cameras. The versatility of a camera depends largely upon the grade of its lens and shutter (see page 23) ... and, in some models, upon the variety of negative materials which can be used.

THE PRICE... Camera prices are determined to a great extent by the types of lenses and shutters employed, since these items represent a large part of the manufacturing cost. As pointed out above, this equipment to a large degree determines the scope of the camera.

YOUR DEALER WILL BE GLAD TO HELP YOU MAKE YOUR SELECTION

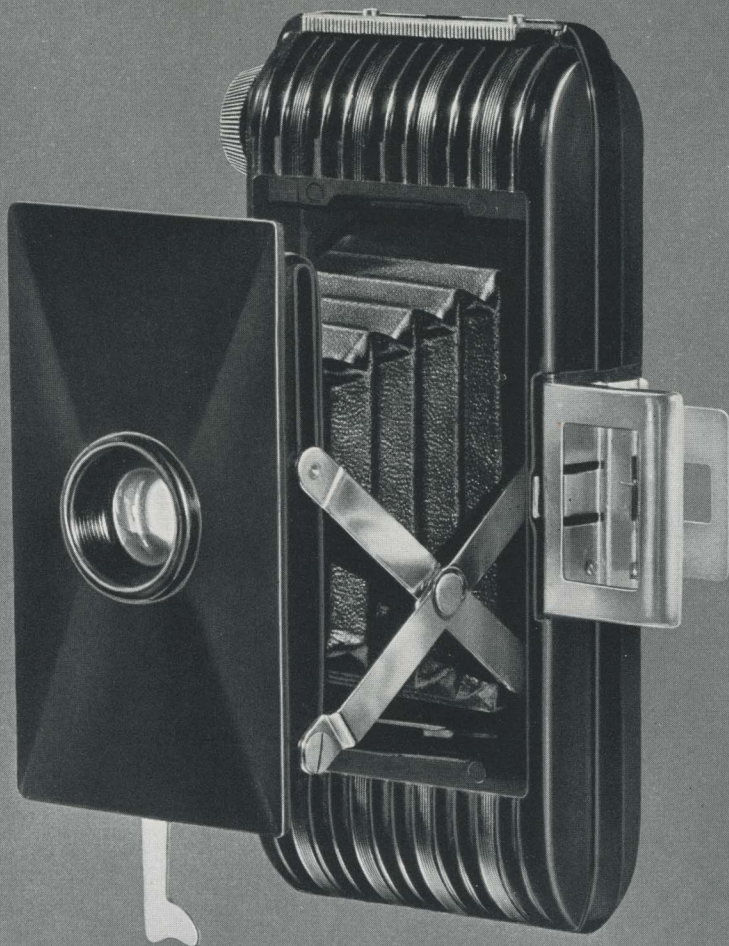
EASTMAN
KODAK
COMPANY
ROCHESTER, N. Y.

FOR YOUR CONVENIENCE
AN INDEX OF THE CON-
TENTS OF THIS CATALOG
IS PROVIDED ON PAGE 40

Compliments of the Digitized Kodak Catalog Project: 1886 - 1941



ACTUAL-SIZE PICTURES,
AND ENLARGEMENT, FROM
JIFFY KODAK V.P. NEGA-
TIVES MADE ON KODAK
VERICHROME FILM



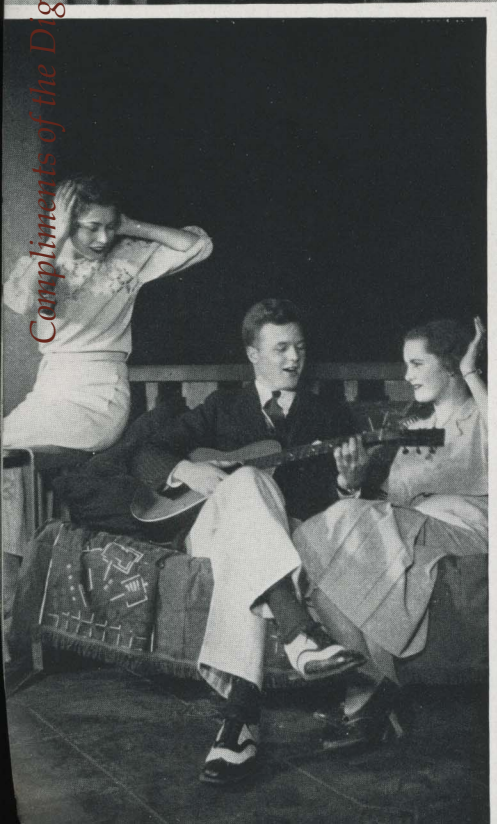
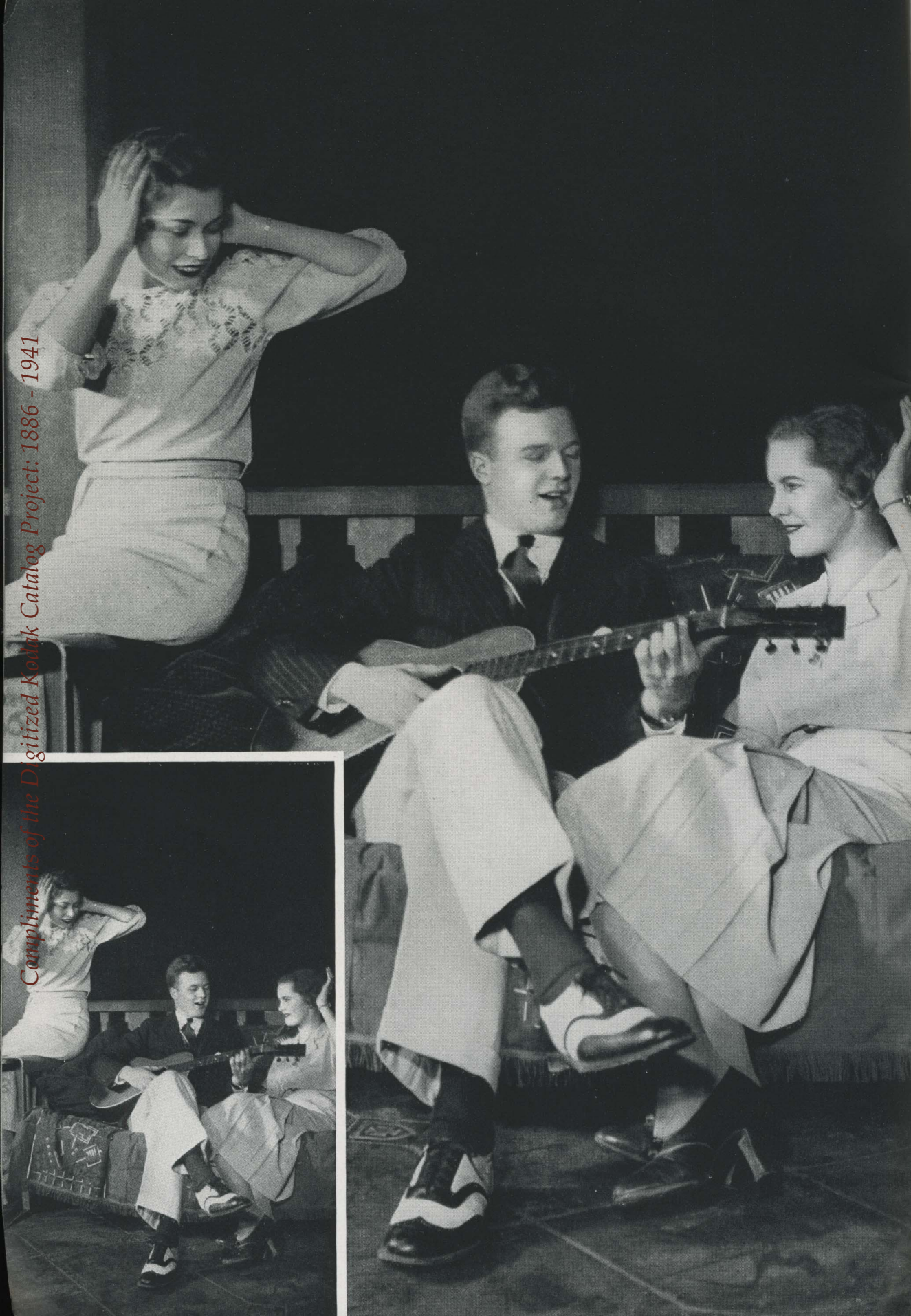
JIFFY KODAK V.P.

Compliments of the Digitized Kodak Catalog Project: 1886 - 1941

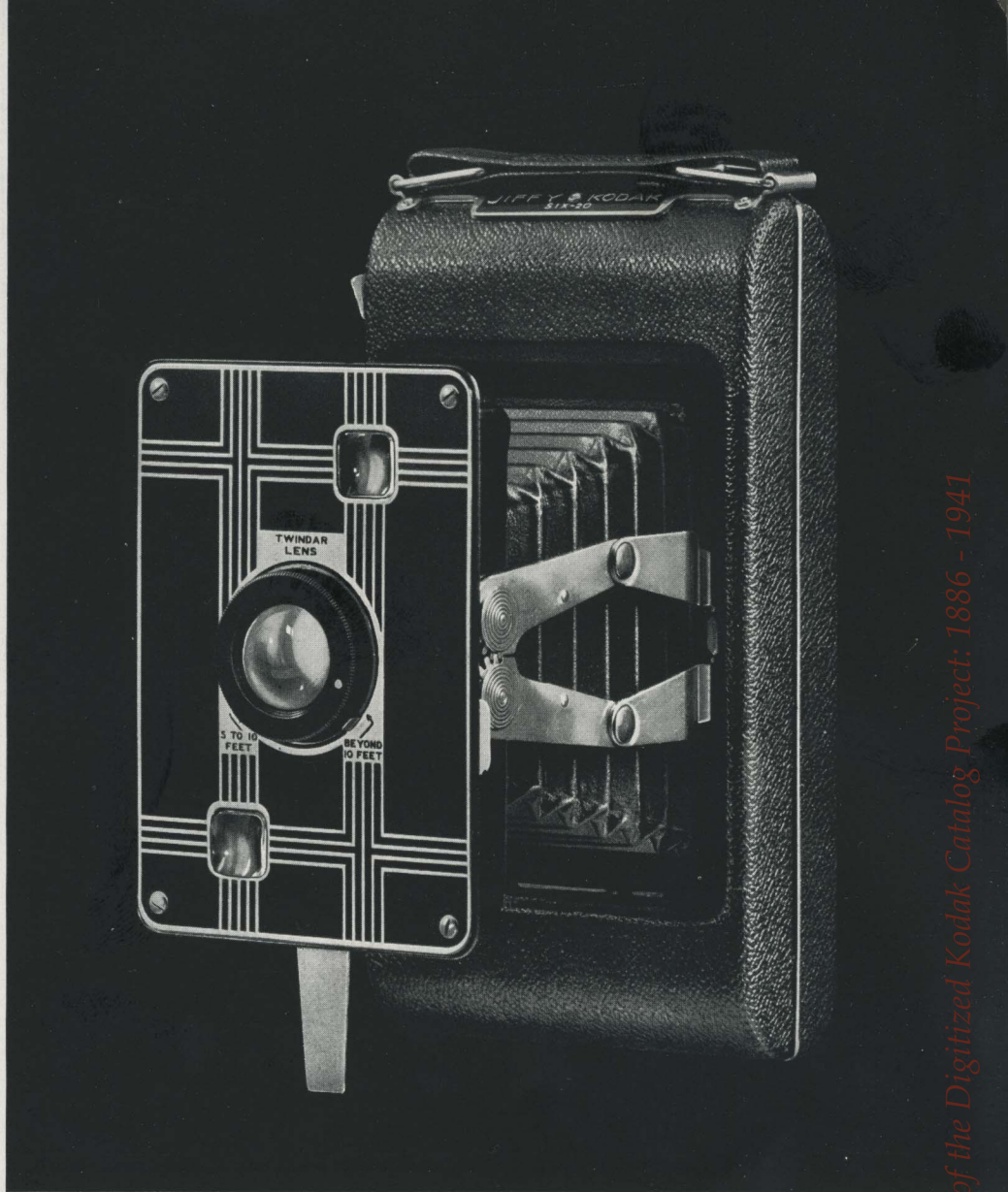


V.P. stands for "Vest Pocket"—and the designation really fits, for this camera is small enough to slip into vest pocket or handbag. Newest of Kodaks, and one of the simplest, it brings you the latest wrinkles: light-weight body of black, molded material...good-looking and efficient folding direct-view finder...the action front that springs out into picture-taking position when you touch a button. Styled to the minute, the V.P. matches style with photographic ability. It makes eight $1\frac{5}{8} \times 2\frac{1}{2}$ -inch pictures...good ones...on a roll of "vest pocket" (No. 127) Kodak Film. Small, smart, swift, it is a big bargain at \$5. See the details on page 24...and see the camera itself at your dealer's.

Compliments of the Digitized Kodak Catalog Project: 1886 - 1941



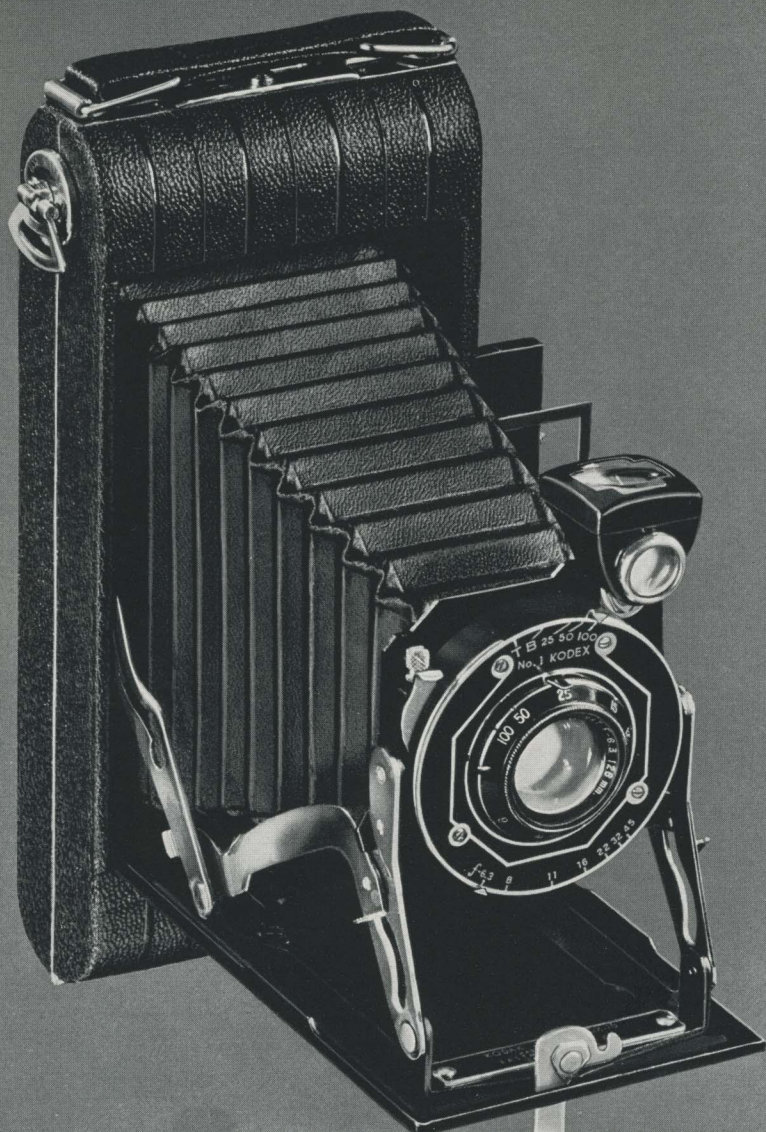
ACTUAL-SIZE PICTURE, AND ENLARGEMENT, FROM JIFFY KODAK SIX-16 NEGATIVE MADE, AT NIGHT, ON KODAK "SS" FILM, WITH THE AID OF A MAZDA PHOTO-FLASH BULB



JIFFY KODAKS

SIX-16 AND SIX-20

A JIFFY Kodak gets into action with the greatest of speed and ease . . . hence its name. Touch a button—"Pop"—it opens. Touch another—"Click"—it makes the picture. Simplest folding camera ever devised, the Jiffy actually combines the dependable simplicity of a box camera with the smart, compact lines of an up-to-the-minute folding model. That fact, plus generous picture sizes and low prices, explains Jiffy popularity. The Six-16 size makes $2\frac{1}{2} \times 4\frac{1}{4}$ -inch pictures, costs but \$9. The Six-20 size makes $2\frac{1}{4} \times 3\frac{1}{4}$ -inch pictures, and costs only \$8. Details listed on page 24.



ACTUAL-SIZE NIGHT SNAPSHOT, AND ENLARGEMENT, FROM KODAK JUNIOR SIX-16 NEGATIVE MADE ON KODAK "SS" FILM, WITH THE AID OF MAZDA PHOTO-FLOOD BULBS

KODAK JUNIORS

I X - 1 6 A N D S I X - 2 0

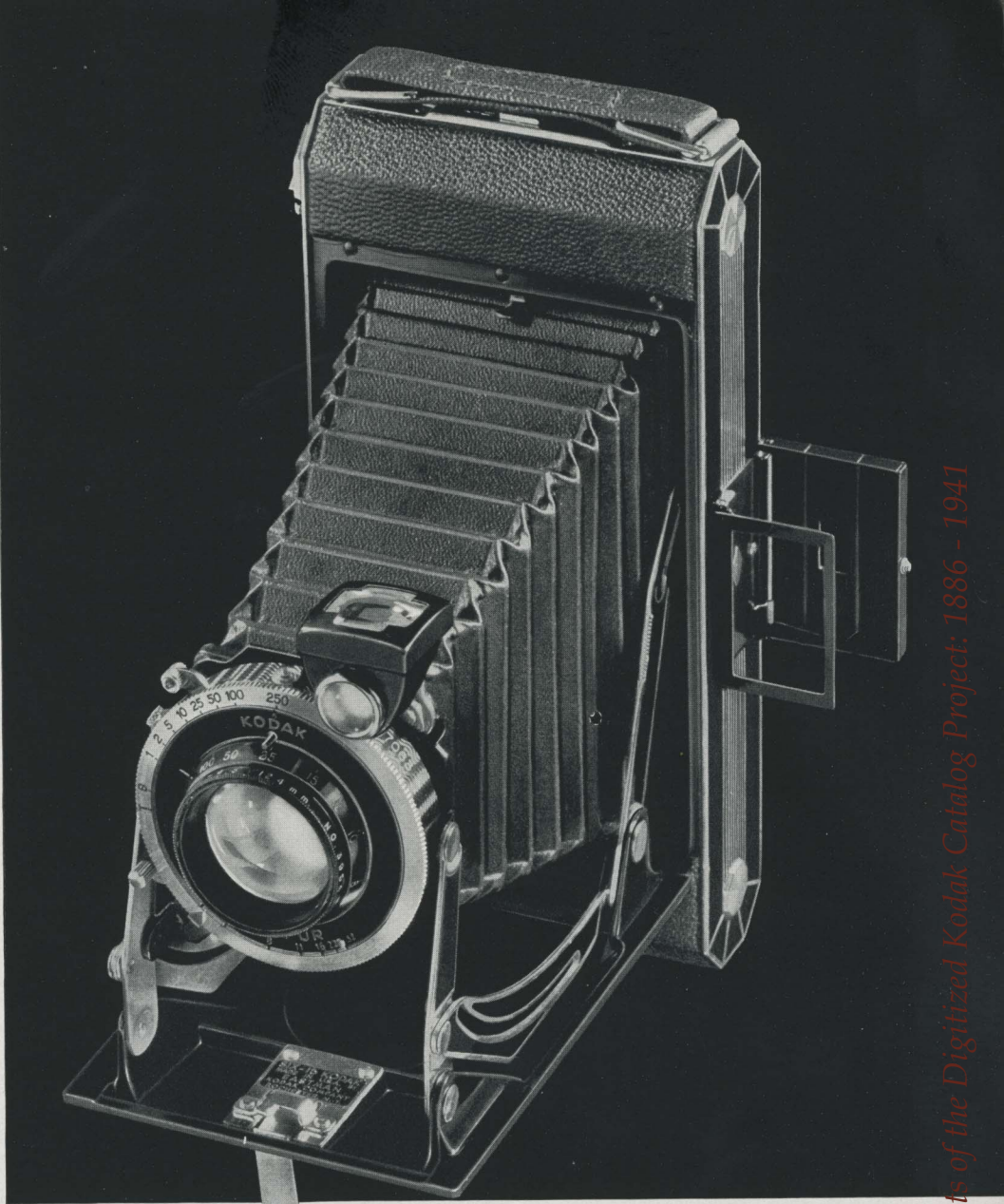
THESE new Kodaks are both versatile and low-priced. They can be had with the keen Kodak Anastigmat $f.6.3$ lens and, so equipped, they make snapshots even on dark days, or at night with Kodak "SS" Film and Mazda Photoflood bulbs. The $f.6.3$ models have eye-level finders as well as regular waist-level finders. All models have self-erecting fronts: one pull opens the camera and snaps the lens into position. More modest lens equipment is afforded by the reliable, simple Kodak Doublet. And, regardless of the lens, you may have a Kodak Junior in either of two favorite sizes. . . for $2\frac{1}{4} \times 3\frac{1}{4}$ or $2\frac{1}{2} \times 4\frac{1}{4}$ -inch pictures. Prices, from \$10 to \$15.50. Details on page 24.



Compliments of the Digitized Kodak Catalog Project: 1886 - 1943



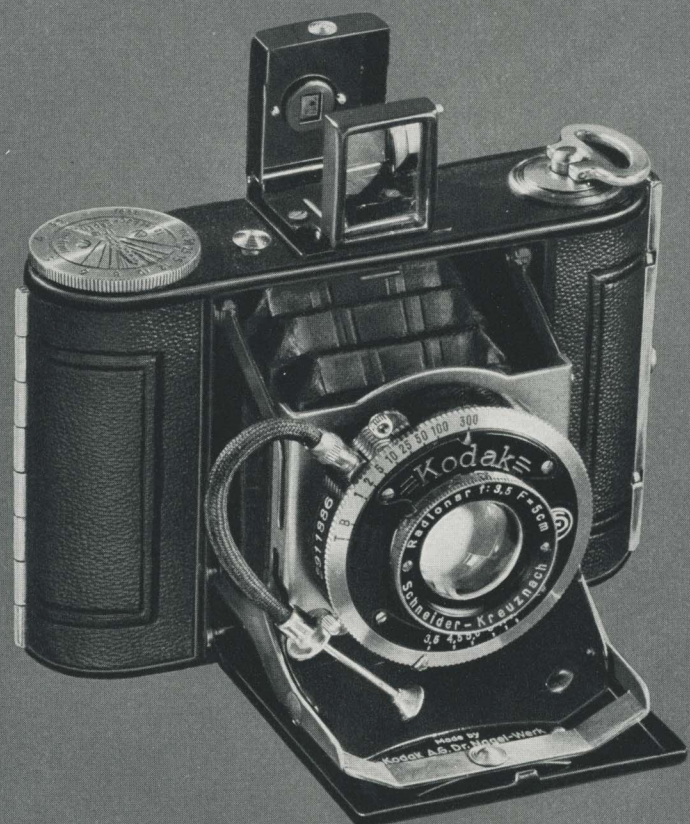
ACTUAL-SIZE PICTURE,
AND ENLARGEMENT,
FROM KODAK SIX-16
NEGATIVE MADE ON
KODAK VERICHROME
FILM



KODAKS

SIX - 16 AND SIX - 20

“SOMETHING to be proud of”...that phrase describes these famous Kodaks. Their octagonal motif and enameled sides spell smartness. Built around Eastman’s smaller, all-metal film spool, they are notably compact. Pressure on a button snaps the camera open...the lens into position. And there is photographic capability galore. It reaches its peak in models equipped with $f.4.5$ lens and Compur shutter—masters of light and action. The six available models are described on pages 24 and 25. Prices, from \$14 to \$40.



ACTUAL-SIZE PICTURES, AND ENLARGEMENT, FROM KODAK VOLLEND A NEGATIVES MADE ON KODAK PANATOMIC FILM



KODAK VOLLEND A

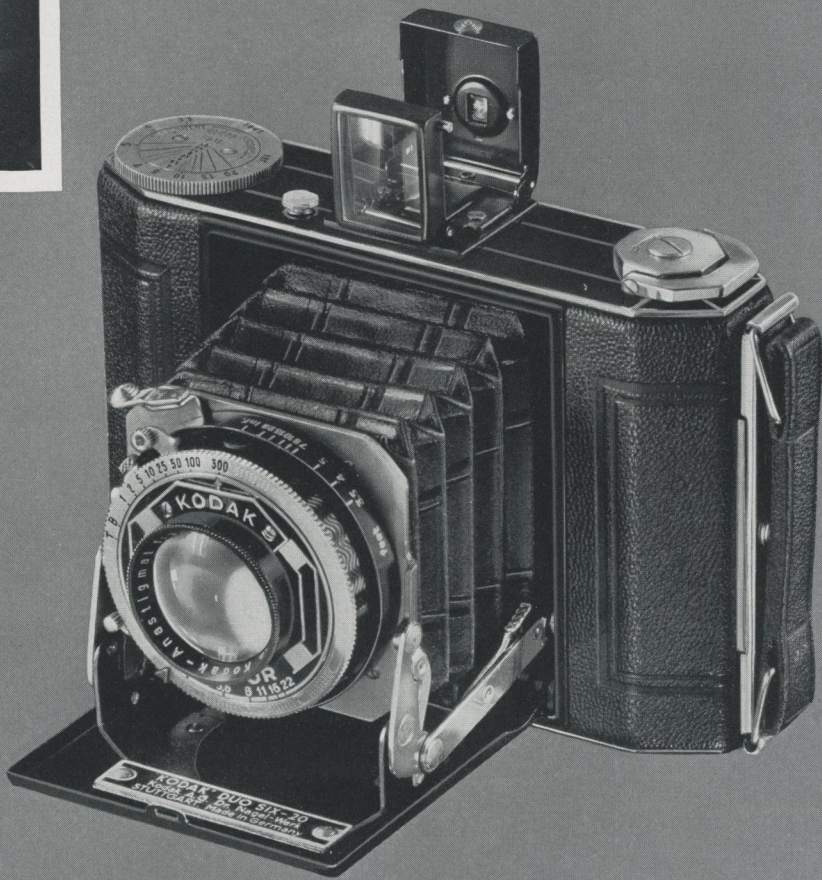
MODERATELY priced yet thoroughly capable, Kodak Vollenda is an exceptional value among miniature-type cameras. It makes sixteen pictures, $1\frac{3}{16} \times 1\frac{9}{16}$ inches, on a roll of "vest pocket" Kodak Film. Either of the versatile lens-and-shutter combinations offered permits making snapshots under widely varying conditions, and the pictures can be greatly enlarged, especially if made on Kodak Panatomic Film. Action front...sturdy construction...low operating cost...extreme compactness...these are outstanding features of the Vollenda, priced at only \$25 and \$39.50. Study the details given on page 25.



Compliments of the Digitized Kodak Catalog Project: 1886 - 1941

Compliments of the Digitized Kodak Catalog Project: 1886 - 1941





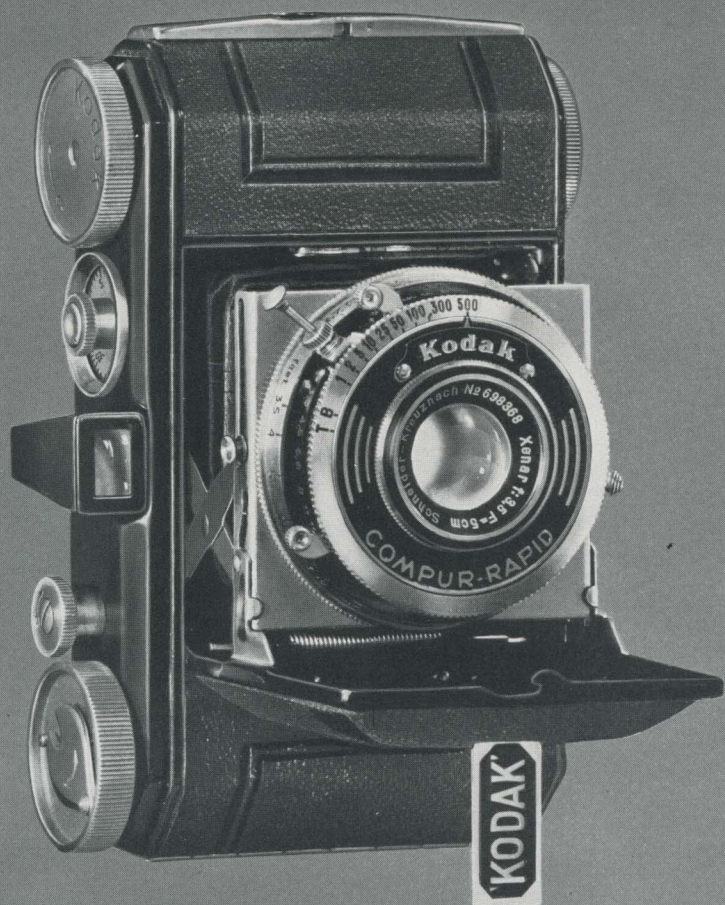
OUTDOOR SNAPSHOT,
AND ENLARGEMENT, FROM
KODAK DUO SIX-20 NEGA-
TIVE ON KODAK PANATOMIC
FILM—INDOOR
SNAPSHOT FROM DUO
NEGATIVE MADE ON
KODAK "SS" FILM WITH THE
AID OF MAZDA PHOTO-
FLOOD BULBS

KODAK DUO SIX-20

Compliments of the Digitized Kodak Catalog Project: 1886 - 1941

HERE is a camera that has the precision and compactness of the true "miniature," yet makes sixteen larger-than-usual pictures... $1\frac{5}{8} \times 2\frac{1}{4}$ inches... on a single roll of 620 Kodak Film. The $f.3.5$ anastigmat lens and Compur shutter with speeds to $\frac{1}{300}$ second spell almost unlimited possibilities. Action shots... rainy-weather pictures... indoor snapshots at night with Kodak "SS" Film and Mazda Photofloods... all are easy for the Duo. And its pictures are so sharp that they can be enlarged to striking proportions. The price is \$52.50. See page 25 for the details.





KODAK RETINA

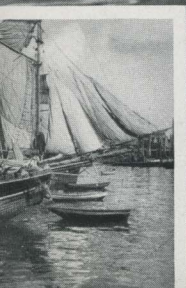
THE Retina is a high-precision, high-speed "miniature" offered at an unusually low price. Equipment includes an *f.3.5* anastigmat lens, nine-speed (1 to $\frac{1}{500}$) Compur-Rapid shutter, automatic film-measuring mechanism, exposure counter, and enclosed eye-level finder. It loads like any roll-film camera, with convenient magazines of Kodak "SS" or Panatomic Film. It's built for versatility...quick action. Negatives are so sharp that they can be greatly enlarged from their original size of about 1 x 1½ inches. At \$57.50, Kodak Retina is a real "buy" for the miniature-camera enthusiast. See page 26 for further details.

ACTUAL-SIZE PICTURES, AND ENLARGEMENT, FROM KODAK RETINA NEGATIVES MADE ON KODAK PANATOMIC FILM

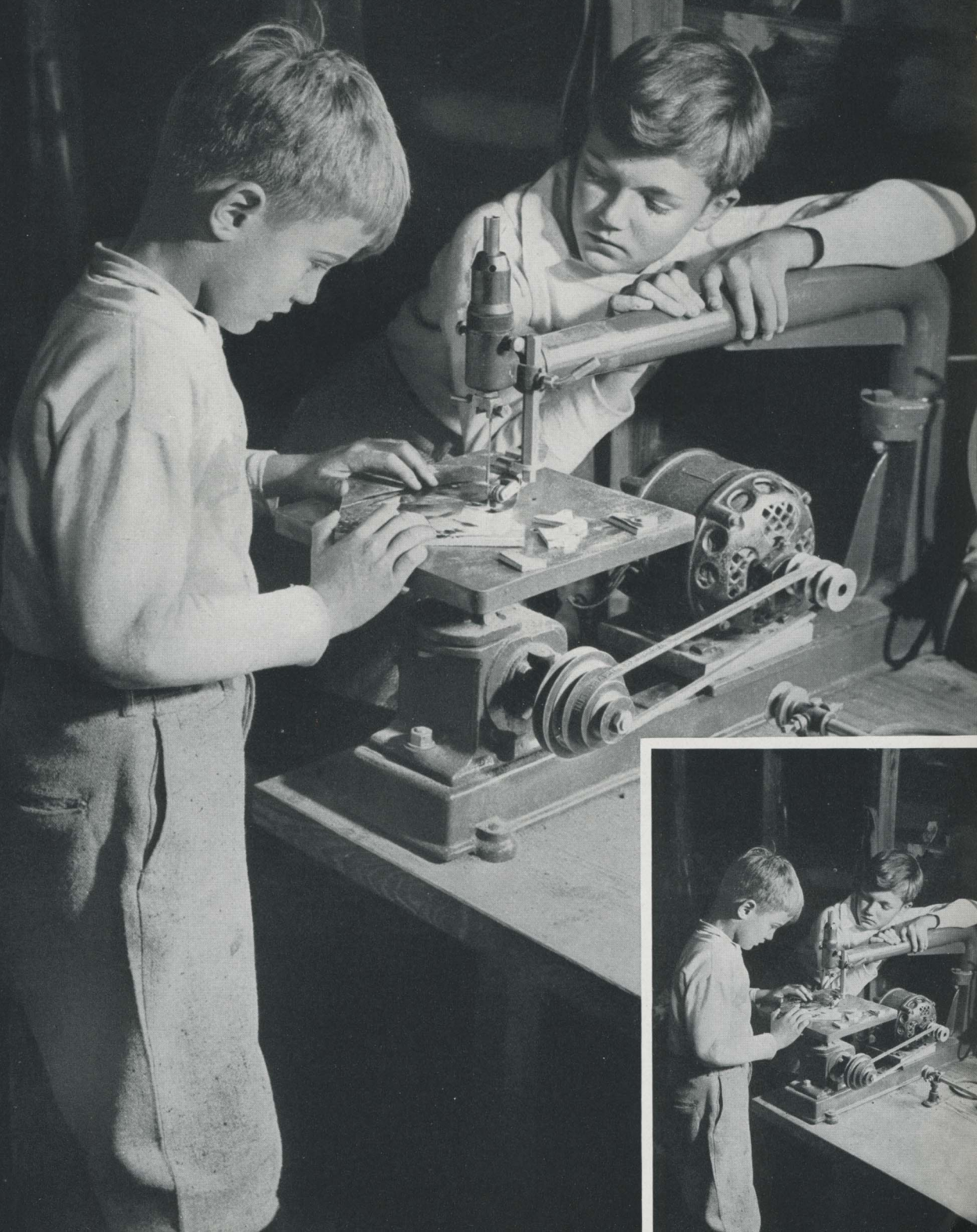




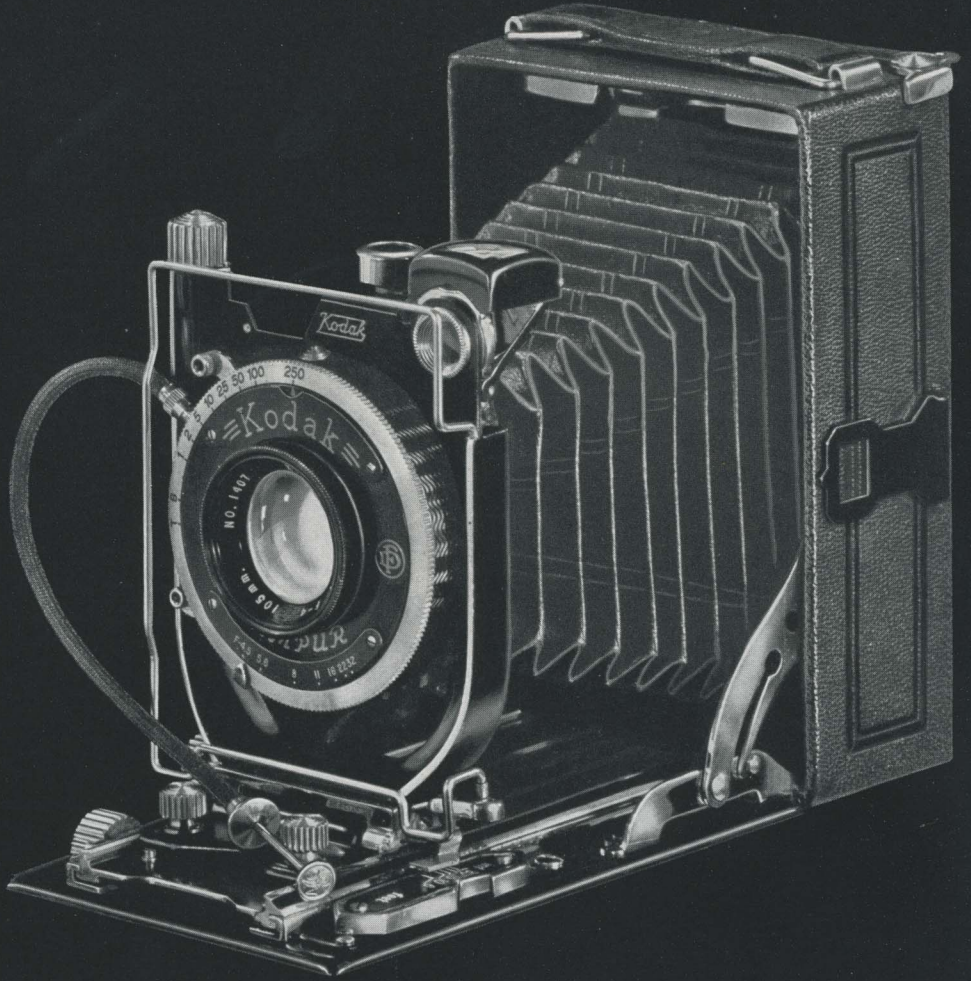
Compliments of the Digitized Kodak Catalog Project: 1886 - 1941



Compliments of the Digitized Kodak Catalog Project: 1886 - 1941



ACTUAL-SIZE PRINT,
AND ENLARGEMENT,
FROM RECOMAR 18
NEGATIVE MADE ON
KODAK VERICHROME
FILM PACK, WITH THE
AID OF A MAZDA
PHOTOFLASH BULB

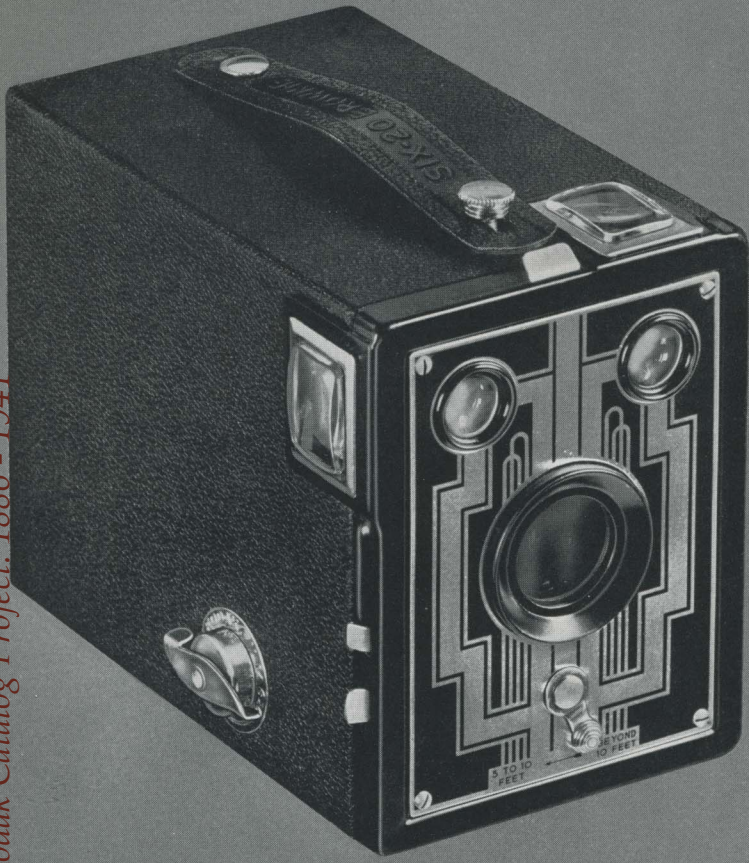


KODAK RECOMARS

1 8 A N D 3 3

BOTH of these cameras are built for the serious amateur photographer . . . not the advanced worker alone (for the Recomars are simple to operate), but anyone who intends to make photography a major hobby. They utilize the almost limitless variety of negative materials afforded by film packs, cut film, and plates. Aside from their splendid Kodak Anastigmat *f*.4.5 lens and Compur shutter, they are equipped with such features as the double-extension bellows and bed, ground-glass focusing backs, and wire-frame finders. They bring the user extreme adaptability, precision construction, great durability, and substantial picture size—the “18,” 2¼ x 3¼ inches; the “33,” 3¼ x 4¼ inches. Prices, \$54 and \$63. See the details of these expert cameras on pages 26 and 27.

Compliments of the Digitized Kodak Catalog Project: 1886 - 1941



ACTUAL-SIZE PICTURES FROM SIX-20 BROWNIE NEGATIVES MADE ON KODAK VERICHROME FILM

SIX - 1 6 A N D S I X - 2 0 BROWNIES

BECAUSE of their unfailing reliability, Brownies have long been the most famous of box cameras. These two models embody traditional Brownie dependability, and in addition offer new convenience and style. They are the only cameras equipped with the Diway lens, which by one simple adjustment insures sharp focus for both near and distant subjects. The prices: Six-16, for $2\frac{1}{2} \times 4\frac{1}{4}$ -inch pictures, \$3.75; Six-20, for $2\frac{1}{4} \times 3\frac{1}{4}$ -inch pictures, \$3.00. Details on page 27.





ACTUAL-SIZE PICTURES FROM SIX-20 BROWNIE JUNIOR NEGATIVES MADE ON KODAK VERICHROME FILM

SIX-16 AND SIX-20 BROWNIE JUNIORS

Compliments of the Digitized Kodak Catalog Project: 1886 - 1941



SIMPLICITY is the keynote of these popular box cameras. Anyone can use them successfully. It isn't necessary to focus, and the sum and substance of their operation is simply this: "Load...aim...shoot." Children and grown-ups alike make good pictures with the Juniors right from the start. Considering their genuine Brownie reliability, their prices are exceptionally low: Six-16, for $2\frac{1}{2} \times 4\frac{1}{4}$ -inch pictures, \$2.75; Six-20, for $2\frac{1}{4} \times 3\frac{1}{4}$ -inch pictures, \$2.25. See details on page 27.



ACTUAL-SIZE PICTURES FROM
BABY BROWNIE NEGATIVES
MADE ON KODAK VERI-
CHROME FILM

BABY BROWNIE

THIS real Brownie costs only one dollar. More need hardly be said. As pleasing to the eye as it is to the pocketbook, it has built into it the trustworthiness which young and old picture-takers everywhere associate with the name "Brownie." Its smart, black, molded body is distinctly modern, as is the folding direct-view finder, but most important is its reliability. The Baby Brownie makes good pictures under all average conditions... and that is what counts. In view of its ability the one-dollar price is indeed astonishing. Pictures, $1\frac{5}{8} \times 2\frac{1}{2}$ inches. Details on page 27.



HOME MOVIES



...WITH CINÉ-KODAK AND KODASCOPE

MORE compact cameras...extreme simplicity of operation...the widest possible range of usefulness...greatly reduced purchasing and operating cost—small wonder that more and more snapshot makers are adding movies to their picture-making fun.

You load Ciné-Kodak as easily as you do your “still” camera. Then you glance at the exposure guide alongside its lens—it tells you what diaphragm stop to use. Point the camera...press the button—and you’ve made movies that you’ll be proud to see and show. Your very first roll will be a winner.

And it costs so little! A \$2.25 roll of Ciné-Kodak Eight Film, for example, makes about 25 full-length scenes, each of which lasts a full ten seconds on the screen. That’s all you pay, because the first cost of the film includes its finishing.

THE PAST LIVES AGAIN

THREAD a tiny strip of cellulose into a Kodascope’s gate, press a switch—and the living past rises up and capers for you.

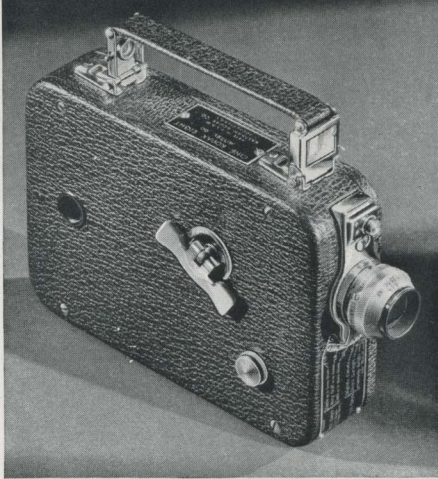
Family, friends, vacations, jaunts abroad, sports, spectacles—all are grist for your movie mill, whether you decide on a versatile 16 mm. Ciné-Kodak or an economical “Eight.”

You won’t want to miss the fun of home movies. See the Eastman equipment listed on the following page.

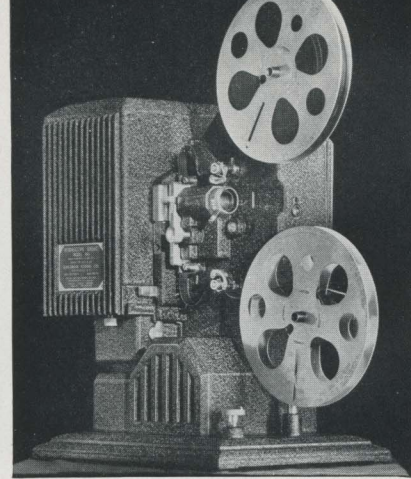




Ciné-Kodak Eight, Model 20



Ciné-Kodak Eight, Model 60



Kodascope Eight, Model 80

MAKING MOVIES WITH CINÉ-KODAK EIGHT

DESPITE their small size and low cost, Ciné-Kodaks Eight are every inch movie makers. The Model 20 costs only \$34.50. Its $f.3.5$ lens makes successful movies on dull days as well as on bright—even indoors under artificial light.

The Model 25, \$45, is similar in appointments to the "20." But its "faster" $f.2.7$ lens permits movie making under less favorable light conditions.

The Model 60 is an amazingly competent little

camera. Its standard $f.1.9$ lens is interchangeable with a telephoto lens (\$37.50 extra) which makes close-ups of distant objects. Price, \$91.50, with case.

And there are three Kodascopes Eight from which to choose. The sturdy, simple Model 20 is but \$26. \$39 buys the 200-watt Model 40. The *de luxe* Model 80, with super-brilliant 300-watt lamp and its full quota of projection conveniences, is priced at \$97.50, with carrying case.

THE WIDER RANGE OF MOVIES WITH A 16 MM. CINÉ-KODAK

CINÉ-KODAK K is justly the most popular of all 16 mm. movie cameras. Its standard $f.1.9$ lens is interchangeable with five accessory lenses ranging from wide-angle to 6-inch telephoto. It loads with black-and-white or full-color films (for indoor or outdoor movies, day or night), priced from \$4.50 to \$9 per hundred feet, including processing. Ciné-Kodak K, $f.1.9$, \$112.50. With case, \$125.

Kodascope L introduces a new idea to home

movies—"tailor-made" projection. Four lenses, three lamps, fit the "L" to meet the exact conditions under which you show your movies. The lenses: 1-inch $f.2$, 2-inch $f.1.6$, 3-inch $f.2$, and 4-inch $f.2.5$; the lamps: 400-, 500-, and 750-watt. Price, from \$184—depending upon your choice of lens and lamp.

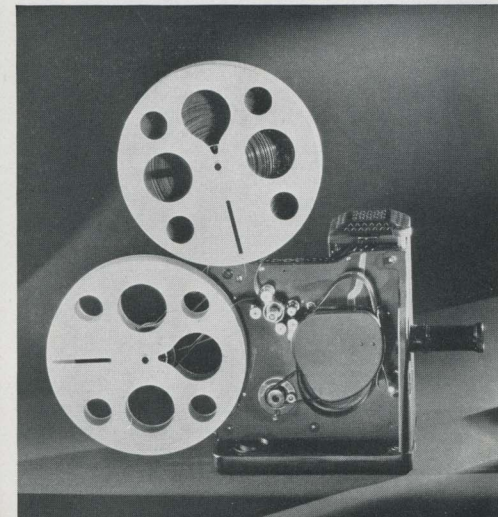
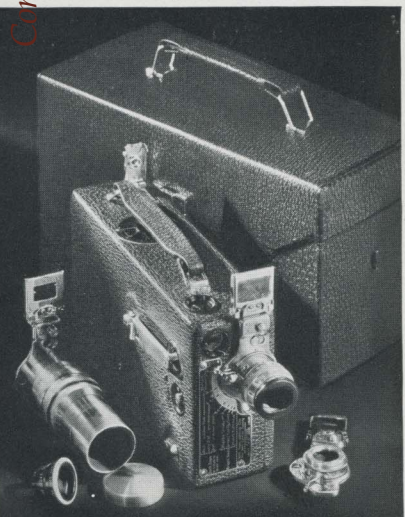
Kodascope D is sturdy, compact, inexpensive, yet, due to its powerful 400-watt lamp, it produces unusually brilliant screen pictures. Only \$71.50.

For booklet on 8 mm. or 16 mm. home movies, see your Ciné-Kodak dealer, or write the Eastman Kodak Company

Ciné-Kodak, Model K

Kodascope, Model L

Kodascope, Model D



DETAILS AND PRICES

OF KODAKS AND BROWNIES SHOWN IN THIS CATALOG

LENSES AND SHUTTERS

IMPORTANT—Because the quality and variety of the pictures which can be made with any camera depend chiefly upon its lens and shutter, it is well to remember the following points when studying Kodak or Brownie details.

Pictures can be made *without* a lens, by simply using a box or chamber with a pinhole in the middle of one side. The pinhole takes the place of a lens and transmits the image. It admits very little light, however, so that the improvised camera has limited scope. And if the pinhole is enlarged, to let in more light, the images transmitted are hopelessly blurred—the camera becomes entirely ineffective.

The principle involved here is the key to all lens structure, quality, and price. Just as the opening of the pinhole camera has limits beyond which it cannot be effectively enlarged, so ordinary inexpensive photographic lenses can be used only at moderate openings. But lenses vary in ability. The larger the relative opening at which any lens can be successfully used—that is, the greater the volume of light that can be passed through it without spoiling the image of the subject—the “faster” and more versatile that lens is.

MENISCUS LENSES—Eastman meniscus lenses, though the simplest type used on Eastman cameras, are carefully computed, ground, polished, and tested. They are designed to make excellent pictures under ordinary conditions, and admit a volume of light ample for this purpose.

DOUBLET LENSES—Kodak Doublet lenses are slightly faster than the meniscus type; that is, they admit somewhat more light, giving the camera added scope. In addition, their outer element helps to protect the shutter and adds to the appearance of the camera. Diway and Twindar lenses are of the doublet type, with a simple adjustment that insures sharp focus for both far and near subjects.

ANASTIGMAT LENSES—Anastigmats represent the highest type of photographic lenses. They are more complicated and more expensive to manufacture than other types; on the other hand,

each of the successively finer grades available on Kodaks gives correspondingly greater versatility, and definitely greater assurance of success in every picture-taking situation. The *f.6.3* is four times as fast as the meniscus. Admitting a very much greater volume of light, it does not require direct sunlight for good snapshots, but makes them even in cloudy weather—or in the rain. The *f.4.5* anastigmats, in their turn, are practically twice as fast as the *f.6.3*—eight times as fast as the meniscus—giving greatly multiplied capability to cope with varying picture-taking conditions. The *f.3.5* anastigmats have even greater speed, being 60% faster than the *f.4.5*'s. Admitting about thirteen times as much light as the meniscus, they give the user a tremendous reserve of lens power with which to capitalize every picture opportunity.

All of these anastigmats yield sharp, brilliant negatives. A Kodak fitted with any one of them, loaded with Kodak “SS” Film, and aided by inexpensive supplementary lighting (see Kodaflector, page 29), will make snapshots indoors *at night*. Each successively higher-priced Eastman lens gives added camera scope, and, of them all, the anastigmats are most certain to make good the picture chances that may come but once.

SHUTTERS—The shutters supplied on Kodaks and Brownies vary widely in design and manufacturing cost, and correspond in versatility to the lenses to which they are geared. With one exception, even the simplest ones can be used to make either snapshots or time exposures. Those coupled with the faster lenses have correspondingly greater ranges of speeds—for such purposes as slow snapshots in weak light, or fast snapshots that “stop” moving objects.

Some of the shutters are provided with conveniences like the built-in self timer (enabling the photographer to include himself in the picture), the built-in exposure guide, or duplicate shutter-speed and diaphragm scales. All of them are reliably and accurately built and can be counted on for years of satisfactory service.

JIFFY KODAK V.P.

A MOLDED KODAK—Jiffy Kodak V.P. has a light but strong body of black, molded material, with permanent, "built-in" glossy finish and ornamental raised ribbing. Removable back. Weight, unloaded, only 10 ounces. Makes 8 pictures, $1\frac{5}{8} \times 2\frac{1}{2}$ inches, per roll of No. 127 Kodak Film. Action front. Fixed focus (no focusing necessary). Kodak Doublet lens, deeply recessed in front plate for protection. Built-in shutter, with instantaneous and bulb actions, and two releases—one for use when making horizontal bulb exposures. Full aperture can be stopped down to *f*.16. Folding direct-view eye-level finder. Swinging foot to support camera in vertical position. Bright metal parts have rust-proof finish.



The "V.P." is particularly slender and stylish when closed

PRICES

Jiffy Kodak V.P., with Kodak Doublet Lens . . . \$5.00
Cowhide Carrying Case, velveteen-lined . . . 1.35

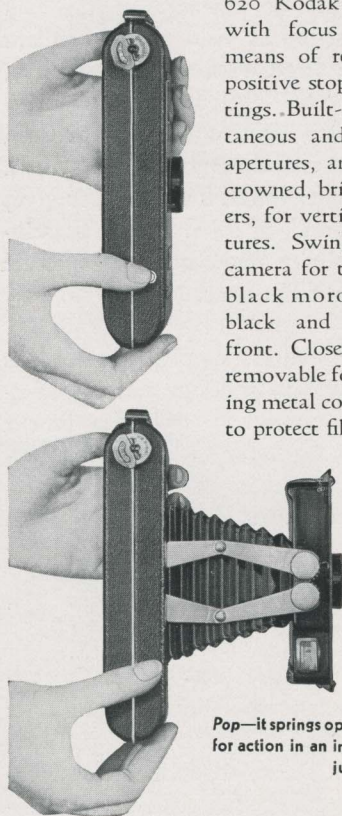
JIFFY KODAKS SIX-16 AND SIX-20

QUICK ACTION—Pressure on a nicked button opens these cameras instantly and extends their bellows, ready for picture taking. Jiffy Kodak Six-16 makes 8 pictures, $2\frac{1}{2} \times 4\frac{1}{4}$ inches, per roll of No. 616 Kodak Film. Jiffy Kodak Six-20 makes 8 pictures, $2\frac{1}{4} \times 3\frac{1}{4}$ inches, per roll of No. 620 Kodak Film. Twindar lens, with focus easily adjustable by means of revolving mount with positive stops for near and far settings. Built-in shutter with instantaneous and time actions. Three apertures, and finger release. Two crowned, brilliant, waist-level finders, for vertical and horizontal pictures. Swinging foot to support camera for time exposures. Finish: black morocco-grain covering; black and nickel etched metal front. Closely fitted back, quickly removable for loading, with swinging metal cover over ruby window, to protect films of high sensitivity.

Black japanned metal cap (extra) protects lens from dust, sand, and breakage.

Touch a little nicked button near the bottom of the Jiffy Kodak:

Pop—it springs open on strong steel arms—ready for action in an instant—and the picture's made just as quickly



PRICES

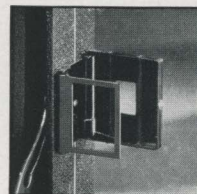
Jiffy Kodak Six-16, with Twindar Lens \$9.00
Grain Leather Carrying Case 1.85
Jiffy Kodak Six-20, with Twindar Lens 8.00
Grain Leather Carrying Case 1.65
Black Japanned Metal Lens Cap for either camera .15

KODAK JUNIORS SIX-16 AND SIX-20

TWO POPULAR SIZES—Kodak Junior Six-16 makes 8 pictures, in the favorite $2\frac{1}{2} \times 4\frac{1}{4}$ -inch size, on a roll of No. 616 Kodak Film. Kodak Junior Six-20 makes 8 pictures, $2\frac{1}{4} \times 3\frac{1}{4}$ inches, per roll of No. 620 Kodak Film. All models durably covered with black morocco-grain material, smartly embossed. Other features: swing cover for ruby window; swing-out, hinged film-supply bracket; hinged back; self-erecting front; tripod socket for vertical pictures. Two lens equipments are offered—Kodak Doublet and Kodak Anastigmat *f*.6.3. Kodak Doublet models have fixed focus (no focusing necessary).

THE *f*.6.3 MODELS

Models carrying Kodak Anastigmat *f*.6.3 lenses are equipped with direct-view eye-level finders as well as regular waist-level brilliant finders. Kodak Junior Six-16 *f*.6.3 has a focal length of 126 mm., No. 1 Kodex shutter with speeds of $\frac{1}{25}$, $\frac{1}{50}$, and $\frac{1}{100}$ second, time and bulb actions, finger-tip focusing mount with distances marked from 6 to 100 feet. Kodak Junior Six-20 *f*.6.3 has a focal length of 100 mm., No. OKodon shutter with speeds of $\frac{1}{25}$, $\frac{1}{50}$, and $\frac{1}{100}$ second, time and bulb actions, revolving focusing mount with distances marked from 5 to 100 feet. These models, when aided by Kodak Super Sensitive Panchromatic Film and Photoflood bulbs, can be used to make snapshots at night.



f.6.3 Models have direct-view eye-level finders

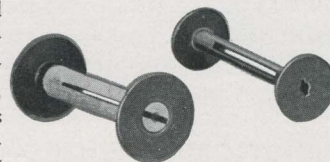
PRICES

KODAK JUNIOR SIX-16
With Kodak Doublet Lens, Kodon Shutter . . . \$12.00
With Kodak Anastigmat *f*.6.3 Lens, Kodex Shutter 15.50
Soft Leather Carrying Case 1.85
Grain Leather Velvet-Lined Carrying Case . . . 3.00

KODAK JUNIOR SIX-20
With Kodak Doublet Lens, Kodon Shutter . . . 10.00
With Kodak Anastigmat *f*.6.3 Lens, Kodon Shutter 13.50
Soft Leather Carrying Case 1.65
Grain Leather Velvet-Lined Carrying Case . . . 2.50

KODAKS SIX-16 AND SIX-20

UNUSUAL COMPACTNESS—Small camera size, as compared with picture size, is a big feature of these Kodaks. Built around Eastman's smaller, all-metal spool, both models are ultra-compact, and Kodak Six-16 is world's smallest folding camera taking $2\frac{1}{2} \times 4\frac{1}{4}$ -inch pictures. It

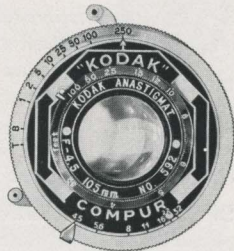


The old wooden film spool—and the smaller, all-metal one

makes 8 such pictures on a roll of No. 616 Kodak Film. Kodak Six-20 makes 8 pictures, $2\frac{1}{4} \times 3\frac{1}{4}$ inches, per roll of No. 620 Kodak Film.

LENSES AND SHUTTERS—Both cameras can be had with any of three lenses. The Kodak Doublet, a three-position focusing lens, combines dependability and simplicity. *F.6.3* and *f.4.5* models have reserve lens power for snapshots under varying conditions—early or late in the day—in cloudy or rainy weather—indoors at night, with Kodak “SS” Film and Photoflood bulbs.

F.4.5 models carry famous Compur shutter, with speeds of $1, \frac{1}{2}, \frac{1}{5}, \frac{1}{10}, \frac{1}{25}, \frac{1}{50}, \frac{1}{100}$, and $\frac{1}{250}$ second. Combined with Kodak Anastigmat *f.4.5*—an exceptional lens—it gives these models great versatility, enabling them, for instance, to “stop” fast action. Compur shutters have built-in self timer, which trips shutter automatically when user wishes to include himself in pictures.



The Compur shutter as supplied on Kodak Six-20 *f.4.5*

Diodak and Kodon shutters on *f.6.3* and Doublet models have secondary shutter-speed and diaphragm scales, visible from above. They permit setting shutter with camera in picture-taking position. Diaphragm scale of Diodak shutter is geared to helpful exposure guide.

OTHER FEATURES—All Six-16 and Six-20 Kodaks have “action front.” Pressing a button opens camera, extends bellows, snaps lens into position—ready for the picture. *F.4.5* and *f.6.3* models have both brilliant reflecting finder and folding direct-view eye-level finder, particularly valuable in locating moving subjects.

Speeds of shutters other than Compur: Diodak, $\frac{1}{10}, \frac{1}{25}, \frac{1}{50}, \frac{1}{100}$; Kodon, $\frac{1}{25}, \frac{1}{50}, \frac{1}{100}$; all with time and bulb actions, finger release.

Cable release may be added to any model. Focus: adjustable, by revolving lens mount. Easy loading assured by swinging spool brackets. Focal lengths: Six-16—*f.4.5*, 124 mm., *f.6.3*, 126 mm.; Six-20—*f.4.5*, 105 mm., *f.6.3*, 100 mm. Finish: covering, black grained material (genuine leather on *f.4.5* models); metal parts, enameled in black, plated, or etched. Dimensions: Six-16, $7 \times 3\frac{3}{8} \times 1\frac{5}{8}$ inches; Six-20, $5\frac{3}{4} \times 3 \times 1\frac{1}{4}$ inches. Weights: Six-16, 26 ounces; Six-20, 19 ounces. Cover over ruby window. Carrying cases, genuine black pig-grain leather, velvet-lined.

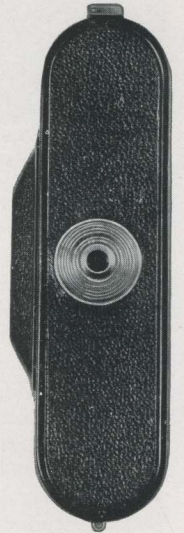
PRICES

	Without Case	With Case
KODAK SIX-16		
With Kodak Doublet Lens, Kodon Shutter	\$16.00	\$18.75
With Kodak Anastigmat <i>f.6.3</i> Lens, Diodak Shutter	20.00	22.75
With Kodak Anastigmat <i>f.4.5</i> Lens, Compur Shutter	40.00	42.75

	Without Case	With Case
KODAK SIX-20		
With Kodak Doublet Lens, Kodon Shutter	\$14.00	\$16.25
With Kodak Anastigmat <i>f.6.3</i> Lens, Kodon Shutter	17.50	19.75
With Kodak Anastigmat <i>f.4.5</i> Lens, Compur Shutter	37.50	39.75

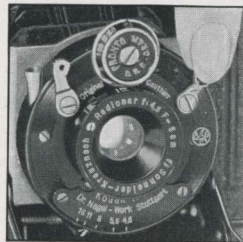
KODAK VOLLEND A

THE SMALLEST KODAK—An extremely compact camera, measuring (when closed) only $4\frac{1}{4} \times 3\frac{1}{8} \times 1\frac{1}{4}$ inches. Makes sixteen pictures, $1\frac{9}{16} \times 1\frac{9}{16}$, on a roll of No. 127 Kodak Film. Action front, actuated by push button, automatically opens camera, locks front in picture-taking position. Focusing: from $3\frac{1}{2}$ feet to infinity, by revolving lens mount. Finish: black pin-grain morocco leather, with tooled panels; polished and nicked metal trim. Tripod socket for vertical pictures. Sturdy hinged back gives easy access to film chambers in loading. Two models available. Ruby windows have safety device requiring no covers for use with fast films.



Not much bulkier than a pocketbook

f.3.5 MODEL—Equipped with *f.3.5* anastigmat lens of 5-cm. focal length. Rim-set Compur shutter, with 8 indicated speeds from 1 to $\frac{1}{300}$ second; intermediate speeds up to $\frac{1}{100}$; time and bulb; diaphragm openings from *f.3.5* to *f.16*; cable and finger releases. Folding optical eye-level direct-view finder. Depth-of-focus scale shows range of sharpness for any combination of distance and diaphragm setting. Weight, 12 ounces.



Setting the built-in self timer on the *f.4.5* Kodak Vollenda

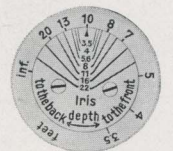
Folding eye-level direct-view finder. Weight, $10\frac{1}{2}$ ounces.

PRICES

Kodak Vollenda, with <i>f.3.5</i> Anastigmat Lens, Compur Shutter	\$39.50
With <i>f.4.5</i> Anastigmat Lens, Pronto Shutter	25.00
Soft Leather Carrying Case, plush-lined, for either model	1.50

KODAK DUO SIX-20

A LARGER “MINIATURE”—An outstanding miniature camera that makes 16 pictures, $1\frac{5}{8} \times 2\frac{1}{4}$ inches, on a roll of No. 620 Kodak Film. Dimensions when closed, $5 \times 3\frac{1}{2} \times 1\frac{3}{8}$ inches. Weight, 17 ounces. Action front opens



The helpful depth-of-focus scale



Kodak Duo Six-20 in the special lined cowhide case provided for it (see listing below)

camera and erects lens at the touch of a button. Kodak Anastigmat $f.3.5$ lens of 70-mm. focal length. Rim-set Compur shutter, with 8 speeds from 1 to $\frac{1}{300}$ second; time and bulb; diaphragm settings from $f.3.5$ to $f.22$; finger release (also bushing for cable release). Focusing: entire lens-and-shutter mount extended by rotating outside ring, graduated from $3\frac{1}{2}$ feet to infinity. Folding optical direct-view eye-level finder. Rotating outer ring of depth-of-focus scale shows sharp-focus range for any stop-and-distance combination. Strong hinged back, with convenient, positive lock, gives full access to spool chambers. Twin ruby windows have built-in, flush-mounted sliding covers to protect fast films. Finish: fine-grained black leather covering, with decorative tooling; top and bottom panels in nickel, black enamel. Tripod socket for vertical position.

PRICES

Kodak Duo Six-20, with $f.3.5$ Anastigmat Lens,
 Compur Shutter \$52.50
 Brown Cowhide Carrying Case, velveteen-lined 4.00

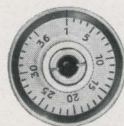
KODAK RETINA

A NEW SPEED KODAK—Kodak Retina makes 36 pictures on either Kodak Panatomic (F135) or Super Sensitive (SS135) Film, provided in daylight-loading magazines. Picture size, 24×36 mm. (approximately $1 \times 1\frac{1}{2}$ inches). Push button releases bed; bringing bed to perpendicular swings front into picture-making position. $F.3.5$ anastigmat lens of 5-cm. focal length. Rim-set Compur-Rapid shutter with 9 speeds from 1 to $\frac{1}{500}$ second; bulb and time; regular finger and special plunger releases. Lens-and-shutter assembly in lever-operated focusing mount. Dupli-

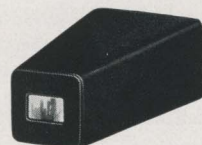


Kodak Retina loads, and operates, as simply as any other roll-film camera—it does not call for any new photographic procedure

cate focus and diaphragm scales for horizontal and vertical pictures. Focus scales graduated from $3\frac{1}{2}$ feet to infinity. Diaphragm openings, $f.3.5$ to $f.16$. Enclosed optical eye-level direct-view finder. Depth-of-focus scale shows sharp-focus range for any stop-and-distance combination. Large knurled knobs for rapid, measured film winding, and for rewinding film into magazine when all exposures have been made. Exposure counter and film-lock release. Hinged back with improved finger-lift latch. Tripod socket for horizontal pictures. Folding camera foot for vertical pictures. Light, die-cast metal case to assure rigidity. Finish: black morocco leather covering, with tooled panels; nickle-trimmed. Dimensions, closed, $4\frac{3}{4} \times 3 \times 1\frac{1}{4}$ inches. Weight, $15\frac{1}{2}$ ounces. When closed, Kodak Retina affords complete protection to its lens.



This little dial counts the exposures for you

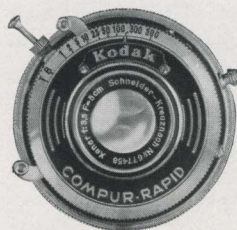


The enclosed view finder is unusually efficient

SPECIAL ATTACHMENTS—Special color filters and portrait attachments screw into lens mount and are so compact that camera can be closed with either (but not both) in position. Portrait attachment and filter may be used together when the camera is open. Color filters have following filter factors in daylight: N-1 (light yellow), 1.5; N-2 (medium yellow), 2.0; N-3 (green), 2.5. Portrait Attachment "A" reduces focal distance as follows: at infinity setting, to 41



The Retina folds into a compact shape—the lens out of sight, and protected from hard knocks and the elements



inches; at $3\frac{1}{2}$ -foot setting, to 21 inches. Portrait Attachment "B" reduces focal distance as follows: at infinity setting, to 25 inches; at $3\frac{1}{2}$ -foot setting, to 16 inches.

The Retina's nine-speed Compur-Rapid shutter can clip exposures to 1/500 second

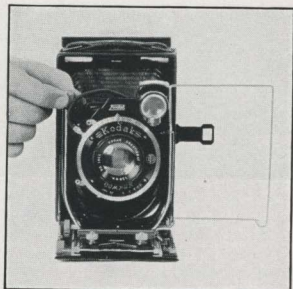
PRICES

Kodak Retina, with $f.3.5$ Anastigmat Lens,
 Compur-Rapid Shutter \$57.50
 Soft Black Leather Carrying Case. 1.50
Special Brown Cowhide Carrying Case, accommodating Kodak Retina and accessories, ready in June, 1935.
 Color Filters N-1, N-2, N-3, each 3.00
 Kodak Portrait Attachments "A" and "B," each 3.00

KODAK RECOMARS
18 AND 33

FOR SERIOUS CAMERISTS—Expert models designed for serious photographic workers. Picture sizes and negative material (see pages 28, 29): "18"— $2\frac{1}{4} \times 3\frac{1}{4}$ -inch film packs, 6.5 x 9-cm. cut film or plates; "33"— $3\frac{1}{4} \times 4\frac{1}{4}$ -inch or 9 x 12-cm. film packs, 9 x 12-cm. cut film or plates.

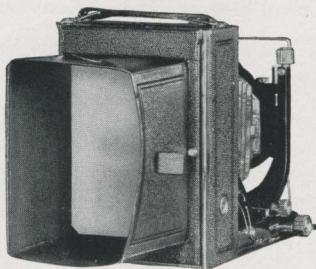
Lens of unsurpassed quality—Kodak Anastigmat *f.4.5*—with focal length of 105 mm. on “18,” 135 mm. on “33.” Famous rim-set Compur shutter, with 8 speeds up to $\frac{1}{200}$ second ($\frac{1}{250}$ on “18”); time, bulb, and built-in self timer; cable and finger releases. Finders: wire-frame direct-view; also brilliant reflecting reversible type, with spirit level attached. Focusing: by rack-and-pinion and scale graduated from 6 feet to infinity; or by hooded ground-glass back. Two tripod sockets.



The wire-frame finder in position—and the rising front in use

CONSTRUCTION FEATURES—Both models have

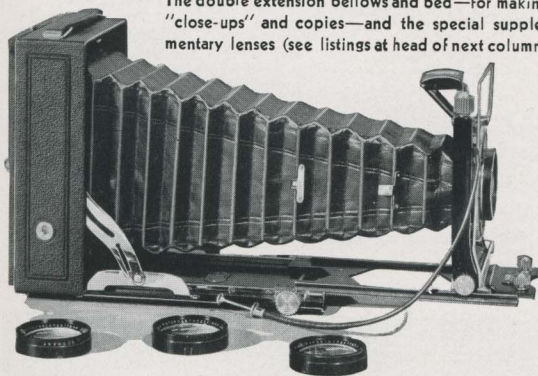
drop bed, actuated by concealed release button. Rigid, U-shaped, cast-metal pull-out front, with rising and sliding movements. Double extension bellows and bed, actuated by rack and pinion controlled by knurled knob; maximum draw (8 inches on “18,” 10½ inches on “33”) permits images



The ground-glass focusing back assures critical focus and pleasing composition

almost actual size. Ground-glass back, film-pack adapter, and film and plate holders are interchangeable. Dimensions (closed): “18,” 4¾ x 3⅛ x 1¾ inches; “33,” 6 x 4¼ x 2 inches. Weights: “18,” 24 ounces; “33,” 40 ounces. Finish: genuine black leather covering, with ornamental tooled panels; nicked and enameled fittings.

The double extension bellows and bed—for making “close-ups” and copies—and the special supplementary lenses (see listings at head of next column)



PRICES

	“18”	“33”
Kodak Recomar, with Kodak Anastigmat <i>f.4.5</i> Lens, Compur Shutter, 3 Combination Plate and Film Holders, Film Pack Adapter, and Cable Release	\$54.00	\$63.00

Brown Cowhide Carrying Case, velvet-lined, to hold camera, plate and film holders, film pack adapter . . .	5.00	5.50
------------------------------------------------------------------------------------------------------------	------	------

(Continued at top of next column)

SUPPLEMENTARY LENSES

	<i>Increase in Image Size</i>	<i>Price</i>
For large images of distant subjects		
Lens A, for “18”	28%	\$3.50
Lens A, for “33”	33%	3.50
Lens B, for “18”	62%	3.50
Lens B, for “33”	70%	3.50

	<i>Increase in Angle of View</i>	
For wide-angle interiors and street scenes—also for magnifying small objects at close range		
Lens D, for “18”	17%	3.50
Lens E, for “33”	23%	3.50

SIX-16 AND SIX-20 BROWNIES

DEPENDABILITY—The Diway lens on these Brownie models assures sharp focus for both near and far subjects. The regular setting, for subjects beyond 10 feet, may be instantly changed for pictures at 5 to 10 feet. Eastman Rotary shutter, with instantaneous and time actions, two diaphragm settings. Two brilliant Magna-finders, for vertical and horizontal pictures. Finish: black morocco-grain covering; two-tone metal front plate; nicked fittings. Six-16 makes 8 pictures, 2½ x 4¼ inches, per roll of No. 616 Kodak Film. Six-20 makes 8 pictures, 2¼ x 3¼ inches, per roll of No. 620 Kodak Film.

PRICES

Six-16 Brownie, with Diway Lens, Eastman Rotary Shutter.	\$3.75
Six-20 Brownie, with Diway Lens, Eastman Rotary Shutter.	3.00

SIX-16 AND SIX-20 BROWNIE JUNIORS

SIMPLICITY—It is not necessary to focus the Brownie Juniors: their focus is “fixed.” Meniscus lens and protective, ornamental front crystal. Rotary shutter, with instantaneous and time actions, two diaphragm settings. Two extra-large ground-glass finders, for vertical and horizontal pictures. Finish: black levant-grain covering; decorative metal front plate; nicked fittings. Six-16 makes 8 pictures, 2½ x 4¼ inches, per roll of No. 616 Kodak Film. Six-20 makes 8 pictures, 2¼ x 3¼ inches, per roll of No. 620 Kodak Film.

PRICES

Six-16 Brownie Junior, with Single Meniscus Lens and Rotary Shutter	\$2.75
Six-20 Brownie Junior, with Single Meniscus Lens and Rotary Shutter	2.25

BABY BROWNIE

SMARTNESS—The Baby Brownie’s rich, glossy-black molded body gives lasting good looks. Camera loaded by removing top, to which film-winding mechanism is attached. Makes 8 pictures, 1⅝ x 2½ inches, vertical or horizontal, per roll of No. 127 Kodak Film. Meniscus lens. Rotary shutter, for instantaneous exposures only. Fixed focus, with range from 5 feet to infinity. Eye-level direct-view finder—folds flush with top of camera.

Baby Brownie, with Meniscus Lens, Rotary Shutter.	\$1.00
-----------------------------------------------------------	--------

ACCESSORIES

SUPPLIES AND SUNDRIES THAT MULTIPLY PICTURE-TAKING PLEASURE

KODAK FILM AND FILM PACKS

IF YOU want greater speed than ordinary film affords, a more natural color balance throughout the picture, and the highest possible percentage of successful snaps, use *Kodak Verichrome Film*. Coated with a double emulsion—slow and fast—it helps substantially to correct exposure errors.

Fastest of all is *Kodak Super Sensitive Panchromatic Film*. Giving complete color correction, it also definitely lengthens the snapshot day, making brilliant snaps earlier in the morning and later in the afternoon. With this "SS" Film, a few Photoflood bulbs (see foot of opposite page),

and a camera with *f.6.3* or faster lens, it is easy to make snapshots *indoors at night*.

For superb enlargements from miniature negatives, and for wonderfully rich contact prints in any size, use *Kodak Panatomic Film*. It is completely color-sensitive, and its microscopically fine grain permits an astonishing degree of sharp enlargement.

For ordinary picture-taking purposes *Regular Kodak Film*—the dependable film that made amateur photography a world-wide pastime—is available.

KODAK Film is listed below in the most commonly used sizes. For other sizes, see your dealer.

Camera Models	Picture Size	Exposures	Kodak Verichrome Film		Kodak Super Sensitive Panchromatic Film		Kodak Panatomic Film		Regular Kodak Film	
			Number	Price	Number	Price	Number	Price	Number	Price
Kodak Retina	1 x 1½	36*	SS135	\$.85	F135	\$.85
Jiffy Kodak V.P., Vest Pocket Kodaks, Kodaks Pupille, Vollenda, No. 0 or Baby Brownie	1⅞ x 2½	8**	V127	\$.30	SS127	.35	F127	.35	127	\$.25
All No. 1 or No. 2 Cameras	2¼ x 3¼	8	V120	.30	SS120	.35	F120	.35	120	.25
All Six-20 Cameras	2¼ x 3¼	8***	V620	.30	SS620	.35	F620	.35	620	.25
All No. 1A or No. 2A Cameras	2½ x 4¼	8	V116	.35	SS116	.40	F116	.40	116	.30
All Six-16 Cameras	2½ x 4¼	8	V616	.35	SS616	.40	F616	.40	616	.30
All No. 2C Cameras	2⅞ x 4⅞	6	V130	.45	SS130	.55	130	.40
All No. 3 Kodaks	3¼ x 4¼	6	V118	.45	SS118	.55	118	.40
No. 3 Brownies	3¼ x 4¼	6	V124	.45	124	.40
All No. 3A Kodaks	3¼ x 5½	6	V122	.55	SS122	.65	122	.50
		10	V122	.90

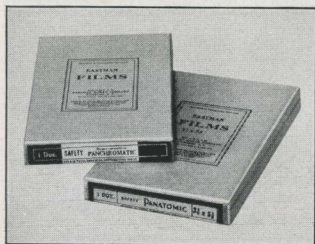
*In daylight-loading magazine. **16 exposures, 1 3/16 x 1 1/8, in Kodak Pupille or Vollenda. ***16 exposures, 1 3/8 x 2 1/4, in Kodak Duo Six-20.

KODAK Film Packs are available in three different types. They embody the same reliable emulsions found in the corresponding roll film. All Kodak Film Packs carry 12 exposures. They are easily identified by the familiar yellow box.

Picture Size in Inches	Picture Size in Centimeters	Kodak Verichrome Film Packs		Kodak Super Sensitive Panchromatic Film Packs		Panatomic		Regular Kodak Film Packs	
		Number	Price	Number	Price	Number	Price	Number	Price
1¾ x 2¾	4.5 x 6	V500	\$.40	SS500	\$.55	F500	\$.55
1¾ x 4¼	4.5 x 10.7	V540	.65
2¼ x 3¼	6 x 9	V520	.60	SS520	.70	F520	.70	520	\$.50
2½ x 5½	6 x 13	V531	1.00
2½ x 4¼	6.5 x 11	V516	.70	516	.60
3 x 5¼	7.5 x 13.5	V542	1.10
3¼ x 4¼	8 x 10.5	V518	1.00	SS518	1.20
3¼ x 5½	8 x 14	V522	1.15
3½ x 4¾	9 x 12	V541	1.10	SS541	1.30
3¾ x 5½	10 x 15	V543	1.40	SS543	1.65
4 x 5	10 x 12.5	V523	1.15	SS523	1.40
4¾ x 6½	12 x 16.5	V525	1.80
5 x 7	13 x 18	V515	2.00	SS515	2.40



EASTMAN CUT FILM IN AMATEUR SIZES



EASTMAN cut film offers all of the advantages of plates, and in addition it is extremely light, free from halation, easy to handle, and unbreakable. It is one of the several negative materials that

make Kodak Recomars 18 and 33 so versatile, and can also be used in other cameras of similar type. It is available in the two modern, highly capable emulsions described and listed below. Both of these can be counted on for typical Eastman uniformity, and for negatives of strictly superior quality.

EASTMAN SUPER SENSITIVE PANCHROMATIC FILM

THIS cut film is completely sensitive to all colors and when used with proper filters gives splendid monochrome reproductions of all tints and shades. In addition it has amazing speed, especially under Mazda lights, and opens up a new field to the serious amateur. Used in a Kodak Recomar, or other similar camera with a lens of *f*.6.3 or faster rating, and aided by the supplementary light inexpensively supplied by Mazda Photoflood bulbs, it can be used to make snapshots indoors *at night*. Because of its extremely high sensitivity, this film must be developed in total darkness.

Eastman Super

Sensitive Pan-
chromatic

Film, dozen . \$.50 \$.55 \$.75 \$.90 \$1.00

EASTMAN SAFETY PANATOMIC FILM

A NEW cut film that gives users of cameras like the Kodak Recomars the advantages of the famous Panatomic emulsion. It has ample speed for the usual picture situation, is completely color-sensitive, and has the typical Panatomic grain of almost atomic fineness. It is therefore particularly suitable for pictures that are to be considerably enlarged, besides yielding unusually rich and brilliant prints of contact size. Because of the panchromatic qualities of Eastman Safety Panatomic Film, the finishing of this material must proceed in total darkness until the film has been in the developer for at least three minutes.

Eastman Safety

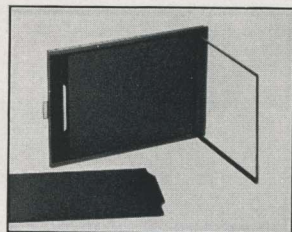
Panatomic

Film, dozen . \$.50 \$.55 \$.75 \$.90 \$1.00

KODAK COMBINATION PLATE AND FILM HOLDERS

THESE holders can be used in Kodak Recomars 18 and 33 or in any cameras that normally take 6.5 x 9 cm. or 9 x 12 cm. single metal plate holders. Because of their self-adjusting pressure plates, they can be loaded with either

plates or cut film, and do not require cut film sheaths. The method of loading is so simple that when highly sensitive negative materials are being used the operation can readily be carried on in total darkness.



Kodak Combination Plate and Film 6.5 x 9 cm. 9 x 12 cm.
Holders, each \$.75 \$.90

EASTMAN PLATES

THE AMATEUR who intends to use plates in a Kodak Recomar 18 or 33, or in a plate camera of any size, will find it advantageous to use the following well-known Eastman brands: Eastman 50, Eastman 40, Single or Double Coated Ortho, Eastman Hyper Press (orthochromatic), Wratten & Wainwright Panchromatic, Wratten Hypersensitive Panchromatic. These plates can be counted on to meet practically any requirement of the serious photographic worker.

THE KODAFLECTOR

THE Kodaflector, an extremely compact, efficient, and economical lighting unit, greatly simplifies the making of either still pictures or "movies" indoors and at night.

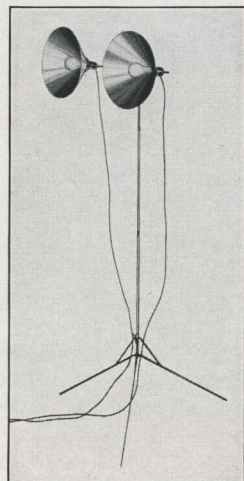
The outfit is designed especially for use with Mazda Photoflood lamps. The intensely bright, white light of these lamps makes them far more effective than several times their number of less powerful "yellow" lamps. Their maximum life on 115-volt lines is two hours—sufficient for many time exposures and snapshots, or for the exposure of hundreds of feet of Ciné-Kodak Film. For flashlights the Kodaflector may, if desired, be equipped with Mazda Photoflash lamps. These bulbs can be used for only one exposure, but they give an extremely intense light, and are suitable for use in large rooms or in photographing large groups.

The Kodaflector lights can be swung in any direction, and set at any height up to 6 feet, 4 inches. The aluminum reflectors lie flat when not in use. The stand, when folded, is only two feet long.

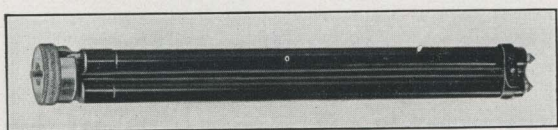
The growing popularity of making snapshots at night has created a wide demand for this outfit—especially since it is low-priced and astonishingly efficient. Two Photoflood bulbs in a Kodaflector are the equivalent of fourteen Photofloods without reflectors.

PRICES

Kodaflector, complete with reflectors, lamp sockets, stand, and connecting cords, but without lamps. . . \$5.00
Mazda Photoflood Lamp No. 125
Mazda Photoflash Lamp, No. 10 (small) .15
Mazda Photoflash Lamp, No. 20 (medium) .25



KODAK METAL TRIPODS



THESE tripods are models of lightness, compactness, and rigidity. They fit any standard tripod socket. The legs are of brass tubing, the sections in each telescoping neatly to give small collapsed size without sacrifice of strength. The lower sections and the heads are nicked, while the upper sections are finished in black enamel.

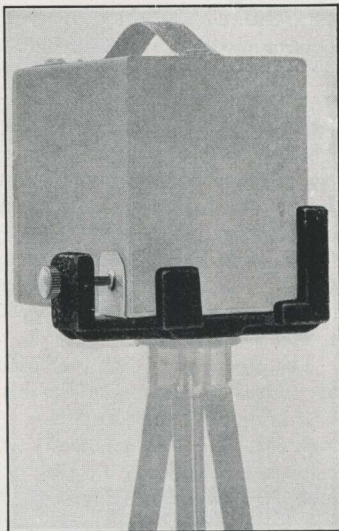
There are three models from which to choose. When closed, they range from 13 1/2 to 15 1/2 inches in length, so that even the largest is convenient to carry. Nos. 1 and 2 have revolving heads which permit the camera to be swung in any desired direction without moving the tripod itself. They also have straps to hold the legs in place when the tripod is not in use. For indoor use, the metal spurs of Kodak Metal Tripods may be covered with the special rubber tips available for this purpose.

DETAILS AND PRICES

	Sections	Length (inches)		Weight (ounces)	Price
		Closed	Extended		
Kodak Metal Tripod No. 0	3	15 1/2	39 1/2	15	\$2.75
Kodak Metal Tripod No. 1	4	15	48 1/2	24 1/2	4.50
Kodak Metal Tripod No. 2	5	13 1/2	49 1/2	25	5.00
Rubber Tips, for Metal Tripod Spurs (per set of 3)	.10				

KODAK TRIPOD ADAPTER

WITH the aid of this simple adapter, many cameras not equipped with tripod sockets can readily be used on a tripod. The one size will accommodate Six-16 and Six-20 Jiffy Kodaks, Six-16 and Six-20 Brownies, Six-16 and Six-20 Brownie Juniors. It is not recommended for molded cameras such as the Baby Brownie or Jiffy Kodak V.P.

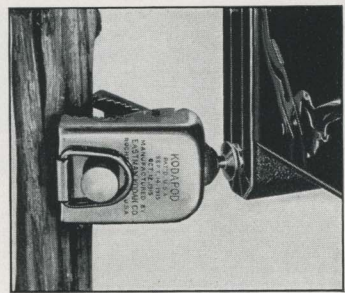


Made of aluminum, the Kodak Tripod Adapter is attractively finished in black crinkled japan. It has horizontal and vertical holes for the tripod screw, and the camera is held firmly in place by a clamp screw.

Kodak Tripod Adapter \$1.00

THE KODAPOD

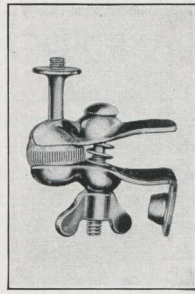
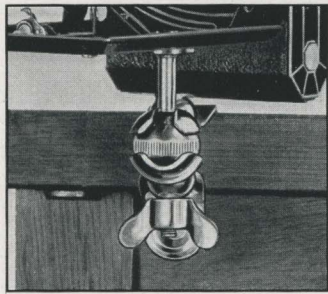
THE little Kodapod is an exceedingly handy arrangement, particularly suited for use in place of a tripod in outdoor photography. The toothed jaws firmly grip tree, fence, or other wooden object, while the other end threads into any standard tripod socket. A clamping screw adjusts the cam-



era to the correct position, where it is firmly held while the exposure is being made. The Kodapod is quickly attached and detached, and can be easily carried in a coat pocket when not in use. Strongly constructed, finished in nickel.

The Kodapod \$1.75

THE OPTIPOD



HERE is a neat little device—a combined tripod head and felt-lined clamp—frequently used instead of a tripod.

Used alone the Optipod clamps to any shelf, table, window ledge, running board or other support, and holds the camera firmly. It fits any standard tripod socket.

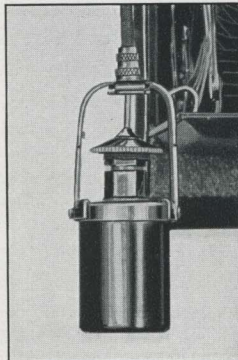
The ball-and-socket joint is a great convenience, since it permits tilting the camera to almost any angle. It is especially valuable when the Optipod is used with a tripod to photograph subjects so situated that it is impossible to place the tripod alone in the desired position.

The Optipod \$1.25

KODAK SELF TIMER

THIS accessory helps in making a really complete picture record. With it the photographer can make snapshots of himself or can include himself in group pictures. It can be used on any camera that takes a cable release. Clip a Kodak Self Timer to the cable release, set it for any interval from one-half second to one minute, and step into the picture. When the interval has elapsed, the plunger of the Timer automatically presses the button of the cable release and trips the shutter, making the exposure without further help from you.

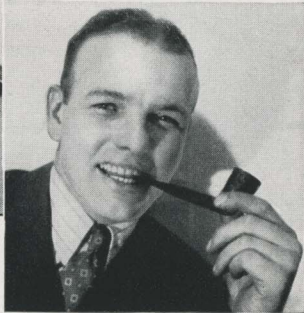
Kodak Self Timer . . \$1.25
 Cable Release (in purchasing, specify name of camera) . . . 35





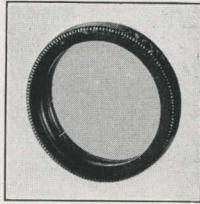
Slip a Kodak Portrait Attachment over your camera lens:

Then you're ready to make clear-cut close-ups like the one illustrated below



KODAK PORTRAIT ATTACHMENT

IF a subject is placed within arm's length of the ordinary hand camera, the result is likely to be a blurred image, because most lenses are not designed to take pictures at extremely short distances. But when you supplement your regular Kodak or Brownie lens with a Kodak Portrait Attachment, your camera is equipped to make "close-ups" of your family and friends, as well as clear-cut, close-range pictures of flowers, art objects, and still-life subjects in general.



It's all very easy, too. The attachment is quickly slipped over the regular lens and the camera is operated as usual, without any change in timing or shutter opening. Using the attachment simply keeps the focus sharp at close range, and results in images that almost fill the negative area.

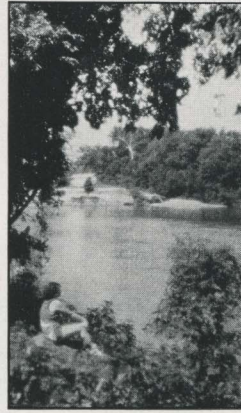


KODAK DIFFUSION PORTRAIT ATTACHMENT

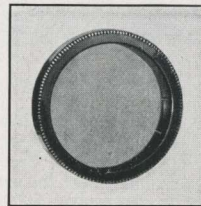
THE concentric lines polished into the surface of this attachment diffuse the light that reaches the lens. Besides giving large images like the regular Kodak Portrait Attachment, this little disk lends a charming softness—*atmosphere*—to pictures. It reduces sharp contrasts, softens chalky highlights, and blends harsh lines, so that pictures made with it take on the popular "soft focus" effect. Avoiding *extreme* diffusion, it gives genuinely artistic results.



KODAK PICTORIAL DIFFUSION DISK



A KODAK Pictorial Diffusion Disk does for landscapes what a Kodak Diffusion Portrait Attachment does for "close-ups." The concentric and radiating lines polished into its surface lend a pleasing softness, without loss of brilliancy, and without carrying the diffusion to the point of "fuzziness."



KODAK COLOR FILTER

THE Kodak Color Filter is valuable in photographing highly colored landscapes, flowers, art objects, etc. The dye in the filter holds back the strong blue and violet

rays, which affect the negative most quickly, and gives the weaker shades time to register. The resulting black-and-white picture renders all colors more nearly in the values which the eye gives them, and preserves much of the brilliancy that would otherwise be lost.

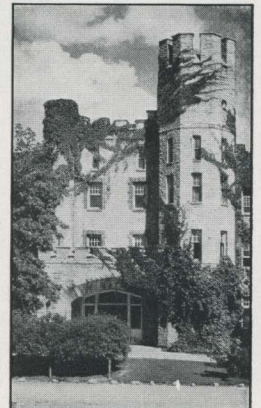
Like other Kodak lens attachments, the Color Filter can be attached instantly.



KODAK SKY FILTER

BRIGHT clouds and blue sky reflect much more light than the rest of an outdoor view. But the Kodak Sky Filter with its yellow-stained upper half holds back the light from the sky. This restrained light renders the clouds distinctly while the darker portions of the picture get the benefit of full exposure through the clear half of the attachment.

The Kodak Sky Filter slips readily over the camera lens.



FOR PRICES OF THESE ATTACHMENTS, SEE FOLLOWING PAGE

KODAK PORTRAIT AND DIFFUSION PORTRAIT ATTACHMENTS, PICTORIAL DIFFUSION DISKS, SKY AND COLOR FILTERS

(Listed only for cameras shown in this catalog. For attachments to be used on older models, see your dealer.)

	Order by this Number	Portrait Attach- ments	Diffusion Portrait Attach- ments	Pictorial Diffusion Disks	Sky or Color Filters
FOR JIFFY KODAKS					
V.P., Doublet lens	13	\$.75	\$1.25	\$1.75	\$1.15
Six-20, Twindar lens	6A	.75	1.50	2.50	1.15
Six-16, Twindar lens	7A	.75	1.50	2.50	1.50
FOR KODAK JUNIOR SIX-20					
Kodak Doublet lens	13	.75	1.25	1.75	1.15
Kodak Anastigmat f.6.3	13	.75	1.25	1.75	1.15
FOR KODAK JUNIOR SIX-16					
Kodak Doublet lens	13	.75	1.25	1.75	1.15
Kodak Anastigmat f.6.3	13	.75	1.25	1.75	1.15
FOR KODAK SIX-20					
Kodak Doublet lens	6A	.75	1.50	2.50	1.15
Kodak Anastigmat f.6.3	13	.75	1.25	1.75	1.15
Kodak Anastigmat f.4.5	7A	.75	1.50	2.50	1.50
FOR KODAK SIX-16					
Kodak Doublet lens	7A	.75	1.50	2.50	1.50
Kodak Anastigmat f.6.3	13	.75	1.25	1.75	1.15
Kodak Anastigmat f.4.5	7A	.75	1.50	2.50	1.50
FOR EUROPEAN-TYPE KODAKS					
Kodak Duo Six-20, Kodak Anastigmat f.3.5	17	.75	1.50	2.50	1.15
Kodak Recomar 18, Kodak Anastigmat f.4.5	5	.75	1.50	2.50	1.50
Kodak Recomar 33, Kodak Anastigmat f.4.5	16	5.00	3.30
Kodak Vollandia, f.3.5 or f.4.5 anastigmat lens (order attach- ments by number specified in camera manual)	13A 17	.75 .75 1.50 2.50	1.15 1.15
Kodak Retina, f.3.5 anastigmat lens	17	(See p. 26)	1.50	2.50	(See p. 26)
FOR BROWNIES					
Baby Brownie, meniscus lens	3	.75	1.25	1.15
Six-20 Brownie, Diway lens.	7A	.75	1.50	2.50	1.50
Six-20 Brownie Junior, meniscus lens	6A	.75	1.50	2.50	1.15
Six-16 Brownie, Diway lens.	7A	.75	1.50	2.50	1.50
Six-16 Brownie Junior, meniscus lens	7A	.75	1.50	2.50	1.50

KODAK FILM TANK

THIS outfit affords the easiest, most reliable means of developing roll film negatives. No experience is necessary, and no experimenting. Furthermore, no darkroom is required; the



whole process of developing can be done in daylight. By means of the light-tight box the film is transferred to a reel, being covered at the same time by a protecting apron. Reel, film, and apron are then immersed in the solution cup, and development is made according to the directions.

The Kodak Film Tank lends itself ideally to the development of Kodak Super Sensitive Panchromatic and Kodak Panatomic Films. Because of the extreme sensitivity of these materials, they must, after exposure, be handled in total darkness until they have been in the developer at least three minutes. (See instructions packed with each roll of film.) Kodak Film Tank's ingenious construc-

tion and method of operation make it the safest and surest device for the amateur's use in developing these films.

2 1/4-inch Kodak Film Tank, for films 2 1/4 inches wide or less	\$5.00
2 1/2-inch Kodak Film Tank, for films 2 1/2 inches wide or less	6.50
3 1/2-inch Kodak Film Tank, for films 3 1/2 inches wide or less	7.50
Kodak Tank Developer Powders, for 2 1/4-inch Tank, per 1/2 dozen.20
Ditto, for 2 1/2-inch or 3 1/2-inch Tank, per 1/2 dozen	.25
Kodak Acid Fixing Powder, per 1/4-lb., 1/2-lb., or 1-lb. package	\$.10, \$.15, \$.25

KODAK LENS CLEANER

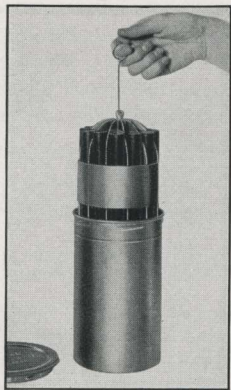
THIS product is far more than an ordinary glass cleaner. It was developed especially to prevent formation of the fungus that attacks photographic lenses in warm and humid weather, making them hazy and correspondingly inefficient. In addition it is a superior product for keeping lenses and lens attachments clean under all conditions. Its use once a month will assure a spotless lens—one that can be counted on for clear pictures. It will not affect the lens mount.



Kodak Lens Cleaner, 1-ounce bottle \$.20

KODAK FILM PACK TANK

A CONVENIENT means of developing any film pack. Films are loaded into a metal cage and immersed in a tank for development. The tank must be loaded in a darkroom. Kodak "SS" Panchromatic and Panatomic Packs must be handled in total darkness until developed for at least three minutes.



- No. 1 Tank, for twelve 1 3/4 x 2 3/8 or 2 1/4 x 3 1/4 films \$1.75
- No. 2 Tank, for twelve 2 1/2 x 4 1/4, 3 1/4 x 4 1/4, 3 x 5 1/4, 3 1/4 x 5 1/2, 4 x 5, or 9 x 12 (cm.) films 3.50
- No. 1 Developer Powders (package of 6 pairs)30
- No. 2 Developer Powders (package of 6 pairs)40
- Kodak Acid Fixing Powders, per 1/4-lb. package10

"HOW TO MAKE GOOD PICTURES"



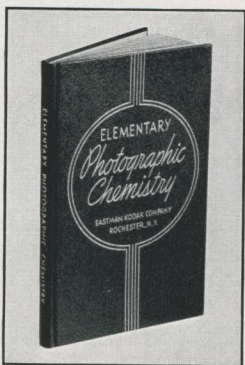
TWENTIETH EDITION, completely revised. 224 pages, profusely illustrated. Explains, in untechnical language, operation of cameras; developing, printing, enlarging, oil and water coloring; landscape, architectural, interior photography (including snapshots at night); home portraiture, etc. Every amateur photographer should own this famous book.

"How to Make Good Pictures" \$.50

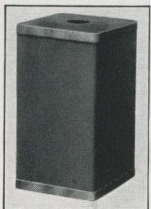
ELEMENTARY PHOTOGRAPHIC CHEMISTRY

INVALUABLE to practical photographers. Includes introduction to elementary chemistry, descriptions of important photographic chemicals, their properties and reactions. Features are a table of solubilities of common chemicals, preparation of solutions, and photographic formulas.

"Elementary Photographic Chemistry" \$1.00



KODAK CANDLE LAMP

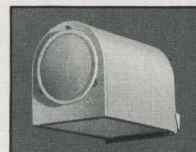


WHENEVER space is at a premium, or electricity not available, this little collapsible lamp can be used in the darkroom. It is made of ruby fabric and gives a light safe for photographic work (except with panchromatic materials).

Kodak Candle Lamp, 1 candle . \$.50
Extra Candles, per dozen60

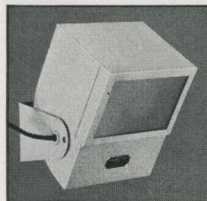
BROWNIE SAFELIGHT LAMP

THE Brownie Safelight Lamp, but little larger than the electric bulb it holds, screws into any electric socket. It is made of gray-lacquered metal, and has safelights at the end and at the front (both Series 2, unless otherwise specified).



Brownie Safelight Lamp, without 10-watt bulb . \$1.75
Extra Circular End Safelight (any series), each25
Extra Rectangular Safelight (any series), each40

KODAK SAFELIGHT LAMP



THIS lamp is ideal for all darkroom uses. With its new adjustable bracket—by which it can be swung in an arc of almost 180°—it is suited to the work of the beginner, the advanced amateur, or the professional. It is regularly supplied with a 5 x 7 Series 2 Safelight (for use with all films

or plates except panchromatic), electric cord, and fittings.
Kodak Safelight Lamp, without 25-watt bulb . \$4.00
Extra Safelight, 5 x 7, any series75

EASTMAN SAFELIGHT LAMP

SUSPENDED from an electric cord or fixture, the Eastman Safelight Lamp throws the light directly downward over the work table. Regularly supplied with 5 x 7 Series 2 Safelight, for use with all films or plates, except panchromatic.



Eastman Safelight Lamp, without 10-watt bulb . \$3.00
Extra Safelight, any series75

EXTRA SAFELIGHTS

SERIES O—Orange, for bromide paper, lantern slide plates.
SERIES OA—Greenish-yellow, for bromide paper, lantern slide plates.

SERIES OO—For developing-out papers (except bromide).

SERIES 1—For films or plates not highly color-sensitive.

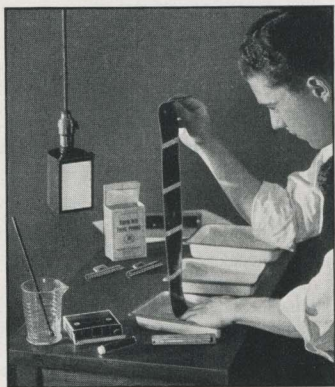
SERIES 2—For use with Kodak Verichrome Film and extra-rapid orthochromatic films and plates.

SERIES 3—For Kodak "SS" Film, Kodak Panatomic Film, and other panchromatic films and plates.

Any Series, for Eastman and Kodak Safelight Lamps \$.75
For Brownie Safelight Lamp, circular25
For Brownie Safelight Lamp, rectangular40
Safelight for Kodak Super Sensitive Panchromatic and Kodak Panatomic Films—Because of the extreme sensitivity of Kodak Super Sensitive Panchromatic Film and Film Packs, and the panchromatic qualities of Kodak Panatomic Film, finishing of these materials must proceed in total darkness until the film has been in the developer not less than three minutes. It may then be examined under a Safelight Lamp fitted with Series 3 Safelight and 10-watt bulb. The lamp must be six feet or more from the film.

KODAK DARKROOM OUTFITS

A CORNER of the basement, a big closet, an attic room—any of these provides a home darkroom where you can have the fun of developing and printing your own pictures with one of these outfits.



KODAK DARKROOM OUTFIT NO. 1

THIS outfit is particularly valuable to advanced amateurs, and can also be used as a basis for permanent darkroom equipment by Boy Scouts, camera clubs, etc. It includes a Brownie Safelight Lamp (with Series 2 Safelight, unless otherwise specified), 10-watt Mazda Bulb, Kodak Auto-Mask Printing Frame, two 4 x 6 Enamelled Trays, 5 x 7 Enamelled Tray, 8-ounce Eastko Graduate, Hard Rubber Stirring Rod, Eastman Thermometer, 1 pair 3 1/2-inch Eastman Film Developing Clips, 6 blotters (size 9 1/2 x 12 inches), 1 package (5 tubes) Eastman M.Q. Developer, 1 package (5 tubes) Eastman Film and Plate Developer, 1 pound Kodak Acid Fixing Powder, instruction booklet, and the most informative book on amateur photography—"How to Make Good Pictures."

Outfit No. 1, complete, packed in black fiber case. \$8.75

KODAK DARKROOM OUTFIT NO. 2

MANY beginners in photography find their greatest joy, not in snapping pictures, but in developing and printing them. Kodak Darkroom Outfit No. 2, surprisingly complete considering its price, provides means for performing these steps efficiently and economically. The outfit includes one Ruby Lamp, a 3 1/4 x 5 1/2-inch Eastman Printing Frame, a 4-ounce Eastko Graduate, a pair of 3 1/2-inch Eastman Film Developing Clips, three 4 x 6-inch Trays, a Special Tray Thermometer, an 8-inch Glass Stirring Rod, five tubes Eastman Universal Developer, 1/2-pound Kodak Acid Fixing Powder, and an instruction booklet.

Outfit No. 2, complete, packed in carton. . . . \$3.25

DEVELOPING AND PRINTING OUTFITS



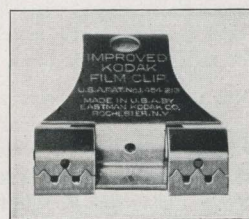
A CHOICE of two outfits that provide reliable and inexpensive assortments of materials for developing and printing. Being assembled in large numbers, they can be offered at prices considerably lower than the total retail values of the separate items. See listings at top of next column.

The Eastman 3A Outfit consists of a Kodak Candle Lamp, Printing Frame, glass for Frame, 4-ounce Graduate, Stirring Rod, 4 Developing Trays, 5 tubes Eastman Universal Developer, 1/2 pound Kodak Acid Fixing Powder, 2 dozen 3 1/4 x 5 1/2-inch Velox Paper, instruction booklet.

Eastman 3A Outfit, complete, neatly packed . . . \$2.00
 Eastman ABC Outfit, similar to 3A, but providing for 4 x 5-inch or smaller pictures 2.00

IMPROVED KODAK FILM CLIP

A STURDY, dependable clip made in two styles of non-corrosive metal. One style is used in suspending the film from a support. The other can be attached to the lower edge of the film, a lead weight keeping the film taut. Both styles have 2-inch jaws. Drainage holes prevent water from collecting and eliminate the danger of streaking dried films.



Improved Kodak Film Clip, without lead weight . . . \$.35
 Improved Kodak Film Clip, with lead weight45

KODAK JUNIOR FILM CLIP

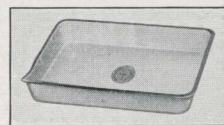


TWO teeth in the jaw of this clip remove all possibility of slipping. The clip is made in one size only, 1 3/16 inches wide, of stainless steel, and is equally practical for tray development or for drying films.

Kodak Junior Film Clip \$.15

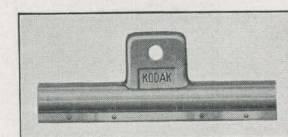
DEVELOPING TRAYS

TWO types are offered—composition and enamelled. Both are carefully selected as to quality.



"Bull's Eye" (Composition)		Eastman Enamelled
3 1/4 x 4 1/4 . . . \$.30	4 x 6 . . . \$.45	4 x 6 . . . \$.60
4 x 540	5 x 880	5 x 775

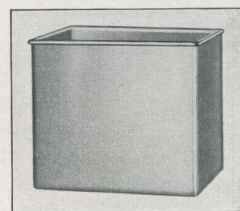
EASTMAN FILM DEVELOPING CLIP



A STRONG, convenient, dependable clip. Suitable for tray development or drying of films.
 3 1/2-inch, per pair . \$.30

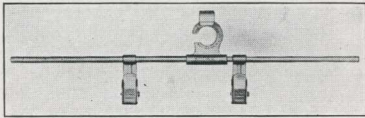
KODAK DEVELOPING BOX, No. 1

THIS tank provides a swift, easy means for the uniform development of cut film. It has a capacity of twelve films, each suspended in the solution from a Kodak Cut Film Developing Hanger (see top of next page). The tank is strongly and durably made of acid-resisting metal. It measures 4 5/8 x 5 1/4 x 6 inches.



Kodak Developing Box, No. 1, without hangers . \$2.50

KODAK CUT FILM DEVELOPING HANGER



DURABLE hangers, sufficiently long to lie across top of Kodak Developing Box No. 1.

Kodak Cut Film Developing Hangers, each . . . \$.30

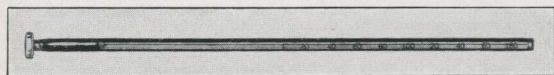
EASTMAN THERMOMETER

ESPECIALLY convenient in tank or tray development. Can be suspended in solutions. Curved back fits corner of a developing tank.



Eastman Thermometer \$.90

THERMOMETER STIRRING ROD

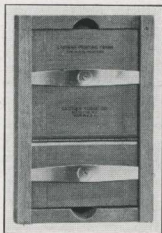


THIS rod can be used to record the temperature of solutions, to stir them, and to crush lumpy powders.

Thermometer Stirring Rod \$1.25

EASTMAN PRINTING FRAMES

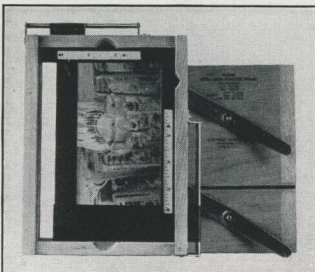
THESE frames have a two-section hinged back, with clamps to hold negative and paper firmly. Construction, of beech, assures rigidity and long life. Supplied without glass.



- For 2 1/4 x 3 1/4-inch plates and V.P.K. or smaller film negatives \$.50
- For 2 1/2 x 4 1/4-inch or smaller film negatives50
- For 3 1/4 x 4 1/4-inch plates and 2 1/4 x 3 1/4-inch or smaller film negatives55
- For 3 1/4 x 5 1/2-inch or smaller film negatives60
- For 3 1/4 x 5 1/2-inch plates45
- For 4 x 5-inch plates or films.60
- For 5 x 7-inch plates or films.70
- Glass for above frames, per sheet05

KODAK AUTO-MASK PRINTING FRAME

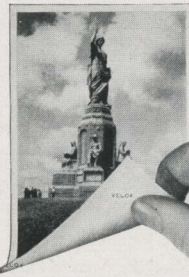
CAN be used in printing from any negatives of amateur size: 4 x 5, 3 1/4 x 5 1/2 inches, or smaller. Has two slides, adjusted from the outside, forming an accurate mask of whatever size is desired. Any number of uniformly masked prints can be made without further adjustment.



Kodak Auto-Mask Printing Frame . \$1.50

VELOX PAPER

"LOOK FOR VELOX ON THE BACK"



Velox prints are identifiable by the name "Velox" tinted lightly on the back

VELOX is a non-abrasion developing-out paper ideal for amateur work. It takes into account the fact that amateur pictures are made under greatly varying light conditions, its four degrees of contrast fitting every type of amateur exposure. If the negative is at all printable, some one of these four degrees will give the proper and most pleasing rendering of highlights and shadows. Velox is also supplied in two surfaces, affording a choice in the matter of finish.

GRADE	SURFACE	CONTRAST			
Velvet Velox	Semi-Gloss	1	2	3	4
Glossy Velox	Enameled	1	2	3	4

SIZES IN INCHES	PRICES	
	2 Dozen	1 Gross
1 7/8 x 2 3/4 (for 1 5/8 x 2 1/2 negatives) . . .	\$.25	\$.85
2 1/2 x 3 1/2 (for 2 1/4 x 3 3/4 negatives)35	1.20
2 3/4 x 4 1/2 (for 2 1/2 x 4 1/4 negatives)35	1.50
3 1/2 x 4 1/2 (for 3 1/4 x 4 1/4 negatives)40	1.85
3 1/8 x 5 1/8 (for 2 7/8 x 4 7/8 negatives)40	1.95
3 1/2 x 5 3/4 (for 3 1/4 x 5 1/2 negatives)50	2.35

Velox is also available in exact negative sizes (except Vest Pocket)

KODAK AMATEUR PRINTER

FOR quick and convenient contact printing the amateur can choose no better means than this compact device.

It fits negatives from 1 5/8 x 2 1/2 to 4 x 5 or 3 1/4 x 5 1/2 inches. The negative to be printed is placed on the top glass window by the light of a red bulb inside the printer. A simple masking arrangement controls the white margins. The paper is placed over the negative and the hinged frame closed. This automatically turns on a 60-watt electric lamp (not supplied).



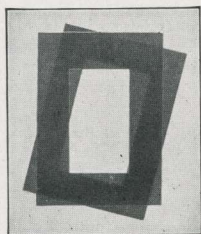
The printer is supplied with 5 1/2 feet of electric cord with plug attached, and one red bulb. By simply inserting an ordinary 60-watt lamp the printer is made ready for instant use.

Thousands of amateurs can attest to the efficiency of this inexpensive printer.

Kodak Amateur Printer . \$12.00

Compliments of the Digitized Kodak Catalog Project: 1886 - 1941

KODALOID PRINTING MASKS



THESE masks, orange-red in color, have openings of various convenient sizes. Their transparency enables the user to see clearly the portions of the picture which are being masked off.

Masking sizes supplied—With 3 3/4 x 6 outside dimensions: 1 1/8 x 1 1/2, 1 1/2 x 2 3/8, 2 1/8 x 2 1/8, 2 1/8 x 3 1/8, 2 3/8 x 4 1/8, 3 1/8 x 3 1/8, 2 15/16 x 3 15/16, 3 1/16 x 4 1/16, 2 3/4 x 4 3/4. With 4 x 5 outside dimensions: 1 1/2 x 2 3/8, 2 1/8 x 3 1/8, 2 3/8 x 4 1/8, 3 1/8 x 3 1/8, 2 15/16 x 3 15/16, 3 1/16 x 4 1/16. With 4 x 6 outside dimensions: 1 1/8 x 1 1/2, 1 1/2 x 2 1/8. With 5 x 7 outside dimensions: 2 3/4 x 4 3/4, 3 1/8 x 5 3/8, 3 15/16 x 4 15/16, 2 7/8 x 5 1/8, 3 1/2 x 4 1/2, 3 1/8 x 4 5/16.

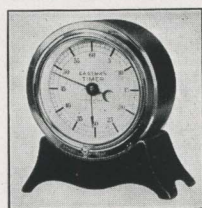
Kodaloid Printing Masks, any size, each . . . \$.15

EASTMAN MASK CHARTS

THESE charts provide the picture taker with the means of cutting out his own printing masks. Limits of any mask desired are quickly determined by means of imprinted horizontal and vertical lines.



Eastman Mask Charts, 5 x 7 inches, per dozen . . \$.15
 Ditto, 8 x 10 inches, per dozen 25
 Ditto, 11 x 14 inches, per dozen 45



EASTMAN TIMER

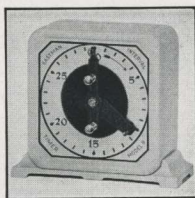
WITH this precise clocking device it is easy to secure accurate timing of exposures in printing. Both minute and second hands may be reset instantly.

Eastman Timer \$5.00

EASTMAN INTERVAL TIMER, MODEL B

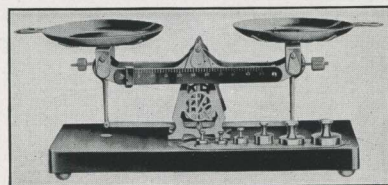
ADJUSTING indicator automatically winds mechanism. At end of interval a bell rings. Very useful in developing and fixing, or in making long exposures. Adjustable stop for repeat timings.

Eastman Interval Timer . \$5.00



EASTMAN STUDIO SCALES

AN ideal weighing instrument for all photographers who mix their own chemicals. Made of finest nicked steel and mounted on a mahogany-finished base, 9 inches long. Supplied with weights and markings in either the avoirdupois or metric system (specify system wanted). A graduated beam provides for minor weights. Larger quantities are weighed by means of accurately turned metal pan weights.



Eastman Studio Scales \$4.50

EASTMAN TESTED CHEMICALS



CERTAINTY of good results in making negatives and prints depends as much on the quality of your chemicals as on any other one thing. All of the chemicals listed below are carefully tested before the E. K. C. seal is affixed.

Acid, Acetic, 28 per cent C.P.—pound bottle	\$.30
Acid, Citric—four-ounce bottle38
Acid, Eastman Pyrogallic—ounce bottle32
Acid Fixing Powder, Kodak—pound package25
Acid Fixing Powder, Kodak—half-pound package15
Acid Fixing Powder, Kodak—quarter-pound package10
Alum, Potassium, fine granular—pound16
D-76 Fine Grain Borax Developer—in cans sufficient to make: one quart, \$.25;	
half gallon, \$.35; one gallon60
Elon—ounce48
Film and Plate Developer, Eastman—carton of 5 glass tubes35
Hydroquinone—ounce can20
Hydroquinone Developer Powders, Eastman—half dozen30
Hydroquinone Developer Powders, Eastman, in sealed glass tubes—package of	
five powders35
Intensifier, Eastman (Chromium)—glass tube15
Kodolon—ounce40
M. Q. Developer, Eastman—package of five tubes30
Nepera Solution, 4-ounce bottle, \$.28; 16-ounce bottle84
Potassium Bromide, granular—ounce can12
Pyro Developer Powders, Eastman—half dozen30
Pyro Developer Powders, Eastman, 5 glass tubes30
Re-developer, Velox, package of twelve tubes	1.08
Reducer and Stain Remover, Eastman—box of five tubes50
Sodium Carbonate, Eastman Tested (desiccated)—pound bottle35
Sodium Sulphate, Eastman Tested (desiccated)—pound bottle39
Sodium Thiosulphate (hypo), granular—pound18
Special Developer Powders, Eastman—half dozen30
Special Developer Powders, Eastman, 5 glass tubes35
Tropical Developer, Eastman, 5 glass tubes40
Universal Developer, Eastman (for all films, plates, and papers)—carton of	
five glass tubes35
Velox Liquid Hardener, 4-oz. bottle, \$.25; 8-oz. bottle35

(A few of these prices are slightly higher west of the Rocky Mts. For Tank Developer Chemicals, see pages 32, 33.)

KODAK HOME ENLARGER

A SIMPLE enlarger, particularly adapted to the beginner. It takes negatives from half-vest pocket size up to and including 3 1/4 x 4 1/4-inch and 9 x 12-centimeter. A 3 1/4 x 5 1/2-inch negative will fit in the holder but only 4 1/2 inches of its length can be enlarged. Enlargements up to 11 x 14 inches can be made; up to 5 x 7 from half-vest pocket negatives, and proportionate enlargements from larger-sized negatives. Exact-size prints by projection also can be made. The lens assures good definition and even illumination of the entire field.



Kodak Home Enlarger, with Kodar 98 mm. lens, negative holder, paper holder (but without 60-watt lamp) \$16.50



KODAK AUTO-FOCUS ENLARGER, MODEL B

THIS enlarger supplies an easy, efficient means of making enlargements. It can be clamped to any table, and is notable for the fact that it focuses itself. As the projector is moved up or down to form the desired image, a cam-

and-lever arrangement keeps the focus critically sharp. The Kodak Anastigmat lens assures big prints of finest quality. The outfit includes an all-metal paper holder, with clamps and a felt-covered bottom. The enlarger negative holder has an opening 4 x 6 inches, and is adaptable to film or plate negatives. They can be enlarged from 1½ to 3½ diameters. Prints approximately 11 x 18½ inches can be made from a 3¼ x 5½ negative; and prints 5¼ x 8¼ inches from a "vest pocket" negative. The ventilated lamphouse holds a Mazda Photoflood lamp. Switches provide two degrees of illumination.

- Kodak Auto-Focus Enlarger, Model B, with Kodak Anastigmat Lens, electric cord and plug, Photoflood lamp, set of seven flexible metal masks, paper holder \$40.00
- Paper Holder only. 7.50
- Diffusing Disc for soft-focus effects 1.00
- Adapter, 100-125 volts, to permit use of Photoflood in old-style Auto-Focus Enlarger 8.00
- Kodak Enlarger Paper-Cabinet Base (see description under Kodak Miniature Enlarger) 10.00

KODAK MINIATURE ENLARGER



WITH this new enlarger the sharp little pictures made by miniature cameras can be enlarged from 2½ to as much as 10 diameters—100 times their original negative area. The enlarger combines utmost capability and convenience. Negative capacity, up to 2¼ x 2½ inches (or 2¼ x 3¼ inches, masking off a 2¼ x 2½-inch area). Gives prints up to 16 x 24

inches from 1⅝ x 2½ negatives, 11 x 14 from 1⅜ x 1⅜ negatives, 9¼ x 14 from 1 x 1½-inch negatives. Head held by positive thumbscrew. Focusing by easy turn of lens barrel. Kodak Anastigmat lens f.4.5, giving beautiful all-over sharpness, even at maximum enlargement. Photoflood lamp, switches, and rheostat give two degrees of

illumination. Special diffusing, heat-absorbing, and safe-light glass discs. Sturdy, convenient Masking Paper Holder has sliding, graduated masking arms on hinged metal frame. Removable "L"-shaped mask provides secondary masking device. Kodak Enlarger Paper-Cabinet Base makes enlarger self-contained unit, independent of table. Has compartments for 5 x 7, 8 x 10, 11 x 14 paper, etc. Base can be used also with Kodak Auto-Focus Enlarger.

- Kodak Miniature Enlarger Outfit, including rheostat standard, enlarger head, f.4.5 Kodak Anastigmat lens, Photoflood lamp, electric cord, plug, and Masking Paper Holder \$67.50
- Without Masking Paper Holder 52.50

- Enlarging Assembly only, for use on standard of Kodak Auto-Focus Enlarger, Model B, or older models adapted to take Photoflood lamp (enlarges up to 8 diameters) 35.00
- Masking Paper Holder 17.50
- Kodak Enlarger Paper-Cabinet Base 10.00

EASTMAN ENLARGING PAPERS

THESE bromide enlarging papers give unsurpassed quality, offer a variety of effects, and are as easy to use as Velox.

Eastman Portrait Bromide is particularly adapted to enlargements from portrait negatives. It is also ideal for enlarging pictures of landscapes and interiors, when it is desired to produce prints that are brilliant but that have a long scale of tones rather than strong contrasts. Surfaces and colors: D (white) Rough Lustre; E (buff) Rough Lustre.

P. M. C. Bromide is a paper of excellent all-around quality. It is supplied in eleven different grades, some of them single weight and others double weight. There is a variety of stocks and surfaces, and some of the grades are made in four degrees of contrast. P. M. C. can, therefore, be counted on to suit every taste and requirement.

MISCELLANEOUS SUPPLIES

- Ferrotypes Plates, Special (for making glossy prints), 10 x 14, light \$ 20
- Ditto, 10 x 14, heavy 30
- Kodacoat Paint (special black paint for making trays and tanks of wood, tin, etc., chemical-proof—½-pint, \$.45; 1 pint 75
- Opaque, Eastman Universal (for blocking-out purposes, on films or plates)—No. 1 jar 25
- Rubber Finger Tips, set of 3 15
- Rubber Focusing Cloth, per yard. 1.00
- Spotting Colors, Eastman (consist of three colors—black, white, and sepia), per set. 25
- Squeegee, Eastman Special, 8-inch (for use with ferrotypes plates, to squeegee prints into contact). 1.25
- Stirring Rod, Hard Rubber (acid- and chemical-proof) 25

VELOX WATER COLOR OUTFIT

PHOTOGRAPHIC prints, lantern slides, and even ordinary magazine pictures can be colored easily, artistically, by using Velox Water Colors. The outfit consists of three brushes and a booklet containing twelve leaves of different colors as well as complete instructions. Each leaf is divided into twenty-six detachable, soluble color stamps. The inside cover of the case serves as a mixing palette.

- Velox Water Color Outfit (book of water color stamps, three special brushes, case). \$1.00
- Book of Water Color Stamps, 12 colors50
- Separate Color Leaves, per sheet04
- Set of three Special Brushes50

Compliments of the Digitized Kodak Catalog Project: 1886 - 1941

KODAK TRANSPARENT OIL COLOR OUTFIT

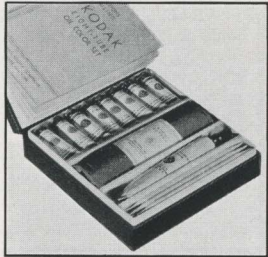


A **SPLENDID** means of coloring photographs. The pigments are of the highest quality and are ground extremely fine to give complete smoothness. They contain no element that might affect photographic prints. Fifteen standard colors, which, when mixed according to the chart supplied, produce almost any tint or shade. They have strength, brilliance, and permanence equal to the standards for artists' oil colors. Complete outfit also includes sizing fluid, cleaning fluid for margins, transparent medium for thinning, stump cotton, applicators (skewers), and instruction book.

- Kodak Transparent Oil Color Outfit (complete, in decorative lacquered box) \$3.75
- Refill Set of 15 No. 2 size Tubes of Oil Colors only, with Instruction Book 2.60
- Kodak Transparent Oil Colors, No. 2 size, per tube, any color.20
- Transparent Thinning Medium, No. 4A size, per tube35
- Sizing Fluid, per 1-oz. bottle20
- Cleaning Fluid, per 1-oz. bottle20
- Stump Cotton, per package15
- Skewers, per dozen20
- Instruction Book only10

KODAK EIGHT-TUBE OIL COLOR SET

A **SMALLER** outfit than the one described above, but thoroughly practical. Contains eight tubes of standard colors, transparent thinning medium, stump cotton, applicators, and an instruction book which tells exactly how to use the materials.



- Kodak Eight-Tube Oil Color Set (complete, in attractive box). \$2.00

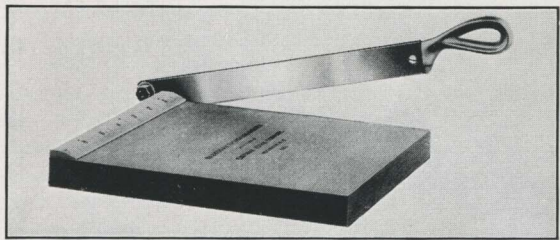
KODAK PHOTO BLOTTER ROLL

AN efficient and ingenious device for drying velvet and matte-surfaced prints or enlargements. One of the two rolls of white blotting paper included has a linen lining, against which the emulsion side of the prints is placed. A strip of corrugated board helps to circulate air through the roll. Dimensions, 11 1/2 inches by 6 feet. Capacity, about 60 prints.



- Kodak Photo Blotter Roll. \$1.50

KODAK TRIMMING BOARDS



STAUNCHLY constructed, with boards of hard wood, blades of fine quality steel, and rules plainly marked.

- No. 1, capacity 5 x 5 inches \$1.00
- No. 2, capacity 7 x 7 inches 1.25

KODAK DRY MOUNTING TISSUE

FIX tissue on the print, lay both on the mount, and press with a warm flat-iron. Heat causes the tissue to fuse, giving perfect contact.



- 1 gross sheets for 2 1/4 x 3 1/4 prints \$.25
- 1 gross sheets for prints up to 3 1/4 x 4 1/430
- 2 dozen sheets for 3 1/4 x 5 1/2 prints15

KODAK PHOTO PASTE



AN excellent white adhesive for mounting prints. It will not bleach or discolor them.

- 1 1/8-ounce tube. \$.10
- 2-ounce tube . . .15

EASTMAN PHOTO PASTE

A **HIGH** quality paste, useful for mounting pictures, and also for general household purposes. It is white in color, of uniform consistency, and will neither discolor nor cockle photographic prints.

- 4-ounce jar. \$.25



KODAK LIQUID GLUE

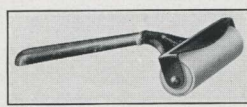


THE **QUICKEST** means of mounting photographic prints. Will not discolor or cockle them.

- Per tube . . . \$.15

FLEXO PRINT ROLLER

FOUR-inch rubber roll, in black metal frame. Price, \$.35.



KODAK PRINT ROLLER



A **HIGHLY** convenient roller, with nickeled frame and six-inch, durable rubber rolls.

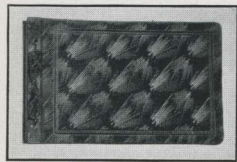
- Kodak Print Roller . . . \$1.50

LIBRARY ALBUMS

MODERN albums in book form, readily placed in the book-case when not in use. The words "Kodak Library" are stamped in gold on the rounded back. Choice of covers: genuine seal-grain black leather, with pressed book design, or *de luxe* grained material, with exclusive design and artistic coloring. Loose-leaf arrangement for holding the 50 black leaves is inside cover so that there are no projections to mar the table or desk on which the album may be placed.



B, Genuine Black Leather Cover, $6\frac{1}{2} \times 9$ (size of leaf from folding edge) . . \$3.00
M, *De Luxe* Grained Cover, $6\frac{1}{2} \times 9$ (size of leaf from folding edge) 2.00
Extra leaves, package of 12, Size L, \$.18



KODAK ALBUMS

LOOSE-LEAF, open-back style. Genuine black leather cover, in choice of pine needle or pearl grain morocco finish. Fifty black, round-cornered

leaves, held in place with silk-finished cord through cover and metal tubes. The unusual covers must be seen in order to be appreciated.

7 x 11, PB, Pine Needle . . . \$3.00 TB, Pearl Grain Morocco . . . \$3.00
10 x 12, PC, Pine Needle . . . 4.50 TC, Pearl Grain Morocco . . . 4.50
11 x 14, PD, Pine Needle . . . 5.00 TD, Pearl Grain Morocco . . . 5.00

Package of 12 extra leaves, Size B (7 x 11), \$1.8;
Size C (10 x 12), \$3.0; Size E (11 x 14), \$4.0

JUNO ALBUMS

LOOSE-LEAF, open-back style. Fifty black leaves held in place by metal tubing and cord through covers. Embossed, English-grain cover, in choice of brown or black. The word "Photographs" is stamped in gilt on the front. A conservatively styled and modestly priced album that never fails to please.

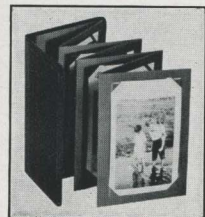


5 x 8, BA, brown or CA, black. \$.90 10 x 12, BC, brown or CC, black. \$2.00
7 x 11, BB, brown or CB, black 1.25 11 x 14, BD, brown or CD, black 2.25

Package of 12 extra leaves, Size A (5 x 8), \$1.5; Size B (7 x 11), \$1.8;
Size C (10 x 12), \$3.0; Size E (11 x 14), \$4.0

SIMPLEX POCKET PHOTO CASES

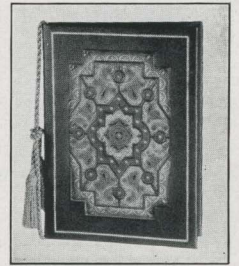
A LIGHT-WEIGHT case that will hold your prized pictures of the home, children, etc., and that will fit your coat pocket or handbag. It keeps prints clean and quickly accessible. The container has the Simplex die-cut slots, so that standard-sized prints are easily inserted—and quickly taken out when they are to be placed in an album. Each case holds 12 prints on an accordion-like, folded leaf. The cover is made of black levant-grain material.



No.	Standard size of trimmed print	Price each
127A	For 12 $1\frac{1}{8} \times 2\frac{3}{4}$ Prints	\$.20
120A	For 12 $2\frac{1}{2} \times 3\frac{1}{2}$ Prints	.25
116A	For 12 $2\frac{3}{4} \times 4\frac{1}{2}$ Prints	.25
118A	For 12 $3\frac{1}{2} \times 4\frac{1}{2}$ Prints	.30
130A	For 12 $3\frac{3}{8} \times 5\frac{1}{2}$ Prints	.30
122A	For 12 $3\frac{1}{2} \times 5\frac{3}{4}$ Prints	.30

SIMPLEX FOLIOS

A NEW note in albums. Large, four-page leaves slip between the heavy tasseled cord and cover. No pasting, tying, or untying is necessary, except in the case of odd-sized prints. Of the leaves listed, all but one have die-cut slots, to hold standard-sized prints. Choice of four covers. Practical—a folio to hold in one container the different-sized pictures made by you and your friends. Incidentally, these folios make ideal gifts. The following prices do not include leaves.

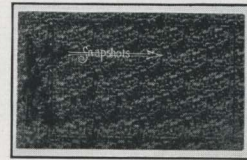


A, Blue Squirrel-finished Cover, \$2.50
E, Black Morocco-finished, Genuine Leather Cover, Multi-toned Florentine Design . . . 7.50
B, Maroon Grained Cover . . \$2.50
F, Black Morocco Leather Cover, with Genuine Gold Line Tooling 5.00

All leaves are the same outside size, and sell at \$1.20 per carton of 12. With one exception, the numbers below correspond to Kodak Film numbers ("H" for horizontal prints; "V" for vertical prints).

No.	Standard Size of Trimmed Print	Leaf—4 pages—will hold
127H	$1\frac{1}{8} \times 2\frac{3}{4}$ inches	32 Prints, Horizontal
127V	$1\frac{1}{8} \times 2\frac{3}{4}$ inches	36 Prints, Vertical
120H	$2\frac{1}{2} \times 3\frac{1}{2}$ inches	24 Prints, Horizontal
120V	$2\frac{1}{2} \times 3\frac{1}{2}$ inches	24 Prints, Vertical
116H	$2\frac{3}{4} \times 4\frac{1}{2}$ inches	12 Prints, Horizontal
116V	$2\frac{3}{4} \times 4\frac{1}{2}$ inches	16 Prints, Vertical
118H	$3\frac{1}{2} \times 4\frac{1}{2}$ inches	12 Prints, Horizontal
118V	$3\frac{1}{2} \times 4\frac{1}{2}$ inches	16 Prints, Vertical
130H	$3\frac{3}{8} \times 5\frac{1}{2}$ inches	12 Prints, Horizontal
130V	$3\frac{3}{8} \times 5\frac{1}{2}$ inches	16 Prints, Vertical
122H	$3\frac{1}{2} \times 5\frac{3}{4}$ inches	12 Prints, Horizontal
122V	$3\frac{1}{2} \times 5\frac{3}{4}$ inches	16 Prints, Vertical
PI	Plain Leaf for pasting or dry-mounting odd-sized prints	

NEW BRIGHTON ALBUMS



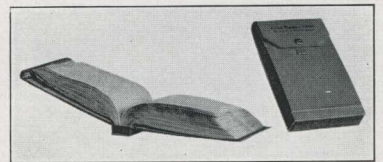
HERE is a moderately priced album. Cover offered in choice of two colors of a sparkling embossed book cloth. Leaves are black—of good quality—held in place by tubes and cord through cover. Cover is

stamped in gilt with the word "Snapshots." This album is unusually good-looking in either of the two colors offered, and will stand long wear. It is an extremely good value, especially at the prices listed. 50 leaves per album.

5 x 8—A-1, Green; A-2, Maroon \$.75
7 x 11—B-1, Green; B-2, Maroon 1.00
10 x 12—C-1, Green; C-2, Maroon 1.50
11 x 14—D-1, Green; D-2, Maroon 1.75
Package of 12 extra leaves, Size A (5 x 8), \$1.5; Size B (7 x 11), \$1.8; Size C (10 x 12), \$3.0; Size E (11 x 14), \$4.0

KODAK NEGATIVE ALBUMS

ENABLE the picture taker to store film negatives in transparent envelopes, where they can be viewed without handling. They are ready for reprints, safe from loss or damage. Each album holds 100 negatives (except the first one, which holds 200), and includes a page for indexing subjects.



For 200 negatives, $1\frac{1}{8} \times 1\frac{1}{8}$, in strips of 4 \$1.25
For 100 negatives, $1\frac{1}{2} \times 2\frac{1}{2}$ 1.25
For 100 negatives, $2\frac{1}{2} \times 3\frac{1}{4}$ 1.25
For 100 negatives, $2\frac{1}{2} \times 4\frac{1}{4}$ 1.25
For 100 negatives, $3\frac{1}{4} \times 4\frac{1}{4}$ \$1.25
For 100 negatives, 4 x 5 1.50
For 100 negatives, $3\frac{1}{4} \times 5\frac{1}{2}$ 1.50
For 100 negatives, 5 x 7 2.00

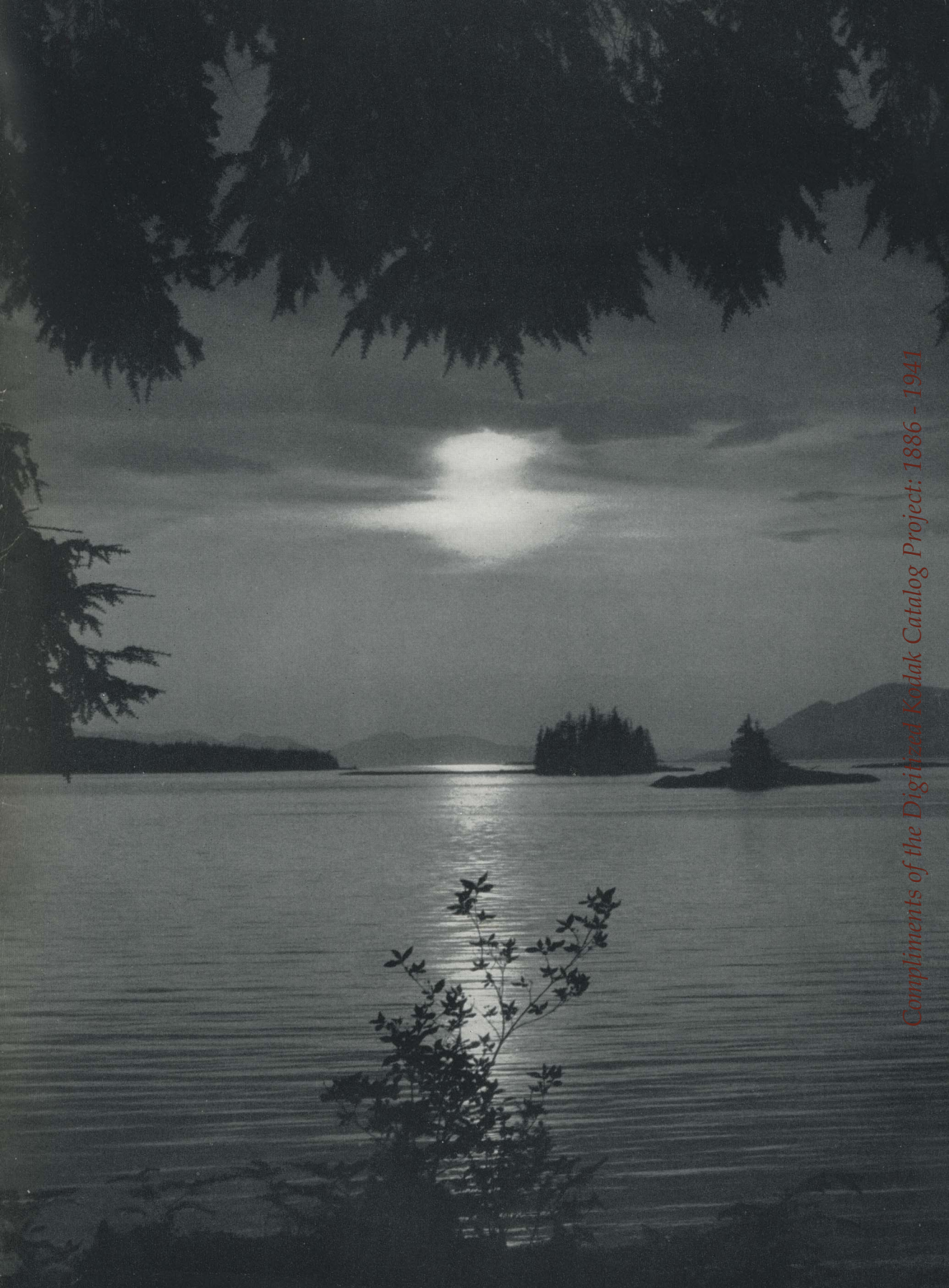
INDEX

	Page		Page		Page
A		F		V	
Adapter, Tripod	30	Finger Tips, Rubber	37	Velox Paper	35
Album Leaves	39	Focusing Cloth, Rubber	37	Velox Water Colors	37
Albums for Negatives	39	Frames, Printing	35	Verichrome Film Packs	28
Albums for Prints	39	G		Verichrome Roll Film	28
Anastigmat Lenses	23	Glue, Kodak Liquid	38	W	
Attachments, Portrait and Diffusion Portrait	31	H		Water Colors, Velox	37
Auto-Focus Enlarger	37	Hangers, Developing	35		
B		Holders, Combination Plate and Film	29		
Blotter Roll, Photo	38	Holders, Paper, for Enlargers	37		
Brownies:		Home Enlarger	36		
Six-16 and Six-20	18, 27	Home Movies	21, 22		
Six-16 and Six-20 Juniors	19, 27	"How to Make Good Pictures"	33		
Baby Brownie	20, 27	I			
Brushes, for Water Colors	37	Interval Timer	36		
C		K			
Cable Releases	30	Kodacoat Paint	37		
Camera Supports	30	Kodaflector	29		
Candle Lamp	33	Kodaks:			
Candles for Candle Lamp	33	Duo Six-20	13, 25		
Carrying Cases for Cameras (listed with cameras)		Jiffy Six-16 and Six-20	5, 24		
Cases, Pocket Photo	39	Jiffy V.P.	3, 24		
Charts, Mask	36	Juniors Six-16 and Six-20	6, 24		
Chemicals, Eastman Tested	36	Six-16 and Six-20	9, 24		
Ciné-Kodak Eight	21, 22	Recomars 18 and 33	17, 26		
Ciné-Kodak K	21, 22	Retina	14, 26		
Cleaner, Lens	32	Vollenda	10, 25		
Cleaning Fluid (for oil coloring)	38	Kodaloid Printing Masks	36		
Clips, Film	34	Kodapod	30		
Color Filter	31	Kodascopes	22		
Coloring Outfits	37, 38	L			
Colors, Spotting	37	Lamps:			
Cotton, Stump	38	Brownie Safelight	33		
Cut Film	29	Candle	33		
D		Eastman Safelight	33		
Darkroom Outfits	34	Kodak Safelight	33		
Developing and Printing Outfits	34	Photoflash	29		
Developing Boxes	34	Photofood	29		
Developing Hangers	35	Lens Attachments	31, 32		
Developing Tanks	32, 33	Lens Cap for Jiffy Kodak Six-16 or Six-20	24		
Developing Trays	34	Lens Cleaner	32		
Diffusing Disc for Auto-Focus Enlarger	37	Lenses	23		
Diffusion Disks, Pictorial	31	Lenses: Supplementary for Kodak Recomars	27		
Diffusion Portrait Attachment	31	M			
Doublet Lenses	23	Mask Charts	36		
Dry Mounting Tissue	38	Masks, Kodaloid Printing	36		
E		Meniscus Lenses	23		
"Elementary Photographic Chemistry"	33	Miniature Enlarger	37		
Enlarger Base	37	Mounting Tissue, Dry	38		
Enlargers	36, 37	N			
Enlarging Papers	37	Negative Albums	39		
F		O			
Ferrotypes Plates	37	Oil Colors, Transparent	38		
Film Clips	34	Opaque, Eastman Universal	37		
Film, Cut	29	Optipod	30		
Film Holders, Combination Plate and	29	P			
Film Packs	28	Packs, Film	28		
Film, Roll	28	Paint, Kodacoat	37		
Film Tanks, Roll and Pack	32, 33	Panatomic Cut Film	29		
Filters, Color	31	Panatomic Film Packs	28		
Filters, Sky	31				

Compliments of the Digitized Kodak Catalog Project: 1886 - 1941

KODAK is the registered and common-law trade-mark of the Eastman Kodak Company, and cannot be rightfully applied except to goods of their manufacture. Prices in this catalog are subject to change without notice.

Printed in U.S.A.



Compliments of the Digitized Kodak Catalog Project: 1886 - 1941

ENLARGED FROM PART OF A KODAK FILM NEGATIVE



THERE'S no way of measuring how much a few simple snapshots may mean later on. Don't risk their success. Any camera is a better camera . . . surer of making good pictures . . . when it's loaded with Kodak Verichrome Film. With it you get your subjects as you want them . . . as they are. Your snapshots will be more precious than ever. Always use Verichrome. Accept nothing but the familiar yellow box with checkered stripes.

ONLY EASTMAN MAKES THE KODAK