



KODAK

## **The Digitized Kodak Catalog Project (1886 - 1941): A Very Brief History**

Most camera collectors at some point in their collecting careers pass through a Kodak phase - some never come out of it. And if there ever was one name that came to be associated with both cameras and collecting, it was Kodak.

George Eastman received his first patent (for coating dry plates) and bought his first manufacturing facility in 1880, and in 1881 he started the Eastman Dry Plate Company. In 1886 he received a patent for the near-mythical Eastman Detective Camera, but it wasn't until 1888 that the first camera bearing the name "Kodak" was introduced.

One of the nice things about collecting Kodak is that the product line is pretty well known, and because the company produced annual catalogs for many years, collectors can be reasonably sure of what they're looking at, when it was made, the variations and so on - presuming that they have access to either the appropriate catalog, or a number of the many books which document Kodak, each to some greater or lesser extent.

But what would be really nice would be to have a complete set of Kodak catalogs in an easily accessible form and readily available. And since the advent of portable computing devices (PC, Macintosh, etc.) that's been possible - except for the difficulty of assembling a complete set of Kodak catalogs in one spot and then scanning them and making the results available.

The idea of digitizing a complete set of Kodak catalogs has kicked around the collecting community for many years. It's been proposed on a number of online forums, during meetings of various photohistory groups, and for years there have been many incomplete "Kodak CDs" on eBay but at best, they only contained a few catalogs - whatever the owner had available. But assembling a complete set of catalogs, then scanning and processing perhaps 3,000 to 4,000 pages, was a daunting task - if not completely overwhelming - and nothing ever came of it.

Until now.

In early 2010, the idea came up again, but this time we - "we" as in "the collecting community" - were lucky. A number of collectors were willing to loan their catalogs to this project and a couple of insane - wait, let's call them "dedicated" - dedicated enthusiasts - neither of whom collected Kodak, but both of whom enjoyed the challenge of such a project - were willing to put in the time and effort to scan and pull together the entire set of catalogs into a full-blown Kodak Catalog Digital Library.

Our initial objective was to include just the annual amateur catalogs, but it turns out that many cameras only appear in certain professional and specialty catalogs. We included as many of those as we could obtain so that almost every Kodak camera made in the US, Canada and Europe, would be documented - at least up to about 1941. After that, it becomes much more difficult as Kodak stopped producing annual catalogs as their product line became increasingly more diversified.

However, even with the additional "non-amateur" catalogs, we weren't completely successful in illustrating "every" camera Kodak ever made. There are an elusive few that might appear in specialty catalogs that we simply couldn't track down. If you can't find one of those odd cameras, that's no doubt why. We may do a revision at some point in the future if someone is willing to loan us a catalog that includes a camera that isn't already recorded.

In this project, a total of 67 catalogs were used from 1886 through 1941 including a number of professional and dealer catalogs, and in some years, two or even three different catalogs to cover all the bases. With the cooperation of a number of dedicated collectors, we were able to pull together all those catalogs and in June 2010, the project started in earnest.

By November 2010, we had scanned everything we needed and eventually all 67 catalogs were then reassembled as image folders and converted to the universally accepted PDF format and finally, converted into individually searchable PDFs which could then be searched globally as a collection.

For those of you interested in the statistics: about 200 hours of scanning time (we never want to hear that sound again), 67 catalogs and 3,908 page scans - which generated 7,917 original and processed images - and 11.4 GB of disk space. Additionally, another 100+ hours of technical development time was needed to convert the digital catalogues into a fully searchable "knowledgebase" that could be launched from most any standard web browser.

The overwhelming number of catalogs was loaned to us by that most remarkable of Kodak collectors, Charlie Kamerman of Eagle Creek, Oregon. Without Charlie, it's very doubtful that this project could even have been attempted.

But as it turned out, even Charlie didn't have all the publications that were needed, but he was able to track down the five that he lacked and was able to secure either a copy or high resolution images that we could work with. And so, our thanks to the contributors of the catalogs and scans that we used:

Charlie Kamerman for the vast majority of catalogs used and all his help,  
Steve Shohet for loaning a variety of test catalogs,  
Ryerson University (Toronto) for the 1886 Eastman Catalog  
George Layne for the 1890 New Kodaks Catalog,  
Mike Kessler for the 1891 Dealer Display Catalog,  
Ralph London for the 1893 UK Catalog,  
Michael Pritchard for the 1897 UK Catalog.

The digital side of the project - also known as "all of the work" - was done by Rob Niederman of Medina, Minnesota, and Milan Zahorcak of Tualatin, Oregon. Remarkably we're still friends and in a few years, we'll probably be able to talk about this project rationally.

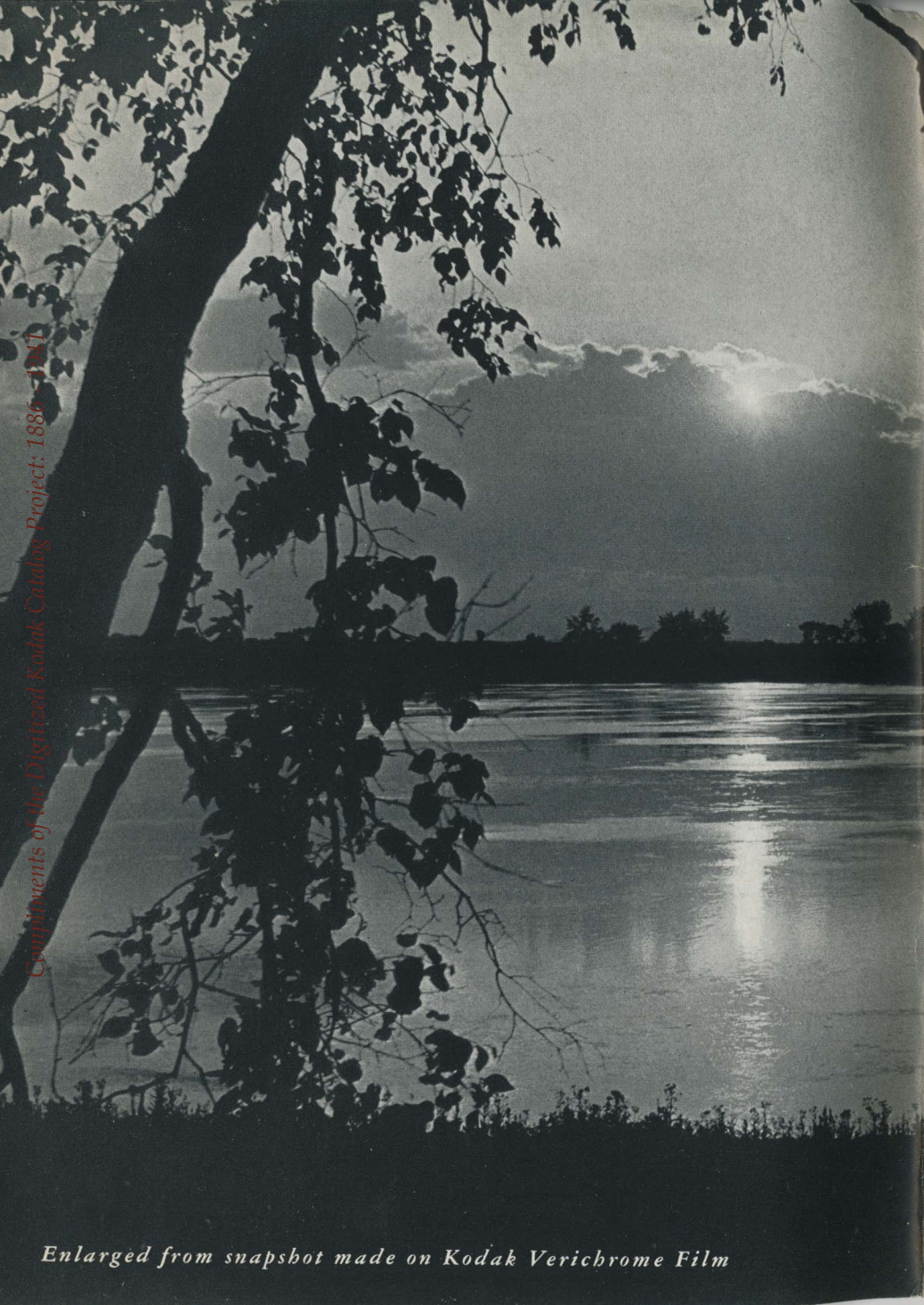
And there you have it, a more-or-less done deal. We're fairly sure that it isn't quite perfect, and expect there will be some carping about something or other; but all-in-all, we believe this to be a pretty good product and can now move on to something else.

Our thanks to all of those involved.

Rob Niederman  
Milan Zahorcak

Fall, 2011





Contributions of the Digitized Kodak Catalog Project: 1886-1941

*Enlarged from snapshot made on Kodak Verichrome Film*



4

525  
JTY

# KODAKS AND KODAK SUPPLIES

1933-1934

•

IN SELECTING A CAMERA, CONSIDER...

... 1 **THE PICTURE SIZE** Among the cameras shown on the following pages you will find all of the popular amateur sizes, from  $1\frac{3}{16} \times 1\frac{9}{16}$  to  $3\frac{1}{4} \times 5\frac{1}{2}$  inches. Sample pictures in most of the sizes are reproduced in this catalog. Pick the proportion that appeals to you, remembering that any good picture can be generously enlarged.

... 2 **THE TYPE YOU PREFER**... box or folding.

... 3 **THE VARIETY OF PICTURES** you want, and the range of conditions under which you expect to take them. These factors apply particularly to the folding type of camera. They depend largely upon the versatility of the lens and shutter (see page 32)... and, in some models, upon the negative materials the camera accommodates.

... 4 **THE PRICE** Camera prices are determined to a great extent by the types of lenses and shutters employed, since these items represent a large part of the manufacturing cost. As pointed out above, this equipment to a large extent determines the scope of the camera.

*Your dealer will be glad to help you make your selection*

•

EASTMAN KODAK COMPANY  
ROCHESTER, NEW YORK

# JIFFY KODAKS SIX-16 AND SIX-20

**T**OUCH a button: *Pop*—it opens. Touch another: *Click*—it snaps the picture. That's photography with a Jiffy Kodak—Eastman's latest.

Though folding models, the Jiffys have box-camera simplicity. With their ingenious fronts, actuated by strong spring extension arms, they literally leap into action—the quickest, simplest folding cameras ever devised.

Yet they're designed to make emphatically good pictures. They have the advantages of "fixed" focus, plus a simple adjustment on the new Twindar lens that keeps near subjects in focus even if they are only five feet away.

Novel in action, Jiffy Kodaks are also distinctive in style. They're compact,—because built around Eastman's smaller, all-metal film spool—and smartly covered with morocco grain material. The black-and-nickel etched front adds the beauty of simple symmetry. As for the prices: they make the Jiffys the most sensational camera values in years!

**DETAILS** Capacity: 8 exposures. Focus: adjustable, by focusing mount with near and far settings. Lens: Twindar. Shutter: built-in, with *instantaneous* and *time* actions, finger release. Two crowned brilliant finders. Swinging foot to support camera for time exposures. Finish: black morocco-grain covering; etched metal front.

## PICTURE SIZES

JIFFY KODAK SIX-16,

2½ x 4¼

JIFFY KODAK SIX-20,

2¼ x 3¼

## PRICES

Jiffy Kodak Six-16 . . . . .	\$7.50
Genuine Leather Carrying Case . . . . .	1.75
Jiffy Kodak Six-20 . . . . .	6.75
Genuine Leather Carrying Case . . . . .	1.50

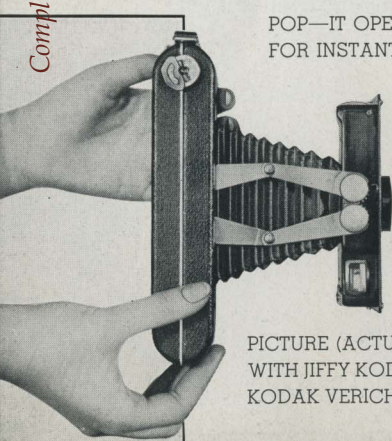
*For prices of Kodak Film see page 33*

TOUCH A BUTTON NEAR THE BOTTOM OF THE CAMERA:

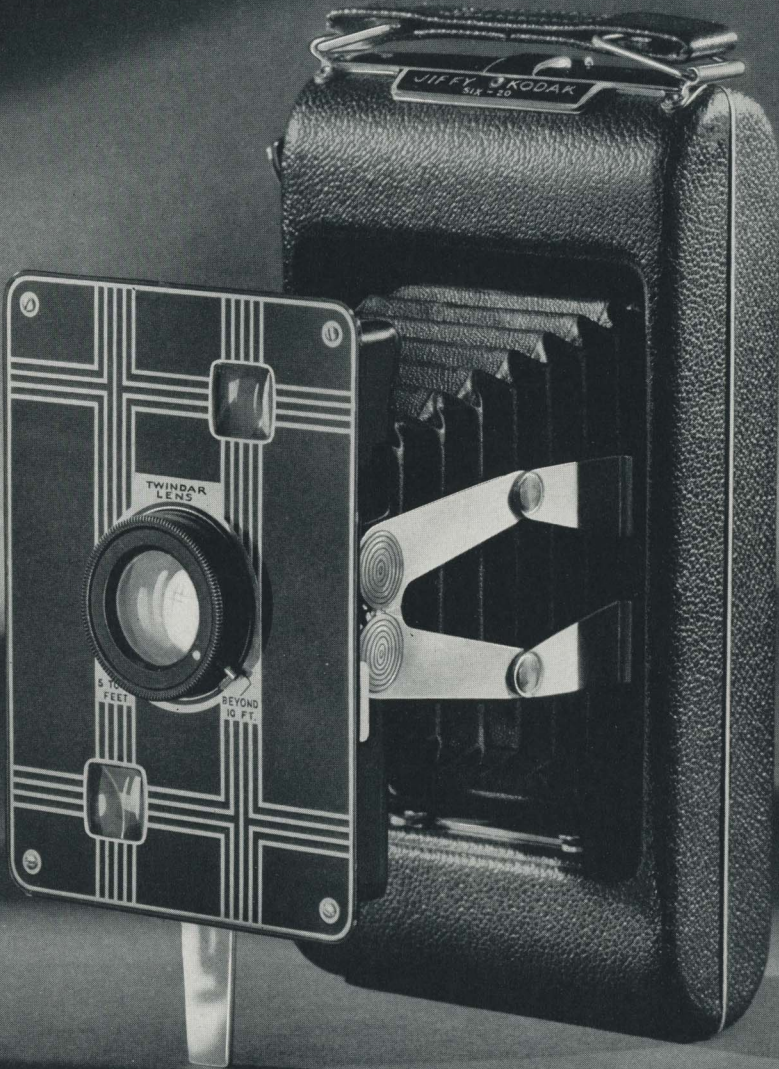
POP—IT OPENS—READY FOR INSTANT ACTION!

PICTURE (ACTUAL SIZE) MADE WITH JIFFY KODAK SIX-20 AND KODAK VERICHROME FILM.

Compliments of the Digitized Kodak Catalog Project: 1886 - 1941





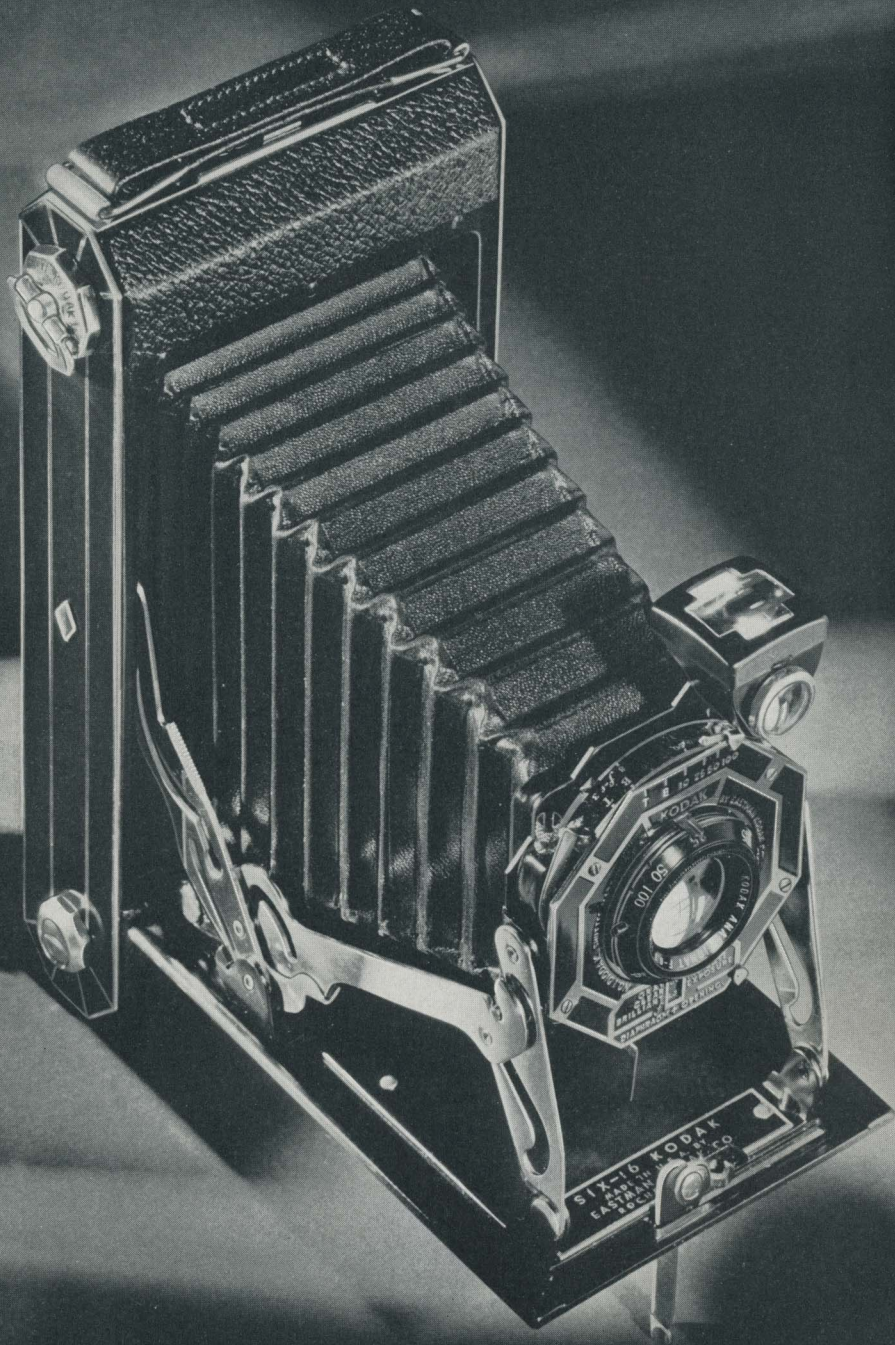


Compliments of the Digitized Kodak Catalog Project: 1886 - 1941

*If it isn't an Eastman, it isn't a Kodak*



Compliments of the Digitized Kodak Catalog Project: 1885 - 1943



*If it isn't an Eastman, it isn't a Kodak*



# KODAKS SIX-16 AND SIX-20

ON this and the two following pages is described the most sensationally successful pair of folding cameras offered in many years—Kodaks Six-16 and Six-20. Emphatically new and different in design and operation, these two Kodaks have captured the fancy of picture takers everywhere. Ultra-convenient and outstandingly efficient, they have proved their worth beyond question to many thousands of users. If you have not yet seen them—and handled them—take the first opportunity to drop in at your Kodak dealer's for this purpose.

In the planning of these cameras, one of the chief objectives was *smaller size*. It was found, however, that more compact Kodaks, using the prevailing film spools, could not be built without a loss in efficiency. Consequently Eastman engineers designed an all-metal spool—smaller, yet carrying eight exposures as against the former six. With this new spool as a starting point, two radically new Kodaks were designed, with the picture taker's needs always foremost in the planning.

Kodak Six-16 is the world's smallest roll-film camera making pictures  $2\frac{1}{2}$  x  $4\frac{1}{4}$  inches. And it is one of the most beautiful. The camera body is covered with a smart, pig-grain material. The side panels of etched metal and inlaid enamel are done in an octagonal motif, which is repeated in the lens and shutter mountings. Every detail harmonizes with this scheme, to make the most tastefully styled folding camera on the market. Kodak Six-20, similarly designed, takes pictures  $2\frac{1}{4}$  x  $3\frac{1}{4}$  inches—a remarkable size for a camera of such small proportions.

Both of these Kodaks are offered in a choice of lens equipments and, in spite of their moderate prices, are strictly precision instruments. They reduce fine picture taking to its simplest terms, as you will discover by reading the details on pages 6 and 7.

## PICTURE SIZES

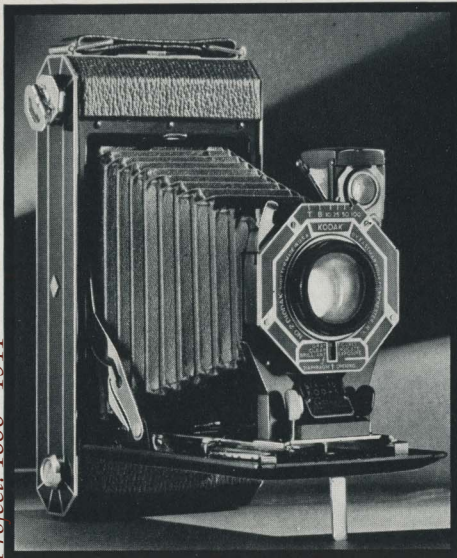
KODAK SIX-16,  $2\frac{1}{2}$  x  $4\frac{1}{4}$  INCHES

KODAK SIX-20,  $2\frac{1}{4}$  x  $3\frac{1}{4}$  INCHES

PICTURE (ACTUAL SIZE) MADE WITH KODAK SIX-16 AND KODAK VERICHROME FILM.







*Kodaks Six-16 and Six-20, equipped with Kodak Anastigmat f.4.5 lens, afford an unusually wide range of picture possibilities—particularly when loaded with Kodak Super Sensitive Panchromatic Film. They permit the making of snapshots early and late in the day—indoors near a window—and in cloudy or rainy weather. These models have a convenient pull-out front.*

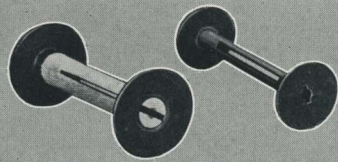
## SPECIAL FEATURES OF KODAKS SIX-16 AND SIX-20

**THE NEW, SMALLER SPOOL** Below at the left are shown the 6-exposure wood-core spool used in older cameras, and the smaller, all-metal, 8-exposure spool which made possible these ultra-compact and refreshingly beautiful Kodaks. The new spool is used in Kodak Film Nos. 616 and 620—regular, Verichrome, and Super Sensitive Panchromatic. (See page 33.)

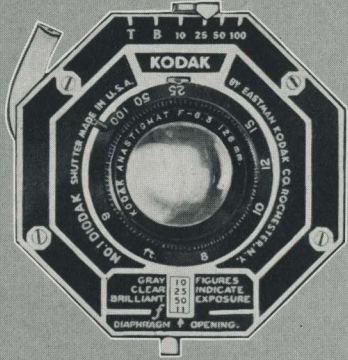
**LENSES AND SHUTTERS** Kodaks Six-16 and Six-20 can be had with any one of three lenses. The well-known Kodak Doublet lens combines dependable efficiency with simplicity. Both cameras reach the peak of their capability in the models fitted with Kodak Anastigmats  $f.6.3$  and  $f.4.5$ . These two lenses give successively higher speeds. With them the user can regularly make negatives of the highest quality, and has a reserve of lens power with which to make snapshots even under adverse light conditions.

The Kodon and Diodak shutters used on Kodaks Six-16 and Six-20 are novel in design and construction. Both of them have secondary shutter-speed and diaphragm scales which are *visible from above*. These scales duplicate those on the front of the shutters. They permit setting the shutter while the camera is in picture-taking position, as well as

6



THE OLD AND NEW SPOOLS



THE DIODAK SHUTTER



THE SELF-ERECTING FEATURE



last-minute checking before making the exposure. On the ultra-convenient Diodak shutter, the diaphragm scale is geared to an unusually helpful exposure guide.

**SELF-ERECTING FEATURE** Because of their improved self-erecting fronts the Doublet and *f.6.3* models get into action with unusual ease and swiftness. An easy pull on the combination locking lever and bed support lowers the bed, extends the bellows, and sets the front rigidly in snapshot position. When the picture has been made, a slight touch on the bed braces reverses this procedure, folding up and closing the Kodak just as quickly as it was opened.

**EASY LOADING** In Kodaks Six-16 and Six-20 the loading and unloading operations have been made simpler and quicker through several important improvements. Sliding a safe but convenient catch opens the back. The latter is hinged, and remains attached. The spool sockets swing out into the open—no more working in close quarters to insert or remove the film. When the loading or unloading has been completed, the back is swung into place and closes easily, positively, with a sure snap of the spring catch.

**COMPARATIVE SIZE** Directly below is shown a back-to-back comparison of an older camera and the more compact Kodak Six-16—both taking  $2\frac{1}{2}$

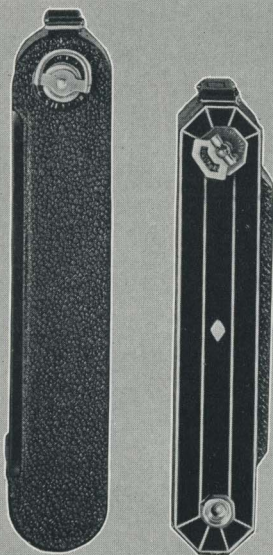
x  $4\frac{1}{4}$  pictures. The smaller camera size, compared to the picture size, is one of the most attractive features of both Six-16 and Six-20.

**DETAILS** Capacity: 8 exposures. Shutters: Diodak, speeds of  $\frac{1}{10}$ ,  $\frac{1}{25}$ ,  $\frac{1}{50}$ , and  $\frac{1}{100}$  second, *time* and *bulb* actions, finger release; Kodon, speeds of  $\frac{1}{25}$ ,  $\frac{1}{50}$ , and  $\frac{1}{100}$  second, *time* and *bulb* actions, finger release. (Cable release may be added to either shutter if desired.) Brilliant, reversible finder. Doublet and *f.6.3* models finished in either black or brown; *f.4.5* models in black only. Optional carrying cases made of genuine pig-grain leather.

**PRICES**

	<i>Without Case</i>	<i>With Case</i>
<b>Kodak Six-16</b>		
With Kodak Doublet Lens, Kodon Shutter . . . . .	\$13.00	\$15.50
With Kodak Anastigmat <i>f.6.3</i> Lens, Diodak Shutter . . .	17.00	19.50
With Kodak Anastigmat <i>f.4.5</i> Lens, Diodak Shutter . . .	30.00	32.50
<b>Kodak Six-20</b>		
With Kodak Doublet Lens, Kodon Shutter . . . . .	12.00	14.00
With Kodak Anastigmat <i>f.6.3</i> Lens, Kodon Shutter . . .	15.00	17.00
With Kodak Anastigmat <i>f.4.5</i> Lens, Diodak Shutter . . .	28.00	30.00

*For prices of Kodak Film see page 33*



COMPARATIVE SIZE



EASY LOADING

# VEST POCKET KODAK

## MODEL B

YOU can actually slip this Kodak into vest pocket or handbag. Wherever you put it, and wherever you take it, it's unobtrusive... out of the way. And yet it is a full-fledged photographic instrument. Its lens and shutter are designed for long and faithful service... to make not merely pictures, but *good* pictures. And that means both sparkling prints and excellent enlargements whenever you want them.

V. P. K., Model B, is neatly and durably finished, too. Its smart black covering is complemented by nickeled and enameled trimmings that emphasize its diminutive completeness.

If you want a very small, very inexpensive camera, buy a Vest Pocket Kodak, Model B. And if you want to give a modest but thoroughly useful gift, rest assured that Model B will "fill the bill" ideally.

**DETAILS** Capacity: 8 exposures. Focus: fixed (no focusing necessary). Lenses: Meniscus, or Kodak Doublet. Shutter: Vest Pocket, with four stops, *instantaneous* and *time* actions, finger release. Brilliant finder, reversible for vertical or horizontal pictures. Black bellows.

### PRICES

Vest Pocket Kodak, Model B, with Meniscus Lens and Vest Pocket Shutter . . . . .	\$5.00
With Kodak Doublet Lens . . . . .	6.75
Levant Grain Leather Case, with strap . . . . .	1.25
Belt Carrying Case, russet leather . . . . .	1.25
Kodak Portrait Attachment (see page 38) . . . . .	.75

*For prices of Kodak Film see page 33*

PICTURE (ACTUAL SIZE) MADE WITH V. P. K., MODEL B, AND KODAK VERICHROME FILM.



IT CAN ACTUALLY BE CARRIED IN A VEST POCKET.

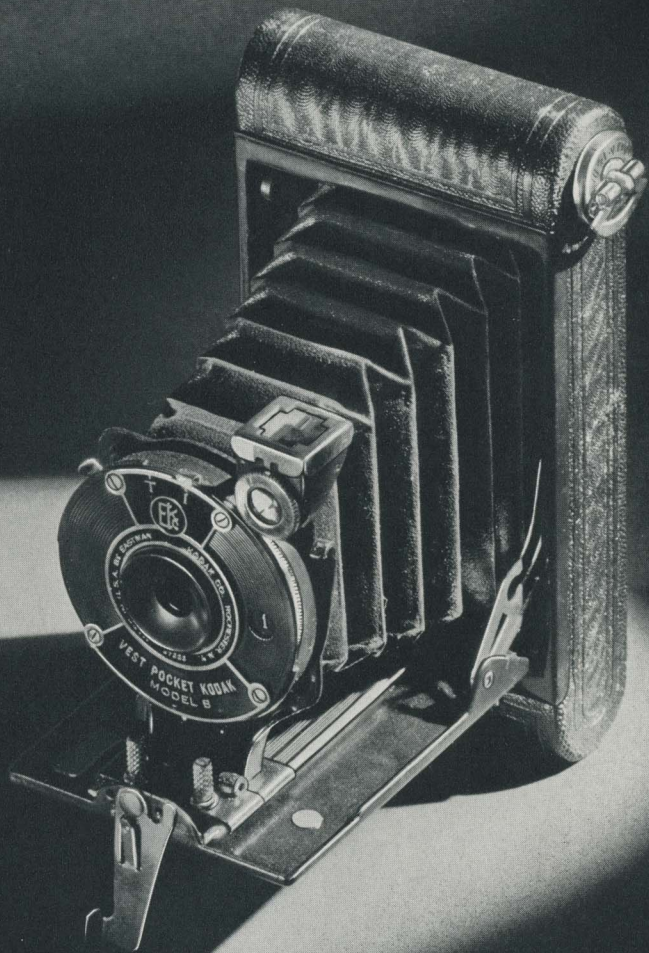


IT CAN READILY BE SLIPPED INTO A HANDBAG.

### PICTURE SIZE

1 $\frac{5}{8}$  x 2 $\frac{1}{2}$  INCHES

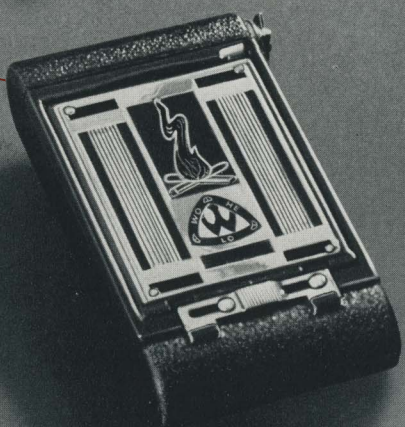
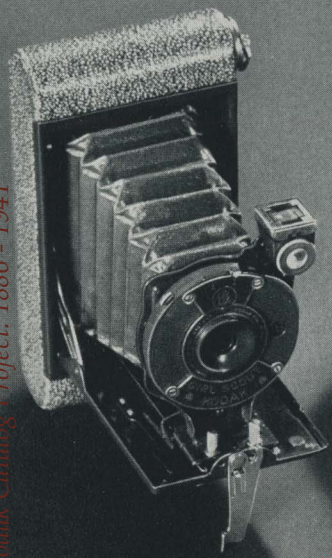




Compliments of the Digitized Kodak Catalog Project: 1888-1941

*If it isn't an Eastman, it isn't a Kodak*







# ORGANIZATION CAMERAS

BOY SCOUT, GIRL SCOUT, AND CAMP FIRE GIRLS  
KODAKS... SIX-20 BOY SCOUT BROWNIE

THESE four cameras have been approved by National Headquarters of the respective organizations whose names they bear. They carry the official insignia on their special fronts. Because of their proficiency, smartness, and low cost they not only meet the needs of the organizations for which they were planned, but are popular with young people in general.

The folding models are of the familiar "vest pocket" type, making  $1\frac{1}{8}$  x  $2\frac{1}{2}$ -inch pictures. They are so small that they can be worn on the belt in their specially designed and stamped cases.

These three cameras are similar in construction, but differ in finish and color. The Boy Scout Kodak is olive drab. The Girl Scout Kodak is finished in green to blend with the official costume. The Camp Fire Girls Kodak is brown. The cases match the cameras in both color and grain.

The Six-20 Boy Scout Brownie is a box camera of novel design and new compactness. It makes pictures in the  $2\frac{1}{4}$  x  $3\frac{3}{4}$ -inch size, and they are pictures of the same quality for which Brownies have always been noted. This photographic ability, plus the durable olive-drab covering, makes the Boy Scout Brownie a big value at the unusually modest price listed below.

Because of their ability, these organization cameras help in winning merit badges for proficiency in photography. Besides, they make the sort of pictures all young people like to keep in their albums. As a result they give genuine joy to every boy and girl.

**DETAILS** Capacity: 8 exposures. Focus: fixed (no focusing necessary). Lens: Meniscus. Shutter for both instantaneous and time exposures. Finders: folding models, brilliant finder, reversible for horizontal and vertical pictures; Boy Scout Brownie, two extra-large ground glass finders, for vertical and horizontal positions. Finish: colored, grained covering material; specially designed, etched, metal fronts.

## PRICES

Boy Scout Kodak, Meniscus Lens, Vest Pocket Shutter, with case to match . . . . .	\$6.00
Girl Scout Kodak, Meniscus Lens, Vest Pocket Shutter, with case to match . . . . .	6.00
Camp Fire Girls Kodak, Meniscus Lens, Vest Pocket Shutter, with case to match . . . . .	6.00
Six-20 Boy Scout Brownie, Meniscus Lens, Rotary Shutter . . . . .	2.25

*For prices of Kodak Film see page 33*

**PICTURE SIZES** BOY SCOUT, GIRL SCOUT,  
CAMP FIRE GIRLS KODAKS,  $1\frac{1}{8}$  x  $2\frac{1}{2}$  INCHES  
SIX-20 BOY SCOUT BROWNIE,  $2\frac{1}{4}$  x  $3\frac{3}{4}$  INCHES

PICTURE (ACTUAL SIZE) MADE WITH SIX-20 BOY SCOUT BROWNIE AND KODAK VERICHROME FILM.



# VEST POCKET KODAKS

## SERIES III AND SPECIAL

**B**OTH of these Kodaks bear eloquent testimony to the wealth of photographic ability which Eastman designers can build into a small camera. Consider the size and efficiency of the two models. Your dealer will quickly demonstrate that either one can be *worn*—in a vest pocket or on a belt—or tucked into a handbag. Neither takes up any room at all in a suitcase or week-end bag, or in the car. Yet these Vest Pocket Kodaks are splendidly equipped, completely dependable, and unusually versatile cameras. They really make quite sizable pictures, considering the small camera size, and, what is more important, the negatives are of such quality that they will yield not only sparkling prints, but also excellent enlargements, whenever they are wanted.

Vest Pocket Kodaks, Series III and *Special*, offer a considerable choice of capable lenses and competent shutters. They are headed by the Kodak Anastigmat *f.4.5* and Diomatic—a combination that can be counted on for good negatives even in the worst of weather, especially when aided by the new Kodak Super Sensitive Panchromatic Film. And, regardless of the model you select, you will find it smartly styled and beautifully finished, as befits a genuinely fine photographic instrument.

**DETAILS** Capacity: 8 exposures. Focus: adjustable, with worm-screw focusing device. Lenses: (see below). Shutters: Kodex, speeds  $\frac{1}{25}$  and  $\frac{1}{50}$  second; Diomatic, speeds  $\frac{1}{10}$ ,  $\frac{1}{25}$ ,  $\frac{1}{50}$ ,  $\frac{1}{100}$  second; both with finger release, *time* and *bulb* actions. Brilliant reversible finder. Two tripod sockets. Finish: V. P. K. Series III, black baby-crepe grain leather covering; V. P. K. *Special*, black seal leather covering; both with exposed metal parts nicked and enameled. Autographic feature.

### PRICES

Vest Pocket Kodak, Series III, with Kodar <i>f.7.9</i> Lens, Kodex Shutter . . . . .	\$12.00
With Kodak Anastigmat <i>f.5.6</i> Lens, Diomatic Shutter . . . . .	18.00
Belt Carrying Case, russet leather. . . . .	1.50
Black Leather Carrying Case . . . . .	1.50
Vest Pocket Kodak <i>Special</i> , with Kodak Anastigmat <i>f.4.5</i> Lens, Diomatic Shutter . . . . .	25.00
Belt Carrying Case, russet leather, velvet lined. . . . .	2.00
Black Leather Carrying Case, velvet lined . . . . .	2.00
Cable release for V. P. K., Series III, or <i>Special</i> , opened. . . . .	.35
Portrait Attachment (see page 38) for V. P. K., Series III, or <i>Special</i> . . . . .	.75

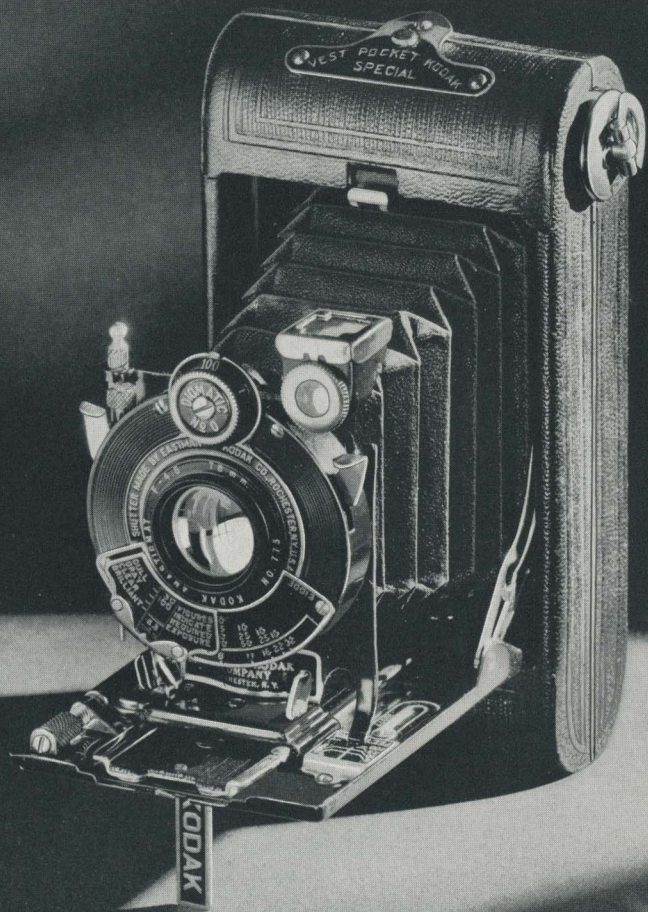
*For prices of Kodak Film see page 33*

### PICTURE SIZE $1\frac{3}{8} \times 2\frac{1}{2}$ INCHES

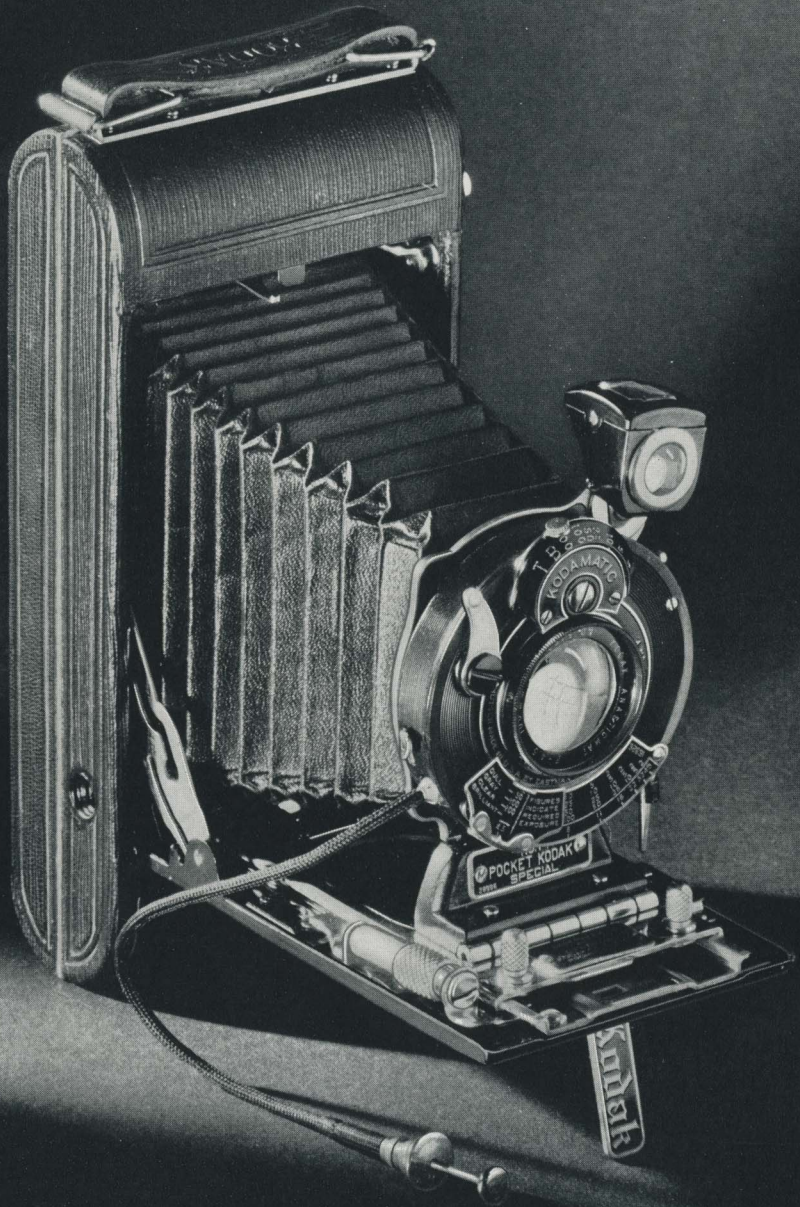
PICTURE (ACTUAL SIZE) MADE WITH VEST POCKET KODAK SPECIAL AND KODAK VERICHROME FILM.







*If it isn't an Eastman, it isn't a Kodak*



*If it isn't an Eastman, it isn't a Kodak*



NOS. 1, 1A, AND 3

# POCKET KODAKS SPECIAL

EVERY one who wants a standard roll-film camera of superior ability will be interested in the Pocket Kodaks *Special*. They offer a choice of three popular picture sizes, fast lenses, versatile shutters, ease of operation, and smart, durable finish—at new prices which make them unusual values.

All three models are equipped with the Kodak Anastigmat *f.4.5* lens and the split-second Kodamatic shutter—a combination long famous for the facility with which it capitalizes every picture chance. Armed with a Kodak *Special*, you can make good pictures under average conditions with utmost ease. And you can take it for granted that when a difficult picture situation arises, your camera will have an abundant reserve of ability to offset poor light or fast action. This applies particularly if you avail yourself of the advantages of Kodak Super Sensitive Panchromatic Film.

See these Kodaks at your dealer's. Examine their finish, and test their supplementary features (the built-in exposure scale, for instance), which make them not only highly capable, but extremely easy to use, as well.

**DETAILS** Capacity: Nos. 1 and 1A, 8 exposures; No. 3, 6 exposures. Focus: adjustable, with screw focusing device on Nos. 1 and 1A, lever focusing device on No. 3. Lens: Kodak Anastigmat *f.4.5*. Shutter: Kodamatic, seven speeds from  $\frac{1}{2}$  to  $\frac{1}{450}$  second ( $\frac{1}{200}$  on No. 1); *time* and *bulb* actions; cable and finger release. Brilliant finder, reversible for horizontal or vertical pictures. Two tripod sockets. Finish: genuine black sealskin covering; exposed metal parts nicked and enameled. Rising front on Nos. 1A and 3. Autographic feature.

**PRICES**

	No. 1	No. 1A	No. 3
Pocket Kodak <i>Special</i> with Kodak Anastigmat <i>f.4.5</i> Lens, Kodamatic Shutter . . . . .	\$35.00	\$40.00	\$42.50
Grain Leather Case, velvet lined . . . . .	3.75	4.50	4.75
Kodak Portrait Attachment (see page 38) . . . . .	.75	.75	.75

*For prices of Kodak Film see page 33*

**PICTURE SIZES**

- NO. 1,  $2\frac{1}{4} \times 3\frac{1}{4}$
- NO. 1A,  $2\frac{1}{2} \times 4\frac{1}{4}$
- NO. 3,  $3\frac{1}{4} \times 4\frac{1}{4}$

PICTURE  
(ACTUAL SIZE)  
MADE WITH  
NO. 1A POCKET  
KODAK SPECIAL  
AND KODAK  
VERICHROME  
FILM.



Compliments of the Digitized Kodak Catalog Project: 1886 - 1941

# NO. 3A KODAKS

THIS notable group of Kodaks offers a wide choice to the camerist who wants pictures of generous proportions. All of the models listed below make pictures as large as postcards— $3\frac{1}{4} \times 5\frac{1}{2}$  inches—yet they are comfortably compact. Because of these two factors, 3A Kodaks are famous travelers—wonderful companions on vacations and (particularly the *Special*) at sports events. They can be had with a variety of lenses and shutters, and reach the height of their efficiency in the expert *Special*, loaded with Kodak Super Sensitive Panchromatic Film. 3A Autographic Kodaks, Regular and *Special*, can be equipped with Combination Backs, for cut film and plates.

**DETAILS** Capacity: 10 exposures. Focus: adjustable (with double focusing scale for films or plates on 3A Autographic). Lenses: (see below). Shutters: Kodex, speeds  $\frac{1}{25}$ ,  $\frac{1}{50}$  second; Kodak Ball Bearing, speeds  $\frac{1}{25}$ ,  $\frac{1}{50}$ ,  $\frac{1}{100}$  second; Kodamatic, seven speeds from  $\frac{1}{2}$  to  $\frac{1}{450}$  second; also reliable multi-speed shutter; all with *time* and *bulb* actions, cable and finger release. Brilliant reversible finder. Two tripod sockets. Autographic feature. Finish: No. 3A Pocket Kodak, black, grained material; No. 3A Autographic, black seal-grain leather; No. 3A *Special*, black Persian morocco leather; black bellows on all models; exposed metal parts finished in nickel and black enamel. Rising and falling front on 3A Autographic and 3A *Special*. Range finder on 3A *Special*.

## PRICES

No. 3A Pocket Kodak, with Meniscus Achromatic Lens and Kodex Shutter . . . . .	\$14.00
With Kodar <i>f</i> .7.9 Lens and Kodex Shutter . . . . .	17.00
With Kodak Anastigmat <i>f</i> .6.3 Lens and Kodak Ball Bearing Shutter . . . . .	21.50
Levant Grain Leather Case for 3A Pocket Kodak . . . . .	3.75
No. 3A Autographic Kodak, with Kodak Anastigmat <i>f</i> .6.3 Lens and multi-speed shutter . . . . .	30.00
Levant Grain Leather Case for No. 3A Autographic Kodak . . . . .	4.00
No. 3A Autographic Kodak <i>Special</i> , Kodak Anastigmat <i>f</i> .6.3 Lens, Kodamatic Shutter . . . . .	45.00
Grain Leather Case, velvet lined, for 3A Autographic Kodak <i>Special</i> . . . . .	5.25
Combination Back (see page 34) for 3A Autographic Kodak Regular . . . . .	4.00
Ditto, for 3A Autographic Kodak <i>Special</i> . . . . .	5.00
Kodak Portrait Attachment (see page 38) for any of above Kodaks . . . . .	.75

For prices of Kodak Film see page 33. For cut film and plates see pages 34, 35

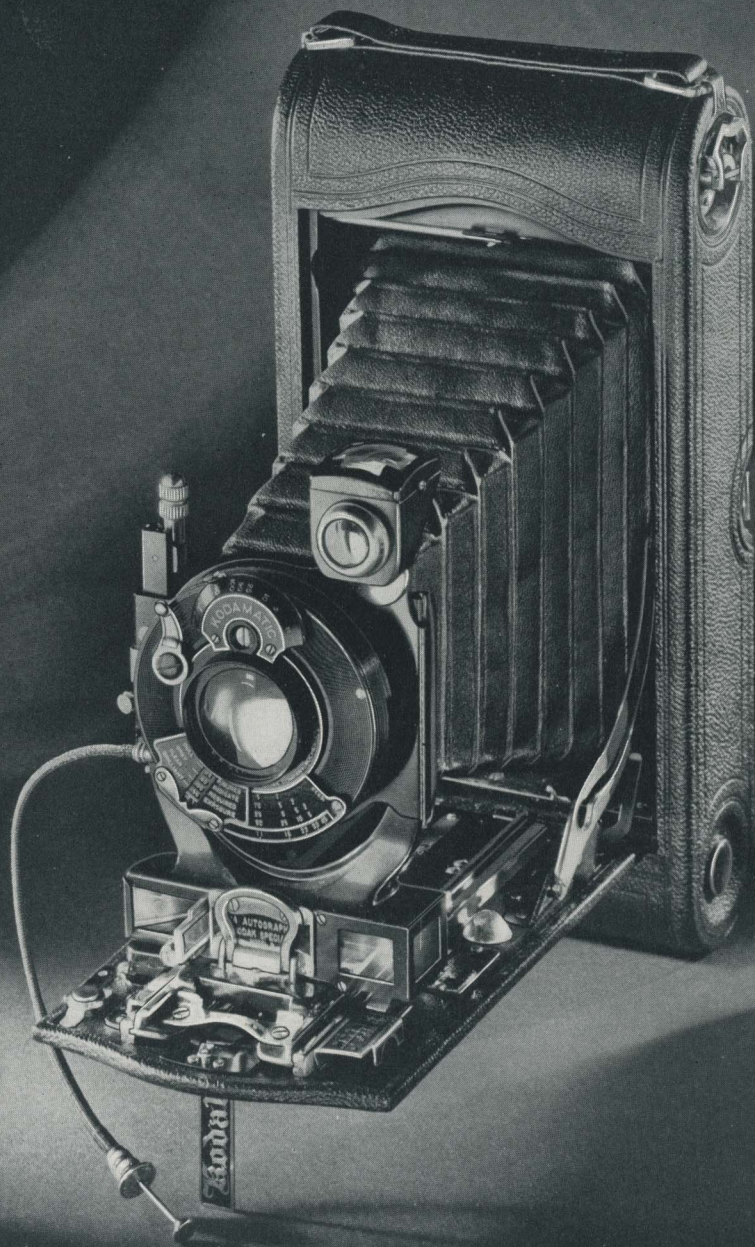
## PICTURE SIZE

$3\frac{1}{4} \times 5\frac{1}{2}$

PICTURE (SOMEWHAT REDUCED)  
MADE WITH 3A  
AUTOGRAPHIC  
KODAK SPECIAL  
AND KODAK  
VERICHROME  
FILM.

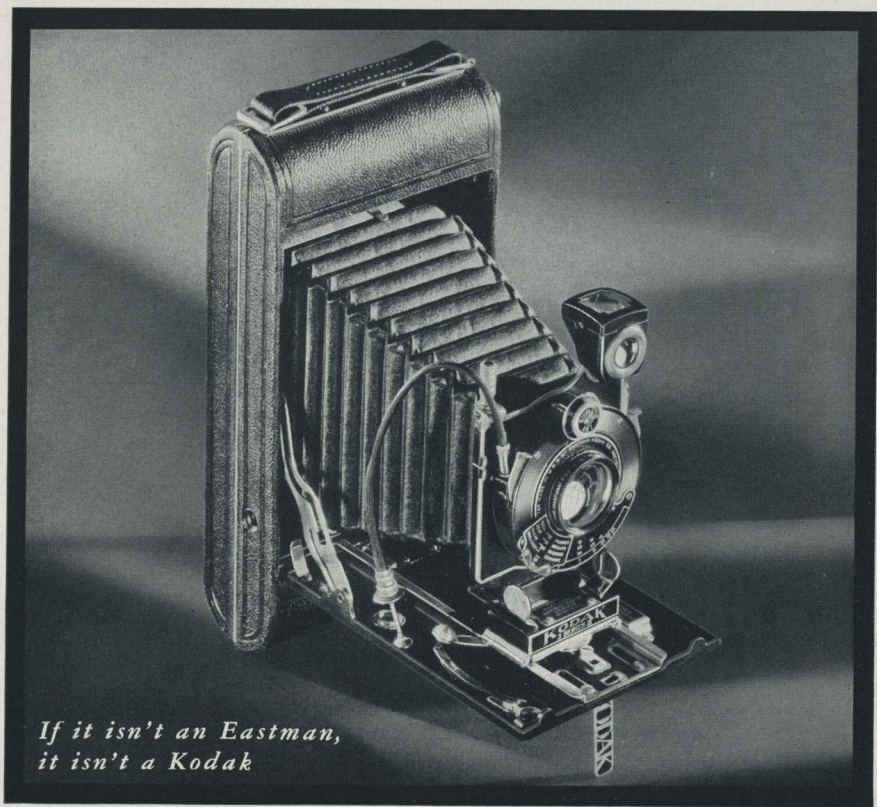






Compliments of the Digitized Kodak Catalog Project, 1888-1941

*If it isn't an Eastman, it isn't a Kodak*



*If it isn't an Eastman,  
it isn't a Kodak*

## NO. 3 KODAK, SERIES III

**I**F you favor the pleasing proportions of  $3\frac{1}{4} \times 4\frac{1}{4}$  pictures, here is your camera! You can have it with either of two fast lenses, and you will get the benefit of full supplementary equipment, superior finish, and moderate cost.

**DETAILS** Capacity: 6 exposures. Shutters: Kodex, speeds  $\frac{1}{25}$  and  $\frac{1}{50}$  second; Diomatic, speeds  $\frac{1}{10}$ ,  $\frac{1}{25}$ ,  $\frac{1}{50}$ ,  $\frac{1}{100}$  second; *time* and *bulb* actions, cable, finger release. Brilliant reversible finder. Two tripod sockets. Autographic feature. Covering: black morocco grain cowhide. Rising front.

**PRICES**

No. 3 Kodak, Series III, with Kodak Anastigmat f.6.3 Lens, Kodex Shutter . . . . .	\$26.00
With Kodak Anastigmat f.5.6 Lens, Diomatic Shutter. . . . .	33.00
Levant Grain Leather Case. . . . .	3.50

*For prices of Kodak Film see page 33*

**PICTURE SIZE**  
 $3\frac{1}{4} \times 4\frac{1}{4}$  INCHES





## NOS. 0, 2C, AND 3 BROWNIES

THESE unassuming cameras are favorites all over the world. They represent *the simplest real cameras*, and make excellent snapshots or time exposures with remarkable ease. Three popular sizes are available, finished in durable black, grained material. No. 2C is illustrated.

**DETAILS** Capacity: No. 0, 8 exposures; Nos. 2C and 3, 6 exposures. Fixed focus. Lenses: Meniscus on No. 0; Meniscus Achromatic on Nos. 2C and 3. Shutter: Eastman Rotary, with *time* and *instantaneous* actions. Two tripod sockets on Nos. 2C and 3.

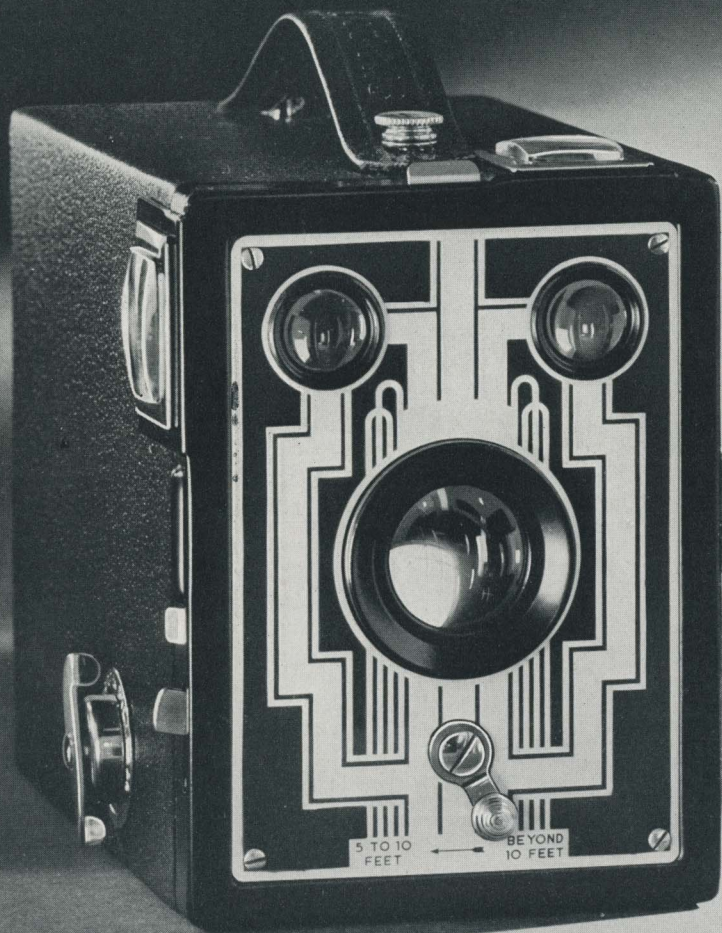
### PRICES

	No. 0	No. 2C	No. 3
Brownie Camera, with lenses as listed above, Eastman Rotary Shutter . . . . .	\$1.50	\$3.25	\$3.25
Brownie Carrying Case . . . . .	1.00	1.60	1.60
Kodak Portrait Attachment (see page 38) . . . . .	.50	.75	.75

*For prices of Kodak Film see page 33*

### PICTURE SIZES

- No. 0, 1 $\frac{5}{8}$  x 2 $\frac{1}{2}$
- No. 2C, 2 $\frac{7}{8}$  x 4 $\frac{7}{8}$
- No. 3, 3 $\frac{1}{4}$  x 4 $\frac{1}{4}$





# SIX-16 AND SIX-20 BROWNIES

Now Eastman offers the most proficient, most convenient Brownies yet perfected—and the best-looking, as well.

The Six-16 and Six-20 Brownies are unusually compact, and utilize Eastman's smaller, all-metal film spool. But this is only one of their advantages. They have a precision feature new to box cameras—the Diway lens. Without sacrificing any of the simplicity characteristic of previous Brownies this lens, controlled by a little lever, yields clearer, sharper pictures of either near or distant subjects. It not only enhances still further the reliability for which Brownies have always been noted, but greatly increases the picture-taking range of the Six-16 and Six-20, because it permits pictures to be made as close to the subject as five feet, if desired.

Aside from these principal functions, the front element of the Diway adds to the appearance of the camera, and at the same time protects working parts from dust. The latter feature will be especially appreciated by people who use these new models at the beach or on motor trips.

New, highly crowned, extra-large finders give a more detailed view of the subject, and make good composition easier. Furthermore, they set off the rich black covering material, and harmonize beautifully with the decorative metal front.

If you want a box camera that's up to the minute in ability and design, see the Six-16 and Six-20 Brownies at your dealer's. And when you do so, remember that they're something new—smart—appropriate—in the way of a gift.

**DETAILS** Capacity: 8 exposures. Lens: Diway (see above). Shutter: Eastman Rotary, with *instantaneous* and *time* actions. Finders: two brilliant Magna-finders, for vertical and horizontal positions. Finish: black morocco-grain covering; harmonizing two-tone metal front plate; nickeled fittings.

## PRICES

Six-16 Brownie, Diway Lens and Eastman Rotary Shutter . . . . .	\$3.50
Six-20 Brownie, Diway Lens and Eastman Rotary Shutter . . . . .	2.50
Portrait Attachment for either camera (see page 38) . . . . .	.75

*For prices of Kodak Film see page 33*

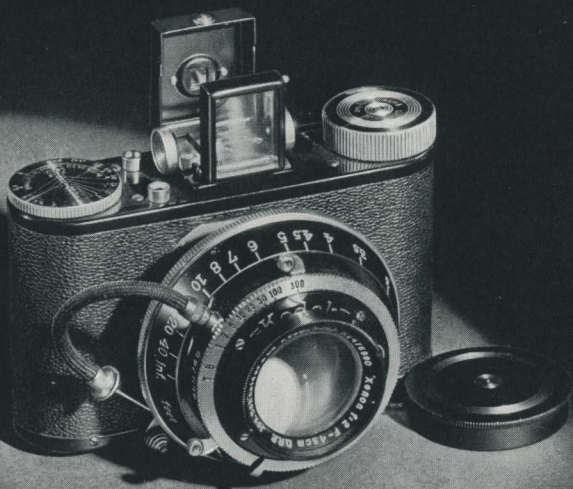
## PICTURE SIZES

SIX-16 BROWNIE, 2½ x 4¼ INCHES

SIX-20 BROWNIE, 2¼ x 3¼ INCHES

PICTURE (ACTUAL SIZE) MADE WITH SIX-16 BROWNIE AND KODAK VERICHROME FILM.





*If it isn't an Eastman,  
it isn't a Kodak*

## KODAK PUPILLE

HERE is a Kodak for the man or woman who wants a miniature camera of European type distinguished for finest workmanship and highest-grade equipment. *Pupille*—"pupil of the eye"—is an apt name for this Kodak, not only because of its marvelous construction and keenness of sight, but also because of the way in which it is used. It is held close to the eye, and what the eye sees through the finder the camera records with utmost fidelity.

Superlative pictures are assured by a highly corrected and extremely fast lens—an anastigmat rated at  $f.2$ . It makes the user practically independent of light conditions, particularly when aided by Kodak Super Sensitive Panchromatic Film, and gives him negatives that may be enlarged many times their



original size. The enlargement shown below gives only an inkling of what can be done. Supporting the *f.2* lens is a Compur shutter with speeds from 1 to  $\frac{1}{300}$  second, enabling Pupille users to "stop" fast action.

Lens and shutter are brought into picture-taking position, not by a bellows, but by a precision spiral mount. This gives sufficient extension for pictures as close as  $2\frac{1}{2}$  feet from the subject, without the use of an auxiliary lens.

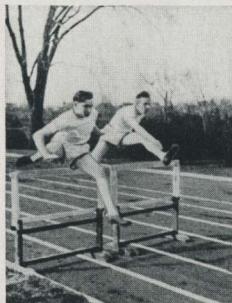
A detachable range finder eliminates all guesswork in focusing. Moreover, by using the built-in depth-of-focus scale, the Pupille owner can determine what objects behind and in front of the principal subject will be in focus.

In short the Kodak Pupille, while it is truly diminutive, and makes sixteen pictures on a roll of "vest pocket" Kodak Film, ranks as a superfine instrument, abundantly provided with the features that give mastery over every picture situation. Ask for it at your dealer's, if only to examine its watch-like construction, its velvet smoothness of operation, and its complete accessories.

**DETAILS** Capacity: 16 exposures,  $1\frac{3}{16} \times 1\frac{1}{16}$  inches, made on No. 127 Kodak Film. Lens: Schneider Xenon Anastigmat *f.2*. Shutter: Compur, 8 speeds from 1 to  $\frac{1}{300}$  second, *bulb, time*. Finder: self-erecting, direct-view. Focusing: from  $2\frac{1}{2}$  feet to infinity, by focusing ring with distance markings corresponding with those on range finder. Range finder: periscopic type. Size:  $3\frac{3}{4} \times 2\frac{5}{8} \times 2$  inches. Color filters: K1 and K2, for landscape work. Tripod socket for vertical position. Detachable camera foot for horizontal position. Finish: black morocco leather, with exposed metal parts polished or lacquered. Carrying case: brown cowhide, velveteen-lined, with hand and shoulder straps; holds camera, range finder, color filters, and camera foot.

#### PRICE

Kodak Pupille, with Schneider Xenon *f.2* Anastigmat Lens, Compur Shutter, Carrying Case, Range Finder, 2 Color Filters, Cable Release, Camera Foot, Lens Cover . . . \$75.00  
*For prices of Kodak Film see page 33*



**PICTURE SIZE**  $1\frac{3}{16} \times 1\frac{1}{16}$  INCHES  
PICTURES MADE WITH KODAK PUPILLE  
AND KODAK VERICHROME FILM.  
(ACTUAL SIZE AND ENLARGEMENT)



*If it isn't an  
Eastman, it isn't a Kodak*

## KODAK VOLLEDDA

THIS miniature European-type Kodak combines high photographic ability with precise and ingenious construction. The lens, an  $f.3.5$  anastigmat, makes negatives so critically sharp that they can be enlarged to surprising proportions—especially if the film used is Kodak Super Sensitive Panchromatic. This lens ability is given full play by the Compur shutter.

A slight pressure on a button at the top of the camera automatically swings down the bed, extends the bellows, and snaps the lens into position, ready for every picture chance. The back is hinged for easy loading and unloading. Careful and convenient design throughout is set off by a genuine morocco leather finish that is both smart and durable.

**DETAILS** Capacity: 16 exposures,  $1\frac{3}{16} \times 1\frac{1}{16}$  inches, made on No. 127 Kodak Film. Lens: Radionar Anastigmat  $f.3.5$ . Shutter: Compur, with 8 speeds from 1 to  $\frac{1}{800}$  second, *bulb, time*;



cable and finger release. Finder: self-erecting direct-view type. Focusing: from 3½ feet to infinity, by revolving lens mount. Size (closed): 3⅞ x 4⅜ x 1¼ inches. For Kodak Film see page 33.

**PRICES**

Kodak Vollenda, with Radionar Anastigmat f.3.5 lens and Compur Shutter . . . . . \$27.50  
Soft Leather Bag. . . . . .75

# KODAK RANCA

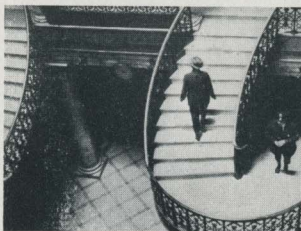
THE brilliant f.4.5 anastigmat lens on this miniature camera supplies a degree of speed unusual in a camera of such low cost. Brought into position by a spiral mount similar to that of the Pupille, it makes clear-cut snapshots even under unfavorable conditions. The Pronto shutter supplied is notable for its automatic action and its built-in self timer, which enables the user to include himself in the picture. Painstakingly built, and smooth in operation, Kodak Ranca is a highly efficient small camera, notably when it is loaded with the new Kodak Super Sensitive Panchromatic Film.

**DETAILS** Capacity: 16 exposures, 1⅜ x 1⅞ inches, made on No. 127 Kodak Film. Lens: Nagel Anastigmat f.4.5. Shutter: Pronto, with speeds of 1/25, 1/50, 1/100 second, *bulb, time*; self timer; cable and finger release. Finder: self-erecting direct-view type. Focusing: from 3½ feet to infinity, by revolving lens mount. Size: 2½ x 3¾ x 2⅞ inches. Finish: black levant-grain covering; nicked and lacquered fittings. For Kodak Film see page 33.

**PRICES**

Kodak Ranca, with Nagel Anastigmat f.4.5 Lens and Pronto Shutter . . . . . \$16.50  
Soft Leather Bag. . . . . .75

PICTURES  
(ACTUAL SIZE  
AND ENLARGE-  
MENT) MADE  
WITH KODAK  
VOLLEND A AND  
KODAK  
VERICHROME  
FILM.



KODAK RANCA  
MAKES  
PICTURES SAME  
SIZE AS THOSE  
ILLUSTRATED

PICTURE SIZE 1⅜ x 1⅞ INCHES



Compliments of the Digitized Kodak Catalog Project: 1886 - 1941

# KODAK RECOMARS 18 AND 33

**R**EMARKABLY versatile, and fashioned with utmost precision, the Kodak Recomars are ideal instruments for serious photographic workers.

Here are factors that contribute to their versatility. They are adaptable to film packs (including the new Kodak Super Sensitive), cut film, and plates—negative materials that afford a wide variety of emulsions. Both models can be quickly fitted with supplementary lenses that give large images of distant objects and wide angle views in small rooms or narrow streets. The double-extension bellows and bed help in making interesting “close-ups.”

These features open up an almost endless vista of unusual picture possibilities, which are reduced to certainties by the outstanding Recomar construction and equipment. The regular lens is a carefully made, sharp-cutting *f*.4.5 anastigmat. The shutter is the famous Compur, with speeds up to 1/200 second (1/250 on the “18”), *time*, *bulb*, and built-in self timer. A wire-frame finder provides an eye-level sighting device, particularly efficient in following and “framing” rapidly moving subjects. It is supplemented by a brilliant, reversible finder of the reflecting type, with a spirit level attached. Focusing is done by means of a micrometer screw and graduated scale, or—to assure critically sharp focus and pleasing composition—the ground-glass focusing back.

The bed and front standard that support these fittings are light, strong, and rigid. They fold into a compact camera body covered with genuine leather.

**DETAILS** Picture sizes and negative materials: Recomar 18—2¼ x 3¼ in. film packs, 6.5 x 9 cm. plates, or 2½ x 3½ in. cut film; Recomar 33—3¼ x 4¼ in. or 9 x 12 cm. film packs, 9 x 12 cm. plates or cut film.

<b>PRICES</b>	“18”	“33”
Kodak Recomar, with <i>f</i> .4.5 Anastigmat Lens, Compur Shutter, 3 single Plate Holders and Film Sheaths, Film Pack Adapter, Exposure Table . . . . .	\$40.00	\$48.00
Carrying Case, brown cowhide, to hold camera, plate holders, film pack adapter	4.50	5.00

<b>SUPPLEMENTARY LENSES</b>	Increase in image size	
For large images of distant subjects		
Lens A, for “18” . . . . .	28%	\$3.50
Lens A, for “33” . . . . .	33%	3.50
Lens B, for “18” . . . . .	62%	3.50
Lens B, for “33” . . . . .	70%	3.50
For wide angle interiors and street scenes	Increase in angle of view	
Lens D, for “18” . . . . .	17%	3.50
Lens E, for “33” . . . . .	23%	3.50

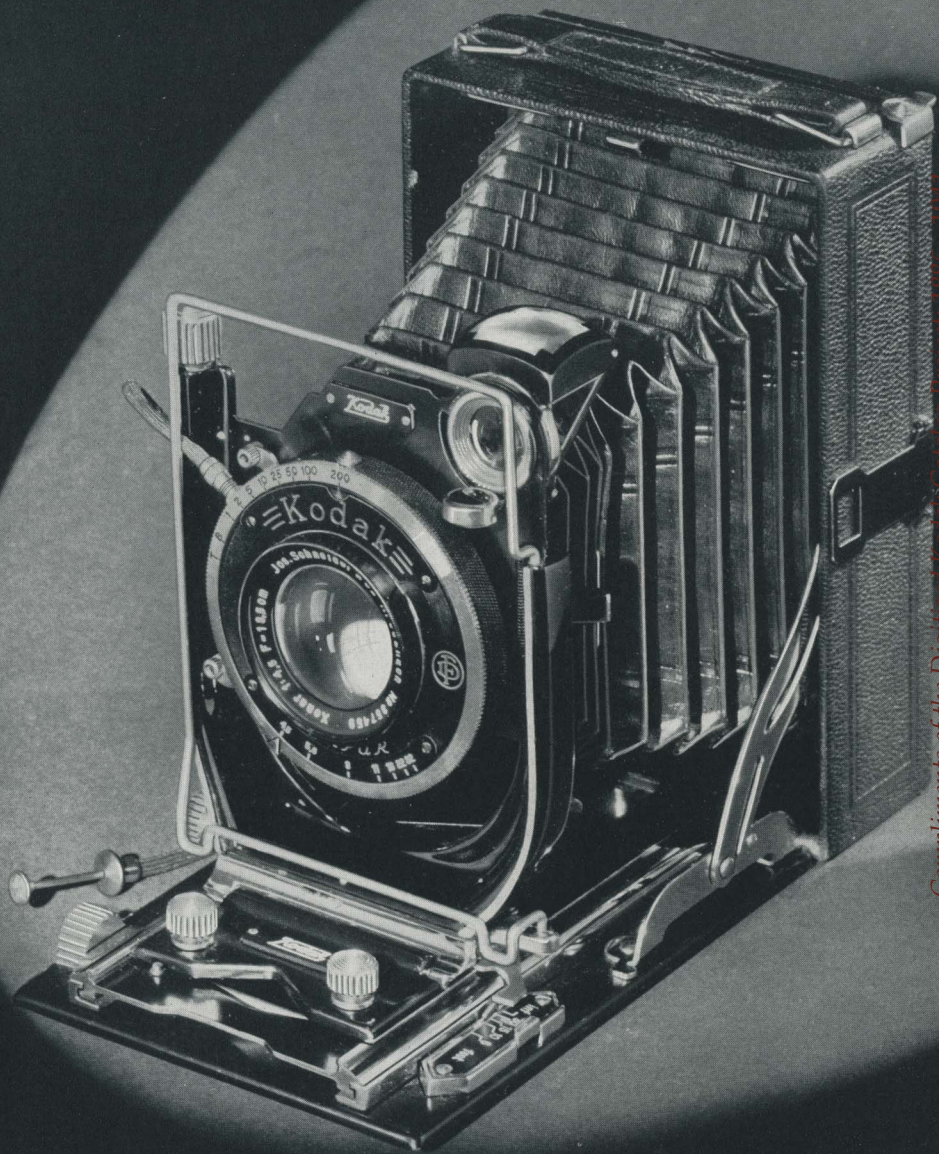
*For negative materials see pages 34, 35.*

ILLUSTRATION (ACTUAL SIZE) MADE WITH KODAK RECOMAR 18 AND KODAK VERICHROME FILM PACK.

Compliments of the Digitized Kodak Catalog Project: 1886 - 1941

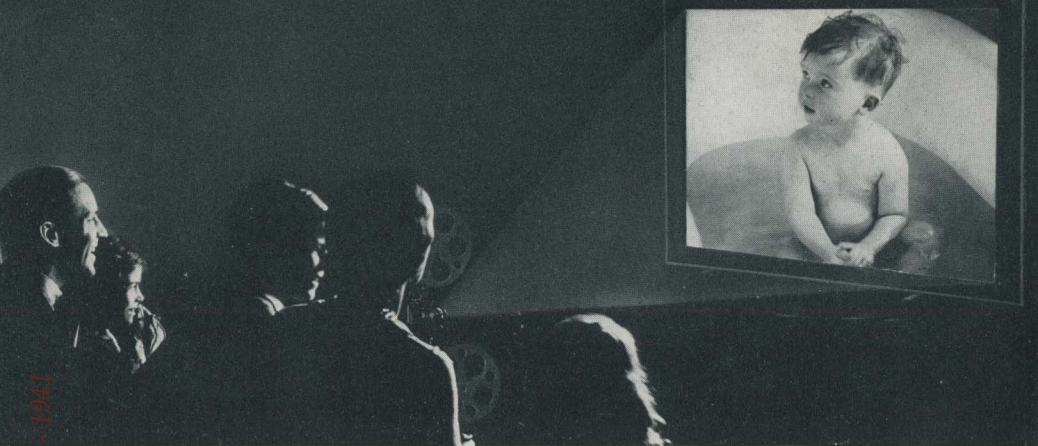






Compliments of the Digitized Kodak Catalog Project: 1886-1941

*If it isn't an Eastman, it isn't a Kodak*



## THE MAGIC OF MOVIES THAT YOU MAKE YOURSELF

**T**HINK of the thrill of capturing forever the events of today—of being able to relive important and happy moments whenever you like—of seeing on your own screen life-like pictures of loved ones and friends. That's the matchless miracle of home movies made possible by Ciné-Kodak.

With Ciné-Kodak, making movies is as simple as taking snapshots. Sight the camera—press a lever—and you'll make clear, sparkling movies with the first roll of film. Projection with a Kodoscope is simplicity itself.

And movie making knows no season or time. Indoors or outdoors, day or night, rain or shine, ultra-fast Ciné-Kodak Super-sensitive Panchromatic Film assures you satisfactory movie results. There's Kodacolor, too, which brings you movies in full, natural colors—amazingly lifelike pictures that are every bit as easy to make with Ciné-Kodak K f.1.9 as black and white movies.

Ask your dealer to show you a Ciné-Kodak, or write to the Eastman Kodak Company, Rochester, New York, for descriptive literature.

## CINÉ-KODAK EIGHT

**H**ERE is a home movie camera anybody can afford. Ciné-Kodak Eight is a new-principle camera that makes 20 to 30 full-length movie scenes on a \$2.25 roll of film—10 cents a scene. And that's all you pay for your pictures; the price includes the finishing. Yet this is a real movie camera that makes pictures you'll be delighted to see and proud to show.

*If it isn't an Eastman, it isn't a Kodak*

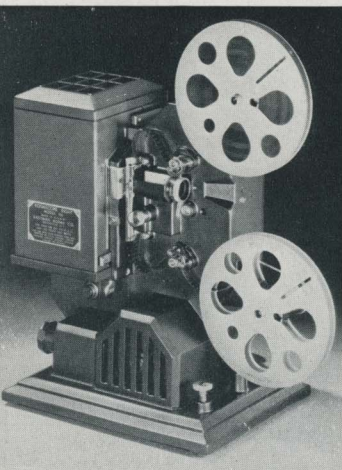




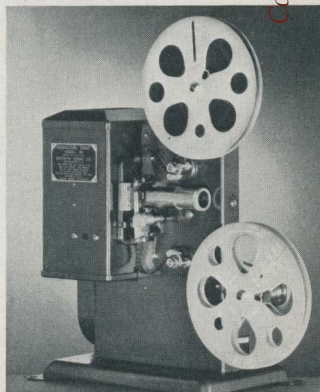
**DETAILS AND PRICES** Ciné-Kodak Eight, Model 20, shown above, is fitted with an  $f.3.5$  lens, costs but \$29.50.

Ciné-Kodak Eight, Model 60, with  $f.1.9$  lens, is a remarkably versatile camera. Price, \$79.50, including carrying case.

There are three Kodascopes Eight. Model 20 projects sparkling, generous-sized movies and sells for but \$22.50. Model 25, a more brilliant projector, costs only \$34.50. Model 60, a de luxe projector with many exclusive refinements, is priced at \$75, including carrying case.

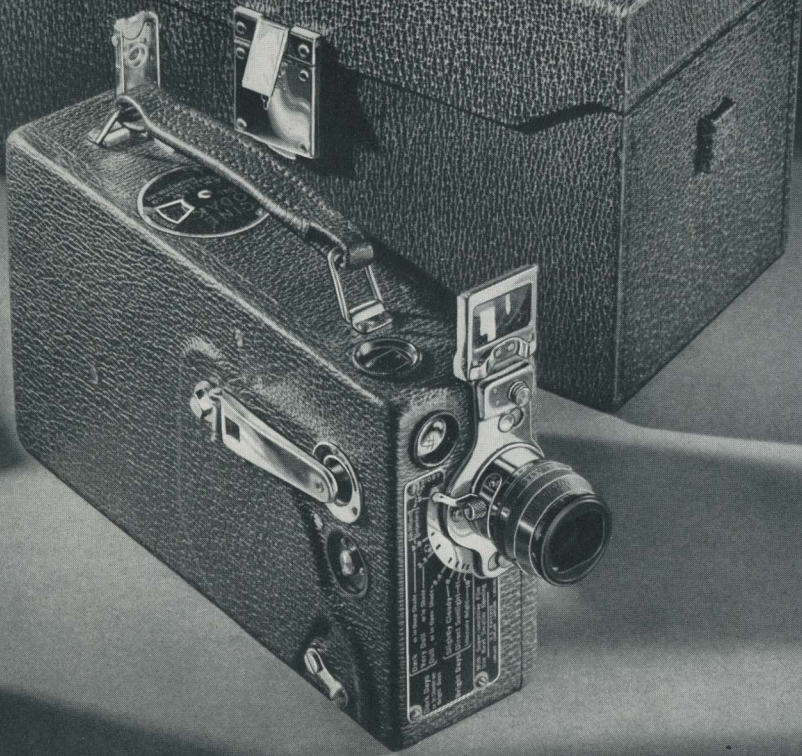


KODASCOPE EIGHT, MODEL 60, INCORPORATES MANY UNUSUAL PROJECTION CONVENIENCES, AND SHOWS CINÉ-KODAK EIGHT MOVIES AT THEIR BEST.



KODASCOPE EIGHT, MODEL 20, DESPITE ITS EXCEPTIONALLY LOW COST, IS A THOROUGHLY DEPENDABLE HOME MOVIE PROJECTOR.





# CINÉ-KODAK "K"

MOST POPULAR OF 16 MM. HOME MOVIE CAMERAS  
... AND CINÉ-KODAK "M," THE SIMPLEST

CINÉ-KODAK, Model K, is the choice of observing amateur movie makers who want a camera that will make clear-cut, sparkling movies out-of-doors under any weather conditions or indoors with proper lighting equipment. This amazingly versatile and efficient 16 mm. camera makes both Kodacolor and black and white movies, and may be instantly fitted for telephoto and wide angle work as well.

Among the many features of the "K" are its built-in exposure guide, simplified focusing, permanently attached winding crank, half-speed device, eye-



level and waist-height finders, and interchangeable lens mount allowing the use of any of five auxiliary lenses.

*If it isn't an Eastman, it isn't a Kodak*

**DETAILS AND PRICES** Ciné-Kodak, Model K, is furnished in blue, brown, or black. With Kodak Anastigmat  $f.1.9$  lens, the "K" costs \$150; with  $f.3.5$  lens, it costs but \$110—including carrying case.

Ciné-Kodak, Model M, with Kodak Anastigmat  $f.3.5$  lens, including portrait attachment and leather case, is supplied in black only, at \$50.

Kodascope, Model K-50, with 500-watt lamp, is priced at \$175; \$190 with carrying case.

Kodascope, Model K-75, with 750-watt lamp, is priced at \$200; \$215 with carrying case.

Kodascope, Model D, with 400-watt lamp, complete with carrying case, is priced at \$69.50; without case, \$62.

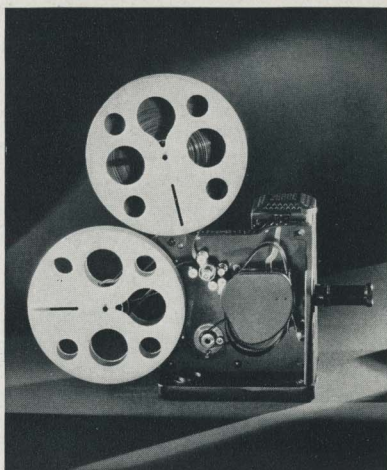
Kodascope, Model A, the original, and for years the most popular Kodascope, is priced at \$150.

Ciné-Kodak Panchromatic Safety Film costs \$3.25 for 50 feet; \$6 for 100 feet.

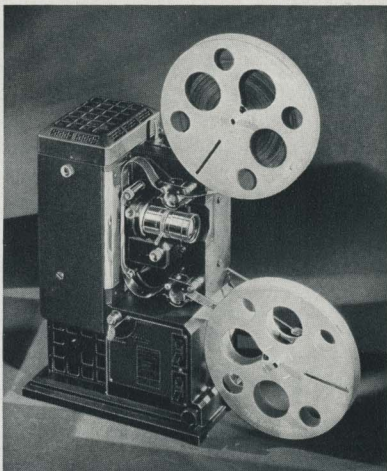
Ciné-Kodak Super-sensitive Panchromatic Safety Film costs \$4 for 50 feet; \$7.50 for 100 feet.

Eastman Super-sensitive Kodacolor Film costs \$4.75 for 50 feet; \$9 for 100 feet.

*All film prices include processing*



KODASCOPE, MODEL D, IS LOW IN COST BUT BRILLIANT IN PERFORMANCE.



ABOVE: NEW KODASCOPES, K-50 AND K-75, SET NEW STANDARDS OF SCREEN BRILLIANCY.

AT LEFT: CINÉ-KODAK, MODEL M, WITH IT'S  $f.3.5$  KODAK ANASTIGMAT LENS AND FIXED FOCUS, IS THE SIMPLEST OF ALL 16 MM. HOME MOVIE CAMERAS.

## EASTMAN LENSES

**K**ODAK and Brownie lenses are made in a number of different types, all designed to serve their particular purpose and to give full value to the camera purchaser.

The meniscus type, though the simplest used on Eastman cameras, is carefully computed, ground, polished, and tested, and has sufficient speed for ordinary picture taking. (The "speed" of a lens of given focal length depends upon the maximum size of the diaphragm or shutter opening at which it can be used; that is, upon the amount of light it admits to the film.)

Kodak Doublet lenses are slightly faster than the meniscus type, and are more nearly rectilinear. The outer element helps to protect the shutter and adds to the appearance of the camera. Diway and Twindar lenses are of the doublet type, with a simple adjustment that insures sharp focus for both far and near subjects. The Kodar *f.7.9* is  $2\frac{1}{2}$  times as fast as the meniscus, and makes good snapshots on bright days without direct sunlight. It also has superior ability to make sharply defined and detailed pictures.

Kodak Anastigmats represent the highest type of photographic lenses. They are made in several speeds, each successive one offering greater versatility. The *f.6.3* is four times as fast as the meniscus. It makes good snapshots even in cloudy weather—or in the rain. The *f.5.6* is 25% faster than the *f.6.3*, giving still greater capability, while the *f.4.5* admits half again as much light as the *f.5.6*. The *f.3.5* and *f.2* anastigmats supplied on some Kodaks have even more remarkable speed. The former is 60% faster than the *f.4.5*, while the *f.2* has the distinction of being fully three times as fast as the *f.3.5*.

Naturally, anastigmat lenses, made up of a number of component parts and painstakingly corrected, cost more than the simpler types. However, they make excellent pictures possible under difficult light conditions, and at high shutter speeds. In general, each successively higher-priced Eastman lens definitely widens the range of conditions under which the camera can be successfully used. And, of them all, the anastigmats are most certain to make good the picture chances that may come but once.

## EASTMAN SHUTTERS

**A**LL Kodak and Brownie shutters make both time exposures and snapshots. Each type affords speeds that correspond with the versatility of the lens to which it is geared. Some are provided with built-in exposure scales and other conveniences. The shutters vary widely in design and manufacturing cost. However, regardless of the Eastman camera you select, you can be sure that it has a shutter built for reliability and accuracy, and one that will pay for itself fully in years of satisfactory service.



## KODAK VERICHROME FILM

**K**ODAK Verichrome Film greatly increases the range of conditions under which any camera may be successfully operated. Its double emulsion—slow and fast—gives the user the results to which he is entitled, whether the light is bright or dull. It also protects him to an unprecedented degree from the results of exposure errors, and maintains a more nearly natural color balance throughout the picture. Its backing prevents halation "fuzz." Verichrome can be identified by the yellow box with checkered stripes.

## KODAK SUPER SENSITIVE PANCHROMATIC FILM

**T**HIS new Eastman film gives all users of roll-film cameras the advantages of extreme speed and complete color correction, formerly available only in cut film. It is 50% faster than Kodak Verichrome Film in morning and afternoon light, and three times as fast in artificial light. In daylight Kodak Super Sensitive gives greatly improved color correction and shadow detail, and in artificial light it is of advantage both because of its color correction and its greatly increased speed. Many indoor picture opportunities which could not formerly be caught by a time exposure become simple snapshot subjects with this film. It is packed in the yellow box with green stripes. Instructions accompany each roll. For proper safelight to use with this film, see page 42.

## REGULAR KODAK FILM

**R**EGULAR Kodak Film is available as before, with the same qualities that made it the stand-by of millions of amateur photographers. For sizes not listed here, see your dealer. Look for the yellow box.

Camera Models	Picture Size	Exposures	Kodak Verichrome Film		Kodak Super Sensitive Panchromatic Film		Regular Kodak Film		
			Number	Price	Number	Price	Number		Price
							Non-Auto-graphic	Auto-graphic	
All Vest Pocket Kodaks; Kodaks Pupille, Vollenda, Ranca; No. 0 Brownie . . . . .	1 5/8 x 2 1/2 2 1/4 x 3 1/4	8* 6 8	V 127 ..... V 120	\$ .30 ..... .30	SS 127 ..... SS 120	\$.40 ..... .40	127 ..... 120	A 127 ..... A 120	\$ .25 .25 .25
All No. 1 or No. 2 Cameras . . . . .	2 1/4 x 3 1/4	8	V 620	.30	SS 620	.40	620	.....	.25
All Six-20 Cameras . . . . .	2 1/4 x 3 1/4	8	V 116	.35	SS 116	.45	116	.....	.30
All No. 1A or No. 2A Cameras . . . . .	2 1/2 x 4 1/4	6 8	V 118 V 616	.55 .35	SS 118 SS 616	.70 .45	118 616	A 118 .....	.45 .30
All Six-16 Cameras . . . . .	2 1/2 x 4 1/4	8	V 130	.55	SS 130	.70	130	A 130	.45
All No. 2C Cameras . . . . .	2 7/8 x 4 7/8	6	V 118	.55	SS 118	.70	118	A 118	.45
All No. 3 Kodaks . . . . .	3 1/4 x 4 1/4	6	V 124	.55	SS 124	.80	124	.....	.45
No. 3 Brownies . . . . .	3 1/4 x 4 1/4	6	V 122	.65	SS 122	.80	122	A 122	.55
All No. 3A Kodaks . . . . .	3 1/4 x 5 1/2	6	V 122	1.10	.....	.....	.....	A 122	.90

\*16 exposures, 1 3/8 x 1 1/8, when used in Kodak Pupille, Vollenda, or Ranca.

For Kodak Film Packs see next page

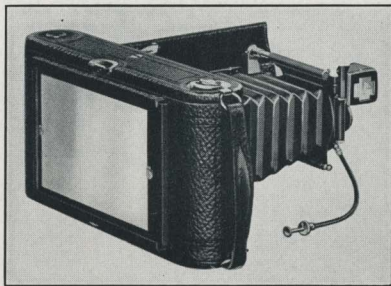
## KODAK FILM PACKS

**K**ODAK Film Packs embody the same reliable emulsions found in Kodak Roll Film. All of them have 12 exposures. They are easily identified by the familiar yellow box.

Picture Size in Inches	Picture Size in Centimeters	Kodak Verichrome Film Packs		Kodak Super Sensitive Panchromatic Film Packs		Regular Kodak Film Packs	
		Number	Price	Number	Price	Number	Price
1 3/4 x 2 3/8	4.5 x 6	V 500	\$ .40	...	...	...	...
1 3/4 x 4 1/4	4.5 x 10.7	V 540	.65	...	...	...	...
2 1/4 x 3 1/4	6 x 9	V 520	.60	SS 520	\$ .75	520	\$ .50
2 9/32 x 5 11/32	6 x 13	V 531	1.10	...	...	...	...
2 1/2 x 4 1/4	6.5 x 11	V 516	.70	...	...	516	.60
3 x 5 1/4	7.5 x 13.5	V 542	1.20	...	...	...	...
3 1/4 x 4 1/4	8 x 10.5	V 518	1.10	SS 518	1.35	...	...
3 3/4 x 5 1/2	8 x 14	V 522	1.30	...	...	...	...
3 3/4 x 4 1/4	10 x 15	V 543	1.60	SS 543	1.90	...	...
4 x 5	10 x 12.5	V 523	1.30	SS 523	1.55	...	...
4 3/4 x 6 1/2	12 x 16.5	V 526	2.10	...	...	...	...
5 x 7	13 x 18	V 515	2.30	SS 515	2.75	...	...
3 1/2 x 4 3/4	9 x 12	V 541	1.20	SS 541	1.45	...	...

## COMBINATION BACKS

**C**OMBINATION Backs adapt 3A Autographic Kodaks, Regular and *Special*, to Double Plate Holders. The photographer then has the advantage of ground glass focusing and, if he so desires, can make one or two exposures and develop them at once. By adding Kodak Cut Film Sheaths to his plate holders, he can also use Eastman Cut Film. (See below.)



Combination Back, with ground glass, for No. 3A Autographic Kodak . . . . . \$4.00  
 Combination Back, with ground glass, for No. 3A Autographic Kodak *Special* . . . . . 5.00  
 Kodak Double Plate Holders for either of the above, each . . . . . 1.50

## EASTMAN CUT FILM IN AMATEUR SIZES



**E**ASTMAN cut film offers every advantage of plates. In addition it is extremely light, free from halation, easy to handle, and unbreakable. It is one of the negative materials that make Kodak Recomars 18 and 33 so versatile. It can also be used in No. 3A Autographic Kodaks, regular and *Special*, with the Combination Back (see above), Kodak Double Plate Holders, and Kodak Cut Film Sheaths.

See next page for descriptions and prices of Eastman Cut Film



## KODAK CUT FILM

THE speed of Regular Kodak Cut Film is comparable to that of the average portrait plate or of regular Kodak Roll Film. The *Super Speed* is half again as fast as Regular, yet it equals the latter in latitude, gradation, and fineness of grain. It yields good negatives under difficult light conditions and with short exposures. It is especially useful in connection with speed work and home portraiture.

	$2\frac{1}{4} \times 3\frac{1}{4}$	$2\frac{1}{2} \times 3\frac{1}{2}$	$3\frac{1}{4} \times 4\frac{1}{4}$	$3\frac{1}{4} \times 5\frac{1}{2}$
Kodak Cut Film, Regular, dozen . .	\$ .45	\$ .45	\$ .65	\$ .90
Kodak Cut Film, <i>Super Speed</i> , dozen .	.45	.45	.65	.90

## EASTMAN COMMERCIAL ORTHO FILM

THIS film is color-sensitive to a high degree, and gives especially good color separation in landscapes or multi-color still-life subjects. It is about half as fast as Kodak Cut Film Regular. It is not sensitive to red.

	$2\frac{1}{4} \times 3\frac{1}{4}$	$3\frac{1}{4} \times 4\frac{1}{4}$	9 x 12 cm.	$3\frac{1}{4} \times 5\frac{1}{2}$
Eastman Commercial Ortho Film, dozen .	\$ .45	\$ .65	\$ .80	\$ .90

## EASTMAN SUPER-SENSITIVE PANCHROMATIC FILM

THIS cut film is completely sensitive to all colors and when used with proper filters gives splendid monochrome reproductions of all tints and shades. In addition it has amazing speed, especially under Mazda lights, and opens up a new field to the serious amateur. Because of its extreme sensitivity it must be manipulated in total darkness.

	$2\frac{1}{4} \times 3\frac{1}{4}$	$2\frac{1}{2} \times 3\frac{1}{2}$	$3\frac{1}{4} \times 4\frac{1}{4}$	9 x 12 cm.	$3\frac{1}{4} \times 5\frac{1}{2}$
Eastman Super-sensitive Panchromatic Film, dozen . . .	\$ .50	\$ .50	\$ .75	\$ .90	\$1.00

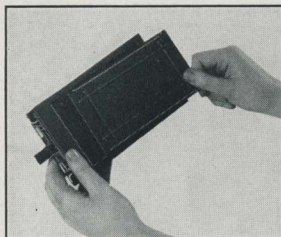
## KODAK CUT FILM SHEATH

ADAPTS a plate holder to the use of Kodak Cut Film, Eastman Commercial Ortho Film, and Eastman Super-sensitive Panchromatic Film. It is made of ribbed aluminum, and is instantly inserted or removed.

Kodak Cut Film Sheath, each:

$2\frac{1}{4} \times 3\frac{1}{4}$	$2\frac{1}{2} \times 3\frac{1}{2}$ *	$3\frac{1}{4} \times 4\frac{1}{4}$	9 x 12 cm.	$3\frac{1}{4} \times 5\frac{1}{2}$
\$ .10	\$ .10	\$ .10	\$ .10	\$ .15

\* Fits both English  $2\frac{1}{2} \times 3\frac{1}{2}$ -inch plate holders and French and German 6.5 x 9 cm. plate holders, but takes film  $2\frac{1}{2} \times 3\frac{1}{2}$  in., not 6.5 x 9 cm.



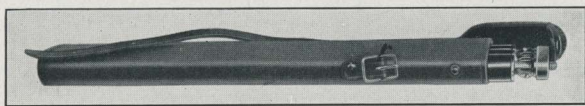
## EASTMAN PLATES

THE amateur who intends to use plates in a 3A Kodak, Kodak Recomar, or plate camera of any size, will find it advantageous to use these well-known Eastman brands: Eastman 50, Eastman 40, Single or Double Coated Ortho, Eastman Hyper Press (orthochromatic), Wratten & Wainwright Panchromatic, Wratten Hypersensitive Panchromatic.

## KODAK METAL TRIPODS

THESE tripods, the result of many years of experience in constructing camera supports, are models of lightness, compactness, and rigidity. They fit any standard tripod socket. The legs are of brass tubing, the sections in each telescoping neatly to give small collapsed size without sacrifice of strength. The lower sections and the heads are nicked, while the upper sections are black.

There are six models from which to choose. When closed, their lengths range from 11 $\frac{3}{8}$  to 15 $\frac{1}{2}$  inches, so that even the largest is convenient to carry. Nos. 1 and 2 have revolving heads which permit the camera to swing in any desired direction without moving the tripod itself. They also have straps to hold the legs in place when closed. Nos. 0, 1C, and 2C have solid heads. Their legs have no straps.



The head of No. 6 (illustrated in its carrying case) includes a hinge which per-

mits the legs to fold flat—parallel to one another instead of in the usual triangular form. The result is a narrow shape which, with the extreme shortness of the tripod when closed, makes No. 6 easiest of all to carry.

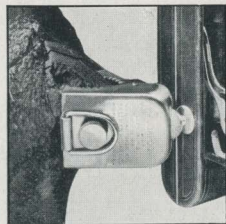
### DETAILS AND PRICES

	Sections	Length		Weight	Price
		Closed	Extended		
Kodak Metal Tripod No. 0	3	15 $\frac{1}{4}$ inches	39 $\frac{1}{4}$ inches	15 ounces	\$2.75
Kodak Metal Tripod No. 1C	4	15 $\frac{1}{4}$ inches	48 $\frac{1}{4}$ inches	25 $\frac{1}{2}$ ounces	4.00
Kodak Metal Tripod No. 1	4	15 inches	48 $\frac{1}{2}$ inches	24 $\frac{1}{2}$ ounces	4.50
Kodak Metal Tripod No. 2C	5	13 $\frac{1}{4}$ inches	49 $\frac{3}{8}$ inches	26 ounces	4.50
Kodak Metal Tripod No. 2	5	13 $\frac{1}{2}$ inches	49 $\frac{1}{2}$ inches	25 ounces	5.00
Kodak Metal Tripod No. 6	6	11 $\frac{3}{8}$ inches	40 inches	24 ounces	6.50
Leather Carrying Case, for Nos. 0 to 2, inclusive					2.70
Ditto, for No. 6					3.15
Rubber Tips, for Metal Tripod Spurs (per set of 3)					.10

## THE KODAPOD



THE little Kodapod is an exceedingly handy arrangement, particularly suited for use in place of a tripod in outdoor photography. The toothed jaws at one end firmly grip tree, fence, or other wooden object, while the other end threads into any standard tripod socket. A clamping screw adjusts the camera to the correct position, where it is firmly held while the exposure is being made.



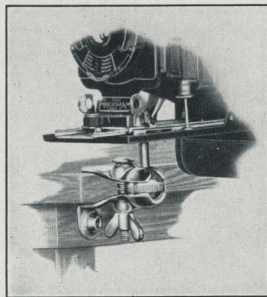
The Kodapod . . . . . \$1.75



## THE OPTIPOD

**H**ERE is a neat little device—a combined tripod head and felt-lined clamp—that is frequently used instead of a tripod.

Used alone the Optipod clamps to any shelf, table, window ledge, running board or other support, and holds the camera firmly while the exposure is being made. It fits any standard tripod socket. It is small and light.



The ball and socket

joint is a great convenience since it permits tilting the camera to almost any angle. It is especially valuable when the Optipod is used in connection with a tripod to photograph subjects so situated that it is impossible to place the tripod alone in the desired position.

The Optipod . . . . . \$1.25

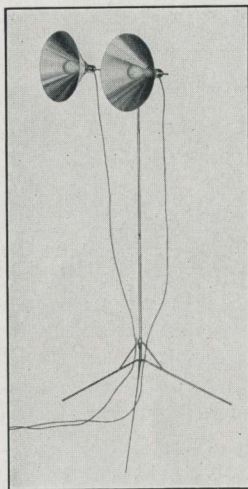
## THE KODAFLECTOR

**T**HE new Kodaflector, an extremely compact, efficient, and economical lighting unit, greatly simplifies the making of still pictures or "movies" indoors and at night.

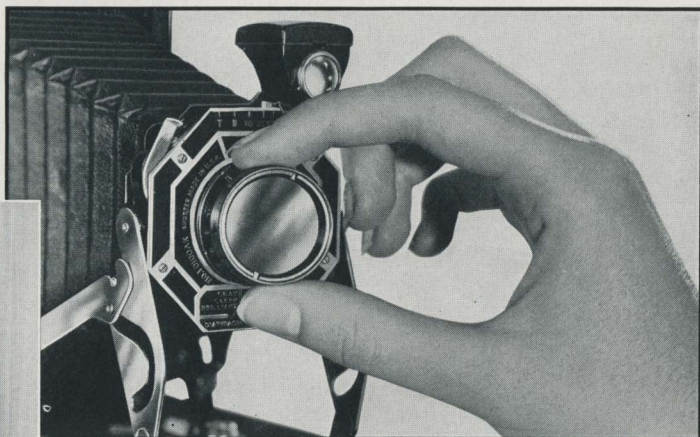
The outfit is designed especially for use with Mazda Photoflood lamps. The intensely bright, white light of these lamps makes them far more effective than several times their number of less powerful "yellow" lamps. Their rated life on 115-volt lines is two hours—sufficient for innumerable time exposures and snapshots, or for the exposure of hundreds of feet of Ciné-Kodak Film. For flashlights the Kodaflector may, if desired, be equipped with Mazda Photoflash bulbs. These bulbs can be used for only one exposure, but they give an extremely intense light, and are suitable for use in large rooms or in photographing large groups; and for "close-ups" when flashlights are required. Both lamps can be obtained from dealers.

The Kodaflector lights can be swung in any direction, and set at any height up to 6 feet, 4 inches. The aluminum reflectors lie flat when not in use. The stand, when folded, is only two feet long.

Kodaflector, complete with reflectors, lamp sockets, stand, and connecting cords, but without lamps (Photoflood, \$.35; Photoflash, \$.25) . . . . . \$5.00



IT'S EASY TO MAKE  
PORTRAITS LIKE THIS  
WITH YOUR KODAK

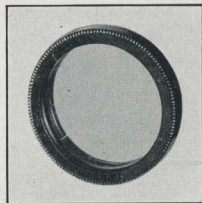


THIS LITTLE ATTACHMENT, SLIPPED OVER YOUR KODAK LENS,  
KEEPS SUBJECTS IN SHARP FOCUS AT CLOSE RANGE

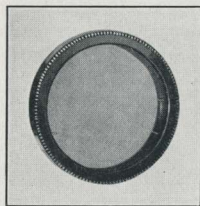
## KODAK PORTRAIT ATTACHMENT

WHEN you supplement your regular Kodak or Brownie lens with a Kodak Portrait Attachment, your camera is equipped to make charming "close-ups" of your family and friends, as well as clear-cut, close-range pictures of flowers, art objects, and still-life subjects. Thus you can make pictures that are *unusual*—pictures that will be among the most highly prized in your albums.

It's all very easy, too. The attachment is quickly slipped over the regular lens and the camera is operated as usual. Using the Kodak Portrait Attachment simply keeps the focus sharp at close range and results in portraits that almost fill the negative area.



## KODAK COLOR FILTER

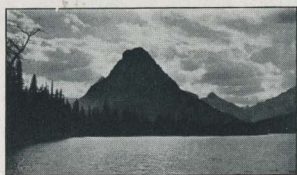


THE Kodak Color Filter is valuable in photographing highly colored landscapes, flowers, art objects, etc. The dye in the filter holds back the strong blue and violet rays, which affect the negative most quickly, and gives the weaker shades time to register. The resulting picture renders all the color values more nearly as the eye sees them.

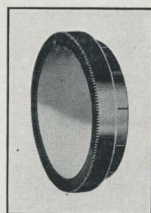
*For prices of these attachments see page 40*



## KODAK SKY FILTER



**B**RIGHT clouds and blue sky reflect much more light than the rest of an outdoor view. But the Kodak Sky Filter with its yellow-stained upper half holds back the light from the sky. This restrained



light renders the clouds distinctly while the darker portions of the picture get the benefit of full exposure through the clear half of the attachment.

The Kodak Sky Filter slips readily over the camera lens and does not require any change in the exposure.

## KODAK DIFFUSION PORTRAIT ATTACHMENT

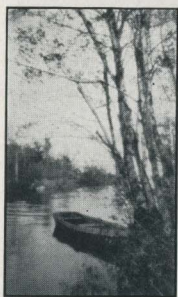


**T**HE concentric lines polished into the surface of this attachment diffuse the light that reaches the lens. Besides giving large images like the regular Kodak Portrait Attachment, this little disk lends a charming softness—*atmosphere*—to pictures. It reduces sharp contrasts, softens chalky highlights

and blends harsh lines, so that pictures made with it take on the popular “soft focus” effect. The attachment is not, however, extreme in its action, and there is no danger of getting unpleasant “fuzziness.”



## KODAK PICTORIAL DIFFUSION DISK



**A** KODAK Pictorial Diffusion Disk does for landscapes what a Kodak Diffusion Portrait Attachment does for “close-ups.” It lends a pleasing softness, without loss of brilliancy.

This disk slips on or off the lens mount in an instant and necessitates no change in camera operation.

The V. P. K. Diffusion Disk, used with the V. P. K. *Special* and the V. P. K. Series III, *f.5.6* lens, can be used for both landscapes and portraits at  $5\frac{1}{2}$  feet and beyond.



*For prices of these attachments see page 40*

# KODAK PORTRAIT AND DIFFUSION PORTRAIT ATTACHMENTS, PICTORIAL DIFFUSION DISKS, SKY AND COLOR FILTERS

(These attachments are listed here only for the cameras shown in this catalog. For attachments to be used on older models, see your dealer.)

	Order by this Number	Portrait Attach- ments	Diffusion Portrait Attach- ments	Pictorial Diffusion Disks	Sky or Color Filters
<b>FOR VEST POCKET KODAKS</b>					
Model B, Meniscus lens or Kodak Doublet lens . . . . .	8	\$.75	\$1.25	....	\$.75
Boy Scout, Meniscus lens . . . . .	8	.75	1.25	....	.75
Girl Scout, Meniscus lens . . . . .	8	.75	1.25	....	.75
Camp Fire Girls, Meniscus lens . . . . .	8	.75	1.25	....	.75
Series III, Kodar f.7.9 . . . . .	8	.75	1.25	....	.75
Series III, Kodak Anastigmat f.5.6 . . . . .	8A	.75	....	....	.75
Special, Kodak Anastigmat f.4.5 . . . . .	8A	.75	....	....	.75
Vest Pocket Kodak Diffusion Disk (see page 39) . . . . .	8A	....	....	\$1.25	....
<b>FOR JIFFY KODAKS</b>					
Six-20, Twindar lens . . . . .	6A	.75	1.50	2.50	1.15
Six-16, Twindar lens . . . . .	7A	.75	1.50	2.50	1.50
<b>FOR KODAKS SIX-20</b>					
Kodak Doublet lens, with shutter plate No. 40832 . . . . .	8	.75	1.25	....	.75
Kodak Doublet lens, with shutter plate No. 44069 . . . . .	13	.75	1.25	1.75	1.15
Kodak Anastigmat f.6.3 . . . . .	13	.75	1.25	1.75	1.15
Kodak Anastigmat f.4.5 . . . . .	5	.75	1.50	2.50	1.50
<b>FOR KODAKS SIX-16</b>					
Kodak Doublet lens . . . . .	13	.75	1.25	1.75	1.15
Kodak Anastigmat f.6.3 . . . . .	13	.75	1.25	1.75	1.15
Kodak Anastigmat f.4.5 . . . . .	7 or 7A	.75	1.50	2.50	1.50
<b>FOR NO. 3 KODAK, SERIES III</b>					
Kodak Anastigmat f.6.3 or f.5.6 . . . . .	6 or 6A	.75	1.50	2.50	1.15
<b>FOR 3A KODAKS</b>					
No. 3A Pocket Kodak, Meniscus Achromatic lens or Kodar f.7.9 . . . . .	6 or 6A	.75	1.50	2.50	1.15
No. 3A Pocket Kodak, Kodak Anastigmat f.6.3 . . . . .	7 or 7A	.75	1.50	2.50	1.50
No. 3A Autographic Kodak, Kodak Anastigmat f.6.3 . . . . .	7 or 7A	.75	1.50	2.50	1.50
No. 3A Autographic Kodak Special, Kodak Anastigmat f.6.3 . . . . .	7 or 7A	.75	1.50	2.50	1.50
<b>FOR POCKET KODAKS SPECIAL</b>					
No. 1, Kodak Anastigmat f.4.5 . . . . .	6 or 6A	.75	1.50	2.50	1.15
No. 1A, Kodak Anastigmat f.4.5 . . . . .	7 or 7A	.75	1.50	2.50	1.50
No. 3, Kodak Anastigmat f.4.5 . . . . .	7 or 7A	.75	1.50	2.50	1.50
<b>FOR EUROPEAN-TYPE KODAKS</b>					
Kodak Recomar 18, f.4.5 Anastigmat lens . . . . .	5	.75	1.50	2.50	1.50
Kodak Recomar 33, f.4.5 Anastigmat lens . . . . .	16	....	....	....	3.30
Kodak Pupille, f.2 Anastigmat lens . . . . .	5	....	1.50	2.50	1.50
Kodak Vollenda, f.3.5 Anastigmat lens . . . . .	13A	....	....	....	1.15
Kodak Ranca, f.4.5 Anastigmat lens . . . . .	13A	....	....	....	1.15
<b>FOR BROWNIES (BOX TYPE)</b>					
No. 0 Brownie, Meniscus lens . . . . .	1	.50	1.25	....	.75
Six-20 Boy Scout Brownie, Meniscus lens . . . . .	6 or 6A	.75	1.50	2.50	1.15
Six-20 Brownie, Diway lens . . . . .	7 or 7A	.75	1.50	2.50	1.50
Six-16 Brownie, Diway lens . . . . .	7 or 7A	.75	1.50	2.50	1.50
Nos. 2C and 3 Brownies, Meniscus Achromatic lens . . . . .	4	.75	1.25	....	1.15

Compliments of the Digitized Kodak Catalog Project: 1886 - 1941



## KODAK LENS CLEANER



THIS product is far more than an ordinary glass cleaner. It was developed especially to remove the fungus that attacks photographic lenses in warm and humid weather, making them hazy and correspondingly inefficient. In addition it is a superior product for keeping lenses and lens attachments clean under all conditions. Its use once a month will assure a spotless lens—one that can be counted on for clear pictures.

Kodak Lens Cleaner, 1-ounce bottle . . . . . \$ .20

## "HOW TO MAKE GOOD PICTURES"

THIS well-known book should be in the home of every amateur photographer. It explains, in easy, untechnical language, the operation of cameras, developing, printing, enlarging, and tinting; landscape, architectural, interior and night photography; home portraiture; the making of silhouettes, etc. It is profusely illustrated, not only with examples of good pictures, but also with helpful charts. The book is well printed, and bound in boards, with a vellum cover. It is offered in its latest, revised edition.

"How To Make Good Pictures" . . . . . \$ .50

## "ELEMENTARY PHOTOGRAPHIC CHEMISTRY"

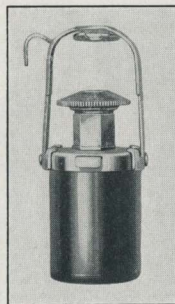
A VALUABLE book for practical photographers. It includes an introduction to elementary chemistry, descriptions of principal photographic chemicals, a table of solubilities, practical information on formulas, the preparation and use of solutions, etc.

"Elementary Photographic Chemistry" . . . . . \$ .50

## KODAK SELF TIMER

THIS accessory helps in making a really complete picture record. With it the photographer can make snapshots of himself or can include himself in group pictures. It can be used on any camera that takes a cable release. Clip a Kodak Self Timer to the cable release, set it for any interval from 1/2 second to 1 minute, and step into the picture. When the interval has elapsed, the plunger of the Timer trips the shutter, making the exposure without further help from you.

Kodak Self Timer . . . . . \$1.25  
Cable Release, each . . . . . .35



## KODAK SAFELIGHT LAMP

**T**HIS lamp is ideal for all darkroom uses. It is made to suit the work of the beginner, the advanced amateur, or the professional. It is regularly supplied with a 5 x 7 Series 2 Safelight (for use with all films or plates except panchromatic), electric cord, and fittings. A safelight of any other series may be specified in ordering.

Kodak Safelight Lamp, without 25-watt bulb . . . . . \$3.50  
 Extra Safelight, 5 x 7, any series. . . . . .75

## EASTMAN SAFELIGHT LAMP

**S**USPENDED from an electric cord or fixture, the Eastman Safelight Lamp throws the light directly downward over the work-table. Unless otherwise ordered, it is supplied with 5 x 7 Series 2 Safelight, for use with all films or plates, except panchromatic. The light source is a 10-watt bulb.

Eastman Safelight Lamp, without bulb . . . . . \$3.00  
 Extra Safelight, 5 x 7, any series . . . . . .75

## BROWNIE SAFELIGHT LAMP

**T**HE Brownie Safelight Lamp, but little larger than the electric bulb it holds, screws into any electric socket. It is made of japanned metal, and has safelights at the end and at the front (both Series 2, unless otherwise specified). A 10-watt bulb is the source of illumination.

Brownie Safelight Lamp, without bulb . . . . . \$1.75  
 Extra Circular End Safelight (any series), each . . . . . .25  
 Extra Rectangular Safelight (any series), each . . . . . .40

## EXTRA SAFELIGHTS FOR SAFELIGHT LAMPS

- SERIES 0—Orange, for bromide paper and lantern slide plates.
- SERIES 0A—Greenish-yellow, for bromide paper, lantern slide plates.
- SERIES 00—For use with developing-out papers (except bromide).
- SERIES 1—For use with films or plates not highly color sensitive.
- SERIES 2—For use with Kodak Verichrome Film and other extra-rapid orthochromatic films and plates.
- SERIES 3—For use with Kodak Super Sensitive Panchromatic Film and other red-sensitive panchromatic films and plates.

Price, any series, for Eastman and Kodak Safelight Lamps—\$ .75;  
 for Brownie Safelight Lamp, circular—\$ .25; rectangular—\$ .40.

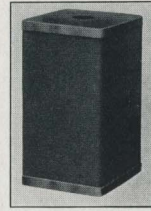
*Safelight for Kodak Super Sensitive Panchromatic Film*—Because of the extreme sensitivity of Kodak Super Sensitive Panchromatic Film and Film Packs (see pages 33, 34), finishing of these materials must proceed in total darkness until the film has been in the developer not less than three minutes. It may then be examined under a Kodak, Eastman, or Brownie Safelight Lamp, fitted with Series 3 (dark green) Safelight and 10-watt bulb. The lamp must be six feet or more from the film.



## KODAK CANDLE LAMP

WHenever space is at a premium, or electricity is not available, this clever lamp is very popular. It is collapsible and takes up but little room when not in use. It is made of special, tested ruby fabric bound in metal frames, and gives a light safe for photographic work (except with panchromatic materials).

Kodak Candle Lamp, with one candle . . . . . \$ .40  
Extra Candles, per dozen . . . . . .50



## KODAK DARKROOM OUTFIT NO. 1



CAMERISTS who wish to do their own developing and printing can save both time and expense by using one of the outfits listed on this page. Being assembled in large numbers, they can be offered at prices considerably less than

the total retail values of the separate items. Good results are assured by the fact that each article is a tried and tested Eastman product.

The new Kodak Darkroom Outfit, No. 1, is particularly valuable to advanced amateurs, and can also be used as a basis for permanent dark-room equipment by Boy Scouts, camera clubs, etc.

This outfit includes a Brownie Safelight Lamp (with Series 2 Safelight, unless otherwise specified), 10-watt Mazda Bulb, Kodak Auto-Mask Printing Frame, two 4 x 6 Enamelled Trays, 5 x 7 Enamelled Tray, 8-ounce Eastko Graduate, Hard Rubber Stirring Rod, Eastman Thermometer, 1 Pair 3 1/4" Eastman Film Developing Clips, 6 blotters—size 9 1/2 x 12 inches—5 tubes Eastman Special Developer, 4-ounce bottle Nepera Solution, 1 pound Kodak Acid Fixing Powder, instruction booklet, and the most informative book on amateur photography—"How to Make Good Pictures."

Kodak Darkroom Outfit No. 1, complete, packed in black fiber case . . . . . \$8.75

## DEVELOPING AND PRINTING OUTFITS

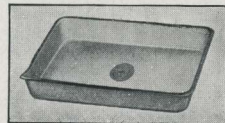
THESE outfits provide reliable and inexpensive assortments of materials for developing and printing.

The Eastman 3A Outfit consists of a Kodak Candle Lamp, Printing Frame, glass for Frame, 4-ounce Graduate, Stirring Rod, 4 Developing Trays, 5 tubes Eastman Special Developer, 1/2 pound Kodak Acid Fixing Powder, 2 dozen 3 1/4 x 5 1/2-inch Velox Paper, 2 ounces Nepera Solution for developing Velox, and an instruction booklet.

Eastman 3A Outfit, complete, neatly packed . . . . . \$2.00  
Eastman ABC Outfit, similar to 3A, but providing for 4 x 5-inch or smaller pictures. \$2.00

## DEVELOPING TRAYS

"Bull's Eye" (Composition)		Eastman Enamelled
3 1/4 x 4 1/4 . . . \$ .30	4 x 6 . . . \$ .45	4 x 6 . . . \$ .60
4 x 5 . . . .40	5 x 8 . . . .80	5 x 7 . . . .75



## KODAK FILM TANK

**T**HIS outfit affords the easiest, most reliable means of developing roll film negatives. No experience is necessary, and no experimenting. Furthermore, no darkroom is required; the whole process of developing can be done in daylight. By means of the light-tight box the film is transferred to a reel, being covered at the same time by a protecting apron. Reel, film, and apron are then immersed in the solution



cup, and development is made according to the accompanying directions.

The Kodak Film Tank lends itself ideally to the development of Kodak Super Sensitive Panchromatic Roll Film. Because of its extreme sensitivity this film must, after exposure, be handled in total darkness until it has been in the developer at least three minutes. (See instructions packed with each roll of film.) Kodak Film Tank's ingenious construction and method of operation make it the safest and surest device for the amateur's use in developing this new and remarkable film.

2¼-inch Kodak Film Tank, for films 2¼ inches wide or less . . . . .	\$4.50
2½-inch Kodak Film Tank, for films 2½ inches wide or less . . . . .	5.50
3½-inch Kodak Film Tank, for films 3½ inches wide or less . . . . .	6.50
Kodak Tank Developer Powders, for 2¼-inch Tank, per ½ dozen . . . . .	.20
Ditto, for 2½-inch or 3½-inch Tank, per ½ dozen . . . . .	.25
Kodak Acid Fixing Powder, per ¼-lb., ½-lb., or 1-lb. package . . . . .	\$ .10, \$ .15, \$ .25

## FILM DEVELOPING CLIPS

**T**HE Improved Kodak Film Clip is a sturdy, dependable clip made in two styles, of solid, non-corrosive metal. One style is used in suspending the film from a support. The other can be attached to the lower edge of the film, a lead weight keeping the film taut. Both have 2-inch jaws.

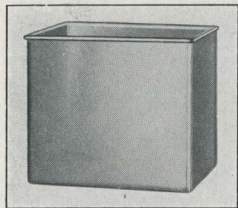
The Kodak Junior Film Clip has two teeth which remove all possibility of slipping. The clip is made in one size only, 1¾ inches wide, of acid-resisting metal, and is equally practical for tray development or for drying films.

The Eastman Film Developing Clip is strong and thoroughly dependable. It has a nickel finish, and is available in two substantial sizes.

Improved Kodak Film Clip, without lead weight . . . . .	\$ .35
Improved Kodak Film Clip, with lead weight . . . . .	.45
Kodak Junior Film Clip . . . . .	.15
Eastman Film Developing Clips, 3½-inch, per pair . . . . .	.30
Eastman Film Developing Clips, 5-inch, per pair . . . . .	.40



## KODAK DEVELOPING BOX, No. 1

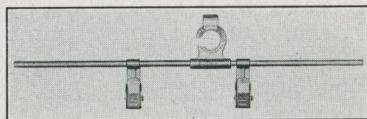


THIS tank provides a swift and easy means to uniform development of cut film. It takes twelve films, each suspended in the solution from a Kodak Cut Film Developing Hanger. Development proceeds by the time and temperature method. The tank is made of acid-resisting metal and measures 4 x 5 $\frac{1}{4}$  x 6 inches.

Kodak Developing Box, No. 1, without hangers . . . \$2.00

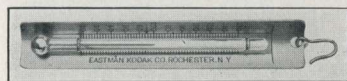
## KODAK CUT FILM DEVELOPING HANGER

FOR use with Kodak Developing Box, No. 1. The hanger is made sufficiently long to lie conveniently across the top of the box. The clips are made of an acid-resisting metal and are therefore adapted to long service in developer solutions.



Kodak Cut Film Developing Hangers, each . . . . . \$ .20

## EASTMAN THERMOMETER



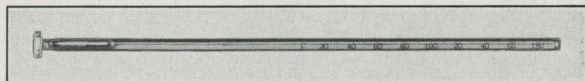
AN accurate instrument, especially convenient in tank or tray development. The swinging hook which is provided makes it easy to suspend the

thermometer in solutions. Its curved back protects the glass tube and fits the corner of a developing tank. Every amateur photographer who does his own developing and printing will appreciate the advantages of this specialized thermometer.

Eastman Thermometer . . . . . \$ .90

## THERMOMETER STIRRING ROD

THIS triple purpose rod is  $\frac{3}{4}$ -inch in diameter by  $9\frac{1}{4}$  inches



long, and is stoutly constructed. Stirring with it mixes ingredients thoroughly. At the same time it gives a quick and accurate record of the temperature of the solution. The enlarged and flattened end is useful in crushing lumpy powders.

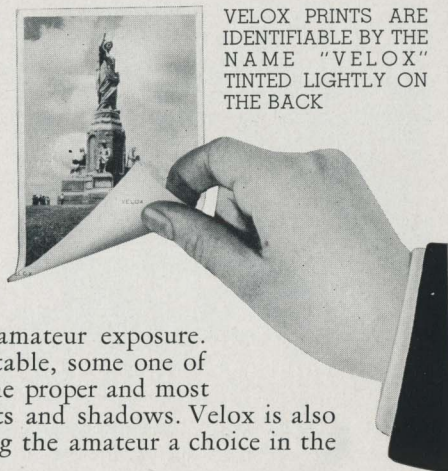
Thermometer Stirring Rod . . . . . \$1.25

# VELOX PAPER

"LOOK FOR VELOX ON THE BACK"

**V**ELOX is a non-abrasion developing-out paper ideal for amateur work.

It takes into account the fact that amateur pictures are made under greatly varying light conditions, its four degrees of contrast fitting every type of amateur exposure. If the negative is at all printable, some one of these four degrees will give the proper and most pleasing rendering of highlights and shadows. Velox is also supplied in two surfaces, giving the amateur a choice in the matter of finish.



GRADE	SURFACE	CONTRAST			
Velvet Velox	Semi-Gloss	1	2	3	4
Glossy Velox	Enameled	1	2	3	4

SIZE IN INCHES	PRICES	
	2 Dozen	1 Gross
1 3/8 x 2 3/4 (for 1 3/8 x 2 1/2 negatives)	\$.25	\$.85
2 1/2 x 3 1/2 (for 2 1/4 x 3 1/4 negatives)	.35	1.20
2 3/4 x 4 1/2 (for 2 1/2 x 4 1/4 negatives)	.35	1.50
3 1/2 x 4 1/2 (for 3 1/4 x 4 1/4 negatives)	.40	1.85
3 3/8 x 5 1/8 (for 2 7/8 x 4 3/8 negatives)	.40	1.95
3 1/2 x 5 3/4 (for 3 1/4 x 5 1/2 negatives)	.50	2.35

Velox is also available in exact negative sizes (except Vest Pocket)

## VELOX SUNDRIES

**T**HIS simple list of sundries gives the amateur all the chemicals he needs for the manipulation of Velox Paper.

Nepera Solution, 4-ounce bottle . . . . .	\$.28
Ditto, 16-ounce bottle . . . . .	.84
Nepera Auxiliary Powders (for converting Nepera Solution to a film or plate developer), package of 12 . . . . .	.35
Eastman M. Q. Developer, package of 5 glass tubes . . . . .	.30
Velox Re-developer Tubes for Septa Toning, package of 12 . . . . .	1.08
Velox Liquid Hardener, 4-ounce bottle . . . . .	.25
Ditto, 8-ounce bottle . . . . .	.35
Kodak Acid Fixing Powder for fixing Velox prints, 1 pound . . . . .	.25
Ditto, 1/2 pound . . . . .	.15
Ditto, 1/4 pound . . . . .	.10



## KODAK AMATEUR PRINTER



**F**OR quick and convenient contact printing the amateur can choose no better means than this compact device, built simply but to Eastman scientific standards.

It fits negatives from  $1\frac{5}{8} \times 2\frac{1}{2}$  to  $4 \times 5$  or  $3\frac{1}{4} \times 5\frac{1}{2}$  inches. The negative to be printed is placed on the top glass window by the light of a red bulb inside the printer. A simple masking arrangement controls the white margins and holds the negative during any number of exposures. The paper is placed over the negative and the hinged frame closed. This automatically turns on a 60-watt electric lamp (not supplied) and makes the exposure. The position of this lamp is readily adjustable to give even illumination to negatives of various sizes.

The printer is supplied with  $5\frac{1}{2}$  feet of electric cord with plug attached, and one red bulb. By simply inserting an ordinary 60-watt lamp the printer is made ready for instant use.

Thousands of amateurs can attest to the convenience and efficiency of this inexpensive printer. See it at your Kodak dealer's.

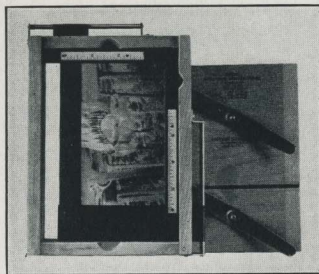
Kodak Amateur Printer . . . . . \$10.00

## KODAK AUTO-MASK PRINTING FRAME

**T**HIS frame can be used in printing from any negatives of amateur size:  $4 \times 5$ ,  $3\frac{1}{4} \times 5\frac{1}{2}$  inches or smaller.

Attached to the frame are two slides adjusted from the outside, forming an accurate mask of whatever size is desired. Any number of uniformly masked prints can be made without readjusting the negative or the masking slides.

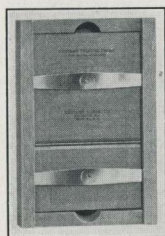
The entire frame is carefully constructed, of quality material, to give years of service.



Kodak Auto-Mask Printing Frame . . . . . \$1.50

## EASTMAN PRINTING FRAMES

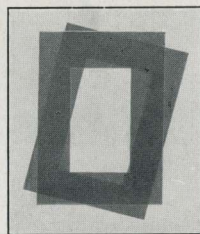
THESE frames have a two-section hinged back, with clamps to hold the negative and paper firmly. Construction is of beech, a high-grade wood that assures rigidity and long life, and obviates danger of warping. Eastman Printing Frames are supplied without glass.



For 2 1/4 x 3 1/4-inch plates and V. P. K. or smaller film negatives . . . . .	\$ .35
For 2 1/2 x 4 1/4-inch or smaller film negatives . . . . .	.40
For 3 1/4 x 4 1/4-inch plates and 2 1/4 x 3 1/4-inch or smaller film negatives . . . . .	.40
For 3 1/4 x 5 1/2-inch or smaller film negatives . . . . .	.40
For 3 1/4 x 5 1/2-inch plates . . . . .	.45
For 4 x 5-inch plates or films . . . . .	.40
For 5 x 7-inch plates or films . . . . .	.55

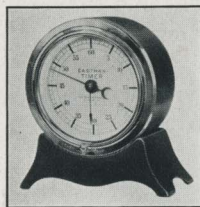
## KODALOID PRINTING MASKS

THESE transparent, durable masks, orange-red in color, have openings of various convenient sizes. Their transparency enables the user to see clearly the portions of the picture which are being masked off. The masks are supplied either with or without trimming guides, which provide for a 1/8-inch margin.



For 3 1/4 x 5 1/2 Frames, 8 masking sizes, each . . . . .	\$ .10
For 4 x 5 Frames, 6 masking sizes, each . . . . .	.10
For 5 x 7 Frames, 5 masking sizes, each . . . . .	.15

## EASTMAN TIMER



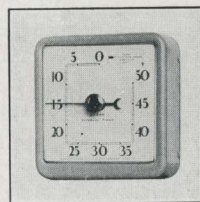
THE most important factor in the making of good prints is accurate exposure. The Eastman Timer, an accurate clocking device, serves this purpose ideally. It has both minute and split-second hands, which may be reset instantly. The large and plainly marked dial can be read easily even in subdued light.

Eastman Timer . . . . . \$5.00

## KODAK INTERVAL TIMER

THIS timer can be set for any number of minutes from 1 to 50. At the expiration of the desired interval an alarm rings. Accurate and modern construction makes the Kodak Interval Timer an unusually efficient and handsome darkroom accessory. It is useful for timing such operations as development, fixing, and washing, or for extremely long exposures.

Kodak Interval Timer . . . . . \$5.00





## KODAK AUTO-FOCUS ENLARGER, MODEL B



THIS new-model enlarger supplies the easiest and most efficient means of making amateur enlargements. It can be clamped to any table, and is notable for the fact that it focuses itself. As the camera is moved up or down to form an image of the desired size, a cam-and-lever arrangement maintains the focus at critical sharpness. Enlarging with this device is therefore as rapid and easy as contact printing. And the Kodak Anastigmat lens supplied assures big prints of finest possible quality. The outfit includes a new type of all-metal paper holder, with clamps for holding the paper, and a felt-covered bottom. The negative holder has an opening 4 x 6 inches, and is adaptable to film or plate

negatives. They can be enlarged from 1½ to 3½ diameters. Prints approximately 11 x 18½ inches can be made from a 3¼ x 5½ negative; and prints 5¼ x 8¼ inches can be made from a "vest pocket" negative.

The ventilated lamp house is designed to hold a Mazda Photoflood lamp (obtainable from photographic dealers). Switches built into the outfit permit using the light in either of two degrees of intensity.

A special diffusing disc is supplied separately for soft-focus effects.

Kodak Auto-Focus Enlarger, Model B, with Kodak Anastigmat Lens, electric cord and plug, set of seven flexible metal masks, paper holder . . . . .	\$40.00
Paper Holder only (for use, if desired, with old-style enlargers) . . . . .	7.50
Diffusing Disc . . . . .	1.00

## EASTMAN ENLARGING PAPERS

THESE bromide enlarging papers give unsurpassed quality, offer a wide variety of effects, and are just as easy to use as Velox.

Eastman Portrait Bromide is particularly adapted to enlargements from portrait negatives. It is also ideal for enlarging pictures of landscapes and interiors, when it is desired to produce prints that are brilliant but that have a long scale of tones and half-tones rather than strong contrasts. Surfaces and colors: D(white)Rough Lustre; E(buff)Rough Lustre.

P. M. C. Bromide is a paper of excellent all-around quality. It is supplied in eleven different grades, some of them single weight and others double weight. There is a variety of stocks and surfaces, and some of the grades are made in two or three degrees of contrast. P. M. C. can, therefore, be counted on to suit every taste and requirement.

## KODAK TRANSPARENT OIL COLOR OUTFIT



THESE perfected oil colors offer a splendid means of coloring photographs. The pigments used are of the highest quality and are ground extremely fine in order to give complete smoothness when applied. They contain no element that might bleach or otherwise affect photographic prints. There are fifteen colors, which may be used singly or in combination. They have strength, brilliance, and permanence equal to the standards of

recognized authorities for artists' oil colors. The complete outfit also includes sizing fluid, cleaning fluid for margins, transparent medium for thinning, a quantity of stump cotton, pointed sticks (skewers), an instruction book which tells exactly how to mix and apply the colors, and a comprehensive color guide. In short, everything necessary to a highly satisfactory coloring job finds a place in the handsome blue wooden box.

Kodak Transparent Oil Color Outfit (complete) . . . . .	\$3.75
Kodak Transparent Oil Colors, No. 2 size, per tube, any color . . . . .	.20
Transparent Thinning Medium, No. 4A size, per tube . . . . .	.35
Sizing Fluid, per 1-oz. bottle . . . . .	.20
Cleaning Fluid, per 1-oz. bottle . . . . .	.20
Stump Cotton, per package . . . . .	.15
Skewers, per dozen . . . . .	.20

## VELOX WATER COLOR OUTFIT

PHOTOGRAPHIC prints, lantern slides, and even ordinary magazine pictures can be colored easily, artistically, by using Velox Water Colors. The outfit consists of three brushes and a booklet containing complete instructions as well as twelve leaves of different colors.



Each leaf is divided into twenty-six detachable, soluble color stamps. The inside cover of the white enamel case is specially designed to serve as a mixing palette.

Velox Water Color Outfit (book of color stamps, three brushes, case) . . . . .	\$1.00
Velox Transparent Water Color Stamps, complete book of 12 colors . . . . .	.50
Separate Color Leaves, per sheet . . . . .	.04
Set of three Special Brushes . . . . .	.50



## LIBRARY ALBUMS

THESE two Library Album styles fill the demand for albums in book form, readily placed in the bookcase when not wanted. In keeping with this idea, the words "Kodak Library" are stamped in gold on the rounded back.

Choice of covers: genuine seal-grain black leather, finished with a pressed book design, or *de luxe* grained material, with an exclusive book design and artistic coloring.

Loose-leaf arrangement, for holding the fifty black leaves, is inside the cover, therefore there are no projections to mar the table or desk on which the album may be placed.

B, Genuine Black Leather Cover, 6½ x 9 (size of leaf from folding edge)	3.00
M, <i>De Luxe</i> Grained Cover, 6½ x 9 (size of leaf from folding edge)	2.00
Extra leaves, package of 12, Size L, \$18	



## KODAK ALBUMS

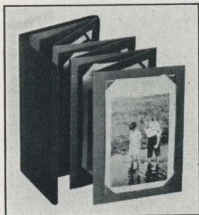
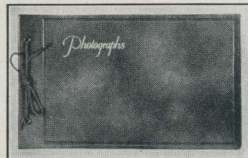
LOOSE-LEAF, open-back style. Choice of genuine leather covers in black or olive blend — both surfaced in an etched pine-needle effect. Fifty black, round-cornered leaves, held in place with silk-finished cord through cover and metal tubes. The unusual cover must be seen to be appreciated.

5 x 8, RA, Black Cover . . . . .	\$2.00	SA, Olive Cover . . . . .	\$2.00
7 x 11, RB, Black Cover . . . . .	3.00	SB, Olive Cover . . . . .	3.00
10 x 12, RC, Black Cover . . . . .	4.50	SC, Olive Cover . . . . .	4.50
11 x 14, RD, Black Cover . . . . .	5.00	SD, Olive Cover . . . . .	5.00
Package of 12 extra leaves, Size A (5 x 8), \$15; Size B (7 x 11), \$18; Size C (10 x 12), \$30; Size E (11 x 14), \$40			

## RHODES ALBUMS

GENUINE leather covers in seal-grain black or cordova-finished brown. Loose-leaf, open-back style. Contains fifty black leaves held in place by metal tubes and cord through cover. Cover stamped with the word "Photographs."

LB, 7 x 11, Black leather . . . . .	\$2.50
LC, 10 x 12, Black leather . . . . .	4.00
LD, 11 x 14, Black leather . . . . .	4.50
BB, 7 x 11, Brown leather . . . . .	2.50
BC, 10 x 12, Brown leather . . . . .	4.00
BD, 11 x 14, Brown leather . . . . .	4.50
Package of 12 extra leaves, Size B (7 x 11), \$18; Size C (10 x 12), \$30; Size E (11 x 14), \$40	



## SIMPLEX POCKET PHOTO CASES

A LIGHT-WEIGHT case that will hold your prized pictures of the home, children, etc., and that will fit your coat pocket or handbag. It keeps prints clean and quickly accessible. The container has the Simplex die-cut slots, so that standard-sized prints are easily inserted—and quickly taken out when they are to be placed in an album. Each case holds 12 prints on an accordion-like, folded leaf. Black Levant-grain cover.

No.	Standard size of trimmed print	Price each	No.	Standard size of trimmed print	Price each
127A	For 12 1⅞ x 2¾ Prints	\$20	118A	For 12 3½ x 4½ Prints	\$30
120A	For 12 2⅞ x 3½ Prints	.25	130A	For 12 3⅞ x 5½ Prints	.30
116A	For 12 2¾ x 4½ Prints	.25	122A	For 12 3½ x 5¾ Prints	.30

## SIMPLEX FOLIOS



A NEW note in albums. Large, four-page leaves slip between the heavy tasseled cord and cover. No pasting, tying, or untying. Leaves have die-cut slots to hold standard-sized prints. Choice of five covers. Practical—a folio to hold in one container the different-sized pictures made by you and your friends. Incidentally, these folios make ideal gifts. Prices do not include leaves.

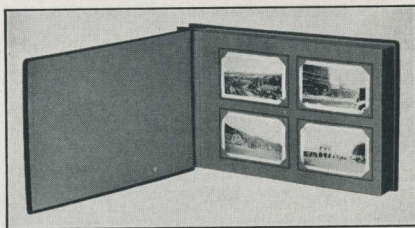
- |   |  |
|---|--|
| A, Blue Squirrel-finished Cover . . . \$2.50                                  | E, Black Morocco-finished, Genuine Leather Cover, Multitoned Florentine Design. \$7.50 |
| B, Maroon Grained Cover . . . 2.50  | F, Black Morocco Leather Cover, with Genuine Gold Line Tooling . . . . . 5.00          |
| C, Black Pigskin-finished Cover, with Multitoned Modern Design . . . . . 3.50 |  |

All leaves are the same outside size, and sell at \$1.20 per carton of 12, taking one print size. The numbers below correspond to Kodak Film numbers ("H" for horizontal prints; "V" for vertical prints).

No.	Standard Size of Trimmed Print	Leaf—4 pages—will hold	No.	Standard Size of Trimmed Print	Leaf—4 pages—will hold
127H	1 1/4 x 2 3/4 inches	32 Prints, Horizontal	118H	3 1/2 x 4 1/2 inches	12 Prints, Horizontal
127V	1 1/4 x 2 3/4 inches	36 Prints, Vertical	118V	3 1/2 x 4 1/2 inches	16 Prints, Vertical
120H	2 1/2 x 3 1/2 inches	24 Prints, Horizontal	130H	3 1/2 x 5 1/2 inches	12 Prints, Horizontal
120V	2 1/2 x 3 1/2 inches	24 Prints, Vertical	130V	3 1/2 x 5 1/2 inches	16 Prints, Vertical
116H	2 3/4 x 4 1/2 inches	12 Prints, Horizontal	122H	3 1/2 x 5 3/4 inches	12 Prints, Horizontal
116V	2 3/4 x 4 1/2 inches	16 Prints, Vertical	122V	3 1/2 x 5 3/4 inches	16 Prints, Vertical

## SIMPLEX ALBUMS

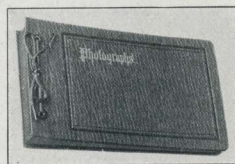
LIKE the Simplex Folios—time savers. No pasting or gluing of prints. Merely slip standard-sized prints underneath raised corners. Made for these print sizes: 2 1/4 x 3 1/4, 2 1/2 x 4 1/4, and 3 1/4 x 5 1/2. Each album as supplied holds 200 prints, and is also provided with ten plain leaves for odd-sized pictures. Cover is in dark green, grained material. Loose-leaf style. Just the type of album you want for preserving your personal, individual collection of prints.



- |   |   |
|---|---|
| B1, 8 1/2 x 12, for 2 1/4 x 3 1/4 prints . . . \$2.75 | B3A, 10 3/4 x 17 3/4, for 3 1/4 x 5 1/2 prints . . . \$3.75 |
| B1A, 9 x 13 3/4, for 2 1/2 x 4 1/4 prints . . . 3.00  |   |
- Package of 6 extra leaves: S1 for 2 1/4 x 3 1/4 prints, \$50; S2 for 2 1/2 x 4 1/4 prints, \$55; S3 for 3 1/4 x 5 1/2 prints, \$60; S4 for odd-sized prints, B1 album, \$15; S5 for odd-sized prints, B1A album, \$20; S6 for odd-sized prints, B3A album, \$25

## JUNO ALBUMS

LOOSE-LEAF, open-back style. Fifty black leaves held in place by metal tubing and cord through covers. Embossed, English-grain cover, in choice of brown or black. The word "Photographs" is stamped in gilt on the front. A conservatively styled and modestly priced album that never fails to please.



- |   |  |
|---|--|
| 5 x 8, BA, brown or CA, black . . . . . \$ 90 | 10 x 12, BC, brown or CC, black . . . . . \$2.00 |
| 7 x 11, BB, brown or CB, black . . . . . 1.25 | 11 x 14, BD, brown or CD, black . . . . . 2.25   |

Package of 12 extra leaves, Size A (5 x 8), \$15; Size B (7 x 11), \$18; Size C (10 x 12), \$30; Size E (11 x 14), \$40





## BRIGHTON ALBUMS

HERE is a moderately priced album. Cover offered in choice of three colors of a sparkling embossed book cloth. Leaves are black—of good quality—held in place by tubes and cord through cover. Cover is stamped in gilt with the word "Snapshots." This album is unusually good-looking in any of the three colors offered, and will stand long

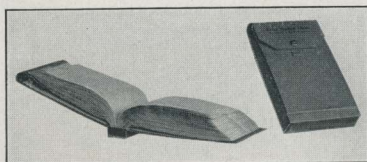
wear. It is an extremely good value, especially at the prices listed.

5 x 8—A-1, Blueblend; A-2, Greentone; A-3, Rubytone . . . . .	\$ .75
7 x 11—B-1, Blueblend; B-2, Greentone; B-3, Rubytone . . . . .	1.00
10 x 12—C-1, Blueblend; C-2, Greentone; C-3, Rubytone . . . . .	1.50
11 x 14—D-1, Blueblend; D-2, Greentone; D-3, Rubytone . . . . .	1.75

Package of 12 extra leaves, Size A (5 x 8), \$1.15; Size B (7 x 11), \$1.18; Size C (10 x 12), \$1.30; Size E (11 x 14), \$1.40

## KODAK NEGATIVE ALBUMS

WITH a Kodak Negative Album the photographer can store film negatives in individual transparent envelopes, where they can be viewed one by one—without being removed. They are ready for reprints, safe from negatives made on trips and vacations, as well as for preserving the films that quickly accumulate around the home.



These albums afford the best means yet devised for the orderly filing of negatives. They will be found invaluable for protecting negatives made on trips and vacations, as well as for preserving the films that quickly accumulate around the home.

For 100 negatives, 1 5/8 x 2 1/2 . . . . .	\$1.25
For 100 negatives, 2 1/4 x 3 3/4 . . . . .	1.25
For 100 negatives, 2 1/2 x 4 3/4 . . . . .	1.25
For 100 negatives, 3 3/4 x 4 3/4 . . . . .	1.25

For 100 negatives, 4 x 5 . . . . .	\$1.50
For 100 negatives, 3 3/4 x 5 1/2 . . . . .	1.50
For 100 negatives, 5 x 7 . . . . .	1.75

## KODAK DRY MOUNTING TISSUE



THIS tissue offers one of the easiest and most satisfactory methods of mounting prints, and through its use your pictures show up to better advantage. Just fix the tissue on the print, lay both on the mount, and press with a warm flat-iron. The heat causes the tissue to fuse, giving perfect contact between print and mount at every point. In this way pictures are mounted smoothly and securely, without fuss or bother. You will be delighted with the convenience which this mounting material offers.

3 dozen sheets for prints of any size up to and including 3 3/4 x 4 3/4 . \$ .10  
2 dozen sheets for 3 3/4 x 5 1/2 prints . . \$ .10

## KODAK PHOTO PASTE

AN EXCELLENT white adhesive. Unlike most pastes, it is made especially for mounting prints, and will not bleach or discolor them. The elongated friction cap can be used as a spreader.

1 1/2-ounce tube . . . . .	\$ .10
2-ounce tube . . . . .	.15



## EASTMAN PHOTO PASTE

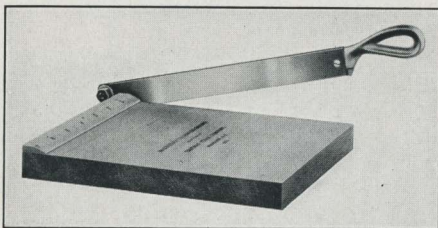
A HIGH quality paste. It is white and will not discolor the print.  
 A 4-ounce jar . . . . . \$ .25

## KODAK LIQUID GLUE

A PHOTOGRAPHIC glue that will not discolor pictures. With it, prints can be mounted by sticking down the corners.  
 Per tube . . . . . \$ .15



## KODAK TRIMMING BOARDS



STAINCHLY constructed, in sizes suited to the amateur photographer's needs. The boards are of hard wood, the blades of fine quality steel, and the rules are plainly marked.

No. 1, capacity 5 x 5 inches . \$ .75  
 No. 2, capacity 7 x 7 inches . 1.00

## KODAK PRINT ROLLER

A HIGHLY convenient aid in mounting. The frame is nickeled and the rubber rolls are six inches long. The desired pressure is easily exerted by means of the overhead handle.

Kodak Print Roller . . . . . \$1.00



## FLEXO PRINT ROLLER



THIS small and inexpensive roller, long a favorite with the amateur, has a four-inch rubber roll, supported in a black enamel frame.

Flexo Print Roller . . . . . \$ .35

## MISCELLANEOUS SUPPLIES

- |  |      |   |        |
|--|------|---|--------|
| Ferrotypes Plates, Special (for making glossy prints), 10 x 14, light . . . . .  | .20  | Spotting Colors, Eastman (consist of three colors—black, white, and sepia), per set . . . . .                 | \$ .25 |
| Ditto, 10 x 14, heavy . . . . .  | .30  | Squeegee, Eastman Special, 8-inch (for use with ferrotypes plates, to squeegee prints into contact) . . . . . | 1.25   |
| Opaque, Eastman, No. 1 (for blocking out parts of negatives), per tube . . . . . | .25  | Stirring Rod, Hard Rubber (acid- and chemical-proof) . . . . .  | .25    |
| Rubber Finger Tips, set of 3 . . . . .   | .15  |   |        |
| Rubber Focusing Cloth, per yard . . . . .  | 1.00 |   |        |



# EASTMAN TESTED CHEMICALS

CERTAINTY of good results in making negatives and prints depends as much on the quality of your chemicals as on any other one thing. Most of the chemicals listed below are manufactured in the plants of the Eastman Kodak Company, and *all* of them are tested both photographically and for purity before the E. K. C. Tested seal is affixed.



Acid, Acetic, 28 per cent C. P.—per pound bottle . . . . .	\$ .30
Acid, Citric—per four-ounce bottle . . . . .	.38
Acid, Eastman Pyrogallic—per ounce bottle . . . . .	.30
Acid Fixing Powder, Kodak—per pound package . . . . .	.25
Acid Fixing Powder, Kodak—per half-pound package . . . . .	.15
Acid Fixing Powder, Kodak—per quarter-pound package . . . . .	.10
Alum, Potassium, fine crystal—per pound . . . . .	.16
Elon—per ounce . . . . .	.48
Hydroquinone—per ounce can . . . . .	.20
Hydroquinone Developer Powders, Eastman—per half dozen . . . . .	.30
Hydroquinone Developer Powders, Eastman, in sealed glass tubes—per package of five powders . . . . .	.35
Intensifier, Eastman—per glass tube . . . . .	.15
Kodolon—per ounce . . . . .	.40
M. Q. Developer, Eastman—per package of five tubes . . . . .	.30
Potassium Bromide, granular—per ounce can . . . . .	.11
Pyro Developer Powders, Eastman—per half dozen . . . . .	.30
Re-developer, Velox, including bleaching agent—per package of twelve tubes . . . . .	1.08
Reducer and Stain Remover, Eastman—per box of five tubes . . . . .	.50
Sodium Carbonate, Eastman Tested (desiccated)—per pound bottle . . . . .	.35
Sodium Sulphite, Eastman Tested (desiccated)—per pound bottle . . . . .	.39
Sodium Thiosulphate (Hypo), granular—per pound . . . . .	.18
Special Developer Powders, Eastman, in glass tubes—per package of five . . . . .	.35
Tropical Developer, Eastman, in glass tubes—per package of five tubes . . . . .	.40

(A few of the above prices are slightly higher west of the Rocky Mountains)  
For Tank Developer Chemicals, see page 44. For Velox preparations, see page 46.

## TERMS

THE prices in this catalog are strictly net, except to regular dealers who carry our goods in stock. THESE PRICES ARE, HOWEVER, SUBJECT TO CHANGE WITHOUT NOTICE. For the convenience of our customers, we recommend that they buy from a dealer in photographic goods, as by so doing they can save time and transportation charges.

EASTMAN KODAK COMPANY, ROCHESTER, N. Y.

*Enlarged from snapshot made on Kodak Verichrome Film*

*Compliments of the Digitized Kodak Catalog Project: 1886 - 1941*







Compliments of the Digitized Kodak Catalog Project: 1886 - 1941

E



KODAK VERICHROME FILM'S TWO COATINGS—SLOW AND FAST—PROTECT AGAINST BOTH UNDER- AND OVEREXPOSURE. IN BRIGHT LIGHT OR DULL, THIS EASTMAN FILM IN THE YELLOW BOX SAFEGUARDS YOUR PICTURE RESULTS.



KODAK is the registered and common-law Trade Mark of the Eastman Kodak Company, and cannot be rightfully applied except to goods of their manufacture. When a dealer tries to sell you, under the Kodak name, a camera or films or other goods not of their manufacture, you can be sure that he has an inferior article that he is trying to market on the Kodak reputation.

*If it isn't an Eastman,  
it isn't a Kodak*