

KODAK

The Digitized Kodak Catalog Project (1886 - 1941): A Very Brief History

Most camera collectors at some point in their collecting careers pass through a Kodak phase - some never come out of it. And if there ever was one name that came to be associated with both cameras and collecting, it was Kodak.

George Eastman received his first patent (for coating dry plates) and bought his first manufacturing facility in 1880, and in 1881 he started the Eastman Dry Plate Company. In 1886 he received a patent for the near-mythical Eastman Detective Camera, but it wasn't until 1888 that the first camera bearing the name "Kodak" was introduced.

One of the nice things about collecting Kodak is that the product line is pretty well known, and because the company produced annual catalogs for many years, collectors can be reasonably sure of what they're looking at, when it was made, the variations and so on - presuming that they have access to either the appropriate catalog, or a number of the many books which document Kodak, each to some greater or lesser extent.

But what would be really nice would be to have a complete set of Kodak catalogs in an easily accessible form and readily available. And since the advent of portable computing devices (PC, Macintosh, etc.) that's been possible - except for the difficulty of assembling a complete set of Kodak catalogs in one spot and then scanning them and making the results available.

The idea of digitizing a complete set of Kodak catalogs has kicked around the collecting community for many years. It's been proposed on a number of online forums, during meetings of various photohistory groups, and for years there have been many incomplete "Kodak CDs" on eBay but at best, they only contained a few catalogs - whatever the owner had available. But assembling a complete set of catalogs, then scanning and processing perhaps 3,000 to 4,000 pages, was a daunting task - if not completely overwhelming - and nothing ever came of it.

Until now.

In early 2010, the idea came up again, but this time we - "we" as in "the collecting community" - were lucky. A number of collectors were willing to loan their catalogs to this project and a couple of insane - wait, let's call them "dedicated" - dedicated enthusiasts - neither of whom collected Kodak, but both of whom enjoyed the challenge of such a project - were willing to put in the time and effort to scan and pull together the entire set of catalogs into a full-blown Kodak Catalog Digital Library.

Our initial objective was to include just the annual amateur catalogs, but it turns out that many cameras only appear in certain professional and specialty catalogs. We included as many of those as we could obtain so that almost every Kodak camera made in the US, Canada and Europe, would be documented - at least up to about 1941. After that, it becomes much more difficult as Kodak stopped producing annual catalogs as their product line became increasingly more diversified.

However, even with the additional "non-amateur" catalogs, we weren't completely successful in illustrating "every" camera Kodak ever made. There are an elusive few that might appear in specialty catalogs that we simply couldn't track down. If you can't find one of those odd cameras, that's no doubt why. We may do a revision at some point in the future if someone is willing to loan us a catalog that includes a camera that isn't already recorded.

In this project, a total of 67 catalogs were used from 1886 through 1941 including a number of professional and dealer catalogs, and in some years, two or even three different catalogs to cover all the bases. With the cooperation of a number of dedicated collectors, we were able to pull together all those catalogs and in June 2010, the project started in earnest.

By November 2010, we had scanned everything we needed and eventually all 67 catalogs were then reassembled as image folders and converted to the universally accepted PDF format and finally, converted into individually searchable PDFs which could then be searched globally as a collection.

For those of you interested in the statistics: about 200 hours of scanning time (we never want to hear that sound again), 67 catalogs and 3,908 page scans - which generated 7,917 original and processed images - and 11.4 GB of disk space. Additionally, another 100+ hours of technical development time was needed to convert the digital catalogues into a fully searchable "knowledgebase" that could be launched from most any standard web browser.

The overwhelming number of catalogs was loaned to us by that most remarkable of Kodak collectors, Charlie Kamerman of Eagle Creek, Oregon. Without Charlie, it's very doubtful that this project could even have been attempted.

But as it turned out, even Charlie didn't have all the publications that were needed, but he was able to track down the five that he lacked and was able to secure either a copy or high resolution images that we could work with. And so, our thanks to the contributors of the catalogs and scans that we used:

Charlie Kamerman for the vast majority of catalogs used and all his help,
Steve Shohet for loaning a variety of test catalogs,
Ryerson University (Toronto) for the 1886 Eastman Catalog
George Layne for the 1890 New Kodaks Catalog,
Mike Kessler for the 1891 Dealer Display Catalog,
Ralph London for the 1893 UK Catalog,
Michael Pritchard for the 1897 UK Catalog.

The digital side of the project - also known as "all of the work" - was done by Rob Niederman of Medina, Minnesota, and Milan Zahorcak of Tualatin, Oregon. Remarkably we're still friends and in a few years, we'll probably be able to talk about this project rationally.

And there you have it, a more-or-less done deal. We're fairly sure that it isn't quite perfect, and expect there will be some carping about something or other; but all-in-all, we believe this to be a pretty good product and can now move on to something else.

Our thanks to all of those involved.

Rob Niederman
Milan Zahorcak

Fall, 2011

● ● 1932 - 1933 ● ●

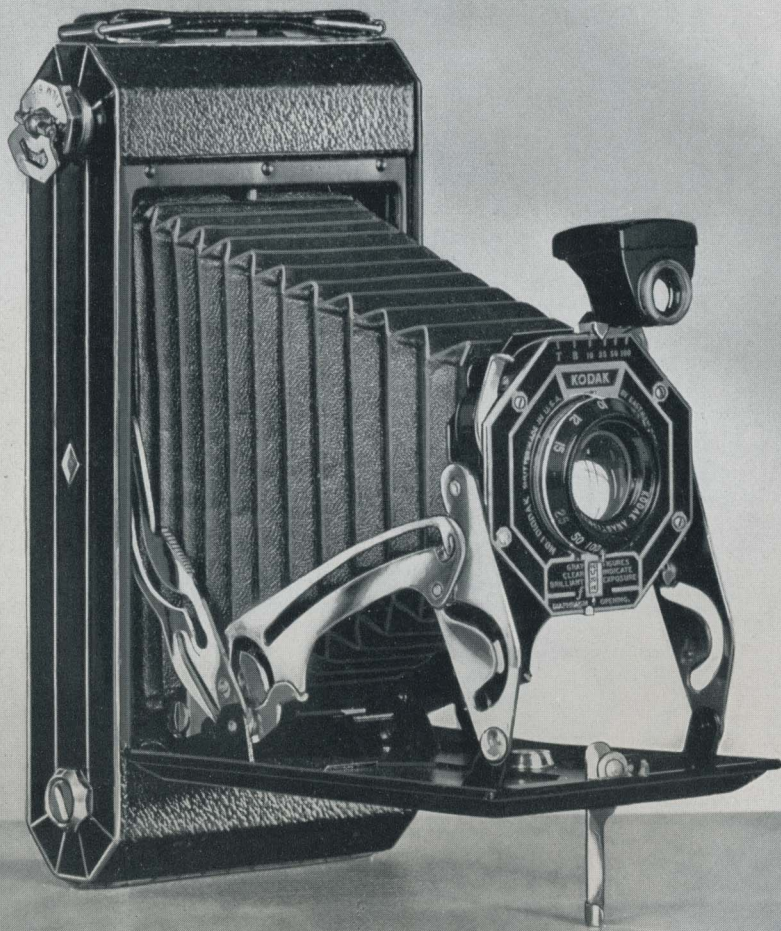


KODAKS AND KODAK SUPPLIES

EASTMAN KODAK COMPANY
ROCHESTER • NEW YORK

SIX-16 and SIX

Compliments of the Digitized Kodak Catalog Project: 1886 - 1941



EMPHATICALLY different in design and operation, Kodaks Six-16 and Six-20 are without doubt the big camera news of the year. Their features are outlined and illustrated on this and the following two pages, but you cannot even begin to appreciate them without actually seeing and handling them. If you have not done this, take the first opportunity to drop in at your Kodak dealer's to examine them.

In planning these cameras, one of the most important objectives was *small size*. It was found, however, that more compact Kodaks, using the prevailing film spools, could not be built without a loss in efficiency. Therefore Eastman engineers designed an all-metal spool—smaller, yet carrying eight exposures as against the former six. With the new spool as a starting point, two radically new Kodaks were designed, with the picture taker's needs always foremost in the planning.

The Kodaks Six-16 and Six-20 are strictly precision instruments. Moreover, they reduce fine picture taking to its simplest terms, as you will see on pages 4 and 5. And this splendid ability has been given a setting which will appeal strongly to every one who appreciates smartly beautiful things.

For in appearance these new Kodaks are exquisite. The camera bodies (as well as the carrying cases) are covered with unusually attractive, pig-grain material—either black or brown. The side panels of etched metal and inlaid enamel are done in an octagonal motif, which reappears in the lens and shutter mountings. Even the rivet heads harmonize, and all other details have been refined. For instance, the tripod sockets, open on older cameras, are concealed by ornamental screws. The brilliance of the metal trimmings sets off the refreshingly new styling.

To top it off, all of this value is offered at exceptionally low prices.

FOR FURTHER
INFORMATION
SEE PAGES 4 AND 5

PICTURE SIZES
SIX-20, $2\frac{3}{4} \times 3\frac{3}{4}$
SIX-16, $2\frac{1}{2} \times 4\frac{1}{4}$

PICTURE (ACTUAL
SIZE) MADE WITH
KODAK SIX-16
AND KODAK VERI-
CHROME FILM



SIX-16 and SIX-20 S

THE NEW, SMALLER SPOOL

THE illustration at the left shows the 6-exposure, wood-core spool used in older cameras, and the smaller, all-metal, 8-exposure spool designed for Kodaks Six-16 and Six-20. This new spool enabled Eastman engineers to develop a Kodak of entirely new compactness and beauty. The spool is used in Kodak Film Nos. 616 and 620—Verichrome and regular—the only films with which these new Kodaks load.

LENSES AND SHUTTERS

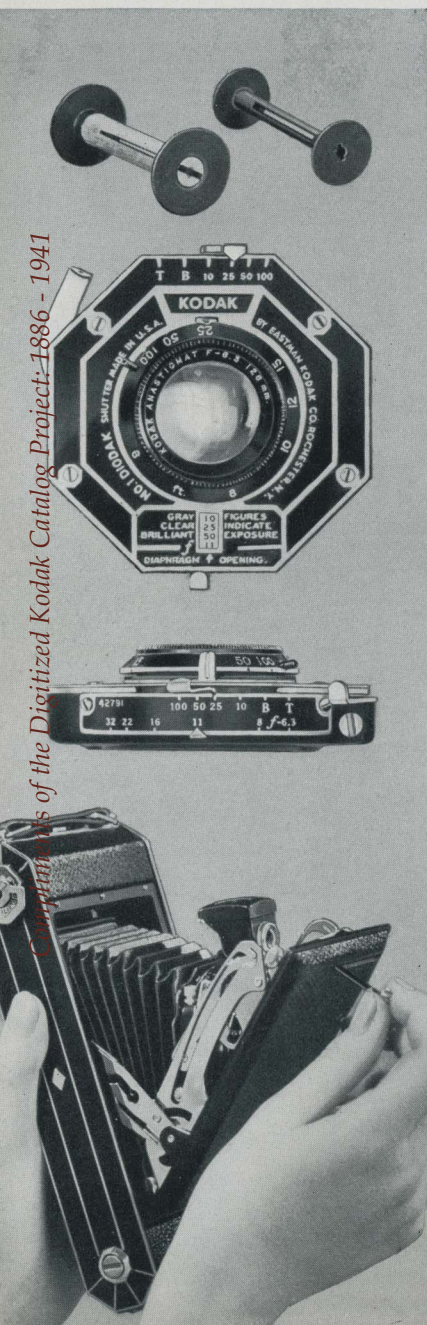
KODAKS Six-16 and Six-20 can be had with any one of three lenses. They reach the peak of their efficiency, however, in the models fitted with the famous Kodak Anastigmat $f.6.3$, which is three times as fast as the Kodak Doublet lens. With this extra power the picture taker can regularly make negatives of the highest possible quality.

The $f.6.3$ models have focusing mounts that click positively into accurate position at each distance marking. The models fitted with the Kodak Doublet or the meniscus achromatic lens have fixed focus.

Three shutters of novel design are used on the new Kodaks. Two of them—the Diodak (illustrated) and the Kodon—have secondary shutter-speed and diaphragm scales, *visible from above*. These scales (see illustration) duplicate those on the front of the shutters. They permit setting the shutter while the camera is in picture-taking position, as well as last-minute checking before making the exposure. On the ultra-convenient Diodak shutter, the diaphragm scale is geared to an unusually helpful exposure guide.

SELF-ERECTING FEATURE

THE simple, easy way in which these Kodaks get into action is illustrated by the improved self-erecting feature. An easy pull on the combination locking lever and bed support lowers the bed, extends the bellows, and sets the front rigidly in snapshot position. When the picture has been made, a slight touch on the bed braces reverses this procedure, folding up and closing the Kodak just as quickly as it was opened.



SPECIAL FEATURES

EASY LOADING

IN Kodaks Six-16 and Six-20 the loading and unloading operations have been made simpler and quicker through several important improvements. Sliding a safe but convenient catch opens the back. The latter is hinged, and remains attached. The spool sockets swing out into the open—no more working in close quarters to insert or remove the film. When the loading or unloading has been completed, the back is swung into place and closes easily with a sure snap of the spring catch.

COMPARATIVE SIZE

BELOW, at the right, is a back-to-back comparison of an older camera and the more compact Kodak Six-16—both taking $2\frac{1}{2} \times 4\frac{1}{4}$ pictures. The smaller camera size, compared to the picture size, is one of the most attractive features of both Six-16 and Six-20. They are the world's smallest roll film cameras making $2\frac{1}{2} \times 4\frac{1}{4}$ and $2\frac{1}{4} \times 3\frac{1}{4}$ pictures, respectively.

DETAILS AND PRICES Capacity: 8 exposures. Shutters: Diodak, speeds of $\frac{1}{10}$, $\frac{1}{25}$, $\frac{1}{50}$, and $\frac{1}{100}$ second, *time* and *bulb* actions, finger release; Kodon, speeds of $\frac{1}{25}$, $\frac{1}{50}$, and $\frac{1}{100}$ second, *time* and *bulb* actions, finger release; Kodak, *instantaneous* and *time* actions, finger release. (Cable release may be added to Diodak or Kodon shutter if desired.) Brilliant, reversible finder.

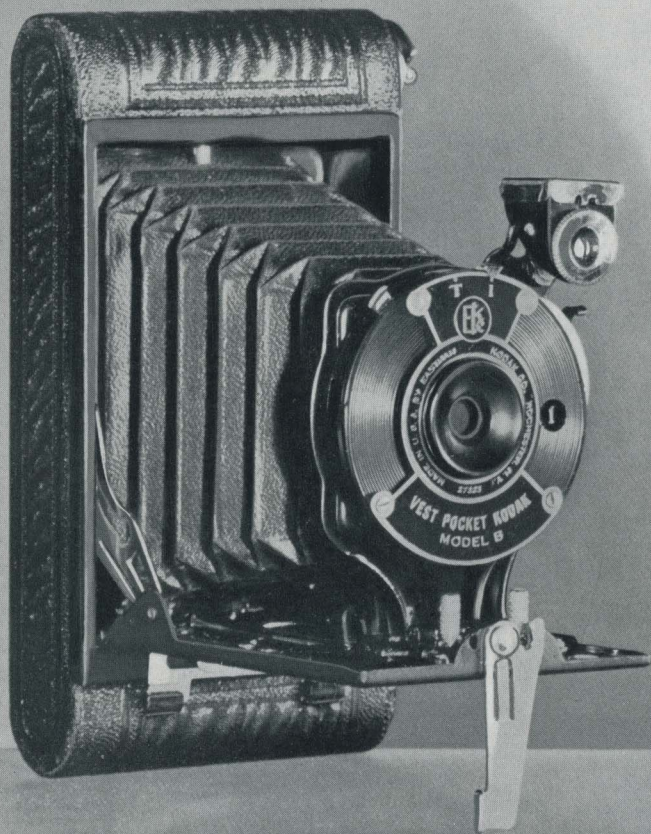
	Without Case	With Case
Kodak Six-16 with Meniscus Achromatic Lens, Kodak Shutter	\$11.00	\$13.50
With Kodak Doublet Lens, Kodon Shutter	13.00	15.50
With Kodak Anastigmat f.6.3 Lens, Diodak Shutter	17.00	19.50
Kodak Six-20 with Meniscus Achromatic Lens, Kodak Shutter	10.00	12.00
With Kodak Doublet Lens, Kodon Shutter	12.00	14.00
With Kodak Anastigmat f.6.3 Lens, Kodon Shutter	15.00	17.00

For Kodak Portrait Attachments see page 40. For Kodak Film and Kodak Verichrome Film see page 34.



Compliments of the Digital Kodak Catalog Project: 1886 - 1941

VEST POCKET K



ODAK, MODEL B

PAGE 7

IF YOU are inclined to be skeptical over the statement that the Vest Pocket Kodak, Model B, really fits the vest pocket, make the test yourself. You will find that it does literally fit into a man's vest pocket. And it slips with equal ease into a woman's handbag.

However, the really remarkable facts about Model B are that, in spite of its diminutive size, it offers such a big combination of picture-making qualities, and that these can be built into it at the cost of only a few dollars to you.

This smartly finished little black camera, so small that you can hide it under your hand, is not a short-lived plaything, but a completely equipped, long-lasting photographic instrument. It is carefully designed and made, and durably finished. Its lens, shutter, and supplementary fittings are planned to function as efficiently as the equipment on larger Kodaks. As a result, the negatives it makes are sparkling and clean-cut.

This last fact is particularly important because it means that you have all the convenience of a small, pocket-size camera that you can carry with you anywhere and everywhere, plus big pictures when you want them. Thus, whenever the pictures that you make particularly please you, you have only to take the negative to your photo finisher in order to have enlargements in any size you could reasonably expect.

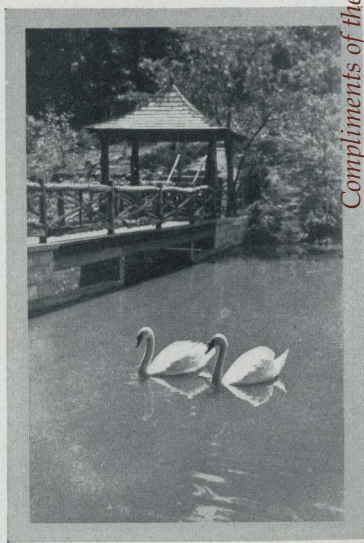
Take this advantage into account along with the other virtues of Model B, and you have an argument that is pretty hard to resist. However, see for yourself. Vest Pocket Kodak, Model B, bears inspection—at your dealer's.

DETAILS AND PRICES Capacity without reloading: 8 exposures. Focus: Fixed. Lenses: Meniscus, or Kodak Doublet. Shutter: Vest Pocket, with four stops, *instantaneous* and *time* actions. Brilliant finder, reversible for vertical or horizontal pictures. Body: All metal, with covering in a smart finish; fittings finished in nickel and black enamel. Black bellows.

Vest Pocket Kodak, Model B, with Meniscus Lens and Vest Pocket Shutter	\$5.00
With Kodak Doublet Lens	7.50
Levant Grain Leather Case, with strap	1.25
Belt Carrying Case, russet leather	1.25
Kodak Portrait Attachment (see page 40)75
For Kodak Film and Kodak Verichrome Film see page 34	

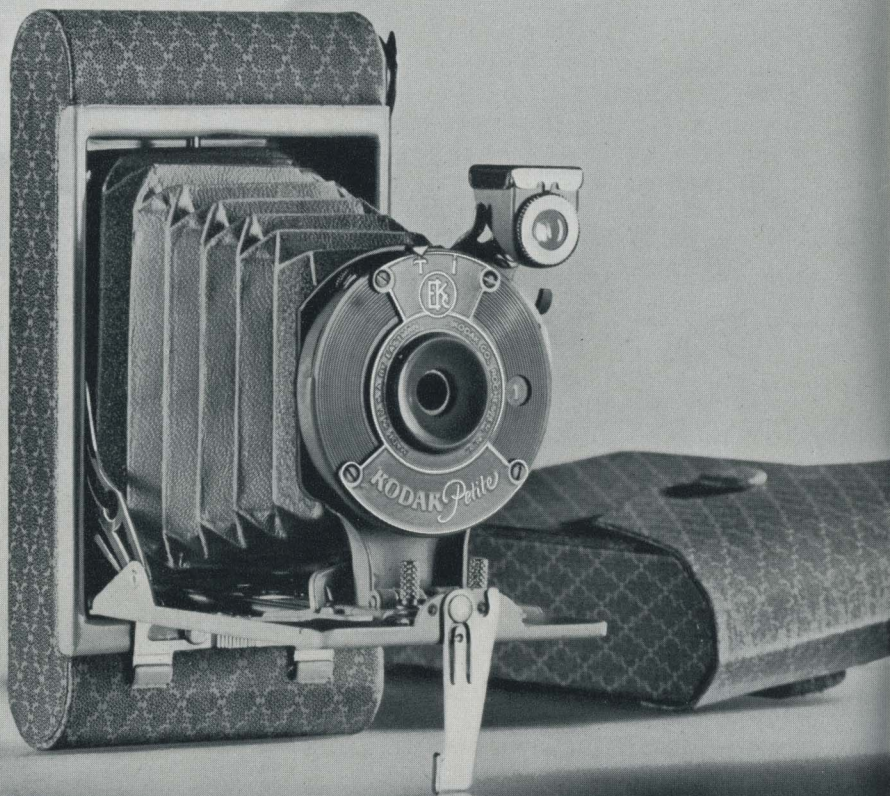
PICTURE SIZE
1½ × 2½ INCHES

PICTURE (ACTUAL
SIZE) MADE WITH
VEST POCKET KODAK,
MODEL B, AND KODAK
VERICHROME FILM



KODAK PETITE

Compliments of the Digitized Kodak Catalog Project: 1886 - 1941



KODAK PETITE

PAGE 9

PARIS inspired this little Kodak—and America acclaimed it. Designed chiefly for milady, it is dainty, shimmering, colorful—delightful to look upon. Made in the “vest pocket” size, it is truly *petite*—ultra-convenient to carry. In its bewitching little carrying case it is a styleful accessory, conceived and executed in the modern mode.

Kodak Petite comes in a choice of five key colors: green, blue, gray, old rose, or lavender, carried out on the camera body in an iridescent, silk-finished fabric. Harmonizing colors, used on the fittings, are set off in turn by the sheen of nickel in tasteful touches. The five color schemes give full play to feminine preferences, and assure a charming blend with every costume.

Naturally the deftly tailored cases are made to match the cameras in finish and color. Lined with a lustrous material, they add generously to the beauty of the ensemble. Their snap-button catch and finger strap give them a decidedly smart appearance, not unlike that of a small, fashionable handbag.

Behind these bright little creations there is, of course, thorough usefulness—the ready picture-making ability which, after all, is their real reason for being. Kodaks Petite are photographically efficient—there’s no doubt about that. Furthermore, they have the simplicity which many women prefer in things mechanical. As a result it’s not only a joy to carry a Kodak Petite, but a distinct pleasure to use it.

There’s another noteworthy feature about the Petite: its price. Examine this little, jewel-like Kodak, and its engaging case, at your dealer’s. Then, and only then, will you appreciate how small a sum you need to pay nowadays for last-minute modishness in cameras.

DETAILS AND PRICES Capacity without reloading: 8 exposures. Focus: Fixed. Lens: Meniscus. Shutter: Vest Pocket, with four stops, *instantaneous* and *time* actions. Brilliant finder, reversible for vertical or horizontal pictures. Body: All metal, covered with a silk-finished fabric, with bellows and fittings in harmonizing shades.

Kodak Petite, with Meniscus Lens and Vest Pocket Shutter, in green, blue, gray, old rose, or lavender, with case to match . . . \$7.50

Kodak Portrait Attachment (see page 40)75

For Kodak Film and Kodak Verichrome Film see page 34

PICTURE SIZE
1½ x 2½ INCHES

PICTURE (ACTUAL
SIZE) MADE WITH
KODAK PETITE AND
KODAK VERICHROME
FILM



BOY SCOUT, GIRL SCOUT, C

Compliments of the Digitized Kodak Catalog Project: 1886-1941



AMP FIRE GIRLS KODAKS

THESE THREE Kodaks were planned specifically to meet the photographic needs of the organizations whose names they bear. They have been approved by National Headquarters of the respective groups, and carry the official insignia on their specially designed fronts.

This will give you an inkling as to why these cameras have become favorites, both on jaunts and around home. They look their part, and they fill the requirements of the boys and girls who use them.

Convenient carrying is one of the essentials. Therefore these Kodaks are made small and compact. They fit neatly into sturdy leather cases. Each case, like each camera, is made especially for use by one of the three organizations, and can be quickly attached to the belt. Thus these Kodaks may be carried where they are instantly ready for action.

The three cameras are similar in construction, but differ in finish and color. The colors themselves are particularly adapted to the organization for which they were selected. The Boy Scout Kodak is olive drab. The Girl Scout Kodak is finished in green to blend with the official costume. The Camp Fire Girls Kodak is brown, with touches of red on the front. The cases match the cameras in both color and grain.

Needless to say, all three models easily and regularly make good pictures—the kind that young people like to keep in their albums, and the kind that helps to win merit badges for proficiency in photography.

In short, these official Kodaks very easily justify themselves, and because of their modest price every boy and girl can own one.

DETAILS AND PRICES Capacity without reloading: 8 exposures. Focus: Fixed. Lens: Meniscus. Shutter: Vest Pocket, with four stops, *instantaneous* and *time* actions. Brilliant finder, reversible for vertical or horizontal pictures. Body: Metal, covered with colored, grained material.

- Boy Scout Kodak, with Meniscus Lens and Vest Pocket Shutter, with case to match \$6.00
- Girl Scout Kodak, with Meniscus Lens and Vest Pocket Shutter, with case to match 6.00
- Camp Fire Girls Kodak, with Meniscus Lens and Vest Pocket Shutter, with case to match 6.00
- Kodak Portrait Attachment (see page 40)75
- For Kodak Film and Kodak Verichrome Film see page 34

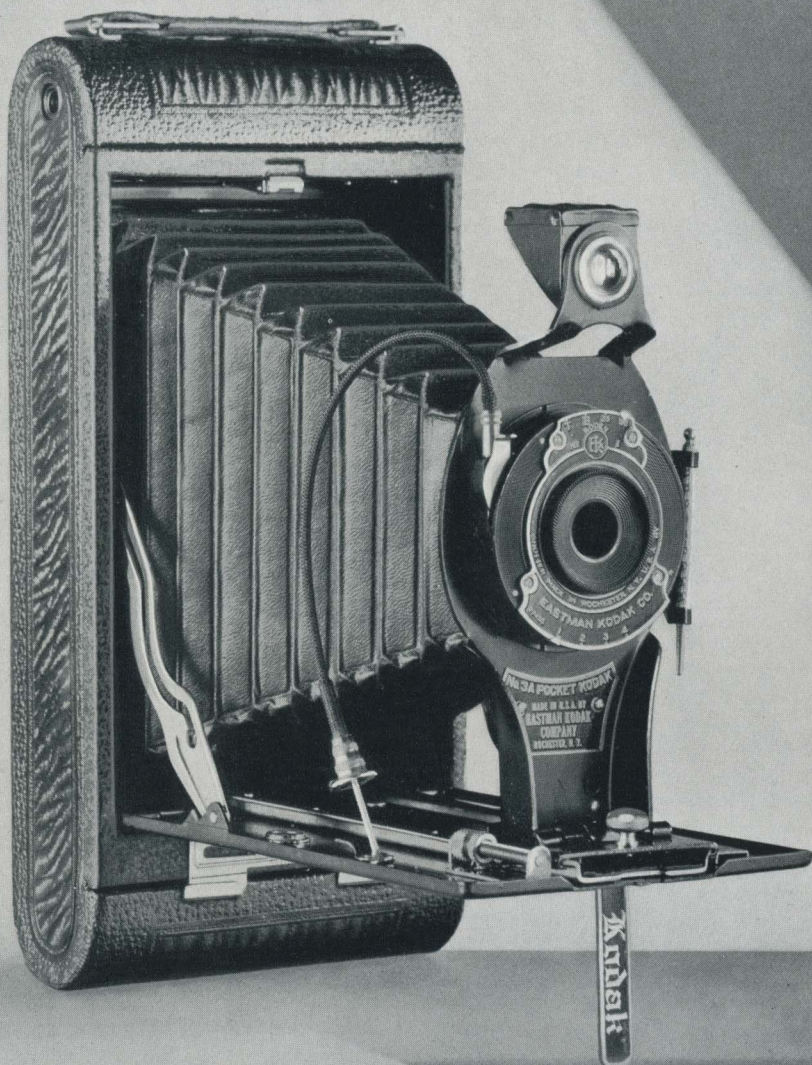
PICTURE SIZE
1 3/8 x 2 1/2 INCHES

PICTURE (ACTUAL
SIZE) MADE WITH BOY
SCOUT KODAK AND
KODAK VERICHROME
FILM



Compliments of the Digitized Kodak Catalog Project: 1886 - 1941

Nos. 2C and 3A PO



IN THE past many people who wanted to make pictures of generous proportions have hesitated to buy the camera of their choice, for the reason that big picture size often meant big camera price. But conditions are different now—this year especially—and here are two of the cameras that have solved the old problem.

They make pictures in two of the most popular large sizes. In addition they have typical Eastman compactness, photographic ability, and neatness of finish. Yet in spite of all this they are priced low, because they are outstanding examples of the modern Kodaks, which combine versatile performance with economy in manufacture.

This is particularly true of the models that carry Kodak Anastigmat lens *f*.6.3. Equipped with this speedy, weather-wise lens, Nos. 2C and 3A Pocket Kodaks are striking evidence of Eastman's ability to provide brilliant camera quality at prices which formerly purchased only equipment of much more limited scope. Your dealer can quickly demonstrate this.

DETAILS AND PRICES Capacity without re-loading: 10 exposures. Focus: Adjustable. Lenses: (See below). Shutters: Kodex, speeds $\frac{1}{25}$ and $\frac{1}{50}$ second; Kodak Ball Bearing, speeds $\frac{1}{25}$, $\frac{1}{50}$, and $\frac{1}{100}$ second; both with cable and finger release, *time* and *bulb* actions. Brilliant, reversible finder. Two tripod sockets. Body: Aluminum, covered with black, grained material. Auto-graphic feature.

Pocket Kodak, with Meniscus Achromatic Lens and Kodex Shutter:

No. 2C, \$13.00 3A, \$17.00

With Kodar Lens *f*.7.9 and Kodex Shutter:

No. 2C, \$16.00 3A, \$20.00

With Kodak Anastigmat Lens *f*.6.3 and Kodak Ball Bearing Shutter:

No. 2C, \$21.00 3A, \$25.00

Levant Grain Leather Case, with strap:

No. 2C, \$3.50 3A, \$3.75

Kodak Portrait Attachment (see page 40):

No. 2C, \$.75 3A, \$.75

Kodak Self Timer (see page 35):

No. 2C, \$1.25 3A, \$1.25

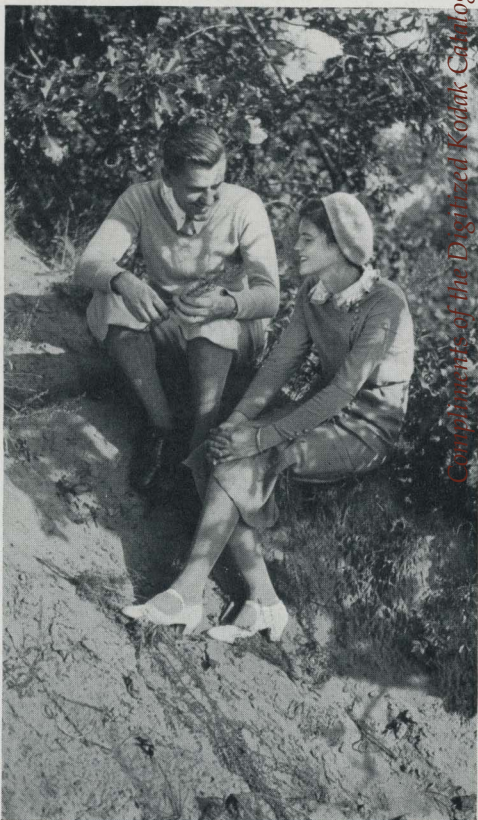
For prices of Kodak Film and Kodak Verichrome Film see page 34

PICTURE SIZES

No. 2C, $2\frac{1}{2} \times 4\frac{1}{2}$

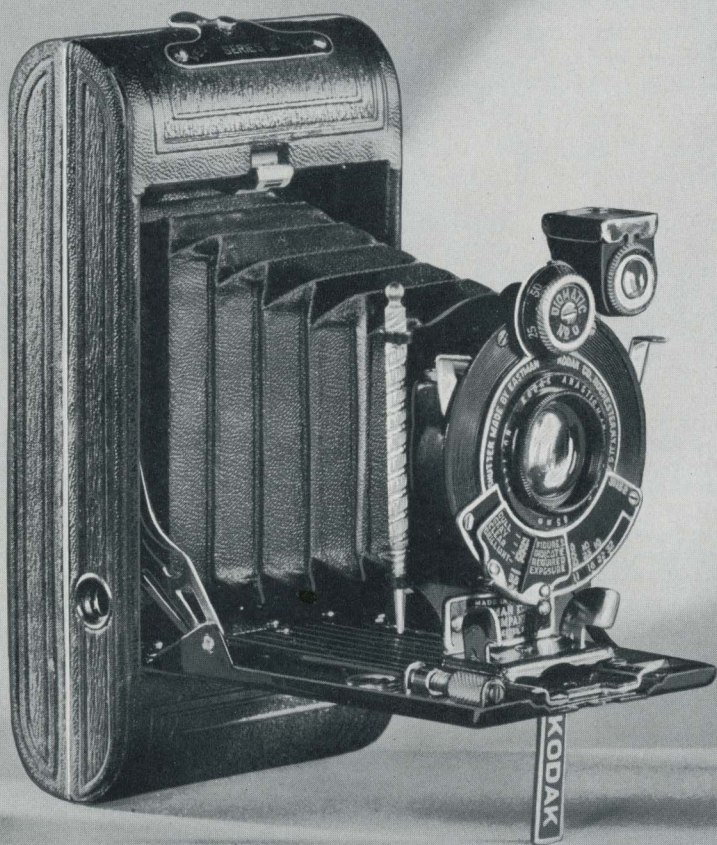
No. 3A, $3\frac{1}{4} \times 5\frac{1}{2}$

PICTURE (SOMEWHAT REDUCED) MADE WITH NO. 2C POCKET KODAK AND KODAK VERICHROME FILM



VEST POCKET KO

Compliments of the Digitized Kodak Catalog Project: 1886 - 1941



DAK, SERIES III

PAGE 15

THIS TRIM little model is an outstanding example of what a vest pocket camera can be. To vest pocket compactness have been added a particularly smart design and picture-making ability plus. The result is the noteworthy value that V. P. K., Series III, offers.

The two lenses offered go far to explain its worth. Kodar *f.7.9*, the exclusively Eastman semi-anastigmat, will give highly gratifying results under all average conditions. If you want greater lens power in order to make snapshots outdoors in all sorts of weather, or indoors at a bright window, you can select the model fitted with Kodak Anastigmat *f.5.6*. This lens, which is practically twice as fast as Kodar *f.7.9*, clearly demonstrates Eastman's ability to produce a superlative anastigmat at a price within the reach of all. Obviously, with lens equipment of this high caliber, the resulting negatives not only yield brilliant, clean-cut prints, but also present the opportunity for sparkling enlargements whenever they are wanted.

Both lenses are paired with highly dependable shutters, and this equipment is supplemented by refinements that spell the last word in picture-making convenience. In appearance, the V. P. K., Series III, is decidedly good looking. Its aluminum body is covered with baby crepe leather, and all metal parts are finished in nickel and black enamel.

DETAILS AND PRICES Capacity without reloading: 8 exposures. Focus: Adjustable, with worm-screw focusing device. Lenses: Kodar *f.7.9*, $3\frac{3}{8}$ -inch focus; or Kodak Anastigmat *f.5.6*, $3\frac{1}{4}$ -inch focus. Shutters: Kodex, speeds $\frac{1}{25}$ and $\frac{1}{50}$ second; or Diomatic, speeds $\frac{1}{10}$, $\frac{1}{25}$, $\frac{1}{50}$, and $\frac{1}{100}$ second. Both with finger release, *time* and *bulb* actions. Brilliant finder, reversible for vertical or horizontal pictures. Two tripod sockets. Body: Aluminum, covered with baby crepe grain leather. Metal parts finished in nickel and black enamel. Black bellows. Auto-graphic feature.

Vest Pocket Kodak, Series III, with Kodar Lens <i>f.7.9</i> and Kodex Shutter	\$12.00
With Kodak Anastigmat Lens <i>f.5.6</i> and Diomatic Shutter	18.00
Belt Carrying Case, russet leather	1.50
Black Leather Carrying Case	1.50
Cable Release for Vest Pocket Kodak, Series III, opened35
Kodak Portrait Attachment (see page 40)75
Kodak Self Timer (see page 35)	1.25

For prices of Kodak Film and Kodak Verichrome Film see page 34

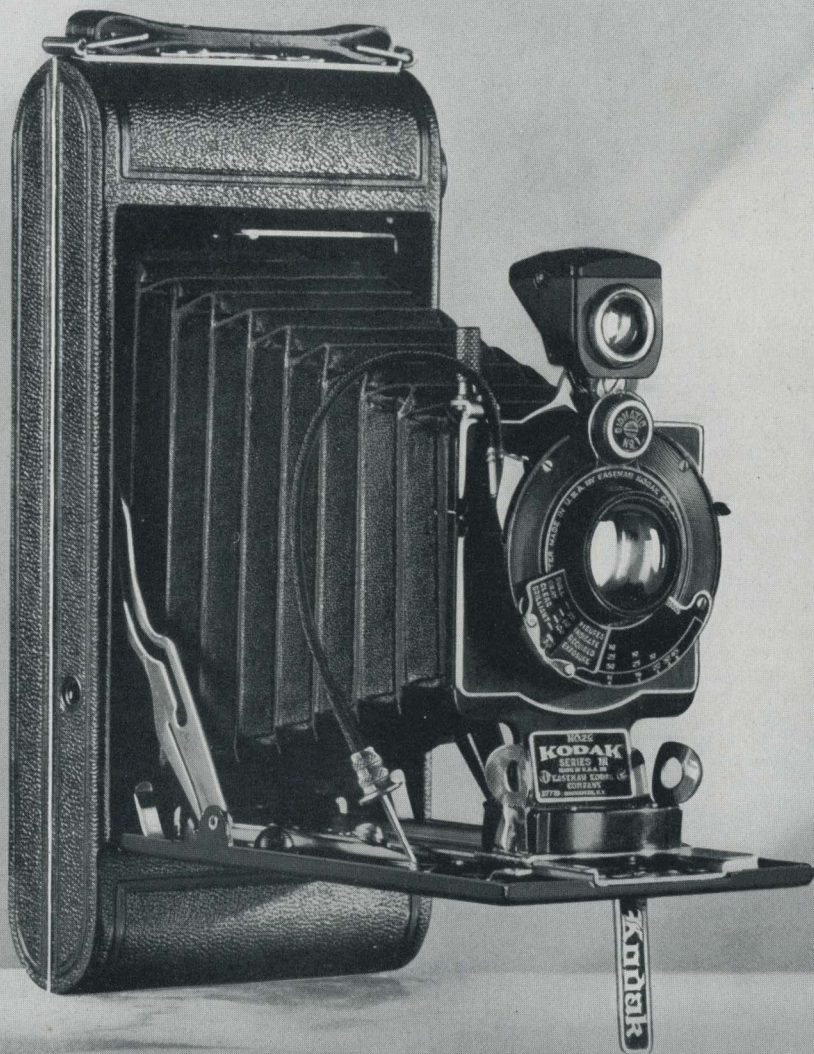
PICTURE SIZE
 $1\frac{3}{8} \times 2\frac{1}{2}$ INCHES

PICTURE (ACTUAL
SIZE) MADE WITH
VEST POCKET KODAK,
SERIES III, AND KODAK
VERICHROME FILM



Nos. 2C and 3 KO

Compliments of the Digitized Kodak Catalog Project: 1886 - 1941



DAKS, SERIES III

PAGE 17

THESE TWO Kodaks are not new to this catalog. They are standard black models that appear here again because of their wide popularity. They immediately recommend themselves to people who want picture-making equipment packed with value—people who are looking for marked versatility and superior finish at moderate cost.

Both sizes come equipped with fast Kodak Anastigmat lenses, and can be had with the Diomatic shutter and its split-second accuracy. No. 3 is available also with the simpler, but highly reliable Kodex shutter. Any of the models will make pictures on dull, even rainy days. All of them have supplementary features that give convenience and capability galore, at a price that pleases the pocketbook.

To top it all off, these Kodaks are finished in a style that suits the most exacting purchaser. Slim, trim, stylish, their very appearance inspires a confidence that will never be found misplaced.

DETAILS AND PRICES Capacity: No. 2C, 10 exposures; No. 3, 12 exposures. Focus: Adjustable. Lenses: Kodak Anastigmat *f*.6.3, 5-inch focus on No. 3; 6-inch focus on No. 2C; or Kodak Anastigmat *f*.5.6, 5½-inch focus on No. 3. Shutters: Kodex (No. 3 only), speeds 1/25 and 1/50 second; Diomatic, speeds 1/10, 1/25, 1/50, and 1/100 second; with *time* and *bulb* actions, cable and finger release. Brilliant finder, reversible for horizontal or vertical pictures. Two tripod sockets. Body: Aluminum, covered with Morocco grain cowhide; metal parts finished in nickel and black enamel. Rising front. Black bellows. Autographic feature.

No. 3 Kodak, Series III, with Kodak Anastigmat Lens <i>f</i> .6.3, Kodex Shutter	\$26.00
With Kodak Anastigmat Lens <i>f</i> .5.6, Diomatic Shutter	33.00
No. 2C Kodak, Series III, with Kodak Anastigmat Lens <i>f</i> .6.3, Diomatic Shutter	35.00
Levant Grain Leather Case, with strap, for either size	3.50
Kodak Portrait Attachment, for either size (see page 40)	.75
Kodak Self Timer for either size (see page 35)	1.25
<i>For prices of Kodak Film and Kodak Verichrome Film see page 34</i>	

PICTURE SIZES

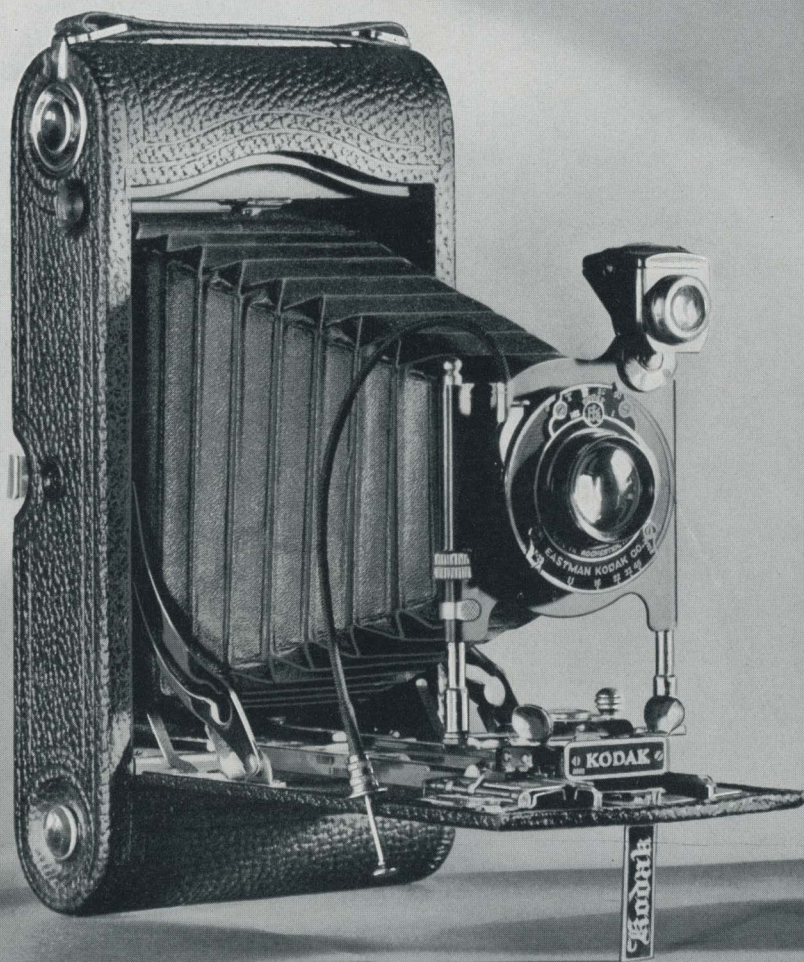
No. 2C, 2 7/8 x 4 3/4
No. 3, 3 1/4 x 4 1/4

PICTURE (SOMEWHAT REDUCED) MADE WITH NO. 2C KODAK, SERIES III, AND KODAK VERICHROME FILM



No. 3A AUTOGR

Compliments of the Digitized Kodak Catalog Project: 1886 - 1941



APHIC KODAK

PAGE 19

THERE HAS probably never been a camera of the folding type that has held wider appeal than the 3A Autographic Kodak. It has very few frills—in fact, it is quite conservative in style—but it embodies unusual versatility, and thoroughly rugged construction. Though compact, it makes pictures as big as postcards— $3\frac{1}{4} \times 5\frac{1}{2}$ inches—and they're bound to be good ones, because of the two excellent lenses offered. In spite of all this the 3A is priced to fit modest pocketbooks.

Like every other Kodak, this one loads quickly with roll film. In addition, however, it may be equipped at will with a Combination Back, by means of which it can be used with Kodak Cut Film or Eastman plates. Thus it affords a wide variety of picture-taking possibilities—a fact which accounts, to a large extent, for the steady demand this model enjoys. If you have in mind getting a substantial, all-purpose camera, begin by looking at this popular and ever-dependable Kodak.

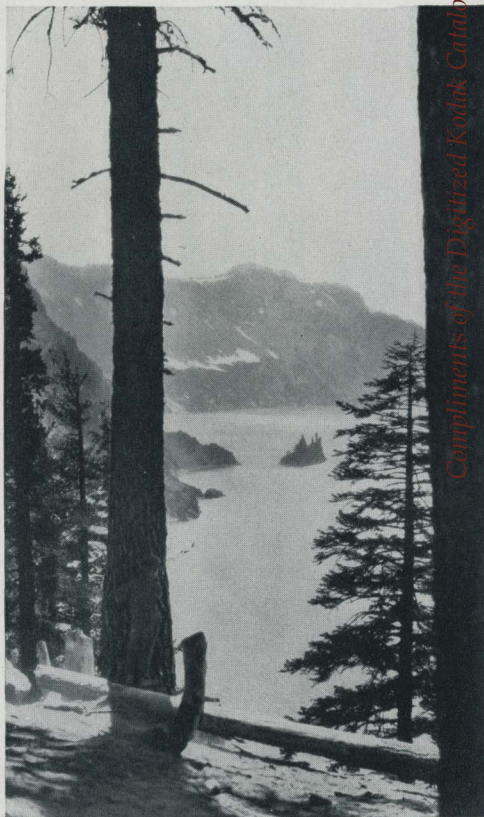
DETAILS AND PRICES Capacity without re-loading: 10 exposures. Focus: Adjustable, with automatic focusing lock. Double focusing scale for films or plates. Lenses: Kodar *f*.7.9, $6\frac{7}{8}$ -inch focus; or Kodak Anastigmat *f*.6.3, $6\frac{3}{4}$ -inch focus. Shutters: Kodex, speeds $\frac{1}{25}$, $\frac{1}{50}$ second; or reliable multi-speed; both with *time* and *bulb* actions. Brilliant finder, reversible for vertical or horizontal pictures. Two tripod sockets. Body: Back and bed of aluminum, covered with seal-grain leather; metal parts finished in nickel and black enamel. Rising, falling, sliding front. Black bellows. Autographic feature.

No. 3A Autographic Kodak, with Kodar Lens <i>f</i> .7.9 and Kodex Shutter	\$25.00
With Kodak Anastigmat Lens <i>f</i> .6.3 and multi-speed shutter	30.00
Levant Grain Leather Case, with strap	4.00
Combination Back for cut film or plates (see page 41)	4.00
Kodak Double Plate Holders, each.	1.50
Kodak Cut Film Sheaths, each.15
Kodak Portrait Attachment (see p. 40).75
Kodak Self Timer (see page 35)	1.25

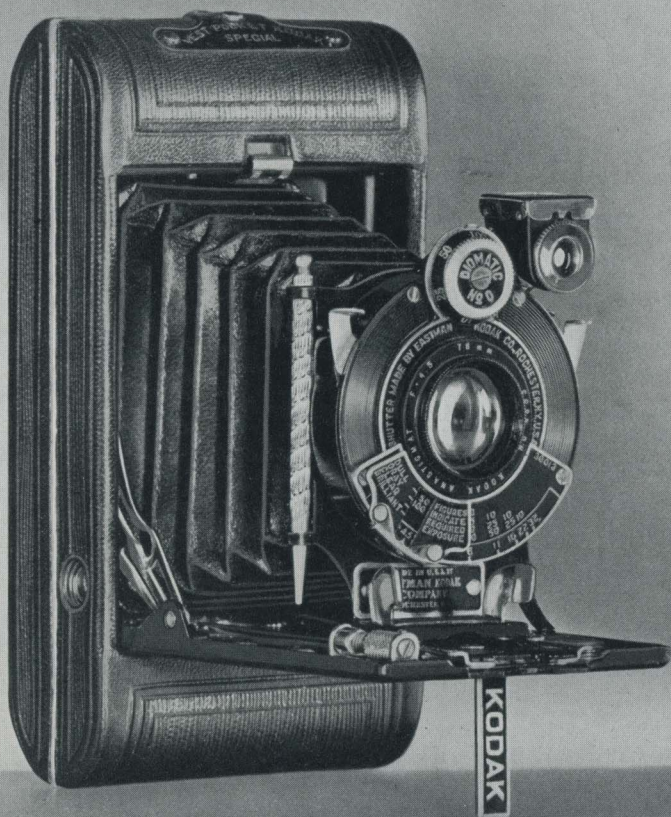
For Kodak Film and Kodak Verichrome Film see page 34. For plates and cut film see pages 41, 42.

PICTURE SIZE
 $3\frac{1}{4} \times 5\frac{1}{2}$ INCHES

PICTURE (REDUCED IN SIZE) MADE WITH 3A AUTOGRAPHIC KODAK AND KODAK VERICHROME FILM



VEST POCKET K



ODAK SPECIAL

PAGE 21

ARE YOU looking for the superlative small camera? Then stop right here and read about the Vest Pocket Kodak *Special*!

It's the sort of instrument that delights the camera connoisseur. It invariably attracts the person who has the faculty of sensing unusual values. It is outstandingly a camera for people who insist on fine things at a fair price. Whether you want it as your mainstay in picture taking, or as a supplement to other high-grade equipment, you can be sure that this is the finest vest pocket camera money can buy.

Consider the lens—Kodak Anastigmat *f*.4.5. It's the fastest lens ever fitted into a Vest Pocket Kodak. Just as a fine car has almost unlimited reserve power for the hills, so this Kodak has a wealth of lens speed in store, to "make the grade" under any and all picture-making conditions. Fair weather or foul, you can always get excellent results when you're armed with a Vest Pocket Kodak *Special*. You can safely count on negatives that yield not only splendid contact prints but also sparkling enlargements several times the original picture size.

A fine lens alone doesn't make a fine camera. But the sharp eye of this *Special* is supported by such fittings as the Diomatic shutter, with its helpful exposure guide and precise snapshot speeds up to $\frac{1}{100}$ second, and the handy worm-screw focusing device. The whole ensemble is built into a beautifully fashioned seal-covered body, to make a camera unsurpassed in quality—yet small enough to wear.

DETAILS AND PRICES Capacity without reloading: 8 exposures. Focus: Adjustable, with worm-screw focusing device. Lens: Kodak Anastigmat *f*.4.5, 3-inch focus. Shutter: Diomatic, with finger release only; speeds $\frac{1}{10}$, $\frac{1}{25}$, $\frac{1}{50}$, and $\frac{1}{100}$ second, time and bulb actions. Brilliant finder, reversible for vertical or horizontal pictures. Two tripod sockets. Body: Aluminum, covered with genuine seal leather; metal parts finished in nickel and black enamel. Black bellows. Autographic feature.

Vest Pocket Kodak *Special*, with Kodak Anastigmat Lens *f*.4.5 and Diomatic Shutter \$25.00

Belt Carrying Case, russet leather, velvet lined 2.00

Black Leather Carrying Case, velvet lined \$ 2.00

Cable Release for Vest Pocket Kodak *Special*, opened35

Kodak Portrait Attachment (see page 40)75

Kodak Self Timer (see page 35) 1.25

For prices of Kodak Film and Kodak Verichrome Film see page 34

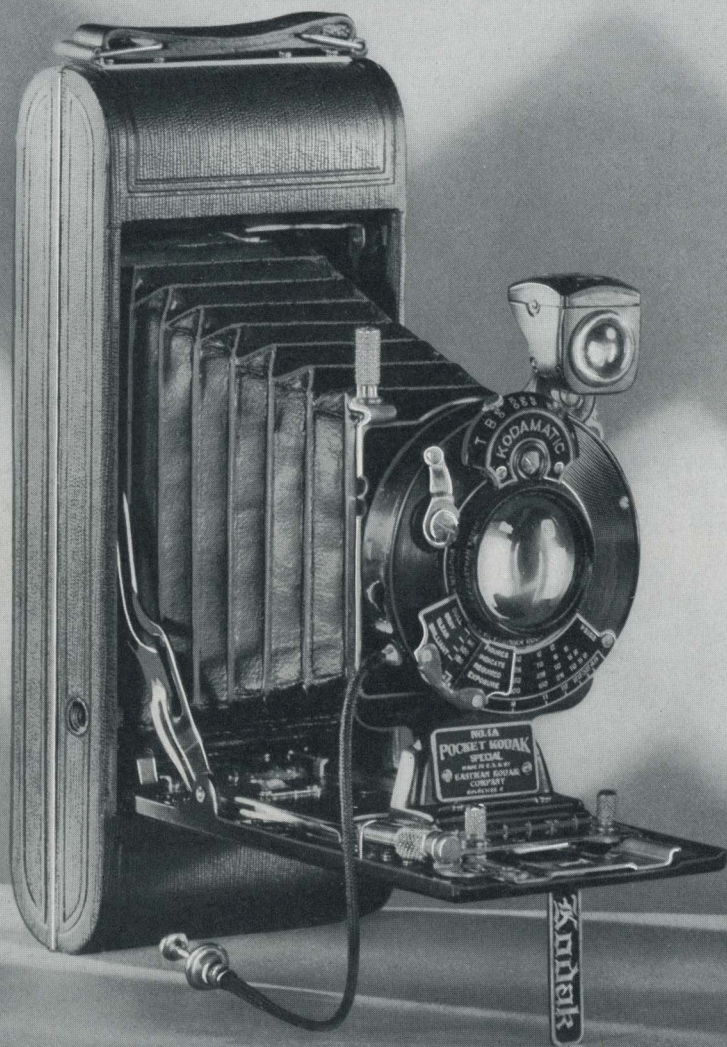
PICTURE SIZE

$1\frac{1}{8} \times 2\frac{1}{8}$ INCHES

PICTURE (ACTUAL SIZE) MADE WITH VEST POCKET KODAK SPECIAL AND KODAK VERICHROME FILM



Nos. 1, 1A, 2C and 3 POCKET



ET KODAKS SPECIAL

PAGE 23

ONE SHORT sentence suffices for a general description of these cameras. *They are four of the finest Kodaks ever built.* Naturally, that statement implies not only the best of design and equipment, but also an appearance of which every present and future user may well be proud.

The reliability and versatility of a camera depend largely upon its lens. All four of these Pocket Kodaks *Special* carry the Kodak Anastigmat lens *f*.4.5—a lens that possesses every one of the qualities for which the anastigmat is famous—and speed to a degree that renders picture making a simple matter even late in the day, or in dark, rainy weather.

As companion to this ultra-fast lens, the Kodamatic shutter, capable of clipping exposures to $\frac{1}{150}$ of a second ($\frac{1}{200}$ on No. 1), offers excellent support. Action “shots” for example are well within its range.

DETAILS AND PRICES Capacity without reloading: No. 1, 8 exposures; No. 2C, 10 exposures; Nos. 1A and 3, 12 exposures. Focus: Adjustable; screw focusing device on Nos. 1, 1A, and 2C; lever focusing device on No. 3. Lens: Kodak Anastigmat *f*.4.5, 4-inch focus on No. 1; $5\frac{1}{8}$ -inch focus on No. 1A; $5\frac{1}{8}$ -inch focus on No. 2C; $5\frac{1}{8}$ -inch focus on No. 3. Shutter: Kodamatic, with cable and finger release; seven speeds, from $\frac{1}{150}$ ($\frac{1}{200}$ on No. 1) to $\frac{1}{2}$ second; *time* and *bulb* actions. Brilliant finder, reversible for horizontal or vertical pictures. Two tripod sockets. Body: Aluminum, covered with genuine sealskin; metal parts finished in nickel and black enamel. Rising front on Nos. 1A, 2C, and 3. Range Finder on No. 2C. Black bellows. Auto-graphic feature.

Pocket Kodak *Special*, with Kodak Anastigmat Lens *f*.4.5 and Kodamatic Shutter:

No. 1, \$55.00	1A, \$60.00
No. 2C, \$65.00	3, \$62.50

Grain Leather Case, velvet lined, with strap:

No. 1, \$3.75	1A, \$4.50
No. 2C, \$5.00	3, \$4.75

Kodak Portrait Attachment for any size (see page 40) \$.75

Kodak Self Timer for any size (see page 35) \$1.25

For prices of Kodak Film and Kodak Verichrome Film see page 34

PICTURE SIZES

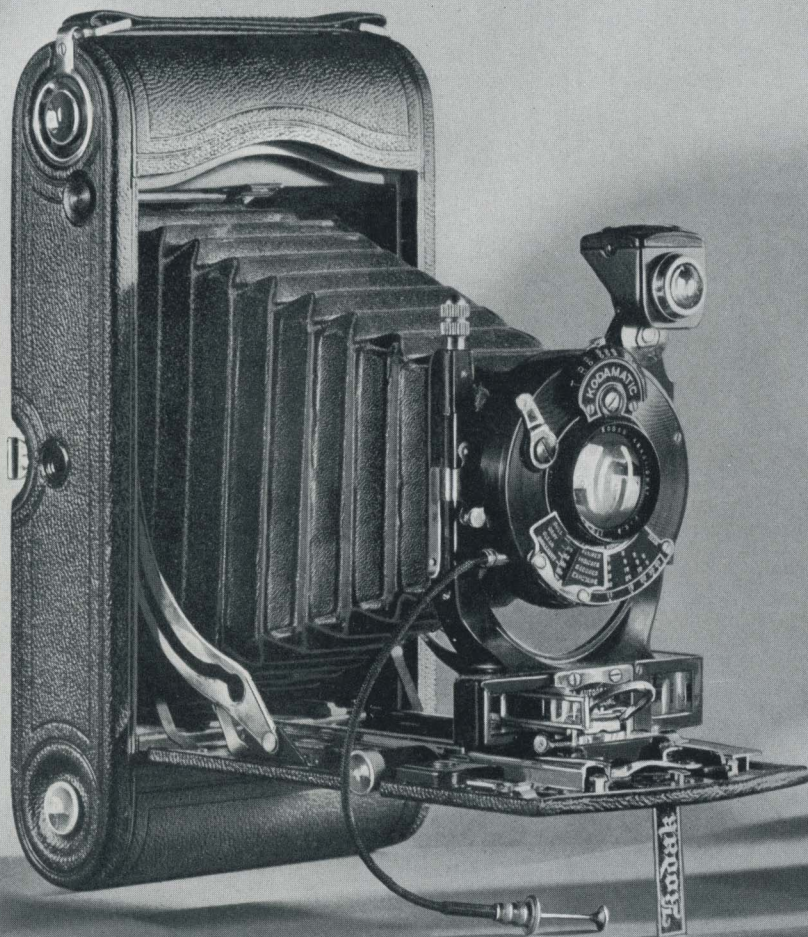
No. 1,	$2\frac{3}{4} \times 3\frac{3}{4}$
No. 1A,	$2\frac{1}{2} \times 4\frac{1}{4}$
No. 2C,	$2\frac{3}{8} \times 4\frac{3}{8}$
No. 3,	$3\frac{1}{4} \times 4\frac{1}{4}$

PICTURE (SOMEWHAT REDUCED) MADE WITH NO. 3 POCKET KODAK SPECIAL AND KODAK VERICHROME FILM



No. 3A AUTOGRAPH

Compliments of the Digitized Kodak Catalog Project: 1886 - 1941



IC KODAK SPECIAL

PAGE 25

HERE IS a camera of unusual interest. It carries the finest of equipment—utilizes every worthwhile picture-taking device—makes postcard-size negatives—yet is small enough for convenient carrying. The earnest camerist, who a generation ago would have shouldered a heavy pack for his picture expeditions, today carries the compact 3A *Special*, and gets photographic efficiency of which his predecessor could not even have dreamed.

One of the outstanding features is a true Kodak Anastigmat lens—the *f.6.3*. Accompanying it is the Kodamatic shutter, providing a wide choice of instantaneous speeds, *bulb* and *time* actions, and built-in exposure guide. Accurate focusing is facilitated by a range finder. The rising and falling front aids in attaining pleasing composition.

By applying a Combination Back to the 3A *Special* the user can avail himself of the various Eastman cut films and Eastman plates.

DETAILS AND PRICES Capacity without re-loading: 10 exposures. Focus: Adjustable. Lens: Kodak Anastigmat *f.6.3*, $6\frac{3}{4}$ -inch focus. Shutter: Kodamatic, with cable and finger release; seven speeds, from $\frac{1}{150}$ to $\frac{1}{2}$ second, *time* and *bulb* actions. Brilliant finder, reversible for horizontal or vertical pictures. Two tripod sockets. Body: Back and bed of aluminum, covered with genuine Persian Morocco; metal parts finished in nickel and black enamel. Range finder. Rising and falling front. Black bellows. Autographic feature.

No. 3A Autographic Kodak *Special*,
with Kodak Anastigmat Lens *f.6.3*
and Kodamatic Shutter \$60.00

Grain Leather Case, velvet lined, with
strap 5.25

Combination Back for cut film or plates
(see page 41) 5.00

Kodak Double Plate Holders, each. . . 1.50

Kodak Cut Film Sheaths, each. . . .15

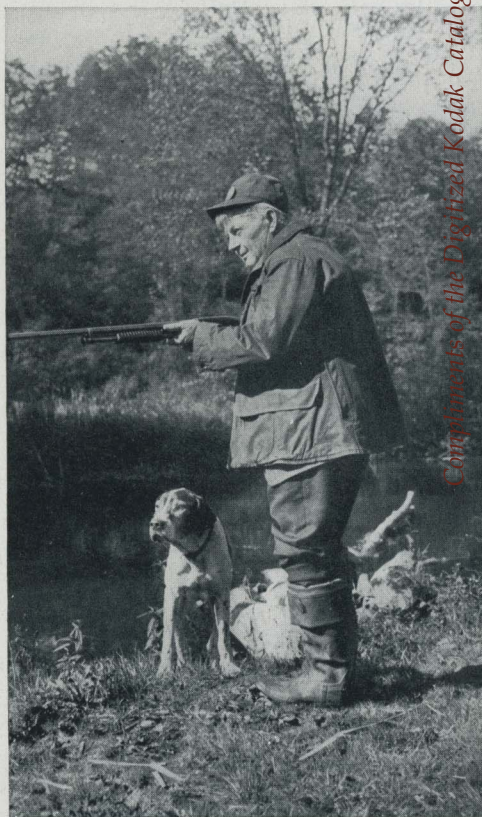
Kodak Portrait Attachment (see p. 40). .75

Kodak Self Timer (see page 35). . . . 1.25

For prices of Kodak Film and Kodak Verichrome
Film see page 34. For cut film and plates see
pages 41, 42.

PICTURE SIZE
 $3\frac{3}{4} \times 5\frac{1}{2}$ INCHES

PICTURE (REDUCED IN
SIZE) MADE WITH 3A
AUTOGRAPHIC
KODAK SPECIAL
AND KODAK VERI-
CHROME FILM



Nos. 2 and 2A BE

Compliments of the Digitized Kodak Catalog Project: 1886 - 1941



AU BROWNIES

PAGE 27

IF EVER cameras were perfectly named, they're the Beau Brownies. They have all the good looks, pertness, and "dressiness" one could ask for—plus every bit of the picture-making ability that long ago made the original Brownies famous.

The most striking feature of their appearance is the decorative front. It consists of an etched plate, ornamented with highly polished nickel and inlaid with colored enamels that complement the unusually handsome, "foam-grain" covering of the body.

Almost as prominent as the front itself is the Kodak Doublet lens. Its construction makes possible a substantially more compact box camera, and contributes to the beauty of the Beaus. Aside from all this, however, it helps to make clear, sparkling pictures, otherwise it would not appear on these proud Brownies.

Being emphatically smaller, the cameras fit snugly into extra-compact carrying cases which are lined with suede-like material and, in spite of their small size, have spare space for two extra rolls of Kodak Film.

Like all other Brownies, the Beaus are highly utilitarian. They're made primarily to make good pictures. But they are bright and chipper as well, and that is one of the chief reasons why they appeal to so many people. Vacationists, especially, who want to take a genuinely smart box camera to the mountains or the seashore, pick Beau Brownies.

DETAILS AND PRICES Capacity: No. 2, 8 exposures; No. 2A, 8 exposures. Fixed focus only. Lens: Kodak Doublet. Shutter: Eastman Rotary, with three stops, *instantaneous* and *time* actions. Two brilliant finders for vertical and horizontal pictures. Two tripod sockets. Body: Aluminum, foam-grain covering. Metal parts in harmonizing shades.

No. 2 No. 2A

Beau Brownie Camera, with Kodak Doublet Lens and Eastman Rotary Shutter, in tan, blue, or black, without case	\$4.00	\$5.00
With case to match.	5.50	6.50
Kodak Portrait Attachment (see p. 40)75	.75
Developing and Printing Outfit (see page 44)	2.00	2.00

For prices of Kodak Film and Kodak Verichrome Film see page 34

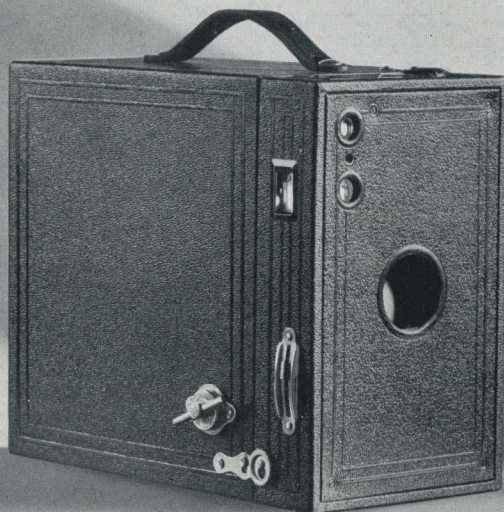
PICTURE SIZES

No. 2, 2¼ x 3¼
No. 2A, 2½ x 4¼

PICTURE (ACTUAL SIZE) MADE WITH NO. 2 BEAU BROWNIE AND KODAK VERICHROME FILM



Nos. 0, 2C and 3 BROWNIES



SIMPLE, unassuming cameras that they are, these Brownies have a reputation that is world-wide. For years they have been used by children and grown-ups alike—everywhere. There's just one answer: remarkably good pictures, easily made. The illustration above represents No. 2C or No. 3. No. 0 differs slightly in appearance and construction. All three come in standard black finish.

DETAILS AND PRICES Capacity: No. 0, 8 exposures; No. 2C, 10 exposures; No. 3, 12 exposures. Fixed focus only. Lenses: Meniscus on No. 0; Meniscus Achromatic on Nos. 2C and 3. Shutter: Eastman Rotary, with one stop on No. 0, three stops on Nos. 2C and 3; all with *instantaneous* and *time* actions. Two finders for vertical and horizontal pictures. Two tripod sockets on Nos. 2C and 3. Body: Covered with durable grained material.

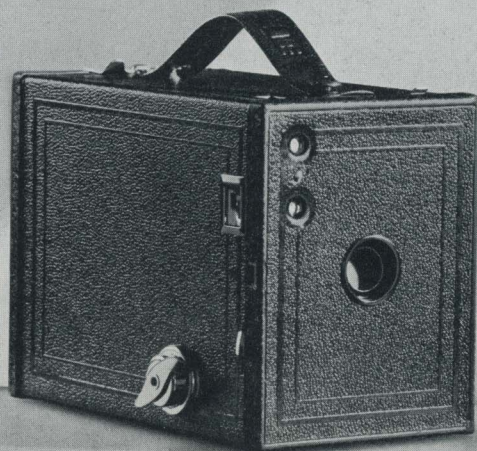
	No. 0	No. 2C	No. 3
Brownie Camera, with lenses as listed above, Eastman Rotary Shutter	\$1.50	\$4.00	\$4.00
Brownie Carrying Case	1.00	1.60	1.60
Kodak Portrait Attachment (see page 40)50	.75	.75
Developing and Printing Outfit (see page 44)	2.00	2.00	2.00

For prices of Kodak Film and Kodak Verichrome Film see page 34

PICTURE SIZES

No. 0,	1½ x 2½
No. 2C,	2¾ x 4¾
No. 3,	3¼ x 4¾

Nos. 2 and 2A BROWNIES



Compliments of the Digitized Kodak Catalog Project: 1886 - 1941

THE TWO Brownies listed here have been popular through a generation, because of the excellent pictures they make. They come not only in black but also in charming colors, at no extra cost. Carrying cases can be had at a small additional outlay. If you want a gay, yet inexpensive camera ensemble, have your dealer show you these Brownies.

DETAILS AND PRICES Capacity: No. 2, 8 exposures; No. 2A, 8 exposures. Fixed focus only. Shutter: Eastman Rotary, with three stops, *instantaneous* and *time* actions. Two brilliant finders for vertical and horizontal pictures. Two tripod sockets. Body: Aluminum, covered with grained material; metal parts finished in nickel and lacquer.

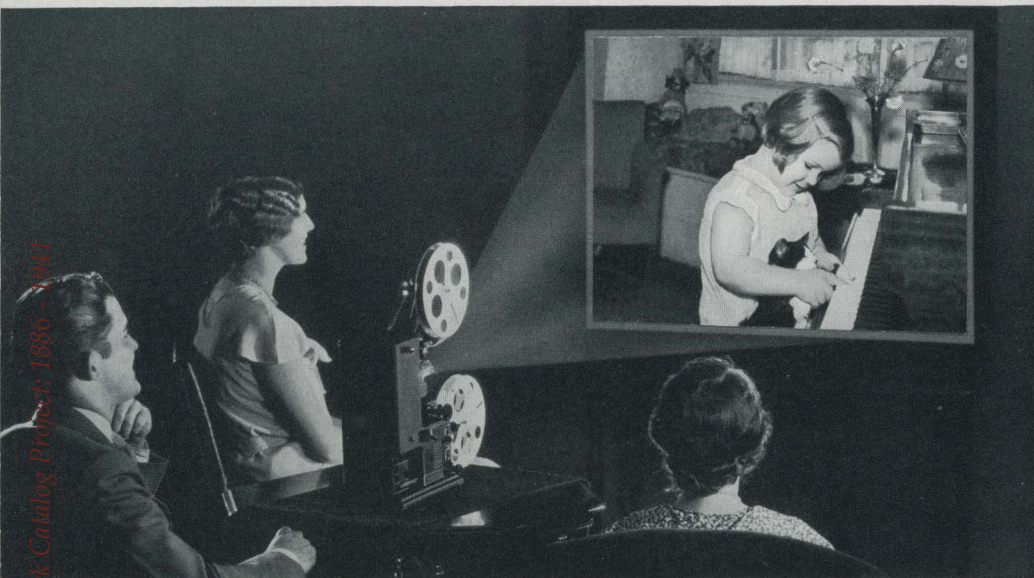
	No. 2	No. 2A
Brownie Camera, Meniscus Lens on No. 2, Meniscus Achromatic Lens on No. 2A, Eastman Rotary Shutter, in black, brown, gray, blue, green, or red, without case.	\$2.00	\$3.00
With case to match (except black)	3.50	4.50
Brownie Carrying Case, black	1.25	1.50
Kodak Portrait Attachment (see page 40)50	.50
Developing and Printing Outfit (see page 44)	2.00	2.00

For prices of Kodak Film and Kodak Verichrome Film see page 34

PICTURE SIZES

No. 2, $2\frac{1}{4} \times 3\frac{1}{4}$
 No. 2A, $2\frac{1}{2} \times 4\frac{1}{4}$

CINÉ-KODAK HOME

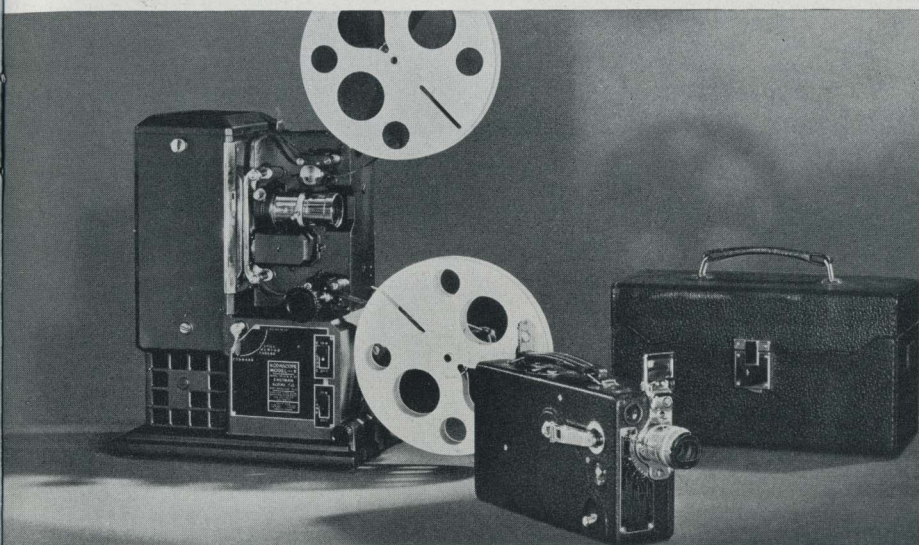


HOME MOVIES BRING YOU THRILLS THAT NEVER PASS

THINK of being able to outwit time...to relive important occasions whenever you like...of seeing on your own home movie screen living pictures of loved ones and friends. Ciné-Kodak makes it possible. With a Ciné-Kodak, movies are made with snapshot ease. Sight the camera—press a lever. Your film is developed by Eastman experts without extra charge.

With Ciné-Kodak Super-sensitive Panchromatic Film, movies can be made in any kind of weather. You can make movies outdoors on dull or rainy days, and even in the home at night with Mazda Photoflood Lamps that cost but 35 cents each. Then there's Kodacolor, enabling you to make movies in full, natural color.

Kodak Cinegraphs, short professional movie subjects for home entertainment, can be purchased from Ciné-Kodak dealers. Feature screen successes may be rented from branches of Kodoscope Libraries, Inc.



CINÉ-KODAKS AND KODASCOPIES

CINÉ-KODAK equipment is known the world over for its quality, simplicity, and performance. Ciné-Kodak, Model K, with the *f*.1.9 lens (illustrated above) makes black and white and Kodacolor movies and can be instantly fitted for telephoto and wide-angle work. Kodascopes—projectors—include the Model K which provides a quality of projection unequalled outside a theater.

Ciné-Kodak, Model K, in blue, brown, or black, with case,	
With Kodak Anastigmat Lens <i>f</i> .1.9	\$150.00
With Kodak Anastigmat Lens <i>f</i> .3.5	110.00
Ciné-Kodak, Model M, with Kodak Anastigmat Lens <i>f</i> .3.5, including	
portrait attachment and leather case. Black only	75.00
Kodascope, Model K, with extra lamp, oiling outfit, etc.	160.00
Kodascope, Model B, complete with fiber case	175.00
Library Kodascope, complete with walnut case	175.00
Kodascope, Model A, with extra lamp, oiling outfit, etc.	150.00
Kodascope, Model C, with lamp, oiling outfit, etc.	50.00
Ciné-Kodak Panchromatic Safety Film, 50 ft., \$3.25; 100 ft.	6.00
Ciné-Kodak Super-sensitive Panchromatic Safety Film, 50 ft., \$4.00; 100 ft.	7.50
Eastman Super-sensitive Kodacolor Safety Film, 50 ft., \$4.75; 100 ft.	9.00

Ask your Ciné-Kodak dealer for descriptive booklet

KODATOY



THE EASTMAN MOVIE PROJECTOR FOR CHILDREN

KODATOY uses 16 mm. Safety Film and is easy to thread and operate even for young children. It projects clear, brilliant pictures on the "silvered" screen of its own miniature theatre.

Kodatoy outfit, including theatre, two empty 100-foot metal reels, cord and plug. For use with 105-125, 60-cycle, AC only	\$ 9.00
Kodatoy, motor-driven model. For use with 105-125, 60-cycle, AC only . .	14.00
Motor-drive unit also available as an accessory. Can be easily and quickly attached to hand-cranked model. Complete with 105-125-volt, 60-cycle, AC motor, belt, and necessary fittings	5.00
Kodatoy, Universal Model, for AC or DC	12.50
Kodatoy, motor-driven Universal Model	20.00
Motor-drive unit for Universal Model	7.50
Kodaplays, special movie subjects on 16 mm. Safety Film for use with the Kodatoy, include comedies, adventure, travel, animated cartoons and other pictures. Priced at 30, 60 and 90 cents each.	

LENSES and SHUTTERS

KODAK LENSES

THROUGH standardized large-scale production, the Eastman Kodak Company has reduced the cost of anastigmat lenses to such an extent that almost any one can take advantage of their splendid qualities.

Kodak Anastigmats record vertical and horizontal lines in the same plane with an equal degree of clearness. They have an essentially flat field. Even at their widest openings, all detail in the same plane is recorded with sharpness to the very edges of the negative.

Kodak Anastigmat *f.6.3* is four times as fast as the meniscus achromatic. The *f.5.6* is one-quarter again as fast as the *f.6.3*, and the ultra-speed *f.4.5* admits half again as much light as the *f.5.6*. These lenses make snapshots possible under almost any conditions.

Kodak *f.7.9*, a modestly priced but efficient Eastman lens, is of the anastigmat type. It is two and one-half times as fast as the meniscus achromatic, and approaches the anastigmat in defining and covering power.

KODAK SHUTTERS

PROMINENT among Eastman shutters are the Diodak, Kodon, and Kodak, all recently developed for use on the new Six-16 and Six-20 Kodaks. They are noteworthy not only for their precise, reliable action but also for their modern design. The Diodak and the Kodon are unique in that they have duplicate speed and diaphragm scales. One set of scales is located as usual on the front, while the second is on the top. The upper scales permit setting the shutter with the camera in picture-taking position, or checking the setting before snapping the picture.

On the Diodak a sliding exposure scale, geared to the diaphragm scale, indicates the degree of light and the speed with which the respective lens openings should be used. This shutter has snapshot speeds of $\frac{1}{10}$, $\frac{1}{25}$, $\frac{1}{50}$, and $\frac{1}{100}$, and the Kodon has all but the lowest of these speeds. Both have the conventional *bulb* and *time* settings. The simple but accurate Kodak has settings for *instantaneous* and *time*.

The Kodamatic shutter, supplied on all *Special* Kodaks (except V.P.K.), is unusually reliable and extremely versatile. Seven snapshot speeds are provided: $\frac{1}{2}$, $\frac{1}{8}$, $\frac{1}{10}$, $\frac{1}{25}$, $\frac{1}{50}$, $\frac{1}{100}$, and $\frac{1}{150}$ or $\frac{1}{200}$ (as listed), besides *bulb* and *time*. A sliding scale controlling the diaphragm shows the speed and stop to use in dull, gray, clear, or brilliant light.

The Diomatic shutter resembles the Kodamatic. Its handy sliding timing scale and automatic speeds of $\frac{1}{10}$, $\frac{1}{25}$, $\frac{1}{50}$, and $\frac{1}{100}$, besides *bulb* and *time*, enable the user to fit his exposure accurately to the light.

The Kodex shutter is simple, yet scientifically constructed and trustworthy. It has *bulb*, *time*, and automatic speeds of $\frac{1}{25}$ and $\frac{1}{50}$.

KODAK VERICHROME FILM

KODAK Verichrome Film, a remarkable Eastman invention, has qualities of speed and latitude that greatly increase the range of conditions under which any camera may be operated, and protect the user to an unprecedented degree from the results of exposure errors. It maintains natural color balance throughout the picture, and its backing prevents halation "fuzz."

The Verichrome emulsion is used in both Kodak Verichrome roll film and Kodak Verichrome Film Packs, and incorporates an exclusive Eastman process. No other film is "the same as" Verichrome.

REGULAR KODAK FILM

REGULAR Kodak Film and Kodak Film Packs are available as before, with the same excellent qualities that have always characterized them.

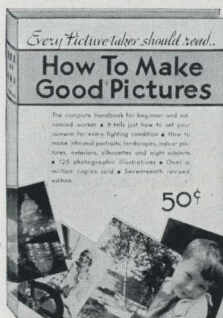
Kodak (roll) Film, Verichrome and regular, is listed here only in the sizes required by cameras in this catalog. For other sizes, see your dealer.

Camera Models	Picture Size	Kodak Verichrome Film			Regular Kodak Film			
		Number	Exposures	Price	Number		Exposures	Price
					Non-Auto-graphic	Auto-graphic		
All Vest Pocket Kodaks; No. 0 Brownie	1 $\frac{5}{8}$ x 2 $\frac{1}{2}$	V 127	8	\$.30	127	A 127	8	\$.25
All No. 1 or No. 2 Cameras	2 $\frac{1}{4}$ x 3 $\frac{1}{4}$	A 120	6	.25
		V 120	8	.30	120	...	8	.25
All Six-20 Kodaks	2 $\frac{1}{4}$ x 3 $\frac{1}{4}$	V 620	8	.30	620	...	8	.25
All No. 1A or No. 2A Cameras	2 $\frac{1}{2}$ x 4 $\frac{1}{4}$	A 116	6	.30
		V 116	8	.35	116	...	8	.30
						A 116	12	.60
All Six-16 Kodaks	2 $\frac{1}{2}$ x 4 $\frac{1}{4}$	V 616	8	.35	616	...	8	.30
All No. 2C Cameras	2 $\frac{7}{8}$ x 4 $\frac{7}{8}$	V 130	6	.55	130	A 130	6	.45
		V 130	10	.90	...	A 130	10	.75
All No. 3 Kodaks	3 $\frac{1}{4}$ x 4 $\frac{1}{4}$	V 118	6	.55	118	A 118	6	.45
		V 118	12	1.10	...	A 118	12	.90
No. 3 Brownies	3 $\frac{1}{4}$ x 4 $\frac{1}{4}$	V 124	6	.55	124	...	6	.45
		V 124	12	1.10	124	...	12	.90
All No. 3A Kodaks	3 $\frac{1}{4}$ x 5 $\frac{1}{2}$	V 122	6	.65	122	A 122	6	.55
		V 122	10	1.10	...	A 122	10	.90

All Kodak Verichrome Film Packs and regular Kodak Film Packs have 12 exposures.

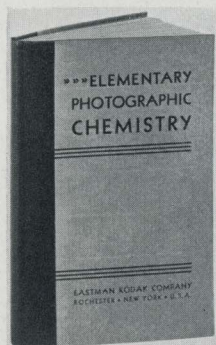
Picture Size in Inches	Picture Size in Centimeters	Kodak Verichrome Film Packs		Regular Kodak Film Packs	
		Number	Price	Number	Price
1 $\frac{3}{4}$ x 2 $\frac{3}{8}$	4 $\frac{1}{2}$ x 6	V 500	\$.40	500	\$.35
2 $\frac{1}{4}$ x 3 $\frac{3}{4}$	6 x 9	V 520	.60	520	.50
2 $\frac{1}{2}$ x 4 $\frac{1}{4}$	6 $\frac{1}{2}$ x 11	V 516	.70	516	.60
3 $\frac{1}{4}$ x 4 $\frac{1}{4}$	8 x 10 $\frac{1}{2}$	V 518	1.10	518	.90
3 $\frac{3}{4}$ x 5 $\frac{1}{2}$	8 x 14	V 522	1.30	522	1.10
3 $\frac{3}{4}$ x 5 $\frac{1}{2}$	10 x 15	V 543	1.60	543	1.35
4 x 5	10 x 12 $\frac{1}{2}$	V 523	1.30	523	1.10
5 x 7	13 x 18	V 515	2.30	515	1.90
3 $\frac{1}{2}$ x 4 $\frac{3}{4}$	9 x 12	V 541	1.20	541	1.00

"HOW TO MAKE GOOD PICTURES"



THIS well-known book, now in its eighteenth edition, should be in the home of every amateur photographer. It explains, in easy, untechnical language, the various phases of picture making. Its brief chapters cover camera operation, developing, printing, enlarging, and tinting; landscape, architectural, and interior photography; flashlight and home portraiture; the making of silhouettes, etc. There are 184 pages full of pointed, definite information, almost as many illustrations, and simple charts that explain photographic theories and processes. The book is printed on high-grade paper and is bound in boards with a vellum cover. "How to Make Good Pictures" \$.50

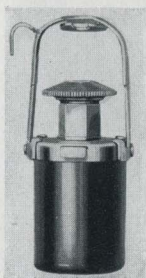
"ELEMENTARY PHOTOGRAPHIC CHEMISTRY"



THIS informative book fills the need for a simple account of photographic chemistry for practical photographers. Chapter I contains a brief introduction to elementary chemistry. Subsequent chapters describe the important photographic chemicals, their properties and reactions. Important features are a table of solubilities of the chemicals in common use, practical information on formulas, the preparation and use of solutions, etc.

The latest edition of this 106-page book has been thoroughly revised. It is well printed, and bound in boards. Price, 50 cents.

KODAK SELF TIMER



THIS accessory helps in making a really complete picture record. With it the photographer can make snapshots of himself or can include himself in group pictures. Clip a Kodak Self Timer to the cable release of any Kodak, set it for any interval from $\frac{1}{2}$ second to 1 minute, and step into the picture. When the interval has elapsed, the plunger of the Timer trips the shutter, making the exposure without further help from you. Kodak Self Timer \$1.25

CAMERA SUPPORTS ● FL

KODAK METAL TRIPODS

THESE tripods, the result of many years of experience in constructing camera supports, are models of lightness, compactness, and rigidity. The legs are of brass tubing, the sections in each telescoping neatly to give small collapsed size without sacrifice of strength. The lower sections and the heads are nicked, while the upper sections are black.

There are six models from which to choose. When closed, their lengths range from 11 $\frac{3}{8}$ to 15 $\frac{1}{2}$ inches, so that even the largest is convenient to carry. Nos. 1 and 2 have revolving heads which permit the camera to swing in any desired direction without moving the tripod itself. They also have straps to hold the legs in place when closed. Nos. 0, 1C, and 2C have solid heads. Their legs have no straps.



The head of No. 6 (illustrated in its carrying case) includes a hinge which per-

mits the legs to fold flat—parallel to one another instead of in the usual triangular form. The result is a narrow shape which, with the extreme shortness of the tripod when closed, makes No. 6 easiest of all to carry.

DETAILS AND PRICES

	Sections	Length		Weight	Price
		Closed	Extended		
Kodak Metal Tripod No. 0	3	15 $\frac{1}{2}$ inches	39 $\frac{1}{2}$ inches	15 ounces	\$2.75
Kodak Metal Tripod No. 1C	4	15 $\frac{1}{4}$ inches	48 $\frac{7}{8}$ inches	25 $\frac{1}{2}$ ounces	4.00
Kodak Metal Tripod No. 1	4	15 inches	48 $\frac{1}{2}$ inches	24 $\frac{1}{2}$ ounces	4.50
Kodak Metal Tripod No. 2C	5	13 $\frac{1}{4}$ inches	49 $\frac{7}{8}$ inches	26 ounces	4.50
Kodak Metal Tripod No. 2	5	13 $\frac{1}{2}$ inches	49 $\frac{1}{2}$ inches	25 ounces	5.00
Kodak Metal Tripod No. 6	6	11 $\frac{3}{8}$ inches	40 inches	24 ounces	6.50
Leather Carrying Case, for Nos. 0 to 2, inclusive					2.70
Ditto, for No. 6					3.15
Rubber Tips, for Metal Tripod Spurs (per set of 3)					.10

THE KODAPOD

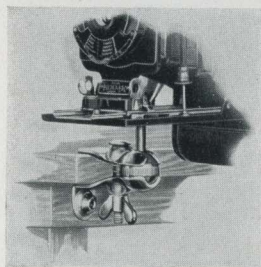


THE little Kodapod is an exceedingly handy arrangement, particularly suited for use in place of a tripod in outdoor photography. The toothed jaws at one end firmly grip tree, fence, or other wooden object, while the other end threads into any standard tripod socket. A clamping screw adjusts the camera to the correct horizontal or vertical position, where it is firmly held while the exposure is being made.



The Kodapod \$1.75

ASHLIGHT MATERIALS



THE OPTIPOD

HERE is a neat little device—a combined tripod head and felt-lined clamp—that is frequently used instead of a tripod and, in many cases, as an adjustable head for a tripod.

Used alone the Optipod clamps to any shelf, table, window ledge, running board or other support, and holds the camera firmly while the exposure is being made. It fits any

standard tripod socket. It is small and light.

The ball and socket joint is a great convenience since it permits tilting the camera to almost any angle. It is especially valuable when the Optipod is used in connection with a tripod to photograph subjects which are at close range or otherwise so situated that it is impossible to place the tripod alone in the desired position.

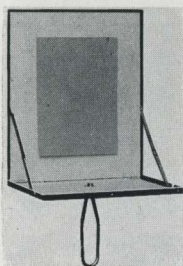
The Optipod \$1.25



FLASHLIGHT MATERIALS

SINCE it makes one independent of daylight, flashlight photography can be carried on at any time. Giving complete control of illumination, it means good indoor pictures under otherwise impossible conditions.

A very simple way is to use the Kodak Flash Sheet Holder and Eastman Flash Sheets. The latter are placed on the holder and ignited from behind. They burn slowly, giving a broad and powerful, yet soft, light.



No. 1 Flash Sheets, package ½ dozen sheets, 3 x 4-inch	\$.35
No. 2 Flash Sheets, package ½ dozen sheets, 4 x 5-inch	.56
No. 3 Flash Sheets, package ½ dozen sheets, 5 x 7-inch	.84
Kodak Flash Sheet Holder	1.25

Flash cartridges are recommended only where instantaneous exposures are required.

Eastman No. 4 Flash Cartridges, for use only with fuse, per package of ½ dozen	\$.50
Ditto, No. 580
Ditto, No. 6	1.25

Flash sheets and cartridges cannot be shipped by mail. Get them directly from your dealer. See "Terms," page 56.

KODAK LENS

KODAK PORTRAIT ATTACHMENT

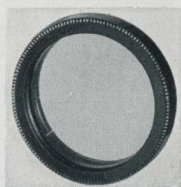


HERE'S THE WAY THE PICTURE WAS MADE

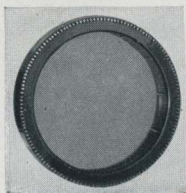
AND HERE'S THE ACTUAL PICTURE (REDUCED IN SIZE),
MADE WITH A KODAK AND KODAK PORTRAIT ATTACHMENT

If a subject is placed within arm's length of the ordinary hand camera, the result is a blurred image. But when the lens is supplemented by a Kodak Portrait Attachment the camera is adapted to the making of charming "close-ups" of your family and friends, as well as clear-cut, close-range pictures of flowers, art objects, and still-life subjects.

It's all very easy, too. The attachment is quickly slipped over the regular lens and the camera is operated as usual. Using the Kodak Portrait Attachment simply keeps the focus sharp at close range and results in portraits that almost fill the negative area.



KODAK COLOR FILTER



THE Kodak Color Filter is valuable in photographing highly colored landscapes, flowers, art objects, etc. The dye in the filter holds back the strong blue and violet rays, which affect the negative most quickly, and gives the weaker shades time to register. The resulting picture reproduces all the color values more nearly as the eye sees them.

For prices of these attachments see page 40

ATTACHMENTS

KODAK SKY FILTER



BRIGHT clouds in a blue sky reflect much more light than the rest of an outdoor view. But the Kodak Sky Filter with its yellow-stained upper half holds back the light from the sky. This restrained light renders the clouds distinctly while the darker portions of the picture get the benefit of full exposure through the clear half of the attachment.



The Kodak Sky Filter slips readily over the camera lens and does not require any change in the exposure.

KODAK DIFFUSION PORTRAIT ATTACHMENT



THE concentric lines polished into the surface of this attachment diffuse the light that reaches the lens. Besides giving large images like the regular Kodak Portrait Attachment, this little disk lends a charming softness—atmosphere—to pictures. It reduces sharp contrasts, softens chalky high-lights



and blends harsh lines, so that pictures made with it take on the popular "soft focus" effect. The attachment is not, however, extreme in its action, and there is no danger of getting unpleasant "fuzziness."

KODAK PICTORIAL DIFFUSION DISK



A KODAK Pictorial Diffusion Disk does for landscapes what a Kodak Diffusion Portrait Attachment does for "close-ups." It lends a pleasing softness, without loss of brilliancy.

The V. P. K. Diffusion Disk, used with the V. P. K. Special and the V. P. K. Series III, *f*.5.6 lens, can be used for both landscapes and portraits at 5½ feet and beyond.



These disks slip on or off the lens mount in an instant and their use does not necessitate any change whatever in the operation of the camera.

For prices of these attachments see page 40

ATTACHMENTS • COMBIN

KODAK PORTRAIT AND DIFFUSION PORTRAIT ATTACHMENTS, PICTORIAL DIFFUSION DISKS, SKY AND COLOR FILTERS

(These attachments are listed here only for the cameras shown in this catalog. For attachments to be used on older models, see your dealer.)

Order by this Number	Portrait Attach- ments	Diffusion Portrait Attach- ments	Pictorial Diffusion Disks	Sky or Color Filters
----------------------------	------------------------------	---	---------------------------------	-------------------------------

FOR VEST POCKET KODAKS

Model B, Meniscus lens or Kodak Doublet lens	8	\$.75	\$1.25 \$.75
Boy Scout, Meniscus lens.	8	.75	1.2575
Girl Scout, Meniscus lens.	8	.75	1.2575
Camp Fire Girls, Meniscus lens.	8	.75	1.2575
Petite, Meniscus lens.	8	.75	1.2575
Series III, Kodak f.7.9.	8	.75	1.2575
Series III, Kodak Anastigmat f.5.6.	8A	.7575
Special, Kodak Anastigmat f.4.5.	8A	.7575
Vest Pocket Kodak Diffusion Disk (see page 39)	8A	\$1.25

FOR POCKET KODAKS

No. 2C Meniscus Achromatic lens or Kodak f.7.9.	6	.75	1.50	2.50 1.15
Kodak Anastigmat f.6.3.	7	.75	1.50	2.50 1.50
No. 3A Meniscus Achromatic lens or Kodak f.7.9.	6	.75	1.50	2.50 1.15
Kodak Anastigmat f.6.3.	7	.75	1.50	2.50 1.50

FOR SIX-20 KODAKS

Meniscus Achromatic lens	3	.75	1.25	1.75 1.15
Kodak Doublet lens, with shutter plate No. 40832	8	.75	1.2575
Kodak Doublet lens, with shutter plate No. 44069	13	.75	1.25	1.75 1.15
Kodak Anastigmat f.6.3.	13	.75	1.25	1.75 1.15

FOR SIX-16 KODAKS

Meniscus Achromatic lens	13	.75	1.25	1.75 1.15
Kodak Doublet lens	13	.75	1.25	1.75 1.15
Kodak Anastigmat f.6.3.	13	.75	1.25	1.75 1.15

FOR KODAKS, SERIES III

No. 3 Kodak Anastigmat f.6.3 or f.5.6	6	.75	1.50	2.50 1.15
No. 2C Kodak Anastigmat f.6.3.	6	.75	1.50	2.50 1.15

FOR 3A AUTOGRAPHIC KODAK

No. 3A Kodak f.7.9.	6	.75	1.50	2.50 1.15
Kodak Anastigmat f.6.3.	7	.75	1.50	2.50 1.50

FOR POCKET KODAKS SPECIAL

No. 1 Kodak Anastigmat f.4.5.	6	.75	1.50	2.50 1.15
No. 1A Kodak Anastigmat f.4.5.	7	.75	1.50	2.50 1.50
No. 3 Kodak Anastigmat f.4.5.	7	.75	1.50	2.50 1.50
No. 2C Kodak Anastigmat f.4.5.	7	.75	1.50	2.50 1.50

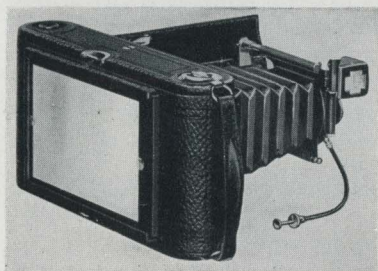
FOR 3A AUTOGRAPHIC KODAK SPECIAL

No. 3A Kodak Anastigmat f.6.3.	7	.75	1.50	2.50 1.50
--	---	-----	------	-----------

FOR BROWNIES (BOX TYPE)

Nos. 0 and 2 Brownies, Meniscus lens	1	.50	1.2575
No. 2A Brownie, Meniscus Achromatic lens	0	.50	1.2575
Nos. 2C and 3 Brownies, Meniscus Achromatic lens.	4	.75	1.25 1.15
No. 2 Beau Brownie, Kodak Doublet lens	13	.75	1.25	1.75 1.15
No. 2A Beau Brownie, Kodak Doublet lens	7	.75	1.50	2.50 1.50

COMBINATION BACKS



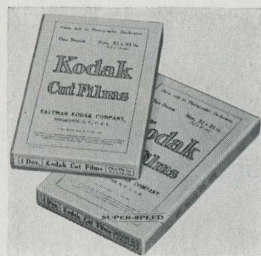
COMBINATION Backs adapt 3A Autographic Kodaks, Regular and *Special*, to Double Plate Holders. The photographer then has the advantage of ground glass focusing and, if he so desires, can make one or two exposures and develop them at once.

With the addition of Kodak Cut Film Sheaths in the plate holder, this special back also equips the camera for use with Kodak Cut Film, Eastman Commercial Ortho Film, and Eastman Super-sensitive Panchromatic Film. (See below and page 42.)

Combination Back with ground glass, for No. 3A Autographic Kodak . . \$4.00
 Ditto, for No. 3A *Special* 5.00
 Kodak Double Plate Holders for either of the above, each 1.50

KODAK CUT FILM

KODAK Cut Film offers every advantage of plates, and in addition it weighs only one-tenth as much, is free from halation, easier to handle, and unbreakable. The negatives it produces are of strictly superior quality. Through the agency of the Combination Back (see above), Double Plate Holder, and Kodak Cut Film Sheaths, No. 3A Autographic Kodaks, Regular and *Special*, can readily be adapted for use with this film.



The speed of Regular Kodak Cut Film is comparable to that of the average portrait plate or of regular Kodak Film. The *Super Speed* is about twice as fast as Regular, yet it equals the latter in latitude, gradation, and fineness of grain. It gives the best possible negatives under difficult light conditions and with short exposures, without sacrificing any of the qualities on which film superiority is founded. It opens the way to unthought-of possibilities in speed work, home portraiture, etc.

	2¼x3¼	3¼x4¼	3¼x5½	4x5
Kodak Cut Film, Regular, dozen . .	\$.45	\$.65	\$.90	\$.90
Kodak Cut Film, <i>Super Speed</i> , dozen	.45	.65	.90	.90

FILMS ● SHEATHS ● PLATES

EASTMAN COMMERCIAL ORTHO FILM

THIS film is color-sensitive to a high degree, and gives especially good color separation in landscapes or multi-color still-life subjects. It is about half as fast as Kodak Cut Film Regular and is supplied in cut film form. It is not sensitive to red.

	2¼ x 3¼	3¼ x 4¼	3¼ x 5½	4x5
Eastman Commercial Ortho Film, dozen .	\$.45	\$.65	\$.90	\$.90

EASTMAN SUPER-SENSITIVE PANCHROMATIC FILM

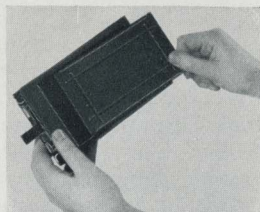
THIS cut film is completely sensitive to all colors and when used with proper filters gives splendid monochrome reproductions of all tints and shades. In addition it has amazing speed, especially under Mazda lights, and opens up a new field to the serious amateur. Because of its extreme sensitivity it must be manipulated in total darkness. (See precautions on package.)

	2¼ x 3¼	3¼ x 4¼	3¼ x 5½	4x5
Eastman Super-sensitive Panchromatic Film, dozen . . .	\$.50	\$.75	\$ 1.00	\$ 1.00

KODAK CUT FILM SHEATH

ADAPTS a plate holder to the use of Kodak Cut Film, Eastman Commercial Ortho Film, and Eastman Super-sensitive Panchromatic Film. It is made of aluminum, ribbed for rigidity, and is instantly inserted or removed.

	2¼ x 3¼	3¼ x 4¼	3¼ x 5½	4x5
Kodak Cut Film Sheath, each	\$.10	\$.10	\$.15	\$.15



EASTMAN PLATES

THE amateur who intends to use plates, either in a 3A Kodak or in a plate camera of any size, will find it very much to his advantage to use one or more of these well-known Eastman brands: Speedway, Eastman 40, Eastman 36, Single or Double Coated Ortho, Eastman Hyper Press (orthochromatic), Wratten & Wainwright Panchromatic, Wratten Hypersensitive Panchromatic.

KODAK SAFELIGHT LAMP

THIS lamp is ideal for all darkroom uses. It is made to suit the work of the beginner, the advanced amateur, or the professional. It is regularly supplied with a 5 x 7 Series 2 Safelight (for use with all films or plates except panchromatic), electric cord, and fittings. A safelight of any other series may be specified in ordering.



Kodak Safelight Lamp, without bulb \$3.50
Extra Safelight, 5 x 7, any series.75



EASTMAN SAFELIGHT LAMP

SUSPENDED from an electric cord or fixture, the Eastman Safelight Lamp throws the light directly downward over the work-table. Unless otherwise ordered, it is supplied with 5 x 7 Series 2 Safelight, for use with all films or plates, except panchromatic.

Eastman Safelight Lamp, without bulb \$3.00
Extra Safelight, 5 x 7, any series75

BROWNIE SAFELIGHT LAMP

THE Brownie Safelight Lamp, but little larger than the electric bulb it holds, screws into any electric socket. It is made of japanned metal, and has safelights both at the end and at the front. Both safelights supplied are Series 2, unless otherwise specified. A 10-watt electric bulb is the source of illumination.



Brownie Safelight Lamp, without bulb \$1.75
Extra Circular End Safelight (any series), each25
Extra Rectangular Safelight (any series), each.40

EXTRA SAFELIGHTS FOR SAFELIGHT LAMPS

SERIES 0—An orange safelight, for use with bromide paper and lantern slide plates.

SERIES 0A—A greenish-yellow safelight, for use with bromide paper and lantern slide plates.

SERIES 00—For use with developing-out papers (except bromide).

SERIES 1—For use with films or plates not highly color sensitive.

SERIES 2—For use with Kodak Verichrome Film and other extra rapid orthochromatic films and plates.

SERIES 3—For use with red-sensitive panchromatic films and plates.

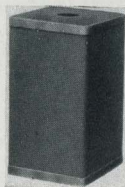
Price, any series, for Eastman and Kodak Safelight Lamps—\$.75;
for Brownie Safelight Lamp, circular—\$.25; rectangular—\$.40.

CANDLE LAMP • DEVELOPI

KODAK CANDLE LAMP

WHENEVER space is at a premium, or wherever electricity is not available—on the camping trip, for instance—this clever lamp is very popular. It is collapsible and takes up but little room when not in use. It is made of special, tested ruby fabric bound in metal frames, and gives a strong light, safe for photographic work.

Kodak Candle Lamp, with one candle \$.40
Extra Candles, per dozen50



DEVELOPING AND PRINTING OUTFITS



THE camerist who wishes to do his own developing by the tray method, and to make his own prints, can save himself both time and expense by using either of these outfits.

Being assembled in large numbers they can be offered at prices that spell economy for the user. Good results are assured by the fact that each item is a tried and tested member of the Eastman line.

PRICES

One Kodak Candle Lamp	\$.40
One Printing Frame40
One Glass for Frame05
One 4-ounce Graduate15
One Stirring Rod06
Four Developing Trays40
Five Tubes Eastman Special Developer35
One-half pound Kodak Acid Fixing Powder15
Two dozen 3¼ x 5½-inch Velox Paper40
Two ounces Nepera Solution for developing Velox20
Instruction Book (free)	

Value \$2.56

EASTMAN 3A OUTFIT, complete, neatly packed Price \$2.00

EASTMAN ABC OUTFIT, similar to above but providing for 4 x 5-inch or smaller pictures. \$2.00

DEVELOPING TRAYS

"Bull's Eye" (Composition)		Eastman Enameled	
3¼x4¼ . \$.30	3½x12 . \$1.30	4x6 . . . \$.60	
4 x5 . .40	5 x 8 . .80	5x775	
4 x6 . .45			



KODAK FILM TANK

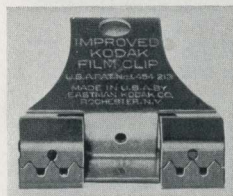
THESE outfits afford the easiest, most reliable means of developing roll film negatives. No darkroom is necessary. By means of the light-tight box the film is transferred to a reel, being covered at the same time by a protecting apron. Reel, film, and apron are immersed in the solution cup and development is made according to directions.



- Vest Pocket Kodak Film Tank, for Vest Pocket or No. 0 Brownie films . . . \$3.50
- 2 1/4-inch Kodak Film Tank, for films 2 1/4 inches wide or less . . . 4.50
- 2 1/2-inch Kodak Film Tank, for films 2 1/2 inches wide or less . . . 5.50
- 3 1/2-inch Kodak Film Tank, for films 3 1/2 inches wide or less . . . 6.50
- Kodak Tank Developer Powders, per 1/2 dozen (according to the size of the Film Tank with which they are to be used) . . . \$.20, \$.25, \$.30
- Kodak Acid Fixing Powder, per 1/4-lb., 1/2-lb., or 1-lb. package. \$.10, \$.15, \$.25

IMPROVED KODAK FILM CLIP

A STURDY, dependable clip made in two styles of solid, non-corrosive metal. One is used in suspending the film from a support. The other can be attached to the lower edge of the film, a lead weight keeping the film taut. Both styles have 2-inch jaws. Drainage holes in them prevent water from collecting, and eliminate the danger of streaking dry films.



Improved Kodak Film Clip, without lead weight \$.35
Improved Kodak Film Clip, with lead weight45

KODAK JUNIOR FILM CLIP

TWO teeth in the jaw of this clip remove all possibility of slipping. The clip is made in one size only, 1 3/16 inches wide, of acid-resisting metal, and is equally practical for tray development or for drying films.

Kodak Junior Film Clip. \$.15



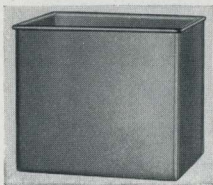
EASTMAN FILM DEVELOPING CLIP



A STRONG and thoroughly dependable clip, made in two sizes. Nickel finish.

3 1/2-inch, per pair. \$.30
5-inch, per pair.40

KODAK DEVELOPING BOX, No. 1

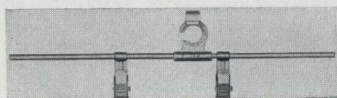


THIS tank provides a swift and easy means to uniform development of cut film. It takes twelve films, each suspended in the solution from a Kodak Cut Film Developing Hanger. Development proceeds by the time and temperature method. The tank is made of acid-resisting metal and measures 4 x 5 $\frac{1}{4}$ x 6 inches.

Kodak Developing Box, No. 1, without hangers . \$2.00

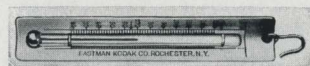
KODAK CUT FILM DEVELOPING HANGER

FOR use with Kodak Developing Box, No. 1. The hanger is made sufficiently long to lie conveniently across the top of the box. The clips are made of an acid-resisting metal.



Kodak Cut Film Developing Hangers, each \$.20

EASTMAN THERMOMETER



AN accurate instrument, especially convenient in tank or tray development. The swinging hook which is provided makes it easy to suspend the thermometer

in solutions. Its curved back protects the glass tube and fits the corner of a developing tank.

Eastman Thermometer. \$.90

THERMOMETER STIRRING ROD

THIS triple purpose rod is $\frac{3}{4}$ -inch in diameter



by 9 $\frac{1}{4}$ inches long, and is stoutly constructed. Stirring with it mixes ingredients thoroughly and at the same time gives an accurate record of the temperature. The enlarged and flattened end is useful in crushing lumpy powders.

Thermometer Stirring Rod \$1.25

VELOX PAPER AND SUNDRIES

VELOX PAPER "LOOK FOR VELOX ON THE BACK"



VELOX PRINTS ARE
IDENTIFIABLE BY THE
NAME "VELOX"
TINTED LIGHTLY ON
THE BACK.



VELOX is a non-abrasion developing-out paper, ideal for amateur work. It takes into account the fact that amateur pictures are made under greatly varying light conditions, its four degrees of contrast fitting every type of amateur exposure. If the negative is at all printable, some one of these four degrees will give the proper and most pleasing rendering of highlights and shadows. Velox is also supplied in two surfaces, giving the amateur a choice in the matter of finish.

GRADE	SURFACE	CONTRAST			
Velvet Velox	Semi-Gloss	1	2	3	4
Glossy Velox	Enameled	1	2	3	4

SIZE IN INCHES		PRICES	
		2 Dozen	1 Gross
1 7/8 x 2 3/4 (for 1 5/8 x 2 1/2 negatives)		\$.25	\$.85
2 1/2 x 3 1/2 (for 2 1/4 x 3 1/4 negatives)		.35	1.20
2 3/4 x 4 1/2 (for 2 1/2 x 4 1/4 negatives)		.35	1.50
3 1/2 x 4 1/2 (for 3 1/4 x 4 1/4 negatives)		.40	1.85
3 1/2 x 5 1/8 (for 2 7/8 x 4 7/8 negatives)		.40	1.95
3 1/2 x 5 3/4 (for 3 1/4 x 5 1/2 negatives)		.50	2.35

Velox is also available in exact negative sizes (except Vest Pocket).

VELOX SUNDRIES

THIS simple list of sundries gives the amateur all the chemicals he needs for the manipulation of Velox Paper.

Nepera Solution, 4-ounce bottle	\$.28
Ditto, 16-ounce bottle84
Nepera Auxiliary Powders (for converting Nepera Solution to a film or plate developer), package of 1235
Eastman M. Q. Developer, package of 5 glass tubes30
Velox Re-developer Tubes for Sepia Toning, package of 12	1.08
Velox Liquid Hardener, 4-ounce bottle25
Ditto, 8-ounce bottle35
Kodak Acid Fixing Powder for fixing Velox prints, 1 pound25
Ditto, 1/2 pound15
Ditto, 1/4 pound10

PRINTING EQUIPMENT

KODAK AMATEUR PRINTER



FOR quick and convenient contact printing the amateur can choose no better means than this compact device, built simply but to Eastman scientific standards.

It fits negatives from $1\frac{5}{8} \times 2\frac{1}{2}$ to 4×5 or $3\frac{1}{4} \times 5\frac{1}{2}$ inches. The negative to be printed is placed on the top glass window by the light of a red bulb inside the printer. A simple masking arrangement controls the white margins and holds the negative during any number of exposures. The paper is placed over the negative and the hinged frame closed. This automatically turns on a 60-watt electric lamp (not supplied) and makes the exposure. The position of this lamp is readily adjustable to give even illumination to negatives of various sizes.

The printer is supplied with $5\frac{1}{2}$ feet of electric cord with plug attached, and one red bulb. By simply inserting an ordinary 60-watt lamp the printer is made ready for instant use.

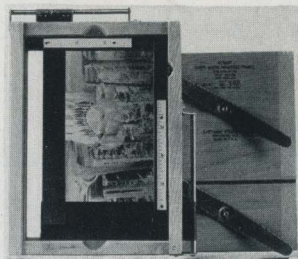
Kodak Amateur Printer \$10.00

KODAK AUTO-MASK PRINTING FRAME

THIS frame can be used in printing from any negatives of amateur size: 4×5 , $3\frac{1}{4} \times 5\frac{1}{2}$ inches or smaller.

Attached to the frame are two slides adjusted from the outside, forming an accurate mask of whatever size is desired. Any number of uniformly masked prints can be made without readjusting the negative or the masking slides.

The entire frame is carefully constructed, of quality material, to give years of service.

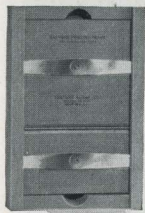


Kodak Auto-Mask Printing Frame \$1.50

AND ACCESSORIES

EASTMAN PRINTING FRAMES

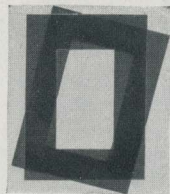
THESE frames have a two-section hinged back, with clamps to hold the negative and paper firmly. Construction is of beech, a high-grade wood that assures rigidity and long life, and obviates danger of warping. Eastman Printing Frames are supplied without glass.



For $2\frac{1}{4} \times 3\frac{1}{4}$ -inch plates and V. P. K. or smaller film negatives	\$.35
For $2\frac{1}{2} \times 4\frac{1}{4}$ -inch or smaller film negatives	.40
For $3\frac{1}{4} \times 4\frac{1}{4}$ -inch plates and $2\frac{1}{4} \times 3\frac{1}{4}$ -inch or smaller film negatives	.40
For $3\frac{1}{4} \times 5\frac{1}{2}$ -inch or smaller film negatives	.40
For $3\frac{1}{4} \times 5\frac{1}{2}$ -inch plates	.45
For 4 x 5-inch plates or films	.40
For 5 x 7-inch plates or films	.55
For $3\frac{1}{2} \times 12$ -inch films	1.60

KODALOID PRINTING MASKS

THESE transparent, durable masks, orange-red in color, have openings of various convenient sizes. Their transparency enables the user to see clearly the portions of the picture which are being masked off. The masks are supplied either with or without trimming guides, which provide for a $\frac{1}{8}$ -inch margin.



For $3\frac{1}{4} \times 5\frac{1}{2}$ Frames, 8 masking sizes, each	\$.10
For 4 x 5 Frames, 6 masking sizes, each	.10
For 5 x 7 Frames, 5 masking sizes, each	.15

KODAK MAGNESIUM RIBBON HOLDER



KODAK Magnesium Ribbon provides an intensely bright light suitable for exposing Velox, and an excellent supplementary illumination for portraiture, copying, and interior work in general. It is furnished in the handy holder illustrated. It is best ignited by means of the special alcohol lamp listed below. A forward

movement of the thumb pushes out the desired length of ribbon through a small opening, while a reverse movement extinguishes the light instantly. Thus, the Kodak Magnesium Ribbon Holder is another of the many Eastman accessories that, when called upon, are ready to add so much to photographic pleasure and convenience.

Kodak Magnesium Ribbon Holder	\$.50
Alcohol Lamp	.50

KODAK AUTO-FOCUS ENLARGER



THE easiest and most efficient means of making amateur enlargements is supplied by this simple apparatus, which clamps to any table.

The enlarger focuses itself. As the camera is moved up or down to form an image of the desired size a cam-and-lever arrangement maintains the focus at critical sharpness. Enlarging with this outfit is therefore as rapid and easy as contact printing. And the Kodak Anastigmat lens supplied assures big prints that are professional in quality.

Plate or film negatives up to 4 x 6 inches can be accommodated, and enlarged from 1½ to 3½ diameters. Prints approximately 11½ x 19¼ inches can be made from a 3¼ x 5½ negative; and prints 5¼ x 8¼

inches can be made from a "vest pocket" negative.

The ventilated lamp house holds an electric lamp (not supplied) of from 75 to 200 watts. A diffusing disc is supplied separately for "soft focus" effects.

Kodak Auto-Focus Enlarger with Kodak Anastigmat Lens, electric cord and plug, set of six flexible metal masks \$33.00

Diffusing Disc 1.00

EASTMAN ENLARGING PAPERS

THESE bromide enlarging papers give unsurpassed quality in the big print and offer a wide variety of effects. Best of all, they are just as easy to use as Velox.

Eastman Portrait Bromide is particularly adapted to enlargements from portrait negatives. It is also ideal for enlarging pictures of landscapes and interiors, when it is desired to produce prints that are brilliant but that have a long scale of tones and half-tones rather than strong contrasts. It is supplied in these surfaces and colors: D—(white) Rough Lustre; E—(buff) Rough Lustre.

P. M. C. Bromide is a paper of excellent all-around quality. It is supplied in eleven different grades, some of them single weight and others double weight. There is a variety of stocks and surfaces, and some of the grades are made in two or three degrees of contrast to fit various types of negatives. P. M. C. can, therefore, be counted on to suit practically every taste and requirement.

COLORING OUTFITS • MAILERS



KODAK TRANSPARENT OIL COLOR OUTFIT

THESE perfected oil colors offer a splendid means of coloring photographs. The pigments used are of the highest quality and are ground extremely fine in order to give complete smoothness when applied. They contain no element that might bleach or otherwise affect photographic prints. There are fifteen colors, which may be used singly or in combination. They have

strength, brilliance, and permanence equal to the standards of recognized authorities for artists' oil colors. The complete outfit also includes sizing fluid for glossy prints, cleaning fluid for margins, transparent medium for thinning, a quantity of stump cotton, pointed sticks (skewers), and an instruction book including a comprehensive guide to the colors and how to mix them. In short, everything necessary to a highly satisfactory coloring job finds a place in the handsome, blue, wooden box.

Kodak Transparent Oil Color Outfit (complete).	\$3.75
Kodak Transparent Oil Colors, per tube, any color	.25
Transparent Thinning Medium, per tube	.35
Sizing Fluid, per 1-oz. bottle	.20
Cleaning Fluid, per 1-oz. bottle	.20
Stump Cotton, per package	.15
Skewers, per dozen	.20

VELOX WATER COLOR OUTFIT

PHOTOGRAPHIC prints and lantern slides can be colored easily, artistically, by using Velox Water Colors. They are transparent and blend readily, so that the desired effect is obtained without experience or special ability. The outfit includes twenty-six stamps of each of twelve colors, and three brushes. It comes in a white enamel case, the inside cover of which is used as a mixing palette.



Velox Water Color Outfit (book of color stamps, three brushes, case)	\$1.00
Velox Transparent Water Color Stamps, complete book of 12 colors	.50
Separate Color Leaves, per sheet	.04
Set of three Special Brushes	.50

THE SAFETY PHOTO MAILER



A TOUGH envelope strengthened with corrugated board and provided with a lock seal.

No.	Size of Card or Print	Outside Size of Mailer	Price per Doz.
A—	5 x 7 or smaller	6 1/8 x 8 1/8	\$1.08
B—	9 3/8 x 11 3/8 or smaller	10 1/2 x 12 1/2	1.80
C—	11 7/8 x 13 1/8 or smaller	13 x 14 1/8	2.10
D—	12 5/8 x 15 5/8 or smaller	13 3/4 x 16 3/4	3.00
E—	17 1/4 x 20 1/4 or smaller	18 5/8 x 21 5/8	4.20

EASTMAN ALBU

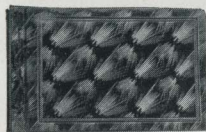
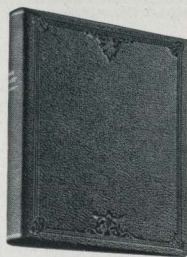
LIBRARY ALBUMS

THESE two Library Album styles fill the demand for albums in book form, readily placed in the bookcase when not wanted. In keeping with this idea, the words "Kodak Library" are stamped in gold on the rounded back.

Choice of covers: genuine seal-grain black leather, finished with a pressed book design, or *de luxe* grained material, with an exclusive book design and artistic coloring.

Loose-leaf arrangement, for holding the fifty black leaves, is inside cover, therefore there are no projections to mar table or desk on which album may be placed.

B, Genuine Black Leather Cover, 6 1/2 x 9 (size of leaf from folding edge)	\$3.00
M, <i>De Luxe</i> Grained Cover, 6 1/2 x 9 (size of leaf from folding edge)	2.00
Extra leaves, package of 12, Size L, \$1.8	



KODAK ALBUMS

LOOSE-LEAF, open-back style. Choice of genuine leather covers in black or olive blend—both surfaced in an etched pine-needle effect. Fifty black, round-cornered leaves, held in place with silk-finished cord through cover and metal tubes.

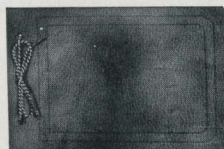
5 x 8, RA, Black Cover	\$2.00	SA, Olive Cover	\$2.00
7 x 11, RB, Black Cover	3.00	SB, Olive Cover	3.00
10 x 12, RC, Black Cover	4.50	SC, Olive Cover	4.50
11 x 14, RD, Black Cover	5.00	SD, Olive Cover	5.00
Package of 12 extra leaves, Size A (5 x 8), \$1.15; Size B (7 x 11), \$1.18; Size C (10 x 12), \$1.30; Size E (11 x 14), \$1.40			

RHODES ALBUMS

GENUINE leather covers in seal-grain black or cordova-finished brown. Loose-leaf, open-back style. Contains fifty black leaves held in place by metal tubes and cord through cover. Cover stamped with the word "Photographs."

LB, 7 x 11, Black leather	\$2.50
LC, 10 x 12, Black leather	4.00
LD, 11 x 14, Black leather	4.50
BB, 7 x 11, Brown leather	2.50
BC, 10 x 12, Brown leather	4.00
BD, 11 x 14, Brown leather	4.50

Package of 12 extra leaves, Size B (7 x 11), \$1.18;
Size C (10 x 12), \$1.30; Size E (11 x 14), \$1.40



THE VACATION ALBUM

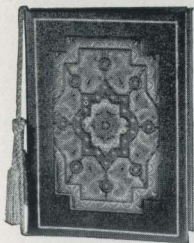
GENUINE LEATHER, flexible cover. See the variety of finishes and colors at your dealer's. Supplied with 12 black leaves; more can be quickly added. Just right to give to friends for that inexpensive "picture" souvenir of a vacation, week-end, auto trip, etc.

No. A (5 1/2 x 8 3/8) \$1.25

Package of 12 extra leaves, Size AV (5 1/4 x 8), \$1.15

MS PHOTO CASES

SIMPLEX FOLIOS



A NEW note in albums. Large, four-page leaves slip between the heavy tasseled cord and cover. No pasting, tying, or untying. Leaves have die-cut slots to hold standard-sized prints. Choice of five covers. Practical—a folio to hold in one container the different-sized pictures made by you and your friends. Incidentally, these folios make ideal gifts. Prices do not include leaves.

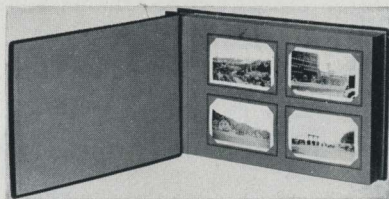
A, Blue Squirrel-finished Cover . . .	\$2.50	D, Black Sharkskin-finished Cover, Genuine Leather . . .	\$5.00
B, Maroon Grained Cover . . .	2.50	E, Black Morocco-finished, Genuine Leather Cover, with Multitoned Florentine Design . . .	7.50
C, Black Pigskin-finished Cover, with Multitoned Modernistic Design. . .	3.50		

All leaves are the same outside size, and sell at \$1.20 per carton of 12, taking one print size. The numbers below correspond to Kodak Film numbers.

No.	Standard Size of Trimmed Print	Leaf—4 pages—will hold	No.	Standard Size of Trimmed Print	Leaf—4 pages—will hold
127H	1 7/8 x 2 3/4 inches	32 Prints, Horizontal	118H	3 1/2 x 4 1/2 inches	12 Prints, Horizontal
127V	1 7/8 x 2 3/4 inches	36 Prints, Vertical	118V	3 1/2 x 4 1/2 inches	16 Prints, Vertical
120H	2 1/2 x 3 1/2 inches	24 Prints, Horizontal	130H	3 1/2 x 5 1/2 inches	12 Prints, Horizontal
120V	2 1/2 x 3 1/2 inches	24 Prints, Vertical	130V	3 1/2 x 5 1/2 inches	16 Prints, Vertical
116H	2 3/4 x 4 1/2 inches	12 Prints, Horizontal	122H	3 1/2 x 5 3/4 inches	12 Prints, Horizontal
116V	2 3/4 x 4 1/2 inches	16 Prints, Vertical	122V	3 1/2 x 5 3/4 inches	16 Prints, Vertical

SIMPLEX ALBUMS

LIKE the Simplex Folios—time savers. No pasting or gluing of prints. Merely slip standard-sized prints underneath raised corners. Made for these print sizes: 2 1/4 x 3 1/4, 2 1/2 x 4 1/4, and 3 1/4 x 5 1/2. Each album as supplied holds 200 prints, and is also provided with ten plain leaves for odd-sized pictures.



Cover is in dark green, grained material. Loose-leaf style. Just the type of album you want for preserving your personal, individual collection of prints.

B1, 8 1/2 x 12, for 2 1/4 x 3 1/4 prints . . .	\$2.75	B3A, 10 3/4 x 17 3/4, for 3 1/4 x 5 1/2 prints . . .	\$3.75
B1A, 9 x 13 3/4, for 2 1/2 x 4 1/4 prints . . .	3.00		

Package of 6 extra leaves: S1 for 2 1/4 x 3 1/4 prints, \$.50; S2 for 2 1/2 x 4 1/4 prints, \$.55; S3 for 3 1/4 x 5 1/2 prints, \$.60; S4 for odd-sized prints, B1 album, \$.15; S5 for odd-sized prints, B1A album, \$.20; S6 for odd-sized prints, B3A album, \$.25



SIMPLEX POCKET PHOTO CASES

A LIGHT-WEIGHT case that will hold your prized pictures of the home, children, etc., and that will fit your coat pocket or handbag. It keeps prints clean and quickly accessible. The container has the Simplex die-cut slots, so that standard-sized prints are easily inserted—and quickly taken out when they are to be placed in an album. Each case holds 12 prints on an accordion-like, folded leaf. Black Levant-grain cover.

No.	Standard size of trimmed print	Price each	No.	Standard size of trimmed print	Price each
127A	For 12 1 7/8 x 2 3/4 Prints	\$.20	118A	For 12 3 1/2 x 4 1/2 Prints	\$.30
120A	For 12 2 1/2 x 3 1/2 Prints	.25	130A	For 12 3 1/2 x 5 1/2 Prints	.30
116A	For 12 2 3/4 x 4 1/2 Prints	.25	122A	For 12 3 1/2 x 5 3/4 Prints	.30

PRINT AND NEGATIVE ALB

JUNO ALBUMS

LOOSE-LEAF, open-back style. Fifty black leaves held in place by metal tubing and cord through covers. Embossed, English-grain cover, in choice of brown or black. The word "Photographs" is stamped in gilt on the front. A conservatively styled and modestly priced album that never fails to please.



5 x 8, BA, brown or CA, black	\$.90	10 x 12, BC, brown or CC, black	\$2.00
7 x 11, BB, brown or CB, black	1.25	11 x 14, BD, brown or CD, black	2.25

Package of 12 extra leaves, Size A (5 x 8), \$.15; Size B (7 x 11), \$.18;
Size C (10 x 12), \$.30; Size E (11 x 14), \$.40



BRIGHTON ALBUMS

HERE is a moderately priced album. Cover offered in choice of three colors of a sparkling embossed book cloth. Leaves are black—of good quality—held in place by tubes and cord through cover. Cover is stamped in gilt with the word "Snapshots." At the prices listed, this

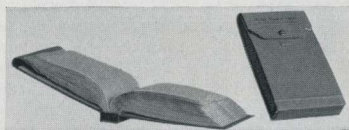
album is an extremely good value.

5 x 8—A-1, Blueblend; A-2, Greentone; A-3, Rubytone	\$.75
7 x 11—B-1, Blueblend; B-2, Greentone; B-3, Rubytone	1.00
10 x 12—C-1, Blueblend; C-2, Greentone; C-3, Rubytone	1.50
11 x 14—D-1, Blueblend; D-2, Greentone; D-3, Rubytone	1.75

Package of 12 extra leaves, Size A (5 x 8), \$.15; Size B (7 x 11), \$.18; Size C (10 x 12), \$.30; Size E (11 x 14), \$.40

KODAK NEGATIVE ALBUMS

WITH a Kodak Negative Album the photographer can store film negatives in individual transparent envelopes, where they can be viewed one by one—without being removed. They are ready for reprints, safe from loss or damage. Each album holds 100 negatives. A convenient index is included.



For 100 negatives, 1 5/8 x 2 1/4	\$1.25
For 100 negatives, 2 1/4 x 3 1/4	1.25
For 100 negatives, 2 1/2 x 4 3/4	1.25
For 100 negatives, 3 1/4 x 4 3/4	1.25

For 100 negatives, 4 x 5	\$1.50
For 100 negatives, 3 3/4 x 5 1/2	1.50
For 100 negatives, 5 x 7	1.75

KODAK DRY MOUNTING TISSUE



THIS tissue offers one of the easiest and most satisfactory methods of mounting prints, and through its use your pictures show up to better advantage. Just fix the tissue on the print, lay both on the mount, and press with a warm flat-iron. In this way pictures are mounted smoothly and securely, without fuss or bother. You will be delighted with the convenience which this tissue offers.

Packages of from 1 to 3 dozen, according to size, to fit
Kodak negatives, \$.10

KODAK PHOTO PASTE

AN EXCELLENT white adhesive, both for mounting prints and for general household use.

1 1/8-ounce tube \$.10
2-ounce tube \$.15



EASTMAN PHOTO PASTE

AHIGH quality paste. It is white and will not discolor the print.
4-ounce jar \$.25

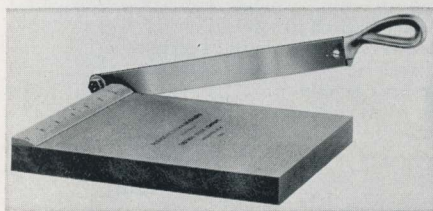
KODAK LIQUID GLUE

AN EXCELLENT glue for any purpose. With it the amateur can do mounting by simply sticking down the print corners.

Per tube \$.15



KODAK TRIMMING BOARDS



STAUNCHLY constructed, in sizes suited to the amateur photographer's needs. The boards are of hard wood, the blades of fine quality steel, and the rules are plainly marked.

No. 1, capacity 5 x 5 inches . \$.75
No. 2, capacity 7 x 7 inches . 1.00

KODAK PRINT ROLLER

AHIGHLY convenient aid in mounting. The frame is nicked and the rubber rolls are six inches long. The desired pressure is easily exerted by means of the overhead handle.

Kodak Print Roller \$1.00



FLEXO PRINT ROLLER



THIS small and inexpensive roller, long a favorite with the amateur, has a four-inch rubber roll, supported in a black enamel frame.

Flexo Print Roller \$.35

TESTED CHEMICALS

CERTAINTY of good results in making negatives and prints depends as much on the quality of your chemicals as on any other one thing. All Kodak chemicals are tested both photographically and for purity before the E. K. C. Tested seal is affixed to them.



Acid, Acetic, 28 per cent C. P.—per pound bottle	\$.30
Acid, Citric—per four-ounce bottle38
Acid, Eastman Pyrogalllic—per ounce bottle30
Acid Fixing Powder, Kodak—per pound package25
Acid Fixing Powder, Kodak—per half-pound package15
Acid Fixing Powder, Kodak—per quarter-pound package10
Alum, Potassium, fine crystal—per pound18
Elon—per ounce48
Hydroquinone—per ounce can20
Hydroquinone Developer Powders, Eastman—per half dozen30
Hydroquinone Developer Powders, Eastman, in sealed glass tubes—per package of five powders35
Intensifier, Eastman—per glass tube15
Kodolon—per ounce40
M. Q. Developer, Eastman—per package of five tubes30
Opaque, Eastman, No. 1—per tube25
Potassium Bromide, granular—per ounce can11
Pyro Developer Powders, Eastman—per half dozen30
Re-developer, Velox, including bleaching agent—per package of twelve tubes	1.08
Reducer and Stain Remover, Eastman—per box of five tubes50
Sodium Carbonate, Eastman Tested (desiccated)—per pound bottle35
Sodium Sulphite, Eastman Tested (desiccated)—per pound bottle39
Sodium Thiosulphate (Hypo), granular—per pound18
Special Developer Powders, Eastman, in glass tubes—per package of five35
Tropical Developer, Eastman, in glass tubes—per package of five powders40

(A few of the above prices are slightly higher west of the Rocky Mountains)

For Tank Developer Chemicals, see page 45. For Velox preparations, see page 47.

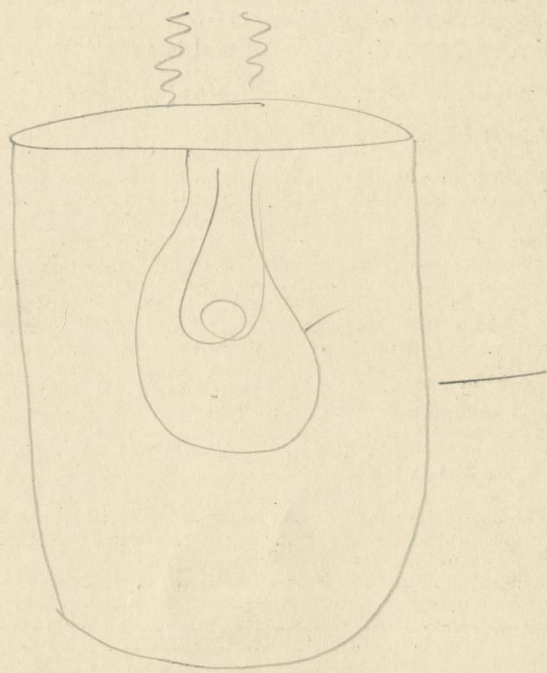
MISCELLANEOUS

Cable Releases, each	\$.35	Rubber Focusing Cloth, per yard	\$1.00
Ferrotypes Plates, Special (for making glossy prints), 10 x 14, light20	Spotting Colors, Eastman (consist of three colors—black, white, and sepia), per set25
10 x 14, heavy30	Squeegee, Eastman Special, 8-inch	1.25
Finger Tips, set of 315	Stirring Rod, Hard Rubber25

TERMS

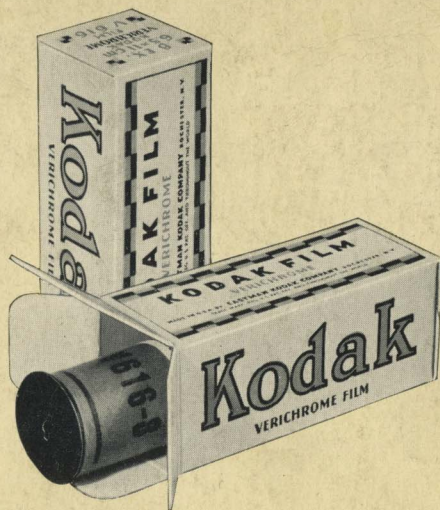
THE prices in this catalog are strictly net, except to regular dealers who carry our goods in stock. THESE PRICES ARE, HOWEVER, SUBJECT TO CHANGE WITHOUT NOTICE. For the convenience of our customers, we recommend that they buy from a dealer in photographic goods, as by so doing they can save time and transportation charges.

EASTMAN KODAK COMPANY, ROCHESTER, N. Y.



1.95

KODAK VERICHROME
FILM IS MADE
BY AN EXCLUSIVE
EASTMAN PROCESS,
NO OTHER FILM
IS "THE SAME AS"
VERICHROME



KODAK is the registered and common-law Trade Mark of the Eastman Kodak Company, and cannot be rightfully applied except to goods of their manufacture. When a dealer tries to sell you, under the Kodak name, a camera or films or other goods not of their manufacture, you can be sure that he has an inferior article that he is trying to market on the Kodak reputation.

ONLY EASTMAN MAKES THE KODAK

KODAK