

KODAK



The Digitized Kodak Catalog Project (1886 - 1941): A Very Brief History

Most camera collectors at some point in their collecting careers pass through a Kodak phase - some never come out of it. And if there ever was one name that came to be associated with both cameras and collecting, it was Kodak.

George Eastman received his first patent (for coating dry plates) and bought his first manufacturing facility in 1880, and in 1881 he started the Eastman Dry Plate Company. In 1886 he received a patent for the near-mythical Eastman Detective Camera, but it wasn't until 1888 that the first camera bearing the name "Kodak" was introduced.

One of the nice things about collecting Kodak is that the product line is pretty well known, and because the company produced annual catalogs for many years, collectors can be reasonably sure of what they're looking at, when it was made, the variations and so on - presuming that they have access to either the appropriate catalog, or a number of the many books which document Kodak, each to some greater or lesser extent.

But what would be really nice would be to have a complete set of Kodak catalogs in an easily accessible form and readily available. And since the advent of portable computing devices (PC, Macintosh, etc.) that's been possible - except for the difficulty of assembling a complete set of Kodak catalogs in one spot and then scanning them and making the results available.

The idea of digitizing a complete set of Kodak catalogs has kicked around the collecting community for many years. It's been proposed on a number of online forums, during meetings of various photohistory groups, and for years there have been many incomplete "Kodak CDs" on eBay but at best, they only contained a few catalogs - whatever the owner had available. But assembling a complete set of catalogs, then scanning and processing perhaps 3,000 to 4,000 pages, was a daunting task - if not completely overwhelming - and nothing ever came of it.

Until now.

In early 2010, the idea came up again, but this time we - "we" as in "the collecting community" - were lucky. A number of collectors were willing to loan their catalogs to this project and a couple of insane - wait, let's call them "dedicated" - dedicated enthusiasts - neither of whom collected Kodak, but both of whom enjoyed the challenge of such a project - were willing to put in the time and effort to scan and pull together the entire set of catalogs into a full-blown Kodak Catalog Digital Library.

Our initial objective was to include just the annual amateur catalogs, but it turns out that many cameras only appear in certain professional and specialty catalogs. We included as many of those as we could obtain so that almost every Kodak camera made in the US, Canada and Europe, would be documented - at least up to about 1941. After that, it becomes much more difficult as Kodak stopped producing annual catalogs as their product line became increasingly more diversified.

However, even with the additional "non-amateur" catalogs, we weren't completely successful in illustrating "every" camera Kodak ever made. There are an elusive few that might appear in specialty catalogs that we simply couldn't track down. If you can't find one of those odd cameras, that's no doubt why. We may do a revision at some point in the future if someone is willing to loan us a catalog that includes a camera that isn't already recorded.

In this project, a total of 67 catalogs were used from 1886 through 1941 including a number of professional and dealer catalogs, and in some years, two or even three different catalogs to cover all the bases. With the cooperation of a number of dedicated collectors, we were able to pull together all those catalogs and in June 2010, the project started in earnest.

By November 2010, we had scanned everything we needed and eventually all 67 catalogs were then reassembled as image folders and converted to the universally accepted PDF format and finally, converted into individually searchable PDFs which could then be searched globally as a collection.

For those of you interested in the statistics: about 200 hours of scanning time (we never want to hear that sound again), 67 catalogs and 3,908 page scans - which generated 7,917 original and processed images - and 11.4 GB of disk space. Additionally, another 100+ hours of technical development time was needed to convert the digital catalogues into a fully searchable "knowledgebase" that could be launched from most any standard web browser.

The overwhelming number of catalogs was loaned to us by that most remarkable of Kodak collectors, Charlie Kamerman of Eagle Creek, Oregon. Without Charlie, it's very doubtful that this project could even have been attempted.

But as it turned out, even Charlie didn't have all the publications that were needed, but he was able to track down the five that he lacked and was able to secure either a copy or high resolution images that we could work with. And so, our thanks to the contributors of the catalogs and scans that we used:

Charlie Kamerman for the vast majority of catalogs used and all his help,
Steve Shohet for loaning a variety of test catalogs,
Ryerson University (Toronto) for the 1886 Eastman Catalog
George Layne for the 1890 New Kodaks Catalog,
Mike Kessler for the 1891 Dealer Display Catalog,
Ralph London for the 1893 UK Catalog,
Michael Pritchard for the 1897 UK Catalog.

The digital side of the project - also known as "all of the work" - was done by Rob Niederman of Medina, Minnesota, and Milan Zahorcak of Tualatin, Oregon. Remarkably we're still friends and in a few years, we'll probably be able to talk about this project rationally.

And there you have it, a more-or-less done deal. We're fairly sure that it isn't quite perfect, and expect there will be some carping about something or other; but all-in-all, we believe this to be a pretty good product and can now move on to something else.

Our thanks to all of those involved.

Rob Niederman
Milan Zahorcak

Fall, 2011

KODAKS AND KODAK SUPPLIES

19

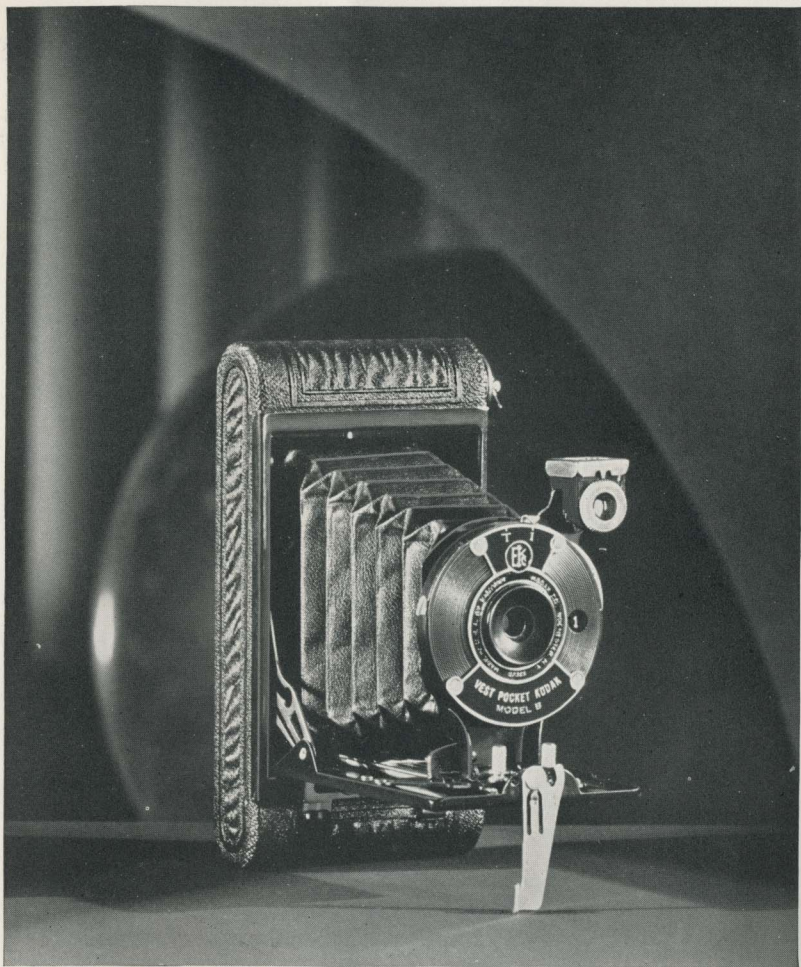


30

EASTMAN KODAK COMPANY
ROCHESTER, N. Y.

KODAK PETITE, PAGE 30, IS SIMILAR IN EQUIPMENT TO V. P. K., MODEL B, WITH MENISCUS LENS

Compliments of the Digitized Kodak Catalog Project: 1886 - 1941



VEST POCKET KODAK MODEL B

PICTURE SIZE

1 $\frac{5}{8}$ x 2 $\frac{1}{2}$ INCHES

HARDLY A HANDFUL—a snug little camera. It can be your constant companion without any inconvenience. Men wear it like a watch. Women have it in their handbags. And yet, small as it is, the Vest

Pocket Kodak, Model B, is a completely equipped photographic instrument. The resulting negatives are sparkling, clean-cut, and of a quality that lends itself readily to enlargements.

The picture size is $1\frac{5}{8} \times 2\frac{1}{2}$ inches—a generous picture area when the compactness of the camera itself is considered. As a general thing, however, the owner of the Vest Pocket Kodak, Model B, is so proud of the pictures he gets that he is not content until many of them are enlarged. The photo finisher will tell you that a substantial percentage of the enlargements which he makes are from Vest Pocket Kodak films.

However, it is its instant availability that makes this camera the popular model it is. In the pocket or in the handbag, it is on the job whenever the picture opportunity presents itself.

The Vest Pocket Kodak, Model B, is supplied in a smart black finish. However, the Kodak Petite, similar in size and equipment, may be secured, with case to match, in a range of colors. It is pictured on page 30.

DETAILS AND PRICES Capacity without reloading: 8 exposures. Focus: Fixed. Lenses: Meniscus; or Kodak Periscopic, $3\frac{1}{4}$ -inch focus. Shutter: Vest Pocket Rotary, with four stops, *instantaneous* and *time* actions. Brilliant finder, reversible for vertical or horizontal pictures. Body: All metal, with covering in a smart finish; fittings finished in nickel and black enamel. Black bellows. Kodak Petite covered with a silk-finished fabric, with bellows and fittings in harmonizing shades.

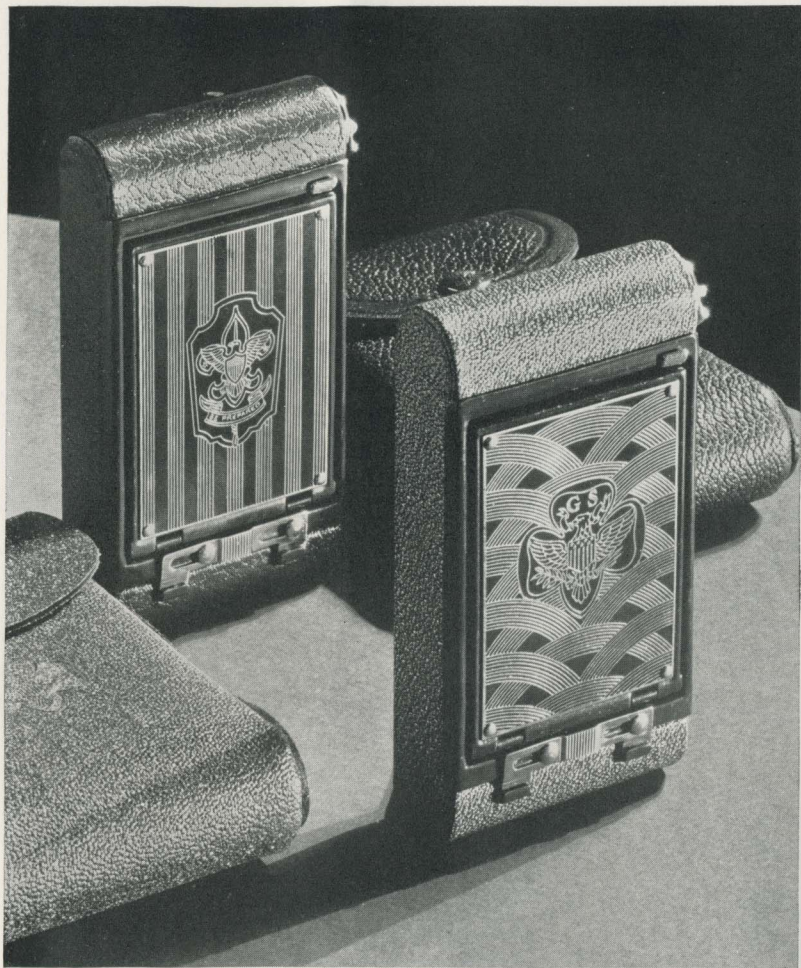
Vest Pocket Kodak, Model B, with Meniscus Lens and Vest Pocket Rotary Shutter, in black	\$5.00
With Kodak Periscopic Lens, in black	7.50
Levant Grain Leather Case, with strap	1.25
Belt Carrying Case (russet leather)	1.25
Kodak Petite, with Meniscus Lens and Vest Pocket Rotary Shutter, in green, blue, gray, old rose and lavender, with case to match (see page 30)	7.50
Kodak Film (No. 127), 8 exposures25
Kodak Portrait Attachment (see page 46)75



HAVE IT
IN YOUR
HANDBAG



WEAR IT
IN YOUR
VEST



BOY SCOUT AND GIRL SCOUT KODAKS

PICTURE SIZE

1 3/8 x 2 1/2 INCHES

EMBOSSSED with the emblem of their respective organizations and manufactured with Headquarters' official approval, the Boy Scout and Girl Scout Kodaks won widespread popularity from

the day on which they were introduced. Both scored an instant success.

Picture-making has always been ideal fun for youth. And the various activities of the Girl Scouts and Boy Scouts supply unusual chances for the kind of pictures everybody likes, particularly the fathers and mothers. Hikes, camping trips—Scouts are on the go most of the time, and opportunities for pictures gather where they do. More than this. Not only does this Kodak make possible interesting picture stories of Scout life, but it provides the means of securing one of the most desirable of awards—the Merit Badge of Photography for Boy Scouts, and the Proficiency Badge in Photography for Girl Scouts.

As far as size and equipment are concerned the two Kodaks are identical. They're Vest Pocket size, making pictures $1\frac{5}{8} \times 2\frac{1}{2}$, and lens and shutter are carefully tested. Both are supplied with weather-proof case, so that they are ready to rough it with the rest.

The Boy Scout Kodak and leather case are olive drab, and the emblem is embossed on both.

The Girl Scout Kodak and case, also embossed with emblem, are finished in green to blend harmoniously with the official Girl Scout costume.

Both cameras may be worn on the belt—out of the way until they go into action.

Boy Scout and Girl Scout Kodaks do not require an occasion in order to make them ideal gifts, but if you do want to observe a birthday in a most fitting manner, certainly one of these Kodaks immediately qualifies as just the thing.

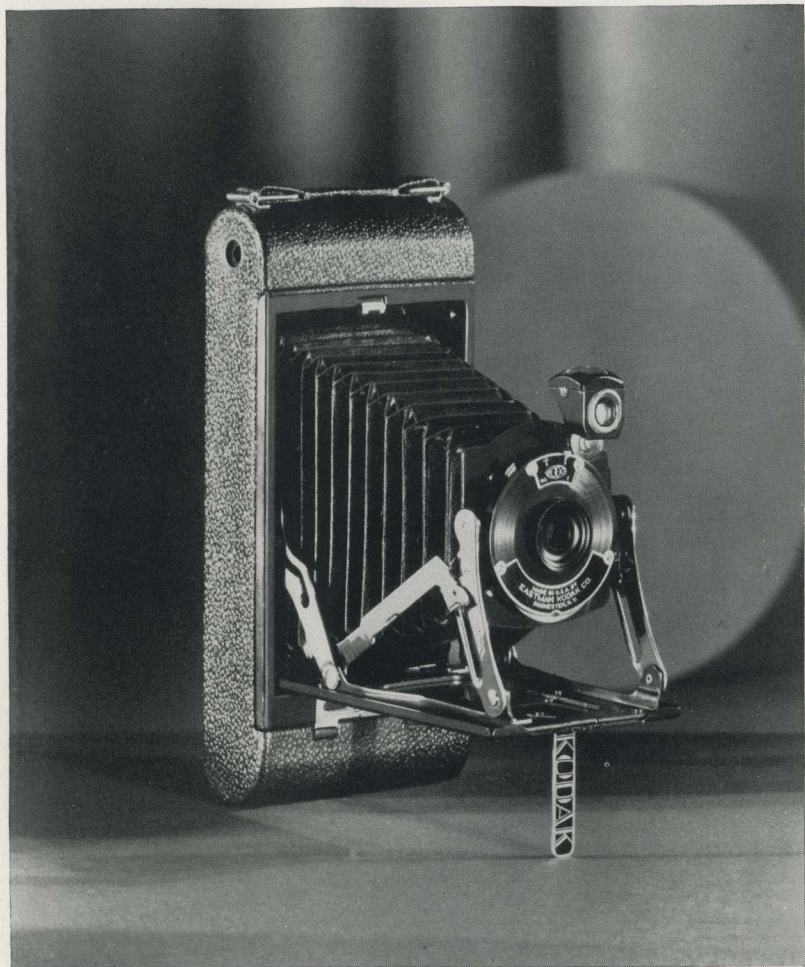
DETAILS AND PRICES Capacity without reloading: 8 exposures. Focus: Fixed. Lens: Meniscus. Shutter: Rotary, with four stops, *instantaneous* and *time* actions. Brilliant finder, reversible for vertical or horizontal pictures. Body: All metal, covered with a durable, leather-like material. Bellows and metal parts finished in color to match camera.

Boy Scout Kodak, with Meniscus Lens and Rotary Shutter, with case to match	\$6.00
Girl Scout Kodak, with Meniscus Lens and Rotary Shutter, with case to match	6.00
Kodak Film (No. 127), 8 exposures25
Kodak Portrait Attachment (see page 46)75



(ACTUAL SIZE)

Compliments of the Digitized Kodak Catalog Project: 1886 - 1941



Nos. 1 and 1A **T**HESE CAMERAS are newcomers to the Kodak catalog, and embody last minute refinements in making picture taking all the easier. Perhaps more than any other model they most effectively demonstrate the Kodak idea of

POCKET KODAKS, JUNIOR

PICTURE SIZES

No. 1, $2\frac{3}{4} \times 3\frac{3}{4}$

No. 1A, $2\frac{3}{8} \times 4\frac{1}{4}$

photography the easy Eastman way. As the camera is opened the lens automatically springs into position, thus clipping valuable seconds off picture-making preliminaries. You're set just so much sooner. The lens is always in focus, and the shutter, with instantaneous and time exposure actions, leaves little for you to do.

The Juniors are covered with leather-like material, and may be obtained with cases to match.

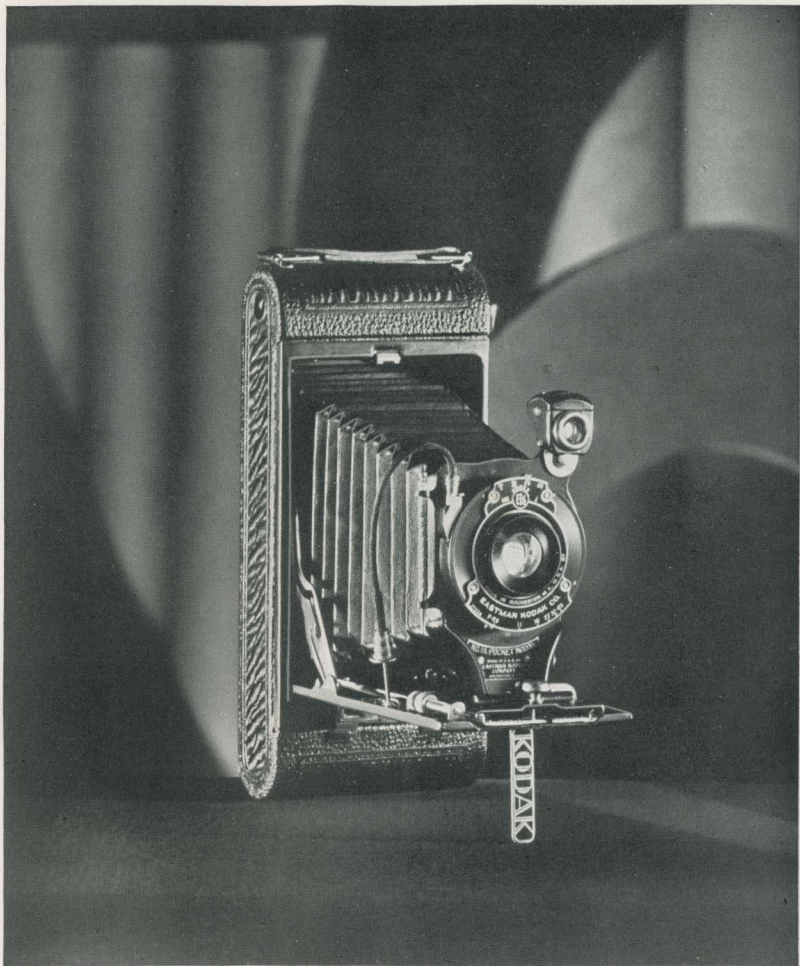
The striking colored models of this camera described on page 33 make excellent companions for those who want to meet the color mode. Men, particularly, seem to be attracted to them, but they're styled to suit discriminating women as well. As a gift for some one you want to particularly please, it would be hard to find anything better than a Pocket Junior in color. •

DETAILS AND PRICES Capacity without reloading: No. 1, 6 exposures; No. 1A, 12 exposures. Focus: Fixed. Lens: Meniscus Achromatic. Shutter: Kodo, with four stops, *instantaneous* and *time* actions. Brilliant finder, reversible for horizontal or vertical pictures. Two tripod sockets. Body: All metal, covered with coral grained artificial leather. Bellows and metal parts in colors to harmonize with camera.

	No. 1	No. 1A
Pocket Kodak Junior, with Meniscus Achromatic Lens and Kodo Shutter, in blue, brown, green and black (see page 33)	\$ 9.00	\$10.00
With case to match	11.00	12.50
Kodak Film (No. 116), 12 exposures for No. 1A60
Ditto, 6 exposures (No. 120) for No. 1; (No. 116) for No. 1A.25	.30
Kodak Portrait Attachment (see page 46)75	.75



MADE WITH 1A POCKET KODAK JUNIOR (ACTUAL SIZE)



Nos. 1 and 1A POCKET KODAKS

PICTURE SIZES

No. 1, $2\frac{1}{4} \times 3\frac{1}{4}$

No. 1A, $2\frac{1}{2} \times 4\frac{1}{4}$

EXCELLENT examples of the Modern Kodak are these two models. Modern Kodaks mean modernized photography—picture-making easier, pleasanter than ever before. The key to this new-day camera is in the lens. The Eastman Kodak Company

makes its own lenses—and as scientific engineering brings costs down, prices fall accordingly.

The result is that even such modestly priced cameras as the Nos. 1 and 1A Pocket Kodaks may be obtained with Kodak Anastigmat lens *f.6.3* which enables you to make pictures in the rain, in dull light and bright, daylight and dusk.

And, because they're modern, they meet the mode most intriguingly in a variety of colors as well as black. See for yourself on page 32.

DETAILS AND PRICES Capacity without reloading: No. 1, 6 exposures; No. 1A, 12 exposures. Focus: Adjustable, with worm-screw focusing device. Lenses: Meniscus Achromatic; Kodar *f.7.9*, $4\frac{3}{8}$ -inch focus on No. 1; $5\frac{1}{8}$ -inch focus on No. 1A; or Kodak Anastigmat *f.6.3*, $4\frac{1}{8}$ -inch focus on No. 1; $5\frac{1}{8}$ -inch focus on No. 1A. Shutter: Kodex, speeds $\frac{1}{25}$ and $\frac{1}{50}$ second, with cable and finger release, *time* and *bulb* actions. Brilliant finder, reversible for horizontal or vertical pictures. Two tripod sockets. Body: All metal, durably and smartly covered. Metal parts in nickel and black. Black bellows. Autographic feature. Colored models covered with artificial leather, with bellows and metal parts in harmonizing colors.

Pocket Kodak, with Meniscus Achromatic Lens and Kodex Shutter, in black:

No. 1, \$11.00 No. 1A, \$12.00

With Kodar Lens *f.7.9* and Kodex Shutter, in black:

No. 1, \$14.00 No. 1A, \$15.00

In blue, brown, gray and green, with carrying case to match (see page 32):

No. 1, \$18.00 No. 1A, \$20.00

With Kodak Anastigmat Lens *f.6.3* and Kodex Shutter, in black:

No. 1, \$17.00 No. 1A, \$18.00

Levant Grain Leather Case (black), with strap:

No. 1, \$2.50 No. 1A, \$3.00

Autographic Film (No. A 116), 12 exposures for No. 1A:

No. 1A, \$.60

Ditto, 6 exposures (No. A 120) for No. 1; (No. A 116) for No. 1A:

No. 1, \$.25 No. 1A, \$.30

Kodak Portrait Attachment (see page 46):

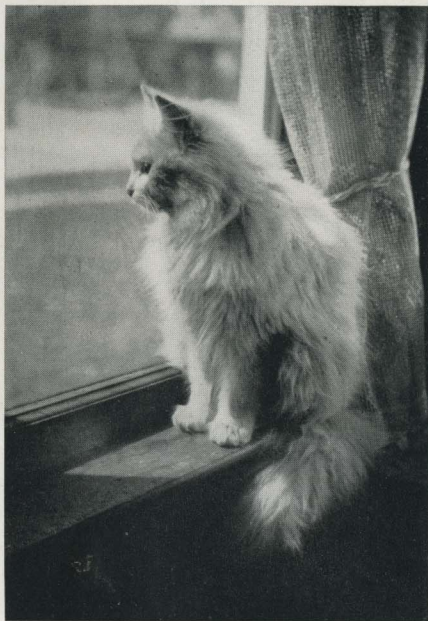
No. 1, \$.75 No. 1A, \$.75

Kodak Portrait Attachment for No. 1 Pocket Kodak, with Meniscus Achromatic Lens (see page 46):

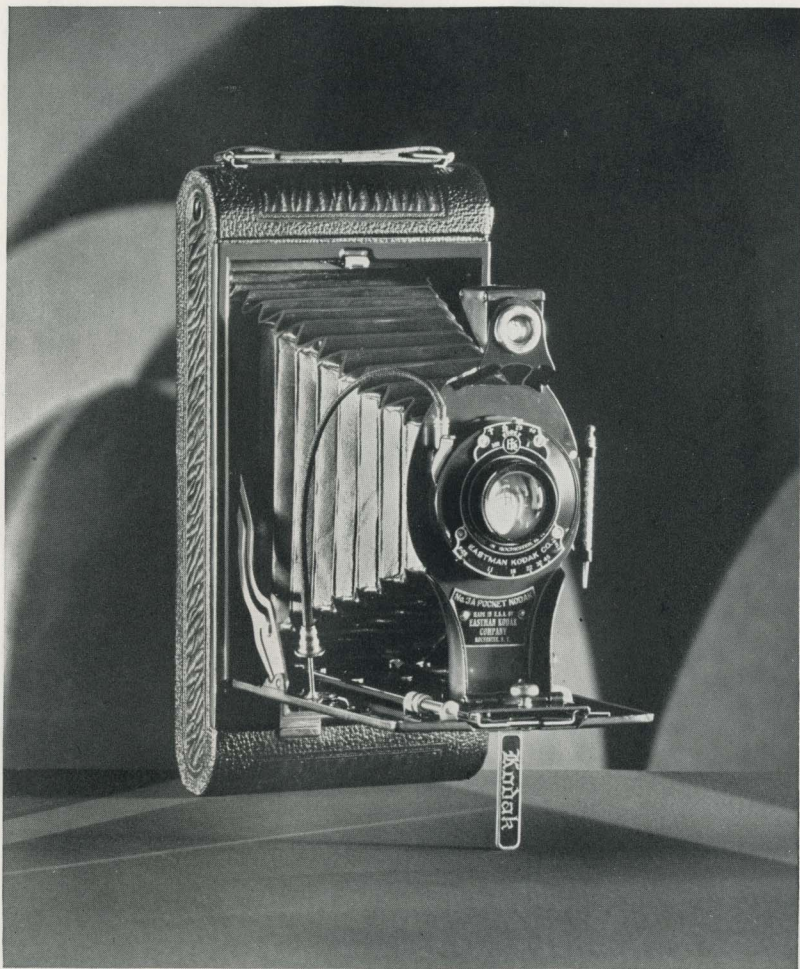
No. 1, \$.50

Kodak Self Timer (see page 41):

No. 1, \$1.25 No. 1A, \$1.25



MADE WITH NO. 1
POCKET KODAK
(ACTUAL SIZE)



Nos. 2C and 3A POCKET KODAKS

PICTURE SIZES

No. 2C, $2\frac{3}{8} \times 4\frac{3}{8}$

No. 3A, $3\frac{1}{4} \times 5\frac{1}{2}$

THE fact that photography has been modernized through the Modern Kodaks is good news to any lover of pictures. That this has been accomplished is due to Eastman enterprise and the ingenuity of Eastman engineers. Today, in a camera like the 2C and

3A Pocket Kodaks, the amateur can secure equipment that a very few years ago might have cost him double.

Visit your Kodak dealer's, where you can see these splendid Kodaks for yourself. As soon as you get one in your hands you'll sense the fact that the camera is an unusually capable one.

DETAILS AND PRICES Capacity without reloading: 10 exposures. Focus: Adjustable, with worm-screw focusing device. Lenses: Meniscus Achromatic; Kodar *f*.7.9, 6 1/8-inch focus on No. 2C; 6 7/8-inch focus on No. 3A; or Kodak Anastigmat *f*.6.3, 6-inch focus on No. 2C; 6 3/4-inch focus on No. 3A. Shutters: Kodex, speeds 1/25 and 1/50 second; Kodak Ball Bearing, speeds, 1/25, 1/50 and 1/100 second; both with cable and finger release, *time* and *bulb* actions. Brilliant finder, reversible for horizontal or vertical pictures. Two tripod sockets. Body: Aluminum, durably and smartly covered, with metal parts in nickel and black enamel. Black bellows. Autographic feature.

Pocket Kodak, with Meniscus Achromatic Lens and Kodex Shutter:

No. 2C, \$15.00 3A, \$17.00

With Kodar Lens *f*.7.9 and Kodex Shutter:

No. 2C, \$18.00 3A, \$20.00

With Kodak Anastigmat Lens *f*.6.3 and Kodak Ball Bearing Shutter:

No. 2C, \$23.00 3A, \$25.00

Levant Grain Leather Case, with strap:

No. 2C, \$3.50 3A, \$3.75

Autographic Film, 10 exposures (No. A 130) for No. 2C; (No. A 122) for No. 3A:

No. 2C, \$.75 3A, \$.90

Ditto, 6 exposures:

No. 2C, \$.45 3A, \$.55

Kodak Portrait Attachment (see page 46):

No. 2C, \$.75 3A, \$.75

Kodak Self Timer (see page 41):

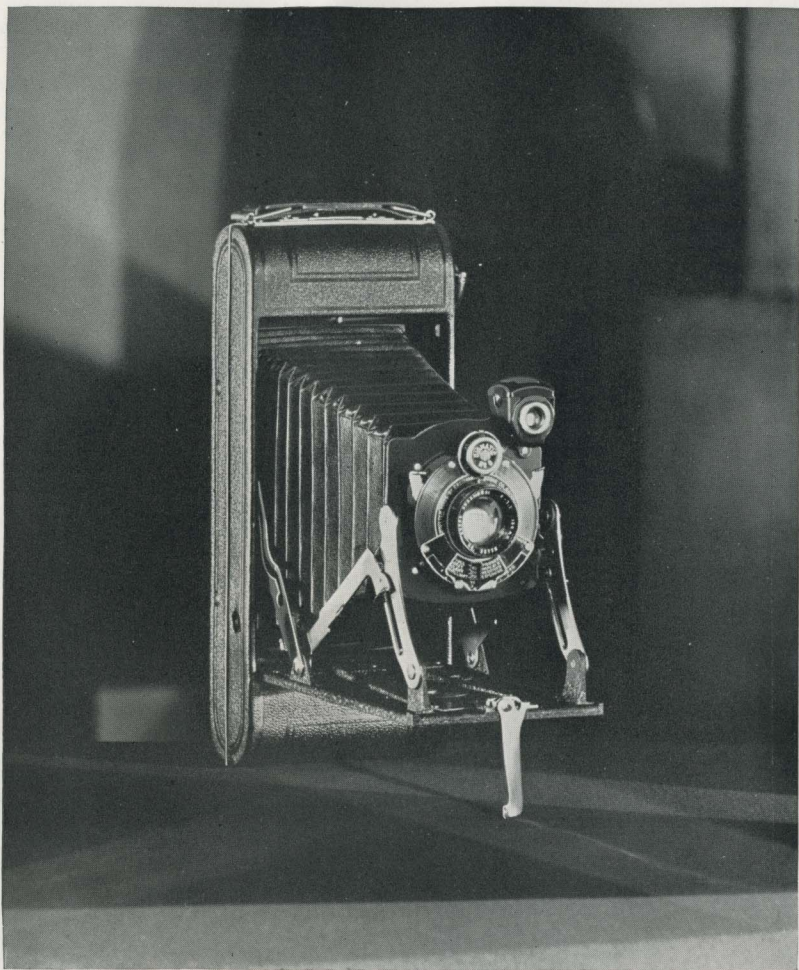
No. 2C, \$1.25 3A, \$1.25



MADE WITH 2C
POCKET KODAK
(REDUCED IN SIZE)

THE NO. 1A POCKET KODAK, SERIES II,
IN COLOR, IS ILLUSTRATED ON PAGE 34

Compliments of the Digitized Kodak Catalog Project: 1886 - 1941



Nos. 1 and 1A
POCKET KODAKS,
SERIES II

EXCEPT for the Vest
Pocket size, the 1A,
Series II, was the first
Kodak to be offered in color.
And it well merited that distinction. The easy
way the Series II Kodaks work impresses

PICTURE SIZES

No. 1, $2\frac{1}{4} \times 3\frac{1}{4}$

No. 1A, $2\frac{1}{2} \times 4\frac{1}{4}$

everyone. Not a lost motion. Open the camera and, automatically, the lens snaps into picture-making position.

And not only are these Kodaks effective in action—they are unusually good looking as well. Their black finish is in the best of taste but it is in the alluring colors of the 1A, Series II, that this model puts its best foot forward. You'll see it illustrated on page 34. A picture can only hint at the camera's real beauty, however. Your Kodak dealer has the Kodak itself—and will show it—gladly.

DETAILS AND PRICES Capacity without reloading: No. 1, 6 exposures; No. 1A, 12 exposures. Focus: Fixed or adjustable. Lenses: Meniscus Achromatic: Kodak *f*.7.9, $4\frac{3}{8}$ -inch focus on No. 1; $5\frac{1}{4}$ -inch focus on No. 1A; or Kodak Anastigmat *f*.7.7, $4\frac{1}{4}$ -inch focus on No. 1; 5-inch focus on No. 1A. Shutters: Kodex, speeds $\frac{1}{25}$ and $\frac{1}{50}$ second; Diomatic, speeds $\frac{1}{10}$, $\frac{1}{25}$, $\frac{1}{50}$ and $\frac{1}{100}$ second; both with finger release, *time* and *bulb* actions. Brilliant finder, reversible for horizontal or vertical pictures. Two tripod sockets. Body: Aluminum, covered with pin-grain cowhide; metal parts finished in nickel and black enamel. Black bellows. Autographic feature. Colored models covered with finest grade Indian goat, with bellows and metal parts in harmonizing colors.

Pocket Kodak, Series II (fixed focus), with Meniscus Achromatic Lens and Kodex Shutter, in black:

No. 1, \$15.00 No. 1A, \$17.00

In blue, gray, green or brown, with carrying case to match (see page 34):

No. 1A, \$25.00

Focusing model with Kodar Lens *f*.7.9, Kodex Shutter, in black:

No. 1, \$19.00 No. 1A, \$21.00

With Kodak Anastigmat Lens *f*.7.7, and Diomatic Shutter, in black:

No. 1, \$24.00 No. 1A, \$26.00

Levant Grain Leather Case (black), with strap:

No. 1, \$2.50 No. 1A, \$3.00

Autographic Film (No. A 116), 12 exposures for No. 1A:

No. 1A, \$.60

Ditto, 6 exposures (No. A 120) for No. 1; (No. A 116) for No. 1A:

No. 1, \$.25 No. 1A, \$.30

Kodak Portrait Attachment (see page 46):

No. 1, \$.75 No. 1A, \$.75

Kodak Self Timer (see page 41):

No. 1, \$1.25 No. 1A, \$1.25

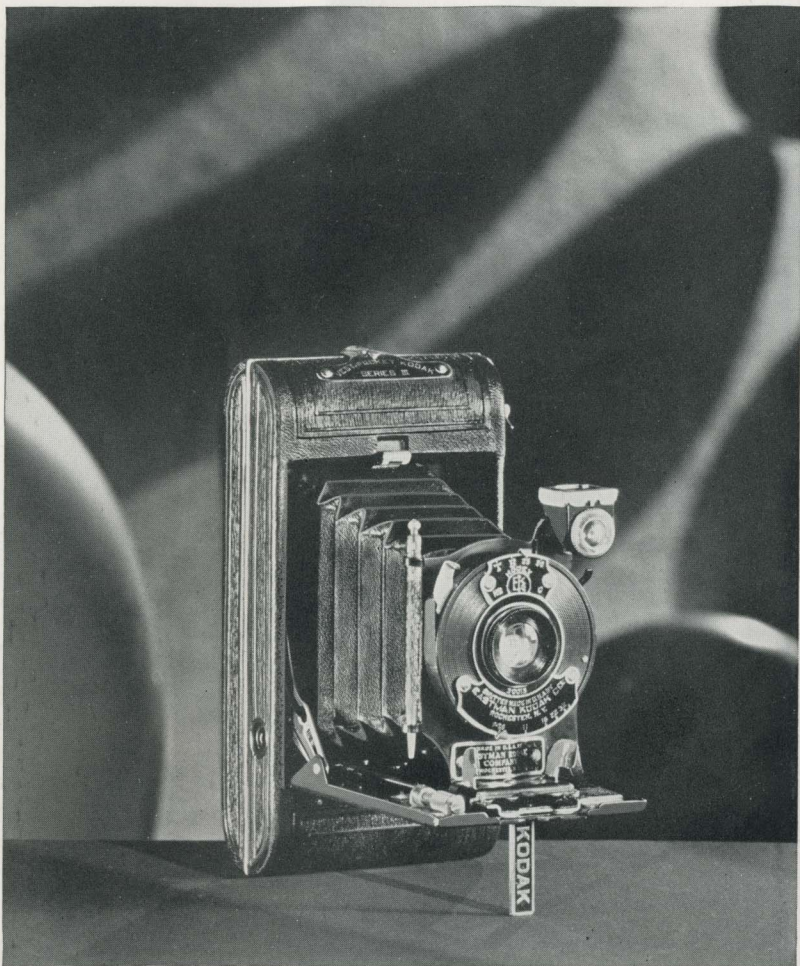
Cable Release for Pocket Kodak, Series II, opened

No. 1, \$.35 No. 1A, \$.35



MADE WITH NO. 1
POCKET KODAK,
SERIES II
(ACTUAL SIZE)

Compliments of the Digitized Kodak Catalog Project: 1886 - 1941



VEST POCKET KODAK, SERIES III

PICTURE SIZE
1½ x 2½ INCHES

"SMALL" it certainly is, as far as size goes. Wear it in your overcoat, tuck it in your handbag—you can have it with you always and use it when you like. "Big" it certainly is, as far as performance goes. Your photo finisher will

deliver you prints made with this camera that will be the cause of mutual admiration.

The lens is half the answer. Kodak Anastigmat *f.5.6*—Eastman-made—gives you added picture-making hours. It's fast enough to make pictures possible from dawn to dusk. Snapshots are yours for the taking—outdoors in the rain or even indoors by the bright light of a window. And the resulting pictures are clean-cut, sparkling. They make excellent enlargements, of course.

As companion equipment for this lens comes the Diomatic shutter that clicks off the exposure with split-second accuracy.

Naturally, a camera of this high type looks the part. Vest Pocket Kodak, Series III, is beautifully finished in baby crepe grain leather; and every refinement, every detail, smacks of style.

In black it's smart, but it is as the Vanity Kodak as pictured on page 31 that it really enters into its own. It becomes bewitching then.

Mechanically and optically, the Vest Pocket Kodak, Series III, with Kodak Anastigmat lens and the Vanity Kodak are substantially the same.

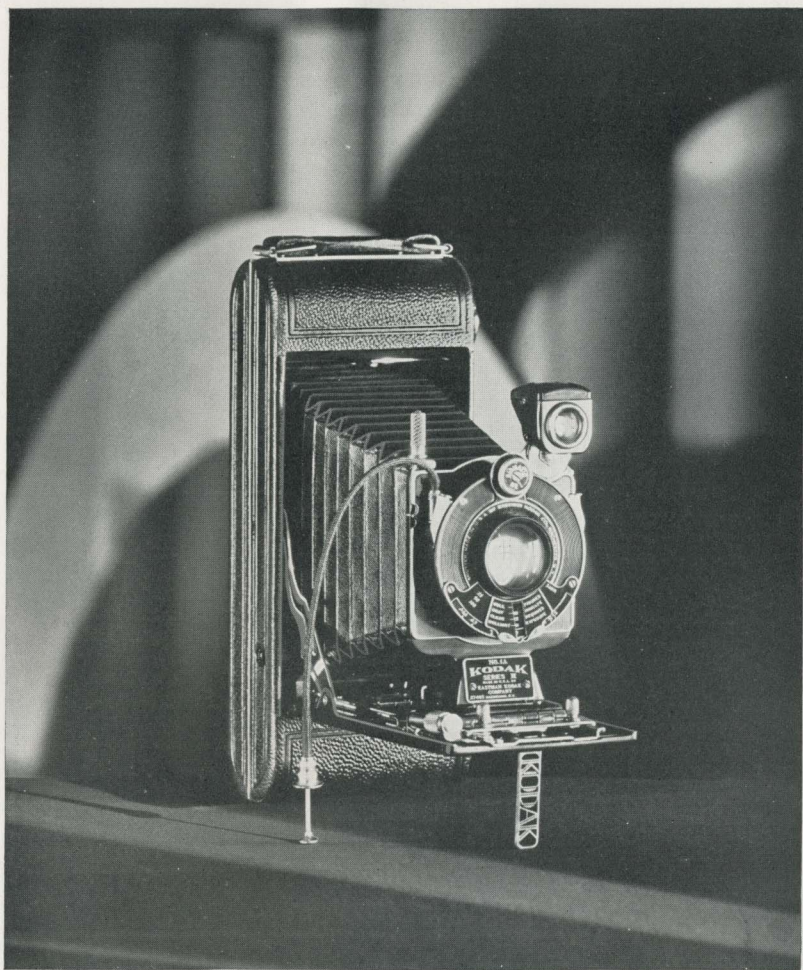
DETAILS AND PRICES Capacity without reloading: 8 exposures. Focus: Adjustable, with worm-screw focusing device. Lenses: Kodar *f.7.9*, 3 $\frac{3}{8}$ -inch focus; or Kodak Anastigmat *f.5.6*, 3 $\frac{1}{4}$ -inch focus. Kodak Anastigmat *f.6.3*, 3 $\frac{1}{4}$ -inch focus, on Vanity Kodak only. Shutters: Kodex, speeds $\frac{1}{25}$ and $\frac{1}{50}$ second; or Diomatic, speeds, $\frac{1}{10}$, $\frac{1}{25}$, $\frac{1}{50}$ and $\frac{1}{100}$ second. Both with finger release, *time* and *bulb* actions. Brilliant finder, reversible for vertical or horizontal pictures. Two tripod sockets.

Body: Aluminum, covered with baby crepe grain leather. Metal parts finished in nickel and black enamel. Black bellows. Autographic feature. Vanity Kodak and case covered with genuine, full-grain calfskin, with bellows and metal parts in harmonizing colors.

Vest Pocket Kodak, Series III, with Kodar Lens <i>f.7.9</i> and Kodex Shutter, in black	\$12.00
With Kodak Anastigmat Lens <i>f.5.6</i> and Diomatic Shutter, in black	18.00
Belt Carrying Case, Russet Leather	1.50
Black Leather Carrying Case	1.50
Vanity Kodak, with Kodak Anastigmat Lens <i>f.6.3</i> and Diomatic Shutter, in red, brown, gray, blue or green, with carrying case to match (see page 31)	20.00
Autographic Film (No. A 127), 8 exposures25
Cable Release for Vest Pocket Kodak, Series III, opened35
Kodak Portrait Attachment (page 46)75
Kodak Self Timer (see page 41)	1.25



MADE WITH VEST
POCKET KODAK
SERIES III
(ACTUAL SIZE)



Nos. 1, 1A, 2C and 3
KODAKS,
SERIES III

BECAUSE of their lens and shutter equipment, the kind of pictures you really want are more readily yours with the Series III Kodaks. There was a time when a high quality anastigmat lens cost more money than the average

PICTURE SIZES

- No. 1, $2\frac{3}{4} \times 3\frac{3}{4}$
- No. 1A, $2\frac{1}{2} \times 4\frac{3}{4}$
- No. 2C, $2\frac{3}{8} \times 4\frac{3}{8}$
- No. 3, $3\frac{1}{4} \times 4\frac{3}{4}$

person cared to pay. Today, through Eastman enterprise, on the inexpensive Series III Kodaks, you will find the Kodak Anastigmat *f.5.6* or *f.6.3*—as good a lens, speed considered, as you can get regardless of price.

Obviously, lens equipment of this calibre calls for a suitable running mate. And Diomatic shutter responds. It has four split-second speeds: $\frac{1}{10}$, $\frac{1}{25}$, $\frac{1}{50}$ and $\frac{1}{100}$ second as well as *time* and *bulb* actions, and this timing may be depended upon to be accurate.

DETAILS AND PRICES Capacity without reloading: No. 1, 6 exposures; No. 2C, 10 exposures; Nos. 1A and 3, 12 exposures. Focus: Adjustable; screw focusing device on Nos. 1 and 1A; lever focusing device on Nos. 3 and 2C. Lenses: Kodar *f.7.9*, $5\frac{1}{8}$ -inch focus on No. 3; Kodak Anastigmat *f.6.3*, $4\frac{1}{4}$ -inch focus on No. 1; 6-inch focus on No. 2C; or Kodak Anastigmat *f.5.6*, $5\frac{1}{8}$ -inch focus on Nos. 1A and 3. Shutters: Kodex (No. 3 only), speeds $\frac{1}{25}$ and $\frac{1}{50}$ second; Diomatic, speeds $\frac{1}{10}$, $\frac{1}{25}$, $\frac{1}{50}$ and $\frac{1}{100}$ second, with *time* and *bulb* actions, cable and finger release. Brilliant finder, reversible for horizontal or vertical pictures. Two tripod sockets. Body: Aluminum, covered with Morocco grain cowhide; metal parts finished in nickel and black enamel. Rising front on Nos. 1A, 3 and 2C. Black bellows. Autographic feature.

Kodak, Series III, with Kodar Lens *f.7.9* and Kodex Shutter:

No. 1	No. 1A	No. 2C	No. 3
.....	\$26.00

With Kodak Anastigmat Lens *f.6.3* and Diomatic Shutter:

No. 1	No. 1A	No. 2C	No. 3
\$29.00	\$35.00

With Kodak Anastigmat Lens *f.5.6* and Diomatic Shutter:

No. 1	No. 1A	No. 2C	No. 3
.....	\$32.00	\$33.00

Levant Grain Leather Case, with strap:

No. 1	No. 1A	No. 2C	No. 3
\$2.50	\$3.00	\$3.50	\$3.50

Autographic Film, 12 exposures (No. A 116) for No. 1A; (No. A 118) for No. 3; 10 exposures (No. A 130) for No. 2C:

No. 1	No. 1A	No. 2C	No. 3
.....	\$.60	\$.75	\$.90

Ditto, 6 exposures (No. A 120) for No. 1; (No. A 116) for No. 1A; (No. A 118) for No. 3; (No. A 130) for No. 2C:

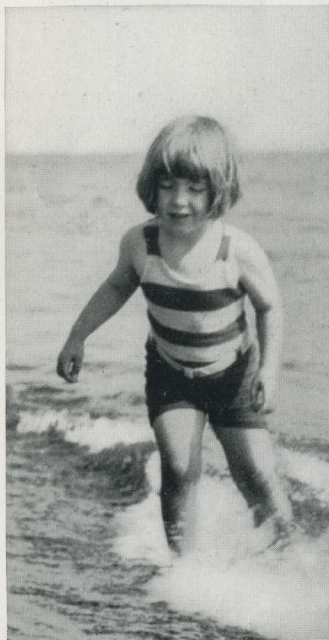
No. 1	No. 1A	No. 2C	No. 3
\$.25	\$.30	\$.45	\$.45

Kodak Portrait Attachment (see page 46):

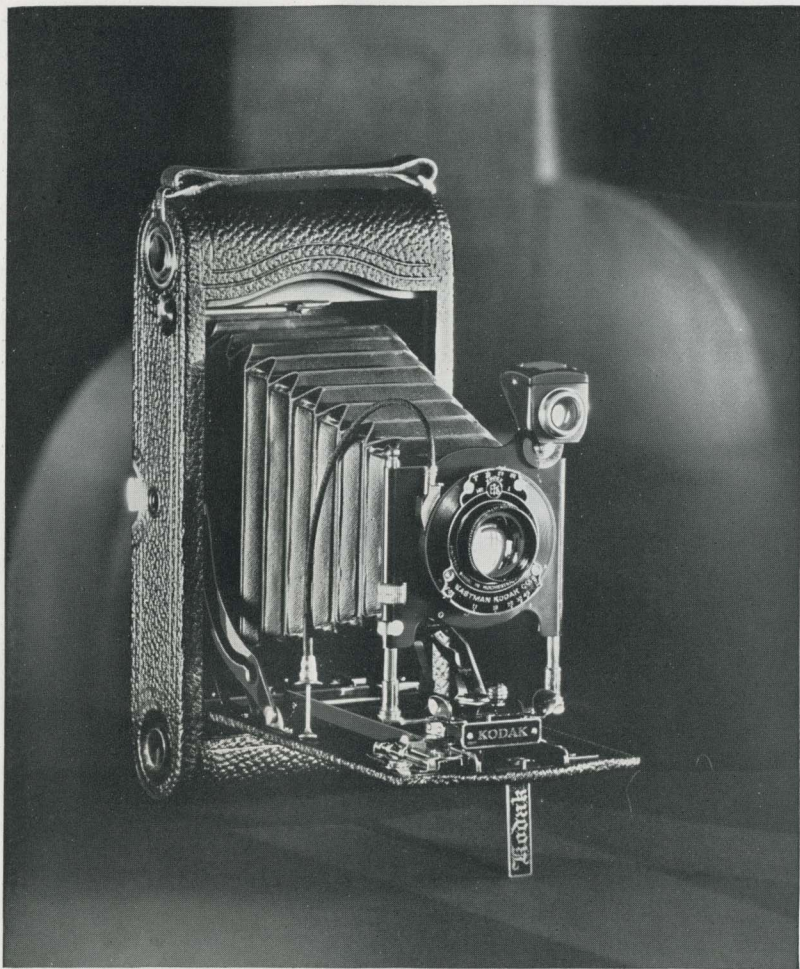
No. 1	No. 1A	No. 2C	No. 3
\$.75	\$.75	\$.75	\$.75

Kodak Self Timer (see page 41):

No. 1	No. 1A	No. 2C	No. 3
\$1.25	\$1.25	\$1.25	\$1.25



MADE WITH NO. 3
KODAK, SERIES III
(REDUCED IN SIZE)



No. 3A
AUTOGRAPHIC
KODAK

PERHAPS you know about this camera. The 3A Autographic Kodak has long been a general favorite. For one thing the picture size, $3\frac{1}{4} \times 5\frac{1}{2}$ (postcard proportions), is popular, secured as it is with-

PICTURE SIZE
 $3\frac{1}{4} \times 5\frac{1}{2}$ INCHES

out resorting to camera bulk. Its equipment is a further recommendation.

Either of two lens equipments is ready for results, but the fast Kodak Anastigmat lens *f*.6.3 and seven-speed Ilex Universal shutter broaden the field of picture-making.

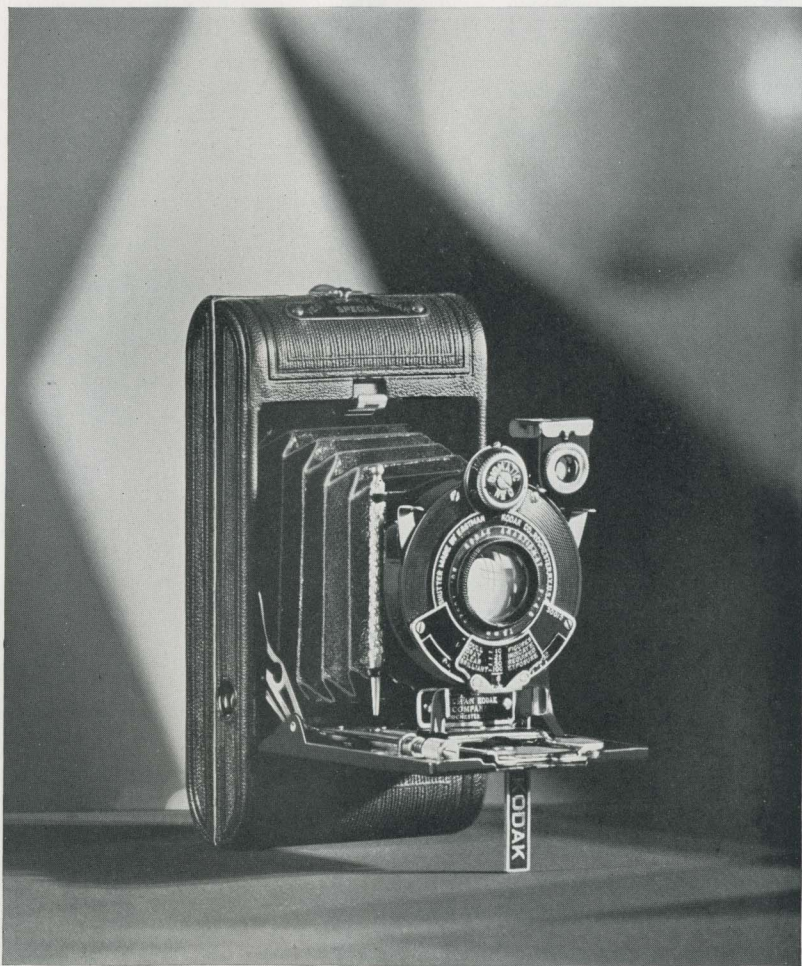
As extra equipment, the 3A Autographic Kodak may be fitted with a Combination Back for Kodak Cut Film as negative material.

DETAILS AND PRICES Capacity without reloading: 10 exposures. Focus: Adjustable only, with automatic focusing lock. Double focusing scale for films or plates. Lenses: Kodar *f*.7.9, 6 $\frac{7}{8}$ -inch focus; or Kodak Anastigmat *f*.6.3, 6 $\frac{3}{4}$ -inch focus. Shutters: Kodex, speeds $\frac{1}{25}$, $\frac{1}{50}$ second; or Ilex Universal, speeds 1, $\frac{1}{2}$, $\frac{1}{6}$, $\frac{1}{10}$, $\frac{1}{25}$, $\frac{1}{50}$ and $\frac{1}{100}$ second, both with *time* and *bulb* actions, cable and finger release. Brilliant finder, reversible for vertical or horizontal pictures. Two tripod sockets. Body: Back and bed of aluminum, covered with fine seal-grain leather; metal parts finished in nickel and black enamel. Rising, falling and sliding front. Black bellows. Autographic feature.

No. 3A Autographic Kodak, with Kodar Lens <i>f</i> .7.9 and Kodex Shutter . . .	\$25.00
With Kodak Anastigmat Lens <i>f</i> .6.3, and Ilex Universal Shutter	33.00
Levant Grain Leather Case, with Strap	4.00
Combination Back for cut film or plates (see page 47)	4.00
Kodak Double Plate Holders, each	1.50
Kodak Cut Film Sheaths, each15
Kodak Cut Film, package of 1290
Kodak Cut Film, <i>Super Speed</i> , package of 1290
Autographic Film (No. A 122), 10 exposures90
Ditto, 6 exposures55
Kodak Portrait Attachment (see page 46)75
Kodak Self Timer (see page 41)	1.25



MADE WITH 3A AUTOGRAPHIC
KODAK (REDUCED IN SIZE)



VEST POCKET KODAK SPECIAL

PICTURE SIZE

1 3/8 x 2 1/2 INCHES

VEST POCKET KODAK *Special* looks as if it would give a good account of itself. And it does. Put it in your pocket—vest pocket if you like—pull out, “click”—and the picture’s yours. For a camera of this com-

pactness the lens and shutter equipment is unusual. Kodak Anastigmat lens *f*.4.5 has speed plus. It is the fastest Kodak Anastigmat lens made for still camera work. This simply means that through its use photography is modernized—that snapshots are possible from dawn to dusk—even indoors by the full light of the window—or in the rain. Four split-second speeds, $\frac{1}{10}$, $\frac{1}{25}$, $\frac{1}{50}$ and $\frac{1}{100}$ second, as well as *time* and *bulb* actions, give this remarkable lens full play, and it makes the most of it.

With a lens speed as fast as *f*.4.5 and shutter actions that synchronize, you can run the gamut of picture-making opportunities and come out with prints and enlargements that money couldn't buy.

That the camera could be kept down to such small size and yet keyed up so beautifully both from a mechanical and an optical point of view is an engineering achievement that, after all, is only to be expected from the standards set by Eastman.

Note the exposure guide under the lens. It tells you at a glance what to do under various lighting conditions.

In appearance, Vest Pocket Kodak *Special* definitely meets the mode. It's good to look at with its black covering of genuine seal leather—and it's fine to work with—as the pictures prove. Let your Kodak dealer show you this trig little camera and see for yourself.

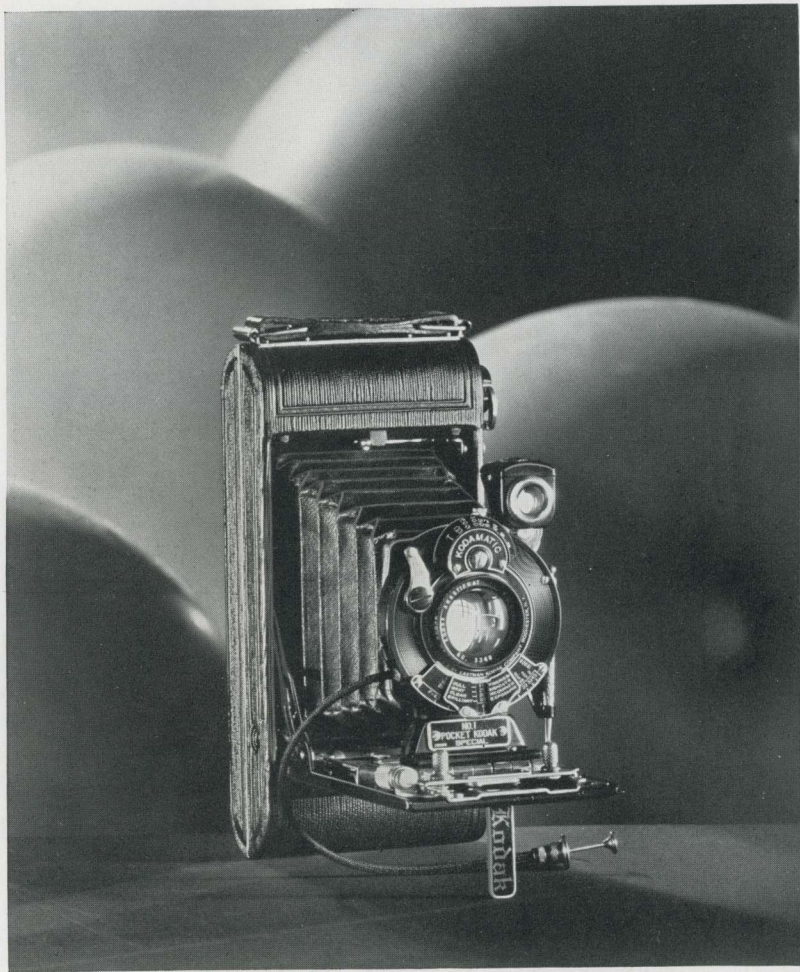
DETAILS AND PRICES Capacity without reloading: 8 exposures. Focus: Adjustable, with worm-screw focusing device. Lens: Kodak Anastigmat *f*.4.5, $3\frac{1}{8}$ -inch focus. Shutter: Diomatic, with finger release only; speeds, $\frac{1}{10}$, $\frac{1}{25}$, $\frac{1}{50}$, and $\frac{1}{100}$ second, *time* and *bulb* actions. Brilliant finder, reversible for vertical or horizontal pictures. Two tripod sockets. Body: Aluminum, covered with genuine seal leather; metal parts finished in nickel and black enamel. Black bellows. Autographic feature.

Vest Pocket Kodak *Special*, with Kodak Anastigmat Lens *f*.4.5 and Diomatic Shutter \$25.00

Belt Carrying Case, Russian Leather, Velvet lined	2.00
Black Leather Carrying Case, Velvet lined	2.00
Autographic Film (No. A 127), 8 exposures25
Cable Release for Vest Pocket Kodak <i>Special</i> , opened35
Kodak Portrait Attachment (see page 46)75
Kodak Self Timer (see page 41)	1.25



(ACTUAL SIZE)



Nos. 1, 1A, 2C and 3
POCKET KODAKS
SPECIAL

POCKET KODAKS
Special are just as good
cameras as it is possible
to make. Lens speed (Kodak

Anastigmat $f.4.5$ is three times as fast as
 $f.7.7$), Kodamatic shutter accuracy, camera

PICTURE SIZES

- No. 1, $2\frac{3}{4} \times 3\frac{3}{4}$
- No. 1A, $2\frac{1}{2} \times 4\frac{1}{4}$
- No. 2C, $2\frac{1}{8} \times 4\frac{3}{8}$
- No. 3, $3\frac{1}{4} \times 4\frac{3}{4}$

refinements, deft design and handsome finish—you find all of them present in these *Specials*.

Pictures ordinarily out of the question are well within the scope of these super instruments.

The *Specials* represent the top of the Eastman line. The refinements and niceties that mean picture-making *de luxe* have been reserved for them. The discerning amateur who wants the utmost wants a *Special*.

DETAILS AND PRICES Capacity without reloading: No. 1, 6 exposures; No. 2C, 10 exposures; Nos. 1A and 3, 12 exposures. Focus: Adjustable; screw focusing device on Nos. 1, 1A and 2C; lever focusing device on No. 3. Lens: Kodak Anastigmat *f*.4.5, 4-inch focus on No. 1; 5 $\frac{1}{8}$ -inch focus on No. 1A; 5 $\frac{1}{8}$ -inch focus on No. 2C; 5 $\frac{1}{8}$ -inch focus on No. 3. Shutter: Kodamatic, with cable and finger release; seven speeds, from $\frac{1}{150}$ ($\frac{1}{200}$ on No. 1) to $\frac{1}{2}$ second; *time* and *bulb* actions. Brilliant finder, reversible for horizontal or vertical pictures. Two tripod sockets. Body: Aluminum, covered with genuine sealskin; metal parts finished in nickel and black enamel. Rising front on Nos. 1A, 2C and 3. Range Finder on No. 2C. Black bellows. Autographic feature.

Pocket Kodak *Special*, with Kodak Anastigmat Lens *f*.4.5 and Kodamatic Shutter:

No. 1	No. 1A	No. 2C	No. 3
\$60.00	\$65.00	\$70.00	\$67.50

Grain Leather, Velvet lined Case, with strap:

No. 1	No. 1A	No. 2C	No. 3
\$3.75	\$4.50	\$5.00	\$4.75

Autographic Film, 12 exposures (No. A 116) for No. 1A; (No. A 118) for No. 3; 10 exposures (No. A 130) for No. 2C:

No. 1A	No. 2C	No. 3
\$.60	\$.75	\$.90

Ditto, 6 exposures (No. A 120) for No. 1; (No. A 116) for No. 1A; (No. A 130) for No. 2C; (No. A 118) for No. 3:

No. 1	No. 1A	No. 2C	No. 3
\$.25	\$.30	\$.45	\$.45

Kodak Portrait Attachment (see page 46):

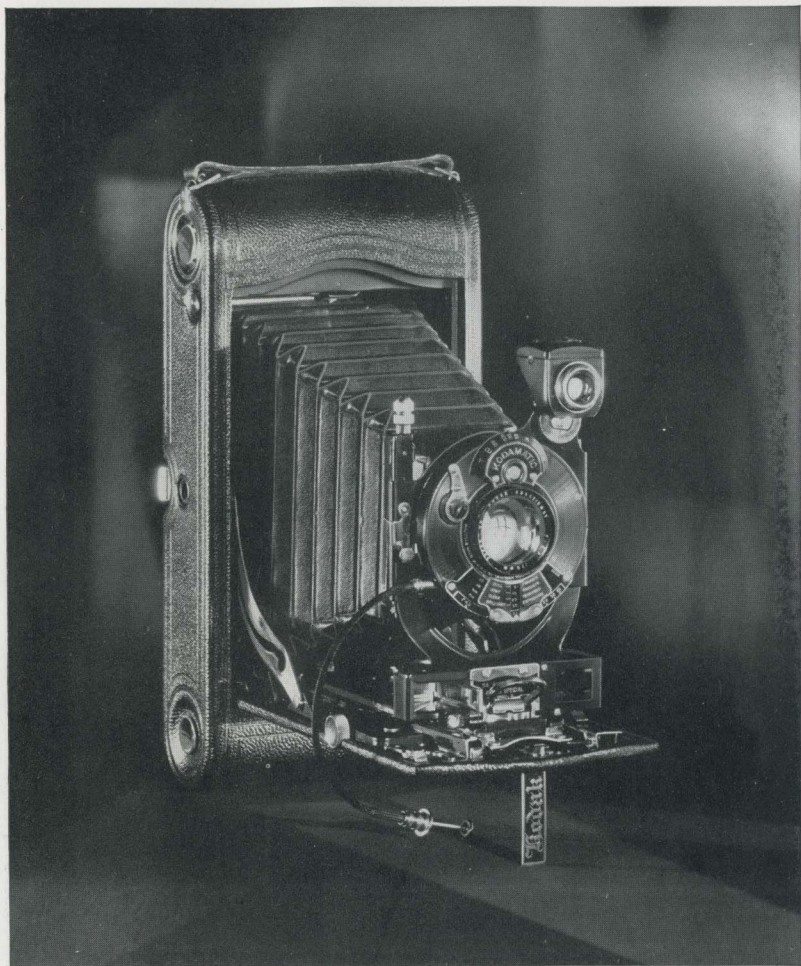
No. 1	No. 1A	No. 2C	No. 3
\$.75	\$.75	\$.75	\$.75

Kodak Self Timer (see page 41):

No. 1	No. 1A	No. 2C	No. 3
\$1.25	\$1.25	\$1.25	\$1.25



MADE WITH NO. 1A
POCKET KODAK
SPECIAL
(REDUCED IN SIZE)



No. 3A
AUTOGRAPHIC
KODAK SPECIAL

PICTURE SIZE
3¼ x 5½ INCHES

WHEN you come to a
"Special," you've
reached the photo-
graphic pinnacle of the
Kodak line. It's just as good
a hand camera as it is pos-

sible to make; and, if it were necessary to prove the point, the 3A Autographic Kodak *Special* would be Exhibit A.

Lens speed is $f.6.3$, and the Kodamatic shutter gives seven split-second timings from $\frac{1}{150}$ to $\frac{1}{2}$ second, as well as *time* and *bulb* actions, providing equipment ideal for an unusually wide hand-camera picture-making range.

Action pictures, of course. Lens and shutter speed point to that. But the story only starts there. Portraits by sunlit windows, or snapshots in the rain are easily possible, but only indicate the lengths to which this camera goes.

Handsome in appearance, it is distinctive in the fact that, through the addition of the Combination Back, Kodak Cut Film may be used.

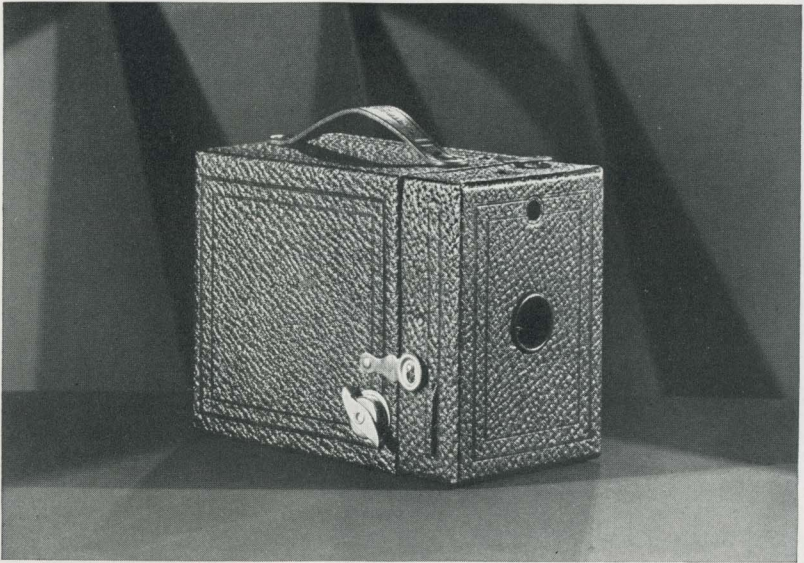
Its generous picture size, postcard proportions, has long made the 3A particularly favored among amateurs.

DETAILS AND PRICES Capacity without reloading: 10 exposures. Focus: Adjustable. Lens: Kodak Anastigmat $f.6.3$, $6\frac{3}{4}$ -inch focus. Shutter: Kodamatic, with cable and finger release; seven speeds, from $\frac{1}{150}$ to $\frac{1}{2}$ second, *time* and *bulb* actions. Brilliant finder, reversible for horizontal or vertical pictures. Two tripod sockets. Body: Back and bed of aluminum, covered with genuine Persian Morocco; metal parts finished in nickel and black enamel. Range finder. Rising and falling front. Black bellows. Autographic feature.

No. 3A Autographic Kodak <i>Special</i> , with Kodak Anastigmat Lens $f.6.3$ and Kodamatic Shutter . . .	\$65.00
Grain Leather Velvet lined Case, with strap.	5.25
Combination Back for cut film or plates (see page 47)	5.00
Kodak Double Plate Holders, each	1.50
Kodak Cut Film Sheaths, each15
Kodak Cut Film, package of 1290
Kodak Cut Film, <i>Super Speed</i> , package of 12 . .	.90
Autographic Film (No. A 122), 10 exposures90
Ditto, 6 exposures55
Kodak Portrait Attachment (see page 46)75
Kodak Self Timer (see page 41)	1.25



MADE WITH 3A
 AUTOGRAPHIC
 KODAK SPECIAL
 (MUCH REDUCED)



No. 2 HAWK-EYE, MODEL C

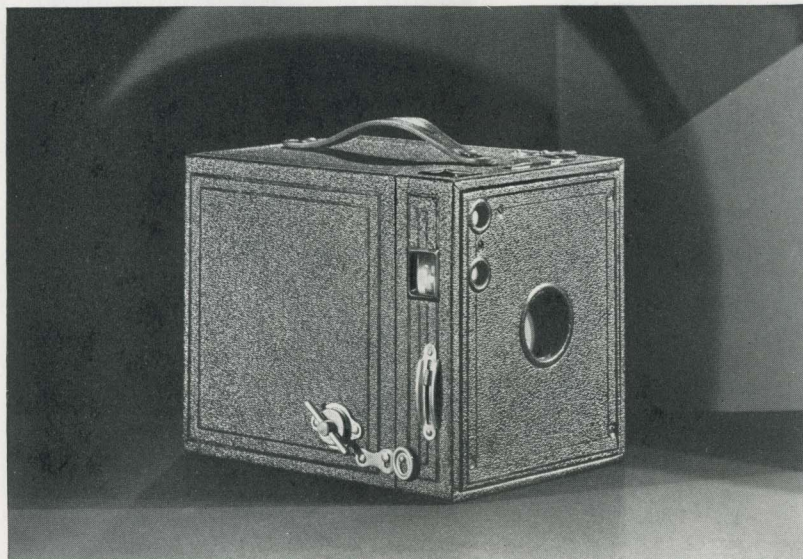
PICTURE SIZE
2¼ x 3¼ INCHES

on plenty of fun and lots of good pictures from an insignificant investment. Covered with durable material grained like leather, with metal parts finished in nickel and black enamel, this camera makes a favorable impression at first glance. It is extremely simple in construction, and consequently easy to use. Children, and adults, of course, get good pictures with it from the first. No. 2 Hawk-Eye, Model C, is Eastman-made and is ready for you at your dealer's. Let him show you how easy picture-making is with this camera, you can't help but be impressed.

DETAILS AND PRICES Capacity without reloading: 6 exposures. Fixed focus only. Lens: Meniscus. Shutter: Eastman Rotary. Ground glass finder for vertical pictures. Body: Covered with durable material grained like leather; metal parts finished in nickel and black enamel.

No. 2 Hawk-Eye, Model C, with Meniscus Lens and Eastman Rotary Shutter \$1.25
Kodak Film (No. 120), 6 exposures25
Kodak Portrait Attachment (see page 46)50

A DOLLAR and a quarter is not much money, but the camera it will buy—No. 2 Hawk-Eye, Model C—is a most capable little picture-maker just the same. Its owner can count



Nos. 0, 2C and 3 BROWNIES

PICTURE SIZES

No. 0, 1 5/8 x 2 1/4
 No. 2C, 2 3/8 x 4 1/8
 No. 3, 3 1/4 x 4 3/4

BROWNIES are the simplest real cameras. Point the camera. Press the lever. The picture's yours. The illustration above represents the No. 2C or the No. 3 Brownie. No. 0 Brownie differs slightly in appearance and construction. All are excellent picture-makers.

DETAILS AND PRICES Capacity: No. 0, 8 exposures; No. 2C, 6 exposures; No. 3, 12 exposures. Fixed focus only. Lenses: Meniscus on No. 0; Meniscus Achromatic on Nos. 2C and 3. Shutter: Eastman Rotary, with one stop on No. 0; three stops on Nos. 2C and 3; all with *instantaneous* and *time* actions. Two finders, for vertical and horizontal pictures. Two tripod sockets on Nos. 2C and 3. Body: Covered with durable material grained like leather.

	No. 0	No. 2C	No. 3
Brownie Camera, with Meniscus Lens and Rotary Shutter.	\$2.00		
With Meniscus Achromatic Lens, Eastman Rotary Shutter.	\$5.00	\$4.50
Brownie Carrying Case	1.00	1.60	1.60
Kodak Film, 8 exposures (No. 127) for No. 0; 12 exposures (No. 124) for No. 3	.2590
Ditto, 6 exposures (No. 130) for No. 2C; (No. 124) for No. 345	.45
Brownie Tripod Adapter for No. 0	.25
Kodak Portrait Attachment (see page 46)	.50	.75	.75
Developing and Printing Outfit (see page 53)	2.00	2.00	2.00



Compliments of the Digitized Kodak Catalog Project: 1886 - 1941

Nos. 2 and 2A BROWNIES

PICTURE SIZES

No. 2, 2¼ x 3¼

No. 2A, 2½ x 4¼

THE simplest real camera is about the smartest as well in its gay garb of color, as shown on opposite page. And in black it looks trig and business-like. Brownies produce excellent results from the start, even for children. Let your dealer show you how easy it all is.

DETAILS AND PRICES Capacity: No. 2, 6 exposures; No. 2A, 12 exposures. Fixed focus only. Lens: No. 2, Meniscus; No. 2A, Meniscus Achromatic. Shutter: Eastman Rotary, with three stops, *instantaneous* and *time* actions. Two moulded brilliant finders for vertical and horizontal pictures. Two tripod sockets. Body: Aluminum, covered with material grained like leather; metal parts finished in nickel and black enamel. Colored models covered with an attractive artificial leather; metal parts in harmonizing shades.

	No. 2	No. 2A
Brownie Camera, Meniscus Lens on No. 2, Meniscus Achromatic Lens on No. 2A, Eastman Rotary Shutter, in black	\$2.50	\$3.50
In brown, gray, blue, green, and red, without case	3.00	4.00
With case to match	5.00	6.00
Brownie Carrying Case, with strap, black only	1.25	1.50
Kodak Film (No. 116), 12 exposures for No. 2A.60
Ditto, 6 exposures (No. 120) for No. 2; (No. 116) for No. 2A.25	.30
Kodak Portrait Attachment (see page 46)50	.50
Developing and Printing Outfit (see page 53)	2.00	2.00

FOR FURTHER DESCRIPTION OF THIS
CAMERA SEE OPPOSITE PAGE



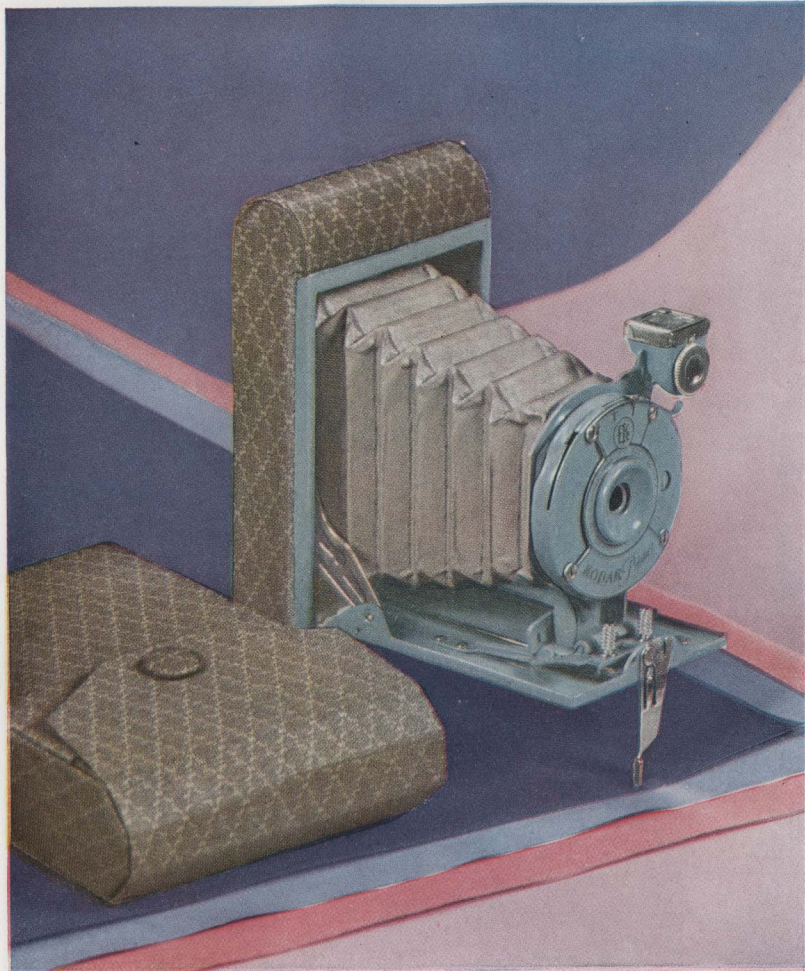
IN five colors—red, blue, brown, green and gray, with or without case to match. Equipped with Single Lens, Eastman Rotary Shutter. Prices: No. 2, \$3 without case; \$5 with case; No. 2A, \$4 without case; \$6 with case. Ready at your dealer's.

Nos. 2 and 2A BROWNIES

PICTURE SIZES

No. 2, $2\frac{1}{4} \times 3\frac{1}{4}$

No. 2A, $2\frac{1}{2} \times 4\frac{1}{4}$



KODAK PETITE

IN green, blue, gray, old rose or lavender—
gay, iridescent colors, with jaunty little case
to match. Equipped with Meniscus Lens,
Rotary Shutter. A complete photographic in-
strument despite its compact and convenient size, in a style
that is Paris-inspired to meet the present mode. Price, \$7.50.



PICTURE SIZE

1½ x 2½ INCHES

FOR FURTHER DESCRIPTION
OF THIS CAMERA SEE PAGE 14



IN red, brown, gray, blue or green, with case to match. Equipped with Kodak Anastigmat Lens *f.6.3*, Diomatic Shutter. A camera that wins the up-to-date woman the instant she first encounters it. And the harmonizing case supplies the final, irresistible touch. Price, \$20.

VANITY
KODAK

PICTURE SIZE
 $1\frac{1}{8} \times 2\frac{1}{2}$ INCHES

Compliments of the Digitized Kodak Catalog Project: 1886 - 1941

FOR FURTHER DESCRIPTION
OF THIS CAMERA SEE PAGE 8



Compliments of the Digitized Kodak Catalog Project: 1886 - 1941

Nos. 1 and 1A POCKET KODAKS

PICTURE SIZES

No. 1, $2\frac{1}{4} \times 3\frac{3}{4}$

No. 1A, $2\frac{1}{2} \times 4\frac{1}{4}$

IN blue, gray, green or brown, with case to match. Equipped with Kodar Lens $f.7.9$, Kodex Shutter. Smart but not obtrusively so—both men and women like it. Prices: No. 1, \$18; No. 1A, \$20.



FOR FURTHER DESCRIPTION
OF THIS CAMERA SEE PAGE 6



In blue, green, brown and black, with or without case to match. Equipped with tested Meniscus Lens, Kodo Shutter. Prices: No. 1, \$9; with case, \$11; No. 1A, \$10; with case, \$12.50.

Nos. 1 and 1A POCKET KODAKS, JUNIOR

PICTURE SIZES

No. 1, $2\frac{3}{4} \times 3\frac{3}{4}$

No. 1A, $2\frac{1}{2} \times 4\frac{1}{4}$

Compliments of the Digitized Kodak Catalog Project: 1886 - 1941

Compliments of the Digitized Kodak Catalog Project: 1886 - 1941



No. 1A POCKET KODAK, SERIES II

IN unusually becoming shades of blue, gray, green or brown, with handsome cases to match. Equipped with Meniscus Achromatic Lens and dependable Kodex Shutter. Price, \$25.

PICTURE SIZE
2 3/4 x 4 3/4 INCHES





THE illustration shows
Ciné-Kodak Model BB,
with $f.1.9$ lens, available,
with case to match, in blue,
brown, gray, and black. Ciné-Kodak Model B, $f.1.9$, may
be obtained in brown, gray and black with case to match.

CINÉ-KODAKS For Home Movies

Compliments of the Digitized Kodak Catalog Project: 1886 - 1941

HOME MOVIES In Full Color

KODACOLOR—home movies in full color—is as easy to make as black and white—and gives you on the screen realism that is almost life itself.

Flesh tones and all the various colors of the costume, the rich green of foliage, the myriad hues of gorgeous flowers—every color that the eye sees is reproduced accurately, faithfully.

Kodacolor—home movies in full color—may be made with Ciné-Kodaks, Models B and BB, *f*.1.9, as easily as snapshots with a Brownie, and projected with Kodascope, Model A or B. You simply use Kodacolor Film and a Kodacolor Filter when making or projecting Kodacolor.

Home movies in black and white are nothing short of marvelous in themselves. But home movies in full, rich, natural color reach into the world of miracles.

Ask a Ciné-Kodak dealer to show you Kodacolor on the screen and see for yourself. You'll find the few minutes required for such an exhibition intensely interesting and worth while.





KNOW THE JOY OF HOME MOVIES

THERE'S a real thrill in seeing movies that you made yourself—living pictures of your family and friends, the excitement of outdoor sports, the flashing turbulence of a mountain brook, the joyous pranks of children at play! And you can see them in either black and white or Kodacolor. (See opposite page.)

It is as easy to make home movies with a Ciné-Kodak as it is to make snapshots with a Brownie. Showing them is equally easy. And Eastman has made home movie equipment as inexpensive as it is easy to use. A complete outfit may be obtained for only \$143.

Kodak Cinegraphs, short professional movies for home entertainment, may be purchased from Ciné-Kodak dealers. Feature films may be rented from branches of Kodascope Libraries, Inc.

CINE-KODAKS

THERE are two models of Ciné-Kodaks—Model B, and Model BB, which may be secured in several attractive colors. Model BB, in its bright garb, is illustrated on page 35.

Both Models B and BB are hand held, spring driven, and are available with either the ultra-fast $f.1.9$ lens or the fast $f.3.5$ lens. Model B takes 100 feet of film; Model BB is smaller and takes 50 feet. Either model, when equipped with the $f.1.9$ lens, will make Kodacolor pictures.

KODASCOPIES

KODASCOPIES are made in four models. Model C is small, light, inexpensive, but without the ability to show Kodacolor.

Model A is heavier, larger; designed for use in schools and churches, as well as in the home. Kodacolor may be shown with Model A.

The outstanding projector in the home movie field is the Library Kodascope. It is self-threading, reversible, has a small self-contained screen, shows Kodacolor, and is equipped with many devices assuring the best possible pictures. The Kodascope is supplied in a handsome walnut case inlaid with ebony and fitted with bronze handles.

A walnut, ebony inlaid cabinet, designed especially as a base for the Library Kodascope, is also available.

The projector of the Library Kodascope is Kodascope Model B. It is obtainable as a separate unit, without the self-contained screen, and with a fiber, instead of a walnut, case. Kodacolor may be shown with Model B.

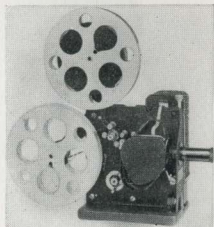
CINÉ-KODAKS

PRICES

Model B, <i>f</i> .1.9, in gray, brown or black, with case to match	\$175.00
Model B, <i>f</i> .1.9, in black, without case	150.00
Model B, <i>f</i> .3.5, in black only, without case	85.00
Model BB, <i>f</i> .1.9, in blue, brown, gray or black, with case to match. . .	140.00
Model BB, <i>f</i> .3.5, in black only, without case	75.00

KODASCOPIES

Model C, with lamp, oiling outfit, etc.	60.00
Model A, with extra lamp, oiling outfit, etc.	180.00
Library Kodascope, complete with walnut case and self-contained screen, extra lamp, 1- and 2-inch lenses, oiling outfit, etc.	300.00
Model B, complete with fiber case, extra lamp, 1- or 2-inch lens, oiling outfit, etc.	275.00
Cabinet for Library Kodascope, including screen	150.00
Kodacolor Assembly for Ciné-Kodaks, Models B and BB <i>f</i> .1.9	15.00
Kodacolor Assembly for Library Kodascope.	18.00
Kodacolor Lens Unit for Kodascope, Model A	20.00
Ciné-Kodak Safety Film, 50-foot roll, \$3.25; 100-foot roll.	6.00
Ciné-Kodak Panchromatic Safety Film, 50-foot roll, \$4.00; 100-foot roll.	7.50
Kodacolor Film, 50-foot roll, \$4.75; 100-foot roll	9.00

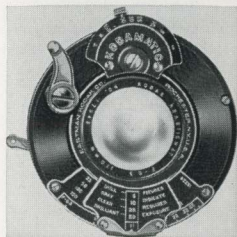


KODASCOPE, MODEL C

*Ask a Ciné-Kodak dealer for a
Ciné-Kodak catalog.*

THE KODAK SHUTTERS

THE KODAMATIC



IN ORDER to make the best possible pictures under greatly varying conditions, a camera must have an unusually reliable and versatile shutter. It was with this in mind that the Kodamatic was developed. It is constructed like a fine watch—precise to the last degree, thoroughly dependable, long-lasting—to challenge successfully every situation in which the amateur photographer may find himself.

A wide choice of automatic speeds—seven in all—is provided: $\frac{1}{2}$, $\frac{1}{5}$, $\frac{1}{10}$, $\frac{1}{25}$, $\frac{1}{50}$, $\frac{1}{100}$, and $\frac{1}{150}$ or $\frac{1}{200}$ (as listed); besides *bulb* and *time*. A sliding scale controlling the diaphragm shows at a glance the speed or stop to use in dull, gray, clear or brilliant light. Adjustment is made in an instant, and the shutter makes the selected exposure with utmost accuracy. The Kodamatic is supplied on the *Special Kodaks* (except V.P.K.).

THE DIOMATIC

WHENEVER extreme speeds are not essential the Diomatic shutter is highly successful. It is modeled after the Kodamatic and, like it, has a handy sliding timing scale. Four automatic speeds, $\frac{1}{10}$, $\frac{1}{25}$, $\frac{1}{50}$ and $\frac{1}{100}$, besides the usual *bulb* and *time*, enable the user to fit his exposure accurately to the light.

The Diomatic performs with all the sure precision expected of quality equipment, for it is designed and assembled with the same care that characterizes the more pretentious Kodamatic.



THE KODEX



PEOPLE who prefer inexpensive and simply operated cameras nevertheless want an entirely trustworthy shutter that assures consistently good results. The Kodex meets these requirements. It has *bulb*, *time*, and automatic speeds of $\frac{1}{25}$ and $\frac{1}{50}$. Carefully, scientifically constructed, the Kodex is a worthy member of the group of shutters found on Eastman cameras.

THE KODAK ANASTIGMATS

f.7.7, f.6.3, f.5.6, f.4.5

THE anastigmat stands at the peak of photographic lens design. Because of high cost, however, it was formerly available only on equipment beyond the reach of the average amateur. It remained for the Eastman Kodak Company—one of whose plants is devoted almost exclusively to lens manufacture—to reduce costs to such an extent that now almost anyone can afford one of these splendid lenses.

TRUE ANASTIGMAT QUALITIES

KODAK Anastigmats record vertical and horizontal lines in the same plane with an equal degree of clearness. They have an essentially flat field—even when they are used at their widest openings, all detail in the same plane is recorded with sharpness to the very edges of the negative.

And they have all the speed for which this type of lens is noted. The Kodak Anastigmat *f.7.7*, aside from its other advantages over the rapid rectilinear, is somewhat faster. The *f.6.3* is sixty per cent speedier than the rectilinear, making snapshots possible under conditions that would be out of the question for an ordinary lens. The *f.5.6*, in turn, is one-quarter again as fast as the *f.6.3*, and the *f.4.5* admits half again as much light as the *f.5.6*. It is interesting to note that the *f.4.5* is practically twice as fast as the *f.6.3*, and almost three times as fast as the *f.7.7*.

FEATURED ON MODERN KODAKS

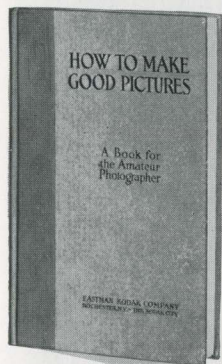
KODAK Anastigmats, the equal of any anastigmats made anywhere, are a prominent feature of all the Modern Kodaks. They offer a wide selection of fast lenses at low costs, enabling the amateur to make pictures under conditions that would have been thought impossible a few years ago.

KODAR LENS *f.7.9*

THE Kodar *f.7.9*, an Eastman development, is of the anastigmat type. It is only a trifle faster than the rapid rectilinear which it replaces, but it approaches the anastigmat in defining and covering power and gives negatives of consistently high quality.

Kodar lenses cost but little more than the rectilinear type and are fully worth the small difference.

"HOW TO MAKE GOOD PICTURES"



THIS well known book should be in the home of every amateur photographer. It explains, in easy, untechnical language, the various phases of picture making. Its brief chapters cover camera operation, developing, printing, enlarging and tinting; landscape, architectural and interior photography; flashlight and home portraiture; the making of silhouettes, etc. There are 184 pages full of pointed, definite information, almost as many illustrations, and simple charts that explain photographic theories and processes. The book is printed on high grade paper and is bound in boards with a vellum cover.

The present edition is the sixteenth—sufficient proof of the value of the book.

"How to Make Good Pictures" \$0.50

KODAK SELF TIMER

THIS accessory helps in making a really complete picture record. With it the photographer can make snapshots of himself or can include himself in group pictures. Clip a Kodak Self Timer to the cable release of any Kodak, set it for any interval from $\frac{1}{2}$ second to 1 minute, and step into the picture. When the predetermined interval has elapsed, the plunger of the timer trips the shutter, making the exposure without further help from you.

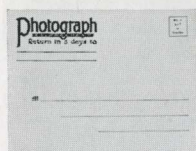


Because of their completeness, pictures made with the aid of the Kodak Self Timer are doubly precious in after years.

Kodak Self Timer \$1.25



THE SAFETY PHOTO MAILER



A TOUGH envelope strengthened with corrugated board and provided with a lock seal.

No.	Size Card or Print	Outside Size of Mailer	Price per Doz.
A—	5 x 7 or smaller	6 $\frac{1}{8}$ x 8 $\frac{1}{8}$	\$1.08
B—	9 $\frac{3}{8}$ x 11 $\frac{3}{8}$ or smaller	10 $\frac{1}{2}$ x 12 $\frac{1}{2}$	1.80
C—	11 $\frac{7}{8}$ x 13 $\frac{1}{8}$ or smaller	13 x 14 $\frac{1}{8}$	2.10
D—	12 $\frac{3}{8}$ x 15 $\frac{3}{8}$ or smaller	13 $\frac{3}{4}$ x 16 $\frac{3}{4}$	3.00
E—	17 $\frac{1}{4}$ x 20 $\frac{1}{4}$ or smaller	18 $\frac{3}{8}$ x 21 $\frac{3}{8}$	4.20

KODAK METAL TRIPODS

THESE tripods, the result of many years of experience in constructing camera supports, are models of lightness, compactness and rigidity. The legs are of brass tubing, the sections in each telescoping neatly to give small collapsed size without sacrifice of strength. The lower sections and the heads are nicked, while the upper sections are finished in black enamel.

There are six models from which to choose. When closed, their lengths range from $11\frac{3}{8}$ to $15\frac{1}{2}$ inches, so that even the largest is convenient to carry. Nos. 1 and 2 have revolving heads which permit the camera to swing in any desired direction without moving the tripod itself. They also have straps to hold the legs in place when closed. Nos. 0, 1C and 2C have solid heads. Their legs have no straps.



The head of No. 6 (illustrated in its carrying case) includes a hinge which permits the legs to fold flat—parallel to one another instead of in the usual triangular form. The result is a narrow shape which, with the extreme shortness of the tripod when closed, makes No. 6 easiest of all to carry.

DETAILS AND PRICES

	Sections	Length		Weight	Price
		Closed	Extended		
Kodak Metal Tripod No. 0	3	$15\frac{1}{2}$ inches	$39\frac{1}{2}$ inches	15 ounces	\$2.75
Kodak Metal Tripod No. 1C	4	$15\frac{1}{4}$ inches	$48\frac{7}{8}$ inches	$25\frac{1}{2}$ ounces	4.00
Kodak Metal Tripod No. 1	4	15 inches	$48\frac{1}{2}$ inches	$24\frac{1}{2}$ ounces	4.50
Kodak Metal Tripod No. 2C	5	$13\frac{1}{4}$ inches	$49\frac{1}{4}$ inches	26 ounces	4.50
Kodak Metal Tripod No. 2	5	$13\frac{1}{2}$ inches	$49\frac{1}{2}$ inches	25 ounces	5.00
Kodak Metal Tripod No. 6	6	$11\frac{3}{8}$ inches	40 inches	24 ounces	6.50
Leather Carrying Case, for Nos. 0 to 2, inclusive					2.70
Ditto, for No. 6					3.15
Rubber Tips, for Metal Tripod Spurs (per set of 3)					1.0

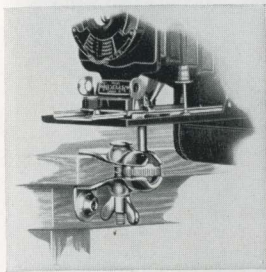
THE KODAPOD



THE little Kodapod is an exceedingly handy arrangement, particularly suited for use in place of a tripod in outdoor photography. The toothed jaws at one end firmly grip tree, fence or other wooden object, while the other end threads into any standard tripod socket. A clamping screw adjusts the camera to the correct horizontal or vertical position, where it is firmly held while the exposure is being made.



The Kodapod \$1.75



THE OPTIPOD

HERE is a neat little device—a combined tripod head and felt-lined clamp—that is frequently used instead of a tripod and, in many cases, in conjunction with that larger support.

Used alone the Optipod clamps to any shelf, table, window ledge, running board or other support, and holds the camera firmly while the exposure is being made. It fits any standard tripod socket. It is

small and light, and slips readily into the pocket.

The ball and socket joint is a great convenience since it permits tilting the camera to almost any angle. It is especially valuable when the Optipod is used in connection with a tripod to photograph subjects which are at close range or otherwise so situated that it is impossible to place the tripod alone in the desired position.

The Optipod \$1.25



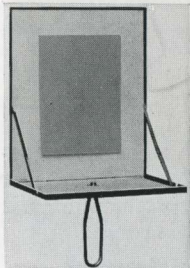
FLASHLIGHT MATERIALS

SINCE it makes one independent of daylight, flashlight photography is a year-around sport. Giving complete control of illumination, it means good indoor pictures under otherwise impossible conditions.

The simplest way is to use the Kodak Flash Sheet Holder and Eastman Flash Sheets. The latter are placed on the holder and ignited from behind. They burn slowly, giving a broad and powerful, yet soft, light.



- No. 1 Flash Sheets, package 1/2 dozen sheets, 3 x 4-inch \$0.35
- No. 2 Flash Sheets, package 1/2 dozen sheets, 4 x 5-inch .56
- No. 3 Flash Sheets, package 1/2 dozen sheets, 5 x 7-inch .84
- Kodak Flash Sheet Holder 1.25



Flash cartridges are recommended only where instantaneous exposures are required.

- Eastman No. 4 Flash Cartridges, for use only with fuse, per package of 1/2 dozen \$0.50
- Ditto, No. 580
- Ditto, No. 6 1.25

Flash sheets and cartridges cannot be shipped by mail. See section on "Terms," page 64.

KODAK PORTRAIT ATTACHMENT

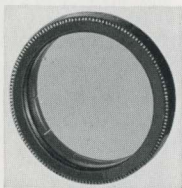


HERE'S THE WAY THE PICTURE WAS MADE

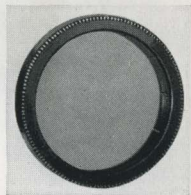
AND HERE'S THE ACTUAL PICTURE, MADE WITH A
KODAK AND KODAK PORTRAIT ATTACHMENT

If a subject is placed within arm's length of the ordinary hand camera, the result is a blurred image. But when the lens is supplemented by a Kodak Portrait Attachment the camera is adapted to the making of charming "close-ups" of your family and friends, as well as clear-cut, close-range pictures of flowers, art objects and still-life subjects.

It's all very easy, too. The attachment is quickly slipped over the regular lens and the camera is operated as usual. Using the Kodak Portrait Attachment simply keeps the focus sharp at close range and results in images that practically fill the negative area.



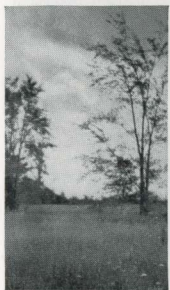
KODAK COLOR FILTER



THE Kodak Color Filter is valuable in photographing highly colored landscapes, flowers, art objects, etc. The dye in the filter holds back the strong blue and violet rays, which affect the negative most quickly, and gives the weaker shades time to register. The resulting picture reproduces all the color values more nearly as the eye sees them.

For prices of these attachments, see page 46

KODAK SKY FILTER



BRIGHT clouds in a blue sky reflect much more light than the rest of an outdoor view. But the Kodak Sky Filter with its yellow-stained upper half holds back the light from the sky. This restrained light renders the clouds distinctly while the darker portions of the picture get the benefit of full exposure through the clear half of the attachment.

The Kodak Sky Filter slips readily over the camera lens and does not require any change in the exposure.



KODAK DIFFUSION PORTRAIT ATTACHMENT



THE concentric lines polished into the surface of this attachment diffuse the light that reaches the lens. Besides giving large images like the regular Kodak Portrait Attachment, this little disk lends a charming softness— atmosphere—to subjects. It reduces sharp contrasts, softens chalky highlights and blends harsh lines, so that pictures made with it take on the popular “soft focus” effect. The attachment is not, however, extreme in its action, and there is no danger of getting unpleasant “fuzziness.”



KODAK PICTORIAL DIFFUSION DISK

A Kodak Pictorial Diffusion Disk does for landscape pictures what a Kodak Diffusion Portrait Attachment does for “close-ups.” It lends a pleasing softness, without loss of brilliancy, and gives results that are artistic as well as different.

The V. P. K. Diffusion Disk, used with the V. P. K. Special, the Vanity Kodak and the V. P. K. Series III, *f*.5.6 lens, can be used not only for landscape work, but also for portraits at 5½ feet and beyond.

These disks slip on or off the lens mount in an instant and their use does not involve any change whatsoever in camera operation.



For prices of these attachments, see page 46

KODAK PORTRAIT AND DIFFUSION PORTRAIT ATTACHMENTS, PICTORIAL DIFFUSION DISKS, SKY AND COLOR FILTERS

(These attachments are listed here only for the cameras shown in this catalog. For attachments to be used on older models, see your dealer.)

	Order by this Number	Portrait Attach- ments	Diffusion Portrait Attach- ments	Pictorial Diffusion Disks	Sky or Color Filters
FOR VEST POCKET KODAKS					
Model B, Single lens or Kodak Periscope	8	\$0.75	\$1.25	\$0.75
Boy Scout, Single lens	8	.75	1.2575
Girl Scout, Single lens	8	.75	1.2575
Pette, Single lens	8	.75	1.2575
Series III, Kodar f.7.9	8	.75	1.2575
Series III, Kodak Anastigmat f.5.6	8A	.7575
Special, Kodak Anastigmat f.4.5	8A	.7575
Vanity, Kodak Anastigmat f.6.3	8A	.7575
Vest Pocket Kodak Diffusion Disk (see page 41)	8A	\$1.25	...

FOR POCKET KODAKS					
No. 1 Single lens	0	.50	1.2575
Kodar f.7.9	8	.75	1.2575
Kodak Anastigmat f.6.3	6	.75	1.50	2.50	1.15
No. 1A Single lens	3	.75	1.25	1.75	1.15
Kodar f.7.9 or Kodak Anastigmat f.6.3	6	.75	1.50	2.50	1.15
No. 2C Single lens or Kodar f.7.9	6	.75	1.50	2.50	1.15
Kodak Anastigmat f.6.3	7	.75	1.50	2.50	1.50
No. 3A Single lens or Kodar f.7.9	6	.75	1.50	2.50	1.15
Kodak Anastigmat f.6.3	7	.75	1.50	2.50	1.50

FOR POCKET KODAKS, SERIES II					
No. 1 Single lens, Kodar f.7.9 or Kodak Anastigmat f.7.7	3	.75	1.25	1.75	1.15
No. 1A Single lens	3	.75	1.25	1.75	1.15
Kodar f.7.9 or Kodak Anastigmat f.7.7	13	.75	1.25	1.75	1.15

FOR POCKET KODAKS, JUNIOR					
No. 1 Single lens	8	.75	1.2575
No. 1A Single lens	3	.75	1.25	1.75	1.15

FOR KODAKS, SERIES III					
No. 1 Kodak Anastigmat f.6.3	3	.75	1.25	1.75	1.15
No. 1A Kodak Anastigmat f.5.6	6	.75	1.50	2.50	1.15
No. 3 Kodar f.7.9 or Kodak Anastigmat f.5.6	6	.75	1.50	2.50	1.15
No. 2C Kodak Anastigmat f.6.3	6	.75	1.50	2.50	1.15

FOR AUTOGRAPHIC KODAK					
No. 3A Kodar f.7.9	6	.75	1.50	2.50	1.15
Kodak Anastigmat f.6.3	7	.75	1.50	2.50	1.50

FOR POCKET KODAKS SPECIAL					
No. 1 Kodak Anastigmat f.4.5	6	.75	1.50	2.50	1.15
No. 1A Kodak Anastigmat f.4.5	7	.75	1.50	2.50	1.50
No. 3 Kodak Anastigmat f.4.5	7	.75	1.50	2.50	1.50
No. 2C Kodak Anastigmat f.4.5	7	.75	1.50	2.50	1.50

FOR AUTOGRAPHIC KODAK SPECIAL					
No. 3A Kodak Anastigmat f.6.3	7	.75	1.50	2.50	1.50

FOR BROWNIES AND HAWK-EYE (BOX TYPE)					
Nos. 0 and 2 Brownies or No. 2 Hawk-Eye, Model C, Single lens	1	.50	1.2575
No. 2A Brownie, Model C, Single lens	0	.50	1.2575
Nos. 2C and 3 Brownies, Single lens	4	.75	1.25	1.15

KODAK FILM PACKS

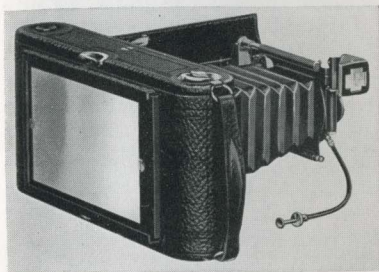
FOR Film Pack cameras and cameras equipped for Film Pack Adapters use Kodak Film Packs. They are coated with the same sensitized emulsion as Kodak Film and have the same dependable qualities. To make them easily identifiable they also are packed in yellow boxes.



KODAK FILM PACKS CONTAIN 12 EXPOSURES EACH.

	Inches	Centimeters	Per Pack		Inches	Centimeters	Per Pack
No. 500	1 3/4 x 2 3/8	4 1/2 x 6	\$0.35	No. 542	3 x 5 1/4	7 1/2 x 13 1/2	\$1.00
No. 540	1 3/4 x 4 1/4	4 5/10 x 10 7/10	.55	No. 522	3 1/4 x 5 1/2	8 x 14	1.10
No. 520	2 1/4 x 3 1/4	6 x 9	.50	No. 543	3 3/4 x 5 1/2	10 x 15	1.35
No. 516	2 1/2 x 4 1/4	6 1/2 x 11	.60	No. 523	4 x 5	10 x 12 1/2	1.10
No. 531	2 3/32 x 5 11/32	6 x 13	.90	No. 526	4 3/4 x 6 1/2	12 x 16 1/2	1.75
No. 518	3 1/4 x 4 1/4	8 x 10 1/2	.90	No. 515	5 x 7	13 x 18	1.90
				No. 541	3 1/2 x 4 3/4	9 x 12	1.00

COMBINATION BACKS



COMBINATION Backs adapt 3A Autographic Kodaks, Regular and *Special*, to double plate holders. The photographer then has the advantage of ground glass focusing and, if he so desires, can make one or two exposures and develop them at once.

With the addition of Kodak Cut Film Sheaths in the plate holder, this special back also equips the

camera for use with Kodak Cut Film, Eastman Commercial Ortho and Eastman Commercial Panchromatic Film. (See pages 48 and 49.)

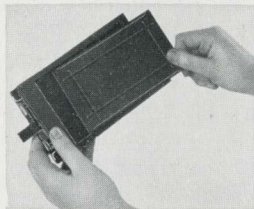
Combination Back with ground glass, for No. 3A Autographic Kodak	..\$4.00
Ditto, for No. 3A <i>Special</i> 5.00
Kodak Double Plate Holders for either of the above, each 1.50

EASTMAN PLATES

THE amateur who intends to use plates, either in a 3A Kodak or in a plate camera of any size, will find it very much to his advantage to use one or more of these well known Eastman brands: Speedway, Eastman 40, Eastman 36, Single or Double Coated Ortho, Wratten & Wainwright Panchromatic.

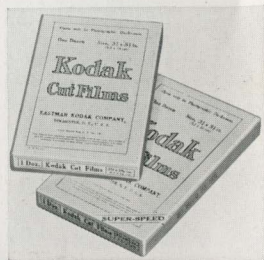
KODAK CUT FILM SHEATH

ADAPTS a plate holder to the use of Kodak Cut Film, Eastman Commercial Ortho Film and Eastman Commercial Panchromatic Film. It is made of aluminum, ribbed for rigidity, and is instantly inserted or removed.



	$2\frac{1}{4} \times 3\frac{1}{4}$	$3\frac{1}{4} \times 4\frac{1}{4}$	$3\frac{1}{4} \times 5\frac{1}{2}$	4×5
Kodak Cut Film Sheath, each	\$.10	\$.10	\$.15	\$.15

KODAK CUT FILM



KODAK Cut Film offers every advantage of plates, and in addition it weighs only one-tenth as much, is free from halation, easier to handle, and unbreakable. The negatives it produces are of strictly superior quality. Through the agency of the Combination Back, Double Plate Holder (see page 47) and Kodak Cut Film Sheaths, No. 3A Auto-graphic Kodaks, Regular and *Special*, can readily be adapted for use with this film.

The speed of regular Kodak Cut Film is comparable to that of the best portrait plate or of Kodak Film. The *Super Speed* is about twice as fast as Regular, yet it equals the latter in latitude, gradation and fineness of grain. It gives the best possible negatives under difficult light conditions and with short exposures, without sacrificing any of the qualities on which film superiority is founded. It opens the way to unthought-of possibilities in speed work, home portraiture, etc.

	$2\frac{1}{4} \times 3\frac{1}{4}$	$3\frac{1}{4} \times 4\frac{1}{4}$	$3\frac{1}{4} \times 5\frac{1}{2}$	4×5
Kodak Cut Film, Regular, dozen . . .	\$.45	\$.65	\$.90	\$.90
Kodak Cut Film, <i>Super Speed</i> , dozen .	.45	.65	.90	.90

EASTMAN COMMERCIAL ORTHO FILM

THIS film is color-sensitive to a high degree, and gives especially good color separation in landscapes or multi-color still-life subjects. It is about half as fast as Kodak Cut Film Regular and is supplied in cut film form. It is not sensitive to red.

	$3\frac{1}{4} \times 4\frac{1}{4}$	$3\frac{1}{4} \times 5\frac{1}{2}$	4×5
Eastman Commercial Ortho Film, dozen	\$.65	\$.90	\$.90

COMMERCIAL PANCHROMATIC FILM

EASTMAN Commercial Panchromatic Film is completely sensitive to all colors, including red, and when used with the proper filter gives a monochrome reproduction of all tints and shades in their proper relation. It cannot be handled by the light of a ruby safelight, but must be manipulated in darkness or by the light of a green Series 3 Safelight. It is supplied in cut film form.

	3¼x4¼	3¼x5½	4x5
Eastman Commercial Panchromatic Film, dozen . . .	\$0.75	\$1.00	\$1.00

KODAK FILM TANK

THESE outfits afford the easiest, most reliable means of developing roll film negatives. No darkroom is necessary. By means of the light-tight box the film is transferred to a reel, being covered at the same time by a protecting apron. Reel, film and apron are immersed in the solution cup and development is made according to directions which accompany each outfit.



Vest Pocket Kodak Film Tank, for Vest Pocket or No. 0 Brownie films . . .	\$3.50
2¼-inch Kodak Film Tank, for films 2¼ inches wide or less	4.50
2½-inch Kodak Film Tank, for films 2½ inches wide or less	5.50
3½-inch Kodak Film Tank, for films 3½ inches wide or less	6.50
5-inch Kodak Film Tank, for films 5 inches wide or less	8.00
Flexible Fixing and Washing Tank, for 3½-inch Kodak Film Tank	2.50
Kodak Tank Developer Powders, per ½ dozen (according to the size of the Film Tank with which they are to be used)	\$.20, \$.25, \$.30
Kodak Acid Fixing Powder, per ¼-lb., ½-lb., or 1-lb. package, \$.10, \$.15, \$.25	

No. 2 BROWNIE DEVELOPING BOX

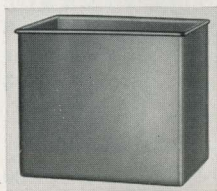


THIS is an adaptation of the Kodak Film Tank, so simple and proficient that any boy or girl can operate it successfully. The covered metal box is just the right length to hold, when looped once, a roll of A120, 120, A127 or 127 Kodak Film. The developing is done in daylight by following the simple and explicit directions packed with each box.

PRICES

No. 2 Brownie Developing Box	\$1.75
Brownie Developing Box Powders, per package of 620
Kodak Acid Fixing Powder, per ¼-lb., ½-lb., or 1-lb. package, \$.10, \$.15, \$.25	

KODAK DEVELOPING BOX, No. 1

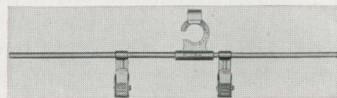


THIS tank provides a swift and easy means to uniform development of cut film. It takes twelve films, each suspended in the solution from a Kodak Cut Film Developing Hanger. Development proceeds by the time and temperature method. The tank is made of acid-resisting metal and measures 4 x 5 $\frac{1}{4}$ x 6 inches.

Kodak Developing Box, No. 1, without hangers. . \$2.00

KODAK CUT FILM DEVELOPING HANGER

FOR use with Kodak Developing Box, No. 1. The hanger is made sufficiently long to lie conveniently across the top of the box. The clips are made of an acid-resisting metal.



Kodak Cut Film Developing Hangers, each. \$0.20

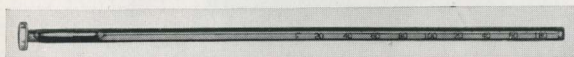
EASTMAN THERMOMETER



AN accurate instrument, especially convenient in tank or tray development. The swinging hook which is provided makes it easy to suspend the thermometer in solutions. Its curved back protects the glass tube and fits the corner of a developing tank.

Eastman Thermometer \$0.90

THERMOMETER STIRRING ROD



THIS triple purpose rod is $\frac{1}{4}$ -inch in diameter by 9 $\frac{1}{4}$ -inches long, and is stoutly constructed. Stirring with it mixes ingredients thoroughly and at the same time gives an accurate record of the temperature. The enlarged and flattened end is useful in crushing powders.

Thermometer Stirring Rod \$1.25

KODAK SAFELIGHT LAMP



THIS lamp is ideal for all darkroom uses. It is made to suit the work of the beginner, the advanced amateur, or the professional.

It is supplied with a 5 x 7 Series 1 Safelight, for use with films or plates that are not highly color sensitive. Safelights of other series are also available.

The lamp is made of metal, neatly finished. It is supplied with safelight, electric cord and fittings, excepting 25-watt electric bulb.

Kodak Safelight Lamp \$3.50
 Extra Safelight, 5 x 7, any series75

EASTMAN SAFELIGHT LAMP

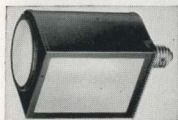
SUSPENDED from an electric cord or fixture, the Eastman Safelight Lamp throws the light from a 10-watt bulb directly downward over the work-table. Supplied with 5 x 7 Series 2 Safelight, for use with films or plates, unless otherwise ordered. Strongly constructed of metal, neat, convenient.



Eastman Safelight Lamp, without bulb \$3.00
 Extra Safelight, 5 x 7, any series75

BROWNIE SAFELIGHT LAMP

THE Brownie Safelight Lamp, but little larger than the electric bulb it holds, screws into any electric socket. It is made of japanned metal, and has safelights both at the end and at the front, as shown. Both safelights are Series 1, and are interchangeable with other series. A 10-watt electric bulb (not supplied) is the source of illumination.



Brownie Safelight Lamp \$1.75
 Extra Circular End Safelight (any series), each25
 Extra Rectangular Safelight (any series), each40

EXTRA SAFELIGHTS FOR SAFELIGHT LAMPS

- SERIES 00—For use with developing-out papers (except bromide).
 - SERIES 0A—For use with bromide paper and with lantern slide plates.
 - SERIES 1—For use with films or plates not highly color sensitive.
 - SERIES 2—For extra rapid orthochromatic films and plates.
 - SERIES 3—For use with red-sensitive panchromatic films and plates.
- Price, any series, for Eastman and Kodak Safelight Lamps—\$.75.
 Price, any series, for Brownie Safelight Lamp; circular—\$.25; rectangular—\$.40.

KODAK CANDLE LAMP

WHENEVER space is at a premium, or wherever electricity is not available—on the camping trip, for instance—this clever lamp is very popular. It is collapsible and takes up very little room when not in use. It is made of special, tested ruby fabric bound in metal frames, and gives a strong light, safe for photographic work.

Kodak Candle Lamp, with one candle \$0.40
 Extra Candles, per dozen50



KODAK DARKROOM LAMP

THE Kodak Darkroom Lamp is oil burning, is fitted with both orange and ruby glass, and has an adjustable winged light shield. The unusually broad wick is regulated from the outside and gives a soft, steady light.

Kodak Darkroom Lamp \$1.50

IMPROVED KODAK FILM CLIP

A STURDY, dependable clip made in two styles of solid, non-corrosive metal. One is used in suspending the film from a support. The other can be attached to the lower edge of the film, a lead weight keeping the film taut. Both styles have 2-inch jaws. Drainage holes in them prevent water from collecting, and eliminate the danger of streaking dry films.

Improved Kodak Film Clip without lead weight \$0.35
 Improved Kodak Film Clip with lead weight . . .45



KODAK JUNIOR FILM CLIP

TWO teeth in the jaw of this clip remove all possibility of slipping. The clip is made in one size only, 1³/₁₆ inches wide, of acid-resisting metal, and is equally practical for tray development or for drying films.

Kodak Junior Film Clip \$0.15



EASTMAN FILM DEVELOPING CLIP



A STRONG and thoroughly dependable clip. Made in two sizes, with nickel finish.

3¹/₂-inch, per pair \$0.30
 5-inch, per pair40

DEVELOPING TRAYS

"Bull's Eye" (Composition)		Eastman Enameled
3¼x4¼ . . \$0.30	3½x12 . . \$1.30	4x6 \$0.65
4 x540	5 x 880	5x785
4 x645		



DEVELOPING AND PRINTING OUTFITS



THE camerist who wishes to do his own developing by the tray method and to make his own prints, can save himself both time and expense by using either of these outfits.

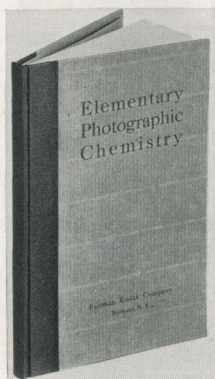
PRICES

One Kodak Candle Lamp	\$0.40
One Printing Frame40
One Glass for Frame05
One 4-ounce Graduate15
One Stirring Rod06
Four Developing Trays40
Five Tubes Eastman Special Developer35
One-half pound Kodak Acid Fixing Powder15
Two dozen 3¼ x 5½-inch Velox Paper40
Two ounces Nepera Solution for developing Velox20
Instruction Book (free)	
	Value \$2.56
EASTMAN 3A OUTFIT, COMPLETE, NEATLY PACKED	Price \$2.00
EASTMAN A B C OUTFIT, similar to above but providing for 4 x 5-inch or smaller pictures	\$2.00

"ELEMENTARY PHOTOGRAPHIC CHEMISTRY"

THIS informative booklet fills the need for a simple account of photographic chemistry for practical photographers. Chapter I contains a brief introduction to elementary chemistry. Subsequent chapters describe the important photographic chemicals, their properties and reactions. Important features are a table of solubilities of the chemicals in common use, practical information on formulas, the preparation and use of solutions, etc.

The latest edition of this 100-page book has been thoroughly revised and much new material has been added to bring it completely up to date. It is carefully printed and is attractively bound in boards. Price, \$0.50.



KODAK AMATEUR PRINTER



FOR quick and convenient contact printing the amateur can choose no better means than this compact device, built to simple but scientific Eastman standards.

It fits negatives from $1\frac{5}{8} \times 2\frac{1}{2}$ to 4×5 or $3\frac{1}{4} \times 5\frac{1}{2}$ inches. The negative to be printed is placed on the top glass window by the light of a red bulb inside the printer. A simple masking arrangement controls the white margins and holds the negative during any number of exposures. The paper is placed over the negative and the hinged frame closed. This automatically turns on a 60-watt electric lamp (not supplied) and makes the exposure. The position of this lamp is readily adjustable to give even illumination to negatives of various sizes.

The printer is supplied with $5\frac{1}{2}$ feet of electric cord with plug attached, and one red bulb. By simply inserting an ordinary 60-watt lamp the printer is made ready for instant use.

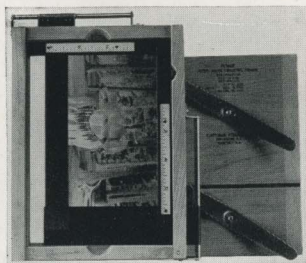
Kodak Amateur Printer \$10.00

KODAK AUTO-MASK PRINTING FRAME

THIS frame can be used in printing from any negatives of amateur size: 4×5 , $3\frac{1}{4} \times 5\frac{1}{2}$ inches or smaller.

Attached to the frame are two slides adjusted from the outside, forming an accurate mask of whatever size is desired. Any number of uniformly masked prints can be made without readjusting the negative or the masking slides.

The entire frame is carefully constructed, of quality materials, to give years of service.

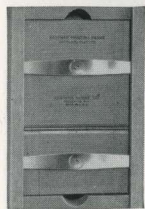


Kodak Auto-Mask Printing Frame \$1.50

EASTMAN PRINTING FRAMES

THESE frames have a two-section hinged back, with clamps to hold the negative and paper firmly.

Construction is of beech, a high grade wood that assures rigidity and long life, and obviates danger of warping.

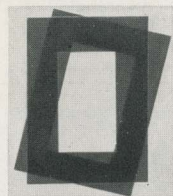


For 2¼ x 3¼-inch plates and V. P. K. or smaller film negatives	\$0.35
For 2½ x 4¼-inch or smaller film negatives40
For 3¼ x 4¼-inch plates and 2¼ x 3¼-inch or smaller film negatives40
For 3¼ x 5½-inch or smaller film negatives40
For 3¼ x 5½-inch plates45
For 4 x 5-inch plates or films40
For 5 x 7-inch plates or films55
For 3½ x 12-inch films	1.60

Eastman Printing Frames are supplied without glass

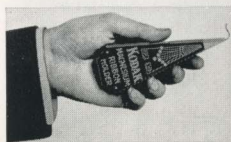
KODALOID PRINTING MASKS

THESE transparent, durable masks, orange-red in color, have openings of various convenient sizes. Their transparency enables the user to see clearly the portions of the picture which are being masked off. The masks are supplied either with or without trimming guides, which provide for a ⅛-inch margin.



For 3A Frames, 8 masking sizes, each	\$0.10
For 4 x 5 Frames, 6 masking sizes, each10
For 5 x 7 Frames, 5 masking sizes, each15

KODAK MAGNESIUM RIBBON HOLDER



KODAK Magnesium Ribbon provides an intensely bright light suitable for exposing Velox, and an excellent supplementary illumination for portraiture, copying and interior work in general. It is furnished in the handy holder illustrated. It is best ignited by means of the special alcohol lamp listed below. A forward

movement of the thumb pushes out the desired length of ribbon through a small opening, while a reverse movement extinguishes the ribbon instantly. Thus, the Kodak Magnesium Ribbon Holder is another of the many Eastman accessories that, when called upon, are ready to add so much to photographic pleasure and convenience.

Kodak Magnesium Ribbon Holder	\$0.50
Alcohol Lamp50

VELOX PAPER

"LOOK FOR VELOX ON THE BACK"

VELOX is a non-abrasion developing-out paper, ideal for amateur work.

It takes into account the fact that amateur pictures are made under greatly varying light conditions, its four degrees of contrast fitting every type of amateur exposure. If the negative is at all printable, some one of these four degrees will give the proper and most pleasing rendering of highlights and shadows. Velox is also supplied in two surfaces, giving the amateur a choice in the matter of finish.



VELOX PRINTS ARE IDENTIFIABLE BY THE NAME "VELOX" TINTED LIGHTLY ON THE BACK.

GRADE	SURFACE	CONTRAST				*Furnished also in Double-weight Velox. Double-weight papers require no mount and when printed under a mask, which will insure a white margin, offer a very artistic effect.
Velvet Velox	Semi-Gloss	1	2	3	4	
Glossy Velox	Enameled	1	*2	*3	4	

PRICES

SIZE IN INCHES	Single Weight		Double Weight	
	2 Dozen	1 Gross	2 Dozen	1 Gross
1 7/8 x 2 3/4 (for 1 5/8 x 2 1/2 negatives)	\$.25	\$0.85	\$0.30	\$1.05
2 1/2 x 3 1/2 (for 2 1/4 x 3 3/4 negatives)	.35	1.20	.45	1.50
2 3/4 x 4 1/2 (for 2 1/2 x 4 1/4 negatives)	.35	1.50	.45	1.90
3 1/2 x 4 1/2 (for 3 1/4 x 4 1/4 negatives)	.40	1.85	.50	2.30
3 3/8 x 5 1/8 (for 2 7/8 x 4 7/8 negatives)	.40	1.95	.50	2.45
3 1/2 x 5 3/4 (for 3 3/4 x 5 1/2 negatives)	.50	2.35	.65	2.95

In addition to the sizes listed above, Velox is available in exact negative sizes (except Vest Pocket) and in post cards.

VELOX SUNDRIES

THIS simple list of sundries gives the amateur all the chemicals he needs for the manipulation of Velox Paper.

Nepera Solution, 4-ounce bottle	\$.28
Ditto, 16-ounce bottle	.84
Nepera Auxiliary Powders (for converting Nepera Solution to a film or plate developer), package of 12	.35
Eastman M. Q. Developer, package of 5 glass tubes	.30
Velox Re-developer Tubes for Sepia Toning, package of 12	1.08
Velox Liquid Hardener, 4-ounce bottle	.25
Ditto, 8-ounce bottle	.35
Kodak Acid Fixing Powder for fixing Velox prints, 1 pound	.25
Ditto, 1/2 pound	.15
Ditto, 1/4 pound	.10

KODAK VELVET GREEN PAPER

KODAK Velvet Green faithfully reproduces the rich green tone of nature and gives effects that are unusual without being freakish. It lends warmth and realism. The manipulation is similar to that of Velox.

PRICES

SIZE IN INCHES	Single Weight		Double Weight	
	2 Dozen	1 Gross	2 Dozen	1 Gross
1 7/8 x 2 3/4 (for 1 5/8 x 2 1/2 negatives)	\$0.20	\$0.70	\$0.25	\$0.90
2 1/2 x 3 1/2 (for 2 1/4 x 3 1/4 negatives)	.25	.95	.30	1.20
2 3/4 x 4 1/2 (for 2 1/2 x 4 1/4 negatives)	.25	1.20	.30	1.50
3 1/2 x 4 1/2 (for 3 1/4 x 4 1/4 negatives)	.35	1.50	.45	1.90
3 1/8 x 5 1/8 (for 2 7/8 x 4 7/8 negatives)	.35	1.55	.45	1.95
3 1/2 x 5 3/4 (for 3 1/4 x 5 1/2 negatives)	.40	1.90	.50	2.40

In addition to the sizes listed above, Kodak Velvet Green is available in exact negative sizes (except Vest Pocket) and in post cards.

SOLIO PAPER

ABROWN-TONED paper for printing proofs by sunlight. Proofs may be made permanent by use of Solio toning and fixing agents.

PRICES

SIZE IN INCHES	2 Dozen	1 Gross
1 7/8 x 2 3/4 (for 1 5/8 x 2 1/2 negatives)	\$0.20	\$0.65
2 1/2 x 3 1/2 (for 2 1/4 x 3 1/4 negatives)	.25	.90
2 3/4 x 4 1/2 (for 2 1/2 x 4 1/4 negatives)	.25	1.15
3 1/2 x 4 1/2 (for 3 1/4 x 4 1/4 negatives)	.30	1.40
3 1/8 x 5 1/8 (for 2 7/8 x 4 7/8 negatives)	.30	1.45
3 1/2 x 5 3/4 (for 3 1/4 x 5 1/2 negatives)	.40	1.75

Solio is also available in exact negative sizes, except Vest Pocket.

Solio Toning and Fixing Powders, per carton, 5 tubes, \$0.35. Solio Combined Toning and Fixing Solution, per 8-ounce bottle, \$0.50; 4-ounce bottle, \$0.30.

VELOX WATER COLOR OUTFIT

PHOTOGRAPHIC prints and lantern slides can be colored easily, artistically, by using Velox Colors. They are transparent and blend readily, so that the desired effect is obtained without experience or special ability. The outfit includes twenty-six stamps of each of twelve colors, and three brushes. It comes in a white enamel case, the inside cover of which is used as a mixing palette.



Velox Water Color Outfit, including book, three brushes and case . . . \$1.00
 Velox Transparent Water Color Stamps, complete booklet, 12 colors50
 Separate Color Leaves, per sheet04
 Set of three Special Brushes50

Compliments of the Digitized Kodak Catalog Project: 1886 - 1941

KODAK AUTO-FOCUS ENLARGER



THE easiest and most efficient means of making amateur enlargements is supplied by this simple apparatus, which clamps to any table.

The enlarger focuses itself. As the camera is moved up or down to form an image of the desired size a cam-and-lever arrangement maintains the focus at critical sharpness. Enlarging with this outfit is therefore as rapid and easy as contact printing. And the Kodak Anastigmat lens supplied assures big prints that are professional in quality.

Plate or film negatives up to 4 x 6 inches can be accommodated, and enlarged from 1½ to 3½ diameters. The largest possible print is 14 x 21 inches. V.P.K. negatives can be enlarged to 5½ x 8¾.

The ventilated lamp house holds an electric lamp (not supplied) of from 75 to 200 watts. A diffusing disc is supplied separately for "soft focus" effects.

Kodak Auto-Focus Enlarger with Kodak Anastigmat lens, electric cord and plug, set of six flexible metal masks. \$33.00
 Diffusing Disc 1.00

EASTMAN ENLARGING PAPERS

THESE bromide enlarging papers give unsurpassed quality in the big print and offer a wide variety of effects. Best of all, they are just as easy to use as Velox.

Royal Bromide is a buff paper, especially suited to the making of sepia enlargements by redevelopment. Eastman Portrait Bromide is particularly adapted to enlargements from portrait negatives. It is supplied in these surfaces and colors: D—(white) Rough Lustre; E—(buff) Rough Lustre; M—(white) Old Master; O—(buff) Old Master. The Old Master surface, especially, lends distinctive character to portraits without sacrificing detail or brilliance.

P. M. C. Bromide is a paper of excellent all-around quality. It is supplied in ten different grades, some of them single weight and others double weight. There is a variety of stocks and surfaces, and some of the grades are made in two or three degrees of contrast to fit various types of negatives. P. M. C. can, therefore, be counted on to suit practically every taste and requirement.



WHETHER YOU MAKE THEM YOURSELF OR HAVE YOUR PHOTO FINISHER MAKE THEM, ENLARGEMENTS MULTIPLY THE FUN YOU GET FROM YOUR PICTURES.





EASTMAN ALBUMS

LASTING pleasure from Kodak pictures is assured by mounting them in albums. The attractive and durable Eastman Albums, a few of which are shown here, are identified by the oval Eastman seal. Make your selection at your Kodak dealer's and look for the seal on the inside back cover.



THE VALENCIA ALBUMS

CHOICE of three shades of covers—gunmetal grey with grey leaves—chestnut brown, and olive grey with black leaves. The covers are ornamented with a beautiful engraved and duotinted embossed design. The word "Photographs" in antique metal colors adds a deft, finished touch. An attractive album at an attractive price.



7 x 11, B-1, Grey cover, Grey leaves	\$2.00	11 x 14, D-1, Grey cover, Grey leaves	\$3.00
7 x 11, B-2, Olive cover, Black leaves	2.00	11 x 14, D-2, Olive cover, Black leaves	3.00
7 x 11, B-3, Brown cover, Black leaves	2.00	11 x 14, D-3, Brown cover, Black leaves	3.00

Package of 12 extra leaves, Size B, Black (7 x 11) \$0.18; Size S, Grey (7 x 11) \$0.25;
Size E, Black (11 x 14) \$0.40; Size T, Grey (11 x 14) \$0.50

LIBRARY ALBUMS



*De Luxe
Library Album*

THESE two Library Album styles fill the demand for albums in book form, readily placed in the bookcase when not wanted. In keeping with this idea, the words "Kodak Library" are stamped in gold on the rounded back.

Choice of genuine seal grain, black leather, finished on cover with a pressed book design—and de luxe artificial leather cover, with an exclusive book design and artistic coloring.

The loose-leaf arrangement for holding the fifty black leaves is inside the cover—therefore, there are no projections to mar table or desk on which album may be placed.

B, Black leather, 6½ x 9 (size of leaf from folding edge)	\$3.25
M, De Luxe artificial leather, 6½ x 9 (size of leaf from folding edge)	2.50

Extra leaves, package of 12, size L, \$0.18

THE KODAK ALBUM

LOOSE-LEAF, open-back style. Choice of genuine leather cover in black and olive blend—both surfaced in an etched pine needle effect. Fifty black, round-cornered leaves held in place with silk-finished cord through cover and metal tubes.



5 x 8, RA, Black Cover	\$2.25	SA, Olive Cover	\$2.25
7 x 11, RB, Black Cover	3.25	SB, Olive Cover	3.25
10 x 12, RC, Black Cover	4.50	SC, Olive Cover	4.50
11 x 14, RD, Black Cover	5.50	SD, Olive Cover	5.50

Package of 12 extra leaves, Size A (5 x 8) \$0.15; Size B (7 x 11) \$0.18;
Size C (10 x 12) \$0.30; Size E (11 x 14) \$0.40

THE LUCERNE ALBUM



HERE is an album that "stands out" from the crowd. The cover is a beautiful glazed brown leather, finished in a pig-skin surface—brightened with genuine gold leaf tooling around edges. The leaves are held in place by a leather thong through cover of the oblong style; in the library style, by a silk-finished cord. Its appearance bespeaks quality—richness. It is especially suitable as a gift.

B, 7 x 11, Oblong	\$4.50
D, 11 x 14, Oblong	8.50
E, 8 x 10, Upright (a library book style)	4.50

Package of 12 extra leaves, Size X (7 x 11) Brown, Oblong, \$0.25
 Size O (11 x 14) Brown, Oblong, \$0.50; Size Z (8 x 10) Brown, Upright, \$0.40

THE JUNO ALBUM

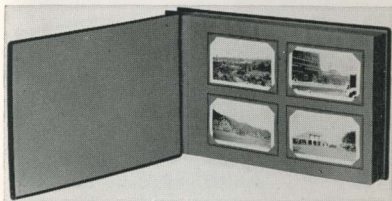
LOOSE-LEAF, open-back style. Fifty black loose leaves held in place by metal tubing and cord through covers. Brown or black embossed English grain imitation leather cover. The word "Photographs" stamped in gilt on cover.



5 x 8, BA, brown or CA, black	\$1.10	10 x 12, BC, brown or CC, black	\$2.25
7 x 11, BB, brown or CB, black	1.50	11 x 14, BD, brown or CD, black	2.50

Package of 12 extra leaves, Size A (5 x 8) \$0.15; Size B (7 x 11) \$0.18;
 Size C (10 x 12) \$0.30; Size E (11 x 14) \$0.40

SIMPLEX ALBUM



CORNERS of prints are inserted underneath raised corners, no pasting and in most cases no trimming necessary, as a slight variation in the size of the prints is provided for by the ample slots. Loose-leaf style. Artificial leather cover finished with an embossed colored modernistic design. Each album holds 200 prints on its slotted pages, and is provided with ten plain leaves for odd-size prints.

B1, 8 1/2 x 12, for 2 1/4 x 3 1/4 prints	\$3.50	B3A, 10 3/4 x 17 3/4, for 3 1/4 x 5 1/2 prints	\$4.25
B1A, 9 x 13 3/4, for 2 1/2 x 4 1/4 prints	3.75		

Package of 6 extra leaves: S1 for 2 1/4 x 3 1/4 prints, \$0.55; S2 for 2 1/2 x 4 1/4 prints, \$0.60; S3 for 3 1/4 x 5 1/2 prints, \$0.65; S4 for odd-size prints, B1 album, \$0.15; S5 for odd-size prints, B1A album, \$0.20; S6 for odd-size prints, B3A album, \$0.25.

THE RHODES ALBUM

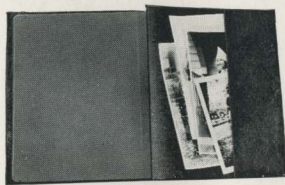
LOOSE-LEAF, open-back style—choice of genuine black grain leather or embossed black book cloth, with 50 black leaves held in place by metal tubes and cord through cover. Cover stamped with word "Photographs."

5 x 8, CA, cloth	\$0.90	LA, leather	\$2.00
7 x 11, CB, cloth	1.25	LB, leather	2.75
8 x 10, CE, cloth	1.50	LE, leather	3.10
10 x 12, CC, cloth	2.00	LC, leather	4.50
11 x 14, CD, cloth	2.25	LD, leather	5.00

Package of 12 extra leaves, Size A (5 x 8) \$0.15; Size B (7 x 11) \$0.18;
 Size K (8 x 10) \$0.20; Size C (10 x 12) \$0.30; Size E (11 x 14) \$0.40



THE ALBUM PORTFOLIO



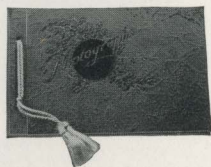
DESIGNED for the library or living-room table. Choice of covers—Polychrome artificial leather and genuine leather finished in antique pattern. Loose leaves in a light brown shade permit titling to be written with ordinary black ink.

An added feature is the practical Portfolio attached to the inside of the back cover for holding enlargements—keeping them flat, clean, in an easily “findable” place.

A1—Artificial Leather Cover, \$5.00; A2—Genuine Leather Cover, \$7.50
 Outside measurement of Album, 12" x 14½"
 Extra Leaves AP 1—Brown, \$0.50 per dozen

THE OUTING ALBUM

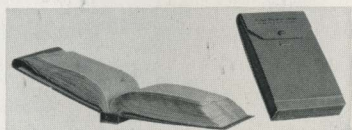
A LOOSE-LEAF album with embossed paper cover, has twelve grey leaves held in place by cord through cover, finished with a beautiful design in high relief—just right to give to friends as an inexpensive souvenir of some event recorded photographically, such as a vacation, auto trip or picnic.



No. 1 (4¾ x 7) \$0.25 No. 2 (7 x 10) \$0.35
 Package of 6 extra leaves, Size P (4¾ x 7) \$0.10; Size R (7 x 10) \$0.15

KODAK NEGATIVE ALBUMS

WITH a Kodak Negative Album the amateur can store film negatives in individual translucent envelopes, where they can be viewed individually—without being removed. They are ready for reprints, safe from loss or damage. Each album holds 100 negatives. A neat index is included.



For 100 negatives, 1⅝ x 2½ \$1.25	For 100 negatives, 4 x 5 \$1.50
For 100 negatives, 2¼ x 3¼ 1.25	For 100 negatives, 3¼ x 5½ 1.50
For 100 negatives, 2½ x 4¼ 1.25	For 100 negatives, 5 x 7 1.75
For 100 negatives, 3¼ x 4¼ 1.25	

KODAK DRY MOUNTING TISSUE



THIS tissue offers one of the easiest and most satisfactory methods of mounting prints, and through its use your pictures show up to better advantage. Just fix the tissue on the print, lay both on the mount and press with a warm flat-iron. In this way pictures are mounted smoothly and securely, without fuss or bother.

Packages of from 1 to 3 dozen, according to size, to fit Kodak negatives, \$0.10

KODAK PHOTO PASTE

AN EXCELLENT white adhesive, both for mounting prints and for general household use.

1 1/8-ounce tube \$0.10
 2-ounce tube15



EASTMAN PHOTO PASTE

AHIGH quality paste. It is white and will not discolor the print.

4-ounce jar \$0.25

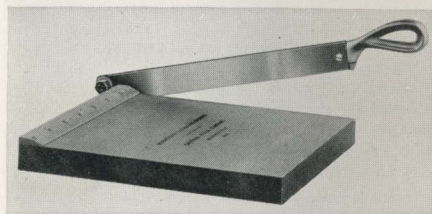
KODAK LIQUID GLUE

AN EXCELLENT glue for any purpose. With it the amateur can do mounting by simply tacking down the corners instead of covering the entire print with adhesive.

Per tube \$0.15



KODAK TRIMMING BOARDS



STAUNCHLY constructed, in sizes suited to the amateur photographer's needs. The boards are of hard wood, the blades of fine quality steel, and the rules are plainly marked.

No. 1, capacity 5 x 5 inches \$0.75
 No. 2, capacity 7 x 7 inches 1.00

KODAK PRINT ROLLER

A HIGHLY convenient aid in mounting. The frame is nickered and the rubber rolls are six inches long. The desired pressure is easily exerted by means of the overhead handle.

Kodak Print Roller \$1.00



FLEXO PRINT ROLLER



THE four-inch rubber roll is supported in a black enamel frame.

Flexo Print Roller \$0.35

TESTED CHEMICALS

CERTAINTY of good results in making negatives and prints depends as much on the quality of your chemicals as on any other one thing. All Kodak chemicals are tested both photographically and for purity before the E. K. C. tested seal is allowed to be affixed to them.



Acetic Acid, 28 per cent pure, per 1-pound bottle	\$0.35
Acid Fixing Powder, Kodak, per pound package25
Ditto, per 1/2-pound package15
Ditto, per 1/4-pound package10
Alum Potassium, powdered, per pound20
Citric Acid, 4-ounce bottle42
Elon, per 1 ounce52
Hydrochinon, per 1-ounce can22
Hydrochinon Developer Powders, Eastman, per 1/2 dozen30
Ditto, per package of 5 powders, in sealed glass tubes35
Intensifier, Eastman, per glass tube15
Kodolon, per 1 ounce47
M. Q. Developer, Eastman, per package of 5 tubes30
Opaque, Eastman, No. 1, per tube25
Potassium Bromide, granular, per ounce can12
Pyro Crystals, Permanent, per 1-ounce bottle27
Pyro Developer Powders, Eastman, per 1/2 dozen30
Re-developer, Velox, including bleaching agent, per package of 12 tubes	1.08
Reducer and Stain Remover, Eastman, per box of 5 tubes50
Sodium Carbonate, Eastman Tested (desiccated), per 1-pound bottle40
Sodium Sulphite, Eastman Tested (desiccated), per 1-pound bottle45
Sodium Thiosulphate (Hypo), granular, per pound18
Special Developer Powders, Eastman, per package of 5, in sealed glass tubes35
Tropical Developer, Eastman, 5 powders, in sealed glass tubes40

For Velox preparations, see page 56. For Solio preparations, see page 57.
For Tank Developer Chemicals, see page 49.

MISCELLANEOUS

Cable Releases, each	\$0.35	Rubber Focusing Cloth, per yard	1.00
Ferrotype Plates, Special (for making glossy prints), 10 x 14, light20	Spotting Colors, Eastman (consist of three colors—black, white and sepia), per set25
10 x 14, heavy30	Squeegee, Eastman Special, 8-inch	1.25
Finger Tips, set of 315	Stirring Rod, Hard Rubber30

TERMS

THE prices in this catalog are strictly net, except to regular dealers who carry our goods in stock. THESE PRICES ARE, HOWEVER, SUBJECT TO CHANGE WITHOUT NOTICE. For the convenience of our customers, we recommend that they make their purchases from a dealer in photographic goods, as by so doing they can save time and transportation charges.

EASTMAN KODAK COMPANY, ROCHESTER, N. Y.

GET THE FILM THAT GETS THE PICTURE



THE DEPENDABLE FILM IN THE YELLOW BOX

KODAK is the registered and common-law Trade Mark of the Eastman Kodak Company, and cannot be rightfully applied except to goods of their manufacture. When a dealer tries to sell you, under the Kodak name, a camera or films or other goods not of their manufacture, you can be sure that he has an inferior article that he is trying to market on the Kodak reputation.

ONLY EASTMAN MAKES THE KODAK

H. S. Courson & Son
117 East State St.
KENNETT SQUARE, PA.