

K O D A K



The Digitized Kodak Catalog Project (1886 - 1941): A Very Brief History

Most camera collectors at some point in their collecting careers pass through a Kodak phase - some never come out of it. And if there ever was one name that came to be associated with both cameras and collecting, it was Kodak.

George Eastman received his first patent (for coating dry plates) and bought his first manufacturing facility in 1880, and in 1881 he started the Eastman Dry Plate Company. In 1886 he received a patent for the near-mythical Eastman Detective Camera, but it wasn't until 1888 that the first camera bearing the name "Kodak" was introduced.

One of the nice things about collecting Kodak is that the product line is pretty well known, and because the company produced annual catalogs for many years, collectors can be reasonably sure of what they're looking at, when it was made, the variations and so on - presuming that they have access to either the appropriate catalog, or a number of the many books which document Kodak, each to some greater or lesser extent.

But what would be really nice would be to have a complete set of Kodak catalogs in an easily accessible form and readily available. And since the advent of portable computing devices (PC, Macintosh, etc.) that's been possible - except for the difficulty of assembling a complete set of Kodak catalogs in one spot and then scanning them and making the results available.

The idea of digitizing a complete set of Kodak catalogs has kicked around the collecting community for many years. It's been proposed on a number of online forums, during meetings of various photohistory groups, and for years there have been many incomplete "Kodak CDs" on eBay but at best, they only contained a few catalogs - whatever the owner had available. But assembling a complete set of catalogs, then scanning and processing perhaps 3,000 to 4,000 pages, was a daunting task - if not completely overwhelming - and nothing ever came of it.

Until now.

In early 2010, the idea came up again, but this time we - "we" as in "the collecting community" - were lucky. A number of collectors were willing to loan their catalogs to this project and a couple of insane - wait, let's call them "dedicated" - dedicated enthusiasts - neither of whom collected Kodak, but both of whom enjoyed the challenge of such a project - were willing to put in the time and effort to scan and pull together the entire set of catalogs into a full-blown Kodak Catalog Digital Library.

Our initial objective was to include just the annual amateur catalogs, but it turns out that many cameras only appear in certain professional and specialty catalogs. We included as many of those as we could obtain so that almost every Kodak camera made in the US, Canada and Europe, would be documented - at least up to about 1941. After that, it becomes much more difficult as Kodak stopped producing annual catalogs as their product line became increasingly more diversified.

However, even with the additional "non-amateur" catalogs, we weren't completely successful in illustrating "every" camera Kodak ever made. There are an elusive few that might appear in specialty catalogs that we simply couldn't track down. If you can't find one of those odd cameras, that's no doubt why. We may do a revision at some point in the future if someone is willing to loan us a catalog that includes a camera that isn't already recorded.

In this project, a total of 67 catalogs were used from 1886 through 1941 including a number of professional and dealer catalogs, and in some years, two or even three different catalogs to cover all the bases. With the cooperation of a number of dedicated collectors, we were able to pull together all those catalogs and in June 2010, the project started in earnest.

By November 2010, we had scanned everything we needed and eventually all 67 catalogs were then reassembled as image folders and converted to the universally accepted PDF format and finally, converted into individually searchable PDFs which could then be searched globally as a collection.

For those of you interested in the statistics: about 200 hours of scanning time (we never want to hear that sound again), 67 catalogs and 3,908 page scans - which generated 7,917 original and processed images - and 11.4 GB of disk space. Additionally, another 100+ hours of technical development time was needed to convert the digital catalogues into a fully searchable "knowledgebase" that could be launched from most any standard web browser.

The overwhelming number of catalogs was loaned to us by that most remarkable of Kodak collectors, Charlie Kamerman of Eagle Creek, Oregon. Without Charlie, it's very doubtful that this project could even have been attempted.

But as it turned out, even Charlie didn't have all the publications that were needed, but he was able to track down the five that he lacked and was able to secure either a copy or high resolution images that we could work with. And so, our thanks to the contributors of the catalogs and scans that we used:

Charlie Kamerman for the vast majority of catalogs used and all his help,
Steve Shohet for loaning a variety of test catalogs,
Ryerson University (Toronto) for the 1886 Eastman Catalog
George Layne for the 1890 New Kodaks Catalog,
Mike Kessler for the 1891 Dealer Display Catalog,
Ralph London for the 1893 UK Catalog,
Michael Pritchard for the 1897 UK Catalog.

The digital side of the project - also known as "all of the work" - was done by Rob Niederman of Medina, Minnesota, and Milan Zahorcak of Tualatin, Oregon. Remarkably we're still friends and in a few years, we'll probably be able to talk about this project rationally.

And there you have it, a more-or-less done deal. We're fairly sure that it isn't quite perfect, and expect there will be some carping about something or other; but all-in-all, we believe this to be a pretty good product and can now move on to something else.

Our thanks to all of those involved.

Rob Niederman
Milan Zahorcak

Fall, 2011

KODAKS AND KODAK SUPPLIES



1928

EASTMAN KODAK COMPANY

ROCHESTER, NEW YORK

The Kodak City



Enlarged from negative made with a 3A Autographic Kodak *Special*
equipped with Kodak Anastigmat lens *f.6.3*

MODERN KODAKS

PICTURES in the rain? . . . impossible! Snapshots indoors? . . . it can't be done! A few years ago you might have said it.

But today, with a Modern Kodak, you can take pictures under conditions that might have discouraged even experts a short time ago.

Important developments in the manufacture of lenses have made possible these remarkable photographic results.

Today, due to Eastman enterprise and the tremendous Eastman manufacturing resources, you can get extra-rapid, extra-efficient lenses on cameras of moderate price.

For example, on the \$20 1A Pocket Kodak is now supplied a lens that in 1925 was not available on any camera selling for less than \$40.

To you, this not only means better pictures. It also means that your photographic day is lengthened . . . picture opportunities are multiplied many times. It is no longer necessary to have your subject in direct sunlight. You can make pictures in the shade . . . indoors under favorable light conditions . . . on rainy days. Pictures you never previously thought of taking are simple snapshots now.

The Modern Kodak is simplicity itself. Everything possible has been made automatic. Things to adjust have been reduced to a minimum. Thus picture-making, good picture-making, through the medium of the Modern Kodak, has been made easier than ever before.

Read about the Modern Kodak in the pages that follow.

EXCLUSIVELY EASTMAN

With a Kodak—and with no other camera—you can write the date and title on the film at the time.

This feature is invaluable for certain types of pictures. No picture of a child,

for example, is complete without the date. For travel pictures, either at home or abroad, the name of the place is essential.

The Autographic feature is just another example of Kodak completeness.

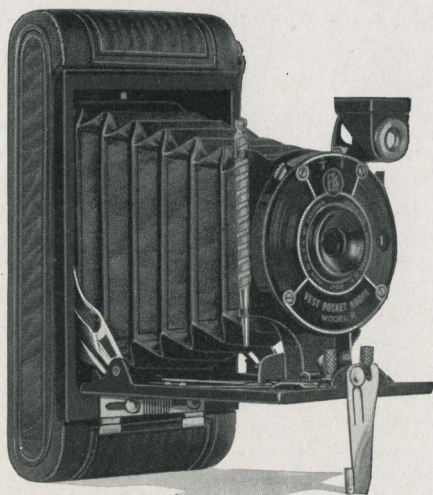
KODAKERY AND THE SERVICE DEPARTMENT

The Eastman Kodak Company's interest in the amateur does not end with the sale of a camera—quite the contrary. A case in point is **KODAKERY**, a fully illustrated monthly magazine on amateur photography which is sent free to all purchasers of Kodak, Brownie or Hawk-Eye cameras who simply sign the coupon in the

manual and then mail it in to Rochester.

Another instance is the Service Department, with its corps of experts who invite questions on photographic subjects and answer them fully in personal letters.

There's just one reason for **KODAKERY** and the Service Department—Eastman's desire to serve.



VEST POCKET KODAK, *MODEL B*

PICTURE SIZE

$1\frac{5}{8} \times 2\frac{1}{2}$

Look at it, actual size, on the opposite page. You can hide it with your hand—a practical, dependable picture maker and yet so small that you can wear it like a watch. There's always a place for the V. P. K. and chances to use it are constantly springing up. You'll want it with you—always.

Model B Vest Pocket Kodak is amazingly easy to use. In the first place, loading is simplified. Then the focus is fixed so you needn't disturb yourself over distance. Sight the subject, press the release and the picture's made. That's about all there is to it.

Because of its instant availability—the fact that it's out of the pocket and "on the point" so to speak before the picture chance has time to get away, amateurs who include the Vest Pocket Kodak in their photographic equipment have more than ordinarily interesting albums. They have usually managed to secure a number of snapshots

quite out of the common run—street incidents, for example, and “off guard” pictures about the neighborhood.

Its price at \$5 looks low—and it is.

It's simply the result of careful planning by Eastman engineers, coupled with high-g geared, quantity production.

The V. P. K., Model B, is good looking with its smart iridescent finish.

Women fancy it and slip it in their handbags. Men like it and tuck it in their vest pockets.

Both take it with them wherever they go.

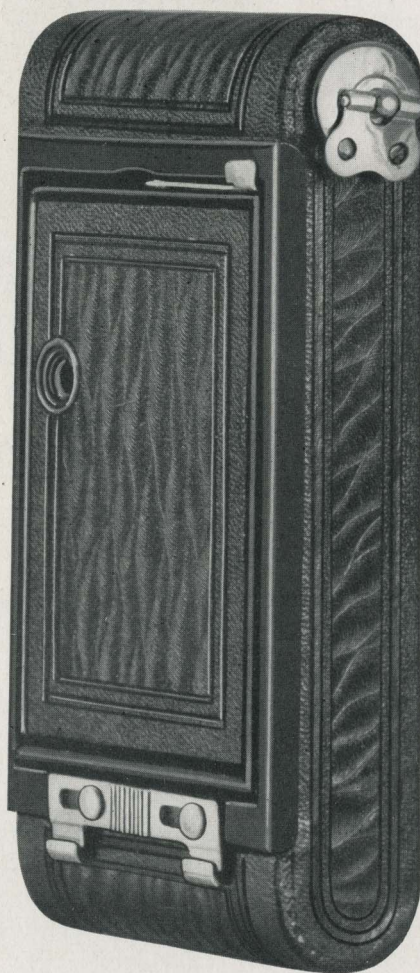
Vest Pocket Kodak, Model B, like all Kodaks, is autographic.

DETAILS

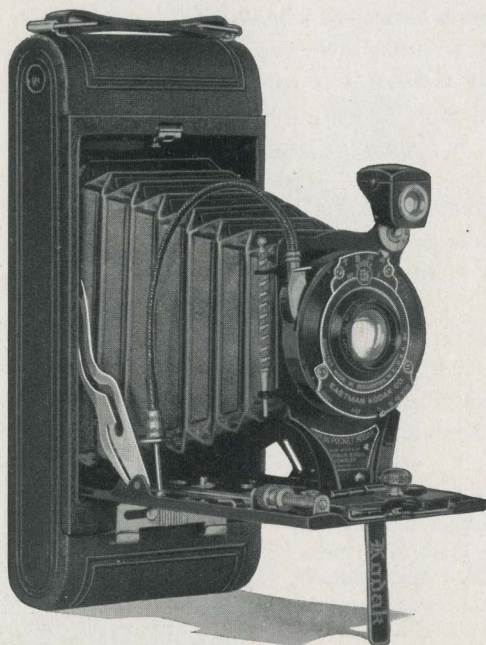
Capacity without reloading: 8 exposures. Focus: Fixed. Lens: Meniscus. Shutter: Vest Pocket Rotary, with four stops, *instantaneous* and *time* actions. Brilliant finder, reversible for vertical or horizontal pictures. Body: All metal, with covering in iridescent finish; fittings finished in nickel and black enamel. One tripod socket, for vertical pictures. Black bellows. Autographic feature.

PRICES

Vest Pocket Kodak, Model B, with Meniscus Lens and Vest Pocket Rotary Shutter	\$5.00
Black Sole Leather Case, with strap	1.25
Belt Carrying Case (russet leather)	1.25
Autographic Film Cartridge, 8 exposures (No. A 127) .	.25
Kodak Portrait Attachment (see page 42)75



Actual size, V. P. K., closed



NOS. 1 AND 1A POCKET KODAKS

PICTURE SIZES

No. 1, $2\frac{1}{4} \times 3\frac{1}{4}$; No. 1A, $2\frac{1}{2} \times 4\frac{1}{4}$

HERE are two splendid examples of the Modern Kodak, with which successful picture-making is possible under conditions that might have discouraged even experts a short time ago.

The particular achievement is the lens.

Due to Eastman enterprise you find on either of these cameras extra-fast, extra-efficient lens equipment without a price premium. Specifically, on the \$20 1A Pocket Kodak is now supplied a lens (Kodak Anastigmat $f.6.3$) which in 1925 was not available on any camera under twice that figure—\$40.

This simply means that this faster lens makes possible pictures

indoors under favorable light conditions, snapshots in the rain, in dull light or bright, daylight to dusk.

See these Modern Kodaks at your dealer's. You'll find them worth your while.

Of course, they're autographic.

DETAILS

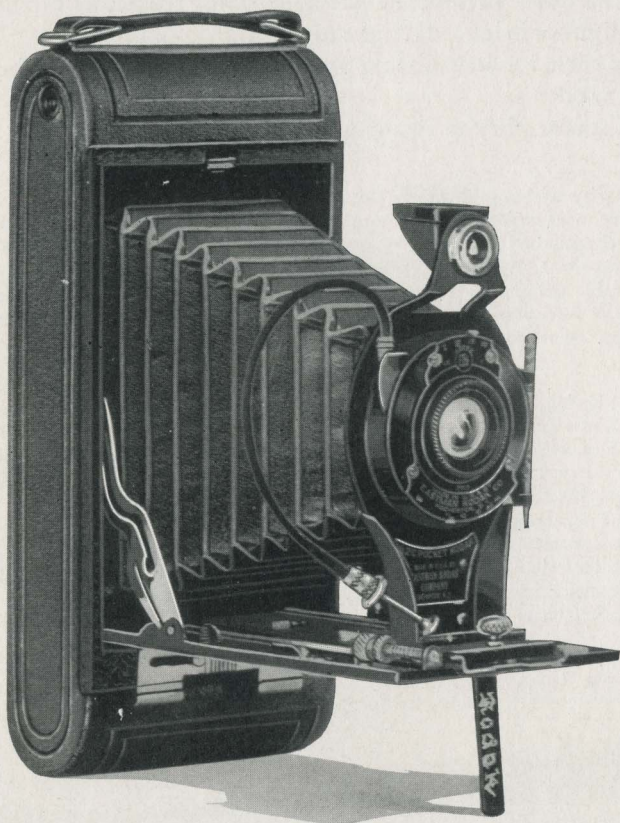
Capacity without reloading: No. 1, 6 exposures; No. 1A, 12 exposures. Focus: Adjustable, with worm-screw focusing device. Lenses: Meniscus Achromatic; Kodar *f*.7.9, $4\frac{3}{8}$ -inch focus on No. 1; $5\frac{1}{8}$ -inch focus on No. 1A; or Kodak Anastigmat *f*.6.3, $4\frac{1}{8}$ -inch focus on No. 1; $5\frac{1}{8}$ -inch focus on No. 1A. Shutter: Kodex, speeds $\frac{1}{25}$ and $\frac{1}{50}$ second, with cable and finger release, *time* and *bulb* actions. Brilliant finder, reversible for horizontal or vertical pictures. Two tripod sockets. Body: All metal, durably and smartly covered. Metal parts in nickel and black. Black bellows. Autographic feature.

PRICES

	No. 1	No. 1A
Pocket Kodak, with Meniscus Achromatic Lens and Kodex Shutter . . .	\$11.00	\$12.00
With Kodar Lens <i>f</i> .7.9 and Kodex Shutter	14.00	15.00
With Kodak Anastigmat Lens <i>f</i> .6.3 and Kodex Shutter	19.00	20.00
Levant Grain Leather Case, with strap	2.50	3.00
Autographic Film Cartridge, 12 exposures (No. A 116) for No. 1A. . .		.60
Ditto, 6 exposures (No. A 120) for No. 1; (No. A 116) for No. 1A . .	.25	.30
Kodak Portrait Attachment (see page 42)75	.75
Kodak Portrait Attachment for No. 1 Pocket Kodak, with Meniscus		
Achromatic lens (see page 42)50	
Kodak Self Timer (see page 52)	1.25	1.25



This picture, actual size, made with 1A Pocket Kodak



NOS. 2C AND 3A POCKET KODAKS

PICTURE SIZES

No. 2C, $2\frac{7}{8} \times 4\frac{7}{8}$; No. 3A, $3\frac{1}{4} \times 5\frac{1}{2}$

MUCH has been accomplished in these Modern Kodaks, not only in making picture-making easier but in lengthening the photographer's day.

For this the lens is responsible. Both the 2C and the 3A may be obtained equipped with a fast lens, Kodak Anastigmat $f.6.3$, at a price

that is moderate to say the least. Actually, equipment to match this would have cost twice as much not so long ago.

The Modern Kodak is an Eastman achievement. It gives the amateur what he has long wanted—fast lens equipment without marked price increase.

DETAILS

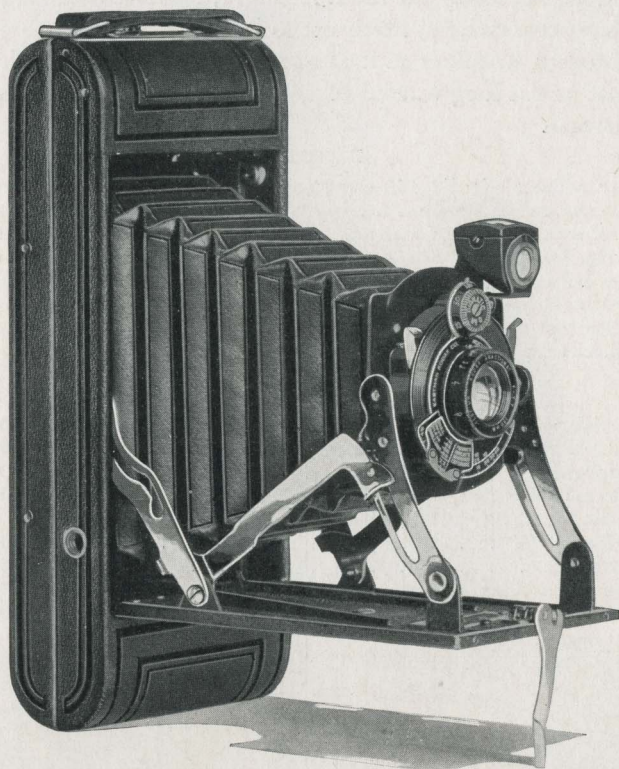
Capacity without reloading: 10 exposures. Focus: Adjustable, with worm-screw focusing device. Lenses: Meniscus Achromatic; Kodak *f*.7.9, 6 $\frac{1}{8}$ -inch focus on No. 2C; 6 $\frac{7}{8}$ -inch focus on No. 3A; or Kodak Anastigmat *f*.6.3, 6-inch focus on No. 2C; 6 $\frac{7}{8}$ -inch focus on No. 3A. Shutters: Kodex, speeds $\frac{1}{25}$ and $\frac{1}{50}$ second; Kodak Ball Bearing, speeds $\frac{1}{25}$, $\frac{1}{50}$ and $\frac{1}{100}$ second; both with cable and finger release, *time* and *bulb* actions. Brilliant finder, reversible for horizontal or vertical pictures. Two tripod sockets. Body: Aluminum, durably and smartly covered, with metal parts in nickel and black enamel. Black bellows. Autographic feature.

PRICES

	No. 2C	No. 3A
Pocket Kodak, with Meniscus Achromatic Lens and Kodex Shutter	\$15.00	\$17.00
With Kodak Lens <i>f</i> .7.9 and Kodex Shutter	18.00	20.00
With Kodak Anastigmat Lens <i>f</i> .6.3 and Kodak Ball Bearing Shutter	23.00	25.00
Levant Grain Leather Case, with strap	3.50	3.75
Autographic Film Cartridge, 10 exposures (No. A 130) for No. 2C; (No. A 122) for No. 3A75	.90
Ditto, 6 exposures45	.55
Kodak Portrait Attachment (see page 42)75	.75
Kodak Self Timer (see page 52)	1.25	1.25



*Reduced from a negative made with 2C Pocket Kodak, with Kodak Anastigmat lens *f*.6.3*



NOS. I AND 1A POCKET KODAKS SERIES II

PICTURE SIZES

No. 1, $2\frac{1}{4} \times 3\frac{3}{4}$; No. 1A, $2\frac{1}{2} \times 4\frac{1}{4}$

As you open the camera, the lens automatically springs into picture-making position—a saving of seconds where seconds count. You get the picture before it goes.

Series II Kodaks are clever in construction and, covered as they are with pin grain cowhide, smart in appearance as well.

The fixed focus models are equipped with Eastman-made lenses and two-speed Kodex shutters.

Focusing models offer two equipments:

Kodak Anastigmat *f*.7.7 lens and Diomatic shutter, with exposure scale and four automatic speeds, *bulb* and *time*.

Kodak (semi-anastigmat) *f*.7.9 lens and Kodex shutter (speeds 1/25, 1/50 and *bulb* and *time*).

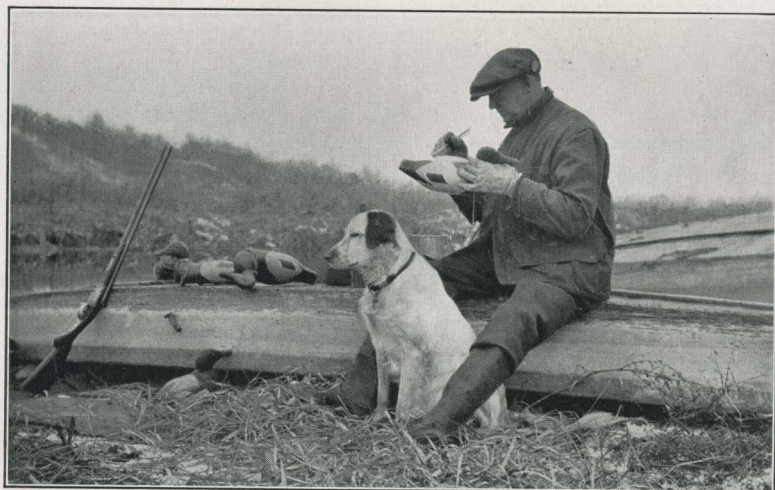
Autographic, of course.

DETAILS

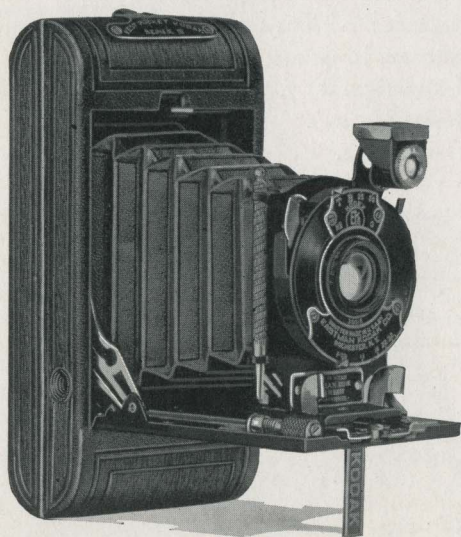
Capacity without reloading: No. 1, 6 exposures; No. 1A, 12 exposures. Focus: Fixed or adjustable. Lenses: Meniscus Achromatic; Kodak *f*.7.9, $4\frac{3}{8}$ -inch focus on No. 1; $5\frac{1}{4}$ -inch focus on No. 1A; or Kodak Anastigmat *f*.7.7, $4\frac{1}{4}$ -inch focus on No. 1; 5-inch focus on No. 1A. Shutters: Kodex, speeds $\frac{1}{25}$ and $\frac{1}{50}$ second; Diomatic, speeds $\frac{1}{10}$, $\frac{1}{25}$, $\frac{1}{50}$ and $\frac{1}{100}$ second; both with finger release, *time* and *bulb* actions. Brilliant finder, reversible for horizontal or vertical pictures. Two tripod sockets. Body: Aluminum, covered with pin grain cowhide; metal parts finished in nickel and black enamel. Black bellows. Autographic feature.

PRICES

Pocket Kodak, Series II (fixed focus), with Meniscus Achromatic Lens and Kodex Shutter	No. 1	No. 1A
Focusing model with Kodak Lens <i>f</i> .7.9, Kodex Shutter	\$15.00	\$17.00
With Kodak Anastigmat Lens <i>f</i> .7.7, and Diomatic Shutter	19.00	21.00
Levant Grain Leather Case, with strap	24.00	26.00
Autographic Film Cartridge, 12 exposures (No. A 116) for No. 1A	2.50	3.00
Ditto, 6 exposures (No. A 120) for No. 1; (No. A 116) for No. 1A	.25	.60
Kodak Portrait Attachment (see page 42)	.75	.30
Kodak Self Timer (see page 52)	.75	.75
Cable Release for Pocket Kodak, Series II, opened	1.25	1.25
	.35	.35



From a 1A Pocket Kodak, Series II, negative (slightly reduced)



VEST POCKET KODAK, SERIES III

PICTURE SIZE

$1\frac{5}{8} \times 2\frac{1}{2}$

A SMALL camera—small as only a Vest Pocket Kodak can be—yet fully equipped for first-class photography.

For example, like other Modern Kodaks, this model may be obtained with Kodak Anastigmat lens $f.6.3$ without entering a new price range. With a lens like this, your picture-making day is lengthened. Snapshots are possible from daylight to dusk—you can even make them indoors by the window under suitable light conditions.

Excellent support is furnished the Kodak Anastigmat $f.6.3$ by the Diomatic shutter with automatic speeds of $1/10$, $1/25$, $1/50$ and $1/100$ second as well as *time* and *bulb* actions.

Vest Pocket Kodak, Series III, is offered as well with Kodar lens $f.7.9$ and Kodex shutter—an excellent combination for all-round work.

The picture size ($1\frac{5}{8} \times 2\frac{1}{2}$) is fully satisfying, but on occasion when larger prints are wanted, the negatives—particularly those

made with Kodak Anastigmat equipment—readily lend themselves to excellent enlargements.

Like the other Vest Pocket Kodaks, the V. P. K., Series III, is smaller than the hand that holds it. That means that men wear it in their waistcoats and women carry it in their handbags. The Vest Pocket Kodak, Series III, can easily become an inseparable companion, whether it be a walk around the block or a trip around the world.

No matter what photographic equipment you may already own, this camera is always a photographic convenience, and frequently—when space is at a premium—a photographic necessity.

Beautifully finished in baby crepe grain cowhide—and autographic, of course.

DETAILS

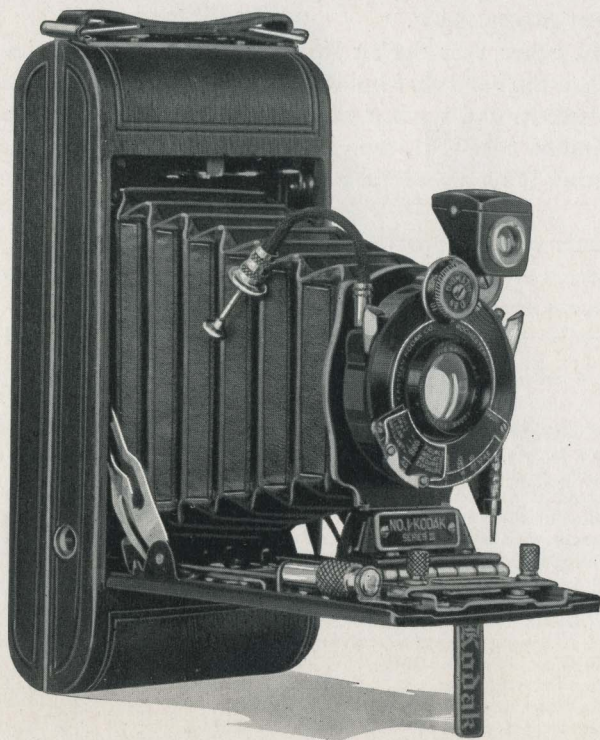
Capacity without reloading: 8 exposures. Focus: Adjustable, with worm-screw focusing device. Lenses: Kodar *f*.7.9, $3\frac{3}{8}$ -inch focus; or Kodak Anastigmat *f*.6.3, $3\frac{1}{4}$ -inch focus. Shutters: Kodex, speeds $\frac{1}{25}$ and $\frac{1}{50}$ second; or Diomatic, speeds $\frac{1}{40}$, $\frac{1}{25}$, $\frac{1}{50}$ and $\frac{1}{100}$ second. Both with finger release, *time* and *bulb* actions. Brilliant finder, reversible for vertical or horizontal pictures. Two tripod sockets. Body: Aluminum, covered with baby crepe grain cowhide. Metal parts finished in nickel and black enamel. Black bellows. Autographic feature.

PRICES

Vest Pocket Kodak, Series III, with Kodar Lens <i>f</i> .7.9 and Kodex Shutter . . .	\$12.00
With Kodak Anastigmat Lens <i>f</i> .6.3 and Diomatic Shutter	17.00
Belt Carrying Case, Russet Leather	1.50
Black Leather Carrying Case	1.50
Autographic Film Cartridge, 8 exposures (No. A 127)25
Cable Release for Vest Pocket Kodak, Series III, opened35
Kodak Portrait Attachment (see page 42)75
Kodak Self Timer (see page 52)	1.25



Made with a Vest Pocket Kodak, Series III (actual size)



NOS. I AND IA KODAKS, SERIES III

PICTURE SIZES

No. 1, $2\frac{1}{4} \times 3\frac{3}{4}$; No. 1A, $2\frac{1}{2} \times 4\frac{1}{4}$

SPECIFICALLY the lens equipment on these Series III Kodaks makes it easier for you to get the kind of pictures you really want.

Its speed, $f.6.3$, lengthens your picture-making day. Snapshots are now possible on dull days as well as bright, in rain or sunshine, and even indoors when the light conditions are favorable.

A further help is the exposure guide beneath the lens that tells you what exposure to use.

As companion equipment for this Kodak Anastigmat *f*.6.3 is the dependably accurate Diomatic shutter with four automatic speeds of 1/10, 1/25, 1/50 and 1/100, as well as *time* and *bulb* actions.

These Kodaks have aluminum bodies covered with baby crepe grain cowhide. In short, they're Modern Kodaks—and look the part. Autographic, of course.

DETAILS

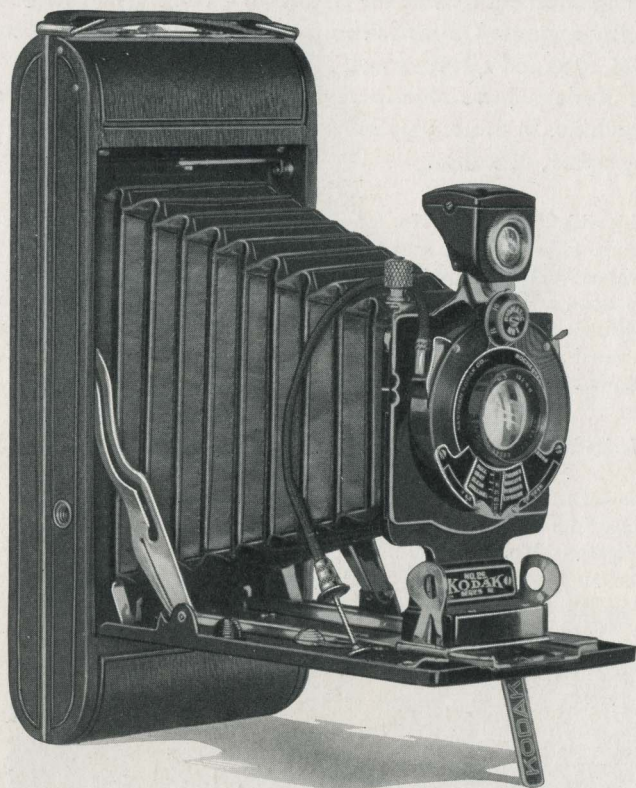
Capacity without reloading: No. 1, 6 exposures; No. 1A, 12 exposures. Focus: Adjustable; screw focusing device. Lens: Kodak Anastigmat *f*.6.3, 4¼-inch focus on No. 1; 5-inch focus on No. 1A. Shutter: Diomatic, speeds 1/10, 1/25, 1/50, 1/100 second, with *time* and *bulb* actions, cable and finger release. Brilliant finder, reversible for horizontal or vertical pictures. Two tripod sockets. Body: Aluminum, covered with baby crepe grain cowhide; metal parts finished in nickel and black enamel. Rising front on No. 1A. Black bellows. Autographic feature.

PRICES

Kodak, Series III, with Kodak Anastigmat Lens <i>f</i> .6.3 and Diomatic	No. 1	No. 1A
Shutter	\$29.00	\$32.00
Levant Grain Leather Case, with strap	2.50	3.00
Autographic Film Cartridge, 12 exposures (No. A 116) for No. 1A.60
Ditto, 6 exposures (No. A 120) for No. 1; (No. A 116) for No. 1A25	.30
Kodak Portrait Attachment (see page 42)75	.75
Kodak Self Timer (see page 52)	1.25	1.25



Made with a No. 1 Kodak, Series III (actual size)



NOS. 3 AND 2C KODAKS, SERIES III

PICTURE SIZES

No. 3, $3\frac{1}{4} \times 4\frac{1}{4}$; No. 2C, $2\frac{7}{8} \times 4\frac{7}{8}$

FIRST and foremost—Kodak Anastigmat $f.6.3$.

This is the lens whose speed broadens the picture-making field so that snapshots are possible under bright skies or cloudy ones and even indoors with the subject near a sunlit window.

Kodak Anastigmat lens $f.6.3$ and the four-speed, accurate Diomatic shutter stamp these Kodaks as high above the average, yet their cost,

as you see below, is amazingly moderate. They're autographic—like all Kodaks.

DETAILS

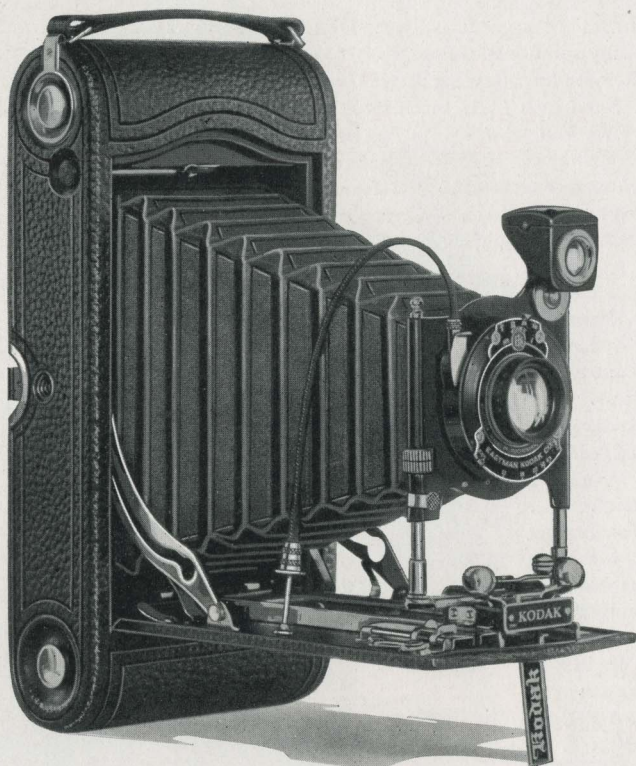
Capacity without reloading: No. 3, 12 exposures; No. 2C, 10 exposures. Focus: Adjustable, with lever focusing device. Lenses: Kodar *f*.7.9, 5 $\frac{1}{8}$ -inch focus on No. 3; or Kodak Anastigmat *f*.6.3, 5-inch focus on No. 3; 6-inch focus on No. 2C. Shutters: Kodex (No. 3 only), speeds $\frac{1}{25}$, $\frac{1}{50}$ second; Diomatic, speeds $\frac{1}{10}$, $\frac{1}{25}$, $\frac{1}{50}$, $\frac{1}{100}$ second; both with cable and finger release, *time* and *bulb* actions. Brilliant finder, reversible for horizontal or vertical pictures. Two tripod sockets. Body: Aluminum, covered with baby crepe grain cowhide; metal parts finished in nickel and black enamel. Rising front. Black bellows. Autographic feature.

PRICES

Kodak, Series III, No. 3	No. 3	No. 2C
with Kodar Lens <i>f</i> .7.9 and Kodex Shutter . . .	\$26.00	
With Kodak Anastigmat Lens <i>f</i> .6.3 and Diomatic Shutter . . .	33.00	\$35.00
Black Sole Leather Case, with strap	3.50	3.50
Autographic Film Cartridge, 12 exposures (No. A 118) for No. 3; 10 exposures (No. A 130) for No. 2C90	.75
Ditto, 6 exposures (No. A 118) for No. 3; (No. A 130) for No. 2C.	.45	.45
Kodak Portrait Attachment (see page 42). . .	.75	.75
Kodak Self Timer (see page 52) .	1.25	1.25



*From a negative made with a No. 3 Kodak, Series III
(Reduced in size)*



No. 3A AUTOGRAPHIC KODAK

PICTURE SIZE

$3\frac{1}{4} \times 5\frac{1}{2}$

THE picture size (postcard proportions) has long been a favorite with the amateur. There's room enough for the story, and the shape is pleasing.

Despite the size of the picture, the camera itself is anything but bulky. Carry it in a case over the shoulder, put it in the pocket of

your car or store it in the top of your traveling bag.

Either of two lens equipments is ready for results, but the fast Kodak Anastigmat lens *f.6.3* and seven-speed Ilex Universal shutter broaden the field of picture-making.

As extra equipment, the 3A Autographic Kodak may be fitted with a Combination Back which makes available Kodak Cut Film as negative material.

It's autographic.



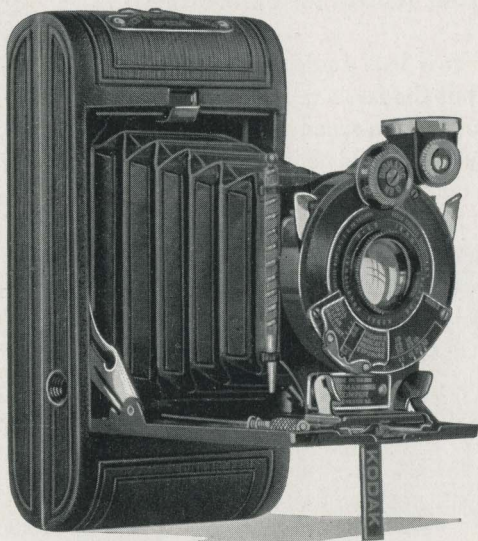
*Putting on
the Combination Back*

DETAILS

Capacity without reloading: 10 exposures. Focus: Adjustable only, with automatic focusing lock. Double focusing scale for films or plates. Lenses: Kodak *f.7.9*, $6\frac{7}{8}$ -inch focus; or Kodak Anastigmat *f.6.3*, $6\frac{3}{4}$ -inch focus. Shutters: Kodex, speeds $\frac{1}{25}$, $\frac{1}{50}$ second; or Ilex Universal, speeds 1, $\frac{1}{2}$, $\frac{1}{5}$, $\frac{1}{10}$, $\frac{1}{25}$, $\frac{1}{50}$ and $\frac{1}{100}$ second, both with *time* and *bulb* actions, cable and finger release. Brilliant finder, reversible for vertical or horizontal pictures. Two tripod sockets. Body: Back and bed of aluminum, covered with fine seal-grain leather; metal parts finished in nickel and black enamel. Rising, falling and sliding front. Black bellows. Autographic feature.

PRICES

No. 3A Autographic Kodak, with Kodar Lens <i>f.7.9</i> and Kodex Shutter	\$25.00
With Kodak Anastigmat Lens <i>f.6.3</i> , and Ilex Universal Shutter	33.00
Black Sole Leather Case, with strap	4.00
Combination Back for cut film or plates (see page 50)	4.00
Kodak Double Plate Holders, each	1.50
Kodak Cut Film Sheaths, each15
Kodak Cut Film, package of 12.90
Kodak Cut Film, <i>Super Speed</i> , package of 12	1.00
Autographic Film Cartridge, 10 exposures (No. A 122).90
Ditto, 6 exposures55
Kodak Portrait Attachment (see page 42)75
Kodak Self Timer (see page 52).	1.25



VEST POCKET KODAK SPECIAL

PICTURE SIZE

$1\frac{5}{8} \times 2\frac{1}{2}$

ANY Kodak will make good pictures. There are Kodaks, however, of superfine equipment that can cope serenely with any situation that's photographically possible.

These are called *Special* Kodaks, and this V. P. K. is Exhibit 1.

In a Kodak that's hardly a handful, you have the lens speed of Kodak Anastigmat *f*.4.5 or Kodak Anastigmat *f*.5.6 and the accuracy and dependability of the Diomatic shutter.

With equipment like this, the amateur can add hours to his photographic day. Snapshots inside by the window if you like; or outdoors in the rain. Action pictures—the high spots of sports events—are easy to get with the V. P. K. *Special*.

Trig in appearance, with aluminum body and genuine seal leather covering, the Vest Pocket Kodak is a camera you'll be proud to own.

Autographic, of course.

Just how so much photographic efficiency can be packed into such small space, only an Eastman engineer could answer. Here is a camera that really does fit the vest pocket or hand bag, with a Kodak Anastigmat lens as fast as *f.5.6* or *f.4.5* and a shutter, with automatic speeds of 1/10, 1/25, 1/50 and 1/100 second, as well as *time* and *bulb* actions. Equipment like this is usually associated with cameras of much larger size. A mechanical and optical achievement—is the V. P. K. *Special*.

DETAILS

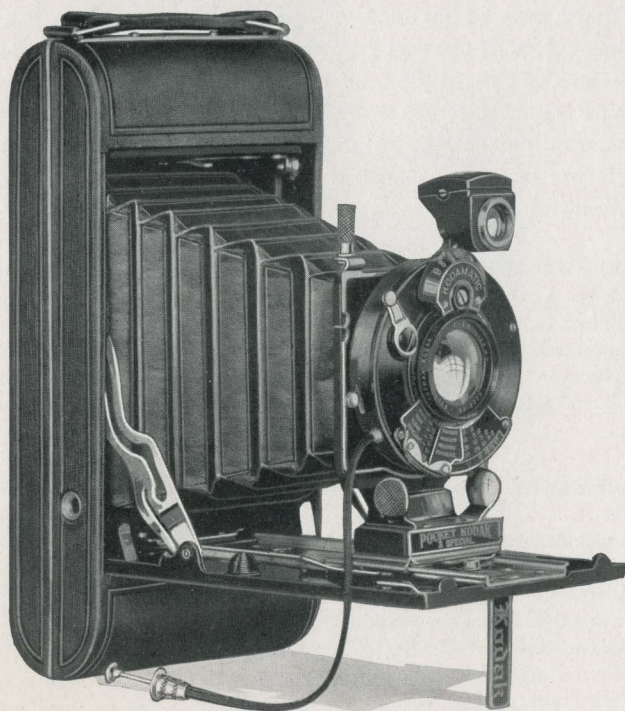
Capacity without reloading: 8 exposures. Focus: Adjustable, with worm-screw focusing device. Lenses: Kodak Anastigmat *f.5.6*, 3 $\frac{3}{8}$ -inch focus; or Kodak Anastigmat *f.4.5*, 3 $\frac{1}{8}$ -inch focus. Shutter: Diomatic, with finger release only; speeds, $\frac{1}{10}$, $\frac{1}{25}$, $\frac{1}{50}$ and $\frac{1}{100}$ second, *time* and *bulb* actions. Brilliant finder, reversible for vertical or horizontal pictures. Two tripod sockets. Body: Aluminum, covered with genuine seal leather; metal parts finished in nickel and black enamel. Black bellows. Autographic feature.

PRICES

Vest Pocket Kodak <i>Special</i> , with Kodak Anastigmat Lens <i>f.5.6</i> and Diomatic Shutter		\$23.00
With Kodak Anastigmat Lens <i>f.4.5</i>		28.00
Belt Carrying Case, Russet Leather, Velvet lined		2.00
Black Leather Carrying Case, Velvet lined		2.00
Autographic Film Cartridge, 8 exposures (No. A 127).25
Cable Release for Vest Pocket Kodak <i>Special</i> , opened35
Kodak Portrait Attachment (see page 42)75
Kodak Self Timer (see page 52)		1.25



*Made with a V. P. K. Special. The man at the wheel
"clicked" the shutter with the aid of a
Kodak Self Timer—page 52*



NOS. 1, 1A, 2C AND 3 POCKET KODAKS SPECIAL

PICTURE SIZES

No. 1, $2\frac{1}{4} \times 3\frac{3}{4}$; No. 1A, $2\frac{1}{2} \times 4\frac{1}{4}$; No. 2C, $2\frac{7}{8} \times 4\frac{7}{8}$; No. 3, $3\frac{1}{4} \times 4\frac{1}{4}$

SUMMED up in a sentence, *Special* Kodaks are just as good hand cameras as it is possible to make. Their high lens speeds fit them for successful picture-making under conditions that put ordinary equipment out of the running.

Specifically, as a basis of comparison, the Kodak Anastigmat lens *f*.4.5 offered on the Nos. 1, 1A and 3 *Specials* is three times as fast as the *f*.7.7.

A feature of all four of these *Special* Kodaks is their shutter. The Kodamatic shutter is just as near mechanical perfection as men and machines can go. It's precise to the *n*th degree in all of its seven split-second speeds—an unusual range, by the way, in any hand camera.

With a lens speed of *f.4.5* or *f.5.6* and the fast shutter speeds available, these *Specials* are ideally equipped for action pictures.

With bodies of aluminum and covering of genuine sealskin, the *Special* Kodaks are tailored to the most exacting taste.

Autographic.

DETAILS

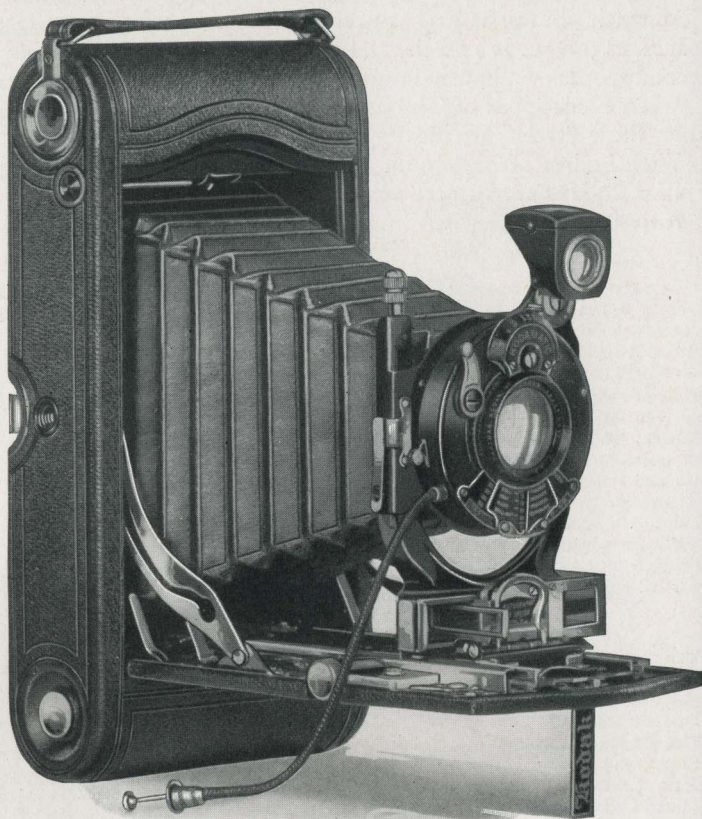
Capacity without reloading: No. 1, 6 exposures; No. 2C, 10 exposures; Nos. 1A and 3, 12 exposures. Focus: Adjustable; screw focusing device on Nos. 1, 1A and 2C; lever focusing device on No. 3. Lenses: Kodak Anastigmat *f.5.6*, $4\frac{3}{8}$ -inch focus on No. 1; $5\frac{1}{8}$ -inch focus on No. 1A; 6-inch focus on No. 2C; $5\frac{1}{8}$ -inch focus on No. 3; or Kodak Anastigmat *f.4.5*, 4-inch focus on No. 1; $5\frac{1}{8}$ -inch focus on No. 1A; $5\frac{1}{8}$ -inch focus on No. 3. Shutter: Kodamatic, with cable and finger release; seven speeds, from $\frac{1}{150}$ ($\frac{1}{200}$ on No. 1) to $\frac{1}{2}$ second; *time* and *bulb* actions. Brilliant finder, reversible for horizontal or vertical pictures. Two tripod sockets. Body: Aluminum, covered with genuine sealskin; metal parts finished in nickel and black enamel. Rising front on Nos. 1A, 2C and 3. Range Finder on No. 2C. Black bellows. Autographic feature.

PRICES

	No. 1	No. 1A	No. 2C	No. 3
Pocket Kodak <i>Special</i> , with Kodak Anastigmat Lens <i>f.5.6</i> and Kodamatic Shutter . . .	\$50.00	\$55.00	\$60.00	\$57.50
With Kodak Anastigmat Lens <i>f.4.5</i> . . .	60.00	65.00		67.50
Grain Leather, Velvet-lined Case, with strap . . .	3.75	4.50	5.00	4.75
Autographic Film Cartridge, 12 exposures (No. A116) for No. 1A; (No. A 118) for No. 3; 10 exposures (No. A 130) for No. 2C60	.75	.90
Ditto, 6 exposures (No. A 120) for No. 1; (No. A 116) for No. 1A; (No. A 130) for No. 2C; (No. A 118) for No. 325	.30	.45	.45
Kodak Portrait Attachment (see page 42)75	.75	.75	.75
Kodak Self Timer (see page 52) . . .	1.25	1.25	1.25	1.25



From a No. 3 Special Negative



NO. 3A AUTOGRAPHIC KODAK SPECIAL

PICTURE SIZE

$3\frac{1}{4} \times 5\frac{1}{2}$

LENS speed—Kodak Anastigmat *f*.6.3—fast enough for snapshots in the rain or even indoors when light conditions are favorable.

Shutter speed—Kodamatic shutter with seven speeds ranging from $\frac{1}{2}$ second to $\frac{1}{150}$ —fast enough for pictures of thrilling action.

That's the 3A Autographic *Special*—a camera you can count on wherever the picture is possible. With the addition of the Combination Back, Kodak Cut Film may be used.

DETAILS

Capacity without reloading: 10 exposures. Focus: Adjustable. Lens: Kodak Anastigmat *f*.6.3, 6 $\frac{3}{8}$ -inch focus. Shutter: Kodamatic, with cable and finger release; seven speeds, from $\frac{1}{150}$ to $\frac{1}{2}$ second, *time* and *bulb* actions. Brilliant finder, reversible for horizontal or vertical pictures. Two tripod sockets. Body: Back and bed of aluminum, covered with genuine Persian Morocco; metal parts finished in nickel and black enamel. Range finder. Rising and falling front. Black bellows. Autographic feature.

PRICES

No. 3A Autographic Kodak <i>Special</i> , with Kodak Anastigmat Lens <i>f</i> .6.3 and Kodamatic Shutter	\$65.00
Grain Leather Velvet-lined Case, with strap	5.25
Combination Back for cut film or plates (see page 50)	5.00
Kodak Double Plate Holders, each	1.50
Kodak Cut Film Sheaths, each15
Kodak Cut Film, package of 1290
Kodak Cut Film, <i>Super Speed</i> , package of 12	1.00
Autographic Film Cartridge, 10 exposures (No. A 122)90
Ditto, 6 exposures55
Kodak Portrait Attachment (see page 42)75
Kodak Self Timer (see page 52)	1.25

No. 3A PANORAM KODAK

PICTURE SIZE

3 $\frac{1}{4}$ x 10 $\frac{3}{8}$

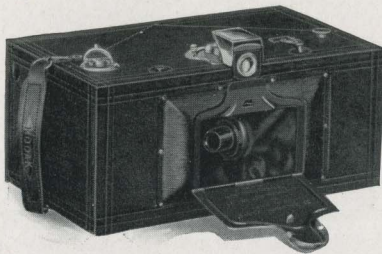
WHETHER it's a broad sweep of landscape or a large group, the Panoram gets the whole view with a single exposure. This camera uses regular 3A Kodak film.

DETAILS

Capacity without reloading: 5 exposures. Focus: Fixed. Lens: Meniscus. Two-speed shutter. Brilliant finder, with hood. Two tripod sockets. Body: Wood, covered with long crepe grain genuine cowhide; metal parts finished in nickel and black enamel. Black bellows. Spirit level.

PRICES

No. 3A Panoram Kodak	\$40.00
Black Sole Leather Carrying Case, with strap	8.00
Kodak Film Cartridge, 5 exposures (No. A 122)90
Ditto, 3 exposures55





THE MAGIC OF MOVIES YOU MAKE YOURSELF

Now, with the Ciné-Kodak, you can make motion pictures with characteristic Eastman ease—real motion pictures of your relatives and friends, your sports, your hobbies, your travels.

Sight the subject in the finder of your Ciné-Kodak and press the release. That's all there is to it—you're making *movies*! There is no tripod; no grinding crank. Every non-essential has been eliminated. And your films are finished at no extra cost to you.

With the Kodascope projector you show your movies on your own screen just as easily as you have made them with the Ciné-Kodak. Kodascope plugs in on your house lighting circuit. Turn the switch and the screen leaps into action with the movies *you* have made.

In addition to pictures of your own making, you may purchase for permanent addition to your home movie library, Kodak Cinegraphs of 100-, 200- or 400-foot lengths (see page 32), showing a great variety of entertaining and instructive subjects. Full-length professional motion pictures featuring screenland's most famous stars may be rented at nominal cost from any of several conveniently located branches of the Kodascope Libraries, Inc.

Ciné-Kodak prices range from \$70 for the Model B, *f.6.5* (page 27), to \$225 for the hand-cranked Model A (page 28). Kodascope projectors are priced at \$60 for the Model C (page 29), \$180 for the Model A (page 30), to \$300 for the new self-threading Model B (page 31).

CINÉ-KODAK, MODEL B

f.6.5 or f.3.5 Lens Equipment



Ciné-Kodak, Model B, with Kodak Anastigmat lens f.3.5

CINÉ-KODAK, Model B, is the simplest of all personal movie cameras. It is hand-held—no tripod is necessary—and it weighs but five pounds, loaded. It is spring-motor driven and it operates with all the ease characteristic of the Brownie.

Both the *f.6.5* and *f.3.5* models are fixed focus cameras—which means that they are always ready for the unexpected picture possibility. Focusing requires no attention, except

when close-up pictures are desired with the *f.3.5* lens; then a small lever at the left of the lens swings a portrait attachment into position. When pressure on the lever is released, the portrait attachment swings back and the camera is instantly ready for pictures of subjects beyond five feet. No portrait attachment is necessary with the *f.6.5* lens.

All Ciné-Kodaks, Model B, are equipped with two finders—waist height and eye level. This is a special Ciné-Kodak feature which greatly facilitates the making of pictures from proper position.

Ciné-Kodak, Model B, is also equipped with a built-in exposure guide which enables the operator to determine at a glance the proper diaphragm opening for the existing light condition.

PRICES

Ciné-Kodak, Model B, with Kodak Anastigmat Lens <i>f.6.5</i>	\$ 70.00
Ciné-Kodak, Model B, with Kodak Anastigmat Lens <i>f.3.5</i>	100.00
Ciné-Kodak, Model B, <i>f.6.5</i> or <i>f.3.5</i> , Carrying Case (leather).	7.50
Ciné-Kodak, Model B, <i>f.6.5</i> or <i>f.3.5</i> , Combination Carrying Case (Ciné-Kodak and two rolls of film)	10.00

CINÉ-KODAK, MODEL B

f.1.9 Lens Equipment



Ciné-Kodak, Model B, f.1.9 lens

THIS camera is equipped with the ultra-fast Kodak Anastigmat *f.1.9* lens—a lens that is over three times as fast as the *f.3.5* and more than ten times as fast as the *f.6.5*.

Such speed, of course, greatly increases the opportunities for successful outdoor pictures. Movies indoors by the bright light of a window are also easily within the scope of this camera, as are

pictures outdoors on dark, dull days—even in the rain.

PRICES

Ciné-Kodak, Model B, with Kodak Anastigmat Lens <i>f.1.9</i>	\$150.00
Ciné-Kodak, Model B, <i>f.1.9</i> , Carrying Case (leather)	8.50
Ciné-Kodak, Model B, <i>f.1.9</i> , Combination Carrying Case	11.00

CINÉ-KODAK, MODEL A

f.1.9 and f.4.5 Lens Equipment

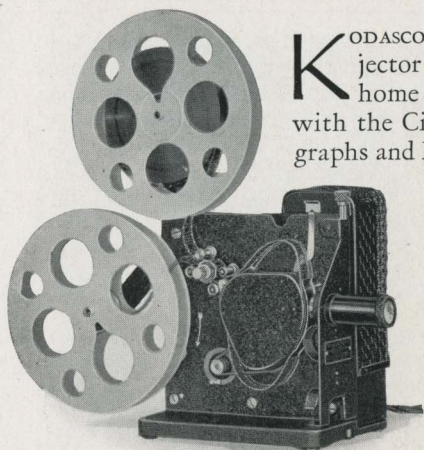
THE hand-cranked Ciné-Kodak, Model A, is the ideal equipment for the advanced amateur. This camera is equipped with the Kodak Anastigmat *f.1.9* lens which is interchangeable with the *f.4.5* (long focus lens for telephoto work).

Extra attachments—slow motion and single picture—still further increase this camera's versatility.

PRICES

Ciné-Kodak, Model A, with Kodak Anastigmat <i>f.1.9</i> Lens (interchangeable with <i>f.4.5</i> [long focus] lens) and tripod	\$225.00
Kodak Anastigmat <i>f.4.5</i> (long focus) Lens	45.00
Single Picture Attachment for Ciné-Kodak, Model A	20.00
Slow Motion Attachment for Ciné-Kodak, Model A	20.00

KODASCOPE, MODEL C



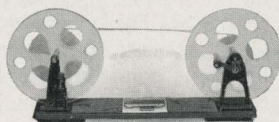
Kodascope, Model C

KODASCOPE is the electrically driven projector that enables you to show on the home screen the pictures you have made with the Ciné-Kodak, as well as Kodak Cinegraphs and Kodascope Library releases.

In simplicity and ease of operation, Kodascope rivals the Ciné-Kodak in every respect. The Model C weighs but nine pounds, and is very compact. It projects a brilliantly illuminated 30 x 40-inch picture at eighteen feet from the screen. It plugs in on the house lighting circuit and is easily threaded. Special rheostats adapted to 210-250-volt lines are available.

Special motors make it possible to use it on 32-volt home generator system. A 6-volt model (hand-cranked), which obtains its illumination from an ordinary storage battery, is also available. Kodascope C has a capacity of 400 feet of 16 mm. (amateur standard) motion picture film, the running time of which is about sixteen minutes.

When the film has run through the projector, a fast working motor driven rewind spins the film back on the supply reel.



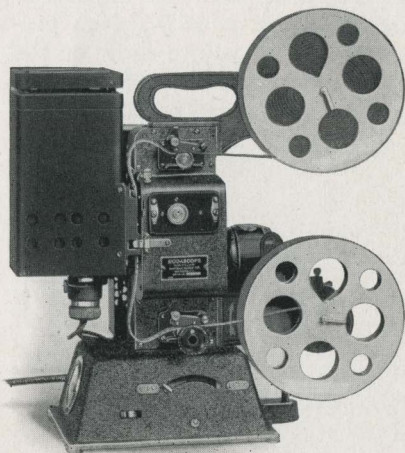
KODASCOPE REWIND

A convenient accessory, especially valuable in editing and titling

PRICES

Kodascope, Model C, with 2-inch lens, coil-coil lamp and one 400-foot reel	\$60.00
Kodascope, Model C, 32-volt, with one 400-foot reel	60.00
Kodascope, Model C (6-volt, operating from storage battery), and one 400-foot reel	60.00
Kodascope, Model C, Carrying Case	5.00
Kodascope Screen, No. 0, mounted in frame with cover	10.00
Kodascope Screen, No. 1 (30 x 40 inches), rollable in case	25.00
Kodascope Screen, No. 1A (30 x 40 inches) demountable in frame	15.00
Kodascope Rewind, including splicing block	7.00
100-watt coil-coil lamp for Kodascope, Model C	3.50
1-inch or 2-inch lens (interchangeable) for Kodascope, Model C	10.00
400-foot Reel and Humidor Can	1.50
Kodascope C Rheostat for 210-250-volt circuits	15.00

KODASCOPE, MODEL A



Kodascope, Model A

FOR the bigger picture in the classroom, church, or drawing-room, the electrically operated Kodascope, Model A (200 watt), fills every requirement and projects a brilliant 39 x 52-inch picture at 23 feet from the screen.

Like the Model C, this projector can be used on any ordinary house circuit from 105 to 125 volts, either alternating or direct current; or special rheostats to adapt it to other circuits may be obtained.

Many features of the modern professional machines are built into Kodascope A; the current is registered by an ammeter and controlled by a rheostat, and the speed of the mechanism is adjusted by a voltage control. It is easily and quickly threaded, and has a capacity of 400 feet of 16 mm. (amateur standard) film. A special attachment (\$1.50) makes it possible to stop the mechanism and to view still pictures on the screen. Kodascope, Model A, is regularly fitted with 2-inch lens.

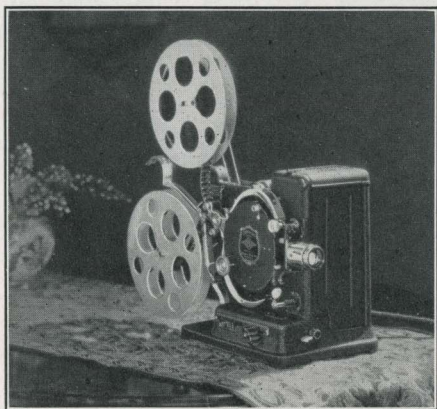
Kodascope, Model A, with 200-watt lamp	\$180.00
Kodascope, Model A, with 5-inch lens	275.00
Carrying Case for Kodascope, Model A, fibre	18.00
No. 2 Kodascope Screen (39 x 52 inches), rollable in case.	35.00
1-inch or 2-inch lens (interchangeable) for Kodascope, Model A	15.00
200-watt lamp for Kodascope, Model A	3.75
Kodascope A Rheostat for 210-250-volt circuits	16.50

TITLING AND EDITING SERVICE

MANY owners of home motion picture outfits make their own titles and edit their own film. But, for those who prefer to have this done for them, titling and editing services are maintained at Rochester, Chicago and San Francisco.

Motion Picture Titles—per word, \$0.03; minimum charge per title, \$0.25; minimum charge per order	\$1.00
Splicing four 100-foot rolls of Ciné-Kodak Film and supplying 400-foot reel and humidor can.	2.50

KODASCOPE, MODEL B



Kodascope, Model B

KODASCOPE, Model B, represents the ultimate in home motion picture projectors. Many new and unique features, chief of which is its ability to thread itself, have earned for it the appellation, "The projector that's almost human."

To thread Kodascope, Model B, the operator merely slips the squared end of the film into a slot. That's all—the film streams smoothly through and onto the take-up reel and—the show is on!

In addition to the self-threading feature, which is exclusive to Kodascope, Model B, further improvements such as a reversible motor, adjustable rheostat, motor-driven rewind, safety "still" picture attachment, combine to make this projector the finest piece of amateur motion picture equipment ever offered. Kodascope, Model B, stands alone in the home movie projector field.

Kodascope, Model B, is packed in a velvet-lined carrying case, and is furnished with one extra lamp, two 400-foot reels, one humidor can, one splicing outfit and one oiling outfit.

PRICES

Kodascope, Model B, 200-watt, with carrying case, extra lamp, two 400-foot reels, one humidor can, one splicing outfit and one oiling outfit	\$300.00
Kodascope Screen, No. 2 (39 x 52), rollable in case	35.00
Kodascope Rewind and Splicer	7.00
200-watt Lamp, for Kodascope, Model B	3.75

CINÉ-KODAK AND KODASCOPE ACCESSORIES

Unipod for Ciné-Kodak (a handy support for the camera)	\$5.00
Ciné-Kodak Titling Scroll (for making your own titles)	2.50
Ciné-Kodak Scene Records60
Kodascope Film Splicing Outfit	1.50
Kodascope Film Cement	2-ounce can, \$0.50; pint can 1.25

KODAK CINEGRAPHS



A "still" from the World War Cinegraphs

KODAK Cinegraphs are condensed classics of comedy, drama, animated cartoons, travel and educational subjects which may be purchased outright for permanent addition to the home movie library. Subjects are obtainable in 100-, 200- or 400-foot lengths, and with few exceptions, are priced at \$7.50 per 100 feet. Each Cinegraph is complete in itself.

Outstanding among the Kodak Cinegraphs is the War series of official United States Government motion pictures, made in France by the United States Signal Corps during the World War. Each of the five reels which comprise this series is 200 feet long and priced at \$15. Two-thousand foot war thriller (projection time—one hour and a quarter) "America Goes Over"—\$150.

KODASCOPE LIBRARIES

FULL-LENGTH motion picture releases, featuring some of screenland's most famous stars, may be rented at nominal cost from the Kodascope Libraries, Inc., branches of which are located at strategic points throughout the country. Over five hundred subjects are listed in the Kodascope Library Descriptive Catalog.

CINÉ-KODAK DUPLICATES

WHILE every movie that you make is intensely interesting to you and yours, certain films have unusual value because of the subjects or incidents that they show. Such pictures as these you will want to guard for the future. And yet, of course, you will want them for present-day showing as well.

Ciné-Kodak film and the reversal process make this all a very simple matter. Ciné-Kodak duplicates so closely approach the originals

in quality that it is virtually impossible to distinguish between them, even when they are viewed side by side.

Another outstanding feature peculiar to the reversal process is that, in both original and duplicate, there is a minimum of any "grainy" effect on the screen. The reversal process does away with this disappointing result. This marked lack of graininess in the original is just as apparent in the duplicate. Between the two, in this very essential quality, no difference whatever exists.

In making a Ciné-Kodak original, it is not necessary to print from a negative. Expensive steps are done away with. The result is a substantial saving.

And the cost for duplicates is little—\$5 for 100-foot lengths and \$3.50 for 50-foot lengths.

CINÉ-KODAK FILM

THE secret of the economy of motion pictures the Kodak way lies largely in the special film which is used. Ciné-Kodak (amateur standard) Film is 16 mm. or $\frac{5}{8}$ " wide, as compared with 35 mm. or $1\frac{3}{8}$ " for professional film. A special process reverses the negative image on the exposed film to a positive, making it possible to project the identical film that is exposed in the camera. This does away with expensive printing from a negative, and effects an appreciable saving in material. No extra charge is made for finishing the film, and, as an example of Eastman service, you will find Ciné-Kodak finishing stations all over the world.

PRICES

100-foot Roll	\$6.00
50-foot Roll	4.00

(Prices include processing and return transportation within the country where the finishing station is located)

THE KODALITE

CLOSE-UPS and full figures, indoors, as well as pictures at night, are often desirable. These are easily made with the new Kodalite, which operates from your house lighting circuit. Specially designed silvered reflectors insure maximum illumination from the 500-watt lamps which are employed.

For ordinary use at $f.3.5$, but two Kodalites are necessary; when one Kodalite is used, a lens aperture of $f.2.8$ to $f.1.9$ is needed. These exceptional illuminating units are light in weight, and are easily carried. Kodalite (without bulb) is priced at \$25. A Diffuser may be obtained for \$1.50.



NO. 2 CARTRIDGE HAWK-EYE MODEL C

PICTURE SIZE

$2\frac{1}{4} \times 3\frac{1}{4}$

ALTHOUGH this camera produces fine results from the first, it costs only a dollar and a quarter. That's because it's Eastman-made throughout and so has the benefit of tremendous production schedules carefully supervised by Eastman engineers.

No. 2 Cartridge Hawk-Eye uses regular Kodak film. Have your dealer show it to you.

DETAILS

Capacity without reloading: 6 exposures. Fixed focus only. Lens: Meniscus. Shutter: Eastman Rotary. Ground glass finder for vertical pictures. Body: Covered with durable material grained like leather; metal parts finished in nickel and black enamel.

PRICES

No. 2 Cartridge Hawk-Eye, Model C, with Meniscus Lens and Eastman Rotary	
Shutter	\$1.25
N. C. Film Cartridge, 6 exposures (No. 120)25
Kodak Portrait Attachment (see page 42)50



No. 0 BROWNIE

PICTURE SIZE

$1\frac{1}{8} \times 2\frac{1}{2}$

THE simplest real camera—that's the Brownie.

The No. 0 proves this statement—a dependably equipped box-type camera that's perfectly at home in the hands of a child as far as successful picture-making is concerned.

The Brownie is as easy to work as it looks.

If you want to take up photography and at the same time keep down the cost, No. 0 Brownie provides a good start.

DETAILS

Capacity: 8 exposures. Fixed focus. Lens: Meniscus. Shutter: Eastman Rotary, with one stop, also *instantaneous* and *time* actions. Two finders, for vertical and horizontal pictures. Body: Covered with durable material grained like leather.

PRICES

No. 0 Brownie Camera, Meniscus Lens, Eastman Rotary Shutter	\$2.00
Brownie Carrying Case	1.00
N. C. Film Cartridge, 8 exposures (No. 127)25
Brownie Tripod Adapter25
Kodak Portrait Attachment (see page 42)50
Developing and Printing Outfit (see page 44)	2.00



NOS. 2 AND 2A BROWNIES

PICTURE SIZES

No. 2, $2\frac{1}{4} \times 3\frac{1}{4}$; No. 2A, $2\frac{1}{2} \times 4\frac{1}{4}$

PRACTICAL, sturdy picture makers that make it just as easy as possible for you to get pictures that will please.

Operation is simplicity itself. Point, press, picture—that's snap-shooting the Brownie way.

Equipment that includes tested lens and Eastman Rotary shutter is dependable.

Look these Brownies over at your dealer's.

DETAILS

Capacity: No. 2, 6 exposures; No. 2A, 12 exposures. Fixed focus only. Lens: No. 2, Meniscus; No. 2A, Meniscus Achromatic. Shutter: Eastman Rotary, with three stops, *instantaneous* and *time* actions. Two moulded brilliant finders for vertical and horizontal pictures. Two tripod sockets. Body: Aluminum, covered with material grained like leather; metal parts finished in nickel and black enamel.

PRICES

	No. 2	No. 2A
Brownie Camera, Meniscus Lens on No. 2, Meniscus Achromatic Lens on No. 2A, Eastman Rotary Shutter	\$2.50	\$3.50
Brownie Carrying Case, with strap	1.25	1.50
N. C. Film Cartridge, 12 exposures (No. 116) for No. 2A60
Ditto, 6 exposures (No. 120) for No. 2; (No. 116) for No. 2A25	.30
Kodak Portrait Attachment (see page 42)50	.50
Developing and Printing Outfit (see page 44)	2.00	2.00



NOS. 3 AND 2C BROWNIES

PICTURE SIZES

No. 3, $3\frac{1}{4} \times 4\frac{1}{4}$; No. 2C, $2\frac{7}{8} \times 4\frac{7}{8}$

REMEMBERING that about all the Brownie user does is to sight the subject and press the release, it isn't strange that he energetically supports us in our statement—"Brownies are the simplest real cameras."

Amateurs, everywhere, who are familiar with the Brownie, recognize it as the easiest means to pictures and concede it to be as well a real camera in every sense of the word.

All Brownies are Eastman-made throughout, with carefully tested lens and shutter.

DETAILS

Capacity: No. 3, 12 exposures; No. 2C, 6 exposures. Fixed focus only. Lens: Meniscus Achromatic. Shutter: Eastman Rotary, with three stops, *instantaneous* and *time* actions. Two finders for vertical and horizontal pictures. Two tripod sockets. Body: Wood, covered with material grained like leather.

PRICES

	No. 3	No. 2C
Brownie Camera, with Meniscus Achromatic Lens, Eastman Rotary Shutter	\$4.50	\$5.00
Brownie Carrying Case, with strap	1.60	1.60
N. C. Film Cartridge, 12 exposures (No. 124) for No. 3	.90	
Ditto, 6 exposures (No. 124) for No. 3; (No. 130) for No. 2C	.45	.45
Kodak Portrait Attachment (see page 42)	.75	.75
Developing and Printing Outfit (see page 44)	2.00	2.00

KODAMATIC SHUTTER

IN ORDER to make the best possible pictures under greatly varying conditions, a camera must have an unusually reliable and versatile shutter. It was with this in mind that the Kodamatic was developed.



It is constructed like a fine watch—precise to the last degree, thoroughly dependable, long-lasting—to challenge successfully every situation in which the photographer is likely to find himself.

A wide choice of snapshot speeds—seven in all—is provided: $1/2$, $1/5$, $1/10$, $1/25$, $1/50$, $1/100$, and $1/150$ or $1/200$ (as listed); besides *bulb* and *time*. A sliding scale controlling the diaphragm shows at a glance the speed or stop to use in dull, gray, clear or brilliant light. Adjustment is made in an instant, and the shutter makes the selected exposure with utmost accuracy. The Kodamatic is supplied on the *Special* Kodaks (except V. P. K.) and helps to give pictures that are strictly *special* as to quality.

DIOMATIC SHUTTER

WHENEVER extreme speeds are not essential the Diomatic shutter is highly successful. It is modeled after the Kodamatic and, like it, has a handy sliding timing scale. Four automatic speeds, $1/10$, $1/25$, $1/50$ and $1/100$, besides the usual *bulb* and *time*, enable the user to fit his exposure accurately to the light.

The Diomatic performs with all the sure precision expected of quality equipment, for it is designed and assembled with the same care that characterizes the more pretentious Kodamatic.



KODEX SHUTTER

PEOPLE who prefer inexpensive and simply operated cameras nevertheless want an entirely trustworthy shutter that assures consistently good results. The Kodex, with *bulb*, *time*, and automatic speeds of $1/25$ and $1/50$, meets these requirements. Carefully, scientifically constructed, it is a worthy member of the group of shutters found on the various types of Eastman cameras.



The logo is a circular seal with the word "ANASTIGMAT" at the top and "KODAK" at the bottom. In the center, the word "ANASTIGMAT" is written in a larger, stylized font.

The KODAK ANASTIGMATS

f.7.7 f.6.3 f.5.6 f.4.5

THE anastigmat stands at the peak of photographic lens design. Because of high cost, however, it was formerly available only on equipment beyond the reach of the average amateur. It remained for the Eastman Kodak Company—one of whose plants is devoted almost exclusively to lens manufacture—to reduce costs to such an extent that now almost anyone can afford one of these splendid lenses.

TRUE ANASTIGMAT QUALITIES

Kodak Anastigmats record vertical and horizontal lines in the same plane with an equal degree of clearness. They have an essentially flat field—even when they are used at their widest openings all detail in the same plane is recorded with critical sharpness to the very edges of the negative.

And they have all the speed for which this type of lens is noted. The Kodak Anastigmat *f.7.7*, aside from its other advantages over the rapid rectilinear, is somewhat faster. The *f.6.3* is sixty per cent speedier than the rectilinear, making snapshots possible under conditions that would be out of the question for an ordinary lens. The *f.5.6*, in turn, is one quarter again as fast as the *f.6.3*, and the *f.4.5* admits half again as much light as the *f.5.6*.

FEATURED ON MODERN KODAKS

These superior lenses, the equals of any anastigmats made anywhere, are a prominent feature of all the Modern Kodaks. They offer a wide selection of fast lenses which enable the amateur to make—easily and at low cost—pictures that would have been thought impossible a few years ago.

KODAR LENS *f.7.9*

THE Kodar *f.7.9*, a recent Eastman development, is a semi-anastigmat. It is only a trifle faster than the rapid rectilinear which it replaces, but it approaches the anastigmat in defining and covering power and gives negatives of consistently high quality.

Kodar lenses cost but little more than the rectilinear type and are fully worth the small difference.

KODAK PORTRAIT ATTACHMENT

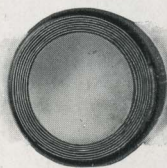
*Here's the way
the picture
was made*



*And here's the actual picture, made with a Kodak
and Kodak Portrait Attachment*

IF A subject is placed within arm's length of the ordinary hand camera the result is a blurred image. But when the lens is supplemented by a Kodak Portrait Attachment the camera is adapted to the making of charming "close-ups" of your family and friends, as well as clear-cut, close-range pictures of flowers, art objects and still life subjects in general.

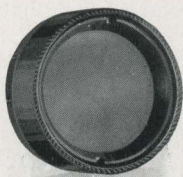
It's all very easy, too. The attachment is quickly slipped over the regular lens and the camera is operated as usual, without any change in timing or shutter opening. Using the Kodak Portrait Attachment simply keeps the focus sharp at close range and results in images that practically fill the area of the negative.



KODAK COLOR FILTER

THE Kodak Color Filter is valuable in photographing highly colored landscapes, flowers, art objects, etc. The dye in the filter holds back the strong blue and violet rays, which affect the negative most quickly, and gives the weaker shades time to register. The resulting picture reproduces all the color values more nearly as the eye sees them.

For prices of these attachments, see page 42



KODAK SKY FILTER

BRIGHT clouds in a blue sky reflect a much greater proportion of light than the rest of an outdoor view. The Kodak Sky Filter is intended to reduce this difference. The upper half of the filter, stained yellow, holds back the light from the sky. This restrained light renders the clouds distinctly while the darker portions of the picture get the benefit of full exposure through the clear half of the filter. This filter slips readily over the camera lens and does not require any change in the timing of the exposure.



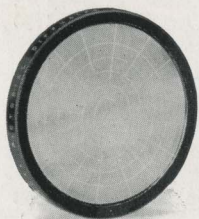
KODAK DIFFUSION PORTRAIT ATTACHMENT

THE portrait photographer often uses a device that diffuses the light as it passes through his lens, in order to get the popular "soft focus" effect. By this means sharp contrasts are reduced, chalky highlights are softened and harsh lines are blended, yielding genuinely artistic results.

By slipping a Kodak Diffusion Portrait Attachment over your Kodak lens you can get the same results in making close-ups. The attachment not only keeps the subject in focus at close range but also gives the pleasing effect of softness, without danger of *extreme* diffusion or "fuzziness."

The V. P. K. Diffusion Disk used with the V. P. K. *Special* and V. P. K. Series III, *f.6.3* lens, is suitable for portraits at $5\frac{1}{2}$ feet and beyond, and also for landscape work.

KODAK PICTORIAL DIFFUSION DISK



A Kodak Pictorial Diffusion Disk does for landscape pictures what a Kodak Diffusion Portrait Attachment does for "close-ups." It lends a pleasing softness, without loss of brilliancy, and gives results that are artistic as well as different.

The V. P. K. Diffusion Disk is a similar attachment.

These disks slip on or off the lens mount in an instant and their use does not involve any change in camera operation.

For prices of these attachments, see page 42

KODAK PORTRAIT ATTACHMENTS, DIFFUSION PORTRAIT ATTACHMENTS, PICTORIAL DIFFUSION DISKS, SKY FILTERS, COLOR FILTERS

(These attachments are listed here only for the cameras shown in this catalog.
For attachments to be used on older models, see your dealer.)

	Order by this Number	Portrait Attach- ments	PRICES Diffusion Portrait Attach- ments	Pictorial Diffusion Disks	Sky and Color Filters
FOR VEST POCKET KODAKS					
Model B	8	\$0.75	\$1.25		\$0.75
Series III, Kodar f.7.9	8	.75	1.25		.75
Series III, Kodak Anastigmat f.6.3	8A	.75			.75
Special, Kodak Anastigmat f.5.6 or f.4.5	8A	.75			.75
Vest Pocket Kodak Diffusion Disk (see page 41)	8A			\$1.25	

FOR POCKET KODAKS					
No. 1 Single lens	0	.50	1.25		.75
Kodar f.7.9	8	.75	1.25		.75
Kodak Anastigmat f.6.3	6	.75	1.50	2.50	1.15
No. 1A Single lens	3	.75	1.25	1.75	1.15
Kodar f.7.9 or Kodak Anastigmat f.6.3	6	.75	1.50	2.50	1.15
No. 2C Single lens, Kodar f.7.9	6	.75	1.50	2.50	1.15
Kodak Anastigmat f.6.3	7	.75	1.50	2.50	1.50
No. 3A Single lens or Kodar f.7.9	6	.75	1.50	2.50	1.15
Kodak Anastigmat f.6.3	7	.75	1.50	2.50	1.50

FOR POCKET KODAKS, SERIES II					
No. 1 Single lens, Kodar f.7.9 or Kodak Anastigmat f.7.7	3	.75	1.25	1.75	1.15
No. 1A Single lens	3	.75	1.25	1.75	1.15
Kodar f.7.9 or Kodak Anastigmat f.7.7	13	.75	1.25	1.75	1.15

FOR KODAKS, SERIES III					
No. 1 Kodak Anastigmat f.6.3	3	.75	1.25	1.75	1.15
No. 1A Kodak Anastigmat f.6.3	6	.75	1.50	2.50	1.15
No. 3 Kodar f.7.9 or Kodak Anastigmat f.6.3	6	.75	1.50	2.50	1.15
No. 2C Kodak Anastigmat f.6.3	6	.75	1.50	2.50	1.15

FOR 3A AUTOGRAPHIC KODAK					
Kodar f.7.9	6	.75	1.50	2.50	1.15
Kodak Anastigmat f.6.3	7	.75	1.50	2.50	1.50

FOR POCKET KODAKS SPECIAL					
No. 1 Kodak Anastigmat f.5.6 or f.4.5	6	.75	1.50	2.50	1.15
No. 1A Kodak Anastigmat f.5.6 or f.4.5	7	.75	1.50	2.50	1.50
No. 3 Kodak Anastigmat f.5.6 or f.4.5	7	.75	1.50	2.50	1.50
No. 2C Kodak Anastigmat f.5.6	7	.75	1.50	2.50	1.50

FOR AUTOGRAPHIC KODAK SPECIAL					
No. 3A Kodak Anastigmat f.6.3	7	.75	1.50	2.50	1.50

FOR BROWNIES AND HAWK-EYE (BOX TYPE)					
Nos. 0 and 2 Brownies or No. 2 Hawk-Eye, Model C, Single lens	1	.50	1.25		.75
No. 2A, Model C, Brownie, Single lens	0	.50	1.25		.75
Nos. 2C and 3 Brownies, Single lens	4	.75	1.25		1.15

VELOX WATER COLOR OUTFIT

PHOTOGRAPHIC prints and lantern slides can be colored easily, artistically, by using Velox Colors. They are transparent and blend readily, so that the desired effect is obtained without experience or special ability. The outfit includes twenty-six stamps of each of twelve colors, and three brushes. It comes in a white enamel case, the inside cover of which is used as a mixing palette.



Velox Transparent Water Color Stamps, complete booklet, 12 colors	\$0 50
Separate Color Leaves, per sheet04
Set of three Special Brushes50
Velox Water Color Outfit, including book, three brushes and case.	1.00

KODAK FILM TANK



THESE outfits afford the easiest, most reliable means of developing film negatives. No darkroom is necessary. By means of the light-tight box the film is transferred to a reel, being covered at the same time by a protecting apron. Reel, film and apron are immersed in the solution cup and development is made according to directions which accompany each outfit.

Vest Pocket Kodak Film Tank, for Vest Pocket or No. 0 Brownie Cartridges, complete	\$3.50
2¼-inch Kodak Film Tank, for use with all Kodak or Brownie Cartridges having a film width 2¼ inches or less, complete	4.50
2½-inch Kodak Film Tank, for use with all Kodak or Brownie Cartridges having a film width 2½ inches or less, complete	5.50
3½-inch Kodak Film Tank, for use with all Kodak or Brownie Cartridges having a film width of 3½ inches or less, complete	6.50
5-inch Kodak Film Tank, for use with all Kodak or Brownie Cartridges having a film width of 5 inches or less, complete	8.00
7-inch Kodak Film Tank, for use with No. 5 Cartridge Kodak or narrower film cartridges, complete	10.00
Flexible Fixing and Washing Tank, for 3½-inch Kodak Film Tank	2.50
Kodak Tank Developer, for Vest Pocket Kodak Film Tank, per ½ dozen20
Ditto, for 2¼-inch Tank, per ½ dozen20
Ditto, for 2½-inch Tank, per ½ dozen25
Ditto, for 3½-inch Tank, per ½ dozen25
Ditto, for 5-inch Tank, per ½ dozen30
Ditto, for 7-inch Tank, per ½ dozen30
Kodak Acid Fixing Powder, per ¼-pound package10
Ditto, per ½-pound package15
Ditto, per 1-pound package25



NO. 2 BROWNIE DEVELOPING BOX

THIS is an adaptation of the Kodak Film Tank, so simple and proficient that any boy or girl can operate it successfully.

The covered metal box is just the right length to hold, when looped once, a roll of A120, 120, A127 or 127 Kodak Film. The developing is done in daylight and by following the directions which accompany each box, consistently good results can be obtained from the very beginning.

PRICES

No. 2 Brownie Developing Box	\$1.75
Brownie Developing Box Powders, per package of 620
Kodak Acid Fixing Powder, ¼-pound package10
Ditto, ½-pound package15
Ditto, 1-pound package25

DEVELOPING AND PRINTING OUTFITS

THE camerist who wishes to do his own developing by the tray method and to make his own prints, can save himself both time and expense by using either the Eastman 3A or Eastman A B C Outfit. Being assembled in large numbers these outfits can be offered at prices that spell economy for the user. Good results are assured by the fact that each item is a tried and tested member of the Eastman line.

The 3A Outfit, listed below, includes all the requisites for finishing twenty-four pictures 3¼ x 5½ inches or smaller.

PRICES

One Kodak Candle Lamp	\$0.40
One Printing Frame40
One Glass for Frame05
One 4-ounce Graduate15
One Stirring Rod06
Four Developing Trays40
Five Tubes Eastman Special Developer35
One-half pound Kodak Acid Fixing Powder15
Two dozen 3¼ x 5½-inch Velox Paper40
Two ounces Nepera Solution for developing Velox20
Instruction Book (free)	

Value \$2.56

EASTMAN 3A OUTFIT, COMPLETE, NEATLY PACKED	Price \$2.00
EASTMAN A B C OUTFIT, similar to above but providing for 4 x 5-inch or smaller pictures	\$2.00

KODAK AMATEUR PRINTER

FOR quick and convenient contact printing the amateur can choose no better means than this compact, simple device.



It fits negatives from $1\frac{5}{8} \times 2\frac{1}{2}$ to 4×5 or $3\frac{1}{4} \times 5\frac{1}{2}$ inches. The negative to be printed is placed on the top glass window by the light of a red bulb inside the printer. A simple masking arrangement controls the white margins and holds the negative during any number of exposures. The paper is placed over the negative and the hinged frame closed. This automatically turns on a 60-watt electric lamp (not supplied) and makes the print. The position of this lamp is readily adjustable to give even illumination to negatives of various sizes.

The printer is supplied with $5\frac{1}{2}$ feet of electric cord, plug and red bulb.

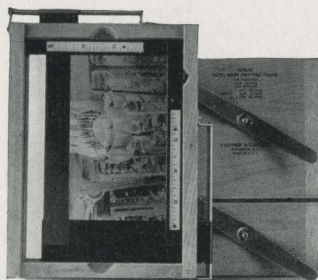
Kodak Amateur Printer. \$10.00

KODAK AUTO-MASK PRINTING FRAME

THIS frame can be used in printing from any negatives of amateur size: 4×5 , $3\frac{1}{4} \times 5\frac{1}{2}$ inches or smaller.

Attached to the frame are two slides adjusted from the outside, forming an accurate mask of whatever size is desired. Any number of uniformly masked prints can be made without readjusting the negative or the masking slides.

The entire frame is carefully constructed, of quality materials, to give years of service.

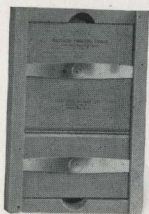


Kodak Auto-Mask Printing Frame \$1.50

EASTMAN PRINTING FRAMES

HAVE a two-section hinged back, with clamps to hold the negative and paper firmly.

These frames are staunchly constructed of beech, a high grade wood that assures rigidity and long life, and obviates danger of warping.



For $2\frac{1}{4}$ x $3\frac{1}{4}$ -inch plates and V. P. K. or smaller film negatives, opens two-thirds.	\$0.35
For $2\frac{1}{2}$ x $4\frac{1}{4}$ -inch or smaller film negatives, opens two-thirds.	.40
For $3\frac{1}{4}$ x $4\frac{1}{4}$ -inch plates and $2\frac{1}{4}$ x $3\frac{1}{4}$ or smaller film negatives, opens two-thirds.	.40
For $3\frac{1}{4}$ x $5\frac{1}{2}$ -inch or smaller film negatives, opens two-thirds.	.40
For $3\frac{1}{4}$ x $5\frac{1}{2}$ -inch plates, opens two-thirds	.45
For 4 x 5-inch plates or films, opens two-thirds	.40
For 5 x 7-inch plates or films, opens two-thirds	.55
For $3\frac{1}{2}$ x 12-inch films, opens in three sections.	1.60

Eastman Printing Frames are supplied without glass

KODALOID PRINTING MASKS

THESE transparent, durable masks, orange-red in color, have openings of various convenient sizes. Their transparency enables the user to see clearly the portions of the picture which are being masked off. This is an advantage not present in masks that are made of opaque material.

For 3A Frames, 8 masking sizes, each	\$0.10
For 4 x 5 Frames, 7 masking sizes, each	.10
For 5 x 7 Frames, 6 masking sizes, each	.15

KODAK MAGNESIUM RIBBON HOLDER

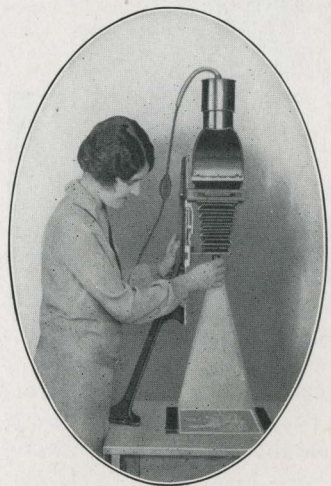


KODAK Magnesium Ribbon provides an intensely bright light suitable for exposing Velox and an excellent supplementary illumination for portraiture, copying and interior work in general. It is furnished in the handy holder illustrated. It is best ignited by means of the special alcohol lamp illustrated below. A forward movement of the thumb pushes out the desired length of ribbon through a small opening, while a reverse movement extinguishes the ribbon instantly.

Kodak Magnesium Ribbon Holder	\$0.50
Alcohol Lamp	.50

KODAK AUTO-FOCUS ENLARGER

THE easiest and most efficient means of making amateur enlargements is supplied by this simple apparatus, which clamps to any table.



The enlarger focuses itself. As the camera is moved up or down to form an image of the desired size a cam-and-lever arrangement maintains the focus at critical sharpness. Enlarging with this outfit is therefore as rapid and easy as contact printing. And the Kodak Anastigmat lens supplied assures big prints that are professional in quality.

Plate or film negatives up to 4 x 6 inches can be accommodated, and enlarged from 1½ to 3½ diameters. The largest possible print is 14 x 21 inches. V. P. K. negatives can be enlarged to 5⅝ x 8¾.

The ventilated lamp house holds an electric lamp (not supplied) of from 75 to 200 watts. A diffusing disc

is supplied separately for soft-focus effects.

Kodak Auto-Focus Enlarger with Kodak Anastigmat lens, electric cord and plug, set of six flexible metal masks \$33.00
Diffusing Disc 1.00

EASTMAN BROMIDE PAPERS

For enlargements, Eastman Bromide Papers are emphatically faster than the other developing papers and as easy to use as Velox. Grades: Velvet, Brilliant Velvet, Royal, Enameled, Matte-enamel and Standard B and C. Royal Bromide is a buff paper, suitable for making sepia enlargements by redevelopment.

Size	Per Doz.	Size	Per Doz.	Size	Per Doz.
5 x 7	\$0.50	8 x 10	\$1.10	14 x 17	\$3.15
5 x 8	.55	10 x 12	1.70	16 x 20	4.20
6½ x 8½	.80	11 x 14	2.10	18 x 22	5.25

STANDARD BB AND CC DOUBLE WEIGHT

Size	Per Doz.	Size	Per Doz.	Size	Per Doz.
5 x 7	\$0.60	6½ x 8½	\$1.00	10 x 12	\$2.15
5 x 8	.70	8 x 10	1.40	11 x 14	2.65

Other sizes in proportion

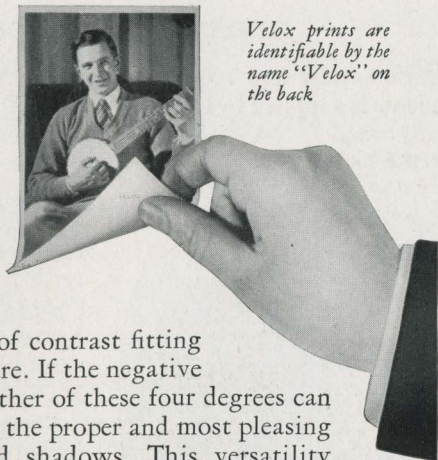
VELOX

*"Look for Velox on
the back"*

VELOX is a non-abrasion developing-out paper, ideal for amateur work. It takes into account the fact that amateur pictures are made under greatly varying light conditions, its four degrees of contrast fitting every type of amateur exposure. If the negative is at all printable one or another of these four degrees can always be counted on to give the proper and most pleasing rendering of highlights and shadows. This versatility makes it possible to tone down extreme contrasts and to help correct exposure errors.

Negatives of extreme contrast give best results on No. 1; negatives of average contrast print best on No. 2; flat negatives call for No. 3, and exceedingly thin or flat negatives yield the best possible prints on No. 4.

Velox is also supplied in four surfaces. Therefore it not only meets the requirements of every negative but also gives the amateur a wide choice in the matter of finish.



*Velox prints are
identifiable by the
name "Velox" on
the back*

GRADE	SURFACE	CONTRAST				*Furnished also in Double-weight Velox. Double-weight papers require no mount and when printed under a mask, which will insure a white margin, offer a very artistic effect.
Velvet Velox	Semi-Gloss	*1	*2	*3	*4	
Portrait Velox	Smooth Matte	2				
Carbon Velox	Matte	1	2	3	4	
Glossy Velox	Enameled	1	*2	*3	4	

PRICES

Size Inches	Single Weight			Double Weight		
	Dozen	½ Gross	Gross	Dozen	½ Gross	Gross
1½ x 2½	\$0.12		\$1.10	\$0.15		\$1.40
2¼ x 3¼	.12		1.10	.15		1.40
2½ x 4¼	.15		1.35	.20		1.70
3¼ x 4¼	.20		1.75	.25		2.20
2½ x 4½	.20		1.75	.25		2.20
3¼ x 5½	.20		2.00	.25		2.50
4 x 5	.25		2.30	.30		2.90
5 x 7	.40	\$2.10	3.90	.50	\$2.60	4.90
3½ x 12	.50	2.60	4.75	.60	3.10	5.95
Velox Post Cards, 3¼ x 5½, furnished in Velvet, Contrasts Nos. 1, 2, 3 and 4, and in Glossy, Contrasts Nos. 2 and 330	1.50	2.90
Velox Double Post Cards, 3¼ x 10½ inches60	3.00	5.80

VELOX SUNDRIES

Nepera Solution, 4-ounce bottle	\$0.28
Ditto, 16-ounce bottle84
Nepera Auxiliary Powders (for converting Nepera Solution to a film or plate developer), package of 1235
Eastman M. Q. Developer, package of 5 glass tubes30
Velox Liquid Developer, 4-ounce bottle28
Ditto, 16-ounce bottle84
Velox Re-developer Tubes for Sepia Toning, package of 12.	1.08
Velox Liquid Hardener, 4-ounce bottle.25
Ditto, 8-ounce bottle35
Kodak Acid Fixing Powder for fixing Velox prints, 1 pound25
Ditto, ½ pound15
Ditto, ¼ pound10

KODAK VELVET GREEN

A SHADY woodland scene, a marine sunset, or a favorite mountain view—those are some of the many outdoor pictures whose beauty is infinitely increased by printing on Kodak Velvet Green. It faithfully reproduces the rich green tone of nature and gives effects that are unusual without being freakish. It lends a warmth and a realism that surprise the amateur who is accustomed to black and white prints and who is using this paper for the first time.

And these prints that seem to breathe the atmosphere of out-of-doors can be made without any complicated materials or unusual skill. For Kodak Velvet Green is a developing-out paper as simple to use as Velox. Its manipulation is the same, excepting a slight change in the fixing bath and printing by daylight instead of artificial illumination. The surface—a smooth semi-matte—brings out detail fully. The degree of contrast is comparable to that of No. 2 Velox.

The paper is supplied in both single and double weights. In addition Kodak Velvet Green Post Cards are available. They are particularly appropriate for use at vacation time.

Size Inches	Single Weight			Double Weight		
	Dozen	½ Gross	Gross	Dozen	½ Gross	Gross
1½ x 2½	\$0.10		\$0.90	\$0.15		\$1.30
2¼ x 3¼	.10		.90	.15		1.35
2½ x 4¼	.12		1.10	.20		1.60
3¼ x 4¼	.15		1.40	.25		1.80
2½ x 4½	.15		1.40	.25		2.00
3¼ x 5½	.15		1.60	.25		2.00
3½ x 12	.40	\$2.10	3.80	.50	\$2.75	5.00
4 x 5	.20		1.85	.30		2.25
5 x 7	.30	1.70	3.10	.40	2.20	3.90
Kodak Velvet Green Post Cards,						
Single Length20	1.10	2.00
Double Length40	2.20	4.00

SOLIO PAPER

A glossy, printing-out paper

Size	Per Package 2 Doz.	Size	Per Package 2 Doz.
1 $\frac{5}{8}$ x 2 $\frac{1}{2}$	\$0.20	4 x 5	\$0.40
2 $\frac{1}{4}$ x 3 $\frac{1}{4}$20		Per Doz.
2 $\frac{1}{2}$ x 4 $\frac{1}{4}$25	4 $\frac{1}{4}$ x 6 $\frac{1}{2}$	\$0.25
3 $\frac{1}{4}$ x 4 $\frac{1}{4}$25	5 x 730
2 $\frac{7}{8}$ x 4 $\frac{7}{8}$25	3 $\frac{1}{2}$ x 1235
3 $\frac{1}{4}$ x 5 $\frac{1}{2}$30	Post Cards20
		Double Post Cards40

Solio Toning and Fixing Powders, per carton, 5 tubes, \$0.35. Solio Combined Toning and Fixing Solution, per 8-ounce bottle, \$0.50; 4-ounce bottle, \$0.30.

EASTMAN PLATES

Single coated: Eastman 40, 36, Speedway,
S. C. Ortho

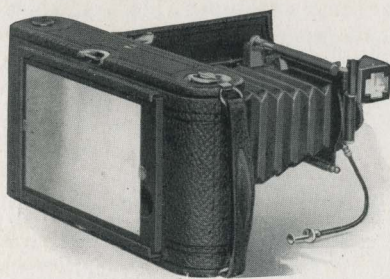
Double coated: Eastman D. C. Ortho

	Per Doz.		Per Doz.
2 $\frac{1}{4}$ x 3 $\frac{1}{4}$	\$0.45	2 $\frac{1}{4}$ x 3 $\frac{1}{4}$	\$0.55
3 $\frac{1}{4}$ x 4 $\frac{1}{4}$65	3 $\frac{1}{4}$ x 4 $\frac{1}{4}$80
3 $\frac{1}{4}$ x 5 $\frac{1}{2}$90	3 $\frac{1}{4}$ x 5 $\frac{1}{2}$	1.10
4 x 590	4 x 5	1.10

Wratten & Wainwright Panchromatic

	Per Doz.
3 $\frac{1}{4}$ x 4 $\frac{1}{4}$	\$0.80
3 $\frac{1}{4}$ x 5 $\frac{1}{2}$	1.10
4 x 5	1.10

COMBINATION BACKS



WHEN substituted for the usual autographic backs on No. 3A Autographic Kodaks, Regular and *Special*, Combination Backs adapt these cameras to double plateholders. The photographer then has the advantage of ground glass focusing and, if he so desires, can make one or two exposures and develop them at once.

With the addition of Kodak Cut Film Sheaths in the plate holder, this special back also equips the camera for use with Kodak Cut Film, Eastman Commercial Orthochromatic and Eastman Commercial Panchromatic Film. (See page 51.)

Combination Back with ground glass, for No. 3A Autographic Kodak	\$4.00
Ditto, for No. 3A <i>Special</i>	5.00
Kodak Double Plate Holders for either of the above, each	1.50

KODAK CUT FILM

KODAK Cut Film offers every advantage of plates, and in addition it weighs only one-tenth as much, is free from halation, easier to handle and unbreakable. The negatives it produces are of strictly superior quality. Through the agency of the Combination Back, Double Plate Holder (see opposite page) and Kodak Cut Film Sheaths, No. 3A Autographic Kodaks, Regular and *Special*, can readily be adapted for use with this film.

The speed of regular Kodak Cut Film is comparable to that of the best portrait plate or of cartridge Kodak Film. The *Super Speed* is about twice as fast as Regular, yet it equals the latter in latitude, gradation and fineness of grain. It gives the best possible negatives under difficult light conditions and with short exposures, without sacrificing any of the qualities on which film superiority is founded. It opens the way to unthought-of possibilities in speed work, home portraiture, etc.

	$2\frac{1}{4} \times 3\frac{1}{4}$	$3\frac{1}{4} \times 4\frac{1}{4}$	$3\frac{1}{4} \times 5\frac{1}{2}$	4×5
Kodak Cut Film, Regular	\$0.45	\$0.65	\$0.90	\$0.90
Kodak Cut Film, <i>Super Speed</i>50	.75	1.00	1.00

EASTMAN COMMERCIAL ORTHO FILM

THIS film is color-sensitive to a high degree, and gives especially good color separation in landscapes or multi-color still life subjects. It is about half as fast as Kodak Cut Film Regular and is supplied in cut film form. It is not sensitive to red.

	$3\frac{1}{4} \times 4\frac{1}{4}$	$3\frac{1}{4} \times 5\frac{1}{2}$	4×5
Eastman Commercial Ortho Film, dozen	\$0.65	\$0.90	\$0.90

EASTMAN COMMERCIAL PANCHROMATIC FILM

EASTMAN Commercial Panchromatic Film is completely sensitive to all colors, including red, and when used with the proper filter gives a monochrome reproduction of all tints and shades in their proper relation. It cannot be handled by the light of a ruby safelight but must be manipulated in darkness or by the light of a green Series 3 Safelight. It is supplied in cut film form.

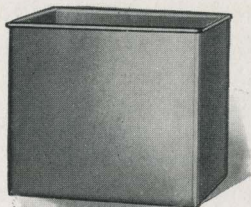
	$3\frac{1}{4} \times 4\frac{1}{4}$	$3\frac{1}{4} \times 5\frac{1}{2}$	4×5
Eastman Commercial Panchromatic Film, dozen	\$0.75	\$1.00	\$1.00

KODAK CUT FILM SHEATH

ADAPTS a plate holder to the use of cut film. It is made of aluminum, ribbed for rigidity, and is instantly inserted or removed.

	$2\frac{1}{4} \times 3\frac{1}{4}$	$3\frac{1}{4} \times 4\frac{1}{4}$	$3\frac{1}{4} \times 5\frac{1}{2}$	4×5
Kodak Cut Film Sheath	\$0.10	\$0.10	\$0.15	\$0.15

KODAK DEVELOPING BOX, NO. 1



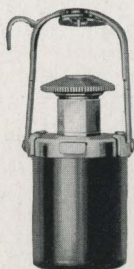
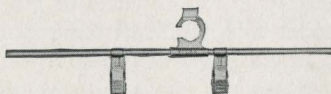
THIS tank provides a swift and easy means to uniform development of cut film. It takes twelve films, each suspended in the solution from a Kodak Cut Film Developing Hanger. Development proceeds by the time and temperature method. The tank is made of acid-resisting metal and measures 4x5 $\frac{1}{4}$ x6 inches.

Kodak Developing Box, No. 1, without hangers. \$2.00

KODAK CUT FILM DEVELOPING HANGER

FOR use with Kodak Developing Box, No. 1. It lies across the top of the box. Clips are of acid-resisting metal.

Kodak Cut Film Developing Hangers, each \$0.20



KODAK SELF TIMER

THIS accessory helps in making a really complete picture record. With it the photographer can make snapshots of himself or can include himself in group pictures.

Clip a Kodak Self Timer to the cable release of any Kodak, set it for any desired interval from $\frac{1}{2}$ second to 1 minute, and step into the picture; the timer trips the shutter and makes the exposure for you.

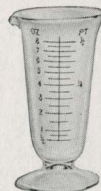
Kodak Self Timer \$1.25

EASTMAN VISIBLE GRADUATE

THE lines and figures on this graduate are opaque, not translucent as is the case with most similar devices.

Even under the rays of a ruby safelight the graduations are easily visible—a convenience and time-saving factor.

2-ounce	\$0.30	8-ounce	\$0.50
4-ounce40	16-ounce80



EASTMAN THERMOMETER

AN ACCURATE instrument, especially convenient in tank or tray development. The hook makes it easy to suspend the thermometer in solutions. Its curved back protects the tube and fits the corner of a developing tank.

Eastman Thermometer \$0.90



THERMOMETER STIRRING ROD



THIS triple purpose rod is $\frac{1}{4}$ inch in diameter by $9\frac{1}{4}$ inches long, and is stoutly constructed. Stirring with it mixes ingredients thoroughly and at the same time gives an accurate record of the temperature. The flat end is useful in crushing lumpy powders.

Thermometer Stirring Rod \$1.25

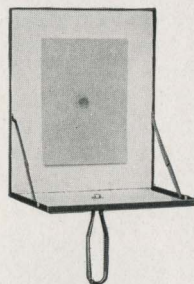
DEVELOPING TRAYS

		"Bull's Eye" (composition)	Eastman Enameled	
$3\frac{1}{4} \times 4\frac{1}{4}$. . .	\$0.30	$3\frac{1}{2} \times 12$. . . \$1.30
4 x 540	5 x 880
4 x 645	4 x 5	. . . \$0.75
			4 x 685
			5 x 7	. . . 1.10

FLASHLIGHT MATERIALS

SINCE it makes one independent of daylight, flashlight photography is a year-round sport. Giving complete control of illumination, it means good indoor pictures under otherwise impossible conditions.

The simplest way is to use a Kodak Flash Sheet Holder and Eastman Flash Sheets. The latter are placed on the holder and ignited from behind. They burn slowly, giving a broad and powerful, yet soft, light.



No. 1 Flash Sheets, per package of $\frac{1}{2}$ dozen sheets, 3 x 4-inch	\$0.35
No. 2 Flash Sheets, per package of $\frac{1}{2}$ dozen sheets, 4 x 5-inch	.56
No. 3 Flash Sheets, per package of $\frac{1}{2}$ dozen sheets, 5 x 7-inch	.84
Kodak Flash Sheet Holder	1.25

Flash cartridges are recommended only where instantaneous exposures are required.

Eastman No. 1 Flash Cartridges, for use only with fuse, per package of $\frac{1}{2}$ dozen	\$1.25
Ditto, No. 2	.80
Ditto, No. 3	.50
Eastman Spreader Flash Cartridges, for use with fuse, per package of $\frac{1}{2}$ dozen	.60

KODAK DRY MOUNTING TISSUE

THIS tissue offers one of the easiest and most satisfactory methods of mounting prints. Just fix the tissue on the print, lay both on the mount and press with a warm flat-iron. In this way pictures are mounted smoothly and securely, without fuss or bother.

Size, $3\frac{1}{2} \times 3\frac{1}{2}$, 3 dozen	. . . \$0.10	Size, 4 x 5, 2 dozen	. . . \$0.10
Size, $3\frac{1}{4} \times 4\frac{1}{4}$, 3 dozen10	Size, $4\frac{1}{4} \times 6\frac{1}{2}$, 1 dozen10
Size, $3\frac{1}{4} \times 5\frac{1}{2}$, 2 dozen10	Size, 5 x 7, 1 dozen10
Size, $3\frac{1}{2} \times 12$, 1 dozen10	Size, 8 x 10, 1 dozen20

KODAK PHOTO PASTE

AN EXCELLENT white adhesive, both for mounting prints and for general household use. The tapered friction cap quickly seals the tube and, as it is weighted, will not tip over when withdrawn from the tube.



1 1/8-ounce tube \$0.10
2-ounce tube15



EASTMAN PHOTO PASTE

A HIGH quality paste. It is white, and stays white, its special composition therefore avoiding the discoloration of print and mount.

4-ounce jar \$0.25

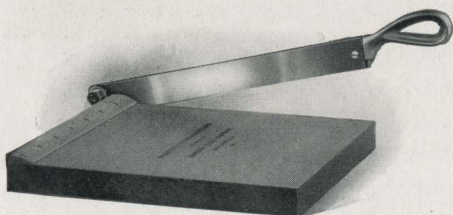
KODAK LIQUID GLUE

AN EXCELLENT glue for any purpose. With it the amateur can do mounting by simply tacking down the corners instead of covering the entire print with adhesive.

Per tube \$0.15



KODAK TRIMMING BOARDS



STAUNCHLY constructed, in sizes suited to the amateur photographer's needs. The boards are of hard wood, the blades of fine quality steel, and the rules are plainly marked.

No. 1, capacity, 5 x 5 inches \$0.75
No. 2, capacity, 7 x 7 inches 1.00

KODAK PRINT ROLLER

A HIGHLY convenient aid in mounting. The frame is nickeled and the rubber rolls are six inches long. The desired pressure is easily exerted by means of the overhead handle.

Kodak Print Roller \$1.00



FLEXO PRINT ROLLER



A THOROUGHLY practical roller for average work. The four-inch rubber roll is supported in a black enamel frame.

Flexo Print Roller \$0.35

THE KODAK ALBUM

LOOSE-LEAF, open-back style. Choice of genuine leather cover in black and oliveblend—both surfaced in an etched pine needle effect. Fifty black, round-cornered leaves held in place with silk-finished cord through cover and metal tubes.



5 x 8, RA, Black Cover	\$2.25	SA, Olive Cover	\$2.25
7 x 11, RB, Black Cover	3.25	SB, Olive Cover	3.25
10 x 12, RC, Black Cover	4.50	SC, Olive Cover	4.50
11 x 14, RD, Black Cover	5.50	SD, Olive Cover	5.50

Package of 12 extra leaves, Size A (5 x 8) \$0.15; Size B (7 x 11) \$0.18;
Size C (10 x 12) \$0.30; Size E (11 x 14) \$0.40



THE KODAGRAPH ALBUM

LOOSE-LEAF, open-back style. Choice of genuine leather cover in black with etched surface, or in dark brown with alligator finish. The word "Kodagraphs" is stamped in gold on cover. A good looking, substantial album.

BB, 7 x 11 Black Leather	\$3.00	AB, Brown Alligator	\$3.00
BD, 11 x 14 Black Leather	5.00	AD, Brown Alligator	5.00

Package of 12 extra leaves, Size B (7 x 11) \$0.18; Size E (11 x 14) \$0.40

THE COLONIAL ALBUM

LOOSE-LEAF, open-back style. Cover is of de luxe artificial leather. The beautiful design in polychrome covers the entire surface and in center the words "Ye Photo Album" are raised embossed in bronze. Fifty black leaves held in place by silk-finished cord through cover and metal tubes. This is a most attractive album.

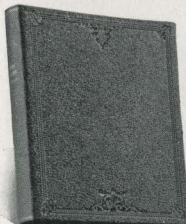


A, 5 x 8 . . . \$1.90	B, 7 x 11 . . . \$2.50	C, 10 x 12 . . . \$3.25	D, 11 x 14 . . . \$3.50
-----------------------	------------------------	-------------------------	-------------------------

Package of 12 extra leaves, Size A (5 x 8) \$0.15; Size B (7 x 11) \$0.18;
Size C (10 x 12) \$0.30; Size E (11 x 14) \$0.40

LIBRARY ALBUMS

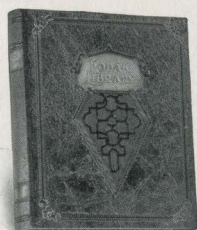
THESE two Library Album styles fill the demand for albums in book form, readily placed in the bookcase when not wanted. In keeping with the idea of a book style, the words "Kodak Library" are stamped in gold on the rounded back.



Black Leather
Library Album

Choice of genuine seal grain, black leather, finished on cover with a pressed book design—and DeLuxe artificial leather cover, ornamented with an exclusive book design and artistically colored.

The loose-leaf arrangement for holding the fifty black leaves is inside the cover—therefore, there are no projections to mar table or desk on which album may be placed.



De Luxe
Library Album

B, Black leather, 6½ x 9 (size of leaf from folding edge)	\$3.25
M, De Luxe artificial leather, 6½ x 9 (size of leaf from folding edge)	2.50

Extra leaves, package of 12, size L, \$0.18

THE VALENCIA ALBUM



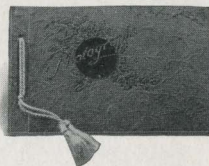
CHOICE of three shades of covers—Gunmetal Grey with grey leaves—Chestnut Brown and Olive Grey with black leaves. The covers are ornamented with a beautiful, engraved and duotinted embossed design. The word "Photographs" in antique metal colors adds a deft finished touch. An attractive album at an attractive price.

7 x 11, B-1, Grey cover, Grey leaves	\$2.00
7 x 11, B-2, Olive cover, Black leaves	2.00
7 x 11, B-3, Brown cover, Black leaves	2.00
11 x 14, D-1, Grey cover, Grey leaves	3.00
11 x 14, D-2, Olive cover, Black leaves	3.00
11 x 14, D-3, Brown cover, Black leaves	3.00

Package of 12 extra leaves, Size B, Black, 7 x 11, \$0.18; Size S, Grey, 7 x 11 \$0.25
Size E, Black, 11 x 14 .40; Size T, Grey, 11 x 14 .50

THE OUTING ALBUM

A LOOSE-LEAF album with embossed, coated paper cover, has twelve grey leaves held in place by cord through cover, finished with a beautiful design in high relief—just right to give to your friends as an inexpensive souvenir of some event recorded photographically, such as a vacation, an auto trip or a picnic.



No. 1 (4¾ x 7)	\$0.25
No. 2 (7 x 10)35

Package of 6 extra leaves, Size P, 4¾ x 7 \$0.10; Size R, 7 x 10 \$0.15

SCOUT'S MEMORY BOOK



PREPARED especially for the Boy Scouts of America. Choice of black or DeLuxe artificial leather cover. The special design, symbolic of Scout life, is embossed in high relief on the black cover and tastefully colored on the DeLuxe. In addition, both albums have the wording, "Scout's Memory Book," brought up in high relief.

Loose-leaf—in addition to the forty-five black leaves, there are added in both albums five white leaves for a written record of items of special interest in Scout life.

B, Black (7 x 11)	\$1.50	M, De Luxe (7 x 11)	\$2.50
-----------------------------	--------	-------------------------------	--------

Package of 12 extra leaves, Size B, Black, \$0.18; Size W, White, \$0.25

THE RHODES ALBUM

LOOSE-LEAF, open-back style—choice of genuine black grain leather or embossed black book cloth, with 50 black leaves held in place by metal tubes and cord through cover. Cover stamped in foil with word "Photographs."



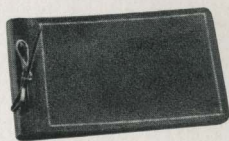
5 x 8	CA, cloth \$0.90	LA, leather	\$2.00
7 x 11	CB, cloth 1.25	LB, leather	2.75
8 x 10.	CE, cloth 1.50	LE, leather	3.10
10 x 12.	CC, cloth 2.00	LC, leather	4.50
11 x 14.	CD, cloth 2.25	LD, leather	5.00

Package of 12 extra leaves, Size A (5 x 8) \$0.15; Size B (7 x 11) \$0.18; Size K (8 x 10) \$0.20;
Size C (10 x 12) \$0.30; Size E (11 x 14) \$0.40



THE LUCERNE ALBUM

HERE is an album that "stands out" from the crowd. The cover is a beautiful glazed brown leather, finished in a pigskin surface—brightened with genuine gold leaf tooling around edges. The leaves are held in place by a leather thong through cover of the oblong style; in the library style, by a silk finished cord. Its appearance bespeaks quality—richness. It is especially suitable as a gift. Just the type



that "looks well" on living-room or library table. The leaves are a dark brown shade.

B, 7 x 11, Oblong.	8.50
D, 11 x 14, Oblong.	8.50
E, 8 x 10, Upright (a library book style)	4.50

Package of 12 extra leaves, Size X, 7 x 11, Brown, Oblong. \$0.25
Size O, 11 x 14, Brown, Oblong \$0.50; Size Z, 8 x 10, Brown, Upright \$0.40

THE JUNO ALBUM

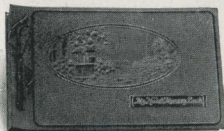
LOOSE-LEAF, open-back style. Fifty black loose leaves held in place by metal tubing and cord through covers. Brown or black embossed English grain imitation leather cover. The work "Photographs" stamped in gilt on cover.



5 x 8, BA, brown or CA, black	\$1.10	10 x 12, BC, brown or CC, black	\$2.25
7 x 11, BB, brown or CB, black	1.50	11 x 14, BD, Brown or CD, black	2.50

Package of 12 extra leaves, Size A (5 x 8) \$0.15; Size B (7 x 11) \$0.18;
Size C (10 x 12) \$0.30; Size E (11 x 14) \$0.40

MY KODAK MEMORY BOOK



IN addition to its embossed, hand-colored cover design, this attractive book has the words "My Kodak Memory Book" embossed in a raised panel. It is unusually handsome and well deserves the pictures you prize the most.

In addition to the forty-five black leaves for the photographs, the five white leaves will be found of practical use to record in writing any special happenings in connection with the making of these pictures, or for recording any other items of interest.

B, 7 x 11.	\$2.50
--------------------	--------

Package of 12 extra leaves, Size B, Black \$0.18; Size W, White \$0.25

THE PALERMO ALBUM

LOOSE-LEAF—closed back style. Cover is one piece, fine quality artificial leather and surfaced in a baby walrus grain effect. The leaves are held in place by a silk finished cord through cover. Choice of black cover with black leaves; grey cover—grey leaves; brown cover—brown leaves. Cover is stamped in gilt with the word "Snapshots." A new looking album at a reasonable price.



B-1, 7 x 11, Black Cover, Black Leaves	\$1.75	D-1, 11 x 14, Black Cover, Black Leaves	\$2.75
B-2, 7 x 11, Grey Cover, Grey Leaves	1.75	D-2, 11 x 14, Grey Cover, Grey Leaves	2.75
B-3, 7 x 11, Brown Cover, Brown Leaves	1.75	D-3, 11 x 14, Brown Cover, Brown Leaves	2.75

Package of 12 extra leaves, Size B, 7 x 11, Black \$0.18; Size S, 7 x 11, Grey \$0.25; Size X, 7 x 11, Brown \$0.25
Size E, 11 x 14, Black \$0.40; Size T, 11 x 14, Grey \$0.50; Size O, 11 x 14, Brown \$0.50

LA NOVELLE

LOOSE-LEAF open-back style. Fifty black leaves held in place by a silk-finished cord through cover and metal tubes. The word "Photographs" is stamped in gilt on cover. This cover is a strongly fibered material in a dark brown shade and finished in a richly embossed Baby Alligator pattern.



BA, 5 x 8	\$1.10	BC, 10 x 12	\$2.25
BB, 7 x 11	1.50	BD, 11 x 14	2.50
Package of 12 extra leaves, Size A (5 x 8) \$0.15; Size B (7 x 11) \$0.18; Size C (10 x 12) \$0.30; Size E (11 x 14) \$0.40			



THE COLOMBO ALBUM

LOOSE-LEAF, open back style. The cover is black artificial leather, embossed in relief with a beautifully engraved floral pattern. The word "Photographs" in gilt in the lower right corner adds a complete, finished touch. Fifty black leaves held in place by silk finished cord through cover and metal tubing. An attractive album sold at a low price.

7 x 11, B, Black Cover	\$1.50
11 x 14, D, Black Cover	2.50
Package of 12 extra leaves, Size B, 7 x 11 \$0.18; Size E, 11 x 14 \$0.40	

KODAK NEGATIVE ALBUMS

Loose negatives often become scattered or mutilated. But with a Kodak Negative Album the amateur can store film negatives in individual translucent envelopes, where they can be viewed individually—without being removed. They are ready for reprints, safe from loss or damage. Each album holds 100 negatives. A neat index makes it easy to keep a record of occasions and subjects.



For 100 negatives, $1\frac{1}{2}$ x $2\frac{1}{2}$	\$1.25	For 100 negatives, 4 x 5	\$1.50
For 100 negatives, $2\frac{1}{4}$ x $3\frac{1}{4}$	1.25	For 100 negatives, $3\frac{1}{4}$ x $5\frac{1}{2}$	1.50
For 100 negatives, $2\frac{1}{2}$ x $4\frac{1}{4}$	1.25	For 100 negatives, 5 x 7	1.75
For 100 negatives, $3\frac{1}{4}$ x $4\frac{1}{4}$	1.25		

THE SAFETY PHOTO MAILER

A COMBINATION of tough Kraft envelope, double scored corrugated board and lock seal. This mailer can be depended on to carry prints and enlargements with safety.

No. Size Card or Print	Outside Size of Mailer	Price per Dozen
A—5 x 7 or smaller	$6\frac{1}{8}$ x $8\frac{1}{8}$	\$1.08
B— $9\frac{3}{8}$ x $11\frac{3}{8}$ or smaller	$10\frac{1}{2}$ x $12\frac{1}{2}$	1.80
C— $11\frac{1}{2}$ x $13\frac{1}{8}$ or smaller	13 x $14\frac{1}{8}$	2.10
D— $12\frac{3}{8}$ x $15\frac{3}{8}$ or smaller	$13\frac{3}{4}$ x $16\frac{3}{4}$	3.00
E— $17\frac{1}{4}$ x $20\frac{1}{4}$ or smaller	$18\frac{3}{8}$ x $21\frac{3}{8}$	4.20

STEREO MOUNTS

CARD mounts of sufficient rigidity to hold stereo pictures in the flat position essential for satisfactory results.

Size of Mount, $3\frac{1}{2}$ x 7	Color, Queen's Grey	Per 100, \$1.30	Per 50, \$0.65
---	-------------------------------	---------------------------	----------------

KODAK CARD MOUNTS

THE BALTIC—BROWN OR GREY

Heavy stock, beveled edges, heavy borders. Sold in lots of not less than fifty, one kind and size.

No.	For Prints	Size of Mount	Per 100	Per 50	No.	For Prints	Size of Mount	Per 100	Per 50
0	1½ x 2½	3¾ x 4¼	\$2.10	\$1.05	2C	2½ x 4½	5½ x 7½	\$3.10	\$1.55
1	2¼ x 3¼	4¾ x 5¾	2.60	1.30	3A	3¼ x 5½	5¾ x 8	3.40	1.70
1A	2½ x 4¼	4½ x 6¼	2.80	1.40	4	4 x 5	6 x 7	4.00	2.00
2	3½ x 3½	5½ x 5½	3.00	1.50	4A	4¼ x 6½	6½ x 8¾	5.00	2.50
3	3¼ x 4¼	5½ x 6½	3.00	1.50	5	5 x 7	8 x 10	6.20	3.10

LANDSCAPE—ASH GREY AND ARTIST BROWN

No.	Color	For Prints	Size of Mount	Per 50	No.	Color	For Prints	Size of Mount	Per 50
A1	Grey	5 x 7	8 x 10	\$3.00	C1	Grey	8 x 10	12 x 14	\$5.00
A2	Brown	5 x 7	8 x 10	3.00	C2	Brown	8 x 10	12 x 14	5.00
B1	Grey	6½ x 8½	10 x 12	4.00	D1	Grey	7 x 11	11 x 15	5.25
B2	Brown	6½ x 8½	10 x 12	4.00	D2	Brown	7 x 11	11 x 15	5.25

DE LUXE ENLARGEMENT MOUNT

White and India Buff stock. All edges deckled. A rich mounter for the favorite enlargement.

No.	Color	For Prints	Size of Mount	Per Doz.	No.	Color	For Prints	Size of Mount	Per Doz.
A1	White	3¼ x 5½	7¼ x 9½	\$0.75	G1	White	6 x 10	10 x 14	\$1.40
A2	India	3¼ x 5½	7¼ x 9½	.75	G2	India	6 x 10	10 x 14	1.40
D1	White	5 x 7	9½ x 11½	1.00	H1	White	8 x 10	12 x 14	1.50
D2	India	5 x 7	9½ x 11½	1.00	H2	India	8 x 10	12 x 14	1.50
E1	White	5 x 8½	9½ x 12½	1.10	J1	White	7 x 11	11 x 15	1.56
E2	India	5 x 8½	9½ x 12½	1.10	J2	India	7 x 11	11 x 15	1.56
F1	White	6½ x 8½	10¾ x 12¾	1.20					
F2	India	6½ x 8½	10¾ x 12¾	1.20					

MAT MOUNT (FOR ENLARGEMENT)—GREY, BROWN

No.	For Prints	Size of Mount	Price	No.	For Prints	Size of Mount	Price
A	3¼ x 5½	7¼ x 9¾	Doz. \$0.93	F	6 x 10	10½ x 14½	Doz. \$1.29
B	4 x 7	8½ x 11½	Doz. .93	G	7 x 11	11½ x 15½	Doz. 1.53
C	5 x 7	9½ x 11½	Doz. .93	H	8 x 10	12 x 14	Doz. 1.53
D	5 x 8½	9½ x 13½	Doz. 1.05	J	8 x 14	13¼ x 19¼	½ Doz. 1.05
E	6½ x 8½	11½ x 13½	Doz. 1.17	K	11 x 14	17¼ x 20¼	½ Doz. 1.89

PROJECTO MOUNT

For inslip prints and enlargements. The base is heavy beveled cardboard—the top is embossed in a heavy relief frame effect. Grey only. Sold in not less than box lots—all sizes, 25 in a box.

No.	For Prints	Size Outside	Per 100	No.	For Prints	Size Outside	Per 100
A	5 x 7	8 x 10	\$ 8.00	D	6 x 10	10 x 14	\$12.00
B	6½ x 8½	10 x 12	10.50	E	7 x 11	11 x 15	16.00
C	8 x 10	12 x 14	12.00				

ENLARGEMENT MOUNT—GREY, BROWN

No.	For Prints	Size of Mount	Price	No.	For Prints	Size of Mount	Price
A	3¼ x 5½	7¼ x 9½	Doz. \$0.48	F	6 x 10	10½ x 14½	Doz. \$0.69
B	4 x 7	8½ x 11½	Doz. .51	G	7 x 11	11½ x 15½	Doz. .81
C	5 x 7	9½ x 11½	Doz. .54	H	8 x 10	12½ x 14½	Doz. .81
D	5 x 8½	9½ x 12½	Doz. .63	J	8 x 14	13 x 19	½ Doz. .69
E	6½ x 8½	11½ x 13½	Doz. .66	K	11 x 14	17 x 20	½ Doz. .84

KODAK METAL TRIPODS

THESE tripods, the result of many years of experience in constructing camera supports, are models of lightness, compactness and rigidity. The legs are of brass tubing, the sections in each telescoping neatly to give small collapsed size without sacrifice of strength. The lower sections and the heads are nicked, while the upper sections are finished in black enamel.

There are six models from which to choose. When closed their lengths range from $11\frac{3}{8}$ to $15\frac{1}{2}$ inches, so that even the largest is convenient to carry. Nos. 1 and 2 have revolving heads which permit the camera to swing in any desired direction without moving the tripod itself. They also have straps to hold the legs in place when closed. Nos. 1C and 2C have solid heads. Their legs have no straps.



The head of No. 6 (illustrated in its carrying case) includes a hinge which permits the legs to fold flat—parallel to one another instead of in the usual triangular form. The result is a narrow shape which, with the extreme shortness of the tripod when closed, makes No. 6 easiest of all to carry.

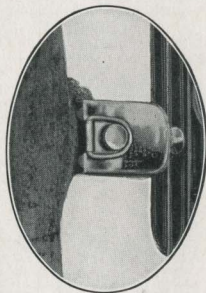
DETAILS AND PRICES

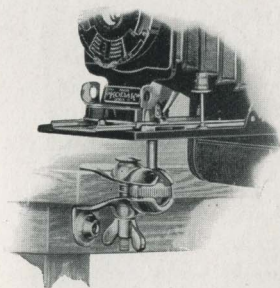
Sections	Length		Weight	Price
	Closed	Extended		
Kodak Metal Tripod No. 0	3 $15\frac{1}{8}$ inches	$39\frac{1}{8}$ inches	15 ounces	\$2.75
Kodak Metal Tripod No. 1C	4 $15\frac{1}{4}$ inches	$48\frac{1}{8}$ inches	$25\frac{1}{2}$ ounces	4.00
Kodak Metal Tripod No. 1	4 15 inches	$48\frac{1}{2}$ inches	$24\frac{1}{2}$ ounces	4.50
Kodak Metal Tripod No. 2C	5 $13\frac{1}{4}$ inches	$49\frac{1}{8}$ inches	26 ounces	4.50
Kodak Metal Tripod No. 2	5 $13\frac{1}{2}$ inches	$49\frac{1}{2}$ inches	25 ounces	5.00
Kodak Metal Tripod No. 6	6 $11\frac{3}{8}$ inches	40 inches	24 ounces	6.50
Leather Carrying Case, for Nos. 0 to 2, inclusive				2.70
Ditto, for No. 6				3.15
Rubber Tips, for Metal Tripod Spurs (per set of 3)				.10

THE KODAPOD

THE little Kodapod is an exceedingly handy arrangement, particularly suited for use in place of a tripod in outdoor photography. The toothed jaws at one end firmly grip tree, fence or other wooden object, while the other end threads into any standard tripod socket. A clamping screw adjusts the camera to the correct horizontal or vertical position, where it is firmly held while the exposure is being made.

The Kodapod \$1.75





THE OPTIPOD

HERE is a neat little device—a combined tripod head and felt-protected clamp—that is frequently used instead of a tripod and, in many cases, in conjunction with that larger support.

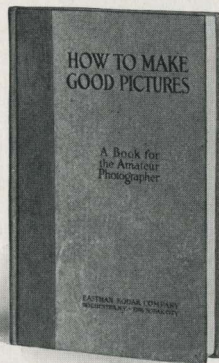
Used alone the Optipod clamps to any shelf, table, window ledge, running board or other support, and holds the camera firmly while the exposure is being made. It fits any standard tripod socket. It is small and light, and slips readily into the pocket.

The ball and socket joint is often a great convenience since it permits tilting the camera to almost any angle. It is especially valuable when the Optipod is used in connection with a tripod to photograph subjects which are at close range or otherwise so situated that it is impossible to place the tripod alone in the desired position.

The Optipod \$1.25

"HOW TO MAKE GOOD PICTURES"

THIS well-known book should be in the home of every amateur photographer. It explains, in easy, untechnical language, the various phases of picture making, and is valuable both for purposes of general reading and for ready reference on some particular subject. Its brief chapters cover camera operation, developing, printing, enlarging and tinting; landscape, architectural and interior photography; flash-light and home portraiture; the making of silhouettes and lantern slides, etc. There are 184 pages full of pointed, definite information for beginner or expert, and almost as many illustrations, including the sort of good pictures you want to make, as well as simple charts that explain photographic theories and processes.



To combine readability, good looks and permanence the book is finely printed on high grade paper and is bound in boards with an attractive vellum cover.

More than two million copies of "How to Make Good Pictures" have been sold—proof enough that the book is at once interesting, practical and instructive.

"How to Make Good Pictures". \$0.50

KODAK FILM CLIP

A FIRMLY gripping clip made of acid-resisting metal. The jaws are two inches wide, with fully sufficient tension to prevent slipping of the film. Because of its strength it is suitable for large as well as small films. It is made in one size only.

Kodak Film Clip. \$0.30



KODAK JUNIOR FILM CLIP

Two teeth in the jaw of this clip remove all possibility of slipping. The clip is made in one size only, $1\frac{3}{16}$ inches wide, of acid-resisting metal, and is the most practical for tray development or for drying films.

Kodak Junior Film Clip No. 1 \$0.15



EASTMAN FILM DEVELOPING CLIP

A STRONG and thoroughly dependable clip. Made in two sizes, with nickel finish.

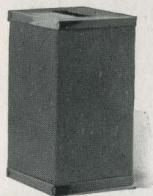
3½-inch, per pair \$0.30
5-inch, per pair40



KODAK CANDLE LAMP

WHENEVER space is at a premium, or wherever electricity is not available—on the camping trip, for instance—this clever little lamp is very popular. It is collapsible and takes up very little room when not in use. It is made of special, tested, ruby fabric bound in metal frames, and gives a strong light, safe for photographic work.

Kodak Candle Lamp, with one candle. \$0.40
Extra Candles, per dozen.40



KODAK DARKROOM LAMP

THE Kodak Darkroom Lamp is oil burning, is fitted with both orange and ruby glass, and has an adjustable winged light shield. The unusually broad wick is regulated from the outside and gives a soft, steady light for the darkroom.

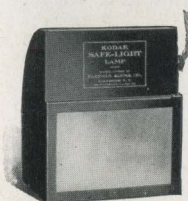
Kodak Darkroom Lamp \$1.50



KODAK SAFELIGHT LAMP

THIS lamp is ideal for all darkroom uses. It is made to suit the work of the beginner, the advanced amateur, or the professional.

It is supplied with a 5 x 7 Series 1 Safelight, for use with films or plates that are not highly color sensitive. Safelights of other series are also available.



The lamp is made of metal, neatly finished. It is supplied with safelight, electric cord and fittings, excepting 25-watt electric bulb.

Kodak Safelight Lamp	\$3.50
Extra Safelight, 5 x 7, any series75

EASTMAN SAFELIGHT LAMP

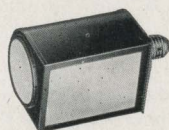
SUSPENDED from an electric cord or fixture, the Eastman Safelight Lamp throws the light from a 10-watt bulb directly downward over the work table. Supplied with 5 x 7 Series 2 Safelight, for use with films or plates, unless otherwise ordered. Strongly constructed of metal, neat, convenient.

Eastman Safelight Lamp, without bulb	\$3.00
Extra Safelight, 5 x 7, any series75



BROWNIE SAFELIGHT LAMP

THE Brownie Safelight Lamp, but little larger than the electric bulb it holds, screws into any electric socket. It is made of japanned metal, and has safelights both at the end and at the front, as shown. Both safelights are Series 1, and are interchangeable with other series. A 10-watt electric bulb (not supplied) is the source of illumination.



Brownie Safelight Lamp	\$1.75
Extra Circular End Safelight (any series), each25
Extra Rectangular Safelight (any series), each40

EXTRA SAFELIGHTS FOR SAFELIGHT LAMPS

SERIES 00—For use with developing-out papers (except bromide).

SERIES 0—For use with bromide paper and with lantern slide plates.

SERIES 1—For use with films or plates not highly color sensitive.

SERIES 2—For extra rapid orthochromatic films and plates.

SERIES 3—For use with red-sensitive panchromatic films and plates.

Price, any series, for Eastman and Kodak Safelight Lamps—\$.75

Price, any series, for Brownie Safelight Lamp; circular—\$.25; rectangular—\$.40

TESTED CHEMICALS



CERTAINTY of good results in making negatives and prints depends as much on the quality of your chemicals as on any other one thing. All Kodak chemicals are tested both photographically and for purity before the E. K. C. tested seal is allowed to be affixed to them.

Eastman Special Developer Powders, per package of 5, in sealed glass tubes . . .	\$0.35
Eastman M. Q. Developer, per package of 5 tubes30
Eastman Hydrochinon Developer Powders, per 1/2 dozen30
Ditto, per package of 5 powders, in sealed glass tubes35
Eastman Pyro Developer Powders, per 1/2 dozen30
Ditto, per package of 5 powders, in sealed glass tubes30
Eastman Tropical Developer, 5 powders, in sealed glass tubes40
Elon, per 1 ounce52
Kodolon, per 1 ounce47
Hydrochinon, per 1-ounce can22
Eastman Permanent Crystal Pyro, per 1-ounce bottle27
Velox Re-developer, including bleaching agent, per package of 12 tubes . . .	1.08
Sodium Thiosulphate (Hypo), granular, per pound18
Alum Potassium, powdered, per pound20
Kodak Acid Fixing Powder, per pound package25
Ditto, per 1/2-pound package15
Ditto, per 1/4-pound package10
Eastman Intensifier, per glass tube15
Eastman Reducer and Stain Remover, per box of 5 tubes50
Eastman Opaque No. 1, per tube25
Potassium Bromide, granular, per ounce can14
Acetic Acid, 28 per cent pure, per 1-pound bottle35
Citric Acid, 4-ounce bottle42
Eastman Tested Sodium Carbonate (desiccated), per 1-pound bottle40
Eastman Tested Sodium Sulphite (desiccated), per 1-pound bottle45

For Velox preparations, see page 49. For Solio preparations, see page 50.

For Tank Developer Chemicals, see page 43.

MISCELLANEOUS

Cable Releases, each . . .	\$0.35	Eastman Spotting Colors (consist of three colors, black, white and sepia), per set . . .	\$0.25
Eastman Special Squeegee, 8-inch . . .	1.25	Ferrotype Plate, 10 x 14, light20
Hard Rubber Stirring Rod30	Ferrotype Plate, 10 x 14, heavy30
Finger Tips, set of 315	Rubber Focusing Cloth, per yard . . .	\$1.00

TERMS

THE prices in this catalog are strictly net, except to regular dealers who carry our goods in stock. THESE PRICES ARE, HOWEVER, SUBJECT TO CHANGE WITHOUT NOTICE. For the convenience of our customers, we recommend that they make their purchases from a dealer in photographic goods, as by so doing they can save time and transportation charges.

EASTMAN KODAK COMPANY, ROCHESTER, N. Y.



KODAK is the registered and common-law Trade Mark of the Eastman Kodak Company and cannot be rightfully applied except to goods of their manufacture. When a dealer tries to sell you, under the Kodak name, a camera or films or other goods not of their manufacture, you can be sure that he has an inferior article that he is trying to market on the Kodak reputation.

Only Eastman Makes the Kodak

Sears Roebuck & Co.

2929 Elliott Ave.

MINNEAPOLIS, MINN.