



KODAK

The Digitized Kodak Catalog Project (1886 - 1941): A Very Brief History

Most camera collectors at some point in their collecting careers pass through a Kodak phase - some never come out of it. And if there ever was one name that came to be associated with both cameras and collecting, it was Kodak.

George Eastman received his first patent (for coating dry plates) and bought his first manufacturing facility in 1880, and in 1881 he started the Eastman Dry Plate Company. In 1886 he received a patent for the near-mythical Eastman Detective Camera, but it wasn't until 1888 that the first camera bearing the name "Kodak" was introduced.

One of the nice things about collecting Kodak is that the product line is pretty well known, and because the company produced annual catalogs for many years, collectors can be reasonably sure of what they're looking at, when it was made, the variations and so on - presuming that they have access to either the appropriate catalog, or a number of the many books which document Kodak, each to some greater or lesser extent.

But what would be really nice would be to have a complete set of Kodak catalogs in an easily accessible form and readily available. And since the advent of portable computing devices (PC, Macintosh, etc.) that's been possible - except for the difficulty of assembling a complete set of Kodak catalogs in one spot and then scanning them and making the results available.

The idea of digitizing a complete set of Kodak catalogs has kicked around the collecting community for many years. It's been proposed on a number of online forums, during meetings of various photohistory groups, and for years there have been many incomplete "Kodak CDs" on eBay but at best, they only contained a few catalogs - whatever the owner had available. But assembling a complete set of catalogs, then scanning and processing perhaps 3,000 to 4,000 pages, was a daunting task - if not completely overwhelming - and nothing ever came of it.

Until now.

In early 2010, the idea came up again, but this time we - "we" as in "the collecting community" - were lucky. A number of collectors were willing to loan their catalogs to this project and a couple of insane - wait, let's call them "dedicated" - dedicated enthusiasts - neither of whom collected Kodak, but both of whom enjoyed the challenge of such a project - were willing to put in the time and effort to scan and pull together the entire set of catalogs into a full-blown Kodak Catalog Digital Library.

Our initial objective was to include just the annual amateur catalogs, but it turns out that many cameras only appear in certain professional and specialty catalogs. We included as many of those as we could obtain so that almost every Kodak camera made in the US, Canada and Europe, would be documented - at least up to about 1941. After that, it becomes much more difficult as Kodak stopped producing annual catalogs as their product line became increasingly more diversified.

However, even with the additional "non-amateur" catalogs, we weren't completely successful in illustrating "every" camera Kodak ever made. There are an elusive few that might appear in specialty catalogs that we simply couldn't track down. If you can't find one of those odd cameras, that's no doubt why. We may do a revision at some point in the future if someone is willing to loan us a catalog that includes a camera that isn't already recorded.

In this project, a total of 67 catalogs were used from 1886 through 1941 including a number of professional and dealer catalogs, and in some years, two or even three different catalogs to cover all the bases. With the cooperation of a number of dedicated collectors, we were able to pull together all those catalogs and in June 2010, the project started in earnest.

By November 2010, we had scanned everything we needed and eventually all 67 catalogs were then reassembled as image folders and converted to the universally accepted PDF format and finally, converted into individually searchable PDFs which could then be searched globally as a collection.

For those of you interested in the statistics: about 200 hours of scanning time (we never want to hear that sound again), 67 catalogs and 3,908 page scans - which generated 7,917 original and processed images - and 11.4 GB of disk space. Additionally, another 100+ hours of technical development time was needed to convert the digital catalogues into a fully searchable "knowledgebase" that could be launched from most any standard web browser.

The overwhelming number of catalogs was loaned to us by that most remarkable of Kodak collectors, Charlie Kamerman of Eagle Creek, Oregon. Without Charlie, it's very doubtful that this project could even have been attempted.

But as it turned out, even Charlie didn't have all the publications that were needed, but he was able to track down the five that he lacked and was able to secure either a copy or high resolution images that we could work with. And so, our thanks to the contributors of the catalogs and scans that we used:

Charlie Kamerman for the vast majority of catalogs used and all his help,
Steve Shohet for loaning a variety of test catalogs,
Ryerson University (Toronto) for the 1886 Eastman Catalog
George Layne for the 1890 New Kodaks Catalog,
Mike Kessler for the 1891 Dealer Display Catalog,
Ralph London for the 1893 UK Catalog,
Michael Pritchard for the 1897 UK Catalog.

The digital side of the project - also known as "all of the work" - was done by Rob Niederman of Medina, Minnesota, and Milan Zahorcak of Tualatin, Oregon. Remarkably we're still friends and in a few years, we'll probably be able to talk about this project rationally.

And there you have it, a more-or-less done deal. We're fairly sure that it isn't quite perfect, and expect there will be some carping about something or other; but all-in-all, we believe this to be a pretty good product and can now move on to something else.

Our thanks to all of those involved.

Rob Niederman
Milan Zahorcak

Fall, 2011

KODAKS and Kodak Supplies

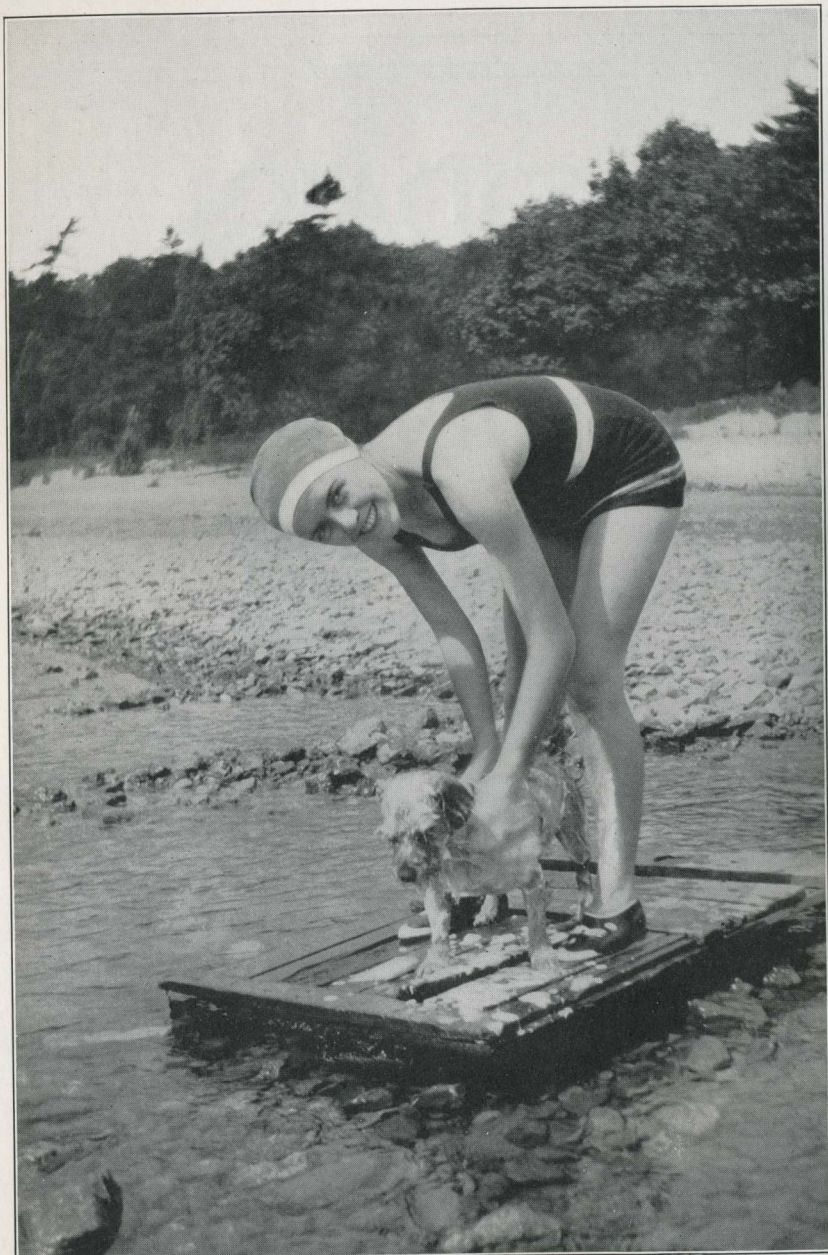


1927

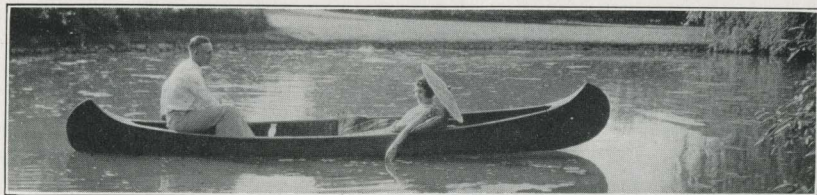
EASTMAN KODAK COMPANY

ROCHESTER, NEW YORK

The Kodak City



Enlarged from a negative made with a No. 3 Box Brownie



An Exclusive Eastman Feature

TO optical excellence, mechanical precision and general photographic proficiency—characteristics you expect—is added one feature that is *exclusively* Eastman—the autographic feature.

With a Kodak you can write the autographic record on the film at the time.

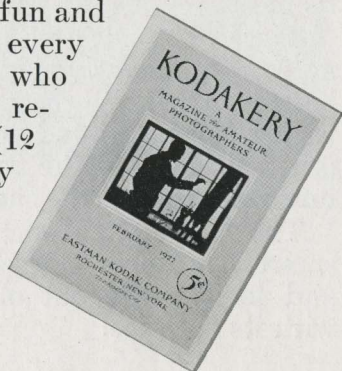
For pictures of the children you'll want the *date*. Write it down on the film directly after exposure, and after development the information appears in the negative margin.

For travel pictures you'll want the *place*. The autographic record keeps it.

The autographic feature is just another example of Kodak completeness.

Twelve Months Free

THE interest of the Eastman Kodak Company does not end with the sale of a camera. What is considered even more important is to make certain that every camera sold delivers its full measure of picture fun and photographic results. That's why every purchaser of an Eastman camera who fills out the blank in the manual receives a full year's subscription (12 issues) to *Kodakery*, a generously illustrated, ably edited magazine for amateur photographers. The regular subscription price of this interesting publication is 60 cents a year, \$1.00 for two years.

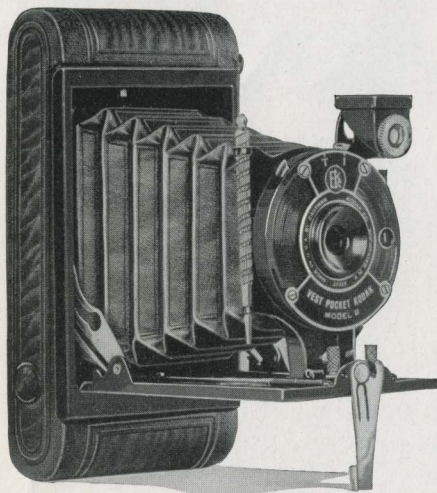


Vest Pocket Kodak, Model B

PICTURE SIZE

$1\frac{5}{8} \times 2\frac{1}{2}$

PRICE \$5



SMALL enough to wear is the Vest Pocket Kodak—yet big enough for thoroughly satisfactory photographic results, as you'll see for yourself from the first.

Too, the V. P. K.'s operating simplicity matches its size—there's little to learn—and pictures are astonishingly easy to get.

The focus is fixed, you can forget distance. There are adjustments both for *instantaneous* and *time* actions. Set the shutter, sight the subject, press the release and the picture's yours.

Though only little more than a year old, the Vest Pocket Kodak, Model B, has already earned the endorsement of thousands of users. They have liked its compactness, its simplicity, its ease of loading and its pictures—just as you will.

The V. P. K. is a photographic note book and, as you can always have it at hand, a picture opportunity will never find you unprepared. It's out of the pocket and into action before the chance goes.

The V. P. K. Model B has a smart, handsome iridescent finish and looks quite out of keeping with its \$5 price.



Wear it in your pocket

Men tuck the Vest Pocket Kodak in their vest pockets; women slip it in their handbags. Both take it with them wherever they go, however they go, and afterwards point with pardonable pride to the resulting album pages. The Vest Pocket Kodak takes the trip and brings it back.

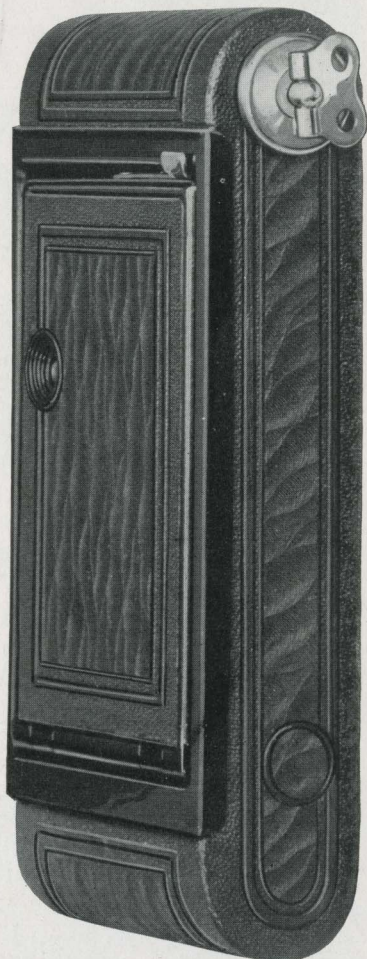
The V. P. K., Model B, like all Kodaks, is autographic.

DETAILS

Capacity without reloading: 8 exposures. Focus: Fixed. Lens: Meniscus. Shutter: Vest Pocket Rotary, with four stops, *instantaneous* and *time* actions. Brilliant finder, reversible for vertical or horizontal pictures. Body: All metal, covered with durable imitation leather; fittings finished in nickel and black enamel. One tripod socket, for vertical pictures. Black bellows. Autographic feature.

PRICES

Vest Pocket Kodak, Model B, with Meniscus Lens and Vest Pocket Rotary Shutter	\$5.00
Black Sole Leather Case, with strap.	1.25
Belt Carrying Case (russet leather)	1.25
Autographic Film Cartridge, 8 exposures (No. A 127) .	.25
Kodak Portrait Attachment (see page 42)75

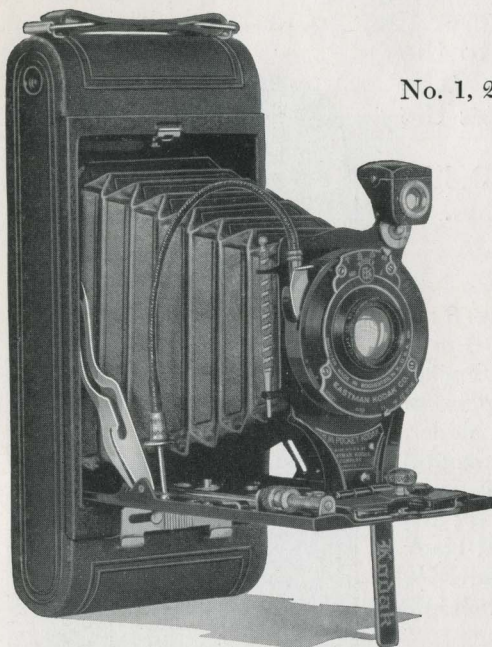


Actual size of Vest Pocket Kodak, closed

Nos. 1 and 1A Pocket Kodaks

PICTURE SIZES

No. 1, $2\frac{1}{4} \times 3\frac{3}{4}$; No. 1A, $2\frac{1}{2} \times 4\frac{1}{4}$



Illustrating the 1A Pocket Kodak with Kodar lens f.7.9 and Koder shutter.

Now you have it—a moderately priced camera which offers you the advantage of anastigmat equipment.

Both the Nos. 1 and 1A Pocket Kodaks are offered with the Kodak Anastigmat *f.6.3*—the first time in photographic history that a lens so good and so fast has been obtainable at a price so small.

The Pocket Kodaks offer other innovations as well. For example, there is the worm screw focusing device and the autographic stylus which remains *inside* when the camera is closed.

You're going to see a lot of these Pocket Kodaks "clicking" their way through vacation time. You're going to meet them on shipboard, at the shore, in the mountains—wherever people have good times and want to keep them. They're *new* and they may be counted on for *results*.

See them at your dealer's.

DETAILS

Capacity without reloading: No. 1, 6 exposures; No. 1A, 12 exposures. Focus: Adjustable, with worm-screw focusing device. Lenses: Meniscus Achromatic; Kodar *f*.7.9, $4\frac{3}{8}$ -inch focus on No. 1; $5\frac{1}{8}$ -inch focus on No. 1A; Kodak Anastigmat *f*.7.7, $4\frac{1}{4}$ -inch focus on No. 1; $5\frac{1}{8}$ -inch focus on No. 1A; or Kodak Anastigmat *f*.6.3, $4\frac{1}{8}$ -inch focus on No. 1; $5\frac{1}{8}$ -inch focus on No. 1A. Shutter: Kodex, speeds $\frac{1}{25}$ and $\frac{1}{50}$ second, with cable and finger release, *time* and *bulb* actions. Brilliant finder, reversible for horizontal or vertical pictures. Two tripod sockets. Body: All metal, covered with durable imitation leather; metal parts finished in nickel and black enamel. Black bellows. Auto-graphic feature.

PRICES

	No. 1	No. 1A
Pocket Kodak, with Meniscus Achromatic Lens and Kodex Shutter	\$ 9.00	\$10.00
With Kodar Lens <i>f</i> .7.9 and Kodex Shutter	12.00	13.00
With Kodak Anastigmat Lens <i>f</i> .7.7 and Kodex Shutter	15.00	16.00
With Kodak Anastigmat Lens <i>f</i> .6.3 and Kodex Shutter	17.00	18.00
Black Sole Leather Case, with strap	2.50	3.00
Autographic Film Cartridge, 12 exposures (No. A 116) for No. 1A60
Ditto, 6 exposures (No. A 120) for No. 1; (No. A 116) for No. 1A25	.30
Kodak Portrait Attachment (see page 42)75	.75
Kodak Self Timer (see page 52)	1.25	1.25

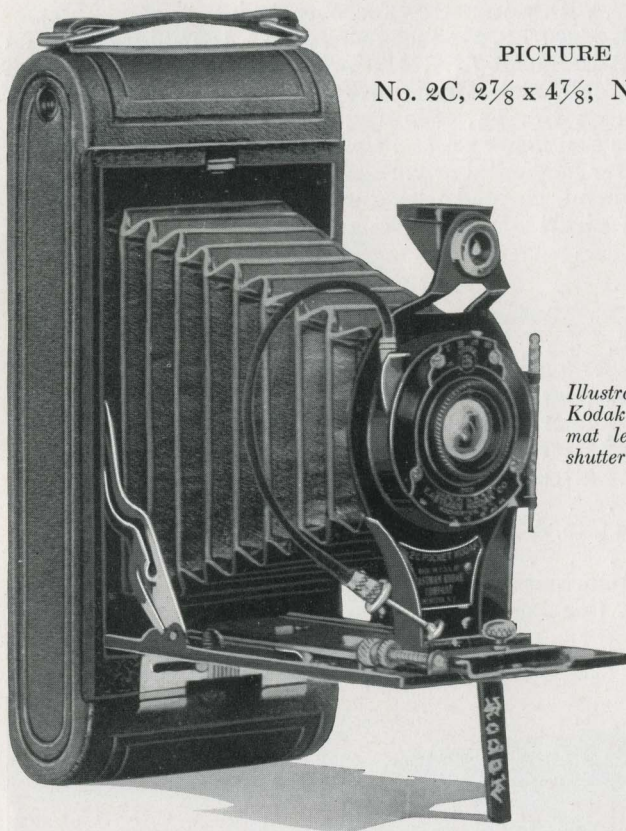


This picture, actual size, made with 1A Pocket Kodak

Nos. 2C and 3A Pocket Kodaks

PICTURE SIZES

No. 2C, $2\frac{7}{8} \times 4\frac{7}{8}$; No. 3A, $3\frac{1}{4} \times 5\frac{1}{2}$



Illustrating the 2C Pocket Kodak with Kodak Anastigmat lens $f.7.7$ and Kodex shutter.

THIS is the first time you have seen announced in a Kodak catalog such lens speed as is offered in the Kodak Anastigmat $f.6.3$ on a camera of such medium price. It's a real manufacturing achievement and means, for those who avail themselves of this equipment, that the opportunity for picture-taking is definitely increased.

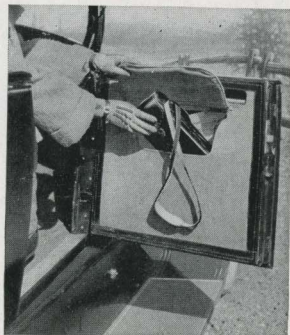
Lens speed, plus shutter dependability, means a camera that comes through with pictures even when light conditions are anything but ideal.

The Kodak Anastigmat lens $f.6.3$ has been stressed be-

cause it deserves the distinction. But the Kodar lens *f*.7.9 and the Kodak Anastigmat *f*.7.7 offer excellent equipment as well.

Pocket Kodaks make excellent summer companions. When they're along you can spend your vacation and have it, too.

Autographic, of course.



An ideal companion for the trip

DETAILS

Capacity without reloading: 10 exposures. Focus: Adjustable, with worm-screw focusing device. Lenses: Meniscus Achromatic; Kodar *f*.7.9, $6\frac{1}{8}$ -inch focus on No. 2C; $6\frac{7}{8}$ -inch focus on No. 3A; Kodak Anastigmat *f*.7.7, 6-inch focus on No. 2C; $6\frac{5}{8}$ -inch focus on No. 3A; or Kodak Anastigmat *f*.6.3, 6-inch focus on No. 2C; $6\frac{5}{8}$ -inch focus on No. 3A. Shutters: Kodex, speeds $\frac{1}{25}$ and $\frac{1}{50}$ second; Kodak Ball Bearing, speeds $\frac{1}{25}$, $\frac{1}{50}$ and $\frac{1}{100}$ second; both with cable and finger release, *time* and *bulb* actions. Brilliant finder, reversible for horizontal or vertical pictures. Two tripod sockets. Body: Aluminum, covered with durable imitation leather; metal parts finished in nickel and black enamel. Black bellows. Autographic feature.

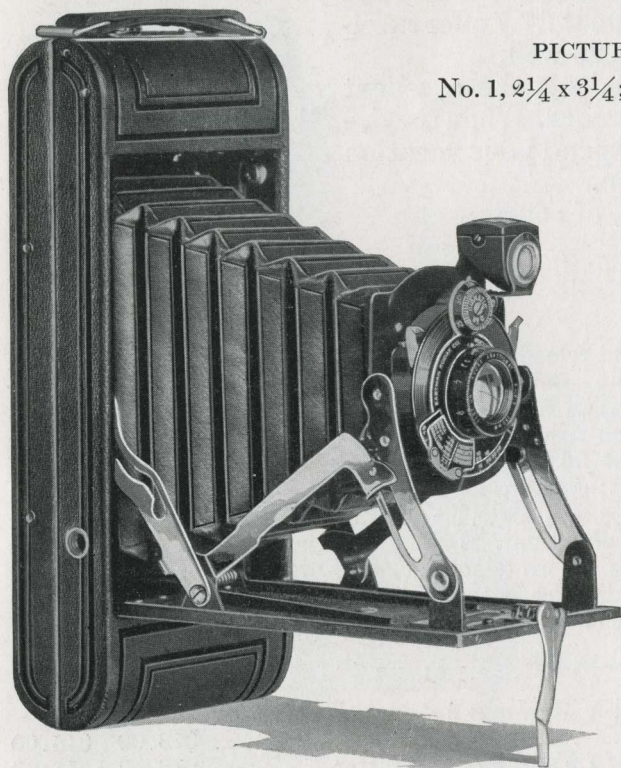
PRICES

Pocket Kodak, with Meniscus Achromatic Lens and	No. 2C	No. 3A
Kodex Shutter	\$13.00	\$15.00
With Kodar Lens <i>f</i> .7.9 and Kodex Shutter	16.00	18.00
With Kodak Anastigmat Lens <i>f</i> .7.7 and Kodex Shutter	18.00	20.00
With Kodak Anastigmat Lens <i>f</i> .6.3 and Kodak Ball Bearing Shutter	21.00	23.00
Black Sole Leather Case, with strap	3.50	3.75
Autographic Film Cartridge, 10 exposures (No. A 130) for No. 2C; (No. A 122) for No. 3A75	.90
Ditto, 6 exposures45	.55
Kodak Portrait Attachment (see page 42)75	.75
Kodak Self Timer (see page 52)	1.25	1.25

Nos. 1 and 1A Pocket Kodaks, Series II

PICTURE SIZES

No. 1, $2\frac{1}{4} \times 3\frac{1}{4}$; No. 1A, $2\frac{1}{2} \times 4\frac{1}{4}$



As the camera opens, the lens snaps into picture-making position—you get the picture before it goes. Three models of this unique Kodak, in two picture sizes, provide range enough to suit almost every individual preference.

The fixed focus models are equipped with Eastman-made lenses and two-speed Kodex shutters.

Focusing models offer two equipments:

Kodak Anastigmat $f.7.7$ lens and Diomatic shutter, with exposure scale and four snapshot speeds, *bulb* and *time*.

Kodak (semi-anastigmat) $f.7.9$ lens and Kodex shutter (speeds $1/25$, $1/50$ and *bulb* and *time*).

DETAILS

Capacity without re-loading: No. 1, 6 exposures; No. 1A, 12 exposures. Focus: Fixed or adjustable. Lenses: Meniscus Achromatic; Kodar $f.7.9$, $4\frac{3}{8}$ -inch focus on No. 1; $5\frac{1}{4}$ -inch focus on No. 1A; or Kodak Anastigmat $f.7.7$, $4\frac{1}{4}$ -inch focus on No. 1; 5-inch focus on No. 1A. Shutters: Kodex, speeds $\frac{1}{25}$ and $\frac{1}{50}$ second; Diomatic, speeds $\frac{1}{10}$, $\frac{1}{25}$, $\frac{1}{50}$ and $\frac{1}{100}$ second; both with finger release, *time* and *bulb* actions. Brilliant finder, reversible for horizontal or vertical pictures. Two tripod sockets. Body: Aluminum. Covering: No. 1, Levant grain leather; No. 1A, fine seal-grain leather; metal parts finished in nickel and black enamel. Black bellows. Auto-graphic feature.

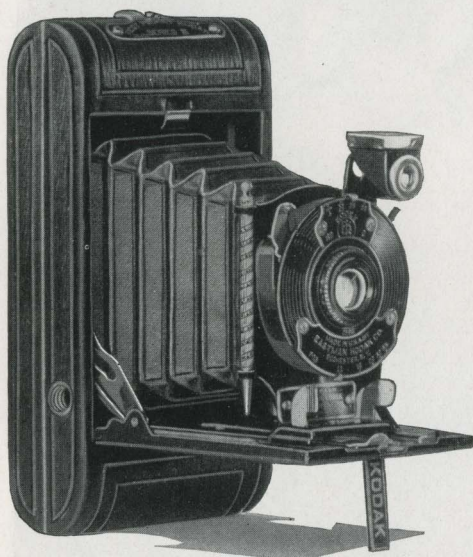


This picture, actual size, made with 1A, Series II

PRICES

	No. 1	No. 1A
Pocket Kodak, Series II (fixed focus), with Meniscus Achromatic Lens and Kodex Shutter	\$12.50	\$14.00
Focusing model with Kodar Lens $f.7.9$, Kodex Shutter	16.00	18.00
With Kodak Anastigmat Lens $f.7.7$, and Diomatic Shutter	21.00	23.00
Black Sole Leather Case, with strap	2.50	3.00
Autographic Film Cartridge, 12 exposures (No. A 116) for No. 1A60
Ditto, 6 exposures (No. A 120) for No. 1; (No. A 116) for No. 1A25	.30
Kodak Portrait Attachment (see page 42)75	.75
Kodak Self Timer (see page 52)	1.25	1.25
Cable Release for Pocket Kodak, Series II, opened35	.35

Vest Pocket Kodak, Series III



PICTURE SIZE

$1\frac{5}{8} \times 2\frac{1}{2}$

Illustrating Vest Pocket Kodak, Series III, with Kodar lens $f.7.9$ and Kodex shutter.

KODAR $f.7.9$, the semi-anastigmat, and Kodex shutter at \$10.

Kodak Anastigmat $f.6.3$ and Diomatic shutter at \$15.

Both good equipments, and both offered on a camera so small that it fits the vest pocket or hand bag.

In the last edition of the catalog there wasn't a Vest Pocket Kodak, Series III. Under the *Special* class never before have you been able to get on a Vest Pocket Kodak a lens as fast as Kodak Anastigmat $f.6.3$.

And with the Vest Pocket Kodak, Series III, you are offered not only the fast Kodak Anastigmat lens $f.6.3$ but the accurate Diomatic shutter, with snap-shot speeds of $1/10$, $1/25$, $1/50$ and $1/100$ second as well as *time* and *bulb* actions. Here is equipment well above the average, obtainable at a price that, for an outfit of this kind, is as new as the camera itself.

Like the other Vest Pocket Kodaks, the V. P. K. Series III is smaller than the hand that holds it. That means that you can have it with you always ready for the unexpected that always happens.

At vacation time particularly, the Vest Pocket Kodak will qualify as "just the thing" whether you own a larger camera or not. In fact, no photographic equipment is complete that does not include a V. P. K.

Beautifully finished in baby crepe grain cowhide—and autographic, of course.



This picture made with Vest Pocket Kodak, Series III

DETAILS

Capacity without reloading: 8 exposures. Lenses: Kodar *f*.7.9, $3\frac{3}{8}$ -inch focus; or Kodak Anastigmat *f*.6.3, $3\frac{1}{4}$ -inch focus. Shutters: Kodex, speeds $\frac{1}{25}$ and $\frac{1}{50}$ second; or Diomatic, speeds $\frac{1}{10}$, $\frac{1}{25}$, $\frac{1}{50}$ and $\frac{1}{100}$ second. Both with finger release, *time* and *bulb* actions. Brilliant finder, reversible for vertical or horizontal pictures. Two tripod sockets. Body: Aluminum, covered with baby crepe grain cowhide. Metal parts finished in nickel and black enamel. Black bellows. Autographic feature.

PRICES

Vest Pocket Kodak, Series III, with Kodar Lens <i>f</i> .7.9 and Kodex Shutter	\$10.00
With Kodak Anastigmat Lens <i>f</i> .6.3 and Diomatic Shutter	15.00
Belt Carrying Case, Russet Leather	1.50
Black Leather Carrying Case	1.50
Autographic Film Cartridge, 8 exposures (No. A 127)	.25
Cable Release for Vest Pocket Kodak, Series III, opened	.35
Kodak Portrait Attachment (see page 42)	.75
Kodak Self Timer (see page 52)	1.25

Nos. 1 and 1A Kodaks, Series III

PICTURE SIZES

No. 1, $2\frac{1}{4} \times 3\frac{1}{4}$; No. 1A, $2\frac{1}{2} \times 4\frac{1}{4}$



Illustrating No. 1 Kodak, Series III, with Kodak Anastigmat lens f.6.3 and Diomatic shutter.

SERIES III Kodaks are among the newer models that the Kodak Company has put out—as a natural result they offer every last minute improvement and refinement in camera manufacture. Of first importance is the lens—Kodak Anastigmat *f.6.3*. Specifically, Kodak Anastigmat *f.6.3* is a lens whose speed and optical properties will help you hand in better exposures to your finisher—and that's what you want.

On these cameras as well—as a part of their up-to-date equipment, you find the Diomatic shutter that clips seconds with precision to $1/10$, $1/25$, $1/50$ and $1/100$ as well as *time*

and *bulb* actions. The proficiency of the lens and the accuracy of the shutter are the answer to the success of the Series III Kodaks.

Naturally enough, cameras as high up in the photographic scale as are the Series III Kodaks have been given particular attention as far as appearance goes. Clever in design and deft in construction, with aluminum body covered with baby crepe grain cowhide, these Kodaks have a smart look about them that you unconsciously associate with up-to-the-minute equipment.

The only difference between these two cameras is the size of the pictures they make, and the fact that the 1A has a rising front for the elimination of undesirable foreground or the inclusion of more "view" at the top of the picture without lifting the camera.

Both Kodaks are autographic—all Kodaks are.

DETAILS

Capacity without reloading: No. 1, 6 exposures; No. 1A, 12 exposures. Focus: Adjustable; screw focusing device. Lens: Kodak Anastigmat *f*.6.3, 4¼-inch focus on No. 1; 5-inch focus on No. 1A. Shutter: Diomatic, speeds ¼₁₀, ¼₂₅, ¼₅₀, ¼₁₀₀ second, with *time* and *bulb* actions, cable and finger release. Brilliant finder, reversible for horizontal or vertical pictures. Two tripod sockets. Body: Aluminum, covered with baby crepe grain cowhide; metal parts finished in nickel and black enamel. Rising front on No. 1A. Black bellows. Autographic feature.

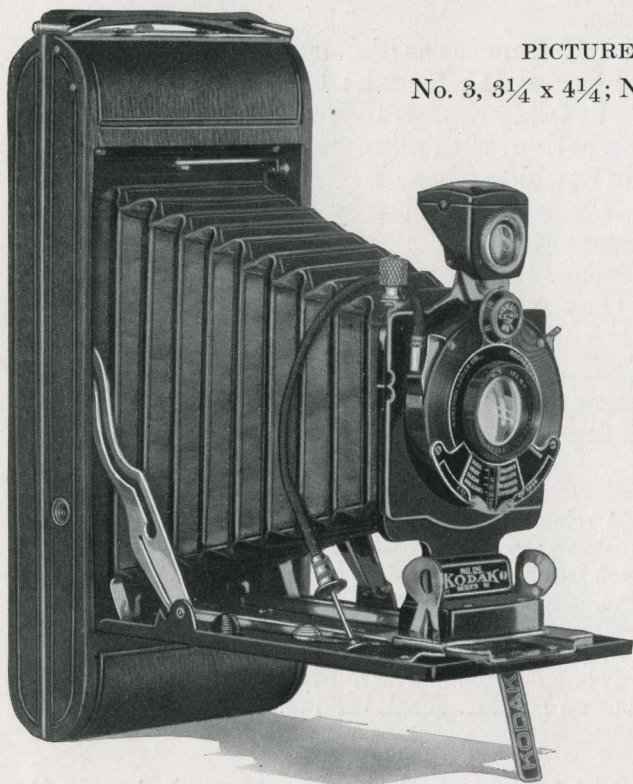
PRICES

	No. 1	No. 1A
Kodak, Series III, with Kodak Anastigmat Lens <i>f</i> .6.3 and Diomatic Shutter	\$26.00	\$29.00
Black Sole Leather Case, with strap	2.50	3.00
Autographic Film Cartridge, 12 exposures (No. A 116) for No. 1A60
Ditto, 6 exposures (No. A 120) for No. 1; (No. A 116) for No. 1A25	.30
Kodak Portrait Attachment (see page 42)75	.75
Kodak Self Timer (see page 52)	1.25	1.25

Nos. 3 and 2C Kodaks, Series III

PICTURE SIZES

No. 3, $3\frac{1}{4} \times 4\frac{1}{4}$; No. 2C, $2\frac{7}{8} \times 4\frac{7}{8}$



No. 2C Kodak, Series III, with Diomatic shutter and Kodak Anastigmat lens f.6.3.

WHAT stamps the Series III Kodaks as worthy of serious consideration is the quality of their lens and shutter equipments.

Kodak Anastigmat *f*.6.3 and Diomatic shutter mean photographic proficiency that you haven't found before in this price range.

Series III Kodaks are new. They embody every worthwhile convenience for good picture-making. With either of the two lens equipments offered they can be counted on for pictures little short of superb.

Both the 2C and 3 Kodaks, Series III, are handsomely

finished in baby crepe grain cowhide and obviously, because they're Kodaks, both are autographic.

DETAILS

Capacity without re-loading: No. 3, 12 exposures; No. 2C, 10 exposures. Focus: Adjustable, with lever focusing device. Lenses: Kodak *f.7.9*, $5\frac{1}{8}$ -inch focus on No. 3; or Kodak Anastigmat *f.6.3*, 5-inch focus on No. 3; 6-inch focus on No. 2C. Shutters: Kodex (No. 3 only), speeds $\frac{1}{25}$, $\frac{1}{50}$ second; Diomatic, speeds $\frac{1}{10}$, $\frac{1}{25}$, $\frac{1}{50}$, $\frac{1}{100}$ second; both with cable and finger release, *time* and *bulb* actions. Brilliant

finder, reversible for horizontal or vertical pictures. Two tripod sockets. Body: Aluminum, covered with baby crepe grain cowhide; metal parts finished in nickel and black enamel. Rising front. Black bellows. Autographic feature.



*This picture made with No. 3 Kodak, Series III
(smaller than actual size)*

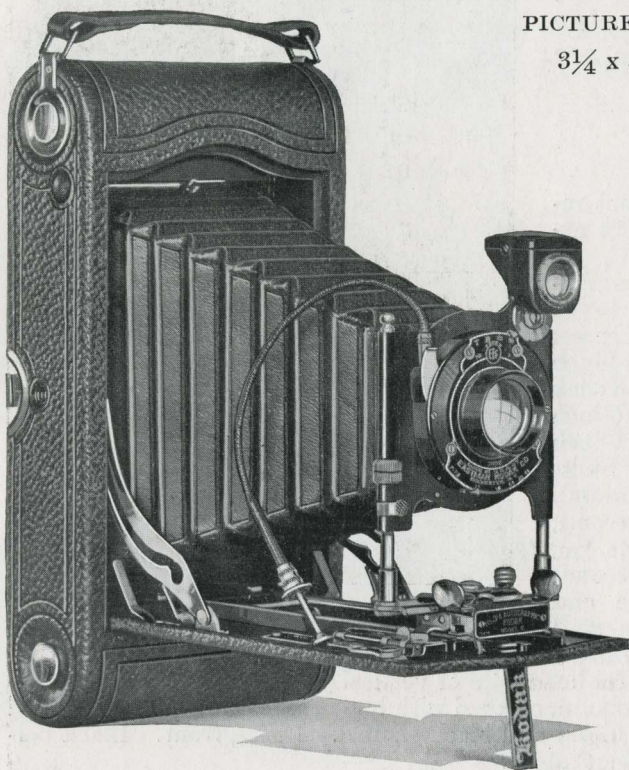
PRICES

	No. 3	No. 2C
Kodak, Series III, with Kodak Lens <i>f.7.9</i> and Kodex Shutter	\$23.00	
With Kodak Anastigmat Lens <i>f.6.3</i> and Diomatic Shutter	30.00	\$32.00
Black Sole Leather Case, with strap	3.50	3.50
Autographic Film Cartridge, 12 exposures (No. A 118) for No. 3; 10 exposures (No. A 130) for No. 2C	.90	.75
Ditto, 6 exposures (No. A 118) for No. 3; (No. A 130) for No. 2C	.45	.45
Kodak Portrait Attachment (see page 42)	.75	.75
Kodak Self Timer (see page 52)	1.25	1.25

No. 3A Autographic Kodak

PICTURE SIZE

$3\frac{1}{4} \times 5\frac{1}{2}$



POSTCARD size and thoroughly capable in performance, the 3A Kodak remains one of the most popular in the Kodak line.

Either of the two lens equipments is ready for results, but the fast Kodak Anastigmat lens $f.6.3$ and the seven-speed Ilex Universal shutter are entitled to special mention.

While the picture size is large, the 3A is compact. Carry it over the shoulder, put it in the pocket of your car, or stow it in the top of your traveling bag.

Though made for roll film, a combination back provides ground glass focusing and makes available Kodak Cut Film (regular or *Super Speed*) as negative material.

To clap on the combination back is the work of but a second and it's just as simple, of course, to slip it off and return the regular back to position.



Putting on the Combination Back

DETAILS

Capacity without reloading: 10 exposures. Focus: Adjustable only, with automatic focusing lock. Double focusing scale for films or plates. Lenses: Kodar *f*.7.9, $6\frac{7}{8}$ -inch focus; or Kodak Anastigmat *f*.6.3, $6\frac{3}{4}$ -inch focus. Shutters: Kodex, speeds $\frac{1}{25}$, $\frac{1}{50}$ second; or Ilex Universal, speeds 1, $\frac{1}{2}$, $\frac{1}{5}$, $\frac{1}{10}$, $\frac{1}{25}$, $\frac{1}{50}$ and $\frac{1}{100}$ second, both with *time* and *bulb* actions, cable and finger release. Brilliant finder, reversible for vertical or horizontal pictures. Two tripod sockets. Body: Back and bed of aluminum, covered with fine seal-grain leather; metal parts finished in nickel and black enamel. Rising, falling and sliding front. Black bellows. Autographic feature.

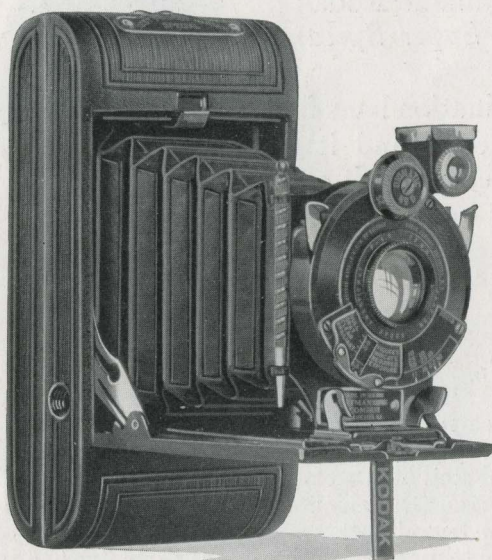
PRICES

No. 3A Autographic Kodak, with Kodar Lens <i>f</i> .7.9 and Kodex Shutter	\$22.00
With Kodak Anastigmat Lens <i>f</i> .6.3, and Ilex Universal Shutter	30.00
Black Sole Leather Case, with strap	4.00
Combination Back for cut film or plates	4.00
Kodak Double Plate Holders, each	1.50
Kodak Cut Film Sheaths, each	.15
Kodak Cut Film, package of 12	.90
Kodak Cut Film, <i>Super Speed</i> , package of 12	1.00
Autographic Film Cartridge, 10 exposures (No. A 122)	.90
Ditto, 6 exposures	.55
Kodak Portrait Attachment (see page 42)	.75
Kodak Self Timer (see page 52)	1.25

Vest Pocket Kodak Special

PICTURE SIZE

$1\frac{5}{8} \times 2\frac{1}{2}$



Illustrating Vest Pocket Kodak Special with Kodak Anastigmat lens f.4.5 and Diomatic shutter.

WHEN a Kodak is called a Special, it means simply this—the manufacturer is offering you equipment, at a little higher price, that will give you considerably more leeway in the photographic field. With the Vest Pocket Kodak *Special*, for example, you have the lens speed of Kodak Anastigmat *f.4.5* or Kodak Anastigmat *f.5.6* and the precision of the Diomatic shutter.

You can take the Vest Pocket Kodak Special with you without a thought, that's how small it is. As cameras go it's tiny, but tiny as it is—and that's the word—the V. P. K. Special will loom big in any photographic album.

There's particular pride in owning smart, up-to-date photographic equipment of the Vest Pocket Kodak Special type. You know you've got as good a camera as it is possible to manufacture and that, so equipped, you can meet the photographic emergency with assurance.

DETAILS

Capacity without reloading: 8 exposures. Focus: Adjustable. Lenses: Kodak Anastigmat *f*.5.6, $3\frac{3}{8}$ -inch focus; or Kodak Anastigmat *f*.4.5, $3\frac{1}{8}$ -inch focus. Shutter: Diomatic, with finger release only; speeds, $\frac{1}{10}$, $\frac{1}{25}$, $\frac{1}{50}$, $\frac{1}{100}$ second, *time* and *bulb* actions. Brilliant finder, reversible for vertical or horizontal pictures. Two tripod sockets. Body: Aluminum, covered with genuine seal leather; metal parts finished in nickel and black enamel. Black bellows. Autographic feature.

PRICES

Vest Pocket Kodak Special, with Kodak Anastigmat Lens <i>f</i> .5.6 and Diomatic Shutter	\$20.00
With Kodak Anastigmat Lens <i>f</i> .4.5	25.00
Belt Carrying Case, Russet Leather, Velvet lined	2.00
Black Leather Carrying Case, Velvet lined	2.00
Autographic Film Cartridge, 8 exposures (No. A 127)	.25
Cable Release for Vest Pocket Kodak Special, opened	.35
Kodak Portrait Attachment (see page 42)	.75
Kodak Self Timer (see page 52)	1.25

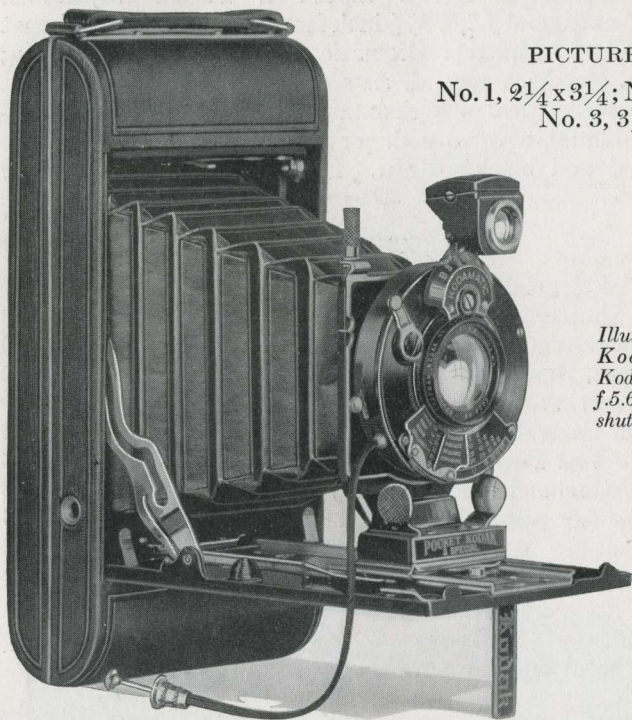


These pictures, actual size, made with the Vest Pocket Kodak Special.

Nos. 1, 1A and 3 Pocket Kodak Specials

PICTURE SIZES

No. 1, $2\frac{1}{4} \times 3\frac{1}{4}$; No. 1A, $2\frac{1}{2} \times 4\frac{1}{4}$;
No. 3, $3\frac{1}{4} \times 4\frac{1}{4}$



Illustrating No. 3 Pocket Kodak Special with Kodak Anastigmat lens f.5.6 and Kodamatic shutter.

HERE are Kodaks that won't stay in when it rains. Their high lens speeds enable them to deal with bad weather and dull light and allow the camera to "click" around the clock.

For example, there is Kodak Anastigmat lens f.4.5—nearly three times as fast as the f.7.7. Kodak Anastigmat f.5.6 is only slightly slower than the f.4.5.

Kodamatic shutter has a well earned reputation for reliability. It's accurate, precise and offers seven split-second speeds—an unusual range in any hand camera.

Naturally enough, cameras of this class look the part they are to play. Their aluminum bodies are covered with genuine sealskin. A word describes them—"smart."

DETAILS

Capacity without reloading: No. 1, 6 exposures; Nos. 1A and 3, 12 exposures. Focus: Adjustable; screw focusing device on Nos. 1 and 1A; lever focusing device on No. 3. Lenses: Kodak Anastigmat *f*.5.6, $4\frac{3}{8}$ -inch focus on No. 1; $5\frac{1}{8}$ -inch focus on No. 1A; $5\frac{1}{8}$ -inch focus on No. 3; or Kodak Anastigmat *f*.4.5, 4-inch focus on No. 1; $5\frac{1}{8}$ -inch focus on No. 1A; $5\frac{1}{8}$ -inch focus on No. 3. Shutter: Kodamatic, with cable and finger release; seven speeds, from $\frac{1}{200}$ (from $\frac{1}{150}$ on Nos. 1A and 3) to $\frac{1}{2}$ second; *time* and *bulb* actions. Brilliant finder, reversible for horizontal or vertical pictures. Two tripod sockets. Body: Aluminum, covered with genuine sealskin; metal parts finished in nickel and black enamel. Rising front on Nos. 1A and 3. Black bellows. Autographic feature.



Made with No. 1 Special under dull light conditions. Actual size.

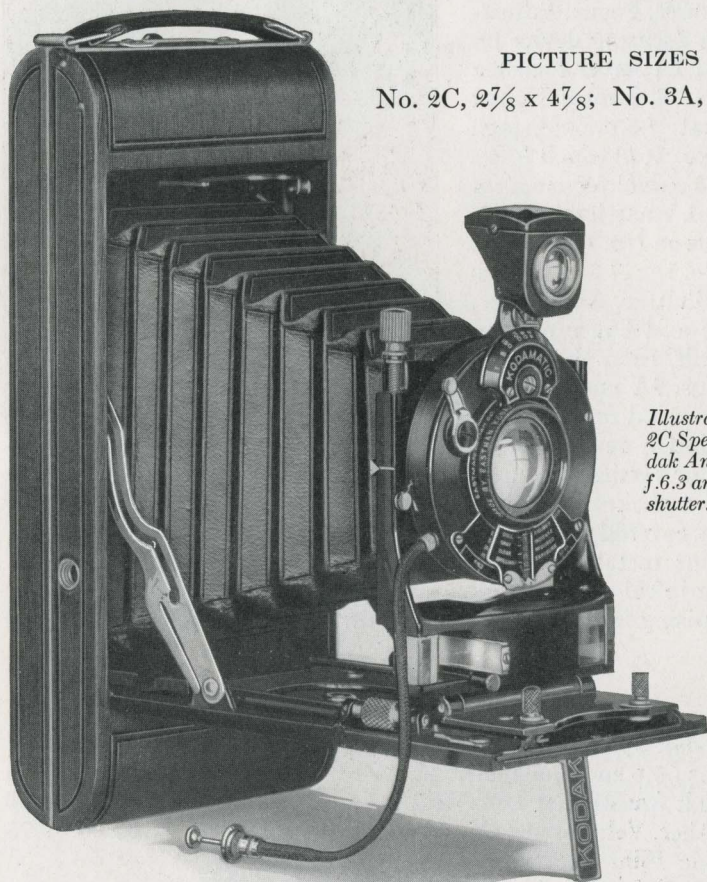
PRICES

	No. 1	No. 1A	No. 3
Pocket Kodak <i>Special</i> , with Kodak Anastigmat Lens <i>f</i> .5.6 and Kodamatic Shutter	\$45.00	\$50.00	\$52.50
With Kodak Anastigmat Lens <i>f</i> .4.5	55.00	60.00	62.50
Grain Leather, Velvet-lined Case, with strap	3.75	4.50	4.75
Autographic Film Cartridge, 12 exposures (No. A 116) for No. 1A; (No. A 118) for No. 360	.90
Ditto, 6 exposures (No. A 120) for No. 1; (No. A 116) for No. 1A; (No. A 118) for No. 325	.30	.45
Kodak Portrait Attachment (see page 42)75	.75	.75
Kodak Self Timer (see page 52)	1.25	1.25	1.25

Nos. 2C and 3A Autographic Kodaks Special

PICTURE SIZES

No. 2C, $2\frac{7}{8} \times 4\frac{7}{8}$; No. 3A, $3\frac{1}{4} \times 5\frac{1}{2}$



Illustrating the No. 2C Special with Kodak Anastigmat lens f.6.3 and Kodamatic shutter.

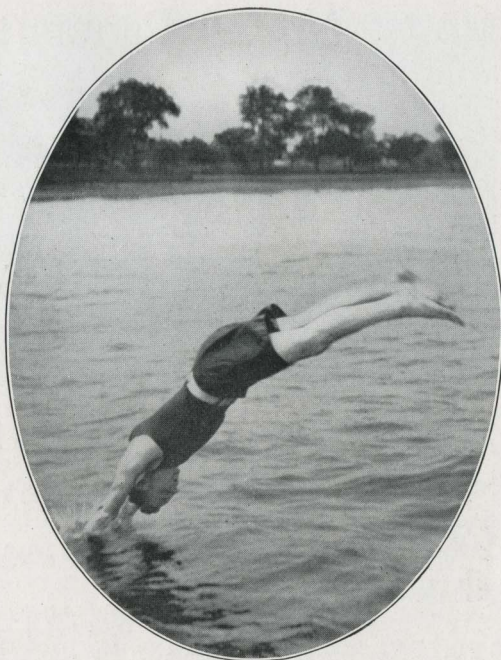
THE picture on the opposite page gives you a hint of what you may expect from your camera—if you own a Special. Lens speed—Kodak Anastigmat *f*.6.3. Shutter speed—seven split seconds up to $1/150$.

There you have the story of the Specials. A fast Eastman-

made lens, an accurate Eastman-made shutter, super-equipment that will give you pictures you'll be proud to own.

DETAILS

Capacity without re-loading: 10 exposures. Focus: Adjustable. Lens: Kodak Anastigmat *f*.6.3, 6-inch focus on No. 2C; 6 $\frac{5}{8}$ -inch focus on No. 3A. Shutter: Kodamatic, with cable release; seven speeds, from $\frac{1}{150}$ to $\frac{1}{2}$ second, *time* and *bulb* actions. Brilliant finder, reversible for horizontal or vertical pictures. Two tripod sockets. Body: No. 2C, aluminum, covered with finest quality genuine sealskin; No. 3A, back and bed of aluminum, covered with genuine Persian Morocco; metal parts finished in nickel and black enamel. Range Finder. Rising and falling front. Black bellows. Autographic feature.

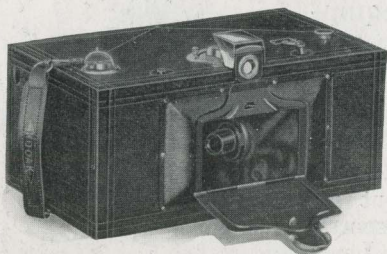


From a 3A Special negative

PRICES

	No. 2C	No. 3A
Autographic Kodak <i>Special</i> , with Kodak Anastigmat Lens <i>f</i> .6.3 and Kodamatic Shutter	\$55.00	\$60.00
Grain Leather Velvet-lined Case, with strap	5.00	5.25
Combination Back for cut film or plates		5.00
Kodak Double Plate Holders, each		1.50
Kodak Cut Film Sheaths, each15
Kodak Cut Film, package of 1290
Kodak Cut Film <i>Super Speed</i> , package of 12		1.00
Autographic Film Cartridge, 10 exposures (No. A 130) for No. 2C; (No. A 122) for No. 3A75	.90
Ditto, 6 exposures45	.55
Kodak Portrait Attachment (see page 42)75	.75
Kodak Self Timer (see page 52)	1.25	1.25

No. 3A Panoram Kodak



SIZE OF PICTURE

$3\frac{1}{4} \times 10\frac{3}{8}$

WHETHER it's a broad sweep of landscape or a large group, the Panoram gets the whole view with a single exposure.

This new camera uses regular 3A Kodak film, on sale at all dealers'.

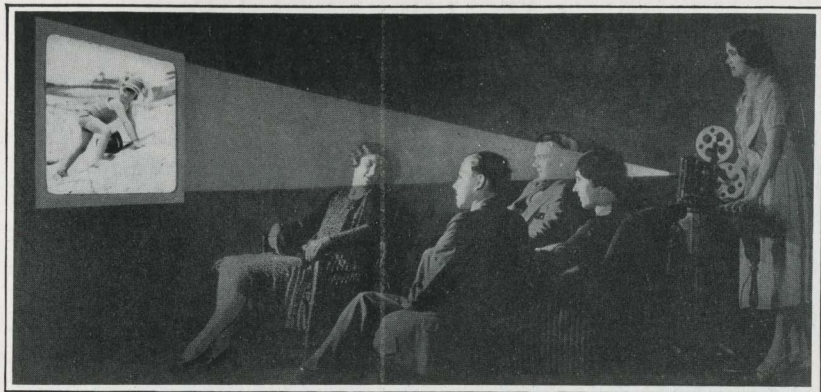
DETAILS

Capacity without reloading: 5 exposures. Focus: Fixed. Lens: Meniscus. Two-speed shutter. Brilliant finder, with hood. Two tripod sockets. Body: Wood, covered with long crepe grain genuine cowhide; metal parts finished in nickel and black enamel. Black bellows. Spirit level.

PRICES

No. 3A Panoram Kodak	\$40.00
Black Sole Leather Carrying Case, with strap	8.00
Kodak Film Cartridge, 5 exposures (No. A 122)	.90
Ditto, 3 exposures	.55





Motion Pictures the Kodak Way

MOTION pictures in your own home! The thrill of action on the screen—real motion pictures, with your family as the cast, and your yard or garden as the studio! There's a new world of entertainment awaiting you when you plug the Kodascope in on your house lighting circuit and sit down, with your friends and loved ones, to watch your own movies—movies you've made yourself!

Ciné-Kodak movies are made with typical Kodak ease and economy. Press the release lever on the Ciné-Kodak and you're making movies—just like making snapshots with a Kodak. Amateur standard Ciné-Kodak Film, smaller than the professional size, and a special finishing process bring the cost of Ciné-Kodak movies within the reach of everyone. No charge is made for finishing the film. "You press the button; we do the rest."

Ciné-Kodak prices range from \$70 for the Model B, *f.6.5* (page 28) to \$225 for the hand-cranked, Model A (page 30). The price of the Kodascope C projector (page 31) is \$60, and of Kodascope A (page 32) \$180. A complete outfit, Ciné-Kodak, Kodascope and screen* is available at \$140.

A demonstration of Ciné-Kodak movies at your dealer's will convince you that a brand new pleasure is ready for your enjoyment—home movies.

* For a fully illuminated picture, the use of a Kodascope screen is necessary.

Ciné-Kodak, Model B

f.6.5 or f.3.5 lens equipment



Ciné-Kodak, Model B, with Kodak Anastigmat lens f.3.5

WEIGHING but five pounds, fully loaded, and but slightly larger than the 3A Kodak, the Ciné-Kodak, Model B, is the ideal camera for the personal movie. It combines the utmost in picture results with an economy and ease of operation that are amazing.

The Ciné-Kodak, Model B, is hand-held,—no tripod is necessary — is spring-motor driven, and daylight-loading. It is a fixed focus camera—which means that it's always ready for the unexpected picture possibility. Focusing requires no attention, except when close-up pictures are desired with the f.3.5 lens; then a small lever at the left of the lens swings a portrait attachment into position. When pressure on this lever is released the portrait attachment swings back and the camera is instantly ready for pictures from five feet to infinity. No portrait attachment is necessary with the f.6.5 lens. A guide affixed to the Ciné-Kodak

shows at a glance the proper diaphragm opening for the prevailing light condition, and a turn of the pointer sets it.

Two convenient finders—eye level and waist height—simplify the taking of pictures from any angle.



At eye level



At waist height

For prices see next page.

Ciné-Kodak, Model B

f.1.9 lens equipment



Ciné-Kodak, Model B, f.1.9 lens

THIS camera, essentially the same as the Ciné-Kodak described on page 28, is equipped with the ultra-fast Kodak Anastigmat *f.1.9* lens—one of the fastest lenses in modern use. The *f.1.9* lens is over three times as fast as the *f.3.5*, and ten times as fast as the *f.6.5*, and is designed primarily for making motion pictures under adverse lighting conditions.

With it, sharp, clear, pictures on dark days—even in the rain—are possible; it catches, with clarity and sharpness, the action—indoors or out—that cannot successfully be obtained with a slower lens. Yet it may be “stopped down” to make pictures in glaring tropical sunlight, without danger of over-exposure.

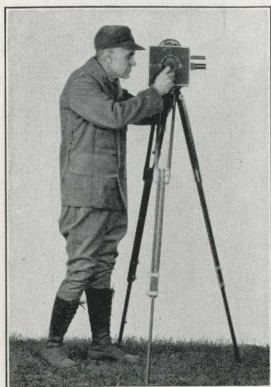
PRICES

Ciné-Kodak, Model B, with Kodak Anastigmat Lens <i>f.6.5</i>	\$ 70.00
Ciné-Kodak, Model B, with Kodak Anastigmat Lens <i>f.3.5</i>	100.00
*Ciné-Kodak, Model B, with Kodak Anastigmat Lens <i>f.1.9</i>	150.00
Ciné-Kodak, Model B, <i>f.6.5</i> or <i>f.3.5</i> , Carrying Case (leather)	7.50
Ciné-Kodak, Model B, <i>f.6.5</i> or <i>f.3.5</i> , Combination Carrying Case (Ciné-Kodak and two rolls of film)	10.00
Ciné-Kodak, Model B, <i>f.1.9</i> , Carrying Case (leather)	8.50
Ciné-Kodak, Model B, <i>f.1.9</i> , Combination Carrying Case (Ciné-Kodak and two rolls of film)	11.00
Unipod for Ciné-Kodak (a handy support for the camera)	5.00
Ciné-Kodak Titling Scroll (for making your own titles)	2.50
Ciné-Kodak Film, including processing, 100 feet	6.00
Ciné-Kodak Film, including processing, 50 feet	4.00

*Ready about June 1st.

Ciné-Kodak, Model A

f.1.9 and f.4.5 (long focus) lens equipment



*Ciné-Kodak A, with attachment
for telephoto effects*

THE ideal equipment for the advanced amateur is the hand-cranked Ciné-Kodak, Model A. This camera, similar in many respects to the professional camera, is equipped with the Kodak Anastigmat *f.1.9* lens. This lens is not only exceptionally fast but, on the Model A Ciné-Kodak, is interchangeable with the *f.4.5* (long focus) lens for telephoto work. With the *f.4.5* lens in position, images of distant objects are enlarged to three times the size secured with the regular lens. This feature makes

the camera a valuable aid to the study of natural history and wild bird or animal life.

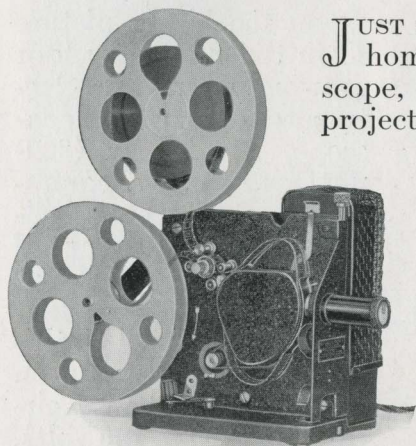
Slow motion pictures are likewise possible with the Ciné-Kodak, Model A. The Slow Motion Attachment, affixed in place of the regular crank, speeds the mechanism to four times its normal rate, and the highly interesting slow motion picture results.

Animated cartoons, dolls, progressive titles and similar subjects offer further possibilities to the owner of the Ciné-Kodak, Model A. The Single Picture Attachment, which exposes but one frame at each turn of the crank, like the Slow Motion Attachment, may easily be affixed or removed.

PRICES

Ciné-Kodak, Model A, Kodak Anastigmat Lens <i>f.1.9</i> , with tripod	\$225.00
<i>f.4.5</i> long focus lens (interchangeable with <i>f.1.9</i> lens)	45.00
Carrying Case for Ciné-Kodak, Model A (<i>f.1.9</i> lens)	18.00
Carrying Case for Ciné-Kodak, Model A (<i>f.1.9</i> and <i>f.4.5</i> lenses)	25.00
Slow Motion Attachment for Ciné-Kodak, Model A	20.00
Single Picture Attachment for Ciné-Kodak, Model A	20.00
Ciné-Kodak Film, including processing, 100-foot roll	6.00
Ciné-Kodak Film, including processing, 50-foot roll	4.00
Tripod for Ciné-Kodak, Model A (with head)	25.00
Tripod handle for Ciné-Kodak, Model A	2.00

Kodascope, Model C



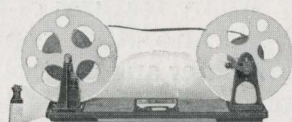
Kodascope, Model C

JUST as Ciné-Kodak is the practical home movie camera, so is Kodascope, Model C, the sensible home projector. In simplicity and ease of operation, it rivals the Ciné-Kodak in every sense. It is light in weight—about nine pounds—and compact; yet it projects a brilliantly illuminated 30 x 40-inch picture at 18 feet.

Kodascope C is electrically operated, of course. It is fitted with a framing lever and is focused by a turn of the lens barrel. A special

rheostat for adapting it to 210-250 volt lines is available. A special motor and lamp for 32 volt home generator systems is also furnished.

Kodascope C has a capacity of 400 feet of 16 millimeter amateur standard motion picture film, the running time of which is about sixteen minutes. This is equivalent to 1000 feet of professional standard 35 millimeter film.

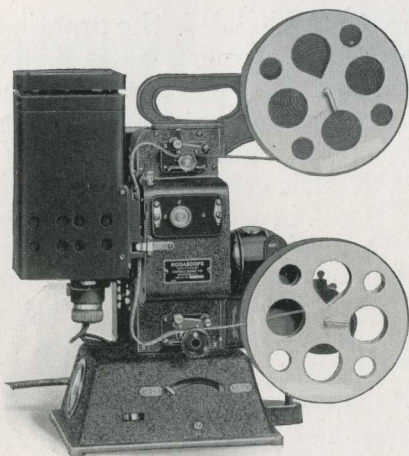


KODASCOPE REWIND—A convenient accessory. Quickly attached to any table, it permits you to rewind reels during the performance.

PRICES

Kodascope, Model C	\$60.00
Kodascope, Model C, Carrying Case	5.00
Kodascope Screen, No. 0, mounted in frame with cover	10.00
Kodascope Screen, No. 1 (30 x 40 inches), rollable in case	25.00
Kodascope Screen, No. 1A (30 x 40 inches) demountable in frame	15.00
Kodascope Rewind, including splicing block and film cement	7.00
100-watt lamp for Kodascope, Model C	2.85
1-inch or 2-inch lens for Kodascope, Model C	10.00
400-foot Reel and Humidor Can	1.50
Kodascope C Rheostat for 210-250 volt circuits	15.00

Kodascope, Model A



Kodascope, Model A

FOR the bigger picture in the club, church or drawing room, the electrically operated Kodascope, Model A (200-watt), fills every requirement and projects a brilliant, fully illuminated 39 x 52-inch picture at 23 feet.

Like the Model C, this projector can be used on any ordinary house circuit from 105 to 125 volts, either alternating or direct current; or special rheostats to adapt it to

other circuits may be obtained. Kodascope A is also easily carried in a special case.

Many features of the modern professional machines are built into Kodascope A; the current is registered by an ammeter and controlled by a rheostat, and the speed of the mechanism is adjusted by a voltage control. It is easily and quickly threaded, and has a capacity of 400 feet of 16 millimeter amateur standard film.

All Kodascopes are designed to minimize film wear. Exhaustive tests prove that film which is projected only in Kodascopes will suffer but little during long use and, properly cared for, will last for an indefinite length of time.

PRICES

Kodascope, Model A, with 200-watt lamp	\$180.00
Carrying Case for Kodascope, Model A, Fibre	18.00
No. 2 Kodascope Screen (39 x 52 inches), rollable in case	35.00
1-inch or 2-inch lens for Kodascope, Model A	15.00
200-watt lamp for Kodascope, Model A	3.75
Kodascope A Rheostat for 210-250 volt circuits	16.50
Kodascope Film Clips, per doz.	1.25



Kodascope Library stars—Mary Astor and John Barrymore

Kodascope Libraries, Inc.

HOME movie enthusiasts are not limited to the showing of their own motion pictures. Norma Talmadge, Douglas Fairbanks, Pola Negri, Jackie Coogan, Irene Rich, John Barrymore, Charlie Chaplin—these are but a few of the internationally famous motion picture stars who are ready, through Kodascope Libraries, Inc., to enliven the home

screen with comedy or drama. In addition, there are educational films, travelogues and animated cartoons to supplement the home movie program.

Kodascope Libraries are located at strategic points throughout this country and abroad, and any of the more than five hundred subjects listed in the Kodascope Library Descriptive Catalog (a copy of which is included with every Kodascope) is furnished at nominal rental.

Titling and Editing Service

Many owners of home motion picture outfits make their own titles and edit their own film. But, for those who prefer to have this done for them, titling and editing services are maintained at Rochester, Chicago and San Francisco.

Motion Picture Titles—per word, \$0.03; minimum charge per title, \$0.25; minimum charge per order \$1.00
Splicing four 100-foot rolls of Ciné-Kodak Film and supplying 400-foot reel and humidor can \$2.50

Ciné-Kodak Film

100-foot Roll	\$6.00
50-foot Roll	4.00
(Price includes processing and return transportation.)	
Duplicate Prints, 100-foot length	5.00
Duplicate Prints, 50-foot length	3.50

No. 2 Cartridge Hawk-Eye Model C



PICTURE SIZE

$2\frac{1}{4} \times 3\frac{1}{4}$

YOU'LL make good pictures with this camera right from the first roll. And yet it costs only \$1.25.

To operate this little camera is simplicity itself, and yet the results it produces are truly amazing. Ask your dealer about it.

No. 2 Cartridge Hawk-Eye uses regular Kodak film and is Eastman-made throughout.

DETAILS

Capacity without reloading: 6 exposures. Fixed focus only. Lens: Meniscus. Shutter: Eastman Rotary. Ground glass finder for vertical pictures. Body: Covered with durable imitation leather; metal parts finished in nickel and black enamel.

PRICES

No. 2 Cartridge Hawk-Eye, Model C, with Meniscus Lens and Eastman Rotary Shutter	\$1.25
N. C. Film Cartridge, 6 exposures (No. 120)25
Kodak Portrait Attachment (see page 42)50

No. 0 Brownie



PICTURE SIZE
1 $\frac{5}{8}$ x 2 $\frac{1}{2}$

THE Brownie idea is simply this—simplicity. It could be no better exemplified than in the No. 0 Brownie.

Here is a camera that costs \$2, making pictures whose quality is all out of proportion with that price. Even children can make good pictures with a Brownie. If you are thinking of taking up photography and want your investment to be slight, a Brownie No. 0 is a good place to start. It looks easy to work—and it is.

DETAILS

Capacity: 8 exposures. Fixed focus. Lens: Meniscus. Shutter: Eastman Rotary, with one stop, also *instantaneous* and *time* actions. Two ground-glass finders for vertical and horizontal pictures. Body: Covered with imitation leather.

PRICES

No. 0 Brownie Camera, Meniscus Lens, Eastman Rotary Shutter	\$2.00
Brownie Carrying Case	1.00
N. C. Film Cartridge, 8 exposures (No. 127)	.25
Brownie Tripod Adapter	.25
Kodak Portrait Attachment (see page 42)	.50
Developing and Printing Outfit (see page 44)	2.00

Nos. 2 and 2A Brownies

PICTURE SIZES

No. 2, $2\frac{1}{4} \times 3\frac{1}{4}$; No. 2A,
 $2\frac{1}{2} \times 4\frac{1}{4}$



EASTMAN-MADE, practical picture-makers that offer you operating simplicity to the *n*th degree—that's the story of these Brownies. Point—press—picture—that's snap-shooting the Brownie way.

See for yourself at your dealer's. You'll find him enthusiastic, too.

DETAILS

Capacity: No. 2, 6 exposures; No. 2A, 12 exposures. Fixed focus only. Lens: No. 2, Meniscus; No. 2A, Meniscus Achromatic. Shutter: Eastman Rotary, with three stops, *instantaneous* and *time* actions. Two finders for vertical and horizontal pictures. Two tripod sockets. Body: Aluminum, covered with imitation leather; metal parts finished in nickel and black enamel.

PRICES

Brownie Camera, Meniscus Lens on No. 2, Meniscus Achromatic Lens on No. 2A, Eastman Rotary Shutter	No. 2 \$2.50	No. 2A \$3.50
Brownie Carrying Case, with strap	1.25	1.50
N. C. Film Cartridge, 12 exposures (No. 116) for 2A		.60
Ditto, 6 exposures (No. 120) for No. 2; (No. 116) for No. 2A	.25	.30
Kodak Portrait Attachment (see page 42)	.50	.50
Developing and Printing Outfit (see page 44)	2.00	2.00



From a No. 2 Brownie negative
(smaller than actual size)

Nos. 3 and 2C Brownies



PICTURE SIZES

No. 3, $3\frac{1}{4} \times 4\frac{1}{4}$

No. 2C, $2\frac{7}{8} \times 4\frac{7}{8}$

BROWNIES have been rightly called the simplest real cameras. Here are two good examples of the truth of this statement.

All you do is point with the lens, press the release and the picture is yours. There is no focusing, nothing to worry about. Any youngster old enough to go to school knows enough to successfully use a Brownie.

It's Eastman-made throughout, with carefully tested lens and shutter, and the really wonderful thing is that a camera that is so simple to use and so inexpensive to buy can produce such splendid pictures.

DETAILS

Capacity: No. 3, 12 exposures; No. 2C, 6 exposures. Fixed focus only. Lens: Meniscus Achromatic. Shutter: Eastman Rotary, with three stops, *instantaneous* and *time* actions. Two finders for vertical and horizontal pictures. Two tripod sockets. Body: Wood, covered with imitation leather.

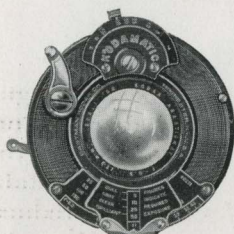
PRICES

	No. 3	No. 2C
Brownie Camera, with Meniscus Achromatic Lens, Eastman Rotary Shutter	\$4.50	\$5.00
Brownie Carrying Case, with strap	1.60	1.60
N. C. Film Cartridge, 12 exposures (No. 124) for No. 3	.90	
Ditto, 6 exposures (No. 124) for No. 3; (No. 130) for No. 2C	.45	.45
Kodak Portrait Attachment (see page 42)	.75	.75
Developing and Printing Outfit (see page 44)	2.00	2.00

Kodamatic Shutter

IN ORDER to make the best possible pictures under greatly varying conditions, a camera must have an unusually reliable and versatile shutter. It was with this in mind that the Kodamatic was developed. It is constructed like a fine watch—precise to the last degree, thoroughly dependable, long-lasting—to challenge successfully every situation in which the photographer is likely to find himself.

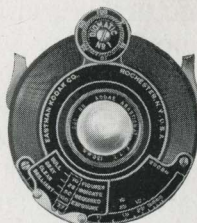
A wide choice of snapshot speeds—seven in all—is provided: $\frac{1}{2}$, $\frac{1}{5}$, $\frac{1}{10}$, $\frac{1}{25}$, $\frac{1}{50}$, $\frac{1}{100}$, and $\frac{1}{150}$ or $\frac{1}{200}$ (as listed); besides *bulb* and *time*. A sliding scale controlling the diaphragm shows at a glance the speed or stop to use in dull, gray, clear or brilliant light. Adjustment is made in an instant, and the shutter makes the selected exposure with utmost accuracy. The Kodamatic is supplied on the *Special* Kodaks (except V.P.K.) and helps to give prints that are strictly *special* as to quality.



Diomatic Shutter

WHENEVER extreme speeds are not essential the Diomatic shutter is highly successful. It is modeled after the Kodamatic and, like it, has a handy sliding timing scale. Four automatic speeds, $\frac{1}{10}$, $\frac{1}{25}$, $\frac{1}{50}$ and $\frac{1}{100}$, besides the usual *bulb* and *time*, enable the user to fit his exposure accurately to the light.

The Diomatic performs with all the sure precision expected of quality equipment, for it is designed and assembled with the same care that characterizes the more pretentious Kodamatic.



Kodex Shutter

PEOPLE who prefer inexpensive and simply operated cameras nevertheless want an entirely trustworthy shutter that assures consistently good results. The Kodex, with *bulb*, *time*, and automatic speeds of $\frac{1}{25}$ and $\frac{1}{50}$, meets these requirements. Carefully, scientifically constructed, it is a worthy member of the group of shutters found on the various Eastman cameras.



The logo is a circular seal with the word "ANASTIGMAT" at the top and "KODAK" at the bottom. In the center, there is a smaller circle containing the word "KODAK".

The KODAK ANASTIGMATS

f.7.7 f.6.3 f.5.6 f.4.5

THE anastigmat stands at the peak of photographic lens design. Because of high cost, however, it was formerly available only on equipment beyond the reach of the average amateur. It remained for the Eastman Kodak Company—one of whose plants is devoted almost exclusively to lens manufacture—to reduce costs, through improved process and large scale production, to such an extent that now almost anyone can afford one of these splendid lenses.

Kodak Anastigmats record vertical and horizontal lines in the same plane with an equal degree of clearness. They have an essentially flat field—even when they are used at their widest openings all detail in the same plane is recorded with critical sharpness to the very edges of the negative.

And they have all the speed for which this type of lens is noted. The Kodak Anastigmat *f.7.7*, aside from its other advantages over the rapid rectilinear, is somewhat faster. The *f.6.3* is sixty per cent speedier than the rectilinear, making snapshots possible under conditions that would be out of the question for an ordinary lens. The *f.5.6*, in turn, is one quarter again as fast as the *f.6.3*, and the *f.4.5* admits half again as much light as the *f.5.6*.

This range gives the amateur a wide selection of fast lenses. All of them make the most of existing light conditions to yield beautifully clear pictures, capable of generous enlargement. In short the Kodak Anastigmats are superior lenses in every respect. They are the equals of any anastigmats made anywhere.

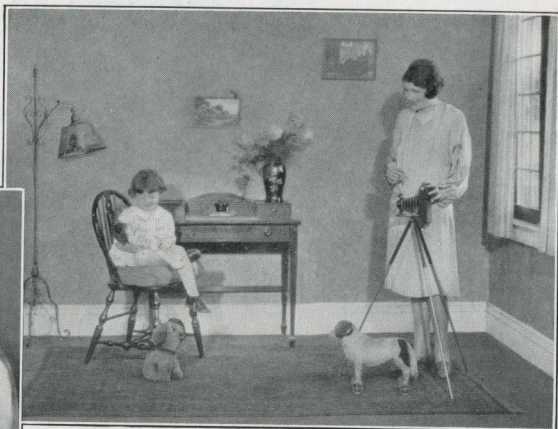
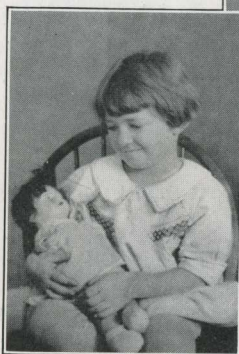
Kodar Lens *f.7.9*

THE Kodar *f.7.9*, a recent Eastman development, is a semi-anastigmat. It is only a trifle faster than the rapid rectilinear but it approaches the anastigmat in defining and covering power and gives negatives of consistently high quality.

Kodar lenses cost but little more than the rectilinear type and are fully worth the small difference.

Kodak Portrait Attachment

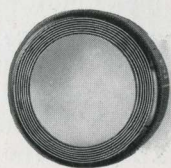
*Here's the way
the picture
was made*



*And here's the actual picture, made with a Kodak
and Kodak Portrait Attachment.*

IF A subject is placed within arm's length of the ordinary hand camera the result is a blurred image. But when the lens is supplemented by a Kodak Portrait Attachment the camera is adapted to the making of charming "close-ups" of your family and friends, as well as clear-cut, close-range pictures of flowers, art objects and still life subjects in general.

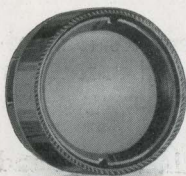
It's all very easy, too. The attachment is quickly slipped over the regular lens and the camera is operated as usual, without any change in timing or shutter opening. The Kodak Portrait Attachment simply keeps the focus sharp at close range, and its use results in images that practically fill the area of the negative.



Kodak Color Filter

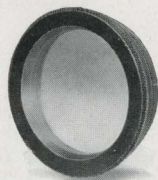
THE Kodak Color Filter is valuable in photographing highly colored landscapes, flowers, art objects, etc. The dye in the filter holds back the strong blue and violet rays, which affect the negativemostquickly, and gives the weaker shades time to register. The resulting picture reproduces all the color values more nearly as the eye sees them.

For prices of these attachments, see page 42.



Kodak Sky Filter

BRIGHT clouds in a blue sky reflect a much greater proportion of light than the rest of an outdoor view. The Kodak Sky Filter is intended to reduce this difference. The upper half of the filter, stained yellow, holds back the light from the sky. This restrained light renders the clouds distinctly while the darker portions of the picture get the benefit of full exposure through the clear half of the filter. This filter slips readily over the camera lens and does not require any change in the timing of the exposure.



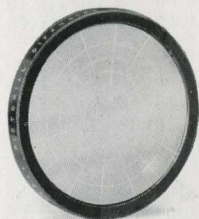
Kodak Diffusion Portrait Attachment

THE portrait photographer often uses a device that diffuses the light as it passes through his lens, in order to get the popular "soft focus" effect. By this means sharp contrasts are reduced, chalky highlights are softened and harsh lines are blended, yielding genuinely artistic results.

By slipping a Kodak Diffusion Portrait Attachment over your Kodak lens you can get the same results in making close-ups. The attachment not only keeps the subject in focus at close range but also gives the pleasing effect of softness, without danger of *extreme* diffusion or "fuzziness."

The V. P. K. Diffusion Disk used with the V. P. K. *Special* and V. P. K. Series III, *f*.6.3 lens, is suitable for portraits at 5½ feet and beyond, and also for landscape work.

Kodak Pictorial Diffusion Disk



A Kodak Pictorial Diffusion Disk does for landscape pictures what a Kodak Diffusion Portrait Attachment does for "close-ups." It lends a pleasing softness, without loss of brilliancy, and gives results that are artistic as well as different.

The V. P. K. Diffusion Disk is a similar attachment.

These disks slip on or off the lens mount in an instant and do not involve any change in the operation of the camera.

For prices of these attachments, see page 42

Kodak Portrait Attachments, Diffusion Portrait Attachments, Pictorial Diffusion Disks, Sky Filters, Color Filters

(These attachments are listed here only for the cameras shown in this catalog.

For attachments to be used on older models, see your dealer.)

	Order by this Number	Portrait Attach- ments	PRICES		
			Diffusion Portrait Attach- ments	Pictorial Diffusion Disks	Sky and Color Filters
For Vest Pocket Kodaks					
Model B.	8	\$0.75	\$1.25		\$0.75
Series III, Kodar f.7.9	8	.75	1.25		.75
Series III, Kodak Anastigmat f.6.3	8A	.75			.75
Special, Kodak Anastigmat f.5.6 or f.4.5	8A	.75			.75
Vest Pocket Kodak Diffusion Disk (see page 41)	8A			\$1.25	

For Pocket Kodaks

No. 1 Single lens	0	.50	1.25		.75
Kodar f.7.9	8	.75	1.25		.75
Kodak Anastigmat f.7.7	3	.75	1.25	1.75	1.15
Kodak Anastigmat f.6.3	6	.75	1.50	2.50	1.15
No. 1A Single lens or Kodak Anastigmat f.7.7	3	.75	1.25	1.75	1.15
Kodar f.7.9 or Kodak Anastigmat f.6.3	6	.75	1.50	2.50	1.15
No. 2C Single lens, Kodar f.7.9 or Kodak Anastigmat f.7.7	6	.75	1.50	2.50	1.15
Kodak Anastigmat f.6.3	7	.75	1.50	2.50	1.50
No. 3A Single lens or Kodar f.7.9	6	.75	1.50	2.50	1.15
Kodak Anastigmat f.7.7 or f.6.3	7	.75	1.50	2.50	1.50

For Pocket Kodaks, Series II

No. 1 Single lens, Kodar f.7.9 or Kodak Anastigmat f.7.7	3	.75	1.25	1.75	1.15
No. 1A Single lens	3	.75	1.25	1.75	1.15
Kodar f.7.9 or Kodak Anastigmat f.7.7	13	.75	1.25	1.75	1.15

For Kodaks, Series III

No. 1 Kodak Anastigmat f.6.3	3	.75	1.25	1.75	1.15
No. 1A Kodak Anastigmat f.6.3	6	.75	1.50	2.50	1.15
No. 3 Kodar f.7.9 or Kodak Anastigmat f.6.3	6	.75	1.50	2.50	1.15
No. 2C Kodak Anastigmat f.6.3	6	.75	1.50	2.50	1.15

For 3A Autographic Kodak

Kodar f.7.9	6	.75	1.50	2.50	1.15
Kodak Anastigmat f.6.3	7	.75	1.50	2.50	1.50

For Pocket Kodaks Special

No. 1 Kodak Anastigmat f.5.6 or f.4.5	6	.75	1.50	2.50	1.15
No. 1A Kodak Anastigmat f.5.6 or f.4.5	7	.75	1.50	2.50	1.50
No. 3 Kodak Anastigmat f.5.6 or f.4.5	7	.75	1.50	2.50	1.50

For Autographic Kodaks Special

No. 2C Kodak Anastigmat f.6.3	7	.75	1.50	2.50	1.50
No. 3A Kodak Anastigmat f.6.3	7	.75	1.50	2.50	1.50

For Brownies and Hawk-Eye (Box Type)

Nos. 0 and 2 Brownies or No. 2 Hawk-Eye, Model C, Single lens	1	.50	1.25		.75
No. 2A, Model C, Brownie, Single lens	0	.50	1.25		.75
Nos. 2C and 3 Brownies, Single lens	4	.75	1.25		1.15

Velox Water Color Outfit

PHOTOGRAPHIC prints and lantern slides can be colored easily, artistically, by using Velox Colors. They are transparent and blend readily, so that the desired effect is obtained without experience or special ability. The outfit includes twenty-six stamps of each of twelve colors, and three brushes. It comes in a white enamel case, the inside cover of which is used as a mixing palette.



Velox Transparent Water Color Stamps, complete booklet, 12 colors.	\$0.50
Separate Color Leaves, per sheet	.04
Set of three Special Brushes	.50
Velox Water Color Outfit, including book, three brushes and case	1.00



Kodak Film Tank

THESE outfits afford the easiest, most reliable means of developing film negatives. No darkroom is necessary. By means of the light-tight box the film is transferred to a reel, being covered at the same time by a protecting apron. Reel, film and apron are immersed in the solution cup and development is

made according to directions which accompany each outfit.

Vest Pocket Kodak Film Tank, for Vest Pocket or No. 0 Brownie Cartridges, complete	\$3.50
2¼-inch Kodak Film Tank, for use with all Kodak or Brownie Cartridges having a film width 2¼ inches or less, complete	4.50
2½-inch Kodak Film Tank, for use with all Kodak or Brownie Cartridges having a film width 2½ inches or less, complete	5.50
3½-inch Kodak Film Tank, for use with all Kodak or Brownie Cartridges having a film width of 3½ inches or less, complete	6.50
5-inch Kodak Film Tank, for use with all Kodak or Brownie Cartridges having a film width of 5 inches or less, complete	8.00
7-inch Kodak Film Tank, for use with No. 5 Cartridge Kodak or narrower film cartridges, complete	10.00
Duplicating Outfit, consisting of one solution cup, one transferring reel and one apron, for Vest Pocket Kodak Film Tank	1.75
Ditto, for 2¼-inch Kodak Film Tank	1.75
Ditto, for 2½-inch Kodak Film Tank	2.75
Ditto, for 3½-inch Kodak Film Tank	3.25
Ditto, for 5-inch Kodak Film Tank	4.00
Ditto, for 7-inch Kodak Film Tank	5.00
Flexible Fixing and Washing Tank, for 3½-inch Kodak Film Tank	2.50
Kodak Tank Developer, for Vest Pocket Kodak Film Tank, per ½ dozen	.20
Ditto, for 2¼-inch Tank, per ½ dozen	.20
Ditto, for 2½-inch Tank, per ½ dozen	.25
Ditto, for 3½-inch Tank, per ½ dozen	.25
Ditto, for 5-inch Tank, per ½ dozen	.30
Ditto, for 7-inch Tank, per ½ dozen	.30
Kodak Acid Fixing Powder, per ¼-pound package.	.10
Ditto, per ½-pound package	.15
Ditto, per 1-pound package	.25



No. 2 Brownie Developing Box

THIS is an adaptation of the Kodak Film Tank, so simple and proficient that any boy or girl can operate it successfully.

The covered metal box is just the right length to hold, when looped once, a roll of A120, 120, A127 or 127 Kodak Film. The developing is done in daylight and by following the directions which accompany each box, consistently good results can be obtained from the very beginning.

Prices

No. 2 Brownie Developing Box	\$1.75
Brownie Developing Box Powders, per package of 620
Kodak Acid Fixing Powder, 1/4-pound package10
Ditto, 1/2-pound package15
Ditto, 1-pound package25

Developing and Printing Outfits

THE camerist who wishes to do his own developing by the tray method and to make his own prints, can save himself both time and expense by using either the Eastman 3A or Eastman A B C Outfit. Being assembled in large numbers these outfits can be offered at prices that spell economy for the user. Good results are assured by the fact that each item is a tried and tested member of the Eastman line.

The 3A Outfit, listed below, includes all the requisites for finishing twenty-four pictures $3\frac{1}{4} \times 5\frac{1}{2}$ inches or smaller.

Prices

One Kodak Candle Lamp	\$0.40
One Printing Frame40
One Glass for Frame05
One 4-ounce Graduate15
One Stirring Rod06
Four Developing Trays40
Five Tubes Eastman Special Developer35
One-half pound Kodak Acid Fixing Powder15
Two dozen $3\frac{1}{4} \times 5\frac{1}{2}$ -inch Velox Paper40
Two ounces Nepera Solution for developing Velox20
Instruction Book (free)	

Value \$2.56

EASTMAN 3A OUTFIT, COMPLETE, NEATLY PACKED	Price \$2.00
EASTMAN A B C OUTFIT, similar to above but providing for 4 x 5-inch or smaller pictures	\$2.00

Kodak Amateur Printer

FOR quick and convenient contact printing the amateur can choose no better means than this compact, simple device.



It accommodates negatives from $1\frac{5}{8} \times 2\frac{1}{2}$ to 4×5 inches. The negative to be printed is placed on the top glass window by the light of a red bulb inside the printer. A simple masking arrangement controls the white margins and holds the negative during any number of exposures. The paper is placed over the negative and the hinged frame closed. This automatically turns on a 60-watt electric lamp (not supplied) and makes the print. The position of this lamp is readily adjustable to give even illumination to negatives of various sizes.

The printer is supplied with $5\frac{1}{2}$ feet of electric cord, plug and red bulb.

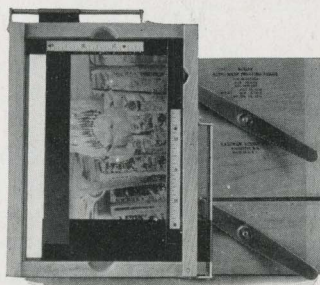
Kodak Amateur Printer \$10.00

Kodak Auto-Mask Printing Frame

THIS frame can be used in printing from any negatives of amateur size: 4×5 , $3\frac{1}{4} \times 5\frac{1}{2}$ inches or smaller.

Attached to the frame are two slides adjusted from the outside, forming an accurate mask of whatever size is desired. Any number of uniformly masked prints can be made without readjusting the negative or the masking slides.

The entire frame is carefully constructed, of quality materials, to give years of service.

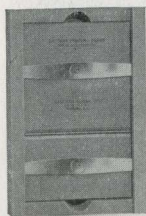


Kodak Auto-Mask Printing Frame \$1.50

Eastman Printing Frames

HAVE a two-section hinged back, with clamps to hold the negative and paper firmly.

These frames are staunchly constructed of beech, a high grade wood that assures rigidity and long life, and obviates danger of warping.



For $2\frac{1}{4}$ x $3\frac{1}{4}$ -inch plates and V. P. K. or smaller film negatives, opens two-thirds	\$0.35
For $2\frac{1}{2}$ x $4\frac{1}{4}$ -inch or smaller film negatives, opens two-thirds	.40
For $3\frac{1}{4}$ x $4\frac{1}{4}$ -inch plates and $2\frac{1}{4}$ x $3\frac{1}{4}$ or smaller film negatives, opens two-thirds	.40
For $3\frac{1}{4}$ x $5\frac{1}{2}$ -inch or smaller film negatives, opens two-thirds	.40
For $3\frac{1}{4}$ x $5\frac{1}{2}$ -inch plates, opens two-thirds	.45
For 4 x 5-inch plates or films, opens two-thirds	.40
For 5 x 7-inch plates or films, opens two-thirds	.55
For $3\frac{1}{2}$ x 12-inch films, opens in three sections	1.60

Eastman Printing Frames are supplied without glass

Kodakoid Printing Masks

THESE transparent, durable masks, orange-red in color, have openings of various convenient sizes. Their transparency enables the user to see clearly the portions of the picture which are being masked off—an advantage not present in masks made of opaque material.

For 3A Frames, 8 masking sizes, each	\$0.10
For 4 x 5 Frames, 7 masking sizes, each	.10
For 5 x 7 Frames, 6 masking sizes, each	.15

Kodak Magnesium Ribbon Holder

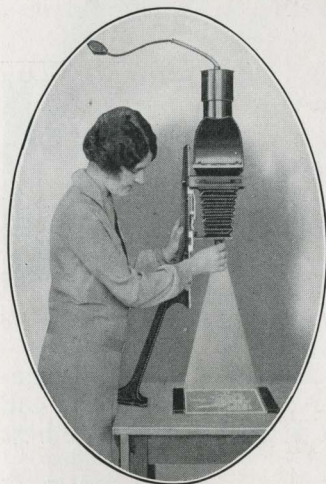


KODAK Magnesium Ribbon provides an intensely bright light suitable for exposing Velox and an excellent supplementary illumination for portraiture, copying and interior work in general. It is furnished in the handy holder illustrated. It is best ignited by means of a special alcohol lamp. A forward movement of the thumb pushes out the desired length of ribbon through a small opening, while a reverse movement extinguishes the ribbon instantly.

Kodak Magnesium Ribbon Holder	\$0.50
Alcohol Lamp	.50

Kodak Auto-Focus Enlarger

THE easiest and most proficient means of making amateur enlargements is supplied by this simple apparatus, which clamps to any table top.



The enlarger focuses itself. As the camera is moved up or down to form an image of the desired size a cam-and-lever arrangement maintains the focus at critical sharpness. Enlarging with this outfit is therefore as rapid and easy as contact printing. And the Kodak Anastigmat lens supplied assures big prints that are professional in quality.

Plate or film negatives up to 4 x 6 inches can be accommodated, and enlarged from 1½ to 3½ diameters. The largest possible print is 14 x 21 inches. V. P. K. negatives can be enlarged to 5½ x 8¾.

The ventilated lamp house holds an electric lamp (not supplied) of from 75 to 200 watts. A diffusing

disc is supplied separately for soft-focus effects.

Kodak Auto-Focus Enlarger with Kodak Anastigmat lens, electric cord and plug, set of six flexible metal masks \$33.00
Diffusing Disc 1.00

Eastman Bromide Papers

FOR enlargements, Eastman Bromide Papers are emphatically faster than the other developing papers and as easy to use as Velox. Grades: Velvet, Brilliant Velvet, Royal, Enameled, Matte-enamel and Standard B and C. Royal Bromide is a buff paper, suitable for making sepia enlargements by redevelopment.

Size	Per Doz.	Size	Per Doz.	Size	Per Doz.
5 x 7	\$0.50	8 x 10	\$1.10	14 x 17	\$3.15
5 x 8	.55	10 x 12	1.70	16 x 20	4.20
6½ x 8½	.80	11 x 14	2.10	18 x 22	5.25

Standard BB and CC Double Weight

Size	Per Doz.	Size	Per Doz.	Size	Per Doz.
5 x 7	\$0.60	6½ x 8½	\$1.00	10 x 12	\$2.15
5 x 8	.70	8 x 10	1.40	11 x 14	2.65

Other sizes in proportion

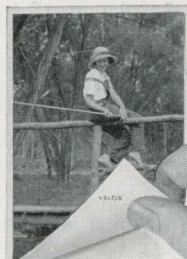
Velox

*"Look for Velox
on the Back"*

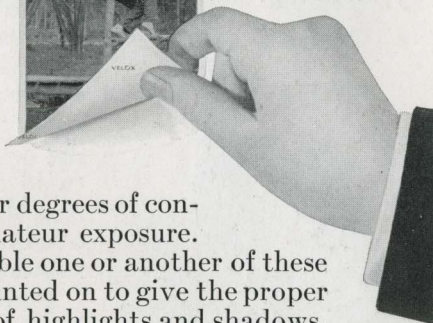
VELOX is a non-abrasion developing-out paper. Ever since it was introduced it has been made especially for printing from amateur negatives. With this single object in view it is made in four degrees of contrast to fit every type of amateur exposure. If the negative is at all printable one or another of these four grades can always be counted on to give the proper and most pleasing rendering of highlights and shadows. This versatility makes it possible to tone down extreme contrasts and to help correct exposure errors.

Negatives of extreme contrast give best results on No. 1; negatives of average contrast print best on No. 2; flat negatives call for No. 3, and exceedingly thin or flat negatives yield the best possible prints on No. 4.

Velox is also supplied in four grades or surfaces. Of these Velvet Velox, which gives semi-gloss prints of splendid quality and tone, is the most popular.



*Velox prints are
identifiable by the
name "Velox"
on the back.*



GRADE	SURFACE	CONTRAST				*Furnished also in Double-weight Velox. Double-weight papers require no mount and when printed under a mask, which will insure a white margin, offer a very artistic effect.
Velvet Velox	Semi-Gloss	*1	*2	*3	*4	
Portrait Velox	Smooth Matte	2				
Carbon Velox	Matte	1	2	3	4	
Glossy Velox	Enameled	1	*2	*3	4	

Prices

Size Inches	Single Weight			Double Weight		
	Dozen	1/2 Gross	Gross	Dozen	1/2 Gross	Gross
1 1/8 x 2 1/2	\$0.12		\$1.10	\$0.15		\$1.40
2 1/4 x 3 1/4	.12		1.10	.15		1.40
2 1/2 x 4 1/4	.15		1.35	.20		1.70
3 1/4 x 4 1/4	.20		1.75	.25		2.20
2 1/8 x 4 1/8	.20		1.75	.25		2.20
3 1/4 x 5 1/2	.20		2.00	.25		2.50
4 x 5	.25		2.30	.30		2.90
5 x 7	.40	\$2.10	3.90	.50	\$2.60	4.90
3 1/2 x 12	.50	2.60	4.75	.60	3.10	5.95
Velox Post Cards, 3 1/8 x 5 1/8, furnished in Velvet, Contrasts Nos. 1, 2, 3 and 4, and in Glossy, Contrasts Nos. 2 and 3						
				.30	1.50	2.90
Velox Double Post Cards, 3 1/8 x 10 7/8 inches						
				.60	3.00	5.80

Velox Sundries

Nepera Solution, 4-ounce bottle	\$0.28
Ditto, 16-ounce bottle	.84
Nepera Auxiliary Powders (for converting Nepera Solution to a film or plate developer), package of 12	.35
Eastman M. Q. Developer, package of 5 glass tubes	.30
Velox Liquid Developer, 4-ounce bottle	.28
Ditto, 16-ounce bottle	.84
Velox Re-developer Tubes for Sepia Toning, package of 12	1.08
Velox Liquid Hardener, 4-ounce bottle	.25
Ditto, 8-ounce bottle	.35
Kodak Acid Fixing Powder for fixing Velox prints, 1 pound	.25
Ditto, $\frac{1}{2}$ pound	.15
Ditto, $\frac{1}{4}$ pound	.10

Kodak Velvet Green

A SHADY woodland scene, a marine sunset, or a favorite mountain view—those are some of the many outdoor pictures whose beauty is infinitely increased by printing on Kodak Velvet Green. It faithfully reproduces the rich green tone of nature and gives effects that are unusual without being freakish. It lends a warmth and a realism that surprise the amateur who is accustomed to black and white prints and who is using this paper for the first time.

And these prints that seem to breathe the atmosphere of out-of-doors can be made without any complicated materials or unusual skill. For Kodak Velvet Green is a developing-out paper as simple to use as Velox. Its manipulation is the same, excepting a slight change in the fixing bath and printing by daylight instead of artificial illumination. The surface—a smooth semi-matte—brings out detail fully.

The paper is supplied in both single and double weights. In addition Kodak Velvet Green Post Cards are available. They are particularly appropriate for use at vacation time to give friends a vivid idea of places visited.

Size Inches	Single Weight			Double Weight		
	Dozen	$\frac{1}{2}$ Gross	Gross	Dozen	$\frac{1}{2}$ Gross	Gross
$1\frac{1}{2}$ x $2\frac{1}{2}$	\$0.10		\$0.90	\$0.15		\$1.30
$2\frac{1}{4}$ x $3\frac{1}{4}$.10		.90	.15		1.35
$2\frac{1}{2}$ x $4\frac{1}{4}$.12		1.10	.20		1.60
$3\frac{1}{4}$ x $4\frac{1}{4}$.15		1.40	.25		1.80
$2\frac{1}{2}$ x $4\frac{3}{4}$.15		1.40	.25		2.00
$3\frac{1}{4}$ x $5\frac{1}{2}$.15		1.60	.25		2.00
$3\frac{1}{2}$ x 12	.40	\$2.10	3.80	.50	\$2.75	5.00
4 x 5	.20		1.85	.30		2.25
5 x 7	.30	1.70	3.10	.40	2.20	3.90
Kodak Velvet Green Post Cards,						
Single Length				.20	1.10	2.00
Double Length				.40	2.20	4.00

Solio Paper

A glossy, printing-out paper

Size	Per Package 2 Doz.	Size	Per Package 2 Doz.
1 $\frac{5}{8}$ x 2 $\frac{1}{2}$	\$0.20	4 x 5	\$0.40
2 $\frac{1}{4}$ x 3 $\frac{1}{4}$20		Per Doz.
2 $\frac{1}{2}$ x 4 $\frac{1}{4}$25	4 $\frac{1}{4}$ x 6 $\frac{1}{2}$	\$0.25
3 $\frac{1}{4}$ x 4 $\frac{1}{4}$25	5 x 730
2 $\frac{7}{8}$ x 4 $\frac{7}{8}$25	3 $\frac{1}{2}$ x 1235
3 $\frac{1}{4}$ x 5 $\frac{1}{2}$30	Post Cards20
		Double Solio Post Cards40

Solio Toning and Fixing Powders, per carton, 5 tubes, \$0.35. Solio Combined Toning and Fixing Solution, per 8-ounce bottle, \$0.50; 4-ounce bottle, \$0.30.

Eastman Plates

Single coated: Eastman 40, 36, Speedway,
S. C. Ortho

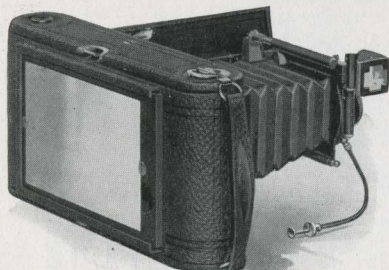
Double coated: Eastman D. C. Ortho

	Per Doz.		Per Doz.
2 $\frac{1}{4}$ x 3 $\frac{1}{4}$	\$0.45	2 $\frac{1}{4}$ x 3 $\frac{1}{4}$	\$0.55
3 $\frac{1}{4}$ x 4 $\frac{1}{4}$65	3 $\frac{1}{4}$ x 4 $\frac{1}{4}$80
3 $\frac{1}{4}$ x 5 $\frac{1}{2}$90	3 $\frac{1}{4}$ x 5 $\frac{1}{2}$	1.10
4 x 590	4 x 5	1.10

Wratten & Wainwright Panchromatic

	Per Doz.
3 $\frac{1}{4}$ x 4 $\frac{1}{4}$	\$0.80
3 $\frac{1}{4}$ x 5 $\frac{1}{2}$	1.10
4 x 5	1.10

Combination Backs



WHEN substituted for the usual autographic backs on No. 3A Autographic Kodaks, Regular and *Special*, Combination Backs adapt these cameras to double plate holders. The photographer then has the advantage of ground glass focusing and, if he so desires, can make one or two exposures and develop them at once.

With the addition of Kodak Cut Film Sheaths in the plate holder, this special back also equips the camera for use with Kodak Cut Film, Eastman Commercial Orthochromatic and Eastman Commercial Panchromatic Film. (See page 51.)

Combination Back with ground glass, for No. 3A Autographic Kodak	\$4.00
Ditto, for No. 3A <i>Special</i>	5.00
Kodak Double Plate Holders for either of the above, each.	1.50

Kodak Cut Film

KODAK Cut Film offers every advantage of plates, and in addition it weighs only one-tenth as much, is free from halation, easier to handle and unbreakable. The negatives it produces are of strictly superior quality. Through the agency of the Combination Back, Double Plate Holder (see opposite page) and Kodak Cut Film Sheaths, No. 3A Auto-graphic Kodaks, Regular and *Special*, can readily be adapted for use with this film.

The speed of regular Kodak Cut Film is comparable to that of the best portrait plate or of cartridge Kodak Film. The *Super Speed* is about twice as fast as Regular, yet it equals the latter in latitude, gradation and fineness of grain. It gives the best possible negatives under difficult light conditions and with short exposures, without sacrificing any of the qualities on which film superiority is founded. It opens the way to unthought-of possibilities in speed work, home portraiture, etc.

Eastman Commercial Orthochromatic Film

THIS film is color-sensitive to a high degree, and gives especially good color separation in landscapes or multi-color still life subjects. It is about half as fast as Kodak Cut Film Regular and is supplied in cut film form. It is not sensitive to red.

	$3\frac{1}{4} \times 4\frac{1}{4}$	$3\frac{1}{4} \times 5\frac{1}{2}$	4×5
Eastman Commercial Orthochromatic Film, dozen	\$0.65	\$0.90	\$0.90

Eastman Commercial Panchromatic Film

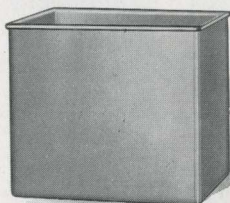
EASTMAN Commercial Panchromatic Film is completely sensitive to all colors, including red, and when used with the proper filter gives a monochrome reproduction of all tints and shades in their proper relation. It cannot be handled by the light of a ruby safelight but must be manipulated in darkness or by the light of a green Series 3 Safelight. It is supplied in cut film form.

	$3\frac{1}{4} \times 4\frac{1}{4}$	$3\frac{1}{4} \times 5\frac{1}{2}$	4×5
Eastman Commercial Panchromatic Film, dozen	\$0.75	\$1.00	\$1.00

Kodak Cut Film Sheath

ADAPTS a plate holder to the use of cut film. It is made of aluminum, ribbed for rigidity, and is instantly inserted or removed.

	$2\frac{1}{4} \times 3\frac{1}{4}$	$3\frac{1}{4} \times 4\frac{1}{4}$	$3\frac{1}{4} \times 5\frac{1}{2}$	4×5
Kodak Cut Film Sheath	\$0.10	\$0.10	\$0.15	\$0.15



Kodak Developing Box, No. 1

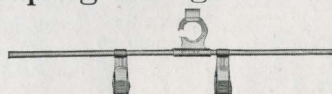
THIS tank provides a swift and easy means of obtaining uniform development of cut film. It takes twelve films, each suspended in the solution from a Kodak Cut Film Developing Hanger. Development proceeds by the time and temperature method.

The tank is made of acid-resisting metal and measures $4 \times 5\frac{1}{4} \times 6$ inches.

Kodak Developing Box, No. 1, without hangers \$2.00

Kodak Cut Film Developing Hanger

FOR use with the Kodak Developing Box, No. 1. It lies securely across the top of the box. The clips are of acid-resisting metal.



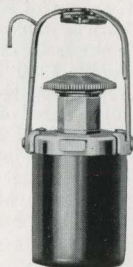
Kodak Cut Film Developing Hangers, each \$0.20

Kodak Self Timer

THIS popular accessory supplies a simple aid for making a really complete picture record, for with it the amateur photographer can make individual snapshots of himself or can include himself in group pictures.

Clip a Kodak Self Timer to the cable release of any Kodak, set it for any desired interval from $\frac{1}{2}$ second to 1 minute, and step into the picture: the timer trips the shutter and makes the exposure for you.

Kodak Self Timer \$1.25



Eastman Visible Graduate

THE lines and figures on this moulded graduate are opaque, not translucent as is the case with most similar measuring devices.

Even under the rays of a ruby safelight the graduations are easily visible—a distinct convenience and time-saving factor.

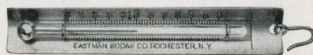


2-ounce	\$0.30	8-ounce	\$0.50
4-ounce40	16-ounce80

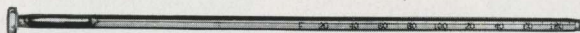
Eastman Thermometer

AN ACCURATE instrument that is especially convenient in tank or tray development. The hook makes it easy to suspend the thermometer in the solution. Its curved back protects the tube and fits the corner of a developing tank.

Eastman Thermometer \$0.90



Thermometer Stirring Rod



THIS triple purpose rod is $\frac{1}{4}$ inch in diameter by $9\frac{1}{4}$ inches long, and is stoutly constructed. Stirring with it mixes ingredients thoroughly and at the same time gives an accurate record of the temperature. The flat end is useful in crushing lumpy powders.

Thermometer Stirring Rod \$1.25

Developing Trays

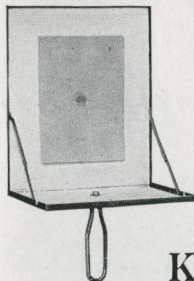
		"Bull's Eye" (composition)	Enameled	
$3\frac{1}{4} \times 4\frac{1}{4}$	\$0.30	$3\frac{1}{2} \times 12$	4×5	\$0.75
4×540	5×8	4×685
4×645		5×7	1.10



Flashlight Materials

SINCE it makes one independent of daylight, flashlight photography is indeed a year-round sport. Giving complete control of the illumination, it means good indoor pictures under otherwise impossible conditions.

The simplest way is to use a Kodak Flash Sheet Holder and Eastman Flash Sheets. The latter are placed on the holder and ignited from behind. They burn slowly, giving a broad and powerful, yet soft, light.



No. 1 Flash Sheets, per package of $\frac{1}{2}$ dozen sheets, 3 x 4-inch . . .	\$0.35
No. 2 Flash Sheets, per package of $\frac{1}{2}$ dozen sheets, 4 x 5-inch56
No. 3 Flash Sheets, per package of $\frac{1}{2}$ dozen sheets, 5 x 7-inch84
Kodak Flash Sheet Holder.	1.25

Flash cartridges are recommended only where instantaneous exposures are required.

Eastman No. 1 Flash Cartridges, for use only with fuse, per package of $\frac{1}{2}$ dozen	\$1.25
Ditto, No. 280
Ditto, No. 350
Eastman Spreader Flash Cartridges, for use with fuse, per package of $\frac{1}{2}$ dozen60

Kodak Dry Mounting Tissue

THIS tissue offers one of the easiest and most satisfactory methods of mounting prints. Just fix the tissue on the print, lay both on the mount and press with a warm flat-iron. In this way pictures are mounted smoothly and securely, without fuss or bother.

Size, $3\frac{1}{2}$ x $3\frac{1}{2}$, 3 dozen	\$0.10	Size, 4 x 5, 2 dozen.	\$0.10
Size, $3\frac{1}{4}$ x $4\frac{1}{4}$, 3 dozen10	Size, $4\frac{1}{4}$ x $6\frac{1}{2}$, 1 dozen.10
Size, $3\frac{1}{4}$ x $5\frac{1}{2}$, 2 dozen10	Size, 5 x 7, 1 dozen.10
Size, $3\frac{1}{2}$ x 12, 1 dozen10		

Kodak Photo Paste

AN EXCELLENT white adhesive, both for mounting prints and for general household use. The tapered, weighted, friction cap quickly seals the tube and also serves as a spreader when the paste is being used.



1 1/8-ounce tube \$0.10
2-ounce tube15



Eastman Photo Paste

A HIGH quality paste. It is white, and stays white, its special composition therefore avoiding the discoloration of print and mount.

4-ounce jar \$0.25

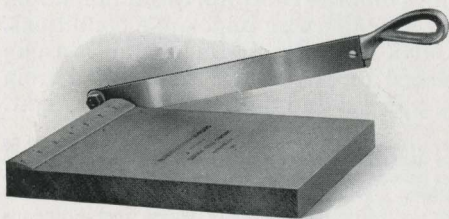
Kodak Liquid Glue

AN EXCELLENT glue for any purpose. With it the amateur can do mounting by simply tacking down the corners instead of covering the entire print with adhesive.

Per tube \$0.15



Kodak Trimming Boards



STAUNCHLY constructed, in sizes suited to the amateur photographer's needs. The boards are of hard wood, the blades of fine quality steel, and the rules are plainly marked.

No. 1, capacity, 5 x 5 inches \$0.75
No. 2, capacity, 7 x 7 inches 1.00

Kodak Print Roller

A HIGHLY convenient aid in mounting. The frame is nicked and the rubber rolls are six inches long. The desired pressure is easily exerted by means of the overhead handle.

Kodak Print Roller \$1.00

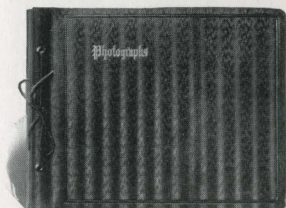


Flexo Print Roller

A THOROUGHLY practical roller for average work. The four-inch rubber roll is supported in a black enamel frame.

Flexo Print Roller \$0.35





The Kodak Album

LOOSE-LEAF, open-back style. Cover made of finest quality genuine leather and surfaced in new patterns: the black in an etched crystalline; the blended olive, a pine needle effect. Stamped in gold leaf with the word "Photographs." Fifty black, round-cornered leaves held in place with silk-finished cord through cover and metal tubes.

5 x 8, RA, Black Crystline Cover . . .	\$2.25	SA, Olive Pine Needle Cover . . .	\$2.25
7 x 11, RB, Black Crystline Cover . . .	3.25	SB, Olive Pine Needle Cover . . .	3.25
10 x 12, RC, Black Crystline Cover . . .	4.50	SC, Olive Pine Needle Cover . . .	4.50
11 x 14, RD, Black Crystline Cover . . .	5.50	SD, Olive Pine Needle Cover . . .	5.50

Package of 12 extra leaves, Size A (5 x 8) \$0.15; Size B (7 x 11) \$0.18;
Size C (10 x 12) \$0.30; Size E (11 x 14) \$0.40

The Panama Album

LOOSE-LEAF, open back style. Two attractively colored covers—Brownblend and Greenblend—of artificial leather. The border frame ornament is hand rubbed, a beautiful polychrome effect. The word "Photographs" is stamped in gilt. Fifty black leaves held in place by a silk-finished cord.



BA, 5 x 8, Brownblend Cover . . .	\$1.50	BB, 7 x 11, Brownblend Cover . . .	\$2.00
GA, 5 x 8, Greenblend Cover . . .	1.50	GB, 7 x 11, Greenblend Cover . . .	2.00

Package of 12 extra leaves, Size A (5 x 8) \$0.15; Size B (7 x 11) \$0.18

The Colonial Album

LOOSE-LEAF, open-back style. Cover is of de luxe artificial leather. The beautiful design in polychrome covers the entire surface and in center the words "Ye Photo Album" are raised embossed in bronze. Fifty black leaves held in place by silk-finished cord through cover and metal tubes. This is a most attractive album.



A, 5 x 8 . \$1.90

B, 7 x 11 \$2.50

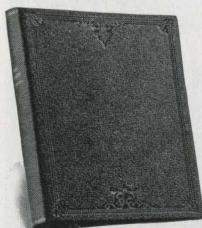
C, 10 x 12 . \$3.25

D, 11 x 14 . \$3.50

Package of 12 extra leaves, Size A (5 x 8) \$0.15; Size B (7 x 11) \$0.18;
Size C (10 x 12) \$0.30; Size E (11 x 14) \$0.40

Library Albums

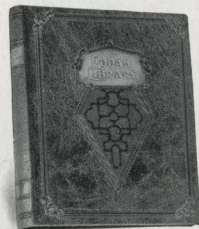
THESE two Library Album styles fill the demand for albums in book form, readily placed in the bookcase when not wanted. In keeping with the idea of a book style, the words "Kodak Library" are stamped in gold on the rounded back.



Black Leather
Library Album

Choice of genuine seal grain, black leather, finished on cover with a pressed book design—and DeLuxe artificial leather cover, ornamented with an exclusive book design and artistically colored.

The loose-leaf arrangement for holding the fifty black leaves is inside the cover—therefore, there are no projections to mar table or desk on which album may be placed.



De Luxe
Library Album

These are high class albums for your library—just the kind you want for your choice Kodak prints.

B, Black leather, 6½ x 9, (size of leaf from folding edge) . . .	\$3.25
M, De Luxe artificial leather, 6½ x 9, (size of leaf from folding edge) . . .	2.50

Extra leaves, package of 12, size L, \$0.18

The Valencia Album



CHOICE of three shades of covers—Gunmetal Grey with grey leaves—Chestnut Brown and Olive Grey with black leaves. The covers are ornamented with a beautiful, engraved and duotinted embossed design. The word "Photographs" in antique metal colors adds a deft finished touch. An attractive album at an attractive price.

7 x 11, B-1, Grey cover, Grey leaves	\$2.00
7 x 11, B-2, Olive cover, Black leaves	2.00
7 x 11, B-3, Brown cover, Black leaves	2.00
11 x 14, D-1, Grey cover, Grey leaves	3.00
11 x 14, D-2, Olive cover, Black leaves	3.00
11 x 14, D-3, Brown cover, Black leaves	3.00

Package of 12 extra leaves, Size B, Black, 7 x 11, \$0.18

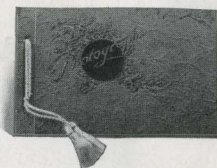
Size S, Grey, 7 x 11 .25

Size E, Black, 11 x 14 .40

Size T, Grey, 11 x 14 .50

The Outing Album

A LOOSE-LEAF album with embossed, coated paper cover, has twelve grey leaves held in place by cord through cover, finished with a beautiful design in high relief—just right to give to your friends as an inexpensive souvenir of some event recorded photographically, such as a vacation, an auto trip or a picnic.



No. 1 (4¾ x 7)	\$0.25
No. 2 (7 x 10)35

Package of 6 extra leaves, Size P (4¾ x 7) \$0.10

Size R (7 x 10) .15

The Colombo Album



LOOSE-LEAF, open back style. The cover is black artificial leather, embossed in relief with a beautifully engraved floral pattern. The word "Photographs" in gilt in the lower right corner adds a complete, finished touch. Fifty black leaves held in place by silk finished cord through cover and metal tubing. An attractive album sold at a low price.

7 x 11, B, Black Cover	\$1.50
11 x 14, D, Black Cover	2.50

Package of 12 extra leaves, Size B, 7 x 11 \$0.18

Size E, 11 x 14 .40

The Rhodes Album

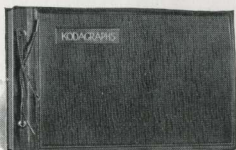
LOOSE-LEAF, open-back style—choice of genuine black grain leather or embossed black book cloth, with 50 black leaves held in place by metal tubes and cord through cover. Cover stamped in foil with word "Photographs."



5 x 8	CA, cloth \$0.90	LA, leather	\$2.00
7 x 11	CB, cloth 1.25	LB, leather	2.75
8 x 10	CE, cloth 1.50	LE, leather	3.10
10 x 12	CC, cloth 2.00	LC, leather	4.50
11 x 14	CD, cloth 2.25	LD, leather	5.00

Package of 12 extra leaves, Size A (5 x 8) \$0.15; Size B (7 x 11) \$0.18; Size K (8 x 10) \$0.20;

Size C (10 x 12) \$0.30; Size E (11 x 14) \$0.40



The Kodagraph Album

LOOSE-LEAF, open-back style. Choice of genuine leather cover in black with etched surface, or in dark brown with alligator finish. The word "Kodagraphs" is stamped in gold on cover. A good looking, substantial album.

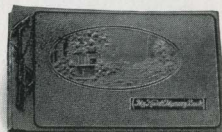
BB, 7 x 11 Black Leather	\$3.00	AB, Brown Alligator	\$3.00
BD, 11 x 14 Black Leather	5.00	AD, Brown Alligator	5.00

Package of 12 extra leaves, Size B (7 x 11) \$0.18; Size E (11 x 14) \$0.40

My Kodak Memory Book

IN addition to its embossed, hand-colored cover design, this attractive book has the words "My Kodak Memory Book" embossed in a raised panel. It is unusually handsome and well deserves the pictures you prize the most.

In addition to the forty-five black leaves for the photographs, the five white leaves will be found of practical use to record in writing any special happenings in connection with the making of these pictures, or for recording any other items of interest.



B, 7 x 11	\$2.50
---------------------	--------

Package of 12 extra leaves, Size B, Black \$0.18
Size W, White .25

"Childhood Days" Book

THE "Childhood Days" Book, for safe keeping of pictures of the children, will not only give immediate pleasure to parents, but will be valued more and more as the years roll along. It is exquisitely finished with an embossed, hand-colored design, and strongly made for years of handling.

In addition to forty-five black leaves for the pictures, five white leaves are added for written record of interesting items in connection with the making of these pictures, or for special mention of events in the youngsters' lives.

B, 7 x 11	\$2.50
---------------------	--------

Package of 12 extra leaves, Size B, Black \$0.18
Size W, White .25

La Novelle

LOOSE-LEAF open-back style. Fifty black leaves held in place by a silk-finished cord through cover and metal tubes. The word "Photographs" is stamped in gilt on cover. This cover is a strongly fibered material in a dark brown shade and finished in a richly embossed Baby Alligator pattern.

BA, 5 x 8	\$1.10	BC, 10 x 12	\$2.25
BB, 7 x 11	1.50	BD, 11 x 14	2.50

Package of 12 extra leaves, Size A (5 x 8) \$0.15; Size B (7 x 11) \$0.18;
Size C (10 x 12) \$0.30; Size E (11 x 14) \$0.40

The Juno Album

LOOSE-LEAF, open-back style. Fifty black loose leaves held in place by metal tubing and cord through covers. Brown or black embossed English grain imitation leather cover. The word "Photographs" stamped in gilt on cover.



5 x 8, BA, brown or CA, black	\$1.10
7 x 11, BB, brown or CB, black	1.50
10 x 12, BC, brown or CC, black	2.25
11 x 14, BD, brown or CD, black	2.50

Package of 12 extra leaves, Size A (5 x 8) \$0.15; Size B (7 x 11) \$0.18;
Size C (10 x 12) \$0.30; Size E (11 x 14) \$0.40

Scout's Memory Book



PREPARED especially for the Boy Scouts of America. Choice of black or DeLuxe artificial leather cover. The special design, symbolic of Scout life, is embossed in high relief on the black cover and tastefully colored on the De Luxe. In addition, both albums have the wording, "Scout's Memory Book," brought up in high relief.

Loose-leaf—in addition to the forty-five black leaves, there are added in both albums five white leaves for a written record of items of special interest in Scout life.

B, Black (7 x 11)	\$1.50
M, De Luxe (7 x 11)	2.50

Package of 12 extra leaves, Size B, Black, \$0.18
Size W, White .25

Kodak Negative Albums

WITH a Kodak Negative Album the amateur can store film negatives in individual translucent envelopes—ready for reprints, safe from loss or damage. Each album holds 100 negatives. A neat index makes it easy to keep a record of occasions and subjects.

For 100 negatives, $1\frac{5}{8}$ x $2\frac{1}{2}$	\$1.25
For 100 negatives, $2\frac{1}{4}$ x $3\frac{1}{4}$	1.25
For 100 negatives, $2\frac{1}{2}$ x $4\frac{1}{4}$	1.25
For 100 negatives, $3\frac{1}{4}$ x $4\frac{1}{4}$	1.25
For 100 negatives, 4 x 5	1.50
For 100 negatives, $3\frac{1}{4}$ x $5\frac{1}{2}$	1.50
For 100 negatives, 5 x 7	1.75



The Safety Photo Mailer

A COMBINATION of tough Kraft envelope, double scored corrugated board and lock seal. This mailer can be depended on to carry prints and enlargements with safety.

No.	Size Card or Print	Outside Size of Mailer	Price per Dozen
A—	5 x 7 or smaller	$6\frac{1}{8}$ x $8\frac{1}{8}$	\$1.08
B—	$9\frac{3}{8}$ x $11\frac{3}{8}$ or smaller	$10\frac{1}{2}$ x $12\frac{1}{2}$	1.80
C—	$11\frac{7}{8}$ x $13\frac{1}{8}$ or smaller	13 x $14\frac{1}{8}$	2.10
D—	$12\frac{5}{8}$ x $15\frac{5}{8}$ or smaller	$13\frac{3}{4}$ x $16\frac{3}{4}$	3.00
E—	$17\frac{1}{4}$ x $20\frac{1}{4}$ or smaller	$18\frac{3}{8}$ x $21\frac{3}{8}$	4.20

Stereo Mounts

Size of Mount, $3\frac{1}{2}$ x 7 . . . Color, Queen's Grey . . . Per 100, \$1.30 . . . Per 50, \$0.65

Kodak Card Mounts

The Baltic—Brown or Grey

Heavy stock, beveled edges, heavy borders. Sold in lots of not less than fifty, one kind and size.

No.	For Prints	Size of Mount	Per 100	Per 50	No.	For Prints	Size of Mount	Per 100	Per 50
0	1½ x 2½	3¾ x 4¼	\$2.10	\$1.05	2C	2½ x 4¾	5½ x 7½	\$3.10	\$1.55
1	2¼ x 3¼	4¾ x 5¾	2.60	1.30	3A	3¼ x 5½	5¾ x 8	3.40	1.70
1A	2¼ x 4¼	4¾ x 6¼	2.80	1.40	4	4 x 5	6 x 7	4.00	2.00
2	3½ x 3½	5½ x 5½	3.00	1.50	4A	4¼ x 6½	6½ x 8½	5.00	2.50
3	3¼ x 4¼	5½ x 6½	3.00	1.50	5	5 x 7	8 x 10	6.20	3.10

Landscape—Ash Grey and Artist Brown

No.	Color	For Prints	Size of Mount	Per 50	No.	Color	For Prints	Size of Mount	Per 50
A1	Grey	5 x 7	8 x 10	\$3.00	C1	Grey	8 x 10	12 x 14	\$5.00
A2	Brown	5 x 7	8 x 10	3.00	C2	Brown	8 x 10	12 x 14	5.00
B1	Grey	6½ x 8½	10 x 12	4.00	D1	Grey	7 x 11	11 x 15	5.25
B2	Brown	6½ x 8½	10 x 12	4.00	D2	Brown	7 x 11	11 x 15	5.25

De Luxe Enlargement Mount

White and India Buff stock. All edges deckled. A rich mounter for the favorite enlargement.

No.	Color	For Prints	Size of Mount	Per Doz.	No.	Color	For Prints	Size of Mount	Per Doz.
A1	White	3¼ x 5½	7¼ x 9½	\$0.75	G1	White	6 x 10	10 x 14	\$1.40
A2	India	3¼ x 5½	7¼ x 9½	.75	G2	India	6 x 10	10 x 14	1.40
D1	White	5 x 7	9½ x 11½	1.00	H1	White	8 x 10	12 x 14	1.50
D2	India	5 x 7	9½ x 11½	1.00	H2	India	8 x 10	12 x 14	1.50
E1	White	5 x 8½	9½ x 12½	1.10	J1	White	7 x 11	11 x 15	1.56
E2	India	5 x 8½	9½ x 12½	1.10	J2	India	7 x 11	11 x 15	1.56
F1	White	6½ x 8½	10¾ x 12¾	1.20					
F2	India	6½ x 8½	10¾ x 12¾	1.20					

Mat Mount (For Enlargement)—Grey, Sepia-Buffer

No.	For Prints	Size of Mount	Price	No.	For Prints	Size of Mount	Price
A	3¼ x 5½	7¾ x 9¾	Doz. \$0.93	F	6 x 10	10½ x 14½	Doz. \$1.29
B	4 x 7	8¾ x 11¾	Doz. .93	G	7 x 11	11½ x 15½	Doz. 1.53
C	5 x 7	9¾ x 11¾	Doz. .93	H	8 x 10	12 x 14	Doz. 1.53
D	5 x 8½	9¾ x 13½	Doz. 1.05	J	8 x 14	13¼ x 19¼	½ Doz. 1.05
E	6½ x 8½	11¾ x 13¾	Doz. 1.17	K	11 x 14	17¼ x 20¼	½ Doz. 1.89

Projecto Mount

For inslip prints and enlargements. The base is heavy beveled cardboard—the top is embossed in a heavy relief frame effect. Grey, only. Sold in not less than box lots—all sizes 25 in a box.

No.	For Prints	Size Outside	Per 100	No.	For Prints	Size Outside	Per 100
A	5 x 7	8 x 10	\$ 8.00	D	6 x 10	10 x 14	\$12.00
B	6½ x 8½	10 x 12	10.50	E	7 x 11	11 x 15	16.00
C	8 x 10	12 x 14	12.00				

Enlargement Mount—Grey or Buff

No.	For Prints	Size of Mount	Price	No.	For Prints	Size of Mount	Price
A	3¼ x 5½	7¼ x 9½	Doz. \$0.48	F	6 x 10	10¾ x 14¾	Doz. \$0.69
B	4 x 7	8¼ x 11¼	Doz. .51	G	7 x 11	11¾ x 15¾	Doz. .81
C	5 x 7	9¼ x 11¼	Doz. .54	H	8 x 10	12¾ x 14¾	Doz. .81
D	5 x 8½	9¾ x 12¾	Doz. .63	J	8 x 14	13 x 19	½ Doz. .69
E	6½ x 8½	11¾ x 13¾	Doz. .66	K	11 x 14	17 x 20	½ Doz. .84

Kodak Metal Tripods

THESE tripods, the result of many years of experience in constructing camera supports, are models of lightness, compactness and rigidity. The legs are of brass tubing, the sections in each telescoping neatly to give small collapsed size without sacrifice of strength. The lower sections and the heads are nicked, while the upper sections are finished in black enamel.

There are six models from which to choose. When closed their lengths range from $11\frac{3}{8}$ to $15\frac{1}{2}$ inches, so that even the largest is convenient to carry. Nos. 1 and 2 have revolving heads which permit the camera to swing in any desired direction without moving the tripod itself. They also have straps to hold the legs in place when closed. Nos. 1C and 2C have solid heads. Their legs have no straps.



The head of No. 6 (illustrated in its carrying case) includes a hinge which permits the legs to fold flat—parallel to one another instead of in the usual triangular form. The result is a narrow shape which, with the extreme shortness of the tripod when closed, makes No. 6 easiest of all to carry.

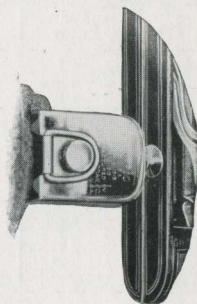
Details and Prices

	Sections	Length		Weight	Price
		Closed	Extended		
Kodak Metal Tripod No. 0	3	$15\frac{1}{8}$ inches	$39\frac{1}{8}$ inches	15 ounces	\$2.75
Kodak Metal Tripod No. 1C	4	$15\frac{1}{4}$ inches	$48\frac{1}{8}$ inches	$25\frac{1}{2}$ ounces	4.00
Kodak Metal Tripod No. 1	4	15 inches	$48\frac{1}{8}$ inches	$24\frac{1}{2}$ ounces	4.50
Kodak Metal Tripod No. 2C	5	$13\frac{1}{4}$ inches	$49\frac{1}{8}$ inches	26 ounces	4.50
Kodak Metal Tripod No. 2	5	$13\frac{1}{4}$ inches	$49\frac{1}{8}$ inches	25 ounces	5.00
Kodak Metal Tripod No. 6	6	$11\frac{3}{8}$ inches	40 inches	24 ounces	6.50
Leather Carrying Case, for Nos. 0 to 2, inclusive					2.70
Ditto, for No. 6					3.15
Rubber Tips, for Metal Tripod Spurs (per set of 3)					.10

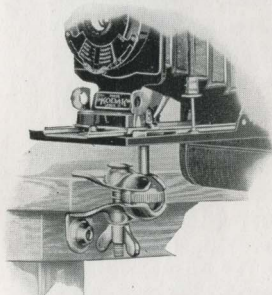
The Kodapod

THE little Kodapod is an exceedingly handy arrangement, particularly suited for use in place of a tripod in outdoor photography. The toothed jaws at one end firmly grip tree, fence or other wooden object, while the other end threads into any standard tripod socket. A clamping screw adjusts the camera to the correct horizontal or vertical position, where it is firmly held while the exposure is being made.

The Kodapod \$1.75



The Optipod



HERE is a neat little device—a combined tripod head and felt-protected clamp—that is frequently used instead of a tripod and, in many cases, in conjunction with that larger support.

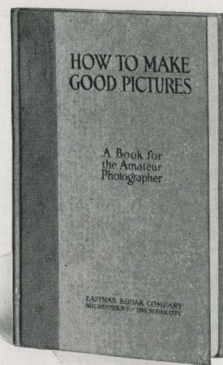
Used alone the Optipod clamps to any shelf, table, window ledge, running board or other support, and holds the camera firmly while the exposure is being made. It fits any standard tripod socket. It is small and light, and slips readily into the pocket.

The ball and socket joint is often a great convenience since it permits tilting the camera to almost any angle. It is especially valuable when the Optipod is used in connection with a tripod to photograph subjects which are at close range or otherwise so situated that it is impossible to place the tripod alone in the desired position.

The Optipod \$1.25

“How to Make Good Pictures”

THIS well-known book should be in the home of every amateur photographer. It explains, in easy, untechnical language, the various phases of picture making, and is valuable both for purposes of general reading and for ready reference on some particular subject. Its brief chapters cover camera operation, developing, printing, enlarging and tinting; landscape, architectural and interior photography; flashlight and home portraiture; the making of silhouettes and lantern slides, etc. There are 184 pages full of pointed, definite information for beginner or expert, and almost as many illustrations, including the sort of good pictures you want to make, as well as simple charts that explain photographic theories and processes.



To combine readability, good looks and permanence the book is finely printed on high grade paper and is bound in boards with an attractive vellum cover.

More than two million copies of “How to Make Good Pictures” have been sold—proof enough that the book is at once interesting, practical and instructive.

“How to Make Good Pictures” \$0.50

Kodak Film Clip

A FIRMLY gripping clip made of acid-resisting metal. The jaws are two inches wide, with fully sufficient tension to prevent slipping of the film. Because of its strength it is suitable for large as well as small films. It is made in one size only.

Kodak Film Clip. \$0.30



Kodak Junior Film Clip

Two teeth in the jaw of this clip remove all possibility of slipping. The clip is made in one size only, $1\frac{3}{16}$ inches wide, of acid-resisting metal, and is the most practical for tray development or for drying films.

Kodak Junior Film Clip No. 1 \$0.15



Eastman Film Developing Clip

A STRONG and thoroughly dependable clip. Made in two sizes, with nickel finish.

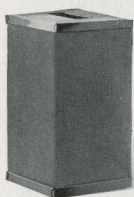
$3\frac{1}{2}$ -inch, per pair \$0.30
5-inch, per pair40



Kodak Candle Lamp

WHENEVER space is at a premium, or wherever electricity is not available—on the camping trip, for instance—this clever little lamp is very popular. It is collapsible and takes up very little room when not in use. It is made of special, tested, ruby fabric bound in metal frames, and gives a strong light, safe for photographic work.

Kodak Candle Lamp, with one candle \$0.40
Extra Candles, per dozen40



Kodak Darkroom Lamp

THE Kodak Darkroom Lamp is oil burning, is fitted with both orange and ruby glass, and has an adjustable winged light shield. The unusually broad wick is regulated from the outside and gives a soft, steady light for the darkroom.

Kodak Darkroom Lamp \$1.50



Kodak Safelight Lamp

THIS lamp is ideal for all darkroom uses. It is made to suit the work of the beginner, the advanced amateur, or the professional.

It is supplied with a 5 x 7 Series 1 Safelight, for use with films or plates that are not highly color sensitive. Safelights of other series are also available.



The lamp is made of metal, neatly finished. It is supplied with safelight, electric cord and fittings, excepting 25-watt electric bulb.

Kodak Safelight Lamp	\$3.50
Extra Safelight, 5 x 7, any series75

Eastman Safelight Lamp

SUSPENDED from an electric cord or fixture, the Eastman Safelight Lamp throws the light from a 10-watt bulb directly downward over the work table. Supplied with 5 x 7 Series 2 Safelight, for use with films or plates, unless otherwise ordered. Strongly constructed of metal, neat, convenient.



Eastman Safelight Lamp, without bulb	\$3.00
Extra Safelight, 5 x 7, any series75

Brownie Safelight Lamp

THE Brownie Safelight Lamp, but little larger than the electric bulb it holds, screws into any electric socket. It is made of japanned metal, and has safelights both at the end and at the front, as shown. Both safelights are Series 1, and are interchangeable with other series. A 10-watt electric bulb (not supplied) is the source of illumination.



Brownie Safelight Lamp	\$1.75
Extra Circular End Safelight (any series), each25
Extra Rectangular Safelight (any series), each40

Safelights for Safelight Lamps

SERIES 00—For use with developing-out papers (except bromide).

SERIES 0—For use with bromide paper and with lantern slide plates.

SERIES 1—For use with films or plates not highly color sensitive.

SERIES 2—For extra rapid orthochromatic films and plates.

SERIES 3—For use with red-sensitive panchromatic films and plates.

SERIES 4—Bright green safelight, for use with ordinary plates, for those who are color blind to red light. Not safe for orthochromatic plates.

Tested Chemicals



CERTAINTY of good results in making negatives and prints depends as much on the quality of your chemicals as on any other one thing. All Kodak chemicals are tested both photographically and for purity before the E. K. C. tested seal is allowed to be affixed to them.

Eastman Chemical Outfit (consists of M. Q. and Special Developers, Intensifier, Reducer and Velox Re-developer)	\$0.40
Eastman Special Developer Powders, per package of 5, in sealed glass tubes	.35
Eastman M. Q. Developer, per package of 5 tubes	.30
Eastman Hydrochinon Developer Powders, per 1/2 dozen	.30
Ditto, per package of 5 powders, in sealed glass tubes	.30
Eastman Pyro Developer Powders, per 1/2 dozen	.25
Ditto, per package of 5 powders, in sealed glass tubes	.25
Eastman Tropical Developer, 5 powders, in sealed glass tubes	.40
Elon, per 1 ounce	.52
Kodolon, per 1 ounce	.47
Hydrochinon, per 1-ounce can	.22
Eastman Permanent Crystal Pyro, per 1-ounce bottle	.27
Velox Re-developer, including bleaching agent, per package of 12 tubes	1.08
Sodium Thiosulphate (Hypo), granular, per pound	.18
Alum, powdered, per pound	.20
Kodak Acid Fixing Powder, per pound package	.25
Ditto, per 1/2-pound package	.15
Ditto, per 1/4-pound package	.10
Eastman Intensifier, per glass tube	.15
Eastman Reducer and Stain Remover, per box of 5 tubes	.50
Eastman Opaque No. 1, per tube	.25
Potassium Bromide, granular, per ounce can	.15
Acetic Acid, 28 per cent pure, per 1-pound bottle	.35
Citric Acid, 4-ounce bottle	.38
Eastman Tested Sodium Carbonate (desiccated), per 1-pound bottle	.40
Eastman Tested Sodium Sulphite (desiccated), per 1-pound bottle	.45

For Velox preparations, see page 49. For Solio preparations, see page 50.

For Tank Developer Chemicals, see page 43.

Miscellaneous

Cable Release (except Vest Pocket), each	\$0.35	Eastman Spotting Colors (consist of three colors, black, white and sepia), per set	\$0.25
Eastman Special Squeegee, 8-inch	1.25	Ferrottype Plate, 10 x 14, light	.20
Hard Rubber Stirring Rod	.30	Ferrottype Plate, 10 x 14, heavy	.30
Finger Tips, set of 3	.15	Rubber Focusing Cloth, per yard	\$1.00

Terms

THE prices in this catalog are strictly net, except to regular dealers who carry our goods in stock. THESE PRICES ARE, HOWEVER, SUBJECT TO CHANGE WITHOUT NOTICE. For the convenience of our customers, we recommend that they make their purchases from a dealer in photographic goods, as by so doing they can save time and transportation charges.

EASTMAN KODAK COMPANY, ROCHESTER, N. Y.

For results to which you're entitled, use:



"The dependable film in the yellow box"

KODAK is the registered and common-law Trade Mark of the Eastman Kodak Company and cannot be rightfully applied except to goods of their manufacture. When a dealer tries to sell you, under the Kodak name, a camera or films or other goods not of their manufacture, you can be sure that he has an inferior article that he is trying to market on the Kodak reputation.

If it isn't an Eastman, it isn't a Kodak

Weed & Co.
292 Main Street
Genesee Building
Main and Genesee Streets
BUFFALO, N. Y.