

KODAK

The Digitized Kodak Catalog Project (1886 - 1941): A Very Brief History

Most camera collectors at some point in their collecting careers pass through a Kodak phase - some never come out of it. And if there ever was one name that came to be associated with both cameras and collecting, it was Kodak.

George Eastman received his first patent (for coating dry plates) and bought his first manufacturing facility in 1880, and in 1881 he started the Eastman Dry Plate Company. In 1886 he received a patent for the near-mythical Eastman Detective Camera, but it wasn't until 1888 that the first camera bearing the name "Kodak" was introduced.

One of the nice things about collecting Kodak is that the product line is pretty well known, and because the company produced annual catalogs for many years, collectors can be reasonably sure of what they're looking at, when it was made, the variations and so on - presuming that they have access to either the appropriate catalog, or a number of the many books which document Kodak, each to some greater or lesser extent.

But what would be really nice would be to have a complete set of Kodak catalogs in an easily accessible form and readily available. And since the advent of portable computing devices (PC, Macintosh, etc.) that's been possible - except for the difficulty of assembling a complete set of Kodak catalogs in one spot and then scanning them and making the results available.

The idea of digitizing a complete set of Kodak catalogs has kicked around the collecting community for many years. It's been proposed on a number of online forums, during meetings of various photohistory groups, and for years there have been many incomplete "Kodak CDs" on eBay but at best, they only contained a few catalogs - whatever the owner had available. But assembling a complete set of catalogs, then scanning and processing perhaps 3,000 to 4,000 pages, was a daunting task - if not completely overwhelming - and nothing ever came of it.

Until now.

In early 2010, the idea came up again, but this time we - "we" as in "the collecting community" - were lucky. A number of collectors were willing to loan their catalogs to this project and a couple of insane - wait, let's call them "dedicated" - dedicated enthusiasts - neither of whom collected Kodak, but both of whom enjoyed the challenge of such a project - were willing to put in the time and effort to scan and pull together the entire set of catalogs into a full-blown Kodak Catalog Digital Library.

Our initial objective was to include just the annual amateur catalogs, but it turns out that many cameras only appear in certain professional and specialty catalogs. We included as many of those as we could obtain so that almost every Kodak camera made in the US, Canada and Europe, would be documented - at least up to about 1941. After that, it becomes much more difficult as Kodak stopped producing annual catalogs as their product line became increasingly more diversified.

However, even with the additional "non-amateur" catalogs, we weren't completely successful in illustrating "every" camera Kodak ever made. There are an elusive few that might appear in specialty catalogs that we simply couldn't track down. If you can't find one of those odd cameras, that's no doubt why. We may do a revision at some point in the future if someone is willing to loan us a catalog that includes a camera that isn't already recorded.

In this project, a total of 67 catalogs were used from 1886 through 1941 including a number of professional and dealer catalogs, and in some years, two or even three different catalogs to cover all the bases. With the cooperation of a number of dedicated collectors, we were able to pull together all those catalogs and in June 2010, the project started in earnest.

By November 2010, we had scanned everything we needed and eventually all 67 catalogs were then reassembled as image folders and converted to the universally accepted PDF format and finally, converted into individually searchable PDFs which could then be searched globally as a collection.

For those of you interested in the statistics: about 200 hours of scanning time (we never want to hear that sound again), 67 catalogs and 3,908 page scans - which generated 7,917 original and processed images - and 11.4 GB of disk space. Additionally, another 100+ hours of technical development time was needed to convert the digital catalogues into a fully searchable "knowledgebase" that could be launched from most any standard web browser.

The overwhelming number of catalogs was loaned to us by that most remarkable of Kodak collectors, Charlie Kamerman of Eagle Creek, Oregon. Without Charlie, it's very doubtful that this project could even have been attempted.

But as it turned out, even Charlie didn't have all the publications that were needed, but he was able to track down the five that he lacked and was able to secure either a copy or high resolution images that we could work with. And so, our thanks to the contributors of the catalogs and scans that we used:

Charlie Kamerman for the vast majority of catalogs used and all his help,
Steve Shohet for loaning a variety of test catalogs,
Ryerson University (Toronto) for the 1886 Eastman Catalog
George Layne for the 1890 New Kodaks Catalog,
Mike Kessler for the 1891 Dealer Display Catalog,
Ralph London for the 1893 UK Catalog,
Michael Pritchard for the 1897 UK Catalog.

The digital side of the project - also known as "all of the work" - was done by Rob Niederman of Medina, Minnesota, and Milan Zahorcak of Tualatin, Oregon. Remarkably we're still friends and in a few years, we'll probably be able to talk about this project rationally.

And there you have it, a more-or-less done deal. We're fairly sure that it isn't quite perfect, and expect there will be some carping about something or other; but all-in-all, we believe this to be a pretty good product and can now move on to something else.

Our thanks to all of those involved.

Rob Niederman
Milan Zahorcak

Fall, 2011

Kodaks

and Kodak Supplies



1926

Eastman Kodak Company

Rochester, New York

The Kodak City



Enlarged from a 3A Kodak negative. Any good negative will yield a good enlargement.

If it isn't an Eastman, it can't be Autographic

APART from the excellence of their lens and shutter equipments and the niceties of their mechanical make-up, all Folding Brownies and Kodaks offer one service that no other camera can—the autographic record.

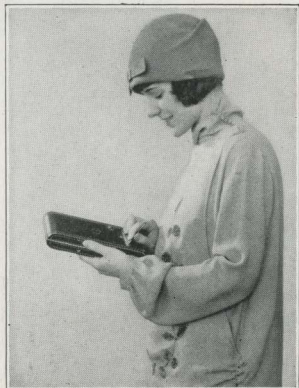
For pictures of the children and travel scenes, for example, the date is always important and the title frequently so. With any Folding Brownie or Kodak you are enabled, through the autographic feature, to write what you want to remember on the film at the time of exposure. This data becomes part of the negative and may always be referred to in the film margin.

Where was this picture made?

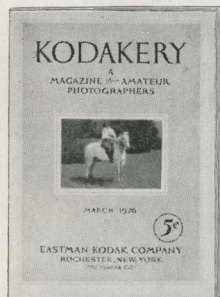
How old was Buddy then?

The autographic record has the answer.

And this feature, which is a part of the regular equipment on all Folding Brownies and Kodaks, is *exclusively* Eastman.

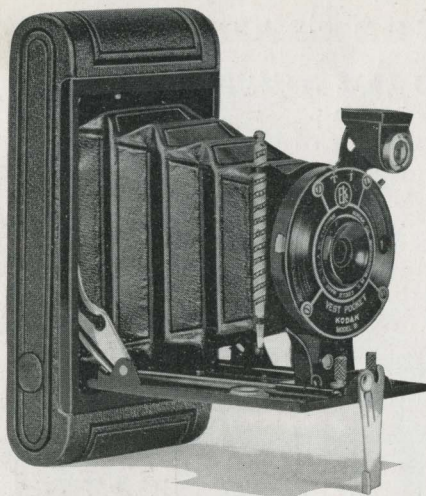


Making the Notation



A Magazine Free for a Year

As another example of Eastman service, *Kodakery*, a generously illustrated and ably edited monthly magazine that deals with amateur picture-making, is mailed *free* for one year to each purchaser of an Eastman camera. Its regular subscription price is 60 cents a year, two years for one dollar.



Picture size

$1\frac{5}{8} \times 2\frac{1}{2}$

PRICE \$5

Vest Pocket Kodak

MODEL B

SMALL as the Vest Pocket Kodak is—you see its actual size on the opposite page—the pictures it makes for your album prove it to be a thoroughly dependable photographic instrument. And these pictures are amazingly easy to get.



Made with the Vest Pocket Kodak,
Model B, actual size

The camera is fixed focus, which means that the question of distance is already answered. Just set the shutter—there are adjustments both for *instantaneous* and *time* actions—train the lens and “click,” the picture is yours.

The Vest Pocket Kodak, Model B, is

a new model introduced only a few months ago and its instant success was something of a sensation. People liked the ease of loading, the ease of working, the ease of carrying, but best of all they liked the pictures. You will too.

Chances for interesting pictures often occur without advance notice. Be prepared for them by keeping this convenient little camera near at hand.

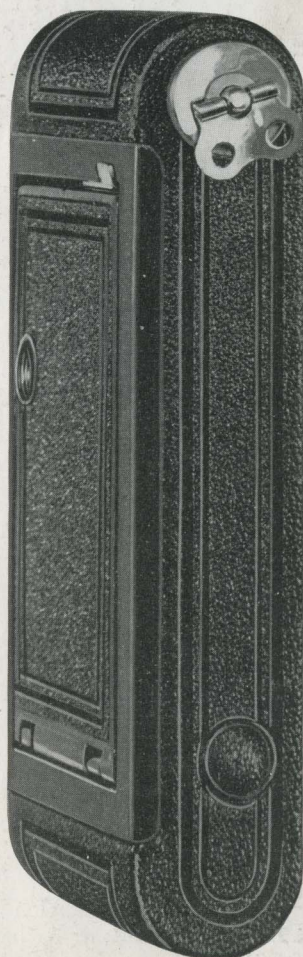
Like all other Kodaks, the V. P. K., Model B, is autographic, and like all Eastman equipment, the lens and shutter are carefully tested.

Details

Capacity without reloading: 8 exposures. Lens: Meniscus. Shutter: Vest Pocket rotary, with four stops, *instantaneous* and *time* actions. Brilliant finder, reversible for vertical or horizontal pictures. Body: All metal, covered with durable imitation leather; fittings finished in nickel and black enamel. One tripod socket, for vertical pictures. Black bellows. Autographic feature.

Prices

| | |
|--|--------|
| Vest Pocket Kodak, Model B (fixed focus) with Meniscus Lens and Vest Pocket Rotary Shutter . . . | \$5.00 |
| Black Sole Leather Case, with strap | 1.00 |
| Belt Carrying Case (russet leather) | 1.25 |
| Autographic Film Cartridge, 8 exposures (No. A 127) | .25 |
| Kodak Portrait Attachment (see page 41) | .75 |



Actual size of Vest Pocket Kodak, closed

Vest Pocket Autographic Kodaks

Regular and *Special*

Pictures— $1\frac{5}{8} \times 2\frac{1}{2}$



Slip it in the hand bag

YOU CAN wear the Vest Pocket Kodak or you can slip it in the handbag—there's room for it always, *always*.

And it's the sort of picture-maker that you'll like to pal around with.

Vest Pocket Autographic Kodak, with Rapid Rectilinear lens and Kodak Ball Bearing shutter has been a photographic favorite for years.

The Vest Pocket Autographic Kodaks *Special* offer the advantages of anastigmat equipment and well deserve the distinguishing mark of "*Special*." Of the two Eastman-made anastigmats offered, *f.7.7* and *f.6.9*, the latter admits more light during a wide-open exposure. In other words, it's faster. As far as "sharpness" is concerned, however, either is the equal of any lens made. Negatives made with Kodak Anastigmat equipment are good enough so that you'll want generous size enlargements from them, and clean-cut enough for splendid results.

A turn of the lens mount on the *Specials* sets the focus, and close-ups are made without the supplementary portrait attachment usually required. Particular attention has been paid to the finish of the *Specials* with the result that they look their class.



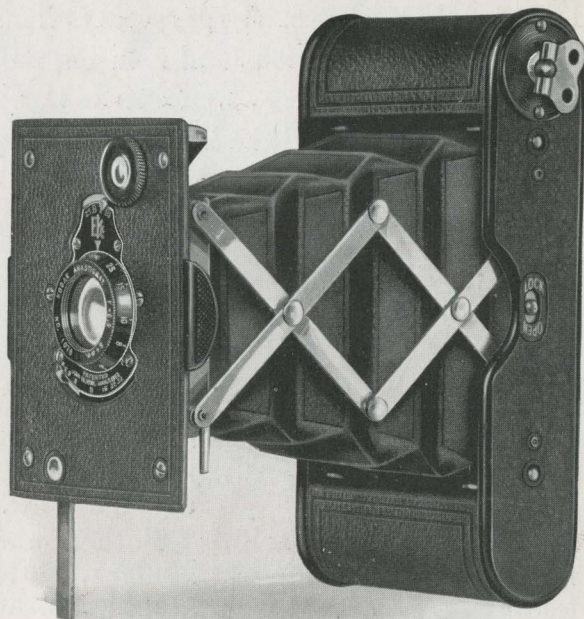
Put it in your Pocket

Details

Capacity without reloading: 8 exposures. Focus: Fixed (with Rapid Rectilinear lens); or Adjustable (with Kodak Anastigmat lens *f.7.7* or *f.6.9*). Lenses: Rapid Rectilinear, $3\frac{1}{4}$ -inch focus; or Kodak Anastigmat *f.7.7* and *f.6.9*, $3\frac{3}{8}$ -inch focus. Shutter: Kodak Ball Bearing No. 0, with finger release only (cable release attachment sold separately). Speeds: $\frac{1}{25}$, $\frac{1}{50}$ second, *time* and *bulb* actions. Brilliant finder, reversible for vertical or horizontal pictures. Body: All metal; fixed focus

*Illustrating Vest
Pocket Kodak Special,
with Kodak Anastig-
mat lens f.6.9.*

PRICE \$14



model finished in Japan Crystal; focusing model covered with Morocco grain leather; fittings finished in nickel and black enamel. Black bellows. Autographic feature.

Prices

| | |
|--|---------|
| Vest Pocket Autographic Kodak (fixed focus), with Rapid Rectilinear Lens and Kodak Ball Bearing Shutter | \$ 7.50 |
| Vest Pocket Autographic Kodak <i>Special</i> (focusing model), with Kodak Anastigmat Lens f.7.7 and Kodak Ball Bearing Shutter | 12.00 |
| With Kodak Anastigmat Lens f.6.9 | 14.00 |
| Leather Case for Vest Pocket Kodak | .90 |
| Leather Case, with strap | 1.00 |
| Belt Carrying Case (russet leather) | 1.25 |
| Autographic Film Cartridge, 8 exposures (No. A 127) | .25 |
| Vest Pocket Kodak Cable Release Attachment | .50 |
| Vest Pocket Kodak Tripod Adapter | .50 |
| Kodak Portrait Attachment for Rapid Rectilinear Lens (see page 41) | .75 |
| Kodak Self Timer (see page 52) | 1.25 |

Nos. 1 and 1A Pocket Kodaks, Series II

(Fixed focus and focusing models)

Picture sizes—No. 1, $2\frac{1}{4} \times 3\frac{3}{4}$; No. 1A, $2\frac{1}{2} \times 4\frac{1}{4}$

OPEN the camera and the lens snaps into position—picture chances haven't time to get away.

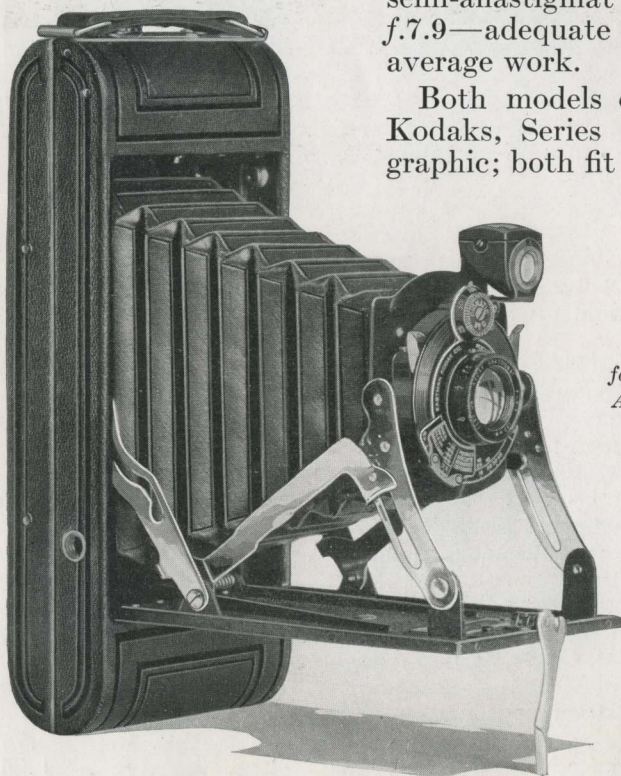
The fixed focus models (no setting for distance) are equipped with carefully tested lens and Kodex shutter.

The focusing models offer two equipments:

One. The Diomatic shutter, with four snap-shot speeds and timing scale; the famous Kodak Anastigmat $f.7.7$ lens that makes *sharp* pictures.

Two. Kodex shutter and the semi-anastigmat lens, Kodar $f.7.9$ —adequate equipment for average work.

Both models of the Pocket Kodaks, Series II, are auto-graphic; both fit the pocket.



*Illustrating No. 1A,
focusing model, Kodak
Anastigmat equipment.*

PRICE \$24.50



This picture actual size, made with 1A, Series II

Details

Capacity without reloading: No. 1, 6 exposures; No. 1A, 12 exposures. Focus: Fixed or adjustable. Lenses: Meniscus Achromatic; Kodar *f*.7.9, 4 $\frac{3}{8}$ -inch focus on No. 1; 5 $\frac{1}{4}$ -inch focus on No. 1A; or Kodak Anastigmat *f*.7.7, 4 $\frac{1}{4}$ -inch focus on No. 1; 5-inch focus on No. 1A. Shutters: Kodex, speeds $\frac{1}{25}$ and $\frac{1}{50}$ second; Diomatic, speeds $\frac{1}{10}$, $\frac{1}{25}$, $\frac{1}{50}$ and $\frac{1}{100}$ second; both with finger release, *time* and *bulb* actions. Brilliant finder, reversible for horizontal or vertical pictures. Two tripod sockets. Body: Aluminum. Covering: No. 1, Levant grain leather; No. 1A, fine seal-grain leather; metal parts finished in nickel and black enamel. Black bellows. Autographic feature.

Prices

| Pocket Kodak, Series II (fixed focus), with Meniscus Achromatic Lens and Kodex Shutter | No. 1 | No. 1A |
|--|---------|---------|
| Focusing model with Kodar Lens <i>f</i> .7.9, Kodex Shutter | \$12.50 | \$14.00 |
| With Kodak Anastigmat Lens <i>f</i> .7.7, and Diomatic Shutter | 16.00 | 18.00 |
| Black Sole Leather Case, with strap | 22.50 | 24.50 |
| Autographic Film Cartridge, 12 exposures (No. A 116) for No. 1A | 2.50 | 3.00 |
| Ditto, 6 exposures (No. A 120) for No. 1; (No. A 116) for No. 1A | | .60 |
| Kodak Portrait Attachment (see page 41) | .25 | .30 |
| Kodak Self Timer (see page 52) | .75 | .75 |
| Cable Release for Pocket Kodak, Series II, opened | 1.25 | 1.25 |
| | .35 | .35 |

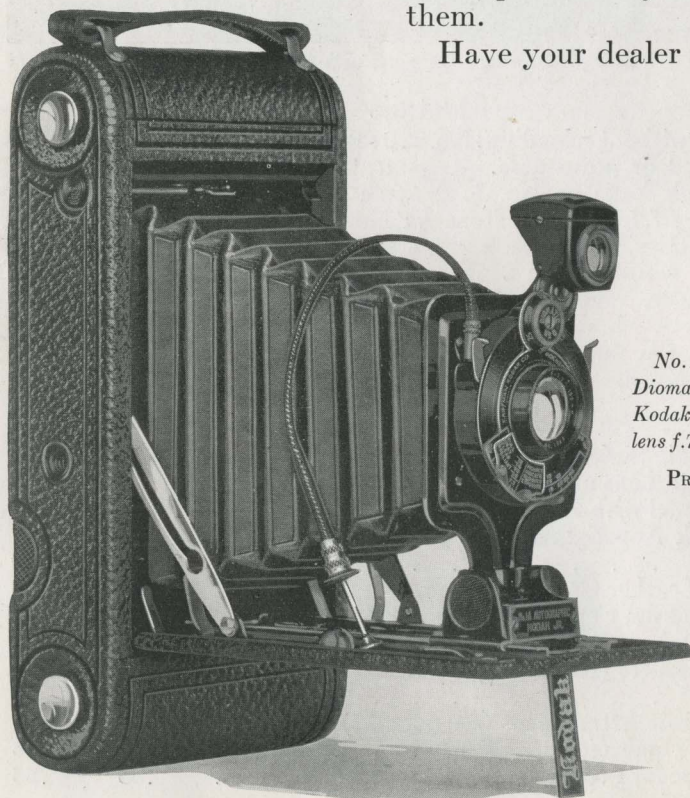
Nos. 1 and 1A Autographic Kodak Juniors

Picture sizes—No. 1, $2\frac{1}{4} \times 3\frac{1}{4}$; No. 1A, $2\frac{1}{2} \times 4\frac{1}{4}$

CAPABLE cameras are the Juniors—nothing sensational about them—sensible instruments that are carefully built for business so that it will be all the easier for you to enjoy photography's fun.

Both the Nos. 1 and 1A Juniors may be secured with anastigmat equipment and the dependable combination of Kodak Anastigmat lens and four-speed Diomatic shutter seems particularly adapted to them.

Have your dealer show you



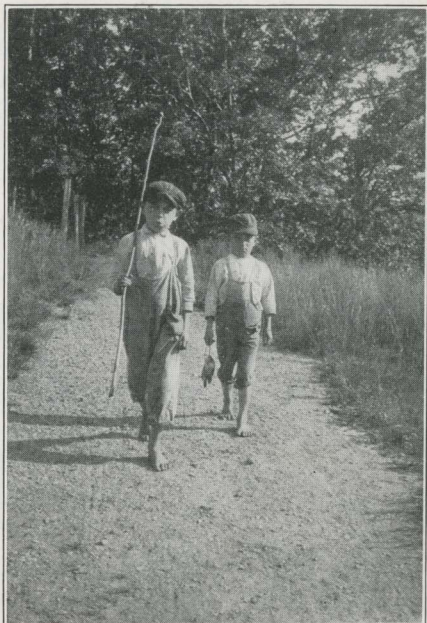
*No. 1A Junior with
Diomatic shutter and
Kodak Anastigmat
lens f.7.7*

PRICE \$23.50

a Junior. You'll find that he is enthusiastic about it, too.

Details

Capacity without reloading: No. 1, 6 exposures; No. 1A, 12 exposures. Focus: Fixed (with Meniscus Achromatic Lens only) or Adjustable (with any listed lens). Lenses: Meniscus Achromatic; Kodar *f*.7.9, $4\frac{3}{8}$ -inch focus on No. 1; $5\frac{1}{4}$ -inch focus on No. 1A; or Kodak Anastigmat *f*.7.7, $4\frac{1}{4}$ -inch focus on No. 1; 5-inch focus on No. 1A. Shutters: Kodex, speeds $\frac{1}{25}$ and $\frac{1}{50}$ second; Diomatic, speeds $\frac{1}{10}$, $\frac{1}{25}$, $\frac{1}{50}$, $\frac{1}{100}$ second; both with cable and finger release, *time* and *bulb* actions. Brilliant finder, reversible for vertical or horizontal pictures. Two tripod sockets. Body: Covered with fine seal-grain leather; metal parts finished in nickel and black enamel. Black bellows. Autographic feature.



Made with No. 1 Junior,
Actual size

Prices

| | No. 1 | No. 1A |
|--|---------|---------|
| Autographic Kodak Junior (fixed focus), with Meniscus Achromatic Lens and Kodex Shutter | \$12.00 | \$13.00 |
| Autographic Kodak Junior (focusing model, with scale), with Meniscus Achromatic Lens and Kodex Shutter | 12.00 | 13.00 |
| With Kodar Lens <i>f</i> .7.9 | 15.00 | 16.00 |
| With Kodak Anastigmat Lens <i>f</i> .7.7, and Diomatic Shutter | 22.50 | 23.50 |
| Black Sole Leather Case, with strap | 3.00 | 3.00 |
| Autographic Film Cartridge, 12 exposures (No. A 116) for No. 1A | | .60 |
| Ditto, 6 exposures (No. A 120) for No. 1; (No. A 116) for No. 1A | .25 | .30 |
| Kodak Portrait Attachment (see page 41) | .75 | .75 |
| Kodak Self Timer (see page 52) | 1.25 | 1.25 |

Nos. 2C and 3A Autographic Kodak Juniors

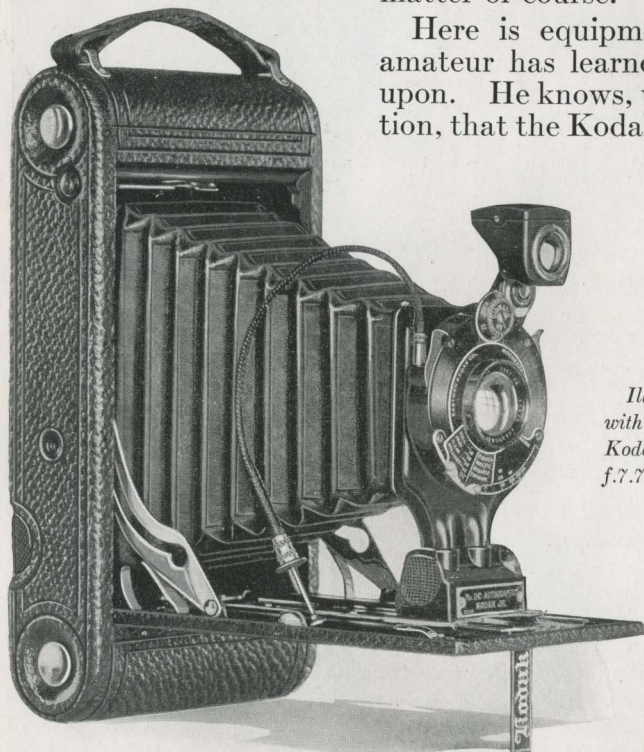
Picture sizes—No. 2C, $2\frac{7}{8} \times 4\frac{7}{8}$; No. 3A, $3\frac{1}{4} \times 5\frac{1}{2}$

JUST two words aptly describe the Juniors. They appear on a preceding page with the Nos. 1 and 1A and they'll have to do duty again. Junior Kodaks, whatever the size, are first "capable" and then "sensible."

Companion equipment for the Meniscus Achromatic and Kodar *f.7.9* (semi-anastigmat type) is Kodex shutter with two snap-shot speeds, $1/25$ and $1/50$.

With the Eastman-made Kodak Anastigmat *f.7.7* appears the Eastman-made, four-speed Diomatic shutter as a matter of course.

Here is equipment that the amateur has learned to depend upon. He knows, without question, that the Kodak Anastigmat



*Illustrating 2C Junior
with Diomatic shutter and
Kodak Anastigmat lens
f.7.7.*

PRICE \$26



A glance at the dial on the Diomatic shutter shows you the exposure to give with the light you have to work with. And due to Diomatic precision, that exposure will be clicked off precisely.

lens *f.7.7* cuts *sharp* and that the Diomatic shutter times *true*. As a further feature, a dial, which is an integral part of the Diomatic shutter, tells at a glance the exposure to give under the various light conditions.

People who want to be quite sure of their step in purchasing photographic equipment will find what they want in a Junior.

Details

Capacity without reloading: Both, 10 exposures. Focus: Adjustable only, with automatic focusing lock. Lenses: Meniscus Achromatic; Kodar *f.7.9*, 6¼-inch focus on No. 2C; 6⅞-inch focus on No. 3A; or Kodak Anastigmat *f.7.7*, 6-inch focus on No. 2C; 6¾-inch focus on No. 3A. Shutters: Kodex, speeds ½₂₅, ⅓₅₀ second; Diomatic, speeds ⅓₁₀, ⅓₂₅, ⅓₅₀, ⅓₁₀₀ second; both with cable and finger release, *time* and *bulb* actions. Brilliant finder, reversible for vertical or horizontal pictures. Two tripod sockets. Body: Back and bed of aluminum, covered with fine seal-grain leather; metal parts finished in nickel and black enamel. Black bellows. Autographic feature.

Prices

| Autographic Kodak Junior, with Meniscus Achromatic | No. 2C | No. 3A |
|---|---------|---------|
| Lens and Kodex Shutter | \$16.00 | \$17.50 |
| With Kodar Lens <i>f.7.9</i> | 19.00 | 21.00 |
| With Kodak Anastigmat Lens <i>f.7.7</i> , and Diomatic Shutter | 26.00 | 28.00 |
| Black Sole Leather Case, with strap | 3.25 | 3.75 |
| Autographic Film Cartridge, 10 exposures (No. A 130) for No. 2C; (No. A 122) for No. 3A | .75 | .90 |
| Ditto, 6 exposures | .45 | .55 |
| Kodak Portrait Attachment (see page 41) | .75 | .75 |
| Kodak Self Timer (see page 52) | 1.25 | 1.25 |

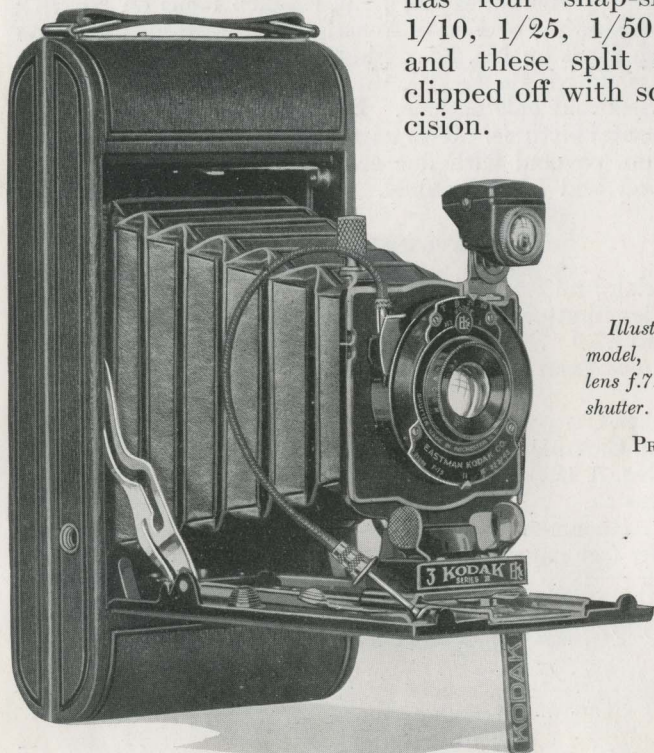
Nos. 1 and 3 Kodaks, Series III

Picture sizes—No. 1, $2\frac{1}{4} \times 3\frac{1}{4}$; No. 3, $3\frac{1}{4} \times 4\frac{1}{4}$

No. 1—ready in June. No. 3—ready now.

THESE two Kodaks, announced for the first time in this catalog, ought to be carefully considered in making a camera choice.

In the first place, their lens and shutter equipment stamps them as cameras out of the ordinary. Kodak Anastigmat lens $f.6.3$ cuts sharp, and the fact that at its largest opening it lets through approximately 50 per cent more light than an $f.7.7$ lens means that it is better able to cope with poor light conditions. The Diomatic shutter has four snap-shot speeds, $1/10$, $1/25$, $1/50$ and $1/100$ and these split seconds are clipped off with scientific precision.



Illustrating No. 3 model, with Kodar lens $f.7.9$ and Kodex shutter.

PRICE \$23

An indication of the refinements that may be expected on Series III Kodaks:

The rising front (except on No. 1) allows the amateur to "edit" his foregrounds, and the method of setting focus through a smooth-working thumb device is a distinct convenience.

Series III Kodaks even look a little bit superior; and they live up to their looks.

Like all Kodaks, the Series III are autographic, and inasmuch as they are bound to be particular favorites of the tourist or the proud parent, this feature will be much in demand.



Any Series III Kodak is an ideal companion for the vacation trip.

Details

Capacity without reloading: No. 1, 6 exposures; No. 3, 12 exposures. Focus: Adjustable; screw focusing device on No. 1; lever focusing device on No. 3. Lenses: Kodar *f*.7.9, 5¼-inch focus on No. 3; or Kodak Anastigmat *f*.6.3, 4¼-inch focus on No. 1, 5-inch focus on No. 3. Shutters: Kodex (No. 3 only), speeds 1/25, 1/50 second; Diomatic, speeds 1/10, 1/25, 1/50, 1/100 second; both with *time* and *bulb* actions, cable and finger release. Brilliant finder, reversible for horizontal or vertical pictures. Two tripod sockets. Body: Aluminum, covered with baby crepe grain cowhide; metal parts finished in nickel and black enamel. Rising front on No. 3. Black bellows. Autographic feature.

Prices

| Kodak, Series III, with Kodar Lens <i>f</i> .7.9 and Kodex Shutter | No. 1 | No. 3 |
|--|---------|---------|
| With Kodak Anastigmat Lens <i>f</i> .6.3 and Diomatic Shutter | \$26.00 | \$30.00 |
| Black Sole Leather Case, with strap | 2.50 | 3.50 |
| Autographic Film Cartridge, 12 exposures (No. A 118) for No. 3 | | .90 |
| Ditto, 6 exposures (No. A 120) for No. 1; (No. A 118) for No. 3 | .25 | .45 |
| Kodak Portrait Attachment (see page 41) | .75 | .75 |
| Kodak Self Timer (see page 52) | 1.25 | 1.25 |

Nos. 1A and 2C Kodaks, Series III

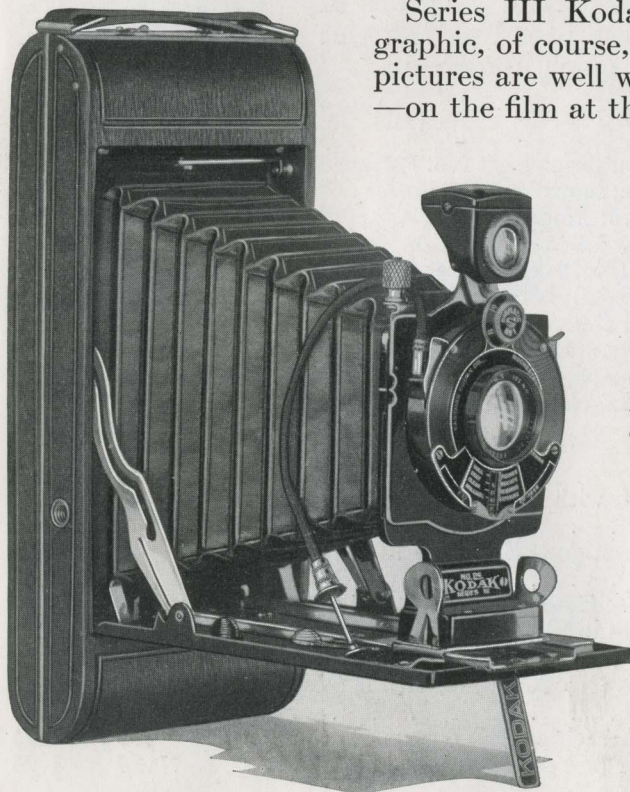
Picture sizes—No. 1A, $2\frac{1}{2} \times 4\frac{1}{4}$; No. 2C, $2\frac{7}{8} \times 4\frac{7}{8}$

A LENS, Kodak Anastigmat *f*.6.3, that at its largest opening lets in half again as much light as the *f*.7.7.

A shutter, the Eastman-made Diomatic, that has four snap-shot speeds— $1/10$, $1/25$, $1/50$ and $1/100$, and these timings are *accurate*, as well as a scale that picks out the exposure for you. That's the equipment on the Series III Kodaks and that's why they are unusually proficient.

For controlling foregrounds, the rising front is a valuable convenience and it is as well an indication of the refinements these models possess.

Series III Kodaks are autographic, of course, and resulting pictures are well worthy of note—on the film at the time.



*Illustrating 2C model, with Kodak Anastigmat *f*.6.3 equipment.*

PRICE \$32

The Series III Kodaks are designed and built to answer every demand of the amateur who wants more pretentious equipment than is found on the regular Kodaks, without the necessity of going into the *Special* class.

Details

Capacity without reloading: No. 1A, 12 exposures; No. 2C, 10 exposures. Focus: Adjustable only, with lever focusing device. Lens: Kodak Anastigmat *f*.6.3, 5-inch focus on No. 1A; 6-inch focus on No. 2C. Shutter: Diomatic, with cable and finger release. Speeds: $\frac{1}{40}$, $\frac{1}{25}$, $\frac{1}{50}$, $\frac{1}{100}$ second, *time* and *bulb* actions. Brilliant finder; reversible for horizontal or vertical pictures. Two tripod sockets. Body: Aluminum, covered with baby crepe grain cowhide; metal parts finished in nickel and black enamel. Rising front. Black bellows. Autographic feature.

Prices

| Kodak, Series III, with Kodak Anastigmat Lens <i>f</i> .6.3 and Diomatic Shutter | No. 1A \$29.00 | No. 2C \$32.00 |
|---|-------------------|-------------------|
| Black Sole Leather Case, with strap | 3.00 | 3.50 |
| Autographic Film Cartridge, 12 exposures (No. A 116) for No. 1A; 10 exposures (No. A 130) for No. 2C | .60 | .75 |
| Ditto, 6 exposures (No. A 116) for No. 1A; (No. A 130) for No. 2C | .30 | .45 |
| Kodak Portrait Attachment (see page 41) | .75 | .75 |
| Kodak Self Timer (see page 52) | 1.25 | 1.25 |



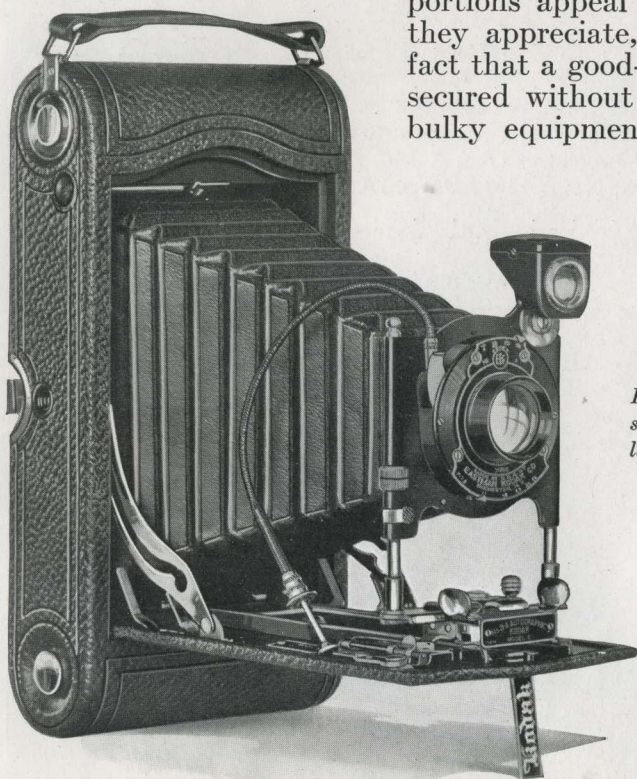
This picture, actual size, made with 1A, Series III

3A Autographic Kodak

Picture size— $3\frac{1}{4} \times 5\frac{1}{2}$

IT IS NOT too much to say that the 3A Kodak has helped to make the postcard popular. Either of the two lens equipments is so well supported by the other camera refinements that the resulting pictures of generous area are the prints most prized in many a collection. However, the equipment which includes the Kodak Anastigmat lens *f*.6.3 and Ilex Universal shutter with seven speeds, from 1/100 to one second, deserves particular attention.

This Kodak has always been a favorite of the motorist and tourist. Its picture proportions appeal to them and they appreciate, as well, the fact that a good-sized print is secured without resorting to bulky equipment.



*3A Autographic
Kodak with Kodak
shutter and Kodak
lens *f*.7.9.*

PRICE \$22

Slung from the shoulder, put in the pocket of the motor door, the 3A Kodak is an ideal companion for any trip and it brings good pictures back.

While this camera is made for roll film, a combination back (page 50) may be added so that the amateur can avail himself of ground glass focusing and plates or Kodak Cut Film (both regular and *Super Speed*) for his negative material.

Details

Capacity without reloading: 10 exposures. Focus: Adjustable only, with automatic focusing lock. Double focusing scale for films or plates. Lenses: Kodar *f*.7.9, 6 $\frac{7}{8}$ -inch focus; or Kodak Anastigmat *f*.6.3, 6 $\frac{3}{4}$ -inch focus. Shutters: Kodex, speeds $\frac{1}{25}$, $\frac{1}{50}$ second; or Ilex Universal, speeds 1, $\frac{1}{2}$, $\frac{1}{5}$, $\frac{1}{10}$, $\frac{1}{25}$, $\frac{1}{50}$ and $\frac{1}{100}$ second, both with *time* and *bulb* actions, cable and finger release. Brilliant finder, reversible for vertical or horizontal pictures. Two tripod sockets. Body: Back and bed of aluminum, covered with fine seal-grain leather; metal parts finished in nickel and black enamel. Rising, falling and sliding front. Black bellows. Autographic feature.

Prices

| | |
|---|---------|
| No. 3A Autographic Kodak, with Kodar Lens <i>f</i> .7.9 and Kodex Shutter | \$22.00 |
| With Kodak Anastigmat Lens <i>f</i> .6.3, and Ilex Universal Shutter | 30.00 |
| Black Sole Leather Case, with strap | 4.00 |
| Combination Back for cut film or plates | 4.00 |
| Kodak Double Plate Holders, each | 1.50 |
| Kodak Cut Film Sheaths, each | .15 |
| Kodak Cut Film, package of 12 | .90 |
| Kodak Cut Film, <i>Super Speed</i> , package of 12 | 1.00 |
| Autographic Film Cartridge, 10 exposures (No. A 122) | .90 |
| Ditto, 6 exposures | .55 |
| Kodak Portrait Attachment (see page 41) | .75 |
| Kodak Self Timer (see page 52) | 1.25 |

Nos. 1, 1A and 3 Pocket Kodaks *Special*

Picture sizes—No. 1, $2\frac{1}{4} \times 3\frac{1}{4}$; No. 1A, $2\frac{1}{2} \times 4\frac{1}{4}$; No. 3, $3\frac{1}{4} \times 4\frac{1}{4}$

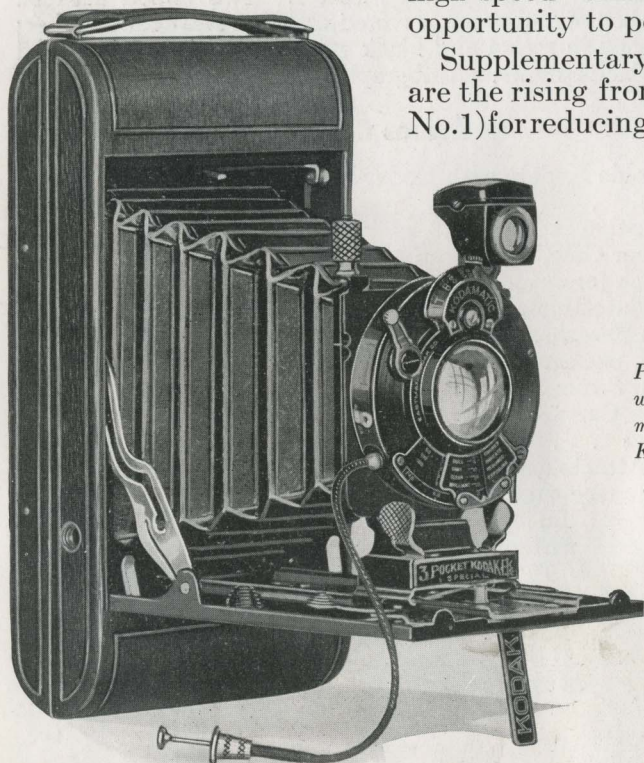
(Nos. 1 and 1A—ready in June. No. 3—ready now)

PEOPLE who want just as good hand cameras as they can possibly buy want *Specials*. But that's just a statement; here's the proof.

Special Kodaks offer a choice of lenses. The amateur may either select the fast, sharp-cutting Kodak Anastigmat *f.6.3* or the faster still and equally sharp-cutting *f.4.5*.

As companion equipment, the Kodamatic shutter, with its seven snap-shot speeds—from $\frac{1}{2}$ second to $\frac{1}{200}$ (to $\frac{1}{150}$ on Nos. 1A and 3 with *f.4.5* lens) gives these high-grade, high-speed anastigmats full opportunity to perform.

Supplementary refinements are the rising front (except on No.1) for reducing foregrounds,



*Illustrating No. 3
Pocket Kodak Special,
with Kodak Anastig-
mat lens *f.4.5* and
Kodamatic shutter.*

PRICE \$62.50

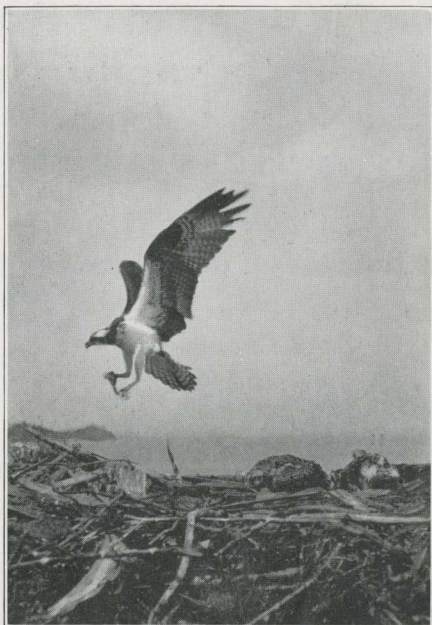
and a timing dial which indicates the proper exposure to use under various light conditions.

Smart in appearance, of course—they're *Specials*, and they look it.

They're autographic, too—all Kodaks are.

Details

Capacity without reloading: No. 1, 6 exposures; Nos. 1A and 3, 12 exposures. Focus: Adjustable; screw focusing device on Nos. 1 and 1A; lever focusing device on No. 3. Lenses: Kodak Anastigmat *f*.6.3, 4¼-inch focus on No. 1; 5-inch focus on No. 1A; 5-inch focus on No. 3; or Anastigmat *f*.4.5, 4-inch focus on No. 1; 5-inch focus on No. 1A; 5-inch focus on No. 3. Shutter: Kodamatic, with cable and finger release; seven speeds, from 1/200 (from 1/150 on Nos. 1A and 3 with *f*.4.5 lens) to 1/2 second; *time* and *bulb* actions. Brilliant finder, reversible for horizontal or vertical pictures. Two tripod sockets. Body: Aluminum, covered with genuine sealskin; metal parts finished in nickel and black enamel. Rising front on Nos. 1A and 3. Black bellows. Autographic feature.



Speed pictures are easily possible with these fast lens and shutter equipments. The No. 1 Special made this one—actual size.

Prices

| | No. 1 | No. 1A | No. 3 |
|--|---------|---------|---------|
| Pocket Kodak <i>Special</i> , with Kodak Anastigmat Lens <i>f</i> .6.3 and Kodamatic Shutter | \$45.00 | \$50.00 | \$52.50 |
| With Anastigmat Lens <i>f</i> .4.5 | 55.00 | 60.00 | 62.50 |
| Grain Leather, Velvet-lined Case, with strap | 3.75 | 4.50 | 4.75 |
| Autographic Film Cartridge, 12 exposures (No. A 116) for No. 1A; (No. A 118) for No. 3 | | .60 | .90 |
| Ditto, 6 exposures (No. A 120) for No. 1; (No. A 116) for No. 1A; (No. A 118) for No. 3 | .25 | .30 | .45 |
| Kodak Portrait Attachment (see page 41) | .75 | .75 | .75 |
| Kodak Self Timer (see page 52) | 1.25 | 1.25 | 1.25 |

Nos. 2C and 3A Autographic Kodaks *Special*

Picture sizes—No. 2C, $2\frac{7}{8} \times 4\frac{7}{8}$; No. 3A, $3\frac{1}{4} \times 5\frac{1}{2}$

THERE'S pride in owning a *Special*. You know that you've got just as good a hand camera as it is possible to buy—and so do your friends.

Both the 2C and 3A are fitted with the fast, sharp-cutting Kodak Anastigmat lens *f.6.3* and the accurate, seven-speed Kodamatic shutter with sliding exposure dial attached.

They carry, as well, the Kodak Range Finder, to make



*Illustrating the
2C Special with
Kodak Anastigmat
lens *f.6.3* and Ko-
damatic shutter.*

PRICE \$55

focusing easy, and the rising front, an invaluable aid in composition.

Both cameras are unusually handsome in appearance and are a decided credit to Kodak craftsmanship.

The real test, however, is the pictures they make, and these your dealer can show you.

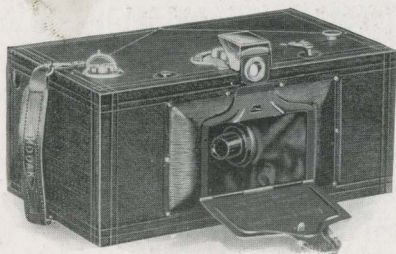
The 3A *Special* may be adapted for ground glass focusing and plates or cut film by the addition of the Combination Back (page 50).

Details

Capacity without reloading: 10 exposures. Focus: Adjustable. Lens: Kodak Anastigmat *f*.6.3, 6-inch focus on No. 2C; $6\frac{3}{8}$ -inch focus on No. 3A. Shutter: Kodamatic, with cable release; seven speeds, from $\frac{1}{150}$ to $\frac{1}{2}$ second, *time* and *bulb* actions. Brilliant finder, reversible for horizontal or vertical pictures. Two tripod sockets. Body: No. 2C, aluminum, covered with finest quality genuine sealskin; No. 3A, back and bed of aluminum, covered with genuine Persian Morocco; metal parts finished in nickel and black enamel. Range Finder. Rising and falling front. Black bellows. Autographic feature.

Prices

| Autographic Kodak <i>Special</i> , with Kodak Anastigmat | No. 2C | No. 3A |
|--|---------|---------|
| Lens <i>f</i> .6.3 and Kodamatic Shutter | \$55.00 | \$60.00 |
| Grain Leather Velvet-lined Case, with strap | 5.00 | 5.25 |
| Combination Back for cut film or plates | | 5.00 |
| Kodak Double Plate Holders, each | | 1.50 |
| Kodak Cut Film Sheaths, each | | .15 |
| Kodak Cut Film, package of 12 | | .90 |
| Kodak Cut Film <i>Super Speed</i> , package of 12 | | 1.00 |
| Autographic Film Cartridge, 10 exposures (No. A 130) for No. 2C; (No. A 122) for No. 3A | .75 | .90 |
| Ditto, 6 exposures | .45 | .55 |
| Kodak Portrait Attachment (see page 41) | .75 | .75 |
| Kodak Self Timer (see page 52) | 1.25 | 1.25 |



The lens swings in an arc and the result is a long narrow print that is pleasingly different.

No. 3A Panoram Kodak

Size of picture— $3\frac{1}{4} \times 10\frac{3}{8}$

WHETHER it's a broad sweep of landscape or a large group, the Panoram gets the whole view with a single exposure.

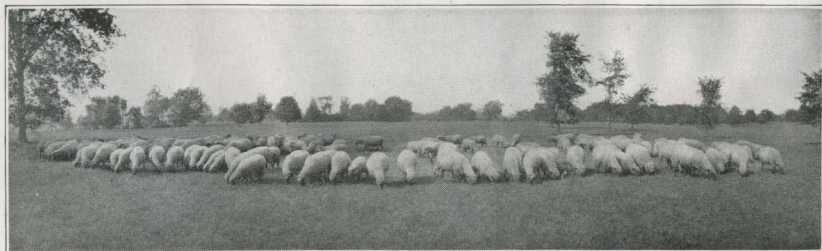
This new camera uses regular 3A Kodak film, on sale at all dealers'.

Details

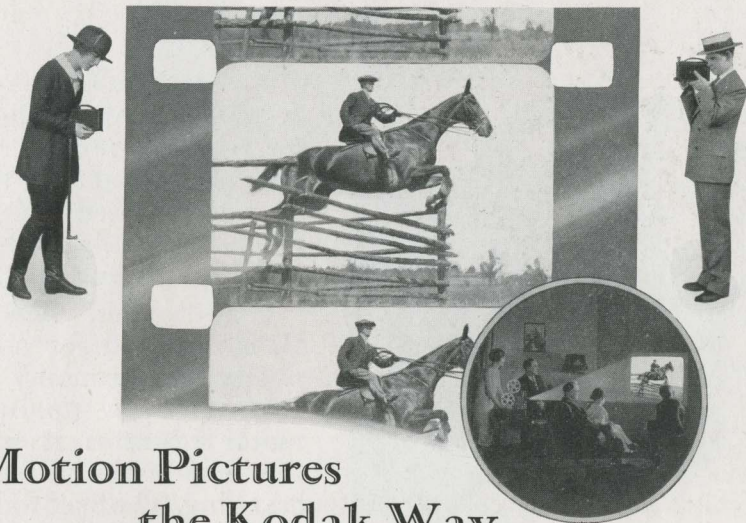
Capacity without reloading: 5 exposures. Focus: Fixed. Lens: Meniscus. Two-speed shutter. Brilliant finder, with hood. Two tripod sockets. Body: Wood, covered with long crepe grain genuine cowhide; metal parts finished in nickel and black enamel. Black bellows. Spirit level.

Prices

| | |
|---|---------|
| No. 3A Panoram Kodak | \$40.00 |
| Black Sole Leather Carrying Case, with strap | 8.00 |
| Kodak Film Cartridge, 5 exposures (No. A 122) | .90 |
| Ditto, 3 exposures | .55 |



A panoram type of picture—much reduced



Motion Pictures the Kodak Way

You can make movies; enjoy the thrill of action on the screen—as easily as you can now make snap-shots.

In this there's a world of entertainment awaiting you; pleasures multiplied, for Ciné-Kodak perpetuates the complete incident and Kodoscope repeats it at home on the screen. All this is economically accomplished with typical Kodak ease as you'll appreciate by a demonstration.

Economy of operation is related chiefly to Ciné-Kodak Film. Smaller than professional size and finished by a special reversal process, Ciné-Kodak Film at once reduces the original cost of making motion pictures by four-fifths—an impressive point in favor of movies the Kodak way.

In addition to personal movies, as explained on page 29 you can have home showings of professional films as well.

There are Ciné-Kodaks to fit any pocketbook, from \$70 to \$225, and special lenses for those who want them. There's a Kodoscope for \$60 and one for \$180. You can choose according to your requirements and feel assured that any outfit will measure up to Eastman standards, to give those gratifying picture results acclaimed by amateur and expert too.

(Continued on next page)

Ciné-Kodak, Model B

f.6.5 or f.3.5 lens equipment



*Ciné-Kodak, Model B, with
Kodak Anastigmat lens f.3.5*

A HANDY hand-camera for personal movies, in size approximating the 3A Kodak closed; weighs five pounds fully loaded, and requires no tripod.

Ciné-Kodak, Model B, is designed for simplicity and economy in operation, a spring-motor operates it and that eliminates all hand cranking. The fixed focus feature emphasizes a fast getaway for quick action movies. When Ciné-

Kodak is loaded with either 100 or 50 feet of film, you're prepared for instant action; focusing requires no attention whatsoever, except that with the *f.3.5* equipment a turn of a disk brings a portrait attachment into position when close-ups are desired.

Complicated and bothering details are at once discarded, even to exposure changes, for a guide beneath the lens tells which diaphragm opening to use for the prevailing light conditions, and a turn of the pointer does it.

There are two finders for convenience: a Reflecting Finder, used when the Ciné-Kodak is held at waist height, and a Sight Finder, adapting the camera for sighting the action at eye level if you wish. Either finder accurately frames the scene you're "shooting."



At Eye Level

Kodascope, Model C

THIS is the projector, in every sense as handy and as easy to operate as the Ciné-Kodak. It's light in weight and mighty compact. When folded for carrying, the dimensions of Kodascope C are $8 \times 5\frac{1}{2} \times 7$ inches and the weight is only nine pounds; small in size yet capable of projecting a brilliantly illuminated picture 30×40 inches.

Kodascope C is electrically operated, of course. But it shows "still" pictures, too; the mechanism can be stopped at will and a single frame of the film viewed without motion.

When there are movies on the program, just plug in. Any ordinary house circuit, 105 to 125 volts, alternating or direct current will do. Thread the film, snap on the switch, set the focus (a turn of the lens barrel does that), "frame" with the framing lever, then sit down to enjoy the picture. That's all you need to do until the movie is over.

Prices

| | |
|---|----------|
| Ciné-Kodak, Model B, with Kodak Anastigmat Lens <i>f</i> .6.5 | \$ 70.00 |
| Ciné-Kodak, Model B, with Kodak Anastigmat Lens <i>f</i> .3.5 | 100.00 |
| Film, including processing, 100 feet | 6.00 |
| Film, including processing, 50 feet | 4.00 |

| | |
|--|-------|
| Ciné-Kodak, Model B, Carrying Case (leather) | 7.50 |
| Kodascope, Model C | 60.00 |
| Kodascope, Model C, Carrying Case | 4.00 |

| | |
|---|-------|
| Kodascope Screen, No. 1 (30 x 40 inches) rollable in case | 25.00 |
|---|-------|

| | |
|--|-------|
| Kodascope Screen, No. 1A (30x40 inches) demountable in frame | 15.00 |
|--|-------|

| | |
|--|-------|
| Kodascope Screen, No. 0 (22 x 30 inches) mounted in frame with cover | 10.00 |
|--|-------|



Kodascope, Model C

Ciné-Kodak, Model A

f.3.5, f.1.9 and f.4.5 lens equipment



Ciné-Kodak A, with f.4.5 lens

FOR the advanced amateur, a hand-cranked Ciné-Kodak, Model A, *f.3.5* is ideal equipment. It may also be obtained with the Kodak Anastigmat *f.1.9*—a lens about ten times as fast as the *f.6.5* and over three times as fast as the *f.3.5*. The *f.1.9* lens is designed for making movies when the light conditions are difficult, permitting cinematography on dark days; and in the operating room, the laboratory or in any interior with sufficient artificial light or daylight. It also permits slow motion movies.

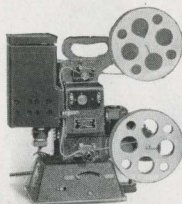
Interchangeable with the *f.1.9* is an *f.4.5* lens for telephoto effects. Slip off the *f.1.9* lens and slip on the *f.4.5*—instantly your Ciné-Kodak is equipped to produce images three times as large in diameter.

Kodascope, Model A

FOR the bigger picture, in the club, church or drawing-room, Kodascope, Model A (200-watt), ably qualifies. It projects a brilliant 39 x 52-inch picture at 23 feet.

Prices

| | |
|--|----------|
| Ciné-Kodak, Model A, Kodak Anastigmat Lens <i>f.3.5</i> , with tripod | \$150.00 |
| Ciné-Kodak, Model A, Kodak Anastigmat Lens <i>f.1.9</i> , with tripod | 225.00 |
| Film, including processing, 100 feet | 6.00 |
| Film, including processing, 50 feet | 4.00 |
| <i>f.4.5</i> lens (interchangeable with <i>f.1.9</i> lens) | 45.00 |
| Carrying Case for Ciné-Kodak, Model A (<i>f.3.5</i> lens) | 18.00 |
| Ditto, for Ciné-Kodak, Model A, with <i>f.1.9</i> lens and <i>f.4.5</i> lens | 20.00 |
| Kodascope, Model A (200-watt Lamp) | 180.00 |
| Traveling Case for Kodascope, Model A, | 18.00 |
| Screen, No. 2 (39" x 52") rollable in case | 35.00 |



*Kodascope
Model A*



*One of the many, Baby Peggy in
"Captain January"*

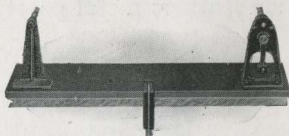
Kodascope Libraries, Inc.

THOSE who have an Eastman-made movie outfit are not limited to showing only the pictures they make themselves. Kodascope Libraries, Inc., is equipped to entertain you and your friends with national photo-

plays supplied at a nominal rental charge. There are hundreds of subjects to choose from; photo-dramas, travelogues, animated cartoons and educational films. Jackie Coogan, Irene Rich, Douglas Fairbanks, Pola Negri and Charlie Chaplin are but a few of the stars from the long list. Kodascope Libraries are now located in Los Angeles, San Francisco, Chicago, Detroit, Philadelphia, Pittsburgh, Boston, New York, and in five foreign cities.

Sundries

| | |
|--|---------|
| Ciné-Kodak, Model A, Tripod (with head) | \$25.00 |
| Leather Bound Canvas Case for Tripod Legs | 6.50 |
| Safety Chains for Tripod | 1.25 |
| Tripod Handle | 1.25 |
| Kodascope Rewind | 5.00 |
| 400 foot Kodascope Reel and Humidor Can | 1.50 |
| 100-watt Lamp for Kodascope, Model C | 2.50 |
| 200-watt Lamp for Kodascope, Model A | 3.75 |
| Motion Picture Titles—per word, \$0.03; minimum charge per title, \$0.25; minimum charge per order | 1.00 |
| Splicing four 100 foot rolls of Ciné-Kodak Film and supplying 400 foot reel and can | 2.50 |



*Kodascope Rewind
conveniently rewinds film
after showing*

Ciné-Kodak Film

| | |
|---|--------|
| 100 foot Roll | \$6.00 |
| 50 foot Roll | 4.00 |
| (Price includes processing and return transportation) | |
| Duplicate Prints, 100 foot length | 6.00 |
| Duplicate Prints, 50 foot length | 4.00 |



No. 2 Cartridge Hawk-Eye

Model C

Picture size— $2\frac{1}{4} \times 3\frac{1}{4}$

\$1.25—that's all that this Eastman-made camera costs and yet it makes first-rate pictures. You'll find your dealer enthusiastic about it. He knows from the finishing that goes through his store what really amazing results this simply-made, easily-worked camera produces. You'll feel the same way about it after your first roll.

No. 2 Cartridge Hawk-Eye, Model C, uses regular Kodak Film and is emphatically Eastman throughout.

Details

Capacity without reloading: 6 exposures. Fixed focus only. Lens: Meniscus. Shutter: Eastman Rotary. Ground glass finder for vertical pictures. Body: Covered with durable imitation leather; metal parts finished in nickel and black enamel.

Prices

| | |
|---|--------|
| No. 2 Cartridge Hawk-Eye, Model C, with Meniscus Lens and | |
| Eastman Rotary Shutter | \$1.25 |
| N. C. Film Cartridge, 6 exposures (No. 120) | .25 |
| Kodak Portrait Attachment (see page 41) | .50 |



No. 0 Brownie

Picture size— $1\frac{5}{8} \times 2\frac{1}{2}$

EASTMAN-MADE, the No. 0 Brownie is a thoroughly practical camera at an amazingly low price—\$2.

Its picture size is the same as that of the popular Vest Pocket Kodak.

Children use the No. 0 Brownie with success, so do their parents; and picture-making is one sport that they can enjoy together.

See it at your dealer's.

Details

Capacity: 8 exposures. Fixed focus. Lens: Meniscus. Shutter: Eastman Rotary, with one stop, also *time* action. Two ground-glass finders for vertical and horizontal pictures. Body: Covered with imitation leather.

Prices

| | |
|---|--------|
| No. 0 Brownie Camera, Meniscus Lens, Eastman Rotary Shutter | \$2.00 |
| Brownie Carrying Case | 1.00 |
| N. C. Film Cartridge, 8 exposures (No. 127) | .25 |
| Brownie Tripod Adapter | .25 |
| Kodak Portrait Attachment (see page 41) | .50 |
| Developing and Printing Outfit (see page 44) | 2.00 |



Nos. 2 and 2A Brownies

Picture sizes—No. 2, $2\frac{1}{4} \times 3\frac{1}{4}$; No. 2A, $2\frac{1}{2} \times 4\frac{1}{4}$

THESE Brownies don't cost much, but they produce a lot as your pictures will prove. The Nos. 2 and 2A Brownies have aluminum bodies and carefully tested lenses and shutters.

Details

Capacity: No. 2, 6 exposures; No. 2A, 12 exposures. Fixed focus only. Lens: No. 2, Meniscus; No. 2A, Meniscus Achromatic. Shutter: Eastman Rotary, with three stops, *instantaneous* and *time* actions. Two ground-glass finders for vertical and horizontal pictures. Two tripod sockets. Body: Aluminum, covered with imitation leather; metal parts finished in nickel and black enamel.

Prices

| | | |
|--|--------|--------|
| Brownie Camera, Meniscus Lens on No. 2, Meniscus Achromatic Lens on No. 2A, Eastman Rotary Shutter | No. 2 | No. 2A |
| | \$2.50 | \$3.50 |
| Brownie Carrying Case, with strap | 1.25 | 1.50 |
| N. C. Film Cartridge, 12 exposures (No. 116) for 2A | | .60 |
| Ditto, 6 exposures (No. 120) for No. 2; (No. 116) for No. 2A | .25 | .30 |
| Kodak Portrait Attachment (see page 41) | .50 | .50 |
| Developing and Printing Outfit (see page 44) | 2.00 | 2.00 |



Nos. 3 and 2C Brownies

Picture sizes—No. 3, $3\frac{1}{4} \times 4\frac{1}{4}$; No. 2C, $2\frac{1}{8} \times 4\frac{7}{8}$

THERE are three arguments in favor of these two Brownies:

1. They are emphatically easy to work.
2. They're decidedly inexpensive.
3. They make good pictures in popular sizes.

Your dealer will be glad to show them to you.

Details

Capacity: No. 3, 12 exposures; No. 2C, 6 exposures. Fixed focus only. Lens: Meniscus Achromatic. Shutter: Eastman Rotary, with three stops, *instantaneous* and *time* actions. Two ground-glass finders for vertical and horizontal pictures. Two tripod sockets. Body: Wood, covered with imitation leather.



Prices

| | | |
|---|---------------|---------------|
| Brownie Camera, with Meniscus Achromatic Lens, Eastman Rotary Shutter. | No. 3. \$4.50 | No. 2C \$5.00 |
| Brownie Carrying Case, with strap . . . | 1.60 | 1.60 |
| N. C. Film Cartridge, 12 exposures (No. 124) for No. 3 | .90 | |
| Ditto, 6 exposures, (No. 124) for No. 3; (No. 130) for No. 2C | .45 | .45 |
| Kodak Portrait Attachment (see page 41) | .75 | .75 |
| Developing and Printing Outfit (see page 44) | 2.00 | 2.00 |

Nos. 2 and 2A

Folding Autographic Brownies

Picture sizes—No. 2, $2\frac{1}{4} \times 3\frac{1}{4}$; No. 2A, $2\frac{1}{2} \times 4\frac{1}{4}$

THERE are many things about the Folding Brownies to remind you of the Kodaks—the autographic feature, for example, but basically they're Brownies as far as simplicity is concerned.

Equipment includes the Kodex shutter, giving accurate speeds of $1/25$ and $1/50$; *bulb* and *time* actions also. Among the lenses offered is Kodar $f.7.9$, the new semi-anastigmat, designed by Eastman scientists and manufactured in Eastman factories. Focus is adjustable.

Through the autographic feature you can note date and title, or similar information, on the film at the time of exposure. The inscription becomes a permanent part of the negative, to identify the print for you later on.

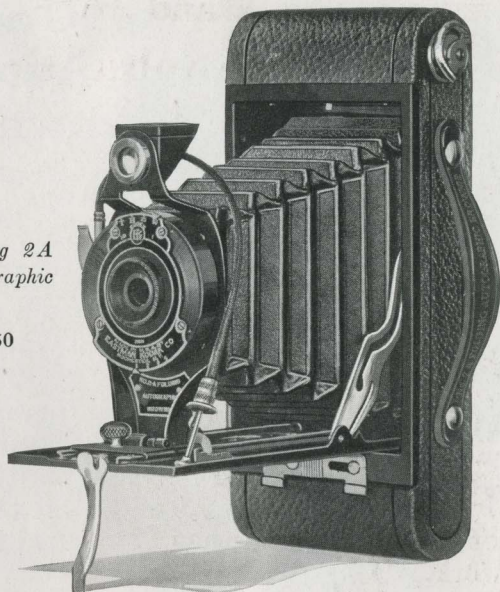
Folding Brownies have nothing that isn't needed. Everything on them is used in every picture.



Made with 2A Brownie,
actual size

*Illustrating 2A
Folding Autographic
Brownie.*

PRICE \$9.50



Details

Capacity without reloading: No. 2, 6 exposures; No. 2A, 12 exposures. Focus: Adjustable, with automatic focusing lock. Lenses: Meniscus Achromatic; or Kodar $f.7.9$, $3\frac{3}{8}$ -inch focus on No. 2; $4\frac{7}{8}$ -inch focus on No. 2A. Shutter: Kodex, with cable and finger release. Speeds: $\frac{1}{25}$ and $\frac{1}{50}$ second, *time* and *bulb* actions. Ground-glass finder, reversible for vertical or horizontal pictures. Two tripod sockets. Body: Metal, covered with durable imitation leather; fittings finished in nickel and black enamel. Black bellows. Autographic feature.

Prices

| | No. 2 | No. 2A |
|--|---------|---------|
| Folding Autographic Brownie, with Meniscus Achromatic Lens and Kodex Shutter | \$ 8.50 | \$ 9.50 |
| With Kodar Lens $f.7.9$ | 11.00 | 12.00 |
| Carrying Case for Folding Autographic Brownie, with strap | 1.50 | 1.60 |
| Autographic Film Cartridge, 12 exposures (No. A 116) for No. 2A | | .60 |
| Ditto, 6 exposures (No. A 120) for No. 2; (No. A 116) for No. 2A | .25 | .30 |
| Kodak Portrait Attachment (see page 41) | .75 | .75 |
| Kodak Self Timer (see page 52) | 1.25 | 1.25 |



*Folding Brownies are
Autographic.*

Nos. 2C and 3A Folding Autographic Brownies

Picture sizes—

No. 2C, $2\frac{7}{8} \times 4\frac{7}{8}$; No. 3A, $3\frac{1}{4} \times 5\frac{1}{2}$

FOLDING Brownies are made in Kodak factories by Kodak workmen and are so designed and built that when they reach your hands they're ready for good pictures.

They are autographic, they are dependably equipped with carefully tested lens and shutter (the Kodar lens $f.7.9$ and Kodex shutter deserve special consideration), and they're finished to look as well as they work.

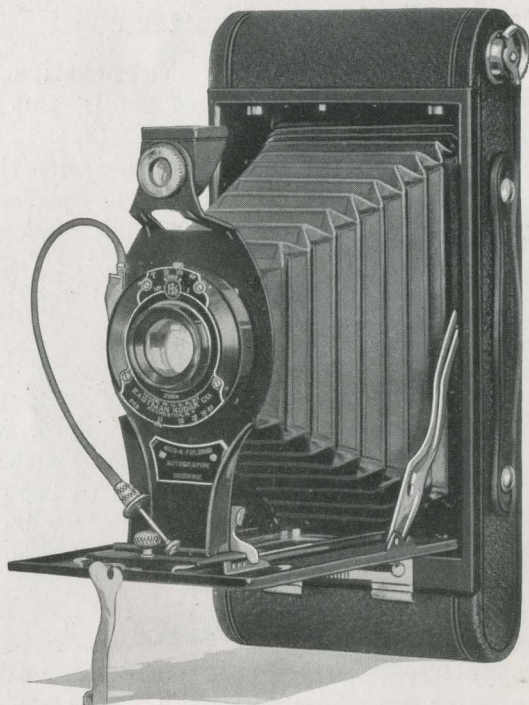
Bodies are of metal, covered with imitation leather of neat appearance and splendid durability. Fittings are in nickel and black enamel. The finder is reversible, and two tripod sockets are provided so that horizontal and vertical exposures are equally easy.

Whichever Folding Brownie you select you may be sure that it is well built, fully equipped and simple to operate.

Generous picture size also recommends the 2C and 3A Folding Brownies. The 3A prints are of postcard dimensions. The 2C model makes slightly smaller pictures; it's a smaller camera.

Details

Capacity without reloading: 10 exposures. Focus: Adjustable, with automatic focusing lock. Lenses: Meniscus Achromatic; or Kodar $f.7.9$, $5\frac{1}{4}$ -inch focus on No. 2C; $6\frac{1}{4}$ -inch focus on No. 3A. Shutter: Kodex, speeds $\frac{1}{25}$ and $\frac{1}{50}$ second, with *time* and *bulb* actions; cable and finger release. Ground-glass finder, reversible for vertical or horizontal pictures. Two tripod sockets. Body: Metal, covered with durable imitation leather; fittings finished in nickel and black enamel. Black bellows. Autographic feature.



*Illustrating 3A model, with Kodar lens
f.7.9 and Kodex shutter equipment.*

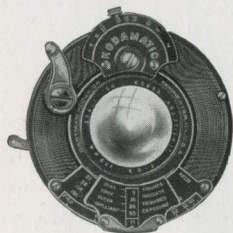
PRICE \$17

Prices

| | No. 2C | No. 3A |
|--|---------|---------|
| Folding Autographic Brownie, with Meniscus Achromatic Lens and Kodex Shutter | \$12.50 | \$14.00 |
| With Kodar Lens f.7.9 | 15.00 | 17.00 |
| Carrying Case for Folding Autographic Brownie, with strap | 1.70 | 1.80 |
| Autographic Film Cartridge, 10 exposures (No. A 130) for No. 2C; (No. A 122) for No. 3A. | .75 | .90 |
| Ditto, 6 exposures | .45 | .55 |
| Kodak Portrait Attachment (see page 41) | .75 | .75 |
| Kodak Self Timer (see page 52) | 1.25 | 1.25 |

Kodamatic Shutter

BACK of each excellent picture is an excellent negative, in which shadows as well as highlights are full of detail—put there by proper exposure.



Proper exposure is easy with the Kodamatic shutter, found on the *Special Kodaks*. It is a watch-like timing device, with a range of seven speeds, $\frac{1}{2}$, $\frac{1}{5}$, $\frac{1}{10}$, $\frac{1}{25}$, $\frac{1}{50}$, $\frac{1}{100}$ and $\frac{1}{150}$ or $\frac{1}{200}$ (as listed); also *bulb* and *time*.

The correct speed or stop for dull, gray, clear or brilliant light is indicated by a sliding scale which controls the diaphragm. And, when the release is pressed, the selected exposure is rendered with accuracy unparalleled. By telling which speed or stop to use and then producing it with precision, the Kodamatic shutter makes well-timed negatives, which in turn make striking pictures.

Diomatic Shutter

THE Diomatic shutter, illustrated on page 13, is an adaptation of the Kodamatic for use where extreme speed is not required. It has four accurate speeds, $\frac{1}{10}$, $\frac{1}{25}$, $\frac{1}{50}$ and $\frac{1}{100}$; *bulb* and *time*, too.

Like the Kodamatic, the Diomatic shutter is of watch-like construction. Like the Kodamatic, its timing scale tells which speed or stop to use with dull, gray, clear or brilliant light.

Kodex Shutter

THE shutter group is completed by the Kodex, a new and dependable device with automatic speeds of $\frac{1}{25}$ and $\frac{1}{50}$; as well as *bulb* and *time*.

Like our other shutters it is of high efficiency because its leaves spread quickly and close quickly, so that the full opening admits light during a high percentage of the exposure period.





The KODAK ANASTIGMATS

f.7.7 f.6.3 f.4.5

OPTICAL experts speak of a lens's flatness of field and speed. A lens of flat field is one capable of producing its sharpest image on the focal plane. Negatives made by such a lens not only yield sharp, clear prints but have the quality which makes them specially suitable for enlarging. For flatness of field, sharpness, definition, the Kodak Anastigmat is the peer of any lens made.

"Speed" means the relative area through which light is admitted. The Kodak Anastigmat *f.7.7* is slightly faster than the rapid rectilinear; the *f.6.3* is sixty per cent faster, thus making snap-shots possible under many conditions where they would be out of the question with a single lens or even with a rapid rectilinear. The *f.4.5*, in turn, is just about twice as fast as the *f.6.3*, which gives it correspondingly greater advantages in making exposures when light conditions are unfavorable or when a fast shutter speed is required.

Time was when anastigmats were costly beyond the reach of most amateur photographers. When the Eastman Kodak Company set out to make anastigmats for its cameras it called on improved processes and big production to keep costs down. As a result, the Kodak purchaser can afford, and enjoy, a lens which at its indicated speed equals any in the world for the work required of it.

Kodar Lens *f.7.9*

KODAR lens *f.7.9* is a semi-anastigmat, only a trifle faster than a rapid rectilinear but of superior defining power which, aside from speed, is the essential quality of the anastigmat. It is easily worth its slight extra cost, if only for the reason that its sharp negatives produce such good enlargements.

Kodak Portrait Attachment

HEAD-AND-SHOULDER "close-ups" that you make yourself add the same zest to your picture record as the "close-ups" you see on the screen add to motion pictures.



And it's all very simple with the help of the Kodak Portrait Attachment. This supplementary lens slips on over the regular lens equipment and, without altering the exposure or changing the operation of the camera in any way, brings the subject into sharp focus at close range. Images that practically fill the negative area are the result.

You can use the Kodak Portrait Attachment for arm's length pictures of flowers, bric-a-brac, art treasures or any still-life subjects as well as for Kodak portraits.



Kodak Diffusion Portrait Attachment

PORTRAITS made with this little attachment are strictly in focus, but they are pleasingly *softened*. Harsh lines are blended, chalky highlights are reduced, interesting effects are easily obtained. In use, this lens is similar to the *sharp* focus Kodak Portrait Attachment, described above.

The V. P. K. Diffusion Disk used with the focusing model V. P. K. *Special*, is adapted for landscape work, as well as close-ups.

Kodak Sky Filter

THE Kodak Sky Filter is intended to equalize the difference of light between the sky and the foreground in landscape photography. The upper half of the filter is stained yellow to relieve the brightness of the sky, while the colorless lower half permits a normal exposure for the foreground. The Kodak Sky Filter slips easily on or off the camera lens.

Kodak Color Filter

THIS attachment is valuable in outdoor photography and for all subjects containing colors which act slowly on the sensitive film. It holds back the strong blue and violet rays, affording the weaker colors time to record. The dye used in Kodak Color Filters is one of the discoveries of the Eastman Research Laboratory.



Kodak Pictorial Diffusion Disk (see page 42)

Kodak Portrait Attachments, Diffusion Portrait Attachments, Sky Filters and Color Filters

| For Vest Pocket Autographic Kodaks | Order by this Number | PRICES | | |
|---|----------------------------|------------------------------|-------------------------------|-----------------------------|
| | | Portrait Attach- ments | Diffusion Attach- ments | Sky and Color Filters |
| Model B, Single lens | 8 | \$0.75 | | \$0.75 |
| Regular Model Rapid Rectilinear lens | 8 | .75 | 1.25 | .75 |
| <i>Special</i> Model (focusing) Kodak Anastigmat <i>f.7.7</i> or <i>f.6.9</i> | 8A | | | .75 |
| <i>Special</i> Model (focusing) V. P. K. Diffusion Disk | 8A | | 1.25 | |

For Autographic Kodak Juniors

| | | | | |
|---|---|-----|------|------|
| No. 1 Single, or Kodar lens <i>f.7.9</i> in Kodex Shutter | 8 | .75 | 1.25 | .75 |
| Kodak Anastigmat lens <i>f.7.7</i> in Diomatic Shutter | 3 | .75 | 1.25 | 1.15 |
| No. 1A Single, Kodar <i>f.7.9</i> in Kodex Shutter, Kodak Anastigmat <i>f.7.7</i> in Diomatic Shutter | 3 | .75 | 1.25 | 1.15 |
| No. 2C Single, Kodar <i>f.7.9</i> in Kodex Shutter or Kodak Anastigmat lens <i>f.7.7</i> in Diomatic Shutter | 6 | .75 | 1.50 | 1.15 |
| No. 3A Single, or Kodar lens <i>f.7.9</i> in Kodex Shutter | 6 | .75 | 1.50 | 1.15 |
| Kodak Anastigmat lens <i>f.7.7</i> in Diomatic Shutter | 7 | .75 | 1.50 | 1.50 |

For Autographic Kodaks

| | | | | |
|---|----|-----|------|------|
| No. 1 Pocket Kodak Series II (fixed focus or focusing) Single, Kodar <i>f.7.9</i> or Kodak Anastigmat <i>f.7.7</i> | 3 | .75 | 1.25 | 1.15 |
| No. 1A Pocket Kodak Series II (fixed focus) Kodex Shutter | 3 | .75 | 1.25 | 1.15 |
| No. 1A Pocket Kodak Series II (focusing) | 13 | .75 | 1.25 | 1.15 |
| No. 1 Kodak Series III, Kodak Anastigmat lens <i>f.6.3</i> | 3 | .75 | 1.50 | 1.15 |
| No. 1A Kodak Series III, Kodak Anastigmat lens <i>f.6.3</i> | 6 | .75 | 1.50 | 1.15 |
| No. 2C Kodak Series III, Kodak Anastigmat lens <i>f.6.3</i> | 6 | .75 | 1.50 | 1.15 |
| No. 3 Kodak Series III, Kodar <i>f.7.9</i> or Kodak Anastig- mat lens <i>f.6.3</i> | 6 | .75 | 1.50 | 1.15 |
| No. 3A Kodak, Kodar lens <i>f.7.9</i> in Kodex Shutter | 6 | .75 | 1.50 | 1.15 |
| Kodak Anastigmat lens <i>f.6.3</i> in Ilex Shutter | 7 | .75 | 1.50 | 1.50 |

For Autographic Kodaks *Special* and Pocket Kodaks *Special*

| | | | | |
|--|---|-----|------|------|
| No. 1 Kodak Anastigmat lens <i>f.6.3</i> or <i>f.4.5</i> | 6 | .75 | 1.50 | 1.15 |
| No. 1A Kodak Anastigmat lens <i>f.6.3</i> | 6 | .75 | 1.50 | 1.15 |
| Kodak Anastigmat lens <i>f.4.5</i> | 7 | .75 | 1.50 | 1.50 |
| No. 2C Kodak Anastigmat lens <i>f.6.3</i> | 7 | .75 | 1.50 | 1.50 |
| No. 3 Kodak Anastigmat lens <i>f.6.3</i> | 6 | .75 | 1.50 | 1.15 |
| Kodak Anastigmat lens <i>f.4.5</i> | 7 | .75 | 1.50 | 1.50 |
| No. 3A Kodak Anastigmat lens <i>f.6.3</i> | 7 | .75 | 1.50 | 1.50 |

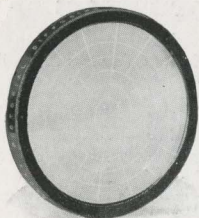
For Brownies and Hawk-Eye (Box Type)

| | | | | |
|--|---|-----|------|------|
| Nos. 0 and 2 Brownies or No. 2 Hawk-Eye, Single lens | 1 | .50 | 1.25 | .75 |
| No. 2A Model C Brownie, Single lens | 0 | .50 | 1.25 | .75 |
| Nos. 2C and 3 Brownies, Single lens | 4 | .75 | 1.25 | 1.15 |

For Folding Autographic Brownies

| | | | | |
|---|---|-----|------|------|
| No. 2 Single or Kodar lens <i>f.7.9</i> in Kodex Shutter | 8 | .75 | 1.25 | .75 |
| No. 2A Single lens in Kodex Shutter | 3 | .75 | 1.25 | 1.15 |
| Kodak lens <i>f.7.9</i> in Kodex Shutter | 6 | .75 | 1.50 | 1.15 |
| No. 2C Single lens in Kodex Shutter | 6 | .75 | 1.50 | 1.15 |
| Kodak lens <i>f.7.9</i> in Kodex Shutter | 3 | .75 | 1.25 | 1.15 |
| No. 3A Single or Kodar lens <i>f.7.9</i> in Kodex Shutter | 6 | .75 | 1.50 | 1.15 |

Kodak Pictorial Diffusion Disk



SOFT focus photography is a popular field with amateurs who want results that are "different." Slipped over the camera lens, the Kodak Pictorial Diffusion Disk gives your pictures a pleasing degree of softness without loss of brilliancy, and without increasing exposures. It is particularly adapted for landscape work.

| Attachment | FOR AUTOGRAPHIC KODAK JUNIORS | Price |
|------------|--|--------|
| No. 3 | For No. 1 with Kodak Anastigmat lens <i>f.7.7</i> and No. 1A with Single, Kodar <i>f.7.9</i> ; or with Kodak Anastigmat lens <i>f.7.7</i> in Diomatic Shutter | \$1.75 |
| No. 6 | For No. 2C with Single, Kodar <i>f.7.9</i> lens in Kodex Shutter or Kodak Anastigmat <i>f.7.7</i> lens in Diomatic Shutter, and No. 3A with Single or Kodar lens <i>f.7.9</i> in Kodex Shutter | 2.50 |
| No. 7 | For No. 3A with Kodak Anastigmat lens <i>f.7.7</i> | 2.50 |

FOR AUTOGRAPHIC KODAKS

| | | |
|--------|---|------|
| No. 3 | For No. 1 Pocket Kodak Series II (fixed focus or focusing) with Single, Kodar <i>f.7.9</i> or Kodak Anastigmat lens <i>f.7.7</i> ; No. 1 Kodak Series III, with Kodak Anastigmat lens <i>f.6.3</i> ; No. 1A Pocket Kodak Series II (fixed focus), Kodex Shutter | 1.75 |
| No. 6 | For No. 1A Kodak Series III, with Kodak Anastigmat <i>f.6.3</i> ; No. 2C Kodak Series III, with Kodak Anastigmat <i>f.6.3</i> ; No. 3 Kodak Series III with Kodar lens <i>f.7.9</i> or Kodak Anastigmat <i>f.6.3</i> ; or No. 3A Kodak with Kodar lens <i>f.7.9</i> | 2.50 |
| No. 7 | For No. 3A Kodak with Kodak Anastigmat lens <i>f.6.3</i> in Ilex Shutter | 2.50 |
| No. 13 | For No. 1A Pocket Kodak Series II (focusing) | 1.75 |

FOR AUTOGRAPHIC KODAKS SPECIAL AND POCKET KODAKS SPECIAL

| | | |
|-------|--|------|
| No. 6 | For No. 1 Pocket Kodak with Kodak Anastigmat lens <i>f.6.3</i> or <i>f.4.5</i> ; No. 1A Pocket Kodak, with Kodak Anastigmat lens <i>f.6.3</i> ; No. 3 Pocket Kodak with Kodak Anastigmat lens <i>f.6.3</i> | 2.50 |
| No. 7 | For No. 1A Pocket Kodak with Kodak Anastigmat lens <i>f.4.5</i> ; No. 2C with Kodak Anastigmat lens <i>f.6.3</i> ; No. 3 Pocket Kodak with Kodak Anastigmat lens <i>f.4.5</i> and No. 3A with Kodak Anastigmat lens <i>f.6.3</i> | 2.50 |

FOR FOLDING AUTOGRAPHIC BROWNIES

| | | |
|-------|---|------|
| No. 3 | For No. 2A with Single lens and No. 2C with Kodar lens <i>f.7.9</i> in Kodex Shutter | 1.75 |
| No. 6 | For No. 2A with Kodar lens <i>f.7.9</i> ; No. 2C with Single lens in Kodex Shutter and No. 3A with Single or Kodar lens <i>f.7.9</i> in Kodex Shutter | 2.50 |

Velox Water Color Outfit

WITH this outfit a photographic print or lantern slide is easily given beautiful colors. No special artistic ability is required. Velox Colors are permanent and transparent so none of the photographic detail is lost. The set is complete in a neat metal case, the cover of which serves as a mixing palette. A book of twelve color sheets, twenty-six stamps to the sheet, and three brushes are included.



| | |
|---|--------|
| Velox Transparent Water Color Stamps, complete booklet, 12 colors | \$0.50 |
| Separate Color Leaves, per sheet | .04 |
| Set of three Special Brushes | .50 |
| Velox Water Color Outfit, including book, three brushes and palette | 1.00 |

Kodak Film Tank



IN the Kodak Film Tank anybody can develop negatives as correctly as an expert can by any known method. No experience is necessary, and no experimenting. Just use the developer recommended and develop for the length of time required for the temperature at which the developer is used, according to instructions included. And no darkroom is necessary; it's all done in daylight.

Prices

| | |
|--|---------|
| Brownie Kodak Film Tank, for use with No. 1, No. 2 and No. 2 Folding Brownie Cartridges, complete | \$ 4.00 |
| Spool Adapter, for using Vest Pocket Kodak Film in Brownie Tank | .10 |
| Vest Pocket Kodak Film Tank, for Vest Pocket or No. 0 Brownie Cartridges, complete | 3.50 |
| 2½-inch Kodak Film Tank, for use with all Kodak or Brownie Cartridges having a film width 2½ inches or less, complete | 5.50 |
| 3½-inch Kodak Film Tank, for use with all Kodak or Brownie Cartridges having a film width of 3½ inches or less, complete | 6.50 |
| 5-inch Kodak Film Tank, for use with all Kodak or Brownie Cartridges having a film width of 5 inches or less, complete | 8.00 |
| 7-inch Kodak Film Tank, for use with No. 5 Cartridge Kodak or narrower film cartridges, complete | 10.00 |
| Duplicating Outfit, consisting of one solution cup, one transferring reel and one apron, for Brownie Kodak Film Tank | 1.75 |
| Ditto, for Vest Pocket Kodak Film Tank | 1.75 |
| Ditto, for 2½-inch Kodak Film Tank | 2.75 |
| Ditto, for 3½-inch Kodak Film Tank | 3.25 |
| Ditto, for 5-inch Kodak Film Tank | 4.00 |
| Ditto, for 7-inch Kodak Film Tank | 5.00 |
| Flexible Fixing and Washing Tank, for 3½-inch Kodak Film Tank | 2.50 |
| Kodak Tank Developer, for Brownie Kodak Film Tank, per ½ dozen | .20 |
| Ditto, for Vest Pocket Kodak Tank, per ½ dozen | .20 |
| Ditto, for 2½-inch Tank, per ½ dozen | .25 |
| Ditto, for 3½-inch Tank, per ½ dozen | .25 |
| Ditto, for 5-inch Tank, per ½ dozen | .30 |
| Ditto, for 7-inch Tank, per ½ dozen | .30 |
| Kodak Acid Fixing Powder, per ¼-pound package | .10 |
| Ditto, per ½-pound package | .15 |
| Ditto, per 1-pound package | .25 |



No. 2 Brownie Developing Box

THIS is a simplified form of the Kodak Film Tank, offering the same assurance of correctly developed film, and so simple that any boy or girl can readily operate it.

It consists of a metal box with cover, and it is just long enough to accommodate, by looping once, a roll of No. A120, 120, A127 or 127 Kodak Film. All the operations are performed in daylight, as with the Kodak Film Tank.

Prices

| | |
|--|--------|
| No. 2 Brownie Developing Box | \$1.75 |
| Brownie Developing Box Powders, per package of 6 | .20 |
| Kodak Acid Fixing Powder, ¼-pound package | .10 |
| Ditto, ½-pound package | .15 |
| Ditto, 1-pound package | .25 |

Developing and Printing Outfits

By combining a variety of articles and assembling large quantities at a time we are able to offer these complete outfits for making prints and developing films by the tray method, at a much lower price than if the articles were sold separately. The Eastman 3A Outfit, below, contains every requisite for finishing twenty-four 3¼ x 5½-inch or smaller pictures.

Prices

| | |
|---|--------------|
| One Kodak Candle Lamp | \$0.40 |
| One Printing Frame | .40 |
| One Glass for Frame | .05 |
| One 4-ounce Graduate | .15 |
| One Stirring Rod | .06 |
| Four Developing Trays | .40 |
| Five Tubes Eastman Special Developer | .35 |
| One-half pound Kodak Acid Fixing Powder | .15 |
| Two dozen 3¼ x 5½-inch Velox Paper | .40 |
| Two ounces Nepera Solution for developing Velox | .20 |
| Instruction Book (free) | |
| | Value \$2.56 |
| EASTMAN 3A OUTFIT, COMPLETE, NEATLY PACKED | Price \$2.00 |
| EASTMAN A B C OUTFIT, similar to above but providing for 4 x 5-inch or smaller pictures | \$2.00 |

Kodak Amateur Printer

THIS compact apparatus makes prints of any size from $1\frac{5}{8} \times 2\frac{1}{2}$ to $3\frac{1}{4} \times 5\frac{1}{2}$ and 4×5 inches. White margins are controlled by a simple masking device. The same device holds the negative

firmly while any number of prints are exposed. A small red electric bulb (furnished) inside the box gives illumination for adjusting negative and paper on the glass window in the removable top. A 60-watt electric lamp (not supplied) is automatically turned on when the hinged frame is closed to make the exposure. The position of this lamp is readily adjustable to secure even illumination on negatives of various sizes.



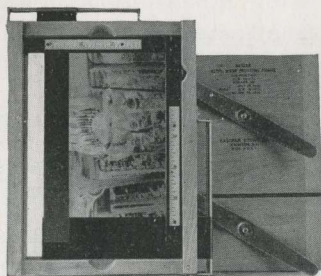
The printer is supplied with $5\frac{1}{2}$ feet of electric light cord, and plug.

Kodak Amateur Printer \$10.00

Kodak Auto-Mask Printing Frame

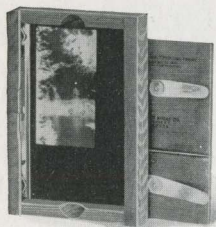
THIS frame is adaptable to the printing of negatives of any amateur size, 4×5 , $3\frac{1}{4} \times 5\frac{1}{2}$ inches and smaller. Attached to the frame are two slides adjusted from the outside, forming a mask of whatever size is desired.

Any desired number of uniformly masked prints may be made without readjusting the negative or the masking slides.



Kodak Auto-Mask Printing Frame \$1.50

Kodak Maskit Printing Frame



THE Kodak Maskit Printing Frame overcomes the difficulty of the negative and mask slipping on the glass, and assures prints with a uniform white margin. Furnished with a set of three paper masks of different sized openings.

Kodak Maskit, for $3\frac{1}{4} \times 4\frac{1}{4}$ -inch plates and $2\frac{1}{4} \times 3\frac{1}{4}$ or smaller roll films, opens two-thirds . . . \$0.65
Kodak Maskit, $3\frac{1}{4} \times 5\frac{1}{2}$ -inch, opens two-thirds70

Kodaloid Printing Masks

For Maskit Printing Frames

THESE transparent, durable, orange-red color masks, intended for use with Maskit Printing Frames, are supplied in sets of three each, with different sized openings.

Per set of 3, $3\frac{1}{4} \times 4\frac{1}{4}$, \$0.30. Per set of 3, $3\frac{1}{4} \times 5\frac{1}{2}$, \$0.30. Per set of 3, 5 x 7, \$0.45

Eastman Printing Frames

HAVE a two-section hinged back with clamps to hold the negative and paper firmly.

For $2\frac{1}{4} \times 3\frac{1}{4}$ inch plates and V. P. K. or smaller film negatives, opens two-thirds. . . \$0.35
For $2\frac{1}{2} \times 4\frac{1}{4}$ inch or smaller film negatives, opens two-thirds40
For $3\frac{1}{4} \times 4\frac{1}{4}$ inch plates and $2\frac{1}{4} \times 3\frac{1}{4}$ or smaller film negatives, opens two-thirds . . .40
For $3\frac{1}{4} \times 5\frac{1}{2}$ inch or smaller film negatives, opens two-thirds40
For $3\frac{1}{4} \times 5\frac{1}{2}$ inch plates, opens two-thirds45
For 4 x 5 inch plates or films, opens two-thirds40
For 5 x 7 inch plates or films, opens two-thirds55

Eastman Printing Frames are supplied without glass

Kodaloid Printing Masks

ORANGE-RED transparent Kodaloid with various sizes of openings.

For 3A Frames, 8 masking sizes, each \$0.10
For 4 x 5 Frames, 7 masking sizes, each10
For 5 x 7 Frames, 6 masking sizes, each15

Kodak Magnesium Ribbon Holder



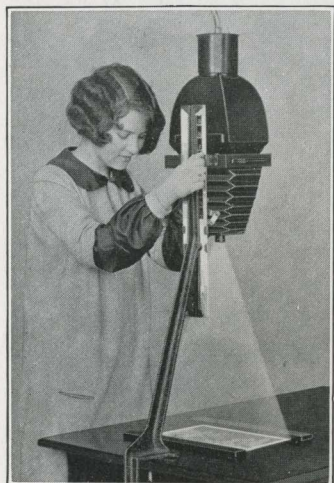
FURNISHED in a handy holder, Kodak Magnesium Ribbon provides an intensely bright light for exposing Velox and an excellent supplementary illumination for portraiture, copying and interior work.

The ribbon is best ignited by a special alcohol lamp.

Kodak Magnesium Ribbon Holder \$0.50
Alcohol Lamp50

The Kodak Auto-Focus Enlarger

MOVE the camera up and down and while the image size changes, the focus remains sharp. Enlarging thus becomes a simplified process that is rapid and as easy as contact printing.



The standard clamps to an ordinary table and the bromide paper is held in position by quickly adjusted paper holders.

Prints any size from $1\frac{1}{2}$ to $3\frac{1}{2}$ diameters can be made from either plate or film negatives up to 4 x 6 inches. The largest possible print is 14 x 21. V. P. K. negatives will make $5\frac{5}{8}$ x $8\frac{3}{4}$ inch enlargements.

The lens is a Kodak Anastigmat, which insures sharpness.

Ventilated lamp house has a capacity for an electric lamp (not supplied) of from 75 to 200 watts.

A diffusing disc is supplied separately for soft focus effects.

Kodak Auto-Focus Enlarger with Kodak Anastigmat lens, electric cord and plug, set of six flexible metal masks \$33.00
Diffusing Disc 1.00

Eastman Bromide Papers

FOR enlargements, Eastman Bromide Papers are emphatically faster than the other developing papers and as easy to use as Velox. Grades: Velvet, Brilliant Velvet, Royal, Enameled, Matte-enameled and Standard B and C. Royal Bromide is a buff paper, suited for making sepia enlargements by redevelopment.

| Size | Per Doz. | Size | Per Doz. | Size | Per Doz. |
|---------------------------------|----------|---------|----------|---------|----------|
| 5 x 7 | \$0.50 | 8 x 10 | \$1.10 | 14 x 17 | \$3.15 |
| 5 x 8 | .55 | 10 x 12 | 1.70 | 16 x 20 | 4.20 |
| $6\frac{1}{2}$ x $8\frac{1}{2}$ | .80 | 11 x 14 | 2.10 | 18 x 22 | 5.25 |

Standard BB and CC Double Weight

| Size | Per Doz. | Size | Per Doz. | Size | Per Doz. |
|-------|----------|---------------------------------|----------|---------|----------|
| 5 x 7 | \$0.60 | $6\frac{1}{2}$ x $8\frac{1}{2}$ | \$1.00 | 10 x 12 | \$2.15 |
| 5 x 8 | .70 | 8 x 10 | 1.40 | 11 x 14 | 2.65 |

Other sizes in proportion

Velox

“Look for Velox on the back”

VELOX paper brings out the best that is in a negative and often produces a better print than the negative itself promises. Because it is made in four degrees of contrast it enables one to partially correct for errors in exposure or contrast of lightings by emphasizing or subduing the character of the negative in the resulting print.

Velox is a non-abrasion, developing-out paper and is identifiable by the name “Velox” faintly tinted on the back. It is the only photographic paper manufactured especially for use with amateur negatives.

Negatives of extreme contrast give best results on No. 1; negatives of average contrast print best on No. 2; flat negatives require No. 3 and exceedingly thin or flat negatives yield good prints on No. 4.

Of the four grades of Velox, the most used is Velvet, which gives semi-gloss prints of splendid quality and tone.



*Velox prints are
identifiable by the
name “Velox”
on the back.*



| GRADE | SURFACE | CONTRAST | | | | *Furnished also in Double-weight Velox. Double-weight papers require no mount and when printed under a mask, which will insure a white margin, offer a very artistic effect. |
|----------------|--------------|----------|----|----|----|--|
| Velvet Velox | Semi-Gloss | *1 | *2 | *3 | *4 | |
| Portrait Velox | Smooth Matte | 2 | | | | |
| Carbon Velox | Matte | 1 | 2 | 3 | 4 | |
| Glossy Velox | Enameled | 1 | *2 | *3 | 4 | |

Prices

| Size Inches | Single Weight | | | Double Weight | | |
|---|---------------|---------|--------|---------------|---------|--------|
| | Dozen | ½ Gross | Gross | Dozen | ½ Gross | Gross |
| 1 ⅝ x 2 ½ | \$0.12 | | \$1.10 | \$0.15 | | \$1.40 |
| 2 ¼ x 3 ¼ | .12 | | 1.10 | .15 | | 1.40 |
| 2 ½ x 4 ¼ | .15 | | 1.35 | .20 | | 1.70 |
| 3 ¼ x 4 ¼ | .20 | | 1.75 | .25 | | 2.20 |
| 2 ⅞ x 4 ⅞ | .20 | | 1.75 | .25 | | 2.20 |
| 3 ¼ x 5 ½ | .20 | | 2.00 | .25 | | 2.50 |
| 4 x 5 | .25 | | 2.30 | .30 | | 2.90 |
| 5 x 7 | .40 | \$2.10 | 3.90 | .50 | \$2.60 | 4.90 |
| Velox Post Cards, 3 ⅞ x 5 ⅞, furnished in Velvet, Contrasts Nos. 1, 2, 3 and 4, and in Glossy, Contrasts Nos. 2 and 3 | | | | .30 | 1.50 | 2.90 |
| Velox Double Post Cards, 3 ⅞ x 10 ⅞ inches | | | | .60 | 3.00 | 5.80 |

Velox Sundries

| | |
|--|--------|
| Nepera Solution, per 4-ounce bottle | \$0.28 |
| Ditto, per 16-ounce bottle | .84 |
| Nepera Auxiliary Powders (for converting Nepera Solution to a film or plate developer), per package, 1 dozen | .35 |
| Eastman M. Q. Developer (per package of 5 glass tubes) | .30 |
| Velox Re-developer Tubes for Sepia Toning, per package, 12 tubes | 1.08 |
| Velox Liquid Hardener, per 4-ounce bottle | .25 |
| Ditto, 8-ounce bottle | .35 |
| Kodak Acid Fixing Powder for fixing Velox prints, per pound | .25 |
| Ditto, $\frac{1}{2}$ pound | .15 |
| Ditto, $\frac{1}{4}$ pound | .10 |

Kodak Velvet Green

NATURE's favorite color is green. With Kodak Velvet Green any amateur photographer can get nature-like effects heretofore obtainable only by the carbon process.

Not only for landscapes and marine views but for a wide variety of other outdoor subjects, Kodak Velvet Green is an appropriate paper. Its rich green tone produces most beautiful and harmonious effects, with an indescribable "atmosphere" of nature itself.

And to use this paper the amateur need not learn new methods, nor possess extraordinary skill. Anyone who can print on Velox paper can print just as successfully on Kodak Velvet Green, as the two processes after exposure are identical, except for a slight change in the fixing bath.

As this paper is much slower than the average developing-out paper, it is advisable to print by daylight.

The surface—a smooth semi-matte—brings out detail fully. The paper is supplied in both single and double weights.

Kodak Velvet Green Post Cards are very appropriate for use at vacation time.

| Size Inches | Single Weight | | | Double Weight | | |
|------------------------------------|---------------|---------------------|--------|---------------|---------------------|--------|
| | Dozen | $\frac{1}{2}$ Gross | Gross | Dozen | $\frac{1}{2}$ Gross | Gross |
| $1\frac{1}{8} \times 2\frac{1}{2}$ | \$0.10 | | \$0.90 | \$0.15 | | \$1.30 |
| $2\frac{1}{4} \times 3\frac{1}{4}$ | .10 | | .90 | .15 | | 1.35 |
| $2\frac{1}{2} \times 4\frac{1}{4}$ | .12 | | 1.10 | .20 | | 1.60 |
| $3\frac{1}{4} \times 4\frac{1}{4}$ | .15 | | 1.40 | .25 | | 1.80 |
| $2\frac{7}{8} \times 4\frac{7}{8}$ | .15 | | 1.40 | .25 | | 2.00 |
| $3\frac{1}{4} \times 5\frac{1}{2}$ | .15 | | 1.60 | .25 | | 2.00 |
| 4 x 5 | .20 | | 1.85 | .30 | | 2.25 |
| 5 x 7 | .30 | \$1.70 | 3.10 | .40 | \$2.20 | 3.90 |
| Kodak Velvet Green Post Cards, | | | | | | |
| Single Length | | | | .20 | 1.10 | 2.00 |
| Double Length | | | | .40 | 2.20 | 4.00 |

Solio Paper

A glossy, printing-out paper

| Size | Per Package 2 Doz. | Size | Per Package 2 Doz. |
|-------------------------|-----------------------|-----------------------------------|-----------------------|
| 1 5/8 x 2 1/2 | \$0.20 | 4 x 5 | \$0.40 |
| 2 1/4 x 3 1/4 | .20 | Per Doz. | |
| 2 1/2 x 4 1/4 | .25 | 4 1/4 x 6 1/2 | \$0.25 |
| 3 1/4 x 4 1/4 | .25 | 5 x 7 | .30 |
| 2 7/8 x 4 7/8 | .25 | Post Cards | .20 |
| 3 1/4 x 5 1/2 | .30 | Double Solio Post Cards | .40 |

Solio Toning and Fixing Powders, per carton, 5 tubes, \$0.35. Solio Combined Toning and Fixing Solution, per 8-ounce bottle, \$0.50; 4-ounce bottle, \$0.30.

Eastman Plates

Single coated: Eastman 40, 36, Speedway,
S. C. Ortho

Double coated: Eastman D. C. Ortho

| | Per Doz. | | Per Doz. |
|-------------------------|----------|-------------------------|----------|
| 2 1/4 x 3 1/4 | \$0.45 | 2 1/4 x 3 1/4 | \$0.55 |
| 3 1/4 x 4 1/4 | .65 | 3 1/4 x 4 1/4 | .80 |
| 3 1/4 x 5 1/2 | .90 | 3 1/4 x 5 1/2 | 1.10 |
| 4 x 5 | .90 | 4 x 5 | 1.10 |

Wratten & Wainwright Panchromatic

| | Per Doz. |
|-------------------------|----------|
| 3 1/4 x 4 1/4 | \$0.80 |
| 3 1/4 x 5 1/2 | 1.10 |
| 4 x 5 | 1.10 |

Combination Backs



USED with the No. 3A Autographic Kodaks, regular and *Special*, in place of the usual Autographic Backs, to accommodate double plate holders and a removable ground glass for focusing. The Combination Back is very convenient when one desires to make one or two exposures and develop them at once. With the addition of Kodak Cut Film Sheaths

in the plate holder, the Combination Back equips the camera for use with Kodak Cut Film. (See page 51.)

| | |
|--|--------|
| Combination Back with ground glass, for No. 3A Autographic Kodak | \$4.00 |
| Ditto, for No. 3A <i>Special</i> | 5.00 |
| Kodak Double Plate Holders for either of the above, each | 1.50 |

Kodak Cut Film

KODAK Cut Film offers every advantage of plates and, in addition, is non-halation, weighs but a fraction as much, is easier to handle, unbreakable and produces negatives of superior quality. Through the agency of the Combination Back, Double Plate Holder (see opposite page) and Kodak Cut Film Sheaths, No. 3A Kodaks, both regular and *Special* models, may be adapted for use with Kodak Cut Film.

It is supplied in two speeds. The regular Kodak Cut Film is equal in speed to the best portrait plate and is standard in every respect.

Kodak Cut Film *Super Speed* has an extra fast emulsion, yet its latitude, gradation and fineness of grain are equal to those of the regular speed. It gives the best possible negatives under difficult light conditions or with short exposures. *Super Speed* film is especially desirable for indoor portraits or snap-shots in the shade. Its speed is attained without sacrificing any of those qualities on which film superiority is founded.

| | | | | |
|--|------------------------------------|------------------------------------|------------------------------------|--------------|
| | $2\frac{1}{4} \times 3\frac{1}{4}$ | $3\frac{1}{4} \times 4\frac{1}{4}$ | $3\frac{1}{4} \times 5\frac{1}{2}$ | 4×5 |
| Kodak Cut Film, dozen | \$0.45 | \$0.65 | \$0.90 | \$0.90 |
| Kodak Cut Film <i>Super Speed</i> , dozen. | .50 | .75 | 1.00 | 1.00 |

Eastman Commercial Panchromatic Film

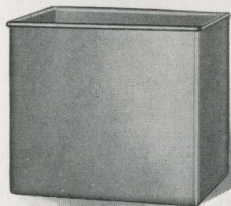
USED with the proper filter, Eastman Commercial Panchromatic Film reproduces all colors, including red, in true relation to one another in the tones of a black and white print.

| | | | |
|---|------------------------------------|------------------------------------|--------------|
| | $3\frac{1}{4} \times 4\frac{1}{4}$ | $3\frac{1}{4} \times 5\frac{1}{2}$ | 4×5 |
| Eastman Commercial Panchromatic Film, dozen | \$0.75 | \$1.00 | \$1.00 |

Kodak Cut Film Sheath

ADAPTS a plate holder to the use of Kodak Cut Film. It is made of aluminum, ribbed for rigidity and is instantly inserted or removed.

| | | | | |
|---------------------------------|------------------------------------|------------------------------------|------------------------------------|--------------|
| | $2\frac{1}{4} \times 3\frac{1}{4}$ | $3\frac{1}{4} \times 4\frac{1}{4}$ | $3\frac{1}{4} \times 5\frac{1}{2}$ | 4×5 |
| Kodak Cut Film Sheath | \$0.10 | \$0.10 | \$0.15 | \$0.15 |



Kodak Developing Box, No. 1

THIS tank provides a swift and easy means of obtaining uniform development of Kodak Cut Film. It takes twelve films, each suspended in the solution from a Kodak Cut Film Developing Hanger. Development proceeds by the time and temperature method.

The tank is made of incorrodible metal and measures $4 \times 5\frac{1}{4} \times 6$ inches.

Kodak Developing Box, No. 1, without hangers \$2.00

Kodak Cut Film Developing Hanger

FOR use with the Kodak Developing Box, No. 1. It lies securely across the top of the box. The clips are of incorrodible metal.



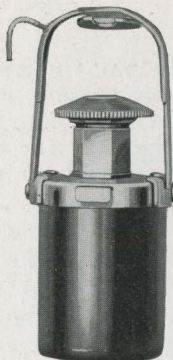
Kodak Cut Film Developing Hangers, each \$0.20

Kodak Self Timer

THIS popular Kodak accessory fits on the cable release of any Kodak or Folding Brownie and automatically presses the button. The time of operation is controlled by the amateur within the limits of $\frac{1}{2}$ second and 1 minute. He sets it for the time interval desired and then gets into the picture.

Thus the group is kept complete and self-portraits are easily possible.

Kodak Self Timer \$1.25



Eastman Visible Graduate

THIS moulded graduate, as its name implies, may be easily read in the darkroom under the rays of the ruby light.

The graduations are opaque, not translucent as is the case with most graduates.

| | | | |
|-------------------|--------|--------------------|--------|
| 2-ounce | \$0.30 | 8-ounce | \$0.50 |
| 4-ounce | .40 | 16-ounce | .80 |



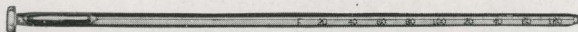
Eastman Thermometer

VALUABLE in tank or tray development. The hook for suspending and the curved back to fit inside the tank are desirable features.

Eastman Thermometer \$0.90



Thermometer Stirring Rod



A COMBINED stirring rod and thermometer. Carefully tested and accurate. Has flat end for pulverizing. The rod is $\frac{1}{4}$ inch in diameter and 9 $\frac{1}{4}$ inches long.

Thermometer Stirring Rod \$1.25

Developing Trays

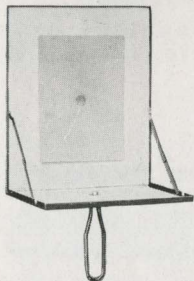
| "Bull's Eye" (composition) | | Enameled | |
|---|--------|-----------------|--------|
| 3 $\frac{1}{4}$ x 4 $\frac{1}{4}$ | \$0.30 | 4 x 6 | \$0.45 |
| 4 x 5 | .40 | 5 x 8 | .80 |
| | | 4 x 5 | \$0.75 |
| | | 4 x 6 | .85 |
| | | 5 x 7 | 1.10 |



Flashlight Materials

THE flashlight makes the amateur photographer independent of daylight. He has complete control of the illumination, not only as to the amount of light, but also its direction.

The simplest method of making flashlight pictures is by means of the Eastman Flash Sheets and Kodak Flash Sheet Holder. The sheets burn slowly, giving a broad, soft light, while the holder makes their proper use conveniently easy.



| | |
|---|--------|
| No. 1 Flash Sheets, per package of $\frac{1}{2}$ dozen sheets, 3 x 4-inch . . . | \$0.35 |
| No. 2 Flash Sheets, per package of $\frac{1}{2}$ dozen sheets, 4 x 5-inch . . . | .56 |
| No. 3 Flash Sheets, per package of $\frac{1}{2}$ dozen sheets, 5 x 7-inch . . . | .84 |
| Kodak Flash Sheet Holder | 1.25 |

Flash cartridges are recommended only where instantaneous exposures are required.

| | |
|--|--------|
| Eastman No. 1 Flash Cartridges, for use only with fuse, per package of $\frac{1}{2}$ dozen | \$1.25 |
| Ditto, No. 2 | .80 |
| Ditto, No. 3 | .50 |
| Eastman Spreader Flash Cartridges, for use with fuse, per package of $\frac{1}{2}$ dozen | .60 |

Kodak Dry Mounting Tissue

MOUNTS prints, even on thin mounts, without cockle or curl. Just fix tissue on print, lay on mount and press with a warm flat-iron; no sticky fingers, no muss of any kind.

| | | | |
|---|--------|---|--------|
| Size, $3\frac{1}{2}$ x $3\frac{1}{2}$, 3 dozen | \$0.10 | Size, 4 x 5, 2 dozen | \$0.10 |
| Size, $3\frac{1}{4}$ x $4\frac{1}{4}$, 3 dozen | .10 | Size, $4\frac{1}{4}$ x $6\frac{1}{2}$, 1 dozen | .10 |
| Size, $3\frac{1}{4}$ x $5\frac{1}{2}$, 2 dozen | .10 | Size, 5 x 7, 1 dozen | .10 |

Kodak Photo Paste

THE weighted friction cap and the spreader top of the tube eliminate muss and fuss. The paste is an excellent adhesive, not only for mounting prints, but for desk or household use as well.

1 1/8-ounce tube \$0.10
2-ounce tube15



Eastman Photo Paste

A SOLID, first quality white paste that will not discolor print or mount.

4-ounce jar \$0.25

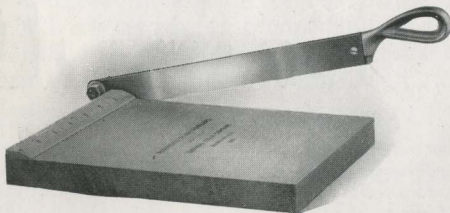
Kodak Liquid Glue

PERMITS tacking prints down at the corners, rather than pasting solid. An excellent glue for any purpose.

Per tube \$0.15



Kodak Trimming Boards



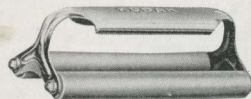
MADE of hard wood, with natural finish. Provided with fine quality steel blades and plainly marked rules.

No. 1, capacity, 5 x 5 inches \$0.75
No. 2, capacity, 7 x 7 inches 1.00

Kodak Print Roller

THE ideal roller for amateur use. Kodak Print Roller has two 6-inch rubber rollers and finely nickeled frame.

Kodak Print Roller \$1.00

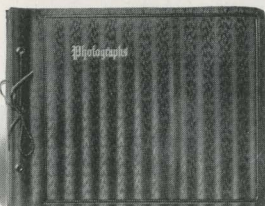


Flexo Print Roller



A THOROUGHLY practical roller for mounting. Has 4-inch rubber roller and black enamel frame.

Flexo Print Roller \$0.35



The Kodak Album

LOOSE-LEAF, open-back style. Cover made of finest quality genuine leather and surfaced in new patterns: the black in an etched crystalline; the blended olive, a pine needle effect. Stamped in gold leaf with the word "Photographs." Fifty black, round-cornered leaves held in place with silk-finished cord through cover and metal tubes.

| | | | |
|--|--------|---------------------------------|--------|
| 5 x 8, RA, Black Crystline | \$2.25 | SA, Olive Pine Needle | \$2.25 |
| 7 x 11, RB, Black Crystline | 3.25 | SB, Olive Pine Needle | 3.25 |
| 10 x 12, RC, Black Crystline | 4.50 | SC, Olive Pine Needle | 4.50 |
| 11 x 14, RD, Black Crystline | 5.50 | SD, Olive Pine Needle | 5.50 |

Package of 12 extra leaves, Size A (5 x 8) \$0.15; Size B (7 x 11) \$0.18;
Size C (10 x 12) \$0.30; Size E (11 x 14) \$0.40

The Panama Album

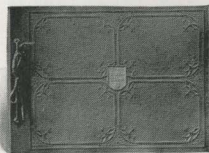
LOOSE-LEAF, open back style. Two attractively colored covers—Brownblend and Greenblend. The cover is artificial leather. The border frame ornament is hand rubbed, a beautiful polychrome effect. In addition, it has the word "Photographs" stamped in gilt. Fifty black leaves held in place by a silk-finished cord through cover and metal tubes.



| | | | |
|---------------------------------------|--------|--|--------|
| BA, 5 x 8, Brownblend Cover | \$1.50 | BB, 7 x 11, Brownblend Cover | \$2.00 |
| GA, 5 x 8, Greenblend Cover | 1.50 | GB, 7 x 11, Greenblend | 2.00 |

Package of 12 extra leaves, Size A (5 x 8) \$0.15; Size B (7 x 11) \$0.18

The Colonial Album



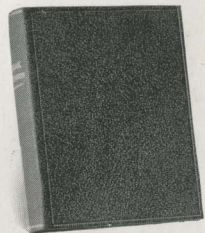
LOOSE-LEAF, open-back style. Cover is of de luxe artificial leather. The beautiful design in polychrome covers the entire surface and in center the words "Ye Photo Album" are raised embossed in color. Fifty black leaves held in place by silk-finished cord through cover and metal tubes. This is a most attractive album.

| | | | |
|-----------------------|------------------------|-------------------------|-------------------------|
| A, 5 x 8 . . . \$1.90 | B, 7 x 11 . . . \$2.50 | C, 10 x 12 . . . \$3.25 | D, 11 x 14 . . . \$3.50 |
|-----------------------|------------------------|-------------------------|-------------------------|

Package of 12 extra leaves, Size A (5 x 8) \$0.15; Size B (7 x 11) \$0.18;
Size C (10 x 12) \$0.30; Size E (11 x 14) \$0.40

Library Album

THE cover is extra stiff—genuine seal grain black leather. The loose-leaf arrangement for holding the fifty black leaves is inside of cover—therefore, there are no projections to mar table or desk on which album may be placed. The outstanding feature, however, is the style which is book form so that the album when not in use may be placed in the bookcase. In keeping with the idea of a book style, the words "Kodak Library" are stamped in gold on the rounded back. This is a high class album suitable for your library—just the kind you want for your choice Kodak prints.



| | |
|--|----------------------|
| B, 6½ x 9 (size of leaf from folding edge) | Price Each \$3.25 |
| Extra leaves, package of 12, size L, \$0.18 | |



The Kodagraph Album

LOOSE-LEAF, open-back, style. Choice of genuine leather cover in black with etched surface, or in dark brown with alligator finish. The word "Kodagraphs" is stamped in gold on cover. A good looking, substantial album.

| | | | |
|-------------------------------------|--------|-------------------------------|--------|
| BB, 7 x 11 Black Leather | \$3.00 | AB, Brown Alligator | \$3.00 |
| BD, 11 x 14 Black Leather | 5.00 | AD, Brown Alligator | 5.00 |

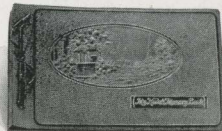
Package of 12 extra leaves, Size B (7 x 11) \$0.18; Size E (11 x 14) \$0.40

My Kodak Memory Book

IN addition to its embossed, hand-colored cover design, this attractive book has the words "My Kodak Memory Book" embossed in a raised panel. It is unusually handsome and well deserves the pictures you prize the most. Fifty black leaves.

| | |
|---|--------|
| My Kodak Memory Book—B, 7 x 11. | \$2.50 |
|---|--------|

Package of 12 extra leaves, Size B—\$0.18



"Childhood Days" Book

THE "Childhood Days" Book, for pictures of the youngsters, will not only give immediate pleasure to parents but will be valued more and more as the years roll along. It is exquisitely finished, with embossed, hand-colored design, and is strongly made for years of handling. Fifty black leaves.

| | |
|---|--------|
| "Childhood Days" Book—B, 7 x 11 | \$2.50 |
|---|--------|

Package of 12 extra leaves, Size B—\$0.18



La Novelle

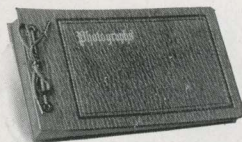
LOOSE-LEAF, open back style. Fifty black leaves held in place by a silk-finished cord through cover and metal tubes. The word "Photographs" is stamped in gilt on cover. This cover is a strongly fibered material in a dark brown shade and finished in a richly embossed Baby Alligator pattern.

| | | | |
|---------------------|--------|-----------------------|--------|
| BA, 5 x 8 | \$1.10 | BC, 10 x 12 | \$2.25 |
| BB, 7 x 11. | 1.50 | BD, 11 x 14 | 2.50 |

Package of 12 extra leaves, size A (5 x 8) \$0.15; Size B (7 x 11) \$0.18;
Size C (10 x 12) \$0.30; Size E (11 x 14) \$0.40

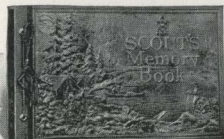
The Juno Album

LOOSE-LEAF, open-back style. Fifty black loose leaves held in place by metal tubing and cord through covers. Brown or black embossed English grain imitation leather cover. The word "Photographs" stamped in gilt on cover.



| | |
|---|--------|
| 5 x 8, BA, brown or CA, black | \$1.10 |
| 7 x 11, BB, brown or CB, black | 1.50 |
| 10 x 12, BC, brown or CC, black | 2.25 |
| 11 x 14, BD, brown or CD, black | 2.50 |

Package of 12 extra leaves, Size A (5 x 8) \$0.15; Size B (7 x 11) \$0.18;
Size C (10 x 12) \$0.30; Size E (11 x 14) \$0.40



Scout's Memory Book

PREPARED especially for the Boy Scouts of America. The black artificial leather cover is artistically embossed with a special design and the wording "Scout's Memory Book." Fifty black leaves, loose-leaf. An unique, handsome book that any boy will be proud to own.

Size B (7 x 11) \$1.50
 Package of 12 extra leaves, Size B, \$0.18

The Rhodes Album

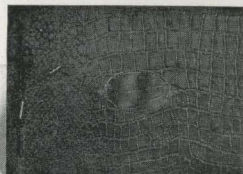
LOOSE-LEAF, open-back style—choice of genuine black grain leather or embossed black book cloth, with 50 black leaves held in place by metal tubes and cord through cover. Cover stamped in foil with word "Photographs."



| | | | |
|-------------------|------------------|-----------------------|--------|
| 5 x 8 | CA, cloth \$0.90 | LA, leather | \$2.00 |
| 7 x 11 | CB, cloth 1.25 | LB, leather | 2.75 |
| 8 x 10 | CE, cloth 1.50 | LE, leather | 3.10 |
| 10 x 12 | CC, cloth 2.00 | LC, leather | 4.50 |
| 11 x 14 | CD, cloth 2.25 | LD, leather | 5.00 |

Package of 12 extra leaves, Size A (5 x 8) \$0.15; Size B (7 x 11) \$0.18; Size K (8 x 10) \$0.20;
 Size C (10 x 12) \$0.30; Size E (11 x 14) \$0.40

The Artist Album



A LOOSE-LEAF album with embossed black paper cover. Has 10 black leaves held in place by cord through cover. Just right to give to your friends as an inexpensive souvenir of some event recorded photographically, such as a vacation, auto trip, or picnic.

| | |
|--------------------------------------|--------|
| No. 1, 5½ x 7 | \$0.25 |
| Extra leaves, package of 5 | .09 |
| No. 4, 7 x 10 | .35 |
| Extra leaves, package of 5 | .12 |

Kodak Negative Albums

THESE albums afford a safe, convenient and effective way of keeping film negatives. Each leaf is, itself, an envelope, and the negatives do not come in contact with each other.

The index furnishes a ready reference.



| | |
|--------------------------------------|--------|
| For 100 negatives, 1½ x 2½ | \$1.25 |
| For 100 negatives, 2¼ x 3¼ | 1.25 |
| For 100 negatives, 2½ x 4¼ | 1.25 |
| For 100 negatives, 3¼ x 4¼ | 1.25 |
| For 100 negatives, 4 x 5 | 1.50 |
| For 100 negatives, 3¼ x 5½ | 1.50 |
| For 100 negatives, 5 x 7 | 1.75 |

Kodak Card Mounts

The Baltic—Brown or Grey

Heavy stock, beveled edges, heavy borders. Sold in lots of not less than fifty, one kind and size.

| No. | For Prints | Size of Mount | Per 100 | Per 50 | No. | For Prints | Size of Mount | Per 100 | Per 50 |
|-----|------------|---------------|---------|--------|-----|------------|---------------|---------|--------|
| 0 | 1½ x 2½ | 3½ x 4¼ | \$2.10 | \$1.05 | 2C | 2½ x 4½ | 5½ x 7½ | \$3.10 | \$1.55 |
| 1 | 2¼ x 3¼ | 4½ x 5½ | 2.60 | 1.30 | 3A | 3¼ x 5½ | 5¾ x 8 | 3.40 | 1.70 |
| 1A | 2½ x 4¼ | 4½ x 6¾ | 2.80 | 1.40 | 4 | 4 x 5 | 6 x 7 | 4.00 | 2.00 |
| 2 | 3½ x 3½ | 5½ x 5½ | 3.00 | 1.50 | 4A | 4¼ x 6½ | 6½ x 8½ | 5.00 | 2.50 |
| 3 | 3¼ x 4¼ | 5½ x 6½ | 3.00 | 1.50 | 5 | 5 x 7 | 8 x 10 | 6.20 | 3.10 |

Landscape—Ash Grey and Artist Brown

| No. | Color | For Prints | Size of Mount | Per 50 | No. | Color | For Prints | Size of Mount | Per 50 |
|-----|-------|------------|---------------|--------|-----|-------|------------|---------------|--------|
| A1 | Grey | 5 x 7 | 8 x 10 | \$3.00 | C1 | Grey | 8 x 10 | 12 x 14 | \$5.00 |
| A2 | Brown | 5 x 7 | 8 x 10 | 3.00 | C2 | Brown | 8 x 10 | 12 x 14 | 5.00 |
| B1 | Grey | 6½ x 8½ | 10 x 12 | 4.00 | D1 | Grey | 7 x 11 | 11 x 15 | 5.25 |
| B2 | Brown | 6½ x 8½ | 10 x 12 | 4.00 | D2 | Brown | 7 x 11 | 11 x 15 | 5.25 |

De Luxe Enlargement Mount

White and India Buff stock. All edges deckled. A rich mounter for the favorite enlargement.

| No. | Color | For Prints | Size of Mount | Per Doz. | No. | Color | For Prints | Size of Mount | Per Doz. |
|-----|-------|------------|---------------|----------|-----|-------|------------|---------------|----------|
| A1 | White | 3¼ x 5½ | 7¼ x 9½ | \$0.75 | G1 | White | 6 x 10 | 10 x 14 | \$1.40 |
| A2 | India | 3¼ x 5½ | 7¼ x 9½ | .75 | G2 | India | 6 x 10 | 10 x 14 | 1.40 |
| D1 | White | 5 x 7 | 9½ x 11½ | 1.00 | H1 | White | 8 x 10 | 12 x 14 | 1.50 |
| D2 | India | 5 x 7 | 9½ x 11½ | 1.00 | H2 | India | 8 x 10 | 12 x 14 | 1.50 |
| E1 | White | 5 x 8½ | 9½ x 12½ | 1.10 | J1 | White | 7 x 11 | 11 x 15 | 1.56 |
| E2 | India | 5 x 8½ | 9½ x 12½ | 1.10 | J2 | India | 7 x 11 | 11 x 15 | 1.56 |
| F1 | White | 6½ x 8½ | 10¾ x 12¾ | 1.20 | | | | | |
| F2 | India | 6½ x 8½ | 10¾ x 12¾ | 1.20 | | | | | |

Mat Mount (For Enlargement)—Grey, Sepia-Buffer

| No. | For Prints | Size Mount | Price | No. | For Prints | Size Mount | Price |
|-----|------------|------------|-------------|-----|------------|------------|-------------|
| A | 3¼ x 5½ | 7¾ x 9¾ | Doz. \$0.93 | F | 6 x 10 | 10½ x 14½ | Doz. \$1.29 |
| B | 4 x 7 | 8¾ x 11¾ | Doz. .93 | G | 7 x 11 | 11½ x 15½ | Doz. 1.53 |
| C | 5 x 7 | 9¾ x 11¾ | Doz. .93 | H | 8 x 10 | 12 x 14 | Doz. 1.53 |
| D | 5 x 8½ | 9¾ x 13½ | Doz. 1.05 | J | 8 x 14 | 13¼ x 19¼ | ½ Doz. 1.05 |
| E | 6½ x 8½ | 11½ x 13½ | Doz. 1.17 | K | 11 x 14 | 17¼ x 20¼ | ½ Doz. 1.89 |

Projecto Mount

For inslip prints and enlargements. The base is heavy beveled cardboard—the top is embossed in a heavy relief frame effect. Grey, only. Sold in not less than box lots—all sizes 25 in a box.

| No. | For Prints | Size Outside | Per 100 | No. | No. Prints | Size Outside | Per 100 |
|-----|------------|--------------|---------|-----|------------|--------------|---------|
| A | 5 x 7 | 8 x 10 | \$ 8.00 | D | 6 x 10 | 10 x 14 | \$12.00 |
| B | 6½ x 8½ | 10 x 12 | 10.50 | E | 7 x 11 | 11 x 15 | 16.00 |
| C | 8 x 10 | 12 x 14 | 12.00 | | | | |

Enlargement Mount—Grey or Buff

| No. | For Prints | Size Mount | Price | No. | For Prints | Size Mount | Price |
|-----|------------|------------|-------------|-----|------------|------------|-------------|
| A | 3¼ x 5½ | 7¼ x 9½ | Doz. \$0.48 | F | 6 x 10 | 10¾ x 14¾ | Doz. \$0.69 |
| B | 4 x 7 | 8¾ x 11¾ | Doz. .51 | G | 7 x 11 | 11¾ x 15¾ | Doz. .81 |
| C | 5 x 7 | 9¾ x 11¾ | Doz. .54 | H | 8 x 10 | 12¾ x 14¾ | Doz. .81 |
| D | 5 x 8½ | 9¾ x 12¾ | Doz. .63 | J | 8 x 14 | 13 x 19 | ½ Doz. .69 |
| E | 6½ x 8½ | 11½ x 13½ | Doz. .66 | K | 11 x 14 | 17 x 20 | ½ Doz. .84 |

Reverso Easel

JUST the thing for the favorite print to set on table or desk. Prints are inserted under cut out opening. The ingenious easel arrangement permits the mountings to be used for either upright or horizontal prints. London Grey color only. All sizes packed 12 in a carton—sold only in carton lots.

| No. | For Prints | Size Outside | Price Per Carton of 12 |
|--------------|------------------------------------|------------------------------------|------------------------|
| 1 | $2\frac{1}{4} \times 3\frac{1}{4}$ | $3\frac{1}{2} \times 4\frac{1}{2}$ | \$0.85 |
| 1A | $2\frac{1}{2} \times 4\frac{1}{4}$ | $4 \times 5\frac{3}{4}$ | .90 |
| 3A | $3\frac{1}{4} \times 5\frac{1}{2}$ | $5 \times 7\frac{1}{4}$ | 1.00 |

The Safety Photo Mailer

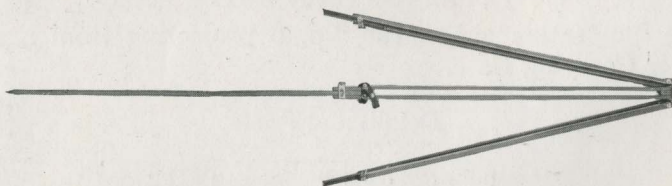
TOUGH Kraft envelope—double scored corrugated board—lock seal. The mailer that insures safe arrival of your prints, and mounted or unmounted enlargements.

| No. | Size Card or Print | Outside Size of Mailer | Price per Dozen |
|--------------------|-------------------------------|--------------------------------------|-----------------|
| A—5 | x 7 or smaller | $6\frac{1}{8} \times 8\frac{1}{8}$ | \$1.08 |
| B—9 $\frac{3}{8}$ | x 11 $\frac{3}{8}$ or smaller | $10\frac{1}{2} \times 12\frac{1}{2}$ | 1.80 |
| C—11 $\frac{7}{8}$ | x 13 $\frac{1}{8}$ or smaller | $13 \times 14\frac{1}{8}$ | 2.10 |
| D—12 $\frac{5}{8}$ | x 15 $\frac{5}{8}$ or smaller | $13\frac{3}{4} \times 16\frac{3}{4}$ | 3.00 |
| E—17 $\frac{1}{4}$ | x 20 $\frac{1}{4}$ or smaller | $18\frac{3}{8} \times 21\frac{3}{8}$ | 4.20 |

Stereo Mounts

Size of Mount, $3\frac{1}{2} \times 7$. . Color, Queen's Grey . . Per 100, \$1.30 . . Per 50, \$0.65

The Flexo Tripod



Two sections. Fixed non-detachable head. Only clear, straight-grained wood is used in its construction. Length, extended, 53 inches; folded, 29 inches. Weight, 18 ounces.

Price, \$2.00

Kodak Metal Tripods

THE Kodak Metal Tripods, which are light, compact and rigid, have telescoping legs of brass tubing. The lower sections, finished in nickel, fit into the upper section which is finished in black enamel.

When closed, the full length ranges in the different models from $11\frac{3}{8}$ to $15\frac{1}{2}$ inches—convincing evidence that they are conveniently carried.

There are six models to select from.

The Nos. 1 and 2 have revolving heads, permitting the camera to swing so as to take in the desired view without moving the tripod. They also have straps for holding the legs in place when closed.

The Nos. 1C and 2C have solid heads; they do not have straps for holding legs.



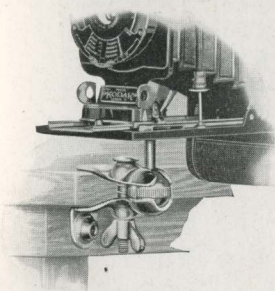
The No. 6 has a special folding head permitting the legs to fold flat. The head contains a hinge so that when folded the three legs of the tripod are parallel to each other rather than set in the usual triangular form. The result is a narrow shape, which with an extremely short length makes the No. 6, when closed, the easiest to carry of all this easily carried family.

The illustration shows the No. 6 projecting from a No. 6 Leather Carrying Case.

Details and Prices

| | Sections | Length | | Weight | Price |
|--|----------|------------------------|------------------------|----------------------------------|--------|
| | | Closed | Extended | | |
| Kodak Metal Tripod No. 0 | 3 | $15\frac{1}{2}$ inches | $39\frac{1}{2}$ inches | 15 ounces | \$2.75 |
| Kodak Metal Tripod No. 1C | 4 | $15\frac{3}{4}$ inches | $48\frac{5}{8}$ inches | $25\frac{1}{2}$ ounces | 4.00 |
| Kodak Metal Tripod No. 1 | 4 | 15 inches | $48\frac{1}{2}$ inches | $24\frac{1}{2}$ ounces | 4.50 |
| Kodak Metal Tripod No. 2C | 5 | $13\frac{1}{4}$ inches | $49\frac{7}{8}$ inches | 26 ounces | 4.50 |
| Kodak Metal Tripod No. 2 | 5 | $13\frac{1}{2}$ inches | $49\frac{1}{2}$ inches | 25 ounces | 5.00 |
| Kodak Metal Tripod No. 6 | 6 | $11\frac{3}{8}$ inches | 40 inches | 24 ounces | 6.50 |
| Leather Carrying Case, for Nos. 0 to 2, inclusive | | | | | 2.70 |
| Ditto, for No. 6 | | | | | 3.15 |
| Rubber Tips, for Metal Tripod Spurs (per set of 3) | | | | | .10 |

The Optipod



THE Optipod is a combined tripod head and felt-protected clamp which may be used effectively as a tripod when clamped to a chair, table, automobile, motorcycle, or any substantial object. It is small and light, slipping readily into the pocket, and may be carried without inconvenience.

The ball and socket joint on the Optipod permits tilting the camera to almost any angle. This feature is especially desirable if the Optipod is used in connection with a tripod for photographing objects at close range, and when it is impossible to place the tripod alone in the desired position.

The Optipod \$1.25

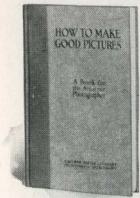
The Kodapod

THE little Kodapod—which is carried easily in the pocket—takes the place of a tripod when a tree, fence, or similar object is near at hand. Its toothed jaws have a bulldog grip that clamps firmly to the wood. By means of a clamping screw, the camera may be adjusted to the correct vertical or horizontal position where it will be securely held. The Kodapod fits any standard tripod socket.



The Kodapod \$1.75

"How to Make Good Pictures"



A PRACTICAL and profusely illustrated book for the amateur that covers in a simple, understandable way every phase of photography that he is likely to be interested in. 184 pages, including 158 illustrations, bound in vellum with board covers.

"How to Make Good Pictures" \$0.50

Kodak Film Clip

THIS clip made of incorrodible metal is designed to secure the maximum amount of grip with its two jaws. Having a width of two inches and a firm grip which prevents the film from slipping, it is particularly adapted for use with large size film but is useful for small film as well. Made in one size only.

Kodak Film Clip \$0.30



Kodak Junior Film Clip No. 1

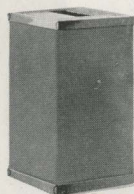
THE No. 1 clip made of incorrodible metal is the most practical for tray development or drying films. Two teeth in jaw to prevent film from slipping, $1\frac{3}{16}$ inches wide. One size only.

Kodak Junior Film Clip No. 1 \$0.15

Eastman Film Developing Clip

A THOROUGHLY dependable clip. Made in two sizes and nickel-plated.

$3\frac{1}{2}$ -inch, per pair \$0.30
5-inch, per pair40



Kodak Candle Lamp

THIS clever little lamp is collapsible and can be packed into very small space when not in use. It is made of special, tested ruby fabric, bound in metal frames and gives a strong, safe light for the darkroom.

Kodak Candle Lamp, with one candle \$0.40
Extra Candles, per dozen40

Kodak Darkroom Lamp

THE Kodak Darkroom Lamp is oil burning, is fitted with both orange and ruby glass, and has an adjustable hinged light shield. It has an unusually broad wick regulated from the outside and gives a soft, steady light for the darkroom.

Kodak Darkroom Lamp \$1.25



Kodak Safelight Lamp

THE Kodak Safelight Lamp is ideal for all darkroom uses, whether the work of the beginner, the advanced amateur, or the professional.

The lamp is supplied with a 5 x 7, Series 1, Safelight for use with film or plates, not highly color sensitive. Safelights of other series may be obtained. It is made of metal, neatly finished.

The lamp is supplied with safelight, electric cord and fittings, excepting 25-watt electric bulb.



| | |
|--|--------|
| Kodak Safelight Lamp | \$3.50 |
| Extra Safelight, 5 x 7, any series | .75 |

Eastman Safelight Lamp

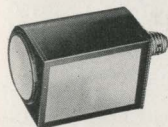
THIS convenient darkroom lamp hangs from an electric cord and fixture and throws the light from a 10-watt bulb directly downward over the work table. Supplied with a 5 x 7 Safelight, Series 2, for use with films or plates, unless otherwise ordered. Strongly constructed of metal.

| | |
|--|--------|
| Eastman Safelight Lamp, without bulb | \$3.00 |
| Extra Safelight, 5 x 7, any series | .75 |



Brownie Safelight Lamp

BUT little larger than the electric bulb it holds, the Brownie Safelight Lamp screws into an electric socket. It is made of japanned metal, has circular safelight in the end, and side safelight as well. Both safelights are the Series 1, and are interchangeable with other series. A 10-watt electric bulb is used, but is not supplied.



| | |
|---|--------|
| Brownie Safelight Lamp | \$1.75 |
| Extra Circular End Safelight (any series), each | .25 |
| Extra Rectangular Safelight (any series), each | .40 |

Safelights for Safelight Lamps

- SERIES 00—For use with developing-out papers (except bromide).
- SERIES 0—For use with bromide paper and with lantern slide plates.
- SERIES 1—For use with films or plates not highly color sensitive.
- SERIES 2—For extra rapid orthochromatic films and plates.
- SERIES 3—For use with red-sensitive panchromatic films and plates.
- SERIES 4—Bright green safelight, for use with ordinary plates, for those who are color blind to red light. Not safe for orthochromatic plates.

Tested Chemicals



CERTAINTY in making negatives and prints depends as much on the quality of your chemicals as on any other one thing. All Kodak chemicals are tested both photographically and for purity before the E. K. C. tested seal is allowed to go on them.

| | | |
|---|--|--------|
| Eastman Chemical Outfit consists of M. Q. and Special Developers, Intensifier, Reducer and Velox Re-developer | | \$0.40 |
| Eastman Special Developer Powders, per package of 5, in sealed glass tubes | | .35 |
| Eastman M. Q. Developer, per package of 5 tubes | | .30 |
| Eastman Hydrochinon Developer Powders, per ½ dozen | | .30 |
| Ditto, per package of 5 powders, in sealed glass tubes | | .30 |
| Eastman Pyro Developer Powders, per ½ dozen | | .25 |
| Ditto, per package of 5 powders, in sealed glass tubes | | .25 |
| Eastman Tropical Developer, 5 powders, in sealed glass tubes | | .40 |
| Elon, per 1 ounce | | .55 |
| Kodolon, per 1 ounce | | .47 |
| Hydrochinon, per 1-ounce can | | .22 |
| Eastman Permanent Crystal Pyro, per 1-ounce bottle | | .27 |
| Velox Re-developer, including bleaching agent, per package of 12 tubes | | 1.08 |
| Hyposulphite of Soda, granular, per pound | | .18 |
| Alum, powdered, per pound | | .20 |
| Kodak Acid Fixing Powder, per pound package | | .25 |
| Ditto, per ½-pound package | | .15 |
| Ditto, per ¼-pound package | | .10 |
| Eastman Intensifier, per glass tube | | .15 |
| Eastman Reducer and Stain Remover, per box of 5 tubes | | .50 |
| Eastman Opaque No. 1, per tube | | .25 |
| Potassium Bromide, granular, per ounce | | .15 |
| Acetic Acid, 28 per cent pure, per 1-pound bottle | | .35 |
| Citric Acid, 4-ounce bottle | | .38 |
| Eastman Tested Sodium Carbonate (desiccated), per 1-pound bottle | | .40 |
| Eastman Tested Sodium Sulphite (desiccated), per 1-pound bottle | | .45 |

For Velox preparations, see page 49. For Solio preparations, see page 50.
For Tank Developer Chemicals, see page 43.

Miscellaneous

| | | | |
|--|--------|--|--------|
| Cable Release (except Vest Pocket), each | \$0.35 | Eastman Scotting Colors consist of three colors, black, white and sepia, per set | \$0.25 |
| Eastman Special Squeegee, 8-inch | 1.00 | Ferrottype Plate, 10 x 14, light | .20 |
| Hard Rubber Stirring Rod | .30 | Ferrottype Plate, 10 x 14, heavy | .30 |
| Finger Tips, set of 3 | .15 | Rubber Focusing Cloth, per yard | \$1.00 |

Terms

THE prices in this catalog are strictly net, except to regular dealers who carry our goods in stock. THESE PRICES ARE, HOWEVER, SUBJECT TO CHANGE WITHOUT NOTICE. For the convenience of our customers, we recommend that they make their purchases from a dealer in photographic goods, as by so doing they can save time and transportation charges.

EASTMAN KODAK COMPANY, ROCHESTER, N. Y.

For results to which you're entitled, use:



"The dependable film in the yellow box"

KODAK is the registered and common-law Trade Mark of the Eastman Kodak Company and cannot be rightfully applied except to goods of their manufacture. When a dealer tries to sell you, under the Kodak name, a camera or films or other goods not of their manufacture, you can be sure that he has an inferior article that he is trying to market on the Kodak reputation

If it isn't an Eastman it isn't a Kodak