



1925

KODAK

The Digitized Kodak Catalog Project (1886 - 1941): A Very Brief History

Most camera collectors at some point in their collecting careers pass through a Kodak phase - some never come out of it. And if there ever was one name that came to be associated with both cameras and collecting, it was Kodak.

George Eastman received his first patent (for coating dry plates) and bought his first manufacturing facility in 1880, and in 1881 he started the Eastman Dry Plate Company. In 1886 he received a patent for the near-mythical Eastman Detective Camera, but it wasn't until 1888 that the first camera bearing the name "Kodak" was introduced.

One of the nice things about collecting Kodak is that the product line is pretty well known, and because the company produced annual catalogs for many years, collectors can be reasonably sure of what they're looking at, when it was made, the variations and so on - presuming that they have access to either the appropriate catalog, or a number of the many books which document Kodak, each to some greater or lesser extent.

But what would be really nice would be to have a complete set of Kodak catalogs in an easily accessible form and readily available. And since the advent of portable computing devices (PC, Macintosh, etc.) that's been possible - except for the difficulty of assembling a complete set of Kodak catalogs in one spot and then scanning them and making the results available.

The idea of digitizing a complete set of Kodak catalogs has kicked around the collecting community for many years. It's been proposed on a number of online forums, during meetings of various photohistory groups, and for years there have been many incomplete "Kodak CDs" on eBay but at best, they only contained a few catalogs - whatever the owner had available. But assembling a complete set of catalogs, then scanning and processing perhaps 3,000 to 4,000 pages, was a daunting task - if not completely overwhelming - and nothing ever came of it.

Until now.

In early 2010, the idea came up again, but this time we - "we" as in "the collecting community" - were lucky. A number of collectors were willing to loan their catalogs to this project and a couple of insane - wait, let's call them "dedicated" - dedicated enthusiasts - neither of whom collected Kodak, but both of whom enjoyed the challenge of such a project - were willing to put in the time and effort to scan and pull together the entire set of catalogs into a full-blown Kodak Catalog Digital Library.

Our initial objective was to include just the annual amateur catalogs, but it turns out that many cameras only appear in certain professional and specialty catalogs. We included as many of those as we could obtain so that almost every Kodak camera made in the US, Canada and Europe, would be documented - at least up to about 1941. After that, it becomes much more difficult as Kodak stopped producing annual catalogs as their product line became increasingly more diversified.

However, even with the additional "non-amateur" catalogs, we weren't completely successful in illustrating "every" camera Kodak ever made. There are an elusive few that might appear in specialty catalogs that we simply couldn't track down. If you can't find one of those odd cameras, that's no doubt why. We may do a revision at some point in the future if someone is willing to loan us a catalog that includes a camera that isn't already recorded.

In this project, a total of 67 catalogs were used from 1886 through 1941 including a number of professional and dealer catalogs, and in some years, two or even three different catalogs to cover all the bases. With the cooperation of a number of dedicated collectors, we were able to pull together all those catalogs and in June 2010, the project started in earnest.

By November 2010, we had scanned everything we needed and eventually all 67 catalogs were then reassembled as image folders and converted to the universally accepted PDF format and finally, converted into individually searchable PDFs which could then be searched globally as a collection.

For those of you interested in the statistics: about 200 hours of scanning time (we never want to hear that sound again), 67 catalogs and 3,908 page scans - which generated 7,917 original and processed images - and 11.4 GB of disk space. Additionally, another 100+ hours of technical development time was needed to convert the digital catalogues into a fully searchable "knowledgebase" that could be launched from most any standard web browser.

The overwhelming number of catalogs was loaned to us by that most remarkable of Kodak collectors, Charlie Kamerman of Eagle Creek, Oregon. Without Charlie, it's very doubtful that this project could even have been attempted.

But as it turned out, even Charlie didn't have all the publications that were needed, but he was able to track down the five that he lacked and was able to secure either a copy or high resolution images that we could work with. And so, our thanks to the contributors of the catalogs and scans that we used:

Charlie Kamerman for the vast majority of catalogs used and all his help,
Steve Shohet for loaning a variety of test catalogs,
Ryerson University (Toronto) for the 1886 Eastman Catalog
George Layne for the 1890 New Kodaks Catalog,
Mike Kessler for the 1891 Dealer Display Catalog,
Ralph London for the 1893 UK Catalog,
Michael Pritchard for the 1897 UK Catalog.

The digital side of the project - also known as "all of the work" - was done by Rob Niederman of Medina, Minnesota, and Milan Zahorcak of Tualatin, Oregon. Remarkably we're still friends and in a few years, we'll probably be able to talk about this project rationally.

And there you have it, a more-or-less done deal. We're fairly sure that it isn't quite perfect, and expect there will be some carping about something or other; but all-in-all, we believe this to be a pretty good product and can now move on to something else.

Our thanks to all of those involved.

Rob Niederman
Milan Zahorcak

Fall, 2011

Kodaks

and Kodak Supplies



1925

EASTMAN KODAK COMPANY

ROCHESTER, NEW YORK

The Kodak City



ENLARGED FROM A NEGATIVE MADE WITH NO. 1A POCKET KODAK,
SERIES II, AND KODAK PORTRAIT ATTACHMENT

Plus Date and Title

KODAK keeps not only the scene, photographically, but also date and title, *autographically*.

With the autographic feature, such a notation can be imprinted on the film at the time of exposure, while the facts are fresh. This inscription remains on the margin of the negative to identify the print later on and to answer the inevitable question, "what?" "when?" or "where?"

Travelers use the autographic feature for recording names of people and of places. Farmers jot down data concerning crops and stock. Engineers supplement their surveys with *autographed* negatives.

A child picture prompts inquiry about the youngster's age at the time. The note on the film margin tells.

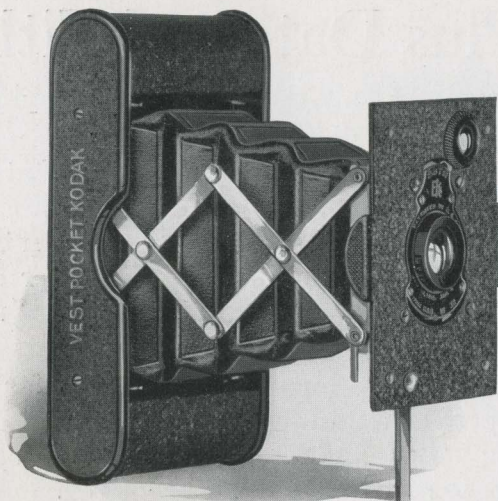
The more interesting a picture, the more urgent the question and the more valuable the *autographic* answer.

This exclusively Eastman device is found on every Folding Brownie and Kodak. These cameras make pictures *plus*.

Kodakery free for a year

TWELVE times a year *Kodakery* magazine offers authentic information about amateur photography. It tells what others are doing and suggests what you should try. The reading is interesting as well as instructive; its 32 pages are packed with pictures.

Kodakery is free for a year to any purchaser of a Kodak or Brownie. Fill out and send in the coupon, first page in the manual that comes with the camera. Regular price is 60 cents a year, an inexpensive means of keeping posted on photography.



Vest Pocket Autographic Kodak

(Fixed Focus Model)

IN the Vest Pocket Kodak, small size is paired with capability. You notice the littleness when you handle the camera; you realize the capability when you see the pictures.

This instrument closes to the size shown opposite. It's so small you wear it like a watch, yet it embodies typical Kodak simplicity, accuracy and reliability. It even has the autographic feature, so that date and title can be written on the film when the exposure is made.

It's a convenient camera to use. One smooth pull snaps the front to position; focus is fixed, always ready for the quick picture.

Smallness doesn't mean weakness in design. The Vest Pocket Kodak is staunch and strong, fit for rough rides in the vacation jacket or on the sportsman's belt. It is made of metal, finished in black enamel, polished nickel and Japan crystal, for durability and good looks.

Shutter speeds are $1/25$ and $1/50$, with adjustments for *bulb*

and *time*. The lens is carefully tested and of sufficient focal length to permit good-sized images and thus avoid foreshortening.

Picture size is $1\frac{5}{8} \times 2\frac{1}{2}$ inches, large enough to show considerable detail. Film costs but a quarter for an eight exposure roll.

The owner of a larger camera often has a Vest Pocket Kodak, too, for a constant companion. It's out of the way until wanted; and then it's emphatically *there*.

Details

Size of pictures: $1\frac{5}{8} \times 2\frac{1}{2}$ inches. Size of Kodak: $1 \times 2\frac{3}{8} \times 4\frac{3}{4}$ inches. Weight: 11 ounces. Capacity without reloading: 8 exposures. Lenses: Meniscus Achromatic; or Rapid Rectilinear, $3\frac{1}{4}$ -inch focus. Shutter: Kodak Ball Bearing No. 0 with finger release only (cable release attachment sold separately). Speeds: $\frac{1}{25}$, $\frac{1}{50}$ second, *time* and *bulb* actions. Brilliant finder; reversible for vertical or horizontal pictures. Body: All metal, Japan Crystal finish; fittings finished in nickel and black enamel. Black bellows. Autographic feature.

Prices

Vest Pocket Autographic Kodak, with Meniscus Achromatic Lens and Kodak Ball Bearing Shutter	\$6.50
With Rapid Rectilinear Lens	8.00
Leather Case for Vest Pocket Kodak90
Leather Case, with strap	1.00
Belt Carrying Case (russet leather)	1.25
Autographic Film Cartridge, 8 exposures, $1\frac{5}{8} \times 2\frac{1}{2}$ (No. A 127)25
Vest Pocket Kodak Cable Release Attachment (see page 61)50
Vest Pocket Kodak Tripod Adapter (see page 58)50
Kodak Portrait Attachment for Meniscus Achromatic Lens (see page 41)50
Kodak Portrait Attachment for Rapid Rectilinear Lens (see page 41)75
Kodak Self Timer (see page 52)	1.25

The prices of cameras and film include the Excise Tax



VEST POCKET KODAK
(FIXED FOCUS)

*Actual size of all models
when closed*

Vest Pocket Autographic Kodak *Special*

(Focusing Model)



MADE AT THREE FEET WITH
REGULAR LENS EQUIPMENT

(Actual Size)

THIS little prodigy is distinguished by fine finish, optical excellence and an unique focusing feature—as well as by small size.

Rich leather makes it a handsome camera. With pride, its owner draws it forth from pocket or handbag. With confidence, too, for it is famous for splendid pictures.

Shutter adjustments are $1/25$, $1/50$, *bulb* and *time*. Of the two Kodak Anastigmats offered, $f.7.7$ and $f.6.9$, the latter admits more light during a wide open exposure. But for sharpness in the negative, either will equal any lens made. Snappy enlargements are therefore obtainable

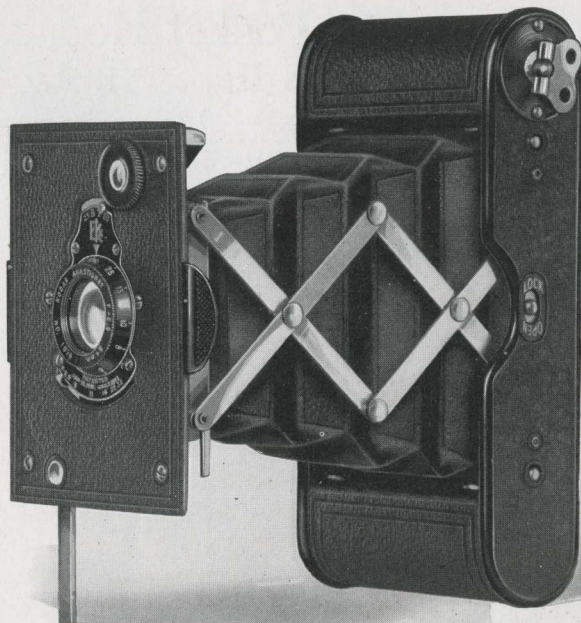
when pictures bigger than $1\frac{5}{8} \times 2\frac{1}{2}$ are desired.

A fractional turn of the lens in its mount sets the focus for any of ten distances—down to three feet. Close-ups are made without the supplementary portrait attachment usually required.

Thus the Vest Pocket Kodak *Special* is big in usefulness though small in size.

Details

Size of pictures: $1\frac{5}{8} \times 2\frac{1}{2}$ inches. Size of Kodak: $1 \times 2\frac{3}{8} \times 4\frac{3}{4}$ inches. Weight: 11 ounces. Capacity without reloading: 8 exposures. Focus: Adjustable. Lenses: Kodak Anastigmat $f.7.7$ and $f.6.9$, $3\frac{3}{8}$ -inch focus. Shutter: Kodak Ball Bearing No. 0 with finger release only (cable release attachment sold separately). Speeds: $\frac{1}{25}$, $\frac{1}{50}$ second, *time* and *bulb* actions. Brilliant finder; reversible for



vertical or horizontal pictures. Body: All metal, covered with Morocco grain leather; fittings finished in nickel and black enamel. Black bellows. Autographic feature.

Prices

Vest Pocket Autographic Kodak <i>Special</i> (focusing model), with Kodak Anastigmat Lens <i>f</i> .7.7, and Kodak Ball Bearing Shutter	\$13.00
With Kodak Anastigmat Lens <i>f</i> .6.9	15.00
Leather Case for Vest Pocket Kodak90
Leather Case, with strap	1.00
Belt Carrying Case (russet leather)	1.25
Autographic Film Cartridge, 8 exposures, $1\frac{5}{8} \times 2\frac{1}{2}$ (No. A 127)25
Vest Pocket Kodak Cable Release Attachment (see page 61)50
Vest Pocket Kodak Tripod Adapter (see page 58)50
Kodak Self Timer (see page 52)	1.25

The prices of cameras and film include the Excise Tax

Nos. 1 and 1A Pocket Kodaks

Series II

(Fixed Focus Models)

THESE cameras are promptness itself. In one motion the bed drops down and the lens comes automatically into focus, ready for the picture.

Pocket Kodaks are compact—they can be carried in the coat. The autographic slot is countersunk, with nothing to



If it isn't an Eastman, it isn't a Kodak



READY IN ONE MOTION

hinder the fingers while dating and titling the film.

No. 1 makes $2\frac{1}{4} \times 3\frac{1}{4}$ pictures; No. 1A, $2\frac{1}{2} \times 4\frac{1}{4}$. Each model has the new Kodex shutter, with speeds of $\frac{1}{25}$, $\frac{1}{50}$, *bulb* and *time*. Each has a reliable lens, thoroughly tested before and after it gets into the camera.

People who recognize mechanical ingenuity praise the Pocket Kodak design; and everyone praises Pocket Kodak pictures.

Details

Size of pictures: No. 1, $2\frac{1}{4} \times 3\frac{1}{4}$ inches; No. 1A, $2\frac{1}{2} \times 4\frac{1}{4}$ inches. Size of Kodak: No. 1, $1\frac{5}{16} \times 3\frac{1}{16} \times 6\frac{7}{16}$ inches; No. 1A, $1\frac{9}{16} \times 3\frac{5}{16} \times 8$ inches. Weight: No. 1, 16 ounces; No. 1A, 22 ounces. Capacity without reloading: No. 1, 6 exposures; No. 1A, 12 exposures. Focus: Fixed. Lens: Meniscus Achromatic. Shutter: Kodex, with finger release. Speeds: $\frac{1}{25}$, $\frac{1}{50}$ second, *time* and *bulb* actions. Brilliant finder; reversible for horizontal or vertical pictures. Two tripod sockets. Body: Aluminum. Covering: No. 1, Levant grain leather; No. 1A, fine seal-grain leather; metal parts finished in nickel and black enamel. Black bellows. Autographic feature.

Prices

Pocket Kodak, Series II (fixed focus), with Meniscus Achromatic Lens and Kodex Shutter	No. 1	No. 1A
Black Sole Leather Case, with strap	\$13.50	\$15.00
Autographic Film Cartridge, 12 exposures (No. A 116) for No. 1A	2.50	3.00
Ditto, 6 exposures (No. A 120) for No. 1; (No. A 116) for No. 1A	.25	.60
Kodak Portrait Attachment (see page 41)75	.75
Kodak Self Timer (see page 52)	1.25	1.25
Cable Release for use with Pocket Kodak when opened35	.35

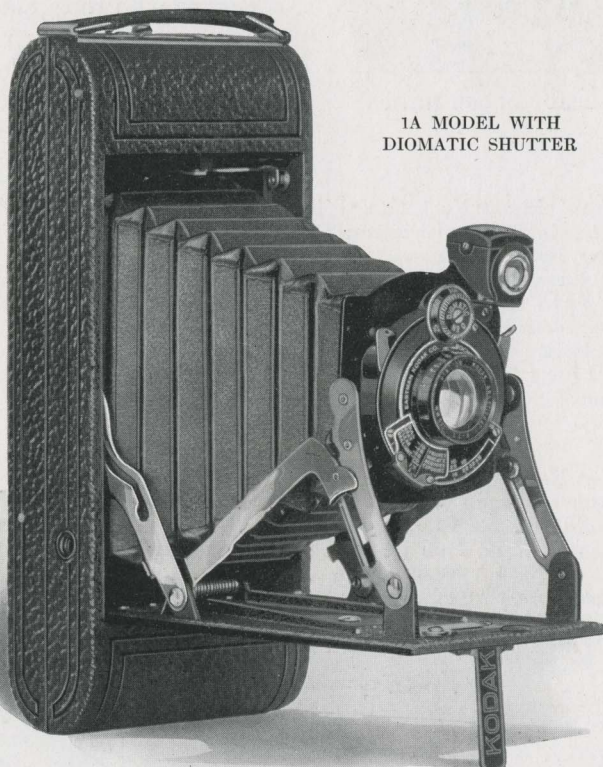
The prices of cameras and film include the Excise Tax

Nos. 1 and 1A Pocket Kodaks

Series II

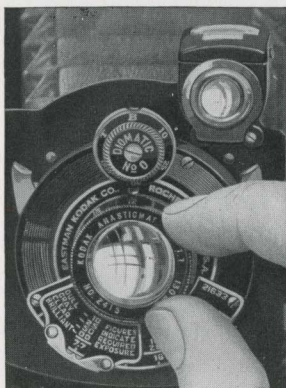
(Focusing Models)

“PROMPT and pRECISE” describes the focusing model Pocket Kodak. PROMPT, because the front snaps into picture position the instant the camera is opened. PRECISE, because the equipment is of superior accuracy.



1A MODEL WITH
DIOMATIC SHUTTER

If it isn't an Eastman, it isn't a Kodak



FOCUS IS AT YOUR
FINGERTIPS

The Diomatic shutter is a watch-like mechanism of impressive accuracy, with adjustments for $1/10$, $1/25$, $1/50$, $1/100$. A sliding timing scale tells which stop or speed will suit the light. Proper exposure is easy; hence pleasing pictures are easy.

Companion to this shutter is the Kodak Anastigmat $f.7.7$, a lens that is known for sharp negatives.

Kodex shutter speeds are $1/25$ and $1/50$, and the Kodar lens $f.7.9$ is a recent achievement of Eastman optical experts.

Either lens is swiftly set for any indicated distance by a fingertip turn of its mount. That's focusing made easy.

No. 1 model is for $2\frac{1}{4} \times 3\frac{1}{4}$ pictures; No. 1A for $2\frac{1}{2} \times 4\frac{1}{4}$. Both are autographic. Both are "prompt and precise."

Details

Size of pictures: No. 1, $2\frac{1}{4} \times 3\frac{1}{4}$ inches; No. 1A, $2\frac{1}{2} \times 4\frac{1}{4}$ inches. Size of Kodak: No. 1, $1\frac{5}{16} \times 3\frac{1}{16} \times 6\frac{7}{16}$ inches; No. 1A, $1\frac{9}{16} \times 3\frac{5}{16} \times 8$ inches. Weight: No. 1, 17 ounces; No. 1A, 23 ounces. Capacity without reloading: No. 1, 6 exposures; No. 1A, 12 exposures. Focus: Adjustable only. Lenses: Kodar $f.7.9$, $4\frac{3}{8}$ -inch focus on No. 1; $5\frac{1}{4}$ -inch focus on No. 1A; or Kodak Anastigmat $f.7.7$, $4\frac{1}{4}$ -inch focus on No. 1; 5-inch focus on No. 1A. Shutters: Kodex, speeds $\frac{1}{25}$ and $\frac{1}{50}$ second; Diomatic, speeds $\frac{1}{10}$, $\frac{1}{25}$, $\frac{1}{50}$ and $\frac{1}{100}$ second; both with finger release, *time* and *bulb* actions. Brilliant finder; reversible for horizontal or vertical pictures. Two tripod sockets. Body: Aluminum. Covering: No. 1, Levant grain leather; No. 1A, fine seal-grain leather; metal parts finished in nickel and black enamel. Black bellows. Autographic feature.

Prices

	No. 1	No. 1A
Pocket Kodak, Series II (focusing model), with Kodar Lens $f.7.9$, and Kodex Shutter	\$17.00	\$19.00
With Kodak Anastigmat Lens $f.7.7$, and Diomatic Shutter	24.00	26.00
Black Sole Leather Case, with strap	2.50	3.00
Autographic Film Cartridge, 12 exposures (No. A 116) for No. 1A		.60
Ditto, 6 exposures (No. A 120) for No. 1; (No. A 116) for No. 1A	.25	.30
Kodak Portrait Attachment (see page 41)	.75	.75
Kodak Self Timer (see page 52)	1.25	1.25
Cable Release for use with Pocket Kodak when opened	.35	.35

The prices of cameras and film include the Excise Tax

Nos. 1 and 1A Autographic Kodak Juniors

JUNIORS are sturdy and simple in construction, easy and sure in operation. They're favorites with amateurs who wish photography to provide much fun without much fuss.

Nos. 1 and 1A make $2\frac{1}{4} \times 3\frac{1}{4}$ and $2\frac{1}{2} \times 4\frac{1}{4}$ pictures



1A JUNIOR WITH
DIOMATIC SHUTTER

If it isn't an Eastman, it isn't a Kodak



The "stop" is set by so placing the scale that the kind of light (dull, gray, clear or brilliant) is opposite the required shutter speed. Or, do it the other way round.

You pick the right exposure easily; the Diomatic clicks it off precisely.

respectively. One fixed focus model and four focusing models are listed in each size.

Kodak lens *f*.7.9 with Kodex shutter (speeds $\frac{1}{25}$, $\frac{1}{50}$) is a new combination. Kodak Anastigmat *f*.7.7 with Diomatic shutter (speeds $\frac{1}{10}$, $\frac{1}{25}$, $\frac{1}{50}$, $\frac{1}{100}$) is a few months older and is already a first choice among Kodak enthusiasts.

Whichever equipment it carries, a Kodak Junior will stand the test for good looks, good design and good pictures.

Details

Size of pictures: No. 1, $2\frac{1}{4} \times 3\frac{1}{4}$ inches; No. 1A, $2\frac{1}{2} \times 4\frac{1}{4}$ inches. Size of Kodak: No. 1, $1\frac{7}{16} \times 3\frac{5}{8} \times 6\frac{5}{8}$ inches; No. 1A, $1\frac{5}{8} \times 3\frac{3}{4} \times 8$ inches. Weight: No. 1, 22 ounces; No. 1A, 28 ounces. Capacity without reloading: No. 1, 6 exposures; No. 1A, 12 exposures. Focus: Fixed (with Meniscus Achromatic Lens only) or Adjustable (with any listed lens). Lenses: Meniscus Achromatic; Rapid Rectilinear, $4\frac{3}{8}$ -inch focus on No. 1; $5\frac{3}{8}$ -inch focus on No. 1A; Kodak *f*.7.9, $4\frac{3}{8}$ -inch focus on No. 1; $5\frac{1}{4}$ -inch focus on No. 1A; or Kodak Anastigmat *f*.7.7, $4\frac{1}{4}$ -inch focus on No. 1; 5-inch focus on No. 1A. Shutters: Kodex, speeds $\frac{1}{25}$ and $\frac{1}{50}$ second; Diomatic, speeds $\frac{1}{10}$, $\frac{1}{25}$, $\frac{1}{50}$, $\frac{1}{100}$ second; both with cable and finger release, *time* and *bulb* actions. Brilliant finder; reversible for vertical or horizontal pictures. Two tripod sockets. Body: Covered with fine seal-grain leather; metal parts finished in nickel and black enamel. Black bellows. Autographic feature.

Prices

	No. 1	No. 1A
Autographic Kodak Junior (fixed focus), with Meniscus Achromatic Lens and Kodex Shutter	\$12.00	\$13.00
Autographic Kodak Junior (focusing model, with scale), with Meniscus Achromatic Lens and Kodex Shutter	12.00	13.00
With Rapid Rectilinear Lens	14.00	15.00
With Kodak Lens <i>f</i> .7.9	15.00	16.00
With Kodak Anastigmat Lens <i>f</i> .7.7, and Diomatic Shutter	23.00	24.00
Black Sole Leather Case, with strap	3.00	3.00
Autographic Film Cartridge, 12 exposures (No. A 116) for No. 1A60
Ditto, 6 exposures (No. A 120) for No. 1; (No. A 116) for No. 1A25	.30
Kodak Portrait Attachment (see page 41)75	.75
Kodak Self Timer (see page 52)	1.25	1.25

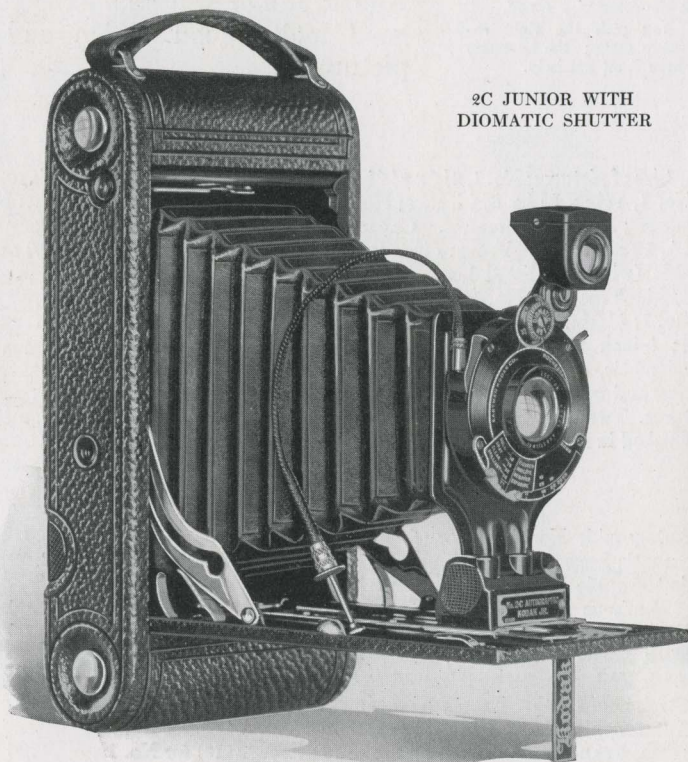
The prices of cameras and film include the Excise Tax

Nos. 2C and 3A Autographic Kodak Juniors

HERE are Juniors that make larger pictures. The 3A size is $3\frac{1}{4} \times 5\frac{1}{2}$, commonly called "postcard." The 2C size is but slightly smaller: $2\frac{7}{8} \times 4\frac{7}{8}$.

There's a 2C or 3A Junior to satisfy almost anyone; two different shutters, four different lenses.

The Kodex shutter has two speeds: $1/25$, $1/50$, while the



2C JUNIOR WITH
DIOMATIC SHUTTER

If it isn't an Eastman, it isn't a Kodak

Diomatic has four: $1/10$, $1/25$, $1/50$, $1/100$.

Among the lenses, Meniscus Achromatic and Rapid Rectilinear are familiar old names. Kodar $f.7.9$ is a new lens, of advanced design. Kodak Anastigmat $f.7.7$ has become famous for sharp negatives and for the correspondingly sharp prints which they produce.

Pick any Junior from the list below and it will be a handy, handsome camera. All of them make highly satisfactory pictures. With the faster lenses and shutters there's a little more of the speed that is often useful, and there's a superior sharpness that is particularly noticeable in enlargements.



A KODAK CASE
IS CONVENIENT
AND STYLISH

Details

Size of pictures: No. 2C, $2\frac{7}{8} \times 4\frac{7}{8}$ inches; No. 3A, $3\frac{1}{4} \times 5\frac{1}{2}$ inches. Size of Kodak: No. 2C, $1\frac{3}{4} \times 4\frac{3}{8} \times 8\frac{3}{4}$ inches; No. 3A, $1\frac{15}{16} \times 5\frac{1}{8} \times 9\frac{3}{4}$ inches. Weight: No. 2C, $33\frac{1}{2}$ ounces; No. 3A, $36\frac{1}{2}$ ounces. Capacity without reloading: Both, 10 exposures. Focus: Adjustable only, with automatic focusing lock. Lenses: Meniscus Achromatic; Rapid Rectilinear, $5\frac{5}{8}$ -inch focus on No. 2C; $6\frac{5}{8}$ -inch focus on No. 3A; Kodar $f.7.9$, $6\frac{1}{4}$ -inch focus on No. 2C; $6\frac{7}{8}$ -inch focus on No. 3A; or Kodak Anastigmat $f.7.7$, 6-inch focus on No. 2C; $6\frac{3}{4}$ -inch focus on No. 3A. Shutters: Kodex, speeds $\frac{1}{25}$, $\frac{1}{50}$ second; Diomatic, speeds $\frac{1}{10}$, $\frac{1}{25}$, $\frac{1}{50}$, $\frac{1}{100}$ second; both with cable and finger release, *time* and *bulb* actions. Brilliant finder; reversible for vertical or horizontal pictures. Two tripod sockets. Body: Back and bed of aluminum, covered with fine seal-grain leather; metal parts finished in nickel and black enamel. Black bellows. Autographic feature.

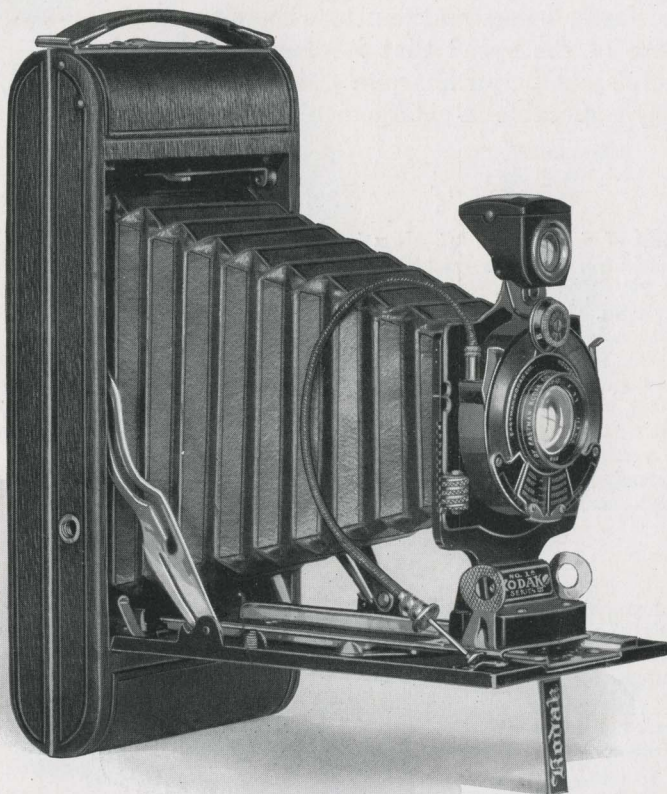
Prices

Autographic Kodak Junior, with Meniscus Achromatic Lens and Kodex Shutter	No. 2C	No. 3A
With Rapid Rectilinear Lens	\$16.00	\$17.50
With Kodar Lens $f.7.9$	18.00	20.00
With Kodak Anastigmat Lens $f.7.7$, and Diomatic Shutter	19.00	21.00
Black Sole Leather Case, with strap	27.00	29.00
Autographic Film Cartridge, 10 exposures (No. A 130) for No. 2C; (No. A 122) for No. 3A	3.25	3.75
Ditto, 6 exposures	.75	.90
Kodak Portrait Attachment (see page 41)	.45	.55
Kodak Self Timer (see page 52)	.75	.75
	1.25	1.25

The prices of cameras and film include the Excise Tax

Nos. 1A and 2C Kodaks Series III

SERIES Threes are the latest Kodaks out and they rank among the leaders of the line. Trim form, luxurious leather and polished fittings give them a rich appearance. Precise shutters and sharp-cutting lenses give them rare photographic capabilities. They're replete with refinements that definitely help toward attractive pictures.



If it isn't an Eastman, it isn't a Kodak

For controlling foregrounds, the rising front is a valuable convenience. Focus is set by a smooth movement of a thumb lever—convenience again.

The Diomatic shutter has four snapshot adjustments, $\frac{1}{10}$ to $\frac{1}{100}$, and its sliding timing scale tells which speed and stop to use. Correct exposure is readily determined, then accurately rendered.

This shutter is found only with the Kodak Anastigmat lens *f.7.7*—an appropriate companionship on a high grade camera.

Since the autographic slot is countersunk, the hand is unhampered when writing date and title on the film.

Though these cameras are all dressed up, they work willingly and well.

Details

Size of pictures: No. 1A, $2\frac{1}{2} \times 4\frac{1}{4}$ inches; No. 2C, $2\frac{7}{8} \times 4\frac{7}{8}$ inches. Size of Kodak: No. 1A, $1\frac{9}{16} \times 3\frac{5}{16} \times 8$ inches; No. 2C, $1\frac{9}{16} \times 3\frac{7}{8} \times 8\frac{3}{4}$ inches. Weight: No. 1A, $26\frac{1}{2}$ ounces; No. 2C, 32 ounces. Capacity without reloading: No. 1A, 12 exposures; No. 2C, 10 exposures. Focus: Adjustable only, with lever focusing device. Lens: Kodak Anastigmat *f.7.7*, 5-inch focus on No. 1A; 6-inch focus on No. 2C. Shutter: Diomatic, with cable and finger release. Speeds: $\frac{1}{10}$, $\frac{1}{25}$, $\frac{1}{50}$, $\frac{1}{100}$ second, *time* and *bulb* actions. Brilliant finder; reversible for horizontal or vertical pictures. Two tripod sockets. Body: Aluminum, covered with baby crepe grain cowhide; metal parts finished in nickel and black enamel. Rising and falling front. Black bellows. Autographic feature.

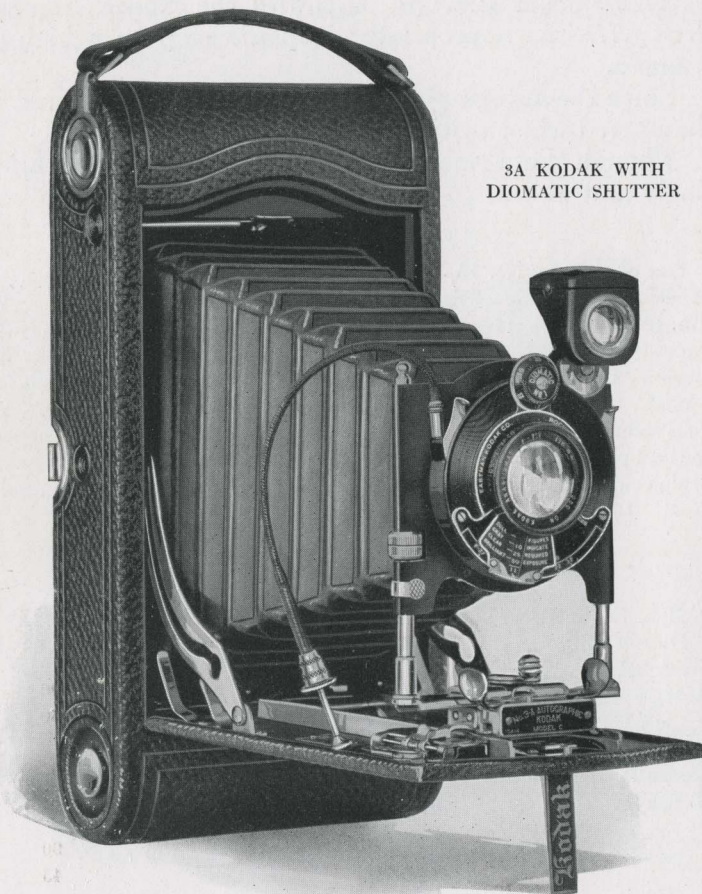
Prices

Kodak, Series III, with Kodak Anastigmat Lens <i>f.7.7</i> , and	No. 1A	No. 2C
Diomatic Shutter	\$30.00	\$33.00
Black Sole Leather Case, with strap	3.00	3.50
Autographic Film Cartridge, 12 exposures (No. A 116) for No.		
1A; 10 exposures (No. A 130) for No. 2C60	.75
Ditto, 6 exposures (No. A 116) for No. 1A; (No. A 130) for No. 2C	.30	.45
Kodak Portrait Attachment (see page 41)75	.75
Kodak Self Timer (see page 52)	1.25	1.25

The prices of cameras and film include the Excise Tax

Nos. 3 and 3A Autographic Kodaks

THE 3A (postcard) Kodak and its running-mate, the No. 3, are old favorites. Yet they're strictly up-to-date, with Kodex shutter and Kodar lens *f*.7.9, Diomatic shutter and Kodak Anastigmat lens *f*.7.7.



3A KODAK WITH
DIOMATIC SHUTTER

If it isn't an Eastman, it isn't a Kodak

While these cameras are made for roll film, a combination back (page 50) can be added. This feature pleases the earnest amateur who sometimes wishes to arrange the image on a ground glass and to use plates or Kodak Cut Film (*Super Speed* is extra fast).

The rising, falling and sliding front encourages careful composition, the mark of an excellent photograph.

And excellent photographs are responsible for the popularity of the 3 and 3A Kodaks.

Details

Size of pictures: No. 3, $3\frac{1}{4} \times 4\frac{1}{4}$ inches; No. 3A, $3\frac{1}{4} \times 5\frac{1}{2}$ inches. Size of Kodak: No. 3, $1\frac{3}{4} \times 4\frac{1}{2} \times 7\frac{1}{2}$ inches; No. 3A, $2 \times 4\frac{3}{4} \times 9\frac{1}{2}$ inches. Weight: No. 3, 30 ounces; No. 3A, 40 ounces. Capacity without reloading: No. 3, 12 exposures; No. 3A, 10 exposures. Focus: Adjustable only, with automatic focusing lock. No. 3A has double focusing scale for films or plates. Lenses: Rapid Rectilinear, $6\frac{5}{8}$ -inch focus on No. 3A; Kodar *f*.7.9, $5\frac{1}{4}$ -inch focus on No. 3; $6\frac{7}{8}$ -inch focus on No. 3A; or Kodak Anastigmat *f*.7.7, 5-inch focus on No. 3; $6\frac{3}{4}$ -inch focus on No. 3A. Shutters: Kodex, speeds $\frac{1}{25}$, $\frac{1}{50}$ second; Diomatic, speeds $\frac{1}{10}$, $\frac{1}{25}$, $\frac{1}{50}$, $\frac{1}{100}$ second; both with cable and finger release, *time* and *bulb* actions. Brilliant finder; reversible for vertical or horizontal pictures. Two tripod sockets. Body: Back and bed of aluminum, covered with fine seal-grain leather; metal parts finished in nickel and black enamel. Rising, falling and sliding front. Black bellows. Autographic feature.

Prices

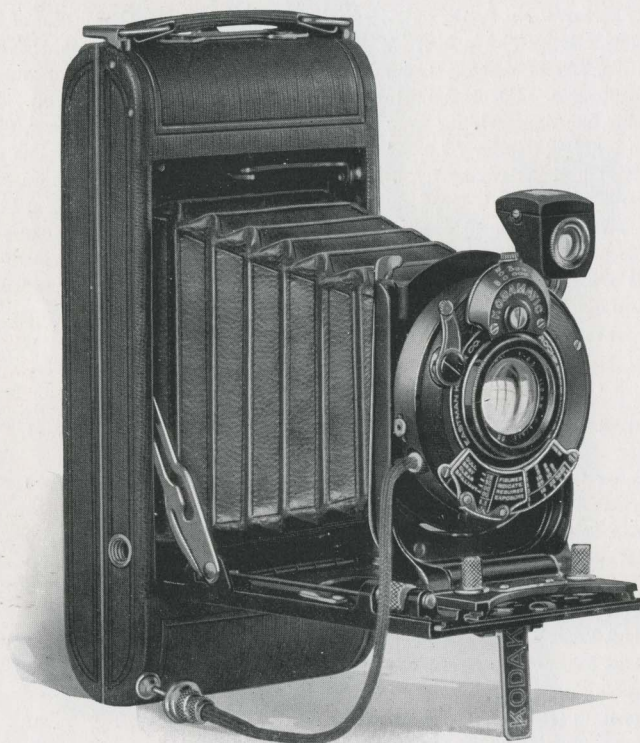
Autographic Kodak, with Rapid Rectilinear Lens and Kodex Shutter	No. 3	No. 3A
Shutter		\$22.50
With Kodar Lens <i>f</i> .7.9	\$20.00	23.50
With Kodak Anastigmat Lens <i>f</i> .7.7, and Diomatic Shutter	28.00	31.50
Black Sole Leather Case, with strap	3.50	4.00
Combination Back for cut film or plates	4.00	4.00
Kodak Double Plate Holders, each	1.50	1.50
Kodak Cut Film Sheaths, each	.10	.15
Kodak Cut Film, package of 12	.67	.93
Kodak Cut Film, <i>Super Speed</i> , package of 12	.77	1.03
Autographic Film Cartridge, 12 exposures (No. A 118) for No. 3;		
10 exposures (No. A 122) for No. 3A	.90	.90
Ditto, 6 exposures	.45	.55
Kodak Portrait Attachment (see page 41)	.75	.75
Kodak Self Timer (see page 52)	1.25	1.25

The prices of cameras and film include the Excise Tax

No. 1 Autographic Kodak *Special*

IN the camera world, *Special* Kodaks comprise the smart set—pride of the experts who make them, pride of the people who carry them.

Examine a No. 1 *Special* and you'll marvel that a little pocket instrument can include so many photographic refinements. Use a No. 1 *Special* and you'll realize how these refinements count toward superior pictures.



If it isn't an Eastman, it isn't a Kodak

There's a rising front, for reducing foreground when the subject is tall; and a worm screw by which the thumb easily adjusts the focus.

There's the Kodak Anastigmat lens *f*.6.3, fast and sharp-cutting. Its negatives are crisp and keen—when $2\frac{1}{4} \times 3\frac{1}{4}$ prints won't serve, you can get striking enlargements.

The Kodamatic shutter, built like a watch, ticks off accurate exposures of $\frac{1}{2}$ to $\frac{1}{200}$ of a second, seven in all. Coupled with the Kodamatic is a sliding timing scale, to simplify selection of the proper speed and stop.

Such superior lens and shutter equipment promises pictures of corresponding excellence—and produces them.

The No. 1 *Special* has an aluminum body and a beautiful finish of real sealskin, black enamel, polished nickel. It's compact to carry, and complete with conveniences that help to make each picture a little masterpiece.

Details

Size of pictures: $2\frac{1}{4} \times 3\frac{1}{4}$ inches. Size of Kodak: $1\frac{5}{16} \times 3\frac{1}{16} \times 6\frac{7}{16}$ inches. Weight: 18 ounces. Capacity without reloading: 6 exposures. Focus: Adjustable only, with screw focusing device. Lenses: Kodak Anastigmat *f*.6.3, $4\frac{3}{8}$ -inch focus; or Bausch & Lomb Tessar Series Ic *f*.4.5, No. 12, of $3\frac{5}{8}$ -inch focus. Shutter: Kodamatic with cable release, seven speeds, from $\frac{1}{200}$ to $\frac{1}{2}$ second, *time* and *bulb* actions. Brilliant finder; reversible for vertical or horizontal pictures. Two tripod sockets. Body: Aluminum, covered with finest quality genuine sealskin; metal parts finished in nickel and black enamel. Black bellows. Autographic feature.

Prices

No. 1 Autographic Kodak <i>Special</i> , with Kodak Anastigmat Lens <i>f</i> .6.3, and Kodamatic Shutter	\$40.00
With Bausch & Lomb Tessar Series Ic Lens <i>f</i> .4.5	61.00
Long-grain Leather, Velvet-lined Case, with strap	3.75
Autographic Film Cartridge, 6 exposures (No. A 120)25
Kodak Portrait Attachment (see page 41)75
Kodak Self Timer (see page 52)	1.25

The prices of cameras and film include the Excise Tax

No. 1A
Autographic Kodak Special

SNAPSHOTS in the shade and exciting action scenes are both within the 1A *Special's* scope. Its Kodamatic shutter has seven accurate speeds, $1/2$ to $1/200$. Its lens is fast, a Kodak



If it isn't an Eastman, it isn't a Kodak

Anastigmat *f.6.3*, unexcelled for sharply defined negatives.

Properly enough, such splendid equipment is in a splendid setting. The aluminum body is covered with finest sealskin, artistically tooled, trimmed with nickel and enamel. Everyone must admire this camera's appearance—and respect its picture-making prowess.

$2\frac{1}{2} \times 4\frac{1}{4}$ is a favorite size for contact prints and 1A *Special* negatives are so sharp that they make most excellent enlargements.

Success is simplified by the Kodamatic shutter's sliding timing scale, to show which stop or speed should be employed. The Kodak Range Finder is an aid in focusing. A rising front helps to place the subject properly on the film. These definitely useful features make the 1A *Special* easy to operate. It has everything that the exacting amateur wants for the kind of pictures he wants.

Details

Size of pictures: $2\frac{1}{2} \times 4\frac{1}{4}$ inches. Size of Kodak: $1\frac{1}{2} \times 3\frac{3}{16} \times 8$ inches. Weight: 25 ounces. Capacity without reloading: 12 exposures. Focus: Adjustable only, with screw focusing device. Lens: Kodak Anastigmat *f.6.3*, 5-inch focus. Shutter: Kodamatic with cable release, seven speeds, from $\frac{1}{200}$ to $\frac{1}{2}$ second, *time* and *bulb* actions. Brilliant finder; reversible for horizontal or vertical pictures. Two tripod sockets. Body: Aluminum, covered with finest quality genuine sealskin; metal parts finished in nickel and black enamel. Range Finder. Rising and falling front. Black bellows. Autographic feature.

Prices

No. 1A Autographic Kodak <i>Special</i> , with Kodak Anastigmat Lens <i>f.6.3</i> , and Kodamatic Shutter	\$55.00
Long-grain Leather, Velvet-lined Case, with strap	4.50
Autographic Film Cartridge, 12 exposures (No. A 116)60
Ditto, 6 exposures30
Kodak Portrait Attachment (see page 41)75
Kodak Self Timer (see page 52)	1.25

The prices of cameras and film include the Excise Tax

No. 2C
Autographic Kodak *Special*

EVEN when closed, the 2C *Special* looks the part; it bears the stamp of style. Opened, it reveals a variety of photo-



If it isn't an Eastman, it isn't a Kodak

graphic conveniences, the kind that make excellent pictures easier to obtain.

Seven Kodamatic shutter speeds, $1/2$ to $1/150$, each one accurate, cover a long list of picture possibilities. And the sliding timing scale simplifies correct exposure by selecting the stop and speed that are right for existing light conditions.

On dull days a slow snapshot with the Kodak Anastigmat at $f.6.3$ is a frequent substitute for *bulb* or *time*. And at any opening, this lens justifies its renown for sharp negatives.

To aid in composition, there's the rising front. To aid in focusing there's the Kodak Range Finder. Picture size is $2\frac{7}{8} \times 4\frac{1}{8}$ inches, an oblong area that fits the view.

Genuine sealskin over an aluminum body makes the 2C *Special* richly handsome. It's a pleasure to carry and to use, and its pictures prove its real efficiency.

Details

Size of pictures: $2\frac{7}{8} \times 4\frac{1}{8}$ inches. Size of Kodak: $1\frac{1}{16} \times 3\frac{3}{8} \times 8\frac{3}{4}$ inches. Weight: 32 ounces. Capacity without reloading: 10 exposures. Focus: Adjustable only, with screw focusing device. Lens: Kodak Anastigmat $f.6.3$, 6-inch focus. Shutter: Kodamatic with cable release, seven speeds, from $1/150$ to $1/2$ second, *time* and *bulb* actions. Brilliant finder; reversible for horizontal or vertical pictures. Two tripod sockets. Body: Aluminum, covered with finest quality genuine sealskin; metal parts finished in nickel and black enamel. Range Finder. Rising and falling front. Black bellows. Autographic feature.

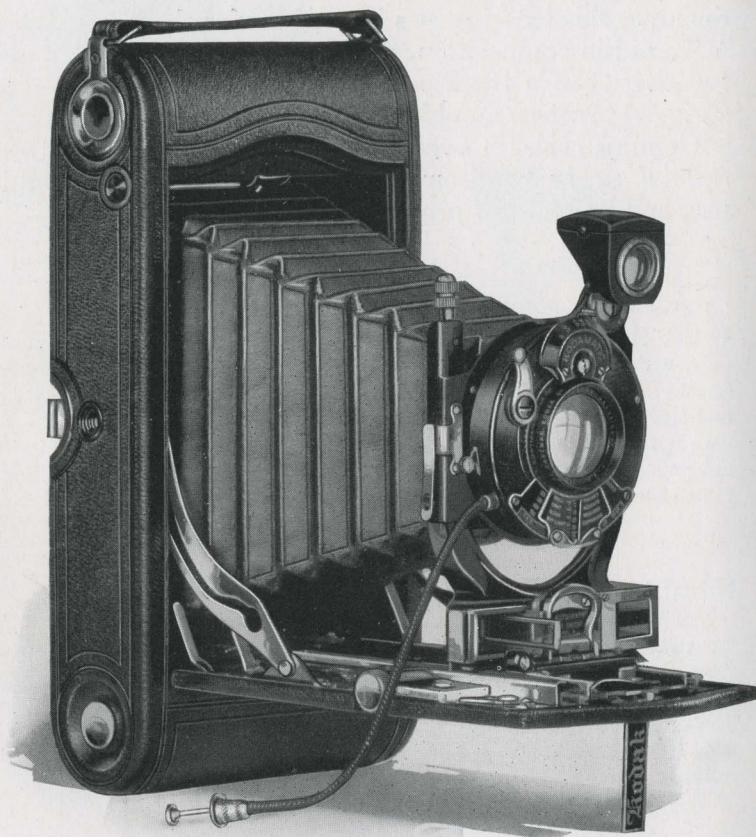
Prices

No. 2C Autographic Kodak <i>Special</i> , with Kodak Anastigmat Lens $f.6.3$, and Kodamatic Shutter	\$58.00
Long-grain Leather, Velvet-lined Case, with strap	5.00
Autographic Film Cartridge, 10 exposures (No. A 130)75
Ditto, 6 exposures45
Kodak Portrait Attachment (see page 41)75
Kodak Self Timer (see page 52)	1.25

The prices of cameras and film include the Excise Tax

Nos. 3 and 3A
Autographic Kodaks Special

WITH special finish, special features and special photographic scope, these cameras live right up to their name. Their lens and shutter—Kodak Anastigmat *f*.6.3 and seven-



If it isn't an Eastman, it isn't a Kodak

speed Kodamatic—clearly fit them for fame as picture-makers.

A No. 3 or 3A *Special* is the very camera that a devoted amateur should select. With the Combination Back (page 50) he can focus on a ground glass and use Kodak Cut Film or plates. It's a feature which makes these two cameras the most versatile of the Kodak *Specials*—and that's the final word in camera praise.

Details

Size of pictures: No. 3, $3\frac{1}{4} \times 4\frac{1}{4}$ inches; No. 3A, $3\frac{1}{4} \times 5\frac{1}{2}$ inches. Size of Kodak: No. 3, $1\frac{7}{8} \times 4\frac{1}{2} \times 8$ inches; No. 3A, $2 \times 4\frac{3}{4} \times 9\frac{1}{2}$ inches. Weight: No. 3, 34 ounces; No. 3A, 46 $\frac{1}{2}$ ounces. Capacity without reloading: No. 3, 12 exposures; No. 3A, 10 exposures. Focus: Adjustable, with rack and pinion. No. 3 equipped with spirit level; No. 3A, with Kodak Range Finder. Lenses: Kodak Anastigmat *f*.6.3, 5-inch focus on No. 3; 6 $\frac{5}{8}$ -inch focus on No. 3A; Bausch & Lomb Kodak Anastigmat *f*.6.3, lens No. 2 of $5\frac{1}{4}$ -inch focus on No. 3; lens No. 4 of 7-inch focus on No. 3A; or Bausch & Lomb Tessar Series IIb *f*.6.3, lens No. 4 of $5\frac{1}{4}$ -inch focus on No. 3; lens No. 5K of 7-inch focus on No. 3A. Shutter: Kodamatic, with cable and finger release; seven speeds, No. 3, from $\frac{1}{200}$ to $\frac{1}{2}$ second; No. 3A, $\frac{1}{150}$ to $\frac{1}{2}$ second; *time* and *bulb* actions. Brilliant finder; reversible for horizontal or vertical pictures. Two tripod sockets. Body: Back and bed of aluminum, covered with genuine Persian Morocco; metal parts finished in nickel and black enamel. Rising and falling front on both; also sliding front on No. 3. Black bellows. Autographic feature.

Prices

Autographic Kodak <i>Special</i> , with Kodak Anastigmat Lens <i>f</i> .6.3 and Kodamatic Shutter	No. 3	No. 3A
With Bausch & Lomb Kodak Anastigmat Lens <i>f</i> .6.3	\$55.00	\$65.00
With Bausch & Lomb Tessar Series IIb Lens <i>f</i> .6.3	70.00	85.00
Grain Leather, Velvet-lined Case, with strap	80.00	104.00
Combination Back for cut film or plates	4.75	5.25
Kodak Double Plate Holders, each	4.50	5.00
Kodak Cut Film Sheaths, each	1.50	1.50
Kodak Cut Film, package of 1210	.15
Kodak Cut Film, <i>Super Speed</i> , package of 1267	.93
Autographic Film Cartridge, 12 exposures (No. A 118) for No. 3; 10 exposures (No. A 122) for No. 3A77	1.03
Ditto, 6 exposures90	.90
Kodak Portrait Attachment (see page 41)45	.55
Kodak Self Timer (see page 52)75	.75
	1.25	1.25

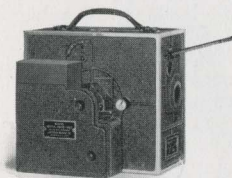
The prices of cameras and film include the Excise Tax

Ciné-Kodak Makes Motion Pictures

YOU can make motion pictures; enjoy photography's biggest thrill. The Ciné-Kodak converts cinematography into an amateur's pastime.

For easy operation the Ciné-Kodak rivals a "still" camera, as a demonstration will prove. And there's multiplied pleasure in recording a complete incident, *in motion*, to project at home on the screen.

Compared to outfits using standard width film, the Ciné-Kodak reduces the cost of the finished picture by over 80 per cent—an impressive argument for motion pictures the Kodak way.



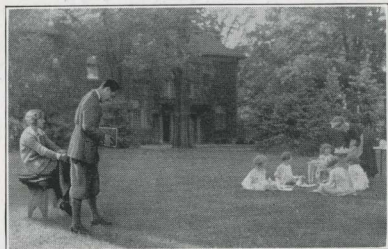
THE CINÉ-KODAK

While the Ciné-Kodak is supplied with either crank and tripod or motor drive, the latter equipment offers many advantages. *You press the button; we do the rest.* "The rest" is paid for when you buy the film. Without further fee, the exposed roll is developed and reversed in Eastman laboratories and returned postpaid, ready for projection.

Supplementing personal pictures of the family's fun, children's tricks and exciting sports, one can show professional dramas, comedies, cartoons and educationals, rented from Kodascope Libraries, Inc., at moderate rates.

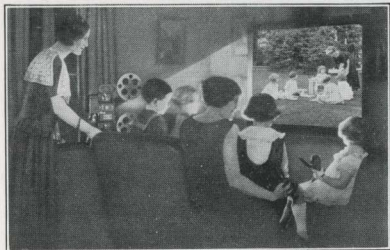
The Kodascope is an electrically driven projector with a 56-watt lamp, filling brilliantly a 30x40-inch screen at 18 feet. On the 56-watt model a safety attachment permits stopping the action for a longer look at any point.

For use in large rooms there is a 200-watt Kodascope, which gives a six-foot image at 33 feet and at 23 feet fills the 39 x 52-inch screen. Either model accommodates 400 feet



THE KODASCOPE

Kodascope Projects Motion Pictures



of 16 millimeter film, equivalent in projection time (about 16 minutes) to 1000 feet of standard width film.

Thread the film in the Kodascope, turn the switches and then sit down and enjoy the picture.

Details

CINÉ-KODAK—Size: $8 \times 4\frac{5}{8} \times 8\frac{5}{8}$. Weight: $7\frac{1}{4}$ pounds. Capacity without reloading: 100 feet daylight loading Safety film, sufficient for 4 minutes continuous action. Lens: Kodak Anastigmat *f*3.5. Body: Aluminum.

KODAK MOTOR DRIVE UNIT—Weight: $4\frac{7}{8}$ pounds. Size: $6\frac{3}{8} \times 2\frac{1}{8} \times 7\frac{7}{8}$. Two volt motor.

KODASCOPE—Size: $18\frac{1}{2} \times 14\frac{7}{8} \times 10\frac{3}{8}$ inches. Weight: 20 pounds. Lens: 50 millimeter focus. Illumination and power taken from any house circuit, alternating or direct current, 105 to 125 volts.

Prices

CINÉ-KODAK OUTFIT

Ciné-Kodak, including Excise Tax	\$125.00
Kodak Motor Drive Unit, with Battery and Charging Outfit	25.00
Tripod	25.00
Kodascope (56-watt lamp) and Splicer	160.00
Kodascope (200-watt lamp) and Splicer	180.00
Screen No. 1 (30 x 40 inches)	25.00
Screen No. 2 (39 x 52 inches)	35.00
Complete outfit: Ciné-Kodak with either Motor Drive or Tripod and Crank, Kodascope (56-watt lamp), Splicer and 30 x 40-inch Screen	335.00
Complete outfit as above but with Kodascope (200-watt lamp) and 39 x 52-inch Screen	365.00

CINÉ-KODAK FILM (Price includes finishing and return transportation)

100-foot Roll	\$6.00	50-foot Roll	\$4.00
-------------------------	--------	------------------------	--------

EXTRA EQUIPMENT

Leather Case for Ciné-Kodak, Magazines and Tripod Head	18.00	Unipod Cane	5.00
Kodascope Traveling Case, plush lined, covered with imitation leather (specify whether for Kodascope having 56-watt or 200-watt lamp)	18.00	Leather Bound Canvas Case for Tripod Legs	6.50
Extra Battery for Motor Drive	8.00	Safety Chains for Tripod	1.25
		Handle for Tripod Top	1.25
		Kodascope Rewind	5.00
		400-foot Kodascope Reel in Humidor Can	1.50

DUPLICATE PRINTS

100-foot length	6.00	50-foot length	4.00
---------------------------	------	--------------------------	------



No. 0 Brownie

WITH this little magic box, children can make pictures of their playmates and their play. Good pictures, too, that grownups would be proud of.

Though it furnishes fun galore, the No. 0 Brownie is more than a toy. It is a practical camera, with a meniscus lens, two finders and a durable cover of neat imitation leather. Picture size is $1\frac{5}{8} \times 2\frac{1}{2}$ inches; eight exposures on a twenty-five cent film.

It is a low priced camera but it's Eastman-made, and that means good pictures.

Details

Size of pictures: $1\frac{5}{8} \times 2\frac{1}{2}$ inches. Size of camera: $2\frac{5}{8} \times 3\frac{3}{8} \times 4\frac{1}{8}$ inches. Weight: 8 ounces. Capacity: 8 exposures. Fixed focus. Lens: Meniscus. Shutter: Eastman Rotary, with one stop, also *time* action. Two ground-glass finders for vertical and horizontal pictures. Body: Covered with imitation leather.

Prices

No. 0 Brownie Camera, Meniscus Lens, Eastman Rotary Shutter . . .	\$2.00
Brownie Carrying Case	1.00
N. C. Film Cartridge, 8 exposures (No. 127)25
Brownie Tripod Adapter (see page 60)25
Kodak Portrait Attachment (see page 41)50
Developing and Printing Outfit (see page 44)	2.00

The prices of cameras and film include the Excise Tax



Nos. 2 and 2A Brownies

THESE improved cameras have aluminum bodies, an easy loading arrangement and two tripod sockets.

They're covered with imitation leather for looks and long wear. They're simple and dependable, for picture success.

No. 2 model, $2\frac{1}{4} \times 3\frac{1}{4}$, is included in the Brownie Gift Box (page 33); No. 2A makes $2\frac{1}{2} \times 4\frac{1}{4}$ pictures, always a popular size.

Details

Size of pictures: No. 2, $2\frac{1}{4} \times 3\frac{1}{4}$ inches; No. 2A, $2\frac{1}{2} \times 4\frac{1}{4}$ inches. Size of camera: No. 2, $3 \times 4 \times 5\frac{5}{16}$ inches; No. 2A, $3\frac{1}{4} \times 5 \times 6$ inches. Weight: No. 2, $17\frac{1}{2}$ ounces; No. 2A, 23 ounces. Capacity: No. 2, 6 exposures; No. 2A, 12 exposures. Fixed focus only. Lens: No. 2, Single Meniscus; No. 2A, Meniscus Achromatic. Shutter: Eastman Rotary, with three stops and *time* action. Two ground-glass finders for vertical and horizontal pictures. Two tripod sockets. Body: Aluminum, covered with imitation leather; metal parts finished in nickel and black enamel.

Prices

Brownie Camera, Single Meniscus Lens on No. 2, Meniscus Achromatic Lens on No. 2A, Eastman Rotary Shutter	No. 2	No. 2A
Brownie Carrying Case, with strap	\$2.75	\$3.75
N. C. Film Cartridge, 12 exposures (No. 116) for 2A	1.25	1.50
Ditto, 6 exposures (No. 120) for No. 2; (No. 116) for No. 2A	.25	.30
Kodak Portrait Attachment (see page 41)	.50	.50
Developing and Printing Outfit (see page 44)	2.00	2.00

The prices of cameras and film include the Excise Tax

Nos. 3 and 2C Brownies

SIMPLICITY and reliability are twin characteristics of the Brownies. Brownies are made right, and they work right. For low-priced cameras they turn out pictures of surprisingly high quality, as many an album will prove.

No. 3 makes $3\frac{1}{4} \times 4\frac{1}{4}$ pictures, one of the early popular sizes. No. 2C makes $2\frac{7}{8} \times 4\frac{7}{8}$ pictures, a newer dimension only slightly smaller than postcard size.

Details



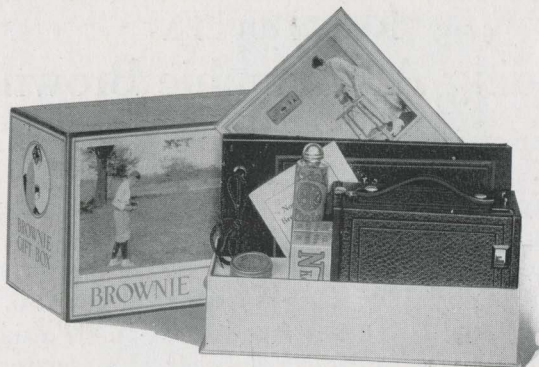
Size of pictures: No. 3, $3\frac{1}{4} \times 4\frac{1}{4}$ inches; No. 2C, $2\frac{7}{8} \times 4\frac{7}{8}$ inches. Size of camera: No. 3, $4\frac{3}{8} \times 5\frac{1}{8} \times 6\frac{1}{8}$ inches; No. 2C, $3\frac{7}{8} \times 6\frac{1}{4} \times 7\frac{1}{4}$ inches. Weight: No. 3, 22½ ounces; No. 2C, 26 ounces. Capacity: No. 3, 12 exposures; No. 2C, 6 exposures. Fixed focus only. Lens: Meniscus Achromatic. Shutter: Eastman Rotary, with three stops and *time* action. Two ground-glass finders for vertical and horizontal pictures.

Two tripod sockets. Body: Wood, covered with imitation leather.

Prices

Brownie Camera with Meniscus Achromatic Lens and Eastman Rotary Shutter	No. 3	No. 2C
Brownie Carrying Case, with strap	\$4.50	\$5.00
N. C. Film Cartridge, 12 exposures (No. 124) for No. 3	1.60	1.60
Ditto, 6 exposures, (No. 124) for No. 3; (No. 130) for No. 2C.	.90	.90
Kodak Portrait Attachment (see page 41)	.45	.45
Developing and Printing Outfit (see page 44)	.75	.75
	2.00	2.00

The prices of cameras and film include the Excise Tax



No. 2 Brownie Camera
Two Rolls Kodak Film
Kodak Portrait Attachment
Tube of Kodak Photo Paste

Fifty-leaf Photo Album
"At Home with the Kodak"
Brownie Instruction Book
Kodakery Subscription Coupon

The Brownie Gift Box

HERE'S a photographic kit that will please any youngster at any time of year. Look at the list of equipment and information it contains—just what a boy or girl needs for making pictures and preserving them properly.

The camera is a new model aluminum-body No. 2 Brownie, with tripod sockets for both vertical and horizontal exposures. Two rolls of film are provided for immediate use; and a portrait attachment for close-ups. The album is an attractive, gold-embossed book of fifty loose leaves. Even a tube of photo paste is included.

In addition to a complete instruction manual, there's a copy of "At Home with the Kodak," which shows and describes a variety of pictures worth making.

Everything in the Brownie Gift Box is of first quality, fit to carry the Eastman name. And the assortment is packed in a substantial, decorated box. It is a good gift and a good buy.

The Price

Including Excise Tax on camera and film

Brownie Gift Box	\$5.00
----------------------------	--------

Nos. 2 and 2A

Folding Autographic Brownies

THESE cameras blend Kodak compactness with Brownie simplicity. Either of them, folded, will carry comfortably in the pocket. Opened and in use, it will make the picture with minimum trouble.

Equipment includes the Kodex shutter, giving accurate speeds of $1/25$ and $1/50$; *bulb* and *time* actions also. Among the lenses offered is the new semi-anastigmat, Kodar *f.7.9*, which places these Brownies another step nearer to the Kodaks. Focus is adjustable.

Even the autographic feature is present. One can note date and title, or similar information, on the film at the time of exposure. The inscription becomes a permanent part of the negative, to identify the print later on.

Bodies are of stiff metal, covered with imitation leather of neat appearance and splendid durability. Fittings are in nickel and black enamel.

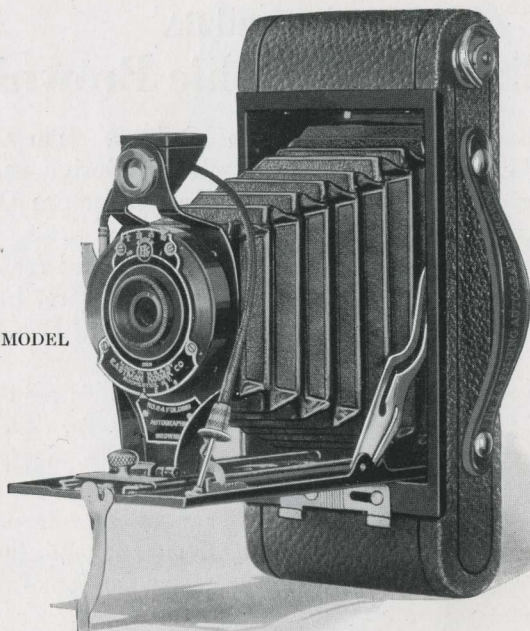
No. 2 makes $2\frac{1}{4} \times 3\frac{1}{4}$ pictures; 2A size is $2\frac{1}{2} \times 4\frac{1}{4}$, an oblong proportion which either a tall or wide subject seems to fit. The finder is reversible, and two tripod sockets are provided: horizontal and vertical exposures are equally easy.

Folding Brownies have few fixings. Everything on them is used in every picture.

Details

Size of pictures: No. 2, $2\frac{1}{4} \times 3\frac{1}{4}$ inches; No. 2A, $2\frac{1}{2} \times 4\frac{1}{4}$ inches. Size of camera: No. 2, $1\frac{1}{4} \times 3\frac{1}{8} \times 6\frac{1}{2}$ inches; No. 2A, $1\frac{7}{16} \times 3\frac{3}{8} \times 7\frac{7}{8}$ inches. Weight: No. 2, $19\frac{1}{2}$ ounces; No. 2A, 27 ounces. Capacity without reloading: No. 2, 6 exposures; No. 2A, 12 exposures. Focus: Adjustable, with automatic focusing lock. Lenses: Meniscus Achromatic; Rapid Rectilinear, $3\frac{3}{4}$ -inch focus on No. 2; 5-inch focus on No. 2A; or Kodar *f.7.9*, $3\frac{7}{8}$ -inch focus on No. 2; $4\frac{7}{8}$ -inch focus on No. 2A. Shutter: Kodex, with cable and finger release. Speeds: $\frac{1}{25}$ and $\frac{1}{50}$ second, *time* and *bulb* actions. Ground-glass finder; reversible for vertical or horizontal pictures. Two tripod sockets. Body: Metal, covered with durable imitation leather; fittings finished in nickel and black enamel. Black bellows. Autographic feature.

2A MODEL



Eastman-designed and Eastman-made

Prices

	No. 2	No. 2A
Folding Autographic Brownie, with Meniscus Achromatic Lens and Kodex Shutter	\$ 9.00	\$10.00
With Rapid Rectilinear Lens	11.00	12.00
With Kodar Lens f.7.9	12.00	13.00
Carrying Case for Folding Autographic Brownie, with strap	1.50	1.60
Autographic Film Cartridge, 12 exposures (No. A 116) for No. 2A60
Ditto, 6 exposures (No. A 120) for No. 2; (No. A 116) for No. 2A25	.30
Kodak Portrait Attachment (see page 41)75	.75
Kodak Self Timer (see page 52)	1.25	1.25

The prices of cameras and film include the Excise Tax

Nos. 2C and 3A

Folding Autographic Brownies

FOLDING Brownies rank next to Kodaks. They are designed, made and tested by the experts who design, make and test Kodaks. They must be rigidly right before they can wear the Eastman name-plate.

Each model is easy to use on any occasion and easy to find room for on any trip. The autographic feature, borrowed from the Kodak, permits writing date and title on the film at the time of exposure.

The 2C and 3A Folding Brownies make pictures of generous area: $2\frac{7}{8} \times 4\frac{7}{8}$ and $3\frac{1}{4} \times 5\frac{1}{2}$ respectively. The latter, postcard size, has long been popular. The 2C size gives almost as large a picture, and is just a bit easier to carry. A choice between them is a matter of personal preference.

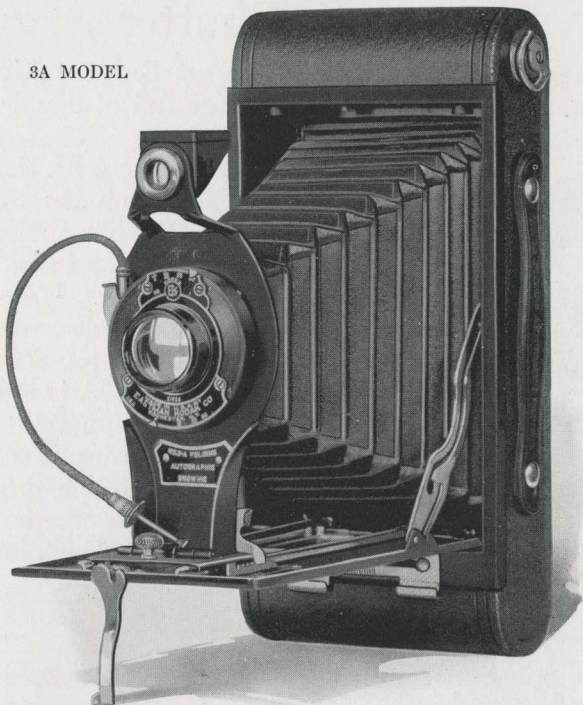
Focus is adjustable; so are shutter speeds. Bodies are of metal, covered with an imitation leather that looks neat and stays neat.

These cameras have become old favorites through splendid pictures made under average conditions, without fuss. And now, the new Kodar lens *f*.7.9 adds to their scope. This semi-anastigmat demonstrates its quality especially in the enlargements which every amateur is sure to want now and then from a favorite negative.

Details

Size of pictures: No. 2C, $2\frac{7}{8} \times 4\frac{7}{8}$ inches; No. 3A, $3\frac{1}{4} \times 5\frac{1}{2}$ inches. Size of camera: No. 2C, $1\frac{3}{4} \times 3\frac{3}{4} \times 8\frac{11}{16}$ inches; No. 3A, $1\frac{11}{16} \times 4\frac{5}{16} \times 9\frac{5}{16}$ inches. Weight: No. 2C, 27 ounces; No. 3A, 30 ounces. Capacity without reloading: 10 exposures. Focus: Adjustable, with automatic focusing lock. Lenses: Meniscus Achromatic; Rapid Rectilinear, $5\frac{5}{8}$ -inch focus on No. 2C; $6\frac{3}{8}$ -inch focus on No. 3A; or Kodar *f*.7.9, $5\frac{1}{4}$ -inch focus on No. 2C; $6\frac{1}{4}$ -inch focus on No. 3A. Shutter: Adjustable speed with *time* and *bulb* actions; cable and finger release. Ground-glass finder; reversible for vertical or horizontal pictures. Two tripod sockets. Body: Metal, covered with durable imitation leather; fittings finished in nickel and black enamel. Black bellows. Autographic feature.

3A MODEL



Eastman-designed and Eastman-made

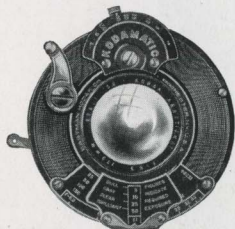
Prices

	No. 2C	No. 3A
Folding Autographic Brownie, with Meniscus Achromatic Lens and adjustable speed shutter	\$13.00	\$14.50
With Rapid Rectilinear Lens	15.00	17.00
With Kodar Lens f.7.9, and Kodex Shutter	16.00	18.00
Carrying Case for Folding Autographic Brownie, with strap	1.70	1.80
Autographic Film Cartridges, 10 exposures (No. A 130) for No. 2C; (No. A 122) for No. 3A75	.90
Ditto, 6 exposures45	.55
Kodak Portrait Attachment (see page 41)75	.75
Kodak Self Timer (see page 52)	1.25	1.25

The prices of cameras and film include the Excise Tax

Kodamatic Shutter

BACK of each excellent picture is an excellent negative, in which shadows as well as highlights are full of detail—put there by proper exposure.



Proper exposure is easy with the Kodamatic shutter, found on the *Special Kodaks*. It is a watch-like timing device, with a range of seven speeds, $\frac{1}{200}$ ($\frac{1}{150}$ on 2C and 3A), $\frac{1}{100}$, $\frac{1}{50}$, $\frac{1}{25}$, $\frac{1}{10}$, $\frac{1}{5}$ and $\frac{1}{2}$; also *bulb* and *time*.

The correct speed or stop for dull, gray, clear or brilliant light is indicated by a sliding scale which controls the diaphragm. And, when the release is pressed, the selected exposure is rendered with accuracy unparalleled. By telling which speed or stop to use and then producing it with precision, the Kodamatic shutter makes well-timed negatives, which in turn make striking pictures.

Diomatic Shutter

THE Diomatic shutter, illustrated on page 13, is an adaptation of the Kodamatic for use where extreme speed is not required. It has four accurate speeds, $\frac{1}{10}$, $\frac{1}{25}$, $\frac{1}{50}$ and $\frac{1}{100}$; *bulb* and *time*, too.

Like the Kodamatic, the Diomatic shutter is of watch-like construction. Like the Kodamatic, its timing scale tells which speed or stop to use with dull, gray, clear or brilliant light.

Kodex Shutter

THE shutter group is completed by the Kodex, a new and dependable device with automatic speeds of $\frac{1}{25}$ and $\frac{1}{50}$; as well as *bulb* and *time*.

Like our other shutters it is of high efficiency because its leaves spread quickly and close quickly, so that the full opening admits light during a high percentage of the exposure period.



KODAK ANASTIGMATS

f.7.7 f.6.3 f.4.5

OPTICAL experts speak of a lens's flatness of field and speed. A lens of flat field cuts sharply throughout the picture area and produces a negative in which every part of the image is well-defined. For flatness of field, sharpness, definition, the Kodak Anastigmat is the peer of any lens made.

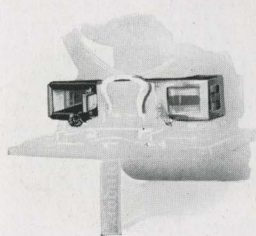
"Speed" means the relative area through which light is admitted. The Kodak Anastigmat *f.7.7* is slightly faster than the rapid rectilinear; the *f.6.3* is sixty per cent faster, thus making snapshots possible under many conditions where they would be out of the question with a single lens or even with a rapid rectilinear.

Time was when anastigmats were costly beyond the reach of most amateur photographers. When the Eastman Kodak Company set out to make anastigmats for its cameras it called on improved processes and big production to keep costs down. As a result, the Kodak purchaser can afford, and enjoy, a lens which at its indicated speed equals any in the world for the work required of it.

Kodak Lens *f.7.9*

KODAK lens *f.7.9* is a semi-anastigmat, only a trifle faster than a rapid rectilinear but of superior defining power. It is easily worth its slight extra cost, if only for the reason that its sharp negatives produce such good enlargements.

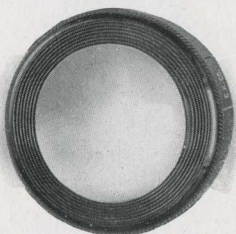
Kodak Range Finder



THE Kodak Range Finder on the Nos. 1A, 2C, and 3A Kodaks *Special*, finds the focus. It's this easy: pick out some horizontal line near the center of the subject, then rack the lens back and forth until the selected line is visible unbroken across the three mirrors in the Range Finder. When the line is continuous, focus is correct.

Kodak Portrait Attachment

HEAD-AND-SHOULDER "close-ups" that you make yourself are a genuine joy. You're proud to show them; glad to keep them.



And it's all very simple with the help of the Kodak Portrait Attachment. This supplementary lens slips on over the regular lens equipment and, without altering the exposure or changing the operation of the camera in any way, brings the subject into sharp focus at close range. Images that practically fill the negative area are the result.

You can use the Kodak Portrait Attachment for arm's-length pictures of flowers, bric-a-brac, art treasures, as well as for Kodak portraits like the one reproduced as the frontispiece of this book.

Kodak Diffusion Portrait Attachment

Portraits made with this little attachment are strictly in focus, but they are pleasingly *softened*. Harsh lines are blended, chalky highlights are reduced, interesting effects are easily obtained. In use, this lens is similar to the *sharp* focus Kodak Portrait Attachment, described above.

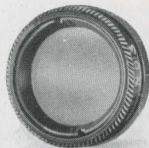
The V. P. K. Diffusion Disk used with the focusing model V. P. K. *Special*, is adapted for landscape work, as well as close-ups.

Kodak Sky Filter

THE Kodak Sky Filter is intended to equalize the difference of light between the sky and the foreground in landscape photography. The upper half of the filter is stained yellow to relieve the brightness of the sky, while the colorless lower half permits a normal exposure for the foreground. The Kodak Sky Filter slips easily on or off the camera lens.

Kodak Color Filter

THIS attachment is valuable in outdoor photography and for all subjects containing colors which act slowly on the sensitive film. For it holds back the strong blue and violet rays, affording the weaker colors time to record. The dye used in Kodak Color Filters is one of the discoveries of the Eastman Research Laboratory.



Kodak Pictorial Diffusion Disk (see page 42)

Kodak Portrait Attachments, Diffusion Portrait Attachments, Sky Filters and Color Filters

For Vest Pocket

		PRICES			
Autographic Kodaks		Order by this Number	Portrait Attachments	Diffusion Attachments	Sky and Color Filters
Regular Model, Single lens		1	\$0.50	\$1.25	\$0.75
Rapid Rectilinear lens		8	.75	1.25	.75
Special Model (Fixed focus), Kodak Anastigmat lens <i>f.7.7</i> or <i>f.6.9</i>		8	.75	1.25	.75
Special Model (Focusing), Kodak Anastigmat lens <i>f.7.7</i> or <i>f.6.9</i>		8A			.75
Special Model (Focusing), V. P. K. Diffusion Disk		8A		1.25	

For Autographic Kodak Juniors

Camera					
No. 1	Single, Rapid Rectilinear or Kodar lens <i>f.7.9</i>	8	.75	1.25	.75
	Kodak Anastigmat lens <i>f.7.7</i>	3	.75	1.25	1.15
No. 1A	Single, Rapid Rectilinear, Kodar <i>f.7.9</i> ; Kodak Anastigmat <i>f.7.7</i> in Diomatic Shutter; or Kodak Anastigmat <i>f.7.7</i> in Kodak Ball Bearing Shutter (without engraving on front of lens barrel)	3	.75	1.25	1.15
	Kodak Anastigmat lens <i>f.7.7</i> in Kodak Ball Bearing Shutter (with engraving on front of lens barrel)	13	.75	1.25	1.15
No. 2C	Single, Rapid Rectilinear, Kodar <i>f.7.9</i> , in Kodex, or Kodak Anastigmat lens <i>f.7.7</i> , in Diomatic Shutter	6	.75	1.50	1.15
	Single or Rapid Rectilinear, Kodak Ball Bearing Shutter	5	.75	1.50	1.50
	Kodak Anastigmat <i>f.7.7</i> , Kodak Ball Bearing Shutter	7	.75	1.50	1.50
No. 3A	Single, Rapid Rectilinear or Kodar lens <i>f.7.9</i> , in Kodex	6	.75	1.50	1.15
	Single or Rapid Rectilinear, Kodak Ball Bearing Shutter	5	.75	1.50	1.50
	Kodak Anastigmat lens <i>f.7.7</i>	7	.75	1.50	1.50

For Autographic Kodaks

No. 1	Pocket Kodak Series II (Fixed focus or focusing), Single, Kodar <i>f.7.9</i> or Kodak Anastigmat lens <i>f.7.7</i>	3	.75	1.25	1.15
No. 1A	Pocket Kodak Series II (Fixed focus), Kodex Shutter (Fixed Focus), Kodak Ball Bearing Shutter	3	.75	1.25	1.15
		6	.75	1.50	1.15
No. 1A	Pocket Kodak Series II (Focusing)	13	.75	1.25	1.15
No. 1A	Kodak Series III, Kodak Anastigmat lens <i>f.7.7</i>	3	.75	1.25	1.15
No. 1A	Kodak Series III, Kodak Anastigmat lens <i>f.7.7</i>	6	.75	1.50	1.15
No. 2C	Kodak Series III, Kodak Anastigmat lens <i>f.7.7</i>	3	.75	1.25	1.15
No. 1A	Kodak, Rapid Rectilinear lens	13	.75	1.25	1.15
	Kodak Anastigmat lens <i>f.7.7</i>				
No. 3	Kodak, Rapid Rectilinear, in Kodex or Kodak Ball Bearing Shutter; Kodar <i>f.7.9</i> , Kodak Anastigmat <i>f.7.7</i> , as listed	3	.75	1.25	1.15
	Rapid Rectilinear lens in Kodak Automatic Shutter	9	.75	1.25	.75
	Kodak Anastigmat <i>f.7.7</i> , Kodak Ball Bearing Shutter	13	.75	1.25	1.15
No. 3A	Kodak, Rapid Rectilinear or Kodar lens <i>f.7.9</i> , in Kodex	6	.75	1.50	1.15
	Rapid Rectilinear lens in Kodak Ball Bearing Shutter	5	.75	1.50	1.50
	Kodak Anastigmat lens <i>f.7.7</i>	7	.75	1.50	1.50

For Autographic Kodaks, Special

No. 1	Kodak Anastigmat lens <i>f.6.3</i> , B. & L. Kodak Anastigmat <i>f.6.3</i> , B. & L. Tessar IIb <i>f.6.3</i> , or B. & L. Tessar Ic <i>f.4.5</i>	6	.75	1.50	1.15
No. 1A	Kodak Anastigmat lens <i>f.6.3</i>	6	.75	1.50	1.15
No. 2C	Kodak Anastigmat lens <i>f.6.3</i>	7	.75	1.50	1.50
No. 3	Kodak Anastigmat lens <i>f.6.3</i> , B. & L. Kodak Anastigmat <i>f.6.3</i> , or B. & L. Tessar IIb Anastigmat <i>f.6.3</i>	6	.75	1.50	1.15
No. 3A	Kodak Anastigmat lens <i>f.6.3</i> , B. & L. Kodak Anastigmat <i>f.6.3</i> , or B. & L. Tessar IIb Anastigmat <i>f.6.3</i>	7	.75	1.50	1.50

For Brownies (Box Type)

Nos. 0 and 2	Single lens	1	.50	1.25	.75
No. 2A, Model C	Single lens	0	.50	1.25	.75
No. 2A	Single lens	2	.50	1.25	.75
Nos. 2C and 3	Single lens	4	.75	1.25	1.15

For Folding Autographic Brownies

No. 2	Single, Rapid Rectilinear or Kodar lens <i>f.7.9</i>	8	.75	1.25	.75
No. 2A	Single or Rapid Rectilinear lens	3	.75	1.25	1.15
	Kodar lens <i>f.7.9</i>	6	.75	1.50	1.15
No. 2C	Single or Rapid Rectilinear lens in Kodex Shutter	6	.75	1.50	1.15
	Single or Rapid Rectilinear lens in Kodak Ball Bearing Shutter	5	.75	1.50	1.50
	Kodar lens <i>f.7.9</i> in Kodex Shutter	3	.75	1.25	1.15
No. 3A	Single, Rapid Rectilinear lens or Kodar lens <i>f.7.9</i> in Kodex Shutter	6	.75	1.50	1.15
	Single or Rapid Rectilinear lens in Kodak Ball Bearing	5	.75	1.50	1.50

Kodak Pictorial Diffusion Disk

SOFT focus photography is a popular field with amateurs who want results that are "different." Slipped over the camera lens, the Kodak Pictorial Diffusion Disk gives your pictures a pleasing degree of softness without loss of brilliancy, and without increasing exposures. It is particularly adapted for landscape work.

Attachment	FOR AUTOGRAPHIC KODAK JUNIORS	Price
No. 3	For No. 1 with Kodak Anastigmat lens <i>f</i> .7.7, and No. 1A with Single, Rapid Rectilinear, Kodar <i>f</i> .7.9; or Kodak Anastigmat <i>f</i> .7.7 in Kodak Ball Bearing shutter <i>without</i> engraving on front of lens barrel, and in all other shutters	\$1.75
No. 5	For Nos. 2C and 3A with Single or Rapid Rectilinear lens in Kodak Ball Bearing shutter	2.50
No. 6	For No. 2C with Single, Rapid Rectilinear, Kodar <i>f</i> .7.9 or Kodak Anastigmat lens <i>f</i> .7.7, and No. 3A with Single, Rapid Rectilinear or Kodar lens <i>f</i> .7.9, as listed	2.50
No. 7	For No. 2C with Kodak Anastigmat lens <i>f</i> .7.7 in Kodak Ball Bearing shutter; and No. 3A with Kodak Anastigmat lens <i>f</i> .7.7	2.50

	FOR AUTOGRAPHIC KODAKS	
No. 3	For No. 1 Pocket Kodak Series II (Fixed Focus or Focusing) with Single, Kodar <i>f</i> .7.9 or Kodak Anastigmat lens <i>f</i> .7.7; No. 1A Pocket Kodak Series II (Fixed Focus) with Single lens in Kodex shutter; No. 1A Autographic Kodak with Rapid Rectilinear lens; No. 3 Autographic Kodak with Rapid Rectilinear, Kodar <i>f</i> .7.9 or Kodak Anastigmat lens <i>f</i> .7.7; and No. 1A Kodak Series III with Kodak Anastigmat lens <i>f</i> .7.7	1.75
No. 5	For No. 3A Autographic Kodak, Rapid Rectilinear lens in Kodak Ball Bearing shutter	2.50
No. 6	For No. 1A Pocket Kodak Series II with Single lens in Kodak Ball Bearing shutter; No. 2C Kodak Series III with Kodak Anastigmat lens <i>f</i> .7.7; and 3A Autographic Kodak with Rapid Rectilinear or Kodar lens <i>f</i> .7.9 in Kodex shutter	2.50
No. 7	For No. 3A Autographic Kodak with Kodak Anastigmat lens <i>f</i> .7.7	2.50

	FOR AUTOGRAPHIC KODAKS, SPECIAL	
No. 6	For No. 1 with Kodak Anastigmat lens <i>f</i> .6.3, B. & L. Kodak Anastigmat <i>f</i> .6.3, B. & L. Tessar Series IIb <i>f</i> .6.3 or B. & L. Tessar Series Ic <i>f</i> .4.5; No. 1A with Kodak Anastigmat lens <i>f</i> .6.3; and No. 3 with Kodak Anastigmat <i>f</i> .6.3, B. & L. Kodak Anastigmat <i>f</i> .6.3, or B. & L. Tessar Series IIb Anastigmat <i>f</i> .6.3	2.50
No. 7	For No. 2C with Kodak Anastigmat lens <i>f</i> .6.3; and No. 3A with Kodak Anastigmat lens <i>f</i> .6.3, B. & L. Kodak Anastigmat <i>f</i> .6.3 or B. & L. Tessar Series IIb Anastigmat <i>f</i> .6.3	2.50

	FOR FOLDING AUTOGRAPHIC BROWNIES	
No. 3	For No. 2A with Single or Rapid Rectilinear lens; and No. 2C with Kodar lens <i>f</i> .7.9	1.75
No. 6	For Nos. 2C and 3A with Single or Rapid Rectilinear lens in Kodex shutter	2.50
No. 5	For Nos. 2C and 3A with Single or Rapid Rectilinear lens in Kodak Ball Bearing shutter	2.50
No. 6	For Nos. 2A and 3A with Kodar lens <i>f</i> .7.9	2.50

Velox Water Color Outfit

WITH this outfit a photographic print or lantern slide is easily given beautiful colors. No special artistic ability is required. Velox Colors are permanent and transparent so none of the photographic detail is lost. The set is complete in a neat metal case, the cover of which serves as a mixing palette. A book of twelve color sheets, twenty-six stamps to the sheet, and three brushes are included.



Velox Transparent Water Color Stamps, complete booklet, 12 colors	\$0.50
Separate Color Leaves, per sheet	.04
Set of three Special Brushes	.50
Velox Water Color Outfit, including book, three brushes and palette	1.00

Kodak Film Tank

IN the Kodak Film Tank anybody can develop negatives as correctly as an expert can by any known method. No experience is necessary, and no experimenting. Just use the developer recommended and develop for the length of time required by the instructions for the temperature at which the developer is used. And no darkroom is necessary; it's all done in daylight.



Prices

Brownie Kodak Film Tank, for use with No. 1, No. 2 and No. 2 Folding Brownie Cartridges, complete	\$4.00
Spool Adapter, for using Vest Pocket Kodak Film in Brownie Tank	.10
Vest Pocket Kodak Film Tank, for Vest Pocket or No. 0 Brownie Cartridges, complete	3.50
2½-inch Kodak Film Tank, for use with all Kodak or Brownie Cartridges having a film width 2½ inches or less, complete	5.50
3½-inch Kodak Film Tank, for use with all Kodak or Brownie Cartridges having a film width of 3½ inches or less, complete	6.50
5-inch Kodak Film Tank, for use with all Kodak or Brownie Cartridges having a film width of 5 inches or less, complete	8.00
7-inch Kodak Film Tank, for use with No. 5 Cartridge Kodak or narrower film cartridges, complete	10.00
Duplicating Outfit, consisting of one solution cup, one transferring reel and one apron, for Brownie Kodak Film Tank	1.75
Ditto, for Vest Pocket Kodak Film Tank	1.75
Ditto, for 2½-inch Kodak Film Tank	2.75
Ditto, for 3½-inch Kodak Film Tank	3.25
Ditto, for 5-inch Kodak Film Tank	4.00
Ditto, for 7-inch Kodak Film Tank	5.00
Flexible Fixing and Washing Tank, for 3½-inch Kodak Film Tank	2.50
Kodak Tank Developer, for Brownie Kodak Film Tank, per ½ dozen	.20
Ditto, for Vest Pocket Kodak Tank, per ½ dozen	.20
Ditto, for 2½-inch Tank, per ½ dozen	.25
Ditto, for 3½-inch Tank, per ½ dozen	.25
Ditto, for 5-inch Tank, per ½ dozen	.30
Ditto, for 7-inch Tank, per ½ dozen	.30
Kodak Acid Fixing Powder, per ¼-pound package	.10
Ditto, per 1-pound package	.25



No. 2 Brownie Developing Box

THIS is a simplified form of the Kodak Film Tank, offering the same assurance of correctly developed film, and so simple that any boy or girl can readily operate it.

It consists of a metal box with cover, just long enough to accommodate, by looping once, a roll of Nos. A120, 120, A127 or 127 Kodak Film. All the operations are performed in daylight.

Prices

No. 2 Brownie Developing Box	\$1.75
Brownie Developing Box Powders, per package of 620
Kodak Acid Fixing Powder, ½-pound package15
Ditto, ¼-pound package10

Developing and Printing Outfits

By combining a variety of articles and assembling large quantities at a time we are able to offer these complete outfits for making prints and developing films by the tray method, at a much lower price than if the articles were sold separately. The Eastman 3A Outfit, below, contains every requisite for finishing twenty-four 3¼ x 5½-inch or smaller pictures.

One Kodak Candle Lamp	\$0.40
One Printing Frame40
One Glass for Frame05
One 4-ounce Graduate15
One Stirring Rod06
Four Developing Trays40
Five Tubes Eastman Special Developer35
One-half pound Kodak Acid Fixing Powder15
Two dozen 3¼ x 5½-inch Velox Paper40
Two ounces Nepera Solution for developing Velox20
Instruction Book (free)	

	Value	\$2.56
EASTMAN 3A OUTFIT, COMPLETE, NEATLY PACKED	Price	\$2.00
EASTMAN A B C OUTFIT, similar to above but providing for 4 x 5-inch or smaller pictures		\$2.00

Kodak Amateur Printer

THIS compact apparatus makes prints of any size from $1\frac{5}{8} \times 2\frac{1}{2}$ to $3\frac{1}{4} \times 5\frac{1}{2}$ and 4×5 inches. White margins are controlled by a simple masking device. The same device holds the negative firmly while any number of prints are exposed. A small red electric bulb (furnished) inside the box gives illumination for adjusting negative and paper on the glass window in the removable top. A 60-watt Mazda lamp (not supplied) is automatically turned on when the hinged frame is closed to make the exposure. The position of this lamp is readily adjustable to secure even illumination on negatives of various sizes.



The printer is supplied with $5\frac{1}{2}$ feet of electric light cord, and plug.

The Kodak Amateur Printer . . \$10.00

Kodak Serial Printing Frame

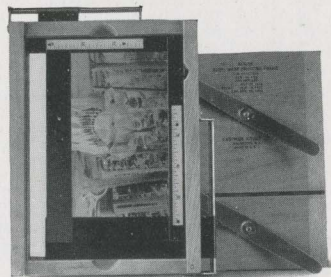
FOR printing from Vest Pocket Kodak and No. 0 Brownie negatives. Developed film slides through the frame in a continuous strip, greatly facilitating handling.

Kodak Serial Printing Frame for V. P. K. and No. 0 Brownie negatives \$0.60

Kodak Auto-Mask Printing Frame

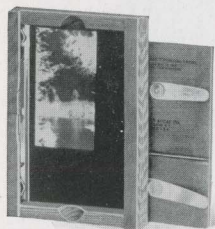
THIS frame is adaptable to the printing of negatives of any amateur size, 4×5 , $3\frac{1}{4} \times 5\frac{1}{2}$ inches and smaller. Attached to the frame are two slides adjusted from the outside, forming a mask of whatever size is desired.

Any desired number of uniformly masked prints may be made without readjusting the negative or the masking slides.



Kodak Auto-Mask Printing Frame . \$1.50

Kodak Maskit Printing Frame



THE Kodak Maskit Printing Frame overcomes the difficulty of the negative and mask slipping on the glass, and assures prints with a uniform white margin. Furnished with a set of three paper masks of different size openings.

Kodak Maskit, for $3\frac{1}{4} \times 4\frac{1}{4}$ -inch plates and $2\frac{1}{4} \times 3\frac{1}{4}$ or smaller roll films, opens two-thirds \$0.65
Kodak Maskit, $3\frac{1}{4} \times 5\frac{1}{2}$ -inch, opens two-thirds70

Kodaloid Printing Masks

For Maskit Printing Frames

THESE transparent, durable, orange-red color masks, intended for use with Maskit Printing Frames, are supplied in sets of three each, with different size openings.

Per set of 3, $3\frac{1}{4} \times 4\frac{1}{4}$, \$0.30 Per set of 3, $3\frac{1}{4} \times 5\frac{1}{2}$, \$0.30 Per set of 3, 5 x 7, \$0.45

Eastman Printing Frames

HAVE a two-section hinged back with clamps to hold the negative and paper firmly.

For $2\frac{1}{4} \times 3\frac{1}{4}$ inch plates and V. P. K. or smaller film negatives, opens two-thirds \$0.35
For $2\frac{1}{2} \times 4\frac{1}{4}$ inch or smaller film negatives, opens two-thirds40
For $3\frac{1}{4} \times 4\frac{1}{4}$ inch plates and $2\frac{1}{4} \times 3\frac{1}{4}$ or smaller film negatives, opens two-thirds40
For $3\frac{1}{4} \times 5\frac{1}{2}$ inch or smaller film negatives, opens two-thirds45
For $3\frac{1}{4} \times 5\frac{1}{2}$ inch plates, opens two-thirds45
For 4 x 5 inch plates, opens two-thirds40
For 5 x 7 inch plates, opens two-thirds55

Eastman Printing Frames are supplied without glass

Kodaloid Printing Masks

MADE of transparent Kodaloid with various sizes of openings.

For 3A Frames, 8 masking sizes, each . . . \$0.10 For 4 x 5 Frames, 7 masking sizes, each . \$0.10 For 5 x 7 Frames, 6 masking sizes, each . \$0.15

Brownie Enlarging Camera

A TAPERED BOX made of cardboard, cloth-covered, with a device at the small end to hold the negative, and one at the large end for the paper. Enlarges on bromide paper by daylight. The lens is always in focus. All except No. 2 Brownie Post Card are collapsible.

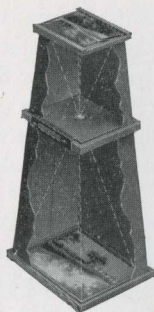
*No. 2 Brownie Post Card Enlarging Camera, for $3\frac{1}{4} \times 5\frac{1}{2}$ enlargements from $2\frac{1}{4} \times 3\frac{1}{4}$ inch negatives . . . \$4.00
*No. 2 Brownie Enlarging Camera, for 5 x 7 enlargements from $2\frac{1}{4} \times 3\frac{1}{4}$ inch negatives . . . 5.00
*No. 3 Ditto, for $6\frac{1}{2} \times 8\frac{1}{2}$ enlargements from $3\frac{1}{4} \times 4\frac{1}{4}$ inch negatives, also for proportionate enlargements from smaller negatives . . . 6.50
*No. 3A Ditto, for 7 x 11 and $6\frac{1}{4} \times 10\frac{1}{2}$ inch enlargements from $3\frac{1}{4} \times 5\frac{1}{2}$ and $2\frac{1}{8} \times 4\frac{1}{8}$ inch negatives, respectively; also for proportionate enlargements from smaller negatives . . . 7.00
*No. 4 Ditto, for 8 x 10, $6\frac{3}{8} \times 10$ and $5\frac{3}{8} \times 9\frac{3}{8}$ inch enlargements from 4 x 5, $3\frac{1}{4} \times 5\frac{1}{2}$ and $2\frac{1}{8} \times 4\frac{1}{8}$ inch negatives, respectively . . . 7.00

V. P. K. Enlarging Camera

LIKE the Brownie Enlarging Camera in principle, it makes $3\frac{1}{4} \times 5\frac{1}{2}$ enlargements from $1\frac{1}{8} \times 2\frac{1}{2}$ negatives. Not collapsible.

*Vest Pocket Kodak Enlarging Camera \$3.75

*These prices include the Excise Tax.



The Kodak Auto-Focus Enlarger

MOVE the camera up and down and while the image size changes, the focus remains sharp. Enlarging thus becomes a simplified process that is rapid and as easy as contact printing.

The standard clamps to an ordinary table and the bromide paper is held in position by quickly adjusted paper holders.

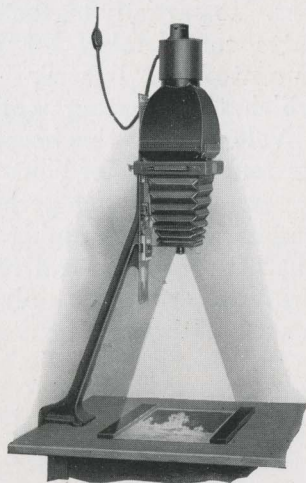
Prints any size from $1\frac{1}{2}$ to $3\frac{1}{2}$ diameters can be made from either plate or film negatives up to 4 x 6 inches. The largest possible print is 14 x 21. V.P.K. negatives will make $5\frac{5}{8}$ x $8\frac{3}{4}$ inch enlargements.

The lens is a Kodak Anastigmat, which insures sharpness.

Ventilated lamp house has a capacity for a Mazda lamp (not supplied) of from 75 to 200 watts.

A diffusing disc is supplied separately for soft focus effects.

Kodak Auto-Focus Enlarger with Kodak Anastigmat lens, electric cord and plug, set of six flexible metal masks (with Excise Tax included) . . . \$35.00
Diffusing Disc 1.00



Eastman Bromide Papers

FOR enlargements, Eastman Bromide Papers are emphatically faster than the other developing papers and as easy to use as Velox. Grades: Velvet, Brilliant Velvet, Royal, Enameled, Matte-enamel and Standard B and C. Royal Bromide is a buff paper, suited for making sepia enlargements by redevelopment.

Size	Per Doz.	Size	Per Doz.	Size	Per Doz.
5 x 7	\$0.50	8 x 10	\$1.10	14 x 17	\$3.15
5 x 8	.55	10 x 12	1.70	16 x 20	4.20
$6\frac{1}{2}$ x $8\frac{1}{2}$.80	11 x 14	2.10	18 x 22	5.25

Standard BB and CC Double Weight

Size	Per Doz.	Size	Per Doz.	Size	Per Doz.
5 x 7	\$0.60	$6\frac{1}{2}$ x $8\frac{1}{2}$	\$1.00	10 x 12	\$2.15
5 x 8	.70	8 x 10	1.40	11 x 14	2.65

Other sizes in proportion

Velox

"Look for VELOX on the back"

VELOX paper brings out the best that is in a negative and often produces a better print than the negative itself promises. It partially corrects for error in exposure and compensates considerably for the uncontrolled lighting by which the amateur works.

Velox can do this because its four degrees of contrast cover a range which permits emphasizing or subduing the character of the negative in

printing. It is the only photographic paper manufactured for use with amateur negatives exclusively.

Each sheet bears the name "Velox" faintly tinted on the back, to indicate that the paper best suited for amateur negatives has been used.

Velox is a non-abrasion, developing-out paper. Each degree of contrast is offered in a variety of surfaces as listed in the table above.

Extremely contrasty negatives give best results on No. 1; average and also contrasty negatives print well with No. 2; flat negatives require No. 3; exceedingly thin or exceedingly flat negatives produce good prints on No. 4.

Of the four grades of Velox, the most used is Velvet, which gives semi-gloss prints of splendid quality and tone.

GRADE	SURFACE	CONTRAST			
Velvet Velox	Semi-Gloss	*1	*2	*3	*4
Portrait Velox	Smooth Matte	2			
Carbon Velox	Matte	1	2	3	4
Glossy Velox	Enameled	1	*2	*3	4

*Furnished also in Double-weight Velox. Double-weight papers require no mount and when printed under a mask, which will insure a white margin, offer a very artistic effect.

Prices

Size Inches	Single Weight			Double Weight		
	Dozen	½ Gross	Gross	Dozen	½ Gross	Gross
15⁄8 x 2½	\$0.12		\$1.10	\$0.15		\$1.40
2¼ x 3¼	.12		1.10	.15		1.40
2½ x 4¼	.15		1.35	.20		1.70
3¼ x 4¼	.20		1.75	.25		2.20
2½ x 4½	.20		1.75	.25		2.20
3¼ x 5½	.20		2.00	.25		2.50
4 x 5	.25		2.30	.30		2.90
5 x 7	.40	\$2.10	3.90	.50	\$2.60	4.90
Velox Post Cards, 3¼ x 5½, furnished in Velvet, Contrasts Nos. 1, 2, 3 and 4, and in Glossy, Contrasts Nos. 2 and 3				.30	1.50	2.90
Velox Double Post Cards, 3¼ x 10½ inches				.60	3.00	5.80

Velox Sundries

Nepera Solution, per 4-ounce bottle	\$0.28
Ditto, per 16-ounce bottle84
Nepera Auxiliary Powders (for converting Nepera Solution to a film or plate developer), per package, 1 dozen35
Eastman M. Q. Developer (per package of 5 glass tubes)30
*Velox Re-developer Tubes for Sepia Toning, per package, 12 tubes	1.08
Velox Liquid Hardener, per 4-ounce bottle25
Ditto, 8-ounce bottle35
Kodak Acid Fixing Powder for fixing Velox prints, per pound25
Ditto, ½ pound15
Ditto, ¼ pound10

* Package includes bleaching agent.

Kodak Velvet Green

NATURE's favorite color is green. With Kodak Velvet Green any amateur photographer can get nature-like effects heretofore obtainable only by the carbon process.

Not only for landscapes and marine views but for a wide variety of other outdoor subjects, Kodak Velvet Green is an appropriate paper. Its rich green tone produces most beautiful and harmonious effects, with an indescribable "atmosphere" of nature itself.

And to use this paper the amateur need not learn new methods, nor possess extraordinary skill. Anyone who can print on Velox paper can print just as successfully on Kodak Velvet Green, as the two processes after exposure are identical, except for a slight change in the fixing bath.

As this paper is much slower than the average developing-out paper, it is advisable to print by daylight.

The surface—a smooth semi-matte—brings out detail fully. The paper is supplied in both single and double weights.

Kodak Velvet Green Post Cards are very appropriate for use at vacation time.

Size Inches	Single Weight			Double Weight		
	Dozen	½ Gross	Gross	Dozen	½ Gross	Gross
1½ x 2½	\$0.10		\$0.90	\$0.15		\$1.30
2¼ x 3¼	.10		.90	.15		1.35
2½ x 4¼	.12		1.10	.20		1.60
3¼ x 4¼	.15		1.40	.25		1.80
2½ x 4½	.15		1.40	.25		2.00
3¼ x 5½	.15		1.60	.25		2.00
4 x 5	.20		1.85	.30		2.25
5 x 7	.30	\$1.70	3.10	.40	\$2.20	3.90
Kodak Velvet Green Post Cards,						
Single Length20	1.10	2.00
Double Length40	2.20	4.00

Solio Paper

A glossy, printing-out paper

Size	Per Package 2 Doz.	Size	Per Package 2 Doz.
1 7/8 x 2 1/2	\$0.20	4 x 5	\$0.40
2 1/4 x 3 1/420		Per Doz.
2 1/2 x 4 1/425	4 1/4 x 6 1/2	\$0.25
3 1/4 x 4 1/425	5 x 730
2 7/8 x 4 7/825	Post Cards20
3 1/4 x 5 1/230	Double Solio Post Cards40

Solio Toning and Fixing Powders, per carton, 5 tubes, \$0.35. Solio Combined Toning and Fixing Solution, per 8-ounce bottle, \$0.50; 4-ounce bottle, \$0.30.

Eastman Plates

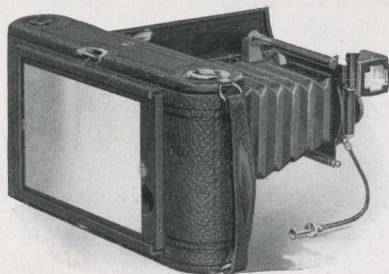
Prices of plates include Excise Tax

Single coated: Eastman 40, 36, Speedway, S. C. Ortho		Double coated: Eastman D. C. Ortho	
	Per Doz.		Per Doz.
2 1/4 x 3 1/4	\$0.46	2 1/4 x 3 1/4	\$0.57
3 1/4 x 4 1/467	3 1/4 x 4 1/482
3 1/4 x 5 1/293	3 1/4 x 5 1/2	1.13
4 x 593	4 x 5	1.13

Wratten & Wainwright Panchromatic

	Per Doz.
3 1/4 x 4 1/4	\$0.83
3 1/4 x 5 1/2	1.14
4 x 5	1.14

Combination Backs



USED with the Nos. 3 and 3A Autographic Kodaks, regular and *Special*, in place of the usual Autographic Backs, to accommodate double plate holders and a removable ground glass for focusing. With the addition of Kodak Cut Film Sheaths in the plate holder, the Combination Back equips the camera for use with Kodak Cut Film. (See page 51.)

Combination Back with ground glass, for No. 3 or 3A "Regular"	\$4.00
Ditto, for No. 3 <i>Special</i>	4.50
Ditto, for No. 3A <i>Special</i>	5.00
Kodak Double Plate Holders for any of above, each	1.50

Kodak Cut Film

KODAK Cut Film offers every advantage of plates and, in addition, is non-halation, weighs but a fraction as much, is easier to handle, unbreakable and produces negatives of superior quality. Through the agency of the Combination Back and Double Plate Holder (see opposite page) and Kodak Cut Film Sheaths, Nos. 3 and 3A Kodaks, both regular and *Special* models, may be adapted for use with Kodak Cut Film.

It is supplied in two speeds. The regular Kodak Cut Film is equal in speed to the best portrait plate emulsions, and is standard in every respect.

Kodak Cut Film *Super Speed* has, as its name implies, an extra fast emulsion, yet its latitude, gradation and fineness of grain are equal to those of the regular speed. It can be depended on to give the best possible negatives under difficult light conditions or when exposure must necessarily be short. This *Super Speed* feature proves its worth especially when making indoor portraits or snapshots in the shade. And all this added speed is attained without sacrificing any of those qualities on which film superiority is founded.

*Kodak Cut Film, dozen	$2\frac{1}{4} \times 3\frac{1}{4}$	$3\frac{1}{4} \times 4\frac{1}{4}$	$3\frac{1}{4} \times 5\frac{1}{2}$	4 x 5
	\$0.46	\$0.67	\$0.93	\$0.93
*Kodak Cut Film <i>Super Speed</i> , dozen	.52	.77	1.03	1.03

Eastman Commercial Panchromatic Film

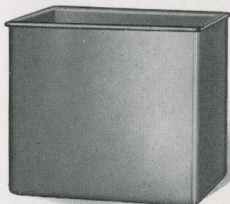
WHEN used with the proper filter, Eastman Commercial Panchromatic Film reproduces all colors, including red, in their true relation to one another in the tones of a black and white print.

*Eastman Commercial Panchromatic Film, dozen	$3\frac{1}{4} \times 4\frac{1}{4}$	$3\frac{1}{4} \times 5\frac{1}{2}$	4 x 5
	\$0.77	\$1.03	\$1.03

Kodak Cut Film Sheath

ADAPTS a plate holder to the use of Kodak Cut Film. It is made of aluminum, ribbed for rigidity and is instantly inserted or removed.

Kodak Cut Film Sheath	$2\frac{1}{4} \times 3\frac{1}{4}$	$3\frac{1}{4} \times 4\frac{1}{4}$	$3\frac{1}{4} \times 5\frac{1}{2}$	4 x 5
	\$0.10	\$0.10	\$0.15	\$0.15



Kodak Developing Box, No. 1

THIS tank provides a swift and easy means of obtaining uniform development of Kodak Cut Film. It takes twelve films, each suspended in the solution from a Kodak Cut Film Developing Hanger. Development proceeds by the time and temperature method.

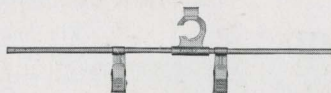
The tank is made of inerrorable metal and measures $4 \times 5\frac{1}{4} \times 6$ inches.

Kodak Developing Box, No. 1, without hangers . . . \$2.00

Kodak Cut Film Developing Hanger

FOR use with the Kodak Developing Box, No. 1. It is considerably longer than the box so that it lies securely across the top. The clips, which grip the edges of the film securely, are of inerrorable metal.

Kodak Cut Film Developing Hangers, each				\$0.20
---	--	--	--	--------



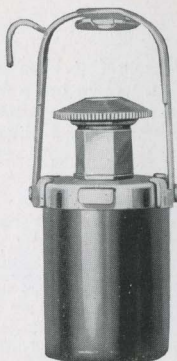
* Prices of film include the Excise Tax.

Kodak Self Timer

THIS popular Kodak accessory fits on the cable release of any Kodak or Folding Brownie and automatically presses the button. The time of operation is controlled by the amateur within the limits of $\frac{1}{2}$ second and 1 minute. He sets it for the time interval desired and then gets into the picture.

Thus the group is kept complete and self-portraits are easily possible.

Kodak Self Timer \$1.25



Eastman Visible Graduate

THIS moulded graduate, as its name implies, may be easily read in the darkroom under the rays of the ruby light.

The graduations are opaque, not translucent as is the case with most graduates.

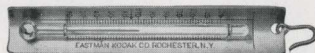
2-ounce	\$0.30	8-ounce	\$0.50
4-ounce40	16-ounce80



Eastman Thermometer

VALUABLE in tank or tray development. The hook for suspending and the curved back to fit inside the tank are desirable features.

Eastman Thermometer \$0.90



Thermometer Stirring Rod



A COMBINED stirring rod and thermometer. Carefully tested and accurate. Has flat end for pulverizing. The rod is $\frac{1}{4}$ inch in diameter and $9\frac{1}{4}$ inches long.

Thermometer Stirring Rod \$1.25

Developing Trays

"Bull's Eye" (composition)

$3\frac{1}{4} \times 4\frac{1}{4}$	\$0.30	4×6	\$0.45	4×5	\$0.75
4×540	5×880	4×685
				5×7	1.10

Enamel

Kodak Magnesium Ribbon Holder



FURNISHED in a handy holder Kodak Magnesium Ribbon provides excellent supplementary illumination for portraiture, copying and interior work, and an intensely bright light for exposing Velox.

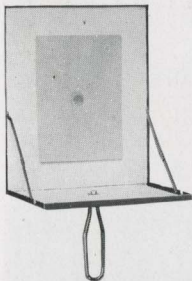
The ribbon is best ignited by a special alcohol lamp.

Kodak Magnesium Ribbon Holder \$0.50
Alcohol Lamp50

Flashlight Materials

THE flashlight makes the amateur photographer independent of daylight. He has complete control of the illumination, not only as to the amount of light, but also its direction.

The simplest method of making flashlight pictures is by means of the Eastman Flash Sheets and Kodak Flash Sheet Holder. The sheets burn slowly, giving a broad, soft light, while the holder makes their proper use conveniently easy.



No. 1 Flash Sheets, per package of $\frac{1}{2}$ dozen sheets, 3 x 4-inch	\$0.35
No. 2 Flash Sheets, per package of $\frac{1}{2}$ dozen sheets, 4 x 5-inch	.50
No. 3 Flash Sheets, per package of $\frac{1}{2}$ dozen sheets, 5 x 7-inch	.84
Kodak Flash Sheet Holder	1.25

Flash cartridges are recommended only where instantaneous exposures are required.

Eastman Spreader Flash Cartridges, for use with pistol or fuse (price includes both fuse and cap), per package of $\frac{1}{2}$ dozen	\$0.60
Eastman Spreader Flash Cartridge Pistol	1.50
Eastman No. 1 Flash Cartridges, for use only with fuse, per package of $\frac{1}{2}$ dozen	1.25
Ditto, No. 2	.80
Ditto, No. 3	.50

Kodak Dry Mounting Tissue

MOUNTS prints, even on thin mounts, without cockle or curl. Just fix tissue on print, lay on mount and press with a warm flat iron; no sticky fingers, no muss of any kind.

Size, $3\frac{1}{2}$ x $3\frac{1}{2}$, 3 dozen	\$0.10	Size, 4 x 5, 2 dozen	\$0.10
Size, $3\frac{1}{4}$ x $4\frac{1}{4}$, 3 dozen	.10	Size, $4\frac{1}{4}$ x $6\frac{1}{2}$, 1 dozen	.10
Size, $3\frac{1}{4}$ x $5\frac{1}{2}$, 2 dozen	.10	Size, 5 x 7, 1 dozen	.10

Kodak Photo Paste

THE weighted friction cap and the spreader top of the tube eliminate muss and fuss. The paste is an excellent adhesive, not only for mounting prints, but for desk or household use as well.

2-ounce tube \$0.15



Eastman Photo Paste

A SOLID, first quality white paste that will not discolor print or mount.

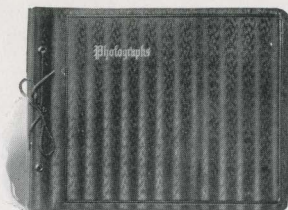
4-ounce jar \$0.25

Kodak Liquid Glue

PERMITS tacking prints down at the corners, rather than pasting solid. An excellent glue for any purpose.

Per tube \$0.15





The Kodak Album

LOOSE-leaf, open-back style. Cover made of finest quality genuine leather and surfaced in new patterns: the black in an etched crystalline; the blended olive a pine needle effect. Stamped in gold leaf with the word "Photographs." Fifty black, round-cornered leaves held in place with silk-finished cord through cover and metal tubes.

5 x 8, RA, Black Crystline	\$2.25	SA, Olive Pine Needle	\$2.25
7 x 11, RB, Black Crystline	3.25	SB, Olive Pine Needle	3.25
10 x 12, RC, Black Crystline	4.50	SC, Olive Pine Needle	4.50
11 x 14, RD, Black Crystline	5.50	SD, Olive Pine Needle	5.50

Package of 12 extra leaves, Size A (5 x 8) \$0.15; Size B (7 x 11) \$0.18;
Size C (10 x 12) \$0.30; Size E (11 x 14) \$0.40

The Altadena Album

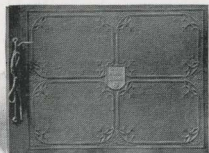
LOOSE-leaf, open-back style. Cover is de luxe artificial leather, deep brown, Morocco grain finished. The word "Photographs," brought up in heavy engraving, and the deeply embossed panels at each end add finish to this handsome album. Fifty black leaves held in place by silk-finished cord through cover and metal tubes.



A, 5 x 8	\$1.50	B, 7 x 11	\$2.00
--------------------	--------	---------------------	--------

Package of 12 extra leaves, Size A (5 x 8) \$0.15; Size B (7 x 11) \$0.18

The Colonial Album



LOOSE-LEAF, open-back style. Cover is of de luxe artificial leather. The beautiful design in polychrome covers the entire surface and in center the words "Ye Photo Album" are raised embossed in color. Fifty black leaves held in place by silk-finished cord through cover and metal tubes. This is a most attractive album.

A, 5 x 8	\$1.90	B, 7 x 11	\$2.50	C, 10 x 12	\$3.25	D, 11 x 14	\$3.50
--------------------	--------	---------------------	--------	----------------------	--------	----------------------	--------

Package of 12 extra leaves, Size A (5 x 8) \$0.15; Size B (7 x 11) \$0.18;

Size C (10 x 12) \$0.30; Size E (11 x 14) \$0.40

Nubian Album

LOOSE-LEAF, open-back style. The surface of the artificial leather cover is etched, and ornamented in black relief with a floral design and the word "Photographs." Handsome and durable. Fifty black leaves held in place by silk-finished cord through cover and metal tubes.



5 x 8, BA	\$1.10
7 x 11, BB	1.50
10 x 12, BC	2.25
11 x 14, BD	2.50

Package of 12 extra leaves, Size A (5 x 8) \$0.15; Size B (7 x 11) \$0.18;

Size C (10 x 12) \$0.30; Size E (11 x 14) \$0.40



The Kodagraph Album

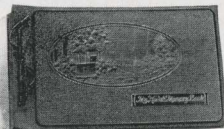
LOOSE-LEAF, open-back, style. Choice of genuine leather cover in black with etched surface, or in dark brown with alligator finish. The word "Kodagraphs" is stamped in gold on cover. A good looking, substantial album.

BB, 7 x 11 Black Leather	\$3.00	AB, Brown Alligator	\$3.00
BD, 11 x 14 Black Leather	5.00	AD, Brown Alligator	5.00
Package of 12 extra leaves, Size B (7 x 11) \$0.18; Size E (11 x 14) \$0.40			

My Kodak Memory Book

IN addition to its embossed, hand-colored cover design, this attractive book has the words "My Kodak Memory Book" embossed in a raised panel. It is unusually handsome and well deserves the pictures you prize the most. Fifty black leaves.

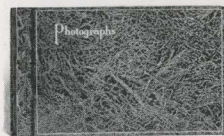
My Kodak Memory Book—B, 7 x 11	\$2.50
Package of 12 extra leaves, Size B—\$0.18	



"Childhood Days" Book

THE "Childhood Days" Book, for pictures of the youngsters, will not only give immediate pleasure to parents but will be valued more and more as the years roll along. It is exquisitely finished, with embossed, hand-colored design, and is strongly made for years of handling. Fifty black leaves.

"Childhood Days" Book—B, 7 x 11	\$2.50
Package of 12 extra leaves, Size B—\$0.18	



La Nouvelle Album (New)

LOOSE-LEAF, open-back style. Fifty black leaves held in place by cord through cover and metal tubes. The word "Photographs" is stamped in gold on cover. The cover is an attractively embossed, silver tinted, imitation leather.

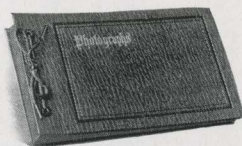
AA, 5 x 8	\$1.10	AC, 10 x 12	\$2.25
AB, 7 x 11	1.50	AD, 11 x 14	2.50
Package of 12 extra leaves, Size A (5 x 8) \$0.15; Size B (7 x 11) \$0.18;			
Size C (10 x 12) \$0.30; Size E (11 x 14) \$0.40			

The Juno Album

LOOSE-LEAF, open-back style. Fifty black loose leaves held in place by metal tubing and cord through covers. Brown or black embossed English grain imitation leather cover. The word "Photographs" stamped in gilt on cover.

5 x 8, BA, brown or CA, black	\$1.10
7 x 11, BB, brown or CB, black	1.50
10 x 12, BC, brown or CC, black	2.25
11 x 14, BD, brown or CD, black	2.50

Package of 12 extra leaves, Size A (5 x 8) \$0.15; Size B (7 x 11) \$0.18;
Size C (10 x 12) \$0.30; Size E (11 x 14) \$0.40





Scout's Memory Book

PREPARED especially for the Boy Scouts of America. The black artificial leather cover is artistically embossed with a special design and the wording "Scout's Memory Book." Fifty black leaves, loose-leaf. An unique, handsome book that any boy will be proud to own.

Size B (7 x 11) \$1.50
 Package of 12 extra leaves, Size B, \$0.18.

The Rhodes Album

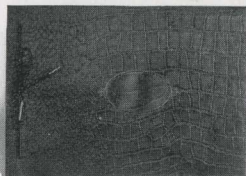
LOOSE-LEAF, open-back style—choice of genuine black grain leather or embossed black book cloth, with 50 black leaves held in place by metal tubes and cord through cover. Cover stamped in foil with word "Photographs."



5 x 8	CA, cloth \$0.90	LA, leather	\$2.00
7 x 11	CB, cloth 1.25	LB, leather	2.75
8 x 10	CE, cloth 1.50	LE, leather	3.10
10 x 12	CC, cloth 2.00	LC, leather	4.50
11 x 14	CD, cloth 2.25	LD, leather	5.00

Package of 12 extra leaves, Size A (5 x 8) \$0.15; Size B (7 x 11) \$0.18; Size K (8 x 10) \$0.20;
 Size C (10 x 12) \$0.30; Size E (11 x 14) \$0.40

The Artist Album

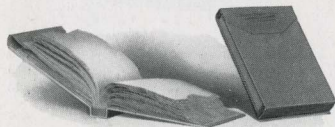


A LOOSE-LEAF album with embossed black paper cover. Has 10 black leaves held in place by cord through cover. Just right to give to your friends as an inexpensive souvenir of some event recorded photographically, such as a vacation, auto trip, or picnic.

No. 1, 5½ x 7	\$0.25
Extra leaves, package of 509
No. 4, 7 x 1035
Extra leaves, package of 512

Eastman Film Negative Albums

THESE albums afford a safe, convenient and effective way of keeping film negatives. Each leaf is, itself, an envelope, and the negatives do not come in contact with each other. The index furnishes a ready reference.



For 100 negatives, 1⅝ x 2½	\$1.25
For 100 negatives, 2½ x 4¼ or smaller	1.25
For 100 negatives, 3¼ x 4¼ or 4 x 5 or smaller	1.50
For 100 negatives, 3¼ x 5½ or smaller	1.50
For 100 negatives, 5 x 7 or smaller	1.75

Kodak Card Mounts

The Baltic—Brown or Grey

Heavy stock, beveled edges, heavy borders. Sold only in lots of fifty, one kind and size.

No.	For Prints	Size of Mount	Per 100	Per 50	No.	For Prints	Size of Mount	Per 100	Per 50
0	1½ x 2½	3½ x 4¼	\$2.10	\$1.05	2C	2½ x 4½	5½ x 7½	\$3.10	\$1.55
1	2¼ x 3¼	4½ x 5½	2.60	1.30	3A	3¼ x 5½	5¾ x 8	3.40	1.70
1A	2¼ x 4¼	4½ x 6¼	2.80	1.40	4	4 x 5	6 x 7	4.00	2.00
2	3½ x 3½	5½ x 5½	3.00	1.50	4A	4¼ x 6½	6½ x 8¾	5.00	2.50
3	3¼ x 4¼	5½ x 6½	3.00	1.50	5	5 x 7	8 x 10	6.20	3.10

Landscape—Ash Grey and Artist Brown

No.	Color	For Prints	Size of Mount	Per 50	No.	Color	For Prints	Size of Mount	Per 50
A1	Grey	5 x 7	8 x 10	\$3.00	C1	Grey	8 x 10	12 x 14	\$5.00
A2	Brown	5 x 7	8 x 10	3.00	C2	Brown	8 x 10	12 x 14	5.00
B1	Grey	6½ x 8½	10 x 12	4.00	D1	Grey	7 x 11	11 x 15	5.25
B2	Brown	6½ x 8½	10 x 12	4.00	D2	Brown	7 x 11	11 x 15	5.25

De Luxe Enlargement Mount

White and India Buff stock. All edges deckled. A rich mounter for the favorite enlargement.

No.	Color	For Prints	Size of Mount	Per Doz.	No.	Color	For Prints	Size of Mount	Per Doz.
A1	White	3¼ x 5½	7¼ x 9½	\$0.75	G1	White	6 x 10	10 x 14	\$1.40
A2	India	3¼ x 5½	7¼ x 9½	.75	G2	India	6 x 10	10 x 14	1.40
D1	White	5 x 7	9½ x 11½	1.00	H1	White	8 x 10	12 x 14	1.50
D2	India	5 x 7	9½ x 11½	1.00	H2	India	8 x 10	12 x 14	1.50
F1	White	6½ x 8½	10¾ x 12¾	1.20	J1	White	7 x 11	11 x 15	1.56
F2	India	6½ x 8½	10¾ x 12¾	1.20	J2	India	7 x 11	11 x 15	1.56

Mat Mount (For Enlargement)—Grey, Sepia-Buff

No.	For Prints	Size of Mount	Price	No.	For Prints	Size of Mount	Price
A	3¼ x 5½	7¾ x 9¾	Doz. \$0.93	F	6 x 10	10½ x 14½	Doz. \$1.29
B	4 x 7	8½ x 11½	Doz. .93	G	7 x 11	11½ x 15½	Doz. 1.53
C	5 x 7	9½ x 11½	Doz. .93	H	8 x 10	12 x 14	Doz. 1.53
D	5 x 8½	9½ x 13½	Doz. 1.05	J	8 x 14	13¼ x 19¼	½ Doz. 1.05
E	6½ x 8½	11½ x 13½	Doz. 1.17	K	11 x 14	17¼ x 20¼	½ Doz. 1.89

Insip Enlargement Folder—Olive and Brown

This folder is supplied in dark olive grey or dark brown, the former with light olive, the latter with sand brown insert. Each size supplied with rectangular opening for either horizontal or upright enlargements.

No.	For Prints	Size of Mount	Per Doz.	No.	For Prints	Size of Mount	Per Doz.
A	5 x 7 Upright	7½ x 10¾	\$1.68	E	8 x 10 Upright	10 x 14	\$2.34
B	5 x 7 Horizontal	8¼ x 9¾	1.68	F	8 x 10 Horizontal	11 x 12½	2.34
C	6½ x 8½ Upright	9 x 13	1.98	G	6 x 10 Upright	8 x 14	2.22
D	6½ x 8½ Horizontal	9¾ x 11	1.98	H	6 x 10 Horizontal	9 x 12½	2.22

Enlargement Mount—Grey or Buff

No.	For Prints	Size of Mount	Price	No.	For Prints	Size of Mount	Price
A	3¼ x 5½	7¼ x 9½	Doz. \$0.48	F	6 x 10	10½ x 14½	Doz. \$0.69
B	4 x 7	8½ x 11½	Doz. .51	G	7 x 11	11½ x 15½	Doz. .81
C	5 x 7	9½ x 11½	Doz. .54	H	8 x 10	12½ x 14½	Doz. .81
D	5 x 8½	9½ x 12½	Doz. .63	J	8 x 14	13 x 17	½ Doz. .69
E	6½ x 8½	11½ x 13½	Doz. .66	K	11 x 14	17 x 20	½ Doz. .84

The Amateur Folder

Just the thing for carrying or mailing favorite pictures. Made of durable, marble-grey cover stock. The picture is inserted under the corners which hold it securely.

No.		Price per doz.
1	for $2\frac{1}{4}$ x $3\frac{1}{4}$ prints upright or horizontal	\$0.50
1A	for $2\frac{1}{8}$ x $4\frac{1}{4}$ prints upright or horizontal55
2C	for $2\frac{7}{8}$ x $4\frac{7}{8}$ prints upright or horizontal57
3A	for $3\frac{1}{4}$ x $5\frac{1}{2}$ prints upright or horizontal60

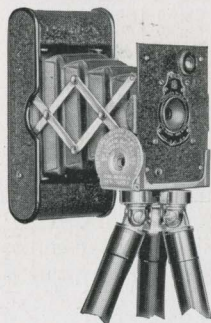
The Safety Photo Mailer

Tough Kraft envelope—double scored corrugated board—lock seal. The mailer that insures safe arrival of your prints, and mounted or unmounted enlargements.

No.	Size Card or Print	Outside Size of Mailer	Price per Dozen
A—5	x 7 or smaller	$6\frac{1}{8}$ x $8\frac{1}{4}$	\$1.08
B—9	x $11\frac{3}{8}$ or smaller	$10\frac{1}{2}$ x $12\frac{1}{2}$	1.80
C—11	x $13\frac{1}{8}$ or smaller	13 x $14\frac{1}{2}$	2.10
D—12	x $15\frac{3}{8}$ or smaller	$13\frac{3}{4}$ x $16\frac{3}{8}$	3.00
E—17	x $20\frac{1}{4}$ or smaller	$18\frac{3}{8}$ x $21\frac{3}{8}$	4.20

Stereo Mounts

Size of Mount, $3\frac{1}{2}$ x 7 Color, Queen's Grey Per 100, \$1.30 Per 50, \$0.65



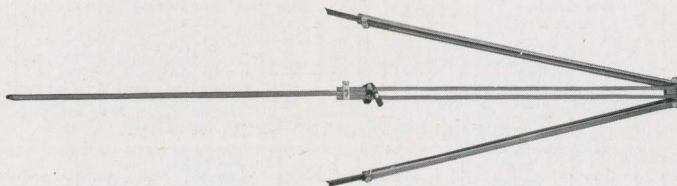
Vest Pocket Kodak Tripod Adapter

Vest Pocket Kodaks have been compressed into such small space that not even a spare cubic quarter of an inch is available for tripod sockets.

The V. P. K. Tripod Adapter is designed as a substitute for them. It can be affixed in a few turns to a tripod head, or to the Optipod or Kodapod (both illustrated on page 60). The camera, instantly slipped into the Adapter, is firmly held by a spring clamp in either vertical or horizontal position, as desired.

Vest Pocket Kodak Tripod Adapter \$0.50

The Flexo Tripod



Two sections. Fixed, non-detachable head. Only clear, straight-grained wood is used in its construction. Length, extended, 53 inches; folded, 29 inches. Weight, 18 ounces.

Price, \$2.00

Kodak Metal Tripods

THE Kodak Metal Tripods, which are light, compact and rigid, have telescoping legs of brass tubing. The lower sections, finished in nickel, fit into the upper section which is finished in black enamel.

When closed, the full length ranges in the different models from $11\frac{3}{8}$ to $15\frac{1}{2}$ inches—convincing evidence that they are conveniently carried.

There are six models to select from.

The Nos. 1 and 2 have revolving heads, permitting the camera to swing so as to take in the desired view without moving the tripod. They also have straps for holding the legs in place when closed.

The Nos. 1C and 2C have solid heads; they do not have straps for holding legs.



The No. 6 has a special folding head permitting the legs to fold flat. The head contains a patented hinge so that when folded the three legs of the tripod are parallel to each other rather than set in the usual triangular form. The result is a narrow shape, which with an extremely short length makes the No. 6, when closed, the easiest to carry of all this easily carried family.

The illustration shows the No. 6 projecting from a No. 6 Leather Carrying Case.

Details and Prices

	Sections	Length		Weight	Price
		Closed	Extended		
Kodak Metal Tripod No. 0	3	$15\frac{1}{2}$ inches	$39\frac{1}{2}$ inches	15 ounces . .	\$2.75
Kodak Metal Tripod No. 1C	4	$15\frac{1}{4}$ inches	$48\frac{7}{8}$ inches	$25\frac{1}{2}$ ounces . .	4.00
Kodak Metal Tripod No. 1	4	15 inches	$48\frac{1}{2}$ inches	$24\frac{1}{2}$ ounces . .	4.50
Kodak Metal Tripod No. 2C	5	$13\frac{3}{4}$ inches	$49\frac{7}{8}$ inches	26 ounces . .	4.50
Kodak Metal Tripod No. 2	5	$13\frac{1}{2}$ inches	$49\frac{1}{2}$ inches	25 ounces . .	5.00
Kodak Metal Tripod No. 6	6	$11\frac{3}{8}$ inches	40 inches	24 ounces . .	6.50
Leather Carrying Case, for Nos. 0 to 2, inclusive					2.70
Ditto, for No. 6					3.15
Rubber Tips, for Metal Tripod Spurs (per set of 3)10

Brownie Tripod Adapter

THE Brownie Tripod Adapter is designed for use on the No. 0 Brownie and on the previous models of the Nos. 2 and 2A Brownie cameras (box type) which are not equipped with tripod sockets.

The illustration shows the Adapter attached to the side of the No. 0 Brownie. The two hooked prongs at the side of the Adapter are inserted in the narrow space between the front board and the camera frame. For taking horizontal pictures it is placed in the position illustrated and for taking vertical pictures it is inserted at the bottom instead of the side.



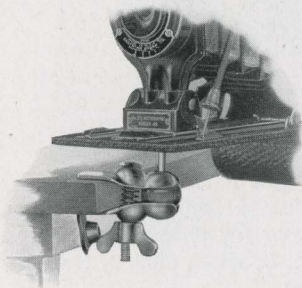
The camera may then be attached to a tripod head or to the Optipod or Kodapod (illustrated below) by merely turning the tripod screw into the threaded hole in the Adapter.

Brownie Tripod Adapter \$0.25

The Optipod

THE Optipod is a combined tripod head and felt-protected clamp which may be used effectively as a tripod when clamped to a chair, table, automobile, motorcycle, or any substantial object. It is small and light, slipping readily into the pocket, and may be carried without inconvenience.

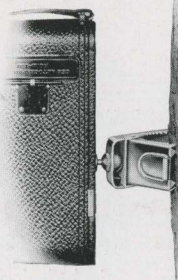
The ball and socket joint on the Optipod permits tilting the camera to almost any angle. This feature is especially desirable if the Optipod is used in connection with a tripod for photographing objects at close range and when it is impossible to place the tripod alone, in the desired position.



The Optipod \$1.25

The Kodapod

THE little Kodapod—which is carried easily in the pocket—takes the place of a tripod when a tree, fence, or similar object is near at hand. Its toothed jaws have a bulldog grip that clamps firmly to the wood. By means of a clamping screw, the camera may be adjusted to the correct vertical or horizontal position where it will be securely held. The Kodapod fits any standard tripod socket.

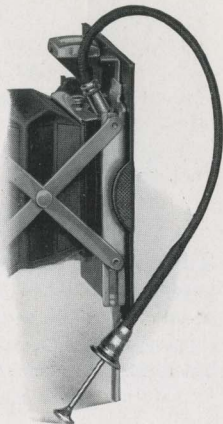


The Kodapod \$1.75

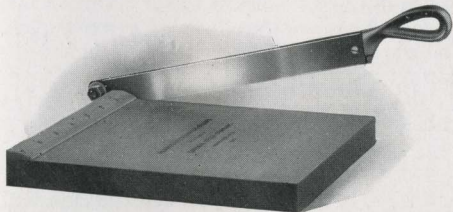
Vest Pocket Kodak Cable Release Attachment

VEST Pocket Kodaks are so compact that there is no space for a cable release. But for those who prefer it, a cable release attachment is made. This consists merely of a nickeled plate attached by a screw to the back of the front board. The plate contains a socket into which the cable release is screwed. The attachment is especially valuable for those who wish to use the Kodak Self Timer (see page 52) with their Vest Pocket Kodaks.

Vest Pocket Kodak Cable Release Attachment (No. 20) . . . \$0.50



Kodak Trimming Boards



MADE of hard wood, with natural finish. Provided with fine quality steel blades and plainly marked rules.

No. 1, capacity, 5 x 5 inches . . . \$0.75
No. 2, capacity, 7 x 7 inches . . . 1.00

Kodak Print Roller

THE ideal roller for amateur use. Kodak Print Roller has two 6-inch rubber rollers and finely nickeled frame.

Kodak Print Roller \$1.00



Flexo Print Roller



A THOROUGHLY practical roller for mounting. Has 4-inch rubber roller and black enamel frame.

Flexo Print Roller \$0.35



"How to Make Good Pictures"

A PRACTICAL and profusely illustrated book for the amateur that covers in a simple, understandable way every phase of photography that he is likely to be interested in. 184 pages, including 158 illustrations, bound in vellum with board covers.

"How to Make Good Pictures" \$0.50

Kodak Film Clip

THIS clip made of incorrodible metal is designed to secure the maximum amount of grip with its two jaws. Having a width of two inches and a firm grip which prevents the film from slipping, it is particularly adapted for use with large size film but is useful for small film as well. Made in one size only.

Kodak Film Clip \$0.30



Kodak Junior Film Clip No. 1

THE No. 1 clip made of incorrodible metal is the most practical for tray development or drying films. Two teeth in jaw to prevent film from slipping. One size only.

Kodak Junior Film Clip No. 1 \$0.15



Eastman Film Developing Clip

A THOROUGHLY dependable clip. Made in two sizes and nickel-plated.

3½-inch, per pair \$0.30
5-inch, per pair40



Kodak Candle Lamp

THIS clever little lamp is collapsible and can be packed into very small space when not in use. It is made of special, tested ruby fabric, bound in metal frames and gives a strong, safe light for the darkroom.

Kodak Candle Lamp, with one candle \$0.40
Extra Candles, per dozen40

Kodak Darkroom Lamp

THE Kodak Darkroom Lamp is oil burning and is fitted with both orange and ruby glass. It has an unusually broad wick regulated from the outside and gives a soft, steady light for the darkroom.

Kodak Darkroom Lamp \$1.25



Kodak Safelight Lamp

THE Kodak Safelight Lamp is ideal for all darkroom uses, whether the work of the beginner, the advanced amateur, or the professional.

The lamp is supplied with a 5 x 7, Series 1, Safelight for use with film or plates, not highly color sensitive. Safelights of other series may be obtained, if desired, for more advanced work. It is made of metal, neatly finished in a warm tone of brown.

The lamp is supplied complete, with electric fittings excepting 25-watt electric bulb, including besides the safelight 4½ feet of electric light cord.



Kodak Safelight Lamp	\$3.50
Extra Safelight, 5 x 7, any series75

Eastman Safelight Lamp

THIS convenient darkroom lamp hangs from an electric cord or fixture and throws the light from a 10-watt bulb directly downward over the work table. Supplied with a 5 x 7 Safelight, Series 2, for use with films or plates, unless otherwise ordered. Strongly constructed of metal.

Eastman Safelight Lamp, without bulb	\$3.00
Extra Safelight, 5 x 7, any series75



Brownie Safelight Lamp

BUT little larger than the electric bulb it holds, the Brownie Safelight Lamp screws into an electric socket.

It is made of metal, neatly japanned; has circular safelight in the end, and side safelight, as well. Both safelights are the regular Series 1, and are removable so that other series may be used, if desired. A 10-watt Mazda bulb is used, but is not supplied.

Brownie Safelight Lamp	\$1.75
Extra Circular End Safelight (any series), each25
Extra Rectangular Safelight (any series), each40



Safelights for Safelight Lamps

SERIES 00—Yellow light, for use with gaslight papers.

SERIES 0—Bright orange light, for use with bromide paper and with lantern slide plates.

SERIES 1—Orange safelight, for use with films or plates not highly color sensitive.

SERIES 2—Safelight, for extra rapid orthochromatic plates sensitive to green but not red.

SERIES 3—Green safelight, for use with red-sensitive panchromatic plates.

SERIES 4—Bright green safelight, for use with ordinary plates, for those who cannot use a red light. Not safe for orthochromatic plates.

Tested Chemicals



CERTAINTY in making negatives and prints depends as much on the quality of your chemicals as on any other one thing. All Kodak chemicals are tested both photographically and for purity before the E. K. C. tested seal is allowed to go on them.

Eastman Chemical Outfit consists of M. Q. and Special Developers, Intensifier, Reducer and Velox Re-developer	\$0.40
Eastman Special Developer Powders, per package of 5, in sealed glass tubes	.35
Eastman M. Q. Developer, per package of 5 tubes	.30
Eastman Hydrochinon Developer Powders, per ½ dozen	.30
Ditto, per package of 5 powders, in sealed glass tubes	.30
Eastman Pyro Developer Powders, per ½ dozen	.25
Ditto, per package of 5 powders, in sealed glass tubes	.25
Eastman Tropical Developer, 5 powders, in sealed glass tubes	.40
Tozol, per 1-ounce bottle	.45
Elon, per 1 ounce	.55
Kodolon, per 1 ounce	.47
Hydrochinon, per 1-ounce can	.23
Eastman Permanent Crystal Pyro, per 1-ounce bottle	.27
Velox Re-developer, including bleaching agent, per package of 12 tubes	1.08
Hyposulphite of Soda, granular, per pound	.18
Alum, powdered, per pound	.20
Kodak Acid Fixing Powder, per pound package	.25
Ditto, per ½-pound package	.15
Ditto, per ¼-pound package	.10
Eastman Intensifier, per glass tube	.15
Eastman Reducer and Stain Remover, per box of 5 tubes	.50
Eastman Opaque No. 1, per tube	.25
Potassium Bromide, granular, per ounce	.13
Acetic Acid, 28 per cent pure, per 1-pound bottle	.35
Citric Acid, 4-ounce bottle	.38
Eastman Tested Sodium Carbonate (desiccated), per 1-pound bottle	.40
Eastman Tested Sodium Sulphite (desiccated), per 1-pound bottle	.45

For Velox preparations, see page 49. For Solio preparations, see page 50.

For Tank Developer Chemicals, see page 43.

Miscellaneous

Cable Release (except Vest Pocket, see page 61), each	\$0.35	Rubber Focusing Cloth, per yard	\$1.00
Eastman Special Squeegee, 8-inch	1.00	Eastman Spotting Colors consist of three colors, black, white and sepia, per set	.25
Hard Rubber Stirring Rod	.30	Ferrotypes Plate, 10 x 14, light	.20
Finger Tips, set of 3	.15	Ferrotypes Plate, 10 x 14, heavy	.30

Terms

THE prices in this catalog are strictly net, except to regular dealers who carry our goods in stock. THESE PRICES ARE, HOWEVER, SUBJECT TO CHANGE WITHOUT NOTICE. For the convenience of our customers, we recommend that they make their purchases from a dealer in photographic goods, as by so doing they can save time, and transportation charges.

EASTMAN KODAK COMPANY, ROCHESTER, N. Y.

“KODAK”

Is the registered and common-law Trade Mark of the Eastman Kodak Company and cannot be rightfully applied except to goods of their manufacture. When a dealer tries to sell you under the Kodak name, a camera or films or other goods not of their manufacture, you can be sure that he has an inferior article that he is trying to market on the Kodak reputation

If it isn't an Eastman it isn't a Kodak

Charles E. Dennis
67 West Broad Street
Bethlehem, Pa.