



# KODAK



## **The Digitized Kodak Catalog Project (1886 - 1941): A Very Brief History**

Most camera collectors at some point in their collecting careers pass through a Kodak phase - some never come out of it. And if there ever was one name that came to be associated with both cameras and collecting, it was Kodak.

George Eastman received his first patent (for coating dry plates) and bought his first manufacturing facility in 1880, and in 1881 he started the Eastman Dry Plate Company. In 1886 he received a patent for the near-mythical Eastman Detective Camera, but it wasn't until 1888 that the first camera bearing the name "Kodak" was introduced.

One of the nice things about collecting Kodak is that the product line is pretty well known, and because the company produced annual catalogs for many years, collectors can be reasonably sure of what they're looking at, when it was made, the variations and so on - presuming that they have access to either the appropriate catalog, or a number of the many books which document Kodak, each to some greater or lesser extent.

But what would be really nice would be to have a complete set of Kodak catalogs in an easily accessible form and readily available. And since the advent of portable computing devices (PC, Macintosh, etc.) that's been possible - except for the difficulty of assembling a complete set of Kodak catalogs in one spot and then scanning them and making the results available.

The idea of digitizing a complete set of Kodak catalogs has kicked around the collecting community for many years. It's been proposed on a number of online forums, during meetings of various photohistory groups, and for years there have been many incomplete "Kodak CDs" on eBay but at best, they only contained a few catalogs - whatever the owner had available. But assembling a complete set of catalogs, then scanning and processing perhaps 3,000 to 4,000 pages, was a daunting task - if not completely overwhelming - and nothing ever came of it.

Until now.

In early 2010, the idea came up again, but this time we - "we" as in "the collecting community" - were lucky. A number of collectors were willing to loan their catalogs to this project and a couple of insane - wait, let's call them "dedicated" - dedicated enthusiasts - neither of whom collected Kodak, but both of whom enjoyed the challenge of such a project - were willing to put in the time and effort to scan and pull together the entire set of catalogs into a full-blown Kodak Catalog Digital Library.

Our initial objective was to include just the annual amateur catalogs, but it turns out that many cameras only appear in certain professional and specialty catalogs. We included as many of those as we could obtain so that almost every Kodak camera made in the US, Canada and Europe, would be documented - at least up to about 1941. After that, it becomes much more difficult as Kodak stopped producing annual catalogs as their product line became increasingly more diversified.

However, even with the additional "non-amateur" catalogs, we weren't completely successful in illustrating "every" camera Kodak ever made. There are an elusive few that might appear in specialty catalogs that we simply couldn't track down. If you can't find one of those odd cameras, that's no doubt why. We may do a revision at some point in the future if someone is willing to loan us a catalog that includes a camera that isn't already recorded.

In this project, a total of 67 catalogs were used from 1886 through 1941 including a number of professional and dealer catalogs, and in some years, two or even three different catalogs to cover all the bases. With the cooperation of a number of dedicated collectors, we were able to pull together all those catalogs and in June 2010, the project started in earnest.

By November 2010, we had scanned everything we needed and eventually all 67 catalogs were then reassembled as image folders and converted to the universally accepted PDF format and finally, converted into individually searchable PDFs which could then be searched globally as a collection.

For those of you interested in the statistics: about 200 hours of scanning time (we never want to hear that sound again), 67 catalogs and 3,908 page scans - which generated 7,917 original and processed images - and 11.4 GB of disk space. Additionally, another 100+ hours of technical development time was needed to convert the digital catalogues into a fully searchable "knowledgebase" that could be launched from most any standard web browser.

The overwhelming number of catalogs was loaned to us by that most remarkable of Kodak collectors, Charlie Kamerman of Eagle Creek, Oregon. Without Charlie, it's very doubtful that this project could even have been attempted.

But as it turned out, even Charlie didn't have all the publications that were needed, but he was able to track down the five that he lacked and was able to secure either a copy or high resolution images that we could work with. And so, our thanks to the contributors of the catalogs and scans that we used:

Charlie Kamerman for the vast majority of catalogs used and all his help,  
Steve Shohet for loaning a variety of test catalogs,  
Ryerson University (Toronto) for the 1886 Eastman Catalog  
George Layne for the 1890 New Kodaks Catalog,  
Mike Kessler for the 1891 Dealer Display Catalog,  
Ralph London for the 1893 UK Catalog,  
Michael Pritchard for the 1897 UK Catalog.

The digital side of the project - also known as "all of the work" - was done by Rob Niederman of Medina, Minnesota, and Milan Zahorcak of Tualatin, Oregon. Remarkably we're still friends and in a few years, we'll probably be able to talk about this project rationally.

And there you have it, a more-or-less done deal. We're fairly sure that it isn't quite perfect, and expect there will be some carping about something or other; but all-in-all, we believe this to be a pretty good product and can now move on to something else.

Our thanks to all of those involved.

Rob Niederman  
Milan Zahorcak

Fall, 2011

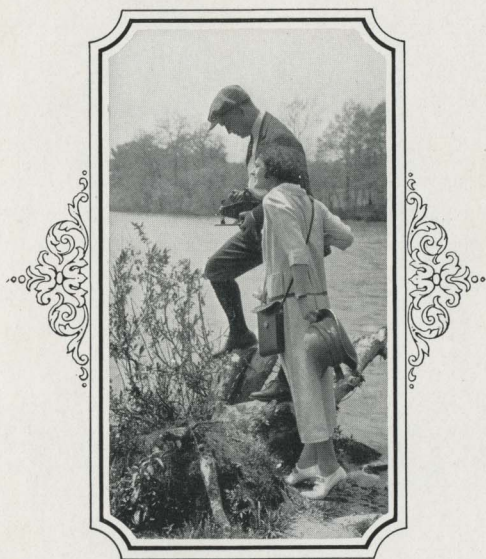




120834

# KODAKS

## AND KODAK SUPPLIES



1924

EASTMAN KODAK COMPANY  
ROCHESTER, N.Y.

*The Kodak City*

120824



FROM A NEGATIVE MADE WITH THE NO. 3A AUTOGRAPHIC KODAK WITH  
KODAK ANASTIGMAT LENS,  $f7.7$ , AND KODAK PORTRAIT ATTACHMENT

## When was it Made?

Without exception the interest of every picture is increased when the date on which it was made is known. The degree of added interest, of course, depends on the kind of picture, but every print has more to tell when the "When?" can be definitely answered.

This is particularly true of snap-shots of the children. "How old was Junior then?" is the natural query that rises to everyone's lips when the picture is shown. The date, here, saves the story.

Pictures made on trips where strange faces and places are encountered demand not only the date but the title to have their story complete.

This fact was recognized years ago by the Eastman Kodak Company and that is the reason all the folding Kodaks and Brownies are autographic and enable the amateur to date and title each negative at the time of exposure.

While you may not care to utilize the autographic feature for every exposure, it is there when you want it and when you do, you will find it of unqualified importance.

Autographic photography is exclusively Eastman—and autographic film costs no more than regular film.

## "Kodakery" free for a year

Every new purchaser of a Kodak or Brownie is entitled to a year's free subscription to "Kodakery"—a generously illustrated, carefully edited photographic publication that will be found not only entertaining but a real help to better pictures.

The manual accompanying the camera contains a subscription blank which should be filled in and sent on to Rochester.

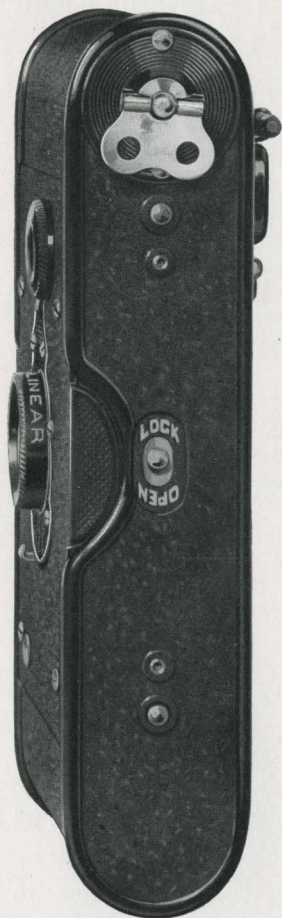
The regular subscription price of "Kodakery" is sixty cents a year.



# Vest Pocket Autographic Kodak

(Fixed Focus Model)

Tiny as it is—and the accompanying illustration shows you just how small—the Vest Pocket Kodak is a photographic instrument that can be trusted. Slip it out, pull it out, press the release—and the picture is made. The lens is always in focus so that whenever the unexpected picture opportunity comes, you can get it before it goes.



VEST POCKET KODAK  
REGULAR

*Actual size of all models  
when closed*

The Vest Pocket Kodak makes pictures  $1\frac{5}{8} \times 2\frac{1}{2}$  inches—and its optical and mechanical equipment is such that they're good pictures.

The fact that the Vest Pocket Kodak is autographic, and so small that you can *wear* it without inconvenience, fits it as a photographic note-book. It is ready to do all that a diary will do—and a great deal more.

An ideal equipment for sportsmen or others who may wish to travel light is the Belt Carrying Case of russet leather which offers the means of wearing the Vest Pocket Kodak on the belt. Here it is readily available when it's wanted and conveniently unobtrusive when it's not.

Even when every inch of space seems occupied, there's a fourth dimension this Kodak will fit—and you'll always be glad that you took it along.

The Vest Pocket Kodak is the smallest camera in the Kodak line but notwithstanding this fact, clever craftsmanship has found room for every photographic essential—even to the autographic feature. The Kodak Ball Bearing Shutter has automatic speeds of  $\frac{1}{25}$  and  $\frac{1}{50}$  of a second as well as time and “bulb” actions, the brilliant finder is reversible for vertical or horizontal pictures, and the lens is carefully tested. The all-metal body has Japan Crystal finish.

### Details

Size of pictures:  $1\frac{1}{8}$  x  $2\frac{1}{2}$  inches. Size of Kodak: 1 x  $2\frac{3}{8}$  x  $4\frac{3}{4}$  inches. Capacity without reloading: 8 exposures. Weight: 11 ounces. Lenses: Meniscus Achromatic or Rapid Rectilinear,  $3\frac{1}{2}$ -inch focus. Kodak Ball Bearing Shutter No. 0 with finger release only (cable release attachment sold separately). Speeds:  $\frac{1}{25}$ ,  $\frac{1}{50}$  second, and time and “bulb” actions. Brilliant finder; reversible for vertical or horizontal pictures. All metal body: Finish, Japan Crystal. Metal parts finished in nickel and black enamel. Black bellows. Autographic feature.

### Prices

Vest Pocket Autographic Kodak, Meniscus Achromatic Lens and Kodak	
Ball Bearing Shutter . . . . .	\$6.50
Ditto, with Rapid Rectilinear Lens . . . . .	8.00
Leather Case for V. P. Kodak . . . . .	.90
Leather Case, with strap . . . . .	1.00
Belt Carrying Case (russet leather) . . . . .	1.25
Autographic Film Cartridge, 8 exposures, $1\frac{1}{8}$ x $2\frac{1}{2}$ (No. A 127) . . . . .	.25
Vest Pocket Cable Release Attachment (see page 61) . . . . .	.50
Vest Pocket Kodak Tripod Adapter (see page 59). . . . .	.50
Kodak Portrait Attachment for Meniscus Achromatic Lens (see page 41) . . . . .	.50
Kodak Portrait Attachment for Rapid Rectilinear Lens (see page 41) . . . . .	.75
Kodak Self Timer (see page 52) . . . . .	1.25

*The prices of cameras and film include the Excise Tax*

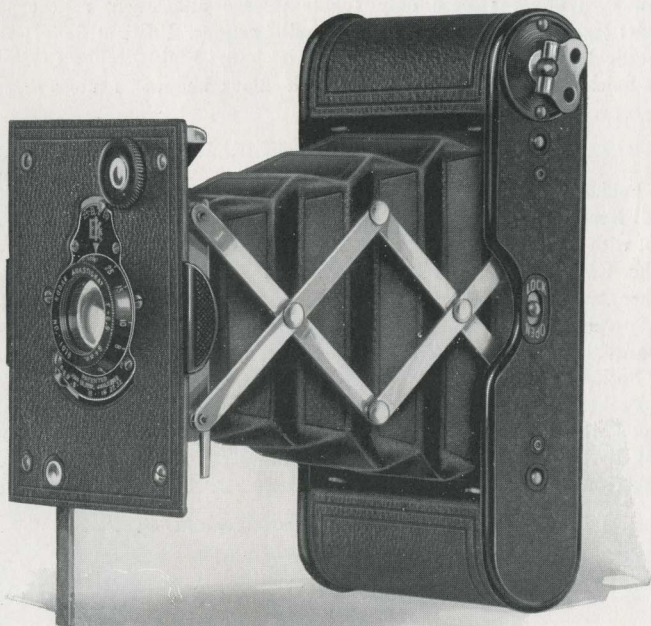


# Vest Pocket Autographic Kodak *Special*

(Focusing Model)

Smart in appearance, smarter still in performance, the Vest Pocket Kodaks *Special* have much more than their compact size to recommend them. They are complete little photographic instruments, as your album page will show.

The camera is offered with the Kodak Anastigmat,  $f.7.7$ , or the Kodak Anastigmat,  $f.6.9$ , and with either lens a turn of the



*If it isn't an Eastman, it isn't a Kodak*

flange establishes sharp focus over a wide range of distances—ten in all—from three feet to 100. This ability to focus sharply with the subject as near as three feet makes possible head and shoulder portraits and other close-up work ordinarily requiring the use of the Kodak Portrait Attachment.

Vest Pocket Kodak *Special* has an all-metal body covered with Morocco grain leather.

The picture size is  $1\frac{5}{8} \times 2\frac{1}{2}$  inches, and so critically sharp are negatives made with the Kodak Anastigmat Lens that, through enlarging, you can have larger prints when you like.



MADE AT THREE FEET WITH  
REGULAR LENS EQUIPMENT  
(Actual Size)

### Details

Size of pictures:  $1\frac{5}{8} \times 2\frac{1}{2}$  inches. Size of Kodak:  $1 \times 2\frac{3}{8} \times 4\frac{3}{4}$  inches. Capacity without reloading: 8 exposures. Weight: 11 ounces. Adjustable focus. Lenses: Kodak Anastigmat,  $f6.9$  and  $f7.7$ ,  $3\frac{1}{2}$ -inch focus. Kodak Ball Bearing Shutter No. 0 with finger release only (cable release attachment sold separately). Speeds:  $\frac{1}{25}$ ,  $\frac{1}{50}$  second, and time and "bulb" actions. Brilliant finder; reversible for vertical or horizontal pictures. All-metal body covered with Morocco grain leather. Metal parts finished in nickel and black enamel. Black bellows. Autographic feature.

### Prices

Vest Pocket Autographic Kodak <i>Special</i> (focusing model), Kodak Anastigmat Lens, $f6.9$ , and Kodak Ball Bearing Shutter . . . . .	\$15.00
Vest Pocket Autographic Kodak <i>Special</i> (focusing model), Kodak Anastigmat Lens, $f7.7$ , and Kodak Ball Bearing Shutter . . . . .	13.00
Leather Case for V. P. Kodak . . . . .	.90
Leather Case, with strap . . . . .	1.00
Belt Carrying Case (russet leather). . . . .	1.25
Autographic Film Cartridge, 8 exposures, $1\frac{5}{8} \times 2\frac{1}{2}$ (No. A 127) . . . .	.25
Vest Pocket Cable Release Attachment (see page 61) . . . . .	.50
Vest Pocket Kodak Tripod Adapter (see page 59) . . . . .	.50
Kodak Self Timer (see page 52) . . . . .	1.25

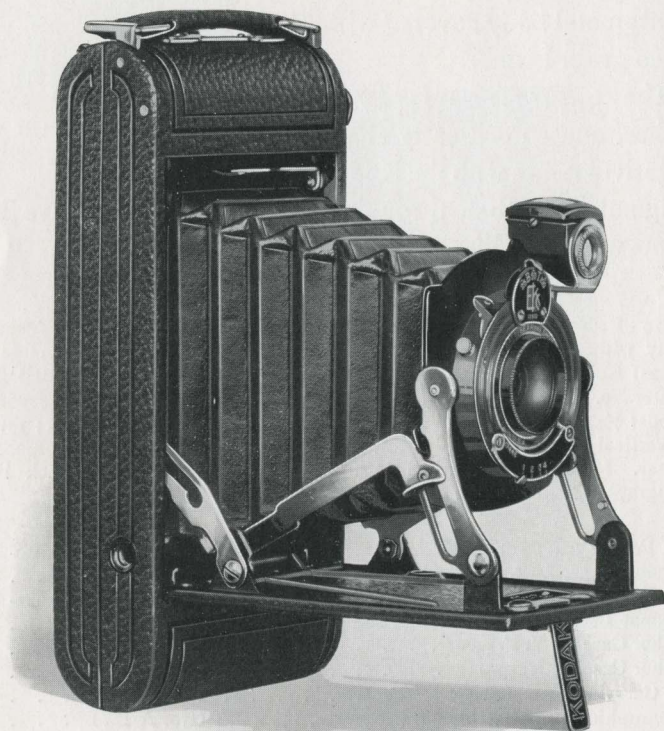
*The prices of cameras and film include the Excise Tax*

# Nos. 1 and 1A Pocket Kodaks

## Series II

(Fixed Focus Models)

The extent to which Kodak photography has been simplified is strikingly illustrated by the Pocket Kodaks, Series II. As the camera is opened, the lens, always in focus, automatically snaps into picture-making position. You're ready to click the shutter almost as soon as the camera's in your hand.



*If it isn't an Eastman, it isn't a Kodak*



The Nos. 1 and 1A, Series II, are similarly equipped. The lens is carefully tested; the shutter, Kodak Ball Bearing, with adjustable speeds of  $\frac{1}{25}$ ,  $\frac{1}{50}$  and  $\frac{1}{100}$  of a second, is reliable and accurate, and the autographic attachment is countersunk so that the hand may have the flat surface of the camera back as support while the date and title are noted.

The only practical difference between the Nos. 1 and 1A Pocket Kodaks, Series II, is in the size of the pictures they make,  $2\frac{1}{4} \times 3\frac{1}{4}$  and  $2\frac{1}{2} \times 4\frac{1}{4}$  inches, respectively.

Both are pocket Kodaks and both bring to amateur photography a new convenience in picture-making.

## Details

Size of pictures: No. 1,  $2\frac{1}{4} \times 3\frac{1}{4}$  inches; No. 1A,  $2\frac{1}{2} \times 4\frac{1}{4}$  inches. Size of Kodak: No. 1,  $1\frac{5}{16} \times 3\frac{1}{16} \times 6\frac{7}{16}$  inches; No. 1A,  $1\frac{9}{16} \times 3\frac{5}{16} \times 8$  inches. Capacity without reloading: No. 1, 6 exposures; No. 1A, 12 exposures. Weight: No. 1, 15 ounces; No. 1A, 23 ounces. Focus: Fixed. Lens: Meniscus Achromatic. Shutter: Kodak Ball Bearing with finger release. Speeds:  $\frac{1}{25}$ ,  $\frac{1}{50}$  and  $\frac{1}{100}$  second, as well as time and "bulb" actions. Brilliant finder; reversible for horizontal or vertical pictures. Body: Aluminum. Covering: No. 1, Levant grain leather; No. 1A, fine seal-grain leather. Metal parts finished in nickel and black enamel. Black bellows. Autographic feature. Two tripod sockets.

## Prices

	No. 1	No. 1A
Pocket Kodak, Series II (fixed focus), with Meniscus Achromatic Lens and Kodak Ball Bearing Shutter . . . . .	\$13.50	\$15.00
Black Sole Leather Case, with strap . . . . .	2.50	3.00
Autographic Film Cartridge, 12 exposures (No. A 116) for No. 1A . . . . .		.60
Ditto, 6 exposures (No. A 120) for No. 1; (No. A 116) for No. 1A . . . . .	.25	.30
Kodak Portrait Attachment (see page 41) . . . . .	.75	.75
Kodak Self Timer (see page 52) . . . . .	1.25	1.25
Cable Release for use with Kodak when opened . . . . .	.35	.35

*The prices of cameras and film include the Excise Tax*

# Nos. 1 and 1A Pocket Kodaks

## Series II

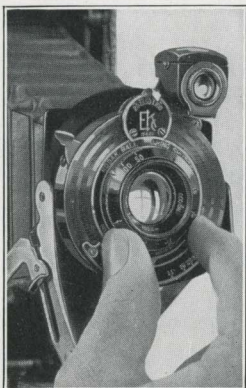
(Focusing Models)

Here is a Kodak offered in two sizes—No. 1, Series II, for  $2\frac{1}{4} \times 3\frac{1}{4}$  pictures, and No. 1A for pictures  $2\frac{1}{2} \times 4\frac{1}{4}$  inches—that can claim unusual distinction on three counts.



*If it isn't an Eastman, it isn't a Kodak*





FOCUS IS AT YOUR  
FINGER TIPS

In the first place, the lens is the famous, sharp-cutting Kodak Anastigmat, *f*.7.7, with Kodak Ball Bearing Shutter speeds of  $\frac{1}{25}$ ,  $\frac{1}{50}$  and  $\frac{1}{100}$  of a second, as well as time and "bulb" actions. In the second place, the Self-erecting Front cuts picture preliminaries by springing the lens into position as the camera bed is dropped. In the third place, sharp focus is secured by merely turning the lens rim.

Autographic, of course.

## Details

Size of pictures: No. 1,  $2\frac{1}{4} \times 3\frac{3}{4}$  inches; No. 1A,  $2\frac{1}{2} \times 4\frac{1}{4}$  inches. Size of Kodak: No. 1,  $1\frac{5}{16} \times 3\frac{3}{16} \times 6\frac{7}{16}$  inches; No. 1A,  $1\frac{9}{16} \times 3\frac{3}{16} \times 8$  inches. Capacity without reloading: No. 1, 6 exposures; No. 1A, 12 exposures. Weight: No. 1,  $16\frac{1}{2}$  ounces; No. 1A, 26 ounces. Adjustable focus only. Lens: Kodak Anastigmat, *f*.7.7—No. 1,  $4\frac{1}{4}$ -inch focus; No. 1A,  $5\frac{1}{4}$ -inch focus. Kodak Ball Bearing Shutter with finger release. Speeds:  $\frac{1}{25}$ ,  $\frac{1}{50}$  and  $\frac{1}{100}$  second, as well as time and "bulb" actions. Brilliant finder; reversible for horizontal or vertical pictures. Body: Aluminum. Covering: No. 1, Levant grain leather; No. 1A, fine seal-grain leather. Metal parts finished in nickel and black enamel. Black bellows. Autographic feature. Two tripod sockets.

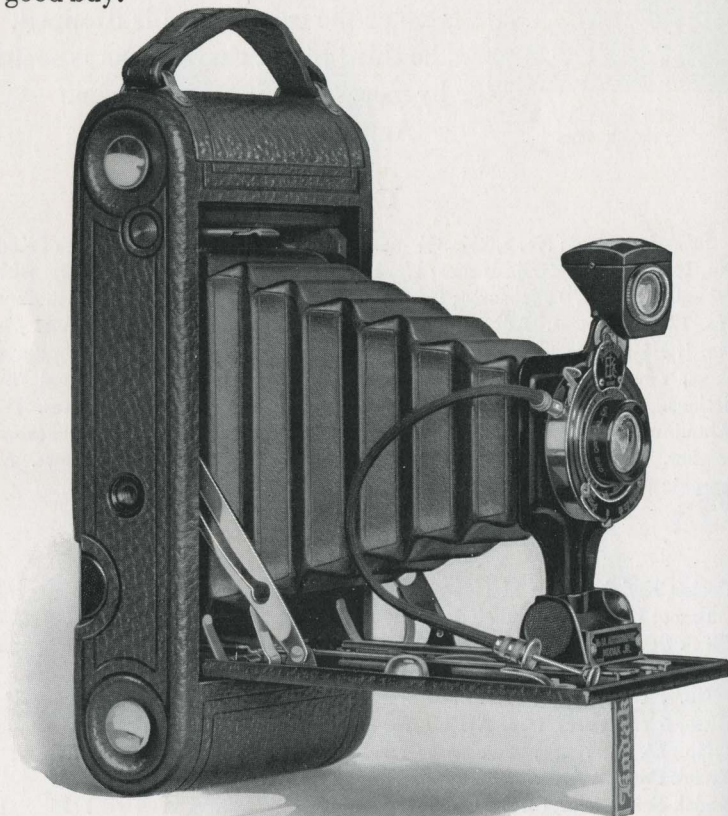
## Prices

	No. 1	No. 1A
Pocket Kodak, Series II (focusing model), with Kodak Anastigmat Lens, <i>f</i> .7.7, and Kodak Ball Bearing Shutter . . . . .	\$20.00	\$22.00
Black Sole Leather Case, with strap . . . . .	2.50	3.00
Autographic Film Cartridge, 12 exposures (No. A 116) for No. 1A . . . . .		.60
Ditto, 6 exposures (No. A 120) for No. 1; (No. A 116) for No. 1A . . . . .	.25	.30
Kodak Portrait Attachment (see page 41) . . . . .	.75	.75
Kodak Self Timer (see page 52) . . . . .	1.25	1.25
Cable Release for use with Kodak when opened . . . . .	.35	.35

*The prices of cameras and film include the Excise Tax*

## Nos. 1 and 1A Autographic Kodak Juniors

Thoroughly practical picture-makers are the Juniors and you get that much at a glimpse. They are handy to handle, both from convenience in size and ease of operation and their price is conservative. Careful purchasers recognize the Juniors as "a good buy."



*If it isn't an Eastman, it isn't a Kodak*



Both the No. 1 and 1A offer the choice of fixed focus or adjustable focus, both have a reliable shutter with cable release, both are autographic, and finally, both are deftly designed and finely finished.

No. 1 Junior is offered with Kodak Ball Bearing Shutter and a choice of three lens equipments, including the Eastman-made Kodak Anastigmat, *f*.7.7.

No. 1A Junior offers a choice of three lens equipments with Kodak Ball Bearing Shutter, and may be secured as well with Kodak Anastigmat Lens and multiple speed shutter.

The No. 1 makes pictures  $2\frac{1}{4} \times 3\frac{1}{4}$  inches; the No. 1A  $2\frac{1}{2} \times 4\frac{1}{4}$  inches.

### Details

Size of pictures: No. 1,  $2\frac{1}{4} \times 3\frac{1}{4}$  inches; No. 1A,  $2\frac{1}{2} \times 4\frac{1}{4}$  inches. Size of Kodak: No. 1,  $1\frac{7}{16} \times 3\frac{5}{8} \times 6\frac{5}{8}$  inches; No. 1A,  $1\frac{5}{8} \times 3\frac{3}{4} \times 8$  inches. Capacity: No. 1, 6 exposures; No. 1A, 12 exposures. Weight: No. 1,  $21\frac{1}{2}$  ounces; No. 1A,  $27\frac{1}{2}$  ounces. Focus: Fixed (with Meniscus Achromatic Lens only), or Adjustable (with any listed lens). Lenses: Meniscus Achromatic; Rapid Rectilinear—No. 1,  $4\frac{1}{4}$ -inch focus; No. 1A,  $5\frac{1}{4}$ -inch focus; or Kodak Anastigmat, *f*.7.7—No. 1,  $4\frac{1}{8}$ -inch focus; No. 1A,  $5\frac{1}{4}$ -inch focus. Kodak Ball Bearing Shutter with cable and finger release. Speeds: No. 1, with Meniscus Achromatic or Rapid Rectilinear Lens,  $\frac{1}{25}$  and  $\frac{1}{50}$  second; with Kodak Anastigmat, *f*.7.7 Lens,  $\frac{1}{25}$ ,  $\frac{1}{50}$  and  $\frac{1}{100}$  second; No. 1A,  $\frac{1}{25}$ ,  $\frac{1}{50}$  and  $\frac{1}{100}$  second. Both with time and “bulb” actions. Multiple speed shutter with Kodak Anastigmat, *f*.7.7, on 1A only. Brilliant finder; reversible for vertical or horizontal pictures. Body covered with fine seal-grain leather. Tripod sockets. Metal parts finished in nickel and black enamel. Black bellows. Autographic feature.

### Prices

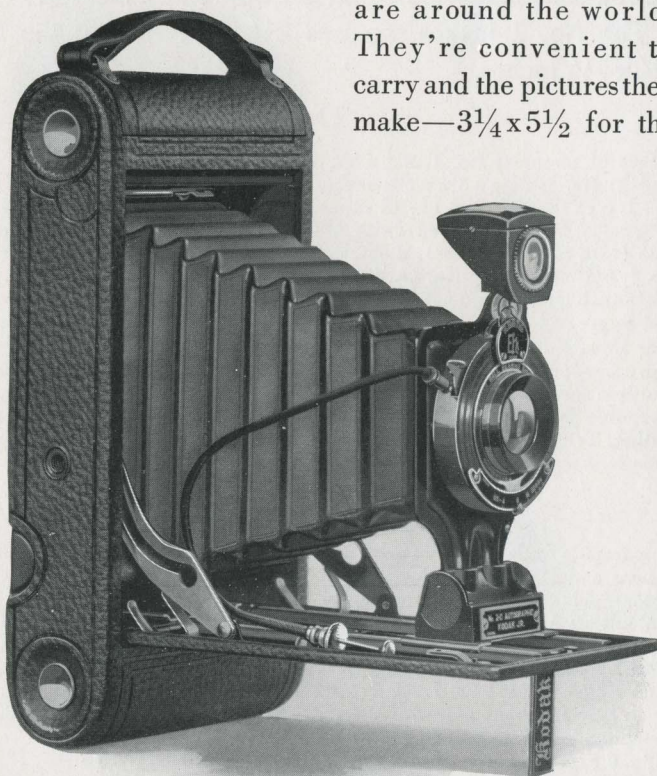
	No. 1	No. 1A
Autographic Kodak Junior (fixed focus), Meniscus Achromatic Lens and Kodak Ball Bearing Shutter . . . . .	\$12.00	\$13.00
Autographic Kodak Junior (focusing model, with scale), Meniscus Achromatic Lens and Kodak Ball Bearing Shutter . . . . .	12.00	13.00
With Rapid Rectilinear Lens . . . . .	14.00	15.00
With Kodak Anastigmat Lens, <i>f</i> .7.7 . . . . .	19.00	20.00
With Kodak Anastigmat Lens, <i>f</i> .7.7, multiple speed shutter . . . . .		24.00
Black Sole Leather Case, with strap . . . . .	3.00	3.00
Autographic Film Cartridge, 12 exposures (No. A 116) for No. 1A . . . . .		.60
Ditto, 6 exposures (No. A 120) for No. 1; (No. A 116) for No. 1A . . . . .	.25	.30
Kodak Portrait Attachment (see page 41) . . . . .	.75	.75
Kodak Self Timer (see page 52) . . . . .	1.25	1.25

*The prices of cameras and film include the Excise Tax*

## Nos. 2C and 3A Autographic Kodak Juniors

Travel pictures are so highly valued that it is a real tribute to the 2C and 3A Juniors to be so often the camera selection of the tourist. Both instruments are big in everything but bulk and mechanically and optically are fully capable of giving a good account of themselves—and the trip.

And these cameras are just as good around the home as they are around the world. They're convenient to carry and the pictures they make— $3\frac{1}{4} \times 5\frac{1}{2}$  for the



*If it isn't an Eastman, it isn't a Kodak*



3A and  $2\frac{7}{8} \times 4\frac{7}{8}$  for the 2C—are sized and proportioned to fit the view.

The lens and shutter equipment is of such excellence that good picture-making becomes all the easier, and the presence of the autographic feature means the presence of the date and title when you want it.

The choice of three lenses includes Meniscus Achromatic, Rapid Rectilinear and Kodak Anastigmat,  $f.7.7$ . All are honestly made and carefully tested but the Anastigmat advantages—sharpness and definition—that come with the Kodak Anastigmat, whether with Kodak Ball Bearing or multiple speed shutter, are well worth the small advance in price.

## Details

Size of pictures: No. 2C,  $2\frac{7}{8} \times 4\frac{7}{8}$  inches; No. 3A,  $3\frac{1}{4} \times 5\frac{1}{2}$  inches. Size of Kodak: No. 2C,  $1\frac{3}{4} \times 4\frac{3}{8} \times 8\frac{3}{4}$  inches; No. 3A,  $1\frac{15}{16} \times 5\frac{1}{8} \times 9\frac{3}{4}$  inches. Capacity without reloading: Both, 10 exposures. Weight: No. 2C, 34 ounces; No. 3A, 37 ounces. Adjustable focus only with automatic focusing lock. Lenses: Meniscus Achromatic; Rapid Rectilinear—No. 2C,  $5\frac{1}{2}$ -inch focus; No. 3A,  $6\frac{3}{4}$ -inch focus; or Kodak Anastigmat,  $f.7.7$ —No. 2C,  $5\frac{1}{2}$ -inch focus; No. 3A,  $6\frac{3}{4}$ -inch focus. Kodak Ball Bearing Shutter with cable and finger release. Speeds:  $\frac{1}{25}$ ,  $\frac{1}{50}$  and  $\frac{1}{100}$  second, and time and “bulb” actions. Multiple speed shutter with Anastigmat equipment only. Brilliant finder; reversible for vertical or horizontal pictures. Back and bed of aluminum, covered with fine seal-grain leather. Metal parts finished in nickel and black enamel. Black bellows. Autographic feature. Two tripod sockets.

## Prices

	No. 2C	No. 3A
Autographic Kodak Junior, with Meniscus Achromatic Lens and Kodak Ball Bearing Shutter . . . . .	\$16.00	\$17.50
With Rapid Rectilinear Lens . . . . .	18.00	20.00
With Kodak Anastigmat Lens, $f.7.7$ . . . . .	23.00	25.00
With Kodak Anastigmat Lens, $f.7.7$ , and multiple speed shutter . . . . .	27.00	29.00
Black Sole Leather Case, with strap . . . . .	3.25	3.75
Autographic Film Cartridge, 10 exposures (No. A 130) for No. 2C; (No. A 122) for No. 3A . . . . .	.75	.90
Ditto, 6 exposures . . . . .	.45	.55
Kodak Portrait Attachment (see page 41) . . . . .	.75	.75
Kodak Self Timer (see page 52) . . . . .	1.25	1.25

*The prices of cameras and film include the Excise Tax*



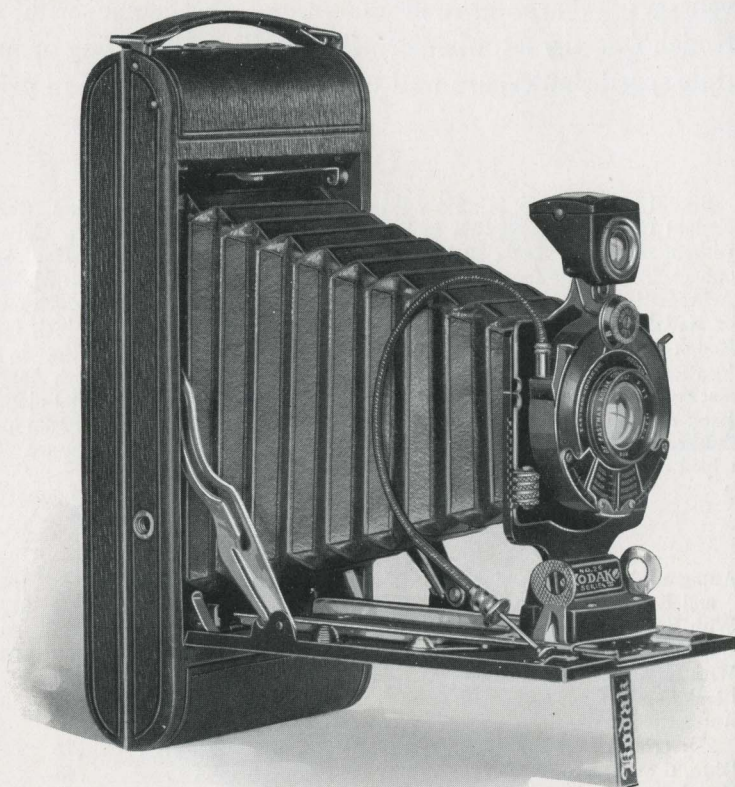
# Nos. 1A and 2C Kodaks

## Series III

(Ready July 1)

You will appreciate the fact that these cameras are emphatically new, as soon as you see the shutter.

The Diomatic Shutter is definitely dependable and may be counted on to split the seconds with reliable accuracy. It has four snap-shot speeds— $\frac{1}{10}$ ,  $\frac{1}{25}$ ,  $\frac{1}{50}$  and  $\frac{1}{100}$  of a second,



*If it isn't an Eastman, it isn't a Kodak*

and exactly how to use them under the light conditions that prevail is graphically shown by the automatic exposure dial.

The lens is the Eastman-made, Kodak Anastigmat,  $f.7.7$ , and sharp negatives result as a matter of course.

The No. 1A, Series III, and the No. 2C, Series III, are identical in finish and equipment, but the No. 1A makes pictures  $2\frac{1}{2} \times 4\frac{1}{4}$  and the No. 2C,  $2\frac{7}{8} \times 4\frac{7}{8}$  inches.

Both are autographic, of course, and both include among their refinements the rising front as well as a quick-action focusing feature that again stamps these cameras as "something different."

Series III Kodaks are new additions to the line. They'll find many friends—and keep them.

## Details

Size of pictures: No. 1A,  $2\frac{1}{2} \times 4\frac{1}{4}$  inches; No. 2C,  $2\frac{7}{8} \times 4\frac{7}{8}$  inches. Size of Kodak: No. 1A,  $1\frac{9}{16} \times 8 \times 3\frac{3}{16}$  inches; No. 2C,  $1\frac{9}{16} \times 8\frac{3}{4} \times 3\frac{7}{8}$  inches. Capacity without reloading: No. 1A, 12 exposures; No. 2C, 10 exposures. Weight: No. 1A, 27 ounces; No. 2C, 35 ounces. Adjustable focus only with lever focusing device. Lens: Kodak Anastigmat,  $f.7.7$ —No. 1A,  $5\frac{1}{4}$ -inch focus; No. 2C,  $5\frac{1}{2}$ -inch focus. Diomatic Shutter with cable and finger release. Speeds:  $\frac{1}{10}$ ,  $\frac{1}{25}$ ,  $\frac{1}{50}$ ,  $\frac{1}{100}$ , as well as time and "bulb" actions. Brilliant finder; reversible for horizontal or vertical pictures. Body: Aluminum. Covering: Baby crepe grain cowhide. Metal parts finished in nickel and black enamel. Black bellows. Autographic feature. Two tripod sockets. Rising and falling front.

## Prices

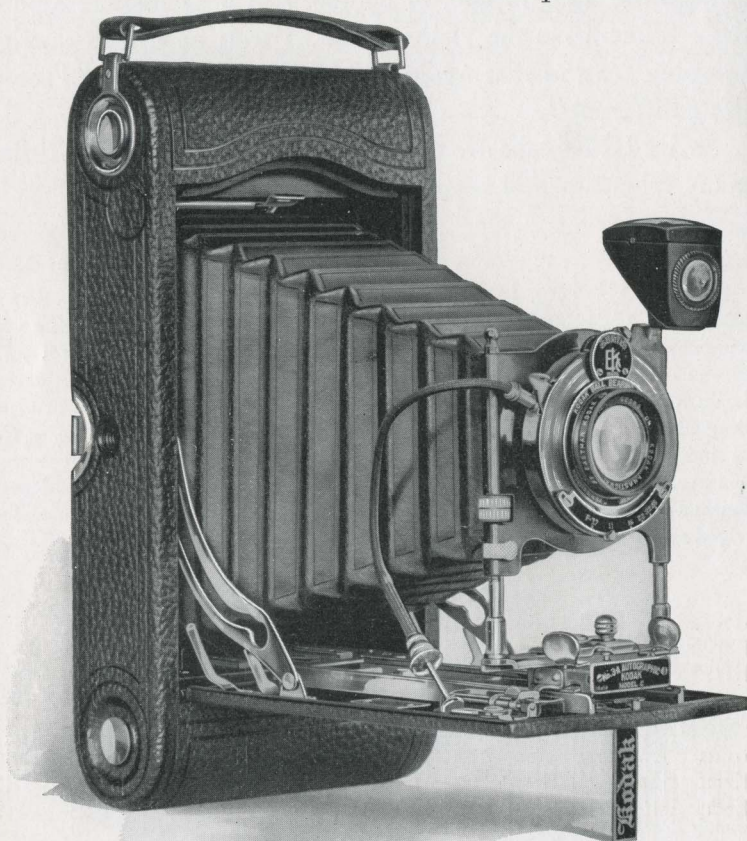
Kodak, Series III, with Kodak Anastigmat Lens, $f.7.7$ , and	No. 1A	No. 2C
Diomatic Shutter . . . . .	\$30.00	\$33.00
Black Sole Leather Case, with strap . . . . .	3.00	3.50
Autographic Film Cartridge, 12 exposures (No. A 116) for		
No. 1A; 10 exposures (No. A 130) for No. 2C . . . . .	.60	.75
Ditto, 6 exposures (No. A 116) for No. 1A; (No. A 130) for		
No. 2C . . . . .	.30	.45
Kodak Portrait Attachment (see page 41) . . . . .	.75	.75
Kodak Self Timer (see page 52) . . . . .	1.25	1.25

*The prices of cameras and film include the Excise Tax*



## Nos. 3 and 3A Autographic Kodaks

Together with the Special Kodaks in the same sizes, the Nos. 3 and 3A Kodaks are the only instruments in the catalog that permit the use of Kodak Cut Film as well as roll film. By the addition of the Combination Back (page 30) either camera accommodates Kodak Cut Film, regular or *Super Speed*, as well as plates if desired.



*If it isn't an Eastman, it isn't a Kodak*

Add to this such an unusual feature as the rising front and the fact that both the 3 and 3A Kodaks offer excellent lens and shutter equipment, and the reason for their reputation as distinctive picture-makers is apparent.

## Details

Size of pictures: No. 3,  $3\frac{1}{4} \times 4\frac{1}{4}$  inches; No. 3A,  $3\frac{1}{4} \times 5\frac{1}{2}$  inches. Size of Kodak: No. 3,  $1\frac{3}{4} \times 4\frac{1}{2} \times 7\frac{1}{2}$  inches; No. 3A,  $2 \times 4\frac{3}{4} \times 9\frac{1}{2}$  inches. Capacity without reloading: No. 3, 12 exposures; No. 3A, 10 exposures. Weight: No. 3, 30 ounces; No. 3A, 41 ounces. Adjustable focus only, with automatic focusing lock. No. 3A has double focusing scale for films or plates. Rising, falling and sliding fronts. Lenses: Rapid Rectilinear, No. 3,  $5\frac{1}{4}$ -inch focus; No. 3A,  $6\frac{1}{2}$ -inch focus; Kodak Anastigmat,  $f7.7$ , No. 3,  $5\frac{1}{4}$ -inch focus; No. 3A,  $6\frac{3}{4}$ -inch focus. Kodak Ball Bearing Shutter with cable and finger release; or on the 3A with anastigmat equipment only, multiple speed shutter with cable and finger release. Speeds: Kodak Ball Bearing Shutter,  $\frac{1}{25}$ ,  $\frac{1}{50}$  and  $\frac{1}{100}$  second, and time and "bulb" actions. Brilliant finder; reversible for vertical or horizontal pictures. Back and bed of aluminum, covered with fine seal grain leather. Metal parts finished in nickel and black enamel. Black bellows. Autographic feature. Two tripod sockets.

## Prices

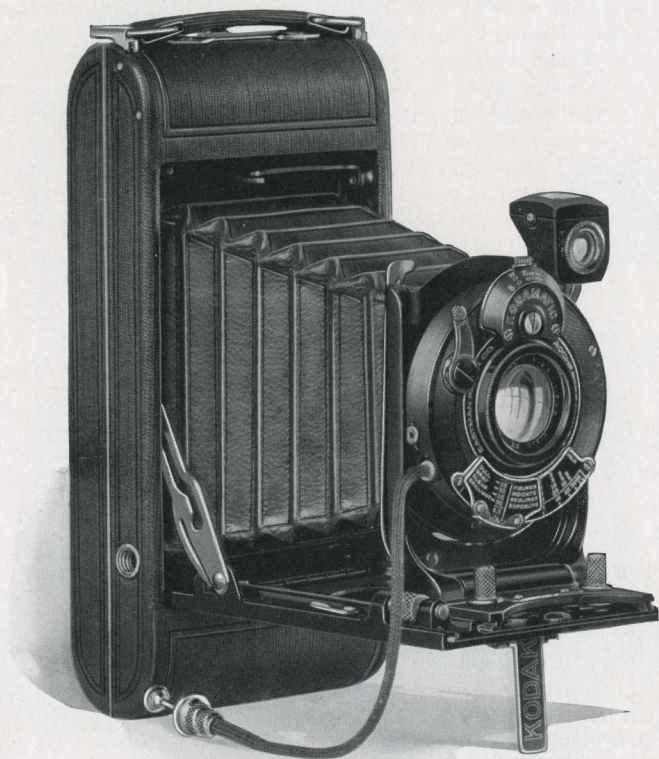
	No. 3	No. 3A
Autographic Kodak, Rapid Rectilinear Lens, Kodak Ball Bearing Shutter . . . . .	\$19.00	\$22.50
Ditto, with Kodak Anastigmat Lens, $f7.7$ . . . . .	24.00	27.50
Ditto, with Kodak Anastigmat Lens, $f7.7$ , and multiple speed shutter . . . . .		31.50
Black Sole Leather Case, with strap . . . . .	3.50	4.00
Combination Back for cut film or plates . . . . .	4.00	4.00
Double Glass Plate Holders, each . . . . .	1.50	1.50
Kodak Cut Film Sheaths, each . . . . .	.10	.15
Kodak Cut Film, package of 12 . . . . .	.67	.93
Kodak Cut Film, <i>Super Speed</i> , package of 12 . . . . .	.77	1.03
Autographic Film Cartridges, 12 exposures (No. A 118) for No. 3; 10 exposures (No. A 122) for No. 3A . . . . .	.90	.90
Ditto, 6 exposures . . . . .	.45	.55
Kodak Portrait Attachment (see page 41) . . . . .	.75	.75
Kodak Self Timer (see page 52) . . . . .	1.25	1.25

*The prices of cameras and film include the Excise Tax*



## No. 1 Autographic Kodak *Special*

At the Kodak factories, there is no model in which the organization takes more pride than the No. 1 Kodak *Special*. A camera hardly as large as your hand, whose equipment includes the high-speed, sharp-cutting Kodak Anastigmat Lens, *f*.6.3, and Kodamatic Shutter with seven adjustable speeds from  $\frac{1}{200}$  of a second to  $\frac{1}{2}$  second, is just about an optical and



*If it isn't an Eastman, it isn't a Kodak*



mechanical masterpiece. The enthusiasm of the people who made the camera is logically shared by those who make pictures with it.

And as for photographic refinements, rising front, counter-sunk autographic attachment and an automatic exposure dial that indicates the speed to use under the light conditions that obtain and with the lens opening used, offer the camerist important assistance in better picture-making.

While satisfying, the No. 1 *Special* picture is not large.

However, the crisp quality that the Kodak Anastigmat, *f*6.3, puts in the negative is such that large prints may easily be made; and so good are No. 1 *Special* pictures that you will certainly want some of them in a size big enough to top the table or brighten the wall.

In appearance, the No. 1 *Special*, with its smart design and handsome finish in nickel and genuine sealskin, more than satisfies the most exacting taste.

## Details

Size of pictures:  $2\frac{1}{4} \times 3\frac{1}{4}$  inches. Size of Kodak:  $1\frac{5}{16} \times 3\frac{1}{16} \times 6\frac{7}{16}$  inches. Capacity without reloading: 6 exposures. Weight: 18 ounces. Adjustable focus only, with screw focusing device. Lenses: For details, see price list below. Shutter: Kodamatic with cable release. Speeds: Seven, from  $\frac{1}{200}$  to  $\frac{1}{2}$  second, with time and "bulb" actions. Brilliant finder; reversible for vertical or horizontal pictures. Aluminum body covered with finest quality genuine sealskin. Metal parts finished in nickel and black enamel. Black leather bellows. Autographic feature. Two tripod sockets.

## Prices

No. 1 Autographic Kodak <i>Special</i> , with Kodak Anastigmat Lens, <i>f</i> 6.3, $4\frac{1}{2}$ -inch focus, and Kodamatic Shutter . . . . .	\$50.00
No. 1 Autographic Kodak <i>Special</i> , with Bausch & Lomb Kodak Anastigmat, <i>f</i> 6.3 Lens No. 1, $4\frac{1}{2}$ -inch focus, and Kodamatic Shutter . . . . .	62.00
No. 1 Autographic Kodak <i>Special</i> , with Bausch & Lomb Tessar Series IIb, <i>f</i> 6.3 Lens No. 3, $4\frac{1}{2}$ -inch focus, and Kodamatic Shutter . . . . .	74.00
No. 1 Autographic Kodak <i>Special</i> , with Bausch & Lomb Tessar Series Ic, <i>f</i> 4.5 Lens No. 12, $3\frac{1}{2}$ -inch focus, and Kodamatic Shutter . . . . .	71.00
Long-grain Leather, Velvet-lined Case, with strap . . . . .	3.75
Autographic Film Cartridge, 6 exposures (No. A 120) . . . . .	.25
Kodak Portrait Attachment (see page 41) . . . . .	.75
Kodak Self Timer (see page 52) . . . . .	1.25

*The prices of cameras and film include the Excise Tax*

## No. 1A Autographic Kodak *Special*

With the 1A *Special* you're ready for the entire range of pictures in the hand camera field. There's the Kodak Anastigmat Lens, *f*.6.3, for example, giving keen definition and



*If it isn't an Eastman, it isn't a Kodak*



a speed that secures successful snap-shots under unfavorable light conditions. There's the Kodamatic Shutter with seven accurate snap-shot speeds from  $\frac{1}{200}$  (fast enough for action pictures) to  $\frac{1}{2}$  second and time and "bulb." There are such niceties of equipment as the rising front and the Kodak Range Finder, the device that finds the focus. And then there is the size of the picture,  $2\frac{1}{2} \times 4\frac{1}{4}$ , perhaps the most popular in photography.

Like the other *Specials*, the 1A is as fine a photographic instrument as it is possible to make. The equipment indicates it. The pictures prove it.

The 1A *Special*, as described, is the newest of the *Special* Kodaks, and this marks its photographic premiere as far as the catalog is concerned.

## Details

Size of pictures:  $2\frac{1}{2} \times 4\frac{1}{4}$  inches. Size of Kodak:  $1\frac{1}{2} \times 3\frac{5}{16} \times 8$  inches. Capacity without reloading: 12 exposures. Weight: 27 ounces. Adjustable focus only with screw focusing device. Lens: Kodak Anastigmat, *f*6.3. Kodamatic Shutter with cable release. Speeds: Seven, from  $\frac{1}{200}$  to  $\frac{1}{2}$  second, with time and "bulb" actions. Brilliant finder; reversible for horizontal or vertical pictures. Aluminum body covered with finest quality genuine sealskin. Metal parts finished in nickel and black enamel. Black leather bellows. Autographic feature. Two tripod sockets. Range Finder. Rising and falling front.

## Prices

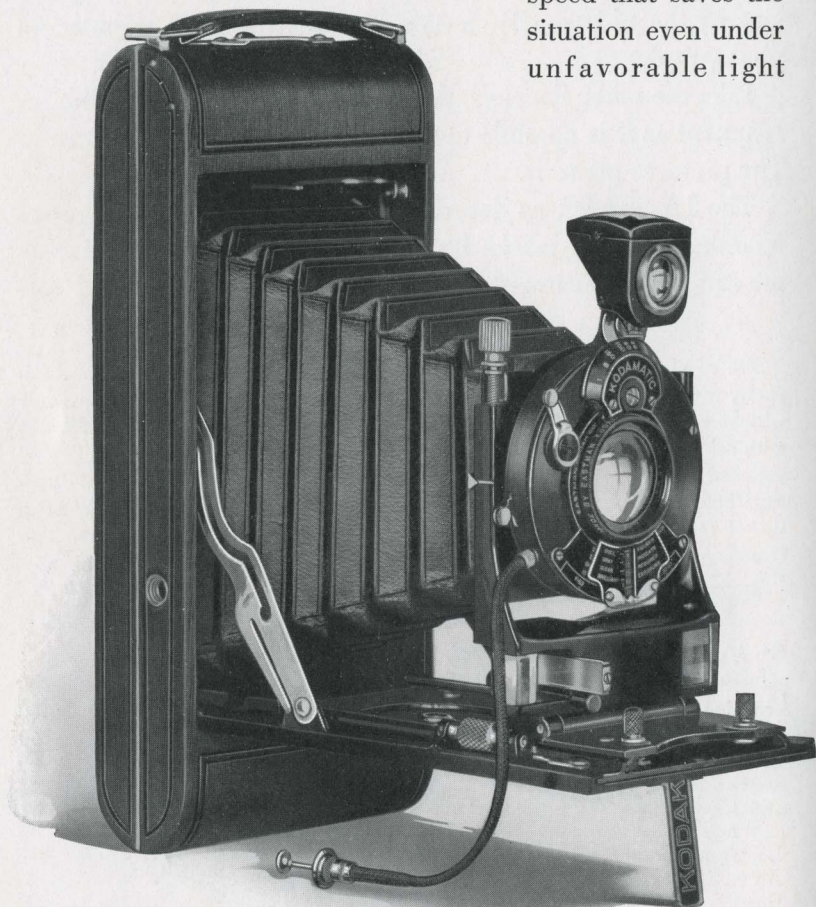
No. 1A Autographic Kodak <i>Special</i> , with Kodak Anastigmat Lens, <i>f</i> 6.3, 5-inch focus, and Kodamatic Shutter . . . . .	\$60.00
Long-grain Leather, Velvet-lined Case, with strap . . . . .	4.50
Autographic Film Cartridge, 12 exposures (No. A 116) . . . . .	.60
Ditto, 6 exposures . . . . .	.30
Kodak Portrait Attachment (see page 41) . . . . .	.75
Kodak Self Timer (see page 52) . . . . .	1.25

*The prices of cameras and film include the Excise Tax*



## No. 2C Autographic Kodak Special

If the picture is photographically possible, the 2C *Special* is equal to the occasion. Its lens, Kodak Anastigmat,  $f.6.3$ , has a speed that saves the situation even under unfavorable light



*If it isn't an Eastman, it isn't a Kodak*

conditions and gives sharp, clean-cut negatives from which it is a delight to print. And to support this lens to the limit, the Kodamatic Shutter offers seven automatic speeds from  $\frac{1}{150}$  to  $\frac{1}{2}$  second, together with time and "bulb," and these speeds are dependably accurate.

There has been a growing preference among amateurs for the  $2\frac{7}{8} \times 4\frac{7}{8}$  picture—the 2C size. There's generous space for the story; the proportions are pleasing and fit the view. This ideal size deserves a superfine camera, and with the 2C *Special* it gets it.

Photographic refinements are present, of course. There's the Kodak Range Finder that finds the focus when you don't care to gauge with your eye. There's the rising front and, as a part of the Kodamatic Shutter, a self-selecting exposure plate that gives at a glance the speed and stop you want with the light you have.

The No. 2C *Special* is made of aluminum and is handsomely covered with finest quality sealskin.

## Details

Size of pictures:  $2\frac{7}{8} \times 4\frac{7}{8}$  inches. Size of Kodak:  $1\frac{1}{16} \times 8\frac{3}{4} \times 3\frac{3}{8}$  inches. Capacity without reloading: 10 exposures. Weight: 32 ounces. Adjustable focus only with screw focusing device. Lens: Kodak Anastigmat, f6.3. Kodamatic Shutter with cable release. Speeds: Seven, from  $\frac{1}{150}$  to  $\frac{1}{2}$  second, with time and "bulb" actions. Brilliant finder; reversible for horizontal or vertical pictures. Aluminum body covered with finest quality genuine sealskin. Metal parts finished in nickel and black enamel. Black leather bellows. Autographic feature. Two tripod sockets. Range Finder. Rising and falling front.

## Prices

No. 2C Autographic Kodak <i>Special</i> , with Kodak Anastigmat Lens, f6.3,	
6-inch focus, and Kodamatic Shutter . . . . .	\$65.00
Long-grain Leather, Velvet-lined Case, with strap . . . . .	5.00
Autographic Film Cartridge, 10 exposures (No. A 130) . . . . .	.75
Ditto, 6 exposures . . . . .	.45
Kodak Portrait Attachment (see page 41) . . . . .	.75
Kodak Self Timer (see page 52) . . . . .	1.25

*The prices of cameras and film include the Excise Tax*



## Nos. 3 and 3A Autographic Kodaks, *Special*

Equipment that includes the fast Kodak Anastigmat, *f*.6.3, Lens and the Kodamatic Shutter stamps these two Kodaks as *Specials* even before you note the name. They are superior cameras—both of them, and equipment, materials and finish

carry this idea  
to the limit.



*If it isn't an Eastman, it isn't a Kodak*



The Combination Back (page 30) converts either camera for use with Kodak Cut Film or plates, and the 3A has the further refinement of the Kodak Range Finder.

## Details

Size of pictures: No. 3,  $3\frac{1}{4} \times 4\frac{1}{4}$  inches; No. 3A,  $3\frac{1}{4} \times 5\frac{1}{2}$  inches. Size of Kodak: No. 3,  $1\frac{7}{8} \times 4\frac{1}{2} \times 8$  inches; No. 3A,  $2 \times 4\frac{3}{4} \times 9\frac{1}{2}$  inches. Capacity without reloading: No. 3, 12 exposures; No. 3A, 10 exposures. Weight: No. 3, 32 ounces; No. 3A, 42 ounces. Adjustable focus, with rack and pinion for focusing, also regular focusing scale; No. 3 equipped with spirit level; No. 3A, with Kodak Range Finder. Rising, sliding and falling front. Lenses: For details, see price heading below. Kodamatic, Ilex Acme or Optimo Shutter with cable and finger release. Speeds: Kodamatic—seven speeds, No. 3, from  $\frac{1}{200}$  to  $\frac{1}{2}$  second; No. 3A,  $\frac{1}{150}$  to  $\frac{1}{2}$  second. Brilliant finder. Aluminum body covered with genuine Persian Morocco. Metal parts finished in nickel and black enamel. Black leather bellows. Autographic feature. Two tripod sockets.

## Prices

Autographic Kodak <i>Special</i> , with Kodak Anastigmat, <i>f</i> 6.3		
Lens, 5-inch focus on No. 3; $6\frac{3}{4}$ -inch focus on No. 3A; and	No. 3	No. 3A
Kodamatic Shutter . . . . .	\$55.00	\$70.00
Ditto, with Ilex Acme or Optimo Shutter . . . . .	45.00	60.00
Autographic Kodak <i>Special</i> , with Bausch & Lomb Kodak		
Anastigmat, <i>f</i> 6.3 Lens No. 2— $5\frac{1}{4}$ -inch focus on No. 3; Lens		
No. 4— $6\frac{3}{4}$ -inch focus on No. 3A; and Kodamatic Shutter . . . . .	70.00	90.00
Ditto, with Ilex Acme or Optimo Shutter . . . . .	60.00	80.00
Autographic Kodak <i>Special</i> , with Bausch & Lomb Tessar Series		
Iib Anastigmat, <i>f</i> 6.3 Lens No. 4— $5\frac{1}{4}$ -inch focus on No. 3;		
Lens No. 5K— $7\frac{1}{4}$ -inch focus on No. 3A; and Kodamatic		
Shutter . . . . .	80.00	100.00
Ditto, with Ilex Acme or Optimo Shutter . . . . .	70.00	90.00
Grain Leather, Velvet-lined Case, with strap . . . . .	4.75	5.25
Combination Back for cut film or plates . . . . .	4.50	5.00
Double Glass Plate Holders, each . . . . .	1.50	1.50
Kodak Cut Film Sheaths, each . . . . .	.10	.15
Kodak Cut Film, package of 12 . . . . .	.67	.93
Kodak Cut Film, <i>Super Speed</i> , package of 12 . . . . .	.77	1.03
Autographic Film Cartridge, 12 exposures (No. A 118) for		
No. 3; 10 exposures (No. A 122) for No. 3A . . . . .	.90	.90
Ditto, 6 exposures . . . . .	.45	.55
Kodak Portrait Attachment (see page 41) . . . . .	.75	.75
Kodak Self Timer (see page 52) . . . . .	1.25	1.25

*The prices of cameras and film include the Excise Tax*

# Ciné-Kodak Makes Motion Pictures

Ciné-Kodak, the new Eastman motion picture camera, gives you pictures in motion just as easily as your folding camera now gives you "stills." You press the button; we do the rest. Pictures of the family—not to forget the children—of friends, trips, sports, you can now project through the Kodescope and show in motion on the screen.



Nor are you confined to personal pictures. Dramas, educational features, comedies and animated cartoons may be rented through Kodescope Libraries, Inc., and shown in your own home.

Compared with cameras using standard width film, the Ciné-Kodak reduces the operating expense of personal motion pictures over 80 per cent.

Development and reversal of the Ciné-Kodak negative so that it becomes a positive is done in the Eastman Laboratories and the charge is included in the price of the film. When you buy your film your finishing is paid for.

The Ciné-Kodak is supplied with either motor drive or crank and tripod.

Prices on page opposite. Descriptive booklet on request.

## Details

Size: 8 x 4½ x 8¾. Capacity without reloading: 100 feet daylight loading, Safety film, sufficient for 4 minutes continuous action. Weight: 7¼ pounds. Lens: Kodak Anastigmat, *f*3.5. Body: Aluminum.

## Ciné-Kodak Motor Drive Unit

Weight: 4½ pounds. Size: 6¾ x 2½ x 7¾. Two volt motor.



# Kodascope Projects Motion Pictures

The Kodascope throws a brilliant 30x40-inch picture when placed 18 feet from the screen.

It accommodates 400 feet of 16 millimeter width film, which is equivalent in time of projection (approximately 16 minutes) to 1000 feet of standard width motion picture film.

Thread the film in the Kodascope, turn the switches for light and motor, and then sit down and enjoy the picture.



## Details

Size: 18½ x 14⅞ x 10⅝ inches. Weight: 20 pounds. Capacity: 400 feet of 16 millimeter width film. Lens: 50 millimeter focus, projecting a 30 x 40-inch picture at 18 feet. Illumination and power taken from any house circuit, alternating or direct current, not over 125 volts or less than 105, by attaching to ordinary bulb socket.

## Prices

### Ciné-Kodak Outfit

Ciné-Kodak . . . . .	\$125.00
Kodak Motor Drive Unit, with battery and Charging Outfit . . . . .	25.00
Kodascope and Splicer . . . . .	160.00
Tripod . . . . .	25.00
Screen . . . . .	25.00
Outfit as above, with <i>either</i> motor drive unit or hand crank and tripod, Kodascope, splicer and screen . . . . .	335.00

### Ciné-Kodak Film

100-foot Rolls . . . . .	\$ 6.00
50-foot Rolls . . . . .	4.00

(Price includes finishing and return transportation)

### Extra Equipment

Leather Carrying Case for Kodak, Magazines and Tripod Head . . . . .	\$ 18.00
Extra Battery for Motor Drive Unit . . . . .	8.00
Unipod Cane . . . . .	5.00
Leather Bound Canvas Case for Tripod Legs . . . . .	6.50
Safety Chains for Tripod . . . . .	1.25
Handle for Tripod Top . . . . .	1.25

### Duplicate Prints

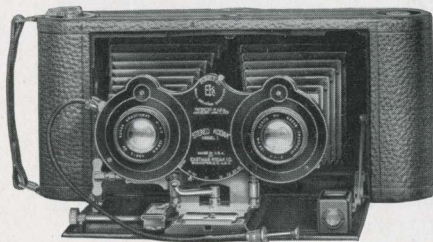
100-foot length . . . . .	\$ 6.00
50-foot length . . . . .	4.00

*The prices of cameras and film include the Excise Tax*



# The Stereo Kodak

Viewed through a stereoscope, the original perspective seems to be restored and instead of looking at the Stereo picture you are looking into it.



## Details

Size of pictures:  $3\frac{1}{8} \times 3\frac{3}{16}$  inches. Size of Kodak:  $2\frac{3}{16} \times 4\frac{3}{4} \times 10\frac{1}{2}$  inches. Capacity: 3 exposures. Weight: 48 ounces. Rising front. Adjustable focus. Lenses: Kodak Anastigmat,  $f.7.7$ ,  $5\frac{1}{4}$ -inch focus. Speeds:  $\frac{1}{25}$ ,  $\frac{1}{50}$  and  $\frac{1}{100}$  second, and time and "bulb" actions. View finder. Aluminum body covered with seal-grain leather. Black bellows. One tripod socket.

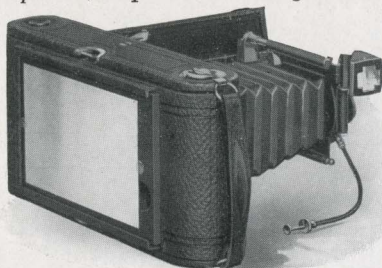
## Prices

Stereo Kodak, Model No. 1, Kodak Anastigmat Lenses, $f.7.7$ , and Stereo Ball Bearing Shutter . . . . .	\$50.00
Stereoscope . . . . .	1.25
Black Sole Leather Carrying Case, with strap . . . . .	4.50
N. C. Film Cartridge (No. 101), 3 exposures, for Stereo . . . . .	.35
Stereo Kodak Self-transposing Printing Frame . . . . .	4.50

*If desired, Stereo film may be developed at Rochester at \$0.20 per roll and prints made at \$0.20 each, mounted.*

## Combination Backs

Used with the Nos. 3 and 3A Autographic Kodaks, Regular and *Special*, in place of the regular Autographic Back, they accommodate double plate holders and a removable ground glass for focusing. With the addition of Kodak Cut Film Sheath in the plate holder, the Combination Back further equips the camera for use with Kodak Cut Film. (See page 51.)



Combination Back with ground glass, for Nos. 3 or 3A "Regular" . . .	\$4.00
Ditto, for No. 3 <i>Special</i> . . . . .	4.50
Ditto, for No. 3A <i>Special</i> . . . . .	5.00
Double Plate Holders for any of above, each . . . . .	1.50

# No. 0 Brownie

Good pictures with least effort at smallest cost—there you have the box Brownie. Children like it because it works so easily; you'll like it because it works so well.

The lens is carefully tested and the body is strongly built and covered with imitation leather.

This camera presents a glorious opportunity for pictures of the children by the children. And such pictures, reflecting as they do the charm of childhood itself, will be among the most prized in your album.

## Details

Size of pictures: 1 $\frac{5}{8}$  x 2 $\frac{1}{2}$  inches. Size of camera: 2 $\frac{5}{8}$  x 3 $\frac{3}{8}$  x 4 $\frac{1}{8}$  inches. Capacity: 8 exposures. Weight: 8 ounces. Fixed focus. Lens: Meniscus. Eastman Rotary Shutter with one stop, also time action. Two ground-glass finders for vertical and horizontal pictures. Body covered with imitation leather.



## Prices

No. 0 Brownie Camera, Meniscus Lens, Eastman Rotary Shutter . . .	\$2.00
Brownie Carrying Case . . . . .	1.00
N. C. Film Cartridge, 8 exposures (No. 127) . . . . .	.25
Brownie Tripod Adapter (see page 60) . . . . .	.25
Kodak Portrait Attachment (see page 41) . . . . .	.50
Developing and Printing Outfit (see page 44) . . . . .	2.00

*The prices of cameras and film include the Excise Tax*



# Nos. 2 and 2A Brownies

## New Models

These two new models not only have aluminum bodies covered with imitation leather but are distinctive as well, from the presence of two tripod sockets.

Their operation is simplicity itself, and they make good pictures as a matter of course.

## Details



Size of pictures: No. 2,  $2\frac{1}{4} \times 3\frac{1}{4}$  inches; No. 2A,  $2\frac{1}{2} \times 4\frac{1}{4}$  inches. Size of camera: No. 2,  $3 \times 4 \times 5\frac{7}{16}$  inches; No. 2A,  $3\frac{1}{4} \times 5 \times 6$  inches. Capacity: No. 2, 6 exposures; No. 2A, 12 exposures. Weight: No. 2,  $16\frac{1}{2}$  ounces; No. 2A,  $21\frac{1}{2}$  ounces. Fixed focus only. Lens: No. 2, Single Meniscus; No. 2A, Meniscus Achromatic. Eastman Rotary Shutter: Both, three stops and time action. Two ground-glass finders for vertical and

horizontal pictures. Two tripod sockets. Aluminum body covered with imitation leather. Metal parts finished in nickel and black enamel.

## Prices

Brownie Camera, Single Meniscus Lens on No. 2, Meniscus	No. 2	No. 2A
Achromatic Lens on No. 2A, Eastman Rotary Shutter . . . . .	\$2.75	\$3.75
Brownie Carrying Case, with strap . . . . .	1.25	1.50
N. C. Film Cartridge, 12 exposures (No. 116) for 2A . . . . .		.60
Ditto, 6 exposures (No. 116) for No. 2A; (No. 120) for No. 2 . . . . .	.25	.30
Kodak Portrait Attachment (see page 41) . . . . .	.50	.50
Developing and Printing Outfit (see page 44) . . . . .	2.00	2.00

*The prices of cameras and film include the Excise Tax*



# Nos. 3 and 2C Brownies

Every Brownie has a carefully tested lens and shutter. Simple as it is in construction and operation, every camera is manufactured in Kodak shops by Kodak workmen, and Eastman standards are rigidly observed.

## Details

Size of pictures: No. 3,  $3\frac{1}{4} \times 4\frac{1}{4}$  inches; No. 2C,  $2\frac{7}{8} \times 4\frac{7}{8}$  inches. Size of camera: No. 3,  $4\frac{3}{8} \times 5\frac{1}{8} \times 6\frac{1}{8}$  inches; No. 2C,  $3\frac{7}{8} \times 6\frac{1}{4} \times 7\frac{1}{4}$  inches. Capacity without re-loading: No. 3, 12 exposures; No. 2C, 10 exposures. Weight: No. 3, 25 ounces; No. 2C, 28 ounces. Fixed focus only. Lens: Meniscus Achromatic. Eastman Rotary Shutter, with three stops and time action. Two ground-glass finders for vertical and horizontal pictures.

Wood body with imitation leather. Two tripod sockets.



No. 3 MODEL

## Prices

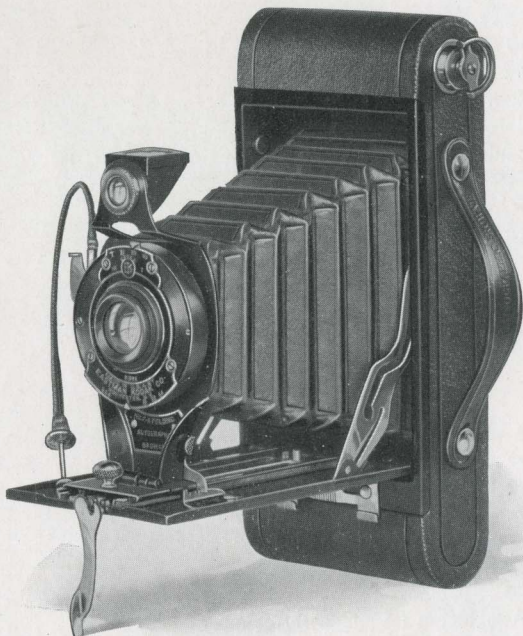
	No. 3	No. 2C
Brownie Camera with Meniscus Achromatic Lens and Eastman Rotary Shutter . . . . .	\$4.50	\$5.00
Brownie Carrying Case, with strap . . . . .	1.60	1.60
N. C. Film Cartridge, 10 exposures (No. 130), for No. 2C . . . . .		.75
Ditto, 6 exposures . . . . .		.45
Ditto, 12 exposures (No. 124), for No. 3 . . . . .	.90	
Ditto, 6 exposures . . . . .	.45	
Kodak Portrait Attachment (see page 41) . . . . .	.75	.75
Developing and Printing Outfit (see page 44) . . . . .	2.00	2.00

*The prices of cameras and film include the Excise Tax*

## Nos. 2 and 2A Folding Autographic Brownies

The Nos. 2 and 2A Folding Brownies are easy cameras to work—as all the Brownies are—but to secure simplicity Eastman standards have not been forgotten. Equipment includes the new Kodex Shutter with accurate automatic speeds of  $\frac{1}{25}$  and  $\frac{1}{50}$  of a second as well as time and “bulb” actions, and carefully tested lens.

These cameras fold like Kodaks, they're autographic, and either one of them will go in the pocket when you go, and bring back results.



2A MODEL

*Eastman-designed and Eastman-made*

There is nothing “fussy” about the Folding Brownies—no puzzling paraphernalia. They’re strictly business so that, as a natural result, to use them is purely pleasure.

The No. 2 Folding Brownie makes pictures  $2\frac{1}{4} \times 3\frac{1}{4}$ ; the 2A,  $2\frac{1}{2} \times 4\frac{1}{4}$ .

Both are made of metal, attractively covered with fine imitation leather.

### Details

Size of pictures: No. 2,  $2\frac{1}{4} \times 3\frac{1}{4}$  inches; No. 2A,  $2\frac{1}{2} \times 4\frac{1}{4}$  inches. Size of camera: No. 2,  $1\frac{1}{4} \times 3\frac{1}{8} \times 6\frac{1}{2}$  inches; No. 2A,  $1\frac{7}{16} \times 3\frac{3}{8} \times 7\frac{7}{8}$  inches. Capacity without reloading: No. 2, 6 exposures; No. 2A, 12 exposures. Weight: No. 2, 19 ounces; No. 2A, 25½ ounces. Adjustable focus with automatic focusing lock. Lenses: Meniscus Achromatic, or Rapid Rectilinear—No. 2,  $3\frac{3}{4}$ -inch focus; No. 2A, 5-inch focus. Kodex Shutter, with cable and finger release. Speeds: both,  $\frac{1}{25}$  and  $\frac{1}{50}$  second, with time and “bulb” actions. Ground-glass finders; reversible for vertical and horizontal pictures. Metal body covered with durable imitation leather. Metal parts finished in nickel and black enamel. Black bellows. Autographic feature. Two tripod sockets.

### Prices

	No. 2	No. 2A
Folding Autographic Brownie, with Meniscus Achromatic Lens and Kodex Shutter . . . . .	\$ 9.00	\$10.00
Ditto, with Rapid Rectilinear Lens . . . . .	11.00	12.00
Carrying Case for Folding Autographic Brownies, with strap . . . . .	1.50	1.60
Autographic Film Cartridge, 12 exposures (No. A 116) for No. 2A . . . . .		.60
Ditto, 6 exposures (No. A 120) for No. 2; (No. A 116) for No. 2A . . . . .	.25	.30
Kodak Portrait Attachment (see page 41) . . . . .	.75	.75
Kodak Self Timer (see page 52) . . . . .	1.25	1.25

*The prices of cameras and film include the Excise Tax*



## Nos. 2C and 3A Folding Autographic Brownies

Even a novice would know at a glance that the Folding Brownie was a sensible sort of a camera. Nothing freakish—no contraptions. “Sensible”—that’s the word.

Both the 2C and 3A Folding Brownies are honestly built to provide practical, dependable equipment for general amateur work.



3A MODEL

*Eastman-designed and Eastman-made*

The lens is carefully tested and the Kodak Ball Bearing Shutter has automatic speeds of  $\frac{1}{25}$ ,  $\frac{1}{50}$  and  $\frac{1}{100}$  second.

The 2C makes the  $2\frac{7}{8} \times 4\frac{7}{8}$  picture while the 3A gives the popular post-card size.

The cameras are substantially constructed of metal, covered with durable imitation leather, and the metal appointments are finished in nickel and black enamel.

## Details

Size of pictures: No. 2C,  $2\frac{7}{8} \times 4\frac{7}{8}$  inches; No. 3A,  $3\frac{1}{4} \times 5\frac{1}{2}$  inches. Size of camera: No. 2C,  $1\frac{3}{4} \times 3\frac{3}{4} \times 8\frac{1}{16}$  inches; No. 3A,  $1\frac{1}{16} \times 4\frac{5}{16} \times 9\frac{5}{16}$  inches. Capacity without reloading: Both, 10 exposures. Weight: No. 2C, 27 ounces; No. 3A, 32 ounces. Adjustable focus with automatic focusing lock. Lenses: Meniscus Achromatic; Rapid Rectilinear—No. 2C,  $5\frac{1}{2}$ -inch focus; No. 3A,  $6\frac{1}{4}$ -inch focus. Kodak Ball Bearing Shutter with cable and finger release. Speeds:  $\frac{1}{25}$ ,  $\frac{1}{50}$  and  $\frac{1}{100}$  second, with time and "bulb" actions. Ground-glass finders; reversible for vertical and horizontal pictures. Metal body covered with durable imitation leather. Metal parts finished in nickel and black enamel. Black bellows. Autographic feature. Two tripod sockets.

## Prices

	No. 2C	No. 3A
Folding Autographic Brownie, with Meniscus Achromatic Lens and Kodak Ball Bearing Shutter . . . . .	\$13.00	\$14.50
Ditto, with Rapid Rectilinear Lens . . . . .	15.00	17.00
Carrying Case for Folding Autographic Brownies, with strap . . . . .	1.70	1.80
Autographic Film Cartridges, 10 exposures (No. A 130) for No. 2C; (No. A 122) for No. 3A . . . . .	.75	.90
Ditto, 6 exposures . . . . .	.45	.55
Kodak Portrait Attachment (see page 41) . . . . .	.75	.75
Kodak Self Timer (see page 52) . . . . .	1.25	1.25

*The prices of cameras and film include the Excise Tax*

## Diomatic Shutter

Only the organization that produces the Kodamatic Shutter could have scored such a signal success as the new Diomatic Shutter, at present fitted on the Nos. 1A and 2C Kodaks, Series III. (Ready July 1.)

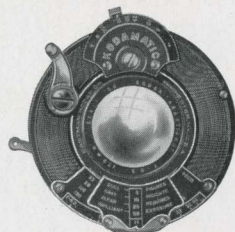


The Diomatic is a four-speed, true-speed shutter and has, as well, time and "bulb" actions. Its automatic speeds of  $\frac{1}{10}$ ,  $\frac{1}{25}$ ,  $\frac{1}{50}$  and  $\frac{1}{100}$  of a second achieve an accuracy that only the Kodamatic can rival. Like the Kodamatic, too, it has an automatic exposure dial that shows the stop and speed you want with the light you have.

## The Kodamatic Shutter

The Kodamatic Shutter splits seconds with an accuracy that has no precedent as far as amateur photography is concerned. It brings a new accuracy, a new dependability to exposure-making. The amateur is sure of his speeds—and better pictures are the logical outcome.

The Kodamatic Shutter has seven speeds,  $\frac{1}{200}$  ( $\frac{1}{150}$  on 2C and 3A),  $\frac{1}{100}$ ,  $\frac{1}{50}$ ,  $\frac{1}{25}$ ,  $\frac{1}{10}$ ,  $\frac{1}{5}$  and  $\frac{1}{2}$ , as well as time and "bulb" action and with these speeds at his disposal, the amateur is equipped for virtually any picture in the hand camera field.



A feature of the utmost value in getting correct exposures is a sliding scale, attached to the "stop" indicator plate, which shows the speed to use for each stop opening under four different lighting conditions—dull, grey, clear or brilliant.

The Kodamatic is furnished only with the *Special* Kodaks.



# KODAK ANASTIGMATS

*f.7.7 f.6.3 f.4.5*

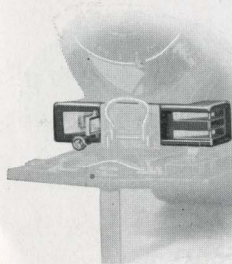
There was a time when anastigmat lenses could only be fashioned slowly and painstakingly through the hand work of master craftsmen. The result was an excellent product, but a small output, and a price that, for amateurs, was prohibitive.

And then came the Eastman-made Kodak Anastigmat. For the first time anastigmat advantages were placed at the disposal of the hundreds of thousands of amateurs who had hitherto felt that they could not afford a lens of the finest quality. Scientific production kept the quality up and brought the price down.

Kodak Anastigmat, *f.7.7*, offers little more speed, but its sharp-cutting quality means sharp pictures—both contact and enlargement. Kodak Anastigmat, *f.6.3*, offers, besides sharpness, a speed that means successful snap-shots when ordinary equipment would fail. Either, at its indicated speed, is *at least* the equal in depth, sharpness and flatness of field of any anastigmat made, regardless of price.

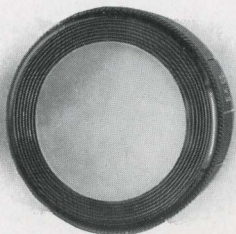
## The Kodak Range Finder

The Kodak Range Finder finds the focus for you. Select some horizontal line near the center of the subject, and rack the lens back and forth until this line is continuous in the three mirrors as glimpsed through the Range Finder. *When the line is continuous, the focus is correct.* That's all there is to it. The Kodak Range Finder is fitted to the 1A, 2C and 3A *Specials*.



## Kodak Portrait Attachment

Just as the close-ups on the screen are often the most effective scenes in the photoplay, so close-ups, with the Kodak Portrait Attachment, often become the prize prints of the album.



And it's all very simple. The attachment is merely an extra lens that slips on over the regular lens equipment and, without altering the exposure or changing the operation of the Kodak in any way, brings the subject in sharp focus at close range.

While Kodak portraits, such as you find as the frontispiece to this book, offer obvious possibilities, the Kodak Portrait Attachment may be used as well for photographing flowers or similar subjects.

### Kodak Diffusion Portrait Attachment

This little lens is similar to the Kodak Portrait Attachment, except that instead of a sharp image the focus is diffused and the lines in the picture pleasingly soft in consequence. The effect is easily obtained and is very interesting pictorially.

The V. P. K. Diffusion Disk used with the focusing model V. P. K. *Special*, is adapted for landscape work, as well as close-ups.

### Kodak Sky Filters

The Kodak Sky Filter, mounted in the same manner as the Kodak Portrait Attachment, is intended to equalize the great difference of light between the sky and foreground in landscape photography. Only the upper half of the filter is stained a yellow color to relieve the brightness from the sky, while the lower half of the filter being colorless, permits a normal exposure for the foreground.

### Kodak Color Filters

Kodak Color Filters are of great value in outdoor photography, and for all subjects embracing colors which act weakly on the sensitive film, as they hold back the strong blue and violet rays, affording the weaker colors time to record. The dye used in Kodak Color Filters is one of the discoveries of the Eastman Research Laboratory.



*Kodak Pictorial Diffusion Disk (see page 42)*



# Kodak Portrait Attachments, Kodak Diffusion Portrait Attachments, Kodak Sky Filters and Kodak Color Filters

Order by this Number	For Vest Pocket Autographic Kodaks	Prices		
		Portrait Attach-ments	Diffusion Attach-ments	Sky and Color Filters
No. 1.	For Regular Vest Pocket Kodak, with single lens . . . . .	\$0.50	\$1.25	\$0.75
No. 8.	For Regular Vest Pocket Kodak, with Rapid Rectilinear Lens . . . . .	.75	1.25	.75
No. 8.	For Special Vest Pocket Kodak, fixed focus model with Anastigmat Lens . . . . .	.75	1.25	.75
No. 8A.	For Special Vest Pocket Kodak, focusing model . . . . .			.75
No. 8A.	V.P.K. Diffusion Disk, for Special Vest Pocket Kodak, focusing model . . . . .		1.25	

## For Autographic Kodaks, Junior

No. 8.	For No. 1 Autographic Kodak Junior, with single or double lens . . . . .	.75	1.25	.75
No. 3.	For No. 1 Autographic Kodak Junior, with Kodak Anastigmat, <i>f7.7</i> Lens . . . . .	.75	1.25	1.15
No. 3.	For No. 1A Autographic Kodak Junior, with single lens, double lens or Kodak Anastigmat, <i>f7.7</i> Lens in Kodak Ball Bearing Shutter (without engraving on front of lens barrel) . . . . .	.75	1.25	1.15
No. 13.	For No. 1A Autographic Kodak Junior, with Kodak Anastigmat, <i>f7.7</i> Lens in Kodak Ball Bearing Shutter (with engraving on front of lens barrel) . . . . .	.75	1.25	1.15
No. 3.	For No. 1A Autographic Kodak Junior, with Kodak Anastigmat, <i>f7.7</i> Lens and Ilex Universal Shutter . . . . .	.75	1.25	1.15
No. 5.	For No. 2C Autographic Kodak Junior, with single or double lens . . . . .	.75	1.50	1.50
No. 7.	For No. 2C Autographic Kodak Junior, with Kodak Anastigmat, <i>f7.7</i> Lens . . . . .	.75	1.50	1.50
No. 5.	For No. 3A Autographic Kodak Junior, with single or double lens . . . . .	.75	1.50	1.50
No. 7.	For No. 3A Autographic Kodak Junior, with Kodak Anastigmat, <i>f7.7</i> Lens . . . . .	.75	1.50	1.50

## For Autographic Kodaks

No. 3.	For No. 1 Pocket Kodak, Series II, fixed focus and focusing models . . . . .	.75	1.25	1.15
No. 6.	For No. 1A Pocket Kodak, Series II, fixed focus model . . . . .	.75	1.50	1.15
No. 13.	For No. 1A Pocket Kodak, Series II, focusing model . . . . .	.75	1.25	1.15
No. 13.	For No. 1A Kodak, Series III . . . . .	.75	1.25	1.15
No. 6.	For No. 2C Kodak, Series III . . . . .	.75	1.50	1.15
No. 3.	For No. 1A Autographic Kodak, with double lens . . . . .	.75	1.25	1.15
No. 13.	For No. 1A Autographic Kodak, with Kodak Anastigmat, <i>f7.7</i> Lens . . . . .	.75	1.25	1.15
No. 3.	For No. 3 Autographic Kodak, with double lens . . . . .	.75	1.25	1.15
No. 13.	For No. 3 Autographic Kodak, with Kodak Anastigmat, <i>f7.7</i> Lens . . . . .	.75	1.25	1.15
No. 9.	For No. 3 Autographic Kodak, with Kodak Automatic Shutter . . . . .	.75	1.25	.75
No. 5.	For No. 3A Autographic Kodak, with double lens . . . . .	.75	1.50	1.50
No. 7.	For No. 3A Autographic Kodak, with Kodak Anastigmat, <i>f7.7</i> Lens . . . . .	.75	1.50	1.50

## For Autographic Kodaks, *Special*

No. 6.	For No. 1 Autographic Kodak <i>Special</i> , with any listed lens . . . . .	.75	1.50	1.15
No. 6.	For No. 1A Autographic Kodak <i>Special</i> , with any listed lens . . . . .	.75	1.50	1.15
No. 7.	For No. 2C Autographic Kodak <i>Special</i> , with Kodak Anastigmat, <i>f6.3</i> Lens . . . . .	.75	1.50	1.50
No. 6.	For No. 3 Autographic Kodak <i>Special</i> , with any listed lens . . . . .	.75	1.50	1.15
No. 7.	For No. 3A Autographic Kodak <i>Special</i> , with any listed lens . . . . .	.75	1.50	1.50

## For Box Brownies

No. 1.	For No. 0 Box Brownie, with single lens . . . . .	.50	1.25	.75
No. 1.	For No. 2 Box Brownie, with single lens . . . . .	.50	1.25	.75
No. 2.	For No. 2A Box Brownie, with single lens . . . . .	.50	1.25	.75
No. 0.	For No. 2A Brownie, Model C . . . . .	.50	1.25	.75
No. 4.	For No. 2C Box Brownie, with single lens . . . . .	.75	1.25	1.15
No. 4.	For No. 3 Box Brownie, with single lens . . . . .	.75	1.25	1.15

## For Folding Autographic Brownies

No. 8.	For No. 2 Folding Autographic Brownie, with single or double lens . . . . .	.75	1.25	.75
No. 3.	For No. 2A Folding Autographic Brownie, Kodak Ball Bearing Shutter . . . . .	.75	1.25	1.15
No. 3.	For No. 2A Folding Brownie, Kodex Shutter . . . . .	.75	1.25	1.15
No. 5.	For No. 2C Folding Autographic Brownie, Kodak Ball Bearing Shutter . . . . .	.75	1.50	1.50
No. 5.	For No. 3A Folding Autographic Brownie, with single or double lens . . . . .	.75	1.50	1.50



# Kodak Pictorial Diffusion Disks

Slip on the Diffusion Disk and your lens, for that particular exposure, becomes a soft-focus lens producing a pleasing degree of softness without loss of brilliancy and without increasing exposures. The disk is particularly adapted for landscape work.

Diffusion Disks fit the following Brownies and Kodaks:

## For Autographic Kodaks, Junior

- No. 3. For No. 1 Autographic Kodak Junior, with Kodak Anastigmat, *f*7.7 Lens; and 1A Autographic Kodak Junior, with single lens, double lens or Kodak Anastigmat, *f*7.7 Lens in Kodak Ball Bearing Shutter; also for No. 1A Junior model, Kodak Anastigmat *f*7.7 Lens, Ilex Universal Shutter (without engraving on front of lens barrel) \$1.75  
 No. 5. For Nos. 2C and 3A Autographic Kodak Juniors, with single or double lens . . . . . 2.50  
 No. 7. For Nos. 2C and 3A Autographic Kodak Juniors, with Kodak Anastigmat, *f*7.7 Lens . . . . . 2.50

## For Autographic Kodaks

- No. 3. For No. 1 Pocket Kodak, Series II, fixed focus and focusing models; and for Nos. 1A and 3 Autographic Kodaks, with double lens . . . . . \$1.75  
 No. 6. For No. 2C Kodak, Series III . . . . . 2.50  
 No. 5. For No. 3A Autographic Kodak, with double lens . . . . . 2.50  
 No. 6. For No. 1A Pocket Kodak, Series II, fixed focus model . . . . . 2.50  
 No. 7. For No. 3A Autographic Kodak, with Kodak Anastigmat, *f*7.7 Lens . . . . . 2.50

## For Autographic Kodaks, *Special*

- No. 6. For Nos. 1, 1A and 3 Autographic Kodaks *Special*, with any listed lens . . . . . \$2.50  
 No. 7. For No. 2C Autographic Kodak *Special*, with Kodak Anastigmat, *f*6.3 Lens; and for No. 3A Autographic Kodak *Special*, with any listed lens . . . . . 2.50

## For Folding Autographic Brownies

- No. 3. For No. 2A Folding Autographic Brownie, Kodak Ball Bearing Shutter . . . . . \$1.75  
 No. 5. For Nos. 2C and 3A Folding Autographic Brownies, Kodak Ball Bearing Shutter . . . . . 2.50  
 No. 3. For No. 2A Folding Brownie, Kodex Shutter . . . . . 1.75

# Velox Water Color Outfit

To convert a print or lantern slide into a beautifully colored picture is simple and interesting with these stamps.

The Velox Transparent Water Color Outfit is a complete coloring set put up in a neat metal case the inside cover of which acts as a mixing palette. The outfit includes book of stamps and three brushes.



- Velox Transparent Water Color Stamps, complete booklet, 12 colors . . . . . \$0.45  
 Separate Color Leaves, per sheet . . . . . .04  
 Set of three Special Brushes, per set . . . . . .50  
 Velox Transparent Water Color Stamp Outfit, including book, three brushes and palette . . . . . 1.00

# Kodak Film Tank

Anybody can get as correctly developed negatives by developing films in the Kodak Film Tank as an expert can by any known method of development.

All that is necessary is to use the developer recommended and develop for the length of time the tank instructions require for the temperature at which the developer is used.

Duplicating outfits for developing more than one roll at a time are listed below.



## Prices

Brownie Kodak Film Tank, for use with No. 1, No. 2 and No. 2 Folding	
Brownie Cartridges, complete . . . . .	\$3.50
Spool Adapter, for Vest Pocket Kodak Film . . . . .	.10
Vest Pocket Kodak Film Tank, for Vest Pocket or No. 0 Brownie Car-	
tridges, complete . . . . .	3.00
2½-inch Kodak Film Tank, for use with all Kodak or Brownie Cartridges	
having a film width 2½ inches or less, complete . . . . .	4.50
3½-inch Kodak Film Tank, for use with all Kodak or Brownie Cartridges	
having a film width of 3½ inches or less, complete . . . . .	5.50
5-inch Kodak Film Tank, for use with all Kodak or Brownie Cartridges	
having a film width of 5 inches or less, complete . . . . .	6.50
7-inch Kodak Film Tank, for use with No. 5 Cartridge Kodak or narrower	
film cartridges, complete . . . . .	8.00
Duplicating Outfit, consisting of one solution cup, one transferring reel	
and one apron, for Brownie Kodak Film Tank . . . . .	1.50
Ditto, for Vest Pocket Film Tank . . . . .	1.50
Ditto, for 2½-inch Kodak Film Tank . . . . .	2.25
Ditto, for 3½-inch Kodak Film Tank . . . . .	2.75
Ditto, for 7-inch Kodak Film Tank . . . . .	4.00
Flexible Fixing and Washing Tank, for 3½-inch Kodak Film Tank . . .	2.50
Kodak Tank Developer, for Brownie Kodak Film Tank, per ½ dozen . .	.20
Ditto, for Vest Pocket Tank . . . . .	.20
Ditto, for 2½-inch Tank, per package, ½ dozen . . . . .	.25
Ditto, for 3½-inch Tank, per package, ½ dozen . . . . .	.25
Ditto, for 5-inch Tank, per package, ½ dozen . . . . .	.30
Ditto, for 7-inch Tank, per package, ½ dozen . . . . .	.30
Kodak Acid Fixing Powder, per ¼-pound package . . . . .	.10
Ditto, per 1-pound package . . . . .	.25





## No. 2 Brownie Developing Box

This is a simplified form of the Kodak Film Tank, offering the same assurance of perfectly developed film, and so simple that any boy or girl can readily operate it.

It consists of a metal box with cover, just long enough to accommodate a roll of Nos. 117, A120, 120, A127 or 127 Film Cartridge in one loop. All the operations are performed in daylight.

### Prices

No. 2 Brownie Developing Box . . . . .	\$1.75
Brownie Developing Box Powders, per package of 6 . . . . .	.20
Kodak Acid Fixing Powders, ½-pound package . . . . .	.15
Ditto, ¼-pound package . . . . .	.10

## Developing and Printing Outfits

By combining a variety of articles and making up the outfits in large quantities we are able to offer complete dark-room developing and printing outfits at a much lower price than if the articles were purchased separately. The Eastman 3A Outfit, below, contains every requisite for finishing twenty-four 3¼ x 5½-inch or smaller pictures.

One Kodak Candle Lamp . . . . .	\$0.40
One Printing Frame . . . . .	.40
One Glass for Frame . . . . .	.05
One 4-ounce Graduate . . . . .	.15
One Stirring Rod . . . . .	.06
Four Developing Trays . . . . .	.40
Five Tubes Eastman Special Developer . . . . .	.30
One-half pound Kodak Acid Fixing Powder . . . . .	.15
Two dozen 3¼ x 5½-inch Velox Paper . . . . .	.40
Two ounces Nepera Solution for developing Velox . . . . .	.20
Instruction Book (free)	\$2.51

**EASTMAN 3A OUTFIT, COMPLETE, NEATLY PACKED, \$2.00**

**EASTMAN A B C OUTFIT, similar to above but providing for 4 x 5-inch or smaller pictures . . . . . \$2.00**



# Kodak Amateur Printer

Through the glass window in the removable top, prints may be made with white margins, any size from  $1\frac{5}{8} \times 2\frac{1}{2}$  to  $4 \times 5\frac{1}{2}$  inches, by a simple automatic masking device, which holds the negatives firmly until released. Within the box is a small red electric bulb to permit the adjustment of negative and paper, and provision is made for a 60 Watt Mazda Lamp, which is automatically turned on when the hinged frame is closed to make the exposure. To secure even illumination on negatives of various sizes, the position of the lamp is readily adjustable.



The printer is supplied without lamp, but including  $5\frac{1}{2}$  feet of cord and plug.

The Kodak Amateur Printer . . . \$10.00

## Kodak Serial Printing Frame No. 2

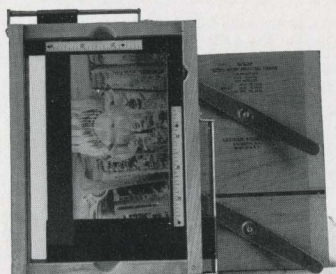
For printing from Vest Pocket Kodak and No. 0 Brownie negatives. Developed film slides through the frame in a continuous strip, facilitating handling.

Kodak Serial Printing Frame No. 2 for V. P. K. and No. 0 Brownie negatives . . . \$0.60

## Kodak Auto-Mask Printing Frame

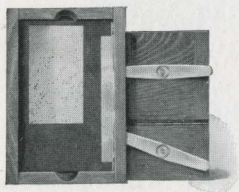
This frame is adaptable to the printing of negatives of any amateur size, from  $4 \times 5$ ,  $3\frac{1}{4} \times 5\frac{1}{2}$  inches and smaller. Attached to the frame are two slides adjusted from the outside, forming a mask of whatever size is desired.

Any number of uniformly masked prints may be made without readjustment.



Kodak Auto-Mask Printing Frame . . . \$1.50

# Kodak Maskit Printing Frame



The Kodak Maskit Printing Frame overcomes the difficulty of the negative and mask slipping on the glass, and secures prints with a uniform white margin.

Kodak Maskit, for  $3\frac{1}{4} \times 4\frac{1}{4}$ -inch plates and  $2\frac{1}{4} \times 3\frac{1}{4}$  or smaller roll films, opens two-thirds . . . . . \$0.65  
Kodak Maskit,  $3\frac{1}{4} \times 5\frac{1}{2}$ -inch, opens two-thirds . . . . . .70

## Kodaloid Printing Masks

For Maskit Printing Frames

These transparent, orange-red color masks, intended for use with Maskit Printing Frames are supplied in sets of three each, with different size openings.

Per set of 3,  $3\frac{1}{4} \times 4\frac{1}{4}$ , \$0.30      Per set of 3,  $3\frac{1}{4} \times 5\frac{1}{2}$ , \$0.30      Per set of 3, 5 x 7, \$0.45

## Eastman Printing Frames

Have a two-section back with clamps to hold the negative and paper firmly.

For  $2\frac{1}{4} \times 3\frac{1}{4}$ -inch plates and V. P. K. or smaller film negatives, opens two-thirds . . . . . \$0.35  
For  $2\frac{1}{2} \times 4\frac{1}{4}$ -inch or smaller film negatives, opens two-thirds . . . . . .40  
For  $3\frac{1}{4} \times 4\frac{1}{4}$ -inch plates and  $2\frac{1}{4} \times 3\frac{1}{4}$  or smaller film negatives, opens two-thirds . . . . . .40  
For  $3\frac{1}{4} \times 5\frac{1}{2}$ -inch or smaller film negatives, opens two-thirds . . . . . .40  
For  $3\frac{1}{4} \times 5\frac{1}{2}$ -inch plates, opens two-thirds . . . . . .45  
For 4 x 5-inch plates, opens two-thirds . . . . . .40  
For 5 x 7-inch plates, opens two-thirds . . . . . .55

## Kodaloid Printing Masks

Made of transparent Kodaloid, to fit the regular Printing Frames, and offering various sizes of openings.

For 3A Frames, 8 masking sizes, each . . . . \$0.10      For 4 x 5 Frames, 7 masking sizes, each . \$0.10      For 5 x 7 Frames, 6 masking sizes, each . \$0.15

## Brownie Enlarging Camera

Consists of a light-tight cone, with an attachment at the small end to hold the negative, and another at the large end for the paper. The lens is always in focus. All except No. 2 Brownie Post-card are collapsible.

\*No. 2 Brownie Post-card Enlarging Camera, for  $3\frac{1}{4} \times 5\frac{1}{2}$  enlargements from  $2\frac{1}{4} \times 3\frac{1}{4}$ -inch negatives . . . . . \$4.00  
\*No. 2 Brownie Enlarging Camera, for 5 x 7 enlargements from  $2\frac{1}{4} \times 3\frac{1}{4}$ -inch negatives . . . . . 5.00  
\*No. 3 Ditto, for  $6\frac{1}{2} \times 8\frac{1}{2}$  enlargements from  $3\frac{1}{4} \times 4\frac{1}{4}$ -inch negatives, also for proportionate enlargements from smaller negatives . . . . . 6.50  
\*No. 3A Ditto, for 7 x 11 and  $6\frac{1}{4} \times 10\frac{1}{2}$ -inch enlargements from  $3\frac{1}{4} \times 5\frac{1}{2}$  and  $2\frac{1}{2} \times 4\frac{1}{4}$ -inch negatives, respectively; also for proportionate enlargements from smaller negatives . . . . . 7.00  
\*No. 4 Ditto, for 8 x 10,  $6\frac{3}{8} \times 10$  and  $5\frac{3}{8} \times 9\frac{1}{2}$ -inch enlargements from 4 x 5,  $3\frac{1}{4} \times 5\frac{1}{2}$  and  $2\frac{7}{8} \times 4\frac{1}{8}$ -inch negatives, respectively . . . . . 7.00

## V. P. K. Enlarging Camera

Like the Brownie Enlarging Camera in principle, it makes  $3\frac{1}{4} \times 5\frac{1}{2}$  enlargements from  $1\frac{5}{8} \times 2\frac{1}{2}$  negatives.

\*Vest Pocket Kodak Enlarging Camera . . . . . \$3.75

\*These prices include the Excise Tax.





# The Kodak Auto-Focus Enlarger

Move the camera up and down and while the image size changes, the focus remains sharp. Enlarging thus becomes a simplified process that is rapid and as easy as contact printing.

The standard clamps to an ordinary table and the bromide paper is held in position by a quickly adjusted paper holder.

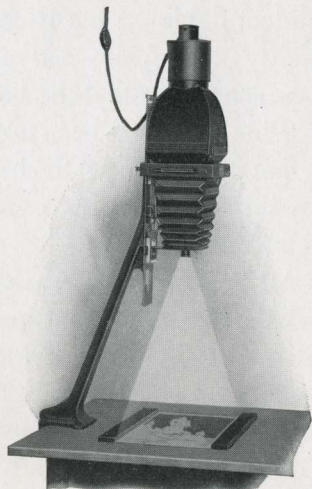
Prints from 1½ to 3½ diameters can be made from either plate or film negatives up to 4 x 6 inches. The largest possible print is 14 x 21. V. P. K. negatives will make 5⅝ x 8¾ enlargements.

The lens is a Kodak Anastigmat, which insures sharpness.

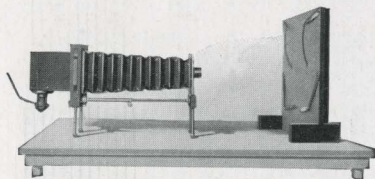
Ventilated lamp house has a capacity for a Mazda lamp (not supplied) of from 75 to 200 watts.

A diffusing disc is supplied separately for soft focus effects.

Kodak Auto-Focus Enlarger with Kodak Anastigmat Lens, electric cord and plug, set of six flexible metal masks (with Excise Tax included) . . . \$35.00  
Diffusing Disc . . . . . 1.00



## Kodak Enlarging Outfit



This outfit will make enlargements up to the size of the easel (14 x 17 inches) from film or glass negatives up to 4 x 6 inches. It consists of a camera of the focusing type, lens, easel, lamp housing, light cord and plug, but without the 60 watt Mazda electric light bulb. With a portrait attachment, reductions may be made for lantern slides.

Kodak Enlarging Outfit (with Excise Tax included) . . . . . \$20.00  
Lantern Slide Block . . . . . .75  
Portrait Attachment No 5 . . . . . .75



# Velox

*“Look for VELOX on the back”*

To protect you and to protect the careful finisher as well, Velox, the only paper made exclusively for amateur negatives, is identifiable on the back. The name is lightly tinted—but readily readable—and its presence means that the best possible paper has been used so that you might get the best possible prints. Look for Velox on the back.

All Velox is non-abrasion.

This developing-out paper is simply worked, prints by artificial light and is divided broadly into four degrees of contrast called No. 1, No. 2, No. 3 and No. 4, each division containing a variety of surfaces. (See table above.)

No. 1 will secure the best possible results from extremely contrasty negatives. No. 2 should be used with average as well as contrasty negatives. No. 3 should be used when printing from flat negatives. No. 4 will secure the best possible results from extremely thin or from very flat negatives. Velvet Velox gives semi-gloss prints of exceptional quality and is generally used for making prints from Kodak negatives.

GRADE	SURFACE	CONTRAST			
Velvet Velox	Semi-Gloss	*1	*2	*3	*4
Portrait Velox	Smooth Matte	2			
Carbon Velox	Matte	1	2	3	4
Glossy Velox	Enameled	1	*2	*3	4

\*Furnished also in Double-weight Velox. Double-weight papers require no mount and when printed under a mask, which will insure a white margin, offer a very artistic effect.

Size Inches	Single Weight			Double Weight		
	Dozen	½ Gross	Gross	Dozen	½ Gross	Gross
1⅞ x 2½	\$0.12		\$1.10	\$0.15		\$1.40
2¼ x 3¼	.12		1.10	.15		1.40
2½ x 4¼	.15		1.35	.20		1.70
3¼ x 4¼	.20		1.75	.25		2.20
2⅞ x 4⅞	.20		1.75	.25		2.20
3¼ x 5½	.20		2.00	.25		2.50
4 x 5	.25		2.30	.30		2.90
5 x 7	.40	\$2.10	3.90	.50	\$2.60	4.90
Velox Post-cards, 3½ x 5½, furnished in Velvet, Contrasts Nos. 1, 2, 3 and 4; Glossy, Contrasts Nos. 2 and 3 . . . . .				.30	1.50	2.90
Velox Double Post-cards, 3½ x 11 inches . . . . .				.60	3.00	5.80

## Velox Sundries

Nepera Solution, per 4-ounce bottle . . . . .	\$0.28
Ditto, per 16-ounce bottle . . . . .	.84
Nepera Auxiliary Powders (for converting Nepera Solution to a film or plate developer), per package, 1 dozen . . . . .	.35
Velox Re-developer Tubes for Sepia Toning, per package, 12 tubes . . . . .	1.08
Velox Liquid Hardener, per 4-ounce bottle . . . . .	.25
Ditto, 8-ounce bottle . . . . .	.35
Kodak Acid Fixing Powder for fixing Velox Prints, per pound . . . . .	.25
Ditto, $\frac{1}{2}$ pound . . . . .	.15
Ditto, $\frac{1}{4}$ pound . . . . .	.10

## Kodak Velvet Green

Effects heretofore to be had only by the carbon process can be secured by any amateur photographer with this paper.

For landscapes, for marine scenes, and in fact, for the majority of outdoor amateur negatives, Kodak Velvet Green, with its rich green tone, produces most beautiful and harmonious effects, with an indescribable "atmosphere" of nature itself.

And to use this paper the amateur need not learn new processes, nor possess extraordinary skill. Anyone who can print on Velox paper can print just as successfully on Kodak Velvet Green, as the two processes after exposure are identical, except for a slight change in the fixing bath.

As this paper is much slower than the average developing-out paper, it is advisable to print by daylight.

The surface—a smooth semi-matte—brings out detail fully, and the paper is supplied in both single and double weights.

Kodak Velvet Green Post-cards are very appropriate for use at vacation time.

Prices are the same as for Velox, and it is obtainable in all the Velox sizes.

# Eastman Bromide Papers

For enlargements, Eastman Bromide Papers are emphatically faster than the other developing papers and as easy to use as Velox. Redevelopment on Royal Bromide gives Sepia effects. Grades: Velvet, Brilliant Velvet, Royal, Enameled, Matte-enamel, and Standard B and C.

Size	Per Doz.	Size	Per Doz.	Size	Per Doz.
5 x 7	\$0.50	8 x 10	\$1.10	14 x 17	\$3.15
5 x 8	.55	10 x 12	1.70	16 x 20	4.20
6½ x 8½	.80	11 x 14	2.10	18 x 22	5.25

## Standard BB and CC Double Weight

Size	Per Doz.	Size	Per Doz.	Size	Per Doz.
5 x 7	\$0.60	6½ x 8½	\$1.00	10 x 12	\$2.15
5 x 8	.70	8 x 10	1.40	11 x 14	2.65

Other sizes in proportion

## Solio Paper

A glossy, printing-out paper

Size	Per Package, 2 Doz.	Size	Per Package, 2 Doz.
1½ x 2½	\$0.20	4 x 5	.40
2¼ x 3¼	.20		
2½ x 4¼	.25		Per Doz.
3½ x 3½	.25	4¼ x 6½	\$0.25
3¼ x 4¼	.25	5 x 7	.30
2¾ x 4¾	.25	Post-cards	.20
3¼ x 5½	.30	Double Solio Post-cards	.40

Solio Toning and Fixing Powders, per carton, 5 tubes, \$0.25. Solio Combined Toning and Fixing Solution, per 8-ounce bottle, \$0.50; 4-ounce bottle, \$0.30.

## Dry Plates

Prices of plates include Excise Tax

Single Coated		Double Coated		Panchromatic	
Size	Per Doz.	Size	Per Doz.	Size	Per Doz.
3½ x 3½	\$0.57	3¼ x 4¼	\$0.83	3½ x 3½	\$0.67
3¼ x 4¼	.67	3¼ x 5½	1.14	3¼ x 4¼	.83
3¼ x 5½	.93	4 x 5	1.14	3¼ x 5½	1.14
4 x 5	.93	4¼ x 6½	1.71	4 x 5	1.14
4¼ x 6½	1.35	5 x 7	1.86	4¼ x 6½	1.71
5 x 7	1.50			5 x 7	1.86
Lantern Slide Plates,		Cover Glass for Lantern		Lantern Slide Binders, per	
3¼ x 4	\$0.52	Slides	\$0.35	package, 50 strips	\$0.20



# Kodak Cut Film

Kodak Cut Film offers every advantage of plates and, in addition, is non-halation, weighs but a fraction as much, is easier to handle, unbreakable and produces negatives of superior quality. Through the agency of the Combination Back and Double Plate Holder (page 30) and Kodak Cut Film Sheath, Nos. 3 and 3A Kodaks, both regular and *Special* models, may be adapted for use with Kodak Cut Film.

It is supplied in two speeds.

The regular Kodak Cut Film is equal in speed to the best portrait plate emulsions, and is standard in every respect.

Kodak Cut Film *Super Speed* has, as its name implies, an extra fast emulsion, yet its latitude, gradation and fineness of grain are equal to those of the regular speed. It can be depended on to give the best possible negatives under difficult light conditions or when exposure must necessarily be short. This *Super Speed* feature proves its worth especially when making indoor portraits or snap-shots in the shade. And all this added speed is attained without sacrificing any of those qualities on which film superiority is founded.

	2¼ x 3¼	3¼ x 4¼	3¼ x 5½	4 x 5
Kodak Cut Film, dozen . . . . .	\$0.46	\$0.67	\$0.93	\$0.93
Kodak Cut Film <i>Super Speed</i> , dozen . . . . .	.52	.77	1.03	1.03

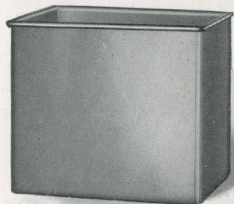
*The prices of Kodak Cut Film include the Excise Tax*

## Kodak Cut Film Sheath

Adapts a plate holder to the use of Kodak Cut Film. It is made of aluminum, ribbed for rigidity and instantly inserted or removed.

	2¼ x 3¼	3¼ x 4¼	3¼ x 5½	4 x 5
Kodak Cut Film Sheath . . . . .	\$0.10	\$0.10	\$0.15	\$0.15

## Kodak Developing Box, No. 1



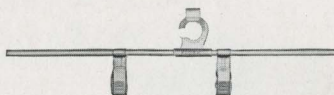
This tank provides a swift and easy means of obtaining uniform development of Kodak Cut Film. It takes twelve films, each suspended in the solution from a Kodak Cut Film Developing Hanger. Development proceeds by the time and temperature method.

The tank is made of Monel metal and measures 4 x 5¼ x 6 inches.

Kodak Developing Box, No. 1, without hangers . . . . \$2.00

## Kodak Cut Film Developing Hanger

For use with the Kodak Developing Box, No. 1. It is considerably longer than the box so that it lies securely across the top. The clips, which grip the edges of the film securely, are of Monel metal.



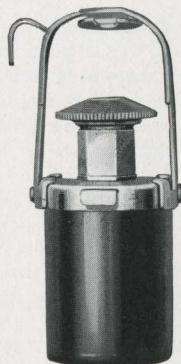
Kodak Film Developing Hangers, each . . . . . \$0.20

## Kodak Self Timer

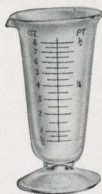
This popular Kodak accessory fits on the cable release of any Kodak or Brownie and automatically presses the button. The time of operation is controlled by the amateur within the limits of  $\frac{1}{2}$  second and 1 minute. He sets it for the time interval desired and then gets in the picture.

Thus the group is kept complete and self-portraits are easily possible.

Kodak Self Timer . . . . . \$1.25



## Eastman Visible Graduate



This moulded graduate, as its name implies, may be easily read in the dark room under the rays of the ruby light.

The graduations are opaque, not translucent as is the case with most graduates.

2-ounce . . . . .	\$0.30	8-ounce . . . . .	\$0.50
4-ounce . . . . .	.40	16-ounce . . . . .	.80

## Eastman Thermometer

Valuable in tank or tray development. The hook for suspending and the curved back to fit inside the tank are desirable features.



Eastman Thermometer . . . . . \$0.75

## Thermometer Stirring Rod



A combined stirring rod and thermometer. Carefully tested and accurate. Has flat end for pulverizing. The rod is  $\frac{1}{4}$  inch in diameter and  $9\frac{1}{4}$  inches long.

Thermometer Stirring Rod . . . . . \$1.50

## Developing Trays

Bull's Eye—Composition		Enamel	
$3\frac{1}{4} \times 4\frac{1}{4}$ . . . . .	\$0.30	$4 \times 6$ . . . . .	\$0.45
$4 \times 5$ . . . . .	.40	$5 \times 8$ . . . . .	.80
		$4 \times 5$ . . . . .	\$0.75
		$4 \times 6$ . . . . .	.85
		$5 \times 7$ . . . . .	1.10

## Kodak Magnesium Ribbon Holder



Provides extra light for interior work, copying or portraiture, and for exposing Velox.

The ribbon is best ignited by a special alcohol lamp.

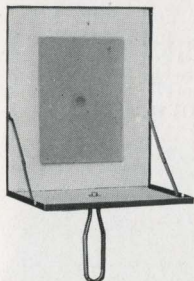
Magnesium Ribbon Holder . . . . .	\$0.35
Alcohol Lamp . . . . .	.40



## Flash Light Material

The Flash Light makes the amateur photographer independent of daylight. He has absolute control of the illumination, not only as to the amount of light, but also its direction.

The simplest method of making flash light pictures is by means of the Eastman Flash Sheets and Kodak Flash Sheet Holder. The sheets burn slowly, giving a broad, soft light, while the holder makes their proper use conveniently easy.



No. 1 Flash Sheets, per package of ½ dozen sheets, 3 x 4-inch . . .	\$0.35
No. 2 Flash Sheets, per package of ½ dozen sheets, 4 x 5-inch . . .	.56
No. 3 Flash Sheets, per package of ½ dozen sheets, 5 x 7-inch . . .	.84
Kodak Flash Sheet Holder . . . . .	1.25

Flash cartridges are recommended only where absolutely instantaneous exposures are required.

Eastman Spreader Flash Cartridges, for use with pistol or fuse (price includes both fuse and cap), per package of ½ dozen . . .	\$0.60
Eastman Spreader Flash Cartridge Pistol . . . . .	1.50
Eastman No. 1 Flash Cartridges, for use only with fuse, per package of ½ dozen . . . . .	1.25
Ditto, No. 2 . . . . .	.80
Ditto, No. 3 . . . . .	.50

## Kodak Dry Mounting Tissue

Mounts prints even on thin mounts without curl. Just fix the tissue on print, lay on mount and press with a warm flat iron; no sticky fingers, no muss of any kind.

### Prices

Size, 3½ x 3½, 3 dozen . . . . .	\$0.10	Size, 4 x 5, 2 dozen . . . . .	\$0.10
Size, 3¼ x 4¼, 3 dozen . . . . .	.10	Size, 4¼ x 6½, 1 dozen . . . . .	.10
Size, 3¼ x 5½, 2 dozen . . . . .	.10	Size, 5 x 7, 1 dozen . . . . .	.10

## Kodak Photo Paste

The weighted friction cap, and the spreader top of the tube eliminate muss and fuss and the paste, itself, is an excellent adhesive not only for mounting but for desk or household use as well.

2-ounce tube . . . . . \$0.15



## Eastman Photo Paste

A solid, first quality white paste that will not discolor print or mount.

4-ounce jar . . . . . \$0.25

## Kodak Liquid Glue

Permits tacking the prints down at the corners, rather than pasting solid. An excellent glue for any purpose.

Per tube . . . . . \$0.15





## The Kodak Album



Loose-leaf, open-back style—made of finest quality genuine leather and surfaced in new patterns. The black in an etched crystalline, the seal brown in a rich Indian weave, the blended olive in a pine needle effect. Stamped in gold leaf with the word “Photographs.” Fifty black, round-cornered leaves held in place with silk finished cord through cover and metal tubes.

5 x 8, RA, Black Crystline . . . \$2.25	WA, Brown Weave . . . \$2.25	SA, Olive Pine Needle . . . \$2.25
7 x 11, RB, Black Crystline . . . 3.25	WB, Brown Weave . . . 3.25	SB, Olive Pine Needle . . . 3.25
10 x 12, RC, Black Crystline . . . 4.50	WC, Brown Weave . . . 4.50	SC, Olive Pine Needle . . . 4.50
11 x 14, RD, Black Crystline . . . 5.50	WD, Brown Weave . . . 5.50	SD, Olive Pine Needle . . . 5.50

Package 12 extra leaves, Size A (5 x 8) \$0.15; Size B (7 x 11) \$0.18;  
Size C (10x12) \$0.30; Size E (11 x 14) \$0.40

## The Altadena Album

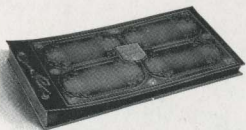
Loose-leaf, open-back style. Cover is de luxe artificial leather, deep brown, Morocco grain finished. The word “Photographs” brought up in heavy engraving—deep embossed panels at each end, add finish to this handsome model. Fifty black leaves held in place by silk-finished cord through cover and metal tubes.



A, 5 x 8 . . . . . \$1.50	B, 7 x 11 . . . . . \$2.00
---------------------------	----------------------------

Package, 12 extra leaves, Size A (5 x 8) \$0.15; Size B (7 x 11) \$0.18

## The Colonial Album



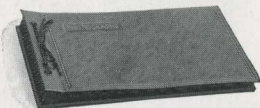
Loose-leaf, open-back style. Cover is of de luxe artificial leather. The beautiful design in polychrome covers the entire surface and in center the words “Ye Photo Album” are raised embossed in color. Fifty black leaves held in place by silk-finished cord through cover and metal tubes. This is a most attractive album.

A, 5 x 8 . . . . . \$1.90	B, 7 x 11 . . . . . \$2.50	C, 10 x 12 . . . . . \$3.25	D, 11 x 14 . . . . . \$3.50
---------------------------	----------------------------	-----------------------------	-----------------------------

Package 12 extra leaves, Size A (5 x 8) \$0.15; Size B (7 x 11) \$0.18;  
Size C (10 x 12) \$0.30; Size E (11 x 14) \$0.40

## The Monica Album

Loose-leaf style. Choice of genuine leather covers—etched surface—in olive or dark grey colors. Attractively finished by machine-tooled lines around edges, and the word “Photographs” stamped in gold. Fifty black leaves held in place by silk-finished cord through cover and metal tubes.



OA, 5 x 8, Olive . . . . . \$2.15	GA, 5 x 8, Dark Grey . . . . . \$2.15
OB, 7 x 11, Olive . . . . . 3.00	GB, 7 x 11, Dark Grey . . . . . 3.00

Package, 12 extra leaves, Size A (5 x 8) \$0.15; Size B (7 x 11) \$0.18

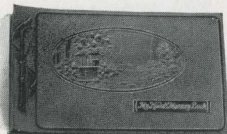
## Nubian Album

Loose-leaf, open-back style. Etched surfaced, artificial leather cover—ornamented in black relief with a floral design and the word "Photographs." Handsome and durable. Fifty black leaves held in place by silk-finished cord through cover and metal tubes.



5 x 8, BA	.....	\$1.10
7 x 11, BB	.....	1.50
10 x 12, BC	.....	2.25
11 x 14, BD	.....	2.50
Package 12 extra leaves, Size A (5 x 8) \$0.15; Size B (7 x 11) \$0.18;		
Size C (10 x 12) \$0.30; Size E (11 x 14) \$0.40.		

## My Kodak Memory Book



The Kodak Memory Book, with embossed, hand-colored design on the cover, has in addition the words "My Kodak Memory Book" embossed in a raised panel. It is an unusually handsome book and well deserves the pictures you prize the most. Fifty black leaves.

Kodak Memory Book—B, 7 x 11 . . . . . \$2.50  
Package of 12 extra leaves, Size B—\$0.18.

## "Childhood Days" Album

The "Childhood Days" Book, for pictures of the youngsters, will not only give immediate pleasure to parents but will be valued more and more as the years roll along. It is exquisitely finished, with embossed, hand-colored design, and is strongly made for years of handling. Fifty black leaves.

"Childhood Days" Book—B, 7 x 11 . . . . . \$2.50  
Package of 12 extra leaves, Size B—\$0.18.

## The La Nouvelle Album

Loose-leaf, open-back style. Fifty black leaves held in place by cord through cover and metal tubes. The word "Photographs" stamped in gold on cover. The cover is an attractively embossed dark brown alligator pattern, imitation leather.



A, 5 x 8	.....	\$1.10	C, 10 x 12	.....	\$2.25
B, 7 x 11	.....	1.50	D, 11 x 14	.....	2.50
Package 12 extra leaves, Size A (5 x 8) \$0.15; Size B (7 x 11) \$0.18;			Size C (10 x 12) \$0.30; Size E (11 x 14) \$0.40.		

## The Juno Album

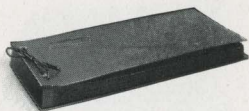


Loose-leaf, open-back style. Fifty black loose leaves held in place by metal tubing and cord through covers. Brown or black embossed English grain imitation leather cover. The word "Photographs" stamped in gilt on cover.

5 x 8, BA, brown or CA, black	.....	\$1.10
7 x 11, BB, brown or CB, black	.....	1.50
10 x 12, BC, brown or CC, black	.....	2.25
11 x 14, BD, brown or CD, black	.....	2.50
Package 12 extra leaves, Size A (5 x 8) \$0.15; Size B (7 x 11) \$0.18;		
Size C (10 x 12) \$0.30; Size E (11 x 14) \$0.40.		



## The Rhodes Album



Loose-leaf, open-back style—choice of genuine black grain leather or embossed black book cloth with 50 black leaves held in place by metal tubes and cord through cover. Cover stamped in foil with word "Photographs."

5 x 8 . . . . .	CA, cloth \$0.90	LA, leather . . . . .	\$2.00
7 x 11 . . . . .	CB, cloth 1.25	LB, leather . . . . .	2.75
10 x 12 . . . . .	CC, cloth 2.00	LC, leather . . . . .	4.50
11 x 14 . . . . .	CD, cloth 2.25	LD, leather . . . . .	5.00
8 x 10 . . . . .	CE, cloth 1.50	LE, leather . . . . .	3.10
Package 12 extra leaves, Size A (5 x 8) \$0.15; Size B (7 x 11) \$0.18; Size C (10 x 12) \$0.30;			
Size E (11 x 14) \$0.40; Size K (8 x 10) \$0.20.			

## The Toledo Album

Loose-leaf style. No exposed metal parts. Fifty jet black leaves held in place by a cord and holder inside of cover. Cover is made of deluxe artificial leather embossed and beautifully tinted in multi-shades.



A, 5 x 8 . . . . .	\$1.90	B, 7 x 11 . . . . .	\$2.50	C, 10 x 12 . . . . .	\$3.25	D, 11 x 14 . . . . .	\$3.50
Package 12 extra leaves, Size A (5 x 8) \$0.15; Size B (7 x 11) \$0.18;							
Size C (10 x 12) \$0.30; Size E (11 x 14) \$0.40.							

## The Artist Album



A loose-leaf album with embossed black paper cover. Has 10 black leaves held in place by cord through cover. Just right to give to your friends as an inexpensive souvenir of some event recorded photographically, such as a vacation, auto trip, or picnic.

No. 1, 5½ x 7 . . . . .	\$0.25
Extra leaves, package of 5 . . . . .	.09
No. 4, 7 x 10 . . . . .	.35
Extra leaves, package of 5 . . . . .	.12

## Picture Message Folder

An attractively designed holder for mailing individual pictures—with additional space the size of a post-card for the written message. Prints are inserted under cut corners. For mailing, it is closed securely by the gummed seal supplied with each folder.

	Price per doz.
A—for 2¼ x 3¼ or 2⅞ x 4⅞ prints, upright or horizontal . . . . .	\$0.60
B—for 2½ x 4¼ or 3¼ x 5½ prints, upright or horizontal . . . . .	.60

## Eastman Film Negative Albums

These albums afford a safe, convenient and effective way of keeping film negatives. Each leaf is, itself, an envelope, and the negatives do not come in contact with each other. The index furnishes a ready reference.



For 100 negatives, 1½ x 2½ . . . . .	\$1.25
For 100 negatives, 2½ x 4¼ or smaller . . . . .	1.25
For 100 negatives, 3¼ x 4¼ or 4 x 5 or smaller . . . . .	1.50
For 100 negatives, 3¼ x 5½ or smaller . . . . .	1.50
For 100 negatives, 5 x 7 or smaller . . . . .	1.75



# Kodak Card Mounts

## The Baltic—Brown or Grey

Heavy stock, beveled edges, heavy borders. Sold only in lots of fifty, one kind and size.

No.	For Prints	Size of Mount	Per 100	Per 50	No.	For Prints	Size of Mount	Per 100	Per 50
0	1½ x 2½	3¾ x 4¼	\$2.10	\$1.05	2C	2½ x 4½	5½ x 7½	\$3.10	\$1.55
1	2¼ x 3¼	4¾ x 5¾	2.60	1.30	3A	3¼ x 5½	5¾ x 8	3.40	1.70
1A	2½ x 4¼	4½ x 6¼	2.80	1.40	4	4 x 5	6 x 7	4.00	2.00
2	3½ x 3½	5½ x 5½	3.00	1.50	4A	4¼ x 6½	6½ x 8¾	5.00	2.50
3	3¼ x 4¼	5½ x 6¾	3.00	1.50	5	5 x 7	8 x 10	6.20	3.10

## Landscape—Ash Grey and Artist Brown

No.	Color	For Prints	Size of Mount	Per 50	No.	Color	For Prints	Size of Mount	Per 50
A1	Grey	5 x 7	8 x 10	\$3.00	C1	Grey	8 x 10	12 x 14	\$5.00
A2	Brown	5 x 7	8 x 10	3.00	C2	Brown	8 x 10	12 x 14	5.00
B1	Grey	6½ x 8½	10 x 12	4.00	D1	Grey	7 x 11	11 x 15	5.25
B2	Brown	6½ x 8½	10 x 12	4.00	D2	Brown	7 x 11	11 x 15	5.25

## De Luxe Enlargement Mount

White and India Buff stock. All edges deckled. A rich mounter for the favorite enlargement.

No.	Color	For Prints	Size of Mount	Per Doz.	No.	Color	For Prints	Size of Mount	Per Doz.
A1	White	3¼ x 5½	7¼ x 9½	\$0.75	G1	White	6 x 10	10 x 14	\$1.40
A2	India	3¼ x 5½	7¼ x 9½	.75	G2	India	6 x 10	10 x 14	1.40
D1	White	5 x 7	9½ x 11½	1.00	H1	White	8 x 10	12 x 14	1.50
D2	India	5 x 7	9½ x 11½	1.00	H2	India	8 x 10	12 x 14	1.50
F1	White	6½ x 8½	10¾ x 12¾	1.20	J1	White	7 x 11	11 x 15	1.56
F2	India	6½ x 8½	10¾ x 12¾	1.20	J2	India	7 x 11	11 x 15	1.56

## Mat Mount (For Enlargement)—Grey, Sepia-Buff

No.	For Prints	Size Mount	Price	No.	For Prints	Size Mount	Price
A	3¼ x 5½	7¼ x 9¾	Doz. \$0.93	F	6 x 10	10½ x 14½	Doz. \$1.29
B	4 x 7	8¾ x 11¾	Doz. .93	G	7 x 11	11½ x 15½	Doz. 1.53
C	5 x 7	9¾ x 11¾	Doz. .93	H	8 x 10	12 x 14	Doz. 1.53
D	5 x 8½	9¾ x 13¾	Doz. 1.05	J	8 x 14	13¼ x 19¼	½ Doz. 1.05
E	6½ x 8½	11¾ x 13¾	Doz. 1.17	K	11 x 14	17¼ x 20¼	½ Doz. 1.89

## Inslip Enlargement Folder—Olive and Brown

This folder is supplied in dark olive grey or dark brown, the former with light olive, the latter with sand brown insert. Each size supplied with square opening for either horizontal or upright enlargements.

No.	For Prints	Size of Mount	Per Doz.	No.	For Prints	Size of Mount	Per Doz.
A	5 x 7 Upright	7½ x 10¾	\$1.68	E	8 x 10 Upright	10 x 14	\$2.34
B	5 x 7 Horizontal	8¾ x 9¾	1.68	F	8 x 10 Horizontal	11 x 12½	2.34
C	6½ x 8½ Upright	9 x 13	1.98	G	6 x 10 Upright	8 x 14	2.22
D	6½ x 8½ Horizontal	9¾ x 11	1.98	H	6 x 10 Horizontal	9 x 12½	2.22

## Enlargement Mount—Grey or Buff

No.	For Prints	Size Mount	Price	No.	For Prints	Size Mount	Price
A	3¼ x 5½	7¼ x 9½	Doz. \$0.48	F	6 x 10	10½ x 14½	Doz. \$0.69
B	4 x 7	8¾ x 11¾	Doz. .51	G	7 x 11	11½ x 15½	Doz. .81
C	5 x 7	9¾ x 11¾	Doz. .54	H	8 x 10	12½ x 14½	Doz. .81
D	5 x 8½	9¾ x 12¾	Doz. .63	J	8 x 14	13 x 17	½ Doz. .69
E	6½ x 8½	11¾ x 13¾	Doz. .66	K	11 x 14	17 x 20	½ Doz. .84

## The Amateur Folder

Just the thing for carrying or mailing favorite pictures. Made of durable, marble grey cover stock. The picture is inserted under the corners which hold it securely.

No.		Price per doz.
1	for 2¼ x 3¼ prints upright or horizontal . . . . .	\$0.50
1A	for 2½ x 4¼ prints upright or horizontal . . . . .	.55
2C	for 2⅞ x 4⅞ prints upright or horizontal . . . . .	.57
3A	for 3¼ x 5½ prints upright or horizontal . . . . .	.60

## The Safety Photo Mailer

Tough Kraft envelope—double scored corrugated board—lock seal. The mailer that insures safe arrival of your prints, and mounted or unmounted enlargements.

No.	Size Card or Print	Outside Size of Mailer	Price per 100
A—5	x 7 or smaller;	6⅞ x 8⅞ . . . . .	\$ 9.00
B—9⅞	x 11⅞ or smaller;	10½ x 12½ . . . . .	15.00
C—11⅞	x 13⅞ or smaller;	13 x 14⅞ . . . . .	17.50
D—12⅞	x 15⅞ or smaller;	13¾ x 16¾ . . . . .	25.00
E—17¼	x 20¼ or smaller;	18⅞ x 21⅞ . . . . .	35.00

### Stereo Mounts

Size of Mount 3½ x 7 . . . . Color, Queen's Grey . . . . Per 100, \$1.30 . . . . Per 50, \$0.65

## Tripods

### Kodak Metal

The Kodak Metal Tripods, which are light, compact and rigid, have telescoping legs of brass tubing. The three lower sections, finished in nickel, fit into the upper section which is finished in black enamel.

When closed, the full length is, in different models, from 11¾ to 15½ inches—convincing evidence that they are conveniently carried.

There are six models to select from.

The Nos. 1 and 2 have revolving heads, permitting the camera to swing so as to take in the desired view without moving the tripod. They also have straps for holding the legs in place when closed.

The Nos. 1C and 2C have solid heads, but do not have straps for holding legs.

The No. 6 has a special folding head permitting the legs to fold flat. The head contains a patented hinge so that when folded the three legs of the tripod are parallel to each other in the same plane rather than set in the usual triangular

form. The result is a narrow shape, which with an extremely short length makes the No. 6, when closed, the easiest to carry of all this easily carried family.

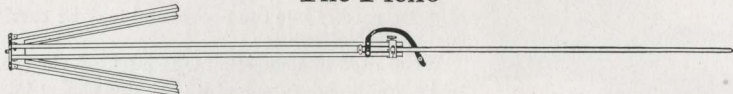


The illustration above shows the No. 6 projecting from a No. 6 Leather Carrying Case.

### Details

	Sections	Length		Weight	Price
		Closed	Extended		
Kodak Metal Tripod No. 0	3	15½ inches	39½ inches	15 ounces . . .	\$2.75
Kodak Metal Tripod No. 1C	4	15¼ inches	48¾ inches	25½ ounces . . .	4.00
Kodak Metal Tripod No. 1	4	15 inches	48½ inches	24½ ounces . . .	4.50
Kodak Metal Tripod No. 2C	5	13¼ inches	49¾ inches	26 ounces . . .	4.50
Kodak Metal Tripod No. 2	5	13½ inches	49½ inches	25 ounces . . .	5.00
Kodak Metal Tripod No. 6	6	11¾ inches	40 inches	24 ounces . . .	6.50
Leather Carrying Case, for Nos. 0 to 2, inclusive . . . . .					2.70
Ditto, for No. 6 . . . . .					3.15
Rubber Tips, for Metal Tripod Spurs (per set of 3) . . . . .					.10

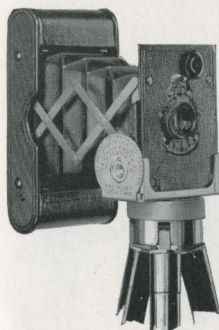
### The Flexo



TWO sections. Fixed, non-detachable head. Only clear, straight-grained wood is used in its construction. Length, extended, 53 inches; folded, 29 inches. Weight, 18 ounces.

Price, \$2.00

### Vest Pocket Kodak Tripod Adapter



Vest Pocket Kodaks have been compressed into such small space that not even a spare cubic quarter of an inch is available for tripod sockets.

This little device is designed as a substitute for them. It can be affixed in a few turns to a tripod head, to the Optipod or to the Kodapod. Choice of sockets permits placing for vertical or horizontal pictures. The camera may be instantly slipped into the Adapter where it is firmly held by a spring clamp.

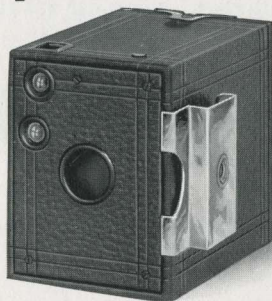
Vest Pocket Kodak Tripod Adapter . . . . . \$0.50



## Brownie Tripod Adapter

The Brownie Tripod Adapter is designed for use on the No. 0 Brownie and on the previous models of the 2 and 2A box Brownie cameras which are not equipped with tripod sockets.

The illustration shows the Adapter attached to the side of the No. 0 Brownie. The two hooked prongs at the side of the Adapter are inserted in the narrow space between the front board and the camera frame. For taking horizontal pictures it is placed in the position illustrated and for taking vertical pictures it is inserted at the bottom instead of the side.



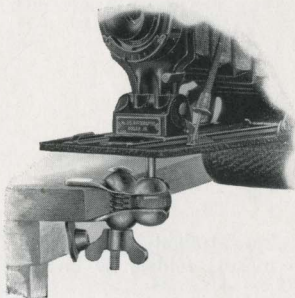
The camera may then be attached to a tripod head or to the Optipod or Kodapod (illustrated below) by merely turning the tripod screw into the threaded hole in the Adapter.

Brownie Tripod Adapter . . . . . \$0.25

## The Optipod

The Optipod is a combined tripod head and clamp which may be used effectively as a tripod when clamped to a chair, table, automobile, motorcycle, or any substantial object. It is small and light, slipping readily into the pocket and may be carried without inconvenience.

When used in connection with a tripod, the Optipod gives the advantage of its ball and socket joint, permitting the camera to be tilted to any desired angle. This feature is especially desirable when photographing objects at close range and when it is impossible to place a tripod alone, in the desired position.



The Optipod . . . . . \$1.25

## The Kodapod

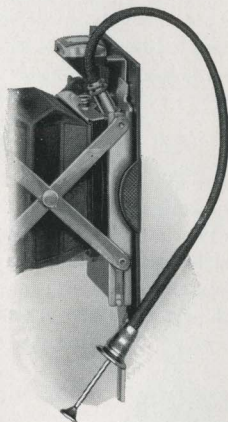
The little Kodapod—which is carried easily in the pocket—takes the place of a tripod, when a tree, fence, or similar object is near at hand. Its jaws have a bulldog grip that holds the wood like a vise, and likewise the Kodak firmly in position. By means of a clamping screw, the camera may be adjusted to the correct vertical or horizontal position. It fits any standard tripod socket.



The Kodapod . . . . . \$1.75

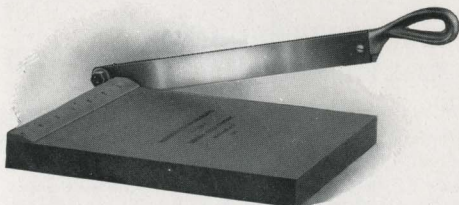
## Vest Pocket Kodak Cable Release Attachment

Vest Pocket Kodaks are so compact that there is no space for a cable release. But for those who prefer it, a cable release attachment is made. This consists merely of a nickeled plate attached by a screw to the back of the front board. The plate contains a socket into which the cable release is screwed. The attachment is especially valuable for those who wish to use the Kodak Self Timer with their Vest Pocket Kodaks.



Vest Pocket Kodak Cable Release Attachment (No. 20) . . \$0.50

## Kodak Trimming Boards



Made of hard wood, with natural finish, have fine quality steel blades and are fitted with rule.

No. 1, capacity, 5 x 5 inches . \$0.75

No. 2, capacity, 7 x 7 inches . 1.00

## Kodak Print Roller

The best roller constructed for amateur use. Has two 6-inch rubber rollers and finely nickeled frame.

Kodak Print Roller . . . . . \$1.00



## Flexo Print Roller



A thoroughly practical roller for mounting. Has 4-inch rubber roller and black enamel frame.

Flexo Print Roller . . . . . \$0.35



## “How to Make Good Pictures”

A practical and profusely illustrated book for the amateur that covers in a simple, understandable way every phase of photography that he is likely to be interested in. 168 pages.

“How to Make Good Pictures” . . . . . \$0.40

### Kodak Film Clip

This clip made of Monel metal is of entirely new construction designed to secure the maximum amount of grip with its two jaws. Having a width of two inches and a firm grip which prevents the film from slipping, it is particularly adapted for use with large size film but is useful for small film as well. Made in one size only.

Kodak Film Clip . . . . . \$0.30



### Kodak Junior Film Clip No. 1

The No. 1 clip made of Monel metal is the most practical for tray development or drying of films. Two teeth in jaw to prevent film from slipping. One size only.

Kodak Junior Film Clip No. 1 . . . . . \$0.12



### Eastman Film Developing Clip

A thoroughly dependable clip. Made in two sizes and nickel-plated.

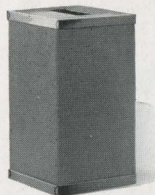
3½-inch, per pair . . . . . \$0.30  
5-inch, per pair . . . . . .40



### Kodak Candle Lamp

This clever little lamp is collapsible and can be packed into very small space when not in use. It is made of special, tested ruby fabric, bound in metal frames and gives a strong, safe light for the dark room.

Kodak Candle Lamp . . . . . \$0.40  
Extra Candles for same, per dozen . . . . . .40



### Kodak Dark Room Lamp

The Kodak Dark Room Lamp is oil burning and is fitted with both orange and ruby glass. It has an unusually broad wick regulated from the outside and gives a soft, steady light for the dark room.

No. 2 Kodak Dark Room Lamp . . . . . \$1.25





## Kodak Safelight Lamp

The Kodak Safelight Lamp is ideal for all dark room uses, whether the work of the beginner, the advanced amateur, or the professional.

The lamp is supplied with a 5 x 7, Series 1, Safelight for use with film or plates, not highly color sensitive. Safelights of other series may be obtained, if desired, for more advanced work. It is made of metal; neatly finished in a warm tone of brown.

The lamp is supplied complete, with electric fittings excepting electric bulb, including besides the safelight 4½ feet of electric light cord.

Kodak Safelight Lamp . . . . .	\$3.50
Extra Safelight, 5 x 7, any series . . . . .	.75



## Eastman Safelight Lamp

This convenient new dark room lamp hangs from an electric cord or fixture and throws the light from a 10 watt bulb directly downward over the work table. Supplied with a 5 x 7 Safelight, Series 2, for use with films or plates, unless otherwise ordered. Strongly constructed of metal.

Eastman Safelight Lamp, without bulb . . . . .	\$3.00
Extra Safelight, 5 x 7, any series . . . . .	.75

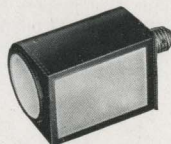


## Brownie Safelight Lamp

But little larger than the electric bulb it holds, the Brownie Safelight Lamp screws into an electric socket.

It is made of metal, neatly japanned; has circular safelight in the end, and side safelight as well. Both safelights are the regular Series 1, and removable so that other series may be used, if desired. A 15 Watt Mazda Lamp is used, but is not supplied.

Brownie Safelight Lamp . . . . .	\$1.75
Extra Circular End Safelight (any series), each . . . . .	.25
Extra Rectangular Safelight (any series), each . . . . .	.40



## Safelights For Safelight Lamps

SERIES 00—Yellow light, for use with gaslight papers.

SERIES 0—Bright orange light, for use with bromide paper and lantern plates.

SERIES 1—Orange safelight, for use with films or plates not highly color sensitive.

SERIES 2—Safelight, for extra rapid orthochromatic plates sensitive to green but not red.

SERIES 3—Green safelight, for use with red-sensitive panchromatic plates.

SERIES 4—Bright green safelight, for use with ordinary plates, for those who cannot use a red light. Not safe for orthochromatic plates.



# Tested Chemicals

Certainty in making negatives and prints depends as much on the quality of your chemicals as on any other one thing. All Kodak chemicals are tested both photographically and for purity before the E. K. C. tested seal is allowed to go on them.

Eastman Chemical Outfit consists of M. Q. and Special Developers, Intensifier, Reducer and	
Velox Re-developer . . . . .	\$0.40
Eastman Special Developer Powders, per package of 5, in sealed glass tubes . . . . .	.35
Eastman M. Q. Developer, per package of 5 tubes . . . . .	.30
Eastman Hydrochinon Developer Powders, per ½ dozen . . . . .	.30
Ditto, per package of 5 powders, in sealed glass tubes . . . . .	.30
Eastman Pyro Developer Powders, per ½ dozen . . . . .	.25
Ditto, per package of 5 powders, in sealed glass tubes . . . . .	.25
Eastman Tropical Developer, 5 powders, in sealed glass tubes . . . . .	.40
Tozol, per 1-ounce bottle . . . . .	.45
Elon, per 1 ounce . . . . .	.55
Kodolon, per 1 ounce . . . . .	.47
Hydrochinon, per 1-ounce can . . . . .	.23
Eastman Permanent Crystal Pyro, per 1-ounce bottle . . . . .	.27
Velox Re-developer Tubes, package of 12 tubes . . . . .	1.08
Hyposulphite of Soda, granular, per pound . . . . .	.18
Alum, powdered, per pound . . . . .	.20
Kodak Acid Fixing Powder, per pound package . . . . .	.25
Ditto, per ½-pound package . . . . .	.15
Ditto, per ¼-pound package . . . . .	.10
Eastman Intensifier, glass tube, per tube . . . . .	.15
Eastman Reducer and Stain Remover, per box of 5 tubes . . . . .	.50
Eastman Opaque No. 1, per tube . . . . .	.25
Potassium Bromide, granular, per ounce . . . . .	.10
Acetic Acid, 28 per cent pure, per 1-pound bottle . . . . .	.35
Citric Acid, 4-ounce bottle . . . . .	.38
Eastman Tested Carbonate of Soda (desiccated), per 1-pound bottle . . . . .	.40
Eastman Tested Sulphite of Soda (desiccated), per 1-pound bottle . . . . .	.45

For Velox preparations, see page 49. For Solio preparations, see page 50.

For Tank Developer Chemicals, see page 43.

## Miscellaneous

Cable Release (except Vest Pocket, see page 61), each . . . . .	\$0.35	Rubber Focusing Cloth, per yard . . . . .	\$1.00
Eastman Special Squeegee, 8-inch . . . . .	1.00	Eastman Spotting Colors consist of three colors, black, white and sepia, per set . . . . .	.25
Hard Rubber Stirring Rod . . . . .	.30	Ferrottype Plate, 10 x 14, light . . . . .	.20
Finger Tips, set of 3 . . . . .	.15	Ferrottype Plate, 10 x 14, heavy . . . . .	.30

## Terms

The prices in this catalogue are strictly net, except to regular dealers who carry our goods in stock. THESE PRICES ARE, HOWEVER, SUBJECT TO CHANGE WITHOUT NOTICE. For the convenience of our customers, we recommend that they make their purchases from a dealer in photographic goods, as by so doing they can save both time and transportation charges.

EASTMAN KODAK COMPANY, Rochester, N. Y.





*Edg. Massey - agt.*  
“KODAK”

Is the registered and common-law Trade Mark of the Eastman Kodak Company and cannot be rightfully applied except to goods of their manufacture. When a dealer tries to sell you under the Kodak name, a camera or films or other goods not of their manufacture, you can be sure that he has an inferior article that he is trying to market on the Kodak reputation

*If it isn't an Eastman it isn't a Kodak*