



KODAK

The Digitized Kodak Catalog Project (1886 - 1941): A Very Brief History

Most camera collectors at some point in their collecting careers pass through a Kodak phase - some never come out of it. And if there ever was one name that came to be associated with both cameras and collecting, it was Kodak.

George Eastman received his first patent (for coating dry plates) and bought his first manufacturing facility in 1880, and in 1881 he started the Eastman Dry Plate Company. In 1886 he received a patent for the near-mythical Eastman Detective Camera, but it wasn't until 1888 that the first camera bearing the name "Kodak" was introduced.

One of the nice things about collecting Kodak is that the product line is pretty well known, and because the company produced annual catalogs for many years, collectors can be reasonably sure of what they're looking at, when it was made, the variations and so on - presuming that they have access to either the appropriate catalog, or a number of the many books which document Kodak, each to some greater or lesser extent.

But what would be really nice would be to have a complete set of Kodak catalogs in an easily accessible form and readily available. And since the advent of portable computing devices (PC, Macintosh, etc.) that's been possible - except for the difficulty of assembling a complete set of Kodak catalogs in one spot and then scanning them and making the results available.

The idea of digitizing a complete set of Kodak catalogs has kicked around the collecting community for many years. It's been proposed on a number of online forums, during meetings of various photohistory groups, and for years there have been many incomplete "Kodak CDs" on eBay but at best, they only contained a few catalogs - whatever the owner had available. But assembling a complete set of catalogs, then scanning and processing perhaps 3,000 to 4,000 pages, was a daunting task - if not completely overwhelming - and nothing ever came of it.

Until now.

In early 2010, the idea came up again, but this time we - "we" as in "the collecting community" - were lucky. A number of collectors were willing to loan their catalogs to this project and a couple of insane - wait, let's call them "dedicated" - dedicated enthusiasts - neither of whom collected Kodak, but both of whom enjoyed the challenge of such a project - were willing to put in the time and effort to scan and pull together the entire set of catalogs into a full-blown Kodak Catalog Digital Library.

Our initial objective was to include just the annual amateur catalogs, but it turns out that many cameras only appear in certain professional and specialty catalogs. We included as many of those as we could obtain so that almost every Kodak camera made in the US, Canada and Europe, would be documented - at least up to about 1941. After that, it becomes much more difficult as Kodak stopped producing annual catalogs as their product line became increasingly more diversified.

However, even with the additional "non-amateur" catalogs, we weren't completely successful in illustrating "every" camera Kodak ever made. There are an elusive few that might appear in specialty catalogs that we simply couldn't track down. If you can't find one of those odd cameras, that's no doubt why. We may do a revision at some point in the future if someone is willing to loan us a catalog that includes a camera that isn't already recorded.

In this project, a total of 67 catalogs were used from 1886 through 1941 including a number of professional and dealer catalogs, and in some years, two or even three different catalogs to cover all the bases. With the cooperation of a number of dedicated collectors, we were able to pull together all those catalogs and in June 2010, the project started in earnest.

By November 2010, we had scanned everything we needed and eventually all 67 catalogs were then reassembled as image folders and converted to the universally accepted PDF format and finally, converted into individually searchable PDFs which could then be searched globally as a collection.

For those of you interested in the statistics: about 200 hours of scanning time (we never want to hear that sound again), 67 catalogs and 3,908 page scans - which generated 7,917 original and processed images - and 11.4 GB of disk space. Additionally, another 100+ hours of technical development time was needed to convert the digital catalogues into a fully searchable "knowledgebase" that could be launched from most any standard web browser.

The overwhelming number of catalogs was loaned to us by that most remarkable of Kodak collectors, Charlie Kamerman of Eagle Creek, Oregon. Without Charlie, it's very doubtful that this project could even have been attempted.

But as it turned out, even Charlie didn't have all the publications that were needed, but he was able to track down the five that he lacked and was able to secure either a copy or high resolution images that we could work with. And so, our thanks to the contributors of the catalogs and scans that we used:

Charlie Kamerman for the vast majority of catalogs used and all his help,
Steve Shohet for loaning a variety of test catalogs,
Ryerson University (Toronto) for the 1886 Eastman Catalog
George Layne for the 1890 New Kodaks Catalog,
Mike Kessler for the 1891 Dealer Display Catalog,
Ralph London for the 1893 UK Catalog,
Michael Pritchard for the 1897 UK Catalog.

The digital side of the project - also known as "all of the work" - was done by Rob Niederman of Medina, Minnesota, and Milan Zahorcak of Tualatin, Oregon. Remarkably we're still friends and in a few years, we'll probably be able to talk about this project rationally.

And there you have it, a more-or-less done deal. We're fairly sure that it isn't quite perfect, and expect there will be some carping about something or other; but all-in-all, we believe this to be a pretty good product and can now move on to something else.

Our thanks to all of those involved.

Rob Niederman
Milan Zahorcak

Fall, 2011

KODAKS *and* Kodak Supplies



1921
EASTMAN KODAK COMPANY
ROCHESTER, NEW YORK
"The Kodak City"



FROM A SELF-PORTRAIT NEGATIVE MADE WITH THE No. 2C *Autographic*
KODAK JUNIOR WITH KODAK ANASTIGMAT LENS *f.7.7* AND
KODAK PORTRAIT ATTACHMENT

THE PRICE TO YOU

IN the thirty three years since the Kodak was introduced, we have never before talked prices in our annual catalogue.

This time it seems worth while.

When everybody else, at least almost everybody else, was advancing prices, we took no advantage of the situation. When war prices began to prevail, we had big stocks of cameras and of raw materials at pre-war costs. We could easily have made a big extra profit by advancing prices, but we gave our customers the benefit; we sold on a cost basis, not a "get all you can" basis.

The time came when we were obliged to raise prices, but we were the last to raise them and we raised them the least. There is probably no line where prices have been advanced as little as in the photographic business. Raw materials and labor costs went up tremendously, yet due to greatly increased sales, we were able with only slight advances to market our product satisfactorily on a very much decreased percentage of profit.

The camera prices in this catalogue show a marked decrease from the prices that prevailed in 1920. These reductions are not made because of present lower costs, but in anticipation of lower costs in the months to come.

We are not all the way back to a pre-war basis. It is probable that we never shall be. But in considering the catalogue prices on Kodaks and Brownies and film, it should be borne in mind that these prices, in every case, *include the war tax*.

And in no case has Kodak quality been sacrificed.

EASTMAN KODAK COMPANY

ROCHESTER, NEW YORK
"The Kodak City"

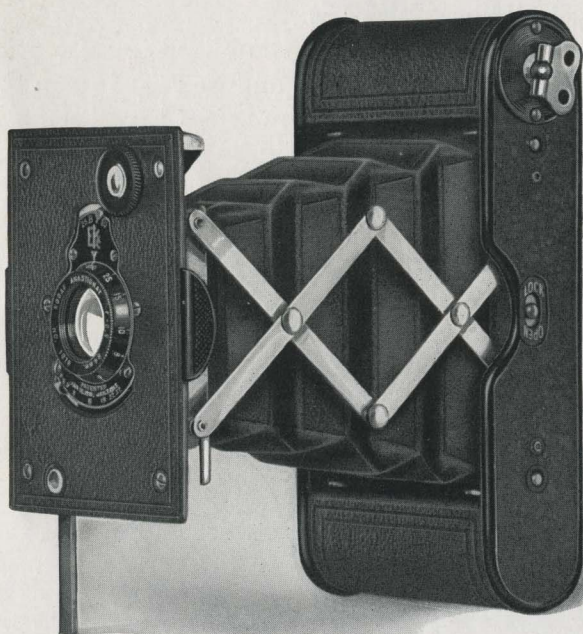
VEST POCKET

Autographic KODAK Special

(Focusing Model)

VEST POCKET KODAKS have always been as much distinguished by their photographic excellence as by their unobtrusive modesty. Now with the perfecting of a new *Special* focusing model, they acquire new distinction. The new focusing device, like all Kodak mechanical features, possesses that simplicity which has made Kodak cameras the choice of discriminating amateurs since 1888.

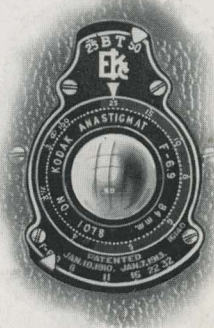
The bellows need not be racked back and forth. Instead, the



If it isn't an EASTMAN, it isn't a KODAK

lens is first drawn out to the full distance, then to adjust the focus for any distance from 3 feet to infinity, the lens flange is merely turned in its socket. All the variations in focus for the indicated distances—3, 3½, 4, 5, 6, 8, 10, 15, 25 and 100 feet—are accomplished in less than one complete revolution of the lens flange.

With this new Vest Pocket Kodak, head-and-shoulder portraits of a person, or large-sized close-ups of any object, may be taken without a Portrait Attachment, the focusing range being even greater than that of other hand cameras that are focused by means of moving the entire front backward and forward. It is equally adapted for all other subjects possible to amateur photography. In design, construction and range of usefulness it reaches the peak of small camera excellence.



FACE PLATE SHOWING
FOCUSING DEVICE

DETAILS

Size of pictures: 1⅝ x 2½ inches. Size of Kodak: 1 x 2⅜ x 4¾ inches. Capacity without reloading: 8 exposures. Weight: 11 ounces. Adjustable focus. Lens: Kodak Anastigmat, f.6.9, 3½-inch focus. Kodak Ball Bearing Shutter No. 0 with finger release only (cable release attachment sold separately). Speeds: ⅓, ½, 1 second, and time and "bulb" actions. Brilliant finder; reversible for vertical or horizontal pictures. All metal body covered with pin-grain Morocco. Metal parts finished in nickel and black enamel. Black bellows. Autographic feature.

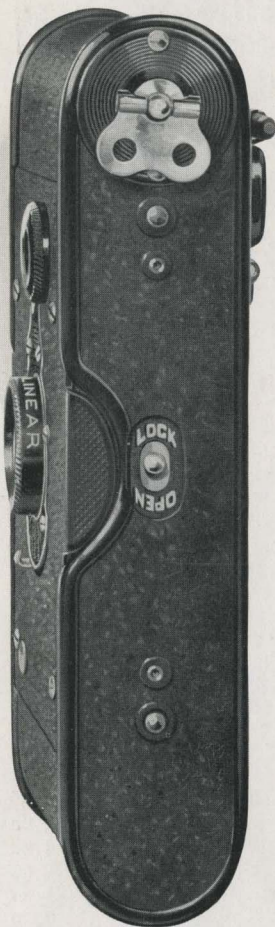
PRICES

Vest Pocket Autographic Kodak, Special (focusing model), Kodak Anastigmat lens, f.6.9, and Kodak Ball Bearing Shutter	\$21.00
Leather Case for V. P. Kodak	1.00
Soft Leather Carrying Bag	2.00
Grain Leather Case	1.50
Belt Carrying Case (russet leather)	1.50
Khaki Belt Carrying Case75
Autographic Film Cartridge, 8 exposures, 1⅝ x 2½ (No. A 127)25
Vest Pocket Cable Release Attachment (see page 60)50
Vest Pocket Kodak Tripod Adapter (see page 58)50
Kodak Self Timer (see page 38)	1.25

The prices of cameras and film include the Excise War Tax

VEST POCKET *Autographic* KODAKS

(Fixed Focus Models)



VEST POCKET KODAK
REGULAR

Actual size of all models
when closed

THESE models have earned a name for themselves. Their reputation for catching the unexpected picture on the wing is based on the fixed-focus feature and the ease of operation. Opening with one quick pull, they are instantly ready for service.

With the autographic feature and an amazing compactness, they have come into general use as pocket note books for recording the incidental events of every day life. But they are also capable of producing important and artistic pictures. In fact, they are much used as general service cameras. They produce negatives of such quality that the small pictures, of a most economical size— $1\frac{5}{8} \times 2\frac{1}{2}$ inches—may be enlarged up to post card size, and often larger, most effectively.

The illustration on page 4 shows the general appearance of all Vest Pocket models when open. Though the ample focal length is sufficient to avoid awkward perspective lines, the bellows collapses into so small a space that the camera when closed is no larger than the adjoining illustration on this page.

It is easy enough to make a small camera but to make a small camera which is also optically correct is the difficult problem which has been solved with precision in these Vest Pocket Kodaks.

All necessary equipment is an integral part of these cameras; every non-essential is omitted for the sake of lightness and compactness. However, Cable Release Attachments (See page 60) and Tripod Adapters (See page 58) are available.

In the fixed focus models, there is a selection of lenses, finish and price to meet all requirements. The Regulars have a stamped metal body; the *Special* body is of aluminum with a fine pin grain, genuine morocco covering.

Below are full details regarding the equipment and prices of the different fixed focus models, all cameras of high quality and assured results.

DETAILS

Size of pictures: $1\frac{5}{8} \times 2\frac{1}{2}$ inches. Size of Kodak: $1 \times 2\frac{3}{8} \times 4\frac{3}{4}$ inches. Capacity without reloading: 8 exposures. Weight: 11 ounces. Lenses: *Regular*—Fixed focus only; Meniscus Achromatic or Rapid Rectilinear, $3\frac{1}{2}$ -inch focus. *Special*—Fixed focus models; Kodak Anastigmat, *f*.7.7, $3\frac{1}{2}$ -inch focus; Kodak Anastigmat, *f*.6.9, $3\frac{1}{2}$ -inch focus. Kodak Ball Bearing Shutter No. 0 with finger release only (cable release attachment sold separately). Speeds: $\frac{1}{25}$, $\frac{1}{50}$ second, and time and "bulb" actions. Brilliant finder; reversible for vertical or horizontal pictures. All metal body: *Regular*—Finished in stamped figured design. *Special*—Covered with pin-grain Morocco. Metal parts finished in nickel and black enamel. Black bellows. Autographic feature.

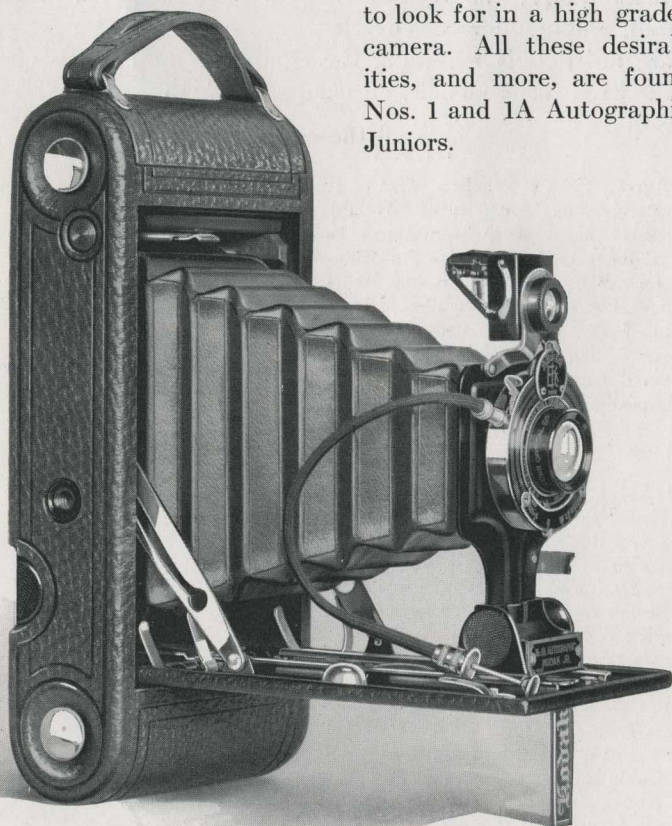
PRICES

Vest Pocket Autographic Kodak (regular model) Meniscus Achromatic	
Lens and Kodak Ball Bearing Shutter	\$ 8.00
Ditto, with Rapid Rectilinear Lens, speed U. S. 8	9.50
Vest Pocket Autographic Kodak, <i>Special</i> (fixed focus model), Kodak Anastigmat Lens, <i>f</i> .7.7, and Kodak Ball Bearing Shutter	15.00
Ditto, with Kodak Anastigmat, <i>f</i> .6.9 Lens	20.00
Leather Case for V. P. Kodak	1.00
Soft Leather Carrying Bag	2.00
Grain Leather Case	1.50
Belt Carrying Case (russet leather)	1.50
Khaki Belt Carrying Case75
Autographic Film Cartridge, 8 exposures, $1\frac{5}{8} \times 2\frac{1}{2}$ (No. A 127)25
Vest Pocket Cable Release Attachment (see page 60)50
Vest Pocket Kodak Tripod Adapter (see page 58)50
Kodak Portrait Attachment (see page 37)75
Kodak Self Timer (see page 38)	1.25

The prices of cameras and film include the Excise War Tax

Nos. 1 AND 1A *Autographic* KODAK JUNIORS

SIMPLE operation—moderate price—coat pocket size—scientific design—durable materials—strong construction—good appearance—these are the qualities to look for in a high grade popular camera. All these desirable qualities, and more, are found in the Nos. 1 and 1A Autographic Kodak Juniors.



1A JR. MODEL

If it isn't an EASTMAN, it isn't a KODAK

Both offer the choice of fixed or adjustable focus and have the same lens equipments. Both have the same highly efficient shutter with cable release—and the autographic feature by which you make the record complete.

They differ as follows: No. 1A takes slightly wider and much longer pictures and is a larger camera with larger film capacity and greater focal length than No. 1. No. 1A permits snapshots of $\frac{1}{25}$, $\frac{1}{50}$ and $\frac{1}{100}$ second, with all lens equipments, while No. 1 has speeds of $\frac{1}{25}$ and $\frac{1}{50}$ second only, except with the Kodak Anastigmat $f.7.7$ lens, with which it has also the $\frac{1}{100}$ speed.

These compact cameras have all the essentials to good picture making.

DETAILS

Size of pictures: No. 1, $2\frac{1}{4} \times 3\frac{1}{4}$ inches; No. 1A, $2\frac{1}{2} \times 4\frac{1}{4}$ inches. Size of Kodak: No. 1, $1\frac{7}{16} \times 3\frac{5}{8} \times 6\frac{5}{8}$ inches; No. 1A, $1\frac{5}{8} \times 3\frac{3}{4} \times 8$ inches. Capacity: No. 1, 6 exposures; No. 1A, 12 exposures. Weight: No. 1, $21\frac{1}{2}$ ounces; No. 1A, $27\frac{1}{2}$ ounces. Focus: Fixed (with meniscus achromatic lens only); or Adjustable (with any listed lens). Lenses: Meniscus Achromatic; Rapid Rectilinear—No. 1, $4\frac{1}{4}$ -inch focus, No. 1A, $5\frac{1}{4}$ -inch focus; or Kodak Anastigmat, $f.7.7$ —No. 1, 4-inch focus, No. 1A, $5\frac{1}{4}$ -inch focus. Kodak Ball Bearing Shutter with cable and finger release. Speeds: No. 1, $\frac{1}{25}$ and $\frac{1}{50}$ second; with K.A. $f.7.7$ lens, $\frac{1}{25}$, $\frac{1}{50}$ and $\frac{1}{100}$ second; No. 1A, $\frac{1}{25}$, $\frac{1}{50}$ and $\frac{1}{100}$ second. Both with time and “bulb” actions. Brilliant finder; reversible for vertical or horizontal pictures. Body covered with grain leather. Tripod sockets. Metal parts finished in nickel and black enamel. Black bellows. Autographic feature.

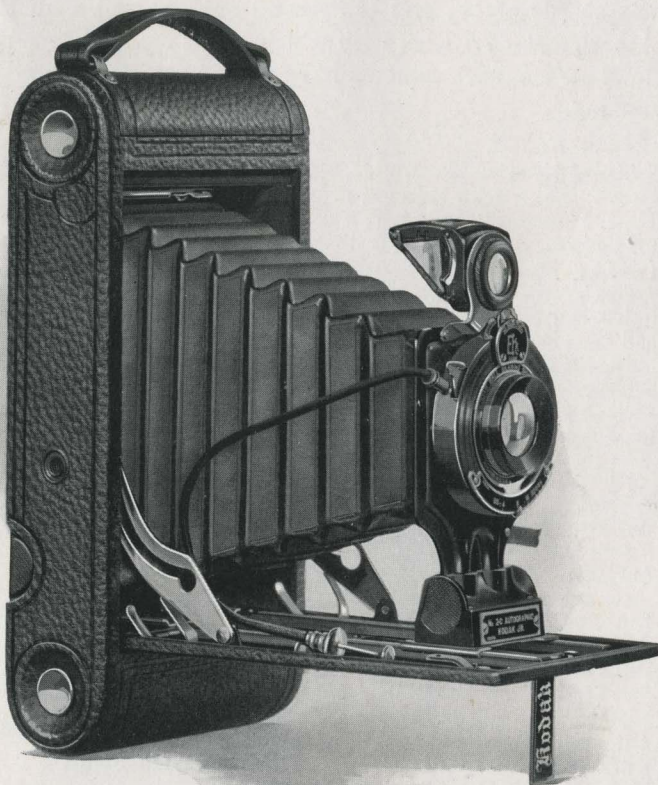
PRICES

	No. 1	No. 1A
Autographic Kodak Junior (fixed focus) Meniscus Achromatic Lens and Kodak Ball Bearing Shutter	\$15.00	\$16.00
Autographic Kodak Junior (focusing model, with scale), Meniscus Achromatic Lens and Kodak Ball Bearing Shutter	15.00	16.00
Ditto, with Rapid Rectilinear Lens	17.00	18.00
Ditto, with Kodak Anastigmat Lens, $f.7.7$	22.00	23.00
Black Sole Leather Case, with strap	4.00	4.00
Soft Leather Bag, with strap	2.75	3.00
Leatherette Carrying Case, with strap	2.50	2.50
Autographic Film Cartridge, 12 exposures (No. A 116) for No. 1A60
Ditto, 6 exposures (No. A 120) for No. 1; (No. A 116) for No. 1A25	.30
Kodak Portrait Attachment (see page 37)75	.75
Kodak Self Timer (see page 38)	1.25	1.25

The prices of cameras and film include the Excise War Tax

No. 2C *Autographic* KODAK JUNIOR

THE pictures made by this Kodak are of the ideal proportions. Their width ($2\frac{7}{8}$ inches) and their length ($4\frac{7}{8}$ inches) give them the same correct shape as the smaller 1A and the larger 3A sizes. This shape so fits the usual view—whether it is a portrait,



If it isn't an EASTMAN, it isn't a KODAK

when used vertically, a group or a broad expanse of landscape, when used horizontally, that trimming of the print is rarely necessary. The 2C size has become tremendously popular since its introduction a few years ago. It gives large pictures with a small camera body—both compact and light, and therefore easily carried.

With an automatic shutter fast enough to record the usual moving objects without blur, adjustable focus giving a desirable range of distances, the autographic feature to tell *who* and *what* and *when*, ample focal length to give good perspective, the 2C Junior is in every sense a desirable camera.

Especial attention is called to this camera equipped with the Kodak Anastigmat *f.7.7* lens. This is an extremely satisfactory camera for the use of the average amateur. The illustration used as a frontispiece in this catalog shows the clear definition which can be expected in negatives made with a 2C Junior with the *f.7.7* equipment.

DETAILS

Size of pictures: $2\frac{7}{8} \times 4\frac{7}{8}$ inches. Size of Kodak: $1\frac{3}{4} \times 4\frac{3}{8} \times 8\frac{3}{4}$ inches. Capacity without reloading: 10 exposures. Weight: 34 ounces. Adjustable focus only; with automatic focusing lock. Lenses: Meniscus Achromatic; Rapid Rectilinear, $5\frac{1}{2}$ -inch focus; or Kodak Anastigmat, *f.7.7*, $5\frac{1}{2}$ -inch focus. Kodak Ball Bearing Shutter, with cable and finger release. Speeds: $\frac{1}{25}$, $\frac{1}{50}$ and $\frac{1}{100}$ second, and time and "bulb" actions. Brilliant finder; reversible for vertical or horizontal pictures. Back and bed of aluminum; covered with fine seal grain leather. Metal parts finished in nickel and black enamel. Black bellows. Autographic feature. Two tripod sockets.

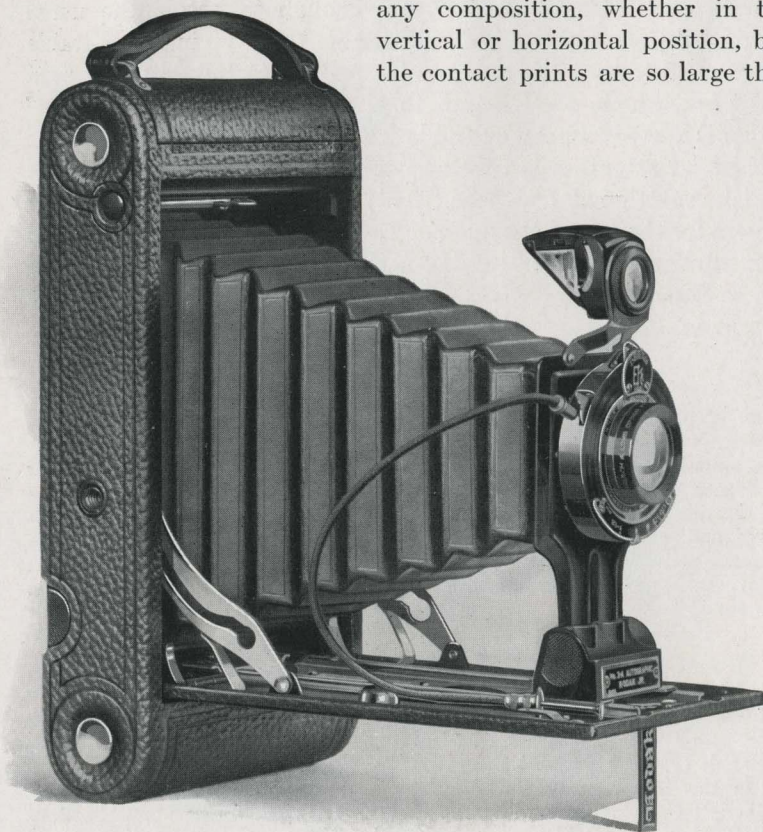
PRICES

No. 2C Autographic Kodak Junior, with Meniscus Achromatic Lens and Kodak Ball Bearing Shutter	\$18.00
Ditto, with Rapid Rectilinear Lens	20.00
Ditto, with Kodak Anastigmat, <i>f.7.7</i> lens	25.00
Black Sole Leather Case, with strap	4.50
Soft Leather Carrying Bag, with strap	3.25
Leatherette Carrying Case, with strap	2.75
Autographic Film Cartridge, 10 exposures (No. A 130)75
Ditto, 6 exposures45
Kodak Portrait Attachment (see page 37)75
Kodak Self Timer (see page 38)	1.25

The prices of cameras and film include the Excise War Tax

No. 3A *Autographic* KODAK JUNIOR

THE 3A makes pictures of post-card size, the largest size that is practical for pocket photography. Not only are its pictures of right proportion for almost any composition, whether in the vertical or horizontal position, but the contact prints are so large that



If it isn't an EASTMAN, it isn't a KODAK

they usually satisfy without enlargement, yet the negatives are of such quality that when enlargements are desired, they can be made satisfactorily in almost any size.

It has always been made a point in the Kodak factories to supply lenses that are the best obtainable of their kind. Whether the simple meniscus achromatic, the Rapid Rectilinear or the faster Anastigmats, each lens is inspected and tested and is capable of making good pictures. The 3A Junior offers a choice of these three lenses, and no matter which is selected it will be in keeping with the honest workmanship, typical of all Kodak products, that is incorporated in the camera itself.

This model is unusually light, weighing less than 10 ounces more than the camera which takes pictures $2\frac{1}{2} \times 4\frac{1}{4}$ inches.

The 3A Junior has that soundness of construction and rightness of design which have made the trade-name Kodak a synonym for quality in a hand camera.

DETAILS

Size of pictures: $3\frac{1}{4} \times 5\frac{1}{2}$ inches. Size of Kodak: $1\frac{1}{8} \times 5\frac{1}{8} \times 9\frac{3}{4}$ inches. Capacity without reloading: 10 exposures. Weight: 37 ounces. Adjustable focus only; with automatic focusing lock. Lenses: Meniscus Achromatic; Rapid Rectilinear, $6\frac{3}{4}$ -inch focus; or Kodak Anastigmat, $f.7.7$, $6\frac{3}{4}$ -inch focus. Kodak Ball Bearing Shutter No. 2, with cable and finger release. Speeds: $\frac{1}{25}$, $\frac{1}{50}$ and $\frac{1}{100}$ second, and time and "bulb" actions. Brilliant finder; reversible for vertical or horizontal pictures. Back and bed of aluminum, covered with fine seal grain leather. Metal parts finished in nickel and black enamel. Black bellows. Autographic feature. Two tripod sockets.

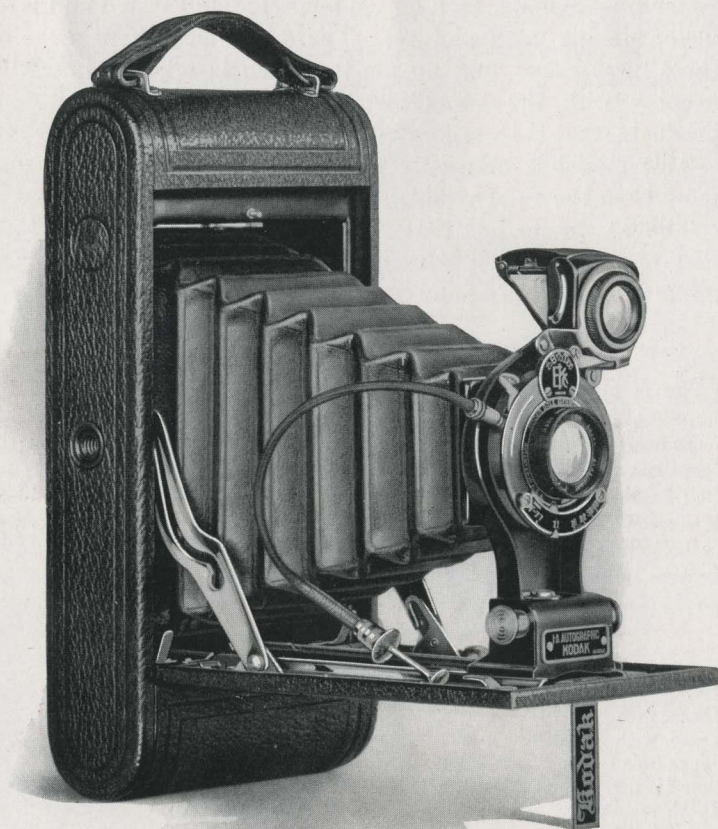
PRICES

No. 3A Autographic Kodak Junior, with Meniscus Achromatic Lens . . .	\$19.00
Ditto, with Rapid Rectilinear Lens . . .	22.00
Ditto, with Kodak Anastigmat Lens, $f.7.7$. . .	27.00
Black Sole Leather Carrying Case, with strap . . .	4.75
Soft Leather Carrying Bag . . .	4.00
Leatherette Carrying Case, with strap . . .	2.75
Autographic Film Cartridge, 10 exposures (No. A 122)90
Ditto, 6 exposures55
Kodak Portrait Attachment (see page 37)75
Kodak Self Timer (see page 38) . . .	1.25

The prices of cameras and film include the Excise War Tax

No. 1A *Autographic* KODAK

THIS camera is designed for those whose judgment and taste demand high quality in materials and workmanship, good lines and refinement of detail in a camera whose operation is simple.



If it isn't an EASTMAN, it isn't a KODAK

Though not an expensive camera, no expense has been spared to make it handsome and durable. It is in every sense a thoroughbred product.

The pictures it makes are $2\frac{1}{2} \times 4\frac{1}{4}$ inches in size, neither too large nor too small for average requirements—and their shape is pleasing.

Simplicity of operation is assured by means of the automatic ball-bearing shutter. There are no complicating features. Every part reflects the strict attention paid to perfection of details—from artistic design to mechanical construction.

The body is of aluminum, combining lightness and strength, and is covered with a fine seal grain leather, which is both durable and handsome. Mechanical parts are well designed and finely finished.

Its appearance of superiority is an indication of its photographic quality.

DETAILS

Size of pictures: $2\frac{1}{2} \times 4\frac{1}{4}$ inches. Size of Kodak: $1\frac{5}{8} \times 3\frac{3}{4} \times 8$ inches. Capacity without reloading: 12 exposures. Weight: 27 ounces. Adjustable focus only, with automatic focusing lock. Lenses: Rapid Rectilinear, $5\frac{1}{4}$ -inch focus; or Kodak Anastigmat, *f.7.7*, $5\frac{1}{4}$ -inch focus. Kodak Ball Bearing Shutter with cable and finger release. Speeds: $\frac{1}{25}$, $\frac{1}{50}$ and $\frac{1}{100}$ second, and time and "bulb" actions. Brilliant finder; reversible for vertical or horizontal pictures. Back and bed of aluminum, covered with fine seal grain leather. Metal parts finished in nickel and black enamel. Black leather bellows. Autographic feature. Two tripod sockets.

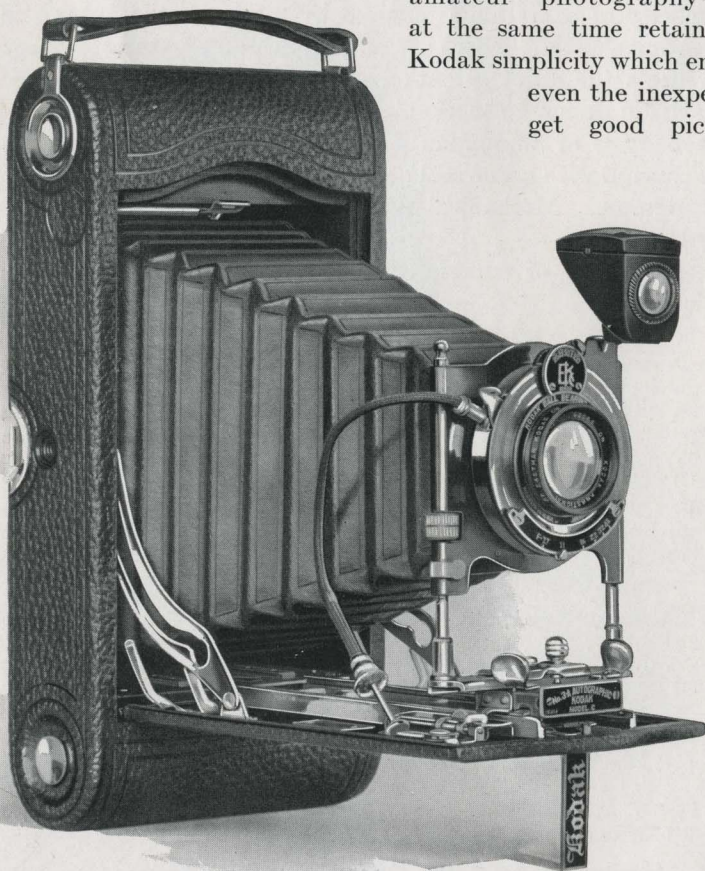
PRICES

No. 1A Autographic Kodak, with Rapid Rectilinear Lens and Kodak Ball Bearing Shutter		\$23.00
Ditto, with Kodak Anastigmat Lens, <i>f.7.7</i>		28.00
Black Sole Leather Case, with strap		4.00
Soft Leather Carrying Bag, with strap		3.00
Leatherette Carrying Case, with strap		2.50
Autographic Film Cartridge, 12 exposures (No. A 116)60
Ditto, 6 exposures30
Kodak Portrait Attachment (see page 37)75
Kodak Self Timer (see page 38)		1.25

The prices of cameras and film include the Excise War Tax

Nos. 3 AND 3A *Autographic* KODAKS

IN these cameras, the aim has been to incorporate every feature or mechanical device necessary to the best results in advanced amateur photography—and at the same time retain that Kodak simplicity which enables even the inexpert to get good pictures.



3A MODEL

If it isn't an EASTMAN, it isn't a KODAK

In addition to the usual equipment, including the simple automatic shutter, they have a mechanism permitting the raising and lowering of the lens (in either the vertical or horizontal position) which reduces the liability of distorted lines when taking pictures from awkward view points.

Although no detail has been overlooked, none has been over-emphasized and while the 3 and 3A literally fulfill every need of even the advanced amateur, they are strictly hand cameras, carried without inconvenience.

Both models will accommodate glass plates by the addition of a combination back (see page 61). This back also permits focusing on ground glass.

DETAILS

Size of pictures: No. 3, $3\frac{1}{4} \times 4\frac{1}{4}$ inches; No. 3A, $3\frac{1}{4} \times 5\frac{1}{2}$ inches. Size of Kodak: No. 3, $1\frac{3}{4} \times 4\frac{1}{2} \times 7\frac{1}{2}$ inches; No. 3A, $2 \times 4\frac{3}{4} \times 9\frac{1}{2}$ inches. Capacity without reloading: No. 3, 12 exposures; No. 3A, 10 exposures. Weight: No. 3, 30 ounces; No. 3A, 41 ounces. Adjustable focus only, with automatic focusing lock. No. 3A has double focusing scale for films or plates. Rising, falling and sliding fronts. Lenses: Rapid Rectilinear, No. 3, $5\frac{1}{4}$ -inch focus; No. 3A, $6\frac{1}{2}$ -inch focus; Kodak Anastigmat, *f.7.7*, No. 3, $5\frac{1}{4}$ -inch focus; No. 3A, $6\frac{1}{2}$ -inch focus. Kodak Ball Bearing Shutter, with cable and finger release. Speeds: $\frac{1}{25}$, $\frac{1}{50}$ and $\frac{1}{100}$ second, and time and "bulb" actions. Brilliant finder; reversible for vertical or horizontal pictures. Back and bed of aluminum, covered with fine seal grain leather. Metal parts finished in nickel and black enamel. Black leather bellows. Autographic feature. Two tripod sockets.

PRICES

	No. 3	No. 3A
Autographic Kodak, Rapid Rectilinear Lens, Kodak Ball Bearing Shutter	\$23.00	\$27.00
Ditto, with Kodak Anastigmat Lens, <i>f.7.7</i>	28.00	32.00
Black Sole Leather Case, with strap	4.00	4.75
Soft Leather Carrying Bag	3.25	4.00
Leatherette Carrying Case, with strap	2.50	2.75
Combination back for plates	4.00	4.00
Double Glass Plate Holders, each	1.50	1.50
Autographic Film Cartridges, 12 exposures (No. A 118) for No. 3; 10 exposures (No. A 122) for No. 3A90	.90
Ditto, 6 exposures45	.55
Kodak Portrait Attachment (see page 37)75	.75
Kodak Self Timer (see page 38)	1.25	1.25

The prices of cameras and film include the Excise War Tax

No. 1 *Autographic* KODAK, *Special*

(A New Model—Ready June 15th)

IN the designing and building of the Special Kodaks, we have always worked to an ideal.

Nothing is omitted that can add to their efficiency, yet there is no departure from Kodak simplicity. Their mechanical precision, their optical quality, their continued usefulness, their quiet richness in finish—all these qualities are jealously guarded.

It is easy to make a small camera. It is quite



If it isn't an EASTMAN, it isn't a KODAK

another matter to make a small camera and incorporate in it a lens that is large enough to have both speed and a sufficient focal length to prevent distortion and a shutter of sufficient size to give the full benefit of those important qualities. In this camera we have achieved compactness without any sacrifice of optical quality.

The regular equipment includes the Kodak Anastigmat lens *f*.6.3 and Kodamatic shutter. Both this shutter and this lens (described in detail on pages 34 and 39) are of our own manufacture and were designed with especial reference to Kodak requirements. We also list the Tessar Series Ic *f*.4.5.

The No. 1 Special will also be furnished, when required, with the Ilex shutter and we offer a choice of two different lenses of the famous B. & L. make.

DETAILS

Size of pictures: $2\frac{1}{4} \times 3\frac{1}{4}$ inches. Size of Kodak: $1\frac{5}{16} \times 3\frac{1}{16} \times 6\frac{7}{16}$ inches. Capacity without reloading: 6 exposures. Weight: 15 ounces. Adjustable focus only, with lever focusing device. Lenses: For details, see price heading below. Kodamatic or Ilex Shutter, with cable release. Speeds: Kodamatic—Seven, from $\frac{1}{200}$ to $\frac{1}{2}$ second; Ilex—Eight, from $\frac{1}{300}$ to 1 second; both with time and “bulb” actions. Brilliant finder; reversible for vertical or horizontal pictures. Aluminum body covered with finest quality long-grain calf. Metal parts finished in nickel and black enamel. Black leather bellows. Autographic feature. Two tripod sockets.

PRICES

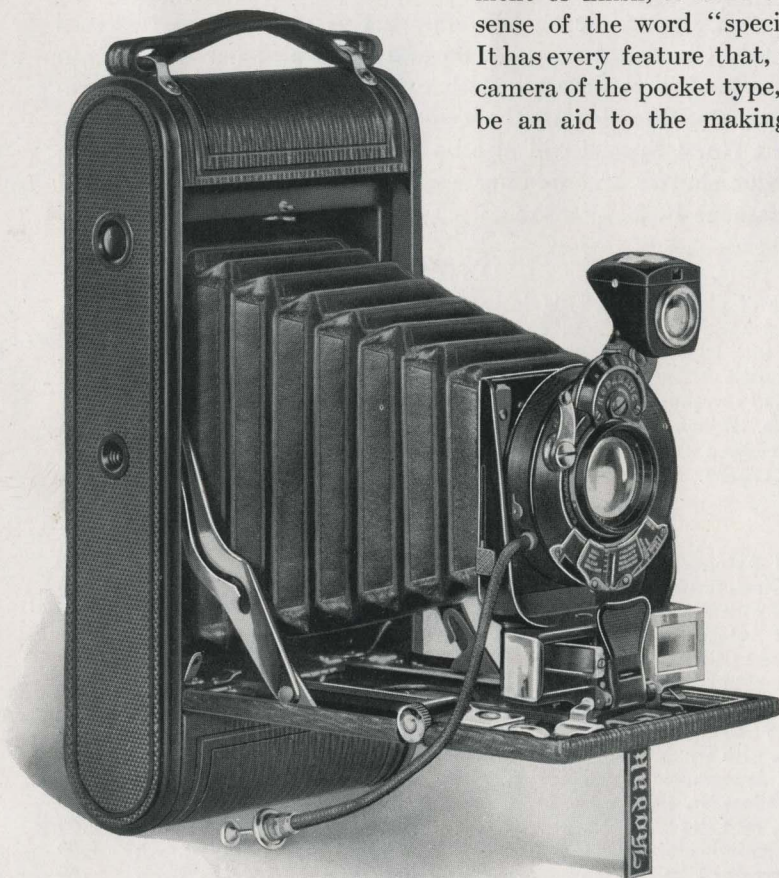
No. 1 Autographic Kodak, <i>Special</i> , with Kodak Anastigmat <i>f</i> .6.3 lens, $4\frac{1}{2}$ -inch focus, and Kodamatic Shutter	\$50.00
Ditto, with Ilex Shutter	45.00
No. 1 Autographic Kodak, <i>Special</i> , with Bausch & Lomb Kodak Anastigmat <i>f</i> .6.3 lens No. 1, $4\frac{1}{2}$ -inch focus, and Kodamatic Shutter	67.00
Ditto, with Ilex Shutter	62.00
No. 1 Autographic Kodak, <i>Special</i> , with Bausch & Lomb Tessar Series IIb <i>f</i> .6.3 lens No. 3, $4\frac{1}{2}$ -inch focus, and Kodamatic Shutter	79.00
Ditto, with Ilex Shutter	74.00
No. 1 Autographic Kodak, <i>Special</i> , with Bausch & Lomb Tessar Series Ic <i>f</i> .4.5 lens No. 12, $3\frac{1}{2}$ -inch focus, and Kodamatic Shutter	79.00
Ditto, with Ilex Shutter	74.00
Long-grain Leather, Velvet-lined Case, with strap	4.50
Autographic Film Cartridge 6 exposures, (No. A 120)25
Kodak Portrait Attachment (see page 37)75
Kodak Self Timer (see page 38)	1.25

The prices of cameras and film include the Excise War Tax

No. 1A *Autographic* KODAK, *Special*

THE series of *Special* Kodaks is special in every way. To the final and finishing touch the camera itself is made with the closest attention to details. Both mechanically and in refinement of finish, it is in every sense of the word "special".

It has every feature that, in a camera of the pocket type, can be an aid to the making of



If it isn't an EASTMAN, it isn't a KODAK

good pictures, yet has no trappy features that serve only to complicate.

The No. 1A Special is fitted with rising front, and in addition to the usual focusing scale is equipped with the Kodak Range Finder which offers a distinct advantage in accurate focusing, especially with high speed lenses such as those with which this camera is equipped.

As furnished in the regular equipment, it is fitted with the Kodak Anastigmat *f*.6.3 lens of 5-inch focus and our new Kodamatic shutter—both Kodak products, so made as to be in perfect keeping with the unusual quality of the camera itself.

The No. 1A Special is also furnished with either the Optimo or the Ilex Shutter and with the Bausch & Lomb Kodak Anastigmat or the Bausch & Lomb Tessar lens.

DETAILS

Size of pictures: $2\frac{1}{2} \times 4\frac{1}{4}$ inches. Size of Kodak: $1\frac{5}{8} \times 3\frac{3}{4} \times 8$ inches. Capacity without reloading: 12 exposures. Weight: 34 ounces. Adjustable focus, with Kodak Range Finder and rack and pinion for focusing; also regular focusing scale. Lenses: For details, see price heading below. Kodamatic, Ilex or Optimo Shutter with cable and finger release. Speeds: Kodamatic—Seven, from $\frac{1}{200}$ to $\frac{1}{2}$ second; Ilex and Optimo—Eight, from $\frac{1}{300}$ to 1 second; all with time and “bulb” actions. Brilliant finder; reversible for vertical or horizontal pictures. Aluminum body covered with finest long-grain calf. Metal parts finished in nickel and black enamel. Black leather bellows. Autographic feature

PRICES

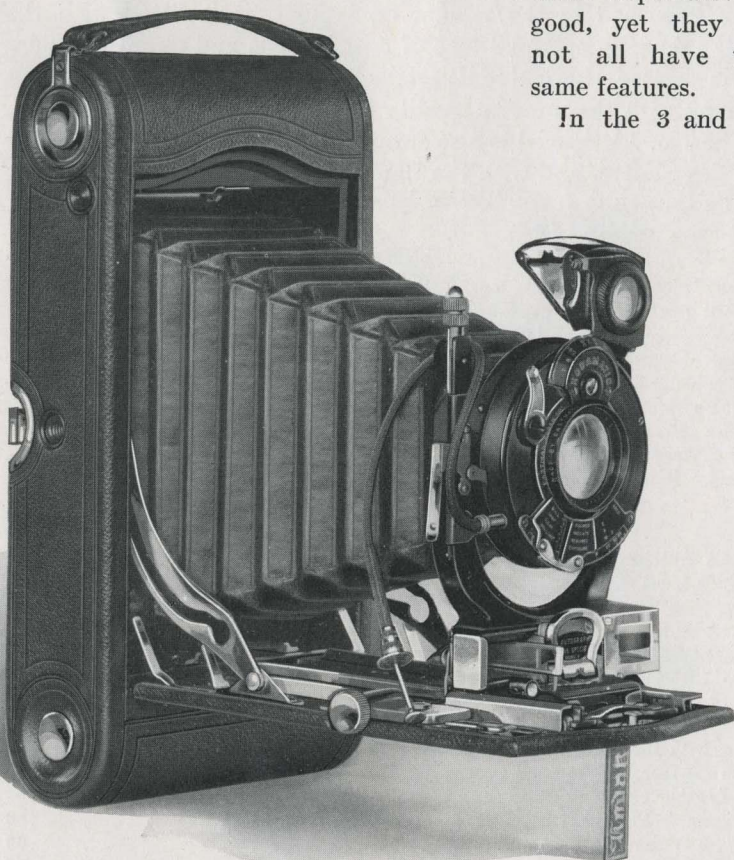
No. 1A Autographic Kodak, <i>Special</i> , with Kodak Anastigmat <i>f</i> .6.3 lens, 5-inch focus, and Kodamatic Shutter	\$70.00
Ditto, with Ilex or Optimo Shutter	65.00
No. 1A Autographic Kodak, <i>Special</i> , with Bausch & Lomb Kodak Anastigmat <i>f</i> .6.3 lens No. 2, $5\frac{1}{4}$ -inch focus, and Kodamatic Shutter	83.00
Ditto, with Ilex or Optimo Shutter	78.00
No. 1A Autographic Kodak, <i>Special</i> , with Bausch & Lomb Tessar Series IIb <i>f</i> .6.3 lens No. 4, $5\frac{1}{4}$ -inch focus, and Kodamatic Shutter	91.00
Ditto, with Ilex or Optimo Shutter	86.00
Grain Leather, Velvet-lined Case, with strap	5.00
Soft Leather Carrying Bag	3.00
Autographic Film Cartridge, 12 exposures (No. A 116)60
Ditto, 6 exposures30
Kodak Portrait Attachment (see page 37)75
Kodak Self Timer (see page 38)	1.25

The prices of cameras and film include the Excise War Tax

Nos. 3 AND 3A
Autographic KODAKS, Special

THE *Special* Kodaks, of whatever size, are alike in one particular. In design, construction, finish and optical equipment they are truly "special." Nothing has been left undone to make them superlatively good, yet they do not all have the same features.

In the 3 and 3A



3A MODEL

If it isn't an EASTMAN, it isn't a KODAK

size we have incorporated the rising front and on the 3A, the Kodak Range Finder—a most effective device for accurate focusing.

With the Combination Backs and plate holders (extra), they provide also for the use of glass plates. (See page 61.)

The regular equipment includes the Kodak Anastigmat *f*.6.3 lens and Kodamatic Shutter, but there is a wide variety in lens and shutter equipment at the option of the purchaser.

DETAILS

Pictures: No. 3, $3\frac{1}{4} \times 4\frac{1}{4}$ inches; No. 3A, $3\frac{1}{4} \times 5\frac{1}{2}$ inches. Size of Kodak: No. 3, $1\frac{1}{8} \times 4\frac{1}{2} \times 8$ inches; No. 3A, $2 \times 4\frac{3}{4} \times 9\frac{1}{2}$ inches. Capacity without re-loading: No. 3, 12 exposures; No. 3A, 10 exposures. Weight: No. 3, 32 ounces; No. 3A, 42 ounces. Adjustable focus, with rack and pinion for focusing, also regular focusing scale; No. 3 also equipped with spirit level; No. 3A, with Kodak Range Finder. Rising and falling front. Autographic feature. Lenses: For details, see price heading below. Kodamatic, Ilex or Optimo Shutter with cable and finger release. Speeds: Kodamatic—Seven speeds, No. 3 from $\frac{1}{200}$ to $\frac{1}{2}$ second; No. 3A, $\frac{1}{150}$ to $\frac{1}{2}$ second. Brilliant finder. Aluminum body covered with genuine Persian Morocco. Metal parts finished in nickel and black enamel. Black leather bellows. Two tripod sockets.

PRICES

Autographic Kodak, <i>Special</i> , with Kodak Anastigmat <i>f</i> .6.3 lens, 5-inch focus on No. 3; $6\frac{3}{4}$ -inch focus on No. 3A; and Kodamatic Shutter	No. 3 \$60.00	No. 3 A \$79.00
Ditto, with Ilex or Optimo Shutter	55.00	74.00
Autographic Kodak, <i>Special</i> , with Bausch & Lomb Kodak Anastigmat <i>f</i> .6.3 lens No. 2— $5\frac{1}{4}$ -inch focus on No. 3; lens No. 4— $6\frac{3}{4}$ -inch focus on No. 3A; and Kodamatic Shutter	75.00	98.00
Ditto, with Ilex or Optimo Shutter	70.00	93.00
Autographic Kodak, <i>Special</i> , with Bausch & Lomb Tessar Series IIb Anastigmat <i>f</i> .6.3 lens No. 4— $5\frac{1}{4}$ -inch focus on No. 3; lens No. 5K— $7\frac{1}{4}$ -inch focus on No. 3A; and Kodamatic Shutter	86.00	109.50
Ditto, with Ilex or Optimo Shutter	81.00	104.50
Grain Leather, Velvet-lined Case, with strap	5.00	6.00
Soft Leather Carrying Bag	3.25	4.00
Combination Back	4.50	5.00
Double Glass Plate Holders, each	1.50	1.50
Autographic Film Cartridge 12 exposures (No. A 118) for No. 3; 10 exposures (No. A 122) for No. 3A.90	.90
Ditto, 6 exposures45	.55
Kodak Portrait Attachment (see page 37)75	.75
Kodak Self Timer (see page 38)	1.25	1.25

The prices of cameras and film include the Excise War Tax

THE STEREO KODAK

IN this camera we have provided the means for bringing the delights of pure stereoscopic photography within reach of the amateur. The anastigmat lenses are matched with the utmost care, the shutters work in perfect unison. The mechanical construction itself is accurate and reliable.

The pictures are of the standard size for use with the ordinary stereoscope. The Self Transposing printing frame makes the printing easy.

DETAILS

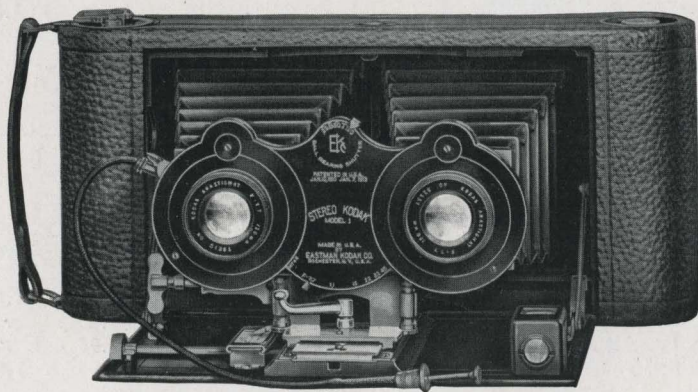
Size of pictures: Two, each $3\frac{3}{8} \times 3\frac{3}{16}$ inches. Size of Kodak: $2\frac{3}{16} \times 4\frac{3}{4} \times 10\frac{1}{2}$ inches. Capacity without reloading: 6 exposures. Weight: 48 ounces. Rising front. Adjustable focus only, with rack and pinion. Lenses: Kodak Anastigmat, $f.7.7$, $5\frac{1}{4}$ -inch focus. Stereo No. 2 B. B. Shutter with cable and finger release. Speeds: $\frac{1}{25}$, $\frac{1}{50}$ and $\frac{1}{100}$ second, and time and "bulb" actions. View finder. Aluminum body covered with seal grain leather. Metal parts finished in nickel and black enamel. Black leather bellows. One tripod socket.

PRICES

Stereo Kodak, Model No. 1, Kodak Anastigmat Lenses, $f.7.7$, and Stereo

Ball Bearing Shutter	\$55.00
Black Sole Leather Carrying Case, with strap	6.75
N. C. Film Cartridge, 6 exposures, for Stereo (No. 101)70
Ditto, 3 exposures for Stereo35
Stereo Kodak Self-transposing Printing Frame	4.50

The prices of cameras and film include the Excise War Tax



THE PANORAM KODAKS

It often happens that the photographer endeavors to picture a broad landscape by making three or four exposures from the same point of view, turning the camera so that it points first to the left, then to the center, then to the right. Such pictures are not often entirely satisfactory; they are always troublesome to make.

But such pictures can easily be made with the Panoram Kodaks which give pleasing panoramic effects with Kodak simplicity.

The Panoram Kodaks are also most effectively used in taking group pictures.

DETAILS

For rectangular pictures, No. 1, $2\frac{1}{4} \times 7$ inches; No. 4, $3\frac{1}{2} \times 12$ inches. Capacity without reloading: No. 1, 6 exposures; No. 4, 4 exposures. Size of Kodak: No. 1, $3\frac{3}{8} \times 4\frac{3}{8} \times 7\frac{3}{8}$ inches; No. 4, $4\frac{3}{4} \times 5\frac{5}{8} \times 10\frac{1}{8}$ inches. Weight: No. 1, 28 ounces; No. 4, 45 ounces. Lenses, specially selected as to quality and focal length. Shutter, Panoram, with finger release only. Two tripod sockets. Brilliant finder with hood. The lens of No. 1 swings in an arc of 112 degrees; of No. 4, 142 degrees.

PRICES

	No. 1	No. 4
Panoram Kodak	\$20.00	\$30.00
Black Sole Leather Carrying Case, with shoulder strap	6.50	9.00
N. C. Film Cartridge, No. 1, 6 exposures, $2\frac{1}{4} \times 7$ inches (No. 105); No. 4, 4 exposures, $3\frac{1}{2} \times 12$ inches (No. 103)50	.90
Ditto, 3 exposures (No. 105)25	

The prices of cameras and film include the Excise War Tax



Nos. 0 AND 2 BROWNIES

THE reputation of the box Brownies as simple, practical and reliable cameras has gone around the world. Their light weight, the absence of bellows, their sturdy construction, simple mechanism, fixed focus and the low price of cameras and pictures have brought them deserved popularity, with children as well as with adults.

Box Brownies are the simplest of all cameras to operate, and Nos. 0 and 2 make pictures of a most economical size.



No. 2 MODEL

DETAILS

Size of pictures: No. 0, $1\frac{5}{8} \times 2\frac{1}{2}$ inches; No. 2, $2\frac{1}{4} \times 3\frac{1}{4}$ inches. Size of camera: No. 0, $2\frac{5}{8} \times 3\frac{3}{8} \times 4\frac{1}{8}$ inches; No. 2, $3\frac{1}{4} \times 4 \times 5\frac{5}{8}$ inches. Capacity: No. 0, 8 exposures; No. 2, 6 exposures. Weight: No. 0, 8 ounces; No. 2, $15\frac{1}{2}$ ounces. Fixed focus. Lens: Meniscus. Eastman Rotary Shutter: No. 0, one stop, also time action; No. 2, three stops and time action. Two ground-glass finders for vertical and horizontal pictures. Body covered with imitation leather.

PRICES

	No. 0	No. 2
Brownie Camera, Meniscus Lens, Eastman Rotary Shutter	\$2.00	\$2.50
Brownie Carrying Case for No. 0	1.00	
Brownie Carrying Case, with strap, for No. 2		1.25
N. C. Film Cartridge, 8 exposures (No. 127), for No. 025	
Ditto, 6 exposures, (No. 120), for No. 225
Brownie Tripod Adapter (see page 59)25	.25
Kodak Portrait Attachment (see page 37)75	.75
Developing and Printing Outfit (see page 43)	1.00	1.65

The prices of cameras and film include the Excise War Tax

No. 2A BROWNIE

ANYBODY can make good pictures with a Box Brownie from the start. The pictures made by the 2A size are of the new oblong shape, $2\frac{1}{2} \times 4\frac{1}{4}$, perfect for portraits in the vertical position and equally ideal for groups and landscapes when turned horizontally.

It is equipped with a good lens—the meniscus achromatic—and has a rotary shutter with three stops.

DETAILS

Size of pictures: $2\frac{1}{2} \times 4\frac{1}{4}$ inches.
Size of camera: $3\frac{7}{8} \times 5\frac{1}{8} \times 6\frac{1}{8}$ inches.
Capacity without reloading: 12 exposures. Weight: $19\frac{1}{2}$ ounces. Fixed focus only. Lens: Meniscus Achromatic. Eastman Rotary Shutter, with three stops and time action. Two ground-glass finders for vertical and horizontal pictures. Body covered with imitation leather. Metal parts finished in nickel and black enamel.



PRICES

No. 2A Brownie Camera, Meniscus Achromatic Lens, Eastman Rotary Shutter	\$3.50
Brownie Carrying Case, with strap	1.50
N. C. Film Cartridge, 12 exposures (No. 116)60
Ditto, 6 exposures30
Kodak Portrait Attachment (see page 37)75
Brownie Tripod Adapter (see page 59)25
Developing and Printing Outfit (see page 43)	1.65

The prices of cameras and film include the Excise War Tax

Nos. 3 AND 2C BROWNIES

THESE cameras make the largest pictures of any of the box Brownies— $3\frac{1}{4} \times 4\frac{1}{4}$ and $2\frac{7}{8} \times 4\frac{7}{8}$ inches respectively—almost post-card size. Simple and inexpensive they are nevertheless efficient—they make good pictures even in the hands of the absolute novice. Both have staunch bodies made of wood which adds strength without undesirable weight and they are well finished in every detail.



No. 3 MODEL

DETAILS

Size of pictures: No. 3, $3\frac{1}{4} \times 4\frac{1}{4}$ inches; No. 2C, $2\frac{7}{8} \times 4\frac{7}{8}$ inches. Size of camera: No. 3, $4\frac{3}{8} \times 5\frac{1}{8} \times 6\frac{1}{8}$ inches; No. 2C, $3\frac{7}{8} \times 6\frac{1}{4} \times 7\frac{1}{4}$ inches. Capacity without reloading: No. 3, 12 exposures; No. 2C, 10 exposures. Weight: No. 3, 25 ounces; No. 2C, 28 ounces. Fixed focus only. Lens: Meniscus Achromatic. Eastman Rotary Shutter, with three stops and time action. Two ground-glass finders for vertical and horizontal pictures. Wood body with imitation leather. Two tripod sockets.

PRICES

	No. 3	No. 2C
Brownie Camera with Meniscus Achromatic Lens and Eastman Rotary Shutter	\$4.50	\$5.00
Brownie Carrying Case, with strap	1.60	1.60
N. C. Film Cartridge, 10 exposures (No. 130), for No. 2C75
Ditto, 6 exposures45
Ditto, 12 exposures (No. 124), for No. 390	
Ditto, 6 exposures45	
Kodak Portrait Attachment (see page 37)75	.75
Developing and Printing Outfit (see page 43)	1.65	1.65

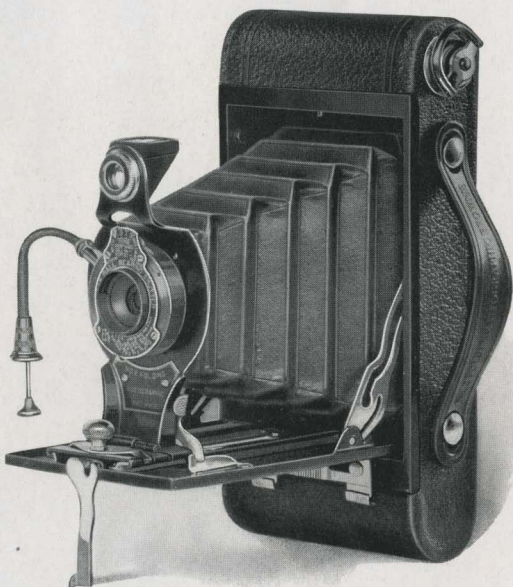
The prices of cameras and film include the Excise War Tax

No. 2 FOLDING *Autographic* BROWNIE

THIS is one of the smallest cameras made for taking pictures $2\frac{1}{4} \times 3\frac{1}{4}$ inches. Like the Kodaks, it has the autographic feature for writing the date and title on the film. The Autotime Scale indicates the opening to use for portraits, average views, clouds, marine and distant views. Its shutter has sufficient speed to take slowly moving objects without blur.

DETAILS

Size of pictures: $2\frac{1}{4} \times 3\frac{1}{4}$ inches. Size of camera: $1\frac{1}{4} \times 3\frac{1}{8} \times 6\frac{1}{2}$ inches. Capacity without reloading: 6 exposures. Weight: 19 ounces. Adjustable focus, with automatic focusing lock. Lenses: Meniscus Achromatic; or Rapid Rectilinear, $3\frac{3}{4}$ -inch focus. Kodak Ball Bearing Shutter, with Autotime Scale and cable and finger release. Speeds: $\frac{1}{25}$ and $\frac{1}{50}$ second, with time and "bulb" actions. Ground-glass finders; reversible for vertical and horizontal pictures. Metal body covered with durable imitation leather. Metal parts finished in nickel and black enamel. Black bellows. Autographic feature. Two tripod sockets.



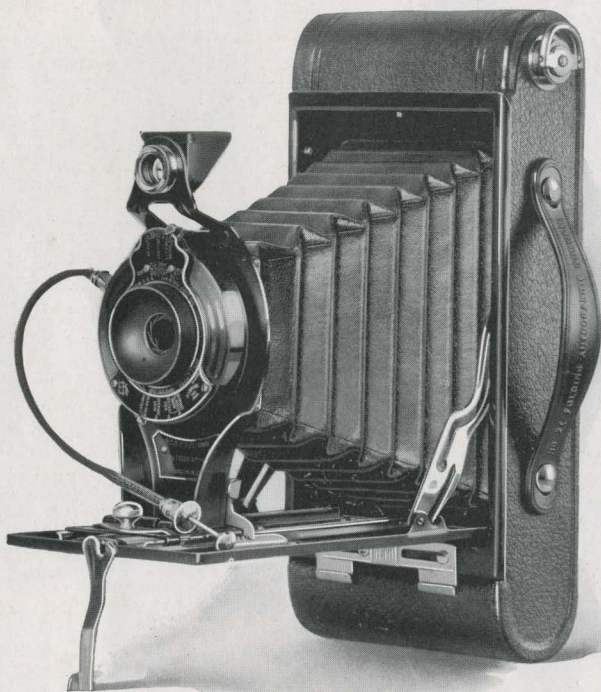
PRICES

No. 2 Folding Autographic Brownie, Meniscus Achromatic Lens and Kodak Ball Bearing Shutter	\$9.00
Ditto, with Rapid Rectilinear Lens	11.00
Carrying Case for No. 2 Folding Autographic Brownie, with strap	1.50
Autographic Film Cartridge, 6 exposures, (No. A 120)25
Kodak Portrait Attachment (see page 37)75
Kodak Self Timer (see page 38)	1.25

The prices of cameras and film include the Excise War Tax

Nos. 2A AND 2C
FOLDING *Autographic* BROWNIES

WHILE these cameras retain much of that ease of operation which distinguishes the Box Brownies, they are more conveniently carried. In fact, they are smaller and lighter than



2C MODEL

EASTMAN-designed and EASTMAN-made

most folding cameras for pictures of this size, and are as compact as it is practicable to make them. They are designed to permit focusing for different distances, and are equipped for all around amateur work.

These two models differ chiefly in the size of pictures taken. The No. 2A makes $2\frac{1}{2} \times 4\frac{1}{4}$ -inch, while the No. 2C makes $2\frac{7}{8} \times 4\frac{7}{8}$ -inch pictures.

Both have the Kodak Ball Bearing Shutter with speeds up to $\frac{1}{100}$ of a second.

They are Eastman-designed and Eastman-made, they are efficient photographic instruments, simple in mechanism and sound in construction.

Both are made of metal, attractively covered with fine imitation leather and, though low priced, are in every sense satisfactory instruments.

DETAILS

Size of pictures: No. 2A, $2\frac{1}{2} \times 4\frac{1}{4}$ inches; No. 2C, $2\frac{7}{8} \times 4\frac{7}{8}$ inches. Size of camera: No. 2A, $1\frac{1}{16} \times 3\frac{3}{8} \times 7\frac{1}{8}$ inches; No. 2C, $1\frac{3}{4} \times 3\frac{3}{4} \times 8\frac{1}{16}$ inches. Capacity without reloading: No. 2A, 12 exposures; No. 2C, 10 exposures. Weight: No. 2A, $25\frac{1}{2}$ ounces; No. 2C, 27 ounces. Adjustable focus, with automatic focusing lock. Lenses: Meniscus Achromatic; or Rapid Rectilinear—No. 2A, 5-inch focus; No. 2C, $5\frac{1}{2}$ -inch focus. Kodak Ball Bearing Shutter with Auto-time Scale and cable and finger release. Speeds: $\frac{1}{25}$, $\frac{1}{50}$ and $\frac{1}{100}$ second, with time and "bulb" actions. Ground-glass finders; reversible for vertical and horizontal pictures. Metal body covered with durable imitation leather. Metal parts finished in nickel and black enamel. Black bellows. Autographic feature. Two tripod sockets.

PRICES

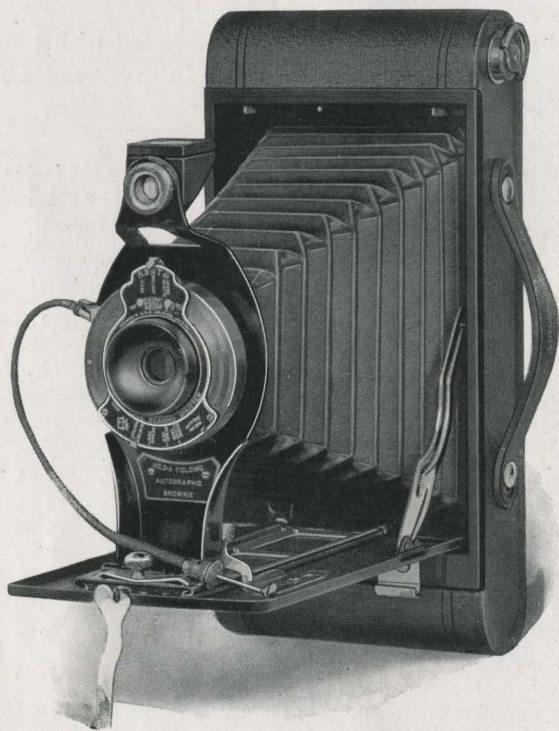
	No. 2A	No. 2C
Folding Autographic Brownies with Meniscus Achromatic Lenses and Kodak Ball Bearing Shutters	\$10.00	\$13.50
Ditto, with Rapid Rectilinear Lenses	12.00	16.00
Carrying Case for Folding Autographic Brownies, with strap	1.60	1.70
Autographic Film Cartridges, 12 exposures, (No. A 116); 10 exposures, (No. A 130)60	.75
Ditto, 6 exposures30	.45
Kodak Portrait Attachment (see page 37)75	.75
Kodak Self Timer (see page 38)	1.25	1.25

The prices of cameras and film include the Excise War Tax

No. 3A FOLDING *Autographic* BROWNIE

THE Folding Brownies give satisfactory results at the lowest possible cost consistent with substantial construction, ample equipment, and careful workmanship.

The 3A makes excellent pictures of the full post card size, $3\frac{1}{4} \times 5\frac{1}{2}$ inches. It contains every feature necessary to good picture taking—three snap-shot speeds of $\frac{1}{25}$, $\frac{1}{50}$ and $\frac{1}{100}$ of a second as well as time and “bulb” actions—the same smooth-



EASTMAN-designed and EASTMAN-made

working automatic shutter that is used in Kodaks—the helpful Autotime Scale which indicates what shutter opening to select—the autographic feature for making notes on the negative. In fact, a complete, durable, well-finished, capable camera.

The 3A Folding Autographic Brownie is the camera for those who want large pictures and a low priced outfit. The complete camera, with every necessary feature for satisfactory results, costs only \$15.00 when equipped with single lens, and \$17.50 with double lens. A serviceable carrying case for insuring the life of the camera, a Kodak Portrait Attachment for making “close-ups” and a Kodak Self Timer for self-portraits, may all be included, and the cost of the entire outfit may still be kept below \$20.00.

Back of every camera are the scientific knowledge, the manufacturing facilities and the reputation of the Eastman organization—sufficient assurance of good value, correct design and economical production.

The autographic feature—exclusive with Eastman cameras—permits the making of a written and a photographic record on the same negative, telling at a glance the whole story of the occasion.

DETAILS

Size of pictures: $3\frac{1}{4} \times 5\frac{1}{2}$ inches. Size of camera: $11\frac{1}{16} \times 4\frac{5}{16} \times 9\frac{5}{16}$ inches. Capacity without reloading: 10 exposures. Weight: 32 ounces. Adjustable focus, with automatic focusing lock. Lenses: Meniscus Achromatic; Rapid Rectilinear, $6\frac{1}{4}$ -inch focus. Kodak Ball Bearing Shutter with Autotime Scale, and cable and finger release. Speeds: $\frac{1}{25}$, $\frac{1}{50}$ and $\frac{1}{100}$ second, and time and “bulb” actions. Ground-glass finders, reversible for vertical and horizontal pictures. Metal body covered with durable imitation leather. Metal parts finished in nickel and black enamel. Black bellows. Autographic feature. Two tripod sockets.

PRICES

No. 3A Folding Autographic Brownie, Meniscus Achromatic Lens and	
Kodak Ball Bearing Shutter	\$15.00
Ditto, with Rapid Rectilinear Lens	17.50
Carrying Case for No. 3A Folding Autographic Brownie, with strap	1.80
Autographic Film Cartridge, 10 exposures, (No. A 122)90
Ditto, 6 exposures55
Kodak Portrait Attachment (see page 37)75
Kodak Self Timer (see page 38)	1.25

The prices of cameras and film include the Excise War Tax

KODAK BALL BEARING SHUTTER



HERE is a shutter that has proved itself. Its ball bearings give smoothness and long life and it has ample speed for the lenses with which it is listed.

There are three models, differing in size and speed. All have, in addition to the snapshot speeds, both "bulb" and time actions.

Shutter No. 0, with speeds of $\frac{1}{25}$ and $\frac{1}{50}$ of a second, is fitted to the Vest Pocket Kodaks, Regular and Special, fixed focus and focusing models; No. 2 Folding Brownie; and No. 1 Kodak Junior, with single or R. R. lens.

Shutter No. 1, with speeds of $\frac{1}{25}$, $\frac{1}{50}$ and $\frac{1}{100}$ of a second, is fitted to the No. 1 Kodak Junior, with $f.7.7$ lens; the No. 1A Kodak Junior; No. 1A Kodak; No. 3 Kodak; and No. 2A Folding Brownie.

Shutter No. 2, with speeds of $\frac{1}{25}$, $\frac{1}{50}$ and $\frac{1}{100}$ of a second is fitted to No. 2C Kodak Jr.; No. 3A Kodak Jr.; No. 3A Kodak and Nos. 2C and 3A Folding Brownie.

THE KODAMATIC SHUTTER

IT would have been impossible, prior to the perfecting of our speed measuring devices in the Kodak Research Laboratory, to have manufactured a shutter with the precision of the new Kodamatic. Moreover, it is so constructed as to insure a maintenance of accuracy.



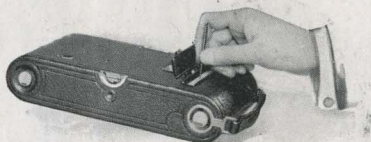
Its highest speed, one-two hundredth of a second, is fast enough to "catch" almost any moving object that the hand camera would ever be expected to photograph. It is a "setting" shutter; that is, it must be set for each exposure, the range of automatic timing being $\frac{1}{200}$, ($\frac{1}{150}$ on 3A), $\frac{1}{100}$, $\frac{1}{50}$, $\frac{1}{25}$, $\frac{1}{10}$, $\frac{1}{5}$ and $\frac{1}{2}$ seconds. It has also, of course, the "bulb" and time actions.

A feature of the utmost value in getting correct exposures is a sliding scale, attached to the "stop" indicator plate, which shows which speed to use for each stop opening under four different lighting conditions—dull, gray, clear or brilliant.

The Kodamatic is furnished only with the *Special* Kodaks.

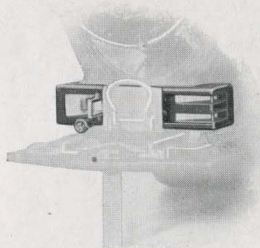
THE AUTOGRAPHIC FEATURE

THE date, the place, exposure data—such facts as these written on the film at the time are often of the greatest value.



It is a simple matter to make the record. On the back of all Folding Kodaks (except the Stereo), and on all Folding Brownies, is a panel opening through which one may write on the red paper that covers the autographic film. Expose this writing to the light for a few seconds and, after development, it will appear on the margin of the negative—as permanent as the negative itself. You can use non-autographic film in an autographic Kodak or Brownie; you can use autographic film in a non-autographic camera but to get autographic results both the camera and film must be autographic.

THE KODAK RANGE FINDER



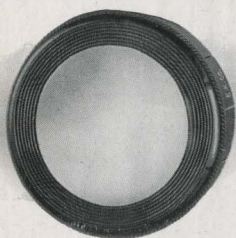
THE Kodak Range Finder gives you the correct focus to a hair, and with little trouble.

Open the Kodak, drawing out the standard to the limit of motion, and holding the Kodak in the horizontal position, look through (not at) the Range Finder at the three mirrors. Select some horizontal line near the center of the subject,

and rack the lens back and forth until this line is continuous in the three mirrors. *When the line is continuous, the focus is correct.* It is all very simple and certain.

The Kodak Range Finder is fitted to the 1A and 3A *Specials* only.

KODAK PORTRAIT ATTACHMENT



FOR many years it was believed that a pocket camera could not be used for taking portraits or for making large images—"close-ups"—of small objects or of the detail of large objects.

For such work, it was thought that a camera must have a long bellows draw. Pocket cameras with a long draw and a correspondingly long front board would immediately acquire so large a bulk that they would cease to be pocket cameras. But by using a Kodak Portrait Attachment it becomes possible to place the camera close to the subject and thereby secure a larger *image* with the same length of bellows, in other words, it decreases the focal length of the lens.

This attachment is simply an extra lens which fits over the front of the regular lens.

The use of it does not in any way complicate picture-taking. It neither affects the length of exposure nor changes the operation of the camera. Extra care in securing exact focusing is necessary but this is clearly explained in the directions accompanying the attachment and no special knowledge is required.

Please order by number, or if required for old models not listed on the next page, specify the shutter and size of camera.

KODAK SKY FILTERS

KODAK Sky Filters are glass attachments mounted in the same manner as the Kodak Portrait Attachments.

The Sky Filter is intended to equalize the great difference of light between the sky and foreground in landscape photography. Only the upper half of the filter is stained a yellow color to relieve the brightness from the sky, while the lower half of the filter being colorless, permits a normal exposure for the foreground.

KODAK COLOR FILTERS

KODAK Color Filters are of great value in outdoor photography, and for all subjects embracing colors which act weakly on the sensitive film, as they hold back the strong blue and violet rays, affording the weaker colors time to record. The dye used in Kodak Color Filters is one of the war discoveries of the Eastman Research Laboratory. It is the same dye which was used so successfully in aerial photography.



KODAK PORTRAIT ATTACHMENTS, KODAK SKY FILTERS AND KODAK COLOR FILTERS

PRICES

Order by this Number		Portrait Attach- ments	Sky and Color Filters
FOR VEST POCKET AUTOGRAPHIC KODAKS			
No. 1.	For Regular Vest Pocket Kodak, with single lens	\$0.75	\$0.75
No. 8.	For Regular Vest Pocket Kodak, with Rapid Rectilinear lens75	.75
No. 8.	For Special Vest Pocket Kodak, fixed focus model, with Anastigmat lens75	.75
No. 8A.	For Special Vest Pocket Kodak, focusing model75

FOR AUTOGRAPHIC KODAKS, JUNIOR

No. 8.	For No. 1A Autographic Kodak Junior, with single or double lens75	.75
No. 3.	For No. 1 Autographic Kodak Junior, with Kodak Anastigmat, f.7.7 lens75	1.15
No. 3.	For No. 1A Autographic Kodak Junior, with single lens, double lens or Kodak Anastigmat, f.7.7 lens (without engraving on front of lens barrel)75	1.15
No. 13.	For No. 1A Autographic Kodak Junior, with Kodak Anastigmat, f.7.7 lens (with engraving on front of lens barrel)75	1.15
No. 5.	For No. 2C Autographic Kodak Junior, with single or double lens75	1.50
No. 7.	For No. 2C Autographic Kodak Junior, with Kodak Anastigmat, f.7.7 lens75	1.50
No. 5.	For No. 3A Autographic Kodak Junior, with single or double lens75	1.50
No. 7.	For No. 3A Autographic Kodak Junior, with Kodak Anastigmat, f.7.7 lens75	1.50

FOR AUTOGRAPHIC KODAKS

No. 3.	For No. 1A Autographic Kodak, with double lens75	1.15
No. 13.	For No. 1A Autographic Kodak, with Kodak Anastigmat, f.7.7 lens75	1.15
No. 3.	For No. 3 Autographic Kodak, with double lens75	1.15
No. 13.	For No. 3 Autographic Kodak, with Kodak Anastigmat, f.7.7 lens75	1.15
No. 9.	For No. 3 Autographic Kodak, with Kodak Automatic Shutter75	.75
No. 5.	For No. 3A Autographic Kodak, with double lens75	1.50
No. 7.	For No. 3A Autographic Kodak, with Kodak Anastigmat, f.7.7 lens75	1.50

FOR AUTOGRAPHIC KODAKS, SPECIAL

No. 6.	For No. 1 Autographic Kodak, <i>Special</i> , with any listed lens75	1.15
No. 6.	For No. 1A Autographic Kodak, <i>Special</i> , with any listed lens75	1.15
No. 6.	For No. 3 Autographic Kodak, <i>Special</i> , with any listed lens75	1.15
No. 7.	For No. 3A Autographic Kodak, <i>Special</i> , with any listed lens75	1.50

FOR BOX BROWNIES

No. 1.	For No. 0 Box Brownie, with single lens75	.75
No. 1.	For No. 2 Box Brownie, with single lens75	.75
No. 2.	For No. 2A Box Brownie, with single lens75	.75
No. 4.	For No. 2C Box Brownie, with single lens75	1.15
No. 4.	For No. 3 Box Brownie, with single lens75	1.15

FOR FOLDING AUTOGRAPHIC BROWNIES

No. 8.	For No. 2 Folding Autographic Brownie, with single or double lens75	.75
No. 3.	For No. 2A Folding Autographic Brownie, with single or double lens . .	.75	1.15
No. 5.	For No. 2C Folding Autographic Brownie, with single or double lens . .	.75	1.50
No. 5.	For No. 3A Folding Autographic Brownie, with single or double lens . .	.75	1.50

KODAK SELF TIMER

THIS little Kodak accessory opens up a fascinating phase of amateur photography.

It fits on the cable release of any Kodak or Brownie and at a selected time—from one-half second to one minute after the timer's trigger is pressed—the piston rod or plunger presses against the head of the cable release and this, in turn, operates the shutter. The piston rod is actuated by a spring and the time of operation is controlled by an air valve.



The Timer can be used only for snap-shots.

In the past the photographer has been left out of group pictures because some one had to operate the shutter. Now the Timer is the operator. The photographer attaches it to the cable release of his camera, sets it to "go off" at a sufficiently long interval to permit him to take his place in the picture, focuses his camera, presses the Timer's trigger and moves to the selected position. The familiar click announces that the picture is taken.

When two persons comprise the group—the photographer and one other—the need for the Timer is equally great. Two persons may be photographed in a canoe with the camera alone on land. Two hikers may be photographed by their camp fire. Two persons on horse back, or in a motor car, or—the variety of uses is infinite.

But there is still another phase of the Timer's utility—for Kodak self-portraiture. With the Kodak Portrait Attachment (See page 36), and the Kodak Self Timer, portraits of one's self may be made out-of-doors or wherever the light is strong enough for a snap-shot. Such pictures should not be made in either direct sunlight or heavy shade. The use of a mirror directly back of the camera will help you get the pose and expression you want, and will increase the light on the face but its use is not essential. Some very artistic results are possible.

Kodak Self Timer \$1.25

KODAK ANASTIGMAT LENSES

WHETHER it is a single lens, a rapid rectilinear or an anastigmat, no lens that is not the best of its particular type is adopted for use on a Kodak or Brownie camera. Any of these lenses, when used with the shutter that it is adapted to use with, and in every case this detail of manufacture is looked after most carefully, will produce good results under all normal conditions of light.

In the Kodak Anastigmats we have a type of lens that is made with particular reference to hand camera requirements. The earlier anastigmats were made to serve a dual purpose. Their owners usually were enthusiasts who had several cameras for pictures of various sizes, and it was customary to shift the lenses from one camera to another. The lens that worked, for instance, at $f.6.3$, on a 4×5 was frequently pressed into use as a wide angle lens on a 5×7 , and when stopped down to $f.16$ would do the work admirably.

Realizing that the user of a Kodak would not, once in a hundred times, care to use a lens on any camera except that to which it was originally fitted (or one of the same size), we set to work to make a one-purpose lens that would meet his specific requirements. The result was the Kodak Anastigmat. It is not adaptable to use as a wide angle lens—but, on the size of film for which it is listed, and at its advertised speed (aperture), it has no superior.

The Kodak Anastigmats $f.7.7$ are speedier than the fastest rectilinear lenses, and at least equal the best anastigmats in depth, sharpness and flatness of field. The Kodak Anastigmat $f.6.3$ has the same high quality and has nearly 50 per cent greater speed than the $f.7.7$.

The Kodak Anastigmat is made for a purpose and fits that purpose. It will not cover a large plate as will some of the higher priced Anastigmats but for Kodak use it has no superior.

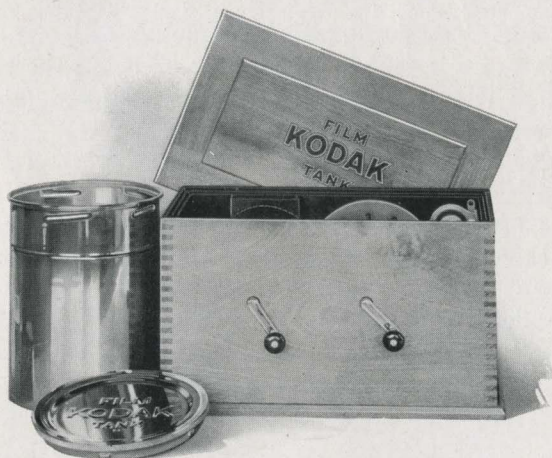
KODAK FILM TANK

ANYBODY can get as correctly developed negatives by developing films in the Kodak Film Tank as an expert can by any known method of development. All that is necessary is to use the developer recommended for use in the tank, and develop for the length of time the tank instructions require for the temperature at which the developer is used. And experience has demonstrated that the tank method gets the utmost out of correctly exposed, under-exposed and over-exposed negatives.

It requires experience to know when to stop development by the tray method, but with the tank it is not a matter of guesswork, for the experience is in the tank. By consulting the table of temperatures you will know how long your film should be developed. But one of the greatest advantages of the tank is that it may be used in broad daylight, eliminating the dark room entirely.

The Kodak Film Tank consists of a winding box, a light-proof apron, and a heavily nickeled brass solution cup with cover. All parts pack in the box, making the entire outfit self-contained.

The film to be developed is placed upon a reel in the winding



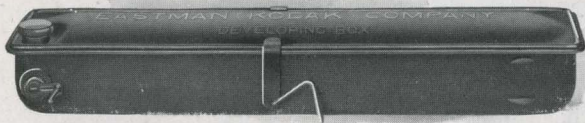
box, the cover is placed on the box and the film is wound around an axle in combination with the apron, in such fashion that, when completely wound, the apron protects the film effectually from light, and may be removed from the winding box safely at any time. It is then lowered into the cup of developer, the cover attached and the film left to develop for about twenty minutes. After development the film is removed for fixing.

Especial attention is called to the $3\frac{1}{2}$ -inch size, for the development of the 2C size films.

Those who wish to develop more than one roll at a time can do so without purchasing extra tanks complete, by securing duplicating outfits as listed below.

PRICES

Brownie Kodak Film Tank, for use with No. 1, No. 2 and No. 2 Folding Brownie Cartridges, complete	\$4.00
Spool Adapter, for Vest Pocket Kodak Film	10
Vest Pocket Kodak Film Tank, for Vest Pocket Cartridges, complete	3.50
$2\frac{1}{2}$ -inch Kodak Film Tank, for use with all Kodak or Brownie Cartridges having a film width $2\frac{1}{2}$ inches or less, complete	5.00
$3\frac{1}{2}$ -inch Kodak Film Tank, for use with all Kodak and Brownie Cartridges having a film width of $3\frac{1}{2}$ inches or less, complete	6.00
5-inch Kodak Film Tank, for use with all Kodak and Brownie Cartridges having a film width of 5 inches or less, complete	7.00
7-inch Kodak Film Tank, for use with No. 5 Cartridge Kodak or narrower film cartridges, complete	8.50
Duplicating Outfit, consisting of one solution cup, one transferring reel and one apron, for Brownie Kodak Film Tank	1.75
Ditto, for Vest Pocket Film Tank	1.75
Ditto, for $2\frac{1}{2}$ -inch Kodak Film Tank	2.50
Ditto, for $3\frac{1}{2}$ -inch Kodak Film Tank	3.00
Ditto, for 5-inch Kodak Film Tank	3.50
Ditto, for 7-inch Kodak Film Tank	4.25
Flexible Fixing and Washing Tank, for $3\frac{1}{2}$ -inch Kodak Film Tank	2.50
Kodak Tank Developer Powders for Brownie Kodak Film Tank, per package, $\frac{1}{2}$ dozen20
Ditto, for Vest Pocket Tank20
Ditto, for $2\frac{1}{2}$ -inch tank, per package, $\frac{1}{2}$ dozen25
Ditto, for $3\frac{1}{2}$ -inch tank, per package, $\frac{1}{2}$ dozen25
Ditto, for 5-inch tank, per package, $\frac{1}{2}$ dozen30
Ditto, for 7-inch tank, per package, $\frac{1}{2}$ dozen30
Kodak Acid Fixing Powder, per $\frac{1}{4}$ -pound package15
Ditto, per $\frac{1}{2}$ -pound package20
Ditto, per 1-pound package35



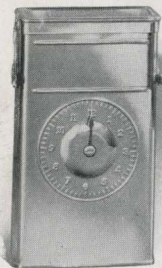
No. 2 BROWNIE DEVELOPING BOX

THIS is a simplified form of the Kodak Film Tank, offering the same assurance of perfectly developed film, and so simple that any boy or girl can readily operate it.

It consists of a metal box with cover, just long enough to accommodate a roll of Nos. 117, A120, 120, A127 or 127 Film Cartridge in one loop. All the operations are performed in daylight.

PRICES

No. 2 Brownie Developing Box	\$2.00
Brownie Developing Box Powders, per package of 620
Kodak Acid Fixing Powders, ½-pound package20
Ditto, ¼-pound package15



EASTMAN PLATE TANK

IT takes only a few moments in the dark room to load this tank, after which it may be brought out into any light for development. The device consists of a metal solution cup with cover, a cage for holding twelve or less plates, and a loading fixture for loading the plates in the cage. On the front of the tank is a dial for registering time.

PRICES

Eastman Plate Tank, for 4 x 5, 3¼ x 5½-inch and smaller plates, includes solution cup, plate cage, loading fixture and adjustable kit	\$4.00
Ditto, 5 x 7-inch, without kit	6.00
Adjustable Kit, for 4 x 5 or 3¼ x 5½-inch tank, to take smaller plates60
Separate Kits, for 5 x 7-inch tank, to take 3¼ x 5½, 4¼ x 6½ or 4¾ x 6½-inch plates, each	1.00
Metal Insert, for 5 x 7-inch tank, to take 4 x 5-inch plates25
Eastman Plate Tank Developer Powders, for 4 x 5-inch tank, per package, ½ dozen25
Ditto, for 5 x 7-inch tank, per package, ½ dozen50
Kodak Acid Fixing Powder, per 1-pound package35
Ditto, per ½-pound package20

DEVELOPING AND PRINTING OUTFITS

FOR those who wish to develop by the dark room method we offer complete developing and printing outfits containing everything necessary for the work. By combining a variety of different articles and making up the outfits in large quantities, we furnish them at a much lower price than if the articles were purchased separately. The Eastman 3A Outfit contains every requisite for finishing twenty-four $3\frac{1}{4} \times 5\frac{1}{2}$ -inch or smaller pictures, and includes the following:

One Kodak Candle Lamp	\$0.50
One Printing Frame40
One Glass for Frame05
One 4-ounce Graduate20
One Stirring Rod07
Four Developing Trays36
Five Tubes Eastman Special Developer30
One-half pound Kodak Acid Fixing Powder20
Two dozen $3\frac{1}{4} \times 5\frac{1}{2}$ -inch Velox Paper40
Two ounces Nepera Solution for developing Velox20
Instruction Book (free)	
	<hr/> \$2.68

EASTMAN 3A OUTFIT, COMPLETE, NEATLY PACKED, \$1.65

EASTMAN A B C OUTFIT, similar to above but providing for 4 x 5 inch or smaller pictures **\$1.65**

No. 0 BROWNIE Developing and Printing Outfit, complete, for developing and printing twenty-four pictures $1\frac{5}{8} \times 2\frac{1}{2}$ inches. Price, complete 1.00



KODAK AMATEUR PRINTER

THE Printer consists of a box with a removable top, in which there is a glass window through which the printing is done. Prints may be made with white margins, any size from $1\frac{5}{8} \times 2\frac{1}{2}$ to $4 \times 5\frac{1}{2}$ inches, by a simple automatic masking device, which holds the negatives firmly until released. Within the box is a small red electric bulb to permit the adjustment of negative and paper, and provision is made for a 60 Watt Mazda lamp, which is automatically turned on when the hinged frame is closed to make the exposure.

In the side of the box is a removable window, covered with orange fabric which serves as a dark-room lamp when developing-out or bromide papers are being used.

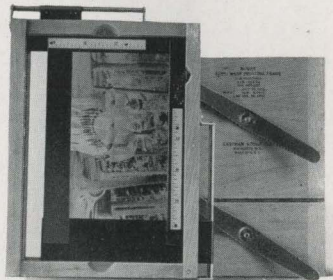
The printer is supplied complete, without lamp, but including $5\frac{1}{2}$ feet of electric light cord and plug.

The Kodak Amateur Printer \$10.00



KODAK AUTO-MASK PRINTING FRAME

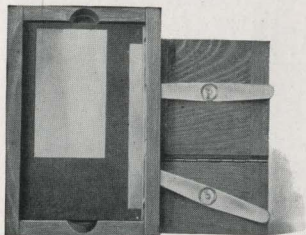
THIS is adaptable to the printing of negatives of any amateur size, from 4 x 5, $3\frac{1}{4} \times 5\frac{1}{2}$ inches and smaller. Attached to the frame are two slides which can be adjusted readily from the outside, forming a mask of whatever size is desired, for prints from 4 inches in width to $5\frac{1}{2}$ inches in depth. The negative is held firmly in place by the mask and is as readily released, when desired, by a slight pressure on the thumb lever.



Any number of uniformly masked prints may be made without changing the position of the negative, and if desired, prints may be so made that white space is left at the side or bottom for writing as, for example, with post-cards. The graduated scales attached to the stationary guides, aid in sizing and holding exact dimensions of mask openings.

Kodak Auto-mask Printing Frame \$1.50

MASKIT PRINTING FRAME



THE Kodak Maskit Printing Frame is designed to overcome the difficulty of the negative and mask slipping on the glass, and to secure prints with a uniform white margin.

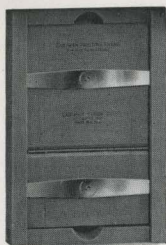
It obviates the necessity of gumming.

Kodak Maskit, $3\frac{1}{4} \times 4\frac{1}{4}$ -inch, opens two-thirds	\$0.65
Kodak Maskit, $3\frac{1}{4} \times 5\frac{1}{2}$ -inch, opens two-thirds	.70
Kodak Maskit, 5 x 7-inch, opens two-thirds	.85

KODALOID PRINTING MASKS

THESE transparent, orange-red color masks, intended for use with Maskit Printing Frames are supplied in sets of three, each with different size opening.

Per set of 3, $3\frac{1}{4} \times 4\frac{1}{4}$, \$0.30	Per set of 3, $3\frac{1}{4} \times 5\frac{1}{2}$, \$0.30	Per set of 3, 5 x 7, \$0.45
Black paper masks, same sizes as above. Price, per set of 3, \$0.10		



EASTMAN PRINTING FRAMES

CONSIST of a wood frame with a two-section back with clamps to hold the negative and paper firmly.

For $2\frac{1}{4} \times 3\frac{1}{4}$ -inch plates and V. P. K. or smaller film negatives, opens two-thirds	\$0.35
For $2\frac{1}{2} \times 4\frac{1}{4}$ -inch or smaller film negatives, opens two-thirds	.40
For $3\frac{1}{4} \times 4\frac{1}{4}$ -inch or smaller film negatives, opens two-thirds	.40
For $3\frac{1}{4} \times 5\frac{1}{2}$ -inch or smaller film negatives, opens two-thirds	.40
For $3\frac{1}{4} \times 5\frac{1}{2}$ -inch plates, opens two-thirds	.45
For 4 x 5-inch plates, opens two-thirds	.40
For 5 x 7-inch plates, opens two-thirds	.55
For $3\frac{1}{2} \times 12$ -inch No. 4 Panoram Kodak negatives, opens in three sections	1.15
For $2\frac{1}{4} \times 7$ -inch No. 1 Panoram Kodak negatives, opens in two sections	.70

BROWNIE PRINTING FRAMES

CONSIST of a glass with padded cardboard backing attached by an imitation leather hinge. Simple but efficient.

Brownie Printing Frame, No. 1, for $2\frac{1}{4} \times 2\frac{1}{4}$ Developing paper only	\$0.25
Brownie Printing Frame, No. 2, for $2\frac{1}{4} \times 3\frac{1}{4}$ Developing paper only	\$0.25

KODAK SERIAL PRINTING FRAME No. 2

FOR printing from Vest Pocket Kodak and No. 0 Brownie negatives. Developed film slides through the frame in a continuous strip, facilitating handling.

Kodak Serial Printing Frame No. 2 for V. P. K. and No. 0 Brownie negatives	\$0.60
--	--------

KODALOID PRINTING MASKS

MADE of transparent Kodaloid, to fit the regular Printing Frames, and offering various sizes of openings.

For 3A Frames, 8 masking sizes, each	\$0.10
For 4 x 5 Frames, 7 masking sizes, each	\$0.10
For 5 x 7 Frames, 6 masking sizes, each	\$0.15

BROWNIE ENLARGING CAMERA

CONSISTS of a light-tight cone, made in two sections, with an attachment at the small end to hold the negative, and another at the large end for the paper. The lens is supported between negative and paper at just the proper focal distance. All except No. 2 Brownie Post-card are collapsible,

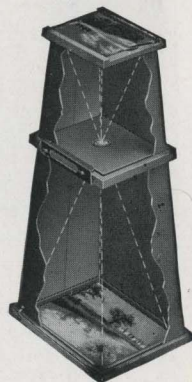
*No. 2 Brownie Post-card Enlarging Camera, for $3\frac{1}{4} \times 5\frac{1}{2}$ enlargements from $2\frac{1}{4} \times 3\frac{1}{4}$ -inch negatives	\$3.71
*No. 2 Brownie Enlarging Camera, for 5 x 7 enlargements from $2\frac{1}{4} \times 3\frac{1}{4}$ -inch negatives	4.86
*No. 3 Ditto, for $6\frac{1}{2} \times 8\frac{1}{2}$ enlargements from $3\frac{1}{4} \times 4\frac{1}{4}$ -inch negatives, also for proportionate enlargements from smaller negatives	6.38
*No. 3A Ditto for 7 x 11 and $6\frac{1}{4} \times 10\frac{1}{2}$ -inch enlargements from $3\frac{1}{4} \times 5\frac{1}{2}$ and $2\frac{1}{2} \times 4\frac{1}{8}$ -inch negatives, respectively; also for proportionate enlargements from smaller negatives	6.91
*No. 4 Ditto, for 8 x 10, $6\frac{3}{8} \times 10$ and $5\frac{3}{8} \times 9\frac{3}{8}$ -inch enlargements from 4 x 5, $3\frac{1}{4} \times 5\frac{1}{2}$ and $2\frac{1}{2} \times 4\frac{1}{8}$ -inch negatives, respectively	6.91

V. P. K. ENLARGING CAMERA

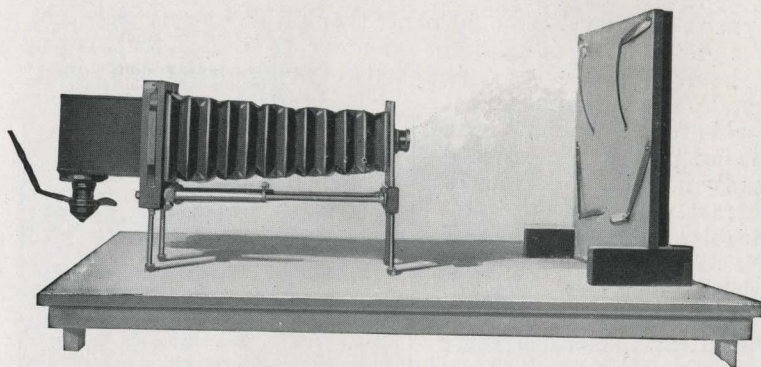
LIKE the Brownie Enlarging Camera in principle, it offers the simplest means for making $3\frac{1}{4} \times 5\frac{1}{2}$ enlargements from $1\frac{5}{8} \times 2\frac{1}{2}$ negatives.

*Vest Pocket Kodak Enlarging Camera	\$3.71
-------------------------------------	--------

*These prices include the Excise War Tax.



KODAK ENLARGING OUTFIT



THE Kodak Enlarging Outfit will make enlargements up to the size of the easel (14 x 17 inches) or even larger, from film or glass negatives of any size up to 4 x 6 inches. This means that good negatives made with any Kodak or Brownie listed in this catalog may be used to make pictures from three to seven times their original size.

The outfit consists of a camera of the focusing type, lens and diaphragm (largest stop U. S. 4), easel, lamp housing, light cord and plug, but does not include the 60-watt Mazda electric light bulb. The negative is placed in a sliding frame which fits in the back of the camera. Behind this negative in a box is an electric lamp, the light from which, shining through the negative, is projected by the lens upon the easel to which is attached a piece of bromide paper. The desired size of enlargement is secured by varying the distance from lens to negative and from lens to easel, and the shape of the picture may be altered by placing masks of varying shapes over the negative. Enlargements of greater dimensions than the capacity of the easel may be made by attaching the paper to the wall instead of to the easel.

By the use of a portrait attachment, reductions may be made for lantern slides or other purposes.

*Kodak Enlarging Outfit	\$20.00
Lantern Slide Block75
Portrait Attachment No. 575

*Price includes the Excise War Tax.

VELOX PAPER

VELOX is a developing-out paper that prints by artificial light, and therefore permits the amateur to utilize his evening hours in print making. Simplicity of manipulation and variety of grades and surfaces make it suitable for all amateur uses.

Velox papers are divided broadly into three degrees of contrast called "Contrast," "Regular," and "Special," each division containing a variety of surfaces. (See adjoining table.)

"Contrast" Velox will secure the best possible results from extremely thin or from dense flat negatives. "Regular" Velox should be used when printing from average negatives. With "Special" papers, soft effects can be obtained from hard negatives. Velvet Velox gives semi-gloss prints of exceptional quality and is generally used for making prints from Kodak negatives.

Royal Velox, coated on an India tint stock, is just rough enough to produce soft mellow-tinted prints.

GRADE	SURFACE	CONTRAST
*Velvet Velox	Semi-Gloss	Special
*Velvet Velox	Semi-Gloss	Regular
*Velvet Velox	Semi-Gloss	Contrast
*Portrait Velox	Smooth Matte	Special
Carbon Velox	Matte	Special
Carbon Velox	Matte	Regular
Carbon Velox	Matte	Contrast
*Glossy Velox	Enameled	Special
*Glossy Velox	Enameled	Regular
Glossy Velox	Enameled	Contrast
Royal Velox	Matte	Special
Royal Velox	Matte	Regular

*Furnished also in Double Weight Velox. Double weight papers require no mount and when printed under a mask, which will insure a white margin, afford a very artistic effect.

PRICES

Size Inches	SINGLE WEIGHT			DOUBLE WEIGHT		
	Dozen	½ Gross	Gross	Dozen	½ Gross	Gross
1½ x 2½	\$0.12		\$1.10	\$0.15		\$1.40
2¼ x 3¼	.12		1.10	.15		1.40
2½ x 4¼	.15		1.35	.20		1.70
3½ x 3½	.15		1.60	.20		2.00
3¼ x 4¼	.20		1.75	.25		2.20
2½ x 4½	.20		1.75	.25		2.20
3¼ x 5½	.20		2.00	.25		2.50
4 x 5	.25		2.30	.30		2.90
2¼ x 7	.20		2.00	.25		2.50
4¼ x 6½	.30		3.05	.40		3.80
5 x 7	.40	\$2.10	3.90	.50	\$2.60	4.90
3½ x 12	.50	2.60	4.75	.60	3.10	5.95
Velox Post-cards, 3½ x 5½, furnished in Regular Velvet, Special Velvet, Special Portrait, Regular Glossy, Special Glossy and Regular Royal and Special Royal				.30	1.50	2.90
Ditto, Double Post-cards, 3½ x 11 inches				.60	3.00	5.80
Brownie Post-cards, 2¾ x 4¼, Regular and Special Velvet				.20	1.10	2.15

VELOX SUNDRIES

Nepera Solution, per 4-ounce bottle	\$0.28
Ditto, per 16-ounce bottle84
Nepera Auxiliary Powders (for converting Nepera solution to a film or plate developer), per package 1 dozen35
Velox Re-developer for Sepia Tones, per 4-ounce bottle50
*Ditto, 2 ounces (sufficient for 150 4 x 5 prints)30
*Velox Re-developer Tubes, for sepia toning, per package 12 tubes84
Velox Liquid Hardener, per 4-ounce bottle25
Ditto, 8-ounce bottle35
Kodak Acid Fixing Powder for fixing Velox Prints, per pound35
Ditto, ½ pound20
Ditto, ¼ pound15

*Package also includes bleaching agent.

KODAK VELVET GREEN

EFFECTS heretofore to be had only by the carbon process can be secured by any amateur photographer with this paper. For landscapes, for marine scenes, and in fact, for the majority of outdoor amateur negatives, the rich green of prints on Kodak Velvet Green produces most beautiful and harmonious effects, with an indescribable "atmosphere" of nature itself.

And to use this paper the amateur need not learn new processes, nor possess extraordinary skill. Anyone who can print on Velox paper can print just as successfully on Kodak Velvet Green, as the two processes after exposure are identical, except for a slight change in the fixing bath.

As this paper is much slower than the average developing out paper, it is advisable to print by daylight.

The surface—a smooth semi-matte—brings out detail fully, and the paper is supplied in both single and double weights.

Kodak Velvet Green Post-cards are very appropriate for use at vacation time.

Prices are the same as for Velox, and it is obtainable in all the Velox sizes. (See page 48.)

EASTMAN BROMIDE PAPERS

FOR enlargements. Grades: Velvet, Brilliant Velvet, Royal, Enameled, Matte-
enamel, and Standard B and C.

Size	Per Doz.	Size	Per Doz.	Size	Per Doz.
5 x 7	\$0.50	8 x 10	\$1.10	14 x 17	\$3.15
5 x 8	.55	10 x 12	1.70	16 x 20	4.20
6½ x 8½	.80	11 x 14	2.10	18 x 22	5.25

Other sizes in proportion

SOLIO PAPER

A rapid, glossy, printing-out paper

Size	Per Package, 2 Doz.	Size	Per Package, 2 Doz.
1½ x 2½	\$0.20	2¼ x 7 (No. 1 Panoram Kodak)	\$0.30
2¼ x 3¼	.20		Per Doz.
2½ x 4¼	.25	4¼ x 6½	\$0.25
3½ x 3½	.25	5 x 7	.30
3¼ x 4¼	.25	3½ x 12 (No. 4 Panoram Kodak)	.35
2½ x 4½	.25	Post-cards	.20
3 x 4	.30	Double Solio Post-cards	.40
3¼ x 5½	.40	Brownie Post-cards, 2¼ x 4¼	.15
4 x 5			

Solio Toning and Fixing Powders, per carton, 5 tubes, \$0.25. Solio Combined Toning and Fixing Solution, per 8-ounce bottle, \$0.50. Ditto, 4-ounce bottle, \$0.30; post-paid, \$0.50. Solio Hardener, per 8-ounce bottle, \$0.70.

KODAK DRY MOUNTING TISSUE

MOUNTS prints even on thin mounts without curl. The simplest method of mounting, no apparatus being required—just fix the tissue on print, lay on mount and press with a warm flat iron; no sticky fingers, no muss of any kind.

PRICES

Size, 3½ x 3½, 3 dozen	\$0.10	Size, 4 x 5, 2 dozen	\$0.10
Size, 3¼ x 4¼, 3 dozen	.10	Size, 4¼ x 6½, 1 dozen	.10
Size, 3¼ x 5½, 2 dozen	.10	Size, 5 x 7, 1 dozen	.10

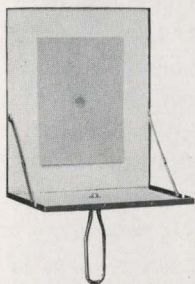
GLASS DRY PLATES

(Prices of plates include the war tax)

Seed (Single Coated)		Seed Non-Halation Ortho (Double Coated)		Wratten & Wainwright Panchromatic	
Size	Per Doz.	Size	Per Doz.	Size	Per Doz.
3½ x 3½	\$0.57	3¼ x 4¼	\$0.83	3½ x 3½	\$0.67
3¼ x 4¼	.67	3¼ x 5½	1.14	3¼ x 4¼	.83
3¼ x 5½	.93	4 x 5	1.14	3¼ x 5½	1.14
4 x 5	.93	4¼ x 6½	1.71	4 x 5	1.14
4¼ x 6½	1.35	5 x 7	1.86	4¼ x 6½	1.71
5 x 7	1.50			5 x 7	1.86
Lantern Slide Plates,		Cover Glass for Lan-		Lantern Slide Binders, per	
3¼ x 4		tern Slides		package, 50 strips, \$0.25	

FLASH LIGHT MATERIAL

THE Flash Light has made the amateur photographer independent of daylight for the making of portraits and other indoor pictures and even for certain outdoor pictures. If the flash light material is properly placed and controlled, it is possible to obtain artistic effects quite foreign to the "contrasty" result which many people associate with this kind of photography. In fact one great advantage of flash light work is the absolute control of the illumination. Not only may the amount of light be fixed but also the direction of its rays.



The simplest method of making flash light pictures is by means of the Eastman Flash Sheets and Kodak Flash Sheet Holder. The sheets burn slowly, giving a broad, soft light, which is not so startling to the subject as to give a staring effect to the eyes.

The holder is provided with a saw tooth for holding the sheet in proper position, and is lighted from the back, through an aperture provided in the center for the purpose. In this manner the holder is always between the operator and the flash sheet, and it may be held in the hand or supported on a tripod, a socket being provided for the purpose.

No. 1 Flash Sheets, per package of $\frac{1}{2}$ dozen sheets, 3 x 4-inch	\$0.35
No. 2 Flash Sheets, per package of $\frac{1}{2}$ dozen sheets, 4 x 5-inch56
No. 3 Flash Sheets, per package of $\frac{1}{2}$ dozen sheets, 5 x 7-inch84
Kodak Flash Sheet Holder	1.25

Flash cartridges are recommended only where absolutely instantaneous exposures are required.

Eastman Spreader Flash Cartridges, for use with pistol or fuse (price includes both fuse and cap), per package of $\frac{1}{2}$ dozen	\$0.50
Eastman Spreader Flash Cartridge Pistol	1.50
Eastman No. 1 Flash Cartridges, for use only with fuse, per package of $\frac{1}{2}$ dozen	1.00
Ditto, No. 270
Ditto, No. 345

VELOX TRANSPARENT WATER COLOR STAMPS

THE making of beautifully colored prints or lantern slides, by the use of Velox Transparent Water Color Stamps, is an interesting diversion, enjoyed by an increasing number of amateurs.

Each book of stamps includes twelve sheets of colors and each sheet is divided by perforations into twenty-six stamps. To use any color, tear off a stamp, place in a small saucer or palette supplied with the outfit, and cover with about a teaspoonful of water.

The Velox Transparent Water Color Stamp Outfit offers the greatest convenience in coloring prints, as it includes the book of stamps, three brushes and a white enameled mixing palette, put up in a neat cardboard case.

Velox Transparent Water Color Stamps, complete booklet, 12 colors . . .	\$0.45
Separate Color Leaves, per sheet04
Set of three Special Brushes, per set50
Mixing Palette25
Velox Transparent Water Color Stamp Outfit, including book, three brushes and palette	1.00



THE KODAK ALBUM



LOOSE-LEAF style. One-piece black narrow grained cowhide—leather lined. Leaves held in place by black cord through cover and metal tubes.

Very flexible—Oxford Bible style edges.

4¾ x 7, A, 50 black leaves \$3.75

7 x 11, B, 50 black leaves 5.50

Package 12 extra leaves, Size F (4¾ x 7), \$0.15;
Size B (7 x 11), \$0.18

THE OTHELLO ALBUM

LOOSE-LEAF style. This album has flexible covers of finest heavy black walrus leather or green artificial leather. Large pocket in back cover for holding loose prints. Has expansion back held firmly by counter-sunk black enamel screws; 50 jet black leaves of best quality and will hold 15 extra.

5 x 8, LA, leather, \$4.00 CA, green, \$2.50 8 x 10, LC, leather, \$6.50 CC, green, \$3.75
7 x 11, LB, leather, 6.00 CB, green, 3.50 11 x 14, LD, leather, 9.00 CD, green, 5.50

Package 12 extra leaves, Size L (5 x 8), \$0.15; Size M (7 x 11), \$0.18;
Size N (8 x 10), \$0.20; Size O (11 x 14), \$0.40



THE TROJAN ALBUM

LOOSE-LEAF style. Made of finest quality flexible, embossed leather, with choice of bronze finish or blended grey and black shade and word "Photographs" stamped in gold leaf. Black silk cloth pocket for loose prints. Contains 50 jet black leaves of extra quality, held in place by cord inside of covers, making album loose-leaf.

5 x 8, BA, bronze, or GA, grey cover \$3.00 10 x 12, BC, bronze, or GC, grey cover \$6.50
7 x 11, BB, bronze, or GB, grey cover 4.50 11 x 14, BD, bronze, or GD, grey cover 7.00

Package 12 extra leaves, Size A (5 x 8), \$0.15; Size B (7 x 11), \$0.18;
Size C (10 x 12), \$0.30; Size E (11 x 14), \$0.40

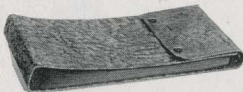


THE HERCULES ALBUM

LOOSE-LEAF style. This is one of the most attractive albums ever offered. The covers are flexible with choice of black or blended grey genuine leathers with flap and clasps holding the album flat when filled. Has large pocket for loose prints; is furnished with 50 black leaves bound inside of cover by silk cord.

5 x 8, BA, black . . . \$4.25 GA, blended . . . \$4.00
7 x 11, BB, black . . . 6.00 GB, blended . . . 5.50
10 x 12, BC, black . . . 8.00 GC, blended . . . 7.50
9 x 14, BD, black . . . 8.50 GD, blended . . . 8.00

Package 12 extra leaves, Size A (5 x 8), \$0.15
Size B (7 x 11), \$0.18; Size C (10 x 12), \$0.30;
Size D (9 x 14), \$0.35



THE DAMASCUS ALBUM



LOOSE-LEAF, open back style; 50 black loose leaves held in place by a cord through covers and metal tubings. De Luxe Artificial Leather, embossed and tinted in Art Craft shades.

B, 7 x 11 \$3.00 C, 11 x 14 \$5.00

Package 12 extra leaves, Size B (7 x 11) \$0.18; Size E (11 x 14), \$0.40

THE NILE ALBUM

LOOSE-LEAF style. A handsome album; cover of the best grade imitation leather, duo-tinted, alligator pattern; 50 black leaves held in place by cord and holder inside of cover. The word "Photographs" stamped in gold foil on cover.

5 x 8, A \$1.65 7 x 11, B \$2.25

Package 12 extra leaves, Size A (5 x 8), \$0.15;
Size B (7 x 11), \$0.18



THE AJAX ALBUM



LOOSE-LEAF style. This album has closed back and 50 black leaves held in place by cord and holder inside of covers. Black narrow grained imitation leather covers. The word "Photographs" stamped in gold foil on cover.

5 x 8, BA, black \$1.50 10 x 12, BC, black \$3.00
7 x 11, BB, black 2.00 9 x 14, BD, black 3.25

Package 12 extra leaves, Size A (5 x 8), \$0.15; Size B (7 x 11), \$0.18;
Size C (10 x 12), \$0.30; Size D (9 x 14), \$0.35

THE AGRIPPA ALBUM

LOOSE-LEAF style. Choice of genuine beautiful black grain leather or embossed black cloth cover; 50 black leaves held in place by cord and holder inside of cover.

5 x 8 CA, cloth, \$1.25; LA, leather. \$2.50
7 x 11 CB, cloth, 1.75; LB, leather. 3.75
10 x 12 CC, cloth, 2.50; LC, leather. 5.75
9 x 14 CD, cloth, 2.75; LD, leather. 6.00

Package 12 extra leaves, Size A (5 x 8), \$0.15; Size B (7 x 11), \$0.18; Size C (10 x 12), \$0.30; Size D (9 x 14), \$0.35



THE THEBES ALBUM

LOOSE-LEAF, open back style; 50 black leaves held in place by cord drawn through metal tubes. The word "Photographs" stamped in gold on leather cover, plain relief on cloth cover. Choice of black seal grain leather or artificial black leather covers.

5½ x 7, CA, cloth, \$1.15; LA, leather, \$2.25 8 x 10, CD, cloth, \$1.75; LD, leather, \$3.75
7 x 10, CB, cloth, 1.60; LB, leather, 3.50 11 x 14, CE, cloth, 3.00; LE, leather, 6.25
10 x 7, CC, cloth, 1.60; LC, leather, 3.50

Package 12 extra leaves, Size G (5½ x 7), \$0.15; Size J (7 x 10), \$0.18; Size H (10 x 7), \$0.18;
Size K (8 x 10), \$0.20; Size E (11 x 14), \$0.40

THE JUNO ALBUM

LOOSE-LEAF, open back style; 50 black loose leaves held in place by metal tubing and cord through covers. Dark green, brown or black imitation leather cover.



5 x 8, GA, green, BA, brown or CA, black \$1.25
7 x 11, GB, green, BB, brown or CB, black 1.75

Package 12 extra leaves, Size A (5 x 8), \$0.15;
Size B (7 x 11), \$0.18

THE TOLEDO ALBUM

LOOSE-LEAF style. No exposed metal parts. 50 jet black leaves held in place by a cord and holder inside of cover. Cover is made of De Luxe Artificial Leather embossed and beautifully tinted in multi-shades.



A, 5 x 8 \$2.50 B, 7 x 11 \$3.25
Package 12 extra leaves, Size A (5 x 8), \$0.15; Size B (7 x 11), \$0.18.

THE FORUM ALBUM

Flexible embossed cloth cover, in imitation black leather, with solid bound back.

5½ x 7, A, 25 black, or N, 25 Sepia leaves, \$0.95	5½ x 7, E, 50 black leaves, \$1.25
7 x 10, B, 25 black, or O, 25 Sepia leaves, 1.25	7 x 10, F, 50 black leaves, 1.60
10 x 7, C, 25 black, or P, 25 Sepia leaves, 1.25	10 x 7, G, 50 black leaves, 1.60
11 x 14, D, 25 black, or R, 25 Sepia leaves, 2.00	11 x 14, H, 50 black leaves, 2.60

THE RHODES ALBUM



LOOSE-LEAF, open back style—choice of genuine black grained leather or embossed black book cloth with 50 black leaves held in place by metal tubes and cord through cover.

5 x 8, CA, cloth \$1.00; LA, leather \$2.25 7 x 11, CB, cloth \$1.50; LB, leather \$3.50
Package 12 extra leaves, Size A (5 x 8), \$0.15; Size B (7 x 11), \$0.18

THE ARTIST'S ALBUM

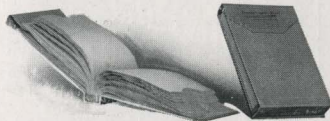
(Loose-leaf system, silk lacing)

No. 1, black leaves; No. 2, white leaves; No. 3, Sepia leaves, 5½ x 7 \$0.25
Extra leaves, package of 509
No. 4, black leaves; No. 5, white leaves; No. 6, Sepia leaves, 7 x 1035
Extra leaves, package of 512



EASTMAN FILM NEGATIVE ALBUMS

THESE albums afford a safe, convenient and efficient way of keeping film negatives. Each leaf is, itself, an envelope, and the negatives do not come in contact with each other. The index furnishes a ready reference.



For 100 negatives, 1½ x 2½ \$0.75
For 100 negatives, 2½ x 4¼, or smaller75
For 100 negatives, 3¼ x 4¼, or 4 x 5, or smaller 1.00
For 100 negatives, 3¼ x 5½, or smaller 1.00
For 100 negatives, 5 x 7, or smaller 1.50

THE AMATEUR FOLDER

THIS folder is just the thing for carrying around or mailing the favorite pictures. It is made of a marble grey cover stock—durable. The picture is inserted under the corners which holds it securely.

No.		Price per doz.
1	for 2¼ x 3¼, prints Upright or Horizontal	\$0.50
1A	for 2½ x 4¼, prints Upright or Horizontal55
2C	for 2¾ x 4¾, prints Upright or Horizontal57
3A	for 3¼ x 5½, prints Upright or Horizontal60

KODAK CARD MOUNTS

THE BALTIC—BUFF, BROWN OR GREY

Heavy stock, beveled edges, heavy borders. Sold only in lots of fifty, one kind and size.

No.	For Prints	Size of Mount	Per 100	Per 50	No.	For Prints	Size of Mount	Per 100	Per 50
0	1 $\frac{3}{8}$ x 2 $\frac{1}{2}$	3 $\frac{3}{8}$ x 4 $\frac{1}{4}$	\$2.10	\$1.05	2C	2 $\frac{7}{8}$ x 4 $\frac{7}{8}$	5 $\frac{1}{8}$ x 7 $\frac{1}{8}$	\$3.10	\$1.55
1	2 $\frac{1}{4}$ x 3 $\frac{1}{4}$	4 $\frac{1}{2}$ x 5 $\frac{3}{8}$	2.60	1.30	3A	3 $\frac{1}{4}$ x 5 $\frac{1}{2}$	5 $\frac{3}{4}$ x 8	3.40	1.70
1A	2 $\frac{1}{4}$ x 4 $\frac{1}{4}$	4 $\frac{1}{2}$ x 6 $\frac{1}{4}$	2.80	1.40	4	4 x 5	6 x 7	4.00	2.00
2	3 $\frac{1}{2}$ x 3 $\frac{1}{2}$	5 $\frac{1}{2}$ x 5 $\frac{1}{2}$	3.00	1.50	4A	4 $\frac{1}{4}$ x 6 $\frac{1}{2}$	6 $\frac{1}{2}$ x 8 $\frac{3}{8}$	5.00	2.50
3	3 $\frac{1}{4}$ x 4 $\frac{1}{4}$	5 $\frac{1}{8}$ x 6 $\frac{3}{8}$	3.00	1.50	5	5 x 7	8 x 10	6.20	3.10

TRIUMPH—ASH GREY AND ARTIST BROWN

No.	Color	For Prints	Size of Mount	Per 50	No.	Color	For Prints	Size of Mount	Per 50
A1	Grey	5 x 7	8 x 10	\$3.10	C1	Grey	8 x 10	12 x 14	\$5.25
A2	Brown	5 x 7	8 x 10	3.10	C2	Brown	8 x 10	12 x 14	5.25
B1	Grey	6 $\frac{1}{2}$ x 8 $\frac{1}{2}$	10 x 12	4.25	D1	Grey	7 x 11	11 x 15	5.50
B2	Brown	6 $\frac{1}{2}$ x 8 $\frac{1}{2}$	10 x 12	4.25	D2	Brown	7 x 11	11 x 15	5.50

RIVIERA—ASH GREY AND WHITE

For Prints	Size of Mount	Per 100	Per 50	For Prints	Size of Mount	Per 100	Per 50
1 $\frac{1}{2}$ x 2	3 x 3 $\frac{1}{8}$	\$1.25	\$0.65	3 $\frac{1}{4}$ x 4 $\frac{1}{4}$	4 $\frac{1}{4}$ x 5 $\frac{1}{8}$	\$1.85	\$0.95
1 $\frac{3}{8}$ x 2 $\frac{1}{2}$	3 x 3 $\frac{1}{8}$	1.35	.70	2 $\frac{7}{8}$ x 4 $\frac{7}{8}$	4 $\frac{1}{2}$ x 6 $\frac{1}{2}$	2.15	1.10
2 $\frac{1}{4}$ x 2 $\frac{1}{4}$	3 $\frac{3}{8}$ x 3 $\frac{3}{8}$	1.50	.75	4 x 5	5 $\frac{1}{8}$ x 6 $\frac{1}{8}$	2.35	1.20
2 $\frac{1}{4}$ x 3 $\frac{1}{4}$	3 $\frac{3}{8}$ x 4 $\frac{3}{8}$	1.60	.80	3 $\frac{1}{4}$ x 5 $\frac{1}{2}$	5 x 7 $\frac{1}{4}$	2.35	1.20
2 $\frac{1}{2}$ x 4 $\frac{1}{4}$	4 $\frac{1}{8}$ x 5 $\frac{3}{4}$	1.85	.95	4 $\frac{1}{4}$ x 6 $\frac{1}{2}$	5 $\frac{3}{4}$ x 8	3.10	1.60
3 $\frac{1}{2}$ x 3 $\frac{1}{2}$	5 x 5	1.85	.95	5 x 7	7 x 9	3.40	1.75

ENLARGEMENT FOLDER

This new Enlargement Folder is supplied in Olive Grey or Brown, the former with white insert, and the latter, sepia-buff insert. Either style is furnished with both oval and rectangular masks.

No.	Color	For Prints	Size of Mount	Per Pkg $\frac{1}{2}$ Doz.	No.	Color	For Prints	Size of Mount	Per Pkg $\frac{1}{2}$ Doz.
A1	White	5 x 7	7 $\frac{1}{2}$ x 9 $\frac{1}{2}$	\$0.81	C1	White	6 x 10	9 x 13	\$1.05
A2	Buff	5 x 7	7 $\frac{1}{2}$ x 9 $\frac{1}{2}$.81	C2	Buff	6 x 10	9 x 13	1.05
B1	White	6 $\frac{1}{2}$ x 8 $\frac{1}{2}$	8 $\frac{3}{4}$ x 10 $\frac{3}{4}$.93	D1	White	8 x 10	10 $\frac{3}{4}$ x 13	1.11
B2	Buff	6 $\frac{1}{2}$ x 8 $\frac{1}{2}$	8 $\frac{3}{4}$ x 10 $\frac{3}{4}$.93	D2	Buff	8 x 10	10 $\frac{3}{4}$ x 13	1.11

INSLIP ENLARGEMENT MOUNT—ENGLISH GREY OR SEPIA-BUFF

No.	For Prints	Size of Mount	Price	No.	For Prints	Size of Mount	Price
A	3 $\frac{1}{4}$ x 5 $\frac{1}{2}$	7 $\frac{1}{4}$ x 9 $\frac{3}{4}$	Doz. \$0.90	F	5 x 8 $\frac{1}{2}$	9 $\frac{5}{8}$ x 13 $\frac{1}{8}$	Doz. \$1.02
B	3 $\frac{3}{8}$ x 5 $\frac{1}{2}$	8 $\frac{1}{8}$ x 9 $\frac{3}{4}$	Doz. .90	F	6 $\frac{1}{2}$ x 8 $\frac{1}{2}$	11 $\frac{5}{8}$ x 13 $\frac{1}{8}$	Doz. 1.14
C	4 $\frac{1}{4}$ x 6 $\frac{1}{2}$	8 $\frac{1}{2}$ x 10 $\frac{3}{4}$	Doz. .90	G	6 x 10	10 $\frac{5}{8}$ x 14 $\frac{3}{8}$	Doz. 1.26
D	5 x 7	9 $\frac{3}{8}$ x 11 $\frac{3}{8}$	Doz. .90	H	8 x 10	12 $\frac{5}{8}$ x 14 $\frac{3}{8}$	Doz. 1.50
J	10 x 12	15 $\frac{1}{4}$ x 17 $\frac{1}{4}$	$\frac{1}{2}$ Doz. 1.50	L	8 x 14	14 $\frac{1}{4}$ x 20 $\frac{1}{4}$	$\frac{1}{2}$ Doz. 1.02
K	7 x 12	12 x 14	$\frac{1}{2}$ Doz. 1.02	M	11 x 14	17 $\frac{1}{4}$ x 20 $\frac{1}{4}$	$\frac{1}{2}$ Doz. 1.86

THE DRIMOUNT—ENGLISH GREY OR SEPIA-BUFF

No.	For Prints	Size of Mount	Price	No.	For Prints	Size of Mount	Price
A	3 $\frac{1}{4}$ x 5 $\frac{1}{2}$	7 $\frac{1}{4}$ x 9 $\frac{3}{4}$	Doz. \$0.45	E	5 x 8 $\frac{1}{2}$	9 $\frac{3}{8}$ x 12 $\frac{7}{8}$	Doz. \$0.60
B	3 $\frac{3}{8}$ x 5 $\frac{1}{2}$	7 $\frac{1}{8}$ x 9 $\frac{3}{4}$	Doz. .45	F	6 $\frac{1}{2}$ x 8 $\frac{1}{2}$	11 $\frac{5}{8}$ x 13 $\frac{1}{8}$	Doz. .63
C	4 $\frac{1}{4}$ x 6 $\frac{1}{2}$	8 $\frac{1}{4}$ x 10 $\frac{1}{2}$	Doz. .48	G	6 x 10	10 $\frac{3}{8}$ x 14 $\frac{3}{8}$	Doz. .66
D	5 x 7	9 $\frac{3}{8}$ x 11 $\frac{3}{8}$	Doz. .51	H	8 x 10	12 $\frac{5}{8}$ x 14 $\frac{3}{8}$	Doz. .78
J	10 x 12	15 x 17	$\frac{1}{2}$ Doz. .66	L	8 x 14	14 x 20	$\frac{1}{2}$ Doz. .66
K	7 x 12	11 $\frac{1}{4}$ x 16 $\frac{3}{4}$	$\frac{1}{2}$ Doz. .60	M	11 x 14	17 x 20	$\frac{1}{2}$ Doz. .81

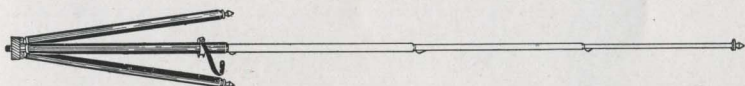
STEREO MOUNTS

Size of Mount, 3 $\frac{1}{2}$ x 7 . . . Color, Queen's Grey . . . Per 100, \$1.30 . . . Per 50, \$0.65

TRIPODS

KODAK METAL

THE requirements of a tripod for amateur use are lightness, compactness and rigidity. The Kodak Metal Tripod combines these three essentials in the most satisfactory way. But in no case have we sacrificed the most important of the three requirements—rigidity.



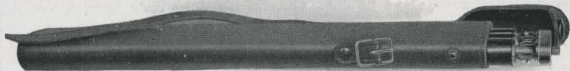
The Kodak metal tripods have telescoping legs of brass tubing. The three lower sections, finished in nickel, fit into the upper section which is finished in black enamel.

When closed, the full length is, in different models, from $11\frac{3}{8}$ to $15\frac{1}{2}$ inches—convincing evidence that they are conveniently carried.

There are six models to select from.

The Nos. 1 and 2 have revolving heads, permitting the camera to swing so as to take in the desired view without moving the tripod. They also have straps for holding the legs in place when closed.

The Nos. 1C and 2C have solid heads, but do not have straps for holding legs.



THE No. 6 has a special folding head permitting the legs to fold flat. The head contains a patented hinge so that when folded the three legs of the tripod are parallel to each other in the same plane rather than set in the usual triangular form. The result is a narrow shape, which with an extremely short length makes the No. 6 when closed the easiest to carry of all this easily carried family.

The illustration above shows the No. 6 projecting from a No. 6 Leather Carrying Case.

DETAILS

	Sections	Length		Weight	Price
		Closed	Extended		
Kodak Metal Tripod No. 0	3	$15\frac{1}{2}$ inches	$39\frac{1}{2}$ inches	15 ounces . .	\$3.50
Kodak Metal Tripod No. 1C	4	$15\frac{1}{4}$ inches	$48\frac{3}{8}$ inches	$25\frac{1}{2}$ ounces . .	4.75
Kodak Metal Tripod No. 1	4	15 inches	$48\frac{1}{2}$ inches	$24\frac{1}{2}$ ounces . .	5.25
Kodak Metal Tripod No. 2C	5	$13\frac{3}{4}$ inches	$49\frac{7}{8}$ inches	26 ounces . .	5.50
Kodak Metal Tripod No. 2	5	$13\frac{1}{2}$ inches	$49\frac{1}{2}$ inches	25 ounces . .	6.00
Kodak Metal Tripod No. 6	6	$11\frac{3}{8}$ inches	40 inches	24 ounces . .	7.50
Leather Carrying Case, for Nos. 0 to 2, inclusive					3.00
Ditto, for No. 6					3.50
Leatherette Case, for Nos. 0 and 1					1.00
Rubber Tips for Metal Tripod Spurs (per set of 3)					.10

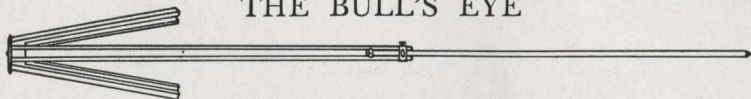
THE FLEXO



Two sections. Fixed, non-detachable head. Only clear, straight-grained wood is used in its construction. Length, extended, 53 inches; folded, 29 inches. Weight, 18 ounces.

Price, \$1.50

THE BULL'S EYE

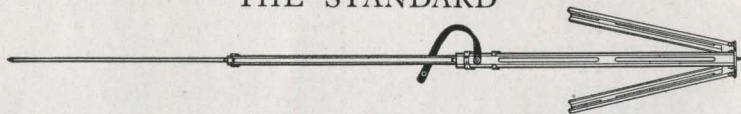


Two sections. Aluminum revolving head. Made of maple, with brass fittings.

For 4 x 5 cameras, or smaller. Length, extended, 42½ inches; folded, 24 inches. Weight, 21 ounces. The two-section tripod that will go into a suitcase.

Price, \$2.00

THE STANDARD



THE feature of this tripod is the automatic locking of the sections when they are extended. Light, compact and rigid. Fixed, non-detachable head. Length, folded 21 inches, extended 53½ inches. Weight, 18 ounces. Cherry finish, brass trimmings.

Price, \$3.50

VEST POCKET KODAK TRIPOD ADAPTER



VEST Pocket Kodaks have been compressed into such small space that not even a spare cubic quarter of an inch is available for tripod sockets.

This little device is designed as a substitute for them. It can be affixed in a few turns to a tripod head, to the Optipod or to the Kodapod. Choice of sockets permits placing for vertical or horizontal pictures. The camera may be instantly slipped into the adapter where it is firmly held by a spring clamp.

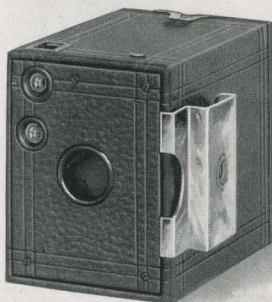
Vest Pocket Kodak Tripod Adapter \$0.50

BROWNIE TRIPOD ADAPTER

THE Brownie Tripod Adapter is designed for use on the Nos. 0, 2 and 2A Brownie cameras which are of the box type and not equipped with tripod sockets.

The illustration shows the Adapter attached to the side of the No. 0 Brownie. The two hooked prongs at the side of the Adapter are inserted in the narrow space between the front board and the camera frame. For taking horizontal pictures it is placed in the position illustrated and for taking vertical pictures it is inserted at the bottom instead of the side.

The camera may then be attached to a tripod head or to the Optipod or Kodapod (illustrated below) by merely turning the tripod screw, into the threaded hole in the Adapter.

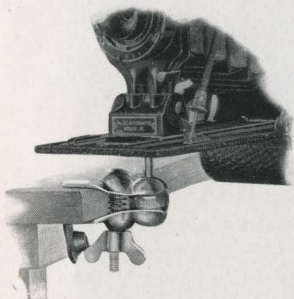


Brownie Tripod Adapter \$0.25

THE OPTIPOD

THE new Optipod is a combined tripod head and clamp which may be used effectively as a tripod when clamped to a chair, table, automobile, motorcycle, or any substantial object. It is small and light, slipping readily into the pocket and may be carried without inconvenience.

When used in connection with a tripod, the Optipod gives the advantage of its ball and socket joint, permitting the camera to be tilted to any desired angle. This feature is especially desirable when photographing objects at close range and when it is impossible to place a tripod alone, in the desired position.

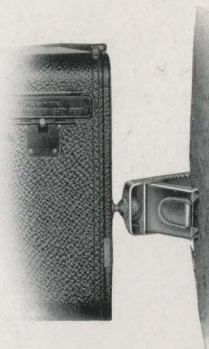


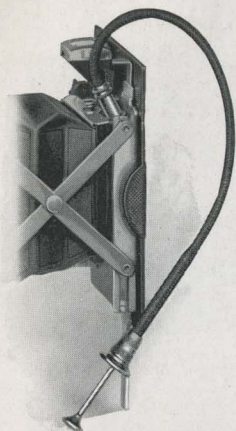
The Optipod \$1.25

THE KODAPOD

THE little Kodapod—which is carried easily in the pocket—takes the place of a tripod, when a tree, fence, or similar object is near at hand. Its jaws have a bulldog grip that holds the wood like a vise, and likewise the Kodak, firmly in position. By means of a clamping screw, the camera may be adjusted to the correct vertical or horizontal position. It fits any standard tripod socket.

The Kodapod \$1.75





VEST POCKET KODAK CABLE RELEASE ATTACHMENT

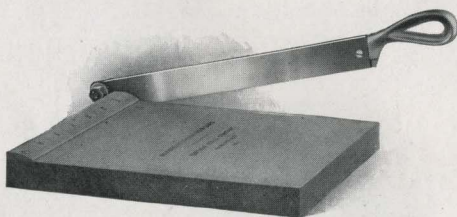
VEST Pocket Kodaks are so compact that there is no space for a cable release. But for those who prefer it, a cable release attachment is made. This consists merely of a nickled plate attached by a screw to the back of the front board. The plate contains a socket into which the cable release is screwed. The attachment is especially valuable for those who wish to use the Kodak Self Timer with their Vest Pocket Kodaks.

Vest Pocket Kodak Cable Release (No. 20) \$0.50

KODAK TRIMMING BOARDS

MADE of hard wood, with natural finish, have fine quality steel blades and are fitted with rule.

No. 1, capacity, 5 x 5 inches \$0.65
No. 2, capacity, 7 x 7 inches .85



EASTMAN PHOTO PASTE

A SOLID, first quality white paste that will not discolor print or mount.

4-ounce jar	\$0.25	3-ounce tube	\$0.20
8-ounce jar35	5-ounce tube30
		2-ounce tube	\$0.15

KODAK PRINT ROLLER

THE best roller constructed for amateur use. Has two 6-inch rubber rollers and finely nickled frame.

Kodak Print Roller \$1.00



FLEXO PRINT ROLLER



A THOROUGHLY practical roller for mounting. Has 4-inch rubber roller and black enamel frame.

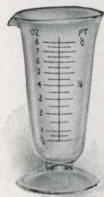
Flexo Print Roller \$0.30

COMBINATION BACKS

THESE backs are made for use with the Nos. 3 and 3A Autographic Kodaks, Regular and *Special*, in place of the regular Autographic Back. They accommodate double plate holders and a removable ground glass for focusing. Note that autographic records can be made only when the Autographic Back is in use—and not with Combination Backs.



Combination Back with ground glass, for Nos. 3 or 3A "Regular"	\$4.00
Ditto, for No. 3 <i>Special</i>	4.50
Ditto, for No. 3A <i>Special</i>	5.00
Double Plate holders for any of above, each	1.50



EASTMAN VISIBLE GRADUATE

THIS new moulded graduate, as its name implies, may be easily read in the dark room under the rays of the ruby light.

The graduations are opaque, not translucent as is the case with most graduates.

2-ounce	\$0.35	8-ounce	\$0.60
4-ounce45	16-ounce90

EASTMAN THERMOMETER

ESPECIALLY valuable in tank or tray development. The hook for suspending and the curved back to fit inside of tank are two of its desirable features.



Eastman Thermometer	\$1.00
-------------------------------	--------

THERMOMETER STIRRING ROD



A COMBINED stirring rod and thermometer. Carefully tested and accurate. Has flat end for pulverizing. The rod is $\frac{1}{4}$ inch in diameter and $9\frac{1}{4}$ inches long.

Thermometer Stirring Rod	\$1.25
------------------------------------	--------

DEVELOPING TRAYS

BULL'S-EYE—COMPOSITION

$3\frac{1}{4} \times 4\frac{1}{4}$. . . \$0.15	4×6 . . . \$0.18	$2\frac{1}{2} \times 7$. . \$0.35
4×517	5×840	$3\frac{1}{2} \times 12$. . .75

ENAMEL

4×5 \$0.85
4×695
5×7 1.20

“HOW TO MAKE GOOD PICTURES”

A PRACTICAL and profusely illustrated book for the amateur that covers in a simple, understandable way every phase of photography that he is likely to be interested in. 170 pages.

“How To Make Good Pictures” \$0.40



KODAK FILM CLIP

THIS is a new clip which replaces the No. 2 Junior. It is of entirely new construction designed to secure the maximum amount of grip with its two jaws. Having a width of two inches and a firm grip which prevents the film from slipping, it is particularly adapted for use with large size film but is useful for large or small film. Made in one size only.

Kodak Film Clip \$0.30

KODAK JUNIOR FILM CLIP No. 1

THE No. 1 clip is the most practical for tray development or drying of films. Two teeth in jaw to prevent film from slipping. One size only.

Kodak Junior Film Clip No. 1, each \$0.12



EASTMAN FILM DEVELOPING CLIP



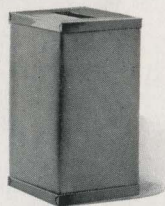
A THOROUGHLY dependable clip. Made in two sizes and nickel-plated.

3½-inch, per pair \$0.30
5-inch, per pair50

KODAK CANDLE LAMP

THIS clever little lamp is collapsible and can be packed into very small space when not in use. It is made of special, tested ruby fabric, bound in metal frames and gives a strong, safe light for the dark room.

Kodak Candle Lamp \$0.50
Extra Candles for same, per dozen40



KODAK DARK ROOM LAMP

THE Kodak Dark Room Lamp is oil burning and is fitted with both orange and ruby glass. It has an unusually broad wick regulated from the outside and gives a soft, steady light for the dark room.

No. 2 Kodak Dark Room Lamp \$1.25

KODAK SAFELIGHT LAMP

THE Kodak Safelight Lamp is ideal for all dark room uses, whether that be the work of the beginner, the advanced amateur, or the professional.

The lamp is supplied with a 5 x 7, Series 1, safelight for use with film or plates, not highly color sensitive. Safelights of other series may be obtained, if desired, for more advanced work. It is made of metal; neatly finished in a warm tone of brown and the inside is enameled white to intensify the force of the reflected light from the electric bulb, in the top.



The lamp is supplied complete, with electric fittings excepting electric bulb, including besides the safelight 4½ feet of electric light cord.

Kodak Safelight Lamp \$3.50

SAFELIGHTS FOR KODAK SAFELIGHT LAMP

SERIES 00—Yellow light, for use with gaslight papers.

SERIES 0—Bright orange light, for use with bromide paper and lantern plates.

SERIES 1—Orange safelight, for use with films or plates not highly color sensitive.

SERIES 2—Safelight, for extra rapid orthochromatic plates sensitive to green but not red.

SERIES 3—Green safelight, for use with red-sensitive panchromatic plates.

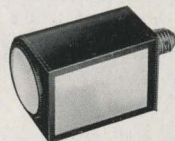
SERIES 4—Bright green safelight, for use with ordinary plates, for those who cannot use a red light. Not safe for orthochromatic plates.

Size, 5 x 7 (any series), each \$0.75

BROWNIE SAFELIGHT LAMP

BUT little larger than the electric bulb it holds, the Brownie Safelight Lamp screws into an electric socket which may be conveniently situated close to the place where the work is to be done.

The lamp is made of metal, neatly japanned; has circular safelight in the end and side safelight as well. Both safelights are the regular Series 1, and removable so that other series may be used, if desired. A 15 Watt Mazda lamp is used, but is not supplied.



The Brownie offers a most satisfactory means for dark room lighting where electricity is available.

Brownie Safelight Lamp	\$1.50
Extra Circular End Safelight (any series), each25
Extra Side Safelight (any series), each40

TESTED CHEMICALS



CERTAINTY in making negatives and prints depends as much on the quality of your chemicals as on any other one thing. All Kodak chemicals are tested both photographically and for purity before the E. K. C. tested seal is allowed to go upon them.

Eastman Chemical Outfit consists of M. Q. and Special Developers, Intensifier, Reducer and Velox Re-developer	\$0.40
Eastman Special Developer Powders, per package of 5, in sealed glass tubes30
Eastman Hydrochinon Developer Powders, per dozen60
Ditto, per ½ dozen30
Ditto, per package of 5 powders, in sealed glass tubes30
Eastman Pyro Developer Powders, per dozen50
Ditto, per ½ dozen25
Ditto, per package of 5 powders, in sealed glass tubes25
Eastman Tropical Developer, 5 powders, in sealed glass tubes40
Tozol, per 1-ounce bottle45
Elon, per 1 ounce68
Kodolon, per 1 ounce60
Hydrochinon, per 1-ounce can25
Eastman Permanent Crystal Pyro, per 1-ounce bottle31
Velox Re-developer Tubes, package of 12 tubes84
Hypo Sulphite of Soda, granular, per pound18
Alum, powdered, per pound25
Kodak Acid Fixing Powder, per pound package35
Ditto, per ½-pound package20
Ditto, per ¼-pound package15
Eastman Intensifier, glass tube, per tube15
Eastman Reducer, per box of 5 tubes50
Eastman Opaque No. 1, per tube25
Potassium Bromide, granular, per ounce12
Acetic Acid, 28 per cent, per 1-pound bottle35
Citric Acid, 4-ounce bottle34
Eastman Tested Carbonate of Soda (desiccated), per 1-pound bottle40
Eastman Tested Sulphite of Soda (desiccated), per 1-pound bottle45

For Velox preparations, see page 49. For Solio preparations, see page 50.

For Tank Developer Chemicals, see page 41.

MISCELLANEOUS

Cable Release (except Vest Pocket, see page 60), each	\$0.35	Eastman Spotting Colors consists of four colors: black, blue, red and white, per set	\$0.25
Eastman Special Squeegee, 8-inch	1.00	Ferrotypes Plate, 10 x 14, light20
Hard Rubber Stirring Rod30	Ferrotypes Plate, 10 x 14, heavy30
Finger Tips, set of 315		
Rubber Focusing Cloth, per yard	1.20		

TERMS

THE prices in this catalogue are strictly net, except to regular dealers who carry our goods in stock. THESE PRICES ARE, HOWEVER, SUBJECT TO CHANGE WITHOUT NOTICE. For the convenience of our customers we recommend that they make their purchases from a dealer in photographic goods, as by so doing they can save both time and transportation charges.

EASTMAN KODAK COMPANY, Rochester, N. Y.

“KODAK”

Is our registered and common-law Trade Mark and cannot be rightfully applied except to goods of our manufacture. When a dealer tries to sell you under the Kodak name, a camera or films or other goods not of our manufacture, you can be sure that he has an inferior article that he is trying to market on the Kodak reputation.

*If it isn't an Eastman
it isn't a Kodak*