



KODAK



The Digitized Kodak Catalog Project (1886 - 1941): A Very Brief History

Most camera collectors at some point in their collecting careers pass through a Kodak phase - some never come out of it. And if there ever was one name that came to be associated with both cameras and collecting, it was Kodak.

George Eastman received his first patent (for coating dry plates) and bought his first manufacturing facility in 1880, and in 1881 he started the Eastman Dry Plate Company. In 1886 he received a patent for the near-mythical Eastman Detective Camera, but it wasn't until 1888 that the first camera bearing the name "Kodak" was introduced.

One of the nice things about collecting Kodak is that the product line is pretty well known, and because the company produced annual catalogs for many years, collectors can be reasonably sure of what they're looking at, when it was made, the variations and so on - presuming that they have access to either the appropriate catalog, or a number of the many books which document Kodak, each to some greater or lesser extent.

But what would be really nice would be to have a complete set of Kodak catalogs in an easily accessible form and readily available. And since the advent of portable computing devices (PC, Macintosh, etc.) that's been possible - except for the difficulty of assembling a complete set of Kodak catalogs in one spot and then scanning them and making the results available.

The idea of digitizing a complete set of Kodak catalogs has kicked around the collecting community for many years. It's been proposed on a number of online forums, during meetings of various photohistory groups, and for years there have been many incomplete "Kodak CDs" on eBay but at best, they only contained a few catalogs - whatever the owner had available. But assembling a complete set of catalogs, then scanning and processing perhaps 3,000 to 4,000 pages, was a daunting task - if not completely overwhelming - and nothing ever came of it.

Until now.

In early 2010, the idea came up again, but this time we - "we" as in "the collecting community" - were lucky. A number of collectors were willing to loan their catalogs to this project and a couple of insane - wait, let's call them "dedicated" - dedicated enthusiasts - neither of whom collected Kodak, but both of whom enjoyed the challenge of such a project - were willing to put in the time and effort to scan and pull together the entire set of catalogs into a full-blown Kodak Catalog Digital Library.

Our initial objective was to include just the annual amateur catalogs, but it turns out that many cameras only appear in certain professional and specialty catalogs. We included as many of those as we could obtain so that almost every Kodak camera made in the US, Canada and Europe, would be documented - at least up to about 1941. After that, it becomes much more difficult as Kodak stopped producing annual catalogs as their product line became increasingly more diversified.

However, even with the additional "non-amateur" catalogs, we weren't completely successful in illustrating "every" camera Kodak ever made. There are an elusive few that might appear in specialty catalogs that we simply couldn't track down. If you can't find one of those odd cameras, that's no doubt why. We may do a revision at some point in the future if someone is willing to loan us a catalog that includes a camera that isn't already recorded.

In this project, a total of 67 catalogs were used from 1886 through 1941 including a number of professional and dealer catalogs, and in some years, two or even three different catalogs to cover all the bases. With the cooperation of a number of dedicated collectors, we were able to pull together all those catalogs and in June 2010, the project started in earnest.

By November 2010, we had scanned everything we needed and eventually all 67 catalogs were then reassembled as image folders and converted to the universally accepted PDF format and finally, converted into individually searchable PDFs which could then be searched globally as a collection.

For those of you interested in the statistics: about 200 hours of scanning time (we never want to hear that sound again), 67 catalogs and 3,908 page scans - which generated 7,917 original and processed images - and 11.4 GB of disk space. Additionally, another 100+ hours of technical development time was needed to convert the digital catalogues into a fully searchable "knowledgebase" that could be launched from most any standard web browser.

The overwhelming number of catalogs was loaned to us by that most remarkable of Kodak collectors, Charlie Kamerman of Eagle Creek, Oregon. Without Charlie, it's very doubtful that this project could even have been attempted.

But as it turned out, even Charlie didn't have all the publications that were needed, but he was able to track down the five that he lacked and was able to secure either a copy or high resolution images that we could work with. And so, our thanks to the contributors of the catalogs and scans that we used:

Charlie Kamerman for the vast majority of catalogs used and all his help,
Steve Shoet for loaning a variety of test catalogs,
Ryerson University (Toronto) for the 1886 Eastman Catalog
George Layne for the 1890 New Kodaks Catalog,
Mike Kessler for the 1891 Dealer Display Catalog,
Ralph London for the 1893 UK Catalog,
Michael Pritchard for the 1897 UK Catalog.

The digital side of the project - also known as "all of the work" - was done by Rob Niederman of Medina, Minnesota, and Milan Zahorcak of Tualatin, Oregon. Remarkably we're still friends and in a few years, we'll probably be able to talk about this project rationally.

And there you have it, a more-or-less done deal. We're fairly sure that it isn't quite perfect, and expect there will be some carping about something or other; but all-in-all, we believe this to be a pretty good product and can now move on to something else.

Our thanks to all of those involved.

Rob Niederman
Milan Zahorcak

Fall, 2011

KODAKS

and

KODAK SUPPLIES



1917

EASTMAN KODAK COMPANY

ROCHESTER, NEW YORK

"The KODAK City"

KODAK SERVICE

FROM the very start we made it a point to furnish with every Kodak a manual that did more than merely explain the mechanical operation of the camera. It gave clear and understandable information about snap-shots and time exposures and lighting. It told about interior exposures, including flash-lights, and gave concise directions in developing and printing.

We have always been interested in our customers and have been glad to help them with their picture making by carefully answering letters on any photographic topic. All this we still do—and more. We now publish a little monthly magazine, “Kodakery,” which we send free for one year to any purchaser of a Kodak or Brownie, who will fill out and mail to us the “Kodakery” subscription blank which is to be found in the Manual of Instructions that accompanies his camera.

“Kodakery” is, first of all, helpful and interesting; it is beautifully illustrated and its editors and contributors are men who not only know photography, but who know how to write about it in a simple way that the amateur can understand. “Kodakery” is a part of the Kodak service that every present purchaser of our amateur cameras is entitled to. It will help you to see the possibilities in photography; will help you to make better pictures. We want you to have it—entirely at our expense.

EASTMAN KODAK COMPANY

ROCHESTER, NEW YORK
“The Kodak City”



PROGRESS



DO the practical thing. Adopt whatever is of real advantage and cast aside those things which are only talking points, which complicate rather than simplify—such has been the invariable rule in Kodak progress.

It is by such standards that each step is measured. Because they were practical, we adopted the daylight loading feature, the non-curling film, the Kodak Tank system of daylight development, the autographic feature and a hundred minor improvements that have helped to perfect Kodak photography. We test exhaustively every idea that seems to promise to make photography more accurate, more simple. We adopt only such ideas as make for genuine improvement.

And lens efficiency is something we have always kept in view—not merely good lenses and shutters, but lenses and shutters that are adapted to each other. Lenses of long enough focus to avoid undue distortion and shutters of sufficient size to give the full benefit of the speed of such lenses, are the only ones that can pass the Kodak test. In camera building we make no sacrifices to mere littleness. We work for compactness, of course, but not that compactness that is reached by the use of too small lenses in too small shutters.

This matter of lens efficiency has led us still further. It has led to the manufacture of the Kodak Anastigmat *f.* 7.7 lenses, wherein, at small cost, we were able to produce an anastigmat which was fully the equal in quality to any anastigmat made and was somewhat faster than the best Rapid Rectilinear lenses. And then came the Kodak Anastigmat, *f.* 6.3, giving *both* quality and speed.

To the use of anastigmat lenses, as fitted to No. 3A and No. 1A Autographic Kodaks, *Special*, an important advantageous factor has been added—the Kodak Range Finder. When used

with the same relative stop openings as other lenses, the high-speed anastigmats are equally simple to work. When used at their full opening they require more accurate focusing, because their depth of focus is then less. That is to say, if the photographer properly focuses on an object 15 feet away, objects 10 feet away and 20 feet away will be sharper when he uses a small stop than when he uses a large stop, no matter what the type of lens. With the anastigmat, however, objects *at the focused distance* will be more sharply defined than will objects at that same distance made with a single or a rectilinear lens. It is obvious, therefore, that with the anastigmat one must be a fairly good judge of distance when focusing by means of a scale, because an error in judging distance will be more damaging than with the slower, small-stop lenses.



AS IMAGE WILL APPEAR WHEN RANGE FINDER IS RACKED TOO FAR FORWARD

Another important factor is the length of focus of the lens (distance from lens to film), for the longer the focus of the lens, the less the depth of focus. Roughly speaking, the larger your Kodak and the faster your lens, the more accurately you must focus. And here is where the Kodak Range Finder comes in. It gives you the correct focus to a hair. And because of the length of focus and high speed of the lenses used on the No. 3A, *Special*, it is on that instrument that the Kodak Range Finder was introduced. It has now been applied also to the No. 1A, *Special*.

How to Use the Kodak Range Finder

Open the Kodak and pull out the standard to the limit of motion, then lock it by pushing up on the handle. It will then be found that the indicator will come just behind the 100-foot mark over the focusing scale.

Draw out the milled head at the right side of the bed. This is to be used for racking the front back and forth.

Hold the Kodak in the horizontal position and at such a distance from the eye that the image is seen clearly and sharply in the three mirrors of the Range Finder which is located at the bottom of the standard.



AS IMAGE WILL APPEAR WHEN RANGE FINDER IS RACKED TOO FAR BACK

The image is most easily seen by looking with one eye through (not at) the Range Finder, and the eye should be quite close to it.

Select some horizontal line near the center of the subject, such as the collar, hat brim or belt, if a portrait; or a window-frame or roof, if a building, and rack the lens back and forth by means of the milled head until this line is continuous in the three mirrors of the finder. By racking back and forth, the continuity of the line can be broken and mended at will. *When the line is continuous, the focus is correct.* An easy method for determining the distance when taking a portrait, is to have the subject hold his hand in a horizontal position across the chest, then focus upon the line formed by the lower part of the hand. The image will appear inverted in the Range Finder, whereas it is right side up in the view finder. The composition of the picture should



AS IMAGE WILL APPEAR WHEN THE KODAK IS CORRECTLY FOCUSED

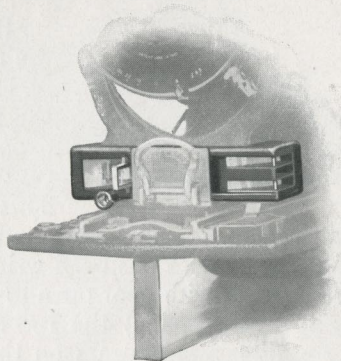
be roughly determined by using the view finder in the usual manner, then the distance of the subject should be found by means of the Range Finder, after which the view finder should again be used in order to make sure that the picture is properly composed. It is obvious, however, that any change in distance from the subject to camera would mean refocusing.

The embodying of the Kodak Range Finder in the No. 3A and No. 1A Autographic Kodaks, *Special*, is in direct line with Kodak progress.

Autographic Photography

Not long ago a traveller made for publication, a series of photographs of famous old churches and cathedrals of Europe, keeping a careful notebook record of each exposure, but it was impossible to retain the identity of each through the process of developing and printing and much of the record was valueless.

Autographic photography had its conception because it was needed as a means of identifying unfamiliar scenes, dates and



SHOWING POSITION OF RANGE FINDER ON 3A SPECIAL

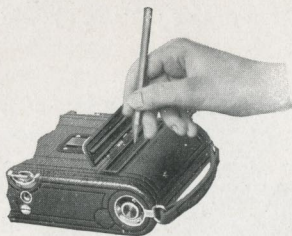
places. To be able to date and title permanently, negatives of the children, of the family groups, or even familiar home scenes and to identify them always—that is the motive in Autographic Photography and it is the only means of positive identification.

The value of the Autographic feature lies in the fact that the date and title are kept as a permanent record on the negative. And while it is not intended that the writing shall appear on the print itself, it is obvious that it can easily be included on the print, if desired.

Every negative that is worth making, is worth dating and titling, if for no other reason than for future identification.

How to use the Autographic Feature

The Autographic Kodak has a little door in the back, covering a slot through which the writing is done on the red paper protecting the film. Any medium hard pencil, or the stylus which is provided for the purpose, can be used for writing the titles.



The slot is so located as to bring the title into the margin between the exposures, when the number appears centered in the little red window.

This brings the title at the bottom of an upright, or at the left end of a horizontal negative.

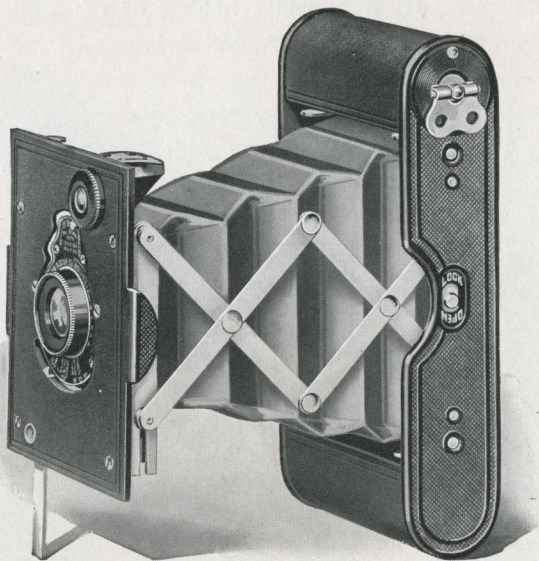
When the data has been written on the red paper, and printed (by exposing with door open to the sky, but not the sun, for from one to five seconds) the record is photographically impressed on the film, and appears on the negative when the film strip is developed.

The process of development of the Autographic Film Cartridge is exactly the same as with the Kodak N. C. Film Cartridge and the prices are the same.

EASTMAN KODAK COMPANY

ROCHESTER, NEW YORK
"The Kodak City"

Vest Pocket Autographic Kodak



THE little Vest Pocket Kodak fits into the day and the place, and without inconvenience. With its autographic feature, it is a veritable vest pocket notebook, that will keep not only the photographic record, but the memorandum record of all that goes to make every good time a lasting pleasure.

Mechanically, it is as right as a full-jeweled watch, and for a camera that will make pictures of the best photographic quality, and yet slip unobtrusively into the vest pocket or a lady's hand bag, is as small as is practical. It is instantly ready for service, opening quickly and easily to a fixed focus, and the exposure is made by a slight pressure of the shutter release at the upper right hand side of the front standard.



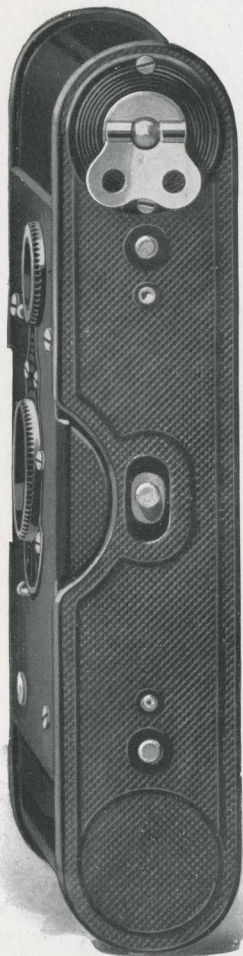
Kodak ingenuity has produced in this camera, one made almost entirely of metal, strong and durable, yet so light in weight and compact as to make it convenient to carry at any time, and the belt case solves the question of its accommodation for anyone on a hunting, fishing or canoeing trip, where space—even for the Vest Pocket—is limited.

No matter how many larger cameras one may have, there's always an added pleasure and an advantage in the possession of this little instrument.

The Vest Pocket Autographic Kodak is fitted with No. 0 Kodak Ball Bearing shutter, working without jerk or jar at speeds of $\frac{1}{25}$ and $\frac{1}{50}$ of a second, as well as the time and "bulb" actions. Also fitted with Kodak Autotime Scale to aid in giving the correct exposure.

It makes pictures $1\frac{5}{8} \times 2\frac{1}{2}$ inches, loading in daylight with eight-exposure Autographic Film Cartridges (No. A 127). The Vest Pocket (\$6.00 model) is supplied with tested meniscus achromatic lens, producing excellent pictures under all ordinary conditions.

The three lens equipments for the Vest Pocket *Special*, are as perfect as can be found on any fixed focus hand camera, giving microscopic definition, freedom from astigmatism, flatness of field and absolute sharpness in detail. The Kodak Anastigmat, *f.* 7.7 lens, offers the unusual advantages of an anastigmat equipment at a surprisingly low price. The Kodak Anastigmat and Bausch & Lomb



VEST POCKET KODAK
(REGULAR) ACTUAL SIZE

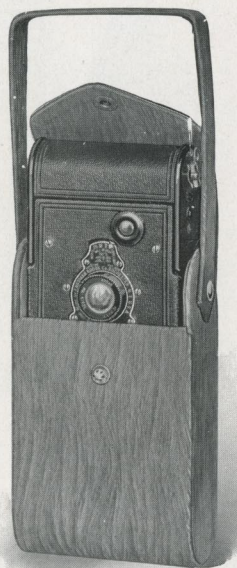
Kodak Anastigmat, *f.* 6.9 lenses, give the maximum of practical speed in a fixed focus camera.

The camera has an all-metal body with black enamel finish for the regular model, while the *Special* is covered with finest pin-grain Morocco leather. Has brilliant reversible finder, black leather bellows, and is finished in nickel and black enamel. This little camera makes an ideal gift, and for the purpose we can supply an imported satin-finish leather case (see illustration) in a shade of soft tan.

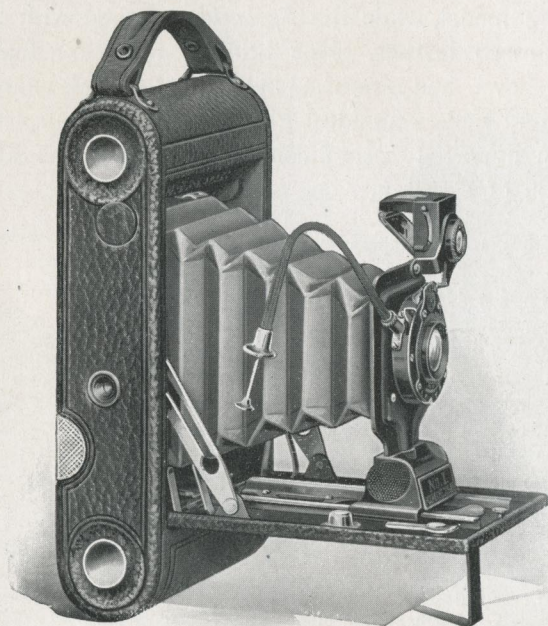
DETAILS For rectangular pictures, $1\frac{5}{8} \times 2\frac{1}{2}$ inches. Capacity, 8 exposures without reloading. Size of Kodak, $1 \times 2\frac{3}{8} \times 4\frac{3}{4}$ inches. Weight, 9 ounces. Lens, regular model, meniscus achromatic; for *Special*, Kodak Anastigmat, *f.* 7.7, $3\frac{3}{8}$ -inch focus; Kodak Anastigmat, *f.* 6.9, $3\frac{3}{8}$ -inch focus; or Bausch & Lomb Kodak Anastigmat, *f.* 6.9, $3\frac{1}{2}$ -inch focus. Shutter, Kodak Ball Bearing No.0. Brilliant reversible finder. All metal body, *Special* covered with pin grain Morocco; nickel and black enamel finish and black leather bellows.

PRICE

Vest Pocket Autographic Kodak (regular model), meniscus achromatic lens and Kodak Ball Bearing shutter	\$6.00
Vest Pocket Autographic Kodak, <i>Special</i> , Kodak Anastigmat lens, <i>f.</i> 7.7, and Kodak Ball Bearing shutter	10.00
Ditto, with Kodak Anastigmat, <i>f.</i> 6.9 lens	20.00
Ditto, with Bausch & Lomb Kodak Anastigmat, <i>f.</i> 6.9 lens	22.50
Hand Bag for Vest Pocket Kodak	\$0.25
Leather Case for Vest Pocket Kodak75
Soft Leather Carrying Bag	1.10
Grain Leather Case	2.00
Imported Satin Finish Leather Case	2.50
Belt Case for Vest Pocket Kodak	1.75
Vest Pocket Kodak Tripod Adapter. (See page 53)50
Autographic Film Cartridge, 8 exposures, $1\frac{5}{8} \times 2\frac{1}{2}$ (No. A 127)20
Kodak Portrait Attachment50



No. 1 Autographic Kodak Junior



THE Juniors are designed to fill the requirements of those who would enjoy photography with assurances of success, and at a low cost. They give results that are satisfactory, not only to the beginner, but to the experienced as well. The No. 1 Kodak Junior has all the daylight features, the conveniences and dependability that characterize the Kodak line.

Though simple in every detail as a focusing camera, the No. 1 Junior will be supplied, if desired, as a fixed focus camera for the convenience of those who prefer this feature. As a fixed focus camera it is supplied, however, with meniscus achromatic lens only and when opened for use, is in focus for objects from eight feet to infinity.

The camera is fitted with the No. 0 Kodak Ball Bearing shutter with cable release, speeds $\frac{1}{25}$ and $\frac{1}{30}$ of a second, with either Rapid Rectilinear or meniscus achromatic lens, and with No. 1 Kodak Ball Bearing shutter, having variable speeds of $\frac{1}{25}$, $\frac{1}{30}$ and $\frac{1}{100}$ of a second when fitted with Kodak Anastigmat, *f.* 7.7 lens.

The No. 1 Autographic Kodak Junior makes $2\frac{1}{4} \times 3\frac{1}{4}$ pictures and loads with the Autographic Film Cartridge of six exposures (No. A 120), permitting the recording of data on each negative; is provided with automatic focusing lock, collapsible reversible finder, two tripod sockets—in fact, the practical, convenient working equipment which one expects in a true Kodak.

It is well made in every respect; is covered with a good quality of grain leather, and the metal parts are finished in nickel and black enamel.

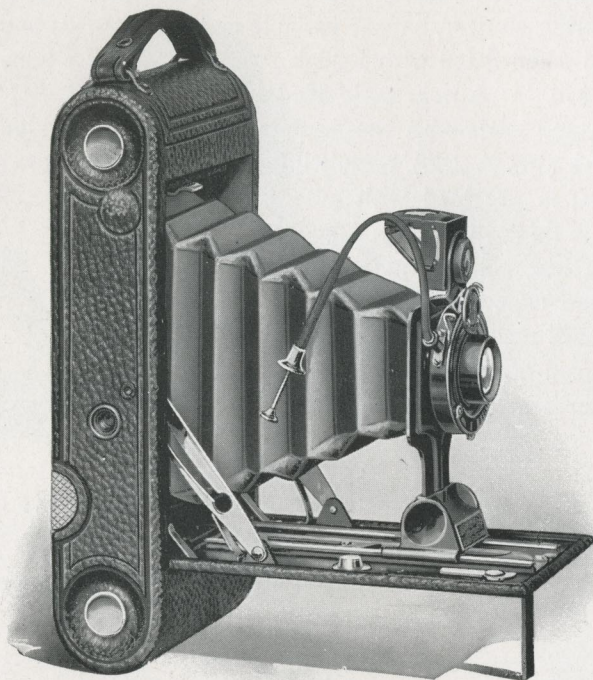


DETAILS For rectangular pictures, $2\frac{1}{4} \times 3\frac{1}{4}$ inches. Capacity, 6 exposures without reloading. Size of Kodak, $1\frac{7}{16} \times 3\frac{5}{8} \times 6\frac{5}{8}$ inches. Weight, 23 ounces. Lens, meniscus achromatic. Also supplied with Rapid Rectilinear, or Kodak Anastigmat, *f.* 7.7 lens, if desired. Shutter, Kodak Ball Bearing with cable release. (See page 36.) Brilliant reversible collapsible finder.

PRICE

No. 1 Autographic Kodak Junior (Fixed focus), meniscus achromatic lens and No. 0 Kodak Ball Bearing shutter	\$9.00
No. 1 Autographic Kodak Junior (Focusing model, with scale), meniscus achromatic lens and No. 0 Kodak Ball Bearing shutter	9.00
Ditto, with Rapid Rectilinear lens	10.50
Ditto, with Kodak Anastigmat lens, <i>f.</i> 7.7, and No. 1 Kodak Ball Bearing shutter	15.00
Imitation Leather Carrying Case	1.75
Soft Leather Carrying Bag, with strap	1.60
Black Sole Leather Case, with strap	2.50
Autographic Film Cartridge, 6 exposures (No. A 120)20
Ditto, 2 exposures10
Kodak Portrait Attachment. (See page 39)50

No. 1A Autographic Kodak Junior



THE No. 1A Junior will appeal to anyone who prefers pictures of the $2\frac{1}{2} \times 4\frac{1}{4}$ size. This is one of the most popular amateur sizes, since the proportions are unusually pleasing for landscapes, street scenes and the like, in the horizontal position, and when used vertically, is especially suited for portraiture. It is recommended as a thoroughly reliable camera of high efficiency, easy to operate, and so compact and thin as to be pocketed without inconvenience.

Like the No. 1 Junior, this Kodak will be supplied with meniscus achromatic lens and as a fixed focus or focusing model, as desired.

The shutter is the Kodak Ball Bearing with cable release, which works not only for bulb and time exposures, but has variable indicated speeds of $\frac{1}{25}$, $\frac{1}{50}$ and $\frac{1}{100}$ of a second. The camera is furnished with either meniscus achromatic, Rapid Rectilinear or Kodak Anastigmat lens.

Simplicity marks this camera in every respect. It has an automatic focusing lock, which permits the camera to be brought to focus quickly for objects at any distance. The finder is of the collapsible reversible type. It has two tripod sockets so that the camera may be easily used with a tripod in either the vertical or horizontal position. The back and bed are of aluminum, the covering is seal grain leather, bellows of black leather and metal parts are finished in nickel and black enamel.



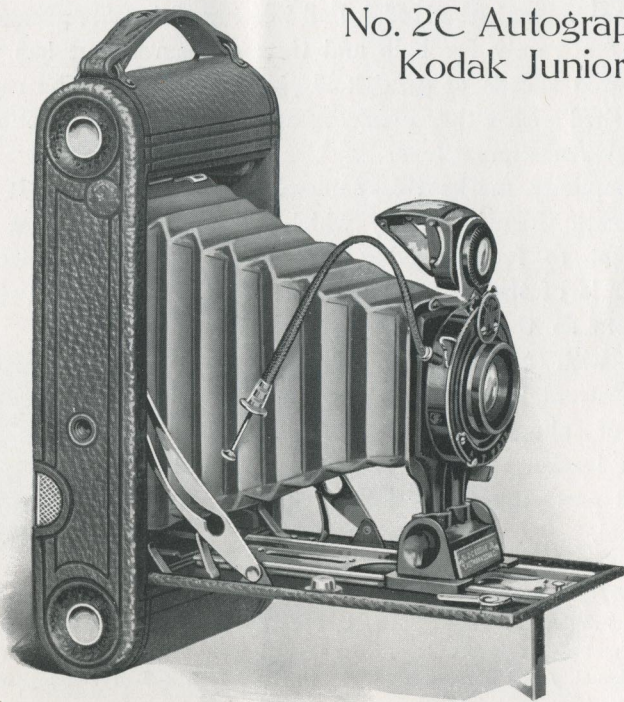
DETAILS For rectangular pictures, $2\frac{1}{2} \times 4\frac{1}{4}$ inches. Capacity, 12 exposures without reloading. Size of Kodak, $1\frac{1}{8} \times 3\frac{3}{4} \times 8$ inches. Weight, 28 ounces. Lens, meniscus achromatic. Also supplied with Rapid Rectilinear or Kodak Anastigmat, *f.* 7.7 lens, if desired. Shutter, Kodak Ball Bearing with cable release. (See page 36.) Brilliant reversible collapsible finder.

PRICE

No. 1A Autographic Kodak Junior (Fixed focus), meniscus achromatic lens and Kodak Ball Bearing shutter	\$11.00
No. 1A Autographic Kodak Junior (Focusing model, with scale), meniscus achromatic lens and Kodak Ball Bearing shutter	11.00
Ditto, with Rapid Rectilinear lens	13.00
Ditto, with Kodak Anastigmat lens, <i>f.</i> 7.7	18.00
Imitation Leather Carrying Case	1.75
Black Sole Leather Case, with strap	2.75
Soft Leather Carrying Bag, with strap	1.60
Autographic Film Cartridge, 12 exposures (No. A 116)50
Ditto, 6 exposures25
Ditto, 2 exposures12
Kodak Portrait Attachment. (See page 39)50

Compliments of the Digitized Kodak Catalog Project: 1886 - 1941

No. 2C Autographic Kodak Junior



THE 2C size, which was introduced about a year ago, was designed for those who prefer pictures between the 1A and 3A sizes, though retaining the same pleasing proportions that have made these two so popular.

The No. 2C Autographic Kodak Junior makes pictures $2\frac{7}{8} \times 4\frac{7}{8}$ inches—a size that gives more for the area than the $3\frac{1}{4} \times 4\frac{1}{4}$, because it fits the view better for a horizontal landscape, and is, as well, a far better shape for photographing a single figure or a high building.

This camera is similiar in every way to the Nos. 1 and 1A Juniors, differing only in the size of the pictures, but having the same thin, compact form and reliable equipment. The No. 2C is supplied only as a focusing camera.

The camera loads in daylight with ten, six or two-exposure Autographic Film Cartridges, permitting the recording of date and title, or any data that one may desire on the negative.

Though regularly supplied with meniscus achromatic lens, the camera, if desired, will be fitted with either Rapid Rectilinear or Kodak Anastigmat, *f.* 7.7 lens, the latter giving the advantages of a fine anastigmat equipment at a low price.

The shutter is the Kodak Ball Bearing with cable release, working at speeds of $\frac{1}{25}$, $\frac{1}{50}$ and $\frac{1}{100}$ of a second, also for "bulb" and time exposures. The leaves of this shutter, opening in the shape of a star, admit the maximum of light for a given exposure.



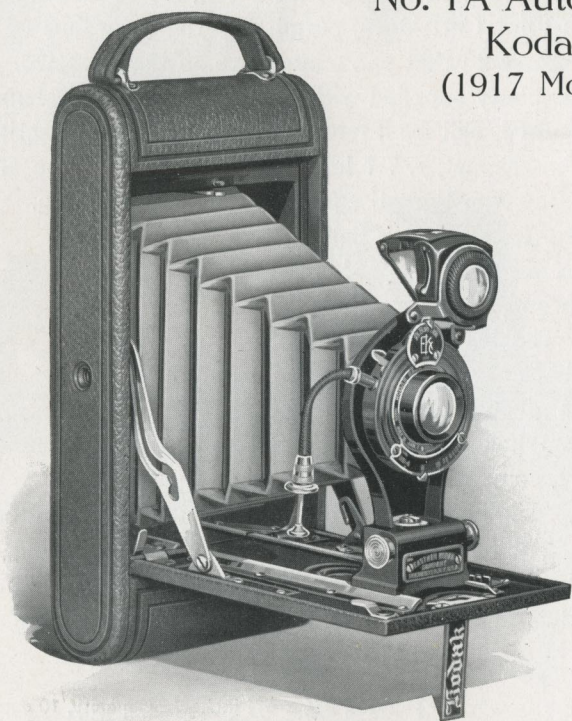
The camera has the Kodak characteristics of simplicity, compactness and reliability, and offers the Kodak high standard of efficiency. It has automatic focusing lock, a finder of the new collapsible, reversible type, and two tripod sockets. The back and bed are of aluminum, covered with fine seal grain leather, black leather bellows, and metal parts in nickel and black enamel.

DETAILS For rectangular pictures, $2\frac{7}{8} \times 4\frac{7}{8}$ inches. Capacity, 10 exposures without reloading. Size of Kodak, $1\frac{3}{4} \times 4\frac{3}{8} \times 8\frac{3}{4}$ inches. Weight, 38 ounces. Lens, meniscus achromatic. Also supplied with Rapid Rectilinear or Kodak Anastigmat, *f.* 7.7 lens, $5\frac{3}{4}$ -inch focus, if desired. Shutter, Kodak Ball Bearing with cable release. (See page 36.) Brilliant reversible collapsible finder. Two tripod sockets. Black leather bellows.

PRICE

No. 2C Autographic Kodak Junior, with meniscus achromatic lens and Kodak Ball Bearing shutter	\$12.00
Ditto, with Rapid Rectilinear lens	14.00
Ditto, with Kodak Anastigmat, <i>f.</i> 7.7 lens	19.00
Imitation Leather Carrying Case	2.00
Black Sole Leather Case, with strap	2.75
Soft Leather Carrying Bag, with strap	1.85
Autographic Film Cartridge, 10 exposures (No. A 130)60
Ditto, 6 exposures35
Ditto, 2 exposures15
Kodak Portrait Attachment. (See page 39)50

No. 1A Autographic Kodak (1917 Model)



HERE is a new Kodak in the 1A size, offering every advantage that could be desired by the most discriminating amateur, and yet so low in price as to appeal to anyone who wants a thoroughly reliable instrument. In this new model there have been incorporated many new features, adding not merely to its appearance, but to its efficiency as well. It has been made thinner, more compact and easier to load. The back is constructed upon an entirely new principle, so cleverly devised as to permit free and instant access to all interior parts of the Kodak. The finder is larger and of the new skeleton type; collapsible, reversible and easily accessible.

The No. 1A makes $2\frac{1}{2} \times 4\frac{1}{4}$ pictures, a shape that is widely adaptable to either horizontal or vertical composition. It has the autographic feature for the recording of data on the film, and loads in daylight with twelve, six and two-exposure Autographic Film Cartridges.

Although regularly supplied with the best quality Rapid Rectilinear lens, it will be fitted, if desired, with Kodak Anastigmat lens, *f.* 7.7, giving the advantages of a fine anastigmat equipment at a low price. The shutter is the Kodak Ball Bearing, with cable release, working at speeds of $\frac{1}{25}$, $\frac{1}{50}$ and $\frac{1}{100}$ of a second, and time and "bulb" exposures.

It has an improved automatic focusing lock, two tripod sockets, bellows of black leather, back and bed are covered with fine seal grain leather, and metal parts are in nickel and black enamel.

The camera is handsomely finished throughout and has the Kodak characteristics of simplicity, compactness and reliability—in fact, the practical, convenient working equipment which one expects and gets, in a Kodak.

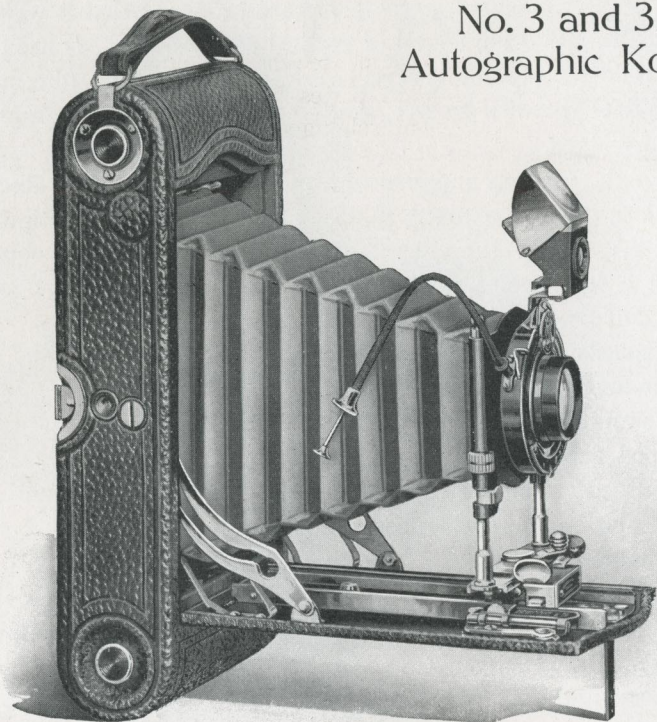


DETAILS For rectangular pictures, $2\frac{1}{2} \times 4\frac{1}{4}$ inches. Capacity, 12 exposures without reloading. Size of Kodak, $1\frac{5}{8} \times 3\frac{3}{4} \times 8$ inches. Weight, $27\frac{1}{2}$ ounces. Lens, double combination, Rapid Rectilinear, focal length, $5\frac{5}{16}$ inches, or, if desired, Kodak Anastigmat lens, *f.* 7.7. Shutter, Kodak Ball Bearing with cable release. Automatic focusing lock. Two tripod sockets. Brilliant, collapsible, reversible finder. Black leather bellows.

PRICE

No. 1A Autographic Kodak, with Rapid Rectilinear lens and Kodak Ball Bearing shutter	\$16.00
Ditto, with Kodak Anastigmat lens, <i>f.</i> 7.7	21.00
Black Sole Leather Case, with strap	2.75
Soft Leather Carrying Bag, with strap	1.60
Imitation Leather Carrying Case	1.75
Autographic Film Cartridge, 12 exposures (No. A 116)50
Ditto, 6 exposures25
Ditto, 2 exposures12
Kodak Portrait Attachment. (See page 39)50

No. 3 and 3A Autographic Kodaks



SINCE its introduction of the post-card size picture, the 3A Kodak has been the leader in the hand camera field. Although the largest of the pocket Kodak series, the camera itself may be pocketed without inconvenience, and the fact that the shape of the picture ($3\frac{1}{4} \times 5\frac{1}{2}$) is especially adapted to landscapes or portraits, has made it one of our most popular models.

By omitting no detail that is essential to the best results in general amateur photography, and adding none that is superfluous, the 3A Kodak, with its autographic feature, meets every need of the most advanced amateur.

In lens equipment, this camera is regularly supplied with the finest quality Rapid Rectilinear lens, with a speed of $f. 8$, or, if desired, the Kodak Anastigmat, $f. 7.7$ lens, offering the anastigmat

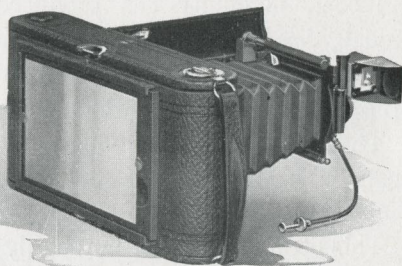
advantages at a moderate price. It is also fitted with Kodak Ball Bearing shutter with cable release; has rising and sliding front, and will accommodate glass plates by the addition of a Combination Back, which is interchangeable with the regular back. The Autographic feature, however, can be used only with Autographic Film, not with glass plates. The No. 3 Kodak is practically identical with the 3A, except in size and except that it has a capacity of twelve, six and two exposures, whereas the 3A uses ten, six and two-exposure Autographic Film Cartridges. Both are made of aluminum and covered with best quality seal grain leather.

DETAILS For rectangular pictures, No. 3, $3\frac{1}{4} \times 4\frac{1}{4}$ inches; No. 3A, $3\frac{1}{4} \times 5\frac{1}{2}$ inches. Capacity, No. 3, 12 exposures; No. 3A, 10 exposures without reloading. Size of Kodak, No. 3, $1\frac{3}{4} \times 4\frac{1}{2} \times 7\frac{1}{2}$ inches; No. 3A, $2 \times 4\frac{3}{4} \times 9\frac{1}{2}$ inches. Weight, No. 3, 23 ounces; No. 3A, 41 ounces. Lenses (regular equipment), Rapid Rectilinear, focal length for No. 3, 5 inches; No. 3A, $6\frac{3}{4}$ inches, or if desired, Kodak Anastigmat, *f.* 7.7 lenses. Shutters, Kodak Ball Bearing with cable release. Two tripod sockets. Black leather bellows. Brilliant reversible finders with hoods. Rising and sliding fronts. Automatic focusing locks. No. 3A has double focusing scale for films or plates.



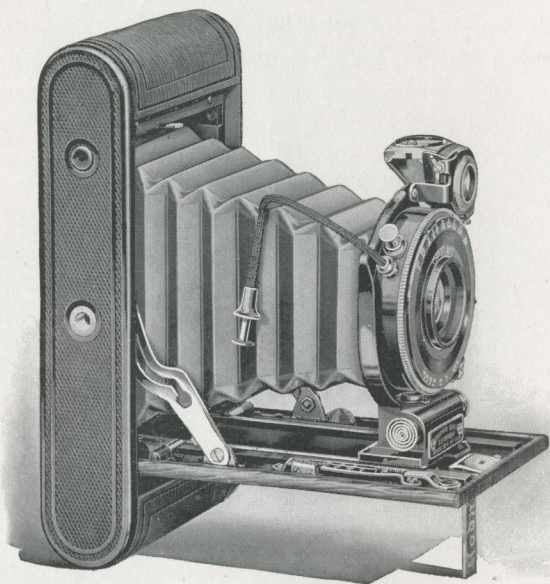
PRICES

	No. 3 $3\frac{1}{4} \times 4\frac{1}{4}$	No. 3A $3\frac{1}{4} \times 5\frac{1}{2}$
Autographic Kodak, Rapid Rectilinear lens, Kodak Ball Bearing shutter	\$18.00	\$20.00
Ditto, with Kodak Automatic shutter	23.00	25.00
Ditto, with Kodak Anastigmat lens, <i>f.</i> 7.7, and Kodak Ball Bearing shutter	23.00	25.00
Ditto, with Kodak Automatic shutter		30.00
Black Sole Leather Case, with strap	2.75	3.50
Soft Leather Carrying Bag	1.85	2.25
Imitation Leather Carrying Case	2.00	2.25
Combination Back for plates	3.50	3.50
	No. 3 $3\frac{1}{4} \times 4\frac{1}{4}$	No. 3A $3\frac{1}{4} \times 5\frac{1}{2}$
Double Glass Plate Holders, each	\$1.00	\$1.00
Autographic Film Cartridges, 12 exposures (No. A 118 for No. 3)70	
10 exposures (No. A 122 for No. 3A)70
Ditto, 6 exposures35	.40
Ditto, 2 exposures15	.20
Kodak Portrait Attachment. (See page 39)50	.50



SHOWING COMBINATION BACK

No. 1 Autographic Kodak Special



HERE, quality and speed are ingeniously combined in a camera as small as is consistent with the utmost in lens and shutter efficiency. Smaller cameras for $2\frac{1}{4}$ by $3\frac{1}{4}$ pictures, can be and have been made, but to make them smaller means to sacrifice results for mere littleness.

Kodak ingenuity has produced in the No. 1 Autographic Kodak, *Special*, a small camera with lenses of sufficient length of focus to give the desirable perspective and at the same time utilize the full speed at which they are listed.

The shutter is large enough and fast enough to work harmoniously with the high speed lenses and to give the full benefit of their speed.

This little Kodak is a thoroughly capable instrument ; optically correct, and works with smoothness and precision.

The regular equipment is the Kodak Anastigmat lens, *f.* 6.3, and Optimo shutter, with cable release, highest speed $\frac{1}{30}$ of a second, and variable speeds to one second, and it has also both "bulb" and time actions. Four other high-grade lens equipments are also listed.

It is quickly opened and extended, the focusing scale is easily adjusted for all distances, by a simple lever attachment. It has a new brilliant, collapsible, reversible finder with revolving mask for correct composition of pictures in both vertical and horizontal positions.

The camera is beautifully finished throughout and covered with the finest quality long grain calf; has black leather bellows and highly nickelled trimmings.



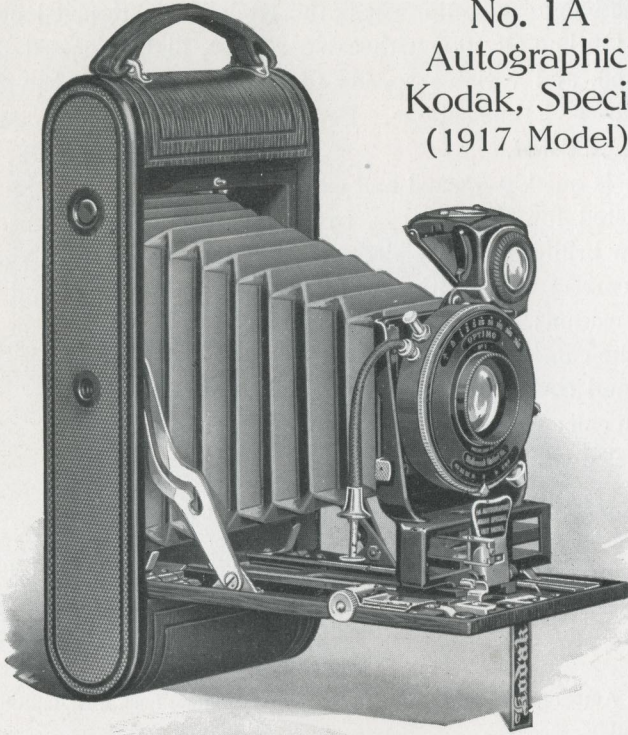
DETAILS For rectangular pictures, $2\frac{1}{4} \times 3\frac{3}{4}$ inches. Capacity, 6 exposures without reloading. Size of Kodak, $1\frac{3}{8} \times 3\frac{3}{8} \times 6\frac{3}{8}$ inches. Weight, $26\frac{1}{2}$ ounces. Lens, Kodak Anastigmat, *f.* 6.3, focal length, $4\frac{3}{8}$ inches. Shutter, Optimo with cable release. New brilliant, reversible, collapsible finder. Two tripod sockets and new lever focusing device.

PRICE

No. 1 Autographic Kodak, <i>Special</i> , Kodak Anastigmat lens, <i>f.</i> 6.3, Optimo shutter	\$40.00
Ditto, with Bausch & Lomb Kodak Anastigmat lens, <i>f.</i> 6.3, $4\frac{3}{8}$ -inch focus	45.00
Ditto, with Bausch & Lomb <i>Special</i> , Anastigmat lens, <i>f.</i> 6.3, $4\frac{5}{8}$ -inch focus	36.00
Ditto, with Bausch & Lomb <i>Tessar</i> , Series IIb, <i>f.</i> 6.3, $4\frac{5}{8}$ -inch focus	54.00
Ditto, with Bausch & Lomb <i>Tessar</i> , Series Ic, <i>f.</i> 4.5, $3\frac{1}{2}$ -inch focus	56.00
Long Grain Leather, Velvet Lined Case, with strap	3.25
Soft Leather Carrying Bag	1.60
Autographic Film Cartridge, 6 exposures, $2\frac{1}{4} \times 3\frac{3}{4}$ (No. A 120)20
Ditto, 2 exposures10
Kodak Portrait Attachment. (See page 39)50



No. 1A
Autographic
Kodak, Special
(1917 Model)



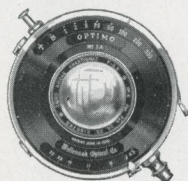
IN efficiency, beauty in design and finish, in speed and accuracy the new No. 1A, *Special*, is typical of the best that is possible in hand cameras. The finest anastigmat lenses and a shutter speed capable of taking care of the high speed of the lenses, combine to make a camera in the $2\frac{1}{2} \times 4\frac{1}{4}$ size that meets every amateur requirement for quick, accurate work. The best materials are used in its construction. It is beautifully finished throughout and covered with the finest quality long grain calf.

An important advantageous feature has been incorporated in this new camera—the Kodak Range Finder, permitting accurate focusing without the necessity of estimating the distances.

High-speed lenses require accurate focusing. The Kodak Range Finder does this simply, quickly and efficiently, as explained under the heading "Progress," on pages 3, 4, 5 and 6.

The 1A, *Special*, offers a choice of the Kodak Anastigmat, *f.* 6.3 lens, and two other high-grade lenses and is equipped with the Autographic feature. The shutter is the Optimo, operated either by cable or finger release, and in addition to the usual time and "bulb" actions, has eight variable speeds from one second to $\frac{1}{300}$ of a second.

The fast lenses give the *Specials* a great advantage over the ordinary camera in dull lights, and the high-speed shutters make them second only to cameras having focal plane shutters for photographing rapidly moving objects.



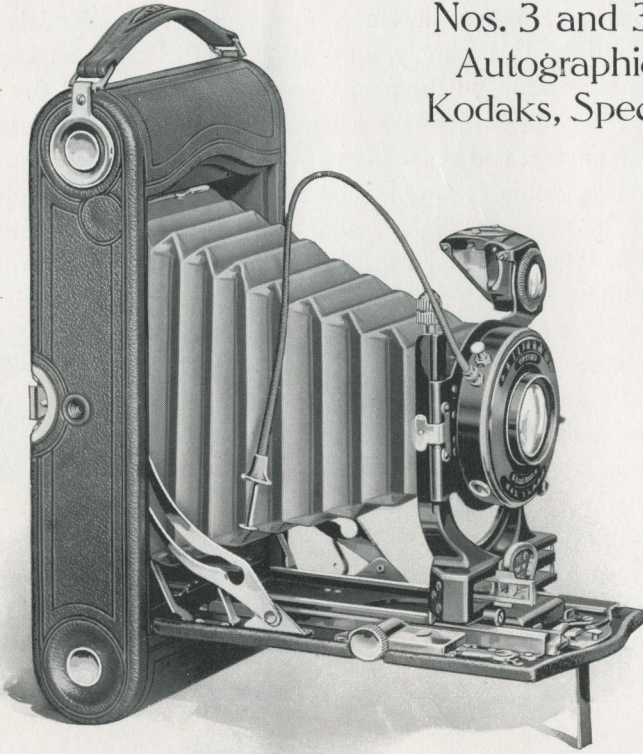
The camera has rising front; brilliant, collapsible, reversible finder with adjustable mask; rack and pinion for focusing, and the usual focusing scale, in addition to the Kodak Range Finder. The bellows is of selected black leather, metal parts highly nicked and altogether the harmony of high quality and general utility, show that honest workmanship is a habit in the Kodak factories.

DETAILS For rectangular pictures, $2\frac{1}{2} \times 4\frac{1}{4}$ inches. Capacity, 12 exposures without reloading. Size of Kodak, $1\frac{5}{8} \times 3\frac{3}{4} \times 8$ inches. Weight, 32 ounces. Lens, Kodak Anastigmat, speed, *f.* 6.3, focal length, $5\frac{1}{16}$ inches. Shutter, Optimo. Two tripod sockets. Brilliant, reversible, collapsible finder with adjustable mask. Rack and pinion for focusing.

PRICE

No. 1A Autographic Kodak, <i>Special</i> , Kodak Anastigmat lens, <i>f.</i> 6.3, Optimo shutter	\$45.00
Ditto, with Bausch & Lomb Kodak Anastigmat, <i>f.</i> 6.3 lens, $5\frac{1}{4}$ -inch focus	49.00
Ditto, with Bausch & Lomb Tessar Series IIb Anastigmat lens, <i>f.</i> 6.3, $5\frac{3}{8}$ -inch focus	59.50
Grain Leather, Velvet Lined Case, with strap	3.50
Soft Leather Carrying Bag	1.60
Autographic Film Cartridge, 12 exposures (No. A 116)50
Ditto, 6 exposures25
Ditto, 2 exposures12
Kodak Portrait Attachment. (See page 39)50

Nos. 3 and 3A
Autographic
Kodaks, Special



EVERY improvement that can possibly contribute to greater efficiency is incorporated in the *Specials*. In finish, in optical and mechanical attainments they have maintained a leadership through their own perfections.

In 1915, the final touch seemed to have been added when they became autographic. Now, another improvement of intrinsic worth—the Kodak Range Finder has been added to the 3A *Special*. The long focus and high speed (large stop opening) lenses used with a camera of this size and type require accurate focusing. The Kodak Range Finder provides for such focusing, simply and efficiently, and means better results and fuller value to the camerist from his high speed lenses. The introductory

matter, pages 3, 4 and 5, explains how simply it works. Above all, the 3A *Special* is optically efficient. The lenses are large (fast) and the focal length long in proportion to the size of the picture.

It offers a choice of the Kodak Anastigmat, *f.* 6.3 lens, and two other high-grade lenses. The shutter is the Optimo, operated either by cable or finger release, and has variable speeds from one second to $\frac{1}{300}$ of a second. The camera is made of aluminum, has rising front and the usual focusing scale in addition to the Kodak Range Finder. It is richly finished in genuine Persian Morocco, has bellows of selected black leather and metal parts are highly nickeled.

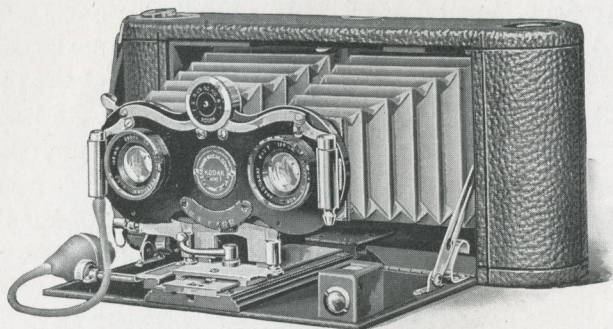
The No. 3 *Special* has the same lenses, shutter equipment and finish but is not equipped with the Kodak Range Finder.



DETAILS For rectangular pictures, No. 3, $3\frac{1}{4} \times 4\frac{1}{4}$ inches; No. 3A, $3\frac{1}{4} \times 5\frac{1}{2}$ inches. Capacity, No. 3, 12 exposures; No. 3A, 10 exposures without reloading. Size of Kodaks, No. 3, $1\frac{1}{8} \times 4\frac{1}{2} \times 8$ inches; No. 3A, $2 \times 4\frac{3}{4} \times 9\frac{1}{2}$ inches. Weight, No. 3, 32 ounces; No. 3A, 42 ounces. Lenses, Kodak Anastigmat, speed, *f.* 6.3, focal length, No. 3, 5 inches; No. 3A, $6\frac{3}{4}$ inches. Shutters, Optimo with cable release. Two tripod sockets. Brilliant collapsible reversible view finders with adjustable window also Kodak Range Finder for No. 3A; brilliant reversible finder with hood and spirit level for No. 3. Rack and pinion for focusing.

PRICES

	No.3 $3\frac{1}{4} \times 4\frac{1}{4}$	No. 3A $3\frac{1}{4} \times 5\frac{1}{2}$
Autographic Kodak, <i>Special</i> , Kodak Anastigmat lens, <i>f.</i> 6.3, and Optimo shutter	\$47.00	\$55.00
Ditto, with Bausch & Lomb Kodak Anastigmat lens, <i>f.</i> 6.3, $6\frac{3}{4}$ -inch focus for No. 3A	51.00	66.00
Ditto, with Bausch & Lomb Tessar Series IIb Anastigmat lens, <i>f.</i> 6.3, $6\frac{7}{8}$ -inch focus for No. 3A	61.50	77.00
Grain Leather, Velvet Lined Case, with strap	3.50	4.25
Soft Leather Carrying Bag	1.85	2.25
Combination Back	4.00	4.00
Double Glass Plate Holders, each	1.00	1.00
Autographic Film Cartridge, 12 exposures (No. A 118 for No. 3); 10 exposures (No. A 122 for No. 3A)70	.70
Ditto, 6 exposures35	.40
Ditto, 2 exposures15	.20
Kodak Portrait Attachment. (See page 39)50	.50



Stereo Kodak

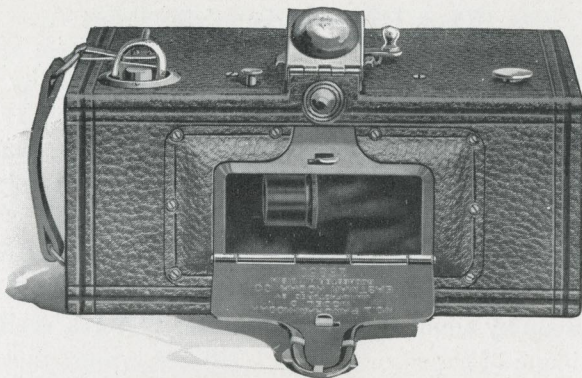
THE correct visual effect in a picture can only be obtained by the use of twin lenses, followed by viewing the twin pictures through a stereoscope. Such pictures give the full effect of depth, roundness, distance and perspective that we see with the eyes. There is no better camera for making such pictures than the Stereo Kodak.

The Stereo is supplied with carefully matched Kodak Anastigmat *f.* 7.7 lenses of the best quality; the shutter is of the double valve automatic type, for retarded speeds from 1 to $\frac{1}{100}$ of a second, also bulb and time exposures. The camera is equipped with rising front; rack and pinion for focusing, view finder and tripod socket. It is covered with fine seal grain leather and metal parts are in nickel and black enamel.

DETAILS For standard Stereo size pictures. Capacity, 6 exposures without reloading. Size of Kodak, $2\frac{3}{8} \times 4\frac{3}{4} \times 10\frac{1}{2}$ inches. Weight, 47 ounces. Lenses, Kodak Anastigmat, *f.* 7.7, focal lengths, $5\frac{1}{8}$ inches. Shutter, double valve, Stereo Automatic, with bulb release. Brilliant finder, tripod socket, rising front, rack and pinion for focusing and black leather bellows.

PRICE

Stereo Kodak, Model No. 1, Kodak Anastigmat lenses, <i>f.</i> 7.7, and Stereo	
Automatic shutter	\$45.00
Black Sole Leather Carrying Case	3.50
N. C. Film Cartridge, 6 exposures, for Stereo (No. 101)60
Ditto, 3 exposures for Stereo30
Stereo Self-transposing printing frame. (See page 62)	2.00
Kodak Portrait Attachment50



The Panoram Kodaks

THE Panoram Kodak does a special kind of work—a very desirable kind of work which cannot be done with a camera of any other type.

As its name implies, it is constructed so as to take panoramic pictures of outdoor groups, landscapes, mountain views, and the like.

Panoram Kodaks use the regular daylight loading N. C. Kodak film, they are carefully made, have genuine leather coverings and nickered fittings.

The No. 1 has a scope of 112 degrees, while the No. 4 embraces an angle of 142 degrees. Panoram Kodaks cannot be used successfully indoors.

DETAILS For rectangular pictures, No. 1, $2\frac{1}{4}$ x 7 inches; No. 4, $3\frac{1}{2}$ x 12 inches. Capacity, No. 1, 6 exposures; No. 4, 4 exposures without reloading. Size of Kodak, No. 1, $3\frac{3}{8}$ x $4\frac{3}{8}$ x $7\frac{3}{8}$ inches; No. 4, $4\frac{3}{4}$ x $5\frac{5}{8}$ x $10\frac{1}{8}$ inches. Weight, No. 1, 24 ounces; No. 4, 2 pounds, 14 ounces. Lenses, specially selected as to quality and focal length. Shutter, Panoram. Two tripod sockets. Brilliant finder with hood. No. 1 uses No. 1 F. P. Kodak; No. 4, No. 4 B. E. Film Cartridges.

PRICES

	No. 1	No. 4
Panoram Kodak	\$10.00	\$22.00
Black Sole Leather Carrying Case, with shoulder strap	3.75	4.50
N. C. Film Cartridge, No. 1, 6 exposures, $2\frac{1}{4}$ x 7 (No. 105); No. 4, 4 exposures, $3\frac{1}{2}$ x 12 (No. 103)40	.75
Ditto, 3 exposures20	
Ditto, 2 exposures45

The Box Brownies

THAT the Brownie idea of simplicity and reliability combined in an inexpensive camera, has stood the test of years, is proven by the thousands of Brownie enthusiasts all over the world, who are making perfectly satisfactory pictures with them.

While they are especially popular among children on account of their simplicity, the fact they are so practical has caused them to be taken up by adults who wish to make pictures easily and at the minimum of expense.



Nos. 0 and 2 Brownies

The No. 0 Brownie makes the popular Vest Pocket size pictures, $1\frac{5}{8} \times 2\frac{1}{2}$ inches, and the No. 2, $2\frac{1}{4} \times 3\frac{1}{4}$ pictures. Both cameras are accurate, reliable, efficient and economical to operate and anybody can make good pictures with them from the start. They have the automatic shutter for snap-shots and time exposures; the No. 0 with one stop and No. 2 with three stops.

Each has carefully tested meniscus lens and view finders, for vertical and horizontal exposures.

DETAILS Nos. 0 and 2 Brownies. For rectangular pictures, No. 0, $1\frac{1}{8} \times 2\frac{1}{2}$ inches; No. 2, $2\frac{1}{4} \times 3\frac{3}{4}$ inches. Capacity, No. 0, 8 exposures; No. 2, 6 exposures without reloading. Size of camera, No. 0, $2\frac{5}{8} \times 3\frac{3}{8} \times 4\frac{1}{8}$ inches; No. 2, $3\frac{1}{4} \times 4 \times 5\frac{5}{8}$ inches. Weight, No. 0, 8 ounces; No. 2, 13 ounces. Lenses, meniscus. Shutters, Eastman Rotary. Two finders.

Nos. 2A and 3 Brownies

All the box Brownies are fixed focus and consequently anyone can, with reasonable care, make excellent pictures with them. The No. 2A makes pictures $2\frac{1}{2} \times 4\frac{1}{4}$ inches, while the No. 3 makes $3\frac{1}{4} \times 4\frac{1}{4}$ pictures. Each has carefully tested meniscus achromatic lens, Eastman Rotary Shutter with three stops, two view finders, and the No. 3 is supplied with two tripod sockets. Both cameras are covered with durable imitation leather covering, with metal parts nicked, and have the daylight-all-the-way feature of the Kodaks.

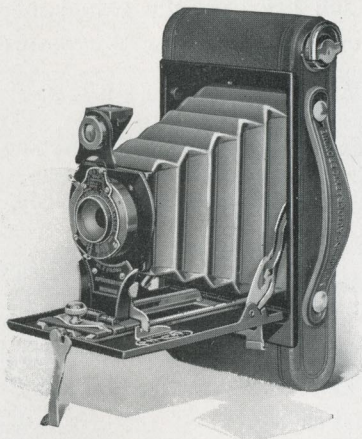
By the addition of a Kodak Portrait Attachment these cameras can be used with excellent success in home portraiture.

DETAILS Nos. 2A and 3 Brownies. For rectangular pictures, No. 2A, $2\frac{1}{2} \times 4\frac{1}{4}$ inches; No. 3, $3\frac{1}{4} \times 4\frac{1}{4}$ inches. Capacity, 12 exposures without reloading. Size of camera, No. 2A, $3\frac{7}{8} \times 5\frac{1}{8} \times 6\frac{1}{8}$ inches; No. 3, $4\frac{3}{8} \times 5\frac{1}{8} \times 6\frac{1}{8}$ inches. Weight, No. 2A, 21 ounces; No. 3, 24 ounces. Lenses, meniscus achromatic. Shutters, Eastman Rotary with three stops. Two finders.

PRICES

	No. 0	No. 2	No. 2A	No. 3
Nos. 0 and 2 Brownie Cameras, meniscus lenses, Eastman Rotary shutters	\$1.25	\$2.00		
Nos. 2A and 3 Brownie Cameras, meniscus achromatic lenses, Eastman Rotary shutters			\$3.00	\$4.00
Brownie Carrying Case50	.75	1.00	1.00
N. C. Film Cartridge, 8 exposures, $1\frac{1}{8} \times 2\frac{1}{2}$ (No. 127) for No. 020			
Ditto, 6 exposures, $2\frac{1}{4} \times 3\frac{1}{4}$ (No. 120) for No. 220		
Ditto, 12 exposures, $2\frac{1}{2} \times 4\frac{1}{4}$ (No. 116) for No. 2A; $3\frac{1}{4} \times 4\frac{1}{4}$ (No. 124) for No. 350	.70
Ditto, 6 exposures25	.35
Kodak Portrait Attachment. (See page 39)50	.50	.50	.50
Developing and Printing Outfit. (See page 44)90	1.50	1.50	1.50

No. 2 Folding Autographic Brownie



LAST year the Folding Brownies were made Autographic and put out in a new form which was a long step ahead in compactness and efficiency, while retaining all the Brownie simplicity of operation. Now they are still further improved by making them with round ends.

The No. 2 loads in daylight with Autographic Film Cartridges of six exposures. Fitted with meniscus achromatic or Rapid Rectilinear lens as desired. Has Kodak Ball Bearing shutter with variable snapshot speeds of $\frac{1}{25}$ and $\frac{1}{50}$ of a second; also time and "bulb" actions and is equipped with Kodak Autotime Scale.

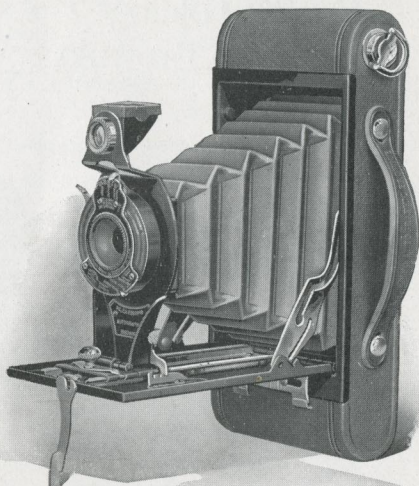
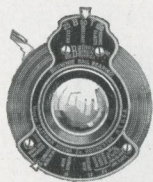
Has reversible finder, automatic focusing lock, two tripod sockets; is made of metal, covered with a fine imitation leather; is well made and carefully finished in every detail.

DETAILS For rectangular pictures, $2\frac{1}{4} \times 3\frac{1}{4}$ inches. Capacity, 6 exposures without reloading. Size of camera, $1\frac{1}{4} \times 3\frac{1}{8} \times 6\frac{1}{2}$ inches. Weight, 19 ounces. Lens, meniscus achromatic. Also supplied with Rapid Rectilinear lens, if desired. Shutter, Kodak Ball Bearing, equipped with Kodak Autotime Scale. Reversible finder, two tripod sockets, automatic focusing lock, black leather bellows.

PRICE

No. 2 Folding Autographic Brownie, meniscus achromatic lens and Kodak Ball Bearing shutter	\$6.00
Ditto, with Rapid Rectilinear lens	7.50
Carrying Case for No. 2 Folding Autographic Brownie90
Autographic Film Cartridge, 6 exposures, $2\frac{1}{4} \times 3\frac{1}{4}$ (No. A 120)20
Ditto, 2 exposures10
Kodak Portrait Attachment. (See page 39)50

No. 2A Folding Autographic Brownie



LIKE the No. 2, this Brownie is now supplied with round ends. It has the Autographic feature which permits the dating and titling of negatives, and the same simplicity and dependability that have characterized the Brownie line in the past.

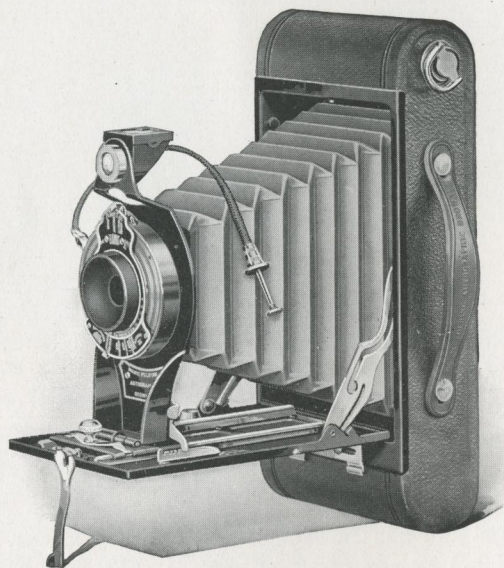
The No. 2A loads with twelve, six or two-exposure Autographic Film Cartridges and has the Kodak Ball Bearing shutter, working at variable indicated speeds of $\frac{1}{25}$, $\frac{1}{30}$ and $\frac{1}{100}$ of a second, as well as the time and "bulb" actions. The camera has automatic focusing lock; is made of metal, covered with fine imitation leather, bellows of black leather and nickel and black enamel fittings.

DETAILS For rectangular pictures, $2\frac{1}{2} \times 4\frac{1}{4}$ inches. Capacity, 12 exposures without reloading. Size of camera, $1\frac{7}{8} \times 3\frac{3}{8} \times 7\frac{7}{8}$ inches. Weight, 25 ounces. Lens, meniscus achromatic. Also supplied with Rapid Rectilinear lens if desired. Shutter, Kodak Ball Bearing, equipped with Kodak Autotime Scale. Reversible finder, two tripod sockets, automatic focusing lock, black leather bellows.

PRICE

No. 2A Folding Autographic Brownie, meniscus achromatic lens and Kodak Ball Bearing shutter	\$8.00
Ditto, with Rapid Rectilinear lens	10.00
Carrying Case for No. 2A Folding Autographic Brownie	1.00
Autographic Film Cartridge, 12 exposures, $2\frac{1}{2} \times 4\frac{1}{4}$ (No. A 116)50
Ditto, 6 exposures25
Ditto, 2 exposures12
Kodak Portrait Attachment. (See page 39)50

No. 2C Folding Autographic Brownie



THE popularity of the 2C Brownie, since its introduction about a year ago, has justified the claim that $2\frac{7}{8} \times 4\frac{7}{8}$ pictures would be recognized as one of the standard amateur sizes. The somewhat elongated shape gives the limit of picture for the area, and whether it be a horizontal landscape or in the vertical, a single figure or a high building, it fits the view. Not only are the proportions of the picture universal in their application, but the narrow, thin camera fits the pocket—and easily.

The No. 2C Folding Autographic Brownie is now made with round ends, and its operation is so simplified as to make the taking of good pictures a matter of course.

It is small in size, neat in appearance, has a fine quality meniscus achromatic lens, or, if desired, the Rapid Rectilinear lens. The camera loads in daylight with ten, six or two-exposure Autographic Film Cartridges (No. A 130), and has the Kodak Ball Bearing shutter, with both cable and finger release, and snapshot speeds of $\frac{1}{25}$, $\frac{1}{50}$ and $\frac{1}{100}$ of a second, as well as the usual time and "bulb" actions. The camera has a very simple loading device and possesses the autographic feature for the recording of data on the film.

An automatic focusing lock permits the quick focusing of objects at any distance. The camera is made of metal, covered with durable imitation leather, has black leather bellows and nickel and black enamel fittings.

The No. 2C Folding Autographic Brownie is exceedingly compact for a camera making $2\frac{7}{8} \times 4\frac{7}{8}$ pictures, although nothing has been sacrificed in length of focus of lens or efficiency of shutter in order to reduce the size.

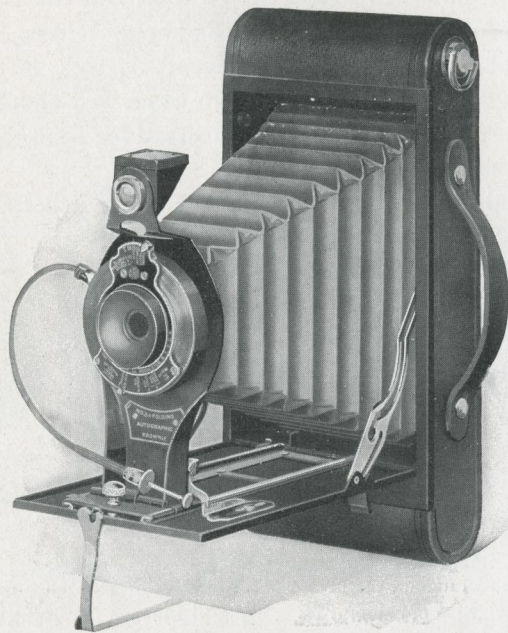


DETAILS For rectangular pictures, $2\frac{7}{8} \times 4\frac{7}{8}$ inches. Capacity, 10 exposures without reloading. Size of camera, $1\frac{3}{4} \times 3\frac{3}{4} \times 8\frac{1}{8}$ inches. Weight, 25 ounces. Lens, meniscus achromatic. Also supplied with Rapid Rectilinear lens, if desired. Shutter, Kodak Ball Bearing, equipped with Kodak Autotime Scale. Reversible finder, two tripod sockets, automatic focusing lock, black leather bellows.

PRICE

No. 2C Folding Autographic Brownie, meniscus achromatic lens, and Kodak Ball Bearing shutter	\$9.00
Ditto, with Rapid Rectilinear lens	11.00
Carrying Case for No. 2C Folding Autographic Brownie	1.00
Autographic Film Cartridges, 10 exposures, $2\frac{7}{8} \times 4\frac{7}{8}$ (No. A 130) . .	.60
Ditto, 6 exposures35
Ditto, 2 exposures15
Kodak Portrait Attachment50

No. 3A Folding Autographic Brownie



THE No. 3A Brownie is sure to delight anyone who desires to make pictures the post-card size ($3\frac{1}{4} \times 5\frac{1}{2}$), at the minimum of expense and with the characteristic Brownie simplicity. In its present form, the 3A is a long step ahead of its predecessor in compactness, utility and efficiency. It has about one-half the bulk of the former model, and with the round ends, like the Kodaks, will slip into the pocket without difficulty.

The camera is not only cleverly constructed and well made throughout, but may be loaded almost instantly; is quick to operate and, like the other Folding Brownies, possesses the autographic feature for the recording of data on each negative at the time of exposure.

It has a fine quality meniscus achromatic lens, or if desired, will be equipped with Rapid Rectilinear lens. The shutter is the Brownie Ball Bearing with cable release; has time and "bulb" actions and snap-shot speeds of $\frac{1}{25}$, $\frac{1}{30}$ and $\frac{1}{100}$ of a second, and is supplied with Kodak Autotime Scale as an aid to correct exposure.

The camera loads in daylight with ten, six or two-exposure Autographic Film Cartridges (No. A 122); has an automatic focusing lock which permits the quick focusing of objects at any distance. Has reversible finder, two tripod sockets, carrying handle; is constructed of metal, covered with a fine quality imitation leather, bellows of black leather, nickel and black enamel fittings and is carefully made and finished throughout.

The No. 3A Folding Autographic Brownie is so simple to operate that anyone, without experience, can secure good results with it from the very start.



DETAILS For rectangular pictures, $3\frac{1}{4} \times 5\frac{1}{2}$ inches. Capacity, 10 exposures without reloading. Size of camera, $1\frac{1}{8} \times 4\frac{5}{8} \times 9\frac{5}{8}$ inches. Weight, 38 ounces. Lens, meniscus achromatic. Also supplied with Rapid Rectilinear lens if desired. Shutter, Brownie Ball Bearing with cable release, also equipped with Kodak Autotime Scale. Reversible finder, two tripod sockets, automatic focusing lock, black leather bellows.

PRICE

No. 3A Folding Autographic Brownie, meniscus achromatic lens and Brownie Ball Bearing shutter	\$10.00
Ditto, with Rapid Rectilinear lens	12.00
Carrying Case for No. 3A Folding Autographic Brownie	1.00
Autographic Film Cartridge, 10 exposures, $3\frac{1}{4} \times 5\frac{1}{2}$ (No. A 122)70
Ditto, 6 exposures40
Ditto, 2 exposures20
Kodak Portrait Attachment. (See page 39)50

Kodak Ball Bearing Shutter

The Kodak Ball Bearing has proved to be the most practical shutter for all ordinary uses. Its leaves work on ball bearings, giving it remarkable smoothness and precision in action and as they open and close in the shape of a star, admit the maximum of light during the entire period of exposure. The shutter is fitted with cable release which is sure at all times; also has finger release and iris diaphragm. The No. 0 Ball Bearing shutter as supplied with the Vest Pocket



Kodak and No. 2 Folding Brownie, operates with finger release only; has variable speeds of $\frac{1}{25}$ and $\frac{1}{30}$ of a second and Kodak Autotime Scale. Fitted to the No. 1 Kodak Junior with meniscus achromatic and Rapid Rectilinear lenses, the No. 0 has cable release and not Autotime Scale.

The No. 1 shutter has variable indicated speeds of $\frac{1}{25}$, $\frac{1}{30}$ and $\frac{1}{100}$ of a second, as well as "bulb" and time actions. It is regularly fitted to the No. 1A Kodak Junior, No. 2A Folding Brownie and Nos. 1A and 3 Kodaks and with No. 1 Kodak Junior, when equipped with the Kodak Anastigmat, *f.* 7.7 lens.

The No. 2 shutter is fitted to No. 2C Kodak Junior, No. 2C Folding Brownie and No. 3A Kodak. This has the same speeds as the No. 1 shutter but is larger.

Kodak Automatic Shutter

The Kodak Automatic is an unusually accurate shutter, adjusted for time, "bulb" and graduated speeds from one second to $\frac{1}{100}$ of a second. It is supplied with Kodak Autotime Scale except when fitted with the Kodak Anastigmat, *f.* 7.7 lens. The shutter is listed as a special equipment on the Nos. 3 and 3A Autographic Kodaks.

Optimo Shutter

The Optimo is one of the best and most accurate shutters for use with fast Anastigmat lenses. It has remarkable precision, smoothness, ease in action and sufficient speed to photograph rapidly moving objects under favorable conditions. The Optimo is now supplied with all the *Specials*. In making an exposure, its five leaves revolve — opening and closing as well — in a star-shaped aperture. In addition to the usual “bulb” and time actions, the Optimo has eight indicated speeds varying from one second to $\frac{1}{300}$ of a second. This thoroughly reliable shutter is of the setting type and works accurately without jar, by either cable or finger release.



It is beautifully finished in nickel and black enamel, with the engraving in gold.

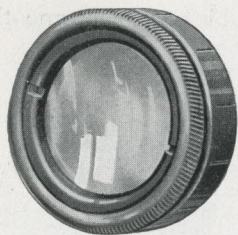
Kodak Lenses

The meniscus achromatic and Rapid Rectilinear lenses supplied with the regular models of the Kodaks and Brownie cameras, are perfectly adapted to the everyday requirements of the average amateur, producing exceedingly good results under all normal conditions of light. They are the best lenses of their respective types that can be secured.

Since the introduction of the Kodak Anastigmat, *f.* 7.7 lenses, the use of Anastigmats has become very general. These *f.* 7.7 lenses are inexpensive, but they produce Anastigmat results. They are speedier than the fastest rectilinear lenses; in quality, depth, definition (sharpness) and flatness of field, they equal the best Anastigmats made. Their popularity led to the announcement, last season, of the Kodak Anastigmat, *f.* 6.3 lenses, with the same high quality, and still greater speed.

For Kodak use, you cannot obtain better lenses, than the Kodak Anastigmats, at any price.

Kodak Portrait Attachment



THERE are so many ways in which one can use a Kodak Portrait Attachment with a Kodak or Brownie Camera, that it is almost an indispensable accessory. They are not only serviceable for making portraits, but also for photographing any small object, such as flowers, fruits, in fact, any composition, at close range. Subjects that with the regular lens equipment appear too small in the picture to be satisfactory, can be shown much larger with the Kodak Portrait Attachment.

One can work up close to the subject and thereby secure bust portraits as large as the size of the negative will permit. The attachment is simply an extra lens, which fits over the barrel of the regular lens. This does not alter the exposure nor affect the operation of the instrument in any way, except to make the lens cut sharply when close to the subject, thereby giving a larger image.

Please order by number, or if required for older models or cameras with special equipments, specify shutter and size of camera.



MADE WITH KODAK AND KODAK
PORTRAIT ATTACHMENT

Prices—Kodak Portrait Attachments

No. 1. For Nos. 0 and 2 Brownies, and Vest Pocket Autographic Kodak with single lens	\$0.50
No. 2. For No. 2A Brownie50
No. 3. For No. 1A Autographic Kodak Junior, both single and double lens; Nos. 1A and 3 Autographic Kodaks, with double lenses; No. 2A Folding Autographic Brownie, both single and double lens, and No. 1 Kodak Junior with Kodak Anastigmat, <i>f. 7.7</i> lens50
No. 4. For No. 3 Brownie50
No. 5. For No. 2C Autographic Kodak Junior, both single and double lens, Nos. 2C and 3A Folding Autographic Brownies, both single and double lenses and No. 3A Autographic Kodak with either B. B. or Kodak Automatic shutter50
No. 6. For Nos. 1A and 3 Autographic Kodaks, <i>Special</i> , Nos. 1A and 3 Autographic Kodaks with Kodak Anastigmat, <i>f. 7.7</i> lens, and No. 1 Autographic Kodak, <i>Special</i>50
No. 7. For No. 3A Autographic Kodak, <i>Special</i> ; No. 3A Autographic Kodak and No. 2C Junior with Kodak Anastigmat, <i>f. 7.7</i> lenses, and Stereo Kodak model 150
No. 8. For No. 1 Autographic Kodak Junior, both single and double lens, Vest Pocket Autographic Kodak, <i>Special</i> , and No. 2 Folding Autographic Brownie, both single and double lens50
No. 9. For No. 3 Autographic Kodak with Kodak Automatic shutter50
No. 13. For No. 1A Autographic Kodak Junior, with Kodak Anastigmat lens, <i>f. 7.7</i> (with engraving on front of lens barrel)50

Kodak Sky Filters and Color Filters

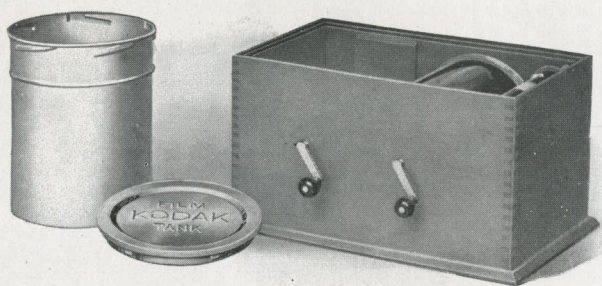
The Sky Filter is intended to equalize the great difference of light between the sky and foreground in landscape photography. Only the upper half of the filter is stained a yellow color to relieve the brightness from the sky, while the lower half of the filter being colorless, permits a normal exposure for the foreground.

Kodak Sky Filters are mounted in the same manner as Kodak Portrait Attachments.

The Kodak Color Filters are of great value in outdoor photography, and for all subjects embracing colors which act weakly on the sensitive film, as they hold back the strong blue and violet rays, affording the weaker colors time to record. The Kodak Color Filters are mounted in the same manner as the Kodak Portrait Attachment.

Prices—Kodak Sky Filters and Color Filters

No. 1. For Vest Pocket, Autographic Kodak with single lens; Nos. 0 and 2 Brownies	\$0.50
No. 2. For No. 2A Brownie50
No. 3. For No. 1A Autographic Kodak Junior, both single and double lens; Nos. 1A and 3 Autographic Kodaks, with double lenses; No. 2A Folding Autographic Brownie, both single and double lens, and No. 1 Kodak Junior with Kodak Anastigmat, <i>f. 7.7</i> lens75
No. 4. For No. 3 Brownie75
No. 5. For No. 2C Autographic Kodak Junior, both single and double lens, Nos. 2C and 3A Folding Autographic Brownies, both single and double lenses and No. 3A Autographic Kodak with either B. B. or Kodak Automatic shutter	1.00
No. 6. For Nos. 1A and 3 Autographic Kodaks, <i>Special</i> , Nos. 1A and 3 Autographic Kodaks with Kodak Anastigmat, <i>f. 7.7</i> lens, and No. 1 Autographic Kodak, <i>Special</i>75
No. 7. For No. 3A Autographic Kodak, <i>Special</i> ; Nos. 3A Autographic Kodak and 2C Junior with Kodak Anastigmat, <i>f. 7.7</i> lenses, and Stereo Kodak, model 1.	1.00
No. 8. For No. 1 Autographic Kodak Junior, both single and double lens, Vest Pocket Autographic Kodak, <i>Special</i> , and No. 2 Folding Autographic Brownie, both single and double lens50
No. 9. For No. 3 Autographic Kodak with Kodak Automatic shutter50
No. 13. For No. 1A Autographic Kodak Junior, with Kodak Anastigmat lens, <i>f. 7.7</i> (with engraving on front of lens barrel)75



Kodak Film Tank

THE Kodak Film Tank automatically develops every roll of film put into it, just as well as that roll of film could be developed by the most experienced photographer. If directions are followed, if the chemicals are mixed and the temperature regulated according to instructions, a boy or girl can get just as good results from the Kodak Film Tank as can an expert by any method.

In other words, every roll of film put into the film tank, where the simple directions are implicitly followed, will come out developed as well, or better, than that roll of film could be developed in the dark room by the most experienced photographer. And it is very simple, it eliminates the dark room entirely, developing the film in broad daylight, and is so compact as to be easily carried and used anywhere.

The Kodak Film Tank consists of a winding box, a light-proof apron, and a heavily nickered brass solution cup with cover. In the Brownie Film Tank, however, no cover is necessary as the film roll itself is turned. All articles can be packed in the box, making the entire outfit self-contained.

The film to be developed is placed upon a reel in the winding box, the cover is placed on the box and the film is wound around an axis in combination with the apron, in such fashion that, when completely wound, the apron protects the film effectually from light, and may be removed from the winding box safely at any time. It is then lowered into the cup of developer, the cover attached and the film left to develop for twenty minutes. After development the film is removed for fixing.

Every step is performed in daylight and the exact time necessary for development, in combination with the chemical formula, has been scientifically worked out, so that all differences of exposure within reasonable bounds are taken care of. Especial attention is called to the 3½-inch size, for the development of the new 2C size films.

Those who wish to develop more than one roll at a time can do so without purchasing extra tanks complete, by securing duplicating outfits as listed below.

PRICES

Brownie Kodak Film Tank, for use with No. 1, No. 2 and No. 2 Folding Pocket Brownie cartridges, complete	\$2.75
Cover for same25
Spool Adapter, for Vest Pocket Kodak Film10
Vest Pocket Kodak Film Tank, for Vest Pocket cartridges, complete	2.75
2½-inch Kodak Film Tank, for use with all Kodak or Brownie cartridges having a film width of 2½ inches or less, complete	4.00
3½-inch Kodak Film Tank, for use with all Kodak and Brownie cartridges having a film width of 3½ inches or less, complete	5.50
5-inch Kodak Film Tank, for use with all Kodak and Brownie cartridges having a film width of 5 inches or less, complete	6.50
7-inch Kodak Film Tank, for use with No. 5 Cartridge Kodak or shorter film cartridges, complete	8.00
Duplicating Outfit, consisting of one solution cup, one transferring reel, and one apron, for Brownie Kodak Film Tank	1.40
Ditto, for Vest Pocket Film Tank	1.40
Ditto, for 2½-inch Kodak Film Tank	2.00
Ditto, for 3½-inch Kodak Film Tank	2.75
Ditto, for 5-inch Kodak Film Tank	3.25
Ditto, for 7-inch Kodak Film Tank	4.00
Flexible Rubber Tray, for 3½-inch Kodak Film Tank	1.40
* Kodak Tank Developer Powders for Brownie Kodak Film Tank, per package, ½ dozen15
Ditto, for Vest Pocket Tank15
Ditto, for 2½-inch tank, per package, ½ dozen20
Ditto, for 3½-inch tank, per package, ½ dozen20
Ditto, for 5-inch tank, per package, ½ dozen25
Ditto, for 7-inch tank, per package, ½ dozen25
* Kodak Acid Fixing Powder, per ¼-pound package10
Ditto, per ½-pound package15
Ditto, per 1-pound package25

* Prices subject to change without notice.

No. 2 Brownie Developing Box

THE Brownie Developing Box is a simplified and modified form of the Kodak Film Tank, offering the same assurance of perfectly developed film, and at the same time is so simple that any boy or girl can readily understand and operate it.

It consists of a metal box with cover, just long enough to accommodate a roll of No. 1 or No. 2 Brownie Film in one loop.

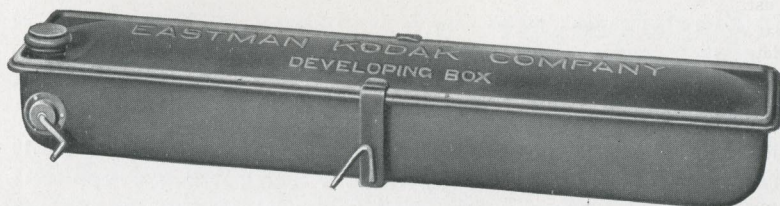
To develop, the roll of film is inserted in the spool carrier, and by means of a cord and winding shaft the film is unrolled and carried around a roller bearing, thus exposing the film to the action of the developer.

Before unrolling the film, the developer is poured in the box and the cover put in place; all these operations being performed in daylight. The film is then unrolled by turning the crank, when the box is rocked on its standard for six minutes. The developer is then poured off and box filled with water to wash out developer, after which film is removed and fixed in daylight.

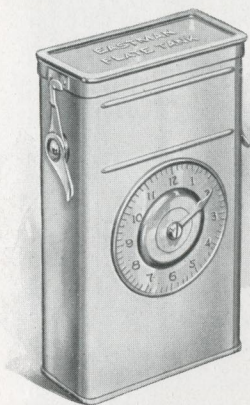
It provides an excellent means for those who have No. 1 or No. 2 Brownie Cameras, of developing their films simply and accurately.

PRICE

No. 2 Brownie Developing Box	\$1.25
Brownie Developing Box Powders, per package of 615
Kodak Acid Fixing Powders, ½-pound package.15
Ditto, ¼-pound package10



Eastman Plate Tank



WHAT the film tank has done for films, the plate tank does for plates. The idea of the two tanks is based upon the same time and temperature system of development, with, of course, such differences in actual construction of the tanks as are required by the physical differences between films and plates. And as plates must be unloaded in a dark room, the plate tank cannot offer the advantage of daylight quite all the way, but it takes only a few moments in the dark room to load this tank, after which it may be brought out into any light for development.

The device consists of a metal solution cup with cover, a cage for holding 12 or less plates, and a loading fixture for loading the plates in the cage.

The exposed plates are loaded into the cage and placed in the tank, which has been filled with developer, in the dark room and the tank cover fastened in place. On the front of the tank is a dial for registering time. Development is allowed to continue for fifteen minutes, the tank being reversed several times. After development, the developer is washed out of the plates, and the fixing and washing are done in the usual manner.

PRICE

Eastman Plate Tank, for 4 x 5, 3¼ x 5½, and smaller plates, includes solution cup, plate cage, loading fixture and adjustable kit	\$4.00
Ditto, 5 x 7, without kit	5.00
Adjustable Kit, for 4 x 5 or 3¼ x 5½ tank, to take smaller plates50
Separate Kits, for 5 x 7 tank, to take 3¼ x 5½, 4¼ x 6½ or 4¾ x 6½ plates, each75
Metal Insert, for 5 x 7 tank, to take 4 x 5 plates10
* Eastman Plate Tank Developer Powders, for 4 x 5 tank, per package, ½ dozen20
Ditto, for 5 x 7 tank, per package, ½ dozen35
* Kodak Acid Fixing Powder, per 1-pound package25
Ditto, per ½-pound package15

* Prices subject to change without notice.

Developing and Printing Outfits

FOR those who wish to develop by the dark room method we offer complete developing and printing outfits containing everything necessary for the work. By combining a variety of different articles and making up the outfits in large quantities, we furnish them at a much lower price than if the articles were purchased separately. The Eastman 3A Outfit contains every requisite for finishing twenty-four $3\frac{1}{4} \times 5\frac{1}{2}$ or smaller pictures, and includes the following:

One Kodak Candle Lamp	\$0.25
One Printing Frame25
One Glass for Frame05
One 4-ounce Graduate15
One Stirring Rod05
Four Developing Trays40
Five tubes Eastman Special Developer25
One-half pound Kodak Acid Fixing Powder15
One package Potassium Bromide10
Two dozen $3\frac{1}{4} \times 5\frac{1}{2}$ Velox Paper30
Two ounces Nepera Solution for developing Velox10
Instruction Book (free)	.00
Eastman 3A Outfit, complete, neatly packed, \$1.50	\$2.05

EASTMAN A B C OUTFIT, similar to above but providing for 4×5 or smaller pictures \$1.50

No. 0 BROWNIE Developing and Printing Outfit, complete, for developing and printing 24 pictures $1\frac{3}{8} \times 2\frac{1}{2}$. Price, complete90



The Kodak Box No. 2

THE Kodak Box No. 2 contains everything for picture making by the daylight method. No dark room is necessary, and even the beginner can get good results by following the simple, explicit directions contained in the instruction book. This outfit is simple enough for boys and girls, while at the same time it will make pictures which will please the grown-up people.

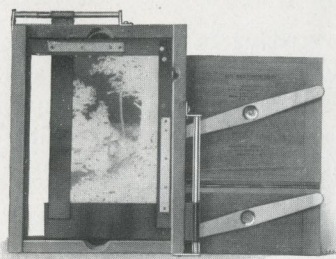
PRICE

One No. 2 Brownie Camera, $2\frac{1}{4} \times 3\frac{1}{4}$	\$2.00
One No. 2 Brownie Developing Box	1.25
One Roll No. 2 Brownie Film, $2\frac{1}{4} \times 3\frac{1}{4}$20
Two Brownie Developing Box Powders05
One $\frac{1}{2}$ -pound package Kodak Acid Fixing Powder15
One 4-ounce Graduate15
One Stirring Rod05
One No. 2 Brownie Printing Frame15
One Package (one dozen) $2\frac{1}{4} \times 3\frac{1}{4}$ Velox.10
One Bottle Nepera Solution10
Three Paper Developing Trays30
One dozen $2\frac{1}{4} \times 3\frac{1}{4}$ Mounts10
One dozen $2\frac{1}{4} \times 3\frac{1}{4}$ Kodak Dry Mounting Tissue05
One Instruction Book (free)	
	\$4.65

Price, complete, neatly packed, \$4.00



Kodak Auto-Mask Printing Frame



The new Auto-Mask is the most convenient and useful thing in printing frames that has yet been produced. It is adaptable to the printing of negatives of any amateur size, from 4 x 5, 3 1/4 x 5 1/2 and smaller, using the same simple masking device employed on the Kodak Amateur Printer. The negative is held firmly in place by the mask and is as readily released, when desired, by a slight pressure on the thumb lever.

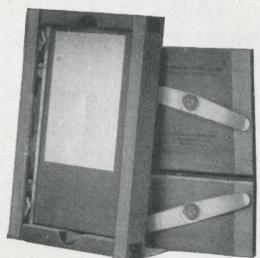
Any number of uniformly masked prints may be made without changing the position of the negative, and if desired, prints may be so made that white space is left at the side or bottom for writing as, for example, with post-cards. The graduated scales attached to the stationary guides, aid in sizing and holding exact dimensions of the mask openings.

Kodak Auto-Mask Printing Frame \$1.00

"Maskit" Printing Frame

The new Kodak "Maskit" Printing Frame is designed to overcome the difficulty of the negative and mask slipping on the glass, and to secure prints with a uniform white margin. Both negative and mask are held firmly, thus obviating the necessity of gumming.

Kodak "Maskit," 3 1/4 x 4 1/4, opens two-thirds \$0.40
 Kodak "Maskit," 3 1/4 x 5 1/2, opens two-thirds45
 Kodak "Maskit," 5 x 7, opens two-thirds50



Kodaloid Printing Masks

These transparent, orange color masks are intended for use with Maskit Printing Frames. Supplied in sets of three, each with different size opening.

Per set of 3, 3 1/4 x 4 1/4 \$0.20 Per set of 3, 3 1/4 x 5 1/2 \$0.25 Per set of 3, 5 x 7 . . \$0.30
 Black paper masks, same sizes as above. Price, per set of 3, \$0.10

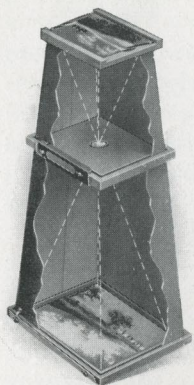
Eastman Printing Masks

Made of transparent Kodaloid, to fit the regular 3A and 4 x 5 Printing Frames, in 7 masking sizes. Price, each, \$0.06

Printing Frames

Eastman 3 1/2 x 12, for No. 4 Panoram Kodak, opens in three sections	\$0.75	Ditto, for 2 1/2 x 4 1/4, film negatives or smaller	\$0.25
Eastman 2 1/4 x 7, for No. 1 Panoram Kodak, opens in two sections30	Ditto, 3 1/2 x 3 1/2, 3 1/4 x 4 1/4 opens two-thirds, each25
Brownie Printing Frame, No. 1, for 2 1/4 x 2 1/4 Developing paper only10	Ditto, 3 1/4 x 5 1/2, for films, opens two-thirds25
Brownie Printing Frame, No. 2, for 2 1/4 x 3 1/4 Developing paper only15	Ditto, for plates25
Eastman, for 2 1/4 x 3 1/4 plates and V. P. or smaller film negatives25	Eastman 4 x 5, opens two-thirds25
		Eastman 5 x 7, opens two-thirds35

Brownie Enlarging Camera



THE Brownie Enlarging Camera is simplicity itself. It's just a light-tight cone, made in two sections, with an attachment at the small end to hold the negative, and another at the large end for the paper. The lens is supported between negative and paper at just the proper focal distance.

To make an enlargement, one merely places the negative and paper in place, sets up the camera with the negative end to the light for a specified time and then develops the paper as usual.

The cameras, with the exception of the No. 2 Brownie Post-card, are collapsible, so that they fold flat and may be conveniently carried in a suitcase.

No. 2 Brownie Post-card Enlarging Camera, for $3\frac{1}{4} \times 5\frac{1}{2}$ enlargements from $2\frac{1}{4} \times 3\frac{1}{4}$ negatives	\$2.00
No. 2 Brownie Enlarging Camera, for 5×7 enlargements from $2\frac{1}{4} \times 3\frac{1}{4}$ negatives	2.50
No. 3 Ditto, for $6\frac{1}{2} \times 8\frac{1}{2}$ enlargements from $3\frac{1}{4} \times 4\frac{1}{4}$ negatives	3.50
No. 4 Ditto, for 8×10 , $6\frac{3}{8} \times 10$ and $5\frac{3}{8} \times 9\frac{3}{8}$ enlargements from 4×5 , $3\frac{1}{4} \times 5\frac{1}{2}$ and $2\frac{7}{8} \times 4\frac{7}{8}$ negatives respectively	4.00

V. P. Kodak Enlarging Camera

This is made upon the same principle as the Brownie Enlarging Camera, excepting that being small in itself, it is not made collapsible and is in one section only.

It offers the simplest means for making $3\frac{1}{4} \times 5\frac{1}{2}$ enlargements from $1\frac{5}{8} \times 2\frac{1}{2}$ negatives.

Vest Pocket Kodak Enlarging Camera	\$2.00
--	--------

Brownie Enlarging Camera Illuminator

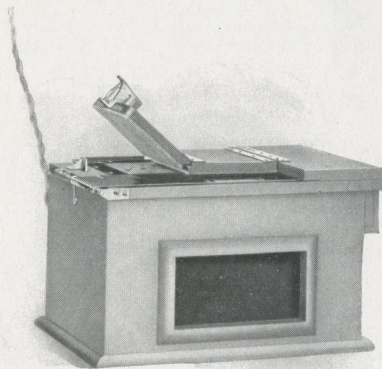
In enlarging with the Brownie or Vest Pocket Enlarging Camera, the exposure may be made by daylight, but the Illuminator will be found a great convenience for anyone who has electricity available.

It is a collapsible half-round light-proof box supplied with lamp socket and opal glass window. May be used as a dark-room lamp, if desired.

Brownie Enlarging Camera Illuminator, \$3.00

The Kodak Amateur Printer

THE Printer consists of a box with a removable top, and in it a glass window through which the printing is done. Prints may be made with white margins, any size from $1\frac{3}{8}$ x $2\frac{1}{2}$ to 4 x $5\frac{1}{2}$ inches, by a simple automatic masking device, which holds the negatives firmly until released. Within the box is a small red electric bulb to permit the adjustment of negative and paper, and provision is made for a 60 Watt Madza lamp, which is automatically turned on when the hinged frame is closed to make the exposure.



In the side of the box is a removable window, covered with red and orange paper, serving as a dark-room lamp for developing-out and bromide papers.

It is supplied complete, without lamp, but including $5\frac{1}{2}$ feet of electric light cord and socket.

The Kodak Amateur Printer . \$6.00

Velox Paper

Velox prints in any light, requires no dark room and permits the amateur to utilize his evening hours in print making. Its simplicity of manipulation, and variety of grades and surfaces, make it especially suitable for all amateur requirements.

Velox is divided broadly into three kinds of paper, called "Contrast," "Regular" and "Special," each division containing a variety of surfaces. "Contrast" and "Regular" papers develop quickly and are best suited for negatives lacking contrast. "Special" papers develop slowly, and give soft effects from hard negatives.

Velox "Contrast" is made in Carbon (matte) single weight and Velvet (semi-gloss) both single and double weight. Contrast Velox will secure the best possible results from extremely thin or from dense flat negatives.

Velox "Regular" has the following surfaces: Carbon (matte), Glossy, Glossy double weight, Velvet, Velvet double weight. Velvet is recommended for very flat negatives and gives semi-gloss prints of exceptional quality.

In the "Special" class, the surfaces are Carbon (matte), Portrait (smooth matte), Portrait double weight, Rough, Glossy, Glossy double weight, Velvet, and Velvet double weight. Special Velvet Velox has a greater range than any of the other "Special" papers.

Royal Velox is coated on an India tint stock in "Regular" and "Special," in one surface, and just rough enough to produce soft, mellow-tinted prints.

PRICE

Size	Single Weight			Double Weight		
	Dozen	½ Gross	Gross	Dozen	½ Gross	Gross
1½ x 2½	\$0.10	\$0.60	\$1.00	\$0.15	\$0.75	\$1.25
2¼ x 3¼	.10	.60	1.00	.15	.75	1.25
2½ x 4¼	.12	.70	1.25	.18	.90	1.55
3½ x 3½	.15	.80	1.50	.20	1.00	1.90
3¼ x 4¼	.15	.80	1.50	.20	1.00	1.90
2½ x 4¾	.15	.80	1.50	.20	1.00	1.90
3¼ x 5½	.15	.80	1.50	.20	1.00	1.90
4 x 5	.20	1.10	2.00	.25	1.40	2.50
† 3¾ x 6½	.20	1.10	2.00			
2¼ x 7	.15	.80	1.50	.20	1.00	1.90
4¼ x 6½	.30	1.65	2.80	.40	2.05	3.50
5 x 7	.35	2.00	3.50	.45	2.50	4.40
3½ x 12	.45	2.50	4.50	.55	3.15	5.65
Velox Post-cards, 3½ x 5½, furnished in Regular Velvet, Special Velvet, Special Portrait, Regular Glossy, Special Glossy and Regular Royal and Special Royal20	1.10	2.00
Ditto, Double Post-cards, 3½ x 11 inches40	2.20	4.00
Brownie Post-cards, 2¾ x 4¼, Regular and Special Velvet				.15	.80	1.50

*Glossy only. †For use in Self-transposing Stereo Printing Frame.

Velox Sundries

N. A. (Non-abrasion) Velox Liquid Developer, 4-ounce bottle (makes 16 ounces for Special, Regular or Contrast)	\$0.25
Ditto, 16-ounce bottle75
Nepera Solution, per 4-ounce bottle28
Ditto, per 16-ounce bottle84
Nepera Auxiliary Powders (for converting Nepera solution to a film or plate developer), per package 1 dozen15
*Velox Re-developer for Sepia Tones, per 4-ounce bottle50
*Ditto, 2 ounces (sufficient for 150 4 x 5 prints)30
Velox Re-developer Tubes, for sepia toning, per package 12 tubes60
Velox Liquid Hardener, per 4-ounce bottle15
Ditto, 8-ounce bottle25
Kodak N. A. M. Q. Developer, per package 3 tubes35
Kodak Acid Fixing Powder for fixing Velox prints, per pound25
Ditto, ½ pound15
Ditto, ¼ pound10

*Package also includes bleaching agent.

Prices subject to change without notice

Kodak Velvet Green

Effects heretofore to be had only by the laborious carbon process can be secured by any amateur photographer with this paper.

For landscapes, for marines, and in fact, for the majority of outdoor amateur negatives, the rich green of prints on Kodak Velvet Green produces most beautiful and harmonious effects, with an indescribable "atmosphere" of nature itself.

And to use this paper the amateur has to learn no new processes nor possess extraordinary skill. Anyone who can print on Velox paper can print just as successfully on Kodak Velvet Green, as the two processes after exposure are identical, and the developing solution is only slightly changed.

The surface—a smooth semi-matte—brings out detail fully, and the paper is supplied in both single and double weights.

Kodak Velvet Green Post-cards are very appropriate for use at vacation time.

Prices same as for Velox. (See page 49.)

Eastman Permanent Bromide Papers

For enlargements. Grades: Velvet, Royal, Standard, Platino, Enameled and Matte-enamel.

Size	Per Doz.	Size	Per Doz.	Size	Per Doz.
5 x 7	\$0.35	8 x 10	\$0.80	14 x 17	\$2.40
5 x 8	.40	10 x 12	1.20	16 x 20	3.20
6½ x 8½	.60	11 x 14	1.60	18 x 22	4.00

Other sizes in proportion

Solio Paper

A rapid, glossy, printing-out paper

Size	Per Package, 2 Doz.	Size	Per Package, 2 Doz.
1½ x 2¼	\$.20	2¼ x 7 (No. 1 Panoram Kodak)	\$.25
2¼ x 3¼	.20		Per Doz.
2½ x 4¼	.20	4¼ x 6½	\$.25
3½ x 3½	.20	5 x 7	.30
3¼ x 4¼	.20	3½ x 12 (No. 4 Panoram Kodak)	.35
2¾ x 4¾	.20	Post-cards	.15
3¼ x 5½	.25	Double Solio Post-cards	.30
4 x 5	.25	Brownie Post-cards, 2¼ x 4¼	.10

Solio Toning and Fixing Powders, per carton, 5 tubes, 25 cents. Solio Combined Toning and Fixing Solution, per 8-ounce bottle, 50 cents. Ditto, 4-ounce bottle, 30 cents; post-paid, 50 cents. Solio Hardener, per 8-ounce bottle, 35 cents.

Kodak Dry Mounting Tissue

Mounts prints even on thin mounts without curl. The simplest method of mounting, no apparatus being required—just fix the tissue on print, lay on mount and press with a warm flat iron; no sticky fingers, no muss of any kind.

PRICE

Size, 3½ x 3½, 3 dozen \$0.08 Size, 3¼ x 4¼, 3 dozen08 Size, 3¼ x 5½, 2 dozen08	Size, 4 x 5, 2 dozen \$0.08 Size, 4¼ x 6½, 1 dozen08 Size, 5 x 7, 1 dozen08
---	---

Glass Dry Plates

Seed (Single Coated)	Per Doz.	Seed Non-Halation Ortho (Double Coated)	Per Doz.
Size 3½ x 3½	\$0.40	Size 3¼ x 4¼	\$0.55
3¼ x 4¼45	3¼ x 5½80
3¼ x 5½65	4 x 580
4 x 565	4¼ x 6½	1.10
4¼ x 6½90	5 x 7	1.40
5 x 7	1.10	Cover Glass for Lantern Slides30
Lantern Slide Plates45		

Lantern Slide Binders, per package, 50 strips \$0.10

Autographic Backs

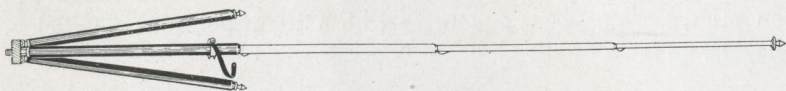
THE Autographic feature may be added to the Kodak not originally equipped with this improvement. There is no extra charge for the Autographic Film and with the Autographic feature incorporated in the old Kodak, one may keep an authentic record of each exposure on the negative, to determine at any time, when and where each picture was made.

Autographic Backs will be supplied for the Kodaks listed, at the following prices :

No. 1 Kodak Junior	\$2.50
No. 1A Kodak Junior	3.00
No. 1A Folding Pocket Kodak, Rapid Rectilinear Type	3.50
No. 3 Folding Pocket Kodak	3.50
No. 3A Folding Pocket Kodak	3.75
No. 4 Folding Pocket Kodak	4.00
No. 4A Folding Kodak	4.50
No. 1A Special Kodak	4.00
No. 3 Special Kodak	4.00
No. 3A Special Kodak	4.25

Tripods

Kodak Metal

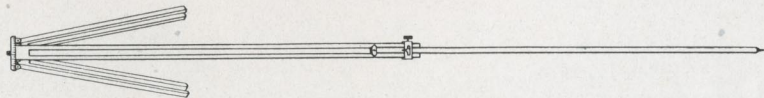


The Kodak Metal Tripods have telescoping legs of brass tubing—the lower ones nickered—the upper, black enameled. They are light in weight, compact and exceptionally rigid.

The Nos. 1 and 2 have revolving heads permitting the camera to swing so as to take in the desired view without moving the tripod. They also have straps for holding the legs in place when closed. The Nos. 1C and 2C have solid heads and are without straps for holding legs. The No. 6 has an improved folding head, permitting the legs to fold flat.

	Sections	Length		Weight	Price
		Closed	Extended		
Kodak Metal Tripod No. 0	3	15½ inches	39½ inches	15 ounces	\$2.75
Kodak Metal Tripod No. 1C	4	15¼ inches	48¾ inches	25½ ounces	3.75
Kodak Metal Tripod No. 1	4	15 inches	48½ inches	24½ ounces	4.00
Kodak Metal Tripod No. 2C	5	13¼ inches	49⅞ inches	26 ounces	4.25
Kodak Metal Tripod No. 2	5	13½ inches	49½ inches	25 ounces	4.50
Kodak Metal Tripod No. 6	6	11⅜ inches	40 inches	24 ounces	6.50
Leatherette Case, for No. 0 and No. 1					.75
Leather Carrying Case, for any style					2.25
Rubber Tips for Metal Tripod Spurs (per set of 3)					.10

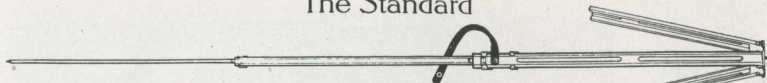
The Bull's-Eye



Two sections. Aluminum revolving head. Made of maple, with brass fittings. For 4 x 5 cameras, or smaller. Length, extended, 42½ inches; folded, 24 inches. The only two-section tripod that will go into a suitcase.

Price, \$1.50

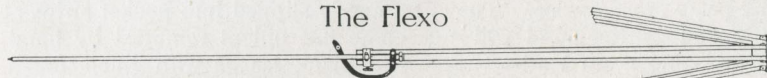
The Standard



The feature of this tripod is the automatic locking of the sections when they are extended. Light, compact and rigid. Fixed, non-detachable head. Length, folded, 21 inches; extended, 53½ inches. Weight, 18 ounces. Cherry finish, brass trimmings.

Price, \$2.00

The Flexo



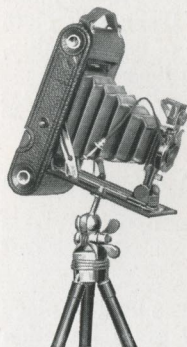
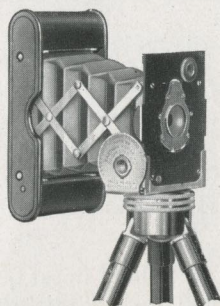
Two sections. Fixed, non-detachable head. Only clear, straight-grained wood is used in its construction.

Price, \$1.00

Vest Pocket Kodak Tripod Adapter

The adapter simply slips over the front standard of the Vest Pocket Kodak and by attaching to a tripod, may be used in either the vertical or horizontal positions. It may be instantly detached when not in use.

Price, \$0.50



Universal Tripod Head

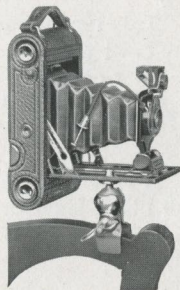
This new Tripod Head is a simple and effective device which will fit any regular tripod socket. Has ball and socket, permitting camera to be tilted to any desired angle, and is especially valuable when photographing objects at close quarters.

Universal Tripod Head . . . \$0.75

The Universal Clamp

• The Universal Clamp is a small, convenient substitute for a tripod and may be attached to a chair, fence, automobile, or a motor cycle handle bar. It is so light and small as to be carried readily in the pocket, and fits any tripod socket.

Universal Clamp \$0.75



The Kodak Album



Made on a new principle, which does away with mounting prints by paste or otherwise. They are merely slipped into pocket strips at top and bottom, and will not come out unless removed by hand. Handsome grain leather cover and black leaves with linen finish.

A, 2¼ x 3¼, 25 leaves, 3 on	\$3.00	E, 3¼ x 5½, 50 leaves, 3 on	\$4.25
B, 2½ x 4¼, 25 leaves, 3 on	3.25	F, 4 x 5, 25 leaves, 2 on	3.25
C, 3¼ x 4¾, 25 leaves, 3 on	3.25	G, 4¼ x 6½, 25 leaves, 2 on	3.50
D, 3¼ x 5½, 25 leaves, 3 on	3.50	H, 5 x 7, 25 leaves, 2 on	3.75

The Othello Album

This album has flexible covers of finest heavy black walrus leather, faced inside with silk finish black cloth, and has large pocket in back of the same material for holding loose prints.

Has expansion back held firmly by countersunk black-enamel screws; 50 jet black leaves of best quality and will hold 25 extra.

A, 5 x 8	\$2.50	B, 7 x 11	\$3.25	C, 8 x 10	\$3.35	D, 11 x 14	\$4.90
Pkg. 12 extra leaves12		.15		.15		.35

The Trojan Album

Made of finest quality flexible, embossed leather, with bronze finish and word "Photographs" stamped in gold leaf. Black silk cloth pocket for loose prints. Contains 50 jet black leaves of extra quality, held in place by cord inside of covers, making album loose-leaf.

A, 5 x 8	\$1.90	B, 7 x 11	\$2.60	C, 10 x 12	\$3.90	D, 11 x 14	\$4.75
Pkg. 12 extra leaves12		.15		.30		.35

The Agrippa Album

A new, unusually flexible loose leaf album with beautiful grain leather covering and 50 linen finish black leaves.

A, 5 x 8	\$1.50	B, 7 x 11	\$1.85	C, 10 x 12	\$3.25	D, 9 x 14	\$3.60
Pkg. 12 extra leaves12		.15		.25		.30

The Ajax Album

This new album has closed back and 50 black leaves held in place by cord and holder inside of covers. Black narrow grain imitation leather covers.

A, 5 x 8	\$1.10	B, 7 x 11	\$1.40	C, 10 x 12	\$2.10	D, 9 x 14	\$2.55
Pkg. 12 extra leaves12		.15		.25		.30

The Tiber Album

A very flexible loose-leaf album with imitation leather covering and 50 black leaves.

A, 5 x 8	\$0.85	B, 7 x 11	\$1.15	C, 10 x 12	\$1.80	D, 9 x 14	\$2.00
Pkg. 12 extra leaves12		.15		.25		.30

The Hercules Album

This is one of the most attractive albums ever offered. The covers are flexible, of genuine leather in a new blended gray and black shade, with flap and clasps holding the album flat when filled.



Has large pocket for loose prints; is furnished with 50 black leaves bound inside of covers by silk cord.

A, 5 x 8	\$2.85	B, 7 x 11	\$3.50	C, 10 x 12	\$4.75	D, 9 x 14	\$5.50
Pkg. 12 extra leaves	.12		.15		.30		.35

The Thebes Album

Black seal grain flexible leather covers, word "Photographs" stamped in gold leaf, open back style; 50 black leaves held in place by silk cord drawn through metal tubes.

A, 5½ x 7	\$1.60	B, 7 x 10	\$2.00	C, 10 x 7	\$2.00	D, 8 x 10	\$2.25	E, 11 x 14	\$3.75
Pkg. 12 ex. leaves	.12		.15		.15		.15		.35

The Juno Album

Brown imitation leather covers. Open back style, with 50 black loose leaves, held in place by metal tubing and silk cord through covers.

A, 5 x 8	\$1.00	B, 7 x 11	\$1.25
Pkg. 12 extra leaves	.12		.15

The Forum Album

Flexible, black leather embossed cloth cover.

A, 25 black leaves, or N, 25 Sepia leaves, 5½ x 7	\$0.45
B, 25 black leaves, or O, 25 Sepia leaves, 7 x 1060
C, 25 black leaves, or P, 25 Sepia leaves, 10 x 760
D, 25 black leaves, or R, 25 Sepia leaves, 11 x 14	1.35
E, 50 black leaves, 5½ x 760
F, 50 black leaves, 7 x 1090
G, 50 black leaves, 10 x 1290
H, 50 black leaves, 11 x 14	1.60

The Apollo Album

Has black watered silk cloth cover, with large pocket in back cover for loose prints. Black leaves only.

A, 25 leaves, 5 x 8	\$0.60	E, 50 leaves, 5 x 8	\$0.80
B, 25 leaves, 7 x 1180	F, 50 leaves, 7 x 11	1.10
C, 25 leaves, 10 x 12	1.50	G, 50 leaves, 10 x 12	1.75
D, 25 leaves, 9 x 14	1.60	H, 50 leaves, 9 x 14	1.85

Artist's Album

Loose leaf system, silk lacing.

No. 1, black leaves; No. 2, white leaves;		No. 4, black leaves; No. 5, white leaves;	
No. 3, Sepia leaves, 5½ x 7	\$0.25	No. 6, Sepia leaves, 7 x 10	\$0.35
Extra leaves, package of 509	Extra leaves, package of 512

Eastman Film Negative Albums

For 100 negatives, 1½ x 2½	\$0.75
For 100 negatives, 2½ x 4¼, or smaller75
For 100 negatives, 3¼ x 4¼, or 4 x 5	1.00
For 100 negatives, 3¼ x 5½, or smaller	1.00
For 100 negatives, 5 x 7, or smaller	1.50

Kodak Card Mounts

Riviera—Ash Grey and White

For Prints	Size of Mount	Per 100	Per 50	For Prints	Size of Mount	Per 100	Per 50
1½ x 2	3 x 3 ³ / ₈	\$0.80	\$0.40	3¼ x 4¼	4¼ x 5 ⁹ / ₁₆	\$1.15	\$0.60
1¾ x 2½	3 x 3 ³ / ₈	.90	.45	2¾ x 4¾	4½ x 6½	1.35	.70
2¼ x 2¼	3 ⁵ / ₈ x 3 ⁵ / ₈	1.00	.50	4 x 5	5 ⁷ / ₈ x 6 ⁷ / ₈	1.55	.80
2¼ x 3¼	3 ⁵ / ₈ x 4 ⁵ / ₈	1.00	.50	3¼ x 5½	5 x 7¼	1.55	.80
2½ x 4¼	4 ⁵ / ₈ x 5¼	1.15	.60	4¼ x 6½	5¾ x 8	2.00	1.00
3½ x 3½	5 x 5	1.15	.60	5 x 7	7 x 9	2.30	1.15

Ontario—Grey and Brown

No.	For Prints	Size of Mount	Per 100	Per 50	No.	For Prints	Size of Mount	Per 100	Per 50
V.P.	1½ x 2½	3¾ x 4¼	\$1.05	\$0.55	3A	3¼ x 5½	5¾ x 8	\$1.80	\$0.90
1	2¼ x 3¼	4¾ x 5¾	1.30	.65	4	4 x 5	6 x 7	2.10	1.05
1A	2½ x 4¼	4½ x 6¼	1.45	.75	4A	4¼ x 6½	6¾ x 8¾	2.50	1.25
3	3¼ x 4¼	5¾ x 6¾	1.55	.80	5	5 x 7	7½ x 9½	3.00	1.50
2C	2½ x 4¾	5 x 7	1.60	.80					

The Baltic—Buff, Brown or Grey

Heavy stock, beveled edges, heavy borders—a beautiful, rich mount

No.	For Prints	Size of Mount	Per 100	Per 50	No.	For Prints	Size of Mount	Per 100	Per 50
0	1½ x 2½	3¾ x 4¼	\$1.25	\$0.65	2C	2¾ x 4¾	5½ x 7½	\$1.90	\$0.95
1	2¼ x 3¼	4¾ x 5¾	1.50	.75	3A	3¼ x 5½	5¾ x 8	2.20	1.10
1A	2½ x 4¼	4½ x 6¼	1.65	.85	4	4 x 5	6 x 7	2.40	1.20
2	3½ x 3½	5½ x 5½	1.80	.90	4A	4¼ x 6½	6¾ x 8¾	3.00	1.50
3	3¼ x 4¼	5¾ x 6¾	1.80	.90	5	5 x 7	8 x 10	3.50	1.75

No orders accepted for less than fifty of one kind and size

Triumph—Ash Grey and Artist Brown

No.	Color	For Prints	Size of Mount	Per 100	No.	Color	For Prints	Size of Mount	Per 100
A1	Grey	5 x 7	8 x 10	\$3.50	C1	Grey	8 x 10	12 x 14	\$6.35
A2	Brown	5 x 7	8 x 10	3.50	C2	Brown	8 x 10	12 x 14	6.35
B1	Grey	6½ x 8½	10 x 12	4.70	D1	Grey	7 x 11	11 x 15	7.00
B2	Brown	6½ x 8½	10 x 12	4.70	D2	Brown	7 x 11	11 x 15	7.00

Enlargement Folder

This new Enlargement Folder is supplied in Olive Grey or Brown, the former with white insert and the latter, sepia-buff insert. Either style is furnished with both oval and rectangular masks.

No.	Color	For Prints	Size Outside	*Per Package	No.	Color	For Prints	Size Outside	*Per Package
A1	White	5 x 7	7½ x 9½	\$0.66	C1	White	6 x 10	9 x 13	\$0.90
A2	Buff	5 x 7	7½ x 9½	.66	C2	Buff	6 x 10	9 x 13	.90
B1	White	6½ x 8½	8¾ x 10¾	.78	D1	White	8 x 10	10¼ x 13	.96
B2	Buff	6½ x 8½	8¾ x 10¾	.78	D2	Buff	8 x 10	10¼ x 13	.96

* Package contains one-half dozen Folders

Inslip Enlargement Mount—English Grey or Sepia-Buffer

No.	For Prints	Size Outside	Price Per Doz.	No.	For Prints	Size Outside	Price Per Doz.
A	3¼ x 5½	7¾ x 9¾	\$0.65	E	5 x 8½	9½ x 13½	\$0.76
B	3½ x 5½	8½ x 9¾	.65	F	6½ x 8½	11½ x 13½	.84
C	4¼ x 6½	8½ x 10¾	.65	G	6 x 10	10½ x 14½	.90
D	5 x 7	9½ x 11½	.65	H	8 x 10	12½ x 14½	1.15

Price Per Half Dozen

J	10 x 12	15¼ x 17¼	\$1.15	L	8 x 14	14¼ x 20¼	\$0.75
K	7 x 12	12 x 17	.75	M	11 x 14	17¼ x 20¼	1.50

The Drimount—English Grey or Sepia-Buffer

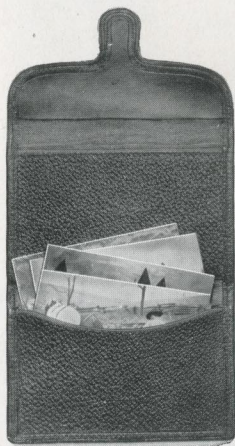
No.	For Prints	Size Outside	Price Per Doz.	No.	For Prints	Size Outside	Price Per Doz.
A	3¼ x 5½	7¼ x 9½	\$0.33	E	5 x 8½	9½ x 12½	\$0.46
B	3½ x 5½	7½ x 9½	.33	F	6½ x 8½	11½ x 13½	.48
C	4¼ x 6½	8¼ x 10½	.34	G	6 x 10	10½ x 14½	.48
D	5 x 7	9½ x 11½	.35	H	8 x 10	12½ x 14½	.60

Price Per Half Dozen

J	10 x 12	15 x 17	\$0.46	L	8 x 14	14 x 20	\$0.46
K	7 x 12	11¼ x 16¼	.46	M	11 x 14	17 x 20	.60

Stereo Mounts

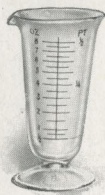
Size of mount, 3½ x 7; color, Queen's Grey; per 100, \$0.90; per 50 \$0.45



The Pocketfoto

In traveling, in calling upon friends, and the like, there are many times when you would like to show some of your best pictures. The Pocketfoto makes this a simple matter. It is a soft, handsome grain leather case, somewhat similar to a pocket bill case, which will easily accommodate twenty-five or more unmounted prints in either side, and folds so as to conveniently go into the pocket.

- No. 1, for 2¼ x 3¼ or smaller pictures, each \$1.50
- No. 3, for 2½ x 4¼ to 3¼ x 4¼ pictures, each 1.75
- No. 3A, for 3¼ x 5½, 4 x 5 or smaller pictures, each 2.00



Eastman Visible Graduate

This new moulded graduate, as its name implies, may be easily read in the dark room under the rays of the ruby light.

The graduations are opaque, not translucent as is the case with most graduates.

2 ounce	\$0.20	8 ounce	\$0.40
4 ounce25	16 ounce60

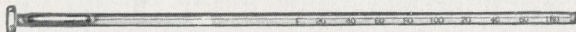
Eastman Thermometer

Especially valuable in tank or tray development. Has hook from which it can be suspended and has curved back to fit inside of tank.



Eastman Thermometer	\$0.65
-------------------------------	--------

Thermometer Stirring Rod



A combined stirring rod and thermometer. Carefully tested and accurate. Has flat end for pulverizing. The rod is $\frac{1}{4}$ inch in diameter and $9\frac{1}{4}$ inches long.

Thermometer Stirring Rod	\$0.75
------------------------------------	--------

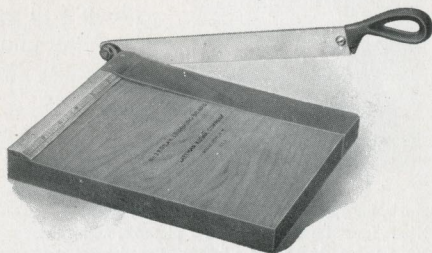
Developing Trays

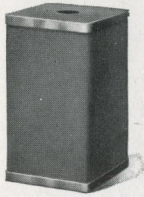
"Bull's-Eye" Composition, $3\frac{1}{4} \times 4\frac{1}{4}$	\$0.20	"Bull's-Eye" Composition, 5×7	\$0.45
"Bull's-Eye" Composition, 4×525	"Bull's-Eye" Composition, $3 \times 8\frac{1}{2}$45
"Bull's-Eye" Composition, 4×625	"Bull's-Eye" Composition, $4\frac{1}{2} \times 14$90

Kodak Trimming Boards

Made of hard wood, with natural finish, have fine quality steel blades and are fitted with rule.

No. 1, capacity, 5×5 inches	\$0.50
No. 2, capacity, 7×7 inches70
Transparent Trimming Gauge (extra)25





Kodak Candle Lamp

This clever little lamp is collapsible and can be packed into very small space when not in use. It is made of special, tested ruby fabric, bound in metal frames and gives a strong, safe light for the dark room.

- Kodak Candle Lamp \$0.25
- Extra Candles for same, per dozen40

Kodak Dark Room Lamp

The Kodak Dark Room Lamp is oil burning and is fitted with both orange and ruby glass. It has an unusually broad wick regulated from the outside and gives a soft, steady light for the dark room.

- No. 2 Kodak Dark Room Lamp \$1.00

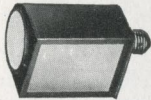


Brownie Safelight Lamp

But little larger than the electric bulb it holds, the Brownie Safelight Lamp screws into an electric socket which may be conveniently situated close to the place where the work is to be done.

The lamp is made of metal, neatly japanned; has circular safelight in the end and side safelight as well. Both safelights are the regular Series 1, and removable so that other series may be used, if desired. A 15 Watt Mazda lamp is used, but is not supplied.

The Brownie offers a most satisfactory means for dark room lighting where electricity is available.



- Brownie Safelight Lamp \$1.00
- Extra Circular End Safelight (any series), each .20
- Extra Side Safelight (any series), each30

Kodak Safelight Lamp

The Kodak Safelight Lamp is ideal for all dark room uses, whether that be the work of the beginner, the advanced amateur, or the professional.

The lamp is supplied with a 5 x 7, Series 1 safelight for use with films or plates, not color sensitive. Safelights of other series may be obtained, if desired, for more advanced work. It is made of metal; neatly finished in a warm tone of brown and the inside is enameled white to intensify the force of the reflected light from the electric bulb in the top.

The lamp is supplied complete, excepting electric bulb, including besides the safelight, four feet of electric light cord with socket.

- Kodak Safelight Lamp \$3.00



Safelights for Kodak Safelight Lamp

Series 00—Yellow light, for use with gaslight papers.

Series 0—Bright orange light, for use with bromide paper and lantern plates.

Series 1—Orange safelight, for use with films or plates not color sensitive.

Series 2—Safelight, for extra rapid orthochromatic plates sensitive to green but not red.

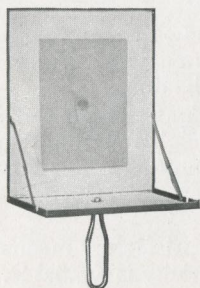
Series 3—Green safelight, for use with red-sensitive panchromatic plates.

Series 4—Bright green safelight, for use with ordinary plates, for those who cannot use a red light. Not safe for orthochromatic plates.

5 x 7 (any series), each \$0.50

Flash Light Material

The simplest and safest method of making flash light pictures is by means of the Eastman Flash Sheets and Kodak Flash Sheet Holder. The sheets burn slowly, giving a broad, soft light, and not so startling to the subject as to give a staring effect to the eyes.



The holder is provided with a saw tooth for holding the sheet in proper position, and is lighted from the back, through an aperture provided in the center for the

purpose. In this manner the holder is always between the operator and the flash sheet, and it may be held in the hand or supported on a tripod, a socket being provided for the purpose.

* No. 1 Flash Sheets, per package of ½ dozen sheets, 3 x 4	\$0.35
* No. 2 Flash Sheets, per package of ½ dozen sheets, 4 x 556
* No. 3 Flash Sheets, per package of ½ dozen sheets, 5 x 784
Kodak Flash Sheet Holder	1.00

Flash cartridges are recommended only where absolutely instantaneous exposures are required.

* Eastman Spreader Flash Cartridges, for use with pistol or fuse (price includes both fuse and cap), per package of ½ dozen	\$0.35
Eastman Spreader Flash Cartridge Pistol75
* Eastman No. 1 Flash Cartridges, per package of ½ dozen84
Ditto, No. 256
Ditto, No. 335

* Prices subject to change without notice.

Velox Transparent Water Color Stamps



Anyone can make beautifully colored prints or lantern slides by the use of Velox Transparent Water Color Stamps.

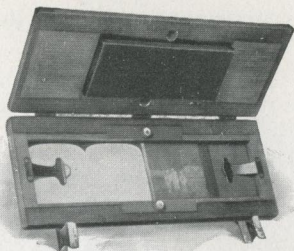
No special artistic skill, no knowledge of painting whatever is necessary. Just a brush or two and the book of stamps, which includes simple directions for coloring both prints and lantern slides.

The making of beautifully colored prints or lantern slides, by the use of Velox Transparent Water Color Stamps, will be found an interesting and highly enjoyable diversion.

Each book of stamps includes twelve sheets of colors and each sheet is divided by perforations into twenty-two stamps. To use any color, merely tear off a stamp, place in a small saucer or palette supplied with the outfit, and cover with about a teaspoonful of water.

The Velox Transparent Water Color Stamp Outfit offers the greatest convenience in coloring prints, as it includes the book of stamps, three brushes and a white enameled mixing palette, put up in a neat cardboard case.

Velox Transparent Water Color Stamps, complete booklet, 12 colors . . .	\$0.25
Separate Color Leaves, two sheets05
Set of 3 Special Brushes, per set50
Mixing Palette25
Velox Transparent Water Color Stamp Outfit, including book, three brushes and palette75



Stereo Self-Transposing Printing Frame

In making Stereo prints it is necessary to transpose either the negatives before the printing or the prints before mounting.

The Stereo Self-Transposing Printing Frame automatically transposes the pictures in printing so they appear correctly as one picture when viewed through the stereoscope, and permits one to make Stereo prints as simply as any others. The frame is for film negatives only and is not adapted for glass plates. For description of Stereo Kodak, see page 26.

Stereo Self-Transposing Printing Frame \$2.00

Eastman Photo Paste



A solid, first quality white paste, will not discolor print or mount.

4-ounce jar	\$0.10	3-ounce tube	\$0.15
8-ounce jar20	5-ounce tube25
2-ounce tube			\$0.10

Flexo Print Roller

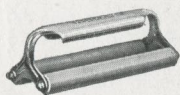
A thoroughly practical roller for mounting. Has 4-inch rubber roller and black enamel frame.

Flexo Print Roller \$0.20



Kodak Print Roller

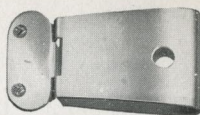
The best roller constructed for amateur use. Has two 6-inch rubber rollers and finely nickeled frame.



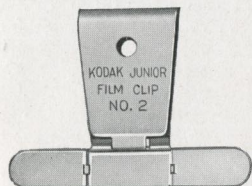
Kodak Print Roller \$0.50

Kodak Junior Film Clip No. 1

The No. 1 clip is the most practical for tank development or drying of films. Has two jaws to prevent film from slipping. One size only.



Kodak Junior Film Clip No. 1, each \$0.12

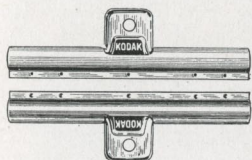


Kodak Junior Film Clip No. 2

This new film clip is similar to the No. 1 but, on account of being wider, may be used with wider film and will hold the film flat.

It is particularly adapted for use with 3A film, but may be used as well with larger or smaller film. Has jaws to prevent the wet film from slipping. Furnished in one size only, 3 inches wide.

Kodak Junior Film Clip No. 2, each \$0.25



Eastman Film Clip

A thoroughly dependable clip. Made in two sizes and nickel plated.

3½-inch, per pair \$0.25
5-inch, per pair30

Sundries

Cable Release, each	\$0.25	Eastman Spotting Colors consists of four colors: black, blue, red and white, per set	\$0.25
Hard Rubber Stirring Rod20	Ferrotypes Plate, 10 x 14, light15
Kodak Film Clips, 5-inch (wood) per pair15	Ferrotypes Plate, 10 x 14, heavy20
Finger Tips, set of 315	Eastman Special Squeegee, 6-inch30
Focusing Cloth, per yard60	Ditto, 8-inch35

Tested Chemicals



Certainty in making negatives and prints depends as much on the quality of your chemicals as on any other one thing. All Kodak chemicals are tested both photographically and for purity before the E. K. C. tested seal is allowed to go upon them. That seal is your protection.

Eastman Chemical Outfit consists of M. Q. and Special Developers, Intensifier, Reducer and Velox Re-developer	\$0.30
Eastman Special Developer Powders, per package 5, in sealed glass tubes25
Eastman Hydrochinon Developer Powders, per dozen50
Ditto, per ½ dozen25
Ditto, per package 5 powders, in sealed glass tubes25
Eastman Pyro Developer Powders, per dozen50
Ditto, per ½ dozen25
Ditto, per package 5 powders, in sealed glass tubes25
Tozol, per 1-ounce bottle85
Elon, per 1 ounce	2.00
Hydrochinon, per 1-ounce can29
Eastman Permanent Crystal Pyro, per 1-ounce bottle40
Velox Re-developer Tubes, package of 12 tubes60
Hypo Sulphite of Soda, granular, per pound08
Alum, powdered, per pound20
Kodak Acid Fixing Powder, per pound package25
Ditto, per ½-pound package15
Ditto, per ¼-pound package10
Eastman Intensifier, glass tube, per tube15
Eastman Reducer, per box of 5 tubes25
Eastman Opaque No. 1, per tube15
Potassium Bromide, per ounce15
Acetic Acid, 28 per cent., per 1-pound bottle27
Citric Acid, 4-ounce bottle43
Eastman Tested Carbonate of Soda (desiccated), per 1-pound bottle22
Eastman Tested Sulphite of Soda (desiccated), per 1-pound bottle33

For Velox preparations, see page 49. For Solio preparations, see page 50.

For Tank Developer Chemicals, see page 41.

Terms

The prices in this catalogue are strictly net, except to regular dealers who carry our goods in stock. *These prices, owing to unsettled conditions, are, however, subject to change without notice.* For the convenience of our customers we recommend that they make their purchases from a dealer in photographic goods, as by so doing they can save both time and transportation charges.

EASTMAN KODAK CO.

ROCHESTER, N. Y.

“KODAK”

is our registered and common-law Trade Mark and cannot be rightfully applied except to goods of our manufacture. When a dealer tries to sell you under the Kodak name, a camera or films or other goods not of our manufacture, you can be sure that he has an inferior article that he is trying to market on the Kodak reputation.

*If it isn't an Eastman,
it isn't a Kodak*