



KODAK

The Digitized Kodak Catalog Project (1886 - 1941): A Very Brief History

Most camera collectors at some point in their collecting careers pass through a Kodak phase - some never come out of it. And if there ever was one name that came to be associated with both cameras and collecting, it was Kodak.

George Eastman received his first patent (for coating dry plates) and bought his first manufacturing facility in 1880, and in 1881 he started the Eastman Dry Plate Company. In 1886 he received a patent for the near-mythical Eastman Detective Camera, but it wasn't until 1888 that the first camera bearing the name "Kodak" was introduced.

One of the nice things about collecting Kodak is that the product line is pretty well known, and because the company produced annual catalogs for many years, collectors can be reasonably sure of what they're looking at, when it was made, the variations and so on - presuming that they have access to either the appropriate catalog, or a number of the many books which document Kodak, each to some greater or lesser extent.

But what would be really nice would be to have a complete set of Kodak catalogs in an easily accessible form and readily available. And since the advent of portable computing devices (PC, Macintosh, etc.) that's been possible - except for the difficulty of assembling a complete set of Kodak catalogs in one spot and then scanning them and making the results available.

The idea of digitizing a complete set of Kodak catalogs has kicked around the collecting community for many years. It's been proposed on a number of online forums, during meetings of various photohistory groups, and for years there have been many incomplete "Kodak CDs" on eBay but at best, they only contained a few catalogs - whatever the owner had available. But assembling a complete set of catalogs, then scanning and processing perhaps 3,000 to 4,000 pages, was a daunting task - if not completely overwhelming - and nothing ever came of it.

Until now.

In early 2010, the idea came up again, but this time we - "we" as in "the collecting community" - were lucky. A number of collectors were willing to loan their catalogs to this project and a couple of insane - wait, let's call them "dedicated" - dedicated enthusiasts - neither of whom collected Kodak, but both of whom enjoyed the challenge of such a project - were willing to put in the time and effort to scan and pull together the entire set of catalogs into a full-blown Kodak Catalog Digital Library.

Our initial objective was to include just the annual amateur catalogs, but it turns out that many cameras only appear in certain professional and specialty catalogs. We included as many of those as we could obtain so that almost every Kodak camera made in the US, Canada and Europe, would be documented - at least up to about 1941. After that, it becomes much more difficult as Kodak stopped producing annual catalogs as their product line became increasingly more diversified.

However, even with the additional "non-amateur" catalogs, we weren't completely successful in illustrating "every" camera Kodak ever made. There are an elusive few that might appear in specialty catalogs that we simply couldn't track down. If you can't find one of those odd cameras, that's no doubt why. We may do a revision at some point in the future if someone is willing to loan us a catalog that includes a camera that isn't already recorded.

In this project, a total of 67 catalogs were used from 1886 through 1941 including a number of professional and dealer catalogs, and in some years, two or even three different catalogs to cover all the bases. With the cooperation of a number of dedicated collectors, we were able to pull together all those catalogs and in June 2010, the project started in earnest.

By November 2010, we had scanned everything we needed and eventually all 67 catalogs were then reassembled as image folders and converted to the universally accepted PDF format and finally, converted into individually searchable PDFs which could then be searched globally as a collection.

For those of you interested in the statistics: about 200 hours of scanning time (we never want to hear that sound again), 67 catalogs and 3,908 page scans - which generated 7,917 original and processed images - and 11.4 GB of disk space. Additionally, another 100+ hours of technical development time was needed to convert the digital catalogues into a fully searchable "knowledgebase" that could be launched from most any standard web browser.

The overwhelming number of catalogs was loaned to us by that most remarkable of Kodak collectors, Charlie Kamerman of Eagle Creek, Oregon. Without Charlie, it's very doubtful that this project could even have been attempted.

But as it turned out, even Charlie didn't have all the publications that were needed, but he was able to track down the five that he lacked and was able to secure either a copy or high resolution images that we could work with. And so, our thanks to the contributors of the catalogs and scans that we used:

Charlie Kamerman for the vast majority of catalogs used and all his help,
Steve Shohet for loaning a variety of test catalogs,
Ryerson University (Toronto) for the 1886 Eastman Catalog
George Layne for the 1890 New Kodaks Catalog,
Mike Kessler for the 1891 Dealer Display Catalog,
Ralph London for the 1893 UK Catalog,
Michael Pritchard for the 1897 UK Catalog.

The digital side of the project - also known as "all of the work" - was done by Rob Niederman of Medina, Minnesota, and Milan Zahorcak of Tualatin, Oregon. Remarkably we're still friends and in a few years, we'll probably be able to talk about this project rationally.

And there you have it, a more-or-less done deal. We're fairly sure that it isn't quite perfect, and expect there will be some carping about something or other; but all-in-all, we believe this to be a pretty good product and can now move on to something else.

Our thanks to all of those involved.

Rob Niederman
Milan Zahorcak

Fall, 2011

MAY 14 1913

KODAKS

and

Kodak Supplies

1913



EASTMAN KODAK COMPANY

Rochester New York

"THE KODAK CITY"

“KODAK”

Is our registered and common-law trade mark and cannot be rightfully applied except to goods of our manufacture. When a dealer tries to sell you, under the Kodak name, a camera or films or other goods not of our manufacture, you can be sure that he has an inferior article that he is trying to market on the Kodak reputation, and he also makes himself liable to suit by us for damages and injunction.

*If it isn't an Eastman,
it isn't a Kodak*

A QUARTER-CENTURY OF 1888 · KODAKERY · 1913 ·



O closely interwoven is the story of amateur photography and the history of Kodak during the last twenty-five years that the chronicles of the one become necessarily the biography of the other.

There were amateur photographers before 1888, a small band of enthusiasts willing, for their love of picture making, to struggle with imperfect apparatus and complicated chemical processes. Likewise there was an Eastman Company that had already made itself felt in the photographic world as a pioneer manufacturer of dry plates and photographic papers and roll films.

But picture making was not for the many. There existed then, as now, the innate love for pictures, not merely pictures of the beautiful and wonderful, the historic and the strange, but pictures of the little every-day happenings of every-day life. But as yet there was no simple, easy road to the making of such pictures.

And then came the Kodak.

Photography was offered to the whole world. Anybody could "press the button" and the makers of the Kodak would "do the rest". The roll film and the roll



holder, earlier Eastman inventions, simply became an integral part of the camera itself. The picture taking part was made as simple as A B C. The picture finishing part, still complicated, was done by the company and then by other finishers for the amateur.

Amateur photography had begun. In the twenty-five years that have since elapsed, it has always grown—for always it has had two things to grow upon—the love of pictures and the constant Kodak improvements in apparatus and materials and methods.

The earlier film, coated on paper, was soon superseded by the transparent film, then came the daylight loading film, in which the film itself was protected from the light so that no dark room was needed for loading. Rapid improvements soon carried this along to the present cartridge system of daylight loading film. Then came the non-curling feature and then the film was made orthochromatic, and all the while improvements were made in speed and keeping qualities until now Kodak Film is unhesitatingly used in the most important and exacting scientific work.

Where once the amateur developed his film slowly in the dark room, examining each exposure by the ruby light, and incidentally destroying more or less of its brilliancy by "light fog" in so doing, he now develops with the Kodak Film Tank in broad daylight, getting from each exposure the best negative that could have been obtained. There's no skill, no experience, no guess work. He simply uses certain ready prepared powders in so much water of a certain temperature, develops for a certain length of time and automatically his exposures are *correctly* developed.



Likewise the handling of Velox and other Kodak papers has been simplified until it no longer requires an expert to make good prints. From every step in picture taking and making the dark room has been successfully eliminated.

And then there are the Kodaks themselves—and their own first cousins, the Brownies. Each year it seems that further simplification and improvement will be impossible, yet improvements continue to come, for there's a steady purpose, a team work, a striving for the best in the Kodak factories that has put Kodak where it is and will go on still further in the years to come. Refinements in the cameras themselves are such that we now slip a wonderfully capable little instrument into the vest pocket and one may buy a better camera for two dollars to-day than could have been had at twenty-five dollars in 1888.

Simplify, simplify, simplify, help the customers in every possible way, supply cameras and films and papers and chemicals and instructions that are *correct*—that is the policy of Kodak, a policy that has put real meaning into the phrase: Kodak means photography with the bother left out.

EASTMAN KODAK CO.

ROCHESTER, NEW YORK
"The Kodak City"



Automatic Shutters

Kodak Ball Bearing Shutter

This shutter is automatic and as its leaves are mounted on ball bearings it operates with remarkable smoothness and precision.



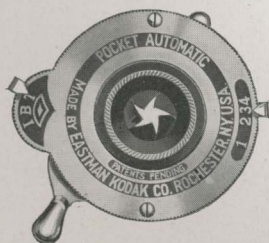
The leaves open and close in the form of a star, admitting a much larger amount of light in the same space of time than the ordinary type of shutter. All but the No. 0 work with bulb or finger release and have variable indicated speeds of $\frac{1}{25}$, $\frac{1}{50}$ and $\frac{1}{100}$ second as well as bulb and time exposures.

They are also fitted with indicator for registering each exposure as made and iris diaphragm.

Supplied with Folding Pocket Kodaks, Nos. 1A, R. R. Type; 3, 3A and 4. The No. 0 is supplied with the Vest Pocket Kodak and Vest Pocket Kodak Special and is similar to the above in all respects excepting that it works with finger release only, has variable speeds of $\frac{1}{25}$ and $\frac{1}{50}$ second and has no registering device but is regularly equipped with the Kodak Autotime Scale.

Pocket Automatic Shutter

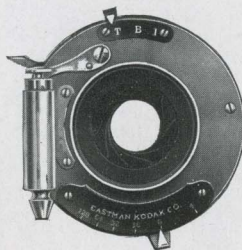
This shutter has star-shaped opening and is automatic in action. For snap-shots, a single pressure of the lever makes the exposure. When set at "B", the shutter opens at one pressure and closes when released. At "T", one pressure opens the shutter and another closes it. Fitted with iris diaphragm stops and regularly supplied with Nos. 1 and 1A Folding Pocket Kodaks, and Nos. 2 and 2A Folding Pocket Brownies.



Automatic Shutters

F. P. K. Automatic Shutter

This shutter is always set, and works with either bulb or finger release for time, bulb or snap-shot exposures. When set at "I" pressure on release makes instantaneous exposure of $\frac{1}{50}$ of a second. When set at "B" the shutter opens at one pressure and closes when released. At "T" one pressure opens the shutter and another closes it. It is a reliable well made shutter which will give good satisfaction under the average conditions which the amateur will meet.



This shutter is fitted with iris diaphragm stops, graduated from No. 4 to 128.

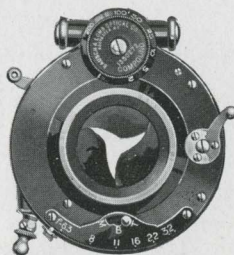
Supplied with the Nos. 3 and 3A Folding Brownies.

Compound Shutter

The Compound shutter is an automatic and setting shutter combined. Automatically, either time or bulb exposures may be made, while it may be set for speeds of from 1 to $\frac{1}{150}$, $\frac{1}{200}$ and $\frac{1}{250}$ second, according to size of shutter. The shutter leaves are formed of segments opening in star shape, giving even illumination over the entire plate the instant the exposure is started, and an iris diaphragm is supplied for stopping down.

Case is made of aluminum, and accurate adjustments can be made with the shutter in any position.

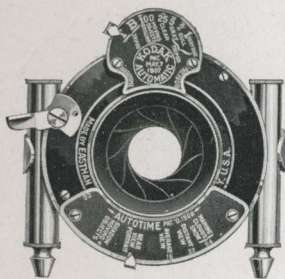
Regularly supplied on the Nos. 1A, 3, 3A Special and *Six-Three* Kodaks and as a special equipment with the No. 4A Folding Kodak.





Kodak Automatic Shutter and Kodak Autotime Scale

The Kodak Automatic shutter is carefully adjusted for time, bulb and instantaneous exposures. It is also graduated for fractional parts of a second, and is unusually accurate.



This shutter is fitted with the Kodak Autotime Scale and is supplied as a special equipment on the Nos. 1A, R. R. Type; 3, 3A and 4 Folding Pocket Kodaks.

The Scale greatly reduces the liability of error in exposure, as it automatically indicates the proper time and stop opening for subjects under any condition of outdoor photography. It is exceedingly simple to use. The speed indicator is merely set at the point on the scale indicating the kind of light prevailing and the diaphragm indicator at the point indicating the character of the subject.

These scales are also supplied at a nominal charge for the following shutters, and can be readily attached by any amateur in a few moments. Always order by Style letter as below.

- Style A. For use with Kodak Ball Bearing shutter, $2\frac{1}{2} \times 4\frac{1}{4}$ and $3\frac{1}{4} \times 4\frac{1}{4}$.
 - Style AA. For use with Kodak Ball Bearing shutter, $3\frac{1}{4} \times 5\frac{1}{2}$ and 4×5 .
 - Style B. For use with F. P. K. Automatic, $2\frac{1}{2} \times 4\frac{1}{4}$ and $3\frac{1}{4} \times 4\frac{1}{4}$, No. 1 S. V. (Blair or Premo) Automatic, or No. 1 B. & L. S. V. Automatic shutters.
 - Style BB. For use with F. P. K. Automatic, $3\frac{1}{4} \times 5\frac{1}{2}$ and 4×5 , No. 2 S. V. (Blair or Premo) Automatic, or No. 2 B. & L. S. V. Automatic shutters.
 - Style C. For use with Kodak Automatic shutter, $3\frac{1}{4} \times 4\frac{1}{4}$.
 - Style CC. For use with Kodak Automatic shutter, $3\frac{1}{4} \times 5\frac{1}{2}$ and 4×5 .
 - Style D. For use with B. & L. Automatic and Century Automatic shutters, $3\frac{1}{4} \times 4\frac{1}{4}$.
 - Style DD. For use with B. & L. Automatic and Century Automatic shutters, $3\frac{1}{4} \times 5\frac{1}{2}$ and 4×5 .
 - Style DDD. For use with B. & L. Automatic shutter, $4\frac{1}{4} \times 6\frac{1}{2}$.
- Price, any of above styles, \$1.00
- Style H. For use with No. 0, $3\frac{1}{4} \times 4\frac{1}{4}$ Compound shutter.
 - Style HH. For use with No. 1, $3\frac{1}{4} \times 5\frac{1}{2}$ and 4×5 Compound shutter.
 - Style HHH. For use with No. 2, $4\frac{1}{4} \times 6\frac{1}{2}$ and 5×7 Compound shutter.
- Price for any style Compound shutter, \$1.50





Kodak Lenses

The regular R. R. and meniscus lenses used on Kodak and Brownie Cameras have always been the best lenses of their respective types that could be secured. These lenses are perfectly well adapted to every-day amateur photography, producing pictures under normal light conditions that leave nothing to be desired by the average amateur.

For those, however, who wish even greater efficiency and capabilities, we supply the anastigmat lens equipments.

The superiority of the anastigmat lens, without attempting to go into the technicalities of the subject, consists of — Perfect definition over the whole negative, absolute flatness of field, and higher speed.

In R. R. lenses the tendency to lack of definition toward the edges, which always occur in an uncorrected lens, is so slight as to be unnoticeable except to the most expert eye. In a true anastigmat, it is entirely eliminated.

The speed of a lens is determined entirely by the size of the diaphragm opening. An R. R. lens cannot be used at an opening greater than $\frac{1}{8}$ its focal length, commonly designated as *f.* 8. But an anastigmat lens can be so corrected as to permit the use of larger diaphragm openings and still produce sharp, clear negatives. This larger opening admits more light within a given time than that of the R. R., and hence the anastigmat is much faster. Thus the Zeiss or Cooke Kodak Anastigmat lens, working at an aperture of *f.* 6.3 admits 60 per cent. more light in a given time than does the R. R.

This speed advantage enables the user to make short exposures on dull days or under poor light conditions, where hopelessly under-timed negatives would result with an R. R. lens. And under proper conditions, exposures up to $\frac{1}{250}$ second with a Compound shutter and $\frac{1}{1000}$ with a focal plane shutter, can be made with the anastigmat.

In the last few years there has been a steadily increasing interest and demand for anastigmat lens equipments among amateur photographers, and we responded to this demand, first by furnishing the Special Kodaks fitted with Zeiss Kodak Anastigmat lens, *f.* 6.3 — a lens fully corrected and offering the advantage of high speed.

This year we offer in addition the *Six-Three* Kodaks. These differ from the Specials in that they are simply our regular Kodak models, without the special covering and finish of "Specials", and fitted with anastigmat lenses specially designed by Taylor, Taylor & Hobson, for Kodak use and called the Cooke Kodak Anastigmat. This lens works at *f.* 6.3 and is fully corrected in every particular.



Vest Pocket Kodak

Since the appearance of the original Pocket Kodak, seventeen years ago, no camera has exerted such a general widespread appeal as has the Vest Pocket Kodak. A natural enough appeal too, for the Vest Pocket is a real Kodak with all the Kodak simplicity and dependability, but made so flat and smooth and small as to go readily into a vest pocket.

As compact as the camera is, however, the pictures which it makes are of good size — $1\frac{5}{8} \times 2\frac{1}{2}$ inches, and the negatives are of such quality as to yield clean sharp enlargements up to practically any standard size. Furthermore, the negatives are of such proportions as to enlarge exactly to the post-card ($3\frac{1}{4} \times 5\frac{1}{2}$) size, and these may be had at 15 cents each, or the Kodaker can easily make his own by use of the Vest Pocket Kodak Enlarging Camera. (See page 38.)

Made to be always ready for action, it is only necessary to pull out the front to its full extent and the Vest Pocket Kodak is in focus for objects at any distance.

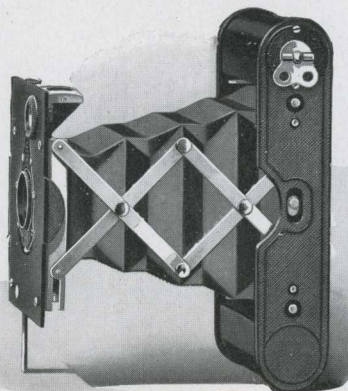
It is regularly fitted with a tested meniscus lens and the Kodak Ball Bearing shutter and Autotime Scale—an ample equipment for ordinary work. But for those who wish the greater speed and other advantages of the anastigmat lens, we offer the Vest Pocket Kodak Special, fitted with Zeiss Kodak Anastigmat lens with a speed of *f.* 6.9.

The Film Cartridges for the Vest Pocket Kodak contain eight exposures each and, of course, have the Kodak daylight loading feature. Another feature is the extreme



Actual Size

Vest Pocket Kodak



simplicity in loading — nothing trappy or fussy about it. Indeed, the operation of the camera is simple in every detail, nothing in the way of simplicity or efficiency having been sacrificed in order to reduce the size.

Quality marks the Vest Pocket Kodak in every detail. It is not made small so that we can produce a cheap camera; it is made small for the sake of convenience. The small price is simply the result of our manufacturing facilities.

In Detail

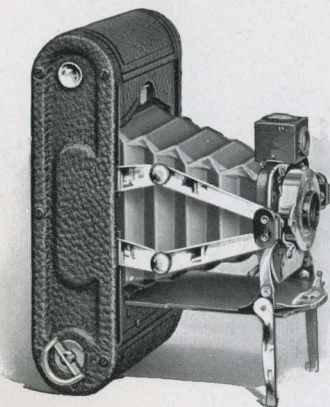
For rectangular pictures, $1\frac{1}{8} \times 2\frac{1}{2}$ inches. Capacity, 8 exposures without reloading. Size of Kodak, $1 \times 2\frac{3}{8} \times 4\frac{3}{4}$. Weight, 9 ounces. Lens, regular, meniscus achromatic, 3-inch focus, *Special*, Zeiss Kodak Anastigmat $f. 6.9$. Shutter, Kodak Ball Bearing No. 0. Brilliant reversible finder. All metal body, black enamel finish and black leather bellows.

The Price

Vest Pocket Kodak, meniscus achromatic lens and Kodak Ball Bearing shutter	\$6.00
Vest Pocket Kodak <i>Special</i> , Zeiss Kodak anastigmat lens, and Kodak Ball Bearing shutter	25.00
Leather Case for Vest Pocket Kodak	.75
Grain Leather Case for Vest Pocket Kodak <i>Special</i>	1.50
Hand Bag for Vest Pocket Kodak	.25
N. C. Film Cartridge, 8 exposures, $1\frac{1}{8} \times 2\frac{1}{2}$.20
Kodak Portrait Attachment	.50



No. 1 Folding Pocket Kodak



This little Kodak is designed for those who wish a compact folding camera which can be easily carried in the pocket and which will make pictures without the necessity of focusing or estimating distances.

Upon opening the camera the front springs automatically into position, ready at once for making pictures of objects at any distance. A reversible finder makes composition easy, and slight pressure of the shutter lever makes the exposure.

When closed the bed folds over front and bellows, concealing all adjustments, and the camera can then be very conveniently carried in any coat pocket. The camera is made of aluminum, with best seal grain leather covering and has nickeled fittings.

In Detail

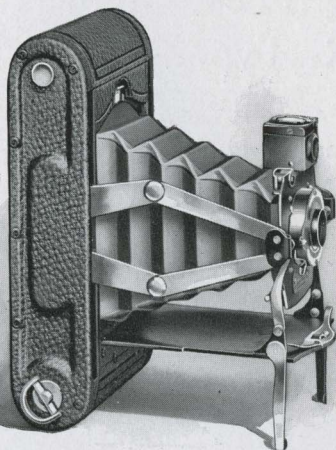
For rectangular pictures, $2\frac{1}{4} \times 3\frac{1}{4}$ inches. Capacity, 12 exposures without reloading. Size of Kodak, $6\frac{3}{4} \times 3\frac{1}{2} \times 1\frac{5}{8}$ inches. Weight, 16 ounces. Lens, meniscus achromatic, 4-inch focus. Shutter, Pocket Automatic. (See page 6.) Brilliant reversible finder.

The Price

No. 1 F. P. K., with meniscus achromatic lens, Pocket Automatic shutter	\$10.00
Black Sole Leather Carrying Case, with strap	1.50
N. C. Film Cartridge, 12 exposures, $2\frac{1}{4} \times 3\frac{1}{4}$.40
Ditto, 6 exposures	.20
Kodak Portrait Attachment	.50



No. 1A Folding Pocket Kodak



Made upon the same principle as the No. 1, this model is operated in precisely the same way, but makes $2\frac{1}{2} \times 4\frac{1}{4}$ pictures. This is one of the most desirable amateur sizes, as it lends itself to many artistic compositions. It is particularly pleasing for horizontal landscapes, for full and three-quarter length portraits and for bust pictures when the camera is fitted with Kodak Portrait Attachment.

Like the No. 1, the camera requires no focusing, it may be carried in any coat pocket without trouble, and it is always ready for action.

It offers opportunity for making good size, artistic pictures with the minimum of effort and at very slight expense. Made of aluminum, with seal grain covering. All metal parts nicked.

In Detail

For rectangular pictures, $2\frac{1}{2} \times 4\frac{1}{4}$ inches. Capacity, 12 exposures without reloading. Size of Kodak, $7\frac{3}{4} \times 3\frac{7}{8} \times 1\frac{3}{4}$ inches. Weight, 20 ounces. Lens, meniscus achromatic, 5-inch focus. Shutter, Pocket Automatic. (See page 6.) Brilliant reversible finder.

The Price

No. 1A Folding Pocket Kodak, with meniscus achromatic lens, Pocket Automatic shutter	\$12.00
Black Sole Leather Case, with shoulder strap.	1.50
N. C. Film Cartridge, 12 exposures, $2\frac{1}{2} \times 4\frac{1}{4}$50
Ditto, 6 exposures25
Kodak Portrait Attachment50



No. 1A Folding Pocket Kodak— R. R. Type

The $2\frac{1}{2} \times 4\frac{1}{4}$ is such an all-around desirable size for amateur pictures that a 1A model with greater capabilities than the regular 1A Folding Pocket Kodak is preferred by many.



To meet this demand we offer the 1A Folding Pocket Kodak, R. R. Type, a compact, light weight model of great capabilities.

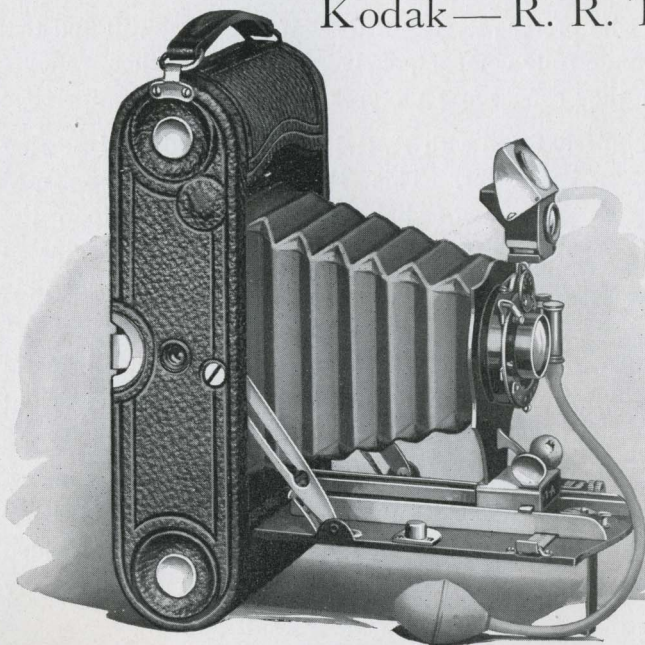
The body of the camera is made of aluminum with drop bed fitted with metal runways, upon which the lens standard slides back and forth.

This instrument is fitted with the finest R. R. lens obtainable aside from the anastigmats, and the shutter is the Kodak Ball Bearing. This shutter operates with unusual smoothness, it is graduated for $\frac{1}{25}$, $\frac{1}{50}$ and $\frac{1}{100}$ of a second, as well as bulb and time, and the leaves, opening in the form of a star, admit much more light in a given time than the ordinary two-wing shutter—a considerable advantage in snap-shot work.

The camera is supplied with accurate focusing scale, including an automatic focusing lock, making it a very simple matter to quickly set the lens in position for objects at any distance. The standard clamp is automatic, holding the standard firmly at any position on the bed where released.

The camera is covered with grain leather, metal parts are highly nicked, and reversible finder and two tripod sockets are supplied. The camera as a whole makes a compact, inexpensive outfit considering its capabilities, and one which, though suitable for the most serious work, will slip readily into the pocket, and is so simple that it may be effectively handled by the beginner.

No. 1A Folding Pocket Kodak — R. R. Type



In Detail

For rectangular pictures, $2\frac{1}{2} \times 4\frac{1}{4}$ inches. Capacity 12 exposures without reloading. Size of Kodak, $8 \times 2 \times 3\frac{3}{4}$ inches. Weight, 23 ounces. Lens, double combination, rapid rectilinear, speed, $f. 8$, focal length, 5 inches. Shutter, Kodak Ball Bearing. (See page 6.) Automatic focusing lock. Two tripod sockets. Brilliant reversible finder.

The Price

No. 1A F. P. K., R. R. Type, R. R. lens, Kodak Ball Bearing shutter . . .	\$15.00
Ditto, with Kodak Automatic shutter	20.00
Black Sole Leather Carrying Case, with strap	1.50
Kodak Autotime Scale	1.00
N. C. Film Cartridge, 12 exposures, $2\frac{1}{2} \times 4\frac{1}{4}$50
Ditto, 6 exposures25
Kodak Portrait Attachment50



No. 3 Folding Pocket Kodak

Those who prefer pictures of the $3\frac{1}{4} \times 4\frac{1}{4}$ size will find this model a wonderfully compact, convenient and efficient camera, with which they can secure pictures of this pleasing proportion.



It is regularly fitted with R. R. lens and Kodak Ball Bearing shutter. This shutter, having star-shaped opening, admits much more light than the ordinary two-winged shutter, and it is graduated for $\frac{1}{25}$, $\frac{1}{30}$ and $\frac{1}{60}$ second, as well as for time and bulb exposures.

The R. R. lens is the best obtainable and will make excellent pictures. No more efficient optical equipment can be had outside of the anastigmats.

The camera is equipped with rising and sliding front—a great convenience in architectural and many forms of landscape photography, and an automatic focusing lock is provided so that the camera can quickly be brought to focus at any distance.

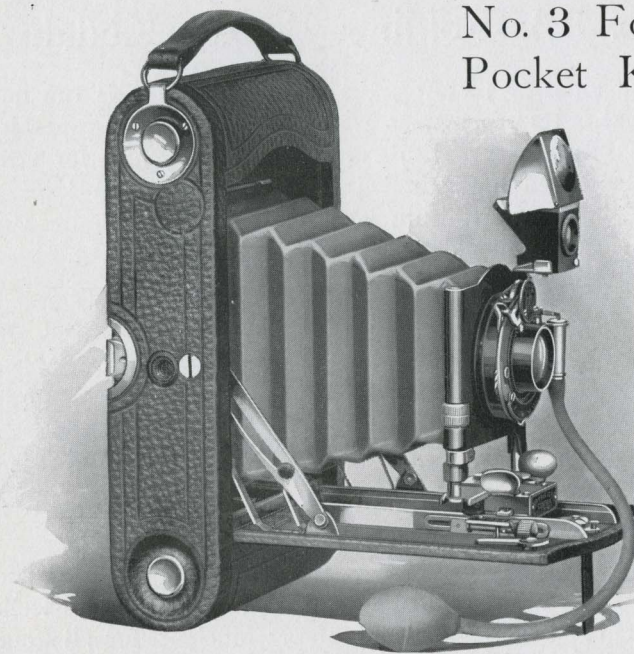
While this model, of course, is designed for the use of our roll films, it can be loaded with plates at any time by the addition of a simple plate adapter or combination back. This is interchangeable with the regular back, is provided with ground glass for focusing and takes double plate holders. (See similar back illustrated on page 18.)

For those who make lantern slides, this camera is especially desirable, for the size, $3\frac{1}{4} \times 4\frac{1}{4}$, is just right for slide making without either enlargement or reduction.

The instrument can be readily carried in the ordinary coat pocket and is handsomely finished throughout. Box and bed are of aluminum, metal parts are highly nickered, and covering is of fine quality grain leather.



No. 3 Folding Pocket Kodak



In Detail

For rectangular pictures, $3\frac{1}{4} \times 4\frac{1}{4}$ inches. Capacity, 12 exposures without reloading. Size of Kodak, $7\frac{1}{2} \times 4\frac{1}{2} \times 1\frac{3}{4}$ inches. Weight, 23 ounces. Lens, double combination, rapid rectilinear, speed, $f. 8$, focal length, 5 inches. Shutter, Kodak Ball Bearing. (See page 6.) Rising and sliding front. Two tripod sockets. Brilliant reversible finder with hood. Automatic focusing lock.

The Price

No. 3 F. P. K., R. R. lens, Kodak Ball Bearing shutter	\$17.50
Ditto, with Kodak Automatic shutter	22.50
Kodak Autotime Scale	1.00
Black Sole Leather Case, with strap	1.75
Combination Back, for $3\frac{1}{4} \times 4\frac{1}{4}$ plates	3.50
Double Glass Plate Holder, $3\frac{1}{4} \times 4\frac{1}{4}$	1.00
N. C. Film Cartridge, 12 exposures, $3\frac{1}{4} \times 4\frac{1}{4}$70
Ditto, 6 exposures35
Ditto, "double-two" cartridge, 4 exposures25
Kodak Portrait Attachment50



No. 3A Folding Pocket Kodak

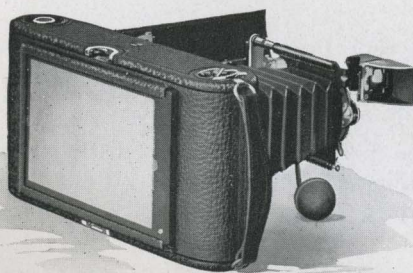
Of all amateur pictures, the 3A ($3\frac{1}{4} \times 5\frac{1}{2}$) is the most popular size. Its proportions are just right for post-cards, it is unusually effective for landscape photography and for street scenes when used horizontally; while vertically it is ideal for portraiture whether full length, or head and shoulders with the Kodak Portrait Attachment.



The first camera made for this popular size—the 3A Folding Pocket Kodak, has come to be recognized as the standard for all cameras, and every improvement made during the years it has been on the market has been incorporated in its construction. And it is so simple to operate that the beginner can make good pictures with it from the start.

This model is regularly fitted with Kodak Ball Bearing shutter and R. R. lens, an optical equipment that cannot be excelled outside of the anastigmats and amply efficient for all-around amateur photography.

Like the No. 3, this model will accommodate plates as well as films by the simple addition of a combination back, which is interchangeable with the regular back. This may be secured from any dealer, it is fitted with ground glass and takes double plate holders.

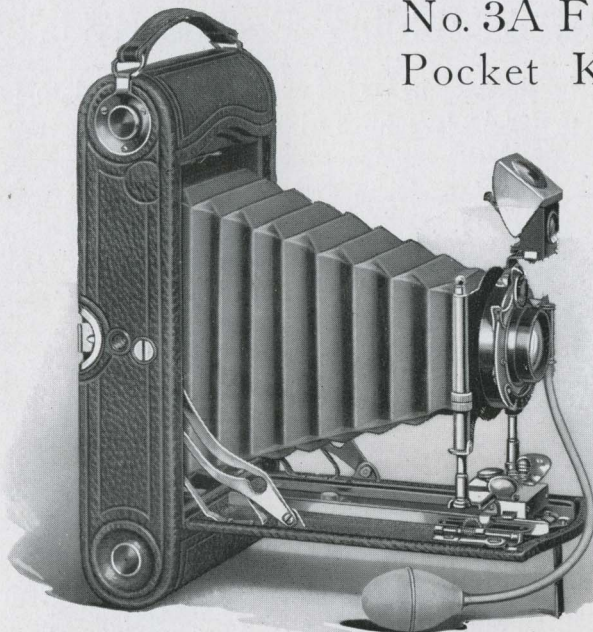


Showing Combination Back with
Focusing Screen

This camera is covered with fine grain best quality leather, has nicked fittings and in every detail is an attractive and capable instrument.



No. 3A Folding Pocket Kodak



In Detail

For rectangular pictures, $3\frac{1}{4} \times 5\frac{1}{2}$ inches. Capacity, 10 exposures without reloading. Size of Kodak, $9\frac{1}{2} \times 4\frac{3}{4} \times 2$ inches. Weight, 41 ounces. Lens, double combination, rapid rectilinear, speed, $f. 8$, focal length, $6\frac{3}{4}$ inches. Shutter, Kodak Ball Bearing. (See page 6.) Two tripod sockets. Brilliant reversible finder with hood. Automatic focusing lock for films. Double focusing scale for films or plates.

The Price

No. 3A F. P. Kodak, R. R. lens, Kodak Ball Bearing shutter	\$20.00
Ditto, with Kodak Automatic shutter	25.00
Black Sole Leather Case, with strap	2.00
Kodak Autotime Scale	1.00
Combination Back	3.50
Double Glass Plate Holders, $3\frac{1}{4} \times 5\frac{1}{2}$, each	1.00
N. C. Film Cartridge, 10 exposures, $3\frac{1}{4} \times 5\frac{1}{2}$70
Ditto, 6 exposures40
Ditto, "double-two" cartridge, 4 exposures30
Kodak Portrait Attachment50



No. 4 Folding Pocket Kodak

The No. 4 Folding Pocket Kodak is designed to provide those who prefer 4 x 5 pictures with a camera having the same conveniences and the same dependability as the 3A. It is, in fact, similar to that model in every essential respect excepting in the size of the pictures which it makes. And there are many photographers who prefer the 4 x 5 proportion on account of its suitability for composition of any character in either the vertical or horizontal position, and also the comparatively large size which it is possible to get of the objects in the composition.



The optical equipment is precisely the same as that of the 3A—the best quality of R. R. lens, mounted in the Kodak Ball Bearing shutter. This is an excellent equipment for general amateur photography and the shutter leaves, opening in star shape, make the camera very effective for snap-shot work.

The camera is provided with rising and sliding front, reversible brilliant finder, automatic focusing lock and two tripod sockets. While thus equipped for a wide range of work, it may be carried in a top coat pocket and may be easily handled by the beginner as well as the advanced amateur.

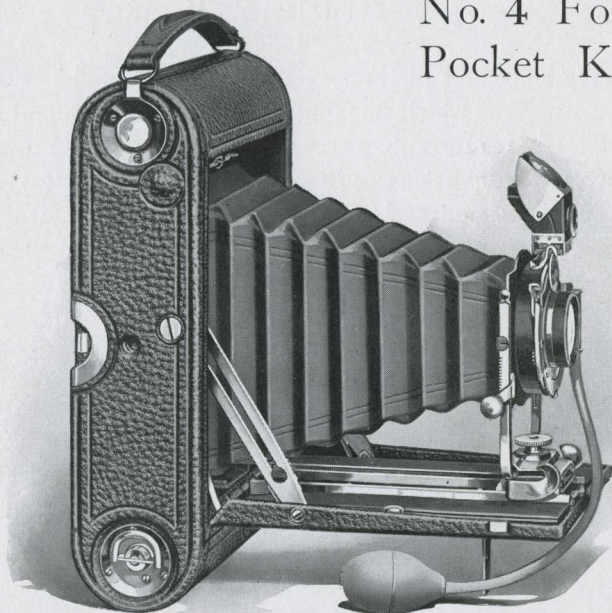
Fitted with Kodak Portrait Attachment, this model is excellent for bust portraits, as it can be focused as close as 2 feet 8 inches to the subject, producing a very large portrait.

A glass plate adapter with focusing screen, and interchangeable with the regular back, can be supplied (extra), and the camera can then be loaded with plates whenever desired.

Constructed with the usual Kodak skill, covered with best quality seal grain leather and all metal parts beautifully nicked.



No. 4 Folding Pocket Kodak



In Detail

For rectangular pictures, 4 x 5 inches. Capacity, 12 exposures without reloading. Size of Kodak, $9 \times 5\frac{3}{4} \times 2\frac{1}{4}$ inches. Weight, 2 pounds 11 ounces. Lens, double combination, rapid rectilinear, speed, $f. 8$, focal length, $6\frac{3}{4}$ inches. Shutter, Kodak Ball Bearing. (See page 6.) Two tripod sockets. Brilliant reversible finder. Automatic focusing lock.

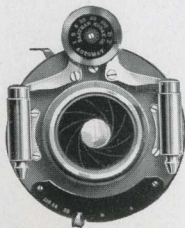
The Price

No. 4 F. P. K., R. R. lens, Kodak Ball Bearing shutter	\$20.00
Ditto, with Kodak Automatic shutter	25.00
Ditto, with Compound shutter, highest speed, $\frac{1}{200}$ second, and Zeiss Kodak anastigmat lens, $f. 6.3$	63.00
Black Sole Leather Carrying Case, with strap	2.00
Kodak Autotime Scale	1.00
Glass Plate Adapter, 4 x 5, with ground glass	3.50
Double Glass Plate Holders, 4 x 5, each	1.00
N. C. Film Cartridge, 12 exposures, 4 x 590
Ditto, 6 exposures45
Ditto, "double-two" cartridge, 4 exposures30
Kodak Portrait Attachment50



No. 4A Folding Kodak

For very large size pictures, we offer the No. 4A Folding Kodak—a camera which combines all the simple and convenient Kodak features in a very light and compact camera, considering the proportions of the picture it makes. It is fully equipped for out of the ordinary work, as well as for snap-shot and general amateur photography.



One of its special features is its adaptability to home portraiture. Fitted with the Kodak Portrait Attachment, it will make bust portraits up to the full size of the film, as it may be operated as close as $3\frac{1}{2}$ feet to the subject. A plate adapter with focusing screen, interchangeable with the regular back, will permit the use of dry plates if desired.

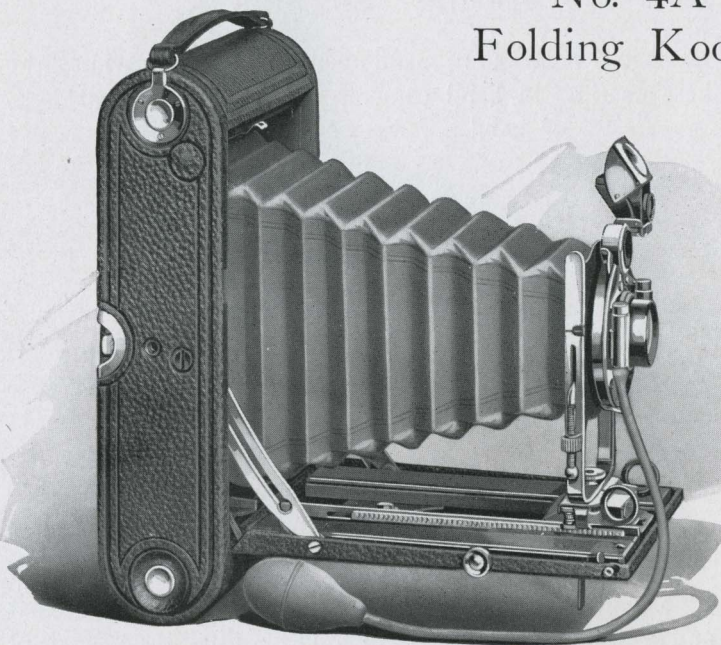
The shutter supplied with this model is a double valve automatic, which works not only for time and bulb exposures, but is also graduated in fractional parts of a second from $\frac{1}{100}$ to 1. The lens is a Rapid Rectilinear of the same high quality as those supplied with the preceding Kodaks.

The camera is equipped with rising and sliding front, rack and pinion for easy focusing two tripod sockets and a very positive automatic standard clamp. The regular finder is a brilliant reversible, but when desired, a direct view finder can be furnished for specially quick snap-shot work with the camera held on a level with the eyes.

Constructed with the same care and attention to detail as the preceding model, the No. 4A is just as simple to operate, and is finished in the same style, with seal grain covering and nicked fittings.



No. 4A Folding Kodak



In Detail

For rectangular pictures, $4\frac{1}{4} \times 6\frac{1}{2}$ inches. Capacity, 6 exposures without reloading. Size of Kodak, $11 \times 6\frac{1}{2} \times 2\frac{5}{8}$ inches. Weight, 4 pounds 4 ounces. Lens, double combination, rapid rectilinear, speed, $f. 8$, focal length, $8\frac{1}{4}$ inches. Shutter, B. & L. Automatic. Rising and sliding front. Rack and pinion for focusing. Two tripod sockets. Brilliant reversible finder with hood.

The Price

No. 4A F. Kodak, R. R. lens, B. & L. Automatic shutter	\$35.00
Ditto, with Zeiss Kodak anastigmat lens, $f. 6.3$	72.50
Ditto, with Compound shutter, highest speed $\frac{1}{150}$ second	85.00
Kodak Autotime Scale (regular equipment)	1.00
Black Sole Leather Case, with strap	2.50
Glass Plate Adapter, with ground glass	5.00
Double Glass Plate Holders, each	1.25
N. C. Film Cartridge, 6 exposures, $4\frac{1}{4} \times 6\frac{1}{2}$65
Ditto, "double-two" cartridge, 4 exposures45
Direct View Finder	2.00
Kodak Portrait Attachment50



Special Kodaks

The Special Kodaks are made upon the idea of providing the very best possible in hand cameras. A fine anastigmat lens, made expressly for hand camera work, a high speed, accurate shutter, a complete operating equipment, and the best materials procurable, richly finished—these, moulded together by the most expert camera workmen in the world, leave nothing to be desired by the user, whether he be beginner or expert.



Aside from the requirements of the focal plane specialist, there is no condition under which amateur pictures can be made, in which these cameras will not produce the best results. And the different sizes in which they are made afford a choice for any one of the three most popular sizes of amateur pictures.

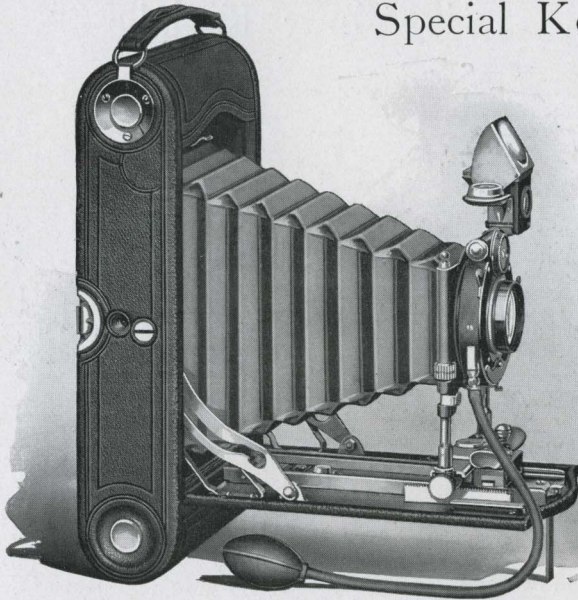
These cameras are fitted with the Zeiss Kodak Anastigmat lens and Compound shutter, which latter attains a speed of $\frac{1}{250}$ of a second in the 1A and 3 sizes, and $\frac{1}{500}$ second in the 3A size. The fast lenses give the Specials a great advantage over the ordinary camera in dull lights, and in combination with the Compound shutter, make them second only to cameras having focal plane shutters for photographing rapidly moving objects.

They have rising and sliding fronts, reversible finders, rack and pinion for focusing, spirit levels, in fact every useful convenience that can be put into a hand camera. The 3 and 3A sizes will take plates by addition of a combination back (supplied extra).

Made as the last word in photographic perfection, these cameras are beautifully finished. Covered with genuine Persian morocco, with rich black leather bellows and nicked fittings, they bear the impress of the quality that is in them.



Special Kodaks



In Detail

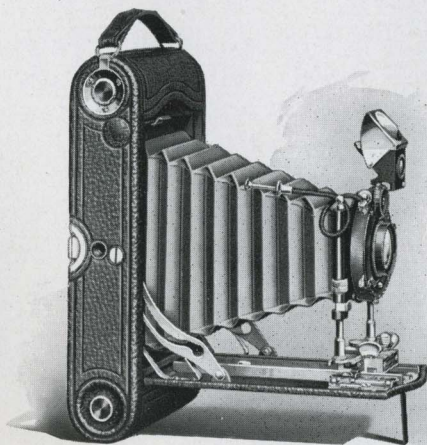
Size of Kodak, No. 1A, $2 \times 3\frac{3}{4} \times 8$ inches; No. 3, $1\frac{1}{8} \times 4\frac{1}{2} \times 8$ inches; No. 3A, $9\frac{1}{2} \times 4\frac{3}{4} \times 2$ inches. Weight, No. 1A, 30 ounces; No. 3, 32 ounces; No. 3A, 42 ounces. Lens, Zeiss Kodak anastigmat, speed, $f. 6.3$, focal length, No. 1A, 5 inches; No. 3, 5 inches; No. 3A, $6\frac{3}{4}$ inches. Shutter, Compound. (See page 7.) Two tripod sockets. Brilliant reversible finder, with hood. Spirit level. Rack and pinion for focusing.

The Price

	No. 1A $2\frac{1}{2} \times 4\frac{1}{4}$	No. 3 $3\frac{1}{4} \times 4\frac{1}{4}$	No. 3A $3\frac{1}{4} \times 5\frac{1}{2}$
Special Kodak, Zeiss Kodak anastigmat lens, $f. 6.3$, and Compound shutter	\$50.00	\$52.00	\$65.00
Ditto, with Cooke Series IIIa, $f. 6.5$ lens	63.00	65.00	74.00
Ditto, with B. & L. Zeiss Tessar Series IIb lens, $f. 6.3$	62.50	64.50	80.50
Kodak Autotime Scale	1.50	1.50	1.50
Grain Leather, Velvet Lined Case, with strap	3.00	3.00	3.50
Combination Back		4.00	4.00
Double Glass Plate Holders, each		1.00	1.00
N. C. Film Cartridge, 12 exposures50	.70	
Ditto, 10 exposures70
Ditto, 6 exposures25	.35	.40
Ditto, "double-two" cartridge, 4 exposures25	.30



Six-Three Kodaks



The purpose of the *Six-Three* Kodaks is to supply those who want the full anastigmat advantages of definition, flatness of field, and speed, at the minimum of expense, with suitably equipped and fully reliable cameras.

Starting with the regular Kodak models, in the standard sizes, as a basis, we have simply replaced the R. R. lens and Ball Bearing shutter with the Compound shutter and a new anastigmat lens, called the Cooke Kodak Anastigmat. This lens has been specially designed for this particular use by the makers of the well-known Cooke Anastigmat Lenses. It is an anastigmat of the very first quality, fully corrected for definition and flatness of field, and working at a speed of *f*. 6.3. The shutter is the regular Compound, but operated with antinuous release instead of bulb and tube.

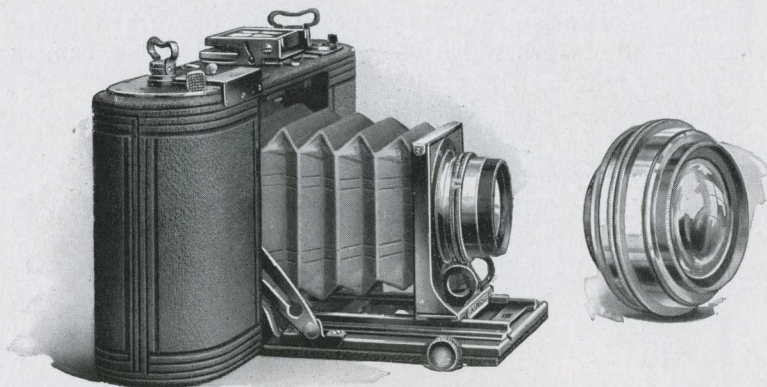
For details on any *Six-Three* Kodak, it is necessary to merely refer to the detailed specifications of the regular models.

Prices

<i>Six-Three</i> Kodak No. 1A, $2\frac{1}{2} \times 4\frac{1}{4}$, Cooke Kodak anastigmat lens, <i>f</i> . 6.3, and Compound shutter, highest speed $\frac{1}{250}$ second	\$38.00
<i>Six-Three</i> Kodak No. 3, $3\frac{1}{4} \times 4\frac{1}{4}$, Cooke Kodak anastigmat lens, <i>f</i> . 6.3, and Compound shutter, highest speed $\frac{1}{250}$ second	40.00
<i>Six-Three</i> Kodak No. 3A, $3\frac{1}{4} \times 5\frac{1}{2}$, Cooke Kodak anastigmat lens, <i>f</i> . 6.3, and Compound shutter, highest speed $\frac{1}{250}$ second	50.00
Kodak Autotime Scale	1.50
For prices on carrying cases, films, etc., see price list of corresponding regular models.	



No. 1A Speed Kodak



In this camera are combined the Kodak convenience, and in large measure the Kodak compactness, with the high speed and efficiency of the Graflex Focal Plane shutter. This shutter permits a latitude of exposures varying from its highest speed, $\frac{1}{1000}$ second, to very slow snap-shots, bulb and time exposures.

The camera is very simple to operate, small enough to slip into a top coat pocket, and while designed for the highest speed work, it is a superior instrument for home portraiture and all general amateur photographic work.

In Detail

For rectangular pictures, $2\frac{1}{2} \times 4\frac{1}{4}$ inches. Capacity, 12 exposures without reloading. Size of Kodak, $2\frac{1}{4} \times 4\frac{1}{2} \times 9\frac{3}{4}$ inches, Weight, 3 pounds. Shutter, Graflex focal plane, speed $\frac{1}{1000}$ second to slow instantaneous. Rack and pinion for focusing, automatic standard clamp, and tripod socket. Direct view finder with mirror attachment. Automatic safety blind for protecting film when shutter is wound.

The Price

No. 1A Speed Kodak, Graflex focal plane shutter, without lens	\$38.00
Ditto, with Zeiss Kodak anastigmat lens No. 2, <i>f.</i> 6.3	60.00
Ditto, with Series IIb B. & L. Zeiss Tessar lens No. 4, <i>f.</i> 6.3	72.50
Ditto, with Cooke Series IV lens No. 25, <i>f.</i> 5.6	76.00
Ditto, with Series, Ic B. & L. Zeiss Tessar lens No. 14, <i>f.</i> 4.5	78.50
Black Sole Leather Carrying Case, with strap	2.00
N. C. Film Cartridge, 12 exposures, $2\frac{1}{2} \times 4\frac{1}{4}$50
Ditto, 6 exposures25



Panoram Kodaks

The Panoram Kodak does a special kind of work — a very desirable kind of work which cannot be obtained with a camera of any other type.

As its name implies, it is constructed so as to take panoramic pictures of outdoor groups, landscapes, mountain views, and the like.

For instance, in making a picture of an outdoor group of twelve or fifteen people, with an ordinary camera, they would have to be arranged in two or three rows to get good sized images, but with a Panoram they can be arranged in a semi-circle, at a given distance from the camera, and all appear in the picture in one row and of the proper relative size. Again, in making a landscape, the sweep of the Panoram lens will take in the complete view, while the scope of the ordinary camera could only permit a portion of it to be taken at one exposure.

In addition to its use for making horizontal pictures, the camera may be as easily used in the vertical position, and decidedly unique pictures of high waterfalls, mountain peaks and such subjects can be secured.

The lens is mounted on a pivot and when the exposure is to be made, by pressing a lever the lens automatically swings on this pivot from one side of the camera to the other, embracing an angle of over 100 degrees. At the same time, the shutter operates automatically with great precision, insuring even illumination throughout the exposure.

There is no complication whatever in operation, the whole process is automatic; it's just as easy to make pictures with the Panoram as with any other Kodak.

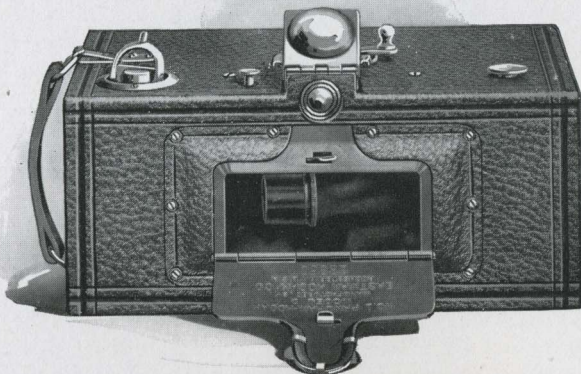
Those who already have regular Kodaks or contemplate purchasing such, will find this a valuable addition to their photographic equipment for the making of out-of-the-ordinary pictures.

Panoram Kodaks use the regular daylight loading N. C. Kodak film, they are carefully made, have genuine leather coverings and nickeled fittings.

The No. 1 has a scope of 112 degrees, while the No. 4 embraces an angle of 142 degrees. Panoram Kodaks cannot be used successfully indoors.



Panoram Kodaks



No. 1 Panoram Kodak

In Detail

For rectangular pictures, $2\frac{1}{4} \times 7$ inches. Capacity, 6 exposures without reloading. Size of Kodak, $3\frac{3}{8} \times 4\frac{3}{8} \times 7\frac{3}{8}$ inches. Weight, 24 ounces. Lens, specially selected as to quality and focal length. Shutter, Panoram. Two tripod sockets. Brilliant finder with hood. Uses No. 1 F. P. Kodak cartridges.

The Price

No. 1 Panoram Kodak	\$10.00
Black Sole Leather Carrying Case, with shoulder strap	2.50
N. C. Film Cartridge, 6 exposures, $2\frac{1}{4} \times 7$.40
Ditto, 3 exposures	.20

No. 4 Panoram Kodak

In Detail

For rectangular pictures, $3\frac{1}{2} \times 12$ inches. Capacity, 4 exposures without reloading. Size of Kodak, $4\frac{3}{4} \times 5\frac{5}{8} \times 10\frac{1}{8}$ inches. Weight, 2 pounds 14 ounces. Lens, specially selected as to quality and focal length. Shutter, Panoram. Two tripod sockets. Brilliant finder with hood. Uses No. 4 B. E. cartridges.

The Price

No. 4 Panoram Kodak	\$20.00
Black Sole Leather Carrying Case, with shoulder strap	3.00
N. C. Film Cartridge, 4 exposures, $3\frac{1}{2} \times 12$.75
Ditto, 2 exposures	.45



Nos. 2 and 3 Bull's-Eye Kodaks



The Bull's-Eye Kodak for years has been a general favorite with those amateurs who wish a simple, inexpensive, yet reliable instrument for photographing the things they are interested in.

These two cameras differ only in the size of the pictures which they make, both have automatic shutters for time or instantaneous work, finders and tripod sockets for vertical or horizontal exposures, and are easily opened for loading or unloading in daylight. They are of the fixed focus type and are always ready to operate. With Kodak Portrait Attachment either can be depended upon for first-rate portraits.

The covering is seal grain leather of fine quality, and metal parts are highly nicked. Cut shows the No. 3.

In Detail

For pictures, No. 2, $3\frac{1}{2} \times 3\frac{1}{2}$ inches; No. 3, $3\frac{1}{4} \times 4\frac{1}{4}$ inches. Capacity, each 12 exposures without reloading. Size of Kodak, No. 2, $5\frac{3}{4} \times 4\frac{5}{8} \times 4\frac{1}{2}$ inches; No. 3, $4\frac{5}{8} \times 5\frac{1}{2} \times 6\frac{1}{2}$ inches. Weight, No. 2, 22 ounces; No. 3, 24 ounces. Lens, meniscus achromatic, $4\frac{1}{2}$ -inch focus. Shutter, Eastman Rotary, with three stops. Tripod socket, No. 2, 1; No. 3, 2. Brilliant finders.

The Price

	No. 2	No. 3
Bull's-Eye Kodak, meniscus achromatic lens, Eastman Rotary shutter	\$8.00	\$8.00
Black Sole Leather Carrying Case, with shoulder strap	1.75	2.00
N. C. Film Cartridge, 12 exposures60	.70
Ditto, 6 exposures30	.35
Ditto, "double-two" cartridge, 4 exposures20	.25
Kodak Portrait Attachment50	.50

No. 1 Brownie



This, the first of the Brownies, is really responsible for the entire line of these popular cameras. Originally produced as a camera particularly for the children, the No. 1 Brownie made such good pictures in their hands as to excite the interest of grown-up people, and the success obtained by its use created a demand for similar inexpensive cameras for pictures of larger size. The No. 1 Brownie is exceedingly simple to operate and each camera has to undergo the regular Kodak inspection for reliability, before being sent out.

The scope of view is ordinarily located by V-shaped lines at the top, but if preferred the Brownie finder (detachable) illustrated below, can be fitted at an extra charge of 25 cents.

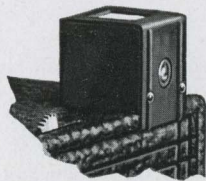
Has automatic shutter for time or snap-shot exposures, and will make good portraits when fitted with the Portrait Attachment.

In Detail

For square pictures, $2\frac{1}{4} \times 2\frac{1}{4}$ inches. Capacity, 6 exposures without reloading. Size of camera, $4\frac{7}{8} \times 3\frac{1}{8} \times 3$ inches. Weight, 8 ounces. Lens, meniscus, $3\frac{3}{4}$ -inch focus. Shutter, Eastman Rotary, with one stop.

The Price

No. 1 Brownie Camera, meniscus lens, Eastman Rotary shutter	\$1.00
No. 1 Brownie Carrying Case, holds camera and finder50
N. C. Film Cartridge, 6 exposures, $2\frac{1}{4} \times 2\frac{1}{4}$15
Brownie Finder, detachable25
No. 1 Brownie Developing and Printing Outfit, including paper for 24 prints90
Kodak Portrait Attachment50





Nos. 2 and 2A Brownies



These convenient fixed focus cameras are as simple to operate as the No. 1 Brownie, but have greater capabilities and make larger pictures. They differ from each other only in the size of the pictures which they make, and under average conditions, will produce excellent pictures.

They are especially desirable for the children on account of their low cost, strong construction and simple operation, but they are perfectly suitable for the use of grown-up people and thousands are being used by such with great satisfaction.

These cameras have two finders, automatic shutters, meniscus lenses of first quality, and are covered with imitation leather.

In Detail

For rectangular pictures, No. 2, $2\frac{1}{4} \times 3\frac{1}{4}$ inches; No. 2A, $2\frac{1}{2} \times 4\frac{1}{4}$ inches. Capacity, No. 2, 6 exposures without reloading; No. 2A, 12 exposures without reloading. Size of camera, No. 2, $5\frac{5}{8} \times 4 \times 3\frac{1}{4}$ inches; No. 2A, $3\frac{7}{8} \times 5\frac{1}{8} \times 6\frac{1}{8}$ inches. Weight, No. 2, 13 ounces; No. 2A, 21 ounces. Lens, meniscus. Shutter, Eastman Rotary, with three stops. Two finders.

The Price

	No. 2	No. 2A
Brownie Camera, meniscus lens, Eastman Rotary shutter . . .	\$2.00	\$3.00
Brownie Carrying Case, with shoulder strap75	.75
N. C. Film Cartridge, 12 exposures50
N. C. Film Cartridge, 6 exposures20	.25
Kodak Portrait Attachment50	.50
A B C Developing and Printing Outfit (see page 46)	1.50	1.50



No. 3 Brownie



The $3\frac{1}{4} \times 4\frac{1}{4}$ is such a popular amateur size that this model, combining all the simple, reliable Brownie features, will appeal to very many.

Like all Brownies, it is furnished at a very moderate price and is suitable alike for the children or the grown-up people. Equipped with an excellent meniscus achromatic lens and automatic shutter, it is thoroughly dependable for general amateur photography and the negatives which it makes are of such quality as to yield excellent $6\frac{1}{2} \times 8\frac{1}{2}$ enlargements by use of the Brownie Enlarging Camera.

When fitted with Kodak Portrait Attachment the camera will make bust portraits of good size.

In Detail

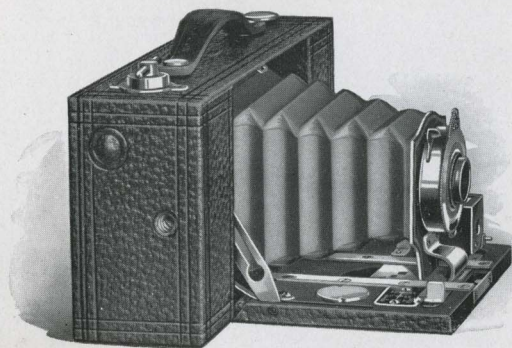
For rectangular pictures, $3\frac{1}{4} \times 4\frac{1}{4}$ inches. Capacity, 12 exposures without reloading. Size of camera, $6\frac{1}{8} \times 4\frac{3}{8} \times 5\frac{1}{8}$ inches. Weight, 24 ounces. Lens, meniscus achromatic, 5-inch focus. Shutter, Eastman Rotary, with three stops. Two tripod sockets. Two finders.

The Price

No. 3 Brownie Camera, meniscus achromatic lens, Eastman Rotary shutter	\$4.00
No. 3 Brownie Carrying Case, with shoulder strap	1.00
N. C. Film Cartridge, 12 exposures, $3\frac{1}{4} \times 4\frac{1}{4}$70
Ditto, 6 exposures35
Ditto, "double-two" cartridge, 4 exposures25
Kodak Portrait Attachment50



No. 2 Folding Pocket Brownie



The folding type of Brownie Camera is made upon the same idea of simplicity and low cost as the box forms, but they are, of course, much more compact and, in some features, more convenient.

The No. 2 is a very dainty little camera which will slip readily into an ordinary pocket, and makes excellent pictures the all-by-day-light way.

It is fitted with our Pocket Automatic shutter working for time, bulb and snap-shot exposures, in which is mounted an excellent meniscus lens. Fitted with Kodak Portrait Attachment, this becomes a good camera for home portraiture and the negatives which it makes will yield excellent 5 x 7 enlargements by use of the Brownie Enlarging Camera.

The camera is carefully finished throughout, it has imitation leather covering and nickeled fittings.

In Detail

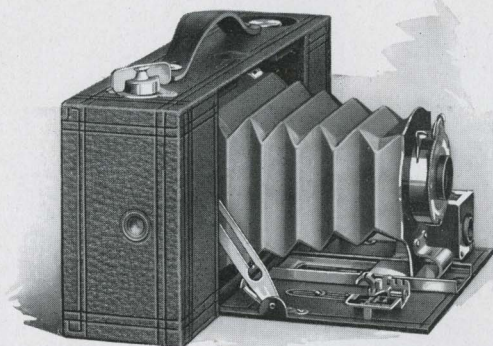
For rectangular pictures, $2\frac{1}{4} \times 3\frac{1}{4}$ inches. Capacity, 6 exposures without reloading. Size of camera, $6\frac{7}{8} \times 3\frac{5}{8} \times 2\frac{1}{8}$ inches. Weight, 16 ounces. Lens, meniscus, $4\frac{1}{2}$ -inch focus. Shutter, Pocket Automatic. (See page 6.) Two tripod sockets. Automatic focusing lock. Reversible finder.

The Price

No. 2 Folding Pocket Brownie, meniscus lens, Pocket Automatic shutter	\$5.00
No. 2 Folding Pocket Brownie Carrying Case75
N. C. Film Cartridge, 6 exposures, $2\frac{1}{4} \times 3\frac{1}{4}$20
Kodak Portrait Attachment50



No. 2A Folding Pocket Brownie



The pleasing proportions of the pictures taken by this little Brownie, combined with its simple operation and reliability, have made it one of the most popular cameras of the whole Brownie line.

For effective landscape composition and full and three-quarter length portraits, the shape of its pictures is ideal. And when fitted with Kodak Portrait Attachment, it may be operated close up to the subject for excellent bust portraits.

Identical in construction and general design with the No. 2, this model can as easily be carried in the pocket, works for time, bulb and instantaneous exposures, and is well finished throughout. Attractively covered with best imitation leather, and metal parts are highly nickeled.

In Detail

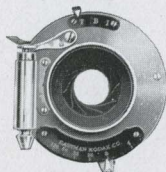
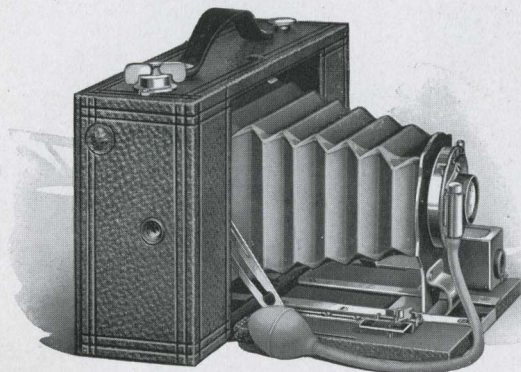
For rectangular pictures, $2\frac{1}{2} \times 4\frac{1}{4}$ inches. Capacity, 12 exposures without reloading. Size of camera, $8\frac{1}{2} \times 2 \times 3\frac{5}{8}$ inches. Weight, 23 ounces. Lens, meniscus achromatic, 5-inch focus. Shutter, Pocket Automatic. Two tripod sockets. Automatic focusing lock. Reversible finder.

The Price

No. 2A Folding Pocket Brownie, meniscus achromatic lens, Pocket Automatic shutter	\$7.00
No. 2A Folding Pocket Brownie Carrying Case90
N. C. Film Cartridge, 12 exposures, $2\frac{1}{2} \times 4\frac{1}{4}$ inches50
Ditto, 6 exposures25
Kodak Portrait Attachment50



No. 3 Folding Brownie



For $3\frac{1}{4} \times 4\frac{1}{4}$ pictures, this model offers all the Brownie simplicity at modest Brownie prices, and the choice of either single or double lens fitted to F. P. K. Automatic shutter with bulb and finger release. It will make any kind of pictures, it works for time, bulb and instantaneous exposures, and with Kodak Portrait Attachment is an excellent instrument for home portraiture.

These cameras are well finished, complete in every detail, and with the Brownie Enlarging Camera, good $6\frac{1}{2} \times 8\frac{1}{2}$ enlargements can be made easily from No. 3 Folding Brownie negatives.

In Detail

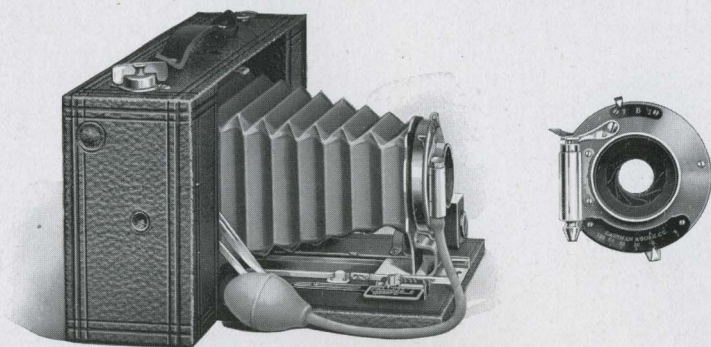
For rectangular pictures, $3\frac{1}{4} \times 4\frac{1}{4}$ inches. Capacity, 12 exposures without reloading. Size of camera, $8\frac{3}{8} \times 4\frac{5}{8} \times 2\frac{5}{8}$ inches. Weight, 25 ounces. Lens, meniscus achromatic, 5-inch focus. Shutter, F. P. K. Automatic with bulb. (See page 7.) Automatic focusing lock. Two tripod sockets. Reversible finder.

The Price

No. 3 Folding Brownie Camera, meniscus achromatic lens, F. P. K. Automatic shutter	\$9.00
Ditto, with R. R. lens and F. P. K. Automatic shutter	11.00
No. 3 Folding Brownie Carrying Case	1.00
N. C. Film Cartridge, 12 exposures, $3\frac{1}{4} \times 4\frac{1}{4}$70
Ditto, 6 exposures35
Ditto, "double-two" cartridge, 4 exposures25
Kodak Portrait Attachment50



No. 3A Folding Brownie



If there is any one particular size favored by the majority of amateurs, it is the $3\frac{1}{4} \times 5\frac{1}{2}$, or post-card size, and here is a Brownie with all the Brownie features, for this effective size.

It offers the choice of either single or double lens and is fitted with F. P. K. Automatic shutter—a most efficient equipment for the ordinary run of amateur photography. Supplied with reversible finder, two tripod sockets and automatic focusing lock, it is furnished at a very moderate price, considering the large size pictures which it makes and the quality of the instrument.

Covered with durable imitation leather. Metal parts nickeled.

In Detail

For rectangular pictures, $3\frac{1}{4} \times 5\frac{1}{2}$ inches. Capacity, 10 exposures without reloading. Size of camera, $2\frac{5}{8} \times 4\frac{5}{8} \times 9\frac{7}{8}$ inches. Weight, 34 ounces. Lens, meniscus achromatic, $6\frac{1}{2}$ -inch focus. Shutter, F. P. K. Automatic, with bulb release. (See page 7.) Automatic focusing lock. Two tripod sockets. Reversible finder.

The Price

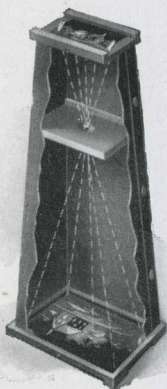
No. 3A Folding Brownie Camera, meniscus achromatic lens, F. P. K.	
Automatic shutter	\$10.00
Ditto, with R. R. lens and F. P. K. Automatic shutter	12.00
No. 3A Folding Brownie Carrying Case	1.00
N. C. Film Cartridge, 10 exposures70
Ditto, 6 exposures40
Ditto, "double-two" cartridge, 4 exposures30
Kodak Portrait Attachment50



Brownie Enlarging Camera

The average amateur usually thinks of enlarging as an intricate, expensive process, requiring considerable skill and experience.

But such is not the fact. Even a youngster can make first-rate enlargements with a Brownie Enlarging Camera. It's just as easy as printing on Velox paper. In fact the two processes are very much the same, excepting that in printing, the negative and paper are in close contact, while in enlarging, the paper is at some distance from the negative, with a lens in between.



As shown in the illustration, the Brownie Enlarging Camera is simplicity itself. It's just a light-tight cone with an attachment at the small end to hold the negative, and another at the large end for the paper. Provision is made inside for holding the lens.

To make an enlargement, one merely places the negative and paper in place, holds the negative end up to the light for a specified time and then develops the paper as usual.

One of these inexpensive outfits will enable you to make enlargements at any time from your favorite negatives.

The cameras are collapsible, so that they fold flat and may be conveniently carried in a suitcase.

The Price

No. 2. Brownie Enlarging Camera, for 5 x 7 enlargements from 2¼ x 3¼ negatives	\$2.00
No. 3. Ditto, for 6½ x 8½ enlargements from 3¼ x 4¼ negatives	3.00
No. 4. Ditto, for 8 x 10 enlargements from 4 x 5 negatives (will also take 3¼ x 5½ negatives)	4.00

V. P. Kodak Enlarging Camera

This is made upon exactly the same principle as the Brownie Enlarging Camera, excepting that being small in itself, it is not made collapsible.

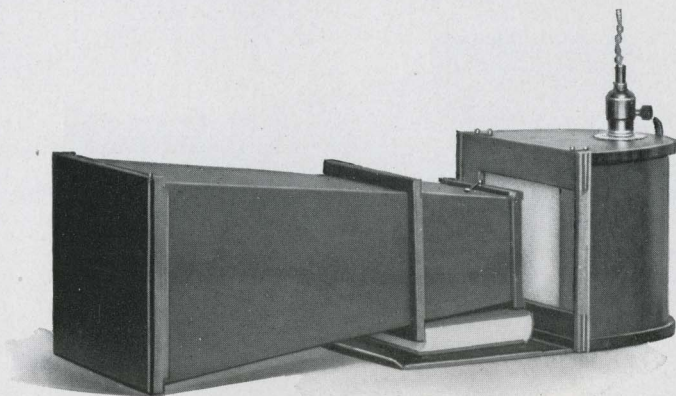
It offers the simplest means for making 3¼ x 5½ enlargements from 1½ x 2½ negatives.

The Price

Vest Pocket Kodak Enlarging Camera	\$1.75
--	--------



Brownie Enlarging Camera Illuminator



In enlarging with the Brownie or Vest Pocket Kodak Enlarging Camera, the exposure may be made by daylight, but to accommodate those who wish to do their enlarging at night or who prefer to use artificial light at all times we have devised the Brownie Enlarging Camera Illuminator, which assures the user a uniformly strong, even light day or night. It is simply constructed, and moderate in price.

The illuminator is collapsible, but when set up, has the form of a half-round, light-proof box with socket through which is inserted an electric light bulb.

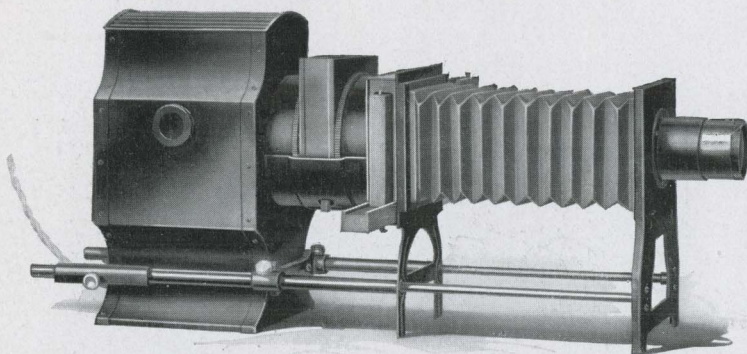
The inner walls of this box are white and act as a reflector when the light is turned on. At the end is a ground glass, which diffuses the light, so that by placing negative end of the enlarging camera in contact with this glass and turning on the electricity, an excellent steady printing light is obtained.

The glass is provided with a hinged protector of ruby cloth, which may be closed as soon as the exposure is completed, and the illuminator then becomes a perfect lamp for the developing and subsequent operations with the enlargement. Complete instructions for use are included with each outfit, and anyone who has electric light in the house will find it invaluable for enlarging purposes.

Brownie Enlarging Camera Illuminator, \$3.00



The Kodiopticon



The Kodiopticon opens a new use—a new pleasure in his negatives, for the amateur photographer. For it enables anyone who has electricity in his house, to show sharp, well-illuminated lantern slide projections without difficulty and at small expense.

The Kodiopticon is substantially made, and operated with an ordinary Mazda electric lamp, at a distance of 10 feet from the sheet, will project images of about 36 inches. A larger image may be secured by setting the Kodiopticon a greater distance away, but the greater the distance the less the illumination. Can also be furnished with an electric arc lamp, when it can be used at 12 feet, with the maximum illumination, projecting an image of about 42 inches.

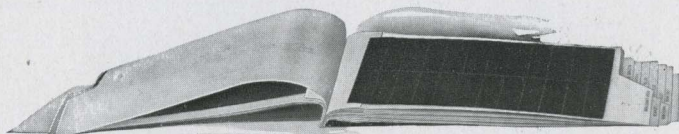
The Kodiopticon has a water jacket for protection of the slides from heat, and the price includes a strong wooden case, which, by reversing the top, serves as a permanent stand for the outfit.

The Price

Kodiopticon, complete, with Mazda Lamp	\$20.00
Ditto, with Hand-feed Arc Lamp and 5 ampere Rheostat, accommodat- ing 110 volts	29.00
Ditto, accommodating 220 volts	30.50
100 Watt Mazda (Tungsten) Lamp, Concentrated Filament	3.00
Eastman Portable Background Carrier	3 00
Eastman Portable Background, plain, 4 x 5 feet	1.50
Lantern Slide Plates, $3\frac{1}{4}$ x 4, per dozen45
Lantern Slide Cover Glass, per dozen25
Lantern Slide Binders, per package 50 strips10
Velox Lantern Slide Films, $2\frac{3}{4}$ x $3\frac{1}{4}$, per dozen30
Velox Lantern Slide Frames, per dozen20
Velox Lantern Slide Mats, $2\frac{7}{8}$ x $3\frac{5}{8}$, per 2 dozen05
Nepera Solution, for developing Velox L. S. Films, 4-ounce bottle20
Lantern Slide Film Varnish, 4-ounce bottle25



Velox Transparent Water Color Stamps



An interesting and highly enjoyable diversion for the amateur photographer is the coloring of prints. And those who use the Kodiopticon will find that many slides are greatly improved by the addition of color.

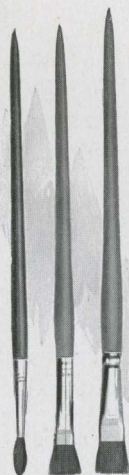
While actual color photography is by no means practical for general amateur use, anyone can make beautifully colored prints by the use of Velox Transparent Water Color Stamps.

No special artistic skill, no knowledge of painting whatever is necessary. Just a brush or two and the book of stamps, which includes simple directions for coloring both prints and lantern slides.

Each book includes twelve sheets of colors and each sheet is divided by perforations into twenty-two stamps. To use any color merely tear off a stamp, place in a small saucer or palette supplied with the outfit, and cover with about a teaspoonful of water.

As the colors are perfectly transparent and blend harmoniously, you will find that the application is very easy and that no skill is necessary in the production of pleasing color prints.

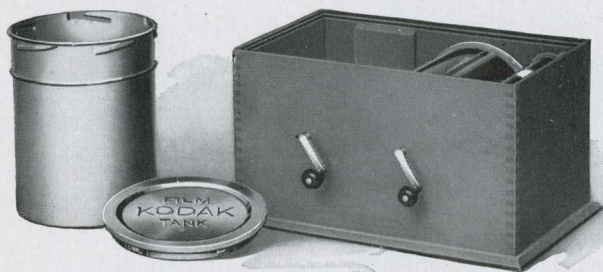
The Velox Transparent Water Color Stamp Outfit offers the greatest convenience in coloring prints, as it includes the book of stamps, three brushes and a white enameled mixing palette, put up in a neat cardboard case.



Velox Transparent Water Color Stamps, complete booklet, 12 colors . . .	\$0.25
Separate Color Leaves, two sheets05
Set of 3 Special Brushes, per set50
Velox Transparent Water Color Stamp Outfit, including book, three brushes and palette75
Velox Water Color Stamp Palette25



Kodak Film Tank



Development, that former bugbear of the amateur photographer and especially of the beginner, is made a simple proposition by the Kodak Film Tank—fully as simple as any part of the photographic process.

For the Kodak Film Tank automatically develops every roll of film put into it, just as well as that roll of film could be developed by the most experienced photographer. If directions are followed, if the chemicals are mixed and the temperature regulated according to instructions, a boy or girl can get just as good results from the Kodak Film Tank as an expert by any method.

In other words, every roll of film put into the film tank, where the simple directions are implicitly followed, will come out developed as well, or better, than that roll of film could be developed in the dark room by the most experienced photographer. And it is very simple, it eliminates the dark room entirely, developing the film in broad daylight, and is so compact as to be easily carried and used anywhere.

The Kodak Film Tank consists of a winding box, a light-proof apron, and a heavily nickeled brass solution cup with cover. In the Brownie Film Tank, however, no cover is necessary as the film roll itself is turned. All articles can be packed in the box, making the entire outfit self-contained.

The film to be developed is placed upon a reel in the winding box, the cover is placed on the box and the film is wound around an



axis in combination with the apron, in such fashion that, when completely wound, the apron protects the film effectually from light, and may be removed from the winding box safely at any time. It is then lowered into the cup of developer, the cover attached and the film left to develop for twenty minutes. After development the film is removed for fixing.

Every step is performed in daylight and the exact time necessary for development, in combination with the chemical formula, has been scientifically worked out, so that all differences of exposure within reasonable bounds are taken care of. Snap-shots and time exposures go into the tank at the same time and come out together, developed to their full values.

Those who wish to develop more than one roll at a time can do so without purchasing extra tanks complete, by securing duplicating outfits as listed below.

The Price

Brownie Kodak Film Tank, for use with No. 1, No. 2 and No. 2 Folding Pocket Brownie cartridges, complete	\$2.50
Vest Pocket Kodak Film Tank, for Vest Pocket cartridges, complete	2.50
3½-inch Kodak Film Tank, for use with all Kodak and Brownie cartridges having a film width of 3½ inches or less, complete	5.00
5-inch Kodak Film Tank, for use with all Kodak and Brownie cartridges having a film width of 5 inches or less, complete	6.00
7-inch Kodak Film Tank, for use with No. 5 Cartridge Kodak or shorter film cartridges, complete	7.50
Duplicating Outfit, consisting of one solution cup, one transferring reel, and one apron, for Brownie Kodak Film Tank	1.25
Ditto, for Vest Pocket Film Tank	1.25
Ditto, for 3½-inch Kodak Film Tank	2.50
Ditto, for 5-inch Kodak Film Tank	3.00
Ditto, for 7-inch Kodak Film Tank	3.75
Kodak Tank Developer Powders for Brownie Kodak Film Tank, per package, ½ dozen15
Ditto, for Vest Pocket Tank15
Ditto, for 3½-inch tank, per package, ½ dozen20
Ditto, for 5-inch tank, per package, ½ dozen25
Ditto, for 7-inch tank, per package, ½ dozen25
Kodak Acid Fixing Powder, per ¼-pound package10
Ditto, per ½-pound package15
Ditto, per 1-pound package25



No. 2 Brownie Developing Box



Offering the same assurance of perfectly developed film as the Kodak Film Tank, the Brownie Developing Box is a modified form of the same, so simple to use that any boy or girl can readily understand and operate it.

It consists of a metal box with cover, just long enough to accommodate a roll of No. 1 or No. 2 Brownie Film in one loop.

To develop, the roll of film is inserted in the spool carrier, and by means of a cord and winding shaft the film is unrolled and carried around a roller bearing, thus exposing the film to the action of the developer.

Before unrolling the film the developer is poured in the box and the cover put in place; all these operations being performed in daylight. The film is then unrolled by turning the crank, when the box is rocked on its standard for six minutes. The developer is then poured off and box filled with water to wash out developer, after which film is removed and fixed in daylight.

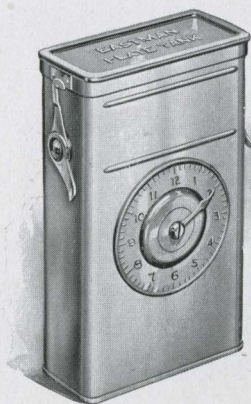
This is an excellent means, for those who have No. 1 or No. 2 Brownie Cameras, of developing their films without the need of skill or experience.

The Price

No. 2 Brownie Developing Box	\$1.00
Brownie Developing Box Powders, per package of 615
Kodak Acid Fixing Powders, ½-pound package15
Ditto, ¼-pound package10



Eastman Plate Tank



What the film tank has done for films, the plate tank does for plates. The idea of the two tanks is based upon the same time and temperature fact of development, with, of course, such differences in actual construction of the tanks as are required by the physical difference between films and plates. And as plates must be unloaded in a dark room, the plate tank cannot offer the advantage of daylight quite all the way, but it takes only a few moments in the dark room to load this tank, after which it may be brought out into any light for development.

The device consists of a metal solution cup with cover, a cage for holding 12 or less plates, and a loading block for loading the plates in the cage.

The exposed plates are loaded into the cage and placed in the tank, which has been filled with developer, in the dark room and the tank cover fastened in place. On the front of the tank is a dial for registering time. Development is allowed to continue for fifteen minutes, the tank being reversed several times. After development the developer is washed out of the plates, and the fixing bath poured into the tank, after which the plates are ready for washing in the usual manner.

The Price

Eastman Plate Tank, for 4 x 5, 3¼ x 5½, and smaller plates, includes solution cup, plate cage, loading block and adjustable kit	\$3.50
Ditto, 5 x 7, without kit	4.50
Adjustable Kit, for 4 x 5 or 3¼ x 5½ tank, to take smaller plates50
Separate Kits, for 5 x 7 tank, to take 3¼ x 5½, 4¼ x 6½ or 4¾ x 6½ plates, each75
Metal Insert, for 5 x 7 tank, to take 4 x 5 plates20
Eastman Plate Tank Developer Powders, for 4 x 5 tank, per package, ½ dozen20
Ditto, for 5 x 7 tank, per package, ½ dozen35
Kodak Acid Fixing Powder, per 1-pound package25
Ditto, per ½-pound package15

Developing and Printing Outfits



Eastman's A B C Developing and Printing Outfit includes every requisite for developing by the dark room method, printing and finishing twenty-four 4 x 5 or smaller pictures.

One Kodak Candle Lamp	\$0.25
One 4 x 5 Printing Frame25
One 4 x 5 Glass for Frame05
One 4-ounce Graduate15
One Stirring Rod05
Four 4½ x 5½ Developing Trays40
Five tubes Eastman's Special Developer25
One-half pound Kodak Acid Fixing Powder15
One package Potassium Bromide05
Two dozen 4 x 5 Velox Paper50
Two ounces Nepera Solution for developing Velox10
Instruction Book10

\$2.30

Price, complete, neatly packed, \$1.50

EASTMAN 3A OUTFIT, similar to above but providing for 3¼ x 5½ prints \$1.50

EASTMAN'S BULL'S-EYE Developing and Printing Outfit, complete, for developing and printing 12 pictures 3½ x 3½. Similar to above outfit. Price, complete, neatly packed 1.25

BROWNIE Developing and Printing Outfit, complete, for developing and printing 24 pictures 2¼ x 2¼. Price, complete90

Note—These outfits cannot be shipped by mail.



The Kodak Box No. 2



The Kodak Box No. 2 contains everything for picture making by the daylight method. No dark room is necessary, and even the beginner can get good results by following the simple, explicit directions contained in the instruction book. This outfit is simple enough for boys and girls, while at the same time it will make pictures which will please the grown-up people.

The Price

One No. 2 Brownie Camera, $2\frac{1}{4} \times 3\frac{1}{4}$	\$2.00
One No. 2 Brownie Developing Box	1.00
One Roll No. 2 Brownie Film, $2\frac{1}{4} \times 3\frac{1}{4}$20
Two Brownie Developing Box Powders05
One $\frac{1}{2}$ -pound package Kodak Acid Fixing Powder15
One 4-ounce Graduate15
One Stirring Rod05
One No. 2 Brownie Printing Frame15
One Package (1 dozen) $2\frac{1}{4} \times 3\frac{1}{4}$ Brownie Velox10
One Bottle Nepera Solution10
Three Paper Developing Trays30
One Dozen $2\frac{1}{4} \times 3\frac{1}{4}$ Mounts10
One Dozen $2\frac{1}{4} \times 3\frac{1}{4}$ Kodak Dry Mounting Tissue05
One Instruction Book10
	<hr/>
	\$4.50

Price, complete, neatly packed, \$4.00



Kodak Portrait Attachment



There is no greater pleasure in photography than Home Portraiture, and this little attachment, fitted to a Kodak or Brownie Camera, will enable one to work up close to the subject and thereby secure bust portraits of excellent quality limited in size with the larger Kodaks only by the dimensions of the film. The attachments are simply extra lenses, which slip on in front of the regular lens, and they in no way affect the operation of the instrument, excepting to make the lens cut sharp at short distances.

These attachments are not only serviceable for portraiture but also for photographing any small object, such as flowers, fruits, still life composition, at close range. Please order by number, or if required for older models or cameras with special equipments specify shutter and size of camera.



Made with Kodak and Kodak Portrait Attachment



The Price—Kodak Portrait Attachment

No. 1. For No. 2 Brownie, No. 2 and No. 2A F. P. Brownie, Vest Pocket and No. 1 and No. 1A F. P. K.	\$0.50
No. 2. For No. 2A Brownie50
No. 3. For No. 1A F. P. K., R. R. Type; No. 3 F. P. K., No. 3 Folding Brownie50
No. 4. For No. 2 and No. 3 Bull's-Eye, No. 3 Brownie50
No. 5. For Nos. 3A, 4 and 4A Folding Kodaks and No. 3A Folding Brownie50
No. 6. For No. 3 Special and <i>Six-Three</i> and 1A Special and <i>Six-Three</i> Kodaks50
No. 7. For No. 3A Special and <i>Six-Three</i> Kodaks50
No. 8. For Vest Pocket Kodak Special50
No. 9. For No. 3 F. P. K. with Kodak Automatic shutter50
No. 10. For No. 1 Brownie50

Kodak Color Screens

These screens are of great value in outdoor photography, and for all subjects embracing colors which act weakly on the sensitive film, as they hold back the strong blue and violet rays, affording the weaker colors time to record. The Kodak Color Screens are mounted in the same manner as the Kodak Portrait Attachment.

The Price

No. 1. For Vest Pocket, Nos. 1 and 1A Folding Pocket Kodaks, Nos. 2 and 2A Folding Pocket Brownies	\$0.50
No. 2. For No. 2A Brownie50
No. 3. For Nos. 2 and 3 Folding Pocket Kodaks; No. 1A F. P. Kodak, R. R. Type; and No. 3 Folding Brownie75
No. 4. For Nos. 2 and 3 Bull's-Eye and No. 3 Brownie75
No. 5. For Nos. 3A, 4 and 4A Kodaks, No. 3A Folding Brownie	1.00
No. 6. For Nos. 1A Special and <i>Six-Three</i> Kodaks and 3 Special and <i>Six-Three</i> Kodaks75
No. 7. For No. 3A Special and <i>Six-Three</i> Kodaks	1.00
No. 8. For Vest Pocket Kodak Special50
No. 9. For No. 3 F. P. K. with Kodak Automatic shutter50

Kodak Wide Angle Lenses

These lenses have a speed of *f.* 16 and are interchangeable with the lenses furnished with the Nos. 3A and 4 Folding Pocket Kodaks, and the No. 4A Folding Kodak. The wide angle Kodak lenses are rectilinear, carefully tested, and are absolutely high grade in every instance. With each one we furnish a leather case and a graduated focusing scale for attaching to the camera bed.

In ordering a Kodak wide angle lens, give size (No.) of Kodak and be sure to specify the shutter that the lens is to be used with.

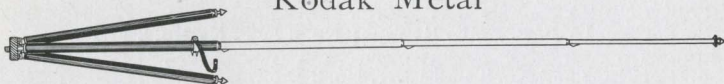
The Price

No. 4. (4 x 5) Wide Angle Kodak Lens, equivalent focus, 4½ inches (Also adapted to 3A Kodak.)	\$5.00
No. 5. (5 x 7) Wide Angle Kodak Lens, equivalent focus, 5½ inches (Also adapted to 4A Kodak.)	7.50



Kodak Tripods

Kodak Metal



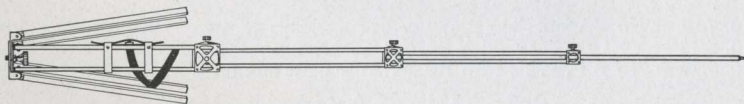
Combining light weight and compactness with exceptional rigidity, this is an ideal tripod for cameras up to 5 x 7.

Has telescoping legs of brass tubing—lower ones nickered—the upper black enameled, and should a part become inoperative through wear or accident, any section may be removed for repairs. This is a unique feature among metal tripods. When extended each section catches and holds firmly. To close, it is necessary to press in top catch only, the others then releasing automatically.

The Nos. 1 and 2 have revolving heads for attaching to camera. With this construction the camera may be swung, so as to take in the desired view without moving the tripod, a distinct advantage over other types of metal tripods. The Nos. 1 and 2 also have straps for holding the legs in place when closed.

	Sections	Length		Weight	Price
		Closed	Extended		
Kodak Metal Tripod No. 0	3	15½ inches	39½ inches	15 ounces	\$1.60
Kodak Metal Tripod No. 1	4	15 inches	48½ inches	24½ ounces	2.50
Kodak Metal Tripod No. 2	5	13½ inches	49½ inches	25 ounces	3.25
Leather Carrying Case, either style					1.50

Eastman Folding Head

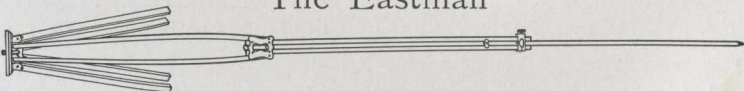


For 4 x 5 cameras, or smaller

In the Eastman Folding Head Tripod the head itself folds, and the tripod then makes a compact, rectangular package. Length, folded, 17 inches; extended, 52½ inches. Weight, 25 ounces.

Eastman Folding Head Tripod	3.50
Black Sole Leather Carrying Case	1.50

The Eastman



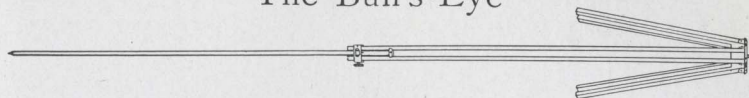
Three sections. No. 1, maple, for cameras up to 6½ x 8½.

Price, \$1.70



Kodak Tripods

The Bull's-Eye



Two sections. Aluminum revolving head. Made of maple, with brass fittings. For 4 x 5 cameras, or smaller. Length, extended, 42½ inches; folded, 24 inches. The only two-section tripod that will go into a suitcase.

Price, \$1.50

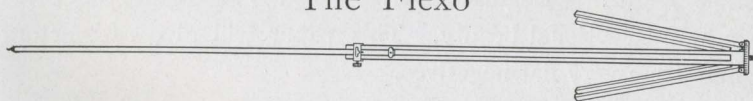
The Standard



The feature of this tripod is the automatic locking of the sections when they are extended. Light, compact and rigid. Fixed, non-detachable head. Length, folded, 21 inches; extended, 53½ inches. Weight, 18 ounces. Cherry finish, brass trimmings.

Price, \$1.75

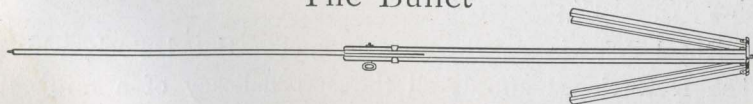
The Flexo



Two sections. Fixed, non-detachable head. Only clear, straight-grained wood is used in its construction.

Price, \$0.90

The Bullet



Two sections. Spruce, solid head. For small cameras.

Price, \$0.70



Velox Paper

Velox is the very best paper for amateur use for it is simple to use, thoroughly dependable and is made in a variety of grades and surfaces to fit all sorts of amateur negatives.

It prints in any light, requires no dark room and permits the amateur to utilize his evening hours in print making. Its simplicity of manipulation and extreme gradation make it suitable for photographic work of every kind.

Velox is divided broadly into two kinds of paper called "Regular" and "Special" (slow and fast) each division containing a variety of surfaces. "Regular" papers develop quickly and are best suited for negatives lacking contrast. "Special" papers develop slowly, and give soft effects from hard negatives. Use "Special" Velox for negatives producing good results on "Printing Out" paper (such as Solio), and "Regular" only with very flat negatives.

Velox surfaces: In the "Regular" class are carbon (matte surface), Glossy, Glossy double weight, Velvet, and Velvet double weight. "Regular" Velvet Velox is semi-gloss and gives prints of exceptional beauty. This paper will give satisfactory results from very flat negatives.

In the "Special" class, the surfaces are Carbon (matte surface), Portrait (smooth matte), Portrait double weight, Rough, Glossy, Glossy double weight, Velvet, and Velvet double weight.

"Special" Velvet Velox has a greater range than any of the other "Special" papers.

Royal Velox is coated on a soft, mellow-tinted stock, which when re-developed affords all the soft delicacy of a rare old etching. It is made in two grades, "Regular" and "Special" and one surface, just rough enough to produce the desired effect.



Velox Paper

The Price

Size	Single Weight			Double Weight		
	Dozen	½ Gross	Gross	Dozen	½ Gross	Gross
1½ x 2½	\$0.15	\$0.60	\$1.00	\$0.20	\$0.75	\$1.25
2¼ x 3¼	.15	.60	1.00	.20	.75	1.25
2½ x 4¼	.15	.70	1.25	.20	.90	1.55
3½ x 3½	.15	.80	1.50	.20	1.00	1.90
3¼ x 4¼	.15	.80	1.50	.20	1.00	1.90
3¼ x 5½	.15	.80	1.50	.20	1.00	1.90
4 x 5	.25	1.10	2.00	.30	1.40	2.50
*3¼ x 6 (Stereo)	.25	1.10	2.00			
†*3½ x 6½	.25	1.10	2.00			
2¼ x 7	.15	.80	1.50	.20	1.00	1.90
4¼ x 6½	.30	1.65	2.80	.40	2.05	3.50
5 x 7	.35	2.00	3.50	.45	2.50	4.40
3½ x 12	.45	2.50	4.50	.55	3.15	5.65
Velox Post-cards, 3½ x 5½, furnished in Regular Velvet, Special Velvet, Special Portrait, Regular Glossy, Special Glossy and Regular Royal and Special Royal20	1.10	2.00
Ditto, Double Post-cards, 3½ x 11 inches40	2.20	4.00
Brownie Post-cards, 2¾ x 4¼, Regular and Special Velvet15		

* Glossy only. † For use in Self-transposing Stereo Printing Frame.

Brownie Velox (one grade only)

2¼ x 2¼, per package 2 dozen sheets	\$0.15
2¼ x 3¼, per package 1 dozen sheets10

Velox Sundries

N. A. (Non-abrasion) Velox Liquid Developer, 4-ounce bottle (makes 20 ounces for Special, 12 ounces for Regular)	\$0.25
Ditto, 16-ounce bottle75
Nepera Solution, per 4-ounce bottle20
Ditto, per 16-ounce bottle60
Nepera Capsules (for converting Nepera solution to a film or plate developer), per package 1 dozen15
Velox Re-developer for Sepia Tones, per 4-ounce bottle50
Ditto, 2 ounces (sufficient for 150 4 x 5 prints)30
Velox Re-developer Tubes, per package 12 tubes60
Velox Liquid Hardener, per 4-ounce bottle15
Ditto, 8-ounce bottle25
Nepera M. Q. N. A. Tubes, box of 5 tubes75
Kodak N. A. M. Q. Developer, per package 3 tubes25
Kodak Acid Fixing Powder for fixing Velox prints, per pound25
Ditto, ½ pound15
Ditto, ¼ pound10
Velox Amateur Printer No. 1 (with gas pillar; adapted for electric socket)	2.00
Electric Attachment (extra). Comprising socket, plug and 6-foot cord75



Kodak Velvet Green

Effects heretofore to be had only by the laborious carbon process can now be secured by any amateur photographer with this new paper.

For landscapes, for marines, and in fact, for the majority of outdoor amateur negatives, the rich green of prints on Kodak Velvet Green produces most beautiful harmonious effects, with an indescribable "atmosphere" of nature itself.

And to use this paper the amateur has to learn no new processes nor possess extraordinary skill. Anyone who can print on Velox paper can print just as successfully on Kodak Velvet Green, as the two processes after exposure are identical, and the developing solution is only slightly changed.

The surface—a smooth semi-matte—brings out detail fully, and the paper is supplied in both single and double weights.

Kodak Velvet Green Post-cards are very appropriate for use at vacation time.

Prices same as for Velox. (See page 53.)

Angelo Platinum Paper

Angelo Platinum Paper is exceedingly simple to handle and yields prints that are marvelous in gradation and delicacy. Made in Sepia only.

Angelo Sepia, unlike most Sepia Platinum Papers, develops in a cold solution. Angelo Platinum Paper is furnished in two grades, "Smooth" and "Rough".

Size	Price per Doz.	Size	Price per Doz.
3½ x 3½	\$0.25	3¼ x 5½	\$0.40
3¼ x 4¼25	4¼ x 6½55
4 x 540	5 x 765

ANGELO SOLUTION

Angelo Sepia Solution (2-ounce bottle) . \$0.30 | Angelo Sepia Salts (2-ounce package) . \$0.10

Aristo Gold Post-cards

Rich sepia and purple tones. Print, wash and fix.

Aristo Gold Post-cards, per dozen \$0.30



Eastman Etching Black Platinum

A black and white platinum, with a soft pleasing warmth, found in no other platinum paper—decidedly away from the ordinary cold blue black. Perfectly simple cold development. Two surfaces, smooth and rough.

Size	Price per Doz.	Size	Price per Doz.
3½ x 3½	\$0.35	5 x 7	\$0.90
3¼ x 4¼35	Eastman E. B. Developer, ½-pound	.35
4 x 555	package35
3¼ x 5½55	Eastman E. B. Developer, ¼-pound	.20
4¼ x 6½75	package20

Eastman Etching Sepia Platinum

A new hot bath paper of unusual brilliancy, combined with extreme richness of tone and coated on a mellow buff stock. Made in both smooth and rough surfaces. Prices for paper and developer, same as for Etching Black above.

Solio Paper

A rapid, glossy, printing-out paper.

Size	Per Package, 2 Doz.	Size	Per Package, 2 Doz.
2½ x 2½	\$0.20	2¼ x 7 (No. 1 Panoram Kodak)	\$0.25
2¼ x 3¼20	Per Doz.25
2½ x 4¼20	4¼ x 6½	\$0.25
3½ x 4¼20	5 x 730
3¼ x 3½20	3½ x 12 (No. 4 Panoram Kodak)35
3¼ x 4½25	Post-cards15
4 x 525	Double Solio Post-cards30
3¼ x 6 (Stereo)25	Brownie Post-cards, 2¼ x 4¼10

Seconds: 4 x 5 (trimmed) seconds, \$1.00 per gross. Solio Combined Toning and Fixing Solution, per 8-ounce bottle, 50 cents. Ditto, 4-ounce bottle, 30 cents; post-paid, 50 cents.

Eastman "Ferro Prussiate" Paper

A "blue print" that retains delicacy and detail. In sealed tubes.

Size	2 Doz. Single Wt.	1 Doz. Double Wt.	Size	2 Doz. Single Wt.	1 Doz. Double Wt.
2½ x 2½	\$0.16	\$0.15	3¼ x 5½	\$0.20	\$0.20
2¼ x 3¼	.16	.15	3¼ x 6 (Stereo)	.20	.20
2½ x 4¼	.16	.15	2¼ x 7	.20	.20
3½ x 3½	.16	.15	4¼ x 6½	.30	.25
3¼ x 4¼	.16	.15	5 x 7	.35	.30
4 x 5	.20	.20	3½ x 12	.40	.35

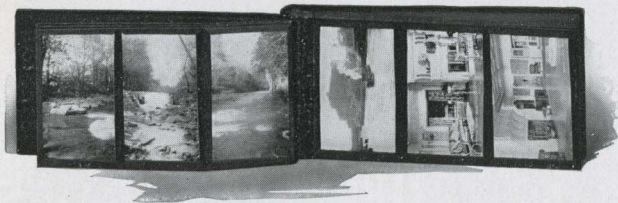
Post-cards, 1 dozen, 15 cents

Eastman Permanent Bromide Papers

For enlargements. Grades: Velvet, Royal, Standard, Platino, Enameled and Matte-enamel.

Size	Per Doz.	Size	Per Doz.	Size	Per Doz.
5 x 7	\$0.35	8 x 10	\$0.80	14 x 17	\$2.40
5 x 8	.40	10 x 12	1.20	16 x 20	3.20
6½ x 8½	.60	11 x 14	1.60	18 x 22	4.00

Other sizes in proportion



The Universal Album

(Patent
Applied For)

Made on a new principle, which does away with mounting prints by paste or otherwise. They are merely slipped into pocket strips at top and bottom, and will not come out unless removed by hand. Handsome grain leather cover and black leaves with linen finish.

A, $2\frac{1}{4} \times 3\frac{3}{4}$, 25 leaves, 3 on	\$2.25	E, $3\frac{1}{4} \times 5\frac{1}{2}$, 50 leaves, 3 on	\$3.50
B, $2\frac{1}{2} \times 4\frac{1}{4}$, 25 leaves, 3 on	2.50	F, 4×5 , 25 leaves, 2 on	2.60
C, $3\frac{1}{4} \times 4\frac{1}{4}$, 25 leaves, 3 on	2.50	G, $4\frac{1}{4} \times 6\frac{1}{2}$, 25 leaves, 2 on	2.75
D, $3\frac{3}{4} \times 5\frac{1}{2}$, 25 leaves, 3 on	2.75	H, 5×7 , 25 leaves, 2 on	3.00

The Interchange Album

An unusually long-lived album on the loose leaf principle. Has special embossed leather cover with grain leather corners and back. Furnished with 50 linen finish leaves—black only.

A, 5×8 . . . \$2.50	B, 7×11 . . . \$3.00	C, 10×12 . . . \$4.25	D, 11×14 . . . \$5.00
------------------------------	-------------------------------	--------------------------------	--------------------------------

The De Luxe Album

A very rich album with heavy grey padded cover of walrus grain leather, and 50 grey leaves with silver edges; or brown padded cover, as above, with 50 brown leaves with gold edges.

11 Grey, $5\frac{1}{2} \times 7\frac{3}{4}$	\$2.25	15 Grey, 11×14	\$5.00
12 Brown, $5\frac{1}{2} \times 7\frac{3}{4}$	2.25	16 Brown, 11×14	5.00
13 Grey, 7×10	3.00	17 Grey, 11×14 , for 200 Post-cards	5.00
14 Brown, 7×10	3.00	18 Brown, 11×14 , for 200 Post-cards	5.00

The Tribune Album

Heavy leather embossed Baby Walrus. Black or grey leaves, linen finish, 50 leaves.

A 1, 50 grey leaves; A 2, 50 black leaves, 5×8	\$1.35
B 1, 50 grey leaves; B 2, 50 black leaves, 7×11	1.90
C 1, 50 grey leaves; C 2, 50 black leaves, 10×12	3.25
D 1, 50 grey leaves; D 2, 50 black leaves, 11×14	4.00

The Stadium Album

Padded black grain leather cover.

H 1, 50 grey leaves; H 2, 50 black leaves, 5×8	\$1.25
J 1, 50 grey leaves; J 2, 50 black leaves, $5\frac{1}{2} \times 7$	1.25
R 1, 50 grey leaves; R 2, 50 black leaves, 7×11	1.90
L 1, 50 grey leaves; L 2, 50 black leaves, 10×7	1.90
M 1, 50 grey leaves; M 2, 50 black leaves, 11×14	3.75

The Arena Album

Flexible, finest quality black grain leather cover.

J, 50 black leaves, or S, 50 Sepia leaves, $5\frac{1}{2} \times 7$	\$1.00
K, 50 black leaves, or T, 50 Sepia leaves, 7×10	1.50
L, 50 black leaves, or U, 50 Sepia leaves, 10×7	1.50
M, 50 black leaves, or W, 50 Sepia leaves, 11×14	3.00



The Coliseum Album

A new, inexpensive but durable album with imitation leather cover.

A 1, 25 black leaves, or A 2, 25 grey leaves, $5\frac{1}{2} \times 7$	\$0.40
B 1, 25 black leaves, or B 2, 25 grey leaves, 5×8	.40
C 1, 25 black leaves, or C 2, 25 grey leaves, 7×11	.60
D 1, 25 black leaves, or D 2, 25 grey leaves, 10×7	.60
F 1, 25 black leaves, or F 2, 25 grey leaves, 11×14	1.40
G 1, 50 black leaves, or G 2, 50 grey leaves, $5\frac{1}{2} \times 7$.60
H 1, 50 black leaves, or H 2, 50 grey leaves, 5×8	.60
J 1, 50 black leaves, or J 2, 50 grey leaves, 7×11	.85
K 1, 50 black leaves, or K 2, 50 grey leaves, 10×7	.85
L 1, 50 black leaves, or L 2, 50 grey leaves, 11×14	1.65

The Forum Album

Flexible, black leather embossed cloth cover.

A, 25 black leaves, or N, 25 Sepia leaves, $5\frac{1}{2} \times 7$	\$0.35
B, 25 black leaves, or O, 25 Sepia leaves, 7×10	.50
C, 25 black leaves, or P, 25 Sepia leaves, 10×7	.50
D, 25 black leaves, or R, 25 Sepia leaves, 11×14	1.25
E, 50 black leaves, $5\frac{1}{2} \times 7$.50
F, 50 black leaves, 7×10	.75
G, 50 black leaves, 10×7	.75
H, 50 black leaves, 11×14	1.50

Artists' Album

Loose leaf system, silk lacing.

No. 1, black leaves; No. 2, white leaves;	No. 4, black leaves; No. 5, white leaves;	
No. 3, Sepia leaves, $5\frac{1}{2} \times 7$	No. 6, Sepia leaves, 7×10	\$0.30
Extra leaves, package of 5	Extra leaves, package of 5	.10

Snap-shot Album

Substantial card covering, soft black leaves.

No. 19 20 pages, $5\frac{1}{2} \times 7$	\$0.12	No. 18 20 pages, 7×10	\$0.15
--	--------	--------------------------------	--------

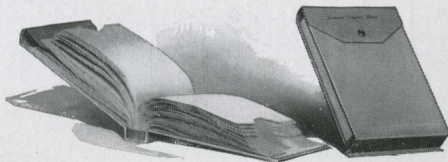
Souvenir Post-card Album

Flexible, black leather embossed cloth cover.

X, 25 black leaves, 10×7 , for 100 cards	\$0.50
X, R, 25 black leaves, 11×14 , for 200 cards	1.50
X, T, { Flexible, black grain leather cover }	
{ 25 leaves, 11×14 , for 200 cards }	2.50

Eastman Film Negative Albums

For 100 negatives, $1\frac{1}{2} \times 2\frac{1}{2}$	\$0.75
For 100 negatives, $2\frac{1}{2} \times 4\frac{1}{4}$, or smaller	.75
For 100 negatives, $3\frac{1}{2} \times 3\frac{1}{2}$, or smaller	.75
For 100 negatives, $3\frac{1}{4} \times 4\frac{1}{4}$, or 4×5	1.00
For 100 negatives, $3\frac{1}{4} \times 5\frac{1}{2}$, or smaller	1.00
For 100 negatives, 5×7 , or smaller	1.50



Woodmat

A new medium for mounting prints on the "slip in" principle, giving the effect of a rich brown wood frame.



	For Print	Outside	Each
No. 1	$2\frac{1}{4} \times 3\frac{1}{4}$	$4\frac{3}{8} \times 5\frac{3}{8}$	\$0.05
No. 1A	$2\frac{1}{2} \times 4\frac{1}{4}$	$4\frac{5}{8} \times 6\frac{3}{8}$.06
No. 3	$3\frac{1}{4} \times 4\frac{1}{4}$	$5\frac{1}{2} \times 6\frac{1}{2}$.07
No. 3A	$3\frac{1}{4} \times 5\frac{1}{2}$	$6\frac{1}{4} \times 8\frac{3}{4}$.08
No. 4	4×5	$6\frac{3}{4} \times 7\frac{3}{4}$.08
No. 4A	$4\frac{1}{4} \times 6\frac{1}{2}$	$7 \times 9\frac{1}{4}$.10



Kodak Card Mounts

Riviera—Ash Grey and White

For Prints	Size of Mount	Per 100	Per 50	For Prints	Size of Mount	Per 100	Per 50
1½ x 2	3 x 3½	\$0.30	\$0.15	3¼ x 4¼	4½ x 5½	\$0.65	\$0.35
1½ x 2½	3 x 3¾	.40	.20	4 x 5	5½ x 6½	.85	.45
2¼ x 2¼	3¾ x 3¾	.40	.20	3¼ x 5½	5 x 7¼	.95	.50
2¼ x 3¼	3¾ x 4¾	.50	.25	4¼ x 6½	5¾ x 8	1.40	.70
2½ x 4½	4½ x 5½	.65	.35	5 x 7	7 x 9	1.50	.75
3½ x 3½	5 x 5	.65	.35				

Bevplane—Carbon Black and Scotch Grey

For Prints	Size of Mount	Per 100	Per 50	For Prints	Size of Mount	Per 100	Per 50
1½ x 2½	3¼ x 4¼	\$0.60	\$0.30	4 x 5	5½ x 6½	\$0.90	\$0.45
2¼ x 3¼	4 x 5	.60	.30	4¼ x 6½	5½ x 8	1.55	.80
2½ x 4¼	4¼ x 6	.80	.40	5 x 7	7 x 9	1.70	.85
3½ x 3½	5 x 5	.80	.40	2¼ x 7	4 x 8¾	.90	.45
3¼ x 4¼	5 x 6	.85	.45	3½ x 12	5½ x 13¾	1.80	.90
3¼ x 5½	4¾ x 7	.90	.45				

The Marine—London Brown and Ash Grey

Good heavy stock, embossed corded silk pattern, beveled edges.

No.	For Prints	Size of Mount	Per 100	Per 50	No.	For Prints	Size of Mount	Per 100	Per 50
0	1½ x 2½	3½ x 4½	\$0.80	\$0.40	3A	3¼ x 5½	5½ x 8	\$1.35	\$0.70
1	2¼ x 3¼	4½ x 5½	.95	.50	4	4 x 5	6 x 7	1.25	.65
1A	2½ x 4¼	4½ x 6¼	1.00	.50	4A	4¼ x 6½	6½ x 8¾	1.55	.80
2	3½ x 3½	5½ x 5½	1.00	.50	5	5 x 7	8 x 10	2.10	1.05
3	3¼ x 4¼	5½ x 6½	1.00	.50					

The Baltic—Buff, Brown or Grey

Heavy stock, beveled edge, heavy borders—a beautiful, rich mount.

No.	For Prints	Size Outside	Per 100	Per 50	No.	For Prints	Size Outside	Per 100	Per 50
0	1½ x 2½	3¾ x 4¼	\$0.90	\$0.45	3A	3¼ x 5½	5½ x 8	\$1.55	\$0.80
1	2¼ x 3¼	4¾ x 5½	1.10	.55	4	4 x 5	6 x 7	1.65	.85
1A	2½ x 4¼	4¾ x 6¼	1.25	.65	4A	4¼ x 6½	6½ x 8¾	2.20	1.10
2	3½ x 3½	5½ x 5½	1.25	.65	5	5 x 7	8 x 10	2.75	1.40
3	3¼ x 4¼	5½ x 6½	1.35	.70					

The Duomat—Grey and Brown

A beautiful "slip in" mount permitting the print to be mounted under either a square or oval opening.

No.	For Prints	Size Outside	Per 100	Per 50
0	1½ x 2½	3¾ x 4¼	\$3.00	\$1.50
1	2¼ x 3¼	4 x 5	3.00	1.50
1A	2½ x 4¼	4¾ x 6¼	4.00	2.00
2	3½ x 3½	5¼ x 5¼	4.00	2.00
3	3¼ x 4¼	5¼ x 6¼	4.00	2.00
3A	3¼ x 5½	5¼ x 7½	5.00	2.50
4	4 x 5	6 x 7	5.00	2.50
4A	4¼ x 6½	6¼ x 8½	6.00	3.00



View Enlargements

Grey and Brown

	For Prints	Size Outside	Per 100		For Prints	Size Outside	Per 100
A	5 x 7	8 x 10	\$2.50	C	8 x 10	12 x 14	\$4.25
B	6½ x 8½	10 x 12	3.50	D	7 x 11	11 x 15	4.75

Souvenir Post-card Hangers

Consisting of six "slip in" embossed mounts, attached by ribbons. Either verticle or horizontal Post-card opening

GH-1	Horizontal London Brown . . .	\$0.25	G-1	Vertical London Brown . . .	\$0.25
GH-2	Horizontal Grey25	G-2	Vertical Grey25

Kodak Trimming Boards

Made of hard wood, with natural finish, have fine quality steel blades and are fitted with rule.

No. 1, capacity, 5 x 5 inches	\$0.40
No. 2, capacity, 7 x 7 inches60
Transparent Trimming Gauge (extra)20



Printing Frames

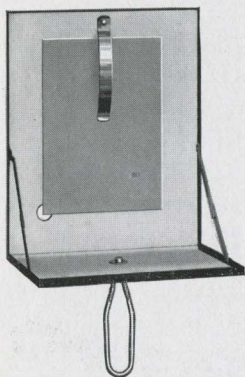
Eastman 3½ x 3½, opens two-thirds	\$0.25
Eastman 3¼ x 4¼, opens two-thirds25
Eastman 3¼ x 5½, for films, opens two-thirds25
Ditto, for plates25
Eastman 4 x 5, opens two-thirds25
Eastman 5 x 7, opens two-thirds35
Eastman 3½ x 12, for No. 4 Panoram Kodak, opens in three sections75
Eastman 2¼ x 7, for No. 1 Panoram Kodak, opens in 2 sections30
Brownie Printing Frame, No. 1, for 2¼ x 2¼ Developing paper only10
Brownie Printing Frame, No. 2, for 2¼ x 3¼ Developing paper only15

Developing Trays

"Bull's-Eye" Composition, 3½ x 4½	\$0.12
"Bull's-Eye" Composition, 4 x 515
"Bull's-Eye" Composition, 4 x 615
"Bull's-Eye" Composition, 5 x 725
"Bull's-Eye" Composition, 3 x 8½22
"Bull's-Eye" Composition, 4½ x 1450
"Flexo", 4 x 610
"Flexo", 5 x 815
Eastman Enameled, 4¾ x 5¾ or 4 x 625
Eastman Enameled, 5¼ x 7¾50



Flash-Light Material



The simplest and safest method of making flash-light pictures is by means of the Eastman Flash Sheets and Eastman Flash Sheet Holder. The sheets burn slowly, giving a broad, soft light, and not startling the subject so as to give a staring effect to the eyes.

The holder is a genuine innovation. A spring finger holds the sheet in proper position and it is lighted from the back through an aperture provided for the purpose. In this manner the holder is always between the operator and the flash sheet, and it may be held in the hand or supported on a tripod, a socket being provided for the latter purpose.

Flash cartridges are recommended only where absolutely instantaneous exposures are required.

No. 1 Flash Sheets, per package of $\frac{1}{2}$ dozen sheets, 3 x 4	\$0.25
No. 2 Flash Sheets, per package of $\frac{1}{2}$ dozen sheets, 4 x 540
No. 3 Flash Sheets, per package of $\frac{1}{2}$ dozen sheets, 5 x 760
Eastman Flash Sheet Holder	1.00
Eastman Spreader Flash Cartridges, for use with pistol or fuse (price includes both fuse and cap), per package of $\frac{1}{2}$ dozen25
Eastman Spreader Flash Cartridge Pistol50
Eastman No. 1 Flash Cartridges, per package of $\frac{1}{2}$ dozen60
Ditto, No. 240
Ditto, No. 325

Kodak Dry Mounting Tissue

Mounts prints even on thin mounts without curl. The simplest method of mounting, no apparatus being required—just fix the tissue on print, lay on mount and press with a warm flat iron; no sticky fingers, no muss of any kind.

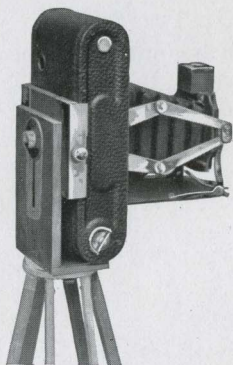
The Price

Size, $3\frac{1}{2}$ x $3\frac{1}{2}$, 3 dozen	\$0.10	Size, 4 x 5, 2 dozen	\$0.10
Size, $3\frac{1}{4}$ x $4\frac{1}{4}$, 3 dozen10	Size, $4\frac{1}{4}$ x $6\frac{1}{2}$, 1 dozen10
Size, $3\frac{1}{4}$ x $5\frac{1}{2}$, 2 dozen10	Size, 5 x 7, 1 dozen10

Glass Dry Plates

Size	Seed	Per Doz.	Size	Seed Non-Halation Ortho	Per Doz.
$3\frac{1}{2}$ x $3\frac{1}{2}$		\$0.40	$3\frac{1}{4}$ x $4\frac{1}{4}$		\$0.55
$3\frac{1}{4}$ x $4\frac{1}{4}$45	$3\frac{1}{4}$ x $5\frac{1}{2}$80
$3\frac{1}{4}$ x $5\frac{1}{2}$65	4 x 580
4 x 590	$4\frac{1}{4}$ x $6\frac{1}{2}$		1.10
$4\frac{1}{4}$ x $6\frac{1}{2}$		1.10	5 x 7		1.40
5 x 745	Cover Glass for Lantern Slides25

Lantern Slide Binders, per package, 50 strips \$0.10



Folding Pocket Kodak Tripod Adapter No. 1

A simple and effective device for holding either the No. 1 or No. 1A Folding Pocket Kodak on a tripod in either horizontal or vertical position. Kodak may be reversed without removing from the adapter.

F. P. K. Tripod Adapter No. 1 . . . \$0.75

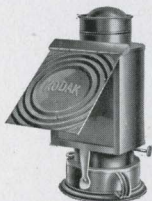
KODAK CANDLE LAMP

This clever little lamp is collapsible and can be packed into very small space when not in use. It is made of special tested ruby fabric, bound in metal frames and gives a strong, safe light for the dark room.



Kodak Candle Lamp . . . \$0.25
Extra Candles for same, per dozen30

KODAK DARK ROOM LAMP



The Kodak Dark Room Lamp is oil burning and is fitted with both orange and ruby glass. It has an unusually broad wick regulated from the outside and gives a soft, steady light for the dark room.

No. 2 Kodak Dark Room Lamp . . . \$1.00

VELOX LANTERN SLIDE FILM

For use with the Kodiopticon or any other lantern slide projector that has a water cell cooling device. With them you can make lantern slides by contact as easily as you can make Velox prints, for the exposure, development and printing light required is just the same. Or, of course, if preferred, slides can be made by projection.

After the slide is made, it is masked with Velox Lantern Slide Mats and mounted in the Velox Lantern Slide Frame which has standard opening, and eliminates the binding of the edges.

These slides are absolutely unbreakable.

Prices

Velox Lantern Slide Films, $2\frac{3}{4} \times 3\frac{1}{4}$, per dozen	\$0.30
Velox Lantern Slide Frames, per dozen20
Velox Lantern Slide Mats, $2\frac{7}{8} \times 3\frac{5}{8}$, per 2 dozen05
Nepera Solution, for developing Velox Lantern Slide Films, 4-ounce bottle20
Lantern Slide Film Varnish, 4-ounce bottle25



Kodak Chemicals

Perfect results cannot be uniformly obtained without the use of pure chemicals. Our chemicals are all carefully tested. We cannot afford to sell impure chemicals; you can afford to buy only the purest chemicals.

Eastman Special Developer Powders, per package 5, in sealed glass tubes	\$0.25
Eastman Hydrochinon Developer Powders, per dozen	.50
Ditto, per ½ dozen	.25
Ditto, per package 5 powders, in sealed glass tubes	.25
Eastman's Pyro Developer Powders, per dozen	.50
Ditto, per ½ dozen	.25
Ditto, per package 5 powders, in sealed glass tubes	.25
Tozol, per 1-ounce bottle	.20
Elon, per ounce	.50
Roylon, per 1-ounce bottle	.60
Hydrochinon, per 1-ounce bottle	.15
Eastman's Permanent Crystal Pyro, per 1-ounce bottle	.25
Velox Re-developer Tubes, package of 12 tubes	.60
Hypo Sulphite of Soda, pulverized, per pound	.08
Alum, powdered, per pound	.10
Kodak Acid Fixing Powder, per pound package	.25
Ditto, per ½-pound package	.15
Ditto, per ¼-pound package	.10
Eastman Intensifier, glass tube, per tube	.15
Eastman Reducer, per box of 5 tubes	.25
Eastman Opaque No. 1, per tube	.15
Potassium Bromide, per ounce	.12
Acetic Acid, 28 per cent., per 1-pound bottle	.18
Citric Acid, 4-ounce bottle	.30
Solio Toning Solution, 8-ounce bottle	.50
Solio Toning Solution, 4-ounce bottle (20 cents extra, post paid)	.30
Solio Toning and Fixing Powders, per carton, 5 tubes	.25
Solio Hardener, per 8-ounce bottle	.35
Eastman Tested Carbonate of Soda (desiccated), per 1-pound bottle	.20
Eastman Tested Sulphite of Soda (desiccated), per 1-pound bottle	.30
For Velox preparations, see page 53. For Tank Developer Chemicals, see page 43	

Kodak Sundries

Eastman Photo Paste, 3-oz. tube	\$0.15	Moulded Tumbler Grad., 2-ounce	\$0.10
Ditto, 5-ounce tube	.25	Ditto, 4-ounce	.15
Ditto, 4-ounce jar	.10	Ditto, 8-ounce	.20
Eastman Thermometer	.50	Ditto, 16-ounce	.30
Thermometer Stirring Rod	.60	Ferrotypes Plate, 10 x 14, light	.15
Eastman Film Clips, 3½-inch, per pair (nickel)	.25	Ditto, 10 x 14, heavy	.20
Ditto, 5-inch	.30	Ditto, 18 x 24, heavy	.75
Ditto, 7-inch	.35	Kodak Print Roller, 2 x 6-inch rubber roller, nickel frame	.50
Kodak Film Clips, 5-inch (wood), per pair	.15	Flexo Print Roller, 4-inch rubber roller, black enameled frame	.15
Finger Tips, set of 3	.15	Eastman's Special Squeegee, 6-inch	.30
Focusing Cloth, per yard	.50	Ditto, 8-inch	.35
Eastman Spotting Colors, per set	.25		



Developing and Printing on Velox Paper

Size	Developing and Printing Per Roll		Developing Only Per Roll	Printing Only Each Exposure	
	Mounted	Unmounted		Mounted	Unmounted
1 1/2 x 2 12 ex. only	\$0.90	\$0.84	\$0.25	\$0.06	\$0.05 1/2
1 5/8 x 2 1/2 12 ex.	.95	.89	.40	.06	.05 1/2
1 5/8 x 2 1/2 8 ex.	.65	.60	.30		
1 5/8 x 2 1/2 6 ex.	.50	.45	.20		
2 1/4 x 2 1/4 6 ex. only	.50	.47	.20	.06	.05 1/2
2 1/4 x 3 1/4 12 ex.	1.40	1.28	.50	.08	.07
2 1/4 x 3 1/4 6 ex.	.70	.64	.25		
2 1/2 x 4 1/4 12 ex.	1.50	1.38	.70	.08	.07
3 1/2 x 3 1/2 12 ex.	1.50	1.38	.70	.08	.07
3 1/4 x 4 1/4 12 ex.	1.50	1.38	.70	.08	.07
3 1/4 x 4 1/4 6 ex.	.75	.69	.35		
3 1/4 x 5 1/2 10 ex.	1.50	1.40	.80	.10	.09
3 1/4 x 5 1/2 6 ex.	.90	.84	.50		
4 x 5 12 ex.	1.80	1.68	1.00	.10	.09
4 x 5 6 ex.	.90	.84	.50		
4 1/4 x 6 1/2 6 ex. only	1.20	1.05	.60	.12 1/2	.10
5 x 7 6 ex. only	1.20	1.05	.60	.12 1/2	.10
2 1/4 x 7 6 ex. only	1.40	1.28	.50	.16	.14
3 1/2 x 12 4 ex. only	1.40	1.28	.75	.20	.17

Unmounted prints are furnished unless otherwise specified in order.

"Double Weight" prints will be billed at mounted rates.

No orders executed for less than \$0.25.

All prints are mounted with "Kodak Dry Mounting Tissue" and therefore do not curl.

Enlargements

	Each	Per Doz.		Each
4 1/4 x 6 1/2, on card . .	\$0.35	\$3.00	10 x 12, on card	\$1.00
6 1/2 x 8 1/2, on card . .	.50	5.00	11 x 14, on card	1.25
8 x 10, on card75		14 x 17, on card	1.50
Lantern Slides50	5.00	Larger sizes in proportion	
3 1/4 x 5 1/2 Enlargements, from 1 5/8 x 2 1/2 negatives, each, unmounted \$0.15; mounted \$0.16				

No extra charge for Sepia Tones. Small extra charge for double or triple mounting.

Where the kind of paper is not specified, we use our own judgment.



Specimen Prints

A specimen photograph made with any Kodak (not larger than 4 x 5) will be sent to any address in the United States upon receipt of four cents in stamps; No. 4A Folding Kodak, eight cents; No. 4 Panoram Kodak, twenty cents.

Tourists

Travelers can always obtain fresh supplies of films at any of the following addresses:

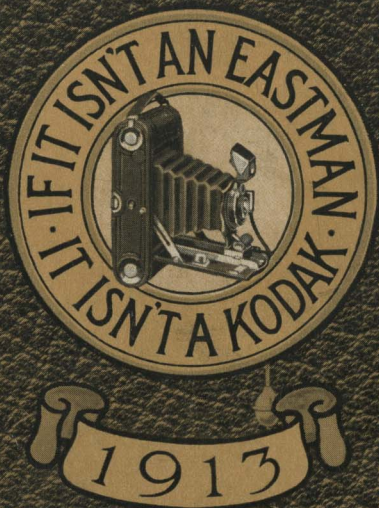
LONDON	Kodak, Limited, Kingsway, W. C. 60 Cheapside, E. C.; 115 Oxford Street, W.; 171-173 Regent Street, W.; 40 Strand, W. C.; 59 Brompton Road, S. W.; 1 and 2 Gracechurch Street, E. C.
LIVERPOOL	Kodak, Limited, 96 Bold Street
BIRMINGHAM	Kodak, Limited, 45 Corporation Street
NEWCASTLE	Kodak, Limited, 34 Grainger Street
GLASGOW	Kodak, Limited, 72-74 Buchanan Street
DUBLIN	Kodak, Limited, 89 Grafton Street
PARIS	Kodak Société Anonyme Française, Avenue de l'Opéra 5; Place Vendôme 4
LYONS	Kodak Société Anonyme Française, Rue de la Republic 26
LAUSANNE	Kodak Société Anonyme, Avenue du Tribunal Federal 13
NICE	Kodak Société Anonyme Française, Avenue de la Gare 34
BERLIN	Kodak Gesellschaft, m. b. H., Leipzigerstrasse 115-116; Unter den Linden 26
BRUSSELS	Kodak, Limited, Rue de l'Ecuyer 36
COPENHAGEN	Kodak Aktieselskab, Ostergade 1
VIENNA	Kodak Gesellschaft, m. b. H. 1 Kärntnerstrasse 16
ST. PETERSBURG	Kodak, Limited, Bolschaia Konnuschenaia 19
MOSCOW	Kodak, Limited, Petrovka 15-16
MILAN	Kodak Società Anonima; Corso Vittorio Emanuele 34
ROME	Kodak Società Anonima; Corso Umberto I, 399
NAPLES	Kodak Società Anonima, Via Roma 288
VENICE	Kodak Società Anonima; Piazza S. Marco 52
BUDAPEST	Kodak Társaság K. f. 4 Vaci-utca 9
ALEXANDRIA	Kodak (Egypt) Société Anonyme, Rue Chérif Pacha 30
CAIRO	Kodak (Egypt) S. A. Opera Square
MELBOURNE	Kodak (Australasia), Limited, 284 Collins Street
SYDNEY	Kodak (Australasia), Limited, 379 George Street
BRISBANE	Kodak (Australasia), Limited, 78 Queen Street
ADELAIDE	Kodak (Australasia), Limited, 97 Rundle Street
WELLINGTON	Kodak (Australasia), Limited, 9 Mercer Street

Terms

The prices in this catalogue are strictly net, except to regular dealers who carry our goods in stock. For the convenience of our customers we recommend that they make their purchases from a dealer in photographic goods, as by so doing they can save both time and express charges.

EASTMAN KODAK CO.

ROCHESTER, N. Y.



H. B. Baltzer
Hooversville, Pa.