



Kodak

## **The Digitized Kodak Catalog Project (1886 - 1941): A Very Brief History**

Most camera collectors at some point in their collecting careers pass through a Kodak phase - some never come out of it. And if there ever was one name that came to be associated with both cameras and collecting, it was Kodak.

George Eastman received his first patent (for coating dry plates) and bought his first manufacturing facility in 1880, and in 1881 he started the Eastman Dry Plate Company. In 1886 he received a patent for the near-mythical Eastman Detective Camera, but it wasn't until 1888 that the first camera bearing the name "Kodak" was introduced.

One of the nice things about collecting Kodak is that the product line is pretty well known, and because the company produced annual catalogs for many years, collectors can be reasonably sure of what they're looking at, when it was made, the variations and so on - presuming that they have access to either the appropriate catalog, or a number of the many books which document Kodak, each to some greater or lesser extent.

But what would be really nice would be to have a complete set of Kodak catalogs in an easily accessible form and readily available. And since the advent of portable computing devices (PC, Macintosh, etc.) that's been possible - except for the difficulty of assembling a complete set of Kodak catalogs in one spot and then scanning them and making the results available.

The idea of digitizing a complete set of Kodak catalogs has kicked around the collecting community for many years. It's been proposed on a number of online forums, during meetings of various photohistory groups, and for years there have been many incomplete "Kodak CDs" on eBay but at best, they only contained a few catalogs - whatever the owner had available. But assembling a complete set of catalogs, then scanning and processing perhaps 3,000 to 4,000 pages, was a daunting task - if not completely overwhelming - and nothing ever came of it.

Until now.

In early 2010, the idea came up again, but this time we - "we" as in "the collecting community" - were lucky. A number of collectors were willing to loan their catalogs to this project and a couple of insane - wait, let's call them "dedicated" - dedicated enthusiasts - neither of whom collected Kodak, but both of whom enjoyed the challenge of such a project - were willing to put in the time and effort to scan and pull together the entire set of catalogs into a full-blown Kodak Catalog Digital Library.

Our initial objective was to include just the annual amateur catalogs, but it turns out that many cameras only appear in certain professional and specialty catalogs. We included as many of those as we could obtain so that almost every Kodak camera made in the US, Canada and Europe, would be documented - at least up to about 1941. After that, it becomes much more difficult as Kodak stopped producing annual catalogs as their product line became increasingly more diversified.

However, even with the additional "non-amateur" catalogs, we weren't completely successful in illustrating "every" camera Kodak ever made. There are an elusive few that might appear in specialty catalogs that we simply couldn't track down. If you can't find one of those odd cameras, that's no doubt why. We may do a revision at some point in the future if someone is willing to loan us a catalog that includes a camera that isn't already recorded.

In this project, a total of 67 catalogs were used from 1886 through 1941 including a number of professional and dealer catalogs, and in some years, two or even three different catalogs to cover all the bases. With the cooperation of a number of dedicated collectors, we were able to pull together all those catalogs and in June 2010, the project started in earnest.

By November 2010, we had scanned everything we needed and eventually all 67 catalogs were then reassembled as image folders and converted to the universally accepted PDF format and finally, converted into individually searchable PDFs which could then be searched globally as a collection.

For those of you interested in the statistics: about 200 hours of scanning time (we never want to hear that sound again), 67 catalogs and 3,908 page scans - which generated 7,917 original and processed images - and 11.4 GB of disk space. Additionally, another 100+ hours of technical development time was needed to convert the digital catalogues into a fully searchable "knowledgebase" that could be launched from most any standard web browser.

The overwhelming number of catalogs was loaned to us by that most remarkable of Kodak collectors, Charlie Kamerman of Eagle Creek, Oregon. Without Charlie, it's very doubtful that this project could even have been attempted.

But as it turned out, even Charlie didn't have all the publications that were needed, but he was able to track down the five that he lacked and was able to secure either a copy or high resolution images that we could work with. And so, our thanks to the contributors of the catalogs and scans that we used:

Charlie Kamerman for the vast majority of catalogs used and all his help,  
Steve Shohet for loaning a variety of test catalogs,  
Ryerson University (Toronto) for the 1886 Eastman Catalog  
George Layne for the 1890 New Kodaks Catalog,  
Mike Kessler for the 1891 Dealer Display Catalog,  
Ralph London for the 1893 UK Catalog,  
Michael Pritchard for the 1897 UK Catalog.

The digital side of the project - also known as "all of the work" - was done by Rob Niederman of Medina, Minnesota, and Milan Zahorcak of Tualatin, Oregon. Remarkably we're still friends and in a few years, we'll probably be able to talk about this project rationally.

And there you have it, a more-or-less done deal. We're fairly sure that it isn't quite perfect, and expect there will be some carping about something or other; but all-in-all, we believe this to be a pretty good product and can now move on to something else.

Our thanks to all of those involved.

Rob Niederman  
Milan Zahorcak

Fall, 2011



Kodak



# KODAKS

*and*

## KODAK SUPPLIES

1911

EASTMAN KODAK COMPANY

ROCHESTER, NEW YORK

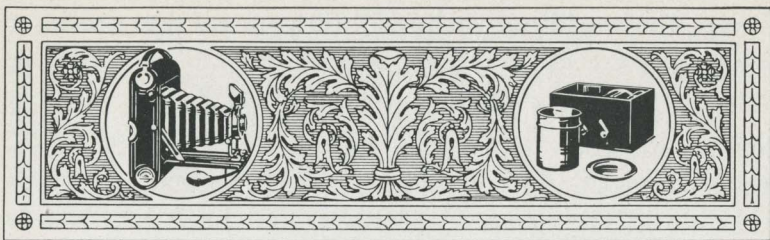
"THE KODAK CITY"

# “KODAK”

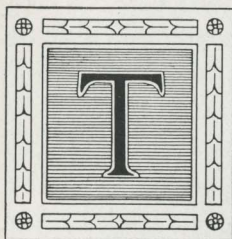
Is our registered and common-law trade-mark and cannot be rightfully applied except to goods of our manufacture. When a dealer tries to sell you a camera or films or other goods not of our manufacture under the Kodak name, you can be sure that he has an inferior article that he is trying to market on the Kodak reputation, and he also makes himself liable to suit by us for damages and injunction.

•

*If it isn't an Eastman,  
it isn't a Kodak*



## The Simple, Kodak Way



THE first Kodak made the actual taking of the photograph, the pressing of the button, a simple matter.

Today, Kodakery has been simplified in every detail. The daylight-loading film cartridge has made it an easy matter to load the Kodak anywhere at any time. The Kodak Film Tank has made it a perfectly simple process for the novice to develop his films without the use of a dark room and do it more perfectly than could an expert by the old dark room method. The transparent, non-curling Kodak film and Velox paper have made the finishing of prints a simple delight. The dark room is absolutely eliminated. All chemicals come ready prepared; the carefully written instruction books explain briefly but clearly every step of picture making. One by one the difficulties have been cleared away. Kodak means photography with the bother left out.

And then! If you wish only to press the button, if you prefer not to develop or print, the old offer—"You press the button; we do the rest"—not only holds good so far as we are concerned, but there are thousands of



others, the world over, who will do your picture finishing for you.

But it is not alone in simplification that Kodak has progressed. Its scope has marvelously increased. Faster lenses and faster film have made shorter exposures possible in taking speed pictures, and have even made slow snap-shots a simple matter on grey days, that, a few years ago, would have required a time exposure. Kodak film has remarkable orthochromatic quality, *i. e.*, it gives truer color values, does not photograph blue as white or yellows and reds as black, as do the ordinary films and plates. But above all is the dependability of Kodak film—the certainty with which it gives the best possible results from every exposure—the latitude which makes up in a remarkable degree for errors on the part of the amateur of giving too much or too little exposure.

Kodak covers the whole field of personally made pictures in a simple, practical way. The Folding Pocket Kodaks, differing little except in size, are, perhaps, best suited to the average man or woman. Convenient for touring, ever ready for a home portrait, efficient for either kind of work, moderate in price, they are the standard in hand camera values the world over. The Nos. 3 and 3A Special Kodaks are equally simple and with their high speed lenses are instruments of wonderful capabilities, while the Speed Kodaks not only cover the special field of their own, which their name indicates, but are perfectly practical for every kind of work that any hand camera will do, from photographing the baby to catching a humming bird on the wing.

And then there are the Brownies. Like the Kodaks they load in daylight with Kodak film cartridges; they are made in Kodak factories by Kodak workmen and must undergo the thorough system of Kodak inspection. They are simple in construction, but are carefully made in every detail. They stand the supreme test—they work.

This is our twenty-third year of making Kodak products, our thirty-first year in making photographic goods. Whatever is best, whatever is practical in photography is at the command of our customers. Simplify, simplify, simplify—this has been our aim and, in combination with quality and dependability, has been the foundation of the Kodak reputation.

And now, if you please, just a word of warning. So great has the reputation of Kodak become that there are those who would wrongfully trade upon it. Genuine Kodak goods are made only by the Eastman Kodak Company. Look for the name “Eastman” on the goods, taking especial care in the purchase of films, particularly when traveling, that no inferior substitute is thrust upon you. Look for “N. C.” on the carton and “Kodak” on the spool end.

*If it isn't an Eastman, it isn't a Kodak.*

EASTMAN KODAK CO.

ROCHESTER, NEW YORK

“The Kodak City”



## Automatic Shutters

### Kodak Ball Bearing Shutter

This shutter embodies a new principle in shutter construction, operating with remarkable smoothness and precision. The leaves are made in five segments, mounted entirely on ball bearings, and open and close in the form of a star, admitting a much larger amount of light in the same space of time than any other type of shutter. The smooth, frictionless action of this shutter makes it possible to work it with a bulb of half the ordinary size. It has variable indicated speeds of  $\frac{1}{25}$ ,  $\frac{1}{50}$  and  $\frac{1}{100}$  second, and operates for bulb or time exposures.

Is automatic in action and has iris diaphragm. Is also fitted with indicator for registering each exposure as made.

Supplied with Folding Pocket Kodaks, Nos. 1A Special, 3, 3A and 4.



### Pocket Automatic Shutter

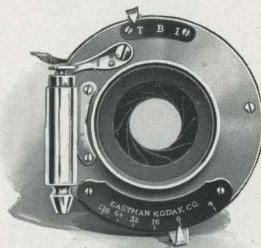
This shutter has star-shaped opening and is automatic in action. For snap-shots, a single pressure of the lever makes the exposure. When set at "B", the shutter opens at one pressure and closes when released. At "T", one pressure opens the shutter and another closes it. Fitted with iris diaphragm stops and regularly supplied with Nos. 1 and 1A Folding Pocket Kodaks, and Nos. 2 and 2A Folding Pocket Brownies.



## Automatic Shutters

### F. P. K. Automatic Shutter

This shutter is always set, works with either bulb or finger release for time, bulb or snap-shot exposures. When set at I pressure on release makes instantaneous exposure of  $\frac{1}{50}$  of a second. When set at "B", the shutter opens at one pressure and closes when released. At "T", one pressure opens the shutter and another closes it.



This shutter is fitted with iris diaphragm stops, graduated from No. 4 to 128.

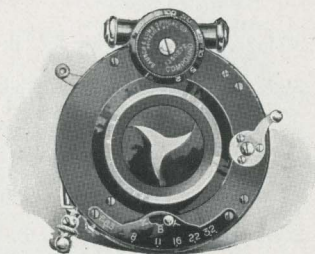
Supplied on the Nos. 3 and 3A Folding Brownies.

### Compound Shutter

The Compound Shutter is an automatic and setting shutter combined. Automatically, either time or bulb exposures may be made, while it may be set for speeds of from 1 to  $\frac{1}{150}$ ,  $\frac{1}{200}$  and  $\frac{1}{300}$  second, according to size of shutter. The shutter leaves are formed of segments opening in star shape, giving even illumination over the entire plate the instant the exposure is started, and an iris diaphragm is supplied for stopping down.

Case is made of aluminum, and accurate adjustments can be made with the shutter in any position.

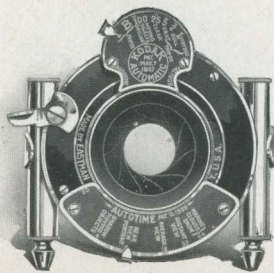
Regularly supplied on the Nos. 3 and 3A Special Kodaks and as a special equipment with the Nos. 1A Special, 3, 3A, 4 and 4A Folding Kodaks.





# Kodak Automatic Shutter and Kodak Autotime Scale

The Kodak Automatic Shutter is carefully adjusted for time, bulb and instantaneous exposures. It is also graduated for fractional parts of a second, and is unusually accurate upon all its speeds.



This shutter is regularly fitted with the Kodak Autotime Scale and is supplied as a special equipment on the Nos. 1A Special, 3, 3A and 4 Folding Pocket Kodaks.

The Kodak Autotime Scale greatly reduces the liability of error in exposure, as it automatically indicates the proper time and stop opening for subjects under any condition of outdoor photography. It is exceedingly simple to use. The speed indicator is merely set at the

point on the scale indicating the kind of light prevailing and the diaphragm indicator at the point indicating the character of the subject. No calculations are necessary.

These scales are also supplied at a nominal charge for the following shutters, and will be found a very great convenience. They can be readily attached by any amateur in a few moments. Always order by number.

Style A. For use with Kodak Ball Bearing shutter,  $2\frac{1}{2} \times 4\frac{1}{4}$  and  $3\frac{1}{4} \times 4\frac{1}{4}$ .

Style AA. For use with Kodak Ball Bearing shutter,  $3\frac{1}{4} \times 5\frac{1}{2}$  and  $4 \times 5$ .

Style B. For use with F. P. K. Automatic,  $2\frac{1}{2} \times 4\frac{1}{4}$  and  $3\frac{1}{4} \times 4\frac{1}{4}$ , No. 1 S. V. (Blair or Premo) Automatic, or No. 1 B. & L. S. V. Automatic shutters.

Style BB. For use with F. P. K. Automatic,  $3\frac{1}{4} \times 5\frac{1}{2}$  and  $4 \times 5$ , No. 2 S. V. (Blair or Premo) Automatic, or No. 2 B. & L. S. V. Automatic shutters.

Style C. For use with Kodak Automatic shutter,  $3\frac{1}{4} \times 4\frac{1}{4}$ .

Style CC. For use with Kodak Automatic shutter,  $3\frac{1}{4} \times 5\frac{1}{2}$  and  $4 \times 5$ .

Style D. For use with B. & L. Automatic and Century Automatic shutters,  $3\frac{1}{4} \times 4\frac{1}{4}$ .

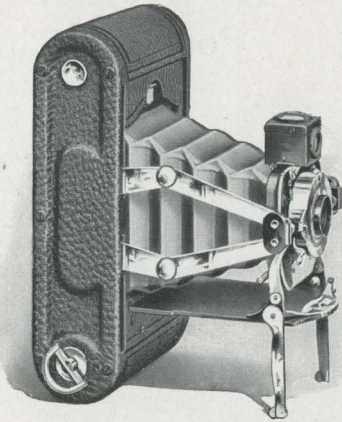
Style DD. For use with B. & L. Automatic and Century Automatic shutters,  $3\frac{1}{4} \times 5\frac{1}{2}$  and  $4 \times 5$ .

Style DDD. For use with B. & L. Automatic shutter,  $4\frac{1}{4} \times 6\frac{1}{2}$ .

Autotime Scale, any type, \$1.00.



## No. 1 Folding Pocket Kodak



This, the smallest of the Kodaks, is designed for those who wish a compact folding camera, which can be easily carried in the pocket and which will make pictures without the necessity of focusing or estimating distances.

Upon opening the camera the front springs automatically into position, ready at once for making pictures of objects at any distance. A reversible finder makes composition easy, and slight pressure of the shutter lever makes the exposure.

When closed the bed folds over front and bellows, concealing all adjustments, and the camera can then be very conveniently carried in any coat pocket. The lens is a meniscus achromatic of the best quality, and camera is made of aluminum, with best seal grain leather covering and nicked fittings. With the aid of a Kodak Portrait Attachment this camera will make good size bust portraits.

### In Detail

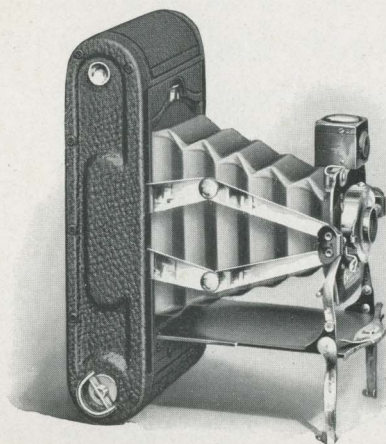
For rectangular pictures,  $2\frac{1}{4} \times 3\frac{1}{4}$  inches. Capacity, 12 exposures without reloading. Size of Kodak,  $6\frac{3}{4} \times 3\frac{1}{2} \times 1\frac{5}{8}$  inches. Weight, 16 ounces. Lens, meniscus achromatic, 4-inch focus. Shutter, Pocket Automatic. (See page 6). Brilliant reversible finder.

### The Price

No. 1 F. P. K., with meniscus achromatic lens, Pocket Automatic shutter	\$10.00
Black Sole Leather Carrying Case, with strap	1.25
N. C. Film Cartridge, 12 exposures, $2\frac{1}{4} \times 3\frac{1}{4}$	.40
Ditto, 6 exposures	.20
Kodak Portrait Attachment	.50



## No. 1A Folding Pocket Kodak



This model is identical in construction and operation with the No. 1, differing only in the size of the pictures which it takes— $2\frac{1}{2} \times 4\frac{1}{4}$ . And this is one of the most popular of amateur sizes, as the shape of the picture is particularly pleasing for horizontal landscape composition, for full and three-quarter length portraits and for bust pictures when the camera is fitted with the Kodak Portrait Attachment.

Like the No. 1, this camera requires no focusing, it may be carried in any coat pocket without trouble, and it is always ready for action.

Made of aluminum, with fine seal grain covering and highly nickeled fittings, it has a pleasing appearance which will appeal to the most fastidious.

### In Detail

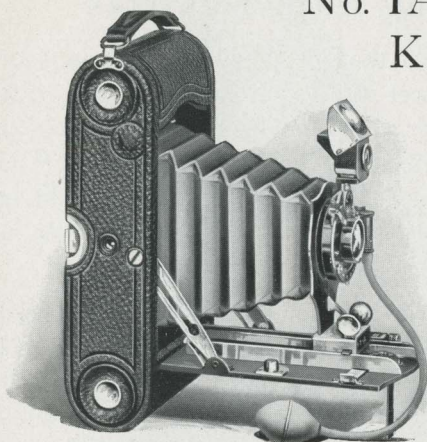
For rectangular pictures,  $2\frac{1}{2} \times 4\frac{1}{4}$  inches. Capacity, 12 exposures without reloading. Size of Kodak,  $7\frac{3}{4} \times 3\frac{7}{8} \times 1\frac{3}{4}$  inches. Weight, 20 ounces. Lens, meniscus achromatic, 5-inch focus. Shutter, Pocket Automatic. (See page 6). Brilliant reversible finder.

### The Price

No. 1A Folding Pocket Kodak, with meniscus achromatic lens, Pocket Automatic shutter . . . . .	\$12.00
Black Sole Leather Case, with shoulder strap . . . . .	1.25
N. C. Film Cartridge, 12 exposures, $2\frac{1}{2} \times 4\frac{1}{4}$ . . . . .	.50
Ditto, 6 exposures . . . . .	.25
Kodak Portrait Attachment . . . . .	.50



## No. 1A Folding Pocket Kodak Special



So very popular is the  $2\frac{1}{2} \times 4\frac{1}{4}$  size, that a Kodak of finest quality for such pictures is a matter of course.

This model is regularly fitted with the finest R. R. lens and Kodak Ball Bearing shutter, while it will accommodate anastigmat lenses when desired.

And although suitable for the most serious work, it slips easily into the pocket and may be readily operated by the beginner.

The box is made of aluminum, with finest quality leather covering and nickeled fittings. Compact, inexpensive, effective, it is a splendid instrument for daylight-all-the-way photography.

### In Detail

For rectangular pictures,  $2\frac{1}{2} \times 4\frac{1}{4}$  inches. Capacity, 12 exposures without reloading. Size of Kodak,  $8 \times 2 \times 3\frac{3}{4}$  inches. Weight, 23 ounces. Lens, double combination, rapid rectilinear, speed,  $f. 8$ , focal length, 5 inches. Shutter, Kodak Ball Bearing. (See page 6). Automatic focusing lock. Two tripod sockets. Brilliant reversible finder.

### The Price

No. 1A F. P. K. Special, R. R. lens, Kodak Ball Bearing shutter . . .	\$15.00
Ditto, with Kodak Automatic shutter and Zeiss Kodak anastigmat lens, $f. 6.3$ . . .	40.50
Ditto, with Compound shutter, highest speed $\frac{1}{250}$ second . . . . .	46.30
Black Sole Leather Carrying Case, with strap . . . . .	1.25
N. C. Film Cartridge, 12 exposures, $2\frac{1}{2} \times 4\frac{1}{4}$ . . . . .	.50
Ditto, 6 exposures . . . . .	.25
Kodak Portrait Attachment . . . . .	.50

## No. 3 Folding Pocket Kodak

This model, made for one of the most popular sizes of amateur pictures, is equipped to meet the requirements of the most advanced photographer under all conditions of general amateur photography. And while it makes larger pictures than any of the preceding Kodaks, it can be carried as conveniently in the ordinary coat pocket and operates as simply, even in the hands of the inexperienced.



The optical equipment deserves especial consideration. The regular lens is a Rapid Rectilinear — the best that money can buy outside of the anastigmats — and an automatic focusing lock is provided for bringing the lens to instant focus for any distance.

The shutter is the new ball bearing type, with star-shaped leaves — a construction that admits the passage of considerably more light in a given time than does either the ordinary two-winged shutter or common type of iris diaphragm shutter. This is a most important feature in making quick exposures in dull lights.

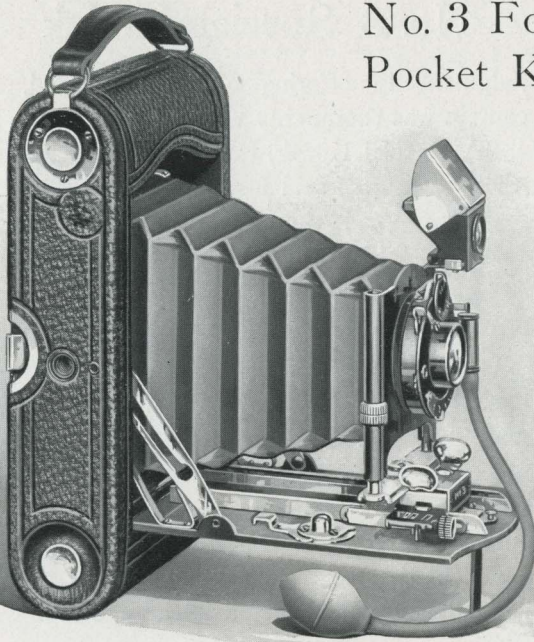
A rising, falling and sliding front — a great convenience in architectural photography — is part of the regular equipment, and dry plates may be used by the addition of a simple plate adapter. This is constructed to take double plate holders, has focusing screen, and is interchangeable with the regular Kodak back. (See similar back illustrated, page 16).

This Kodak is especially recommended to those who wish to make lantern slides from their negatives, as the size  $3\frac{1}{4} \times 4\frac{1}{4}$  is just right for slide-making without either enlargement or reduction.

Box and bed are of aluminum, covering is seal grain leather of the finest quality, metal parts are highly nicked, and the instrument is handsomely finished throughout.



## No. 3 Folding Pocket Kodak



### In Detail

For rectangular pictures,  $3\frac{1}{4} \times 4\frac{1}{4}$  inches. Capacity, 12 exposures without reloading. Size of Kodak,  $7\frac{1}{2} \times 4\frac{1}{2} \times 1\frac{3}{4}$  inches. Weight, 23 ounces. Lens, double combination, rapid rectilinear, speed,  $f. 8$ , focal length, 5 inches. Shutter, Kodak Ball Bearing. (See page 6). Rising and sliding front. Two tripod sockets. Brilliant reversible finder with hood. Automatic focusing lock.

### The Price

No. 3 F. P. K., R. R. lens, Kodak Ball Bearing shutter . . . . .	\$17.50
Ditto, with Kodak Automatic shutter . . . . .	22.50
Ditto, with Kodak Automatic shutter and Zeiss Kodak anastigmat lens, $f. 6.3$ . . . . .	43.00
Ditto, with Compound shutter, highest speed $\frac{1}{250}$ second . . . . .	48.80
Black Sole Leather Case, with strap . . . . .	1.25
Combination Back, for $3\frac{1}{4} \times 4\frac{1}{4}$ plates . . . . .	3.50
Double Glass Plate Holder, $3\frac{1}{4} \times 4\frac{1}{4}$ . . . . .	1.00
N. C. Film Cartridge, 12 exposures, $3\frac{1}{4} \times 4\frac{1}{4}$ . . . . .	.70
Ditto, 6 exposures . . . . .	.35
Ditto, "double-two" cartridge, 4 exposures . . . . .	.25
Kodak Portrait Attachment. . . . .	.50

## No. 3 Special Kodak

Our judgment in offering a richly finished, anastigmat equipped camera was thoroughly vindicated last year, in the case of the No. 3A Special Kodak, for no sooner had the cameras appeared, than they were sold faster than we could make them, and there arose also a demand for an identical camera for  $3\frac{1}{4} \times 4\frac{1}{4}$  pictures.



The No. 3 Special Kodak meets this demand fully. It has all the conveniences and the general size and weight of the regular No. 3. But instead of the usual R. R. lens, it is fitted with the Zeiss Kodak Anastigmat lens and Compound shutter. The shutter works for time and bulb exposures and has a range of instantaneous exposures, up to  $\frac{1}{250}$  of a second—a speed which the Zeiss Kodak lens easily accommodates, giving this Kodak a very decided advantage over the ordinary camera.

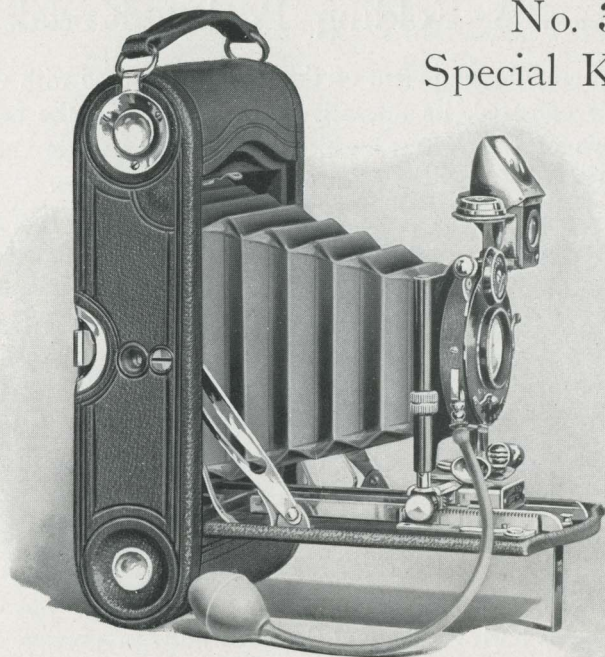
Designed to meet any and all conditions, every detail of the camera is in keeping with its high grade lens and shutter equipment. It has rising, falling and sliding front, reversible finder, spirit level, and a rack and pinion for focusing. This last is especially useful for focusing when the camera is loaded with plates, as may be easily done by securing a combination back, which is interchangeable with the regular back on the Kodak. This is provided with focusing screen.

A supplementary focusing scale for plates is also supplied on the camera, so that when using plates, one can focus on the ground glass or by scale, as preferred.

Covered with genuine Persian morocco, with nickeled fitting, and rich black leather bellows, it is truly a quality camera—the finest and most efficient for  $3\frac{1}{4} \times 4\frac{1}{4}$  pictures that money can buy.



## No. 3 Special Kodak



### In Detail

For rectangular pictures,  $3\frac{1}{4} \times 4\frac{1}{4}$  inches. Capacity 12 exposures without reloading. Size of Kodak,  $1\frac{7}{8} \times 4\frac{1}{2} \times 8$  inches. Weight, 32 ounces. Lens, Zeiss Kodak anastigmat, speed,  $f. 6.3$ , focal length, 5 inches. Shutter, Compound. (See page 7). Two tripod sockets. Brilliant reversible finder, with hood. Spirit level. Double focusing scale for use with either film or plates. Rack and pinion for focusing.

### The Price

No. 3 Special Kodak, Zeiss Kodak anastigmat lens, $f. 6.3$ , Compound	
shutter, highest speed $\frac{1}{250}$ second . . . . .	\$52.00
Grain Leather, Velvet Lined Case, with strap . . . . .	2.75
Combination Back . . . . .	4.00
Double Glass Plate Holders, $3\frac{1}{4} \times 4\frac{1}{4}$ , each . . . . .	1.00
N. C. Film Cartridge, 12 exposures, $3\frac{1}{4} \times 4\frac{1}{4}$ . . . . .	.70
Ditto, 6 exposures. . . . .	.35
Ditto, "double-two" cartridge, 4 exposures . . . . .	.25
Kodak Portrait Attachment . . . . .	.50



## No. 3A Folding Pocket Kodak

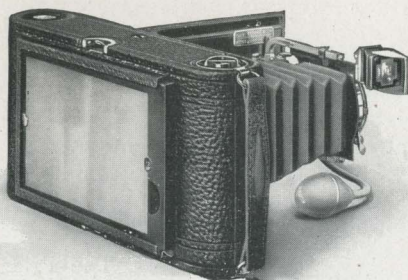
The thorough equipment of this model, the ease with which it may be operated, its attractive appearance, and the artistic proportions of the pictures which it takes, has made the 3A Folding Pocket Kodak the most popular of all cameras.



It is fitted with Kodak Ball Bearing shutter, which makes it especially effective for instantaneous work, and the best R. R. lens obtainable outside of the anastigmats. It has rising, sliding and falling front, automatic focusing lock, and reversible finder. And while thus equipped for the most serious work, it can be effectively handled even by the absolute novice.

The size of pictures made with this model is generally preferred, not only on account of its applicability to post-card photography, but also for the unusually effective landscape views which it yields horizontally, and the beautifully proportioned full length portraits, vertically.

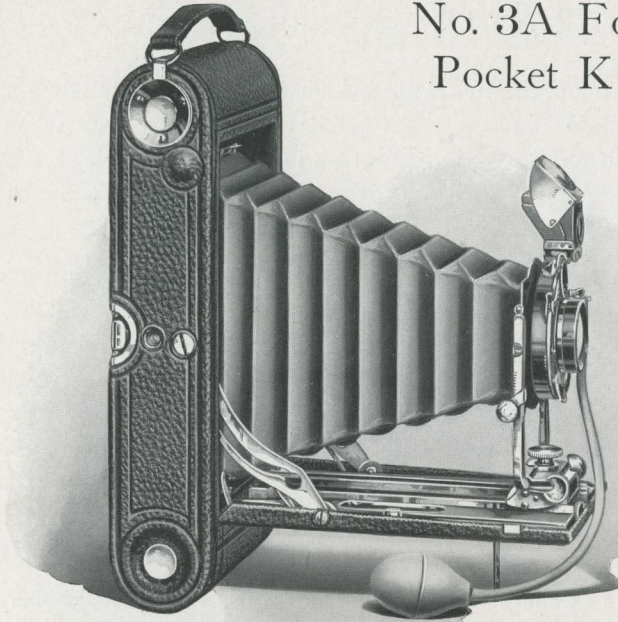
The Kodak Portrait Attachment will make this an excellent camera for home portraiture, while dry plates may be used at any time by means of a combination back, interchangeable with the regular back. This may be secured from any dealer. It is fitted with ground glass focusing screen and accommodates double plate holders.



Showing Combination Back with Focusing Screen

Covered with fine seal grain leather, with nickeled fittings, it is a camera which will instantly attract the eye by its beauty.

## No. 3A Folding Pocket Kodak



### In Detail

For rectangular pictures,  $3\frac{1}{4} \times 5\frac{1}{2}$  inches. Capacity, 10 exposures without reloading. Size of Kodak,  $9\frac{1}{2} \times 4\frac{3}{4} \times 1\frac{7}{8}$  inches. Weight, 41 ounces. Lens, double combination, rapid rectilinear, speed,  $f. 8$ , focal length,  $6\frac{1}{2}$  inches. Shutter, Kodak Ball Bearing. (See page 6). Two tripod sockets. Brilliant reversible finder with hood. Automatic focusing lock.

### The Price

No. 3A F. P. Kodak, R. R. lens, Kodak Ball Bearing shutter . . . . .	\$20.00
Ditto, with Kodak Automatic shutter . . . . .	25.00
Ditto, with Compound shutter, highest speed $\frac{1}{200}$ second, and Zeiss Kodak anastigmat lens, $f. 6.3$ . . . . .	61.40
Black Sole Leather Case, with strap . . . . .	1.50
Combination Back . . . . .	3.50
Double Glass Plate Holders, $3\frac{1}{4} \times 5\frac{1}{2}$ , each . . . . .	1.00
N. C. Film Cartridge, 10 exposures, $3\frac{1}{4} \times 5\frac{1}{2}$ . . . . .	.70
Ditto, 6 exposures . . . . .	.40
Ditto, "double-two" cartridge, 4 exposures . . . . .	.30
Kodak Portrait Attachment . . . . .	.50



## No. 3A Special Kodak

That photography is a serious art among amateur photographers, and that they are quick to take advantage of every help which means greater progress in their art is well illustrated by the remarkable sales of the 3A Special Kodak since its introduction last year.



With its high speed shutter and Zeiss Kodak Anastigmat lens, it offers the photographer an equipment for work of the very highest quality. And this without sacrifice of the underlying principle of Kodak simplicity, for no special experience is necessary to operate it effectively.

Making the same popular size picture as the regular 3A, it conforms in general size and design with that instrument. It has the same advantages of rising, falling and sliding front, reversible finder, and automatic clamp. In addition, it has the anastigmat lens and high speed shutter equipment, a rack and pinion for focusing, a spirit level, and is superbly finished.

It is covered with Persian morocco of the very finest quality, which, in combination with the black leather bellows, nicked fittings and pleasing proportions of the instrument, produces a very handsome, rich appearance.

A double focusing scale is supplied, the one for film, the other for plates, as dry plates can be used in this Kodak by means of a combination back (supplied extra), and which is interchangeable with the regular back.

The last word in photographic perfection—the 3A Special Kodak is indispensable for those who demand the highest quality in every feature.

## No. 3A Special Kodak



### In Detail

For rectangular pictures,  $3\frac{1}{4} \times 5\frac{1}{2}$  inches. Capacity, 10 exposures without reloading. Size of Kodak,  $9\frac{1}{2} \times 4\frac{3}{4} \times 2$  inches. Weight, 42 ounces. Lens, Zeiss Kodak anastigmat, speed,  $f. 6.3$ , focal length,  $6\frac{1}{2}$  inches. Shutter, Compound. (See page 7). Two tripod sockets. Brilliant reversible finder, with hood. Spirit level. Double focusing scale for use with either film or plates. Rack and pinion for focusing.

### The Price

3A Special Kodak, Zeiss Kodak anastigmat lens, $f. 6.3$ , Compound shutter, highest speed $\frac{1}{200}$ second . . . . .	\$65.00
Grain Leather, Velvet Lined Case, with strap . . . . .	3.00
Combination Back . . . . .	4.00
Double Glass Plate Holders, $3\frac{1}{4} \times 5\frac{1}{2}$ , each . . . . .	1.00
N. C. Film Cartridge, 10 exposures, $3\frac{1}{4} \times 5\frac{1}{2}$ . . . . .	.70
Ditto, 6 exposures . . . . .	.40
Ditto, "double-two" cartridge, 4 exposures . . . . .	.30



## No. 4 Folding Pocket Kodak

The 4 x 5 picture is the largest of the standard amateur sizes. Its shape is suitable for composition of any character, either in the vertical or horizontal position, and the comparatively large size of all objects in the composition has made it a favorite with thousands of amateur photographers.



And the Folding Pocket Kodak No. 4 provides the amateur with an instrument for such pictures, so light and compact that it may be carried in a top coat pocket, and offering all the advantages of the 3 and 3A models.

Its splendid lens and ball bearing shutter give it a great efficiency for snap-shot photography, while a rising, falling and sliding front, automatic focusing lock and two tripod sockets make it equally effective for work of the most exacting character.

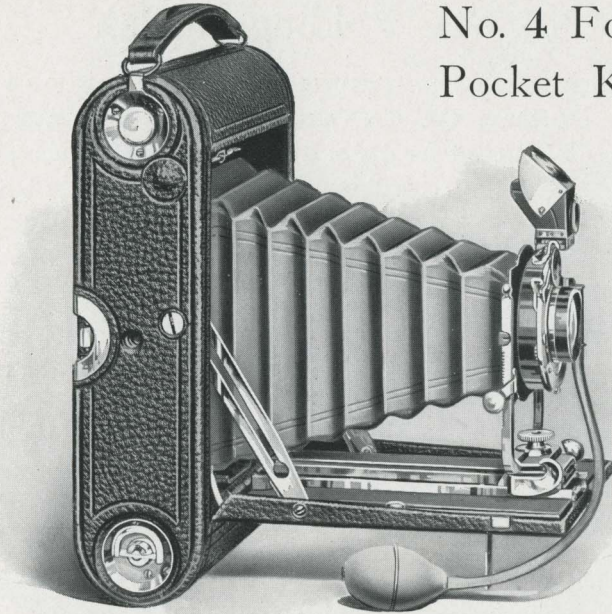
Fitted with Kodak Portrait Attachment it will produce large bust portraits of the highest quality, as the camera may then be focused as close as 2 feet 8 inches to the subject. And, if desired, a plate adapter with focusing screen, taking double plate holders, may be substituted in place of the regular back, adapting the Kodak for the use of dry plates.

No. 4 Folding Pocket Kodak retains all the Kodak simplicity and ease of operation. No previous experience is necessary to secure good pictures with it. It can be readily used by the beginner for daylight-all-the-way photography.

The camera body is made of aluminum, covered with the finest quality black seal grain leather. Constructed with the usual Kodak skill, and beautifully finished, this instrument will appeal to both novice and seasoned expert.



## No. 4 Folding Pocket Kodak



### In Detail

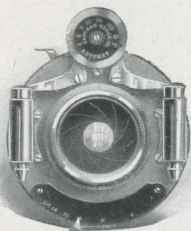
For rectangular pictures, 4 x 5 inches. Capacity, 12 exposures without reloading. Size of Kodak, 9 x 5 $\frac{3}{4}$  x 2 $\frac{1}{4}$  inches. Weight, 2 pounds 11 ounces. Lens, double combination, rapid rectilinear, speed, *f*. 8, focal length, 6 $\frac{1}{2}$  inches. Shutter, Kodak Ball Bearing. (See page 6). Two tripod sockets. Brilliant reversible finder. Automatic focusing lock.

### The Price

No. 4 F. P. K., R. R. lens, Kodak Ball Bearing shutter . . . . .	\$20.00
Ditto, with Kodak Automatic shutter . . . . .	25.00
Ditto, with Compound shutter, highest speed $\frac{1}{200}$ second, and Zeiss Kodak anastigmat lens, <i>f</i> . 6.3 . . . . .	61.40
Black Sole Leather Carrying Case, with strap . . . . .	1.50
Glass Plate Adapter, 4 x 5, with ground glass . . . . .	3.50
Double Glass Plate holders, 4 x 5, each . . . . .	1.00
N. C. Film Cartridge, 12 exposures, 4 x 5 . . . . .	.90
Ditto, 6 exposures . . . . .	.45
Ditto, "double-two" cartridge, 4 exposures . . . . .	.30
Kodak Portrait Attachment . . . . .	.50

## No. 4A Folding Kodak

Many amateurs prefer pictures even larger than the 4 x 5 size, and for these the 4A Kodak provides a thoroughly satisfactory instrument for  $4\frac{1}{4}$  x  $6\frac{1}{2}$  pictures. It combines all the advantages of the preceding models in a camera that is very light and compact, considering the large size picture it makes.



So convenient that it may be readily used for snap-shots, it is suitable likewise for work of the most serious character. It has rising, falling and sliding front, rack and pinion attachment for instant focusing, and two tripod sockets for horizontal or vertical use with tripod.

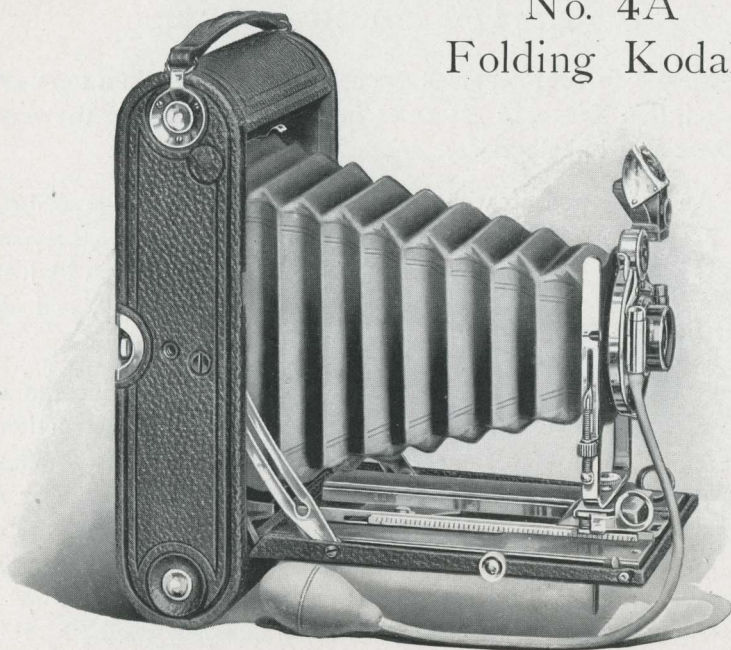
The lens is a rapid rectilinear and is the best obtainable outside of the anastigmats. The shutter is a double valve, automatic, working for time, bulb, instantaneous and retarded exposures. The regular finder is a brilliant reversible, but a direct-view finder may be fitted to the box for specially quick, accurate snap-shot work with the Kodak held on a level with the eye.

One of the special features of this instrument is its adaptability to home portraiture. Fitted with the Kodak Portrait Attachment it will make bust portraits up to the full size of the film, as it may be operated as close as  $3\frac{1}{2}$  feet to the subject. A plate adapter with focusing screen, interchangeable with the regular back, will permit the use of dry plates if desired.

With all these advantages, the instrument retains the usual Kodak simplicity and ease of operation. There is nothing in its construction which cannot be easily understood by the merest beginner. Made of aluminum, with nickered fittings and genuine leather covering of beautiful grain.



## No. 4A Folding Kodak



### In Detail

For rectangular pictures,  $4\frac{1}{4} \times 6\frac{1}{2}$  inches. Capacity, 6 exposures without reloading. Size of Kodak,  $11 \times 6\frac{1}{2} \times 2\frac{5}{8}$  inches. Weight, 4 pounds 4 ounces. Lens, double combination, rapid rectilinear, speed,  $f. 8$ , focal length,  $8\frac{1}{4}$  inches. Shutter, B. & L. Automatic. Rising and sliding front. Rack and pinion for focusing. Two tripod sockets. Brilliant reversible finder with hood.

### The Price

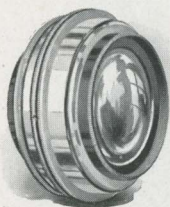
No. 4A F. Kodak, R. R. lens, B. & L. Automatic shutter . . . . .	\$35.00
Ditto, with Zeiss Kodak anastigmat lens, $f. 6.3$ . . . . .	72.50
Ditto, with Compound shutter, highest speed $\frac{1}{150}$ second . . . . .	83.45
Black Sole Leather Case, with strap . . . . .	2.50
Glass Plate Adapter, with ground glass . . . . .	5.00
Double Glass Plate Holders, each . . . . .	1.25
N. C. Film Cartridge, 6 exposures, $4\frac{1}{4} \times 6\frac{1}{2}$ . . . . .	.65
Ditto, "double-two" cartridge, 4 exposures . . . . .	.45
Direct View Finder . . . . .	3.00
Kodak Portrait Attachment . . . . .	.50



## No. 1A Speed Kodak

Simple to operate, small enough to be carried in a top coat pocket, this Kodak, as its name implies, is suitable for the very highest speed photography.

And although it will easily make pictures of the fastest moving objects, such as automobiles, express trains, athletes and race horses, it can be just as easily used for home portraiture, and all other ordinary amateur work.

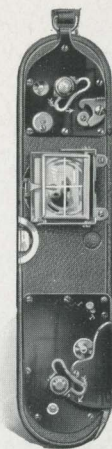


Its high speed is attained by the incorporation of a focal plane shutter in its construction.

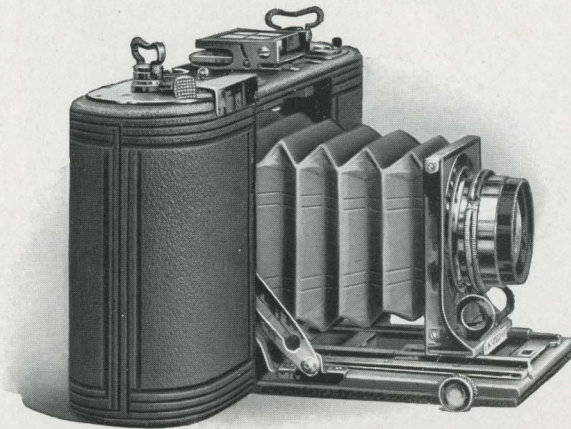
This shutter is of the well known Graflex Focal Plane type, which is provided with a curtain having a series of slots of varying widths. This curtain, in combination with a speed tension regulator, permits a latitude of exposures varying from  $\frac{1}{10000}$  of a second to very slow instantaneous, bulb, or time exposures. The shutter can be instantly wound by the half turn of a key, and released by merely touching a lever.

The finder of the No. 1A Speed is of the direct view type for use with the camera held on a level with the eyes. This is supplemented by a mirror attachment, which springs up at an angle of 45 degrees, for location and composition of subjects with the Kodak held in any other position.

Rack and pinion is furnished for easy focusing, metal parts have gun-metal finish, and covering is a very fine grain leather. The size of picture,  $2\frac{1}{2} \times 4\frac{1}{4}$ , is suitable for any style of composition, and is very desirable for portraiture.



# No. 1A Speed Kodak



## In Detail

For rectangular pictures,  $2\frac{1}{2} \times 4\frac{1}{4}$  inches. Capacity, 12 exposures without reloading. Size of Kodak,  $2\frac{1}{4} \times 4\frac{1}{2} \times 9\frac{3}{4}$  inches. Weight, 3 pounds. Shutter, Graflex focal plane, speed  $\frac{1}{1000}$  second to slow instantaneous. Rack and pinion for focusing, automatic standard clamp, and tripod socket. Direct view finder with mirror attachment. Automatic safety blind for protecting film when shutter is wound.

## The Price

No. 1A Speed Kodak, Graflex focal plane shutter, without lens . . . . .	\$38.00
Ditto, with Zeiss Kodak anastigmat lens No. 2, <i>f.</i> 6.3 . . . . .	60.00
Ditto, with Series IIb B. & L. Zeiss Tessar lens No. 4 <i>f.</i> 6.3 . . . . .	72.50
Ditto, with Cooke Series IV lens No. 25, <i>f.</i> 5.6 . . . . .	76.00
Ditto, with Series Ic B. & L. Zeiss Tessar lens No. 14, <i>f.</i> 4.5 . . . . .	78.50
Black Sole Leather Carrying Case, with strap . . . . .	1.50
N. C. Film Cartridge, 12 exposures, $2\frac{1}{2} \times 4\frac{1}{4}$ . . . . .	.50
Ditto, 6 exposures . . . . .	.25



## No. 4A Speed Kodak

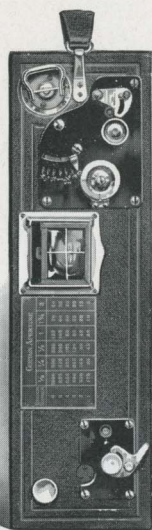
The shape of the pictures made by this camera is of splendid proportions for the very high speed work for which it is adapted, as well as for the general run of amateur work. And the pictures are of that larger size which many photographers, who make a specialty of some particular class of work, prefer.



This camera attains a maximum speed exposure of  $\frac{1}{1000}$  of a second—thanks to the Kodak Focal Plane shutter, which is built into the camera box. The shutter is provided with a curtain having an adjustable opening, which, in combination with a speed tension device, regulates the duration of the exposure. The shutter is in no way complicated, but can be easily understood and operated by anyone who follows the simple directions included with the camera.

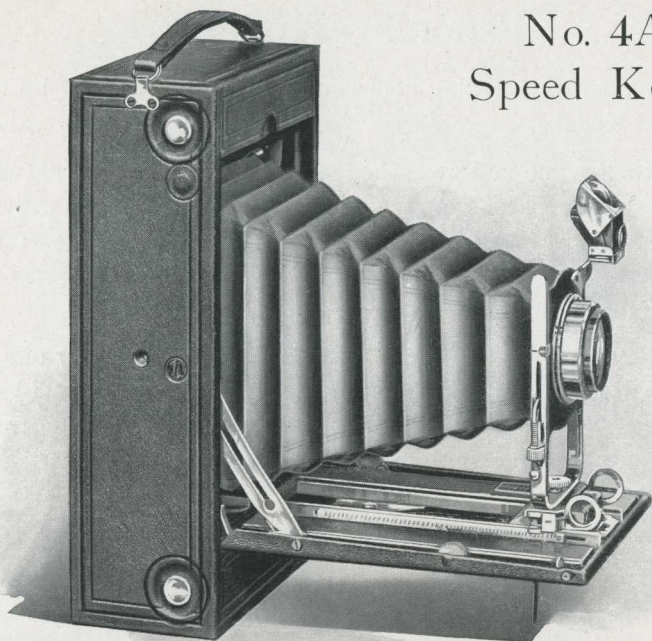
The 4A Speed shutter, of course, works for time as well as instantaneous exposures, and besides being wonderfully efficient for making pictures of automobiles, aeroplanes, race horses, athletes, and other rapidly moving objects, is a perfectly satisfactory camera for home portraiture and other work for which the ordinary camera is regularly used.

The camera is fitted with direct view finder, it is beautifully finished, metal parts are nickered, and covering is of the finest grain leather.





## No. 4A Speed Kodak



### In Detail

For rectangular pictures,  $4\frac{1}{4} \times 6\frac{1}{2}$  inches. Capacity, 6 exposures without reloading. Size of Kodak,  $11\frac{3}{4} \times 3\frac{7}{8} \times 6\frac{1}{2}$  inches. Weight, 6 pounds. Shutter, Kodak focal plane, speed  $\frac{1}{1000}$  of a second to slow instantaneous. Rising and sliding front, rack and pinion for focusing. Two tripod sockets. Brilliant reversible finder, with hood, also direct view finder and focusing scale.

### The Price

No. 4A Speed Kodak, Kodak focal plane shutter (without lens)	\$50.00
Ditto, with Zeiss Kodak anastigmat lens, <i>f.</i> 6.3	90.00
Ditto, with B & L Zeiss Tessar lens, <i>f.</i> 6.3	111.50
Black Sole Leather Carrying Case, with strap	2.50
Glass Plate Adapter, with ground glass, $4\frac{1}{4} \times 6\frac{1}{2}$	7.50
Double Glass Plate Holders, each	1.25
N. C. Film Cartridge, 6 exposures, $4\frac{1}{4} \times 6\frac{1}{2}$	.65
Ditto, "double-two" cartridge, 4 exposures	.45

## Panoram Kodaks

A wonderfully inviting field is opened to the amateur by the Panoram Kodaks.

As their name indicates, they are intended for picturing wide expanses of landscape and similar subjects, and this without the exceedingly small images incident to the use of extreme wide angle lenses, heretofore the only method of securing such pictures.

Aside from the remarkable horizontal views, decidedly unique pictures of high waterfalls, mountain peaks and similar subjects may be made by holding the camera vertically. Two tripod sockets are supplied for use with the camera either vertically or horizontally.

For taking outdoor group pictures the Panorams are unequaled, as the subjects may be arranged in a semi-circle, at a given distance from the Kodak, thus permitting all of them to be in the "front row" and of proper relative size.

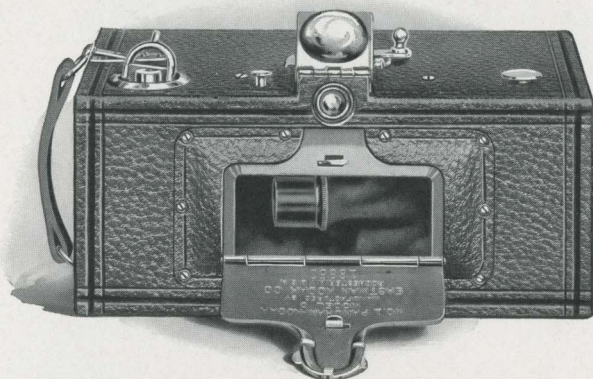
Though possessing such remarkable advantages, the Panoram Kodaks are exceedingly simple in construction and operation.

The compassing of so wide an angle of view is accomplished by swinging the lens on a pivot during the exposure, the shutter being accurately adjusted to insure even illumination throughout the exposure.

The brilliant finder shows the sky and foreground, and the entire view may be examined by simply swinging the camera in position so as to take in the full view, as indicated by the V-shaped lines on the top of the camera. The No. 1 Panoram takes a view of 112 degrees, while the No. 4 has the great scope of 142 degrees. The Panoram Kodaks use the regular daylight loading cartridges. Not adapted to indoor work. Covered with best black leather and have nickeled fittings.



# Panoram Kodaks



## No. 1 Panoram Kodak

### In Detail

For rectangular pictures,  $2\frac{1}{4} \times 7$  inches. Capacity, 6 exposures without reloading. Size of Kodak,  $3\frac{3}{8} \times 4\frac{1}{4} \times 7\frac{3}{8}$  inches. Weight, 24 ounces. Lens, specially selected as to quality and focal length. Shutter, Panoram. Two tripod sockets. Brilliant finder with hood. Uses No. 1 F. P. Kodak cartridges.

### The Price

No. 1 Panoram Kodak . . . . .	\$10.00
Black Sole Leather Carrying Case, with shoulder strap . . . . .	1.75
N. C. Film Cartridge, 6 exposures, $2\frac{1}{4} \times 7$ . . . . .	.40
Ditto, 3 exposures . . . . .	.20

## No. 4 Panoram Kodak

### In Detail

For rectangular pictures,  $3\frac{1}{2} \times 12$  inches. Capacity, 4 exposures without reloading. Size of Kodak,  $4\frac{3}{4} \times 5\frac{1}{2} \times 10\frac{1}{8}$  inches. Weight, 2 pounds 14 ounces. Lens, specially selected as to quality and focal length. Shutter, Panoram. Two tripod sockets. Brilliant finder with hood. Uses No. 4 B. E. cartridges.

### The Price

No. 4 Panoram Kodak . . . . .	\$20.00
Black Sole Leather Carrying Case, with shoulder strap . . . . .	2.00
N. C. Film Cartridge, 4 exposures, $3\frac{1}{2} \times 12$ . . . . .	.75
Ditto, 2 exposures . . . . .	.45



## No. 2 Flexo Kodak



This Kodak is of the simplest form of picture-taking instruments. It has a fixed focus, requires no estimating of distances, and with automatic shutter is always ready for action.

The No. 2 Flexo makes a square picture,  $3\frac{1}{2} \times 3\frac{1}{2}$  inches in size, and is a thoroughly satisfactory instrument for all kinds of general amateur work.

The shutter works for time or instantaneous exposures, and with the Kodak Portrait Attachment excellent results may be secured in home portraiture.

Complete in every respect, with finder and tripod socket, the price includes every requisite for picture making except the film.

Loads and unloads in daylight, and is constructed with the same care given to the higher priced Kodaks.

### In Detail

For square pictures,  $3\frac{1}{2} \times 3\frac{1}{2}$  inches. Capacity, 12 exposures without reloading. Size of Kodak,  $5\frac{7}{8} \times 4\frac{5}{8} \times 4\frac{3}{8}$  inches. Weight, 19 ounces. Lens, single achromatic,  $4\frac{1}{2}$ -inch focus. Shutter, Eastman Rotary, with three stops. Tripod socket and finder.

### The Price

No. 2 Flexo Kodak, achromatic lens, Eastman Rotary shutter . . . . .	\$5.00
Black Sole Leather Carrying Case, with shoulder strap . . . . .	1.25
N. C. Film Cartridge, 12 exposures, $3\frac{1}{2} \times 3\frac{1}{2}$ . . . . .	.60
Ditto, 6 exposures . . . . .	.30
Ditto, "double-two" cartridge, 4 exposures . . . . .	.20
Kodak Portrait Attachment . . . . .	.50

## Nos. 2 and 3 Bull's-Eye Kodaks



The Bull's-Eye Kodak for years has been a general favorite with those amateurs who wish a simple, inexpensive, yet reliable instrument for photographing the things they are interested in.

These two cameras differ only in the size of the pictures which they make, both have automatic shutters for time or instantaneous work, finders and tripod sockets for vertical or horizontal exposures, and are easily opened for loading or unloading in daylight. They are of the fixed focus type and are always ready to operate. With Kodak Portrait Attachment either can be depended upon for first-rate portraits.

The covering is seal grain leather of fine quality, and metal parts are highly nickered. Cut shows the No. 3.

### In Detail

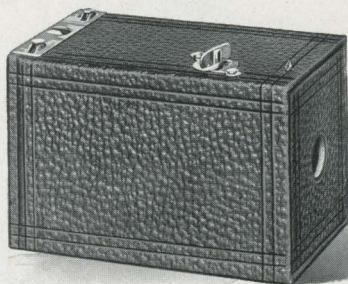
For pictures, No. 2,  $3\frac{1}{2} \times 3\frac{1}{2}$  inches; No. 3,  $3\frac{1}{4} \times 4\frac{1}{4}$  inches. Capacity, each 12 exposures without reloading. Size of Kodak, No. 2,  $5\frac{3}{4} \times 4\frac{5}{8} \times 4\frac{1}{2}$  inches; No. 3,  $4\frac{5}{8} \times 5\frac{1}{2} \times 6\frac{1}{2}$  inches. Weight, No. 2, 22 ounces; No. 3, 24 ounces. Lens, meniscus achromatic,  $4\frac{1}{2}$ -inch focus. Shutter, Eastman Rotary, with three stops. Tripod socket, No. 2, 1; No. 3, 2. Brilliant finders.

### The Price

	No. 2	No. 3
Bull's-Eye Kodak, meniscus achromatic lens, Eastman Rotary shutter	\$8.00	\$8.00
Black Sole Leather Carrying Case, with shoulder strap . . . . .	1.25	1.25
N. C. Film Cartridge, 12 exposures . . . . .	.60	.70
Ditto, 6 exposures . . . . .	.30	.35
Ditto, "double-two" cartridge, 4 exposures . . . . .	.20	.25
Kodak Portrait Attachment . . . . .	.50	.50



# No. 1 Brownie



Only immense manufacturing facilities and enormous production of these little Brownies make it possible to supply a camera which will take good pictures at such a trifling price.

The No. 1 Brownie is well made in every respect, and each camera undergoes the usual Kodak inspection for reliability before being sent out.

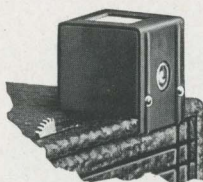
It is fitted with meniscus lens and the shutter works automatically for time or snap-shot exposures. V-shaped lines at the top indicate the scope of view, or, if preferred, the Brownie Finder (detachable) illustrated below can be fitted at an extra charge of 25 cents.

Very simple to load and operate, inexpensive and thoroughly practical, this is an excellent instrument for starting the children along the delightful road of photography.

## In Detail

For square pictures,  $2\frac{1}{4} \times 2\frac{1}{4}$  inches. Capacity, 6 exposures without reloading. Size of camera,  $4\frac{7}{8} \times 3\frac{1}{8} \times 3$  inches. Weight, 8 ounces. Lens, meniscus,  $3\frac{3}{4}$ -inch focus. Shutter, Eastman Rotary, with one stop.

## The Price



No. 1 Brownie Camera, meniscus lens, Eastman Rotary shutter . . . . .	\$1.00
No. 1 Brownie Carrying Case, holds camera and finder . . . . .	.50
N. C. Film Cartridge, 6 exposures, $2\frac{1}{4} \times 2\frac{1}{4}$ . . . . .	.15
Brownie Finder, detachable . . . . .	.25
No. 1 Brownie Developing and Printing Outfit, including paper for 24 prints . . . . .	.90



## Nos. 2 and 2A Brownies



Remarkable pictures have been produced by these simple, fixed focus cameras even in the hands of school children, while work of the highest character has been done with them by experts. As simple to operate as the No. 1 Brownie, but with greater capabilities, they differ from each other only in the size of pictures which they make. Those made by the No. 2A are splendidly proportioned for landscape composition and for full-length portraiture.

These cameras have two finders, automatic shutters, meniscus lenses of the first quality, and are covered with handsome imitation leather. The Kodak Portrait Attachment can be used to advantage with either.

### In Detail

For rectangular pictures, No. 2,  $2\frac{1}{4} \times 3\frac{1}{4}$  inches; No. 2A,  $2\frac{1}{2} \times 4\frac{1}{4}$  inches. Capacity, No. 2, 6 exposures without reloading; No. 2A, 12 exposures without reloading. Size of camera, No. 2,  $5\frac{5}{8} \times 4 \times 3\frac{1}{4}$  inches; No. 2A,  $3\frac{1}{8} \times 5\frac{1}{8} \times 6\frac{1}{8}$  inches. Weight, No. 2, 13 ounces; No. 2A, 12 ounces. Lens, meniscus. Shutter, Eastman Rotary, with three stops. Two finders.

### The Price

	No. 2	No. 2A
Brownie Camera, meniscus lens, Eastman Rotary shutter . . . . .	\$2.00	\$3.00
Brownie Carrying Case, with shoulder strap . . . . .	.75	.75
N. C. Film Cartridge, 12 exposures . . . . .		.50
N. C. Film Cartridge, 6 exposures . . . . .	.20	.25
Kodak Portrait Attachment . . . . .	.50	.50
A B C Developing and Printing Outfit (see page 48) . . . . .	1.50	1.50

## No. 3 Brownie



In this camera are combined all the simple, reliable Brownie features, for those who want to make  $3\frac{1}{4} \times 4\frac{1}{4}$  pictures — one of the most popular of amateur sizes.

Like all Brownies, it is a camera that the children can easily operate, while at the same time it is so efficient as to satisfy the grown-up people. Equipped with a fine quality meniscus achromatic lens and automatic shutter, it is thoroughly dependable for general amateur photography, and the negatives which it makes are of such quality as to yield excellent  $6\frac{1}{2} \times 8\frac{1}{2}$  enlargements, by use of the Brownie Enlarging Camera.

With nickeled trimmings and covering of fine grain imitation leather, it is a very attractive camera indeed, and when fitted with Kodak Portrait Attachment, it will make bust portraits of good size.

### In Detail

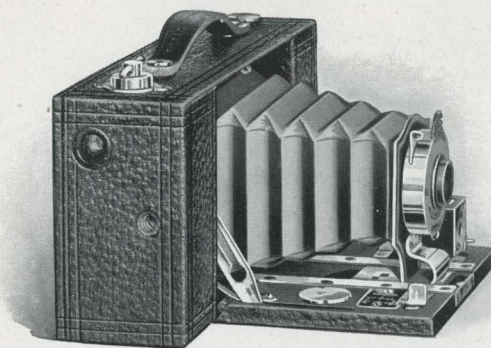
For rectangular pictures,  $3\frac{1}{4} \times 4\frac{1}{4}$  inches. Capacity, 12 exposures without reloading. Size of camera,  $6\frac{1}{8} \times 4\frac{3}{8} \times 5\frac{1}{8}$  inches. Weight, 24 ounces. Lens, meniscus achromatic, 5-inch focus. Shutter, Eastman Rotary, with three stops. Two tripod sockets. Two finders.

### The Price

No. 3 Brownie Camera, meniscus achromatic lens, Eastman Rotary shutter	\$4.00
No. 3 Brownie Carrying Case, with shoulder strap	1.00
N. C. Film Cartridge, 12 exposures, $3\frac{1}{4} \times 4\frac{1}{4}$	.70
Ditto, 6 exposures	.35
Ditto, "double-two" cartridge, 4 exposures	.25
Kodak Portrait Attachment	.50



## No. 2 Folding Pocket Brownie



Inexpensive, devoid of all complications, extremely simple to understand and to operate, this dainty little instrument brings the Brownie into the field of pocket photography.

It slips easily into any ordinary coat pocket, and it will produce splendid  $2\frac{1}{4} \times 3\frac{1}{4}$  pictures the all-by-daylight way. Adapted for snap-shots, bulb or time exposures, it has reversible finder, two tripod sockets and automatic focusing lock. The shape of the pictures it makes is suitable for any style of composition, and the Kodak Portrait Attachment may be used with this instrument with excellent success. Excellent  $5 \times 7$  enlargements can be made from its negatives by use of the Brownie Enlarging Camera.

Carefully finished throughout with covering of imitation grain leather and nickeled fittings.

### In Detail

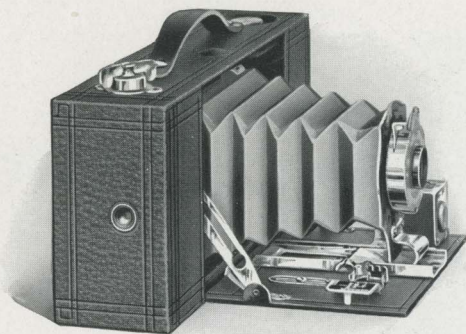
For rectangular pictures,  $2\frac{1}{4} \times 3\frac{1}{4}$  inches. Capacity, 6 exposures without reloading. Size of camera,  $6\frac{7}{8} \times 3\frac{5}{8} \times 2\frac{1}{8}$  inches. Weight, 16 ounces. Lens, meniscus,  $4\frac{1}{2}$ -inch focus. Shutter, Pocket Automatic. (See page 6). Two tripod sockets. Automatic focusing lock. Reversible finder

### The Price

No. 2 Folding Pocket Brownie, meniscus lens, Pocket Automatic shutter	\$5.00
No. 2 Folding Pocket Brownie Carrying Case	.75
N. C. Film Cartridge, 6 exposures, $2\frac{1}{4} \times 3\frac{1}{4}$	.20
Kodak Portrait Attachment	.50



## No. 2A Folding Pocket Brownie



The pleasing proportions of the pictures taken by this little Brownie, combined with its simple operation and reliability, have made it one of the most popular cameras of the whole Brownie line.

For effective landscape composition and full and three-quarter length portraits, the shape of its pictures is ideal. And when fitted with Kodak Portrait Attachment, it may be operated close up to the subject for excellent bust pictures.

Identical in construction and general design with the No. 2, this model can as easily be carried in the pocket, works for time, bulb and instantaneous exposures, and is well finished throughout. Attractively covered with best imitation leather, and metal parts are highly nickeled.

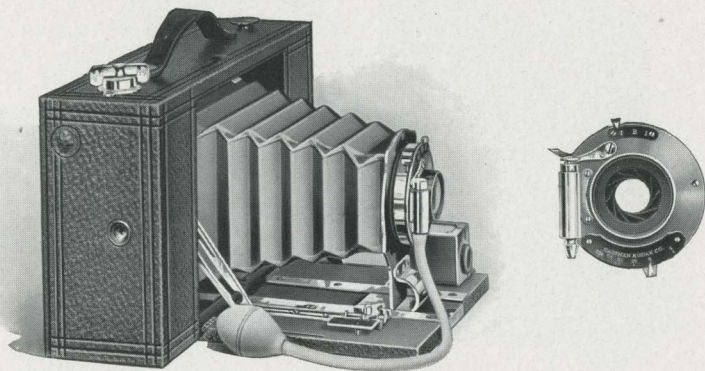
### In Detail

For rectangular pictures,  $2\frac{1}{2} \times 4\frac{1}{4}$  inches. Capacity, 12 exposures without reloading. Size of camera,  $8\frac{1}{2} \times 2 \times 3\frac{3}{8}$  inches. Weight, 23 ounces. Lens, meniscus achromatic, 5-inch focus. Shutter, Pocket Automatic. Two tripod sockets. Automatic focusing lock. Reversible finder.

### The Price

No. 2A Folding Pocket Brownie, meniscus achromatic lens, Pocket Automatic shutter . . . . .	\$7.00
No. 2A Folding Pocket Brownie Carrying Case . . . . .	.90
N. C. Film Cartridge, 12 exposures, $2\frac{1}{2} \times 4\frac{1}{4}$ inches . . . . .	.50
Ditto, 6 exposures . . . . .	.25
Kodak Portrait Attachment . . . . .	.50

## No. 3 Folding Brownie



For  $3\frac{1}{4} \times 4\frac{1}{4}$  pictures, this model offers all the Brownie simplicity at modest Brownie prices, and the choice of either single or double lens fitted to F. P. K. Automatic shutter with bulb and finger release. It will make any kind of pictures, it works for time, bulb and instantaneous exposures, and with Kodak Portrait Attachment is an excellent instrument for home portraiture.

These cameras are well finished, complete in every detail, and with the Brownie Enlarging Camera, good  $6\frac{1}{2} \times 8\frac{1}{2}$  enlargements can be made easily from No. 3 Folding Brownie negatives.

### In Detail

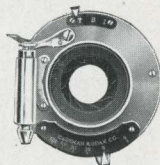
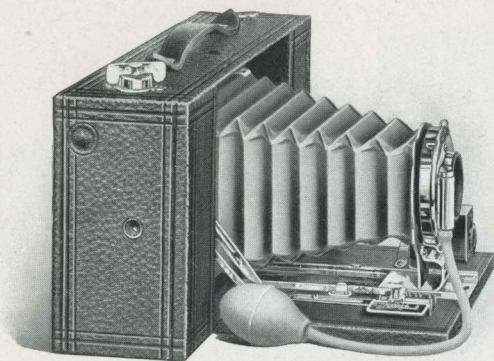
For rectangular pictures,  $3\frac{1}{4} \times 4\frac{1}{4}$  inches. Capacity, 12 exposures without reloading. Size of camera,  $8\frac{3}{8} \times 4\frac{5}{8} \times 2\frac{5}{8}$  inches. Weight, 25 ounces. Lens, meniscus achromatic, 5-inch focus. Shutter, F. P. K. automatic with bulb. (See page 7). Automatic focusing lock. Two tripod sockets. Reversible finder.

### The Price

No. 3 Folding Brownie Camera, meniscus achromatic lens, F. P. K. Automatic shutter . . . . .	\$9.00
Ditto, with R. R. lens and F. P. K. Automatic shutter . . . . .	11.00
No. 3 Folding Brownie Carrying Case . . . . .	1.00
N. C. Film Cartridge, 12 exposures, $3\frac{1}{4} \times 4\frac{1}{4}$ . . . . .	.70
Ditto, 6 exposures . . . . .	.35
Ditto, "double-two" cartridge, 4 exposures . . . . .	.25
Kodak Portrait Attachment . . . . .	.50



## No. 3A Folding Brownie



With all the advantages of the No. 3, and similar to it in design and general appearance, this model is made for the most popular of all amateur size pictures— $3\frac{1}{4} \times 5\frac{1}{2}$ .

This size is just right for post-card use, is unusually effective for landscape composition, and, used vertically, its proportions are ideal for full and three-quarter length portraits.

Exceedingly simple, yet thoroughly practical, this model offers the choice of single or double lens, and, considering the large size pictures which it makes and the quality of the instrument, is very inexpensive.

Covered with durable imitation leather. All metal parts highly nickered.

### In Detail

For rectangular pictures,  $3\frac{1}{4} \times 5\frac{1}{2}$  inches. Capacity, 10 exposures without reloading. Size of camera,  $2\frac{5}{8} \times 4\frac{5}{8} \times 9\frac{7}{8}$  inches. Weight, 34 ounces. Lens, meniscus achromatic,  $6\frac{1}{2}$ -inch focus. Shutter, F. P. K. Automatic, with bulb release. (See page 7). Automatic focusing lock. Two tripod sockets. Reversible finder.

### The Price

No. 3A Folding Brownie Camera, meniscus achromatic lens, F. P. K.	
Automatic shutter . . . . .	\$10.00
Ditto, with R. R. lens and F. P. K. Automatic shutter . . . . .	12.00
No. 3A Folding Brownie Carrying Case . . . . .	1.00
N. C. Film Cartridge, 10 exposures . . . . .	.70
Ditto, 6 exposures . . . . .	.40
Ditto, "double-two" cartridge, 4 exposures . . . . .	.30
Kodak Portrait Attachment . . . . .	.50

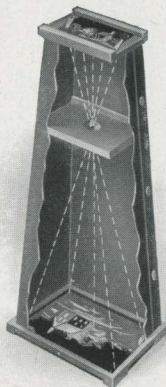


# Brownie Enlarging Cameras

The average amateur usually thinks of enlarging as a complicated, expensive process, requiring considerable apparatus and experience. But the Brownie Enlarging Cameras have changed all this.

With one of these cameras it's just as easy to make first-class enlargements from your favorite negatives as it is to print on Velox paper. In fact, the two processes are very much the same excepting that, in ordinary printing, the negative and paper are in close contact, while in enlarging, the paper is at some distance from the negative, with a lens in between.

The Brownie Enlarging Camera consists of a light-tight cone with attachments to hold a negative at the small end, and a sheet of Bromide or Velox paper at the other; the lens is fixed inside the cone at just the right distance to insure perfect focus.



## The Price

No. 2 Brownie Enlarging Camera, for 5 x 7 enlargements from 2¼ x 3¼ negatives . . . . .	\$2.00
No. 3, Ditto, for 6½ x 8½ enlargements from 3¼ x 4¼ negatives . . .	3.00
No. 4, Ditto, for 8 x 10 enlargements from 4 x 5 negatives (will also take 3¼ x 5½ negatives). . . . .	4.00

# No. 1 Kodak Enlarging Camera

For making 6½ x 8½ enlargements from 4 x 5 and 3¼ x 4¼ negatives. Smaller negatives enlarge in proportion. May be used as a portrait camera by removing negative carrier and substituting portrait lens.

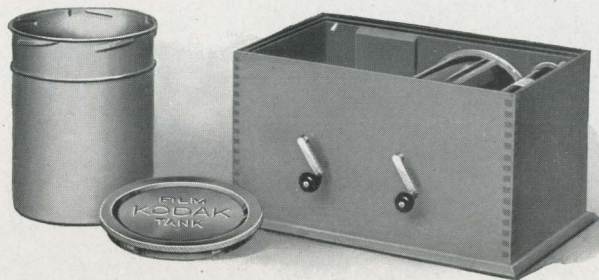
## The Price

No. 1 Kodak Enlarging Camera, for 6½ x 8½ enlargements . . . . .	\$15.00
Inside Kits, 6½ x 8½, with 5 x 7 or 4 x 5 opening . . . . .	.30
Glass Negative Holders, 3¼ x 4¼ or 3½ x 3½ . . . . .	.50
Special Portrait Lens, 8½-inch focus, speed f. 8, for bust work . . . .	7.50
Extra Lens Board; no extra charge for fitting to our special portrait lens	.75

## Kodak Film Tank

The Kodak Film Tank has so thoroughly demonstrated the superiority of the time and temperature method of development that the old hand development of dark room days is practically obsolete, except for the development of extra large glass plates.

The Kodak Tank is immeasurably more convenient — can be carried and used anywhere; but that is not its greatest advantage: It eliminates the dark room entirely, developing film in broad daylight; but even this is not its greatest advantage. For with both these extraordinary features it produces *better results*; and this is its greatest advantage — the assurance that



every roll of film put into the tank, where the simple directions are implicitly followed, will come out developed as well or better than that roll of film could be developed in the dark room by the most experienced photographer.

The Kodak Film Tank consists of a winding box, a light-proof apron, and a heavily nickeled brass solution cup with cover. All articles can be packed in the box, making the entire outfit self-contained.

The film to be developed is placed upon a reel in the winding box, the cover is placed on the box and the film is wound around a central axis in combination with the apron, in such fashion that,



when completely wound, the apron protects the film effectually from light, and may be removed from the winding box safely at any time. It is then lowered into the cup of developer, the cover attached and the film left to develop for twenty minutes. After development the film is removed for fixing.

Every step may be performed in daylight and the entire operation is so simple as to be readily understood by the absolute novice. The exact time necessary for development, in combination with the chemical formula, has been scientifically worked out, so that all differences of exposure within reasonable bounds are taken care of. Snap-shots and time exposures go into the tank at the same time and come out together, developed to their full values.

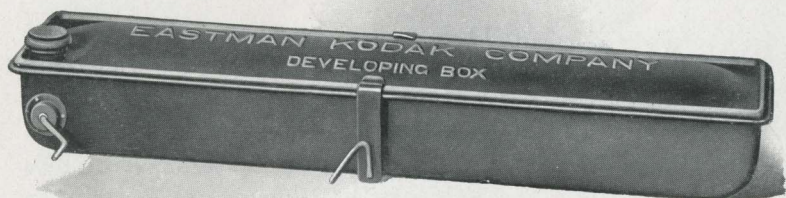
With the Kodak Film Tank, the amateur can develop a number of rolls at once by means of duplicating outfits.

#### The Price

Brownie Kodak Film Tank, for use with No. 1, No. 2 and No. 2 Folding Pocket Brownie cartridges, complete . . . . .	\$2.50
3½-inch Kodak Film Tank, for use with all Kodak and Brownie cartridges having a film width of 3½ inches or less, complete . . . . .	5.00
5-inch Kodak Film Tank, for use with all Kodak and Brownie cartridges having a film width of 5 inches or less, complete . . . . .	6.00
7-inch Kodak Film Tank, for use with No. 5 Cartridge Kodak or shorter film cartridges, complete . . . . .	7.50
Duplicating Outfit, consisting of one solution cup, one transferring reel, and one apron for Brownie Kodak Film Tank . . . . .	1.25
Ditto, for 3½-inch Kodak Film Tank . . . . .	2.50
Ditto, for 5-inch Kodak Film Tank . . . . .	3.00
Ditto, for 7-inch Kodak Film Tank . . . . .	3.75
Kodak Tank Developer Powders for Brownie Kodak Film Tank, per package of half dozen . . . . .	.15
Ditto, for 3½-inch tank, per package, half dozen . . . . .	.20
Ditto, for 5-inch tank, per package, half dozen . . . . .	.25
Ditto, for 7-inch tank, per package, half dozen . . . . .	.25
Kodak Acid Fixing Powder, per ¼-pound package . . . . .	.10
Ditto, per ½-pound package . . . . .	.15
Ditto, per 1-pound package . . . . .	.25



## No. 2 Brownie Developing Box



Offering the same assurance of perfectly developed film as the Kodak Film Tank, the Brownie Developing Box is a modified form of the same, so simple to use that any boy or girl can readily understand and operate it.

It consists of a metal box with cover, just long enough to accommodate a roll of No. 1 or No. 2 Brownie Film in one loop.

To develop, the roll of film is inserted in the spool carrier, and by means of a cord and winding shaft the film is unrolled and carried around a roller bearing, thus exposing the film to the action of the developer.

Before unrolling the film the developer is poured in the box and the cover put in place; all these operations being performed in daylight. The film is then unrolled by turning the crank, when the box is rocked on its standard for six minutes. The developer is then poured off and box filled with water to wash out developer, after which film is removed and fixed in daylight.

This is an excellent means, for those who have No. 1 or No. 2 Brownie Cameras, of developing their films without the need of skill or experience.

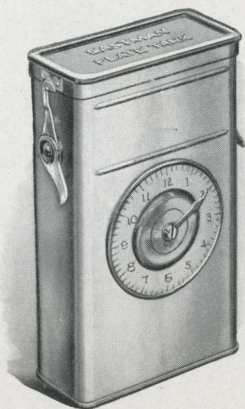
### The Price

No. 2 Brownie Developing Box . . . . .	\$1.00
Brownie Developing Box Powders, per package of 6 . . . . .	.15
Kodak Acid Fixing Powders, ½-pound package . . . . .	.15
Ditto, ¼-pound package . . . . .	.10

# The Eastman Plate Tank

The Eastman Plate Tank is the same in theory as the highly successful Kodak Film Tank, with, of course, such modifications as are rendered necessary by the physical difference between plates and film. That equally successful results are produced goes without saying. The Eastman Plate Tank consists of a metal solution cup, with tightly fitting cover, a cage for holding twelve plates, or less, during development and fixing, and an ingenious loading block for loading the plates into the cage in the dark room.

The exposed plates are loaded into the cage and placed in the tank in the dark room, and the tank cover fastened in place. On the front of the tank is a dial for registering time. Development is allowed to continue for fifteen minutes, the tank being reversed several times. After development the developer is washed out of the plates, and the fixing bath poured into the tank, after which the plates are ready for washing in the usual manner.



## The Price

Eastman Plate Tank, 4 x 5 or 3¼ x 5½, including solution cup, plate cage and loading block . . . . .	\$3.50
Ditto, 5 x 7 . . . . .	4.50
Adjustable Kit, for 4 x 5 or 3¼ x 5½ tank, to take 3¼ x 4¼ plates . . . . .	.50
Kits, for 5 x 7 tank, to take 3¼ x 5½, 4¼ x 6½ or 4¾ x 6½ plates . . . . .	.75
Metal Insert, for 5 x 7 tank, to take 4 x 5 plates . . . . .	.20
Eastman Plate Tank Developer Powders, for 4 x 5 tank, per package, ½ dozen . . . . .	.20
Ditto, for 5 x 7 tank, per package, ½ dozen . . . . .	.35
Kodak Acid Fixing Powder, per 1-pound package . . . . .	.25
Ditto, per ½ pound . . . . .	.15



## Kodak Portrait Attachment

There is no greater pleasure in photography than Home Portraiture, and this little attachment, fitted to a Kodak or Brownie camera, will enable one to work up close to the subject

and thereby secure bust portraits of excellent quality. The attachments are simply extra lenses, which slip on in front of the regular lens, and they in no way affect the operation of the instrument, excepting to make the lens cut sharp at short distances.

With a small Kodak or a Brownie camera, good size head and shoulder pictures can be secured, while with the larger Kodaks, one



MADE WITH  
KODAK AND  
KODAK  
PORTRAIT  
ATTACHMENT

can make bust pictures, limited in size only by the dimensions of the film.

These attachments are not only serviceable for portraiture, but also for photographing any small object, such as flowers, fruits, still life composition, at close range. Kodak Portrait Attachments are supplied for all Kodaks listed in this catalogue, excepting 1A and 4A Speed Kodaks and the Panoram



Kodaks, and for all Brownie cameras excepting the No. 1.

In ordering be sure to give exact designation of instrument, and when to be used with pneumatic release shutter, be careful to give exact name of shutter.



#### Price

Kodak Portrait Attachment any size . . . . . \$0.50

### Kodak Color Screens

These screens are of great value in outdoor photography, and for all subjects embracing colors which act weakly on the sensitive film, as they hold back the strong blue and violet rays, affording the weaker colors time to record. The Kodak Color Screens are mounted in the same manner as the Kodak Portrait Attachment.

#### The Price

No. 1. For Nos. 1 and 1A Folding Pocket Kodaks, Nos. 2 and 2A Folding Pocket Brownies . . . . .	\$0.50
No. 2. For No. 2A Brownie . . . . .	.50
No. 3. For Nos. 2 and 3 Folding Pocket Kodaks, No. 1A Special F. P. Kodak and No. 3 Folding Brownie . . . . .	.75
No. 3. Special. For No. 3 Special Kodak . . . . .	.75
No. 4. For Nos. 2 and 3 Bull's-Eye, 2 Flexo and No. 3 Brownie . . . . .	.75
No. 5. For Nos. 3A, 4 and 4A Kodaks, No. 3A Folding Brownie . . . . .	1.00
No. 5. Special. For No. 3A Special Kodak . . . . .	1.00

### Kodak Wide Angle Lenses

These lenses have a speed of *f*. 16 and are interchangeable with the lenses furnished with the Nos. 3A and 4 Folding Pocket Kodaks, and the No. 4A Folding Kodak.

The wide angle Kodak lenses are rectilinear, carefully tested, and are absolutely high grade in every instance. With each one we furnish a leather case and a graduated focusing scale for attaching to the camera bed.

In ordering a Kodak wide angle lens, give size (No.) of Kodak and be sure to specify the shutter that the lens is to be used with.

#### The Price

No. 4. (4 x 5) Wide Angle Kodak Lens, equivalent focus, 4½ inches . . . . .	\$5.00
(Also adapted to 3A Kodak).	
No. 5 (5 x 7) Wide Angle Kodak Lens, equivalent focus, 5½ inches . . . . .	7.50
(Also adapted to 4A Kodak).	

## Anastigmat Lenses

The steadily increasing demand for anastigmat lenses among amateur photographers, the extraordinary sale of Kodaks like the No. 3 and 3A Special, is due to the fact that amateur photographers are beginning to realize the advantages and possibilities of the anastigmat as compared with the ordinary Rapid Rectilinear.

In an R. R. lens the opening, or working aperture, must not be larger than one-eighth the focal length of the lens. If it were made larger, each negative would be blurred and unsatisfactory. An opening of this size admits sufficient light on clear, bright days to produce well timed exposures even as fast as  $\frac{1}{100}$  of a second; but in dull lights, snap-shots are impossible, and at higher speed, hopelessly undertimed negatives are the results.

But with an anastigmat, the construction and optical corrections are such that sharp, satisfactory pictures can be made at an opening more than one-seventh the focal length of the lens; hence admitting more light in a given time than the R. R. In combination with a focal plane shutter, exposures as short as  $\frac{1}{1000}$  of a second can be successfully made, while on dull days, and even indoors near a window, where with an R. R. lens little or no impression could be obtained, the anastigmat admits so much more light that slow snap-shots can be made.

### The Zeiss Kodak Anastigmat Lens *f.* 6.3

From the above it will be obvious that the natural step for us was to provide an anastigmat lens peculiarly suited to Kodak requirements, and in the Zeiss Kodak Anastigmat, we offer a lens which is worthy in every respect of bearing the name Kodak—a lens that we can unqualifiedly recommend to the most critical photographer as perfectly suited to hand camera work.

It encompasses all the quality and dependability which the name Kodak implies, and it is apparent that we would not have given the name Kodak to any article unless we had absolutely assured ourselves from rigid tests and comparisons, that it would bear the name worthily.



# Anastigmat Lenses

## Special Lens and Shutter Equipments

The No. 1A Special, No. 3 Special, No. 3A Special, No. 3, No. 3A and No. 4 Folding Pocket, No. 4A Folding Kodaks  
No. 1A and No. 4A Speed Kodaks may be equipped as follows :

Style of Kodak	Fitted with Zeiss Kodak Anastigmat Lens, <i>f</i> . 6.3		Fitted with B. & L. Zeiss Tessar Lens Series II-B, <i>f</i> . 6.3		Fitted with Cooke Lens Series III-A, <i>f</i> . 6.5	
	Compound Shutter	Kodak Auto Shutter	Compound Shutter	Kodak Auto Shutter	Compound Shutter	Kodak Auto Shutter
No. 1A F. P. K. Special . {	No. 2 Lens, \$46.30 0 Shutter	No. 2 Lens, \$40.50 1 Shutter	No. 4 Lens, \$58.80 0 Shutter	No. 4 Lens, \$53.00 1 Shutter	No. 3 Lens, \$59.30 0 Shutter	No. 3 Lens, \$53.50 1 Shutter
No. 3 F. P. Kodak . . {	No. 2 Lens, \$48.80 0 Shutter	No. 2 Lens, \$43.00 1 Shutter	No. 4 Lens, \$61.30 0 Shutter	No. 4 Lens, \$55.50 1 Shutter	No. 3 Lens, \$61.80 0 Shutter	No. 3 Lens, \$56.00 1 Shutter
No. 3 Special Kodak . . {	No. 2 Lens, \$52.00 0 Shutter		No. 4 Lens, \$64.50 0 Shutter		No. 3 Lens, \$65.00 0 Shutter	
No. 3A F. P. Kodak . . {	No. 4 Lens, \$61.40 1 Shutter		No. 5 K Lens, \$76.90 1 Shutter		No. 4 Lens, \$70.40 1 Shutter	No. 4 Lens, \$62.50 1 Shutter
No. 3A Special Kodak . {	No. 4 Lens, \$65.00 1 Shutter		No. 5 K Lens, \$80.50 1 Shutter		No. 4 Lens, \$74.00 1 Shutter	
No. 4 F. P. Kodak . . {	No. 4 Lens, \$61.40 1 Shutter		No. 5 K Lens, \$76.90 1 Shutter		No. 4 Lens, \$70.40 1 Shutter	No. 4 Lens, \$62.50 1 Shutter
No. 4A Folding Kodak . {	No. 5 Lens, \$83.45 2 Shutter	No. 5 Lens, \$72.50 2 B. & L. Auto only	No. 6 Lens, \$104.95 2 Shutter	No. 6 Lens, \$94.00 2 B. & L. Auto only	No. 6 Lens, \$96.45 2 Shutter	No. 6 Lens, \$85.50 2 B. & L. Auto only
No. 4A Speed Kodak . . {	No. 5 Lens, \$90.00 Focal Plane Shutter		No. 6 Lens, \$111.50 Focal Plane Shutter		No. 6 Lens, \$103.00 Focal Plane Shutter	
No. 1A Speed Kodak . . {	No. 2 Lens, \$60.00 Focal Plane Shutter		No. 4 Lens, \$72.50 Focal Plane Shutter No. 14 Lens, \$78.50 Series I-c f. 4.5 Focal Plane Shutter		No. 25 Lens Series IV, \$76.00 Focal Plane Shutter	

Wherever, in the above list, any of the lenses are not listed with Kodak Automatic Shutter, it is because such lenses cannot be worked at their full advertised aperture with said shutters. Price of Speed Kodaks includes Focal Plane Shutter only.

# Developing and Printing Outfits



Eastman's A B C Developing and Printing Outfit includes every requisite for developing by the dark room method, printing and finishing twenty-four 4 x 5 or smaller pictures.

One Kodak Candle Lamp . . . . .	\$0.25
One 4 x 5 Printing Frame . . . . .	.25
One 4 x 5 Glass for Frame . . . . .	.05
One 4-ounce Graduate . . . . .	.15
One Stirring Rod . . . . .	.05
Four 4½ x 5½ Developing Trays . . . . .	.40
Five tubes Eastman's Special Developer . . . . .	.25
One-half pound Kodak Acid Fixing Powder . . . . .	.15
One-half ounce Potassium Bromide . . . . .	.05
Two dozen 4 x 5 Velox Paper . . . . .	.50
Two ounces Nepera Solution, for developing Velox . . . . .	.10
Instruction Book . . . . .	.10

Price, complete, neatly packed, \$1.50 \$2.30

EASTMAN 3A OUTFIT, similar to above but providing for 3¼ x 5½ prints . . . . . \$1.50

EASTMAN'S BULL'S-EYE Developing and Printing Outfit complete, for developing and printing 12 pictures 3½ x 3½. Similar to above outfit. Price, complete, neatly packed . . . . . 1.25

BROWNIE Developing and Printing Outfit, complete, for developing and printing 24 pictures 2¼ x 2¼. Price, complete . . . . . .90

*Note*—These outfits cannot be shipped by mail.



## The Kodak Box No. 2



The Kodak Box No. 2 contains everything for picture making by the daylight method. No dark room is necessary, and even the beginner can get good results by following the simple, explicit directions contained in the instruction book. This outfit is simple enough for boys and girls, while at the same time it will make pictures which will please the grown-up people.

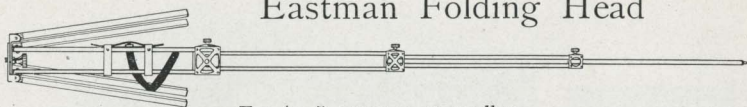
### The Price

One No. 2 Brownie Camera, $2\frac{1}{4} \times 3\frac{1}{4}$ . . . . .	\$2.00
One No. 2 Brownie Developing Box . . . . .	1.00
One Roll No. 2 Brownie Film, $2\frac{1}{4} \times 3\frac{1}{4}$ . . . . .	.20
Two Brownie Developing Box Powders . . . . .	.05
One $\frac{1}{2}$ -pound package Kodak Acid Fixing Powder . . . . .	.15
One 4-ounce Graduate . . . . .	.15
One Stirring Rod . . . . .	.05
One No. 2 Brownie Printing Frame . . . . .	.15
One Package (1 dozen) $2\frac{1}{4} \times 3\frac{1}{4}$ Brownie Velox . . . . .	.10
One Bottle Nepera Solution . . . . .	.10
Three Paper Developing Trays . . . . .	.30
One Dozen $2\frac{1}{4} \times 3\frac{1}{4}$ Mounts . . . . .	.10
One Dozen $2\frac{1}{4} \times 3\frac{1}{4}$ Kodak Dry Mounting Tissue . . . . .	.05
One Instruction Book . . . . .	.10
	<hr/>
	\$4.50

Price, complete, neatly packed, \$4.00

# Kodak Tripods

## Eastman Folding Head

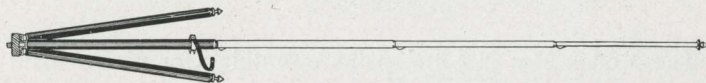


For 4 x 5 cameras, or smaller

In the Eastman Folding Head Tripod the head itself folds, and the tripod then makes a compact, rectangular package. No loose parts, no complicated mechanism, and the tripod is very rigid. Length, folded, 17 inches; extended, 52½ inches. Weight, 25 ounces.

Eastman Folding Head Tripod . . . .	\$3.50
Black Sole Leather Carrying Case . . . .	1.50

## The Kodak Metal



For Kodaks and other small cameras

The strongest and most satisfactory of all metal tripods, yet exceedingly light and compact. A most important feature is, that should any part become inoperative through accident or wear, any section may be readily taken apart and repaired. Legs made of brass tubing, nickered, except upper section, which is black enameled. Nickered revolving head and screw. Weight, 24½ ounces. No. 1, four sections, 48½ inches extended, 15 inches closed; No. 2, five sections, 49½ inches extended, 13½ inches closed.

Kodak Metal Tripod, No. 1 . . . . .	\$2.50
Kodak Metal Tripod, No. 2 . . . . .	3.25
Leather Carrying Case, for either style . . . .	1.50

## The Eastman



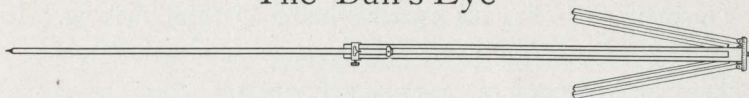
Three sections. No. 1, maple, for cameras up to 6½ x 8½. Weight, 2 pounds, 2 ounces.

Price, \$2.00



# Kodak Tripods

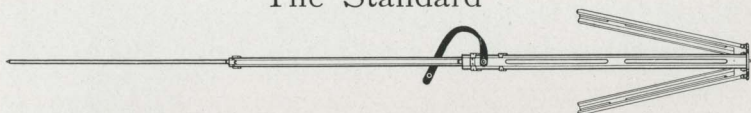
## The Bull's-Eye



Two sections. Aluminum revolving head. Made of maple, with brass fittings. For 4 x 5 cameras, or smaller. Length extended, 42½ inches; folded, 24 inches. The only two-section tripod that will go into a suit case.

Price, \$1.50

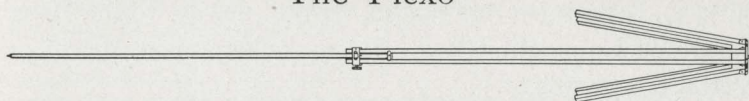
## The Standard



The feature of this tripod is the automatic locking of the sections when they are extended. Light, compact and rigid. Fixed, non-detachable head. Length, folded, 21 inches; extended, 53½ inches. Weight, 18 ounces. Cherry finish, brass trimmings.

Price, \$1.75

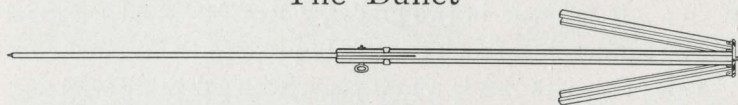
## The Flexo



Two sections. Fixed, non-detachable head. Only clear, straight-grained wood is used in its construction.

Price, \$0.90

## The Bullet



Two sections. Spruce, solid head. For small cameras.

Price, \$0.70

## Velox Paper

Velox prints in any light, requires no dark room and permits the amateur to utilize his evening hours in print making. Its simplicity of manipulation and extreme graduation make it suitable for photographic work of every sort.

Velox is divided broadly into two kinds of paper called "Regular" and "Special" (slow and fast) each division containing a variety of surfaces. "Regular" papers develop quickly and are best suited for negatives lacking contrast. "Special" papers develop slowly, and give soft effects from hard negatives. Use "Special" Velox for negatives producing good results on "Printing Out" paper (such as Solio), and "Regular" only with very flat negatives.

**Velox surfaces:** In the "Regular" class are Carbon (matte surface), Glossy, Glossy double weight, Velvet, and Velvet double weight. "Regular" Velvet Velox is semi-gloss and gives prints of exceptional beauty. This paper will give satisfactory results from very flat negatives.

In the "Special" class, the surfaces are Carbon (matte surface), Portrait (smooth matte), Portrait double weight, Rough, Rough double weight, Glossy, Glossy double weight, Velvet, and Velvet double weight.

"Special" Velvet Velox has a greater range than any of the other "Special" papers.

Royal Velox is coated on a soft, mellow-tinted stock, which when re-developed affords all the soft delicacy of a rare old etching. It is made in two grades, "Regular" and "Special" and one surface, just rough enough to produce the desired effect.

Velox Salon Brown is a new paper with a delicate semi-matte surface yielding prints of a beautiful carbon like brown. Made in single weight only.



# Velox Paper

## The Price

Size	Single Weight			Double Weight		
	Dozen	½ Gross	Gross	Dozen	½ Gross	Gross
2¼ x 3¼	\$0.15	\$0.60	\$1.00	\$0.20	\$0.75	\$1.25
2½ x 4¼	.15	.70	1.25	.20	.90	1.55
3½ x 3½	.15	.80	1.50	.20	1.00	1.90
3¼ x 4¼	.15	.80	1.50	.20	1.00	1.90
3¼ x 5½	.15	.80	1.50	.20	1.00	1.90
4 x 5	.25	1.10	2.00	.30	1.40	2.50
*3¼ x 6 (Stereo)	.25	1.10	2.00			
†*3¾ x 6½	.25	1.10	2.00			
2¼ x 7	.15	.80	1.50	.20	1.00	1.90
4¼ x 6½	.30	1.65	2.80	.40	2.05	3.50
5 x 7	.35	2.00	3.50	.45	2.50	4.40
3½ x 12	.45	2.50	4.50	.55	3.15	5.65
Velox Post-cards, 3½ x 5½, furnished in Regular Velvet, Special Velvet, Special Portrait, Regular Glossy, Special Glossy and Regular Royal and Special Royal . . . . .				.20	1.10	2.00
Ditto Double Post-cards, 3½ x 11 inches . . . . .				.40	2.20	4.00
Brownie Post-cards, 2¾ x 4¼, Regular and Special Velvet . . . . .				.15		

\* Glossy only. † For use in Self-transposing Stereo Printing Frame.

### Brownie Velox (one grade only)

2¼ x 2¼, per package 2 dozen sheets . . . . .	\$0.15
2¼ x 3¼, per package 1 dozen sheets . . . . .	.10

### Velox Sundries

N. A. (Non-abrasion) Velox Liquid Developer, 4-ounce bottle (makes 20 ounces for Special, 12 ounces for Regular) . . . . .	\$0.25
Ditto, 16-ounce bottle . . . . .	.75
Nepera Solution, per 4-ounce bottle . . . . .	.20
Ditto, 16-ounce bottle . . . . .	.60
Nepera Capsules (for converting Nepera solution to a film or plate developer), per package 1 dozen . . . . .	.15
Velox Re-developer for Sepia Tones, 4-ounce bottle . . . . .	.50
Ditto, 2 ounces (sufficient for 150 4 x 5 prints) . . . . .	.30
Velox Liquid Hardener, per 4-ounce bottle . . . . .	.15
Ditto, 8-ounce bottle . . . . .	.25
Nepera M. Q. N. A. Tubes, box of 5 tubes . . . . .	.75
Kodak N. A. M. Q. Developer, per package 3 tubes . . . . .	.25
Kodak Acid Fixing Powder for fixing Velox prints, per pound . . . . .	.25
Ditto, ½ pound . . . . .	.15
Ditto, ¼ pound . . . . .	.10
Velox Amateur Printer No. 1. (with gas pillar; adapted for electric socket) . . . . .	2.00
Electric Attachment (extra). Comprising socket, plug and 6-foot cord . . . . .	.75

## Kodak Velvet Green

Effects heretofore to be had only by the laborious carbon process can now be secured by any amateur photographer with this new paper.

For landscapes, for marines, and in fact, for the majority of outdoor amateur negatives, the rich green of prints on Kodak Velvet Green produces most beautiful harmonious effects, with an indescribable "atmosphere" of nature itself.

And to use this paper the amateur has to learn no new processes nor possess extraordinary skill. Anyone who can print on Velox paper can print just as successfully on Kodak Velvet Green, as the two processes after exposure are identical, and the same developer and fixing bath are used for both.

The surface — a smooth semi-matte — brings out detail fully, and the paper is supplied in both single and double weights.

Kodak Velvet Green Post-cards are very appropriate for use at vacation time.

Prices, same as for Velox. See page 53.

## Angelo Platinum Papers

Angelo Platinum Papers are exceedingly simple to handle and yield prints that are marvelous in gradation and delicacy. Made in both Black and White and Sepia.

Angelo Sepia, unlike most Sepia Platinum Papers, develops in a cold solution. Angelo Platinum Papers are furnished in two grades, "Smooth" and "Rough".

Size	Price per Doz.	ANGELO SOLUTION
3½ x 3½ . . . . .	\$0.30	Angelo Developer, for Angelo Black and
3¼ x 4¼ . . . . .	.30	White, ¼-pound package . \$0.20
4 x 5 . . . . .	.50	Angelo Developer, for Angelo Black and
3½ x 5½ . . . . .	.50	White, ½-pound package . .35
4¼ x 6½ . . . . .	.70	Angelo Sepia Solution (2-ounce bottle) . .35
5 x 7 . . . . .	.80	Angelo Sepia Salts (2-ounce package) . .10

## Aristo Gold Post-cards

Rich sepia and purple tones. Print, wash and fix.

Aristo Gold Post-cards, per dozen . . . . . \$0.30



## Eastman Etching Black Platinum

A black and white platinum, with a soft pleasing warmth, found in no other platinum paper—decidedly away from the ordinary cold blue black. Perfectly simple cold development. Two surfaces, smooth and rough.

Size	Price per Doz.	Size	Price per Doz.
3½ x 3½ . . . . .	\$0.30	5 x 7 . . . . .	\$0.80
3¼ x 4¼ . . . . .	.30	Eastman's E. B. Developer, ½-pound	.35
4 x 5 . . . . .	.50	package	.20
3¼ x 5½ . . . . .	.50	Eastman's E. B. Developer, ¼-pound	.20
4¼ x 6½ . . . . .	.70	package	

## Eastman Etching Sepia Platinum

A new hot bath paper of unusual brilliancy, combined with extreme richness of tone and coated on a mellow buff stock. Made in both smooth and rough surfaces. Prices for paper and developer, same as for Etching Black above.

## Solio Paper

A rapid, glossy printing-out paper.

Size	Per Package, 2 Doz.	Size	Per Package, 2 Doz.
2½ x 2½ . . . . .	\$0.20	2¼ x 7 (No. 1 Panoram Kodak) . . . . .	\$0.25
2¼ x 3¼ . . . . .	.20	Per Doz.	
2¼ x 4¼ . . . . .	.20	4¼ x 6½ . . . . .	\$0.25
3¼ x 3½ . . . . .	.20	5 x 7 . . . . .	.30
3¼ x 4¼ . . . . .	.20	3½ x 12 (No 4 Panoram Kodak) . . . . .	.35
3¼ x 5½ . . . . .	.25	Post-cards . . . . .	.15
4 x 5 . . . . .	.25	Double Solio Post-cards . . . . .	.30
3¼ x 6 (Stereo) . . . . .	.25	Brownie Post-cards, 2¼ x 4¼ . . . . .	.10

Seconds: 4 x 5 (trimmed) seconds, \$1.00 per gross. Solio Combined Toning and Fixing Solution, per 8-ounce bottle, 50 cents. Ditto, 4-ounce bottle, 30 cents; post-paid, 50 cents.

## Eastman "Ferro Prussiate" Paper

A "blue print" that retains delicacy and detail. In sealed tubes.

Size	2 Doz. Single Wt.	1 Doz. Double Wt.	Size	2 Doz. Single Wt.	1 Doz. Double Wt.
2½ x 2½	\$0.16	\$0.15	3¼ x 5½	\$0.20	\$0.20
2¼ x 3¼	.16	.15	3¼ x 6 (Stereo)	.20	.20
2½ x 4¼	.16	.15	2¼ x 7	.20	.20
3½ x 3½	.16	.15	4¼ x 6½	.30	.25
3¼ x 4¼	.16	.15	5 x 7	.35	.30
4 x 5	.20	.20	3½ x 12	.40	.35

Post-cards, 1 dozen, 15 cents. Brownie Post-cards, 2¼ x 4¼, 1 dozen, 10 cents.

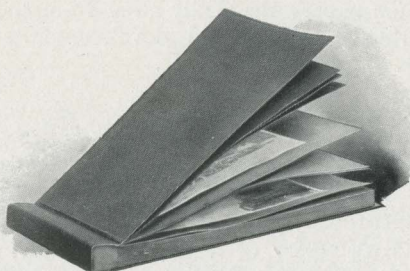
## Eastman Permanent Bromide Papers

For enlargements. Grades: Velvet, Royal, Standard, Platino, Enameled and Matte-enamel.

Size	Per Doz.	Size	Per Doz.	Size	Per Doz.
5 x 7	\$0.35	8 x 10	\$0.80	14 x 17	\$2.40
5 x 8	.40	10 x 12	1.20	16 x 20	3.20
6½ x 8½	.60	11 x 14	1.60	18 x 22	4.00

Other sizes in proportion.

# Kodak Albums



## The Forum Album

Flexible, black leather embossed cloth cover.

A, 25 black leaves, or N, 25 Sepia leaves, 5½ x 7	\$0.35
B, 25 black leaves, or O, 25 Sepia leaves, 7 x 10	.50
C, 25 black leaves, or P, 25 Sepia leaves, 10 x 7	.50
D, 25 black leaves, or R, 25 Sepia leaves, 11 x 14	1.25
E, 50 black leaves, 5½ x 7	.50
F, 50 black leaves, 7 x 10	.75
G, 50 black leaves, 10 x 7	.75
H, 50 black leaves, 11 x 14	1.50

## The Parthenon Album

A new flexible album, with imitation lizard skin cover.

A 1, 25 black leaves; A 2, 25 grey leaves; A 3, 25 brown leaves, 5½ x 7	\$0.45
B 1, 25 black leaves; B 2, 25 grey leaves; B 3, 25 brown leaves, 7 x 10	.65
C 1, 25 black leaves; C 2, 25 grey leaves; C 3, 25 brown leaves, 10 x 7	.65
D 1, 25 black leaves; D 2, 25 grey leaves; D 3, 25 brown leaves, 11 x 14	1.50
E 1, 50 black leaves; E 2, 50 grey leaves; E 3, 50 brown leaves, 5½ x 7	.65
F 1, 50 black leaves; F 2, 50 grey leaves; F 3, 50 brown leaves, 7 x 10	.90
G 1, 50 black leaves; G 2, 50 grey leaves; G 3, 50 brown leaves, 10 x 7	.90
H 1, 50 black leaves; H 2, 50 grey leaves; H 3, 50 brown leaves, 11 x 14	1.80

## The Arena Album

Flexible, finest quality black grain leather cover.

J, 50 black leaves, or S, 50 Sepia leaves, 5½ x 7	\$1.00
K, 50 black leaves, or T, 50 Sepia leaves, 7 x 10	1.50
L, 50 black leaves, or U, 50 Sepia leaves, 10 x 7	1.50
M, 50 black leaves, or W, 50 Sepia leaves, 11 x 14	3.00

## The Stadium Album

Padded black grain leather cover

J 1, 50 grey leaves; J 2, 50 brown leaves, 5½ x 7	\$1.25
K 1, 50 grey leaves; K 2, 50 brown leaves, 7 x 10	1.90
L 1, 50 grey leaves; L 2, 50 brown leaves, 10 x 7	1.90
M 1, 50 grey leaves; M 2, 50 brown leaves, 11 x 14	3.75

## Souvenir Post-card Album

Flexible, black leather embossed cloth cover.

X, 25 black leaves, 10 x 7, for 100 cards	\$0.50
X R., 25 black leaves, 11 x 14, for 200 cards	1.50
X T, { Flexible, black grain leather cover }	2.50
{ 25 leaves, 11 x 14, for 200 cards }	



## The De Luxe Album

A very rich album with heavy grey padded cover of walrus grain leather, and 50 grey leaves with silver edges; or brown padded cover, as above, with 50 brown leaves with gold edges.



11 Grey, 5½ x 7¾ . . . . .	\$2.25	15 Grey, 11 x 14 . . . . .	\$5.00
12 Brown, 5½ x 7¾ . . . . .	2.25	16 Brown, 11 x 14 . . . . .	5.00
13 Grey, 7 x 10 . . . . .	3.00	17 Grey, 11 x 14, for 200 Post-cards . . . . .	5.00
14 Brown, 7 x 10 . . . . .	3.00	18 Brown, 11 x 14, for 200 Post-cards . . . . .	5.00

## Artists' Album

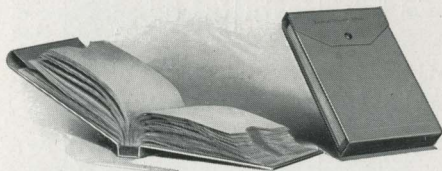
Loose leaf system, silk lacing

No. 1, black leaves; No. 2, white leaves;		No. 4, black leaves; No. 5, white leaves;	
No. 3, Sepia leaves, 5½ x 7 . . . . .	\$0.20	No. 6, Sepia leaves, 7 x 10 . . . . .	\$0.30
Extra leaves, package of 5 . . . . .	.07	Extra leaves, package of 5 . . . . .	.10

## Snap-shot Album

Substantial card covering, soft black leaves

19 20 pages, 5½ x 7 . . . . .	\$0.12	18 20 pages, 7 x 10 . . . . .	\$0.15
-------------------------------	--------	-------------------------------	--------



## Eastman Film Negative Albums

For 100 negatives, 3½ x 3½, or smaller . . . . .	\$0.75
For 100 negatives, 3½ x 4¼, or 4 x 5 . . . . .	1.00
For 100 negatives, 3½ x 5½, or smaller . . . . .	1.00
For 100 negatives, 5 x 7, or smaller . . . . .	1.50

## The Atlantic Card Mounts

Grey and Black. Embossed center, wide margins

No.	For Prints	Size of Mount	Per 100	Per 50	No.	For Prints	Size of Mount	Per 100	Per 50
1	2¼ x 3¾	4¼ x 5¾	\$0.70	\$0.35	3A	3¼ x 5½	5¾ x 8	\$1.00	\$0.50
1A	2½ x 4¼	4½ x 6¼	.80	.40	4	4 x 5	6 x 7	1.00	.50
2	3½ x 3½	5½ x 5½	.80	.40	4A	4¼ x 6¾	6½ x 8¾	1.25	.65
3	3¼ x 4¼	5½ x 6½	.85	.45	5	5 x 7	7 x 9	1.25	.65

## Stereo Mounts

Size of mount, 3½ x 7; color, Queen's Grey; per 100, \$0.45; per 50 . . . . . \$0.25

## Souvenir Post-card Hangers

Consisting of six "slip in" embossed mounts, attached by ribbons. Either vertical or horizontal Post-card opening

GH-1 Horizontal London Brown . . . . .	\$0.25	G-1 Vertical London Brown . . . . .	\$0.25
GH-2 Horizontal Grey . . . . .	.25	G-2 Vertical Grey . . . . .	.25

# Kodak Card Mounts

Riviera—Ash Grey and White

For Prints	Size of Mount	Per 100	Per 50	For Prints	Size of Mount	Per 100	Per 50
1½ x 2	3 x 3½	\$0.30	\$0.15	3¼ x 4¼	4½ x 5½	\$0.65	\$0.35
1½ x 2½	3 x 3½	.40	.20	4 x 5	5½ x 6½	.85	.45
2¼ x 2¼	3½ x 3½	.40	.20	3¼ x 5½	5 x 7¼	.95	.50
2¼ x 3¼	3½ x 4½	.50	.25	4¼ x 6½	5¾ x 8	1.40	.70
2½ x 4¼	4½ x 5¼	.65	.35	5 x 7	7 x 9	1.50	.75
3½ x 3½	5 x 5	.65	.35				

## Bevplane—Carbon Black and Scotch Grey

For Prints	Size of Mount	Per 100	Per 50	For Prints	Size of Mount	Per 100	Per 50
1½ x 2½	3¼ x 4¼	\$0.60	\$0.30	4 x 5	5½ x 6½	\$0.90	\$0.45
2¼ x 3¼	4 x 5	.60	.30	4¼ x 6½	5¾ x 8	1.55	.80
2½ x 4¼	4¼ x 6	.80	.40	5 x 7	7 x 9	1.70	.85
3½ x 3½	5 x 5	.85	.40	2¼ x 7	4 x 8¾	.90	.45
3¼ x 4¼	5 x 6	.85	.45	3½ x 12	5¾ x 13¾	1.80	.90
3½ x 5½	4¾ x 7	.90	.45				

## The Marine—London Brown and Ash Grey

Good heavy stock, embossed corded silk pattern, beveled edges

No.	For Prints	Size of Mount	Per 100	Per 50	No.	For Prints	Size of Mount	Per 100	Per 50
1	2¼ x 3¼	4½ x 5½	\$0.95	\$0.50	3A	3¼ x 5½	5¾ x 8	\$1.35	\$0.70
1A	2½ x 4¼	4½ x 6¼	1.00	.50	4	4 x 5	6 x 7	1.25	.65
2	3½ x 3½	5½ x 5½	1.00	.50	4A	4¼ x 6½	6½ x 8¼	1.55	.80
3	3¼ x 4¼	5½ x 6½	1.00	.50	5	5 x 7	8 x 10	2.10	1.05

## The Cascade—Golden Brown and White

Heavy stock, beveled edges, linen finish, with heavy dark border

No.	For Prints	Size of Mount	Per 100	Per 50	No.	For Prints	Size of Mount	Per 100	Per 50
1	2¼ x 3¼	4 x 5	\$1.10	\$0.55	3A	3¼ x 5½	5¼ x 7½	\$1.55	\$0.80
1A	2½ x 4¼	4¼ x 6	1.25	.65	4	4 x 5	6 x 7	1.65	.85
2	3½ x 3½	5 x 5	1.25	.65	4A	4¼ x 6½	6¼ x 8½	2.20	1.10
3	3¼ x 4¼	5 x 6	1.35	.70	5	5 x 7	7 x 9	2.75	1.40

## The Venice—London Brown or English Grey

A "slip in" mount; kid leather finish

No.	Opening	Per 100	Per 50	No.	Opening	Per 100	Per 50
1-S	2 x 3 Square	\$1.55	\$0.80	3-S	3 x 4 Square	\$1.80	\$0.90
1-O	2 x 3 Oval	1.55	.80	3-O	3 x 4 Oval	1.80	.90
1A-S	2¼ x 4 Square	1.70	.85	3A-S	3 x 5½ Square	1.80	.90
1A-O	2¼ x 4 Oval	1.70	.85	3A-O	3 x 5½ Oval	1.80	.90
2-S	3 x 3 Square	1.70	.85	4-S	3¼ x 4¼ Square	2.00	1.00
2-O	3 x 3 Oval	1.70	.85	4-O	3¼ x 4¼ Oval	2.00	1.00

## Two-color Enlargement Blanks

London Brown on one side, Ash Grey on the reverse

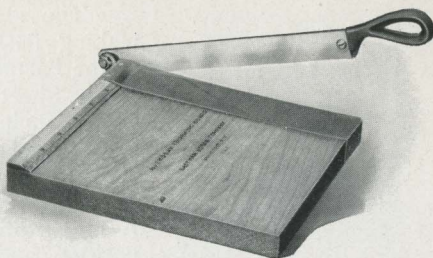
No.	Size	Per 100	No.	Size	Per 100	No.	Size	Per 100
A	7 x 9	\$1.05	C	10 x 12	\$2.10	E	16 x 20	\$3.50
B	8 x 10	1.45	D	11 x 14	2.25	F	22 x 28	8.00



## Kodak Trimming Boards

Made of hard wood,  
with natural finish, have  
fine quality steel blades  
and are fitted with rule.

No. 1, capacity, 5 x 5 inches . . . . .	\$0.40
No. 2, capacity, 7 x 7 inches . . . . .	.60
Transparent Trimming Gauge (extra) . . .	.20



## Printing Frames

Eastman's $3\frac{1}{2}$ x $3\frac{1}{2}$ , opens two-thirds . . . . .	\$0.25
Eastman's $3\frac{1}{4}$ x $4\frac{1}{4}$ , opens two-thirds . . . . .	.25
Eastman's $3\frac{1}{4}$ x $5\frac{1}{2}$ , for films opens two-thirds . . . . .	.25
Ditto, for plates . . . . .	.25
Eastman's $4$ x $5$ , opens two-thirds . . . . .	.25
Eastman's $5$ x $7$ , opens two-thirds . . . . .	.35
Eastman's $3\frac{1}{2}$ x $12$ , for No. 4 Panoram Kodak opens in 3 sections . . . . .	.75
Eastman's $2\frac{1}{4}$ x $7$ , for No. 1 Panoram Kodak opens in 2 sections . . . . .	.30
Brownie Printing Frame, No. 1, for $2\frac{1}{4}$ x $2\frac{1}{4}$ Developing paper only . . . . .	.10
Brownie Printing Frame, No. 2, for $2\frac{1}{4}$ x $3\frac{1}{4}$ Developing paper only . . . . .	.15
Stereo Self-transposing Printing Frame, for making $3\frac{1}{4}$ x $2\frac{1}{2}$ stereo prints without cutting negatives apart . . . . .	1.50

## Developing Trays

"Bull's-Eye" Composition, $3\frac{1}{2}$ x $4\frac{1}{2}$ . . . . .	\$0.12
"Bull's-Eye" Composition, $4$ x $5$ . . . . .	.15
"Bull's-Eye" Composition, $5$ x $7$ . . . . .	.25
"Bull's-Eye" Composition, $3$ x $8\frac{1}{2}$ . . . . .	.22
"Bull's-Eye" Composition, $4\frac{1}{2}$ x $14$ . . . . .	.50
Paper, $4$ x $5$ . . . . .	.10
Paper, $5$ x $7$ . . . . .	.15
Eastman Non-Breakable, $4$ x $5$ . . . . .	.20
Eastman Non-Breakable, $5$ x $7$ . . . . .	.25
Eastman Enameled, $4\frac{3}{8}$ x $5\frac{3}{8}$ . . . . .	.25
Eastman Enameled, $5\frac{1}{4}$ x $7\frac{3}{8}$ . . . . .	.50

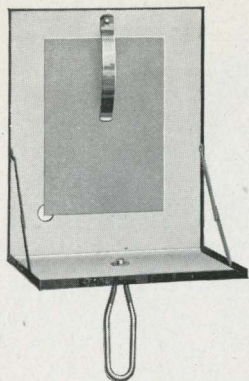
## Kodak Dry Mounting Tissue

Mounts prints even on thin mounts without curl, no apparatus  
being required—just the tissue and a flat iron.

### The Price

Size, $3\frac{1}{2}$ x $3\frac{1}{2}$ , 3 dozen . . . . .	\$0.10	Size, $4$ x $5$ , 2 dozen . . . . .	\$0.10
Size, $3\frac{1}{4}$ x $4\frac{1}{4}$ , 3 dozen . . . . .	.10	Size, $4\frac{1}{4}$ x $6\frac{1}{2}$ , 1 dozen . . . . .	.10
Size, $3\frac{1}{4}$ x $5\frac{1}{2}$ , 2 dozen . . . . .	.10	Size, $5$ x $7$ , 1 dozen . . . . .	.10

## Flash-Light Material



The simplest and safest method of making flash-light pictures is by means of the Eastman Flash Sheets and Eastman Flash Sheet Holder. The sheets burn slowly, giving a broad, soft light, and not startling the subject so as to give a staring effect to the eyes.

The holder is a genuine innovation. A spring finger holds the sheet in proper position and it is lighted from the back through an aperture provided for the purpose. In this manner the holder is always between the operator and the flash sheet, and it may be held in the hand or supported on a tripod, a socket being provided for the latter purpose.

Flash cartridges are recommended only where absolutely instantaneous exposures are required.

No. 1 Flash Sheets, per package of $\frac{1}{2}$ dozen sheets, 3 x 4	\$0.25
No. 2 Flash Sheets, per package of $\frac{1}{2}$ dozen sheets, 4 x 5	.40
No. 3 Flash Sheets, per package of $\frac{1}{2}$ dozen sheets, 5 x 7	.60
Eastman Flash Sheet Holder	1.00
Eastman's Spreader Flash Cartridges, for use with pistol or fuse (price includes both fuse and cap), per package of $\frac{1}{2}$ dozen	.25
Eastman's Spreader Flash Cartridge pistol	.50
Eastman's No. 1 Flash Cartridges, per package of $\frac{1}{2}$ dozen	.60
Ditto, No. 2	.40
Ditto, No. 3	.25

## Dark Room Lamps

The Kodak Candle Lamp. This lamp is well made, collapsible, of special tested ruby fabric, bound in metal frames.

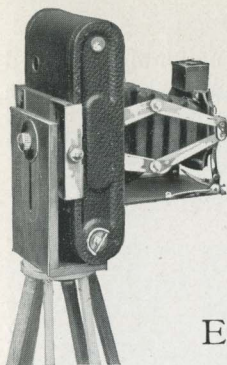
No. 2 Kodak Dark Room Lamp. Oil burning, fitted with both orange and ruby glass.

Kodak Candle Lamp	\$0.25
Extra Candles for same, per dozen	.30
No. 2 Kodak Dark Room Lamp	1.00

## Glass Dry Plates

Size	Standard Extra Rapid	Per Doz.	Size	Standard Orthonon	Per Doz.
$3\frac{1}{2} \times 3\frac{1}{2}$		\$0.40	$3\frac{1}{4} \times 4\frac{1}{4}$		\$0.55
$3\frac{3}{4} \times 4\frac{1}{4}$		.45	$3\frac{3}{4} \times 5\frac{1}{2}$		.80
$3\frac{3}{4} \times 5\frac{1}{2}$		.65	4 x 5		.80
4 x 5		.65	$4\frac{1}{4} \times 6\frac{1}{2}$		1.20
$4\frac{1}{4} \times 6\frac{1}{2}$		.90	5 x 7		1.40
5 x 7		1.10	Cover Glass for Lantern Slides		.25
Lantern Slide Plates		.55			
Lantern Slide Binders, per package, 50 strips			\$0.10		





## Folding Pocket Kodak Tripod Adapter No. 1

A simple and effective device for holding either the No. 1 or No. 1A Folding Pocket Kodak on a tripod in either horizontal or vertical position. Kodak may be reversed without removing from the adapter.

F. P. K. Tripod Adapter No. 1 . . . \$0.75

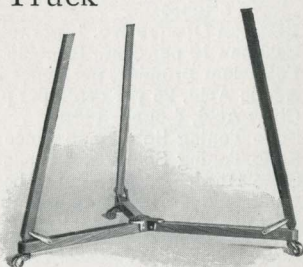
## Eastman Tripod Brace

Out of doors, or indoors when the R. O. C. Tripod Truck is not used, this is an excellent attachment for holding tripod legs in position. Made entirely of metal, it can be instantly attached, and even when tripod is lifted the legs cannot collapse or change their position.

Eastman Tripod Brace . . . . . \$1.00

## R. O. C. Tripod Truck

For flash-light work, home portraiture, in fact, any branch of indoor photography, this truck is a very great convenience. It holds the tripod legs firmly in place and there is no danger of slipping nor of tripod spikes marring floors or rugs. Can be easily moved on its castors to any part of room, and folds up compactly when not in use.



R. O. C. Tripod Truck No. 1 . . . . . \$1.00

## Velox Transparent Water Color Stamps

These colors are the simplest of all to use, working especially well with Velox. Prepared in twelve shades, in the form of paper leaves, divided by perforations into small sections of proper size for use and the leaves bound into neat booklets, each color being preceded by a descriptive page.

Velox Transparent Water Color Stamps, complete booklet, 12 colors . .	\$0.25
Separate color leaves, two sheets . . . . .	.05
Set of 3 special brushes, per set . . . . .	.50



## Kodak Chemicals

Perfect results cannot be uniformly obtained without the use of pure chemicals. Our chemicals are all carefully tested. We cannot afford to sell impure chemicals; you can afford to buy only the purest chemicals.

Eastman's Special Developer Powders, per package 5 powders, in sealed glass tubes . . . . .	\$0.25
Eastman's Hydrochinon Developer Powders, per dozen . . . . .	.50
Ditto, per ½ dozen . . . . .	.25
Ditto, per package 5 powders, in sealed glass tubes . . . . .	.25
Eastman's Pyro Developer Powders, per dozen . . . . .	.50
Ditto, per ½ dozen . . . . .	.25
Ditto, per package 5 powders, in sealed glass tubes . . . . .	.25
Elon, per 1-ounce bottle . . . . .	.60
Hydrochinon, per 1-ounce bottle . . . . .	.15
Eastman's Permanent Crystal Pyro, per 1-ounce bottle . . . . .	.20
Royal Re-developer, per package of 6 tubes . . . . .	.75
Hypo Sulphite of Soda, pulverized, per pound . . . . .	.08
Alum, powdered, per pound . . . . .	.10
Kodak Acid Fixing Powder, per pound package . . . . .	.25
Ditto, per ½-pound package . . . . .	.15
Ditto, ¼-pound package . . . . .	.10
Eastman's Reducer (for reducing negatives and removing stains), per box of 5 tubes . . . . .	.25
Eastman Opaque No. 1, per tube . . . . .	.25
Eastman 10 per cent., Bromide Powders, per package 4 powders . . . . .	.05
Potassium Bromide, per ounce . . . . .	.10
Acetic Acid, 25 per cent., per pound bottle . . . . .	.18
Citric Acid, 4-ounce bottle . . . . .	.30
Solio Toning Solution, 8-ounce bottle . . . . .	.50
Solio Toning Solution, 4-ounce bottle (20 cents extra, post-paid) . . . . .	.30
Solio Hardener, per 8-ounce bottle . . . . .	.35
Eastman's Tested Carbonate of Soda (desiccated), per 1-pound bottle . . . . .	.20
Eastman's Tested Sulphite of Soda (desiccated), per 1-pound bottle . . . . .	.30
For Velox preparations, see page 53. For Tank Developer Chemicals, see page 41	

## Kodak Sundries

Eastman's Photo Paste, 3-oz. tube . . . . .	\$0.15	Moulded Tumbler Grad., 4-ounce . . . . .	\$0.15
Ditto, 5-ounce tube . . . . .	.25	Ditto, 8-ounce . . . . .	.20
Eastman Thermometer . . . . .	.50	Ditto, 16-ounce . . . . .	.30
Thermometer Stirring Rod . . . . .	.60	Ferrotypes Plate, 10 x 14, light . . . . .	.15
Eastman's Film Clips, 3½-inch, per pair (nickel) . . . . .	.25	Ditto, 10 x 14, heavy . . . . .	.20
Ditto, 5-inch . . . . .	.30	Ditto, 18 x 24, heavy . . . . .	.75
Ditto, 7-inch . . . . .	.35	Kodak Print Roller, 2 x 6-inch rubber roller, nickel frame . . . . .	.50
Kodak Film Clips, 5-inch (wood), per pair . . . . .	.15	Flexo Print Roller, 4-inch rubber roller, black enameled frame . . . . .	.15
Finger Tips, set of 3 . . . . .	.15	Eastman's Special Squeegee, 6-inch . . . . .	.30
Focusing Cloth, per yard . . . . .	.50	Eastman's Special Squeegee, 8-inch . . . . .	.35
Eastman Spotting Colors, per set . . . . .	.25		
Moulded Tumbler Grad., 2-ounce . . . . .	.10		



# Developing and Printing

Finishing Kodak Cartridge films on Velox Paper	Pocket Kodak 1½ x 2	No. 0 Folding P. K. 1½ x 2½	No. 1 Folding P. K. 2¼ x 3¼	No. 1A F. P. K. Special No. 1A Folding P. K. 1A Speed Kodak, No. 2A 2A Brownie, 2A Folding, 2½ x 4¼	No. 2 Bull's-Eye, etc. 3½ x 3½	No. 3 F. P. K., No. 3 Special, No. 3 Bull's- Eye, No. 3 Brownies, etc., 3¼ x 4¼	Nos. 3A, 3A F. P. K. Special and 3B 3¼ x 5½	No. 4 B. E., etc. 4 x 5, 10 ex.	Speed Kodak No. 4A, 4¼ x 6½ 5 Kodaks, etc., 5 x 7
Developing, Printing and Mounting 1-Film Cartridge . . . . .	\$.90	\$.95	\$1.40	\$1.50	\$1.50	\$1.50	\$1.50	\$1.50	\$1.20
Developing and Printing, Unmounted . . . . .	.84	.89	1.28	1.38	1.38	1.38	1.40	1.40	1.05
Developing only, each . . . . .	.02	.03	.04	.06	.06	.06	.08	.08	.10
Printing and Mounting only, each . . . . .	.06	.06	.08	.08	.08	.08	.10	.10	.12½
Printing, Unmounted only, each . . . . .	.05½	.05½	.07	.07	.07	.07	.09	.09	.10
Developing, Printing and Mounting, each . . . . .	.08	.08½	.12	.12½	.12½	.12½	.15	.15	.20
Developing and Printing, Unmounted, each . . . . .	.07½	.08	.11	.11½	.11½	.11½	.14	.14	.17½

Above prices cover Cartridges of 12 exposures for Pocket Kodak, No. 0 Folding, No. 1 Folding, No. 1A Folding, No. 1A Special, No. 1A Speed, 3½ x 3½, No. 3 Folding, No. 3 Special, No. 4 Folding, and Nos. 2A, 2A F. P. and 3A Folding Brownies; 10 exposures for Nos. 3A, 3A Special and 3B, and 6 exposures for No. 4A Folding, Speed Kodak and 5 x 7. No order executed for less than 25 cents.

Brownie Camera, Stereo and Panoram Kodak sizes, on Velox	No. 1 Brownie 2¼ x 2¼	No. 2 and No. 2 F. P. Brownie 2¼ x 3¼	No. 1 Panoram 2¼ x 7	No. 4 Panoram 3½ x 12	No. 2 Stereo Brownie, 3¼ x 5
Developing, Printing and Mounting 1-Film Cartridge . . . . .	\$0.50	\$0.70	\$1.40	\$1.40	\$1.50
Developing and Printing, Unmounted 1-Film Cartridge . . . . .	.47	.64	1.28	1.28	1.40
Developing only, each . . . . .	.03	.04	.08	.18	.08
Printing and Mounting only, each . . . . .	.06	.08	.16	.20	.10
Printing, Unmounted only, each . . . . .	.05½	.07	.14	.17	.09

Above price list is for one full roll as follows: 6 exposures No. 1 and No. 2 Brownie; 10 exposures No. 2 Stereo Brownie; 6 exposures No. 1 Panoram, or 4 exposures No. 4 Panoram. No order executed for less than 25 cents.

Prints are furnished unmounted in all cases, unless otherwise specified in order.  
Unmounted prints on "Double Weight" Velox will be billed at mounted rates.  
All prints are mounted with Kodak Dry Mounting Tissue, and, therefore, do not curl.

## Enlargements

	Each	Per Doz.		Each
4¼ x 6½, on card . . . . .	\$0.35	\$3.00	10 x 12, on card . . . . .	\$1.00
6½ x 8½, on card . . . . .	.50	5.00	11 x 14, on card . . . . .	1.25
8 x 10, on card . . . . .	.75		14 x 17, on card . . . . .	1.50
Lantern Slides . . . . .	.50	5.00	Larger sizes in proportion	

No Extra charge for Sepia Tones. Small extra charge for double or triple mounting.  
Where the kind of paper is not specified, we use our own judgment.

# Specimen Prints

A specimen photograph made with any Kodak (not larger than 4 x 5) will be sent to any address in the United States upon receipt of four cents in stamps; No. 4A Folding Kodak, 4A Speed Kodak, eight cents; No. 4 Panoram Kodak, twenty cents.

## Tourists

Travelers can always obtain fresh supplies of films at any of the following addresses:

LONDON	Kodak, Limited, 57-61 Clerkenwell Road, E. C. 60 Cheapside, E. C. ; 115 Oxford Street, W. ; 171-173 Regent Street, W. ; 40 Strand, W. C. ; 59 Brompton Road, S. W.
LIVERPOOL	Kodak, Limited, 96 Bold Street
BIRMINGHAM	Kodak, Limited, 3 Victoria Square
NEWCASTLE	Kodak, Limited, 2 St. Nicholas Buildings
GLASGOW	Kodak, Limited, 72-74 Buchanan Street
DUBLIN	Kodak, Limited, 89 Grafton Street
PARIS	Kodak, Société Anonyme Française, Avenue de l'Opéra 5 ; Place Vendôme 4
LYONS	Kodak Société Anonyme Française, 26-28 Rue de la République
LAUSANNE	Kodak Société Anonyme 13 Avenue de Tribunal Federal
NICE	Kodak Société Anonyme Française 34 Avenue de la Gare
BERLIN	Kodak Gesellschaft, m. b. H., Leipzigerstrasse 114 ; Unter den Linden 26
BRUSSELS	Kodak, Limited, 36 Rue de l'Ecuyer ; 59 Montagne de la Cour
COPENHAGEN	Kodak Aktieselskab, Ostergade 1
VIENNA	Kodak Gesellschaft, m. b. H. 29 Graben
ST. PETERSBURG	Kodak, Limited, Bolschaia Konnuschenaia 19
MOSCOW	Kodak, Limited, 15-16 Petrovka
MILAN	Kodak Societa Anonima ; 34 Corso Vittorio Emanuele
NAPLES	Kodak Societa Anonima, 288 Via Roma
MELBOURNE	Australian Kodak, Limited, 284 Collins Street
SYDNEY	Australian Kodak, Limited, 379 George Street
BRISBANE	Australian Kodak, Limited, 78 Queen Street
ADELAIDE	Australian Kodak, Limited, 37 Rundel Street
WELLINGTON	Australian Kodak, Limited, 6 Mercer Street

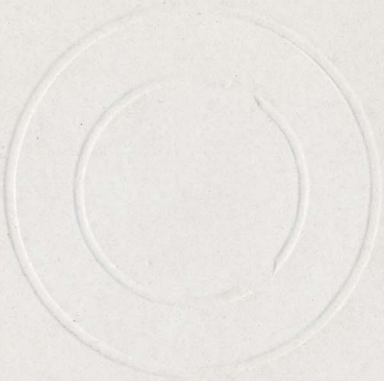
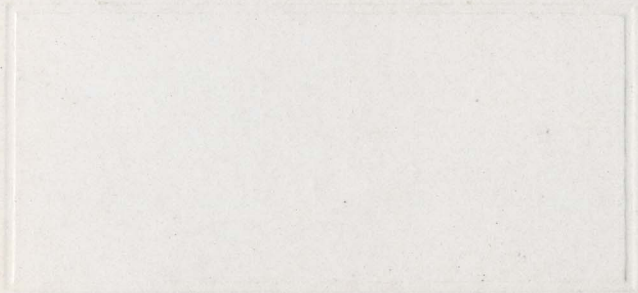
## Terms

The prices in this catalogue are strictly net, except to regular dealers who carry our goods in stock. For the convenience of our customers we recommend that they make their purchases from a dealer in photographic goods, as by so doing they can save both time and express charges.

EASTMAN KODAK CO.

ROCHESTER, N. Y.







1911

F. R. Collins  
Canaan, Conn.