



Kodak

The Digitized Kodak Catalog Project (1886 - 1941): A Very Brief History

Most camera collectors at some point in their collecting careers pass through a Kodak phase - some never come out of it. And if there ever was one name that came to be associated with both cameras and collecting, it was Kodak.

George Eastman received his first patent (for coating dry plates) and bought his first manufacturing facility in 1880, and in 1881 he started the Eastman Dry Plate Company. In 1886 he received a patent for the near-mythical Eastman Detective Camera, but it wasn't until 1888 that the first camera bearing the name "Kodak" was introduced.

One of the nice things about collecting Kodak is that the product line is pretty well known, and because the company produced annual catalogs for many years, collectors can be reasonably sure of what they're looking at, when it was made, the variations and so on - presuming that they have access to either the appropriate catalog, or a number of the many books which document Kodak, each to some greater or lesser extent.

But what would be really nice would be to have a complete set of Kodak catalogs in an easily accessible form and readily available. And since the advent of portable computing devices (PC, Macintosh, etc.) that's been possible - except for the difficulty of assembling a complete set of Kodak catalogs in one spot and then scanning them and making the results available.

The idea of digitizing a complete set of Kodak catalogs has kicked around the collecting community for many years. It's been proposed on a number of online forums, during meetings of various photohistory groups, and for years there have been many incomplete "Kodak CDs" on eBay but at best, they only contained a few catalogs - whatever the owner had available. But assembling a complete set of catalogs, then scanning and processing perhaps 3,000 to 4,000 pages, was a daunting task - if not completely overwhelming - and nothing ever came of it.

Until now.

In early 2010, the idea came up again, but this time we - "we" as in "the collecting community" - were lucky. A number of collectors were willing to loan their catalogs to this project and a couple of insane - wait, let's call them "dedicated" - dedicated enthusiasts - neither of whom collected Kodak, but both of whom enjoyed the challenge of such a project - were willing to put in the time and effort to scan and pull together the entire set of catalogs into a full-blown Kodak Catalog Digital Library.

Our initial objective was to include just the annual amateur catalogs, but it turns out that many cameras only appear in certain professional and specialty catalogs. We included as many of those as we could obtain so that almost every Kodak camera made in the US, Canada and Europe, would be documented - at least up to about 1941. After that, it becomes much more difficult as Kodak stopped producing annual catalogs as their product line became increasingly more diversified.

However, even with the additional "non-amateur" catalogs, we weren't completely successful in illustrating "every" camera Kodak ever made. There are an elusive few that might appear in specialty catalogs that we simply couldn't track down. If you can't find one of those odd cameras, that's no doubt why. We may do a revision at some point in the future if someone is willing to loan us a catalog that includes a camera that isn't already recorded.

In this project, a total of 67 catalogs were used from 1886 through 1941 including a number of professional and dealer catalogs, and in some years, two or even three different catalogs to cover all the bases. With the cooperation of a number of dedicated collectors, we were able to pull together all those catalogs and in June 2010, the project started in earnest.

By November 2010, we had scanned everything we needed and eventually all 67 catalogs were then reassembled as image folders and converted to the universally accepted PDF format and finally, converted into individually searchable PDFs which could then be searched globally as a collection.

For those of you interested in the statistics: about 200 hours of scanning time (we never want to hear that sound again), 67 catalogs and 3,908 page scans - which generated 7,917 original and processed images - and 11.4 GB of disk space. Additionally, another 100+ hours of technical development time was needed to convert the digital catalogues into a fully searchable "knowledgebase" that could be launched from most any standard web browser.

The overwhelming number of catalogs was loaned to us by that most remarkable of Kodak collectors, Charlie Kamerman of Eagle Creek, Oregon. Without Charlie, it's very doubtful that this project could even have been attempted.

But as it turned out, even Charlie didn't have all the publications that were needed, but he was able to track down the five that he lacked and was able to secure either a copy or high resolution images that we could work with. And so, our thanks to the contributors of the catalogs and scans that we used:

Charlie Kamerman for the vast majority of catalogs used and all his help,
Steve Shoet for loaning a variety of test catalogs,
Ryerson University (Toronto) for the 1886 Eastman Catalog
George Layne for the 1890 New Kodaks Catalog,
Mike Kessler for the 1891 Dealer Display Catalog,
Ralph London for the 1893 UK Catalog,
Michael Pritchard for the 1897 UK Catalog.

The digital side of the project - also known as "all of the work" - was done by Rob Niederman of Medina, Minnesota, and Milan Zahorcak of Tualatin, Oregon. Remarkably we're still friends and in a few years, we'll probably be able to talk about this project rationally.

And there you have it, a more-or-less done deal. We're fairly sure that it isn't quite perfect, and expect there will be some carping about something or other; but all-in-all, we believe this to be a pretty good product and can now move on to something else.

Our thanks to all of those involved.

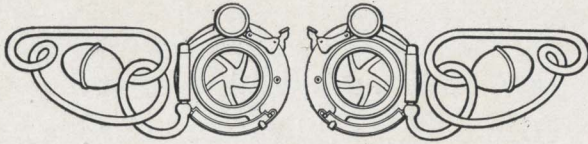
Rob Niederman
Milan Zahorcak

Fall, 2011

Kodak

KODAKS

AND KODAK SUPPLIES



1910

EASTMAN KODAK COMPANY

ROCHESTER, NEW YORK

The Kodak City

“KODAK”

Is our registered and common-law trade-mark and cannot be rightfully applied except to goods of our manufacture. When a dealer tries to sell you a camera or films or other goods not of our manufacture under the Kodak name, you can be sure that he has an inferior article that he is trying to market on the Kodak reputation, and he also makes himself liable to suit by us for damages and injunction.

If it isn't an Eastman, it isn't a Kodak

THE BOTHER LEFT OUT

WHEN asked what "Kodak" meant, somebody epigrammatically replied: "Kodak means photography with the bother left out."

The very freedom from bother, from annoying detail, gives to the user of the Kodak an opportunity to pay closer attention to lighting and posing and to finding the point of view from which to make the most pleasing picture. The very simplicity of the Kodak, therefore, is a help in the securing of correct and artistic pictures.

In the Kodak we first eliminated the bulky, fragile glass plate, substituting therefor the rollable film. Later came the daylight loading system, in which the film, wound on flanged spools, is protected from the light by opaque paper which runs the full length of, and extends beyond, each end of the film, forming light-proof Kodak cartridges which may be placed in, and removed from, the Kodak in broad daylight. Then came the daylight method of development, this cartridge system making it a simple matter to load the exposed film into a developing machine in daylight, after which development proceeds in perfect safety. Thus the Kodak system now stands not only for simplicity in the camera itself, but "daylight all the way." And the results secured by this method are so superior to those secured by the old method that the tank development plan has been adopted with glass plates, and is now in use by leading photographers the world over, *because it gives the best results.*

But the Kodaker is tied down to no hard and fast rule. He may develop in the tank or in the dark room, or may send his work to someone else to "do the rest," as he sees fit. And he gets better results from the finisher than in the

THE BOTHER LEFT OUT

old days, because the finisher also uses the tank system of development.

While the main features of the Kodak system may be said to be the daylight Kodak cartridge and the daylight Kodak Tank system of development, minor details have been by no means lost sight of. We have been making photographic goods for thirty years. We have been making films for twenty-five years; transparent films for twenty years; Kodaks for twenty-two years. Every year there has been a marked advance in the perfection of Kodak products. And along with our improvements in films and plates and paper have come improvements in the cameras themselves—better shutters, better lenses, a refinement here, a simplification there. The twenty-five dollar Kodak of 1888 was considered—and was, at the time—a marvelously compact and ingenious instrument. Yet compared with even the two-dollar Brownie of to-day it was bulky, inconvenient, inefficient.

Kodak commands not only the best facilities, but the best thought in the photographic world. Of the new ideas that come to us almost daily from all parts of the globe, our experts know from experience which are practical and which should be discarded. Supplying, as we do, not only the amateur but the professional and the moving picture trades, we are enabled to carry an experimental staff and provide facilities that would otherwise be impossible. Each department is a help to every other department and all work together for the further enhancement of the reputation of “Kodak.”

The dominant Kodak idea is, “Simplify.” Remove, so far as is humanly possible, every opportunity for mistakes; combine with this reliability in every product; aim at all

THE BOTHER LEFT OUT

times to help the photographer secure a successful picture from every exposure.

In the making of inexpensive as well as high-priced cameras long experience is necessary to the best results. Obviously, we do not put a high-priced lens in a two-dollar Brownie, but we do put in a lens that is the best of its kind, and with it a shutter that will give the best results from that lens. The Brownie cameras are, in the principles of operation, built on the Kodak plan, and, while not so fully equipped for high-speed work and not such comprehensive instruments, they have the Kodak simplicity and reliability, are suitable for ordinary snap shots and for time exposures as well. In short, they stand the supreme test—they work.

Unquestionably there is no business where experience counts for more than in the manufacture of photographic products. The permanent recording of a ray of light on a sensitive surface in $\frac{1}{1000}$ part of a second means that skill and care and experience, in combination with perfect facilities, are necessary in every step of the manufacture of the goods that enter into the making of such record. Our organization has these requisites in the highest degree. It is upon them that we have built the Kodak reputation.

Experiment with no experiments. Insist on "Kodak" goods, bearing in mind: "If it isn't an Eastman it isn't a Kodak."

EASTMAN KODAK CO.

Rochester, N. Y., *The Kodak City.*

A U T O M A T I C S H U T T E R S

KODAK BALL-BEARING SHUTTER

THIS shutter embodies a new principle in shutter construction, operating with remarkable smoothness and precision. The leaves are made in five segments, mounted entirely on ball bearings, and open and close in the form of a star, admitting a much larger amount of light in the same space of time than any other type of shutter. The smooth, frictionless action of this shutter makes it possible to work it with a bulb of half the ordinary size. It has variable indicated speeds of $\frac{1}{25}$, $\frac{1}{50}$ and $\frac{1}{100}$ seconds, and operates for bulb or time exposures.

Is automatic in action and has iris diaphragm. Is also fitted with indicator for registering each exposure as made.

Supplied with Folding Pocket Kodaks, Nos. 1A Special, 3, 3A and 4.



POCKET AUTOMATIC SHUTTER

THIS shutter has star-shaped opening and is automatic in action. For snap-shots, a single pressure of the lever makes the exposure. When set at "B," the shutter opens at one pressure and closes when released. At "T," one pressure opens the shutter and another closes it. Fitted with iris diaphragm stops and regularly supplied with Nos. 1 and 1A Folding Pocket Kodaks, and Nos. 2 and 2A Folding Pocket Brownies.



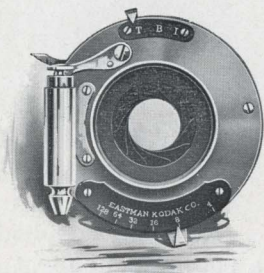
AUTOMATIC SHUTTERS—CONTINUED

F. P. K. AUTOMATIC SHUTTER

THIS shutter is always set, works with either bulb or finger release for time, bulb or snap-shot exposures. When set at I pressure on release makes instantaneous exposure of $\frac{1}{50}$ of a second. When set at "B," the shutter opens at one pressure and closes when released. At "T," one pressure opens the shutter and another closes it.

This shutter is fitted with iris diaphragm stops, graduated from No. 4 to 128.

Supplied on the Nos. 3 and 3A Folding Brownies.



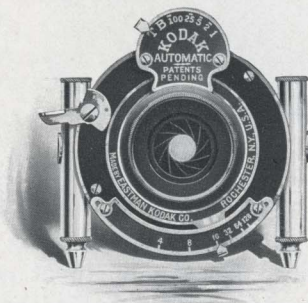
KODAK AUTOMATIC SHUTTER

THIS shutter is automatic in action and is beautifully finished. Carefully adjusted for automatic exposures from $\frac{1}{100}$ of a second to one second. "Bulb" (opens when bulb is pressed and closes when it is released) and "time" exposures may also be made.

Iris diaphragm stops from No. 4 to 128.

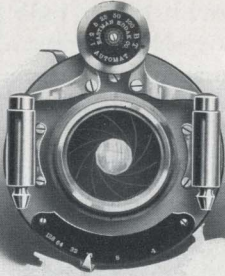
This shutter has proved itself to be thoroughly reliable and is unusually accurate on the automatic instantaneous speeds.

Supplied as a special equipment on the Nos. 1A Special, 3, 3A and No. 4 Folding Pocket Kodaks.



AUTOMATIC SHUTTERS—CONTINUED

B. & L. AUTOMATIC SHUTTER



A FIRST-CLASS shutter in every respect. Automatic in action, and may be operated with either pneumatic or finger release. Automatic exposure from $\frac{1}{100}$ of a second to one second; also "bulb" and "time" adjustments.

Iris diaphragm stops, U. S. system.

Regularly supplied on the No. 4A Folding Kodak, and as a special equipment on the Nos. 1A Special, 3, 3A, and 4 Folding Pocket Kodaks.

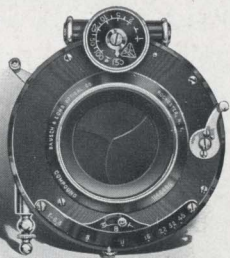
COMPOUND SHUTTER

THE Compound Shutter is an automatic and setting shutter combined. Automatically, either time or bulb exposures may be made, while the shutter may be set for speeds of from one to $\frac{1}{200}$ second.

The shutter leaves are formed of segments opening in star shape, giving even illumination over the entire plate the instant the exposure is started, and an iris diaphragm is supplied for stopping down.

Case is made of aluminum, and accurate adjustments can be made with the shutter in any position.

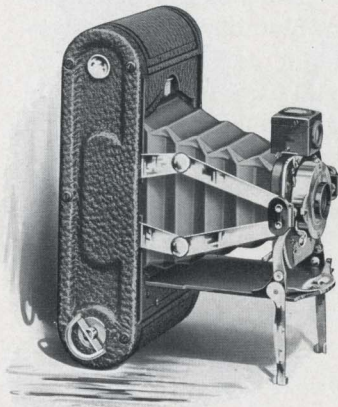
Regularly supplied on the No. 3A Special Kodak and as a special equipment with the Nos. 1A Special, 3, 3A, 4, and 4A Folding Kodaks.



No. 1 FOLDING POCKET KODAK

TAKING a picture $2\frac{1}{4} \times 3\frac{1}{4}$ inches, this highly efficient little instrument is the smallest of the Kodaks. In addition to its compactness, its mechanical workings will also strongly appeal, as when closed the bed folds automatically over the front board and bellows concealing all adjustments and allowing the camera to be easily slipped into an ordinary coat pocket. Pulling down the bed automatically springs the front into position, no estimating of distances or focusing is necessary, just press the shutter lever. The lens is a first quality Meniscus Achromatic, and

when fitted with the Kodak Portrait Attachment will make good sized bust portraits. Made of aluminum, with best seal grain leather covering and nickeled fittings, this dainty little instrument will appeal to the most fastidious.



IN DETAIL

For rectangular pictures, $2\frac{1}{4} \times 3\frac{1}{4}$ inches. Capacity, 12 exposures without reloading. Size of Kodak, $6\frac{3}{4} \times 3\frac{1}{2} \times 1\frac{5}{8}$ inches. Weight, 16 ounces. Lens, meniscus achromatic, 4-inch focus. Shutter, Pocket Automatic. (See page 6.) Brilliant reversible finder.

THE PRICE

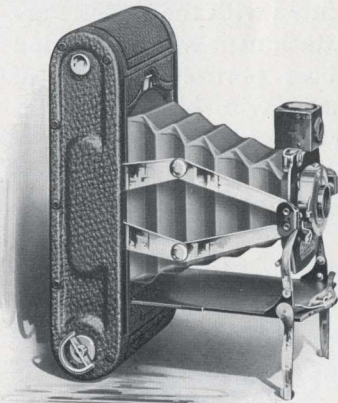
No. 1 Folding Pocket Kodak, with meniscus achromatic lens,	
Pocket Automatic shutter	\$10.00
Black Sole Leather Carrying Case, with strap	1.25
N. C. Film Cartridge, 12 exposures, $2\frac{1}{4} \times 3\frac{1}{4}$40
Ditto, 6 exposures20
Kodak Portrait Attachment50

No. 1A FOLDING POCKET KODAK

THIS model is identical in construction and operation with the No. 1, but it makes pictures of the attractive $2\frac{1}{2} \times 4\frac{1}{4}$ size—a shape that is peculiarly happy for horizontal landscape composition and for full and three-quarter length portraiture in the vertical position.

Exceedingly light and compact, to those who wish to make good sized pictures with the minimum of effort, this camera will especially appeal. Like the No. 1, it requires no focusing, may be carried in any coat pocket without trouble, and is always ready.

Box and bed are made entirely of aluminum, with covering of fine seal grain leather. All metal parts are handsomely nickered, producing a very rich appearance.



IN DETAIL

For rectangular pictures, $2\frac{1}{2} \times 4\frac{1}{4}$ inches. Capacity, 12 exposures without reloading. Size of Kodak $7\frac{3}{4} \times 3\frac{3}{8} \times 1\frac{3}{4}$ inches. Weight, 20 ounces. Lens, meniscus achromatic, 5-inch focus. Shutter, Pocket Automatic. (See page 6.) Brilliant reversible finder.

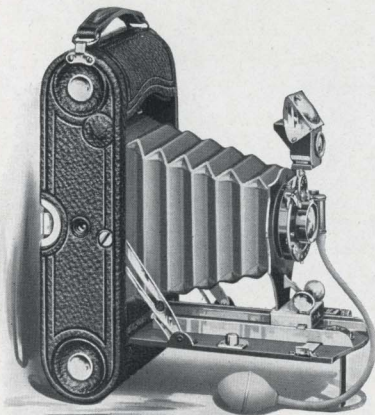
THE PRICE

No. 1A Folding Pocket Kodak, with meniscus achromatic lens,	
Pocket Automatic shutter	\$12.00
Black Sole Leather Case, with shoulder strap	1.25
N. C. Film Cartridge, 12 exposures, $2\frac{1}{2} \times 4\frac{1}{4}$50
Ditto, 6 exposures25
Kodak Portrait Attachment50

No. 1A FOLDING POCKET KODAK SPECIAL

THAT extra quality in the smaller instruments would be appreciated by the discriminating purchaser has been fully demonstrated by the remarkable popularity of this little camera. Slipping easily into the pocket and readily operated by the merest beginner, this model is yet equipped for most serious work. Regularly fitted with the finest Rapid Rectilinear Lens and the Kodak Ball Bearing shutter, it will

also accommodate high grade anastigmat lenses when desired. The camera body is made of aluminum, covered with finest quality black leather and full nickeled fittings.



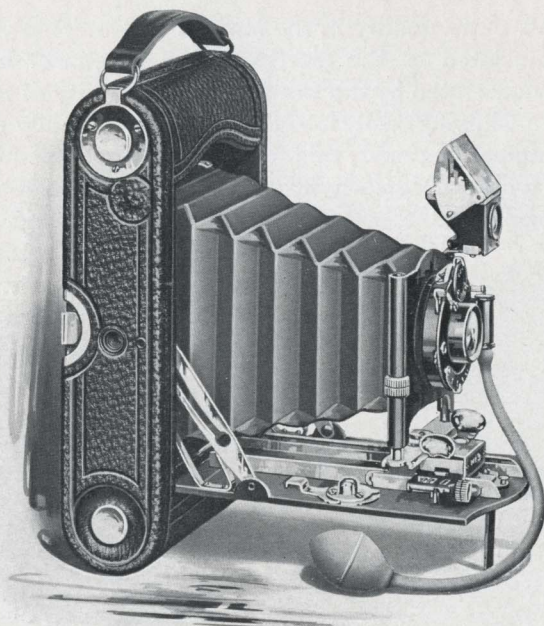
IN DETAIL

For rectangular pictures, $2\frac{1}{2} \times 4\frac{1}{4}$ inches. Capacity, 12 exposures without reloading. Size of Kodak, $8 \times 2 \times 3\frac{3}{4}$ inches. Weight, 23 ounces. Lens, double combination, rapid rectilinear, speed, $f. 8$, focal length, 5 inches. Shutter, Kodak Ball Bearing. (See page 6.) Automatic focusing lock. Two tripod sockets. Brilliant reversible finder.

THE PRICE

No. 1A Folding Pocket Kodak Special, R. R. lens, Kodak Ball Bearing shutter	\$15.00
Ditto, with Kodak or B. & L. automatic shutter and Zeiss Kodak anastigmat lens, $f. 6.3$	40.50
Ditto, with Compound shutter, highest speed $\frac{1}{250}$ second	46.30
Black Sole Leather Carrying Case, with strap	1.25
N. C. Film Cartridge, 12 exposures, $2\frac{1}{2} \times 4\frac{1}{4}$50
Ditto, 6 exposures25
Kodak Portrait Attachment50

No. 3 FOLDING POCKET KODAK



IN DETAIL

For rectangular pictures, $3\frac{1}{4} \times 4\frac{1}{4}$ inches. Capacity, 12 exposures without reloading. Size of Kodak, $7\frac{1}{2} \times 4\frac{1}{2} \times 1\frac{5}{8}$ inches. Weight, 23 ounces. Lens, double combination, rapid rectilinear, speed, $f. 8$, focal length, 5 inches. Shutter, Kodak Ball Bearing. (See page 6.) Rising and sliding front. Two tripod sockets. Brilliant reversible finder with hood. Automatic focusing lock.

THE PRICE

No. 3 F. P. K., R. R. lens, Kodak Ball Bearing shutter	\$17.50
Ditto, with Kodak Automatic shutter	22.50
Ditto, with Kodak or B. & L. Automatic shutter and Zeiss Kodak anastigmat lens, $f. 6.3$	43.00
Ditto, with Compound shutter, highest speed $\frac{1}{350}$ second	48.80
Black Sole Leather Case, with strap	1.25
Glass Plate Adapter, for $3\frac{1}{4} \times 4\frac{1}{4}$ plates	3.50
Single Glass Plate Holder, $3\frac{1}{4} \times 4\frac{1}{4}$50
N. C. Film Cartridge, 12 exposures, $3\frac{1}{4} \times 4\frac{1}{4}$70
Ditto, 6 exposures35
Ditto, "double-two" cartridge, 4 exposures25
Kodak Portrait Attachment50

No. 3 FOLDING POCKET—CONTINUED

THIS model, made for one of the most popular sizes of amateur pictures, is equipped to meet the requirements of the most advanced photographer under all conditions of general amateur photography. And while it makes larger pictures than any of the preceding Kodaks, it can be carried as conveniently in the ordinary coat pocket and operates as simply, even in the hands of the inexperienced.

The optical equipment deserves special consideration. The regular lens is a Rapid Rectilinear—the best that money can buy outside of the anastigmats—and an automatic focusing lock is provided for bringing the lens to instant focus for any distance. The shutter is the new ball-bearing type, with star-shaped leaves—a construction that admits the passage of considerably more light in a given time than does either the ordinary two-winged shutter or common type of iris diaphragm shutter. This is a most important feature in making quick exposures in dull lights.

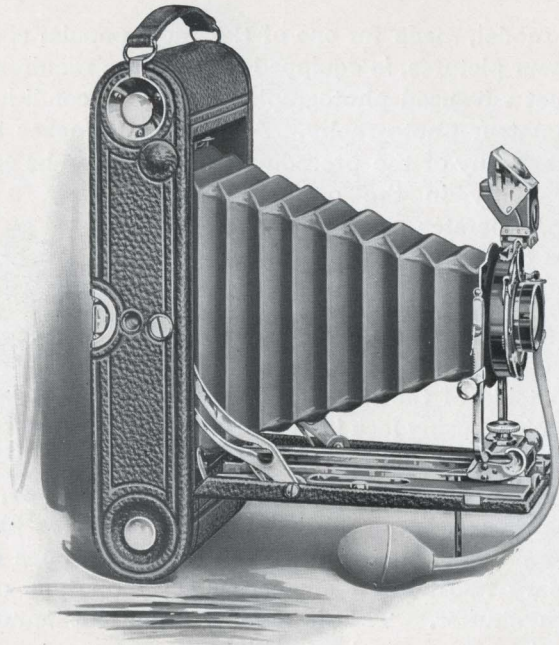


A rising, falling and sliding front—a great convenience in architectural photography—is part of the regular equipment, and dry plates may be used by the addition of a simple plate adapter. This is constructed to take aluminum plate holders, has focusing screen, and is interchangeable with the regular Kodak back. (See similar back illustrated, page 15.)

This Kodak is particularly strong in its appeal to those who wish to make lantern slides from their negatives, as the size $3\frac{1}{4} \times 4\frac{1}{4}$ is just right for slide making without either enlargement or reduction.

Box and bed are of aluminum, covering is seal grain leather of the finest quality, metal parts are highly nickered, and the instrument is handsomely finished throughout.

No. 3A FOLDING POCKET KODAK



IN DETAIL

For rectangular pictures, $3\frac{1}{4} \times 5\frac{1}{2}$ inches. Capacity, 10 exposures without reloading. Size of Kodak, $9\frac{1}{2} \times 4\frac{3}{4} \times 1\frac{7}{8}$ inches. Weight, 41 ounces. Lens, double combination, rapid rectilinear, speed, f , 8, focal length, $6\frac{1}{2}$ inches. Shutter, Kodak Ball Bearing. (See page 6.) Two tripod sockets. Brilliant reversible finder with hood. Automatic focusing lock.

THE PRICE

No. 3A F. P. Kodak, R. R. lens, Kodak B. B. shutter	\$20.00
Ditto, with Kodak Automatic shutter	25.00
Ditto, with Compound shutter, highest speed $\frac{1}{200}$ second, and Zeiss Kodak anastigmat lens, f , 6.3	61.40
Black Sole Leather Case, with strap	1.50
Combination Back	3.50
Double Glass Plate Holders, $3\frac{1}{4} \times 5\frac{1}{2}$, each	1.00
N. C. Film Cartridge, 10 exposures, $3\frac{1}{4} \times 5\frac{1}{2}$70
Ditto, 6 exposures40
Ditto, "double-two" cartridge, 4 exposures30
Kodak Portrait Attachment50

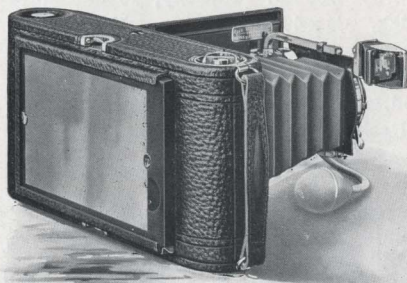
No. 3A FOLDING POCKET—CONTINUED

WITH the finely adjusted Kodak Ball Bearing shutter, splendid lens, rising, falling and sliding front and automatic focusing lock, the 3 A Folding Pocket Kodak is fully equipped for the most serious branches of amateur photography. And with these advantages it is an exceedingly compact Pocket Kodak, which, though containing the features desired by the expert, may be effectively handled even by the absolute novice.

This model first introduced the $3\frac{1}{4}$ x $5\frac{1}{2}$ picture, a size that has become remarkably popular, not only on account of its applicability to post-card photography, but also for the unusually effective landscape views which it produces horizontally, and the beautifully proportioned full-length portraits which it makes when used vertically.

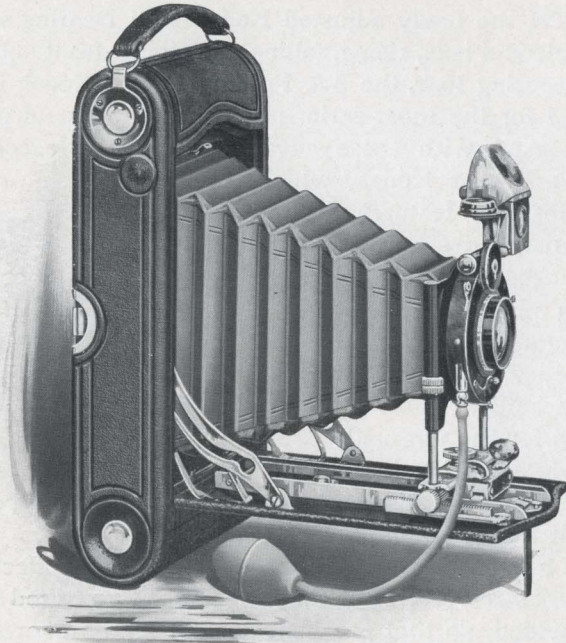
The ball-bearing shutter makes it especially effective for instantaneous work. For time exposures two tripod sockets are provided, so that the instrument may be conveniently used, either vertically or horizontally, with tripod. And if it is desired to use dry plates at any time, a combination back interchangeable with the regular Kodak back may be had.

This is fitted with focusing screen and takes double plate holders. The pleasing proportions of this model, combined with its covering of fine seal grain leather and its highly nickered metal parts, produce an unusually attractive appearance.



Showing Combination Back with Focusing Screen

No. 3A SPECIAL KODAK



IN DETAIL

For rectangular pictures, $3\frac{1}{4} \times 5\frac{1}{2}$ inches. Capacity, 10 exposures without reloading. Size of Kodak, $9\frac{1}{2} \times 4\frac{3}{4} \times 2$ inches. Weight, 42 ounces. Lens, Zeiss Kodak anastigmat, speed, $f. 6.3$, focal length, $6\frac{1}{2}$ inches. Shutter, Compound. (See page 8.) Two tripod sockets. Brilliant reversible finder, with hood. Spirit level. Double focusing scale for use with either film or plates. Rack and pinion for focusing.

THE PRICE

3A Special Kodak, Zeiss Kodak anastigmat lens, $f. 6.3$, Compound shutter, highest speed $\frac{1}{300}$ second	\$65.00
Grain Leather, velvet lined, Case, with strap	3.00
Combination Back	4.00
Double Glass Plate Holders, $3\frac{1}{4} \times 5\frac{1}{2}$, each	1.00
N. C. Film Cartridge, 10 exposures, $3\frac{1}{4} \times 5\frac{1}{2}$.70
Ditto, 6 exposures	.40
Ditto, "double-two" cartridge, 4 exposures	.30

NO. 3A SPECIAL KODAK—CONTINUED

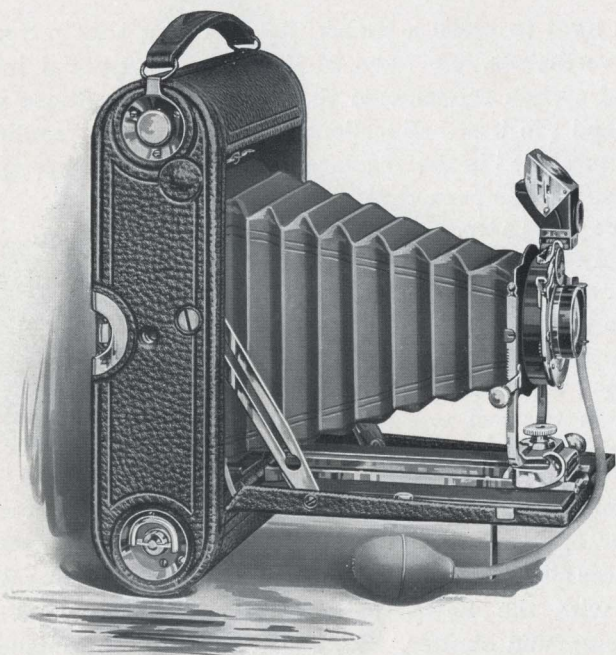
IT is hard to make a Kodak that is better than a Kodak. Nevertheless, we have in this new 3A Special incorporated certain refinements that will appeal to those who command the best. Excellent as are the rapid rectilinear lenses furnished in the regular Folding Pocket Kodak equipment, there has been during the past two or three years a tremendous increase in the demand for high speed anastigmat lenses and for shutters that give the full advantage of such lenses. And so in this 3A Special we are making a camera which is to be furnished with anastigmat lenses only, and which is the last word in photographic perfection, yet embodies Kodak simplicity.



Conforming in size of picture and outline to that most popular of all cameras, the regular 3A, this special camera embraces all its practical features, and in addition is regularly fitted with the Zeiss-Kodak anastigmat lens *f.* 6.3 and the Compound shutter, affording a range of instantaneous exposures up to $\frac{1}{200}$ of a second, as well as "bulb" and "time" exposures. By means of a combination back, which takes the place of the regular back (supplied extra), the camera may be used with either film or plates, a double focusing scale being provided and so graduated as to insure accurate focus when working close to the subject—especially valuable in portraiture. Included in its special conveniences may be noted a spirit level, and rack and pinion for focusing. Fully in keeping with the other qualities is the finish, the bellows being made of black leather and the camera covered with the finest quality of genuine black Persian morocco.

To those who demand absolutely the highest quality in every feature, the 3A Special Kodak must appeal.

No. 4 FOLDING POCKET KODAK



IN DETAIL

For rectangular pictures, 4 x 5 inches. Capacity, 12 exposures without reloading. Size of Kodak, 9 x 5 $\frac{3}{4}$ x 2 $\frac{1}{4}$ inches. Weight, 2 pounds 11 ounces. Lens, double combination, rapid rectilinear, speed, *f.* 8, focal length, 6 $\frac{1}{2}$ inches. Shutter, Kodak Ball Bearing. (See page 6.) Two tripod sockets. Brilliant reversible finder. Automatic focusing lock.

THE PRICE

No. 4 F. P. K., R. R. lens, Kodak B. B. shutter	\$20.00
Ditto, with Kodak Automatic shutter	25.00
Ditto, with Compound shutter, highest speed $\frac{1}{200}$ second, and Zeiss Kodak anastigmat lens, <i>f.</i> 6.3	61.40
Black Sole Leather Carrying Case, with strap	1.50
Glass Plate Adapter, 4 x 5, with ground glass	3.50
Double Glass Plate Holders, 4 x 5, each	1.00
N. C. Film Cartridge, 12 exposures, 4 x 590
Ditto, 6 exposures45
Ditto, "double-two" cartridge, 4 exposures30
Kodak Portrait Attachment50

No. 4 FOLDING POCKET KODAK—CONTINUED

THE four by five picture is the largest of the standard amateur sizes. Its shape is suitable for composition of any character, either in the vertical or horizontal position, and the comparatively large size of all objects in the composition has made it a favorite with thousands of amateur photographers.

And the Folding Pocket Kodak No. 4 provides the amateur with an instrument for such pictures, so light and compact that it may be carried in a top coat pocket, and offering all the advantages of the 3 and 3A models.



Its splendid lens and ball-bearing shutter give it great efficiency for snap-shot photography, while a rising, falling and sliding front, automatic focusing lock and two tripod sockets make it equally effective for work of the most exacting character.

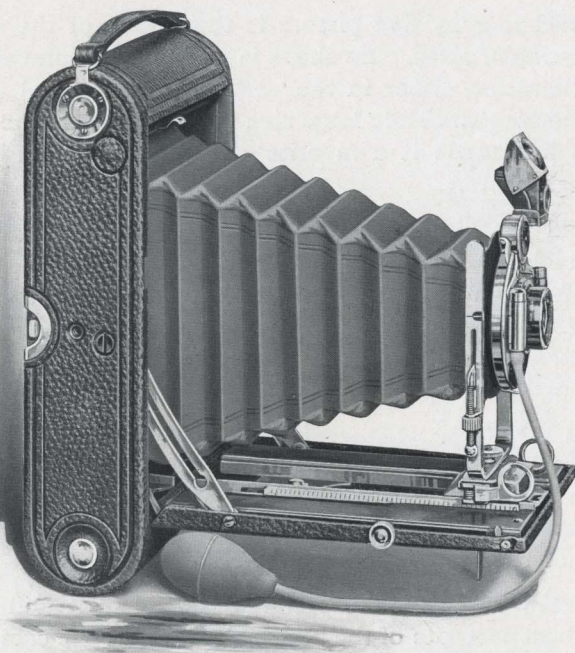
Fitted with Kodak Portrait Attachment it will produce large bust portraits of the highest quality, as the camera may then be focused as close as two feet eight inches from the subject. And, if desired, a plate adapter with focusing screen, taking double plate holders, may be substituted in place of the regular back, adapting the Kodak for the use of dry plates.

No. 4 Folding Pocket Kodak retains all the Kodak simplicity and ease of operation. No previous experience is necessary to secure good pictures with it. It can be readily used by the beginner for daylight-all-the-way photography.

The camera body is made of aluminum, covered with the finest quality black seal grain leather. Constructed with the usual Kodak skill, and beautifully finished, this instrument will appeal to both novice and seasoned expert.

N o . 4 A F O L D I N G K O D A K

Compliments of the Digitized Kodak Catalog Project: 1886 - 1941



IN DETAIL

For rectangular pictures, $4\frac{1}{4} \times 6\frac{1}{2}$ inches. Capacity, 6 exposures without reloading. Size of Kodak, $11 \times 6\frac{1}{2} \times 2\frac{3}{8}$ inches. Weight, 4 pounds 4 ounces. Lens, double combination, rapid rectilinear, speed, $f. 8$, focal length, $8\frac{1}{4}$ inches. Shutter, B. & L. Automatic. (See page 8.) Rising and sliding front. Rack and pinion for focusing. Two tripod sockets. Brilliant reversible finder with hood.

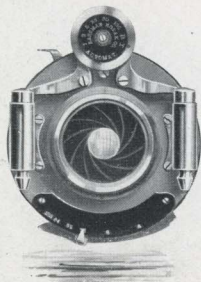
THE PRICE

No. 4A F. Kodak, R. R. lens, B. & L. Automatic shutter	\$35.00
Ditto, with Zeiss Kodak anastigmat lens, $f. 6.3$	72.50
Ditto, with Compound shutter, highest speed $\frac{1}{180}$ second	83.45
Black Sole Leather Case, with strap	2.50
Glass Plate Adapter, with ground glass	5.00
Double Glass Plate Holders, each	1.25
N. C. Film Cartridge, 6 exposures, $4\frac{1}{4} \times 6\frac{1}{2}$65
Ditto, "double-two" cartridge, 4 exposures45
Direct View Finder (see page 60)	3.00
Kodak Portrait Attachment50

No. 4A FOLDING KODAK—CONTINUED

MANY amateurs prefer pictures even larger than the 4 x 5 size, and for these the 4A Kodak provides a thoroughly satisfactory instrument for 4 $\frac{1}{4}$ x 6 $\frac{1}{2}$ pictures. It combines all the advantages of the preceding models in a camera light and compact, with no suggestion of the usual clumsy bulk of cameras for large size pictures.

So convenient that it may be readily used for snap shots, it is suitable likewise for work of the most serious character. It has rising, falling and sliding front, rack and pinion attachment for instant focusing, and two tripod sockets for horizontal or vertical use with tripod.

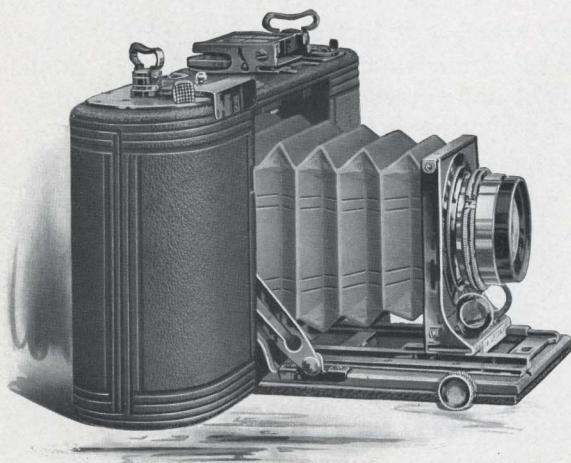


The lens is a rapid rectilinear and is the best obtainable outside of the anastigmats. The shutter is a double valve, automatic, working for time, bulb, instantaneous and retarded exposures. The regular finder is a brilliant reversible, but a direct-view finder may be fitted to the box for specially quick, accurate snap-shot work with the Kodak held on a level with the eye.

One of the special features of this instrument is its adaptability to home portraiture. Fitted with the Kodak Portrait Attachment it will make bust portraits up to the full size of the film, as it may be operated as close as 3 $\frac{1}{2}$ feet to the subject. A plate adapter with focusing screen, interchangeable with the regular back, will permit the use of dry plates if desired.

With all these advantages, the instrument retains the usual Kodak simplicity and ease of operation. There is nothing in its construction which cannot be easily understood by the merest beginner. Made of aluminum, with nickeled fittings and genuine leather covering of beautiful grain.

No. 1A SPEED KODAK



IN DETAIL

For rectangular pictures, $2\frac{1}{2} \times 4\frac{1}{4}$ inches. Capacity, 12 exposures without reloading. Size of Kodak, $2\frac{1}{4} \times 4\frac{1}{2} \times 9\frac{3}{4}$ inches. Weight, 3 pounds. Shutter, Graflex focal plane, speed $\frac{1}{1000}$ second to slow instantaneous. Rack and pinion for focusing, automatic standard clamp, and tripod socket. Direct view finder with mirror attachment. Automatic safety blind for protecting film when shutter is wound.

THE PRICE

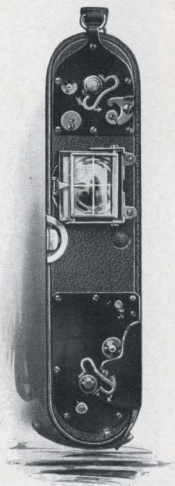
No. 1A Speed Kodak, Graflex focal plane shutter, without lens . . .	\$38.00
Ditto, with Zeiss Kodak anastigmat lens No. 2, <i>f.</i> 6.3	60.00
Ditto, with Series IIb B. & L. Zeiss Tessar lens No. 4, <i>f.</i> 6.3	72.50
Ditto, with Cooke Series IV lens No. 25, <i>f.</i> 5.6	76.00
Ditto, with Series Ic B. & L. Zeiss Tessar lens No. 14, <i>f.</i> 4.5	78.50
Black Sole Leather Carrying Case, with strap	1.50
N. C. Film Cartridge, 12 exposures, $2\frac{1}{2} \times 4\frac{1}{4}$50
Ditto, 6 exposures25

WITH focal plane shutter efficiency, yet so light and compact that it can easily be carried in a top coat pocket, and so simple to operate that a beginner can successfully use it, this recent addition to the Kodak family has met with high favor.

The mile-a-minute automobile, express trains traveling at full speed, race horses, athletes at their highest strain, instantaneous indoor pictures, home portraiture, ordinary time exposures—these are all as one to this remarkable Kodak.



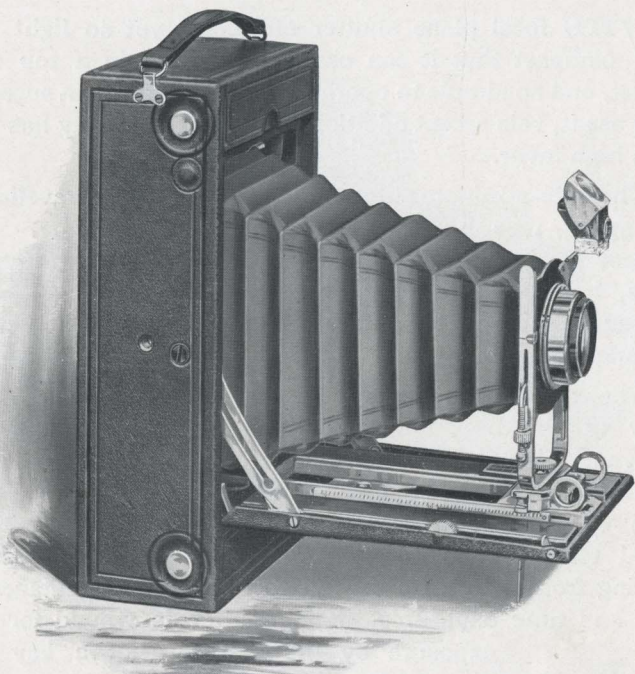
The shutter is incorporated in the body of the box, and is of the well-known Graflex focal plane construction; provided with curtain with a series of slots of varying widths, which, in combination with a speed tension regulator, permits a latitude of exposures varying from $\frac{1}{1000}$ of a second to very slow instantaneous, bulb and time exposures. The shutter is wound for any exposure by the half turn of a key and released by merely touching a lever.



A direct view finder is supplied for use with Kodak held on a level with the eyes, supplemented by a mirror attachment which springs up to an angle of 45 degrees, for location and composition of subjects with the Kodak held in any other position.

Rack and pinion is furnished for easy focusing, metal parts have gun-metal finish, and covering is a very fine grain leather. The size of picture, $2\frac{1}{2} \times 4\frac{1}{4}$, is suitable for any style of composition, and is very desirable for portraiture.

N o . 4 A S P E E D K O D A K



IN DETAIL

For rectangular pictures, $4\frac{1}{4} \times 6\frac{1}{2}$ inches. Capacity, 6 exposures without reloading. Size of Kodak, $11\frac{3}{4} \times 3\frac{7}{16} \times 6\frac{1}{2}$ inches. Weight, 6 pounds. Shutter, Kodak focal plane, speed $\frac{1}{1000}$ of a second to slow instantaneous. Rising and sliding front, rack and pinion for focusing. Two tripod sockets. Brilliant reversible finder, with hood, also direct view finder and focusing scale.

THE PRICE

No. 4A Speed Kodak, Kodak focal plane shutter (without lens) . . .	\$50.00
Ditto, with Zeiss Kodak anastigmat lens, <i>f.</i> 6.3	90.00
Ditto, with B. & L. Zeiss Tessar lens, <i>f.</i> 6.3	111.50
Black Sole Leather Carrying Case, with strap	2.50
Glass Plate Adapter, with ground glass, $4\frac{1}{4} \times 6\frac{1}{2}$	7.50
Double Glass Plate Holders, each	1.25
N. C. Film Cartridge, 6 exposures, $4\frac{1}{4} \times 6\frac{1}{2}$65
Ditto, "double-two" cartridge, 4 exposures45

No. 4A SPEED KODAK—CONTINUED

THIS camera, while designed primarily for the photographing of rapidly moving objects, is equally well adapted to all other classes of work.

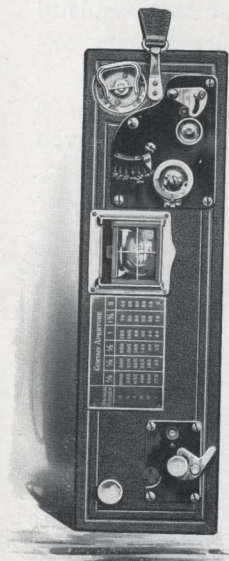
The important feature of the 4A Speed Kodak is the Kodak Focal Plane Shutter, by means of which automatic exposures, varying from slow instantaneous to a speed of $\frac{1}{1000}$ of a second may be made. It is also, of course, adapted to time exposures. The shutter is built into the camera body, and the exposures are made by means of a curtain, with an adjustable opening, which passes directly in front of the sensitive film.



The shutter is in no way complicated, and is simple to understand and operate.

The Focal Plane Shutter is the only shutter with which it is possible to get extremely short exposures, such as are essential with rapidly moving objects. The Focal Plane is also the most efficient of shutters, as it permits a greater amount of light to reach the plate with a given exposure, thus affording a fully-timed negative, where hopeless under exposure would result with the ordinary shutter.

Equipped with this type of shutter the 4A Speed Kodak is ideal for photographing all objects in rapid motion—such as athletes, race horses, automobiles, railroad trains, birds on the wing—and it is also well adapted to home portraiture.



N o . 2 F L E X O K O D A K

THIS Kodak is of the simplest form of picture-taking instruments. It has a fixed focus, requires no estimating of distances, and with automatic shutter is always ready for action.

The No. 2 Flexo makes a square picture, $3\frac{1}{2} \times 3\frac{1}{2}$ inches in size, and is a thoroughly satisfactory instrument for all kinds of general amateur work. The shutter works for time



or instantaneous exposures, and with the Kodak Portrait Attachment excellent results may be secured in home portraiture.

Complete in every respect, with finder and tripod socket, the price includes every requisite for picture making excepting the film.

Loads and unloads in daylight, and is constructed with the same care given to the higher-priced Kodaks.

IN DETAIL

For square pictures, $3\frac{1}{2} \times 3\frac{1}{2}$ inches. Capacity, 12 exposures without reloading. Size of Kodak, $5\frac{7}{8} \times 4\frac{5}{8} \times 4\frac{3}{8}$ inches. Weight, 19 ounces. Lens, single achromatic, $4\frac{1}{2}$ -inch focus. Shutter, Eastman Rotary, with three stops. Tripod socket and finder.

THE PRICE

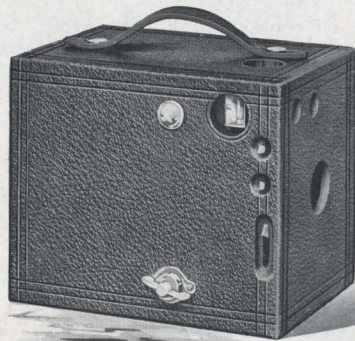
No. 2 Flexo Kodak, achromatic lens, Eastman Rotary shutter . . .	\$5.00
Black Sole Leather Carrying Case, with shoulder strap	1.25
N. C. Film Cartridge, 12 exposures, $3\frac{1}{2} \times 3\frac{1}{2}$60
Ditto, 6 exposures30
Ditto, "double-two" cartridge, 4 exposures20
Kodak Portrait Attachment50

No. 2 AND No. 3 BULL'S-EYE KODAK

THE Bull's-Eye Kodak has long held sway as absolutely the simplest and most thoroughly practical camera for general amateur use.

Differing only in the size of pictures which they make, these Kodaks have automatic shutters for time or instantaneous work, finders and tripod sockets for vertical or horizontal exposures, and are easily opened for loading or unloading in daylight. They are of the fixed focus type and are always ready to operate. With Kodak Portrait Attachment either can be depended upon for first-rate portraits.

The covering is seal grain leather of the finest quality, and metal parts highly nicked. Cut shows the No. 3.



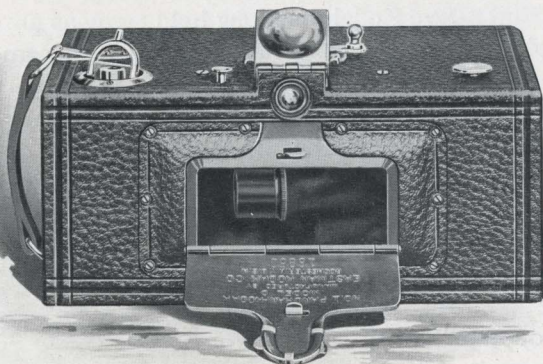
IN DETAIL

For pictures, No. 2, $3\frac{1}{2} \times 3\frac{1}{2}$ inches; No. 3, $3\frac{1}{4} \times 4\frac{1}{4}$ inches. Capacity, each 12 exposures without reloading. Size of Kodak, No. 2, $5\frac{3}{4} \times 4\frac{5}{8} \times 4\frac{1}{2}$ inches; No. 3, $4\frac{5}{8} \times 5\frac{1}{2} \times 6\frac{1}{2}$ inches. Weight, No. 2, 22 ounces; No. 3, 24 ounces. Lens, meniscus achromatic, $4\frac{1}{2}$ -inch focus. Shutter, Eastman Rotary, with three stops. Tripod socket, No. 2, 1; No. 3, 2. Brilliant finders.

THE PRICE

	No. 2	No. 3
Bull's-Eye Kodak, meniscus achromatic lens, Eastman Rotary shutter	\$8.00	\$8.00
Black Sole Leather Carrying Case, with shoulder strap	1.25	1.25
N. C. Film Cartridge, 12 exposures60	.70
Ditto, 6 exposures30	.35
Ditto, "double-two" cartridge, 4 exposures20	.25
Kodak Portrait Attachment50	.50

P A N O R A M K O D A K S



No. 1 PANORAM KODAK

IN DETAIL

For rectangular pictures, $2\frac{1}{4} \times 7$ inches. Capacity, 6 exposures without reloading. Size of Kodak, $3\frac{3}{8} \times 4\frac{1}{4} \times 7\frac{3}{8}$ inches. Weight, 24 ounces. Lens, specially selected as to quality and focal length. Shutter, Panoram. Two tripod sockets. Brilliant finder with hood. Uses No. 1 F. P. Kodak cartridges.

THE PRICE

No. 1 Panoram Kodak	\$10.00
Black Sole Leather Carrying Case, with shoulder strap	1.75
N. C. Film Cartridge, 6 exposures, $2\frac{1}{4} \times 7$40
Ditto, 3 exposures20

No. 4 PANORAM KODAK

IN DETAIL

For rectangular pictures, $3\frac{1}{2} \times 12$ inches. Capacity, 4 exposures without reloading. Size of Kodak, $4\frac{3}{4} \times 5\frac{1}{2} \times 10\frac{1}{8}$ inches. Weight, 2 pounds 14 ounces. Lens, specially selected as to quality and focal length. Shutter, Panoram. Two tripod sockets. Brilliant finder with hood. Uses No. 4 B. E. cartridges.

THE PRICE

No. 4 Panoram Kodak	\$20.00
Black Sole Leather Carrying Case, with shoulder strap	2.00
N. C. Film Cartridge, 4 exposures, $3\frac{1}{2} \times 12$75
Ditto, 2 exposures45

PANORAM KODAKS - CONTINUED

A WONDERFULLY inviting field was opened to the amateur by the Panoram Kodaks.

As their name indicates, they are intended for picturing wide expanses of landscape and similar subjects, and this without the exceedingly small images incident to the use of extreme wide angle lenses, heretofore the only method of securing such pictures.

Aside from the remarkable horizontal views, decidedly unique pictures of high waterfalls, mountain peaks and similar subjects may be made by holding the camera vertically. Two tripod sockets are supplied for use with the camera either vertically or horizontally.

For taking outdoor group pictures the Panorams are unequaled, as the subjects may be arranged in a semi-circle, at a given distance from the Kodak, thus permitting all of them to be in the "front row" and of proper relative size.

Though possessing such remarkable advantages, the Panoram Kodaks are exceedingly simple in construction and operation.

The compassing of so wide an angle of view is accomplished by swinging the lens on a pivot during the exposure, the shutter being accurately adjusted to insure even illumination throughout the exposure.

The brilliant finder shows the sky and foreground, and the entire view may be examined by simply swinging the camera in position so as to take in the full view, as indicated by the V-shaped lines on the top of the camera. The No. 1 Panoram takes a view of 112 degrees, while the No. 4 has the great scope of 142 degrees. The Panoram Kodaks use the regular daylight loading cartridges. Not adapted to indoor work. Covered with best black leather and have nickeled fittings.

N O . 3 B Q U I C K F O C U S K O D A K

FOR street scenes and those continually passing subjects which must be taken at a moment's notice, this instrument is especially suited.



The turn of a dial and pressure of a button throws the lens into instant focus for any required distance, and, as the shutter is always ready, the exposure can be made without the slightest delay.

This special feature in no way complicates the operation of the instrument nor affects its efficiency for general amateur use. It can be handled by the most inexperienced person; it makes vertical or horizontal time and instantaneous exposures, and when fitted with the Kodak Portrait Attachment produces splendid bust or full-length portraits.

I N D E T A I L

For rectangular pictures, $3\frac{1}{4} \times 5\frac{1}{2}$ inches. Capacity, 10 exposures without reloading. Size of Kodak, $8\frac{1}{8} \times 6\frac{1}{8} \times 4\frac{3}{8}$ inches. Weight, 2 pounds 9 ounces. Lens, meniscus achromatic. Focal length, $6\frac{1}{2}$ inches. Shutter, Eastman Rotary, with three stops. Two tripod sockets. Two brilliant finders.

T H E P R I C E

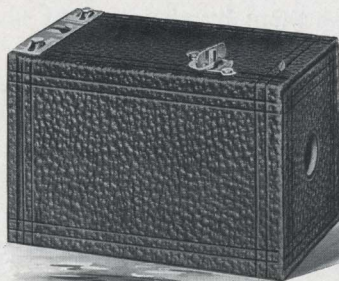
No. 3B Quick Focus Kodak, meniscus achromatic lens, Eastman Rotary shutter	\$12.00
Black Sole Leather Carrying Case, with shoulder strap	2.50
* N. C. Film Cartridge, 10 exposures, $3\frac{1}{4} \times 5\frac{1}{2}$70
* Ditto, 6 exposures40
* Ditto, "double-two" cartridge, 4 exposures30
Kodak Portrait Attachment50
* Specify "For 3B Quick Focus Kodak."	

N O . 1 B R O W N I E C A M E R A

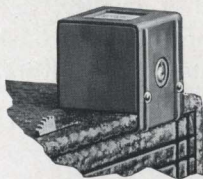
SIMPLE in construction and operation, and costing but a trifle, this little fixed focus camera stands the test — it takes good pictures.

Notwithstanding its low cost every Brownie undergoes the regular thorough Kodak inspection.

Only our immense manufacturing facilities and the enormous quantities of Brownies sold make the quality possible at the price. The camera is well made, covered with fine quality



imitation leather, and has nickeled fittings. V-shaped lines on top give the scope of view, or a Brownie Finder (detachable) may be provided for twenty-five cents. This is as illustrated below and slips on the box easily.



The Brownie Finder

Pictures of any sort may be made with the Brownie, both “snap-shots” and “time” exposures, and it will be found an ideal instrument for interesting children in picture making.

IN DETAIL

For square pictures, $2\frac{1}{4} \times 2\frac{1}{4}$ inches. Capacity, 6 exposures without reloading. Size of camera, $4\frac{7}{8} \times 3\frac{3}{8} \times 3$ inches. Weight, 8 ounces. Lens, meniscus, $3\frac{3}{4}$ -inch focus. Shutter, Eastman Rotary, with one stop.

THE PRICE

No. 1 Brownie Camera, meniscus lens, Eastman Rotary shutter . . .	\$1.00
No. 1 Brownie Carrying Case, holds camera and finder50
N. C. Film Cartridge, 6 exposures, $2\frac{1}{4} \times 2\frac{1}{4}$15
Brownie Finder, detachable25
No. 1 Brownie Developing and Printing Outfit, including paper for 24 prints90

Compliments of the Digitized Kodak Catalog Project: 1886 - 1941

Nos. 2 AND 2A BROWNIE CAMERAS

REMARKABLE pictures have been produced by these simple, fixed focus cameras even in the hands of school children, while work of the highest character has been done with them by experts. As simple to operate as the No. 1



Brownie, but with greater capabilities, they differ from each other only in the size of pictures which they make. Those made by the No. 2A are splendidly proportioned for landscape composition and for full-length portraiture.

These cameras have two finders, automatic shutters, meniscus lenses of the first quality, and are covered with handsome imitation leather. The Kodak Portrait Attachment can be used to advantage with either.

IN DETAIL.

For rectangular pictures, No. 2, $2\frac{1}{4} \times 3\frac{1}{4}$ inches; No. 2A, $2\frac{1}{2} \times 4\frac{1}{4}$ inches. Capacity, No. 2, 6 exposures without reloading; No. 2A, 12 exposures without reloading. Size of camera, No. 2, $5\frac{3}{8} \times 4 \times 3\frac{1}{4}$ inches; No. 2A, $3\frac{7}{16} \times 5\frac{1}{8} \times 6\frac{1}{16}$ inches. Weight, No. 2, 13 ounces; No. 2A, 12 ounces. Lens, meniscus. Shutter, Eastman Rotary, with three stops. Two finders.

THE PRICE

	No. 2	No. 2A
Brownie Camera, meniscus lens, Eastman Rotary shutter	\$2.00	\$3.00
Brownie Carrying Case, with shoulder strap75	.75
N. C. Film Cartridge, 12 exposures50
N. C. Film Cartridge, 6 exposures20	.25
Kodak Portrait Attachment50	.50
A B C Developing and Printing Outfit (see page 48)	1.50	1.50

N o . 3 B R O W N I E C A M E R A

DESIGNED for one of the most popular of amateur sizes, this latest addition to the Brownie family brings $3\frac{1}{4} \times 4\frac{1}{4}$ pictures within the scope of simple, fixed focus Brownie photography.

Like all Brownies this is a camera that the children can easily operate, while at the same time it is so efficient as to satisfy the grown-up people. Equipped with a fine quality meniscus achromatic lens and automatic shutter it is thoroughly dependable for general amateur photography.



This Brownie takes four, six or twelve exposure cartridges, and when fitted with the Kodak Portrait Attachment will make bust portraits of good size. The metal parts are all nickeled, and in combination with the handsome covering of imitation grain leather, give the instrument a very rich finish.

IN DETAIL

For rectangular pictures, $3\frac{1}{4} \times 4\frac{1}{4}$ inches. Capacity, 12 exposures without reloading. Size of camera, $6\frac{1}{8} \times 4\frac{3}{8} \times 5\frac{1}{8}$ inches. Weight, 24 ounces. Lens, meniscus achromatic, 5-inch focus. Shutter, Eastman Rotary, with three stops. Two tripod sockets. Two finders.

THE PRICE

No. 3 Brownie Camera, meniscus achromatic lens, Eastman Rotary shutter	\$4.00
No. 3 Brownie Carrying Case, with shoulder strap	1.00
N. C. Film Cartridge, 12 exposures, $3\frac{1}{4} \times 4\frac{1}{4}$70
Ditto, 6 exposures35
Ditto, "double-two" cartridge, 4 exposures25
Kodak Portrait Attachment50

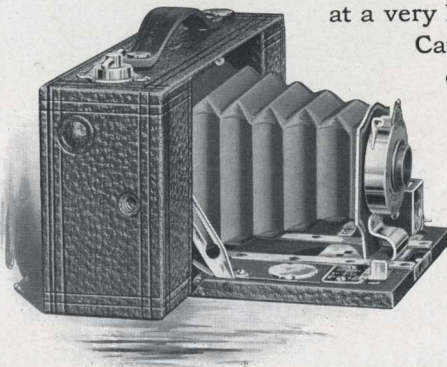
No. 2 FOLDING POCKET BROWNIE

INEXPENSIVE, devoid of all complications, extremely simple to understand and to operate, this dainty little instrument brings the Brownie into the field of pocket photography.

It slips easily into any ordinary coat pocket, and it will produce splendid $2\frac{1}{4} \times 3\frac{1}{4}$ pictures the all-by-daylight way. Adapted for snap shots, bulb or time exposures, it has reversible finder, two tripod sockets and automatic focusing lock. The shape of the pictures it makes is suitable for any style of composition, and the Kodak Portrait Attachment may be used with this instrument with excellent success.

A practical all-round little camera at a very low price.

Carefully finished throughout with covering of imitation grain leather and nickeled fittings.



IN DETAIL

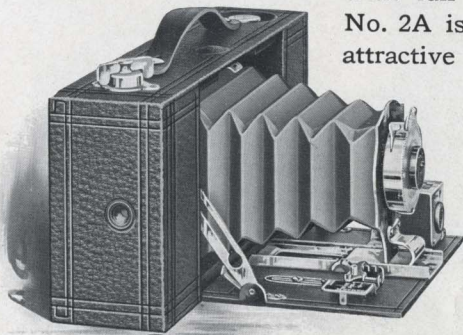
For rectangular pictures, $2\frac{1}{4} \times 3\frac{1}{4}$ inches. Capacity, 6 exposures without reloading. Size of camera, $6\frac{7}{8} \times 3\frac{3}{8} \times 2\frac{1}{8}$ inches. Weight, 16 ounces. Lens, meniscus, $4\frac{1}{2}$ -inch focus. Shutter, Pocket Automatic. (See page 6.) Two tripod sockets. Automatic focusing lock. Reversible finder.

THE PRICE

No. 2 Folding Pocket Brownie, meniscus lens, Pocket Automatic shutter	\$5.00
No. 2 Folding Pocket Brownie Carrying Case	.75
N. C. Film Cartridge, 6 exposures, $2\frac{1}{4} \times 3\frac{1}{4}$.20
Kodak Portrait Attachment	.50

No. 2A FOLDING POCKET BROWNIE

DUPLICATING in construction and general appearance the exceedingly popular No. 2 Folding Pocket Brownie, this new addition to the Brownies is bound to meet with equal favor. The size of the picture it takes, $2\frac{1}{2} \times 4\frac{1}{4}$ inches, makes it not only unusually valuable for effective horizontal compositions, but equally suitable for full and three-quarter length portraits when used vertically. Coat pocket size, and adapted for snap shots, bulb or time exposures, and covered with fine quality imitation leather, with full nickeled fittings, the No. 2A is a most efficient and attractive instrument.



IN DETAIL

For rectangular pictures, $2\frac{1}{2} \times 4\frac{1}{4}$ inches. Capacity, 12 exposures without reloading. Size of camera, $8\frac{1}{2} \times 2 \times 3\frac{3}{8}$ inches. Weight, 23 ounces. Lens, meniscus achromatic, 5-inch focus. Shutter, Pocket Automatic. Two tripod sockets. Automatic focusing lock. Reversible finder.

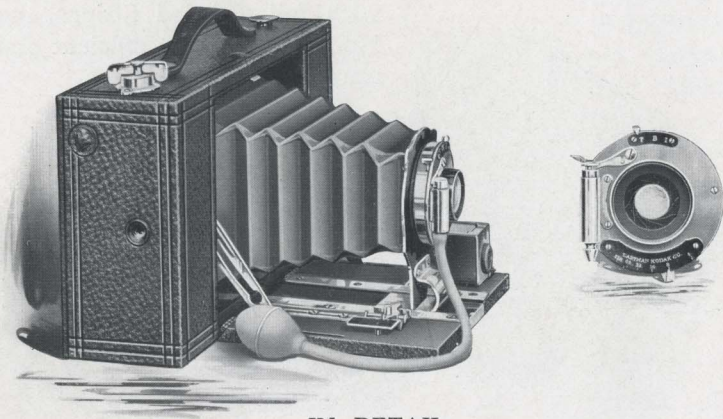
THE PRICE

No. 2A Folding Pocket Brownie, meniscus achromatic lens, Pocket Automatic shutter	\$7.00
No. 2A Folding Pocket Brownie Carrying Case90
N. C. Film Cartridge, 12 exposures, $2\frac{1}{2} \times 4\frac{1}{4}$ inches50
Ditto, 6 exposures25
Kodak Portrait Attachment50

N o . 3 F O L D I N G B R O W N I E

AN inexpensive, yet highly efficient camera for making the popular $3\frac{1}{4} \times 4\frac{1}{4}$ pictures the all-by-daylight way. Simple in every detail it is equally dependable for snap-shot work, time exposures, or home portraiture with addition of the Kodak Portrait Attachment.

Has two tripod sockets, reversible finder and automatic focusing lock. It is handsomely finished, offers the choice of single or double lens, and takes 12 exposure cartridges.



IN DETAIL

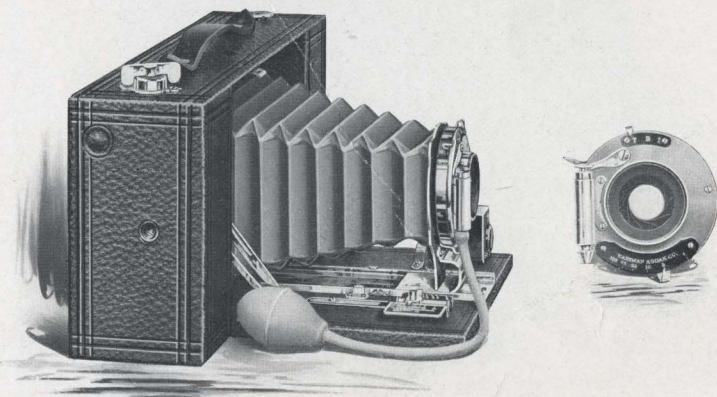
For rectangular pictures, $3\frac{1}{4} \times 4\frac{1}{4}$ inches. Capacity, 12 exposures without reloading. Size of camera, $8\frac{3}{8} \times 4\frac{5}{8} \times 2\frac{5}{8}$ inches. Weight, 25 ounces. Lens, meniscus achromatic, 5-inch focus. Shutter, F. P. K. automatic with bulb. (See page 7.) Automatic focusing lock. Two tripod sockets. Reversible finder.

THE PRICE

No. 3 Folding Brownie Camera, meniscus achromatic lens, F. P. K.	
Automatic shutter	\$9.00
Ditto, with R. R. lens and F. P. K. Automatic shutter	11.00
No. 3 Folding Brownie Carrying Case	1.00
N. C. Film Cartridge, 12 exposures, $3\frac{1}{4} \times 4\frac{1}{4}$70
Ditto, 6 exposures35
Ditto, "double-two" cartridge, 4 exposures25
Kodak Portrait Attachment50

No. 3A FOLDING BROWNIE

THIS instrument is the largest of the Brownies, and takes the popular $3\frac{1}{4} \times 5\frac{1}{2}$ picture. This size is just right for post-card use, is unusually effective for landscape compositions, and used vertically its proportions are ideal for full and three-quarter length portraits. Exceedingly simple, yet thoroughly practical and inexpensive, this camera has developed an enviable reputation since its introduction a year ago. Handsome finish, careful construction.



IN DETAIL

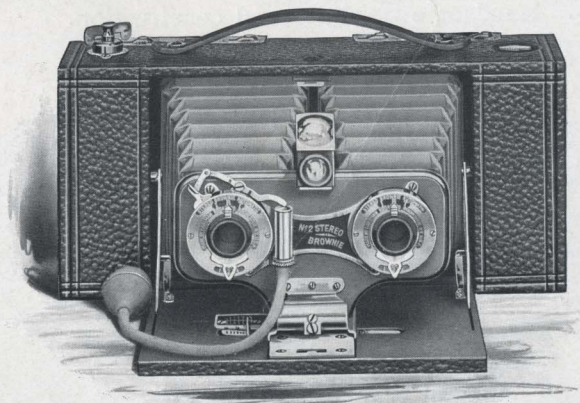
For rectangular pictures, $3\frac{1}{4} \times 5\frac{1}{2}$ inches. Capacity, 10 exposures without reloading. Size of camera, $2\frac{5}{8} \times 4\frac{5}{8} \times 9\frac{7}{8}$ inches. Weight, 34 ounces. Lens, meniscus achromatic, $6\frac{1}{2}$ -inch focus. Shutter, F. P. K. Automatic, with bulb release. (See page 7.) Automatic focusing lock. Two tripod sockets. Reversible finder.

THE PRICE

No. 3A Folding Brownie Camera, meniscus achromatic lens, F. P. K. Automatic shutter	\$10.00
Ditto, with R. R. lens and F. P. K. Automatic shutter	12.00
No. 3A Folding Brownie Carrying Case	1.00
N. C. Film Cartridge, 10 exposures70
Ditto, 6 exposures40
Ditto, "double-two" cartridge, 4 exposures30
Kodak Portrait Attachment50

N o . 2 S T E R E O B R O W N I E

THE making of stereoscopic photographs will prove doubly fascinating with this instrument, as all complications have been avoided, and even the cutting apart and transposing of the negatives has been done away with by means of the self-transposing printing frame. The lenses are carefully selected and the twin shutters are equally effective.



IN DETAIL

For stereo pictures, each $3\frac{1}{4} \times 2\frac{1}{2}$ inches. Capacity, 10 stereo exposures without reloading. Size of camera, $9\frac{3}{4} \times 4\frac{1}{2} \times 2\frac{1}{2}$ inches. Weight, 29 ounces. Lenses, meniscus achromatic, $4\frac{1}{2}$ -inch focus. Shutters, Pocket Automatic, with four stop openings. (See page 6.) Automatic focusing lock. Tripod socket. Brilliant finder, with hood.

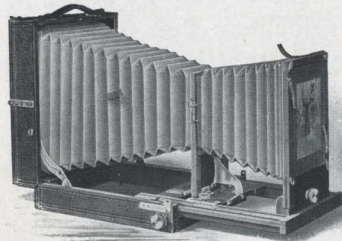
THE PRICE

No. 2 Stereo Brownie Camera, meniscus achromatic lenses, Pocket Automatic shutter	\$12.00
No. 2 Stereo Brownie Carrying Case	1.00
N. C. Film Cartridge, 10 stereo exposures70
Ditto, 6 exposures40
Ditto, "double-two" cartridge, 4 exposures30
Self-transposing Printing Frame, for $3\frac{1}{4} \times 2\frac{1}{2}$ stereo prints	1.50
Brownie Stereoscope75

ENLARGING CAMERAS

No. 1 KODAK ENLARGING CAMERA

FOR making $6\frac{1}{2} \times 8\frac{1}{2}$ enlargements from 4×5 and $3\frac{1}{4} \times 4\frac{1}{4}$ negatives. Smaller negatives enlarge in proportion. May be used as a portrait camera by removing negative carrier and substituting portrait lens.

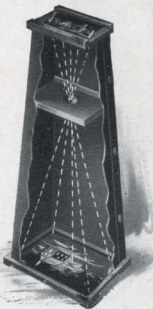


THE PRICE

No. 1 Kodak Enlarging Camera, $6\frac{1}{2} \times 8\frac{1}{2}$	\$15.00
Inside Kits, $6\frac{1}{2} \times 8\frac{1}{2}$, with 5×7 or 4×5 opening30
Glass Negative Holders, $3\frac{1}{4} \times 4\frac{1}{4}$ or $3\frac{1}{2} \times 3\frac{1}{2}$50
Special Portrait Lens, $8\frac{1}{2}$ -inch focus, speed, <i>f.</i> 8, for best work	7.50
Extra Lens Board, no extra charge for fitting to our special portrait lens75

BROWNIE ENLARGING CAMERAS

THE Brownie Enlarging Camera is practically an extended printing frame, as it consists of a light tight cone with attachments to hold a negative at the small end, and a sheet of bromide paper at the other; the lens is fixed inside the cone at just the right distance to insure perfect focus. Exposure is made by daylight, and dark room is necessary only for loading and development. The entire operation may be performed in daylight when Velox instead of bromide paper is used, but in such case the exposure is of course much longer.



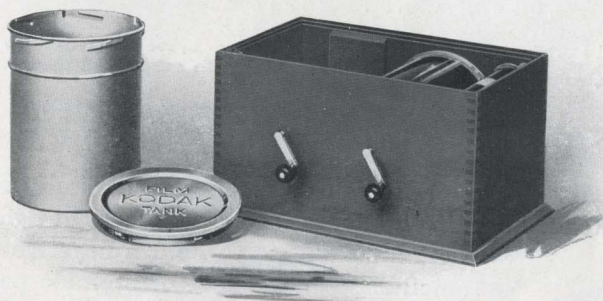
THE PRICE

No. 2 Brownie Enlarging Camera (including lens) for 5×7 enlargements from $2\frac{1}{4} \times 3\frac{3}{4}$ negatives	\$2.00
No. 3, ditto, for $6\frac{1}{2} \times 8\frac{1}{2}$ enlargements from $3\frac{1}{4} \times 4\frac{1}{4}$ negatives	3.00
No. 4, ditto, for 8×10 enlargements from 4×5 negatives (will also take $3\frac{1}{4} \times 5\frac{1}{2}$ negatives)	4.00

K O D A K F I L M T A N K

THE Kodak Film Tank has so thoroughly demonstrated the superiority of the time and temperature method of development that the old hand development of dark-room days is practically obsolete, except for the development of extra large glass plates.

The Kodak Tank is immeasurably more convenient—can be carried and used anywhere; but that is not its greatest advantage. It eliminates the dark room entirely, developing film in broad daylight; but even this is not its greatest advantage. For with both these extraordinary features it produces *better results*; and this is its greatest advantage—



the assurance that every roll of film put into the tank, where the simple directions are implicitly followed, will come out developed as well or better than that roll of film could be developed in the dark room by the most experienced photographer.

The Kodak Film Tank consists of a winding box, a light-proof apron, and a heavily nickered brass solution cup with cover. All articles can be packed in the box, making the entire outfit self-contained.

The film to be developed is placed upon a reel in the winding box, the cover is placed on box and the film is

K O D A K F I L M T A N K — C O N T I N U E D

wound around a central axis in combination with the apron, in such fashion that, when completely wound, the apron protects the film effectually from light, and may be removed from the winding box safely at any time. It is then lowered into the cup of developer, the cover attached and the film left to develop for twenty minutes. After development the film is removed for fixing. Every step may be performed in daylight and the entire operation is so simple as to be readily understood by the absolute novice. The exact time necessary for development, in combination with the chemical formula, has been scientifically worked out, so that all differences of exposure within reasonable bounds are taken care of. Snap shots and time exposures go into the tank at the same time and come out together, developed to their full values.

With the Kodak Film Tank, the amateur can develop a number of rolls at once by means of duplicating outfits.

THE PRICE

Brownie Kodak Film Tank, for use with No. 1, No. 2 and No. 2 Folding Pocket Brownie cartridges, complete	\$2.50
3 ½-inch Kodak Film Tank, for use with all Kodak and Brownie cartridges having a film width of 3 ½ inches or less, complete	5.00
5-inch Kodak Film Tank, for use with all Kodak and Brownie cartridges having a film width of 5 inches or less, complete	6.00
7-inch Kodak Film Tank, for use with No. 5 cartridge Kodak or shorter film cartridges, complete	7.50
Duplicating Outfit, consisting of one solution cup, one transferring reel, and one apron for Brownie Kodak Film Tank	1.25
Ditto, for 3 ½-inch Kodak Film Tank	2.50
Ditto, for 5-inch Kodak Film Tank	3.00
Ditto, for 7-inch Kodak Film Tank	3.75
Kodak Tank Developer Powders for Brownie Kodak Film Tank, per package of ½ dozen15
Ditto, for 3 ½-inch tank, per package, ½ dozen20
Ditto, for 5-inch tank, per package, ½ dozen25
Ditto, for 7-inch tank, per package, ½ dozen25
Kodak Acid Fixing Powder, per ¼-pound package10
Ditto, per ½-pound package15
Ditto, per 1-pound package25

No. 2 BROWNIE DEVELOPING BOX

THE No. 2 Brownie Developing Box is a modified form of the Kodak Film Tank, so simple as to be readily understood and successfully operated by any boy or girl.

The No. 2 Brownie Developing Box is a metal box fifteen inches in length, just long enough to accommodate a roll of No. 1 or No. 2 Brownie film in one loop.

To develop, the roll of film is inserted in the spool carrier, and by means of a cord and winding shaft the film is unrolled and carried around a roller bearing, thus exposing the film to the action of the developer.



Before unrolling the film the developer is poured in the box and the cover put in place. The film is unrolled by turning the crank.

Then the box is rocked on its standard for six minutes. The developer is then poured off and box filled with water to wash out developer, after which film is removed and fixed in daylight.

The Brownie Developing Box produces better negatives than can be produced by the old method of hand development in the dark room.

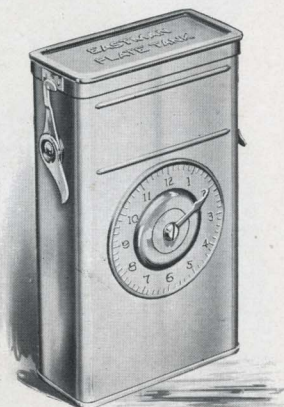
THE PRICE

No. 2 Brownie Developing Box	\$1.00
Brownie Developing Box Powders, per package of 615
Kodak Acid Fixing Powders, ½-pound package15
Ditto, ¼-pound package10

THE EASTMAN PLATE TANK

THE Eastman Plate Tank is the same in theory as the highly successful Kodak Film Tank, with, of course, such modifications as are rendered necessary by the physical difference between plates and film. That equally successful results are produced goes without saying. The Eastman Plate Tank consists of a metal solution cup, with tightly-fitting cover, a cage for holding twelve plates, or less, during development and fixing, and an ingenious loading block for loading the plates into the cage in the dark room.

The exposed plates are loaded into the cage and placed in the tank in the dark room, and the tank cover fastened in place. On the front of the tank is a dial for registering time. Development is allowed to continue for fifteen minutes, the tank being reversed several times. After development the developer is washed out of the plates, and the fixing bath poured into the tank, after which the plates are ready for washing in the usual manner.



THE PRICE

Eastman Plate Tank, 4 x 5, including solution cup, plate cage and loading block	\$3.50
Ditto, 5 x 7	4.50
Kit for 4 x 5 Tank, to take 3¼ x 4¼ plates50
Kit for 5 x 7 Tank, to take 4¼ x 6½ and 4¾ x 6½ plates75
Metal Insert for 5 x 7 Tank, to take 4 x 5 plates20
Eastman Plate Tank Developer Powders, for 4 x 5 tank, per package, ½ dozen20
Ditto, for 5 x 7 tank, per package, ½ dozen35
Kodak Acid Fixing Powder, per 1-pound package25

KODAK PORTRAIT ATTACHMENT

A FIFTY-CENT portrait attachment on a small Kodak or Brownie camera will enable one to make good-sized head and shoulder pictures—while the attachment which we now furnish for the 4A and the other Kodaks of larger



Made with Kodak Portrait Attachment and
No. 3 F. P. Kodak, Exact Size

size enables one to make bust portraits of any size desired, limited only by the dimensions of the film. The Kodak Portrait Attachments are simply extra lenses which slip on in front of the regular lenses. They in no way affect the operation of the Kodaks except that they make them cut sharp at short distances, and thus throw more distant ob-

jects out of focus. For use with all regularly equipped Kodaks listed in this catalogue except the 1A and 4A Speed Kodaks and the Panoram Kodaks. May also be used with the Nos. 2, 2A and 3 Brownies, Nos. 2, 2A Folding Pocket, and Nos. 3 and 3A Folding Brownie Cameras.

PORTRAIT ATTACHMENT—CONTINUED

Be sure and give exact designation of instrument when ordering, and when to be used with a pneumatic release shutter, also give exact designation of same.

THE PRICE

Kodak Portrait Attachment . . . \$0.50



KODAK COLOR SCREENS

THESSE screens are of great value in outdoor photography, and for all subjects embracing colors which act weakly on the sensitive film, as they hold back the strong blue and violet rays, affording the weaker colors time to record. The Kodak Color Screens are mounted in the same manner as the Kodak Portrait Attachment.

THE PRICE

No. 1. For Nos. 1 and 1A Folding Pocket Kodaks, Nos. 2 and 2A Folding Pocket Brownies	\$0.50
No. 2. For No. 2A Brownie50
No. 3. For Nos. 2 and 3 Folding Pocket Kodaks, No. 1A Special F. P. Kodak and No. 3 Folding Brownie75
No. 4. For Nos. 2 and 3 Bull's-Eye, 2 Flexo and No. 3 Brownie75
No. 5. For Nos. 3A, 4 and 4A Kodaks, No. 3A Folding Brownie	1.00

KODAK WIDE ANGLE LENSES

THESSE lenses have a speed of $f. 16$ and are interchangeable with the lenses furnished with the Nos. 3A and 4 Folding Pocket Kodaks, and the No. 4A Folding Kodak.

The wide angle Kodak lenses are rectilinear, carefully tested, and are absolutely high grade in every instance. With each one we furnish a leather case and a graduated focusing scale for attaching to the camera bed.

In ordering a Kodak wide angle lens, give size (No.) of Kodak and be sure to specify the shutter that the lens is to be used with.

THE PRICE

No. 4 (4 × 5) Wide Angle Kodak Lens, equivalent focus, 4½ inches (Also adapted to 3A Kodak.)	\$5.00
No. 5 (5 × 7) Wide Angle Kodak Lens, equivalent focus, 5½ inches (Also adapted to 4A Kodak.)	7.50

THE ANASTIGMAT ADVANTAGE

TO secure a sharp, satisfactory negative with the ordinary R. R. lens, its opening cannot be larger in diameter than one-eighth the focal length of the lens. Such opening admits sufficient light on clear, bright days to obtain well-timed exposures even as fast as $\frac{1}{100}$ of a second; but in very dull lights snap shots are impossible.

But with an anastigmat the construction and optical corrections are such that sharp satisfactory pictures may be made at an opening more than one-seventh the focal length of the lens—hence, admitting over 40 per cent. more light in a given time than the R. R. lens. In combination with a Focal Plane shutter exposures as short as $\frac{1}{1000}$ second may be made. And on dull days and even indoors, where with an R. R. lens little or no impression could be obtained, the anastigmat admits so much light that “slow snap shots” may be made.

THE ZEISS-KODAK ANASTIGMAT

THE steadily increasing demand for anastigmat lenses, and the opportunity for still further extending Kodak quality, led us to seek an anastigmat lens peculiarly fitted to Kodak requirements, and worthy of bearing the word “Kodak.”

One year ago we introduced the Zeiss-Kodak Lens, its name being a sufficient guarantee of quality. To-day thousands of amateurs testify that the Zeiss-Kodak Anastigmat has made good.

The Zeiss-Kodak encompasses all the quality and dependability which the word Kodak implies, and occupies the same position among anastigmats that the Kodaks themselves occupy among cameras.

Everybody will fully appreciate the fact that we would not give the name Kodak to any article unless we had absolutely assured ourselves from rigid tests and comparisons that it would bear the name worthily.

SPECIAL LENS AND SHUTTER EQUIPMENTS

The No. 1A Special, No. 3A Special, No. 3, No. 3A and No. 4 Folding Pocket, No. 4A Folding Kodaks
No. 1A and No. 4A Speed Kodaks may be equipped as follows :

Style of Kodak	Fitted with Zeiss-Kodak Anasigmat Lens, f. 6.3		Fitted with B. & L. Zeiss Tessar Lens, Series II-B, f. 6.3		Fitted with Cooke Lens Series III-A, f. 6.5	
	Compound Shutter	B. & L. Auto or Kodak Auto Shutters	Compound Shutter	B. & L. Auto or Kodak Auto Shutters	Compound Shutter	B. & L. Auto or Kodak Auto Shutters
No. 1A F. P. K. Special . . .	No. 2 Lens \$46.30 0 Shutter	No. 2 Lens \$40.50 1 Shutter	No. 4 Lens \$58.80 0 Shutter	No. 4 Lens \$53.00 1 Shutter	No. 3 Lens \$59.30 0 Shutter	No. 3 Lens \$53.50 1 Shutter
No. 3 F. P. Kodak . . .	No. 2 Lens \$48.80 0 Shutter	No. 2 Lens \$43.00 1 Shutter	No. 4 Lens \$61.30 0 Shutter	No. 4 Lens \$55.50 1 Shutter	No. 3 Lens \$61.80 0 Shutter	No. 3 Lens \$56.00 1 Shutter
No. 3A F. P. Kodak . . .	No. 4 Lens \$61.40 1 Shutter		No. 5 K Lens \$76.90 1 Shutter		No. 4 Lens \$70.40 1 Shutter	No. 4 Lens \$62.50 1 Shutter
No. 3A Special Kodak . . .	No. 4 Lens \$65.00 1 Shutter		No. 5 K Lens \$80.50 1 Shutter		No. 4 Lens \$74.00 1 Shutter	
No. 4 F. P. Kodak . . .	No. 4 Lens \$61.40 1 Shutter		No. 5 K Lens \$76.90 1 Shutter		No. 4 Lens \$70.40 1 Shutter	No. 4 Lens \$62.50 1 Shutter
No. 4A Folding Kodak . . .	No. 5 Lens \$83.45 2 Shutter	No. 5 Lens \$72.50 2 B. & L. Auto only	No. 6 Lens \$104.95 2 Shutter	No. 6 Lens \$94.00 2 B. & L. Auto only	No. 6 Lens \$96.45 2 Shutter	No. 6 Lens \$85.50 2 B. & L. Auto only
No. 4A Speed Kodak . . .	No. 5 Lens \$90.00 Focal Plane Sh.		No. 6 Lens \$111.50 Focal Plane Sh.		No. 6 Lens \$103.00 Focal Plane Sh.	
No. 1A Speed Kodak . . .	No. 2 Lens \$60.00 Focal Plane Sh.		No. 4 Lens \$72.50 Focal Plane Sh.		No. 25 Lens Series IV \$76.00 Focal Plane Sh.	
			No. 14 Lens \$78.50 Series I-c f.4.5 Focal Plane Sh.			

Wherever, in the above list, any of the lenses are not listed with a B. & L. Auto. or Kodak Automatic Shutter, it is because such lenses cannot be worked at their full advertised aperture with said shutters. Price of Speed Kodaks includes Focal Plane Shutter only.

ANASTIGMAT LENSES - CONTINUED

DEVELOPING AND PRINTING OUTFITS



EASTMAN'S A B C Developing and Printing Outfit includes every requisite for developing by the dark-room method, printing and finishing twenty-four $2\frac{1}{2} \times 4\frac{1}{4}$, $3\frac{1}{4} \times 4\frac{1}{4}$, or 4×5 pictures. The outfit contains:

One Kodak Candle Lamp	\$0.25
One 4×5 Printing Frame25
One 4×5 Glass for Frame05
One 4-ounce Graduate10
One Stirring Rod05
Four $4\frac{1}{2} \times 5\frac{1}{2}$ Developing Trays40
Five tubes Eastman's Special Developer25
One-half pound Kodak Acid Fixing Powder15
One-half ounce Potassium Bromide10
Two dozen 4×5 Velox Paper50
Two ounces Nepera Solution, for developing Velox10
Instruction Book10
	\$2.25

Price, complete, neatly packed, \$1.50

EASTMAN'S BULL'S-EYE Developing and Printing Outfit, complete, for developing and printing 12 pictures $3\frac{1}{2} \times 3\frac{1}{2}$. Similar to above outfit. Price, complete, neatly packed \$1.25

BROWNIE Developing and Printing Outfit, complete, for developing and printing 24 pictures $2\frac{1}{4} \times 2\frac{1}{4}$. Price, complete90

Note—These outfits cannot be shipped by mail.

THE KODAK BOX No. 2



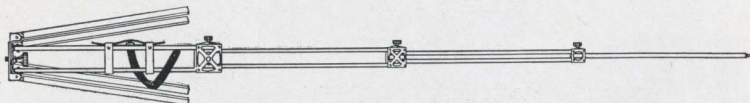
THE Kodak Box No. 2 contains everything for picture making by the daylight method. No dark room is necessary, and even the beginner can get good results by following the simple, explicit directions contained in the instruction book. This outfit is simple enough for boys and girls, while at the same time it will make pictures which will please the grown-up people.

THE PRICE

One No. 2 Brownie Camera, $2\frac{1}{4} \times 3\frac{1}{4}$	\$2.00
One No. 2 Brownie Developing Box	1.00
One Roll No. 2 Brownie Film, $2\frac{1}{4} \times 3\frac{1}{4}$20
Two Brownie Developing Box Powders05
One $\frac{1}{2}$ -pound package Kodak Acid Fixing Powder15
One 4-ounce Graduate10
One Stirring Rod05
One No. 2 Brownie Printing Frame15
One Package (1 dozen) $2\frac{1}{4} \times 3\frac{1}{4}$ Brownie Velox10
One Bottle Nepera Solution10
Three Paper Developing Trays30
One Dozen $2\frac{1}{4} \times 3\frac{1}{4}$ Mounts10
One Dozen $2\frac{1}{4} \times 3\frac{1}{4}$ Kodak Dry Mounting Tissue05
One Instruction Book10
	\$4.45
Price, complete, neatly packed, \$4.00	

K O D A K T R I P O D S

EASTMAN'S FOLDING HEAD

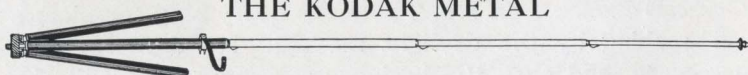


FOR 4x5 CAMERAS, OR SMALLER

IN the Eastman Folding Head Tripod the head itself folds, and the tripod then makes a compact, rectangular package. No loose parts, no complicated mechanism, and the tripod is very rigid. Length, folded, 17 inches; extended, 52½ inches. Weight, 25 ounces.

Eastman's Folding Head Tripod . . . \$3.50
 Black Sole Leather Carrying Case . . . 1.50

THE KODAK METAL

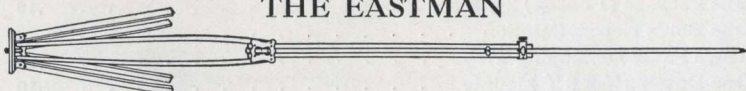


FOR KODAKS AND OTHER SMALL CAMERAS

The strongest and most satisfactory of all metal tripods, yet exceedingly light and compact. A most important feature is, that should any part become inoperative through accident or wear, any section may be readily taken apart and repaired. Legs made of brass tubing, nickered, except upper section which is black enameled. Nickered revolving head and screw. Weight, 24½ ounces. No. 1, four sections, 48½ inches extended, 15 inches closed; No. 2, five sections, 49½ inches extended, 13½ inches closed.

Kodak Metal Tripod, No. 1 . . . \$2.50
 Kodak Metal Tripod, No. 2 . . . 3.25

THE EASTMAN



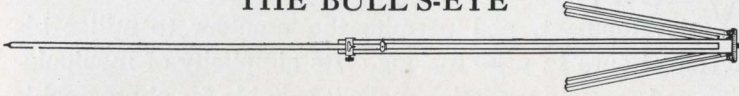
Three sections. No. 1, maple, for cameras up to 6½ x 8½. Weight, 2 pounds 2 ounces.

Price . . . \$2.00

Compliments of the Digitized Kodak Catalog Project: 1886 - 1941

K O D A K T R I P O D S — C O N T I N U E D

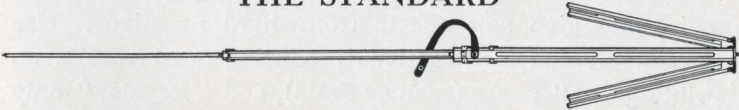
THE BULL'S-EYE



Two sections. Aluminum revolving head. Made of maple, with brass fittings. For 4x5 cameras, or smaller. Length extended, 42½ inches; folded, 24 inches. The only two-section tripod that will go into a suit case.

Price \$1.50

THE STANDARD



The feature of this tripod is the automatic locking of the sections when they are extended. Light, compact and rigid. Fixed, non-detachable head. Length, folded, 21 inches; extended, 53½ inches. Weight, 18 ounces. Cherry finish, brass trimmings.

Price \$1.75

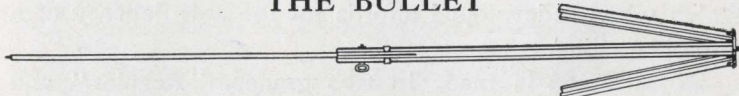
THE FLEXO



Two sections. Fixed, non-detachable head. Only clear, straight-grained wood is used in its construction.

Price \$0.90

THE BULLET



Two sections. Spruce, solid head. For small cameras.

Price \$0.70

Compliments of the Digitized Kodak Catalog Project: 1886 - 1941

V E L O X P A P E R

VELOX prints in any light, requires no dark room for development, and permits the amateur to utilize his evening hours in print making. Its simplicity of manipulation and extreme gradation make it suitable for photographic work of every sort.

Velox is divided broadly into two kinds of paper, called "Regular" and "Special" (slow and fast) each division containing a variety of surfaces.

"Regular" papers develop quickly and are best suited for negatives lacking contrast. "Special" papers develop slowly, and give soft effects from hard negatives. Use "Special" Velox for negatives producing good results on "Printing Out" paper (such as Solio), and "Regular" only with very flat negatives.

Velox surfaces: In the "Regular" class are Carbon (matte surface), Carbon double weight, Glossy, Glossy double weight, Velvet, and Velvet double weight. "Regular" Velvet Velox is semi-glossy and gives prints of exceptional beauty. This paper will give satisfactory results from very flat negatives.

In the "Special" class, the surfaces are Carbon (matte surface), Portrait (smooth matte), Portrait double weight, Rough, Rough double weight, Glossy, Glossy double weight, Velvet, and Velvet double weight.

"Special" Velvet Velox has a greater range than any of the other "Special" papers.

Royal Velox is coated on a soft, mellow-tinted stock, which when redeveloped affords all the soft delicacy of a rare old etching.

Royal Velox is made in two grades, "Regular" and "Special" and one surface, just rough enough to produce the desired effect.

VELOX PAPER - CONTINUED

THE PRICE

Size	Single Weight			Double Weight		
	Dozen	½ Gross	Gross	Dozen	½ Gross	Gross
2¼ x 3¼	\$0.15	\$0.60	\$1.00	\$0.20	\$0.75	\$1.25
2½ x 4¼	.15	.70	1.25	.20	.90	1.55
3½ x 3½	.15	.80	1.50	.20	1.00	1.90
3¼ x 4¼	.15	.80	1.50	.20	1.00	1.90
3¼ x 5½	.15	.80	1.50	.20	1.00	1.90
4 x 5	.25	1.10	2.00	.30	1.40	2.50
* 3¼ x 6 (Stereo)	.25	1.10	2.00			
† 3¾ x 6½	.25	1.10	2.00			
2¼ x 7	.15	.80	1.50	.20	1.00	1.90
4¼ x 6½	.30	1.65	2.80	.40	2.05	3.50
5 x 7	.35	2.00	3.50	.45	2.50	4.40
3½ x 12	.45	2.50	4.50	.55	3.15	5.65
Velox Post-cards, 3½ x 5½, furnished in Regular Velvet, Special Velvet, Special Rough, Special Portrait, Regular Glossy, Special Glossy and Regular Royal and Special Royal				.20	1.10	2.00
Ditto Double Post-cards, 3½ x 11 inches				.40	2.20	4.00
Brownie Post-cards, 2¼ x 4¼, Regular and Special Velvet				.15		

* Glossy only. † For use in Self-transposing Stero Printing Frame.

BROWNIE VELOX (ONE GRADE ONLY)

2¼ x 2¼, per package 2 dozen sheets	\$0.15
2¼ x 3¼, per package 1 dozen sheets	10

VELOX SUNDRIES

N. A. (Non-abrasion) Velox Liquid Developer, 4-ounce bottle (makes 20 ounces for Special, 12 ounces for Regular)	\$0.25
Ditto, 16-ounce bottle	.75
Nepera Solution, per 4-ounce bottle	.20
Ditto, 16-ounce bottle	.60
Nepera Capsules (for converting Nepera solution to a film or plate developer), per package 1 dozen	.15
Velox Redeveloper for Sepia Tones, 4-ounce bottle	.50
Ditto, 2 ounces (sufficient for 150 4 x 5 prints)	.30
Velox Liquid Hardener, per 4-ounce bottle	.15
Ditto, 8-ounce bottle	.25
Nepera M. Q. N. A. Tubes, box of 5 tubes	.75
Kodak N. A. M. Q. Developer, per package 3 tubes	.25
Kodak Acid Fixing Powder for fixing Velox prints, per pound	.25
Ditto, ½ pound	.15
Ditto, ¼ pound	.10
Velox Amateur Printer No. 1 (with gas pillar; adapted for electric socket)	2.00
Electric Attachment (extra). Comprising socket, plug and 6-foot cord	.75
Wellsbach Attachment (extra). Burner, mantel and large chimney	1.25
Extra mantles, each	.15
Tubing, 6-foot lengths (for connecting printer with gas supply)	.50

K O D A K P A P E R S

ANGELO PLATINUM PAPERS

Angelo Platinum Papers are exceedingly simple to handle and yield prints that are marvelous in gradation and delicacy. Made in both Black and White and Sepia.

Angelo Sepia, unlike most Sepia Platinum Papers, develops in a cold solution. Angelo Platinum Papers are furnished in two grades, "Smooth" and "Rough."

Size	Price per Doz.	ANGELO SOLUTION	
3½ x 3½	\$.30	Angelo Developer, for Angelo Black and White, ¼-pound package	\$.20
3¾ x 4¼30	Angelo Developer, for Angelo Black and White, ½-pound package35
4 x 550	Angelo Sepia Solution (2-oz. bottle)35
3¾ x 5½50	Angelo Sepia Salts (2-oz. package)10
4¼ x 6½70		
5 x 780		

EASTMAN'S ETCHING BLACK PLATINUM

A black and white platinum with a soft pleasing warmth found in no other platinum paper—decidedly away from the ordinary cold blue black. Perfectly simple cold development. Two surfaces, smooth and rough.

Size	Price per Doz.	Size	Price per Doz.
3½ x 3½	\$.30	5 x 7	\$.80
3¾ x 4¼30	Eastman's E. B. Developer, ½-pound package35
4 x 550	Eastman's E. B. Developer, ¼-pound package20
3¾ x 5½50		
4¼ x 6½70		

SOLIO PAPER

A rapid, glossy printing-out paper.

Size	Per Package, 2 Doz.	Size	Per Package, 2 Doz.
2½ x 2½	\$.20	2¼ x 7 (No. 1 Panoram Kodak)	\$.25
2¾ x 3¼20		Per Doz.
2½ x 4¼20	4¼ x 6½	\$.25
3½ x 3½20	5 x 730
3¾ x 4¼20	3½ x 12 (No. 4 Panoram Kodak)35
3¾ x 5½25	Post-cards15
4 x 525	Double Solio Post-cards30
3¾ x 6 (Stereo)25	Brownie Post-cards, 2¾ x 4¼10

Seconds: 4 x 5 (trimmed) seconds, \$1.00 per gross. Solio Combined Toning and Fixing Solution, per 8-ounce bottle, 50 cents. Ditto, 4-ounce bottle, 30 cents; post-paid, 50 cents.

EASTMAN'S SEPIA PAPER

As simple to handle and much quicker than Blue Print Paper. Especially desirable with negatives giving sketchy effects. Packed in sealed tubes.

Size	Price per 2 Doz.	Size	Price per 2 Doz.
2½ x 2½	\$.15	4 x 5	\$.20
2¾ x 3¼15	3¾ x 6 (Stereo)20
2½ x 4¼15	2¼ x 720
3½ x 3½15		1 Doz.
3¾ x 4¼15	4¼ x 6½	\$.15
3¾ x 5½20	5 x 720
Post-cards25	3½ x 1220

KODAK PAPERS—CARD MOUNTS

EASTMAN'S "FERRO PRUSSIAN" PAPER

A "blue print" that retains delicacy and detail. In sealed tubes.

Size	2 Doz. Single Wt.	1 Doz. Double Wt.	Size	2 Doz. Single Wt.	1 Doz. Double Wt.
2½ x 2½	\$0.16	\$0.15	3¼ x 5½	\$0.20	\$0.20
2½ x 3¼	.16	.15	3¼ x 6 (Stereo)	.20	.20
2½ x 4¼	.16	.15	2¼ x 7	.20	.20
3½ x 3½	.16	.15	4¼ x 6½	.30	.25
3¼ x 4¼	.16	.15	5 x 7	.35	.30
4 x 5	.20	.20	3½ x 12	.40	.35

Post-cards, 1 dozen, 15 cents. Brownie Post-cards, 2¼ x 4¼, 1 dozen, 10 cents.

EASTMAN'S PERMANENT BROMIDE PAPERS

For enlargements. Grades: Velvet, Royal, Standard, Platino, Enamelled and Matte-Enamel.

Size	Per Doz.	Size	Per Doz.	Size	Per Doz.
5 x 7	\$0.35	8 x 10	\$0.80	14 x 17	\$2.40
5 x 8	.40	10 x 12	1.20	16 x 20	3.20
6½ x 8½	.60	11 x 14	1.60	18 x 22	4.00

Other sizes in proportion.

ARISTO GOLD POST-CARDS

Rich sepia and purple tones. Print, wash and fix.

Aristo Gold Post-cards, per dozen \$0.30

THE ATLANTIC CARD MOUNTS

Gray and Black. Embossed center, wide margins.

No.	For Prints		Size of Mount		Per 100	Per 50	No.	For Prints		Size of Mount		Per 100	Per 50
	For Prints	Size of Mount	Per 100	Per 50				For Prints	Size of Mount	Per 100	Per 50		
1	2¼ x 3¼	4¼ x 5¼	\$0.70	\$0.35	3A	3¼ x 5½	5¾ x 8	\$1.00	\$0.50				
1A	2½ x 4¼	4½ x 6¼	.80	.40	4	4 x 5	6 x 7	1.00	.50				
2	3½ x 3½	5¾ x 5¾	.80	.40	4A	4¼ x 6½	6½ x 8¾	1.25	.65				
3	3¼ x 4¼	5¾ x 6¾	.85	.45	5	5 x 7	7 x 9	1.25	.65				

STEREO MOUNTS

Size of mount, 3½ x 7; color, Queen's Gray; per 100, \$0.45; per 50 \$0.25

SOUVENIR POST-CARD HANGERS

Consisting of six "slip in" embossed mounts, attached by ribbons. Either vertical or horizontal Post-Card opening.

GH-1 Horizontal London Brown . . . \$0.25	G-1 Vertical London Brown . . . \$0.25
GH-2 Horizontal Grey25	G-2 Vertical Grey25

DEN HANGERS

For suspending prints, passepartouts or enlargements.

Per Package of 12 10 cents

Compliments of the Digitized Kodak Catalog Project: 1886 - 1941

K O D A K M O U N T S - C O N T I N U E D

BEVPLANE—CARBON BLACK AND SCOTCH GRAY

For Prints	Size of Mount	Per 100	Per 50	For Prints	Size of Mount	Per 100	Per 50
1½ x 2½	3¼ x 4¼	\$0.60	\$0.30	4 x 5	5½ x 6½	\$0.90	\$0.45
2¼ x 3¼	4 x 5	.60	.30	4¼ x 6½	5¼ x 8	1.55	.80
2½ x 4¼	4¼ x 6	.80	.40	5 x 7	7 x 9	1.70	.85
3¼ x 3½	5 x 5	.80	.40	2¼ x 7	4 x 8¾	.90	.45
3¼ x 4¼	5	.85	.45	3½ x 12	5¾ x 13¾	1.80	.90
3¼ x 5½	4¾ x 7	.90	.45				

RIVIERA—ASH GRAY AND WHITE

For Prints	Size of Mount	Per 100	Per 50	For Prints	Size of Mount	Per 100	Per 50
1½ x 2	3 x 3½	\$0.30	\$0.15	3¼ x 4¼	4½ x 5½	\$0.65	\$0.35
1½ x 2½	3 x 3¾	.40	.20	4 x 5	5½ x 6½	.85	.45
2¼ x 2¼	3½ x 3¾	.40	.20	3¼ x 5½	5 x 7¼	.95	.50
2¼ x 3¼	3½ x 4¾	.50	.25	4¼ x 6½	5¼ x 8	1.40	.70
2¼ x 4¼	4½ x 5¾	.65	.35	5 x 7	7 x 9	1.50	.75
3½ x 3½	5 x 5	.65	.35				

THE MARINE—LONDON BROWN AND ASH GRAY

Good heavy stock, embossed corded silk pattern, beveled edges.

No.	For Prints	Size of Mount	Per 100	Per 50	No.	For Prints	Size of Mount	Per 100	Per 50
1	2¼ x 3¼	4¾ x 5¾	\$0.95	\$0.50	3A	3¼ x 5½	5¾ x 8	\$1.95	\$0.70
1A	2½ x 4¼	4½ x 6¼	1.00	.50	4	4 x 5	6 x 7	1.25	.65
2	3½ x 3½	5½ x 5½	1.00	.50	4A	4¼ x 6½	6½ x 8¼	1.55	.80
3	3¼ x 4¼	5½ x 6½	1.00	.50	5	5 x 7	8 x 10	2.10	1.05

THE CASCADE—GOLDEN BROWN AND WHITE

Heavy stock, beveled edges, linen finish, with heavy dark border.

No.	For Prints	Size of Mount	Per 100	Per 50	No.	For Prints	Size of Mount	Per 100	Per 50
1	2¼ x 3¼	4 x 5	\$1.10	\$0.55	3A	3¼ x 5½	5¼ x 7½	\$1.55	\$0.80
1A	2½ x 4¼	4¼ x 6	1.25	.65	4	4 x 5	6 x 7	1.65	.85
2	3½ x 3½	5 x 5	1.25	.65	4A	4¼ x 6½	6¼ x 8½	2.20	1.10
3	3¼ x 4¼	5 x 6	1.35	.70	5	5 x 7	7 x 9	2.75	1.40

THE MARINE—LONDON BROWN OR ENGLISH GRAY

A "slip in" mount; kid leather finish.

No.	Opening	Per 100	Per 50	No.	Opening	Per 100	Per 50
1-S	2 x 3 Square	\$1.55	\$0.80	3-S	3 x 4 Square	\$1.80	\$0.90
1-O	2 x 3 Oval	1.55	.80	3-O	3 x 4 Oval	1.80	.90
1A-S	2¼ x 4 Square	1.70	.85	3A-S	3 x 5¼ Square	1.80	.90
1A-O	2¼ x 4 Oval	1.70	.85	3A-O	3 x 5¼ Oval	1.80	.90
2-S	3 x 3 Square	1.70	.85	4-S	3¾ x 4¾ Square	2.00	1.00
2-O	3 x 3 Oval	1.70	.85	4 O	3¾ x 4¾ Oval	2.00	1.00

TWO-COLOR ENLARGEMENT BLANKS

London Brown on one side, Ash Gray on the reverse.

No.	Size	Per 100	No.	Size	Per 100	No.	Size	Per 100
A	7 x 9	\$1 05	C	10 x 12	\$2 10	E	16 x 20	\$3 70
B	8 x 10	1.45	D	11 x 14	2.25	F	22 x 28	8.10

Compliments of the Digitized Kodak Catalog Project: 1886 - 1941

K O D A K A L B U M S

THE FORUM ALBUM

Flexible, black leather embossed cloth cover.

A, 25 black leaves, or N, 25 Sepia leaves, 5½ x 7	\$0.35
B, 25 black leaves, or O, 25 Sepia leaves, 7 x 1050
C, 25 black leaves, or P, 25 Sepia leaves, 10 x 750
D, 25 black leaves, or R, 25 Sepia leaves, 11 x 14	1.25
E, 50 black leaves, 5½ x 750
F, 50 black leaves, 7 x 1075
G, 50 black leaves, 10 x 775
H, 50 black leaves, 11 x 14	1.50



THE ARENA ALBUM

Flexible, finest quality black grain leather cover.

J, 50 black leaves, or S, 50 Sepia leaves, 5½ x 7	\$1.00
K, 50 black leaves, or T, 50 Sepia leaves, 7 x 10	1.50
L, 50 black leaves, or U, 50 Sepia leaves, 10 x 7	1.50
M, 50 black leaves, or W, 50 Sepia leaves, 11 x 14	3.00

SOUVENIR POST-CARD ALBUM

Flexible, black leather embossed cloth cover.

X	25 black leaves, 10 x 7, for 100 cards	\$0.50
X. R.,	25 black leaves, 11 x 14, for 200 cards	1.50
X. T.,	{ Flexible, Black Grain Leather Cover } { 25 leaves, 11 x 14, for 200 cards }	2.50

LIBRARY ALBUM

Rich brown suede padded cover with fifty brown leaves and gold edges, or gray suede padded cover and 50 gray leaves with silver edges.

11	Gray, 5½ x 7¾	\$2.25	15	Gray, 11 x 14	\$5.00
12	Brown, 5½ x 7¾	2.25	16	Brown, 11 x 14	5.00
13	Gray, 7 x 10	3.00	17	Gray, 11 x 14, for 200 Post-cards	5.00
14	Brown, 7 x 10	3.00	18	Brown, 11 x 14, for 200 Post-cards	5.00

ARTISTS' ALBUM

Loose leaf system, silk lacing.

No. 1, black leaves; No. 2, white leaves; No. 3, Sepia leaves, 5½ x 7	\$0.20	No. 4, black leaves; No. 5, white leaves; No. 6, Sepia leaves, 7 x 10	.30
Extra leaves, package of 5	.07	Extra leaves, package of 5	.10

SNAP-SHOT ALBUM

Substantial card covering, soft black leaves.

19	20 pages, 5½ x 7	\$0.12	18	20 pages, 7 x 10	\$0.15
----	------------------	-----------	--------	----	------------------	-----------	--------

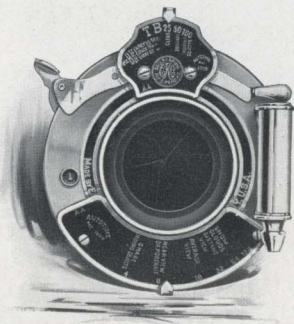
EASTMAN'S FILM NEGATIVE ALBUMS

For 100 negatives, 3½ x 3½, or smaller	\$0.75
For 100 negatives, 3¼ x 4¼, or 4 x 5	1.00
For 100 negatives, 3¼ x 5½, or smaller	1.00
For 100 negatives, 5 x 7, or smaller	1.50



THE AUTOTIME SCALE

EVERY step in the "all-by-daylight" way is simple, and this simplicity is backed by the remarkable latitude and speed of Eastman N. C. Film, and it is just this continued search for still simpler and better methods and devices that has made Kodak stand for "picture making with the bother left out."



Thorough testing has demonstrated that the Autotime Scale is worthy of a place in the Kodak system, as it still further reduces the liability of error, and is an automatic guide to the approximately correct exposure for any and all outdoor subjects.

Its simplicity will appeal at once to the amateur who is uncertain as to just what stop and shutter speed to use, as all that is necessary is to set the speed indicator at the kind of light and the diaphragm or stop indicator at the class of view about to be photographed, and make the exposure—no calculations or time wasting manipulations. The scales may be readily attached to the shutter by any amateur in a few moments.

The Autotime Scales are supplied for the following shutters: Always order by number.

Style A. For use with Kodak Ball-Bearing Shutter, $2\frac{1}{2} \times 4\frac{1}{4}$ and $3\frac{3}{4} \times 4\frac{1}{4}$.

Style AA. For use with Kodak Ball-Bearing Shutter, $3\frac{3}{4} \times 5\frac{1}{2}$ and 4×5 .

Style B. For use with F. P. K. Automatic, $2\frac{1}{2} \times 4\frac{1}{4}$ and $3\frac{3}{4} \times 4\frac{1}{4}$, No. 1 S. V. (Blair or Premo) Automatic, or No. 1 B. & L. S. V. Automatic Shutters.

Style BB. For use with F. P. K. Automatic, $3\frac{3}{4} \times 5\frac{1}{2}$ and 4×5 , No. 2 S. V. (Blair or Premo) Automatic, or No. 2 B. & L. S. V. Automatic Shutters.

Style C. For use with Kodak Automatic Shutter, $3\frac{3}{4} \times 4\frac{1}{4}$.

Style CC. For use with Kodak Automatic Shutter, $3\frac{3}{4} \times 5\frac{1}{2}$ and 4×5 .

Style D. For use with B. & L. Automatic and Century Automatic Shutters, $3\frac{3}{4} \times 4\frac{1}{4}$.

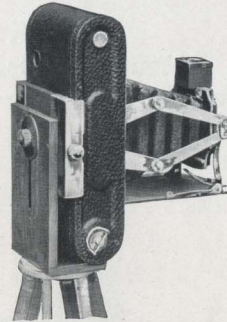
Style DD. For use with B. & L. Automatic and Century Automatic Shutters, $3\frac{3}{4} \times 5\frac{1}{2}$ and 4×5 .

Style DDD. For use with B. & L. Automatic Shutter, $4\frac{1}{4} \times 6\frac{1}{2}$.

Autotime Scale, any style, \$1.00.

**FOLDING POCKET KODAK
TRIPOD ADAPTER No. 1**

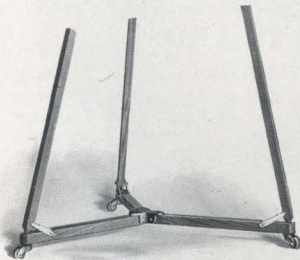
A simple and effective device for holding either the No. 1 or No. 1A Folding Pocket Kodak on a tripod in either horizontal or vertical position. Kodak may be reversed without removing from the adapter.



F. P. K. Tripod Adapter, No. 1 \$0.75

R. O. C. TRIPOD TRUCK

A practical and almost indispensable device for those obliged to employ the ordinary tripod indoors. The tripod legs are held firmly in position by quick action spring catches, and when in position the combination forms a splendid portable camera stand. The truck folds compactly when not in use, and is perfectly solid when extended.



R. O. C. Tripod Truck \$1.00

EASTMAN TRIPOD BRACE

An exceedingly simple device for holding the tripod legs in position when extended. The tripod cannot collapse when lifted to change position.

Eastman Tripod Brace \$1.00

DARK-ROOM LAMPS

The Kodak Candle Lamp. This lamp is well made, collapsible, of special tested ruby fabric, bound in metal frames.

No. 2 Kodak Dark-room Lamp. Oil burning, fitted with both orange and ruby glass.

Kodak Candle Lamp	\$0.25
Extra Candles for same, per dozen30
No. 2 Kodak Dark-room Lamp	1.00

KODAK SUNDRIES - CONTINUED

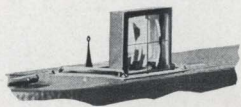
KODAK DRY MOUNTING TISSUE

Mounts prints even on thin mounts without curl, no apparatus being required—just the tissue and a flatiron.

THE PRICE

Size, $3\frac{1}{2} \times 3\frac{1}{2}$, 3 dozen . . .	\$0.10	Size, 4 x 5, 2 dozen . . .	\$0.10
Size, $3\frac{1}{4} \times 4\frac{1}{4}$, 3 dozen10	Size, $4\frac{1}{4} \times 6\frac{1}{2}$, 1 dozen10
Size, $3\frac{1}{4} \times 5\frac{1}{2}$, 2 dozen10	Size, 5 x 7, 1 dozen10

DIRECT VIEW FINDER

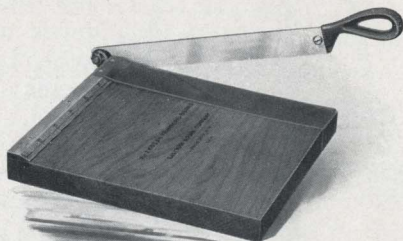


This is a special equipment for the 4A Folding Kodak, and is for quick, accurate work when Kodak is held on a level with the eyes.

Direct View Finder \$3.00

KODAK TRIMMING BOARDS

Made of hard wood, with natural finish, have fine quality steel blades and are fitted with rule.



No. 1, capacity, 5 x 5 inches	\$.40
No. 2, capacity, 7 x 7 inches60
Transparent Trimming Gauge (extra)20

FLASH SHEETS AND FLASH CARTRIDGES

Owing to the fact that they burn slowly (in about one second) Eastman Flash Sheets give a broad, soft light. They do not startle the subject, nor give a staring effect to the eyes. Just pin to a card and light with a match.

No. 1 Flash Sheets, per package of half dozen sheets, 3 x 4	\$0.25
No. 2 Flash Sheets, per package of half dozen sheets, 4 x 540
No. 3 Flash Sheets, per package of half dozen sheets, 5 x 760
Eastman's Spreader Flash Cartridges, for use with pistol or fuse (price includes both fuse and cap), per package of half dozen25
Eastman's Spreader Flash Cartridge pistol50
Eastman's No. 1 Flash Cartridges, per package of half dozen60
Ditto, No. 240
Ditto, No. 325

KODAK SUNDRIES—CONTINUED

GLASS DRY PLATES

Standard Extra Rapid		Standard Orthonon	
Size	Per Doz.	Size	Per Doz.
3½ x 3½	\$0.40	3¼ x 4¼	\$0.55
3¼ x 4¼45	3¼ x 5½80
3¼ x 5½65	4 x 580
4 x 565	4¼ x 6½	1.20
4¼ x 6½90	5 x 7	1.40
5 x 7	1.10	Cover Glass for Lantern	
Lantern Slide Plates55	Slides25
Lantern Slide Binders, per package, 50 strips		\$0.10	

PRINTING FRAMES

Eastman's 3½ x 3½, opens two-thirds	\$0.25
Eastman's 3¼ x 4¼, opens two-thirds25
Eastman's 3¼ x 5½, opens two-thirds25
Eastman's 4 x 5, opens two-thirds25
Eastman's 5 x 7, opens two-thirds35
Eastman's 3½ x 12, for No. 4 Panoram-Kodak, opens in 3 sections75
Eastman's 2¼ x 7, for No. 1 Panoram-Kodak, opens in 2 sections30
Brownie Printing Frame, No. 1, for 2¼ x 2¼ Developing paper only10
Brownie Printing Frame, No. 2, for 2¼ x 3¼ Developing paper only15
Stereo Self-transposing Printing Frame, for making 3¼ x 2½ stereo prints without cutting negatives apart	1.50

DEVELOPING TRAYS

"Bull's-eye" Composition, 3½ x 4½	\$0.12
"Bull's-eye" Composition, 4 x 515
"Bull's-eye" Composition, 5 x 725
"Bull's-eye" Composition, 3 x 8½22
"Bull's-eye" Composition, 4½ x 1450
Paper, 4 x 510
Paper, 5 x 715
R. O. C. Hard Rubber, 4¼ x 5¼55
R. O. C. Hard Rubber, 5¼ x 7¼65

VELOX TRANSPARENT WATER COLOR STAMPS

These colors are the simplest of all to use, working especially well with Velox. Prepared in twelve shades, in the form of paper leaves, divided by perforations into small sections of proper size for use and the leaves bound into neat booklets, each color being preceded by a descriptive page.

Velox Transparent Water Color Stamps, complete booklet, 12 colors	\$0.25
Separate color leaves, two sheets05
Set of 3 special brushes, per set50

KODAK SUNDRIES — CONTINUED

CHEMICALS



Perfect results cannot be uniformly obtained without the use of pure chemicals. Our chemicals are all carefully tested. We cannot afford to sell impure chemicals; you can afford to buy only the purest chemicals.

Eastman's Special Developer Powders, per package 5 powders, in sealed glass tubes	\$0.25
Eastman's Hydrochinon Developer Powders, per dozen50
Ditto, per half dozen25
Ditto, per package 5 powders, in sealed glass tubes25
Eastman's Pyro Developer Powders, per dozen50
Ditto, per half dozen25
Ditto, per package 5 powders, in sealed glass tubes25
Royal Redeveloper, per package of 6 tubes75
Hypo Sulphite of Soda, pulverized, per pound08
Kodak Acid Fixing Powder, per pound package25
Ditto, per ½-pound package15
Ditto, ¼-pound package10
Eastman's Reducer (for reducing negatives and removing stains), per box of 5 tubes25
Eastman Opaque No. 1, per tube25
Eastman 10 per cent. Bromide Powders, per package 4 powders05
Potassium Bromide, per ounce10
Citric Acid, 4-ounce bottle30
Solio Toning Solution, 8-ounce bottle50
Solio Toning Solution, 4-ounce bottle (20 cents extra, post-paid)30
Solio Hardener, per 8-ounce bottle35
Eastman's Tested Carbonate of Soda (desiccated), per 1-pound bottle20
Eastman's Tested Sulphite of Soda (desiccated), per 1-pound bottle30

For Tank Developer Chemicals, see page 41.

SUNDRIES

Eastman's Photo Paste, 3-ounce tube	\$0.15	Moulded Tumbler Grad., 4 oz.	\$0.15
Eastman's Photo Paste, 5-ounce tube25	Ditto, 8 ounces20
Eastman Thermometer50	Ditto, 16 ounces30
Eastman's Film Clips, 3½-inch, per pair (nickeled)25	Ferrotypes Plate, 10 × 14, light15
Ditto, 5-inch30	Ditto, 10 × 14, heavy20
Ditto, 7-inch35	Ditto, 18 × 24, heavy75
Kodak Film Clips, 5-inch (wood), per pair15	Kodak Print Roller, 2 × 6-inch rubber roller, nick-eled frame50
Finger Tips, set of 315	Flexo Print Roller, 4-inch rubber roller, black enam-eled frame15
Focusing Cloth, per yard50	Eastman's Special Squeegee, 6-inch30
Eastman Spotting Colors, per set25	Eastman's Special Squeegee, 8-inch35
Moulded Tumbler Grad., 2 oz.10		

DEVELOPING AND PRINTING

Finishing Kodak Cartridge Films on Velox Paper	Pocket Kodak 1½ x 2	No. 0 Folding P. K. 1½ x 2½	No. 1 Folding P. K. 2¼ x 3¼	No. 1A F. P. K. Special No. 1A Folding P. K. 1A Speed Kodak, No. 2A 2A Brownie, 2A Folding, 2½ x 4¼	No. 2 Bull's-eye etc., 3½ x 9½	No. 3 F. P. K. No. 3 Bull's-eye, No. 3 Brownies, etc. 3¼ x 4¼	Nos. 3A, 3A F. P. K. Special and 3B 3¼ x 5½	No. 4 B. E., etc. 4 x 5, 10 ex.	Speed Kodak No. 4A, 4¼ x 6½ 5 Kodaks, etc., 5 x 7
Developing, Printing and Mounting 1-Film Cartridge	\$.90	\$.95	\$1.40	\$1.50	\$1.50	\$1.50	\$1.50	\$1.50	\$1.20
Developing and Printing, Unmounted	.84	.89	1.28	1.38	1.38	1.38	1.40	1.40	1.05
Developing only, each	.02	.03	.04	.06	.06	.06	.08	.08	.10
Printing and Mounting only, each	.06	.06	.08	.08	.08	.08	.10	.10	.12½
Printing, Unmounted only, each	.05½	.05½	.07	.07	.07	.07	.09	.09	.10
Developing, Printing and Mounting, each	.08	.08½	.12	.12½	.12½	.12½	.15	.15	.20
Developing and Printing, Unmounted, each	.07½	.08	.11	.11½	.11½	.11½	.14	.14	.17½

Above prices cover Cartridges of 12 exposures for Pocket Kodak, No. 0 Folding, No. 1 Folding, No. 1A Folding, No. 1A Special, No. 1A Speed, 3½ x 9½, No. 3 Folding, No. 4 Folding, and Nos. 2A, 2A F. P. and 3A Folding Brownies; 10 exposures for Nos. 3A, 3A Special and 3B, and 6 exposures for No. 4A Folding, Speed Kodak and 5 x 7. On orders for less, 25 cents extra will be charged.

Brownie Camera, Stereo and Panoram-Kodak sizes, on Velox	No. 1 Brownie 2¼ x 2¼	No. 2 and No. 2 F. P. Brownie 2¼ x 3¼	No. 1 Panoram 2¼ x 7	No. 4 Panoram 3½ x 12	No. 2 Stereo Brownie, 3¼ x 5
Developing, Printing and Mounting 1-Film Cartridge	\$.50	\$.70	\$1.40	\$1.40	\$1.50
Developing and Printing, Unmounted 1-Film Cartridge	.47	.64	1.28	1.28	1.40
Developing only, each	.03	.04	.08	.18	.08
Printing and Mounting only, each	.06	.08	.16	.20	.10
Printing, Unmounted only, each	.05½	.07	.14	.17	.09

Above price list is for one full roll as follows: 6 exposures No. 1 and No. 2 Brownie; 10 exposures No. 2 Stereo Brownie; 6 exposures No. 1 Panoram, or 4 exposures No. 4 Panoram. On orders for less than a full roll, as above, 25 cents extra will be charged.

Prints are furnished unmounted in all cases, unless otherwise specified in order.

Unmounted prints on "Double Weight" Velox will be billed at mounted rates.

All prints are mounted with Kodak Dry Mounting Tissue, and therefore do not curl.

ENLARGEMENTS

	Each	Per Doz.		Each
4¼ x 6½, on card	\$.35	\$3.00	10 x 12, on card	\$1.00
6½ x 8½, on card	.50	5.00	11 x 14, on card	1.25
8 x 10, on card	.75		14 x 17, on card	1.50
Lantern Slides	.50	5.00	Larger sizes in proportion	

No extra charge for Sepia Tones. Small extra charge for double or triple mounting. Where the kind of paper is not specified, we use our own judgment.

S P E C I M E N P R I N T S

A SPECIMEN photograph made with any Kodak (not larger than 4 x 5) will be sent to any address in the United States upon receipt of four cents in stamps; No. 4A Folding Kodak, 4A Speed Kodak, eight cents; Stereo, eight cents; No. 4 Panoram Kodak, twenty cents.

TOURISTS

Travelers can always obtain fresh supplies of films at any of the following addresses:

LONDON	Kodak, Limited, 57-61 Clerkenwell Road, E. C.
	60 Cheapside, E. C.; 115 Oxford Street, W.; 171-173 Regent Street, W.;
	40 Strand, W. C.; 59 Brompton Road, S. W.
LIVERPOOL	Kodak, Limited, 96 Bold Street
BIRMINGHAM	Kodak, Limited, 3 Victoria Square
NEWCASTLE	Kodak, Limited, 2 St. Nicholas Buildings
GLASGOW	Kodak, Limited, 72-74 Buchanan Street
DUBLIN	Kodak, Limited, 89 Grafton Street
PARIS	Kodak Société Anonyme Française, Avenue de l'Opéra 5; Place Vendôme 4
LYONS	Kodak Société Anonyme Française, 26-28 Rue de la République
NICE	Kodak Société Anonyme Française, 34 Avenue de la Gare
BERLIN	Kodak Gesellschaft, m. b. H., Kodak Galerie, Leipzigerstrasse 114 Unter den Linden 26
BRUSSELS	Kodak, Limited, 36 Rue de l'Ecuyer; 59 Montagne de la Cour
VIENNA	Kodak Gesellschaft, m. b. H. 29 Graben
ST. PETERSBURG	Kodak, Limited, Bolschaja Konjuschennaja 19
MOSCOW	Kodak, Limited, 15-16 Petrovka
MILAN	Kodak Societa Anonima, 10 Via Vittore Pisani; 34 Corso Vittorio Emanuele
NAPLES	Kodak Societa Anonima, 288 Via Roma
MELBOURNE	Baker & Rouse, Proprietary, Limited, 284 Collins Street
SIDNEY	Baker & Rouse, Proprietary, Limited, 375 George Street

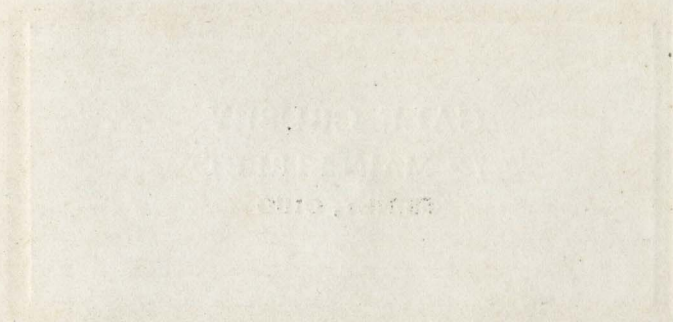
TERMS

THE prices in this catalogue are strictly net, except to regular dealers who carry our goods in stock. For the convenience of our customers we recommend that they make their purchases from a dealer in photographic goods, as by so doing they can save both time and express charges.

EASTMAN KODAK CO.,
ROCHESTER, N. Y.



6101





1910

GALE CRUSEY
724 MAIN STREET
SIDNEY, OHIO