



Kodak

The Digitized Kodak Catalog Project (1886 - 1941): A Very Brief History

Most camera collectors at some point in their collecting careers pass through a Kodak phase - some never come out of it. And if there ever was one name that came to be associated with both cameras and collecting, it was Kodak.

George Eastman received his first patent (for coating dry plates) and bought his first manufacturing facility in 1880, and in 1881 he started the Eastman Dry Plate Company. In 1886 he received a patent for the near-mythical Eastman Detective Camera, but it wasn't until 1888 that the first camera bearing the name "Kodak" was introduced.

One of the nice things about collecting Kodak is that the product line is pretty well known, and because the company produced annual catalogs for many years, collectors can be reasonably sure of what they're looking at, when it was made, the variations and so on - presuming that they have access to either the appropriate catalog, or a number of the many books which document Kodak, each to some greater or lesser extent.

But what would be really nice would be to have a complete set of Kodak catalogs in an easily accessible form and readily available. And since the advent of portable computing devices (PC, Macintosh, etc.) that's been possible - except for the difficulty of assembling a complete set of Kodak catalogs in one spot and then scanning them and making the results available.

The idea of digitizing a complete set of Kodak catalogs has kicked around the collecting community for many years. It's been proposed on a number of online forums, during meetings of various photohistory groups, and for years there have been many incomplete "Kodak CDs" on eBay but at best, they only contained a few catalogs - whatever the owner had available. But assembling a complete set of catalogs, then scanning and processing perhaps 3,000 to 4,000 pages, was a daunting task - if not completely overwhelming - and nothing ever came of it.

Until now.

In early 2010, the idea came up again, but this time we - "we" as in "the collecting community" - were lucky. A number of collectors were willing to loan their catalogs to this project and a couple of insane - wait, let's call them "dedicated" - dedicated enthusiasts - neither of whom collected Kodak, but both of whom enjoyed the challenge of such a project - were willing to put in the time and effort to scan and pull together the entire set of catalogs into a full-blown Kodak Catalog Digital Library.

Our initial objective was to include just the annual amateur catalogs, but it turns out that many cameras only appear in certain professional and specialty catalogs. We included as many of those as we could obtain so that almost every Kodak camera made in the US, Canada and Europe, would be documented - at least up to about 1941. After that, it becomes much more difficult as Kodak stopped producing annual catalogs as their product line became increasingly more diversified.

However, even with the additional "non-amateur" catalogs, we weren't completely successful in illustrating "every" camera Kodak ever made. There are an elusive few that might appear in specialty catalogs that we simply couldn't track down. If you can't find one of those odd cameras, that's no doubt why. We may do a revision at some point in the future if someone is willing to loan us a catalog that includes a camera that isn't already recorded.

In this project, a total of 67 catalogs were used from 1886 through 1941 including a number of professional and dealer catalogs, and in some years, two or even three different catalogs to cover all the bases. With the cooperation of a number of dedicated collectors, we were able to pull together all those catalogs and in June 2010, the project started in earnest.

By November 2010, we had scanned everything we needed and eventually all 67 catalogs were then reassembled as image folders and converted to the universally accepted PDF format and finally, converted into individually searchable PDFs which could then be searched globally as a collection.

For those of you interested in the statistics: about 200 hours of scanning time (we never want to hear that sound again), 67 catalogs and 3,908 page scans - which generated 7,917 original and processed images - and 11.4 GB of disk space. Additionally, another 100+ hours of technical development time was needed to convert the digital catalogues into a fully searchable "knowledgebase" that could be launched from most any standard web browser.

The overwhelming number of catalogs was loaned to us by that most remarkable of Kodak collectors, Charlie Kamerman of Eagle Creek, Oregon. Without Charlie, it's very doubtful that this project could even have been attempted.

But as it turned out, even Charlie didn't have all the publications that were needed, but he was able to track down the five that he lacked and was able to secure either a copy or high resolution images that we could work with. And so, our thanks to the contributors of the catalogs and scans that we used:

Charlie Kamerman for the vast majority of catalogs used and all his help,
Steve Shoet for loaning a variety of test catalogs,
Ryerson University (Toronto) for the 1886 Eastman Catalog
George Layne for the 1890 New Kodaks Catalog,
Mike Kessler for the 1891 Dealer Display Catalog,
Ralph London for the 1893 UK Catalog,
Michael Pritchard for the 1897 UK Catalog.

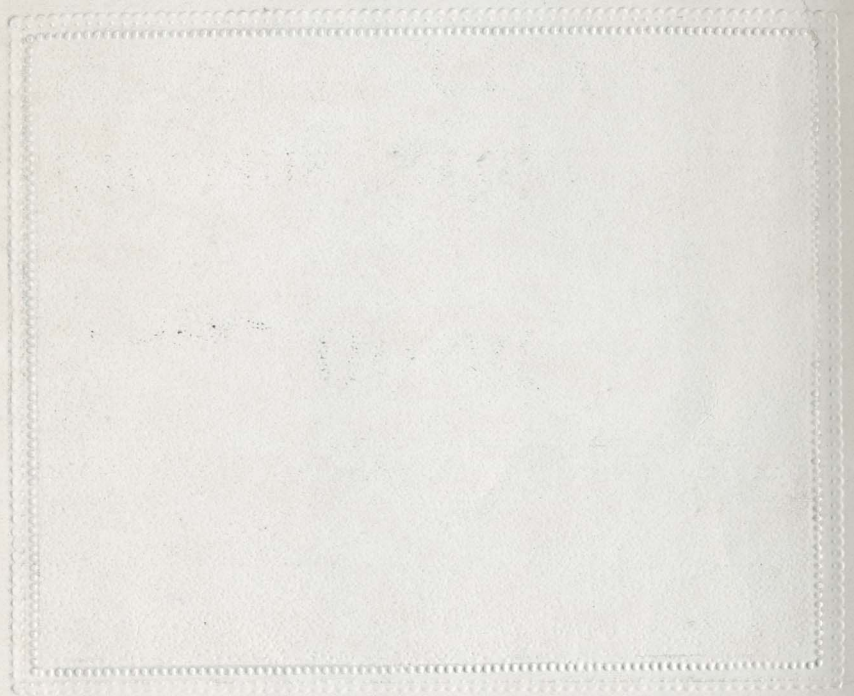
The digital side of the project - also known as "all of the work" - was done by Rob Niederman of Medina, Minnesota, and Milan Zahorcak of Tualatin, Oregon. Remarkably we're still friends and in a few years, we'll probably be able to talk about this project rationally.

And there you have it, a more-or-less done deal. We're fairly sure that it isn't quite perfect, and expect there will be some carping about something or other; but all-in-all, we believe this to be a pretty good product and can now move on to something else.

Our thanks to all of those involved.

Rob Niederman
Milan Zahorcak

Fall, 2011



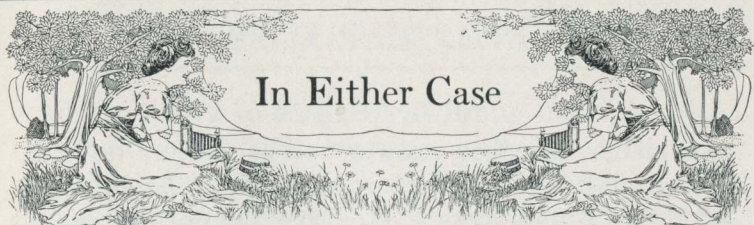
Kodak

K O D A K S
AND KODAK SUPPLIES

1909

EASTMAN KODAK COMPANY
ROCHESTER, N. Y. *The Kodak City*

IF IT ISN'T AN EASTMAN
IT ISN'T A KODAK



In Either Case

THERE are two kinds of amateur photographers, those who simply enjoy taking and possessing pictures of the things that interest them and those who enjoy the making even more than the taking of the pictures.

To Cherish a Favorite Fad

The one may use a camera for the sake of telling pictorially the story of his travels,—the ocean trip, the scenes in strange lands are all in all to him. He may use the camera in telling a picture story of the children. He may use it in his business, or with it may cherish his favorite fad, be it golf or motoring or shooting or fishing, and yet, perhaps, will care nothing for photography except as a means to an end—the obtaining of pictures that have the personal interest.

The Lure of the Art

To another, photography appeals of itself. To him an iris diaphragm is more wonderful than a carburettor, pyro more interesting than gasoline; a tripod is a thing of beauty compared with a brassie, an anastigmat lens is more wonderful than a gun-barrel of the finest Damascus, and for him a piece of Velox paper has greater lure than has the most brilliant fly in the collection of an Izaak Walton.

IN EITHER CASE

All By Daylight

In either case the answer to the camera question is—"Kodak." To either it appeals by its lightness and its well-made-ness. To either it appeals because no dark-room is needed for loading or unloading.

When the exposed film is taken from the Kodak, the ways diverge. Yes, but the Kodak advantage still exists for each. He who is not interested in photography can easily take or send his film for development—by mail if he likes, for a cent or so—and no danger of breakage, while the camera enthusiast finds that his photographic pleasures are but beginning.

The tank method of development has done much for the photographer, whether he uses Kodak cartridges, cut films, or glass plates. With either he may do away with the old-fashioned hand method for actual development, but the Kodak system is the only system which does away absolutely with a dark-room. With plates and cut films the dark-room is still necessary for transferring from holders to tank. With a Kodak Cartridge and Kodak Film Tank the film is transferred to the tank in broad daylight by a method as simple as loading the Kodak itself. *The Kodak way is the only all-by-daylight way.*

The Argument is Closed

And the results? There is no longer any argument. The most progressive professional, with the skill that comes from long experience, with a perfectly equipped dark-room, with the necessity of

IN EITHER CASE

using that dark-room for transferring his plates from holders to tank still existing, with the knowledge that upon the success of his negatives depends the future of his business, trusts his plates to tank development because by so doing he gets the best results. The tank, then, being best for the professional, there can remain no question about it from the standpoint of the amateur. The experience is in the tank.

The Know How

In either case the Kodak system is best. But it is not alone in the plan of operation that Kodak goods excel. They have back of them, not only the best materials and the most thorough workmanship, and most careful inspection, but the broadest experience. They have in them the *know-how*, and that know-how applied with the idea that the goods are not made merely for the sale of to-day but for the reputation of to-morrow. For more than a quarter of a century we have been making photographic films and papers and cameras. Our factory facilities are the largest and most perfect in the whole world. Our experts not only have had broad individual experience but the opportunity of consulting others of wide experience along similar lines—our film experts, for instance, having access to the formulæ of the best plate makers—the Seed.

The Perfect Combination

In our camera works the same rule applies. Being the largest consumers of photographic lenses, our

IN EITHER CASE

trade is most sought and we are therefore in a position to command the best. Our camera makers know the limitations of lenses and of shutters, know just what is necessary to make the perfect combination, the combination that works.

The Man with an Idea

In apparatus, in sensitized products, in the very chemicals that are used with those products, experience and facility combine for superiority. Within our works are skill and training and inventive genius. But the Kodak advantage does not end there. Wherever there's a new idea in photography there is also a man seeking a market for that idea, and he turns first of all to the Kodak City. If his idea has merit, if it will stand the test of those who know, if it simplifies or improves picture making, it becomes, no matter what the cost, a part of the Kodak system.

The Bother Left Out

Whether the amateur cares only for the pictures or whether he wishes to make as well as take them, it is the Kodak way that leads to success. Simplicity of method combined with perfection in material and apparatus—in them is the witchery of Kodakery.

EASTMAN KODAK COMPANY

Rochester, N. Y., the Kodak City.

AUTOMATIC SHUTTERS

KODAK BALL-BEARING SHUTTER

THIS shutter embodies a new principle in shutter construction, operating with remarkable smoothness and precision. The leaves are made in five segments, mounted entirely on ball bearings, and open and close in the form of a star, admitting a much larger amount of light in the same space of time than any other type of shutter. The smooth, frictionless action of this shutter makes it possible to work it with a bulb of half the ordinary size. It has variable indicated speeds of $\frac{1}{25}$, $\frac{1}{50}$, and $\frac{1}{100}$ seconds, and operates for bulb or time exposures.

Is automatic in action and has iris diaphragm. Is also fitted with indicator for registering each exposure as made.

Supplied with Folding Pocket Kodaks, Nos. 3, 3A, and 4.



POCKET AUTOMATIC SHUTTER

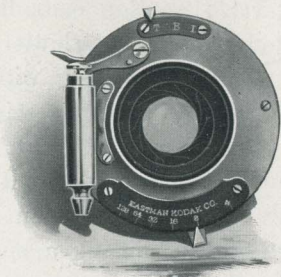
THIS shutter has star-shaped opening and is automatic in action. For snap-shots, a single pressure of the lever makes the exposure. When set at "B," the shutter opens at one pressure and closes when released. At "T," one pressure opens the shutter and another closes it. Fitted with iris diaphragm stops and regularly supplied with Nos. 1 and 1A Folding Pocket Kodaks, and No. 2 Folding Pocket Brownie.



AUTOMATIC SHUTTERS—CONTINUED

F. P. K. AUTOMATIC SHUTTER

THIS shutter is always set, works with either bulb or finger release for time, bulb, or "snap-shot" exposures. When set at I pressure on release makes instantaneous exposure of $\frac{1}{50}$ of a second. Set at B and T, respectively, "bulb" and "time" exposures are made.



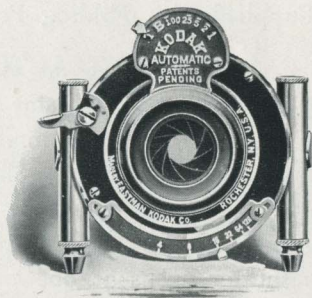
This shutter is fitted with iris diaphragm stops, graduated from No. 4 to 128.

Supplied on the No. 1A Special, and No. 2 Folding Pocket Kodaks, the No. 3A Folding Brownie, and without pneumatic release on the No. 3 Folding Brownie.

KODAK AUTOMATIC SHUTTER

THIS shutter is automatic in action and is beautifully finished.

Carefully adjusted for automatic exposures from $\frac{1}{100}$ of a second to one second. "Bulb" (opens when bulb is pressed and closes when it is released) and "time" exposures may also be made.



Iris diaphragm stops from No. 4 to 128.

Regularly supplied on the No. 4 Screen Focus Kodak, and as a special equipment on the Nos. 1A Special, 3, 3A, and No. 4 Folding Pocket Kodaks.

AUTOMATIC SHUTTERS—CONTINUED

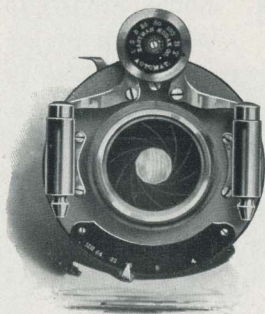
B. & L. AUTOMATIC SHUTTER

A FIRST-CLASS shutter in every respect.

Automatic in action, and may be operated with either pneumatic or finger release. Automatic exposure from $\frac{1}{100}$ of a second to one second; also "bulb" and "time" adjustments.

Iris diaphragm stops, 4 to 128.

Regularly supplied on the No. 4A Folding Kodak, and as a special equipment on the Nos. 1A Special, 3, 3A, and 4 Folding Pocket Kodaks.



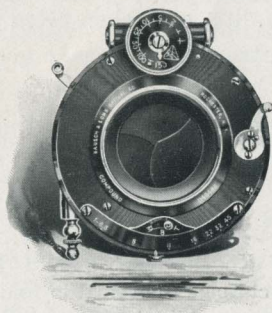
COMPOUND SHUTTER

THE Compound Shutter is an automatic and setting shutter combined. Automatically, either time or bulb exposures may be made, while the shutter may be set for speeds of from one to $\frac{1}{250}$ second.

The shutter leaves are formed of segments opening in star shape, giving even illumination over the entire plate the instant the exposure is started, and an iris diaphragm is supplied for stopping down.

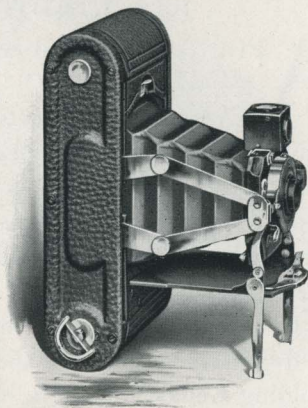
Case is made of aluminum, and accurate adjustments can be made with the shutter in any position.

Supplied as a special equipment with the Nos. 1A Special, 3, 3A, 4, and 4A Kodaks.



No. 1 FOLDING POCKET KODAK

THE smallest member of the Kodak family, this is an instrument of the highest efficiency for $2\frac{1}{4} \times 3\frac{1}{4}$ pictures. And when closed the bed folds automatically over the front board and bellows, concealing all adjustments and producing a very diminutive box, which may be easily slipped into any coat pocket.



Perfectly simple in operation, the front springs readily into place when desired; no focusing is necessary, no estimating of distances, just a pressure of the shutter lever. The lens is a Meniscus Achromatic of the first quality, and when fitted with Kodak Portrait Attachment the instrument will make good sized bust portraits.

Made of aluminum, with first quality seal grain leather covering and nicked fittings, this is a neat, dainty little instrument, which will appeal to the most fastidious.

IN DETAIL For rectangular pictures, $2\frac{1}{4} \times 3\frac{1}{4}$ inches. Capacity, 12 exposures without reloading. Size of Kodak, $6\frac{3}{4} \times 3\frac{1}{2} \times 1\frac{5}{8}$ inches. Weight, 16 ounces. Lens, Meniscus Achromatic, fixed 4-inch focus. Shutter, Pocket Automatic. (See page 7.) Brilliant reversible finder.

THE PRICE



No. 1 Folding Pocket Kodak, with Meniscus Achromatic Lens, Pocket Automatic Shutter,	\$10.00
Black Sole Leather Carrying Case, with strap,	1.25
N. C. Film Cartridge, 12 exposures, $2\frac{1}{4} \times 3\frac{1}{4}$,40
Ditto, 6 exposures,20
Kodak Portrait Attachment,50

No. 1A FOLDING POCKET KODAK

THIS model is identical in construction and operation with the No. 1; but it makes pictures of the attractive $2\frac{1}{2} \times 4\frac{1}{4}$ size — a shape that is peculiarly happy for horizontal landscape composition and for full and three-quarter length portraiture in the vertical position.

Exceedingly light and compact, to those who wish to make good sized pictures with the minimum of effort, this camera will especially appeal. Like the No. 1, it requires no focusing, may be carried in any coat pocket without trouble, and is always ready.

Box and bed are made entirely of aluminum, with covering of fine seal grain leather. All metal parts are handsomely nicked, producing a very rich appearance.

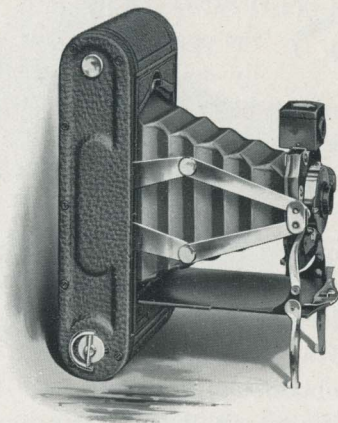
IN DETAIL

For rectangular pictures, $2\frac{1}{2} \times 4\frac{1}{4}$ inches. Capacity, 12 exposures without reloading. Size of Kodak, $7\frac{3}{4} \times 3\frac{3}{8} \times 1\frac{3}{4}$ inches. Weight, 20 ounces. Lens, Meniscus Achromatic, fixed 5-inch focus. Shutter, Pocket Automatic. (See page 7.) Brilliant reversible finder.



THE PRICE

No. 1A Folding Pocket Kodak, Meniscus Achromatic Lens, Pocket Automatic Shutter, . . .	\$12.00
Black Sole Leather Case, with shoulder strap, . . .	1.25
N. C. Film Cartridge, 12 exposures, $2\frac{1}{2} \times 4\frac{1}{4}$,50
Ditto, 6 exposures,25
Kodak Portrait Attachment,50



No. 1A FOLDING POCKET KODAK SPECIAL

SLIPPING easily into the pocket and readily operated by the merest beginner, this model is equipped for work of the most particular character.

Never before has so much quality been put into so small an instrument. Regularly fitted with the finest Rapid Rectilinear Lens obtainable and automatic shutter with bulb release, it will also accommodate the highest grade anastigmats, when desired.

With body of aluminum, finest quality leather covering, and nickeled fittings, the 1A Folding Pocket Kodak Special is a model of Kodak strength and beauty.



IN DETAIL

For rectangular pictures, $2\frac{1}{2} \times 4\frac{1}{4}$ inches. Capacity, 12 exposures without reloading. Size of Kodak, $8 \times 2 \times 3\frac{3}{4}$ inches. Weight, 23 ounces. Lens, Double Combination, Rapid Rectilinear, Speed, $f. 8$, focal length, 5 inches. Shutter, F. P. K. Automatic. (See page 8.) Automatic focusing lock. Two Tripod Sockets. Brilliant reversible finder.

THE PRICE



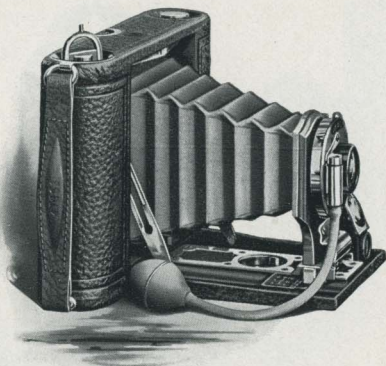
No. 1A Folding Pocket Kodak Special, R. R.	
Lens, F. P. K. Automatic Shutter,	\$15.00
Do., with Kodak or B. & L. Auto. Shutter and	
Zeiss Kodak Anastigmat Lens, $f. 6.3$,	40.50
Do., with Compound Shutter,	46.30
Black Sole Leather Carrying Case, with strap, . .	1.25
N. C. Film Cartridge, 12 exposures, $2\frac{1}{2} \times 4\frac{1}{4}$, . .	.50
Ditto, 6 exposures,25
Kodak Portrait Attachment,50

No. 2 FOLDING POCKET KODAK

FOR those amateurs who like pictures of the square shape, this Kodak is a remarkably compact, simple instrument for the $3\frac{1}{2} \times 3\frac{1}{2}$ size.

It slips easily into any coat pocket, it is very light, and it offers that precision and dependability which characterize all Kodaks. An automatic focusing lock provides for the quick and easy focusing of the lens for any distance. The lens of this model is the best obtainable outside of the anastigmats, and when fitted with the Kodak Portrait Attachment it will make excellent bust portraits.

Made of aluminum, with genuine leather covering and nicked fittings, this is a camera of great efficiency, while simple enough for the absolute novice.



IN DETAIL

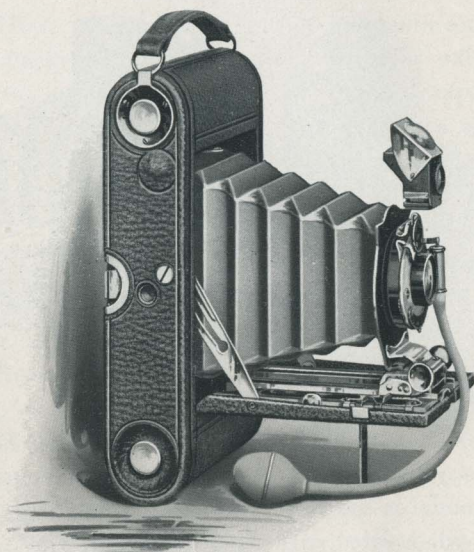
For square pictures, $3\frac{1}{2} \times 3\frac{1}{2}$ inches. Capacity, 12 exposures without reloading. Size of Kodak, $6\frac{3}{4} \times 4\frac{1}{2} \times 1\frac{1}{2}$ inches. Weight, 18 ounces. Lens, Double Combination, Rapid Rectilinear, $4\frac{1}{4}$ -inch focus. Shutter, F. P. K. Automatic. (See page 8.) Automatic focusing lock. Finder. Socket for Tripod Screw.



THE PRICE

No. 2 Folding Pocket Kodak, R. R. Lens, F. P. K.	
Automatic Shutter,	\$15.00
Black Sole Leather Case, with shoulder strap,	1.25
N. C. Film Cartridge, 12 exposures, $3\frac{1}{2} \times 3\frac{1}{2}$,60
Ditto, 6 exposures,30
Ditto, "Double-Two" Cartridge, 4 exposures,20
Kodak Portrait Attachment,50

No. 3 FOLDING POCKET KODAK



IN DETAIL

For rectangular pictures, $3\frac{1}{4} \times 4\frac{1}{4}$ inches. Capacity, 12 exposures without reloading. Size of Kodak, $7\frac{1}{2} \times 4\frac{1}{2} \times 1\frac{5}{8}$ inches. Weight, 23 ounces. Lens, Double Combination, Rapid Rectilinear, Speed, $f. 8$, focal length, 5 inches. Shutter, Kodak Ball Bearing. (See page 7.) Two Tripod Sockets. Brilliant reversible finder with hood. Automatic focusing lock.

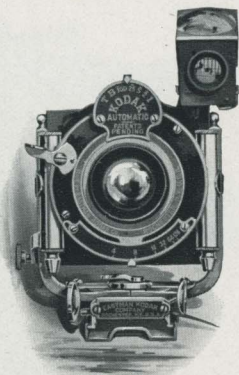
THE PRICE



- * No. 3 F. P. K., R. R. Lens, B. B. Shutter, . \$17.50
- * Do., with Kodak Automatic Shutter, 22.50
- * Do., with Kodak or B. & L. Auto. Shutter
and Zeiss Kodak Anastigmat Lens, $f. 6.3$, 43.00
- Do., with Compound Shutter, 48.80
- Black Sole Leather Case, with strap, 1.25
- Glass Plate Adapter, for $3\frac{1}{4} \times 4\frac{1}{4}$ plates, 3.50
- Single Glass Plate Holder, $3\frac{1}{4} \times 4\frac{1}{4}$,50
- N. C. Film Cartridge, 12 exposures, $3\frac{1}{4} \times 4\frac{1}{4}$,70
- Ditto, 6 exposures,35
- Ditto, "Double-Two" Cartridge, 4 exposures,25
- * Add one dollar if Rising and Sliding Front is desired.

No. 3 FOLDING POCKET—CONTINUED

THIS model, made for one of the most popular sizes of amateur pictures, is equipped to meet the requirements of the most advanced photographer under all conditions of general amateur photography. And while it makes larger pictures than any of the preceding Kodaks, it can be carried as conveniently in the ordinary coat pocket and operates as simply, even in the hands of the inexperienced.



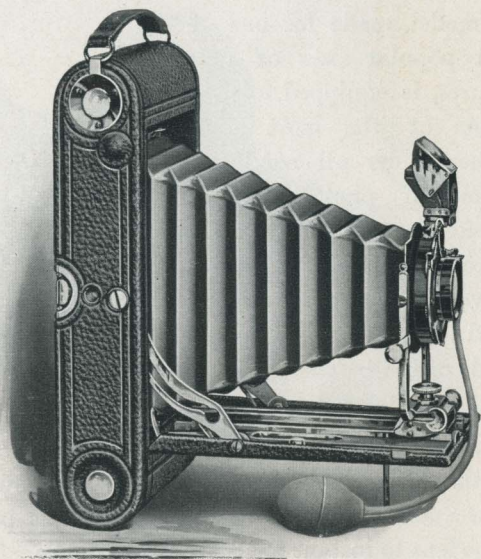
SHOWING RISING AND FALLING
FRONT AND KODAK AUTO-
MATIC SHUTTER

The optical equipment deserves especial consideration. The regular lens is a Rapid Rectilinear—the best that money can buy outside of the anastigmats—and an automatic focusing lock is provided for bringing the lens to instant focus for any distance. The shutter is the new ball-bearing type, with star-shaped leaves—a construction that admits the passage of considerably more light in a given time than does either the ordinary two-winged shutter or common type of iris diaphragm shutter. This is a most important feature in making quick exposures in dull lights.

A rising, falling, and sliding front—a great convenience in architectural photography—is supplied at an extra cost of one dollar, and dry plates may be used by the addition of a simple plate adapter. This is constructed to take aluminum plate holders, has focusing screen, and is interchangeable with the regular Kodak back.

Box and bed are of aluminum, covering is seal grain leather of the finest quality, metal parts are highly nickered and the instrument is handsomely finished throughout.

No. 3A FOLDING POCKET KODAK



IN DETAIL

For rectangular pictures, $3\frac{1}{4} \times 5\frac{1}{2}$ inches. Capacity, 10 exposures without reloading. Size of Kodak, $9\frac{1}{2} \times 4\frac{3}{4} \times 1\frac{7}{8}$ inches. Weight, 41 ounces. Lens, Double Combination, Rapid Rectilinear, Speed, $f. 8$, focal length, $6\frac{1}{2}$ inches. Shutter, Kodak Ball Bearing. (See page 7.) Two Tripod Sockets. Brilliant reversible finder with hood. Automatic focusing lock.

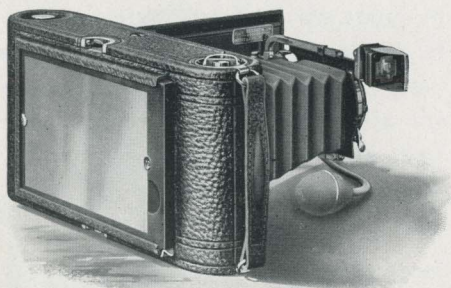
THE PRICE

No. 3A F. P. Kodak, R. R. Lens, Kodak	
B. B. Shutter,	\$20.00
Ditto, with Kodak Automatic Shutter,	25.00
Ditto, with Compound Shutter and Zeiss Kodak	
Anastigmat Lens, $f. 6.3$,	61.40
Black Sole Leather Case, with strap,	1.50
Combination Back,	3.50
Double Glass Plate Holders, $3\frac{1}{4} \times 5\frac{1}{2}$, each,	1.00
N. C. Film Cartridge, 10 exposures, $3\frac{1}{4} \times 5\frac{1}{2}$,70
Ditto, 6 exposures,40
Ditto, "Double-Two" Cartridge, 4 exposures,30
Kodak Portrait Attachment,50



No. 3A FOLDING POCKET—CONTINUED

WITH new ball-bearing shutter, splendid lens, rising, falling and sliding front, and automatic focusing lock, this model is fully equipped for the most serious branches of amateur photography. And with these



SHOWING COMBINATION BACK WITH FOCUSING SCREEN

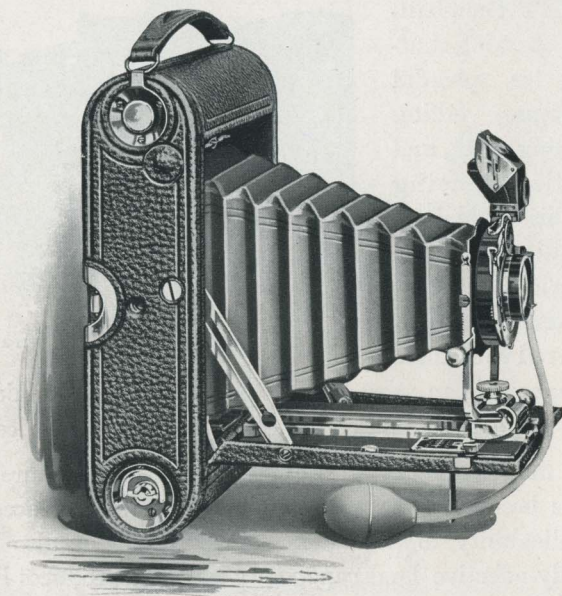
advantages it is an exceedingly compact Pocket Kodak, which may be effectively handled even by the absolute novice.

This model first introduced the $3\frac{1}{4} \times 5\frac{1}{2}$ picture, a size that has become remarkably popular, not only on account of its applicability to post-card photography, but also for the unusually effective landscape views which it produces horizontally, and the beautifully proportioned full-length portraits which it makes when used vertically.

The ball-bearing shutter makes it especially effective for instantaneous work. For time exposures two tripod sockets are provided, so that the instrument may be conveniently used, either vertically or horizontally, with tripod. And if it is desired to use dry plates at any time, a combination back interchangeable with the regular Kodak back may be had. This is fitted with focusing screen and takes double plate holders.

The pleasing proportions of this model, combined with its covering of fine seal grain leather and its highly nickered metal parts, produce an unusually attractive appearance.

No. 4 FOLDING POCKET KODAK



IN DETAIL

For rectangular pictures, 4 x 5 inches. Capacity, 12 exposures without reloading. Size of Kodak, 9 x 5 3/4 x 2 1/4 inches. Weight, 2 pounds, 11 ounces. Lens, Double Combination, Rapid Rectilinear, Speed, *f.* 8, focal length, 6 1/2 inches. Shutter, Kodak Ball Bearing. (See page 7.) Two Tripod Sockets. Brilliant reversible finder. Automatic focusing lock.

THE PRICE



No. 4 F. P. K., R. R. Lens, B. B. Shutter, . . .	\$20.00
Ditto, with Kodak Automatic Shutter, . . .	25.00
Ditto, with Compound Shutter and Zeiss Kodak Anastigmat Lens, <i>f.</i> 6.3,	61.40
Black Sole Leather Carrying Case, with strap, . . .	1.50
Glass Plate Adapter, 4 x 5, with ground glass, . . .	3.50
Double Glass Plate Holders, 4 x 5, each, . . .	1.00
N. C. Film Cartridge, 12 exposures, 4 x 5,90
Ditto, 6 exposures,45
Ditto, "Double-Two" Cartridge, 4 exposures,30

No. 4 FOLDING POCKET—CONTINUED

THE four by five picture is the largest of the standard amateur sizes. Its shape is suitable for composition of any character, either in the vertical or horizontal position, and the comparatively large size of all objects in the composition has made it a favorite with thousands of amateur photographers.

And the Folding Pocket Kodak, No. 4, provides the amateur with an instrument for such pictures, so light and compact that it may be carried in a top coat pocket, and offering all the advantages of the 3 and 3A models.

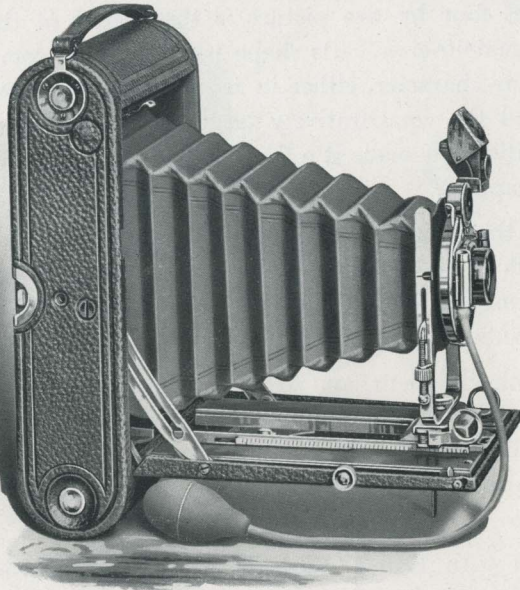
Its splendid lens and ball-bearing shutter give it great efficiency for snap-shot photography, while a rising, falling, and sliding front, automatic focusing lock and two tripod sockets make it equally effective for work of the most exacting character.

Fitted with Kodak Portrait Attachment it will produce large bust portraits of the highest quality, as the camera may then be focused as close as two feet, eight inches to the subject. And, if desired, a plate adapter with focusing screen, taking double plate holders, may be substituted in place of the regular back, adapting the Kodak for the use of dry plates.

No. 4 Folding Pocket Kodak retains all the Kodak simplicity and ease of operation. No previous experience is necessary to secure good pictures with it. It can be readily used by the beginner for daylight-all-the-way photography.

The camera body is made of aluminum, covered with the finest quality black seal grain leather. Constructed with the usual Kodak skill, and beautifully finished, this instrument will appeal to both novice and seasoned expert.

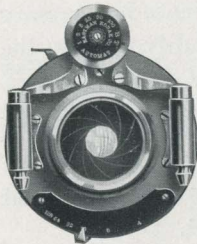
No. 4A FOLDING KODAK



IN DETAIL

For rectangular pictures, $4\frac{1}{4} \times 6\frac{1}{2}$ inches. Capacity, 6 exposures without reloading. Size of Kodak, $11 \times 6\frac{1}{2} \times 2\frac{5}{8}$ inches. Weight, 4 pounds, 4 ounces. Lens, Double Combination, Rapid Rectilinear, Speed, $f. 8$, focal length, $8\frac{1}{4}$ inches. Shutter, B. & L. Automatic. (See page 9.) Rising and sliding front. Rack and pinion for focusing. Two Tripod Sockets. Brilliant reversible finder with hood.

THE PRICE



No. 4A F. Kodak, R. R. Lens, B. & L. Auto. Shutter,	\$35.00
Do., with Zeiss Kodak Anastigmat Lens, $f. 6.3$,	72.50
Do., with Compound Shutter,	83.45
Black Sole Leather Case, with strap,	2.50
Glass Plate Adapter, with ground glass,	5.00
Double Glass Plate Holders, each,	1.25
N. C. Film Cartridge, 6 exposures, $4\frac{1}{4} \times 6\frac{1}{2}$,65
Ditto, "Double-Two" Cartridge, 4 exposures,45
Direct View Finder (see page 62),	3.00

No. 4A FOLDING KODAK—CONTINUED

MANY amateurs like pictures even larger than the 4 x 5 size, and for these the 4A Kodak provides a thoroughly satisfactory instrument for 4¼ x 6½ pictures. It combines all the advantages of the preceding models in a camera light and compact, with no suggestion of the usual clumsy bulk of cameras for large size pictures.

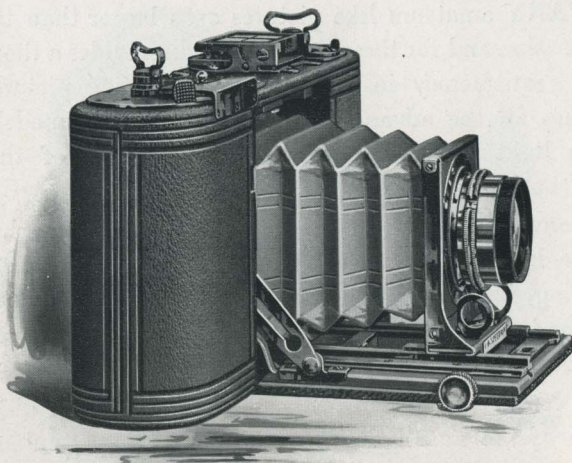
So convenient that it may be readily used for snap shots, it is suitable likewise for work of the most serious character. It has rising, falling, and sliding front, rack and pinion attachment for instant focusing, and two tripod sockets for horizontal or vertical use with tripod.

The lens is a rapid rectilinear and is the best obtainable outside of the anastigmats. The shutter is a double valve, automatic, working for time, bulb, instantaneous, and retarded exposures. The regular finder is a brilliant reversible, but a direct-view finder may be fitted to the box for specially quick, accurate snap-shot work with the Kodak held on a level with the eye.

One of the special features of this instrument is its adaptability to home portraiture. Fitted with the Kodak Portrait Attachment, it will make bust portraits up to the full size of the film, as it may be operated as close as 3½ feet to the subject. A plate adapter with focusing screen, interchangeable with the regular back, will permit the use of dry plates, if desired.

With all these advantages, the instrument retains the usual Kodak simplicity and ease of operation. There is nothing in its construction which cannot be easily understood by the merest beginner. Made of aluminum, with nickered fittings and genuine leather covering of beautiful grain.

No. 1A SPEED KODAK



IN DETAIL

For rectangular pictures, $2\frac{1}{2} \times 4\frac{1}{4}$ inches.
 Capacity, 12 exposures, without reloading.
 Size of Kodak, $2\frac{1}{4} \times 4\frac{1}{2} \times 9\frac{3}{4}$. Weight, 3 pounds. Shutter,
 Graflex Focal Plane, speed $\frac{1}{1000}$ second to slow instantaneous.
 Rack and pinion for focusing, automatic standard clamp, and
 Tripod Socket. Direct view finder with mirror attachment.
 Automatic safety blind for protecting film when shutter is wound.

THE PRICE



No. 1A Speed Kodak, Graflex Focal Plane	
Shutter, without lens,	\$38.00
Ditto, with Zeiss Kodak Anastigmat Lens No. 2, f. 6.3,	60.00
Ditto, with Series IIb B. & L. Zeiss Tessar Lens No. 4, f. 6.3,	72.50
Ditto, with Cooke Series IV Lens No. 25, f. 5.6,	76.00
Ditto, with Series Ic B. & L. Zeiss Tessar Lens No. 14, f. 4.5,	78.50
Black Sole Leather Carrying Case, with strap,	1.50
N. C. Film Cartridge, 12 exposures, $2\frac{1}{2} \times 4\frac{1}{4}$,50
Ditto, 6 exposures,25

No. 1A SPEED KODAK—CONTINUED

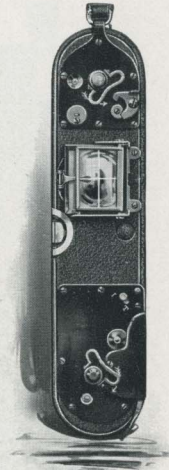
THE mile-a-minute automobile, express trains traveling at full speed, race horses, athletes at their highest strain, instantaneous indoor pictures, home portraiture, ordinary time exposures—these are all as one to this new and remarkable Kodak.

Capable, as its name implies, of making pictures of the most rapidly-moving objects in any position, it is thoroughly satisfactory also for any branch of ordinary amateur photography. And it is so light and compact that it can be easily carried in a top-coat pocket; so simple to operate that a beginner can readily use it.

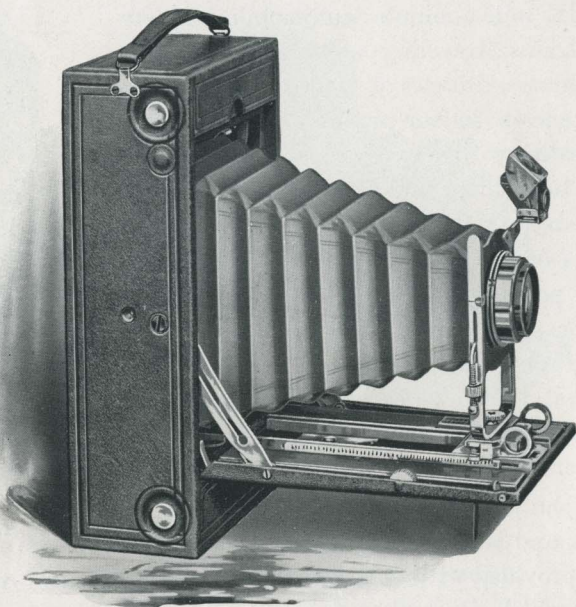
The shutter is incorporated in the body of the box and is of the well-known Graflex focal plane construction; provided with curtain with a series of slots of varying widths, which, in combination with a speed tension regulator, permits a latitude of exposures varying from $\frac{1}{1000}$ of a second to very slow instantaneous, bulb and time exposures. The shutter is wound for any exposure by the half-turn of a key and released by merely touching a lever.

A direct view finder is supplied for use with Kodak held on a level with the eyes, supplemented by a mirror attachment which springs up to an angle of 45° , for location and composition of subjects with the Kodak held in any other position.

Rack and pinion is furnished for easy focusing, metal parts have gun-metal finish, and covering is a very fine grain leather. The size of picture, $2\frac{1}{2} \times 4\frac{1}{4}$, is suitable for any style of composition and is very desirable for portraiture.



No. 4A SPEED KODAK



IN DETAIL

For rectangular pictures, $4\frac{1}{4} \times 6\frac{1}{2}$ inches. Capacity, 6 exposures without reloading. Size of Kodak, $11\frac{3}{4} \times 3\frac{7}{8} \times 6\frac{1}{2}$ inches. Weight, 6 pounds. Shutter, Kodak Focal Plane, speed $\frac{1}{1000}$ of a second to slow instantaneous. Rising and sliding front, rack and pinion for focusing. Two Tripod Sockets. Brilliant reversible finder, with hood, also direct view finder and focusing scale.

THE PRICE



No. 4A Speed Kodak, Kodak Focal Plane Shutter (without lens),	\$50.00
Do., with Zeiss Kodak Anastigmat Lens, <i>f.</i> 6.3,	90.00
Do., with B. & L. Zeiss Tessar Lens, <i>f.</i> 6.3,	111.50
Black Sole Leather Carrying Case, with strap,	2.50
Glass Plate Adapter, with ground glass, $4\frac{1}{4} \times 6\frac{1}{2}$,	7.50
Double Glass Plate Holders, each,	1.25
N. C. Film Cartridge, 6 exposures, $4\frac{1}{4} \times 6\frac{1}{2}$,65
Ditto, "Double-Two" Cartridge, 4 exposures,45

No. 4A SPEED KODAK—CONTINUED

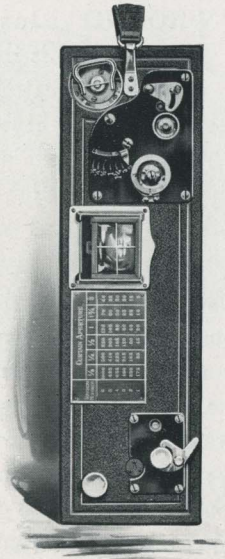
THIS camera, while designed primarily for the photographing of rapidly-moving objects, is equally well adapted to all other classes of work.

The important feature of the 4A Speed Kodak is the Kodak Focal Plane Shutter, by means of which automatic exposures, varying from slow instantaneous to a speed of $\frac{1}{10000}$ of a second may be made. It is also, of course, adapted to time exposures. The shutter is built into the camera body, and the exposures are made by means of a curtain, with an adjustable opening, which passes directly in front of the sensitive film.

The shutter is in no way complicated, and is simple to understand and operate.

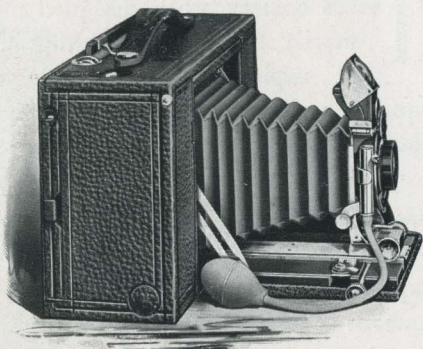
The Focal Plane Shutter is the only shutter with which it is possible to get extremely short exposures, such as are essential with rapidly-moving objects. The Focal Plane is also the most efficient of shutters, as it permits a greater amount of light to reach the plate with a given exposure, thus affording a fully-timed negative, where hopeless under-exposure would result with the ordinary shutter.

Equipped with this type of shutter, the 4A Speed Kodak is ideal for photographing all objects in rapid motion—such as athletes, race horses, automobiles, railroad trains, birds on the wing—and it is also well adapted to home portraiture.



SCREEN FOCUS KODAK

GROUND glass focusing is the special feature of this model, combined with the usual Kodak simplicity and daylight-all-the-way method of photography.



Every subject may be focused if desired, as the roll holder at any time may be swung up instantly out of the focal plane to the top of the Kodak, affording direct access to the back for focusing; after which it is as easily swung back into place for the exposure. A simple glass plate adapter, taking the place of the film carrier, readily adapts this instrument for the use of plates.

IN DETAIL

For rectangular pictures, 4 x 5 inches. Capacity, 12 exposures without reloading. Size of Kodak, 10 x 5 3/4 x 3 3/8 inches. Weight, 3 pounds, 14 ounces. Lens, Rapid Rectilinear, Speed, *f.* 8, focal length, 6 1/2 inches. Shutter, Kodak Automatic. (See page 8.) Rack and pinion for focusing. Rising and sliding front. Two Tripod Sockets. Brilliant reversible finder with hood, spirit level, and double extension bed.

THE PRICE



No. 4 Screen Focus Kodak, R. R. Lens, Kodak Automatic Shutter,	\$30.00
Ditto, with Volute Shutter and Zeiss Kodak Anastigmat Lens, <i>f.</i> 6.3,	71.80
Black Sole Leather Carrying Case, velvet lined,	2.50
Glass Plate Adapter, 4 x 5,	2.50
Double Glass Plate Holders, 4 x 5, each,	1.00
N. C. Film Cartridge, 12 exposures, 4 x 5,90
Ditto, 6 exposures,45
Ditto, "Double-Two" Cartridge, 4 exposures,30
Kodak Portrait Attachment,50

No. 2 FLEXO KODAK

THIS Kodak is of the simplest form of picture-taking instruments. It has fixed focus lens, requires no estimating of distances, and with automatic shutter is always ready for action.



The No. 2 Flexo makes a square picture, $3\frac{1}{2} \times 3\frac{1}{2}$ inches in size, and is a thoroughly satisfactory instrument for all kinds of general amateur work. The shutter works for time or instantaneous exposures, and with the Kodak Portrait Attachment excellent results may be secured in home portraiture.

Complete in every respect, with finder and tripod socket, the price includes every requisite for picture making, excepting the film.

Loads and unloads in daylight, and is constructed with the same care given to the higher-priced Kodaks.

IN DETAIL For square pictures, $3\frac{1}{2} \times 3\frac{1}{2}$ inches. Capacity, 12 exposures without reloading. Size of Kodak, $5\frac{7}{8} \times 4\frac{5}{8} \times 4\frac{3}{8}$ inches. Weight, 19 ounces. Lens, Single Achromatic, fixed $4\frac{1}{2}$ -inch focus. Shutter, Eastman Rotary, with three stops. Tripod Socket and finder.

THE PRICE

No. 2 Flexo Kodak, Achromatic Lens, Eastman Rotary Shutter,	\$5.00
Black Sole Leather Carrying Case, with shoulder strap,	1.25
N. C. Film Cartridge, 12 exposures, $3\frac{1}{2} \times 3\frac{1}{2}$,60
Ditto, 6 exposures,30
Ditto, "Double-Two" Cartridge, 4 exposures,20
Kodak Portrait Attachment,50

No. 2 AND No. 3 BULL'S-EYE KODAKS

THE Bull's-Eye Kodak has long held sway as absolutely the simplest and most thoroughly practical for general amateur use.

Differing only in the size of pictures which they make, these Kodaks have automatic shutters for time or instantaneous work, finders and tripod sockets for vertical or horizontal exposures, and are easily opened for loading or unloading in daylight. They are of the fixed focus type and are always ready to operate. With Kodak Portrait Attachment either can be depended upon for first-rate portraits.

The covering is seal grain leather of the finest quality, and metal parts highly nickered. Cut shows the No. 3.



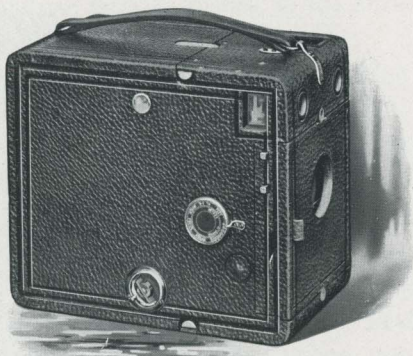
IN DETAIL For pictures, No. 2, $3\frac{1}{2} \times 3\frac{1}{2}$ inches; No. 3, $3\frac{3}{4} \times 4\frac{1}{4}$ inches. Capacity, each 12 exposures without reloading. Size of Kodak, No. 2, $5\frac{3}{4} \times 4\frac{5}{8} \times 4\frac{1}{2}$ inches; No. 3, $4\frac{5}{8} \times 5\frac{1}{2} \times 6\frac{1}{2}$ inches. Weight, No. 2, 22 ounces; No. 3, 24 ounces. Lens, Meniscus Achromatic, fixed focus. Shutter, Eastman Rotary, with three stops. Tripod Socket, No. 2, 1; No. 3, 2. Brilliant finders.

THE PRICE

	No. 2	No. 3
Bull's-Eye Kodak, Meniscus Achromatic Lens, Eastman Rotary Shutter,	\$8.00	\$8.00
Black Sole Leather Carrying Case, with shoulder strap,	1.25	1.25
N. C. Film Cartridge, 12 exposures,60	.70
Ditto, 6 exposures,30	.35
Ditto, "Double Two" Cartridge, 4 exposures,20	.25
Kodak Portrait Attachment,50	.50

No. 3B QUICK FOCUS KODAK

FOR street scenes and those continually passing subjects which must be taken at a moment's notice, this instrument is especially suited. The turn of a dial and pressure of a button throws the lens into instant focus for any required distance, and, as the shutter is always ready, the exposure can be made without the slightest delay.



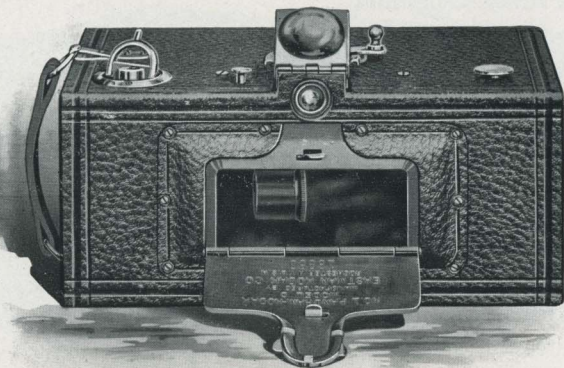
This special feature in no way complicates the operation of the instrument nor affects its efficiency for general amateur use. It can be handled by the most inexperienced person, it makes vertical or horizontal time and instantaneous exposures, and when fitted with the Kodak Portrait Attachment produces splendid bust or full-length portraits.

IN DETAIL For rectangular pictures, $3\frac{1}{4} \times 5\frac{1}{2}$ inches. Capacity, 10 exposures without reloading. Size of Kodak, $8\frac{1}{8} \times 6\frac{7}{8} \times 4\frac{5}{8}$ inches. Weight, 2 pounds, 9 ounces. Lens, Meniscus Achromatic. Focal length, $6\frac{1}{2}$ inches. Shutter, Eastman Rotary, with three stops. Two Tripod Sockets. Two brilliant finders.

THE PRICE

No. 3B Quick Focus Kodak, Meniscus Achromatic Lens, Eastman Rotary Shutter,		\$12.00
Black Sole Leather Carrying Case, with shoulder strap,		2.50
* N. C. Film Cartridge, 10 exposures, $3\frac{1}{4} \times 5\frac{1}{2}$,70
* Ditto, 6 exposures,40
* Ditto, "Double-Two" Cartridge, 4 exposures,30
Kodak Portrait Attachment,50
* Specify "For 3B Quick Focus Kodak."		

PANORAM KODAKS



No. 1 PANORAM KODAK

IN DETAIL For rectangular pictures, $2\frac{1}{4} \times 7$ inches. Capacity, 6 exposures without reloading. Size of Kodak, $3\frac{3}{8} \times 4\frac{1}{4} \times 7\frac{3}{8}$ inches. Weight, 24 ounces. Lens, specially selected as to quality and focal length. Shutter, Panoram. Two Tripod Sockets. Brilliant finder with hood. Uses No. 1 F. P. Kodak Cartridges.

No. 4 PANORAM KODAK

IN DETAIL For rectangular pictures, $3\frac{1}{2} \times 12$ inches. Capacity, 4 exposures without reloading. Size of Kodak, $4\frac{3}{4} \times 5\frac{1}{2} \times 10\frac{1}{8}$ inches. Weight, 2 pounds, 14 ounces. Lens, specially selected as to quality and focal length. Shutter, Panoram. Two Tripod Sockets. Brilliant finder with hood. Uses No. 4 B. E. Cartridges.

THE PRICE

<p>No. 1 Panoram Kodak, . . . \$10.00 Black Sole Leather Carrying Case, with shoulder strap, 1.75 N. C. Film Cartridge, 6 exposures, $2\frac{1}{4} \times 7$,40 Ditto, 3 exposures,20</p>	<p>No. 4 Panoram Kodak, . . . \$20.00 Black Sole Leather Carrying Case, with shoulder strap, 2.00 N. C. Film Cartridge, 4 exposures, $3\frac{1}{2} \times 12$,75 Ditto, 2 exposures,45</p>
---	--

PANORAM KODAKS—CONTINUED

A WONDERFULLY inviting field is opened to the amateur by the Panoram Kodaks.

As their name indicates, they are intended for picturing wide expanses of landscape and similar subjects, and this without the exceedingly small images incident to the use of extreme wide angle lenses, heretofore the only method of securing such pictures.

Aside from the remarkable horizontal views, decidedly unique pictures of high waterfalls, mountain peaks, and similar subjects may be made by holding the camera vertically. Two tripod sockets are supplied for use with the camera either vertically or horizontally.

For taking outdoor group pictures the Panorams are unequaled, as the subjects may be arranged in a semi-circle, at a given distance from the Kodak, thus permitting all of them to be in the "front row" and of proper relative size.

Though possessing such remarkable advantages, the Panoram Kodaks are exceedingly simple in construction and operation.

The compassing of so wide an angle of view is accomplished by swinging the lens on a pivot during the exposure, the shutter being accurately adjusted to insure even illumination throughout the exposure.

The brilliant finder shows the sky and foreground, and the entire view may be examined by simply swinging the camera in position so as to take in the full view, as indicated by the V-shaped lines on the top of the camera. The No. 1 Panoram takes a view of 112 degrees, while the No. 4 has the great scope of 142 degrees. The Panoram Kodaks use the regular daylight loading cartridges. Not adapted to indoor work. Covered with best black leather and have nickeled fittings.

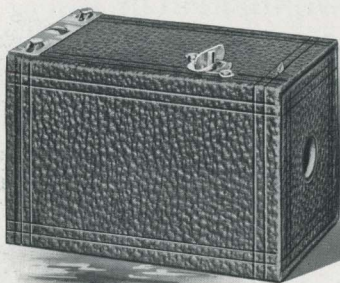
No. 1 BROWNIE CAMERA

SIMPLE in construction and operation, and costing but a trifle, this little camera stands the test—it takes good pictures.

Notwithstanding its low cost, every Brownie undergoes the regular, thorough Kodak inspection.

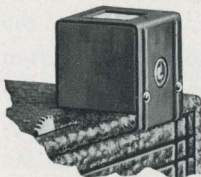
Only our immense manufacturing facilities and the enormous quantities of Brownies sold, make the quality and price possible. The camera is well made, covered with fine quality imitation leather, and has nickeled fittings. V-shaped lines on top give the scope of view, or a Brownie Finder (detachable) may be provided for twenty-five cents. This is as illustrated below and slips on the box easily.

Pictures of any sort may be made with the Brownie, both “snap-shots” and “time” exposures, and it will be found an ideal instrument for interesting children in picture making.



IN DETAIL

For square pictures, $2\frac{1}{4} \times 2\frac{1}{4}$ inches. Capacity, 6 exposures without reloading. Size of Camera, $4\frac{7}{8} \times 3\frac{1}{8} \times 3$ inches. Weight, 8 ounces. Lens, Meniscus, fixed $3\frac{3}{4}$ -inch focus. Shutter, Eastman Rotary, with one stop.



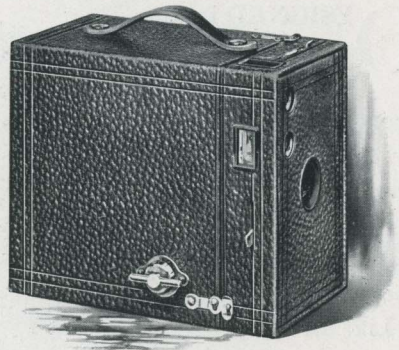
THE BROWNIE FINDER

THE PRICE

No. 1 Brownie Camera, Meniscus Lens, Eastman Rotary Shutter,	\$1.00
No. 1 Brownie Carrying Case, holds Camera and Finder,50
N. C. Film Cartridge, 6 exposures, $2\frac{1}{4} \times 2\frac{1}{4}$,15
Brownie Finder, detachable,25
No. 1 Brownie Developing and Printing Outfit, including paper for 24 prints,90

Nos. 2 AND 2A BROWNIE CAMERAS

REMARKABLE pictures have been produced by these cameras even in the hands of school children, while work of the highest character has been done with them by experts. As simple to operate as the No. 1 Brownie,



but with greater capabilities, they differ from each other only in the size of pictures which they make. Those made by the No. 2A are splendidly proportioned for landscape composition and for full-length portraiture.

These cameras have two finders, automatic shutters, meniscus lenses of the first quality, and are covered with handsome imitation leather. The Kodak Portrait Attachment can be used to advantage with either.

IN DETAIL

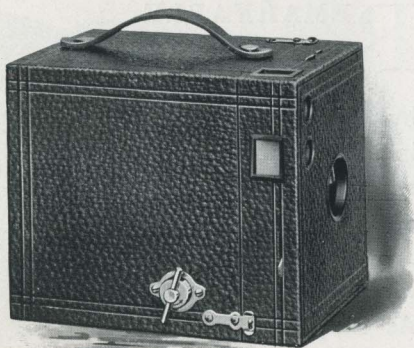
For rectangular pictures, No. 2, $2\frac{1}{4} \times 3\frac{1}{4}$ inches; No. 2A, $2\frac{1}{2} \times 4\frac{1}{4}$ inches. Capacity, No. 2, 6 exposures without reloading; No. 2A, 12 exposures without reloading. Size of Camera, No. 2, $5\frac{5}{8} \times 4 \times 3\frac{1}{4}$ inches; No. 2A, $3\frac{7}{8} \times 5\frac{1}{8} \times 6\frac{1}{8}$ inches. Weight, No. 2, 13 ounces; No. 2A, 21 ounces. Lens, Meniscus, fixed focus. Shutter, Eastman Rotary; with three stops. Two finders.

THE PRICE

	No. 2	No. 2A
Brownie Camera, Meniscus Lens, Eastman Rotary Shutter, \$2.00		\$3.00
Brownie Carrying Case, with shoulder strap,75	.75
N. C. Film Cartridge, 12 exposures,50
N. C. Film Cartridge, 6 exposures,20	.25
Kodak Portrait Attachment,50	.50
A B C Developing and Printing Outfit (see page 48), . . .	1.50	1.50

No. 3 BROWNIE CAMERA

DESIGNED for one of the most popular of amateur sizes, this latest addition to the Brownie family brings $3\frac{1}{4} \times 4\frac{1}{4}$ pictures within the scope of simple, inexpensive Brownie photography.



Like all Brownies, this is a camera that the children can easily operate, while at the same time it is so efficient as to satisfy the grown-up people. Equipped with a fine quality meniscus achromatic lens and automatic shutter, it is thoroughly dependable for general amateur photography.

This Brownie takes four, six, or twelve exposure cartridges, and when fitted with the Kodak Portrait Attachment will make bust portraits of good size. The metal parts are all nickered and, in combination with the handsome covering of imitation grain leather, give the instrument a very rich finish.

IN DETAIL

For rectangular pictures $3\frac{1}{4} \times 4\frac{1}{4}$ inches.
Capacity, 12 exposures without reloading.
Size of Camera, $6\frac{1}{8} \times 4\frac{3}{8} \times 5\frac{1}{8}$ inches. Weight, 24 ounces.
Lens, Meniscus Achromatic, fixed 5-inch focus. Shutter, Eastman Rotary, with three stops. Two Tripod Sockets. Two finders.

THE PRICE

No. 3 Brownie Camera, Meniscus Achromatic Lens, Eastman Rotary Shutter,	\$ 4.00
No. 3 Brownie Carrying Case, with shoulder strap,	1.00
N. C. Film Cartridge, 12 exposures, $3\frac{1}{4} \times 4\frac{1}{4}$,70
Ditto, 6 exposures,35
Ditto, "Double Two" Cartridge, 4 exposures,25
Kodak Portrait Attachment,50

No. 2 FOLDING POCKET BROWNIE

INEXPENSIVE, devoid of all complications, extremely simple to understand and to operate, this dainty little instrument brings the Brownie into the field of pocket photography.

It slips easily into any ordinary coat pocket and it will produce splendid $2\frac{1}{4} \times 3\frac{1}{4}$ pictures the all-by-daylight way. Adapted for snap shots, bulb or time exposures, it has reversible finder, two tripod sockets and automatic focusing lock. The shape of the pictures it makes is suitable for any style of composition, and the Kodak Portrait Attachment may be used with this instrument with excellent success.

Carefully finished throughout with covering of imitation grain leather and nickeled fittings.

IN DETAIL

For rectangular pictures, $2\frac{1}{4} \times 3\frac{1}{4}$ inches. Capacity, 6 exposures without reloading. Size of Camera, $6\frac{7}{8} \times 3\frac{5}{8} \times 2\frac{1}{8}$ inches. Weight, 16 ounces. Lens, Meniscus, fixed $4\frac{1}{2}$ -inch focus. Shutter, Pocket Automatic. (See page 7.) Two Tripod Sockets. Automatic focusing lock. Reversible finder.

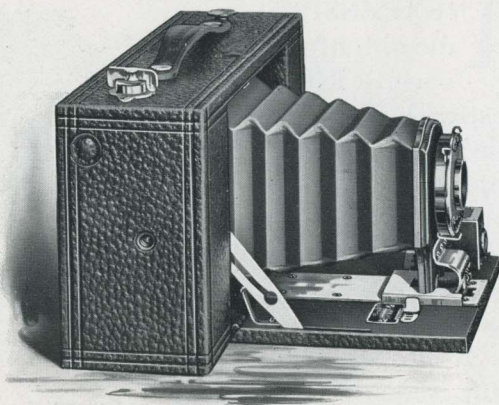


THE PRICE

No. 2 Folding Pocket Brownie, Meniscus Lens,	
Pocket Automatic Shutter,	\$5.00
No. 2 Folding Pocket Brownie Carrying Case, .	.75
N. C. Film Cartridge, 6 exposures, $2\frac{1}{4} \times 3\frac{1}{4}$, .	.20
Kodak Portrait Attachment,50

No. 3 FOLDING BROWNIE

An inexpensive, yet highly efficient camera for making the popular $3\frac{1}{4} \times 4\frac{1}{4}$ picture the all-by-daylight way. Simple in every detail, it is equally dependable for snap-shot work, time exposures, or home portraiture with addition of the Kodak Portrait Attachment.



Has two tripod sockets, reversible finder, and automatic focusing lock. It is handsomely finished, offers the choice of single or double lens, and takes 12 exposure cartridges.

IN DETAIL For rectangular pictures, $3\frac{1}{4} \times 4\frac{1}{4}$ inches. Capacity, 12 exposures without reloading. Size of Camera, $8\frac{3}{8} \times 4\frac{5}{8} \times 2\frac{5}{8}$ inches. Weight, 25 ounces. Lens, Meniscus Achromatic, 5-inch focus. Shutter, F. P. K. Automatic without bulb. (See page 8.) Automatic focusing lock. Two Tripod Sockets. Reversible finder.

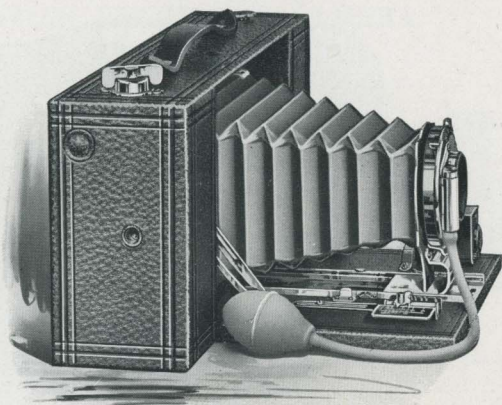
THE PRICE



No. 3 Folding Brownie Camera, Meniscus Achromatic Lens, F. P. K. Automatic Shutter, . . .	\$ 9.00
Ditto, with R. R. Lens and F. P. K. Automatic Shutter, . . .	11.00
No. 3 Folding Brownie Carrying Case, . . .	1.00
N. C. Film Cartridge, 12 exposures, $3\frac{1}{4} \times 4\frac{1}{4}$,70
Ditto, 6 exposures,35
Ditto, "Double-Two" Cartridge, 4 exposures,25
Kodak Portrait Attachment,50

No. 3A FOLDING BROWNIE

THERE has never been a size for pictures that has so perfectly met all requirements as our 3A size ($3\frac{1}{4} \times 5\frac{1}{2}$). It is just right for post-card use, is unusually effective for landscape compositions, and



used vertically its proportions are ideal for full and three-quarter length portraits.

This popular size is now offered in the simple, inexpensive Brownies. The new 3A is a reliable and effective camera that is sure to prove widely popular.

IN DETAIL

For rectangular pictures, $3\frac{1}{4} \times 5\frac{1}{2}$ inches. Capacity, 10 exposures without reloading. Size of Camera, $2\frac{5}{8} \times 4\frac{5}{8} \times 9\frac{7}{8}$ inches. Weight, 34 ounces. Lens, Meniscus Achromatic, $6\frac{1}{2}$ -inch focus. Shutter, F. P. K. Automatic, with bulb release. (See page 8.) Automatic focusing lock. Two Tripod Sockets. Reversible finder.

THE PRICE



No. 3A Folding Brownie Camera, Meniscus Achromatic Lens, F. P. K. Automatic Shutter, . . .	\$10.00
Ditto, with R. R. Lens and F. P. K. Automatic Shutter,	12.00
No. 3A Folding Brownie Carrying Case,	1.00
N. C. Film Cartridge, 10 exposures,70
Ditto, 6 exposures,40
Ditto, "Double Two" Cartridge, 4 exposures,30
Kodak Portrait Attachment,50

No. 2 STEREO BROWNIE



THE making of stereoscopic photographs will prove doubly fascinating with this instrument, as all complications have been avoided, and even the cutting apart and transposing of the negatives has been done away with by means of the self-transposing printing frame. The lenses are carefully selected and the twin shutters are equally effective.

IN DETAIL

For stereo pictures, each $3\frac{1}{4} \times 2\frac{1}{2}$ inches.
Capacity, 10 stereo exposures without reloading.
Size of Camera, $9\frac{3}{4} \times 4\frac{1}{2} \times 2\frac{1}{2}$ inches. Weight, 29 ounces.
Lenses, Meniscus Achromatic, $4\frac{1}{2}$ -inch focus. Shutters, Pocket Automatic, with four stop openings. (See page 7.) Automatic focusing lock. Tripod Socket. Brilliant finder, with hood.

THE PRICE

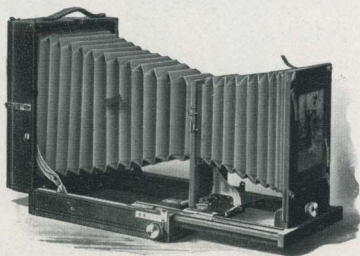
No. 2 Stereo Brownie Camera, Meniscus Achromatic Lenses, Pocket Automatic Shutter,	\$12.00
No. 2 Stereo Brownie Carrying Case,	1.00
N. C. Film Cartridge, 10 stereo exposures,70
Ditto, 6 exposures,40
Ditto, "Double-Two" Cartridge, 4 exposures,30
Self-Transposing Printing Frame, for $3\frac{3}{4} \times 2\frac{1}{2}$ stereo prints,	1.50
Brownie Stereoscope,75

ENLARGING CAMERAS

No. 1 KODAK ENLARGING CAMERA

FOR making $6\frac{1}{2} \times 8\frac{1}{2}$ enlargements from 4×5 and $3\frac{1}{4} \times 4\frac{1}{4}$ negatives.

Smaller negatives enlarge in proportion. May be used as a portrait camera by removing negative carrier and substituting portrait lens.

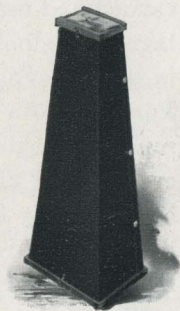


THE PRICE

No. 1 Kodak Enlarging Camera, $6\frac{1}{2} \times 8\frac{1}{2}$	\$15.00
Inside Kits, $6\frac{1}{2} \times 8\frac{1}{2}$, with 5×7 or 4×5 opening,35
Glass Negative Holders, $3\frac{1}{4} \times 4\frac{1}{4}$ or $3\frac{1}{2} \times 3\frac{1}{2}$,50
Special Portrait Lens, $8\frac{1}{2}$ -inch focus, Speed, <i>f</i> . 8, for Bust Work,	7.50
Extra Lens Board, no extra charge for fitting to our Special Portrait Lens,75

BROWNIE ENLARGING CAMERAS

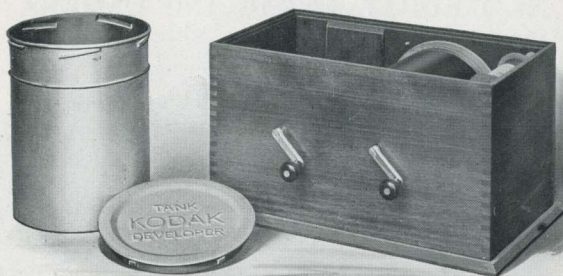
THE Brownie Enlarging Camera consists of a light tight cone with attachments to hold a negative at the small end, and a sheet of Bromide paper at the other; the lens is fixed inside the cone at just the right distance to insure perfect focus. Exposure is made by daylight, and dark-room is necessary only for loading and development. The entire operation may be performed in daylight when Velox instead of Bromide paper is used, but in such case the exposure is, of course, much longer.



THE PRICE

No. 2 Brownie Enlarging Camera, for 5×7 Enlargements from $2\frac{1}{4} \times 3\frac{3}{4}$ negatives,	\$2.00
No. 3, ditto, for $6\frac{1}{2} \times 8\frac{1}{2}$ Enlargements from $3\frac{1}{4} \times 4\frac{1}{4}$ negatives,	3.00
No. 4, ditto, for 8×10 Enlargements from 4×5 negatives (will also take $3\frac{1}{4} \times 5\frac{1}{2}$ negatives),	4.00

KODAK FILM TANK



SO thoroughly has the Kodak Film Tank demonstrated the superiority of the time and temperature method of development that the old tentative hand development of dark-room days is rapidly becoming a process of the past.

The Kodak Tank is immeasurably more convenient—can be carried and used anywhere; but this is not its greatest advantage. It eliminates the dark-room entirely, developing film in broad daylight; but even this is not its greatest advantage. For with both these extraordinary features it produces *better results*; and this is its greatest advantage—the assurance that every roll of film put into the tank, where the simple directions are implicitly followed, will come out developed as well or better than that roll of film could be developed in the dark-room by the most experienced photographer.

The Kodak Film Tank consists of a winding box, a light-proof apron, and a heavily nickeled brass solution cup with cover. All articles can be packed in the box, making the entire outfit self-contained.

The film to be developed is placed upon a reel in the winding box, the cover is placed on box and the film is wound

KODAK FILM TANK—CONTINUED

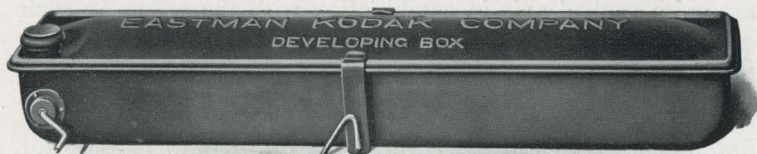
around a central axis in combination with the apron, in such fashion that, when completely wound, the apron protects the film effectually from light, and may be removed from the winding box safely at any time. It is then lowered into the cup of developer, the cover attached and the film left to develop for twenty minutes. After development, the film is removed for fixing. Every step may be performed in daylight and the entire operation is so simple as to be readily understood by the absolute novice. The exact time necessary for development, in combination with the chemical formula, has been scientifically worked out, so that all differences of exposure within reasonable bounds are taken care of. Snap shots and time exposures go into the tank at the same time and come out together, developed to their full values.

With the Kodak Film Tank, the amateur can develop a number of rolls at once, by means of duplicating outfits.

THE PRICE

Brownie Kodak Film Tank. For use with No. 1, No. 2, and No. 2 Folding Pocket Brownie Cartridges, complete,	\$2.50
3½-inch Kodak Film Tank. For use with all Kodak or Brownie Cartridges having a film width of 3½ inches or less, complete,	5.00
5-inch Kodak Film Tank. For use with all Kodak and Brownie Cartridges having a film width of 5 inches or less, complete,	6.00
7-inch Kodak Film Tank. For use with No. 5 Cartridge Kodak or shorter film Cartridges, complete,	7.50
Duplicating Outfit, consisting of one Solution Cup, one Transferring Reel, and one Apron for Brownie Kodak Film Tank,	1.25
Ditto, for 3½-inch Kodak Film Tank,	2.50
Ditto, for 5-inch Kodak Film Tank,	3.00
Ditto, for 7-inch Kodak Film Tank,	3.75
Kodak Tank Developer Powders for Brownie Kodak Film Tank, per package of ½ dozen,15
Ditto, for 3½-inch Tank, per package, ½ dozen,20
Ditto, for 5-inch Tank, per package, ½ dozen,25
Ditto, for 7-inch Tank, per package, ½ dozen,25
Kodak Acid Fixing Powder, per ¼-pound package,10
Ditto, per ½-pound package,15
Ditto, per 1-pound package,25

No. 2 BROWNIE DEVELOPING BOX



THE No. 2 Brownie Developing Box is a modified form of the Kodak Film Tank, so simple as to be readily understood and successfully operated by any boy or girl.

The No. 2 Brownie Developing Box is a metal box fifteen inches in length, just long enough to accommodate a roll of No. 1 or No. 2 Brownie film in one loop.

To develop, the roll of film is inserted in the spool carrier, and by means of a cord and winding shaft the film is unrolled and carried around a roller bearing, thus exposing the film to the action of the developer.

Before unrolling the film the developer is poured in the box and the cover put in place. The film is unrolled by turning the crank.

Then the box is rocked on its standard for six minutes. The developer is then poured off and box filled with water to wash out developer, after which film is removed and fixed in daylight.

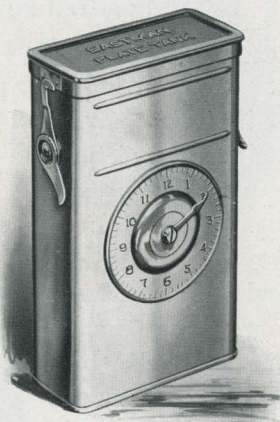
The Brownie Developing Box produces better negatives than can be produced by the old method of hand development in the dark-room.

THE PRICE

No. 2 Brownie Developing Box,	\$1.00
Brownie Developing Box Powders, per package of 6,15
Kodak Acid Fixing Powders, ½-pound package,15
Ditto, ¼-pound package,10

THE EASTMAN PLATE TANK

THE Eastman Plate Tank is the same in theory as the highly successful Kodak Film Tank, with, of course, such modifications as are rendered necessary by the physical difference between plates and film. That equally successful results are produced goes without saying. The Eastman Plate Tank consists of a metal solution cup, with tightly-fitting cover, a cage for holding twelve plates, or less, during development and fixing, and an ingenious loading block for loading the plates into the cage in the dark-room.



The exposed plates are loaded into the cage and placed in the tank in the dark-room, and the tank cover fastened in place. On the front of the tank is a dial for registering time. Development is allowed to continue for fifteen minutes, the tank being reversed several times. After development the developer is washed out of the plates, and the fixing bath poured into the tank, after which the plates are ready for washing in the usual manner.

THE PRICE

Eastman Plate Tank, 4 x 5, including Solution Cup, Plate Cage, and Loading Block,	\$3.50
Ditto, 5 x 7,	4.50
Kit for 4 x 5 Tank, to take 3¼ x 4¼ plates,50
Kit for 5 x 7 Tank, to take 4¼ x 6½ and 4¾ x 6½ plates,75
Metal Insert for 5 x 7 Tank, to take 4 x 5 plates,20
Eastman Plate Tank Developer Powders, for 4 x 5 Tank, per package, ½ dozen,20
Ditto, for 5 x 7 Tank, per package, ½ dozen,35
Kodak Acid Fixing Powder, per 1-pound package,25

KODAK PORTRAIT ATTACHMENT

HOME portraiture the Kodak way requires no elaborate apparatus — no lengthy experience.

A fifty-cent portrait attachment on a small Kodak or Brownie camera will enable one to make good-sized head and shoulder pictures

—while the attachment which we now furnish for the 4A and other Kodaks of larger size enables one to make bust portraits of any size desired, limited only by the dimensions of the film. The Kodak Portrait Attachments are simply extra lenses which slip on in front of the regular lenses. They in no way affect the operation of the fixed focus Kodaks except that they make them cut sharp at a distance of $3\frac{1}{2}$

feet, and thus throw more distant objects out of focus.

They may also be used to good advantage with any of the focusing Kodaks, not only for portraits, but for small objects at close range.



MADE WITH KODAK PORTRAIT ATTACHMENT AND
NO. 3 F. P. KODAK, EXACT SIZE

PORTRAIT ATTACHMENT—CONTINUED

With the attachment in place, the focus of these instruments set at 15 feet, and the subject $3\frac{1}{2}$ feet from the cameras, admirable bust portraits are obtained, and, by changing the focus, it is practical to work at different distances, thus varying the size of the image.



For use with all regularly equipped Kodaks listed in this catalogue except the 1A and 4A Speed Kodaks and the Panoram-Kodaks. May also be used with the Nos. 2, 2A, and 3 Brownies, No. 2 Folding Pocket, and Nos. 3 and 3A Folding Brownie Cameras.

Be sure and give exact designation of instrument when ordering, and when to be used with a pneumatic release shutter, also give exact designation of same.

THE PRICE

Kodak Portrait Attachment, \$.50

KODAK WIDE ANGLE LENSES

These lenses have a speed of $f.16$ and are interchangeable with the lenses furnished with the No. 4 Screen Focus Kodak, the Nos. 3A and 4 Folding Pocket Kodaks, and the No. 4A Folding Kodak.

The wide angle Kodak lenses are rectilinear, carefully tested, and are absolutely high grade in every instance. With each one we furnish a leather case and a graduated focusing scale for attaching to the camera bed.

In ordering a Kodak wide angle lens, give size (No.) of Kodak and be sure to specify the shutter that the lens is to be used with.

THE PRICE

No. 4 (4 x 5) Wide Angle Kodak Lens, equivalent focus, $4\frac{1}{2}$ inches, \$5.00
(Also adapted to 3A Kodak.)
No. 5 (5 x 7) Wide Angle Kodak Lens, equivalent focus, $5\frac{1}{2}$ inches, 7.50
(Also adapted to 4A Kodak.)

THE ANASTIGMAT ADVANTAGE

TO secure a sharp, satisfactory negative with the ordinary R. R. lens, its opening cannot be larger in diameter than one-eighth the focal length of the lens. Such opening admits sufficient light on clear, bright days to obtain well-timed exposures as fast as $\frac{1}{100}$ of a second; in dull lights snap shots are impossible.

But with an anastigmat the construction and optical corrections are such that sharp, satisfactory pictures may be made at an opening more than one-seventh the focal length of the lens—a considerably larger opening than is possible with the ordinary lens, and, hence, admitting very much more light in a given time. So much more, that in clear, bright light exposures as short as $\frac{1}{100}$ second may be made. And on dull days and even indoors, where with an R. R. lens little or no impression could be obtained, the anastigmat admits so much light that “slow snap shots” may be made.

THE ZEISS KODAK ANASTIGMAT

With our knowledge of the steadily increasing use of anastigmats in recent years, the opportunity of extending Kodak quality in still another direction has naturally suggested itself. And in offering this new anastigmat under the name of the *Zeiss Kodak Anastigmat* lens, we do so with the assurance that it encompasses all the quality and dependability which the word Kodak implies; that this lens will occupy the same position among anastigmats that the Kodaks themselves occupy among cameras.

Everybody will fully appreciate the fact that we would not give the name of Kodak to any article unless we had absolutely assured ourselves from rigid tests and comparisons that it would bear the name worthily.

SPECIAL LENS AND SHUTTER EQUIPMENTS

The No. 1A Special, No. 3, No. 3A, and No. 4 Folding Pocket, No. 4 Screen Focus,
No. 4A Folding Kodaks, No. 1A and No. 4A Speed Kodaks
may be equipped as follows :

STYLE OF KODAK	FITTED WITH ZEISS KODAK ANASTIGMAT LENS, <i>f.</i> 6.3			FITTED WITH B. & L. ZEISS TESSAR LENS, SERIES II-B, <i>f.</i> 6.3			FITTED WITH COOKE LENS, SERIES III-A, <i>f.</i> 6.5		
	Compound Shutter	Volute Shutter	B. & L. Auto. or Kodak Auto. Shutters	Compound Shutter	Volute Shutter	B. & L. Auto. or Kodak Auto. Shutters	Compound Shutter	Volute Shutter	B. & L. Auto. or Kodak Auto. Shutters
No. 1A F. P. K. Special,	No. 2 Lens, \$46.30 0 Sh.	No. 2 Lens, \$40.50 1 Sh.	No. 4 Lens, \$58.80 0 Sh.	No. 4 Lens, \$53.00 1 Sh.	No. 3 Lens, \$59.30 0 Sh.	No. 3 Lens, \$53.50 1 Sh.
No. 3 F. P. Kodak,	No. 2 Lens, \$48.80 0 Sh.	No. 2 Lens, \$53.80 1 Sh.	No. 2 Lens, \$43.00 1 Sh.	No. 4 Lens, \$61.30 0 Sh.	No. 4 Lens, \$66.30 1 Sh.	No. 4 Lens, \$55.50 1 Sh.	No. 3 Lens, \$61.80 0 Sh.	No. 3 Lens, \$66.80 1 Sh.	No. 3 Lens, \$56.00 1 Sh.
No. 3A F. P. Kodak,	No. 4 Lens, \$61.40 1 Sh.	No. 4 Lens, \$63.90 1 Sh.	No. 5K Lens \$76.90 1 Sh.	No. 5K Lens \$79.40 1 Sh.	No. 4 Lens, \$70.40 1 Sh.	No. 4 Lens, \$72.90 1 Sh.	No. 4 Lens, \$62.50 1 Sh.
No. 4 F. P. Kodak,	No. 4 Lens, \$61.40 1 Sh.	No. 4 Lens, \$63.90 1 Sh.	No. 5K Lens \$76.90 1 Sh.	No. 5K Lens \$79.40 1 Sh.	No. 4 Lens, \$70.40 1 Sh.	No. 4 Lens, \$72.90 1 Sh.	No. 4 Lens, \$62.50 1 Sh.
No. 4 Screen Focus Kodak,	No. 4 Lens, \$71.80 1 Sh.	No. 5K Lens \$87.30 1 Volute only	No. 4 Lens, \$80.80 1 Volute only	No. 4 Lens, \$67.50 1 Kodak Auto. only
No. 4A Folding Kodak,	No. 5 Lens, \$83.45 2 Sh.	No. 5 Lens, \$85.70 2 Sh.	No. 5 Lens, \$72.50 2 B. & L. Sh.	No. 6 Lens, \$104.95 2 Sh.	No. 6 Lens, \$107.20 2 Sh.	No. 6 Lens, \$94.00 2 B. & L. Auto. only No. 4 Lens, \$72.50 G. F. P. Sh.	No. 6 Lens, \$96.45 2 Sh.	No. 6 Lens, \$98.70 2 Sh.	No. 6 Lens, \$85.50 2 B. & L. Auto. only No. 25 Lens, Ser. IV, \$76.00 G. F. P. Sh.
No. 1A Speed Kodak,	No. 2 Lens, \$60.00 G. F. P. Shutter
No. 4A Speed Kodak,	No. 5 Lens, \$90.00 Focal Plane Shutter	No. 6 Lens, \$111.50 Focal Plane Shutter	No. 6 Lens, \$103.00 Focal Plane Shutter

Wherever, in the above list, any of the lenses are not listed with a B. & L. Auto. or Kodak Automatic Shutter it is because such lenses cannot be worked at their full advertised aperture with said shutters. Price of Speed Kodaks includes Focal Plane Shutter only.

ANASTIGMAT LENSES—CONTINUED

DEVELOPING AND PRINTING OUTFITS



EASTMAN'S A B C Developing and Printing Outfit includes every requisite for developing by the dark-room method, printing and finishing twenty-four $2\frac{1}{2} \times 4\frac{1}{4}$, $3\frac{1}{4} \times 4\frac{1}{4}$, or 4×5 pictures. The outfit contains:

1 Kodak Candle Lamp,	\$.25
1 4×5 Printing Frame,25
1 4×5 Glass for Frame,05
1 4-ounce Graduate,10
1 Stirring Rod,05
4 $4\frac{1}{2} \times 5\frac{1}{2}$ Developing Trays,40
5 Tubes Eastman's Special Developer,25
$\frac{1}{2}$ pound Kodak Acid Fixing Powder,15
$\frac{1}{2}$ ounce Potassium Bromide,10
2 dozen 4×5 Velox Paper,50
2 ounces Nepera Solution, for developing Velox,15
Instruction Book,10

Price, complete, neatly packed, \$1.50

EASTMAN'S BULL'S-EYE DEVELOPING AND PRINTING OUTFIT, complete, for developing and printing 12 pictures $3\frac{1}{2} \times 3\frac{1}{2}$. Similar to above outfit. Price, complete, neatly packed, \$1.25

BROWNIE DEVELOPING AND PRINTING OUTFIT, complete, for developing and printing 24 pictures $2\frac{1}{4} \times 2\frac{1}{4}$. Price, complete,90

NOTE.— These outfits cannot be shipped by mail.

THE KODAK BOX No. 2



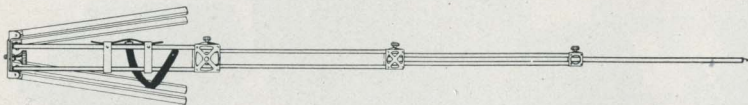
THE Kodak Box No. 2 contains everything for picture making by the daylight method. No dark-room is necessary, and even the beginner can get good results by following the simple, explicit directions contained in the instruction book. This outfit is simple enough for boys and girls, while at the same time it will make pictures which will please the grown-up people.

THE PRICE

1 No. 2 Brownie Camera, $2\frac{1}{4} \times 3\frac{1}{4}$,	\$2.00
1 No. 2 Brownie Developing Box,	1.00
1 Roll No. 2 Brownie Film, $2\frac{1}{4} \times 3\frac{1}{4}$,20
2 Brownie Developing Box Powders,05
1 One-half-lb. pkg. Kodak Acid Fixing Powder,15
1 4-oz. Graduate,10
1 Stirring Rod,05
1 No. 2 Brownie Printing Frame,15
1 Pkg. (1 doz.) $2\frac{1}{4} \times 3\frac{1}{4}$ Brownie Velox,10
1 Bottle Nepera Solution,10
3 Paper Developing Trays,30
1 Doz. $2\frac{1}{4} \times 3\frac{1}{4}$ Mounts,10
1 Doz. $2\frac{1}{4} \times 3\frac{1}{4}$ Kodak Dry Mounting Tissue,05
1 Instruction Book,10
	\$4.45
Price, complete, neatly packed,	\$4.00

KODAK TRIPODS

EASTMAN'S FOLDING HEAD TRIPOD FOR 4x5 CAMERAS, OR SMALLER



BY the simplest device, all the inconveniences of the old-fashioned tripod have been overcome. Other tripods are either awkwardly bulky when closed or else the head has to be removed from the legs. In the Eastman Folding Head Tripod the head itself folds, and the tripod then makes a compact, rectangular package. No loose parts, no complicated mechanism, and the tripod is very rigid. Length, folded, 17 inches; extended, 52 1/2 inches. Weight, 25 ounces.

THE PRICE

Eastman's Folding Head Tripod,	\$3.50
Black Sole Leather Carrying Case,	1.50

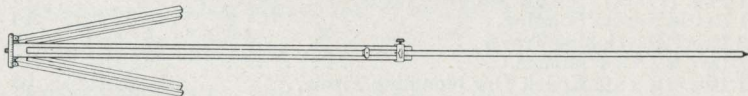
THE EASTMAN TRIPOD



Three sections. No. 1, Maple, for cameras up to 6 1/2 x 8 1/2. Weight, 2 pounds, 2 ounces.

Price, \$2.00

THE BULL'S-EYE TRIPOD



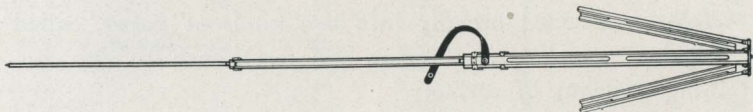
Two sections. An Aluminum revolving head holds the socket screw and seats it in place in camera when turned, thus

KODAK TRIPODS—CONTINUED

doing away with tripod screw. Made of maple, with brass fittings. For 4 x 5 cameras, or smaller.

Price, \$1.50

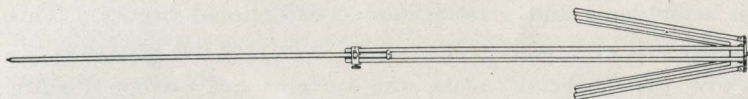
THE STANDARD TRIPOD



The feature of this new tripod is the automatic locking of the sections when they are extended. It is exceedingly light and compact, yet rigid when in use. Fixed, non-detachable head. Length, folded, 21 inches; extended, 53 1/2 inches. Weight, 18 ounces. Handsome cherry finish, brass trimmings.

Price, \$1.75

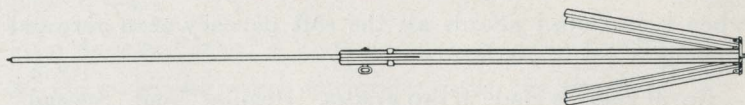
THE FLEXO TRIPOD



Two sections. Has a fixed, non-detachable head. Only clear, straight-grained wood is used in its construction. The metal work is of brass and all parts are accurately made.

Price, \$.90

THE BULLET TRIPOD



Two sections. Spruce, solid head. For small cameras.

Price, \$.70

VELOX PAPER

VELOX prints in any light, requires no dark-room for development, and permits the amateur to utilize his evening hours in print making. Its simplicity of manipulation and extreme gradation make it suitable for photographic work of every sort.

Velox is divided broadly into two kinds of paper, called "Regular" and "Special" (slow and fast), each division containing a variety of surfaces.

"Regular" papers develop quickly and are best suited for negatives lacking contrast. "Special" papers develop slowly, and give soft effects from hard negatives. Use "Special" Velox for negatives producing good results on "Printing Out" paper (such as Solio), and "Regular" only with very flat negatives.

Velox Surfaces: In the "Regular" class are Carbon (matte surface), Carbon double weight, Glossy, Glossy double weight, Velvet, and Velvet double weight. "Regular" Velvet Velox is semi-glossy and gives prints of exceptional beauty. This paper will give satisfactory results from very flat negatives.

In the "Special" class, the surfaces are Carbon (matte surface), Portrait (smooth matte), Portrait double weight, Rough, Rough double weight, Glossy, Glossy double weight, Velvet, and Velvet double weight.

"Special" Velvet Velox has a greater range than any of the other "Special" papers.

Royal Velox is coated on a soft, mellow tinted stock, which when redeveloped affords all the soft delicacy of a rare old etching.

Royal Velox is made in two grades, "Regular" and "Special" and one surface, just rough enough to produce the desired effect.

VELOX PAPER—CONTINUED

THE PRICE

SIZE	SINGLE WEIGHT			DOUBLE WEIGHT		
	Doz.	½ GROSS	GROSS	Doz.	½ GROSS	GROSS
2¼ x 3¼	\$.15	\$.60	\$1.00	\$.20	\$.75	\$1.25
2½ x 4¼	.15	.70	1.25	.20	.90	1.55
3½ x 3½	.15	.80	1.50	.20	1.00	1.90
3¼ x 4¼	.15	.80	1.50	.20	1.00	1.90
3¼ x 5½	.15	.80	1.50	.20	1.00	1.90
4 x 5	.25	1.10	2.00	.30	1.40	2.50
* 3¼ x 6 (Stereo)	.25	1.10	2.00			
† * 3⅜ x 6½	.25	1.10	2.00			
2¼ x 7	.15	.80	1.50	.20	1.00	1.90
4¼ x 6½	.30	1.65	2.80	.40	2.05	3.50
5 x 7	.35	2.00	3.50	.45	2.50	4.40
3½ x 12	.45	2.50	4.50	.55	3.15	5.65
Velox Post-cards, 3½ x 5½, furnished in Regular Velvet, Special Velvet, Special Rough, Special Portrait, Regular Glossy, Special Glossy, and Regular Royal and Special Royal,						
				.20	1.10	2.00
Brownie Post-cards, 2¼ x 4¼, Reg. and Spc. Velvet, .15						
Double Post-cards, 3½ x 11 inches,						
				.40	2.20	4.00

* Glossy only. † For use in Self-Transposing Stereo Printing Frame.

BROWNIE VELOX (ONE GRADE ONLY)

2¼ x 2¼, per package 2 doz. sheets,	\$.15
2¼ x 3¼, per package 1 doz. sheets,10

VELOX SUNDRIES

N. A. (Non-Abrasion) Velox Liquid Developer, 4-ounce bottle (makes 20 ounces for Special, 12 ounces for Regular),	\$.25
Ditto, 16-ounce bottle,75
Nepera Solution, per 4-ounce bottle,20
Ditto, 16-ounce bottle,60
Nepera Capsules (for converting Nepera solution to a film or plate developer), per package 1 doz.,15
Velox Re-Developer, for Sepia Tones, 4-ounce bottle,50
Ditto, 2 ounces (sufficient for 150 4 x 5 prints),30
Velox Liquid Hardener, per 4-ounce bottle,15
Ditto, 8-ounce bottle,25
Nepera M. Q. N. A. Tubes, box of 5 tubes,75
Kodak Acid Fixing Powder for fixing Velox prints, per pound,25
Ditto, ½ pound,15
Ditto, ¼ pound,10
Velox Amateur Printer No. 1 (with gas pillar; adapted for electric socket),	2.00
Electric Attachment (extra). Comprising socket, plug, and 6-foot cord,75
Welsbach Attachment (extra). Burner, mantle, and large chimney,	1.25
Extra mantles, each,15
Tubing, 6-foot lengths (for connecting printer with gas supply),50

KODAK PAPERS

ANGELO PLATINUM PAPERS

Angelo Platinum Papers are exceedingly simple to handle and yield prints that are marvelous in gradation and delicacy. Made in both Black and White and Sepia.

Angelo Sepia, unlike most Sepia Platinum papers, develops in a cold solution. Angelo Platinum papers are furnished in two grades, "Smooth" and "Rough."

Size	Price Per Doz.
3½ x 3½	\$.30
3½ x 4¼30
4 x 550
3½ x 5½50
4¼ x 6½70
5 x 780

ANGELO SOLUTION	
Angelo Developer, for Angelo Black and White, ¼-pound package, . . .	\$.20
Angelo Developer, for Angelo Black and White, ½-pound package,35
Angelo Sepia Solution (2-oz. bottle),35
Angelo Sepia Salts (2-oz. package),10

EASTMAN'S W. D. PLATINUM PAPER

A pure platinum paper, requiring only water development, without chemicals. Clears in water and acid. Produces effects equal in beauty to any photographic process. Packed in sealed tubes; two grades—"Smooth" and "Rough."

Size	Price Per Doz.
2½ x 3½	\$.15
2½ x 4¼20
3½ x 3½20
3½ x 4¼25
4 x 535

Size	Price Per Doz.
3½ x 5½	\$.30
3½ x 6 (Stereo),35
2½ x 730
4¼ x 6½45
5 x 760
3½ x 1270

SOLIO PAPER

A rapid, glossy printing-out paper.

Size	Per Pkg., 2 Doz.
2½ x 2½	\$.20
2½ x 3½20
2½ x 4¼20
3½ x 3½20
3½ x 4¼20
4 x 525
3½ x 6 (Stereo),25

Size	Per Pkg., 2 Doz.
2½ x 7 (No. 1 Panoram-Kodak), . . .	\$.25
Per Doz.	
4¼ x 6½	\$.25
5 x 730
3½ x 12 (No. 4 Panoram-Kodak),35
Post-cards,15
Double Solio Post-cards,30
Brownie Post-cards, 2½ x 4¼,10

SECONDS: 4 x 5 (trimmed) seconds, \$1.00 per gross.

SOLIO Combined Toning and Fixing Solution, per 8-ounce bottle, 50 cents.

Ditto, 4-ounce bottle, 30 cents; post-paid, 50 cents.

EASTMAN'S SEPIA PAPER

As simple to handle and much quicker than Blue Print Paper. Especially desirable with negatives giving sketchy effects. Packed in sealed tubes.

Size	Price Per 2 Doz.
2½ x 2½	\$.15
2½ x 3½15
2½ x 4¼15
3½ x 3½15
3½ x 4¼15
3½ x 5½20
Post-cards,25

Size	Price Per 2 Doz.
4 x 5	\$.20
3½ x 6 (Stereo),20
2½ x 720
1 Doz.	
4¼ x 6½	\$.15
5 x 720
3½ x 1220

KODAK PAPERS—CARD MOUNTS

EASTMAN'S "FERRO-PRUSSIATE" PAPER

A "Blue Print" that retains delicacy and detail. In sealed tubes.

Size	Price Per 2 Doz.	Size	Price Per 2 Doz.
2½ x 2½	\$.16	3¼ x 5½	\$.20
2½ x 3½	.16	3¼ x 6 (Stereo)	.20
2½ x 4½	.16	2½ x 7	.20
3½ x 3½	.16	4½ x 6½	.30
3½ x 4½	.16	5 x 7	.35
4 x 5	.20	3½ x 12	.40
	1 Doz.		1 Doz.
Post-cards	\$.15	Brownie Post-cards 2¼ x 4¼	\$.10

EASTMAN'S PERMANENT BROMIDE PAPERS

Enlargements are easily made on these papers by means of the Kodak Enlarging Camera, the Brownie Enlarging Cameras, or an improvised apparatus.

Velvet, Royal, Standard, Platino, Enameled, and Matte-Enamel.

Size	Per Doz.	Size	Per Doz.
5 x 7	\$.35	11 x 14	\$1.60
5 x 8	.40	14 x 17	2.40
6½ x 8½	.60	16 x 20	3.20
8 x 10	.80	18 x 22	4.00
10 x 12	1.20	Other sizes in proportion.	

ARISTO GOLD POST-CARDS

Rich sepia and purple tones.

Print, wash and fix for sepias.

Print, wash, a simple salt bath and fix, for purple tones—absolutely permanent.

Aristo Gold Post-cards, Per Doz., \$.30

THE ATLANTIC CARD MOUNTS

Gray and Black

An attractive card with embossed center and specially wide margins.

No.	Size of Photo	Size of Card	Per 100	Per 50
1	2½ x 3½	4¼ x 5½	\$.70	\$.35
1A	2½ x 4¼	4¼ x 6½	.80	.40
2	3½ x 3½	5½ x 5½	.80	.40
3	3½ x 4¼	5½ x 6½	.85	.45
3A	3½ x 5½	5½ x 8	1.00	.50
4	4 x 5	6 x 7	1.00	.50
4A	4¼ x 6½	6¼ x 8½	1.25	.65
5	5 x 7	7 x 9	1.25	.65

STEREO MOUNTS

Size of Mount	Per 100	Per 50
3½ x 7; color, Queen's Gray,	\$.45	\$.25

KODAK MOUNTS—CONTINUED

BEVPLANE

Carbon Black and Scotch Gray

For Prints	Size of Mount	Per 100	Per 50	For Prints	Size of Mount	Per 100	Per 50
1½ x 2½	3¼ x 4¼	\$.60	\$.30	4 x 5	5½ x 6½	\$.90	\$.45
2½ x 3½	4 x 5	.60	.30	4¼ x 6½	5¾ x 8	1.55	.80
2½ x 4¼	4¼ x 6	.80	.40	5 x 7	7 x 9	1.70	.85
3½ x 3½	5 x 5	.80	.40	2¼ x 7	4 x 8¾	.90	.45
3½ x 4¼	5 x 6	.85	.45	3½ x 12	5¾ x 13¾	1.80	.90
3¼ x 5½	4¾ x 7	.90	.45				

No orders accepted for less than fifty of one kind and size.

RIVIERA

Ash Gray and White

For Prints	Size of Mount	Per 100	Per 50	For Prints	Size of Mount	Per 100	Per 50
1½ x 2	3 x 3 ⁷ / ₁₆	\$.30	\$.15	3¼ x 4¼	4½ x 5 ⁹ / ₁₆	\$.65	\$.35
1½ x 2½	3 x 3 ³ / ₈	.40	.20	4 x 5	5 ⁷ / ₁₆ x 6 ⁷ / ₁₆	.85	.45
2½ x 2½	3 x 3 ³ / ₈	.40	.20	3¼ x 5½	5 x 7¼	.95	.50
2½ x 3½	3 x 4	.50	.25	4¼ x 6½	5¼ x 8	1.40	.70
2½ x 4¼	4 x 5 ³ / ₈	.65	.35	5 x 7	7 x 9	1.50	.75
3½ x 3½	5 x 5	.65	.35				

No orders accepted for less than fifty of one kind and size.

NAPLES

Queen's Gray, Artist's Brown, and Jet Black

For Prints	Size of Mount	Per 100	Per 50	For Prints	Size of Mount	Per 100	Per 50
2½ x 3¼	4 x 5	\$.85	\$.45	3¼ x 5½	5¼ x 7½	\$1.25	\$.65
2½ x 4¼	4¼ x 6	.90	.45	4 x 5	5½ x 6½	1.05	.55
3½ x 3½	5 x 5	.90	.45	4¼ x 6½	6¼ x 8½	1.65	.85
3½ x 4¼	5 x 6	.95	.50	5 x 7	7 x 9	1.95	1.00

No orders accepted for less than fifty of one kind and size.

THE RIVERTON

Ash Gray—Golden Brown. Beveled Edge, dark border with handsome inlaid design.

For Prints	Size of Mount	Per 100	Per 50	For Prints	Size of Mount	Per 100	Per 50
2½ x 3¼	4 x 5	\$1.10	\$.55	3¼ x 5½	5¼ x 7½	\$1.65	\$.85
2½ x 4¼	4¼ x 6	1.25	.65	4 x 5	6 x 7	1.65	.85
3½ x 3½	5 x 5	1.25	.65	4¼ x 6½	6¼ x 8½	2.20	1.10
3½ x 4¼	5 x 6	1.35	.70	5 x 7	7 x 9	2.75	1.40

No orders accepted for less than fifty of one kind and size.

THE BAYVIEW

Ash Gray and Golden Brown. For squeegee and unmounted prints, beveled edges, snowflake finish.

Mount consists of mat with loose back to be pasted down.

For Prints	Size of Mat	Per 100	Per 50	For Prints	Size of Mat	Per 100	Per 50
3½ x 3½	5 x 5	\$1.65	\$.85	4 x 5	6 x 7	\$2.20	\$1.10
3¼ x 4¼	5 x 6	2.00	1.00	4¼ x 6½	6¼ x 8½	2.70	1.35
3¼ x 5½	5½ x 7½	2.20	1.10	5 x 7	7 x 9	3.10	1.55

No orders accepted for less than fifty of one kind and size.

DEVELOPING AND PRINTING

	Pocket Kodak, 1½ x 2	No. 0 Folding P. K., 1½ x 2½	No. 1 Folding P. K., 2¼ x 3¼	No. 1A F. P. K. Special, No. 1A Folding P. K., 1A Speed Kodak No. 2A Brownie, 2½ x 4½	No. 2 Bull's-eye, etc., 3½ x 3½	No. 3 F. P. K., No. 3 Bull's-eye, No. 3 Brownies, etc., 3¼ x 4¼	Nos. 3A and 3B, 3¼ x 5½	No. 4 B. F., etc., 4 x 5, 10 ex.	Speed Kodak, No. 4A, 4½ x 6½, 5 Kodaks, etc., 5 x 7
Developing, Printing, and Mounting 1-Film Cartridge,	\$.90	\$.95	\$ 1.40	\$ 1.50	\$ 1.50	\$ 1.50	\$ 1.50	\$ 1.50	\$ 1.20
Developing and Printing, Unmounted,84	.89	1.28	1.38	1.38	1.38	1.40	1.40	1.05
Developing only, each,02	.03	.04	.06	.06	.06	.08	.08	.10
Printing and Mounting only, each,06	.06	.08	.08	.08	.08	.10	.10	.12½
Printing, Unmounted only, each,05½	.05½	.07	.07	.07	.07	.09	.09	.10
Developing, Printing, and Mounting, each,08	.08½	.12	.12½	.12½	12½	.15	.15	.20
Developing and Printing, Unmounted, each,07½	.08	.11	.11½	.11½	.11½	.14	.14	.17½

Above prices cover Cartridges of 12 exposures for Pocket Kodak, No. 0 Folding, No. 1 Folding, No. 1A Folding, No. 1A Special, No. 1A Speed, 3½ x 3½, No. 3 Folding, No. 4 Folding, and Nos. 2A and 3 Folding Brownies; 10 exposures for Nos. 3A and 3B, and 6 exposures for No. 4A Folding, Speed Kodak, and 5 x 7. On orders for less, 25 cents extra will be charged.

	No. 1 Brownie, 2¼ x 2¼	No. 2 and No. 2 F. P. Brownie, 2¼ x 3¼	No. 1 Panoram, 2¼ x 7	No. 4 Panoram, 3½ x 12	No. 2 Stereo Brownie, 3¼ x 5
Brownie Camera, Stereo and Panoram-Kodak sizes, on Velox					
Developing, Printing, and Mounting 1-Film Cartridge,	\$.50	\$.70	\$ 1.40	\$ 1.40	\$ 1.50
Developing and Printing, Unmounted 1-Film Cartridge,47	.64	1.28	1.28	1.40
Developing only, each,03	.04	.08	.18	.08
Printing and Mounting only, each,06	.08	.16	.20	.10
Printing, Unmounted only, each,05½	.07	.14	.17	.09

Above price list is for one full roll as follows: 6 exposures No. 1 and No. 2 Brownie; 10 exposures No. 2 Stereo Brownie; 6 exposures No. 1 Panoram, or 4 exposures No. 4 Panoram. On orders for less than a full roll, as above, 25 cents extra will be charged.

Prints are furnished unmounted in all cases, unless otherwise specified in order. Unmounted prints on "Double Weight" Velox will be billed at mounted rates. All prints are mounted with Kodak Dry Mounting Tissue, and therefore do not curl.

ENLARGEMENTS

	Each	Per Doz.		Each
4½ x 6½, on card,	\$.35	\$ 3.00	10 x 12, on card,	\$ 1.00
6½ x 8½, on card,50	5.00	11 x 14, on card,	1.25
8 x 10, on card,75		14 x 17, on card,	1.50
Lantern Slides,50	5.00	Larger sizes in proportion.	

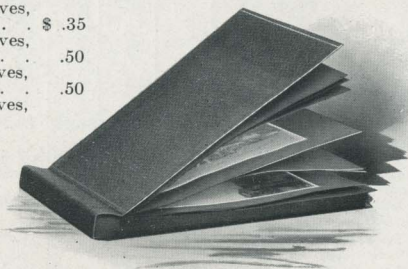
No extra charge for Sepia Tones. Small extra charge for double or triple mounting. Where the kind of paper is not specified, we use our own judgment.

KODAK ALBUMS

THE FORUM ALBUM

Flexible, Black Leather Embossed Cloth Cover.

- | | |
|--|--------|
| A, 25 black leaves, or N, 25 Sepia leaves,
5½ x 7, | \$.35 |
| B, 25 black leaves, or O, 25 Sepia leaves,
7 x 10, | .50 |
| C, 25 black leaves, or P, 25 Sepia leaves,
10 x 7, | .50 |
| D, 25 black leaves, or R, 25 Sepia leaves,
11 x 14, | \$1.25 |
| E, 50 black leaves, 5½ x 7, | .50 |
| F, 50 black leaves, 7 x 10, | .75 |
| G, 50 black leaves, 10 x 7, | .75 |
| H, 50 black leaves, 11 x 14, | 1.50 |



THE ARENA ALBUM

Flexible, Finest Quality Black Grain Leather Cover.

- | | |
|---|--------|
| J, 50 black leaves, or S, 50 Sepia leaves, 5½ x 7, | \$1.00 |
| K, 50 black leaves, or T, 50 Sepia leaves, 7 x 10, | 1.50 |
| L, 50 black leaves, or U, 50 Sepia leaves, 10 x 7, | 1.50 |
| M, 50 black leaves, or W, 50 Sepia leaves, 11 x 14, | 3.00 |

SOUVENIR POST CARD ALBUM

Flexible, Black Leather Embossed Cloth Cover.

- | | |
|---|--------|
| X, 25 black leaves, 10 x 7, for 100 cards, | \$.50 |
| X. R., 25 black leaves, 11 x 14, for 200 cards, | 1.50 |
| X. T., } Flexible, Black Grain Leather Cover, }
} 25 leaves, 11 x 14, for 200 cards, } | 2.50 |

LIBRARY ALBUM

A newly designed album and the handsomest one ever offered. Furnished with a rich brown suede padded cover with brown leaves and gold edges, or with gray suede padded cover and gray leaves with silver edges.

Order by No.

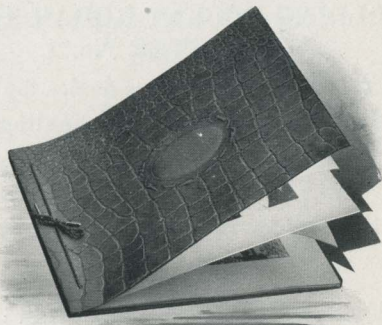
- | | Each |
|---|--------|
| 11 50 gray leaves, 5½ x 7½, Landscape, | \$2.25 |
| 12 50 brown leaves, 5½ x 7½, Landscape, | 2.25 |
| 13 50 gray leaves, 7 x 10, Landscape, | 3.00 |
| 14 50 brown leaves, 7 x 10, Landscape, | 3.00 |
| 15 50 gray leaves, 11 x 14, Landscape, | 5.00 |
| 16 50 brown leaves, 11 x 14, Landscape, | 5.00 |
| 17 Gray leaves, 11 x 14, for 200 Post-cards, | 5.00 |
| 18 Brown leaves, 11 x 14, for 200 Post-cards, | 5.00 |

KODAK ALBUMS — CONTINUED

ARTISTS' ALBUM

The new Artists' Album is on the loose-leaf system with covers of fine alligator leather finish material. Tied with silk lacing. Panel in cover for lettering. Leaves of heavy stock, antique finish. Ribbed tissue paper bound between each leaf.

Made for both black and white, and sepia toned prints, and for all sizes of Kodak prints up to and including 5 x 7. Extra leaves and tissues may be inserted when desired.



No. 1, black leaves; No. 2, white leaves; No. 3, Sepia leaves, 5½ x 7,	\$.20
Extra leaves, either color, complete with tissue, package of 5,07
No. 4, black leaves; No. 5, white leaves; No. 6, Sepia leaves, 7 x 10,30
Extra leaves, either color, complete with tissues, package of 5,10

SNAP-SHOT ALBUM

An inexpensive album with substantial card covering and soft black leaves.

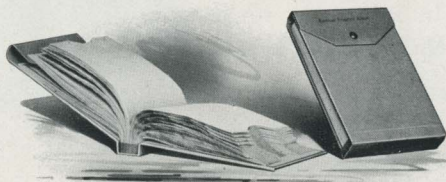
19 20 pages, 5½ x 7,	\$.12
18 20 pages, 7 x 10,15

VELOX POST CARD ALBUMS

On the loose-leaf, lace system. Alligator leather finish cover.

No. 1, golden brown; No. 2, naval gray; capacity, 20 cards,	\$.25
No. 3, golden brown; No. 4, naval gray; capacity, 100 cards,60
Extra leaves, Nos. 1 and 2, per package of 5,09
Ditto, Nos. 3 and 4, per package of 5,15

EASTMAN'S FILM NEGATIVE ALBUMS



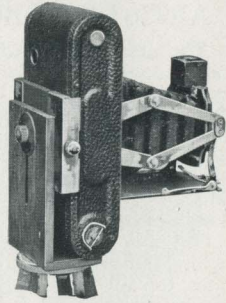
Each album contains 100 pockets made of strong paper and consecutively numbered from 1 to 100, and an index on white paper.

Eastman's Negative Albums for 100 negatives, 3½ x 3½, or smaller,	\$0.75
Eastman's Negative Albums for 100 negatives, 3½ x 4½, or 4 x 5,	1.00
Eastman's Negative Albums for 100 negatives, 3½ x 5½, or smaller,	1.00
Eastman's Negative Albums for 100 negatives, 5 x 7, or smaller,	1.50

KODAK SUNDRIES—CONTINUED

FOLDING POCKET KODAK TRIPOD ADAPTER No. 1

A simple and effective device for holding either the No. 1 or No. 1A Folding Pocket Kodaks on a tripod in either horizontal or vertical position. Kodak may be reversed without removing from the adapter.



THE PRICE

Price, F. P. K. Tripod Adapter, No. 1, . . . \$.75

KODAK DRY MOUNTING TISSUE

Mounts prints even on thin mounts without curl, no apparatus being required—just the tissue and a flatiron.

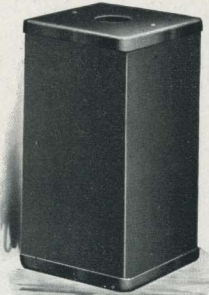
THE PRICE

Size	Size
$3\frac{1}{2} \times 3\frac{1}{2}$, 3 dozen, \$.10	4×5 , 2 dozen, \$.10
$3\frac{3}{4} \times 4\frac{1}{4}$, 3 dozen,10	$4\frac{1}{4} \times 6\frac{1}{2}$, 1 dozen,10
$3\frac{3}{4} \times 5\frac{1}{2}$, 2 dozen,10	5×7 , 1 dozen,10

DARK-ROOM LAMPS

THE KODAK CANDLE LAMP

This lamp is well made, collapsible, of special tested ruby fabric, bound in metal frames. Metal top and bottom instantly attached. Exceedingly compact when folded. Ideal for the tourist.



No. 2 KODAK DARK-ROOM LAMP

Oil burning, fitted with both orange and ruby glass.

THE PRICE

Kodak Candle Lamp,	\$.25
Extra Candles for same, per dozen,30
No. 2 Kodak Dark-Room Lamp,	1.00

KODAK CANDLE LAMP

KODAK SUNDRIES—CONTINUED

GLASS DRY PLATES

Eastman and Standard Extra Rapid		Standard Orthonon	
Size	Per Doz.	Size	Per Doz.
3½ x 3½,	\$.40	3¼ x 4¼,	\$.55
3¼ x 4¼,45	3¼ x 5½,80
3¼ x 5½,65	4 x 5,80
4 x 5,65	4¼ x 6½,	1.20
4¼ x 6½,90	5 x 7,	1.40
5 x 7,	1.10		
Lantern Slide Plates,55	Cover Glass for Lantern Slides,25

PRINTING FRAMES

Eastman's 3½ x 3½, opens two-thirds,	\$.25
Eastman's 3¼ x 4¼, opens two-thirds,25
Eastman's 4 x 5, opens two-thirds,25
Eastman's 5 x 7, opens two-thirds,35
Eastman's 3½ x 12, for No. 4 Panoram-Kodak, opens in 3 sections,75
Eastman's 2¼ x 7, for No. 1 Panoram-Kodak, opens in 2 sections,30
Flexo Printing Frame, 4 x 5, opens two-thirds,20
Flexo Printing Frame, 3¼ x 5½, opens two-thirds,20
Brownie Printing Frame, No. 1, for 2¼ x 2¼ Developing paper only,10
Brownie Printing Frame, No. 2, for 2¼ x 3¼ Developing paper only,15
Stereo Self-Transposing Printing Frame, for making 3¼ x 2½ stereo prints without cutting negatives apart,	1.50

DEVELOPING TRAYS

"Bull's-eye" Composition, 3½ x 4¼, \$.12 "Bull's-eye" Composition, 4 x 5,15 "Bull's-eye" Composition, 5 x 7,25 "Bull's-eye" Composition, 3 x 8½,22	"Bull's-eye" Composition, 4½ x 14, \$.50 Paper, 4 x 5,10 Paper, 5 x 7,15 Hard Rubber, 4 x 5,27 Hard Rubber, 5 x 7,56
--	---

JAPANESE TRANSPARENT WATER COLORS

These colors are the simplest of all to use, working especially well with Velox. Prepared in fifteen shades, in the form of paper leaves and bound into neat booklets, each color being preceded by a descriptive page.

THE PRICE

Japanese Water Colors, complete booklet, 15 colors,	\$.75
Japanese sizing, for surfaces that resist water colors (glossy surfaces), per leaf,08
Separate color leaves, each,08
Set of 3 special brushes, per set,50

KODAK SUNDRIES—CONTINUED

“THE MODERN WAY IN PICTURE MAKING”

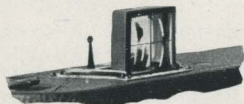
The most practical and common-sense book ever published for the amateur. Superb illustrations. Nearly 200 pages. Printed on heavy coated paper. Cloth bound.

“Modern Way in Picture Making,” cloth bound, beautifully illustrated, \$1.00

DIRECT VIEW FINDER

This is a special equipment for the 4A Folding Kodak, and is for quick, accurate work when Kodak is held on a level with the eyes.

Direct View Finder, \$3.00



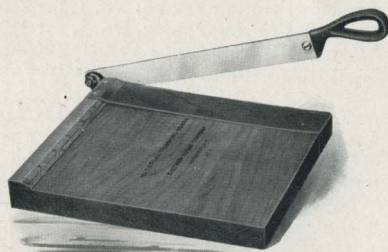
KODAK TRIMMING BOARDS

Made of hard wood, with natural finish, have fine quality steel blades and are fitted with rule.

No. 1, capacity, 5 x 5 inches, \$.40

No. 2, capacity, 7 x 7 inches, .60

Transparent Trimming Gauge (extra),20



FLASH SHEETS AND FLASH CARTRIDGES

Owing to the fact that they burn slowly (in about one second) Eastman Flash Sheets give a broad, soft light. They do not startle the subject, nor give a staring effect to the eyes.

No. 1 Flash Sheets, per package of half dozen sheets, 3 x 4, \$.25

No. 2 Flash Sheets, per package of half dozen sheets, 4 x 5,40

No. 3 Flash Sheets, per package of half dozen sheets, 5 x 7,60

Eastman's Spreader Flash Cartridges, for use with pistol or fuse (price includes both fuse and cap), per package of half dozen, . . .25

Eastman's Spreader Flash Cartridge Pistol,50

Eastman's No. 1 Flash Cartridges, per package of half dozen, . . .60

Ditto, No. 2,40

Ditto, No. 3,25

KODAK SUNDRIES—CONTINUED

CHEMICALS

Perfect results cannot be uniformly obtained without the use of pure chemicals. Our chemicals are all carefully tested. We cannot afford to sell impure chemicals; you can afford to buy only the purest chemicals.



Eastman's Special Developer Powders, per package 5 powders, in sealed glass tubes,	\$.25
Eastman's Hydrochinon Developer Powders, per dozen,50
Ditto, per half dozen,25
Ditto, per package 5 powders, in sealed glass tubes,25
Eastman's Pyro Developer Powders, per dozen,50
Ditto, per half dozen,25
Ditto, per package 5 powders, in sealed glass tubes,25
Royal Re-Developer, per package of 6 tubes,75
Hypo Sulphite of Soda, pulverized, per pound,10
Kodak Acid Fixing Powder, per pound package,25
Ditto, per 1/2-pound package,15
Ditto, 1/4-pound package,10
Eastman's Reducer (for reducing negatives and removing stains), per box of five tubes,25
Potassium Bromide, per ounce,15
Citric Acid, 4-ounce bottle,30
Solio Toning Solution, 8-ounce bottle,50
Solio Toning Solution, 4-ounce bottle (20 cents extra, post-paid),30
Solio Hardener, per 8-ounce bottle,35
Eastman's Tested Carbonate of Soda (desiccated), per 1-pound bottle,20
Eastman's Tested Sulphite of Soda (desiccated), per 1-pound bottle,30

For Tank Developer Chemicals, see page 41.

SUNDRIES

Eastman's Photo Paste, 3-ounce tube,	\$.15	Graduate, 24 ounces,	\$.25
Eastman's Photo Paste, 5-ounce tube,25	Ferrotyping Plate, 10x14, light,15
Eastman's Thermometer,50	Ditto, 10 x 14, heavy,20
Eastman's Film Clips, 3 1/2-inch, per pair (nickel),25	Ditto, 18 x 24, heavy,75
Ditto, 5-inch,30	Kodak Print Roller, 2x6-inch rubber roller, nickel frame,50
Ditto, 7-inch,35	Flexo Print Roller, 4-inch rubber roller, black enameled frame,15
Kodak Film Clips, 5-inch (wood), per pair,15	Eastman's Special Squeegee, 6-inch,30
Graduate, 4 ounces,10	Eastman's Special Squeegee, 8-inch,35
Ditto, 8 ounces,15		
Ditto, 16 ounces,20		

SPECIMEN PRINTS

A SPECIMEN photograph made with any Kodak (not larger than 4 x 5) will be sent to any address in the United States upon receipt of four cents in stamps; No. 4A Folding Kodak, 4A Speed Kodak, eight cents; Stereo, eight cents; No. 4 Panoram-Kodak, twenty cents.

TOURISTS

Travelers can always obtain fresh supplies of film at short notice at any one of the following addresses:

LONDON — Kodak, Limited, 57-61 Clerkenwell Road, E. C. ; 60 Cheapside, E. C. ; 115 Oxford Street, W. ; 171-173 Regent Street, W. ; 59 Brompton Road, S. W. ; 40 Strand, W. C.

LIVERPOOL — Kodak, Limited, 96 Bold Street.

GLASGOW — Kodak, Limited, 72-74 Buchanan Street.

PARIS — Kodak, Société Anonyme Française, Avenue de l'Opera, 5; Place Vendome, 4.

LYONS — Kodak Société Anonyme Française, 26-28 Rue de la Republique; 11 Rue du Palais-Grillet.

NICE — Kodak Société Anonyme Française, 34 Avenue de la Gare.

BERLIN — Kodak Gesellschaft, m. b. H., Markgrafen Strasse 92-93; Kodak Galerie, Leipzigerstrasse, 114; Unter den Linden, 26.

BRUSSELS — Kodak, Limited, 36 Rue De L'Ecuyer; 59 Montagne de la Cour.

VIENNA — Kodak Gesellschaft, m. b. H., 29 Graben.

ST. PETERSBURG — Kodak, Limited, Bolschaja Konjuschennaja 19.

MOSCOW — Kodak, Limited, 15, 16 Petrovka.

MILAN — Societa Kodak, 10 Via Vittore Pisani; 34 Corso Vittorio Emanuele.

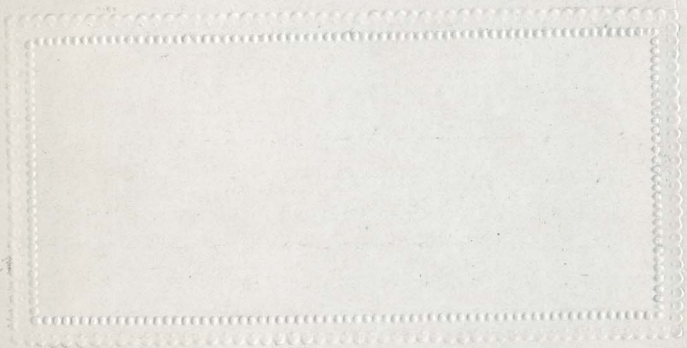
MELBOURNE — Baker & Rouse Proptr., Ltd., 284 Collins Street.

SYDNEY — Baker & Rouse Proptr., Ltd., 375 George Street.

TERMS

THE prices in this catalogue are strictly net, except to regular dealers who carry our goods in stock. For the convenience of our customers we recommend that they make their purchases from a dealer in photographic goods, as by so doing they can save both time and express charges.

EASTMAN KODAK Co.,
Rochester, N. Y.





MITCHELL'S PHARMACY
WATERVILLE, WASH.