



Kodak

W. A. Gillet

## **The Digitized Kodak Catalog Project (1886 - 1941): A Very Brief History**

Most camera collectors at some point in their collecting careers pass through a Kodak phase - some never come out of it. And if there ever was one name that came to be associated with both cameras and collecting, it was Kodak.

George Eastman received his first patent (for coating dry plates) and bought his first manufacturing facility in 1880, and in 1881 he started the Eastman Dry Plate Company. In 1886 he received a patent for the near-mythical Eastman Detective Camera, but it wasn't until 1888 that the first camera bearing the name "Kodak" was introduced.

One of the nice things about collecting Kodak is that the product line is pretty well known, and because the company produced annual catalogs for many years, collectors can be reasonably sure of what they're looking at, when it was made, the variations and so on - presuming that they have access to either the appropriate catalog, or a number of the many books which document Kodak, each to some greater or lesser extent.

But what would be really nice would be to have a complete set of Kodak catalogs in an easily accessible form and readily available. And since the advent of portable computing devices (PC, Macintosh, etc.) that's been possible - except for the difficulty of assembling a complete set of Kodak catalogs in one spot and then scanning them and making the results available.

The idea of digitizing a complete set of Kodak catalogs has kicked around the collecting community for many years. It's been proposed on a number of online forums, during meetings of various photohistory groups, and for years there have been many incomplete "Kodak CDs" on eBay but at best, they only contained a few catalogs - whatever the owner had available. But assembling a complete set of catalogs, then scanning and processing perhaps 3,000 to 4,000 pages, was a daunting task - if not completely overwhelming - and nothing ever came of it.

Until now.

In early 2010, the idea came up again, but this time we - "we" as in "the collecting community" - were lucky. A number of collectors were willing to loan their catalogs to this project and a couple of insane - wait, let's call them "dedicated" - dedicated enthusiasts - neither of whom collected Kodak, but both of whom enjoyed the challenge of such a project - were willing to put in the time and effort to scan and pull together the entire set of catalogs into a full-blown Kodak Catalog Digital Library.

Our initial objective was to include just the annual amateur catalogs, but it turns out that many cameras only appear in certain professional and specialty catalogs. We included as many of those as we could obtain so that almost every Kodak camera made in the US, Canada and Europe, would be documented - at least up to about 1941. After that, it becomes much more difficult as Kodak stopped producing annual catalogs as their product line became increasingly more diversified.

However, even with the additional "non-amateur" catalogs, we weren't completely successful in illustrating "every" camera Kodak ever made. There are an elusive few that might appear in specialty catalogs that we simply couldn't track down. If you can't find one of those odd cameras, that's no doubt why. We may do a revision at some point in the future if someone is willing to loan us a catalog that includes a camera that isn't already recorded.

In this project, a total of 67 catalogs were used from 1886 through 1941 including a number of professional and dealer catalogs, and in some years, two or even three different catalogs to cover all the bases. With the cooperation of a number of dedicated collectors, we were able to pull together all those catalogs and in June 2010, the project started in earnest.

By November 2010, we had scanned everything we needed and eventually all 67 catalogs were then reassembled as image folders and converted to the universally accepted PDF format and finally, converted into individually searchable PDFs which could then be searched globally as a collection.

For those of you interested in the statistics: about 200 hours of scanning time (we never want to hear that sound again), 67 catalogs and 3,908 page scans - which generated 7,917 original and processed images - and 11.4 GB of disk space. Additionally, another 100+ hours of technical development time was needed to convert the digital catalogues into a fully searchable "knowledgebase" that could be launched from most any standard web browser.

The overwhelming number of catalogs was loaned to us by that most remarkable of Kodak collectors, Charlie Kamerman of Eagle Creek, Oregon. Without Charlie, it's very doubtful that this project could even have been attempted.

But as it turned out, even Charlie didn't have all the publications that were needed, but he was able to track down the five that he lacked and was able to secure either a copy or high resolution images that we could work with. And so, our thanks to the contributors of the catalogs and scans that we used:

Charlie Kamerman for the vast majority of catalogs used and all his help,  
Steve Shohet for loaning a variety of test catalogs,  
Ryerson University (Toronto) for the 1886 Eastman Catalog  
George Layne for the 1890 New Kodaks Catalog,  
Mike Kessler for the 1891 Dealer Display Catalog,  
Ralph London for the 1893 UK Catalog,  
Michael Pritchard for the 1897 UK Catalog.

The digital side of the project - also known as "all of the work" - was done by Rob Niederman of Medina, Minnesota, and Milan Zahorcak of Tualatin, Oregon. Remarkably we're still friends and in a few years, we'll probably be able to talk about this project rationally.

And there you have it, a more-or-less done deal. We're fairly sure that it isn't quite perfect, and expect there will be some carping about something or other; but all-in-all, we believe this to be a pretty good product and can now move on to something else.

Our thanks to all of those involved.

Rob Niederman  
Milan Zahorcak

Fall, 2011







# KODAKS

## AND KODAK SUPPLIES

# 1907

EASTMAN KODAK COMPANY  
ROCHESTER, N. Y. *The Kodak City*

"IF IT ISN'T AN EASTMAN;  
IT ISN'T A KODAK"



## *There are no Game Laws for those who Hunt with a Kodak*

---

THE healthy movement toward a fuller enjoyment of the great out-doors is not, fortunately, resulting in a greater slaughter of nature's wild creatures. There is to-day a growing sentiment against killing for the mere sake of killing. There's a better realization that death to the timid dwellers of the forest is not an essential to the full enjoyment of nature undefiled. And with this growing sentiment of enjoying rather than destroying nature's handiwork has come a realization of the charm that photography holds for the sportsman.

With many a hunter the gun has been laid aside for the Kodak. Alongside the antlers which adorn his den, as a trophy of some earlier chase, are enlargements of a bull-moose cropping lily pads at the edge of the pond, of a startled doe caught by flash-light as she came down to the brook for her evening drink. There are pictures of the mother grouse covering her precious eggs in fancied security, of the inquisitive chipmunk inspecting the camp equipment, or even of Bruin nosing for a dainty morsel among the dead leaves.

The same skill and patience, yes, and luck, that was required in hunting with the gun is required in hunting with the Kodak. The same knowledge of woodcraft that marks the successful hunter with the rifle marks the successful hunter with the Kodak. And the photographic trophy of the chase has even greater power than the mounted specimen to hold fresh in the memory those days of free life in the great out-doors.



# H u n t   w i t h   a   K o d a k

---

Neither must the Kodak sportsman await his return to civilization before seeing for himself the results of his trigger touch. The Kodak Tank Developer and the few necessary chemicals add but little to the weight of his camp equipment, and when the rainy days do come they provide the means of passing what might otherwise prove to be many weary hours.

The hunter of to-day is no less a sportsman because his rifle is a repeater in which he uses shells that are ready prepared for him with just the right proportions of powder and of ball. His weapon is none the less effective because he does not measure his powder from a horn by rule of thumb. And so the photographer now has his Film cartridges with which he loads in daylight, and his ready-prepared developer powders, with the chemicals in exact proportion, requiring nothing from him except accuracy in timing development.

The Kodak Tank Developer not only does away with the bother of the dark-room, not only does away with the danger of finger-marks and scratches on the film, but it has been proved, both practically and theoretically, that it gives negatives of a better quality than can be obtained by the dark-room method.

The Tank is an advantage to the experienced photographer. For the beginner, its utility can hardly be overestimated. He has only to follow the very simple directions, using the ready-prepared chemicals, and he will get the best possible results from every exposure.

*The experience is in the Tank.*

# *It Fits all Hobbies*

---

**P**HOTOGRAPHY as a hobby is delightful. But more, it fits all other hobbies. The sportsman is by no means the only one to profit by the fact that Kodak has made it a simple matter for anyone to take and finish pictures. Whatever one's hobby may be—automobiling, driving, golfing, yachting, or traveling—he can get more out of it by having pictures of all that pertains to it. And then there are the home pictures, the children, the thousand-and-one little interests of daily life. There are pictures everywhere, pictures worth the keeping, pictures that will be prized more highly every year. And in making them the Kodaker is bound by no hard-and-fast rule.

He may make the exposures and leave it to another to “do the rest.” He may do the developing and leave it to his dealer or his photographer to make the prints. He may have his negatives developed and then make the prints himself. Or, by most convenient means, he may do all the work, exposing, developing, printing.

It is always at his option to do as much or as little of the work as he chooses—doing it all this time, if he likes, and next time, if busy with other affairs, leaving the detail to another. In every phase the Kodak system has in view the getting of good pictures by simple, easy means.

Kodak means photography with the bother left out.

EASTMAN KODAK CO.,

Rochester, N. Y., *The Kodak City.*



# K o d a k      P r o g r e s s

---

**E**VERY year marks a distinct step forward in the development of the Kodak system. The advance from the Kodak of 1888, making a round picture two and one-half inches in diameter and selling at \$25.00, to the efficient and inexpensive Kodaks of to-day shows what can be accomplished by a sustained effort to produce goods of the highest merit, when such effort is backed by perfect facilities and valuable experience.

And the advance has not been confined to the Kodak alone. The daylight-loading cartridges, Non-Curling Film, Machine and then Tank Development have followed each other in rapid succession. The printing processes have been equally simplified and improved. Solio and Velox and Eastman Sepia have taken the place of the old Albumen printing, and Kodak Dry Mounting Tissue is supplanting the use of paste. Every step in Kodak work is now simple, easy, and satisfactory.

There is a multitude of little improvements in Kodak goods for 1907. Among the notable new things are the Dollar Brownie Developing Box for daylight development of No. 1 and No. 2 Brownie films, the 2A Brownie Camera for pictures of the popular  $2\frac{1}{2} \times 4\frac{1}{4}$  size, the 4 x 5 Folding Pocket Kodak, and the Brownie Enlarging Camera, which makes it possible for the army of Brownie users to make large prints from their small negatives, easily and inexpensively.

There are new papers and albums and tripods and specialties that are sure to interest the advanced as well as the novice in photography.



# *The Film of Experience*

---

**I**T has taken us more than twenty years to learn what we know about film making. And in that twenty years we have also learned how to make the perfect raw materials which are absolutely essential to the manufacture of film—materials which cannot be obtained in the market with a certainty that they will be what they should be. We nitrate our own cotton for the film base; we nitrate our own silver for the emulsion. We go further, we even make the acid with which the cotton and silver are nitrated. Wherever it is possible to improve the completed product by manufacturing the raw material, we erect a factory and make that raw material.

Some years ago, we felt that we were approaching film perfection, but no concern, even if it could make film as good as that *was*, could compete in quality with the Kodak N. C. Film of to-day. But experience is not the only advantage that our chemists and film-makers enjoy. They have access to the formulæ of the chemists who make the best dry plates in the world. The Kodak films of to-day have in them the combined knowledge of the most expert film makers and the most expert plate makers.

The film you use is even more important than the camera you use. Be sure it's Kodak film with which you load your Kodak.

Remember:

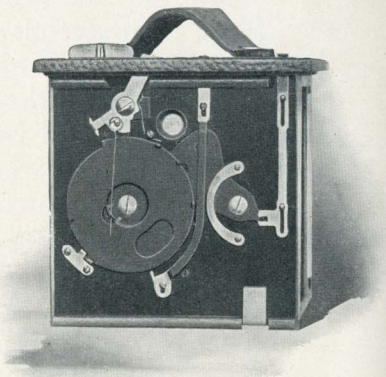
IF IT ISN'T  
EASTMAN  
IT ISN'T KODAK FILM

Look for "Eastman" on the Box  
Look for "Kodak" on the spool end

# Automatic Shutters

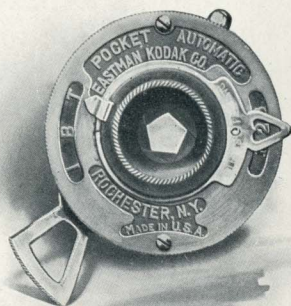
## EASTMAN ROTARY SHUTTER

**A** SIMPLE, practical, and time-tested shutter. Throwing a lever alternately to the right or left makes the exposure. A lever sets it for time exposures and the three stops with which this shutter is supplied are similarly controlled. Supplied on the Bull's-Eye, Flexo, No. 3B Quick Focus Kodak, and on the No. 1, No. 2, and No. 2A Brownies.



## POCKET AUTOMATIC SHUTTER

**T**HIS shutter is always set. One pressure makes the snap and when set at "B," pressure on the lever opens the shutter, which closes when released. For time exposures, one pressure opens and another closes the shutter. A new finger release increases the convenience of the 1907 model. Iris diaphragm stops. Supplied on the No. 1 and 1A Folding Pocket Kodaks, and No. 2 Folding and Stereo Brownies.



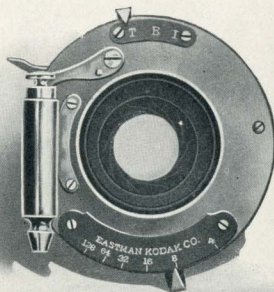


# *A u t o m a t i c   S h u t t e r s*

---

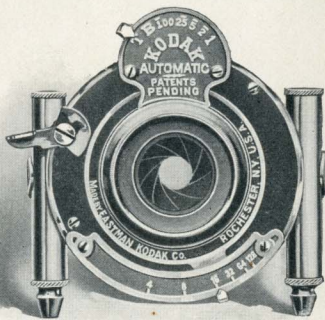
## F. P. K. AUTOMATIC SHUTTER

**T**HIS shutter is always set. Pressure of the bulb makes instantaneous exposures of  $\frac{1}{50}$  of a second. It may also be set for "bulb" and "time" exposures. Fitted with Iris diaphragm stops, Nos. 4 to 128. Supplied on the No. 2, No. 3, 3A, and No. 4 Folding Pocket Kodaks, and without Pneumatic release on the No. 3 Folding Brownie.



## KODAK AUTOMATIC SHUTTER

**T**HIS shutter is made with the utmost accuracy by the finest watch-making machinery. Always set, makes automatic exposures from  $\frac{1}{100}$  of a second to one second. "Bulb" and "time" exposures may also be made. Iris diaphragm stops from Nos. 4 to 128. Supplied on No. 3 and No. 4 Cartridge Kodaks, No. 4 Screen Focus Kodak, and as a special equipment on Nos. 3, 3A, and No. 4 Folding Pocket Kodaks.

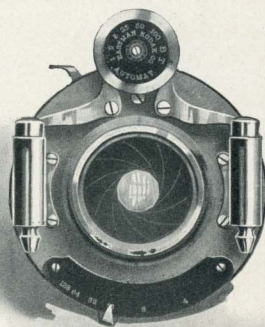




# Automatic Shutters

## B. & L. AUTOMATIC SHUTTER

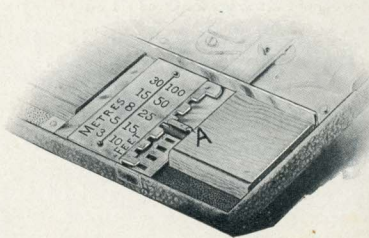
**A** STANDARD shutter of the first grade. Automatic in action and working with either pneumatic or finger release. Exposures from  $\frac{1}{100}$  of a second to one second; also "bulb" and "time" adjustments. Iris diaphragm stops Nos. 4 to 128. Regularly supplied on the No. 4A Folding Kodak and as a special equipment on the No. 3, 3A, and 4 Folding Pocket Kodaks, and No. 5 Cartridge Kodak.



## AUTOMATIC FOCUSING LOCK

**A**N automatic device for bringing the Kodak to a quick and certain focus. To operate, set lever A in slot marked for distance desired, then pull out camera front to the limit of motion.

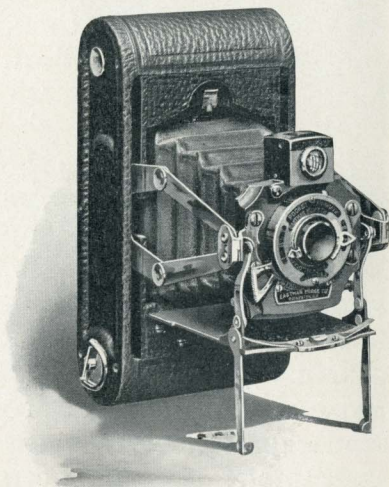
Supplied with all focusing Pocket Kodaks and the 4A Folding Kodak. This lock in no way interferes with the use of regular focusing scale when desired.



# Folding Pocket Kodak No. 1

---

**T**HE efficiency of this deservedly popular camera has been further increased by the new model Pocket Automatic Shutter and new reversible brilliant finder. When closed, this camera is exceedingly compact and all adjustments are concealed, as the bed folds automatically over the front board and bellows, making it an ideal instrument for the tourist. When making vertical time exposures, the bed is supported by two standards which swing up out of the way when the camera is used for snap shots.



For rectangular pictures  $2\frac{1}{4} \times 3\frac{1}{4}$  inches. Capacity, 12 exposures without reloading. Size of Kodak,  $6\frac{3}{4} \times 3\frac{1}{2} \times 1\frac{5}{8}$  inches. Weight, 16 ounces. Lens, Meniscus Achromatic, 4-inch focus. Shutter, Pocket Automatic. (See page 8.) Brilliant reversible finder.

## The Price

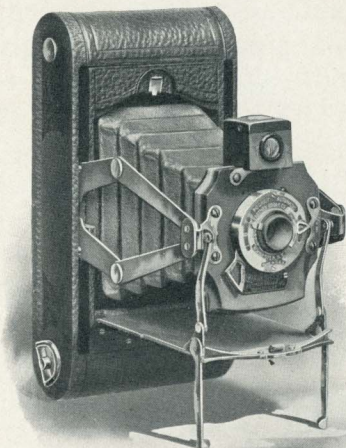
No. 1 Folding Pocket Kodak, for pictures $2\frac{1}{4} \times 3\frac{1}{4}$ inches, with Pocket Automatic Shutter, . . . . .	\$10.00
N. C. Film Cartridge, 12 exposures, $2\frac{1}{4} \times 3\frac{1}{4}$ , . . . . .	.40
Ditto, 6 exposures, . . . . .	.20
Kodak Portrait Attachment, . . . . .	.50
Black Sole Leather Carrying Case, with shoulder strap, . . . . .	1.25



# No. 1A *Folding Pocket Kodak*

---

**T**HIS camera is the same as the No. 1, except as to size, and embodies all the recent improvements of the No. 1, including the new Pocket Automatic Shutter, with iris diaphragm, and with instantaneous, time, and bulb exposure adjustments, and the automatic closing front. The pictorialist will appreciate the shape of the picture made with this instrument—long in proportion to the width, which lends itself particularly well to the purpose of artistic composition. It is especially adapted to landscape views when the instrument is used horizontally. For full and three-quarter length portraits, the shape is ideal when the camera is used vertically.



For rectangular pictures  $2\frac{1}{2} \times 4\frac{1}{4}$  inches. Capacity, 12 exposures without reloading. Size of Kodak,  $7\frac{3}{4} \times 3\frac{3}{8} \times 1\frac{3}{4}$  inches. Weight, 20 ounces. Lens, meniscus achromatic, with fixed focus of 5 inches. Shutter, Pocket Automatic. (See page 8.) Brilliant reversible finder.

## The Price

Folding Pocket Kodak No. 1A, with Pocket Automatic Shutter, . . .	\$12.00
N. C. Film Cartridge, 12 exposures, $2\frac{1}{2} \times 4\frac{1}{4}$ , . . .	.50
Ditto, 6 exposures, . . .	.25
Kodak Portrait Attachment, . . .	.50
Black Sole Leather Carrying Case, with shoulder strap, . . .	1.25



# Folding Pocket Kodak No. 2

**T**HIS is a remarkably compact folding camera taking the popular  $3\frac{1}{2} \times 3\frac{1}{2}$  picture. The lens is a double combination, rapid rectilinear,  $4\frac{1}{2}$ -inch focus, and the F. P. K. Automatic Shutter—the same as fitted to the highest class instruments—is regularly supplied. The Automatic Locking Device is an advantageous feature of the No. 2 Folding Pocket Kodak; by means of this, the camera locks at 8 feet, 20 feet, or 100 feet focus, or may be left locked at the twenty feet focus and used as a “fixed focus” camera. Camera body, aluminum, covered with fine black seal grain leather.



For square picturers,  $3\frac{1}{2} \times 3\frac{1}{2}$  inches. Capacity, 12 exposures without reloading. Size of Kodak,  $6\frac{3}{4} \times 4\frac{1}{2} \times 1\frac{1}{2}$  inches. Weight, 18 ounces. Lens, double combination rapid rectilinear,  $4\frac{1}{2}$ -inch focus. Shutter, F. P. K. Automatic. (See page 9.) Automatic focusing lock. (See page 10.) Brilliant finder. Socket for tripod screw.

## The Price

No. 2 Folding Pocket Kodak with Rapid Rectilinear Lens and F. P. K.	
Automatic Shutter, . . . . .	\$15.00
N. C. Film Cartridge, 12 exposures, $3\frac{1}{2} \times 3\frac{1}{2}$ , . . . . .	.60
Ditto, 6 exposures, . . . . .	.30
Ditto, “Double-Two” Cartridge, 4 exposures, . . . . .	.20
Kodak Portrait Attachment, . . . . .	.50
Black Sole Leather Carrying Case, with shoulder strap, . . . . .	1.25

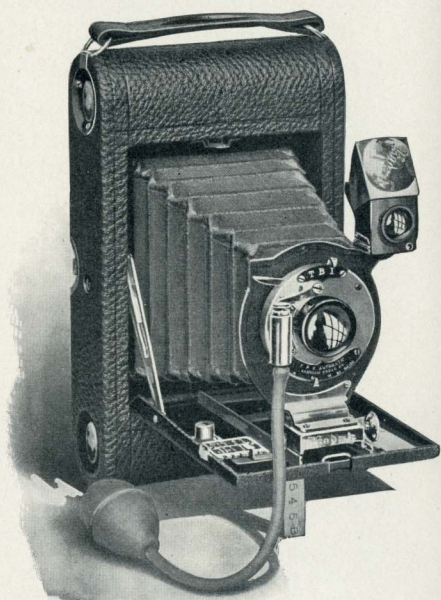
## No. 3 *Folding Pocket Kodak*

---

**S**IMPLICITY and compactness, combined with great adaptability to a wide range of conditions have made this camera a remarkable success. Of such small compass as to be readily carried in an overcoat pocket, it is ample in size for serious pictorial work. The size of the picture it takes— $3\frac{1}{4} \times 4\frac{1}{4}$  inches—is also exactly suited to the making of lantern slides by contact. Fitted with very rapid double combination Rectilinear lenses, and the reliable F. P. K. Automatic Shutter, which works with either bulb or finger release, and equipped with the automatic focusing lock, this camera is a marvel of convenience. Furnished with a rising and sliding front at an extra charge of one dollar.

A shutter of greater scope and anastigmat lenses are desired by many amateurs with this high-grade instrument.

We furnish the camera with B. & L. Plastigmat Lens and Kodak Automatic or Volute Shutter, B. & L. Zeiss Tessar Lens and Volute Shutter, or Cooke Anastigmat Lens and Volute Shutter.



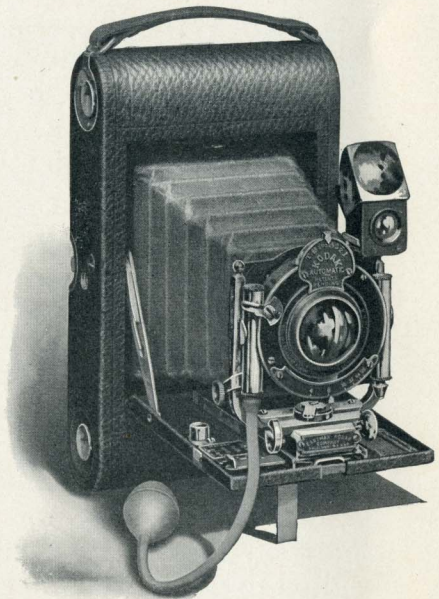


# Folding Pocket—Continued No. 3

By the use of a simple adapter, these instruments may be readily used with glass dry plates. This attachment has a ground glass for focusing and uses single aluminum plate holders.

The camera is made of aluminum, covered with fine black seal grain leather and beautifully finished in every detail.

For rectangular pictures,  $3\frac{1}{4} \times 4\frac{1}{4}$  inches. Capacity, 12 exposures without reloading. Size of Kodak,  $7\frac{1}{2} \times 4\frac{1}{2} \times 1\frac{1}{2}$  inches. Weight, 23 ounces. Lens, Rapid Rectilinear, speed f.8, focal length, 5 inches. Shutter F. P. K. Automatic. (See page 9.) Two tripod sockets. Brilliant reversible finder with hood. Automatic focusing lock. (See page 10.)



SHOWING RISING FRONT AND KODAK AUTOMATIC SHUTTER

## The Price

* No. 3 Folding Pocket Kodak with Rapid Rectilinear Lens, speed f.8, F. P. K. Automatic Shutter, . . . . .	\$17.50
* Ditto, with Kodak Automatic Shutter, . . . . .	22.50
* Ditto, with Kodak Automatic Shutter and B. & L. Plastigmat Lens, No. 1, f.6.8, . . . . .	49.90
* Ditto, with Volute Shutter and B. & L. Zeiss Tessar Lens, Series II B, No. 4, f.6.3, . . . . .	63.70
* Ditto, with Volute Shutter and Cooke Anastigmat Lens, Series III, No. 3K, f.6.5, . . . . .	65.20
Black Sole Leather Carrying Case, with strap, . . . . .	1.25
Glass Plate Adapter, with ground glass, . . . . .	3.50
Single Glass Plate Holders, $3\frac{1}{4} \times 4\frac{1}{4}$ , . . . . .	.50
N. C. Film Cartridge, 12 exposures, $3\frac{1}{4} \times 4\frac{1}{4}$ , . . . . .	.70
Ditto, 6 exposures, . . . . .	.35
Ditto, "Double-Two," 4 exposures, . . . . .	.25
Kodak Portrait Attachment, . . . . .	.50

\* Add one dollar if Rising and Sliding Front is desired.

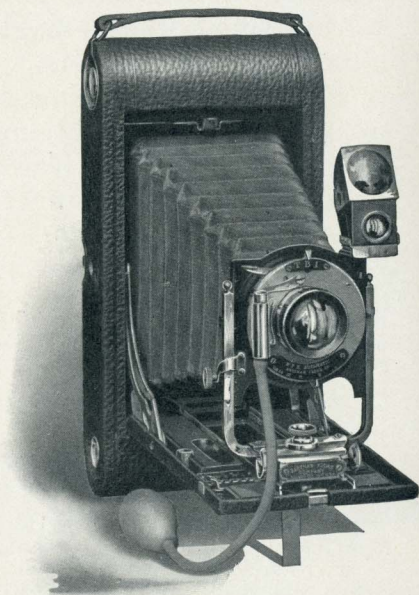
## No. 3A *Folding Pocket Kodak*

---

**R**EADILY carried in a top-coat pocket, this camera embraces all the practical features of cameras of several times its bulk, yet still retains the Kodak simplicity—making it satisfactory for either novice or expert. The size and shape of the picture it takes,  $3\frac{1}{4} \times 5\frac{1}{2}$  inches, appeal at once to the serious worker striving for pictorial effects, and at the same time are an aid to the beginner, for, whether used horizontally for a landscape or vertically for a portrait, they are exactly suited to simple and effective composition.

The lenses for this camera have been selected with great care, both as to quality and focal length. The lenses are Rapid Rectilinear,  $6\frac{1}{2}$ -inch focus, with a speed of f.8. The shutter, the F. P. K. Automatic, is fully in keeping with the lens. The rising, falling, and sliding front and the automatic focusing device are part of the regular equipment.

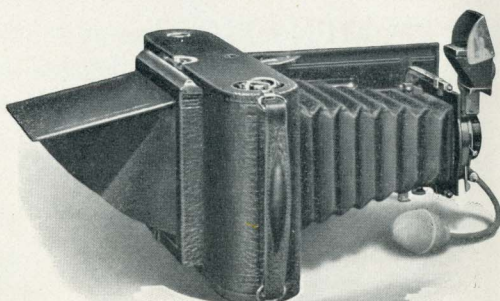
By means of a simple adapter, the 3A Folding Pocket Kodak may be used with glass plates, taking the standard sizes,  $3\frac{1}{4} \times 4\frac{1}{4}$ . The plate adapter is simply





an extra back, and may be placed in position instantly. A ground glass with focusing shade is provided. Single aluminum plate holders are used.

The B. & L. Plastigmat lens and Kodak Automatic or Volute shutter, B. & L. Zeiss Tessar and Volute shutter or Cooke anastigmat lens and Volute shutter furnished extra (see page 45).



SHOWING PLATE ADAPTER WITH FOCUSING SHADE

For rectangular pictures,  $3\frac{1}{4} \times 5\frac{1}{2}$  inches. Capacity, 10 exposures. Size of Kodak,  $9\frac{1}{2} \times 4\frac{3}{4} \times 1\frac{7}{8}$  inches. Weight, 41 ounces. Lens, Double combination, Rapid Rectilinear, Speed f.8, focal length,  $6\frac{1}{2}$  inches. Shutter, F. P. K. Automatic. (See page 9.) Two Tripod Sockets. Brilliant reversible finder with hood. Automatic focusing lock. (See page 10.)

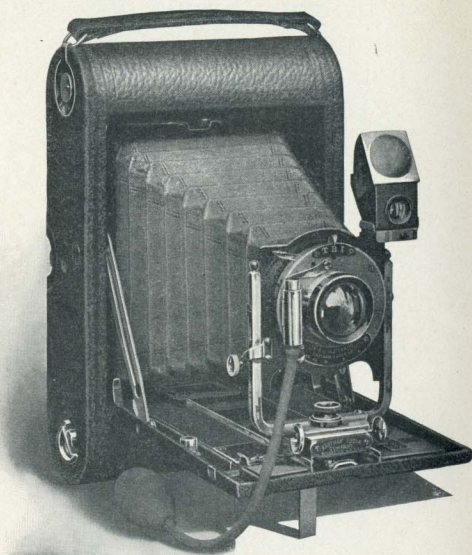
## The Price

No. 3A Folding Pocket Kodak, with Rapid Rectilinear Lens, Speed f.8, and F. P. K. Automatic Shutter, . . . . .	\$20.00
Ditto, with Kodak Automatic Shutter, . . . . .	25.00
Ditto, with Kodak Automatic Shutter and B. & L. Plastigmat Lens, No. 2, f.6.8, . . . . .	57.95
Ditto, with Volute Shutter and B. & L. Zeiss Tessar Lens, Series II B, No. 5K, f.6.3, . . . . .	78.25
Ditto, with Volute Shutter and Cooke Anastigmat Lens, Series III, No. 4K, f.6.5, . . . . .	71.75
Black Sole Leather Carrying Case, with strap, . . . . .	1.50
Glass Plate Adapter, $3\frac{1}{4} \times 4\frac{1}{4}$ , with ground glass, . . . . .	3.50
Single Glass Plate Holders, $3\frac{1}{4} \times 4\frac{1}{4}$ , each, . . . . .	.50
N. C. Film Cartridge, 10 exposures, $3\frac{1}{4} \times 5\frac{1}{2}$ , . . . . .	.70
Ditto, 6 exposures, . . . . .	.40
Ditto, "Double-Two" Cartridge, 4 exposures, . . . . .	.30
Kodak Portrait Attachment, . . . . .	.50

## No. 4 *Folding Pocket Kodak*

---

**E**MPHATIC demand for a Folding Pocket Kodak taking pictures 4x5 is fulfilled in this instrument. It is truly a Pocket Kodak built along the lines of the popular 3 and 3A F. P. Kodaks and measuring when closed but 2¼ inches in thickness and 9 inches in length. All the popular features of the older Pocket Kodak models are embraced in this new instrument, including automatic focusing device; the rising and sliding front being also a part of the regular equipment. The wide range of this instrument is further enhanced by its splendid optical equipment. The especially selected lenses are Rapid Rectilinear with a focal length of 6½ inches, with a speed of f.8. The shutter is the F. K. P. Automatic, with both bulb and finger release—high grade in every respect. Daylight loading, using either “Double-Two,” 6, or 12 exposure film cartridges, and constructed with the usual Kodak skill, this instrument will appeal not only to the ambitious novice but to the seasoned expert. By means of a simple adapter, the No. 4 Folding Pocket





# *Folding Pocket—Continued*      **No. 4**

---

Kodak may be used with glass plates, taking the standard size, 4 x 5. This attachment is simply an extra back for the camera, taking the place of the regular back and adjusted in a few seconds; provided with ground glass and focusing shade, and using double plate holders.

To meet the demands of the most ambitious amateurs, we are prepared to supply the No. 4 Folding Pocket Kodaks with the following high-grade anastigmat lenses and shutters.

The B. & L. Plastigmat Lens and Kodak Automatic or Volute Shutter, the B. & L. Zeiss Tessar Lens and Volute Shutter, or the Cooke Anastigmat Lens and Volute Shutter. (See page 45.)

For rectangular pictures 4x5 inches. Capacity, 12 exposures. Size of Kodak, 9x5¾ x 2¼ inches. Weight, 2 pounds, 11 ounces. Lens, Double Combination Rapid Rectilinear, speed f.8, focal length, 6½ inches. Shutter, F. P. K. Automatic. (See page 9.) Two tripod sockets. Brilliant reversible finder with hood. Automatic focusing lock. (See page 10.)

## **The Price**

No. 4 Folding Pocket Kodak with Rapid Rectilinear Lens, speed f.8 and F. P. K. Automatic Shutter, . . . . .	\$20.00
Ditto, fitted with R. R. Lens and Kodak Automatic Shutter, . . . . .	25.00
Ditto, with Volute Shutter and B. & L. Zeiss Tessar Lens, Series II B, No. 5K, f.6.3, . . . . .	78.25
Ditto, with Volute Shutter and Cooke Anastigmat Lens, Series III, No. 4K, f.6.5, . . . . .	71.75
Ditto, Kodak Automatic Shutter, B. & L. Plastigmat Lens, No. 2, f.6.8, . . . . .	57.95
N. C. Film Cartridge, 12 exposures, 4 x 5, . . . . .	.90
Ditto, 6 exposures, 4 x 5, . . . . .	.45
Ditto, "Double-Two" Cartridge, 4 exposures, . . . . .	.30
Black Sole Leather Carrying Case, . . . . .	1.50
Glass Plate Adapter, with ground glass, . . . . .	3.50
Double Glass Plate Holders, each, . . . . .	1.00
Kodak Portrait Attachment, . . . . .	.50

## No. 4 A      *Folding Kodak*

---

THE demand for a simple camera making large sized pictures is adequately filled by this instrument. Constructed along the lines of the popular Folding Pocket Kodaks, it retains all their simple compactness, while the picture it takes,  $4\frac{1}{4} \times 6\frac{1}{2}$  inches, not only gets away from the conventional sizes but is particularly happy for the purpose of artistic composition, whether landscape, genre, or portraiture.

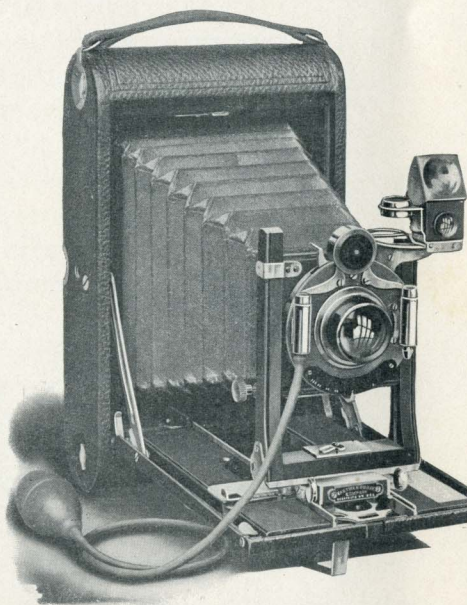
The optical equipment is fully in keeping with the character and quality of the instrument. The specially selected lenses are double combination Rapid Rectilinear, working at a speed of f.8, amply rapid to meet the demands of ordinary conditions. Their focal length,  $8\frac{1}{2}$  inches, affords correct perspective and their quality insures the plate being covered sharp to the corners even when using the largest stop opening.

The shutter is the high-grade No. 2 Bausch and Lomb Automatic. These lenses and shutters are the same ordinarily fitted to the highest grade 5x7 cameras.

Loading in daylight with 6 exposure film cartridges, equipped with rising and sliding front and the automatic focusing device, the No. 4A is adapted to every class of work, and yet is so simple in operation that even the absolute novice is secure in good results. Remarkably compact, being only  $2\frac{5}{8}$  inches in thickness, when closed, this camera particularly commends itself to the traveler. With the Kodak Portrait Attachment, which may be supplied, and the extension focusing scale, the camera may be operated as close as  $3\frac{1}{2}$  feet from the subject, permitting head and shoulder portraits, limited only by



the size of the film. When desired, glass plates may be used by means of an adapter, furnished extra. Double plate holders,  $4\frac{1}{4} \times 6\frac{1}{2}$ , are used. The frame-work of the camera is made of aluminum, providing lightness and rigidity, and covered with finest black seal grain leather, all fittings nickeled. Every part works with that nicety of adjustment which has made the Kodak quality famous.



For rectangular pictures,  $4\frac{1}{4} \times 6\frac{1}{2}$  inches. Capacity, 6 exposures. Size of Kodak,  $11 \times 6\frac{1}{2} \times 2\frac{5}{8}$  inches. Lens, Double Combination Rapid Rectilinear, speed f. 8, focal length,  $8\frac{1}{2}$  inches. Shutter, B. & L. Automatic. (See page 10.) Rising and sliding front. Brilliant reversible finder with hood. Two tripod sockets.

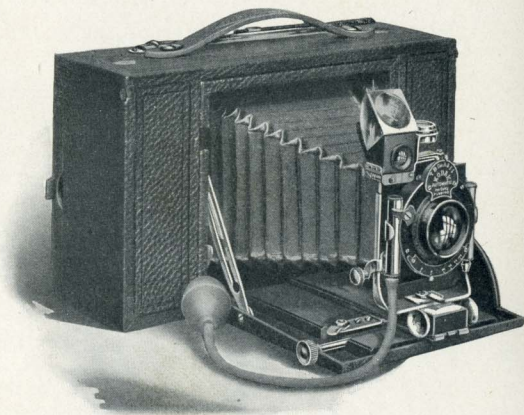
## The Price

No. 4A Folding Kodak, R. R. Lens, speed f. 8, B. & L. Automatic Shutter,	\$35.00
Ditto, with Volute Shutter and B. & L. Zeiss Tessar Lens, Series II B, No. 6, f. 6.3,	106.50
Ditto, Volute Shutter, Cooke Anastigmat Lens, Series III, No. 6 K, f. 6.5,	100.00
Ditto, B. & L. Automatic Shutter, B. & L. Plastigmat Lens, No. 3, f. 6.8,	78.70
N. C. Film Cartridge, 6 exposures, $4\frac{1}{4} \times 6\frac{1}{2}$ ,	.65
Ditto, "Double-Two" Cartridges, 4 exposures,	.45
Black Sole Leather Carrying Case,	2.50
Glass Plate Adapter, with ground glass,	5.00
Double Glass Plate Holders, each,	1.25
Kodak Portrait Attachment,	.50
Direct View Finder (Special Equipment, see page 57),	3.00

## No. 4 Screen Focus Kodak

---

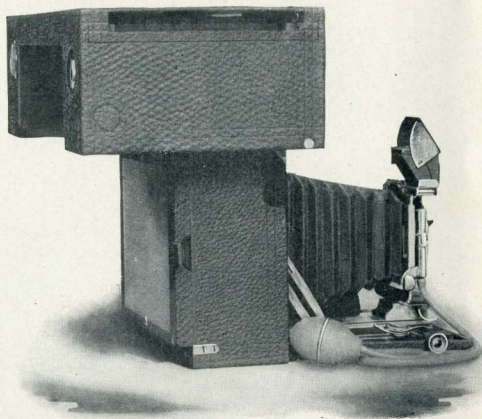
**T**HIS instrument is built upon the Cartridge system, daylight loading principle, but is distinct from all other Kodaks in that it permits focusing on the screen or ground glass without removing the roll of film from the camera. This is accomplished by simply swinging the roll holder up out of the focal plane whenever it is desired to use the ground glass. The focusing is then accomplished as with the ordinary plate camera, after which roll holder is swung back into place, dark slide removed, and exposure made. The focusing, of course, may be done between each exposure. This Kodak will be appreciated by the careful photographers who desire to use film on account of its convenience, and yet desire to prove the composition of their picture by seeing it on the ground glass before exposure. Even with this added convenience, the usual Kodak simplicity is still evident. If desired, the regular focusing scale may be used instead of the ground glass. The No. 4 Screen Focus Kodak becomes a plate camera by simply removing roll holder and adjusting plate holder back containing ground glass and focusing screen, an





# *S. F. Kodak—Continued* No. 4

operation requiring but a few seconds. A double extension bed allows the operator to work within 22 inches of the subject when focusing upon the ground glass. This is a valuable feature in copying work and in photographing still life. The instrument is covered with best black seal grain leather and has nickel fittings.



SHOWING GROUND GLASS FOR FOCUSING

For rectangular pictures, 4 x 5 inches. Capacity, 12 exposures without reloading. Size of Kodak, 10 x 5½ x 3¾ inches. Weight, 3 pounds, 14 ounces. Lens, Rapid Rectilinear f.8, with focal length of 6½ inches. Shutter, Kodak Automatic. (See page 9.) Rack and pinion for focusing. Rising and sliding front. Two tripod sockets. Brilliant reversible finder with hood and spirit level.

## The Price

No. 4 Screen Focus Kodak with Rapid Rectilinear Lens and Kodak Automatic Shutter, . . . . .	\$30.00
Ditto, with Kodak Automatic Shutter and B. & L. Plastigmat Lens No. 2, f. 6.8, . . . . .	67.95
Ditto, with Volute Shutter and B. & L. Zeiss Tessar Lens, Series II B, No. 5K, f. 6.3, . . . . .	88.25
Ditto, with Volute Shutter and Cooke Anastigmat Lens, Series III, No. 4K, F. 6.5, . . . . .	81.75
N. C. Film Cartridge, 12 exposures, 4 x 5, . . . . .	.90
Ditto, 6 exposures, . . . . .	.45
Ditto, "Double-Two" Cartridge, 4 exposures, . . . . .	.30
Black Sole Leather Carrying Case, velvet lined, . . . . .	2.50
Glass Plate Adapter, . . . . .	2.50
Double Glass Plate Holders, 4 x 5, . . . . .	1.00
Kodak Portrait Attachment, . . . . .	.50

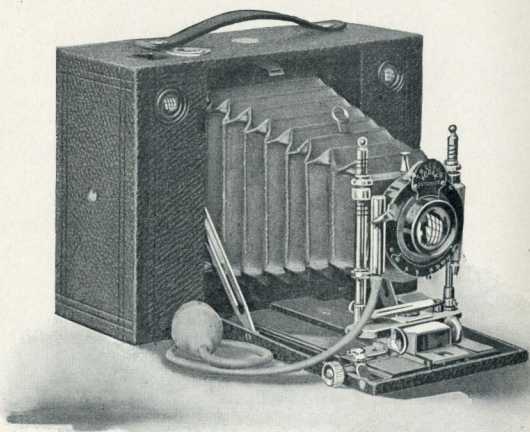
# Cartridge Kodaks

---

**I**N the Cartridge Kodaks will be found all the practical simplicity of the Cartridge system, combined with such adjustments as permit a wide range for all-around work. The lenses furnished are strictly Rectilinear, and very rapid, having a working speed of f.8. Wide angle lenses will be supplied at a reasonable extra charge, and high-grade Anastigmat lenses may also be fitted. Attachments for using glass plates will be supplied (extra).

The No. 3 and No. 4 Cartridge Kodaks are regularly fitted with our new Kodak Automatic shutter, the No. 5 Cartridge being regularly equipped with the well-known Unicum shutter. The new Cartridge Kodaks have an improved rising front which locks automatically, and a side slide. An extra extension to bellows, operated with rack and pinion (permitting photographing objects at a distance of only eighteen inches from the lens), is a part of the regular equipment.

The Cartridge Kodaks are covered with the finest black seal grain leather, all fittings nicked, and are most desirable instruments where a wide range of utility combined with durability is essential.





# Cartridge Kodaks—Continued

## Cartridge Kodak No. 3

For rectangular pictures  $4\frac{1}{4} \times 3\frac{3}{4}$  inches. Capacity, 12 exposures without reloading. Size of Kodak,  $3\frac{1}{4} \times 5\frac{3}{4} \times 7\frac{1}{2}$  inches. Weight, 2 pounds, 12 ounces. Lens, rapid rectilinear, f.8. Focal length of 6 inches. Shutter, Kodak Automatic. (See page 9.) Two brilliant finders and two spirit levels. Two tripod sockets.

No. 3 Cartridge Kodak, Rapid Rectilinear Lens, Kodak Automatic Shutter, . . . . .	\$20.00
Ditto, with Kodak Automatic Shutter and B. & L. Plastigmat Lens No. 1, f. 6.8, . . . . .	52.10
Ditto, with Volute Shutter and B. & L. Zeiss Tessar Lens, Series II B, No. 5, f. 6.3, . . . . .	72.40
Ditto, with Volute Shutter and Cooke Anastigmat Lens, Series III, No. 3K, f. 6.5, . . . . .	67.40
N. C. Film Cartridge, 12 exposures, $4\frac{1}{4} \times 3\frac{3}{4}$ , . . . . .	.70
Ditto, 6 exposures, . . . . .	.35
Ditto, "Double-Two" Cartridge, 4 exposures, . . . . .	.25
Carrying Case, . . . . .	1.50
Glass Plate Adapter, with ground glass, . . . . .	2.00
Double Glass Plate Holders, each, . . . . .	1.00

## Cartridge Kodak No. 4

For rectangular pictures  $5 \times 4$  inches. Capacity, 12 exposures without reloading. Size of Kodak,  $3\frac{1}{4} \times 6\frac{3}{8} \times 8\frac{1}{4}$  inches. Weight, 3 pounds, 2 ounces. Lens, rapid rectilinear, f.8. Length of focus,  $6\frac{1}{2}$  inches. Shutter, Kodak Automatic. (See page 9.) Two brilliant finders and two spirit levels. Two tripod sockets.

No. 4 Cartridge Kodak, Rapid Rectilinear Lens, Kodak Automatic Shutter, . . . . .	\$25.00
Ditto, with Kodak Automatic Shutter and B. & L. Plastigmat Lens No. 2, f. 6.8, . . . . .	62.95
Ditto, with Volute Shutter and B. & L. Zeiss Tessar Lens, Series II B, No. 5K, f. 6.3, . . . . .	83.25
Ditto, with Volute Shutter and Cooke Anastigmat Lens, Series III, No. 4K, f. 6.5, . . . . .	76.75
N. C. Film Cartridge, 12 exposures, $5 \times 4$ , . . . . .	.90
Ditto, 6 exposures, . . . . .	.45
Ditto, "Double-Two" Cartridge, 4 exposures, . . . . .	.30
Carrying Case, . . . . .	2.00
Glass Plate Adapter, with ground glass, . . . . .	2.50
Double Glass Plate Holders, each, . . . . .	1.00

## Cartridge Kodak No. 5

For rectangular pictures  $7 \times 5$  inches. Capacity, 6 exposures without reloading. Size of Kodak,  $3\frac{3}{8} \times 8\frac{1}{2} \times 10$  inches. Weight, 4 pounds, 8 ounces. Lens, rapid rectilinear, f.8. Length of focus,  $8\frac{1}{2}$  inches. Shutter, Unicum. Two brilliant finders and two spirit levels. Two tripod sockets.

No. 5 Cartridge Kodak, Rapid Rectilinear Lens, Unicum Shutter, . . . . .	\$35.00
Ditto, with B. & L. Automatic Shutter, . . . . .	40.00
Ditto, with B. & L. Automatic Shutter and B. & L. Plastigmat Lens No. 3, f. 6.8, . . . . .	80.30
Ditto, with Volute Shutter and B. & L. Zeiss Tessar Lens, Series II B, No. 6, f. 6.3, . . . . .	108.10
Ditto, with Volute Shutter and Cooke Anastigmat Lens, Series III, No. 6K, f. 6.5, . . . . .	101.60
*N. C. Film Cartridge, 6 exposures, $7 \times 5$ , . . . . .	.80
Ditto, "Double-Two" Cartridge, 4 exposures, . . . . .	.55
Carrying Case, . . . . .	2.50
Glass Plate Adapter, with ground glass, . . . . .	3.00
Double Glass Plate Holders, each, . . . . .	1.25

\*Not furnished in 12 exposure cartridges.

# No. 2 Flexo Kodak

**T**AKING the popular sized picture,  $3\frac{1}{2} \times 3\frac{1}{2}$  inches, and of the fixed focus type, this camera is a simple and practical instrument for the beginner in photography. It also finds high

favor with the experienced, as it is an efficient and reliable camera. Like other Kodaks, it is ready for use, the price including every requisite for taking pictures except the film. Every detail of construction in this camera is as carefully guarded as with the higher priced instruments. It is covered with fine black grain leather and handsomely finished.



For square pictures,  $3\frac{1}{2} \times 3\frac{1}{2}$  inches. Capacity, 12 exposures without reloading. Size of Kodak,  $5\frac{7}{8} \times 4\frac{3}{8} \times 4\frac{3}{8}$  inches. Weight, 19 ounces. Lens, single achromatic, fixed  $4\frac{1}{2}$ -inch focus. Shutter, Eastman Rotary. (See page 8.) Tripod Socket and finder.

## The Price

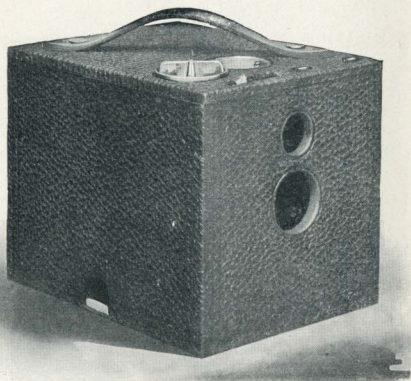
No. 2 Flexo Kodak, with Achromatic Lens, . . . . .	\$5.00
N. C. Film Cartridge, 12 exposures, $3\frac{1}{2} \times 3\frac{1}{2}$ , . . . . .	.60
Ditto, 6 exposures, . . . . .	.30
Ditto, "Double Two" Cartridge, 4 exposures, . . . . .	.20
Kodak Portrait Attachment, . . . . .	.50
Black Sole Leather Carrying Case, with shoulder strap, . . . . .	1.25



# *Bull's-Eye Kodak No. 2*

---

**S**IMPLE in operation, yet lacking none of the features necessary to secure the best pictures, this instrument continues to be the leader among the box-form cameras. Of the fixed focus type and fitted with the Eastman Rotary Shutter, this camera is always ready for action, and taking the popular size square picture,  $3\frac{1}{2} \times 3\frac{1}{2}$  inches, is adapted to a variety of work. It is easily and quickly opened for loading, and for removing the film after exposures have been made. The lenses are carefully selected and tested and universally give good results. The covering is seal grain leather of the finest quality, all fittings nickeled.



For square pictures,  $3\frac{1}{2} \times 3\frac{1}{2}$  inches. Capacity, 12 exposures without reloading. Size of Kodak,  $5\frac{3}{4} \times 4\frac{1}{8} \times 4\frac{1}{2}$  inches. Weight, 22 ounces. Lens, meniscus achromatic, fixed focus,  $4\frac{1}{2}$  inches. Shutter, Eastman Rotary. (See page 8.) Brilliant finder and socket for tripod screw.

## **The Price**

No. 2 Bull's-Eye Kodak, fitted with Meniscus Achromatic Lens, . . . . .	\$8.00
N. C. Film Cartridge, 12 exposures, $3\frac{1}{2} \times 3\frac{1}{2}$ , . . . . .	.60
Ditto, 6 exposures, . . . . .	.30
Ditto, "Double-Two" Cartridge, 4 exposures, . . . . .	.20
Kodak Portrait Attachment, . . . . .	.50
Black Sole Leather Carrying Case, with shoulder strap, . . . . .	1.25

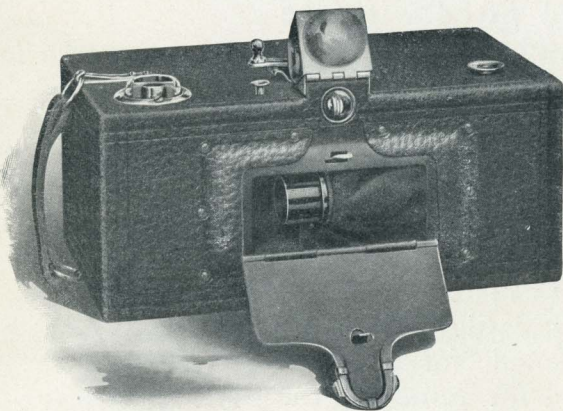
# P a n o r a m - K o d a k s

**B**Y means of the Panoram-Kodaks, a new and most inviting field is opened to the amateur. The pictures taken by these instruments have a breadth and beauty not attainable with the

ordinary camera.

The wide scope of view makes the Panoram unequalled in taking landscapes, outdoor group pictures, vertical pictures

of high water falls, and similar subjects. It affords unique and delightful effects. Not adapted to indoor work.



No. 1 Panoram-Kodak.—For pictures  $2\frac{1}{4} \times 7$  inches; capacity, 6 exposures without reloading; size of camera,  $3\frac{3}{8} \times 4\frac{1}{4} \times 7\frac{3}{8}$  inches; weight, 24 ounces; brilliant finder; two tripod sockets. Uses No. 1 F. P. Kodak Cartridges.

No. 4 Panoram-Kodak.—For pictures  $3\frac{1}{2} \times 12$  inches; capacity, 5 exposures without reloading; size of camera,  $4\frac{3}{4} \times 5\frac{1}{2} \times 10\frac{1}{8}$  inches; weight 2 pounds, 14 ounces; brilliant finder; two tripod sockets. Uses No. 4 B. E. Cartridges.

## The Price

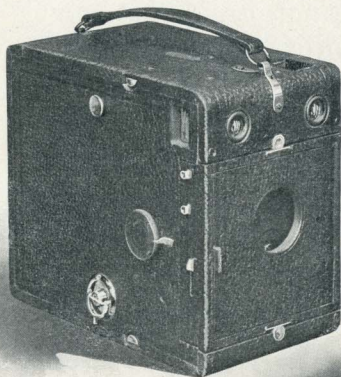
No. 1 Panoram-Kodak, . . .	\$10.00
N. C. Film Cart., 6 exposures, $2\frac{1}{4} \times 7$ , . . .	.40
Ditto, 3 exposures, . . .	.20
Leather Carrying Case, . . .	1.75

No. 4 Panoram-Kodak, . . .	\$20.00
N. C. Film Cart., 5 exposures, $3\frac{1}{2} \times 12$ , . . .	.90
Ditto, 2 exposures, . . .	.45
Leather Carrying Case, . . .	2.00



# Quick Focus Kodak No. 3B

**T**HE special feature of this new instrument is the fact that it may be placed in focus for any distance with exceeding rapidity, rendering it of unusual value for photographing street scenes and work of like nature. To focus, turn the large focusing dial marked with various distances until the required distance is opposite the pointer in front of same. Pressure on a concealed button springs out the front and the instrument is in focus. The size of the picture,  $3\frac{1}{4} \times 5\frac{1}{2}$ , makes it especially advantageous for all around work.



For rectangular pictures,  $3\frac{1}{4} \times 5\frac{1}{2}$  inches. Capacity, 10 exposures. Size of Kodak,  $8\frac{1}{8} \times 6\frac{7}{8} \times 4\frac{3}{8}$  inches. Weight, 2 pounds, 9 ounces. Lens, meniscus achromatic, focal length,  $6\frac{1}{2}$  inches. Shutter, Eastman Rotary. (See page 8.) Two brilliant finders. Two tripod sockets.

## The Price

No. 3B Quick Focus Kodak, with Eastman Rotary Shutter, . . . . .	\$12.00
* N. C. Film Cartridge, 10 exposures, $3\frac{1}{4} \times 5\frac{1}{2}$ , . . . . .	.70
* Ditto, 6 exposures, . . . . .	.40
* Ditto, "Double-Two," 4 exposures, . . . . .	.30
Black Sole Leather Carrying Case, with strap, . . . . .	2.50

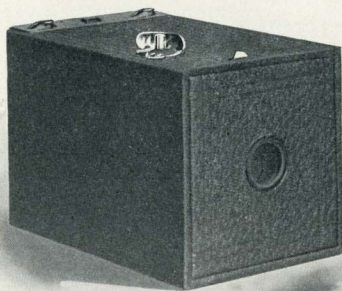
<sup>o</sup> Specify, "For 3B Quick Focus Kodak."

# No. 1 Brownie Camera

---

THE remarkable popularity of this little instrument is due to the fact that it is an accurate and reliable camera, and the work which has been done with it by school children proves

that photography, as now simplified, is by no means confined to "Grown-ups." It is well made, covered with fine quality imitation leather, and has nickel fittings. V-shaped lines on top give the scope of view, or a Brownie finder (detachable) may be provided for twenty-five cents.



Only our immense manufacturing facilities and the enormous quantities of No. 1 Brownies sold makes the price possible.

For square pictures,  $2\frac{1}{4} \times 2\frac{1}{4}$  inches. Capacity, 6 exposures. Size of camera,  $4\frac{7}{8} \times 3\frac{1}{8} \times 3$  inches. Weight, 8 ounces. Lens, meniscus,  $3\frac{3}{4}$ -inch focus. Shutter, Eastman Rotary (see page 8), with but one stop.

## The Price

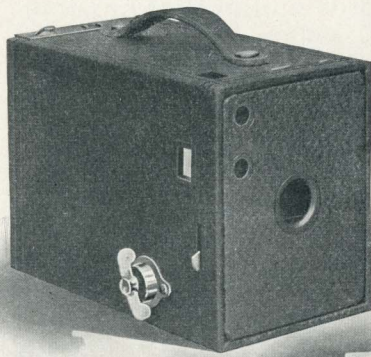
No. 1 Brownie Camera, with Eastman Rotary Shutter, . . . . .	\$1.00
N. C. Film Cartridge, 6 exposures, $2\frac{1}{4} \times 2\frac{1}{4}$ , . . . . .	.15
Brownie Finder, detachable, . . . . .	.25
No. 1 Brownie Carrying Case, holds camera and finder, . . . . .	.50
No. 1 Brownie Developing and Printing Outfit, including paper for 24 prints, . . . . .	.90



# Brownie Camera No. 2

---

**T**HIS camera is as simple as the No. 1 Brownie, but larger and with greater capabilities. These instruments produce truly remarkable photographs even in the hands of children, and work of the highest character has been done with them by experts. They are as easy to operate as the No. 1 Brownie and a most serviceable instrument on any vacation trip. When provided with Kodak Portrait Attachment they will take good sized bust photographs of excellent quality.



Equipped with two finders, and covered with a fine quality imitation leather, the No. 2 Brownie presents a most attractive appearance.

For rectangular pictures,  $2\frac{1}{4} \times 3\frac{1}{4}$  inches. Capacity, 6 exposures. Size of camera,  $5\frac{5}{8} \times 4 \times 3\frac{1}{4}$  inches. Weight, 13 ounces. Lens, meniscus,  $4\frac{1}{2}$ -inch focus. Shutter, Eastman Rotary. (See page 8.) Two finders.

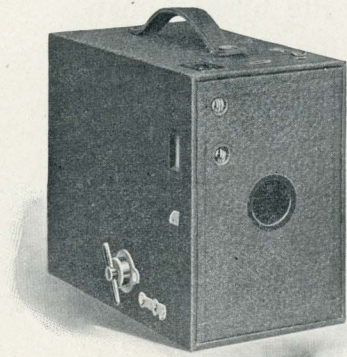
## The Price

No. 2 Brownie Camera, with Eastman Rotary Shutter, . . . . .	\$2.00
N. C. Film Cartridge, for 6 exposures, $2\frac{1}{4} \times 3\frac{1}{4}$ , . . . . .	.20
No. 2 Brownie Carrying Case, with shoulder strap, . . . . .	.75
Kodak Portrait Attachment, . . . . .	.50
A B C Developing and Printing Outfit. (See page 46.) . . . . .	1.50

## No. 2A *Brownie* Camera

---

**A** NEW Brownie, sure to meet with instant favor from the standpoint of practical utility. In construction it is truly "almost a Kodak," while the size picture it takes,  $2\frac{1}{2} \times 4\frac{1}{4}$  inches, affords numberless possibilities for unique landscape compositions, and when used vertically permits the making of excellent full length portraits. Exceedingly well made, fitted with meniscus achromatic lens of 5-inch focus, Eastman rotary shutter. Covered with fine quality imitation leather, with nickered fittings, it presents a most attractive appearance.



The No. 2A Brownie uses the regular Six and Twelve exposure film cartridges, same as used in the No. 1A Folding Pocket Kodak.

For rectangular pictures  $2\frac{1}{2} \times 4\frac{1}{4}$  inches. Capacity, 12 exposures. Size of camera,  $6\frac{1}{8} \times 3\frac{7}{8} \times 5\frac{1}{8}$  inches. Weight, 21 ounces. Lens, meniscus 5-inch focus. Shutter, Eastman Rotary (see page 8). Two finders.

### The Price

No. 2A Brownie Camera with Eastman Rotary Shutter, . . . . .	\$3.00
N. C. Film Cartridge for 12 exposures, $2\frac{1}{2} \times 4\frac{1}{4}$ , . . . . .	.50
Ditto, 6 exposures, . . . . .	.25
No. 2A Brownie Carrying Case, with shoulder strap, . . . . .	.75
Kodak Portrait Attachment, . . . . .	.50
A B C Developing and Printing Outfit (see page 46), . . . . .	1.50

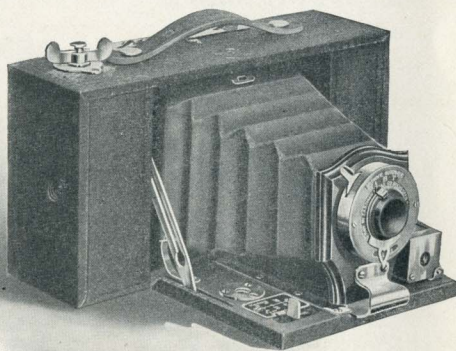


# Folding Brownie No. 2

---

**T**HIS is an amplification of the Brownie idea, embracing in a folding camera, the features of equipment usually found only in high-priced instruments. It is, in fact, a very superior little

instrument, and with its Iris diaphragm shutter affording instantaneous, time, and "bulb" exposures and automatic focusing device it becomes "almost a Kodak." Always ready for use as a fixed focus camera, with the additional advantage of special focusing lock for 8, 20, and 100 feet, for portraiture or landscape. The No. 2 Folding Brownie is exceedingly well made and assembled with that nicety of adjustment characteristic of all Eastman products.



For rectangular pictures,  $2\frac{1}{4} \times 3\frac{1}{4}$  inches. Capacity, 6 exposures. Size of camera,  $6\frac{7}{8} \times 3\frac{5}{8} \times 2\frac{1}{2}$  inches. Weight, 16 ounces. Lens, meniscus,  $4\frac{1}{2}$ -inch focus. Shutter, Pocket Automatic. (See page 8.) Reversible finder. Two tripod sockets. Automatic focusing lock.

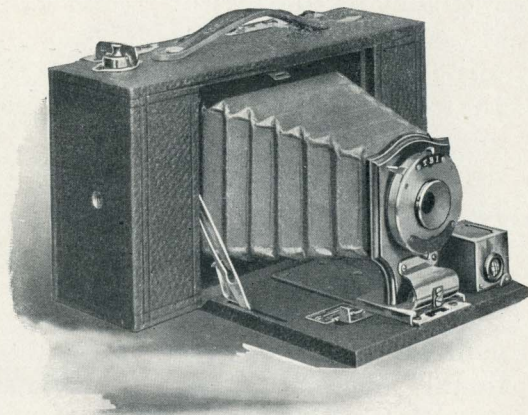
## The Price

No. 2 Folding Brownie Camera, with Pocket Automatic Shutter, . . . . .	\$5.00
N. C. Film Cartridge, 6 exposures, $2\frac{1}{4} \times 3\frac{1}{4}$ , . . . . .	.20
No. 2 Folding Brownie Carrying Case, . . . . .	.75
Kodak Portrait Attachment, . . . . .	.50

## No. 3 *Folding Brownie*

---

**T**HIS is the head of the Brownie clan. Light, compact, carefully constructed, with the same shutter as supplied on No. 3 Folding Pocket Kodak, but without pneumatic release, it fully deserves the unqualified praise it has received. A noteworthy feature of this camera is the scope of the Automatic Focusing device which provides for 6, 8, 10, 15, 25, and 100 feet. A remarkable value for all who use an inexpensive instrument, taking pictures  $3\frac{1}{4} \times 4\frac{1}{4}$  inches. The No. 3 Folding Brownie takes *12 exposure cartridges*.



For rectangular pictures,  $3\frac{1}{4} \times 4\frac{1}{4}$  inches. Capacity, 12 exposures. Size of camera,  $8\frac{3}{8} \times 4\frac{5}{8} \times 2\frac{3}{8}$  inches. Weight, 25 ounces. Lens, meniscus, 5-inch focus. Shutter, F. P. K. Automatic (see page 9), without bulb. Automatic focusing lock. (See page 10.) Reversible finder. Two tripod sockets.

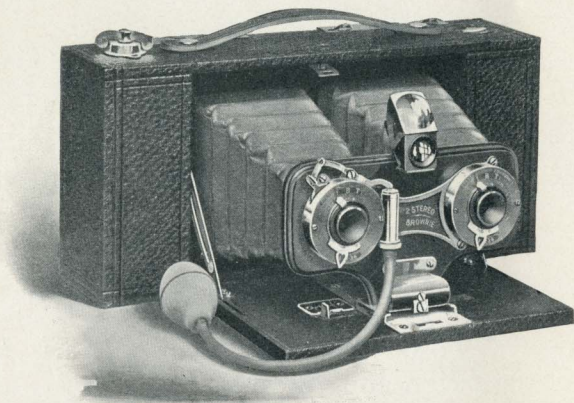
### The Price

No. 3 Folding Brownie Camera, with F. P. K. Automatic Shutter, . . .	\$9.00
N. C. Film Cartridge, 12 exposures, $3\frac{1}{4} \times 4\frac{1}{4}$ , . . . . .	.70
Ditto, 6 exposures, . . . . .	.35
Ditto, "Double-Two" Cartridge, 4 exposures, . . . . .	.25
No. 3 Folding Brownie Carrying Case, . . . . .	1.00
Kodak Portrait Attachment, . . . . .	.50



# Stereo Brownie No. 2

**T**HERE is a fascination in the making of stereoscopic photographs, and especially so with this instrument, as all complications have been avoided and the cutting apart and transposing of the negative, the only difficult feature of stereoscopic work, is entirely done away with by the self-transposing printing frame. The No. 2 Stereo Brownie is an accurate stereoscopic camera, simple in every detail. The lenses and twin shutters are effective, and are optically correct.



For Stereo pictures, each  $3\frac{1}{4} \times 2\frac{1}{2}$  inches. Capacity, 10 Stereo exposures. Size of camera,  $9\frac{3}{4} \times 4\frac{1}{2} \times 2\frac{1}{2}$  inches. Weight, 29 ounces. Lenses, meniscus achromatic,  $4\frac{1}{2}$ -inch focus. Shutters, Pocket Automatic (see page 8), with 4 stop openings. Automatic focusing lock. (See page 10.) Brilliant finder with hood. Tripod socket.

## The Price

No. 2 Stereo Brownie, fitted with pair of Pocket Automatic Shutters, . . .	\$12.00
N. C. Film Cartridge, 10 Stereo exposures, . . . . .	.70
Ditto, 6 exposures, . . . . .	.40
Ditto, "Double-Two," 4 exposures, . . . . .	.30
Carrying Case, . . . . .	1.00
Self-Transposing Printing Frame, for $3\frac{1}{4} \times 2\frac{1}{2}$ Stereo prints, . . . . .	1.50
Brownie Stereoscope, . . . . .	.75

# No. 2 Brownie Developing Box

---



## FOR DAYLIGHT DEVELOPMENT

**T**HE No. 2 Brownie Developing Box is a simplification of the Kodak Tank Developer, such simplification being made possible by the short length of the Brownie film.

The No. 2 Brownie Developing Box is a metal box fifteen inches in length, just long enough to accommodate a roll of No. 1 or No. 2 Brownie film in one loop.

To develop, the roll of film is inserted in the spool carrier and by means of a cord and winding shaft the film is unrolled and carried around a roller bearing, thus exposing the film to the action of the developer.

Before unrolling the film the developer is poured in the box and the cover put in place. The film is unrolled by turning the crank.

Then the box is rocked on its standard for six minutes. The developer is then poured off and box filled with water to wash out developer, after which film is removed and fixed in daylight.

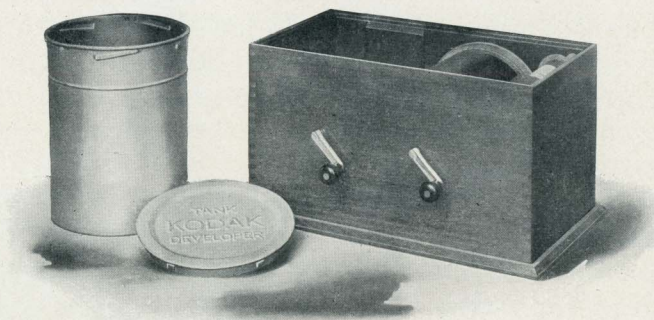
## The Price

No. 2 Brownie Developing Box, . . . . .	\$1.00
Brownie Developing Box Powders, per package of 6, . . . . .	.15
Kodak Acid Fixing Powders, ½ lb. package, . . . . .	.15
Ditto, ¼ lb. package, . . . . .	.10



# Kodak Tank Developer

---



**T**HE Kodak Tank Developer makes the daylight development of film a very simple process and the negatives are of a much higher average than those obtained by any other method.

In principle, the Kodak Tank Developer is the same as the Kodak Developing Machine, but is an improvement upon that process in convenience and results.

The film, after exposure, is protected from light by being first wound up with a light-proof apron. With the Developing Machine, the operator continues turning a crank, thus revolving the film through the developer; while with the Kodak Tank Developer the film is removed from the winding box and placed in a cup of developer until development is completed.

As shown in cut on page 38, apron, black paper, and film are wound on axle D, and, when so wound, are removed from the box and placed in the Developing Tank in the light of an ordinary room. Development is allowed to go on for twenty minutes and the film requires no attention during that time beyond turning

# Tank Developer—*Continued*

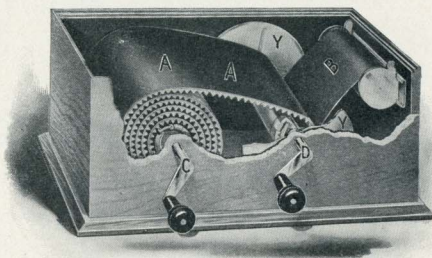
---

the cup containing film end for end two or three times during development, a tightly fitting cover for the cup being provided for this purpose. (In case of the Brownie Tank Developer, the film roll itself is turned, no cover for cup being necessary.) When development is completed the film is removed for fixing. It has been definitely proven by numberless experiments that development by timing—the Kodak Tank Developer, Kodak Developing Machine, and Brownie Developing Box, is correct from a scientific standpoint, and in practice, better than trying to determine the proper duration of development by inspecting the negative before the dark room lamp. The Kodak Tank Developer is endorsed and used by many of the leading pictorialists, who are obtaining with it their best negatives.

Compared with dark room development, it is not only convenience against inconvenience, but it is science against guess work.

Kodak Tank Developers are made in four sizes, the "7-inch," the "5-inch," the "3½-inch," and "Brownie," the latter taking only 2¼-inch Brownie film and having no cover for solution cup.

With the Kodak Tank Developer, the amateur can develop a number of rolls of film at once; merely pro-



BOX FOR WINDING PROTECTING APRON AND  
FILM TOGETHER



# Tank Developer—*Continued*

viding himself with extra tanks, aprons, and reels, which will be found listed (Duplicating Outfits) in the price list below. The Winding Boxes themselves are strongly made with metal parts nickeled. The Tank is of brass, heavily nickeled. Both handles of the box are removable and, together with the tank and apron, can be packed inside of the box, thus making the entire outfit self-contained.

## The Price

Brownie Kodak Tank Developer. For use with No. 1, No. 2, and No. 2 Folding Brownie Cartridges, complete, . . . . .	\$2.50
Duplicating Outfit for same, consisting of 1 Solution Cup, 1 Transferring Reel, and 1 Apron, . . . . .	1.25
3½-inch Kodak Tank Developer. For use with all Kodak or Brownie Cartridges having a film width of 3½ inches or less, complete, . . . .	5.00
Duplicating Outfit for same, consisting of 1 Solution Cup, 1 Transferring Reel, and 1 Apron, . . . . .	2.50
5-inch Kodak Tank Developer. For use with all Kodak and Brownie Cartridges having a film width of 5 inches or less, complete, . . . . .	6.00
Duplicating Outfit for same, consisting of 1 Solution Cup, 1 Transferring Reel, and 1 Apron, . . . . .	3.00
7-inch Kodak Tank Developer. For use with No. 5 Cartridge Kodak or shorter film cartridges, complete, . . . . .	7.50
Duplicating Outfit for same, consisting of 1 Solution Cup, 1 Transferring Reel, and 1 Apron, . . . . .	3.75

## KODAK TANK DEVELOPER SUPPLIES

All the amateur needs in the line of supplies for the Kodak Tank Developer are Developing Powders, and Kodak Acid Hypo for fixing. The developer powders listed below are accurately prepared and contain only carefully-tested chemicals of the best quality.

Kodak Tank Developer Powders, Brownie, per package of ½ dozen, . . . .	\$ .15
Ditto, for 3½-inch Tank, per package, ½ dozen, . . . . .	.20
Ditto, for 5-inch Tank, per package, ½ dozen, . . . . .	.25
Ditto, for 7-inch Tank, per package, ½ dozen, . . . . .	.25
Kodak Acid Fixing Powder, per ¼-pound package, . . . . .	.10
Ditto, per ½-pound package, . . . . .	.15
Ditto, per 1-pound package, . . . . .	.25

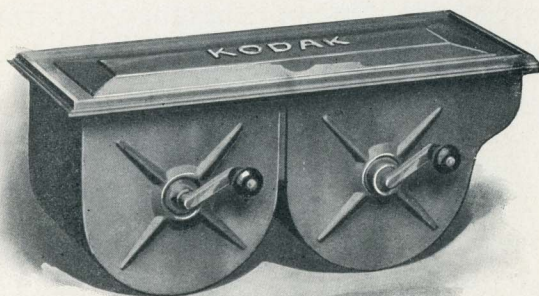
# Kodak *Developing Machine*

---

**I**N operation, the Kodak Developing Machine is similar to the Kodak Tank Developer, but the Film is revolved through the solution during development. The Kodak Developing Machines

are of brass and fully nickeled.

They may be readily packed in the traveler's trunk or suit case, or may be carried as hand baggage in their



neatly-finished wooden cases. All Kodak or Brownie film cartridges, having a spool length of five inches or less, may be developed in daylight in these machines.

## The Price

Style E Kodak Developing Machine. For use with Kodak and Brownie.

Cartridges of all sizes up to and including  $4\frac{1}{4} \times 6\frac{1}{2}$  (price includes a handsomely finished wooden carrying case, with leather handle), . . . \$7.50

### KODAK DEVELOPING MACHINE SUNDRIES

Kodak Developing Outfits for use with Kodak Developing Machines, include Developer Powders, Kodak Acid Fixing Powder, Graduates, Stirring Rod, and Squeegee.

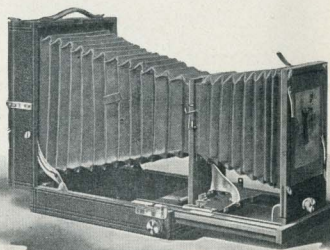
"E" for use with Style E Machine, . . . . .	\$1.60
Kodak Developing Powders for Style E Machine, per package of $\frac{1}{2}$ dozen, . . . . .	.25
Kodak Acid Fixing Powder, per $\frac{1}{4}$ -pound package, . . . . .	.10
Ditto, per $\frac{1}{2}$ -pound package, . . . . .	.15
Ditto, per 1-pound package, . . . . .	.25



# The Kodak Enlarging Camera

**F**OR making  $6\frac{1}{2} \times 8\frac{1}{2}$  enlargements from  $4 \times 5$  and  $3\frac{1}{4} \times 4\frac{1}{4}$  negatives. Smaller negatives enlarge to approximately  $4 \times 5$  and  $5 \times 7$ . Focusing by scale or ground glass, as desired.

No dark room necessary except for loading and development. May be used as a portrait camera by removing negative carrier and substituting portrait lens.



## The Price

No. 1 Kodak Enlarging Camera, equipped for making enlargements from $4 \times 5$ glass negatives, or from film negatives up to $4 \times 5\frac{1}{2}$ inches, . . .	\$15.00
$6\frac{1}{2} \times 8\frac{1}{2}$ Inside Kits, $5 \times 7$ opening, . . . . .	.35
Ditto, $4 \times 5$ opening, . . . . .	.35
Glass Negative Holders, $3\frac{1}{4} \times 4\frac{1}{4}$ , . . . . .	.50
Ditto, $3\frac{1}{2} \times 3\frac{1}{2}$ , . . . . .	.50
Special Portrait Lens, $8\frac{1}{2}$ -inch focus, speed f.8 for bust work, . . . . .	7.50
Extra Lens Board. No extra charge for fitting to our Special Portrait Lens, . . . . .	.75

## Brownie Enlarging Camera No. 2

**A** SIMPLE device for making  $5 \times 7$  bromide enlargements from No. 2 Brownie negatives, or  $5 \times 5$  bromide enlargements from No. 1 Brownie negatives.

No focusing necessary and dark room required only for loading and development. Every step perfectly simple.



## The Price

No. 2 Brownie Enlarging Camera, . . . . .	\$2.00
---	--------

# Kodak Portrait Attachment

---

**P**ORTRAIT making does not demand elaborate apparatus. A fifty-cent portrait attachment on a small Kodak or Brownie camera will enable one to make good sized head and shoulder pic-

tures—while the attachment which we now furnish for the Cartridge and other Kodaks of larger size enables one to make bust portraits of any size desired, limited only by the dimensions of the plate. The Kodak Portrait Attachments are simply extra lenses which slip on in front of the regular lenses. They in no way affect the operation of the fixed-focus Kodaks except that they make them cut sharp at a distance of  $3\frac{1}{2}$  feet, and thus throw more distant objects out of focus.

They may also be used to good advantage with any of the focusing Kodaks.



MADE WITH KODAK PORTRAIT ATTACHMENT  
BY LIGHT OF ORDINARY WINDOW



## Portrait Attachment—Continued

---

With the attachment in place, the focus of these instruments set at 15 feet, and the subject  $3\frac{1}{2}$  feet from the cameras, admirable bust portraits are obtained, and, by changing the focus, it is practical to work at different distances, thus varying the size of the image.



For use with all regularly equipped Kodaks listed in this catalogue except the Panoram-Kodaks. May also be used with the No. 2 and 2A Brownies, and No. 2 and No. 3 Folding Brownie Cameras.

Be sure and give exact designation of instrument when ordering, and when to be used with a pneumatic release shutter, also give exact designation of same.

### The Price

Kodak Portrait Attachment, . . . . . \$ .50

## KODAK WIDE ANGLE LENSES

These lenses have a speed of  $f.16$  and are interchangeable with the lenses furnished with the Cartridge Kodak, the No. 4 Screen Focus Kodak, the No. 4 Folding Pocket Kodak, and the No. 4A Folding Kodak. The wide Angle Kodak lenses are rectilinear, carefully tested, and are absolutely high grade in every instance. With each one we furnish a leather case and a graduated focusing scale for attaching to the camera bed.

In ordering, give size (No.) of Kodak and specify the shutter the lens is to be used with.

### The Price

- |  |        |
|--|--------|
| No. 3 ( $3\frac{1}{4} \times 4\frac{1}{4}$ ) Wide Angle Kodak Lens, equivalent focus, $3\frac{1}{2}$ inches, | \$5.00 |
| No. 4 ( $4 \times 5$ ) Wide Angle Kodak Lens, equivalent focus, $4\frac{1}{2}$ inches, . . .                 | 5.00   |
| (Also adapted to 3A Kodak.)  |        |
| No. 5 ( $5 \times 7$ ) Wide Angle Kodak Lens, equivalent focus, $5\frac{1}{2}$ inches, . . .                 | 7.50   |
| (Also adapted to 4A Kodak.)  |        |

# The Anastigmat *Advantage*

---

**A**LMOST any lens will do good work if you do not ask too much of it. The speed of the shutter and the size of the stop openings must, however, be in harmony with the power of the lens. The stop opening must be small enough to make it cut a sharp picture. If this opening is small, the shutter must be relatively slow, in order to allow light enough to pass through the lens to affect the sensitive film.

Our double combination or "Rapid Rectilinear" lenses are fast, but the largest opening that will give sharp results is one-eighth of their focal length, designated as f. 8 (U. S. 4). Such lenses will make snap shots in sunlight in a hundredth of a second and at a fiftieth will make very satisfactory negatives on hazy days.

When lenses of still greater speed are required we get into the Anastigmat class, the representative lenses of which are the Bausch & Lomb Zeiss-Tessar and Plastigmat lenses, and the Cooke Series III Anastigmats. These lenses consist of several pieces of glass most carefully ground and adjusted and the diameter of the largest opening is more than one-seventh of the focal length—designated with the Tessar lens, f. 6.3, Plastigmat f. 6.8, and the Cooke f. 6.5. It is this large opening that gives the speed. The great advantage of the Anastigmat lies in the fact that it permits the making of slow instantaneous exposures on days when they would be out of the question with a single lens and when results would be doubtful even with a Rapid Rectilinear.

Either of these lenses which we list will prove a great satisfaction to the Kodaker.



## SPECIAL LENS AND SHUTTER EQUIPMENTS

The No. 3, No. 3A, and No. 4 Folding Pocket, No. 4 Screen Focus, No. 4A Folding, and the Cartridge Kodaks, may be equipped as follows :

Style of Camera	Full Description Page	Size of Picture	B. & L. Plastigmat lens, f. 6.8, and Kodak Automatic Shutter	B. & L. Plastigmat lens, f. 6.8, and Volute Shutter	B. & L. Zeiss Tessar Series 11 B lens, f. 6.3, and Volute Shutter	Cooke Anastigmat lens, Series III f. 6.5, and Volute Shutter
No. 3 Folding Pocket Kodak, . . .	14	3¼ x 4¼	No. 1 lens, \$49.90	No. 1 lens, \$64.20	No. 4 lens, \$63.70	No. 3K lens, \$65.20
No. 3A Folding Pocket Kodak, . .	16	3¼ x 5½	No. 2 lens, 57.95	No. 2 lens, 72.25	No. 5K lens, 78.25	No. 4K lens, 71.75
No. 4 Folding Pocket Kodak, . . .	18	4 x 5	No. 2 lens, 57.95	No. 2 lens, 72.25	No. 5K lens, 78.25	No. 4K lens, 71.75
No. 3 Cartridge Kodak, . . . . .	24	4¼ x 3¾	No. 1 lens, 52.10	No. 1 lens, 66.40	No. 5 lens, 72.40	No. 3K lens, 67.40
No. 4 Cartridge Kodak, . . . . .	24	5 x 4	No. 2 lens, 62.95	No. 2 lens, 77.25	No. 5K lens, 83.25	No. 4K lens, 76.75
No. 4 Screen Focus Kodak, . . . .	22	4 x 5	No. 2 lens, 67.95	No. 2 lens, 82.25	No. 5K lens, 88.25	No. 4K lens, 81.75
			No. 2 B. & L. Automatic Shutter			
No. 5 Cartridge Kodak, . . . . .	24	7 x 5	No. 3 lens, \$80.30	No. 3 lens, 96.60	No. 6 lens, 108.10	No. 6K lens, 101.60
No. 4A Folding Kodak, . . . . .	20	4¼ x 6½	No. 3 lens, 78.70	No. 3 lens, 95.00	No. 6 lens, 106.50	No. 6K lens, 100.00

# Developing and Printing Outfits



**E**ASTMAN'S A B C Developing and Printing Outfit includes every requisite for developing by the darkroom method, printing and finishing twenty-four 4 x 5, 2½ x 4¼, or 3¼ x 4¼ pictures. The outfit contains:

1 Kodak Candle Lamp, . . . . .	\$ .25
1 4 x 5 Printing Frame, . . . . .	.25
1 4 x 5 Glass for Frame, . . . . .	.05
1 4-ounce Graduate, . . . . .	.10
1 Stirring Rod, . . . . .	.05
4 4½ x 5½ Developing Trays, . . . . .	.40
5 Tubes Eastman's Special Developer, . . . . .	.25
½ pound Kodak Acid Fixing Powder, . . . . .	.15
½ ounce Bromide Potassium, . . . . .	.10
2 dozen 4 x 5 Solio Paper, . . . . .	.25
2 ounces Solio Toning Solution, . . . . .	.15
Instruction Book, . . . . .	.10
	<u>\$2.10</u>

Price, complete, neatly packed, . . . . . \$1.50

Eastman's Bull's-Eye Developing and Printing Outfit, complete, for developing and printing 12 pictures 3½ x 3½. Similar to above outfit.

Price, complete, neatly packed, . . . . . \$1.25

Brownie Developing and Printing Outfit, complete, for developing and printing 24 pictures 2¼ x 2¼. Price, complete, . . . . . .90

NOTE.—These outfits cannot be shipped by mail.



# The Kodak Box No. 2



**T**HE Kodak Box No. 2 contains everything for picture making by the daylight method. No dark-room is necessary, and even the beginner can get good results by following the simple, explicit directions contained in the instruction book.

## THE KODAK BOX No. 2

1 No. 2 Brownie Camera, . . . . .	\$2.00
1 No. 2 Brownie Developing Box, . . . . .	1.00
1 Roll No. 2 Brownie Film, . . . . .	.20
2 Brownie Developing Box Powders, . . . . .	.05
1 one-half-lb. pkge. Kodak Acid Fixing Powder, . . . . .	.15
1 4-oz. Graduate, . . . . .	.10
1 Stirring Rod, . . . . .	.05
1 No. 2 Brownie Printing Frame, . . . . .	.15
1 Pkge. (1 doz.) $2\frac{1}{4} \times 3\frac{1}{4}$ Brownie Velox, . . . . .	.10
2 Eastman Metol Quinol Developing Tubes, . . . . .	.10
3 Paper Developing Trays, . . . . .	.30
1 Doz. $2\frac{1}{4} \times 3\frac{1}{4}$ Bevelplane Mounts, . . . . .	.10
1 Doz. $2\frac{1}{4} \times 3\frac{1}{4}$ Kodak Dry Mounting Tissue, . . . . .	.05
1 Instruction Book, . . . . .	.10
	<b>\$4.45</b>

## The Price

The Kodak Box No. 2, . . . . .	\$4.00
--------------------------------	--------

# V e l o x      P a p e r

---

**V**ELOX prints in any light and requires no dark room for development. Its simplicity of manipulation and extreme gradation make it suitable for photographic work of every sort.

Velox is divided broadly into two kinds of paper, called "Regular" and "Special" (slow and fast), each division containing a variety of surfaces.

"Regular" papers develop quickly and are best suited for negatives lacking contrast. "Special" papers develop slowly, and give soft effects from hard negatives. Use "Special" Velox for negatives producing good results on "Printing Out" paper (such as Solio), and "Regular" only with very flat negatives.

**Velox Surfaces:** In the "Regular" class, are Carbon (matte surface), Carbon double weight, Glossy, Velvet, and Velvet double weight. "Regular" Velvet Velox is semi-glossy and gives prints of exceptional beauty. This paper will give satisfactory results from very flat negatives.

In the "Special" class, the surfaces are Carbon (matte surface), Portrait (smooth matte), Portrait double weight, Rough, Rough double weight, Glossy, Velvet, and Velvet double weight.

"Special" Velvet Velox has a greater range than any of the other "Special" papers.

Royal Velox, an entirely new product, is coated on a soft mellow tinted stock, which when redeveloped affords all the soft delicacy of a rare old etching. Royal Velox is made in the two grades, "Regular" and "Special" and one surface, just rough enough to produce the desired effect.



# Velox Paper—Continued

## The Price

Size	SINGLE WEIGHT			DOUBLE WEIGHT		
	Doz.	½ Gross	Gross	Doz.	½ Gross	Gross
2¼ x 3¼	\$ .15	\$ .60	\$1.00	\$ .20	\$ .75	\$1.25
2½ x 4¼	.15	.70	1.25	.20	.90	1.55
3½ x 3½	.15	.80	1.50	.20	1.00	1.90
3¼ x 4¼	.15	.80	1.50	.20	1.00	1.90
3¼ x 5½	.15	.80	1.50	.20	1.00	1.90
4 x 5	.25	1.10	2.00	.30	1.40	2.50
* 3¼ x 6 (Stereo)	.25	1.10	2.00			
† * 3¾ x 6½	.25	1.10	2.00			
2¼ x 7	.15	.80	1.50	.20	1.00	1.90
4¼ x 6½	.30	1.65	2.80	.40	2.05	3.50
5 x 7	.35	2.00	3.50	.45	2.50	4.40
3½ x 12	.45	2.50	4.50	.55	3.15	5.65

Velox Post Cards furnished in Regular Velvet,

Special Velvet, Special Rough, and Special Portrait, .20 1.10 2.00

\* Glossy only. † For use in Self-Transposing Stereo Printing Frame.

### BROWNIE VELOX (ONE GRADE ONLY)

2¼ x 2¼, per package 2 doz. sheets, . . . . .	\$ .15
2¼ x 3¼, per package 1 doz. sheets, . . . . .	.10

### VELOX SUNDRIES

N. A. (Non-Abrasion) Velox Liquid Developer, 4-ounce bottle (makes 20 ounces for Special, 12 ounces for Regular), . . . . .	\$ .25
Ditto, 16 ounce bottle, . . . . .	.75
Nepera Solution, per 4-ounce bottle (including 4 capsules for converting to film and plate developer), . . . . .	.25
Ditto, 16-ounce bottle (without capsules), . . . . .	.60
Nepera Capsules, per package 1 dozen, . . . . .	.15
Velox Re-Developer, for Sepia Tones, 4-ounce bottle, . . . . .	.50
Ditto, 2 ounces (sufficient for 150 4 x 5 prints), . . . . .	.30
Velox Liquid Hardener, per 4-ounce bottle, . . . . .	.15
Ditto, 8-ounce bottle, . . . . .	.25
Nepera M. Q. N. A. Tubes, box of 5 tubes, . . . . .	.75
Kodak Acid Fixing Powder for fixing Velox prints, per pound, . . . . .	.25
Ditto, ½ pound, . . . . .	.15
Ditto, ¼ pound, . . . . .	.10
Velox Amateur Printer, No. 2, . . . . .	1.00
Velox Amateur Printer No. 1 (with gas pillar; adapted for electric socket), . . . . .	2.00
Electric Attachment (extra). Comprising socket, plug, and 6-foot cord, . . . . .	.75
Welsbach Attachment (extra). Burner, mantle, and large chimney, . . . . .	1.25
Extra mantles, each, . . . . .	.15
Tubing, 6-foot lengths. For connecting printer with gas supply, . . . . .	.50

# Kodak Papers

## ANGELO PLATINUM PAPERS

Angelo Platinum Papers are exceedingly simple to handle and yield prints marvelous in gradation and delicacy.

Made in both Black and White and Sepia.

Angelo Sepia, unlike most Sepia Platinum papers, develops in a cold solution, doing away with heating the bath for each lot of prints. Angelo Platinum papers are furnished in two grades, "Smooth" and "Rough."

Size	Price Per Doz.
3½ x 3½, . . . . .	\$ .30
3¼ x 4¼, . . . . .	.30
4 x 5, . . . . .	.50
3¼ x 5½, . . . . .	.45
4¼ x 6½, . . . . .	.70
5 x 7, . . . . .	.80
Angelo Developer, for Angelo Black and White, ¼-lb. pkge., . . . . .	.20
½-lb. pkge., . . . . .	.35
Angelo Sepia Solution (2 oz. bottle), . . . . .	.35
Angelo Sepia Salts (2 oz. pkge.), . . . . .	.10

## EASTMAN'S W. D. PLATINUM PAPER

A pure platinum paper, requiring only water development, without chemicals. Clears in water and acid. Produces effects equal in beauty to any photographic process. Packed in sealed tubes.

Two grades — "Smooth" and "Rough."

Size	Price per Doz.	Size	Price per Doz.
2¼ x 3¼, . . . . .	\$ .15	3¼ x 5½, . . . . .	\$ .30
2½ x 4¼, . . . . .	.20	3¼ x 6 (Stereo), . . . . .	.35
3½ x 3½, . . . . .	.20	2¼ x 7, . . . . .	.30
3¼ x 4¼, . . . . .	.25	4¼ x 6½, . . . . .	.45
4 x 5, . . . . .	.35	5 x 7, . . . . .	.60
		3½ x 12, . . . . .	.70

## SOLIO PAPER

A rapid, glossy printing-out paper.

Size	Per Pkg., 2 Doz.	Size	Per Pkg., 2 Doz.
2½ x 2½, . . . . .	\$ .20	3¼ x 5½, . . . . .	\$ .25
2¼ x 3¼, . . . . .	.20	4 x 5, . . . . .	.25
2½ x 4¼, . . . . .	.20	3¼ x 6 (Stereo), . . . . .	.25
3½ x 3½, . . . . .	.20	2¼ x 7 (No. 1 Panoram-Kodak), . . . . .	.25
3¼ x 4¼, . . . . .	.20		



# Kodak Papers—Continued

## SOLIO PAPER—Continued

	Per Doz.		Per Doz.
$4\frac{1}{4} \times 6\frac{1}{2}$ , . . . . .	\$ .25	$3\frac{1}{2} \times 12$ (No. 4 Panoram-Kodak), . . . .	\$ .35
5 x 7, . . . . .	.30		

SECONDS: 4 x 5 (trimmed) seconds, \$1.00 per gross.  
 SOLIO Combined Toning and Fixing Solution, per 8-ounce bottle, 50 cents.  
 Ditto, 4-ounce bottle, 30 cents; post-paid, 50 cents.

## EASTMAN'S SEPIA PAPER

As simple to handle and much quicker than Blue Print Paper. Especially desirable with negatives giving sketchy effects. Packed in sealed tubes.

Size	Price per 2 Doz.	Size	Price per 2 Doz.
$2\frac{1}{2} \times 2\frac{1}{2}$ , . . . . .	\$ .15	4 x 5, . . . . .	\$ .20
$2\frac{1}{4} \times 3\frac{1}{4}$ , . . . . .	.15	$3\frac{1}{4} \times 6$ (Stereo), . . . . .	.20
$2\frac{1}{2} \times 4\frac{1}{4}$ , . . . . .	.15	$2\frac{1}{4} \times 7$ , . . . . .	.20
$3\frac{1}{2} \times 3\frac{1}{2}$ , . . . . .	.15		1 Doz.
$3\frac{1}{4} \times 4\frac{1}{4}$ , . . . . .	.15	$4\frac{1}{4} \times 6\frac{1}{2}$ , . . . . .	\$ .15
$3\frac{1}{4} \times 5\frac{1}{2}$ , . . . . .	.20	5 x 7, . . . . .	.20
Sepia post-cards, per pkg., 2 doz., . . . . .	.25	$3\frac{1}{2} \times 12$ , . . . . .	.20

## EASTMAN'S "FERRO-PRUSSIAN" PAPER

Not a cheap commercial "Blue Print," but a paper that retains the delicacy and detail of the finest negatives. Packed in sealed tubes.

Size	Price per 2 Doz.	Size	Price per 2 Doz.
$2\frac{1}{2} \times 2\frac{1}{2}$ , . . . . .	\$ .16	$3\frac{1}{4} \times 5\frac{1}{2}$ , . . . . .	\$ .20
$2\frac{1}{4} \times 3\frac{1}{4}$ , . . . . .	.16	$3\frac{1}{4} \times 6$ (Stereo), . . . . .	.20
$2\frac{1}{2} \times 4\frac{1}{4}$ , . . . . .	.16	$2\frac{1}{4} \times 7$ , . . . . .	.20
$3\frac{1}{2} \times 3\frac{1}{2}$ , . . . . .	.16	$4\frac{1}{4} \times 6\frac{1}{2}$ , . . . . .	.30
$3\frac{1}{4} \times 4\frac{1}{4}$ , . . . . .	.16	5 x 7, . . . . .	.35
4 x 5, . . . . .	.20	$3\frac{1}{2} \times 12$ , . . . . .	.40
	1 Doz.		
Eastman's "Ferro-Prussiate" post-cards, . . . . .	\$ .15		

## EASTMAN'S PERMANENT BROMIDE PAPERS

Enlargements are easily made on these papers by means of the Kodak Enlarging Camera, the Brownie Enlarging Camera, or an improvised apparatus.

Velvet, Royal, Standard, Platino, Enameled, and Matte-Enamel.

Size	Per Doz.	Size	Per Doz.
$2\frac{1}{4} \times 3\frac{1}{4}$ , . . . . .	\$ .15	8 x 10, . . . . .	\$ .80
$3\frac{1}{4} \times 4\frac{1}{4}$ , . . . . .	.15	10 x 12, . . . . .	1.20
$3\frac{1}{4} \times 5\frac{1}{2}$ , . . . . .	.15	11 x 14, . . . . .	1.60
4 x 5, . . . . .	.25	14 x 17, . . . . .	2.40
$3\frac{1}{4} \times 6$ (Stereo), . . . . .	.25	16 x 20, . . . . .	3.20
$4\frac{1}{4} \times 6\frac{1}{2}$ , . . . . .	.30	18 x 22, . . . . .	4.00
5 x 7, . . . . .	.35	20 x 24, . . . . .	4.80
5 x 8, . . . . .	.40		
$6\frac{1}{2} \times 8\frac{1}{2}$ , . . . . .	.60		

Other sizes in proportion.

"Standard" is furnished in three weights: A, thin smooth; B, heavy smooth; C, heavy rough.

"Platino" is furnished in A, thin smooth, or C, heavy rough.

The "Royal" is furnished in "smooth" or "rough."

"Velvet" is furnished in one surface and one weight only.

# K o d a k   S u n d r i e s

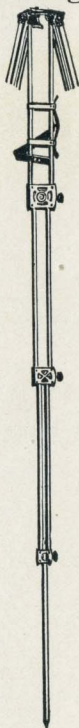
## EASTMAN'S FOLDING HEAD TRIPOD

FOR 4x5 CAMERAS, OR SMALLER

By the simplest device, all the inconveniences of the old-fashioned tripod have been overcome. Other tripods are either awkwardly closed or else the head has to be bulky when removed from the legs. In the Eastman Folding Head Tripod the head itself folds, and the tripod then makes a compact, rectangular package. No loose parts, no complicated mechanism.

The accompanying illustration shows the working in detail. The brass plate upon which the camera rests is covered with leather, thus protecting the instrument.

All of the parts being accurately made, this tripod is exceedingly rigid, in spite of its small size and light weight. The wooden parts are of selected maple. Folds in four sections; has leather handle for carrying. Length, folded, 17 inches; extended, 52½ inches; weight, 25 ounces.



SHOWING HEAD UNFOLDED  
READY TO RECEIVE CAMERA



SHOWING HEAD FOLDED AND TRIPOD  
CLOSED FOR CARRYING

### The Price

Eastman Folding Head Tripod, . . . . .	\$3.50
Black Sole Leather Carrying Case, . . . . .	1.50



# Kodak Sundries—Continued

---

## THE EASTMAN TRIPOD

### THREE SECTIONS

No. 1, Maple, for cameras up to  $6\frac{1}{2} \times 8\frac{1}{2}$ ; weight, 2 pounds, 2 ounces, . \$2.00

## THE BULL'S-EYE TRIPOD

### TWO SECTIONS

An Aluminum revolving head holds the socket screw and seats it in place in camera when turned, thus doing away with tripod screw. Made of maple, with brass fittings. Leather handle for carrying. For 4x5 cameras, or smaller.

Price, . . . . . \$1.50

## THE FLEXO TRIPOD

### TWO SECTIONS

Has a fixed, non-detachable head. Only clear, straight grained, wood is used in its construction. The metal work is of brass and all parts are carefully and accurately made.

Price, . . . . . \$ .90

## THE BULLET TRIPOD

### TWO SECTIONS

Made of spruce, solid head. For small Cameras.

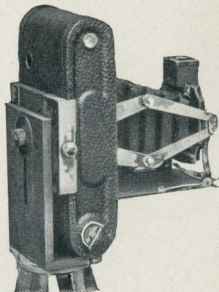
Price, . . . . . \$ .70

## FOLDING POCKET KODAK TRIPOD

### ADAPTER NO. 1

A simple and effective device for holding either the No. 1 or No. 1A Folding Pocket Kodaks on a tripod in either horizontal or vertical position. Kodak may be reversed without removing from adapter.

Price, F. P. K. Tripod Adapter, No. 1, . . . \$ .75

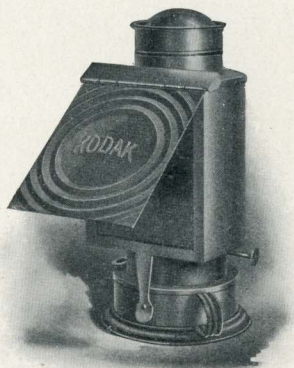


## Kodak Sundries—Continued

---

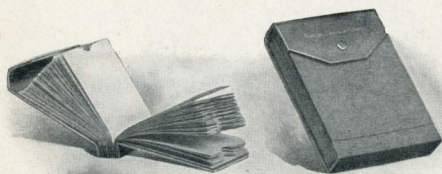
### EASTMAN KODAK DARKROOM LAMP

This lamp is well made and safe. It is equipped with improved burner carrying extra broad wick, and has new ventilating top, ensuring a bright, steady flame. Fitted with both ruby and orange glass. Flame controlled from the outside.



No. 2, Improved Kodak Darkroom Lamps,  $\frac{5}{8}$ -inch wick, each, . . . . \$1.00

### EASTMAN'S FILM NEGATIVE ALBUMS



Each album contains 100 pockets made of strong paper and consecutively numbered from 1 to 100, and an index on white paper.

Eastman's Negative Albums for 100 negatives,  $3\frac{1}{2} \times 3\frac{1}{2}$ , or smaller, . . . \$ .75  
Eastman's Negative Albums for 100 negatives,  $3\frac{1}{4} \times 4\frac{1}{4}$ , or  $4 \times 5$ , . . . 1.00  
Eastman's Negative Albums for 100 negatives,  $5 \times 7$ , or smaller, . . . 1.50



# Kodak Sundries—Continued

## EASTMAN'S KODOID PLATES

Consisting of N. C. Film sheets clipped at the edges to a black cardboard backing. Light, non-breakable, non-halation, orthochromatic. May be used in ordinary plate holders. No kits or other extras.

Size	Per Doz.	Size	Per Doz.
$3\frac{1}{4} \times 3\frac{1}{2}$ , . . . . .	\$ .35	$4 \times 5$ , . . . . .	\$ .65
$3\frac{1}{2} \times 3\frac{1}{2}$ , . . . . .	.35	$5 \times 7$ , . . . . .	1.10
$3\frac{1}{4} \times 4\frac{1}{4}$ , . . . . .	.45		

## EASTMAN AND STANDARD DRY PLATES

### EXTRA RAPID FOR INSTANTANEOUS WORK

Size	Per Doz.	Size	Per Doz.
$3\frac{1}{4} \times 3\frac{1}{2}$ , . . . . .	\$ .40	$4 \times 5$ , . . . . .	\$ .65
$3\frac{1}{2} \times 3\frac{1}{2}$ , . . . . .	.40	$4\frac{1}{4} \times 6\frac{1}{2}$ , . . . . .	.90
$3\frac{1}{4} \times 4\frac{1}{4}$ , . . . . .	.45	$5 \times 7$ , . . . . .	1.10

## STANDARD ORTHONON PLATES

Size	Per Doz.	Size	Per Doz.
$3\frac{1}{4} \times 4\frac{1}{4}$ , . . . . .	\$ .55	$4\frac{1}{4} \times 6\frac{1}{2}$ , . . . . .	\$1.20
$4 \times 5$ , . . . . .	.80	$5 \times 7$ , . . . . .	1.40

## LANTERN SLIDE PLATES

	Per Doz.		Per Doz.
Plates for making Lantern Slides, . . . . .	\$ .55	Cover Glass for Lantern Slides, . . . . .	\$ .25

## PRINTING FRAMES

Eastman's $3\frac{1}{2} \times 3\frac{1}{2}$ , opens two-thirds, . . . . .	\$ .25
Eastman's $3\frac{1}{4} \times 4\frac{1}{4}$ , opens two-thirds, . . . . .	.25
Eastman's $4 \times 5$ , opens two-thirds, . . . . .	.25
Eastman's $5 \times 7$ , opens two-thirds, . . . . .	.35
Eastman's $3\frac{1}{2} \times 12$ , for No. 4 Panoram-Kodak, opens in 3 sections, . . . . .	.75
Eastman's $2\frac{1}{4} \times 7$ , for No. 1 Panoram-Kodak, opens in 2 sections, . . . . .	.30
Lofstedt Printing Frame, a new printing frame with an improved method of locking the springs so the paper cannot shift when opening or closing the frame, $4 \times 5$ , . . . . .	.35
Flexo Printing Frame, $4 \times 5$ , opens two-thirds, . . . . .	.20
Brownie Printing Frame, No. 1, for $2\frac{1}{4} \times 2\frac{1}{4}$ Developing paper only, . . . . .	.10
Brownie Printing Frame, No. 2, for $2\frac{1}{4} \times 3\frac{1}{4}$ Developing paper only, . . . . .	.15
Stereo Self-Transposing Printing Frame, for making $3\frac{1}{4} \times 2\frac{1}{2}$ stereo prints without cutting negatives apart, . . . . .	1.50

# Kodak Sundries—Continued

## KODAK DRY MOUNTING TISSUE

An entirely new product, by which prints can be mounted even on thin mounts without curl, no apparatus being required—just the tissue and a flatiron. Put up in different sizes in packages with full directions for use.

Sizes			Sizes		
3½ x 3½, 3 dozen, . . . .	\$ .10		4 x 5, 2 dozen, . . . .	\$ .10	
3¼ x 4¼, 3 dozen, . . . .	.10		5 x 7, 1 dozen, . . . .	.10	
3¼ x 5½, 2 dozen, . . . .	.10				

## BOOKS FOR THE AMATEUR

"The Modern Way in Picture Making." The most practical and common sense book ever published for the amateur. Superb illustrations. Nearly 200 pages. Printed on heavy coated paper. Cloth bound. Title in gold.

"Modern Way in Picture Making," cloth bound, beautifully illustrated, . \$1.00

"Home Portraiture," by Frank Morris Steadman, an illustrated book to guide the amateur in portrait work, leather cover, . . . . .75

## KODAK TRIMMING BOARDS

Made of hard wood, with natural finish, have fine quality steel blades and are fitted with rule.



No. 1, capacity, 5 x 5 inches, . . . . .	\$ .40
No. 2, capacity, 7 x 7 inches, . . . . .	.60
Transparent Trimming Gauge, for either size, extra, . . . . .	.20



# Kodak Sundries—Continued

## PEERLESS JAPANESE TRANSPARENT WATER COLORS

Owing to their peculiar self-blending quality these colors are the simplest of all to use, working especially well with Velox. Prepared in fifteen shades, in the form of paper leaves and bound into neat booklets, each color being preceded by a descriptive page. Colors when used may be replaced by new leaves.

### The Price

Japanese Water Colors, complete booklet, 15 colors, . . . . .	\$ .75
Japanese sizing, for surfaces that resist water colors (glossy surfaces), per leaf, . . . . .	.08
Separate color leaves, each, . . . . .	.08
Set of 3 special brushes, per set, . . . . .	.50

## EASTMAN'S SPECIAL SQUEEGEE

Its special feature is the double handle, giving the desirable strong grip. Superior quality velvet rubber.

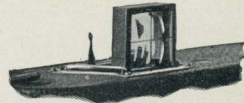


### The Price

Eastman's Special Squeegee, 6 inch, . . . . .	\$ .30
Eastman's Special Squeegee, 8 inch, . . . . .	.35

## DIRECT VIEW FINDER

This is a special equipment for the 4A Folding Kodak, and is for quick, accurate work when Kodak is held on a level with the eyes.



### The Price

Direct View Finder, . . . . .	\$3.00
-------------------------------	--------

# Kodak Sundries—Continued

## FLASH SHEETS AND FLASH CARTRIDGES

Owing to the fact that they burn slowly (in about one second) the Eastman Flash Sheets give a broad, soft light—not the glare of the ordinary flash-powder. They do not startle the subject, nor give a staring effect to the eyes.

No. 1, per pkg. of half dozen sheets, 3 x 4, . . . . .	\$ .25
No. 2, per pkg. of half dozen sheets, 4 x 5, . . . . .	.40
No. 3, per pkg. of half dozen sheets, 5 x 7, . . . . .	.60
Eastman's Spreader Flash Cartridges, for use with pistol or fuse (price includes both fuse and cap), per pkg. of one-half dozen, . . . . .	.25
Eastman's Spreader Flash Cartridge Pistol, . . . . .	.50
Eastman's No. 1 Flash Cartridges, per pkg. of ½ doz., . . . . .	.60
Ditto, No. 2, . . . . .	.40
Ditto, No. 3, . . . . .	.25

## DEVELOPING TRAYS

"Bull's-Eye" Composition, 3½ x 3½, . . . \$ .10	Paper, 4 x 5, . . . . . \$ .10
"Bull's-Eye" Composition, 4 x 5, . . . . . .12	Paper, 5 x 7, . . . . . .15
"Bull's-Eye" Composition, 5 x 7, . . . . . .30	Hard Rubber, 4 x 5, . . . . . .27
"Bull's-Eye" Composition, 3 x 8½, . . . . . .22	Hard Rubber, 5 x 7, . . . . . .56
"Bull's-Eye" Composition, 4½ x 14, . . . . . .50	

## CHEMICALS

For Tank Developer Chemicals, see page 39  
For Developing Machine Chemicals, see page 40

Eastman's Special Developer Powder, per pkg. 5 powders, in sealed glass tubes, . . . . .	\$ .25
Eastman's Hydrochinon Developer Powders, per dozen, . . . . .	.50
Ditto, per half dozen, . . . . .	.25
Ditto, per pkg. 5 powders, in sealed glass tubes, . . . . .	.25
Eastman's Pyro Developer Powders, per dozen, . . . . .	.50
Ditto, per half dozen, . . . . .	.25
Ditto, per pkg. 5 powders, in sealed glass tubes, . . . . .	.25
Royal Re-Developer, per pkg. of 6 tubes, . . . . .	.75
Hypo Sulphite of Soda, pulverized, per pound, . . . . .	.10
Kodak Acid Fixing Powder, per lb. pkg., . . . . .	.25
Ditto, per one-half lb. pkg., . . . . .	.15
Ditto, ¼ lb. pkg., . . . . .	.10
Bromide Potassium, per ounce, . . . . .	.15
Citric Acid, 4-ounce bottle, . . . . .	.30
Solio Toning Solution, 8-ounce bottle, . . . . .	.50
Solio Toning Solution in 4-ounce bottles. 4 ounces Toning Solution (20c. extra, post-paid), . . . . .	.30
Solio Hardener, per 8-ounce bottle, . . . . .	.35

## SUNDRIES

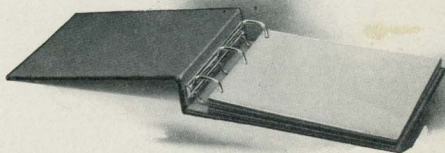
Eastman's Photo Paste, 3 oz. tube, . . . \$ .15	Graduate, 4 oz., . . . . . \$ .10
Eastman's Photo Paste, 5 oz. tube, . . . . . .25	Ditto, 8 oz., . . . . . .15
Kodak Push Pins, per box ½ doz., . . . . . .10	Ditto, 16 oz., . . . . . .20
Kodak Candle Lamp, . . . . . .25	Ditto, 24 oz., . . . . . .25
Solio Thermometer, . . . . . .40	Ferrotypc Plate, 10 x 14, light, . . . . . .15
Eastman's Film Clips, 3½-inch, per pair (nickelcd), . . . . . .25	Ditto, 10 x 14, heavy, . . . . . .20
Ditto, 5-inch, . . . . . .30	Ditto, 18 x 24, heavy, . . . . . .75
Ditto, 7-inch, . . . . . .35	Kodak Print Roller, 2 x 6-inch rubber rol- lers, nickelcd frame, . . . . . .50
Kodak Film Clips, 5-inch (wood), per pair, . . . . . .15	Flexo Print Roller, 4-inch rubber roller, black enameled frame, . . . . . .15



# Amateur Albums

## THE COLUMBIA BINDER AND ALBUM

By means of an ingenious and simple patented device, new leaves may be added or old ones removed instantly without disturbing the remainder. Black Morocco leather binding; capacity, 25 leaves. Furnished with 12 heavy card board leaves, gray, edges finished in enameled black.



### THE PRICE

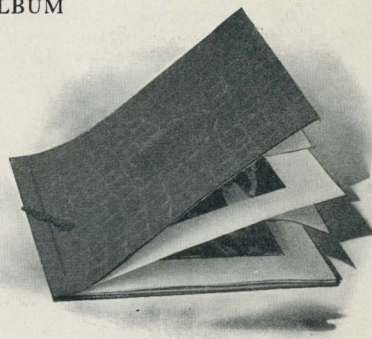
No. 1.	5½ x 7½ for prints 3¼ x 5½ and under, . . . . .	\$2.00
No. 2.	7 x 10 for prints 5 x 7 and under, . . . . .	2.50
Extra leaves for No. 1, per package of 6, . . . . .		.15
Extra leaves for No. 2, per package of 6, . . . . .		.20

## ARTISTS' ALBUM

The new Artists' Album is on the loose-leaf system with covers of fine alligator leather finish material. Tied with silk lacing. Panel in cover for lettering. Leaves of heavy stock, antique finish. Ribbed tissue paper bound between each leaf.

Made for both black and white, and brown or sepia toned prints, and for all sizes of Kodak prints up to and including 5 x 7.

Extra leaves and tissues may be inserted when desired.



No.	Color Leaf	Size of Leaf	
1	Black	5½ x 7	Capacity 20, 4 x 5, 3½ x 3½, or 3¼ x 4¼; or 40, 2¼ x 3¼.
2	White	5½ x 7	Capacity 20, 4 x 5, 3½ x 3½, or 3¼ x 4¼; or 40, 2¼ x 3¼.
3	Sepia	5½ x 7	Capacity 20, 4 x 5, 3½ x 3½, or 3¼ x 4¼; or 40, 2¼ x 3¼.

Price 20 cents each, either color.

Extra leaves, either color, complete with tissues, package of 5, 7 cents.

No.	Color Leaf	Size of Leaf	
4	Black	7 x 10	Capacity 20, 5 x 7, 3¼ x 5½; or 40, 4 x 5, 3¼ x 4¼, or 3½ x 3½; or 80, 2¼ x 3¼.
5	White	7 x 10	Capacity 20, 5 x 7, 3¼ x 5½; or 40, 4 x 5, 3¼ x 4¼, or 3½ x 3½; or 80, 2¼ x 3¼.
6	Sepia	7 x 10	Capacity 20, 5 x 7, 3¼ x 5½; or 40, 4 x 5, 3¼ x 4¼, or 3½ x 3½; or 80, 2¼ x 3¼.

Price 30 cents each, either color.

Extra leaves, either color, complete with tissues, package of 5, 10 cents.

# A l b u m s—*Continued*

## LAKESIDE ALBUM

The Lakeside Album is covered with finely finished imitation leather, heavily backed, with an artistically designed panel for lettering. Twenty black leaves.

No.	Size of Leaf		
8	5 x 7½	Capacity 40, 3¼ x 5½; or 80, 2¼ x 3¼, . . . . .	\$ .40
9	5½ x 7	Capacity 40, 4 x 5, 3¼ x 4¼, 3½ x 3½, . . . . .	.40
10	7 x 10	Capacity 40, 5 x 7; or 80, 4 x 5, or 3¼ x 4¼; or 160, 2¼ x 3¼, . . . . .	.50
11	10 x 12	Capacity 40, 8 x 10, or 80, 5 x 7; or 160, 3¼ x 4¼; or 160, 4 x 5, . . . . .	1.00

Order by number.

## VELOX POST CARD ALBUMS

On the loose-leaf, lace system. Cover of fine Alligator leather finish material, embossed panel on cover for special wording. Two colors, two sizes. In Naval Gray, with leaves for black and white and blue toned cards. In Golden Brown with Sepia leaves, for Sepia and Redeveloped Velox, and Aristo gold post cards. Will also hold any regular souvenir post card.

### THE PRICE

No. 1 Golden Brown, No. 2 Naval Gray, capacity 20 cards, . . . . .	\$ .25
No. 3 Golden Brown, No. 4 Naval Gray, capacity 100 cards, . . . . .	.60
Extra leaves, Nos. 1 and 2, per package of 5, . . . . .	.09
Ditto, Nos. 3 and 4, per package of 5, . . . . .	.15

## THE GIFT ALBUM

Made in white only, with a handsome cover of imitation watered silk, enclosing four leaves of extra fine thin mount stock. The daintiness of this album is heightened by a protecting cover of white tissue. Made in four sizes.

### THE PRICE

No. 8, for pictures 2¼ x 3¼, . . . . .	\$ .25
No. 9, for pictures 3¼ x 4¼, . . . . .	.35
No. 10, for pictures 3¼ x 5½, . . . . .	.35
No. 11, for pictures 4¼ x 6½, and 5 x 7, . . . . .	.40

## VACATION ALBUMS

The Vacation Album is made in five sizes, to accommodate all Kodak prints up to 5x7, and consists of a handsomely embossed panel cover, enclosing a folder for four or eight prints. Made in Photo Black or Golden Brown.

### THE PRICE

"A" Photo Black or "B" Golden Brown, for pictures 2¼ x 3¼, each, . . . . .	\$ .07
"C" Photo Black or "D" Golden Brown, for pictures 3¼ x 4¼, or smaller, each, . . . . .	.08
"E" Photo Black or "F" Golden Brown, for pictures 4 x 5, or smaller, each, . . . . .	.10
"G" Photo Black or "H" Golden Brown, for pictures 3¼ x 5½, or smaller, each, . . . . .	.10
"I" Photo Black or "J" Golden Brown, for pictures 4¼ x 6½ or 5 x 7, or smaller, each, . . . . .	.15



# K o d a k M o u n t s

## BEVPLANE

### Carbon Black and Scotch Gray

For Prints	Size of Mount	Per 100	per 50	For Prints	Size of Mount	Per 100	Per 50
1½ x 2½	3¼ x 4¼	\$.60	\$.30	4 x 5	5½ x 6½	\$ .90	\$.45
2¼ x 3¼	4 x 5	.60	.30	4¼ x 6½	5½ x 8	1.55	.80
2½ x 4¼	4¼ x 6	.80	.40	5 x 7	7 x 9	1.70	.85
3½ x 3½	5 x 5	.80	.40	2¼ x 7	4 x 8¾	.90	.45
3¼ x 4¼	5 x 6	.85	.45	3½ x 12	5½ x 13¾	1.80	.90
3¼ x 5½	4¼ x 7	.90	.45				

No orders accepted for less than fifty of one kind and size.

## RIVIERA

### Ash Gray and White

For Prints	Size of Mount	Per 100	Per 50	For Prints	Size of Mount	Per 100	Per 50
1½ x 2	3 x 3½	\$.30	\$.15	3¼ x 4¼	4½ x 5½	\$.65	\$.35
1½ x 2½	3 x 3¾	.40	.20	4 x 5	5½ x 6½	.85	.45
2¼ x 2¼	3¾ x 3¾	.40	.20	3¼ x 5½	5 x 7¼	.95	.50
2¼ x 3¼	3¾ x 4½	.50	.25	4¼ x 6½	5½ x 8	1.40	.70
2½ x 4¼	4½ x 5¼	.65	.35	5 x 7	7 x 9	1.50	.75
3½ x 3½	5 x 5	.65	.35				

No orders accepted for less than fifty of one kind and size.

## NAPLES

### Queen Gray, Artist's Brown and Jet Black

For Prints	Size of Mount	Per 100	Per 50	For Prints	Size of Mount	Per 100	Per 50
2¼ x 3¼	4 x 5	\$.85	\$.45	3¼ x 5½	5¼ x 7½	\$1.25	\$.65
2½ x 4¼	4¼ x 6	.90	.45	4 x 5	5½ x 6½	1.05	.55
3½ x 3½	5 x 5	.90	.45	4¼ x 6½	6¼ x 8½	1.65	.85
3¼ x 4¼	5 x 6	.95	.50	5 x 7	7 x 9	1.95	1.00

No orders accepted for less than fifty of one kind and size.

## THE RIVERTON

Ash Gray—Golden Brown. Beveled Edge, dark border with handsome inlaid design.

For Prints	Size of Mount	Per 100	Per 50	For Prints	Size of Mount	Per 100	Per 50
2¼ x 3¼	4 x 5	\$1.10	\$.55	3¼ x 5½	5¼ x 7½	\$1.65	\$.85
2½ x 4¼	4¼ x 6	1.25	.65	4 x 5	6 x 7	1.65	.85
3½ x 3½	5 x 5	1.25	.65	4¼ x 6½	6¼ x 8½	2.20	1.10
3¼ x 4¼	5 x 6	1.35	.70	5 x 7	7 x 9	2.75	1.40

No orders accepted for less than fifty of one kind and size.

## THE BAYVIEW

Ash Gray and Golden Brown. For squeegee and unmounted prints, beveled edges, snow flake finish.

Mount consists of mat with loose back to be pasted down.

For Prints	Size of Mat	Per 100	Per 50	For Prints	Size of Mat	Per 100	Per 50
3½ x 3½	5 x 5	\$1.65	\$.85	4 x 5	6 x 7	2.20	1.10
3¼ x 4¼	5 x 6	2.00	1.00	5 x 7	7 x 9	3.10	1.55
3¼ x 5½	5¼ x 7½	2.20	1.10				

No orders accepted for less than fifty of one kind and size.

# Kodak Mounts—Continued

## STEREO MOUNTS

COLOR, QUEEN'S GRAY

Size of Mount	Per 100	Per 50
3½ x 7, . . . . .	\$ .45	\$ .25

No orders accepted for less than fifty of one kind and size.

## THE PHOTO FOLIO

The Photo Folio consists of an embossed folder, containing an insert (with tissue protector) on which photograph is to be mounted.

Inserts are loose so either side may be used. Furnished in two styles—Naval Gray Folder with duplex White and Gray insert. Golden Brown Folder with duplex Champagne and Golden Brown insert.

### THE PRICE

A-S White and Gray, 5 x 7, for prints 3¼ x 4¼ and under, per ½ doz., . . . . .	\$ .20
B-T Champagne and Brown, 5 x 7, for prints 3¼ x 4¼ and under, per ½ doz., . . . . .	.20
C-S White and Gray, 7 x 9, for prints 4 x 5, per ½ doz., . . . . .	.30
D-T Champagne and Brown, 7 x 9, for prints 4 x 5, per ½ doz., . . . . .	.30
E-S White and Gray, 8 x 10, for prints 5 x 7, per ½ doz., . . . . .	.40
F-T Champagne and Brown, 8 x 10, for prints 5 x 7, per ½ doz., . . . . .	.40

## TWO-COLOR BRISTOL BLANKS

A very desirable flexible stock mount, for Black and White and Sepia Prints. Colors, Champagne and Golden Brown, Parisian Gray and Cream White. Specify color and size of mount.

### THE PRICE

For Prints	Size of Mount	Price per Dozen	For Prints	Size of Mount	Price per Dozen
2¼ x 3¼	5 x 6	\$ .12	3¼ x 5½	6¼ x 8½	\$ .20
2½ x 4¼	5¼ x 7	.15	4 x 5	6¼ x 8½	.20
3½ x 3½	6 x 6	.15	4¼ x 6½	7 x 9½	.22
3¼ x 4¼	5¼ x 6¾	.15	5 x 7	8 x 10	.25

Sold only in dozen packages.

## BAYOU

DOVE-WHITE AND SEPIATONE

Very heavy bristol stock, ripple finish. Beveled plate sunk design. Straight edges. Specify color and size of mount.

### THE PRICE

For Prints	Size of Mount	Price per Dozen	For Prints	Size of Mount	Price per Dozen
2¼ x 3¼	5 x 6	\$ .20	3¼ x 5½	6¼ x 8½	\$ .30
2½ x 4¼	5¼ x 7	.23	4 x 5	7 x 8½	.30
3½ x 3½	6 x 6	.23	4¼ x 6½	7 x 9½	.30
3¼ x 4¼	5¼ x 6¾	.24	5 x 7	8 x 10	.35

Sold only in dozen packages.



# Developing and Printing

Finishing Kodak Cartridge Films on Velox Paper	Pocket Kodak, 1½ x 2	No. 0 Folding P. K., 1½ x 2½	No. 1 Folding P. K., 2¼ x 3¼	No. 1A Folding P. K., No. 2A Brownie, 2½ x 4¼	No. 2 Bull's-eye, Etc., 3½ x 3½	No. 3 F. P. K., No. 3 F. Brownie, etc., 3¼ x 4¼	No. 3A and 3B, 3¼ x 5½	No. 4 B. E., etc., 4 x 5	No. 4A, 4¼ x 6½, 5 Kodaks, etc., 5 x 7
Developing, Printing, and Mounting 1-Film Cartridge, . . . . .	\$ .90	\$ .95	\$ 1.40	\$ 1.50	\$ 1.50	\$ 1.50	\$ 1.50	\$ 1.80	\$ 1.20
Developing and Printing Unmounted, . . . . .	.84	.89	1.28	1.38	1.38	1.38	1.40	1.68	1.05
Developing only, each, . . . . .	.02	.03	.04	.06	.06	.06	.08	.08	.10
Printing and Mounting only, each, . . . . .	.06	.06	.08	.08	.08	.08	.10	.10	.12½
Printing, Unmounted only, each, . . . . .	.05½	.05½	.07	.07	.07	.07	.09	.09	.10
Developing, Printing, and Mounting, each, . . . . .	.08	.08½	.12	.12½	.12½	.12½	.15	.15	.20
Developing and Printing, Unmounted, each, . . . . .	.07½	.08	.11	.11½	.11½	.11½	.14	.14	.17½

Above prices cover Cartridges of 12 exposures for Pocket Kodak No. 0 Folding, No. 1 Folding, No. 1A Folding, 3½ x 3½, No. 3 Folding, No. 4 Folding, and Nos. 2A and 3 Folding Brownies: 10 exposures for Nos. 3A and 3B, and 6 exposures for No. 4A Folding, and 5 x 7. On orders for less, 25 cents extra will be charged.

Brownie Camera, Stereo and Panoram-Kodak sizes, on Velox	No. 1 Brownie, 2¼ x 2¼	No. 2 and No. 2 Folding Brownie, 2¼ x 3¼	No. 1 Panoram, 2¼ x 7	No. 4 Panoram, 3½ x 12	No. 2 Stereo Kodak, 3¼ x 6	No. 2 Stereo Brownie, 3¼ x 5
Developing, Printing, and Mounting 1-Film Cartridge, . . . . .	\$ .50	\$ .70	\$ 1.40	\$ 1.75	\$ 1.50	\$ 1.50
Developing and Printing Unmounted 1-Film Cartridge, . . . . .	.47	.64	1.28	1.60	1.38	1.40
Developing only, each, . . . . .	.03	.04	.08	.18	.12	.08
Printing and Mounting only, each, . . . . .	.06	.08	.16	.20	.16	.10
Printing, Unmounted only, each, . . . . .	.05½	.07	.14	.17	.14	.09

Above price list is for one full roll as follows: 6 exposures No. 1 and No. 2 Brownie; 10 exposures No. 2 Stereo Brownie; 6 exposures No. 2 Stereo Kodak; 6 exposures No. 1 Panoram, or 5 exposures No. 4 Panoram. On orders for less than a full roll, as above, 25 cents extra will be charged.

Prints are furnished unmounted in all cases, unless otherwise specified in order.

Unmounted prints on "Double Weight" Velox will be billed at mounted rates.

All prints are mounted with Kodak Dry Mounting Tissue, and therefore do not curl.

## ENLARGEMENTS

	Each	Per doz.		Each	Per doz.
4¼ x 6½, on card, . . . . .	\$ .35	\$ 3.00	10 x 12, on card, . . . . .		\$ 1.00
6½ x 8½, on card, . . . . .	.50	5.00	11 x 14, on card, . . . . .		1.25
8 x 10, on card, . . . . .	.75		14 x 17, on card, . . . . .		1.50
Larger sizes in proportion, . . . . .					
Lantern Slides, . . . . .	.50	\$ 5.00			

No extra charge for Sepia Tones on Royal or Enamel Bromide enlargements.

Where the kind of paper is not specified we will make the enlargements upon the paper which, in our judgment, is best suited to the negative and the subject.

Small extra charge for double or triple mounting.

# Specimen Prints

---

A SPECIMEN photograph made with any kodak (not larger than 4 x 5) will be sent to any address in the United States upon receipt of four cents in stamps; No. 4A Folding Kodak, No. 5 Cartridge Kodak, eight cents; Stereo, eight cents; No. 4 Panoram-Kodak, twenty cents.

## Tourists

Travelers can always obtain fresh supplies of film at short notice at any one of the following addresses:

LONDON—Kodak, Limited, 57-61 Clerkenwell Road, E. C.; 60 Cheapside, E. C.; 115 Oxford Street, W.; 171-173 Regent Street, W.; 59 Brompton Road, S. W.; 40 Strand, W. C.

LIVERPOOL—Kodak, Limited, 96 Bold Street.

GLASGOW—Kodak, Limited, 72-74 Buchanan Street.

PARIS—Kodak, Société Anonyme Française, Avenue de l'Opera, 5; Place Vendome, 4.

LYONS—Kodak Société Anonyme Française, 26-28 Rue de la Republique; 11 Rue du Palais-Grillet.

BERLIN—Kodak Gesellschaft, m. b. H., Friedrichstrasse, 16; Kodak Galerie, Leipzigerstrasse, 114; Unter den Linden, 26.

BRUSSELS—Kodak, Limited, 36 Rue du Fosse aux Loups; 59 Montagne de la Cour.

VIENNA—Kodak Gesellschaft, m. b. H., 29 Graben.

ST. PETERSBURG—Kodak, Limited, Bolschaja Konjuschennaja 1.

MOSCOW—Kodak, Limited, 15, 16 Petrovka.

MILAN—Societa Kodak, 10 Via Vittore Pisani; 34 Corso Vittorio Emanuele.

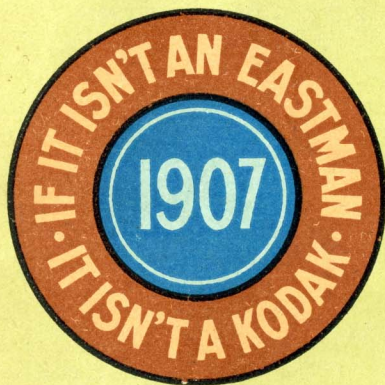
## Terms

THE prices in this catalogue are strictly net, except to regular dealers who carry our goods in stock. For the convenience of our customers we recommend that they make their purchases from a dealer in photographic goods, as by so doing they can save both time and express charges.

EASTMAN KODAK CO.,  
Rochester, N. Y.







A. H. FULLER & CO.

CHESTER, VT.