



The Digitized Kodak Catalog Project (1886 - 1941): A Very Brief History

Most camera collectors at some point in their collecting careers pass through a Kodak phase - some never come out of it. And if there ever was one name that came to be associated with both cameras and collecting, it was Kodak.

George Eastman received his first patent (for coating dry plates) and bought his first manufacturing facility in 1880, and in 1881 he started the Eastman Dry Plate Company. In 1886 he received a patent for the near-mythical Eastman Detective Camera, but it wasn't until 1888 that the first camera bearing the name "Kodak" was introduced.

One of the nice things about collecting Kodak is that the product line is pretty well known, and because the company produced annual catalogs for many years, collectors can be reasonably sure of what they're looking at, when it was made, the variations and so on - presuming that they have access to either the appropriate catalog, or a number of the many books which document Kodak, each to some greater or lesser extent.

But what would be really nice would be to have a complete set of Kodak catalogs in an easily accessible form and readily available. And since the advent of portable computing devices (PC, Macintosh, etc.) that's been possible - except for the difficulty of assembling a complete set of Kodak catalogs in one spot and then scanning them and making the results available.

The idea of digitizing a complete set of Kodak catalogs has kicked around the collecting community for many years. It's been proposed on a number of online forums, during meetings of various photohistory groups, and for years there have been many incomplete "Kodak CDs" on eBay but at best, they only contained a few catalogs - whatever the owner had available. But assembling a complete set of catalogs, then scanning and processing perhaps 3,000 to 4,000 pages, was a daunting task - if not completely overwhelming - and nothing ever came of it.

Until now.

In early 2010, the idea came up again, but this time we - "we" as in "the collecting community" - were lucky. A number of collectors were willing to loan their catalogs to this project and a couple of insane - wait, let's call them "dedicated" - dedicated enthusiasts - neither of whom collected Kodak, but both of whom enjoyed the challenge of such a project - were willing to put in the time and effort to scan and pull together the entire set of catalogs into a full-blown Kodak Catalog Digital Library.

Our initial objective was to include just the annual amateur catalogs, but it turns out that many cameras only appear in certain professional and specialty catalogs. We included as many of those as we could obtain so that almost every Kodak camera made in the US, Canada and Europe, would be documented - at least up to about 1941. After that, it becomes much more difficult as Kodak stopped producing annual catalogs as their product line became increasingly more diversified.

However, even with the additional "non-amateur" catalogs, we weren't completely successful in illustrating "every" camera Kodak ever made. There are an elusive few that might appear in specialty catalogs that we simply couldn't track down. If you can't find one of those odd cameras, that's no doubt why. We may do a revision at some point in the future if someone is willing to loan us a catalog that includes a camera that isn't already recorded.

In this project, a total of 67 catalogs were used from 1886 through 1941 including a number of professional and dealer catalogs, and in some years, two or even three different catalogs to cover all the bases. With the cooperation of a number of dedicated collectors, we were able to pull together all those catalogs and in June 2010, the project started in earnest.

By November 2010, we had scanned everything we needed and eventually all 67 catalogs were then reassembled as image folders and converted to the universally accepted PDF format and finally, converted into individually searchable PDFs which could then be searched globally as a collection.

For those of you interested in the statistics: about 200 hours of scanning time (we never want to hear that sound again), 67 catalogs and 3,908 page scans - which generated 7,917 original and processed images - and 11.4 GB of disk space. Additionally, another 100+ hours of technical development time was needed to convert the digital catalogues into a fully searchable "knowledgebase" that could be launched from most any standard web browser.

The overwhelming number of catalogs was loaned to us by that most remarkable of Kodak collectors, Charlie Kamerman of Eagle Creek, Oregon. Without Charlie, it's very doubtful that this project could even have been attempted.

But as it turned out, even Charlie didn't have all the publications that were needed, but he was able to track down the five that he lacked and was able to secure either a copy or high resolution images that we could work with. And so, our thanks to the contributors of the catalogs and scans that we used:

Charlie Kamerman for the vast majority of catalogs used and all his help,
Steve Shohet for loaning a variety of test catalogs,
Ryerson University (Toronto) for the 1886 Eastman Catalog
George Layne for the 1890 New Kodaks Catalog,
Mike Kessler for the 1891 Dealer Display Catalog,
Ralph London for the 1893 UK Catalog,
Michael Pritchard for the 1897 UK Catalog.

The digital side of the project - also known as "all of the work" - was done by Rob Niederman of Medina, Minnesota, and Milan Zahorcak of Tualatin, Oregon. Remarkably we're still friends and in a few years, we'll probably be able to talk about this project rationally.

And there you have it, a more-or-less done deal. We're fairly sure that it isn't quite perfect, and expect there will be some carping about something or other; but all-in-all, we believe this to be a pretty good product and can now move on to something else.

Our thanks to all of those involved.

Rob Niederman
Milan Zahorcak

Fall, 2011

KODAKS
AND KODAK SUPPLIES
FOR 1906

EASTMAN KODAK COMPANY
ROCHESTER, N. Y.

PUBLISHED, MARCH, 1906,
AT THE KODAK CITY
FOR THE INFORMATION
OF THE USERS OF
THE KODAK PRODUCTS

THE HOME SIDE

AN old, old friend drops in for the evening. Talk turns to other days and presently the ancient family album and the basket of loose photographs appear from somewhere. Full they are of pleasant memories and in reminiscent mood each of you recalls a tale of the past that through all the years has remained as clear within the mind as a happening of yesterday. And, though you do not admit it to anyone—hardly even to yourself—there is one picture that makes your heart beat just a trifle quicker, and for the moment you forget the chatter of the friends present, in a dream of a friend of the days of long ago.

And then you go to the drawer in the old secretaire and fetch out a little package of Daguerreotypes. Quaint they are, with their ornamental cases and red plush and gilt. And as you look at the picture of grandfather on his fifteenth birthday you declare that "John looks just as his great grandfather did." And there is one of grandmother and Aunt Elizabeth in the full glory of puff sleeves and hoopskirts. Their hair is parted in the middle, with a net-bound "water-fall" at the back, and at the throat each wears a painted miniature.

To you those pictures are beyond price. But what a delight if they were only supplemented by something less formal—Kodaks of those childhood days, Kodaks of the days of young man and womanhood, Kodaks of the things that they were interested in, and then Kodaks of their sunset days.

But the Kodak had not come then. Photography was but creeping. It was the mysterious dark art, not the intimate part of home life that it is to-day.

Photography has worked wonders along the road of scientific research ; but of what value is the photograph showing the flight of a comet compared with the Kodak of baby taking his first steps? The photographic record of a seismic disturbance may appeal to a few dry scientists, but it is insignificant in interest when alongside the Kodak of *the* four-year-old, proud in the possession of his first trousers with pockets.

Strongly as photography appeals in every phase of living interest, in science, history, travel, sport, 'tis in its home side that it touches most vitally. Therein is the true witchery of Kodakery.

THE SIMPLE WAY TO BETTER PICTURES

TWO things we have always had in mind in the manufacture of Kodaks and photographic material: simplifying the processes of picture making and improving the pictures. Along these lines we are still progressing.

At first Kodaks loaded and unloaded in the dark-room. Then the cartridge system was devised, and now film is put up in light proof cartridge spools of 12, 6, or 4 exposures each, which can be slipped into the Kodak in any light; the exposures made, and the spool removed from the camera in any light.

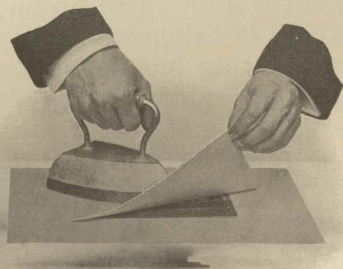
For years film was of necessity developed in the darkroom with all the inconvenience attendant upon that operation. Then came the Kodak Developing Machine, in which a roll of film could be developed in daylight—a far simpler and more certain process. Not long since we made a decided improvement even upon the Kodak Developing Machine in the Kodak Tank Developer. By this most modern process of development the film is rolled up in a winding box together with a light proof apron; then the film thus protected is transferred in daylight to a metal cup, where development is allowed to go on until completion. Simple to the last degree.

The matter of printing has engaged our attention. Years ago every photographer coated his own printing paper. We perfected gelatine printing-out papers that were sold ready for printing. But these papers could only be printed by sunlight. Then came the gaslight papers, of which Velox is the standard. Velox prints by artificial light in a few seconds; is developed by immersing in a chemical solution for a

few seconds more. The Velox papers make print making an enjoyable diversion about the library lamp in the evening, and have alone attracted thousands of amateurs to that fascinating part of photography beyond merely "pressing the button."

The problem of chemicals was once a bothersome one for the amateur photographer with limited time at his disposal. We have figured out perfect formulæ and now put up chemicals combined in just the right proportion for the different operations of picture making, leaving the amateur nothing to do but combine the powders with water to get solutions which will give him the very best results.

In simplifying and improving the processes of photography, no part has escaped our attention. We have even been able to make a great improvement in mounting. Prints mounted with our new product, Kodak Dry Mounting Tissue, do not curl even on the thinnest mounts. Those at all familiar with picture making will appreciate what this means. The curl of mounted prints has always been very objectionable — impossible to overcome on thin mounts, while even on heavy mounts there invariably is the tendency to curl. With Kodak Dry Mounting Tissue all this curling trouble is ended. The thinnest mount lies flat with the print entirely in contact. Thus double and triple mounting becomes possible ; different tints



of light stock may be used as inserts, one above the other, and all will lie flat. Kodak Dry Mounting Tissue is especially desirable in mounting prints in albums, as there is no crinkling of the album leaves after the print is attached.

Besides the non-curling feature, Kodak Dry Mounting Tissue has other decided advantages. The Tissue is dry ; not sticky to handle ; mounting is done more quickly ; no time lost in drying, as is the case with paste mounting ; there is no apparatus required — just the Tissue and a flatiron.

So photography by the Kodak system becomes simpler and simpler, and the quality of pictures keeps averaging higher and higher. And the end is not yet, for each important step forward seems to open the way to still newer and better methods undreamed of before.

OUR TWENTY YEARS OF FILM EXPERI- ENCE

IF there is any one line of business in which experience is more important than in any other, that line is the manufacture of highly sensitive photographic goods. And of all photographic processes, film making is the most difficult. It has taken us more than twenty years to learn what we know about making film.

And in that twenty years we have also learned how to make the perfect raw materials which are absolutely essential to the manufacture of film—materials which cannot be obtained in the market with a certainty that they will be what they should be. We nitrate our own cotton for the film base; we nitrate our own silver for the emulsion. We go further, we even make the acid with which the cotton and silver are nitrated. Wherever it is possible to improve the completed product by manufacturing the raw material, we erect a factory and make that raw material.

Five years ago we felt that we were approaching film perfection, but no concern, even if it could make film as good as that *was*, could compete in quality with the Kodak N. C. Film of to-day. But experience is not the only advantage that our chemists and film makers enjoy. They have access to the formulæ of the chemists who make the best dry plates in the world. The Kodak films of to-day have in them the combined knowledge of the most expert film makers and the most expert plate makers.

The wise amateur will be sure that he gets the film with experience behind it. There are dealers, fortunately not many, who try to substitute inferior films

from inexperienced makers, the only advantageous feature which these films possess being the "bigger discount to the dealer." Amateurs, especially those who leave their Kodaks with the dealer to be loaded, should make sure that substitution is not practiced against them.

The film you use is even more important than the camera you use. Be sure it's Kodak film with which you load your Kodak.

Remember :

IF IT ISN'T
EASTMAN
IT ISN'T KODAK FILM

LOOK FOR "EASTMAN" ON THE BOX
LOOK FOR "KODAK" ON THE SPOOL END

NEW KODAKS AND NEW KODAK GOODS

THE efforts of our experimental department through the past year, now with this article and now with that, have been fruitful. We have brought to perfection a Kodak with entirely new features of equipment, the No. 3B Quick-Focus Kodak, and offer it this season as an effective box form camera of a most desirable size.

The great success of the Folding Pocket Kodaks in the larger sizes has induced us to go a step further and in the new No. 4A Folding Kodak we have produced a superb instrument of this type which takes a picture $4\frac{1}{4} \times 6\frac{1}{2}$, an entirely new size in a film camera.

This new Kodak is fully described on page 24.

In our Kodak Tank Developers we have made a decided improvement this year. The Solution Cup (in the larger sizes) is now furnished with a cover, and instead of turning the film in the cup end for end during development, as heretofore, the entire cup containing the film is now inverted. Covers are not furnished, however, for the Brownie Tanks, as in such a small size there is no difficulty in taking out and inverting the transferring reel. A new size Kodak Tank Developer is also offered, the "7-inch." This size takes No. 5 Cartridge Kodak Film.

In papers and sundries we have also made improvements and added to our lists: Velvet Bromide paper, a new surface in Bromide paper like Velvet Velox, will be welcomed by every amateur who does enlarging; also Royal Re-Developer, a preparation for giving Sepia tones to Eastman's Bromide papers by a simple process; a splendid line of new Albums at a moderate price will interest every amateur. Kodak

Dry Mounting Tissue we have referred to in the preceding pages.

We catalogue, also, some attractive new Kodak mounts.

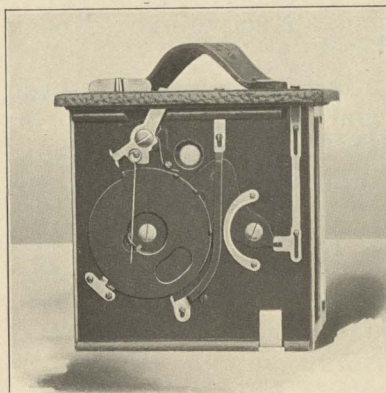
Our developing and printing department has been given greater efficiency and is now equipped for mounting prints with Kodak Dry Mounting Tissue so they will not curl, and all orders will be filled in this way.

EASTMAN KODAK COMPANY,

Rochester, N. Y.

The Kodak City.

EASTMAN ROTARY SHUTTER



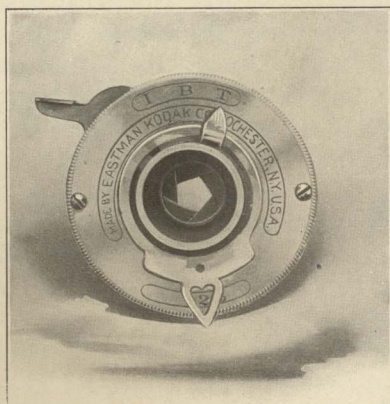
A SIMPLE but efficient shutter, operated by simply throwing a lever alternately to the right and left. Another lever sets it for "time" exposures, and another operates the stops, of which there are three. Supplied on the Bull's-Eye, the Flexo, No. 3B Quick-Focus Kodak,

and on the No. 1 and No. 2 Brownies.

POCKET AUTOMATIC SHUTTER

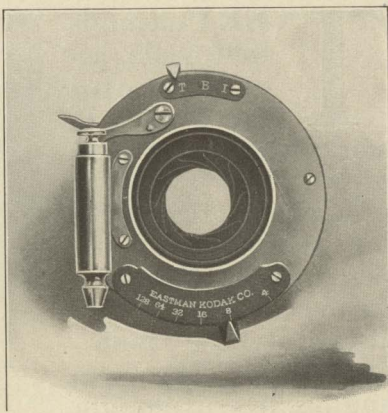
DESIGNED especially for the smaller cameras.

One pressure makes a snap. With the "B" exposure, the shutter opens when lever is pressed and closes when it is released. Time exposures are made by pressing the lever once to open and again to close the shutter. Has iris diaphragm stops. Supplied on the No. 1 and 1A Folding Pocket Kodaks, and No. 2 Folding and Stereo Brownies.

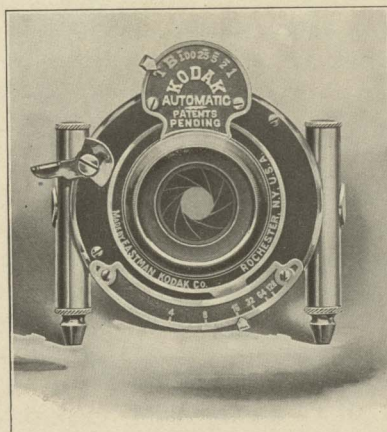


F. P. K. AUTOMATIC SHUTTER

THIS shutter is always set, a single pressure of the bulb giving instantaneous exposures of $\frac{1}{50}$ of a second. It has also the "bulb" exposure and "time" exposure. It has iris diaphragm stops Nos. 4 to 128. Supplied on the No. 2, No. 3, and No. 3A Folding Pocket Kodaks and, without pneumatic release, on No. 3 Folding Brownie.



KODAK AUTOMATIC SHUTTER

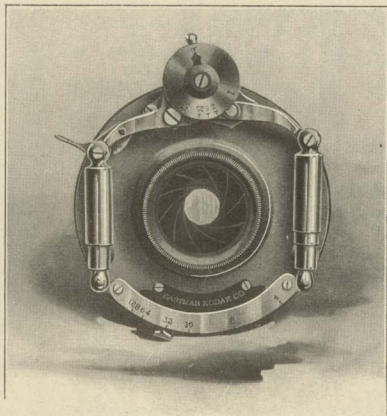


IN THIS new shutter the highest degree of excellence is attained. It gives automatic exposures from $\frac{1}{100}$ of a second to one second; has the "bulb" exposure, and the "time" action. Has iris diaphragm stops Nos. 4 to 128. Supplied on No. 3 and No. 4 Cartridge Kodaks, and No. 4

Screen Focus Kodak, and as special equipment on No. 3 and 3A Folding Pocket Kodaks.

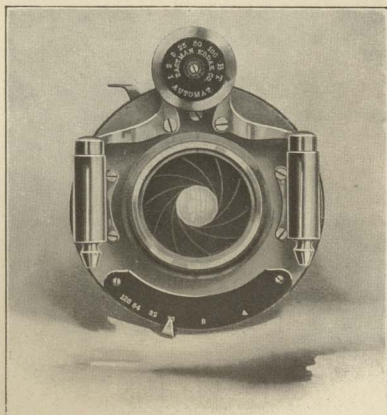
THE UNICUM SHUTTER

THE Unicum is well made, accurate, and durable. It works with finger lever or bulb and by means of a pneumatic retarding device gives exposures from $\frac{1}{100}$ of a second to one second. It has also the "bulb" and "time" exposures and has iris diaphragm stops with scale for Nos. 4 to 128. This shutter is regularly fitted to the No. 5 Cartridge Kodak.

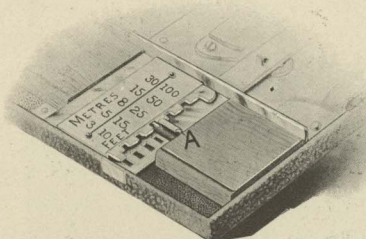


B. & L. AUTOMATIC SHUTTER

THIS is a standard shutter of the highest grade. It works with either pneumatic or finger release. It has iris diaphragm stops with scale for Nos. 4, 8, 16, 32, 64, and 128. Gives exposures automatically from $\frac{1}{100}$ of a second to one second. Also "bulb" and "time" actions. Regularly supplied on No. 4A Folding Kodak and as special equipment on the No. 5 Cartridge Kodak.



AUTOMATIC FOCUSING LOCK



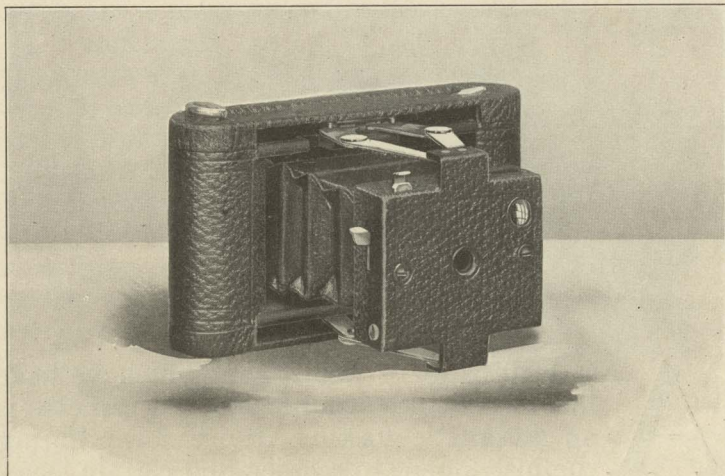
A NEW feature of adjustment which we have introduced into a number of our cameras is an automatic locking device for bringing the instrument to a quick and certain focus.

The focusing lock consists of a lever, marked "A" in the above illustration, and a scale of distances marked differently on the different cameras. Many times when one wishes to take a picture in a hurry he is careless about drawing the front bed of his camera out so that the pointer is *exactly* opposite the proper distance on the regular focusing scale. Then his picture is a little out of focus.

With the locking device, which in no way interferes with the regular focusing scale, all the operator does to get his camera in focus is to set the lever A in the slot marked for the distance desired. Then he pulls out front of camera to limit of motion and the instrument catches and is in focus for the number of feet for which he has set the catch.

Frequently it is convenient to use the $3\frac{1}{2} \times 3\frac{1}{2}$ or smaller instruments as fixed-focus cameras, which is easily done by setting the lock at 20 feet and leaving it so set. For accurate work, however, it is advisable to make use of the other locking points.

No. 0 FOLDING POCKET KODAK



TO THOSE who want a camera of even more than the usual compactness, this complete little instrument will strongly appeal. It can be slipped into the pocket as easily as a wallet, is always ready for making pictures, and there is no point about it that is not of the highest quality. Pictures made with it are so sharp and clear that they may be enlarged to almost any size. It is made of aluminum, rendering it light; covered with fine black seal grain leather, and has nickeled fittings. It is as dainty as a lady's purse.

For rectangular pictures $1\frac{5}{8} \times 2\frac{1}{2}$ inches. Capacity, 12 exposures without reloading. Size of Kodak, $5\frac{5}{8} \times 3\frac{1}{8} \times 1\frac{3}{8}$ inches. Weight, 12 ounces. Lens, fixed focus meniscus, 3-inch focus. Shutter, Eastman Automatic, which has set of three stops and is adjustable for "instantaneous" and "time" exposures.

THE PRICE

No. 0 Folding Pocket Kodak, for pictures $1\frac{5}{8} \times 2\frac{1}{2}$ inches.	\$6.00
N. C. Film Cartridge, 12 exposures, $1\frac{5}{8} \times 2\frac{1}{2}$ inches.25
Ditto, 6 exposures.15
Kodak Portrait Attachment.50
Black Sole Leather Carrying Case, with shoulder strap.	1.00

No. 1 FOLDING POCKET KODAK

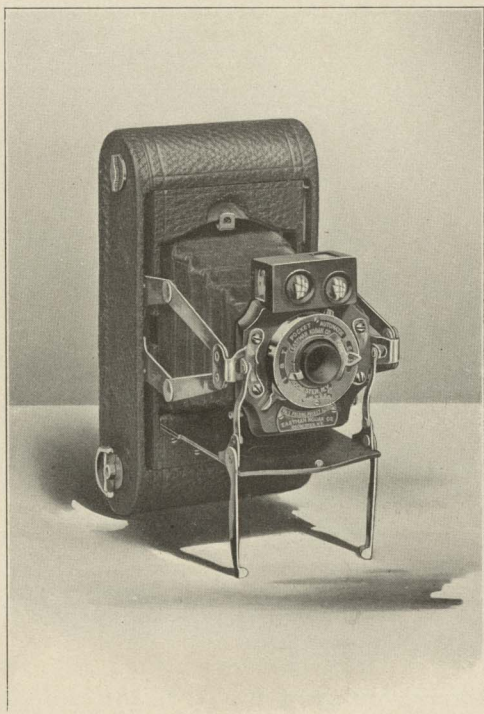
IMPROVEMENTS recently made on this camera double its value as a practical instrument for tourists. The highly efficient Pocket Automatic Shutter, with which it is now fitted, places it distinctly in the class of the higher-grade instruments.

The camera closes compactly with all adjustments concealed, the bed folding automatically over the front board and bellows. The two standards provided to support the camera when making vertical time exposures swing up out of the way when the camera is used for snap shots.

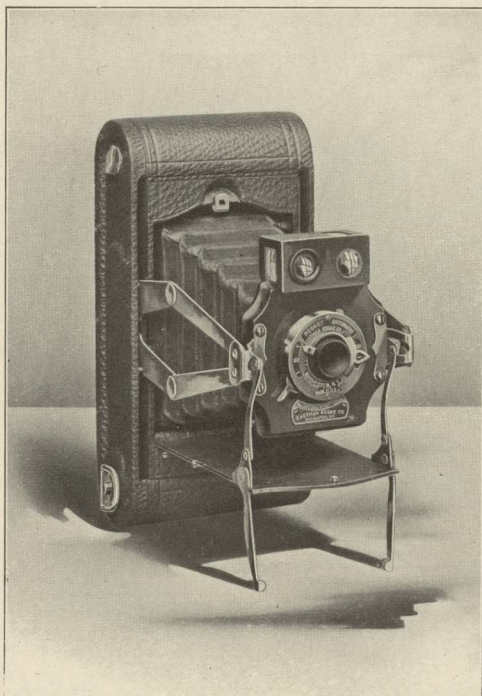
For rectangular pictures $2\frac{1}{4} \times 3\frac{1}{4}$ inches. Capacity, 12 exposures without reloading. Size of Kodak, $6\frac{3}{4} \times 3\frac{1}{2} \times 1\frac{5}{8}$ inches. Weight, 16 ounces. Lens, Meniscus Achromatic, 4-inch focus. Shutter, Pocket Automatic. (See page 12.) Two brilliant finders.

THE PRICE

No. 1 Folding Pocket Kodak, for pictures $2\frac{1}{4} \times 3\frac{1}{4}$ inches, with Pocket Automatic Shutter,	\$10.00
N. C. Film Cartridge, 12 exposures, $2\frac{1}{4} \times 3\frac{1}{4}$,40
Ditto, 6 exposures,20
Kodak Portrait Attachment,50
Black Sole Leather Carrying Case, with shoulder strap,	1.25



No. 1A FOLDING POCKET KODAK



THE new features of the No. 1 are embodied in the No. 1A Folding Pocket Kodak—Pocket Automatic Shutter with iris diaphragm, and with instantaneous, time, and bulb exposure adjustments; new automatic closing front. The shape of the pictures this instrument takes—long in proportion to the width—is par-

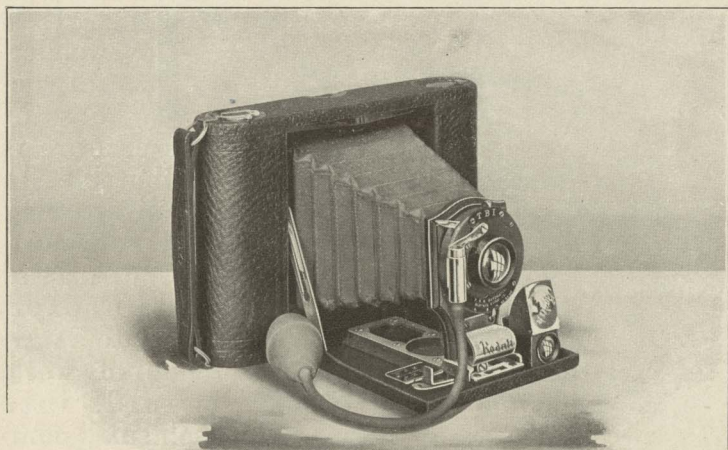
ticularly artistic, and makes the camera invaluable for pictorial composition. It is particularly adapted to landscape views where the instrument is used horizontally, and to portraiture (especially full-length figures) where it is used vertically.

For rectangular pictures $2\frac{1}{2} \times 4\frac{1}{4}$ inches. Capacity, 12 exposures without reloading. Size of Kodak, $7\frac{3}{4} \times 3\frac{7}{8} \times 1\frac{3}{4}$ inches. Weight, 20 ounces. Lens, meniscus achromatic with fixed focus of 5 inches. Shutter, Pocket Automatic. (See page 12.) Two brilliant finders.

THE PRICE

Folding Pocket Kodak No. 1A, with Pocket Automatic Shutter,	\$12.00
N. C. Film Cartridge, 12 exposures, $2\frac{1}{2} \times 4\frac{1}{4}$,50
Ditto, 6 exposures,25
Kodak Portrait Attachment,50
Black Sole Leather Carrying Case, with shoulder strap,	1.25

No. 2 FOLDING POCKET KODAK



THIS marvelously compact folding camera takes the popular $3\frac{1}{2} \times 3\frac{1}{2}$ picture and is regularly fitted with the F. P. K. Automatic shutter—a shutter that has given perfect satisfaction on the highest class instruments.

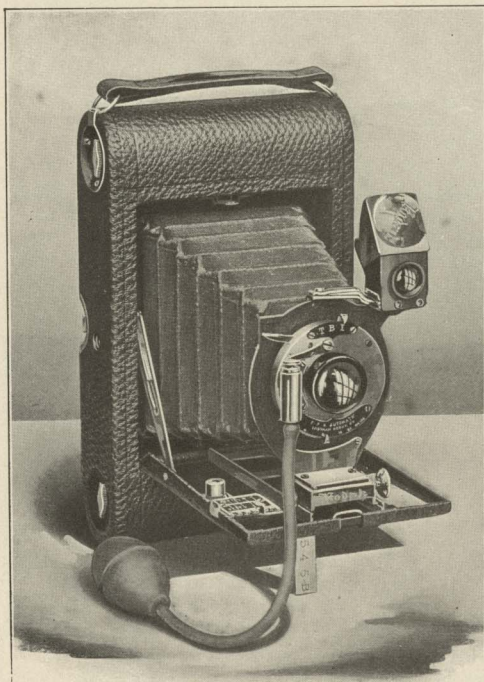
An advantageous feature of No. 2 Folding Pocket Kodak is the automatic locking device. By means of this the camera locks at eight feet, twenty feet, or 100 feet focus, or may be left locked at the twenty feet focus and used as a “fixed focus” camera.

For square pictures, $3\frac{1}{2} \times 3\frac{1}{2}$ inches. Capacity, 12 exposures without reloading. Size of Kodak, $6\frac{3}{4} \times 4\frac{1}{2} \times 1\frac{1}{2}$. Weight, 18 ounces. Lens, double combination rapid rectilinear, $4\frac{1}{2}$ -inch focus. Shutter, F. P. K. Automatic. (See page 13.) Automatic focusing lock. (See page 15.) Brilliant finder. Socket for tripod screw.

THE PRICE

No. 2 Folding Pocket Kodak with Rapid Rectilinear Lens and F. P. K. Automatic Shutter.	\$15.00
N. C. Film Cartridge, 12 exposures, $3\frac{1}{2} \times 3\frac{1}{2}$.	.60
Ditto, 6 exposures.	.30
Ditto, “Double-Two” Cartridge, 4 exposures.	.20
Kodak Portrait Attachment.	.50
Black Sole Leather Carrying Case, with shoulder strap.	1.25

No. 3 FOLDING POCKET KODAK



TH E wonderful success of this camera is attributable to its simplicity and compactness, coupled with its adaptability to a wide range of work. It folds into such small compass as to be carried with little or no inconvenience in an ordinary coat pocket, yet has the features needed for pictorial work.

Fitted with our F. P. K. Automatic Shutter and double combination lenses, which are strictly rectilinear and very rapid. This shutter works either with bulb or trigger. The camera has the automatic locking device, which greatly adds to its convenience.

A rising and sliding front, a shutter of greater scope, and anastigmat lenses are desired by many amateurs with this high-grade instrument. We furnish the camera with B. & L. Plastigmat and Kodak Automatic shutter, or with B. & L. Zeiss Tessar lens and Volute shutter.

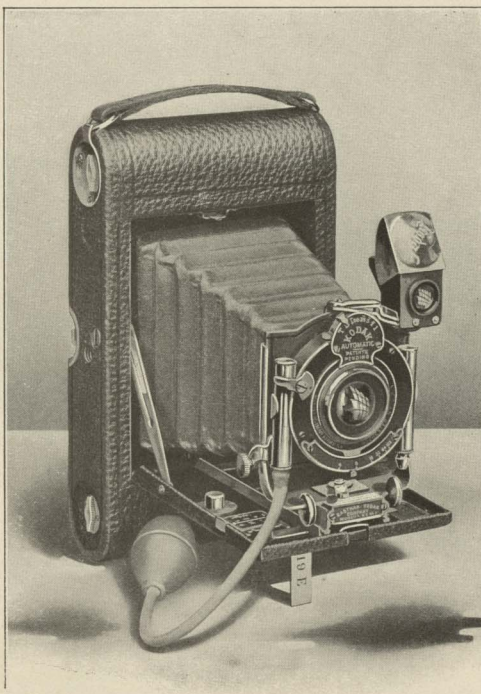
The extra charge for rising and sliding front with

No. 3 F. P. KODAK—CONTINUED

the regular equipment is \$1.

By the use of a simple adapter these instruments may be readily used with glass dry plates. This attachment has a ground glass for focusing, and uses single aluminum plate holders.

The camera is made of aluminum, covered with fine, black, seal grain leather.



SHOWING RISING FRONT AND KODAK AUTOMATIC SHUTTER

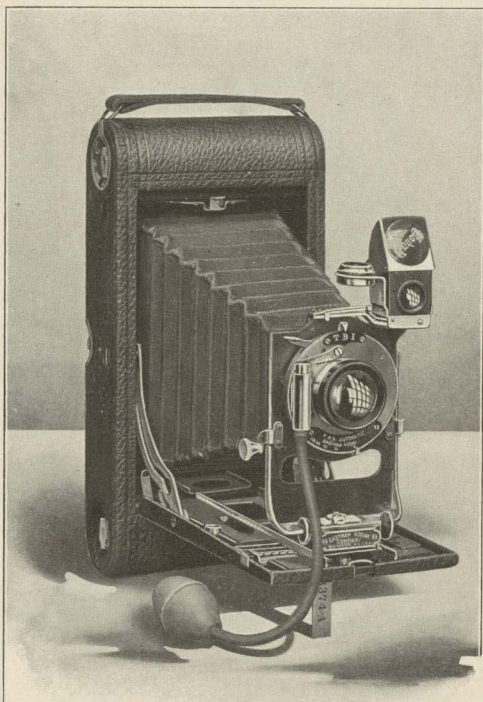
For rectangular pictures, $3\frac{1}{4} \times 4\frac{1}{4}$ inches. Capacity, 12 exposures without reloading. Size of Kodak, $7\frac{1}{2} \times 4\frac{1}{2} \times 1\frac{5}{8}$ inches. Weight, 23 ounces. Lens, Rapid Rectilinear, speed f. 8. Focal length, 5 inches. Shutter F. P. K. Automatic. (See page 13.) Two tripod sockets. Brilliant reversible finder with hood. Automatic focusing lock. (See page 15.)

THE PRICE

*No. 3 Folding Pocket Kodak with Rapid Rectilinear Lens, speed f. 8, F. P. K. Automatic Shutter.	\$17.50
*Ditto, with Kodak Automatic Shutter.	25.00
*Ditto, with Kodak Automatic Shutter and B. & L. Plastigmat Lens No. 1, f. 6.8.	57.00
*Ditto, with Volute Shutter and B. & L. Zeiss Tessar Lens, Series II B, No. 4, f. 6.3.	63.50
Black Sole Leather Carrying Case, with strap.	1.25
Glass Plate Adapter, with ground glass.	3.50
Single Glass Plate Holders, $3\frac{1}{4} \times 4\frac{1}{4}$.	.50
N. C. Film Cartridge, 12 exposures, $3\frac{1}{4} \times 4\frac{1}{4}$.	.70
Ditto, 6 exposures.	.35
Ditto, "Double-Two," 4 exposures.	.25
Kodak Portrait Attachment.	.50

* Add one dollar if Rising and Sliding Front is desired.

No. 3A FOLDING POCKET KODAK



THIS is a most efficient instrument, taking pictures of a size and shape, $3\frac{1}{4} \times 5\frac{1}{2}$, that commend it to the most ambitious amateurs. It may be carried in a top-coat pocket, yet has really all the practical features found in cameras of three times its bulk. With its great capabilities, however, the Kodak simplicity is

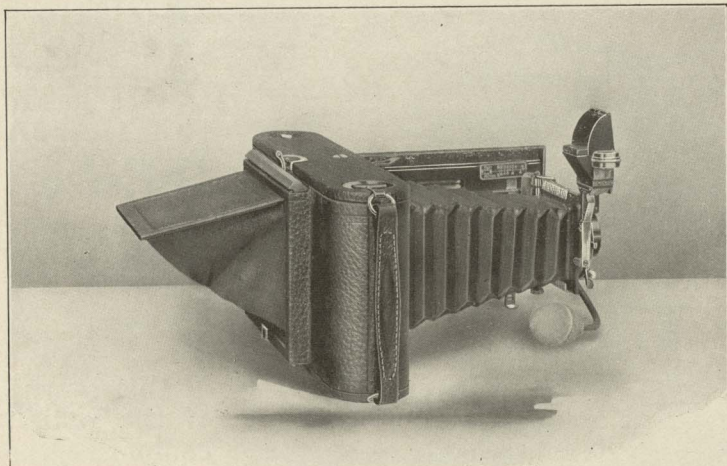
fully maintained, and the merest novice can operate the instrument with no further directions than those contained in the illustrated manual.

In selecting the lenses for these cameras we exercise the greatest care. The lenses furnished with the regular equipment are Rapid Rectilinear, with a focal length of $6\frac{1}{2}$ inches and a speed of f.8. The shutter is the F. P. K. Automatic—high grade in every way.

A desirable feature with which every No. 3A Folding Pocket Kodak is equipped is the rising, falling, and sliding front. The camera also has the automatic locking device.

No. 3A FOLDING POCKET KODAK

CONTINUED



SHOWING PLATE ADAPTER WITH FOCUSING SHADE

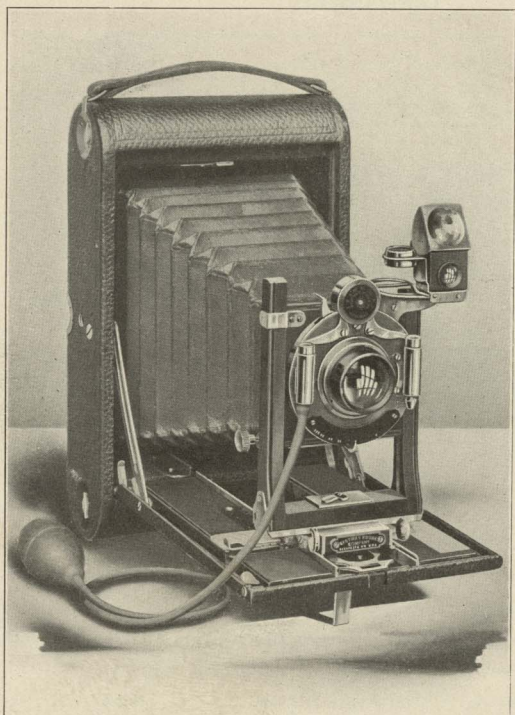
By the use of a simple adapter the No. 3A Folding Pocket Kodaks may be used with glass plates, taking the standard size, $3\frac{1}{4} \times 4\frac{1}{4}$. This attachment is simply an extra back for the camera, taking the place of the regular back, and can be placed in position in a few seconds. It has a ground glass with focusing shade, and uses single aluminum plate holders.

For rectangular pictures $3\frac{1}{4} \times 5\frac{1}{2}$ inches. Capacity, 10 exposures. Weight, 41 ounces. Lens, double combination, rapid rectilinear, speed f.8. Focal length, $6\frac{1}{2}$ inches. Shutter, F. P. K. Automatic. (See page 13.) Two tripod sockets. Brilliant reversible finder with hood and spirit level. Automatic focusing lock. (See page 15.)

THE PRICE

No. 3A Folding Pocket Kodak with Rapid Rectilinear Lens, speed f.8, and	
F. P. K. Automatic Shutter,	\$20.00
Ditto, with Kodak Automatic Shutter,	27.50
Ditto, with Kodak Automatic Shutter and B. & L. Plastigmat Lens No. 2, f.6.8,	65.00
Ditto, with Volute Shutter and B. & L. Zeiss Tessar Lens, Series II B, No. 4, f.6.3,	78.00
Black Sole Leather Carrying Case, with strap,	1.50
Glass Plate Adapter, $3\frac{1}{4} \times 4\frac{1}{4}$, with ground glass,	3.50
Single Glass Plate Holders, $3\frac{1}{4} \times 4\frac{1}{4}$, each,50
N. C. Film Cartridge, 10 exposures, $3\frac{1}{4} \times 5\frac{1}{2}$,70
Ditto, 6 exposures,40
Ditto, "Double-Two" Cartridge, 4 exposures,30
Kodak Portrait Attachment,50

No. 4A FOLDING KODAK



IN this camera we have followed the lines of the No. 3A Folding Pocket Kodak, but have increased the size of the picture to $4\frac{1}{4} \times 6\frac{1}{2}$ inches. A strong feature of this camera is the optical equipment, the lenses and shutters being such as are ordinarily furnished on the highest grade 5×7 cameras, thus ensuring speed

and covering power. The lens is a Double Combination Rapid Rectilinear with a speed of f.8, which covers the plate sharp to the very corners; the shutter is the No. 2 Bausch and Lomb Automatic.

Yet there is nothing the least complicated in the operation of this camera. It's as simple as the Folding Pocket Kodaks. It loads in daylight with 6 exposure film cartridges; the Automatic Focusing Lock, makes focusing so easy that a child can place the instrument accurately in focus. Such adjustments as the rising front and the sliding front which the No. 4A Folding Kodak has are at once simple and effective.

No. 4A FOLDING KODAK

CONTINUED

For the traveler this camera is ideal. Notwithstanding the large-size picture it takes, it folds into a smaller compass than one would believe possible, being when closed only $2\frac{5}{8}$ inches in thickness. For home portraiture it is excellent, making portraits of a desirable size. With the Kodak Portrait Attachment, with which it may be supplied, and the extension focusing scale, it can be operated as close as $3\frac{1}{2}$ feet from the subject, thus permitting head and shoulder portraits of a size limited only by the size of the plate.

In landscape work it affords great scope for the composition of the picture, used either vertically or horizontally.

The frame work of the instrument is made of aluminum, rendering it very light. The parts are fitted together with that nicety of adjustment which has made Kodaks famous for their qualities of endurance under trying conditions.

By means of an adapter, furnished extra, the camera becomes available for glass plates. With this adapter double plate holders, $4\frac{1}{4} \times 6\frac{1}{2}$, may be used.

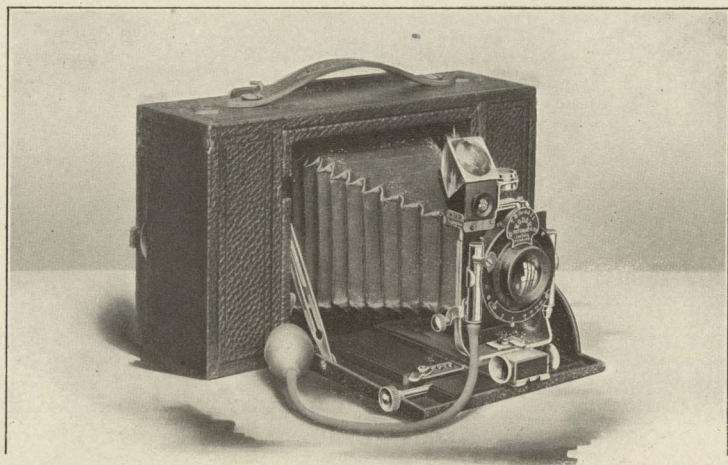
It is covered with the finest black seal grain leather, and has nickel fittings.

For rectangular pictures, $4\frac{1}{4} \times 6\frac{1}{2}$ inches. Capacity, 6 exposures. Size of Kodak, $11 \times 6\frac{1}{2} \times 2\frac{5}{8}$ inches. Lens, Double Combination Rapid Rectilinear, speed f. 8. Focal length, $8\frac{1}{2}$ inches. Shutter, B. & L. Automatic. (See page 14.) Rising and sliding front. Brilliant reversible finder with hood and spirit level. Two tripod sockets.

THE PRICE

No. 4A Folding Kodak, pictures $4\frac{1}{4} \times 6\frac{1}{2}$	\$ 35.00
Ditto, with Volute Shutter and B. & L. Zeiss Tessar Lens, Series II B, No. 6, f. 6.3.	100.00
N. C. Film Cartridge, 6 exposures, $4\frac{1}{4} \times 6\frac{1}{2}$.65
Ditto, "Double-Two" Cartridges, 4 exposures.	.45
Black Sole Leather Carrying Case.	2.50
Glass Plate Adapter, with ground glass.	5.00
Double Glass Plate Holders, each.	1.25
Kodak Portrait Attachment.	.50

No. 4 SCREEN FOCUS KODAK



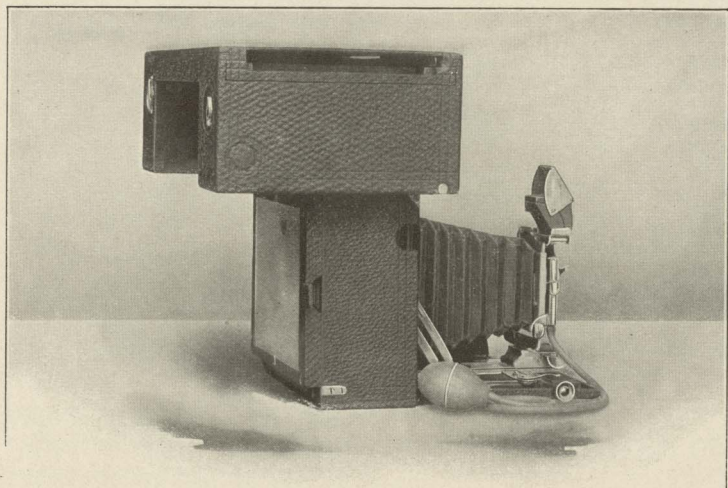
THIS instrument is built upon the Cartridge system, daylight loading principle, but is distinct from all other Kodaks in that it permits focusing on the screen or ground glass without removing the roll of film from the camera. This is accomplished by simply swinging the roll holder containing the film out of the focal plane whenever it is desired to use the ground glass.

The operation of focusing then being accomplished as with the ordinary plate camera, the film holder and film is swung back into the focal plane, dark slide removed and the exposure made. Focusing, of course, may be done between each exposure.

A convenient feature in the construction of this camera is the recess provided for carrying the ground glass within the film holder part of the camera, where it is completely out of the way, but instantly available when desired for use. The dark slide, which protects the film when raised out of the focal plane, is also carried in the roll holder.

No. 4 SCREEN FOCUS KODAK

CONTINUED



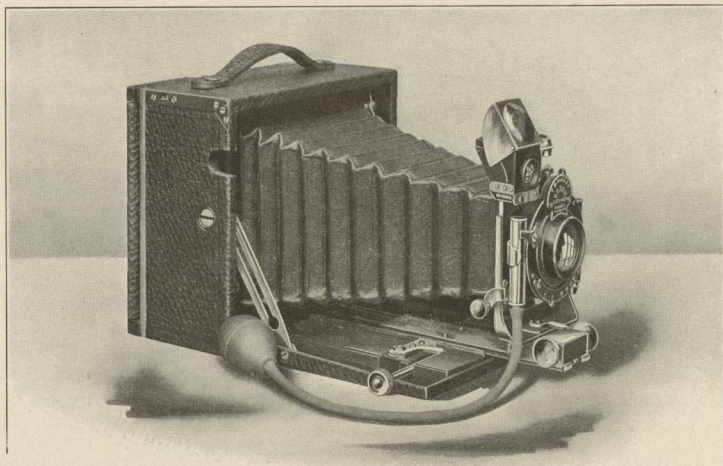
SHOWING GROUND GLASS

This Kodak embodies ideas absolutely new in camera construction. It will be especially appreciated by that class of careful photographers who wish to use film on account of its convenience, yet who want to be able to perfect the composition of their picture by seeing it on the ground glass before exposure. The end is gained in the new cameras, while at the same time all the old Kodak simplicity is conserved.

In operating, the film cartridge is loaded into the camera in daylight in the usual way. To focus on the ground glass, first pull a dark slide from its position in the roll-holding part of the Kodak and insert it in front of the film. This renders the film chamber light-proof. The whole back of the Kodak containing film is then swung up out of the focal plane and the ground glass is placed in position. The mechanism is such that the film cannot be swung up until the dark slide is in position.

No. 4 SCREEN FOCUS KODAK

CONTINUED



AS A PLATE CAMERA SHOWING EXTENSION FRONT

The roll holder being raised, it catches automatically and remains in position. (Page 27.) The screen or ground glass frame is then removed from its recess in roll holder, described on preceding page, and snapped into position at the back of Kodak, an operation requiring but an instant. The raised roll holder projecting beyond the back of the Kodak will act as a focusing shade, or a focusing cloth may be used. After focusing, the ground glass is removed and returned to its place.

Pressure on a spring releases catch which holds roll holder in position shown in cut. The film is then let down into the focal plane, the dark slide removed, and exposure made.

If desired, the usual focusing scale may be used instead of the ground glass.

The No. 4 Screen Focus Kodak becomes a plate camera by merely removing the roll holder and

No. 4 SCREEN FOCUS KODAK

CONTINUED

adjusting the plate holder back containing ground glass and focusing shade, an operation requiring but a few seconds.

As a plate camera, it is light, strong, and convenient, being fully as compact as instruments which are constructed for use with plates only.

A feature which will commend the No. 4 Screen Focus Kodak to ambitious amateurs who wish to do their best work with film, is the double extension bed with which the camera is equipped. This allows the operator to work to within 22 inches of the subject when focusing the image upon the ground glass—insuring perfect accuracy and sharpness. This is a valuable feature in copying work, and in taking pictures of still life subjects.

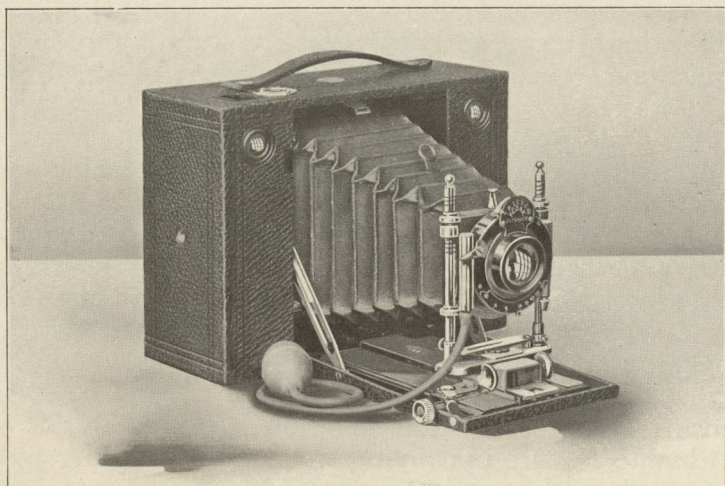
The workmanship on the Screen Focus Kodak is up to the high Kodak standard—which means the very best. No pains have been spared in construction and adjustment to make it satisfactorily accomplish the purpose for which it is intended—that of providing an instrument of the most advanced type. The instrument is covered with the best black seal grain leather and has nickel fittings.

For rectangular pictures, 4 x 5 inches. Capacity, 12 exposures without reloading. Size of Kodak, 10 x 5 $\frac{3}{4}$ x 3 $\frac{1}{8}$ inches. Weight, 3 pounds, 14 ounces. Lens, Rapid Rectilinear f. 8, with focal length of 6 $\frac{1}{2}$ inches. Shutter, Kodak Automatic. (See page 13.) Two tripod sockets. Brilliant reversible finder with hood and spirit level.

THE PRICE

No. 4 Screen Focus Kodak with Rapid Rectilinear Lens and Kodak Automatic Shutter,	\$80.00
Ditto, with Kodak Automatic Shutter and B. & L. Plagmat Lens No. 2, f. 6.8,	67.50
Ditto, with Volute Shutter and B. & L. Zeiss Tessar Lens, Series II B, No. 5K, f. 6.3,	87.50
N. C. Film Cartridge, 12 exposures, 4 x 5,	.90
Ditto, 6 exposures,	.45
Ditto, "Double-Two" Cartridge, 4 exposures,	.30
Black Sole Leather Carrying Case, velvet lined,	2.50
Glass Plate Adapter,	2.50
Double Glass Plate Holders, 4 x 5,	1.00
Kodak Portrait Attachment,	.50

CARTRIDGE KODAKS



IN the Cartridge Kodaks we have combined the simplicity of the cartridge system with those features of adjustment which give the instrument a wide range for all-round work.

The lenses furnished are strictly rectilinear and very rapid, having a working speed of $f.8$. Wide angle lenses can be supplied at a reasonable extra charge, and the cameras may be fitted with the high-grade anastigmats. These instruments may also be fitted with glass plate attachments (extra).

The No. 3 and No. 4 Cartridge Kodaks are regularly fitted with our new Kodak Automatic Shutter, the No. 5 Cartridge Kodak being regularly equipped with the well-known Unicum Shutter.

The new Cartridge Kodaks have an improved rising front which locks automatically, and a side slide.

An extra extension to bellows, operated by means of rack and pinion, permits the photographing of objects at a distance of only 18 inches from the lens.

No. 3 CARTRIDGE KODAK

FILM AND PLATES

For rectangular pictures $4\frac{1}{4} \times 3\frac{1}{4}$ inches. Capacity, 12 exposures without reloading. Size of Kodak, $3\frac{1}{4} \times 5\frac{3}{4} \times 7\frac{1}{2}$ inches. Weight, 2 pounds, 12 ounces. Lens, rapid rectilinear, f. 8. Focal length of 6 inches. Shutter, Kodak Automatic. (See page 13.) Two brilliant finders and two spirit levels. Two tripod sockets.

No. 3 Cartridge Kodak, Rapid Rectilinear Lens, Kodak Automatic Shutter, . . .	\$20.00
Ditto, with Kodak Automatic Shutter and B. & L. Plastigmat Lens No. 1, f. 6.8, . .	52.00
Ditto, with Volute Shutter and B. & L. Zeiss Tessar Lens, Series II B, No. 5, f. 6.3, .	72.00
N. C. Film Cartridge, 12 exposures, $4\frac{1}{4} \times 3\frac{1}{4}$,70
Ditto, 6 exposures,35
Ditto, "Double-Two" Cartridge, 4 exposures,35
Carrying Case,	1.50
Glass Plate Adapter, with ground glass,	2.00
Double Glass Plate Holders, each,	1.00

No. 4 CARTRIDGE KODAK

FILM AND PLATES

For rectangular pictures 5×4 inches. Capacity, 12 exposures without reloading. Size of Kodak, $3\frac{1}{4} \times 6\frac{3}{8} \times 8\frac{1}{4}$ inches. Weight, 3 pounds, 2 ounces. Lens, rapid rectilinear, f. 8. Length of focus, $6\frac{1}{2}$ inches. Shutter, Kodak Automatic. (See page 13.) Two brilliant finders and two spirit levels. Two tripod sockets.

No. 4 Cartridge Kodak, Rapid Rectilinear Lens, Kodak Automatic Shutter, . . .	\$25.00
Ditto, with Kodak Automatic Shutter and B. & L. Plastigmat Lens No. 2, f. 6.8, . .	62.50
Ditto, with Volute Shutter and B. & L. Zeiss Tessar Lens, Series II B, No. 5K, f. 6.3,	82.50
N. C. Film Cartridge, 12 exposures, 5×4 ,90
Ditto, 6 exposures,45
Ditto, "Double-Two" Cartridge, 4 exposures,30
Carrying Case,	2.00
Glass Plate Adapter, with ground glass,	2.50
Double Glass Plate Holders, each,	1.00

No. 5 CARTRIDGE KODAK

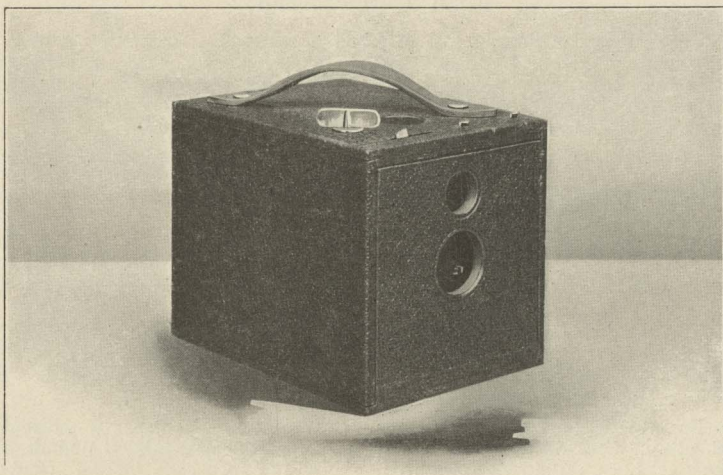
FILM AND PLATES

For rectangular pictures 7×5 inches. Capacity, 6 exposures without reloading. Size of Kodak, $3\frac{3}{8} \times 8\frac{1}{2} \times 10$ inches. Weight, 4 pounds, 8 ounces. Lens, rapid rectilinear, f. 8. Length of focus, $8\frac{1}{2}$ inches. Shutter, Unicum. (See page 14.) Two brilliant finders and two spirit levels. Two tripod sockets.

No. 5 Cartridge Kodak, Rapid Rectilinear Lens, Unicum Shutter,	\$ 35.00
Ditto, with B. & L. Automatic Shutter,	40.00
Ditto, with B. & L. Automatic Shutter and B. & L. Plastigmat Lens No. 3, f. 6.8, . .	84.50
Ditto, with Volute Shutter and B. & L. Zeiss Tessar Lens, Series II B, No. 6, f. 6.3, .	105.00
*N. C. Film Cartridge, 6 exposures, 7×5 ,80
Ditto, "Double-Two" Cartridge, 4 exposures,55
Carrying Case,	2.50
Glass Plate Adapter, with ground glass,	3.00
Double Glass Plate Holders, each,	1.25

*Not furnished in 12 exposures cartridges.

No. 2 FLEXO KODAK



THE simplicity of this instrument commends it to beginners in photography. Its capabilities place it high in favor with those who are experienced. It is an efficient and reliable camera.

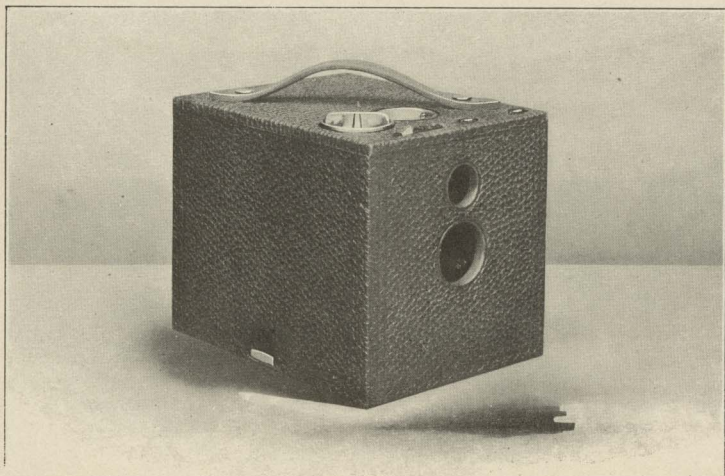
Like the other Kodaks, it is ready for use, the price including every requisite for taking pictures except the film. Every detail of construction in this camera is as carefully guarded as with our higher-priced instruments. It is covered with fine black grain leather and handsomely finished.

For square pictures, $3\frac{1}{2} \times 3\frac{1}{2}$ inches. Capacity, 12 exposures without reloading. Size of Kodak, $5\frac{7}{8} \times 4\frac{5}{8} \times 4\frac{3}{8}$. Weight, 19 ounces. Lens, single achromatic, fixed $4\frac{1}{2}$ -inch focus. Shutter, Eastman Rotary. (See page 12.)

THE PRICE

No. 2 Flexo Kodak, with Achromatic Lens,	\$5.00
N. C. Film Cartridge, 12 exposures, $3\frac{1}{2} \times 3\frac{1}{2}$,60
Ditto, 6 exposures,30
Ditto, "Double-Two" Cartridge, 4 exposures,20
Kodak Portrait Attachment,50
Black Sole Leather Carrying Case, with shoulder strap,	1.25

No. 2 BULL'S-EYE KODAK



THIS instrument continues to be the leader among box-form cameras. It is to the last degree simple in operation, yet lacks none of the features necessary to securing the best pictures. It can be easily and quickly opened for loading and removing the film after exposures have been made.

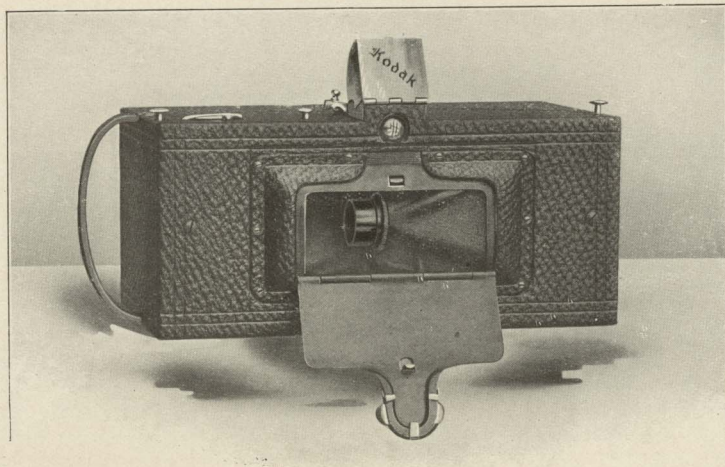
The lenses are carefully selected and tested and universally give good results. The covering is seal grain leather of the finest quality, and the fittings are nicked.

For square pictures, $3\frac{1}{2} \times 3\frac{1}{2}$ inches. Capacity, 12 exposures without reloading. Size of Kodak, $5\frac{3}{4} \times 4\frac{5}{8} \times 4\frac{1}{3}$ inches. Weight, 22 ounces. Lens, meniscus achromatic, fixed focus, $4\frac{1}{2}$ inches. Shutter, Eastman Rotary. (See page 12.) Brilliant finder and socket for tripod screw.

THE PRICE

No. 2 Bull's-Eye Kodak fitted with meniscus achromatic lens,	\$8.00
N. C. Film Cartridge, 12 exposures, $3\frac{1}{2} \times 3\frac{1}{2}$,60
Ditto, 6 exposures,30
Ditto, "Double-Two" Cartridge, 4 exposures,20
Kodak Portrait Attachment,50
Black Sole Leather Carrying Case, with shoulder strap,	1.25

PANORAM-KODAKS



CERTAIN kinds of photographic work can only be done with the Panoram-Kodaks. The pictures they take have a breadth and beauty not attainable with the ordinary camera. Vertical pictures of high waterfalls and mountain peaks, as well as horizontal pictures, give most delightful effects, while the wide scope of view makes the Panoram unequaled in the taking of outdoor group pictures.

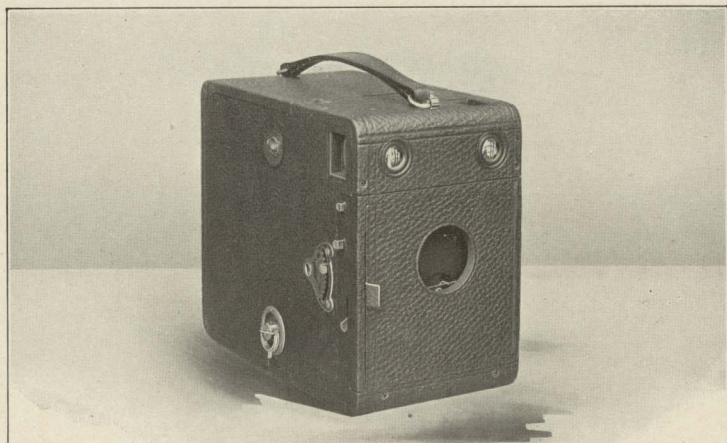
No. 1 Panoram-Kodak.—For pictures $2\frac{1}{4} \times 7$ inches; capacity, 6 exposures without reloading; size of camera, $3\frac{3}{8} \times 4\frac{1}{4} \times 7\frac{3}{8}$ inches; weight, 24 ounces; two spirit levels; brilliant finder; two tripod sockets. Uses No. 1 F. P. Kodak Cartridges.

No. 4 Panoram-Kodak.—For pictures $3\frac{1}{2} \times 12$ inches; capacity, 5 exposures without reloading; size of camera, $4\frac{3}{4} \times 5\frac{1}{2} \times 10\frac{1}{8}$ inches; weight, 2 pounds, 14 ounces; two spirit levels; brilliant finder; two tripod sockets. Uses No. 4 B. E. Cartridges.

THE PRICE

No. 1 Panoram-Kodak,	\$10.00	No. 4 Panoram-Kodak,	\$20.00
N. C. Film Cart., 6 ex., $2\frac{1}{4} \times 7$,40	N. C. Film Cart., 5 ex., $3\frac{1}{2} \times 12$,90
Ditto 3 exposures,20	Ditto 2 exposures,45
Leather Carrying Case,	1.75	Leather Carrying Case,	2.00

No. 3B QUICK-FOCUS KODAK



THE rapidity with which this new camera can be placed in focus for any distance will render it of great value in catching street scenes and work of like nature. To focus, a catch in the Focusing Scale is set in the notch corresponding to the distance away of the object to be photographed; pressure on a concealed button then springs out the front and the instrument is in focus. The size and shape of the picture, $3\frac{1}{4} \times 5\frac{1}{2}$, is something new in a box-form camera. Just right for post cards, too.

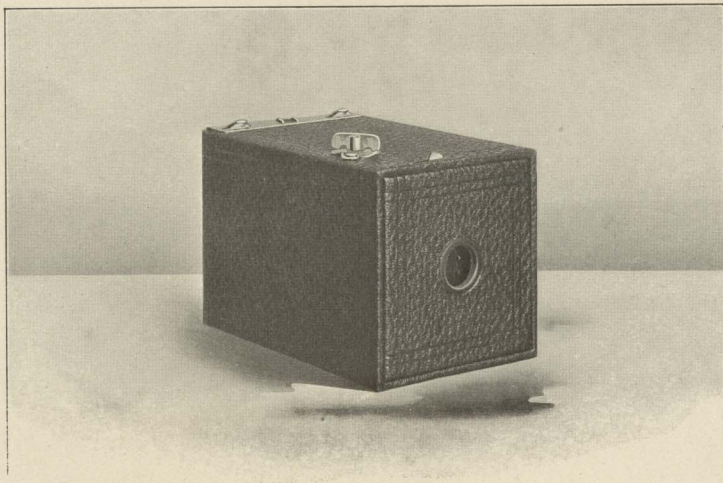
For rectangular pictures, $3\frac{1}{4} \times 5\frac{1}{2}$ inches. Capacity, 10 exposures. Size of Kodak, $8\frac{1}{8} \times 6\frac{7}{8} \times 4\frac{5}{8}$ inches. Weight, 2 pounds, 9 ounces. Lens, meniscus achromatic, focal length, $6\frac{1}{2}$ inches. Shutter, Eastman Rotary. (See page 12.) Two brilliant finders. Two tripod sockets.

THE PRICE

No. 3B Quick Focus Kodak, with Eastman Rotary Shutter,	\$12.00
* N. C. Film Cartridge, 10 exposures, $3\frac{1}{4} \times 5\frac{1}{2}$,70
* Ditto, 6 exposures,40
* Ditto, "Double-Two," 4 exposures,30
Black Sole Leather Carrying Case, with strap,	2.50

* Specify, "For 3B Quick Focus Kodak."

No. 1 BROWNIE CAMERA



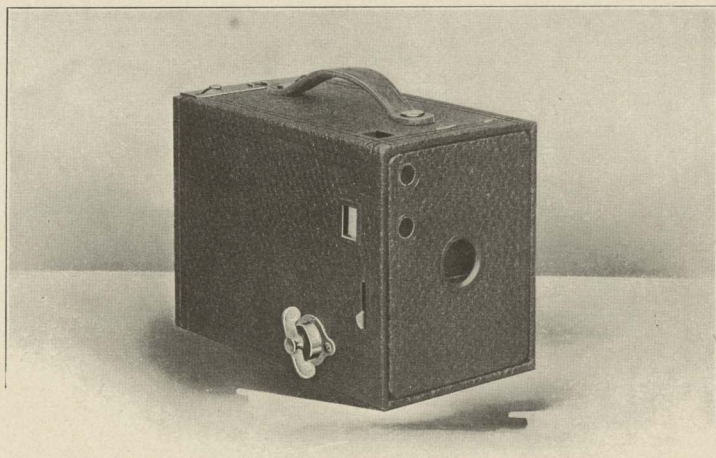
THIS is a wonderfully accurate and reliable little instrument, and the work which has been done with it by school children proves that photography as now simplified is by no means confined to "grown-ups." It is well made, covered with fine quality imitation leather, and has nickeled fittings. V-shaped lines on top give the scope of view, or a Brownie finder (detachable) may be provided for 25c. Only our immense manufacturing facilities and the enormous quantities of No. 1 Brownies sold make their price possible.

For square pictures, $2\frac{1}{4} \times 2\frac{1}{4}$ inches. Capacity, 6 exposures. Size of camera, $4\frac{7}{8} \times 3\frac{1}{8} \times 3$ inches. Weight, 8 ounces. Lens, meniscus, $3\frac{3}{4}$ -inch focus. Shutter, Eastman Rotary (see page 12), with but one stop.

THE PRICE

No. 1 Brownie Camera, with Eastman Rotary Shutter,	\$1.00
N. C. Film Cartridge, 6 exposures, $2\frac{1}{4} \times 2\frac{1}{4}$,15
Brownie Finder, detachable,25
No. 1 Brownie Carrying Case, holds camera and finder,50
No. 1 Brownie Developing and Printing Outfit, including paper for 24 prints,90

No. 2 BROWNIE CAMERA



THIS camera is similar to the No. 1 Brownie, but larger and with greater capability. These instruments, even in the hands of children, have produced remarkable photographs, while work of the highest character has been done with them by experts. They are just as easy to operate as the No. 1 Brownie, and are most serviceable instruments on any vacation trip.

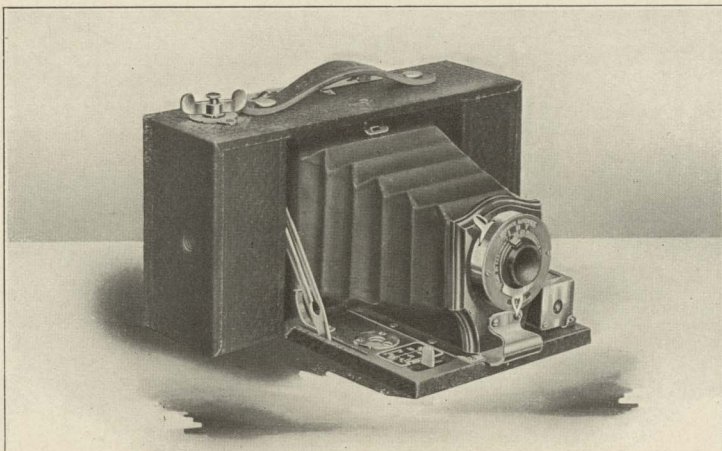
When provided with the Kodak Portrait Attachment, they will take good sized bust photographs of excellent quality.

For rectangular pictures, $2\frac{1}{4} \times 3\frac{1}{4}$ inches. Capacity, 6 exposures. Size of camera, $5\frac{5}{8} \times 4 \times 3\frac{1}{4}$ inches. Weight, 13 ounces. Lens, meniscus, $4\frac{1}{2}$ -inch focus. Shutter, Eastman Rotary. (See page 12.) Two finders.

THE PRICE

No. 2 Brownie Camera, with Rotary Shutter,	\$2.00
N. C. Film Cartridge, for 6 exposures, $2\frac{1}{4} \times 3\frac{1}{4}$,20
No. 2 Brownie Carrying Case, with shoulder strap,75
Kodak Portrait Attachment,50
A B C, Developing and Printing Outfit. (See page 56.)	1.50

No. 2 FOLDING BROWNIE



IN this camera the Brownie idea is extended to a folding camera with features of equipment usually found on only high-priced cameras. It is, in fact, a very superior little instrument, and with its iris diaphragm shutter and the three-lock focusing device becomes "almost a Kodak." Always ready for use as a fixed focus camera, with the additional advantage of special focusing lock for portraiture or landscape.

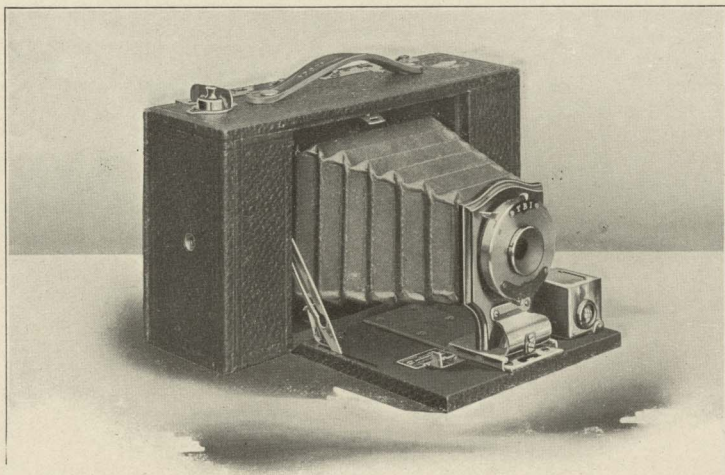
Well made in every detail, perfect in adjustment, rich in finish.

For rectangular pictures, $2\frac{1}{4} \times 3\frac{1}{4}$ inches. Capacity, 6 exposures. Size of camera, $6\frac{7}{8} \times 3\frac{5}{8} \times 2\frac{1}{8}$ inches. Weight, 16 ounces. Lens, meniscus, $4\frac{1}{8}$ -inch focus. Shutter, Pocket Automatic. (See page 12.) Reversible finder. Two tripod sockets. Automatic focusing lock.

THE PRICE

No. 2 Folding Brownie Camera, with Pocket Automatic Shutter,	\$5.00
N. C. Film Cartridge, 6 exposures, $2\frac{1}{4} \times 3\frac{1}{4}$,20
No. 2 Folding Brownie Carrying Case,75
Kodak Portrait Attachment,50

No. 3 FOLDING BROWNIE



THIS is the leader of the Brownies. Light, compact, carefully constructed; with the same shutter that we supply on our No. 3 Folding Pocket Kodak, but without pneumatic release, it well deserves the unqualified praise it has received.

The scope of the automatic focusing lock is a noteworthy feature of the camera, the scale being for 6, 8, 10, 15, 25, and 100 feet.

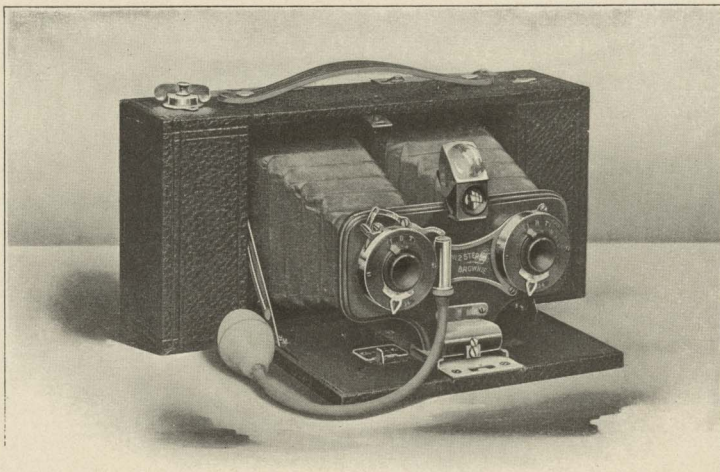
It appeals to all who wish an inexpensive instrument taking a picture $3\frac{1}{4} \times 4\frac{1}{4}$ inches. Unlike the other Brownies, it takes *12 exposure cartridges*.

For rectangular pictures, $3\frac{1}{4} \times 4\frac{1}{4}$ inches. Capacity, 12 exposures. Size of camera, $8\frac{3}{8} \times 4\frac{5}{8} \times 2\frac{5}{8}$ inches. Weight, 25 ounces. Lens, meniscus, 5-inch focus. Shutter, F. P. K. Automatic (see page 13), without bulb. Automatic focusing lock. (See page 15.) Reversible finder. Two tripod sockets.

THE PRICE

No. 3 Folding Brownie Camera, with F. P. K. Automatic Shutter,	\$9.00
N. C. Film Cartridge, 12 exposures, $3\frac{1}{4} \times 4\frac{1}{4}$,70
Ditto, 6 exposures,35
Ditto, "Double-Two" Cartridge, 4 exposures,25
No. 3 Folding Brownie Carrying Case,	1.00
Kodak Portrait Attachment,50

No. 2 STEREO BROWNIE



THERE is a rapidly growing interest in Stereoscopic photography—a field of fascinating work for any amateur. And it's not at all complicated now; the cutting apart and transposing of the negatives, the only difficult feature of stereoscopic work, being entirely done away with by the Self-Transposing Printing Frame.

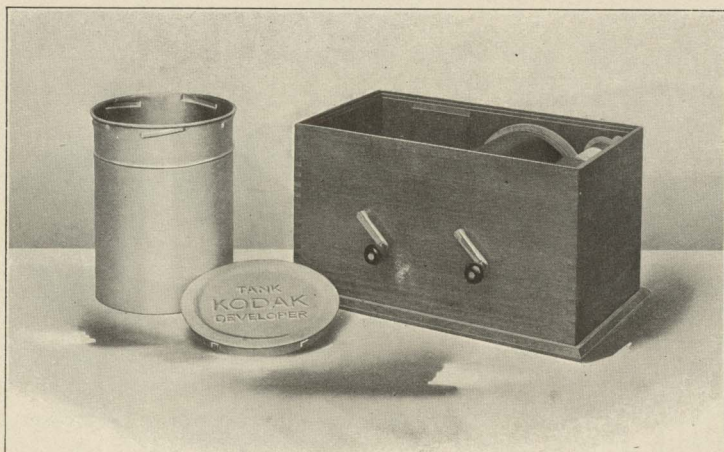
The No. 2 Stereo Brownie is an accurate Stereoscopic camera, simple in every detail. The lenses and twin shutters are effective and optically correct.

For Stereo pictures, each $3\frac{1}{4} \times 2\frac{1}{2}$ inches. Capacity, 10 Stereo exposures. Size of camera, $9\frac{3}{4} \times 4\frac{1}{2} \times 2\frac{1}{2}$ inches. Weight, 29 ounces. Lenses, meniscus achromatic, $4\frac{1}{2}$ -inch focus. Shutters, Pocket Automatic (see page 12), with 4 stop openings. Automatic Focusing lock. (See page 15.) Brilliant finder with hood. Tripod socket.

THE PRICE

No. 2 Stereo Brownie, fitted with pair of Pocket Automatic Shutters,	\$12.00
N. C. Film Cartridge, 10 Stereo exposures.	.70
Ditto, 6 exposures,	.40
Ditto, "Double-Two," 4 exposures,	.30
Carrying Case,	1.00
Self-Transposing Printing Frame, for $8\frac{1}{4} \times 2\frac{1}{2}$ Stereo prints,	1.50
Brownie Stereoscope,	.75

KODAK TANK DEVELOPER



THE Kodak Tank Developer makes the daylight development of film a very simple process and the resulting negatives are of a higher average than those obtained in the old darkroom way.

In general principle, the Kodak Tank Developer is the same as the Kodak Developing Machine, but is an improvement upon that process in convenience and results.

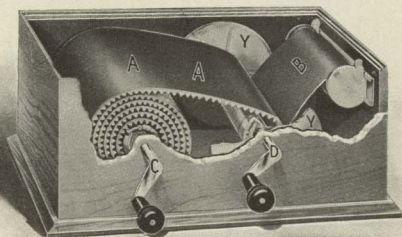
As with the Developing Machine, the film after exposure is protected from light by being first wound up with a light-proof apron. But with the Developing Machine the operator has to continue turning a crank, thus revolving the film through the developer; while with the Kodak Tank Developer the film is removed from the winding box and, being placed in a cup of developer, requires no turning or motion at all during development, beyond tipping the cup end for end two or three times to insure the developer acting

KODAK TANK DEVELOPER

CONTINUED

evenly. (In case of the Brownie Tank Developer the film roll itself is turned.)

A glance at the cut on this page will show the method of winding film and protecting apron together. B is the black paper of the Kodak Cartridge; AA is the protecting apron. Apron, black paper, and



BOX FOR WINDING PROTECTING APRON AND
FILM TOGETHER

film are wound on to axle D, and when so wound are removed from the box and placed in the Developing Tank in the light of an ordinary room.

Development is allowed to go on for twenty minutes and the film requires no attention during that time beyond turning the cup containing film end for end two or three times during development, a tightly-fitting cover being provided for the cup for this purpose. When development is completed the film is removed for fixing.

That development by timing—the Kodak Tank Developer and Developing Machine—is correct from a scientific standpoint, and in practice better than trying to determine the proper length to which development should be carried by inspecting the negative before the darkroom lamp, is now generally conceded. The Kodak Tank Developer to-day is being used by many of the leading pictorialists, who are obtaining with it their best negatives. Compared with darkroom development, it is not only convenience against inconvenience, but it is science against guess work.

KODAK TANK DEVELOPER

CONTINUED

Kodak Tank Developers are made in four sizes, the "7-inch," the "5-inch," the "3½-inch," and "Brownie," the latter taking only 2¼-inch Brownie film and having no cover for Solution Cup.

With the Kodak Tank Developer the amateur can develop a number of rolls of film at once; merely providing himself with extra tanks, aprons, and reels, which will be found listed (Duplicating Outfits) in the price list below. The winding boxes themselves are strongly made, with metal parts nickeled. The Tank is of brass, heavily nickeled.

Both handles of the box are removable, and together with the Tank and apron can be packed inside the box, thus making the entire outfit self-contained.

THE PRICE

Brownie Kodak Tank Developer. For use with No. 1, No. 2, and No. 2 Folding Brownie Cartridges, complete,	\$2.50
Duplicating Outfit for same, consisting of 1 Solution Cup, 1 Transferring Reel, and 1 Apron,	1.25
3½-inch Kodak Tank Developer. For use with all Kodak or Brownie Cartridges having a film width of 3½ inches or less, complete,	5.00
Duplicating Outfit for same, consisting of 1 Solution Cup, 1 Transferring Reel, and 1 Apron,	2.50
5-inch Kodak Tank Developer. For use with all Kodak and Brownie Cartridges having a film width of 5 inches or less, complete,	6.00
Duplicating Outfit for same, consisting of 1 Solution Cup, 1 Transferring Reel, and 1 Apron,	3.00
7-inch Kodak Tank Developer. For use with No. 5 Cartridge Kodak or shorter film cartridges, complete,	7.50
Duplicating Outfit for same, consisting of 1 Solution Cup, 1 Transferring Reel, and 1 Apron,	3.75

KODAK TANK DEVELOPER SUPPLIES

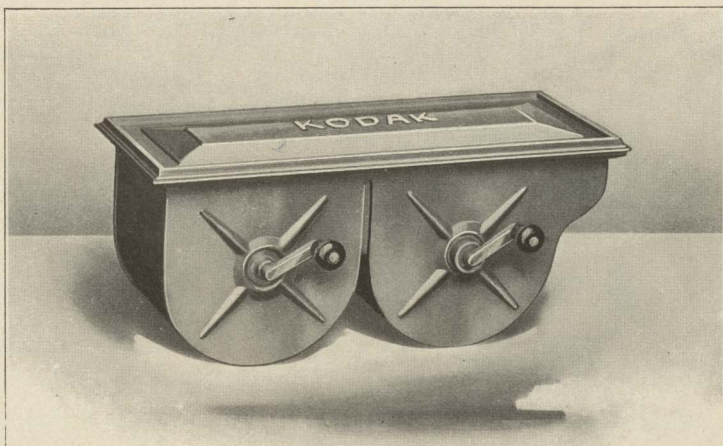
All the amateur needs in the line of supplies for the Kodak Tank Developer are Developing Powders, and Kodak Acid Hypo for fixing. The developer powders listed below are accurately prepared and contain only carefully-tested chemicals of the best quality.

The developing solution is prepared by simply dissolving the powders in water. No graduate is needed, the water being measured in the solution cup.

A wooden stirring rod will be found convenient in preparing the developer, but a spoon or even a stick will do.

Kodak Tank Developer Powders, Brownie, per package of ¼ dozen,	\$.15
Ditto, for 3½-inch Tank, per package, ¼ dozen,	.20
Ditto, for 5-inch Tank, per package, ¼ dozen,	.25
Ditto, for 7-inch Tank, per package, ¼ dozen,	.25
Kodak Acid Fixing Powder, per ½-pound package,	.15
Ditto, per 1-pound package,	.25

KODAK DEVELOPING MACHINES



THE Kodak Developing Machines are of brass and fully nickeled. They may be readily packed in the traveler's trunk or suit case, or may be carried as hand baggage in their neatly-finished wooden cases. All Kodak or Brownie film cartridges may be developed in daylight in these machines. Their operation is similar to the Kodak Tank Developer, but in the machine the film is revolved through the solution during development.

THE PRICE

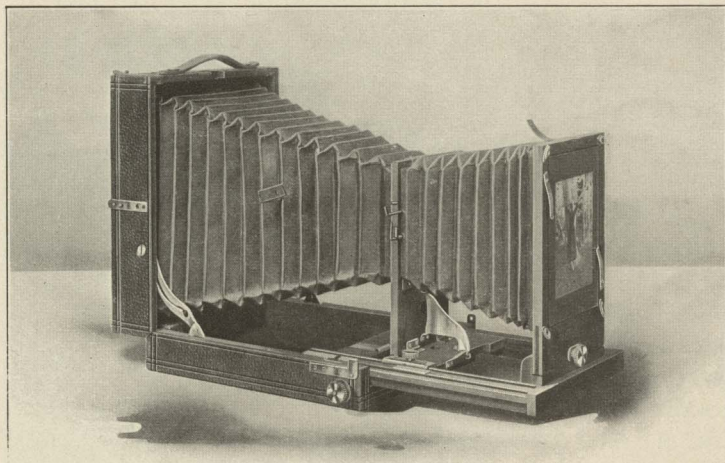
Style E Kodak Developing Machine. For use with Kodak and Brownie Cartridges of all sizes up to and including 4x5 (price includes a handsomely-finished wooden carrying case, with leather handle), \$7.50
Brownie Developing Machine. For No. 1 and No. 2 Brownie Cartridges, 2.00

KODAK DEVELOPING MACHINE SUNDRIES

Kodak Developing Outfits for use with Kodak Developing Machines, include Developer Powders, Kodak Acid Fixing Powder, Graduates, Stirring Rod, and Squeegee.

"E," for use with Style E Machine,	\$1.60
"Brownie," for use with Brownie Machine,75
Kodak Developer Powders for Style E Machine, per package of 1/2 dozen,25
Ditto, for Brownie Machine,15
Kodak Acid Fixing Powder, per pound package,25

KODAK ENLARGING CAMERA



THIS instrument enables the amateur to gratify his ambition for large pictures, without the bother of carrying about a large camera. Simple, convenient, inexpensive.

By its use enlargements up to $6\frac{1}{2} \times 8\frac{1}{2}$ are made from 4×5 , and $3\frac{1}{4} \times 4\frac{1}{4}$ negatives. Smaller negatives enlarge to approximately 4×5 or 5×7 . Focusing may be done by the scale or on the ground glass, as desired. No darkroom is necessary, except for loading holder and for development. May be used as a portrait camera by removing negative carrier and lens and substituting a suitable lens, the change being made in a few seconds.

THE PRICE

No. 1 Kodak Enlarging Camera, equipped for making enlargements from 4×5 glass negatives, or from film negatives up to $4 \times 5\frac{1}{2}$ inches,	\$15.00
$6\frac{1}{2} \times 8\frac{1}{2}$ Inside Kits, 5×7 opening,35
Ditto, 4×5 opening,35
Glass Negative Holders, $3\frac{3}{4} \times 4\frac{1}{4}$,50
Ditto, $3\frac{1}{2} \times 3\frac{1}{2}$,50
Special Portrait Lens, $8\frac{1}{2}$ -in. focus, speed f. 8, for bust work,	7.50
Extra Lens Board. No extra charge for fitting to our Special Portrait Lens,75

KODAK PORTRAIT ATTACHMENT

FOR portrait making one does not need to have elaborate apparatus. A fifty-cent attachment on a small Kodak or Brownie camera will enable one to make good sized head and shoulder pictures — while the attachments which we now furnish for the Cartridge and other Kodaks of larger size, enable one to make bust portraits of any size desired, limited only by the dimensions of the plate.



MADE WITH KODAK PORTRAIT ATTACHMENT

The Kodak Portrait Attachments are simply extra lenses which slip on in front of the regular lenses. They in no way affect the operation of the fixed-focus Kodaks except that they make them cut sharp at a distance of $3\frac{1}{2}$ feet, and thus throw more distant objects out of focus. They may also be used to good advantage with any of the focusing Kodaks.

With the attachment in place, the focus of these instruments set at 15 feet, and the subject $3\frac{1}{2}$ feet

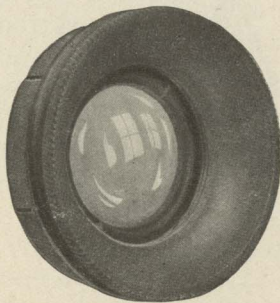
KODAK PORTRAIT ATTACHMENT

(CONTINUED)

from the camera, admirable bust portraits are obtained, and, by changing the focus, it is practical to work at different distances, thus increasing or diminishing the size of the image.

For use with all regularly equipped Kodaks listed in this catalogue except the Panoram-Kodaks. May also be used with the No. 2 Brownie, and No. 2 and No. 3 Folding Brownie Cameras.

Be sure and give exact designation of instrument when ordering, and when to be used with a pneumatic release shutter, also give exact designation of same.



KODAK PORTRAIT ATTACHMENT

THE PRICE

Kodak Portrait Attachment, \$.50.

KODAK WIDE ANGLE LENSES

THESE lenses have a speed of f.16, and are interchangeable with the lenses furnished with the Cartridge Kodak, the No. 4 Screen Focus Kodak, and the No. 4A Folding Kodak.

The Wide Angle Kodak lenses are rectilinear, carefully tested, and are absolutely high grade in every instance. With each one we furnish a leather case and a properly graduated focusing scale for attaching to the camera bed.

In ordering, give size (No.) of Kodak and specify the shutter the lens is to be used with.

THE PRICE

No. 3 (3¼ x 4¼) Wide Angle Kodak Lens, equivalent focus, 3¼ inches, speed f. 16,	\$5.00
No. 4 (4 x 5) Wide Angle Kodak Lens, equivalent focus, 4½ inches, speed f. 16,	5.00
No. 5 (5 x 7) Wide Angle Kodak Lens, equivalent focus, 5½ inches, speed f. 16,	7.50
(also adapted to 4A Kodak),	

THE ANASTIGMAT ADVANTAGE

ALMOST any lens will do good work if you do not ask too much of it. The speed of the shutter and the size of the stop openings must, however, be in harmony with the power of the lens. The stop opening must be small enough to make it cut a sharp picture. If this opening is small the shutter must be relatively slow, in order to allow light enough to pass through the lens to affect the sensitive film.

Our double combination or "Rapid Rectilinear" lenses are fast, but the largest opening that will give sharp results is one-eighth of their focal length, designated as f -8. Such lenses will make snap shots in sunlight in a hundredth of a second and with the shutter working at a fiftieth will make very satisfactory negatives on hazy days.

When lenses of still greater speed are required we get into the Anastigmat class, the representative lenses of which are the Bausch & Lomb Zeiss-Tessar and Plastigmat lenses, and the Goerz Series III Anastigmats. These lenses consist of several pieces of glass most carefully ground and adjusted and the diameter of the largest opening is more than one-seventh of the focal length—designated with the Tessar lens, f -6.3, and with the other two, f -6.8. It is this large opening that gives the speed. Under good light conditions they may be used with high speed shutters for photographing the most rapidly-moving objects, but the great advantage of the Anastigmat lies in the fact that it permits the making of slow instantaneous exposures on days when they would be out of the question with a single lens and when results would be doubtful even with a Rapid Rectilinear.

Either of the makes of these lenses which we list will prove a great satisfaction to the Kodaker.

ANASTIGMAT LENSES

SPECIAL SHUTTER EQUIPMENTS

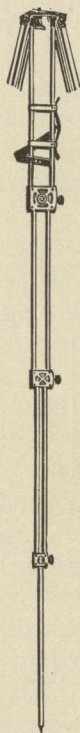
The No. 3, No. 3A Folding Pocket, No. 4 Screen Focus, No. 4A Folding, and the Cartridge Kodaks, may be equipped as follows :

Style of Camera	Full Description page	Size of Picture	B. & L. Plastigmat lens, f. 6.8, and Kodak Automatic Shutter	B. & L. Plastigmat lens, f. 6.8, and Volute Shutter	B. & L. Zeiss Tessar Series II B lens, f. 6.3, and Volute Shutter	Goerz Anastigmat lens, Series III f. 6.8, and Kodak Automatic Shutter	Goerz Anastigmat lens, Series III f. 6.8, and Volute Shutter
No. 3 Folding Pocket Kodak...	20	3¼ x 4¼	No. 1 lens, \$57.00	No. 1 lens, \$64.00	No. 4 lens, \$63.50	No. 0 lens, \$60.50	No. 0 lens, \$67.50
No. 3A Folding Pocket Kodak	22	3¼ x 5½	No. 2 lens, 65.00	No. 2 lens, 72.00	No. 5K lens, 78.00	No. 1A lens, 70.00	No. 1A lens, 77.00
No. 3 Cartridge Kodak.....	30	4¼ x 3¼	No. 1 lens, 52.00	No. 1 lens, 66.00	No. 5 lens, 72.00	No. 0 lens, 55.50	No. 0 lens, 69.50
No. 4 Cartridge Kodak.....	30	5 x 4	No. 2 lens, 62.50	No. 2 lens, 76.50	No. 5 lens, 76.50	No. 1A lens, 67.50	No. 1A lens, 81.50
No. 4 Cartridge Kodak	30	5 x 4			No. 5K lens, 82.50		
No. 4 Screen Focus Kodak.....	26	4 x 5	No. 2 lens, 67.50	No. 2 lens, 81.50	No. 5 lens, 81.50	No. 1A lens, 72.50	No. 1A lens, 86.50
No. 4 Screen Focus Kodak.....	26	4 x 5			No. 5K lens, 87.50		
			B. & L. Automatic Shutter			B. & L. Automatic Shutter	
No. 5 Cartridge Kodak	30	7 x 5	No. 3 lens, \$84.50	No. 3 lens, 93.50	No. 6 lens, 105.00	No. 3 lens, \$99.00	No. 3 lens, 108.00
No. 4A Folding Kodak.....	24	4¼ x 6½			No. 6 lens, 100.00	No. 3 lens, 94.00	No. 3 lens, 103.00

EASTMAN'S FOLDING HEAD TRIPOD

FOR 4x5 CAMERAS, OR SMALLER

BY the simplest device, all the inconveniences of the old-fashioned tripod have been overcome. Other tripods are either awkwardly bulky when closed or else the head has to be removed from the legs. In the Eastman Folding Head Tripod the head itself folds, and the tripod then makes a compact, rectangular package. There are no loose parts. There is no complicated mechanism.



The accompanying illustration shows the working in detail. The brass plate upon which the camera rests is covered with leather, thus protecting the instrument.



SHOWING HEAD UNFOLDED
READY TO RECEIVE CAMERA

All of the parts being accurately made, this tripod is exceedingly rigid, in spite of its small size and light weight. The wooden parts are of selected maple. The tripod is unusually handsome. Folds in four sections; has leather handle for carrying. Length, folded, 17 inches; length, extended, 52 1/2 inches; weight, 25 ounces.



SHOWING HEAD FOLDED AND TRIPOD
CLOSED FOR CARRYING

THE PRICE

Eastman Folding Head Tripod,	\$3.50
Black Sole Leather Carrying Case,	1.50

THE BULL'S-EYE TRIPOD

TWO SECTIONS

An aluminum revolving head holds the socket screw and seats it in place in camera when turned, thus doing away with tripod screw. Made of spruce, with brass fittings. Leather handle for carrying. For 4 x 5 cameras, or smaller.

Price, \$1.50

EASTMAN'S FEATHER TRIPOD

FOUR SECTIONS

An aluminum revolving head holds the socket screw and seats it in place in camera when turned, thus doing away with tripod screw. Legs fold in four sections. Length, closed, 14½ inches. Weight, in spruce, 17½ ounces; in cherry, 20½ ounces. Brass fittings, superb finish. For 4 x 5 cameras, or smaller.

Eastman's Feather Tripod, Spruce,	\$3.00
Ditto, Cherry,	3.25
Ditto, Mahogany Finish,	3.50
Black Sole Leather Carrying Case,	1.50

THE EASTMAN TRIPOD

THREE SECTIONS

No. 1, Spruce, for cameras up to 6¼ x 8¼; weight, 1 pound, 10 ounces,	\$2.25
No. 1, Maple, for cameras up to 6¼ x 8¼; weight, 2 pounds, 2 ounces,	2.25

NOTE—When kind of wood is not specified, we will furnish in maple.

THE VICTOR TRIPOD

TWO SECTIONS

No. 1, Spruce, for cameras up to 6¼ x 8¼; weight, 1 pound, 11 ounces,	\$1.50
No. 1, Maple, for cameras up to 6¼ x 8¼; weight, 2 pounds, 3 ounces,	1.50

NOTE—When kind of wood is not specified, we will furnish in maple.

THE FLEXO TRIPOD

TWO SECTIONS

Has a fixed, non-detachable head. Only clear, straight-grained wood is used in its construction. The metal work is of brass and all parts are carefully and accurately made.

Price, \$1.00

VELOX PAPER



Velox prints in any light and requires no darkroom for development. Richness of the blacks and simplicity of manipulation are Velox characteristics.

It is suitable for portraits, landscapes, interiors, in fact, for photographic work of every sort. It is used in every branch of photography and avoids delay arising from dependence on sunlight for printing.

Velox permits the amateur to utilize his evening hours in print-making.

Velox is made in a number of different surfaces and two different grades. These enable the user to produce good prints from almost any negative, suiting his own individual taste and the peculiar requirements of his negatives.

Velox is divided broadly into two kinds of papers called "Regular" and "Special" (slow and fast), these terms having reference to the time required for exposure and development. In each division will be found a variety of surfaces which adapt the paper to all kinds of work and negatives of different qualities.

"Regular" papers develop quickly, and are best suited to negatives that lack contrast.

"Special" papers require longer development than the "Regular," and give soft effects from hard negatives. Any negative which will produce a good result with "printing-out" paper should be printed on "Special" Velox, while "Regular" Velox should be used only with very flat negatives.

Velox is furnished in a great variety of surfaces. In the "Regular" class the surfaces are Carbon (matt surface), Carbon Double Weight, Glossy, Velvet, and Velvet Double Weight. The surface of "Regular" Velvet Velox is semi-gloss and gives

VELOX PAPER

CONTINUED

prints of exceptional beauty. This paper will give satisfactory results from very flat negatives.

In the "Special" class the surfaces are Carbon (matt surface), Portrait (smooth matt), Portrait Double Weight, Rough, Rough Double Weight, Glossy, Velvet, and Velvet Double Weight. Special Velvet Velox has a greater range, however, than any of the other "Special" papers.

Size	SINGLE WEIGHT			DOUBLE WEIGHT		
	Doz.	$\frac{1}{2}$ Gross	Gross	Doz.	$\frac{1}{2}$ Gross	Gross
$2\frac{1}{4} \times 3\frac{1}{4}$	\$.15	.60	\$1.00	.20	.75	\$1.25
$2\frac{1}{2} \times 4\frac{1}{4}$.15	.70	1.25	.20	.90	1.55
$3\frac{1}{4} \times 3\frac{1}{2}$.15	.80	1.50	.20	1.00	1.90
$3\frac{1}{4} \times 4\frac{1}{4}$.15	.80	1.50	.20	1.00	1.90
$3\frac{1}{4} \times 5\frac{1}{2}$.15	.80	1.50	.20	1.00	1.90
4×5	.25	1.10	2.00	.30	1.40	2.50
$3\frac{1}{4} \times 6$ (Stereo)	.25	1.10	2.00			
+ $3\frac{1}{4} \times 6\frac{1}{2}$.25	1.10	2.00			
$2\frac{1}{4} \times 7$.15	.80	1.50	.20	1.00	1.90
$4\frac{1}{4} \times 6\frac{1}{2}$.30	1.65	2.80	.40	2.05	3.50
5×7	.35	2.00	3.50	.45	2.50	4.40
$3\frac{1}{2} \times 12$.45	2.50	4.50	.55	3.15	5.65

Velox Post-Cards furnished in Regular Velvet,
Special Velvet, Special Rough and Special Portrait,

* Glossy only.

† For use in Self-Transposing Stereo Printing Frame.

VELOX SUNDRIES

Various sundries are manufactured to be used in connection with Velox paper. A valuable acquisition to the list is the Nepera Solution, a universal developer, which is an ideal developer for Velox paper, and which, used in connection with the Nepera capsules, makes a perfect developer for film or plates.

The Velox Re-Developer is a new product with which Sepia tones can be obtained on Velox.

N. A. (Non-Abrasion) Velox Liquid Developer, 4-ounce bottle (makes 20 ounces for Special, 12 ounces for Regular),	\$.25
Ditto, 16-ounce bottle,75
Nepera Solution, per 4-ounce bottle (including 4 capsules for converting to film and plate developer),25
Ditto, 16 ounce bottle (without capsules),60
Nepera Capsules, per package 1 dozen,15
Velox Re-Developer, 4-ounce bottle (sufficient for 300 4×5 prints),50
Ditto, 2-ounces,30
Velox Liquid Hardener, per 4 ounce bottle,15
Ditto, 8-ounce bottle,25
Nepera M. Q. Tubes, box of 5 tubes,75
Kodak Acid Fixing Powder for fixing Velox prints, per pound,25
Ditto, $\frac{1}{2}$ pound,15
Velox Amateur Printer, No. 2,	1.00
Velox Amateur Printer No. 1 (furnished with gas pillar and adapter for electric socket),	2.00
Electric Attachment (extra). Comprising socket and plug connected by 6-foot cord,75
Welsbach Attachment (extra). Consisting of burner, mantle and large chimney,	1.25
Extra mantles, each,15
Tubing, 6-foot lengths. For connecting printer with gas supply,50

EASTMAN'S SEPIA PAPER

As simple to handle and much quicker than Blue Print Paper. Especially desirable with negatives giving sketchy effects. Packed in sealed tubes.

Size	Price per 2 Doz.
2 $\frac{1}{4}$ x 2 $\frac{1}{4}$	\$.15
2 $\frac{1}{4}$ x 3 $\frac{1}{4}$15
2 $\frac{1}{2}$ x 4 $\frac{1}{4}$15
3 $\frac{1}{8}$ x 3 $\frac{1}{8}$15
3 $\frac{1}{8}$ x 4 $\frac{1}{4}$15
3 $\frac{1}{4}$ x 5 $\frac{1}{8}$20
Sepia post-cards, per pkg., 2 doz.,	.25

Size	Price Per 2 Doz.
4 x 5,	\$.20
3 $\frac{1}{4}$ x 6 (Stereo),20
2 $\frac{1}{4}$ x 7,20
1 Doz.	
4 $\frac{1}{4}$ x 6 $\frac{1}{4}$,15
5 x 7,20
3 $\frac{1}{8}$ x 12,20

EASTMAN'S "FERRO-PRUSSIAN" PAPER

Not a cheap commercial "Blue Print," but a paper that retains the delicacy and detail of the finest negatives. Packed in sealed tubes.

Size	Price per 2 Doz.
2 $\frac{1}{4}$ x 2 $\frac{1}{4}$	\$.16
2 $\frac{1}{4}$ x 3 $\frac{1}{4}$16
2 $\frac{1}{2}$ x 4 $\frac{1}{4}$16
3 $\frac{1}{8}$ x 3 $\frac{1}{8}$16
3 $\frac{1}{8}$ x 4 $\frac{1}{4}$16
4 x 5,20
Eastman's "Ferro - Prussiate " 1 Doz.	
post-cards,	\$0.15

Size	Price per 2 Doz.
3 $\frac{1}{4}$ x 5 $\frac{1}{4}$,	\$.20
3 $\frac{1}{4}$ x 6 (Stereo),20
2 $\frac{1}{4}$ x 7,20
4 $\frac{1}{4}$ x 6 $\frac{1}{4}$,30
5 x 7,35
3 $\frac{1}{8}$ x 12,40

EASTMAN'S W. D. PLATINUM PAPER

A pure platinum paper, requiring only water development, without chemicals. Clears in water and acid. Produces effects equal in beauty to any photographic process. Packed in sealed tubes.

Two Grades—"Smooth" and "Rough."

Size	Price per Doz.
2 $\frac{1}{4}$ x 3 $\frac{1}{4}$	\$.15
2 $\frac{1}{2}$ x 4 $\frac{1}{4}$20
3 $\frac{1}{8}$ x 3 $\frac{1}{8}$20
3 $\frac{1}{4}$ x 4 $\frac{1}{4}$25
4 x 5,35

Size	Price per Doz.
3 $\frac{1}{4}$ x 5 $\frac{1}{4}$,	\$.30
3 $\frac{1}{4}$ x 6 (Stereo),35
2 $\frac{1}{4}$ x 7,30
4 $\frac{1}{4}$ x 6 $\frac{1}{4}$,45
5 x 7,60
3 $\frac{1}{8}$ x 12,70

MEZZO-TONE PAPER

A semi-matt self-toning paper, giving warm tones. Prints like Solio ; clears in common salt and water.

Size	Price per Doz.
2 $\frac{1}{4}$ x 2 $\frac{1}{4}$	\$.15
2 $\frac{1}{4}$ x 3 $\frac{1}{4}$15
2 $\frac{1}{2}$ x 4 $\frac{1}{4}$15
3 $\frac{1}{8}$ x 3 $\frac{1}{8}$15
3 $\frac{1}{4}$ x 4 $\frac{1}{4}$15

Size	Price per Doz.
3 $\frac{1}{4}$ x 5 $\frac{1}{4}$,	\$.20
4 x 5,20
2 $\frac{1}{4}$ x 7,20
4 $\frac{1}{4}$ x 6 $\frac{1}{4}$,30
5 x 7,35
3 $\frac{1}{8}$ x 12,45

EASTMAN'S PERMANENT BROMIDE PAPERS

The amateur can readily make enlargements from his own negatives by the use of Eastman's Bromide Paper and the Kodak Enlarging Camera, or can improvise an enlarging apparatus.

Velvet, Royal, Standard, Platino, Enameled, and Matte-Enamel.

Size	Per Doz.	Size	Per Doz.
2 1/4 x 3 1/4	\$.15	8 x 10	\$.80
3 1/4 x 4 1/415	10 x 12	1.20
3 1/4 x 5 1/215	11 x 14	1.60
4 x 525	14 x 17	2.40
3 1/4 x 6 (Stereo)25	16 x 20	3.20
4 1/4 x 6 1/230	18 x 22	4.00
5 x 735	20 x 24	4.80
5 x 840		
6 1/2 x 8 1/260		

Other sizes in proportion.

"Standard" is furnished in three weights: A, thin smooth; B, heavy smooth; C, heavy rough.

"Platino" is furnished in A, thin smooth, or C, heavy rough.

The "Royal" is furnished in "smooth" or "rough."

"Velvet" is furnished in one surface and one weight only.

SOLIO PAPER

A rapid, glossy printing-out paper.

Size	Per Pkg., 2 Doz.	1/2 Gross	Gross
2 1/4 x 2 1/2	\$.20	\$.60	\$1.00
2 1/4 x 3 1/420	.60	1.00
2 1/4 x 4 1/420	.60	1.00
3 1/2 x 3 1/220	.60	1.15
3 1/4 x 4 1/420	.60	1.15
3 1/4 x 5 1/225	.70	1.25
4 x 525	.70	1.25
3 1/4 x 6 (Stereo)25	.70	1.25
2 1/4 x 7 (No. 1 Panoram-Kodak)25	.70	1.25
	Per Doz.		
4 1/4 x 6 1/225		
5 x 730	1.60	2.65
3 1/2 x 12 (No. 4 Panoram-Kodak)35	2.00	3.50

SECONDS: 4 x 5 (trimmed) seconds, \$1.00 per gross.

SOLIO Combined Toning and Fixing Solution, per 8-ounce bottle, 50 cents.

Ditto, 4-ounce bottle, 30 cents; post-paid, 50 cents.

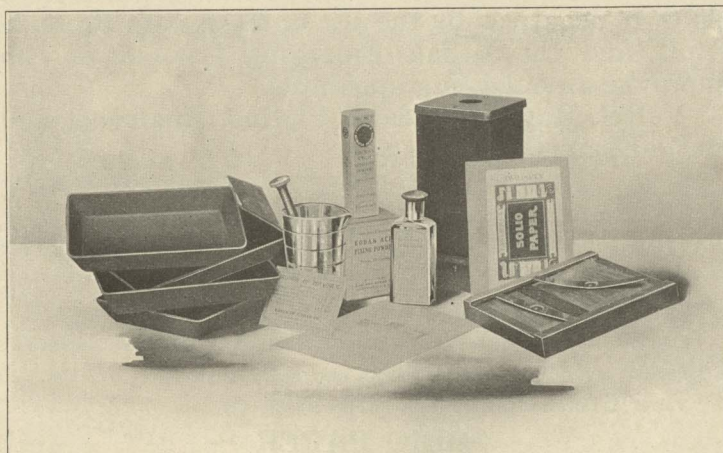
EASTMAN'S EXO CLOTH

Gives delightfully warm Sepia tones, which, in combination with the satin-like effect of the cloth itself, yield soft, yet brilliant, prints of charming texture. All the operations are readily performed by any amateur. Packed in sealed tubes.

4 x 5, per dozen	\$.35
5 x 7, per dozen60
8 x 10, per dozen	1.40
24 x 36, per sheet	1.25

Other sizes will be cut to order in sizes smaller than 8 x 10 in dozen packages, and in sizes over 8 x 10 in one-half dozen packages, at proportionate prices.

DEVELOPING AND PRINTING OUTFITS



EASTMAN'S A B C Developing and Printing Outfit includes every requisite for developing by the darkroom method, printing and finishing twenty-four 4 x 5, 2½ x 4¼, or 3¼ x 4¼, or ninety-six 1⅝ x 2½ pictures.

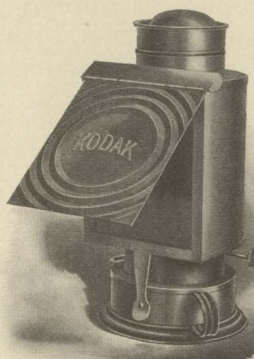
EASTMAN'S A B C DEVELOPING AND PRINTING OUTFIT.

1 Kodak Candle Lamp,	\$.25
1 4 x 5 Printing Frame,25
1 4 x 5 Glass for Frame,05
1 4-ounce graduate,10
1 Stirring Rod,05
4 4¼ x 5½ Developing Trays,40
5 Tubes Eastman's Special Developer,25
½ pound Kodak Acid Fixing Powder,15
½ ounce Bromide Potassium,10
2 dozen 4 x 5 Solio Paper,25
2 ounces Solio Toning Solution,15
Instruction Book,10
	\$2.10
Price, complete, neatly packed,	\$1.50
Eastman's Bull's-Eye Developing and Printing Outfit, complete, for developing and printing 12 pictures 3¼ x 3¼. Similar to above outfit, but containing 1 dozen 3¼ x 3¼ Solio paper and smaller quantities of chemicals. Price, complete, neatly packed,	
	\$1.25
Brownie Developing and Printing Outfit, complete, for developing and printing 24 pictures 2¼ x 2¼. Price, complete,	
	.90

NOTE.—These outfits cannot be shipped by mail.

EASTMAN'S KODAK DARKROOM LAMP

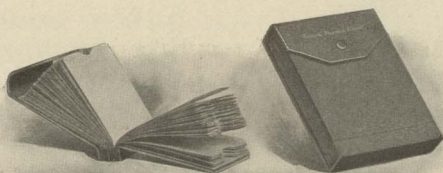
This lamp is well made and safe. It is equipped with improved burner carrying extra broad wick, and has new ventilating top, ensuring a bright, steady flame. Fitted with both ruby and orange glass. Flame controlled from the outside.



THE PRICE

No. 1, Improved Kodak Darkroom Lamps, 1-inch wick, each,	\$1.50
No. 2, ditto, $\frac{5}{8}$ -inch wick, each,	1.00

EASTMAN'S FILM NEGATIVE ALBUMS



Each album contains 100 pockets made of strong paper and consecutively numbered from 1 to 100, and an index on white paper.

THE PRICE

Eastman's Negative Albums for 100 negatives, $3\frac{1}{4} \times 3\frac{1}{4}$, or smaller,	\$.75
Eastman's Negative Albums for 100 negatives, $3\frac{1}{4} \times 4\frac{1}{4}$, or 4×5 ,	1.00
Eastman's Negative Albums for 100 negatives, 5×7 , or smaller,	1.50

EASTMAN'S KODOID PLATES

Consisting of N. C. Film sheets clipped at the edges to a black cardboard backing. Light, non-breakable, non-halation, orthochromatic. May be used in ordinary plate holders. No kits or other extras.

Size	Per Doz.	Size	Per Doz.
$3\frac{1}{4} \times 3\frac{1}{2}$,	\$.35	4×5 ,	\$.65
$3\frac{1}{2} \times 3\frac{3}{4}$,35	5×7 ,	1.10
$3\frac{1}{4} \times 4\frac{1}{4}$,45		

EASTMAN'S DRY PLATES

EXTRA RAPID FOR INSTANTANEOUS WORK

Size	Per Doz.	Size	Per Doz.
$3\frac{1}{4} \times 3\frac{1}{2}$,	\$.35	4×5 ,	\$.65
$3\frac{1}{2} \times 3\frac{3}{4}$,35	$4\frac{1}{4} \times 6\frac{1}{2}$,90
$3\frac{1}{4} \times 4\frac{1}{4}$,45	5×7 ,	1.10

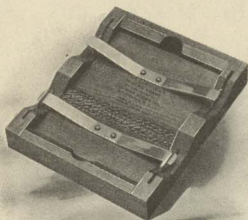
EASTMAN'S DOUBLE COATED NON-HALATION PLATES

Size	Per Doz.	Size	Per Doz.
$3\frac{1}{4} \times 4\frac{1}{4}$,	\$.55	$4\frac{1}{4} \times 6\frac{1}{2}$,	\$1.10
4×5 ,80	5×7 ,	1.40

LANTERN SLIDE PLATES

Plates for making Lantern Slides,	Per Doz.	Cover Glass for Lantern Slides,	Per Doz.
	\$.55		\$.35

LOFSTEDT PRINTING FRAME



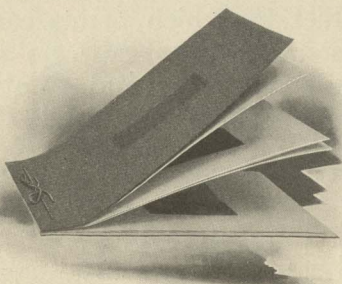
A new printing frame with an improved method of locking the springs so the paper cannot shift when opening or closing the frame.

Price, 4×5 , \$.35

PRINTING FRAMES

Eastman's $3\frac{1}{2} \times 3\frac{1}{2}$, opens two-thirds,	\$.25
Eastman's $3\frac{1}{4} \times 4\frac{1}{4}$, opens two-thirds,25
Eastman's 4×5 , opens two-thirds,25
Eastman's 5×7 , opens two-thirds,35
Eastman's $3\frac{1}{2} \times 12$, for No. 1 Panoram-Kodak, opens in 3 sections,75
Eastman's $2\frac{1}{4} \times 7$, for No. 1 Panoram-Kodak, opens in 2 sections,30
Flexo Printing Frame, 4×5 , opens two-thirds,10
Stereo Self-Transposing Printing Frame, for making $3\frac{1}{4} \times 2\frac{1}{2}$ stereo prints without cutting negatives apart,	1.50

ARTIST'S AND LAKESIDE ALBUMS



THE ARTIST'S ALBUM

sue paper bound between each leaf.

The Artist's Album is on the loose leaf system with covers of heavy embossed stock. Tied with silk lacing. Panel in cover for lettering. Leaves of heavy stock, antique finish. Ribbed tissue paper bound between each leaf.

No.	Color Leaf	Size of Leaf	Capacity,	20,	4 x 5,	3 1/2 x 3 1/2	or	3 1/4 x 4 1/4,	or	40,	2 1/4 x 3 1/4
1	Black	5 1/2 x 7	"	20,	4 x 5,	3 1/2 x 3 1/2	or	3 1/4 x 4 1/4,	or	40,	2 1/4 x 3 1/4
2	White	5 1/2 x 7	"	20,	4 x 5,	3 1/2 x 3 1/2	or	3 1/4 x 4 1/4,	or	40,	2 1/4 x 3 1/4
3	Sepia	5 1/2 x 7	"	20,	4 x 5,	3 1/2 x 3 1/2	or	3 1/4 x 4 1/4,	or	40,	2 1/4 x 3 1/4

Price 20 cents each, either color.

Extra Leaves, any color, complete with tissues, package of 5, 7 cents.

No.	Color Leaf	Size of Leaf	Capacity,	20,	5x7,	3 1/4 x 5 1/2,	or	40,	4x5,	3 1/4 x 4 1/4,	or	3 1/2 x 3 1/2,	or	80,	2 1/4 x 3 1/4
4	Black	7x10	"	20,	5x7,	3 1/4 x 5 1/2,	or	40,	4x5,	3 1/4 x 4 1/4,	or	3 1/2 x 3 1/2,	or	80,	2 1/4 x 3 1/4
5	White	7x10	"	20,	5x7,	3 1/4 x 5 1/2,	or	40,	4x5,	3 1/4 x 4 1/4,	or	3 1/2 x 3 1/2,	or	80,	2 1/4 x 3 1/4
6	Sepia	7x10	"	20,	5x7,	3 1/4 x 5 1/2,	or	40,	4x5,	3 1/4 x 4 1/4,	or	3 1/2 x 3 1/2,	or	80,	2 1/4 x 3 1/4

Price 30 cents each, either color.

Extra leaves, any color, complete with tissues, package of 5, 10 cents.

The Lakeside Album is covered with finely-finished imitation leather heavily backed, with an artistically designed panel for lettering. The leaves of this album (twenty) are black and of superior stock.

No.	Size of Leaf	Capacity,							
8	5 x 7 $\frac{1}{2}$	"	40,	3 $\frac{1}{4}$ x 5 $\frac{1}{2}$,	or 80,	2 $\frac{1}{4}$ x 3 $\frac{1}{4}$,			\$.40
9	5 $\frac{1}{2}$ x 7	"	40,	4 x 5, 3 $\frac{1}{4}$ x 4 $\frac{1}{4}$,	3 $\frac{1}{2}$ x 3 $\frac{1}{2}$,				.40
10	7 x 10	"	40,	5 x 7, or 80,	4 x 5, or 3 $\frac{1}{4}$ x 4 $\frac{1}{4}$,	or 160,	2 $\frac{1}{4}$ x 3 $\frac{1}{4}$,		.50
11	10 x 12	"	40,	8 x 10, or 80,	5 x 7, or 160,	3 $\frac{1}{4}$ x 4 $\frac{1}{4}$,	or 160,	4 x 5,	1.00

Order by number.

KODAK ALBUMS

On the loose leaf, lace system, and have plain gray leaves, of good, heavy stock, twenty leaves to the album. There is no printing on the leaves. The covers are of cloth in a delicate gray tint, with the title, "The Kodak Book," printed in gold leaf.

No. 101.	Size of leaf 5 x 6 1/2, 5 inches at back, 20 leaves,	\$1.00
No. 102.	Size of leaf 6 x 5, 6 inches at back, 20 leaves,	1.00
No. 103.	Size of leaf 7 x 6, 7 inches at back, 20 leaves,	1.10
No. 104.	Size of leaf 9 1/4 x 6 1/4, 9 1/4 inches at back, 20 leaves,	1.25
No. 105.	Size of leaf 6 1/2 x 9, 6 1/2 inches at back, 20 leaves,	1.25

KODAK DRY MOUNTING TISSUE

An entirely new product, by which prints can be mounted even on thin mounts without curl, no apparatus being required—just the tissue and a flatiron. Put up in different sizes in packages with full directions for use.

Sizes	
3½ x 8½, 3 dozen,	\$.10
3¼ x 4¼, 3 dozen,10
3¼ x 5½, 2 dozen,10
4 x 5, 2 dozen,10

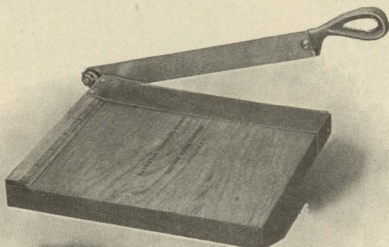
Sizes	
5 x 7, 1 dozen,	\$.10
6½ x 8½, 1 dozen,15
8 x 10, 1 dozen,20
5 yards, 20 inches wide (in roll), .	.75

BOOKS FOR THE AMATEUR

"The Modern Way in Picture Making." The most practical and common sense book ever published for the amateur. Superb illustrations. Nearly 200 pages. Printed on heavy enameled paper. Cloth bound. Title in gold.

"Modern Way in Picture Making," cloth bound, beautifully illustrated,	\$1.00
"Home Portraiture," by Frank Morris Steadman, an illustrated book to guide the amateur in portrait work, leather cover,75
Ditto, paper cover,25
"Amateur Portraiture by Flashlight," by William S. Ritch, a book full of valuable instruction,10

KODAK TRIMMING BOARDS



Made of hard wood, with natural finish, have fine quality steel blades and are fitted with rule.

No. 1, capacity, 5 x 5 inches,	\$.40
No. 2, capacity, 7 x 7 inches,60
Transparent Trimming Gauge, for either size, extra,20

FLASH SHEETS AND FLASH CARTRIDGES

OUR flash sheets are the softest, cleanest flash medium, giving a broad, soft light. As these sheets are not instantaneous, they give the effect of a short time exposure under a slightly subdued light—not the glare of the ordinary flash-powder. They do not startle the subject, nor give a staring effect to the eyes.

No. 1, per pkg. of half dozen sheets, 3 x 4,	\$.35
No. 2, per pkg. of half dozen sheets, 4 x 5,40
No. 3, per pkg. of half dozen sheets, 5 x 7,60
Eastman's Spreader Flash Cartridges, for use with pistol or fuse (price includes both fuse and cap), per pkg. of one-half dozen,25
Eastman's Spreader Flash Cartridge Pistol,50
Eastman's No. 1 Flash Cartridges, per pkg. of ½ doz.,60
Ditto, No. 2,40
Ditto, No. 3,25

DEVELOPING TRAYS

"Bull's-Eye" Composition, 3½x3½, \$.10	Paper, 4 x 5, \$.10
"Bull's-Eye" Composition, 4 x 5,12	Paper, 5 x 7,15
"Bull's-Eye" Composition, 5 x 7,30	Hard Rubber, 4 x 5,27
"Bull's-Eye" Composition, 3x8½,22	Hard Rubber, 5 x 7,56
"Bull's-Eye" Composition, 4½x14,50	

CHEMICALS

For Tank Developer Chemicals, see page 43

For Developing Machine Chemicals, see page 44

Eastman's Special Developer Powder, per pkg., 5 powders in sealed glass tubes,	\$.25
Eastman's Hydrochinon Developer Powders, per dozen,50
Ditto, per half dozen,25
Ditto, per pkg. 5 powders in sealed glass tubes,25
Eastman's Pyro Developer Powders, per dozen,50
Ditto, per half dozen,25
Ditto, per pkg. 5 powders in sealed glass tubes,25
Eastman's Dekko Developer Powders, per dozen,50
Ditto, per half dozen,25
Ditto, per pkg. 5 powders in sealed glass tubes,25
Royal Re-Developer, per pkg. of 6 tubes,75
Hypo Sulphite of Soda, pulverized, per pound,10
Kodak Acid Fixing Powder, per lb. pkg.,25
Ditto, per one-half lb. pkg.,15
Bromide Potassium, per ounce,15
Citric Acid, 4-ounce bottle,30
Solio Toning Solution, per 8-ounce bottle,50
Solio Toning Solution in 4-ounce bottles, as follows: 4 ounces Toning Solution (20c. extra, postpaid),30
Solio Hardener, per 8-ounce bottle,35

SUNDRIES

Eastman's Photo Paste, 3 oz. tube, \$.15	Graduate, 4 oz., \$.10
Eastman's Photo Paste, 5 oz. tube,25	Ditto, 8 oz.,15
Kodak Push Pins, per box ½ doz.,10	Ditto, 16 oz.,20
Kodak Candle Lamp,25	Ditto, 24 oz.,25
Solio Thermometer,40	Ferrottype Plate, 10 x 14, light,15
Eastman's Film Clips, 3½-inch, per pair (nickeled),25	Ditto, 10 x 14, heavy,20
Ditto, 5-inch,30	Ditto, 18 x 24, heavy,75
Ditto, 7-inch,35	Kodak Print Roller, 2 x 6-inch rubber rollers, nickeled frame,50
Kodak Film Clips, 5-inch (wooden), .15	Flexo Print Roller, 4-inch rubber roller, black enameled frame,15

KODAK MOUNTS

DUPLEX

CARBON BLACK ON ONE SIDE, SCOTCH GRAY ON THE OTHER. EACH SIDE SUITABLE FOR MOUNTING ON

For Prints	Size Outside	Per 100	Per 50	For Prints	Size Outside	Per 100	Per 50
1½ x 2	2¾ x 3¾	\$.20	\$.10	3½ x 3½	5 x 5	\$.50	\$.25
2¼ x 2¼	3¾ x 3¾	.30	.10	3½ x 4¼	4¾ x 5¾	.65	.35
1½ x 2¼	3¼ x 4	.30	.15	3½ x 5½	4¾ x 7	.65	.35
2¼ x 3¼	4 x 5	.40	.20	4 x 5	5½ x 6½	.65	.35
2½ x 4¼	4¼ x 6	.50	.25	4¼ x 6½	5¾ x 8	.95	.50
				5 x 7	7 x 9	1.00	.50

No orders accepted for less than fifty of one kind and size.

BEVPLANE

CARBON BLACK AND SCOTCH GRAY

For Prints	Size Outside	Per 100	Per 50	For Prints	Size Outside	Per 100	Per 50
1½ x 2	2¾ x 3¾	\$.30	\$.15	3½ x 5½	4¾ x 7	\$.90	\$.45
1½ x 2¼	3¼ x 4	.55	.30	4 x 5	5½ x 6½	.90	.45
2¼ x 3¼	4 x 5	.55	.30	2¼ x 7	4 x 8¾	.90	.45
2¼ x 4¼	4¼ x 6	.80	.40	4¼ x 6½	5¾ x 8	1.50	.75
3¼ x 3¾	5 x 5	.80	.40	5 x 7	7 x 9	1.75	.90
3¼ x 4¼	4¾ x 5¾	.80	.40	3½ x 12	5¾ x 13¾	1.75	.90

No orders accepted for less than fifty of one kind and size.

RIVIERA

ASH GRAY AND WHITE

For Prints	Size Outside	Per 100	Per 50	For Prints	Size Outside	Per 100	Per 50
1½ x 2	3 x 3¾	\$.30	\$.15	3½ x 4¼	4½ x 5¾	\$.65	\$.35
1½ x 2¼	3 x 3¾	.40	.20	4 x 5	5½ x 6½	.85	.45
2¼ x 2¼	3¾ x 3¾	.40	.20	3½ x 5½	5 x 7¼	.95	.50
2¼ x 3¼	3¾ x 4¾	.50	.25	4¼ x 6½	5¾ x 8	1.40	.70
2½ x 4¼	4½ x 5¾	.65	.35	5 x 7	7 x 9	1.50	.75
3½ x 3½	5 x 5	.65	.35				

No orders accepted for less than fifty of one kind and size.

NAPLES

QUEEN'S GRAY, ARTISTS' BROWN, AND JET BLACK

For Prints	Size Outside	Per 100	Per 50	For Prints	Size Outside	Per 100	Per 50
2¼ x 3¼	4 x 5	\$.75	\$.40	4 x 5	5½ x 6½	\$ 1.00	\$.50
2½ x 4¼	4¼ x 6	.85	.45	3½ x 5½	5¼ x 7½	1.10	.55
3½ x 3½	5 x 5	.85	.45	4¼ x 6½	6 x 8¼	1.50	.75
3¼ x 4¼	5 x 6	.90	.45	5 x 7	7 x 9	1.75	.90

No orders accepted for less than fifty of one kind and size.

WASHINGTON

QUEEN'S GRAY

For Prints	Size Outside	Per 100	Per 50	For Prints	Size Outside	Per 100	Per 50
2¼ x 3¼	4 x 5	\$ 1.10	\$.55	3½ x 5½	5¼ x 7½	\$ 1.40	\$.70
2½ x 4¼	4¼ x 6	1.15	.60	4 x 5	5½ x 6½	1.35	.70
3½ x 3½	5 x 5	1.15	.60	5 x 7	7 x 9	2.75	1.40
3¼ x 4¼	5 x 6	1.25	.65				

No orders accepted for less than fifty of one kind and size.

STEREO MOUNTS

QUEEN'S GRAY

Size of Mount	Per 100	Per 50
3½ x 7	\$.45	\$.25

No orders accepted for less than fifty of one kind and size.

DEVELOPING AND PRINTING

Finishing Kodak Cartridge Films on Velox Paper	Pocket Kodak, 1½ x 2	No. 0 Folding P. K., 1½ x 2½	No. 1 Folding P. K., 2¼ x 3¼	No. 1A Folding P. K., 2½ x 4¼	No. 2 Bull's-eye, Etc., 3½ x 9½	No. 3 F. P. K. No. 3 F. Brownie, etc., 3¼ x 4¼	No. 3A and 3B, 3¼ x 9½	No. 4 B. E., etc., 4 x 6	No. 4A, 4½ x 6½ 5 Kodaks, etc., 5 x 7
Developing, Printing, and Mounting 1-Film Cartridge,	\$.90	\$.95	\$ 1.40	\$ 1.50	\$ 1.50	\$ 1.50	\$ 1.50	\$ 1.80	\$ 1.20
Developing and Printing Unmounted,84	.89	1.28	1.38	1.38	1.38	1.40	1.68	1.05
Developing only,02	.03	.04	.06	.06	.06	.08	.08	.10
Printing and Mounting only, each,06	.06	.08	.08	.08	.08	.10	.10	.12½
Printing, Unmounted only, each,05½	.05½	.07	.07	.07	.07	.09	.09	.10
Developing, Printing, and Mounting, each,08	.08½	.12	.12½	.12½	.12½	.15	.15	.20
Developing and Printing Unmounted, each,07½	.08	.11	.11½	.11½	.11½	.14	.14	.17½

Above prices cover Cartridges of 12 exposures for Pocket Kodak No. 0 Folding, No. 1 Folding, No. 1A Folding, 3¼ x 3¼, No. 3 Folding, and No. 3 Folding Brownie; 10 exposures for Nos. 3A and 3B, and 6 exposures for No. 4A Folding, and 5 x 7. On orders for less, 25 cents extra will be charged.

Brownie Camera, Stereo and Panoram-Kodak sizes, on Velox.	No. 1 Brownie, 2¼ x 2¼	No. 2, and No. 2 Folding Brownie, 2¼ x 3¼	No. 1 Panoram, 2¼ x 7	No. 4 Panoram, 3½ x 12	No. 2 Stereo Kodak, 3¼ x 6	No. 2 Stereo Brownie, 3¼ x 5
Developing, Printing, and Mounting 1-Film Cartridge,	\$.50	\$.70	\$ 1.40	\$ 1.75	\$ 1.50	\$ 1.50
Developing and Printing Unmounted 1-Film Cartridge,47	.64	1.28	1.60	1.38	1.40
Developing only,03	.04	.08	.18	.12	.08
Printing and Mounting only, each,06	.08	.16	.20	.16	.10
Printing, Unmounted only, each,05½	.07	.14	.17	.14	.09

Above price list is for one full roll as follows: 6 exposures No. 1 and No. 2 Brownie; 10 exposures No. 2 Stereo Brownie; 6 exposures No. 2 Stereo Kodak; 6 exposures No. 1 Panoram, or 5 exposures No. 4 Panoram. On orders for less than a full roll, as above, 25 cents extra will be charged.

Prints are furnished unmounted in all cases, unless otherwise specified in order.

Unmounted prints on "Double Weight" Velox will be billed at mounted rates.

All prints are mounted with Kodak Dry Mounting Tissue, and therefore do not curl.

ENLARGEMENTS

	Each	Per Doz.		Each	Per Doz.
4¼ x 6½, on card,	\$.35	\$3.00	10 x 12, on card,	\$1.00	
6½ x 8½, on card,50	5.00	11 x 14, on card,	1.25	
8 x 10, on card,75		14 x 17, on card,	1.50	
Larger sizes in proportion.					
Lantern Slides,50	\$5.00

No extra charge for Sepia Tones on Royal or Enamel Bromide enlargements.

Where the kind of paper is not specified we will make the enlargements upon the paper which, in our judgment, is best suited to the negative and the subject.

Small extra charge for double or triple mounting.

SPECIMEN PRINTS

A SPECIMEN photograph made with any kodak (not larger than 4 x 5) will be sent to any address in the United States upon receipt of four cents in stamps; No. 4A Folding Kodak, No. 5 Cartridge Kodak, eight cents; Stereo, eight cents; No. 4 Panoram-Kodak, twenty cents.

TOURISTS

Travelers can always obtain fresh supplies of film at short notice at any one of the following addresses:

LONDON — Kodak, Limited, 57-61 Clerkenwell Road, E. C.; 60 Cheapside, E. C.; 115 Oxford Street, W.; 171-173 Regent Street, W.; 59 Brompton Road, S. W.; 40 Strand, W. C.

LIVERPOOL — Kodak, Limited, 96 Bold Street.

GLASGOW — Kodak, Limited, 72-74 Buchanan Street.

PARIS — Eastman Kodak Societe Anonyme Francaise, Avenue de l'Opera, 5; Place Vendome, 4.

LYONS — Eastman Kodak Societe Anonyme Francaise, 26-28 Rue de la Republique; 11 Rue du Palais-Grillet.

BERLIN — Kodak Gesellschaft, m. b. H., Friedrichstrasse, 16; Kodak Galerie, Leipzigerstrasse, 114; Unter den Linden, 26.

BRUSSELS — Kodak, Limited, 36 Rue du Fosse aux Loups; 59 Montagne de la Cour.

VIENNA — Kodak, Limited, Graben 29.

ST. PETERSBURG — Kodak, Limited, Bolschaja Konjuschennaja 1.

MOSCOW — Kodak, Limited, 15, 16 Petrovka.

MILAN — Societa Kodak, 10 Via Vittore Pisani; 34 Corso Vittorio Emanuele.

TORONTO — Canadian Kodak Company, 588-592 King Street, West.

TERMS

THE prices in this catalogue are strictly net, except to regular dealers who carry our goods in stock. For the convenience of our customers we recommend that they make their purchases from a dealer in photographic goods, as by so doing they can save both time and express charges.

EASTMAN KODAK CO.,
Rochester, N. Y.



JORDAN MARSH COMPANY,
WASHINGTON, SUMMER & AVON STS., BOSTON, MASS.