



The Digitized Kodak Catalog Project (1886 - 1941): A Very Brief History

Most camera collectors at some point in their collecting careers pass through a Kodak phase - some never come out of it. And if there ever was one name that came to be associated with both cameras and collecting, it was Kodak.

George Eastman received his first patent (for coating dry plates) and bought his first manufacturing facility in 1880, and in 1881 he started the Eastman Dry Plate Company. In 1886 he received a patent for the near-mythical Eastman Detective Camera, but it wasn't until 1888 that the first camera bearing the name "Kodak" was introduced.

One of the nice things about collecting Kodak is that the product line is pretty well known, and because the company produced annual catalogs for many years, collectors can be reasonably sure of what they're looking at, when it was made, the variations and so on - presuming that they have access to either the appropriate catalog, or a number of the many books which document Kodak, each to some greater or lesser extent.

But what would be really nice would be to have a complete set of Kodak catalogs in an easily accessible form and readily available. And since the advent of portable computing devices (PC, Macintosh, etc.) that's been possible - except for the difficulty of assembling a complete set of Kodak catalogs in one spot and then scanning them and making the results available.

The idea of digitizing a complete set of Kodak catalogs has kicked around the collecting community for many years. It's been proposed on a number of online forums, during meetings of various photohistory groups, and for years there have been many incomplete "Kodak CDs" on eBay but at best, they only contained a few catalogs - whatever the owner had available. But assembling a complete set of catalogs, then scanning and processing perhaps 3,000 to 4,000 pages, was a daunting task - if not completely overwhelming - and nothing ever came of it.

Until now.

In early 2010, the idea came up again, but this time we - "we" as in "the collecting community" - were lucky. A number of collectors were willing to loan their catalogs to this project and a couple of insane - wait, let's call them "dedicated" - dedicated enthusiasts - neither of whom collected Kodak, but both of whom enjoyed the challenge of such a project - were willing to put in the time and effort to scan and pull together the entire set of catalogs into a full-blown Kodak Catalog Digital Library.

Our initial objective was to include just the annual amateur catalogs, but it turns out that many cameras only appear in certain professional and specialty catalogs. We included as many of those as we could obtain so that almost every Kodak camera made in the US, Canada and Europe, would be documented - at least up to about 1941. After that, it becomes much more difficult as Kodak stopped producing annual catalogs as their product line became increasingly more diversified.

However, even with the additional "non-amateur" catalogs, we weren't completely successful in illustrating "every" camera Kodak ever made. There are an elusive few that might appear in specialty catalogs that we simply couldn't track down. If you can't find one of those odd cameras, that's no doubt why. We may do a revision at some point in the future if someone is willing to loan us a catalog that includes a camera that isn't already recorded.

In this project, a total of 67 catalogs were used from 1886 through 1941 including a number of professional and dealer catalogs, and in some years, two or even three different catalogs to cover all the bases. With the cooperation of a number of dedicated collectors, we were able to pull together all those catalogs and in June 2010, the project started in earnest.

By November 2010, we had scanned everything we needed and eventually all 67 catalogs were then reassembled as image folders and converted to the universally accepted PDF format and finally, converted into individually searchable PDFs which could then be searched globally as a collection.

For those of you interested in the statistics: about 200 hours of scanning time (we never want to hear that sound again), 67 catalogs and 3,908 page scans - which generated 7,917 original and processed images - and 11.4 GB of disk space. Additionally, another 100+ hours of technical development time was needed to convert the digital catalogues into a fully searchable "knowledgebase" that could be launched from most any standard web browser.

The overwhelming number of catalogs was loaned to us by that most remarkable of Kodak collectors, Charlie Kamerman of Eagle Creek, Oregon. Without Charlie, it's very doubtful that this project could even have been attempted.

But as it turned out, even Charlie didn't have all the publications that were needed, but he was able to track down the five that he lacked and was able to secure either a copy or high resolution images that we could work with. And so, our thanks to the contributors of the catalogs and scans that we used:

Charlie Kamerman for the vast majority of catalogs used and all his help,
Steve Shohet for loaning a variety of test catalogs,
Ryerson University (Toronto) for the 1886 Eastman Catalog
George Layne for the 1890 New Kodaks Catalog,
Mike Kessler for the 1891 Dealer Display Catalog,
Ralph London for the 1893 UK Catalog,
Michael Pritchard for the 1897 UK Catalog.

The digital side of the project - also known as "all of the work" - was done by Rob Niederman of Medina, Minnesota, and Milan Zahorcak of Tualatin, Oregon. Remarkably we're still friends and in a few years, we'll probably be able to talk about this project rationally.

And there you have it, a more-or-less done deal. We're fairly sure that it isn't quite perfect, and expect there will be some carping about something or other; but all-in-all, we believe this to be a pretty good product and can now move on to something else.

Our thanks to all of those involved.

Rob Niederman
Milan Zahorcak

Fall, 2011

KODAKS

AND

Kodak Supplies

1905

EASTMAN KODAK CO.

ROCHESTER, N. Y.

PUBLISHED BY THE
KODAK PRESS, AT ROCHESTER,
THE HOME OF THE KODAK

The Kodak at the Front.

THE KODAK has given to the world a vivid impression of war in its reality. During the past year, pictures of fleets in action, of armies on the march and of bloody battles have been reproduced on every hand in the pictorial press—and in nearly every case these pictures have been from Kodak negatives.

In all of the wars of the last decade the Kodak has played an important part. Under the peculiarly trying conditions which have prevailed in the Japanese-Russian conflict it has been almost alone at the front. Those correspondents who started out with elaborate plate equipments, abandoned them as their impracticability developed, and took only their Kodaks to the field of action. Publishers who are sparing no expense to secure war photographs tell us that nearly all of the important war pictures they receive are on film.

It's easy to see why the Kodak is the camera which the correspondent depends upon. Lightness and compactness he must have. His photographic supplies must take up the least possible room. His

instrument must stand hard usage and still take pictures; it must be proof against Manchurian extremes of temperature; it must load in daylight; it must permit of development under the most difficult conditions, and must make negatives of such quality that greatly enlarged pictures may be reproduced from them at the home office, thousands of miles away.

And these very qualities, which have made the Kodak indispensable to the correspondent, make it best for everybody.

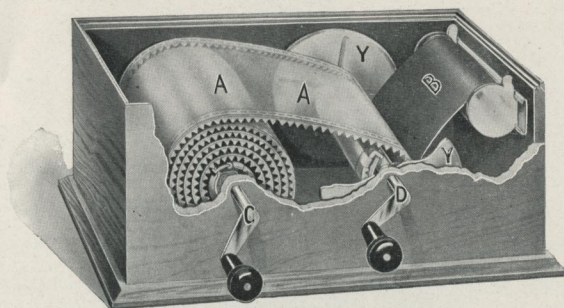
On the following pages we tell something of the Kodak system, with its film cartridges, its daylight development and its simple methods of operation—a system that has removed most of the opportunities for making mistakes.

EASTMAN KODAK CO.,
Rochester, N. Y.

Tank Development.

ANOTHER important step forward has been taken in photographic methods. We have a new and better way of developing film.

The latest process, "Tank Development," follows the idea of the Kodak Developing Machine so far as the daylight development feature goes, but instead of the roll of film being revolved through the developer it is allowed to remain stationary in the solution. Careful experiments with Tank Development prove that it gives negatives of better average than those developed in the dark-room and even better than those developed in the Kodak Developing Machine. With Tank Development the necessity of turning a crank throughout the process of development is obviated and the new method is even simpler than with the Kodak Developing Machine.

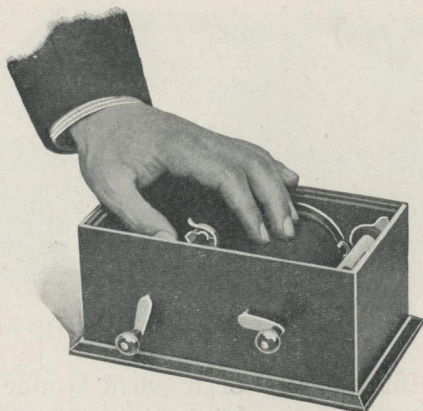


Kodak Tank Developer Box, for rolling film up with Transparent Apron.

The outfit consists of a small wooden box in which is a transparent red apron (A A) rolled on an axle (C), a carrier for holding the spool of film, and an

axle (D), holding in place a hollow rod at each end of which is a large metal flange (Y), this rod and flanges forming what is known as the "Transferring Reel." Besides this box there is a nickeled brass tank designated as the "Solution Cup." A slender rod with a hook at one end for the purpose of lifting the roll of film out of this cup is provided also.

After the exposed roll of film has been removed from the Kodak, it is placed in the carrier at end of the box opposite the roll of transparent apron, the black paper leading from the top. The black paper is fastened under the wire guard on the hollow rod through which axle D passes, the end of transparent apron hooked to the hollow rod and the cover placed on the box. The crank is then turned to the right, which operation rolls the apron and black paper up together, with the film next to the black paper face up. The roll of film is protected from actinic light by the red apron around it, and by the flanges at the end of the



The film is rolled up inside the transparent red apron.

hollow rod, and when fully rolled up may be safely removed from the box in daylight. Those who are familiar with the Kodak Developing Machine will observe that thus far the process is practically the same as with the Machine.

The developing solution is now prepared with powders and water and placed in the Solution Cup. The cover is removed from the box and the axle (D) is pulled out, thus releasing the transferring reel holding apron and film, which is taken out of the box and let down either end first, into the developing tank. This operation should be performed in a subdued light if



Placing film in developing tank.

possible. Development is allowed to go on for twenty minutes. The developer reaches all parts of the film immediately through holes in the hollow rod and through the ends of the roll. It is advisable to turn the roll of film end for end once or twice during development. The roll is pulled from the tank with the small hook.

When development is completed, the solution is

poured off and clear water let into the tank to rinse the film.

The roll is then removed, film separated in daylight from black paper and apron and placed in the waiting tray of fixing solution.

Kodak Tank Developers are made for all Kodak Cartridges up to and including five inch. With extra Solution Cups, Transferring Reels and Aprons, one can develop several rolls at a time if he wishes.

Tank Development for film is introduced only after the most exhaustive experiments in our factory have conclusively proved that it is by far the best way of developing film ever devised. The convenience of allowing development to proceed the full time without manipulation except reversing the Transferring Reel once or twice, needs no comment.

The Kodak Developing Machine was introduced by us in the face of the most violent criticism. Our faith in it was based, however, not on theory but on the most exhaustive experiments, and its three years of growing success have proven that we were right. We have used equal caution in our experiments with the Kodak Tank Developer. We have taken plenty of time. The quality of the work it produces is such as to prove that another forward step has been taken in the growth of the Kodak Idea—Simplicity.

The Kodak System.

ANYBODY who knows anything at all about photography is more or less familiar with the Kodak system of picture making.

For the absolute novice we would explain that Kodaks load in daylight with transparent film rolled into cartridges and protected from light during the processes of loading, unloading, and developing, by black paper. These Film Cartridges permit the taking of a half dozen or a dozen pictures without reloading the camera. After the exposures have been made the film is removed from the camera and developed as described in the preceding pages, by the Kodak Tank Developer process; or in the Kodak Developing Machine, or in a dark room.

This film when developed becomes the negative image, from which the pictures are printed on many different kinds of paper with a wide variety of tones and effects. Some of these Kodak papers are printed by sunlight; others print either by sunlight or by artificial light. These papers are made in a great variety of grades and give to the amateur choice of many color effects.

In the Kodak system everything is very simple. We make photography from start to finish so easy that one who knows nothing at all about it can, from the directions which we furnish with all of our goods, make good pictures, doing all the work himself, from the very first roll of film.

New Goods.

THE present season finds us with new models of cameras, new goods of every sort. The immense popularity of the No. 2 Folding Brownie leads us to offer the No. 3 Folding Brownie, a camera taking pictures $3\frac{1}{4} \times 4\frac{1}{4}$ inches; with a shutter having somewhat greater possibilities than the one on the No. 2. The latest Brownie has the automatic locking scale for focusing and is an attractive instrument.

The No. 2 Stereo Brownie camera is another new model offered to meet the need of an inexpensive stereoscopic camera among that rapidly growing class of photographers who desire pictures with perfect perspective. The Stereo Brownie is optically perfect, fitted with twin shutters having iris diaphragm stops.

A great improvement has been made in the Panoram Kodaks. They are now provided with a device for regulating the length of exposure and fitted with iris diaphragm stops, thus greatly increasing their scope.

To the No. 5 Cartridge Kodak we have given a longer focusing scale, by which it is possible to focus as close as $3\frac{1}{2}$ feet from the subject. This with a view of making the instrument complete for portrait work, to which it is now splendidly adapted. On many of the other Kodaks changes have been made—changes which would look insignificant in print, but which nevertheless mean pictures that are just a little better. There are new papers too, giving new tones, and new chemical solutions which we have discovered, that give different tones to the old papers.

Nepera Division has the new Velvet Velox, a semi-

matt surface paper with wonderful softness and charm. Other new Nepera products are Nepera Solution, a universal developer that can be used for paper or film or plates; N. A. Velox Liquid Developer, a developer that does away with abrasion marks on glossy Velox, and Velox Re-Developer, a new chemical solution for giving Sepia tones on Velox and Bromide papers.

Much Kodak apparatus has been given additional efficiency; the result of a year's experimenting, now with this thing, now with that, with the idea of discovering some place where an improvement could be made or a new feature added.

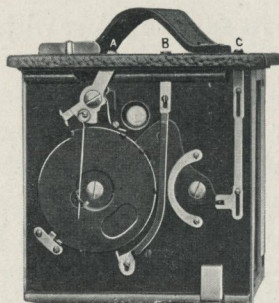
Kodak Competition.

WE believe the new Kodaks and Kodak goods and improved methods will be the means of enabling amateurs to make better pictures this year than ever before, and to encourage workers to do their best we offer \$2,000 in prizes, nearly all cash, for the best Kodak and Brownie pictures sent in before Nov. 15, 1905.

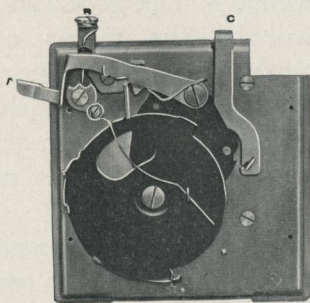
The competition is divided into two general classes, "Open" and "Novice", and these in turn are properly subdivided. The "Novice" class is open to *amateurs* who have never been awarded a prize in a photographic contest. Well-known photographic judges will award the prizes. Circulars giving full details may be had of any Kodak dealer or by mail.

EASTMAN KODAK CO.,
Rochester, N. Y.

Eastman
Rotary
Shutter.



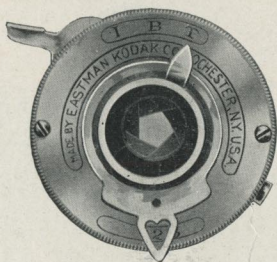
IT was the perfect simplicity of this shutter which had much to do with the success of the Bulls-Eye and the original Pocket Kodak. It is operated by simply throwing the lever A, alternately to the right and left. Lever B sets it for time and lever C operates the stops, of which there are three. It is supplied on the Bulls-Eye, the Flexo and the No. 1 and No. 2 Brownies. The No. 1 Brownie, however, has but one stop.



Eastman
Automatic
Shutter.

THIS shutter is always set and is extremely simple in operation. To make a snap shot, press lever B. To make a time exposure, press lever A. The three stops are operated by means of lever C.

A thoroughly satisfactory shutter, most carefully made and as carefully tested. Supplied on the No. 0 Folding Pocket Kodak.



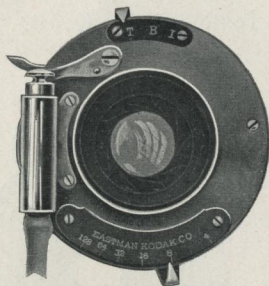
Brownie Automatic Shutter.

DESIGNED with special reference to the requirements of the smaller cameras. One pressure of the lever makes a snap.

With the "B" exposure, the shutter opens when lever is pressed and closes when it is released. Time exposures are made by pressing the lever once to open and again to close the shutter. Has iris diaphragm stops.

Supplied on the No. 2 Folding Brownie and No. 2 Stereo Brownie.

F. P. K. Automatic Shutter.

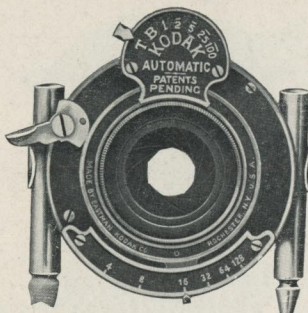


THIS shutter is admirably adapted to use on the superb little instruments with which it is listed.

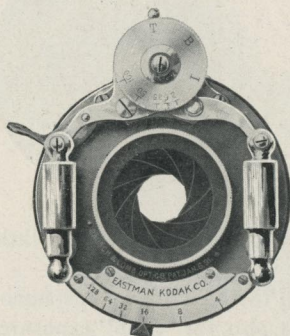
It is always set, a single pressure of the bulb giving instantaneous exposures of $\frac{1}{50}$ of a second. It has, also, the "bulb" exposure, by which the shutter opens when the bulb is pressed, and closes when it is released. Time exposures are made by pressing the bulb once to open and again to close the shutter. It has iris diaphragm stops Nos. 4, 8, 16, 32, 64 and 128.

Supplied on the No. 2, No. 3 and the No. 3A Folding Pocket Kodaks, and, without pneumatic release, on the No. 3 Folding Brownie.

Kodak Automatic Shutter.

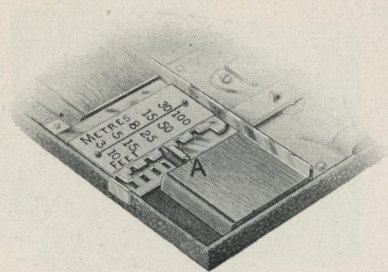


IN this new shutter the highest degree of excellence is attained. It gives automatic exposures from $\frac{1}{100}$ of a second to one second; has the "bulb" exposure by which the shutter opens when the bulb is pressed and closes when released; and the "time" action, one pressure of bulb opening and another closing shutter. Has iris diaphragm stops with scale for Nos. 4, 8, 16, 32, 64, 128. Supplied on No. 3 and No. 4 Cartridge Kodaks, and No. 4 Screen Focus Kodak, and as special equipments on the No. 3 and 3A Folding Pocket Kodaks.



The Unicum Shutter.

THE Unicum is well made, accurate and durable. It works with finger lever or bulb and by means of a pneumatic retarding device gives exposures from $\frac{1}{100}$ of a second to one second. It has also the "bulb" and "time" exposures and has iris diaphragm stops with scale for Nos. 4 to 128. This shutter is regularly fitted to the No. 5 Cartridge Kodak.



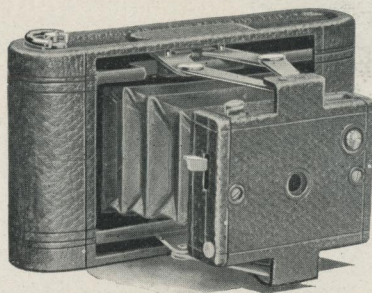
Automatic Focusing Lock.

A NEW feature of adjustment which we have introduced into a number of our cameras is an automatic locking device which greatly assists the operator in bringing his instrument to a quick and certain focus.

This focusing lock consists of a lever marked "A" in the above illustration and a scale of distances marked differently on the different cameras. Many times when one wishes to take a picture in a hurry he is careless about drawing the front bed of his camera out so that the pointer is *exactly* opposite the proper distance on the regular focusing scale. Then his picture is a little out of focus.

With the locking device, which in no way interferes with the regular focusing scale, all the operator does to get his camera in focus, is to set the lever A in the slot marked for the distance desired. Then pull out front of camera to limit of motion and the instrument catches and is in focus for the number of feet for which you have set the catch.

Frequently it is convenient to use the smaller instruments as fixed focus cameras. Those of the $3\frac{1}{2} \times 3\frac{1}{2}$ (or smaller) instruments which have the Automatic Focusing Lock, may be practically converted into "fixed focus" cameras by setting the lock at 20 feet and leaving it so set. For accurate work, however, it is advisable to make use of the other locking points.



No. 0 Folding Pocket Kodak.

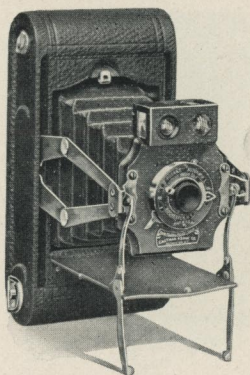
ALMOST for the vest pocket, this delightful instrument appeals strongly to those who wish to carry a Kodak on their outings, but require one with even more than the usual compactness. It slips into the pocket as readily as a wallet, is always ready and is of the highest quality in every detail. It can be carried anywhere without the least inconvenience and takes a perfect picture.

It is but $3\frac{1}{8}$ inches wide, $1\frac{3}{8}$ inches thick and $5\frac{5}{8}$ inches long, and weighs but 12 ounces, yet makes pictures $1\frac{5}{8} \times 2\frac{1}{2}$ inches. It has a fixed focus meniscus lens of perfect covering power, has the Eastman Automatic shutter and set of three stops described on page 12, is fitted with brilliant finder and loads in daylight for six or for twelve exposures.

Made of aluminum, covered with fine black seal grain leather and has nickeled fittings. As dainty as a lady's purse.

THE PRICE.

No. 0 Folding Pocket Kodak, for pictures $1\frac{5}{8} \times 2\frac{1}{2}$,	\$6.00
N. C. Film Cartridge, 12 exposures, $1\frac{5}{8} \times 2\frac{1}{2}$,25
Do., 6 exposures,15
Kodak Portrait Attachment,50
Black Sole Leather Carrying Case, with shoulder strap,	1.00



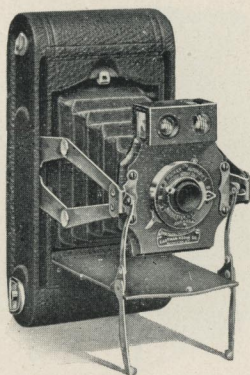
No. 1 Folding Pocket Kodak.

IMPROVEMENTS made this season upon this camera actually double its value as a practical instrument for tourists.

The No. 1 Folding Pocket Kodak is now fitted with the Pocket Automatic Shutter which has iris diaphragm stops and is adjustable for "instantaneous", "time" or "bulb" exposures. The front is also remodeled so that the camera closes compactly with all adjustments concealed, the bed folding automatically over the front board and bellows when they are pushed in. The two standards provided to support the camera when making vertical time exposures and shown in the illustration, swing up out of the way when the camera is closed or when it is being used for snap-shots. It has two brilliant finders, one for vertical and one for horizontal exposures. It has a capacity for 12 exposures $2\frac{1}{4} \times 3\frac{1}{4}$, yet measures only $1\frac{5}{8} \times 3\frac{1}{2} \times 6\frac{3}{4}$ inches and weighs 16 ounces. Covered with fine black seal grain leather.

THE PRICE.

No. 1 Folding Pocket Kodak, for pictures $2\frac{1}{4} \times 3\frac{1}{4}$ inches with Pocket	
Automatic Shutter,	\$10.00
N. C. Film Cartridge, 12 exposures, $2\frac{1}{4} \times 3\frac{1}{4}$,40
Do., 6 exposures,20
Kodak Portrait Attachment,50
Black Sole Leather Carrying Case, with shoulder strap,	1.25



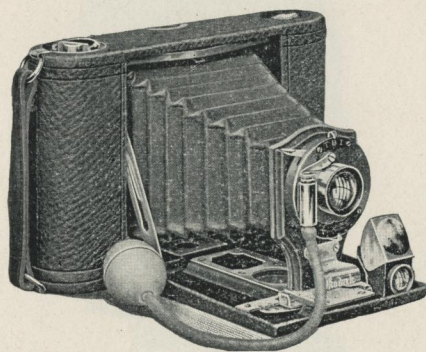
No. 1A Folding Pocket Kodak.

THE new features of the No. 1 are also embodied in the No. 1A Folding Pocket Kodak—Pocket Automatic Shutter with iris diaphragm stops, and with instantaneous, time and “bulb” exposure adjustments; new automatic closing front. The shape of the pictures this instrument takes is particularly artistic. Their size, $2\frac{1}{2} \times 4\frac{1}{4}$ inches, is well adapted to broad landscape views where the instrument is used horizontally, and to portraiture (especially full length figures,) where it is used vertically.

The lens is meniscus achromatic with a fixed focus of 5 inches. It has two brilliant finders and a capacity of 12 exposures without reloading. The size, $1\frac{3}{4} \times 3\frac{7}{8} \times 7\frac{3}{4}$ inches, is wonderfully small for an instrument of such great capabilities, and the weight is but 20 ounces. Made of aluminum, covered with fine black seal grain leather.

THE PRICE.

Folding Pocket Kodak No. 1A, for pictures $2\frac{1}{2} \times 4\frac{1}{4}$ inches, with Pocket Automatic Shutter,	\$12.00
N. C. Film Cartridge, 12 exposures, $2\frac{1}{2} \times 4\frac{1}{4}$,50
Do., 6 exposures,25
Kodak Portrait Attachment,50
Black Sole Leather Carrying Case, with shoulder strap,	1.25



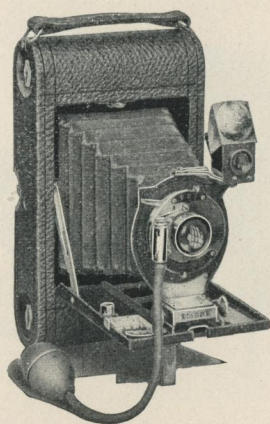
No. 2 Folding Pocket Kodak.

THIS camera is now regularly fitted with our F. P. K. Automatic shutter described on page 13, with iris diaphragm stops, and is equipped with our three lock automatic focusing device. By means of this new feature the instrument locks at 8 feet, 20 feet or 100 feet focus. It may, when desired, be locked at the 20 foot focus and used as a practical "fixed focus" camera. Every experienced worker knows, however, that the other adjustments are desirable even with so small a camera.

The No. 2 Folding Pocket Kodaks have a capacity of 12 exposures, $3\frac{1}{2} \times 3\frac{1}{2}$ yet measure but $1\frac{1}{2} \times 4\frac{1}{2} \times 6\frac{3}{4}$ inches, and weigh 18 ounces. They have double combination rapid rectilinear lenses of great speed, brilliant finder, and socket for tripod screw. They are made of aluminum, have the finest seal grain cover, and handsomely nickeled fittings.

THE PRICE.

No. 2 Folding Pocket Kodak, for pictures $3\frac{1}{2} \times 3\frac{1}{2}$ inches, with Rapid Rectilinear Lens and F. P. K. Automatic Shutter,	\$15.00
N. C. Film Cartridge, 12 exposures, $3\frac{1}{2} \times 3\frac{1}{2}$,60
Do., 6 exposures,30
Do., "Double-Two" Cartridge (4 exposures),20
Kodak Portrait Attachment,50
Black Sole Leather Carrying Case, with shoulder strap,	1.25



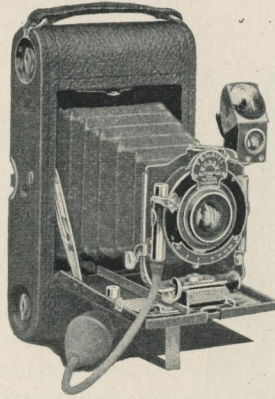
No. 3 Folding Pocket Kodak.

THE wonderful success of this camera is attributable to its simplicity and compactness, coupled with its adaptability to a wide range of work. It folds into such small compass as to be carried with little or no inconvenience in an ordinary coat pocket, yet has all the features and adjustments needed for the very highest kind of photography. It is an excellent camera for the tourist. It is generally used as a hand camera, but may be used with tripod, either for vertical or horizontal pictures.

The No. 3 Folding Pocket Kodak is fitted with our F. P. K. automatic shutter, described on page 13, and double combination lenses which are strictly rectilinear and very rapid. This shutter works either with trigger or pneumatic attachment. The camera has the automatic locking device, described on page 15, which greatly adds to the convenience of the instrument.

The camera has two tripod sockets, one for vertical, the other for horizontal exposures, and brilliant reversible finder with hood. Made of aluminum, covered with the finest black seal grain leather, the No. 3 F. P. K. is light, strong and handsome.

It has capacity for 12 pictures $3\frac{1}{4} \times 4\frac{1}{4}$ inches, yet weighs only 23 ounces, and measures but $1\frac{5}{8} \times 4\frac{1}{2} \times 7\frac{1}{2}$ inches. A desirable



No. 3 Folding Pocket Kodak with Rising Front and
Kodak Automatic Shutter.

No. 3 FOLDING POCKET KODAK.—Continued.

feature is the size, $3\frac{1}{4} \times 4\frac{1}{4}$, which adapts the negatives to the making of lantern slides by contact.

These instruments will be furnished with a rising and sliding front, for an extra charge of one dollar.

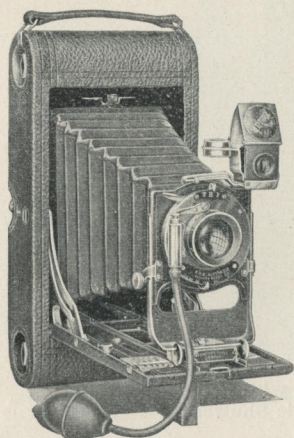
By the use of a simple Adapter these instruments may be readily used with glass dry plates. This attachment has a ground glass for focusing and uses single aluminum plate holders.

A rising and sliding front, a shutter of greater scope and anastigmat lenses, are desired by many amateurs with this high grade instrument. We furnish the camera with B. & L. Plastigmat or Goerz lens and the Kodak Automatic shutter described on page 14 as listed below.

THE PRICE.

*No. 3 Folding Pocket Kodak, for pictures $3\frac{1}{4} \times 4\frac{1}{4}$ inches, with Rapid Rectilinear Lens, speed <i>f.</i> 8, F. P. K. Automatic Shutter,	\$17.50
*Do., with Kodak Automatic Shutter,	25.00
*Do., with Kodak Automatic Shutter and B. & L. Plastigmat Lens No. 1, <i>f.</i> 6.8,	57.00
*Do., with Goerz No. o, series III, Anastigmat Lens, <i>f.</i> 6.8,	60.50
Black Sole Leather Carrying Case, with strap,	1.25
Glass Plate Adapter, with ground glass,	3.50
Single glass plate holders, $3\frac{1}{4} \times 4\frac{1}{4}$, each,50
N. C. Film Cartridge, 12 exposures, $3\frac{1}{4} \times 4\frac{1}{4}$,70
Do., 6 exposures,35
Do., "Double-Two" Cartridge (4 exposures),25
Kodak Portrait Attachment,50

*Add one dollar if Rising and Sliding Front is desired.

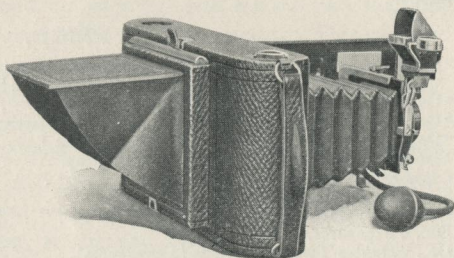


No. 3A Folding Pocket Kodak.

THIS instrument is the largest and most efficient of the Pocket Kodaks. It may be carried in a top coat pocket, yet the size and shape of the pictures it takes, $3\frac{1}{4} \times 5\frac{1}{2}$ inches, are such as to commend it to the most ambitious amateurs.

It really has all the practical features found in cameras of three times its bulk, yet the Kodak Simplicity is fully maintained, and the merest novice can operate the instrument with no further directions than those contained in the illustrated manual which goes with each camera sold. The Folding Pocket Kodaks have done much to demonstrate that bulky apparatus is not necessary even in serious work. This latest addition to the series still further proves the practical value of pocket instruments. The No. 3A Folding Pocket Kodak greatly widens the field of pocket photography.

The lenses furnished with the regular equipment are rapid rectilinear and are selected and tested with the utmost care. They have a focal



Showing Glass Plate Adapter with
Focusing Shade Raised.

No. 3A FOLDING POCKET KODAK.—Continued.

length of $6\frac{1}{2}$ inches and a speed of $f. 8$. The shutter is the new F. P. K. Automatic, fully described on page 13.

A desirable feature with which every No. 3A Folding Pocket Kodak is equipped is the rising, falling and sliding front. These adjustments assist the operator in a certain class of photographic work, such as photographing high buildings. There are tripod sockets for both vertical and horizontal exposures, a brilliant reversible finder, a spirit level, reversing with the finder and a focusing scale.

The camera also has the automatic locking device described on page 15 which will be found a great convenience when it is desired to take a picture on short notice.

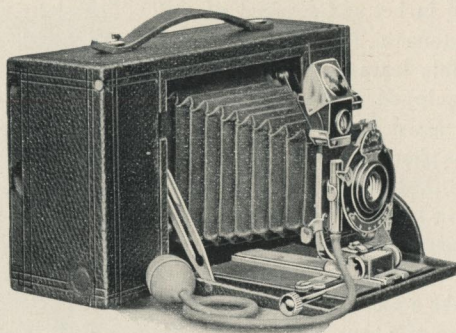
By the use of a simple adapter the No. 3A F. P. Kodaks may be used with glass plates, taking the standard size $3\frac{1}{4} \times 4\frac{1}{4}$. This attachment is simply an extra back for the camera, taking the place of the regular back, and can be placed in position in a few seconds. It has a ground glass for focusing and focusing shade, and with it are used single aluminum plate holders which are very light, yet safe.

Considering the size of the pictures and its wide capabilities the compactness of the camera is remarkable, the measurements being $1\frac{7}{8} \times 4\frac{3}{4} \times 9\frac{1}{2}$ inches, and the weight, loaded for 10 exposures $3\frac{1}{4} \times 5\frac{1}{2}$ inches, only 41 ounces. Made of aluminum, covered with the finest seal grain leather, and with full nickeled fittings, it is as strong, as durable and as handsome as it is efficient.

It is practical to fit the No. 3A Folding Pocket Kodaks with Plastigmat or Goerz lenses, prices of the cameras so fitted being given in the price list below.

THE PRICE.

Folding Pocket Kodak No. 3A, for pictures $3\frac{3}{4} \times 5\frac{1}{2}$ inches, with Rapid Rectilinear Lens, speed $f. 8$ and F. P. K. Automatic Shutter, . . .	\$20.00
Do., with Kodak Automatic Shutter, . . .	27.50
Do., with Kodak Automatic Shutter and B. & L. Plastigmat Lens No. 2 $f. 6.8$, . . .	65.00
Do., with Goerz No. 1, series III, Anastigmat Lens $f. 6.8$, . . .	70.00
Black Sole Leather Carrying Case with strap, . . .	1.50
Glass Plate Adapter, $3\frac{1}{4} \times 4\frac{1}{4}$, with ground glass, . . .	3.50
Single Glass Plate Holders, $3\frac{1}{4} \times 4\frac{1}{4}$, each,50
N. C. Film Cartridges, 10 exposures, $3\frac{1}{4} \times 5\frac{1}{2}$,70
Do., 6 exposures,40
Do., "Double-Two" Cartridge (4 exposures),30
Kodak Portrait Attachment,50



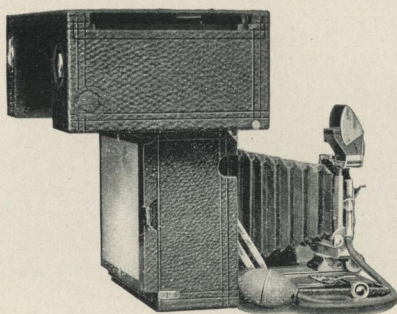
No. 4 Screen Focus Kodak.

THIS instrument is built upon the Cartridge system, daylight loading principle, but is distinct from all other Kodaks in that it permits focusing on the screen or ground glass without removing the roll of film from the camera. This is accomplished by simply swinging the roll holder containing the film out of the focal plane whenever it is desired to use the ground glass.

The operation of focusing then being accomplished as with the ordinary plate camera, the film holder and film is swung back into the focal plane, dark slide removed and the exposure made. Focusing of course may be done between each exposure.

A convenient feature in the construction of this camera is the recess provided for carrying the ground glass within the film holder part of the camera, where it is completely out of the way, but instantly available when desired for use. The dark slide which protects the film when raised out of the focal plane, is also carried in the roll holder.

This Kodak embodies ideas absolutely new in camera construction. It will be especially appreciated by that class of careful photographers who wish to use film on account of its convenience, yet who want to be able to perfect the composition of their picture by seeing it on the ground glass before exposure. This end is



Showing Ground Glass.

No. 4 SCREEN FOCUS KODAK.—Continued.

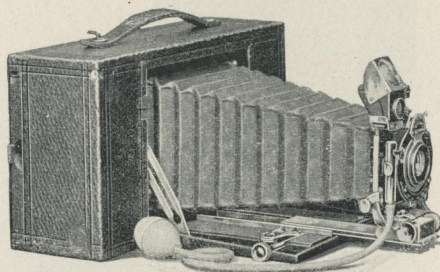
gained in the new cameras, while at the same time all the old Kodak simplicity is conserved.

In operating, the film cartridge is loaded into the camera in daylight in the usual way. To focus on the ground glass, first pull a dark slide from its position in the roll-holding part of the Kodak and insert it in front of the film. This renders the film chamber light-proof. The whole back of the Kodak containing film is then swung up out of the focal plane and a ground glass, always carried in the back of camera, is placed in position. The mechanism is such that the film cannot be swung up until the dark slide is in position in front of the film.

The roll holder being raised, it catches automatically and remains in the position shown in cut. The screen or ground glass frame is then removed from its recess in roll holder, described on preceding page, and snapped into position at the back of Kodak, an operation requiring but an instant. The raised roll holder projecting beyond the back of the Kodak will act as a focusing shade, or a focusing cloth may be used. After focusing, the ground glass is removed and returned to its place.

Pressure on a spring releases catch which holds roll holder in position shown in cut. The film is then let down into the focal plane, the dark slide removed and exposure made.

If desired the usual focusing scale may be used instead of the ground glass.



Showing Extension Front.

No. 4 SCREEN FOCUS KODAK.—Continued.

The No. 4 Screen Focus Kodak becomes a plate camera by merely removing the roll holder and adjusting the plate holder back containing ground glass and focusing shade, an operation requiring but a few seconds.

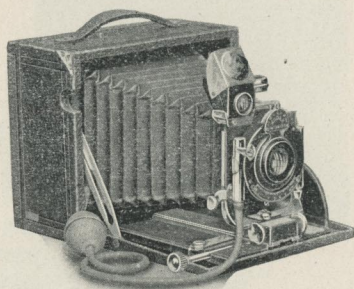
As a plate camera it is light, strong and convenient, being fully as compact as instruments which are constructed for use with plates only.

The optical equipment of the No. 4 Screen Focus Kodak consists of a Rapid Rectilinear lens of exceptional quality and the Kodak Automatic Shutter, described on page 14. It has rising and sliding front operated with the most convenient adjustment and a brilliant reversible finder with hood.

It is fitted with tripod sockets for both vertical and horizontal exposures, with either film or plates.

A feature which will commend the No. 4 Screen Focus Kodak to ambitious amateurs who wish to do their best work with film, is the double extension bed with which this camera is equipped. This allows the operator to work to within 22 inches of the subject when focusing the image upon the ground glass—insuring perfect accuracy and sharpness.

This Kodak, notwithstanding its many desirable features in construction and equipment, is by no means a bulky, cumbersome camera. When closed it measures only $10 \times 5\frac{3}{4} \times 3\frac{1}{8}$ inches.



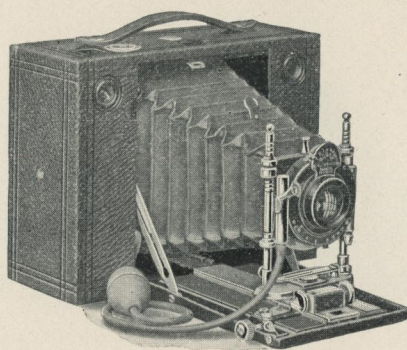
As a Plate Camera.

No. 4 SCREEN FOCUS KODAK.—Continued.

The workmanship on the Screen Focus Kodak is up to the high Kodak standard—which means the very best. No pains have been spared in construction and adjustment to make it satisfactorily accomplish the purpose for which it is intended—that of providing an instrument of the most advanced type. It is covered with the finest seal grain leather and has nickeled trimmings. It has a capacity of 12 exposures without reloading. Cartridges are provided also of 6 and 4 exposures each.

THE PRICE.

No. 4 Screen Focus Kodak, for 4 x 5 pictures, Rapid Rectilinear lens and Kodak Automatic Shutter,	\$30.00
Do., with Kodak Automatic Shutter and B. & L. Plastigmat lens No. 2, f. 6.8,	67.50
Do., with Goerz No. 1, Series III, Anastigmat lens, f. 6.8,	72.50
N. C. Film Cartridge, 12 exposures, 4 x 5,90
Do., 6 exposures,45
Do., Double-Two Cartridge (4 exposures),30
Black Sole Leather Carrying Case, velvet lined,	2.50
Glass Plate Adapter,	2.00
Double Glass Plate Holders, 4 x 5, each,	1.00
Kodak Portrait Attachment,50



Cartridge Kodaks.

IN the Cartridge Kodaks we have combined the simplicity of the cartridge system with those features of adjustment which give the instrument a wide range for all-around work. Their construction, of aluminum and mahogany, gives strength and lightness—points of great importance to the tourist.

The lenses furnished in the regular equipment are strictly rectilinear and very rapid, having a working speed of *f. 8*. Wide angle lenses, the cells of which fit the regular shutter, and which are easily attached, can be supplied at a very reasonable extra charge, and the cameras may be fitted with the high grade anastigmats.

The No. 3 and No. 4 Cartridge Kodaks are regularly fitted with our new Kodak Automatic Shutter, described on page 14, the No. 5 Cartridge Kodak being regularly equipped with the well-known Unicum Shutter, also described on page 14.

The new Cartridge Kodaks have an improved rising front which locks automatically, and also an improved side slide (rising when used for horizontal pictures) and have aluminum leather covered front boards. There are two brilliant finders and two spirit levels on each instrument. Glass plate attachments extra.

An extra extension to bellows, operated by means of rack and pinion, permits the photographing of objects at a distance of only 18 inches from the lens, and also permits of the advantageous use of a telephoto attachment when plates are used.

No. 3 Cartridge Kodak.

FILM AND PLATES.

For rectangular pictures, $4\frac{1}{4} \times 3\frac{1}{4}$ inches; capacity, 12 exposures without reloading; size, closed, $3\frac{1}{4} \times 5\frac{3}{4} \times 7\frac{1}{2}$ inches; weight, 2 lbs., 12 ozs.; length of focus of lens, 6 inches.

No. 3 Cartridge Kodak, Rapid Rectilinear Lens, Kodak Automatic Shutter,	\$20.00
Do., with Kodak Automatic Shutter and B. & L. Plastigmat Lens No. 1, <i>f</i> . 6.8,	52.00
Do., with Goerz No. 0, Series III, Anastigmat Lens, <i>f</i> . 6.8,	55.50
N. C. Film Cartridge, 12 exposures, $4\frac{1}{4} \times 3\frac{1}{4}$,	.70
Do., 6 exposures,	.35
Do., "Double-Two" Cartridge (4 exposures),	.25
Carrying Case,	1.50
Glass Plate Adapter, with ground glass,	2.00
Double Plate Holders, each,	1.00

No. 4 Cartridge Kodak.

FILM AND PLATES.

For rectangular pictures, 5×4 inches; capacity, 12 exposures without reloading; size of camera, $3\frac{1}{4} \times 6\frac{3}{8} \times 8\frac{1}{4}$ inches; weight, 3 lbs., 2 ozs.; length of focus of lens, $6\frac{1}{2}$ inches.

No. 4 Cartridge Kodak, Rapid Rectilinear Lens, Kodak Automatic Shutter,	\$25.00
Do., with Kodak Automatic Shutter and B. & L. Plastigmat Lens No. 2 <i>f</i> . 6.8,	62.50
Do., with Goerz No. 1, series III, Anastigmat Lens, <i>f</i> . 6.8,	67.50
N. C. Film Cartridge, 12 exposures, 5×4 ,	.90
Do., 6 exposures,	.45
Do., "Double-Two" Cartridge (4 exposures),	.30
Carrying Case,	2.00
Glass Plate Adapter, with ground glass,	2.50
Double Glass Plate Holders, each,	1.00

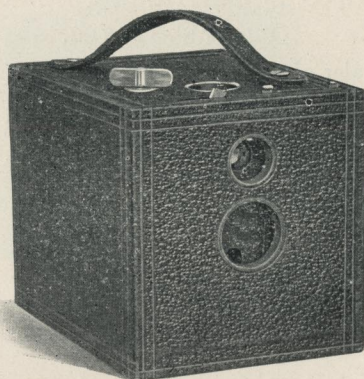
No. 5 Cartridge Kodak.

FILM AND PLATES.

For rectangular pictures, 7×5 inches; capacity, 6 exposures without reloading; size of camera, $3\frac{3}{8} \times 8\frac{1}{2} \times 10$ inches; weight, 4 lbs., 8 ozs.; length of focus of lens, $8\frac{1}{2}$ inches.

No. 5 Cartridge Kodak, Rapid Rectilinear Lens, Unicum Shutter,	\$35.00
Do., with B. & L. Automatic Shutter,	40.00
Do., with B. & L. Automatic Shutter and B. & L. Plastigmat Lens No. 3, <i>f</i> . 6.8,	84.50
Do., with B. & L. Automatic Shutter and Goerz No. 3, Series III, Anastigmat Lens, <i>f</i> . 6.8,	99.00
*N. C. Film Cartridge, 6 exposures, 7×5 ,	.80
Do., "Double-Two" Cartridge (4 exposures),	.55
Carrying Case,	2.50
Glass Plate Adapter, with ground glass,	3.00
Double Glass Plate Holders, each,	1.25

*Not furnished in 12 exposure cartridges.



No. 2 Flexo Kodak.

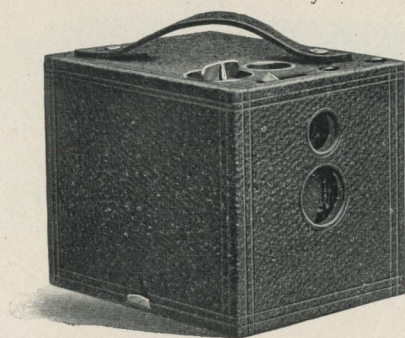
THE simplicity of this instrument commends it to beginners in photography. Its capabilities place it high in favor with those who are experienced. It is an efficient and reliable camera.

The No. 2 Flexo is fitted with achromatic lens having a fixed focus and has a set of three stops, finder, socket for tripod screw and our improved Rotary shutter described on page 12. It has a capacity of 12 exposures without reloading, making pictures $3\frac{1}{2} \times 3\frac{1}{2}$ inches, measures $4\frac{3}{8} \times 4\frac{5}{8} \times 5\frac{7}{8}$ inches, and weighs 19 ounces. Covered with fine grain leather and handsomely finished.

The Flexo, like the other Kodaks, is ready for use, the price including every requisite for taking pictures except the film. The film for this camera may be secured in cartridges of 12 exposures, 6 exposures or 4 (Double-Two) exposures.

THE PRICE.

No. 2 Flexo Kodak, for pictures $3\frac{1}{2} \times 3\frac{1}{2}$ inches, with Achromatic Lens,	\$5.00
N. C. Film Cartridge, 12 exposures, $3\frac{1}{2} \times 3\frac{1}{2}$,	.60
Do., 6 exposures,	.30
Do., "Double-Two" Cartridge (4 exposures),	.20
Kodak Portrait Attachment,	.50
Black Sole Leather Carrying Case, with shoulder strap,	1.25



No. 2 Bulls-Eye Kodak.

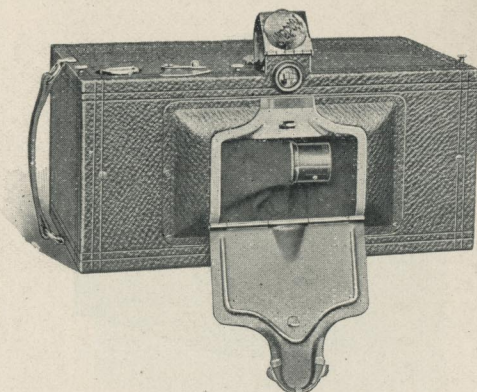
THIS instrument is the leader among box form cameras. It is to the last degree simple in operation, yet lacks none of the features necessary to securing the best pictures.

The No. 2 Bulls-Eye has a capacity for 12 pictures, $3\frac{1}{2} \times 3\frac{1}{2}$ inches, measures $4\frac{1}{2} \times 4\frac{5}{8} \times 5\frac{3}{4}$ inches, and weighs 22 ounces. It has a meniscus achromatic lens with fixed focus of $4\frac{1}{2}$ inches, the Eastman Rotary shutter, described on page 12, set of three stops, brilliant finder, socket for tripod screw. The No. 2 Bulls-Eyes are covered with the finest seal grain leather, have nicked fittings and are handsomely finished. They are easily and quickly opened for loading and for removing the film after the exposures have been made.

Like all other Kodaks they are subjected to the most rigid inspection before leaving the factory.

THE PRICE.

No. 2 Bulls-Eye Kodak, for pictures $3\frac{1}{2} \times 3\frac{1}{2}$ inches, fitted with meniscus achromatic lens,	\$8.00
N. C. Film Cartridge, 12 exposures, $3\frac{1}{2} \times 3\frac{1}{2}$,60
Do., 6 exposures,30
Do., "Double Two" Cartridge (4 exposures),20
Kodak Portrait Attachment,50
Black Sole Leather Carrying Case, with shoulder strap,	1.25



The Panoram Kodaks.

CERTAIN kinds of photographic work can only be done with the Panoram-Kodaks. To the traveler one of these instruments is almost indispensable, as it will enable him to take views which he would otherwise be unable to secure. As their name suggests, they are particularly for landscapes and marines, and the pictures they take have a breadth and beauty not attainable with the ordinary camera.

Vertical pictures of high waterfalls and mountain peaks, as well as horizontal pictures, give most delightful effects, while the great speed of the swinging lens and shutter, combined with the wide scope of view, make them unequaled in the taking of out-door group pictures, the subjects in such cases being arranged in a semi-circle and all at an equal distance from the Kodak.

The 1905 models of these instruments have greatly increased scope as the shutters are provided with a device giving a wide latitude in the speed of the exposure. The shutters have diaphragm stops with openings Nos. 8, 16, 32 and 64. Panoram-Kodaks have carefully tested lenses, two spirit levels, one for vertical and the other for horizontal exposures, and two tripod sockets. They have brilliant finders which show the sky and foreground, and by means of which the entire view may be examined by simply swinging the camera, before exposure, so as to take in the full scope of view, as

THE PANORAM KODAKS.—Continued.

indicated by the V shaped lines on top of camera. The No. 1 Panoram takes in an angle of view of 112° , while the No. 4 has the great scope of 142° . The Panoram-Kodaks are covered with the finest black morocco, have nickeled fittings and are beautifully finished.

The operation of the Panoram-Kodaks is perfectly simple and is rendered plain by the well illustrated and concisely written manual which accompanies each instrument. The Panorams use regular Kodak film cartridges.

No. 1 Panoram-Kodak.

USES NO. 1 FOLDING POCKET KODAK CARTRIDGES.

For pictures $2\frac{1}{4} \times 7$ inches; capacity, 6 exposures without reloading; size of camera, $3\frac{3}{8} \times 4\frac{1}{4} \times 7\frac{3}{8}$ inches; weight, 24 ounces; length of focus of lens, $3\frac{1}{16}$ inches; angle of view, 112° .

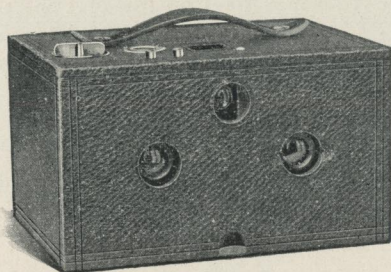
No. 1 Panoram-Kodak,	\$15 00
N. C. Film Cartridge, 6 ex., $2\frac{1}{4} \times 7$ (regular No. 1 Folding Pocket Kodak Cartridge),	.40
Do., 3 exposures,	.20
Black Leather Carrying Case, with shoulder strap,	1.75

No. 4 Panoram-Kodak.

USES NO. 4 BULLS-EYE FILM CARTRIDGES.

For pictures $3\frac{1}{2} \times 12$ inches; capacity, 5 exposures without reloading; size of camera, $4\frac{3}{4} \times 5\frac{1}{2} \times 10\frac{1}{8}$ inches; weight, 2 lbs., 14 oz.; length of focus of lens, 5 inches; angle of view, 142° .

No. 4 Panoram-Kodak,	\$20.00
N. C. Film Cartridge, 5 exposures, $3\frac{1}{2} \times 12$ (regular No. 4 Bulls-Eye Cartridges),	.90
Do., 2 exposures,	.45
Black Sole Leather Carrying Case, with shoulder strap,	2.00



No. 2 Stereo Kodak.

THESE cameras, resembling in model the well-known Bulls-Eyes, are equipped with twin Rapid Rectilinear lenses and a modified form of the Eastman Automatic Shutter. They use standard No. 2 Kodak Cartridges, which may be obtained the world over and may be loaded for one, two, three or six stereoscopic pictures of the standard size, $3\frac{1}{4} \times 6$ inches. A Stereo Kodak may also be used for single exposures by use of a blind over one lens, in which case the pictures are the same size as those made with the No. 2 Bulls-Eye Kodak, $3\frac{1}{2} \times 3\frac{1}{2}$ inches.

The Stereo Kodaks have sets of three stops, square, brilliant finder, spirit level, socket for tripod screw, are covered with fine seal grain leather and have nickeled fittings. They are simple and accurate and give correct stereoscopic effects.

Size of Kodak, $4\frac{3}{4} \times 6 \times 8\frac{1}{8}$ inches; weight, 2 lbs., 3 ozs. Length of focus of lenses, $4\frac{3}{4}$ inches.

THE PRICE.

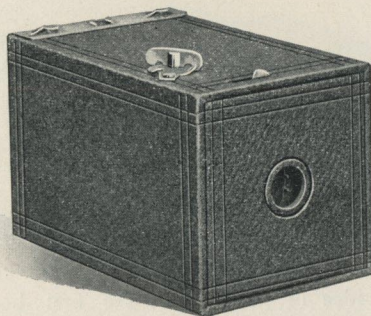
No. 2 Stereo Kodak, fitted with pair of Rapid Rectilinear lenses,	\$15.00
N. C. Film Cartridge, 6 stereo exposures (regular No. 2 Bulls-Eye 12 ex. cart.),	.60
Do., 3 exposures (No. 2 B.-E. 6 ex. cart.),	.30
Do., 2 exposures (No. 2 B.-E. "Double Two" cart.),	.20
Black Sole Leather Carrying Case, with shoulder strap,	2.00

The Brownie Cameras.

TO place photography within the grasp of children was our original idea in putting out the first box-form Brownie camera. With it we believed that youngsters could photograph their mates, the games they played, the places they visited, and have a great deal of fun making pictures. Indeed there's hardly a day in summer that a camera would not prove a source of the greatest enjoyment to the young folks and help out the "long vacation" with a diversion which isn't time thrown away. And now that there are so many simple ways of portrait making, with each step clearly defined, even the little Brownie opens an all the year 'round field for delightful photographic work.

These first Brownies proved very popular, but it soon developed that school boys and girls could handle successfully, cameras with more adjustments and wider range. It has developed too, that many "grown ups" found Brownie cameras inexpensive instruments with which they obtained pictures of very high quality. So we have been making bigger and better Brownies year by year and this season offer the No. 3 Folding Brownie, an instrument taking a picture $3\frac{1}{4} \times 4\frac{1}{4}$ inches, and No. 2 Stereo Brownie, described in the following pages.

These cameras retain much of the original simplicity yet open a very wide field of picture making to boys and girls and those who desire inexpensive cameras. With them picture taking is practical for young children, while the subsequent work of developing film and printing the picture is made so easy by daylight processes of development and simple methods of operation, that boys and girls without any previous experience can do surprisingly good work at the very outset.



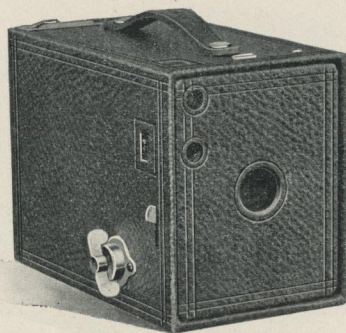
No. 1 Brownie Camera.

THIS is a wonderfully accurate and reliable little instrument and the splendid work which has been done with it by school children proves that photography as now simplified is by no means confined to "grown-ups".

The No. 1 Brownie Cameras make pictures $2\frac{1}{4} \times 2\frac{1}{4}$ inches, loading in daylight for 6 exposures. They have $3\frac{1}{4}$ inch focus meniscus lenses, and the Eastman Rotary shutter, described on page 12, the shutter, however, having one stop only. These instruments measure $3 \times 3\frac{1}{8} \times 4\frac{7}{8}$ inches and weigh 8 ounces. V shaped lines on top of camera give the scope of view, or a Brownie finder (detachable) may be provided for only 25 cents. The Brownies are strongly made, are covered with imitation leather and have nickeled fittings. Forty-four page instruction book free with every instrument.

THE PRICE.

No. 1 Brownie Camera, for $2\frac{1}{4} \times 2\frac{1}{4}$ pictures,	\$1.00
N. C. Film Cartridge, 6 exposures, $2\frac{1}{4} \times 2\frac{1}{4}$,15
Brownie Finder, detachable,25
No. 1 Brownie Carrying Case, holds camera and finder,50
No. 1 Brownie Developing and Printing Outfit, including Dekko Paper for 24 prints,90



No. 2 Brownie Camera.

THIS camera is similar to the No. 1 Brownie, but larger and with greater capability. These instruments in the hands of young children have produced remarkable photographs, while work of the highest character has been done with them by experts.

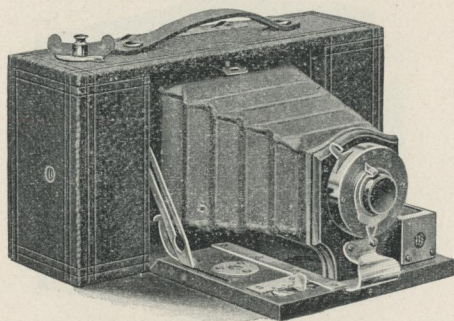
They are just as simple to operate as the No. 1, but take pictures $2\frac{1}{4} \times 3\frac{1}{4}$ inches. They have two finders, one for vertical and the other for horizontal exposures. They are fitted with the Eastman Rotary Shutter described on page 12, and have meniscus lenses with $4\frac{1}{2}$ inch focus.

The No. 2 Brownie Cameras measure $3\frac{1}{4} \times 4 \times 5\frac{5}{8}$ inches; weigh 13 ounces; are covered with fine imitation leather; have handsomely nickeled fittings, and are well made in every particular. Film for these cameras is furnished in cartridges of 6 exposures each.

These little instruments may be fitted with the Kodak Portrait Attachment described on page 41, by means of which they will make large bust photographs.

THE PRICE.

No. 2 Brownie Camera, for $2\frac{1}{4} \times 3\frac{1}{4}$ pictures,	\$2.00
N. C. Film Cartridge, for 6 exposures, $2\frac{1}{4} \times 3\frac{1}{4}$,20
No. 2 Brownie Carrying Case, with shoulder strap,75
No. 2 Brownie Portrait Attachment,50
A B C Developing and Printing Outfit, see page 48,	1.50



No. 2 Folding Brownie.

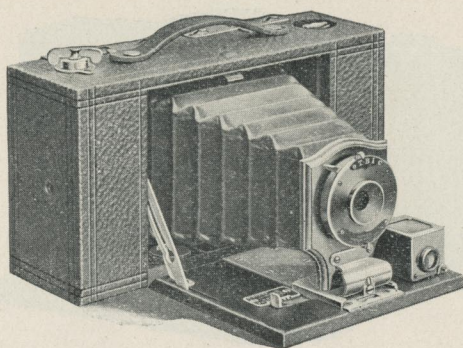
IN this camera the Brownie idea is extended to a folding camera with new features of equipment—almost a Kodak in fact.

The No. 2 Folding Brownie takes pictures $2\frac{1}{4} \times 3\frac{1}{4}$ inches and loads in daylight for 6 exposures. It has our Brownie Automatic shutter with iris diaphragm stops, described on page 13, and a fine meniscus lens. It has the three lock focusing device by which the front locks automatically at 8, 20 or 100 feet focus. This makes focusing very simple, yet greatly increases the scope of the camera. With the focusing lock set at 20 feet the instrument may be used as a fixed focus camera, very convenient when touring and sight seeing.

The No. 2 Folding Brownie has a reversible finder for making either vertical or horizontal exposures, has two tripod sockets, is covered with a fine quality imitation leather, has full nickeled fittings, and is beautifully finished.

THE PRICE.

No. 2 Folding Brownie Camera, for pictures $2\frac{1}{4} \times 3\frac{1}{4}$ inches, Brownie Automatic Shutter,	\$5.00
N. C. Film Cartridge, 6 exposures, $2\frac{1}{4} \times 3\frac{1}{4}$,20
No. 2 Folding Brownie Carrying Case,75
" 2 " " Portrait Attachment,50



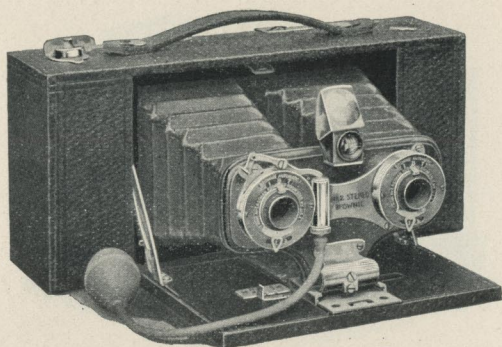
No. 3 Folding Brownie.

THIS instrument is similar to the No. 2 Folding Brownie, but takes a picture $3\frac{1}{4} \times 4\frac{1}{4}$ inches and is generally of greater capability. It is equipped with single achromatic meniscus lens and with a modification of the F. P. K. Automatic Shutter described on page 13, with stop openings Nos. 8, 16, 32 and 64. It loads for 12, 6, or 4 exposures. The No. 3 Folding Brownie meets the requirements of those who wish an inexpensive folding instrument taking a $3\frac{1}{4} \times 4\frac{1}{4}$ picture. It has the automatic locking device for quick focusing, see page 15, with scale for 8, 20 and 100 feet.

The camera weighs 25 ounces and measures $8\frac{3}{8} \times 4\frac{5}{8} \times 2\frac{5}{8}$ inches. It has reversible finder for vertical and for horizontal exposures, two tripod sockets and is covered with imitation leather. The fittings of this camera are heavily nicked and the same care in construction of each part is taken as with the more expensive instruments.

THE PRICE.

No. 3 Folding Brownie Camera, for pictures $3\frac{1}{4} \times 4\frac{1}{4}$ inches, Automatic Shutter,	\$9.00
N. C. Film Cartridge, 12 exposures, $3\frac{1}{4} \times 4\frac{1}{4}$,70
Do., 6 exposures, $3\frac{1}{4} \times 4\frac{1}{4}$,35
Do., "Double-Two" Cartridge, (4 exposures),25
No. 3 Folding Brownie Carrying Case,	1.00
" 3 " " Portrait Attachment,50



No. 2 Stereo Brownie.

THIS is an accurate stereoscopic camera and will appeal to that growing class of photographers who wish an inexpensive outfit for making pictures having perfect perspective.

The No. 2 Stereo Brownies are equipped with excellent twin single achromatic meniscus lenses and twin Brownie Automatic Shutters. These shutters are the same as the Brownie Automatic described on page 13 except that they have four stop openings and operate with either bulb or finger release. They operate simultaneously, all the adjustments being on the right hand shutter. Stereo Brownie cameras use daylight loading cartridge film. Each picture is $3\frac{1}{4} \times 2\frac{1}{2}$ inches.

The instruments weigh 29 ozs. each and measure $9\frac{3}{4} \times 4\frac{1}{2} \times 2\frac{1}{2}$ inches. Stereo Brownies have brilliant finders and the three lock automatic focusing device. They are covered with imitation leather and have nickeled fittings, and are fitted with tripod socket. They are in every respect perfect stereoscopic instruments.

THE PRICE.

No. 2 Brownie Stereo, fitted with pair of Brownie Automatic Shutters,	\$12.00
N. C. Film Cartridge, 10 Stereo exposures,70
Do., 6 Stereo exposures,40
Do., "Double-Two" (4 Stereo exposures),30
Carrying Case,	1.00



Kodak Portrait Attachments.

FOR portrait making one does not need to have elaborate apparatus. A fifty-cent attachment on a small Kodak or Brownie camera will enable one to make good sized head and shoulder pictures—while the attachments which we now furnish for the Cartridge and other Kodaks of larger size, enable one to make bust portraits of any size desired, limited only by the dimensions of the plate.

The Kodak Portrait Attachments are simply extra lenses which slip on in front of the regular lenses. The quality of work done with them is the very best.

They in no way affect the operation of the fixed focus Kodaks except that they make them cut sharp at a distance of $3\frac{1}{2}$ feet, and thus throw more distant objects out of focus. They may also be used to good advantage with the Cartridge Kodaks, the Screen Focus Kodaks and the No. 3 and No. 3 A Folding Pocket Kodaks. With the attachment in place, the focus of these instruments set at 15 feet, and the subject $3\frac{1}{2}$ feet from the camera, admirable bust portraits are obtained, and by changing the focus, it is practical to work at different distances, thus increasing or diminishing the size of the image.

THE PRICE.

Kodak Portrait Attachment, \$.50

For use with all regularly equipped Kodaks listed in this catalogue except the Panoram Kodaks. May also be used with the No. 2 Brownie and No. 2 and No. 3 Folding Brownie Cameras.

Be sure and give exact designation of instrument when ordering, and when to be used with a pneumatic release shutter also give exact designation of same.

The Anastigmat Advantage.

ALMOST any lens will do good work if you do not ask too much of it. The speed of the shutter and the size of the stop openings must, however, be in harmony with the power of the lens. The stop opening must be small enough to make it cut a sharp picture. If this opening is small the shutter must be relatively slow in order to allow light enough to pass through the lens to affect the sensitive film.

Take for instance the cameras with single lenses. The openings are comparatively small, but the shutters are not of high speed and snap-shots can therefore be made on any ordinarily bright day.

Our double combination or "Rapid Rectilinear" lenses are considerably faster, the largest opening that will give sharp results being one-eighth of their focal length, designated as $f/8$. Such lenses will make snap-shots in sunlight in a hundredth of a second and with the shutter working at a fiftieth will make very satisfactory negatives on hazy days.

When lenses of still greater speed are required we get into the Anastigmat class, the representative lenses of which are the Goerz Series III Anastigmats and the Bausch & Lomb Plastigmats. These lenses consist of several pieces of glass most carefully ground and adjusted and the diameter of the largest opening is more than one-seventh of the focal length—designated $f/6.8$. It is this large opening that gives the speed. Under good light conditions they may be used with high speed shutters for photographing the most rapidly moving objects, but the great advantage of the Anastigmat lies in the fact that it permits the making of slow instantaneous exposures on days when they would be out of the question with a single lens and when results would be doubtful even with a Rapid Rectilinear.

Relatively the same thing is true in time exposures. Suppose that in making a home portrait three seconds' exposure were required with the Rapid Rectilinear lens. The Anastigmat would cut the exposure to two seconds—a decided advantage if baby is the subject.

You do not always need to avail yourself of the high speed of the Anastigmat, but when you do need it, it is there. Either of the two makes of these lenses which we list will prove a source of much satisfaction to the Kodaker.

Anastigmat Lenses.

Special Shutter Equipments.

The No. 3 and No. 3A Folding Pocket, No. 4 Screen Focus and the Cartridge Kodaks may be equipped as follows :

THE PRICE.

	SHUTTERS:	
	Kodak Automatic.	Volute.
*No. 3 Folding Pocket Kodak, B. & L. Plastigmat Lens, No. 1, <i>f.</i> 6.8,	\$57.00	\$64.00
*Do., Goerz No. o, Series III, Anastigmat Lens, <i>f.</i> 6.8,	60.50	67.50
No. 3A Folding Pocket Kodak, B. & L. Plastigmat Lens, No. 2, <i>f.</i> 6.8,	65.00	72.00
Do., Goerz No. 1, Series III, Anastigmat Lens, <i>f.</i> 6.8, .	70.00	77.00
No. 3 Cartridge Kodak, B. & L. Plastigmat Lens, No. 1, <i>f.</i> 6.8,	52.00	66.00
Do., Goerz No. o, Series III, Anastigmat Lens, <i>f.</i> 6.8,	55.50	69.50
No. 4 Cartridge Kodak, B. & L. Plastigmat Lens, No. 2, <i>f.</i> 6.8,	62.50	76.50
Do., Goerz No. 1, Series III, Anastigmat Lens, <i>f.</i> 6.8,	67.50	81.50
No. 4 Screen Focus Kodak, B. & L. Plastigmat Lens, No. 2, <i>f.</i> 6.8,	67.50	81.50
Do., Goerz No. 1, Series III, Anastigmat Lens, <i>f.</i> 6.8,	72.50	86.50
No. 5 Cartridge Kodak, B. & L. Plastigmat Lens, No. 3, <i>f.</i> 6.8,	B. & L. Automatic. 84.50	93.50
Do., Goerz No. 3, Series III, Anastigmat Lens, <i>f.</i> 6.8,	99.00	108.00

*Add one dollar for rising and sliding front.

Kodak Wide Angle Lenses.

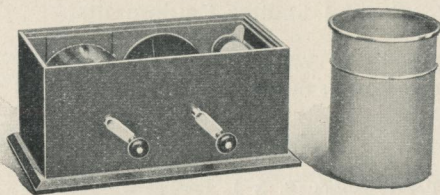
These lenses have a speed of *f.* 16, and are interchangeable with the lenses furnished with the Cartridge Kodaks and the No. 4 Screen Focus Kodak.

The Wide Angle Kodak lenses are rectilinear and are carefully tested, not only at the factory where they are manufactured, but by our own inspector. They are absolutely high grade in every instance. With each one we furnish a leather case and a properly graduated focusing scale for attaching to the camera bed.

In ordering, give size (No.) of Kodak and specify the shutter the lens is to be used with.

THE PRICE.

No. 3 ($3\frac{3}{4} \times 4\frac{1}{4}$) Wide Angle Kodak Lens, equivalent focus, $3\frac{1}{2}$ inches, speed <i>f.</i> 16,	\$5.00
No. 4 (4×5) Wide Angle Kodak Lens, equivalent focus, $4\frac{1}{2}$ inches, speed <i>f.</i> 16,	5.00
No. 5 (5×7) Wide Angle Kodak Lens, equivalent focus, $5\frac{1}{2}$ inches, speed <i>f.</i> 16,	7.50



Kodak Tank Developer.

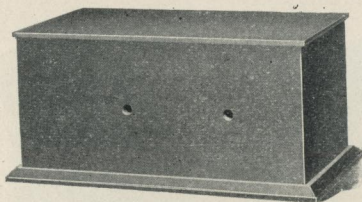
THE Kodak Tank Developer makes the daylight development of film a very simple process and the resulting negatives are of a higher average than those produced by any other method. The box in which the film is rolled up in the light-proof apron is well made, with a mahogany finish. The metal parts are nickered. The tank for the developer is of brass, heavily nickered. There is also provided a wire hook for lifting the roll of film and apron from the tank.

Both handles of the box are removable and together with the tank and apron can be packed inside the box, thus making the entire outfit self contained. It can then be packed in trunk or suit case. A dummy film cartridge is provided with each Tank Developer sold, with which a little experimenting may be done before starting to develop an exposed roll.

Kodak Tank Developers are made in three sizes, the "5 inch," the "3 1/2 inch" and "Brownie," the latter taking only 2 1/4 inch Brownie film.

With the Kodak Tank Developer the amateur can develop a number of rolls of film at once; merely providing himself with extra tanks, aprons and reels which will be found listed (Duplicating Outfits) in the price list below.

For details of the operation of Kodak Tank Developers see pp. 9-11. With each one sold is an illustrated manual containing precise directions, so that the amateur can readily be successful in developing his first roll of film.



The entire outfit is self contained.

All Kodak and Brownie cartridges except the No. 5 Cartridge Kodak may be developed in the Tank Developer. Any Roll Holder cartridges, except the 12 exposure No. 4 Horizontal, and the No. 5 may also be developed in the Tank Developer.

THE PRICE.

Brownie Kodak Tank Developer. For use with No. 1, No. 2 and No. 2	
Folding Brownie Cartridges, complete,	\$2.50
Duplicating Outfit for same, consisting of 1 Solution Cup, 1 Transferring	
Reel and 1 Apron,	1.50
3 1/2 inch Kodak Tank Developer. For use with all Kodak or Brownie	
Cartridges having a spool length of 3 1/2 inches or less, complete,	4.00
Duplicating Outfit for same, consisting of 1 Solution Cup, 1 Transferring	
Reel and 1 Apron,	2.00
5 inch Kodak Tank Developer. For use with all Kodak and Brownie	
Cartridges having a spool length of 5 inches or less, complete,	5.00
Duplicating Outfit for same, consisting of 1 Solution Cup, 1 Transferring	
Reel and 1 Apron,	2.50

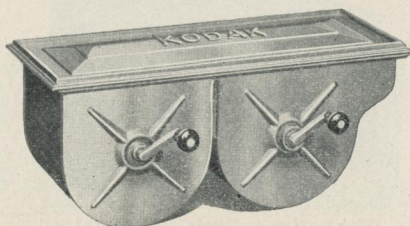
Kodak Tank Developer Supplies.

All the amateur needs in the line of supplies for the Kodak Tank Developer are developing powders, and Kodak Acid Hypo for fixing. The developer powders listed below are carefully prepared in accordance with our latest experimenting.

The developing solution is prepared by simply dissolving the powders in water. No graduate is needed, the water being measured in the solution cup.

A wooden stirring rod will be found convenient in preparing the developer, but a spoon or even a stick will do.

Kodak Tank Developer Powders, Brownie, per pkg. of 1/2 doz.,	\$.15
Do., for 3 1/2 inch Tank, per pkg. 1/2 doz.,	.20
Do., for 5 inch Tank, per pkg. 1/2 doz.,	.25
Kodak Acid Fixing Powder, per 1/2 lb. pkg.,	.15
Do., per 1 lb. pkg.,	.25



Kodak Developing Machines.

THE Kodak Developing Machines are of brass and fully nickelled. They may be readily packed in the traveler's trunk or suit case, or may be carried as hand baggage in their handsome wooden cases. All Kodak or Brownie film cartridges may be developed in these machines. Any roll holder cartridges, except the 12 exposure No. 4 Horizontal (4-inch spool) and the No. 5, may also be developed in the Kodak Developing Machine.

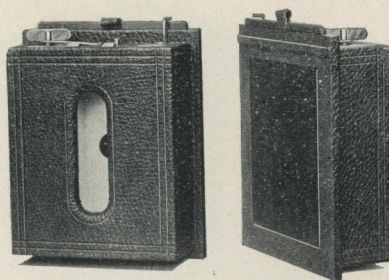
THE PRICE.

STYLE A KODAK DEVELOPING MACHINE. For use with No. 0, No. 1 and No. 1A Folding Pocket Kodak, No. 1 Panoram-Kodak and No. 1 and No. 2 Brownie cartridges (price includes a handsomely finished wooden carrying case, with leather handle),	\$ 6.00
STYLE E KODAK DEVELOPING MACHINE. For use with Kodak and Brownie cartridges of all sizes up to and including 4 x 5 (price includes a handsomely finished wooden carrying case, with leather handle),	7.50
STYLE H KODAK DEVELOPING MACHINE. For use with No. 5 Cartridge Kodak Films or any smaller size (price includes a handsomely finished wooden carrying case, with leather handle),	10.00
BROWNIE DEVELOPING MACHINE, MODEL B. For use with No. 1, No. 2, and No. 2 Folding Brownie cartridges,	2.00

Kodak Developing Machine Sundries.

Kodak Developing Outfits for use with Kodak Developing Machines, include Developer Powders, Kodak Acid Fixing Powder, Graduates, Stirring Rod, Glycerine and Squeegee.

"A" for use with Style A Machine,	\$1.25
"E" for use with Style E Machine,	1.60
"H" for use with Style H Machine,	2.00
"Brownie" for use with Brownie Machine,	.75
Kodak Developer Powders for style A Machine, per package of ½ dozen,	.20
Do., for Style E Machine,	.25
Do., for Style H Machine,	.35
Do., for Brownie Machine,	.15
Kodak Acid Fixing Powder per lb. pkg.,	.25



Cartridge Roll Holders.

BY means of the Cartridge Roll Holders those having plate cameras can avail themselves of many of the advantages of the Kodak System at slight expense. They can be fitted to any ordinary camera by an intelligent cabinet maker, or we will do the fitting for a small charge, varying, of course, according to the camera and the work necessary.

Special Spools for Cartridge Roll Holders.

In ordering cartridges, be sure and state that they are for Cartridge Roll Holder, giving length of spool and size of roll holder, as the film and paper are wound differently from those used in the Bullets, Bulls-Eyes, etc. Kodak spools will not fit Cartridge Roll Holders

THE PRICE.

No. 3 Cartridge Roll Holders, for $4\frac{1}{4} \times 3\frac{3}{4}$ pictures, $\frac{1}{4}$ inch spool, . . .	\$5.00
No. 4 (4×5) Cartridge Roll Holders, (specify whether vertical or horizontal), . . .	5.00
No. 5 Cartridge Roll Holders, 7 inch spool,	6.50

N. C. FILM CARTRIDGES.

$\frac{1}{4}$ inch, for No. 3 Cartridge Roll Holder, 12 exposures,70
Do., 6 exposures,35
4 inch, for No. 4 Horizontal Cartridge Roll Holder, 12 exposures,90
Do., 6 exposures,45
5 inch, for No. 4 Vertical Cartridge Roll Holder, 12 exposures,90
Do., 6 exposures,45
7 inch for No. 5 Cartridge Roll Holder, 12 exposures,	1.60
Do., 6 exposures,80



Developing and Printing Outfits.

EASTMAN'S A B C DEVELOPING AND PRINTING OUTFIT includes every requisite for developing by the dark-room method, printing and finishing 24 4 x 5, 2 1/2 x 4 1/4, or 3 1/4 x 4 1/4, or 96 1 5/8 x 2 1/2 pictures.

EASTMAN'S A B C DEVELOPING AND PRINTING OUTFIT.

1 Kodak Candle Lamp,	\$.25
1 4 x 5 Printing Frame,25
" Glass for do.,05
1 4 oz. Graduate,10
1 Stirring Rod,05
4 4 1/2 x 5 1/2 Developing Trays,40
5 Tubes Eastman's Special Developer,25
1/2 lb. Kodak Acid Fixing Powder,15
1/2 oz. Bromide Potassium,10
2 doz. 4 x 5 Solio Paper,25
2 ozs. Solio Toning Solution,15
1 oz. Glycerine,05
Instruction Book,10

\$2.15

Price, complete, neatly packed, \$1.50

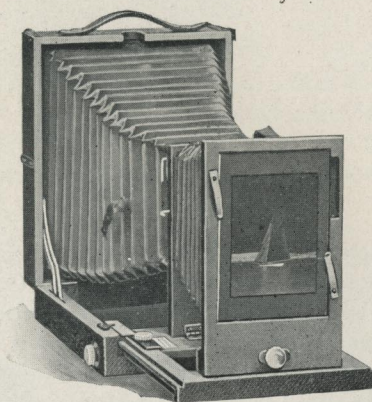
EASTMAN'S BULLS-EYE DEVELOPING AND PRINTING OUTFIT, complete, for developing and printing 12 pictures 3 1/2 x 3 1/2. Similar to above outfit, but containing 1 dozen 3 1/2 x 3 1/2 Solio paper and smaller quantities of chemicals.

Price, complete, neatly packed, \$1.25

BROWNIE DEVELOPING AND PRINTING OUTFIT, complete, for developing 24 pictures 2 1/4 x 2 1/4 and printing on Dekko paper.

Price, complete, \$.90

NOTE—These outfits cannot be shipped by mail.



The Kodak Enlarging Camera.

THIS new instrument enables the amateur to gratify his ambition for large pictures, without the bother of carrying about a large camera, and moreover it is simple, convenient and inexpensive.

By its use enlargements up to $6\frac{1}{2} \times 8\frac{1}{2}$ are made from 4×5 , and $3\frac{1}{4} \times 4\frac{1}{4}$ negatives. Smaller negatives enlarge to approximately 4×5 or 5×7 , depending, of course, on the size of the negatives. Focusing may be done by the scale or on the ground glass as desired. The enlarging is done by daylight, no dark-room being necessary, except for loading holder and for development.

May be used as a portrait camera by removing negative carrier and lens and substituting a suitable lens, the change being made in a few seconds. In every detail a high-grade and efficient piece of apparatus.

THE PRICE.

No. 1 Kodak Enlarging Camera, equipped for making enlargements from 4×5 glass negatives or from film negatives of any size, $4 \times 5\frac{1}{2}$ inches, or smaller,	\$15.00
$6\frac{1}{2} \times 8\frac{1}{2}$ Inside Kits, 5×7 opening,35
Do., 4×5 opening,35
Glass Negative Holders, $3\frac{1}{4} \times 4\frac{1}{4}$,50
Do., $3\frac{1}{2} \times 3\frac{1}{2}$,50
Do., $3\frac{1}{4} \times 3\frac{1}{2}$,50
Special Portrait Lens, $8\frac{1}{2}$ in. focus, speed $f. 8$ for bust work,	7.50
Extra Lens Board,75

No extra charge for fitting lens board to our Special Portrait Lens. Fitted to any other suitable lens at small extra charge.

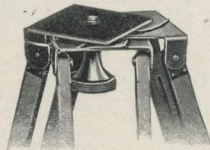
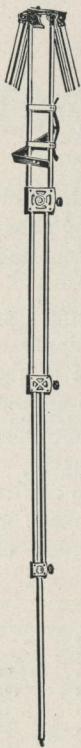
Eastman Folding Head Tripod.

FOR 4 X 5 CAMERAS OR SMALLER.

BY the simplest device, all the inconveniences of the old-fashioned tripod have been overcome. Other tripods are either awkwardly bulky when closed, or else the head has to be removed from the legs. In this new tripod the head itself folds, and the tripod then makes a compact, rectangular package. There are no loose parts. There is no complicated mechanism. This tripod is very convenient when traveling, as it occupies little room and is a handy tripod for carrying on a picture making trip anywhere.

The accompanying illustration shows the working in detail. The brass plate upon which the camera rests is covered with leather, thus protecting the instrument.

All of the parts being accurately made, this tripod is exceedingly rigid, in spite of its small size and light weight. The wooden parts are of selected maple. The tripod is unusually handsome. Folds in four sections; has leather handle for carrying. Length, folded, 17 inches; length, extended, 52 ½ inches; weight, 25 ounces.



Showing Head
Unfolded Ready
to Receive
Camera.



Showing Head Folded and Tripod Closed
for Carrying.

Price,	\$3.50
Black Sole Leather Carrying Case,	1.50

The Bulls-Eye Tripod.

TWO SECTIONS.

An aluminum revolving head holds the socket screw and seats it in place in camera when turned, thus doing away with tripod screw. Made of spruce, with brass fittings. Leather handle for carrying. For 4 x 5 camera or smaller.

Price, \$1.50

Eastman's Feather Tripod.

FOUR SECTIONS.

An aluminum revolving head holds the socket screw and seats it in place in camera when turned, thus doing away with tripod screw. Legs fold in four sections. Length, closed, 14½ inches. Weight, in spruce, 17½ ounces; cherry, 20½ ounces. Brass fittings, superb finish. For 4 x 5 cameras or smaller.

Eastman's Feather Tripod, Spruce,	\$3.00
Do., Cherry,	3.25
Do., Mahogany Finish,	3.50
Black Sole Leather Carrying Case,	1.50

The Eastman Tripod.

THREE SECTIONS.

No. 1, Spruce, for cameras up to 6½ x 8½; weight, 1 lb., 10 ozs., . . .	\$2.25
No. 1, Maple, for cameras up to 6½ x 8½; weight, 2 lbs., 2 ozs., . . .	2.25

NOTE—When kind of wood is not specified, we will furnish in maple.

The Victor Tripod.

TWO SECTIONS.

No. 1, Spruce, for cameras up to 6½ x 8½; weight, 1 lb., 11 ozs., . . .	\$1.50
No. 1, Maple, for cameras up to 6½ x 8½; weight, 2 lbs., 3 ozs., . . .	1.50

NOTE—When kind of wood is not specified, we will furnish in maple.

The Flexo Tripod.

TWO SECTIONS.

Has a fixed, non-detachable head. Only clear straight-grained wood is used in its construction. The metal work is of brass and all parts are carefully and accurately made.

Price, \$1.00

Velox Paper.

MANUFACTURED BY NEPERA DIVISION.



Velox prints in any light and requires no dark-room for development. Richness of the blacks and simplicity of manipulation, are Velox characteristics.

It is suitable for portraits, landscapes, interiors, in fact for photographic work of every sort. It is used in every branch of photography and avoids delay arising from dependence on sunlight for printing.

Velox permits the amateur to utilize his evening hours in print-making.

Velox is made in a number of different surfaces and two different grades. These enable the user to produce good prints from almost any negative, suiting his own individual taste and the peculiar requirements of his negatives.

Velox is divided broadly into two kinds of papers called "Regular" and "Special" (slow and fast), these terms having reference to the time required for exposure and development. In each division will be found a variety of surfaces which adapt the paper to all kinds of work and negatives of different qualities.

"Regular" papers develop quickly, suiting them to negatives that lack contrast.

"Special" papers require a long development as compared with the "Regular," and give soft effects from hard negatives. Any negative which will produce a good result with "printing-out" paper should be printed on "Special" Velox, while "Regular" Velox should be used only with very flat negatives.

Velox is furnished in a great variety of surfaces. In the "Regular" class the surfaces are Carbon (matt surface), Carbon Double Weight, Rough, Glossy and Velvet. The surface of "Regular" Velvet Velox is semi-matt and gives prints of exceptional beauty. This paper will give satisfactory results from very flat negatives.

In the "Special" class the surfaces are Carbon (matt surface), Portrait, Portrait Double Weight, Rough Double Weight, Glossy and "Velvet". Special Velvet Velox has a greater range, however, than any of the other "Special" papers.

Size.	SINGLE WEIGHT.			DOUBLE WEIGHT.		
	Doz.	½ Gross.	Gross.	Doz.	½ Gross.	Gross.
2¼ x 3¼,	\$.15	\$.60	\$1.00	\$.20	\$.75	\$1.25
2½ x 4¼,15	.70	1.25	.20	.90	1.55
3½ x 3½,15	.80	1.50	.20	1.00	1.90
3¼ x 4¼,15	.80	1.50	.20	1.00	1.90
3¼ x 5½,15	.80	1.50	.20	1.00	1.90
4 x 5,25	1.10	2.00	.30	1.40	2.50
3¼ x 6 (Stereo),25	1.10	2.00	.30	1.40	2.50
2¼ x 7,15	.80	1.50	.20	1.00	1.90
5 x 7,35	2.00	3.50	.45	2.50	4.40
3½ x 12,45	2.50	4.50	.55	3.15	5.65
Velox Post Cards,20	1.10	2.00

Nepera Division manufactures various sundries to be used in connection with Velox paper. A valuable acquisition to the list is the NEPERA SOLUTION, a universal developer which is an ideal developer for Velox paper and which, used in connection with the Nepera capsules, makes a perfect developer for film or plates.

The Velox Re-Developer is a new product with which Sepia tones can be obtained on Velox.

Velox Sundries.

N. A. (Non-Abrasion) Velox Liquid Developer, 4 oz. bottle (makes 20 ozs. for Special, 12 ozs. for Regular),	\$.25
Do., 16 oz. bottle,75
Do., ½ gal.,	2.00
Do., 5 gal. keg,	20.00
Nepera Solution, per 4 oz. bottle (including 4 capsules for converting to film and plate developer),25
Do., 16 oz. bottle (without capsules),60
Do., ½ gal. bottle, (without capsules),	1.60
Do., 5 gal. keg (without capsules),	16.00
Nepera Capsules, per pkg. 1 doz.,15
Velox Re-Developer, 4 oz. bottle, (sufficient for 300 4 x 5 prints),50
Velox Liquid Hardener, per 4 oz. bottle,15
Do., 8 oz. bottle,25
Nepera M. Q. Tubes, box of 5 tubes,75
Nepera Acid Hypo, box making 1 pint solution,15
Velox Developing Machine,	5.00
Velox Amateur Printer, No. 2,	1.00
Velox Amateur Printer No. 1 (furnished with gas pillar and adapter for electric socket),	2.00
Electric Attachment (extra). Comprising socket and plug connected by 6 ft. cord,75
Welsbach Attachment (extra). Consisting of burner, mantle and large chimney,	1.25
Extra Mantles, each,15
Tubing, 6 ft. lengths. For connecting printer with gas supply,50

Eastman's Sepia Paper.

As simple to handle and much quicker than Blue Print Paper. Especially desirable with negatives giving broad sketchy effects. This paper is packed in air-tight, sealed tubes.

		2 Doz.			2 Doz.
2 1/2 x 2 1/2	\$.15	4 x 5	\$.20
2 1/4 x 3 1/415	3 1/4 x 6 (Stereo)20
2 1/2 x 4 1/415	2 1/4 x 720
3 1/2 x 3 1/215			1 Doz.
3 1/4 x 4 1/415	5 x 720
3 1/4 x 5 1/220	3 1/2 x 1220
Sepia Post-cards, per pkg., 2 doz.,					.25

Eastman's "Ferro-Prussiate" Paper.

This is not a cheap commercial "Blue Print" paper, but a paper made purposely for printing from the finest negatives with a view to retaining all their delicacy and detail. This paper is packed in air-tight, sealed tubes.

Size.	Price per 2 Doz.	Size.	Price per 2 Doz.
2 1/2 x 2 1/2 \$.16	3 1/4 x 5 1/2 \$.20
2 1/4 x 3 1/416	3 1/4 x 6 (Stereo)20
2 1/2 x 4 1/416	2 1/4 x 720
3 1/2 x 3 1/216	5 x 735
3 1/4 x 4 1/416	3 1/2 x 1240
4 x 520		

Eastman's W. D. Platinum Paper.

A pure platinum paper, requiring only water development, without chemicals. Clears in water and acid. Simple to handle, yet produces effects equal in beauty to any photographic process. This paper is packed in air-tight, sealed tubes.

Two Grades—"Smooth" and "Rough."

Size.	Price per Doz.	Size.	Price per Doz.
2 1/4 x 3 1/4 \$.15	3 1/4 x 5 1/2 \$.30
2 1/2 x 4 1/420	3 1/4 x 6 (Stereo)35
3 1/2 x 3 1/220	2 1/4 x 730
3 1/4 x 4 1/425	5 x 760
4 x 535	3 1/2 x 1270

Mezzo-Tone Paper.

A semi-matt self toning paper, giving warm tones. Prints like Solio, clears in common salt and water.

Size.	Per Doz.	Size.	Per Doz.
2 1/4 x 2 1/4 \$.15	3 1/4 x 5 1/2 \$.20
2 1/4 x 3 1/415	4 x 520
2 1/2 x 4 1/415	2 1/4 x 720
3 1/2 x 3 1/215	5 x 735
3 1/4 x 4 1/415	3 1/2 x 1245

Eastman's Permanent Bromide Papers.

The amateur can readily make enlargements from his own negatives by the use of Eastman's Bromide Paper and the Kodak Enlarging Camera, or can improvise an enlarging apparatus.

Illustrated Booklet, "Bromide Enlarging with a Kodak," 10c.

Royal, Standard, Platino, Enameled and Matte-Enamel.

PRICE LIST.

Size.	Per Doz.	Size.	Per Doz.
$2\frac{1}{4} \times 3\frac{1}{4}$,	\$.15	8×10 ,	\$.80
$3\frac{1}{4} \times 4\frac{1}{4}$,15	10×12 ,	1.20
$3\frac{1}{4} \times 5\frac{1}{2}$,15	11×14 ,	1.60
4×5 ,25	14×17 ,	2.40
$3\frac{1}{4} \times 6$ (Stereo),25	16×20 ,	3.20
5×7 ,35	18×22 ,	4.00
5×8 ,40	20×24 ,	4.80
$6\frac{1}{2} \times 8\frac{1}{2}$,60	Other sizes in proportion.	

"Standard" is furnished in three weights: A, thin smooth—B, heavy smooth—C, heavy rough.

"Platino" is furnished in A, thin smooth, or C, heavy rough.

The "Royal" is furnished in "smooth" or "rough."

Dekko Paper.

A quick printing development paper, printing by either artificial light or daylight, and developing in subdued daylight or subdued artificial light. No dark-room required. Beautiful platinum-like effects.

Size.	Doz.	$\frac{1}{2}$ Gross.	Gross.
$2\frac{1}{4} \times 3\frac{1}{4}$,	\$.15	\$.60	\$1.00
$2\frac{1}{2} \times 4\frac{1}{4}$,15	.70	1.25
$3\frac{1}{2} \times 3\frac{1}{2}$,15	.80	1.50
$3\frac{1}{4} \times 4\frac{1}{4}$,15	.80	1.50
$3\frac{1}{4} \times 5\frac{1}{2}$,15	.80	1.50
4×5 ,25	1.10	2.00
$3\frac{1}{4} \times 6$ (Stereo),25	1.10	2.00
$2\frac{1}{4} \times 7$ (No. 1 Panoram-Kodak),15	.80	1.50
5×7 ,35	2.00	3.50
$3\frac{1}{2} \times 12$ (No. 4 Panoram-Kodak),45	2.50	4.50

Brownie Dekko, one grade only, per pkg. 2 doz., $2\frac{1}{4} \times 2\frac{1}{4}$, 15 cts.

MADE IN FOUR GRADES.

Carbon Matte, Plain Matte, Egg-Shell Matte, Rough Matte.

Eastman's Dekko Developer Powders, per dozen,	\$.50
Do., per half dozen,25
Do., per pkg., 5 powders in hermetically sealed glass tubes,25

Solio Paper.

A rapid, glossy printing-out paper.

Size.	Per Pkg. of Doz.	1/2 Gross.	Gross.
2 1/2 x 2 1/2,	\$.20	\$.60	\$ 1.00
2 1/4 x 3 1/4,20	.60	1.00
2 1/2 x 4 1/4,20	.60	1.00
3 1/2 x 3 1/2,20	.60	1.15
3 1/4 x 4 1/4,20	.60	1.15
3 1/4 x 5 1/2,25	.70	1.25
4 x 5,25	.70	1.25
3 1/4 x 6 (Stereo),25	.70	1.25
2 1/4 x 7 (No. 1 Panoram-Kodak),25	.70	1.25
	Per Doz.		
5 x 7,30	1.60	2.65
3 1/2 x 12 (No. 4 Panoram-Kodak),35	2.00	3.50

SECONDS.—4 x 5 (trimmed) seconds, \$1.00 per gross.

SOLIO Combined Toning and Fixing Solution, per 8 oz. bottle, 50 cts.

Do., 4 oz. bottle, 30 cts., post-paid, 50 cts.

Eastman's Exo Cloth.

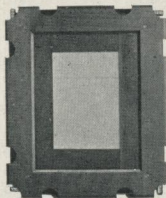
Gives delightfully warm Sepia tones, which, in combination with the satin-like effect of the cloth itself, yield soft yet brilliant prints of charming texture. All the operations are readily performed by any amateur.

PRICE, PACKED IN HERMETICALLY SEALED TUBES.

4 x 5, per dozen,	\$.35
5 x 7, " "60
8 x 10, " "	1.40
24 x 36, " sheet,	1.25

Other sizes will be cut to order in sizes smaller than 8 x 10 in doz. packages, and in sizes over 8 x 10 in 1/2 dozen packages, at proportionate prices.

Adjustable Mask Printing Frame.

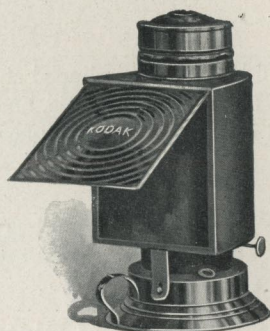


By means of the celluloid masks, (mounted on rollers at each edge of frame), the opening is adjusted to any size or place. Does away with cutting masks for white margin prints. For use with 6 1/2 x 8 1/2 plates or films of any smaller size. Splendidly made of hard wood and polished brass. Convenient for postals.

Price, Eastman Adjustable Mask Printing Frame, . \$2.50

Printing Frames.

Eastman's 3 1/2 x 3 1/2, opens two-thirds,	\$.25
" 3 1/4 x 4 1/4, opens two-thirds,25
" 4 x 5, opens two-thirds,25
" 5 x 7, opens two-thirds,35
" 3 1/2 x 12, for No. 4 Panoram-Kodak, opens in 3 sections,75
" 2 1/4 x 7, for No. 1 Panoram-Kodak, opens in 2 sections,30
Flexo Printing Frame, 4 x 5, opens two-thirds,20
Special Brownie Frame, for 2 1/4 x 2 1/4 Developing Paper only,10

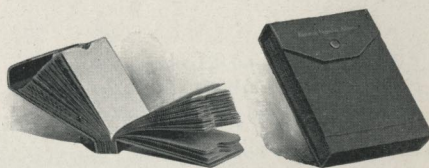


Eastman's Kodak Dark-Room Lamp.

THIS lamp is well made and safe. It is equipped with improved burner carrying extra broad wick, and has new ventilating top, ensuring a bright, steady flame. Fitted with both ruby and orange glass. Flame controlled from the outside

THE PRICE.

No. 1, Improved Kodak Dark-Room Lamps, 1 in. wick, each,	\$1.50
No. 2, do., $\frac{3}{8}$ in. wick, each,	1.00



Eastman's Film Negative Albums.

EACH album contains 100 pockets made of strong paper and consecutively numbered from 1 to 100, and an index on white paper.

THE PRICE.

Eastman's Negative Albums for 100 negatives $3\frac{1}{4} \times 3\frac{1}{2}$, or smaller,	\$.75
Eastman's Negative Albums for 100 negatives $3\frac{1}{4} \times 4\frac{1}{4}$, or 4×5 ,	1.00
Eastman's Negative Albums for 100 negatives 5×7 , or smaller,	1.50

Eastman's Kodoid Plates.

Consisting of N. C. Film Sheets clipped at the edges to a black cardboard backing. Light, non-breakable, non-halation, orthochromatic. May be used in ordinary plate holders. No kits or other extras.

Size.	Per Doz.
$3\frac{1}{4}$ x $3\frac{1}{2}$, (for No. 2 Bullet and Bullet Special),	\$.35
$3\frac{1}{2}$ x $3\frac{1}{2}$,35
$3\frac{1}{4}$ x $4\frac{1}{4}$,45
4 x 5,65
5 x 7,	1.10

Eastman's Dry Plates.

EXTRA RAPID FOR INSTANTANEOUS WORK.

Size.	Per Doz.
$3\frac{1}{4}$ x $3\frac{1}{2}$, (for No. 2 Bullet and Bullet Special),	\$.35
$3\frac{1}{2}$ x $3\frac{1}{2}$,35
$3\frac{1}{4}$ x $4\frac{1}{4}$,45
4 x 5,65
5 x 7,	1.10

Eastman's Double Coated Non-Halation Plates.

Size.	Per Doz.
$3\frac{1}{4}$ x $4\frac{1}{4}$,	\$.55
4 x 5,80
5 x 7,	1.40

Lantern Slide Plates, etc.

	Per Doz.
Plates for making Lantern Slides,	\$.70
Cover Glass for Lantern Slides,35

Chemicals.

For Tank Developer Chemicals see page 45.

For Developing Machine Chemicals see page 46.

Eastman's Special Developer Powder, per pkg., 5 powders in sealed glass tubes,	\$.25
Eastman's Hydrochinon Developer Powders, per doz.,50
Do., per half dozen,25
Do., per pkg. 5 powders in sealed glass tubes,25
Eastman's Pyro Developer Powders, per dozen,50
Do., per half dozen,25
Do., per pkg. 5 powders in sealed glass tubes,25
Eastman's Dekko Developer Powders, per dozen,50
Do., per half dozen,25
Do., per pkg. 5 powders in sealed glass tubes,25
Hypo Sulphite of Soda, pulverized, per pound,10
Kodak Acid Fixing Powder, per lb. pkg.,25
Do., per one half lb. pkg.,15
Bromide Potassium, per ounce,15
Citric Acid, 4 ounce bottle,30
Solio Toning Solution, per 8 ounce bottle,50
Solio Toning Solution in 4 ounce bottles as follows: 4 ounces Toning Solution (2oc. extra postpaid),30
Solio Hardener, per 8 ounce bottle,35

Eastman's Flash Sheets.

"MOST LIKE DAYLIGHT."

The softest, cleanest flash medium, giving a broad, soft light. As these sheets are not instantaneous, they give the effect of a short time exposure under a slightly subdued light—not the glare of the ordinary flash-powder. They do not startle the subject, nor give a staring effect to the eyes.

No. 1, per pkg. of half dozen sheets, 3 x 4,	\$.25
No. 2, per pkg. of half dozen sheets, 4 x 5,40
No. 3, per pkg. of half dozen sheets, 5 x 7,60

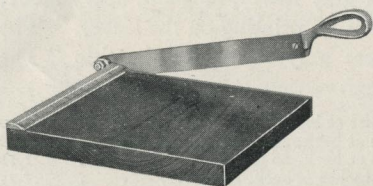
Eastman's Flash Cartridges.

Eastman's Spreader Flash Cartridges, for use with pistol or fuse (price includes both fuse and cap), per pkg. of one-half dozen,	\$.25
Eastman's Spreader Flash Cartridge Pistol,50
Eastman's No. 1 Flash Cartridges, per pkg. of ½ doz.,60
Do., No. 2,40
Do., No. 3,25

Trays.

Paper Developing Trays, for 4 x 5, each,	\$.10
Paper Developing Trays, for 5 x 7, each,15
Hard Rubber Trays, for 4 x 5, each,27
Hard Rubber Trays, for 5 x 7, each,56
"Bulls-Eye" Composition Trays, for 3½ x 3½, each,10
"Bulls-Eye" Composition Trays, for 4 x 5, each,12
"Bulls-Eye" Composition Trays, for 5 x 7, each,30
"Bulls-Eye" Composition Trays, 3 x 8½,22
"Bulls-Eye" Composition Trays, 4½ x 14,50

Kodak Trimming Boards.



Made of hard wood, with natural finish, have fine quality steel blades and are fitted with rule.

No. 1, Capacity, 5 x 7 inches,	\$.40
No. 2, Capacity, 7 x 7 inches,	.60
Transparent Trimming Gauge, for either size,	
extra,20

Eastman's Film Cutting Boards.

For cutting up Cartridge Films for development. Hold paper and film securely. Simple and accurate. For Kodak Cartridges only.

Any Kodak size (except No. 3A) up to and including 4 x 5,*	\$.25
5 x 7, for No. 5 Cartridge Kodak Spools,35

*Give exact designation of your instrument when ordering.

Eastman's Embossing Boards.

For giving plate sunk centers with $2\frac{1}{4} \times 3\frac{1}{4}$, $2\frac{1}{2} \times 4\frac{1}{4}$, $3\frac{1}{2} \times 3\frac{1}{2}$, $3\frac{1}{4} \times 4\frac{1}{4}$, $3\frac{1}{4} \times 5\frac{1}{2}$, 4×5 and 5×7 unmounted prints on matte surface papers. These boards provide in each case for suitable margin.

Price, each, for $3\frac{1}{4} \times 4\frac{1}{4}$ or smaller,	\$.10
Price, each for $3\frac{1}{4} \times 5\frac{1}{2}$, 4×5 or 5×7 ,15

When ordering always give size of prints to be used with.

Special Ferrotypes Plates.

10 x 14 Ferrotypes Plates, Light, each,	\$.15
10 x 14 Ferrotypes Plates, Heavy, each,20
18 x 24 Ferrotypes Plates, Heavy, each,75

Books for the Amateur.

"Picture Taking and Picture Making." The most practical book for the beginner ever published. Printed on heavy coated paper.

Beautifully illustrated, 125 pages, cardboard covers,	\$.50
Do., Cloth bound,	1.00
"Home Portraiture," by Frank Morris Steadman, an illustrated book to guide the amateur in portrait work, leather cover,75
Do., paper cover,25
"Amateur Portraiture by Flashlight," by William S. Ritch, a book full of valuable instruction,10

Kodak Albums.

Well made and substantially covered. They are on the loose leaf, lace system and have plain gray leaves, of good, heavy stock, 20 leaves to the album. There is no printing on the leaves. The covers are of cloth in a delicate gray tint, with the title "The Kodak Book" printed in gold leaf.

No. 101. Size of leaf $5 \times 6\frac{1}{2}$, 5 inches at back, 20 leaves,	\$1.00
No. 102. Size of leaf 6×5 , 6 inches at back, 20 leaves,	1.00
No. 103. Size of leaf 7×6 , 7 inches at back, 20 leaves,	1.10
No. 104. Size of leaf $9\frac{1}{4} \times 6\frac{1}{2}$, $9\frac{1}{4}$ inches at back, 20 leaves,	1.25
No. 105. Size of leaf $6\frac{1}{2} \times 9$, 6 inches at back, 20 leaves,	1.25

Kodak Adhesive.

A powder for making photographic paste by the mere addition of cold water. No boiling, no straining, no souring. The best photo mountant.

No. 1 pkg., makes 35 ozs. paste,	\$.10
No. 2 pkg., makes 7 lbs. paste,25

Special Carrying Cases for Cartridge Kodaks.

	No. 3, 3¼ x 4¼	No. 4, 4 x 5	No. 5, 5 x 7
Black Sole Leather Carrying Case, to hold 3 double plate holders and focusing glass,	\$1.00	\$1.00	\$1.50
Do., to hold 6 double plate holders and focusing glass,	1.50	1.50	2.00
Black Sole Leather Carrying Case, to hold glass plate adapter, ground glass and 6 double plate holders,	—	2.50	3.00
Black Sole Leather Carrying Case, to hold Cartridge Kodak and adapter, 4 double plate holders, focusing glass and 3 Film Cartridges,	2.75	3.50	4.50

Sundries.

Eastman's Photo Paste, per 3 ounce tube,	\$.15
Eastman's Photo Paste, per 5 ounce tube,25
Velvet Rubber Squeegees, 4½ inches, each,20
Velvet Rubber Squeegees, 6 inches, each,25
Velvet Rubber Squeegees, 8 inches, each,30
Kodak Push Pins, for pinning up film negatives, per box of ½ doz.,10
¾ x ¾ Glass for Printing Frames, each,05
¾ x 4¼ Glass for Printing Frames, each,05
4 x 5 Glass for Printing Frames, each,05
5 x 7 Glass for Printing Frames, each,05
2¼ x 7 Glass for No. 1 Panoram-Kodak Printing Frame,05
4 x 13 Glass for No. 4 Panoram-Kodak Printing Frame,10
4 x 13 Felt Mats for No. 4 Panoram-Kodak Printing Frames, each,15
Kodak Candle Lamp,25
Solio Thermometer,40
Kodak Print Rollers, two 6-inch rubber rollers, nicked steel frame,50
Flexo Print Roller, 4-inch rubber roller, black enameled steel frame,15
Eastman's Film Developing Clips, 3½ in., per pair (nicked),25
Do., 5 inch,30
Do., 7 inch,35
Kodak Film Clips, 5 inch, per pair (wooden),15
Graduate, 4 oz.,10
Do., 8 oz.,15
Do., 16 oz.,20
Do., 24 oz.,25

Specimen Prints.

A specimen photograph made with any Kodak (not larger than 4 x 5) will be sent to any address in the United States upon receipt of 4 cents in postage stamps; No. 5 Cartridge Kodak specimens, 8 cents; Stereo specimens, 8 cents; No. 4 Panoram-Kodak specimens, 20 cents.

Kodak Mounts.

WELLINGTON.

Narrow embossed ornamental design. Bevel edges. Olive Brown, Scotch Gray and Egyptian Black. Specify color in ordering.

For Prints.	Size Outside.	Per 100.	Per Doz.	For Prints.	Size Outside.	Per 100.	Per Doz.
1 $\frac{5}{8}$ x 2 $\frac{1}{2}$	3 $\frac{1}{8}$ x 4	\$.50	\$.10	3 $\frac{1}{4}$ x 4 $\frac{1}{4}$	5 x 6	\$.90	\$.15
2 $\frac{1}{4}$ x 3 $\frac{3}{4}$	4 x 5	.75	.10	4 x 5	5 $\frac{5}{16}$ x 6 $\frac{3}{8}$	1.00	.15
2 $\frac{1}{2}$ x 4 $\frac{1}{4}$	4 x 6	.85	.15	3 $\frac{1}{4}$ x 5 $\frac{1}{2}$	5 $\frac{1}{4}$ x 7 $\frac{1}{2}$	1.10	.20
3 $\frac{1}{2}$ x 3 $\frac{1}{2}$	5 x 5	.85	.15	5 x 7	7 x 9	1.75	.25

BISMARCK.

Plate center. Full embossed ornamental border design. Square edges. Furnished in Sage Green, Ash Gray or White. Specify color in ordering.

For Prints.	Size Outside.	Per 100.	Per Doz.	For Prints.	Size Outside.	Per 100.	Per Doz.
1 $\frac{5}{8}$ x 2 $\frac{1}{2}$	3 x 3 $\frac{3}{4}$	\$.40	\$.10	3 $\frac{1}{4}$ x 4 $\frac{1}{4}$	4 $\frac{1}{2}$ x 5 $\frac{1}{2}$	\$.65	\$.10
2 $\frac{1}{4}$ x 2 $\frac{1}{4}$	3 $\frac{3}{8}$ x 3 $\frac{3}{8}$.40	.10	4 x 5	5 $\frac{7}{16}$ x 6 $\frac{7}{8}$.85	.15
2 $\frac{1}{4}$ x 3 $\frac{1}{4}$	3 $\frac{3}{8}$ x 4 $\frac{3}{8}$.50	.10	3 $\frac{1}{4}$ x 5 $\frac{1}{2}$	5 x 7 $\frac{1}{4}$.95	.15
2 $\frac{1}{2}$ x 4 $\frac{1}{4}$	4 x 5 $\frac{1}{4}$.65	.10	5 x 7	7 x 9	1.50	.25
3 $\frac{1}{2}$ x 3 $\frac{1}{2}$	5 x 5	.65	.10				

WASHINGTON.

Narrow embossed dark brown design surrounding print. Three-quarter inch border. Bevel edges. Furnished in Queen's Gray only.

For Prints.	Size Outside.	Per 100.	Per Doz.	For Prints.	Size Outside.	Per 100.	Per Doz.
1 $\frac{5}{8}$ x 2 $\frac{1}{2}$	3 $\frac{3}{8}$ x 4	\$ 1.00	\$.15	3 $\frac{1}{4}$ x 4 $\frac{1}{4}$	5 x 6	\$ 1.25	\$.20
2 $\frac{1}{4}$ x 3 $\frac{1}{4}$	4 x 5	1.10	.15	3 $\frac{1}{4}$ x 5 $\frac{1}{2}$	5 x 7 $\frac{1}{4}$	1.40	.20
2 $\frac{1}{2}$ x 4 $\frac{1}{4}$	4 x 6	1.15	.20	4 x 5	5 $\frac{5}{16}$ x 6 $\frac{3}{8}$	1.35	.20
3 $\frac{1}{2}$ x 3 $\frac{1}{2}$	5 x 5	1.15	.20	5 x 7	7 x 9	2.75	.40

SERIES H, I, J, K.

Plain felt surface. Beveled edges. H, Scotch Gray; I, Ivy Green; J, Carbon Black; K, Royal Brown.

For Prints.	Size Outside.	Per 100.	Per Doz.	For Prints.	Size Outside.	Per 100.	Per Doz.
1 $\frac{5}{8}$ x 2 $\frac{1}{2}$	3 $\frac{1}{4}$ x 4	\$.55	\$.10	3 $\frac{1}{4}$ x 5 $\frac{1}{2}$	4 $\frac{3}{4}$ x 7	\$.90	\$.15
2 $\frac{1}{4}$ x 3 $\frac{1}{4}$	4 x 5	.55	.10	4 x 5	5 $\frac{1}{2}$ x 6 $\frac{1}{2}$.90	.15
2 $\frac{1}{2}$ x 4 $\frac{1}{4}$	4 $\frac{1}{4}$ x 6	.80	.15	2 $\frac{1}{4}$ x 7	4 x 8 $\frac{1}{4}$.90	.15
3 $\frac{1}{2}$ x 3 $\frac{1}{2}$	5 x 5	.80	.15	5 x 7	7 x 9	1.75	.25
3 $\frac{1}{4}$ x 4 $\frac{1}{4}$	4 $\frac{3}{4}$ x 5 $\frac{3}{4}$.80	.15	3 $\frac{1}{2}$ x 12	5 $\frac{3}{8}$ x 13 $\frac{3}{4}$	1.75	.25

SERIES L, M, N, O.

Plain felt surface. Square edges. L, Scotch Gray; M, Ivy Green; N, Carbon Black; O, Royal Brown.

For Prints.	Size Outside.	Per 100.	Per Doz.	For Prints.	Size Outside.	Per 100.	Per Doz.
2 $\frac{1}{4}$ x 2 $\frac{1}{4}$	3 $\frac{3}{8}$ x 3 $\frac{3}{8}$	\$.20	\$.05	3 $\frac{1}{2}$ x 3 $\frac{1}{2}$	5 x 5	\$.50	\$.10
1 $\frac{5}{8}$ x 2 $\frac{1}{2}$	3 $\frac{1}{4}$ x 4	.30	.05	3 $\frac{1}{4}$ x 4 $\frac{1}{4}$	4 $\frac{3}{4}$ x 5 $\frac{3}{4}$.65	.10
2 $\frac{1}{4}$ x 3 $\frac{1}{4}$	4 x 5	.40	.05	4 x 5	5 $\frac{1}{2}$ x 6 $\frac{1}{2}$.65	.10
2 $\frac{1}{2}$ x 4 $\frac{1}{4}$	4 $\frac{1}{4}$ x 6	.50	.10	5 x 7	7 x 9	1.00	.15

Compliments of the Digitized Kodak Catalog Project: 1886 - 1941

KODAK SIZES ONLY.		No. 0 Folding Pocket Kodak 1½ x 2½	No. 1 Folding Pocket Kodak 2¼ x 3¼	No. 1A Folding Pocket Kodak 2½ x 4¼	No. 2, 3½ x 3½ and No. 3, 3¼ x 4¼	No. 2, 3½ x 4½ and 4 x 5	No. 5 Kodaks, etc. 5 x 7
Developing, Printing and Mounting 1 Film							
Cartridge, 12 Exposures, Printed on Solio.		\$.65	\$ 1.00	\$ 1.25	\$ 1.50	* \$ 1.80	\$ 2.40
Do., Printed on Velox,95	1.40	1.50	1.50	* 1.80	2.40
Developing only each,03	.04	.06	.06	.08	.10
Printing and Mounting only, each, Solio,03 ½	.05	.07	.08	.10	.12 ½
Do., Velox,06	.08	.08	.08	.10	.12 ½

*The price of 10 exposures, $3\frac{1}{4} \times 5\frac{1}{2}$, No. 3A, is \$1.50.

BROWNIE CAMERA AND STEREO AND PANORAM KODAK SIZES.		No. 1 Brownie $2\frac{1}{4} \times 2\frac{3}{4}$	No. 2 Brownie $2\frac{1}{2} \times 3\frac{1}{4}$	No. 1 Panoram $2\frac{1}{4} \times 7$	No. 4 Panoram $3\frac{1}{2} \times 12$	No. 2 Stereo Kodak $3\frac{1}{4} \times 6$	Stereo Brownie
*Developing, Printing and Mounting 1 Film Car-							
tridge, printed on Solio,		\$.40	\$.50	\$ 1.00	\$ 1.75	\$ 1.50	\$ 1.50
Do., Printed on Velox,		.50	.70	1.40	1.75		
Developing only, each,		.03	.04	.08	.18	.12	.08
Printing and Mounting only, each, Solio,		.04	.05	.10	.20	.16	.10
Do., Velox,		.06	.08	.16	.20		

Enlargements.

4 1/4 x 6 1/2, Mounted on Card,	Each.	Per Doz.
6 1/2 x 8 1/2, " " " "	\$.35	\$3 00
8 x 10, " " " "	.50	5.00
10 x 12, " " " "	.75	_____
11 x 14, " " " "	1.00	_____
14 x 17, " " " "	1.25	_____
	1.50	_____

Lantern Slides,50	5.00
---------------------------	-----	------

(63)

Tourists.

Travelers can always obtain fresh supplies of film at short notice at any one of the following addresses :

LONDON—Kodak, Limited, 61 Clerkenwell Road, E. C.; 60 Cheapside, E. C.; 115 Oxford St., W.; 171-173 Regent St., W.; 59 Brompton Road, S. W.; 40 Strand, W. C.

LIVERPOOL—Kodak, Limited, 96 Bold St.

GLASGOW—Kodak, Limited, 72 and 74 Buchanan St.

PARIS—Eastman Kodak Société Anonyme Française, Avenue de l'Opera, 5; Place Vendôme, 4.

LYONS—Eastman Kodak Société Anonyme Française, 26 and 28 Rue de la République; 11 Ru du Palais-Grillet.

BERLIN—Kodak Gesellschaft, m. b. H., Friedrich Strasse, 16; Kodak Galerie, Leipzigerstrasse, 114; Unter den Linden, 26.

BRUSSELS—Kodak, 36 Rue du Fossé aux Loups; Montagne, 59 de la Cour.

VIENNA—Kodak, Graben 29.

ST. PETERSBURG—Kodak, Bolschaja Konjuschennaja 1.

MOSCOW—Kodak, 15 and 16 Petrovka.

MILAN—Kodak, 10 Via Vittore Pisani; 34 Corso Vittorio Emanuele.

TORONTO—Canadian Kodak Co., 588-592 King St., West.

Terms.

The prices in this catalogue are strictly net, except to regular dealers who carry our goods in stock.

For the convenience of our customers we recommend that they make their purchases from a dealer in photographic goods, as by so doing they can save both time and express charges.

EASTMAN KODAK CO.

Rochester, N. Y.

