



Kodak

## **The Digitized Kodak Catalog Project (1886 - 1941): A Very Brief History**

Most camera collectors at some point in their collecting careers pass through a Kodak phase - some never come out of it. And if there ever was one name that came to be associated with both cameras and collecting, it was Kodak.

George Eastman received his first patent (for coating dry plates) and bought his first manufacturing facility in 1880, and in 1881 he started the Eastman Dry Plate Company. In 1886 he received a patent for the near-mythical Eastman Detective Camera, but it wasn't until 1888 that the first camera bearing the name "Kodak" was introduced.

One of the nice things about collecting Kodak is that the product line is pretty well known, and because the company produced annual catalogs for many years, collectors can be reasonably sure of what they're looking at, when it was made, the variations and so on - presuming that they have access to either the appropriate catalog, or a number of the many books which document Kodak, each to some greater or lesser extent.

But what would be really nice would be to have a complete set of Kodak catalogs in an easily accessible form and readily available. And since the advent of portable computing devices (PC, Macintosh, etc.) that's been possible - except for the difficulty of assembling a complete set of Kodak catalogs in one spot and then scanning them and making the results available.

The idea of digitizing a complete set of Kodak catalogs has kicked around the collecting community for many years. It's been proposed on a number of online forums, during meetings of various photohistory groups, and for years there have been many incomplete "Kodak CDs" on eBay but at best, they only contained a few catalogs - whatever the owner had available. But assembling a complete set of catalogs, then scanning and processing perhaps 3,000 to 4,000 pages, was a daunting task - if not completely overwhelming - and nothing ever came of it.

Until now.

In early 2010, the idea came up again, but this time we - "we" as in "the collecting community" - were lucky. A number of collectors were willing to loan their catalogs to this project and a couple of insane - wait, let's call them "dedicated" - dedicated enthusiasts - neither of whom collected Kodak, but both of whom enjoyed the challenge of such a project - were willing to put in the time and effort to scan and pull together the entire set of catalogs into a full-blown Kodak Catalog Digital Library.

Our initial objective was to include just the annual amateur catalogs, but it turns out that many cameras only appear in certain professional and specialty catalogs. We included as many of those as we could obtain so that almost every Kodak camera made in the US, Canada and Europe, would be documented - at least up to about 1941. After that, it becomes much more difficult as Kodak stopped producing annual catalogs as their product line became increasingly more diversified.

However, even with the additional "non-amateur" catalogs, we weren't completely successful in illustrating "every" camera Kodak ever made. There are an elusive few that might appear in specialty catalogs that we simply couldn't track down. If you can't find one of those odd cameras, that's no doubt why. We may do a revision at some point in the future if someone is willing to loan us a catalog that includes a camera that isn't already recorded.

In this project, a total of 67 catalogs were used from 1886 through 1941 including a number of professional and dealer catalogs, and in some years, two or even three different catalogs to cover all the bases. With the cooperation of a number of dedicated collectors, we were able to pull together all those catalogs and in June 2010, the project started in earnest.

By November 2010, we had scanned everything we needed and eventually all 67 catalogs were then reassembled as image folders and converted to the universally accepted PDF format and finally, converted into individually searchable PDFs which could then be searched globally as a collection.

For those of you interested in the statistics: about 200 hours of scanning time (we never want to hear that sound again), 67 catalogs and 3,908 page scans - which generated 7,917 original and processed images - and 11.4 GB of disk space. Additionally, another 100+ hours of technical development time was needed to convert the digital catalogues into a fully searchable "knowledgebase" that could be launched from most any standard web browser.

The overwhelming number of catalogs was loaned to us by that most remarkable of Kodak collectors, Charlie Kamerman of Eagle Creek, Oregon. Without Charlie, it's very doubtful that this project could even have been attempted.

But as it turned out, even Charlie didn't have all the publications that were needed, but he was able to track down the five that he lacked and was able to secure either a copy or high resolution images that we could work with. And so, our thanks to the contributors of the catalogs and scans that we used:

Charlie Kamerman for the vast majority of catalogs used and all his help,  
Steve Shohet for loaning a variety of test catalogs,  
Ryerson University (Toronto) for the 1886 Eastman Catalog  
George Layne for the 1890 New Kodaks Catalog,  
Mike Kessler for the 1891 Dealer Display Catalog,  
Ralph London for the 1893 UK Catalog,  
Michael Pritchard for the 1897 UK Catalog.

The digital side of the project - also known as "all of the work" - was done by Rob Niederman of Medina, Minnesota, and Milan Zahorcak of Tualatin, Oregon. Remarkably we're still friends and in a few years, we'll probably be able to talk about this project rationally.

And there you have it, a more-or-less done deal. We're fairly sure that it isn't quite perfect, and expect there will be some carping about something or other; but all-in-all, we believe this to be a pretty good product and can now move on to something else.

Our thanks to all of those involved.

Rob Niederman  
Milan Zahorcak

Fall, 2011





**KODAKS**  
and  
**Kodak Supplies**

**1904.**

**EASTMAN KODAK CO.**  
**Rochester, N. Y.**

**Issued from Rochester, the Home  
of the Kodak, for the information  
of all who may be interested in the  
growth and simplification of photography.**

## The New Photography.

**P**ICTURE making is simpler to-day than it was yesterday.

There is no halt in photographic progress. New and simple methods displace old and difficult ones with gratifying rapidity. Old theories are upset at every turn of the calendar. Indeed, so rapid has been the progress that the worker of two decades ago, if in the meantime out of touch with photographic advancement, would fail utterly to understand how the simple processes of the present are possible.

Sixteen years ago the public was offered a new idea in photography—the Kodak. It is in the perfecting of this Idea that the greatest progress has been made—a progress so remarkable that Rochester, “the Home of the Kodak,” has become the photographic center of the world. Here are the greatest camera factories, the greatest film plant, the greatest plants for the manufacture of photographic papers, the most perfectly appointed dry plate factory, an enormous lens industry. In facilities, in trained experience and in



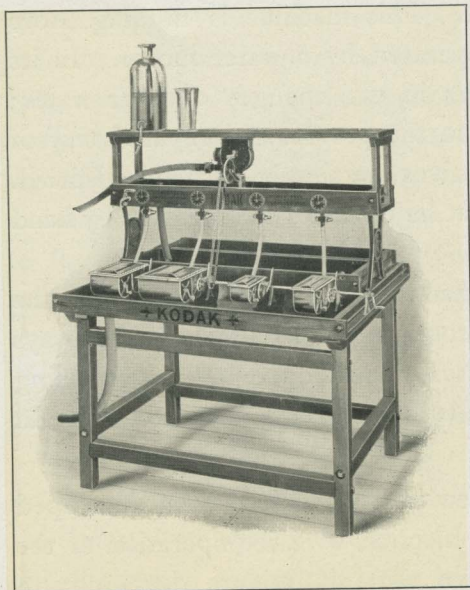
photographic capital, the Kodak city leads the world. Nor is this all. It has become the lodestone which attracts the new thought in photography. The man with a photographic invention turns to Rochester for a market as surely as he turns to Washington for his letters patent.

Fully conversant with every phase of photographic progress, the Rochester manufacturers are quick to sift the wheat from the chaff. What is good they accept, and the world soon enjoys the benefits. In the introductory pages that follow we have tried to tell in a simple way of the new photography. There is in them much to interest the confirmed camerist as well as to instruct the novice. It has been our endeavor to make this little publication something more than a mere catalogue. It is a photographic news-letter from Rochester, the Home of the Kodak.

EASTMAN KODAK COMPANY.

Rochester, N. Y., 1904.





*Commercial Kodak Developing Machine.*

## MODERN DEVELOPMENT.

THE amateur of to-day loads and unloads his camera, develops his negatives, and makes his prints—all without a dark-room. His chemicals come ready prepared in little packets. There is nothing to weigh; nothing to measure but water. His watch has supplanted the dark-room lamp.

All this has been made possible by the Kodak system.

The Kodak Developing Machine in the hands of the amateur taught us a lesson. It caused us to discard the dark-room so far as cartridge film development was concerned, and install the Commercial Kodak Developing

Machine for daily use in our finishing department. This machine is nothing more nor less than a battery of the regular machines operated by a water motor. In its operation we develop for six minutes; rinse the film in two changes of clear water; transfer the negatives *in the light of an ordinary room* to the previously prepared tray of Kodak Acid Fixing Solution. After fixing, the negatives are simply washed and dried. The amateur proceeds in the same manner, except that he operates the machine by hand instead of by motor.

Our experience with the machine has proven that it gives better average results than we were ever able to obtain under the old dark-room methods, although we always employed skilled and careful workmen. The machine-developed negatives being superior to those developed in the old way *by experts*, it is clear that the amateur should utilize it—not endeavor to compete with it.

**IMPROVED METHODS.** Among the new ideas that have been developed during the past year are some important ones in connection with the operation of the Kodak Developing Machine. Experience has shown that six minute development, using a comparatively weak solution at a temperature of 65° Fahr., produces negatives of charming quality, full of detail—negatives that have strength without harshness. Moreover, this slow-acting developer is a help in the matter of latitude, making good



printing negatives from every exposure that has had anywhere near the correct time. And to correctly expose is not so difficult as the beginner imagines, there being a latitude of fully five points. For instance, if the correct exposure for a given subject were three seconds, any exposure of from one to six seconds would give a *perfect negative*, and the under or over exposure might be even greater than this without causing a total failure. Whether "snap-shot" or "time exposure" makes no difference to the machine, and it handles both kinds of exposures on the same strip of film with perfect results.

Our machine developing powders, as now put up, take into consideration the new light which experience has thrown on this subject, and are of the proper strength for six-minute development. Each package bears the line "1904 Formula".

Another forward step lies in the discovery that after developing, the film may be safely removed from the machine in the light of an ordinary room and transferred to the fixing tray without danger of fogging, provided only that the developer is rinsed out of the film before the latter is exposed to the light.

The Kodak Acid Fixing Bath is another step in the right direction. It hardens the gelatine, removes any stain that may have come from the developer, and gives a clearness to the negative that helps greatly in the matter of rapid printing. The acid

powders for this solution may be purchased ready prepared, or the operator may make it up for himself by following the directions furnished with every Kodak cartridge.

**CORRECT IN THEORY.** The Kodak Developing Machine works in harmony with the theories of the most advanced photographic workers. Messrs. Hurter and Driffield and Mr. Alfred Watkins claim that the operator has little or no control over the negative after the image has appeared in development. It is also claimed by many thoughtful experimenters that within reasonable limits the density of a negative does not affect the print, except in the length of time required for printing. Suppose for instance we select an interior view which requires three minutes, and we make six exposures, varying the time from one to six minutes, making them all on one strip of film and developing in the machine. There will be a noticeable difference in the density of the negatives. It will take longer to print from the six-minute than from the one-minute exposure, but prints from the negatives will be so nearly alike as to be almost indistinguishable.

The wide latitude allowed in exposure by Kodak Film, combined with the fact that the novice no longer depends for his results upon an untried judgment, but is governed by simple rules and by his watch, has made a certainty of what was uncertainty.



## AS TO APPARATUS.

**T**HERE are improvements big and little that have been made in Kodak goods since the last catalogue issue. Some are so minor that we pass them over without comment, though they are among the thousand and one little things that we watch out for in keeping the Kodak at the forefront.

Others are so important that they must not be overlooked. In the Kodak Automatic Shutter shown on page 17, a long step in advance is made in amateur equipment, one which is made, however, at no increased cost to the consumer so far as the application of this shutter to the No. 3 and No. 4 Cartridge Kodaks is concerned. Other improvements in the Cartridge Kodaks are a new clamping device on the bed, a focusing scale for bust portraits that allows the operator to work to within  $3\frac{1}{2}$  feet of the sitter, and a spirit level.

The No. 5 Cartridge Kodak now has the well known Unicum shutter, instead of the Eastman Triple Action with which it was formerly equipped.

The new No. 2 Folding Pocket Kodak has improvements that are bound to make it continue in its popularity. It is now equipped with the F. P. K. Automatic shutter, has an R. R. lens and our three lock automatic focusing device. This new feature combines the advantages of a focusing and a set focus camera.

In the way of entirely new apparatus is the No. 4 Screen Focus Kodak, an instrument that will appeal to that large class of amateurs who prefer film on account of its convenience and chemical superiority, yet on a portion of their work desire to use the ground-glass for focusing.

The No. 1 Brownie Camera was a great success—the No. 2 has proven even more popular than its tiny predecessor. We believe that the new No. 2 Folding Brownie will have even a more remarkable sale than either. The new Brownie Automatic shutter, the three lock automatic focusing device, the simplicity and daintiness of it all, make it a wonderful little instrument—almost a Kodak.

The new Kodak Enlarging Camera will interest many amateurs who have been looking for a simple way of making larger pictures—it is but an extension to another department in photography of the Kodak idea, simplicity.

This catalogue represents nothing but up-to-date cameras, many of them recently improved in model—all of them perfectly adapted to the amateur's use.

## NEW FILM, NEW PAPERS.

**P**ROGRESS in the manufacture of sensitized goods has been no less rapid than that in the simplifying of methods and of apparatus.

The year 1903 saw the perfecting of our N. C. Film, a product with which we began experimenting more than a dozen years ago. In N. C. (non-curling) Film we have overcome absolutely what has always been the greatest drawback to the use of film—its tendency to curl, both in the solutions and after the negatives have been dried. N. C. Film lies flat and dries flat. The negatives can be as readily handled as so many pieces of thin card-board. This most desirable result has been accomplished by coating the back of the transparent support with gelatine, thus offsetting the draw of the emulsion which gives ordinary film a tendency to curl inward. The gelatine coating on the back also does away with all of the trouble from electric markings. The emulsion with which N. C. Film is coated is orthochromatic (*i. e.* it gives a true rendering of color values), it allows of the utmost latitude in exposure, and this film has



the highest non-halation qualities. The non-curling feature is found only in N. C. Film and is patented. No other film equals N. C. in chemical quality.

N. C. film is now furnished on all orders where the kind of film is not specified, but the "Regular" film will be supplied to those who prefer it.

Kodoid Plates, consisting of a sheet of N. C. Film fastened at the edges to a special card backing, have all the good qualities of glass plates with none of their drawbacks. Light, non-breakable and are used in an ordinary plate holder.

Velox and Dekko are among the papers that are favorite with the amateur. Prints on these papers are made and developed in a few seconds, giving soft black and white platinum effects. The papers are furnished in a variety of surfaces.

Eastman's Sepia is a paper that requires only washing and fixing, giving warm brown tones with soft creamy high-lights. Solio, the paper for detail, with a highly glossy surface, and W. D. (Water-Development) Platinum are among the other papers that lend variety and charm to the printing processes.

One of the new photographic delights lies in sending prints from one's favorite negatives on sensitized post cards. These cards are printed in accordance with the postal regulations, and may be mailed by affixing a one-cent stamp. They are made both in Velox and in Eastman's Sepia emulsions.



## NOTHING TOO GOOD FOR THE KODAKER.

THE continued and increasing interest in photography is evidence that picture making is not a passing fancy, not a mere "fad". It is the natural expression of the human interest in pictures.

To the amateur who takes up photography for itself alone, the constant improvements, the new processes, give to it a variety that keeps the interest from flagging. He who takes it up as an ally to some other hobby, who does not care for photography for itself alone, but simply wants pictures of the things he is interested in, finds the up-to-date processes so easy that he can, from the start, accomplish every step himself. Yet he has the option of merely pressing the button and leaving it to some one else to "do the rest".

The Kodak system fits the requirements of both these classes of amateurs. Whatever is good in lenses, in shutters, in camera construction, is at the command of the Kodaker. All Kodaks use film cartridges, several styles use either films or plates. All

are made on the principle that it is only the high-grade goods which enjoy a permanent and increasing sale.

Thus it is also in the manufacture of our sensitized products. In the making of a picture, nothing can be too good. If the film or plate, the paper or the chemicals, be bad, the results are more than likely to prove a disappointment. Quality then, not cheapness, is the aim in every one of our manufacturing departments. 'Tis on this policy that the reputation of Kodak has been builded, and so persistent have we been in following it that wherever the photographic art is practiced Kodaks are known, and "Kodak" stands for all that is best in photography.

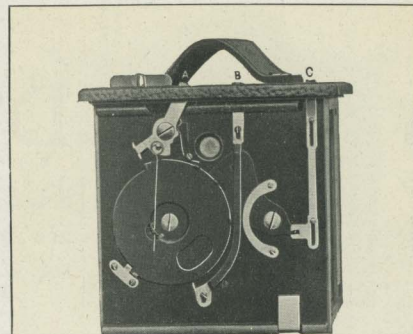
EASTMAN KODAK CO.

Rochester, N. Y., 1904.

## Eastman Rotary Shutter.

**I**T was the perfect simplicity of this shutter which had much to do with the success of the Bulls-Eye and the original Pocket Kodak. It is operated by simply throwing the lever A, alternately to the right and left. Lever B sets it for time and lever C operates the stops, of which there are three.

*Supplied on the Bulls-Eye, the Flexo and the No. 1 and No. 2 Brownies. The No. 1 Brownie, however, has but one stop.*

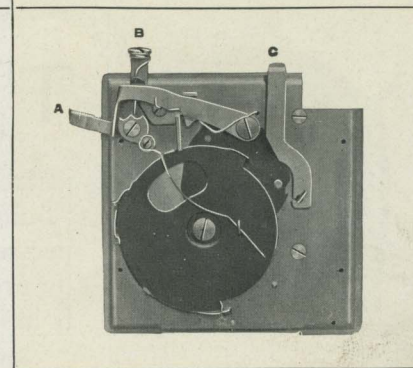


## Eastman Automatic Shutter.

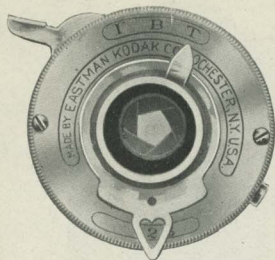
**T**HIS shutter is always set and is extremely simple in operation. To make a snap shot, press lever B. To make a time exposure, press lever A. The three stops are operated by means of lever C.

A thoroughly satisfactory shutter, most carefully made and as carefully tested.

*Supplied on the No. O, No. 1 and No. 1A Folding Pocket Kodaks.*



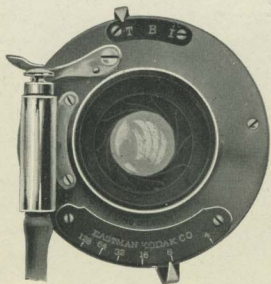




### Brownie Automatic Shutter.

**D**ESIGNED with special reference to the requirements of the smaller cameras. One pressure of the lever makes a snap. With the "B" exposure, the shutter opens when lever is pressed and closes when it is released. Time exposures are made by pressing the lever once to open and again to close the shutter. Has iris diaphragm stops.

*Supplied on the No. 2 Folding Brownie.*



### F. P. K. Automatic Shutter.

**T**HIS shutter is admirably adapted to use on the superb little instruments with which it is listed.

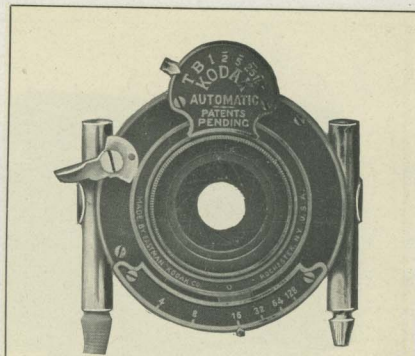
It is always set, a single pressure of the bulb giving instantaneous exposures of  $\frac{1}{80}$  of a second. It has, also, the "bulb" exposure, by which the shutter opens when the bulb is pressed, and closes when it is released. Time exposures are made by pressing the bulb once to open and again to close the shutter. It has iris diaphragm stops Nos. 4, 8, 16, 32, 64 and 128.

*Supplied with the No. 2, No. 3 and the No. 3A Folding Pocket Kodaks.*



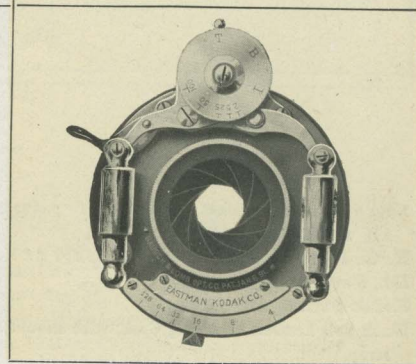
## Kodak Automatic Shutter.

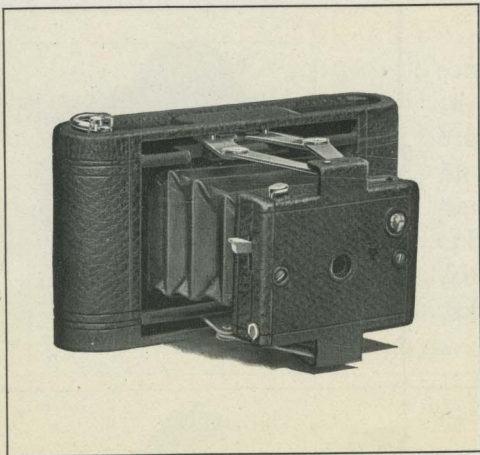
**I**N this new shutter the highest degree of excellence is attained. It gives automatic exposures from  $\frac{1}{100}$  of a second to one second; has the "bulb" exposure by which the shutter opens when the bulb is pressed and closes when released; and the "time" action, one pressure of bulb opening and another closing shutter. Has iris diaphragm stops with scale for Nos. 4, 8, 16, 32, 64, 128. Supplied on No. 3 and No. 4 Cartridge Kodaks, and No. 4 Screen Focus Kodak.



## The Unicum Shutter.

**T**HE Unicum is well made, accurate and durable. It works with finger lever or bulb and by means of a pneumatic retarding device gives exposures from  $\frac{1}{100}$  of a second to one second. It has also the "bulb" and "time" exposure and has iris diaphragm stops with scale for Nos. 4 to 128. This shutter is regularly fitted to the No. 5 Cartridge Kodak.





### THE PRICE.

No. 0 Folding Pocket Kodak, for pictures	
1 3/8 x 2 1/2, . . . . .	\$6.00
N. C. Film Cartridge, 12 exposures, 1 3/8 x 2 1/2, . . . . .	.25
Do., 6 exposures, . . . . .	.15
Kodak Portrait Attachment, . . . . .	.50
Black Sole Leather Carrying Case, with shoulder strap, . . . . .	1.00

## No. 0 Folding Pocket Kodak.

**A**LMOST for the vest pocket, this delightful instrument appeals strongly to those who wish to carry a Kodak on their outings, but require one with even more than the usual compactness. It slips into the pocket as readily as a wallet, is always ready and is of the highest quality in every detail.

It is but 3 1/8 inches wide, 1 3/8 inches thick and 5 5/8 inches long, and weighs but 12 ounces, yet makes pictures 1 5/8 x 2 1/2 inches. It has a fixed focus meniscus lens of perfect covering power, has the Eastman Automatic Shutter and set of three stops described on page 15, is fitted with brilliant finder and loads in daylight for six or for twelve exposures.

Made of aluminum, covered with fine black seal grain leather and has nickeled fittings. As dainty as a lady's purse.



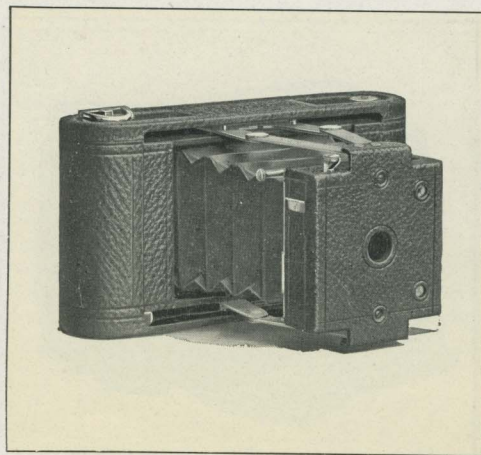
## No. 1 Folding Pocket Kodak.

**T**HIS practical little camera has done much to popularize photography; its simplicity of operation, convenience and quality perfectly adapting it to the tourist who has had no previous experience in picture taking. It is a pocket camera in every sense of the word, slipping readily into the side pocket of an ordinary coat.

The lenses are meniscus achromatic, have a fixed focus of 4 inches and are most carefully tested. These cameras have the Eastman Automatic shutters with a set of three stops, described on page 15, have two brilliant finders, one for vertical and one for horizontal exposures, and have a capacity for 12 exposures,  $2\frac{1}{4} \times 3\frac{1}{4}$ , yet measure only  $1\frac{1}{8} \times 3\frac{1}{2} \times 6\frac{3}{4}$  inches, and weigh but 15 ounces.

Made of aluminum, covered with fine black seal grain leather, and have nickeled fittings.

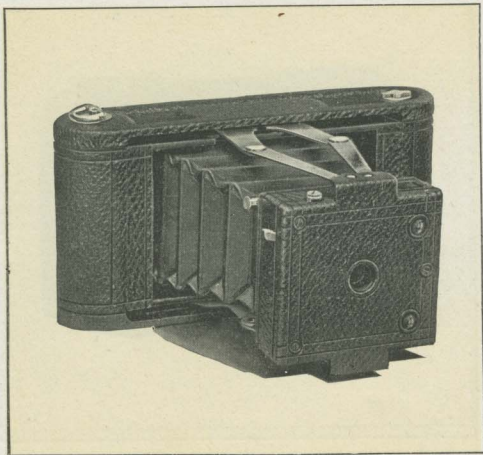
(19)



### THE PRICE.

No. 1 Folding Pocket Kodak, for pictures	
$2\frac{1}{4} \times 3\frac{1}{4}$ inches with achromatic lens, . . .	\$10.00
N. C. Film Cartridge, 12 exposures, $2\frac{1}{4} \times 3\frac{1}{4}$ , . . .	.40
Do., 6 exposures, . . . . .	.20
Kodak Portrait Attachment, . . . . .	.50
Black Sole Leather Carrying Case, with shoulder strap, . . . . .	1.25





### THE PRICE.

Folding Pocket Kodak No. 1A, for pictures	
2½ x 4¼ inches, with achromatic lens, .	\$12.00
N. C. Film Cartridge, 12 exposures, 2½ x 4¼, .	.50
Do., 6 exposures, . . . . .	.25
Kodak Portrait Attachment, . . . . .	.50
Black Sole Leather Carrying Case, with shoulder	
strap, . . . . .	1.25

## Folding Pocket Kodak No. 1A.

A UNIQUE feature of this instrument is the artistic shape of the pictures which it makes. Their size, 2½ x 4¼, is particularly adapted to broad landscape views where the instrument is used horizontally, and to portraiture (especially full length figures) where it is used vertically. The No. 1A is, nevertheless, wonderfully light and compact.

The lens is meniscus achromatic with a fixed focus of 5 inches, the shutter is the Eastman Automatic described on page 15, and is equipped with a set of three stops. It has two finders, one for vertical and one for horizontal exposures, and a capacity of 12 exposures without reloading. The size, 1¾ x 3⅞ x 7¾ inches, is marvelously small for an instrument of such great capabilities, and the weight is but 18 ounces.

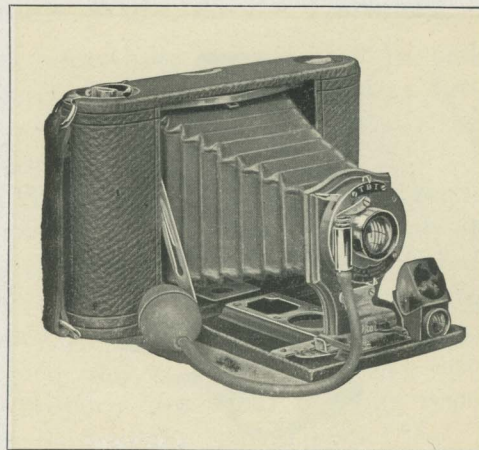
Made of aluminum, covered with fine black seal grain leather and has nickeled fittings.

## No. 2 Folding Pocket Kodak.

THE 1904 model of this instrument has our F. P. K. Automatic Shutter shown on page 16, with iris diaphragm stops, and is equipped with our three lock automatic focusing device. By means of this new feature the instrument locks at 8 feet, 20 feet or 100 feet focus. It may, when desired, be locked at the 20 foot focus and used as a practical "fixed focus" camera. Every experienced worker knows, however, that the other adjustments are desirable even with so small a camera.

The No. 2 Folding Pocket Kodaks have a capacity of 12 exposures,  $3\frac{1}{2} \times 3\frac{1}{2}$ , yet measure but  $1\frac{1}{2} \times 4\frac{1}{2} \times 6\frac{3}{4}$  inches, and weigh 18 ounces. They have double combination rapid rectilinear lenses of great speed, brilliant finder, and socket for tripod screw. They are made of aluminum, have the finest black seal grain cover, and handsomely nickered fittings.

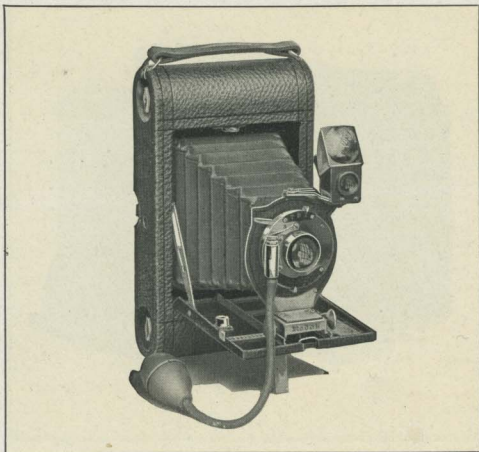
(21)



### THE PRICE.

No. 2 Folding Pocket Kodak, for pictures $3\frac{1}{2} \times 3\frac{1}{2}$ inches, with Rapid Rectilinear lens and F. P. K. Automatic Shutter, . . . . .	\$15.00
N. C. Film Cartridge, 12 exposures, $3\frac{1}{2} \times 3\frac{1}{2}$ , . . . . .	.60
Do., 6 exposures, . . . . .	.30
Do., "Double-Two" Cartridge (4 exposures), . . . . .	.20
Kodak Portrait Attachment, . . . . .	.50
Black Sole Leather Carrying Case, with shoulder strap, . . . . .	1.25





### THE PRICE.

*No. 3 Folding Pocket Kodak, for pictures $3\frac{1}{4} \times 4\frac{1}{4}$ inches, with Rapid Rectilinear Lens, speed f. 8, F. P. K. Automatic Shutter, . . .	\$17.50
*Do., B. & L. Automatic Shutter, . . .	25.00
Black Sole Leather Carrying Case, with strap, . .	1.25
Glass Plate Adapter, with ground glass, . . .	3.50
Single glass plate holders, $3\frac{1}{4} \times 4\frac{1}{4}$ , each, . .	.50
N. C. Film Cartridge, 12 exposures, $3\frac{1}{4} \times 4\frac{1}{4}$ , . .	.70
Do., 6 exposures, . . .	.35
Do., "Double-Two" Cartridge (4 exposures), . .	.25
Kodak Portrait Attachment, . . .	.50

\*Add one dollar if Rising and Sliding Front is desired.

### No. 3 Folding Pocket Kodak.

THE wonderful success of this camera is attributable to its simplicity and compactness, coupled with its adaptability to a wide range of work. It folds into such a small compass as to be carried with little or no inconvenience in an ordinary coat pocket, yet has all the features and adjustments needed for the very highest kind of photography. It is an excellent camera for the tourist. It is generally used as a hand camera, but used with tripod, either for vertical or horizontal pictures, it gives equal satisfaction.

In the latest model the scope of the No. 3 has been greatly increased. Several new features have been added, yet all of the old simplicity has been retained.

This year's model is fitted with our F. P. K. automatic shutter, described on page 16, and double combination lenses which are strictly



### No. 3 Folding Pocket Kodak.—Continued.

rectilinear and very rapid. This shutter works either with trigger or pneumatic attachment.

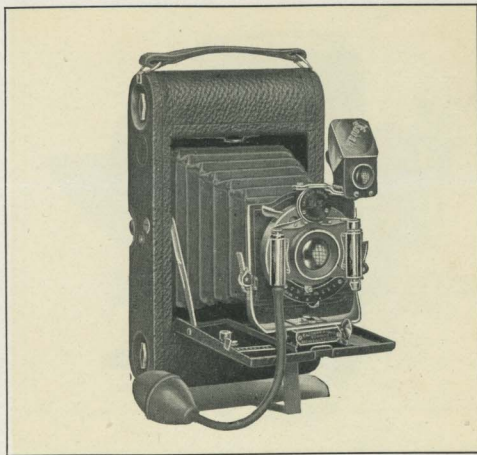
The camera has two tripod sockets, one for vertical, the other for horizontal exposures, and brilliant reversible finder with hood. Made of aluminum, covered with the finest black seal grain leather, the No. 3 F. P. K. is light, strong and handsome.

It has capacity for 12 pictures  $3\frac{1}{4} \times 4\frac{1}{4}$  inches, yet weighs only 23 ounces, and measures but  $1\frac{5}{8} \times 4\frac{1}{2} \times 7\frac{1}{2}$  inches. A desirable feature is the size,  $3\frac{1}{4} \times 4\frac{1}{4}$ , which adapts the negatives to the making of lantern slides by contact.

These instruments will be furnished with a rising and sliding front, for an extra charge of one dollar.

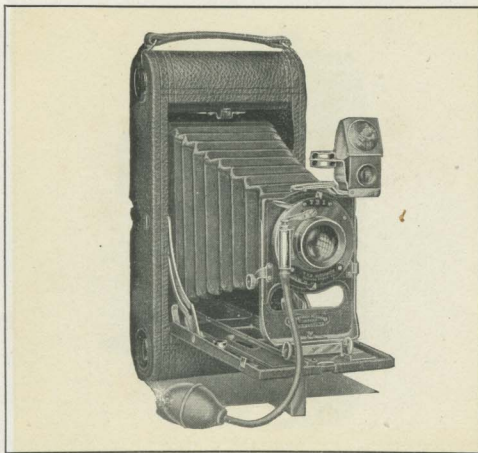
By the use of a simple Adapter these instruments may be readily used with glass dry plates. This attachment has a ground glass for focusing and uses single aluminum plate holders.

(23)



No. 3 Folding Pocket Kodak with rising front and  
B. & L. Automatic Shutter.

*A rising and sliding front, B. & L. Automatic Shutter and anastigmat lenses are desired by many amateurs with this high grade little instrument. Our charges for such special equipment are very moderate.*



### THE PRICE.

Folding Pocket Kodak No. 3A, for pictures $3\frac{1}{4} \times 5\frac{1}{2}$ inches, with Rapid Rectilinear Lens, speed f. 8 and F. P. K. Automatic Shutter, . . .	\$20.00
Do., with B. & L. Automatic Shutter, . . .	27.50
Black Sole Leather Carrying Case, with strap, . . .	1.50
Glass Plate Adapter, with ground glass, . . .	3.50
Single Glass Plate Holders, $3\frac{1}{4} \times 4\frac{1}{4}$ , each, . . .	.50
N. C. Film Cartridge, 10 exposures, $3\frac{1}{4} \times 5\frac{1}{2}$ , . . .	.70
Do., 6 exposures, . . .	.40
Do., "Double-Two" Cartridge (4 exposures), . . .	.30
Kodak Portrait Attachment, . . .	.50

## No. 3A Folding Pocket Kodak.

THIS instrument is broader in scope than anything heretofore attained in pocket photography. It may be carried in a top coat pocket, yet the size and shape of the pictures it takes,  $3\frac{1}{4} \times 5\frac{1}{2}$  inches, are such as to commend it to the most ambitious amateurs.

It really has all the practical features found in cameras of three times its bulk, yet the Kodak Simplicity is fully maintained, and the merest novice can operate the instrument with no further directions than those contained in the illustrated manual which goes with each camera sold. The Folding Pocket Kodaks have done much to demonstrate that bulky apparatus is not necessary even in serious work. This latest addition to the series will still further prove the practical value of pocket instruments. The No. 3A Folding Pocket Kodak greatly widens the field of pocket photography.



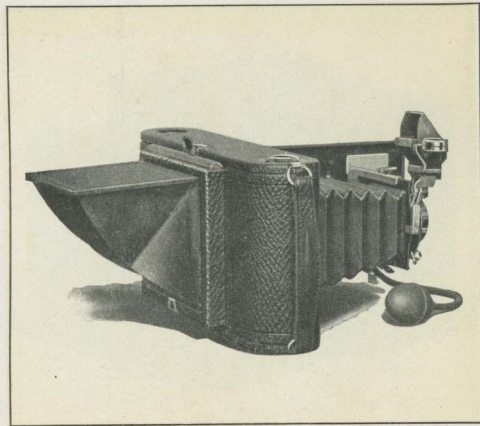
### 3A Folding Pocket Kodak.—Continued.

The lenses furnished with the regular equipment are rapid rectilinear and are selected and tested with the utmost care. They have a focal length of  $6\frac{1}{2}$  inches and a speed of  $f.8$ , covering fully with this opening. The shutter is the new F. P. K. Automatic, fully described on page 16.

A desirable feature with which every No. 3A Folding Pocket Kodak is equipped is the rising, falling and sliding front. There are tripod sockets for both vertical and horizontal exposures, a brilliant reversible finder, a spirit level, reversing with the finder and a focusing scale.

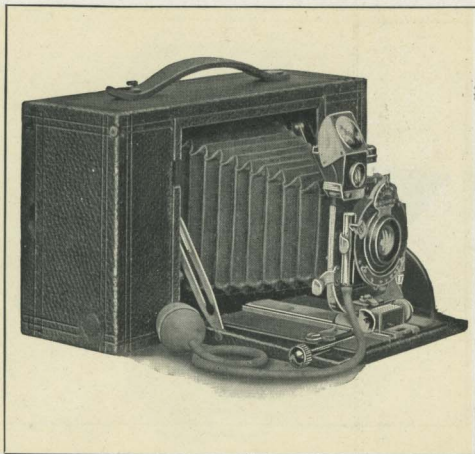
Considering the size of the pictures and its wide capabilities the compactness of the camera is remarkable, the measurements being  $1\frac{7}{8} \times 4\frac{3}{4} \times 9\frac{1}{2}$  inches, and the weight, loaded for 10 exposures  $3\frac{1}{4} \times 5\frac{1}{2}$  inches, only 41 ounces. Made of aluminum, covered with the finest seal grain leather, and with full nickel fittings, it is as strong, as durable and as handsome as it is efficient.

(25)



*By the use of a simple adapter (extra) either the No. 3 or the No. 3A F. P. Kodaks may be used with glass plates, taking the standard size,  $3\frac{1}{4} \times 4\frac{1}{4}$ . This attachment is simply an extra back for the camera, taking the place of the regular back, and can be placed in position in a few seconds. It has a ground glass for focusing and focusing shade, and with it are used single aluminum plate holders which are very light, yet safe.*





### THE PRICE.

No. 4 Screen Focus Kodak, for 4 x 5 pictures, Rapid Rectilinear lens and Kodak Automatic Shutter, . . . . .		\$30.00
N. C. Film Cartridge, 12 exposures, 4 x 5, . . . . .		.90
Do., 6 exposures, . . . . .		.45
Do., Double-Two Cartridge (4 exposures), . . . . .		.30
Black Sole Leather Carrying Case, velvet lined, . . . . .		2.50
Glass Plate Adapter, . . . . .		2.00
Double Glass Plate Holders, 4 x 5, each, . . . . .		1.00
Kodak Portrait Attachment, . . . . .		.50

## No. 4 Screen Focus Kodak.

*Ready May 15th.*

**T**HIS instrument like all of the others is built on the Cartridge system daylight loading principle, yet it is a radical departure from the style of any Kodak heretofore manufactured, in that it permits focusing on the screen or ground glass without removing the roll of film from the camera. This is accomplished by simply swinging the roll holder containing the film out of the focal plane whenever it is desired to use the ground glass.

The operation of focusing then being accomplished as with the ordinary plate camera, the film holder and film is swung back into the focal plane, dark slide removed and the exposure made. Focusing of course may be done between each exposure.

A convenient feature in the construction of this camera is the recess provided for carrying

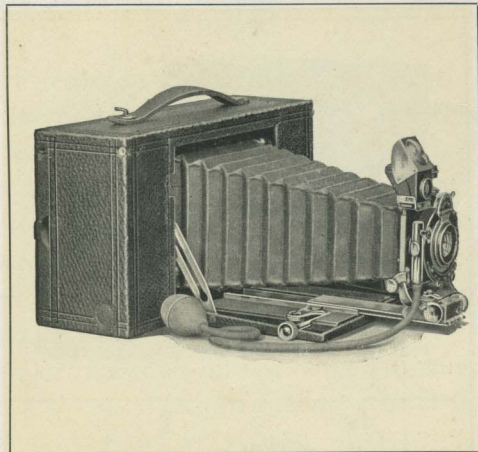
#### No. 4 Screen Focus Kodak.—Continued.

the ground glass within the film holder part of the camera, where it is completely out of the way, but instantly available when desired for use. The dark slide also, which protects the film when raised out of the focal plane, is carried in the roll holder.

This Kodak embodies ideas absolutely new in camera construction. It will be especially appreciated by that class of careful photographers who wish to use film on account of its convenience, yet who want to be able to perfect the composition of their picture by seeing it on the ground glass before exposure. This end is gained in the new cameras, while at the same time all the old Kodak simplicity is conserved.

In operating, the film cartridge is loaded into the camera in daylight in the usual way. To focus on the ground glass, first pull a dark slide from its position in the roll-holding part of the Kodak and insert it in front of the film. This

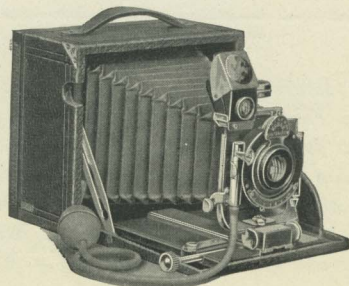
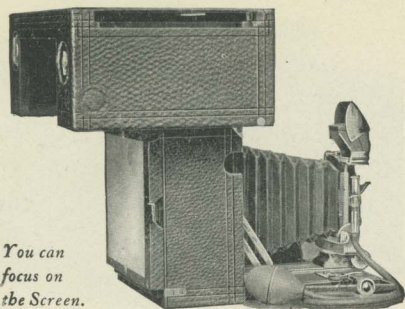
(27)



*Showing Extension Bed.*

*A feature which will commend the No. 4 Screen Focus Kodak to ambitious amateurs who wish to do their best work with film, is the double extension bed with which this camera is equipped. This allows the operator to work to within 22 inches of the subject when focusing the image upon the ground glass—insuring perfect accuracy and sharpness.*





#### No. 4 Screen Focus Kodak.—Continued.

renders the film chamber light-proof. The whole back of the Kodak containing film is then swung up out of the focal plane and a ground glass, always carried in the back of camera, is placed in position. The mechanism is such that the film cannot be swung up until the dark slide is in position in front of the film.

The roll holder being raised, it catches automatically and remains in the position shown in cut. The screen or ground glass frame is then removed from its recess in roll holder, described on preceding page, and snapped into position at the back of Kodak, an operation requiring but an instant. The raised roll holder projecting beyond the back of the Kodak will act as a focusing shade, or a focusing cloth may be used. After focusing the ground glass is removed and returned to its place.

Pressure on a spring releases catch which holds roll holder in position shown in cut. The



**No. 4 Screen Focus Kodak.—Continued.**

film is then let down into the focal plane, the dark slide removed and exposure made.

If desired the usual focusing scale may be used instead of the ground glass.

The No. 4 Screen Focus Kodak becomes a plate camera by merely removing the roll holder and adjusting the plate holder back containing ground glass and focusing shade, an operation requiring but a few seconds.

As a plate camera it is light, strong and convenient, being fully as compact as instruments which are constructed for use with plates only.

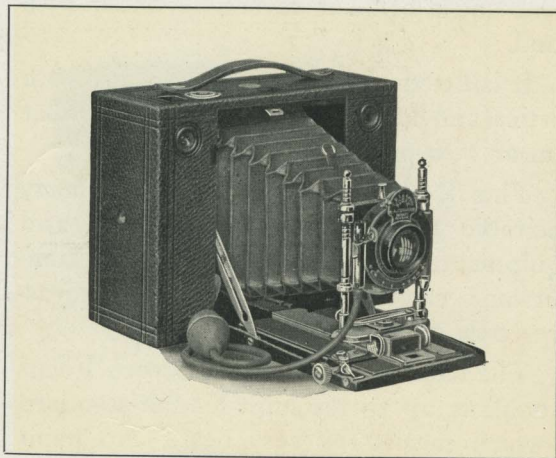
The optical equipment of the No. 4 Screen Focus Kodak consists of a Rapid Rectilinear lens of exceptional quality and the Kodak Automatic Shutter, described on page 17. It has rising and sliding front operated with the most convenient adjust-

ment and a brilliant reversible finder with hood.

It is fitted with tripod sockets for both vertical and horizontal exposures, with either film or with plates.

This Kodak, notwithstanding its many desirable features in construction and equipment, is by no means a bulky, cumbersome camera. When closed it measures only  $10 \times 5\frac{3}{4} \times 3\frac{3}{8}$  inches.

The workmanship on the Screen Focus Kodak is up to the high Kodak standard—which means the very best. No pains have been spared in construction and adjustment to make it satisfactorily accomplish the purpose for which it is intended—that of providing an instrument of the most advanced type. It is covered with the finest seal grain leather and has nicked trimmings. Capacity, 12 exposures without reloading.



### The Cartridge Kodaks.

**I**N the Cartridge Kodaks we have combined the simplicity of the cartridge system with those features of adjustment which give the instrument a wide range for all-around work. They are used successfully by the beginner. Their

construction, of aluminum and hard wood, gives strength and lightness—points of great importance to the tourist. We have ourselves been surprised at the rough usage and severe climatic changes which these instruments have withstood in Cuba, China, the Philippines and South Africa, and, with the increased use of aluminum in the new models, these instruments are even stronger than were the earlier designs. No other camera of equal capabilities can so well withstand the rough usage of travel. The equipments with which they are furnished admit of the very highest grade of photographic work. Cartridge Kodaks are as handsome in finish as the finest seal grain leather, nickel and polished mahogany can make them.

The lenses furnished in the regular equipment are strictly rectilinear and very rapid, having a working speed of *f.* 8.



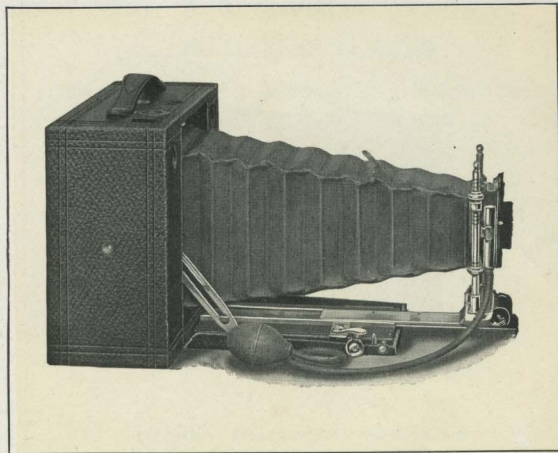
### Cartridge Kodaks.—Continued.

They do not, therefore, require the most favorable conditions, but enable the operator to secure good instantaneous pictures under circumstances where such pictures would be impossible with a less powerful lens. Our system of inspection insures a perfect lens with every instrument.

Wide angle lenses, the cells of which fit the regular shutter, and which are easily attached, can be supplied at a very reasonable extra charge, or, if desired, the instruments may be given a special lens and shutter equipment. See page 43.

The No. 3 and No. 4 Cartridge Kodaks are regularly fitted with our new Kodak Automatic Shutter, described on page 17, which is built with the accuracy of a watch and is of the highest efficiency.

We now equip the No. 5 Cartridge Kodak regularly with the well-known

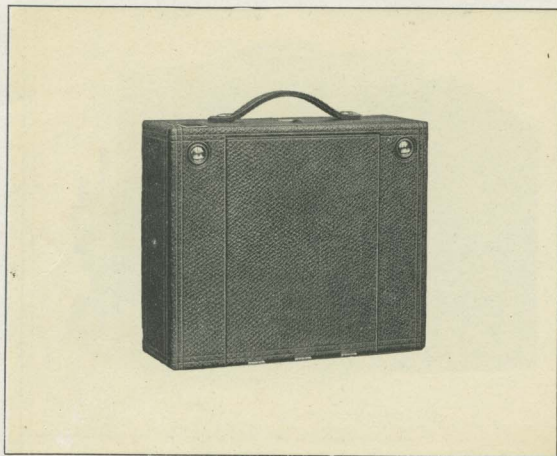


*Showing extension front.*

Unicum Shutter, described on page 17.

The new Cartridge Kodaks have an improved rising front which locks automatically, and also an improved side slide (rising when used for horizontal pictures) and have aluminum leather covered front boards of great strength, but which are





**Cartridge Kodaks.—Continued.**

nevertheless light, and are very neat in appearance. There are two brilliant finders and two spirit levels on each instrument.

An extra extension to bellows, operated by means of rack and pinion, permits the

photographing of objects at a distance of only 18 inches from the lens, and also permits of the advantageous use of a telephoto attachment when plates are used.

All Cartridge Kodaks are practical enlarging cameras. These instruments will make enlargements of any size, being limited only in the negatives which they will "cover". The No. 3, for instance, will make enlargements from  $3\frac{1}{4} \times 4\frac{1}{4}$ , or from any smaller negatives, the No. 4 from  $4 \times 5$  or smaller, and the No. 5 from  $5 \times 7$  or smaller.

The No. 3 makes pictures the proper size for making lantern slides by contact, at the same time having that optical perfection so necessary to the lanternist; absolute sharpness, of course, being a first essential in lantern slides, for the reason that any imperfection in the slide will be magnified many times on the screen.

### No. 3 Cartridge Kodak.

#### FILM AND PLATES.

For rectangular pictures,  $4\frac{1}{4} \times 3\frac{1}{4}$  inches; capacity, 12 exposures without reloading; size, closed,  $3\frac{3}{4} \times 5\frac{3}{4} \times 7\frac{1}{2}$  inches; weight, 2 lbs., 12 ozs.; length of focus of lens, 6 inches.

No. 3 Cartridge Kodak, Rapid Rectilinear lens, Kodak	
Automatic Shutter, . . . . .	\$20.00
N. C. Film Cartridge, 12 exposures, $4\frac{1}{4} \times 3\frac{1}{4}$ , . . . . .	.70
Do., 6 exposures, . . . . .	.35
Do., "Double-Two" Cartridge, 4 exposures, . . . . .	.25
Glass Plate Adapter, with ground glass, . . . . .	2.00
Double Plate Holders, each, . . . . .	1.00

### No. 4 Cartridge Kodak.

#### FILM AND PLATES.

For rectangular pictures,  $5 \times 4$  inches; capacity, 12 exposures without reloading; size of camera,  $3\frac{1}{4} \times 6\frac{3}{8} \times 8\frac{1}{4}$  inches; weight, 3 lbs., 2 ozs.; length of focus of lens,  $6\frac{1}{2}$  inches.

No. 4 Cartridge Kodak, Rapid Rectilinear lens, Kodak	
Automatic Shutter, . . . . .	\$25.00
N. C. Film Cartridge, 12 exposures, $5 \times 4$ , . . . . .	.90
Do., 6 exposures, . . . . .	.45
Do., "Double-Two" Cartridge, 4 exposures, . . . . .	.30
Glass Plate Adapter, with ground glass, . . . . .	2.50
Double Glass Plate Holders, each, . . . . .	1.00

### No. 5 Cartridge Kodak.

#### FILM AND PLATES.

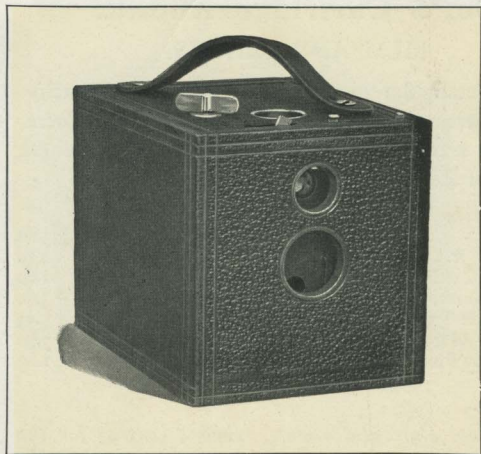
For rectangular pictures,  $7 \times 5$  inches; capacity, 12 exposures without reloading; size of camera,  $3\frac{3}{8} \times 8\frac{1}{2} \times 10$  inches; weight, 4 lbs., 8 ozs.; length of focus of lens,  $8\frac{1}{2}$  inches.

No. 5 Cartridge Kodak, Rapid Rectilinear lens, Unicum	
Shutter, . . . . .	\$35.00
Do., with B. & L. Automatic Shutter, . . . . .	40.00
N. C. Film Cartridge, 12 exposures, $7 \times 5$ , . . . . .	1.60
Do., 6 exposures, . . . . .	.80
Do., "Double-Two" Cartridge, 4 exposures, . . . . .	.55
Glass Plate Adapter, with ground glass, . . . . .	3.00
Double Glass Plate Holders, each, . . . . .	1.25

*The glass plate attachments, supplied (extra) for the Cartridge Kodaks, are attached by simply removing the back and replacing with glass plate attachment, an operation requiring but a few seconds. With plates the instrument may be focused, either on the ground glass or by the focusing scale. Fitted in this way the Cartridge Kodaks are complete and efficient plate cameras. They may be used of course either for vertical or horizontal exposures the same as when using film.*

*Kodak Portrait Attachments are now made for Cartridge Kodaks of all sizes. See pages 44 and 45.*





### THE PRICE.

No. 2 Flexo Kodak, for pictures $3\frac{1}{2} \times 3\frac{1}{2}$ inches, with achromatic lens, . . . . .	\$5.00
N. C. Film Cartridge, 12 exposures, $3\frac{1}{2} \times 3\frac{1}{2}$ , . . . . .	.60
Do., 6 exposures, . . . . .	.30
Do., "Double-Two" Cartridge (4 exposures), . . . . .	.20
Kodak Portrait Attachment, . . . . .	.50
Black Sole Leather Carrying Case, with shoulder strap, . . . . .	1.25

## No. 2 Flexo Kodak.

THE simplicity of this instrument commends it to beginners in photography. Its capabilities place it high in favor with those who are experienced. It is an efficient and reliable camera.

The No. 2 Flexo is fitted with fixed focus achromatic lens, set of three stops, finder, socket for tripod screw and our improved Rotary Shutter described on page 15. It has a capacity of 12 exposures without reloading, making pictures  $3\frac{1}{2} \times 3\frac{1}{2}$  inches, measures  $4\frac{3}{8} \times 4\frac{5}{8} \times 5\frac{7}{8}$  inches, and weighs 19 ounces. Covered with fine grain leather and handsomely finished. The Flexo, like the other Kodaks, is ready for use, the price including every requisite for taking pictures except the film, whereas the price of most five dollar plate cameras includes but one plate holder and a further expenditure of \$2 or \$3 is called for to supply the necessary number of holders.



## The No. 2 Bulls-Eye Kodak.

**T**HIS instrument first made the cartridge system popular. For more than 10 years its simple and practical excellence has maintained it as the leader among box form cameras.

Since the earlier models great improvements have of course been made, but in none of them has there been any sacrifice of the simplicity in operation.

The No. 2 Bulls-Eye has a capacity for 12 pictures,  $3\frac{1}{2} \times 3\frac{1}{2}$  inches, measures  $4\frac{1}{2} \times 4\frac{5}{8} \times 5\frac{3}{4}$  inches, and weighs 22 ounces. It has a meniscus achromatic lens with fixed focus of  $4\frac{1}{2}$  inches, the Eastman Rotary Shutter, described on page 15, set of three stops, brilliant finder, socket for tripod screw. The No. 2 Bulls-Eyes are covered with the finest seal grain leather, have nicked fittings and are handsomely finished.

Like all other Kodaks they are subjected to the most rigid inspection before leaving the factory.

(35)



### THE PRICE.

No. 2 Bulls-Eye Kodak, for pictures $3\frac{1}{2} \times 3\frac{1}{2}$ inches, fitted with meniscus achromatic lens,	\$8.00
N. C. Film Cartridge, 12 exposures, $3\frac{1}{2} \times 3\frac{1}{2}$ , .	.60
Do., 6 exposures, . . . . .	.30
Do., "Double-Two" Cartridge (4 exposures), .	.20
Kodak Portrait Attachment, . . . . .	.50
Black Sole Leather Carrying Case, with shoulder strap, . . . . .	1.25



### THE PRICE.

No. 4 Bulls-Eye Kodak, for pictures 4 x 5 inches, fitted with achromatic lens, . . . . .	\$12.00
N. C. Film Cartridge, 12 exposures, 4 x 5, . . . . .	.90
Do., 6 exposures, . . . . .	.45
Do., "Double-Two" Cartridge (4 exposures), . . . . .	.30
Black Sole Leather Carrying Case, with shoulder strap, . . . . .	2.00

## No. 4 Bulls-Eye Kodak.

**T**HIS instrument makes pictures of the popular 4 x 5 size. It is absolutely reliable and splendidly equipped for general photographic work.

The No. 4 Bulls-Eye has an achromatic lens of superior quality with a focus of  $6\frac{1}{4}$  inches. It has the Eastman Rotary Shutter, described on page 15, focusing scale, set of three stops, two brilliant finders, and is provided with two tripod sockets. It has a capacity of 12 exposures, 4 x 5, measures  $5 \times 5\frac{7}{8} \times 9\frac{1}{4}$  inches, and weighs 2 pounds, 10 ounces. It has a handsome finish, nickel fittings, and is covered with fine seal grain leather.

The extreme simplicity of the No. 4 Bulls-Eye and its durability, make it very desirable for tourists, who wish pictures as large as 4 x 5 but who prefer the box to the folding form of camera.



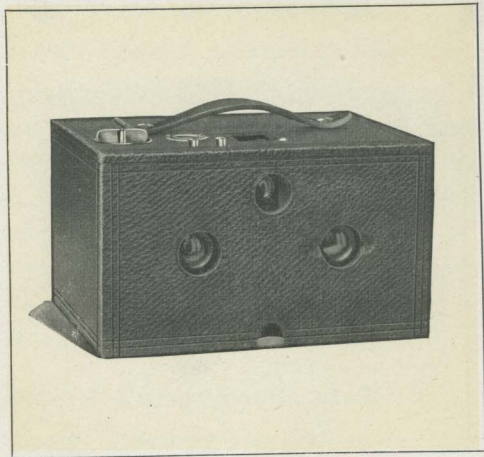
## No. 2 Stereo Kodak.

THESE cameras, resembling in model the well known Bulls-Eyes, are equipped with twin Rapid Rectilinear lenses and a modified form of the Eastman Automatic Shutter. They use standard No. 2 Kodak Cartridges, which may be obtained the world over and may be loaded for one, two, three or six stereoscopic pictures of the standard size,  $3\frac{1}{4} \times 6$  inches. A Stereo Kodak may also be used for single exposures by use of a blind over one lens, in which case the pictures are the same size as those made with the No. 2 Bulls-Eye Kodak,  $3\frac{1}{2} \times 3\frac{1}{2}$  inches.

The Stereo Kodaks have sets of three stops, square, brilliant finder, spirit level, socket for tripod screw, are covered with fine seal grain leather and have nicked fittings. They are simple and accurate and give correct stereoscopic effects.

Size of Kodak,  $4\frac{3}{4} \times 6 \times 8\frac{1}{8}$  inches; weight, 2 lbs., 3 ozs. Length of focus of lenses,  $4\frac{3}{4}$  inches.

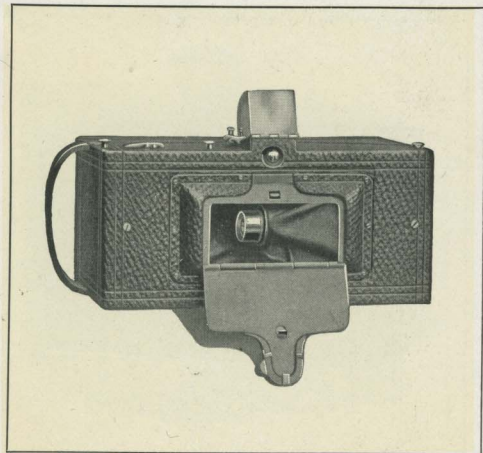
(37)



### THE PRICE.

No. 2 Stereo Kodak, fitted with pair of Rapid Rectilinear lenses, . . . . .	\$15.00
N. C. Film Cartridge, 6 stereo exposures (regular No. 2 Bulls-Eye 12 ex. cart.), . . . . .	.60
Do., 3 exposures (No. 2 B.-E. 6 ex. cart.), . . . . .	.30
Do., 2 exposures (No. 2 B.-E. "Double-Two" cart.), . . . . .	.20
Black Sole Leather Carrying Case, with shoulder strap, . . . . .	2.00





*A Panoram Kodak is needed to complete one's photographic outfit no matter how many other cameras he may possess. Certain pictures are obtainable only with these instruments.*

## The Panoram Kodaks.

CERTAIN kinds of photographic work can only be done with the Panoram-Kodaks. To the traveler one of these instruments is almost indispensable, as it will enable him to take views which he would otherwise be unable to secure. As their name suggests, they are particularly for landscapes and marines, and the pictures they take have a breadth and beauty not attainable with the ordinary camera.

Vertical pictures of high waterfalls and mountain peaks, as well as horizontal pictures, give most delightful effects, while the great speed of the swinging lens and shutter, combined with the wide scope of view, make them unequalled in the taking of out-door group pictures, the subjects in such cases being arranged in a semi-circle and all at an equal distance from the Kodak.

These instruments have carefully tested achromatic lenses, improved two-speed shutters, spirit

level, and brilliant finder, which shows the sky and foreground, and by means of which the entire view may be examined by simply swinging the camera, before exposure, so as to take in the full scope of view, as indicated by the V shaped lines on top of camera. The No. 1 Panoram takes in an angle of view of  $112^{\circ}$ , while the No. 4 has the great scope of  $142^{\circ}$ . The Panoram-Kodaks are covered with the finest black morocco, have nickeled fittings and are beautifully finished.

These instruments are, of course, not intended for taking time exposures or interiors.

The operation of the Panoram-Kodaks is just as simple as that of any of the smaller Kodaks and is rendered perfectly plain with the well illustrated and concisely written manual which accompanies each instrument. The Panorams use regular Kodak film cartridges.

## No. 1 Panoram-Kodak.

*Uses No. 1 Folding Pocket Kodak Cartridges.*

For pictures  $2\frac{1}{4} \times 7$  inches; capacity, 6 exposures without reloading; size of camera,  $3\frac{3}{8} \times 4\frac{1}{4} \times 7\frac{3}{8}$  inches; weight, 24 ounces; length of focus of lens,  $3\frac{9}{16}$  inches; angle of view,  $112^{\circ}$ .

No. 1 Panoram-Kodak,	\$10.00
N. C. Film Cartridge, 6 ex., $2\frac{1}{4} \times 7$ (regular No. 1 Folding Pocket Kodak Cartridge),	.40
Do., 3 exposures,	.20
Black Sole Leather Carrying Case, with shoulder strap,	1.75

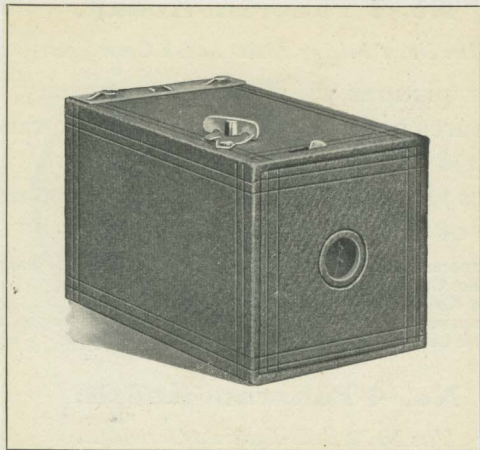
## No. 4 Panoram-Kodak.

*Uses No. 4 Bulls-Eye Film Cartridges.*

For pictures  $3\frac{1}{2} \times 12$  inches; capacity, 5 exposures without reloading; size of camera,  $4\frac{3}{4} \times 5\frac{1}{2} \times 10\frac{1}{8}$  inches; weight, 2 lbs., 14 ozs.; length of focus of lens, 5 inches; angle of view,  $142^{\circ}$ .

No. 4 Panoram-Kodak,	\$20.00
N. C. Film Cartridge, 5 exposures, $3\frac{1}{2} \times 12$ (regular No. 4 Bulls-Eye Cartridges),	.90
Do., 2 exposures,	.45
Black Sole Leather Carrying Case, with shoulder strap,	2.00





### THE PRICE.

No. 1 Brownie Camera, for $2\frac{1}{4} \times 2\frac{1}{4}$ pictures,	\$1.00
N. C. Film Cartridge, 6 exposures, $2\frac{1}{4} \times 2\frac{1}{4}$ ,	.15
Brownie Finder, detachable,	.25
No. 1 Brownie Carrying Case, holds camera and finder,	.50
No. 1 Brownie Developing and Printing Outfit, including Dekko Paper for 24 prints,	.90

## No. 1 Brownie Camera.

THE Brownie Cameras have not only proven themselves to be wonderfully reliable and accurate little instruments, but have demonstrated that photography—as simplified by the Cartridge system—is readily within the grasp of the school boy and the school girl.

The No. 1 Brownie Cameras make pictures  $2\frac{1}{4} \times 2\frac{1}{4}$  inches, loading in daylight for six exposures. They have  $3\frac{1}{4}$  inch focus meniscus lenses, and the Eastman Rotary shutter, described on page 15, the shutter, however, having one stop only. These instruments measure  $3 \times 3\frac{1}{8} \times 4\frac{7}{8}$  inches and weigh 8 ounces. V shaped lines on top of camera give the scope of view, or a Brownie finder (detachable) may be provided for only 25 cents. The Brownies are strongly made, are covered with imitation leather and have nickeled fittings. Forty-four page instruction book free with every instrument.



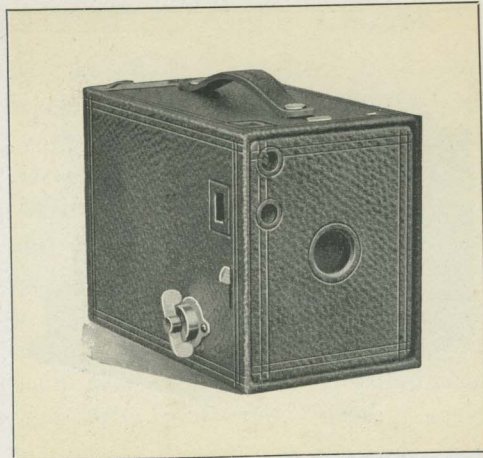
## No. 2 Brownie Camera.

**T**HIS camera is an elaboration of the No. 1 Brownie. In the hands of very young children these instruments have produced remarkable photographs, while work of the highest type has been done with them by experts. They are just as simple to operate as the No. 1, but take pictures  $2\frac{1}{4} \times 3\frac{1}{4}$  inches. They have two finders, one for vertical and the other for horizontal exposures. They are fitted with the Eastman Rotary Shutter described on page 15, and have meniscus lenses with  $4\frac{1}{2}$  inch focus.

The No. 2 Brownie Cameras measure  $3\frac{1}{4} \times 4 \times 5\frac{5}{8}$  inches; weigh 13 ounces; are covered with fine imitation leather; have handsomely nickeled fittings, and are well made in every particular.

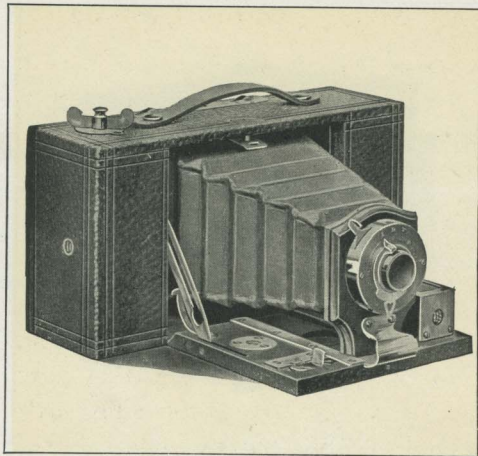
These little instruments may be fitted with the Kodak Portrait Attachment described on page 44, by means of which they will make large bust photographs.

(41)



### THE PRICE.

No. 2 Brownie Camera, for $2\frac{1}{4} \times 3\frac{1}{4}$ pictures,	\$2.00
N. C. Film Cartridge, for 6 exposures, $2\frac{1}{4} \times 3\frac{1}{4}$ ,	.20
No. 2 Brownie Carrying Case, with shoulder strap,	.75
No. 2 Brownie Portrait Attachment,	.50
A B C Developing and Printing Outfit, see page 49,	1.50



### THE PRICE.

No. 2 Folding Brownie Camera, for pictures $2\frac{1}{4}$ x $3\frac{1}{4}$ inches, Brownie Automatic Shutter, .	\$5.00
N. C. Film Cartridge, 6 exposures, $2\frac{1}{4}$ x $3\frac{1}{4}$ , .	.20
No. 2 Folding Brownie Carrying Case, .	.75
" 2 " " Portrait Attachment, .	.50

## No. 2 Folding Brownie.

*Ready May 15th.*

**I**N this camera the Brownie idea has been extended to a folding camera with several new features of equipment—it's almost a Kodak.

The No. 2 Folding Brownie takes pictures  $2\frac{1}{4}$  x  $3\frac{1}{4}$  inches and loads in daylight for 6 exposures. It has our new Brownie automatic shutter with iris diaphragm stops, described on page 16, and a fine meniscus lens. It has the three lock focusing device by which the front locks automatically at 8, 20 or 100 feet focus. This makes focusing very simple yet greatly increases the scope of the camera.

The No. 2 Folding Brownie has a reversible finder for making either vertical or horizontal exposures, has two tripod sockets, is covered with a fine quality imitation leather, has full nickeled fittings, and is beautifully finished.



## Special Lens and Shutter Equipments.

The No. 3 and No. 3A Folding Pocket, No. 4 Screen Focus and the Cartridge Kodaks may be equipped as follows:

### THE PRICE.

	Kodak Automatic.	Shutters: B. & L. Automatic.	Volute.
No. 3 Folding Pocket Kodak, B. & L. Plastigmat lens, No. 1, <i>f.</i> 6.8, . . .		\$57.00	\$64.00
Do., Goerz No. 0, Series III. Anastigmat lens, <i>f.</i> 6.8, . . .		60.50	67.50
No. 3A Folding Pocket Kodak, B. & L. Plastigmat lens, No. 2, <i>f.</i> 6.8, . . .		65.00	72.00
Do., Goerz No. 1, Series III. Anastigmat lens, <i>f.</i> 6.8, . . .		70.00	77.00
No. 3 Cartridge Kodak, B. & L. Plastigmat lens, No. 1, <i>f.</i> 6.8, . . .	\$52.00	57.00	66.00
Do., Goerz No. 0, Series III. Anastigmat lens, <i>f.</i> 6.8, . . .	55.50	60.50	69.50
No. 4 Cartridge Kodak, B. & L. Plastigmat lens, No. 2, <i>f.</i> 6.8, . . .	62.50	67.50	76.50
Do., Goerz No. 1, Series III. Anastigmat lens, <i>f.</i> 6.8, . . .	67.50	72.50	81.50
No. 4 Screen Focus Kodak, B. & L. Plastigmat lens No. 2, <i>f.</i> 6.8, . . .	67.50	72.50	81.50
Do., Goerz No. 1, Series III. Anastigmat lens, <i>f.</i> 6.8, . . .	72.50	77.50	86.50
No. 5 Cartridge Kodak, B. & L. Plastigmat lens No. 3, <i>f.</i> 6.8, . . .		84.50	93.50
Do., Goerz No. 3, Series III. Anastigmat lens, <i>f.</i> 6.8, . . .		99.00	—
Do., Goerz No. 2, Series III. Anastigmat lens, <i>f.</i> 6.8, . . .		—	97.00

## Kodak Wide Angle Lenses.

These lenses have a speed of *f.* 16, and are interchangeable with the lenses furnished with the Cartridge Kodaks and the No. 4 Screen Focus Kodak.

The Wide Angle Kodak lenses are rectilinear and are carefully tested not only at the factory where they are manufactured but by our own inspector. They are absolutely high grade in every instance. With each one we furnish a leather case and a properly graduated focusing scale for attaching to the camera bed.

In ordering give size (No.) of Kodak and specify the shutter the lens is to be used with.

### THE PRICE.

No. 3 (3¼ x 4¼) Wide Angle Kodak Lens, equivalent focus, 3½ inches, speed <i>f.</i> 16, . . .	\$5.00
No. 4 (4 x 5) Wide Angle Kodak Lens, equivalent focus, 4½ inches, speed <i>f.</i> 16, . . .	5.00
No. 5 (5 x 7) Wide Angle Kodak Lens, equivalent focus, 5½ inches, speed <i>f.</i> 16, . . .	7.50





*Made with No. 2 Brownie Camera with Kodak  
Portrait Attachment. Actual size.*

## Kodak Portrait Attachments.

**P**ORTRAIT making is simple nowadays. A fifty cent attachment on a small Kodak or Brownie camera will enable one to make good sized head and shoulder pictures—while the attachments which we now furnish for the Cartridge and other Kodaks of larger size, enable one to make bust portraits of any size desired, limited only by the dimensions of the plate.

Portraiture is one of the most enjoyable phases of amateur photography; for good home pictures of one's friends have an ever increasing interest and charm.

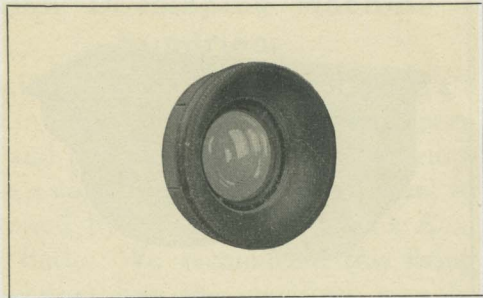
The Kodak Portrait Attachments are simply extra lenses which slip on in front of the regular lenses. The quality of work done with them is the very best.

They in no way affect the operation of the fixed focus Kodaks except that they make them cut sharp at a distance of  $3\frac{1}{2}$  feet, and thus

### Portrait Attachments.—Continued.

throw more distant objects out of focus. They may also be used to good advantage with the Cartridge Kodaks, the No. 4 Screen Focus Kodaks and the No. 3 and No. 3 A Folding Pocket Kodaks. With the attachment in place, the focus of these instruments set at 15 feet, and the subject  $3\frac{1}{2}$  feet from the camera, admirable bust portraits are obtained; but the Kodaker is by no means confined to the particular size of image given at that distance; for by changing the focus, it is practical to work at different distances, thus increasing or diminishing the size of the image at pleasure.

The rapidity of Eastman's N. C. Film makes portraiture indoors by a window easy, and in this class of work the Kodak Portrait attachment may be used to great advantage. A variety of effects in lighting may be secured indoors, and negatives obtained of the highest quality.



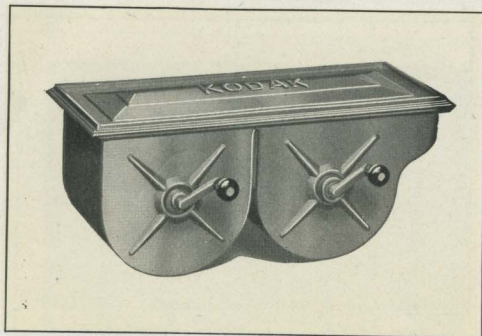
### THE PRICE.

Kodak Portrait Attachment, . . . . \$ .50

For use with all regularly equipped Kodaks listed in this catalogue except the No. 4 Bulls-Eye and the Panoram Kodaks. May also be used with the No. 2 Brownie and No. 2 Folding Brownie Cameras.

Be sure and give exact designation of instrument when ordering and when to be used with a pneumatic release shutter also give exact designation of same. With each portrait attachment are furnished full directions for its use, and with those Kodaks which are not fixed focus a table is provided for setting the focus to obtain bust pictures of various sizes.





### THE PRICE.

STYLE A KODAK DEVELOPING MACHINE. For use with No. 0, No. 1 and No. 1A Folding Pocket Kodak, No. 1 Panoram-Kodak and No. 1 and No. 2 Brownie cartridges (price includes a handsomely finished wooden carrying case, with leather handle), . . . . .	\$6.00
STYLE E KODAK DEVELOPING MACHINE. For use with Kodak and Brownie cartridges of all sizes up to and including 4 x 5 (price includes a handsomely finished wooden carrying case, with leather handle), . . . . .	7.50
STYLE H KODAK DEVELOPING MACHINE. For use with No. 5 Cartridge Kodak Films or any smaller size (price includes a handsomely finished wooden carrying case, with leather handle) . . . . .	10.00
THE "BROWNIE" KODAK DEVELOPING MACHINE. For use with No. 1 and No. 2 Brownie cartridges (packed in neat wooden box), . . . . .	2.00

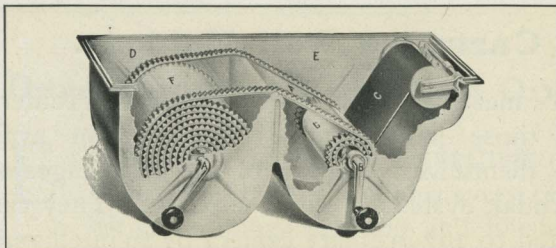
## Kodak Developing Machines.

THE Kodak Developing Machines are constructed of brass and fully nickeled, and are durable and handsome.

They may be readily packed in the traveler's trunk or suit case, or the Style A, E and H Machines may be carried as hand baggage in their handsome wooden cases. All Kodak or Brownie film cartridges may be developed in these machines. Any roll holder cartridges, except the No. 4 Horizontal (4-inch spool) and the No. 5, may also be developed in the Kodak Developing Machine.

In operating, the cartridge is inserted in the machine so that the black paper will lead from the top, as shown in cut on following page, the transparent apron (F-F) having first been wound onto Arbor "A". The gummed sticker, which holds down the end of black paper, is then broken, the paper pulled out and the end





*The Kodak Developing Machine in detail.*

attached to Arbor "B" by slipping under the wire guard. Arbor "B" is now turned to the right until the word "Stop" appears on top of cartridge. The developer is poured into compartment "E"; the end of Apron (F-F) is hooked onto Arbor "B", and the top put on machine. The operator now turns handle to the right, slowly and evenly, until the time of development—about six minutes has expired. The film is then removed from machine, in daylight, and fixed in an acid hypo bath.

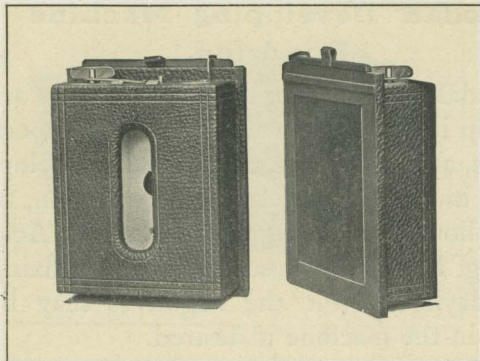
## Kodak Developing Machine Sundries.

Kodak Developing Machine Outfits are put up in accordance with the latest experiments, and provide for six minute development in a comparatively weak solution, to be followed by fixing in the Kodak Acid Fixing Bath. We recommend tray fixing (in daylight) but the negatives may be fixed in the machine if desired.

### THE PRICE.

*Kodak Developing Outfits for use with Kodak Developing Machines, including Developer Powders, Kodak Acid Fixing Powder, Graduates, Stirring Rod, Glycerine and Squeegee:*

"A" for use with Style A Machine,	. . . . .	\$1.25
"E" for use with Style E Machine,	. . . . .	1.60
"H" for use with Style H Machine,	. . . . .	2.00
"Brownie" for use with Brownie Machine,	. . . . .	.75
Kodak Developer Powders for Style A Machine, per		
package of ½ dozen,	. . . . .	.15
Do., for Style E Machine,	. . . . .	.20
Do., for Style H Machine,	. . . . .	.25
Do., for Brownie Machine,	. . . . .	.10
Kodak Acid Fixing Powder per lb. pkg.,	. . . . .	.25



### THE PRICE.

No. 3 Vertical, for $4\frac{1}{4} \times 3\frac{3}{4}$ pictures, $\frac{1}{4}$ inch spool,	\$5.00
No. 4 ( $4 \times 5$ ) Cartridge Roll Holders (specify whether vertical or horizontal),	5.00
No. 5 Vertical Cartridge Roll Holders, $\frac{1}{2}$ inch spool,	6.50

### N. C. FILM CARTRIDGES.

$4\frac{1}{4}$ inch, for No. 3 Cartridge Roll Holder, 12 exposures,	.70
4 inch, for No. 4 Horizontal Cartridge Roll Holder, 12 exposures,	.90
5 inch, for No. 4 Vertical Cartridge Roll Holder, 12 exposures,	.90
7 inch, for No. 5 Cartridge Roll Holder, 12 exposures,	1.60

## Cartridge Roll Holders.

**B**Y means of the Cartridge Roll Holders those having plate cameras can avail themselves of many of the advantages of the Kodak system at slight expense. They can be fitted to any ordinary camera by an intelligent cabinet maker, or we will do the fitting for a small charge, varying, of course, according to the camera and the work necessary.

The Cartridge Roll Holders load in daylight and are well made of hard wood, with fine seal grain leather covering (except No. 4 horizontal, which is hard wood finish), have nickel fittings, and are handsomely finished.

### Special Spools for Cartridge Roll Holders.

*In ordering cartridges, be sure and state that they are for Cartridge Roll Holder, giving length of spool and size of roll holder, as the film and paper are wound differently from those used in the Bullets, Bulls-Eyes, etc. Kodak spools will not fit Cartridge Roll Holders.*



## Developing and Printing Outfits.

**E**ASTMAN'S A B C DEVELOPING AND PRINTING OUTFIT includes every requisite for developing, printing and finishing 24 4 x 5, 2½ x 4¼, or 3¼ x 4¼, or 96 1⅝ x 2½ pictures.

Price, complete, neatly packed, . . . . . \$1.50

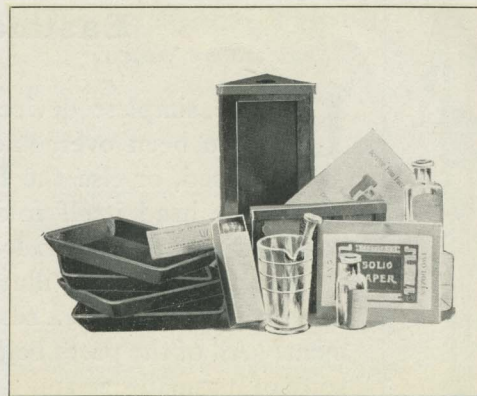
**EASTMAN'S BULLS-EYE DEVELOPING AND PRINTING OUTFIT**, complete, for developing and printing 12 pictures 3½ x 3½. Similar to above outfit, but containing 1 dozen 3½ x 3½ Solio paper and smaller quantities of chemicals.

Price, complete, neatly packed, . . . . . \$1.25

**BROWNIE DEVELOPING AND PRINTING OUTFIT**, complete, for developing 24 pictures 2¼ x 2¼ and printing on Dekko paper.

Price, complete, . . . . . \$ .90

NOTE—These outfits cannot be shipped by mail.



EASTMAN'S A B C DEVELOPING AND PRINTING OUTFIT.

1 Kodak Candle Lamp, . . . . .	\$ .25
1 4 x 5 Printing Frame, . . . . .	.25
“ Glass for do., . . . . .	.05
1 4 oz. Graduate, . . . . .	.10
1 Stirring Rod, . . . . .	.05
4 4½ x 5½ Developing Trays, . . . . .	.40
5 Tubes Eastman's Special Developer, . . . . .	.25
½ lb. Kodak Acid Fixing Powder, . . . . .	.15
½ oz. Bromide Potassium, . . . . .	.10
2 doz. 4 x 5 Solio Paper, . . . . .	.25
2 ozs. Solio Toning Solution, . . . . .	.15
1 oz. Glycerine, . . . . .	.05
Instruction Book, . . . . .	.10
	<hr/>
	\$2.15

Price, complete, neatly packed, \$1.50





## The Bulls-Eye Tripod.

### TWO SECTIONS.

An aluminum revolving head holds the socket screw and seats it in place in camera when turned, thus doing away with tripod screw. Made of spruce, with brass fittings. Leather handle for carrying. For 4 x 5 camera or smaller.

Price, . . . . . \$1.50

## Eastman's Feather Tripod.

### FOUR SECTIONS.

An aluminum revolving head holds the socket screw and seats it in place in camera when turned, thus doing away with tripod screw. Legs fold in four sections. Length, closed, 14½ inches. Weight, in spruce, 17½ ounces; cherry, 20½ ounces. Brass fittings, superb finish. For 4 x 5 cameras or smaller.

Eastman's Feather Tripod, Spruce, . . . . .	\$3.00
Do., Cherry, . . . . .	3.25
Do., Mahogany finish, . . . . .	3.50
Black Sole Leather Carrying Case, . . . . .	1.50

## The Eastman Tripod.

### THREE SECTIONS.

No. 1, Spruce, for cameras up to 6½ x 8½; weight, 1 lb.,	
10 ozs., . . . . .	\$2.25

No. 1, Maple, for cameras up to 6½ x 8½; weight, 2 lbs.,	
2 ozs., . . . . .	2.25

NOTE—When kind of wood is not specified, we will furnish in maple.

## The Victor Tripod.

### TWO SECTIONS.

No. 1, Spruce, for cameras up to 6½ x 8½; weight, 1 lb.,	
11 ozs., . . . . .	\$1.50

No. 1, Maple, for cameras up to 6½ x 8½; weight, 2 lbs.,	
3 ozs., . . . . .	1.50

NOTE—When kind of wood is not specified, we will furnish in maple.

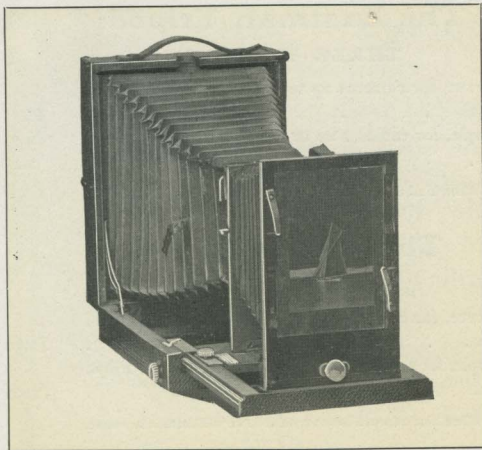
## The Flexo Tripod.

### TWO SECTIONS.

Has a fixed, non-detachable head. Only clear straight-grained wood is used in its construction. The metal work is of brass and all parts are carefully and accurately made.

Price, . . . . . \$1.00





### THE PRICE.

No. 1 Kodak Enlarging Camera, equipped for making enlargements from 4 x 5 glass negatives or from film negatives of any size, 4 x 5 1/2 inches, or smaller.		\$15.00
6 1/2 x 8 1/2 Inside Kits, 5 x 7 opening,		.35
Do., 4 x 5 opening,		.35
Glass Negative Holders, 3 1/4 x 4 1/4,		.50
Do., 3 1/2 x 3 1/2,		.50
Do., 3 1/4 x 3 1/2,		.50
Special Portrait Lens, 8 1/2 in. focus, speed f. 8 for bust work,		7.50
Extra Lens Board,		.75

No extra charge for fitting lens board to our Special Portrait Lens. Fitted to any other suitable lens at small extra charge.

## The Kodak Enlarging Camera.

THIS new instrument enables the amateur to gratify his ambition for large pictures, without the bother of carrying about a large camera, and moreover it is simple, convenient and inexpensive.

By its use enlargements up to 6 1/2 x 8 1/2 are made from 4 x 5, and 3 1/4 x 4 1/4 negatives. Smaller negatives enlarge to approximately 4 x 5 or 5 x 7, depending, of course, on the size of the negatives. Focusing may be done by the scale or on the ground glass as desired. The enlarging is done by daylight, no dark-room being necessary, except for loading holder and for development.

May be used as a portrait camera by removing negative carrier and lens and substituting a suitable lens, the change being made in a few seconds. In every detail a high-grade and efficient piece of apparatus.

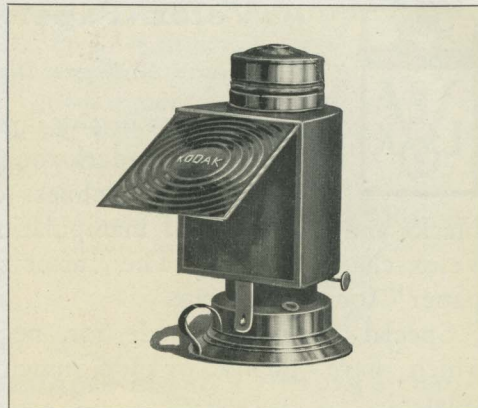


## Eastman's Kodak Dark-Room Lamp.

**T**HIS lamp is well made and safe. It is equipped with improved burner carrying extra broad wick, and has new ventilating top, ensuring a bright, steady flame. Fitted with both ruby and orange glass. Flame controlled from the outside.

### THE PRICE.

No. 1 Improved Kodak Dark-Room Lamps, 1 in. wick, each,	. . . \$1.50
No. 2, do., $\frac{5}{8}$ in. wick, each,	. . . 1.00

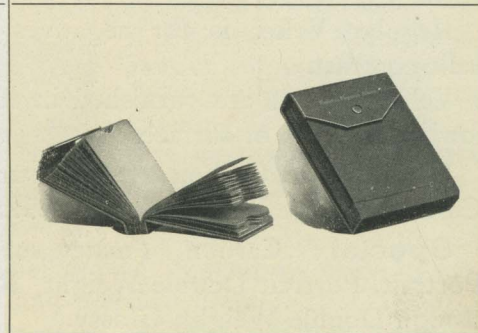


## Eastman's Film Negative Albums.

**E**ACH album contains 100 pockets made of strong paper and consecutively numbered from 1 to 100, and an index on white paper.

### THE PRICE.

Eastman's Negative Albums for 100 negatives $3\frac{1}{2} \times 3\frac{1}{2}$ , or smaller,	. \$ .75
Eastman's Negative Albums for 100 negatives $3\frac{1}{4} \times 4\frac{1}{4}$ , or $4 \times 5$ ,	. 1.00
Eastman's Negative Albums for 100 negatives $5 \times 7$ , or smaller,	. 1.50





## Velox Paper.

*Manufactured by Nepera Division.*

Velox prints in any light and requires no dark-room for development. Richness of the blacks and simplicity of manipulation, are Velox characteristics. The "after supper paper" for the amateur.

Special Velox is made for negatives which have plenty or too much contrast.

Regular Velox is for negatives which lack contrast.

Velox Papers are furnished in the following varieties of surfaces:

**Regular:** Carbon (matt surface), Carbon Double Weight, Rough, Glossy.

**Special:** Carbon (matt surface), Portrait, Portrait Double Weight, Rough, Rough Double Weight, Glossy.

## THE PRICE.

Size,	Doz.	½ Gross.	Gross.
2¼ x 3½, . . . . .	\$ .15	\$ .60	\$1.00
2½ x 4¼, . . . . .	.15	.70	1.25
3½ x 3½, . . . . .	.15	.80	1.50
3¼ x 4¼, . . . . .	.15	.80	1.50
3¼ x 5½, . . . . .	.15	.80	1.50
4 x 5, . . . . .	.25	1.10	2.00
3¼ x 6 (Stereo), . . . . .	.25	1.10	2.00
2¼ x 7 (No. 1 Panoram-Kodak), . . . . .	.15	.80	1.50
5 x 7, . . . . .	.35	2.00	3.50
3½ x 12 (No. 4 Panoram-Kodak), . . . . .	.45	2.50	4.50
Velox Post Cards, . . . . .	.20	....	2.00

"Double Weight" papers are 25 per cent. higher than above list.

## Velox Sundries.

Velox Liquid Developer, 4 oz. bottle (makes 20 ozs. for Special, 12 ozs. for Regular), . . . . .	\$ .25
Velox Liquid Hardener, per 8 oz. bottle, . . . . .	.25
Nepera M. Q. Tubes, box of 5 tubes, . . . . .	.75
Nepera Acid Hypo, box making 1 pint solution, . . . . .	.15
Velox Amateur Printer, (furnished with gas pillar and adapter for electric socket), . . . . .	2.00
Electric Attachment (extra). Comprising socket and plug connected by 6 ft. cord, . . . . .	.75
Welsbach Attachment (extra). Consisting of burner, mantle and large chimney, . . . . .	1.25
Extra Mantles, each, . . . . .	.15
Tubing, 6 ft. lengths. For connecting printer with gas supply, . . . . .	.50



## Eastman's Sepia Paper.

*Packed in air-tight, sealed tubes.*

As simple to handle and much quicker than Blue Print Paper. Especially desirable with negatives giving broad sketchy effects.

Size.	Price per 2 doz.	Size.	Price per 2 Doz.
2 1/2 x 2 1/2, . . .	.15	4 x 5, . . .	.20
2 1/4 x 3 1/4, . . .	.15	3 1/4 x 6 (Stereo), . . .	.20
2 1/2 x 4 1/4, . . .	.15	2 1/4 x 7, . . .	.20
3 1/2 x 3 1/2, . . .	.15		1 Doz.
3 1/4 x 4 1/4, . . .	.15	5 x 7, . . .	.20
3 1/4 x 5 1/2, . . .	.20	3 1/2 x 12, . . .	.20
Sepia Post-cards, per pkg., 2 doz., . . .			.25

## Eastman's "Ferro-Prussiate" Paper.

*Packed in air-tight, sealed tubes.*

This is not a cheap commercial "Blue Print" paper, but a paper made purposely for printing from the finest negatives with a view to retaining all their delicacy and detail.

Size.	Price per 2 doz.	Size.	Price per 2 doz.
2 1/2 x 2 1/2, . . .	.16	3 1/4 x 5 1/2, . . .	.20
2 1/4 x 3 1/4, . . .	.16	3 1/4 x 6 (Stereo), . . .	.20
2 1/2 x 4 1/4, . . .	.16	2 1/4 x 7, . . .	.20
3 1/2 x 3 1/2, . . .	.16	7 x 7, . . .	.35
3 1/4 x 4 1/4, . . .	.16	3 1/2 x 12, . . .	.40
4 x 5, . . .	.20		

## Eastman's W. D. Platinum Paper.

*Packed in air-tight, sealed tubes.*

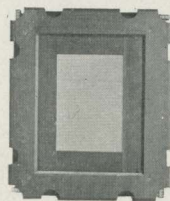
A pure platinum paper, requiring only water development, without chemicals. Clears in water and acid. Simple to handle, yet produces effects equal in beauty to any photographic process.

Two Grades—"Smooth" and "Rough."

Size.	Price per Doz.	Size.	Price per Doz.
2 1/4 x 3 1/4, . . .	.15	3 1/4 x 5 1/2, . . .	.30
2 1/2 x 4 1/4, . . .	.20	3 1/4 x 6 (Stereo), . . .	.35
3 1/2 x 3 1/2, . . .	.20	2 1/4 x 7, . . .	.30
3 1/4 x 4 1/4, . . .	.25	5 x 7, . . .	.60
4 x 5, . . .	.35	3 1/2 x 12, . . .	.70

## Adjustable Mask Printing Frame.

*Especially convenient in printing postals.*



By means of the celluloid masks, (mounted on rollers at each edge of frame), the opening is adjusted to any size or place. Does away with cutting masks for white margin prints. For use with 6 1/2 x 8 1/2 plates or films of any smaller size. Splendidly made of hard wood and polished brass.

Price, Eastman Adjustable Mask Printing Frame, . . . \$2.50



## Eastman's Permanent Bromide Papers.

The amateur can readily make enlargements from his own negatives by the use of Eastman's Bromide Paper and the Kodak Enlarging Camera, or can improvise an enlarging apparatus.

Illustrated Booklet, "Bromide Enlarging with a Kodak," 10c.

**Royal, Standard, Platino, Enameled and Matte=Enamel.**

### PRICE LIST.

Size.	Per Doz.	Size.	Per Doz.
2¼ x 3¼, . . . . .	\$ .15	8 x 10, . . . . .	\$ .80
3¼ x 4¼, . . . . .	.15	10 x 12, . . . . .	1.20
3¼ x 5½, . . . . .	.15	11 x 14, . . . . .	1.60
4 x 5, . . . . .	.25	14 x 17, . . . . .	2.40
3¼ x 6 (Stereo), . . . . .	.25	16 x 20, . . . . .	3.20
5 x 7, . . . . .	.35	18 x 22, . . . . .	4.00
5 x 8, . . . . .	.40	20 x 24, . . . . .	4.80
6½ x 8½, . . . . .	.60	Other sizes in proportion.	

"Standard" is furnished in three weights: A, thin smooth—B, heavy smooth—C, heavy rough.

"Platino" is furnished in A, thin smooth, or C, heavy rough.

The "Royal" is furnished in "smooth" or "rough."

## Dekko Paper.

A quick printing development paper, printing by either artificial light or daylight, and developing in subdued daylight or subdued artificial light. No dark-room required. Beautiful platinum-like effects.

Size.	Doz.	½ Gross	Gross.
2¼ x 3¼, . . . . .	\$ .15	\$ .60	\$ 1.00
2½ x 4¼, . . . . .	.15	.70	1.25
3½ x 3½, . . . . .	.15	.80	1.50
3¼ x 4¼, . . . . .	.15	.80	1.50
3¼ x 5½, . . . . .	.15	.80	1.50
4 x 5, . . . . .	.25	1.10	2.00
3¼ x 6 (Stereo), . . . . .	.25	1.10	2.00
2¼ x 7 (No. 1 Panoram-Kodak), . . . . .	.15	.80	1.50
5 x 7, . . . . .	.35	2.00	3.50
3½ x 12 (No. 4 Panoram Kodak), . . . . .	.45	2.50	4.50
Brownie Dekko, one grade only, per pkg. 2 doz., 2¼ x 2¼, 15 cts.			

### MADE IN FOUR GRADES.

Carbon Matte, Plain Matte,  
Egg-Shell Matte, Rough Matte.

Eastman's Dekko Developer Powders, per dozen, . . . . .	\$ .50
Do., per half dozen, . . . . .	.25
Do., per pkg., 5 powders in hermetically sealed glass tubes, . . . . .	.25

## Solio Paper.

A rapid, glossy printing-out paper.

Size.	Per Pkg. 2 doz.	1/2 Gross.	Gross.
2 1/2 x 2 1/2,	. . . . .	\$ .20	\$ .60
2 1/4 x 3 1/4,	. . . . .	.20	.60
2 1/2 x 4 1/4,	. . . . .	.20	.60
3 1/2 x 3 1/2,	. . . . .	.20	.60
3 1/4 x 4 1/4,	. . . . .	.20	.60
3 1/4 x 5 1/2,	. . . . .	.25	.70
4 x 5,	. . . . .	.25	.70
3 1/4 x 6 (Stereo),	. . . . .	.25	.70
2 1/4 x 7 (No. 1 Panoram-Kodak),	. . . . .	.25	.70
	Per Doz.		
5 x 7,	.30	1.60	2.65
3 1/2 x 12 (No. 4 Panoram-Kodak),	.35	2.00	3.50

SECONDS.—4 x 5 (trimmed) seconds,  
\$1.00 per gross.

SOLIO Combined Toning and Fixing  
Solution, per 8 oz. bottle, 50 cts.

Do., 4 oz. bottle, 30 cts., post-paid, 50 cts.

## Printing Frames.

Eastman's 3 1/2 x 3 1/2, opens two-thirds,	. . . . .	\$ .25
" 3 1/4 x 4 1/4, opens two-thirds,	. . . . .	.25
" 4 x 5, opens two-thirds,	. . . . .	.25
" 5 x 7, opens two-thirds,	. . . . .	.35
" 3 1/2 x 12, for No. 4 Panoram-Kodak, opens in 3 sections,	. . . . .	.75
Eastman's 2 1/4 x 7, for No. 1 Panoram-Kodak, opens in 2 sections,	. . . . .	.30
Flexo Printing Frame, 4 x 5, opens two-thirds,	. . . . .	.20
Special Brownie Frame, for 2 1/4 x 2 1/4 Developing Paper only,	. . . . .	.10

## Mezzo-Tone Paper.

A semi-mat self toning paper, giving  
warm tones. Prints like Solio, clears in  
common salt and water.

Size.	Per Doz.	Size.	Per Doz.
2 1/4 x 2 1/4,	. . . \$ .15	3 1/4 x 5 1/2,	. . . \$ .20
2 1/4 x 3 1/4,	. . . .15	4 x 5,	. . . .20
2 1/2 x 4 1/4,	. . . .15	2 1/4 x 7,	. . . .20
3 1/2 x 3 1/2,	. . . .15	5 x 7,	. . . .35
3 1/4 x 4 1/4,	. . . .15	3 1/2 x 12,	. . . .45

## Eastman's Exo Cloth.

Gives delightfully warm Sepia tones,  
which, in combination with the satin-like  
effect of the cloth itself, yield soft yet  
brilliant prints of charming texture. All  
the operations are readily performed by  
any amateur.

*Price, Packed in Hermetically Sealed Tubes.*

4 x 5, per dozen,	. . . . .	\$ .35
5 x 7, " "	. . . . .	.60
8 x 10, " "	. . . . .	1.40
24 x 36, " sheet,	. . . . .	1.25

Other sizes will be cut to order in sizes smaller than 8 x 10 in  
doz. packages and in sizes over 8 x 10 in 1/2 dozen packages, at  
proportionate prices.



## Eastman's Kodoid Plates.

Consisting of N. C. Film Sheets clipped at the edges to a black card-board backing. Light, non-breakable, non-halation, orthochromatic. May be used in ordinary plate holders. No kits or other extras.

Size.	Per Doz.
$3\frac{3}{4} \times 3\frac{1}{2}$ (for No. 2 Bullet and Bullet Special), . . . . .	\$ .35
$3\frac{1}{2} \times 3\frac{1}{2}$ , . . . . .	.35
$3\frac{3}{4} \times 4\frac{1}{4}$ , . . . . .	.45
4 x 5, . . . . .	.65
5 x 7, . . . . .	1.10

## Eastman's Dry Plates.

*Extra Rapid for Instantaneous Work.*

Size.	Per Doz.
$3\frac{3}{4} \times 3\frac{1}{2}$ (for No. 2 Bullet and Bullet Special), . . . . .	\$ .35
$3\frac{1}{2} \times 3\frac{1}{2}$ , . . . . .	.35
$3\frac{3}{4} \times 4\frac{1}{4}$ , . . . . .	.45
4 x 5, . . . . .	.65
5 x 7, . . . . .	1.10

## Eastman's Double Coated Non-Halation Plates.

Size.	Per Doz.
$3\frac{3}{4} \times 4\frac{1}{4}$ , . . . . .	\$ .55
4 x 5, . . . . .	.80
5 x 7, . . . . .	1.40

## Lantern Slide Plates, etc.

Size.	Per Doz.
Plates for making Lantern Slides, . . . . .	\$ .70
Cover Glass for Lantern Slides, . . . . .	.35

## Chemicals.

*For Developing Machine Chemicals see page 47.*

Eastman's Special Developer Powder, per pkg., 5 powders in sealed glass tubes, . . . . .	\$ .25
Eastman's Hydrochinon Developer Powders, per doz., . . . . .	.50
Do., per half dozen, . . . . .	.25
Do., per pkg. 5 powders in sealed glass tubes, . . . . .	.25
Eastman's Pyro Developer Powders, per dozen, . . . . .	.50
Do., per half dozen, . . . . .	.25
Do., per pkg. 5 powders in sealed glass tubes, . . . . .	.25
Eastman's Dekko Developer Powders, per dozen, . . . . .	.50
Do., per half dozen, . . . . .	.25
Do., per pkg. 5 powders in sealed glass tubes, . . . . .	.25
Hypo-Sulphite of Soda, pulverized, per pound, . . . . .	.10
Kodak Acid Fixing Powder, per lb. pkg., . . . . .	.25
Do., per one half lb. pkg., . . . . .	.15
Bromide Potassium, per ounce, . . . . .	.15
Citric Acid, 4 ounce bottle, . . . . .	.30
Solio Toning Solution, per 8 ounce bottle, . . . . .	.50
Solio Toning Solution in 4 ounce bottles as follows: 4 ounces Toning Solution (2oc. extra postpaid), . . . . .	.30
Solio Hardener, per 8 ounce bottle, . . . . .	.35



## Eastman's Flash Sheets.

"Most Like Daylight."

The softest, cleanest flash medium, giving a broad, soft light. As these sheets are not instantaneous, they give the effect of a short time exposure under a slightly subdued light—not the glare of the ordinary flash-powder. They do not startle the subject, nor give a staring effect to the eyes.

No. 1, per pkg. of half dozen sheets, 3 x 4,	. . . . \$	.25
No. 2, per pkg. of half dozen sheets, 4 x 5,	. . . .	.40
No. 3, per pkg. of half dozen sheets, 5 x 7,	. . . .	.60

## Eastman's Flash Cartridges.

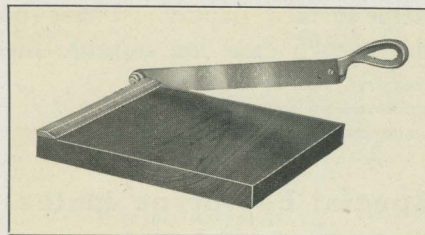
Eastman's Spreader Flash Cartridges, for use with pistol or fuse (price includes both fuse and cap), per pkg. of one-half dozen,	. . . . \$	.25
Eastman's Spreader Flash Cartridge Pistol,	. . . .	.50
Eastman's No. 1 Flash Cartridges, per pkg. of ½ doz.	. . . .	.60
Do., No. 2,	. . . .	.40
Do., No. 3,	. . . .	.25

## Trays.

Paper Developing Trays, for 4 x 5, each,	. . . . \$	.10
Paper Developing Trays, for 5 x 7, each,	. . . .	.15
Hard Rubber Trays, for 4 x 5, each,	. . . .	.27
Hard Rubber Trays, for 5 x 7, each,	. . . .	.56
"Bulls-Eye" Composition Trays, for 3½ x 3½, each,	. . . .	.10
"Bulls-Eye" Composition Trays, for 4 x 5, each,	. . . .	.12
"Bulls-Eye" Composition Trays, for 5 x 7, each,	. . . .	.30
"Bulls-Eye" Composition Trays, 3 x 8½,	. . . .	.22
"Bulls-Eye" Composition Trays, 4½ x 14,	. . . .	.50

## Kodak Trimming Boards.

Made of hard wood, with natural finish, have fine quality steel blades and are fitted with rule.



No. 1, Capacity, 5 x 5 inches,	. . . . \$	.40
No. 2, Capacity, 7 x 7 inches,	. . . .	.60
Transparent Trimming Gauge, for either size, extra,	. . . .	.20

## Eastman's Film Cutting Boards.

For cutting up Cartridge Films for development. Hold paper and film securely. Simple and accurate. For Kodak Cartridges only.

Any Kodak size (except No. 3 A) up to and including 4 x 5,*	. . . . \$	.25
5 x 7, for No. 5 Cartridge Kodak Spools,	. . . .	.35

\*Give exact designation of your instrument when ordering.

## Eastman's Embossing Boards.

For giving plate sunk centers with  $2\frac{1}{4} \times 3\frac{1}{4}$ ,  $2\frac{1}{2} \times 4\frac{1}{4}$ ,  $3\frac{1}{2} \times 3\frac{1}{2}$ ,  $3\frac{1}{4} \times 4\frac{1}{4}$ ,  $3\frac{1}{4} \times 5\frac{1}{2}$ ,  $4 \times 5$  and  $5 \times 7$  unmounted prints on matte surface papers. These boards provide in each case for suitable margin.

Price, each, for  $3\frac{1}{4} \times 4\frac{1}{4}$  or smaller, . . . . \$ .10  
 Price, each, for  $3\frac{1}{4} \times 5\frac{1}{2}$ ,  $4 \times 5$  or  $5 \times 7$ , . . . . .15

When ordering always give size of prints to be used with.

## Special Ferrottype Plates.

10 x 14 Ferrottype Plates, Light, each, . . . . \$ .15  
 10 x 14 Ferrottype Plates, Heavy, each, . . . . .20  
 18 x 24 Ferrottype Plates, Heavy, each, . . . . .75

## "Picture Taking and Picture Making."

The most simple and practical book for the beginner ever published. Over 50,000 copies have been sold.

Printed on heavy coated paper, beautifully illustrated,  
 120 pages, cardboard covers, . . . . \$ .50  
 Cloth bound, . . . . . 1.00

## Kodak Albums.

Well made and substantially covered. They are on the loose leaf, lace system and have plain gray leaves, of good, heavy stock, 20 leaves to the album. There is no printing on the leaves. The covers are of cloth in a delicate gray tint, with the title "The Kodak Book" printed in gold leaf.

No. 101. Size of leaf  $5 \times 6\frac{1}{2}$ , 5 inches at back, 20 leaves, . . . . \$1.00  
 No. 102. Size of leaf  $6 \times 5$ , 6 inches at back, 20 leaves, . . . . 1.00  
 No. 103. Size of leaf  $7 \times 6$ , 7 inches at back, 20 leaves, . . . . 1.10  
 No. 104. Size of leaf  $9\frac{1}{4} \times 6\frac{1}{2}$ ,  $9\frac{1}{4}$  inches at back, 20 leaves, . . . . 1.25  
 No. 105. Size of leaf  $6\frac{1}{2} \times 9$ , 6 inches at back, 20 leaves, . . . . 1.25

## Kodak Adhesive.

A powder for making photographic paste by the mere addition of cold water. No boiling, no straining, no souring. The best photo mountant.

No. 1 pkg., makes 35 ozs. paste, . . . . \$ .10  
 No. 2 pkg., makes 7 lbs. paste, . . . . .25



## Developing and Printing.

Developing and Printing orders are given most careful attention. All Cartridge films are developed in the Water Power Kodak Developing Machine. Prints are furnished mounted or unmounted as desired. Unmounted Solio prints are furnished with gummed backs ready for insertion in album. When not specified in order, prints will be furnished unmounted.

KODAK SIZES ONLY.	No. 0 Folding Pocket Kodak 1 5/8 x 2 1/2	No. 1 Folding Pocket Kodak 2 1/4 x 3 1/4	No. 1A Folding Pocket Kodak 2 1/2 x 3 1/4	No. 2 3/4 x 3 1/2 and 3 1/4 x 4 1/2	3 1/4 x 5 1/2 and 4 x 5	No. 5 Kodaks, etc. 5 x 7
Developing, Printing and Mounting 1 Film Cartridge, 12 Exposures, Printed on Solio, . . . . .	\$.65	\$1.00	\$1.25	\$1.50	\$1.80	\$2.40
Do., Printed on Dekko, . . . . .	.95	1.40	1.50	1.50	1.80	2.40
Developing only, each, . . . . .	.03	.04	.06	.06	.08	.10
Printing and Mounting, only, each, Solio, . . . . .	.03 1/2	.05	.07	.08	.10	.12 1/2
Do., Dekko, . . . . .	.06	.08	.08	.08	.10	.12 1/2

Twenty-five cents extra will be charged on orders for less than 10 3 1/4 x 5 1/2 prints or less than 12 prints of any other size.

## BROWNIE CAMERA AND STEREO AND PANORAM KODAK SIZES.

	No. 1 Brownie 2 1/4 x 2 1/4	No. 2 Brownie 2 1/4 x 3 1/4	No. 1 Panoram 2 1/4 x 7	No. 4 Panoram 3 1/2 x 12	No. 2 Stereo 3 1/4 x 6
*Developing, Printing and Mounting 1 Film Cartridge, Printed on Solio, . . .	\$.40	\$.50	\$1.00	\$1.75	\$1.50
Do., Printed on Dekko, . . . . .	.50	.70	1.40	1.75	—
Developing only, each, . . . . .	.03	.04	.08	.18	.12
Printing and Mounting only, each, Solio, . . . . .	.04	.05	.10	.20	.16
Do., Dekko, . . . . .	.06	.08	.16	.20	—

\*Above price list is for one full roll as follows: 6 exposures No. 1 and No. 2 Brownie, 6 exposures No. 2 Stereo, 6 exposures No. 1 Panoram or 5 exposures No. 4 Panoram. On orders for less than a full roll as above, 25 cents extra will be charged.

## Enlargements.

Our enlarging work is carefully and conscientiously done by skilled operators.

	Each.	Per Doz.
4 1/4 x 6 1/2, Mounted on Card, . . . . .	\$.35	\$3.00
6 1/2 x 8 1/2, " " " . . . . .	.50	5 00
8 x 10, " " " . . . . .	.75	—
10 x 12, " " " . . . . .	1.00	—
11 x 14, " " " . . . . .	1.25	—
14 x 17, " " " . . . . .	1.50	—
Larger sizes in proportion.		
Lantern Slides, . . . . .	.50	5.00

No extra charge for Sepia Tones on Royal or Enameled Bromide Enlargements Where the kind of paper is not specified we will make the enlargements upon the paper which in our judgment is best suited to the negative and the subject.



# Kodak Mounts.

## SERIES L, M, N, O.

Plain felt surface. Square edges. L, Scotch gray; M, Ivy Green; N, Carbon black; O, Royal Brown.

For Prints.	Size Outside.	Per 100	Per Doz.
2¼ x 2¼	3¾ x 3¾	\$.20	\$.05
1½ x 2½	3¼ x 4	.30	.05
2¼ x 3¼	4 x 5	.40	.05
2½ x 4¼	4¼ x 6	.50	.10
3½ x 3½	5 x 5	.50	.10
3¼ x 4¼	4¾ x 5¾	.65	.10
4 x 5	5½ x 6½	.65	.10
5 x 7	7 x 9	1.00	.15

## SERIES H, I, J, K.

Plain felt surface. Beveled edges. H, Scotch Gray; I, Ivy Green; J, Carbon Black; K, Royal Brown.

For Prints.	Size Outside.	Per 100	Per Doz.
1½ x 2½	3¼ x 4	\$.55	\$.10
2¼ x 3¼	4 x 5	.55	.10
2½ x 4¼	4¼ x 6	.80	.15
3½ x 3½	5 x 5	.80	.15
3¼ x 4¼	4¾ x 5¾	.80	.15
3½ x 5½	4¾ x 7	.90	.15
4 x 5	5½ x 6½	.90	.15
2¼ x 7	4 x 8¼	.90	.15
5 x 7	7 x 9	1.75	.25
3½ x 12	5¾ x 13¾	1.75	.25

## \*BISMARCK.

Plate center. Full embossed ornamental border design. Square edges. Furnished in Sage Green, Ash Gray or White.

For Prints.	Size Outside.	Per 100	Per Doz.
1½ x 2½	3 x 3¾	\$.40	\$.10
2¼ x 2¼	3¾ x 3¾	.40	.10
2¼ x 3¼	3¾ x 4¾	.50	.10
2½ x 4¼	4 x 5¾	.65	.10
3½ x 3½	5 x 5	.65	.10
3¼ x 4¼	4½ x 5½	.65	.10
4 x 5	5½ x 6½	.85	.15
3¼ x 5½	5½ x 7¼	.95	.15
5 x 7	7 x 9	1.50	.25

## \*WELLINGTON.

Narrow embossed ornamental design. Bevel edges. Olive Brown, Scotch Gray, and Egyptian Black.

For Prints.	Size Outside.	Per 100	Per Doz.
1½ x 2½	3¾ x 4	\$.50	\$.10
2¼ x 3¼	4 x 5	.75	.10
2½ x 4¼	4 x 6	.85	.15
3½ x 3½	5 x 5	.85	.15
3¼ x 4¼	5 x 6	.90	.15
4 x 5	5½ x 6½	1.00	.15
3¼ x 5½	5¼ x 7½	1.10	.20
5 x 7	7 x 9	1.75	.25

## WASHINGTON.

Narrow embossed dark brown design surrounding print. Three-quarter inch border. Bevel edges. Queen's Gray only.

For Prints.	Size Outside.	Per 100	Per Doz.
1½ x 2½	3¾ x 4	\$1.00	\$.15
2¼ x 3¼	4 x 5	1.10	.15
2½ x 4¼	4 x 6	1.15	.20
3½ x 3½	5 x 5	1.15	.20
3¼ x 4¼	5 x 6	1.25	.20
3¼ x 5½	5 x 7¼	1.40	.20
4 x 5	5½ x 6½	1.35	.20
5 x 7	7 x 9	2.75	.40

## \*NAPOLEON.

Plain egg-shell surface, plate sunk center, wide margin, thin mount. Very artistic. Cream White and Black.

For Prints.	Size Outside.	Per 100	Per Doz.
1½ x 2½	4¾ x 5½	\$1.10	\$.15
2¼ x 3¼	5¼ x 6¼	1.30	.20
2½ x 4¼	5½ x 7¼	1.50	.25
3½ x 3½	6½ x 6½	1.60	.25
3¼ x 4¼	6 x 7¼	1.65	.25
3¼ x 5½	6 x 8½	2.00	.30
4 x 5	9 x 8	2.20	.35
5 x 7	10 x 12	3.50	.50

\*Specify color in ordering.

## KODAK MOUNTS—Continued.

### KAISER.

A simple beading surrounding print. Wide margins. Extra heavy stock. Beveled edges. Cream White, Dawn Gray, and Jet Black. Specify color in order.

For Prints.	Size Outside.	Per 100.	Per Doz.
1 3/8 x 2 1/2	4 5/8 x 5 1/2	\$2.00	\$ .30
2 1/4 x 3 1/4	5 1/4 x 6 1/4	2.20	.35
2 1/2 x 4 1/4	5 1/2 x 7 1/2	2.30	.35
3 1/2 x 3 1/2	6 1/2 x 6 1/2	2.30	.35
3 3/4 x 4 1/4	6 x 7 1/4	2.30	.35
3 3/4 x 5 1/2	6 x 8 1/2	3.10	.45
4 x 5	7 x 9	3.30	.50
5 x 7	8 x 10	4.40	.70

### Special Carrying Cases for Cartridge Kodaks.

	No. 3, 3 3/4 x 4 1/4.	No. 4, 4 x 5.	No. 5, 5 x 7.
Black Sole Leather Carrying Case, to hold 3 double plate holders and focusing glass, . . . . .	\$1.00	\$1.00	\$1.50
Do., to hold 6 double plate holders and focusing glass, . . . . .	1.50	1.50	2.00
Black Sole Leather Carrying Case, to hold glass plate adapter, ground glass and 6 double plate holders, . . . . .	—	2.50	3.00
Black Sole Leather Carrying Case, to hold Cartridge Kodak and adapter, 4 double plate holders, focusing glass and 3 Film Cartridges, . . . . .	2.75	3.50	4.50

## Sundries.

Eastman's Photo Paste, per 3 ounce tube, . . . . .	\$ .15
Eastman's Photo Paste, per 5 ounce tube, . . . . .	.25
Velvet Rubber Squeegees, 4 1/2 inches, each, . . . . .	.20
Velvet Rubber Squeegees, 6 inches, each, . . . . .	.25
Velvet Rubber Squeegees, 8 inches, each, . . . . .	.30
Kodak Push Pins, for pinning up film negatives, per box of 1/2 doz., . . . . .	.10
3 1/2 x 3 1/2 Glass for Printing Frames, each, . . . . .	.05
3 1/4 x 4 1/4 Glass for Printing Frames, each, . . . . .	.05
4 x 5 Glass for Printing Frames, each, . . . . .	.05
5 x 7 Glass for Printing Frames, each, . . . . .	.05
2 1/4 x 7 Glass for No. 1 Panoram-Kodak Printing Frame, . . . . .	.05
4 x 13 Glass for No. 4 Panoram-Kodak Printing Frame, . . . . .	.10
4 x 13 Felt Mats for No. 4 Panoram-Kodak Printing Frames, each, . . . . .	.15
Kodak Candle Lamp, . . . . .	.25
Solio Thermometers, each, . . . . .	.40
Kodak Print Rollers, two 6-inch rubber rollers, nicked steel frame, . . . . .	.50
Flexo Print Roller, 4-inch rubber roller, black enameled steel frame, . . . . .	.15
Eastman's Film Developing Clips, 3 1/2 in., per pair, . . . . .	.25
Do., 5 inch, . . . . .	.30
Do., 7 inch, . . . . .	.35
Graduates, 4 oz., . . . . .	.10
Do., 8 oz., . . . . .	.15
Do., 16 oz., . . . . .	.20
Do., 24 oz., . . . . .	.25



## Tourists.

Travelers can always obtain fresh supplies of film at short notice at any one of the following addresses:

LONDON—Kodak, Limited, 43 Clerkenwell Road, E. C.; 60 Cheapside, E. C.; 115 Oxford St., W.; 171-173 Regent St., W.; 59 Brompton Road, S. W.; 40 Strand, W. C.

LIVERPOOL—Kodak, Limited, 96 Bold St.

GLASGOW—Kodak, Limited, 72 and 74 Buchanan St.

PARIS—Eastman Kodak Société Anonyme Française, Avenue de l'Opera, 5. Place Vendôme, 4.

LYONS—Eastman Kodak Société Anonyme Française, 26 and 28 Rue de la République. 11 Ru du Palais-Grillet.

BERLIN—Kodak Gesellschaft, m. b. H., Friedrich Strasse, 16; Kodak Galerie, Leipzigerstrasse, 114; Unter den Linden, 26.

BRUSSELS—Kodak, 36 Rue du Fossé aux Loups; Montagne, 59 de la Cour.

VIENNA—Kodak, Graben 29.

ST. PETERSBURG—Kodak, Bolschaja Konjuschennaja 1.

MOSCOW—Kodak, 15 and 16 Petrovka.

MILAN—Kodak, 10 Via Vittore Pisani; 34 Corso Vittorio Emanuele.

MELBOURNE—Kodak, 284 Collins St.

TORONTO—Canadian Kodak Co., 588-592 King St., West.

## Specimen Prints.

A specimen photograph made with any Kodak (not larger than 4 x 5) will be sent to any address in the United States upon receipt of 4 cents in postage stamps; No. 5 Cartridge Kodak specimens, 8 cents; Stereo specimens, 8 cents; No. 4 Panoram-Kodak specimens, 20 cents.

## Terms.

The prices in this catalogue are strictly net, except to regular dealers who carry our goods in stock.

For the convenience of our customers we recommend that they make their purchases from a dealer in photographic goods, as by so doing they can save both time and express charges.

EASTMAN KODAK CO.

Rochester, N. Y.







D. P. HARRIS  
West Chazy, N. Y.