



IF YOU WANT
IT-TAKE IT-
WITH A
KODAK



The Digitized Kodak Catalog Project (1886 - 1941): A Very Brief History

Most camera collectors at some point in their collecting careers pass through a Kodak phase - some never come out of it. And if there ever was one name that came to be associated with both cameras and collecting, it was Kodak.

George Eastman received his first patent (for coating dry plates) and bought his first manufacturing facility in 1880, and in 1881 he started the Eastman Dry Plate Company. In 1886 he received a patent for the near-mythical Eastman Detective Camera, but it wasn't until 1888 that the first camera bearing the name "Kodak" was introduced.

One of the nice things about collecting Kodak is that the product line is pretty well known, and because the company produced annual catalogs for many years, collectors can be reasonably sure of what they're looking at, when it was made, the variations and so on - presuming that they have access to either the appropriate catalog, or a number of the many books which document Kodak, each to some greater or lesser extent.

But what would be really nice would be to have a complete set of Kodak catalogs in an easily accessible form and readily available. And since the advent of portable computing devices (PC, Macintosh, etc.) that's been possible - except for the difficulty of assembling a complete set of Kodak catalogs in one spot and then scanning them and making the results available.

The idea of digitizing a complete set of Kodak catalogs has kicked around the collecting community for many years. It's been proposed on a number of online forums, during meetings of various photohistory groups, and for years there have been many incomplete "Kodak CDs" on eBay but at best, they only contained a few catalogs - whatever the owner had available. But assembling a complete set of catalogs, then scanning and processing perhaps 3,000 to 4,000 pages, was a daunting task - if not completely overwhelming - and nothing ever came of it.

Until now.

In early 2010, the idea came up again, but this time we - "we" as in "the collecting community" - were lucky. A number of collectors were willing to loan their catalogs to this project and a couple of insane - wait, let's call them "dedicated" - dedicated enthusiasts - neither of whom collected Kodak, but both of whom enjoyed the challenge of such a project - were willing to put in the time and effort to scan and pull together the entire set of catalogs into a full-blown Kodak Catalog Digital Library.

Our initial objective was to include just the annual amateur catalogs, but it turns out that many cameras only appear in certain professional and specialty catalogs. We included as many of those as we could obtain so that almost every Kodak camera made in the US, Canada and Europe, would be documented - at least up to about 1941. After that, it becomes much more difficult as Kodak stopped producing annual catalogs as their product line became increasingly more diversified.

However, even with the additional "non-amateur" catalogs, we weren't completely successful in illustrating "every" camera Kodak ever made. There are an elusive few that might appear in specialty catalogs that we simply couldn't track down. If you can't find one of those odd cameras, that's no doubt why. We may do a revision at some point in the future if someone is willing to loan us a catalog that includes a camera that isn't already recorded.

In this project, a total of 67 catalogs were used from 1886 through 1941 including a number of professional and dealer catalogs, and in some years, two or even three different catalogs to cover all the bases. With the cooperation of a number of dedicated collectors, we were able to pull together all those catalogs and in June 2010, the project started in earnest.

By November 2010, we had scanned everything we needed and eventually all 67 catalogs were then reassembled as image folders and converted to the universally accepted PDF format and finally, converted into individually searchable PDFs which could then be searched globally as a collection.

For those of you interested in the statistics: about 200 hours of scanning time (we never want to hear that sound again), 67 catalogs and 3,908 page scans - which generated 7,917 original and processed images - and 11.4 GB of disk space. Additionally, another 100+ hours of technical development time was needed to convert the digital catalogues into a fully searchable "knowledgebase" that could be launched from most any standard web browser.

The overwhelming number of catalogs was loaned to us by that most remarkable of Kodak collectors, Charlie Kamerman of Eagle Creek, Oregon. Without Charlie, it's very doubtful that this project could even have been attempted.

But as it turned out, even Charlie didn't have all the publications that were needed, but he was able to track down the five that he lacked and was able to secure either a copy or high resolution images that we could work with. And so, our thanks to the contributors of the catalogs and scans that we used:

Charlie Kamerman for the vast majority of catalogs used and all his help,
Steve Shohet for loaning a variety of test catalogs,
Ryerson University (Toronto) for the 1886 Eastman Catalog
George Layne for the 1890 New Kodaks Catalog,
Mike Kessler for the 1891 Dealer Display Catalog,
Ralph London for the 1893 UK Catalog,
Michael Pritchard for the 1897 UK Catalog.

The digital side of the project - also known as "all of the work" - was done by Rob Niederman of Medina, Minnesota, and Milan Zahorcak of Tualatin, Oregon. Remarkably we're still friends and in a few years, we'll probably be able to talk about this project rationally.

And there you have it, a more-or-less done deal. We're fairly sure that it isn't quite perfect, and expect there will be some carping about something or other; but all-in-all, we believe this to be a pretty good product and can now move on to something else.

Our thanks to all of those involved.

Rob Niederman
Milan Zahorcak

Fall, 2011

A CATALOGUE OF

KODAKS

and Kodak Supplies

Manufactured by

EASTMAN KODAK CO.,

Rochester, N. Y.



KODAK, Limited,

London,

Paris,

Berlin,

Liverpool,

Brussels,

Vienna,

Glasgow,

St. Petersburg,

Moscow,

Melbourne,

Milan,

PUBLISHED AT THE
HOME OF THE KODAK
ROCHESTER · N. Y.
BY THE KODAK PRESS

THE KODAK IDEA.

The Kodak idea is "simplicity,"—simplicity of operation and of construction.

It is not, however, a simplicity which limits the capabilities of the instrument—but, on the other hand, one which widens its scope by removing annoying details.

The original Kodak, with its capacity for a hundred pictures at one loading, contained an idea so new, so novel, as to set the world a-talking. In the Kodaks of to-day that idea has been developed until the present instruments practically cover the photographic field. And yet they remain the simplest of cameras—cameras which the beginner can readily master, but which still possess those features which the advanced amateur requires.

The first Kodak made thousands of amateur photographers where there had, perhaps, been hundreds. It upset old ideas and replaced them with new and better ones. It was a gain. But it was the steady development of that idea, the application to it of new ideas, the continuous looking for details in which improvement could be made, that has kept the Kodak at the fore front in the camera world.

The first Kodak contained the roll film. Then came the daylight loading cartridges. Upon these two fundamental ideas the entire Kodak system is based. They have made pocket photography practical, have made picture-taking easy for everyone.

The Kodak was thus started on right lines, and it has

been continued on right lines. Wherever a chance for improvement in construction or in detail is found, that improvement is made. Aluminum is now used in the construction of those instruments where it can be adopted to advantage. Improvements have been steadily made in shutters and in the reeling mechanism. The field of the Kodak has been constantly widened. Originally it loaded only in a dark room with rolls of a hundred exposures. Now Kodaks load in daylight with cartridges of two, six or twelve exposures. The Cartridge Kodaks and the Bullet Kodaks use either film cartridges or glass plates and the former are now made with an extra extension to bellows by which they will focus objects at a distance of only 18 inches from the lens, and by which the use of a tele-photo attachment is made practical.

And the small fixed focus Kodaks have been adapted to bust portraiture by means of the Kodak Portrait Attachment, which is no more nor less than a simple little lens that may be instantly attached to or detached from the instrument.

In the Panoram-Kodaks another field of intense photographic interest has been opened to the amateur, yet they are perfectly simple to operate and with them good pictures may be made by the merest tyro.

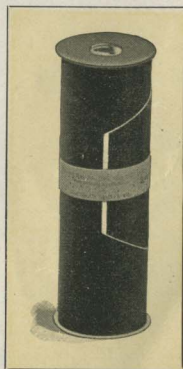
Thus all the charms that photography has to offer are within easy grasp of him who Kodaks. The Kodak idea, simplicity, and the Kodak ideal, perfect quality, are maintained in every instrument. It is the constant aim at improvement and the equally constant watching of the minutest details of manufacture which have made Kodaks the recognized standards the world over. The development of the idea, and the following of the highest ideals, have resulted in the triumph of Kodakery.

EASTMAN KODAK COMPANY.

THE FILM CARTRIDGE.

Kodaks load and unload in broad daylight, thus absolutely doing away with the necessity of a dark room for any purpose except development. The method by which this is accomplished is most simple and the Kodak may be loaded or unloaded, even by one not accustomed to the operation, in one to two minutes. Extending the full length of the strip of film and several inches beyond each end is a strip of black paper, which, in connection with the flanges on the spool, forms a light-proof cartridge.

After inserting the cartridge spool in the Kodak and threading up the black paper the camera is closed and the key turned until the black paper has been reeled off and the sensitive film brought into place in the focal plane ready for the picture-taking to begin. The black paper runs with and behind the film, and at proper intervals is marked in white with the number of the section of film, 1, 2, 3, etc. In the back of the camera is a small window of red celluloid through which the figures appear as the key is turned. The figures as seen through the window thus show just how far to turn the key and how many exposures have been made. After all the exposures have been made a few extra turns of the key entirely covers the film with black paper and the Kodak may be unloaded in daylight.



Film Cartridge.

DO NOT BREAK.

The cartridges are non-breakable ; a half dozen can be carried in the pocket without inconvenience and they may be sent by mail without fear of damage.

THE WEIGHT.

All Kodaks of existing models use our light-proof film cartridges which weigh but ounces where plates weigh pounds. A cartridge of twelve exposures, 4 x 5, for instance, tips just $2\frac{1}{2}$ ozs., while an equivalent in glass plates and the necessary holders weighs three pounds, about twenty times as much.

12, 6 AND "DOUBLE-TWO" CARTRIDGES.

Formerly cartridges were furnished for twelve exposures only, but as the amateur frequently wishes to make from two to half a dozen pictures at times when he does not care to use up an entire spool of a dozen films before development we now furnish the larger sizes of daylight loading cartridges of Transparent Film for "Double-Two," six or twelve exposures. For work at home, then, as well as for one's outings, the Kodak becomes more convenient than the plate camera. Transparent Film Kodak Cartridges in the $3\frac{1}{2} \times 3\frac{1}{2}$, $3\frac{1}{4} \times 4\frac{1}{4}$, 4 x 5 and 5 x 7 sizes may be had for "Double-Two," six or twelve exposures. In the $2\frac{1}{4} \times 3\frac{1}{4}$ and $2\frac{1}{2} \times 4\frac{1}{4}$ sizes they are furnished for six or for twelve exposures. The $1\frac{1}{2} \times 2$ size is furnished in twelve exposure cartridges only and the $2\frac{1}{2} \times 2\frac{1}{2}$ (Brownie Camera) cartridges are furnished for six exposures only.

Roll Holder Cartridges are furnished only for twelve exposures.

The "Double-Two" cartridges, as the name implies, contain film for four exposures, but are so wound that two

exposures may be made and then removed *in daylight* and the remaining two exposures threaded up for further use or, if preferred, the operator may make the entire four exposures with a single loading and he has the option, until making ready for the third exposure, of handling the film in either way.

TRANSPARENT FILM.

In every phase of photographic work, except that of gallery use, Transparent Film is rapidly taking the place of glass plates. The reasons are obvious. Film has that quality which appeals to the most artistic workers, yet has none of the drawbacks of glass plates. It is a thin, light, rollable and non-breakable substance *versus* heavy, fragile glass. It means comfort *versus* discomfort, and where the transportation problem is to be faced, it frequently means success *versus* failure.

Films and plates are, nevertheless, more nearly alike than those not familiar with the facts usually imagine. Indeed, they are identical except in the support upon which the sensitive material (emulsion) is coated.

When this emulsion is coated on glass we have "plates."

Coated on a thin, flexible support it is called "film."

Neither the glass nor this flexible transparent material does more than furnish a support for the emulsion which is to take the picture. When exposed in the camera, *the results are identical*, and when the pictures are made they are indistinguishable, except that in work where there is a tendency to what is technically known as halation, films are superior to plates, owing to the thin support backed by black paper giving back no reflection.

Not only in their non-halation qualities are they superior, but Kodak Films reproduce the true color values of

the landscape and the lights and shades of the clouds with wonderful fidelity—a fidelity which puts into the hands of the amateur the means of accomplishing the best work in pictorial photography and that, too, without the inconveniences of the glass plate system.



PLATES IF YOU LIKE.

Six styles of Kodaks use either plates or films. The Bullet and Bullet Special Kodaks and the Cartridge Kodaks can be fitted with plate holders, making compact and convenient plate cameras, the change from films to plates or *vice versa* being accomplished in a few seconds.

The No. 2 Bulls-Eye, the Nos. 2 and 4 Bulls-Eye Specials and the Nos. 2 and 3 Folding Pocket Kodaks can also be used for making single plate exposures. They do not take plate holders but when a single plate exposure is to be made in or near the house a plate can be put in position in the camera in a few seconds.

KODAK CONSTRUCTION.

LENSES.

The selection and inspection of lenses is a detail of our business that is conducted with most painstaking care. *Every lens used by us is tested by our own inspector.* Every lens is, therefore, twice tested—by the lens makers' inspector and by our own, and the inspections are most rigid. *A perfect lens in every camera,* is our only standard.

We are, we believe, far more careful as to the quality of the lenses used in our instruments than are any other manufacturers, and it is to this painstaking care in lens selection that the recognized superiority of the Kodak is largely due. We not only select types of lenses that are suitable for the work that is required of them, but what is of even more importance, we insist that every lens be the best of its kind.

All of our lenses, whether single or double, are of sufficient focal length to avoid that disagreeable distortion seen in some hand camera work.

SHUTTERS.

All the shutters used in the Kodaks are mechanically accurate, are adapted to either time exposures or instantaneous work, and are provided with suitable sets of stops. See pages 13, 14 and 15.

THEIR FIELD.

Snap-shots or timed exposures out-of-doors, timed

exposures indoors and flash-light work at night, all come within the scope of the Kodak.

Home portraiture is one of the delightful phases of photography to which even the smallest Kodaks are adapted, the Kodak Portrait Attachments enabling the amateur to secure large head and shoulder pictures with the small fixed focus instruments.

The Panoram-Kodaks widen the field by offering new possibilities in broad landscape work and are peculiarly adapted to the taking of large out-door groups.

A CRUCIAL TEST.

The closing years of the nineteenth century put the Kodak to a crucial test—and it stood that test. Throughout the campaigns in Cuba, Porto Rico, the Philippines, in South Africa and in China the Kodak served so faithfully and so well that the non-combatant world has now seen war more nearly as it is than had ever before been possible. The correspondents and soldiers first carried Kodaks because films were lighter than plates. They continued to carry them because they found that they not only solved the transportation problem but because they didn't go to pieces in the presence of the enemy. They withstood heat and humidity as no other camera could.

On this point the correspondent of the Glasgow Times says: "Solid as is the workmanship of my plate camera and slides, the heat of South Africa has left its mark on both. The baseboard of my camera has developed a yawning crack and several of the slides have so far followed suit as to be utterly useless. On the other hand the two Kodaks (No. 4 Cartridge Kodak and No. 2 Folding Pocket Kodak) have come triumphantly through the heat ordeal and are as light-proof to-day as the day I bought them."

It is largely due to the judicious use of aluminum, which enters into the construction of several styles of Kodaks, and the treatment of the wooden parts to a secret process that we have so far overcome the troubles which are caused by severe atmospheric conditions.

Our camera works are the largest and most perfectly equipped in the world, much of the machinery being made for our own special purposes. We employ men of the broadest experience in camera construction and are careful to allow only perfect material to enter into the composition of our instruments. It is only by reason of this perfection of our facilities, our broad experience and our painstaking care that we have been able to realize and maintain the high standard of Kodak construction.

HUNTING WITH A KODAK.

Photographing instead of shooting wild animals presents a side of sport that has grown wonderfully in favor in the last five years, and, on account of their extreme portability, Kodaks are peculiarly adapted to this kind of work. Indeed, they lend themselves with particular facility to every out-door sport ; the more important the question of transportation and the rougher the conditions under which the instrument is to be used, the more marked is the superiority of the Kodak over the plate camera. The hunter, the fisherman, the wheelman, the canoeist and the yachtsman find in the Kodak the *only* instrument adapted to their needs.

Folding Pocket Kodaks, Folding Bulls-Eyes, No. 2 Flexos, No. 2 Bullets, No. 2 Bulls-Eyes, No. 2 Bullet Specials, No. 2 Bulls-Eye Specials and the Cartridge Kodaks are especially adapted to use awheel. They are so light as to add no perceptible weight to the wheel and we have prepared a line of carrying cases for them that are

light, convenient and practical. They are the result of a long series of experiments, are made to withstand wear and tear and have been given severe tests on all kinds of roads.

KODAKS AS ENLARGING CAMERAS.

There is no more interesting branch of photography than enlarging from one's own negatives. The Cartridge Kodaks of either size are especially adapted to this work, while the No. 2 Bulls-Eyes, No. 2 Bullets, No. 2 Special Bulls-Eyes, No. 2 Special Bullets, No. 2 Folding Bulls-Eyes and all of the Folding Pocket Kodaks will make perfect enlargements, the focusing being done by simply moving the camera itself backward and forward.

IF IT ISN'T AN EASTMAN, IT ISN'T A KODAK.

"Kodak" is our trade-mark and no camera is a Kodak unless manufactured by us. All "Kodaks" have our name upon them and bear our serial number. Kodaks on which the number has been destroyed or mutilated are not guaranteed by us.

YOU CAN "DO THE REST."

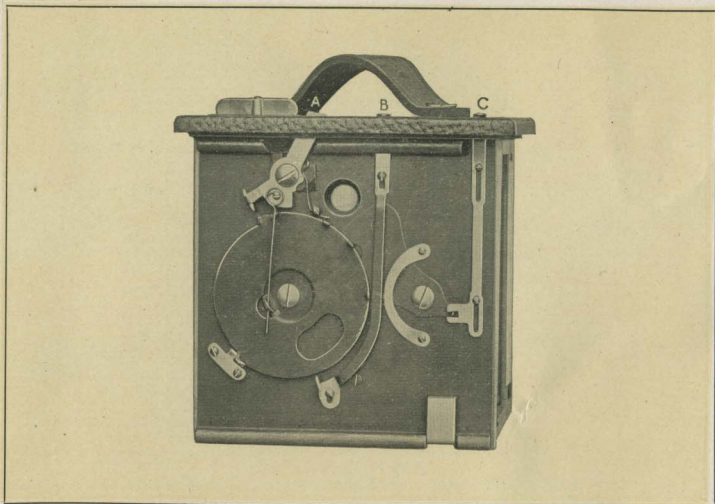
With every camera we furnish an illustrated instruction-book, which explains each step of the picture taking and picture making in non-technical terms. Many amateurs enjoy work in the dark room, and find as much pleasure in the making as in the taking of photographs. Films are quite as easy to develop as plates and are far less liable to injury. *"You can do the rest."*

"WE DO THE REST."

Film cartridges can readily be sent through the mails when desired, and our old offer still holds good:

"You press the button, we do the rest."

EASTMAN KODAK CO.,
Rochester, N. Y.



EASTMAN'S IMPROVED ROTARY SHUTTER.

The simplicity and absolute reliability of our Rotary Shutter was one of the features which gave to the original Bulls-Eye and to the Pocket Kodak their immense popularity. It is always set. Snap-shots are made by simply pushing the lever "A" alternately to the right or left, thus revolving the metal disc and making the exposure as the opening in disc passes the lens. If, by chance, the lever be pushed in the wrong direction it will simply remain unmoved and no click will be heard.

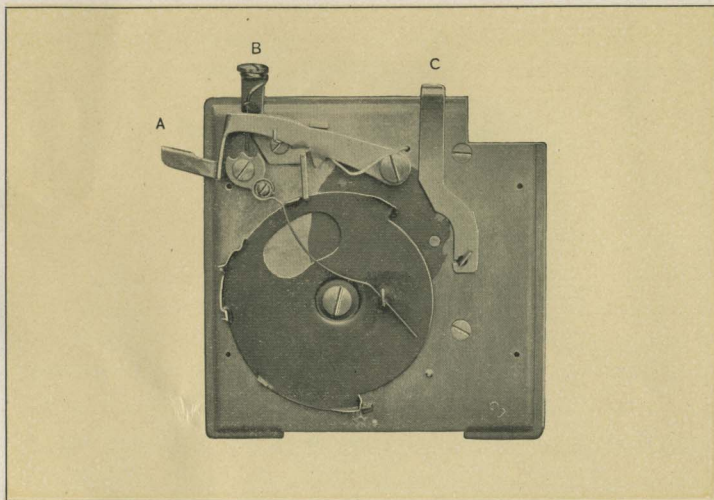
For time exposures the Kodaker simply pulls up the slide "B" and then pushes the lever "A" in one direction to open and in the opposite direction to close the shutter. It will be seen that when the slide "B" is pulled out the shutter strikes as it passes the lens, stopping half way across with the opening over the lens.

The lever "C" controls the stops, of which there are three.

Made with special machinery, by skilled mechanics, this simple mechanism makes an ideal shutter for the hand camera.

The Eastman Rotary Shutter is used on the No. 2 and No. 4 Bulls-Eye, No. 2 Folding Bulls-Eye, No. 2 Bullet and the No. 2 Flexo Kodaks.

This shutter, without stops, is also used on the Brownie Cameras.



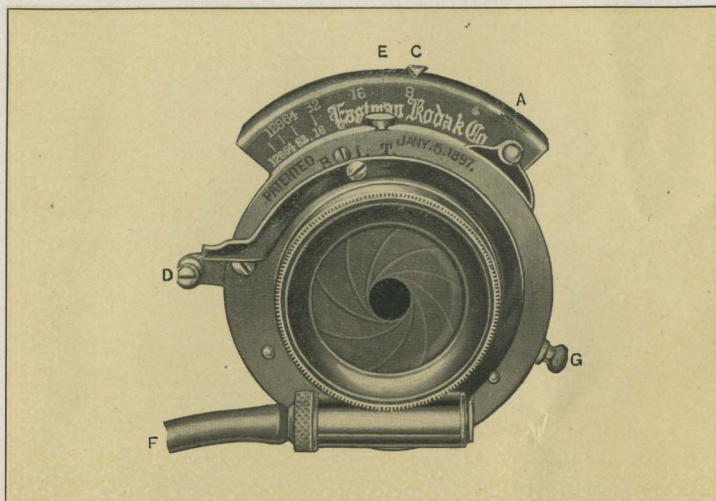
EASTMAN AUTOMATIC SHUTTER.

To make a snap-shot : Press down lever "B." To make a time exposure : Press down lever "A" once to open, and again to close the shutter. That's all there is to operating the Eastman Automatic Shutter. It is always set.

The lever "C" operates the stops, of which there are three.

Not only are these shutters made with the finest special machinery and with the utmost care, but they are given a thorough and practical test by experienced inspectors. In fact, all of our shutters are subjected to the most rigid inspection before shipment as a guarantee that every part is perfect and that no error of adjustment has been made in assembling.

The Eastman Automatic Shutter is used on the Folding Pocket Kodaks, No. 1, No. 1A, No. 2 and No. 3.



EASTMAN TRIPLE ACTION SHUTTER

This is a shutter with a wide range of action, built with the accuracy of a watch, yet simple, strong, reliable and far more compact than any other shutter of similar capabilities.

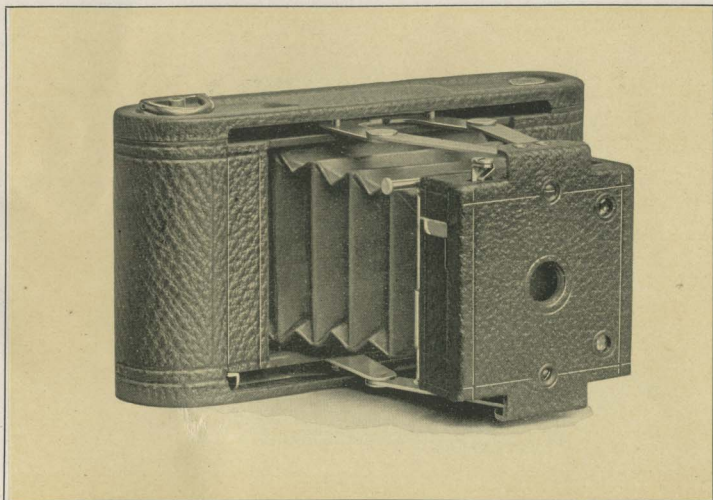
For snap-shots place lever "E" at point "I" and set shutter by turning lever "A" to left to limit of motion. Expose by pressing bulb attached to tube "F" or by touching release "D." There are three speeds for instantaneous exposures, which are regulated by moving the lever "G."

For time exposures place lever "E" at point "T" and set shutter by turning lever "A" to left to limit of motion. Press bulb (or release "D") once to open and again to close shutter.

For short time exposure place lever "E" at "B" and set shutter by moving "A" to left to limit of motion. Press bulb (or finger release D) to open shutter and release it to close shutter. The shutter remains open as long as the bulb remains under pressure and closes the instant it is released.

The stops are operated by moving lever "C" and range from U. S. 4 to U. S. 128.

As furnished with the No. 3, 4 and 5 Cartridge Kodaks and No. 4 Bullet Special (Model C) Kodaks, this shutter is fitted with pneumatic release operated by bulb. With the No. 2 and No. 4 Bulls-Eye Special and the No. 2 Bullet Special Kodaks it is operated by levers, those for setting the shutter and making the exposure *working from the outside of camera*, so that the front does not have to be opened except to change the adjustment.



FOLDING POCKET KODAKS No. 1 AND No. 1 A

In the Folding Pocket Kodaks we have adapted the Film Cart-ridge System to instruments that have well been called "Photo-graphic Pocket Pieces."

The lenses used in these instruments are specially ground, are meniscus achromatic, are carefully tested by an experienced inspector and have a fixed focus of a sufficient length to avoid that violent perspective which is so disagreeable in many amateur photographs. They are, in short, the finest achromatic lenses that can be made, covering the plate clear and sharp to the very corners.

The shutters are the Eastman Automatic described on page 14, and are equipped with a set of three stops.

These Kodaks have two brilliant view finders, one for vertical and one for horizontal exposures. There are no loose parts to become lost or mislaid, and to load the instruments is simplicity itself. Made of aluminum, covered with the finest black morocco, with handsomely nickeled fittings, they are at once strong, dainty and durable. In short, the Folding Pocket Kodaks are instruments of the finest quality and workmanship, but of the smallest compass ; and though practical pocket cameras, make pictures of good size and of artistic shape and so sharp that they can be enlarged to any size.

Can be readily carried on the bicycle by the use of the hand cases and our special clamps. See pages 41 and 42.

Folding Pocket Kodak No. 1.

For rectangular pictures, $2\frac{1}{4} \times 3\frac{1}{4}$ inches; capacity, 12 exposures without reloading; size of Kodak, $1\frac{5}{8} \times 3\frac{1}{2} \times 6\frac{3}{4}$ inches; weight, 15 ounces; length of focus of lens, 4 inches.

Price.

No. 1 Folding Pocket Kodak with achromatic lens, not loaded,	\$10.00
Transparent Film Cartridge, 12 exposures, $2\frac{1}{4} \times 3\frac{1}{4}$,40
Do., 6 exposures,20
Kodak Portrait Attachment,50
Black Sole Leather Carrying Case,	1.25

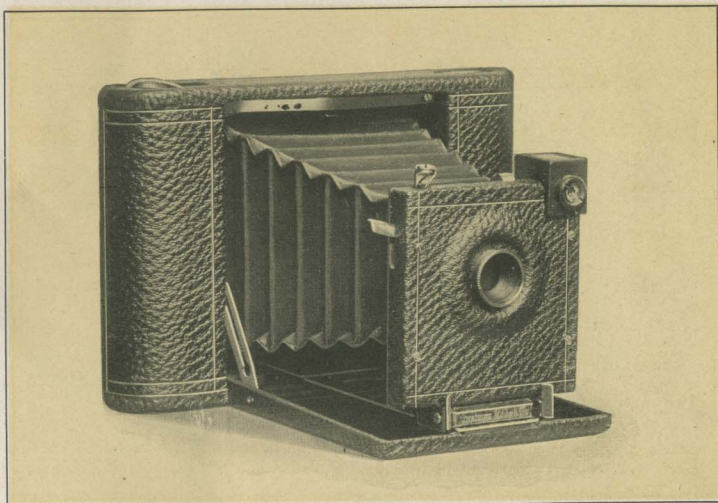


Folding Pocket Kodak No. 1 A.

For rectangular pictures, $2\frac{1}{2} \times 4\frac{1}{4}$ inches; capacity, 12 exposures without reloading; size of Kodak, $1\frac{3}{4} \times 3\frac{3}{8} \times 7\frac{3}{4}$ inches; weight, 18 ounces; length of focus of lens, 5 inches.

Price.

Folding Pocket Kodak No. 1 A, with achromatic lens, not loaded,	\$12.00
Transparent Film Cartridge, 12 exposures, $2\frac{1}{2} \times 4\frac{1}{4}$,50
Do., 6 exposures,25
Kodak Portrait Attachment,50
Black Sole Leather Carrying Case,	1.25



NO. 2 FOLDING POCKET KODAK.

For square pictures, $3\frac{1}{2} \times 3\frac{1}{2}$ inches; capacity, 12 exposures without reloading; size of Kodak, $1\frac{1}{2} \times 4\frac{1}{2} \times 6\frac{3}{4}$ inches; weight, 17 ounces; length of focus of lens, $4\frac{1}{2}$ inches.

In the No. 2 Folding Pocket Kodak we have adapted the popular $3\frac{1}{2} \times 3\frac{1}{2}$ size to a pocket instrument of extreme lightness and mechanical perfection. It slips readily into an ordinary coat pocket and being in every way equipped for the best photographic work it marks a distinct advance in Pocket Photography.

The lenses are the finest meniscus achromatic, having wonderful depth, definition and speed and cover fully with the largest stop opening and have a fixed focus of $4\frac{1}{2}$ inches.

Fitted with Eastman Automatic shutter, described on page 14, with set of three stops, socket for tripod screw and brilliant finder. Made of aluminum, covered with the finest black morocco, with handsomely nickeled fittings, it is at once strong, dainty and durable.

Can be readily carried on the bicycle by the use of the regular hand case and our special clamps. See pages 41 and 42.

No. 2 Folding Pocket Kodak, with achromatic lens,	
not loaded,	\$15.00
Transparent Film Cartridge, 12 exposures, $3\frac{1}{2} \times 3\frac{1}{2}$,	.60
Do., 6 exposures,	.30
Do., "Double-Two" Cartridge (4 exposures),	.20
Kodak Portrait Attachment,	.50
Black Sole Leather Carrying Case,	1.25

No. 3 FOLDING POCKET KODAK.

For rectangular pictures, $3\frac{1}{4} \times 4\frac{1}{4}$ in.; capacity, 12 exposures without reloading; size of camera, $1\frac{5}{8} \times 4\frac{1}{2} \times 7\frac{1}{2}$ inches; weight, 22 ozs.; length of focus of lens, 5 in.

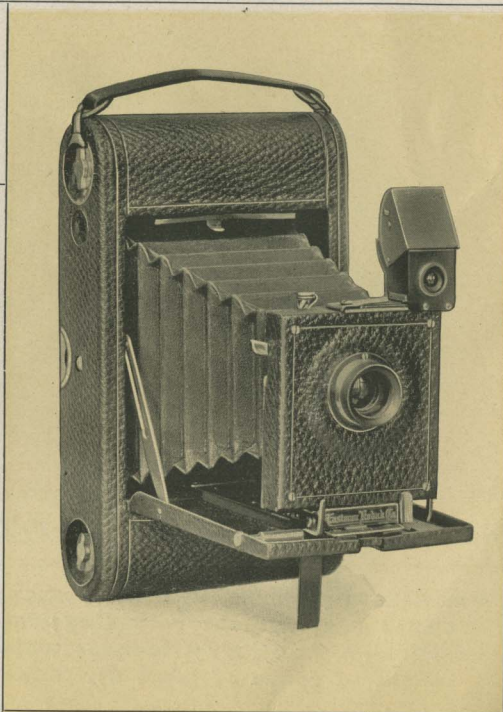
Although readily fitting the pocket, this Kodak has the capabilities of cameras of triple the bulk. The lens is rapid rectilinear and carefully tested, the shutter is the

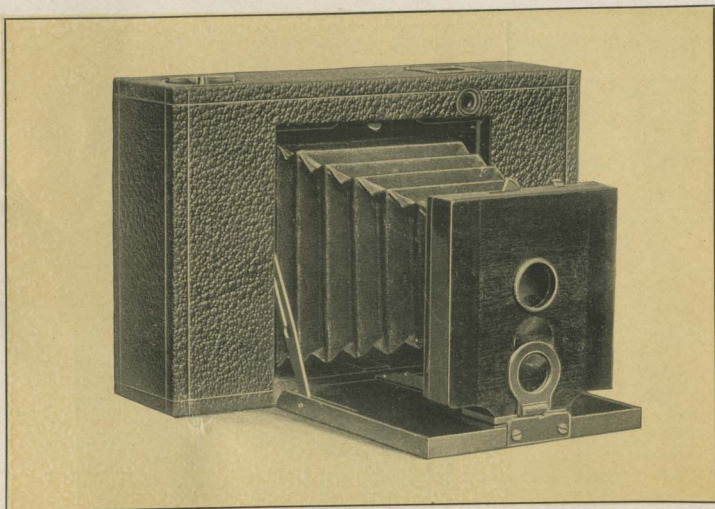
Eastman Automatic, described on page 14, and is fitted with a set of three stops. Reversible brilliant finder with hood, index for focusing, tripod socket for horizontal exposures.

Made of aluminum and covered with the finest black morocco, with full nickel fittings, this instrument is not only light and durable but is neat and dainty in appearance. It will prove the ideal camera for those who demand the highest excellence in camera construction, yet desire a pocket instrument. Can be readily carried on the bicycle by the use of our special cases. See pages 41 and 42.

*No. 3 Folding Pocket Kodak, with rapid rectilinear lens (not loaded),	\$17.50
Transparent Film Cartridge, 12 exposures, $3\frac{1}{4} \times 4\frac{1}{4}$,	.70
Do., 6 exposures,	.35
Do., "Double-Two" Cartridge (4 exposures),	.25
Kodak Portrait Attachment,	.50
Black Sole Leather Carrying Case, with shoulder strap,	1.25

*This Kodak can be furnished with a Bausch & Lomb Plagstigmat or with a Goerz lens and with Unicum shutter. See "Special Lens and Shutter Equipments," page 38.





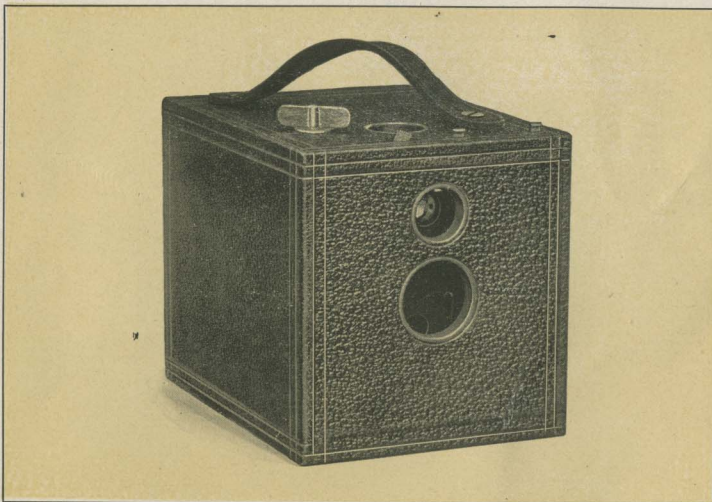
No. 2 FOLDING BULLS-EYE KODAK

For square pictures $3\frac{1}{2} \times 3\frac{1}{2}$ inches; capacity, 12 exposures without reloading; size of camera closed, $1\frac{3}{4} \times 4\frac{5}{8} \times 7\frac{1}{8}$ inches; weight, 16 ounces; length of focus of lens, $4\frac{1}{2}$ inches.

Being but $1\frac{3}{4}$ inches in thickness when closed is very convenient to carry. Will go in an ordinary overcoat pocket. This instrument is an adaptation of the well-known Bulls-Eye camera to the folding form and though not quite so compact as the Folding Pocket Kodaks it is in every way an efficient and reliable camera, capable of the highest grade of work. Fitted with fixed focus, achromatic lens, set of three stops, socket for tripod screw, square finder and improved Rotary shutter described on page 13. Handsomely finished with fine grain leather covering and nickel fittings.

Can be readily carried on the bicycle by use of our special clamps and the regular hand case. See pages 41 and 42.

No. 2 Folding Bulls-Eye Kodak, for $3\frac{1}{2} \times 3\frac{1}{2}$ pictures,	\$10.00
Transparent Film Cartridge, 12 exposures, $3\frac{1}{2} \times 3\frac{1}{2}$,	.60
Do., 6 exposures,	.30
Do., "Double-Two" Cartridge (4 exposures),	.20
Black Sole Leather Carrying Case with strap,	1.25



No. 2 FLEXO KODAK.

For square pictures $3\frac{1}{2} \times 3\frac{1}{2}$ inches; capacity, 12 exposures without reloading; size of camera, $4\frac{3}{8} \times 4\frac{3}{8} \times 5\frac{5}{8}$ inches; weight, 19 ounces; length of focus of lens, $4\frac{1}{2}$ inches.

The No. 2 Flexo is a well-made instrument in every respect and is fitted with fixed focus achromatic lens, set of three stops, finder, socket for tripod screw and our improved Rotary shutter, described on page 13.

Well made, covered with grain leather and handsomely finished.

Can be carried on bicycle by use of our special cases. See pages 43 and 44.

NOTE—The prospective purchaser should bear in mind that the price of the Flexo Kodak includes every requisite for taking pictures except the film, whereas the price of most of the so-called five-dollar plate cameras includes only one plate holder, and a further expenditure of \$2 or \$3 is necessary if it is desired to make more than two exposures between each trip to the dark room.

No. 2 Flexo Kodak, with achromatic lens, not loaded,	\$5.00
Transparent Film Cartridge, 12 exposures, $3\frac{1}{2} \times 3\frac{1}{2}$,	.60
Do., 6 exposures,30
Do., "Double-two" Cartridge (4 exposures),20
Kodak Portrait Attachment,50
Black Sole Leather Carrying Case with shoulder	
Strap,	1.25



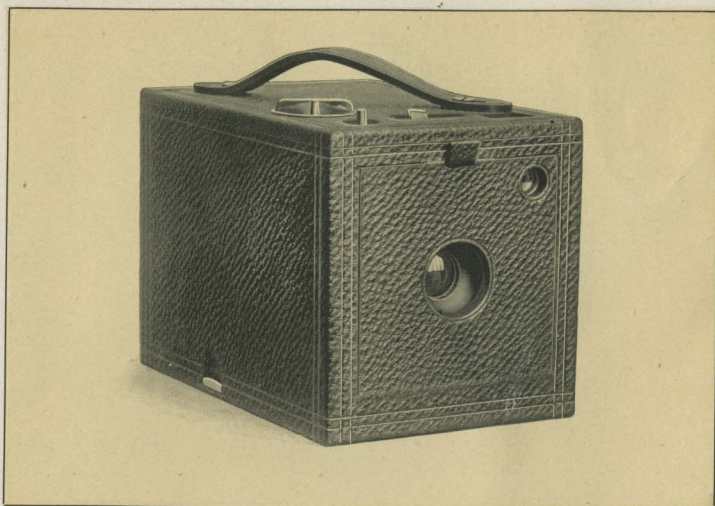
No. 2 BULLS-EYE KODAK.

For square pictures, $3\frac{1}{2} \times 3\frac{1}{2}$ inches; capacity, 12 exposures without reloading; size of camera, $4\frac{1}{2} \times 4\frac{1}{2} \times 5\frac{3}{4}$ inches; weight, 22 ounces; length of focus of lens, $4\frac{1}{2}$ inches.

Simple, practical and reliable, the Bulls Eye is the prime favorite with hundreds of thousands of amateurs the world over. Though simple of manipulation it is a high grade camera in every sense and capable of producing the very best results. Indeed the No. 2 Bulls-Eye was the pioneer cartridge system camera but by constant improvement it has been kept fully up-to-date and has more than retained its popularity.

Fitted with fixed focus, meniscus achromatic lens of the finest quality, brilliant finder, set of three stops, socket for tripod screw, and improved Rotary shutter described on page 13. Handsomely finished, with fine seal grain leather covering and nickeled fittings. Can be carried on bicycle by use of our special cases. See pages 43 and 44.

No. 2 Bulls-Eye Kodak fitted with achromatic lens,	
not loaded,	\$8.00
Transparent Film Cartridge, 12 exposures, $3\frac{1}{2} \times 3\frac{1}{2}$,	.60
Do., 6 exposures,	.30
Do., "Double-Two" Cartridge (4 exposures),	.20
Kodak Portrait Attachment,	.50
Black Sole Leather Carrying Case, with shoulder strap,	1.25



No. 2 BULLS-EYE SPECIAL KODAK

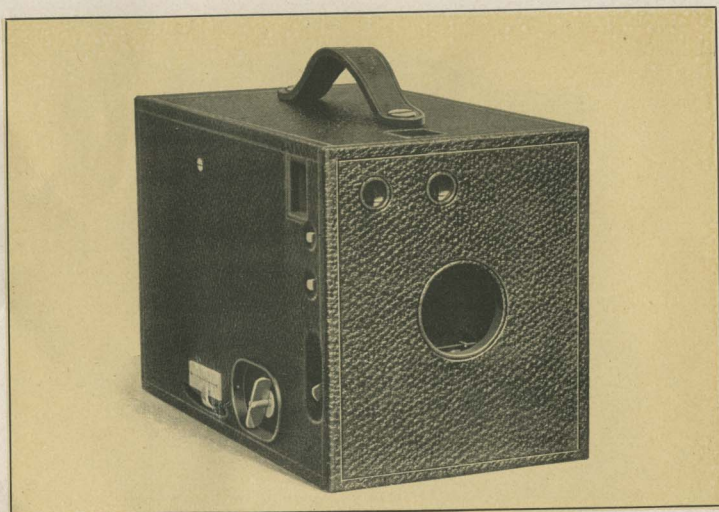
For square pictures $3\frac{1}{2} \times 3\frac{1}{2}$ inches; capacity, 12 exposures without reloading; size of camera, $4\frac{1}{2} \times 4\frac{3}{8} \times 6\frac{3}{4}$ inches; weight, 28 ounces; length of focus of lens, $5\frac{3}{8}$ inches.

This instrument combines the extreme simplicity of the Cartridge System as exemplified in the No. 2 Bulls-Eye with a shutter and lens of the finest quality.

It has the Eastman triple action shutter described on page 15, fitted with iris diaphragm stops graduated for Nos. 4, 8, 16, 32, 64, and 128, and it is fitted with a lens of the finest quality. The lens has a fixed focus, a length of $5\frac{3}{8}$ inches, is strictly rectilinear and very rapid with wonderful depth and definition. Every lens being carefully tested by our own expert, the highest quality will be maintained. In short, each one must be perfect.

This Kodak has brilliant square finder, socket for tripod screw, nicked fittings, is covered with fine black morocco and beautifully finished. Can be carried on bicycle by use of our special cases. See pages 43 and 44.

No. 2 Bulls-Eye Special Kodak, with rapid rectilinear lens, not loaded,	\$15.00
Transparent Film Cartridge, 12 exposures, $3\frac{1}{2} \times 3\frac{1}{2}$,	.60
Do., 6 exposures,	.30
Do., "Double-Two" Cartridge, (4 exposures),	.20
Kodak Portrait Attachment,	.50
Black Sole Leather Carrying Case with shoulder strap,	1.25

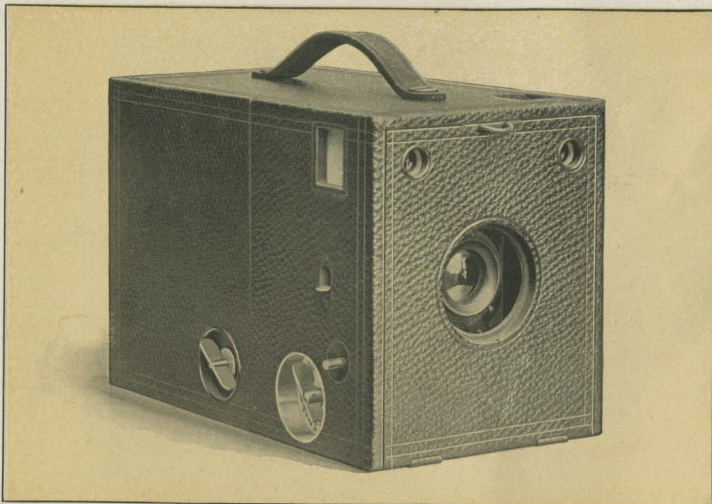


No. 4 BULLS-EYE KODAK.

For rectangular pictures 4 x 5 inches; capacity, 12 exposures without reloading; size of camera, 5 x 5 $\frac{7}{8}$ x 9 $\frac{1}{4}$ inches; weight, 2 pounds, 10 ounces; length of focus of lens, 6 $\frac{1}{4}$ inches.

The No. 4 Bulls-Eye is fitted with an achromatic lens of superior quality, having a set of three stops; has two brilliant finders, one for vertical and one for horizontal exposures; and is also provided with two sockets for tripod screws, one for vertical and one for horizontal exposures. Fitted with our improved Rotary shutter described on page 13 and has a carefully adjusted focusing scale. Handsome finish, nickel fittings, covered with fine seal grain leather.

No. 4 Bulls-Eye Kodak, fitted with Achromatic lens,	
not loaded,	\$12.00
Transparent Film Cartridge, 12 exposures, 4 x 5,90
Do., 6 exposures,45
Do., "Double-Two" Cartridge (4 exposures),30
Black Sole Leather Carrying Case, with shoulder strap,	2.00



No. 4 BULLS-EYE SPECIAL KODAK

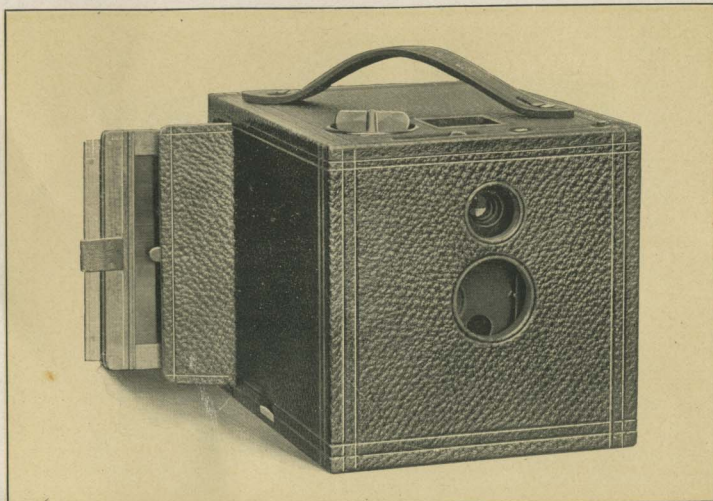
For rectangular pictures, 4 x 5 inches; capacity, 12 exposures without reloading; size of camera, 5 x 5 $\frac{7}{8}$ x 8 $\frac{3}{4}$ inches; weight, 2 lbs. 12 ozs.; length of focus of lens, 6 $\frac{1}{2}$ inches.

This instrument combines with the simplicity of the original No. 4 Bulls-Eye, a rapid rectilinear lens of superior quality and the Eastman triple action shutter described on page 15.

Fitted with two brilliant finders, one for vertical and one for horizontal exposures, and two sockets for tripod screws and a carefully adjusted focusing scale.

The construction is of the strongest, the finish rich and elegant. The No. 4 Bulls-Eye Special Kodak is, in short, the most convenient of high-grade 4 x 5 cameras and will be fully appreciated by those who demand the very best in camera construction, but who prefer the box to the folding form because it is always ready for use. Covered with fine morocco with nicked fittings.

No. 4 Bulls-Eye Special Kodak, rapid rectilinear lens, Eastman triple action shutter, with iris diaphragm stops (not loaded),	\$20.00
Transparent Film Cartridge, 12 exposures, 4 x 5, .	.90
Do., 6 exposures, .	.45
Do., "Double-Two" Cartridge (4 exposures), .	.30
Black Sole Leather Carrying Case, with strap, .	2.00

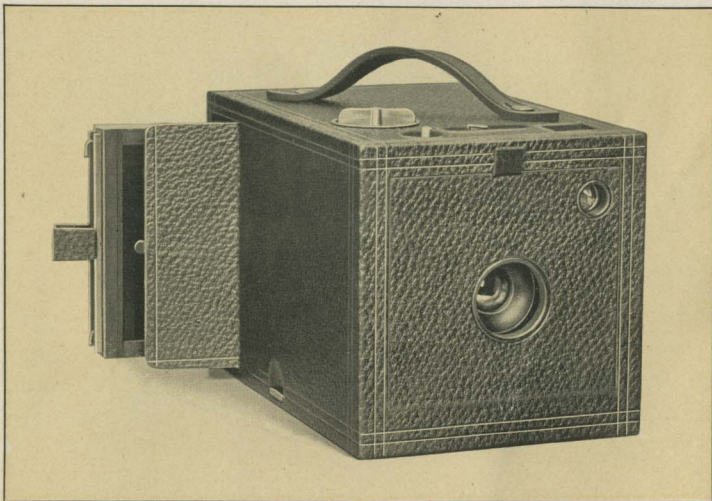


No. 2 BULLET KODAK. FILMS AND PLATES.

For square pictures, $3\frac{1}{2} \times 3\frac{1}{2}$ inches; capacity, 12 exposures without reloading; size of camera, $4\frac{3}{4} \times 4\frac{3}{4} \times 6\frac{1}{2}$ inches; weight, 28 ounces; length of focus of lens, $4\frac{1}{2}$ inches.

The Improved Bullet uses either roll films or glass plates (with plates the picture is $3\frac{1}{4} \times 3\frac{1}{2}$ inches) and whether used for Film Cartridges or glass plates is a complete and compact instrument of great capabilities. It is fitted with the finest fixed focus, meniscus achromatic lens, set of three stops, square brilliant finder, socket for tripod screw, and has our improved Rotary shutter described on page 13. Handsome finish, nickel fittings, covered with finest seal grain leather. Can be carried on bicycle by use of our special cases. See pages 43 and 44.

No. 2 Bullet Kodak, fitted with achromatic lens (not loaded),	\$10.00
Transparent Film Cartridge, 12 exposures, $3\frac{1}{2} \times 3\frac{1}{2}$.60
Do., 6 exposures,	.30
Do., "Double-Two" Cartridge (4 exposures),	.20
Double Plate Holders, $3\frac{1}{4} \times 3\frac{1}{2}$, each,	1.00
Kodak Portrait Attachment,	.50
Black Sole Leather Carrying Case, with shoulder strap,	1.25



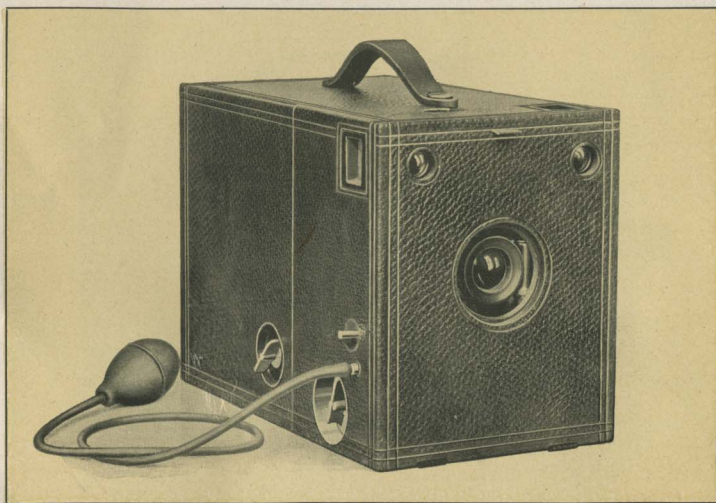
No. 2 BULLET SPECIAL KODAK. Films and Plates

For square pictures, $3\frac{1}{2} \times 3\frac{1}{2}$ inches; capacity, 12 exposures without reloading; size of camera, $4\frac{3}{4} \times 4\frac{3}{4} \times 7\frac{1}{2}$ inches; weight, 2 lbs., 2 oz.; length of focus of lens, $5\frac{3}{8}$ inches.

This instrument combines the extreme simplicity of the Cartridge System with a shutter and lens of the finest quality and can be used with film cartridges or glass plates. (With plates the picture is $3\frac{1}{4} \times 3\frac{1}{2}$ inches.) The shutter is the Eastman triple action described on page 15, and is fitted with iris diaphragm stops graduated for Nos. 4, 8, 16, 32, 64 and 128.

This instrument is fitted with a lens of the finest quality. It has a fixed focus of $5\frac{3}{8}$ inches, is strictly rectilinear and very rapid with wonderful depth and definition. Square brilliant finder, socket for tripod screw, covered with fine black morocco. Nickel fittings and beautiful finish. Can be carried on bicycle by use of our special cases. See pages 43 and 44.

No. 2 Bullet Special Kodak, with rapid rectilinear lens (not loaded),	\$18.00
Transparent Film Cartridge, 12 exposures, $3\frac{1}{2} \times 3\frac{1}{2}$,	.60
Do., 6 exposures,	.30
Do., "Double=Two" Cartridge (4 exposures)	.20
Double Plate Holders, $3\frac{1}{4} \times 3\frac{1}{2}$, each,	1.00
Kodak Portrait Attachment,	.50
Black Sole Leather Carrying Case, with shoulder strap,	1.25



No. 4 BULLET SPECIAL KODAK. (Model C)
FILMS AND PLATES.

For rectangular pictures, 4 x 5 inches; capacity, 12 exposures without reloading; size of Camera, 5½ x 6¾ x 9¾ inches; weight, 3 lbs., 12 ozs.; length of focus of lens, 6½ inches.

The Model C No. 4 Bullet Special Kodak is a box form film and plate instrument of the finest construction and finish, and is of the highest grade in every detail. It has the best rapid rectilinear lenses, Eastman triple action shutter, described on page 15, fitted with iris diaphragm stops from No. 4 to No. 128, and so arranged as to be conveniently operated with the finger lever or with the pneumatic release—the latter being instantly detachable.

Fitted with brilliant finders and with tripod sockets for both vertical and horizontal exposures and has carefully adjusted focusing scale. When used with plates, may be focused on ground glass if desired.

Former models of the No. 4 Bullet Special used roll-holder cartridges. The Model C uses Kodak Cartridges of either "Double-Two," 6 or 12 exposures. Be sure, therefore, to specify "Model C" when ordering film for this Kodak.

No. 4 Bullet Special Kodak, Model C, with rapid rectilinear lens, not loaded,	\$22.50
*Transparent Film Cartridge, 12 exposures, 4 x 5,	.90
*Do., 6 exposures,	.45
*Do., "Double-Two" Cartridge (4 exposures),	.30
*Double Plate Holders, 4 x 5, each,	1.00
*Black Sole Leather Carrying Case, with strap,	2.25

*Be sure and specify Model C when ordering.

Cartridge Kodaks.

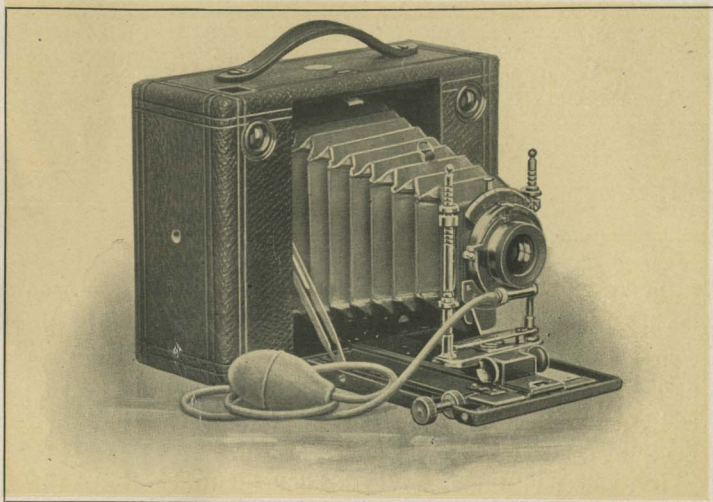
FILMS AND PLATES.

In these instruments the Kodak idea is perfected. Based upon the daylight loading film principle they are both compact and convenient. In construction they combine lightness and strength—a combination that is only made possible by our unequaled facilities and experience, while by their great scope they open practically the entire field of photography to the amateur.

Strength and lightness are secured in the Cartridge Kodaks by a judicious combination of aluminum and hard wood—the latter being treated to a secret process of our own by which it resists atmospheric changes to a remarkable degree. We have ourselves been surprised at the rough usage and severe climatic changes which these instruments have withstood in Cuba, China, the Philippines and South Africa, and with the increased use of aluminum in the new models these instruments are even stronger than were the earlier designs. No other camera of equal capabilities can so well withstand the rough usage of travel. The Cartridge Kodaks are particularly adapted to the cyclists' use when carried in the special cases described on page 45.

The lenses furnished in the regular equipment are strictly rectilinear and very rapid, having a working speed of $f. 8$. They do not, therefore, require the most favorable conditions but enable the operator to secure good instantaneous pictures under circumstances where such pictures would be impossible with a less powerful lens. Our system of inspection insures a perfect lens with every instrument.

Wide angle lenses, the cells of which fit the regular shutter and



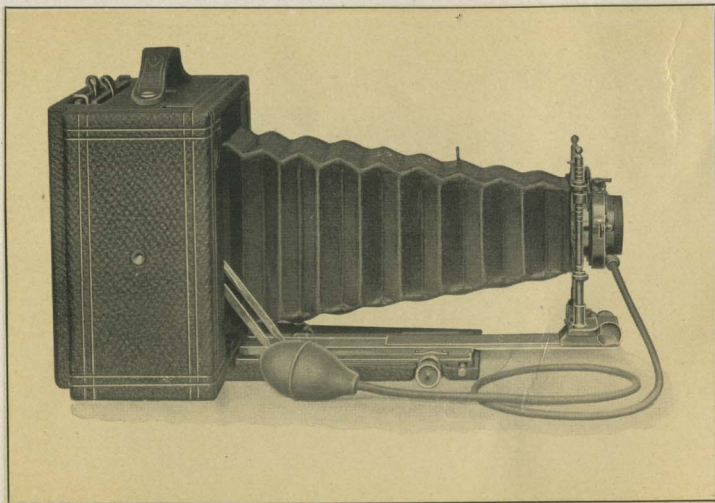
CARTRIDGE KODAKS Nos. 3, 4 and 5

which are easily attached, can be supplied at a very reasonable extra charge or if desired the instruments may be given a special lens and shutter equipment. See pages 38 and 39.

The Eastman Triple Action Shutters furnished with the Cartridge Kodaks are accurate and reliable ; meet every requirement of the most advanced amateurs, and have iris diaphragm stops from No. 4 to No. 128. They are described in detail on page 15.

The new Cartridge Kodaks have an improved rising front which locks automatically and also an improved side slide (rising when used for horizontal pictures) and have aluminum leather covered front boards of great strength, but which are nevertheless light and are very neat in appearance.

The glass plate attachments which are supplied (extra) for these instruments are in no way "trappy" and are attached by simply removing the back and replacing with glass plate attachment, an operation requiring but a few seconds. With plates the instrument may be focused either on the ground glass or by the focusing scale.



**CARTRIDGE KODAK, SHOWING BELLOWS EXTENDED
AND GLASS PLATE ADAPTER ATTACHED.**

An extra extension to bellows, operated by means of rack and pinion, permits the photographing of objects at a distance of only 18 inches from the lens and also permits of the advantageous use of a tele-photo attachment. With the extra extension the ground glass is, of course, to be employed in focusing.

The Cartridge Kodaks are so constructed as to make them practical enlarging cameras, for which purpose they are particularly convenient. These instruments will make enlargements of any size, being limited only in the negatives which they will "cover." The No. 3, for instance, will make enlargements from $3\frac{1}{4} \times 4\frac{1}{4}$ or from any smaller negatives, the No. 4 from 4×5 or smaller, and the No. 5 from 5×7 or smaller.

The Cartridge Kodaks have brilliant finders and tripod sockets for both vertical and horizontal exposures, have our patent non-collapsing bellows and are covered with the finest seal grain leather. The richness of the leather and the polished mahogany sets off the



CARTRIDGE KODAK, Closed.

nicked fittings in brilliant contrast, while the correct proportioning of all the parts gives an instrument which satisfies the eye in every detail. In design, construction and finish they more than meet the demands of the most exacting experts—they leave nothing to be desired.



No. 3 Cartridge Kodak.

FILMS AND PLATES.

For rectangular pictures, $4\frac{1}{4} \times 3\frac{3}{4}$ inches; capacity, 12 exposures without reloading; size, closed, $3\frac{1}{4} \times 5\frac{3}{4} \times 7\frac{1}{2}$ inches; weight, 2 lbs., 12 ozs.; length of focus of lens, 6 inches.

No. 3 Cartridge Kodak, rapid rectilinear lens, Eastman	
Triple Action Pneumatic Shutter, (not loaded), . . .	\$20.00
Transparent Film Cartridge, 12 exposures, $4\frac{1}{4} \times 3\frac{3}{4}$,70
Do., 6 exposures,35
Do., "Double-Two" Cartridge, 4 exposures,25
Glass Plate Adapter, with ground glass, . . .	2.00
Double Plate Holders, each, . . .	1.00

No. 4 Cartridge Kodak.

FILM AND PLATES.

**For rectangular pictures, 5 x 4 inches; capacity,
12 exposures without reloading; size of camera,
 $3\frac{1}{4}$ x $6\frac{3}{8}$ x $8\frac{1}{4}$ inches; weight, 3 lbs. 2 oz.;
length of focus of lens, $6\frac{1}{2}$ inches.**

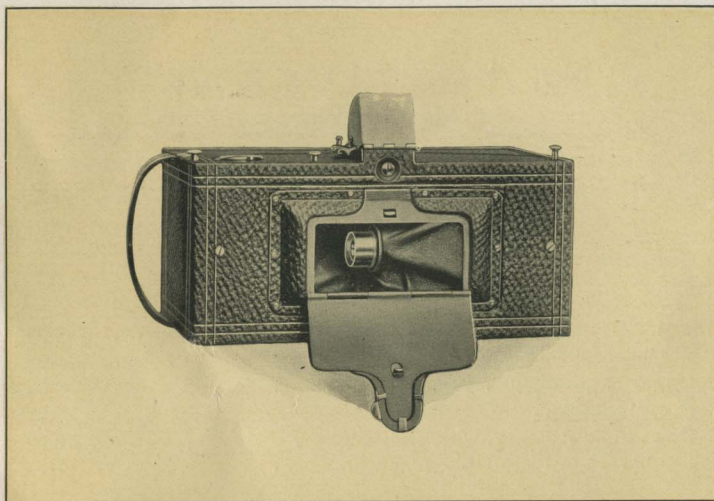
No. 4 Cartridge Kodak, with rapid rectilinear lens and Eastman Triple Action Pneumatic Shutter (not loaded),	\$25.00
Transparent Film Cartridge, 12 exposures, 5 x 4,90
Do., 6 exposures,45
Do., "Double-Two" Cartridge, 4 exposures,30
Glass Plate Adapter, with ground glass,	2.50
Double Glass Plate Holders, each,	1.00

No. 5 Cartridge Kodak.

FILM AND PLATES.

**For rectangular pictures, 7 x 5 inches; capacity,
12 exposures without reloading; size of camera,
 $3\frac{3}{8}$ x $8\frac{1}{2}$ x 10 inches; weight, 4 lbs., 8 ozs.;
length of focus of lens, $8\frac{1}{2}$ inches.**

No. 5 Cartridge Kodak with rapid rectilinear lens and Eastman Triple Action Pneumatic Shutter (not loaded),	\$35.00
Transparent Film Cartridge, 12 exposures, 7 x 5,	1.60
Do., 6 exposures,80
Do., "Double-Two" Cartridge, 4 exposures,55
Glass Plate Adapter, with ground glass,	3.00
Double Glass Plate Holders, each,	1.25



THE PANORAM-KODAKS.

A new and delightful phase of photography is offered to the amateur by the Panoram-Kodaks. Pictures of broad landscapes, river and marine views made with these instruments have a breadth and beauty not attainable with the ordinary camera. Vertical pictures of high water falls and mountain peaks as well as horizontal pictures give most delightful effects, while the great speed of the swinging lens and shutter, combined with the wide scope of view, make them unequaled in the taking of out-door group pictures, the subjects in such cases being arranged in a semi-circle and all at an equal distance from the Kodak.

In the Panoram-Kodaks is found a new "witchery of Kodakery"—a most delightful field for the amateur.

These instruments have carefully tested lenses, improved two-speed shutters, spirit levels, brilliant finders which show the sky and foreground and by means of which the entire view may be examined by simply swinging the camera, before exposure, so as to take in the full scope of view as indicated by the V shaped lines on top of camera. The Panoram-Kodaks are covered with the finest black morocco, have nicked fittings and are beautifully finished.

These instruments are, of course, not intended for taking timed exposures or interiors.

No. 1 Panoram-Kodak.

USES No. 1 FOLDING POCKET KODAK CARTRIDGES.

For pictures, $2\frac{1}{4} \times 7$ inches; capacity, 6 exposures without reloading; size of Camera, $3\frac{3}{8} \times 4\frac{1}{4} \times 7\frac{3}{8}$ inches; weight, 24 ounces; length of focus of lens, $3\frac{9}{16}$ inches; angle of view, 112° .

No. 1 Panoram-Kodak (not loaded),	\$10.00
Transparent Film Cartridge, 6 exposures, $2\frac{1}{4} \times 7$ (regular No. 1 Folding Pocket Kodak Cartridge),40
Do., 3 exposures,20
Black Sole Leather Carrying Case with shoulder strap,	1.75

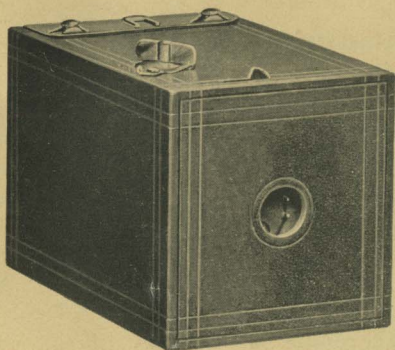


No. 4 Panoram-Kodak.

USES No. 4 BULLS-EYE FILM CARTRIDGES.

For pictures, $3\frac{1}{2} \times 12$ inches; capacity, 5 exposures without reloading; size of camera, $4\frac{3}{4} \times 5\frac{1}{2} \times 10\frac{1}{8}$ inches; weight, 2 lbs., 14 ozs.; length of focus of lens, 5 inches; angle of view, 142° .

No. 4 Panoram-Kodak (not loaded),	\$20.00
Transparent Film Cartridge, 5 exposures, $3\frac{1}{2} \times 12$ (regular No. 4 Bulls-Eye Cartridges),90
Do., 2 exposures,45
Black Sole Leather Carrying Case,	2.00



THE BROWNIE CAMERA.

For square pictures, $2\frac{1}{4} \times 2\frac{1}{4}$ in.; capacity, 6 exposures without re-loading; size of camera, $3\frac{1}{8} \times 4\frac{7}{8}$ in.; weight, 8 ozs.; length of focus of lens, $3\frac{1}{4}$ in.

The Brownie cameras are compact and perfect little instruments. They load in daylight with our six exposure film cartridges and can be readily operated by any school boy or girl.

The Brownies are fitted with fine Meniscus lenses and our famous rotary shutters, such as are used on the Bullet and Bulls-Eye Kodaks, except that they have but one stop instead of three. See page 13.

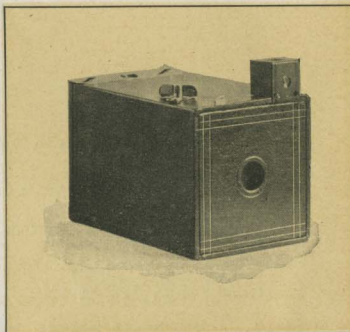
V shaped lines on top of camera give the scope of view, and the novice will soon be able to judge accurately by them just what will appear in the picture, or a Brownie Finder (detachable) may be provided for only 25 cents.

The Brownie finder can be attached or detached in an instant, a metal clamp clasping the top of camera and holding it securely in position, while a shoulder on this clamp prevents it from being placed too far to the left.

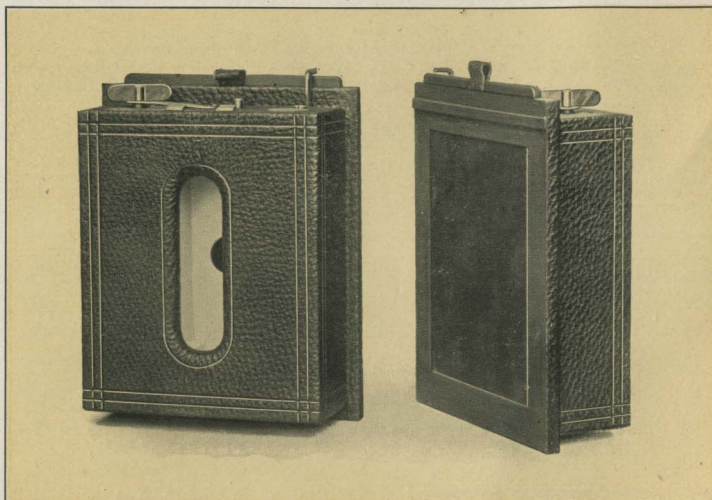
The Brownies are strongly made, are covered with imitation leather and have nickeled fittings.

Forty-four page instruction book free with every instrument.

Brownie Camera, for $2\frac{1}{4} \times 2\frac{1}{4}$ pictures,	\$1.00
Transparent Film Cartridge, 6 exposures, $2\frac{1}{4} \times 2\frac{1}{4}$,	.15
Brownie Finder, detachable,	.25
Brownie Carrying Case, holds camera and finder,	.50
Brownie Developing and Printing Outfit, including Dekko Paper for 24 prints,	.75



Showing Brownie with
Finder Attached.



THE CARTRIDGE ROLL HOLDER

We are now prepared to furnish Cartridge System Roll Holders which can be fitted to any ordinary camera by an intelligent cabinet maker, or we will do the fitting for a small charge, varying, of course, according to the camera and the work necessary.

The Cartridge Roll Holders load in daylight and are well made of hard wood, with fine seal grain leather covering (except No. 2, and No. 4 Horizontal, which are hard wood finish), have nickel fittings, and are handsomely finished.

SPECIAL SPOOLS FOR CARTRIDGE ROLL HOLDERS.

In ordering cartridges, be sure and state that they are for Cartridge Roll Holder, giving length of spool and size of roll holder, as the film and paper are wound differently from those used in the Bullets, Bulls-Eyes, etc. Kodak spools will not fit Cartridge Roll Holders.

PRICE LIST.

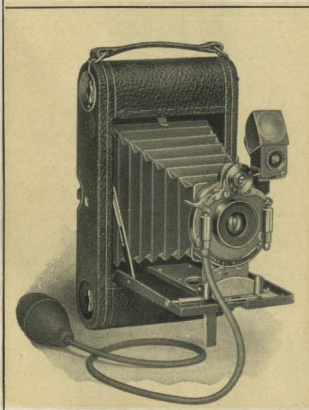
No. 2 ($3\frac{1}{2} \times 3\frac{1}{2}$) Cartridge Roll Holder,	\$5.00
No. 3, Vertical, for $4\frac{1}{4} \times 3\frac{1}{4}$ pictures, $4\frac{1}{4}$ inch spool, .	5.00
No. 4 (4×5) Cartridge Roll Holders, (specify whether vertical or horizontal),	5.00
No. 5 Vertical, Cartridge Roll Holders, 7 inch spool,	6.50

TRANSPARENT FILM CARTRIDGES.

$3\frac{1}{2}$ inch, for No. 2 Cartridge Roll Holder, 12 exposures,	.60
$4\frac{1}{4}$ inch, for No. 3 Cartridge Roll Holder, 12 exposures,	.70
4 inch, for No. 4 Horizontal Cartridge Roll Holder, 12 exposures,	.90
5 inch, for No. 4 Vertical Cartridge Roll Holder, 12 exposures,	.90
7 inch, for No. 5 Cartridge Roll Holder, 12 exposures,	1.60

SPECIAL LENS AND SHUTTER EQUIPMENTS.

In place of the excellent regular equipment with which we furnish the Cartridge Kodaks and the No. 3 Folding Pocket Kodaks these instruments can be equipped with either the famous Goerz Double Anastigmat or the new Bausch & Lomb Plastigmat lenses if the customer so desires. The lenses and shutters manufactured by these concerns are fully guaranteed by them and are favorably known the world over.



No. 3 FOLDING POCKET KODAK
WITH UNICUM SHUTTER AND
PLASTIGMAT LENS.

EXTRA PRICES FOR SPECIAL EQUIPMENTS.

The following prices are to be added to the list price of the Kodak with regular equipment.

No. 3 Folding Pocket Kodak, Rapid Rectilinear lens, Equivalent focus, 5 inches; Speed, <i>f.</i> 8, and Unicum shutter, EXTRA,	\$8.00
No. 3 Folding Pocket Kodak, Goerz Anastigmat lens, Series III, No. 0, Equivalent focus, 5 inches; Speed, <i>f.</i> 6.8, and Unicum shutter, EXTRA,	43.50
No. 3 Folding Pocket Kodak, Bausch & Lomb Plastigmat lens, No. 1, Equivalent focus, 5 inches; Speed, <i>f.</i> 6.8, and Unicum Shutter, EXTRA,	40.00
No. 3 Cartridge Kodak, Goerz Anastigmat lens, Series III, No. 0, Equivalent focus, 5 inches; Speed, <i>f.</i> 6.8, and Unicum shutter, EXTRA,	40.00

No. 3 Cartridge Kodak, Bausch & Lomb Plastigmat lens, No. 1, Equivalent focus, 5 inches; Speed, <i>f.</i> 6.8, and Unicum shutter, EXTRA,	\$35.00
No. 4 Cartridge Kodak, Goerz Anastigmat lens, Series III, No. 1, Equivalent focus, 6 inches; Speed, <i>f.</i> 6.8, and Bausch & Lomb Iris Diaphragm shutter, EXTRA,	54.00
No. 4 Cartridge Kodak, Bausch & Lomb Plastigmat lens, No. 2, Equivalent focus, 6½ inches; Speed, <i>f.</i> 6.8, and Bausch & Lomb Iris Diaphragm shutter, EXTRA,	47.50
No. 5 Cartridge Kodak, Goerz Anastigmat lens, Series III, No. 2, Equivalent focus, 7 inches; Speed, <i>f.</i> 6.8, and Bausch & Lomb Iris Diaphragm shutter, EXTRA,	59.50
No. 5 Cartridge Kodak, Bausch & Lomb Plastigmat lens, No. 3, Equivalent focus, 7½ inches; Speed, <i>f.</i> 6.8, and Bausch & Lomb Iris Diaphragm shutter, EXTRA,	54.50

WIDE ANGLE LENSES.

Regularly equipped Cartridge Kodaks may be fitted with our wide angle Kodak lenses at a trifling cost. These lenses are mounted in cells which fit the Eastman Triple Action shutters, and are, therefore, interchangeable with the Rapid Rectilinear lenses furnished with the Cartridge Kodaks. The W. A. Kodak lenses are rectilinear, have a speed of *f.* 16 and are carefully tested. With each one we furnish a leather case and a properly graduated focusing scale for attaching to the camera bed.

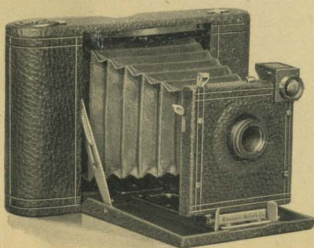
PRICE LIST.

No. 3 (3¼ x 4¼) Wide Angle Kodak Lens, Equivalent focus, 3½ inches; Speed, <i>f.</i> 16,	\$5.00
No. 4 (4 x 5) Wide Angle Kodak Lens, Equivalent focus, 4½ inches; Speed, <i>f.</i> 16.	5.00
No. 5 (5 x 7) Wide Angle Kodak Lens, Equivalent focus, 5½ inches; Speed, <i>f.</i> 16,	7.50

KODAK PORTRAIT ATTACHMENTS.

The Kodak Portrait Attachments greatly increase the value of the small fixed focus instruments by adapting them to the making

of large bust pictures. By their use any one of the Kodaks named below will make head and shoulder pictures equaling in size an ordinary mantello photograph. These attachments are simply extra lenses which slip on over the lens hood or are inserted in the opening in the front board of camera as the case may be.



**No. 2 Folding Pocket Kodak with
Portrait Attachment.**

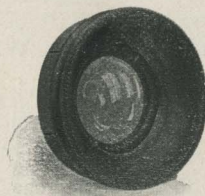
They in no way affect the operation of the Kodak except that they make it cut sharp at a distance of three and one-half feet and consequently throw more distant objects out of focus. They are therefore to be used for bust portrait work only. The possibilities of the smaller Kodaks in portraiture are attractively set forth in "Pocket Kodak Portraiture," an instructive little booklet profusely illustrated by Rudolf Eickemeyer, Jr., and containing a number of his most charming studies of child life. Free at any Kodak dealer's, or by mail.

Kodak Portrait Attachments are made for the following instruments:

- | | |
|-------------------------------|-------------------------------|
| No. 1 Folding Pocket Kodaks. | No. 2 Bulls-Eye Spec. Kodaks. |
| No. 1A Folding Pocket Kodaks. | No. 2 Bullet Kodaks. |
| No. 2 Folding Pocket Kodaks. | No. 2 Bullet Special Kodaks. |
| No. 3 Folding Pocket Kodaks. | No. 2 Flexo Kodaks. |
| No. 2 Bulls-Eye Kodaks. | |

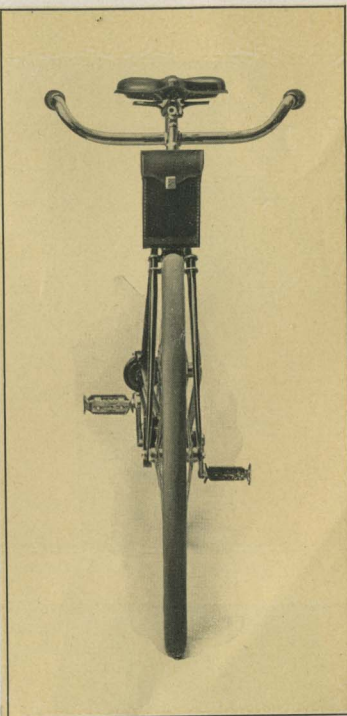
Price of attachment to fit either of above instruments, 50 cts.

Be sure and give exact designation of instrument when ordering.



**Kodak Portrait
Attachment for
No. 2 Bulls-Eye.**

**BICYCLE
CARRYING
CASES.**



In solving the transportation problem for Kodakers we did not stop when we had made the lightest and strongest of cameras. Our Kodak Bicycle Cases are so made as to carry the instruments in safety over the roughest roads. Neither have we forgotten to protect the wheel itself from damage, our cases being so attached as to give the least possible amount of wear to the enamel. Particular attention has also been given to the matter of opening and closing the cases. There are no bothersome buckles to unfasten in removing the Kodak, each style of case fastening with a strong and simple clasp that may be operated with one hand.



COMBINATION HAND AND CYCLE CASES

Our Combination Hand and Bicycle Cases are made of the best black sole leather; perfectly protect the Kodak against rough usage, and are neat and dainty in appearance. Can be used as a hand case; carried like a field glass, or when desired, may be used for carrying the Kodak on a bicycle.

The No. 1, No. 1 A and No. 2 Folding Pocket Kodak cases are attached to the bicycle by means of a single clamp. The No. 3 Folding Pocket Kodak and the No. 2 Folding Bulls-Eye cases being somewhat larger are fastened by means of two clamps.

- | | |
|--|--------|
| Carrying Case, with shoulder strap, for No. 1, No. 1 A or No. 2 Folding Pocket Kodak, (always specify in order whether for No. 1, No. 1 A or No. 2), . | \$1.25 |
| Clamp for carrying either above cases on head of bicycle, (fits any tubing from $\frac{7}{8}$ to $1\frac{1}{4}$), . | .50 |
| Carrying Case, with shoulder strap, for No. 3 Folding Pocket Kodak, . | 1.25 |
| Pair Clamps for carrying above case on head of bicycle (fit any tubing from $\frac{7}{8}$ to $1\frac{1}{4}$), . | 1.00 |
| No. 2 Folding Bulls-Eye Carrying Case with shoulder strap, . | 1.25 |
| Pair of Clamps for carrying above case on head of bicycle (fit any tubing from $\frac{7}{8}$ to $1\frac{1}{4}$), . | 1.00 |



STYLE A, BICYCLE CASES.

For No. 2 Bullet, Bulls-Eye and Flexo Kodaks, Bullet Special and Bulls-Eye Special Kodaks.

The Style A case is strongly made of wood, covered with fine grain leather and lined with cloth and is fitted with springs on the inside which take up the vibration of the wheel and prevent injury to the camera. By means of two simple thumb screws, it clamps securely to the head of the bicycle, and there being no play at points of contact with the machine, it will not wear the enamel.

Outside measurements for No. 2 Bulls-Eye case, $5\frac{3}{8}$ x $5\frac{1}{2}$ x $6\frac{7}{8}$ inches.

The door latch can be opened with one hand, yet it cannot jar open and will not rattle.

By means of a set of adjustable washers (extra) the case may be held far enough in front of the bicycle head to allow for the free passage of the brake rod. It may also be provided (extra) with a lamp bracket attachment. A set of washers is furnished with each case and by their use the clamps will firmly grip any tubing from $\frac{7}{8}$ inch to $1\frac{1}{4}$ inches, both inclusive. No wrench, screwdriver or other tools are necessary in making the attachment.

***Bicycle Carrying Case, Style A, for No. 2 Bullet,
Bulls-Eye, Flexo, Bullet Special and Bulls-Eye
Special Kodaks,
Washers for holding Case in front of Brake Rod,
Detachable Lamp Bracket,**

**\$2.00
1.00
.25**

*In ordering specify whether for No. 2 Bullet, Bulls-Eye, Flexo, Bullet Special or Bulls-Eye Special.



STYLE B, BICYCLE CASES.

For No. 2 Bullet, Bulls-Eye, Flexo, Bullet Special and Bulls-Eye Special Kodaks.

This case is designed to attach to the rear forks immediately under the saddle and is especially adapted to use on a lady's wheel or on any wheel having mud-guards. It is provided with three straps, two of which attach to the rear forks, the third passing through the saddle spring proper or through the U spring where one is used. It is made of the best black sole leather and is easily accessible, a single strong clasp securing the flap in position. It makes a safe and convenient carrier for the camera.

In ordering state whether for use with Bullet, Bulls-Eye, Bullet Special, Bulls-Eye Special or Flexo.

Price, Bicycle Carrying Case, Style B for No. 2 Bullet, Bulls-Eye, Flexo, Bullet Special and Bulls-Eye Special Kodaks, \$1.50

NOTE—This case is impracticable for very short riders as it requires a space of 6 inches in the clear between the mud-guard and the saddle spring.



CARTRIDGE KODAK BICYCLE CASE.

This case is strongly made of wood, covered with fine grain leather, lined with cloth and fitted with springs on the inside which take up the vibration of the wheel and prevent injury to the camera. By means of two thumb screws which securely grasp the tubing, the case may be attached to the head of the machine or suspended from the top bar. The clamps will firmly grasp any tubing from $\frac{7}{8}$ to $1\frac{1}{4}$ inches, both inclusive, and can be attached to any side of the case (except, of course, the door). There being no play at the point of contact with the machine, it will not wear the enamel.

The door fastens with a strong brass catch which can be opened with one hand, yet cannot jar open and will not rattle.

By means of a set of adjustable washers (extra) the case may be held far enough in front of the bicycle head to allow for the free passage of a brake rod. It may also be provided (extra) with a lamp bracket attachment. No wrench, screw driver or other tools are necessary in making the attachment.

No. 3 Cartridge Kodak Bicycle Case,	\$2.25
" 4 " " " "	2.50
" 5 " " " "	3.25
Washers for holding case in front of brake rod, per set,	1.00
Detachable Lamp Bracket,	.25



DEVELOPING AND PRINTING OUTFITS

Eastman's A B C Developing and Printing Outfit includes every requisite for developing, printing and finishing 24 4 x 5, 2½ x 4¼ or 3¼ x 4¼ pictures.

IT CONTAINS:

1 Eastman Improved Candle Lamp,	\$0.25	½ lb. Hyposulphite Soda,	\$0.07
1 4 x 5 Printing Frame	.25	½ oz. Bromide Potassium,	.10
Glass for do.,	.05	2 doz. 4 x 5 Solio Paper	.25
1 Glass Beaker,	.12	2 ozs. Solio Toning Solution,	.15
1 Stirring Rod,	.05	1 oz. Glycerine,	.05
4 4½ x 5½ Developing Trays,	.40	Instruction Book,	.10
½ dozen Developing Powders,	.25		\$2.09

Price, complete, neatly packed, . . . \$1.50.

Eastman's Bulls-Eye Developing and Printing Outfit complete for developing and printing 12 pictures 3½ x 3½. Similar to above outfit, but including 1 doz. 3½ x 3½ Solio paper, instead of 2 doz. 4 x 5, and containing smaller quantities of chemicals.

Price, complete, neatly packed, . . . \$1.00

Special 5 x 7 Developing and Printing Outfit complete for developing and printing 24 pictures 5 x 7.

Price, complete, neatly packed, . . . \$2.00

Brownie Developing and Printing Outfit, complete for developing 24 pictures 2½ x 2½ and printing on Dekko Paper, . . . **.75**

NOTE.—These outfits cannot be shipped by mail.

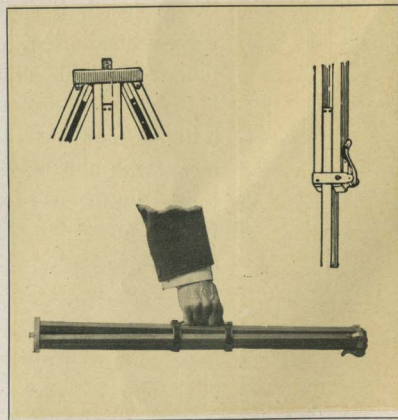
TRIPODS.

THE BULLS-EYE TRIPOD.

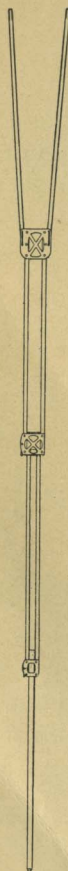
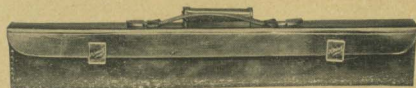
A compact and convenient tripod for use with any camera up to and including 4 x 5. An aluminum top plate with milled edges holds the socket screw securely in place and seats it in place in the camera when turned—thus doing away with the nuisance of the ordinary screw, turned by means of a key handle inconveniently located under the plate between the tripod legs, and always likely to be missing when most wanted.

The Bulls-Eye Tripod folds in two sections and is provided with a leather hand strap for carrying. Made of the best seasoned spruce with brass fittings. Although far from high in

price, this tripod is wonderfully light, compact and strong, as none but the very best of straight grain spruce and the most accurate fittings are used in its construction.



Price, \$2.00



EASTMAN'S FEATHER TRIPOD.

Length, folded, 14½ inches. Length, extended, 52½ inches. Suitable for any 4 x 5 camera or smaller.

Wonderfully light, compact and strong, this tripod is especially designed for the tourist or cycling Kodaker. Only 14½ inches in length when closed, it can be readily strapped to the bicycle handle bar, whether carried in a case or not. An aluminum top plate with milled edges, holds the socket screw securely in place and seats it in place in the camera when turned—thus doing away with the nuisance of the ordinary screw, turned by means of a key handle inconveniently located under the plate between the tripod legs, and always likely to be missing when most wanted. The Feather tripod folds in four sections, has brass fittings, except the top plate, which is of aluminum, and weighs, in spruce, but 17½ ozs., in cherry, or in mahogany finish, 20½ ozs.

PRICE.

Eastman's Feather Tripod, Cherry, .	\$4.00
Eastman's Feather Tripod, Spruce, .	4.00
Eastman's Feather Tripod, Mahogany finish,	4.50
Black Sole Leather Hand Carrying Case,	1.50

THE EASTMAN TRIPOD.

Folds in three sections.

No. 1, Spruce, for cameras up to 6½
x 8½; weight, 1 lb. 10 ozs., . \$3.00

No. 1, Maple, for cameras up to 6½
x 8½; weight, 2 lbs. 2 ozs., . 3.00

NOTE—When kind of wood is not specified, we will furnish in maple.

THE VICTOR TRIPOD.

Folds in two sections.

No. 1, Spruce, for cameras up to 6½
x 8½; weight, 1 lb. 11 ozs., . \$2.00

No. 1, Maple, for cameras up to 6½
x 8½; weight, 2 lbs. 3 ozs., . 2.00

NOTE—When kind of wood is not specified, we will furnish in maple.

THE STAFF TRIPOD.

This tripod does not fold but closes together, forming a staff or cane.

Improved Staff Tripod, . . . \$1.50

Special Adjustable Head, extra, . 1.00

THE KODAK TRIPOD.

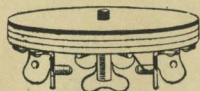
Folds in four sections.

No. 1, Cherry, for cameras up to
8 x 10; folding lugs, . . . \$5.00

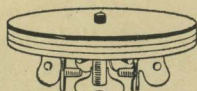
No. 2, Cherry, for cameras up to
8 x 10; solid lugs, . . . 4.00

Leather Carrying Case with pocket
for top for No. 1, . . . 3.00

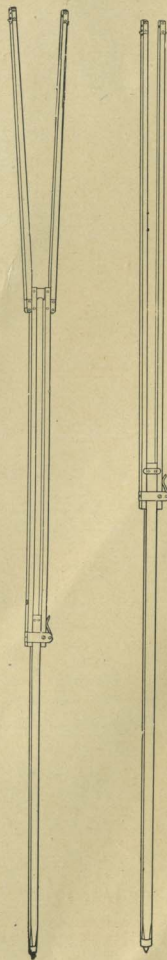
Leather Carrying Case without pocket, . 2.00



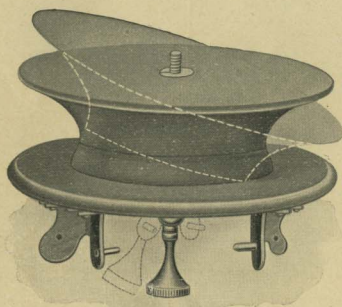
Eastman.



Victor.



Eastman Tripod. Victor Tripod.



The Adjustable Tripod Head.



**Adjustable Jr.
Tripod Head.**

ADJUSTABLE TRIPOD HEADS.

"ADJUSTABLE" TRIPOD HEAD.

By the use of our "Adjustable" Tripod Head, the camera can be tilted to any desired angle and fastened securely in position without moving the tripod legs.

PRICE LIST.

No. 1. For the Eastman Tripod No. 1 and Victor No. 1,	\$1.25
No. 2. For Kodak Tripod,	1.50

In ordering always give the name and number of Tripod for which you want adjustable head.

Any of the foregoing Tripods (except Feather, Staff and Bulls-Eye) may be ordered with the adjustable head and without the regular head, at the following prices :

Eastman No. 1,	\$3.75
*Kodak No. 2,	4.80
Victor No. 1,	2.75

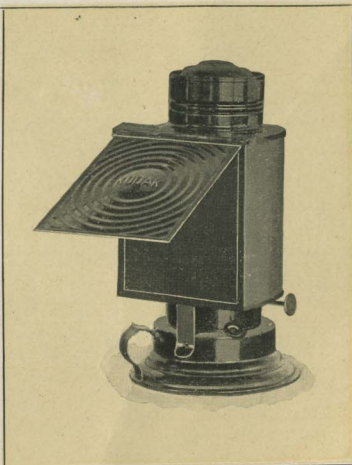
*We do not furnish the "Adjustable" head with folding lugs.

"ADJUSTABLE JR." TRIPOD HEAD.

No. 1 "Adjustable Jr." for cameras up to 4 x 5, can be used on Bulls-Eye, Feather or Staff Tripods,	\$1.00
No. 2 "Adjustable Jr." for cameras up to 5 x 8, fits any ordinary Tripod,	1.50

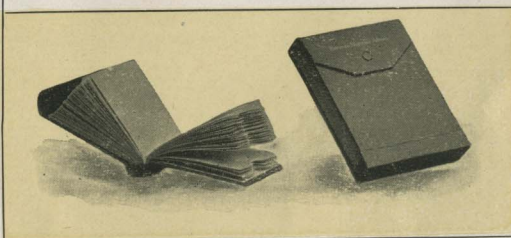
EASTMAN'S KODAK DARK-ROOM LAMP.

This lamp is well made and safe. It is equipped with improved burner carrying extra broad wick, and has new ventilating top, ensuring a bright, steady flame. It is the safest dark-room lamp made, being fitted with both ruby and orange glass. The flame can be controlled from the outside, and it is fitted with adjustable shield to protect the eyes from the light and throw it directly on the work.



No. 1 Improved Kodak Dark-Room Lamps, 1 inch wick, each,	\$1.50
No. 2 do., $\frac{3}{8}$ inch wick, each,	1.00

EASTMAN'S FILM NEGATIVE ALBUMS.



How to preserve film negatives is a question that has been successfully answered by the introduction of Eastman's Film Negative Albums. Each

album contains 100 pockets made of strong manilla paper and consecutively numbered from 1 to 100, and an index on white paper, ruled and numbered for 100 entries. They thus provide a perfectly safe means of keeping the negatives in such a way that the one desired can always be instantly found.

PRICE.

Eastman's Negative Albums for 100 negatives $3\frac{1}{2}$ x $3\frac{1}{2}$ or smaller,	\$0.75
Eastman's Negative Albums for 100 negatives $3\frac{1}{2}$ x $4\frac{1}{4}$ or 4 x 5,	1.00
Eastman's Negative Albums for 100 negatives 5 x 7 or smaller,	1.50

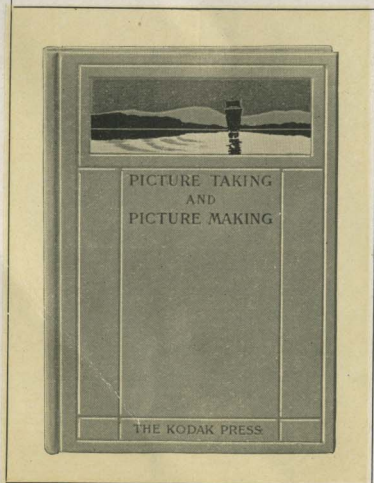
KODAK ALBUMS.

These albums are intended for those who want a good, substantial, permanent book for preserving pictures of more than passing interest. They are therefore well made and substantially covered. They are made on the loose leaf, lace system and have plain gray leaves, of good, heavy stock, 20 leaves to the album. There is no printing on the leaves. The covers are of cloth in a delicate gray tint with the title "The Kodak Book" printed in gold leaf.

PRICE LIST.

No. 101. Size of leaf 5 x 6½, 5 inches at back, 20 leaves. Capacity, 40, 4 x 5; 160, 1½ x 2; 80, 2½ x 2½; 40, 3¼ x 4¼; or 40, 3½ x 3½ prints.	\$1.00
No. 102. Size of leaf 6 x 5, 6 inches at back, 20 leaves. Capacity, 80, 2¼ x 3¼; 80, 2¼ x 2¼; 120, 1½ x 2; or 40, 3½ x 3½ prints.	1.00
No. 103. Size of leaf 7 x 6, 7 inches at back, 20 leaves. Capacity, 80, 2½ x 4¼; 160, 1½ x 2 prints. Also appropriate for Brownies or No. 1 Folding Pocket Kodak Prints.	1.10
No. 104. Size of leaf 9¼ x 6½, 9¼ inches at back, 20 leaves. Capacity, 80, 4 x 5; 80, 3¼ x 4¼; 120, 2½ x 4¼; or 80, 3½ x 3½ prints.	1.25
No. 105. Size of leaf 6½ x 9, 6 inches at back, 20 leaves. Capacity, 40, 5 x 7; or 80, No. 1 Panoram-Kodak Prints.	1.25

"PICTURE TAKING AND PICTURE MAKING."



A simple and practical book for the beginner, yet full of "meat" for the advanced amateur. There are four valuable contributed articles: "Platinum Printing," by Alfred Stieglitz; "The Gum Bi-Chromate Process," by M. Robert Demachy; "Sensitizing and Use of Plain Papers," by Bernard Alfieri, and "Carbon Printing," by James A. Sinclair.

Printed on heavy coated paper, beautifully illustrated, 120 pages, cardboard covers, . . . \$.50
Cloth bound, . . . 1.00

EASTMAN'S PHOTOGRAPHIC PAPERS.

SOLIO PAPER.

A rapid, glossy printing-out paper.

Size.	Per Pkg. 2 doz.	½ Gross.	Gross.
2½ x 2½,	\$.20	\$.60	\$1.00
2¼ x 3¼,	.20	.60	1.00
2½ x 4¼,	.20	.60	1.00
3½ x 3½,	.20	.60	1.15
3¼ x 4¼,	.20	.60	1.15
4 x 5,	.25	.70	1.25
2¼ x 7, (No. 1 Panoram-Kodak)	.25	.70	1.25
	Per Doz.		
5 x 7,	.30	1.60	2.65
3½ x 12, (for No. 4 Panoram-Kodak)	.35	2.00	3.50

Seconds.—4 x 5 (trimmed) seconds, \$1.00 per gross.

Solio Combined Toning and Fixing Sol., per 8 oz. bottle, 50 cts.
Do., 4 oz. bottle (20 cts. extra postpaid), 30 cts.

DEKKO PAPER.

A quick printing development paper, printing by either artificial light or daylight and developing in subdued daylight or subdued artificial light. No dark-room required. Beautiful platinum-like effects.

Size.	Doz.	½ Gross.	Gross.
2¼ x 3¼,	\$.15	\$.60	\$1.00
2½ x 4¼,	.15	.70	1.25
3½ x 3½,	.15	.80	1.50
3¼ x 4¼,	.15	.80	1.50
4 x 5,	.25	1.10	2.00
2¼ x 7, (for No. 1 Panoram-Kodak)	.15	.80	1.50
5 x 7,	.35	2.00	3.50
3½ x 12, (for No. 4 Panoram-Kodak)	.45	2.50	4.50

Brownie Dekko, one grade only, per pkg. 2 doz., 2¼ x 2¼, 15 cts.

Made in Four Grades.

Carbon Matte,	Plain Matte,
Egg-Shell Matte,	Rough Matte.
Eastman's Dekko Developer Powders, per dozen,	\$.50
Do., per half dozen,	.25

EASTMAN'S SEPIA PAPER.

Packed in Air-Tight, Sealed Tubes.

As simple to handle and much quicker than Blue Print paper. Especially desirable with negatives giving broad, sketchy effects.

	2 Doz.	½ Gross.
2¼ x 3¼,	\$.15	\$.40
2½ x 4¼,15	.40
3½ x 3½,15	.40
3¼ x 4¼,15	.40
4 x 5,20	.50
2¼ x 7,20	.50
	1 Doz.	
5 x 7,20	.90
3½ x 12,20	1.00

EASTMAN'S "FERRO-PRUSSIAN" PAPER.

Packed in Air-Tight, Sealed Tubes.

This is not a cheap commercial "Blue Print" paper, but a paper made purposely for printing from the finest negatives with a view to retaining all their delicacy and detail.

Size.	Price per 2 doz.	Size.	Price per 2 doz.
2¼ x 2¼,	\$.16	4 x 5,	\$.20
2¼ x 3¼,16	2¼ x 7,20
2½ x 4¼,16	5 x 7,35
3½ x 3½,16	3½ x 12,40
3¼ x 4¼,16		

EASTMAN'S W. D. PLATINUM PAPER.

Packed in Air-Tight, Sealed Tubes.

A pure platinum paper, requiring only Water Development, without chemicals. Clears in water and acid. Simple to handle yet produces effects equal in beauty to any photographic process.

Two Grades—"Smooth" and "Rough."

Size.	Price per Doz.	Size.	Price per Doz.
2¼ x 3¼,	\$.15	4 x 5,	\$.35
2½ x 4¼,20	2¼ x 7,30
3½ x 3½,20	5 x 7,60
3¼ x 4¼,25	3½ x 12,70

EASTMAN'S PERMANENT BROMIDE PAPERS.

The amateur can readily make enlargements from his own negatives by the use of Eastman's Bromide Paper and the Bulls-Eye Enlarging Camera described below, or can improvise an enlarging apparatus. See page 12.

Illustrated Booklet, "Bromide Enlarging with a Kodak," 10c.

ROYAL, STANDARD, PLATINO, ENAMELED AND MATTE-ENAMEL.

Size.	Per Doz.	Size.	Per Doz.
2¼ x 3¼, . . .	\$0.15	10 x 12, . . .	\$1.20
3¼ x 4¼,15	11 x 14, . . .	1.60
4 x 5,25	14 x 17, . . .	2.40
5 x 7,35	16 x 20, . . .	3.20
5 x 8,40	18 x 22, . . .	4.00
6½ x 8½,60	20 x 24, . . .	4.80
8 x 10,80	Other sizes in proportion.	

Two Grades—Hard and Soft.

The Bromide papers (except Royal) are made in two grades, "Hard" and "Soft." The "Hard" paper should be used for printing or enlarging by sunlight, while the "Soft" paper should be used for work with artificial light.

"Standard" is furnished in three weights: A, thin smooth—B, heavy smooth—C, heavy rough.

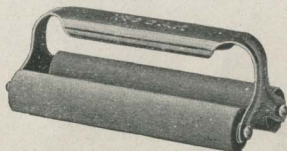
"Platino" is furnished in A, thin smooth, or C, heavy rough.

The "Royal" is furnished in "smooth" or "rough."

BULLS-EYE ENLARGING CAMERAS.

The Bulls-Eye Enlarging Camera is adapted to making 4 x 5 Bromide enlargements from Pocket Kodak, and 6½ x 8½ enlargements from Folding Pocket Kodak and 3½ x 3½ negatives.

Bulls-Eye Enlarging Camera, double holder for paper, \$7.50
Do., with single holder for paper, 6.00
Extra inside Kit to hold 4 x 5 paper,35



"Kodak" Print Roller.

This roller has two six inch fine rubber rollers with steel frame, handsomely nickeled. A durable and practical article.

Price, \$.75

EASTMAN'S DRY PLATES.

Extra Rapid for Instantaneous Work.

	Per Doz.
3¼ x 3½ inches, (for No. 2 Bullet and Bullet Special),	\$.35
3½ x 3½ inches,35
3¼ x 4¼ inches,45
4 x 5 inches,65
5 x 7 inches,	1.10

Eastman's Double Coated Non-Halation Plates.

3¼ x 4¼ inches, per doz.,	\$.55
4 x 5 inches, per doz.,80
5 x 7 inches, per doz.,	1.40

LANTERN SLIDE PLATES, ETC.

Plates for making Lantern Slides, per dozen,	\$.70
Cover Glass for Lantern Slides, per dozen,35

CHEMICALS.

Eastman's Hydrochinon Developer Powders, per dozen,	\$.50
Do., per half dozen,25
Eastman's Pyro Developer Powders, per dozen,50
Do., per half dozen,25
Eastman's Dekko Developer Powders, per dozen,50
Do., per half dozen,25
Hypo-sulphite of Soda, pulverized, per pound,10
Bromide Potassium, per ounce,15
Citric Acid, 4 ounce bottle,30
Oxalate Potash, per pound,40
Protosulphate Iron, per pound,10
Powdered Alum, per pound,10
Solio Toning Solution, per 8 ounce bottle,50
Solio Toning Solution in 4 ounce bottles as follows:	
4 ounces Toning Solution (20c. extra postpaid),30
Solio Hardener, per 8 ounce bottle,35

PRINTING FRAMES.

3½ x 3½, opens two-thirds,	\$.25
3¼ x 4¼, opens two-thirds,25
4 x 5, opens two-thirds,25
5 x 7, opens two-thirds,35
3½ x 12, for No. 4 Panoram-Kodak, opens in 3 sections,75
2¼ x 7, for No. 1 Panoram-Kodak, opens in 2 sections,30
Special Brownie Printing Frame for 2¼ x 2¼ Developing paper only,10

KODAK MOUNTS.

		Brownie Cam- era 2 1/4 x 2 1/4	No. 1 Folding Pocket Kodak 2 1/4 x 3 1/4	Folding Pocket Kodak No. 1 A 2 1/2 x 4 1/4	No. 2 3 1/2 x 3 3/4	No. 3 3 3/4 x 4 1/4	No. 4 4 x 5	No. 5 5 x 7	STYLE
White center, Queen's gray border, enam- elled face, plain back,	Per Doz. " 100 " 1000	\$.15 1.05 10.20			\$.20 1.45 14.20	\$.20 1.45 14.20	\$.25 1.70 17.00	\$.40 3.20 32.00	A.
White or Queen's gray embossed border, straight edges, . .	Per Doz. " 100 " 1000	.10 .75 7.45	\$.15 .85 8.50	.15 .95 9.25	.15 .95 9.25	.20 1.30 12.75	.30 2.30 22.75	B. W. (white) B. G. (gray)	
White, plain straight edge, round corners,	Per Doz. " 100 " 1000						.10 .15 .45 .60 4.25 8.90	C.	
Primrose, plain beveled edge, round corners,	Per Doz. " 100 " 1000						.10 .15 .65 1.05 6.20 10.30	D.	
Primrose, gilt beveled edge, round corners,	Per Doz. " 100 " 1000						.10 .20 .75 1.45 7.45 14.20	E.	
Maroon, gold beveled edge, round corners,	Per Doz. " 100 " 1000						.20 .40 1.50 3.20 14.75 32.00	F.	
Scotch Gray, beveled edges,	Per Doz. " 100 " 1000	.10 .60 6.00	.10 .75 7.45	.10 .80 7.80	.10 .80 7.80	.15 .95 9.25	.25 1.80 17.75	H.	
Ivy Green, beveled edges,	Per Doz. " 100 " 1000	.10 .60 6.00	.10 .75 7.45	.10 .80 7.80	.10 .80 7.80	.15 .95 9.25	.25 1.80 17.75	I.	
Carbon Black, beveled edges,	Per Doz. " 100 " 1000	.10 .60 6.00	.10 .75 7.45	.10 .80 7.80	.10 .80 7.80	.15 .95 9.25	.25 1.80 17.75	J.	
Royal Brown, beveled edges,	Per Doz. " 100 " 1000	.10 .60 6.00	.10 .75 7.45	.10 .80 7.80	.10 .80 7.80	.15 .95 9.25	.25 1.80 17.75	K.	
Scotch Gray, square edges,	Per Doz. " 100 " 1000	\$.07 .30 2.80	.08 .50 5.00	.09 .60 6.00	.10 .65 6.40	.10 .65 6.40	.12 .80 7.80	.20 1.60 15.60	L.
Ivy Green, square edges,	Per Doz. " 100 " 1000	.07 .30 2.80	.08 .50 5.00	.09 .60 6.00	.10 .65 6.40	.10 .65 6.40	.12 .80 7.80	.20 1.60 15.60	M.
Carbon Black, square edges,	Per Doz. " 100 " 1000	.07 .30 2.80	.08 .50 5.00	.09 .60 6.00	.10 .65 6.40	.10 .65 6.40	.12 .80 7.80	.20 1.60 15.60	N.
Royal Brown, square edges,	Per Doz. " 100 " 1000	.07 .30 2.80	.08 .50 5.00	.09 .60 6.00	.10 .65 6.40	.10 .65 6.40	.12 .80 7.80	.20 1.60 15.60	O.

When ordering state quantity, style (indicating by letter) and size prints to be used with. Bear in mind that style B is made in either white or Queen's gray. Order "style B. W." for white or "style B. G." for gray. When color is not specified we will furnish white.

PANORAM-KODAK MOUNTS.

No. 4, for $3\frac{1}{2}$ x 12 prints, (style I), Ivy Green, (style K) Royal Brown, beveled edges,	Per Doz.	\$.35
	" 100	2.50
	" 1000	25.00
No. 1, for $2\frac{1}{4}$ x 7 prints, (style I), Ivy Green, (style K) Royal Brown, beveled edges,	Per Doz.	.10
	" 100	.75
	" 1000	7.45

FLASH SPECIALTIES.

Eastman's Flash Lamp,		\$1.25
Eastman's Flash Powder, per ounce bottle,		.60
Eastman's No. 1 Flash Cartridges, per pkg. $\frac{1}{2}$ doz.,		.60
Eastman's No. 2 Flash Cartridges, per pkg. $\frac{1}{2}$ doz.,		.40
Eastman's No. 3 Flash Cartridges, per pkg. $\frac{1}{2}$ doz.,		.25
Eastman's Flash Sheets, per pkg., $\frac{1}{2}$ doz.,		.25
Illustrated Booklet, "Pictures by Flashlight,"		.10

EASTMAN'S FILM CUTTING BOARDS.

For cutting up Cartridge Films for development. Holds paper and film securely. Is simple and accurate. For Kodak Cartridges only.

No. 1, $2\frac{1}{4}$ x $3\frac{1}{4}$ (also for No. 1 Panoram),		\$.25
No. 1 A, $2\frac{1}{2}$ x $4\frac{1}{4}$,		.25
No. 2, $3\frac{1}{2}$ x $3\frac{1}{2}$,		.25
No. 3, Hor., $3\frac{1}{4}$ x $4\frac{1}{4}$, ($3\frac{1}{4}$ inch spool),		.25
No. 3, Ver., $4\frac{1}{4}$ x $3\frac{1}{4}$, ($4\frac{1}{4}$ inch spool),		.25
No. 4, Hor., 4 x 5, (4 inch spool),		.25
No. 4, Vert., 5 x 4, (5 inch spool),		.25
No. 5, Vert., 7 x 5, (7 inch spool),		.35

TRAYS.

Paper Developing Trays, for 4 x 5, each,	\$.10
Paper Developing Trays, for 5 x 7, each,	.15
Hard Rubber Trays, for 4 x 5, each,	.27
Hard Rubber Trays, for 5 x 7, each,	.56
Japanned Metal Trays, $4\frac{1}{2}$ x $13\frac{1}{2}$, for No. 4 Panoram-Kodak,	.40
"Bulls-Eye" Composition Trays, for $3\frac{1}{2}$ x $3\frac{1}{2}$, each,	.18
"Bulls-Eye" Composition Trays, for 4 x 5, each,	.25
"Bulls-Eye" Composition Trays, for 5 x 7, each,	.50

SPECIAL FERROTYPE PLATES.

10 x 14, Ferrotypes Plates, Light, each,	\$.15
10 x 14, Ferrotypes Plates, Heavy, each,	.20
18 x 24, Ferrotypes Plates, Heavy, each,	.75

SUNDRIES.

Eastman's Photo Paste, per 3 ounce tube,	\$.15
Eastman's Photo Paste, per 5 ounce tube,25
Velvet Rubber Squeegees, 6 inches, each,40
Velvet Rubber Squeegees, 8 inches, each,50
Kodak Push Pins, for pinning up film negatives, per box of 1 doz.,25
3½ x 3½ Glass for Printing Frames, each,05
3¼ x 4¼ Glass for Printing Frames, each,05
4 x 5 Glass for Printing Frames, each,05
5 x 7 Glass for Printing Frames, each,05
2¼ x 7 Glass for No. 1 Panoram-Kodak Printing Frames, each,05
4 x 13 Glass for No. 4 Panoram-Kodak Printing Frames, each,10
4 x 13 Felt Mats for No. 4 Panoram-Kodak Printing Frames, each,15
Eastman's Orange Candle Lamp,25
Silk Bolting Cloth, 18 x 20 squares, fine,	1.25
Silk Bolting Cloth, 18 x 20 squares, medium,	1.13
Silk Bolting Cloth, 18 x 20 squares, coarse,	1.00
Solio Thermometers, each,40

ENLARGEMENTS.

Every amateur has among his negatives some that are well worth enlarging and framing. Our enlarging department contains only skilled operators and we secure the very best results possible from every negative. Where the kind of paper is not specified we will make the enlargements upon the paper which, in our judgment, is best suited to the negative and the subject.

PRICE LIST.

Royal Bromide, Standard Bromide, Platino-Bromide, Enameled Bromide or Matte-Enamel Bromide Enlargements from any size negatives, mounted on cardboard :

No extra charge for Sepia Tones on Royal or Enameled Bromide Enlargements.

	Each.	Per Doz.
4¼ x 6½,	\$.35	\$3.00
6½ x 8½,50	5.00
8 x 10,75	—
10 x 12,	1.00	—
11 x 14,	1.25	—
14 x 17,	1.50	—
Larger sizes in proportion.		
Lantern Slides,50	5.00

CONDENSED KODAK LIST.

FOLDING POCKET KODAKS No. 1 and No. 1 A.

	No. 1 2 $\frac{1}{4}$ x 3 $\frac{3}{4}$	No. 1 A 2 $\frac{1}{2}$ x 4 $\frac{1}{2}$
Folding Pocket Kodak , capacity 12 exposures, not loaded,	\$10.00	\$12.00
Transparent Film Cartridge, 12 exposures,	.40	.50
Do., 6 exposures,	.20	.25
Carrying Case with shoulder strap,	1.25	1.25
Clamp for carrying case on Bicycle Head,	.50	.50
Kodak Portrait Attachment,	.50	.50
*Developing, printing and mounting, 12 exposures,	1.00	1.25
*Developing only, each,	.04	.06
*Printing and mounting only, each,	.05	.07

FOLDING POCKET KODAKS No. 2 and No. 3.

	No. 2 3 $\frac{1}{2}$ x 3 $\frac{1}{2}$	No. 3 3 $\frac{1}{4}$ x 4 $\frac{1}{4}$
Folding Pocket Kodak , capacity 12 exposures, not loaded,	\$15.00	\$17.50
Transparent Film Cartridge, 12 exposures,	.60	.70
Do., 6 exposures,	.30	.35
Do., "Double-Two" Cartridge (4 exposures),	.20	.25
Carrying Case with shoulder strap,	1.25	1.25
Clamp for carrying case on Bicycle Head,	.50	
Pair of Clamps for carrying case on Bicycle Head,		1.00
Kodak Portrait Attachment,	.50	.50
*Developing, printing and mounting, 12 exposures,	1.50	1.50
*Developing only, each,	.06	.06
*Printing and mounting only, each,	.08	.08

BULLET, BULLS-EYE, FOLDING BULLS-EYE and FLEKO KODAKS.

	No. 2 3 $\frac{1}{2}$ x 3 $\frac{1}{2}$	No. 4 4 x 5
Bullet Kodak (not loaded),	\$10.00	
Bulls-Eye Kodak (not loaded),	8.00	\$12.00
Folding Bulls-Eye (not loaded),	10.00	
Fleko Kodak (not loaded),	5.00	
Transparent Film Cartridge, 12 exposures,	.60	.90
Do., 6 exposures,	.30	.45
Do., "Double-Two" Cartridge (4 exposures),	.20	.30
*Developing, printing and mounting, 12 exposures,	1.50	1.80
*Developing only, each,	.06	.08
*Printing and mounting only, each,	.08	.10
†Black Sole Leather Carrying Case,	1.25	2.00
†Bicycle Carrying Case to clamp on head of machine, Style A,	2.00	

*On orders for less than one dozen, 25 cents extra will be charged. Prints are always furnished mounted unless otherwise specified.

†For special lens and shutter equipment for No. 3 see page 38.

‡In ordering state whether for Bullet, Bulls-Eye, Folding Bulls-Eye or Fleko. The Folding Bulls-Eye Bicycle Case is formed by using pair of clamps to attach hand case to wheel. Price, complete, with clamps, \$2.25.

	No. 2 3 1/4 x 3 1/2	No. 4 4 x 5
Washers to hold case in front of brake rod, per set,	\$1.00	—
Lamp Bracket to attach to front of Bicycle Carrying Case,25	—
1 Sole Leather Bicycle Carrying Case, to attach under saddle, Style B,	1.50	—
Pair Clamps for carrying Folding Bulls-Eye Case on wheel,	1.00	—
Double Glass Plate Holders for Bullet, (3 1/4 x 3 1/2 inches for No. 2)	1.00	—
Leather Carrying Case for 3 Double Plate Holders (for Bullet)75	—
Kodak Portrait Attachment, (not made for Folding Bulls-Eye)50	—

BULLET SPECIAL AND BULLS-EYE SPECIAL KODAKS.

	No. 2 Special 3 1/4 x 3 1/2	No. 4 Special 4 x 5
Bullet Special Kodak (not loaded),	\$18.00	\$22.50
Bulls-Eye Special Kodak (not loaded),	15.00	20.00
Transparent Film Cartridge, 12 exposures,60	.90
Do., 6 exposures,30	.45
Do., "Double-Two" Cartridge (4 exposures),20	.30
*Developing, printing and mounting 12 ex.,	1.50	1.80
*Developing only, each,06	.08
*Printing and mounting only, each,08	.10
†Black Sole Leather Carrying Case for Bulls-Eye Special,	1.25	2.00
†Black Sole Leather Carrying Case for Bullet Special,	1.25	2.25
†Bicycle Carrying Case to clamp on head of machine, Style A,	2.00	—
Washers to hold case in front of brake rod, per set,	1.00	—
Lamp Bracket to attach to front of Carrying Case,25	—
†Sole Leather Bicycle Carrying Case, to attach under saddle, Style B,	1.50	—
†Double Glass Plate Holders for Bullet Special (3 1/4 x 3 1/2 inches, for No. 2),	1.00	1.00
Leather Carrying Case for 3 Dbl. Plate Holders for Bullet Special75	1.00
Do., for 6 Double Plate Holders,	1.00	1.50
Kodak Portrait Attachment,50	—

CARTRIDGE KODAKS.

	No. 3 3 1/4 x 4 1/4	No. 4 4 x 5	No. 5 5 x 7
Cartridge Kodak with rapid rectilinear lens and Triple Action Pneumatic Shutter (not loaded)	\$20.00	\$25.00	\$35.00
For Special Lens and Shutter Equip- ment see pages 38 and 39.			
Wide Angle Lens for Cartridge Kodak,	5.00	5.00	7.50
Transparent Film Cartridge, 12 exposures,70	.90	1.60
Do., 6 exposures,35	.45	.80
Do., "Double-Two" Cartridge (4 exposures),25	.30	.55
Black Sole Leather Carrying Case with shoulder strap,	1.50	2.00	2.50
Do., to hold camera with plate adapter attached,	1.75	2.50	3.00
*Developing, printing and mounting (12 exposures),	1.50	1.80	2.40
*Developing only, each,06	.08	.10
*Printing and mounting only, each,08	.10	.12 1/2
Bicycle Carrying Case,	2.25	2.50	3.25
Washers to hold case in front of brake rod, per set,	1.00	1.00	1.00
Adjustable lamp bracket,25	.25	.25
Glass Plate Adapter with ground glass,	2.00	2.50	3.00
Double Glass Plate Holders, each,	1.00	1.00	1.25
Black Sole Leather Carrying Case to hold three double plate holders and focusing glass,	1.00	1.00	1.50
Do., to hold six double plate holders and focusing glass,	1.50	1.50	2.00

*On orders for less than one dozen, 25 cents extra will be charged. Prints are always furnished mounted unless otherwise specified.

†In ordering state whether for Bullet Special or Bulls-Eye Special. In ordering for No. 4 Bullet Special, specify "Model C."

SPECIMEN PRINTS.

A specimen photograph made with any Kodak (not larger than 4 x 5) will be sent to any address in the United States upon receipt of 4 cents in postage stamps. No. 5 Cartridge Kodak specimens, 8 cents. No. 4 Panoram-Kodak specimens, 20 cents.

DEVELOPING AND PRINTING.

The Eastman Company was the first to render commercially possible the separation of the developing and printing from the picture taking. The division of labor inaugurated by it has brought picture taking within the reach of thousands of persons throughout the world who could not otherwise practice the art.

Carrying the division of labor still further, in our own factory we employ trained operators in every branch of the work. Men who do nothing but develop, girls who do nothing but print, men who do nothing but tone, girls who do nothing but mount, girls who do nothing but "spot" prints, men who do nothing but burnish, etc., etc. As a consequence each becomes skilled in his or her particular branch, and the result, under good superintendence, is good work—better work in particular and in average than can be done except under these favorable conditions.

TOURISTS.

European travelers can always obtain fresh supplies of Film on short notice, by post, at any one of the following addresses :

LONDON—KODAK, Limited, 43 Clerkenwell Road, E. C.; 60 Cheapside, E. C.; 115 Oxford St., W.; 171-173 Regent St., W.; 59 Brompton Road, S. W.

LIVERPOOL—KODAK, Limited, 96 Bold St.

GLASGOW—KODAK, Limited, 72 and 74 Buchanan St.

PARIS—Eastman Kodak Société Anonyme Française, Avenue de l'Opéra 5 ; Place Vendôme 4.

BERLIN—Kodak Gesellschaft, m. b. H., Friedrich Strasse 16 ; Friedrich Strasse 191.

BRUSSELS—KODAK, Limited, 36 Rue du Fossé aux Loups.

VIENNA—KODAK, Limited, Graben 29.

ST. PETERSBURG—KODAK, Limited, Bolschaja Konjuschennaja 1.

MOSCOW—KODAK, Limited, Petrovka, Dom Michalkoff.

MELBOURNE—KODAK, Limited, 284 Collins St.

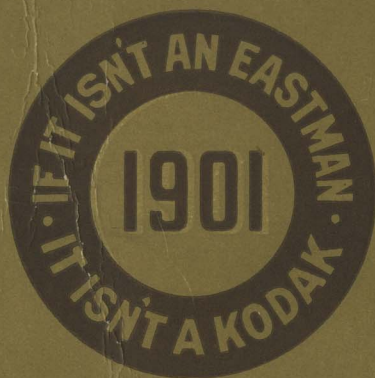
TERMS.

The prices in this catalogue are strictly net, except to regular dealers who carry our goods in stock.

For the convenience of our customers we recommend that they make their purchases from a dealer in photographic goods, as by so doing they can save both time and expressage.

EASTMAN KODAK CO.

Rochester, N. Y.



E. E. LAWRENCE,
Stanberry, Mo.