



The Witchery
of
Kodakery

The Digitized Kodak Catalog Project (1886 - 1941): A Very Brief History

Most camera collectors at some point in their collecting careers pass through a Kodak phase - some never come out of it. And if there ever was one name that came to be associated with both cameras and collecting, it was Kodak.

George Eastman received his first patent (for coating dry plates) and bought his first manufacturing facility in 1880, and in 1881 he started the Eastman Dry Plate Company. In 1886 he received a patent for the near-mythical Eastman Detective Camera, but it wasn't until 1888 that the first camera bearing the name "Kodak" was introduced.

One of the nice things about collecting Kodak is that the product line is pretty well known, and because the company produced annual catalogs for many years, collectors can be reasonably sure of what they're looking at, when it was made, the variations and so on - presuming that they have access to either the appropriate catalog, or a number of the many books which document Kodak, each to some greater or lesser extent.

But what would be really nice would be to have a complete set of Kodak catalogs in an easily accessible form and readily available. And since the advent of portable computing devices (PC, Macintosh, etc.) that's been possible - except for the difficulty of assembling a complete set of Kodak catalogs in one spot and then scanning them and making the results available.

The idea of digitizing a complete set of Kodak catalogs has kicked around the collecting community for many years. It's been proposed on a number of online forums, during meetings of various photohistory groups, and for years there have been many incomplete "Kodak CDs" on eBay but at best, they only contained a few catalogs - whatever the owner had available. But assembling a complete set of catalogs, then scanning and processing perhaps 3,000 to 4,000 pages, was a daunting task - if not completely overwhelming - and nothing ever came of it.

Until now.

In early 2010, the idea came up again, but this time we - "we" as in "the collecting community" - were lucky. A number of collectors were willing to loan their catalogs to this project and a couple of insane - wait, let's call them "dedicated" - dedicated enthusiasts - neither of whom collected Kodak, but both of whom enjoyed the challenge of such a project - were willing to put in the time and effort to scan and pull together the entire set of catalogs into a full-blown Kodak Catalog Digital Library.

Our initial objective was to include just the annual amateur catalogs, but it turns out that many cameras only appear in certain professional and specialty catalogs. We included as many of those as we could obtain so that almost every Kodak camera made in the US, Canada and Europe, would be documented - at least up to about 1941. After that, it becomes much more difficult as Kodak stopped producing annual catalogs as their product line became increasingly more diversified.

However, even with the additional "non-amateur" catalogs, we weren't completely successful in illustrating "every" camera Kodak ever made. There are an elusive few that might appear in specialty catalogs that we simply couldn't track down. If you can't find one of those odd cameras, that's no doubt why. We may do a revision at some point in the future if someone is willing to loan us a catalog that includes a camera that isn't already recorded.

In this project, a total of 67 catalogs were used from 1886 through 1941 including a number of professional and dealer catalogs, and in some years, two or even three different catalogs to cover all the bases. With the cooperation of a number of dedicated collectors, we were able to pull together all those catalogs and in June 2010, the project started in earnest.

By November 2010, we had scanned everything we needed and eventually all 67 catalogs were then reassembled as image folders and converted to the universally accepted PDF format and finally, converted into individually searchable PDFs which could then be searched globally as a collection.

For those of you interested in the statistics: about 200 hours of scanning time (we never want to hear that sound again), 67 catalogs and 3,908 page scans - which generated 7,917 original and processed images - and 11.4 GB of disk space. Additionally, another 100+ hours of technical development time was needed to convert the digital catalogues into a fully searchable "knowledgebase" that could be launched from most any standard web browser.

The overwhelming number of catalogs was loaned to us by that most remarkable of Kodak collectors, Charlie Kamerman of Eagle Creek, Oregon. Without Charlie, it's very doubtful that this project could even have been attempted.

But as it turned out, even Charlie didn't have all the publications that were needed, but he was able to track down the five that he lacked and was able to secure either a copy or high resolution images that we could work with. And so, our thanks to the contributors of the catalogs and scans that we used:

Charlie Kamerman for the vast majority of catalogs used and all his help,
Steve Shohet for loaning a variety of test catalogs,
Ryerson University (Toronto) for the 1886 Eastman Catalog
George Layne for the 1890 New Kodaks Catalog,
Mike Kessler for the 1891 Dealer Display Catalog,
Ralph London for the 1893 UK Catalog,
Michael Pritchard for the 1897 UK Catalog.

The digital side of the project - also known as "all of the work" - was done by Rob Niederman of Medina, Minnesota, and Milan Zahorcak of Tualatin, Oregon. Remarkably we're still friends and in a few years, we'll probably be able to talk about this project rationally.

And there you have it, a more-or-less done deal. We're fairly sure that it isn't quite perfect, and expect there will be some carping about something or other; but all-in-all, we believe this to be a pretty good product and can now move on to something else.

Our thanks to all of those involved.

Rob Niederman
Milan Zahorcak

Fall, 2011

The Mitchell
of
Kodak
Kodak

KODAKS

1900

If it isn't an Eastman, it isn't a Kodak.

EASTMAN KODAK COMPANY,
Rochester, N. Y.

KODAK, Limited,
London.

EASTMAN KODAK SOCIÉTÉ ANONYME FRANÇAISE,
Paris.

EASTMAN KODAK GESELLSCHAFT, m. b. H.
Berlin.

KODAK, Limited,
Brussels.

KODAK, Limited,
Vienna.

KODAK, Limited,
St. Petersburg.

Copyright 1899, by Eastman Kodak Co.

PUBLISHED BY THE KODAK
PRESS AT ROCHESTER, N. Y.,
THE HOME OF THE KODAK.

FOR ITS OWN SAKE

There is witchery in Kodakery.

For its own sake, the true photographic devotee revels in the delights, the surprises, and even the disappointments of picture making. But photography is a hobby that may be ridden for itself alone, or may be made to render some other pastime more delightful. It interferes with none ; it adds to all. Unobtrusive, yet ubiquitous, the Kodak is always ready to picture those things in which one is interested. Traveler, hunter, cyclist, disciple of Walton, golfer, and (may we coin a word?) automobiler, all find in the Kodak an ally of enjoyment. He may "press the button" and leave it to another to "do the rest," or he may delve deeper and solve for himself the charming mysteries of the dark room.

In the days of Niepce and Daguerre, when a photographic exposure required more minutes than it now requires hundredth parts of a second, there were already a few who became enthusiasts for mere love of the art. With the advent of the wet plate came a few more to capture the sunbeams and paint with them the beauties of nature. But the difficulties and inconveniences of the process were still so great that with the exception of those who lived by it, few there were with the time and patience for picture making. Another step and we have the "dry plate," and the devotees of amateur photography begin slowly to increase in number. The cameras are clumsy affairs at best ; the plate holders a bulky nuisance, the plates heavy and fragile, but in spite of these drawbacks the

charm of photography becomes fixed upon many an artistic soul, and slowly but surely amateur picture making gains ground.

But from Rochester comes a new factor that is to revolutionize photography — the Kodak! Where there had been hundreds of amateurs there now were thousands. The Kodak gave a stimulus to every branch of the photographic art. New and simplified printing processes were rapidly introduced. The amateur's lot became indeed a happy one. But still another step, a long step in advance, is made, and we have the daylight loading cartridge system, and, hand in hand with it, the Pocket Kodak. Both have been steadily developed. The first little Pocket Kodak was in box form and made a picture $1\frac{1}{2} \times 2$ inches. The latest member of the family is of aluminum, folds to fit an ordinary coat pocket, makes pictures $3\frac{1}{4} \times 4\frac{1}{4}$ inches, and is equipped with the finest rapid rectilinear lenses.

With simplified photography, a synonym for "Kodak photography," picture taking becomes the end sought for, not the mere means of enhancing the delights of some other pastime. The number of Kodakers who do their own developing and printing steadily increases; more and more there are who skillfully guide the growth of the picture from its inception to its completion, and the mystic circle of those to whom this fascinating art yields its most cherished secrets constantly widens. In thus combining the art of picture making with the art of picture taking is found the true "Witchery of Kodakery."

EASTMAN KODAK COMPANY.

KODAK QUALITY.

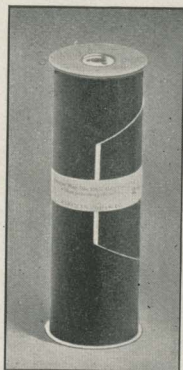
Wherever the photographic art is practised Kodaks are known as the standard in hand camera values. Kodak quality and Kodak convenience have made them so. The cartridge system upon which all Kodaks are now constructed is the embodiment of simplicity, and they have that perfection in every detail which is the first essential to the best photographic work.

IN BROAD DAYLIGHT.

Above all is the convenience of loading and unloading the Kodak in broad daylight.

In the cartridge system the film is put up in light-tight rolls which may be inserted in the Kodak anywhere at any time. Extending the full length of the strip of film and several inches beyond each end is a strip of black paper, which, in connection with the flanges on the spool, forms a light-proof cartridge.

After inserting the cartridge spool in the Kodak and threading up the black paper the camera is closed and the key turned until the black paper has been reeled off and the sensitive film brought into place in the focal plane ready for the picture taking to begin. The black paper runs with and behind the film, and at proper intervals is marked in white with the number of the section of film, 1, 2, 3, etc. In the



Film Cartridge.

back of the camera is a small window of red celluloid through which the figures appear as the key is turned. The figures as seen through the window thus show just how far to turn the key and how many exposures have been made. After all the exposures have been made a few extra turns of the key entirely covers the film with black paper and the Kodak may be unloaded in daylight.

DO NOT BREAK.

The cartridges are non-breakable; a half dozen can be carried in the pocket without inconvenience and they may be sent by mail without fear of damage.

THE WEIGHT.

All 1900 Kodaks use our light-proof film cartridges which weigh but ounces where plates weigh pounds. A cartridge of twelve exposures 4 x 5, for instance, tips just $2\frac{1}{2}$ ozs., while an equivalent in glass plates and the necessary holders weighs three pounds, about twenty times as much.

LENSES.

We believe that we are more careful than any other manufacturers as to the quality of the lenses used in our cameras. Unquestionably the recognized superiority of the Kodak to-day is due largely to the high standard which we demand and insist upon in the quality of our lenses. It is only by the most rigid inspection that this quality can be maintained, and therefore, *every lens used by us is tested by our own inspector.* Every lens is, therefore, twice tested—by the lens maker's inspector and by

our own, a precaution that insures a *perfect lens in every camera.*

All of our lenses, whether single or double, are of sufficient focal length to avoid that disagreeable distortion found in some hand camera work.

SHUTTERS.

All the shutters used in the Kodaks are mechanically accurate, are adapted to either time exposures or instantaneous work, and are provided with suitable sets of stops. See pages 12, 13 and 14.

THEIR SCOPE.

Kodaks are perfectly adapted to making snap-shots or time exposures out of doors, time exposures indoors or flash-lights at night. Indeed, they have that adaptability to all conditions which is essential to the all around camera, and though wonderfully compact are not limited in their capabilities by any false economies.

FILMS AND PLATES.

Eight styles use either plates or films. The Bullet and Bullet Special Kodaks, the Cartridge Kodaks and the Pocket Kodaks can be fitted with plate holders, making compact and convenient plate cameras, the change from films to plates or *vice versa* being accomplished in a few seconds.

The No. 2 Bulls-Eye, the Nos. 2 and 4 Bulls-Eye Specials and the Folding Pocket Kodaks can also be used for making single plate exposures. They do not take plate holders but when a single plate exposure is to be made in or near the house a plate can be put in position in the camera in a few seconds.

AS ENLARGING CAMERAS.

Many amateurs are of late showing a great interest in making bromide enlargements from their own negatives. The process is not difficult and there are several styles of Kodaks which are so constructed as to be perfectly adapted to this work. The Cartridge Kodaks of either size are especially adapted to this work, while the No. 2 Bulls-Eyes, No. 2 Bullets, No. 2 Special Bulls-Eyes, No. 2 Special Bullets, No. 2 Folding Bulls-Eyes and all of the Folding Pocket Kodaks will make perfect enlargements, the focusing being done by simply moving the camera itself backward and forward.

THE KODAK AWHEEL.

Pocket Kodaks, Folding Pocket Kodaks, Folding Bulls-Eyes, No. 2 Flexos, No. 2 Bullets, No. 2 Bulls-Eyes, No. 2 Bullet Specials, No. 2 Bulls-Eye Specials and the Cartridge Kodaks are especially adapted to use awheel. They are so light as to add no perceptible weight to the wheel and we have prepared a line of carrying cases for them that are light, convenient and practical. They are the result of a long series of experiments, are made to withstand wear and tear and have been given severe tests on all kinds of roads.

FILMS.

Kodak Cartridges are now furnished with either Eastman's Transparent Film or with Eastman's Paper-Film.

TRANSPARENT FILM.

The advantages of Transparent Film over glass plates for outdoor work are obvious. Indeed, for all except gal-

lery work, film is rapidly superseding glass plates, and the best amateurs the world over are counted among the users of the Kodak and film.

“Films” and “plates” are identical except in the support upon which the sensitive material (emulsion) is coated.

When this emulsion is coated on glass we have “plates.”

Coated on a thin, flexible support it is called “film.”

Neither the glass nor this flexible transparent material does more than furnish a support for the emulsion which is to take the picture. When exposed in the camera, *the results are identical*, and when the pictures are made they are indistinguishable, except that in work where there is a tendency to what is technically known as halation, films are superior to plates, owing to the thin support backed by black paper giving back no reflection.

Not only in their non-halation qualities are they superior, but Kodak Films reproduce the true color values of the landscape and the lights and shades of the clouds with wonderful fidelity—a fidelity which puts into the hands of the amateur the means of accomplishing the best work in pictorial photography and that, too, without the inconveniences of the glass plate system.

PAPER-FILM.

Paper-Film is similar to Transparent Film, but the emulsion instead of being coated on a transparent base is coated upon a special paper base. This base is translucent but *not* transparent, and negatives made on this film must therefore be printed on Dekko or Velox paper, as the partial opacity of Paper-Film makes the use of a printing out paper too slow. Paper-Film cartridges are

inserted in the camera in precisely the same way as Transparent Film cartridges, and are of equal speed with Transparent Film. With Paper-Film, however, development should be continued considerably further than with Transparent Films or glass plates, as the best results are obtained with strong "plucky" negatives, the partial opacity of the paper somewhat softening the print.

The price of Paper-Films is about one-third less than that of the Transparent Films.

2, 6 AND 12 EXPOSURES.

Formerly cartridges were furnished for twelve exposures only, but as the amateur frequently wishes to make from two to half a dozen pictures at times when he does not care to use up an entire spool of a dozen films before development we now furnish the larger sizes of daylight loading cartridges of Transparent Film for two, six or twelve exposures. For work at home then, as well as for one's outings, the Kodak becomes more convenient than the plate camera, as the necessity for a dark room is entirely done away with except for the purposes of development. Transparent Film Kodak Cartridges in the $3\frac{1}{2} \times 3\frac{1}{2}$, $3\frac{1}{4} \times 4\frac{1}{4}$, 4×5 and 5×7 sizes may be had for two, six or twelve exposures. In the $2\frac{1}{4} \times 3\frac{1}{4}$ and $2\frac{1}{2} \times 4\frac{1}{4}$ sizes they are furnished for six or for twelve exposures. The $1\frac{1}{2} \times 2$ size is furnished in twelve exposure cartridges only.

Paper-Film Kodak Cartridges are furnished for either six or twelve exposures in all Kodak sizes except the $1\frac{1}{2} \times 2$, which is furnished in twelve exposures only.

Roll Holder Cartridges are furnished only in Transparent Film and for twelve exposures. The No. 4 Bullet Special is the only Kodak using the Cartridge Roll Holder spools instead of Kodak spools.

IF IT ISN'T AN EASTMAN, IT ISN'T A KODAK.

“Kodak” is our trade-mark and no camera is a Kodak unless manufactured by us. Do not, therefore, accept any instrument as a Kodak until you are certain that it is of our make. All Kodaks have our name upon them and (except the \$5.00 Pocket Kodaks) bear our serial number. Kodaks on which the number has been destroyed or mutilated are not guaranteed by us. Authorized dealers have no reason for destroying our serial number.

A BOOK OF INSTRUCTION.

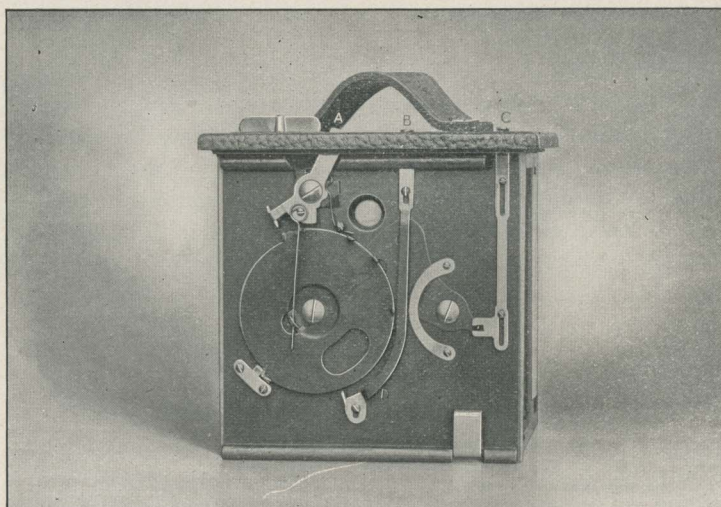
With every camera we furnish a carefully written and handsomely illustrated instruction-book, which explains each step of the picture taking and picture making in non-technical terms that anyone can understand. Many amateurs enjoy work in the dark room, and find as much pleasure in the making as in the taking of photographs. Films are quite as easy to handle in the developer as plates and are far less liable to injury. “*You can do the rest.*”

“WE DO THE REST.”

Film cartridges can readily be sent through the mails when desired, and our old offer still holds good :

“*You press the button, we do the rest.*”

EASTMAN KODAK CO.,
Rochester, N. Y.



EASTMAN'S IMPROVED ROTARY SHUTTER.

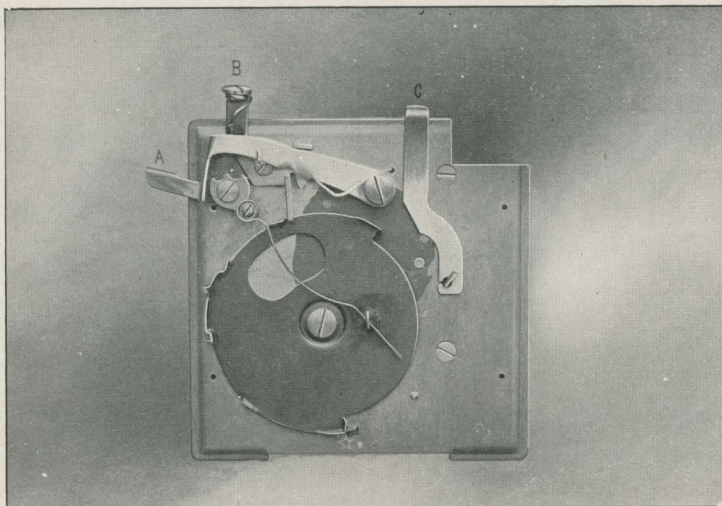
The simplicity and absolute reliability of our Rotary Shutter was one of the features which gave to the original Bulls-Eye and to the Pocket Kodak their immense popularity. It is always set. Snap-shots are made by simply pushing the lever "A" alternately to the right or left, thus revolving the metal disc and making the exposure as the opening in disc passes the lens. If, by chance, the lever be pushed in the wrong direction it will simply remain unmoved and no click will be heard.

For time exposures the Kodaker simply pulls up the slide "B" and then pushes the lever "A" in one direction to open and in the opposite direction to close the shutter. It will be seen that when the slide "B" is pulled out the shutter strikes as it passes the lens, stopping half way across with the opening over the lens.

The lever "C" controls the stops, of which there are three.

Made with special machinery, by skilled mechanics, this simple mechanism makes an ideal shutter for the hand camera.

The Eastman Rotary Shutter is used on the Pocket Kodak, the No. 2 and No. 4 Bulls-Eye, No. 2 Folding Bulls-Eye, No. 2 and No. 4 Bullet and the No. 2 Flexo Kodaks.



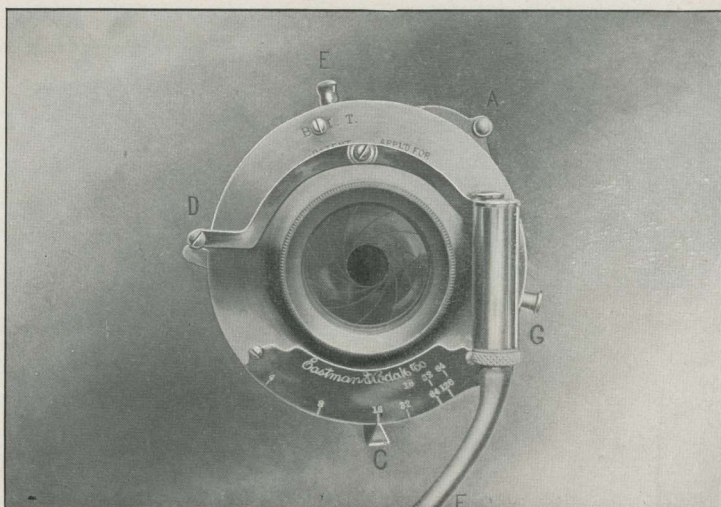
EASTMAN AUTOMATIC SHUTTER.

To make a snap-shot : Press down lever "B." To make a time exposure : Press down lever "A" once to open, and again to close the shutter. That's all there is to operating the Eastman Automatic Shutter. It is always set.

The lever "C" operates the stops, of which there are three.

Not only are these shutters made with the finest special machinery and with the utmost care, but they are given a thorough and practical test by experienced inspectors. In fact, all of our shutters are subjected to the most rigid inspection before shipment as a guarantee that every part is perfect and that no error of adjustment has been made in assembling.

The Eastman Automatic Shutter is used on the Folding Pocket Kodaks, No. 1, No. 1A, No. 2 and No. 3.



EASTMAN TRIPLE ACTION SHUTTER.

This is a shutter with a wide range of action, built with the accuracy of a watch, yet simple, strong, reliable and far more compact than any other shutter of similar capabilities.

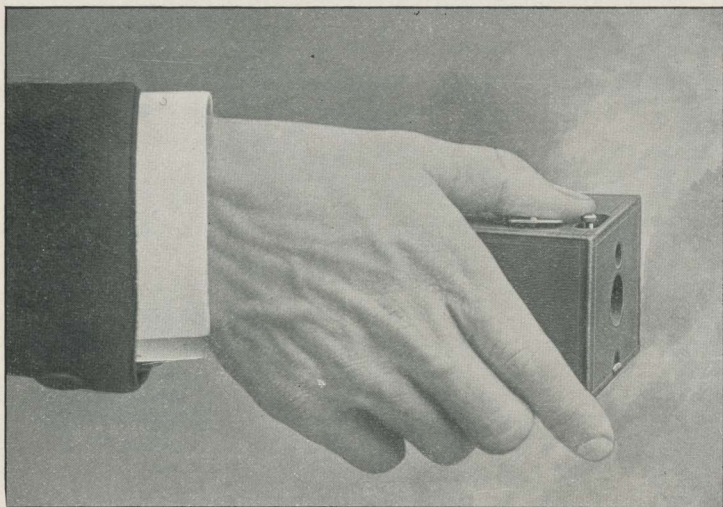
For snap-shots place lever "E" at point "I" and set shutter by turning lever "A" to left to limit of motion. Expose by pressing bulb attached to tube "F" or by touching release "D." There are three speeds for instantaneous exposures which are regulated by moving the lever "G."

For time exposures place lever "E" at point "T" and set shutter by turning lever "A" to left to limit of motion. Press bulb (or release "D") once to open and again to close shutter.

For short time exposure place lever "E" at "B" and set shutter by moving "A" to left to limit of motion. Press bulb (or finger release D) to open shutter and release it to close shutter. The shutter remains open as long as the bulb remains under pressure and closes the instant it is released.

The stops are operated by moving lever "C" and range from U. S. 4 to U. S. 128.

As furnished with the No. 3, 4 and 5 Cartridge Kodaks this shutter is fitted with pneumatic release operated by bulb. With the No. 2 and No. 4 Bulls-Eye Special and the No. 2 and No. 4 Bullet Special Kodaks it is operated by levers, those for setting the shutter and making the exposure *working from the outside of camera*, so that the front does not have to be opened except to change the adjustment.



THE POCKET KODAK.

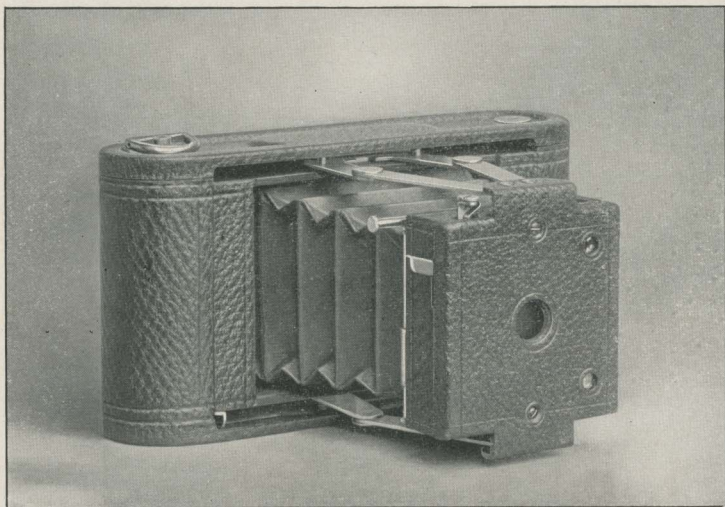
For rectangular pictures, $1\frac{1}{2} \times 2$ inches; capacity, 12 exposures without reloading; size of camera, $2\frac{3}{8} \times 2\frac{7}{8} \times 3\frac{3}{8}$ inches; weight, 6 ounces; length of focus of lens, $2\frac{1}{2}$ inches.

This is the original daylight loading pocket instrument, improved, of course, since the earlier models, and though small in size, it is in every way a perfect camera. Indeed, in the quality of the work which they accomplish, the Pocket Kodaks equal the most expensive cameras and make negatives of such sharpness that enlargements of any size can be made from them.

Pocket Kodaks have carefully tested lenses with a fixed focus of sufficient length to avoid distortion, they have our Rotary shutter described on page 12, sets of three stops, square finder, are of perfect construction and are covered with fine seal grain leather.

Can be readily carried on the bicycle by use of our special cases. See page 37.

| | |
|---|--------|
| Pocket Kodak, covered with fine leather, with roll of film for 12 exposures, | \$5.00 |
| Leather Hand Carrying Case (for Pocket Kodak and three extra spools of film). Price of case only, | .75 |
| Transparent Film Cartridge, 12 exposures, | .25 |
| Paper-Film Cartridge, 12 exposures, | .20 |



FOLDING POCKET KODAKS No.1 AND No.1 A.

In the Folding Pocket Kodaks we have adapted the Film Cartridge system to instruments that have well been called "Photographic Pocket Pieces."

The lenses used in these instruments are specially ground, are meniscus achromatic, are carefully tested by an experienced inspector and have a fixed focus of a sufficient length to avoid that violent perspective which is so disagreeable in many amateur photographs. They are, in short, the finest achromatic lenses that can be made, covering the plate clear and sharp to the very corners.

The shutters are the Eastman Automatic described on page 13, and are equipped with a set of three stops.

These Kodaks have two view finders, one for vertical and one for horizontal exposures. There are no loose parts to become lost or mislaid, and to load the instruments is simplicity itself. Made of aluminum, covered with the finest black morocco, with handsomely nickeled fittings, they are at once strong, dainty and durable. In short, the Folding Pocket Kodaks are instruments of the finest quality and workmanship, but of the smallest compass; and though practical pocket cameras, make pictures of good size and of artistic shape and so sharp that they can be enlarged to any size.

Can be readily carried on the bicycle by the use of the hand cases and our special clamps. See pages 38 and 39.

FOLDING POCKET KODAK No. 1.

For rectangular pictures $2\frac{1}{4} \times 3\frac{1}{4}$ inches ; capacity, 12 exposures without reloading ; size of Kodak, $1\frac{5}{8} \times 3\frac{1}{2} \times 6\frac{3}{4}$ inches ; weight, $14\frac{1}{2}$ ounces ; length of focus of lens, 4 inches.

PRICE.

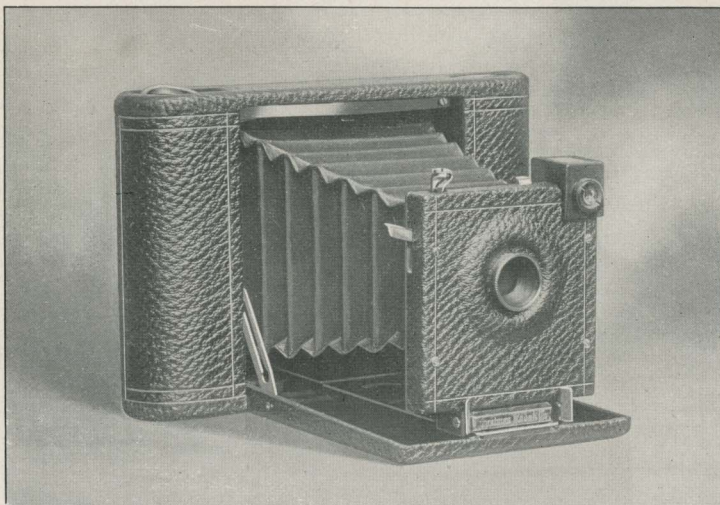
| | |
|--|---------|
| No. 1 Folding Pocket Kodak with achromatic lens, not loaded, | \$10.00 |
| Transparent Film Cartridge, 12 exposures, $2\frac{1}{4} \times 3\frac{1}{4}$, | .40 |
| Do., 6 exposures, | .20 |
| Paper-Film Cartridge, 12 exposures, $2\frac{1}{4} \times 3\frac{1}{4}$, | .30 |
| Do., 6 exposures, | .15 |
| Black Sole Leather Carrying Case, | 1.25 |

FOLDING POCKET KODAK No. 1 A.

For rectangular pictures $2\frac{1}{2} \times 4\frac{1}{4}$ inches ; capacity, 12 exposures without reloading ; size of Kodak, $1\frac{3}{4} \times 3\frac{3}{4} \times 7\frac{3}{4}$ inches ; weight, $17\frac{1}{2}$ ounces ; length of focus of lens, 5 inches.

PRICE.

| | |
|--|---------|
| Folding Pocket Kodak No. 1 A, with achromatic lens, not loaded, | \$12.00 |
| Transparent Film Cartridge, 12 exposures, $2\frac{1}{2} \times 4\frac{1}{4}$, | .50 |
| Do., 6 exposures, | .25 |
| Paper-Film Cartridge, 12 exposures, $2\frac{1}{2} \times 4\frac{1}{4}$, | .35 |
| Do., 6 exposures, | .18 |
| Black Sole Leather Carrying Case, | 1.25 |



No. 2 FOLDING POCKET KODAK.

For square pictures $3\frac{1}{2} \times 3\frac{1}{2}$ inches; capacity, 12 exposures without reloading; size of Kodak, $1\frac{1}{2} \times 4\frac{1}{2} \times 6\frac{3}{4}$ inches; weight, $16\frac{1}{2}$ ounces, length of focus of lens, $4\frac{1}{2}$ inches.

In the No. 2 Folding Pocket Kodak we have adapted the popular $3\frac{1}{2} \times 3\frac{1}{2}$ size to a pocket instrument of extreme lightness and mechanical perfection. It slips readily into an ordinary coat pocket and being in every way equipped for the best photographic work it marks a distinct advance in Pocket Photography.

The lenses are the finest meniscus achromatic, having wonderful depth, definition and speed and cover fully with the largest stop opening and have a fixed focus of $4\frac{1}{2}$ inches.

Fitted with Eastman Automatic shutter, described on page 13, with set of three stops, socket for tripod screw and square finder. Made of aluminum covered with the finest black morocco, with handsomely nickered fittings, it is at once strong, dainty and durable.

Can be readily carried on the bicycle by the use of the regular hand case and our special clamps. See pages 38 and 39.

| | |
|--|---------|
| No. 2 Folding Pocket Kodak with achromatic lens, not loaded, | \$15.00 |
| Transparent Film Cartridge, 12 exposures, $3\frac{1}{2} \times 3\frac{1}{2}$, | .60 |
| Do., 6 exposures, | .30 |
| Do., Box 2 Cartridges, 2 exposures each (4 ex.), | .25 |
| Paper-Film Cartridge, 12 exposures, $3\frac{1}{2} \times 3\frac{1}{2}$, | .40 |
| Do., 6 exposures, | .20 |
| Black Sole Leather Carrying Case, | 1.25 |

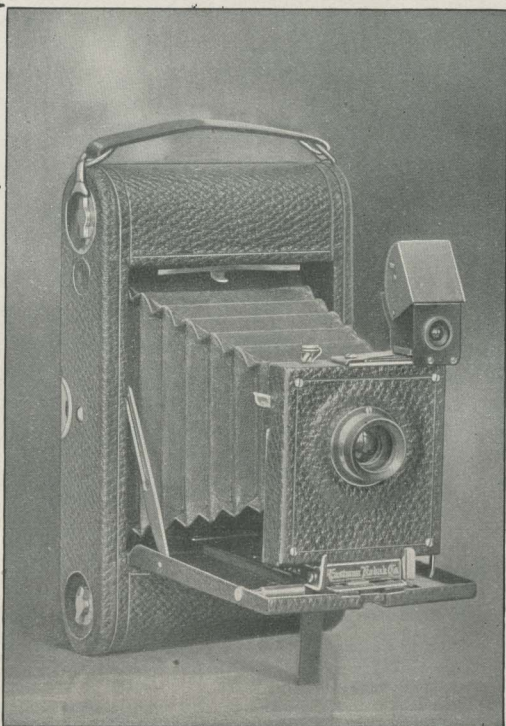
No. 3 FOLDING POCKET KODAK.

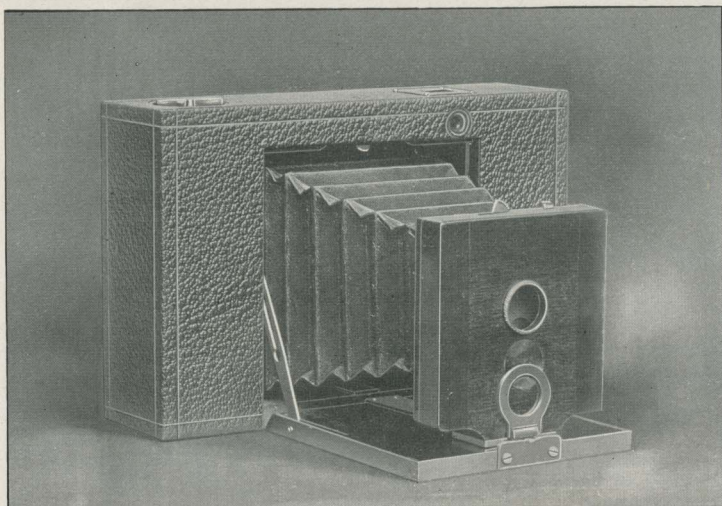
For rectangular pictures, $3\frac{1}{4}$ x $4\frac{1}{4}$ inches; capacity, 12 exposures without re-loading; size of camera, $1\frac{5}{8}$ x $4\frac{3}{8}$ x $7\frac{1}{4}$ in.; weight, 22 ozs.; length of focus of lens, 5 inches.

The No. 3 Folding Pocket Kodak marks the highest achievement in pocket photography, making pictures of a most desirable size and shape and of perfect quality. Indeed, though readily fitting the pocket this Kodak has the capabilities of cameras of triple the bulk. The lens is rapid rectilinear and carefully tested, the shutter is the Eastman Automatic, described on page 13, and is fitted with a set of three stops. Reversible finder with hood, index for focusing, tripod socket for horizontal exposures.

Made of aluminum and covered with the finest black morocco, with full nickel fittings, this instrument is not only light and durable but is neat and dainty in appearance. It will prove the ideal camera for those who demand the highest excellence in camera construction, yet desire a pocket instrument. Can be readily carried on the bicycle by the use of our special cases. See pages 38 and 39.

| | |
|---|---------|
| No. 3 Folding Pocket Kodak, with rapid rectilinear lens (not loaded), | \$17.50 |
| Transparent Film Cartridge, 12 exposures, $3\frac{1}{4}$ x $4\frac{1}{4}$ inches, | .70 |
| Do., 6 exposures, | .35 |
| Do., 2 Cartridges, 2 exposures each (4 ex.), | .30 |
| Paper-Film Cartridge, 12 exposures, $3\frac{1}{4}$ x $4\frac{1}{4}$, | .50 |
| Do., 6 exposures, | .25 |
| Black Sole Leather Carrying Case, with shoulder strap, | 1.25 |





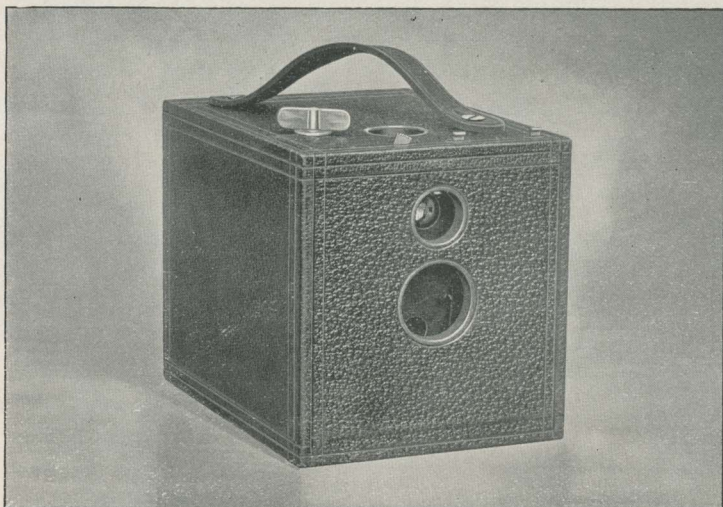
No. 2 FOLDING BULLS-EYE KODAK.

For square pictures $3\frac{1}{2} \times 3\frac{1}{2}$ inches; capacity, 12 exposures without reloading; size of camera closed, $1\frac{3}{4} \times 4\frac{5}{8} \times 7\frac{1}{8}$ inches; weight, 15 ounces; length of focus of lens, $4\frac{1}{2}$ inches.

Being but $1\frac{3}{4}$ inches in thickness when closed is very convenient to carry. Will go in an ordinary overcoat pocket. This instrument is an adaptation of the well-known Bulls-Eye camera to the folding form and though not quite so compact as the Folding Pocket Kodaks it is in every way an efficient and reliable camera, capable of the highest grade of work. Fitted with fixed focus, achromatic lens, set of three stops, socket for tripod screw and improved Rotary shutter described on page 12. Handsomely finished with fine grain leather covering.

Can be readily carried on the bicycle by use of our special clamps and the regular hand case. See pages 38 and 39.

| | | |
|---|-------|---------|
| No. 2 Folding Bulls-Eye Kodak, for $3\frac{1}{2} \times 3\frac{1}{2}$ pictures, | . . . | \$10.00 |
| Transparent Film Cartridge, 12 exposures, $3\frac{1}{2} \times 3\frac{1}{2}$, | . . . | .60 |
| Do., 6 exposures, | . . . | .30 |
| Do., box 2 cartridges, 2 exposures each (4 ex.), | . . . | .25 |
| Paper-Film Cartridge, 12 exposures, $3\frac{1}{2} \times 3\frac{1}{2}$, | . . . | .40 |
| Do., 6 exposures, | . . . | .20 |
| Black Sole Leather Carrying Case with strap, | . . . | 1.25 |



No. 2 FLEXO KODAK.

For square pictures $3\frac{1}{2} \times 3\frac{1}{2}$ inches; capacity, 12 exposures without reloading; size of camera, $4\frac{3}{8} \times 4\frac{1}{2} \times 5\frac{7}{8}$ inches; weight, 19 ozs.; length of focus of lens, $4\frac{1}{2}$ inches.

The No. 2 Flexo is a well-made instrument in every respect and is fitted with fixed focus achromatic lens, set of three stops, socket for tripod screw and our improved Rotary shutter, described on page 12.

Well made, covered with grain leather and handsomely finished.

Can be carried on bicycle by use of our special cases. See pages 40 and 41.

NOTE—The prospective purchaser should bear in mind that the price of the Flexo Kodak includes every requisite for taking pictures except the film, whereas the price of most of the so-called five-dollar plate cameras includes only one plate holder, and a further expenditure of \$2 or \$3 is necessary if it is desired to make more than two exposures between each trip to the dark room.

| | |
|--|--------|
| No. 2 Flexo Kodak, with achromatic lens, not loaded, | \$5.00 |
| Transparent Film Cartridge, 12 exposures, $3\frac{1}{2} \times 3\frac{1}{2}$, | .60 |
| Do., 6 exposures, | .30 |
| Do., Box 2 Cartridges, 2 exposures each, (4 ex.) | .25 |
| Paper-Film Cartridge, 12 exposures, $3\frac{1}{2} \times 3\frac{1}{2}$, | .40 |
| Do., 6 exposures, | .20 |
| Black Sole Leather Carrying Case with shoulder strap, | 1.25 |



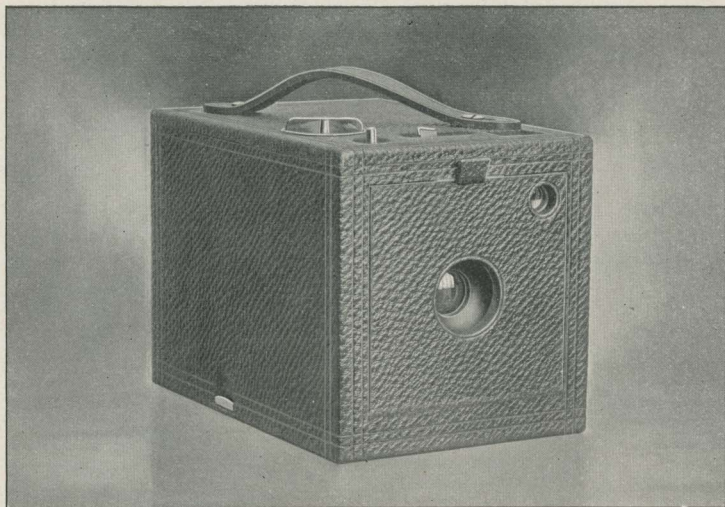
✕ **No. 2 BULLS-EYE KODAK.**

For square pictures, $3\frac{1}{2} \times 3\frac{1}{2}$ inches; capacity, 12 exposures without reloading; size of camera, $4\frac{1}{2} \times 4\frac{1}{2} \times 5\frac{3}{4}$ inches; weight, 24 ounces; length of focus of lens, $4\frac{1}{2}$ inches.

Simple, practical and reliable, the Bulls-Eye is the prime favorite with hundreds of thousands of amateurs the world over. Though simple of manipulation it is a high grade camera in every sense and capable of producing the very best results. Indeed the No. 2 Bulls-Eye was the pioneer cartridge system camera but by constant improvement it has been kept fully up-to-date and has more than retained its popularity.

Fitted with fixed focus, meniscus achromatic lens of the finest quality, set of three stops, socket for tripod screw, and improved Rotary shutter described on page 12. Handsomely finished, with fine seal grain leather covering and nicked fittings. Can be carried on bicycle by use of our special cases. See pages 40 and 41.

| | |
|--|--------|
| No. 2 Bulls-Eye Kodak fitted with achromatic lens, not loaded, | \$8.00 |
| Transparent Film Cartridge, 12 exposures, $3\frac{1}{2} \times 3\frac{1}{2}$, | .60 |
| Do., 6 exposures, | .30 |
| Do., Box 2 cartridges, 2 exposures each, (4 ex.), | .25 |
| Paper-Film Cartridge, 12 exposures, $3\frac{1}{2} \times 3\frac{1}{2}$, | .40 |
| Do., 6 exposures, | .20 |
| Black Sole Leather Carrying Case, with shoulder strap, | 1.25 |



No. 2 BULLS-EYE SPECIAL KODAK.

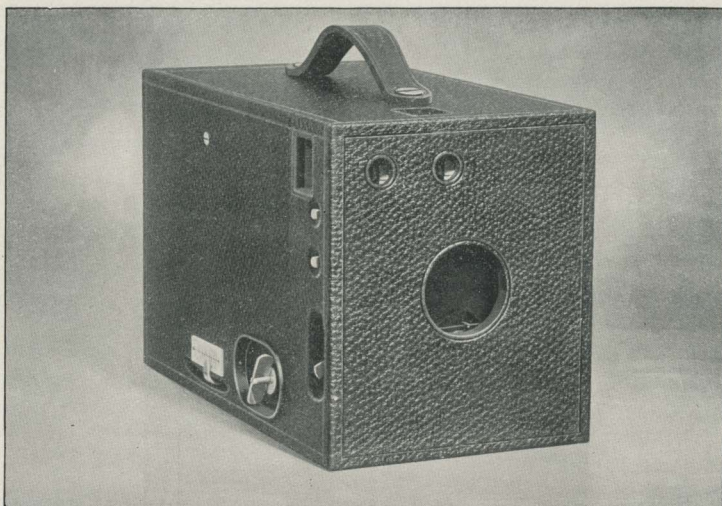
For square pictures $3\frac{1}{2} \times 3\frac{1}{2}$ inches; capacity, 12 exposures without reloading; size of camera, $4\frac{1}{2} \times 4\frac{5}{8} \times 6\frac{3}{4}$ inches; weight, 28 ounces; length of focus of lens, $5\frac{3}{8}$ inches.

This instrument combines the extreme simplicity of the Cart-ridge System as exemplified in the No. 2 Bulls-Eye with a shutter and lens of the finest quality.

It has the Eastman triple action shutter described on page 14, fitted with iris diaphragm stops graduated for Nos. 4, 8, 16, 32, 64 and 128, and no expense has been spared in fitting it with a lens of the finest quality. The lens has a fixed focus, a length of $5\frac{3}{8}$ inches, is strictly rectilinear and very rapid with wonderful depth and definition. Every lens being carefully tested by our own expert, the highest quality will be maintained. In short, each one must be perfect.

This Kodak has square finder, socket for tripod screw, nicked fittings, is covered with fine black morocco and beautifully finished. Can be carried on bicycle by use of our special cases. See pages 40 and 41.

| | |
|--|---------|
| No. 2 Bulls-Eye Special Kodak, with rapid rectilinear lens, not loaded, | \$15.00 |
| Transparent Film Cartridge, 12 exposures, $3\frac{1}{2} \times 3\frac{1}{2}$, | .60 |
| Do., 6 exposures, | .30 |
| Do., Box 2 cartridges, 2 exposures each, (4 ex.,) | .25 |
| Paper-Film Cartridge, 12 exposures, $3\frac{1}{2} \times 3\frac{1}{2}$, | .40 |
| Do., 6 exposures, | .20 |
| Black Sole Leather Carrying Case with shoulder strap | 1.25 |

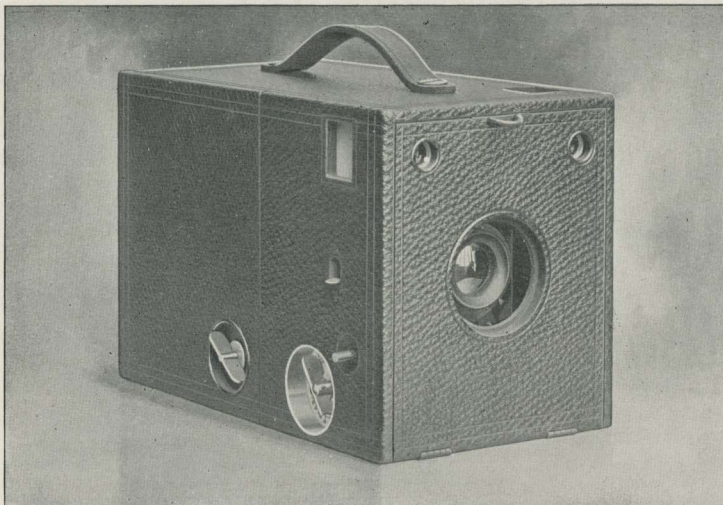


No. 4 BULLS-EYE KODAK.

For rectangular pictures, 4 x 5 inches; capacity, 12 exposures without reloading. Size of camera, 5 x 5 $\frac{7}{8}$ x 9 $\frac{1}{4}$ inches; weight, 2 pounds, 10 ounces; length of focus of lens, 6 $\frac{1}{4}$ inches.

The No. 4 Bulls-Eye is fitted with an achromatic lens of superior quality, having a set of three stops; has two finders, one for vertical and one for horizontal exposures; and is also provided with two sockets for tripod screws, one for vertical and one for horizontal exposures. Fitted with our improved Rotary shutter, described on page 12 and has a carefully adjusted focusing scale. Handsome finish, nickel fittings, covered with fine seal grain leather.

| | |
|---|---------|
| No. 4 Bulls-Eye Kodak, fitted with achromatic lens, not loaded, | \$12.00 |
| Transparent Film Cartridge, 12 exposures, 4 x 5, | .90 |
| Do., 6 exposures, | .45 |
| Do., Box 2 cartridges, 2 exposures each, (4 ex.), | .35 |
| Paper-Film Cartridge, 12 exposures, 4 x 5, | .60 |
| Do., 6 exposures, | .30 |
| Black Sole Leather Carrying Case, with shoulder strap, | 2.00 |



No. 4 BULLS-EYE SPECIAL KODAK.

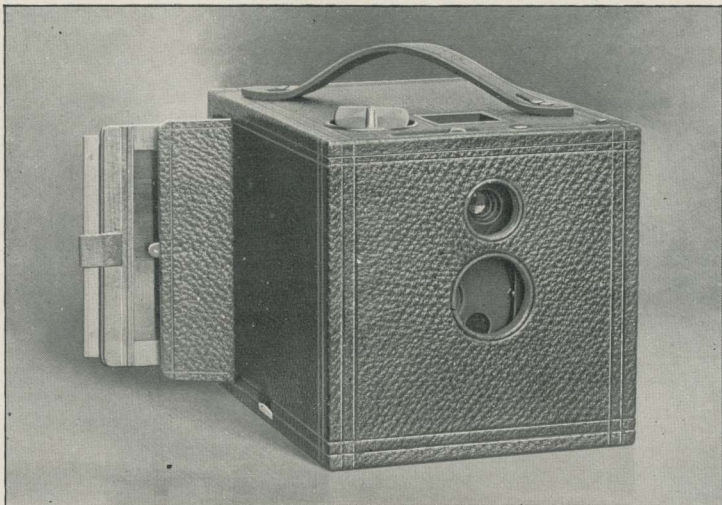
For rectangular pictures, 4 x 5 inches; capacity, 12 exposures without reloading; size of camera, 5 x 5 $\frac{1}{8}$ x 8 $\frac{3}{4}$ inches; weight, 2 lbs. 12 ozs.; length of focus of lens, 6 $\frac{1}{2}$ inches.

This instrument combines with the simplicity of the original No. 4 Bulls-Eye, a rapid rectilinear lens of superior quality and the Eastman triple action shutter described on page 14.

Fitted with two finders, one for vertical and one for horizontal exposures, and two sockets for tripod screws and a carefully adjusted focusing scale.

The construction is of the strongest, the finish rich and elegant. The No. 4 Bulls-Eye Special Kodak is, in short, the most convenient of high-grade 4 x 5 cameras, and will be fully appreciated by those who demand the very best in camera construction, but who prefer the box to the folding form because it is always ready for use. Covered with fine morocco with nickeled fittings.

| | |
|---|---------|
| No. 4 Bulls-Eye Special Kodak, rapid rectilinear lens, Eastman triple action shutter, with iris diaphragm stops (not loaded), | \$20.00 |
| Transparent Film Cartridge, 12 exposures, 4 x 5, | .90 |
| Do., 6 exposures, | .45 |
| Do., Box 2 Cartridges, 2 exposures each (4 ex.), | .35 |
| Paper-Film Cartridge, 12 exposures, | .60 |
| Do., 6 exposures, | .30 |
| Black Sole Leather Carrying Case, | 2.00 |

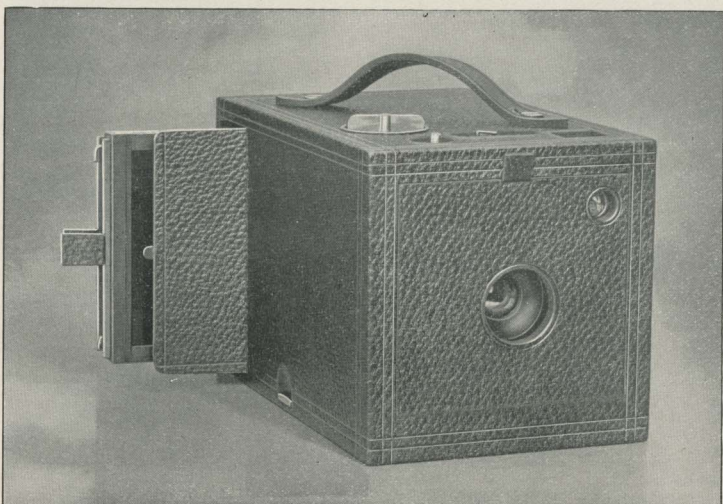


No. 2 BULLET KODAK. FILMS AND PLATES.

For square pictures $3\frac{1}{2} \times 3\frac{1}{2}$ inches; capacity, 12 exposures without reloading; size of camera, $4\frac{5}{8} \times 4\frac{3}{4} \times 6\frac{1}{4}$ inches; weight, 26 ounces; length of focus of lens, $4\frac{1}{2}$ inches.

The Improved Bullet uses either roll films or glass plates (with plates the picture is $3\frac{3}{4} \times 3\frac{1}{2}$ inches) and whether used for Film Cartridges or glass plates is a complete and compact instrument of great capabilities. It is fitted with the finest fixed focus, meniscus achromatic lens, set of three stops, square finder, socket for tripod screw, and has our improved Rotary shutter described on page 12. Handsome finish, nickel fittings, covered with the finest black grain leather. Can be carried on bicycle by use of our special cases. See pages 40 and 41.

| | |
|--|---------|
| No. 2 Bullet Kodak, fitted with achromatic lens (not loaded), | \$10.00 |
| Transparent Film Cartridge, 12 exposures, $3\frac{1}{2} \times 3\frac{1}{2}$, | .60 |
| Do., 6 exposures, | .30 |
| Do., box 2 cartridges, 2 exposures each (4 ex.), | .25 |
| Paper-Film Cartridge, 12 exposures, $3\frac{1}{2} \times 3\frac{1}{2}$, | .40 |
| Do., 6 exposures, | .20 |
| Single Plate Holders, $3\frac{1}{4} \times 3\frac{1}{2}$, each, | .60 |
| Black Sole Leather Carrying Case, with shoulder strap, | 1.25 |



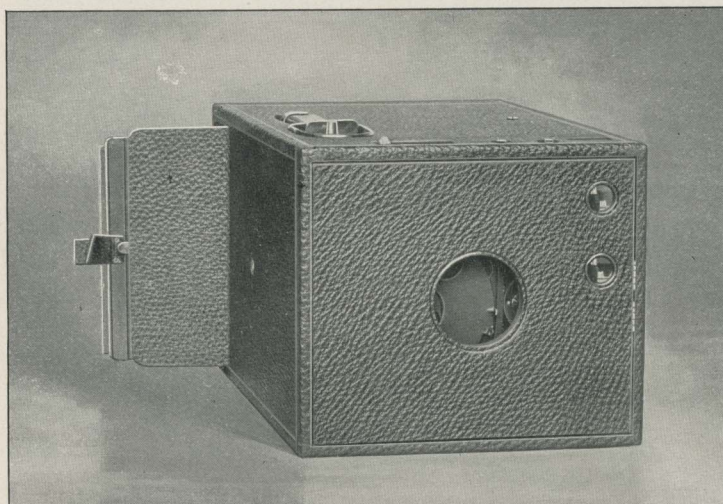
No. 2 BULLET SPECIAL KODAK. FILMS AND PLATES.

For square pictures, $3\frac{1}{2} \times 3\frac{1}{2}$ inches; capacity, 12 exposures without reloading; size of camera, $4\frac{3}{4} \times 4\frac{3}{4} \times 7\frac{1}{2}$ inches; weight, 2 lbs., 1 oz.; length of focus of lens, $5\frac{3}{8}$ inches.

This instrument combines the extreme simplicity of the Cartridge System with a shutter and lens of the finest quality and can be used with film cartridges or glass plates. (With plates the picture is $3\frac{1}{4} \times 3\frac{1}{2}$ inches.) The shutter is the Eastman triple action described on page 14 and is fitted with iris diaphragm stops graduated for Nos. 4, 8, 16, 32, 64 and 128.

No expense has been spared in fitting this instrument with a lens of the finest quality. It has a fixed focus of $5\frac{3}{8}$ inches, is strictly rectilinear and very rapid with wonderful depth and definition. Square finder, socket for tripod screw, covered with fine black morocco. Nickel fittings and beautiful finish. Can be carried on bicycle by use of our special cases. See pages 40 and 41.

| | |
|--|---------|
| No. 2 Bullet Special Kodak, with rapid rectilinear lens (not loaded), | \$18.00 |
| Transparent Film Cartridge, 12 exposures, $3\frac{1}{2} \times 3\frac{1}{2}$, | .60 |
| Do., 6 exposures, | .30 |
| Do., box 2 cartridges, 2 exposures each (4 ex.), | .25 |
| Paper-Film Cartridge, 12 exposures, $3\frac{1}{2} \times 3\frac{1}{2}$, | .40 |
| Do., 6 exposures, | .20 |
| Double Plate Holders, $3\frac{1}{4} \times 3\frac{1}{2}$, each, | 1.00 |
| Black Sole Leather Carrying Case, with shoulder strap, | 1.25 |

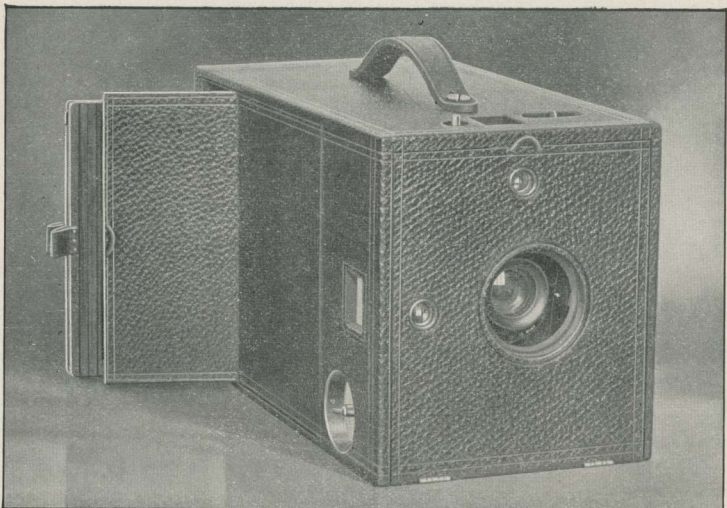


No. 4 BULLET KODAK. FILMS AND PLATES.

For rectangular pictures, 4 x 5 inches; capacity, 12 exposures without reloading; size of camera, 5¼ x 6 x 9¾ inches; weight, 3 pounds; length of focus of lens, 6¼ inches.

The No. 4 Bullet uses either roll films or glass plates, and it is fitted with an achromatic lens, set of three stops, two finders, one for vertical and one for horizontal exposures, focusing index, two sockets for tripod screw, and has our improved Rotary shutter described on page 12. Whether used for films or plates it is a most compact and convenient camera. When used with plates it may be focused either with the index or on the ground glass. Handsome finish, with nickel fittings, and covered with fine leather.

| | |
|---|---------|
| No. 4 Bullet Kodak, fitted with achromatic lens (not loaded), | \$15.00 |
| Transparent Film Cartridge, 12 exposures, 4 x 5, | .90 |
| Do., 6 exposures, | .45 |
| Do., Box 2 cartridges, 2 exposures each, (4 ex.), | .35 |
| Paper-Film Cartridge, 12 exposures, 4 x 5, | .60 |
| Do., 6 exposures, | .30 |
| Single Plate Holders, (4 x 5 inches), each, | .75 |
| Black Sole Leather Carrying Case, with shoulder strap, | 2.00 |



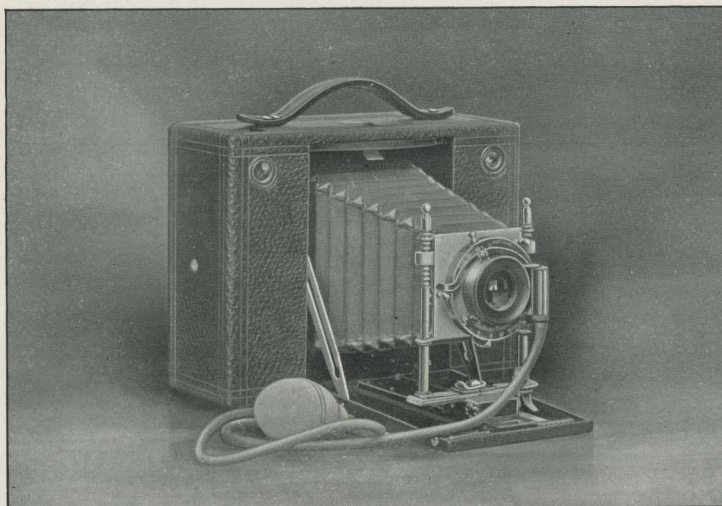
No. 4 BULLET SPECIAL KODAK. FILMS AND PLATES.

For rectangular pictures, 4 x 5 inches; capacity, 12 exposures without reloading; size of camera, 5½ x 6¼ x 10¾ inches; weight, including roll holder, 3 lbs. 12 ozs.; length of focus of lens, 6½ inches.

Adapted to either plates or film cartridges. Has the finest rapid rectilinear lenses, Eastman triple action shutter, described on page 14, fitted with iris diaphragm stops from No. 4 to No. 128. Unlike the other Kodaks the roll holder is detachable (the regular No. 4 horizontal Cartridge Roll Holder), and being equipped with a dark slide is interchangeable with plate holders in the field and permits of focusing on the ground glass when using film.

Fitted with finders and tripod sockets for both vertical and horizontal exposures and has carefully adjusted focusing scale. Handsome leather covering, nickered fittings.

| | |
|---|---------|
| No. 4 Bullet Special Kodak, for film or plates, including Cartridge Roll Holder, and one Double Plate Holder, (not loaded), | \$25.00 |
| Do., with one Double Plate Holder, but without Roll Holder, | 20.00 |
| Cartridge Roll Holder for No. 4 Bullet Special, | 5.00 |
| 4-inch Transparent Film Roll Holder Cartridge, 12 exposures, 4 x 5, | .90 |
| Double Plate Holders, 4 x 5 inches, each, | 1.00 |
| Black Sole Leather Carrying Case, | 2.25 |



No. 3 CARTRIDGE KODAK. FILMS AND PLATES.

For rectangular pictures, $4\frac{1}{4} \times 3\frac{1}{4}$ inches; capacity, 12 exposures without reloading; size, closed, $2\frac{3}{4} \times 5\frac{3}{4} \times 7\frac{1}{2}$ inches; weight, 2 lbs., 5 ozs.; length of focus of lens, 6 inches.

This Kodak will meet the demand for a small and compact instrument of the very highest type. The lens is a rapid rectilinear of great speed, the shutter the Eastman triple action described on page 14, with iris diaphragm stops from 4 to 128. Fitted with rising and sliding front, focusing scale, two brilliant finders and two tripod sockets. The bed is of aluminum, blackened, all other exposed metal parts are polished or nicked, and the covering is the finest black morocco, thus combining lightness and strength with elegance of finish.

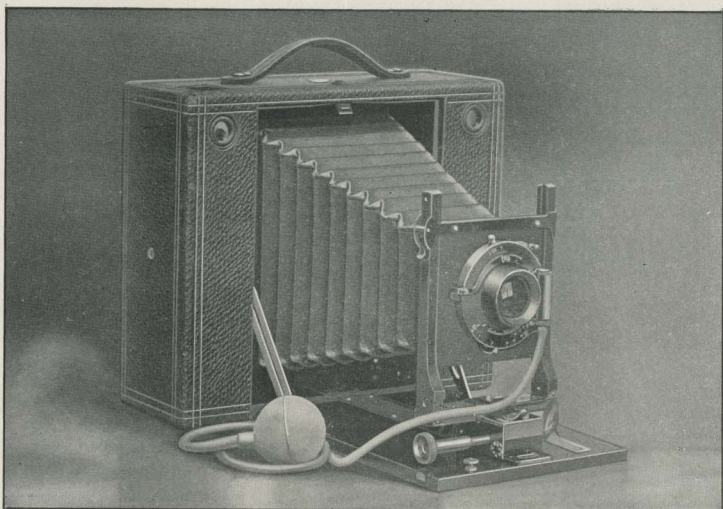
Uses plates by the addition of adapter and plate holders.

Can be carried on a bicycle by the use of our special cases.

See page 42.

| | |
|--|---------|
| *No. 3 Cartridge Kodak, rapid rectilinear lens, Eastman triple action shutter, with iris diaphragm stops (not loaded), | \$20.00 |
| Transparent Film Cartridge, 12 exposures, $4\frac{1}{4} \times 3\frac{1}{4}$, | .70 |
| Do., 6 exposures, | .35 |
| Do., Box 2 cartridges, 2 exposures each (4 ex.), | .30 |
| Paper-Film Cartridge, 12 exposures, $4\frac{1}{4} \times 3\frac{1}{4}$, | .50 |
| Do., 6 exposures, | .25 |
| Glass Plate Adapter, with ground glass, | 2.00 |
| Double Plate Holders, each, | 1.00 |
| Black Sole Leather Carrying Case, with shoulder strap, | 1.50 |

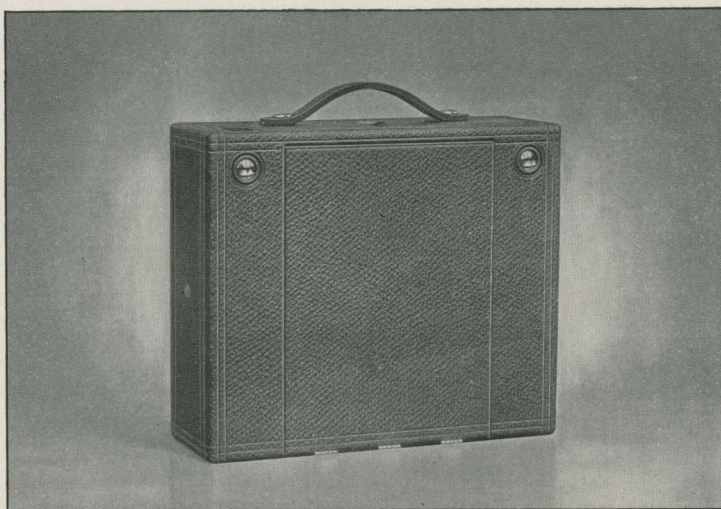
*This Kodak can be fitted with Unicum shutter and Bausch & Lomb Zeiss-Anastigmat lens No. 1, Series 11a, at an extra charge of \$31.00.



CARTRIDGE KODAKS, Nos. 4 and 5.

In the Cartridge Kodaks we have adapted the "Film Cartridge System" to Folding Kodaks of the finest quality and greatest capabilities. They are hardly more than half the thickness of other cameras which are adapted to both film and plates and are the only folding instruments capable of taking 4 x 5 and 5 x 7 pictures and having the daylight loading feature. We never place a camera upon the market until we have thoroughly tested its actual working qualities under all conditions and the finished product is always an improvement over the first model; but in our years of experience in camera making no instrument which we have introduced has been more carefully planned, more severely tested, or has been the subject of more thought and experiment than the Cartridge Kodak. The result is an instrument which is the embodiment of photographic perfection.

The No. 4 and 5 Cartridge Kodaks use either our daylight loading Film Cartridges or glass plates, are fitted with carefully tested rapid rectilinear lenses and the Eastman triple action shutter described on page 14, fitted with iris diaphragm stops for Nos. 4 to 128. Provided with rising, sliding and falling fronts, two view



CARTRIDGE KODAK CLOSED.

finders, one for vertical and one for horizontal exposures, two sockets for tripod screws, Eastman's patent non-collapsing bellows, rack and pinion for fine focusing, and are equally perfect as hand or tripod cameras. Fitted with index for focusing and when used with plates may be focused on the ground glass if desired.

When used with film there are no projecting parts, no attachments to become lost, no extras to be mislaid. The plate adapter is simple and compact and can be put in place or removed in five seconds.

Both the No. 4 and No. 5 Cartridge Kodaks are perfectly adapted to use on the wheel and can be readily carried by the use of our special cases described on page 42. Can be fitted with wide angle lenses the cells of which fit the regular shutter. See price list, page 53.

Strength and reliability have not been sacrificed to mere lightness, nor efficiency to compactness. The finish is rich and beautiful. When closed for carrying the Cartridge Kodak is inconspicuous, there being no metal parts in sight, even the key, which is in the bottom of the camera, being recessed and entirely hidden from view. When open for use these instruments expose to view a bed and front board of highly polished mahogany with buffed brass fittings. In short, they have in a superlative degree, that rich and dainty finish which characterizes all our goods.

No. 4 CARTRIDGE KODAK. FILM AND PLATES.

For rectangular pictures 4 x 5 inches; capacity, 12 exposures without reloading; size of camera, $3\frac{1}{8} \times 6\frac{3}{8} \times 8\frac{1}{4}$; weight, 3 pounds; length of focus of lens, $6\frac{1}{2}$ inches.

*No. 4 Cartridge Kodak with Rapid Rectilinear lens and Eastman Triple

| | |
|---|---------|
| Action Pneumatic Shutter (not loaded), | \$25.00 |
| Transparent Film Cartridge, 12 exposures, 5 x 4 inches, | .90 |
| Do., 6 exposures, | .45 |
| Do., Box 2 cartridges, 2 exposures each, (4 ex.) | .35 |
| Paper-Film Cartridge, 12 exposures, 5 x 4 inches, | .60 |
| Do., 6 exposures, | .30 |
| Glass plate adapter with ground glass, | 2.50 |
| Double glass plate holders, each, | 1.00 |

*This Kodak can be fitted with Bausch & Lomb Iris diaphragm shutter and No. 2 Series II a, Zeiss Anastigmat lens at an *extra charge* of \$41.00.

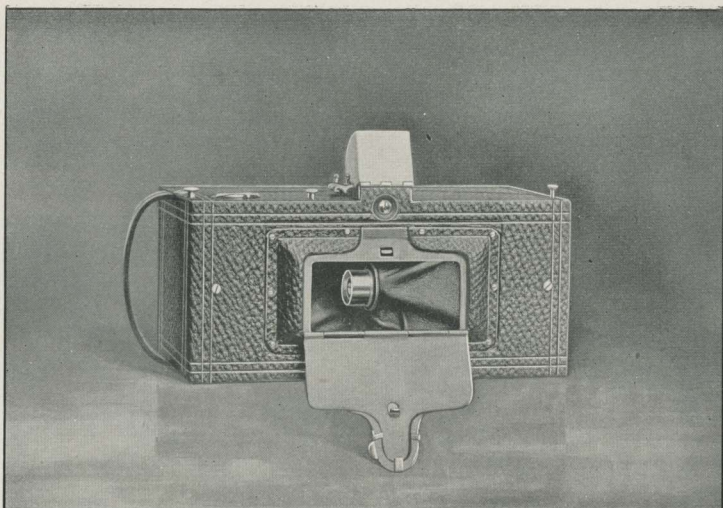
No. 5 CARTRIDGE KODAK. FILM AND PLATES.

For rectangular pictures 7 x 5 inches; capacity, 12 exposures without reloading; size of camera, $3\frac{1}{4} \times 8\frac{1}{2} \times 10\frac{1}{8}$; weight, 4 pounds, 4 ounces; length of focus of lens, $8\frac{1}{2}$ inches.

*No. 5 Cartridge Kodak with Rapid Rectilinear lens and Eastman Triple

| | |
|---|---------|
| Action Pneumatic Shutter (not loaded), | \$35.00 |
| Transparent Film Cartridge, 12 exposures, 7 x 5 inches. | 1.60 |
| Do., 6 exposures, | .80 |
| Do., Box 2 cartridges, 2 exposures each (4 ex.), | .60 |
| Paper-Film Cartridge, 12 exposures, 7 x 5, | 1.00 |
| Do., 6 exposures, | .50 |
| Glass Plate Adapter with ground glass, | 3.00 |
| Double Glass Plate Holders, each, | 1.25 |

*This Kodak can be fitted with Bausch & Lomb Iris diaphragm shutter and No. 3 Series II a, Zeiss Anastigmat lens at an *extra charge* of \$50.50.



No. 1 PANORAM-KODAK.

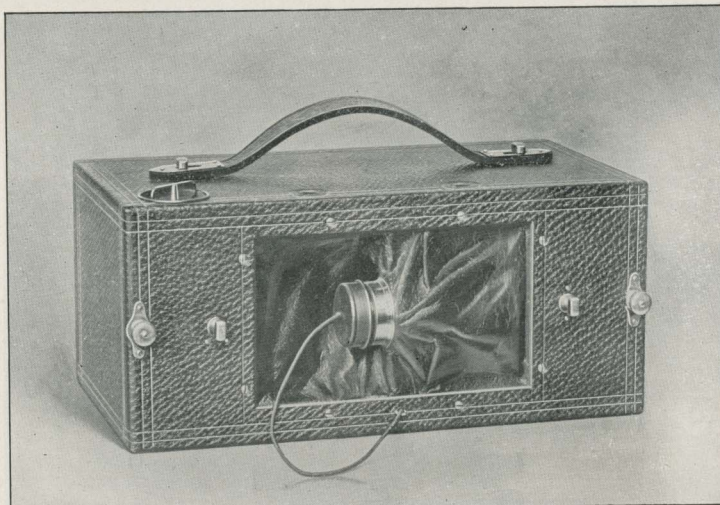
USES No. 1 FOLDING POCKET KODAK CARTRIDGES.

For pictures $2\frac{1}{4} \times 7$ inches; capacity, six exposures without reloading; size of camera, $3\frac{3}{4} \times 4\frac{1}{4} \times 7\frac{1}{2}$ inches; weight, 23 ozs.; length of focus of lens, $3\frac{9}{16}$ inches.

With a scope of view of 112° the No. 1 Panoram-Kodak offers in compact and convenient form an instrument capable of taking panoramic views in all their breadth and beauty. It will perfectly fill this niche in the photographer's outfit, but of course is not intended for interiors or time exposures. Pictures made with this instrument are so clear and sharp that they can be enlarged to any size.

This instrument has a carefully tested lens, improved two-speed shutter, spirit level, a finder which shows the sky and foreground but which does not of course give the full scope of view, and is fitted with tripod socket. V shaped lines on top show the operator the scope of view. Has nicked fittings, is covered with the finest black morocco and is beautifully finished.

| | |
|--|---------|
| No. 1 Panoram-Kodak, not loaded, | \$10.00 |
| Transparent Film Cartridge, 6 exposures, $2\frac{1}{4} \times 7$ (Regular No. 1 Folding Pocket Kodak Cartridge), | .40 |
| Do., 3 exposures, | .20 |
| Paper-Film Cartridge, 6 exposures, $2\frac{1}{4} \times 7$, | .30 |
| Do., 3 exposures, | .15 |
| Black Sole Leather Carrying Case with shoulder strap, | 1.75 |



No. 4 PANORAM-KODAK.

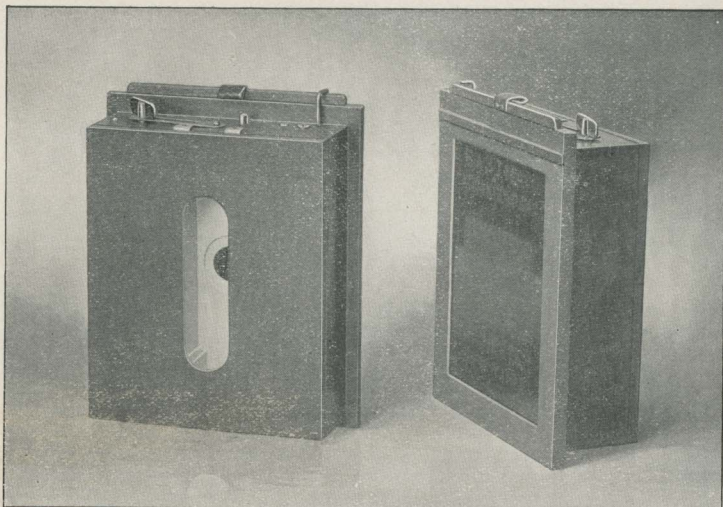
USES No. 4 BULLS-EYE FILM CARTRIDGES.

For pictures $3\frac{1}{2} \times 12$ inches; capacity 5 exposures without reloading; size of camera, $4\frac{1}{2} \times 5\frac{1}{2} \times 10\frac{1}{4}$ inches; weight, 2 lbs., 6 ozs.; length of focus of lens, 5 inches.

Broad landscapes, views of cities from high buildings, the intersections of wide streets, river and marine views—all offer to the photographer beautiful panoramic effects that are well worth preserving. It is to put into his hands an instrument capable of taking such views that we offer the Panoram-Kodak. It is not intended for interiors or time exposures.

The No. 4 Panoram-Kodak has a scope of view 142° , with a rapid rectilinear 5-inch focus lens, revolving through the arc of the circle and covering fully. Stop opening of lens is $f. 10$ and the shutter working practically in the focal plane allows of extreme speed. Space in back provides for carrying two extra film cartridges. Fitted with tripod socket. Has nicked fittings, is covered with the finest black morocco and beautifully finished.

| | |
|---|---------|
| No. 4 Panoram-Kodak, rapid rectilinear lens, (not loaded), | \$20.00 |
| Transparent Film Cartridge, 5 exposures, $3\frac{1}{2} \times 12$, (regular No. 4 Bulls- | |
| Eye Cartridges), | .90 |
| Do., 2 exposures, | .45 |
| Paper-Film Cartridge, 5 exposures, $3\frac{1}{2} \times 12$, (regular No. 4 Bulls-Eye | |
| Cartridges), | .60 |
| Do., 2 exposures, | .30 |
| Black Sole Leather Carrying Case, | 2.00 |



THE CARTRIDGE ROLL HOLDER.

We are now prepared to furnish Cartridge System Roll Holders which can be fitted to any ordinary camera by an intelligent cabinet maker, or we will do the fitting for a small charge, varying, of course, according to the camera and the work necessary.

Load in daylight and are well made of hard wood, with brass fittings, and handsomely finished.

SPECIAL SPOOLS FOR CARTRIDGE ROLL HOLDERS.

In ordering cartridges, be sure and state that they are for Cartridge Roll Holder, giving length of spool and size of roll holder, as the film and paper are wound differently from those used in the Bullets, Bulls-Eyes, etc. Kodak spools will not fit Cartridge Roll Holders.

PRICE LIST.

| | |
|---|--------|
| No. 2 (3½ x 3½) Cartridge Roll Holders, | \$5.00 |
| No. 3, Vertical, for 4¼ x 3¼ pictures, 4¼ inch spool, | 5.00 |
| No. 4 (4 x 5) Cartridge Roll Holders, (specify whether vertical or horizontal), | 5.00 |
| No. 5 Vertical Cartridge Roll Holders, 7 inch spool, | 6.50 |

TRANSPARENT FILM CARTRIDGES.

| | |
|---|------|
| 3½ inch, for No. 2 Cartridge Roll Holder, 12 exposures, | .60 |
| 4¼ inch, for No. 3 Cartridge Roll Holder, 12 exposures, | .70 |
| 4 inch, for No. 4 Horizontal Cartridge Roll Holder, 12 exposures, | .90 |
| 5 inch, for No. 4 Vertical Cartridge Roll Holder, 12 exposures, | .90 |
| 7 inch, for No. 5 Cartridge Roll Holder, 12 exposures, | 1.60 |

BICYCLE CARRYING CASES.

THE POCKET KODAK BICYCLE CARRYING CASE.

The Pocket Kodak Bicycle Carrying Case is made of the best black sole leather, and will hold, beside the Kodak, three extra spools of film. It attaches to the frame in much the same manner as a tool bag and may be carried suspended from the top bar of the machine, either at the head or at the seat post.

Price of Pocket Kodak Bicycle Case, \$1.00



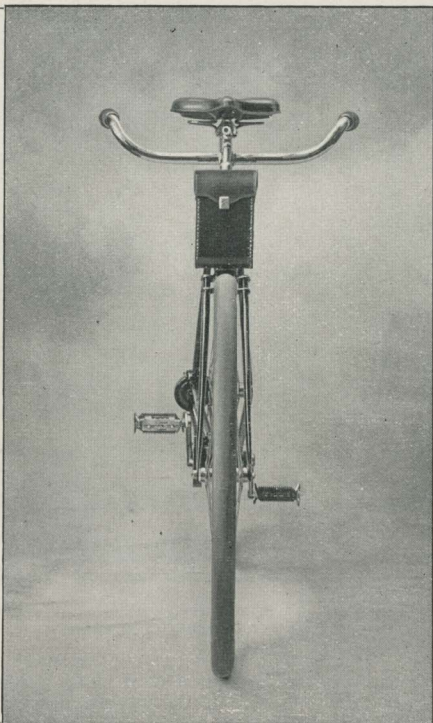
COMBINATION HAND AND CYCLE CASES.

Our combination hand and bicycle cases for the Folding Pocket Kodaks and for the No. 2 Folding Bulls-Eye Kodaks are made of the best black sole leather; are so strongly put together as to perfectly protect the Kodak against rough usage, and are neat and dainty in appearance. Can be used as a hand case; can be carried like a field glass with a shoulder strap, or when desired, may be used for carrying the Kodak on a bicycle.

The No. 1, No. 1 A and No. 2 Folding Pocket Kodak cases are attached to the bicycle by means of a single clamp which fastens securely to the head of the machine. The No. 3 Folding Pocket Kodak and the No. 2 Folding Bulls-Eye cases being somewhat larger are fastened by means of two clamps.

PRICE LIST.

FOLDING
POCKET
KODAK
AND
FOLDING
BULLS-EYE
COMBINATION
CARRYING
CASES.



| | |
|--|--------|
| Carrying Case, with shoulder strap, for No. 1, No. 1 A or No. 2 Folding Pocket Kodak, (always specify in order whether for No. 1, No. 1 A or No. 2), | \$1.25 |
| Clamp for carrying either of above cases on head of bicycle, (fits any tubing from $\frac{3}{8}$ to $1\frac{1}{4}$), | .50 |
| Carrying Case, with shoulder strap, for No. 3 Folding Pocket Kodak, | 1.25 |
| Pair Clamps for carrying above case on head of bicycle (fit any tubing from $\frac{3}{8}$ to $1\frac{1}{4}$), | 1.00 |
| No. 2 Folding Bulls-Eye Carrying Case with shoulder strap, | 1.25 |
| Pair Clamps for carrying above case on head of bicycle, (fit any tubing from $\frac{3}{8}$ to $1\frac{1}{4}$), | 1.00 |



STYLE A BICYCLE CASES.

For No. 2 Bullet, Bulls-Eye and Flexo Kodaks, Bullet Special and Bulls-Eye Special Kodaks.

The Style A case is strongly made of wood, covered with fine grain leather and lined with cloth and is fitted with springs on the inside which take up the vibration of the wheel and prevent injury to the camera. By means of two simple thumb screws, it clamps securely to the head of the bicycle, and there being no play at points of contact with the machine, it will not wear the enamel.

Outside measurements for No. 2 Bulls-Eye case, $5\frac{3}{8}$ x $5\frac{1}{2}$ x $6\frac{7}{8}$ inches.

The door latch can be opened with one hand, yet it cannot jar open and will not rattle.

By means of a set of adjustable washers (extra) the case may be held far enough in front of the bicycle head to allow for the free passage of the brake rod. It may also be provided (extra) with a lamp bracket attachment. A set of washers is furnished with each case and by their use the clamps will firmly grip any tubing from $\frac{7}{8}$ inch to $1\frac{1}{4}$ inches, both inclusive. No wrench, screwdriver or other tools are necessary in making the attachment.

| | |
|---|--------|
| *Bicycle Carrying Case, Style A, for No. 2 Bullet, Bulls-Eye, Flexo, Bullet Special and Bulls-Eye Special Kodaks, | \$2.00 |
| Washers for holding Case in front of Brake Rod, | 1.00 |
| Detachable Lamp Bracket, | .25 |

*In ordering specify whether for No. 2 Bullet, Bulls-Eye, Flexo, Bullet Special or Bulls-Eye Special.



STYLE B CASES.

For No. 2 Bullet, Bulls-Eye, Flexo, Bullet Special and Bulls-Eye Special Kodaks.

This case is designed to attach to the rear forks immediately under the saddle and is especially adapted to use on a lady's wheel or on any wheel having mud-guards. It is provided with three straps, two of which attach to the rear forks, the third passing through the saddle spring proper or through the U spring where one is used. It is made of the best black sole leather and is easily accessible, a single strong clasp securing the flap in position. It makes a safe and convenient carrier for the camera.

In ordering state whether for use with Bullet, Bulls-Eye, Bullet Special, Bulls-Eye Special or Flexo.

Price, Bicycle Carrying Case, Style B for No. 2 Bullet, Bulls-Eye, Flexo,
Bullet Special and Bulls-Eye Special Kodaks, \$1.50

NOTE—This case is impracticable for very short riders as it requires a space of 6 inches in the clear between the mud-guard and the saddle spring.



CARTRIDGE KODAK BICYCLE CASE.

This case is strongly made of wood, covered with fine grain leather, lined with cloth and fitted with springs on the inside which take up the vibration of the wheel and prevent injury to the camera. By means of two thumb screws which securely grasp the tubing, the case may be attached to the head of the machine or suspended from the top bar. The clamps will firmly grasp any tubing from $\frac{7}{8}$ to $1\frac{1}{4}$ inches, both inclusive, and can be attached to any side of the case (except, of course, the door). There being no play at the point of contact with the machine, it will not wear the enamel.

The door fastens with a strong brass catch which can be opened with one hand, yet cannot jar open and will not rattle.

By means of a set of adjustable washers (extra) the case may be held far enough in front of the bicycle head to allow for the free passage of a brake rod. It may also be provided (extra) with a lamp bracket attachment. No wrench, screw driver or other tools are necessary in making the attachment.

| | | |
|--|-----------|---------|
| No. 3 Cartridge Kodak Bicycle Case, | | \$ 2.25 |
| 4 " " " " " " | | 2.50 |
| 5 " " " " " " | | 3.25 |
| Washers for holding case in front of brake rod, per set, | | 1.00 |
| Detachable Lamp Bracket, | | .25 |

TRIPODS.

THE KODAK TRIPOD.

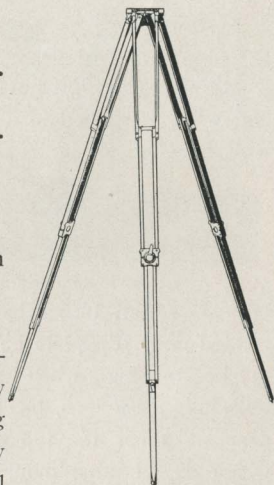
Length, extended, 55½ inches.

Length, folded, 15¾ inches.

Weight, 2 lbs., 3 ozs.

Especially designed for use with Kodaks.

When put up in the Leather Carrying Case, the Kodak Tripod is perfectly adapted to the wheelman's use. Being but 15¾ inches long it can be readily strapped to the handle bar where it will in no way inconvenience the rider. Perfectly rigid and suitable for any camera up to 8 x 10. Made of the best seasoned cherry with brass fittings.



PRICE OF KODAK TRIPODS.

| | | |
|--|-----------|--------|
| No. 1 Kodak Tripod with folding lugs, | | \$5.00 |
| No. 2 Kodak Tripod with solid lugs, | | 4.00 |
| Leather Carrying Case with pocket for top for No. 1, | | 3.00 |
| Leather Carrying Case without pocket, | | 2.00 |

EASTMAN'S FEATHER TRIPOD.

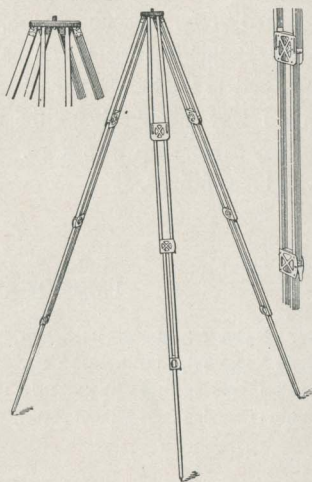
Length, folded, 14½ inches. Length, extended, 52½ inches.
Suitable for any 4 x 5 camera or smaller.

Wonderfully light, compact and strong, this tripod is especially designed for the tourist or cycling Kodaker. Only 14½ inches in length when closed, it can be readily strapped to the bicycle handle bar, whether carried in a case or not. An aluminum top plate with milled edges, holds the socket screw securely in place and seats it in place in the camera when turned—thus doing away with the nuisance of the



HAND CARRYING CASE.

ordinary screw, turned by means of a key handle inconveniently located under the plate between the tripod legs, and always likely to be missing when most wanted. The Feather tripod folds in four sections, has brass fittings, except the top plate, which is of aluminum, and weighs, in spruce, but 17½ ounces, in cherry, or in mahogany finish, 20½ ounces.

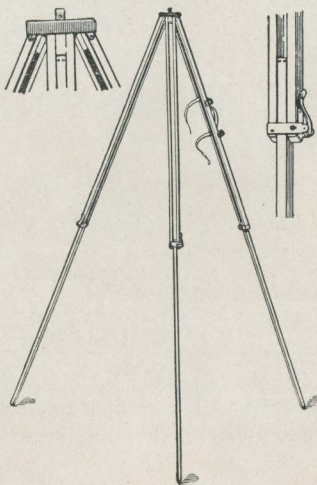


PRICE.

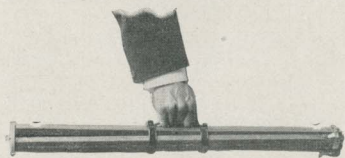
| | |
|---|--------|
| Eastman's Feather Tripod, Cherry, | \$4.00 |
| Eastman's Feather Tripod, Spruce, | 4.00 |
| Eastman's Feather Tripod, Mahogany finish, | 4.50 |
| Black Sole Leather Hand Carrying Case, | 1.50 |

THE BULLS-EYE TRIPOD.

A compact and convenient tripod for use with any camera up to and including 4 x 5. A brass top plate with milled edges holds the socket screw securely in place and seats it in place in the camera when turned—thus doing away with the nuisance of the ordinary screw, turned by means of a key handle inconveniently located under the plate between the tripod legs, and always likely to be missing when most wanted.



The Bulls-Eye Tripod folds in two sections and is provided with a leather hand strap for carrying. Made of the best seasoned spruce with brass fittings. Although far from high in price, this tripod is wonderfully light, compact and strong, as none but the very best of straight grain spruce and the most accurate fittings are used in its construction.



Price, \$2.00

THE EASTMAN TRIPOD.

Folds in three sections.

| | |
|---|--------|
| No. 1 Spruce, for cameras up to 6½ x 8½, weight 1 lb. 10 oz., . . . | \$3.00 |
| No. 1 Maple, for cameras up to 6½ x 8½, weight 2 lbs. 2 oz., . . . | 3.00 |

NOTE—When kind of wood is not specified, we will furnish in maple.

THE VICTOR TRIPOD.

Folds in two sections.

| | |
|---|--------|
| No. 1 Spruce, for cameras up to 6½ x 8½, weight 1 lb. 11 oz., . . . | \$2.00 |
| No. 1 Maple, for cameras up to 6½ x 8½, weight 2 lbs. 3 oz., . . . | 2.00 |

NOTE—When kind of wood is not specified, we will furnish in maple.

THE STAFF TRIPOD.

This tripod does not fold but closes together, forming a staff or cane.

| | |
|--|--------|
| Improved Staff Tripod, | \$1.50 |
| When for use with Pocket Kodak so specify. | |
| Special Adjustable Head, extra, | 1.00 |

“ADJUSTABLE” TRIPOD HEAD.

By the use of our “Adjustable” Tripod Head, the camera can be tilted to any desired angle and fastened securely in position without moving the tripod legs.

PRICE LIST.

| | |
|---|--------|
| No. 1. For the Eastman Tripod No. 1 and Victor No. 1, | \$1.25 |
| No. 2. For Kodak Tripod, | 1.50 |

In ordering always give the name and number of Tripod for which you want adjustable head.

Any of the foregoing Tripods (except Feather, Staff and Bulls-Eye) may be ordered with the adjustable head and without the regular head, at the following prices :

| | |
|--------------------------|--------|
| Eastman No. 1, | \$3.75 |
| *Kodak No. 2, | 4.80 |
| Victor No. 1, | 2.75 |

*We do not furnish the “Adjustable” head with folding lugs.

ADJUSTABLE JR. HEAD.

| | |
|--|--------|
| No. 1 “Adjustable Jr.” for cameras up to 4 x 5, can be used on Bulls-Eye, Feather or Staff Tripods, | \$1.00 |
| No. 2 “Adjustable Jr.” for cameras up to 5 x 8, fits any ordinary Tripod, . . . | 1.50 |



DEVELOPING AND PRINTING OUTFITS.

Eastman's A B C Developing and Printing Outfit includes every requisite for developing, printing and finishing 24 pictures 4 x 5, or 95 Pocket Kodak pictures, also the most economical outfit for 2½ x 4¼ and 3¼ x 4¼ pictures.

IT CONTAINS:

| | | | |
|---|--------|--|--------|
| 1 Eastman Improved Candle Lamp, | \$0.25 | ½ oz. Bromide Potassium, | \$0.10 |
| 1 4 x 5 Printing Frame, | .25 | 2 doz. 4 x 5 Solio Paper, | .25 |
| Glass for do., | .05 | 2 ozs. Solio Toning Solution, | .15 |
| 1 Glass Beaker, | .12 | 1 oz. Glycerine, | .05 |
| 1 Stirring Rod, | .05 | Mask for making Pocket Kodak Medallions, | |
| 4 4½ x 5½ Developing Trays, | .40 | Instruction Book, | .10 |
| ½ doz. Developing Powders, | .25 | | |
| ½ lb. Hyposulphite Soda, | .07 | | \$2.09 |

Price, complete, neatly packed, **\$1.50**

Eastman's Bulls-Eye Developing and Printing Outfit complete for developing and printing 12 pictures 3½ x 3½. Similar to above outfit, but including 1 doz. 3½ x 3½ Solio paper, instead of 2 doz. 4 x 5, and containing smaller quantities of chemicals.

Price complete, neatly packed, **\$1.00.**

Eastman's Special 5 x 7 Developing and Printing Outfit complete for developing and printing 24 pictures 5 x 7. Similar to 4 x 5 outfit but having 5 x 7 trays, paper, etc.

Price complete, neatly packed, **\$2.00.**

NOTE.—These outfits cannot be shipped by mail.

EASTMAN'S KODAK DARK ROOM LAMP.

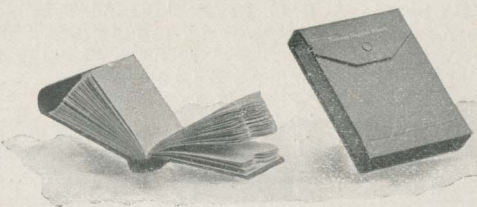


This lamp is well made and safe. It is equipped with improved burner carrying extra broad wick, and has new ventilating top, ensuring a bright, steady flame. It is the safest dark-room lamp made, being fitted with both ruby and orange glass. The flame can be controlled from the outside, and it is fitted with adjustable shield to protect the eyes from the light and throw it directly on the work.

No. 1 Improved Kodak Dark-Room
Lamps, 1 inch wick, each, . . . \$1.50
No. 2 do., $\frac{5}{8}$ inch wick, each, . . . 1.00

EASTMAN'S FILM NEGATIVE ALBUMS.

How to preserve film negatives is a question that has been successfully answered by the introduction of Eastman's Film



Negative Albums. Each album contains 100 pockets made of strong manila paper and consecutively numbered from 1 to 100, and an index on white paper, ruled and numbered for 100 entries. They thus provide for a perfectly safe means of keeping the negatives in such a way that the one desired can always be instantly found.

PRICE.

| | |
|--|--------|
| Eastman's Negative Albums for 100 negatives $3\frac{1}{2} \times 3\frac{1}{2}$ or smaller, . . . | \$0.75 |
| Eastman's Negative Albums for 100 negatives $3\frac{1}{4} \times 4\frac{1}{4}$ or 4×5 , . . . | 1.00 |
| Eastman's Negative Albums for 100 negatives 5×7 or smaller, . . . | 1.50 |

KODAK ALBUMS.

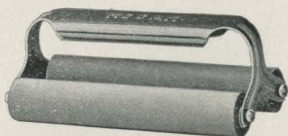
For pasting in prints. The leaves in these albums are detachable. The covers are intended to hold 13 leaves, and prices of complete Albums include that number, but 15 leaves can be used in an Album when desired.

PRICE LIST.

| Albums. | NO. 1 FLDG. POCKET | | | | |
|---|---|---|---|------------------------------------|-----------------------------------|
| | POCKET KODAK for 104 Pictures. | KODAK for 104 Pictures. $2\frac{1}{4} \times 3\frac{1}{4}$ | NO. 2 for 104 Pictures. $3\frac{1}{2} \times 3\frac{1}{2}$ | 4 for 104 Pictures. 4 x 5 | 5 for 52 Pictures. 5 x 7 |
| Style A, Cloth bound, | \$ 75 | \$1 25 | \$1 60 | \$2 00 | \$2 25 |
| Style B, half Mor., gold edges, | 1 00 | 1 65 | 2 00 | 2 50 | 2 75 |
| Style C, full Mor., gold edges, | 1 50 | 2 25 | 2 75 | 3 50 | 3 75 |
| Printing and Mounting. | | | | | |
| Pictures including | | (104) | (104) | (104) | (52) |
| Album, Style A*, | 2 75 | 5 00 | 8 00 | 10 00 | 6 75 |
| Album, Style B*, | 3 00 | 5 40 | 8 50 | 10 50 | 7 25 |
| Album, Style C*, | 3 50 | 6 00 | 9 50 | 11 50 | 8 25 |
| Bindings Only. | | | | | |
| Style A, without leaves, | 40 | 60 | 80 | 1 00 | 1 10 |
| Style B, without leaves, | 60 | 85 | 1 10 | 1 30 | 1 50 |
| Style C, without leaves, | 1 10 | 1 50 | 1 80 | 2 30 | 2 50 |
| Leaves Only. | | | | | |
| Style A, each, | 03½ | 06 | 07 | 08 | 09 |
| Style B or C, each, | 04 | 07 | 07½ | 09 | 10 |
| Prints, Gummed Backs. | | | | | |
| Unmounted, each, | 02 | 05 | 08 | 10 | 12½ |

*These prices hold good only for *duplicate* prints, i. e., when the negatives have been printed from before. When the first prints are ordered mounted in an Album, the price of the Album will be added to the unmounted price of the pictures.

"KODAK" PRINT ROLLERS.



This roller has two six inch fine rubber rollers with steel frame, handsomely nicked. A durable and practical article.

PRICE.

"Kodak" Print Roller, 6 inch double, \$.75

"PICTURE TAKING AND PICTURE MAKING."

A simple and practical book for the beginner, yet full of "meat" for the advanced amateur. There are four valuable contributed articles: "Platinum Printing," by Alfred Stieglitz; "The Gum Bi-Chromate Process," by M. Robert Demachy; "Sensitizing and Use of Plain Papers," by Bernard Alfieri, and "Carbon Printing," by James A. Sinclair.

PRESS COMMENTS.

"Answers the most puzzling questions asked by the beginner—there are abundant hints to save the amateur from many a discouraging stumble."—*Camera Notes*.

"Makes each step easy."—*Professional Photographer*.

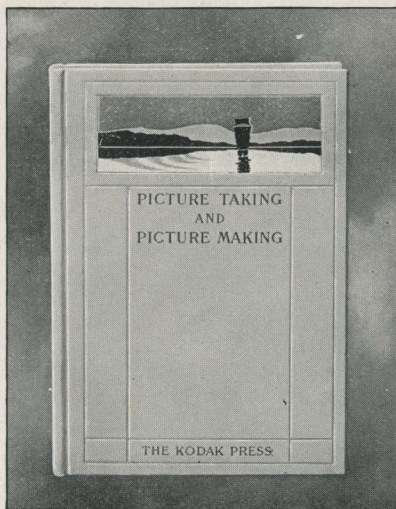
"Refrains from loading up with 'advanced' scientific matter which, to the ordinary individual, is of little value and is apt to be confusing."—*Photo Beacon*.

"Four special articles are alone worth more than the price of the book."—*Snap Shots*.

"A book that will help."—*Recreation*.

Printed on heavy coated paper, beautifully illustrated, 120 pages, cardboard covers, . . . \$.50

Cloth bound, 1.00



CONDENSED KODAK LIST.

POCKET KODAKS.

| | 1½ x 2 |
|---|--------|
| Pocket Kodak with film cartridge for 12 exposures, | \$5.00 |
| Black Leather Hand Carrying Case (to hold Pocket Kodak and three extra spools of film). Price, case only, | .75 |
| Do., do., olive, chocolate or pigskin leather, | 1.25 |
| Leather Bicycle Carrying Case (to hold Pocket Kodak and three extra spools of film). Price, case only, | 1.00 |
| Transparent Film Cartridge, 12 exposures, (per box 4 cartridges, \$1.00), | .25 |
| Paper-Film Cartridge, 12 exposures, (per box 4 cartridges .80), | .20 |
| Single Glass Plate Holders, | .25 |
| *Developing and Printing 12 exposures, (postage .05), | .50 |
| *Developing only, roll 12 exposures, (postage .02), | .25 |
| *Printing and Mounting only, per doz., (postage .05), | .25 |
| NOTE—When there are any failures we furnish enough duplicates from the good negatives to make up the full number. | |
| Staff Tripod, fitted for Pocket Kodak, | 1.50 |

FOLDING POCKET KODAKS No. 1 and No. 1 A.

| | No. 1 2¼x3¼ | No. 1 A 2½x4¼ |
|--|----------------|------------------|
| Folding Pocket Kodak, capacity 12 exposures, not loaded, | \$10.00 | \$12.00 |
| Transparent Film Cartridge, 12 exposures, | .40 | .50 |
| Do., 6 exposures, | .20 | .25 |
| Paper-Film Cartridge, 12 exposures, | .30 | .35 |
| Do., 6 exposures, | .15 | .18 |
| Carrying Case with shoulder strap, | 1.25 | 1.25 |
| Clamp for carrying case on Bicycle Head, | .50 | .50 |
| *Developing, printing and mounting, 12 exposures, | 1.00 | 1.25 |
| *Developing only, each, | .04 | .06 |
| *Printing and mounting only, each, | .05 | .07 |

FOLDING POCKET KODAKS No. 2 and No. 3.

| | No. 2 3½x3½ | No. 3 3¼x4¼ |
|--|----------------|----------------|
| Folding Pocket Kodak, capacity 12 exposures, not loaded, | \$15.00 | \$17.50 |
| Transparent Film Cartridge, 12 exposures, | .60 | .70 |
| Do., 6 exposures, | .30 | .35 |
| Box 2 cartridges, 2 ex. each, (4 ex.) | .25 | .30 |
| Paper-Film Cartridge, 12 exposures, | .40 | .50 |
| Do., 6 exposures, | .20 | .25 |
| Carrying Case with shoulder strap, | 1.25 | 1.25 |
| Clamp for carrying case on Bicycle Head, | .50 | .50 |
| Pair of Clamps for carrying case on Bicycle Head, | — | 1.00 |
| *Developing, printing and mounting, 12 exposures, | 1.50 | 1.50 |
| *Developing only, each, | .06 | .06 |
| *Printing and mounting only, each, | .08 | .08 |

*On orders for less than one dozen, 25 cents extra will be charged. Prints are always furnished mounted unless otherwise specified.

FOLDING BULLS-EYE KODAKS.

| | 3½ x 3½ |
|---|---------|
| No. 2 Folding Bulls-Eye Kodak, capacity 12 ex., not loaded, | \$10.00 |
| Transparent Film Cartridge, 12 exposures, 3½ x 3½, | .60 |
| Do., 6 exposures, | .30 |
| Box 2 cart. 2 ex. each, (4 ex.), | .25 |
| Paper-Film Cartridges, 12 exposures, 3½ x 3½, | .40 |
| Do., 6 exposures, | .20 |
| Carrying Case with shoulder strap, | 1.25 |
| Pair Clamps for carrying case on Bicycle Head, | 1.00 |
| *Developing and printing 12 exposures, | 1.50 |
| *Developing only, each, | .06 |
| *Printing and mounting only, each, | .08 |

BULLET, BULLS-EYE AND FLEXO KODAKS.

| | No. 2 3½ x 3½ | No. 4 4 x 5 |
|---|------------------|----------------|
| Bullet Kodak (not loaded), | \$10.00 | \$15.00 |
| Bulls-Eye Kodak (not loaded), | 8.00 | 12.00 |
| Flexo Kodak (not loaded), | 5.00 | — |
| Transparent Film Cartridge, 12 exposures, | .60 | .90 |
| Do., 6 exposures, | .30 | .45 |
| Box 2 cartridges, 2 ex. each, (4 ex.), | .25 | .35 |
| Paper-Film Cartridge, 12 exposures, | .40 | .60 |
| Do., 6 exposures, | .20 | .30 |
| *Developing, printing and mounting 12 ex., | 1.50 | 1.80 |
| *Developing only, each, | .06 | .08 |
| *Printing and mounting only, each, | .08 | .10 |
| †Black Sole Leather Carrying Case, | 1.25 | 2.00 |
| †Ladies' Bufl Sole Leather Carrying Case, with name plate, | 2.00 | — |
| †Bicycle Carrying Case to clamp on head of machine, style A, | 2.00 | — |
| Washers to hold case in front of brake rod, per set, | 1.00 | — |
| Lamp Bracket to attach to front of Carrying Case, | .25 | — |
| †Sole Leather Bicycle Carrying Case, to attach under saddle, style B, | 1.50 | — |
| Single Glass Plate Holders for Bullet, (3¼ x 3½ inches for No. 2) | .60 | .75 |
| Leather Carrying Case for 6 Single Plate Holders (for Bullet) | 1.00 | — |
| Focusing Glass for No. 4 Bullet, | — | .50 |

!In ordering state whether for Bullet, Bulls-Eye or Flexo.

BULLET SPECIAL AND BULLS-EYE SPECIAL KODAKS.

| | No. 2 Special 3½ x 3½ | No. 4 Special 4 x 5 |
|--|-----------------------------|---------------------------|
| Bullet Special Kodak (not loaded), | \$18.00 | \$25.00 |
| Bulls-Eye Special Kodak (not loaded), | 15.00 | 20.00 |
| Transparent Film Cartridge, 12 exposures, | .60 | .90 |
| Do., 6 exposures, | .30 | .45 |
| Box 2 cartridges, 2 ex. each, (4 ex.), | .25 | .35 |
| Paper-Film Cartridge, 12 exposures, | .40 | .60 |
| Do., 6 exposures, | .20 | .30 |
| *Developing, printing and mounting 12 ex., | 1.50 | 1.80 |
| *Developing only, each, | .06 | .08 |
| *Printing and mounting only, each, | .08 | .10 |

!Be sure to specify "4 inch Cartridge Roll Holder Spool" if for No. 4 Bullet Special.
!For Bulls-Eye only. Not furnished for No. 4 Bullet Special.

*On orders for less than one dozen, 25 cents extra will be charged. Prints are always furnished mounted unless otherwise specified.

| | No. 2 Special 3½ x 3½ | No. 4 Special 4 x 5 |
|---|-----------------------------|---------------------------|
| ‡Black Sole Leather Carrying Case for Bulls-Eye Special, | \$1.25 | \$2.00 |
| ‡Black Sole Leather Carrying Case for Bullet Special, | 1.25 | 2.25 |
| ‡Ladies' Buff Sole Leather Carrying Case, with name plate, | 2.00 | — |
| ‡Bicycle Carrying Case to clamp on head of machine, style A, | 2.00 | — |
| Washers to hold case in front of brake rod, per set, | 1.00 | — |
| Lamp Bracket to attach to front of Carrying Case, | .25 | — |
| ‡Sole Leather Bicycle Carrying Case, to attach under saddle, style B, | 1.50 | — |
| Double Glass Plate Holders for Bullet Special (3¼ x 3½ inches, for No. 2), | 1.00 | 1.00 |
| Leather Carrying Case for 3 Dbl. Plate Holders for Bullet Special | .75 | 1.00 |
| Do., for 6 Double Plate Holders, | 1.00 | 1.50 |

‡In ordering state whether for Bullet Special or Bulls-Eye Special.

CARTRIDGE KODAKS.

| | No. 3. 3¼ x 4¼ | No. 4. 4 x 5 | No. 5. 5 x 7 |
|---|-------------------|-----------------|-----------------|
| Cartridge Kodak with rapid rectilinear lens and triple action pneumatic shutter (not loaded), | \$20.00 | \$25.00 | \$35.00 |
| If equipped with Bausch & Lomb Zeiss lenses and iris diaphragm shutter, add to price of camera with regular equipment for No. 4 \$41.00, No. 5 \$50.50. | | | |
| If equipped with Bausch & Lomb Zeiss lens and Unicum shutter add to price of camera with regular equipment for No. 3 \$31.00. | | | |
| Wide Angle Lens for Cartridge Kodak, | — | 5.00 | 7.50 |
| Transparent Film Cartridge, 12 exposures, | .70 | .90 | 1.60 |
| Do., 6 exposures, | .35 | .45 | .80 |
| Box 2 Cartridges, 2 exposures each (4 ex.), | .30 | .35 | .60 |
| Paper-Film Cartridge, 12 exposures, | .50 | .60 | 1.00 |
| Do., 6 exposures, | .25 | .30 | .50 |
| Black Sole Leather Carrying Case with shoulder strap, Do., to hold camera with plate adapter attached, | 1.50 1.75 | 2.00 2.50 | 2.50 3.00 |
| *Developing, printing and mounting 12 exposures, | 1.50 | 1.80 | 2.40 |
| *Developing only, each, | .06 | .08 | .10 |
| *Printing and mounting only, each, | .08 | .10 | .12½ |
| Bicycle Carrying Case for Cartridge Kodak, | 2.25 | 2.50 | 3.25 |
| Washers to hold case in front of brake rod, per set, | 1.00 | 1.00 | 1.00 |
| Adjustable lamp bracket, | .25 | .25 | .25 |
| Glass Plate Adapter with ground glass, | 2.00 | 2.50 | 3.00 |
| Double Glass Plate Holders, each, | 1.00 | 1.00 | 1.25 |
| Black Sole Leather Carrying Case to hold three double plate holders and focusing glass, | 1.00 | 1.00 | 1.50 |
| Do. to hold six double plate holders and focusing glass, | 1.50 | 1.50 | 2.00 |
| Black Sole Leather Carrying Case to hold glass plate adapter, ground glass and six double plate holders, | — | 2.50 | 3.00 |
| Black Sole Leather Carrying Case to hold Cartridge Kodak and adapter, four double plate holders, focusing glass and three Film Cartridges, | 2.75 | 3.50 | 4.50 |
| Lens Cap, | .25 | .25 | .25 |

*On orders for less than one dozen, 25 cents extra will be charged. Prints are always furnished mounted unless otherwise specified.

No. 1 PANORAM-KODAK.

| | 2¼ x 7 |
|--|---------|
| No. 1 Panoram-Kodak, for pictures 2¼ x 7 inches, (not loaded), | \$10.00 |
| Transparent Film Cartridge, 6 exposures, 2¼ x 7 inches, | .40 |
| Do., 3 exposures, | .20 |
| Paper-Film Cartridge, 6 exposures, 2¼ x 7 inches, | .30 |
| Do., 3 exposures, | .15 |
| Black Sole Leather Carrying Case, with shoulder strap, | 1.75 |
| *Developing, printing and mounting, 6 exposures, | 1.00 |
| *Developing only, each, | .08 |
| *Printing and mounting only, each, | .10 |

*On orders for less than 6 pictures, 25 cents extra will be charged. Prints are always furnished mounted when not otherwise specified in order.

No. 4 PANORAM-KODAK.

| | |
|---|---------|
| | 3½ x 12 |
| No. 4 Panoram-Kodak, for pictures 3½ x 12 inches, not loaded, | \$20.00 |
| Transparent Film Cartridge, 5 ex., (uses regular No. 4 Bulls-Eye Cartridge), | .90 |
| Do., 2 exposures, (No. 4 B. E. 6 ex. Cart.), | .45 |
| Paper-Film Cartridge, 5 exposures, (No. 4 Bulls-Eye Paper-Film 12 ex. Cart.), | .60 |
| Do., 2 exposures, (No. 4 B. E. 6 ex. Cart.), | .30 |
| Black Sole Leather Carrying Case, | 2.00 |
| *Developing, printing and mounting 5 exposures, | 1.75 |
| *Developing only, each, | .18 |
| *Printing and mounting only, each, | .20 |

*On orders for less than five pictures 25 cents extra will be charged. Prints are always furnished mounted when not otherwise specified in order.

CARTRIDGE ROLL HOLDERS.

| | |
|--|--------|
| No. 2, for 3½ x 3½ pictures, 3½ inch spool, | \$5.00 |
| No. 3, vertical, for 4¼ x 3¼ pictures, 4¼ inch spool, | 5.00 |
| No. 4, vertical, for 5 x 4 pictures, 5 inch spool, | 5.00 |
| No. 4, horizontal, for 4 x 5 pictures, 4 inch spool, | 5.00 |
| No. 5, (vertical only) for 7 x 5 pictures, 7 inch spool, | 6.50 |
| 3½ in. Film Cart. for No. 2 Cart. Roll Holder, 12 exposures, | .60 |
| 4¼ " " " " " " 3 Vert. Cart. Roll Holder, 12 exposures, | .70 |
| 5 " " " " " " 4 " " " " " " | .90 |
| 4 " " " " " " 4 Hor. " " " " " " | .90 |
| 7 " " " " " " 5 " " " " " " | 1.60 |

In ordering Film for Cartridge Roll Holders always give length of spool and state that Film is to be used with Roll Holder. Kodak Cartridges will not fit Roll Holders and vice versa.

BULLS-EYE ENLARGING CAMERAS.

The Bulls-Eye Enlarging Camera is adapted to making 4 x 5 Bromide enlargements from Pocket Kodak, and 6½ x 8½ enlargements from Folding Pocket Kodak and 3½ x 3½ negatives.

| | |
|---|--------|
| Bulls-Eye Enlarging Camera, with double holder for paper, | \$7.50 |
| Do., with single holder for paper, | 6.00 |
| Extra inside Kit to hold 4 x 5 paper, | .35 |

EASTMAN'S PERMANENT BROMIDE PAPERS.

The amateur can readily make enlargements from his own negatives by the use of Eastman's Bromide Paper and the Bulls-Eye Enlarging Camera described above, or can improvise an enlarging apparatus. (See page 8.) Enlargements made on Eastman's Royal Bromide Paper and given the Sepia tone have the softness and breadth of rare old etchings. Any of the Eastman Bromide papers make beautiful contact prints.

Illustrated Booklet, "Bromide Enlarging with a Kodak," 10 cents

ROYAL, STANDARD, PLATINO, ENAMELED AND MATTE-ENAMEL BROMIDE PAPERS.

| Size. | Per Doz. | Size. | Per Doz. |
|-------------------|----------|-------------------|----------|
| 2¼ x 3¼ | \$ 0.15 | 10 x 12 | \$1.20 |
| 3¼ x 4¼ | .15 | 11 x 14 | 1.60 |
| 4 x 5 | .25 | 14 x 17 | 2.40 |
| 5 x 7 | .35 | 16 x 20 | 3.20 |
| 5 x 8 | .40 | 18 x 22 | 4.00 |
| 6½ x 8½ | .60 | 20 x 24 | 4.80 |
| 8 x 10 | .80 | | |

Other sizes in proportion.

TWO GRADES—HARD AND SOFT.

The Bromide papers (except Royal) are made in two grades, "Hard" and "Soft." The "Hard" paper is especially adapted to use with sunlight, and should therefore be used for enlarging with the Kodak, while the "Soft" paper should be used for contact printing, as it is especially adapted to work with artificial light.

"Standard" is furnished in three weights: A, thin smooth—B, heavy smooth—C, heavy rough.

The "Platino" paper is furnished in A, thin smooth, or C, heavy rough.

The "Royal" is furnished in "smooth" or "rough."

We do not recommend Royal paper in sizes smaller than 8 x 10.

In ordering (except Royal), always state whether the "hard" or "soft" emulsion is desired, and if the Standard, Platino or Royal is desired, state what grade of paper.

ENLARGEMENTS.

Every amateur has among his negatives some that are well worth enlarging and framing. Our enlarging department contains only skilled operators and we secure the very best results possible from every negative. Where the kind of paper is not specified we will make the enlargements upon the paper which, in our judgment, is best suited to the negative and the subject.

Royal Bromide, Standard Bromide, Platino-Bromide, Enameled Bromide or Matte-Enamel Bromide Enlargements from any size negatives, mounted on cardboard:

No extra charge for Sepia Tones on Royal or Enameled Bromide Enlargements.

| | Each. | Per Doz. |
|-----------------------------|--------|----------|
| 4¼ x 6½, | \$.35 | \$3.00 |
| 6½ x 8½, | .50 | 5.00 |
| 8 x 10, | .75 | — |
| 10 x 12, | 1.00 | — |
| 11 x 14, | 1.25 | — |
| 14 x 17, | 1.50 | — |
| Larger sizes in proportion. | | |
| Lantern Slides, | .50 | 5.00 |

EASTMAN'S SOLIO.

| Size. | A Rapid Printing-Out Paper. | Per Pkg. 2 doz. | ½ Gross. | Gross. |
|--|-----------------------------|-----------------|----------|--------|
| 2¼ x 3¼, | | \$.20 | \$.60 | \$1.00 |
| 2½ x 4¼, | | .20 | .60 | 1.00 |
| 3½ x 3½, | | .20 | .60 | 1.15 |
| 3¼ x 4¼, | | .20 | .60 | 1.15 |
| 4 x 5, (makes 4 Pocket Kodak prints 1½ x 2), | | .25 | .70 | 1.25 |
| 2¼ x 7, (No. 1 Panoram-Kodak), | | .25 | .70 | 1.25 |
| | | Per Doz. | | |
| 5 x 7, | | .30 | 1.60 | 2.65 |
| 3½ x 12, (for No. 4 Panoram-Kodak) | | .35 | — | — |

SECONDS.—A limited quantity of 4 x 5 (trimmed) seconds at \$1.00 per gross.

SOLIO Combined Toning and Fixing Solution, per 8 oz. bottle, 50 cts.

EASTMAN'S DEKKO PAPER.

A quick printing development paper, printing by either artificial or daylight and developing in subdued daylight or subdued artificial light. No dark-room required. Beautiful platinum-like effects. *Use Dekko with Paper-Film Negatives.*

| | Doz. | ½ Gross. | Gross. |
|------------------------------------|-------|----------|--------|
| 2¼ x 3¼, | \$.15 | \$.60 | \$1.00 |
| 2½ x 4¼, | .15 | .70 | 1.25 |
| 3½ x 3½, | .15 | .80 | 1.50 |
| 3¼ x 4¼, | .15 | .80 | 1.50 |
| 4 x 5, | .25 | 1.10 | 2.00 |
| 2¼ x 7, (for No. 1 Panoram-Kodak) | .15 | .80 | 1.50 |
| 5 x 7, | .35 | 2.00 | 3.50 |
| 3½ x 12, (for No. 4 Panoram-Kodak) | .45 | | |

MADE IN FOUR GRADES.

| | |
|---|--------------|
| Carbon Matte, | Plain Matte, |
| Egg-Shell Matte, | Rough Matte, |
| Eastman's Dekko Developer Powders, per dozen, | \$.50 |

EASTMAN'S SEPIA PAPER.

As simple to handle and much quicker than Blue Print paper. Especially desirable with negatives giving broad, sketchy effects.

| | 2 Doz. | ½ Gross |
|--------------------|--------|---------|
| 2¼ x 3¼, | \$.15 | \$.40 |
| 2½ x 4¼, | .15 | .40 |
| 3½ x 3½, | .15 | .40 |
| 3¼ x 4¼, | .15 | .40 |
| 4 x 5, | .20 | .50 |
| 2¼ x 7, | .20 | .50 |
| | 1 Doz. | |
| 5 x 7, | .20 | .90 |
| 3½ x 12, | .20 | 1.00 |

“BLUE PRINT” PAPER.

| | 2 Doz. |
|--------------------|--------|
| 2¼ x 3¼, | \$.16 |
| 2½ x 4¼, | .16 |
| 3½ x 3½, | .16 |
| 3¼ x 4¼, | .16 |
| 4 x 5, | .20 |
| 2¼ x 7, | .20 |
| 5 x 7, | .35 |
| 3½ x 12, | .40 |

EASTMAN'S DRY PLATES.

Extra Rapid for Instantaneous Work.

| | |
|--|--------|
| 1 ½ x 2 inches, (for Pocket Kodak), per doz., | \$.20 |
| 3¼ x 3½ inches, (for No. 2 Bullet and Bullet Special), per doz., | .35 |
| 3½ x 3½ inches, (for No. 2 Eureka and No. 2 Eureka Jr.) per doz., | .35 |
| 3¼ x 4¼ inches, per doz., | .45 |
| 4 x 5 inches, per doz., | .65 |
| 5 x 7 inches, per doz., | 1.10 |

EASTMAN'S DOUBLE COATED NON- HALATION PLATES.

| | |
|-------------------------------------|--------|
| 3¼ x 4¼ inches, per doz., | \$.55 |
| 4 x 5 inches, per doz., | .80 |
| 5 x 7 inches, per doz., | 1.40 |

LANTERN SLIDE PLATES, ETC.

| | |
|--|--------|
| Plates for making Lantern Slides, per dozen, | \$.70 |
| Cover Glass for Lantern Slides, per dozen, | .35 |

CHEMICALS.

| | |
|--|--------|
| Eastman's Hydrochinon Developer Powders, per dozen, sufficient for 48 ounces Developer, | \$.50 |
| Eastman's Pyro Developer Powders, per doz., | .50 |
| Eastman's Dekko Developer Powders, per dozen, | .50 |
| Hypo-sulphite of Soda, pulverized, per pound, | .10 |
| Bromide Potassium, per ounce, | .15 |
| Citric Acid, 4 ounce bottle, | .30 |
| Oxalate Potash, per pound, | .40 |
| Protosulphate Iron, per pound, | .10 |
| Powdered Alum, per pound, | .10 |
| Solio Toning Solution, per 8 ounce bottle, | .50 |
| Solio Toning Solution can be shipped by mail in 4 ounce bottles as follows : 4 ounces Toning Solution (20c. extra postpaid), | .30 |
| Solio Hardener, per 8 ounce bottle, | .35 |

PRINTING FRAMES.

| | |
|---|--------|
| 3½ x 3½ Special, opens one-half, | \$.25 |
| 3¼ x 4¼ Special, opens one-half, | .25 |
| 4 x 5 Special, opens one-half, | .25 |
| 5 x 7 Special, opens two-thirds, | .35 |
| 3½ x 12 Special, for No. 4 Panoram-Kodak, opens in 3 sections, | .75 |
| 2¼ x 7 Special for No. 1 Panoram-Kodak, opens in 2 sec- tions, | .30 |

KODAK MOUNTS.

| | | Pocket Kodak 1½ x 2 | No. 1 Folding Pocket Kodak 2¼ x 3¼ | Folding Pocket Kodak No. 1 A 2½ x 4¼ | No. 2 3½ x 3½ | No. 3 3¾ x 4¼ | No. 4 4 x 5 | No. 5 5 x 7 | STYLE |
|---|-----------------|------------------------|--|---|------------------|------------------|----------------|----------------|---|
| White center, Queen's gray border, enameled face, plain back, | Per Doz. \$.10 | .15 | | | .20 | | .25 | | A. |
| “ 100 | “ .70 | 1.05 | | | 1.45 | | 1.70 | | |
| “ 1000 | “ 6.75 | 10.30 | | | 14.20 | | 17.00 | | |
| White or Queen's gray embossed border, straight edges, . . . | Per Doz. .10 | .10 | \$.15 | .15 | | | .20 | .30 | B. W. (white) B. G. (gray) |
| “ 100 | “ .45 | .75 | .85 | .95 | | | 1.30 | 2.30 | |
| “ 1000 | “ 4.25 | 7.45 | 8.50 | 9.25 | | | 12.75 | 22.75 | |
| White, plain straight edge, round corners, | Per Doz. | | | | | | .10 | | C. |
| “ 100 | “ .45 | | | | | | .45 | | |
| “ 1000 | “ 4.25 | | | | | | 4.25 | | |
| Primrose, plain beveled edge, round corners, | Per Doz. | | | | | | .10 | | D. |
| “ 100 | “ .65 | | | | | | .65 | | |
| “ 1000 | “ 6.20 | | | | | | 6.20 | | |
| Primrose, gilt beveled edge, round corners, | Per Doz. | | | | | | .10 | .20 | E. |
| “ 100 | “ .75 | | | | | | .75 | 1.45 | |
| “ 1000 | “ 7.45 | | | | | | 14.20 | 14.20 | |
| Maroon, gold beveled edge, round corners, | Per Doz. | | | | | | .20 | .40 | F. |
| “ 100 | “ 1.50 | | | | | | 1.50 | 3.20 | |
| “ 1000 | “ 14.75 | | | | | | 32.00 | 32.00 | |
| Scotch Gray, beveled edges, | Per Doz. .07 | .10 | .10 | .10 | .10 | .15 | .25 | | H. |
| “ 100 | “ .35 | .60 | .75 | .80 | .80 | .95 | 1.80 | | |
| “ 1000 | “ 3.40 | 6.00 | 7.45 | 7.80 | 7.80 | 9.25 | 17.75 | | |
| Ivy Green, beveled edges, | Per Doz. .07 | .10 | .10 | .10 | .10 | .15 | .25 | | I. |
| “ 100 | “ .35 | .60 | .75 | .80 | .80 | .95 | 1.80 | | |
| “ 1000 | “ 3.40 | 6.00 | 7.45 | 7.80 | 7.80 | 9.25 | 17.75 | | |
| Carbon Black, beveled edges, | Per Doz. .07 | .10 | .10 | .10 | .10 | .15 | .25 | | J. |
| “ 100 | “ .35 | .60 | .75 | .80 | .80 | .95 | 1.80 | | |
| “ 1000 | “ 3.40 | 6.00 | 7.45 | 7.80 | 7.80 | 9.25 | 17.75 | | |
| Royal Brown, beveled edges, | Per Doz. .07 | .10 | .10 | .10 | .10 | .15 | .25 | | K. |
| “ 100 | “ .35 | .60 | .75 | .80 | .80 | .95 | 1.80 | | |
| “ 1000 | “ 3.40 | 6.00 | 7.45 | 7.80 | 7.80 | 9.25 | 17.75 | | |
| Scotch Gray, square edges, | Per Doz. .06 | .08 | .09 | .10 | .10 | .12 | .20 | | L. |
| “ 100 | “ .25 | .50 | .60 | .65 | .65 | .70 | 1.60 | | |
| “ 1000 | “ 2.50 | 5.00 | 6.00 | 6.40 | 6.40 | 7.80 | 15.60 | | |
| Ivy Green, square edges, | Per Doz. .06 | .08 | .09 | .10 | .10 | .12 | .20 | | M. |
| “ 100 | “ .25 | .50 | .60 | .65 | .65 | .70 | 1.60 | | |
| “ 1000 | “ 2.50 | 5.00 | 6.00 | 6.40 | 6.40 | 7.80 | 15.60 | | |
| Carbon Black, square edges, | Per Doz. .06 | .08 | .09 | .10 | .10 | .12 | .20 | | N. |
| “ 100 | “ .25 | .50 | .60 | .65 | .65 | .70 | 1.60 | | |
| “ 1000 | “ 2.50 | 5.00 | 6.00 | 6.40 | 6.40 | 7.80 | 15.60 | | |
| Royal Brown, square edges, | Per Doz. .06 | .08 | .09 | .10 | .10 | .12 | .20 | | O. |
| “ 100 | “ .25 | .50 | .60 | .65 | .65 | .70 | 1.60 | | |
| “ 1000 | “ 2.50 | 5.00 | 6.00 | 6.50 | 6.40 | 7.80 | 15.60 | | |

When ordering state quantity, style (indicating by letter) and size prints to be used with. Bear in mind that style B is made in either white or Queen's gray. Order "style B. W." for white or "style B. G." for gray. When color is not specified we will furnish white.

PANORAM-KODAK MOUNTS.

| | |
|--|---|
| No. 4, for $3\frac{1}{2}$ x 12 prints, (style I), Ivy Green, | { Per Doz. \$.35 " 100 2.50 " 1000 25.00 |
| (style K) Royal Brown, beveled edges, | |
| No. 1, for $2\frac{1}{4}$ x 7 prints, (style I), Ivy Green, | { Per Doz. .10 " 100 .75 " 1000 7.55 |
| (style K) Royal Brown, beveled edges, | |

FLASH SPECIALTIES.

| | |
|--|--------|
| Eastman's Flash Lamp, | \$1.25 |
| Eastman's Flash Powder, per ounce bottle, | .60 |
| Eastman's No. 1 Flash Cartridges, per pkg. $\frac{1}{2}$ doz., | .60 |
| Eastman's No. 2 Flash Cartridges, per pkg. $\frac{1}{2}$ doz., | .40 |
| Eastman's No. 3 Flash Cartridges, per pkg. $\frac{1}{2}$ doz., | .25 |
| Eastman's Flash Sheets, per pkg. $\frac{1}{2}$ doz., | .25 |
| Illustrated Booklet, "Pictures by Flashlight," | .10 |

EASTMAN'S FILM CUTTING BOARDS.

For cutting up Cartridge Films for development. Holds paper and film securely. Is simple and accurate. For Kodak Cartridges only.

| | |
|--|--------|
| No. 1, $2\frac{1}{4}$ x $3\frac{1}{4}$, | \$.25 |
| No. 1 A, $2\frac{1}{2}$ x $4\frac{1}{4}$, | .25 |
| No. 2, $3\frac{1}{2}$ x $3\frac{1}{2}$, | .25 |
| No. 3, Hor., $3\frac{1}{4}$ x $4\frac{1}{4}$, ($3\frac{1}{4}$ inch spool), | .25 |
| No. 3, Ver., $4\frac{1}{4}$ x $3\frac{1}{4}$, ($4\frac{1}{4}$ inch spool), | .25 |
| No. 4, Hor., 4 x 5, (4 inch spool), | .25 |
| No. 4, Vert., 5 x 4, (5 inch spool), | .25 |
| No. 5, Vert., 7 x 5, (7 inch spool), | .35 |

TRAYS.

| | |
|---|--------|
| Paper Developing Trays, for 4 x 5, each, | \$.10 |
| Paper Developing Trays, for 5 x 7, each, | .15 |
| Hard Rubber Trays, for 4 x 5, each, | .27 |
| Hard Rubber Trays, for 5 x 7, each, | .56 |
| Japanned Metal Trays, $4\frac{1}{2}$ x $13\frac{1}{2}$, for No. 4 Panoram-Kodak, | .50 |
| "Bulls-Eye" Composition Trays, for $3\frac{1}{2}$ x $3\frac{1}{2}$, each, | .18 |
| "Bulls-Eye" Composition Trays, for 4 x 5, each, | .25 |
| "Bulls-Eye" Composition Trays, for 5 x 7, each, | .50 |

SPECIAL FERROTYPE PLATES.

| | |
|--|-------|
| 10 x 14, Ferrotypes Plates, Light, each, | \$.15 |
| 10 x 14, Ferrotypes Plates, Heavy, each, | .20 |
| 18 x 24, Ferrotypes Plates, Heavy, each, | .75 |

SUNDRIES.

| | |
|---|-------|
| Eastman's Photo Paste, per 3 ounce tube, | \$.15 |
| Eastman's Photo Paste, per 5 ounce tube, | .25 |
| Eastman's Pocket Case for Pocket Kodak Pictures, (holds 100 unmounted prints), | .50 |
| Velvet Rubber Squeegees, 6 inches, each, | .40 |
| Velvet Rubber Squeegees, 8 inches, each, | .50 |
| Eastman's Negative Pins, per box of 25, | .50 |
| 3½ x 3½ Glass for Printing Frames, each, | .05 |
| 3¼ x 4¼ " " " " " " | .05 |
| 4 x 5 " " " " " " | .05 |
| 5 x 7 " " " " " " | .05 |
| 2¼ x 7 " " No. 1 Panoram-Kodak Printing Frames, each, | .05 |
| 4 x 13 Glass for No. 4 Panoram-Kodak Printing Frames, each, | .10 |
| 4 x 13 Felt Mats for No. 4 Panoram-Kodak Printing Frames, each, | .15 |
| Eastman's Orange Candle Lamp, | .25 |
| Silk Bolting Cloth, 18 x 20 squares, fine, | 1.25 |
| " " " " " " medium, | 1.13 |
| " " " " " " coarse, | 1.00 |
| Solio Thermometers, each, | .40 |

SPECIMENS.

A specimen photograph made with any Kodak (not larger than 4 x 5) will be sent to any address in the United States upon receipt of 4 cents in postage stamps. No. 5 Cartridge Kodak specimens, 8 cents. No. 4 Panoram-Kodak specimens, 20 cents.

DEVELOPING AND PRINTING.

The Eastman Company was the first to render commercially possible the separation of the developing and printing from the picture taking. The division of labor inaugurated by it has brought picture taking within the reach of thousands of persons throughout the world who could not otherwise practice the art.

Carrying the division of labor still further, in our own factory we employ trained operators in every branch of the work. Men who do nothing but develop, girls who do nothing but print, men who do nothing but tone, girls who do nothing but mount, girls who do nothing but "spot" prints, men who do nothing but burnish, etc., etc. As a consequence each becomes skilled in his or her particular branch, and the result, under good superintendence, is good work—better work in particular and in average than can be done except under these favorable conditions.

TOURISTS.

European travelers can always obtain fresh supplies of Film on short notice, by post, from KODAK, Limited, 43 Clerkenwell Road, 171-173 Regent Street, 115 Oxford Street, or 60 Cheapside, London; the Eastman Kodak Société Anonyme Française, Avenue de l'Opera 5, Place Vendôme 4, Paris; the Eastman Kodak Gesellschaft, m. b. H., Friedrich Strasse 16, Friedrich Strasse 191, Berlin; or from KODAK, Limited, 36 Rue du Fossé aux Loups, Brussels, 29 Graben, Vienna, Bolschaja Konjuschennaja No. 1, St. Petersburg. In ordering, always remit by postal orders, or send currency in registered letter.

TERMS.

The prices in this catalogue are strictly net, except to regular dealers who carry our goods in stock.

All prices are f. o. b. at Rochester. We make no charge for packing.

For the convenience of our customers we recommend that they make their purchases from a dealer in photographic goods as by so doing they can save both time and expressage, but where orders are sent direct, remittances must be by New York draft, express order, postal order, or currency (if currency, letter must be registered). Amounts less than one dollar may be remitted in postage stamps. We do not accept personal checks.

EASTMAN KODAK COMPANY,
Rochester, N. Y.

ROCHESTER.

| | | |
|-------------------------------------|-----------------------|-----------|
| George Eastman, | - - - - - | 1880 |
| The Eastman Dry Plate Co., | - - - - - | 1881-1884 |
| The Eastman Dry Plate and Film Co., | - - - - - | 1884-1889 |
| | Capital, \$300,000. | |
| The Eastman Company, | - - - - - | 1890 1892 |
| | Capital, \$1,000,000. | |
| Eastman Kodak Company, | - - - - - | 1892 |
| | Capital, \$5,000,000. | |

LONDON.

| | | |
|---|----------------------|-----------|
| The Eastman Dry Plate and Film Co. | - - - - - | 1885-1889 |
| The Eastman Photographic Materials Co., Ltd., | - - - - - | 1890-1899 |
| | Capital, £200,000. | |
| KODAK, Limited, | - - - - - | 1899 |
| | Capital, £1,600,000. | |

PARIS.

| | | |
|---|----------------------------|------|
| The Eastman Photographic Materials Co., Ltd., | - - - - - | 1891 |
| Eastman Kodak Société Anonyme Française, | - - - - - | 1897 |
| | Capital, 1,000,000 Francs. | |

BERLIN.

| | | |
|--------------------------------------|-------------------------|------|
| Eastman Kodak Gesellschaft, m. b. H. | - - - - - | 1896 |
| | Capital, 100,000 Marks. | |

BRUSSELS.

| | | |
|-----------------|-----------|------|
| KODAK, Limited, | - - - - - | 1899 |
|-----------------|-----------|------|

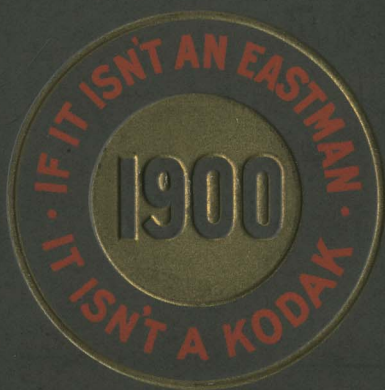
VIENNA.

| | | |
|-----------------|-----------|------|
| KODAK, Limited. | - - - - - | 1899 |
|-----------------|-----------|------|

ST. PETERSBURG.

| | | |
|-----------------|-----------|------|
| KODAK, Limited, | - - - - - | 1900 |
|-----------------|-----------|------|





BENJ. FRENCH & CO.,
319 Washington St., Boston, Mass.