

DPL



DAGUERRE 1839

KODAKS

1899

CHAS. H. LOEBER,
12 East 17th St., New York City.

The Digitized Kodak Catalog Project (1886 - 1941): A Very Brief History

Most camera collectors at some point in their collecting careers pass through a Kodak phase - some never come out of it. And if there ever was one name that came to be associated with both cameras and collecting, it was Kodak.

George Eastman received his first patent (for coating dry plates) and bought his first manufacturing facility in 1880, and in 1881 he started the Eastman Dry Plate Company. In 1886 he received a patent for the near-mythical Eastman Detective Camera, but it wasn't until 1888 that the first camera bearing the name "Kodak" was introduced.

One of the nice things about collecting Kodak is that the product line is pretty well known, and because the company produced annual catalogs for many years, collectors can be reasonably sure of what they're looking at, when it was made, the variations and so on - presuming that they have access to either the appropriate catalog, or a number of the many books which document Kodak, each to some greater or lesser extent.

But what would be really nice would be to have a complete set of Kodak catalogs in an easily accessible form and readily available. And since the advent of portable computing devices (PC, Macintosh, etc.) that's been possible - except for the difficulty of assembling a complete set of Kodak catalogs in one spot and then scanning them and making the results available.

The idea of digitizing a complete set of Kodak catalogs has kicked around the collecting community for many years. It's been proposed on a number of online forums, during meetings of various photohistory groups, and for years there have been many incomplete "Kodak CDs" on eBay but at best, they only contained a few catalogs - whatever the owner had available. But assembling a complete set of catalogs, then scanning and processing perhaps 3,000 to 4,000 pages, was a daunting task - if not completely overwhelming - and nothing ever came of it.

Until now.

In early 2010, the idea came up again, but this time we - "we" as in "the collecting community" - were lucky. A number of collectors were willing to loan their catalogs to this project and a couple of insane - wait, let's call them "dedicated" - dedicated enthusiasts - neither of whom collected Kodak, but both of whom enjoyed the challenge of such a project - were willing to put in the time and effort to scan and pull together the entire set of catalogs into a full-blown Kodak Catalog Digital Library.

Our initial objective was to include just the annual amateur catalogs, but it turns out that many cameras only appear in certain professional and specialty catalogs. We included as many of those as we could obtain so that almost every Kodak camera made in the US, Canada and Europe, would be documented - at least up to about 1941. After that, it becomes much more difficult as Kodak stopped producing annual catalogs as their product line became increasingly more diversified.

However, even with the additional "non-amateur" catalogs, we weren't completely successful in illustrating "every" camera Kodak ever made. There are an elusive few that might appear in specialty catalogs that we simply couldn't track down. If you can't find one of those odd cameras, that's no doubt why. We may do a revision at some point in the future if someone is willing to loan us a catalog that includes a camera that isn't already recorded.

In this project, a total of 67 catalogs were used from 1886 through 1941 including a number of professional and dealer catalogs, and in some years, two or even three different catalogs to cover all the bases. With the cooperation of a number of dedicated collectors, we were able to pull together all those catalogs and in June 2010, the project started in earnest.

By November 2010, we had scanned everything we needed and eventually all 67 catalogs were then reassembled as image folders and converted to the universally accepted PDF format and finally, converted into individually searchable PDFs which could then be searched globally as a collection.

For those of you interested in the statistics: about 200 hours of scanning time (we never want to hear that sound again), 67 catalogs and 3,908 page scans - which generated 7,917 original and processed images - and 11.4 GB of disk space. Additionally, another 100+ hours of technical development time was needed to convert the digital catalogues into a fully searchable "knowledgebase" that could be launched from most any standard web browser.

The overwhelming number of catalogs was loaned to us by that most remarkable of Kodak collectors, Charlie Kamerman of Eagle Creek, Oregon. Without Charlie, it's very doubtful that this project could even have been attempted.

But as it turned out, even Charlie didn't have all the publications that were needed, but he was able to track down the five that he lacked and was able to secure either a copy or high resolution images that we could work with. And so, our thanks to the contributors of the catalogs and scans that we used:

Charlie Kamerman for the vast majority of catalogs used and all his help,
Steve Shoet for loaning a variety of test catalogs,
Ryerson University (Toronto) for the 1886 Eastman Catalog
George Layne for the 1890 New Kodaks Catalog,
Mike Kessler for the 1891 Dealer Display Catalog,
Ralph London for the 1893 UK Catalog,
Michael Pritchard for the 1897 UK Catalog.

The digital side of the project - also known as "all of the work" - was done by Rob Niederman of Medina, Minnesota, and Milan Zahorcak of Tualatin, Oregon. Remarkably we're still friends and in a few years, we'll probably be able to talk about this project rationally.

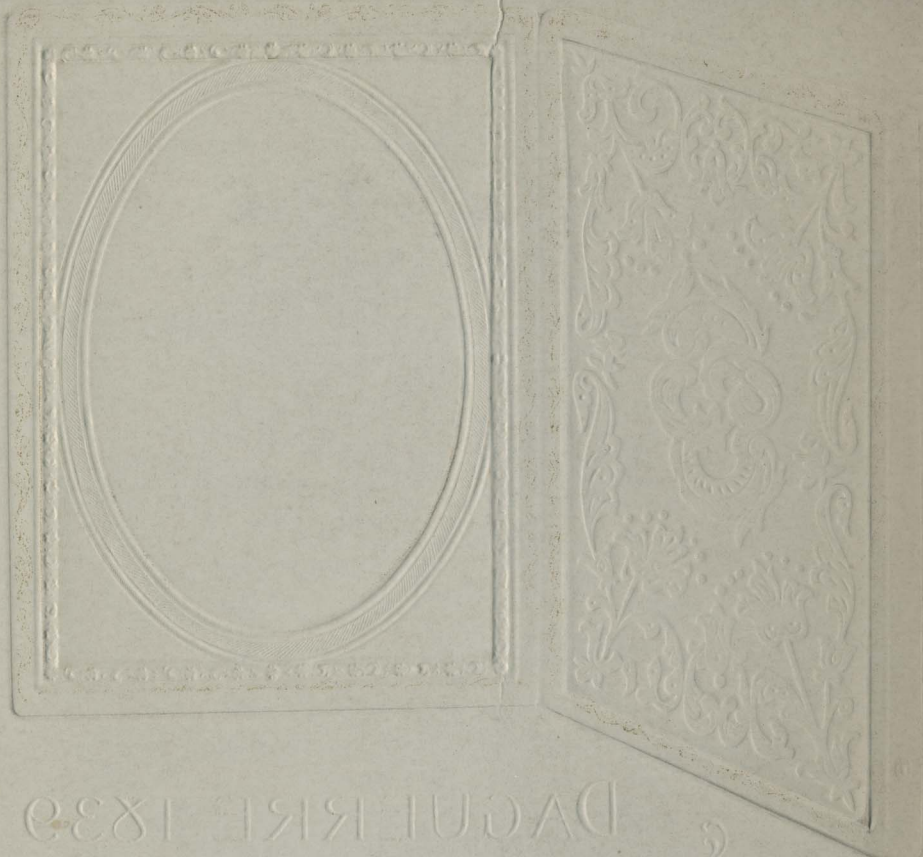
And there you have it, a more-or-less done deal. We're fairly sure that it isn't quite perfect, and expect there will be some carping about something or other; but all-in-all, we believe this to be a pretty good product and can now move on to something else.

Our thanks to all of those involved.

Rob Niederman
Milan Zahorcak

Fall, 2011

Compliments of the Digitized Kodak Catalog Project: 1886 - 1941



DAGUERRE 1839

KODAK

1889

DPL 174

KODAKS

1899

◆

*EASTMAN KODAK COMPANY,
Rochester, N. Y.*

*KODAK, Limited,
London.*

*EASTMAN KODAK SOCIÉTÉ ANONYME FRANÇAISE,
Paris.*

*EASTMAN KODAK GESELLSCHAFT, m. b. H.
Berlin.*

A DIVERSION.

IT'S a long step from Daguerre to the '99 Kodak. Not long in years, perhaps, but it marks a marvelous stride in photographic advancement. Could the father of the process which bears his name look from the gilded frame of the old Daguerreotype case and note the contrast between the photography of 1839 and that with which he was familiar, he could but marvel!

A process once difficult, full of uncertainties, and limited in its scope, has, in three score years, become so simple that a boy or girl can master it; so certain that success can always be depended upon, and of such unlimited scope as to be employed in every science, in every profession, in every branch of business. Yet it is, perhaps, in its recreative features that the greatest value of photography lies. Whether used for the mere storing up of pleasant vacation memories, or for the pursuit of photography as an art, Kodaking possesses the charm of interest. It gives rest to the busy mind by turning it into channels new—it educates the young in art, in chemistry, and above all, induces a habit of observation.

And the Kodaker may pursue the art just so far as his fancy dictates. He may "press the button" and leave it to us to "do the rest," he may go a step further and do his own developing and printing, or if so inclined, may delve among the delightful mysteries of photographic chemistry and the intricacies of photographic optics. You already have another pet diversion? (Hobby, if you like.) Then the Kodak can unobtrusively add to its charms.

You are fond of travel? Kodak what you see from your own point of view. Take the picture, through your own eyes, as it

were—it will have tenfold the interest of any “view” that you can purchase.

You hunt or fish? Take a Kodak to the woods or lake. Picture the deer as he wades mid-leg among the lily pads or the salmon as he leaps the waterfall. Picture your camp, your dog, as, with every sense alert, he stands at point; and photograph your friends of outing days.

You are fond of golf? What better subjects for the camera than the picturesque links and the equally picturesque costumes of the golfers?

You are a cyclist? You can attach a Kodak to the wheel as easily as a tool bag, and distance has no terrors for you. Every picturesque bit of roadway, every cooling stream and rustic bridge, each stretch of somber marsh land, each ancient water mill half fallen to decay offers itself, a tempting subject.

And the children? Here, indeed, lies the true “witchery of Kodakery.” In nurse’s arms, toddling from chair to chair, playing with blocks or “choo-choo cars,” indoors or out, morning, noon and night *the* baby presents innumerable poses, thoroughly original and unconventional.

And so photography adds to the interests that we already enjoy, yet itself is so broad, so full of pleasing diversion that with many it supplants everything else as a means of recreation.

KODAK SIMPLICITY.

FREED from the annoying details with which it was formerly associated photography gains a double charm. In the Kodak the amateur has an instrument which adds to the delights of picture taking by making it simple and easy and yet is lacking in nothing that is required for the very best photographic work.

In every detail the Kodak is constructed with a view to simplicity, but the "Cartridge System," which is the Kodak's distinguishing feature, marks its superiority over other cameras.

COMPARATIVE WEIGHT.

All 1899 Kodaks use our light proof film cartridges. They weigh but ounces where plates weigh pounds. A cartridge of twelve exposures 4 x 5, for instance, tips just 2½ ozs., while an equivalent in glass plates and the necessary holders weighs three pounds, about twenty times as much.



FILM CARTRIDGE.

NON-BREAKABLE.

The cartridges are non-breakable ; a half dozen can be carried in the pocket without inconvenience and they may be sent by mail without fear of damage.

DAYLIGHT LOADING.

Above all is the convenience of loading and unloading the Kodak in broad daylight.

In the cartridge system the film is put up in light-tight rolls that may be inserted in the Kodak anywhere at any time. Extending the full length of the strip of film and several inches

beyond each end is a strip of black paper, which, in connection with the flanges on the spool, forms a light-proof cartridge.

After inserting the cartridge spool in the Kodak and threading up the black paper the camera is closed and the key turned until the black paper has been reeled off and the sensitive film brought into place in the focal plane ready for the picture taking to begin. The black paper runs with and behind the film, and at proper intervals is marked in white with the number of the section of film, 1, 2, 3, etc. In the back of the camera is a small window of red celluloid through which the figures appear as the key is turned. The figures as seen through the window thus show just how far to turn the key and how many exposures have been made. After all the exposures have been made a few extra turns of the key entirely covers the film with black paper and the Kodak may be unloaded in daylight.

LENSES.

Every lens used by us is tested by our own inspector. We believe that no other camera manufacturers go to this trouble and expense. Every lens is therefore tested twice—by the lens maker's inspector and by our inspector. We know that however good an instrument may be in other respects it will prove a practical failure if it has a poor lens—our inspection is, therefore, made with extreme care, and the uniformly excellent work done by Kodak lenses is proof of the wisdom of our policy in this particular.

Folding Pocket Kodaks, Falcon, Bullet and Bulls-Eye Kodaks and the No. 2 and 4 Eureka Cameras have strictly achromatic lenses. The Bullet and Bulls-Eye Special, the Cartridge Kodaks and the Panoram-Kodaks have lenses that are not only achromatic but are rapid rectilinear as well, and all of our lenses are of sufficient focal length to avoid that disagreeable distortion found in some hand camera work. *We allow none but perfect lenses to be used.*

SHUTTERS.

All the shutters used in our cameras are mechanically accurate, are adapted to either time exposures or instantaneous work, and are provided with suitable sets of stops.

ADAPTABILITY.

Snap shots out of doors, time exposures indoors and flashlights at night all come within the scope of the Cartridge System cameras. Pocket Kodaks, Cartridge Kodaks and Bullets use either plates or films and can be fitted with plate-holders, while the No. 2 Falcon, No. 2 Bulls-Eye, the Nos. 2 and 4 Bulls-Eye Specials and the Folding Pocket Kodaks can be readily used for making single plate exposures. They do not take plate-holders but when a single plate exposure is to be made in or near the house a plate can be put in position in the camera in a few seconds.

TRANSPARENT FILM.

The advantages of a light, transparent roll film over glass plates for outdoor work are so obvious that film is rapidly superseding glass plates for all except gallery work. The best amateur photographers the world over, the prize winners in the photographic exhibitions of both continents are counted among the users of the Kodak and film. Even the convenience of film would not tempt such people to use it were they not satisfied that it gave the very best results—better average results than glass plates. For all work where there is a tendency to halation, film cartridges are far better than plates, owing to the thin support backed by black paper giving back no reflection.

FOR THE CYCLIST.

Pocket Kodaks, Folding Pocket Kodaks, Folding Bulls-Eyes, No. 2 Falcons, No. 2 Bullets, No. 2 Bulls-Eyes, No. 2 Bullet Specials, No. 2 Bulls-Eye Specials, No. 4 and No. 5 Cartridge

Kodaks are especially adapted to use awheel. They are so light as to add no perceptible weight to the wheel and we have prepared a line of carrying cases for them that are light, convenient and practical. They are the result of a long series of experiments, are made to withstand wear and tear and have been given severe tests on all kinds of roads.

A BOOK OF INSTRUCTION.

With every camera we furnish a carefully written and handsomely illustrated instruction-book, which explains each step of the picture taking and picture making in non-technical terms that anyone can understand. Many amateurs enjoy work in the dark room, and find as much pleasure in the making as in the taking of photographs. Films are quite as easy to handle in the developer as plates and are far less liable to injury. "*You can do the rest.*"

"WE DO THE REST."

Film cartridges can readily be sent through the mails when desired and our old offer still holds good :

" You press the button, we do the rest."

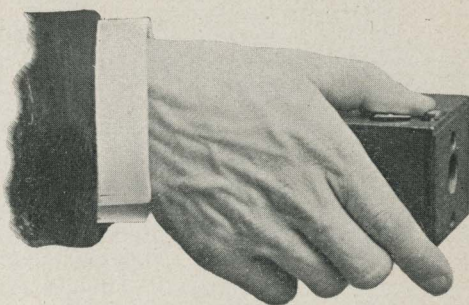
EASTMAN KODAK CO.,

Rochester, N. Y.

THE POCKET KODAK.

Measures $2\frac{3}{8}$ x $2\frac{7}{8}$ x $3\frac{7}{8}$ inches, makes a picture $1\frac{1}{2}$ x 2 inches, and weighs only 6 ounces.

The lens is carefully tested, and has a fixed focus of sufficient length, ($2\frac{1}{2}$ inches) to avoid distortion.



Built on the "Cartridge System" and can be loaded in daylight. Has improved rotary shutter and set of three stops for lens. The slides for changing stops and for time exposures are alongside of the exposure lever and always show by their position what stop is before the lens and whether the shutter is set for time or instantaneous exposures, thus acting as a warning.

A Plate Holder for glass plates can be provided with each Pocket Kodak, no extra attachment being required. The change from a film to a plate camera can be made in a few seconds.

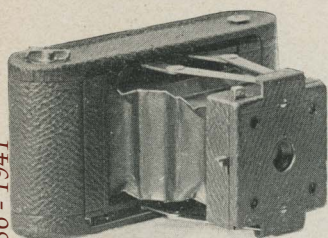
A rectangular Finder is provided for locating the image with accuracy. The construction is simple and accurate.

In the quality of work they will do, Pocket Kodaks equal the best cameras on the market. They make negatives of such perfect quality that enlargements of any size can be made from them. We do it, at a reasonable price, or you can do it yourself with a Bulls-Eye enlarging camera.

The Pocket Kodaks are covered with fine leather, and the trimmings are handsomely nickeled. They are elegant, artistic and durable.

Can be readily carried on the bicycle by use of our special cases. See page 30.

Pocket Kodak covered with fine leather, with roll of film for 12 exposures, - - - - -	\$5 00
Leather Hand Carrying Case (for Pocket Kodak and three extra spools of film). Price of case only, - - - - -	75
Light Proof Film Cartridge, 12 exposures, - - - - -	25
Complete A B C Developing and Printing Outfit, - - - - -	1 50

No. 1 FOLDING POCKET KODAK.

For rectangular pictures $2\frac{1}{4} \times 3\frac{1}{4}$ inches; capacity, 12 exposures without reloading; size of Kodak, $1\frac{5}{8} \times 3\frac{1}{2} \times 6\frac{3}{4}$ inches; weight, $14\frac{1}{2}$ ounces; length of focus of lens, 4 inches.

In this Kodak we have adapted the Film Cartridge System to an instrument that has been appropriately called a "Photographic Pocket Piece." Though but a trifle over one and one-half inches in thickness and so light as hardly to be noticed when carried in the pocket, it is in every way a complete camera.

The lenses used in these instruments are specially ground, are strictly achromatic, are carefully tested by an experienced inspector and have a fixed focus of 4 inches, a sufficient length to avoid that violent perspective which is so disagreeable in many amateur photographs. They are in short the finest achromatic lenses that can be made, covering the plate clear and sharp to the very corners.

The shutter is entirely new and is simplicity itself. It is always set. A single downward pressure on one exposure lever makes a snap shot. The instant the pressure is removed the shutter sets itself ready for the next exposure. A pressure on another lever opens the shutter for time exposure while a second pressure closes it.

It has a set of three stops and is equipped with two view finders, one for vertical and one for horizontal exposures. There are no loose parts to become lost or mislaid, and to load the instrument is simplicity itself. Made of aluminum, covered with the finest black morocco, with handsomely nicked fittings, it is at once strong, dainty and durable. In short, the Folding Pocket Kodak is an instrument of the finest quality and workmanship, but of the smallest compass; and though a practical pocket camera makes pictures of good size and of artistic shape and so sharp that they can be enlarged to any size.

Can be readily carried on the bicycle by the use of our special cases. See pages 31 and 32.

No. 1 Folding Pocket Kodak with achromatic lens, not loaded,	- \$10 00
Light-proof Film Cartridge, 12 exposures, $2\frac{1}{4} \times 3\frac{1}{4}$,	- - - 40
Black Sole Leather Carrying Case,	- - - 1 25
Complete A B C Developing and Printing Outfit,	- - - 1 50

No. 2 FOLDING POCKET KODAK.

For square pictures $3\frac{1}{2} \times 3\frac{1}{2}$ inches; capacity, 12 exposures without reloading; size of Kodak, $1\frac{1}{2} \times 4\frac{1}{2} \times 6\frac{3}{4}$ inches; weight, $16\frac{1}{2}$ ounces, length of focus of lens, $4\frac{1}{2}$ inches.

In the No. 2 Folding Pocket Kodak we have adapted the popular $3\frac{1}{2} \times 3\frac{1}{2}$ size to a pocket instrument of extreme lightness and mechanical perfection. It slips readily into an ordinary coat pocket and being in every way equipped for the best photographic work it marks a distinct advance in Pocket Photography.

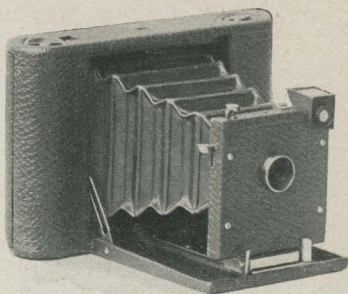
The lenses are the finest meniscus achromatic, having wonderful depth, definition and speed and cover fully with the largest stop opening. They have a fixed focus of $4\frac{1}{2}$ inches, a sufficient length to overcome the violent perspective seen in so many hand camera pictures, and each one is given a rigid photographic test by our own inspector.

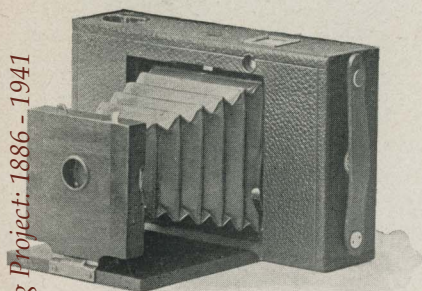
The shutter is the same as that which during 1898 proved so deservedly popular on the No. 1 Folding Pocket. It is always set. A single downward pressure on one exposure lever makes a snap shot. The instant the pressure is removed the shutter sets itself ready for the next exposure. A pressure on another lever opens the shutter for time exposure, while a second pressure closes it.

Fitted with set of three stops, socket for tripod screw and square finder. There are no loose parts to become lost or mislaid, and to load the instrument is simplicity itself. Made of aluminum covered with the finest black morocco, with handsomely nicked fittings, it is at once strong, dainty and durable. An instrument of the finest quality and workmanship, but of the smallest compass. Makes pictures of good size and so sharp that they can be enlarged to any size.

Can be readily carried on the bicycle by the use of our special cases. See pages 31 and 32.

No. 2 Folding Pocket Kodak with achromatic lens, not loaded,	-	\$15	00
Light-proof Film Cartridge, 12 exposures, $3\frac{1}{2} \times 3\frac{1}{2}$,	-	-	60
Black Sole Leather Carrying Case,	-	-	1 25
Complete Bulls-Eye Developing and Printing Outfit,	-	-	1 00



No. 2 FOLDING BULLS-EYE KODAK.

For square pictures $3\frac{1}{2}$ x $3\frac{1}{2}$ inches; capacity, 12 exposures without reloading; size of camera closed, $1\frac{3}{4}$ x $4\frac{5}{8}$ x $7\frac{1}{8}$ inches; weight, 15 ounces; length of focus of lens, $4\frac{1}{2}$ inches.

Being but $1\frac{3}{4}$ inches in thickness when closed is very convenient to carry. Will go in an ordinary overcoat pocket.

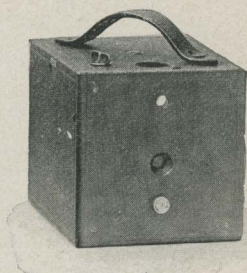
Built on the "Cartridge System," and can be loaded in daylight. Fitted with fixed focus, achromatic lens, set of three stops, socket for tripod screw and improved rotary shutter for snap shots or time exposures. The slides for changing stops and for time exposure are near the exposure lever and always indicate by their position what stop is before the lens, and whether the shutter is set for time or instantaneous exposure. There is, therefore, no danger of committing the too common error of making snap shots with the smallest stop in the lens, or setting the shutter for a time exposure when a snap shot is intended, or vice versa. Handsomely finished with fine grain leather covering.

Can be readily carried on the bicycle by use of our special clamps and the regular hand case. See page 33.

No. 2 Folding Bulls-Eye Kodak, for $3\frac{1}{2}$ x $3\frac{1}{2}$ pictures,	-	-	\$10 00
Transparent Film Cartridge, 12 exposures, $3\frac{1}{2}$ x $3\frac{1}{2}$,	-	-	60
Black Sole Leather Carrying Case with strap,	-	-	1 25
Complete Bulls-Eye Developing and Printing Outfit,	-	-	1 00

No. 2 FALCON KODAK.

For square pictures $3\frac{1}{2}$ x $3\frac{1}{2}$ inches; capacity, 12 exposures without reloading; size of camera, $4\frac{1}{2}$ x $4\frac{1}{2}$ x $5\frac{3}{4}$ inches, = 116 cubic inches; weight, 19 ounces; length of focus of lens, $4\frac{1}{2}$ inches.



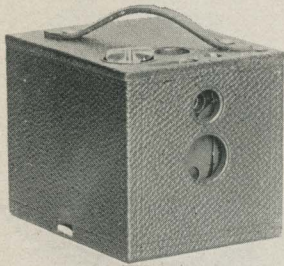
This camera is built on the Cartridge System and can be loaded in daylight. The No. 2 Falcon lenses have a fixed focus of $4\frac{1}{2}$ inches, are strictly achromatic and are given the most rigid tests. No other five dollar camera is equipped with a lens of equal depth, definition and rapidity. Set of three stops, view finder, socket for tripod screw and safety shutter, which is perfectly adapted to time or instantaneous exposures.

Well made, covered with grain leather and handsomely finished.

Can be readily carried on the bicycle by use of our special cases. See pages 34 to 37.

NOTE—The prospective purchaser should bear in mind that the price of the Falcon Kodak includes every requisite for taking pictures except the film, whereas the price of most of the so-called five-dollar plate cameras includes only one plate holder, and a further expenditure of \$2 or \$3 is necessary if it is desired to make more than two exposures between each trip to the dark room.

No. 2 Falcon Kodak, not loaded,	-	-	-	-	\$5 00
Light-proof Film Cartridge, 12 exposures, $3\frac{1}{2}$ x $3\frac{1}{2}$,	-	-	-	-	60
Black Sole Leather Carrying Case,	-	-	-	-	1 25
Complete Bulls-Eye Developing and Printing Outfit,	-	-	-	-	1 00

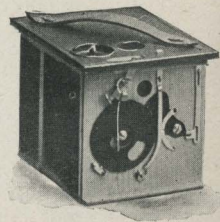
No. 2 BULLS-EYE KODAK.**READY FOR USE.**

For square pictures, $3\frac{1}{2} \times 3\frac{1}{2}$ inches; capacity, 12 exposures without reloading; size of camera, $4\frac{1}{2} \times 4\frac{1}{2} \times 5\frac{3}{4}$ inches = 116 cubic inches; weight, 24 ounces; length of focus of lens, $4\frac{1}{2}$ inches.

This camera is built on the "Cartridge System," and can be loaded in daylight. Fitted with fixed focus, meniscus achromatic lens of the finest quality, set of three stops, socket for tripod screw, and improved rotary shutter for snap shots or time exposures. The slides for changing shutter stops and for time exposure are alongside of the exposure lever and always indicate by their position what stop is before the lens, and whether the shutter is set for time or instantaneous exposure. There is, therefore, no danger of committing the too common error of making snap shots with the smallest stop in the lens, or setting the shutter for a time exposure when a snap shot is intended, or vice versa. Handsomely finished with fine grain leather covering and nicked fittings.

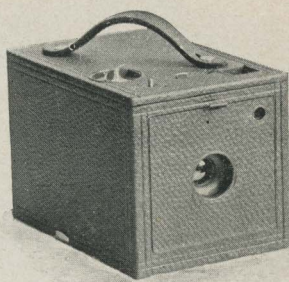
Can be readily carried on the bicycle by use of our special cases. See pages 34 to 37.

No. 2 Bulls-Eye Kodak fitted with achromatic lens, not loaded,	-	-	-	\$8 00
Light-proof Film Cartridge, 12 exposures, $3\frac{1}{2} \times 3\frac{1}{2}$,	-	-	-	60
Black Sole Leather Carrying Case,	-	-	-	1 25
Complete Bulls-Eye Developing and Printing Outfit,	-	-	-	1 00

**SHOWING SHUTTER.**

No. 2 BULLS-EYE SPECIAL KODAK.

For square pictures $3\frac{1}{2} \times 3\frac{1}{2}$ inches; capacity, 12 exposures without reloading; size of camera, $4\frac{1}{2} \times 4\frac{5}{8} \times 6\frac{3}{4}$ inches = 140 cubic inches; weight, 28 ounces; length of focus of lens, 5 inches.



This instrument combines the extreme simplicity of the Cartridge System as exemplified in the No. 2 Bulls-Eye with a shutter and lens of the finest quality.

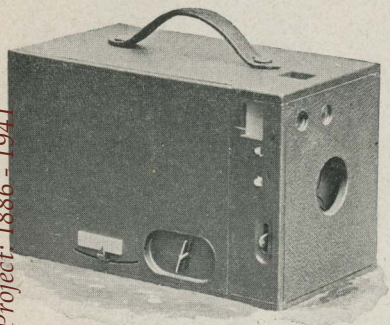
The shutter is, in fact, the Eastman triple action which is furnished with the Cartridge Kodaks but arranged to work with a finger release instead of with a bulb. It has three speeds for instantaneous exposures and by the moving of a single lever can be instantly changed from instantaneous to time or to "Lever" exposures, the latter being used for very short "time exposures," the shutter remaining open as long as the exposure lever is kept under pressure, and closing the instant it is released. This shutter is fitted with iris diaphragm stops graduated for Nos. 4, 8, 16, 32, 64 and 128. The shutter is set and operated without opening the front except to change stops or change action from time to instantaneous or vice versa.

No expense has been spared in fitting this instrument with a lens of the finest quality. It has a fixed focus, a length of 5 inches, is strictly rectilinear and very rapid with wonderful depth and definition. Every lens being carefully tested by our own expert the highest quality will be maintained. In short, each one must be perfect.

This Kodak has square finder, socket for tripod screw, nickered fittings, is covered with fine black morocco and beautifully finished.

Can be readily carried on a bicycle by the use of our special cases. See pages 34 to 37.

No. 2 Bulls-Eye Special Kodak, with rapid rectilinear lens and Eastman triple action shutter with iris diaphragm stops, not loaded,	-	-	-	-	\$15 00
Light-proof Film Cartridge, 12 exposures, $3\frac{1}{2} \times 3\frac{1}{2}$,	-	-	-	-	60
Black Sole Leather Carrying Case,	-	-	-	-	1 25
Complete Bulls-Eye Developing and Printing Outfit,	-	-	-	-	1 00

No. 4 BULLS-EYE KODAK.

For rectangular pictures, 4 x 5 inches ; capacity, 12 exposures without reloading. Size of camera, 5 x 5 $\frac{7}{8}$ x 9 $\frac{1}{4}$ inches = 268 cubic inches ; weight, 2 pounds, 10 ounces ; length of focus of lens, 6 $\frac{1}{4}$ inches.

The No. 4 Bulls-Eye is fitted with an achromatic lens of superior quality, having a set of three stops ; has two finders, one for vertical and one for horizontal exposures ; and is also provided with two sockets for tripod screws, one for vertical and one for horizontal exposures. Fitted with our improved rotary shutter, for snap shots or time exposures. The slides for changing stops and for time exposures are alongside of the exposure lever and always show by their position what stop is before the lens, and whether the shutter is set for time or instantaneous exposure. There is, therefore, no danger of committing the too common error of making snap shots with the smallest stop in the lens, or setting the shutter for time exposures when a snap shot is intended, or vice versa. It has a carefully adjusted focusing scale, and, being built on the "Cartridge System," can be loaded in daylight. Handsome finish, nickel fittings, covered with fine leather.

No. 4 Bulls-Eye Kodak, fitted with achromatic lens (not loaded),	\$12 00
Light-Proof Film Cartridge, 12 exposures, 4 x 5,	90
Black Sole Leather Carrying Case,	2 00
Complete A B C Developing and Printing Outfit,	1 50

No. 4 BULLS-EYE SPECIAL KODAK.

For rectangular pictures 4 x 5 inches; capacity, 12 exposures without reloading; size of camera, 5 x 5 $\frac{7}{8}$ x 8 $\frac{3}{4}$ inches = 257 cubic inches; weight, 2 lbs. 12 ozs., length of focus of lens, 6 $\frac{1}{2}$ inches.

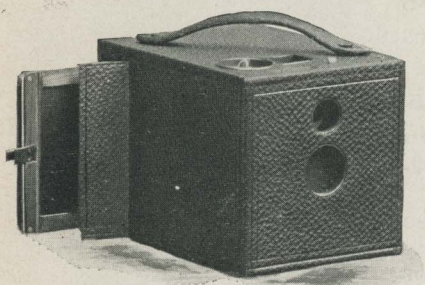


This instrument combines with the simplicity of the original No. 4 Bulls-Eye, a rapid rectilinear lens of superior quality and the Eastman triple action shutter, which has given such perfect satisfaction on the Cartridge Kodak. The shutter is, however, arranged to work with finger release instead of bulb. It has three speeds for instantaneous exposures and by the moving of a single lever can be instantly changed from instantaneous to time or to "Lever" exposures, the latter being used for very short "time exposures," the shutter remaining open as long as the exposure lever is kept under pressure, and closing the instant it is released. This shutter is fitted with iris diaphragm stops graduated for Nos. 4, 8, 16, 32, 64 and 128. The shutter is set and operated without opening the front except to change stops or change action from time to instantaneous or vice versa.

Fitted with two finders, one for vertical and one for horizontal exposures and two sockets for tripod screw. It has a carefully adjusted focusing scale and being built on the Cartridge System can be loaded in daylight.

The construction is of the strongest, the finish rich and elegant. The No. 4 Bulls-Eye Special Kodak is in short the most convenient of high grade 4 x 5 cameras and will be fully appreciated by those who demand the very best in camera construction but who prefer the box to the folding form because it is always ready for use. Covered with fine black morocco with nickeled fittings.

No. 4 Bulls-Eye Special Kodak, rapid rectilinear lens, Eastman triple action shutter, with iris diaphragm stops (not loaded),	\$20 00
Light proof film cartridge, 12 exposures, 4 x 5, - - - - -	90
Black Sole Leather Carrying Case, - - - - -	2 00
Complete A B C Developing and Printing Outfit, - - - - -	1 50

No. 2 BULLET KODAK. FOR FILMS AND PLATES.

For square pictures, $3\frac{1}{2} \times 3\frac{1}{2}$ inches; capacity, 12 exposures without reloading; size of camera, $4\frac{5}{8} \times 4\frac{3}{4} \times 6\frac{1}{4}$ inches = 137 cubic inches; weight, 26 ounces; length of focus of lens, $4\frac{1}{2}$ inches.

SHOWING NO. 2 BULLET ADAPTED TO PLATES.

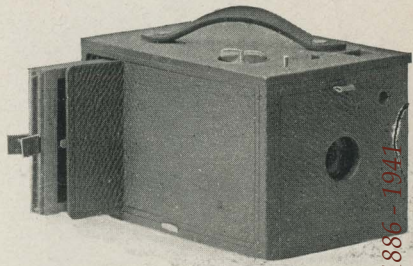
The Improved Bullet uses either roll films or glass plates (with plates the picture is $3\frac{1}{4} \times 3\frac{1}{2}$ inches), and being built on the "Cartridge System," can be loaded in daylight. It is fitted with a fixed focus, meniscus achromatic lens, set of three stops, square finder, socket for tripod screw, and has our improved rotary shutter for snap shots or time exposures. The slides for changing stops and for time exposures are alongside of the exposure lever and always show by their position what stop is before the lens, and whether the shutter is set for time or instantaneous exposure. There is, therefore, no danger of committing the too common error of making snap shots with the smallest stop in the lens, or setting the shutter for a time exposure when a snap shot is intended, or vice versa. Handsome finish, nickel fittings, covered with fine leather.

Can be readily carried on the bicycle by use of our special cases. See pages 34 to 37.

No. 2 Bullet Kodak, for film and plates, fitted with achromatic lens, (not loaded),	-	-	-	-	-	-	\$10 00
Light-proof Film Cartridge, 12 exposures, $3\frac{1}{2} \times 3\frac{1}{2}$,	-	-	-	-	-	-	60
Single Plate Holders ($3\frac{1}{4} \times 3\frac{1}{2}$ inches) each,	-	-	-	-	-	-	60
Black Sole Leather Carrying Case,	-	-	-	-	-	-	1 25
Complete Bulls-Eye Developing and Printing Outfit,	-	-	-	-	-	-	1 00

No. 2 BULLET SPECIAL KODAK. FILMS AND PLATES.

For square pictures, $3\frac{1}{2} \times 3\frac{1}{2}$ inches; capacity, 12 exposures without re-loading; size of camera, $4\frac{3}{4} \times 4\frac{3}{4} \times 7\frac{1}{2}$ inches = 182 cubic inches; weight, 2 lbs., 1 oz.; length of focus of lens, 5 inches.



SHOWING NO. 2 BULLET SPECIAL ADAPTED TO PLATES.

This instrument combines the extreme simplicity of the Cartridge System with a shutter and lens of the finest quality and can be used with film cartridges or glass plates. (With plates the picture is $3\frac{1}{4} \times 3\frac{1}{2}$ inches.)

The shutter is the Eastman triple action but arranged to work with a finger release instead of with a bulb. It has three speeds for instantaneous exposures and by the moving of a single lever can be instantly changed from instantaneous to time or to "Lever" exposures. The shutter is fitted with iris diaphragm stops graduated for Nos. 4, 8, 16, 32, 64 and 128. The shutter is set and operated without opening the front except to change stops or change action from time to instantaneous or vice versa.

No expense has been spared in fitting this instrument with a lens of the finest quality. It has a fixed focus of 5 inches, is strictly rectilinear and very rapid with wonderful depth and definition.

Square finder, socket for tripod screw, covered with fine black morocco. Nickel fittings and beautiful finish.

Can be readily carried on a bicycle by the use of our special cases. See pages 34 to 37.

No. 2 Bullet Special Kodak, for film and plates, with rapid rectilinear lens and Eastman triple action shutter with iris diaphragm stops, not loaded,	-	-	-	-	\$18 00
Light-proof film cartridge, 12 exposures, $3\frac{1}{2} \times 3\frac{1}{2}$,	-	-	-	-	60
Double Plate Holders ($3\frac{1}{4} \times 3\frac{1}{2}$) each,	-	-	-	-	1 00
Black Sole Leather Carrying Case,	-	-	-	-	1 25
Complete Bulls-Eye Developing and Printing Outfit,	-	-	-	-	1 00

No. 4 BULLET KODAK. FOR FILMS AND PLATES.

For rectangular pictures, 4 x 5 inches; capacity, 12 exposures without reloading; size of camera, $5\frac{1}{4}$ x 6 x $9\frac{3}{4}$ inches = 307 cubic inches; weight, 3 pounds; length of focus of lens, $6\frac{1}{4}$ inches.

The No. 4 Bullet uses either roll films or glass plates, and, being built on the "Cartridge System," can be loaded in daylight. It is fitted with an achromatic lens, set of three stops, two finders, one for vertical and one for horizontal exposures, two sockets for tripod screw, and has our improved rotary shutter for snap shots or time exposures. The slides for changing stops and for time exposures are alongside of the exposure lever and always show by their position what stop is before the lens, and whether the shutter is set for time or instantaneous exposure. There is, therefore, no danger of committing the too common error of making snap shots with the smallest stop in the lens, or setting the shutter for a time exposure when a snap shot is intended, or vice versa. Handsome finish, with nickel fittings, and covered with fine leather.

No. 4 Bullet Kodak, for film and plates, fitted with achromatic lens (not loaded),	-	-	-	-	-	-	-	\$15 00
Light-proof Film Cartridge, 12 exposures, 4 x 5,	-	-	-	-	-	-	-	90
Single Plate Holders, (4 x 5 inches), each,	-	-	-	-	-	-	-	75
Black Sole Leather Carrying Case,	-	-	-	-	-	-	-	2 00
Complete A B C Developing and Printing Outfit,	-	-	-	-	-	-	-	1 50

No. 4 BULLET SPECIAL KODAK. FILM AND PLATES.

For rectangular pictures 4 x 5 inches; capacity 12 exposures without reloading; size of camera, 5½ x 6¼ x 10¾ inches = 373 cubic inches; weight, including roll holder, 3 lbs. 12 ozs.; length of focus of lens, 6½ inches.

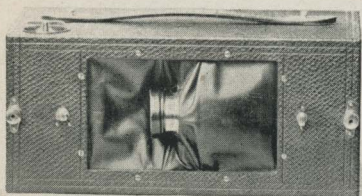


In the No. 4 Bullet Special Kodak we offer in box form an instrument of the highest grade and greatest efficiency. Adapted to either plates or film cartridges. Has the finest rapid rectilinear lenses, Eastman triple action shutter, and is capable of a wide range of work. It is simple to operate, instantly ready for use, is of the strongest construction and is rich and elegant in finish. Unlike the other Bullet Kodaks the roll holder is detachable (the regular No. 4 horizontal Cartridge Roll Holder, see page 29), and being equipped with a dark slide is interchangeable with plate holders in the field and permits of focusing on the ground glass when using film.

The shutter is the Eastman pneumatic arranged to work with a finger release instead of a bulb. It has three speeds for instantaneous exposures and by the moving of a single lever can be instantly changed from instantaneous to time or to "Lever" exposures. Fitted with iris diaphragm stops graduated for Nos. 4, 8, 16, 32, 64 and 128. The shutter is set and operated without opening the front. Fitted with finders and tripod sockets for both vertical and horizontal exposures and has carefully adjusted focusing scale. Handsome leather covering, nickeled fittings.

No. 4 Bullet Special Kodak, for film or plates, including Cartridge Roll Holder, and one Double Plate Holder, Rapid Rectilinear lens, Eastman triple action shutter, iris diaphragm stops (not loaded), - - - - -

	\$25 00
Do. with one Double Plate Holder, but without Roll Holder, -	20 00
Cartridge Roll Holder for No. 4 Bullet Special, - - - - -	5 00
4-inch Light-proof Roll Holder Cartridge, 12 exposures 4 x 5,	90
Double Plate Holders, 4 x 5 inches, each, - - - - -	1 00
Black Sole Leather Carrying Case, - - - - -	2 25
Complete A B C Developing and Printing Outfit, - - - - -	1 50

No. 4 PANORAM-KODAK.

Uses No. 4 Bulls-Eye Film Cartridges.

For pictures $3\frac{1}{2} \times 12$ inches.
Size of camera, $4\frac{1}{2} \times 5\frac{1}{2} \times 10\frac{1}{4}$ inches; weight, 2 lbs., 6 ounces; length of focus of lens, 5 inches.

Broad landscapes, views of cities from high buildings, the intersections of wide streets, river and marine views—all offer to the photographer beautiful panoramic effects that are well worth preserving, but which are beyond the scope of the ordinary camera. It is to put into the hands of the photographer an instrument capable of taking such views in all their breadth and beauty that we offer the Panoram-Kodak. It will fill this niche in the photographer's outfit and fill it perfectly. The Panoram-Kodak is not intended for interiors or time exposures, the very nature of the instrument preventing its use in this way, and we do not, therefore, recommend its purchase by anyone not already having another instrument for ordinary work.

The No. 4 Panoram-Kodak has a scope of view 142° , with a rapid rectilinear 5-inch focus lens, revolving through the arc of the circle and covering fully. Stop opening of lens is *f.* 10 and the shutter working practically in the focal plane allows of extreme speed. Detachable handle allows of carrying by either the side or the top. Space in back provides for carrying two extra film cartridges. Fitted with tripod socket. V shaped lines on top show the operator the scope of view. Has nicked fittings, is covered with the finest black morocco and beautifully finished.

No. 4 Panoram-Kodak, rapid rectilinear lens, not loaded, -	-	\$20 00
Light Proof Film Cartridge, 5 exposures, $3\frac{1}{2} \times 12$, (regular No. 4 Bulls-Eye Cartridges),	-	90
Black Sole Leather Carrying Case, -	-	2 00

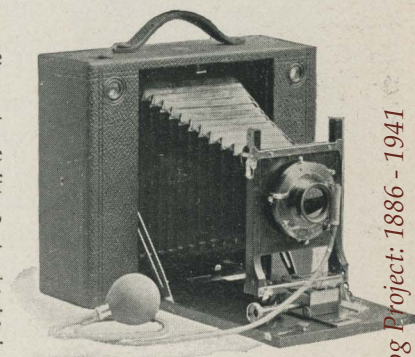
CARTRIDGE KODAKS.

In the Cartridge Kodaks we have adapted the "Film Cartridge System" to Folding Kodaks of the finest quality and greatest capabilities. They are hardly more than half the thickness of other cameras which are adapted to both film and plates and are the only folding instruments capable of taking 4 x 5 and 5 x 7 pictures and having the daylight loading feature. We never place a camera upon the market until we have thoroughly tested its actual

working qualities under all conditions and the finished product is always an improvement over the first model, but in our years of experience in camera making no instrument which we have introduced has been more carefully planned, more severely tested, or has been the subject of more thought and experiment than the Cartridge Kodak. The result is an instrument which is the embodiment of photographic perfection.

The Cartridge Kodaks of both sizes use either our daylight loading Film Cartridges or glass plates, are fitted with carefully tested rapid rectilinear lenses and our pneumatic release shutter fitted with iris diaphragm stops. This shutter has three speeds for instantaneous exposures; it makes short time exposures by one pressure of the bulb, the shutter closing when the bulb is released; and makes longer time exposures by pressing the bulb once to open the shutter and again to close it. It may be operated by the finger trigger instead of the bulb when so desired.

The Cartridge Kodak is provided with a rising, sliding and falling front, two view finders, one for vertical and one for horizontal exposures, two sockets for tripod screws, has Eastman's patent



CARTRIDGE KODAK OPEN.



CARTRIDGE KODAK CLOSED.

non-collapsing bellows and is equally perfect as a hand or as a tripod camera. It has an index for focusing and when used with plates may be focused on the ground glass if desired.

When used with film there are no projecting parts, no attachments to become lost, no extras to be mislaid. The plate adapter is simple and compact and can be put in place or removed in five seconds.

Both the No. 4 and No. 5 Cartridge Kodaks are perfectly adapted to use on the wheel and can be readily carried by the use of our special cases described on pages 38 to 40. For the wheelman's use no cameras capable of making 4 x 5 or 5 x 7 pictures are to be compared with the Cartridge Kodaks. A Film Cartridge for 12 exposures 5 x 7 weighs 4 ounces. An equivalent in glass plates and the necessary holders weighs 4 pounds. The moral is obvious.

Strength and reliability have not been sacrificed to mere lightness, nor efficiency to compactness. The finish is rich and beautiful. When closed for carrying it is inconspicuous, there being no metal parts in sight, even the key, which is in the bottom of the camera, being recessed and entirely hidden from view. When open for use it exposes to view a bed and front board of highly polished mahogany with buffed brass fittings set off in brilliant contrast by the highly polished nickel shutter. In short, it has in a superlative degree, that rich and dainty finish which characterizes all our goods,

No. 4 CARTRIDGE KODAK. FOR FILM AND PLATES.

For rectangular pictures 4 x 5 inches ; capacity, 12 exposures without reloading ; size of camera, $3\frac{1}{8} \times 6\frac{3}{8} \times 8\frac{1}{4} = 167$ cubic inches ; weight, 3 pounds ; length of focus of lens, $6\frac{1}{2}$ inches.

*No. 4 Cartridge Kodak with Rapid Rectilinear lens and Eastman

Triple Action Pneumatic Shutter,	-	-	-	\$25 00
Light-Proof Film Cartridge, 12 exposures, 5 x 4 inches,	-	-	-	90
Glass plate adapter with ground glass,	-	-	-	2 50
Double glass plate holders, each,	-	-	-	1 00
Eastman's A B C Developing and Printing Outfit,	-	-	-	1 50

No. 5 CARTRIDGE KODAK. FOR FILM AND PLATES.

For rectangular pictures 5 x 7 inches ; capacity, 12 exposures without reloading ; size of camera, $3\frac{1}{4} \times 8\frac{1}{2} \times 10\frac{1}{8} = 280$ cubic inches ; weight, 4 pounds, 4 ounces ; length of focus of lens, $8\frac{1}{2}$ inches.

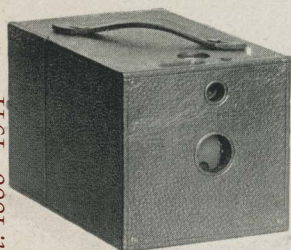
*No. 5 Cartridge Kodak with Rapid Rectilinear lens and Eastman

Triple Action Pneumatic Shutter,	-	-	-	\$35 00
Light-Proof Film Cartridge, 12 exposures, 7 x 5 inches,	-	-	-	1 60
Glass Plate Adapter with ground glass,	-	-	-	3 00
Double Glass Plate Holders, each,	-	-	-	1 25
Eastman's Special 5 x 7 Developing and Printing Outfit,	-	-	-	2 00

*Customers having favorite lenses or shutters can have them fitted to these cameras at a small extra charge. All matters of change in equipment should, however, be made the subject of correspondence.

No. 2 EUREKA CAMERA. FOR GLASS PLATES.

Can be used with Film by addition of Cartridge Roll Holder.



For square pictures, $3\frac{1}{2} \times 3\frac{1}{2}$ inches ;
size of camera, $4\frac{3}{4} \times 4\frac{7}{8} \times 7\frac{5}{8}$ inches ;
weight, 18 ounces ; length of focus of
lens, $4\frac{1}{2}$ inches.

The No. 2 Eureka is a simple, practical camera whether used for plates only or with the Cartridge Roll Holder described on page 29. It is an instrument that can be depended upon, and at a price that is only made possible by the magnificent facilities at our command. It contains no uncertain or untried devices for cheapening cost, and no clumsy attempts at making it a "magazine" camera.

The new model is equipped with our improved rotary shutter for snap shots or time exposures, the same shutter which has been so successfully used on the Pocket Kodak, the Bullet and the Bulls-Eye. It has a fine achromatic lens, set of three stops, view finder and socket for tripod screw. Perfectly adapted to hand or tripod use and has space in back for three double plate holders or Cartridge Roll Holder. Covered with fine grain leather and fitted with leather handle for carrying.

No. 2 Eureka Camera, with Achromatic lens and one double plate holder,	\$4 00
Double Plate Holders, $3\frac{1}{2} \times 3\frac{1}{2}$, each,	75
Eastman's Extra Rapid Dry Plates, $3\frac{1}{2} \times 3\frac{1}{2}$, per dozen,	35
No. 2 Cartridge Roll Holder, (see page 29),	5 00
Light-proof Roll Holder Cartridge, 12 ex. $3\frac{1}{2} \times 3\frac{1}{2}$,	60
Black Sole Leather Carrying Case,	1 25
Eastman's Bulls-Eye Developing and Printing Outfit, complete for developing and printing 12 pictures,	1 00

No. 4 EUREKA CAMERA. FOR GLASS PLATES.

Can be used with Film by addition of Cartridge Roll Holder.

For rectangular pictures, 4 x 5 inches. Size of camera 5½ x 6⅛ x 11 inches; weight, 2 pounds, 3 ounces; length of focus of lens, 6¼ inches.



The No. 4 Eureka is the only camera at the price or at anywhere near the price, which permits of focusing. It is arranged to focus either by index scale or on the ground glass, and has a fine achromatic lens with a set of three stops, and our improved rotary shutter. Fitted with finders and tripod sockets for both vertical and horizontal exposures. Can be used with films by the addition of a No. 4 (Horizontal) Cartridge Roll Holder, plate holders and roll holder being interchangeable in the field. Has space in back for three double plate holders or Cartridge Roll Holder. Well made in every particular and of greater capabilities than any other 4 x 5 camera sold at less than double the price. Covered with fine grain leather.

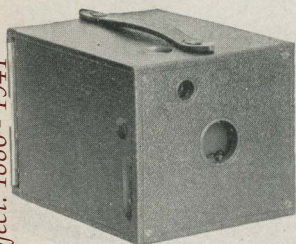
No. 4 Eureka Camera with one double plate holder, achromatic lens,	\$6 00
Double Plate Holders, 4 x 5, each,	1 00
Eastman's Extra Rapid Dry Plates, per dozen, 4 x 5,	65
Eastman's No. 4 Horizontal Cartridge Roll Holder, to fit No. 4 Eureka, see page 29,	5 00
Light Proof Film Roll Holder Cartridge, 12 ex. 4 x 5, 4 in. spool to fit above,	90
Black Sole Leather Carrying Case,	2 25

Compliments of the Digitized Kodak Catalog Project: 1886 - 1941

No. 2 EUREKA JR. CAMERA. GLASS PLATES ONLY.

For square pictures, $3\frac{1}{2} \times 3\frac{1}{2}$ inches.

Size of Camera, $4\frac{1}{4} \times 4\frac{1}{2} \times 6\frac{1}{8}$ inches; weight, $12\frac{1}{2}$ ounces; length of focus of lens, $4\frac{1}{2}$ inches.



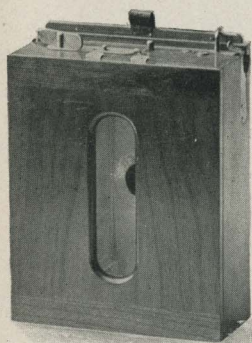
Our own building, erected by us for a camera factory; machinery built especially for the manufacture of cameras, skilled mechanics who have been employed by us for years, ample capital, years of experience, and a trade that reaches every corner of the earth enabling us to manufacture in enormous quantities—it is only through a combination of all these conditions that we are able to offer such an instrument as the No. 2 Eureka Jr. Camera for \$2.50.

It is an honest camera, honestly made and is fully fitted for the best photographic work. The lens has great depth and definition and covers the plate fully. The shutter is our improved rotary, such as we use on the Pocket Kodak, the Bullet and the Bulls-Eye Kodaks. Fitted with set of three stops, brass socket for tripod screw, view finder and with single aluminum plate holder. This plate holder is the lightest, simplest and safest form of holder made, is quickly loaded and weighs but $1\frac{1}{4}$ ozs.

The camera is well made in every particular and covered with black leatherette.

No. 2 Eureka Jr. Camera, with carefully tested lens, rotary shutter and one single plate holder,	- - - - -	\$2 50
Single plate holders, $3\frac{1}{2} \times 3\frac{1}{2}$, each,	- - - - -	40
Carrying Case to hold No. 2 Eureka Jr. Camera and 5 extra plate holders,	- - - - -	50
Bulls-Eye developing and printing outfit,	- - - - -	1 00

THE CARTRIDGE ROLL HOLDER.



CARTRIDGE ROLL HOLDER
SHOWING BACK.

We are now prepared to furnish Cartridge System Roll Holders which can be fitted to any ordinary camera by an intelligent cabinet maker, or we will do the fitting for a small charge, varying, of course, according to the camera and the work necessary.* They take *special* light-proof film cartridges of 12 exposures; are provided with red celluloid windows in the back for counting exposures in same manner as the Cartridge System Kodaks; have an improved tension device to make the film lie flat during exposure and are equipped with dark slides, making them *interchangeable with plate holders in the field.*

Well made of hard wood, with brass fittings, and handsomely finished.

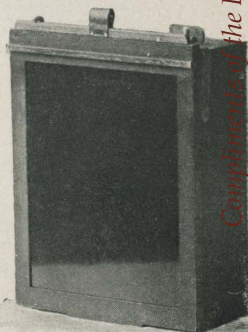
SPECIAL SPOOLS FOR CARTRIDGE ROLL HOLDERS.

In ordering cartridges, be sure and state that they are for Cartridge Roll Holder, giving length of spool and size of roll holder, as the film and paper are wound differently from those used in the Bullets, Bulls-Eyes, etc. Kodak Spools will not fit Cartridge Roll Holders.

PRICE LIST.

No. 2 ($3\frac{1}{2} \times 3\frac{1}{2}$) Cartridge Roll Holders, - - -	\$5 00
No. 3, Vertical, for $4\frac{1}{4} \times 3\frac{1}{4}$ pictures, $4\frac{1}{4}$ inch spool, -	5 00
No. 4 (4×5) Cartridge Roll Holders (specify whether vertical or horizontal), - - -	5 00
No. 5 (5×7) Cartridge Roll Holders, (vertical style only),	6 50
$3\frac{1}{2}$ -inch Light-proof Film Cartridge, for No. 2 Cartridge Roll Holder, 12 exposures, - - -	60
$4\frac{1}{4}$ inch Light Proof Film Cartridge, for No. 3 Vertical Cartridge Roll Holder, 12 exposures, - - -	70
4-inch Light proof Film Cartridge, for No. 4 Horizontal Cartridge Roll Holder, 12 exposures, - - -	90
5-inch Light-proof Film Cartridge, for No. 4 Vertical Cartridge Roll Holder, 12 exposures, - - -	90
7-inch Light-proof Film Cartridge for No. 5 Cartridge Roll Holder, 12 exposures, - - -	1 60

*No extra charge for fitting to Eureka Cameras or No. 4 Bullet Special Kodak.



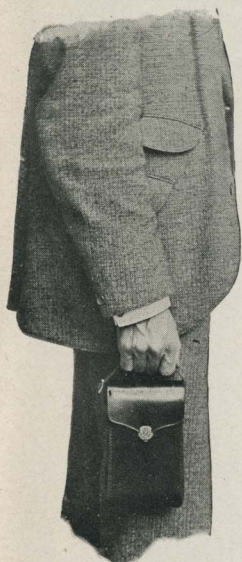
CARTRIDGE ROLL HOLDER
SHOWING FRONT.

BICYCLE CARRYING CASES.**THE POCKET KODAK
BICYCLE CARRYING CASE.**

The Pocket Kodak Bicycle Carrying Case is made of the best black sole leather, and will hold, beside the Kodak, three extra spools of film. It attaches to the frame in much the same manner as a tool bag and may be carried suspended from the top bar of the machine either at the head or at the seat post.

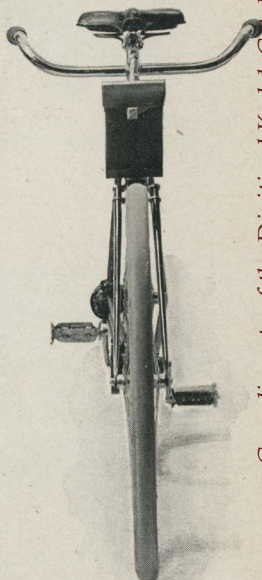
Price of Pocket Kodak Bicycle Case, - - - - \$1 00

COMBINATION HAND AND BICYCLE CASE FOR FOLDING POCKET KODAKS.



NO. 1 CASE
CARRIED IN THE HAND.

These cases are made of the best black sole leather; are so strongly put together as to perfectly protect the Kodak against rough usage, and are neat and dainty in appearance. Can be used as a hand case; can be carried like a field-glass with a shoulder strap, or when desired, may be used for carrying the Kodak on a bicycle by the addition of bicycle clamp to the outfit.



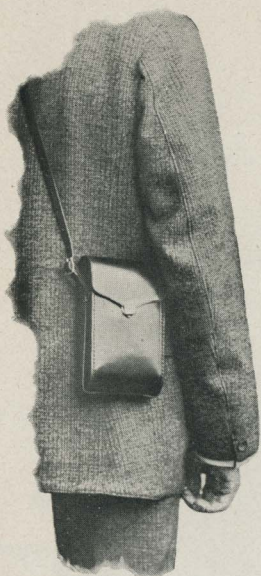
NO. 1 CASE
ON THE WHEEL.

PRICE.

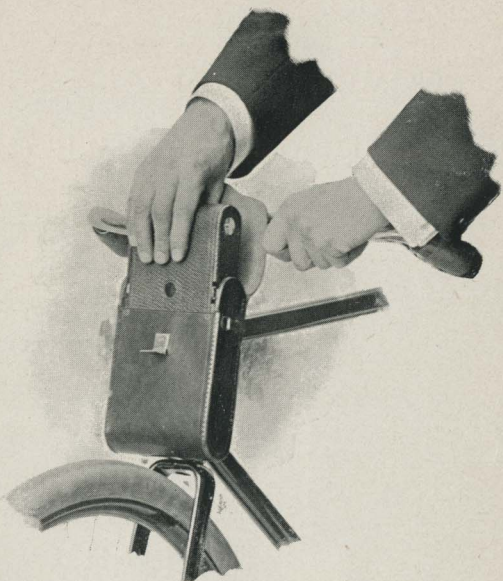
Carrying Case with shoulder strap, for No. 1 or No. 2 Folding Pocket Kodak, (always specify in order whether for No. 1 or No. 2,) - - - - -	\$1 25
Clamp for carrying either of above cases on head of bicycle, (fits any tubing from $\frac{7}{8}$ to $1\frac{1}{4}$.) - - - - -	50

Compliments of the Digitized Kodak Catalog Project: 1886 - 1941

There is no Kodak but the Eastman Kodak.



NO. 1 FOLDING POCKET KODAK CASE
WITH SHOULDER STRAP.



REMOVING NO. 2 FOLDING POCKET KODAK
FROM BICYCLE CASE.



NO. 2 FOLDING POCKET KODAK BICYCLE CASE ATTACHED TO HEAD OF MACHINE
BY MEANS OF CLAMP.



SHOWING NO. 2 FOLDING BULLS-EYE CASE ON BICYCLE.

COMBINATION HAND AND BICYCLE CASE FOR No. 2 FOLDING BULLS-EYE.

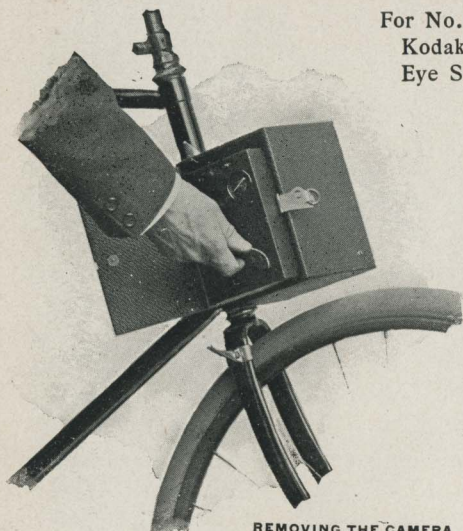
This case is made of the best sole leather ; is so strongly put together as to perfectly protect the Kodak against rough usage, and is neat and dainty in appearance. It can be used as a hand case; can be carried like a field-glass with a shoulder strap, or when desired, may be used for carrying the Kodak on a bicycle by the addition of a pair of Eastman bicycle clamps to the outfit.

PRICE.

No. 2 Folding Bulls-Eye Carrying Case with shoulder strap,	-	\$1 25
Pair Clamps for carrying above case on head of bicycle, (fit any tubing from $\frac{7}{8}$ to $1\frac{1}{4}$.)	- - - -	1 00

STYLE A BICYCLE CASE

For No. 2 Bullet, Bulls-Eye and Falcon Kodaks, and No. 2 Bullet and Bulls-Eye Special Kodaks.



REMOVING THE CAMERA
FROM CASE.

The Style A case is strongly made of wood, covered with fine grain leather and lined with cloth and is fitted with springs on the inside which take up the vibration of the wheel and prevent injury to the camera. By means of two simple thumb screws, it clamps securely to the head of the bicycle, and there being no play at points of contact with the machine, it will not wear the enamel. It can be attached to the

**STYLE A BICYCLE CASE.**

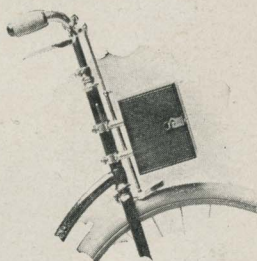
For No. 2 Bullet, Bulls-Eye, Falcon, Bulls-Eye Special and Bullet Special Kodaks.

wheel so as to open either at the side or at the top, the door fastening with a strong catch.

Outside measurements for No. 2 Bulls-Eye case, $5\frac{3}{8} \times 5\frac{1}{2} \times 6\frac{7}{8}$ inches.

The door latch can be opened with one hand, yet it cannot jar open and will not rattle.

By means of a set of adjustable washers (extra) the case may be held far enough in front of the bicycle head to allow for the free passage of the brake rod. It may also be provided (extra) with a lamp bracket attachment. A set of washers is furnished with each case and by their use the clamps will firmly grip any tubing from $\frac{7}{8}$ inch to $1\frac{1}{4}$ inches, both inclusive. No wrench, screwdriver or other tools are necessary in making the attachment.



STYLE A BICYCLE CASE.

Showing Case held in front of brake rod by means of washers. For No. 2 Bullet, Bulls-Eye, Falcon, Bulls-Eye Special and Bulls-Eye Special Kodaks.

*Bicycle Carrying Case, Style A, for No. 2 Bullet, Bulls-Eye, Falcon, No. 2 Bullet Special, and No. 2 Bulls-Eye Special Kodaks,	\$ 2 00
Washers for holding Case in front of Brake Rod,	1 00
Detachable Lamp Bracket,	25

*In ordering specify whether for No. 2 Bullet, Bulls-Eye, Falcon, Bullet Special or Bulls-Eye Special.

STYLE B CASE

FOR No. 2 BULLET, BULLS-EYE, FALCON, BULLET SPECIAL AND BULLS-EYE SPECIAL KODAKS.



REMOVING THE CAMERA.

This case is designed to attach to the rear forks immediately under the saddle and is especially adapted to use on a lady's wheel, or on any wheel having mud-guards. It is provided with three straps, two of which attach to the rear forks, the third passing through the saddle spring proper or through the U spring where one is used as shown in the illustration. It is made of the best black sole leather and is easily accessible, a single strong clasp securing the flap in position. It makes a safe and convenient carrier for the camera.

In ordering state whether for use with Bullet, Bulls-Eye, Bullet Special, Bulls-Eye Special or Falcon.

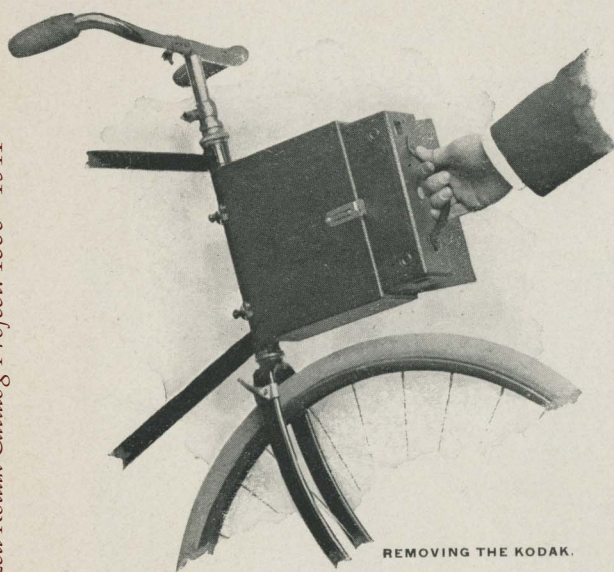
Price, Bicycle Carrying Case, Style B for No. 2 Bullet, Bulls-Eye, Falcon, Bullet Special and Bulls-Eye Special Kodaks, - - \$1.50

NOTE.—This case is impracticable for very short riders as it requires a space of 6 inches in the clear between the mud-guard and the saddle spring.



STYLE B BICYCLE CASE.

For No. 2 Bullet, Bulls-Eye, Falcon, Bullet Special and Bulls-Eye Special Kodaks.

CARTRIDGE KODAK BICYCLE CASE.

REMOVING THE KODAK.

This case is strongly made of wood, covered with fine grain leather, lined with cloth and fitted with springs on the inside which take up the vibration of the wheel and prevent injury to the camera. By means of two thumb screws which securely grasp the tubing the case may be attached to the head of the machine or suspended from the

top bar. The clamps will firmly grasp any tubing from $\frac{7}{8}$ to $1\frac{1}{4}$ inches, both inclusive, and can be attached to any side of the case (except, of course, the door). There being no play at the points of contact with the machine, it will not wear the enamel.

Outside measurements of the No. 4 Cartridge Case are $3\frac{3}{4} \times 7\frac{1}{4} \times 8\frac{7}{8}$ inches, and of the No. 5 Cartridge Case $4 \times 9\frac{3}{8} \times 11$ inches.

The door fastens with a strong brass catch which can be opened with one hand, yet cannot jar open and will not rattle.

By means of a set of adjustable washers (extra) the case may be held far enough in front of the bicycle head to allow for the free passage of a brake rod. It may also be provided (extra) with a lamp bracket attachment. No wrench, screw driver or other tools are necessary in making the attachment.

No. 4 Cartridge Kodak Bicycle Case,	-	-	-	-	-	\$2 50
" 5 " " " " " " " " " "	-	-	-	-	-	3 25
Washers for holding case in front of brake rod,	-	-	-	-	-	1 00
Detachable Lamp Bracket,	-	-	-	-	-	25



No. 4 CARTRIDGE KODAK BICYCLE CASE.

Showing Case Attached to Top Bar.

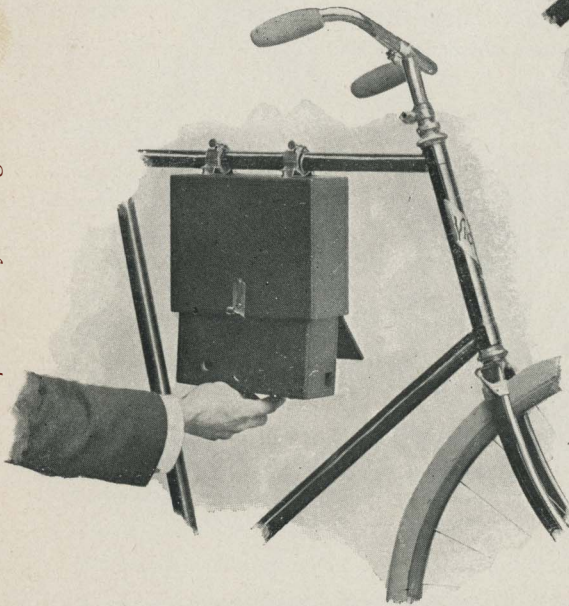
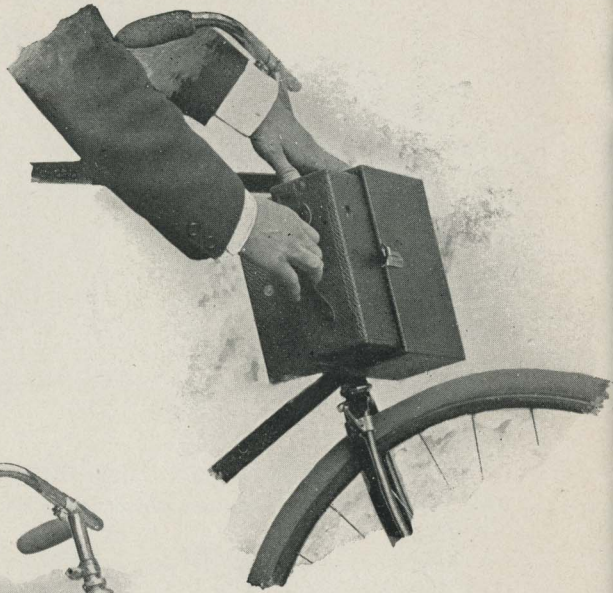


No. 5 CARTRIDGE KODAK BICYCLE CASE.

Showing Case Attached to Top Bar.

There is no Kodak but the Eastman Kodak.

REMOVING
KODAK FROM CASE.



TWO POSITIONS.

TRIPODS.

THE KODAK TRIPOD.

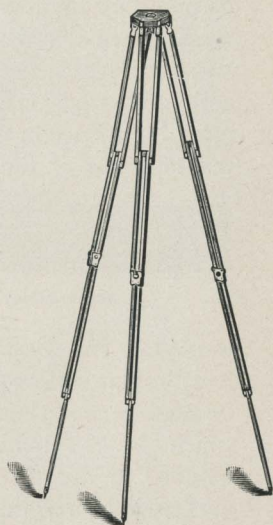
Length, extended, 55½ inches.

Length, folded, 15⅞ inches.

Weight, 2 lbs. 3 oz.

Especially designed for use with Kodaks.

When put up in the Leather Carrying Case, the Kodak Tripod is perfectly adapted to the wheelman's use. Being but 15⅞ inches long it can be readily strapped to the handle bar where it will in no way inconvenience the rider. Perfectly rigid and suitable for any camera up to 8 x 10. Made of the best seasoned cherry with brass fittings.



PRICE OF KODAK TRIPODS.

No. 1 Kodak Tripod with folding lugs,	-	-	-	-	\$5 00
No. 2 Kodak Tripod with solid lugs,	-	-	-	-	4 00
Leather Carrying Case with pocket for top for No. 1,	-	-	-	-	3 00
Leather Carrying Case without pocket,	-	-	-	-	2 00

EASTMAN'S FEATHER TRIPOD.

Length, folded, $14\frac{1}{2}$ inches. Length, extended, $52\frac{1}{2}$ inches.

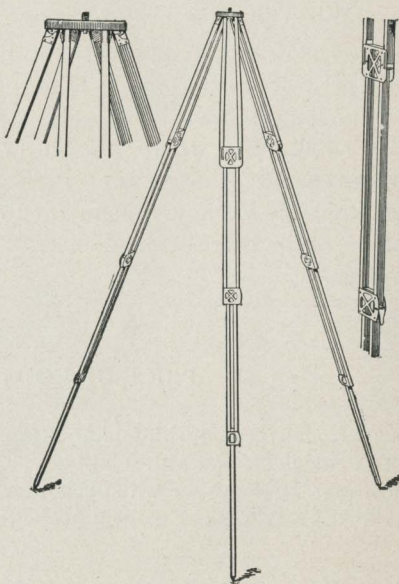
Suitable for any 4 x 5 camera or smaller.

Wonderfully light, compact and strong, this tripod is especially designed for the tourist or cycling Kodaker. Only $14\frac{1}{2}$ inches in length when closed, it can be readily strapped to the bicycle handle bar, whether carried in a case or not. An aluminum top plate with milled edges, holds the socket screw securely in place and seats it in place in the camera when turned—thus doing away with the nuisance of the ordinary screw, turned by means of a key handle inconveniently located under the plate between the tripod legs, and always likely to be missing when most



HAND CARRYING CASE.

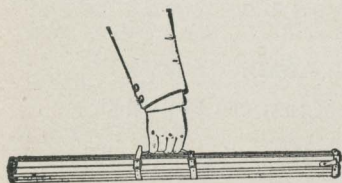
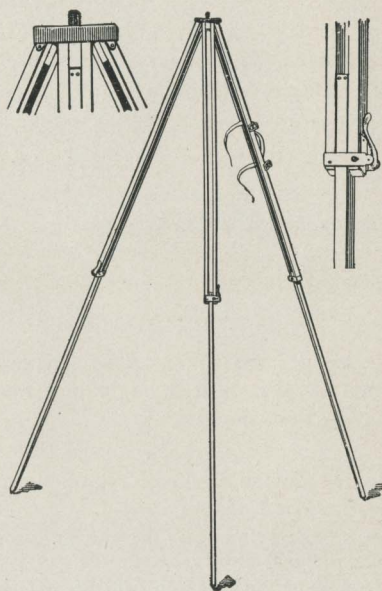
wanted. The Feather tripod folds in four sections, has brass fittings, except the top plate, which is of aluminum, and weighs, in spruce, but $17\frac{1}{2}$ ounces, in cherry, or in mahogany finish, $20\frac{1}{2}$ ounces.

**PRICE.**

Eastman's Feather Tripod,				
Cherry, - - - -	-	-	-	\$ 4 00
Eastman's Feather Tripod,				
Spruce, - - - -	-	-	-	4 00
Eastman's Feather Tripod,				
Mahogany finish, - -	-	-	-	4 50
Black Sole Leather Hand				
Carrying Case, - - -	-	-	-	1 50

THE BULLS-EYE TRIPOD.

A compact and convenient tripod for use with any camera up to and including 4 x 5. A brass top plate with milled edges holds the socket screw securely in place and seats it in place in the camera when turned—thus doing away with the nuisance of the ordinary screw, turned by means of a key handle inconveniently located under the plate between the tripod legs, and always likely to be missing when most wanted.



The Bulls-Eye Tripod folds in two sections and is provided with a leather hand strap for carrying. Made of the best seasoned spruce with brass fittings.

Price, - - - - - \$2 00

THE EASTMAN TRIPOD.

Folds in three sections.

No. 1 Spruce, for cameras up to 6½ x 8½, weight 1 lb., 10 oz.,	-	\$3 00
No. 1 Maple, for cameras up to 6½ x 8½, weight 2 lbs., 2 oz.,	-	3 00

NOTE—When kind of wood is not specified, we will furnish in maple.

THE VICTOR TRIPOD.

Folds in two sections.

No. 1 Spruce, for cameras up to 6½ x 8½, weight 1 lb., 11 oz.,	-	\$2 00
No. 1 Maple, for cameras up to 6½ x 8½, weight 2 lbs., 3 oz.,	-	2 00

NOTE—When kind of wood is not specified, we will furnish in maple.

THE STAFF TRIPOD.

This tripod does not fold but closes together, forming a staff or cane.

Improved Staff Tripod,	-	-	-	-	-	\$1 50
When for use with Pocket Kodak so specify.						
Special Adjustable Head, extra,	-	-	-	-	-	1 00

“ADJUSTABLE” TRIPOD HEAD.

By the use of our “Adjustable” Tripod Head, the camera can be tilted to any desired angle and fastened securely in position without moving the tripod legs.

!PRICE LIST.

No. 1. For the Eastman Tripod No. 1 and Victor No. 1,	-	-	\$1 25
No. 2. For Kodak Tripod,	-	-	1 50

In ordering always give the name and number of Tripod for which you want adjustable head.

Any of the foregoing Tripods (except Feather, Staff and Bulls-Eye,) may be ordered with the adjustable head and without the regular head, at the following prices :

Eastman No. 1,	-	-	-	-	-	\$3 75
*Kodak No. 2,	-	-	-	-	-	4 80
Victor No. 1,	-	-	-	-	-	2 75

*We do not furnish the “Adjustable” head with folding lugs.

ADJUSTABLE JR. HEAD.

No. 1 “Adjustable Jr.” for cameras up to 4 x 5, can be used on Bulls-Eye, Feather or Staff Tripods.	-	-	-	-	\$1 00
No. 2 “Adjustable Jr.” for cameras up to 5 x 8, fits any ordinary Tripod,	-	-	-	-	1 50

EASTMAN'S A B C DEVELOPING AND PRINTING OUTFIT.



Includes every requisite for Developing, Printing and Finishing 24 pictures 4 x 5, or 96 Pocket Kodak pictures.

IT CONTAINS :

1 Eastman Improved Candle Lamp,	\$0 25	2 doz. 4 x 5 Solio Paper,	\$0 25
1 4 x 5 Printing Frame,	25	2 ozs. Solio Toning Solution,	15
1 " Glass for do.,	05	1 oz. Glycerine,	05
1 Glass Beaker,	12	Mask for making Pocket Kodak	
1 Stirring Rod,	05	Medallions,	10
4 4 1/2 x 5 1/2 Developing Trays,	40	Instruction Book,	10
1/2 doz. Developing Powders,	25		
1/2 lb. Hyposulphite Soda,	07		
1/2 oz. Bromide Potassium,	10		
		<u>Price complete, neatly packed.</u>	<u>\$1 50</u>

Eastman's Bulls-Eye Developing and Printing Outfit complete for developing and printing 12 pictures 3 1/2 x 3 1/2. Similar to above outfit, but including 1 doz. 3 1/2 x 3 1/2 Solio Paper, instead of 2 doz. 4 x 5, and containing less chemicals.

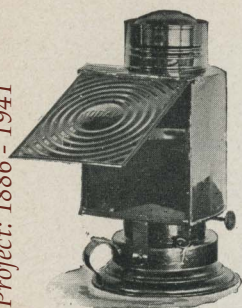
Price complete, neatly packed, \$1.00.

Eastman's Special 5 x 7 Developing and Printing Outfit complete for developing and printing 24 pictures 5 x 7. Similar to 4 x 5 outfit but having 5 x 7 trays, paper, etc.

Price complete, neatly packed, \$2.00.

NOTE—These outfits cannot be shipped by mail.

EASTMAN'S KODAK DARK-ROOM LAMP.

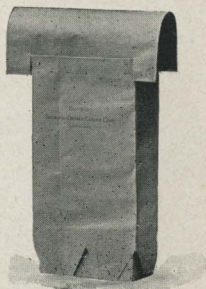


This lamp is well made and safe. It is equipped with improved burner carrying extra broad wick, and has new ventilating top ensuring a bright, steady flame. It is the safest dark-room lamp made, being fitted with both ruby and orange glass. The flame can be controlled from the outside, and it is fitted with adjustable shield to protect the eyes from the light and throw it directly on the work.

No. 1 Improved Kodak Dark-Room Lamps, 1 inch wick, each, \$ 1 50
 No. 2 do., $\frac{3}{8}$ inch wick, each, - - - - - 1 00

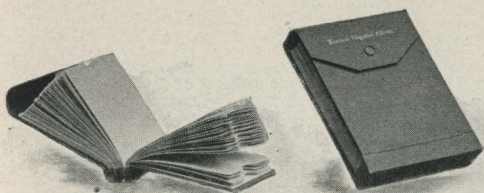
EASTMAN'S IMPROVED ORANGE CANDLE LAMP.

This lamp consists simply of an orange paper hood set over a candle, the holder for which is the box in which the lamp is packed, yet it gives an ideal non-actinic light for the dark room. The ventilation is perfect and the *volume* of light greater than that given by many expensive lamps. No oil to spill when carried in bag or pocket. Lightest in weight of any dark room lamp made.



Price, Eastman's Improved Orange Candle Lamp, - - - 25 cts.

EASTMAN'S FILM NEGATIVE ALBUMS.



How to preserve film negatives is a question that has been successfully answered by the introduction of Eastman's Film Negative Albums. Each album contains 100 pockets made of strong manila paper and

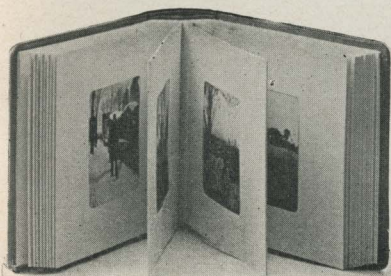
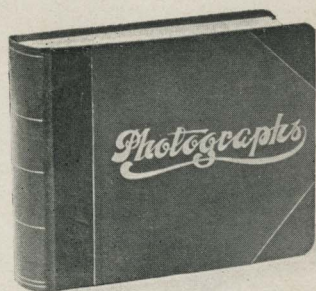
secutively numbered from 1 to 100, and an index on white paper, ruled and numbered for 100 entries. They thus provide for a perfectly safe means of keeping the negatives in such a way that the one desired can always be instantly found.

PRICE.

Eastman's Negative Albums for 100 3½ x 3½ negatives,	-	-	\$0 75
Eastman's Negative Albums for 100 4 x 5 negatives,	-	-	1 00
Eastman's Negative Albums for 100 5 x 7 negatives,	-	-	1 50

EASTMAN'S "SQUEEGEE" ALBUMS.

These Albums are for unmounted prints, and are provided with openings in which the prints can be inserted.



EASTMAN'S "SQUEEGEE" ALBUMS.	Pocket Kodak for 200 pictures	Folding Pocket Kodak for 100 pictures	Bulls-Eye for 50 pictures 3½ x 3½	No. 4 for 50 pictures 4 x 5
Style A, Cloth bound.....	\$1 25	\$1 25	\$1 25	\$1 25
Style B, Half Morocco.....	1 50	1 50	1 50	1 50
Style C, Full Morocco, gold edges, heavily padded....	4 00	4 00	4 00	4 00

KODAK ALBUMS.

For pasting in prints. The leaves in these albums are detachable. The covers are intended to hold 13 leaves and prices of complete Albums include that number, but 15 leaves can be used in an Album when desired.

PRICE LIST.

Albums.	POCKET KODAK for 104 Pictures.	No. 1 FLDG.			
		POCKET KODAK for 104 Pictures. 2¼ x 3¼	No. 2 for 104 Pictures. 3¼ x 3¼	4 for 104 Pictures. 4 x 5	5 for 52 Pictures. 5 x 7
Style A, Cloth bound,	\$ 75	\$1 25	\$1 60	\$2 00	\$2 25
Style B, half Morocco, gold edges,	1 00	1 65	2 00	2 50	2 75
Style C, full Morocco, gold edges,	1 50	2 25	2 75	3 50	3 75

Printing and Mounting.

Pictures including	(104)	(104)	(104)	(104)	(52)
Album, Style A*,	2 75	5 00	8 00	10 00	6 75
Album, Style B*,	3 00	5 40	8 50	10 50	7 25
Album, Style C*,	3 50	6 00	9 50	11 50	8 25

Bindings Only.

Style A, without leaves,	40	60	80	1 00	1 10
Style B, without leaves,	60	85	1 10	1 30	1 50
Style C, without leaves,	1 10	1 50	1 80	2 30	2 50

Leaves Only.

Style A, each,	03½	06	07	08	09
Style B or C, each,	04	07	07½	09	10

Prints, Gummed Back.

Unmounted, each	02	05	08	10	12½
---------------------------	----	----	----	----	-----

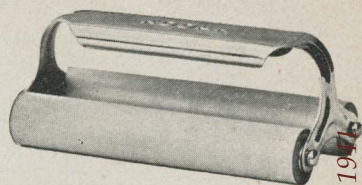
*These prices hold good only for *duplicate* prints, i. e., when the negatives have been printed from before. When the first prints are ordered mounted in an Album the price of the Album will be added to the unmounted price of the pictures.

“KODAK” PRINT ROLLERS.

This roller has two six inch fine rubber rollers with steel frame, handsomely nickered. A durable and practical article.

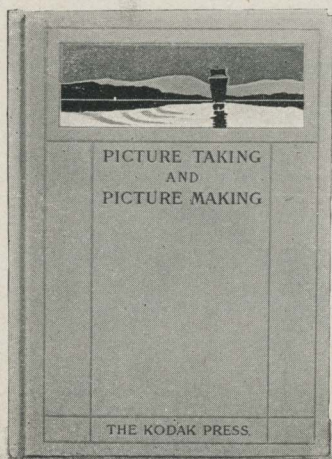
PRICE.

“Kodak” Print Roller, 6 inch double, 75 cts.



“PICTURE TAKING AND PICTURE MAKING.”

A simple and practical book for the beginner, yet full of “meat” for the advanced amateur. There are four valuable contributed articles: “Platinum Printing,” by Alfred Stieglitz; “The Gum Bi-Chromate Process,” by M. Robert Demachy; “Sensitizing and Use of Plain Papers,” by Bernard Alfieri, and “Carbon Printing,” by James A. Sinclair.



PRESS COMMENTS.

“Answers the most puzzling questions asked by the beginner—there are abundant hints to save the amateur from many a discouraging stumble.”—*Camera Notes*.

“Makes each step easy.”—*Professional Photographer*.

“Refrains from loading up with ‘advanced’ scientific matter which, to the ordinary individual, is of little value and is apt to be confusing.”—*Photo Beacon*.

“Four special articles are alone worth more than the price of the book.”—*Snap Shots*.

“A book that will help.”—*Recreation*.

Printed on heavy coated paper, beautifully illustrated, 120 pages, cardboard covers,	\$ 50
Cloth bound, - - - - -	1 00

Compliments of the Digitized Kodak Catalog Project: 1886 - 1946

PRICE LIST.

POCKET KODAKS.

Pocket Kodak with film cartridge for 12 exposures,	\$5 00
Black Leather Hand Carrying Case (to hold Pocket Kodak and three extra spools of film). Price, case only,	75
Do. do., olive or pigskin leather,	1 25
Leather Bicycle Carrying Case (to hold Pocket Kodak and three extra spools of film). Price, case only,	1 00
Film Cartridge, 12 exposures, (per box 4 cartridges, \$1.00),	25
Single Glass Plate Holders,	25
*Developing and printing 12 exposures, (postage .05),	50
*Developing only, roll 12 exposures, (postage .02),	25
*Printing and Mounting only, per doz., (postage .05),	25
NOTE—When there are any failures we furnish enough duplicates from the good negatives to make up the full number.	
Staff Tripod, fitted for Pocket Kodak,	1 50

FOLDING POCKET KODAKS.

	No. 1 2¼ x 3¼	No. 2 3½ x 3½
Folding Pocket Kodak, capacity 12 exposures, not loaded,	\$10 00	\$15 00
Light Proof Film Cartridge, 12 exposures,	40	60
Do. per box of 4,	1 60	—
Carrying Case with shoulder strap,	1 25	1 25
Clamp for carrying case on Bicycle Head,	50	50
*Developing, printing and mounting, 12 exposures,	1 00	1 50
*Developing only, each,	04	06
*Printing and mounting only, each,	05	08

FOLDING BULLS-EYE KODAKS.

No. 2 Folding Bulls-Eye Kodak, capacity 12 ex. 3½ x 3½, not loaded,	\$10 00
Light Proof Film Cartridge, 12 exposures, 3½ x 3½,	60
Carrying Case with shoulder strap,	1 25
Pair Clamps for carrying case on Bicycle Head,	1 00
*Developing and Printing 12 exposures,	1 50
*Developing only, each,	06
*Printing and Mounting only, each,	08

BULLET, BULLS-EYE AND FALCON KODAKS.

	No. 2. 3½ x 3½	No. 4. 4 x 5	No. 2. SPECIAL 3½ x 3½	No. 4. SPECIAL 4 x 5
Bullet Kodak (not loaded),	\$10 00	\$15 00	\$18. 00	\$25 00
Bulls-Eye Kodak (not loaded),	8 00	12 00	15 00	20 00
Falcon Kodak (not loaded),	5 00	—	—	—
Film Cartridge, 12 exposures,	60	90	60	†90
*Developing, printing and mounting 12 ex.	1 50	1 80	1 50	1 80
*Developing only, each,	06	08	06	08
*Printing and Mounting only, each,	08	10	08	10

*On orders for less than one dozen prints 25 cents extra will be charged.

†4 inch. Cartridge Roll Holder Spool. Be sure and so specify when ordering. See page 29.

*Black Sole Leather Carrying Case,	\$1 25	\$2 00	\$1 25	\$2 25
*Ladies' Buff Sole Leather Carrying Case, with name plate,	2 00	—	2 00	—
*Bicycle Carrying Case to clamp on head of machine, style A,	2 00	—	2 00	—
Washers to hold case in front of brake rod, per set,	1 00	—	1 00	—
Lamp Bracket to attach to front of Carrying Case,	25	—	25	—
*Sole Leather Bicycle Carrying Case, to attach under saddle, style B,	1 50	—	1 50	—
Single Glass Plate Holders for Bullet, (3¼ x 3½ inches, for No. 2),	60	75	—	—
Double Glass Plate Holders for Bullet Special (3¼ x 3½ inches, for No. 2),	—	—	1 00	1 00
†Leather Carrying Case for 6 Single Plate Holders (for Bullet),	1 00	1 50	—	—
Leather Carrying Case for 3 Double Plate Holders for Bullet Special,	—	—	75	1 00
Do. for 6 Double Plate Holders,	—	—	1 00	1 50
Focusing Glass for No. 4 Bullet,	—	50	—	—

*In ordering state whether for Bullet, Bullet Special, Bulls-Eye, Bulls-Eye Special or Falcon.

†The No. 4 case has also space for focusing glass.

CARTRIDGE KODAKS.

	NO. 4. 4 x 5	NO. 5. 5 x 7
Cartridge Kodak with rapid rectilinear lens and pneumatic shutter (not loaded),	\$25 00	\$35 00
Wide Angle Lens for Cartridge Kodak,	5 00	7 50
Film Cartridge, 12 exposures,	90	1 60
Black Sole Leather Carrying Case with shoulder strap,	2 00	2 50
Developing, printing and mounting 12 exposures,	1 80	2 40
*Developing only, each,	08	10
*Printing and mounting only, each,	10	12½
Bicycle Carrying Case for Cartridge Kodak,	2 50	3 25
Washers to hold case in front of brake rod, per set,	1 00	1 00
Adjustable lamp bracket,	25	25
Glass Plate Adapter with ground glass,	2 50	3 00
Double Glass Plate Holders, each,	1 00	1 25

*On orders for less than one dozen 25 cents extra will be charged.

BULLS-EYE ENLARGING CAMERAS.

The Bulls-Eye Enlarging Camera is adapted to making 4 x 5 Bromide enlargements from Pocket Kodak, and 6½ x 8½ enlargements from Folding Pocket Kodak and 3½ x 3½ negatives.

Bulls-Eye Enlarging Camera, with double holder for paper,	\$7 50
Do., with single holder for paper,	6 00
Extra inside Kit to hold 4 x 5 paper,	35

EASTMAN'S PERMANENT BROMIDE PAPERS.

The amateur can readily make enlargements from his negatives by the use of Eastman's Bromide Paper and the Bulls-Eye Enlarging Camera described above, or can improvise an enlarging apparatus from his Kodak, if it be a No. 2 Bullet or Bulls-Eye, No. 2 Special Bullet or Bulls-Eye, Folding Pocket Kodak, Folding Bulls-Eye or a Cartridge Kodak. The Cartridge Kodaks are particularly adapted to this work. Enlargements made on Eastman's Royal Bromide Paper and given the Sepia tone have the softness and breadth of rare old etchings. Any of the Eastman Bromide papers make beautiful contact prints.

Illustrated Booklet, "Bromide Enlarging with a Kodak," - 10 cents.

ROYAL, STANDARD, PLATINO, ENAMELED AND MATTE-ENAMEL BROMIDE PAPERS.

SIZE.	PER DOZ.	SIZE.	PER DOZ.
2¼ x 3¾	\$ 0 15	10 x 12	1 20
3¼ x 4¾	15	11 x 14	1 55
4 x 5	25	14 x 17	2 35
5 x 7	35	16 x 20	3 20
5 x 8	40	18 x 22	4 00
6½ x 8½	60	20 x 24	4 80
8 x 10	80		

Other sizes in proportion.

TWO GRADES—HARD AND SOFT.

The Bromide papers (except Royal) are made in two grades, "Hard" and "Soft." The "Hard" paper is especially adapted to use with sunlight, and should therefore be used for enlarging with the Kodak, while the "Soft" paper should be used for contact printing, as it is especially adapted to work with artificial light.

"Standard" is furnished in three weights, A, thin smooth—B, heavy smooth—C, heavy rough.

The "Platino" paper is furnished in A, thin smooth, or C, heavy rough.

The "Royal" is furnished in "smooth" or "rough."

We do not recommend Royal paper in sizes smaller than 8 x 10.

In ordering (except Royal), always state whether the "hard" or "soft" emulsion is desired, and if the Standard, Platino or Royal is desired, state what grade of paper.

ENLARGEMENTS.

Every amateur has among his negatives some that are well worth enlarging and framing. Our enlarging department contains only skilled operators and we secure the very best results possible from every negative. Where the kind of paper is not specified we will make the enlargements upon the paper which, in our judgment, is best suited to the negative and the subject.

Royal Bromide, Standard Bromide, Platino-Bromide, Enameled Bromide or Matte-Enamel Bromide Enlargements from any size negatives, mounted on cardboard:

No extra charge for Sepia Tones on Royal or Enameled Bromide Enlargements.

	Each.	Per Doz.
4¼ x 6½, each,	\$ 35	\$3 00
6½ x 8½, each,	50	5 00
8 x 10, each,	75	—
10 x 12, each,	1 00	—
11 x 14, each,	1 25	—
14 x 17, each,	1 50	—
Larger sizes in proportion.		
Lantern Slides, each,	50	5 00

EASTMAN'S SOLIO.

Size.	A Rapid Printing-Out Paper.	Per Pkg. 2 Doz.	Gross.
3½ x 3½,		\$ 20	\$1 15
4 x 5 (For 4 x 5 pictures or four Pocket Kodaks),		25	1 25
		Per Doz.	
5 x 7,		30	2 65
3½ x 12, (for No. 4 Panoram-Kodak),		35	—

SECONDS.—A limited quantity of 4 x 5 (trimmed) seconds at \$1.00 per gross.

SOLIO Combined Toning and Fixing Solution, per 8 oz. bottle, 50 cts.

EASTMAN'S DRY PLATES.

Extra Rapid for Instantaneous Work.

1½ x 2 inches, (for Pocket Kodak), per doz.,	\$ 20
3¼ x 3½ inches, (for No. 2 Bullet and Bullet Special), per doz.,	35
3½ x 3½ inches, (for No. 2 Eureka and No. 2 Eureka Jr.), per doz.,	35
4 x 5 inches, per doz.,	65
5 x 7 inches, per doz.,	1 10

EASTMAN'S DOUBLE COATED NON-HALATION PLATES.

4 x 5 inches, per doz.,	\$ 80
5 x 7 inches, per doz.,	1 40

EASTMAN'S DEKKO PAPER.

A quick printing development paper, printing by either artificial or daylight and developing in subdued daylight or subdued artificial light. No dark-room required. Beautiful platinum-like effects.

	Doz.	Gross.
2¼ x 3½,	\$ 15	\$1 10
3½ x 3½,	15	1 25
4 x 5,	20	2 00
5 x 7,	35	3 50

Made in Four Grades :

Carbon Matte,	Plain Matte,
Egg-Shell Matte,	Rough Matte.

Eastman's Dekko Developer Powders, per dozen, \$ 50

LANTERN SLIDE PLATES, ETC.

Plates for making Lantern Slides, per dozen, \$ 70
 Cover Glass for Lantern Slides, per dozen, 35

"BLUE PRINT" PAPER.

Ferro-Prussiate Paper, 2 dozen sheets, 3½ x 3½, \$ 16
 Ferro-Prussiate Paper, 2 dozen sheets, 4 x 5, 20
 Ferro-Prussiate Paper, 2 dozen sheets, 5 x 7, 35

CHEMICALS.

Eastman's Hydrochinon Developer Powders, per dozen, sufficient for 48 ounces Developer, \$ 50
 Eastman's Pyro Developer Powders, per dozen, 50
 Eastman's Dekko Developer Powders, per dozen, 50
 Hypo-sulphite of Soda, pulverized, per pound, 10
 Bromide Potassium, per ounce, 15
 Citric Acid, 4 ounce bottle, 30
 Oxalate Potash, per pound, 40
 Protosulphate Iron, per pound, 10
 Powdered Alum, per pound, 10
 Solio Toning Solution, per 8 ounce bottle, 50
 Solio Toning Solution can be shipped by mail in 4 ounce bottles as follows : 4 ounces Toning Solution (20c. extra postpaid), . . 30
 Solio Hardener, per 8 ounce bottle, 35

Compliments of the Digitized Kodak Catalog Project: 1886 - 1941

PRINTING FRAMES.

3½ x 3½ Special, opens one-half,	\$ 25
4 x 5 Special, opens one-half,	25
5 x 7 Special, opens two-thirds,	35
4½ x 13½ Special, for Panoram-Kodak, opens in 3 sections,	75

SPECIAL FERROTYPE PLATES.

10 x 14, Ferrotypes Plates, Light, each,	\$ 15
10 x 14, Ferrotypes Plates, Heavy, each,	20
18 x 24, Ferrotypes Plates, Heavy, each,	75

TRAYS.

Paper Developing Trays, 4 x 5, each,	\$ 10
Paper Developing Trays, 5 x 7, each,	15
Hard Rubber Trays, 4 x 5, each,	27
Hard Rubber Trays, 5 x 7, each,	56
Japanned Metal Trays, 4½ x 13½ for Panoram-Kodak,	75
"Bulls-Eye" Composition Trays, 3½ x 3½, each,	18
"Bulls-Eye" Composition Trays, 4½ x 5½, "	25
"Bulls-Eye" Composition Trays, 5½ x 7½, "	50

KODAK MOUNTS.

		Pocket Kodak, 1½ x 2	No. 1 Folding Kodak, 2¼ x 3¼	No. 2 3½ x 3½	No. 4 4 x 5	No. 5 5 x 7	STYLE.
White center, Queen's gray border, enameled face plain back,	Per Doz. " 100 " 1000	\$.10 .70 6.75	\$.15 1.05 10.30	\$.20 1.45 14.20	\$.25 1.70 17.00		A.
White or Queen's gray embossed border, straight edges,	Per Doz. " 100 " 1000	.10 .45 4.25	.10 .75 7.45	.15 .95 9.25	.20 1.30 12.75	\$.30 2.30 22.75	B. W. (white) B. G. (gray)
White, plain straight edge, round corners,	Per Doz. " 100 " 1000				.10 .45 4.25		C.
Primrose, plain beveled edge, round corners,	Per Doz. " 100 " 1000				.10 .65 6.20		D.
Primrose, gilt beveled edge, round corners,	Per Doz. " 100 " 1000				.10 .75 7.45	.20 1.45 14.20	E.
Maroon, gold beveled edge, round corners,	Per Doz. " 100 " 1000				.20 1.50 14.75	.40 3.20 32.00	F.

WHEN ORDERING.

State quantity, style (indicating by letter) and size prints to be used with. Bear in mind that style B is made in either white or Queen's gray. Order "style B. W." for white or "style B. G." for gray. When color is not specified we will furnish white.

FLASH SPECIALTIES.

Eastman's Flash Lamp,	\$1 25
Eastman's Flash Powder, per ounce bottle,	60
Eastman's No. 1 Flash Cartridges, per pkg. ½ doz.,	60
Eastman's No. 2 Flash Cartridges, per pkg. ½ doz.,	40
Eastman's No. 3 Flash Cartridges, per pkg. ½ doz.,	25
Eastman's Flash Sheets, per pkg., ½ doz.,	40
Illustrated Booklet, " Pictures by Flashlight,"	10

SUNDRIES.

Eastman's Photo Paste, per 3 ounce tube,	\$ 15
Eastman's Photo Paste, per 5 ounce tube,	25
Eastman's Pocket Case for Pocket Kodak pictures, (holds 100 unmounted prints),	50
Velvet Rubber Squeegees, 6 inches, each,	40
Velvet Rubber Squeegees, 8 inches, each,	50
Eastman's Negative Pins, per box of 25,	50
3½ x 3½ Glass for Printing Frames, each,	05
4 x 5 " " " " "	05
5 x 7 " " " " "	05
4 x 13 " " Panoram-Kodak Printing Frames, each,	10
4 x 13 Felt Mats for " " " " "	15

DEVELOPING AND PRINTING.

The Eastman Company was the first to render commercially possible the separation of the developing and printing from the picture taking. The division of labor inaugurated by it has brought picture taking within the reach of thousands of persons throughout the world who could not otherwise practice the art.

Carrying the division of labor still further, in our own factory we employ trained operators in every branch of the work. Men who do nothing but develop, girls who do nothing but print, men who do nothing but tone, girls who do nothing but mount, girls who do nothing but "spot" prints, men who do nothing but burnish, etc., etc. As a consequence each becomes skilled in his or her particular branch, and the result, under good superintendence, is good work—better work in particular and in average than can be done except under these favorable conditions.

SPECIMENS.

A specimen photograph made with any of our cartridge cameras (not larger than 4 x 5) will be sent to any address in the United States upon receipt of 4 cents in postage stamps. No. 5 Cartridge Kodak specimens, 8 cents. No. 4 Panoram-Kodak specimens, 20 cents.

TOURISTS.

European travelers can always obtain fresh supplies of Film on short notice, by post, from KODAK, Limited, 43 Clerkenwell Road, 171-173 Regent Street, 115 Oxford Street, or 60 Cheapside, London; the Eastman Kodak Société Anonyme Française, Avenue de l'Opera 5, Place Vendôme 4, Paris, or from the Eastman Kodak Gesellschaft, m. b. H., Markgrafen Strasse 91, Friedrich Strasse 191, Berlin. In ordering, always remit by postal orders, or send currency in registered letter,

TERMS.

The prices in this catalogue are strictly net, except to regular dealers who carry our goods in stock.

All prices are f. o. b. at Rochester. We make no charge for packing.

For the convenience of our customers we recommend that they make their purchases from a dealer in photographic goods as by so doing they can save both time and expressage, but where orders are sent direct, remittances must be by New York draft, express order, postal order, or currency (if currency, letter must be registered). Amounts less than one dollar may be remitted in postage stamps. We do not accept personal checks.

EASTMAN KODAK COMPANY,

Rochester, N. Y.

ROCHESTER.

George Eastman,	- - - - -	1880
The Eastman Dry Plate Co.,	- - - - -	1881-1884
The Eastman Dry Plate and Film Co.,	- - - - -	1884-1889
	Capital, \$300,000.	
The Eastman Company,	- - - - -	1890-1892
	Capital, \$1,000,000.	
Eastman Kodak Company,	- - - - -	1892
	Capital, \$5,000,000.	

LONDON.

The Eastman Dry Plate and Film Co.,	- - - - -	1885-1889
The Eastman Photographic Materials Co., Ltd.,	- - - - -	1890-1899
	Capital, £200,000.	
KODAK, Limited.	- - - - -	1899
	Capital, £1,800,000.	

PARIS.

The Eastman Photographic Materials Co., Ltd.,	- - - - -	1891
Eastman Kodak Société Anonyme Française,	- - - - -	1897
	Capital, 1,000,000 Francs.	

BERLIN.

Eastman Kodak Gesellschaft, m. b. H.	- - - - -	1896
	Capital, 100,000 Marks.	



*“There is no Kodak
but the Eastman Kodak.”*

