



KODAKS

ROCHESTER LONDON PARIS BERLIN

EASTMAN KODAK COMPANY,
ROCHESTER, NEW YORK.

The Digitized Kodak Catalog Project (1886 - 1941): A Very Brief History

Most camera collectors at some point in their collecting careers pass through a Kodak phase - some never come out of it. And if there ever was one name that came to be associated with both cameras and collecting, it was Kodak.

George Eastman received his first patent (for coating dry plates) and bought his first manufacturing facility in 1880, and in 1881 he started the Eastman Dry Plate Company. In 1886 he received a patent for the near-mythical Eastman Detective Camera, but it wasn't until 1888 that the first camera bearing the name "Kodak" was introduced.

One of the nice things about collecting Kodak is that the product line is pretty well known, and because the company produced annual catalogs for many years, collectors can be reasonably sure of what they're looking at, when it was made, the variations and so on - presuming that they have access to either the appropriate catalog, or a number of the many books which document Kodak, each to some greater or lesser extent.

But what would be really nice would be to have a complete set of Kodak catalogs in an easily accessible form and readily available. And since the advent of portable computing devices (PC, Macintosh, etc.) that's been possible - except for the difficulty of assembling a complete set of Kodak catalogs in one spot and then scanning them and making the results available.

The idea of digitizing a complete set of Kodak catalogs has kicked around the collecting community for many years. It's been proposed on a number of online forums, during meetings of various photohistory groups, and for years there have been many incomplete "Kodak CDs" on eBay but at best, they only contained a few catalogs - whatever the owner had available. But assembling a complete set of catalogs, then scanning and processing perhaps 3,000 to 4,000 pages, was a daunting task - if not completely overwhelming - and nothing ever came of it.

Until now.

In early 2010, the idea came up again, but this time we - "we" as in "the collecting community" - were lucky. A number of collectors were willing to loan their catalogs to this project and a couple of insane - wait, let's call them "dedicated" - dedicated enthusiasts - neither of whom collected Kodak, but both of whom enjoyed the challenge of such a project - were willing to put in the time and effort to scan and pull together the entire set of catalogs into a full-blown Kodak Catalog Digital Library.

Our initial objective was to include just the annual amateur catalogs, but it turns out that many cameras only appear in certain professional and specialty catalogs. We included as many of those as we could obtain so that almost every Kodak camera made in the US, Canada and Europe, would be documented - at least up to about 1941. After that, it becomes much more difficult as Kodak stopped producing annual catalogs as their product line became increasingly more diversified.

However, even with the additional "non-amateur" catalogs, we weren't completely successful in illustrating "every" camera Kodak ever made. There are an elusive few that might appear in specialty catalogs that we simply couldn't track down. If you can't find one of those odd cameras, that's no doubt why. We may do a revision at some point in the future if someone is willing to loan us a catalog that includes a camera that isn't already recorded.

In this project, a total of 67 catalogs were used from 1886 through 1941 including a number of professional and dealer catalogs, and in some years, two or even three different catalogs to cover all the bases. With the cooperation of a number of dedicated collectors, we were able to pull together all those catalogs and in June 2010, the project started in earnest.

By November 2010, we had scanned everything we needed and eventually all 67 catalogs were then reassembled as image folders and converted to the universally accepted PDF format and finally, converted into individually searchable PDFs which could then be searched globally as a collection.

For those of you interested in the statistics: about 200 hours of scanning time (we never want to hear that sound again), 67 catalogs and 3,908 page scans - which generated 7,917 original and processed images - and 11.4 GB of disk space. Additionally, another 100+ hours of technical development time was needed to convert the digital catalogues into a fully searchable "knowledgebase" that could be launched from most any standard web browser.

The overwhelming number of catalogs was loaned to us by that most remarkable of Kodak collectors, Charlie Kamerman of Eagle Creek, Oregon. Without Charlie, it's very doubtful that this project could even have been attempted.

But as it turned out, even Charlie didn't have all the publications that were needed, but he was able to track down the five that he lacked and was able to secure either a copy or high resolution images that we could work with. And so, our thanks to the contributors of the catalogs and scans that we used:

Charlie Kamerman for the vast majority of catalogs used and all his help,
Steve Shohet for loaning a variety of test catalogs,
Ryerson University (Toronto) for the 1886 Eastman Catalog
George Layne for the 1890 New Kodaks Catalog,
Mike Kessler for the 1891 Dealer Display Catalog,
Ralph London for the 1893 UK Catalog,
Michael Pritchard for the 1897 UK Catalog.

The digital side of the project - also known as "all of the work" - was done by Rob Niederman of Medina, Minnesota, and Milan Zahorcak of Tualatin, Oregon. Remarkably we're still friends and in a few years, we'll probably be able to talk about this project rationally.

And there you have it, a more-or-less done deal. We're fairly sure that it isn't quite perfect, and expect there will be some carping about something or other; but all-in-all, we believe this to be a pretty good product and can now move on to something else.

Our thanks to all of those involved.

Rob Niederman
Milan Zahorcak

Fall, 2011

1898

KODAKS.



EASTMAN KODAK COMPANY,
ROCHESTER, N. Y.

EASTMAN PHOTOGRAPHIC MATERIALS CO., LTD.
LONDON.

EASTMAN KODAK SOCIÉTÉ ANONYME FRANÇAISE,
PARIS.

EASTMAN KODAK GESELLSCHAFT m. b. H.
BERLIN.

IN BROAD DAY LIGHT.

A KODAK catalogue no longer needs to open with an essay on the charms of amateur photography. There is no longer any such question as "Do I want a camera?" The 50,000 visitors who attended our recent exhibitions of Kodak work in London and New York and who admired and wondered at the display of enlargements from Kodak negatives put aside all doubts as to the status of amateur photography. The "witchery of Kodakery" is conceded and as each year it is simplified new thousands join the ranks of the picture makers.

Amateurs could be found in the "good old days of the wet plate." They doubled with the advent of the hand camera and the dry plate; they multiplied when the Kodak, the roll film and our offer "*you press the button, we do the rest*" made photography easy, but it remained for the introduction of the cartridge system of film photography to make Kodaking what might be termed a "*universal habit*."

All 1898 Kodaks can be loaded in daylight.

The original Kodaks, excellent as they were have made way for this latest development in photography, the daylight loading Cartridge System. It was in 1895 that we began the manufacture of Cartridge System cameras. The wonderful percentage of perfect pictures secured by amateurs with these instruments as shown by the results in our own developing and printing departments impressed us at once. For three years we have been improving, experimenting, adapting, until now we have applied the system to all Kodaks, from the little Pocket up to the 5 x 7 Cartridge which is equipped with the finest lenses and shutters, has every feature that the most exacting amateur can ask and while simple of manipulation is adapted to the most serious photographic work with either film or plates.

With 1898 we abandon all other styles, for in the cartridge system the expert amateur, the tourist Kodaker and the novice

will find not only the greatest simplicity and convenience but the greatest certainty of good results.

CARTRIDGE PHOTOGRAPHY.

The absolute simplicity of the system has been the secret of its success. Indeed, so easy has photography become under our system of cartridge cameras that any bright boy or girl of ten years can successfully accomplish every step of picture-taking, from "pressing the button" to "doing the rest."

In the cartridge system the film is put up in light-tight rolls that may be inserted in the camera in broad daylight. Extending the whole length of the strip of film and several inches beyond each end is a strip of black paper, which, in connection with the flanges on the spool, forms a light-proof cartridge.



FILM CARTRIDGE.

After inserting the spool in the camera and threading up the black paper the camera is closed and the key turned until the black paper has been reeled off and the sensitive film brought into place in the focal plane. The black paper runs with and behind the film, and at proper intervals is marked in white with the number of the section of film, 1, 2, 3, etc. In the back of the camera is a small window of red celluloid through which the figures appear as the key is turned. The figures as seen through the window thus show just how far to turn the key and how many exposures have been made. After all the exposures have been made a few extra turns of the key entirely covers the film with black paper and the camera may be unloaded in daylight.

The black paper running the full length of and beyond the ends of the film, the pull of the roll-holder is all upon one section, a great improvement over other types, where, owing to a piece of black paper being attached to each end of the film, there are three sections and therefore a liability to pull apart.

KODAK DETAILS.

THE LENS.

Every lens manufacturer turns out some good lenses—some poor lenses. Some manufacturers inspect their lenses more carefully than others and hold them up to a higher standard. They are said to be better lens makers—they are in reality better lens inspectors. The lenses used in our cameras must pass two inspectors—the lens maker's inspector and our inspector. *Every lens used by us is tested photographically.* We believe that no other camera manufacturers go to this trouble and expense. We know that however excellent our camera may be it will be useless if we put in a poor lens—our inspection is, therefore, rigid.

Folding Pocket Kodaks, Falcons, Bullets and Bulls-Eyes have strictly achromatic lenses. The Bullet and Bulls-Eye Special and the Cartridge Kodaks have lenses that are not only achromatic but are rapid rectilinear as well and all of our lenses are of sufficient focal length to avoid that disagreeable distortion found in some hand camera work. *We allow none but perfect lenses to be used.*

SHUTTERS.

All the shutters used in our cameras are mechanically accurate, are adapted to either time exposures or instantaneous work, and are provided with suitable sets of stops.

ADAPTABILITY.

Snap shots out of doors, time exposures indoors and flashlights at night all come within the scope of the Cartridge System cameras. Pocket Kodaks, Cartridge Kodaks and Bullets use either plates or

films and can be fitted with plate-holders, while the No. 2 Falcon, No. 2 Bulls-Eye, the Nos. 2 and 4 Bulls-Eye Specials and the Folding Pocket Kodaks can be readily used for making single plate exposures. They do not take plate-holders but when a single plate exposure is to be made in or near the house a plate can be put in position in the camera in a few seconds.

OUNCES VS. POUNDS.

The cartridge cameras are lighter than glass plate instruments of the same capacity, and a film cartridge of twelve exposures 4 x 5, weighs but 2½ ozs., while a dozen plates of equivalent size and half a dozen double plate holders to carry them in, weigh just three pounds, or nearly twenty times as much. It's no trouble to carry a half dozen film cartridges in one's pockets when out for a day's Kodaking. They contain material for seventy-two shots and weigh only fifteen ounces. An equivalent in glass plates and holders would tip the scales at eighteen pounds, weight enough to spoil any outing.

TRANSPARENT FILM.

The advantages of a light, transparent roll film over glass plates for outdoor work are so obvious that film is rapidly superseding glass plates for all except gallery work. The best amateur photographers the world over, the prize winners in the photographic exhibitions of both continents are counted among the users of the Kodak and film. Even the convenience of film would not tempt such people to use it were they not satisfied that it gave the very best results—better average results than glass plates. For all work where there is a tendency to halation, film cartridges are far better than plates, owing to the thin support backed by black paper giving back no reflection.

ON THE WHEEL.

Pocket Kodaks, Folding Pocket Kodaks, No. 2 Falcons, No. 2 Bullets, No. 2 Bulls-Eyes, No. 2 Bullet Specials, No. 2 Bulls-Eye Specials, No. 4 and No. 5 Cartridge Kodaks are especially adapted to use awheel. They are so light as to add no perceptible weight to the wheel and we have prepared a line of carrying cases for them that are light, convenient and practical. They are the result of a long series of experiments, are made to withstand wear and tear and have been given severe tests on all kinds of roads.

YOU CAN "DO THE REST."

With every camera we furnish a carefully written and handsomely illustrated instruction-book, which explains each step of the picture taking and picture making in non-technical terms that anyone can understand. Many amateurs enjoy work in the dark room, and find as much pleasure in the making as in the taking of photographs. Films are quite as easy to handle in the developer as plates and are far less liable to injury. "*You can do the rest.*"

"WE DO THE REST."

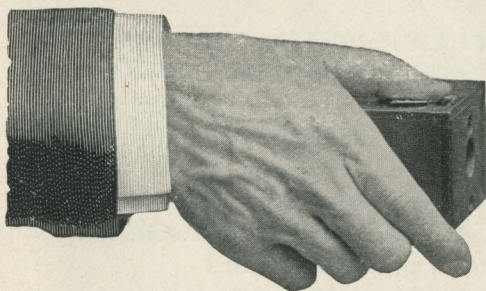
Film cartridges can readily be sent through the mails when desired and our old offer still holds good :

"You press the button, we do the rest."

EASTMAN KODAK CO.

Rochester, N. Y.

THE POCKET KODAK.



Measures $2\frac{1}{4}$ x $2\frac{3}{8}$ x $3\frac{3}{8}$ inches, makes a picture $1\frac{1}{2}$ x 2 inches, and weighs only 6 ounces.

The Lens is carefully tested, and has a fixed focus of sufficient length,

($2\frac{1}{2}$ ins.) to avoid distortion.

Built on the "Cartridge System" and can be loaded in daylight. Has improved rotary shutter and set of three stops for lens. The slides for changing stops and for time exposures are alongside of the exposure lever and always show by their position what stop is before the lens and whether the shutter is set for time or instantaneous exposures, thus acting as a warning.

A Plate Holder for glass plates can be provided with each Pocket Kodak, no extra attachment being required. The change from a film to a plate camera can be made in a few seconds.

A rectangular Finder is provided for locating the image with accuracy. The construction is simple and accurate. The Camera Body is wonderfully strong and light.

In the quality of work they will do, Pocket Kodaks equal the best cameras on the market. They make negatives of such perfect quality that enlargements of any size can be made from them. We do it, at a reasonable price, or you can do it yourself with a Pocket Kodak enlarging camera.

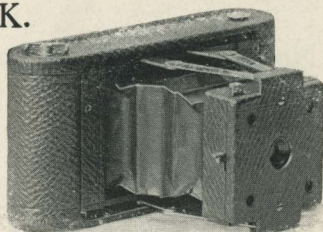
The Pocket Kodaks are covered with fine leather, and the trimmings are handsomely finished and lacquered. They are elegant, artistic and durable.

Can be readily carried on the bicycle by use of our special cases. See page 25.

Pocket Kodak covered with fine Leather, with roll of film for 12 exposures,	-	-	-	\$5 00
Leather Hand Carrying Case (for Pocket Kodak and three extra spools of film). Price of case only,	-	-	-	75
Light Proof Film Cartridge, 12 exposures,	-	-	-	25
Complete A B C Developing and Printing Outfit,	-	-	-	1 50

FOLDING POCKET KODAK.

For rectangular pictures $2\frac{1}{4} \times 3\frac{1}{4}$ inches; capacity, 12 exposures without reloading; size of Kodak, $1\frac{1}{8} \times 3\frac{1}{2} \times 6\frac{3}{4}$ inches; weight, $14\frac{1}{2}$ ounces; length of focus of lens, 4 inches.



In this Kodak we have adapted the Film Cartridge System to an instrument that has been appropriately called a "Photographic Pocket Piece." Though but one and one-half inches in thickness and so light as hardly to be noticed when carried in the pocket it is in every way a complete camera.

The lenses used in these instruments are specially ground, are strictly achromatic, are carefully tested by an experienced inspector and have a fixed focus of 4 inches, a sufficient length to avoid that violent perspective which is so disagreeable in many amateur photographs. They are in short the finest achromatic lenses that can be made, covering the plate clear and sharp to the very corners.

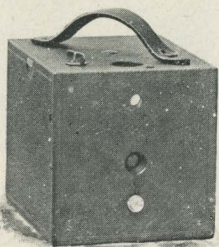
The shutter is entirely new and is simplicity itself. It is always set. A single downward pressure on one exposure lever makes a snap shot. The instant the pressure is removed the shutter sets itself ready for the next exposure. A pressure on another lever opens the shutter for time exposure while a second pressure closes it.

It has a set of three stops and is equipped with two view finders, one for vertical and one for horizontal exposures. There are no loose parts to become lost or mislaid, and to load the instrument is simplicity itself. Made of aluminum covered with the finest black morocco, with handsomely nickeled fittings it is at once strong, dainty and durable. In short the Folding Pocket Kodak is an instrument of the finest quality and workmanship, but of the smallest compass; and though a practical pocket camera makes pictures of good size and of artistic shape and so sharp that they can be enlarged to any size.

Can be readily carried on the bicycle by the use of our special cases. See pages 26 and 27.

Folding Pocket Kodak with achromatic lens, not loaded,	-	\$10 00
Light-proof Film Cartridge, 12 exposures, $2\frac{1}{4} \times 3\frac{1}{4}$,	-	40
Black Sole Leather Carrying Case,	-	1 25
Complete A B C Developing and Printing Outfit,	-	1 50

No. 2 FALCON KODAK.



For square pictures $3\frac{1}{2} \times 3\frac{1}{2}$ inches; capacity 12 exposures without reloading; size of camera, $4\frac{1}{2} \times 4\frac{1}{2} \times 5\frac{3}{4}$ inches, = 116 cubic inches; weight, 19 ounces; length of focus of lens, $4\frac{1}{2}$ inches.

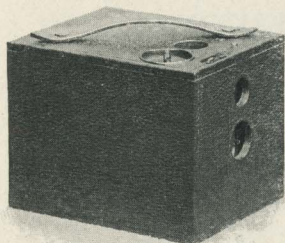
This camera is built on the Cartridge System and can be loaded in daylight. The No. 2 Falcon lenses have a fixed focus of $4\frac{1}{2}$ inches, are strictly achromatic and are given the most rigid tests. No other five dollar camera is equipped with a lens of equal depth, definition and rapidity. Set of three stops, view finder, socket for tripod screw and safety shutter, which is perfectly adapted to time or instantaneous exposures.

Well made, covered with grain leather and handsomely finished.

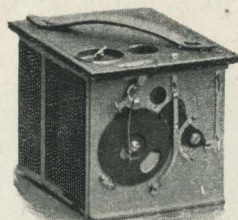
Can be readily carried on the bicycle by use of our special cases. See pages 28 to 31.

NOTE—The prospective purchaser should bear in mind that the price of the Falcon Kodak includes every requisite for taking pictures except the film, whereas the price of most of the so-called five dollar plate cameras includes only one plate holder, and a further expenditure of \$2 or \$3 is necessary if it is desired to make more than two exposures between each trip to the dark room.

No. 2 Falcon Kodak, not loaded,	-	-	-	-	-	\$5 00
Light-proof Film Cartridge, 12 exposures, $3\frac{1}{2} \times 3\frac{1}{2}$,	-	-	-	-	-	60
Black Sole Leather Carrying Case,	-	-	-	-	-	1 25
Complete Bulls-Eye Developing and Printing Outfit,	-	-	-	-	-	1 00



READY FOR USE.



SHOWING SHUTTER

No. 2 BULLS-EYE KODAK.

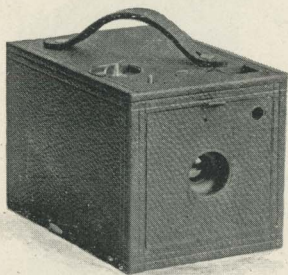
For square pictures, $3\frac{1}{2} \times 3\frac{1}{2}$ inches; capacity 12 exposures without reloading; size of camera, $4\frac{1}{2} \times 4\frac{1}{2} \times 5\frac{3}{4}$ inches = 116 cubic inches; weight, 24 ounces; length of focus of lens, $4\frac{1}{2}$ inches.

This camera is built on the "Cartridge System," and can be loaded in daylight. Fitted with fixed focus, achromatic lens, set of three stops, socket for tripod screw, and improved rotary shutter for snap shots or time exposures. The slides for changing stops and for time exposure are alongside of the exposure lever and always indicate by their position what stop is before the lens, and whether the shutter is set for time or instantaneous exposure. There is therefore, no danger of committing the too common error of making snap shots with the smallest stop in the lens, or setting the shutter for a time exposure when a snap shot is intended, or vice versa. Handsomely finished with fine grain leather covering and nicked fittings.

Can be readily carried on the bicycle by use of our special cases. See pages 28 to 31.

No. 2 Bulls-Eye Kodak fitted with achromatic lens, not loaded.	\$ 8 00
Light-proof Film Cartridge, 12 exposures, $3\frac{1}{2} \times 3\frac{1}{2}$,	- - 60
Black Sole Leather Carrying Case, - - -	- - 1 25
Complete Bulls-Eye Developing and Printing Outfit, - - -	- - 1 00

No. 2 BULLS-EYE SPECIAL KODAK.



For square pictures $3\frac{1}{2} \times 3\frac{1}{2}$ inches; capacity 12 exposures without reloading; size of camera, $4\frac{3}{4} \times 4\frac{3}{4} \times 6\frac{3}{4}$ inches = 152 cubic inches; weight, 28 ounces; length of focus of lens, 5 inches.

This instrument combines the extreme simplicity of the Cartridge System as exemplified in the No. 2 Bulls-Eye with a shutter and lens of the finest quality.

The shutter is, in fact, the Eastman pneumatic shutter which is furnished with the Cartridge Kodaks but arranged to work with a finger release instead of with a bulb. It has three speeds for instantaneous exposures and by the moving of a single lever can be instantly changed from instantaneous to time or to "Lever" exposures, the latter being used for very short "time exposures," the shutter remaining open as long as the exposure lever is kept under pressure, and closing the instant it is released. This shutter is fitted with iris diaphragm stops graduated for Nos. 4, 8, 16, 32, 64 and 128. The shutter is set and operated without opening the front except to change stops or change action from time to instantaneous or vice versa.

No expense has been spared in fitting this instrument with a lens of the finest quality. It has a fixed focus, a length of 5 inches, is strictly rectilinear and very rapid with wonderful depth and definition. Every lens being carefully tested by our own expert the highest quality will be maintained. In short, each one must be perfect.

This Kodak has square finder, socket for tripod screw, nicked fittings, is covered with fine black Morocco and beautifully finished.

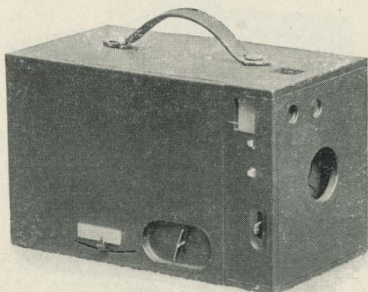
Can be readily carried on a bicycle by the use of our special cases. See pages 28 to 31.

No. 2 Bulls-Eye Special Kodak, with rapid rectilinear lens, and

Eastman shutter with iris diaphragm stops, not loaded,	-	\$15	00
Light-proof film cartridge, 12 exposures, $3\frac{1}{2} \times 3\frac{1}{2}$,	-	-	60
Black Sole Leather Carrying Case,	-	-	1 25
Complete Bulls-Eye Developing and Printing Outfit,	-	-	1 00

No. 4 BULLS-EYE KODAK.

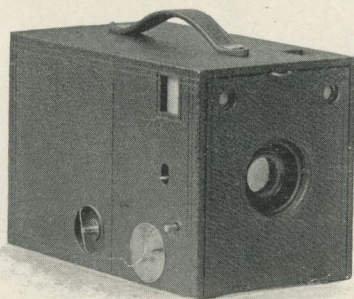
For rectangular pictures, 4 x 5 inches; capacity 12 exposures without reloading. Size of camera, $4\frac{7}{8} \times 5\frac{7}{8} \times 9\frac{1}{4}$ inches = 265 cubic inches; weight, 2 pounds, 8 ounces; length of focus of lens, $6\frac{1}{4}$ inches.



As manufactured by us, the No. 4 (4 x 5) Bulls-Eye is vastly improved over the original instrument. It is fitted with an achromatic lens of superior quality, having a set of three stops; has two finders, one for vertical and one for horizontal exposures; and is also provided with two sockets for tripod screws, one for vertical and one for horizontal exposures. Fitted with our improved rotary shutter, for snap shots or time exposures. The slides for changing stops and for time exposures are alongside of the exposure lever and always show by their position what stop is before the lens, and whether the shutter is set for time or instantaneous exposure. There is, therefore, no danger of committing the too common error of making snap shots with the smallest stop in the lens, or setting the shutter for time exposures when a snap shot is intended, or vice versa. It has a carefully adjusted focusing scale, and, being built on the "Cartridge System," can be loaded in daylight. Handsome finish, nickel fittings, covered with leather.

No. 4 Bulls-Eye Kodak, fitted with achromatic lens (not loaded),	\$12 00
Light-Proof Film Cartridge, 12 exposures, 4 x 5, - - -	90
Black Sole Leather Carrying Case, - - -	2 00
Complete A B C Developing and Printing Outfit, - - -	1 50

No. 4 BULLS-EYE SPECIAL KODAK.



For rectangular pictures
4 x 5 inches; capacity
12 exposures without re-
loading; size of camera,
5 x 5 $\frac{7}{8}$ x 8 $\frac{3}{4}$ inches =
257 cubic inches; weight
2 lbs. 9 ozs., length of
focus of lens, 6 $\frac{1}{2}$ inches.

This instrument combines with the simplicity of the original No. 4 Bulls-Eye, a rapid rectilinear lens of superior quality and the Eastman triple action shutter, which during 1897 gave such perfect satisfaction on the Cartridge Kodak. The shutter is, however, arranged to work with finger release instead of bulb. It has three speeds for instantaneous exposures and by the moving of a single lever can be instantly changed from instantaneous to time or to "Lever" exposures, the latter being used for very short "time exposures," the shutter remaining open as long as the exposure lever is kept under pressure, and closing the instant it is released. This shutter is fitted with iris diaphragm stops graduated for Nos. 4, 8, 16, 32, 64 and 128. The shutter is set and operated without opening the front except to change stops or change action from time to instantaneous or vice versa.

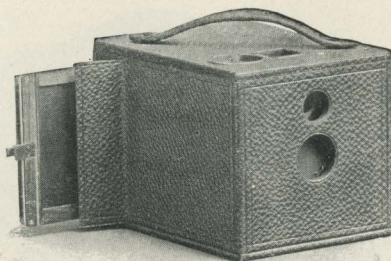
Fitted with two finders, one for vertical and one for horizontal exposures and two sockets for tripod screw. It has a carefully adjusted focusing scale and being built on the Cartridge System can be loaded in daylight.

The construction is of the strongest, the finish rich and elegant. The No. 4 Bulls-Eye Special Kodak is in short, the most convenient of high grade 4 x 5 cameras and will be fully appreciated by those who demand the very best in camera construction but who prefer the box to the folding form because it is always ready for use. Covered with fine black morocco with nickeled fittings.

No. 4 Bulls-Eye Special Kodak, rapid rectilinear lens, Eastman shutter, with iris diaphragm stops (not loaded)	-	-	\$20 00
Light proof film cartridge, 12 exposures, 4 x 5,	-	-	90
Black Sole Leather Carrying Case,	-	-	2 00
Complete A B C Developing and Printing Outfit,	-	-	1 50

No. 2 BULLET KODAK. FOR FILMS AND PLATES.

For square pictures, $3\frac{1}{2}$ x $3\frac{1}{2}$ inches; capacity, 12 exposures without reloading; size of camera, $4\frac{1}{2}$ x $4\frac{1}{2}$ x 6 inches=121 cubic inches; weight, 26 ounces; length of focus of lens, $4\frac{1}{2}$ inches.



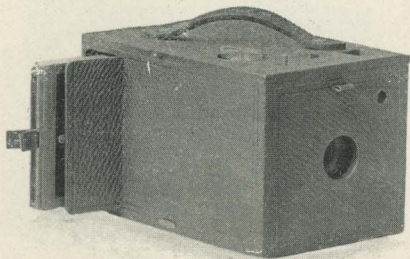
SHOWING NO. 2 BULLET ADAPTED TO PLATES.

The Improved Bullet uses either roll films or glass plates (with plates the picture is $3\frac{1}{4}$ x $3\frac{1}{2}$ inches), and being built on the "Cartridge System," can be loaded in daylight. It is fitted with a fixed focus, achromatic lens, set of three stops, square finder, socket for tripod screw, and has our improved rotary shutter for snap shots or time exposures. The slides for changing stops and for time exposures are alongside of the exposure lever and always show by their position what stop is before the lens, and whether the shutter is set for time or instantaneous exposure. There is, therefore, no danger of committing the too common error of making snap shots with the smallest stop in the lens, or setting the shutter for a time exposure when a snap shot is intended, or vice versa. Handsome finish, nickel fittings, covered with fine leather.

Can be readily carried on the bicycle by use of our special cases. See pages 28 to 31.

No. 2 Bullet Kodak, for film and plates, fitted with achromatic lens, (not loaded)	-	-	-	-	\$10 00
Light-proof Film Cartridge, 12 exposures, $3\frac{1}{2}$ x $3\frac{1}{2}$,	-	-	-	-	60
Single Plate Holders, ($3\frac{1}{4}$ x $3\frac{1}{2}$ inches), each,	-	-	-	-	60
Black Sole Leather Carrying Case,	-	-	-	-	1 25
Complete A B C Developing and Printing Outfit,	-	-	-	-	1 50

No. 2 BULLET SPECIAL KODAK. FILMS AND PLATES.



SHOWING NO. 2 BULLET SPECIAL ADAPTED TO PLATES.

For square pictures $3\frac{1}{2} \times 3\frac{1}{2}$ inches; capacity 12 exposures without re-loading; size of camera, $4\frac{3}{4} \times 4\frac{3}{4} \times 7\frac{1}{2}$ inches = 182 cubic inches; weight 2 lbs. 7 ozs.; length of focus of lens, 5 inches.

This instrument combines the extreme simplicity of the Cartridge System with a shutter and lens of the finest quality and can be used with film cartridges or glass plates. (With plates the picture is $3\frac{1}{4} \times 3\frac{1}{2}$ inches.)

The shutter is the Eastman pneumatic but arranged to work with a finger release instead of with a bulb. It has three speeds for instantaneous exposures and by the moving of a single lever can be instantly changed from instantaneous to time or to "Lever" exposures. The shutter is fitted with iris diaphragm stops graduated for Nos. 4, 8, 16, 32, 64 and 128. The shutter is set and operated without opening the front except to change stops or change action from time to instantaneous or vice versa.

No expense has been spared in fitting this instrument with a lens of the finest quality. It has a fixed focus of 5 inches, it is strictly rectilinear and very rapid with wonderful depth and definition.

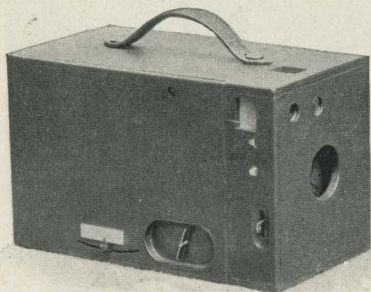
Square finder, socket for tripod screw, covered with fine black morocco. Nickel fittings and beautiful finish.

Can be readily carried on a bicycle by the use of our special cases. See pages 28 to 31.

No. 2 Bullet Special Kodak, for film and plates, with rapid rectilinear lens and Eastman shutter with iris diaphragm stops, not loaded.	\$18 00
Light proof film cartridge, 12 exposures, $3\frac{1}{2} \times 3\frac{1}{2}$,	60
Double Plate Holders ($3\frac{1}{4} \times 3\frac{1}{2}$) each,	1 00
Black Sole Leather Carrying Case,	1 25
Complete Bulls-Eye Developing and Printing Outfit,	1 00

No. 4 BULLET KODAK. FOR FILMS AND PLATES.

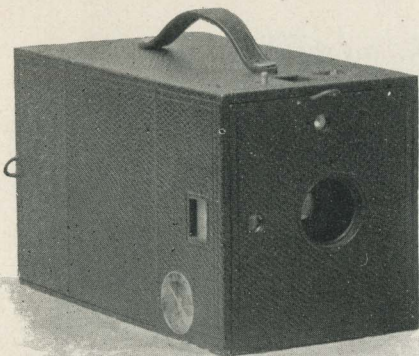
For rectangular pictures, 4 x 5 inches; capacity 12 exposures without reloading; size of camera, $5\frac{1}{4}$ x 6 x $9\frac{3}{4}$ inches=307 cubic inches; weight, 2 lbs. 10 ozs.; length of focus of lens, $6\frac{1}{4}$ inches.



The No. 4 Bullet uses either roll films or glass plates, and, being built on the "Cartridge System," can be loaded in daylight. It is fitted with an achromatic lens, set of three stops, two finders, one for vertical and one for horizontal exposures, two sockets for tripod screw, and has our improved rotary shutter for snap shots or time exposures. The slides for changing stops and for time exposures are alongside of the exposure lever and always show by their position what stop is before the lens, and whether the shutter is set for time or instantaneous exposure. There is, therefore, no danger of committing the too common error of making snap shots with the smallest stop in the lens, or setting the shutter for a time exposure when a snap shot is intended, or vice versa. Handsome finish, with nickel fittings, and covered with fine leather.

No. 4 Bullet Kodak, for film and plates, fitted with achromatic lens (not loaded),	-	-	-	-	-	\$15 00
Light-proof Film Cartridge, 12 exposures, 4 x 5,	-	-	-	-	-	90
Single Plate Holders, (4 x 5 inches), each,	-	-	-	-	-	75
Black Sole Leather Carrying Case,	-	-	-	-	-	2 00
Complete A B C Developing and Printing Outfit,	-	-	-	-	-	1 50

No. 4 BULLET SPECIAL KODAK. FILM AND PLATES.



For rectangular pictures
 4 x 5 inches ; capacity 12
 exposures without reload-
 ing; size of camera, $5\frac{1}{2}$ x
 $6\frac{1}{4}$ x $10\frac{3}{4}$ inches = 373
 cubic inches ; weight, in-
 cluding roll holder, 3 lbs.
 9 ozs.; length of focus of
 lens, $6\frac{1}{2}$ inches.

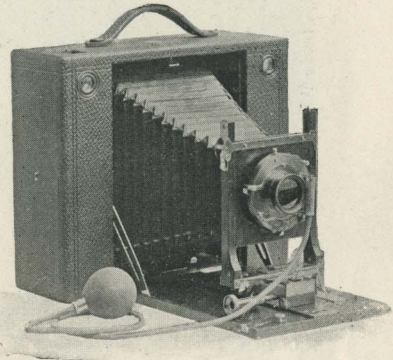
In the No. 4 Bullet Special Kodak we offer in box form an instrument of the highest grade and greatest efficiency. Adapted to either plates or film cartridges. Has the finest rapid rectilinear lenses, Eastman triple action shutter and is capable of a wide range of work. It is simple to operate, instantly ready for use, is of the strongest construction and is rich and elegant in finish. Unlike the other Bullet Kodaks the roll holder is detachable (the regular No. 4 horizontal Cartridge Roll Holder, see page 24), and being equipped with a dark slide is interchangeable with plate holders in the field and permits of focusing on the ground glass when using film.

The shutter is the Eastman pneumatic arranged to work with a finger release instead of a bulb. It has three speeds for instantaneous exposures and by the moving of a single lever can be instantly changed from instantaneous to time or to "Lever" exposures. Fitted with iris diaphragm stops graduated for Nos. 4, 8, 16, 32, 64 and 128. The shutter is set and operated without opening the front. Fitted with finders and tripod sockets for both vertical and horizontal exposures and carefully adjusted focusing scale. Handsome leather covering, nickeled fittings.

No. 4 Bullet Special Kodak, for film or plates, including Cartridge Roll Holder, and one Double Plate Holder, Rapid Rectilinear lens, Eastman shutter, iris diaphragm stops (not loaded,)	-	\$25 00
Do. with one Double Plate Holder, but without Roll Holder,	-	20 00
Cartridge Roll Holder for No. 4 Bullet Special,	-	5 00
4-inch Light-proof Roll Holder Cartridge, 12 exposures 4 x 5,	-	90
Double Plate Holders, 4 x 5 inches, each,	-	1 00
Black Sole Leather Carrying Case,	-	2 25
Complete A B C Developing and Printing Outfit,	-	1 50

CARTRIDGE KODAKS.

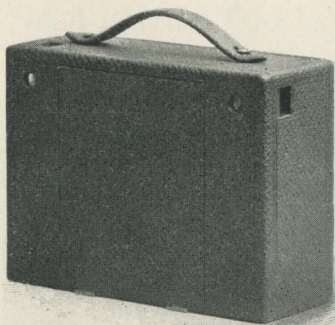
In the Cartridge Kodaks we have adapted the "Film Cartridge System" to Folding Kodaks of the finest quality and greatest capabilities. They are hardly more than half the thickness of other cameras which are adapted to both film and plates and are the only folding instruments capable of taking 4 x 5 and 5 x 7 pictures and having the daylight loading feature. We never place a camera upon the market until we have thoroughly tested its actual working qualities under all conditions and the finished product is always an improvement over the first model, but in our years of experience in camera making no instrument which we have introduced has been so carefully planned, so severely tested, or has been the subject of so much thought and experiment as the Cartridge Kodak. The result is an instrument which is the embodiment of photographic perfection.



CARTRIDGE KODAK OPEN.

The Cartridge Kodaks of both sizes use either our daylight loading Film Cartridges or glass plates, are fitted with carefully tested rapid rectilinear lenses and our pneumatic release shutter fitted with iris diaphragm stops. This shutter has three speeds for instantaneous exposures; it makes short time exposures by one pressure of the bulb, the shutter closing when the bulb is released; and makes longer time exposures by pressing the bulb once to open the shutter and again to close it. It may be operated by the finger trigger instead of the bulb when so desired.

The Cartridge Kodak is provided with a rising, sliding and falling front, two view finders, one for vertical and one for horizontal



CARTRIDGE KODAK CLOSED.

exposures, two sockets for tripod screws, has Eastman's patent non-collapsing bellows and is equally perfect as a hand or as a tripod camera. It has an index for focusing and when used with plates may be focused on the ground glass if desired.

When used with film there are no projecting parts, no attachments to become lost, no extras to be mislaid. The plate adapter is simple and compact and can be put in place or removed in five seconds.

Both the No. 4 and No. 5 Cartridge Kodaks are perfectly adapted to use on the wheel and can be readily carried by the use of our special cases described on pages 32 to 35. For the wheelman's use no cameras capable of making 4 x 5 or 5 x 7 pictures are to be compared with the Cartridge Kodaks. A Film Cartridge for 12 exposures 5 x 7 weighs 4 ounces. An equivalent in glass plates and the necessary holders weighs 4 pounds. The moral is obvious.

Strength and reliability have not been sacrificed to mere, lightness, nor efficiency to compactness. The finish is rich and beautiful. When closed for carrying they are inconspicuous, there being no metal parts in sight, even the key, which is in the bottom of the camera, being recessed and entirely hidden from view. When open for use it exposes to view a bed and front board of highly polished mahogany with buffed brass fittings set off in brilliant contrast by the highly polished nickeled shutter. In short, it has in a superlative degree, that rich and dainty finish which characterizes all our goods.

No. 4 CARTRIDGE KODAK. FOR FILM AND PLATES.

For rectangular pictures 4 x 5 inches ; capacity, 12 exposures without reloading ; size of camera, $3\frac{1}{8} \times 6\frac{3}{8} \times 8\frac{1}{4} = 167$ cubic inches ; weight, 2 lbs., 10 ozs. ; length of focus of lens, $6\frac{1}{2}$ inches.

*No. 4 Cartridge Kodak with Rapid Rectilinear lens and Eastman				
Pneumatic Shutter,	-	-	-	\$25 00
Light-Proof Film Cartridge, 12 exposures, 5 x 4 inches,	-	-	-	90
Glass plate adapter with ground glass,	-	-	-	2 50
Double glass plate holders, each,	-	-	-	1 00
Eastman's A B C Developing and Printing Outfit,	-	-	-	1 50

No. 5 CARTRIDGE KODAK. FOR FILM AND PLATES.

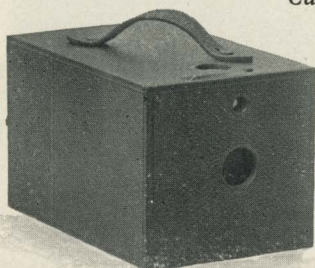
For rectangular pictures 5 x 7 inches ; capacity, 12 exposures without reloading ; size of camera, $3\frac{1}{4} \times 8\frac{1}{2} \times 10\frac{1}{8} = 280$ cubic inches ; weight 3 lbs., 15 ozs. ; length of focus of lens, $8\frac{1}{2}$ inches.

*No. 5 Cartridge Kodak with Rapid Rectilinear lens and Eastman				
Pneumatic Shutter,	-	-	-	\$35 00
Light-proof Film Cartridge, 12 exposures 7 x 5 inches,	-	-	-	1 60
Glass Plate Adapter with ground glass,	-	-	-	3 00
Double Glass Plate Holders, each,	-	-	-	1 25
Eastman's Special 5 x 7 Developing and Printing Outfit,	-	-	-	2 00

*Customers having favorite lenses or shutters can have them fitted to these cameras at a small extra charge. All matters of change in equipment should, however, be made the subject of correspondence.

No. 2 EUREKA CAMERA. FOR GLASS PLATES.

*Can be used with Film by addition of
Cartridge Roll Holder.*



For square pictures, $3\frac{1}{2} \times 3\frac{1}{2}$ inches; size of camera, $4\frac{3}{4} \times 4\frac{7}{8} \times 7\frac{5}{8}$ inches; weight, 18 ounces; length of focus of lens, $4\frac{1}{2}$ inches.

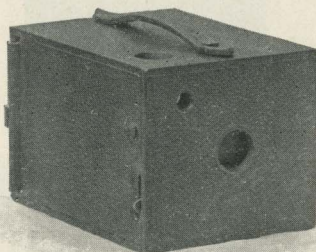
The No. 2 Eureka is a simple, practical camera whether used for plates only or with the Cartridge Roll Holder described on page 24. It is an instrument that can be depended upon, and at a price that is only made possible by the magnificent facilities at our command. It contains no uncertain or untried devices for cheapening cost, and no clumsy attempts at making it a "magazine" camera.

The 1898 model is equipped with our improved rotary shutter for snap shots or time exposures, the same shutter which has been so successfully used on the Pocket Kodak, the Bullet and the Bulls-Eye. It has a fine achromatic lens, set of three stops, view finder and socket for tripod screw. Perfectly adapted to hand or tripod use and has space in back for three double plate holders or Cartridge Roll Holder. Covered with fine grain leather and fitted with leather handle for carrying.

No. 2 Eureka Camera, with Achromatic lens and one double plate holder, - - - - -	\$ 4 00
Double Plate Holders, $3\frac{1}{2} \times 3\frac{1}{2}$, each, - - - - -	75
Eastman's Extra Rapid Dry Plates, $3\frac{1}{2} \times 3\frac{1}{2}$, per dozen, - - - - -	35
No. 2 Cartridge Roll Holder, (see page 24) - - - - -	5 00
Light-proof Roll Holder Cartridge, 12 ex. $3\frac{1}{2} \times 3\frac{1}{2}$, - - - - -	60
Black Sole Leather Carrying Case, - - - - -	1 25
Eastman's Bulls-Eye Developing and Printing Outfit, complete for developing and printing 12 pictures, - - - - -	1 00

No. 2 EUREKA JR. CAMERA. GLASS PLATES ONLY.

For square pictures, $3\frac{1}{2} \times 3\frac{1}{2}$ inches. Size of Camera $4\frac{1}{4} \times 4\frac{1}{2} \times 6\frac{1}{8}$ inches ; weight $12\frac{1}{2}$ ounces, length of focus of lens, $4\frac{1}{2}$ inches.



Our own building, erected by us for a camera factory ; machinery built especially for the manufacture of cameras, skilled mechanics who have been employed by us for years, ample capital, years of experience, and a trade that reaches every corner of the earth enabling us to manufacture in enormous quantities—it is only through a combination of all these conditions that we are able to offer such an instrument as the No. 2 Eureka Jr. Camera for \$2.50.

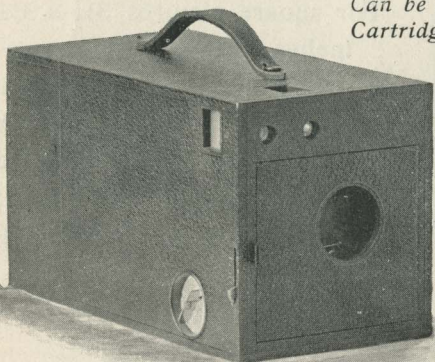
It is an honest camera, honestly made and is fully fitted for the best photographic work. The lens has great depth and definition and covers the plate fully. The shutter is our improved rotary, such as we use on the Pocket Kodak, the Bullet and the Bulls-Eye Kodaks. Fitted with set of three stops, brass socket for tripod screw, view finder and with single aluminum plate holder. This plate holder is the lightest, simplest and safest form of holder made, is quickly loaded and weighs but $1\frac{1}{4}$ ozs.

The camera is well made in every particular and covered with black leatherette.

No. 2 Eureka Jr. Camera, with carefully tested lens, rotary shutter and one single plate holder,	-	-	-	-	-	\$2 50
Single plate holders, $3\frac{1}{2} \times 3\frac{1}{2}$, each,	-	-	-	-	-	40
Carrying case to hold No. 2 Eureka Jr. Camera and 5 extra plate holders,	-	-	-	-	-	1 00
Bulls-Eye developing and printing outfit,	-	-	-	-	-	1 00

No. 4 EUREKA CAMERA. FOR GLASS PLATES.

Can be used with Film by addition of Cartridge Roll Holder.

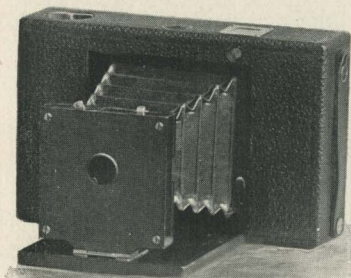


For rectangular pictures, 4 x 5 inches. Size of camera $5\frac{1}{2}$ x $6\frac{1}{8}$ x 11 inches; weight, 2 pounds 3 ounces. Length of focus of lens, $6\frac{1}{4}$ inches.

THE No. 4 EUREKA is the only Camera at the price or at anywhere near the price, which permits of focusing. It is arranged to focus either by index scale or on the ground glass, and has a fine achromatic lens with a set of three stops, and our improved rotary shutter. Fitted with finders and tripod sockets for both vertical and horizontal exposures. Can be used with films by the addition of a No. 4 (Horizontal) Cartridge Roll Holder, plate holders and roll holder being interchangeable in the field. Well made in every particular and of greater capabilities than any other 4 x 5 camera sold at less than double the price. Covered with fine grain leather.

No. 4 Eureka Camera with one double plate holder, achromatic lens,	\$6 00
Double Plate Holders, 4 x 5, each,	1 00
Eastman's Extra Rapid Dry Plates, per dozen, 4 x 5,	65
Eastman's No. 4 Horizontal Cartridge Roll Holder, to fit No. 4 Eureka,	5 00
Light Proof Film Roll Holder Cartridge, 12 ex. 4 x 5, 4 in. spool to fit above,	90
Black Sole Leather Carrying Case,	2 25

No. 2 FOLDING BULLS-EYE KODAK.



For square pictures $3\frac{1}{2} \times 3\frac{1}{2}$ inches; capacity 12 exposures without reloading; size of camera closed, $1\frac{3}{4} \times 4\frac{5}{8} \times 7\frac{1}{8}$ inches, = 58 cubic inches; weight, 15 ounces; length of focus of lens, $4\frac{1}{2}$ inches.

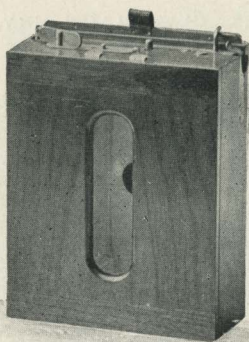
A POCKET EDITION OF THE BULLS-EYE.

Being but $1\frac{3}{4}$ inches in thickness when closed is very convenient to carry. Will go in an ordinary overcoat pocket.

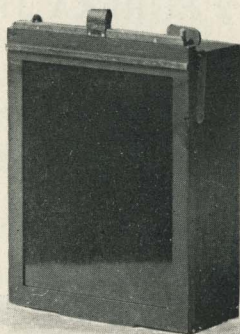
Built on the "Cartridge System," and can be loaded in daylight. Fitted with fixed focus, achromatic lens, set of three stops, socket for tripod screw, and improved rotary shutter for snap shots or time exposures. The slides for changing stops and for time exposure are near the exposure lever and always indicate by their position what stop is before the lens, and whether the shutter is set for time or instantaneous exposure. There is therefore, no danger of committing the too common error of making snap shots with the smallest stop in the lens, or setting the shutter for a time exposure when a snap shot is intended, or vice versa. Handsomely finished with fine grain leather covering.

Can be readily carried on the bicycle by use of our special clamps and the regular hand case.

No. 2 Folding Bulls-Eye Kodak, for $3\frac{1}{2} \times 3\frac{1}{2}$ pictures,	-	\$10 00
Transparent Film Cartridge, 12 exposures, $3\frac{1}{2} \times 3\frac{1}{2}$,	- - -	60
Black Sole Leather Carrying Case with strap,	- - -	1 25
Pair of Clamps for carrying above Case on head of bicycle,	- - -	1 00



CARTRIDGE ROLL HOLDER SHOWING BACK.



CARTRIDGE ROLL HOLDER SHOWING FRONT.

THE CARTRIDGE ROLL HOLDER.

We are now prepared to furnish Cartridge System Roll Holders which can be fitted to any ordinary camera by an intelligent cabinet maker, or we will do the fitting for a small charge, varying, of course, according to the camera and the work necessary. They take *special* light-proof film cartridges of 12 exposures; are provided with red celluloid windows in the back for counting exposures in same manner as the Cartridge System Kodaks; have an improved tension device to make the film lie flat during exposure and are equipped with dark slides, making them *interchangeable with plate holders in the field*.

Well made of hard wood, with brass fittings, and handsomely finished.

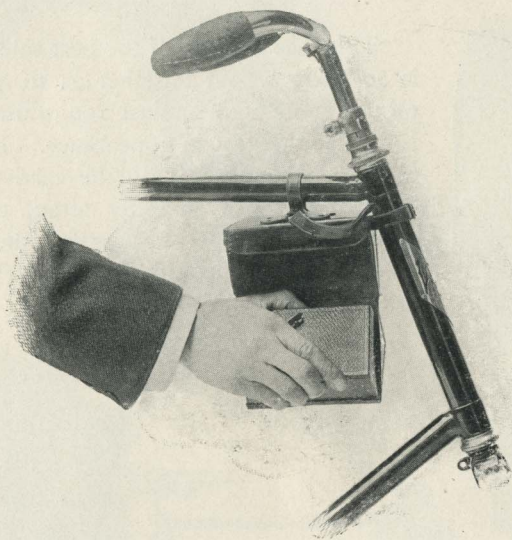
SPECIAL SPOOLS FOR CARTRIDGE ROLL HOLDERS.

In ordering cartridges, be sure and state that they are for Cartridge Roll Holder, giving length of spool and size of roll holder, as the film and paper are wound differently from those used in the Bullets, Bulls-Eyes, etc. Kodak Spools will not fit Cartridge Roll Holders.

PRICE LIST.

*No. 2 ($3\frac{1}{2} \times 3\frac{1}{2}$) Cartridge Roll Holders,	-	\$5 00
No. 4 (4×5) Cartridge Roll Holders (specify whether vertical or horizontal),	-	5 00
No. 5 (5×7) Cartridge Roll Holders (vertical style only)	-	6 50
$3\frac{1}{2}$ -inch Light proof Film Cartridge, for No. 2 Cartridge Roll Holder, 12 exposures,	-	60
4-inch Light-proof Film Cartridge, for No. 4 Horizontal Cartridge Roll Holder,	-	
12 exposures.	-	90
5-inch Light proof Film Cartridge, for No. 4 Vertical Cartridge Roll Holder, 12	-	
exposures,	-	90
7-inch Light-proof Film Cartridge for No. 5 Cartridge Roll Holder. 12 exposures,	-	1 60
*Ready June 1st.		

BICYCLE CARRYING CASES.



THE POCKET KODAK BICYCLE CASE.

THE POCKET KODAK
BICYCLE CARRYING CASE.

The Pocket Kodak Bicycle Carrying Case is made of the best black sole leather and will hold, beside the Kodak, three extra spools of film. It attaches to the frame in much the same manner as a tool bag and may be carried suspended from the top bar of the machine either at the head or at the seat post.

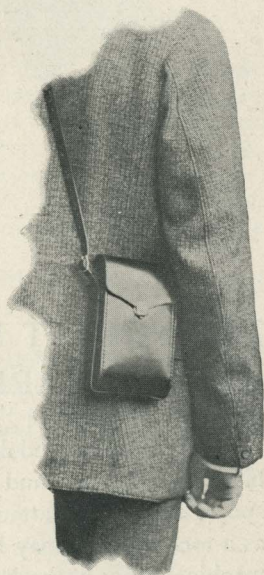
Price of Pocket Kodak Bicycle Case, - - - - - \$1 00

COMBINATION HAND AND BICYCLE CASE FOR THE FOLDING POCKET KODAK.



AS A HAND CASE.

This case is made of the best sole leather; is so strongly put together as to perfectly protect the Kodak against rough usage, and is neat and dainty in appearance. It can be used as a hand case; can be carried like a field-glass with a shoulder strap, or when desired, may be used for carrying the Kodak on a bicycle by the addition of bicycle clamp to the outfit.

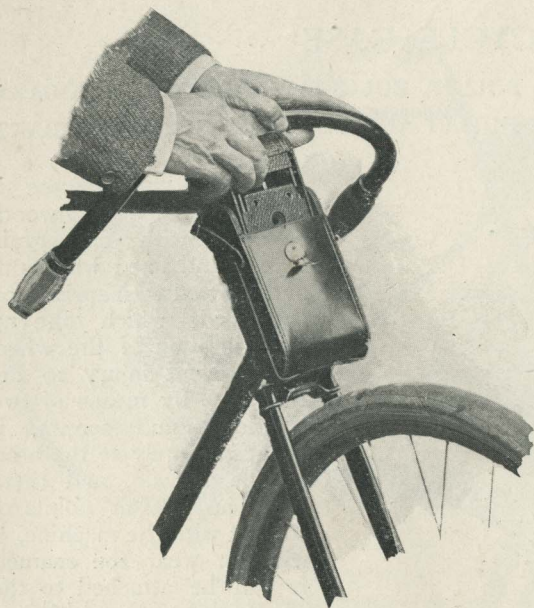


WITH SHOULDER STRAP.

PRICE.

Folding Pocket Kodak Carrying Case with
shoulder strap, - - - \$ 1 25

Clamp for carrying above case on head of
bicycle, (fits any tubing from $\frac{7}{8}$ to $1\frac{1}{4}$) 50



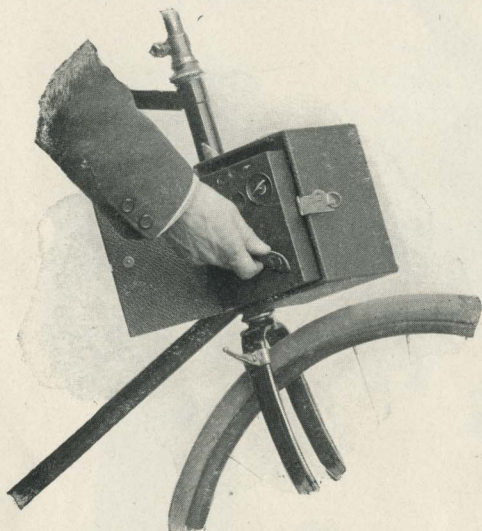
REMOVING
FOLDING
POCKET
KODAK
FROM
BICYCLE
CASE.



FOLDING POCKET KODAK BICYCLE CASE ATTACHED TO HEAD OF MACHINE
BY MEANS OF CLAMP.

STYLE A BICYCLE CASE

FOR No. 2 BULLET, BULLS-EYE AND FALCON KODAKS,
AND No. 2 BULLET AND BULLS-EYE SPECIAL KODAKS.



REMOVING THE CAMERA FROM CASE.

for No. 2 Bulls-Eye case, $5\frac{3}{8} \times 5\frac{1}{2} \times 6\frac{7}{8}$ inches.

The door latch can be opened with one hand, yet it cannot jar open and will not rattle.

By means of a set of adjustable washers (extra) the case may be held far enough in front of the bicycle head to allow for the free passage of the brake rod. It may also be provided (extra) with a lamp bracket attachment. A set of washers are furnished with each case and by their use the clamps will firmly grip any tubing from $\frac{7}{8}$ inch to $1\frac{1}{4}$ inches, both inclusive. No wrench, screwdriver or other tools are necessary in making the attachment.

The Style A case is strongly made of wood, covered with fine grain leather and lined with cloth and is fitted with springs on the inside which take up the vibration of the wheel and prevent injury to the camera. By means of two simple thumb screws, it clamps securely to the head of the bicycle, and there being no play at points of contact with the machine, it will not wear the enamel. It can be attached to the wheel so as to open either at the side or at the top, the door fastening with a strong catch.

Outside measurements

*Bicycle Carrying Case, Style A, for No. 2 Bullet, Bulls-Eye, Falcon,	
No. 2 Bullet Special, and No. 2 Bulls-Eye Special Kodaks,	\$ 2 00
Washers for holding Case in front of Brake Rod,	50
Detachable Lamp Bracket, (see page 35),	25

*In ordering specify whether for No. 2 Bullet, Bulls-Eye, Falcon, Bullet Special or Bulls-Eye Special.



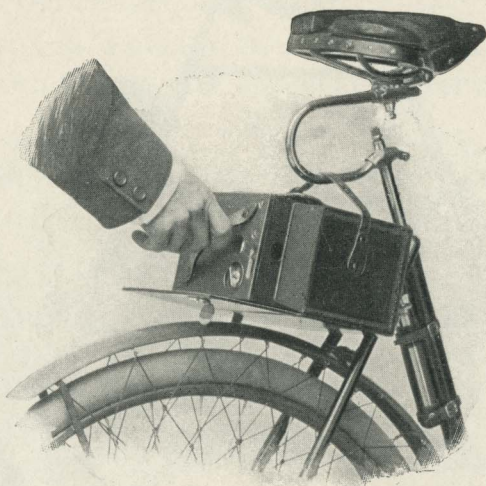
STYLE A BICYCLE CASE.

For No. 2 Bullet, Bulls-Eye, Falcon, Bulls-Eye Special and Bullet Special Kodaks.



STYLE A BICYCLE CASE.

Showing Case held in front of brake rod by means of washers. For No. 2 Bullet, Bulls-Eye, Falcon, Bulls Eye Special and Bullet Special Kodaks.



REMOVING THE CAMERA.

STYLE B CASE

FOR No. 2 BULLET, BULLS-EYE, FALCON, BULLET SPECIAL AND BULLS-EYE SPECIAL KODAKS.

This case is designed to attach to the rear forks immediately under the saddle and is especially adapted to use on a lady's wheel, or on any wheel having mud-guards. It is provided with three straps, two of which attach to the rear forks, the third passing through the saddle spring proper or through the U spring where one is used as shown in the illustration. It is made of the best black sole leather and is easily accessible, a single strong clasp securing the flap in position. It makes a safe and convenient carrier for the camera.

In ordering state whether for use with Bullet, Bulls-Eye, Bullet Special, Bulls-Eye Special or Falcon.

Price, Bicycle Carrying Case, Style B for No. 2 Bullet, Bulls-Eye, Falcon, Bullet Special and Bulls-Eye Special Kodaks, - - - \$1 50

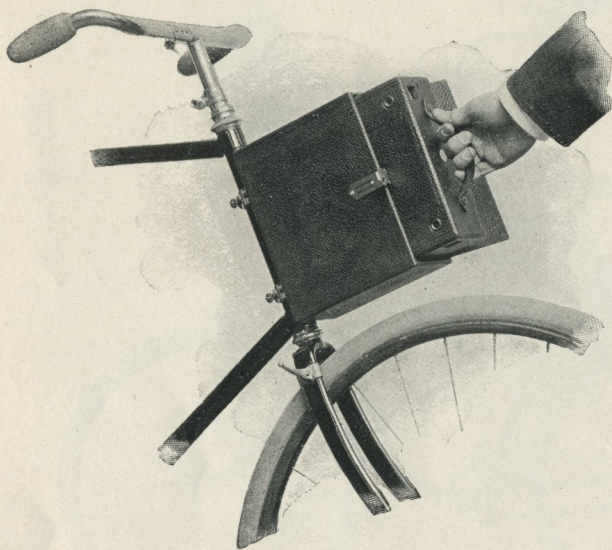
NOTE.—This case is impracticable for very short riders as it requires a space of 6 inches in the clear between the mud-guard and the saddle spring.



STYLE B BICYCLE CASE.

For No. 2 Bullet, Bulls-Eye, Falcon, Bullet Special and Bulls-Eye Special Kodaks.

CARTRIDGE KODAK BICYCLE CASE.



REMOVING THE KODAK.

firmly grasp any tubing from $\frac{7}{8}$ to $1\frac{1}{4}$ inches, both inclusive, and can be attached to any side of the case (except, of course, the door). There being no play at the points of contact with the machine, it will not wear the enamel.

Outside measurements of the No. 4 Cartridge Case are $3\frac{3}{4} \times 7\frac{1}{4} \times 8\frac{7}{8}$ inches and of the No. 5 Cartridge Case $4 \times 9\frac{3}{8} \times 11$ inches.

The door fastens with a strong brass catch which can be opened with one hand, yet cannot jar open and will not rattle.

By means of a set of adjustable washers (extra) the case may be held far enough in front of the bicycle head to allow for the free passage of a brake rod. It may also be provided (extra) with a lamp bracket attachment. No wrench, screw driver or other tools are necessary in making the attachment.

No. 4 Cartridge Kodak Bicycle Case,	-	-	-	-	-	-	\$2 50
No. 5 " " " " " "	-	-	-	-	-	-	3 25
Washers for holding case in front of brake rod,	-	-	-	-	-	-	50
Detachable Lamp Bracket,	-	-	-	-	-	-	25

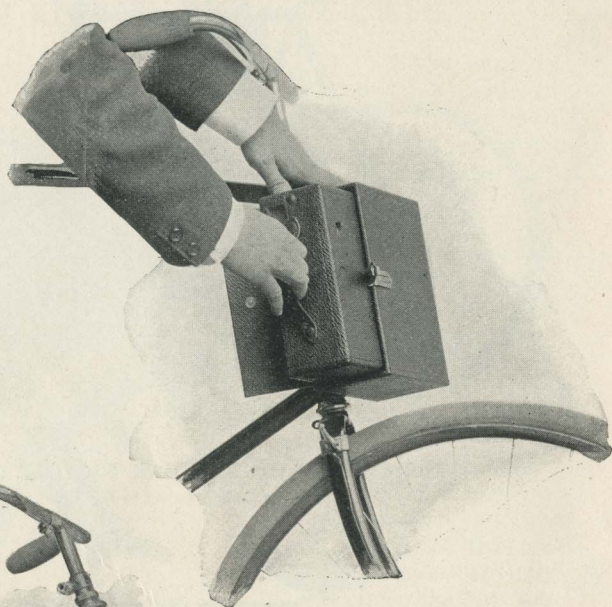


No. 4 CARTRIDGE KODAK BICYCLE CASE.
Showing Case Attached to Top Bar.

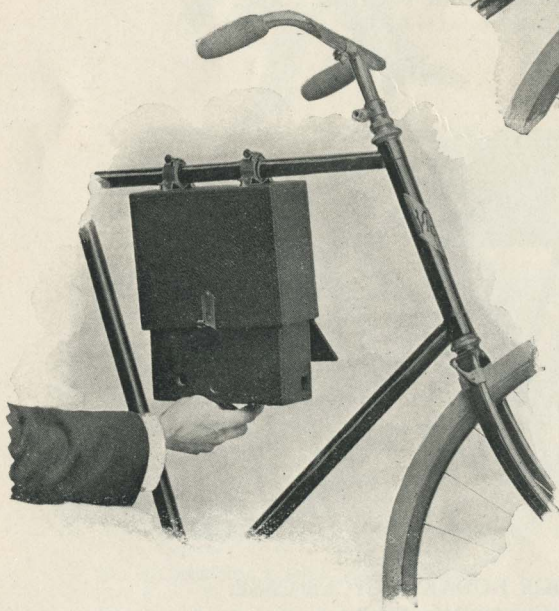


No. 5 CARTRIDGE KODAK BICYCLE CASE.
Showing Case Attached to Top Bar.

REMOVING
THE KODAK.



TWO POSITIONS
OF CASE.

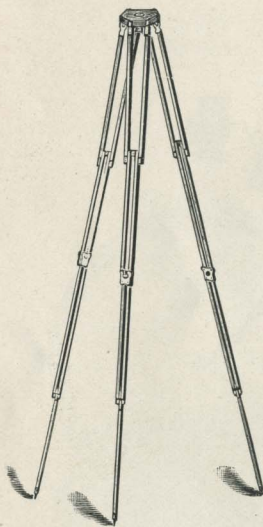




No. 4 CARTRIDGE KODAK BICYCLE CASE.

Showing Case held in front of brake rod by means of washers and with lamp attachment.

TRIPODS.



THE KODAK TRIPOD.

Length, extended, 55½ inches.

Length, folded, 15⅞ inches.

Weight, 2 lbs. 3 oz.

Especially designed for use with Kodaks.

When put up in the Leather Carrying Case, the Kodak Tripod is perfectly adapted to the wheelman's use. Being but 15⅞ inches long it can be readily strapped to the handle bar where it will in no way inconvenience the rider. Perfectly rigid and suitable for any camera up to 8 x 10. Made of the best seasoned cherry with brass fittings.

PRICE OF KODAK TRIPODS.

No. 1 Kodak Tripod with folding lugs,	-	-	-	\$ 5 00
No. 2 Kodak Tripod with solid lugs,	-	-	-	4 00
Leather Carrying Case with pocket for top for No. 1,	-	-	-	3 00
Leather Carrying Case without pocket,	-	-	-	2 00

EASTMAN'S FEATHER TRIPOD.

Length, folded, $14\frac{1}{2}$ inches. Length, extended, $52\frac{1}{2}$ inches.

Suitable for any 4 x 5 camera or smaller.

Wonderfully light, compact and strong, this tripod is especially designed for the tourist or cycling Kodaker. Only $14\frac{1}{2}$ inches in length when closed, it can be readily strapped to the bicycle handle bar, whether carried in a case or not. An aluminum top plate with milled edges, holds the socket screw securely in place and seats it in place in the camera when turned—thus doing away with the nuisance of the ordinary screw, turned by means of a key handle inconveniently located under the plate between the tripod legs, and always likely to be missing when most

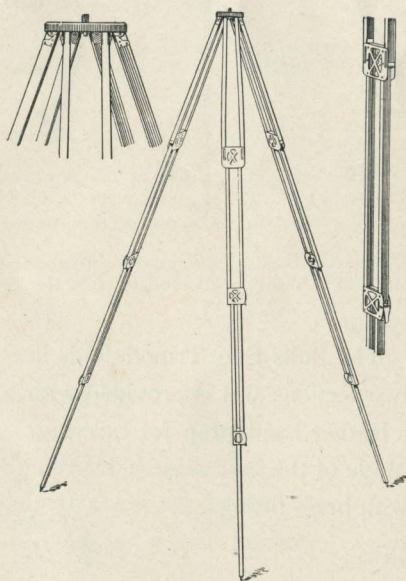


HAND CARRYING CASE.

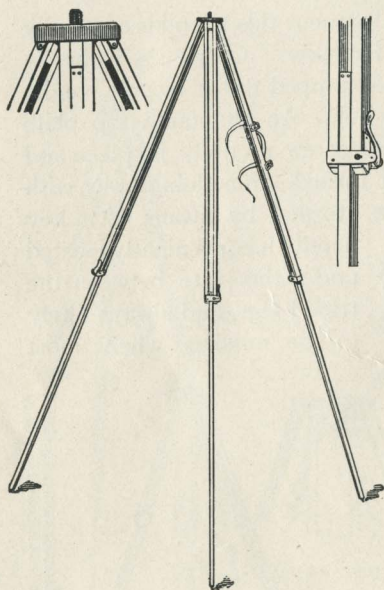
wanted. The Feather tripod folds in four sections, has brass fittings, except the top plate, which is of aluminum, and weighs, in spruce, but $17\frac{1}{2}$ ounces, in cherry or in mahogany finish, $20\frac{1}{2}$ ounces.

PRICE.

Eastman's Feather Tripod,	
Cherry, - - - -	\$ 4 00
Eastman's Feather Tripod,	
Spruce, - - - -	4 00
Eastman's Feather Tripod,	
Mahogany finish, - -	4 50
Black Sole Leather Hand	
Carrying Case, - -	1 50



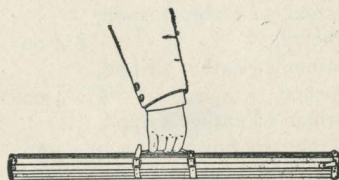
THE BULLS-EYE TRIPOD.



A compact and convenient tripod for use with any camera up to and including 4 x 5. A brass top plate with milled edges holds the socket screw securely in place and seats it in place in the camera when turned—thus doing away with the nuisance of the ordinary screw, turned by means of a key handle inconveniently located under the plate between the tripod legs, and always likely to be missing when most wanted.

The Bulls-Eye Tripod folds in two sections and is provided with a leather hand-strap for carrying. Made of the best seasoned spruce with brass fittings.

Price, - - - - \$2 00



THE EASTMAN TRIPOD.

Folds in three sections.

No. 1 Spruce, for cameras up to $6\frac{1}{2} \times 8\frac{1}{2}$, weight 1 lb., 10 oz.,	-	\$3 00
No. 1 Maple, for cameras up to $6\frac{1}{2} \times 8\frac{1}{2}$, weight 2 lbs., 2 oz.,	-	3 00

NOTE—When kind of wood is not specified, we will furnish in maple.

THE VICTOR TRIPOD.

Folds in two sections.

No. 1 Spruce, for cameras up to $6\frac{1}{2} \times 8\frac{1}{2}$, weight 1 lb., 11 oz.,	-	\$2 00
No. 1 Maple, for cameras up to $6\frac{1}{2} \times 8\frac{1}{2}$, weight 2 lbs., 3 oz.,	-	2 00

NOTE—When kind of wood is not specified, we will furnish in maple.

THE STAFF TRIPOD.

This Tripod does not fold but closes together, forming a staff or cane.

†Improved Staff Tripod, - - - - -	\$1 50
Special Adjustable Head, extra, - - - - -	1 00

†When for use with Pocket Kodak so specify.

“ADJUSTABLE” TRIPOD HEAD.

By the use of our new “Adjustable” Tripod Head, the camera can be tilted to any desired angle and fastened securely in position without moving the tripod legs.

PRICE LIST.

No. 1. For the Eastman Tripod, No. 1 and Victor No. 1,	- -	\$1 25
No. 2. For Kodak Tripod,	- - - - -	1 50

In ordering always give the name and number of Tripod for which you want adjustable head.

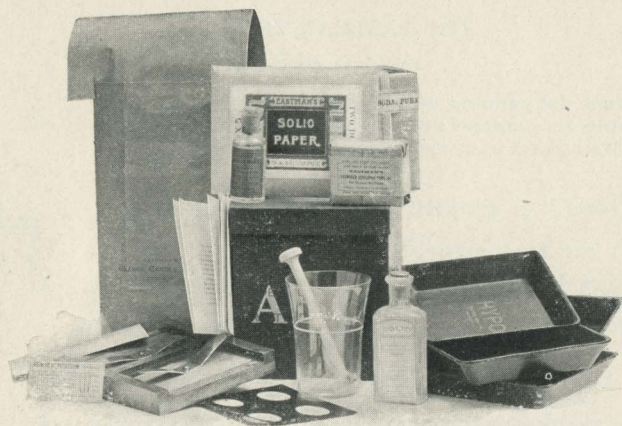
Any of the foregoing Tripods (except Feather, Staff and Bulls-Eye) may be ordered with the adjustable head and without the regular head, at the following prices:

Eastman No. 1, - - - - -	\$3 75
*Kodak No. 2, - - - - -	4 80
Victor No. 1, - - - - -	2 75

*We do not furnish the “Adjustable” head with folding lugs.

ADJUSTABLE JR. HEAD.

No. 1 “Adjustable Jr.” for cameras up to 4×5 , can be used on Bulls-Eye, Feather or Staff Tripods, - - - - -	\$1 00
No. 2 “Adjustable Jr.” for cameras up to 5×8 , fits any ordinary Tripod, - - - - -	1 50



EASTMAN'S A B C DEVELOPING AND PRINTING OUTFIT.

Includes every requisite for Developing, Printing and Finishing 24 pictures 4 x 5, or 96 Pocket Kodak pictures.

IT CONTAINS:

1 Eastman Improved Candle Lamp,	\$0 25	2 doz. 4 x 5 Solio Paper,	\$0 30
1 4 x 5 Printing Frame,	25	2 ozs. Solio Toning Solution,	15
1 " Glass for do.,	05	1 oz. Glycerine,	05
1 Glass Beaker,	12	Mask for making Pocket Kodak	
1 Stirring Rod,	05	Medallions,
1 4 1/2 x 5 1/2 Developing Trays,	40	Instruction Book,
1 1/2 doz. Developing Powders,	25		
1/2 lb. Hyposulphite Soda,	07		\$2 04
1/2 oz. Bromide Potassium,	10	Price complete, neatly packed,	\$1 50

Eastman's Bulls-Eye Developing and Printing Outfit complete for Developing and Printing 12 pictures 3 1/2 x 3 1/2. Similar to above outfit, but including 1 doz. 3 1/2 x 3 1/2 Solio Paper, instead of 2 doz. 4 x 5, and containing less chemicals.

Price complete, neatly packed, \$1.00.

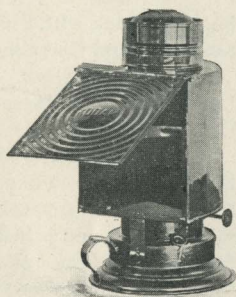
Eastman's Special 5 x 7 Developing and Printing Outfit complete for developing and printing 24 pictures 5 x 7. Similar to 4 x 5 outfit but having 5 x 7 trays, paper, etc.

Price complete, neatly packed, \$2.00.

NOTE--These outfits cannot be shipped by mail.

EASTMAN'S KODAK DARK-ROOM LAMP.

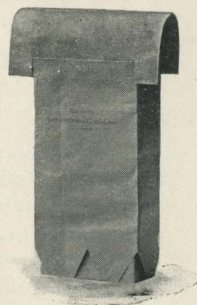
This lamp is well made and safe. It is equipped with improved burner carrying extra broad wick, and has new ventilating top ensuring a bright, steady flame. It is the safest dark-room lamp made, being fitted with both ruby and orange glass. The flame can be controlled from the outside, and it is fitted with adjustable shield to protect the eyes from the light and throw it directly on the work.



No. 1 Improved Kodak Dark-Room Lamps, 1 inch wick, each,	\$ 1 50
No. 2 do., $\frac{5}{8}$ inch wick, each, - - - - -	1 00

EASTMAN'S IMPROVED ORANGE CANDLE LAMP.

This lamp consists simply of an orange paper hood set over a candle the holder for which is the box in which the lamp is packed, yet it gives an ideal non-actinic light for the dark room. The ventilation is perfect and the *volume* of light greater than that given by many expensive lamps. No oil to spill when carried in bag or pocket. Lightest in weight of any dark room lamp made.



Price Eastman's Improved Orange Candle Lamp, - -	\$ 25
--	-------

PRICE LIST.

POCKET KODAKS.

Pocket Kodak with film cartridge for 12 exposures,	\$5 00
Leather Hand Carrying Case (to hold Pocket Kodak and three extra spools of film). Price, case only,	75
Do. do., russet leather,	1 00
Leather Bicycle Carrying Case (to hold Pocket Kodak and three extra spools of film). Price, case only,	1 00
Film Cartridge, 12 exposures, (per box 4 cartridges, \$1.00),	25
Single Glass Plate Holders,	25
*Developing and printing 12 exposures, (postage .05),	50
*Developing only, roll 12 exposures, (postage .02),	25
*Printing and Mounting only, per doz., (postage .05),	25
NOTE—When there are any failures we furnish enough duplicates from the good negatives to make up the full number.	
Staff Tripod, fitted for Pocket Kodak,	1 50

FOLDING POCKET KODAKS.

Folding Pocket Kodak, capacity 12 exposures, $2\frac{1}{4} \times 3\frac{1}{4}$, not loaded.	\$10 00
Light proof Film Cartridge, 12 exposures, $2\frac{1}{4} \times 3\frac{1}{4}$, (per box, 4 cartridges, \$1.60),	40
Carrying Case with shoulder strap,	1 25
Clamp for carrying case on Bicycle Head,	50
*Developing, printing and mounting, 12 exposures,	1 00
*Developing only, each,	04
*Printing and mounting only, each,	05

BULLET, BULLS-EYE AND FALCON KODAKS.

	No. 2. $3\frac{1}{2} \times 3\frac{1}{2}$	No. 4. 4 x 5	No. 2. SPECIAL $3\frac{1}{2} \times 3\frac{1}{2}$	No. 4. SPECIAL 4 x 5
Bullet Kodak (not loaded),	\$10 00	\$15 00	\$18 00	\$25 00
Bulls-Eye Kodak (not loaded)	8 00	12 00	15 00	20 00
Falcon Kodak (not loaded)	5 00			
Film Cartridge, 12 exposures,	60	90	60	†90
*Developing and Printing 12 exposures,	1 50	1 80	1 50	1 80
*Developing only, each,	06	08	06	08
*Printing and Mounting only, each,	08	10	08	10

*On orders for less than one dozen prints, 25 cents extra will be charged.

† $\frac{1}{4}$ inch. Cartridge Roll Holder Spool. Be sure and so specify when ordering. See page 24.

*Sole Leather Carrying Case,	\$1 25	\$2 00	\$1 25	\$2 25
*Ladies' Buff Sole Leather Carrying Case, with name plate,	2 00	—	2 00	—
*Bicycle Carrying Case to clamp on head of machine, style A,	2 00	—	2 00	—
Washers to hold case in front of brake rod	50	—	50	—
Lamp Bracket to attach to front of Carrying Case,	25	—	25	—
*Sole Leather Bicycle Carrying Case to attach under saddle, style B,	1 50	—	1 50	—
⊕Single Glass Plate Holders for Bullet (3¼ x 3½ inches, for No. 2),	60	75	—	—
Double Glass Plate Holders for Bullet Special (3¼ x 3½ inches, for No. 2), ————	—	—	1 00	1 00
†Leather Carrying Case for 6 Single Plate Holders (for Bullet),	1 00	1 50	—	—
†Leather Carrying Case for 12 Single Plate Holders (for Bullet),	1 50	2 00	—	—
Leather Carrying Case for 3 Double Plate Holders for Bullet Special	—	—	75	1 00
Do. for 6 Double Plate Holders,	—	—	1 00	1 50
Focusing Glass for No. 4 Bullet,	—	50	—	—

*In ordering state whether for Bullet, Bullet Special, Bulls-Eye, Bulls-Eye Special or Falcon.

⊕In ordering state if for use with '96 Bullet.

†The No. 4 case has also space for focusing glass.

CARTRIDGE KODAKS.

	No. 4. 5 x 4	No. 5. 5 x 7
Cartridge Kodak with rapid rectilinear lens and pneumatic shutter (not loaded),	\$25 00	\$35 00
Wide Angle Lens for Cartridge Kodak,	5 00	7 50
Film Cartridge, 12 exposures,	90	1 60
Black Sole Leather Carrying Case with shoulder strap,	2 00	2 50
Developing, printing and mounting 12 exposures,	1 80	2 40
*Developing only, each,	08	10
*Printing and mounting only, each,	10	12½
Bicycle Carrying Case for Cartridge Kodak,	2 50	3 25
Washers to hold case in front of brake rod, per set,	50	50
Adjustable lamp bracket,	25	25
Glass Plate Adapter with ground glass,	2 50	3 00
Double Glass Plate Holders, each,	1 00	1 25

*On orders for less than one dozen 25 cents extra will be charged.

Compliments of the Digitized Kodak Catalog Project: 1886 - 1941

Compliments of the Digitized Kodak Catalog Project: 1886 - 1941

Compliments of the Digitized Kodak Catalog Project: 1886 - 1941

Compliments of the Digitized Kodak Catalog Project: 1886 - 1941

Compliments of the Digitized Kodak Catalog Project: 1886 - 1941

Compliments of the Digitized Kodak Catalog Project: 1886 - 1941

Compliments of the Digitized Kodak Catalog Project: 1886 - 1941

Compliments of the Digitized Kodak Catalog Project: 1886 - 1941

Compliments of the Digitized Kodak Catalog Project: 1886 - 1941

Compliments of the Digitized Kodak Catalog Project: 1886 - 1941

Compliments of the Digitized Kodak Catalog Project: 1886 - 1941

EASTMAN'S PERMANENT BROMIDE PAPERS.

The amateur can readily make beautiful enlargements from his negatives by the use of Eastman's Royal, Standard, Platino, Enameled, or Matte-Enamel Bromide Paper and the Bulls-Eye Enlarging Camera described above, or he can improvise an enlarging apparatus from his Kodak, if it be a No. 2 Bullet or Bulls-Eye, No. 2 Special Bullet or Bulls-Eye or a Cartridge Kodak. The Cartridge Kodaks are particularly adapted to this work. To those who are interested, we will send free, our illustrated pamphlet, "Bromide Enlarging with a Kodak." Enlargements made on Eastman's Royal Bromide Paper and given the Sepia tone have the softness and breadth of rare old etchings. Any of the Eastman Bromide papers make beautiful contact prints.

PRICE LIST.

ROYAL, STANDARD, PLATINO, ENAMELED AND MATTE-ENAMEL BROMIDE PAPERS.

SIZE.	PER DOZ.	SIZE.	PER DOZ.
2¼ x 3¾ - - - -	\$ 0 15	6½ x 8½ - - - -	\$ 0 60
3 x 4 - - - - -	15	7 x 9 - - - - -	65
3¼ x 4¼ - - - -	15	8 x 10 - - - - -	80
3¾ x 5½ - - - -	25	10 x 12 - - - - -	1 20
4 x 5 - - - - -	25	11 x 14 - - - - -	1 55
4 x 6 - - - - -	25	12 x 15 - - - - -	1 80
4¼ x 6½ - - - -	30	14 x 17 - - - - -	2 35
4¾ x 6¾ - - - -	35	16 x 20 - - - - -	3 20
5 x 7 - - - - -	35	17 x 20 - - - - -	3 40
5 x 7½ - - - - -	40	18 x 22 - - - - -	4 00
5 x 8 - - - - -	40	20 x 24 - - - - -	4 80
5½ x 7¾ - - - -	45		

Larger sizes in proportion.

TWO GRADES—HARD AND SOFT.

The Bromide papers (except Royal) are made in two grades, "Hard" and "Soft." The "Hard" paper is especially adapted to use with sunlight, and should therefore be used for enlarging with the Kodak, while the "Soft" paper should be used for contact printing, as it is especially adapted to work with artificial light.

The "Standard" paper is furnished in three weights, A, thin smooth—B, heavy smooth—C, heavy rough.

The "Platino" paper is furnished in A, thin smooth, or C, heavy rough.

The "Royal" is furnished in "smooth" or "rough."

On account of its broad effects, we do not recommend the Royal paper for use in sizes smaller than 8 x 10.

In ordering (except Royal), always state whether the "hard" or "soft" emulsion is desired, and if the Standard, Platino or Royal is desired, state what grade of paper.

ENLARGEMENTS.

Every amateur has among his negatives some that are well worth enlarging and framing. Our enlarging department contains only skilled operators and we secure the very best results possible from every negative. Where the kind of paper is not specified we will make the enlargements upon the paper which, in our judgment, is best suited to the negative and the subject.

PRICE LIST.

Royal Bromide, Standard Bromide, Platino-Bromide, Enameled Bromide or Matte-Enamel Bromide Enlargements from any size negatives, mounted on cardboard :

	Each.	Per Dozen.
4¼ x 6½, each,	\$ 35	\$ 3 00
6½ x 8½, each,	50	5 00
8 x 10, each,	75	—
10 x 12, each,	1 00	—
11 x 14, each,	1 25	—
14 x 17 each,	1 50	—
Larger sizes in proportion.		
Lantern Slides, each,	50	5 00

EASTMAN'S SOLIO.

Size.	A Rapid Printing-out Paper.	Doz.	Gross.
3½ x 3½,		\$ 15	\$ 1 00
4 x 5 (For 4 x 5 pictures or four Pocket Kodaks),		15	1 00
5 x 7,		35	2 65

SECONDS.—A limited quantity of 4 x 5 (trimmed) Seconds at 50 cents per hundred.

SOLIO Combined Toning and Fixing Solution, per 8 oz. bottle, 50 cts.

EASTMAN'S DRY PLATES.

Extra Rapid for Instantaneous Work.

1½ x 2 inches, (for Pocket Kodak), per doz.,	\$ 20
3¼ x 3½ inches, (for No. 2 Bullet and Bullet Special), per doz.,	35
3½ x 3½ inches, (for No. 2 Eureka and No. 2 Eureka, Jr.) per doz.,	35
4 x 5 inches, per doz.,	65
5 x 7 inches, per doz.,	1 10

EASTMAN'S DOUBLE COATED NON-HALATION PLATES.

4 x 5 inches, per doz.,	\$ 80
5 x 7 inches, per doz.,	1 40

LANTERN SLIDE PLATES, ETC.

Plates for making Lantern Slides, per dozen,	\$ 70
Cover Glass for Lantern Slides, per dozen,	35
Masks and Gummed Strips for Lantern Slides, per pkg.,	25

"BLUE PRINT" PAPER.

Ferro-Prussiate Paper, 2 dozen sheets, $3\frac{1}{2} \times 3\frac{1}{2}$,	\$ 16
Ferro-Prussiate Paper, 2 dozen sheets, 4×5 ,	20
Ferro-Prussiate Paper, 2 dozen sheets, 5×7 ,	35

CHEMICALS.

Eastman's Hydrochinon Developer Powders, per dozen, sufficient for 48 ounces Developer,	\$ 50
Eastman's Pyro Developer Powders, per dozen,	50
Hypsulphite of Soda, pulverized, per pound,	10
Bromide Potassium, per ounce,	15
Citric Acid, 4 ounce bottle,	30
Oxalate Potash, per pound,	40
Protosulphate Iron, per pound,	10
Powdered Alum, per pound,	10
Solio Toning Solution, per 8 ounce bottle,	50
Solio Toning Solution can be shipped by mail in 4 ounce bottles as follows: 4 ounces Toning Solution, (20c. extra postpaid),	25
Solio Hardener, per 8 oz. bottle,	35

TRAYS.

Paper Developing Trays, 4×5 , each,	\$ 10
Paper Developing Trays, 5×7 , each,	15
Hard Rubber Trays, 4×5 , each,	27
Hard Rubber Trays, 5×7 , each,	56

PRINTING FRAMES.

$3\frac{1}{2} \times 3\frac{1}{2}$ Special, opens one-half,	\$ 25
4×5 Special, opens one-half,	25
5×7 Special, opens two-thirds,	35

SPECIAL FERROTYPE PLATES.

10×14 , Ferrotypes Plates, Light, each,	\$ 15
10×14 , Ferrotypes Plates, Heavy, each,	20
18×24 , Ferrotypes Plates, Heavy, each,	75

SPECIALTIES.

Actino Flash Lamp,	\$1 25
Actino Flash Powder, per ounce bottle,	60
Eastman's Photo Paste, per 3 ounce tube,	15
Eastman's Photo Paste, per 5 ounce tube,	25
Eastman's Wire Easels for Pocket Kodak pictures, per box of 15,	25
Eastman's Pocket Case for Pocket Kodak pictures (holds 50 unmounted prints),	25
Do., do., (holds 100 unmounted prints),	50
Velvet Rubber Squeegees, 6 inches, each,	40
Velvet Rubber Squeegees, 8 inches, each,	50
Eastman's Negative Pins, per box of 25,	50

KODAK MOUNTS.

		Pocket Kodak, $1\frac{1}{2} \times 2$	Folding Pocket Kodak, $2\frac{1}{4} \times 3\frac{1}{4}$	No. 2 Bullet, Bulls-Eye and Falcon, $3\frac{1}{2} \times 3\frac{1}{2}$	No. 4 Bullet, Bulls-Eye and Kodak, 4×5	No. 5 Kodak, 5×7	STYLE
White center, Queen's gray border, enameled face plain back,	Per Doz. " 100 " 1000	\$.10 .70 6.75	\$.15 1.05 10.30	\$.20 1.45 14.20	\$.25 1.70 17.00		A.
White or Queen's gray embossed border, straight edges,	Per Doz. " 100 " 1000	.10 .45 4.25	.10 .75 7.45	.15 .95 9.25	.20 1.30 12.75		B. W. (white) B. G. (gray)
White, plain straight edge, round corners,	Per Doz. " 100 " 1000				.10 .45 4.25		C.
Primrose, plain beveled edge, round corners,	Per Doz. " 100 " 1000				.10 .65 6.20		D.
Primrose, gilt beveled edge, round corners,	Per Doz. " 100 " 1000				.10 .75 7.45	\$.20 1.45 14.20	E.
Maroon, gold beveled edge, round corners,	Per Doz. " 100 " 1000				.20 1.50 14.75	.40 3.20 32.00	F.

WHEN ORDERING.

State quantity, style (indicating by letter) and size prints to be used with. Bear in mind that style B is made in either white or Queen's gray. Order "style B. W." for white or "style B. G." for gray. When color is not specified we will furnish white.

KODAK ALBUMS.

For pasting in prints. The leaves in these albums are detachable. The covers are intended to hold 13 leaves and prices of complete Albums include that number, but 15 leaves can be used in an Album when desired.

ALBUMS.	NO. 4. FOR 104 PICTURES 4 x 5	NO. 5. FOR 52 PICTURES 5 x 7	POCKET KODAK FOR 104 PICTURES.	BULLS-EYE FOR 104 PICTURES 3½ x 3½
Style A, Cloth bound,	\$ 2 00	\$ 2 25	\$ 75	\$ 1 60
Style B, Half Morocco, gilt edges,	2 50	2 75	1 00	2 00
Style C, Full Morocco, gilt edges,	3 50	3 75	1 50	2 75
PRINTING AND MOUNTING.				
Pictures including	(104)	(52)	(104)	(104)
Album, Style A*,	10 00	6 75	2 75	8 00
" " B*,	10 50	7 25	3 00	8 50
" " C*,	11 50	8 25	3 50	9 50
BINDINGS ONLY.				
Style A, without leaves,	1 00	—	40	80
Style B, " "	1 30	—	60	1 10
Style C, " "	2 30	—	1 10	1 80
LEAVES ONLY.				
Style A, each,	08	—	03½	07
Style B or C, each,	09	—	04	07½
PRINTS, GUMMED BACK.				
Unmounted, each,	10	12½	02	08

*These prices hold good only for *duplicate* prints, i. e., when the negatives have been printed from before. When the first prints are ordered mounted in an Album, the price of the Album will be added to the unmounted price of the pictures.

EASTMAN'S "SQUEEGEE" ALBUMS.

These Albums are for unmounted prints, and are provided with openings in which the prints can be inserted.

	POCKET KODAK FOR 200 PICTURES.	FOLDING POCKET KODAK FOR 100 PICTURES.	BULLS-EYE FOR 50 PICTURES 3½ x 3½	NO. 4. FOR 50 PICTURES 4 x 5
Style A, Cloth bound,	\$1 25	\$1 25	\$1 25	\$1 25
Style B, Half Morocco,	1 50	1 50	1 50	1 50
Style C, Full Morocco, gold edges, heavily padded,	4 00	4 00	4 00	4 00

EASTMAN'S FILM NEGATIVE ALBUMS.

Eastman's Negative Album for 100 3½ x 3½ Film negatives,	\$0 75
Eastman's Negative Album for 100 4 x 5 Film negatives,	1 00
Eastman's Negative Album for 100 5 x 7 Film negatives,	1 50

DEVELOPING AND PRINTING.

The Eastman Company was the first to render commercially possible the separation of the developing and printing from the picture taking. The division of labor inaugurated by it has brought picture taking within the reach of thousands of persons throughout the world who could not otherwise practice the art.

Carrying the division of labor still further, in our own factory we employ trained operators in every branch of the work. Men who do nothing but develop, girls who do nothing but print, men who do nothing but tone, girls who do nothing but mount, girls who do nothing but "spot" prints, men who do nothing but burnish, etc., etc. As a consequence each becomes skilled in his or her particular branch, and the result, under good superintendence, is good work—better work in particular and in average than can be done except under these favorable conditions.

SPECIMENS.

A specimen photograph made with any of our cartridge cameras (not larger than 4 x 5) will be sent to any address in the United States upon receipt of 4 cents in postage stamps. Specimens made with the No. 5 Cartridge Kodak, 8 cents.

TOURISTS.

European travelers can always obtain fresh supplies of Film on short notice, by post, from the Eastman Photographic Materials Co., Ltd., 43 Clerkenwell Road, 115 Oxford Street, or 60 Cheapside, London; the Eastman Kodak, Place Vendôme 4, Avenue de l'opéra 5, Paris, or from the Eastman Kodak Gesellschaft, m. b. H., Markgrafen Strasse 91, Berlin. In ordering, always remit by postal orders, or send currency in registered letter.

TERMS.

The prices in this catalogue are strictly net, except to regular dealers who carry our goods in stock.

All prices are f. o. b. at Rochester. We make no charge for packing.

For the convenience of our customers we recommend that they make their purchases from a dealer in photographic goods as by so doing they can save both time and expressage, but where orders are sent direct, remittances must be by New York draft, express order, postal order, or currency (if currency, letter must be registered.) Amounts less than one dollar may be remitted in postage stamps. We do not accept personal checks.

EASTMAN KODAK COMPANY,
Rochester, N. Y.

ROCHESTER.

George Eastman,	- - - - -	1880
The Eastman Dry Plate Co.,	- - - - -	1881-1884
The Eastman Dry Plate and Film Co.,	- - - - -	1884-1889
Capital, \$300,000.		
The Eastman Company,	- - - - -	1890-1892
Capital, \$1,000,000.		
Eastman Kodak Company,	- - - - -	1892
Capital, \$5,000,000.		

LONDON.

The Eastman Dry Plate and Film Co.,	- - - - -	1885-1889
The Eastman Photographic Materials Co., Ltd.,	- - - - -	1889
Capital, £200,000.		

PARIS.

The Eastman Photographic Materials Co., Ltd.,	- - - - -	1891
Eastman Kodak Société Anonyme Française,	- - - - -	1897
Capital, 1,000,000 Francs.		

BERLIN.

Eastman Kodak Gesellschaft, m. b. H.	- - - - -	1896
Capital, 100,000 Marks.		

**“There is no Kodak
but the Eastman Kodak.”**

