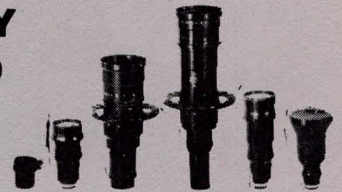


## THE MAGNIFICENT APOCHROMATS CUSTOM GROUND, COLOR-MATCHED, INDIVIDUALLY BENCH TESTED, UNCONDITIONALLY GUARANTEED

THE MOST COMPLETE SET OF MORE THAN 30 PROFESSIONAL LENSES FROM 1.9 TO 1000MM, HAND SELECTED FOR CRITICAL SHARPNESS, ACUTE CONTRAST, COMPLETE SCALE OF AUTHENTIC TONAL VALUES, ULTRA LUMINOSITY AND PRECISE COLOR FIDELITY



1. KINOPTIK exclusive lens formulas and limited precision production guarantee you the very finest optical quality.
2. Each lens is custom-ground for you by skilled master craftsmen, trained in the art of lens making for half a lifetime.
3. Highest resolving power provides finest details up to the very corners, even at full aperture, for critical sharpness without distortion.
4. Acute contrast and subtle greytones offer complete scale of authentic tonal values.
5. Finest optical Lanthanum glass with high refractive power, large apertures and all-surface coatings, render striking overall luminosity.
6. KINOPTIK APOCHROMATS reproduce all 3 primary colors into film plane, for precise color fidelity.
7. Equidistant T-stops and similar optical constructions guarantee perfectly color-matched lens sets, without color variations.
8. Choice of more than 30 professional lenses from 1.9mm ultra wide angle up to 1000mm super-telephoto, for 16mm, 35mm, larger size cameras, instruments, etc.
9. KINOPTIK lenses are used on Alpa, Arriflex, Bell & Howell, Eclair, Fairchild, Geotel, Hazeltine, Hycam, Maurer, Motorola, NASA, Orthicon, Pathe, Photosonic, Plumbicon, RCA, Robot, Teledyne, Traid, Vidicon, etc.

10. Set of 4 MACRO-APOCHROMATS 50mm f/2, 75mm f/2, 100mm f/2 and 150mm f/2.5, focusing from infinity all the way down to close-ups of 1:1 magnification, without any accessories.
11. Choice of highspeed lenses, suitable for optical amplification (image intensifiers): 100mm f/1.3, 65mm f/0.75, 50mm f/1.3, 35mm f/1.3.
12. Stigmat lenses for 16mm or 35mm micro-film from 20mm to 75mm.
13. Special lenses for Kinescope, video recorders, aerial cameras, cathode ray tubes, etc.
14. KINOPTIK Collimator is supplied with 125mm, 275mm and 485mm lenses for different focal lengths.
15. Lenses can be especially mounted for the extreme temperatures, vibrations, pressures and radiation effects of outer space.
16. KINOPTIK lenses have been successfully used in numerous space projects such as Tiros, Nimbus, Gemini, Apollo, Skylab, etc.
17. Virtually indestructible lens mounts withstand rugged use, for utmost durability.
18. Built to the most rigid European precision standards, every lens passes the most severe, 100% quality controls.
19. Each lens is individually bench tested on KINOPTIK Collimator and hand selected for you.
20. KINOPTIK lenses carry an unconditional warranty for their optical excellence.

EXCLUSIVE

KINOPTIK

FEATURE LIST

IDEAL FOR: 16mm, 35mm, LARGER SIZE MOVIE, TV, VIDEO, PHOTO, HIGHSPEED, AERIAL, UNDERWATER, SPACE CAMERAS AND PROJECTORS AS WELL AS INSTRUMENTATION.

### C-MOUNT

#### 16mm AND VIDICON TV (w/HOOD)

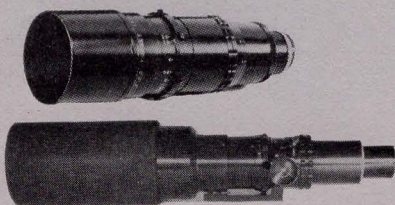
##### WIDE-ANGLE LENSES



##### STANDARD LENSES



##### TELE-PHOTO AND CLOSE-UP LENSES



##### EXTREME TELE-PHOTO LENSES

	PRICE	CATALOG NUMBER
1. 1.9mm f/1.9 SUPER-TEGEA (8.7mm diam. image, no hood, optical backfocus 9.2mm)*	1399.00	101260/00K
2. 5.7mm f/1.8 TEGEA (filterslot, hood extra)	899.00	102720/00K
3. 9mm f/1.5 APOCHROMAT (hood extra)	599.00	104480/00K
12.5mm f/2.5 APOCHROMAT	399.00	106320/00K
12.5mm f/1.5 APOCHROMAT (hood extra)	599.00	108480/00K
18mm f/1.8 APOCHROMAT	469.00	101376/00K
25mm f/2 APOCHROMAT	299.00	110240/00K
25mm f/1.8 APOCHROMAT (for Kinescope)*	399.00	112340/00K
32mm f/1.9 APOCHROMAT	339.00	114272/00K
4. 35mm f/1.3 APOCHROMAT *	599.00	116480/00K
40mm f/2 APOCHROMAT	399.00	118320/00K
5. 50mm f/2 APOCHROMAT	339.00	120272/00K
50mm f/2 MACRO-APOCHROMAT (Close-up focus to 1:1)	599.00	122480/00K
50mm f/1.3 APOCHROMAT *	699.00	124560/00K
65mm f/0.75 APOCHROMAT (Vidicon, barrel, no hood, optical backfocus 2.4mm)*	999.00	126900/00K
75mm f/2 APOCHROMAT	369.00	128296/00K
75mm f/2 MACRO-APOCHROMAT (Close-up focus to 1:1)	699.00	130560/00K
100mm f/2 APOCHROMAT	599.00	132480/00K
100mm f/2 MACRO-APOCHROMAT (Close-up focus to 1:1)	799.00	134640/00K
150mm f/2.5 APOCHROMAT	699.00	136560/00K
150mm f/2.5 MACRO-APOCHROMAT (Close-up focus to 1:1)	899.00	138720/00K
210mm f/2.8 SPECIAL-CINE { large	849.00	140680/00K
300mm f/3.5 SPECIAL-CINE { focusing wheel	849.00	142680/00K
500mm f/5.6 SPECIAL-CINE { extra	899.00	144720/00K
1000mm f/8 KINOPTAR (500mm long * 10 elements, focuses from int. -11' / 1:4)	4995.00	1464500/00K

\*special order only, minimum quantities

KINOPTIK SYMBOL OF OPTICAL EXCELLENCE

## ARRIFLEX 16mm and 35mm



### WIDE-ANGLE LENSES

- 5.7mm f/1.8 TEGEA (16mm only) { filterslot, ..... 899.00
- 9.8mm f/1.8 TEGEA ..... 1199.00
- 1. 9mm f/1.5 APOCHROMAT (16mm only, hood extra) .. 599.00
- 12.5mm f/1.5 APOCHROMAT (16mm only, hood extra) 599.00
- 2 18mm f/1.8 APOCHROMAT ..... 599.00

### (w/HOOD)

### STANDARD LENSES

- 3. 25mm f/2 APOCHROMAT (16mm only) ..... 399.00
- 28mm f/2 APOCHROMAT ..... 399.00
- 32mm f/2.8 APOCHROMAT \* ..... 399.00
- 35mm f/2 APOCHROMAT ..... 399.00
- 35mm f/1.3 APOCHROMAT (16mm only) \* ..... 599.00
- 40mm f/2 APOCHROMAT ..... 439.00

### TELE-PHOTO AND CLOSE-UP LENSES

- 50mm f/2 APOCHROMAT ..... 439.00
- 4 50mm f/2 MACRO-APOCHROMAT (Close-up focus to 1:1) ..... 599.00
- 50mm f/1.3 APOCHROMAT \* ..... 699.00
- 75mm f/2 APOCHROMAT ..... 499.00
- 5. 75mm f/2 MACRO-APOCHROMAT (Close-up focus to 1:1) ..... 699.00
- 100mm f/2 APOCHROMAT ..... 599.00
- 6. 100mm f/2 MACRO-APOCHROMAT (Close-up focus to 1:1) ..... 799.00
- 150mm f/2.5 APOCHROMAT ..... 699.00
- 7. 150mm f/2.5 MACRO-APOCHROMAT (Close-up focus to 1:1) ..... 899.00

### EXTREME TELE-PHOTO LENSES

- 8. 210mm f/2.8 SPECIAL-CINE { large ..... 849.00
- 300mm f/3.5 SPECIAL-CINE { focusing wheel ..... 849.00
- 500mm f/5.6 SPECIAL-CINE { extra ..... 899.00
- 1000mm f/8 KINOPTAR (500mm long, ..... 4995.00
- 10 elements, focuses from inf. -11'/1:4)

## ALPA BARREL

see ALPA page A 3

### 16mm, 35mm, VIDICON, PLUMBICON, ORTHICON (NO FOCUSING, HOOD, CAP)

### WIDE-ANGLE LENSES

- 1.9mm f/1.9 SUPER-TEGEA (8.7mm diam. image, optical backfocus 9.2mm) \* ..... 1399.00
- 5.7mm f/1.8 TEGEA (16mm only) ..... 899.00
- 9mm f/1.5 APOCHROMAT (16mm only) ..... 499.00
- 9.8mm f/1.8 TEGEA ..... 899.00
- 12.5mm f/1.5 APOCHROMAT (16mm only) ..... 499.00
- 18mm f/1.8 APOCHROMAT ..... 449.00

### STANDARD LENSES

- 25mm f/2 APOCHROMAT ..... 239.00
- 1. 28mm f/2 APOCHROMAT ..... 239.00
- 32mm f/1.9 APOCHROMAT (16mm only) ..... 239.00
- 32mm f/2.8 APOCHROMAT ..... 239.00
- 35mm f/2 APOCHROMAT ..... 239.00
- 35mm f/1.3 APOCHROMAT (16mm only, no diaphragm) ..... 399.00
- 2. 40mm f/2 APOCHROMAT ..... 259.00

### TELE-PHOTO LENSES

- 3. 50mm f/2 APOCHROMAT ..... 259.00
- 50mm f/1.8 APOCHROMAT ..... available soon
- 50mm f/1.3 APOCHROMAT (no diaphragm) ..... 599.00
- 65mm f/0.75 APOCHROMAT (16mm only, optical backfocus 2.4mm) ..... 999.00
- 75mm f/2 APOCHROMAT ..... 299.00

### EXTREME TELE-PHOTO LENSES

(ALSO FOR 24x36mm AND ORTHICON TV CAMERAS)

- 100mm f/2 APOCHROMAT ..... 439.00
- 100mm f/1.3 APOCHROMAT w/elbow ..... 1099.00
- 4. 150mm f/2.5 APOCHROMAT ..... 499.00
- 210mm f/2.8 SPECIAL-CINE ..... 599.00
- 300mm f/3.5 SPECIAL-CINE ..... 599.00
- 500mm f/5.6 SPECIAL-CINE ..... 599.00
- 1000mm f/8 KINOPTAR, hood ..... 4995.00

\*special order only, minimum quantities

## SPECIAL LENSES



### VIDICON TV CAMERAS

<b>16mm</b>	← 65mm f/0.75 (optical backfocus 2.4mm) .....	<b>999.00</b>	CATALOG NUMBER 250900/00K
-------------	---	---------------	------------------------------

### KINESCOPE, VIDEO RECORDERS

<b>16mm</b>	25 mm f/1.8 * .....	<b>399.00</b>	260340/00K
	35mm f/1.3 * .....	<b>599.00</b>	262480/00K
	50mm f/1.3 * .....	<b>699.00</b>	264560/00K

### AERIAL AND VIEW CAMERAS

<b>2 1/4" x 2 1/4"</b> <b>(57x57mm OR 70mm)</b>	75mm f/1.8 .....	<b>1099.00</b>	270990/00K
	150mm f/2.8 * .....	<b>price on request</b>	

<b>4x5"</b> <b>(114x114mm)</b>	75mm f/1.8 * .....	<b>price on request</b>	
	150mm f/2.8 .....	<b>1199.00</b>	2801080/00K
	300mm f/4 * .....	<b>price on request</b>	
	600mm f/4 * .....	<b>price on request</b>	
	900mm f/4 * .....	<b>price on request</b>	

<b>8x10"</b> <b>(240x240mm)</b>	300mm f/4.5 * .....	<b>price on request</b>	
------------------------------------	---------------------	-------------------------	--

### STIGMAR LENSES FOR MICRO-FILM

<b>16mm</b>	20mm f/4, max. field 32° * .....	<b>239.00</b>	290192/00K
	25mm f/4, max. field 32° * .....	<b>239.00</b>	292192/00K
<b>18x24mm</b>	40mm f/4, max. field 32° * .....	<b>239.00</b>	294192/00K
	50mm f/8, max. field 32° * .....	<b>239.00</b>	296192/00K
<b>24x36mm</b>	65mm f/10, max. field 40° .....	<b>199.00</b>	298160/00K
	68mm f/10, max. field 40° .....	<b>199.00</b>	291160/00K
	75mm f/10, max. field 32° .....	<b>199.00</b>	213160/00K

### SCANNER LENS FOR CATHODE RAY TUBES (FLYING SPOT)

← 55mm f/2.7 (approx. reduction 1:3), for color (C) wavelength 4500-6500 A * .....	<b>699.00</b>	300630/00K
Same, for black-and-white (N) wavelength 4050 A * .....	<b>699.00</b>	302630/00K

### HIGHSPEED LENSES FOR OPTICAL AMPLIFIERS (IMAGE INTENSIFIERS)

← 100mm f/1.3, with elbow .....	<b>1099.00</b>	310990/00K
combines as follows:		
w/35mm f/1.3 (Barrel mount) or .....	add <b>399.00</b>	312320/00K
w/65mm f/0.75 (Barrel mount) .....	add <b>999.00</b>	314900/00K
w/50mm f/1.3 (Barrel mount) or .....	add <b>599.00</b>	316480/00K
w/75mm f/2 (Barrel mount) .....	add <b>299.00</b>	318240/00K
w/100mm f/2 (Barrel mount) .....	add <b>439.00</b>	311352/00K

\*special order only, minimum quantities required

## VOLPI OPTICS

### PERI-APOLLAR 360° CIRCULAR IMAGE LENSES \*\*

16mm, Vidicon: C-mount, Arriflex, Barrel mount, etc. ** .....	<b>3595.00</b>	5003240/00K
18x24mm: Arriflex, Barrel mount, etc. ** .....	<b>3999.00</b>	5023600/00K
24x36mm, Orthicon, etc.: ALPA mount, Barrel mount, etc. ** .....	<b>3999.00</b>	5043600/00K
2 1/4 x 2 1/4", 70mm, w/o shutter: Barrel mount, etc. ** .....	<b>4595.00</b>	5064140/00K
2 1/4 x 2 1/4", with shutter: Hasselblad mount, etc. ** .....	<b>4999.00</b>	5084500/00K
Attachable Periscope 90° Angle-Viewfinder with adjustable 10x ocular, for 16mm lens in C-mount ** .....	<b>299.50</b>	501270/00K

\*\*Special order only

## COLLIMATOR

w/3 interchangeable 125, 275 and 485mm lenses \*...  
 Special chamber for C-mount lenses only \*.....  
 Spare bulb 100 Watt .....

PRICE	CATALOG NUMBER
<b>5995.00</b>	4005400/00K
<b>499.00</b>	402450/00K
<b>19.95</b>	404016/00K

## ACCESSORIES

Viewfinder for 5.7mm \*.....  
 Viewfinder for 9.8mm and 18mm (for ALPA etc.)\*.....  
 Large Focusing Wheel for 210, 300 and 500mm .....  
 Adjustable cradle for 100-300mm .....  
 Same, for 500 and 1000mm .....  
 Simple tripod support for 210-500mm .....  
 Interchangeable mount for 50mm f/2, 75mm f/2, 100mm f/2, 150 mm f/2.5 with close-up focus to 1:1 .....  
 Interchangeable mount for 210-500: C, Arriflex, ALPA Same, for LEICA, ROBOT, NIKON, CANON, ETC. (please specify)\*.....  
 Same, for 1000mm ..... add

<b>199.50</b>	410180/00K
<b>199.50</b>	412180/00K
<b>99.95</b>	414085/00K
<b>299.50</b>	416240/00K
<b>299.50</b>	418240/00K
<b>89.95</b>	411076/50K
<b>49.95</b>	420042/50K
<b>49.95</b>	422042/50K
<b>69.95</b>	424059/50K
<b>20.00</b>	430017/00K

32mm diam. for 1.9, 12.5 f/2.5, 18 -50mm in C-mount ..... each  
 37mm diam. for 9, 12.5 f/1.5mm ..... e.  
 45mm diam. for 50 75mm (1:1), 75mm in C-mount, 25-75mm for Arriflex ..... each  
 50mm diam. for 18mm for Arriflex ..... each  
 70mm diam. for 100, 150mm (1:1). 100, 150mm each  
 92mm diam. for 210-500mm ..... each

<b>29.95</b>	433025/50K
<b>35.95</b>	432031/10K
<b>39.95</b>	434034/00K
<b>35.95</b>	436031/10K
<b>89.95</b>	438081/00K
<b>139.95</b>	431126/00K

**FILTERS**  
 16 or 35mm lenses (give tint below)

**TINTS:**

haze, 85 (type A film outdoors), 85 3N, 85 6N, 85 9N, other tints\*

2 1/4" x 2 1/4" and 4x5" lenses

For 75 mm f/1.8 yellow or red \*.....  
 For 150mm f/2.8, yellow or red .....

prices on request

**FILTERSLOT, LENSHOODS**

Filterslot (2" square filters) for 5.7mm or 9.8mm (must be ordered with lens) .....  
 Adapter to filterslot for 45mm diam. filters .....  
 1. Lenshood for 5.7 or 9.8mm .....  
 Lenshood for 9mm in C-mount or Arriflex .....  
 2. Lenshood for 18mm, 12.5 f/1.5 for Arriflex .....  
 Lenshood for 210-500mm (spare part) .....

<b>59.95</b>	440051/00K
<b>25.00</b>	442021/25K
<b>59.95</b>	444051/00K
<b>24.95</b>	446021/25K
<b>24.95</b>	448021/25K
<b>59.95</b>	441051/00K

**METAL TRIMMED CARRYING CASES**

For eight-ten lenses: 5.7-100mm in C-mount .....  
 For eight-ten lenses: 5.7-100mm for Arriflex .....  
 For 1.9mm .....  
 For 5.7 or 9.8mm incl. filterslot, lenshood .....  
 For 100mm or 150mm .....  
 For 210mm .....  
 For same w/ large focusing wheel \*\* .....  
 For 300mm .....  
 For same w/ large focusing wheel \* .....  
 For 500mm .....  
 For same w/ large focusing wheel \*\* .....  
 For 1000mm .....

<b>119.95</b>	450102/00K
<b>119.95</b>	452102/00K
<b>49.95</b>	454042/50K
<b>69.95</b>	456059/50K
<b>49.95</b>	458042/50K
<b>79.95</b>	451068/00K
<b>89.95</b>	453076/50K
<b>89.95</b>	455076/50K
<b>99.95</b>	457085/00K
<b>99.95</b>	459085/00K
<b>109.95</b>	460093/50K
<b>119.95</b>	462102/00K

**LENSCAPS (Spare Parts)**

For 1.9mm .....  
 For 5.7 or 9.8mm .....  
 For 9-50mm C-mount ..... (please specify lens)  
 For 9-75mm Arriflex, 75mm C-mount (please specify lens)  
 For 100 or 150mm ..... (please specify lens)  
 For 210-1000mm ..... (please specify lens)  
 Rear lenscap ..... (please specify lens mount)

<b>29.95</b>	470025/50K
<b>19.95</b>	472017/00K
<b>9.95</b>	474008/50K
<b>14.95</b>	480012/75K
<b>19.95</b>	481017/00K
<b>29.95</b>	482025/50K
<b>9.95</b>	484008/50K

**BOOKLETS**

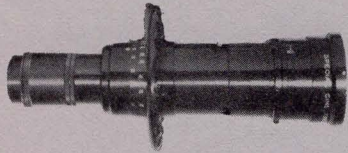
KINOPTIK 2-COLOR STUFFER.....  
 KINOPTIK BLUE PRINTS.....  
 KINOPTIK COLLIMATOR .....

\*Special order only  
 \*\*Special order only, minimum quantities

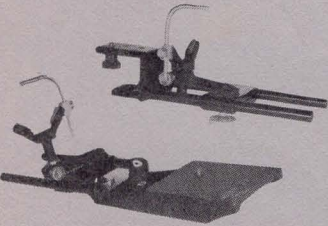


KINOPTIK COLLIMATOR

VIEWFINDERS, SUPPORTS, WHEEL, MOUNTS



FILTERS 16 or 35mm lenses (give tint below)



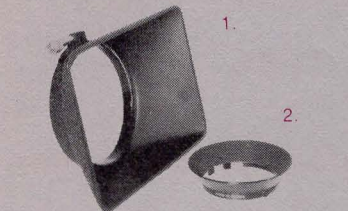
TINTS:

2 1/4" x 2 1/4" and 4x5" lenses

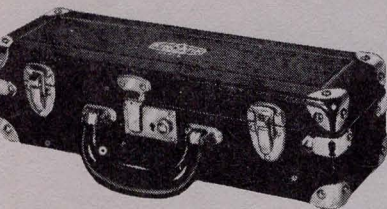


FILTERSLOT, LENSHOODS

METAL TRIMMED CARRYING CASES



LENSCAPS (Spare Parts)



BOOKLETS